



**DEPARTMENT OF NATURAL RESOURCES  
STATE OF MICHIGAN  
TIMBER SALE PROSPECTUS #7070**

SCHEDULED SALE DATE AND TIME: 10:00 a.m. (local time) on June 23, 2022.

LOCATION: GLADWIN MGMT UNIT, 801 NORTH SILVERLEAF, GLADWIN, MI 48624.

PROSPECTUS NOTE: The bidder is advised to inspect the sale area and review the location, estimated volumes, operating costs and contract terms of proposed sales. Please be aware that some landowners may request 60 days or more notice for access across their land.

Notice is hereby given that bids will be received by the Unit Manager, GLADWIN MANAGEMENT UNIT, for certain timber on the following described lands:

Shearer Aspen (73-001-21) / T16N, R02E, SEC. 17, NW,W1/2NE,W1/2SE.

T16N, R02E, SEC. 18, S1/2NW,S1/2NE,SW,N1/2SE,SWSE.

T16N, R02E, SEC. 19, SENW.

T16N, R02E, SEC. 8 , NWNW,S1/2NW,S1/2SW.

Midland County, Advertised Price \$164,255.05, 180.9 Acres, Aspen, Hardwood.

SALE NOTE: All units of volume listed for this sale were estimated using the Inventory Manager computer program and the new Michigan taper model.

The sale is around the Kawkawlin Flooding and associated creeks and rivers.

See sale spec 5.2.40 for information on recreational trails in the sale.

See sale spec 5.2.22.1 for information on operation limitations.

See sale spec 4.2.2 for information on need fill material.

See sale spec 4.1.5 for information on needed culverts.

The Kawkawlin Flooding has areas with active beavers that may impact access and the amount of road work needed. Beavers may also impact the aspen volume of the sale.

A recreation site such as a trail, pathway, or campground is within the sale area or the vicinity. Certain restrictions/specifications may be applicable including time restrictions. Access may be through private or other public land.

Deer Kawkawlin (73-002-21) / T16N, R01E, SEC. 1 , SENE.

T16N, R01E, SEC. 12, S1/2SE.

T16N, R01E, SEC. 13, N1/2NE,N1/2SW.

T16N, R02E, SEC. 4 , N1/2NW.

T16N, R02E, SEC. 5 , NENE,S1/2NE,N1/2SE.

T16N, R02E, SEC. 6 , SWNW,NWSW.

T16N, R02E, SEC. 7 , SW.

Midland County, Advertised Price \$132,005.65, 208.5 Acres, Aspen, Hardwood.

SALE NOTE: All units of volume listed for this sale were estimated using the Inventory Manager computer program and the new Michigan taper model.

See sale spec 4.2.2 for information need fill material.

See sale spec 4.1.5 for information on needed culverts.

See sale spec 5.2.22.1 for information on operation times.

Fur Farm Harvest (73-005-21) / T19N, R05W, SEC. 5 , W1/2NW.

T20N, R05W, SEC. 27, NW,W1/2NE,SW,W1/2SE.

T20N, R05W, SEC. 32, SWNW,W1/2SW.

T20N, R05W, SEC. 35, NENE.

Clare County, Advertised Price \$129,736.20, 169.6 Acres, Aspen, Hardwood.

SALE NOTE: All units of volume listed for this sale were estimated using the Inventory Manager computer program and the new Michigan taper model.

Edge-Tastic Aspen (73-006-21) / T15N, R01E, SEC. 12, SESW.

T15N, R01E, SEC. 13, N1/2NW,NE,N1/2SE,SESE.

T15N, R02E, SEC. 18, SWSW.

Midland County, Advertised Price \$65,451.70, 95.2 Acres, Aspen, Hardwood.

SALE NOTE: All units of volume listed for this sale were estimated using the Inventory Manager computer program and the new Michigan taper model.

Access to Payment Unit 2 is across private property only. Contact Roberts Putnis for private property access. Cell 989-430-8901. Email roberts.putnis@dow.com or rputnis@ameritech.net.

Access to Payment Unit 3 is either across state or private property. Easiest access is across private property to the north. Contact Lawrence Salva for private property access, 3565 Dublin Rd, Midland, MI 48642.

See sale spec 4.1.5 for information on required culverts.

See sale spec 5.2.17 for information on required crane mats.

Access may be through private land.

## BID INSTRUCTIONS (VER. 07/02/2018):

### 1. Scheduled Bid Location, Date, and Time (2/11)

Bids must be received by the Unit Manager, GLADWIN OFFICE, 801 NORTH SILVERLEAF, GLADWIN, MI 48624, no later than 10:00 a.m. (local time) on June 23, 2022. For further information concerning this sale, contact Patrick Mohney at 989-426-9205 extension 7640.

### 2. Bidder's Qualifications (5/16)

Purchaser shall obtain workers compensation insurance to cover claims under Michigan's Worker's Disability Compensation Act of 1969 or similar employee benefit act of any other state applicable to an employee. If all or part of a timber sale was prepared by a private contractor, the contractor and that contractor's company are not permitted to bid on the timber sale contract. Bids will not be accepted from individuals or companies appearing on the DNR/FRD No-Bid List. This list contains the names of purchasers who previously failed to execute a contract within 21-days or who have a history of poor performance.

### 3. Preparation of Sealed Bids (5/16)

Bid Forms may be completed online thru Michigan DNR Timber Sale Online Bidding (OLB) at [www.michigan.gov/timberbidding](http://www.michigan.gov/timberbidding) or by completing the hardcopy Bid Form found in the Timber Sale Prospectus. Hardcopy Bid Forms shall be manually signed in ink. Registration in OLB is considered your 'signature' for all bids submitted thru that system. Bid prices must be entered for each species and product in the Bid Price column for all material subject to bidding and all fill-in blanks must be completed. If erasures or other changes appear on the hardcopy Bid Form, each erasure or change must be initialed by the person signing the bid.

### 4. Submission of Sealed Bids (5/16)

Bid forms may be obtained from the Unit Manager or thru OLB. Bids may be submitted hardcopy or thru OLB. All hardcopy bids must be submitted on the bid form and in an envelope clearly identified as described in this section. NOTE: Only one bid form per bid envelope. Sealed bids must be submitted to the Unit office designated in the prospectus and must be submitted at or prior to the time established in the prospectus. The envelope should show on the outside (a) the sale name or number and (b) the date and time of bid opening, as shown in the prospectus. Bids received after the time specified in the sale prospectus are late bids and will be rejected.

It is possible for a bidder to submit multiple bids on a single sale. For example, a bid may be submitted hardcopy and a bid may be submitted thru OLB. Or, two bidders from the same company could both submit bids on the same sale. If this were to happen, the State would accept all bids received and award the contract accordingly. All bidding and contractual requirements would apply to all bids received.

### 5. Public Opening of Sealed Bids (7/16)

If conditions permit, the sealed bids will be publicly opened and posted at the time and place set in the prospectus.

If a bidder, present at a bid opening, has submitted bids on more than one sale, that bidder may withdraw their unopened bid envelopes or announce the withdrawal of their online bid after being declared the successful bidder on one sale.

### 6. Award of Contract (1/11)

Award of the contract will be made to the Bidder whose bid, conforming to the prospectus, is most advantageous to the State of Michigan on the basis of total value at rates bid for the estimated quantities. The State reserves the right to reject any bid or waive any minor irregularity in bids received. A written award mailed (or otherwise furnished) to the successful Bidder shall be deemed to result in a binding contract without further action by either party.

### 7. Down Payment (1/11)

The Bidder to whom award is made must make a down payment within 21 days of the sale award. The amount of the down payment will be calculated as shown in the Bond and Payment Schedule of this prospectus. Only cash may be used to meet this requirement.

### 8. Performance Security (1/11)

As guarantee of faithful performance, a cash bond, certificate of deposit, surety bond or irrevocable letter of credit (LOC) is required within 21 days of the sale award. The amount of the performance security is shown in the Bond and

Payment Schedule of this prospectus. If an LOC or surety is used, the coverage must extend for at least 6 months beyond the contract expiration.

#### 9. Timber Sale Contract (7/18)

Additional conditions and requirements common to all timber sales are listed on the timber sale contract (R4031) and are available on line at [www.michigan.gov/timber](http://www.michigan.gov/timber). Contact the Unit Manager for additional information or a sample contract. Within 21 days of the date of the award letter, the bidder must sign the contract and provide the required down payment, performance security, and verification of worker's disability compensation. The down payment and performance security shall be in accordance with the provisions of the timber sale contract, in the sums stated in this prospectus. If these actions are not taken, then the Bidder, the Bidder's corporation, and the corporation's principals may not be permitted to bid on State timber sales for a period of 3 months after the first offense, 6 months after the second offense, and 1 year after the third offense. An offense will only be counted against the Bidder for 5 years. In addition, the Bidder certifies that if awarded this contract, the Bidder will complete the timber sale contract in accordance with its terms and any modifications thereof including requirements to purchase, cut, and remove the included timber by the expiration date.

Payment Unit values in the State Forest Timber Sale Contract are calculated based on the advertised value of the Payment Unit as a percentage of the total advertised value of the contract. The advertised value of each Payment Unit is given in the Description of Timber by Payment Unit table on the Timber Sale Information page. For example, if the value of Payment Unit 1 is advertised as \$1,500 and the total Timber Sale value is advertised as \$10,000, the contract price for Payment Unit 1 will be 15% of the total bid price ( $\$1,500/\$10,000 * 100$ ).

#### 10. Disclaimer of Estimates and Bidder's Warranty of Inspection (7/16)

Before submitting this bid, the Bidder is advised and cautioned to inspect the sale area, review the requirements of the sale contract, and take other steps as may be reasonably necessary to ascertain the location, estimated volumes, construction estimates, and operating costs of the proposed sale. Failure to do so will not relieve the Bidder from responsibility for completing the contract.

The Bidder warrants that this bid is submitted solely on the basis of the Bidder's examination and inspection of the quality and quantity of the timber offered for sale and the Bidder's opinion of the value thereof and the costs of recovery. No reliance should be placed on the State of Michigan's estimates of timber quality, quantity or costs of recovery. Bidder further acknowledges that the State of Michigan: (i) expressly disclaims any warranty of fitness of timber for any purpose; (ii) offers this timber as is without any warranty of quality (merchantability) or quantity and (iii) expressly disclaims any warranty as to the quantity or quality of timber sold.

#### 11. Certification and Chain-of-Custody (10/14)

Unless otherwise indicated in the contract under section 7 – Other Conditions of the Sale Specific Conditions & Requirements, the area encompassed by this timber sale is certified to the standards of the Forest Stewardship Council (FSC) - Certificate #SCS-FM/COC-00090N and the Sustainable Forestry Initiative (SFI) - Certificate #NSF-SFIS-5Y031-SF5. Forest products from this sale may be delivered to the mill as "FSC 100% and / or SFI certified" as long as the contractor hauling the forest products is chain-of-custody (COC) certified or covered under a COC certificate from the destination mill. The purchaser is responsible for maintaining COC after leaving the sale area.

#### 12. Good Neighbor Authority (GNA) Requirements (7/16)

If the name of this timber sales contains the acronym GNA, it is authorized by the Good Neighbor Authority (GNA) and covered by various agreements between the U.S. Forest Service and the State. The timber sale occurs on federal land and the following conditions apply:

GNA contracts on US Forest Service land will not be awarded to purchasers on the Federal list of excluded parties. The System for Award Management (SAM) will be checked for active excluded parties prior to award of contract. In addition, the Bidder to whom award is made must complete an Assurance Regarding Felony Conviction or Tax Delinquent Status for Corporate Applicants (AD-3031).

#### 13. Good Neighbor Authority (GNA) Requirements, con't (9/16)

Bidder certifies, by signing this bid form, that to the best of Bidder's knowledge that the following representations are accurate and complete.

- a. That the Bidder and its principals are not presently debarred, suspended, proposed for debarment, declared ineligible, or voluntary excluded from timber sales (covered transactions) by any Federal department or agency.
- b. That the Bidder and its principals have not within a 3-year period preceding this bid been convicted of or had a civil judgment rendered against them for commission of fraud or a criminal offense in connection with obtaining , attempting to obtain, or performing a public (Federal, State, or local) transaction or contract under a public transaction; violation of Federal or State antitrust statutes or commission of embezzlement, theft, forgery, bribery, falsification or destruction of records, making false statements, or receiving stolen property.
- c. That the Bidder and its principals are not presently indicted for or otherwise criminally or civilly charged by a governmental entity (Federal, State, or local) with commission of any of the offenses enumerated in paragraph b of this certification.
- d. That the Bidder and its principals have not within a 3-year period preceding this bid had one or more public transactions (Federal, State, or local) terminated for breach or default of a timber or forest product contract.

Bidders that cannot certify this requirement, in whole or in part, shall submit an explanation with their bid.

DAN EICHINGER  
Director



# TIMBER SALE INFORMATION

Shearer Aspen (73-001-21)

T16N, R02E, SEC. 17; T16N, R02E, SEC. 18; T16N, R02E, SEC. 19; T16N, R02E, SEC. 8.

Midland County (Advertised Price \$164,255.05)

SALE NOTE: All units of volume listed for this sale were estimated using the Inventory Manager computer program and the new Michigan taper model.

The sale is around the Kawkawlin Flooding and associated creeks and rivers.

See sale spec 5.2.40 for information on recreational trails in the sale.

See sale spec 5.2.22.1 for information on operation limitations.

See sale spec 4.2.2 for information on need fill material.

See sale spec 4.1.5 for information on needed culverts.

The Kawkawlin Flooding has areas with active beavers that may impact access and the amount of road work needed. Beavers may also impact the aspen volume of the sale.

A recreation site such as a trail, pathway, or campground is within the sale area or the vicinity. Certain restrictions/specifications may be applicable including time restrictions. Access may be through private or other public land.

A timber sale contract for this lump sum, sealed bid timber sale will be awarded to the responsible bidder offering the highest sealed bid price. All units of volume listed below were estimated using the Inventory Manager computer program and the new Michigan taper model. Bids must be at or above the following advertised price for each product and species:

<u>PRODUCTS &amp; SPECIES</u>	<u>ESTIMATED UNITS*</u>	<u>ADVERTISED PRICE</u>
Sawtimber		
Mixed Aspen	604.0 MBF	\$ 77.00 / MBF
Red Maple	134.5 MBF	\$ 38.00 / MBF
Red Oak	83.1 MBF	\$ 152.00 / MBF
Swamp White Oak	7.0 MBF	\$ 77.00 / MBF
White Ash	2.4 MBF	\$ 38.00 / MBF
White Oak	5.2 MBF	\$ 63.00 / MBF
Pulpwood		
Mixed Aspen	3,122 Cords	\$ 20.20 / Cord
Mixed Hardwood	103 Cords	\$ 16.45 / Cord
Paper Birch	251 Cords	\$ 19.60 / Cord
Red Maple	1,409 Cords	\$ 16.45 / Cord
Red Oak	392 Cords	\$ 13.65 / Cord
Swamp White Oak	12 Cords	\$ 15.55 / Cord
Tamarack	9 Cords	\$ 5.85 / Cord
White Oak	44 Cords	\$ 13.65 / Cord

\* The total volume is statistically estimated within plus (+) or minus (-) 3.86 percent. There are an estimated 6,832 cords on this timber sale, plus or minus 264 cords at the 95% confidence level. The estimated units are final and not subject to adjustment. Prospective bidders are urged to examine this timber and to make their own estimates of quantity and quality.

## **BOND AND PAYMENT SCHEDULE:**

1. A bond in the amount of \$16,426.00 to insure faithful performance of the conditions of the contract will be deposited by the successful bidder within 21 days of the sale award.
2. Cutting in any sale or unit without the required advance payment would be considered a trespass.
3. Total payment must be paid in advance or according to the following schedule:
  - (a) Ten percent (10%) of the sale value must be paid within 21 days of the sale award.
  - (b) The 10% down payment will be credited towards the first unit cut.

(c) Payment for each of the following units must be made before cutting begins in that unit:

PAYMENT UNIT NUMBER	PERCENT OF TOTAL SALE VALUE
01	0.8%
02	4.3%
03	11.1%
04	15.0%
05	3.8%
06	8.1%
07	14.4%
08	7.5%
09	11.7%
10	20.4%
11	2.9%

4. If no cutting takes place, the 10% down payment will not be refunded.

5. Operations on the contract issued will terminate on 03/31/2025.

**SALE STATISTICS**

Volumes were calculated in cubic feet using the Michigan taper model. Cubic foot volume includes all wood inside bark for the product indicated. For display purposes, cubic feet were converted to cords and MBF using a simple conversion factor, e.g. 79 cubic feet per cord and 185 cubic feet per MBF. The cubic foot volumes are precise; the cords and MBF volumes are not. Cubic foot volume cannot be directly converted to cords or boards with precision.

**SALE VOLUMES**

The total estimated sale volume may not equal the sum of the species/products due to the nature of statistical calculations associated with double sampling methodology.

VOLUME		STATISTICAL RANGE IN CORDS		
TOTAL CUBIC FEET	TOTAL CORDS	PERCENT ERROR	MINIMUM	MAXIMUM
539,766	6,832	3.86%	6,568	7,097

**VDU VOLUMES**

A VDU is a Volume Determination Unit. Volumes and their associated statistics are calculated at the VDU level and summarized to the sale level. There is often a one to one relationship between a VDU and a Payment Unit, but not always, depending on the cruise design. Refer to the VDU TO PAYMENT UNIT table.

VDU	VOLUME		PERCENT ERROR	RANGE IN CORDS	
	TOTAL CUBIC FEET	TOTAL CORDS		MINIMUM	MAXIMUM
41	5,244	66	29.74%	47	86
240	60,890	771	9.78%	695	846
262	45,471	576	10.29%	516	635
264	52,818	669	11.76%	590	747
267	135,978	1,721	7.04%	1,600	1,842
272	18,897	239	21.03%	189	290
274	75,403	954	11.57%	844	1,065
291	27,867	353	24.06%	268	438
295	99,776	1,263	8.81%	1,152	1,374
298	17,421	221	32.53%	149	292
<b>TOTAL:</b>	<b>539,766</b>	<b>6,832</b>		<b>6,050</b>	<b>7,615</b>



**VDU TO PAYMENT UNIT**

When a VDU is associated with more than one Payment Unit (PU), the VDU volumes are assigned to the PU based on acres of the VDU within the PU.

VDU	VDU ACRES	PU	PU ACRES
41	5.4	1	5.4
240	24.8	9	24.8
262	15.7	8	15.7
264	18.5	6	18.5
267	41.5	3	17.7
		4	23.8
272	4.6	5	4.6
274	19.7	7	19.7
291	11.8	2	11.8
295	30.8	10	30.8
298	8.1	11	8.1
<b>TOTAL:</b>	<b>180.9</b>		<b>180.9</b>

**DESCRIPTION OF TIMBER BY PAYMENT UNIT (PU)**

PU	MARKET GROUP	PRODUCT	QUANTITY	UNIT	ACRES	ADVERTISE PRICE
1	Mixed Aspen	Sawtimber	2.7	MBF	5.4	\$1,339.70
	<i>B. T. Aspen</i>		2.7	<i>MBF</i>		
	Red Maple		2.8	MBF		
	Mixed Aspen	Pulpwood	29	Cords		
	<i>B. T. Aspen</i>		29	<i>Cords</i>		
	Paper Birch		9	Cords		
	<i>Paper Birch</i>		1.9	<i>MBF</i>		
	<i>Paper Birch</i>		5	<i>Cords</i>		
	Red Maple		16	Cords		
2	Mixed Aspen	Sawtimber	7.1	MBF	11.8	\$7,055.75
	<i>B. T. Aspen</i>		7.1	<i>MBF</i>		
	Red Maple		8.3	MBF		
	Red Oak	6.0	MBF			
	Mixed Aspen	Pulpwood	121	Cords		
	<i>B. T. Aspen</i>		75	<i>Cords</i>		
	<i>Quaking Aspen</i>		46	<i>Cords</i>		
	Red Maple		131	Cords		
	Red Oak		37	Cords		
White Oak	13		Cords			
3	Mixed Aspen	Sawtimber	82.1	MBF	17.7	\$18,222.30
	<i>B. T. Aspen</i>		32.1	<i>MBF</i>		
	<i>Quaking Aspen</i>		50.0	<i>MBF</i>		
	Red Maple	19.6	MBF			
	Red Oak	8.2	MBF			
	White Ash	1.0	MBF			
	White Oak	1.3	MBF			
	Mixed Aspen	Pulpwood	343	Cords		
	<i>B. T. Aspen</i>		136	<i>Cords</i>		
	<i>Quaking Aspen</i>		207	<i>Cords</i>		
	Mixed Hardwood		15	Cords		
	<i>Green Ash</i>		9	<i>Cords</i>		
	<i>Rock Elm</i>		4	<i>Cords</i>		
	<i>White Ash</i>		2	<i>Cords</i>		
	Paper Birch		3	Cords		
	<i>Paper Birch</i>		3	<i>Cords</i>		
	Red Maple		118	Cords		
	Red Oak		33	Cords		
	White Oak		12	Cords		
4	Mixed Aspen	Sawtimber	110.4	MBF	23.8	\$24,562.25
	<i>B. T. Aspen</i>		43.1	<i>MBF</i>		
	<i>Quaking Aspen</i>		67.3	<i>MBF</i>		
	Red Maple	26.4	MBF			
	Red Oak	11.1	MBF			
	White Ash	1.4	MBF			
	White Oak	1.8	MBF			
	Mixed Aspen	Pulpwood	462	Cords		
	<i>B. T. Aspen</i>		184	<i>Cords</i>		
	<i>Quaking Aspen</i>		278	<i>Cords</i>		
	Mixed Hardwood		22	Cords		
	<i>Green Ash</i>		13	<i>Cords</i>		
	<i>Rock Elm</i>		6	<i>Cords</i>		
	<i>White Ash</i>		3	<i>Cords</i>		
	Paper Birch		4	Cords		
	<i>Paper Birch</i>		4	<i>Cords</i>		
	Red Maple		158	Cords		
Red Oak	44	Cords				

**DESCRIPTION OF TIMBER BY PAYMENT UNIT (PU), CON'T**

PU	MARKET GROUP	PRODUCT	QUANTITY	UNIT	ACRES	ADVERTISE PRICE
4 con't	White Oak	Pulpwood	17	Cords		
5	Mixed Aspen	Sawtimber	34.3	MBF	4.6	\$6,319.20
	<i>B. T. Aspen</i>		12.7	<i>MBF</i>		
	<i>Quaking Aspen</i>		21.6	<i>MBF</i>		
	Red Oak		2.0	MBF		
	White Oak		2.1	MBF		
	Mixed Aspen	Pulpwood	132	Cords		
	<i>B. T. Aspen</i>		61	<i>Cords</i>		
	<i>Quaking Aspen</i>		71	<i>Cords</i>		
	Red Maple		30	Cords		
	Red Oak		4	Cords		
	White Oak		2	Cords		
6	Mixed Aspen	Sawtimber	30.2	MBF	18.5	\$13,285.65
	<i>B. T. Aspen</i>		26.7	<i>MBF</i>		
	<i>Quaking Aspen</i>		3.5	<i>MBF</i>		
	Red Maple		19.7	MBF		
	Mixed Aspen	Pulpwood	283	Cords		
	<i>B. T. Aspen</i>		245	<i>Cords</i>		
	<i>Quaking Aspen</i>		38	<i>Cords</i>		
	Mixed Hardwood		2	Cords		
	<i>Rock Elm</i>		2	<i>Cords</i>		
	Paper Birch		55	Cords		
	<i>Paper Birch</i>		55	<i>Cords</i>		
	Red Maple		180	Cords		
	Red Oak		31	Cords		
7	Mixed Aspen	Sawtimber	85.0	MBF	19.7	\$23,617.50
	<i>B. T. Aspen</i>		34.2	<i>MBF</i>		
	<i>Cottonwood</i>		10.4	<i>MBF</i>		
	<i>Quaking Aspen</i>		40.4	<i>MBF</i>		
	Red Maple		23.2	MBF		
	Red Oak		25.6	MBF		
	Mixed Aspen	Pulpwood	294	Cords		
	<i>B. T. Aspen</i>		48	<i>Cords</i>		
	<i>Cottonwood</i>		6	<i>Cords</i>		
	<i>Quaking Aspen</i>		240	<i>Cords</i>		
	Mixed Hardwood		12	Cords		
	<i>Basswood</i>		12	<i>Cords</i>		
	Paper Birch		49	Cords		
	<i>Paper Birch</i>		49	<i>Cords</i>		
	Red Maple		152	Cords		
	Red Oak		198	Cords		
8	Mixed Aspen	Sawtimber	31.1	MBF	15.7	\$12,294.75
	<i>B. T. Aspen</i>		15.9	<i>MBF</i>		
	<i>Cottonwood</i>		15.2	<i>MBF</i>		
	Red Maple		6.0	MBF		
	Red Oak		4.3	MBF		
	Swamp White Oak		3.2	MBF		
	Mixed Aspen	Pulpwood	280	Cords		
	<i>B. T. Aspen</i>		153	<i>Cords</i>		
	<i>Cottonwood</i>		10	<i>Cords</i>		
	<i>Quaking Aspen</i>		117	<i>Cords</i>		
	Mixed Hardwood		19	Cords		
	<i>Green Ash</i>		7	<i>Cords</i>		
	<i>Rock Elm</i>		12	<i>Cords</i>		
	Red Maple		158	Cords		
	Red Oak		7	Cords		

**DESCRIPTION OF TIMBER BY PAYMENT UNIT (PU), CON'T**

PU	MARKET GROUP	PRODUCT	QUANTITY	UNIT	ACRES	ADVERTISE PRICE		
8 con't	Swamp White Oak	Pulpwood	7	Cords				
9	Mixed Aspen	Sawtimber	77.0	MBF	24.8	\$19,202.05		
	<i>B. T. Aspen</i>		25.6	<i>MBF</i>				
	<i>Quaking Aspen</i>		51.4	<i>MBF</i>				
	Red Maple		11.1	MBF				
	Red Oak		12.7	MBF				
	Swamp White Oak		3.8	MBF				
	Mixed Aspen	Pulpwood	319	Cords				
	<i>B. T. Aspen</i>		58	<i>Cords</i>				
	<i>Quaking Aspen</i>		261	<i>Cords</i>				
	Mixed Hardwood		18	Cords				
	<i>Basswood</i>		2	<i>Cords</i>				
	<i>Black Cherry</i>		16	<i>Cords</i>				
	Red Maple		216	Cords				
	Red Oak		15	Cords				
	Swamp White Oak		5	Cords				
	Tamarack		9	Cords				
	<i>Tamarack</i>	<i>Sawtimber</i>	2.6	<i>MBF</i>				
	<i>Tamarack</i>	<i>Pulpwood</i>	4	<i>Cords</i>				
10	Mixed Aspen	Sawtimber	144.1	MBF			30.8	\$31,212.40
	<i>B. T. Aspen</i>		22.1	<i>MBF</i>				
	<i>Cottonwood</i>		5.0	<i>MBF</i>				
	<i>Quaking Aspen</i>		117.0	<i>MBF</i>				
	Red Maple		11.5	MBF				
	Red Oak		13.2	MBF				
	Mixed Aspen	Pulpwood	668	Cords				
	<i>B. T. Aspen</i>		376	<i>Cords</i>				
	<i>Cottonwood</i>		3	<i>Cords</i>				
	<i>Quaking Aspen</i>		289	<i>Cords</i>				
	Mixed Hardwood		15	Cords				
	<i>Basswood</i>		7	<i>Cords</i>				
	<i>Black Cherry</i>		8	<i>Cords</i>				
	Red Maple		220	Cords				
	Red Oak		23	Cords				
11	Red Maple	Sawtimber	5.9	MBF	8.1	\$4,752.30		
	Mixed Aspen	Pulpwood	191	Cords				
	<i>B. T. Aspen</i>		191	<i>Cords</i>				
	Paper Birch		9	Cords				
	<i>Paper Birch</i>	<i>Sawtimber</i>	1.7	<i>MBF</i>				
	<i>Paper Birch</i>	<i>Pulpwood</i>	6	<i>Cords</i>				
	Red Maple		30	Cords				
TOTAL:			836.2	MBF				
TOTAL:			5,220	Cords				

# Sale Specific Conditions & Requirements

**Sale Name: Shearer Aspen**

**Sale Number: 73-001-21 Seq#: 1**

## 1 - Sale Area

### 1.2 - Boundaries

#### 1.2.1 - Painted boundaries (9/19)

The sale boundary and Payment Unit boundaries are marked and identified by blue, red, and yellow paint. Exterior sale boundary lines against private property are marked with blue paint. Exterior sale boundary lines against state are marked with red paint. Interior Payment Unit boundaries are marked with yellow paint. Retention patches are marked with red paint; no harvesting activities may occur within these areas. Yellow painted trees designating an interior Payment Unit boundary are only to be cut when all surrounding Payment Units have been paid.

## 2 - Timber Specifications

### 2.1 - Included Timber

#### 2.1.1 - Clearcut unit(s) with unmerchantable trees (6/14)

Within Payment Unit(s) 1-11, cut all trees that are two (2) inches or more at DBH, except trees marked with green paint above and below stump height.

## 3 - Payments

### 3.4 - Damaged Timber

#### 3.4.1 - Damaged timber (7/16)

General Condition and Requirement 3.4 Damaged Timber, defines liquidated damages for undesignated live merchantable trees which are cut or injured. No damage is acceptable to undesignated live merchantable trees. Within the Sale Area, if more than 5% of trees (> 4.5" DBH) within a specified area of the sale are damaged, liquidated damages will be assessed for all trees damaged. Rates will be in accordance with General Condition and Requirement 3.4 Damaged Timber.

## 4 - Transportation

### 4.1 - Construction

#### 4.1.5 - Culverts (5/14)

Roads may require the installation of culverts for cross drainage or at natural drainage-ways. If culverts are needed in these locations, their placement will be specified by the sale administrator, and they shall be installed prior to hauling. The culverts shall be corrugated metal or plastic gauge. If culverts are removed, fill shall be removed from wetland soils as specified. Soils shall be maintained and left in a non-erodible condition, with water bars, seed, fertilizer, mulch, and slash installed as directed by the sale administrator and as specified in the BMP manual.

### 4.2 - Maintenance

#### 4.2.2 - Fill material (4/07)

To maintain roads, fill material may be needed in areas where "holes" exist or may be expected to develop. This fill material should be placed before trucking begins. Contact the sale administrator regarding the availability of onsite sand or gravel from adjacent State-owned lands.

#### 4.2.5 - Two wheel drive condition (2/04)

All existing trail roads on and adjacent to the sale area must be passable by two-wheel drive traffic for the duration of the sale.

### 4.4 - Access

#### 4.4.2 - Alternate route on private property (2/04)

It is the Purchaser's responsibility to obtain access across private land for any routes other than the route shown on the Timber Sale Map.

#### 4.4.3 - Access gate (12/08)

The access gate must be locked at the completion of each day between the dates of March 1 to August 31 unless otherwise approved by the Unit Manager or his/her representative.

## 5 - Operations

### 5.2 - Conduct of Operations

#### 5.2.2 - Hazard Trees/Snags

##### 5.2.2.1 - Den trees (10/16)

Obvious hollow and/or den trees shall be protected and left standing unless they are a safety hazard.

#### 5.2.4 - Dead and Down Creation

##### 5.2.4.4 - Dead and down creation, grouse (6/18)

To encourage grouse and other wildlife, in Payment Unit(s) 1-11 leave one 12" or larger diameter whole tree on the ground for every 3 acres. Trees should be scattered throughout the sale and at least two chains from any roads, two-tracks, or trails open to vehicles, or positioned per the sale administrators instructions. Stumps must be at least 3 feet tall.

#### 5.2.22 - Operating Caution

##### 5.2.22.1 - Operating caution (6/11)

It is recommended, but not required, that within Payment Unit(s) 1-11, cutting, skidding, and hauling occur during dry summer or frozen winter conditions. The reason for the recommendation is because the Payment Units are seasonal wet, and rutting could become an issue.

#### 5.2.40 - Pathway protection (10/10)

The Midland to Mackinac Hiking Trail and is shown on the Timber Sale Map. Do not cut trees or damage posts with blue paint or pathway markers. Maintain a 20-foot-wide slash, debris, and rut free zone daily, using the pathway as the centerline. Do not run equipment down the pathway. Skidding across the trail may only occur in locations approved by the sale administrator.

### 5.4 - Soil Protection

#### 5.4.1 - Rutting restriction, general (7/16)

Operations are to cease immediately if equipment and weather conditions result in rutting of roads and/or skid trails which is 12 inches or greater in depth and 50 feet in length. The Unit Manager or his/her representative may restrict hauling and/or skidding if ruts exceed the specified depth. With the Unit Manager or his/her representative's approval, the Purchaser may return to the area when the risk of rutting has decreased.



# TIMBER SALE MAP

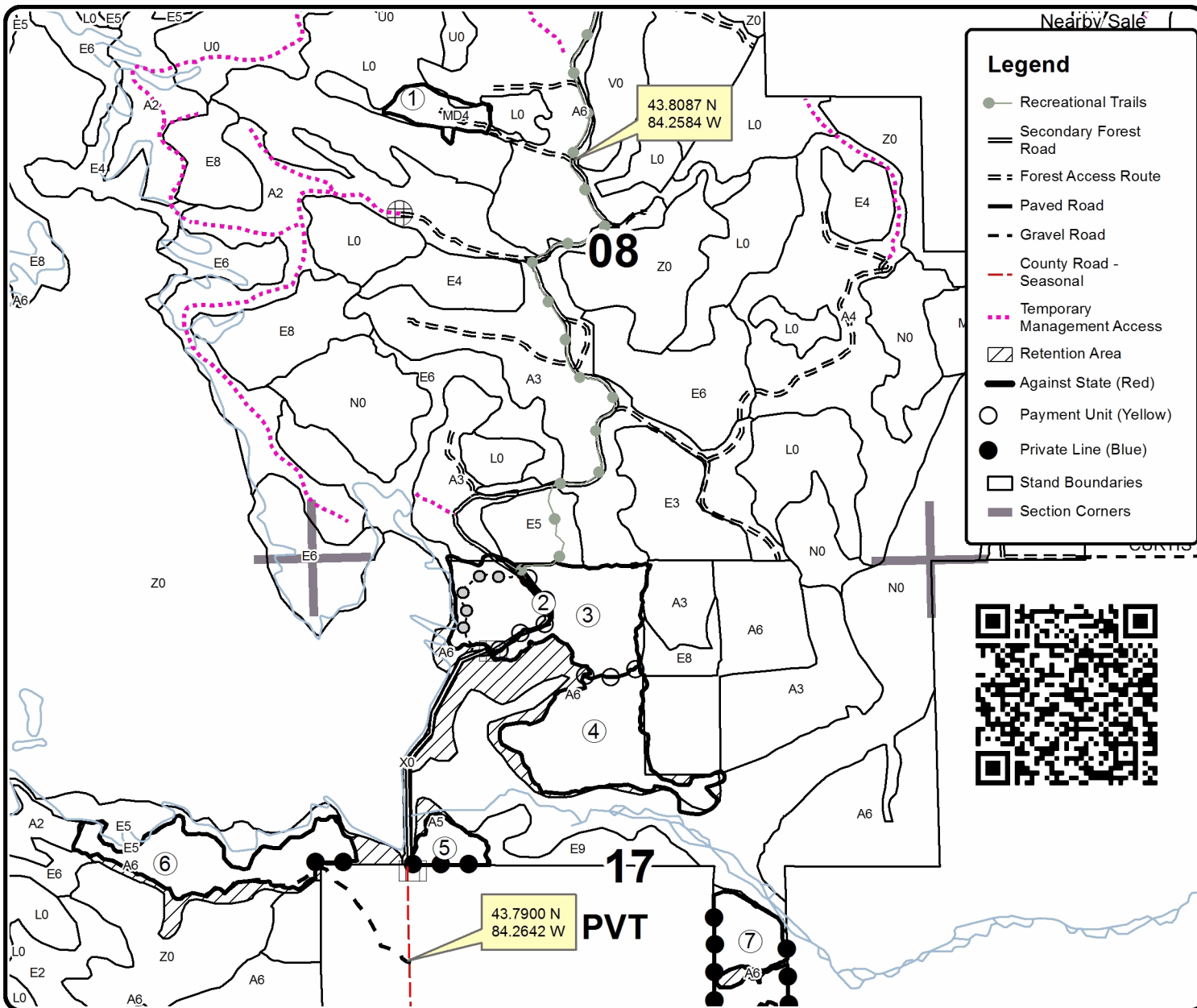
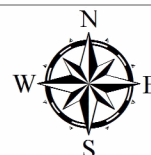
This information provided by authority of Part 525, 1994 PA 451, as amended.

Forest Management Unit Gladwin Management Unit	County Midland	Mapped By Steven Nyhoff	Date 05/06/2021	Page 1	of 3
Township 16N	Range 02E	Section(s) and Subdivision(s) Sections 8, 18, 18, 19	Scale 1:15,840		

Cover Type				Density	
A = Aspen	H = Hemlock	N = Marsh	U = Upland Brush	0 = Non Stocked	5 = Pole Timber Medium
B = Paper Birch	J = Jack Pine	O = Oak	UM = Upland Mixed	1 = Seedling Sapling Poor	6 = Pole Timber Well
C = Cedar	L = Lowland Brush	P = Lowland Poplar	V = Bog or Marsh	2 = Seedling Sapling Medium	7 = Saw Timber Poor
D = Treed Bog	LM = Lowland Mixed	Q = Mixed Swamp Conifer	W = White Pine	3 = Seedling Sapling Well	8 = Saw Timber Medium
E = Swamp Hdwoods	M = Mpl. Bch, Brch	R = Red Pine	X = Non Stocked	4 = Pole Timber Poor	9 = Saw Timber Well
F = Spruce Fir	MC = Mixed Conifer	S = Black Spruce	Z = Water		
G = Grass	MD = Mixed Deciduous	T = Tamarack			

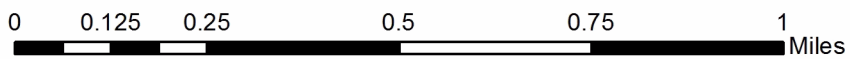
PU	Acres	PU	Acres	PU	Acres
1	5.4	5	4.6	9	24.8
2	11.8	6	18.5	10	30.8
3	17.7	7	19.7	11	8.1
4	23.8	8	15.7		

## Shearer Aspen Compartment 92 180.9 Acres



**Legend**

- Recreational Trails
- Secondary Forest Road
- Forest Access Route
- Paved Road
- Gravel Road
- County Road - Seasonal
- Temporary Management Access
- Retention Area
- Against State (Red)
- Payment Unit (Yellow)
- Private Line (Blue)
- Stand Boundaries
- Section Corners





# TIMBER SALE MAP

This information provided by authority of Part 525, 1994 PA 451, as amended.

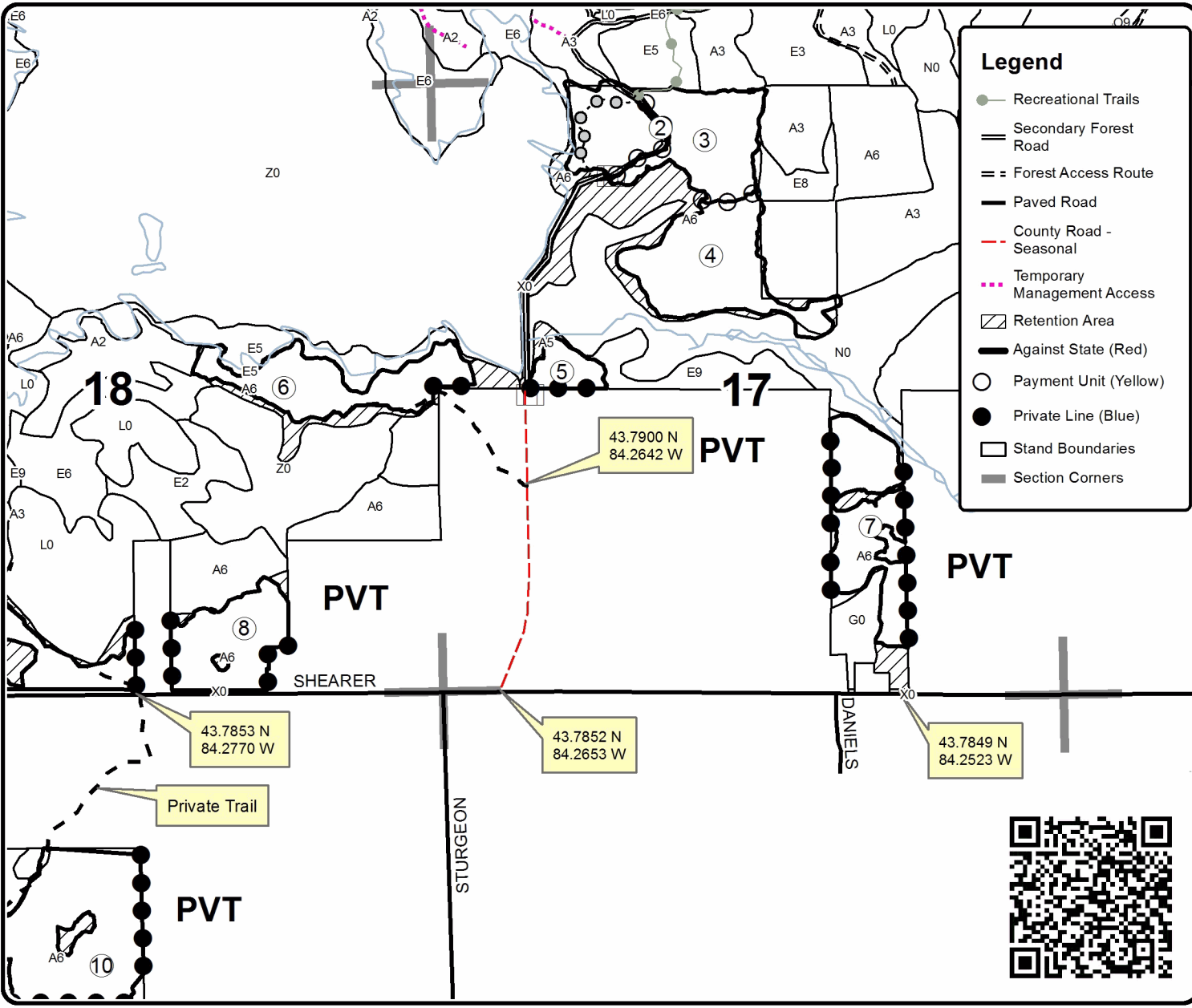
Sale Number	Year
73 - 001	21

Forest Management Unit	County	Mapped By	Date	Page	of
Gladwin Management Unit	Midland	Steven Nyhoff	05/06/2021	2	3
Township	Range	Section(s) and Subdivision(s)	Scale		
16N	02E	Sections 8, 18, 18, 19	1:15,840		

Cover Type				Density			
A = Aspen	H = Hemlock	N = Marsh	U = Upland Brush	0 = Non Stocked	5 = Pole Timber Medium		
B = Paper Birch	J = Jack Pine	O = Oak	UM = Upland Mixed	1 = Seedling Sapling Poor	6 = Pole Timber Well		
C = Cedar	L = Lowland Brush	P = Lowland Poplar	V = Bog or Marsh	2 = Seedling Sapling Medium	7 = Saw Timber Poor		
D = Treed Bog	LM = Lowland Mixed	Q = Mixed Swamp Conifer	W = White Pine	3 = Seedling Sapling Well	8 = Saw Timber Medium		
E = Swamp Hdwoods	M = Mpl, Bch, Brch	R = Red Pine	X = Non Stocked	4 = Pole Timber Poor	9 = Saw Timber Well		
F = Spruce Fir	MC = Mixed Conifer	S = Black Spruce	Z = Water				
G = Grass	MD = Mixed Deciduous	T = Tamarack					

PU	Acres	PU	Acres	PU	Acres
1	5.4	5	4.6	9	24.8
2	11.8	6	18.5	10	30.8
3	17.7	7	19.7	11	8.1
4	23.8	8	15.7		

## Shearer Aspen Compartment 92 180.9 Acres







# TIMBER SALE MAP

This information provided by authority of Part 525, 1994 PA 451, as amended.

Sale Number	Year
73 - 001	21

Forest Management Unit	County	Mapped By	Date	Page	of
Gladwin Management Unit	Midland	Steven Nyhoff	05/06/2021	3	3
Township	Range	Section(s) and Subdivision(s)	Scale		
16N	02E	Sections 8, 18, 18, 19	1:15,840		

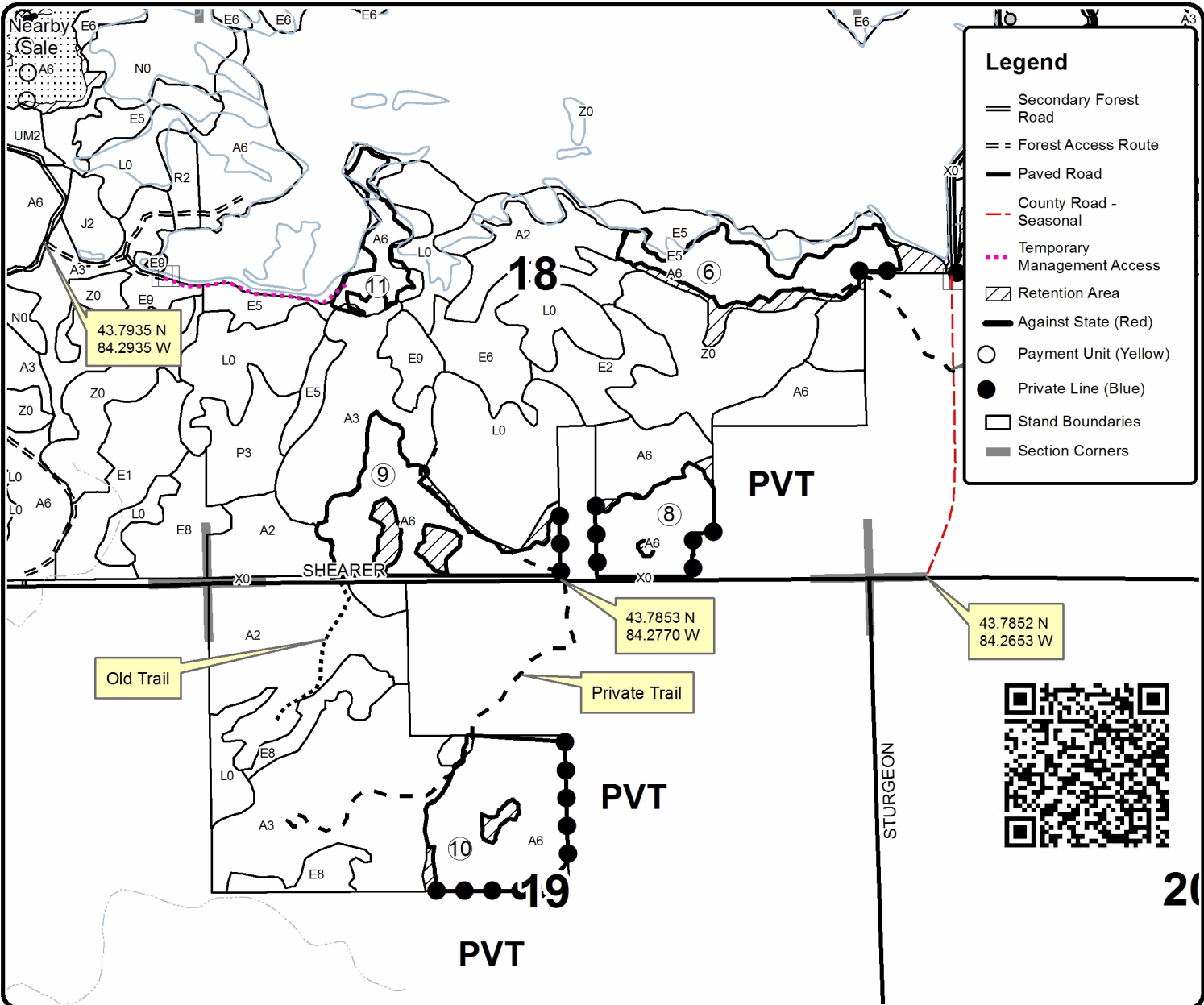
Cover Type				Density			
A = Aspen	H = Hemlock	N = Marsh	U = Upland Brush	0 = Non Stocked	5 = Pole Timber Medium		
B = Paper Birch	J = Jack Pine	O = Oak	UM = Upland Mixed	1 = Seedling Sapling Poor	6 = Pole Timber Well		
C = Cedar	L = Lowland Brush	P = Lowland Poplar	V = Bog or Marsh	2 = Seedling Sapling Medium	7 = Saw Timber Poor		
D = Treed Bog	LM = Lowland Mixed	Q = Mixed Swamp Conifer	W = White Pine	3 = Seedling Sapling Well	8 = Saw Timber Medium		
E = Swamp Hdwoods	M = Mpl. Bch. Brch	R = Red Pine	X = Non Stocked	4 = Pole Timber Poor	9 = Saw Timber Well		
F = Spruce Fir	MC = Mixed Conifer	S = Black Spruce	Z = Water				
G = Grass	MD = Mixed Deciduous	T = Tamarack					

PU	Acres	PU	Acres	PU	Acres
1	5.4	5	4.6	9	24.8
2	11.8	6	18.5	10	30.8
3	17.7	7	19.7	11	8.1
4	23.8	8	15.7		

## Shearer Aspen

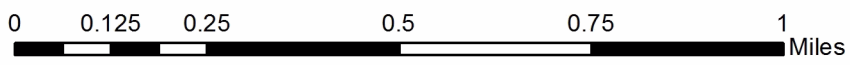
### Compartment 92

#### 180.9 Acres



### Legend

- Secondary Forest Road
- Forest Access Route
- Paved Road
- County Road - Seasonal
- Temporary Management Access
- Retention Area
- Against State (Red)
- Payment Unit (Yellow)
- Private Line (Blue)
- Stand Boundaries
- Section Corners





## TIMBER SALE INFORMATION

### Deer Kawkawlin (73-002-21)

T16N, R01E, SEC. 1; T16N, R01E, SEC. 12; T16N, R01E, SEC. 13; T16N, R02E, SEC. 4; T16N, R02E, SEC. 5; T16N, R02E, SEC. 6;  
T16N, R02E, SEC. 7.

SALE NOTE: All units of volume listed for this sale were estimated using the Inventory Manager computer program and the new Michigan taper model.

See sale spec 4.2.2 for information need fill material.

See sale spec 4.1.5 for information on needed culverts.

See sale spec 5.2.22.1 for information on operation times.

A timber sale contract for this lump sum, sealed bid timber sale will be awarded to the responsible bidder offering the highest sealed bid price. All units of volume listed below were estimated using the Inventory Manager computer program and the new Michigan taper model. Bids must be at or above the following advertised price for each product and species:

<u>PRODUCTS &amp; SPECIES</u>	<u>ESTIMATED UNITS*</u>		<u>ADVERTISED PRICE</u>
<b>Sawtimber</b>			
Black Cherry	9.5	MBF	\$ 128.00 / MBF
Mixed Aspen	288.7	MBF	\$ 77.00 / MBF
Red Maple	201.4	MBF	\$ 38.00 / MBF
Red Oak	40.8	MBF	\$ 152.00 / MBF
Swamp White Oak	5.6	MBF	\$ 79.00 / MBF
White Oak	0.9	MBF	\$ 63.00 / MBF
White Pine	1.0	MBF	\$ 59.00 / MBF
<b>Pulpwood</b>			
Mixed Aspen	2,954	Cords	\$ 20.20 / Cord
Mixed Hardwood	32	Cords	\$ 16.45 / Cord
Mixed Oak	206	Cords	\$ 13.65 / Cord
Paper Birch	133	Cords	\$ 19.60 / Cord
Red Maple	1,725	Cords	\$ 16.45 / Cord
Swamp White Oak	8	Cords	\$ 15.55 / Cord
White Pine	1	Cords	\$ 30.30 / Cord

\* The total volume is statistically estimated within plus (+) or minus (-) 4.47 percent. There are an estimated 6,294 cords on this timber sale, plus or minus 281 cords at the 95% confidence level. The estimated units are final and not subject to adjustment. Prospective bidders are urged to examine this timber and to make their own estimates of quantity and quality.

### **BOND AND PAYMENT SCHEDULE:**

1. A bond in the amount of \$13,201.00 to insure faithful performance of the conditions of the contract will be deposited by the successful bidder within 21 days of the sale award.
2. Cutting in any sale or unit without the required advance payment would be considered a trespass.
3. Total payment must be paid in advance or according to the following schedule :
  - (a) Ten percent (10%) of the sale value must be paid within 21 days of the sale award.
  - (b) The 10% down payment will be credited towards the first unit cut.
  - (c) Payment for each of the following units must be made before cutting begins in that unit:

PAYMENT UNIT NUMBER	PERCENT OF TOTAL SALE VALUE
01	5.1%
02	4.9%
03	4.8%
04	4.4%
05	10.8%
06	13.8%
07	19.9%
08	9.0%
09	12.6%
10	10.4%
11	4.3%

4. If no cutting takes place, the 10% down payment will not be refunded.
5. Operations on the contract issued will terminate on 03/31/2025.

### **SALE STATISTICS**

Volumes were calculated in cubic feet using the Michigan taper model. Cubic foot volume includes all wood inside bark for the product indicated. For display purposes, cubic feet were converted to cords and MBF using a simple conversion factor, e.g. 79 cubic feet per cord and 185 cubic feet per MBF. The cubic foot volumes are precise; the cords and MBF volumes are not. Cubic foot volume cannot be directly converted to cords or boards with precision.

### **SALE VOLUMES**

The total estimated sale volume may not equal the sum of the species/products due to the nature of statistical calculations associated with double sampling methodology.

VOLUME			STATISTICAL RANGE IN CORDS	
TOTAL CUBIC FEET	TOTAL CORDS	PERCENT ERROR	MINIMUM	MAXIMUM
497,200	6,294	4.47%	6,012	6,575

### **VDU VOLUMES**

A VDU is a Volume Determination Unit. Volumes and their associated statistics are calculated at the VDU level and summarized to the sale level. There is often a one to one relationship between a VDU and a Payment Unit, but not always, depending on the cruise design. Refer to the VDU TO PAYMENT UNIT table.

VDU	VOLUME			RANGE IN CORDS	
	TOTAL CUBIC FEET	TOTAL CORDS	PERCENT ERROR	MINIMUM	MAXIMUM
17	177,887	2,252	8.75%	2,055	2,449
66	69,897	885	8.93%	806	964
78	21,409	271	17.86%	223	319
161	50,774	643	11.52%	569	717
189	150,818	1,909	7.59%	1,764	2,054
224	26,415	334	21.75%	262	407
<b>TOTAL:</b>	<b>497,200</b>	<b>6,294</b>		<b>5,677</b>	<b>6,910</b>

### **VDU TO PAYMENT UNIT**

When a VDU is associated with more than one Payment Unit (PU), the VDU volumes are assigned to the PU based on acres of the VDU within the PU.

VDU	VDU ACRES	PU	PU ACRES
17	58.9	6	24.1
		7	34.8
66	55.9	2	19.2
		3	19.0
		4	17.7
78	11.1	1	11.1
161	23.9	5	23.9
189	52.2	8	14.7
		9	20.5
		10	17.0
224	6.5	11	6.5
<b>TOTAL:</b>	<b>208.5</b>		<b>208.5</b>

**DESCRIPTION OF TIMBER BY PAYMENT UNIT (PU)**

PU	MARKET GROUP	PRODUCT	QUANTITY	UNIT	ACRES	ADVERTISE PRICE	
1	Mixed Aspen	Sawtimber	49.7	MBF	11.1	\$6,711.05	
	<i>B. T. Aspen</i>		27.1	<i>MBF</i>			
	<i>Quaking Aspen</i>		22.6	<i>MBF</i>			
	Red Maple		13.5	MBF			
	White Oak		0.9	MBF			
	Mixed Aspen	Pulpwood	36	Cords			
	<i>B. T. Aspen</i>		26	<i>Cords</i>			
	<i>Quaking Aspen</i>		10	<i>Cords</i>			
	Mixed Oak		5	Cords			
	<i>Red Oak</i>		4	<i>Cords</i>			
	<i>White Oak</i>		1	<i>Cords</i>			
	Paper Birch		7	Cords			
	<i>Paper Birch</i>		Sawtimber	1.1			<i>MBF</i>
	<i>Paper Birch</i>			Pulpwood			5
Red Maple	84	Cords					
2	Mixed Aspen	Sawtimber	3.8	MBF	19.2	\$6,405.25	
	<i>B. T. Aspen</i>		3.8	<i>MBF</i>			
	Red Oak		5.7	MBF			
	White Pine		0.4	MBF			
	Mixed Aspen	Pulpwood	174	Cords			
	<i>B. T. Aspen</i>		163	<i>Cords</i>			
	<i>Quaking Aspen</i>		11	<i>Cords</i>			
	Mixed Hardwood		1	Cords			
	<i>Black Cherry</i>		1	<i>Cords</i>			
	Mixed Oak		55	Cords			
	<i>Red Oak</i>		55	<i>Cords</i>			
	Paper Birch		7	Cords			
	<i>Paper Birch</i>		7	<i>Cords</i>			
	Red Maple		47	Cords			
White Pine	1	Cords					
3	Mixed Aspen	Sawtimber	3.7	MBF	19.0	\$6,307.30	
	<i>B. T. Aspen</i>		3.7	<i>MBF</i>			
	Red Oak		5.7	MBF			
	White Pine		0.3	MBF			
	Mixed Aspen	Pulpwood	172	Cords			
	<i>B. T. Aspen</i>		161	<i>Cords</i>			
	<i>Quaking Aspen</i>		11	<i>Cords</i>			
	Mixed Hardwood		1	Cords			
	<i>Black Cherry</i>		1	<i>Cords</i>			
	Mixed Oak		54	Cords			
	<i>Red Oak</i>		54	<i>Cords</i>			
	Paper Birch		7	Cords			
	<i>Paper Birch</i>		7	<i>Cords</i>			
	Red Maple		47	Cords			
4	Mixed Aspen	Sawtimber	3.5	MBF	17.7	\$5,865.15	
	<i>B. T. Aspen</i>		3.5	<i>MBF</i>			
	Red Oak		5.3	MBF			
	White Pine		0.3	MBF			
	Mixed Aspen	Pulpwood	160	Cords			
	<i>B. T. Aspen</i>		150	<i>Cords</i>			
	<i>Quaking Aspen</i>		10	<i>Cords</i>			
	Mixed Hardwood		1	Cords			
	<i>Black Cherry</i>		1	<i>Cords</i>			
	Mixed Oak		50	Cords			
	<i>Red Oak</i>		50	<i>Cords</i>			
	Paper Birch		6	Cords			

**DESCRIPTION OF TIMBER BY PAYMENT UNIT (PU), CON'T**

PU	MARKET GROUP	PRODUCT	QUANTITY	UNIT	ACRES	ADVERTISE PRICE
4 con't	<i>Paper Birch</i>	<i>Pulpwood</i>	6	<i>Cords</i>		
	Red Maple		44	<i>Cords</i>		
5	Mixed Aspen	Sawtimber	51.8	MBF	23.9	\$14,192.75
	<i>B. T. Aspen</i>		20.3	<i>MBF</i>		
	<i>Quaking Aspen</i>		31.5	<i>MBF</i>		
	Red Maple		4.2	MBF		
	Mixed Aspen	Pulpwood	379	<i>Cords</i>		
	<i>B. T. Aspen</i>		281	<i>Cords</i>		
	<i>Balsam Poplar</i>		3	<i>Cords</i>		
	<i>Quaking Aspen</i>		95	<i>Cords</i>		
	Paper Birch		22	<i>Cords</i>		
	<i>Paper Birch</i>		22	<i>Cords</i>		
	Red Maple		119	<i>Cords</i>		
6	Mixed Aspen	Sawtimber	26.6	MBF	24.1	\$18,201.05
	<i>B. T. Aspen</i>		11.3	<i>MBF</i>		
	<i>Quaking Aspen</i>		15.3	<i>MBF</i>		
	Red Maple		17.7	MBF		
	Swamp White Oak	2.3	MBF			
	Mixed Aspen	Pulpwood	529	<i>Cords</i>		
	<i>B. T. Aspen</i>		231	<i>Cords</i>		
	<i>Quaking Aspen</i>		298	<i>Cords</i>		
	Mixed Hardwood		5	<i>Cords</i>		
	<i>Black Cherry</i>		4	<i>Cords</i>		
	<i>Rock Elm</i>		1	<i>Cords</i>		
	Paper Birch		3	<i>Cords</i>		
	<i>Paper Birch</i>		3	<i>Cords</i>		
	Red Maple		269	<i>Cords</i>		
	Swamp White Oak		3	<i>Cords</i>		
7	Mixed Aspen	Sawtimber	38.6	MBF	34.8	\$26,304.45
	<i>B. T. Aspen</i>		16.4	<i>MBF</i>		
	<i>Quaking Aspen</i>		22.2	<i>MBF</i>		
	Red Maple		25.5	MBF		
	Swamp White Oak	3.3	MBF			
	Mixed Aspen	Pulpwood	763	<i>Cords</i>		
	<i>B. T. Aspen</i>		335	<i>Cords</i>		
	<i>Quaking Aspen</i>		428	<i>Cords</i>		
	Mixed Hardwood		7	<i>Cords</i>		
	<i>Black Cherry</i>		5	<i>Cords</i>		
	<i>Rock Elm</i>		2	<i>Cords</i>		
	Paper Birch		5	<i>Cords</i>		
	<i>Paper Birch</i>		5	<i>Cords</i>		
	Red Maple		389	<i>Cords</i>		
Swamp White Oak	5		<i>Cords</i>			
8	Black Cherry	Sawtimber	2.7	MBF	14.7	\$11,911.25
	Mixed Aspen		29.9	MBF		
	<i>B. T. Aspen</i>		28.8	<i>MBF</i>		
	<i>Quaking Aspen</i>		1.1	<i>MBF</i>		
	Red Maple	19.6	MBF			
	Red Oak	6.8	MBF			
	Mixed Aspen	Pulpwood	208	<i>Cords</i>		
	<i>B. T. Aspen</i>		207	<i>Cords</i>		
	<i>Quaking Aspen</i>		1	<i>Cords</i>		
	Mixed Hardwood		5	<i>Cords</i>		
	<i>Beech</i>		1	<i>Cords</i>		
	<i>Black Cherry</i>		3	<i>Cords</i>		
	<i>Misc. Species 1</i>		1	<i>Cords</i>		

**DESCRIPTION OF TIMBER BY PAYMENT UNIT (PU), CON'T**

PU	MARKET GROUP	PRODUCT	QUANTITY	UNIT	ACRES	ADVERTISE PRICE	
8 con't	Mixed Oak	Pulpwood	12	Cords			
	<i>Red Oak</i>		12	<i>Cords</i>			
	Paper Birch		19	Cords			
	<i>Paper Birch</i>		1.6	<i>MBF</i>			
	<i>Paper Birch</i>		16	<i>Cords</i>			
	Red Maple		162	Cords			
9	Black Cherry	Sawtimber	3.7	MBF	20.5	\$16,624.60	
	Mixed Aspen		41.7	MBF			
	<i>B. T. Aspen</i>		40.1	<i>MBF</i>			
	<i>Quaking Aspen</i>		1.6	<i>MBF</i>			
	Red Maple		27.4	MBF			
	Red Oak		9.5	MBF			
	Mixed Aspen		Pulpwood	290			Cords
	<i>B. T. Aspen</i>			289			<i>Cords</i>
	<i>Quaking Aspen</i>			1			<i>Cords</i>
	Mixed Hardwood			7			Cords
	<i>Beech</i>	1		<i>Cords</i>			
	<i>Black Cherry</i>	4		<i>Cords</i>			
	<i>Misc. Species 1</i>	2		<i>Cords</i>			
	Mixed Oak	16		Cords			
	<i>Red Oak</i>	16		<i>Cords</i>			
	Paper Birch	27		Cords			
	<i>Paper Birch</i>	Sawtimber	2.2	<i>MBF</i>			
	<i>Paper Birch</i>		Pulpwood	23			<i>Cords</i>
	Red Maple	227		Cords			
	10	Black Cherry	Sawtimber	3.1			MBF
Mixed Aspen		34.6		MBF			
<i>B. T. Aspen</i>		33.3		<i>MBF</i>			
<i>Quaking Aspen</i>		1.3		<i>MBF</i>			
Red Maple		22.7		MBF			
Red Oak		7.8		MBF			
Mixed Aspen		Pulpwood		241	Cords		
<i>B. T. Aspen</i>				240	<i>Cords</i>		
<i>Quaking Aspen</i>				1	<i>Cords</i>		
Mixed Hardwood				5	Cords		
<i>Beech</i>			1	<i>Cords</i>			
<i>Black Cherry</i>			3	<i>Cords</i>			
<i>Misc. Species 1</i>			1	<i>Cords</i>			
Mixed Oak			14	Cords			
<i>Red Oak</i>			14	<i>Cords</i>			
Paper Birch			23	Cords			
<i>Paper Birch</i>		Sawtimber	1.9	<i>MBF</i>			
<i>Paper Birch</i>			Pulpwood	19	<i>Cords</i>		
Red Maple		188		Cords			
11		Mixed Aspen	Sawtimber	4.8	MBF	6.5	\$5,688.65
	<i>Cottonwood</i>	4.8		<i>MBF</i>			
	Red Maple	70.8	MBF				
	Mixed Aspen	Pulpwood	2	Cords			
	<i>Cottonwood</i>		2	<i>Cords</i>			
	Paper Birch		7	Cords			
	<i>Paper Birch</i>		7	<i>Cords</i>			
	Red Maple		149	Cords			
TOTAL:			547.9	MBF			
TOTAL:			5,059	Cords			

# Sale Specific Conditions & Requirements

**Sale Name: Deer Kawkawlin**

**Sale Number: 73-002-21 Seq#: 1**

## 1 - Sale Area

### 1.2 - Boundaries

#### 1.2.1 - Painted boundaries (9/19)

The sale boundary and Payment Unit boundaries are marked and identified by blue, red, and yellow paint. Exterior sale boundary lines against private property are marked with blue paint. Exterior sale boundary lines against state are marked with red paint. Interior Payment Unit boundaries are marked with yellow paint. Retention patches are marked with red paint; no harvesting activities may occur within these areas. Yellow painted trees designating an interior Payment Unit boundary are only to be cut when all surrounding Payment Units have been paid.

## 2 - Timber Specifications

### 2.1 - Included Timber

#### 2.1.1 - Clearcut unit(s) with unmerchantable trees (6/14)

Within Payment Unit(s) 2-4 and 6-11, cut all trees that are two (2) inches or more at DBH, except trees marked with green paint above and below stump height.

#### 2.1.4 - Designated timber unit(s) (6/17)

Within Payment Unit(s) 5, all aspen and birch trees are designated for cutting regardless of merchantability.

#### 2.1.7 - Leave tree marked unit(s) (6/14)

Within Payment Unit(s) 1, cut all trees that are two (2) inches or more at DBH, except trees marked with green paint above and below stump height.

## 3 - Payments

### 3.4 - Damaged Timber

#### 3.4.1 - Damaged timber (7/16)

General Condition and Requirement 3.4 Damaged Timber, defines liquidated damages for undesignated live merchantable trees which are cut or injured. No damage is acceptable to undesignated live merchantable trees. Within the Sale Area, if more than 5% of trees (> 4.5" DBH) within a specified area of the sale are damaged, liquidated damages will be assessed for all trees damaged. Rates will be in accordance with General Condition and Requirement 3.4 Damaged Timber.

## 4 - Transportation

### 4.1 - Construction

#### 4.1.5 - Culverts (5/14)

Roads may require the installation of culverts for cross drainage or at natural drainage-ways. If culverts are needed in these locations, their placement will be specified by the sale administrator, and they shall be installed prior to hauling. The culverts shall be corrugated metal or plastic gauge. Culverts will be a minimum of 12 inches in diameter and 24 feet in length. If culverts are removed, fill shall be removed from wetland soils as specified. Soils shall be maintained and left in a non-erodible condition, with water bars, seed, fertilizer, mulch, and slash installed as directed by the sale administrator and as specified in the BMP manual.

#### 4.1.7 - Road closure (10/11)

All new roads built into the sale must be blocked to vehicle traffic upon completion of the sale. Overgrown roads that are reopened shall be considered new roads. Some existing roads may also need to be closed, see the Timber Sale Map for locations. Stumps and brush must be placed along the remainder of the trail. These roads must be rendered impassable to cars and trucks. All stumps from road building and landing construction must be reserved to block any newly constructed roads upon completion of the sale. These stumps must be scattered along the road system to prohibit vehicular movement. Contact the sale administrator for specific details of design and placement.

### 4.2 - Maintenance



#### 4.2.2 - Fill material (4/07)

To maintain roads, fill material may be needed in areas where "holes" exist or may be expected to develop. This fill material should be placed before trucking begins. Contact the sale administrator regarding the availability of onsite sand or gravel from adjacent State-owned lands.

#### 4.2.5 - Two wheel drive condition (2/04)

All existing trail roads on and adjacent to the sale area must be passable by two-wheel drive traffic for the duration of the sale.

### 4.4 - Access

#### 4.4.2 - Alternate route on private property (2/04)

It is the Purchaser's responsibility to obtain access across private land for any routes other than the route shown on the Timber Sale Map.

#### 4.4.3 - Access gate (12/08)

The access gate must be locked at the completion of each day during the dates March 1 to August 31 unless otherwise approved by the Unit Manager or his/her representative.

## 5 - Operations

### 5.2 - Conduct of Operations

#### 5.2.2 - Hazard Trees/Snags

##### 5.2.2.1 - Den trees (10/16)

Obvious hollow and/or den trees shall be protected and left standing unless they are a safety hazard.

#### 5.2.3 - Operating Restrictions

##### 5.2.3.5 - Oak wilt restriction (1/18)

Within Payment Unit(s) 1 unless changed by written agreement, cutting, skidding, hauling within the sale and brushing of access roads to the sale are not permitted during the period of April 15 to July 15. Operations may be allowed if specific steps are taken to prevent damaging uncut oak during the high risk period. Those steps may include completing all road brushing before April 15th and clearing a tree-length buffer along uncut oak cover before April 15th. This is necessary to reduce the spread of oak wilt. For more information, contact the Unit Manager or his/her representative.

#### 5.2.4 - Dead and Down Creation

##### 5.2.4.4 - Dead and down creation, grouse (6/18)

To encourage grouse and other wildlife, in Payment Unit(s) 2-10 leave one 12" or larger diameter whole tree on the ground for every 3 acres. Trees should be scattered throughout the sale and at least two chains from any roads, two-tracks, or trails open to vehicles, or positioned per the sale administrator's instructions. Stumps must be at least 3 feet tall.

#### 5.2.17 - Timber Mats and Interlocking Composite Mats (10/20)

Some roads or skid trails may require extra protection such as that afforded by timber mats, interlocking composite mats, or another approved system. Approximately 35 feet of road or trail may need extra protection at locations shown on the Timber Sale Map. If available, mats may be borrowed from the DNR. A Timber Sale Contract Supplement will be used to document the Purchaser's use of the DNR's mats. Contact the sale administrator regarding availability and pick-up. Timber mats are available from various field offices. Composite mats are only available from the Grayling field office and the Marquette ICC. The Purchaser is responsible for picking up and hauling the mats to and from the site. The composite mats will require DNR staff onsite for installation and removal. Contact the sale administrator to schedule at least 30 days before desired install/removal date. All mats must be cleaned prior to drop off. This may include, but is not limited to, power washing and brushing to remove mud and debris. A charge of \$700.00 per timber mat and \$2,000.00 per composite mat will be assessed for all damaged or non-returned mats. Damage for the crane/timber mats is defined as three or more broken cants. Damage for the composite mats is defined as cracked or broken mats.

#### 5.2.22 - Operating Caution

##### 5.2.22.1 - Operating caution (6/11)

It is recommended, but not required, that within Payment Unit(s) 1-11, cutting, skidding, and hauling occur during dry summer or frozen winter conditions. The reason for the recommendation is because Payment Units are seasonally wet and prone to rutting.

#### 5.4 - Soil Protection

##### 5.4.1 - Rutting restriction, general (7/16)

Operations are to cease immediately if equipment and weather conditions result in rutting of roads and/or skid trails which is 12 inches or greater in depth and 50 feet in length. The Unit Manager or his/her representative may restrict hauling and/or skidding if ruts exceed the specified depth. With the Unit Manager or his/her representative's approval, the Purchaser may return to the area when the risk of rutting has decreased.



# TIMBER SALE MAP

This information provided by authority of Part 525, 1994 PA 451, as amended.

Sale Number	Year
73 - 002	21

Forest Management Unit	County	Mapped By	Date	Page	of
Gladwin Management Unit	Midland	Steven Nyhoff	06/07/2021	1	3
Township	Range	Section(s) and Subdivision(s)	Scale		
16N	1 & 2E	1E: SEC 1, 12,13; 2E: SEC 4, 5, 6, 7	1:15,840		

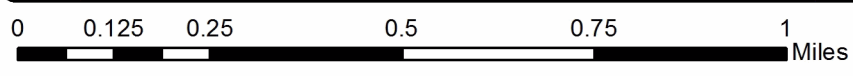
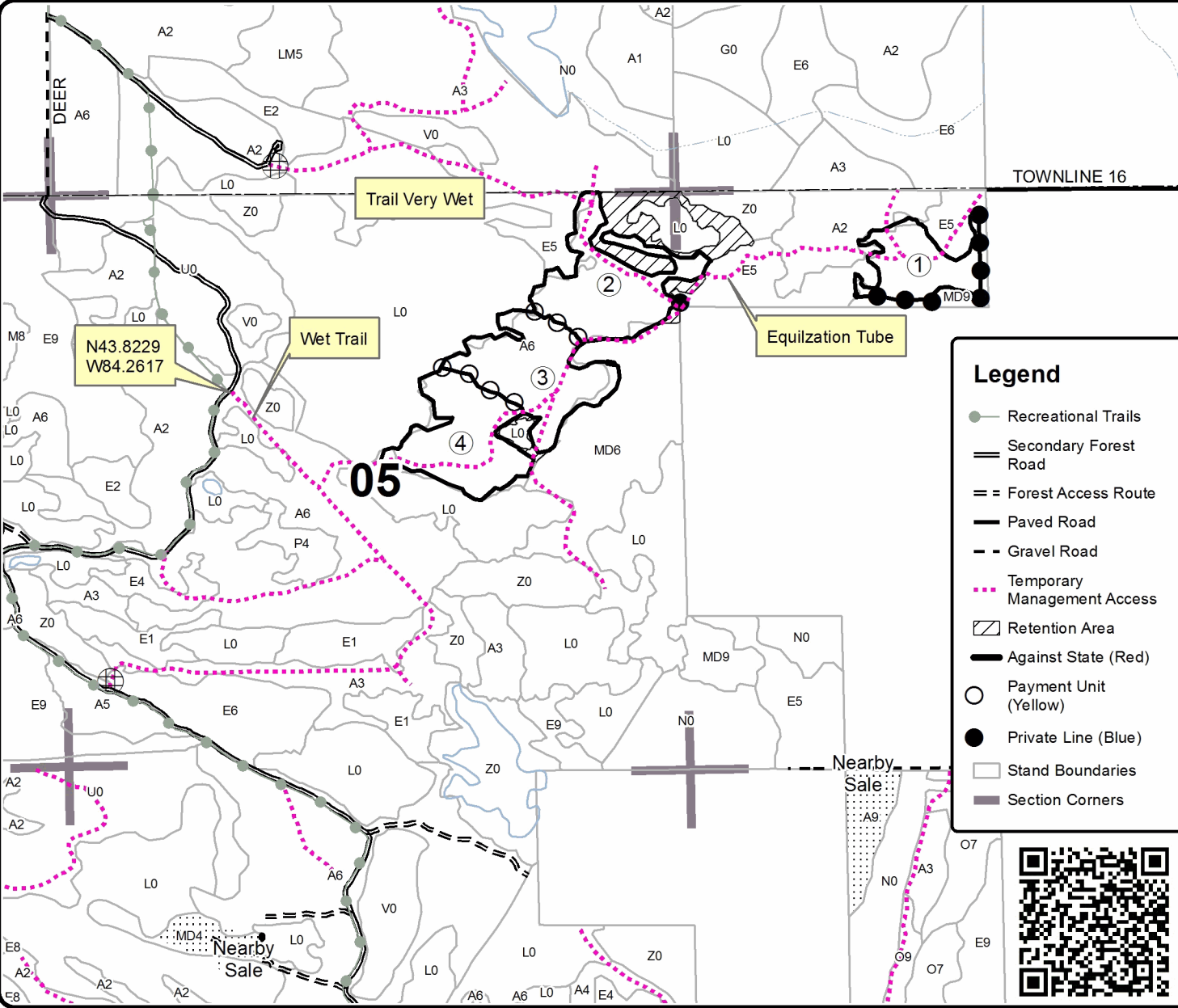
Cover Type				Density	
A = Aspen	H = Hemlock	N = Marsh	U = Upland Brush	0 = Non Stocked	5 = Pole Timber Medium
B = Paper Birch	J = Jack Pine	O = Oak	UM = Upland Mixed	1 = Seedling Sapling Poor	6 = Pole Timber Well
C = Cedar	L = Lowland Brush	P = Lowland Poplar	V = Bog or Marsh	2 = Seedling Sapling Medium	7 = Saw Timber Poor
D = Treed Bog	LM = Lowland Mixed	Q = Mixed Swamp Conifer	W = White Pine	3 = Seedling Sapling Well	8 = Saw Timber Medium
E = Swamp Hdwoods	M = Mpl, Bch, Brch	R = Red Pine	X = Non Stocked	4 = Pole Timber Poor	9 = Saw Timber Well
F = Spruce Fir	MC = Mixed Conifer	S = Black Spruce	Z = Water		
G = Grass	MD = Mixed Deciduous	T = Tamarack			

PU	Acres	PU	Acres	PU	Acres
1	11.1	5	23.9	9	20.5
2	19.2	6	24.1	10	17.0
3	19.0	7	34.8	11	6.5
4	17.7	8	14.7		

## Deer Kawkawlin

### Compartment 91

### 208.5 Acres





# TIMBER SALE MAP

This information provided by authority of Part 525, 1994 PA 451, as amended.

Sale Number	Year
73 - 002	21

Forest Management Unit	County	Mapped By	Date	Page	of
Gladwin Management Unit	Midland	Steven Nyhoff	06/07/2021	2	3
Township	Range	Section(s) and Subdivision(s)	Scale		
16N	1 & 2E	1E: SEC 1, 12,13; 2E: SEC 4, 5, 6, 7	1:15,840		

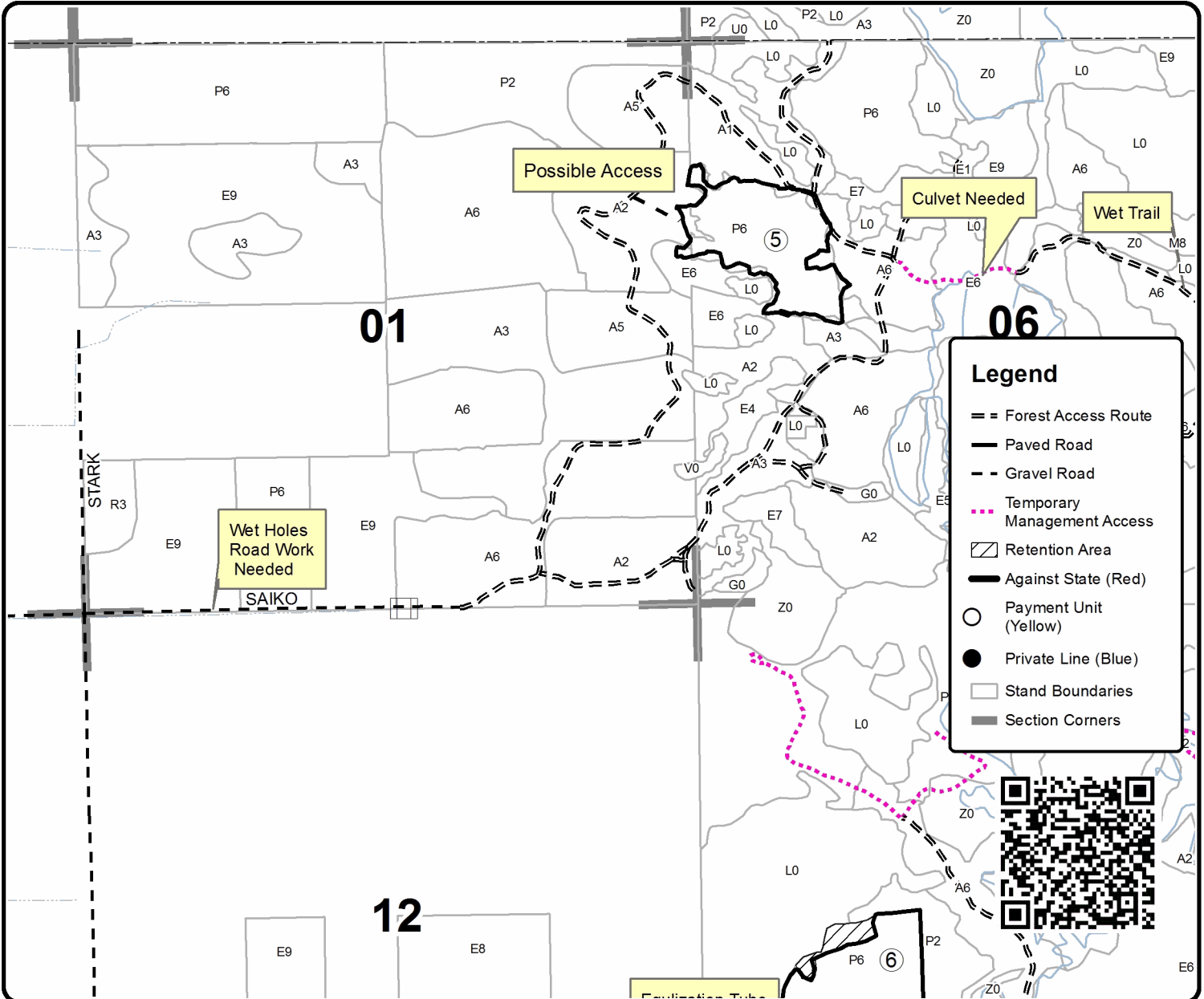
Cover Type				Density			
A = Aspen	H = Hemlock	N = Marsh	U = Upland Brush	0 = Non Stocked	5 = Pole Timber Medium		
B = Paper Birch	J = Jack Pine	O = Oak	UM = Upland Mixed	1 = Seedling Sapling Poor	6 = Pole Timber Well		
C = Cedar	L = Lowland Brush	P = Lowland Poplar	V = Bog or Marsh	2 = Seedling Sapling Medium	7 = Saw Timber Poor		
D = Treed Bog	LM = Lowland Mixed	Q = Mixed Swamp Conifer	W = White Pine	3 = Seedling Sapling Well	8 = Saw Timber Medium		
E = Swamp Hdwoods	M = Mpl. Bch, Brch	R = Red Pine	X = Non Stocked	4 = Pole Timber Poor	9 = Saw Timber Well		
F = Spruce Fir	MC = Mixed Conifer	S = Black Spruce	Z = Water				
G = Grass	MD = Mixed Deciduous	T = Tamarack					

PU	Acres	PU	Acres	PU	Acres
1	11.1	5	23.9	9	20.5
2	19.2	6	24.1	10	17.0
3	19.0	7	34.8	11	6.5
4	17.7	8	14.7		

## Deer Kawkawlin

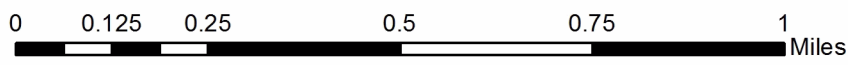
### Compartment 91

### 208.5 Acres



**Legend**

- == Forest Access Route
- Paved Road
- - Gravel Road
- ... Temporary Management Access
- ▨ Retention Area
- Against State (Red)
- Payment Unit (Yellow)
- Private Line (Blue)
- Stand Boundaries
- Section Corners





# TIMBER SALE MAP

This information provided by authority of Part 525, 1994 PA 451, as amended.

Sale Number	Year
73 - 002	21

Forest Management Unit	County	Mapped By	Date	Page	of
Gladwin Management Unit	Midland	Steven Nyhoff	06/07/2021	3	3
Township	Range	Section(s) and Subdivision(s)	Scale		
16N	1 & 2E	1E: SEC 1, 12,13; 2E: SEC 4, 5, 6, 7	1:15,840		

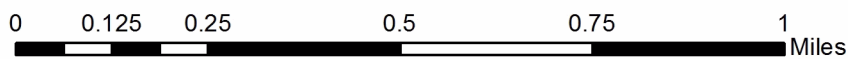
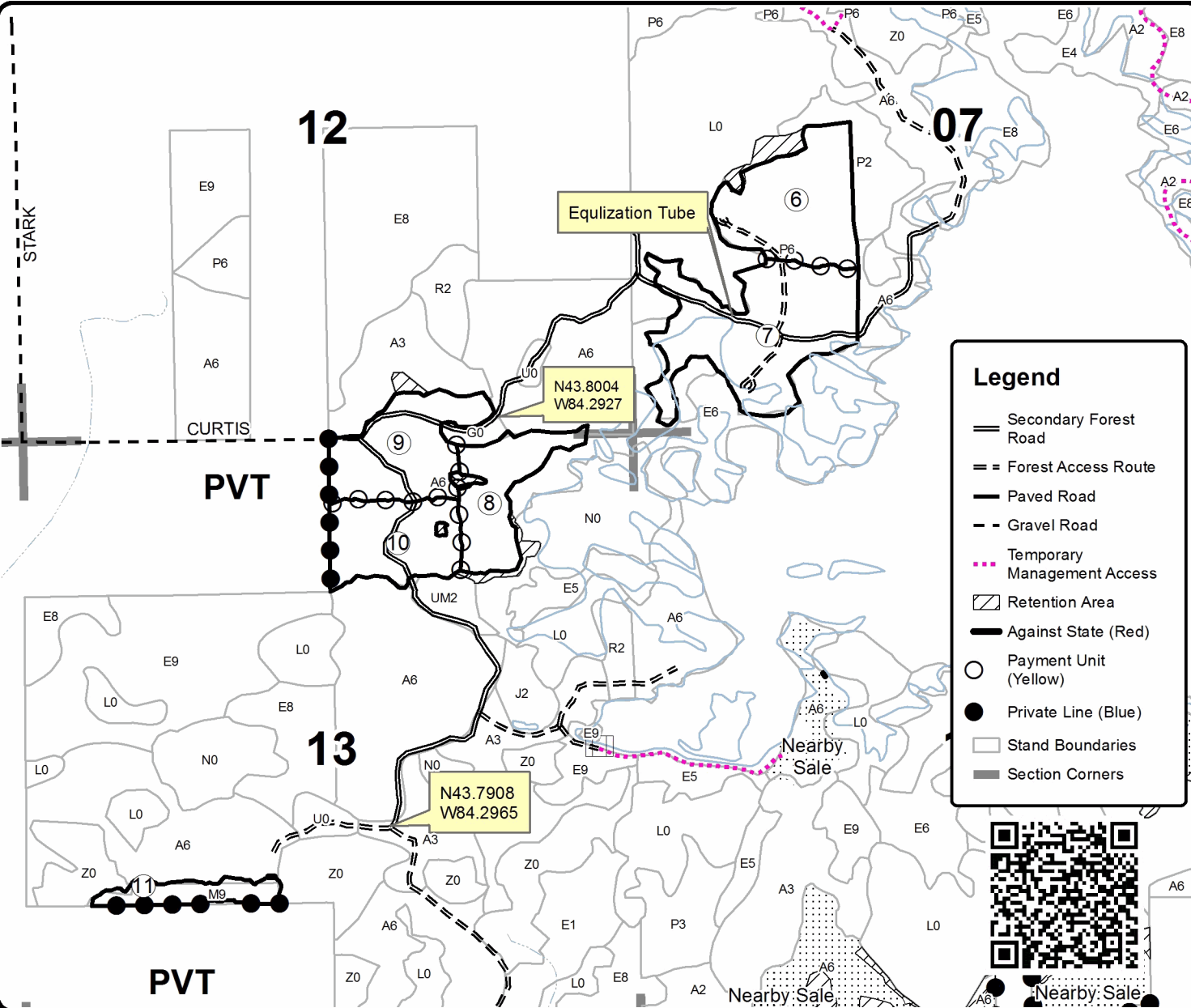
Cover Type				Density			
A = Aspen	H = Hemlock	N = Marsh	U = Upland Brush	0 = Non Stocked	5 = Pole Timber Medium		
B = Paper Birch	J = Jack Pine	O = Oak	UM = Upland Mixed	1 = Seedling Sapling Poor	6 = Pole Timber Well		
C = Cedar	L = Lowland Brush	P = Lowland Poplar	V = Bog or Marsh	2 = Seedling Sapling Medium	7 = Saw Timber Poor		
D = Treed Bog	LM = Lowland Mixed	Q = Mixed Swamp Conifer	W = White Pine	3 = Seedling Sapling Well	8 = Saw Timber Medium		
E = Swamp Hdwoods	M = Mpl, Bch, Brch	R = Red Pine	X = Non Stocked	4 = Pole Timber Poor	9 = Saw Timber Well		
F = Spruce Fir	MC = Mixed Conifer	S = Black Spruce	Z = Water				
G = Grass	MD = Mixed Deciduous	T = Tamarack					

PU	Acres	PU	Acres	PU	Acres
1	11.1	5	23.9	9	20.5
2	19.2	6	24.1	10	17.0
3	19.0	7	34.8	11	6.5
4	17.7	8	14.7		

## Deer Kawkawlin

### Compartment 91

### 208.5 Acres







## TIMBER SALE INFORMATION

### Fur Farm Harvest (73-005-21)

T19N, R05W, SEC. 5; T20N, R05W, SEC. 27; T20N, R05W, SEC. 32; T20N, R05W, SEC. 35.  
Clare County (Advertised Price \$129,736.20)

SALE NOTE: All units of volume listed for this sale were estimated using the Inventory Manager computer program and the new Michigan taper model.

A timber sale contract for this lump sum, sealed bid timber sale will be awarded to the responsible bidder offering the highest sealed bid price. All units of volume listed below were estimated using the Inventory Manager computer program and the new Michigan taper model. Bids must be at or above the following advertised price for each product and species:

<u>PRODUCTS &amp; SPECIES</u>	<u>ESTIMATED UNITS*</u>	<u>ADVERTISED PRICE</u>
<b>Sawtimber</b>		
Jack Pine	42.8 MBF	\$ 31.00 / MBF
Mixed Aspen	249.2 MBF	\$ 77.00 / MBF
Mixed Oak	113.9 MBF	\$ 58.00 / MBF
Red Maple	208.6 MBF	\$ 38.00 / MBF
Red Pine	72.2 MBF	\$ 82.00 / MBF
White Pine	53.1 MBF	\$ 59.00 / MBF
<b>Pulpwood</b>		
Balsam Fir	145 Cords	\$ 15.90 / Cord
Black Cherry	113 Cords	\$ 16.45 / Cord
Black Spruce	22 Cords	\$ 12.65 / Cord
Jack Pine	275 Cords	\$ 15.90 / Cord
Mixed Aspen	2,596 Cords	\$ 20.20 / Cord
Mixed Oak	450 Cords	\$ 13.65 / Cord
Paper Birch	24 Cords	\$ 19.60 / Cord
Red Maple	769 Cords	\$ 16.45 / Cord
Red Pine	42 Cords	\$ 39.60 / Cord
White Pine	114 Cords	\$ 30.30 / Cord

\* The total volume is statistically estimated within plus (+) or minus (-) 3.28 percent. There are an estimated 6,171 cords on this timber sale, plus or minus 203 cords at the 95% confidence level. The estimated units are final and not subject to adjustment. Prospective bidders are urged to examine this timber and to make their own estimates of quantity and quality.

### **BOND AND PAYMENT SCHEDULE:**

1. A bond in the amount of \$12,974.00 to insure faithful performance of the conditions of the contract will be deposited by the successful bidder within 21 days of the sale award.
2. Cutting in any sale or unit without the required advance payment would be considered a trespass.
3. Total payment must be paid in advance or according to the following schedule :
  - (a) Ten percent (10%) of the sale value must be paid within 21 days of the sale award.
  - (b) The 10% down payment will be credited towards the first unit cut.
  - (c) Payment for each of the following units must be made before cutting begins in that unit:
 

PAYMENT UNIT NUMBER	PERCENT OF TOTAL SALE VALUE
01	6.1%
02	6.4%
03	20.3%
04	26.6%
05	25.5%
06	5.9%
07	9.2%
4. If no cutting takes place, the 10% down payment will not be refunded.
5. Operations on the contract issued will terminate on 06/30/2024.

### **SALE STATISTICS**

Volumes were calculated in cubic feet using the Michigan taper model. Cubic foot volume includes all wood inside bark for the product indicated. For display purposes, cubic feet were converted to cords and MBF using a simple conversion factor, e.g. 79 cubic feet per cord and 185 cubic feet per MBF. The cubic foot volumes are precise; the cords and MBF volumes are not. Cubic foot volume cannot be directly converted to cords or boards with precision.

## SALE VOLUMES

The total estimated sale volume may not equal the sum of the species/products due to the nature of statistical calculations associated with double sampling methodology.

VOLUME			STATISTICAL RANGE IN CORDS	
TOTAL CUBIC FEET	TOTAL CORDS	PERCENT ERROR	MINIMUM	MAXIMUM
487,480	6,171	3.28%	5,968	6,373

## VDU VOLUMES

A VDU is a Volume Determination Unit. Volumes and their associated statistics are calculated at the VDU level and summarized to the sale level. There is often a one to one relationship between a VDU and a Payment Unit, but not always, depending on the cruise design. Refer to the VDU TO PAYMENT UNIT table.

	VOLUME			RANGE IN CORDS	
VDU	TOTAL CUBIC FEET	TOTAL CORDS	PERCENT ERROR	MINIMUM	MAXIMUM
28	101,471	1,284	7.35%	1,190	1,379
34	243,708	3,085	5.30%	2,921	3,248
52	31,249	396	9.96%	356	435
139	29,440	373	9.80%	336	409
224	33,471	424	4.29%	405	442
262	48,141	609	7.84%	562	657
<b>TOTAL:</b>	<b>487,480</b>	<b>6,171</b>		<b>5,771</b>	<b>6,570</b>

## VDU TO PAYMENT UNIT

When a VDU is associated with more than one Payment Unit (PU), the VDU volumes are assigned to the PU based on acres of the VDU within the PU.

VDU	VDU ACRES	PU	PU ACRES
28	37.6	3	37.6
34	78.9	4	40.2
		5	38.7
52	11.3	2	11.3
139	14.2	1	14.2
224	10.2	6	10.2
262	17.4	7	17.4
<b>TOTAL:</b>	<b>169.6</b>		<b>169.6</b>



**DESCRIPTION OF TIMBER BY PAYMENT UNIT (PU)**

PU	MARKET GROUP	PRODUCT	QUANTITY	UNIT	ACRES	ADVERTISE PRICE	
1	Mixed Aspen	Sawtimber	4.8	MBF	14.2	\$7,914.50	
	<i>B. T. Aspen</i>		4.8	<i>MBF</i>			
	Mixed Oak		56.4	MBF			
	<i>BI/R/Hybrid Oak</i>		55.1	<i>MBF</i>			
	<i>White Oak</i>		1.3	<i>MBF</i>			
	Red Pine		1.9	MBF			
	Balsam Fir		Pulpwood	33			Cords
	<i>Balsam Fir</i>			33			<i>Cords</i>
	Black Cherry			21			Cords
	<i>Black Cherry</i>			1.9			<i>MBF</i>
	<i>Black Cherry</i>			17			<i>Cords</i>
	Mixed Aspen			68			Cords
	<i>B. T. Aspen</i>		21	<i>Cords</i>			
	<i>Quaking Aspen</i>		47	<i>Cords</i>			
	Mixed Oak	82	Cords				
	<i>BI/R/Hybrid Oak</i>	81	<i>Cords</i>				
	<i>White Oak</i>	1	<i>Cords</i>				
	Red Maple	17	Cords				
	Red Pine	12	Cords				
	2	Mixed Aspen	Sawtimber	22.7			MBF
<i>B. T. Aspen</i>		9.2		<i>MBF</i>			
<i>Quaking Aspen</i>		13.5		<i>MBF</i>			
Mixed Oak		6.0		MBF			
<i>BI/R/Hybrid Oak</i>		6.0		<i>MBF</i>			
Red Maple		9.0		MBF			
Balsam Fir		Pulpwood		32	Cords		
<i>Balsam Fir</i>				32	<i>Cords</i>		
Black Cherry				4	Cords		
<i>Black Cherry</i>				4	<i>Cords</i>		
Mixed Aspen				189	Cords		
<i>B. T. Aspen</i>				50	<i>Cords</i>		
<i>Quaking Aspen</i>		139		<i>Cords</i>			
Mixed Oak		42		Cords			
<i>BI/R/Hybrid Oak</i>		42		<i>Cords</i>			
Red Maple		57		Cords			
3	Mixed Aspen	Sawtimber	59.5	MBF	37.6	\$26,398.70	
	<i>B. T. Aspen</i>		15.4	<i>MBF</i>			
	<i>Quaking Aspen</i>		44.1	<i>MBF</i>			
	Mixed Oak		5.3	MBF			
	<i>BI/R/Hybrid Oak</i>		5.3	<i>MBF</i>			
	Red Maple		47.2	MBF			
	Red Pine		1.7	MBF			
	White Pine		4.5	MBF			
	Balsam Fir		Pulpwood	55			Cords
	<i>Balsam Fir</i>			5.4			<i>MBF</i>
	<i>Balsam Fir</i>			44			<i>Cords</i>
	Black Cherry			51			Cords
	<i>Black Cherry</i>			51			<i>Cords</i>
	Jack Pine			12			Cords
	Mixed Aspen		655	Cords			
	<i>B. T. Aspen</i>		148	<i>Cords</i>			
	<i>Quaking Aspen</i>	507	<i>Cords</i>				
	Mixed Oak	46	Cords				
	<i>BI/R/Hybrid Oak</i>	46	<i>Cords</i>				
	Red Maple	197	Cords				
Red Pine	7	Cords					

**DESCRIPTION OF TIMBER BY PAYMENT UNIT (PU), CON'T**

PU	MARKET GROUP	PRODUCT	QUANTITY	UNIT	ACRES	ADVERTISE PRICE
3 con't	White Pine	Pulpwood	1	Cords		
4	Jack Pine	Sawtimber	0.7	MBF	40.2	\$34,381.00
	Mixed Aspen		65.1	MBF		
	<i>B. T. Aspen</i>		18.8	<i>MBF</i>		
	<i>Quaking Aspen</i>		46.3	<i>MBF</i>		
	Mixed Oak		9.6	MBF		
	<i>BI/R/Hybrid Oak</i>		9.6	<i>MBF</i>		
	Red Maple		69.1	MBF		
	Red Pine		31.9	MBF		
	White Pine		23.9	MBF		
	Balsam Fir	Pulpwood	13	Cords		
	<i>Balsam Fir</i>		13	<i>Cords</i>		
	Black Cherry		16	Cords		
	<i>Black Cherry</i>	<i>Sawtimber</i>	1.0	<i>MBF</i>		
	<i>Black Cherry</i>	<i>Pulpwood</i>	14	<i>Cords</i>		
	Black Spruce		11	Cords		
	<i>Black Spruce</i>	<i>Sawtimber</i>	0.7	<i>MBF</i>		
	<i>Black Spruce</i>	<i>Pulpwood</i>	10	<i>Cords</i>		
	Jack Pine		3	Cords		
	Mixed Aspen		778	Cords		
	<i>B. T. Aspen</i>		236	<i>Cords</i>		
	<i>Quaking Aspen</i>		542	<i>Cords</i>		
	Mixed Oak		57	Cords		
	<i>BI/R/Hybrid Oak</i>		57	<i>Cords</i>		
	Paper Birch		8	Cords		
	<i>Paper Birch</i>	<i>Sawtimber</i>	3.2	<i>MBF</i>		
	<i>Paper Birch</i>	<i>Pulpwood</i>	2	<i>Cords</i>		
	Red Maple		186	Cords		
	Red Pine		8	Cords		
	White Pine		48	Cords		
5	Jack Pine	Sawtimber	0.7	MBF	38.7	\$33,056.85
	Mixed Aspen		62.6	MBF		
	<i>B. T. Aspen</i>		18.1	<i>MBF</i>		
	<i>Quaking Aspen</i>		44.5	<i>MBF</i>		
	Mixed Oak		9.2	MBF		
	<i>BI/R/Hybrid Oak</i>		9.2	<i>MBF</i>		
	Red Maple		66.5	MBF		
	Red Pine		30.8	MBF		
	White Pine		23.0	MBF		
	Balsam Fir	Pulpwood	12	Cords		
	<i>Balsam Fir</i>		12	<i>Cords</i>		
	Black Cherry		15	Cords		
	<i>Black Cherry</i>	<i>Sawtimber</i>	1.0	<i>MBF</i>		
	<i>Black Cherry</i>	<i>Pulpwood</i>	13	<i>Cords</i>		
	Black Spruce		10	Cords		
	<i>Black Spruce</i>	<i>Sawtimber</i>	0.7	<i>MBF</i>		
	<i>Black Spruce</i>	<i>Pulpwood</i>	9	<i>Cords</i>		
	Jack Pine		2	Cords		
	Mixed Aspen		750	Cords		
	<i>B. T. Aspen</i>		228	<i>Cords</i>		
	<i>Quaking Aspen</i>		522	<i>Cords</i>		
	Mixed Oak		54	Cords		
	<i>BI/R/Hybrid Oak</i>		54	<i>Cords</i>		
	Paper Birch		8	Cords		
	<i>Paper Birch</i>	<i>Sawtimber</i>	3.0	<i>MBF</i>		
	<i>Paper Birch</i>	<i>Pulpwood</i>	2	<i>Cords</i>		

**DESCRIPTION OF TIMBER BY PAYMENT UNIT (PU), CON'T**

PU	MARKET GROUP	PRODUCT	QUANTITY	UNIT	ACRES	ADVERTISE PRICE	
5 con't	Red Maple	Pulpwood	180	Cords			
	Red Pine		7	Cords			
	White Pine		46	Cords			
6	Jack Pine	Sawtimber	33.2	MBF	10.2	\$7,690.60	
	Mixed Aspen		12.8	MBF			
	<i>Quaking Aspen</i>		12.8	<i>MBF</i>			
	Mixed Oak		4.9	MBF			
	<i>B/R/Hybrid Oak</i>		4.9	<i>MBF</i>			
	Red Maple		1.1	MBF			
	Black Cherry		Pulpwood	2			Cords
	<i>Black Cherry</i>			2			<i>Cords</i>
	Jack Pine			242			Cords
	Mixed Aspen			30			Cords
	<i>Quaking Aspen</i>	30	<i>Cords</i>				
	Mixed Oak	9	Cords				
	<i>B/R/Hybrid Oak</i>	9	<i>Cords</i>				
	Red Maple	45	Cords				
7	Jack Pine	Sawtimber	8.2	MBF	17.4	\$11,940.65	
	Mixed Aspen		21.7	MBF			
	<i>Quaking Aspen</i>		21.7	<i>MBF</i>			
	Mixed Oak		22.5	MBF			
	<i>B/R/Hybrid Oak</i>		22.5	<i>MBF</i>			
	Red Maple		15.7	MBF			
	Red Pine		5.9	MBF			
	White Pine		1.7	MBF			
	Black Cherry		Pulpwood	4			Cords
	<i>Black Cherry</i>			4			<i>Cords</i>
	Jack Pine	16		Cords			
	Mixed Aspen	126		Cords			
	<i>Quaking Aspen</i>	126	<i>Cords</i>				
	Mixed Oak	160	Cords				
	<i>B/R/Hybrid Oak</i>	154	<i>Cords</i>				
	<i>White Oak</i>	6	<i>Cords</i>				
	Paper Birch	8	Cords				
	<i>Paper Birch</i>	8	<i>Cords</i>				
	Red Maple	87	Cords				
Red Pine	8	Cords					
White Pine	19	Cords					
TOTAL:			739.8	MBF			
TOTAL:			4,549	Cords			

# Sale Specific Conditions & Requirements

**Sale Name: Fur Farm Harvest**

**Sale Number: 73-005-21 Seq#: 1**

## 1 - Sale Area

### 1.2 - Boundaries

#### 1.2.1 - Painted boundaries (9/19)

The sale boundary and Payment Unit boundaries are marked and identified by blue, red, and yellow paint. Exterior sale boundary lines against private property are marked with blue paint. Exterior sale boundary lines against state are marked with red paint. Old State Avenue is an unmarked boundary for Payment Unit 1. Bringold Avenue is an unmarked boundary for Payment Units 6 and 7. Interior Payment Unit boundaries are marked with yellow paint. Retention patches are marked with red paint; no harvesting activities may occur within these areas. The painted boundary line trees are not Included Timber and are to be protected unless marked with orange paint. Yellow painted trees designating an interior Payment Unit boundary are only to be cut when all surrounding Payment Units have been paid.

## 2 - Timber Specifications

### 2.1 - Included Timber

#### 2.1.1 - Clearcut unit(s) with unmerchantable trees (6/14)

Within Payment Unit(s) 1-7, cut all trees that are two (2) inches or more at DBH.

## 3 - Payments

### 3.3 - Pre-measured Sales

#### 3.3.4 - Dividing payment units (7/14)

Payment Unit(s) may be divided at the request of the Purchaser and upon approval of the Unit Manager. Dividing Payment Units is a contract modification which requires a Timber Sale Contract Amendment. There will be only one division per Payment Unit.

## 4 - Transportation

### 4.1 - Construction

#### 4.1.6 - Road construction (1/09)

Construction of new roads or improvements of existing roads shall be done in such a way as to minimize the environmental and visual impacts. Merchantable trees shall be cut and utilized unless otherwise directed. Non-merchantable trees shall be severed and laid flat on the ground. Slash shall be scattered, and not left in windrows and kept a minimum of 10 feet back from the road edge. Stumps shall be set upright, not left on edge, and be moved at least 10 feet away from the road edge. Disturbed soil shall be feathered into the woods and not left in berms or windrows.

#### 4.1.7 - Road closure (10/11)

All new roads built into the sale must be blocked to vehicle traffic upon completion of the sale. Overgrown roads that are reopened shall be considered new roads. In general, this will require constructing a four (4') foot high berm of stumps and logs covered with earth. Stumps and brush must be placed along the remainder of the trail. These roads must be rendered impassable to cars and trucks. Contact the sale administrator for specific details of design and placement.

### 4.4 - Access

#### 4.4.3 - Access gate (12/08)

The access gate must be locked at the completion of each day unless otherwise approved by the Unit Manager or his/her representative.

## 5 - Operations

### 5.1 - Notification

#### 5.1.1 - Pre-sale conference (10/16)

A pre-sale conference between the Purchaser and sale administrator is required prior to beginning any operations to determine

landing and road locations. The Unit Manager or his/her representative must be contacted at least 3 business days in advance to schedule the conference.

## 5.2 - Conduct of Operations

### 5.2.2 - Hazard Trees/Snags

#### 5.2.2.1 - Den trees (10/16)

Obvious hollow and/or den trees shall be protected and left standing unless they are a safety hazard.

### 5.2.3 - Operating Restrictions

#### 5.2.3.5 - Oak wilt restriction (1/18)

Within Payment Unit(s) 1, unless changed by written agreement, cutting, skidding, hauling within the sale and brushing of access roads to the sale are not permitted during the period of April 15 to July 15. Operations may be allowed if specific steps are taken to prevent damaging uncut oak during the high risk period. Those steps may include completing all road brushing before April 15th and clearing a tree-length buffer along uncut oak cover before April 15th. This is necessary to reduce the spread of oak wilt. For more information, contact the Unit Manager or his/her representative.

### 5.2.4 - Dead and Down Creation

#### 5.2.4.4 - Dead and down creation, grouse (6/18)

To encourage grouse and other wildlife, in Payment Unit(s) 2-5 leave one 12" or larger diameter whole tree on the ground for every 3 acres. Trees should be scattered throughout the Sale Area and at least two chains from any roads, two-tracks, or trails open to vehicles, or positioned per the sale administrator's instructions.

#### 5.2.32 - Decking/landing restoration (9/13)

All decking and landing areas must have the surface area restored to a condition equal to or better than before. This is to ensure the proper regeneration of the stand. Wood debris, chips, and "cookies" from trimmings must be removed or scattered away from landing and loading areas and may not be windrowed on the edge.

#### 5.2.41 - Snowmobile trail protection (9/11)

LP-656 is a snowmobile trail and is shown on the Timber Sale Map. Do not cut or damage posts with orange trail markers or traffic control signs. If the trail is used for hauling, it must be graded to the satisfaction of the Unit Manager or his/her representative prior to December 1. If the trail road is to be used for hauling during the snowmobile season, then a snow-covered base must be left on the trail. Maintain a 20-foot-wide slash, debris, and rut free zone daily using the snowmobile trail as the centerline. No decking of forest products will be permitted along the snowmobile trail. All stumps within 20 feet of the snowmobile trail must be cut at ground level. In addition, any trees cut within 5 feet of the trail must have the stumps removed and be disposed of according to the direction of the Unit Manager or his/her representative.

## 6 - Safety and Fire Prevention

### 6.2 - Signing

#### 6.2.1 - Road posting (10/20)

The Purchaser is responsible for posting and maintaining caution signs on Bringold and Old State Avenue prior to beginning operations. The road must be posted at appropriate distances from the Sale Area to warn of logging activity and truck traffic. Signs must be removed when harvest operations are suspended or completed.



# TIMBER SALE MAP

This information provided by authority of Part 525, 1994 PA 451, as amended.

Sale Number	Year
73 - 005	21

Forest Management Unit	County	Mapped By	Date	Page	of
Gladwin Management Unit	Clare County	Behrmann	08/10/2021	1	3
Township	Range	Section(s) and Subdivision(s)	Scale		
19N & 20N	05W	20N Sec. 27, 32, 35 19N Sec. 5	1:7,920		

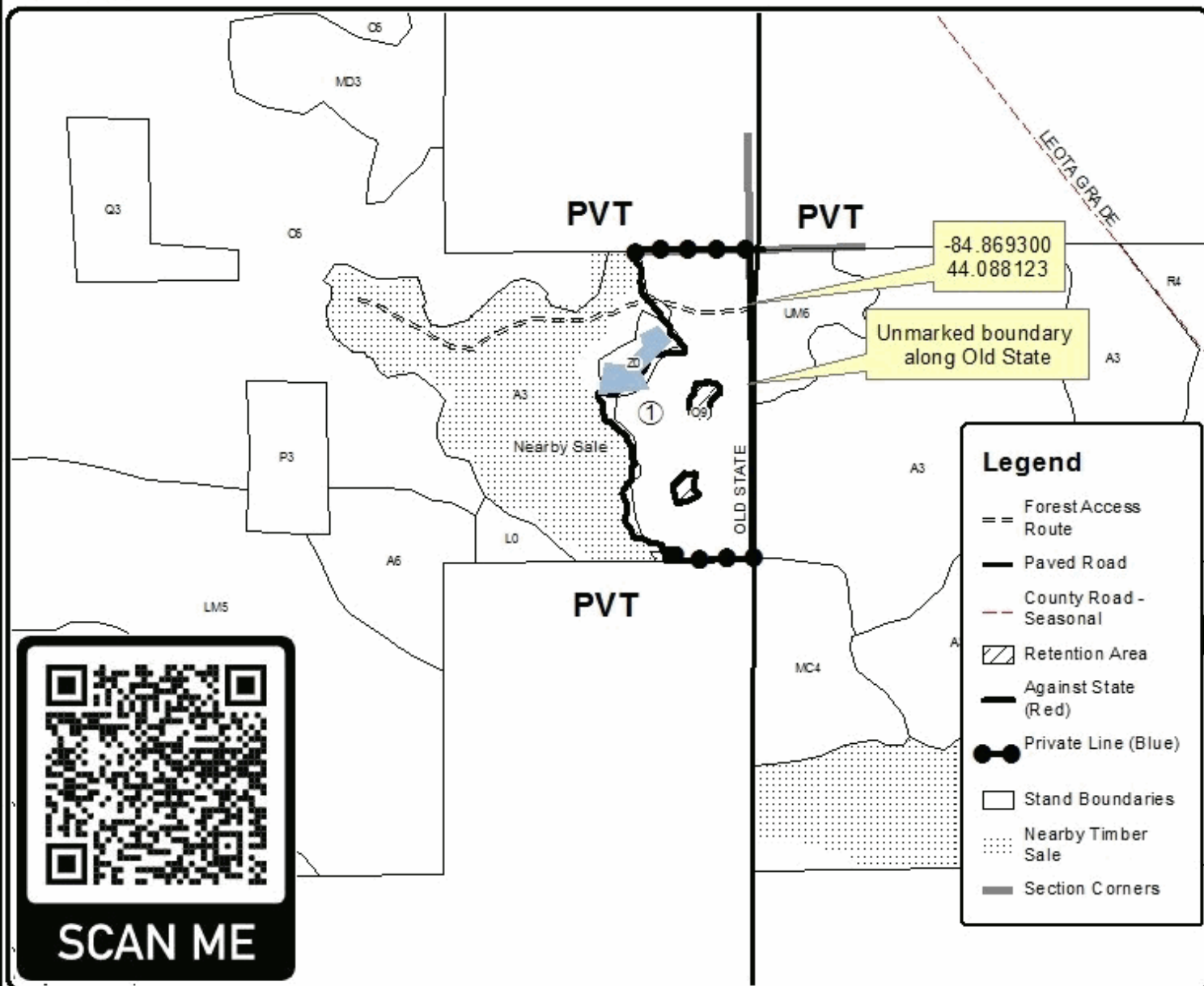
Cover Type				Density	
A = Aspen	H = Hemlock	N = Marsh	U = Upland Brush	0 = Non Stocked	5 = Pole Timber Medium
B = Paper Birch	J = Jack Pine	O = Oak	UM = Upland Mixed	1 = Seedling Sapling Poor	6 = Pole Timber Well
C = Cedar	L = Lowland Erush	P = Lowland Poplar	V = Bog or Marsh	2 = Seedling Sapling Medium	7 = Saw Timber Poor
D = Troad Bog	LM = Lowland Mixed	Q = Mixed Swamp Conifer	W = White Pine	3 = Seedling Sapling Well	8 = Saw Timber Medium
E = Swamp Hdwoods	M = Mpl, Bch, Brch	R = Red Pine	X = Non Stocked	4 = Pole Timber Poor	9 = Saw Timber Well
F = Spruce Fir	MC = Mixed Conifer	S = Black Spruce	Z = Water		
G = Grass	MD = Mixed Deciduous	T = Tamarack			

PU	Acres	PU	Acres
1	14.2	5	38.7
2	11.3	6	10.2
3	37.6	7	17.4
4	40.2		

## Fur Farm Harvest

### Compartment 12

169.6 Acres





# TIMBER SALE MAP

This information provided by authority of Part 525, 1994 PA 451, as amended.

Sale Number	Year
73 - 005	21

Forest Management Unit	County	Mapped By	Date	Page	of
Gladwin Management Unit	Clare County	Behrmann	08/10/2021	2	3
Township	Range	Section(s) and Subdivision(s)	Scale		
19N & 20N	05W	20N Sec. 27, 32, 35 19N Sec. 5	1:15,840		

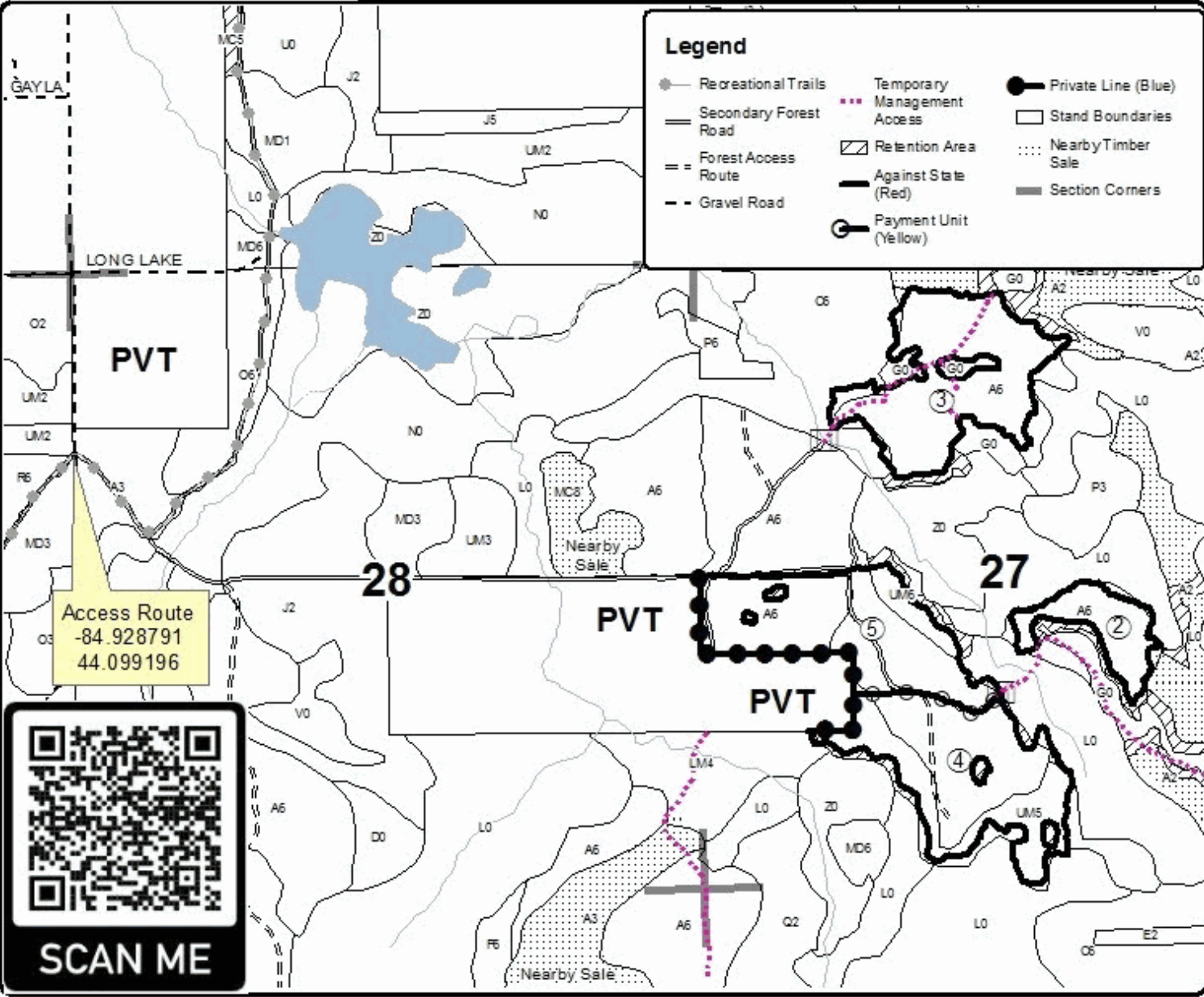
Cover Type				Density			
A = Aspen	H = Hemlock	N = Marsh	U = Upland Brush	0 = Non Stocked	5 = Pole Timber Medium		
B = Paper Birch	J = Jack Pine	O = Oak	UM = Upland Mixed	1 = Seeding Sapling Poor	6 = Pole Timber Well		
C = Cedar	L = Lowland Erush	P = Lowland Poplar	V = Bog or Marsh	2 = Seeding Sapling Medium	7 = Saw Timber Poor		
D = Troad Bog	LM = Lowland Mixed	Q = Mixed Swamp Conifer	W = White Pine	3 = Seeding Sapling Well	8 = Saw Timber Medium		
E = Swamp Hdwoods	M = Mol, Boh, Brch	R = Red Pine	X = Non Stocked	4 = Pole Timber Poor	9 = Saw Timber Well		
F = Spruce Fir	MC = Mixed Conifer	S = Black Spruce	Z = Water				
G = Grass	MD = Mixed Deciduous	T = Tamarack					

PU	Acres	PU	Acres
1	14.2	5	38.7
2	11.3	6	10.2
3	37.6	7	17.4
4	40.2		

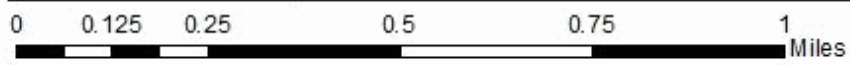
## Fur Farm Harvest

### Compartment 12

169.6 Acres



Legend					
	Recreational Trails		Temporary Management Access		Private Line (Blue)
	Secondary Forest Road		Retention Area		Stand Boundaries
	Forest Access Route		Against State (Red)		Nearby Timber Sale
	Gravel Road		Payment Unit (Yellow)		Section Corners







# TIMBER SALE MAP

This information provided by authority of Part 525, 1994 PA 451, as amended.

Sale Number	Year
73 - 005	21

Forest Management Unit Gladwin FMU	County Clare	Mapped By Behrmann	Date 09/21/2021	Page 3	of 3
Township 19N & 20N	Range 05W	Section(s) and Subdivision(s) 20N Sec. 27, 32, 35 19N Sec. 5	Scale 1:15,840		

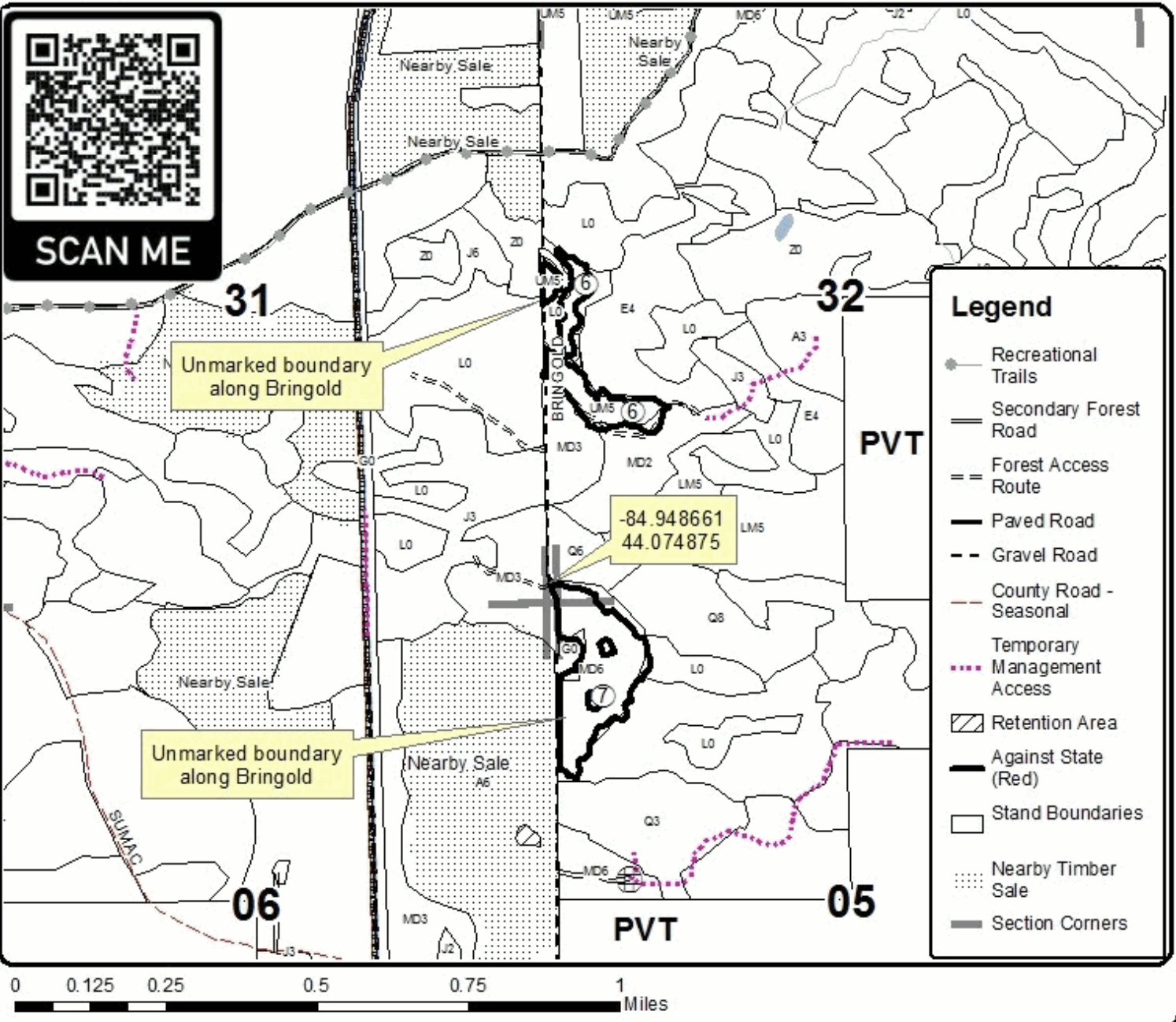
Cover Type				Density	
A = Aspen	H = Hemlock	N = Marsh	U = Upland Brush	0 = Non Stocked	5 = Pole Timber Medium
B = Paper Birch	J = Jack Pine	O = Oak	UM = Upland Mixed	1 = Seeding Sapling Poor	6 = Pole Timber Well
C = Cedar	L = Lowland Erush	P = Lowland Poplar	V = Bog or Marsh	2 = Seeding Sapling Medium	7 = Saw Timber Poor
D = Troad Bog	LM = Lowland Mixed	Q = Mixed Swamp Conifer	W = White Pine	3 = Seeding Sapling Well	8 = Saw Timber Medium
E = Swamp Hdwoods	M = Mpl, Boh, Brch	R = Red Pine	X = Non Stocked	4 = Pole Timber Poor	9 = Saw Timber Well
F = Spruce Fir	MC = Mixed Conifer	S = Black Spruce	Z = Water		
G = Grass	MD = Mixed Deciduous	T = Tamarack			

PU	Acres	PU	Acres
1	14.2	5	38.7
2	11.3	6	10.2
3	37.6	7	17.4
4	40.2		

## Fur Farm Harvest

### Compartment 12

169.6 Acres





## TIMBER SALE INFORMATION

### Edge-Tastic Aspen (73-006-21)

T15N, R01E, SEC. 12; T15N, R01E, SEC. 13; T15N, R02E, SEC. 18.  
Midland County (Advertised Price \$65,451.70)

SALE NOTE: All units of volume listed for this sale were estimated using the Inventory Manager computer program and the new Michigan taper model.

Access to Payment Unit 2 is across private property only. Contact Roberts Putnis for private property access. Cell 989-430-8901. Email roberts.putnis@dow.com or rputnis@ameritech.net.

Access to Payment Unit 3 is either across state or private property. Easiest access is across private property to the north. Contact Lawrence Salva for private property access, 3565 Dublin Rd, Midland, MI 48642.

See sale spec 4.1.5 for information on required culverts.

See sale spec 5.2.17 for information on required crane mats.

Access may be through private land.

A timber sale contract for this lump sum, sealed bid timber sale will be awarded to the responsible bidder offering the highest sealed bid price. All units of volume listed below were estimated using the Inventory Manager computer program and the new Michigan taper model. Bids must be at or above the following advertised price for each product and species:

<u>PRODUCTS &amp; SPECIES</u>	<u>ESTIMATED UNITS*</u>	<u>ADVERTISED PRICE</u>
Sawtimber		
Mixed Aspen	279.6 MBF	\$ 70.00 / MBF
Mixed Oak	106.4 MBF	\$ 53.00 / MBF
Red Maple	70.7 MBF	\$ 35.00 / MBF
Pulpwood		
Mixed Aspen	1,419 Cords	\$ 18.35 / Cord
Mixed Oak	443 Cords	\$ 12.40 / Cord
Red Maple	417 Cords	\$ 14.95 / Cord

\* The total volume is statistically estimated within plus (+) or minus (-) 5.02 percent. There are an estimated 3,317 cords on this timber sale, plus or minus 167 cords at the 95% confidence level. The estimated units are final and not subject to adjustment. Prospective bidders are urged to examine this timber and to make their own estimates of quantity and quality.

### **BOND AND PAYMENT SCHEDULE:**

1. A bond in the amount of \$3,273.00 to insure faithful performance of the conditions of the contract will be deposited by the successful bidder within 21 days of the sale award.
2. Cutting in any sale or unit without the required advance payment would be considered a trespass.
3. Total payment must be paid in advance or according to the following schedule :
  - (a) Ten percent (10%) of the sale value must be paid within 21 days of the sale award.
  - (b) The 10% down payment will be credited towards the first unit cut.
  - (c) Payment for each of the following units must be made before cutting begins in that unit:
 

PAYMENT UNIT NUMBER	PERCENT OF TOTAL SALE VALUE
01	14.6%
02	6.5%
03	32.3%
04	7.2%
05	7.6%
06	14.3%
07	17.5%
4. If no cutting takes place, the 10% down payment will not be refunded.
5. Operations on the contract issued will terminate on 06/30/2025.

### **SALE STATISTICS**

Volumes were calculated in cubic feet using the Michigan taper model. Cubic foot volume includes all wood inside bark for the product indicated. For display purposes, cubic feet were converted to cords and MBF using a simple conversion factor, e.g. 79 cubic feet per cord and 185 cubic feet per MBF. The cubic foot volumes are precise; the cords and MBF volumes are not. Cubic foot volume cannot be directly converted to cords or boards with precision.

### SALE VOLUMES

The total estimated sale volume may not equal the sum of the species/products due to the nature of statistical calculations associated with double sampling methodology.

VOLUME			STATISTICAL RANGE IN CORDS	
TOTAL CUBIC FEET	TOTAL CORDS	PERCENT ERROR	MINIMUM	MAXIMUM
262,039	3,317	5.02%	3,150	3,484

### VDU VOLUMES

A VDU is a Volume Determination Unit. Volumes and their associated statistics are calculated at the VDU level and summarized to the sale level. There is often a one to one relationship between a VDU and a Payment Unit, but not always, depending on the cruise design. Refer to the VDU TO PAYMENT UNIT table.

VDU	VOLUME			RANGE IN CORDS	
	TOTAL CUBIC FEET	TOTAL CORDS	PERCENT ERROR	MINIMUM	MAXIMUM
1	156,961	1,987	6.72%	1,853	2,120
102	8,558	108	45.88%	59	158
122	17,223	218	19.34%	176	260
123	20,720	262	15.14%	223	302
138	50,750	642	9.90%	579	706
185	7,827	99	9.76%	89	109
<b>TOTAL:</b>	<b>262,039</b>	<b>3,317</b>		<b>2,979</b>	<b>3,655</b>

### VDU TO PAYMENT UNIT

When a VDU is associated with more than one Payment Unit (PU), the VDU volumes are assigned to the PU based on acres of the VDU within the PU.

VDU	VDU ACRES	PU	PU ACRES
1	46.7	1	8.7
		2	4.9
		3	22.3
		6	10.8
102	3.8	1	3.8
122	8.2	4	8.2
123	9.1	5	9.1
138	24.3	7	24.3
185	3.1	3	3.1
<b>TOTAL:</b>	<b>95.2</b>		<b>95.2</b>

**DESCRIPTION OF TIMBER BY PAYMENT UNIT (PU)**

PU	MARKET GROUP	PRODUCT	QUANTITY	UNIT	ACRES	ADVERTISE PRICE	
1	Mixed Aspen	Sawtimber	37.4	MBF	12.5	\$9,552.80	
	<i>B. T. Aspen</i>		26.7	<i>MBF</i>			
	<i>Quaking Aspen</i>		10.7	<i>MBF</i>			
	Mixed Oak		23.1	MBF			
	<i>Bl/R/Hybrid Oak</i>		20.4	<i>MBF</i>			
	<i>Northern Pin Oak</i>		0.9	<i>MBF</i>			
	<i>Red Oak</i>		1.8	<i>MBF</i>			
	Red Maple		2.8	MBF			
	Mixed Aspen		Pulpwood	217			Cords
	<i>B. T. Aspen</i>	203		<i>Cords</i>			
	<i>Quaking Aspen</i>	14		<i>Cords</i>			
	Mixed Oak	111		Cords			
	<i>Bl/R/Hybrid Oak</i>	100		<i>Cords</i>			
	<i>Northern Pin Oak</i>	3		<i>Cords</i>			
	<i>Red Oak</i>	7		<i>Cords</i>			
	<i>White Oak</i>	1		<i>Cords</i>			
	Red Maple	17		Cords			
	<i>Red Maple</i>	17		<i>Cords</i>			
	2	Mixed Aspen	Sawtimber	18.2	MBF	4.9	\$4,250.70
<i>B. T. Aspen</i>		15.0		<i>MBF</i>			
<i>Quaking Aspen</i>		3.2		<i>MBF</i>			
Mixed Oak		5.5		MBF			
<i>Bl/R/Hybrid Oak</i>		4.0		<i>MBF</i>			
<i>Northern Pin Oak</i>		0.5		<i>MBF</i>			
<i>Red Oak</i>		1.0		<i>MBF</i>			
Red Maple		0.6		MBF			
Mixed Aspen		Pulpwood		118	Cords		
<i>B. T. Aspen</i>			115	<i>Cords</i>			
<i>Quaking Aspen</i>			3	<i>Cords</i>			
Mixed Oak			33	Cords			
<i>Bl/R/Hybrid Oak</i>			27	<i>Cords</i>			
<i>Northern Pin Oak</i>			2	<i>Cords</i>			
<i>Red Oak</i>			4	<i>Cords</i>			
Red Maple			6	Cords			
<i>Red Maple</i>			6	<i>Cords</i>			
3			Mixed Aspen	Sawtimber	85.9	MBF	25.4
		<i>B. T. Aspen</i>	71.1		<i>MBF</i>		
	<i>Quaking Aspen</i>	14.8	<i>MBF</i>				
	Mixed Oak	32.3	MBF				
	<i>Bl/R/Hybrid Oak</i>	25.6	<i>MBF</i>				
	<i>Northern Pin Oak</i>	2.2	<i>MBF</i>				
	<i>Red Oak</i>	4.5	<i>MBF</i>				
	Red Maple	10.7	MBF				
	Mixed Aspen	Pulpwood	550		Cords		
	<i>B. T. Aspen</i>		535	<i>Cords</i>			
	<i>Quaking Aspen</i>		15	<i>Cords</i>			
	Mixed Oak		154	Cords			
	<i>Bl/R/Hybrid Oak</i>		128	<i>Cords</i>			
	<i>Northern Pin Oak</i>		7	<i>Cords</i>			
	<i>Red Oak</i>		19	<i>Cords</i>			
	Red Maple		68	Cords			
	<i>Paper Birch</i>		5	<i>Cords</i>			
	<i>Red Maple</i>		63	<i>Cords</i>			
	4	Mixed Aspen	Sawtimber	32.7	MBF	8.2	\$4,711.50
<i>B. T. Aspen</i>		29.4		<i>MBF</i>			
<i>Quaking Aspen</i>		3.3		<i>MBF</i>			

**DESCRIPTION OF TIMBER BY PAYMENT UNIT (PU), CON'T**

PU	MARKET GROUP	PRODUCT	QUANTITY	UNIT	ACRES	ADVERTISE PRICE
4 con't	Mixed Aspen	Pulpwood	48	Cords		
	<i>B. T. Aspen</i>		11	<i>Cords</i>		
	<i>Quaking Aspen</i>		37	<i>Cords</i>		
	Mixed Oak		11	Cords		
	<i>Northern Pin Oak</i>		11	<i>Cords</i>		
	Red Maple		94	Cords		
	<i>Paper Birch</i>		8	<i>Cords</i>		
	<i>Red Maple</i>		86	<i>Cords</i>		
5	Mixed Aspen	Sawtimber	11.0	MBF	9.1	\$4,978.05
	<i>B. T. Aspen</i>		11.0	<i>MBF</i>		
	Mixed Oak		4.8	MBF		
	<i>Northern Pin Oak</i>		4.8	<i>MBF</i>		
	Red Maple	3.8	MBF			
	Mixed Aspen	Pulpwood	185	Cords		
	<i>B. T. Aspen</i>		179	<i>Cords</i>		
	<i>Quaking Aspen</i>		6	<i>Cords</i>		
	Mixed Oak		3	Cords		
	<i>Northern Pin Oak</i>		3	<i>Cords</i>		
	Red Maple		26	Cords		
	<i>Paper Birch</i>		24	<i>Cords</i>		
	<i>Red Maple</i>		2	<i>Cords</i>		
6	Mixed Aspen		Sawtimber	40.2	MBF	10.8
	<i>B. T. Aspen</i>	33.1		<i>MBF</i>		
	<i>Quaking Aspen</i>	7.1		<i>MBF</i>		
	Mixed Oak	12.1		MBF		
	<i>Bl/R/Hybrid Oak</i>	8.8		<i>MBF</i>		
	<i>Northern Pin Oak</i>	1.1		<i>MBF</i>		
	<i>Red Oak</i>	2.2	<i>MBF</i>			
	Red Maple	1.3	MBF			
	Mixed Aspen	Pulpwood	260	Cords		
	<i>B. T. Aspen</i>		253	<i>Cords</i>		
	<i>Quaking Aspen</i>		7	<i>Cords</i>		
	Mixed Oak		72	Cords		
	<i>Bl/R/Hybrid Oak</i>		60	<i>Cords</i>		
	<i>Northern Pin Oak</i>		3	<i>Cords</i>		
	<i>Red Oak</i>		9	<i>Cords</i>		
	Red Maple		14	Cords		
<i>Red Maple</i>	14		<i>Cords</i>			
7	Mixed Aspen		Sawtimber	54.2	MBF	24.3
	<i>B. T. Aspen</i>	50.9		<i>MBF</i>		
	<i>Quaking Aspen</i>	3.3		<i>MBF</i>		
	Mixed Oak	28.6		MBF		
	<i>Bl/R/Hybrid Oak</i>	28.6	<i>MBF</i>			
	Red Maple	51.5	MBF			
	Mixed Aspen	Pulpwood	41	Cords		
	<i>B. T. Aspen</i>		39	<i>Cords</i>		
	<i>Quaking Aspen</i>		2	<i>Cords</i>		
	Mixed Oak		59	Cords		
	<i>White Oak</i>		1.1	<i>MBF</i>		
	<i>Bl/R/Hybrid Oak</i>		52	<i>Cords</i>		
	<i>White Oak</i>		5	<i>Cords</i>		
	Red Maple		192	Cords		
<i>Red Maple</i>	192		<i>Cords</i>			
TOTAL:			456.7	MBF		

TOTAL:	2,279 Cords
--------	-------------

## Sale Specific Conditions & Requirements

**Sale Name: Edge-Tastic Aspen**

**Sale Number: 73-006-21 Seq#: 1**

### 1 - Sale Area

#### 1.2 - Boundaries

##### 1.2.1 - Painted boundaries (9/19)

The sale boundary and Payment Unit boundaries are marked and identified by blue, red, and yellow paint. Exterior sale boundary lines against private property are marked with blue paint. Exterior sale boundary lines against state are marked with red paint. Interior Payment Unit boundaries are marked with yellow paint. The painted boundary line trees are not Included Timber and are to be protected. Yellow painted trees designating an interior Payment Unit boundary are only to be cut when all surrounding Payment Units have been paid.

### 2 - Timber Specifications

#### 2.1 - Included Timber

##### 2.1.1 - Clearcut unit(s) with unmerchantable trees (6/14)

Within Payment Unit(s) 1-6, cut all trees that are two (2) inches or more at DBH, except do not cut trees marked with green paint above and below stump height and within Payment Unit 5, do not cut pine.

##### 2.1.7 - Leave tree marked unit(s) (6/14)

Within Payment Unit(s) 7, cut all trees that are two (2) inches or more at DBH, except trees marked with green paint above and below stump height.

#### 2.2 - Utilization

##### 2.2.9 - No chipping permitted (12/08)

Within Payment Unit(s) 2, 3, 6, and 7, all wood must be removed by whole tree, tree segment, or roundwood. No chipping is permitted.

### 4 - Transportation

#### 4.1 - Construction

##### 4.1.5 - Culverts (5/14)

Roads may require the installation of culverts for cross drainage or at natural drainage-ways. If culverts are needed in these locations, their placement will be specified by the sale administrator, and they shall be installed prior to hauling. The culverts shall be new, corrugated metal or plastic gauge. Culverts will be a minimum of 12 inches in diameter and 24 feet in length. If culverts are removed, fill shall be removed from wetland soils as specified. Soils shall be maintained and left in a non-erodible condition, with water bars, seed, fertilizer, mulch, and slash installed as directed by the sale administrator and as specified in the BMP manual. Stream crossing permits, if needed, will be obtained by the DNR.

##### 4.1.6 - Road construction (1/09)

Construction of new roads or improvements of existing roads shall be done in such a way as to minimize the environmental and visual impacts. Merchantable trees shall be cut and utilized unless otherwise directed. Non-merchantable trees shall be severed and laid flat on the ground. Slash shall be scattered, and not left in windrows and kept a minimum of 10 feet back from the road edge. Stumps shall be set upright, not left on edge, and be moved at least 10 feet away from the road edge. Disturbed soil shall be feathered into the woods and not left in berms or windrows.

##### 4.1.7 - Road closure (10/11)

All new roads built into the sale must be blocked to vehicle traffic upon completion of the sale. Overgrown roads that are reopened shall be considered new roads. In general, this will require constructing a four (4') foot high berm of stumps and logs covered with earth. Stumps and brush must be placed along the remainder of the trail. These roads must be rendered impassable to cars and trucks. All stumps from road building and landing construction must be reserved to block any newly constructed roads upon completion of the sale. These stumps must be scattered along the road system to prohibit vehicular movement. Temporary berms may be required if no sale activity occurs for 30 or more consecutive days. Contact the sale administrator for specific details of design and placement.

#### 4.4 - Access

##### 4.4.1 - Private property access (3/11)

Permission for access across private land is the responsibility of the Purchaser. A copy of the written permission from the private landowner must be given to the Unit Manager within 30 days of the bid opening and prior to the beginning of operations.

### 5 - Operations

#### 5.2 - Conduct of Operations

##### 5.2.1 - Slash

###### 5.2.1.11 - Slash for reforestation (3/21)

To facilitate reforestation, the Sale Area shall be left with slash evenly distributed. Bunched tops within the cutting area shall be broken up and scattered. Stumps shall be cut low to the ground. Processing sites shall not be left with a compacted layer of slash; tops from these sites shall be hauled back into the cut area and scattered.

##### 5.2.3 - Operating Restrictions

###### 5.2.3.1 - Operating restrictions (9/11)

Within Payment Unit(s) 1-7, unless changed by written agreement, cutting, skidding, and hauling are limited to the period of December 1 to April 15 and from June 15 to November 1. This restriction is because of seasonally saturated soils.

###### 5.2.3.4 - Oak wilt restriction, no exceptions (1/18)

Within Payment Unit(s) 7, cutting, skidding, hauling within the sale and brushing of access roads to the sale are not permitted during the period of April 15 to July 15. No exceptions will be granted. This is necessary to reduce the spread of oak wilt.

##### 5.2.4 - Dead and Down Creation

###### 5.2.4.4 - Dead and down creation, grouse (6/18)

To encourage grouse and other wildlife, in Payment Unit(s) 1-6, leave one 12" or larger diameter whole tree on the ground for every 3 acres. Trees should be scattered throughout the sale and at least two chains from any roads, two-tracks, or trails open to vehicles, or positioned per the sale administrator's instructions. Stumps must be at least 3 feet tall.

###### 5.2.17 - Timber Mats and Interlocking Composite Mats (10/20)

Some roads or skid trails may require extra protection such as that afforded by timber mats, interlocking composite mats, or another approved system. Approximately 50 feet of trail will need extra protection at locations shown on the Timber Sale Map. If available, mats may be borrowed from the DNR. A Timber Sale Contract Supplement will be used to document the Purchaser's use of the DNR's mats. Contact the sale administrator regarding availability and pick-up. Timber mats are available from various field offices. Composite mats are only available from the Grayling field office and the Marquette ICC. The Purchaser is responsible for picking up and hauling the mats to and from the site. The composite mats will require DNR staff onsite for installation and removal. Contact the sale administrator to schedule at least 30 days before desired install/removal date. All mats must be cleaned prior to drop off. This may include, but is not limited to, power washing and brushing to remove mud and debris. A charge of \$700.00 per timber mat and \$2,000.00 per composite mat will be assessed for all damaged or non-returned mats. Damage for the crane/timber mats is defined as three or more broken cants. Damage for the composite mats is defined as cracked or broken mats.

###### 5.2.31 - Landing locations (9/13)

Recommended landing areas are marked on the Timber Sale Map with the letter "L". These locations are recommendations only. All landing locations must be approved by the sale administrator.

#### 5.4 - Soil Protection

##### 5.4.1 - Rutting restriction, general (7/16)

Operations are to cease immediately if equipment and weather conditions result in rutting of roads and/or skid trails which is 12 inches or greater in depth and 50 feet in length. The Unit Manager or his/her representative may restrict hauling and/or skidding if ruts exceed the specified depth. With the Unit Manager or his/her representative's approval, the Purchaser may

return to the area when the risk of rutting has decreased.





# TIMBER SALE MAP

This information provided by authority of Part 525, 1994 PA 451, as amended.

Forest Management Unit Gladwin	County Midland	Mapped By Scott Shooltz	Date 09/30/2021	Page 1	of 1
Township 15N	Range 01E/02E	Section(s) and Subdivision(s) 12, 13, & 18	Scale 1:15,840		

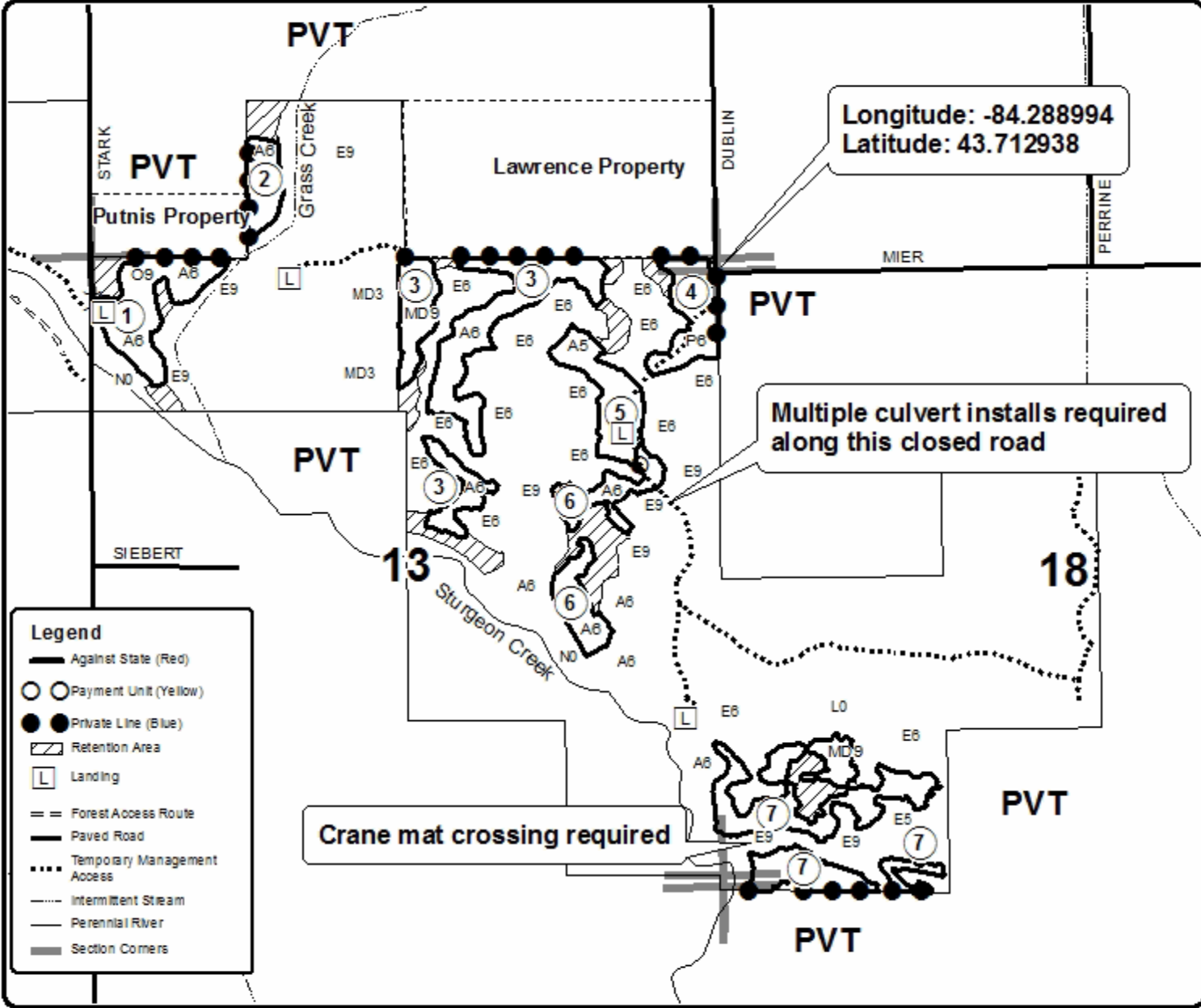
Cover Type				Density	
A = Aspen	H = Hemlock	N = Marsh	L = Upland Brush	0 = Non Stocked	5 = Pole Timber Medium
E = Paper Birch	J = Jack Pine	O = Oak	LM = Upland Mixed	1 = Seedling Sapling Poor	6 = Pole Timber Well
C = Cedar	L = Lowland Brush	P = Lowland Poplar	V = Bog or Marsh	2 = Seedling Sapling Medium	7 = Saw Timber Poor
D = Treed Bog	LM = Lowland Mixed	Q = Mixed Swamp Conifer	W = White Pine	3 = Seedling Sapling Well	8 = Saw Timber Medium
E = Swamp Hardwoods	M = Mpl. Bch. Brok	R = Red Pine	X = Nut Staked	4 = Pole Timber Poor	9 = Saw Timber Well
F = Spruce Fir	MC = Mixed Conifer	S = Black Spruce	Z = Water		
G = Cress	MD = Mixed Deciduous	T = Tamarack			

PU	Acres	PU	Acres	PU	Acres
1	12.5	4	8.2	7	24.3
2	4.9	5	9.1		
3	25.4	6	10.8		

## Edge-Tastic Aspen

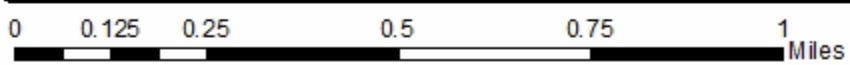
### Compartment 101

95.2 Acres



**Legend**

- Against State (Red)
- Payment Unit (Yellow)
- Private Line (Blue)
- Retention Area
- Landing
- Forest Access Route
- Paved Road
- Temporary Management Access
- Intermittent Stream
- Perennial River
- Section Corners





Shearer Aspen (73-001-21)

T16N, R02E, SEC. 17; T16N, R02E, SEC. 18; T16N, R02E, SEC. 19; T16N, R02E,

In response to the notice of sale to be held 10:00 a.m. (local time) on June 23, 2022, I am hereby submitting my sealed bid ( firm offer) for the following forest products to be cut. Bids for individual species must be at or above the advertised price. All non-responsive bid forms may be rejected.

<u>PRODUCTS &amp; SPECIES</u>	<u>ESTIMATED VOLUME*</u>	<u>ADVERTISED PRICE</u>	<u>BID PRICE/UNIT</u>
<b>Sawtimber</b>			
Mixed Aspen	604.0 MBF	\$ 77.00/MBF	\$ _____
Red Maple	134.5 MBF	\$ 38.00/MBF	\$ _____
Red Oak	83.1 MBF	\$ 152.00/MBF	\$ _____
Swamp White Oak	7.0 MBF	\$ 77.00/MBF	\$ _____
White Ash	2.4 MBF	\$ 38.00/MBF	\$ _____
White Oak	5.2 MBF	\$ 63.00/MBF	\$ _____
<b>Pulpwood</b>			
Mixed Aspen	3,122 Cords	\$ 20.20/Cord	\$ _____
Mixed Hardwood	103 Cords	\$ 16.45/Cord	\$ _____
Paper Birch	251 Cords	\$ 19.60/Cord	\$ _____
Red Maple	1,409 Cords	\$ 16.45/Cord	\$ _____
Red Oak	392 Cords	\$ 13.65/Cord	\$ _____
Swamp White Oak	12 Cords	\$ 15.55/Cord	\$ _____
Tamarack	9 Cords	\$ 5.85/Cord	\$ _____
White Oak	44 Cords	\$ 13.65/Cord	\$ _____

\*The volumes are statistically estimated within plus (+) or minus (-) 3.86 percent at 95% confidence level. These estimated volumes are final and not subject to adjustment. Prospective bidders are urged to examine this timber and to make their own estimates of quantity and quality.

I understand that any or all bids may be rejected. All bids must be signed and all bid items must be bid or the bid form may be rejected. I also understand that consideration and awarding a contract will be based upon my past performance and ability to complete the contract based upon equipment and staffing subject to my control .

FEDERAL ID: \_\_\_\_\_ - \_\_\_\_\_ or SOCIAL SECURITY NUMBER: \_\_\_\_\_ - \_\_\_\_\_ - \_\_\_\_\_

Company or individual bidding: \_\_\_\_\_

Company representative's name: \_\_\_\_\_

Address: \_\_\_\_\_

City: \_\_\_\_\_ State: \_\_\_\_\_ Zip: \_\_\_\_\_

IF AVAILABLE, PLEASE PLACE THE PERSONALIZED LABEL FROM YOUR PROSPECTUS IN THE ABOVE BOX.

Individual or company representative's signature: \_\_\_\_\_ Date: \_\_\_\_\_

Phone number : \_\_\_\_\_ Email (optional): \_\_\_\_\_

**THE WINNING BIDDER MUST COMPLETE THE VERIFICATION OF WORKER'S DISABILITY COMPENSATION ACT COMPLIANCE (ON REVERSE SIDE IF DOUBLE SIDED) WITHIN 21 DAYS OF SALE AWARD DATE**



<b>FOR DEPARTMENT USE ONLY</b>	
Sale Number (XX - XXX - XX - XX)	
Forest Management Unit:	

# TIMBER SALE VERIFICATION OF WORKER'S DISABILITY COMPENSATION ACT COMPLIANCE

As required by Act 317, P.A. 1969 (Worker's Compensation) and  
Part 5 of Act 451 of 1994, as amended.

## VERIFICATION OF WORKER'S DISABILITY COMPENSATION ACT COMPLIANCE

- This verification must be completed and submitted within 21 days of contract award and prior to the issuance of the timber sale contract.
- In addition, if boxes 2B or 2C are checked, then Notice of Exclusion or Certificate of Insurance must be submitted within twenty-one (21) days of the contract award and prior to the issuance of the timber sale contract.
- All information must be typed or printed except for written signatures.

Please Check Appropriate Categories:

1. My business is organized as (you **must** check one of the boxes below):
  - A.  Sole Proprietorship (individual)
  - B.  Partnership
  - C.  Corporation
2. You **must** check one of the boxes below:
  - A.  I certify my business is a sole proprietorship and it has no employees but the sole proprietor. I am not subject to the Worker's Compensation Laws.
  - B.  I certify my business has satisfied its obligation to the Worker's Compensation Act through the use of an approved Notice of Exclusion (BWC-337, Rev. 5/96). I will provide a copy of the Notice of Exclusion within 21 days of the contract award. (For questions or a copy of the BWC-337, please call the Worker's Compensation Bureau at 517-322-1195).
  - C.  I certify my business has a Worker's Compensation Policy. I will provide an original Certificate of Insurance within twenty-one (21) days of the contract award.
3. If you have checked item 2(A) or 2(B), you **must** indicate the number of **both** full-time and part-time employees, other than yourself, including family members and active partners (if none, you must enter "0").

\_\_\_\_\_ Full-time Employees

\_\_\_\_\_ Part-time Employees

Name of Business		Federal ID (or) Social Security No.	
Address		Telephone (       )	
City	State	ZIP	

*I hereby certify that the above information is true and correct. I agree to notify the Michigan DNR of any changes that occur in factors affecting my coverage during any of my present and future operations.*

\_\_\_\_\_  
Signature of Owner or Authorized Representative

\_\_\_\_\_  
Title

\_\_\_\_\_  
Date

Please complete the "SEALED BID" information on the next page

Deer Kawkawlin (73-002-21)  
T16N, R01E, SEC. 1; T16N, R01E, SEC. 12; T16N, R01E, SEC. 13; T16N, R02E,

In response to the notice of sale to be held 10:00 a.m. (local time) on June 23, 2022, I am hereby submitting my sealed bid ( firm offer) for the following forest products to be cut. Bids for individual species must be at or above the advertised price. All non-responsive bid forms may be rejected.

<u>PRODUCTS &amp; SPECIES</u>	<u>ESTIMATED VOLUME*</u>	<u>ADVERTISED PRICE</u>	<u>BID PRICE/UNIT</u>
<b>Sawtimber</b>			
Black Cherry	9.5 MBF	\$ 128.00/MBF	\$ _____
Mixed Aspen	288.7 MBF	\$ 77.00/MBF	\$ _____
Red Maple	201.4 MBF	\$ 38.00/MBF	\$ _____
Red Oak	40.8 MBF	\$ 152.00/MBF	\$ _____
Swamp White Oak	5.6 MBF	\$ 79.00/MBF	\$ _____
White Oak	0.9 MBF	\$ 63.00/MBF	\$ _____
White Pine	1.0 MBF	\$ 59.00/MBF	\$ _____
<b>Pulpwood</b>			
Mixed Aspen	2,954 Cords	\$ 20.20/Cord	\$ _____
Mixed Hardwood	32 Cords	\$ 16.45/Cord	\$ _____
Mixed Oak	206 Cords	\$ 13.65/Cord	\$ _____
Paper Birch	133 Cords	\$ 19.60/Cord	\$ _____
Red Maple	1,725 Cords	\$ 16.45/Cord	\$ _____
Swamp White Oak	8 Cords	\$ 15.55/Cord	\$ _____
White Pine	1 Cords	\$ 30.30/Cord	\$ _____

\*The volumes are statistically estimated within plus (+) or minus (-) 4.47 percent at 95% confidence level. These estimated volumes are final and not subject to adjustment. Prospective bidders are urged to examine this timber and to make their own estimates of quantity and quality.

I understand that any or all bids may be rejected. All bids must be signed and all bid items must be bid or the bid form may be rejected. I also understand that consideration and awarding a contract will be based upon my past performance and ability to complete the contract based upon equipment and staffing subject to my control .

FEDERAL ID: \_\_\_\_\_ - \_\_\_\_\_ or SOCIAL SECURITY NUMBER: \_\_\_\_\_ - \_\_\_\_\_ - \_\_\_\_\_

Company or individual bidding: \_\_\_\_\_

Company representative's name: \_\_\_\_\_

Address: \_\_\_\_\_

City: \_\_\_\_\_ State: \_\_\_\_\_ Zip: \_\_\_\_\_

IF AVAILABLE, PLEASE PLACE THE PERSONALIZED LABEL FROM YOUR PROSPECTUS IN THE ABOVE BOX.

Individual or company representative's signature: \_\_\_\_\_ Date: \_\_\_\_\_

Phone number : \_\_\_\_\_ Email (optional): \_\_\_\_\_

**THE WINNING BIDDER MUST COMPLETE THE VERIFICATION OF WORKER'S DISABILITY COMPENSATION ACT COMPLIANCE (ON REVERSE SIDE IF DOUBLE SIDED) WITHIN 21 DAYS OF SALE AWARD DATE**



FOR DEPARTMENT USE ONLY	
Sale Number (XX - XXX - XX - XX)	
Forest Management Unit:	

## TIMBER SALE VERIFICATION OF WORKER'S DISABILITY COMPENSATION ACT COMPLIANCE

As required by Act 317, P.A. 1969 (Worker's Compensation) and  
Part 5 of Act 451 of 1994, as amended.

### VERIFICATION OF WORKER'S DISABILITY COMPENSATION ACT COMPLIANCE

- This verification must be completed and submitted within 21 days of contract award and prior to the issuance of the timber sale contract.
- In addition, if boxes 2B or 2C are checked, then Notice of Exclusion or Certificate of Insurance must be submitted within twenty-one (21) days of the contract award and prior to the issuance of the timber sale contract.
- All information must be typed or printed except for written signatures.

Please Check Appropriate Categories:

1. My business is organized as (you **must** check one of the boxes below):
  - A.  Sole Proprietorship (individual)
  - B.  Partnership
  - C.  Corporation
2. You **must** check one of the boxes below:
  - A.  I certify my business is a sole proprietorship and it has no employees but the sole proprietor. I am not subject to the Worker's Compensation Laws.
  - B.  I certify my business has satisfied its obligation to the Worker's Compensation Act through the use of an approved Notice of Exclusion (BWC-337, Rev. 5/96). I will provide a copy of the Notice of Exclusion within 21 days of the contract award. (For questions or a copy of the BWC-337, please call the Worker's Compensation Bureau at 517-322-1195).
  - C.  I certify my business has a Worker's Compensation Policy. I will provide an original Certificate of Insurance within twenty-one (21) days of the contract award.
3. If you have checked item 2(A) or 2(B), you **must** indicate the number of **both** full-time and part-time employees, other than yourself, including family members and active partners (if none, you must enter "0").

\_\_\_\_\_ Full-time Employees

\_\_\_\_\_ Part-time Employees

Name of Business		Federal ID (or) Social Security No.	
Address		Telephone (       )	
City	State	ZIP	

*I hereby certify that the above information is true and correct. I agree to notify the Michigan DNR of any changes that occur in factors affecting my coverage during any of my present and future operations.*

\_\_\_\_\_  
Signature of Owner or Authorized Representative

\_\_\_\_\_  
Title

\_\_\_\_\_  
Date

Please complete the "SEALED BID" information on the next page

Fur Farm Harvest (73-005-21)

T19N, R05W, SEC. 5; T20N, R05W, SEC. 27; T20N, R05W, SEC. 32; T20N, R05W,

In response to the notice of sale to be held 10:00 a.m. (local time) on June 23, 2022, I am hereby submitting my sealed bid ( firm offer) for the following forest products to be cut. Bids for individual species must be at or above the advertised price. All non-responsive bid forms may be rejected.

<u>PRODUCTS &amp; SPECIES</u>	<u>ESTIMATED VOLUME*</u>	<u>ADVERTISED PRICE</u>	<u>BID PRICE/UNIT</u>
<b>Sawtimber</b>			
Jack Pine	42.8 MBF	\$ 31.00/MBF	\$ _____
Mixed Aspen	249.2 MBF	\$ 77.00/MBF	\$ _____
Mixed Oak	113.9 MBF	\$ 58.00/MBF	\$ _____
Red Maple	208.6 MBF	\$ 38.00/MBF	\$ _____
Red Pine	72.2 MBF	\$ 82.00/MBF	\$ _____
White Pine	53.1 MBF	\$ 59.00/MBF	\$ _____
<b>Pulpwood</b>			
Balsam Fir	145 Cords	\$ 15.90/Cord	\$ _____
Black Cherry	113 Cords	\$ 16.45/Cord	\$ _____
Black Spruce	22 Cords	\$ 12.65/Cord	\$ _____
Jack Pine	275 Cords	\$ 15.90/Cord	\$ _____
Mixed Aspen	2,596 Cords	\$ 20.20/Cord	\$ _____
Mixed Oak	450 Cords	\$ 13.65/Cord	\$ _____
Paper Birch	24 Cords	\$ 19.60/Cord	\$ _____
Red Maple	769 Cords	\$ 16.45/Cord	\$ _____
Red Pine	42 Cords	\$ 39.60/Cord	\$ _____
White Pine	114 Cords	\$ 30.30/Cord	\$ _____

\*The volumes are statistically estimated within plus (+) or minus (-) 3.28 percent at 95% confidence level. These estimated volumes are final and not subject to adjustment. Prospective bidders are urged to examine this timber and to make their own estimates of quantity and quality.

I understand that any or all bids may be rejected. All bids must be signed and all bid items must be bid or the bid form may be rejected. I also understand that consideration and awarding a contract will be based upon my past performance and ability to complete the contract based upon equipment and staffing subject to my control.

FEDERAL ID: \_\_\_\_ - \_\_\_\_ - \_\_\_\_ or SOCIAL SECURITY NUMBER: \_\_\_\_ - \_\_\_\_ - \_\_\_\_

Company or individual bidding: \_\_\_\_\_

Company representative's name: \_\_\_\_\_

Address: \_\_\_\_\_

City: \_\_\_\_\_ State: \_\_\_\_\_ Zip: \_\_\_\_\_

IF AVAILABLE, PLEASE PLACE THE PERSONALIZED LABEL FROM YOUR PROSPECTUS IN THE ABOVE BOX.

Individual or company representative's signature: \_\_\_\_\_ Date: \_\_\_\_\_

Phone number : \_\_\_\_\_ Email (optional): \_\_\_\_\_

**THE WINNING BIDDER MUST COMPLETE THE VERIFICATION OF WORKER'S DISABILITY COMPENSATION ACT COMPLIANCE (ON REVERSE SIDE IF DOUBLE SIDED) WITHIN 21 DAYS OF SALE AWARD DATE**



FOR DEPARTMENT USE ONLY	
Sale Number (XX - XXX - XX - XX)	
Forest Management Unit:	

## TIMBER SALE VERIFICATION OF WORKER'S DISABILITY COMPENSATION ACT COMPLIANCE

As required by Act 317, P.A. 1969 (Worker's Compensation) and  
Part 5 of Act 451 of 1994, as amended.

### VERIFICATION OF WORKER'S DISABILITY COMPENSATION ACT COMPLIANCE

- This verification must be completed and submitted within 21 days of contract award and prior to the issuance of the timber sale contract.
- In addition, if boxes 2B or 2C are checked, then Notice of Exclusion or Certificate of Insurance must be submitted within twenty-one (21) days of the contract award and prior to the issuance of the timber sale contract.
- All information must be typed or printed except for written signatures.

Please Check Appropriate Categories:

1. My business is organized as (you **must** check one of the boxes below):
  - A.  Sole Proprietorship (individual)
  - B.  Partnership
  - C.  Corporation
2. You **must** check one of the boxes below:
  - A.  I certify my business is a sole proprietorship and it has no employees but the sole proprietor. I am not subject to the Worker's Compensation Laws.
  - B.  I certify my business has satisfied its obligation to the Worker's Compensation Act through the use of an approved Notice of Exclusion (BWC-337, Rev. 5/96). I will provide a copy of the Notice of Exclusion within 21 days of the contract award. (For questions or a copy of the BWC-337, please call the Worker's Compensation Bureau at 517-322-1195).
  - C.  I certify my business has a Worker's Compensation Policy. I will provide an original Certificate of Insurance within twenty-one (21) days of the contract award.
3. If you have checked item 2(A) or 2(B), you **must** indicate the number of **both** full-time and part-time employees, other than yourself, including family members and active partners (if none, you must enter "0").

\_\_\_\_\_ Full-time Employees

\_\_\_\_\_ Part-time Employees

Name of Business		Federal ID (or) Social Security No.	
Address		Telephone (       )	
City	State	ZIP	

*I hereby certify that the above information is true and correct. I agree to notify the Michigan DNR of any changes that occur in factors affecting my coverage during any of my present and future operations.*

\_\_\_\_\_  
Signature of Owner or Authorized Representative

\_\_\_\_\_  
Title

\_\_\_\_\_  
Date

Please complete the "SEALED BID" information on the next page



Edge-Tastic Aspen (73-006-21)

T15N, R01E, SEC. 12; T15N, R01E, SEC. 13; T15N, R02E, SEC. 18; Midland

In response to the notice of sale to be held 10:00 a.m. (local time) on June 23, 2022, I am hereby submitting my sealed bid ( firm offer) for the following forest products to be cut. Bids for individual species must be at or above the advertised price. All non-responsive bid forms may be rejected.

<u>PRODUCTS &amp; SPECIES</u>	<u>ESTIMATED VOLUME*</u>	<u>ADVERTISED PRICE</u>	<u>BID PRICE/UNIT</u>
<b>Sawtimber</b>			
Mixed Aspen	279.6 MBF	\$ 70.00/MBF	\$ _____
Mixed Oak	106.4 MBF	\$ 53.00/MBF	\$ _____
Red Maple	70.7 MBF	\$ 35.00/MBF	\$ _____
<b>Pulpwood</b>			
Mixed Aspen	1,419 Cords	\$ 18.35/Cord	\$ _____
Mixed Oak	443 Cords	\$ 12.40/Cord	\$ _____
Red Maple	417 Cords	\$ 14.95/Cord	\$ _____

\*The volumes are statistically estimated within plus (+) or minus (-) 5.02 percent at 95% confidence level. These estimated volumes are final and not subject to adjustment. Prospective bidders are urged to examine this timber and to make their own estimates of quantity and quality.

I understand that any or all bids may be rejected. All bids must be signed and all bid items must be bid or the bid form may be rejected. I also understand that consideration and awarding a contract will be based upon my past performance and ability to complete the contract based upon equipment and staffing subject to my control.

FEDERAL ID: \_\_\_\_\_ - \_\_\_\_\_ or SOCIAL SECURITY NUMBER: \_\_\_\_\_ - \_\_\_\_\_ - \_\_\_\_\_

Company or individual bidding: \_\_\_\_\_

Company representative's name: \_\_\_\_\_

Address: \_\_\_\_\_

City: \_\_\_\_\_ State: \_\_\_\_\_ Zip: \_\_\_\_\_

IF AVAILABLE, PLEASE PLACE THE PERSONALIZED LABEL FROM YOUR PROSPECTUS IN THE ABOVE BOX.

Individual or company representative's signature: \_\_\_\_\_ Date: \_\_\_\_\_

Phone number : \_\_\_\_\_ Email (optional): \_\_\_\_\_

**THE WINNING BIDDER MUST COMPLETE THE VERIFICATION OF WORKER'S DISABILITY COMPENSATION ACT COMPLIANCE (ON REVERSE SIDE IF DOUBLE SIDED) WITHIN 21 DAYS OF SALE AWARD DATE**



<b>FOR DEPARTMENT USE ONLY</b>	
Sale Number (XX - XXX - XX - XX)	
Forest Management Unit:	

# TIMBER SALE VERIFICATION OF WORKER'S DISABILITY COMPENSATION ACT COMPLIANCE

As required by Act 317, P.A. 1969 (Worker's Compensation) and  
Part 5 of Act 451 of 1994, as amended.

## VERIFICATION OF WORKER'S DISABILITY COMPENSATION ACT COMPLIANCE

- This verification must be completed and submitted within 21 days of contract award and prior to the issuance of the timber sale contract.
- In addition, if boxes 2B or 2C are checked, then Notice of Exclusion or Certificate of Insurance must be submitted within twenty-one (21) days of the contract award and prior to the issuance of the timber sale contract.
- All information must be typed or printed except for written signatures.

Please Check Appropriate Categories:

1. My business is organized as (you **must** check one of the boxes below):
  - A.  Sole Proprietorship (individual)
  - B.  Partnership
  - C.  Corporation
2. You **must** check one of the boxes below:
  - A.  I certify my business is a sole proprietorship and it has no employees but the sole proprietor. I am not subject to the Worker's Compensation Laws.
  - B.  I certify my business has satisfied its obligation to the Worker's Compensation Act through the use of an approved Notice of Exclusion (BWC-337, Rev. 5/96). I will provide a copy of the Notice of Exclusion within 21 days of the contract award. (For questions or a copy of the BWC-337, please call the Worker's Compensation Bureau at 517-322-1195).
  - C.  I certify my business has a Worker's Compensation Policy. I will provide an original Certificate of Insurance within twenty-one (21) days of the contract award.
3. If you have checked item 2(A) or 2(B), you **must** indicate the number of **both** full-time and part-time employees, other than yourself, including family members and active partners (if none, you must enter "0").

\_\_\_\_\_ Full-time Employees

\_\_\_\_\_ Part-time Employees

Name of Business		Federal ID (or) Social Security No.	
Address		Telephone (       )	
City	State	ZIP	

*I hereby certify that the above information is true and correct. I agree to notify the Michigan DNR of any changes that occur in factors affecting my coverage during any of my present and future operations.*

\_\_\_\_\_  
Signature of Owner or Authorized Representative

\_\_\_\_\_  
Title

\_\_\_\_\_  
Date

Please complete the "SEALED BID" information on the next page