



**DEPARTMENT OF NATURAL RESOURCES
STATE OF MICHIGAN**

TIMBER SALE PROSPECTUS #6961

SCHEDULED SALE DATE AND TIME: 1:00 p.m. (local time) on November 30, 2021.

LOCATION: GWINN MGMT UNIT, 410 WEST M 35, GWINN, MI 49841.

PROSPECTUS NOTE: The bidder is advised to inspect the sale area and review the location, estimated volumes, operating costs and contract terms of proposed sales. Please be aware that some landowners may request 60 days or more notice for access across their land.

Notice is hereby given that bids will be received by the Unit Manager, GWINN MANAGEMENT UNIT, for certain timber on the following described lands:

Compartment 59 East (32-016-21) / T44N, R26W, SEC. 28, S1/2SE.

T44N, R26W, SEC. 33, NW,NE,NESW.

T44N, R26W, SEC. 34, NWNW,S1/2NW.

Marquette County, Advertised Price \$79,619.70, 155.9 Acres, Aspen, Hardwood.

SALE NOTE: All units of volume listed for this sale were estimated using the Inventory Manager computer program and the new Michigan taper model.

Minimum gravel amount required for soft areas of the access road. Areas of soft ground along the west edge of Payment Unit 9.

Compartment 59 West (32-017-21) / T43N, R26W, SEC. 6 , N1/2NW.

T44N, R26W, SEC. 30, S1/2SW.

T44N, R26W, SEC. 31, NW,NWNE,SW.

T44N, R27W, SEC. 36, E1/2NE,SESE.

Marquette County, Advertised Price \$98,964.85, 171.4 Acres, Hardwood, Sugar Maple.

SALE NOTE: All units of volume listed for this sale were estimated using the Inventory Manager computer program and the new Michigan taper model.

Payment Units 8-11 is best accessed through private property from Yellow Rock Road but alternate routes may be possible through state land which require freezing of roads and/or skid trails.

- See sale spec 4.2.1 for hauling restrictions on Ross Grade.

- See sale spec 7.5.1 for information on budworm damage.

Centerfield (32-018-21) / T43N, R26W, SEC. 4 , NENW,NWNE.

T44N, R26W, SEC. 29, S1/2SW,SWSE.

T44N, R26W, SEC. 31, SENW,SWNE,NESW,N1/2SE.

T44N, R26W, SEC. 32, NW,W1/2NE,N1/2SW,N1/2SE,SESE.

T44N, R26W, SEC. 33, SWNW,SW,SWSE.

Marquette County, Advertised Price \$110,666.85, 218.8 Acres, Hardwood, Spruce/Fir/Tamarack.

SALE NOTE: All units of volume listed for this sale were estimated using the Inventory Manager computer program and the new Michigan taper model.

- See sale spec 7.5.1 for information regarding timber damage due to spruce budworm.

BID INSTRUCTIONS (VER. 07/02/2018):

1. Scheduled Bid Location, Date, and Time (2/11)

Bids must be received by the Unit Manager, GWINN OFFICE, 410 WEST M 35, GWINN, MI 49841, no later than 1:00 p.m. (local time) on November 30, 2021. For further information concerning this sale, contact Kristen Matson at 906-346-9201 extension 103.

2. Bidder's Qualifications (5/16)

Purchaser shall obtain workers compensation insurance to cover claims under Michigan's Worker's Disability Compensation Act of 1969 or similar employee benefit act of any other state applicable to an employee. If all or part of a timber sale was prepared by a private contractor, the contractor and that contractor's company are not permitted to bid on the timber sale contract. Bids will not be accepted from individuals or companies appearing on the DNR/FRD No-Bid List. This list contains the names of purchasers who previously failed to execute a contract within 21-days or who have a history of poor performance.

3. Preparation of Sealed Bids (5/16)

Bid Forms may be completed online thru Michigan DNR Timber Sale Online Bidding (OLB) at www.michigan.gov/timberbidding or by completing the hardcopy Bid Form found in the Timber Sale Prospectus. Hardcopy Bid Forms shall be manually signed in ink. Registration in OLB is considered your 'signature' for all bids submitted thru that system. Bid prices must be entered for each species and product in the Bid Price column for all material subject to bidding and all fill-in blanks must be completed. If erasures or other changes appear on the hardcopy Bid Form, each erasure or change must be initialed by the person signing the bid.

4. Submission of Sealed Bids (5/16)

Bid forms may be obtained from the Unit Manager or thru OLB. Bids may be submitted hardcopy or thru OLB. All hardcopy bids must be submitted on the bid form and in an envelope clearly identified as described in this section. NOTE: Only one bid form per bid envelope. Sealed bids must be submitted to the Unit office designated in the prospectus and must be submitted at or prior to the time established in the prospectus. The envelope should show on the outside (a) the sale name or number and (b) the date and time of bid opening, as shown in the prospectus. Bids received after the time specified in the sale prospectus are late bids and will be rejected.

It is possible for a bidder to submit multiple bids on a single sale. For example, a bid may be submitted hardcopy and a bid may be submitted thru OLB. Or, two bidders from the same company could both submit bids on the same sale. If this were to happen, the State would accept all bids received and award the contract accordingly. All bidding and contractual requirements would apply to all bids received.

5. Public Opening of Sealed Bids (7/16)

If conditions permit, the sealed bids will be publicly opened and posted at the time and place set in the prospectus.

If a bidder, present at a bid opening, has submitted bids on more than one sale, that bidder may withdraw their unopened bid envelopes or announce the withdrawal of their online bid after being declared the successful bidder on one sale.

6. Award of Contract (1/11)

Award of the contract will be made to the Bidder whose bid, conforming to the prospectus, is most advantageous to the State of Michigan on the basis of total value at rates bid for the estimated quantities. The State reserves the right to reject any bid or waive any minor irregularity in bids received. A written award mailed (or otherwise furnished) to the successful Bidder shall be deemed to result in a binding contract without further action by either party.

7. Down Payment (1/11)

The Bidder to whom award is made must make a down payment within 21 days of the sale award. The amount of the down payment will be calculated as shown in the Bond and Payment Schedule of this prospectus. Only cash may be used to meet this requirement.

8. Performance Security (1/11)

As guarantee of faithful performance, a cash bond, certificate of deposit, surety bond or irrevocable letter of credit (LOC) is required within 21 days of the sale award. The amount of the performance security is shown in the Bond and

Payment Schedule of this prospectus. If an LOC or surety is used, the coverage must extend for at least 6 months beyond the contract expiration.

9. Timber Sale Contract (7/18)

Additional conditions and requirements common to all timber sales are listed on the timber sale contract (R4031) and are available on line at www.michigan.gov/timber. Contact the Unit Manager for additional information or a sample contract. Within 21 days of the date of the award letter, the bidder must sign the contract and provide the required down payment, performance security, and verification of worker's disability compensation. The down payment and performance security shall be in accordance with the provisions of the timber sale contract, in the sums stated in this prospectus. If these actions are not taken, then the Bidder, the Bidder's corporation, and the corporation's principals may not be permitted to bid on State timber sales for a period of 3 months after the first offense, 6 months after the second offense, and 1 year after the third offense. An offense will only be counted against the Bidder for 5 years. In addition, the Bidder certifies that if awarded this contract, the Bidder will complete the timber sale contract in accordance with its terms and any modifications thereof including requirements to purchase, cut, and remove the included timber by the expiration date.

Payment Unit values in the State Forest Timber Sale Contract are calculated based on the advertised value of the Payment Unit as a percentage of the total advertised value of the contract. The advertised value of each Payment Unit is given in the Description of Timber by Payment Unit table on the Timber Sale Information page. For example, if the value of Payment Unit 1 is advertised as \$1,500 and the total Timber Sale value is advertised as \$10,000, the contract price for Payment Unit 1 will be 15% of the total bid price ($\$1,500/\$10,000 * 100$).

10. Disclaimer of Estimates and Bidder's Warranty of Inspection (7/16)

Before submitting this bid, the Bidder is advised and cautioned to inspect the sale area, review the requirements of the sale contract, and take other steps as may be reasonably necessary to ascertain the location, estimated volumes, construction estimates, and operating costs of the proposed sale. Failure to do so will not relieve the Bidder from responsibility for completing the contract.

The Bidder warrants that this bid is submitted solely on the basis of the Bidder's examination and inspection of the quality and quantity of the timber offered for sale and the Bidder's opinion of the value thereof and the costs of recovery. No reliance should be placed on the State of Michigan's estimates of timber quality, quantity or costs of recovery. Bidder further acknowledges that the State of Michigan: (i) expressly disclaims any warranty of fitness of timber for any purpose; (ii) offers this timber as is without any warranty of quality (merchantability) or quantity and (iii) expressly disclaims any warranty as to the quantity or quality of timber sold.

11. Certification and Chain-of-Custody (10/14)

Unless otherwise indicated in the contract under section 7 – Other Conditions of the Sale Specific Conditions & Requirements, the area encompassed by this timber sale is certified to the standards of the Forest Stewardship Council (FSC) - Certificate #SCS-FM/COC-00090N and the Sustainable Forestry Initiative (SFI) - Certificate # NSF-SFIS-5Y031-SF5. Forest products from this sale may be delivered to the mill as "FSC 100% and / or SFI certified" as long as the contractor hauling the forest products is chain-of-custody (COC) certified or covered under a COC certificate from the destination mill. The purchaser is responsible for maintaining COC after leaving the sale area.

12. Good Neighbor Authority (GNA) Requirements (7/16)

If the name of this timber sales contains the acronym GNA, it is authorized by the Good Neighbor Authority (GNA) and covered by various agreements between the U.S. Forest Service and the State. The timber sale occurs on federal land and the following conditions apply:

GNA contracts on US Forest Service land will not be awarded to purchasers on the Federal list of excluded parties. The System for Award Management (SAM) will be checked for active excluded parties prior to award of contract. In addition, the Bidder to whom award is made must complete an Assurance Regarding Felony Conviction or Tax Delinquent Status for Corporate Applicants (AD-3031).

13. Good Neighbor Authority (GNA) Requirements, con't (9/16)

Bidder certifies, by signing this bid form, that to the best of Bidder's knowledge that the following representations are accurate and complete.

- a. That the Bidder and its principals are not presently debarred, suspended, proposed for debarment, declared ineligible, or voluntary excluded from timber sales (covered transactions) by any Federal department or agency.
- b. That the Bidder and its principals have not within a 3-year period preceding this bid been convicted of or had a civil judgment rendered against them for commission of fraud or a criminal offense in connection with obtaining , attempting to obtain, or performing a public (Federal, State, or local) transaction or contract under a public transaction; violation of Federal or State antitrust statutes or commission of embezzlement, theft, forgery, bribery, falsification or destruction of records, making false statements, or receiving stolen property.
- c. That the Bidder and its principals are not presently indicted for or otherwise criminally or civilly charged by a governmental entity (Federal, State, or local) with commission of any of the offenses enumerated in paragraph b of this certification.
- d. That the Bidder and its principals have not within a 3-year period preceding this bid had one or more public transactions (Federal, State, or local) terminated for breach or default of a timber or forest product contract.

Bidders that cannot certify this requirement, in whole or in part, shall submit an explanation with their bid.

DAN EICHINGER
Director

TIMBER SALE INFORMATION

Compartment 59 East (32-016-21)

T44N, R26W, SEC. 28; T44N, R26W, SEC. 33; T44N, R26W, SEC. 34.
Marquette County (Advertised Price \$79,619.70)

SALE NOTE: All units of volume listed for this sale were estimated using the Inventory Manager computer program and the new Michigan taper model.

Minimum gravel amount required for soft areas of the access road. Areas of soft ground along the west edge of Payment Unit 9.

A timber sale contract for this lump sum, sealed bid timber sale will be awarded to the responsible bidder offering the highest sealed bid price. All units of volume listed below were estimated using the Inventory Manager computer program and the new Michigan taper model. Bids must be at or above the following advertised price for each product and species:

<u>PRODUCTS & SPECIES</u>	<u>ESTIMATED UNITS*</u>	<u>ADVERTISED PRICE</u>
Sawtimber		
Basswood	16.6 MBF	\$ 59.00 / MBF
Paper Birch	14.1 MBF	\$ 66.00 / MBF
Red Maple	1.5 MBF	\$ 95.00 / MBF
Red Oak	0.7 MBF	\$ 97.00 / MBF
Sugar Maple	136.8 MBF	\$ 209.00 / MBF
Pulpwood		
Balsam Fir	149 Cords	\$ 12.90 / Cord
Mixed Aspen	2,200 Cords	\$ 15.90 / Cord
Mixed Hardwood	897 Cords	\$ 12.15 / Cord
Mixed Spruce	81 Cords	\$ 13.25 / Cord
Red Oak	2 Cords	\$ 17.10 / Cord

* The total volume is statistically estimated within plus (+) or minus (-) 5.53 percent. There are an estimated 3,518 cords on this timber sale, plus or minus 195 cords at the 95% confidence level. The estimated units are final and not subject to adjustment. Prospective bidders are urged to examine this timber and to make their own estimates of quantity and quality.

BOND AND PAYMENT SCHEDULE:

1. A bond in the amount of \$3,981.00 to insure faithful performance of the conditions of the contract will be deposited by the successful bidder within 21 days of the sale award.
2. Cutting in any sale or unit without the required advance payment would be considered a trespass.
3. Total payment must be paid in advance or according to the following schedule :
 - (a) Ten percent (10%) of the sale value must be paid within 21 days of the sale award.
 - (b) The 10% down payment will be credited towards the first unit cut.
 - (c) Payment for each of the following units must be made before cutting begins in that unit:

PAYMENT UNIT NUMBER	PERCENT OF TOTAL SALE VALUE
01	7.3%
02	10.9%
03	13.1%
04	12.2%
05	13.4%
06	7.1%
07	10.3%
08	14.2%
09	11.5%

4. If no cutting takes place, the 10% down payment will not be refunded.
5. Operations on the contract issued will terminate on 08/31/2024.

SALE STATISTICS

Volumes were calculated in cubic feet using the Michigan taper model. Cubic foot volume includes all wood inside bark for the product indicated. For display purposes, cubic feet were converted to cords and MBF using a simple conversion factor, e.g. 79 cubic feet per cord and 185 cubic feet per MBF. The cubic foot volumes are precise; the cords and MBF volumes are not. Cubic foot volume cannot be directly converted to cords or boards with precision.

SALE VOLUMES

The total estimated sale volume may not equal the sum of the species/products due to the nature of statistical calculations associated with double sampling methodology.

VOLUME			STATISTICAL RANGE IN CORDS	
TOTAL CUBIC FEET	TOTAL CORDS	PERCENT ERROR	MINIMUM	MAXIMUM
277,944	3,518	5.53%	3,323	3,713

VDU VOLUMES

A VDU is a Volume Determination Unit. Volumes and their associated statistics are calculated at the VDU level and summarized to the sale level. There is often a one to one relationship between a VDU and a Payment Unit, but not always, depending on the cruise design. Refer to the VDU TO PAYMENT UNIT table.

	VOLUME			RANGE IN CORDS	
VDU	TOTAL CUBIC FEET	TOTAL CORDS	PERCENT ERROR	MINIMUM	MAXIMUM
1	38,276	485	9.85%	437	532
2	53,929	683	15.24%	579	787
3	113,225	1,433	9.50%	1,297	1,569
4	23,207	294	13.96%	253	335
5	34,563	438	16.73%	364	511
6	26,685	338	17.41%	279	397
TOTAL:	289,885	3,669		3,208	4,130

VDU TO PAYMENT UNIT

When a VDU is associated with more than one Payment Unit (PU), the VDU volumes are assigned to the PU based on acres of the VDU within the PU.

VDU	VDU ACRES	PU	PU ACRES
1	38.5	3	19.9
		4	18.6
2	17.3	5	17.3
		3	17.5
		6	11.4
4	25.5	7	16.6
		8	25.5
5	17.4	9	17.4
6	11.7	1	11.7
TOTAL:	155.9		155.9

DESCRIPTION OF TIMBER BY PAYMENT UNIT (PU)

PU	MARKET GROUP	PRODUCT	QUANTITY	UNIT	ACRES	ADVERTISE PRICE
1	Red Oak	Sawtimber	0.7	MBF	11.7	\$5,790.95
	Sugar Maple		5.4	MBF		
	Balsam Fir	Pulpwood	49	Cords		
	Mixed Aspen		153	Cords		
	<i>Quaking Aspen</i>		153	<i>Cords</i>		
	Mixed Hardwood		98	Cords		
	<i>Ironwood</i>		5	<i>Cords</i>		
	<i>Paper Birch</i>		41	<i>Cords</i>		
	<i>Red Maple</i>		12	<i>Cords</i>		
	<i>Sugar Maple</i>		35	<i>Cords</i>		
	<i>White Ash</i>		5	<i>Cords</i>		
	Mixed Spruce		23	Cords		
	<i>Black Spruce</i>		17	<i>Cords</i>		
	<i>White Spruce</i>		6	<i>Cords</i>		
Red Oak		2	Cords			
2	Balsam Fir	Pulpwood	3	Cords	17.5	\$8,653.50
	Mixed Aspen		525	Cords		
	<i>B. T. Aspen</i>		15	<i>Cords</i>		
	<i>Balsam Poplar</i>		20	<i>Cords</i>		
	<i>Quaking Aspen</i>		490	<i>Cords</i>		
	Mixed Hardwood		22	Cords		
	<i>American Elm</i>		2	<i>Cords</i>		
	<i>Ironwood</i>		3	<i>Cords</i>		
	<i>Red Maple</i>		1	<i>Cords</i>		
	<i>Sugar Maple</i>		16	<i>Cords</i>		
	3	Basswood	Sawtimber	5.2		
Paper Birch			2.4	MBF		
Sugar Maple			38.1	MBF		
Mixed Aspen		Pulpwood	11	Cords		
<i>B. T. Aspen</i>			6	<i>Cords</i>		
<i>Quaking Aspen</i>			5	<i>Cords</i>		
Mixed Hardwood			149	Cords		
<i>Basswood</i>			11	<i>Cords</i>		
<i>Ironwood</i>			3	<i>Cords</i>		
<i>Paper Birch</i>			7	<i>Cords</i>		
<i>Sugar Maple</i>			128	<i>Cords</i>		
4	Basswood	Sawtimber	4.9	MBF	18.6	\$9,701.10
	Paper Birch		2.3	MBF		
	Sugar Maple		35.6	MBF		
	Mixed Aspen	Pulpwood	9	Cords		
	<i>B. T. Aspen</i>		5	<i>Cords</i>		
	<i>Quaking Aspen</i>		4	<i>Cords</i>		
	Mixed Hardwood		138	Cords		
	<i>Basswood</i>		11	<i>Cords</i>		
	<i>Ironwood</i>		2	<i>Cords</i>		
	<i>Paper Birch</i>		6	<i>Cords</i>		
	<i>Sugar Maple</i>		119	<i>Cords</i>		
5	Paper Birch	Sawtimber	4.9	MBF	17.3	\$10,694.85
	Balsam Fir	Pulpwood	27	Cords		
	Mixed Aspen		561	Cords		
	<i>B. T. Aspen</i>		32	<i>Cords</i>		
	<i>Balsam Poplar</i>		22	<i>Cords</i>		
	<i>Quaking Aspen</i>		507	<i>Cords</i>		
	Mixed Hardwood		45	Cords		
	<i>Paper Birch</i>		45	<i>Cords</i>		
	Mixed Spruce		42	Cords		

DESCRIPTION OF TIMBER BY PAYMENT UNIT (PU), CON'T

PU	MARKET GROUP	PRODUCT	QUANTITY	UNIT	ACRES	ADVERTISE PRICE
5 con't	<i>White Spruce</i>	<i>Pulpwood</i>	42	<i>Cords</i>		
6	Balsam Fir Mixed Aspen <i>B. T. Aspen</i> <i>Balsam Poplar</i> <i>Quaking Aspen</i> Mixed Hardwood <i>American Elm</i> <i>Ironwood</i> <i>Red Maple</i> <i>Sugar Maple</i>	Pulpwood	2 342 10 13 319 15 1 2 1 11	Cords Cords <i>Cords</i> <i>Cords</i> <i>Cords</i> Cords <i>Cords</i> <i>Cords</i> <i>Cords</i> <i>Cords</i>	11.4	\$5,645.85
7	Balsam Fir Mixed Aspen <i>B. T. Aspen</i> <i>Balsam Poplar</i> <i>Quaking Aspen</i> Mixed Hardwood <i>American Elm</i> <i>Ironwood</i> <i>Red Maple</i> <i>Sugar Maple</i>	Pulpwood	3 498 14 19 465 21 2 3 1 15	Cords Cords <i>Cords</i> <i>Cords</i> <i>Cords</i> Cords <i>Cords</i> <i>Cords</i> <i>Cords</i> <i>Cords</i>	16.6	\$8,212.05
8	Basswood Paper Birch Sugar Maple Mixed Hardwood <i>Basswood</i> <i>Ironwood</i> <i>Paper Birch</i> <i>Sugar Maple</i> <i>Yellow Birch</i>	Sawtimber Pulpwood	6.5 2.9 40.1 194 39 1 10 143 1	MBF MBF MBF Cords <i>Cords</i> <i>Cords</i> <i>Cords</i> <i>Cords</i> <i>Cords</i>	25.5	\$11,312.90
9	Paper Birch Red Maple Sugar Maple Balsam Fir Mixed Aspen <i>Balsam Poplar</i> <i>Quaking Aspen</i> Mixed Hardwood <i>Paper Birch</i> <i>Red Maple</i> <i>Sugar Maple</i> Mixed Spruce <i>Black Spruce</i> <i>White Spruce</i>	Sawtimber Pulpwood	1.6 1.5 17.6 65 101 55 46 215 93 34 88 16 7 9	MBF MBF MBF Cords Cords <i>Cords</i> <i>Cords</i> Cords <i>Cords</i> <i>Cords</i> <i>Cords</i> Cords <i>Cords</i> <i>Cords</i>	17.4	\$9,195.15
TOTAL:			169.7	MBF		
TOTAL:			3,329	Cords		

Sale Specific Conditions & Requirements

Sale Name: Compartment 59 East

Sale Number: 32-016-21 Seq#: 1

1 - Sale Area

1.2 - Boundaries

1.2.1 - Painted boundaries (9/19)

The sale boundary and Payment Unit boundaries are marked and identified by red and yellow paint. Exterior sale boundary lines against state are marked with red paint. Interior Payment Unit boundaries are marked with yellow paint. The painted boundary line trees are not Included Timber and are to be protected unless marked with orange paint. Yellow painted trees designating an interior Payment Unit boundary are only to be cut when all surrounding Payment Units have been paid.

2 - Timber Specifications

2.1 - Included Timber

2.1.1 - Clearcut unit(s) with unmerchantable trees (6/14)

Within Payment Unit(s) 1, 2, 6, 7, and 9, cut all trees that are 2 inches or more at DBH, except cedar, hemlock, white pine, and yellow birch.

Within Payment Unit 5, cut all trees that are 2 inches or more at DBH, except cedar, hemlock, black cherry, maple, and yellow birch.

2.1.3 - Cut tree marked unit(s) (12/08)

Within Payment Unit(s) 3, 4, and 8, all trees are designated for cutting when marked with orange paint above and below stump height, regardless of merchantability.

2.2 - Utilization

2.2.6 - Roundwood operation required (3/21)

The skidding of whole trees or tree segments with limbs attached is prohibited within Payment Units 3, 4, and 8. All products must be produced as roundwood and forwarded to existing roads or landing areas in final product length.

3 - Payments

3.4 - Damaged Timber

3.4.1 - Damaged timber (7/16)

General Condition and Requirement 3.4 Damaged Timber, defines liquidated damages for undesignated live merchantable trees which are cut or injured. No damage is acceptable to undesignated live merchantable trees. Within the Sale Area, if more than 5 % of trees (> 4.5" DBH) within a specified area of the sale are damaged, liquidated damages will be assessed for all trees damaged. Rates will be in accordance with General Condition and Requirement 3.4 Damaged Timber.

4 - Transportation

4.1 - Construction

4.1.3 - Slash and earthen piles (8/04)

Piles or windrows of earth along roads and landings that have been widened or constructed shall be leveled. Slash from road maintenance or construction, including stumps, shall be dispersed throughout the sale.

4.1.4 - Timber removed for construction (12/09)

Trees cut or damaged in the process of pre-approved road, landing or skid trail construction will be decked in an area separate from other Designated Timber and not removed until measured by the sale administrator. Payment will be made at the specified Purchase Unit Price.

4.1.6 - Road construction (1/09)

Construction of new roads or improvements of existing roads shall be done in such a way as to minimize the environmental and visual impacts. Merchantable trees shall be cut and utilized unless otherwise directed. Non-merchantable trees shall be severed and laid flat on the ground. Slash shall be scattered, and not left in windrows and kept a minimum of 10 feet back from the road edge. Stumps shall be set upright, not left on edge, and be moved at least 10 feet away from the road edge.

Disturbed soil shall be feathered into the woods and not left in berms or windrows.

4.1.7 - Road closure (10/11)

All new roads built into the sale must be blocked to vehicle traffic upon completion of the sale. Overgrown roads that are reopened shall be considered new roads. In general, this will require constructing a four (4') foot high berm of stumps and logs covered with earth. Contact the sale administrator for specific details of design and placement.

4.1.8 - Road work (1) (8/07)

The following road work is required: A minimum of 100 yards of gravel must be placed in soft road areas before trucking begins. Contact the sale administrator for placement of the gravel.

4.2 - Maintenance

4.2.4 - Grading (10/16)

For completion of the sale, state forest roads must be graded. In general, this will require a road grader or bulldozer to shape up the roads after forest products have been hauled off site. This includes cleaning of drainage areas, grading, crowning, and filling with gravel, if necessary. The grading equipment to be used must be approved by the Unit Manager or his/her representative.

5 - Operations

5.1 - Notification

5.1.1 - Pre-sale conference (10/16)

A pre-sale conference between the Purchaser and sale administrator is required prior to beginning any operations. The Unit Manager or his/her representative must be contacted at least 3 business days in advance to schedule the conference.

5.2 - Conduct of Operations

5.2.1 - Slash

5.2.1.11 - Slash for reforestation (3/21)

To facilitate reforestation, Payment Units 1, 2, 5-7, and 9 shall be left with slash evenly distributed. Bunched tops within the cutting area shall be broken up and scattered. Stumps shall be cut low to the ground. Processing sites shall not be left with a compacted layer of slash; tops from these sites shall be hauled back into the cut area and scattered.

5.2.2 - Hazard Trees/Snags

5.2.2.1 - Den trees (10/16)

Obvious hollow and/or den trees shall be protected and left standing unless they are a safety hazard.

5.2.3 - Operating Restrictions

5.2.3.3 - Bark slippage restriction (3/09)

Within Payment Unit(s) 3, 4, and 8, unless changed by written agreement, cutting and skidding are not permitted during the period of April 15 to July 15. This restriction is because of bark slippage.

5.2.22 - Operating Caution

5.2.22.1 - Operating caution (6/11)

It is recommended, but not required, that within Payment Unit(s) 9, cutting and skidding occur during dry summer or frozen winter conditions. The reason for the recommendation areas of soft ground along the west edge.

5.2.32 - Decking/landing restoration (9/13)

All decking and landing areas must have the surface area restored to a condition equal to or better than before. This is to ensure the proper regeneration of the stand. Wood debris, chips, and "cookies" from trimmings must be removed or scattered away from landing and loading areas and may not be windrowed on the edge.

5.2.38 - No decking against live trees (2/04)

Cut products may not be decked against unmarked or designated leave trees.

5.4 - Soil Protection

5.4.1 - Rutting restriction, general (7/16)

Operations are to cease immediately if equipment and weather conditions result in rutting of roads and/or skid trails which is 12 inches or greater in depth and 50 feet in length. The Unit Manager or his/her representative may restrict hauling and/or skidding if ruts exceed the specified depth. With the Unit Manager or his/her representative's approval, the Purchaser may return to the area when the risk of rutting has decreased.

5.4.2 - Skid trails (2/04)

Skid trails up and down slopes should be avoided. If however this is unavoidable, these trails will be left in a non-erodible condition using water bars, logs, and slash. Placing of slash on these skid trails while logging is ongoing may alleviate need for any further action. At the direction of the sale administrator, seed, fertilizer, and mulch may also be required.

5.8 - Protection of Endangered Species

5.8.5 - Protection of raptor nests (3/13)

All trees with raptor nests will be protected if found during harvesting operations. Notification will be made to the Unit Manager or his/her representative who will notify the Wildlife Biologist so an on-site evaluation and recommendation can be made, if necessary.

7 - Other Conditions

7.5 - Loss

7.5.1 - Deteriorating timber (7/09)

The sale area has received damage from spruce budworm. The Purchaser should harvest the wood as soon as possible. The Department of Natural Resources is held free of responsibility of any further damage or deterioration due to delay in harvesting.



Sale Number	Year
32-016	21

TIMBER SALE MAP

This information provided by authority of Part 525, 1994 PA 451, as amended.

Forest Management Unit	County	Mapped By	Date	Page	of
Gwinn Management Unit	Marquette	Brolin	04/26/2021	1	1
		Cruised By			
		Brolin			

Township	Range	Section(s) and Subdivision(s)	Scale
44 N	26 W	Sections 28, 33, 34	1:15,840

Cover Type				Density	
A = Aspen	H = Hemlock	N = Marsh	U = Upland Brush	0 = Non Stocked	5 = Pole Timber Medium
B = Paper Birch	J = Jack Pine	O = Oak	UM = Upland Mixed	1 = Seedling Sapling Poor	6 = Pole Timber Well
C = Cedar	L = Lowland Brush	P = Lowland Poplar	V = Bog or Marsh	2 = Seedling Sapling Medium	7 = Saw Timber Poor
D = Treed Bog	LM = Lowland Mixed	Q = Mixed Swamp Conifer	W = White Pine	3 = Seedling Sapling Well	8 = Saw Timber Medium
E = Swamp Hdwoods	M = Mpl, Bch, Brch	R = Red Pine	X = Non Stocked	4 = Pole Timber Poor	9 = Saw Timber Well
F = Spruce Fir	MC = Mixed Conifer	S = Black Spruce	Z = Water		
G = Grass	MD = Mixed Deciduous	T = Tamarack			

PU	Acres	PU	Acres
1	11.7	6	11.4
2	17.5	7	16.6
3	19.9	8	25.5
4	18.6	9	17.4
5	17.3		

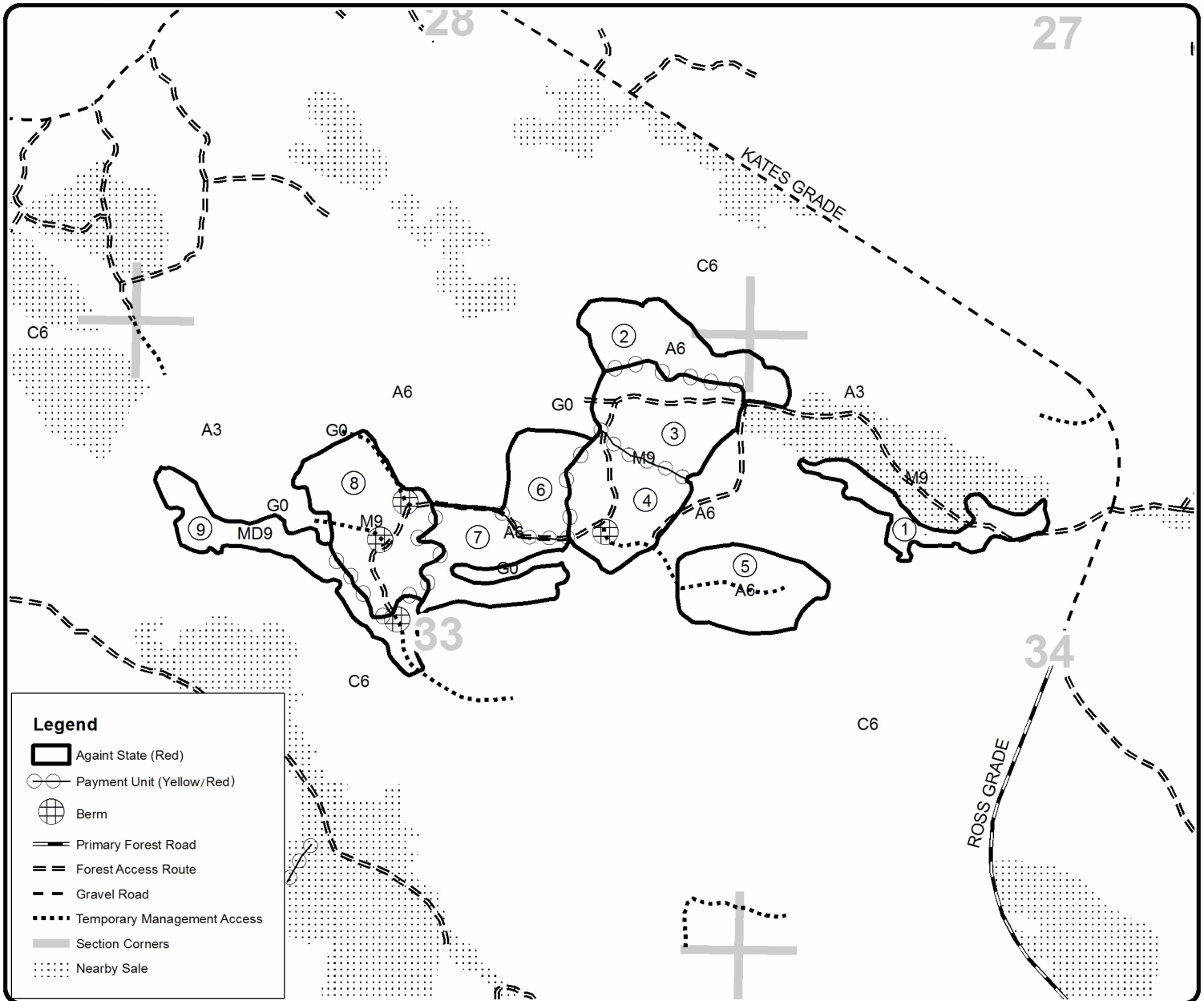
Compartment 59 East

Compartment 53 and 59

155.9 Acres

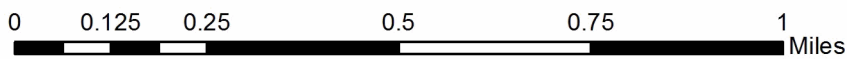


QR code for PDF Map app



Legend

- Againt State (Red)
- Payment Unit (Yellow/Red)
- Berm
- Primary Forest Road
- Forest Access Route
- Gravel Road
- Temporary Management Access
- Section Corners
- Nearby Sale



TIMBER SALE INFORMATION

Compartment 59 West (32-017-21)

T43N, R26W, SEC. 6; T44N, R26W, SEC. 30; T44N, R26W, SEC. 31; T44N, R27W, SEC. 36.
Marquette County (Advertised Price \$98,964.85)

SALE NOTE: All units of volume listed for this sale were estimated using the Inventory Manager computer program and the new Michigan taper model.

Payment Units 8-11 is best accessed through private property from Yellow Rock Road but alternate routes may be possible through state land which require freezing of roads and/or skid trails.

- See sale spec 4.2.1 for hauling restrictions on Ross Grade.

- See sale spec 7.5.1 for information on budworm damage.

A timber sale contract for this lump sum, sealed bid timber sale will be awarded to the responsible bidder offering the highest sealed bid price. All units of volume listed below were estimated using the Inventory Manager computer program and the new Michigan taper model. Bids must be at or above the following advertised price for each product and species:

<u>PRODUCTS & SPECIES</u>	<u>ESTIMATED UNITS*</u>	<u>ADVERTISED PRICE</u>
Sawtimber		
Paper Birch	65.8 MBF	\$ 66.00 / MBF
Red Maple	52.0 MBF	\$ 95.00 / MBF
Sugar Maple	297.3 MBF	\$ 209.00 / MBF
Pulpwood		
Balsam Fir	478 Cords	\$ 12.90 / Cord
Mixed Aspen	468 Cords	\$ 15.90 / Cord
Mixed Hardwood	1,048 Cords	\$ 12.15 / Cord
Mixed Spruce	91 Cords	\$ 13.25 / Cord

* The total volume is statistically estimated within plus (+) or minus (-) 5.59 percent. There are an estimated 3,168 cords on this timber sale, plus or minus 177 cords at the 95% confidence level. The estimated units are final and not subject to adjustment. Prospective bidders are urged to examine this timber and to make their own estimates of quantity and quality.

BOND AND PAYMENT SCHEDULE:

1. A bond in the amount of \$4,948.00 to insure faithful performance of the conditions of the contract will be deposited by the successful bidder within 21 days of the sale award.
2. Cutting in any sale or unit without the required advance payment would be considered a trespass.
3. Total payment must be paid in advance or according to the following schedule :
 - (a) Ten percent (10%) of the sale value must be paid within 21 days of the sale award.
 - (b) The 10% down payment will be credited towards the first unit cut.
 - (c) Payment for each of the following units must be made before cutting begins in that unit:

PAYMENT UNIT NUMBER	PERCENT OF TOTAL SALE VALUE
01	5.7%
02	5.0%
03	4.1%
04	10.8%
05	26.8%
06	12.2%
07	8.3%
08	3.5%
09	4.2%
10	4.2%
11	15.2%

4. If no cutting takes place, the 10% down payment will not be refunded.
5. Operations on the contract issued will terminate on 08/31/2024.

SALE STATISTICS

Volumes were calculated in cubic feet using the Michigan taper model. Cubic foot volume includes all wood inside bark for the product indicated. For display purposes, cubic feet were converted to cords and MBF using a simple conversion factor, e.g. 79 cubic feet per cord and 185 cubic feet per MBF. The cubic foot volumes are precise; the cords and MBF volumes are not. Cubic foot volume cannot be directly converted to cords or boards with precision.

SALE VOLUMES

The total estimated sale volume may not equal the sum of the species/products due to the nature of statistical calculations associated with double sampling methodology.

VOLUME			STATISTICAL RANGE IN CORDS	
TOTAL CUBIC FEET	TOTAL CORDS	PERCENT ERROR	MINIMUM	MAXIMUM
250,260	3,168	5.59%	2,991	3,345

VDU VOLUMES

A VDU is a Volume Determination Unit. Volumes and their associated statistics are calculated at the VDU level and summarized to the sale level. There is often a one to one relationship between a VDU and a Payment Unit, but not always, depending on the cruise design. Refer to the VDU TO PAYMENT UNIT table.

VDU	VOLUME			RANGE IN CORDS	
	TOTAL CUBIC FEET	TOTAL CORDS	PERCENT ERROR	MINIMUM	MAXIMUM
1	68,266	864	6.20%	811	918
2	23,815	301	18.09%	247	356
3	24,663	312	12.89%	272	352
4	15,332	194	17.23%	161	228
5	58,757	744	16.10%	624	863
6	30,706	389	13.71%	335	442
7	8,844	112	27.22%	81	142
TOTAL:	230,383	2,916		2,531	3,302

VDU TO PAYMENT UNIT

When a VDU is associated with more than one Payment Unit (PU), the VDU volumes are assigned to the PU based on acres of the VDU within the PU.

VDU	VDU ACRES	PU	PU ACRES
1	56.3	4	10.5
		5	26.0
		6	11.8
		7	8.0
2	22.4	2	22.4
3	11.0	1	11.0
4	6.6	8	6.6
5	23.5	11	23.5
6	39.8	9	19.9
		10	19.9
7	11.8	3	11.8
TOTAL:	171.4		171.4

DESCRIPTION OF TIMBER BY PAYMENT UNIT (PU)

PU	MARKET GROUP	PRODUCT	QUANTITY	UNIT	ACRES	ADVERTISE PRICE
1	Red Maple	Sawtimber	2.6	MBF	11.0	\$5,600.65
	Sugar Maple		6.8	MBF		
	Balsam Fir	Pulpwood	132	Cords		
	Mixed Aspen		65	Cords		
	<i>Quaking Aspen</i>		65	<i>Cords</i>		
	Mixed Hardwood		81	Cords		
	<i>Paper Birch</i>		20	<i>Cords</i>		
	<i>Red Maple</i>		31	<i>Cords</i>		
	<i>Sugar Maple</i>		30	<i>Cords</i>		
	Mixed Spruce		16	Cords		
	<i>Black Spruce</i>		16	<i>Cords</i>		
2	Paper Birch	Sawtimber	4.1	MBF	22.4	\$4,933.05
	Red Maple		5.1	MBF		
	Sugar Maple		3.1	MBF		
	Balsam Fir	Pulpwood	98	Cords		
	Mixed Aspen		19	Cords		
	<i>Quaking Aspen</i>		19	<i>Cords</i>		
	Mixed Hardwood		130	Cords		
	<i>Paper Birch</i>		32	<i>Cords</i>		
	<i>Red Maple</i>		95	<i>Cords</i>		
	<i>Sugar Maple</i>		3	<i>Cords</i>		
	Mixed Spruce		29	Cords		
	<i>Black Spruce</i>		25	<i>Cords</i>		
	<i>White Spruce</i>		4	<i>Cords</i>		
3	Red Maple	Sawtimber	3.5	MBF	11.8	\$4,068.90
	Sugar Maple		13.3	MBF		
	Balsam Fir	Pulpwood	12	Cords		
	Mixed Hardwood		66	Cords		
	<i>Red Maple</i>		13	<i>Cords</i>		
	<i>Sugar Maple</i>		53	<i>Cords</i>		
4	Red Maple	Sawtimber	3.3	MBF	10.5	\$10,724.10
	Sugar Maple		46.2	MBF		
	Balsam Fir	Pulpwood	2	Cords		
	Mixed Hardwood		60	Cords		
	<i>Red Maple</i>		6	<i>Cords</i>		
	<i>Sugar Maple</i>		54	<i>Cords</i>		
5	Red Maple	Sawtimber	8.2	MBF	26.0	\$26,522.00
	Sugar Maple		114.2	MBF		
	Balsam Fir	Pulpwood	4	Cords		
	Mixed Hardwood		149	Cords		
	<i>Red Maple</i>		16	<i>Cords</i>		
	<i>Sugar Maple</i>		133	<i>Cords</i>		
	Mixed Spruce		1	Cords		
	<i>White Spruce</i>		1	<i>Cords</i>		
6	Red Maple	Sawtimber	3.7	MBF	11.8	\$12,038.45
	Sugar Maple		51.9	MBF		
	Balsam Fir	Pulpwood	2	Cords		
	Mixed Hardwood		67	Cords		
	<i>Red Maple</i>		7	<i>Cords</i>		
	<i>Sugar Maple</i>		60	<i>Cords</i>		
7	Red Maple	Sawtimber	2.5	MBF	8.0	\$8,166.10
	Sugar Maple		35.2	MBF		
	Balsam Fir	Pulpwood	1	Cords		
	Mixed Hardwood		46	Cords		
	<i>Red Maple</i>		5	<i>Cords</i>		

Sale Specific Conditions & Requirements

Sale Name: Compartment 59 West

Sale Number: 32-017-21 Seq#: 1

1 - Sale Area

1.2 - Boundaries

1.2.1 - Painted boundaries (9/19)

The sale boundary and Payment Unit boundaries are marked and identified by red and yellow paint. Exterior sale boundary lines against state are marked with red paint. Interior Payment Unit boundaries are marked with yellow paint. The painted boundary line trees are not Included Timber and are to be protected unless marked with orange paint. Yellow painted trees designating an interior Payment Unit boundary are only to be cut when all surrounding Payment Units have been paid.

2 - Timber Specifications

2.1 - Included Timber

2.1.1 - Clearcut unit(s) with unmerchantable trees (6/14)

Within Payment Unit(s) 2, 8, and 11, cut all trees that are 2 inches or more at DBH, except cedar, hemlock, red pine, and white pine. Also, within Payment Unit 2, leave trees with a 24 inch or larger diameter at the stump.

2.1.2 - Clearcut unit(s) w/o unmerchantable trees (8/11)

Within Payment Unit(s) 9 and 10, cut all balsam fir, spruce, aspen, ironwood, and paper birch trees which meet minimum piece specifications in 2.2 Utilization. Also, all trees are designated for cutting when marked with orange paint above and below stump height, regardless of merchantability.

2.1.3 - Cut tree marked unit(s) (12/08)

Within Payment Unit(s) 3-7, all trees are designated for cutting when marked with orange paint above and below stump height, regardless of merchantability.

2.1.7 - Leave tree marked unit(s) (6/14)

Within Payment Unit(s) 1, cut all trees that are two 2 inches or more at DBH, except cedar, hemlock, white pine, yellow birch, and trees marked with green paint above and below stump height.

2.2 - Utilization

2.2.6 - Roundwood operation required (3/21)

The skidding of whole trees or tree segments with limbs attached is prohibited within Payment Units 1, 3-7, 9, and 10. All products must be produced as roundwood and forwarded to existing roads or landing areas in final product length.

3 - Payments

3.4 - Damaged Timber

3.4.1 - Damaged timber (7/16)

General Condition and Requirement 3.4 Damaged Timber, defines liquidated damages for undesignated live merchantable trees which are cut or injured. In addition, within Payment Units 3-7, 9, and 10, extreme care should be taken to avoid damage to tree seedlings and saplings. No damage is acceptable to undesignated live merchantable trees. Within the Sale Area, if more than 5% of trees (> 4.5" DBH) within a specified area of the sale are damaged, liquidated damages will be assessed for all trees damaged. Rates will be in accordance with General Condition and Requirement 3.4 Damaged Timber.

4 - Transportation

4.1 - Construction

4.1.3 - Slash and earthen piles (8/04)

Piles or windrows of earth along roads and landings that have been widened or constructed shall be leveled. Slash from road maintenance or construction, including stumps, shall be dispersed throughout the sale.

4.1.4 - Timber removed for construction (12/09)

Trees cut or damaged in the process of pre-approved road, landing or skid trail construction will be decked in an area separate

from other Designated Timber and not removed until measured by the sale administrator. Payment will be made at the specified Purchase Unit Price.

4.1.6 - Road construction (1/09)

Construction of new roads or improvements of existing roads shall be done in such a way as to minimize the environmental and visual impacts. Merchantable trees shall be cut and utilized unless otherwise directed. Non-merchantable trees shall be severed and laid flat on the ground. Slash shall be scattered, and not left in windrows and kept a minimum of 10 feet back from the road edge. Stumps shall be set upright, not left on edge, and be moved at least 10 feet away from the road edge. Disturbed soil shall be feathered into the woods and not left in berms or windrows.

4.1.7 - Road closure (10/11)

All new roads built into the sale must be blocked to vehicle traffic upon completion of the sale. Overgrown roads that are reopened shall be considered new roads. In general, this will require constructing a four (4') foot high berm of stumps and logs covered with earth. These roads must be rendered impassable to cars and trucks. Contact the sale administrator for specific details of design and placement.

4.2 - Maintenance

4.2.1 - Hauling restriction (12/08)

Hauling is restricted on Ross Grade during non-frozen conditions, unless changed by written agreement. The restriction may occur on Ross Grade by the Unit Manager or his/her representative during warm or wet conditions that can cause damage to the road throughout any winter months.

4.2.2 - Fill material (4/07)

To maintain roads, fill material may be needed in areas where "holes" exist or may be expected to develop. This fill material should be placed before trucking begins. Contact the sale administrator regarding the availability of onsite sand or gravel from adjacent State-owned lands.

4.2.4 - Grading (10/16)

For completion of the sale, state forest roads must be graded. In general, this will require a road grader or bulldozer to shape up the roads after forest products have been hauled off site. This includes cleaning of drainage areas, grading, crowning, and filling with gravel, if necessary. The grading equipment to be used must be approved by the Unit Manager or his/her representative.

4.4 - Access

4.4.1 - Private property access (3/11)

Permission for access across private land is the responsibility of the Purchaser. Should the Purchaser desire to cross private land, a copy of the written permission from the private land-owner may be required by the DNR.

4.4.2 - Alternate route on private property (2/04)

It is the Purchaser's responsibility to obtain access across private land for any routes other than the route shown on the Timber Sale Map.

4.4.3 - Access gate (12/08)

If the Purchaser uses access through Yellow Rock Road, the access gate must be locked at all times unless approved by the Unit Manager or his/her representative and the private landowner.

5 - Operations

5.1 - Notification

5.1.1 - Pre-sale conference (10/16)

A pre-sale conference between the Purchaser and sale administrator is required prior to beginning any operations. The Unit Manager or his/her representative must be contacted at least 3 days in advance to schedule the conference.

5.2 - Conduct of Operations

5.2.1 - Slash

5.2.1.11 - Slash for reforestation (3/21)

To facilitate reforestation, Payment Units 1, 2, 8, and 11, shall be left with slash evenly distributed. Bunched tops within

the cutting area shall be broken up and scattered. Stumps shall be cut low to the ground. Processing sites shall not be left with a compacted layer of slash; tops from these sites shall be hauled back into the cut area and scattered.

5.2.2 - Hazard Trees/Snags

5.2.2.1 - Den trees (10/16)

Obvious hollow and/or den trees shall be protected and left standing unless they are a safety hazard.

5.2.3 - Operating Restrictions

5.2.3.3 - Bark slippage restriction (3/09)

Within Payment Unit(s) 3-7, 9, and 10, unless changed by written agreement, cutting and skidding are not permitted during the period of April 15 to July 15. This restriction is because of bark slippage.

5.2.17 - Timber Mats and Interlocking Composite Mats (10/20)

Some roads or skid trails may require extra protection such as that afforded by timber mats. If available, mats may be borrowed from the DNR. A Timber Sale Contract Supplement will be used to document the Purchaser's use of the DNR's mats. Contact the sale administrator regarding availability and pick-up. Timber mats are available from various field offices. The Purchaser is responsible for picking up and hauling the mats to and from the site. All mats must be cleaned prior to drop off. This may include, but is not limited to, power washing and brushing to remove mud and debris. A charge of \$700.00 per timber mat will be assessed for all damaged or non-returned mats. Damage for the crane/timber mats is defined as three or more broken cants.

5.2.32 - Decking/landing restoration (9/13)

All decking and landing areas must have the surface area restored to a condition equal to or better than before. This is to ensure the proper regeneration of the stand. Wood debris, chips, and "cookies" from trimmings must be removed or scattered away from landing and loading areas and may not be windrowed on the edge.

5.2.38 - No decking against live trees (2/04)

Cut products may not be decked against unmarked or designated leave trees.

5.4 - Soil Protection

5.4.1 - Rutting restriction, general (7/16)

Operations are to cease immediately if equipment and weather conditions result in rutting of roads and/or skid trails which is 12 inches or greater in depth and 50 feet in length. The Unit Manager or his/her representative may restrict hauling and/or skidding if ruts exceed the specified depth. With the Unit Manager or his/her representative's approval, the Purchaser may return to the area when the risk of rutting has decreased.

5.4.2 - Skid trails (2/04)

Skid trails up and down slopes should be avoided. If however this is unavoidable, these trails will be left in a non-erodible condition using water bars, logs, and slash. Placing of slash on these skid trails while logging is ongoing may alleviate need for any further action. At the direction of the sale administrator, seed, fertilizer, and mulch may also be required.

5.8 - Protection of Endangered Species

5.8.5 - Protection of raptor nests (3/13)

All trees with raptor nests will be protected if found during harvesting operations. Notification will be made to the Unit Manager or his/her representative who will notify the Wildlife Biologist so an on-site evaluation and recommendation can be made, if necessary.

6 - Safety and Fire Prevention

6.2 - Signing

6.2.1 - Road posting (10/20)

The Purchaser is responsible for posting and maintaining caution signs on County Road 581/438, Ross Grade, and access roads entering the active Sale Area prior to beginning operations. The road must be posted at appropriate distances from the Sale Area to warn of logging activity and truck traffic. Signs must be removed when harvest operations are suspended or completed. The Purchaser will provide these signs.

7 - Other Conditions

7.5 - Loss

7.5.1 - Deteriorating timber (7/09)

The sale area has received damage from spruce budworm. The Purchaser should harvest the wood as soon as possible. The Department of Natural Resources is held free of responsibility of any further damage or deterioration due to delay in harvesting.



Sale Number	Year
32-017	21

TIMBER SALE MAP

This information provided by authority of Part 525, 1994 PA 451, as amended.

Forest Management Unit	County	Mapped By	Date	Page	of
Gwinn Management Unit	Marquette, Dickinson	Brolin	08/23/2021	1	1
Township	Range	Section(s) and Subdivision(s)	Scale		
43, 44N	26, 27W	Sections 26, 36 (44N-27W) / 30, 31 (44N-26W) / 6 (43N-26W)	1:15,840		

Cover Type				Density	
A = Aspen	H = Hemlock	N = Marsh	U = Upland Brush	0 = Non Stocked	5 = Pole Timber Medium
B = Paper Birch	J = Jack Pine	O = Oak	UM = Upland Mixed	1 = Seedling Sapling Poor	6 = Pole Timber Well
C = Cedar	L = Lowland Brush	P = Lowland Poplar	V = Bog or Marsh	2 = Seedling Sapling Medium	7 = Saw Timber Poor
D = Treed Bog	LM = Lowland Mixed	Q = Mixed Swamp Conifer	W = White Pine	3 = Seedling Sapling Well	8 = Saw Timber Medium
E = Swamp Hdwoods	M = Mpl, Bch, Brch	R = Red Pine	X = Non Stocked	4 = Pole Timber Poor	9 = Saw Timber Well
F = Spruce Fir	MC = Mixed Conifer	S = Black Spruce	Z = Water		
G = Grass	MD = Mixed Deciduous	T = Tamarack			

PU Acres	PU Acres	PU Acres
1	11.0	7 8.0
2	22.4	8 6.6
3	11.8	9 19.9
4	10.5	10 19.9
5	26.0	11 23.5
6	11.8	

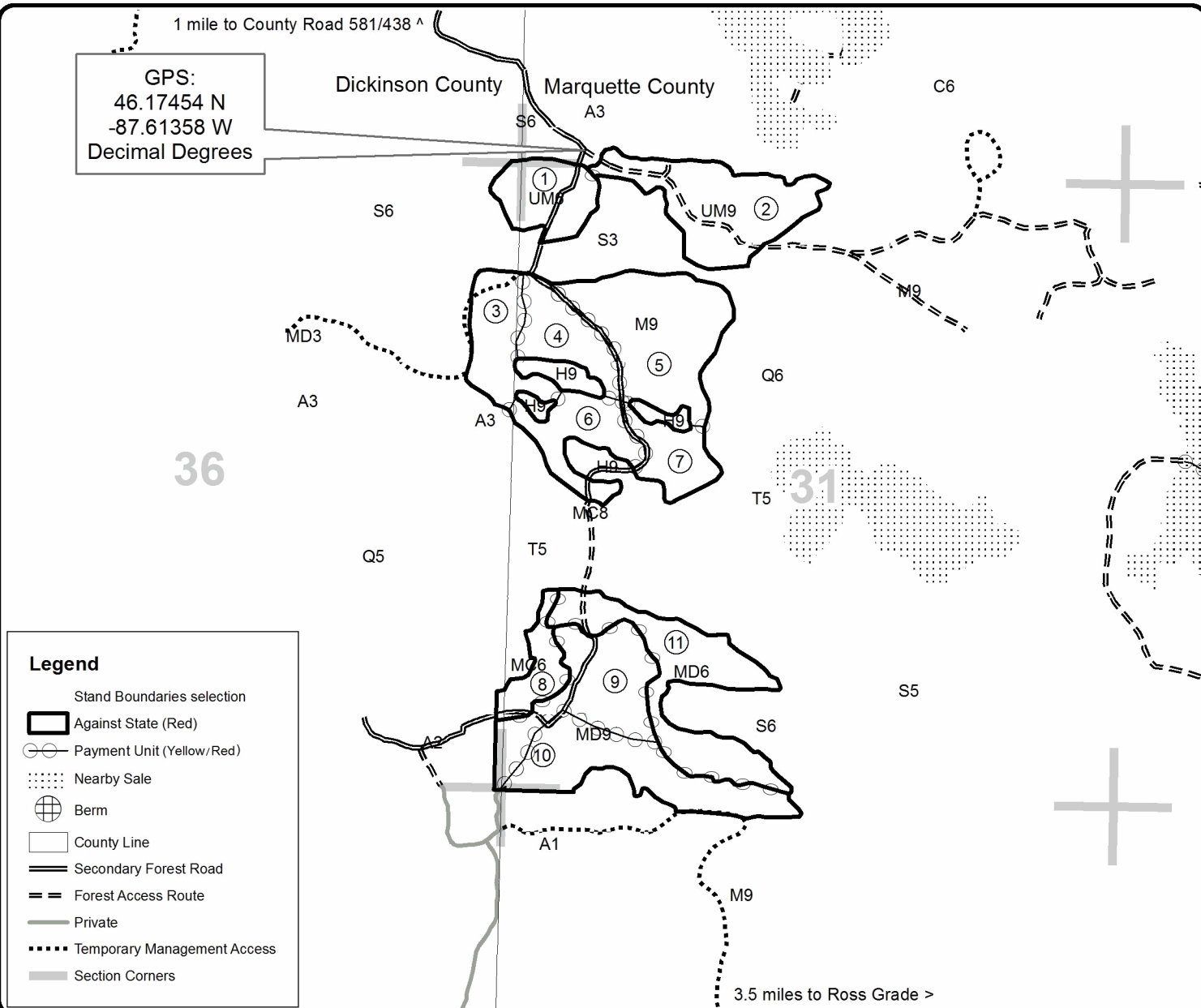
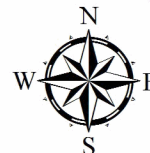
Compartment 59 West

Compartment 59

171.4 Acres



QR code for PDF Maps app



TIMBER SALE INFORMATION

Centerfield (32-018-21)

T43N, R26W, SEC. 4; T44N, R26W, SEC. 29; T44N, R26W, SEC. 31; T44N, R26W, SEC. 32; T44N, R26W, SEC. 33.
Marquette County (Advertised Price \$110,666.85)

SALE NOTE: All units of volume listed for this sale were estimated using the Inventory Manager computer program and the new Michigan taper model.

- See sale spec 7.5.1 for information regarding timber damage due to spruce budworm.

A timber sale contract for this lump sum, sealed bid timber sale will be awarded to the responsible bidder offering the highest sealed bid price. All units of volume listed below were estimated using the Inventory Manager computer program and the new Michigan taper model. Bids must be at or above the following advertised price for each product and species:

<u>PRODUCTS & SPECIES</u>	<u>ESTIMATED UNITS*</u>	<u>ADVERTISED PRICE</u>
Sawtimber		
Basswood	10.6 MBF	\$ 59.00 / MBF
Black Ash	6.0 MBF	\$ 24.00 / MBF
Paper Birch	32.4 MBF	\$ 66.00 / MBF
Red Maple	64.2 MBF	\$ 95.00 / MBF
Sugar Maple	290.0 MBF	\$ 209.00 / MBF
Yellow Birch	1.5 MBF	\$ 31.00 / MBF
Pulpwood		
Balsam Fir	408 Cords	\$ 12.90 / Cord
Mixed Hardwood	1,563 Cords	\$ 12.15 / Cord
Mixed Spruce	714 Cords	\$ 13.25 / Cord
Quaking Aspen	386 Cords	\$ 15.90 / Cord
Red Pine	8 Cords	\$ 40.05 / Cord
Tamarack	77 Cords	\$ 10.80 / Cord

* The total volume is statistically estimated within plus (+) or minus (-) 4.47 percent. There are an estimated 4,136 cords on this timber sale, plus or minus 185 cords at the 95% confidence level. The estimated units are final and not subject to adjustment. Prospective bidders are urged to examine this timber and to make their own estimates of quantity and quality.

BOND AND PAYMENT SCHEDULE:

1. A bond in the amount of \$5,533.00 to insure faithful performance of the conditions of the contract will be deposited by the successful bidder within 21 days of the sale award.
2. Cutting in any sale or unit without the required advance payment would be considered a trespass.
3. Total payment must be paid in advance or according to the following schedule :
 - (a) Ten percent (10%) of the sale value must be paid within 21 days of the sale award.
 - (b) The 10% down payment will be credited towards the first unit cut.
 - (c) Payment for each of the following units must be made before cutting begins in that unit:

<u>PAYMENT UNIT NUMBER</u>	<u>PERCENT OF TOTAL SALE VALUE</u>
01	12.6%
02	8.4%
03	3.0%
04	4.9%
05	7.0%
06	7.3%
07	18.0%
08	8.2%
09	1.1%
10	4.5%
11	8.6%
12	5.8%
13	10.6%

4. If no cutting takes place, the 10% down payment will not be refunded.
5. Operations on the contract issued will terminate on 08/31/2024.

SALE STATISTICS

Volumes were calculated in cubic feet using the Michigan taper model. Cubic foot volume includes all wood inside bark for the product indicated. For display purposes, cubic feet were converted to cords and MBF using a simple conversion factor, e.g. 79 cubic feet per cord and 185 cubic feet per MBF. The cubic foot volumes are precise; the cords and MBF volumes are not. Cubic foot volume cannot be directly converted to cords or boards with precision.

SALE VOLUMES

The total estimated sale volume may not equal the sum of the species/products due to the nature of statistical calculations associated with double sampling methodology.

VOLUME			STATISTICAL RANGE IN CORDS	
TOTAL CUBIC FEET	TOTAL CORDS	PERCENT ERROR	MINIMUM	MAXIMUM
326,731	4,136	4.47%	3,951	4,321

VDU VOLUMES

A VDU is a Volume Determination Unit. Volumes and their associated statistics are calculated at the VDU level and summarized to the sale level. There is often a one to one relationship between a VDU and a Payment Unit, but not always, depending on the cruise design. Refer to the VDU TO PAYMENT UNIT table.

VDU	VOLUME			RANGE IN CORDS	
	TOTAL CUBIC FEET	TOTAL CORDS	PERCENT ERROR	MINIMUM	MAXIMUM
1	75,944	961	9.45%	870	1,052
2	68,860	872	9.16%	792	951
3	64,034	811	7.90%	747	875
4	6,827	86	25.99%	64	109
5	17,878	226	12.31%	198	254
6	29,228	370	12.69%	323	417
7	50,426	638	15.15%	542	735
TOTAL:	313,199	3,965		3,536	4,393

VDU TO PAYMENT UNIT

When a VDU is associated with more than one Payment Unit (PU), the VDU volumes are assigned to the PU based on acres of the VDU within the PU.

VDU	VDU ACRES	PU	PU ACRES
1	81.4	1	18.5
		2	12.3
		7	26.5
		12	8.5
		13	15.6
2	37.7	10	12.9
		11	24.8
3	25.6	5	12.6
		6	13.0
4	19.8	9	19.8
5	12.7	3	12.7
6	18.9	4	18.9
7	22.7	8	22.7
TOTAL:	218.8		218.8

DESCRIPTION OF TIMBER BY PAYMENT UNIT (PU)

PU	MARKET GROUP	PRODUCT	QUANTITY	UNIT	ACRES	ADVERTISE PRICE	
1	Basswood	Sawtimber	2.0	MBF	18.5	\$13,905.30	
	Paper Birch		1.0	MBF			
	Red Maple		2.5	MBF			
	Sugar Maple		59.4	MBF			
	Mixed Hardwood		Pulpwood	88			Cords
	<i>Basswood</i>			1			Cords
	<i>Paper Birch</i>			1			Cords
	<i>Red Maple</i>			4			Cords
	<i>Sugar Maple</i>			82			Cords
2	Basswood	Sawtimber	1.3	MBF	12.3	\$9,256.75	
	Paper Birch		0.7	MBF			
	Red Maple		1.7	MBF			
	Sugar Maple		39.5	MBF			
	Mixed Hardwood		Pulpwood	59			Cords
	<i>Basswood</i>			1			Cords
	<i>Paper Birch</i>			1			Cords
	<i>Red Maple</i>			3			Cords
	<i>Sugar Maple</i>			54			Cords
3	Paper Birch	Sawtimber	2.1	MBF	12.7	\$3,312.50	
	Balsam Fir	Pulpwood	29	Cords			
	Mixed Hardwood		97	Cords			
	<i>Balsam Poplar</i>		6	Cords			
	<i>Paper Birch</i>		2	Cords			
	<i>Red Maple</i>		89	Cords			
	Mixed Spruce		28	Cords			
	<i>Black Spruce</i>		23	Cords			
	<i>White Spruce</i>		5	Cords			
	Quaking Aspen		61	Cords			
	Red Pine		7	Cords			
4	Sugar Maple	Sawtimber	4.1	MBF	18.9	\$5,388.90	
	Balsam Fir	Pulpwood	3	Cords			
	Mixed Hardwood		68	Cords			
	<i>Balsam Poplar</i>		46	Cords			
	<i>Paper Birch</i>		2	Cords			
	<i>Red Maple</i>		5	Cords			
	<i>Sugar Maple</i>		15	Cords			
	Mixed Spruce		214	Cords			
	<i>Black Spruce</i>		193	Cords			
	<i>White Spruce</i>		21	Cords			
	Tamarack		77	Cords			
5	Black Ash	Sawtimber	1.4	MBF	12.6	\$7,798.90	
	Paper Birch		5.7	MBF			
	Red Maple		2.6	MBF			
	Sugar Maple		12.1	MBF			
	Balsam Fir		Pulpwood	33			Cords
	Mixed Hardwood			226			Cords
	<i>Black Ash</i>			24			Cords
	<i>Paper Birch</i>			102			Cords
	<i>Red Maple</i>			40			Cords
	<i>Sugar Maple</i>			60			Cords
	Mixed Spruce			38			Cords
<i>Black Spruce</i>	38	Cords					
Quaking Aspen	59	Cords					
6	Black Ash	Sawtimber	1.4	MBF	13.0	\$8,027.65	
	Paper Birch		5.9	MBF			
	Red Maple		2.6	MBF			

DESCRIPTION OF TIMBER BY PAYMENT UNIT (PU), CON'T

PU	MARKET GROUP	PRODUCT	QUANTITY	UNIT	ACRES	ADVERTISE PRICE
6 con't	Sugar Maple	Sawtimber	12.5	MBF		
	Balsam Fir	Pulpwood	34	Cords		
	Mixed Hardwood		231	Cords		
	<i>Black Ash</i>		24	Cords		
	<i>Paper Birch</i>		105	Cords		
	<i>Red Maple</i>		41	Cords		
	<i>Sugar Maple</i>		61	Cords		
	Mixed Spruce		40	Cords		
	<i>Black Spruce</i>		40	Cords		
	Quaking Aspen		61	Cords		
7	Basswood	Sawtimber	2.7	MBF	26.5	\$19,932.65
	Paper Birch		1.5	MBF		
	Red Maple		3.6	MBF		
	Sugar Maple		85.0	MBF		
	Mixed Hardwood	Pulpwood	129	Cords		
	<i>Basswood</i>		2	Cords		
	<i>Ironwood</i>		2	Cords		
	<i>Paper Birch</i>		2	Cords		
	<i>Red Maple</i>		6	Cords		
	<i>Sugar Maple</i>		117	Cords		
8	Red Maple	Sawtimber	12.9	MBF	22.7	\$9,096.85
	Balsam Fir	Pulpwood	149	Cords		
	Mixed Hardwood		212	Cords		
	<i>Balsam Poplar</i>		44	Cords		
	<i>Red Maple</i>		161	Cords		
	<i>Sugar Maple</i>		7	Cords		
	Mixed Spruce		227	Cords		
	<i>Black Spruce</i>		32	Cords		
	<i>White Spruce</i>		195	Cords		
	Quaking Aspen		23	Cords		
9	Balsam Fir	Pulpwood	26	Cords	19.8	\$1,259.25
	Mixed Hardwood		6	Cords		
	<i>Balsam Poplar</i>		3	Cords		
	<i>Black Cherry</i>		3	Cords		
	Mixed Spruce		18	Cords		
	<i>White Spruce</i>		18	Cords		
	Quaking Aspen		36	Cords		
	Red Pine		1	Cords		
10	Basswood	Sawtimber	0.7	MBF	12.9	\$4,995.85
	Black Ash		1.1	MBF		
	Paper Birch		4.9	MBF		
	Red Maple		12.0	MBF		
	Yellow Birch		0.5	MBF		
	Balsam Fir	Pulpwood	46	Cords		
	Mixed Hardwood		114	Cords		
	<i>Balsam Poplar</i>		20	Cords		
	<i>Basswood</i>		1	Cords		
	<i>Black Ash</i>		8	Cords		
	<i>Paper Birch</i>		28	Cords		
	<i>Red Maple</i>		54	Cords		
	<i>Sugar Maple</i>		1	Cords		
	<i>Yellow Birch</i>		2	Cords		
	Mixed Spruce		51	Cords		
	<i>Black Spruce</i>		32	Cords		
	<i>White Spruce</i>		19	Cords		
	Quaking Aspen		50	Cords		

DESCRIPTION OF TIMBER BY PAYMENT UNIT (PU), CON'T

PU	MARKET GROUP	PRODUCT	QUANTITY	UNIT	ACRES	ADVERTISE PRICE
11	Basswood	Sawtimber	1.3	MBF	24.8	\$9,546.95
	Black Ash		2.1	MBF		
	Paper Birch		9.2	MBF		
	Red Maple		23.0	MBF		
	Yellow Birch		1.0	MBF		
	Balsam Fir	Pulpwood	88	Cords		
	Mixed Hardwood		217	Cords		
	<i>Balsam Poplar</i>		39	<i>Cords</i>		
	<i>Basswood</i>		1	<i>Cords</i>		
	<i>Black Ash</i>		14	<i>Cords</i>		
	<i>Paper Birch</i>		53	<i>Cords</i>		
	<i>Red Maple</i>		103	<i>Cords</i>		
	<i>Sugar Maple</i>		2	<i>Cords</i>		
	<i>Yellow Birch</i>		5	<i>Cords</i>		
	Mixed Spruce		98	Cords		
	<i>Black Spruce</i>		62	<i>Cords</i>		
	<i>White Spruce</i>		36	<i>Cords</i>		
Quaking Aspen	96	Cords				
12	Basswood	Sawtimber	0.9	MBF	8.5	\$6,416.10
	Paper Birch		0.5	MBF		
	Red Maple		1.2	MBF		
	Sugar Maple		27.3	MBF		
	Mixed Hardwood	Pulpwood	42	Cords		
	<i>Basswood</i>		1	<i>Cords</i>		
	<i>Paper Birch</i>		1	<i>Cords</i>		
	<i>Red Maple</i>		2	<i>Cords</i>		
	<i>Sugar Maple</i>		38	<i>Cords</i>		
13	Basswood	Sawtimber	1.7	MBF	15.6	\$11,729.20
	Paper Birch		0.9	MBF		
	Red Maple		2.1	MBF		
	Sugar Maple		50.1	MBF		
	Mixed Hardwood	Pulpwood	74	Cords		
	<i>Basswood</i>		1	<i>Cords</i>		
	<i>Paper Birch</i>		1	<i>Cords</i>		
	<i>Red Maple</i>		3	<i>Cords</i>		
	<i>Sugar Maple</i>		69	<i>Cords</i>		
TOTAL:			404.7	MBF		
TOTAL:			3,156	Cords		

Sale Specific Conditions & Requirements

Sale Name: Centerfield

Sale Number: 32-018-21 Seq#: 1

1 - Sale Area

1.2 - Boundaries

1.2.1 - Painted boundaries (9/19)

The sale boundary and Payment Unit boundaries are marked and identified by red and yellow paint. Exterior sale boundary lines against state are marked with red paint. Interior Payment Unit boundaries are marked with yellow paint. The painted boundary line trees are not Included Timber and are to be protected unless marked with orange paint. Yellow painted trees designating an interior Payment Unit boundary are only to be cut when all surrounding Payment Units have been paid.

2 - Timber Specifications

2.1 - Included Timber

2.1.1 - Clearcut unit(s) with unmerchantable trees (6/14)

Within Payment Unit(s) 3-6 and 8-11, cut all species trees that are two (2) inches or more at DBH, except:

- Within Payment Unit(s) 3, leave hemlock, cedar, and white pine.
- Within Payment Unit(s) 4, leave hemlock, cedar, white pine, paper birch and sugar maple.
- Within Payment Unit(s) 5-6, leave hemlock, cedar, white pine, black ash, and yellow birch.
- Within Payment Unit(s) 8, leave cedar, hemlock, white pine, black cherry, and elm.
- Within Payment Unit(s) 10-11, leave hemlock, cedar, white pine, and any trees marked in green paint.

2.1.3 - Cut tree marked unit(s) (12/08)

Within Payment Unit(s) 1, 2, 7, 12, and 13, all trees are designated for cutting when marked with orange paint above and below stump height, regardless of merchantability.

2.2 - Utilization

2.2.6 - Roundwood operation required (3/21)

The skidding of whole trees or tree segments with limbs attached is prohibited within Payment Units 1, 2, 7, 12, and 13. All products must be produced as roundwood and forwarded to existing roads or landing areas in final product length.

3 - Payments

3.4 - Damaged Timber

3.4.1 - Damaged timber (7/16)

General Condition and Requirement 3.4 Damaged Timber, defines liquidated damages for undesignated live merchantable trees which are cut or injured. In addition, extreme care should be taken to avoid damage to tree seedlings and saplings within Payment Units 1, 2, 7, 12, and 13. No damage is acceptable to undesignated live merchantable trees. Within the Sale Area, if more than 5% of trees (> 4.5" DBH) within a specified area of the sale are damaged, liquidated damages will be assessed for all trees damaged. Rates will be in accordance with General Condition and Requirement 3.4 Damaged Timber.

4 - Transportation

4.1 - Construction

4.1.3 - Slash and earthen piles (8/04)

Piles or windrows of earth along roads and landings that have been widened or constructed shall be leveled. Slash from road maintenance or construction, including stumps, shall be dispersed throughout the sale.

4.1.4 - Timber removed for construction (12/09)

Trees cut or damaged in the process of pre-approved road, landing or skid trail construction will be decked in an area separate from other Designated Timber and not removed until measured by the sale administrator. Payment will be made at the specified Purchase Unit Price.

4.1.6 - Road construction (1/09)

Construction of new roads or improvements of existing roads shall be done in such a way as to minimize the environmental

and visual impacts. Merchantable trees shall be cut and utilized unless otherwise directed. Non-merchantable trees shall be severed and laid flat on the ground. Slash shall be scattered, and not left in windrows and kept a minimum of 10 feet back from the road edge. Stumps shall be set upright, not left on edge, and be moved at least 10 feet away from the road edge. Disturbed soil shall be feathered into the woods and not left in berms or windrows.

4.1.7 - Road closure (10/11)

All new roads built into the sale must be blocked to vehicle traffic upon completion of the sale. Overgrown roads that are reopened shall be considered new roads. In general, this will require constructing a four (4') foot high berm of stumps and logs covered with earth. These roads must be rendered impassable to cars and trucks. Contact the sale administrator for specific details of design and placement.

4.2 - Maintenance

4.2.2 - Fill material (4/07)

To maintain roads, fill material may be needed in areas where "holes" exist or may be expected to develop. This fill material should be placed before trucking begins. Contact the sale administrator regarding the availability of onsite sand or gravel from adjacent State-owned lands.

4.2.4 - Grading (10/16)

For completion of the sale, state forest roads must be graded. In general, this will require a road grader or bulldozer to shape up the roads after forest products have been hauled off site. This includes cleaning of drainage areas, grading, crowning, and filling with gravel, if necessary. The grading equipment to be used must be approved by the Unit Manager or his/her representative.

4.4 - Access

4.4.2 - Alternate route on private property (2/04)

It is the Purchaser's responsibility to obtain access across private land for any routes other than the route shown on the Timber Sale Map.

5 - Operations

5.1 - Notification

5.1.1 - Pre-sale conference (10/16)

A pre-sale conference between the Purchaser and sale administrator is required prior to beginning any operations. The Unit Manager or his/her representative must be contacted at least 3 days in advance to schedule the conference.

5.2 - Conduct of Operations

5.2.1 - Slash

5.2.1.11 - Slash for reforestation (3/21)

To facilitate reforestation, Payment Units 3-6 and 8-11, shall be left with slash evenly distributed. Bunched tops within the cutting area shall be broken up and scattered. Stumps shall be cut low to the ground. Processing sites shall not be left with a compacted layer of slash; tops from these sites shall be hauled back into the cut area and scattered.

5.2.2 - Hazard Trees/Snags

5.2.2.1 - Den trees (10/16)

Obvious hollow and/or den trees shall be protected and left standing unless they are a safety hazard.

5.2.3 - Operating Restrictions

5.2.3.3 - Bark slippage restriction (3/09)

Within Payment Unit(s) 1, 2, 7, 12, and 13, unless changed by written agreement, cutting and skidding are not permitted during the period of April 15 to July 15. This restriction is because of bark slippage.

5.2.22 - Operating Caution

5.2.22.1 - Operating caution (6/11)

It is recommended, but not required, that within Payment Unit(s) 3-6, 10, and 11, cutting, skidding, and hauling occur

during dry summer or frozen winter conditions. The reason for the recommendation is because of soft ground within Payment Units and soft ground access to Payment Units.

5.2.32 - Decking/landing restoration (9/13)

All decking and landing areas must have the surface area restored to a condition equal to or better than before. This is to ensure the proper regeneration of the stand. Wood debris, chips, and "cookies" from trimmings must be removed or scattered away from landing and loading areas and may not be windrowed on the edge.

5.2.38 - No decking against live trees (2/04)

Cut products may not be decked against unmarked or designated leave trees.

5.4 - Soil Protection

5.4.1 - Rutting restriction, general (7/16)

Operations are to cease immediately if equipment and weather conditions result in rutting of roads and/or skid trails which is 12 inches or greater in depth and 50 feet in length. In addition, within Payment Unit 4, operations are to cease immediately if equipment and weather conditions result in rutting on skid trails which is 24 inches or greater in depth and 100 feet in length. The Unit Manager or his/her representative may restrict hauling and/or skidding if ruts exceed the specified depth. With the Unit Manager or his/her representative's approval, the Purchaser may return to the area when the risk of rutting has decreased.

5.4.2 - Skid trails (2/04)

Skid trails up and down slopes should be avoided. If however this is unavoidable, these trails will be left in a non-erodible condition using water bars, logs, and slash. Placing of slash on these skid trails while logging is ongoing may alleviate need for any further action. At the direction of the sale administrator, seed, fertilizer, and mulch may also be required.

6 - Safety and Fire Prevention

6.2 - Signing

6.2.1 - Road posting (10/20)

The Purchaser is responsible for posting and maintaining caution signs on County Road 438, access roads entering the active Sale Area, and/or any other roads used for access prior to beginning operations. The road must be posted at appropriate distances from the Sale Area to warn of logging activity and truck traffic. Signs must be removed when harvest operations are suspended or completed. The Purchaser will provide these signs.

7 - Other Conditions

7.5 - Loss

7.5.1 - Deteriorating timber (7/09)

The sale area has received damage from spruce budworm. The Purchaser should harvest the wood as soon as possible. The Department of Natural Resources is held free of responsibility of any further damage or deterioration due to delay in harvesting.



TIMBER SALE MAP

This information provided by authority of Part 525, 1994 PA 451, as amended.

Forest Management Unit	County	Mapped By	Brolin	Date	Page	of
Gwinn Management Unit	Marquette	Cruised By	Contractor, EB, PH, KG	08/03/2021	1	1
Township	Range	Section(s) and Subdivision(s)		Scale		
43, 44N	26W	Sections 29, 31, 32, 33 (44N-26W) / 4 (43N-26W)		1:31,680		

Cover Type				Density	
A = Aspen	H = Hemlock	N = Marsh	U = Upland Brush	0 = Non Stocked	5 = Pole Timber Medium
B = Paper Birch	J = Jack Pine	O = Oak	UM = Upland Mixed	1 = Seedling Sapling Poor	6 = Pole Timber Well
C = Cedar	L = Lowland Brush	P = Lowland Poplar	V = Bog or Marsh	2 = Seedling Sapling Medium	7 = Saw Timber Poor
D = Treed Bog	LM = Lowland Mixed	Q = Mixed Swamp Conifer	W = White Pine	3 = Seedling Sapling Well	8 = Saw Timber Medium
E = Swamp Hdwoods	M = Mpl. Bch, Brch	R = Red Pine	X = Non Stocked	4 = Pole Timber Poor	9 = Saw Timber Well
F = Spruce Fir	MC = Mixed Conifer	S = Black Spruce	Z = Water		
G = Grass	MD = Mixed Deciduous	T = Tamarack			

PU Acres	PU Acres
1	22.7
2	19.8
3	12.9
4	24.8
5	8.5
6	15.6
7	26.5

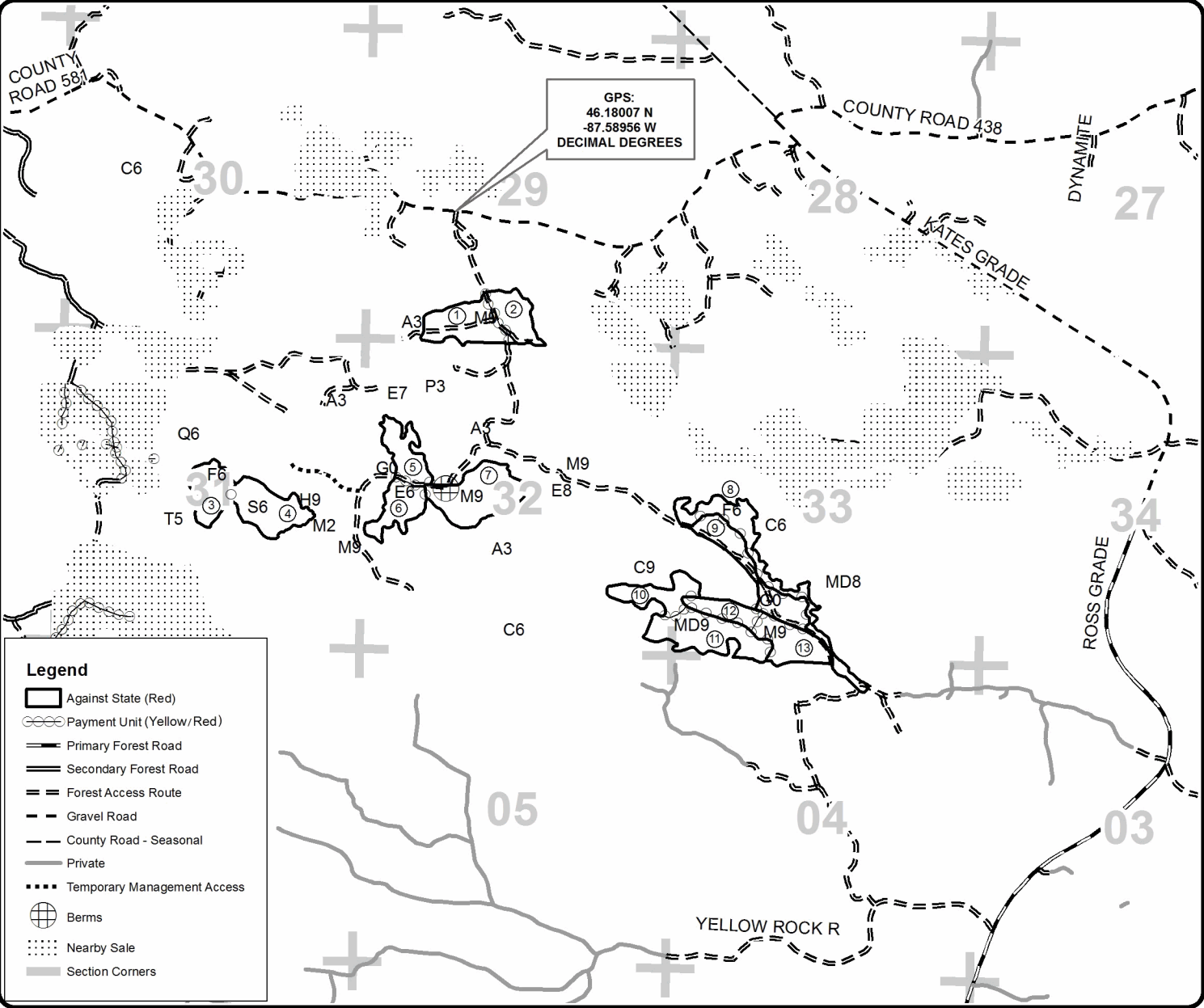
Centerfield

Compartment 58 and 59

218.8 Acres

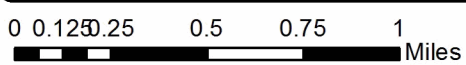


QR code for PDF Maps app



Legend

- Against State (Red)
- Payment Unit (Yellow/Red)
- Primary Forest Road
- Secondary Forest Road
- Forest Access Route
- Gravel Road
- County Road - Seasonal
- Private
- Temporary Management Access
- Berns
- Nearby Sale
- Section Corners



Compartment 59 East (32-016-21)
T44N, R26W, SEC. 28; T44N, R26W, SEC. 33; T44N, R26W, SEC. 34; Marquette

In response to the notice of sale to be held 1:00 p.m. (local time) on November 30, 2021, I am hereby submitting my sealed bid (firm offer) for the following forest products to be cut. Bids for individual species must be at or above the advertised price. All non-responsive bid forms may be rejected.

<u>PRODUCTS & SPECIES</u>	<u>ESTIMATED VOLUME*</u>	<u>ADVERTISED PRICE</u>	<u>BID PRICE/UNIT</u>
Sawtimber			
Basswood	16.6 MBF	\$ 59.00/MBF	\$ _____
Paper Birch	14.1 MBF	\$ 66.00/MBF	\$ _____
Red Maple	1.5 MBF	\$ 95.00/MBF	\$ _____
Red Oak	0.7 MBF	\$ 97.00/MBF	\$ _____
Sugar Maple	136.8 MBF	\$ 209.00/MBF	\$ _____
Pulpwood			
Balsam Fir	149 Cords	\$ 12.90/Cord	\$ _____
Mixed Aspen	2,200 Cords	\$ 15.90/Cord	\$ _____
Mixed Hardwood	897 Cords	\$ 12.15/Cord	\$ _____
Mixed Spruce	81 Cords	\$ 13.25/Cord	\$ _____
Red Oak	2 Cords	\$ 17.10/Cord	\$ _____

*The volumes are statistically estimated within plus (+) or minus (-) 5.53 percent at 95% confidence level. These estimated volumes are final and not subject to adjustment. Prospective bidders are urged to examine this timber and to make their own estimates of quantity and quality.

I understand that any or all bids may be rejected. All bids must be signed and all bid items must be bid or the bid form may be rejected. I also understand that consideration and awarding a contract will be based upon my past performance and ability to complete the contract based upon equipment and staffing subject to my control.

FEDERAL ID: _____ or SOCIAL SECURITY NUMBER: _____

Company or individual bidding: _____

Company representative's name: _____

Address: _____

City: _____ State: _____ Zip: _____

IF AVAILABLE, PLEASE PLACE THE PERSONALIZED LABEL FROM YOUR PROSPECTUS IN THE ABOVE BOX.

Individual or company representative's signature: _____ Date: _____

Phone number : _____ Email (optional): _____

THE WINNING BIDDER MUST COMPLETE THE VERIFICATION OF WORKER'S DISABILITY COMPENSATION ACT COMPLIANCE (ON REVERSE SIDE IF DOUBLE SIDED) WITHIN 21 DAYS OF SALE AWARD DATE



FOR DEPARTMENT USE ONLY	
Sale Number (XX - XXX - XX - XX)	
Forest Management Unit:	

TIMBER SALE VERIFICATION OF WORKER'S DISABILITY COMPENSATION ACT COMPLIANCE

As required by Act 317, P.A. 1969 (Worker's Compensation) and
Part 5 of Act 451 of 1994, as amended.

VERIFICATION OF WORKER'S DISABILITY COMPENSATION ACT COMPLIANCE

- This verification must be completed and submitted within 21 days of contract award and prior to the issuance of the timber sale contract.
- In addition, if boxes 2B or 2C are checked, then Notice of Exclusion or Certificate of Insurance must be submitted within twenty-one (21) days of the contract award and prior to the issuance of the timber sale contract.
- All information must be typed or printed except for written signatures.

Please Check Appropriate Categories:

1. My business is organized as (you **must** check one of the boxes below):
 - A. Sole Proprietorship (individual)
 - B. Partnership
 - C. Corporation
2. You **must** check one of the boxes below:
 - A. I certify my business is a sole proprietorship and it has no employees but the sole proprietor. I am not subject to the Worker's Compensation Laws.
 - B. I certify my business has satisfied its obligation to the Worker's Compensation Act through the use of an approved Notice of Exclusion (BWC-337, Rev. 5/96). I will provide a copy of the Notice of Exclusion within 21 days of the contract award. (For questions or a copy of the BWC-337, please call the Worker's Compensation Bureau at 517-322-1195).
 - C. I certify my business has a Worker's Compensation Policy. I will provide an original Certificate of Insurance within twenty-one (21) days of the contract award.
3. If you have checked item 2(A) or 2(B), you **must** indicate the number of **both** full-time and part-time employees, other than yourself, including family members and active partners (if none, you must enter "0").

_____ Full-time Employees

_____ Part-time Employees

Name of Business		Federal ID (or) Social Security No.	
Address		Telephone ()	
City	State	ZIP	

I hereby certify that the above information is true and correct. I agree to notify the Michigan DNR of any changes that occur in factors affecting my coverage during any of my present and future operations.

Signature of Owner or Authorized Representative

Title

Date

Please complete the "SEALED BID" information on the next page

Centerfield (32-018-21)

T43N, R26W, SEC. 4; T44N, R26W, SEC. 29; T44N, R26W, SEC. 31; T44N, R26W,

In response to the notice of sale to be held 1:00 p.m. (local time) on November 30, 2021, I am hereby submitting my sealed bid (firm offer) for the following forest products to be cut. Bids for individual species must be at or above the advertised price. All non-responsive bid forms may be rejected.

<u>PRODUCTS & SPECIES</u>	<u>ESTIMATED VOLUME*</u>	<u>ADVERTISED PRICE</u>	<u>BID PRICE/UNIT</u>
Sawtimber			
Basswood	10.6 MBF	\$ 59.00/MBF	\$ _____
Black Ash	6.0 MBF	\$ 24.00/MBF	\$ _____
Paper Birch	32.4 MBF	\$ 66.00/MBF	\$ _____
Red Maple	64.2 MBF	\$ 95.00/MBF	\$ _____
Sugar Maple	290.0 MBF	\$ 209.00/MBF	\$ _____
Yellow Birch	1.5 MBF	\$ 31.00/MBF	\$ _____
Pulpwood			
Balsam Fir	408 Cords	\$ 12.90/Cord	\$ _____
Mixed Hardwood	1,563 Cords	\$ 12.15/Cord	\$ _____
Mixed Spruce	714 Cords	\$ 13.25/Cord	\$ _____
Quaking Aspen	386 Cords	\$ 15.90/Cord	\$ _____
Red Pine	8 Cords	\$ 40.05/Cord	\$ _____
Tamarack	77 Cords	\$ 10.80/Cord	\$ _____

*The volumes are statistically estimated within plus (+) or minus (-) 4.47 percent at 95% confidence level. These estimated volumes are final and not subject to adjustment. Prospective bidders are urged to examine this timber and to make their own estimates of quantity and quality.

I understand that any or all bids may be rejected. All bids must be signed and all bid items must be bid or the bid form may be rejected. I also understand that consideration and awarding a contract will be based upon my past performance and ability to complete the contract based upon equipment and staffing subject to my control.

FEDERAL ID: ____ - ____ - ____ or SOCIAL SECURITY NUMBER: ____ - ____ - ____

Company or individual bidding: _____

Company representative's name: _____

Address: _____

City: _____ State: _____ Zip: _____

IF AVAILABLE, PLEASE PLACE THE PERSONALIZED LABEL FROM YOUR PROSPECTUS IN THE ABOVE BOX.

Individual or company representative's signature: _____ Date: _____

Phone number : _____ Email (optional): _____

THE WINNING BIDDER MUST COMPLETE THE VERIFICATION OF WORKER'S DISABILITY COMPENSATION ACT COMPLIANCE (ON REVERSE SIDE IF DOUBLE SIDED) WITHIN 21 DAYS OF SALE AWARD DATE

Compartment 59 West (32-017-21)

T43N, R26W, SEC. 6; T44N, R26W, SEC. 30; T44N, R26W, SEC. 31; T44N, R27W,

In response to the notice of sale to be held 1:00 p.m. (local time) on November 30, 2021, I am hereby submitting my sealed bid (firm offer) for the following forest products to be cut. Bids for individual species must be at or above the advertised price. All non-responsive bid forms may be rejected.

<u>PRODUCTS & SPECIES</u>	<u>ESTIMATED VOLUME*</u>	<u>ADVERTISED PRICE</u>	<u>BID PRICE/UNIT</u>
Sawtimber			
Paper Birch	65.8 MBF	\$ 66.00/MBF	\$ _____
Red Maple	52.0 MBF	\$ 95.00/MBF	\$ _____
Sugar Maple	297.3 MBF	\$ 209.00/MBF	\$ _____
Pulpwood			
Balsam Fir	478 Cords	\$ 12.90/Cord	\$ _____
Mixed Aspen	468 Cords	\$ 15.90/Cord	\$ _____
Mixed Hardwood	1,048 Cords	\$ 12.15/Cord	\$ _____
Mixed Spruce	91 Cords	\$ 13.25/Cord	\$ _____

*The volumes are statistically estimated within plus (+) or minus (-) 5.59 percent at 95% confidence level. These estimated volumes are final and not subject to adjustment. Prospective bidders are urged to examine this timber and to make their own estimates of quantity and quality.

I understand that any or all bids may be rejected. All bids must be signed and all bid items must be bid or the bid form may be rejected. I also understand that consideration and awarding a contract will be based upon my past performance and ability to complete the contract based upon equipment and staffing subject to my control.

FEDERAL ID: _____ or SOCIAL SECURITY NUMBER: _____

Company or individual bidding: _____

Company representative's name: _____

Address: _____

City: _____ State: _____ Zip: _____

IF AVAILABLE, PLEASE PLACE THE PERSONALIZED LABEL FROM YOUR PROSPECTUS IN THE ABOVE BOX.

Individual or company representative's signature: _____ Date: _____

Phone number : _____ Email (optional): _____

THE WINNING BIDDER MUST COMPLETE THE VERIFICATION OF WORKER'S DISABILITY COMPENSATION ACT COMPLIANCE (ON REVERSE SIDE IF DOUBLE SIDED) WITHIN 21 DAYS OF SALE AWARD DATE



FOR DEPARTMENT USE ONLY
Sale Number (XX - XXX - XX - XX)
Forest Management Unit:

TIMBER SALE VERIFICATION OF WORKER'S DISABILITY COMPENSATION ACT COMPLIANCE

*As required by Act 317, P.A. 1969 (Worker's Compensation) and
Part 5 of Act 451 of 1994, as amended.*

VERIFICATION OF WORKER'S DISABILITY COMPENSATION ACT COMPLIANCE

- This verification must be completed and submitted within 21 days of contract award and prior to the issuance of the timber sale contract.
- In addition, if boxes 2B or 2C are checked, then Notice of Exclusion or Certificate of Insurance must be submitted within twenty-one (21) days of the contract award and prior to the issuance of the timber sale contract.
- All information must be typed or printed except for written signatures.

Please Check Appropriate Categories:

1. My business is organized as (you **must** check one of the boxes below):
 - A. Sole Proprietorship (individual)
 - B. Partnership
 - C. Corporation
2. You **must** check one of the boxes below:
 - A. I certify my business is a sole proprietorship and it has no employees but the sole proprietor. I am not subject to the Worker's Compensation Laws.
 - B. I certify my business has satisfied its obligation to the Worker's Compensation Act through the use of an approved Notice of Exclusion (BWC-337, Rev. 5/96). I will provide a copy of the Notice of Exclusion within 21 days of the contract award. (For questions or a copy of the BWC-337, please call the Worker's Compensation Bureau at 517-322-1195).
 - C. I certify my business has a Worker's Compensation Policy. I will provide an original Certificate of Insurance within twenty-one (21) days of the contract award.
3. If you have checked item 2(A) or 2(B), you **must** indicate the number of **both** full-time and part-time employees, other than yourself, including family members and active partners (if none, you must enter "0").

_____ Full-time Employees

_____ Part-time Employees

Name of Business		Federal ID (or) Social Security No.	
Address		Telephone ()	
City	State	ZIP	

I hereby certify that the above information is true and correct. I agree to notify the Michigan DNR of any changes that occur in factors affecting my coverage during any of my present and future operations.

Signature of Owner or Authorized Representative

Title

Date

Please complete the "SEALED BID" information on the next page