



**DEPARTMENT OF NATURAL RESOURCES
STATE OF MICHIGAN
TIMBER SALE PROSPECTUS #7003**

SCHEDULED SALE DATE AND TIME: 3:00 p.m. (local time) on May 12, 2022.

LOCATION: NEWBERRY MGMT UNIT, 5666 S STATE HWY M 123, NEWBERRY, MI 49868.

PROSPECTUS NOTE: The bidder is advised to inspect the sale area and review the location, estimated volumes, operating costs and contract terms of proposed sales. Please be aware that some landowners may request 60 days or more notice for access across their land.

Notice is hereby given that bids will be received by the Unit Manager, NEWBERRY MANAGEMENT UNIT, for certain timber on the following described lands:

Johnsonville Spruce (42-006-21) / T46N, R12W, SEC. 18, NW,NE,N1/2SE.

Luce County, Advertised Price \$58,483.50, 164.1 Acres, Spruce/Fir/Tamarack, White Pine.

SALE NOTE: All units of volume listed for this sale were estimated using the Inventory Manager computer program and the new Michigan taper model.

Road work may be required. See Sale Spec. 4.2.3 for details.

Within Payment Units 1-6, it is recommended that harvesting occur during dry summer or frozen winter conditions because of the lowland nature of the soil types. Tracked equipment is recommended regardless of what time of year these Payment Units are harvested.

Hummingbird Pine (42-033-21) / T47N, R12W, SEC. 28, S1/2NW,SWNE,SW,NWSE,S1/2SE.

T47N, R12W, SEC. 29, NESE.

T47N, R12W, SEC. 33, N1/2NW,NWNE.

Luce County, Advertised Price \$83,708.75, 151.9 Acres, Red Pine, White Pine.

SALE NOTE: All units of volume listed for this sale were estimated using the Inventory Manager computer program and the new Michigan taper model.

No new roads will be permitted in any Payment Unit. See Sale Spec. 4.1.12 for additional information.

Road work may be required. See Sale Spec. 4.2.3 for details.

Harvesting is not permitted during the period of December 31 to April 15 because of the low stump requirement to facilitate cultivation operations.

Torretta Bruciata Mix (42-034-21) / T47N, R12W, SEC. 33, SENW,NE,N1/2SE,SESE.

T47N, R12W, SEC. 34, SWNW,NWSW.

Luce County, Advertised Price \$59,264.55, 132.4 Acres, White Pine, Aspen.

SALE NOTE: All units of volume listed for this sale were estimated using the Inventory Manager computer program and the new Michigan taper model.

Road work may be required on this sale. See Sale Spec. 4.2.3 for details.

Within Payment Units 1-4, harvesting is not permitted during the period of December 31 to April 15 because of the low stump restriction to facilitate cultivation operations.

BID INSTRUCTIONS (VER. 07/02/2018):

1. Scheduled Bid Location, Date, and Time (2/11)

Bids must be received by the Unit Manager, NEWBERRY OFFICE, 5666 S STATE HWY M 123, NEWBERRY, MI 49868, no later than 3:00 p.m. (local time) on May 12, 2022. For further information concerning this sale, contact Keith Magnusson at 906-291-0120 extension n/a.

2. Bidder's Qualifications (5/16)

Purchaser shall obtain workers compensation insurance to cover claims under Michigan's Worker's Disability Compensation Act of 1969 or similar employee benefit act of any other state applicable to an employee. If all or part of a timber sale was prepared by a private contractor, the contractor and that contractor's company are not permitted to bid on the timber sale contract. Bids will not be accepted from individuals or companies appearing on the DNR/FRD No-Bid List. This list contains the names of purchasers who previously failed to execute a contract within 21-days or who have a history of poor performance.

3. Preparation of Sealed Bids (5/16)

Bid Forms may be completed online thru Michigan DNR Timber Sale Online Bidding (OLB) at www.michigan.gov/timberbidding or by completing the hardcopy Bid Form found in the Timber Sale Prospectus. Hardcopy Bid Forms shall be manually signed in ink. Registration in OLB is considered your 'signature' for all bids submitted thru that system. Bid prices must be entered for each species and product in the Bid Price column for all material subject to bidding and all fill-in blanks must be completed. If erasures or other changes appear on the hardcopy Bid Form, each erasure or change must be initialed by the person signing the bid.

4. Submission of Sealed Bids (5/16)

Bid forms may be obtained from the Unit Manager or thru OLB. Bids may be submitted hardcopy or thru OLB. All hardcopy bids must be submitted on the bid form and in an envelope clearly identified as described in this section. NOTE: Only one bid form per bid envelope. Sealed bids must be submitted to the Unit office designated in the prospectus and must be submitted at or prior to the time established in the prospectus. The envelope should show on the outside (a) the sale name or number and (b) the date and time of bid opening, as shown in the prospectus. Bids received after the time specified in the sale prospectus are late bids and will be rejected.

It is possible for a bidder to submit multiple bids on a single sale. For example, a bid may be submitted hardcopy and a bid may be submitted thru OLB. Or, two bidders from the same company could both submit bids on the same sale. If this were to happen, the State would accept all bids received and award the contract accordingly. All bidding and contractual requirements would apply to all bids received.

5. Public Opening of Sealed Bids (7/16)

If conditions permit, the sealed bids will be publicly opened and posted at the time and place set in the prospectus.

If a bidder, present at a bid opening, has submitted bids on more than one sale, that bidder may withdraw their unopened bid envelopes or announce the withdrawal of their online bid after being declared the successful bidder on one sale.

6. Award of Contract (1/11)

Award of the contract will be made to the Bidder whose bid, conforming to the prospectus, is most advantageous to the State of Michigan on the basis of total value at rates bid for the estimated quantities. The State reserves the right to reject any bid or waive any minor irregularity in bids received. A written award mailed (or otherwise furnished) to the successful Bidder shall be deemed to result in a binding contract without further action by either party.

7. Down Payment (1/11)

The Bidder to whom award is made must make a down payment within 21 days of the sale award. The amount of the down payment will be calculated as shown in the Bond and Payment Schedule of this prospectus. Only cash may be used to meet this requirement.

8. Performance Security (1/11)

As guarantee of faithful performance, a cash bond, certificate of deposit, surety bond or irrevocable letter of credit (LOC) is required within 21 days of the sale award. The amount of the performance security is shown in the Bond and

Payment Schedule of this prospectus. If an LOC or surety is used, the coverage must extend for at least 6 months beyond the contract expiration.

9. Timber Sale Contract (7/18)

Additional conditions and requirements common to all timber sales are listed on the timber sale contract (R4031) and are available on line at www.michigan.gov/timber. Contact the Unit Manager for additional information or a sample contract. Within 21 days of the date of the award letter, the bidder must sign the contract and provide the required down payment, performance security, and verification of worker's disability compensation. The down payment and performance security shall be in accordance with the provisions of the timber sale contract, in the sums stated in this prospectus. If these actions are not taken, then the Bidder, the Bidder's corporation, and the corporation's principals may not be permitted to bid on State timber sales for a period of 3 months after the first offense, 6 months after the second offense, and 1 year after the third offense. An offense will only be counted against the Bidder for 5 years. In addition, the Bidder certifies that if awarded this contract, the Bidder will complete the timber sale contract in accordance with its terms and any modifications thereof including requirements to purchase, cut, and remove the included timber by the expiration date.

Payment Unit values in the State Forest Timber Sale Contract are calculated based on the advertised value of the Payment Unit as a percentage of the total advertised value of the contract. The advertised value of each Payment Unit is given in the Description of Timber by Payment Unit table on the Timber Sale Information page. For example, if the value of Payment Unit 1 is advertised as \$1,500 and the total Timber Sale value is advertised as \$10,000, the contract price for Payment Unit 1 will be 15% of the total bid price ($\$1,500/\$10,000 * 100$).

10. Disclaimer of Estimates and Bidder's Warranty of Inspection (7/16)

Before submitting this bid, the Bidder is advised and cautioned to inspect the sale area, review the requirements of the sale contract, and take other steps as may be reasonably necessary to ascertain the location, estimated volumes, construction estimates, and operating costs of the proposed sale. Failure to do so will not relieve the Bidder from responsibility for completing the contract.

The Bidder warrants that this bid is submitted solely on the basis of the Bidder's examination and inspection of the quality and quantity of the timber offered for sale and the Bidder's opinion of the value thereof and the costs of recovery. No reliance should be placed on the State of Michigan's estimates of timber quality, quantity or costs of recovery. Bidder further acknowledges that the State of Michigan: (i) expressly disclaims any warranty of fitness of timber for any purpose; (ii) offers this timber as is without any warranty of quality (merchantability) or quantity and (iii) expressly disclaims any warranty as to the quantity or quality of timber sold.

11. Certification and Chain-of-Custody (10/14)

Unless otherwise indicated in the contract under section 7 – Other Conditions of the Sale Specific Conditions & Requirements, the area encompassed by this timber sale is certified to the standards of the Forest Stewardship Council (FSC) - Certificate #SCS-FM/COC-00090N and the Sustainable Forestry Initiative (SFI) - Certificate #NSF-SFIS-5Y031-SF5. Forest products from this sale may be delivered to the mill as "FSC 100% and / or SFI certified" as long as the contractor hauling the forest products is chain-of-custody (COC) certified or covered under a COC certificate from the destination mill. The purchaser is responsible for maintaining COC after leaving the sale area.

12. Good Neighbor Authority (GNA) Requirements (7/16)

If the name of this timber sales contains the acronym GNA, it is authorized by the Good Neighbor Authority (GNA) and covered by various agreements between the U.S. Forest Service and the State. The timber sale occurs on federal land and the following conditions apply:

GNA contracts on US Forest Service land will not be awarded to purchasers on the Federal list of excluded parties. The System for Award Management (SAM) will be checked for active excluded parties prior to award of contract. In addition, the Bidder to whom award is made must complete an Assurance Regarding Felony Conviction or Tax Delinquent Status for Corporate Applicants (AD-3031).

13. Good Neighbor Authority (GNA) Requirements, con't (9/16)

Bidder certifies, by signing this bid form, that to the best of Bidder's knowledge that the following representations are accurate and complete.

- a. That the Bidder and its principals are not presently debarred, suspended, proposed for debarment, declared ineligible, or voluntary excluded from timber sales (covered transactions) by any Federal department or agency.
- b. That the Bidder and its principals have not within a 3-year period preceding this bid been convicted of or had a civil judgment rendered against them for commission of fraud or a criminal offense in connection with obtaining , attempting to obtain, or performing a public (Federal, State, or local) transaction or contract under a public transaction; violation of Federal or State antitrust statutes or commission of embezzlement, theft, forgery, bribery, falsification or destruction of records, making false statements, or receiving stolen property.
- c. That the Bidder and its principals are not presently indicted for or otherwise criminally or civilly charged by a governmental entity (Federal, State, or local) with commission of any of the offenses enumerated in paragraph b of this certification.
- d. That the Bidder and its principals have not within a 3-year period preceding this bid had one or more public transactions (Federal, State, or local) terminated for breach or default of a timber or forest product contract.

Bidders that cannot certify this requirement, in whole or in part, shall submit an explanation with their bid.

DAN EICHINGER
Director

TIMBER SALE INFORMATION

Johnsonville Spruce (42-006-21)
T46N, R12W, SEC. 18.
Luce County (Advertised Price \$58,483.50)

SALE NOTE: All units of volume listed for this sale were estimated using the Inventory Manager computer program and the new Michigan taper model.

Road work may be required. See Sale Spec. 4.2.3 for details.

Within Payment Units 1-6, it is recommended that harvesting occur during dry summer or frozen winter conditions because of the lowland nature of the soil types. Tracked equipment is recommended regardless of what time of year these Payment Units are harvested.

A timber sale contract for this lump sum, sealed bid timber sale will be awarded to the responsible bidder offering the highest sealed bid price. All units of volume listed below were estimated using the Inventory Manager computer program and the new Michigan taper model. Bids must be at or above the following advertised price for each product and species:

<u>PRODUCTS & SPECIES</u>	<u>ESTIMATED UNITS*</u>	<u>ADVERTISED PRICE</u>
Pulpwood		
Balsam Fir	36 Cords	\$ 8.50 / Cord
Black Spruce	1,762 Cords	\$ 18.85 / Cord
Jack Pine	55 Cords	\$ 16.25 / Cord
Mixed Aspen	77 Cords	\$ 19.95 / Cord
Mixed Hardwood	169 Cords	\$ 10.00 / Cord
N. White Cedar	530 Cords	\$ 4.50 / Cord
Red Pine	82 Cords	\$ 43.20 / Cord
Tamarack	45 Cords	\$ 3.30 / Cord
White Pine	1,136 Cords	\$ 13.00 / Cord

* The total volume is statistically estimated within plus (+) or minus (-) 4.90 percent. There are an estimated 4,101 cords on this timber sale, plus or minus 201 cords at the 95% confidence level. The estimated units are final and not subject to adjustment. Prospective bidders are urged to examine this timber and to make their own estimates of quantity and quality.

BOND AND PAYMENT SCHEDULE:

1. A bond in the amount of \$2,924.00 to insure faithful performance of the conditions of the contract will be deposited by the successful bidder within 21 days of the sale award.
2. Cutting in any sale or unit without the required advance payment would be considered a trespass.
3. Total payment must be paid in advance or according to the following schedule:
 - (a) Ten percent (10%) of the sale value must be paid within 21 days of the sale award.
 - (b) The 10% down payment will be credited towards the first unit cut.
 - (c) Payment for each of the following units must be made before cutting begins in that unit:

<u>PAYMENT UNIT NUMBER</u>	<u>PERCENT OF TOTAL SALE VALUE</u>
01	10.8%
02	9.3%
03	20.7%
04	20.1%
05	11.6%
06	15.7%
07	11.8%

4. If no cutting takes place, the 10% down payment will not be refunded.
5. Operations on the contract issued will terminate on 06/30/2026.

SALE STATISTICS

Volumes were calculated in cubic feet using the Michigan taper model. Cubic foot volume includes all wood inside bark for the product indicated. For display purposes, cubic feet were converted to cords and MBF using a simple conversion factor, e.g. 79 cubic feet per cord and 185 cubic feet per MBF. The cubic foot volumes are precise; the cords and MBF volumes are not. Cubic foot volume cannot be directly converted to cords or boards with precision.

SALE VOLUMES

The total estimated sale volume may not equal the sum of the species/products due to the nature of statistical calculations associated with double sampling methodology.

VOLUME			STATISTICAL RANGE IN CORDS	
TOTAL CUBIC FEET	TOTAL CORDS	PERCENT ERROR	MINIMUM	MAXIMUM
324,003	4,101	4.90%	3,900	4,303

VDU VOLUMES

A VDU is a Volume Determination Unit. Volumes and their associated statistics are calculated at the VDU level and summarized to the sale level. There is often a one to one relationship between a VDU and a Payment Unit, but not always, depending on the cruise design. Refer to the VDU TO PAYMENT UNIT table.

	VOLUME			RANGE IN CORDS	
VDU	TOTAL CUBIC FEET	TOTAL CORDS	PERCENT ERROR	MINIMUM	MAXIMUM
29	24,456	310	16.91%	257	362
30	93,517	1,184	10.67%	1,057	1,310
31	161,343	2,042	6.00%	1,920	2,165
37	44,688	566	14.55%	483	648
TOTAL:	324,003	4,101		3,718	4,485

VDU TO PAYMENT UNIT

When a VDU is associated with more than one Payment Unit (PU), the VDU volumes are assigned to the PU based on acres of the VDU within the PU.

VDU	VDU ACRES	PU	PU ACRES
29	39.5	7	39.5
30	40.1	2	14.9
		6	25.2
31	66.8	3	26.4
		4	25.6
		5	14.8
37	17.7	1	17.7
TOTAL:	164.1		164.1

DESCRIPTION OF TIMBER BY PAYMENT UNIT (PU)

PU	MARKET GROUP	PRODUCT	QUANTITY	UNIT	ACRES	ADVERTISE PRICE
1	Balsam Fir	Pulpwood	9	Cords	17.7	\$6,322.00
	Black Spruce		192	Cords		
	Mixed Hardwood		58	Cords		
	<i>Paper Birch</i>		23	<i>Cords</i>		
	<i>Red Maple</i>		35	<i>Cords</i>		
	N. White Cedar		178	Cords		
	Tamarack		11	Cords		
	White Pine		93	Cords		
	<i>White Pine</i>		41.2	<i>MBF</i>		
	<i>White Pine</i>		11	<i>Cords</i>		
2	Balsam Fir	Pulpwood	7	Cords	14.9	\$5,457.25
	Black Spruce		119	Cords		
	Mixed Hardwood		3	Cords		
	<i>Paper Birch</i>		3	<i>Cords</i>		
	N. White Cedar		61	Cords		
	Red Pine		6	Cords		
	<i>Red Pine</i>		6	<i>Cords</i>		
	Tamarack		13	Cords		
	White Pine		196	Cords		
	<i>White Pine</i>		76.0	<i>MBF</i>		
<i>White Pine</i>	44	<i>Cords</i>				
3	Balsam Fir	Pulpwood	2	Cords	26.4	\$12,109.20
	Black Spruce		492	Cords		
	Mixed Hardwood		34	Cords		
	<i>Red Maple</i>		1.0	<i>MBF</i>		
	<i>Paper Birch</i>		9	<i>Cords</i>		
	<i>Red Maple</i>		23	<i>Cords</i>		
	N. White Cedar		74	Cords		
	White Pine		165	Cords		
	<i>White Pine</i>		66.9	<i>MBF</i>		
	<i>White Pine</i>		31	<i>Cords</i>		
4	Balsam Fir	Pulpwood	2	Cords	25.6	\$11,761.30
	Black Spruce		478	Cords		
	Mixed Hardwood		33	Cords		
	<i>Red Maple</i>		1.0	<i>MBF</i>		
	<i>Paper Birch</i>		9	<i>Cords</i>		
	<i>Red Maple</i>		22	<i>Cords</i>		
	N. White Cedar		72	Cords		
	White Pine		160	Cords		
	<i>White Pine</i>		64.9	<i>MBF</i>		
	<i>White Pine</i>		30	<i>Cords</i>		
5	Balsam Fir	Pulpwood	1	Cords	14.8	\$6,794.60
	Black Spruce		276	Cords		
	Mixed Hardwood		19	Cords		
	<i>Red Maple</i>		0.6	<i>MBF</i>		
	<i>Paper Birch</i>		5	<i>Cords</i>		
	<i>Red Maple</i>		13	<i>Cords</i>		
	N. White Cedar		41	Cords		
	White Pine		93	Cords		
	<i>White Pine</i>		37.5	<i>MBF</i>		
	<i>White Pine</i>		18	<i>Cords</i>		
6	Balsam Fir	Pulpwood	12	Cords	25.2	\$9,154.10
	Black Spruce		200	Cords		
	Mixed Hardwood		4	Cords		
	<i>Paper Birch</i>		4	<i>Cords</i>		
	N. White Cedar		104	Cords		

DESCRIPTION OF TIMBER BY PAYMENT UNIT (PU), CON'T

PU	MARKET GROUP	PRODUCT	QUANTITY	UNIT	ACRES	ADVERTISE PRICE
6 con't	Red Pine	Pulpwood	9	Cords		
	<i>Red Pine</i>		9	<i>Cords</i>		
	Tamarack		21	Cords		
	White Pine		332	Cords		
	<i>White Pine</i>	<i>Sawtimber</i>	128.6	<i>MBF</i>		
	<i>White Pine</i>	<i>Pulpwood</i>	75	<i>Cords</i>		
7	Balsam Fir	Pulpwood	3	Cords	39.5	\$6,885.05
	Black Spruce		5	Cords		
	Jack Pine		55	Cords		
	Mixed Aspen		77	Cords		
	<i>B. T. Aspen</i>		69	<i>Cords</i>		
	<i>Quaking Aspen</i>		8	<i>Cords</i>		
	Mixed Hardwood		18	Cords		
	<i>Paper Birch</i>	<i>Sawtimber</i>	2.4	<i>MBF</i>		
	<i>Paper Birch</i>	<i>Pulpwood</i>	5	<i>Cords</i>		
	<i>Red Maple</i>		8	<i>Cords</i>		
	Red Pine		67	Cords		
	<i>Red Pine</i>	<i>Sawtimber</i>	5.5	<i>MBF</i>		
	<i>Red Pine</i>	<i>Pulpwood</i>	56	<i>Cords</i>		
	White Pine		97	Cords		
	<i>White Pine</i>	<i>Sawtimber</i>	7.5	<i>MBF</i>		
<i>White Pine</i>	<i>Pulpwood</i>	82	<i>Cords</i>			
TOTAL:			3,892	Cords		

Sale Specific Conditions & Requirements

Sale Name: Johnsonville Spruce

Sale Number: 42-006-21 Seq#: 1

1 - Sale Area

1.2 - Boundaries

1.2.1 - Painted boundaries (9/19)

The sale boundary and Payment Unit boundaries are marked and identified by blue, red, and yellow paint. Exterior sale boundary lines against private property are marked with blue paint. Exterior sale boundary lines against state are marked with red paint. Interior Payment Unit boundaries are marked with yellow paint. Retention patches are marked with red paint in Payment Unit 7. Retention Pockets in Payment Units 1-4 and 6 will require a digital Avenza map to cut around the pockets. This map will be provided by the DNR. The painted boundary line trees are not Included Timber and are to be protected unless marked with orange paint. Yellow painted trees designating an interior Payment Unit boundary are only to be cut when all surrounding Payment Units have been paid.

2 - Timber Specifications

2.1 - Included Timber

2.1.1 - Clearcut unit(s) with unmerchantable trees (6/14)

Within Payment Unit(s) 7, cut all trees that are two (2) inches or more at DBH, except for trees ringed with green paint. These will be oak trees.

2.1.2 - Clearcut unit(s) w/o unmerchantable trees (8/11)

Within Payment Unit(s) 1-6, cut all trees which meet minimum piece specifications in 2.2 Utilization except hemlock. Within Payment Unit 2 and 6 leave all white pine over 20" and red pine over 18".

2.2 - Utilization

2.2.3 - Stump heights (4/07)

Stump heights within Payment Unit(s) 7 shall not exceed 6 inches for all trees. This is to facilitate planting operations. A written waiver of this requirement may be obtained if wet summer weather makes winter logging necessary.

4 - Transportation

4.1 - Construction

4.1.6 - Road construction (1/09)

Construction of new roads or improvements of existing roads shall be done in such a way as to minimize the environmental and visual impacts. Merchantable trees shall be cut and utilized unless otherwise directed. Non-merchantable trees shall be severed and laid flat on the ground. Slash shall be scattered, and not left in windrows and kept a minimum of 10 feet back from the road edge. Stumps shall be set upright, not left on edge, and be moved at least 10 feet away from the road edge. Disturbed soil shall be feathered into the woods and not left in berms or windrows.

4.1.7 - Road closure (10/11)

All new roads built into the sale must be blocked to vehicle traffic upon completion of the sale. In general, this will require constructing double earthen berms at strategic locations. These roads must be rendered impassable to cars and trucks. Contact the sale administrator for specific details of design and placement.

4.2 - Maintenance

4.2.3 - Road maintenance (8/13)

The following road maintenance may be needed: cleaning of drainage areas, grading, crowning, and filling with gravel, if necessary. Damages will be assessed if grading/repair does not occur.

4.2.5 - Two wheel drive condition (2/04)

All existing trail roads on and adjacent to the sale area must be passable by two-wheel drive traffic for the duration of the sale.

5 - Operations

5.2 - Conduct of Operations

5.2.1 - Slash

5.2.1.8 - Slash height (12/08)

No slash or tree tops may exceed 24 inches in height.

5.2.2 - Hazard Trees/Snags

5.2.2.1 - Den trees (10/16)

Obvious hollow and/or den trees shall be protected and left standing unless they are a safety hazard.

5.2.22 - Operating Caution

5.2.22.1 - Operating caution (6/11)

It is recommended, but not required, that within Payment Unit(s) 1-6, cutting and skidding occur during dry summer or frozen winter conditions. The reason for the recommendation is because of the lowland nature of the soil types. Tracked equipment is recommended regardless of what time of year these Payment Units are harvested.

5.2.32 - Decking/landing restoration (9/13)

All decking and landing areas must have the surface area restored to a condition equal to or better than before. This is to ensure the proper regeneration of the stand. Wood debris, chips, and "cookies" from trimmings must be removed or scattered away from landing and loading areas and may not be windrowed on the edge.

5.2.38 - No decking against live trees (2/04)

Cut products may not be decked against unmarked or designated leave trees.

5.4 - Soil Protection

5.4.1 - Rutting restriction, general (7/16)

Operations are to cease immediately if equipment and weather conditions result in rutting of roads and/or skid trails which is 12 inches or greater in depth and 50 feet in length. The Unit Manager or his/her representative may restrict hauling and/or skidding if ruts exceed the specified depth. With the Unit Manager or his/her representative's approval, the Purchaser may return to the area when the risk of rutting has decreased.

5.8 - Protection of Endangered Species

5.8.5 - Protection of raptor nests (3/13)

All trees with raptor nests will be protected if found during harvesting operations. Notification will be made to the Unit Manager or his/her representative who will notify the Wildlife Biologist so an on-site evaluation and recommendation can be made, if necessary.

6 - Safety and Fire Prevention

6.2 - Signing

6.2.1 - Road posting (10/20)

The Purchaser is responsible for posting and maintaining caution signs on Spring Creek Road prior to beginning operations. The road must be posted at appropriate distances from the Sale Area to warn of logging activity and truck traffic. Signs must be removed when harvest operations are suspended or completed. The Purchaser will provide these signs.

7 - Other Conditions

7.2 - Extensions

7.2.5 - Weather related extension (1/13)

If weather conditions during the operating period of this contract prevent harvesting, this sale may qualify for a weather related extension. If approved, the normal extension fee would be waived. To qualify, there must be a documented attempt each year to harvest in the difficult portion of the sale.

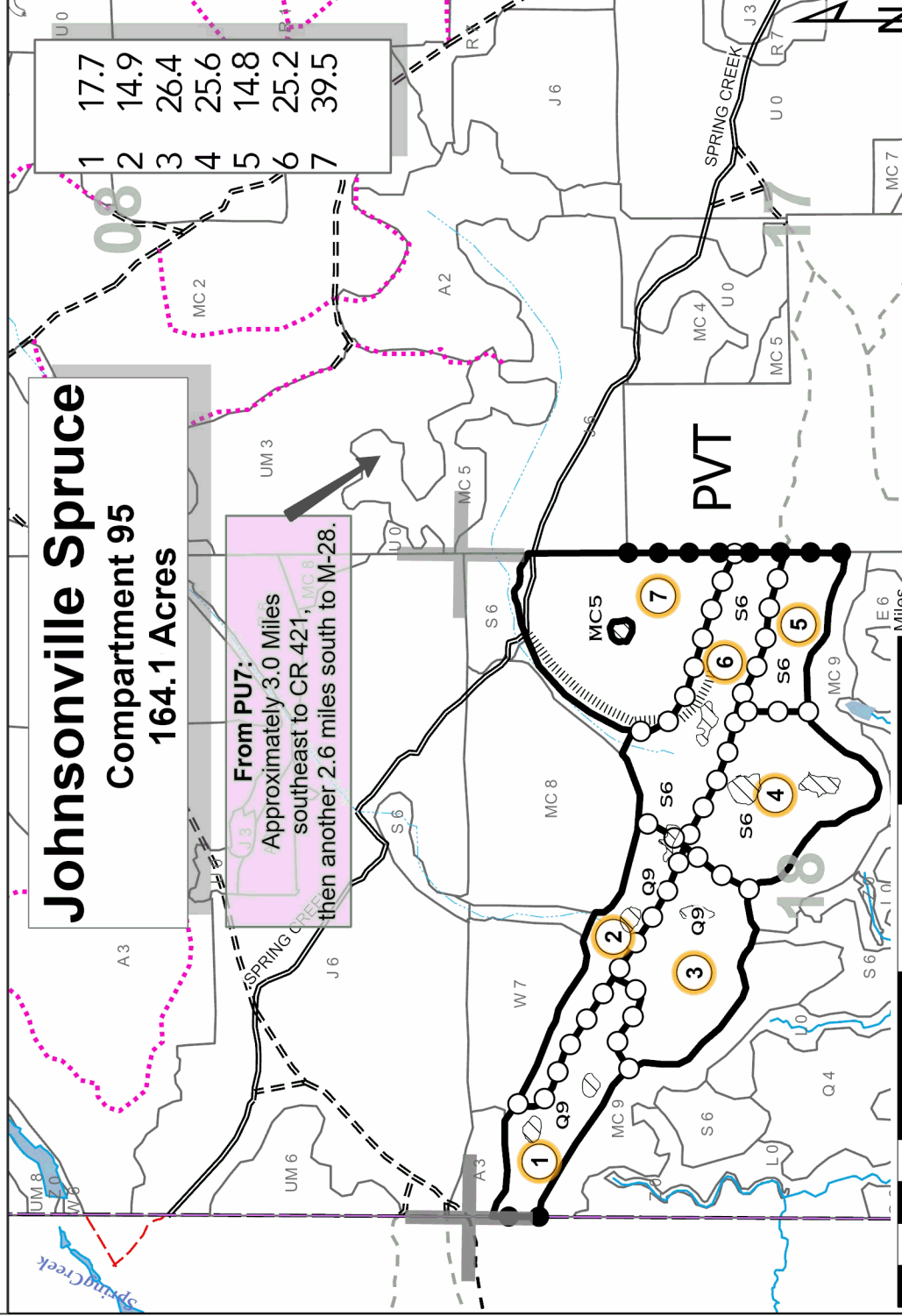


TIMBER SALE MAP

This information provided by authority of Part 525, 1994 PA 451, as amended.

Forest Management Unit Newberry	County Luce	Mapped By Livermore	Sale Number 42-006-21	Year 2021
Range 12W	Section(s) and Subdivision(s) Section 18: NW, NE, N½SE	Cruised By Newberry Staff / Superior Forestry & Land Management	Date 3/27/2021	Page of 1 1
Township 46N	Scale 1:15,840	Density		

Cover Type	
A = Aspen	H = Hemlock
B = Paper Birch	J = Jack Pine
C = Cedar	L = Lowland Brush
D = Treed Bog	LM = Lowland Mixed
E = Swamp Hdwoods	M = Mpl, Bch, Birch
F = Spruce Fir	MC = Mixed Conifer
G = Grass	MD = Mixed Deciduous
	N = Marsh
	O = Oak
	P = Lowland Poplar
	Q = Mixed Swamp Conifer
	R = Red Pine
	S = Black Spruce
	T = Tamarack
	U = Upland Brush
	UM = Upland Mixed
	V = Bog or Marsh
	W = White Pine
	X = Non Stocked
	Z = Water



Johnsonville Spruce
Compartment 95
164.1 Acres

From PU7:
 Approximately 3.0 Miles
 southeast to CR 421, MC 8
 then another 2.6 miles south to M-28.

1	17.7
2	14.9
3	26.4
4	25.6
5	14.8
6	25.2
7	39.5

Against State (Red)

Payment Unit (Yellow)

Private Line (Blue)

Payment Unit Label

Retention Area

01 Section Numbers

Section Corners

Intermittent Stream

Perennial River

Lakes and Rivers

Retention Area

DNR - Primary Forest Road

DNR - Secondary Forest Road

DNR - Forest Access Route

Federal / State Highway

Federal / State / County - Paved Road

Federal / State - Dirt / Gravel Road

County - Gravel Road

County - Dirt Road (Seasonal)

Private - Paved Road

Private - Dirt / Gravel Road

DNR - Management Access

DNR - Temporary Management Access

Proposed Access



Locator Map: 1:200,000

- Main Map Extent



TIMBER SALE INFORMATION

Hummingbird Pine (42-033-21)

T47N, R12W, SEC. 28; T47N, R12W, SEC. 29; T47N, R12W, SEC. 33.
Luce County (Advertised Price \$83,708.75)

SALE NOTE: All units of volume listed for this sale were estimated using the Inventory Manager computer program and the new Michigan taper model.

No new roads will be permitted in any Payment Unit. See Sale Spec. 4.1.12 for additional information.

Road work may be required. See Sale Spec. 4.2.3 for details.

Harvesting is not permitted during the period of December 31 to April 15 because of the low stump requirement to facilitate cultivation operations.

A timber sale contract for this lump sum, sealed bid timber sale will be awarded to the responsible bidder offering the highest sealed bid price. All units of volume listed below were estimated using the Inventory Manager computer program and the new Michigan taper model. Bids must be at or above the following advertised price for each product and species:

<u>PRODUCTS & SPECIES</u>	<u>ESTIMATED UNITS*</u>	<u>ADVERTISED PRICE</u>
Sawtimber		
Paper Birch	5.3 MBF	\$ 35.00 / MBF
Pulpwood		
Jack Pine	386 Cords	\$ 16.25 / Cord
Mixed Aspen	249 Cords	\$ 19.95 / Cord
Mixed Hardwood	114 Cords	\$ 10.00 / Cord
Red Pine	1,272 Cords	\$ 43.20 / Cord
White Pine	1,234 Cords	\$ 13.00 / Cord
White Spruce	8 Cords	\$ 18.85 / Cord

* The total volume is statistically estimated within plus (+) or minus (-) 4.16 percent. There are an estimated 3,419 cords on this timber sale, plus or minus 142 cords at the 95% confidence level. The estimated units are final and not subject to adjustment. Prospective bidders are urged to examine this timber and to make their own estimates of quantity and quality.

BOND AND PAYMENT SCHEDULE:

1. A bond in the amount of \$4,185.00 to insure faithful performance of the conditions of the contract will be deposited by the successful bidder within 21 days of the sale award.
2. Cutting in any sale or unit without the required advance payment would be considered a trespass.
3. Total payment must be paid in advance or according to the following schedule :
 - (a) Ten percent (10%) of the sale value must be paid within 21 days of the sale award.
 - (b) The 10% down payment will be credited towards the first unit cut.
 - (c) Payment for each of the following units must be made before cutting begins in that unit:

PAYMENT UNIT NUMBER	PERCENT OF TOTAL SALE VALUE
01	1.7%
02	29.6%
03	24.1%
04	19.9%
05	14.5%
06	10.2%

4. If no cutting takes place, the 10% down payment will not be refunded.
5. Operations on the contract issued will terminate on 12/31/2025.

SALE STATISTICS

Volumes were calculated in cubic feet using the Michigan taper model. Cubic foot volume includes all wood inside bark for the product indicated. For display purposes, cubic feet were converted to cords and MBF using a simple conversion factor, e.g. 79 cubic feet per cord and 185 cubic feet per MBF. The cubic foot volumes are precise; the cords and MBF volumes are not. Cubic foot volume cannot be directly converted to cords or boards with precision.

SALE VOLUMES

The total estimated sale volume may not equal the sum of the species/products due to the nature of statistical calculations associated with double sampling methodology.

VOLUME			STATISTICAL RANGE IN CORDS	
TOTAL CUBIC FEET	TOTAL CORDS	PERCENT ERROR	MINIMUM	MAXIMUM
270,062	3,419	4.16%	3,276	3,561

VDU VOLUMES

A VDU is a Volume Determination Unit. Volumes and their associated statistics are calculated at the VDU level and summarized to the sale level. There is often a one to one relationship between a VDU and a Payment Unit, but not always, depending on the cruise design. Refer to the VDU TO PAYMENT UNIT table.

	VOLUME			RANGE IN CORDS	
VDU	TOTAL CUBIC FEET	TOTAL CORDS	PERCENT ERROR	MINIMUM	MAXIMUM
15	1,610	20	35.13%	13	28
16	79,120	1,002	7.84%	923	1,080
28	58,724	743	10.53%	665	822
29	125,517	1,589	5.45%	1,502	1,675
32	3,611	46	41.95%	27	65
404	1,481	19	28.87%	13	24
TOTAL:	270,062	3,419		3,143	3,694

VDU TO PAYMENT UNIT

When a VDU is associated with more than one Payment Unit (PU), the VDU volumes are assigned to the PU based on acres of the VDU within the PU.

VDU	VDU ACRES	PU	PU ACRES
15	2.3	1	2.3
16	63.7	5	37.4
		6	26.3
28	34.2	2	34.2
29	44.4	3	24.3
		4	20.1
32	5.1	1	5.1
404	2.2	2	2.2
TOTAL:	151.9		151.9

DESCRIPTION OF TIMBER BY PAYMENT UNIT (PU)

PU	MARKET GROUP	PRODUCT	QUANTITY	UNIT	ACRES	ADVERTISE PRICE
1	Jack Pine	Pulpwood	13	Cords	7.4	\$1,452.25
	<i>Jack Pine</i>		13	<i>Cords</i>		
	Red Pine		20	Cords		
	<i>Red Pine</i>	Sawtimber	1.6	<i>MBF</i>		
	<i>Red Pine</i>	Pulpwood	17	<i>Cords</i>		
	White Pine		29	Cords		
	<i>White Pine</i>	Sawtimber	10.2	<i>MBF</i>		
	<i>White Pine</i>	Pulpwood	9	<i>Cords</i>		
	2	Jack Pine	Pulpwood	141		
<i>Jack Pine</i>			141	<i>Cords</i>		
Mixed Aspen			42	Cords		
<i>B. T. Aspen</i>			11	<i>Cords</i>		
<i>Quaking Aspen</i>			31	<i>Cords</i>		
Mixed Hardwood			19	Cords		
<i>Black Cherry</i>			4	<i>Cords</i>		
<i>Red Maple</i>			15	<i>Cords</i>		
Red Pine			465	Cords		
<i>Red Pine</i>		Sawtimber	126.6	<i>MBF</i>		
<i>Red Pine</i>		Pulpwood	212	<i>Cords</i>		
White Pine			97	Cords		
<i>White Pine</i>		Sawtimber	10.1	<i>MBF</i>		
<i>White Pine</i>		Pulpwood	77	<i>Cords</i>		
3		Jack Pine	Pulpwood	47	Cords	24.3
	<i>Jack Pine</i>	Sawtimber	10.6	<i>MBF</i>		
	<i>Jack Pine</i>	Pulpwood	26	<i>Cords</i>		
	Mixed Aspen		90	Cords		
	<i>B. T. Aspen</i>		90	<i>Cords</i>		
	Mixed Hardwood		26	Cords		
	<i>Red Maple</i>	Sawtimber	0.9	<i>MBF</i>		
	<i>Black Cherry</i>	Pulpwood	2	<i>Cords</i>		
	<i>Red Maple</i>		22	<i>Cords</i>		
	Red Pine		279	Cords		
	<i>Red Pine</i>	Sawtimber	55.2	<i>MBF</i>		
	<i>Red Pine</i>	Pulpwood	169	<i>Cords</i>		
	White Pine		409	Cords		
	<i>White Pine</i>	Sawtimber	78.0	<i>MBF</i>		
	<i>White Pine</i>	Pulpwood	253	<i>Cords</i>		
4	Jack Pine	Pulpwood	39	Cords	20.1	\$16,683.00
	<i>Jack Pine</i>	Sawtimber	8.8	<i>MBF</i>		
	<i>Jack Pine</i>	Pulpwood	21	<i>Cords</i>		
	Mixed Aspen		75	Cords		
	<i>B. T. Aspen</i>		75	<i>Cords</i>		
	Mixed Hardwood		21	Cords		
	<i>Red Maple</i>	Sawtimber	0.8	<i>MBF</i>		
	<i>Black Cherry</i>	Pulpwood	1	<i>Cords</i>		
	<i>Red Maple</i>		18	<i>Cords</i>		
	Red Pine		230	Cords		
	<i>Red Pine</i>	Sawtimber	45.6	<i>MBF</i>		
	<i>Red Pine</i>	Pulpwood	139	<i>Cords</i>		
	White Pine		339	Cords		
	<i>White Pine</i>	Sawtimber	64.6	<i>MBF</i>		
	<i>White Pine</i>	Pulpwood	210	<i>Cords</i>		
5	Paper Birch	Sawtimber	3.1	MBF	37.4	\$12,173.60
	Jack Pine	Pulpwood	86	Cords		
	<i>Jack Pine</i>	Sawtimber	16.9	<i>MBF</i>		
	<i>Jack Pine</i>	Pulpwood	52	<i>Cords</i>		

DESCRIPTION OF TIMBER BY PAYMENT UNIT (PU), CON'T

PU	MARKET GROUP	PRODUCT	QUANTITY	UNIT	ACRES	ADVERTISE PRICE
5 con't	Mixed Aspen	Pulpwood	25	Cords		
	<i>B. T. Aspen</i>		10	<i>Cords</i>		
	<i>Quaking Aspen</i>		15	<i>Cords</i>		
	Mixed Hardwood		29	Cords		
	<i>Red Maple</i>	<i>Sawtimber</i>	0.6	<i>MBF</i>		
	<i>Paper Birch</i>	<i>Pulpwood</i>	20	<i>Cords</i>		
	<i>Red Maple</i>		8	<i>Cords</i>		
	Red Pine		163	Cords		
	<i>Red Pine</i>	<i>Sawtimber</i>	57.1	<i>MBF</i>		
	<i>Red Pine</i>	<i>Pulpwood</i>	49	<i>Cords</i>		
	White Pine		211	Cords		
	<i>White Pine</i>	<i>Sawtimber</i>	35.8	<i>MBF</i>		
	<i>White Pine</i>	<i>Pulpwood</i>	139	<i>Cords</i>		
	White Spruce		5	Cords		
6	Paper Birch	Sawtimber	2.2	MBF	26.3	\$8,512.75
	Jack Pine	Pulpwood	61	Cords		
	<i>Jack Pine</i>	<i>Sawtimber</i>	11.8	<i>MBF</i>		
	<i>Jack Pine</i>	<i>Pulpwood</i>	37	<i>Cords</i>		
	Mixed Aspen		17	Cords		
	<i>B. T. Aspen</i>		7	<i>Cords</i>		
	<i>Quaking Aspen</i>		10	<i>Cords</i>		
	Mixed Hardwood		20	Cords		
	<i>Red Maple</i>	<i>Sawtimber</i>	0.5	<i>MBF</i>		
	<i>Paper Birch</i>	<i>Pulpwood</i>	14	<i>Cords</i>		
	<i>Red Maple</i>		5	<i>Cords</i>		
	Red Pine		114	Cords		
	<i>Red Pine</i>	<i>Sawtimber</i>	40.1	<i>MBF</i>		
	<i>Red Pine</i>	<i>Pulpwood</i>	34	<i>Cords</i>		
	White Pine		148	Cords		
	<i>White Pine</i>	<i>Sawtimber</i>	25.2	<i>MBF</i>		
	<i>White Pine</i>	<i>Pulpwood</i>	98	<i>Cords</i>		
White Spruce		3	Cords			
TOTAL:			5.3	MBF		
TOTAL:			3,263	Cords		

Sale Specific Conditions & Requirements

Sale Name: Hummingbird Pine

Sale Number: 42-033-21 Seq#: 1

1 - Sale Area

1.2 - Boundaries

1.2.1 - Painted boundaries (9/19)

The sale boundary and Payment Unit boundaries are marked and identified by red and green paint. Exterior sale boundary lines against state are marked with red paint. Interior Payment Unit boundaries are marked with green paint. The portion of Clark Trail that runs between Payment Units 5 and 6 is the Payment Unit line. Retention patches are marked with red paint; no harvesting activities may occur within these areas. The painted boundary line trees are not Included Timber and are to be protected unless marked with orange paint. Green painted trees designating an interior Payment Unit boundary are only to be cut when all surrounding Payment Units have been paid.

2 - Timber Specifications

2.1 - Included Timber

2.1.1 - Clearcut unit(s) with unmerchantable trees (6/14)

Within Payment Unit(s) 1-6, cut all trees that are two (2) inches or more at DBH.

2.2 - Utilization

2.2.3 - Stump heights (4/07)

Stump heights within the Sale Area shall not exceed 6 inches for all trees. This is to facilitate cultivation operations.

3 - Payments

3.3 - Pre-measured Sales

3.3.4 - Dividing payment units (7/14)

Payment Unit(s) 2 and 5 may be divided at the request of the Purchaser and upon approval of the Unit Manager. Dividing Payment Units is a contract modification which requires a Timber Sale Contract Amendment. There will be only one division per Payment Unit.

4 - Transportation

4.1 - Construction

4.1.6 - Road construction (1/09)

Improvements of existing roads shall be done in such a way as to minimize the environmental and visual impacts. Merchantable trees shall be cut and utilized unless otherwise directed. Non-merchantable trees shall be severed and laid flat on the ground. Slash shall be scattered, and not left in windrows and kept a minimum of 10 feet back from the road edge. Stumps shall be set upright, not left on edge, and be moved at least 10 feet away from the road edge. Disturbed soil shall be feathered into the woods and not left in berms or windrows.

4.1.12 - No new roads (1/12)

No new roads will be permitted in any Payment Unit. All operations are limited to existing roads. Back in spurs and truck turnarounds will be allowed.

4.2 - Maintenance

4.2.3 - Road maintenance (8/13)

The following road maintenance may be needed: grading, crowning, and filling with gravel, if necessary.

5 - Operations

5.2 - Conduct of Operations

5.2.1 - Slash

5.2.1.8 - Slash height (12/08)

No slash or tree tops may exceed 24 inches in height.

5.2.2 - Hazard Trees/Snags

5.2.2.1 - Den trees (10/16)

Obvious hollow and/or den trees shall be protected and left standing unless they are a safety hazard.

5.2.3 - Operating Restrictions

5.2.3.1 - Operating restrictions (9/11)

Within Payment Unit(s) 1-6, unless changed by written agreement, cutting and skidding are not permitted during the period of December 31 to April 15. This restriction is because of the low stump requirement to facilitate cultivation operations.

5.2.3.6 - Bark beetle restriction (12/08)

In the event drought creates a high risk of pine bark beetle infestation, pine is not to be cut during the period March 1 through July 1, unless all portions of trees greater than two inches in diameter are removed from the sale area, reduced to chips, or treated to the satisfaction of the Unit Manager or his/her representative, within fifteen days of being severed from the stump. Pine log decks, pulpwood piles and treetops that are piled for chipping in the fall or winter within a 1/4 mile of susceptible sites must be removed before March 15. Residual slash must not be placed in piles or rows and must be spread over the site for quick drying. The Department of Natural Resources will exercise this specification if the risk of damage warrants.

5.2.32 - Decking/landing restoration (9/13)

All decking and landing areas must have the surface area restored to a condition equal to or better than before. This is to ensure the proper regeneration of the stand. Wood debris, chips, and "cookies" from trimmings must be removed or scattered away from landing and loading areas and may not be windrowed on the edge.

5.2.38 - No decking against live trees (2/04)

Cut products may not be decked against unmarked or designated leave trees.

5.8 - Protection of Endangered Species

5.8.5 - Protection of raptor nests (3/13)

All trees with raptor nests will be protected if found during harvesting operations. Notification will be made to the Unit Manager or his/her representative who will notify the Wildlife Biologist so an on-site evaluation and recommendation can be made, if necessary.

6 - Safety and Fire Prevention

6.2 - Signing

6.2.1 - Road posting (10/20)

The Purchaser is responsible for posting and maintaining caution signs on Clark Trail and County Road 421 prior to beginning operations. The road must be posted at appropriate distances from the Sale Area to warn of logging activity and truck traffic. Signs must be removed when harvest operations are suspended or completed. The Purchaser will provide these signs.



TIMBER SALE MAP

This information provided by authority of Part 525, 1994 PA 451, as amended.

Forest Management Unit Newberry	County Luce	Mapped By Kriehn	Date 9/21/2021	Page 1	of 1
Township 47N	Range 12W	Section(s) and Subdivision(s) Section 28: S1/2NW,SWNE,SW,NWSE,S1/2SE; Section 29: NESE; Section 33: N1/2NW,NWNE	Scale 1:15,840		

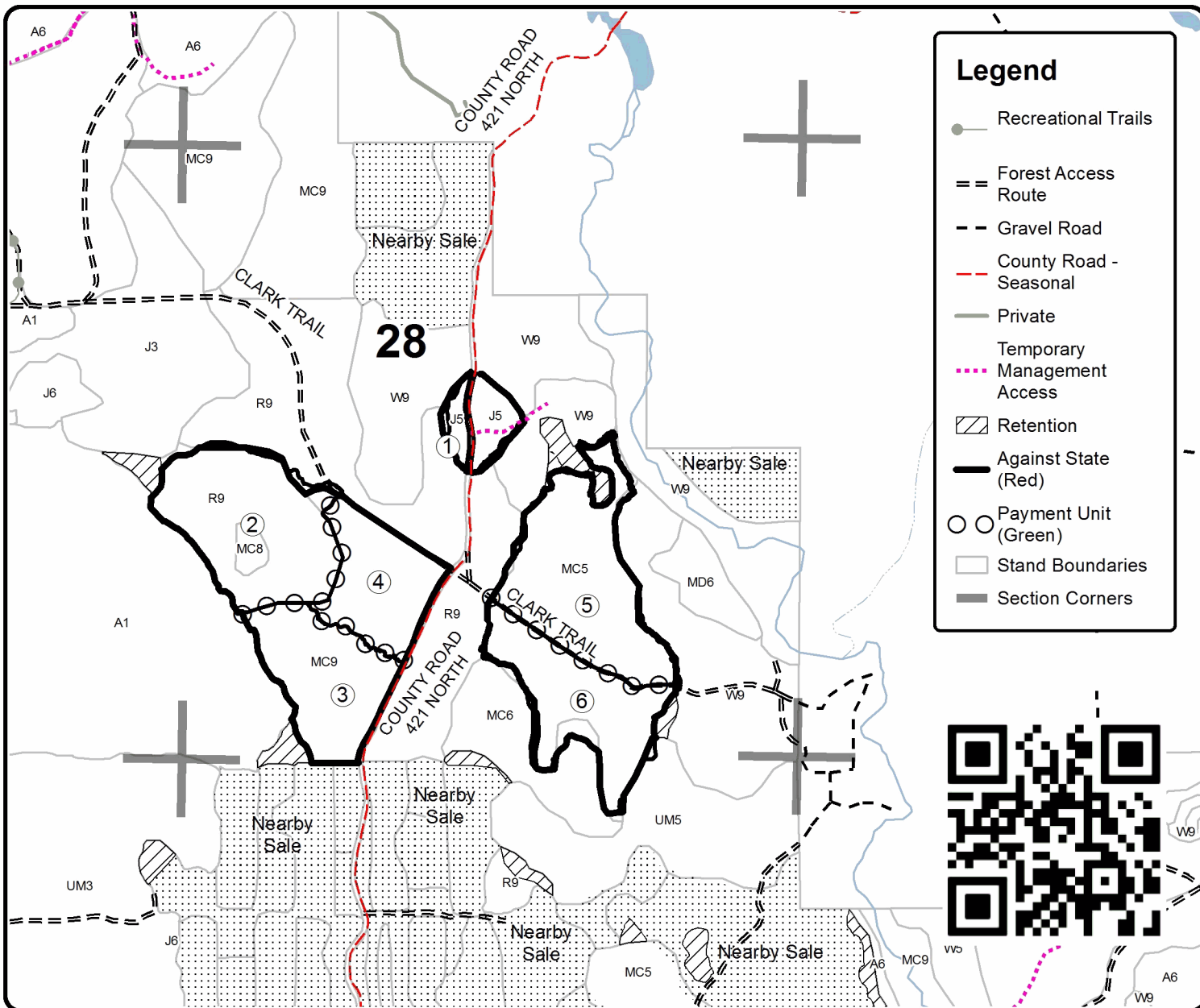
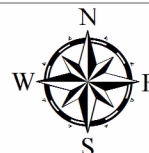
Cover Type				Density	
A = Aspen	H = Hemlock	N = Marsh	U = Upland Brush	0 = Non Stocked	5 = Pole Timber Medium
B = Paper Birch	J = Jack Pine	O = Oak	UM = Upland Mixed	1 = Seedling Sapling Poor	6 = Pole Timber Well
C = Cedar	L = Lowland Brush	P = Lowland Poplar	V = Bog or Marsh	2 = Seedling Sapling Medium	7 = Saw Timber Poor
D = Treed Bog	LM = Lowland Mixed	Q = Mixed Swamp Conifer	W = White Pine	3 = Seedling Sapling Well	8 = Saw Timber Medium
E = Swamp Hdwoods	M = Mpl, Bch, Brch	R = Red Pine	X = Non Stocked	4 = Pole Timber Poor	9 = Saw Timber Well
F = Spruce Fir	MC = Mixed Conifer	S = Black Spruce	Z = Water		
G = Grass	MD = Mixed Deciduous	T = Tamarack			

PU	Acres	PU	Acres
1	7.4	4	20.1
2	36.4	5	37.4
3	24.3	6	26.3

Hummingbird Pine

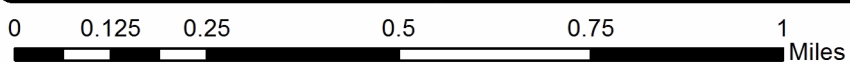
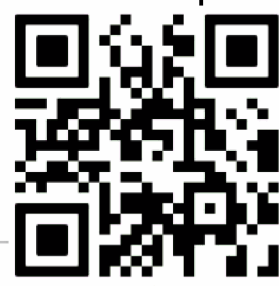
Compartment 93

151.9 Acres



Legend

- Recreational Trails
- Forest Access Route
- Gravel Road
- County Road - Seasonal
- Private
- Temporary Management Access
- Retention
- Against State (Red)
- Payment Unit (Green)
- Stand Boundaries
- Section Corners



TIMBER SALE INFORMATION

Torretta Bruciata Mix (42-034-21)
T47N, R12W, SEC. 33; T47N, R12W, SEC. 34.
Luce County (Advertised Price \$59,264.55)

SALE NOTE: All units of volume listed for this sale were estimated using the Inventory Manager computer program and the new Michigan taper model.

Road work may be required on this sale. See Sale Spec. 4.2.3 for details.

Within Payment Units 1-4, harvesting is not permitted during the period of December 31 to April 15 because of the low stump restriction to facilitate cultivation operations.

A timber sale contract for this lump sum, sealed bid timber sale will be awarded to the responsible bidder offering the highest sealed bid price. All units of volume listed below were estimated using the Inventory Manager computer program and the new Michigan taper model. Bids must be at or above the following advertised price for each product and species:

<u>PRODUCTS & SPECIES</u>	<u>ESTIMATED UNITS*</u>	<u>ADVERTISED PRICE</u>
Sawtimber		
Red Maple	8.1 MBF	\$ 71.00 / MBF
Pulpwood		
Balsam Fir	4 Cords	\$ 8.50 / Cord
Jack Pine	360 Cords	\$ 16.25 / Cord
Mixed Aspen	551 Cords	\$ 19.95 / Cord
Mixed Hardwood	349 Cords	\$ 10.00 / Cord
Red Pine	534 Cords	\$ 43.20 / Cord
White Pine	1,156 Cords	\$ 13.00 / Cord
White Spruce	12 Cords	\$ 18.85 / Cord

* The total volume is statistically estimated within plus (+) or minus (-) 5.75 percent. There are an estimated 3,052 cords on this timber sale, plus or minus 176 cords at the 95% confidence level. The estimated units are final and not subject to adjustment. Prospective bidders are urged to examine this timber and to make their own estimates of quantity and quality.

BOND AND PAYMENT SCHEDULE:

1. A bond in the amount of \$2,963.00 to insure faithful performance of the conditions of the contract will be deposited by the successful bidder within 21 days of the sale award.
2. Cutting in any sale or unit without the required advance payment would be considered a trespass.
3. Total payment must be paid in advance or according to the following schedule :
 - (a) Ten percent (10%) of the sale value must be paid within 21 days of the sale award.
 - (b) The 10% down payment will be credited towards the first unit cut.
 - (c) Payment for each of the following units must be made before cutting begins in that unit:

PAYMENT UNIT NUMBER	PERCENT OF TOTAL SALE VALUE
01	23.1%
02	20.6%
03	6.5%
04	16.1%
05	6.3%
06	20.7%
07	6.7%
4. If no cutting takes place, the 10% down payment will not be refunded.
5. Operations on the contract issued will terminate on 12/31/2025.

SALE STATISTICS

Volumes were calculated in cubic feet using the Michigan taper model. Cubic foot volume includes all wood inside bark for the product indicated. For display purposes, cubic feet were converted to cords and MBF using a simple conversion factor, e.g. 79 cubic feet per cord and 185 cubic feet per MBF. The cubic foot volumes are precise; the cords and MBF volumes are not. Cubic foot volume cannot be directly converted to cords or boards with precision.

SALE VOLUMES

The total estimated sale volume may not equal the sum of the species/products due to the nature of statistical calculations associated with double sampling methodology.

VOLUME			STATISTICAL RANGE IN CORDS	
TOTAL CUBIC FEET	TOTAL CORDS	PERCENT ERROR	MINIMUM	MAXIMUM
241,075	3,052	5.75%	2,876	3,227

VDU VOLUMES

A VDU is a Volume Determination Unit. Volumes and their associated statistics are calculated at the VDU level and summarized to the sale level. There is often a one to one relationship between a VDU and a Payment Unit, but not always, depending on the cruise design. Refer to the VDU TO PAYMENT UNIT table.

	VOLUME			RANGE IN CORDS	
VDU	TOTAL CUBIC FEET	TOTAL CORDS	PERCENT ERROR	MINIMUM	MAXIMUM
49	14,707	186	22.70%	144	228
50	84,382	1,068	10.38%	957	1,179
52	37,944	480	12.99%	418	543
55	20,092	254	18.26%	208	301
79	34,663	439	17.38%	363	515
81	49,288	624	11.27%	554	694
TOTAL:	241,075	3,052		2,643	3,460

VDU TO PAYMENT UNIT

When a VDU is associated with more than one Payment Unit (PU), the VDU volumes are assigned to the PU based on acres of the VDU within the PU.

VDU	VDU ACRES	PU	PU ACRES
49	8.1	3	8.1
50	58.3	5	13.7
		6	44.6
52	22.5	4	22.5
55	13.2	7	13.2
79	15.9	2	15.9
81	14.4	1	14.4
TOTAL:	132.4		132.4

DESCRIPTION OF TIMBER BY PAYMENT UNIT (PU)

PU	MARKET GROUP	PRODUCT	QUANTITY	UNIT	ACRES	ADVERTISE PRICE
1	Mixed Aspen	Pulpwood	31	Cords	14.4	\$13,732.65
	<i>B. T. Aspen</i>		31	<i>Cords</i>		
	Mixed Hardwood		17	Cords		
	<i>Paper Birch</i>		4	<i>Cords</i>		
	<i>Red Maple</i>		13	<i>Cords</i>		
	Red Pine		191	Cords		
	<i>Red Pine</i>	<i>Sawtimber</i>	67.7	<i>MBF</i>		
	<i>Red Pine</i>	<i>Pulpwood</i>	56	<i>Cords</i>		
	White Pine		361	Cords		
	<i>White Pine</i>	<i>Sawtimber</i>	87.5	<i>MBF</i>		
	<i>White Pine</i>	<i>Pulpwood</i>	186	<i>Cords</i>		
2	Red Pine	Pulpwood	232	Cords	15.9	\$12,206.40
	<i>Red Pine</i>	<i>Sawtimber</i>	79.7	<i>MBF</i>		
	<i>Red Pine</i>	<i>Pulpwood</i>	73	<i>Cords</i>		
	White Pine		168	Cords		
	<i>White Pine</i>	<i>Sawtimber</i>	30.9	<i>MBF</i>		
	<i>White Pine</i>	<i>Pulpwood</i>	106	<i>Cords</i>		
3	Jack Pine	Pulpwood	150	Cords	8.1	\$3,828.95
	<i>Jack Pine</i>	<i>Sawtimber</i>	7.4	<i>MBF</i>		
	<i>Jack Pine</i>	<i>Pulpwood</i>	135	<i>Cords</i>		
	Mixed Aspen		7	Cords		
	<i>B. T. Aspen</i>		7	<i>Cords</i>		
	Mixed Hardwood		2	Cords		
	<i>Red Maple</i>		2	<i>Cords</i>		
	Red Pine		24	Cords		
	<i>Red Pine</i>	<i>Sawtimber</i>	9.3	<i>MBF</i>		
	<i>Red Pine</i>	<i>Pulpwood</i>	5	<i>Cords</i>		
	White Pine		15	Cords		
	<i>White Pine</i>	<i>Sawtimber</i>	5.0	<i>MBF</i>		
	<i>White Pine</i>	<i>Pulpwood</i>	5	<i>Cords</i>		
4	Balsam Fir	Pulpwood	2	Cords	22.5	\$9,540.25
	Jack Pine		88	Cords		
	<i>Jack Pine</i>	<i>Sawtimber</i>	4.3	<i>MBF</i>		
	<i>Jack Pine</i>	<i>Pulpwood</i>	79	<i>Cords</i>		
	Mixed Aspen		135	Cords		
	<i>B. T. Aspen</i>		135	<i>Cords</i>		
	Mixed Hardwood		14	Cords		
	<i>Black Cherry</i>		3	<i>Cords</i>		
	<i>Red Maple</i>		11	<i>Cords</i>		
	Red Pine		70	Cords		
	<i>Red Pine</i>	<i>Sawtimber</i>	14.6	<i>MBF</i>		
	<i>Red Pine</i>	<i>Pulpwood</i>	41	<i>Cords</i>		
	White Pine		172	Cords		
	<i>White Pine</i>	<i>Sawtimber</i>	64.6	<i>MBF</i>		
	<i>White Pine</i>	<i>Pulpwood</i>	43	<i>Cords</i>		
5	Red Maple	Sawtimber	1.5	MBF	13.7	\$3,739.20
	Jack Pine	Pulpwood	27	Cords		
	<i>Jack Pine</i>	<i>Sawtimber</i>	2.0	<i>MBF</i>		
	<i>Jack Pine</i>	<i>Pulpwood</i>	23	<i>Cords</i>		
	Mixed Aspen		71	Cords		
	<i>B. T. Aspen</i>		28	<i>Cords</i>		
	<i>Quaking Aspen</i>		43	<i>Cords</i>		
	Mixed Hardwood		67	Cords		
	<i>Black Cherry</i>		2	<i>Cords</i>		
	<i>Paper Birch</i>		5	<i>Cords</i>		
	<i>Red Maple</i>		60	<i>Cords</i>		

DESCRIPTION OF TIMBER BY PAYMENT UNIT (PU), CON'T

PU	MARKET GROUP	PRODUCT	QUANTITY	UNIT	ACRES	ADVERTISE PRICE
5 con't	Red Pine	Pulpwood	4	Cords		
	<i>Red Pine</i>	<i>Sawtimber</i>	1.8	<i>MBF</i>		
	White Pine	Pulpwood	69	Cords		
	<i>White Pine</i>	<i>Sawtimber</i>	5.2	<i>MBF</i>		
	<i>White Pine</i>	<i>Pulpwood</i>	59	<i>Cords</i>		
	White Spruce		2	Cords		
6	Red Maple	Sawtimber	4.9	MBF	44.6	\$12,268.75
	Balsam Fir	Pulpwood	2	Cords		
	Jack Pine		88	Cords		
	<i>Jack Pine</i>	<i>Sawtimber</i>	6.4	<i>MBF</i>		
	<i>Jack Pine</i>	<i>Pulpwood</i>	75	<i>Cords</i>		
	Mixed Aspen		234	Cords		
	<i>B. T. Aspen</i>		93	<i>Cords</i>		
	<i>Quaking Aspen</i>		141	<i>Cords</i>		
	Mixed Hardwood		220	Cords		
	<i>Black Cherry</i>		7	<i>Cords</i>		
	<i>Paper Birch</i>		16	<i>Cords</i>		
	<i>Red Maple</i>		197	<i>Cords</i>		
	Red Pine		13	Cords		
	<i>Red Pine</i>	<i>Sawtimber</i>	6.0	<i>MBF</i>		
	<i>Red Pine</i>	<i>Pulpwood</i>	1	<i>Cords</i>		
	White Pine		224	Cords		
	<i>White Pine</i>	<i>Sawtimber</i>	16.9	<i>MBF</i>		
	<i>White Pine</i>	<i>Pulpwood</i>	190	<i>Cords</i>		
	White Spruce		7	Cords		
	7	Red Maple	Sawtimber	1.7		
Jack Pine		Pulpwood	7	Cords		
<i>Jack Pine</i>			7	<i>Cords</i>		
Mixed Aspen			73	Cords		
<i>B. T. Aspen</i>			42	<i>Cords</i>		
<i>Quaking Aspen</i>			31	<i>Cords</i>		
Mixed Hardwood			29	Cords		
<i>Red Maple</i>			29	<i>Cords</i>		
White Pine			147	Cords		
<i>White Pine</i>			147	<i>Cords</i>		
White Spruce			3	Cords		
TOTAL:			8.1	MBF		
TOTAL:			2,966	Cords		

Sale Specific Conditions & Requirements

Sale Name: Torretta Bruciata Mix

Sale Number: 42-034-21 Seq#: 1

1 - Sale Area

1.2 - Boundaries

1.2.1 - Painted boundaries (9/19)

The sale boundary and Payment Unit boundaries are marked and identified by red, blue, and green paint. Exterior sale boundary lines against private property are marked with blue paint. Exterior sale boundary lines against state are marked with red paint. Interior Payment Unit boundaries are marked with green paint. The Payment Unit line between Payment Units 5 and 6 is the forest road. Retention patches are marked with red paint; no harvesting activities may occur within these areas. The painted boundary line trees are not Included Timber and are to be protected unless marked with orange paint. Green painted trees designating an interior Payment Unit boundary are only to be cut when all surrounding Payment Units have been paid.

2 - Timber Specifications

2.1 - Included Timber

2.1.1 - Clearcut unit(s) with unmerchantable trees (6/14)

Within Payment Unit(s) 1-4, cut all trees that are two (2) inches or more at DBH.

2.1.2 - Clearcut unit(s) w/o unmerchantable trees (8/11)

Within Payment Unit(s) 5-7, cut all trees which meet minimum piece specifications in 2.2 Utilization, except leave all trees marked with green paint.

2.2 - Utilization

2.2.3 - Stump heights (4/07)

Stump heights within Payment Unit(s) 1-4 shall not exceed 6 inches for all trees. This is to facilitate cultivation operations.

3 - Payments

3.3 - Pre-measured Sales

3.3.4 - Dividing payment units (7/14)

Payment Unit(s) 1, 2, 4, and 6 may be divided at the request of the Purchaser and upon approval of the Unit Manager.

Dividing Payment Units is a contract modification which requires a Timber Sale Contract Amendment. There will be only one division per Payment Unit.

4 - Transportation

4.1 - Construction

4.1.3 - Slash and earthen piles (8/04)

Piles or windrows of earth along roads and landings that have been widened or constructed shall be leveled. Slash from road maintenance or construction, including stumps, shall be dispersed throughout the sale.

4.1.6 - Road construction (1/09)

Construction of new roads or improvements of existing roads shall be done in such a way as to minimize the environmental and visual impacts. Merchantable trees shall be cut and utilized unless otherwise directed. Non-merchantable trees shall be severed and laid flat on the ground. Slash shall be scattered, and not left in windrows and kept a minimum of 10 feet back from the road edge. Stumps shall be set upright, not left on edge, and be moved at least 10 feet away from the road edge. Disturbed soil shall be feathered into the woods and not left in berms or windrows. Any new roads will need to be approved by the sale administrator.

4.1.7 - Road closure (10/11)

All new roads built into the sale must be blocked to vehicle traffic within 30 days of completion of hauling. Overgrown roads that are reopened shall be considered new roads. All stumps from road building and landing construction must be reserved to block any newly constructed roads upon completion of the sale. These stumps must be scattered along the road system to

prohibit vehicular movement. Contact the sale administrator for specific details of design and placement.

4.2 - Maintenance

4.2.3 - Road maintenance (8/13)

The following road maintenance may be needed: grading, crowning, and filling with gravel, as necessary.

4.2.5 - Two wheel drive condition (2/04)

All existing trail roads on and adjacent to the sale area must be passable by two-wheel drive traffic for the duration of the sale.

5 - Operations

5.2 - Conduct of Operations

5.2.1 - Slash

5.2.1.8 - Slash height (12/08)

No slash or tree tops may exceed 24 inches in height.

5.2.2 - Hazard Trees/Snags

5.2.2.1 - Den trees (10/16)

Obvious hollow and/or den trees shall be protected and left standing unless they are a safety hazard.

5.2.3 - Operating Restrictions

5.2.3.2 - Operating restrictions (9/11)

Within Payment Unit(s) 1-4, unless changed by written agreement, cutting and skidding are not permitted during the period of December 31 to April 15. This restriction is because of the low stump restriction to facilitate cultivation operations.

5.2.3.6 - Bark beetle restriction (12/08)

In the event drought creates a high risk of pine bark beetle infestation, pine is not to be cut during the period March 1 through July 1, unless all portions of trees greater than two inches in diameter are removed from the sale area, reduced to chips, or treated to the satisfaction of the Unit Manager or his/her representative, within fifteen days of being severed from the stump. Pine log decks, pulpwood piles and treetops that are piled for chipping in the fall or winter within a 1/4 mile of susceptible sites must be removed before March 15. Residual slash must not be placed in piles or rows and must be spread over the site for quick drying. The Department of Natural Resources will exercise this specification if the risk of damage warrants.

5.2.32 - Decking/landing restoration (9/13)

All decking and landing areas must have the surface area restored to a condition equal to or better than before. This is to ensure the proper regeneration of the stand. Wood debris, chips, and "cookies" from trimmings must be removed or scattered away from landing and loading areas and may not be windrowed on the edge.

5.2.38 - No decking against live trees (2/04)

Cut products may not be decked against unmarked or designated leave trees.

5.4 - Soil Protection

5.4.1 - Rutting restriction, general (7/16)

Operations are to cease immediately if equipment and weather conditions result in rutting of roads and/or skid trails which is 12 inches or greater in depth and 50 feet in length. The Unit Manager or his/her representative may restrict hauling and/or skidding if ruts exceed the specified depth. With the Unit Manager or his/her representative's approval, the Purchaser may return to the area when the risk of rutting has decreased.

5.8 - Protection of Endangered Species

5.8.5 - Protection of raptor nests (3/13)

All trees with raptor nests will be protected if found during harvesting operations. Notification will be made to the Unit Manager or his/her representative who will notify the Wildlife Biologist so an on-site evaluation and recommendation can be

made, if necessary.

6 - Safety and Fire Prevention

6.2 - Signing

6.2.1 - Road posting (10/20)

The Purchaser is responsible for posting and maintaining caution signs on Clark Trail and County Road 421 prior to beginning operations. The road must be posted at appropriate distances from the Sale Area to warn of logging activity and truck traffic. Signs must be removed when harvest operations are suspended or completed. The Purchaser will provide these signs.



TIMBER SALE MAP

This information provided by authority of Part 525, 1994 PA 451, as amended.

Sale Number	Year
42 - 034	21

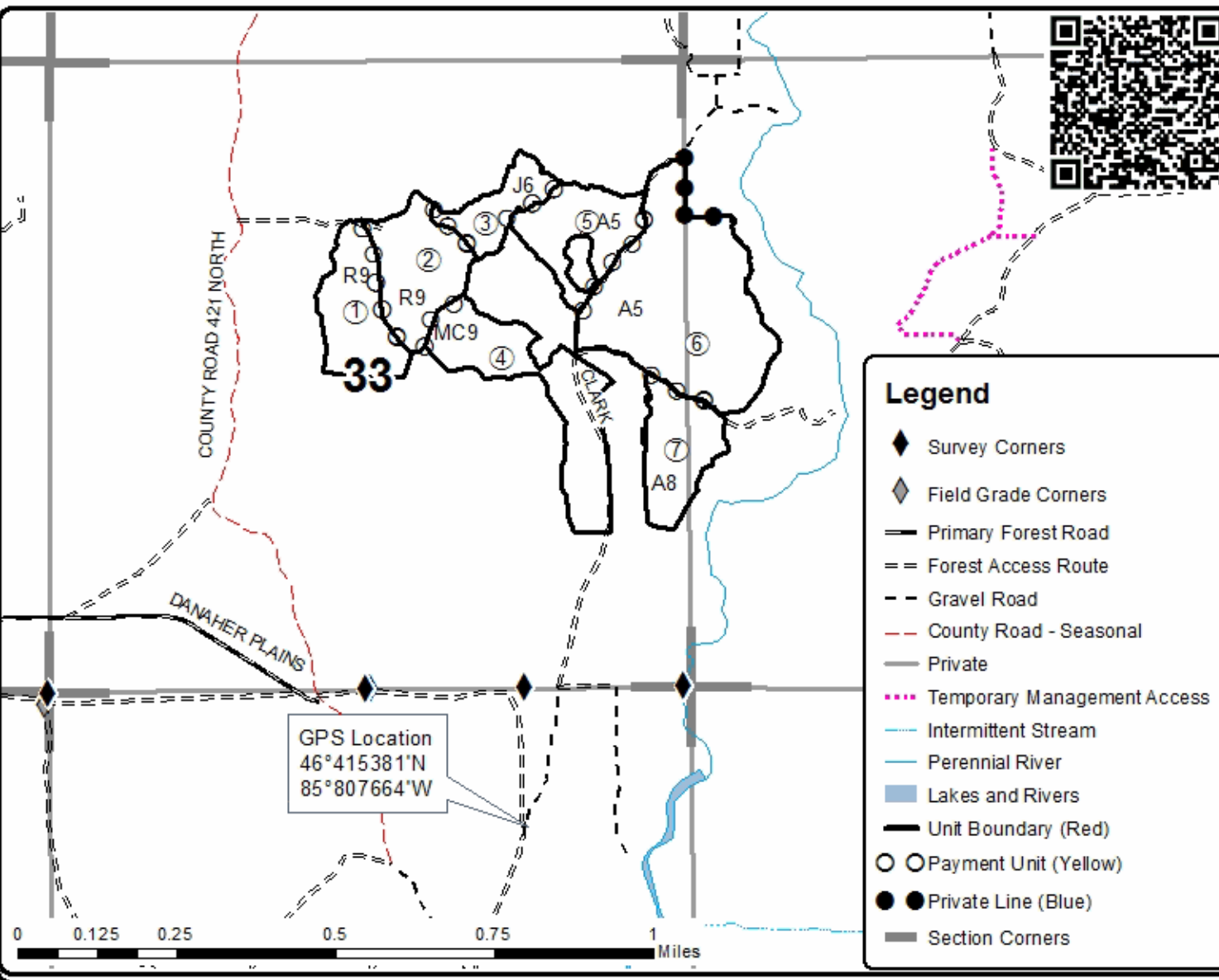
Forest Management Unit Newberry	County Luce	Mapped By A. Livermore	Date 09/21/2021	Page 1	of 1
Township 47N	Range 12W	Section(s) and Subdivision(s) SE 1/4, NE 1/4, NE SW sec. 33 SWNW, NWSW sec. 34	Cruised By Newberry DNR		
Scale					1:15,840

Cover Type				Density			
A = Aspen	H = Hemlock	N = Marsh	U = Upland Brush	0 = Non Stocked	5 = Pole Timber Medium		
B = Paper Birch	J = Jack Pine	O = Oak	UM = Upland Mixed	1 = Seedling Sapling Poor	6 = Pole Timber Well		
C = Cedar	L = Lowland Brush	P = Lowland Poplar	V = Bog or Marsh	2 = Seedling Sapling Medium	7 = Saw Timber Poor		
D = Treed Bog	LM = Lowland Mixed	Q = Mixed Swamp Conifer	W = White Pine	3 = Seedling Sapling Well	8 = Saw Timber Medium		
E = Swamp Hdwoods	M = Mpl. Bch. Brch	R = Red Pine	X = Non Stocked	4 = Pole Timber Poor	9 = Saw Timber Well		
F = Spruce Fir	MC = Mixed Conifer	S = Black Spruce	Z = Water				
G = Grass	MD = Mixed Deciduous	T = Tamarack					

PU	Acres	Cords
1	14.4	600
2	15.9	400
3	8.1	198
4	22.5	481
5	13.7	243
6	44.6	798
7	13.2	262

Torretta Bruciata Mix

Compartment 42093
132.3 Acres



Legend

- ◆ Survey Corners
- ◆ Field Grade Corners
- Primary Forest Road
- == Forest Access Route
- - Gravel Road
- - - County Road - Seasonal
- Private
- ⋯ Temporary Management Access
- ⋯ Intermittent Stream
- Perennial River
- Lakes and Rivers
- Unit Boundary (Red)
- Payment Unit (Yellow)
- Private Line (Blue)
- Section Corners

Johnsonville Spruce (42-006-21)
T46N, R12W, SEC. 18; Luce COUNTY

In response to the notice of sale to be held 3:00 p.m. (local time) on May 12, 2022, I am hereby submitting my sealed bid (firm offer) for the following forest products to be cut. Bids for individual species must be at or above the advertised price. All non-responsive bid forms may be rejected.

<u>PRODUCTS & SPECIES</u>	<u>ESTIMATED VOLUME*</u>	<u>ADVERTISED PRICE</u>	<u>BID PRICE/UNIT</u>
Pulpwood			
Balsam Fir	36 Cords	\$ 8.50/Cord	\$ _____
Black Spruce	1,762 Cords	\$ 18.85/Cord	\$ _____
Jack Pine	55 Cords	\$ 16.25/Cord	\$ _____
Mixed Aspen	77 Cords	\$ 19.95/Cord	\$ _____
Mixed Hardwood	169 Cords	\$ 10.00/Cord	\$ _____
N. White Cedar	530 Cords	\$ 4.50/Cord	\$ _____
Red Pine	82 Cords	\$ 43.20/Cord	\$ _____
Tamarack	45 Cords	\$ 3.30/Cord	\$ _____
White Pine	1,136 Cords	\$ 13.00/Cord	\$ _____

*The volumes are statistically estimated within plus (+) or minus (-) 4.90 percent at 95% confidence level. These estimated volumes are final and not subject to adjustment. Prospective bidders are urged to examine this timber and to make their own estimates of quantity and quality.

I understand that any or all bids may be rejected. All bids must be signed and all bid items must be bid or the bid form may be rejected. I also understand that consideration and awarding a contract will be based upon my past performance and ability to complete the contract based upon equipment and staffing subject to my control.

FEDERAL ID: ____ - ____ - ____ or SOCIAL SECURITY NUMBER: ____ - ____ - ____

Company or individual bidding: _____

Company representative's name: _____

Address: _____

City: _____ State: _____ Zip: _____

IF AVAILABLE, PLEASE PLACE THE PERSONALIZED LABEL FROM YOUR PROSPECTUS IN THE ABOVE BOX.

Individual or company representative's signature: _____ Date: _____

Phone number : _____ Email (optional): _____

THE WINNING BIDDER MUST COMPLETE THE VERIFICATION OF WORKER'S DISABILITY COMPENSATION ACT COMPLIANCE (ON REVERSE SIDE IF DOUBLE SIDED) WITHIN 21 DAYS OF SALE AWARD DATE



FOR DEPARTMENT USE ONLY	
Sale Number (XX - XXX - XX - XX)	
Forest Management Unit:	

TIMBER SALE VERIFICATION OF WORKER'S DISABILITY COMPENSATION ACT COMPLIANCE

As required by Act 317, P.A. 1969 (Worker's Compensation) and
Part 5 of Act 451 of 1994, as amended.

VERIFICATION OF WORKER'S DISABILITY COMPENSATION ACT COMPLIANCE

- This verification must be completed and submitted within 21 days of contract award and prior to the issuance of the timber sale contract.
- In addition, if boxes 2B or 2C are checked, then Notice of Exclusion or Certificate of Insurance must be submitted within twenty-one (21) days of the contract award and prior to the issuance of the timber sale contract.
- All information must be typed or printed except for written signatures.

Please Check Appropriate Categories:

1. My business is organized as (you **must** check one of the boxes below):
 - A. Sole Proprietorship (individual)
 - B. Partnership
 - C. Corporation
2. You **must** check one of the boxes below:
 - A. I certify my business is a sole proprietorship and it has no employees but the sole proprietor. I am not subject to the Worker's Compensation Laws.
 - B. I certify my business has satisfied its obligation to the Worker's Compensation Act through the use of an approved Notice of Exclusion (BWC-337, Rev. 5/96). I will provide a copy of the Notice of Exclusion within 21 days of the contract award. (For questions or a copy of the BWC-337, please call the Worker's Compensation Bureau at 517-322-1195).
 - C. I certify my business has a Worker's Compensation Policy. I will provide an original Certificate of Insurance within twenty-one (21) days of the contract award.
3. If you have checked item 2(A) or 2(B), you **must** indicate the number of **both** full-time and part-time employees, other than yourself, including family members and active partners (if none, you must enter "0").

_____ Full-time Employees

_____ Part-time Employees

Name of Business		Federal ID (or) Social Security No.	
Address		Telephone ()	
City	State	ZIP	

I hereby certify that the above information is true and correct. I agree to notify the Michigan DNR of any changes that occur in factors affecting my coverage during any of my present and future operations.

Signature of Owner or Authorized Representative

Title

Date

Please complete the "SEALED BID" information on the next page

Torretta Bruciata Mix (42-034-21)
T47N, R12W, SEC. 33; T47N, R12W, SEC. 34; Luce COUNTY

In response to the notice of sale to be held 3:00 p.m. (local time) on May 12, 2022, I am hereby submitting my sealed bid (firm offer) for the following forest products to be cut. Bids for individual species must be at or above the advertised price. All non-responsive bid forms may be rejected.

<u>PRODUCTS & SPECIES</u>	<u>ESTIMATED VOLUME*</u>	<u>ADVERTISED PRICE</u>	<u>BID PRICE/UNIT</u>
Sawtimber			
Red Maple	8.1 MBF	\$ 71.00/MBF	\$ _____
Pulpwood			
Balsam Fir	4 Cords	\$ 8.50/Cord	\$ _____
Jack Pine	360 Cords	\$ 16.25/Cord	\$ _____
Mixed Aspen	551 Cords	\$ 19.95/Cord	\$ _____
Mixed Hardwood	349 Cords	\$ 10.00/Cord	\$ _____
Red Pine	534 Cords	\$ 43.20/Cord	\$ _____
White Pine	1,156 Cords	\$ 13.00/Cord	\$ _____
White Spruce	12 Cords	\$ 18.85/Cord	\$ _____

*The volumes are statistically estimated within plus (+) or minus (-) 5.75 percent at 95% confidence level. These estimated volumes are final and not subject to adjustment. Prospective bidders are urged to examine this timber and to make their own estimates of quantity and quality.

I understand that any or all bids may be rejected. All bids must be signed and all bid items must be bid or the bid form may be rejected. I also understand that consideration and awarding a contract will be based upon my past performance and ability to complete the contract based upon equipment and staffing subject to my control .

FEDERAL ID: ____ - ____ - ____ or SOCIAL SECURITY NUMBER: ____ - ____ - ____

Company or individual bidding: _____

Company representative's name: _____

Address: _____

City: _____ State: _____ Zip: _____

IF AVAILABLE, PLEASE PLACE THE PERSONALIZED LABEL FROM YOUR PROSPECTUS IN THE ABOVE BOX.

Individual or company representative's signature: _____ Date: _____

Phone number : _____ Email (optional): _____

THE WINNING BIDDER MUST COMPLETE THE VERIFICATION OF WORKER'S DISABILITY COMPENSATION ACT COMPLIANCE (ON REVERSE SIDE IF DOUBLE SIDED) WITHIN 21 DAYS OF SALE AWARD DATE



FOR DEPARTMENT USE ONLY
Sale Number (XX - XXX - XX - XX)
Forest Management Unit:

TIMBER SALE VERIFICATION OF WORKER'S DISABILITY COMPENSATION ACT COMPLIANCE

*As required by Act 317, P.A. 1969 (Worker's Compensation) and
Part 5 of Act 451 of 1994, as amended.*

VERIFICATION OF WORKER'S DISABILITY COMPENSATION ACT COMPLIANCE

- This verification must be completed and submitted within 21 days of contract award and prior to the issuance of the timber sale contract.
- In addition, if boxes 2B or 2C are checked, then Notice of Exclusion or Certificate of Insurance must be submitted within twenty-one (21) days of the contract award and prior to the issuance of the timber sale contract.
- All information must be typed or printed except for written signatures.

Please Check Appropriate Categories:

1. My business is organized as (you **must** check one of the boxes below):
 - A. Sole Proprietorship (individual)
 - B. Partnership
 - C. Corporation
2. You **must** check one of the boxes below:
 - A. I certify my business is a sole proprietorship and it has no employees but the sole proprietor. I am not subject to the Worker's Compensation Laws.
 - B. I certify my business has satisfied its obligation to the Worker's Compensation Act through the use of an approved Notice of Exclusion (BWC-337, Rev. 5/96). I will provide a copy of the Notice of Exclusion within 21 days of the contract award. (For questions or a copy of the BWC-337, please call the Worker's Compensation Bureau at 517-322-1195).
 - C. I certify my business has a Worker's Compensation Policy. I will provide an original Certificate of Insurance within twenty-one (21) days of the contract award.
3. If you have checked item 2(A) or 2(B), you **must** indicate the number of **both** full-time and part-time employees, other than yourself, including family members and active partners (if none, you must enter "0").

_____ Full-time Employees

_____ Part-time Employees

Name of Business		Federal ID (or) Social Security No.	
Address		Telephone ()	
City	State	ZIP	

I hereby certify that the above information is true and correct. I agree to notify the Michigan DNR of any changes that occur in factors affecting my coverage during any of my present and future operations.

Signature of Owner or Authorized Representative

Title

Date

Please complete the "SEALED BID" information on the next page

Hummingbird Pine (42-033-21)
T47N, R12W, SEC. 28; T47N, R12W, SEC. 29; T47N, R12W, SEC. 33; Luce

In response to the notice of sale to be held 3:00 p.m. (local time) on May 12, 2022, I am hereby submitting my sealed bid (firm offer) for the following forest products to be cut. Bids for individual species must be at or above the advertised price. All non-responsive bid forms may be rejected.

<u>PRODUCTS & SPECIES</u>	<u>ESTIMATED VOLUME*</u>	<u>ADVERTISED PRICE</u>	<u>BID PRICE/UNIT</u>
Sawtimber			
Paper Birch	5.3 MBF	\$ 35.00/MBF	\$ _____
Pulpwood			
Jack Pine	386 Cords	\$ 16.25/Cord	\$ _____
Mixed Aspen	249 Cords	\$ 19.95/Cord	\$ _____
Mixed Hardwood	114 Cords	\$ 10.00/Cord	\$ _____
Red Pine	1,272 Cords	\$ 43.20/Cord	\$ _____
White Pine	1,234 Cords	\$ 13.00/Cord	\$ _____
White Spruce	8 Cords	\$ 18.85/Cord	\$ _____

*The volumes are statistically estimated within plus (+) or minus (-) 4.16 percent at 95% confidence level. These estimated volumes are final and not subject to adjustment. Prospective bidders are urged to examine this timber and to make their own estimates of quantity and quality.

I understand that any or all bids may be rejected. All bids must be signed and all bid items must be bid or the bid form may be rejected. I also understand that consideration and awarding a contract will be based upon my past performance and ability to complete the contract based upon equipment and staffing subject to my control.

FEDERAL ID: _____ or SOCIAL SECURITY NUMBER: _____
 Company or individual bidding: _____
 Company representative's name: _____
 Address: _____
 City: _____ State: _____ Zip: _____

IF AVAILABLE, PLEASE PLACE THE PERSONALIZED LABEL FROM YOUR PROSPECTUS IN THE ABOVE BOX.

Individual or company representative's signature: _____ Date: _____
Phone number : _____ Email (optional): _____

THE WINNING BIDDER MUST COMPLETE THE VERIFICATION OF WORKER'S DISABILITY COMPENSATION ACT COMPLIANCE (ON REVERSE SIDE IF DOUBLE SIDED) WITHIN 21 DAYS OF SALE AWARD DATE



FOR DEPARTMENT USE ONLY
Sale Number (XX - XXX - XX - XX)
Forest Management Unit:

TIMBER SALE VERIFICATION OF WORKER'S DISABILITY COMPENSATION ACT COMPLIANCE

*As required by Act 317, P.A. 1969 (Worker's Compensation) and
Part 5 of Act 451 of 1994, as amended.*

VERIFICATION OF WORKER'S DISABILITY COMPENSATION ACT COMPLIANCE

- This verification must be completed and submitted within 21 days of contract award and prior to the issuance of the timber sale contract.
- In addition, if boxes 2B or 2C are checked, then Notice of Exclusion or Certificate of Insurance must be submitted within twenty-one (21) days of the contract award and prior to the issuance of the timber sale contract.
- All information must be typed or printed except for written signatures.

Please Check Appropriate Categories:

1. My business is organized as (you **must** check one of the boxes below):
 - A. Sole Proprietorship (individual)
 - B. Partnership
 - C. Corporation

2. You **must** check one of the boxes below:
 - A. I certify my business is a sole proprietorship and it has no employees but the sole proprietor. I am not subject to the Worker's Compensation Laws.
 - B. I certify my business has satisfied its obligation to the Worker's Compensation Act through the use of an approved Notice of Exclusion (BWC-337, Rev. 5/96). I will provide a copy of the Notice of Exclusion within 21 days of the contract award. (For questions or a copy of the BWC-337, please call the Worker's Compensation Bureau at 517-322-1195).
 - C. I certify my business has a Worker's Compensation Policy. I will provide an original Certificate of Insurance within twenty-one (21) days of the contract award.

3. If you have checked item 2(A) or 2(B), you **must** indicate the number of **both** full-time and part-time employees, other than yourself, including family members and active partners (if none, you must enter "0").

_____ Full-time Employees

_____ Part-time Employees

Name of Business		Federal ID (or) Social Security No.	
Address		Telephone ()	
City	State	ZIP	

I hereby certify that the above information is true and correct. I agree to notify the Michigan DNR of any changes that occur in factors affecting my coverage during any of my present and future operations.

Signature of Owner or Authorized Representative

Title

Date

Please complete the "SEALED BID" information on the next page