



**DEPARTMENT OF NATURAL RESOURCES  
STATE OF MICHIGAN  
TIMBER SALE PROSPECTUS #7018**

SCHEDULED SALE DATE AND TIME: 3:00 p.m. (local time) on May 19, 2022.

LOCATION: NEWBERRY MGMT UNIT, 5666 S STATE HWY M 123, NEWBERRY, MI 49868.

PROSPECTUS NOTE: The bidder is advised to inspect the sale area and review the location, estimated volumes, operating costs and contract terms of proposed sales. Please be aware that some landowners may request 60 days or more notice for access across their land.

Notice is hereby given that bids will be received by the Unit Manager, NEWBERRY MANAGEMENT UNIT, for certain timber on the following described lands:

Seahorse Pine (42-007-21) / T46N, R12W, SEC. 6 , E1/2NW,W1/2NE,SWSW,NESE,S1/2SE.

T46N, R12W, SEC. 7 , N1/2NW,SWNW,NE,N1/2SE,SESE.

Luce County, Advertised Price \$103,837.70, 246.0 Acres, Red Pine, Hardwood.

SALE NOTE: All units of volume listed for this sale were estimated using the Inventory Manager computer program and the new Michigan taper model.

Road maintenance may be required. See Sale Spec. 4.2.3 for details.

Spring Creek Jack Pine (42-008-21) / T46N, R12W, SEC. 18, N1/2NW,N1/2NE.

T46N, R12W, SEC. 7 , SW,NWSE,S1/2SE.

Luce County, Advertised Price \$76,228.00, 183.1 Acres, Jack Pine, White Pine.

SALE NOTE: All units of volume listed for this sale were estimated using the Inventory Manager computer program and the new Michigan taper model.

No new roads will be permitted in any Payment Unit. See Sale Spec. 4.1.12 for additional information.

The following road maintenance may be needed: within 60 days of completion of hauling, or if no hauling occurs for 60 days, the road must be maintained and graded. See Sale Spec. 4.2.3 for additional information.

North Wines Road Jack Pine (42-014-21) / T49N, R06W, SEC. 4 , SENW,W1/2NE,NESW,NWSE.

T49N, R06W, SEC. 8 , SENW,NENE,S1/2NE,NESE.

T49N, R06W, SEC. 9 , W1/2NW,NWSW.

Chippewa County, Advertised Price \$31,607.25, 107.4 Acres, Jack Pine, Red Pine.

SALE NOTE: All units of volume listed for this sale were estimated using the Inventory Manager computer program and the new Michigan taper model.

Note that red and white pine was cruised as all pulp and sawlogs may be present within stands.

Road work may be required. See Sale Spec. 4.2.3 for additional information.

Harvesting is limited to the period of April 1 to December 31 because of the need to cut low stumps.

It is recommended, but not required, that hauling occur during the late summer on into the fall because of the sandy nature of the access roads leading to the Sale Area.

The snowmobile trail is shown on the Timber Sale Map. See Sale Spec. 5.2.41 for additional information.

Disappearing DTape Pine (42-015-21) / T49N, R06W, SEC. 17, SENW,N1/2NE,SWNE,SW,NWSE.

T49N, R06W, SEC. 18, NENE,S1/2NE,S1/2SW,SE.

T49N, R06W, SEC. 19, N1/2NW,NENE.

T49N, R06W, SEC. 20, N1/2NW,N1/2NE.

T49N, R06W, SEC. 21, NWNW.

T49N, R06W, SEC. 7 , SESE.

T49N, R06W, SEC. 8 , SWSW,S1/2SE.

Chippewa County, Advertised Price \$44,486.60, 105.4 Acres, Jack Pine, Red Pine.

SALE NOTE: All units of volume listed for this sale were estimated using the Inventory Manager computer program and the new Michigan taper model.

No new roads will be permitted. See Sale Spec. 4.1.12 for additional information.

Within Payment Units 1, 2 and 4, it is recommended, but not required, that hauling occur during late summer or into the fall because of the sandy nature of the access roads leading into the sale.

The West Farm Truck Road is also snowmobile trail and is shown on the Timber Sale Map. See Sale Spec. 5.2.41 for restrictions.

A recreation site such as a trail, pathway, or campground is within the sale area or the vicinity. Certain restrictions/specifications may be applicable including time restrictions.

## BID INSTRUCTIONS (VER. 07/02/2018):

### 1. Scheduled Bid Location, Date, and Time (2/11)

Bids must be received by the Unit Manager, NEWBERRY OFFICE, 5666 S STATE HWY M 123, NEWBERRY, MI 49868, no later than 3:00 p.m. (local time) on May 19, 2022. For further information concerning this sale, contact Keith Magnusson at 906-291-0120 extension n/a.

### 2. Bidder's Qualifications (5/16)

Purchaser shall obtain workers compensation insurance to cover claims under Michigan's Worker's Disability Compensation Act of 1969 or similar employee benefit act of any other state applicable to an employee. If all or part of a timber sale was prepared by a private contractor, the contractor and that contractor's company are not permitted to bid on the timber sale contract. Bids will not be accepted from individuals or companies appearing on the DNR/FRD No-Bid List. This list contains the names of purchasers who previously failed to execute a contract within 21-days or who have a history of poor performance.

### 3. Preparation of Sealed Bids (5/16)

Bid Forms may be completed online thru Michigan DNR Timber Sale Online Bidding (OLB) at [www.michigan.gov/timberbidding](http://www.michigan.gov/timberbidding) or by completing the hardcopy Bid Form found in the Timber Sale Prospectus. Hardcopy Bid Forms shall be manually signed in ink. Registration in OLB is considered your 'signature' for all bids submitted thru that system. Bid prices must be entered for each species and product in the Bid Price column for all material subject to bidding and all fill-in blanks must be completed. If erasures or other changes appear on the hardcopy Bid Form, each erasure or change must be initialed by the person signing the bid.

### 4. Submission of Sealed Bids (5/16)

Bid forms may be obtained from the Unit Manager or thru OLB. Bids may be submitted hardcopy or thru OLB. All hardcopy bids must be submitted on the bid form and in an envelope clearly identified as described in this section. NOTE: Only one bid form per bid envelope. Sealed bids must be submitted to the Unit office designated in the prospectus and must be submitted at or prior to the time established in the prospectus. The envelope should show on the outside (a) the sale name or number and (b) the date and time of bid opening, as shown in the prospectus. Bids received after the time specified in the sale prospectus are late bids and will be rejected.

It is possible for a bidder to submit multiple bids on a single sale. For example, a bid may be submitted hardcopy and a bid may be submitted thru OLB. Or, two bidders from the same company could both submit bids on the same sale. If this were to happen, the State would accept all bids received and award the contract accordingly. All bidding and contractual requirements would apply to all bids received.

### 5. Public Opening of Sealed Bids (7/16)

If conditions permit, the sealed bids will be publicly opened and posted at the time and place set in the prospectus.

If a bidder, present at a bid opening, has submitted bids on more than one sale, that bidder may withdraw their unopened bid envelopes or announce the withdrawal of their online bid after being declared the successful bidder on one sale.

### 6. Award of Contract (1/11)

Award of the contract will be made to the Bidder whose bid, conforming to the prospectus, is most advantageous to the State of Michigan on the basis of total value at rates bid for the estimated quantities. The State reserves the right to reject any bid or waive any minor irregularity in bids received. A written award mailed (or otherwise furnished) to the successful Bidder shall be deemed to result in a binding contract without further action by either party.

### 7. Down Payment (1/11)

The Bidder to whom award is made must make a down payment within 21 days of the sale award. The amount of the down payment will be calculated as shown in the Bond and Payment Schedule of this prospectus. Only cash may be used to meet this requirement.

### 8. Performance Security (1/11)

As guarantee of faithful performance, a cash bond, certificate of deposit, surety bond or irrevocable letter of credit (LOC) is required within 21 days of the sale award. The amount of the performance security is shown in the Bond and

Payment Schedule of this prospectus. If an LOC or surety is used, the coverage must extend for at least 6 months beyond the contract expiration.

#### 9. Timber Sale Contract (7/18)

Additional conditions and requirements common to all timber sales are listed on the timber sale contract (R4031) and are available on line at [www.michigan.gov/timber](http://www.michigan.gov/timber). Contact the Unit Manager for additional information or a sample contract. Within 21 days of the date of the award letter, the bidder must sign the contract and provide the required down payment, performance security, and verification of worker's disability compensation. The down payment and performance security shall be in accordance with the provisions of the timber sale contract, in the sums stated in this prospectus. If these actions are not taken, then the Bidder, the Bidder's corporation, and the corporation's principals may not be permitted to bid on State timber sales for a period of 3 months after the first offense, 6 months after the second offense, and 1 year after the third offense. An offense will only be counted against the Bidder for 5 years. In addition, the Bidder certifies that if awarded this contract, the Bidder will complete the timber sale contract in accordance with its terms and any modifications thereof including requirements to purchase, cut, and remove the included timber by the expiration date.

Payment Unit values in the State Forest Timber Sale Contract are calculated based on the advertised value of the Payment Unit as a percentage of the total advertised value of the contract. The advertised value of each Payment Unit is given in the Description of Timber by Payment Unit table on the Timber Sale Information page. For example, if the value of Payment Unit 1 is advertised as \$1,500 and the total Timber Sale value is advertised as \$10,000, the contract price for Payment Unit 1 will be 15% of the total bid price ( $\$1,500/\$10,000 * 100$ ).

#### 10. Disclaimer of Estimates and Bidder's Warranty of Inspection (7/16)

Before submitting this bid, the Bidder is advised and cautioned to inspect the sale area, review the requirements of the sale contract, and take other steps as may be reasonably necessary to ascertain the location, estimated volumes, construction estimates, and operating costs of the proposed sale. Failure to do so will not relieve the Bidder from responsibility for completing the contract.

The Bidder warrants that this bid is submitted solely on the basis of the Bidder's examination and inspection of the quality and quantity of the timber offered for sale and the Bidder's opinion of the value thereof and the costs of recovery. No reliance should be placed on the State of Michigan's estimates of timber quality, quantity or costs of recovery. Bidder further acknowledges that the State of Michigan: (i) expressly disclaims any warranty of fitness of timber for any purpose; (ii) offers this timber as is without any warranty of quality (merchantability) or quantity and (iii) expressly disclaims any warranty as to the quantity or quality of timber sold.

#### 11. Certification and Chain-of-Custody (10/14)

Unless otherwise indicated in the contract under section 7 – Other Conditions of the Sale Specific Conditions & Requirements, the area encompassed by this timber sale is certified to the standards of the Forest Stewardship Council (FSC) - Certificate #SCS-FM/COC-00090N and the Sustainable Forestry Initiative (SFI) - Certificate #NSF-SFIS-5Y031-SF5. Forest products from this sale may be delivered to the mill as "FSC 100% and / or SFI certified" as long as the contractor hauling the forest products is chain-of-custody (COC) certified or covered under a COC certificate from the destination mill. The purchaser is responsible for maintaining COC after leaving the sale area.

#### 12. Good Neighbor Authority (GNA) Requirements (7/16)

If the name of this timber sales contains the acronym GNA, it is authorized by the Good Neighbor Authority (GNA) and covered by various agreements between the U.S. Forest Service and the State. The timber sale occurs on federal land and the following conditions apply:

GNA contracts on US Forest Service land will not be awarded to purchasers on the Federal list of excluded parties. The System for Award Management (SAM) will be checked for active excluded parties prior to award of contract. In addition, the Bidder to whom award is made must complete an Assurance Regarding Felony Conviction or Tax Delinquent Status for Corporate Applicants (AD-3031).

#### 13. Good Neighbor Authority (GNA) Requirements, con't (9/16)

Bidder certifies, by signing this bid form, that to the best of Bidder's knowledge that the following representations are accurate and complete.

- a. That the Bidder and its principals are not presently debarred, suspended, proposed for debarment, declared ineligible, or voluntary excluded from timber sales (covered transactions) by any Federal department or agency.
- b. That the Bidder and its principals have not within a 3-year period preceding this bid been convicted of or had a civil judgment rendered against them for commission of fraud or a criminal offense in connection with obtaining , attempting to obtain, or performing a public (Federal, State, or local) transaction or contract under a public transaction; violation of Federal or State antitrust statutes or commission of embezzlement, theft, forgery, bribery, falsification or destruction of records, making false statements, or receiving stolen property.
- c. That the Bidder and its principals are not presently indicted for or otherwise criminally or civilly charged by a governmental entity (Federal, State, or local) with commission of any of the offenses enumerated in paragraph b of this certification.
- d. That the Bidder and its principals have not within a 3-year period preceding this bid had one or more public transactions (Federal, State, or local) terminated for breach or default of a timber or forest product contract.

Bidders that cannot certify this requirement, in whole or in part, shall submit an explanation with their bid.

DAN EICHINGER  
Director



# TIMBER SALE INFORMATION

Seahorse Pine (42-007-21)  
 T46N, R12W, SEC. 6; T46N, R12W, SEC. 7.  
 Luce County (Advertised Price \$103,837.70)

SALE NOTE: All units of volume listed for this sale were estimated using the Inventory Manager computer program and the new Michigan taper model.

Road maintenance may be required. See Sale Spec. 4.2.3 for details.

A timber sale contract for this lump sum, sealed bid timber sale will be awarded to the responsible bidder offering the highest sealed bid price. All units of volume listed below were estimated using the Inventory Manager computer program and the new Michigan taper model. Bids must be at or above the following advertised price for each product and species:

<u>PRODUCTS &amp; SPECIES</u>	<u>ESTIMATED UNITS*</u>	<u>ADVERTISED PRICE</u>
Sawtimber		
Red Maple	136.6 MBF	\$ 71.00 / MBF
Sugar Maple	6.7 MBF	\$ 172.00 / MBF
White Pine	3.9 MBF	\$ 45.00 / MBF
Pulpwood		
Balsam Fir	7 Cords	\$ 8.50 / Cord
Jack Pine	427 Cords	\$ 16.25 / Cord
Mixed Hardwood	554 Cords	\$ 10.00 / Cord
Quaking Aspen	97 Cords	\$ 19.95 / Cord
Red Pine	1,802 Cords	\$ 43.20 / Cord
White Pine	3 Cords	\$ 13.00 / Cord
White Spruce	24 Cords	\$ 18.85 / Cord

\* The total volume is statistically estimated within plus (+) or minus (-) 5.09 percent. There are an estimated 3,236 cords on this timber sale, plus or minus 165 cords at the 95% confidence level. The estimated units are final and not subject to adjustment. Prospective bidders are urged to examine this timber and to make their own estimates of quantity and quality.

**BOND AND PAYMENT SCHEDULE:**

1. A bond in the amount of \$5,192.00 to insure faithful performance of the conditions of the contract will be deposited by the successful bidder within 21 days of the sale award.
2. Cutting in any sale or unit without the required advance payment would be considered a trespass.
3. Total payment must be paid in advance or according to the following schedule :
  - (a) Ten percent (10%) of the sale value must be paid within 21 days of the sale award.
  - (b) The 10% down payment will be credited towards the first unit cut.
  - (c) Payment for each of the following units must be made before cutting begins in that unit:

PAYMENT UNIT NUMBER	PERCENT OF TOTAL SALE VALUE
01	3.5%
02	16.5%
03	23.5%
04	0.9%
05	18.5%
06	14.5%
07	14.0%
08	8.6%

4. If no cutting takes place, the 10% down payment will not be refunded.
5. Operations on the contract issued will terminate on 12/31/2025.

**SALE STATISTICS**

Volumes were calculated in cubic feet using the Michigan taper model. Cubic foot volume includes all wood inside bark for the product indicated. For display purposes, cubic feet were converted to cords and MBF using a simple conversion factor, e.g. 79 cubic feet per cord and 185 cubic feet per MBF. The cubic foot volumes are precise; the cords and MBF volumes are not. Cubic foot volume cannot be directly converted to cords or boards with precision.

## SALE VOLUMES

The total estimated sale volume may not equal the sum of the species/products due to the nature of statistical calculations associated with double sampling methodology.

VOLUME			STATISTICAL RANGE IN CORDS	
TOTAL CUBIC FEET	TOTAL CORDS	PERCENT ERROR	MINIMUM	MAXIMUM
255,682	3,236	5.09%	3,072	3,401

## VDU VOLUMES

A VDU is a Volume Determination Unit. Volumes and their associated statistics are calculated at the VDU level and summarized to the sale level. There is often a one to one relationship between a VDU and a Payment Unit, but not always, depending on the cruise design. Refer to the VDU TO PAYMENT UNIT table.

	VOLUME			RANGE IN CORDS	
VDU	TOTAL CUBIC FEET	TOTAL CORDS	PERCENT ERROR	MINIMUM	MAXIMUM
3	17,837	226	12.54%	197	254
11	144,750	1,832	7.85%	1,688	1,976
12	16,352	207	24.72%	156	258
14	3,819	48	33.06%	32	64
17	72,924	923	5.73%	870	976
<b>TOTAL:</b>	<b>255,682</b>	<b>3,236</b>		<b>2,944</b>	<b>3,529</b>

## VDU TO PAYMENT UNIT

When a VDU is associated with more than one Payment Unit (PU), the VDU volumes are assigned to the PU based on acres of the VDU within the PU.

VDU	VDU ACRES	PU	PU ACRES
3	31.9	1	31.9
11	153.1	3	50.8
		5	40.3
		6	31.6
		7	30.4
12	15.1	8	15.1
14	5.6	4	5.6
17	40.3	2	40.3
<b>TOTAL:</b>	<b>246.0</b>		<b>246.0</b>



**DESCRIPTION OF TIMBER BY PAYMENT UNIT (PU)**

PU	MARKET GROUP	PRODUCT	QUANTITY	UNIT	ACRES	ADVERTISE PRICE
1	White Pine	Sawtimber	3.1	MBF	31.9	\$3,618.30
	Jack Pine	Pulpwood	171	Cords		
	Mixed Hardwood		3	Cords		
	<i>Black Cherry</i>		1	Cords		
	<i>Red Maple</i>		2	Cords		
	Quaking Aspen		20	Cords		
	<i>Quaking Aspen</i>	Sawtimber	0.9	MBF		
	<i>Quaking Aspen</i>	Pulpwood	18	Cords		
	White Pine		2	Cords		
	White Spruce		13	Cords		
	<i>White Spruce</i>	Sawtimber	3.3	MBF		
	<i>White Spruce</i>	Pulpwood	6	Cords		
2	Red Maple	Sawtimber	136.6	MBF	40.3	\$17,106.10
	Sugar Maple		6.7	MBF		
	Balsam Fir	Pulpwood	7	Cords		
	Mixed Hardwood		529	Cords		
	<i>Beech</i>	Sawtimber	8.1	MBF		
	<i>Beech</i>	Pulpwood	15	Cords		
	<i>Red Maple</i>		454	Cords		
	<i>Sugar Maple</i>		44	Cords		
	Quaking Aspen		35	Cords		
	<i>Quaking Aspen</i>		35	Cords		
	White Spruce		11	Cords		
	<i>White Spruce</i>	Sawtimber	3.2	MBF		
	<i>White Spruce</i>	Pulpwood	5	Cords		
	3	Jack Pine	Pulpwood	75		
Mixed Hardwood			6	Cords		
<i>Paper Birch</i>			5	Cords		
<i>Red Maple</i>			1	Cords		
Quaking Aspen			14	Cords		
<i>Quaking Aspen</i>		Sawtimber	2.4	MBF		
<i>Quaking Aspen</i>		Pulpwood	9	Cords		
Red Pine			527	Cords		
4		White Pine	Sawtimber	0.8	MBF	5.6
	Jack Pine	Pulpwood	31	Cords		
	Quaking Aspen		2	Cords		
	<i>Quaking Aspen</i>		2	Cords		
	Red Pine		9	Cords		
	White Pine		1	Cords		
5	Jack Pine	Pulpwood	59	Cords	40.3	\$19,252.60
	Mixed Hardwood		6	Cords		
	<i>Paper Birch</i>		5	Cords		
	<i>Red Maple</i>		1	Cords		
	Quaking Aspen		11	Cords		
	<i>Quaking Aspen</i>	Sawtimber	1.8	MBF		
	<i>Quaking Aspen</i>	Pulpwood	7	Cords		
	Red Pine		417	Cords		
6	Jack Pine	Pulpwood	46	Cords	31.6	\$15,083.50
	Mixed Hardwood		5	Cords		
	<i>Paper Birch</i>		4	Cords		
	<i>Red Maple</i>		1	Cords		
	Quaking Aspen		8	Cords		
	<i>Quaking Aspen</i>	Sawtimber	1.4	MBF		
	<i>Quaking Aspen</i>	Pulpwood	5	Cords		
	Red Pine		327	Cords		

**DESCRIPTION OF TIMBER BY PAYMENT UNIT (PU), CON'T**

PU	MARKET GROUP	PRODUCT	QUANTITY	UNIT	ACRES	ADVERTISE PRICE	
7	Jack Pine	Pulpwood	45	Cords	30.4	\$14,548.85	
	Mixed Hardwood		5	Cords			
	<i>Paper Birch</i>		4	<i>Cords</i>			
	<i>Red Maple</i>		1	<i>Cords</i>			
	Quaking Aspen		8	Cords			
	<i>Quaking Aspen</i>		<i>Sawtimber</i>	1.4			<i>MBF</i>
	<i>Quaking Aspen</i>		<i>Pulpwood</i>	5			<i>Cords</i>
	Red Pine		315	Cords			
8	Red Pine	Pulpwood	207	Cords	15.1	\$8,942.40	
TOTAL:			147.2	MBF			
TOTAL:			2,915	Cords			

## Sale Specific Conditions & Requirements

**Sale Name: Seahorse Pine**

**Sale Number: 42-007-21 Seq#: 1**

### 1 - Sale Area

#### 1.2 - Boundaries

##### 1.2.1 - Painted boundaries (9/19)

The sale boundary and Payment Unit boundaries are marked and identified by blue, red, and yellow paint. Exterior sale boundary lines against private land are marked in blue paint. Exterior sale boundary lines against state are marked with red paint. Interior Payment Unit boundaries are marked with yellow paint. Retention patches are marked with red paint; no harvesting activities may occur within these areas. The painted boundary line trees are not Included Timber and are to be protected unless marked with orange paint. Yellow painted trees designating an interior Payment Unit boundary are only to be cut when all surrounding Payment Units have been paid.

### 2 - Timber Specifications

#### 2.1 - Included Timber

##### 2.1.1 - Clearcut unit(s) with unmerchantable trees (6/14)

Within Payment Unit(s) 1 and 4, cut all trees that are two (2) inches or more at DBH.

##### 2.1.3 - Cut tree marked unit(s) (12/08)

Within Payment Unit(s) 3 and 5-8, all trees are designated for cutting when marked with orange paint above and below stump height, regardless of merchantability. Also, cut all jack pine, aspen, maple, and birch.

##### 2.1.7 - Leave tree marked unit(s) (6/14)

Within Payment Unit(s) 2, all trees, which meet minimum piece specifications in 2.2 Utilization, are designated for cutting, except trees marked with green paint above and below stump height.

#### 2.2 - Utilization

##### 2.2.3 - Stump heights (4/07)

Stump heights within the Sale Area, except for Payment Unit 2, shall not exceed 6 inches for all trees. This is to facilitate future planting operations.

### 3 - Payments

#### 3.3 - Pre-measured Sales

##### 3.3.4 - Dividing payment units (7/14)

Payment Unit(s) 2, 3, and 5-7 may be divided at the request of the Purchaser and upon approval of the Unit Manager. Dividing Payment Units is a contract modification which requires a Timber Sale Contract Amendment. There will be only one division per Payment Unit.

### 4 - Transportation

#### 4.1 - Construction

##### 4.1.4 - Timber removed for construction (12/09)

Trees cut or damaged in the process of pre-approved road, landing or skid trail construction will be decked in an area separate from other Designated Timber and not removed until measured by the sale administrator. Payment will be made at the specified Purchase Unit Price.

##### 4.1.6 - Road construction (1/09)

Construction of new roads or improvements of existing roads shall be done in such a way as to minimize the environmental and visual impacts. Merchantable trees shall be cut and utilized unless otherwise directed. Non-merchantable trees shall be severed and laid flat on the ground. Slash shall be scattered, and not left in windrows and kept a minimum of 10 feet back from the road edge. Stumps shall be set upright, not left on edge, and be moved at least 10 feet away from the road edge. Disturbed soil shall be feathered into the woods and not left in berms or windrows.

#### 4.1.7 - Road closure (10/11)

All new roads built into the sale must be blocked to vehicle traffic within 30 days of completion of hauling. Overgrown roads that are reopened shall be considered new roads. In general, this will require constructing double earthen berms at strategic locations. These roads must be rendered impassable to cars and trucks. All stumps from road building and landing construction must be reserved to block any newly constructed roads upon completion of the sale. These stumps must be scattered along the road system to prohibit vehicular movement. Temporary berms may be required if no sale activity occurs for 30 or more consecutive days. Contact the sale administrator for specific details of design and placement.

### 4.2 - Maintenance

#### 4.2.2 - Fill material (4/07)

To maintain roads, fill material may be needed in areas where "holes" exist or may be expected to develop. This fill material should be placed before trucking begins. Contact the sale administrator regarding the availability of onsite sand or gravel from adjacent State-owned lands.

#### 4.2.3 - Road maintenance (8/13)

The following road maintenance may be needed: cleaning of drainage areas, grading, crowning, and filling with gravel, if necessary. Damages will be assessed if grading/repair does not occur. Provide a description of the road maintenance here.

#### 4.2.4 - Grading (10/16)

For completion of the sale, state forest roads must be graded. In general, this will require a road grader or bulldozer to shape up the roads after forest products have been hauled off site. This includes cleaning of drainage areas, grading, crowning, and filling with gravel, if necessary. The grading equipment to be used must be approved by the Unit Manager or his/her representative.

## 5 - Operations

### 5.2 - Conduct of Operations

#### 5.2.1 - Slash

##### 5.2.1.8 - Slash height (12/08)

No slash or tree tops may exceed 24 inches in height.

##### 5.2.1.11 - Slash for reforestation (3/21)

Sale Area shall be left with slash evenly distributed. Bunched tops within the cutting area shall be broken up and scattered. Stumps shall be cut low to the ground. Processing sites shall not be left with a compacted layer of slash; tops from these sites shall be hauled back into the cut area and scattered.

#### 5.2.2 - Hazard Trees/Snags

##### 5.2.2.1 - Den trees (10/16)

Obvious hollow and/or den trees shall be protected and left standing unless they are a safety hazard.

#### 5.2.3 - Operating Restrictions

##### 5.2.3.6 - Bark beetle restriction (12/08)

In the event drought creates a high risk of pine bark beetle infestation, pine is not to be cut during the period March 1 through July 1, unless all portions of trees greater than two inches in diameter are removed from the sale area, reduced to chips, or treated to the satisfaction of the Unit Manager or his/her representative, within fifteen days of being severed from the stump. Pine log decks, pulpwood piles and treetops that are piled for chipping in the fall or winter within a 1/4 mile of susceptible sites must be removed before March 15. Residual slash must not be placed in piles or rows and must be spread over the site for quick drying. The Department of Natural Resources will exercise this specification if the risk of damage warrants.

##### 5.2.32 - Decking/landing restoration (9/13)

All decking and landing areas must have the surface area restored to a condition equal to or better than before. This is to ensure the proper regeneration of the stand. Wood debris, chips, and "cookies" from trimmings must be removed or scattered away from landing and loading areas and may not be windrowed on the edge.

##### 5.2.38 - No decking against live trees (2/04)

Cut products may not be decked against unmarked or designated leave trees.

#### 5.4 - Soil Protection

##### 5.4.1 - Rutting restriction, general (7/16)

Operations are to cease immediately if equipment and weather conditions result in rutting of roads and/or skid trails which is 12 inches or greater in depth and 50 feet in length. The Unit Manager or his/her representative may restrict hauling and/or skidding if ruts exceed the specified depth. With the Unit Manager or his/her representative's approval, the Purchaser may return to the area when the risk of rutting has decreased.

##### 5.4.3 - Erosion control (12/08)

Skid trails or haul roads may require erosion control structures or berms per direction of the Unit Manager or his/her representative.

##### 5.4.4 - Slope protection (9/19)

Skid trails and roads on slopes shall be water barred with slash and stumps as soon as use is complete to prevent erosion.

#### 5.8 - Protection of Endangered Species

##### 5.8.5 - Protection of raptor nests (3/13)

All trees with raptor nests will be protected if found during harvesting operations. Notification will be made to the Unit Manager or his/her representative who will notify the Wildlife Biologist so an on-site evaluation and recommendation can be made, if necessary.

### **6 - Safety and Fire Prevention**

#### 6.2 - Signing

##### 6.2.1 - Road posting (10/20)

The Purchaser is responsible for posting and maintaining caution signs on access roads within the Sale Area prior to beginning operations. The road must be posted at appropriate distances from the Sale Area to warn of logging activity and truck traffic. Signs must be removed when harvest operations are suspended or completed. The Purchaser will provide these signs.

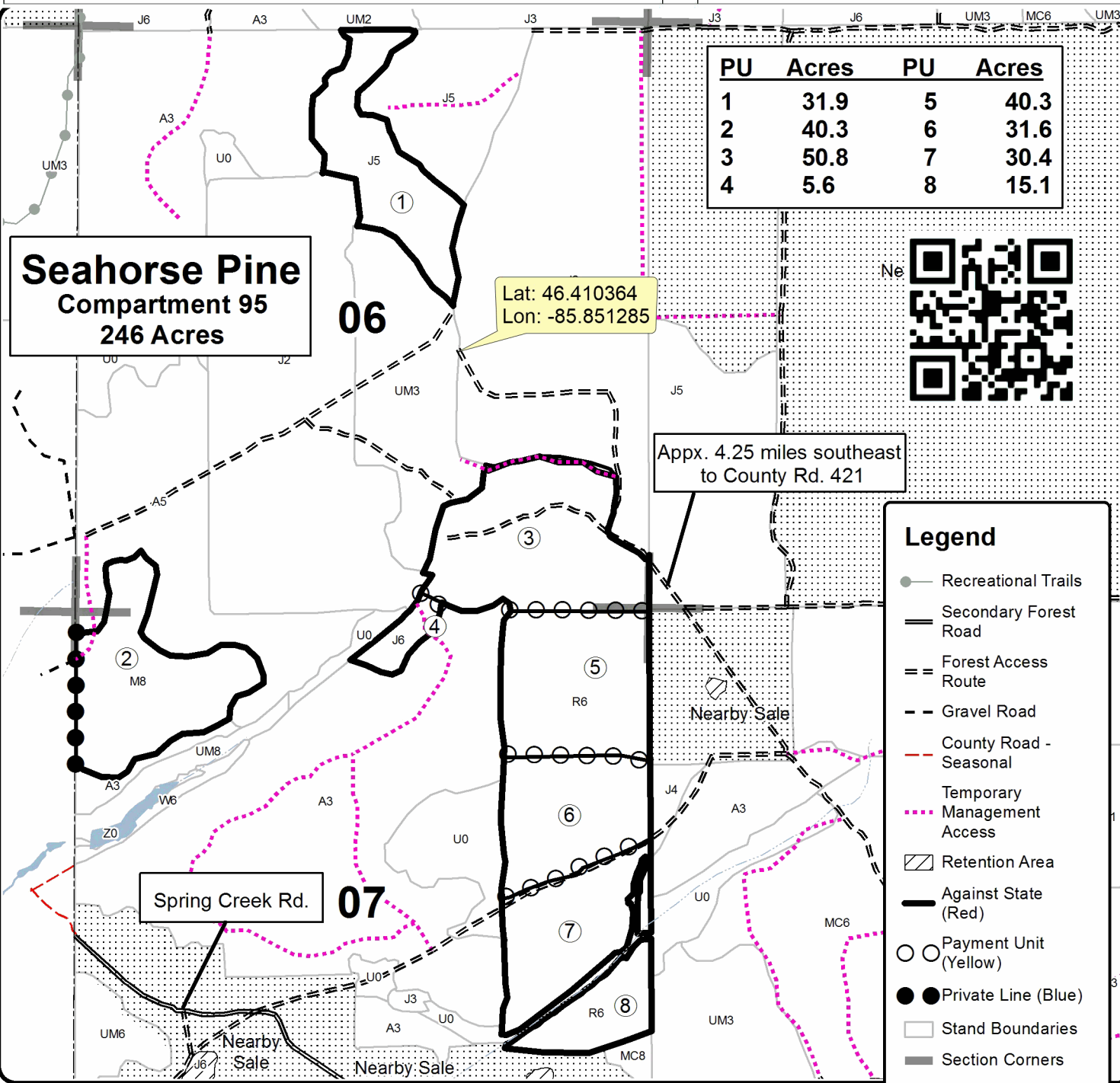


# TIMBER SALE MAP

This information provided by authority of Part 525, 1994 PA 451, as amended.

Forest Management Unit Newberry	County Luce	Mapped By Kriehn	Date 9/22/2021	Page 1	of 1
Township 46N	Range 12W	Section(s) and Subdivision(s) Section 6: E1/2NW,W1/2NE,SWSW,NESE,S1/2SE	Scale 1:15,840		

Cover Type				Density	
A = Aspen	H = Hemlock	N = Marsh	U = Upland Brush	0 = Non Stocked	5 = Pole Timber Medium
B = Paper Birch	J = Jack Pine	O = Oak	UM = Upland Mixed	1 = Seedling Sapling Poor	6 = Pole Timber Well
C = Cedar	L = Lowland Brush	P = Lowland Poplar	V = Bog or Marsh	2 = Seedling Sapling Medium	7 = Saw Timber Poor
D = Treed Bog	LM = Lowland Mixed	Q = Mixed Swamp Conifer	W = White Pine	3 = Seedling Sapling Well	8 = Saw Timber Medium
E = Swamp Hdwoods	M = Mpl, Bch, Brch	R = Red Pine	X = Non Stocked	4 = Pole Timber Poor	9 = Saw Timber Well
F = Spruce Fir	MC = Mixed Conifer	S = Black Spruce	Z = Water		
G = Grass	MD = Mixed Deciduous	T = Tamarack			



## TIMBER SALE INFORMATION

Spring Creek Jack Pine (42-008-21)  
T46N, R12W, SEC. 18; T46N, R12W, SEC. 7.  
Luce County (Advertised Price \$76,228.00)

SALE NOTE: All units of volume listed for this sale were estimated using the Inventory Manager computer program and the new Michigan taper model.

No new roads will be permitted in any Payment Unit. See Sale Spec. 4.1.12 for additional information.

The following road maintenance may be needed: within 60 days of completion of hauling, or if no hauling occurs for 60 days, the road must be maintained and graded. See Sale Spec. 4.2.3 for additional information.

A timber sale contract for this lump sum, sealed bid timber sale will be awarded to the responsible bidder offering the highest sealed bid price. All units of volume listed below were estimated using the Inventory Manager computer program and the new Michigan taper model. Bids must be at or above the following advertised price for each product and species:

<u>PRODUCTS &amp; SPECIES</u>	<u>ESTIMATED UNITS*</u>	<u>ADVERTISED PRICE</u>
Pulpwood		
Black Spruce	11 Cords	\$ 18.85 / Cord
Jack Pine	4,144 Cords	\$ 16.25 / Cord
Mixed Aspen	187 Cords	\$ 19.95 / Cord
Mixed Hardwood	88 Cords	\$ 10.00 / Cord
Red Pine	25 Cords	\$ 43.20 / Cord
White Pine	230 Cords	\$ 13.00 / Cord

\* The total volume is statistically estimated within plus (+) or minus (-) 5.42 percent. There are an estimated 4,298 cords on this timber sale, plus or minus 233 cords at the 95% confidence level. The estimated units are final and not subject to adjustment. Prospective bidders are urged to examine this timber and to make their own estimates of quantity and quality.

### **BOND AND PAYMENT SCHEDULE:**

1. A bond in the amount of \$3,811.00 to insure faithful performance of the conditions of the contract will be deposited by the successful bidder within 21 days of the sale award.
2. Cutting in any sale or unit without the required advance payment would be considered a trespass.
3. Total payment must be paid in advance or according to the following schedule:
  - (a) Ten percent (10%) of the sale value must be paid within 21 days of the sale award.
  - (b) The 10% down payment will be credited towards the first unit cut.

(c) Payment for each of the following units must be made before cutting begins in that unit:

<u>PAYMENT UNIT NUMBER</u>	<u>PERCENT OF TOTAL SALE VALUE</u>
01	13.2%
02	5.1%
03	5.9%
04	10.8%
05	22.3%
06	5.4%
07	6.3%
08	5.1%
09	6.4%
10	9.7%
11	9.8%

4. If no cutting takes place, the 10% down payment will not be refunded.
5. Operations on the contract issued will terminate on 12/31/2025.

### **SALE STATISTICS**

Volumes were calculated in cubic feet using the Michigan taper model. Cubic foot volume includes all wood inside bark for the product indicated. For display purposes, cubic feet were converted to cords and MBF using a simple conversion factor, e.g. 79 cubic feet per cord and 185 cubic feet per MBF. The cubic foot volumes are precise; the cords and MBF volumes are not. Cubic foot volume cannot be directly converted to cords or boards with precision.

## SALE VOLUMES

The total estimated sale volume may not equal the sum of the species/products due to the nature of statistical calculations associated with double sampling methodology.

VOLUME			STATISTICAL RANGE IN CORDS	
TOTAL CUBIC FEET	TOTAL CORDS	PERCENT ERROR	MINIMUM	MAXIMUM
339,520	4,298	5.42%	4,064	4,531

## VDU VOLUMES

A VDU is a Volume Determination Unit. Volumes and their associated statistics are calculated at the VDU level and summarized to the sale level. There is often a one to one relationship between a VDU and a Payment Unit, but not always, depending on the cruise design. Refer to the VDU TO PAYMENT UNIT table.

	VOLUME			RANGE IN CORDS	
VDU	TOTAL CUBIC FEET	TOTAL CORDS	PERCENT ERROR	MINIMUM	MAXIMUM
23	339,520	4,298	5.43%	4,064	4,531
<b>TOTAL:</b>	<b>339,520</b>	<b>4,298</b>		<b>4,064</b>	<b>4,531</b>

## VDU TO PAYMENT UNIT

When a VDU is associated with more than one Payment Unit (PU), the VDU volumes are assigned to the PU based on acres of the VDU within the PU.

VDU	VDU ACRES	PU	PU ACRES
23	183.1	1	24.3
		2	9.3
		3	10.8
		4	19.8
		5	40.6
		6	9.9
		7	11.5
		8	9.3
		9	11.6
		10	17.9
		11	18.1
<b>TOTAL:</b>	<b>183.1</b>		<b>183.1</b>



**DESCRIPTION OF TIMBER BY PAYMENT UNIT (PU)**

PU	MARKET GROUP	PRODUCT	QUANTITY	UNIT	ACRES	ADVERTISE PRICE
1	Black Spruce	Pulpwood	1	Cords	24.3	\$10,084.70
	Jack Pine		550	Cords		
	<i>Jack Pine</i>	<i>Sawtimber</i>	11.1	<i>MBF</i>		
	<i>Jack Pine</i>	<i>Pulpwood</i>	528	<i>Cords</i>		
	Mixed Aspen		25	Cords		
	<i>B. T. Aspen</i>		23	<i>Cords</i>		
	<i>Quaking Aspen</i>		2	<i>Cords</i>		
	Mixed Hardwood		11	Cords		
	<i>Paper Birch</i>		3	<i>Cords</i>		
	<i>Red Maple</i>		8	<i>Cords</i>		
	Red Pine		3	Cords		
	<i>Red Pine</i>	<i>Sawtimber</i>	1.6	<i>MBF</i>		
	White Pine	Pulpwood	30	Cords		
	<i>White Pine</i>	<i>Sawtimber</i>	2.1	<i>MBF</i>		
<i>White Pine</i>	<i>Pulpwood</i>	26	<i>Cords</i>			
2	Black Spruce	Pulpwood	1	Cords	9.3	\$3,886.30
	Jack Pine		211	Cords		
	<i>Jack Pine</i>	<i>Sawtimber</i>	4.3	<i>MBF</i>		
	<i>Jack Pine</i>	<i>Pulpwood</i>	202	<i>Cords</i>		
	Mixed Aspen		10	Cords		
	<i>B. T. Aspen</i>		9	<i>Cords</i>		
	<i>Quaking Aspen</i>		1	<i>Cords</i>		
	Mixed Hardwood		4	Cords		
	<i>Paper Birch</i>		1	<i>Cords</i>		
	<i>Red Maple</i>		3	<i>Cords</i>		
	Red Pine		1	Cords		
	<i>Red Pine</i>	<i>Sawtimber</i>	0.6	<i>MBF</i>		
	White Pine	Pulpwood	12	Cords		
	<i>White Pine</i>	<i>Sawtimber</i>	0.8	<i>MBF</i>		
<i>White Pine</i>	<i>Pulpwood</i>	10	<i>Cords</i>			
3	Black Spruce	Pulpwood	1	Cords	10.8	\$4,494.75
	Jack Pine		245	Cords		
	<i>Jack Pine</i>	<i>Sawtimber</i>	5.0	<i>MBF</i>		
	<i>Jack Pine</i>	<i>Pulpwood</i>	235	<i>Cords</i>		
	Mixed Aspen		11	Cords		
	<i>B. T. Aspen</i>		10	<i>Cords</i>		
	<i>Quaking Aspen</i>		1	<i>Cords</i>		
	Mixed Hardwood		5	Cords		
	<i>Paper Birch</i>		1	<i>Cords</i>		
	<i>Red Maple</i>		4	<i>Cords</i>		
	Red Pine		1	Cords		
	<i>Red Pine</i>	<i>Sawtimber</i>	0.7	<i>MBF</i>		
	White Pine	Pulpwood	14	Cords		
	<i>White Pine</i>	<i>Sawtimber</i>	0.9	<i>MBF</i>		
<i>White Pine</i>	<i>Pulpwood</i>	12	<i>Cords</i>			
4	Black Spruce	Pulpwood	1	Cords	19.8	\$8,239.45
	Jack Pine		448	Cords		
	<i>Jack Pine</i>	<i>Sawtimber</i>	9.1	<i>MBF</i>		
	<i>Jack Pine</i>	<i>Pulpwood</i>	430	<i>Cords</i>		
	Mixed Aspen		20	Cords		
	<i>B. T. Aspen</i>		19	<i>Cords</i>		
	<i>Quaking Aspen</i>		1	<i>Cords</i>		
	Mixed Hardwood		10	Cords		
	<i>Paper Birch</i>		3	<i>Cords</i>		
	<i>Red Maple</i>		7	<i>Cords</i>		
	Red Pine		3	Cords		

**DESCRIPTION OF TIMBER BY PAYMENT UNIT (PU), CON'T**

PU	MARKET GROUP	PRODUCT	QUANTITY	UNIT	ACRES	ADVERTISE PRICE
4 con't	<i>Red Pine</i>	<i>Sawtimber</i>	1.3	<i>MBF</i>		
	White Pine	Pulpwood	24	Cords		
	<i>White Pine</i>	<i>Sawtimber</i>	1.7	<i>MBF</i>		
	<i>White Pine</i>	<i>Pulpwood</i>	21	<i>Cords</i>		
5	Black Spruce	Pulpwood	1	Cords	40.6	\$16,880.25
	Jack Pine		917	Cords		
	<i>Jack Pine</i>	<i>Sawtimber</i>	18.6	<i>MBF</i>		
	<i>Jack Pine</i>	<i>Pulpwood</i>	880	<i>Cords</i>		
	Mixed Aspen		41	Cords		
	<i>B. T. Aspen</i>		40	<i>Cords</i>		
	<i>Quaking Aspen</i>		1	<i>Cords</i>		
	Mixed Hardwood		22	Cords		
	<i>Paper Birch</i>		7	<i>Cords</i>		
	<i>Red Maple</i>		15	<i>Cords</i>		
	Red Pine		6	Cords		
	<i>Red Pine</i>	<i>Sawtimber</i>	2.6	<i>MBF</i>		
	<i>Red Pine</i>	<i>Pulpwood</i>	1	<i>Cords</i>		
	White Pine		51	Cords		
	<i>White Pine</i>	<i>Sawtimber</i>	3.5	<i>MBF</i>		
	<i>White Pine</i>	<i>Pulpwood</i>	44	<i>Cords</i>		
6	Black Spruce	Pulpwood	1	Cords	9.9	\$4,110.55
	Jack Pine		224	Cords		
	<i>Jack Pine</i>	<i>Sawtimber</i>	4.5	<i>MBF</i>		
	<i>Jack Pine</i>	<i>Pulpwood</i>	215	<i>Cords</i>		
	Mixed Aspen		10	Cords		
	<i>B. T. Aspen</i>		9	<i>Cords</i>		
	<i>Quaking Aspen</i>		1	<i>Cords</i>		
	Mixed Hardwood		4	Cords		
	<i>Paper Birch</i>		1	<i>Cords</i>		
	<i>Red Maple</i>		3	<i>Cords</i>		
	Red Pine		1	Cords		
	<i>Red Pine</i>	<i>Sawtimber</i>	0.7	<i>MBF</i>		
	White Pine	Pulpwood	13	Cords		
	<i>White Pine</i>	<i>Sawtimber</i>	0.9	<i>MBF</i>		
<i>White Pine</i>	<i>Pulpwood</i>	11	<i>Cords</i>			
7	Black Spruce	Pulpwood	1	Cords	11.5	\$4,827.90
	Jack Pine		261	Cords		
	<i>Jack Pine</i>	<i>Sawtimber</i>	5.3	<i>MBF</i>		
	<i>Jack Pine</i>	<i>Pulpwood</i>	250	<i>Cords</i>		
	Mixed Aspen		12	Cords		
	<i>B. T. Aspen</i>		11	<i>Cords</i>		
	<i>Quaking Aspen</i>		1	<i>Cords</i>		
	Mixed Hardwood		6	Cords		
	<i>Paper Birch</i>		2	<i>Cords</i>		
	<i>Red Maple</i>		4	<i>Cords</i>		
	Red Pine		2	Cords		
	<i>Red Pine</i>	<i>Sawtimber</i>	0.8	<i>MBF</i>		
	White Pine	Pulpwood	14	Cords		
	<i>White Pine</i>	<i>Sawtimber</i>	1.0	<i>MBF</i>		
<i>White Pine</i>	<i>Pulpwood</i>	12	<i>Cords</i>			
8	Black Spruce	Pulpwood	1	Cords	9.3	\$3,886.30
	Jack Pine		211	Cords		
	<i>Jack Pine</i>	<i>Sawtimber</i>	4.3	<i>MBF</i>		
	<i>Jack Pine</i>	<i>Pulpwood</i>	202	<i>Cords</i>		
	Mixed Aspen		10	Cords		
	<i>B. T. Aspen</i>		9	<i>Cords</i>		

**DESCRIPTION OF TIMBER BY PAYMENT UNIT (PU), CON'T**

PU	MARKET GROUP	PRODUCT	QUANTITY	UNIT	ACRES	ADVERTISE PRICE
8 con't	<i>Quaking Aspen</i>	<i>Pulpwood</i>	1	<i>Cords</i>		
	Mixed Hardwood		4	Cords		
	<i>Paper Birch</i>		1	<i>Cords</i>		
	<i>Red Maple</i>		3	<i>Cords</i>		
	Red Pine		1	Cords		
	<i>Red Pine</i>	<i>Sawtimber</i>	0.6	<i>MBF</i>		
	White Pine	Pulpwood	12	Cords		
	<i>White Pine</i>	<i>Sawtimber</i>	0.8	<i>MBF</i>		
	<i>White Pine</i>	<i>Pulpwood</i>	10	<i>Cords</i>		
9	Black Spruce	Pulpwood	1	Cords	11.6	\$4,873.40
	Jack Pine		263	Cords		
	<i>Jack Pine</i>	<i>Sawtimber</i>	5.3	<i>MBF</i>		
	<i>Jack Pine</i>	<i>Pulpwood</i>	252	<i>Cords</i>		
	Mixed Aspen		12	Cords		
	<i>B. T. Aspen</i>		11	<i>Cords</i>		
	<i>Quaking Aspen</i>		1	<i>Cords</i>		
	Mixed Hardwood		6	Cords		
	<i>Paper Birch</i>		2	<i>Cords</i>		
	<i>Red Maple</i>		4	<i>Cords</i>		
	Red Pine		2	Cords		
	<i>Red Pine</i>	<i>Sawtimber</i>	0.8	<i>MBF</i>		
	White Pine	Pulpwood	15	Cords		
	<i>White Pine</i>	<i>Sawtimber</i>	1.0	<i>MBF</i>		
	<i>White Pine</i>	<i>Pulpwood</i>	13	<i>Cords</i>		
10	Black Spruce	Pulpwood	1	Cords	17.9	\$7,411.60
	Jack Pine		405	Cords		
	<i>Jack Pine</i>	<i>Sawtimber</i>	8.2	<i>MBF</i>		
	<i>Jack Pine</i>	<i>Pulpwood</i>	389	<i>Cords</i>		
	Mixed Aspen		18	Cords		
	<i>B. T. Aspen</i>		17	<i>Cords</i>		
	<i>Quaking Aspen</i>		1	<i>Cords</i>		
	Mixed Hardwood		8	Cords		
	<i>Paper Birch</i>		2	<i>Cords</i>		
	<i>Red Maple</i>		6	<i>Cords</i>		
	Red Pine		2	Cords		
	<i>Red Pine</i>	<i>Sawtimber</i>	1.2	<i>MBF</i>		
	White Pine	Pulpwood	22	Cords		
	<i>White Pine</i>	<i>Sawtimber</i>	1.6	<i>MBF</i>		
	<i>White Pine</i>	<i>Pulpwood</i>	19	<i>Cords</i>		
11	Black Spruce	Pulpwood	1	Cords	18.1	\$7,505.85
	Jack Pine		410	Cords		
	<i>Jack Pine</i>	<i>Sawtimber</i>	8.3	<i>MBF</i>		
	<i>Jack Pine</i>	<i>Pulpwood</i>	393	<i>Cords</i>		
	Mixed Aspen		18	Cords		
	<i>B. T. Aspen</i>		17	<i>Cords</i>		
	<i>Quaking Aspen</i>		1	<i>Cords</i>		
	Mixed Hardwood		8	Cords		
	<i>Paper Birch</i>		2	<i>Cords</i>		
	<i>Red Maple</i>		6	<i>Cords</i>		
	Red Pine		2	Cords		
	<i>Red Pine</i>	<i>Sawtimber</i>	1.2	<i>MBF</i>		
	White Pine	Pulpwood	23	Cords		
	<i>White Pine</i>	<i>Sawtimber</i>	1.6	<i>MBF</i>		
	<i>White Pine</i>	<i>Pulpwood</i>	20	<i>Cords</i>		
TOTAL:			4,685	Cords		

# Sale Specific Conditions & Requirements

**Sale Name: Spring Creek Jack Pine**

**Sale Number: 42-008-21 Seq#: 1**

## 1 - Sale Area

### 1.2 - Boundaries

#### 1.2.1 - Painted boundaries (9/19)

The sale boundary and Payment Unit boundaries are marked and identified by blue, red, and yellow paint. Exterior sale boundary lines against private property are marked with blue paint. Exterior sale boundary lines against state are marked with red paint. Interior Payment Unit boundaries are marked with yellow paint. Retention patches are marked with red paint; no harvesting activities may occur within these areas. The painted boundary line trees are not Included Timber and are to be protected unless marked with orange paint. Yellow painted trees designating an interior Payment Unit boundary are only to be cut when all surrounding Payment Units have been paid.

## 2 - Timber Specifications

### 2.1 - Included Timber

#### 2.1.1 - Clearcut unit(s) with unmerchantable trees (6/14)

Within Payment Unit(s) 1-11, cut all trees that are two (2) inches or more at DBH. Leave all oak and leave all pockets of retention marked in red.

### 2.2 - Utilization

#### 2.2.3 - Stump heights (4/07)

Stump heights within the Sale Area shall not exceed 12 inches for trees greater than 10 inches at DBH and 4 inches for trees smaller than 10 inches at DBH. This is to facilitate planting operations. A written waiver of this requirement may be obtained if agreed upon by Unit Manager.

## 3 - Payments

### 3.3 - Pre-measured Sales

#### 3.3.4 - Dividing payment units (7/14)

Payment Unit(s) 5 may be divided at the request of the Purchaser and upon approval of the Unit Manager. Dividing Payment Units is a contract modification which requires a Timber Sale Contract Amendment.

## 4 - Transportation

### 4.1 - Construction

#### 4.1.6 - Road construction (1/09)

Improvements of existing roads shall be done in such a way as to minimize the environmental and visual impacts. Merchantable trees shall be cut and utilized unless otherwise directed. Non-merchantable trees shall be severed and laid flat on the ground. Slash shall be scattered, and not left in windrows and kept a minimum of 10 feet back from the road edge. Stumps shall be set upright, not left on edge, and be moved at least 10 feet away from the road edge. Disturbed soil shall be feathered into the woods and not left in berms or windrows.

#### 4.1.12 - No new roads (1/12)

No new roads will be permitted in any Payment Unit. All operations are limited to existing roads. Skid trails only will be allowed.

### 4.2 - Maintenance

#### 4.2.2 - Fill material (4/07)

To maintain roads, fill material may be needed in areas where "holes" exist or may be expected to develop. This fill material should be placed before trucking begins. Contact the sale administrator regarding the availability of onsite sand or gravel from adjacent State-owned lands.

#### 4.2.3 - Road maintenance (8/13)

The following road maintenance may be needed: within 60 days of completion of hauling, or if no hauling occurs for 60 days, the road must be maintained and graded. This includes cleaning of drainage areas, grading, crowning, and filling with gravel, if necessary. Damages will be assessed if grading/repair does not occur.

#### 4.2.5 - Two wheel drive condition (2/04)

All existing trail roads on and adjacent to the sale area must be passable by two-wheel drive traffic for the duration of the sale.

## 5 - Operations

### 5.2 - Conduct of Operations

#### 5.2.1 - Slash

##### 5.2.1.8 - Slash height (12/08)

No slash or tree tops may exceed 24 inches in height.

##### 5.2.1.11 - Slash for reforestation (5/07)

To facilitate reforestation, the Sale Area shall be left with slash evenly distributed. Bunched tops within the cutting area shall be broken up and scattered. Stumps shall be cut low to the ground. Processing sites shall not be left with a compacted layer of slash; tops from these sites shall be hauled back into the cut area and scattered.

#### 5.2.2 - Hazard Trees/Snags

##### 5.2.2.1 - Den trees (10/16)

Obvious hollow and/or den trees shall be protected and left standing unless they are a safety hazard.

#### 5.2.3 - Operating Restrictions

##### 5.2.3.6 - Bark beetle restriction (12/08)

In the event drought creates a high risk of pine bark beetle infestation, pine is not to be cut during the period March 1 through July 1, unless all portions of trees greater than two inches in diameter are removed from the sale area, reduced to chips, or treated to the satisfaction of the Unit Manager or his/her representative, within fifteen days of being severed from the stump. Pine log decks, pulpwood piles and treetops that are piled for chipping in the fall or winter within a 1/4 mile of susceptible sites must be removed before March 15. Residual slash must not be placed in piles or rows and must be spread over the site for quick drying. The Department of Natural Resources will exercise this specification if the risk of damage warrants.

##### 5.2.32 - Decking/landing restoration (9/13)

All decking and landing areas must have the surface area restored to a condition equal to or better than before. This is to ensure the proper regeneration of the stand. Wood debris, chips, and "cookies" from trimmings must be removed or scattered away from landing and loading areas and may not be windrowed on the edge.

##### 5.2.38 - No decking against live trees (2/04)

Cut products may not be decked against unmarked or designated leave trees.

### 5.4 - Soil Protection

#### 5.4.2 - Skid trails (2/04)

Skid trails up and down slopes should be avoided. If however this is unavoidable, these trails will be left in a non-erodible condition using water bars, logs, and slash. Placing of slash on these skid trails while logging is ongoing may alleviate need for any further action. At the direction of the sale administrator, seed, fertilizer, and mulch may also be required.

### 5.8 - Protection of Endangered Species

#### 5.8.5 - Protection of raptor nests (3/13)

All trees with raptor nests will be protected if found during harvesting operations. Notification will be made to the Unit Manager or his/her representative who will notify the Wildlife Biologist so an on-site evaluation and recommendation can be made, if necessary.

## 6 - Safety and Fire Prevention

## 6.2 - Signing

### 6.2.1 - Road posting (10/20)

The Purchaser is responsible for posting and maintaining caution signs on Spring Creek Road prior to beginning operations. The road must be posted at appropriate distances from the Sale Area to warn of logging activity and truck traffic. Signs must be removed when harvest operations are suspended or completed. The Purchaser will provide these signs.

## 7 - Other Conditions

### 7.3 - Contract Modifications

#### 7.3.3 - Modification for reforestation (8/05)

When contractual work of Purchaser has been accepted for any Payment Unit identified on Sale Area Map, Payment Unit will be eliminated from the Sale Area on written notice so that reforestation operations can begin.



# TIMBER SALE MAP

This information provided by authority of Part 525, 1994 PA 451, as amended.

Forest Management Unit  
Newberry

Township  
Newberry

Range  
12W

Section(s) and Subdivision(s)  
Section 18: N $\frac{1}{2}$ NW, N $\frac{1}{2}$ NE

County  
Luce

Mapped By  
Livermore

Cruised By  
Newberry Staff

Date  
1/27/2021

Scale  
1:15,840

Page  
1

of  
1

Year  
2021

PU Acres

1 24.3

2 9.3

3 10.8

4 19.8

5 40.6

6 9.9

7 11.5

8 9.3

9 11.6

10 17.9

11 18.1

12

13

14

15

16

17

18

19

20

21

22

23

24

25

26

27

28

29

30

31

32

33

34

35

36

37

38

39

40

41

42

43

44

45

46

47

48

49

50

51

52

53

54

55

56

57

58

59

60

61

62

63

64

65

66

67

68

69

70

71

72

73

74

75

76

77

78

79

80

81

82

83

84

85

86

87

88

89

90

91

92

93

94

95

96

97

98

99

100

101

102

103

104

105

106

107

108

109

110

111

112

113

114

115

116

117

118

119

120

121

122

123

124

125

126

127

128

129

130

131

132

133

134

135

136

137

138

139

140

141

142

143

144

145

146

147

148

149

150

151

152

153

154

155

156

157

158

159

160

161

162

163

164

165

166

167

168

169

170

171

172

173

174

175

176

177

178

179

180

181

182

183

184

185

186

187

188

189

190

191

192

193

194

195

196

197

198

199

200

201

202

203

204

205

206

207

208

209

210

211

212

213

214

215

216

217

218

219

220

221

222

223

224

225

226

227

228

229

230

231

232

233

234

235

236

237

238

239

240

241

242

243

244

245

246

247

248

249

250

251

252

253

254

255

256

257

258

259

260

261

262

263

264

265

266

267

268

269

270

271

272

273

274

275

276

277

278

279

280

281

282

283

284

285

286

287

288

289

290

291

292

293

294

295

296

297

298

299

300





## TIMBER SALE INFORMATION

North Wines Road Jack Pine (42-014-21)  
T49N, R06W, SEC. 4; T49N, R06W, SEC. 8; T49N, R06W, SEC. 9.  
Chippewa County (Advertised Price \$31,607.25)

SALE NOTE: All units of volume listed for this sale were estimated using the Inventory Manager computer program and the new Michigan taper model.

Note that red and white pine was cruised as all pulp and sawlogs may be present within stands.

Road work may be required. See Sale Spec. 4.2.3 for additional information.

Harvesting is limited to the period of April 1 to December 31 because of the need to cut low stumps.

It is recommended, but not required, that hauling occur during the late summer on into the fall because of the sandy nature of the access roads leading to the Sale Area.

The snowmobile trail is shown on the Timber Sale Map. See Sale Spec. 5.2.41 for additional information.

A timber sale contract for this lump sum, sealed bid timber sale will be awarded to the responsible bidder offering the highest sealed bid price. All units of volume listed below were estimated using the Inventory Manager computer program and the new Michigan taper model. Bids must be at or above the following advertised price for each product and species:

<u>PRODUCTS &amp; SPECIES</u>	<u>ESTIMATED UNITS*</u>	<u>ADVERTISED PRICE</u>
Pulpwood		
Jack Pine	687 Cords	\$ 16.25 / Cord
Mixed Hardwood	10 Cords	\$ 10.00 / Cord
Quaking Aspen	38 Cords	\$ 19.95 / Cord
Red Pine	432 Cords	\$ 43.20 / Cord
White Pine	71 Cords	\$ 13.00 / Cord

\* The total volume is statistically estimated within plus (+) or minus (-) 8.21 percent. There are an estimated 1,246 cords on this timber sale, plus or minus 102 cords at the 95% confidence level. The estimated units are final and not subject to adjustment. Prospective bidders are urged to examine this timber and to make their own estimates of quantity and quality.

### **BOND AND PAYMENT SCHEDULE:**

1. A bond in the amount of \$1,580.00 to insure faithful performance of the conditions of the contract will be deposited by the successful bidder within 21 days of the sale award.
2. Cutting in any sale or unit without the required advance payment would be considered a trespass.
3. Total payment must be paid in advance or according to the following schedule:
  - (a) Ten percent (10%) of the sale value must be paid within 21 days of the sale award.
  - (b) The 10% down payment will be credited towards the first unit cut.

(c) Payment for each of the following units must be made before cutting begins in that unit:

<u>PAYMENT UNIT NUMBER</u>	<u>PERCENT OF TOTAL SALE VALUE</u>
01	6.6%
02	54.6%
03	15.9%
04	16.6%
05	6.3%

4. If no cutting takes place, the 10% down payment will not be refunded.
5. Operations on the contract issued will terminate on 12/31/2025.

### **SALE STATISTICS**

Volumes were calculated in cubic feet using the Michigan taper model. Cubic foot volume includes all wood inside bark for the product indicated. For display purposes, cubic feet were converted to cords and MBF using a simple conversion factor, e.g. 79 cubic feet per cord and 185 cubic feet per MBF. The cubic foot volumes are precise; the cords and MBF volumes are not. Cubic foot volume cannot be directly converted to cords or boards with precision.

## SALE VOLUMES

The total estimated sale volume may not equal the sum of the species/products due to the nature of statistical calculations associated with double sampling methodology.

VOLUME			STATISTICAL RANGE IN CORDS	
TOTAL CUBIC FEET	TOTAL CORDS	PERCENT ERROR	MINIMUM	MAXIMUM
98,415	1,246	8.21%	1,143	1,348

## VDU VOLUMES

A VDU is a Volume Determination Unit. Volumes and their associated statistics are calculated at the VDU level and summarized to the sale level. There is often a one to one relationship between a VDU and a Payment Unit, but not always, depending on the cruise design. Refer to the VDU TO PAYMENT UNIT table.

	VOLUME			RANGE IN CORDS	
VDU	TOTAL CUBIC FEET	TOTAL CORDS	PERCENT ERROR	MINIMUM	MAXIMUM
4	7,122	90	23.40%	69	111
6	34,380	435	13.10%	378	492
18	48,779	617	11.56%	546	689
23	8,134	103	40.00%	62	144
<b>TOTAL:</b>	<b>98,415</b>	<b>1,246</b>		<b>1,055</b>	<b>1,436</b>

## VDU TO PAYMENT UNIT

When a VDU is associated with more than one Payment Unit (PU), the VDU volumes are assigned to the PU based on acres of the VDU within the PU.

VDU	VDU ACRES	PU	PU ACRES
4	5.3	1	5.3
6	29.4	2	29.4
18	64.3	3	31.5
		4	32.8
23	8.4	5	8.4
<b>TOTAL:</b>	<b>107.4</b>		<b>107.4</b>

**DESCRIPTION OF TIMBER BY PAYMENT UNIT (PU)**

PU	MARKET GROUP	PRODUCT	QUANTITY	UNIT	ACRES	ADVERTISE PRICE
1	Jack Pine	Pulpwood	9	Cords	5.3	\$2,072.30
	Mixed Hardwood		6	Cords		
	<i>Paper Birch</i>		6	<i>Cords</i>		
	Quaking Aspen		27	Cords		
	Red Pine		22	Cords		
	White Pine		29	Cords		
2	Red Pine	Pulpwood	388	Cords	29.4	\$17,268.60
	White Pine		39	Cords		
3	Jack Pine	Pulpwood	289	Cords	31.5	\$5,032.00
	Mixed Hardwood		2	Cords		
	<i>Red Maple</i>		2	<i>Cords</i>		
	Quaking Aspen		5	Cords		
	Red Pine		5	Cords		
4	Jack Pine	Pulpwood	301	Cords	32.8	\$5,246.95
	Mixed Hardwood		2	Cords		
	<i>Red Maple</i>		2	<i>Cords</i>		
	Quaking Aspen		6	Cords		
	Red Pine		5	Cords		
5	Jack Pine	Pulpwood	88	Cords	8.4	\$1,987.40
	Red Pine		12	Cords		
	White Pine		3	Cords		
TOTAL:			1,238	Cords		

## Sale Specific Conditions & Requirements

**Sale Name: North Wines Road Jack Pine**

**Sale Number: 42-014-21 Seq#: 1**

### 1 - Sale Area

#### 1.2 - Boundaries

##### 1.2.1 - Painted boundaries (9/19)

The sale boundary and Payment Unit boundaries are marked and identified by red and green paint. Exterior sale boundary lines against state are marked with red paint. Interior Payment Unit boundaries are marked with green paint. Retention patches are marked with red paint; no harvesting activities may occur within these areas. The painted boundary line trees are not Included Timber and are to be protected unless marked with orange paint. Green painted trees designating an interior Payment Unit boundary are only to be cut when all surrounding Payment Units have been paid.

### 2 - Timber Specifications

#### 2.1 - Included Timber

##### 2.1.1 - Clearcut unit(s) with unmerchantable trees (6/14)

Within Payment Unit(s) 1-5, cut all trees that are two (2) inches or more at DBH. Leave all oak that is present.

##### 2.1.11 - Description of timber note (2/04)

Note that red and white pine was cruised as all pulp and sawlogs may be present within stands.

#### 2.2 - Utilization

##### 2.2.3 - Stump heights (4/07)

Stump heights within Payment Unit(s) 1-5, shall not exceed 12 inches for trees greater than 10 inches at DBH and 4 inches for trees smaller than 10 inches at DBH. This is to facilitate planting operations. A written waiver of this requirement may be obtained if wet summer weather makes winter logging necessary.

### 3 - Payments

#### 3.3 - Pre-measured Sales

##### 3.3.4 - Dividing payment units (7/14)

Payment Unit(s) 2 may be divided at the request of the Purchaser and upon approval of the Unit Manager. Dividing Payment Units is a contract modification which requires a Timber Sale Contract Amendment. There will be only one division per Payment Unit.

### 4 - Transportation

#### 4.1 - Construction

##### 4.1.4 - Timber removed for construction (12/09)

Trees cut or damaged in the process of pre-approved road, landing or skid trail construction will be decked in an area separate from other Designated Timber and not removed until measured by the sale administrator. Payment will be made at the specified Purchase Unit Price.

##### 4.1.6 - Road construction (1/09)

Construction of new roads or improvements of existing roads shall be done in such a way as to minimize the environmental and visual impacts. Merchantable trees shall be cut and utilized unless otherwise directed. Non-merchantable trees shall be severed and laid flat on the ground. Slash shall be scattered, and not left in windrows and kept a minimum of 10 feet back from the road edge. Stumps shall be set upright, not left on edge, and be moved at least 10 feet away from the road edge. Disturbed soil shall be feathered into the woods and not left in berms or windrows.

##### 4.1.7 - Road closure (10/11)

All new roads built into the sale must be blocked to vehicle traffic upon completion of the sale. Overgrown roads that are reopened shall be considered new roads. In general, this will require constructing double earthen berms at strategic locations. These roads must be rendered impassable to cars and trucks. Contact the sale administrator for specific details of design and placement.

## 4.2 - Maintenance

### 4.2.2 - Fill material (4/07)

To maintain roads, fill material may be needed in areas where "holes" exist or may be expected to develop. This fill material should be placed before trucking begins. Contact the sale administrator regarding the availability of onsite sand or gravel from adjacent State-owned lands.

### 4.2.3 - Road maintenance (8/13)

The following road maintenance may be needed for completion of the sale. The road must be maintained and graded. This includes cleaning of drainage areas, grading, crowning, and filling with gravel, if necessary. Damages will be assessed if grading/repair does not occur.

## 5 - Operations

### 5.2 - Conduct of Operations

#### 5.2.1 - Slash

##### 5.2.1.8 - Slash height (12/08)

No slash or tree tops may exceed 24 inches in height.

##### 5.2.1.11 - Slash for reforestation (5/07)

To facilitate reforestation, the Sale Area or Payment Unit(s) 1-5, shall be left with slash evenly distributed. Bunched tops within the cutting area shall be broken up and scattered. Stumps shall be cut low to the ground. Processing sites shall not be left with a compacted layer of slash; tops from these sites shall be hauled back into the cut area and scattered.

#### 5.2.2 - Hazard Trees/Snags

##### 5.2.2.1 - Den trees (10/16)

Obvious hollow and/or den trees shall be protected and left standing unless they are a safety hazard.

#### 5.2.3 - Operating Restrictions

##### 5.2.3.2 - Operating restrictions (9/11)

Within Payment Unit(s) 1-5, unless changed by written agreement, cutting is limited to the period of April 1 to December 31. This restriction is because of the need to cut low stumps.

##### 5.2.3.6 - Bark beetle restriction (12/08)

In the event drought creates a high risk of pine bark beetle infestation, pine is not to be cut during the period March 1 through July 1, unless all portions of trees greater than two inches in diameter are removed from the sale area, reduced to chips, or treated to the satisfaction of the Unit Manager or his/her representative, within fifteen days of being severed from the stump. Pine log decks, pulpwood piles and treetops that are piled for chipping in the fall or winter within a 1/4 mile of susceptible sites must be removed before March 15. Residual slash must not be placed in piles or rows and must be spread over the site for quick drying. The Department of Natural Resources will exercise this specification if the risk of damage warrants.

#### 5.2.22 - Operating Caution

##### 5.2.22.1 - Operating caution (6/11)

It is recommended, but not required, that within Payment Unit(s) 1-5, that hauling occur during the late summer on into the fall. The reason for the recommendation is because of the sandy nature of the access roads leading to the Sale Area. Fall weather tends to offer better conditions for trucking to occur.

#### 5.2.32 - Decking/landing restoration (9/13)

All decking and landing areas must have the surface area restored to a condition equal to or better than before. This is to ensure the proper regeneration of the stand. Wood debris, chips, and "cookies" from trimmings must be removed or scattered away from landing and loading areas and may not be windrowed on the edge.

#### 5.2.38 - No decking against live trees (2/04)

Cut products may not be decked against unmarked or designated leave trees.

#### 5.2.41 - Snowmobile trail protection (9/11)

The snowmobile trail and is shown on the Timber Sale Map. Do not cut or damage posts with orange trail markers or traffic control signs. If the trail is used, it must be maintained and restored to a condition equal to or better than before the sale. If the trail is used for hauling, it must be graded to the satisfaction of the Unit Manager or his/her representative prior to December 1. If the trail road is to be used for hauling during the snowmobile season, then a snow-covered base must be left on the trail. No decking of forest products will be permitted along the snowmobile trail.

### 5.4 - Soil Protection

#### 5.4.2 - Skid trails (2/04)

Skid trails up and down slopes should be avoided. If however this is unavoidable, these trails will be left in a non-erodible condition using water bars, logs, and slash. Placing of slash on these skid trails while logging is ongoing may alleviate need for any further action. At the direction of the sale administrator, seed, fertilizer, and mulch may also be required.

#### 5.4.3 - Erosion control (12/08)

Skid trails or haul roads may require erosion control structures or berms per direction of the Unit Manager or his/her representative.

#### 5.4.4 - Slope protection (9/19)

Skid trails and roads on slopes shall be water barred with slash, stumps, and/or clean straw bales native to the area as soon as use is complete to prevent erosion.

### 5.8 - Protection of Endangered Species

#### 5.8.5 - Protection of raptor nests (3/13)

All trees with raptor nests will be protected if found during harvesting operations. Notification will be made to the Unit Manager or his/her representative who will notify the Wildlife Biologist so an on-site evaluation and recommendation can be made, if necessary.

## 6 - Safety and Fire Prevention

### 6.2 - Signing

#### 6.2.1 - Road posting (10/20)

The Purchaser is responsible for posting and maintaining caution signs on West Farm Truck Trail prior to beginning operations. The road must be posted at appropriate distances from the Sale Area to warn of logging activity and truck traffic. Signs must be removed when harvest operations are suspended or completed. The Purchaser will provide these signs.

#### 6.2.2 - Snowmobile trail posting (10/20)

The Purchaser is responsible for posting and maintaining caution signs on snowmobile trail prior to beginning operations during the snowmobile season (approximately December 1 to March 31). The trail must be posted at appropriate distances from the Sale Area to warn of logging activity and truck traffic. Signs must be removed when harvest operations are suspended or completed. The DNR will provide these signs.

#### 6.2.3 - Recreational trail posting (10/20)

The Purchaser is responsible for posting and maintaining caution signs on the ski trail along the West Farm Truck Trail prior to beginning operations. The trail must be posted at appropriate distances from the Sale Area to warn of logging activity and truck traffic at both ends of the trail. Signs must be removed when harvest operations are suspended or completed. The DNR will provide these signs.



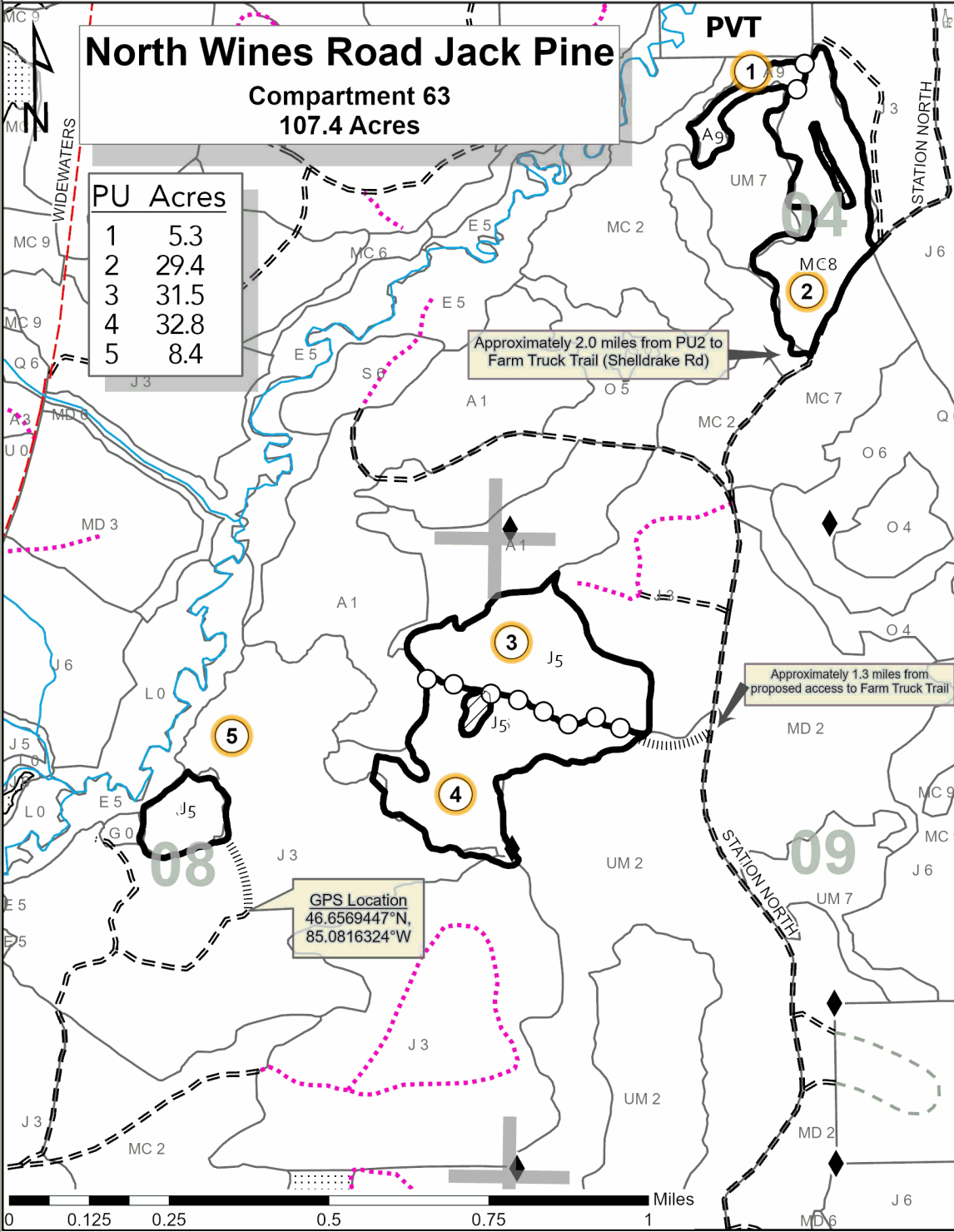
# TIMBER SALE MAP

This information provided by authority of Part 525, 1994 PA 451, as amended.

Sale Number	Year
42-014	21

Forest Management Unit Newberry	County Chippewa	Mapped By Livermore	Date 3/24/2021	Page 1	of 1
Township 49N	Range 06W	Section(s) and Subdivision(s) Section 04: SENW,W $\frac{1}{2}$ NE,NESW,NWSE Section 08: SENW,NENE,S $\frac{1}{2}$ NE,NESE Section 09: W $\frac{1}{2}$ NW, NWSW	Scale 1:15,840		

Cover Type				Density				
A = Aspen	H = Hemlock	N = Marsh	U = Upland Brush	0 = Non Stocked	5 = Pole Timber Medium			
B = Paper Birch	J = Jack Pine	O = Oak	UM = Upland Mixed	1 = Seedling Sapling Poor	6 = Pole Timber Well			
C = Cedar	L = Lowland Brush	P = Lowland Poplar	V = Bog or Marsh	2 = Seedling Sapling Medium	7 = Saw Timber Poor			
D = Tread Bog	LM = Lowland Mixed	Q = Mixed Swamp Conifer	W = White Pine	3 = Seedling Sapling Well	8 = Saw Timber Medium			
E = Swamp Hdwoods	M = Mpl, Bch, Brch	R = Red Pine	X = Non Stocked	4 = Pole Timber Poor	9 = Saw Timber Well			
F = Spruce Fir	MC = Mixed Conifer	S = Black Spruce	Z = Water					
G = Grass	MD = Mixed Deciduous	T = Tamarack						



**North Wines Road Jack Pine**  
**Compartment 63**  
**107.4 Acres**

PU	Acres
1	5.3
2	29.4
3	31.5
4	32.8
5	8.4

Approximately 2.0 miles from PU2 to Farm Truck Trail (Shell Drake Rd)

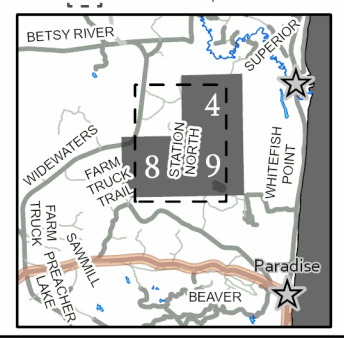
Approximately 1.3 miles from proposed access to Farm Truck Trail

GPS Location  
 46.6569447°N,  
 85.0816324°W



- Against State (Red)
- Payment Unit (Green)
- Payment Unit Label
- PVT Private Ownership
- Retention Area
- Section Numbers
- Section Corners
- Survey Corners
- Perennial River
- Nearby Timber Sale
- Proposed Access
- DNR - Forest Access Route
- County - Dirt Road (Seasonal)
- Private - Dirt / Gravel Road
- DNR - Temporary Management Access

Locator Map: 1:200,000  
 - Main Map Extent







## TIMBER SALE INFORMATION

### Disappearing DTape Pine (42-015-21)

T49N, R06W, SEC. 17; T49N, R06W, SEC. 18; T49N, R06W, SEC. 19; T49N, R06W, SEC. 20; T49N, R06W, SEC. 21; T49N, R06W, SEC. 7; T49N, R06W, SEC. 8.

SALE NOTE: All units of volume listed for this sale were estimated using the Inventory Manager computer program and the new Michigan taper model.

No new roads will be permitted. See Sale Spec. 4.1.12 for additional information.

Within Payment Units 1, 2 and 4, it is recommended, but not required, that hauling occur during late summer or into the fall because of the sandy nature of the access roads leading into the sale.

The West Farm Truck Road is also snowmobile trail and is shown on the Timber Sale Map. See Sale Spec. 5.2.41 for restrictions.

A recreation site such as a trail, pathway, or campground is within the sale area or the vicinity. Certain restrictions/specifications may be applicable including time restrictions.

A timber sale contract for this lump sum, sealed bid timber sale will be awarded to the responsible bidder offering the highest sealed bid price. All units of volume listed below were estimated using the Inventory Manager computer program and the new Michigan taper model. Bids must be at or above the following advertised price for each product and species:

<u>PRODUCTS &amp; SPECIES</u>	<u>ESTIMATED UNITS*</u>	<u>ADVERTISED PRICE</u>
Sawtimber		
Paper Birch	2.6 MBF	\$ 35.00 / MBF
Pulpwood		
Jack Pine	657 Cords	\$ 16.25 / Cord
Mixed Aspen	95 Cords	\$ 19.95 / Cord
Mixed Hardwood	18 Cords	\$ 10.00 / Cord
Paper Birch	24 Cords	\$ 9.45 / Cord
Quaking Aspen	2 Cords	\$ 19.95 / Cord
Red Oak	33 Cords	\$ 15.05 / Cord
Red Pine	650 Cords	\$ 43.20 / Cord
Scotch Pine	103 Cords	\$ 7.25 / Cord
White Pine	158 Cords	\$ 13.00 / Cord

\* The total volume is statistically estimated within plus (+) or minus (-) 6.18 percent. There are an estimated 1,733 cords on this timber sale, plus or minus 107 cords at the 95% confidence level. The estimated units are final and not subject to adjustment. Prospective bidders are urged to examine this timber and to make their own estimates of quantity and quality.

### **BOND AND PAYMENT SCHEDULE:**

1. A bond in the amount of \$2,224.00 to insure faithful performance of the conditions of the contract will be deposited by the successful bidder within 21 days of the sale award.
2. Cutting in any sale or unit without the required advance payment would be considered a trespass.
3. Total payment must be paid in advance or according to the following schedule :
  - (a) Ten percent (10%) of the sale value must be paid within 21 days of the sale award.
  - (b) The 10% down payment will be credited towards the first unit cut.
  - (c) Payment for each of the following units must be made before cutting begins in that unit:

PAYMENT UNIT NUMBER	PERCENT OF TOTAL SALE VALUE
01	15.7%
02	10.7%
03	13.6%
04	8.1%
05	28.4%
06	9.1%
07	10.3%
08	2.2%
09	0.6%
10	1.3%

4. If no cutting takes place, the 10% down payment will not be refunded.
5. Operations on the contract issued will terminate on 12/31/2025.

**SALE STATISTICS**

Volumes were calculated in cubic feet using the Michigan taper model. Cubic foot volume includes all wood inside bark for the product indicated. For display purposes, cubic feet were converted to cords and MBF using a simple conversion factor, e.g. 79 cubic feet per cord and 185 cubic feet per MBF. The cubic foot volumes are precise; the cords and MBF volumes are not. Cubic foot volume cannot be directly converted to cords or boards with precision.

**SALE VOLUMES**

The total estimated sale volume may not equal the sum of the species/products due to the nature of statistical calculations associated with double sampling methodology.

VOLUME		PERCENT ERROR	STATISTICAL RANGE IN CORDS	
TOTAL CUBIC FEET	TOTAL CORDS		MINIMUM	MAXIMUM
136,877	1,733	6.18%	1,625	1,840

**VDU VOLUMES**

A VDU is a Volume Determination Unit. Volumes and their associated statistics are calculated at the VDU level and summarized to the sale level. There is often a one to one relationship between a VDU and a Payment Unit, but not always, depending on the cruise design. Refer to the VDU TO PAYMENT UNIT table.

VDU	VOLUME			RANGE IN CORDS	
	TOTAL CUBIC FEET	TOTAL CORDS	PERCENT ERROR	MINIMUM	MAXIMUM
14	17,324	219	19.22%	177	261
27	20,498	259	18.80%	211	308
32	17,533	222	19.23%	179	265
39	14,356	182	24.60%	137	226
50	37,535	475	10.81%	424	526
53	6,813	86	8.46%	79	94
54	2,056	26	5.18%	25	27
55	1,606	20	45.94%	11	30
59	7,840	99	23.60%	76	123
60	11,317	143	9.24%	130	156
<b>TOTAL:</b>	<b>136,877</b>	<b>1,733</b>		<b>1,448</b>	<b>2,017</b>

**VDU TO PAYMENT UNIT**

When a VDU is associated with more than one Payment Unit (PU), the VDU volumes are assigned to the PU based on acres of the VDU within the PU.

VDU	VDU ACRES	PU	PU ACRES
14	8.3	1	8.3
27	13.4	3	13.4
32	21.9	2	21.9
39	8.8	4	8.8
50	17.9	5	17.9
53	3.8	8	3.8
54	1.4	9	1.4
55	4.0	10	4.0
59	20.8	7	20.8
60	5.1	6	5.1
<b>TOTAL:</b>	<b>105.4</b>		<b>105.4</b>

**DESCRIPTION OF TIMBER BY PAYMENT UNIT (PU)**

PU	MARKET GROUP	PRODUCT	QUANTITY	UNIT	ACRES	ADVERTISE PRICE	
1	Jack Pine	Pulpwood	58	Cords	8.3	\$6,968.75	
	Mixed Aspen		35	Cords			
	<i>B. T. Aspen</i>		35	<i>Cords</i>			
	Mixed Hardwood		4	Cords			
	<i>Red Maple</i>		4	<i>Cords</i>			
	Red Pine		120	Cords			
	White Pine		8	Cords			
2	Paper Birch	Sawtimber	1.7	MBF	21.9	\$4,765.50	
	Jack Pine	Pulpwood	166	Cords			
	Mixed Hardwood		2	Cords			
	<i>Red Maple</i>		2	<i>Cords</i>			
	Quaking Aspen		2	Cords			
	Red Pine		43	Cords			
	White Pine		7	Cords			
3	Jack Pine	Pulpwood	179	Cords	13.4	\$6,053.95	
	Red Pine		71	Cords			
	White Pine		6	Cords			
4	Mixed Aspen	Pulpwood	17	Cords	8.8	\$3,624.10	
	<i>Quaking Aspen</i>		17	<i>Cords</i>			
	Paper Birch		18	Cords			
	Red Oak		9	Cords			
	Red Pine		47	Cords			
	White Pine		73	Cords			
5	Jack Pine	Pulpwood	204	Cords	17.9	\$12,636.10	
	Mixed Aspen		21	Cords			
	<i>Quaking Aspen</i>		21	<i>Cords</i>			
	Mixed Hardwood		10	Cords			
	<i>Beech</i>		Sawtimber	1.1			<i>MBF</i>
	<i>Beech</i>			Pulpwood			8
	Paper Birch		3				Cords
	Red Oak		24	Cords			
	Red Pine		183	Cords			
	White Pine		39	Cords			
6	Paper Birch	Sawtimber	0.9	MBF	5.1	\$4,052.65	
	Jack Pine	Pulpwood	35	Cords			
	Mixed Aspen		22	Cords			
	<i>Quaking Aspen</i>		22	<i>Cords</i>			
	Paper Birch		2	Cords			
	Red Pine		63	Cords			
	White Pine		21	Cords			
7	Jack Pine	Pulpwood	2	Cords	20.8	\$4,594.50	
	Red Pine		105	Cords			
	White Pine		2	Cords			
8	Jack Pine	Pulpwood	3	Cords	3.8	\$976.55	
	Paper Birch		1	Cords			
	Red Pine		8	Cords			
	Scotch Pine		79	Cords			
9	Jack Pine	Pulpwood	1	Cords	1.4	\$249.20	
	Mixed Hardwood		1	Cords			
	<i>Red Maple</i>		1	<i>Cords</i>			
	Red Pine		1	Cords			
	Scotch Pine		23	Cords			
White Pine	1	Cords					
10	Jack Pine	Pulpwood	9	Cords	4.0	\$565.30	
	Mixed Hardwood		1	Cords			

**DESCRIPTION OF TIMBER BY PAYMENT UNIT (PU), CON'T**

PU	MARKET GROUP	PRODUCT	QUANTITY	UNIT	ACRES	ADVERTISE PRICE
10 con't	<i>Red Maple</i>	<i>Pulpwood</i>	1	<i>Cords</i>		
	Red Pine		9	Cords		
	Scotch Pine		1	Cords		
	White Pine		1	Cords		
TOTAL:			2.6	MBF		
TOTAL:			1,740	Cords		

## Sale Specific Conditions & Requirements

**Sale Name: Disappearing DTape Pine**

**Sale Number: 42-015-21 Seq#: 1**

### 1 - Sale Area

#### 1.2 - Boundaries

##### 1.2.1 - Painted boundaries (9/19)

The sale boundary and Payment Unit boundaries are marked and identified by red and yellow paint. Exterior sale boundary lines against state are marked with red paint. Interior Payment Unit boundaries are marked with yellow paint. Retention patches are marked with red paint; no harvesting activities may occur within these areas. The painted boundary line trees are not Included Timber and are to be protected. Yellow painted trees designating an interior Payment Unit boundary are only to be cut when all surrounding Payment Units have been paid.

### 2 - Timber Specifications

#### 2.1 - Included Timber

##### 2.1.1 - Clearcut unit(s) with unmerchantable trees (6/14)

Within Payment Unit(s) 1, 2, and 5-10, cut all trees that are two (2) inches or more at DBH. Try to protect understory spruce pockets if possible. In addition:

- Within Payment Units 1, 2, 6, 7 and 10, leave all oak;
- Within Payment Unit 1, leave all red pine over 22";
- Within Payment Unit 2, leave all aspen and birch;
- Within Payment Unit 6, leave one (1) red pine per acre of varying sizes.

##### 2.1.3 - Cut tree marked unit(s) (12/08)

Within Payment Unit(s) 3, all trees are designated for cutting when marked with orange paint above and below stump height, regardless of merchantability.

Remove all jack pine. Leave all other species and take care to protect understory spruce pockets where possible.

##### 2.1.7 - Leave tree marked unit(s) (6/14)

Within Payment Unit(s) 4, all trees, which meet minimum piece specifications in 2.2 Utilization, are designated for cutting, except trees marked with green paint above and below stump height. Species marked in green are red pine, white pine and oak.

#### 2.2 - Utilization

##### 2.2.3 - Stump heights (4/07)

Stump heights within the Sale Area shall not exceed 12 inches for trees greater than 10 inches at DBH and 4 inches for trees smaller than 10 inches at DBH. This is to facilitate planting operations. A written waiver of this requirement may be obtained if wet summer weather makes winter logging necessary.

### 4 - Transportation

#### 4.1 - Construction

##### 4.1.6 - Road construction (1/09)

Construction of new roads or improvements of existing roads will be limited to Payment Units 1 and 5 and shall be done in such a way as to minimize the environmental and visual impacts. Merchantable trees shall be cut and utilized unless otherwise directed. Non-merchantable trees shall be severed and laid flat on the ground. Slash shall be scattered, not left in windrows, and kept a minimum of 10 feet back from the road edge. Stumps shall be set upright, not left on edge, and be moved at least 10 feet away from the road edge. Disturbed soil shall be feathered into the woods and not left in berms or windrows.

##### 4.1.7 - Road closure (10/11)

All new roads built into the sale must be blocked to vehicle traffic upon completion of the sale. Overgrown roads that are reopened shall be considered new roads. In general, this will require constructing double earthen berms at strategic locations. These roads must be rendered impassable to cars and trucks. Contact the sale administrator for specific details of design and placement.

#### 4.1.12 - No new roads (1/12)

No new roads will be permitted in any Payment Unit, except Payment Units 1 and 5. All other operations are limited to existing roads. Skid trails only will be allowed.

### 4.2 - Maintenance

#### 4.2.3 - Road maintenance (8/13)

The following road maintenance may be needed: cleaning of drainage areas, grading, crowning, and filling with gravel, if necessary. Damages will be assessed if grading/repair does not occur.

#### 4.2.5 - Two wheel drive condition (2/04)

All existing trail roads on and adjacent to the sale area must be passable by two-wheel drive traffic for the duration of the sale.

## 5 - Operations

### 5.2 - Conduct of Operations

#### 5.2.1 - Slash

##### 5.2.1.8 - Slash height (12/08)

No slash or tree tops may exceed 24 inches in height.

##### 5.2.1.11 - Slash for reforestation (5/07)

To facilitate reforestation, Payment Unit(s) 1, 2, and 4-10 shall be left with slash evenly distributed. Bunched tops within the cutting area shall be broken up and scattered. Stumps shall be cut low to the ground. Processing sites shall not be left with a compacted layer of slash; tops from these sites shall be hauled back into the cut area and scattered.

#### 5.2.2 - Hazard Trees/Snags

##### 5.2.2.1 - Den trees (10/16)

Obvious hollow and/or den trees shall be protected and left standing unless they are a safety hazard.

#### 5.2.3 - Operating Restrictions

##### 5.2.3.6 - Bark beetle restriction (12/08)

In the event drought creates a high risk of pine bark beetle infestation, pine is not to be cut during the period March 1 through July 1, unless all portions of trees greater than two inches in diameter are removed from the sale area, reduced to chips, or treated to the satisfaction of the Unit Manager or his/her representative, within fifteen days of being severed from the stump. Pine log decks, pulpwood piles and treetops that are piled for chipping in the fall or winter within a 1/4 mile of susceptible sites must be removed before March 15. Residual slash must not be placed in piles or rows and must be spread over the site for quick drying. The Department of Natural Resources will exercise this specification if the risk of damage warrants.

#### 5.2.22 - Operating Caution

##### 5.2.22.1 - Operating caution (6/11)

It is recommended, but not required, that within Payment Unit(s) 1, 2 and 4, hauling occur during late summer or into the fall. The reason for the recommendation is because of the sandy nature of the access roads leading to the Sale Area. Fall weather tends to offer better conditions for trucking to occur.

#### 5.2.32 - Decking/landing restoration (9/13)

All decking and landing areas must have the surface area restored to a condition equal to or better than before. This is to ensure the proper regeneration of the stand. Wood debris, chips, and "cookies" from trimmings must be removed or scattered away from landing and loading areas and may not be windrowed on the edge.

#### 5.2.38 - No decking against live trees (2/04)

Cut products may not be decked against unmarked or designated leave trees.

#### 5.2.41 - Snowmobile trail protection (9/11)

The West Farm Truck Road is also snowmobile trail and is shown on the Timber Sale Map. Do not cut or damage posts with

orange trail markers or traffic control signs. If the trail is used, it must be maintained and restored to a condition equal to or better than before the sale. The road maintenance/restoration must be done prior to December 1. If the trail road is to be used for hauling during the snowmobile season, then a snow-covered base must be left on the trail. Maintain a 20-foot-wide slash, debris, and rut free zone daily using the snowmobile trail as the centerline. All stumps within 20 feet of the snowmobile trail must be cut at ground level.

#### 5.4 - Soil Protection

##### 5.4.1 - Rutting restriction, general (7/16)

Operations are to cease immediately if equipment and weather conditions result in rutting of roads and/or skid trails which is 12 inches or greater in depth and 50 feet in length. The Unit Manager or his/her representative may restrict hauling and/or skidding if ruts exceed the specified depth. With the Unit Manager or his/her representative's approval, the Purchaser may return to the area when the risk of rutting has decreased.

#### 5.8 - Protection of Endangered Species

##### 5.8.5 - Protection of raptor nests (3/13)

All trees with raptor nests will be protected if found during harvesting operations. Notification will be made to the Unit Manager or his/her representative who will notify the Wildlife Biologist so an on-site evaluation and recommendation can be made, if necessary.

### 6 - Safety and Fire Prevention

#### 6.2 - Signing

##### 6.2.1 - Road posting (10/20)

The Purchaser is responsible for posting and maintaining caution signs on West Farm Truck Road and M-123 prior to beginning operations. The road must be posted at appropriate distances from the Sale Area to warn of logging activity and truck traffic. Signs must be removed when harvest operations are suspended or completed. The Purchaser will provide these signs.

##### 6.2.2 - Snowmobile trail posting (10/20)

The Purchaser is responsible for posting and maintaining caution signs on the snowmobile trail prior to beginning operations during the snowmobile season (approximately December 1 to March 31). The trail must be posted at appropriate distances from the Sale Area to warn of logging activity and truck traffic. Signs must be removed when harvest operations are suspended or completed. The DNR will provide these signs.



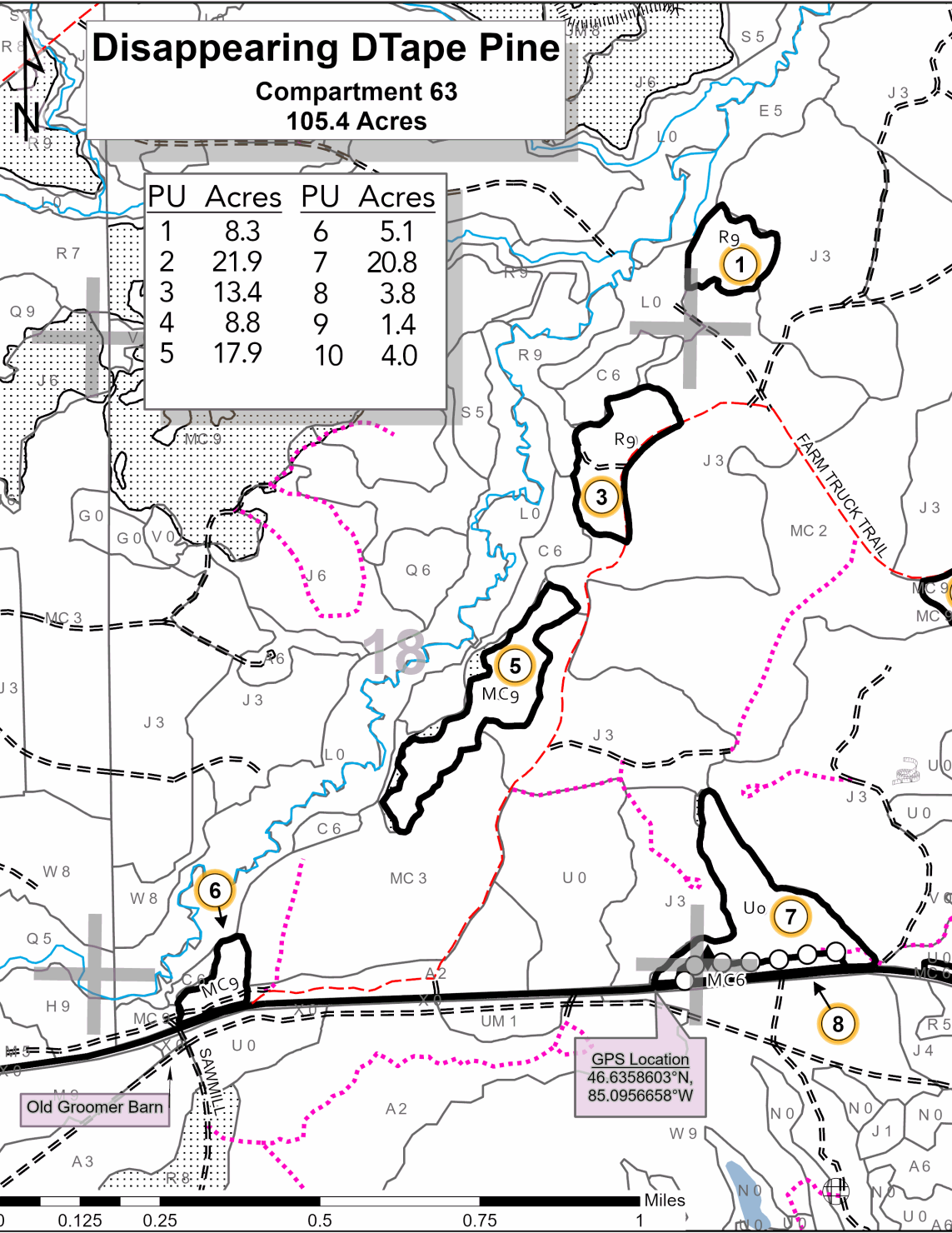
# TIMBER SALE MAP

This information provided by authority of Part 525, 1994 PA 451, as amended.

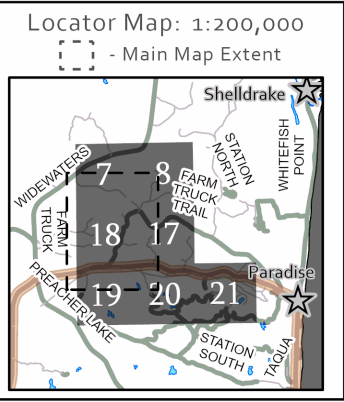
Sale Number	Year
42-015	21

Forest Management Unit Newberry	County Chippewa	Mapped By Livermore	Date 3/25/2021	Page 1	of 2
Township 49N	Range 06W	Section(s) and Subdivision(s) Section 07: SESE Section 08: SWSW,S $\frac{1}{2}$ SE Section 17: SENW,N $\frac{1}{2}$ NE,SWNE,SW,NWSE Section 18: NENE,S $\frac{1}{2}$ NE,S $\frac{1}{2}$ SW,SE Section 19: N $\frac{1}{2}$ NW,NENE Section 20: N $\frac{1}{2}$ NW,N $\frac{1}{2}$ NE Section 21: NWNW	Scale 1:15,840		

Cover Type				Density			
A = Aspen	H = Hemlock	N = Marsh	U = Upland Brush	0 = Non Stocked	5 = Pole Timber Medium		
B = Paper Birch	J = Jack Pine	O = Oak	UM = Upland Mixed	1 = Seedling Sapling Poor	6 = Pole Timber Well		
C = Cedar	L = Lowland Brush	P = Lowland Poplar	V = Bog or Marsh	2 = Seedling Sapling Medium	7 = Saw Timber Poor		
D = Tread Bog	LM = Lowland Mixed	Q = Mixed Swamp Conifer	W = White Pine	3 = Seedling Sapling Well	8 = Saw Timber Medium		
E = Swamp Hdwoods	M = Mpl, Bch, Brch	R = Red Pine	X = Non Stocked	4 = Pole Timber Poor	9 = Saw Timber Well		
F = Spruce Fir	MC = Mixed Conifer	S = Black Spruce	Z = Water				
G = Grass	MD = Mixed Deciduous	T = Tamarack					



- Against State (Red)
- Payment Unit (Yellow)
- Payment Unit Label
- PVT Private Ownership
- Retention Area
- Section Numbers
- Section Corners
- Survey Corners
- Berms
- Perennial River
- Lakes and Rivers
- Nearby Timber Sale
- Proposed Access
- DNR - Forest Access Route
- Federal / State Highway
- County - Dirt Road (Seasonal)
- DNR - Temporary Management Access







# TIMBER SALE MAP

This information provided by authority of Part 525, 1994 PA 451, as amended.

Sale Number	Year
42-015	21

Forest Management Unit Newberry	County Chippewa	Mapped By Livermore	Date 3/25/2021	Page 2	of 2
Township 49N	Range 06W	Section(s) and Subdivision(s) Section 07: SESE Section 08: SWSW,S $\frac{1}{2}$ SE Section 17: SENW,N $\frac{1}{2}$ NE,SWNE,SW,NWSE Section 18: NENE,S $\frac{1}{2}$ NE,S $\frac{1}{2}$ SW,SE Section 19: N $\frac{1}{2}$ NW,NENE Section 20: N $\frac{1}{2}$ NW,N $\frac{1}{2}$ NE Section 21: NWNW	Crused By Newberry Staff	Scale 1:15,840	

### Cover Type

### Density

A = Aspen	H = Hemlock	N = Marsh	U = Upland Brush	0 = Non Stocked	5 = Pole Timber Medium
B = Paper Birch	J = Jack Pine	O = Oak	UM = Upland Mixed	1 = Seedling Sapling Poor	6 = Pole Timber Well
C = Cedar	L = Lowland Brush	P = Lowland Poplar	V = Bog or Marsh	2 = Seedling Sapling Medium	7 = Saw Timber Poor
D = Treed Bog	LM = Lowland Mixed	Q = Mixed Swamp Conifer	W = White Pine	3 = Seedling Sapling Well	8 = Saw Timber Medium
E = Swamp Hdwoods	M = Mpl, Bch, Brch	R = Red Pine	X = Non Stocked	4 = Pole Timber Poor	9 = Saw Timber Well
F = Spruce Fir	MC = Mixed Conifer	S = Black Spruce	Z = Water		
G = Grass	MD = Mixed Deciduous	T = Tamarack			

## Disappearing DTape Pine

Compartment 63  
105.4 Acres

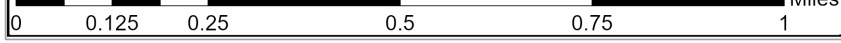
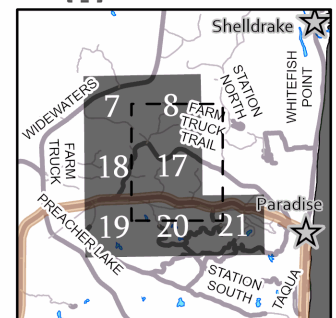
PU	Acres	PU	Acres
1	8.3	6	5.1
2	21.9	7	20.8
3	13.4	8	3.8
4	8.8	9	1.4
5	17.9	10	4.0



GPS Location  
46.6471885°N,  
85.0822578°W

- Against State (Red)
- Payment Unit (Yellow)
- Payment Unit Label
- PVT Private Ownership
- Retention Area
- Section Numbers
- Section Corners
- Survey Corners
- Berms
- Perennial River
- Lakes and Rivers
- Nearby Timber Sale
- Proposed Access
- DNR - Forest Access Route
- Federal / State Highway
- Federal / State - Dirt / Gravel Road
- County - Dirt Road (Seasonal)
- DNR - Temporary Management Access

Locator Map: 1:200,000  
- Main Map Extent





Seahorse Pine (42-007-21)  
T46N, R12W, SEC. 6; T46N, R12W, SEC. 7; Luce COUNTY

In response to the notice of sale to be held 3:00 p.m. (local time) on May 19, 2022, I am hereby submitting my sealed bid ( firm offer) for the following forest products to be cut. Bids for individual species must be at or above the advertised price. All non-responsive bid forms may be rejected.

<u>PRODUCTS &amp; SPECIES</u>	<u>ESTIMATED VOLUME*</u>	<u>ADVERTISED PRICE</u>	<u>BID PRICE/UNIT</u>
<b>Sawtimber</b>			
Red Maple	136.6 MBF	\$ 71.00/MBF	\$ _____
Sugar Maple	6.7 MBF	\$ 172.00/MBF	\$ _____
White Pine	3.9 MBF	\$ 45.00/MBF	\$ _____
<b>Pulpwood</b>			
Balsam Fir	7 Cords	\$ 8.50/Cord	\$ _____
Jack Pine	427 Cords	\$ 16.25/Cord	\$ _____
Mixed Hardwood	554 Cords	\$ 10.00/Cord	\$ _____
Quaking Aspen	97 Cords	\$ 19.95/Cord	\$ _____
Red Pine	1,802 Cords	\$ 43.20/Cord	\$ _____
White Pine	3 Cords	\$ 13.00/Cord	\$ _____
White Spruce	24 Cords	\$ 18.85/Cord	\$ _____

\*The volumes are statistically estimated within plus (+) or minus (-) 5.09 percent at 95% confidence level. These estimated volumes are final and not subject to adjustment. Prospective bidders are urged to examine this timber and to make their own estimates of quantity and quality.

I understand that any or all bids may be rejected. All bids must be signed and all bid items must be bid or the bid form may be rejected. I also understand that consideration and awarding a contract will be based upon my past performance and ability to complete the contract based upon equipment and staffing subject to my control.

FEDERAL ID: \_\_\_\_\_ - \_\_\_\_\_ or SOCIAL SECURITY NUMBER: \_\_\_\_\_ - \_\_\_\_\_ - \_\_\_\_\_

Company or individual bidding: \_\_\_\_\_

Company representative's name: \_\_\_\_\_

Address: \_\_\_\_\_

City: \_\_\_\_\_ State: \_\_\_\_\_ Zip: \_\_\_\_\_

IF AVAILABLE, PLEASE PLACE THE PERSONALIZED LABEL FROM YOUR PROSPECTUS IN THE ABOVE BOX.

Individual or company representative's signature: \_\_\_\_\_ Date: \_\_\_\_\_

Phone number : \_\_\_\_\_ Email (optional): \_\_\_\_\_

**THE WINNING BIDDER MUST COMPLETE THE VERIFICATION OF WORKER'S DISABILITY COMPENSATION ACT COMPLIANCE (ON REVERSE SIDE IF DOUBLE SIDED) WITHIN 21 DAYS OF SALE AWARD DATE**



<b>FOR DEPARTMENT USE ONLY</b>	
Sale Number (XX - XXX - XX - XX)	
Forest Management Unit:	

# TIMBER SALE VERIFICATION OF WORKER'S DISABILITY COMPENSATION ACT COMPLIANCE

As required by Act 317, P.A. 1969 (Worker's Compensation) and  
Part 5 of Act 451 of 1994, as amended.

## VERIFICATION OF WORKER'S DISABILITY COMPENSATION ACT COMPLIANCE

- This verification must be completed and submitted within 21 days of contract award and prior to the issuance of the timber sale contract.
- In addition, if boxes 2B or 2C are checked, then Notice of Exclusion or Certificate of Insurance must be submitted within twenty-one (21) days of the contract award and prior to the issuance of the timber sale contract.
- All information must be typed or printed except for written signatures.

Please Check Appropriate Categories:

1. My business is organized as (you **must** check one of the boxes below):
  - A.  Sole Proprietorship (individual)
  - B.  Partnership
  - C.  Corporation
2. You **must** check one of the boxes below:
  - A.  I certify my business is a sole proprietorship and it has no employees but the sole proprietor. I am not subject to the Worker's Compensation Laws.
  - B.  I certify my business has satisfied its obligation to the Worker's Compensation Act through the use of an approved Notice of Exclusion (BWC-337, Rev. 5/96). I will provide a copy of the Notice of Exclusion within 21 days of the contract award. (For questions or a copy of the BWC-337, please call the Worker's Compensation Bureau at 517-322-1195).
  - C.  I certify my business has a Worker's Compensation Policy. I will provide an original Certificate of Insurance within twenty-one (21) days of the contract award.
3. If you have checked item 2(A) or 2(B), you **must** indicate the number of **both** full-time and part-time employees, other than yourself, including family members and active partners (if none, you must enter "0").

\_\_\_\_\_ Full-time Employees

\_\_\_\_\_ Part-time Employees

Name of Business		Federal ID (or) Social Security No.	
Address		Telephone (       )	
City	State	ZIP	

*I hereby certify that the above information is true and correct. I agree to notify the Michigan DNR of any changes that occur in factors affecting my coverage during any of my present and future operations.*

\_\_\_\_\_  
Signature of Owner or Authorized Representative

\_\_\_\_\_  
Title

\_\_\_\_\_  
Date

Please complete the "SEALED BID" information on the next page

North Wines Road Jack Pine (42-014-21)  
T49N, R06W, SEC. 4; T49N, R06W, SEC. 8; T49N, R06W, SEC. 9; Chippewa

In response to the notice of sale to be held 3:00 p.m. (local time) on May 19, 2022, I am hereby submitting my sealed bid ( firm offer) for the following forest products to be cut. Bids for individual species must be at or above the advertised price. All non-responsive bid forms may be rejected.

<u>PRODUCTS &amp; SPECIES</u>	<u>ESTIMATED VOLUME*</u>	<u>ADVERTISED PRICE</u>	<u>BID PRICE/UNIT</u>
Pulpwood			
Jack Pine	687 Cords	\$ 16.25/Cord	\$ _____
Mixed Hardwood	10 Cords	\$ 10.00/Cord	\$ _____
Quaking Aspen	38 Cords	\$ 19.95/Cord	\$ _____
Red Pine	432 Cords	\$ 43.20/Cord	\$ _____
White Pine	71 Cords	\$ 13.00/Cord	\$ _____

\*The volumes are statistically estimated within plus (+) or minus (-) 8.21 percent at 95% confidence level. These estimated volumes are final and not subject to adjustment. Prospective bidders are urged to examine this timber and to make their own estimates of quantity and quality.

I understand that any or all bids may be rejected. All bids must be signed and all bid items must be bid or the bid form may be rejected. I also understand that consideration and awarding a contract will be based upon my past performance and ability to complete the contract based upon equipment and staffing subject to my control .

FEDERAL ID: \_\_\_\_\_ - \_\_\_\_\_ or SOCIAL SECURITY NUMBER: \_\_\_\_\_ - \_\_\_\_\_ - \_\_\_\_\_

Company or individual bidding: \_\_\_\_\_

Company representative's name: \_\_\_\_\_

Address: \_\_\_\_\_

City: \_\_\_\_\_ State: \_\_\_\_\_ Zip: \_\_\_\_\_

IF AVAILABLE, PLEASE PLACE THE PERSONALIZED LABEL FROM YOUR PROSPECTUS IN THE ABOVE BOX.

Individual or company representative's signature: \_\_\_\_\_ Date: \_\_\_\_\_

Phone number : \_\_\_\_\_ Email (optional): \_\_\_\_\_

**THE WINNING BIDDER MUST COMPLETE THE VERIFICATION OF WORKER'S DISABILITY COMPENSATION ACT COMPLIANCE (ON REVERSE SIDE IF DOUBLE SIDED) WITHIN 21 DAYS OF SALE AWARD DATE**



# TIMBER SALE VERIFICATION OF WORKER'S DISABILITY COMPENSATION ACT COMPLIANCE

As required by Act 317, P.A. 1969 (Worker's Compensation) and  
Part 5 of Act 451 of 1994, as amended.

FOR DEPARTMENT USE ONLY	
Sale Number (XX - XXX - XX - XX)	
Forest Management Unit:	

## VERIFICATION OF WORKER'S DISABILITY COMPENSATION ACT COMPLIANCE

- This verification must be completed and submitted within 21 days of contract award and prior to the issuance of the timber sale contract.
- In addition, if boxes 2B or 2C are checked, then Notice of Exclusion or Certificate of Insurance must be submitted within twenty-one (21) days of the contract award and prior to the issuance of the timber sale contract.
- All information must be typed or printed except for written signatures.

Please Check Appropriate Categories:

1. My business is organized as (you **must** check one of the boxes below):
  - A.  Sole Proprietorship (individual)
  - B.  Partnership
  - C.  Corporation
2. You **must** check one of the boxes below:
  - A.  I certify my business is a sole proprietorship and it has no employees but the sole proprietor. I am not subject to the Worker's Compensation Laws.
  - B.  I certify my business has satisfied its obligation to the Worker's Compensation Act through the use of an approved Notice of Exclusion (BWC-337, Rev. 5/96). I will provide a copy of the Notice of Exclusion within 21 days of the contract award. (For questions or a copy of the BWC-337, please call the Worker's Compensation Bureau at 517-322-1195).
  - C.  I certify my business has a Worker's Compensation Policy. I will provide an original Certificate of Insurance within twenty-one (21) days of the contract award.
3. If you have checked item 2(A) or 2(B), you **must** indicate the number of **both** full-time and part-time employees, other than yourself, including family members and active partners (if none, you must enter "0").

\_\_\_\_\_ Full-time Employees

\_\_\_\_\_ Part-time Employees

Name of Business		Federal ID (or) Social Security No.	
Address		Telephone (       )	
City	State	ZIP	

*I hereby certify that the above information is true and correct. I agree to notify the Michigan DNR of any changes that occur in factors affecting my coverage during any of my present and future operations.*

\_\_\_\_\_  
Signature of Owner or Authorized Representative

\_\_\_\_\_  
Title

\_\_\_\_\_  
Date

Please complete the "SEALED BID" information on the next page

Disappearing DTape Pine (42-015-21)

T49N, R06W, SEC. 17; T49N, R06W, SEC. 18; T49N, R06W, SEC. 19; T49N,

In response to the notice of sale to be held 3:00 p.m. (local time) on May 19, 2022, I am hereby submitting my sealed bid ( firm offer) for the following forest products to be cut. Bids for individual species must be at or above the advertised price. All non-responsive bid forms may be rejected.

<u>PRODUCTS &amp; SPECIES</u>	<u>ESTIMATED VOLUME*</u>	<u>ADVERTISED PRICE</u>	<u>BID PRICE/UNIT</u>
<b>Sawtimber</b>			
Paper Birch	2.6 MBF	\$ 35.00/MBF	\$ _____
<b>Pulpwood</b>			
Jack Pine	657 Cords	\$ 16.25/Cord	\$ _____
Mixed Aspen	95 Cords	\$ 19.95/Cord	\$ _____
Mixed Hardwood	18 Cords	\$ 10.00/Cord	\$ _____
Paper Birch	24 Cords	\$ 9.45/Cord	\$ _____
Quaking Aspen	2 Cords	\$ 19.95/Cord	\$ _____
Red Oak	33 Cords	\$ 15.05/Cord	\$ _____
Red Pine	650 Cords	\$ 43.20/Cord	\$ _____
Scotch Pine	103 Cords	\$ 7.25/Cord	\$ _____
White Pine	158 Cords	\$ 13.00/Cord	\$ _____

\*The volumes are statistically estimated within plus (+) or minus (-) 6.18 percent at 95% confidence level. These estimated volumes are final and not subject to adjustment. Prospective bidders are urged to examine this timber and to make their own estimates of quantity and quality.

I understand that any or all bids may be rejected. All bids must be signed and all bid items must be bid or the bid form may be rejected. I also understand that consideration and awarding a contract will be based upon my past performance and ability to complete the contract based upon equipment and staffing subject to my control.

FEDERAL ID: \_\_\_\_\_ or SOCIAL SECURITY NUMBER: \_\_\_\_\_

Company or individual bidding: \_\_\_\_\_

Company representative's name: \_\_\_\_\_

Address: \_\_\_\_\_

City: \_\_\_\_\_ State: \_\_\_\_\_ Zip: \_\_\_\_\_

IF AVAILABLE, PLEASE PLACE THE PERSONALIZED LABEL FROM YOUR PROSPECTUS IN THE ABOVE BOX.

Individual or company representative's signature: \_\_\_\_\_ Date: \_\_\_\_\_

Phone number : \_\_\_\_\_ Email (optional): \_\_\_\_\_

**THE WINNING BIDDER MUST COMPLETE THE VERIFICATION OF WORKER'S DISABILITY COMPENSATION ACT COMPLIANCE (ON REVERSE SIDE IF DOUBLE SIDED) WITHIN 21 DAYS OF SALE AWARD DATE**





Spring Creek Jack Pine (42-008-21)  
T46N, R12W, SEC. 18; T46N, R12W, SEC. 7; Luce COUNTY

In response to the notice of sale to be held 3:00 p.m. (local time) on May 19, 2022, I am hereby submitting my sealed bid ( firm offer) for the following forest products to be cut. Bids for individual species must be at or above the advertised price. All non-responsive bid forms may be rejected.

<u>PRODUCTS &amp; SPECIES</u>	<u>ESTIMATED VOLUME*</u>	<u>ADVERTISED PRICE</u>	<u>BID PRICE/UNIT</u>
Pulpwood			
Black Spruce	11 Cords	\$ 18.85/Cord	\$ _____
Jack Pine	4,144 Cords	\$ 16.25/Cord	\$ _____
Mixed Aspen	187 Cords	\$ 19.95/Cord	\$ _____
Mixed Hardwood	88 Cords	\$ 10.00/Cord	\$ _____
Red Pine	25 Cords	\$ 43.20/Cord	\$ _____
White Pine	230 Cords	\$ 13.00/Cord	\$ _____

\*The volumes are statistically estimated within plus (+) or minus (-) 5.42 percent at 95% confidence level. These estimated volumes are final and not subject to adjustment. Prospective bidders are urged to examine this timber and to make their own estimates of quantity and quality.

I understand that any or all bids may be rejected. All bids must be signed and all bid items must be bid or the bid form may be rejected. I also understand that consideration and awarding a contract will be based upon my past performance and ability to complete the contract based upon equipment and staffing subject to my control.

FEDERAL ID: \_\_\_\_ - \_\_\_\_ - \_\_\_\_ or SOCIAL SECURITY NUMBER: \_\_\_\_ - \_\_\_\_ - \_\_\_\_

Company or individual bidding: \_\_\_\_\_

Company representative's name: \_\_\_\_\_

Address: \_\_\_\_\_

City: \_\_\_\_\_ State: \_\_\_\_\_ Zip: \_\_\_\_\_

IF AVAILABLE, PLEASE PLACE THE PERSONALIZED LABEL FROM YOUR PROSPECTUS IN THE ABOVE BOX.

Individual or company representative's signature: \_\_\_\_\_ Date: \_\_\_\_\_

Phone number : \_\_\_\_\_ Email (optional): \_\_\_\_\_

**THE WINNING BIDDER MUST COMPLETE THE VERIFICATION OF WORKER'S DISABILITY COMPENSATION ACT COMPLIANCE (ON REVERSE SIDE IF DOUBLE SIDED) WITHIN 21 DAYS OF SALE AWARD DATE**



<b>FOR DEPARTMENT USE ONLY</b>	
Sale Number (XX - XXX - XX - XX)	
Forest Management Unit:	

## TIMBER SALE VERIFICATION OF WORKER'S DISABILITY COMPENSATION ACT COMPLIANCE

As required by Act 317, P.A. 1969 (Worker's Compensation) and  
Part 5 of Act 451 of 1994, as amended.

### VERIFICATION OF WORKER'S DISABILITY COMPENSATION ACT COMPLIANCE

- This verification must be completed and submitted within 21 days of contract award and prior to the issuance of the timber sale contract.
- In addition, if boxes 2B or 2C are checked, then Notice of Exclusion or Certificate of Insurance must be submitted within twenty-one (21) days of the contract award and prior to the issuance of the timber sale contract.
- All information must be typed or printed except for written signatures.

Please Check Appropriate Categories:

1. My business is organized as (you **must** check one of the boxes below):
  - A.  Sole Proprietorship (individual)
  - B.  Partnership
  - C.  Corporation
2. You **must** check one of the boxes below:
  - A.  I certify my business is a sole proprietorship and it has no employees but the sole proprietor. I am not subject to the Worker's Compensation Laws.
  - B.  I certify my business has satisfied its obligation to the Worker's Compensation Act through the use of an approved Notice of Exclusion (BWC-337, Rev. 5/96). I will provide a copy of the Notice of Exclusion within 21 days of the contract award. (For questions or a copy of the BWC-337, please call the Worker's Compensation Bureau at 517-322-1195).
  - C.  I certify my business has a Worker's Compensation Policy. I will provide an original Certificate of Insurance within twenty-one (21) days of the contract award.
3. If you have checked item 2(A) or 2(B), you **must** indicate the number of **both** full-time and part-time employees, other than yourself, including family members and active partners (if none, you must enter "0").

\_\_\_\_\_ Full-time Employees

\_\_\_\_\_ Part-time Employees

Name of Business		Federal ID (or) Social Security No.	
Address		Telephone (       )	
City	State	ZIP	

*I hereby certify that the above information is true and correct. I agree to notify the Michigan DNR of any changes that occur in factors affecting my coverage during any of my present and future operations.*

\_\_\_\_\_  
Signature of Owner or Authorized Representative

\_\_\_\_\_  
Title

\_\_\_\_\_  
Date

Please complete the "SEALED BID" information on the next page