



**DEPARTMENT OF NATURAL RESOURCES
STATE OF MICHIGAN
TIMBER SALE PROSPECTUS #7021**

SCHEDULED SALE DATE AND TIME: 3:00 p.m. (local time) on June 23, 2022.

LOCATION: NEWBERRY MGMT UNIT, 5666 S STATE HWY M 123, NEWBERRY, MI 49868.

PROSPECTUS NOTE: The bidder is advised to inspect the sale area and review the location, estimated volumes, operating costs and contract terms of proposed sales. Please be aware that some landowners may request 60 days or more notice for access across their land.

Notice is hereby given that bids will be received by the Unit Manager, NEWBERRY MANAGEMENT UNIT, for certain timber on the following described lands:

Arbutus Truck Trail Hardwoods (42-030-21) / T45N, R07W, SEC. 11, SENE.

T45N, R07W, SEC. 12, SWNW,SW.

T45N, R07W, SEC. 13, N1/2SE,SWSE.

T45N, R07W, SEC. 13, NW,NWNE,S1/2NE,N1/2SW,SESW.

Chippewa County, Advertised Price \$95,092.60, 337.6 Acres, Hardwood, Sugar Maple.

SALE NOTE: All units of volume listed for this sale were estimated using the Inventory Manager computer program and the new Michigan taper model.

Roads may require the installation of equalization culverts for cross drainage or at natural drainage-ways. See Sale Spec 4.1.5 for additional information.

Road maintenance may be needed. See Sale Spec 4.2.3 for details.

Harvesting is not permitted during the period of April 15 to July 15 because of bark slippage.

The snowmobile trail and is shown on the Timber Sale Map. See Sale Spec 5.2.41 for restrictions.

A recreation site such as a trail, pathway, or campground is within the sale area or the vicinity. Certain restrictions/specifications may be applicable including time restrictions.

Southeast Border Red Pine (42-031-21) / T45N, R07W, SEC. 13, SE.

T45N, R07W, SEC. 24, NENE.

Chippewa County, Advertised Price \$31,785.30, 44.3 Acres, White Pine, Red Pine.

SALE NOTE: All units of volume listed for this sale were estimated using the Inventory Manager computer program and the new Michigan taper model.

A snowmobile trail is shown on the Timber Sale Map. See Sale Spec 5.2.41 for restrictions.

A recreation site such as a trail, pathway, or campground is within the sale area or the vicinity. Certain restrictions/specifications may be applicable including time restrictions.

Slow Roll Hardwoods (42-032-21) / T45N, R07W, SEC. 14, E1/2NW,NE,N1/2SW,N1/2SE,SWSE.
Chippewa County, Advertised Price \$64,189.35, 171.4 Acres, Hardwood, Sugar Maple.

SALE NOTE: All units of volume listed for this sale were estimated using the Inventory Manager computer program and the new Michigan taper model.

Roads may require the installation of equalization culverts for cross drainage or at natural drainage-ways. See Sale Spec 4.1.5 for additional information.

Harvesting is limited to the period of October 1 to April 1 because of wintering deer and providing forage.

BID INSTRUCTIONS (VER. 07/02/2018):

1. Scheduled Bid Location, Date, and Time (2/11)

Bids must be received by the Unit Manager, NEWBERRY OFFICE, 5666 S STATE HWY M 123, NEWBERRY, MI 49868, no later than 3:00 p.m. (local time) on June 23, 2022. For further information concerning this sale, contact Keith Magnusson at 906-291-0120 extension n/a.

2. Bidder's Qualifications (5/16)

Purchaser shall obtain workers compensation insurance to cover claims under Michigan's Worker's Disability Compensation Act of 1969 or similar employee benefit act of any other state applicable to an employee. If all or part of a timber sale was prepared by a private contractor, the contractor and that contractor's company are not permitted to bid on the timber sale contract. Bids will not be accepted from individuals or companies appearing on the DNR/FRD No-Bid List. This list contains the names of purchasers who previously failed to execute a contract within 21-days or who have a history of poor performance.

3. Preparation of Sealed Bids (5/16)

Bid Forms may be completed online thru Michigan DNR Timber Sale Online Bidding (OLB) at www.michigan.gov/timberbidding or by completing the hardcopy Bid Form found in the Timber Sale Prospectus. Hardcopy Bid Forms shall be manually signed in ink. Registration in OLB is considered your 'signature' for all bids submitted thru that system. Bid prices must be entered for each species and product in the Bid Price column for all material subject to bidding and all fill-in blanks must be completed. If erasures or other changes appear on the hardcopy Bid Form, each erasure or change must be initialed by the person signing the bid.

4. Submission of Sealed Bids (5/16)

Bid forms may be obtained from the Unit Manager or thru OLB. Bids may be submitted hardcopy or thru OLB. All hardcopy bids must be submitted on the bid form and in an envelope clearly identified as described in this section. NOTE: Only one bid form per bid envelope. Sealed bids must be submitted to the Unit office designated in the prospectus and must be submitted at or prior to the time established in the prospectus. The envelope should show on the outside (a) the sale name or number and (b) the date and time of bid opening, as shown in the prospectus. Bids received after the time specified in the sale prospectus are late bids and will be rejected.

It is possible for a bidder to submit multiple bids on a single sale. For example, a bid may be submitted hardcopy and a bid may be submitted thru OLB. Or, two bidders from the same company could both submit bids on the same sale. If this were to happen, the State would accept all bids received and award the contract accordingly. All bidding and contractual requirements would apply to all bids received.

5. Public Opening of Sealed Bids (7/16)

If conditions permit, the sealed bids will be publicly opened and posted at the time and place set in the prospectus.

If a bidder, present at a bid opening, has submitted bids on more than one sale, that bidder may withdraw their unopened bid envelopes or announce the withdrawal of their online bid after being declared the successful bidder on one sale.

6. Award of Contract (1/11)

Award of the contract will be made to the Bidder whose bid, conforming to the prospectus, is most advantageous to the State of Michigan on the basis of total value at rates bid for the estimated quantities. The State reserves the right to reject any bid or waive any minor irregularity in bids received. A written award mailed (or otherwise furnished) to the successful Bidder shall be deemed to result in a binding contract without further action by either party.

7. Down Payment (1/11)

The Bidder to whom award is made must make a down payment within 21 days of the sale award. The amount of the down payment will be calculated as shown in the Bond and Payment Schedule of this prospectus. Only cash may be used to meet this requirement.

8. Performance Security (1/11)

As guarantee of faithful performance, a cash bond, certificate of deposit, surety bond or irrevocable letter of credit (LOC) is required within 21 days of the sale award. The amount of the performance security is shown in the Bond and

Payment Schedule of this prospectus. If an LOC or surety is used, the coverage must extend for at least 6 months beyond the contract expiration.

9. Timber Sale Contract (7/18)

Additional conditions and requirements common to all timber sales are listed on the timber sale contract (R4031) and are available on line at www.michigan.gov/timber. Contact the Unit Manager for additional information or a sample contract. Within 21 days of the date of the award letter, the bidder must sign the contract and provide the required down payment, performance security, and verification of worker's disability compensation. The down payment and performance security shall be in accordance with the provisions of the timber sale contract, in the sums stated in this prospectus. If these actions are not taken, then the Bidder, the Bidder's corporation, and the corporation's principals may not be permitted to bid on State timber sales for a period of 3 months after the first offense, 6 months after the second offense, and 1 year after the third offense. An offense will only be counted against the Bidder for 5 years. In addition, the Bidder certifies that if awarded this contract, the Bidder will complete the timber sale contract in accordance with its terms and any modifications thereof including requirements to purchase, cut, and remove the included timber by the expiration date.

Payment Unit values in the State Forest Timber Sale Contract are calculated based on the advertised value of the Payment Unit as a percentage of the total advertised value of the contract. The advertised value of each Payment Unit is given in the Description of Timber by Payment Unit table on the Timber Sale Information page. For example, if the value of Payment Unit 1 is advertised as \$1,500 and the total Timber Sale value is advertised as \$10,000, the contract price for Payment Unit 1 will be 15% of the total bid price ($\$1,500/\$10,000 * 100$).

10. Disclaimer of Estimates and Bidder's Warranty of Inspection (7/16)

Before submitting this bid, the Bidder is advised and cautioned to inspect the sale area, review the requirements of the sale contract, and take other steps as may be reasonably necessary to ascertain the location, estimated volumes, construction estimates, and operating costs of the proposed sale. Failure to do so will not relieve the Bidder from responsibility for completing the contract.

The Bidder warrants that this bid is submitted solely on the basis of the Bidder's examination and inspection of the quality and quantity of the timber offered for sale and the Bidder's opinion of the value thereof and the costs of recovery. No reliance should be placed on the State of Michigan's estimates of timber quality, quantity or costs of recovery. Bidder further acknowledges that the State of Michigan: (i) expressly disclaims any warranty of fitness of timber for any purpose; (ii) offers this timber as is without any warranty of quality (merchantability) or quantity and (iii) expressly disclaims any warranty as to the quantity or quality of timber sold.

11. Certification and Chain-of-Custody (10/14)

Unless otherwise indicated in the contract under section 7 – Other Conditions of the Sale Specific Conditions & Requirements, the area encompassed by this timber sale is certified to the standards of the Forest Stewardship Council (FSC) - Certificate #SCS-FM/COC-00090N and the Sustainable Forestry Initiative (SFI) - Certificate # NSF-SFIS-5Y031-SF5. Forest products from this sale may be delivered to the mill as "FSC 100% and / or SFI certified" as long as the contractor hauling the forest products is chain-of-custody (COC) certified or covered under a COC certificate from the destination mill. The purchaser is responsible for maintaining COC after leaving the sale area.

12. Good Neighbor Authority (GNA) Requirements (7/16)

If the name of this timber sales contains the acronym GNA, it is authorized by the Good Neighbor Authority (GNA) and covered by various agreements between the U.S. Forest Service and the State. The timber sale occurs on federal land and the following conditions apply:

GNA contracts on US Forest Service land will not be awarded to purchasers on the Federal list of excluded parties. The System for Award Management (SAM) will be checked for active excluded parties prior to award of contract. In addition, the Bidder to whom award is made must complete an Assurance Regarding Felony Conviction or Tax Delinquent Status for Corporate Applicants (AD-3031).

13. Good Neighbor Authority (GNA) Requirements, con't (9/16)

Bidder certifies, by signing this bid form, that to the best of Bidder's knowledge that the following representations are accurate and complete.

- a. That the Bidder and its principals are not presently debarred, suspended, proposed for debarment, declared ineligible, or voluntary excluded from timber sales (covered transactions) by any Federal department or agency.
- b. That the Bidder and its principals have not within a 3-year period preceding this bid been convicted of or had a civil judgment rendered against them for commission of fraud or a criminal offense in connection with obtaining , attempting to obtain, or performing a public (Federal, State, or local) transaction or contract under a public transaction; violation of Federal or State antitrust statutes or commission of embezzlement, theft, forgery, bribery, falsification or destruction of records, making false statements, or receiving stolen property.
- c. That the Bidder and its principals are not presently indicted for or otherwise criminally or civilly charged by a governmental entity (Federal, State, or local) with commission of any of the offenses enumerated in paragraph b of this certification.
- d. That the Bidder and its principals have not within a 3-year period preceding this bid had one or more public transactions (Federal, State, or local) terminated for breach or default of a timber or forest product contract.

Bidders that cannot certify this requirement, in whole or in part, shall submit an explanation with their bid.

DAN EICHINGER
Director

TIMBER SALE INFORMATION

Arbutus Truck Trail Hardwoods (42-030-21)
 T45N, R07W, SEC. 11; T45N, R07W, SEC. 12; T45N, R07W, SEC. 13.
 Chippewa County (Advertised Price \$95,092.60)

SALE NOTE: All units of volume listed for this sale were estimated using the Inventory Manager computer program and the new Michigan taper model.

Roads may require the installation of equalization culverts for cross drainage or at natural drainage-ways. See Sale Spec 4.1.5 for additional information.

Road maintenance may be needed. See Sale Spec 4.2.3 for details.

Harvesting is not permitted during the period of April 15 to July 15 because of bark slippage.

The snowmobile trail and is shown on the Timber Sale Map. See Sale Spec 5.2.41 for restrictions.

A recreation site such as a trail, pathway, or campground is within the sale area or the vicinity. Certain restrictions/specifications may be applicable including time restrictions.

A timber sale contract for this lump sum, sealed bid timber sale will be awarded to the responsible bidder offering the highest sealed bid price. All units of volume listed below were estimated using the Inventory Manager computer program and the new Michigan taper model. Bids must be at or above the following advertised price for each product and species:

<u>PRODUCTS & SPECIES</u>	<u>ESTIMATED UNITS*</u>	<u>ADVERTISED PRICE</u>
Sawtimber		
Red Maple	232.1 MBF	\$ 89.00 / MBF
Sugar Maple	125.9 MBF	\$ 175.00 / MBF
Yellow Birch	3.4 MBF	\$ 79.00 / MBF
Pulpwood		
Balsam Fir	108 Cords	\$ 8.65 / Cord
Mixed Hardwood	5,692 Cords	\$ 8.95 / Cord
Quaking Aspen	10 Cords	\$ 25.70 / Cord

* The total volume is statistically estimated within plus (+) or minus (-) 3.76 percent. There are an estimated 6,864 cords on this timber sale, plus or minus 259 cords at the 95% confidence level. The estimated units are final and not subject to adjustment. Prospective bidders are urged to examine this timber and to make their own estimates of quantity and quality.

BOND AND PAYMENT SCHEDULE:

1. A bond in the amount of \$4,755.00 to insure faithful performance of the conditions of the contract will be deposited by the successful bidder within 21 days of the sale award.
2. Cutting in any sale or unit without the required advance payment would be considered a trespass.
3. Total payment must be paid in advance or according to the following schedule :
 - (a) Ten percent (10%) of the sale value must be paid within 21 days of the sale award.
 - (b) The 10% down payment will be credited towards the first unit cut.
 - (c) Payment for each of the following units must be made before cutting begins in that unit:

<u>PAYMENT UNIT NUMBER</u>	<u>PERCENT OF TOTAL SALE VALUE</u>
01	7.2%
02	8.2%
03	4.8%
04	5.3%
05	7.4%
06	6.0%
07	8.8%
08	11.5%
09	6.2%
10	15.6%
11	6.2%
12	12.8%

4. If no cutting takes place, the 10% down payment will not be refunded.
5. Operations on the contract issued will terminate on 12/31/2025.

SALE STATISTICS

Volumes were calculated in cubic feet using the Michigan taper model. Cubic foot volume includes all wood inside bark for the product indicated. For display purposes, cubic feet were converted to cords and MBF using a simple conversion factor, e.g. 79 cubic feet per cord and 185 cubic feet per MBF. The cubic foot volumes are precise; the cords and MBF volumes are not. Cubic foot volume cannot be directly converted to cords or boards with precision.

SALE VOLUMES

The total estimated sale volume may not equal the sum of the species/products due to the nature of statistical calculations associated with double sampling methodology.

VOLUME			STATISTICAL RANGE IN CORDS	
TOTAL CUBIC FEET	TOTAL CORDS	PERCENT ERROR	MINIMUM	MAXIMUM
542,244	6,864	3.76%	6,605	7,123

VDU VOLUMES

A VDU is a Volume Determination Unit. Volumes and their associated statistics are calculated at the VDU level and summarized to the sale level. There is often a one to one relationship between a VDU and a Payment Unit, but not always, depending on the cruise design. Refer to the VDU TO PAYMENT UNIT table.

	VOLUME			RANGE IN CORDS	
VDU	TOTAL CUBIC FEET	TOTAL CORDS	PERCENT ERROR	MINIMUM	MAXIMUM
51	165,526	2,095	4.54%	2,000	2,190
62	326,821	4,137	5.64%	3,903	4,370
67	49,898	632	9.17%	574	690
TOTAL:	542,244	6,864		6,477	7,250

VDU TO PAYMENT UNIT

When a VDU is associated with more than one Payment Unit (PU), the VDU volumes are assigned to the PU based on acres of the VDU within the PU.

VDU	VDU ACRES	PU	PU ACRES		
51	131.8	1	37.5		
		2	42.4		
		3	24.7		
		4	27.2		
62	168.0	7	24.2		
		8	31.7		
		9	16.9		
		10	42.9		
		11	17.0		
		12	35.3		
		67	37.8	5	21.0
				6	16.8
TOTAL:	337.6		337.6		

DESCRIPTION OF TIMBER BY PAYMENT UNIT (PU)

PU	MARKET GROUP	PRODUCT	QUANTITY	UNIT	ACRES	ADVERTISE PRICE
1	Red Maple	Sawtimber	22.7	MBF	37.5	\$6,893.60
	Sugar Maple		2.3	MBF		
	Yellow Birch		0.4	MBF		
	Mixed Hardwood	Pulpwood	496	Cords		
	<i>Beech</i>		21	<i>Cords</i>		
	<i>Black Cherry</i>		1	<i>Cords</i>		
	<i>Red Maple</i>		425	<i>Cords</i>		
	<i>Sugar Maple</i>		47	<i>Cords</i>		
	<i>Yellow Birch</i>		2	<i>Cords</i>		
2	Red Maple	Sawtimber	25.7	MBF	42.4	\$7,775.90
	Sugar Maple		2.6	MBF		
	Yellow Birch		0.5	MBF		
	Mixed Hardwood	Pulpwood	558	Cords		
	<i>Beech</i>		23	<i>Cords</i>		
	<i>Red Maple</i>		480	<i>Cords</i>		
	<i>Sugar Maple</i>		53	<i>Cords</i>		
	<i>Yellow Birch</i>		2	<i>Cords</i>		
	3	Red Maple	Sawtimber	15.0		
Sugar Maple			1.5	MBF		
Yellow Birch			0.3	MBF		
Mixed Hardwood		Pulpwood	327	Cords		
<i>Beech</i>			14	<i>Cords</i>		
<i>Black Cherry</i>			1	<i>Cords</i>		
<i>Red Maple</i>			280	<i>Cords</i>		
<i>Sugar Maple</i>			31	<i>Cords</i>		
<i>Yellow Birch</i>			1	<i>Cords</i>		
4	Red Maple	Sawtimber	16.5	MBF	27.2	\$5,002.75
	Sugar Maple		1.7	MBF		
	Yellow Birch		0.3	MBF		
	Mixed Hardwood	Pulpwood	359	Cords		
	<i>Beech</i>		15	<i>Cords</i>		
	<i>Black Cherry</i>		1	<i>Cords</i>		
	<i>Red Maple</i>		308	<i>Cords</i>		
	<i>Sugar Maple</i>		34	<i>Cords</i>		
	<i>Yellow Birch</i>		1	<i>Cords</i>		
5	Sugar Maple	Sawtimber	26.3	MBF	21.0	\$7,081.65
	Mixed Hardwood	Pulpwood	277	Cords		
	<i>Ironwood</i>		6	<i>Cords</i>		
	<i>Sugar Maple</i>		271	<i>Cords</i>		
6	Sugar Maple	Sawtimber	21.0	MBF	16.8	\$5,661.90
	Mixed Hardwood	Pulpwood	222	Cords		
	<i>Ironwood</i>		4	<i>Cords</i>		
	<i>Sugar Maple</i>		218	<i>Cords</i>		
7	Red Maple	Sawtimber	21.9	MBF	24.2	\$8,379.00
	Sugar Maple		10.2	MBF		
	Yellow Birch		0.3	MBF		
	Balsam Fir	Pulpwood	16	Cords		
	Mixed Hardwood		498	Cords		
	<i>Beech</i>		9	<i>Cords</i>		
	<i>Black Cherry</i>		1	<i>Cords</i>		
	<i>Red Maple</i>		387	<i>Cords</i>		
	<i>Sugar Maple</i>		99	<i>Cords</i>		
	<i>Yellow Birch</i>		2	<i>Cords</i>		
Quaking Aspen		1	Cords			
8	Red Maple	Sawtimber	28.7	MBF	31.7	\$10,964.25

DESCRIPTION OF TIMBER BY PAYMENT UNIT (PU), CON'T

PU	MARKET GROUP	PRODUCT	QUANTITY	UNIT	ACRES	ADVERTISE PRICE
8 con't	Sugar Maple	Sawtimber	13.3	MBF		
	Yellow Birch		0.4	MBF		
	Balsam Fir	Pulpwood	20	Cords		
	Mixed Hardwood		651	Cords		
	<i>Beech</i>		11	<i>Cords</i>		
	<i>Black Cherry</i>		1	<i>Cords</i>		
	<i>Red Maple</i>		506	<i>Cords</i>		
	<i>Sugar Maple</i>		130	<i>Cords</i>		
	<i>Yellow Birch</i>		3	<i>Cords</i>		
	Quaking Aspen		2	Cords		
9	Red Maple	Sawtimber	15.3	MBF	16.9	\$5,855.45
	Sugar Maple		7.1	MBF		
	Yellow Birch		0.2	MBF		
	Balsam Fir	Pulpwood	11	Cords		
	Mixed Hardwood		348	Cords		
	<i>Beech</i>		6	<i>Cords</i>		
	<i>Black Cherry</i>		1	<i>Cords</i>		
	<i>Red Maple</i>		270	<i>Cords</i>		
	<i>Sugar Maple</i>		69	<i>Cords</i>		
	<i>Yellow Birch</i>		2	<i>Cords</i>		
Quaking Aspen		1	Cords			
10	Red Maple	Sawtimber	38.9	MBF	42.9	\$14,821.40
	Sugar Maple		18.0	MBF		
	Yellow Birch		0.4	MBF		
	Balsam Fir	Pulpwood	27	Cords		
	Mixed Hardwood		879	Cords		
	<i>Beech</i>		15	<i>Cords</i>		
	<i>Black Cherry</i>		1	<i>Cords</i>		
	<i>Red Maple</i>		684	<i>Cords</i>		
	<i>Sugar Maple</i>		176	<i>Cords</i>		
	<i>Yellow Birch</i>		3	<i>Cords</i>		
Quaking Aspen		3	Cords			
11	Red Maple	Sawtimber	15.4	MBF	17.0	\$5,891.20
	Sugar Maple		7.1	MBF		
	Yellow Birch		0.2	MBF		
	Balsam Fir	Pulpwood	11	Cords		
	Mixed Hardwood		351	Cords		
	<i>Beech</i>		6	<i>Cords</i>		
	<i>Black Cherry</i>		1	<i>Cords</i>		
	<i>Red Maple</i>		272	<i>Cords</i>		
	<i>Sugar Maple</i>		70	<i>Cords</i>		
	<i>Yellow Birch</i>		2	<i>Cords</i>		
Quaking Aspen		1	Cords			
12	Red Maple	Sawtimber	32.0	MBF	35.3	\$12,217.65
	Sugar Maple		14.8	MBF		
	Yellow Birch		0.4	MBF		
	Balsam Fir	Pulpwood	23	Cords		
	Mixed Hardwood		726	Cords		
	<i>Beech</i>		13	<i>Cords</i>		
	<i>Black Cherry</i>		1	<i>Cords</i>		
	<i>Red Maple</i>		564	<i>Cords</i>		
	<i>Sugar Maple</i>		145	<i>Cords</i>		
	<i>Yellow Birch</i>		3	<i>Cords</i>		
Quaking Aspen		2	Cords			
TOTAL:			361.4	MBF		

TOTAL:	5,810 Cords
--------	-------------

Sale Specific Conditions & Requirements

Sale Name: Arbutus Truck Trail Hardwoods

Sale Number: 42-030-21 Seq#: 1

1 - Sale Area

1.2 - Boundaries

1.2.1 - Painted boundaries (9/19)

The sale boundary and Payment Unit boundaries are marked and identified by blue, red, and yellow paint. Exterior sale boundary lines against private property are marked with blue paint. Exterior sale boundary lines against state are marked with red paint. Interior Payment Unit boundaries are marked with yellow paint. The painted boundary line trees are not Included Timber and are to be protected unless marked with orange paint. Yellow painted trees designating an interior Payment Unit boundary are only to be cut when all surrounding Payment Units have been paid.

2 - Timber Specifications

2.1 - Included Timber

2.1.3 - Cut tree marked unit(s) (12/08)

Within Payment Unit(s) 1-12, all trees are designated for cutting when marked with orange paint above and below stump height, regardless of merchantability. In addition, cut the following species in their designated Payment Units:

- Within Payment Units 1-4 and 7-12 cut all aspen and beech,
- Within Payment Units 1-4 cut all spruce,
- Within Payment Units 7-12 cut all balsam fir.

Leave the following species in their designated Payment Units:

- Within Payment Units 1-4 leave all balsam fir,
- Within Payment Units 7-12 leave all spruce,
- Within Payment Units 5 and 6 leave any trees ringed in green paint.

4 - Transportation

4.1 - Construction

4.1.4 - Timber removed for construction (12/09)

Trees cut or damaged in the process of pre-approved road, landing or skid trail construction will be decked in an area separate from other Designated Timber and not removed until measured by the sale administrator. Payment will be made at the specified Purchase Unit Price.

4.1.5 - Culverts (5/14)

Roads may require the installation of equalization culverts for cross drainage or at natural drainage-ways. If culverts are needed in these locations, their placement will be specified by the sale administrator, and they shall be installed by the Purchaser prior to hauling. The culverts shall be new, corrugated metal and will be a minimum of 12 inches in diameter and 24 feet in length. Culverts will be provided by the DNR.

4.1.6 - Road construction (1/09)

Construction of new roads or improvements of existing roads shall be done in such a way as to minimize the environmental and visual impacts. Merchantable trees shall be cut and utilized unless otherwise directed. Non-merchantable trees shall be severed and laid flat on the ground. Slash shall be scattered, and not left in windrows and kept a minimum of 10 feet back from the road edge. Stumps shall be set upright, not left on edge, and be moved at least 10 feet away from the road edge. Disturbed soil shall be feathered into the woods and not left in berms or windrows.

4.1.7 - Road closure (10/11)

All new roads built into the sale must be blocked to vehicle traffic upon completion of the sale. All new roads built into the sale must be blocked to vehicle traffic within 30 days of completion of hauling. Overgrown roads that are reopened shall be considered new roads. In general, this will require constructing a four (4') foot high berm of stumps and logs covered with earth. These roads must be rendered impassable to cars and trucks. Contact the sale administrator for specific details of design and placement.

4.2 - Maintenance

4.2.3 - Road maintenance (8/13)

The following road maintenance may be needed: leveling, grading, and graveling along forest roads. Contact sale administrator for details.

4.2.4 - Grading (10/16)

For completion of the sale, state forest roads must be graded. In general, this will require a road grader or bulldozer to shape up the roads after forest products have been hauled off site. This includes cleaning of drainage areas, grading, crowning, and filling with gravel, if necessary. The grading equipment to be used must be approved by the Unit Manager or his/her representative.

5 - Operations

5.2 - Conduct of Operations

5.2.1 - Slash

5.2.1.8 - Slash height (12/08)

No slash or tree tops may exceed 36 inches in height.

5.2.2 - Hazard Trees/Snags

5.2.2.1 - Den trees (10/16)

Obvious hollow and/or den trees shall be protected and left standing unless they are a safety hazard.

5.2.3 - Operating Restrictions

5.2.3.3 - Bark slippage restriction (3/09)

Within Payment Unit(s) 1-12, unless changed by written agreement, cutting, and skidding are not permitted during the period of April 15 to July 15. This restriction is because of bark slippage.

5.2.32 - Decking/landing restoration (9/13)

All decking and landing areas must have the surface area restored to a condition equal to or better than before. This is to ensure the proper regeneration of the stand. Wood debris, chips, and "cookies" from trimmings must be removed or scattered away from landing and loading areas and may not be windrowed on the edge.

5.2.38 - No decking against live trees (2/04)

Cut products may not be decked against unmarked or designated leave trees.

5.2.41 - Snowmobile trail protection (9/11)

The snowmobile trail and is shown on the Timber Sale Map. Do not cut or damage posts with orange trail markers or traffic control signs. If the trail is used, it must be maintained and restored to a condition equal to or better than before the sale. The road maintenance/restoration must be done prior to December 15. If the trail is used for hauling, it must be graded to the satisfaction of the Unit Manager or his/her representative prior to December 15. If the trail road is to be used for hauling during the snowmobile season, then a snow-covered base must be left on the trail. Maintain a 20-foot-wide slash, debris, and rut free zone daily using the snowmobile trail as the centerline. Stumps must be flush to the ground for any trees cut along the trail. No decking of forest products will be permitted along the snowmobile trail. In order to limit issues with the snowmobile trail, it is recommended that cutting of Payment Units 1-4 start prior to, but no later than October 1.

5.8 - Protection of Endangered Species

5.8.5 - Protection of raptor nests (3/13)

All trees with raptor nests will be protected if found during harvesting operations. Notification will be made to the Unit Manager or his/her representative who will notify the Wildlife Biologist so an on-site evaluation and recommendation can be made, if necessary.

6 - Safety and Fire Prevention

6.2 - Signing

6.2.1 - Road posting (10/20)

The Purchaser is responsible for posting and maintaining caution signs on Arbutus Truck Trail and Kabelman Road prior to beginning operations. The road must be posted at appropriate distances from the Sale Area to warn of logging activity and

truck traffic. Signs must be removed when harvest operations are suspended or completed. The Purchaser will provide these signs.

6.2.2 - Snowmobile trail posting (10/20)

The Purchaser is responsible for posting and maintaining caution signs on snowmobile trail prior to beginning operations during the snowmobile season (approximately December 1 to March 31). The trail must be posted at appropriate distances from the Sale Area to warn of logging activity and truck traffic. Signs must be removed when harvest operations are suspended or completed. The DNR will provide these signs.



TIMBER SALE MAP

This information provided by authority of Part 525, 1994 PA 451, as amended.

Forest Management Unit Newberry		County Chippewa	Mapped By A. Livermore	Date 09/24/2021	Page 1	of 2
Township 47N	Range 07W	Section(s) and Subdivision(s) SENE sec 11, SW1/4, SWNW sec 12, NW1/4, NWNE, SWNE, SENE, NWSW, NESW, SE SW, NWSE, NESE, SWSE sec 13		Scale 1:15,840		
Cruised By Newberry DNR						

Cover Type

A = Aspen	H = Hemlock	N = Marsh	U = Upland Brush
B = Paper Birch	J = Jack Pine	O = Oak	UM = Upland Mixed
C = Cedar	L = Lowland Brush	P = Lowland Poplar	V = Bog or Marsh
D = Treed Bog	LM = Lowland Mixed	Q = Mixed Swamp Conifer	W = White Pine
E = Swamp Hdwoods	M = Mpl. Bch, Brch	R = Red Pine	X = Non Stocked
F = Spruce Fir	MC = Mixed Conifer	S = Black Spruce	Z = Water
G = Grass	MD = Mixed Deciduous		

Density

0 = Non Stocked	5 = Pole Timber Medium
1 = Seedling Sapling Poor	6 = Pole Timber Well
2 = Seedling Sapling Medium	7 = Saw Timber Poor
3 = Seedling Sapling Well	8 = Saw Timber Medium
4 = Pole Timber Poor	9 = Saw Timber Well

PU	Acres	PU	Acres
1	37.5	7	24.2
2	42.4	8	31.7
3	24.7	9	16.9
4	27.2	10	42.9
5	21	11	17
6	16.8	12	35.3

Arbutus Truck Trail Hardwoods

Compartment 42074
337.6 Acres

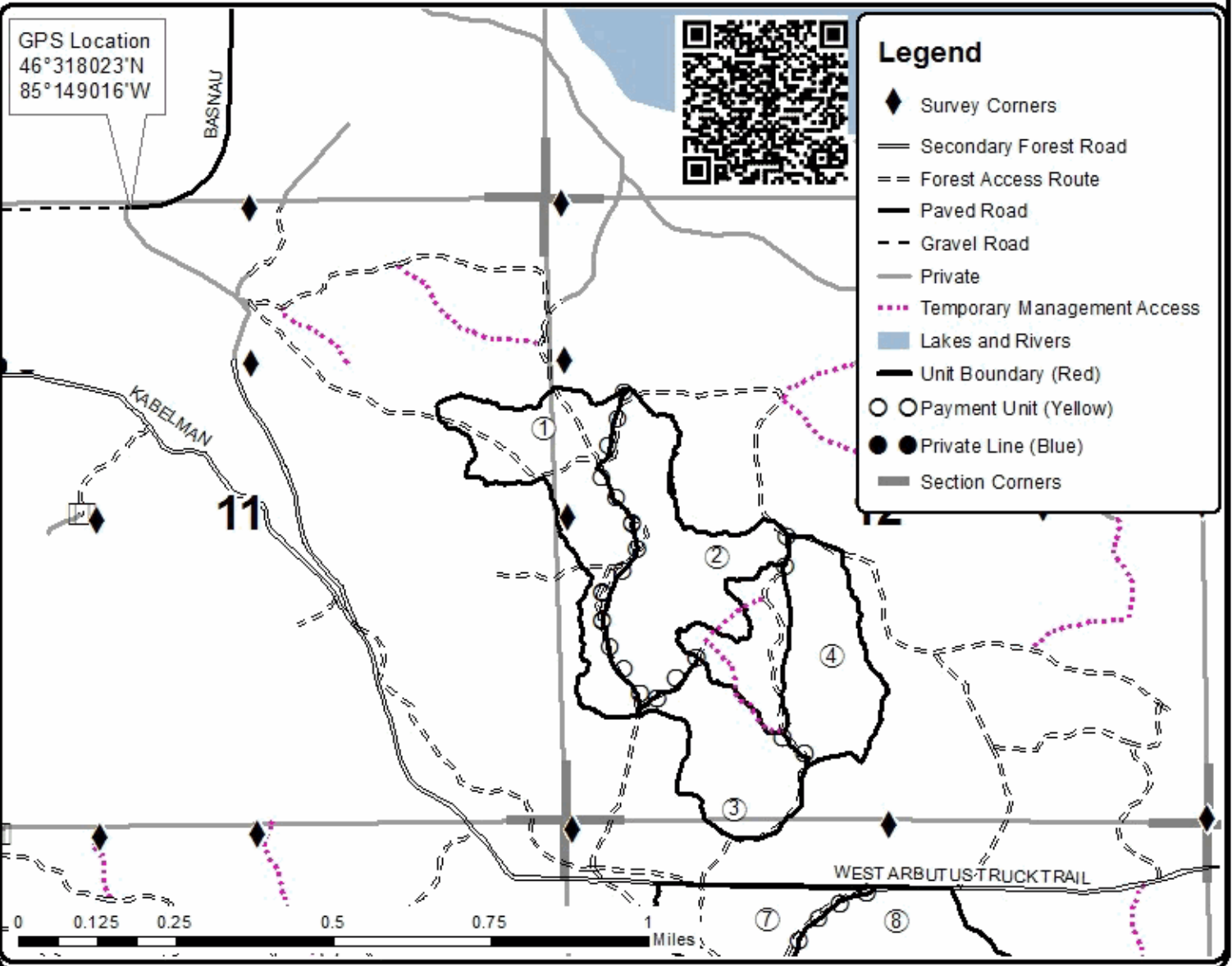


GPS Location
46°318023'N
85°149016'W



Legend

- ◆ Survey Corners
- Secondary Forest Road
- == Forest Access Route
- Paved Road
- - Gravel Road
- Private
- ⋯ Temporary Management Access
- Lakes and Rivers
- Unit Boundary (Red)
- Payment Unit (Yellow)
- Private Line (Blue)
- Section Corners





TIMBER SALE MAP

This information provided by authority of Part 525, 1994 PA 451, as amended.

Sale Number	Year
42 - 030	21

Forest Management Unit Newberry	County Chippewa	Mapped By A. Livermore	Date 09/24/2021	Page 2	of 2
Township 47N	Range 07W	Section(s) and Subdivision(s) SENE sec. 11, SW1/4, SWNW sec. 12, NW1/4, NWNE, SWNE, SENE, NWSW, NESW, SE SW, NWSE, NESE, SWSE sec. 13	Scale 1:15,840		

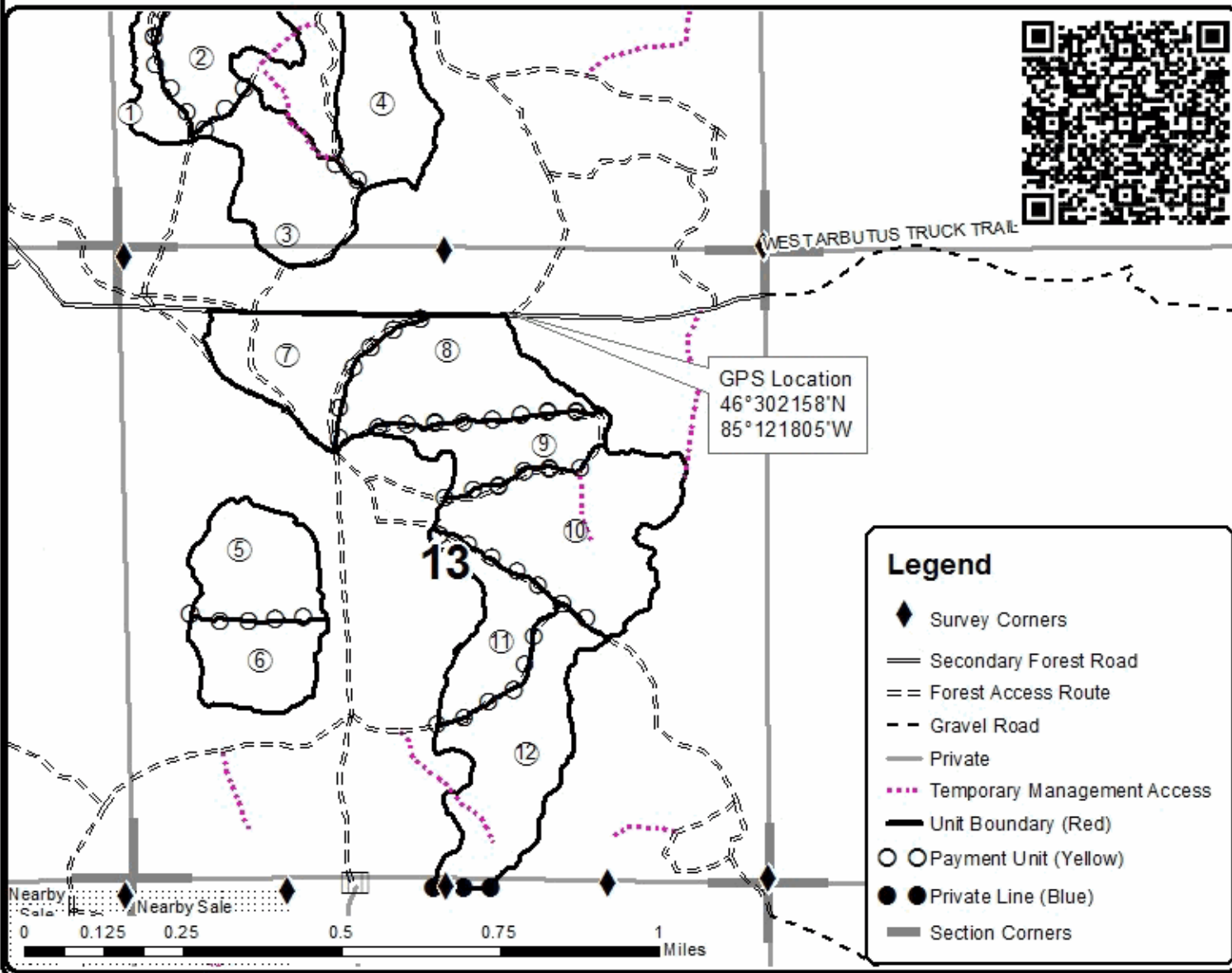
Cover Type				Density	
A = Aspen	H = Hemlock	N = Marsh	U = Upland Brush	0 = Non Stocked	5 = Pole Timber Medium
B = Paper Birch	J = Jack Pine	O = Oak	UM = Upland Mixed	1 = Seedling Sapling Poor	6 = Pole Timber Well
C = Cedar	L = Lowland Brush	P = Lowland Poplar	V = Bog or Marsh	2 = Seedling Sapling Medium	7 = Saw Timber Poor
D = Treed Bog	LM = Lowland Mixed	Q = Mixed Swamp Conifer	W = White Pine	3 = Seedling Sapling Well	8 = Saw Timber Medium
E = Swamp Hdwoods	M = Mpl, Bch, Brch	R = Red Pine	X = Non Stocked	4 = Pole Timber Poor	9 = Saw Timber Well
F = Spruce Fir	MC = Mixed Conifer	S = Black Spruce	Z = Water		
G = Grass	MD = Mixed Deciduous	T = Tamarack			

PU	Acres	PU	Acres
1	37.5	7	24.2
2	42.4	8	31.7
3	24.7	9	16.9
4	27.2	10	42.9
5	21	11	17
6	16.8	12	35.3

Arbutus Truck Trail Hardwoods

Compartment 42074

337.6 Acres



TIMBER SALE INFORMATION

Southeast Border Red Pine (42-031-21)
T45N, R07W, SEC. 13; T45N, R07W, SEC. 24.
Chippewa County (Advertised Price \$31,785.30)

SALE NOTE: All units of volume listed for this sale were estimated using the Inventory Manager computer program and the new Michigan taper model.

A snowmobile trail is shown on the Timber Sale Map. See Sale Spec 5.2.41 for restrictions.

A recreation site such as a trail, pathway, or campground is within the sale area or the vicinity. Certain restrictions/specifications may be applicable including time restrictions.

A timber sale contract for this lump sum, sealed bid timber sale will be awarded to the responsible bidder offering the highest sealed bid price. All units of volume listed below were estimated using the Inventory Manager computer program and the new Michigan taper model. Bids must be at or above the following advertised price for each product and species:

<u>PRODUCTS & SPECIES</u>	<u>ESTIMATED UNITS*</u>	<u>ADVERTISED PRICE</u>
Pulpwood		
B. T. Aspen	64 Cords	\$ 25.70 / Cord
Balsam Fir	16 Cords	\$ 8.65 / Cord
Hemlock	4 Cords	\$ 1.00 / Cord
Mixed Hardwood	162 Cords	\$ 8.95 / Cord
Mixed Spruce	31 Cords	\$ 12.00 / Cord
N. White Cedar	9 Cords	\$ 3.30 / Cord
Red Pine	412 Cords	\$ 43.25 / Cord
White Pine	765 Cords	\$ 13.50 / Cord

* The total volume is statistically estimated within plus (+) or minus (-) 7.02 percent. There are an estimated 1,495 cords on this timber sale, plus or minus 105 cords at the 95% confidence level. The estimated units are final and not subject to adjustment. Prospective bidders are urged to examine this timber and to make their own estimates of quantity and quality.

BOND AND PAYMENT SCHEDULE:

1. A bond in the amount of \$1,589.00 to insure faithful performance of the conditions of the contract will be deposited by the successful bidder within 21 days of the sale award.
2. Cutting in any sale or unit without the required advance payment would be considered a trespass.
3. Total payment must be paid in advance or according to the following schedule :
 - (a) Ten percent (10%) of the sale value must be paid within 21 days of the sale award.
 - (b) The 10% down payment will be credited towards the first unit cut.
 - (c) Payment for each of the following units must be made before cutting begins in that unit:

PAYMENT UNIT NUMBER	PERCENT OF TOTAL SALE VALUE
01	37.4%
02	62.6%
4. If no cutting takes place, the 10% down payment will not be refunded.
5. Operations on the contract issued will terminate on 12/31/2025.

SALE STATISTICS

Volumes were calculated in cubic feet using the Michigan taper model. Cubic foot volume includes all wood inside bark for the product indicated. For display purposes, cubic feet were converted to cords and MBF using a simple conversion factor, e.g. 79 cubic feet per cord and 185 cubic feet per MBF. The cubic foot volumes are precise; the cords and MBF volumes are not. Cubic foot volume cannot be directly converted to cords or boards with precision.

SALE VOLUMES

The total estimated sale volume may not equal the sum of the species/products due to the nature of statistical calculations associated with double sampling methodology.

VOLUME		STATISTICAL RANGE IN CORDS		
TOTAL CUBIC FEET	TOTAL CORDS	PERCENT ERROR	MINIMUM	MAXIMUM
118,085	1,495	7.02%	1,390	1,600

VDU VOLUMES

A VDU is a Volume Determination Unit. Volumes and their associated statistics are calculated at the VDU level and summarized to the sale level. There is often a one to one relationship between a VDU and a Payment Unit, but not always, depending on the cruise design. Refer to the VDU TO PAYMENT UNIT table.

VDU	VOLUME		PERCENT ERROR	RANGE IN CORDS	
	TOTAL CUBIC FEET	TOTAL CORDS		MINIMUM	MAXIMUM
43	50,695	642	11.67%	567	717
61	67,390	853	8.64%	779	927
TOTAL:	118,085	1,495		1,346	1,643

VDU TO PAYMENT UNIT

When a VDU is associated with more than one Payment Unit (PU), the VDU volumes are assigned to the PU based on acres of the VDU within the PU.

VDU	VDU ACRES	PU	PU ACRES
43	23.5	1	23.5
61	20.8	2	20.8
TOTAL:	44.3		44.3

DESCRIPTION OF TIMBER BY PAYMENT UNIT (PU)

PU	MARKET GROUP	PRODUCT	QUANTITY	UNIT	ACRES	ADVERTISE PRICE
1	B. T. Aspen	Pulpwood	64	Cords	23.5	\$11,885.35
	Balsam Fir		16	Cords		
	Mixed Hardwood		146	Cords		
	<i>Paper Birch</i>		8	<i>Cords</i>		
	<i>Red Maple</i>		138	<i>Cords</i>		
	Mixed Spruce		28	Cords		
	<i>Black Spruce</i>		20	<i>Cords</i>		
	<i>White Spruce</i>		8	<i>Cords</i>		
	N. White Cedar		9	Cords		
	Red Pine		115	Cords		
	<i>Red Pine</i>	<i>Sawtimber</i>	40.9	<i>MBF</i>		
	<i>Red Pine</i>	<i>Pulpwood</i>	33	<i>Cords</i>		
	White Pine		256	Cords		
	<i>White Pine</i>	<i>Sawtimber</i>	75.7	<i>MBF</i>		
<i>White Pine</i>	<i>Pulpwood</i>	105	<i>Cords</i>			
2	Hemlock	Pulpwood	4	Cords	20.8	\$19,899.95
	Mixed Hardwood		16	Cords		
	<i>Paper Birch</i>	<i>Sawtimber</i>	2.0	<i>MBF</i>		
	<i>Paper Birch</i>	<i>Pulpwood</i>	3	<i>Cords</i>		
	<i>Red Maple</i>		9	<i>Cords</i>		
	Mixed Spruce		3	Cords		
	<i>Black Spruce</i>		3	<i>Cords</i>		
	Red Pine		297	Cords		
	<i>Red Pine</i>	<i>Sawtimber</i>	100.0	<i>MBF</i>		
	<i>Red Pine</i>	<i>Pulpwood</i>	97	<i>Cords</i>		
	White Pine		509	Cords		
	<i>White Pine</i>	<i>Sawtimber</i>	184.9	<i>MBF</i>		
	<i>White Pine</i>	<i>Pulpwood</i>	139	<i>Cords</i>		
TOTAL:			1,463	Cords		

Sale Specific Conditions & Requirements

Sale Name: Southeast Border Red Pine

Sale Number: 42-031-21 Seq#: 1

1 - Sale Area

1.2 - Boundaries

1.2.1 - Painted boundaries (9/19)

The sale boundary and Payment Unit boundaries are marked and identified by blue, red, and yellow paint. Exterior sale boundary lines against private property are marked with blue paint. Exterior sale boundary lines against state are marked with red paint. Interior Payment Unit boundaries are marked with yellow paint. Retention patches are marked with red paint; no harvesting activities may occur within these areas. The painted boundary line trees are not Included Timber and are to be protected unless marked with orange paint. Yellow painted trees designating an interior Payment Unit boundary are only to be cut when all surrounding Payment Units have been paid.

2 - Timber Specifications

2.1 - Included Timber

2.1.3 - Cut tree marked unit(s) (12/08)

Within Payment Unit(s) 1, all trees are designated for cutting when marked with orange paint above and below stump height, regardless of merchantability. In addition, cut all aspen, maple, balsam, and spruce, but retain all hemlock.

2.1.7 - Leave tree marked unit(s) (6/14)

Within Payment Unit(s) 2, cut all trees that are two (2) inches or more at DBH, except trees marked with green paint above and below stump height.

2.1.11 - Description of timber note (2/04)

Note that species with sawlog sized trees within the sale has been converted to pulpwood. See Timber Market Groupings.

3 - Payments

3.3 - Pre-measured Sales

3.3.4 - Dividing payment units (7/14)

Payment Unit(s) 2 may be divided at the request of the Purchaser and upon approval of the Unit Manager. Dividing Payment Units is a contract modification which requires a Timber Sale Contract Amendment. There will be only one division per Payment Unit.

4 - Transportation

4.1 - Construction

4.1.4 - Timber removed for construction (12/09)

Trees cut or damaged in the process of pre-approved road, landing or skid trail construction will be decked in an area separate from other Designated Timber and not removed until measured by the sale administrator. Payment will be made at the specified Purchase Unit Price.

4.1.6 - Road construction (1/09)

Construction of new roads or improvements of existing roads shall be done in such a way as to minimize the environmental and visual impacts. Merchantable trees shall be cut and utilized unless otherwise directed. Non-merchantable trees shall be severed and laid flat on the ground. Slash shall be scattered, and not left in windrows and kept a minimum of 10 feet back from the road edge. Stumps shall be set upright, not left on edge, and be moved at least 10 feet away from the road edge. Disturbed soil shall be feathered into the woods and not left in berms or windrows.

4.1.7 - Road closure (10/11)

All new roads built into the sale must be blocked to vehicle traffic upon completion of the sale. Overgrown roads that are reopened shall be considered new roads. In general, this will require constructing double earthen berms at strategic locations. These roads must be rendered impassable to cars and trucks. Contact the sale administrator for specific details of design and placement.

4.2 - Maintenance

4.2.2 - Fill material (4/07)

To maintain roads, fill material may be needed in areas where "holes" exist or may be expected to develop. This fill material should be placed before trucking begins.

4.2.4 - Grading (10/16)

For completion of the sale, state forest roads must be graded. In general, this will require a road grader or bulldozer to shape up the roads after forest products have been hauled off site. This includes cleaning of drainage areas, grading, crowning, and filling with gravel, if necessary. The grading equipment to be used must be approved by the Unit Manager or his/her representative.

5 - Operations

5.2 - Conduct of Operations

5.2.1 - Slash

5.2.1.8 - Slash height (12/08)

No slash or tree tops may exceed 36 inches in height.

5.2.2 - Hazard Trees/Snags

5.2.2.1 - Den trees (10/16)

Obvious hollow and/or den trees shall be protected and left standing unless they are a safety hazard.

5.2.32 - Decking/landing restoration (9/13)

All decking and landing areas must have the surface area restored to a condition equal to or better than before. This is to ensure the proper regeneration of the stand. Wood debris, chips, and "cookies" from trimmings must be removed or scattered away from landing and loading areas and may not be windrowed on the edge.

5.2.38 - No decking against live trees (2/04)

Cut products may not be decked against unmarked or designated leave trees.

5.2.41 - Snowmobile trail protection (9/11)

The snowmobile trail is shown on the Timber Sale Map. Do not cut or damage posts with orange trail markers or traffic control signs. If the trail is used, it must be maintained and restored to a condition equal to or better than before the sale. The road maintenance/restoration must be done prior to December 15. If the trail is used for hauling, it must be graded to the satisfaction of the Unit Manager or his/her representative prior to December 15. If the trail road is to be used for hauling during the snowmobile season, then a snow-covered base must be left on the trail. Maintain a 20-foot-wide slash, debris, and rut free zone daily using the snowmobile trail as the centerline.

5.8 - Protection of Endangered Species

5.8.5 - Protection of raptor nests (3/13)

All trees with raptor nests will be protected if found during harvesting operations. Notification will be made to the Unit Manager or his/her representative who will notify the Wildlife Biologist so an on-site evaluation and recommendation can be made, if necessary.

6 - Safety and Fire Prevention

6.2 - Signing

6.2.1 - Road posting (10/20)

The Purchaser is responsible for posting and maintaining caution signs on Kabelman Road prior to beginning operations. The road must be posted at appropriate distances from the Sale Area to warn of logging activity and truck traffic. Signs must be removed when harvest operations are suspended or completed. The Purchaser will provide these signs.

6.2.2 - Snowmobile trail posting (10/20)

The Purchaser is responsible for posting and maintaining caution signs on snowmobile trail prior to beginning operations during the snowmobile season (approximately December 1 to March 31). The trail must be posted at appropriate distances from the

Sale Area to warn of logging activity and truck traffic. Signs must be removed when harvest operations are suspended or completed. The DNR will provide these signs.



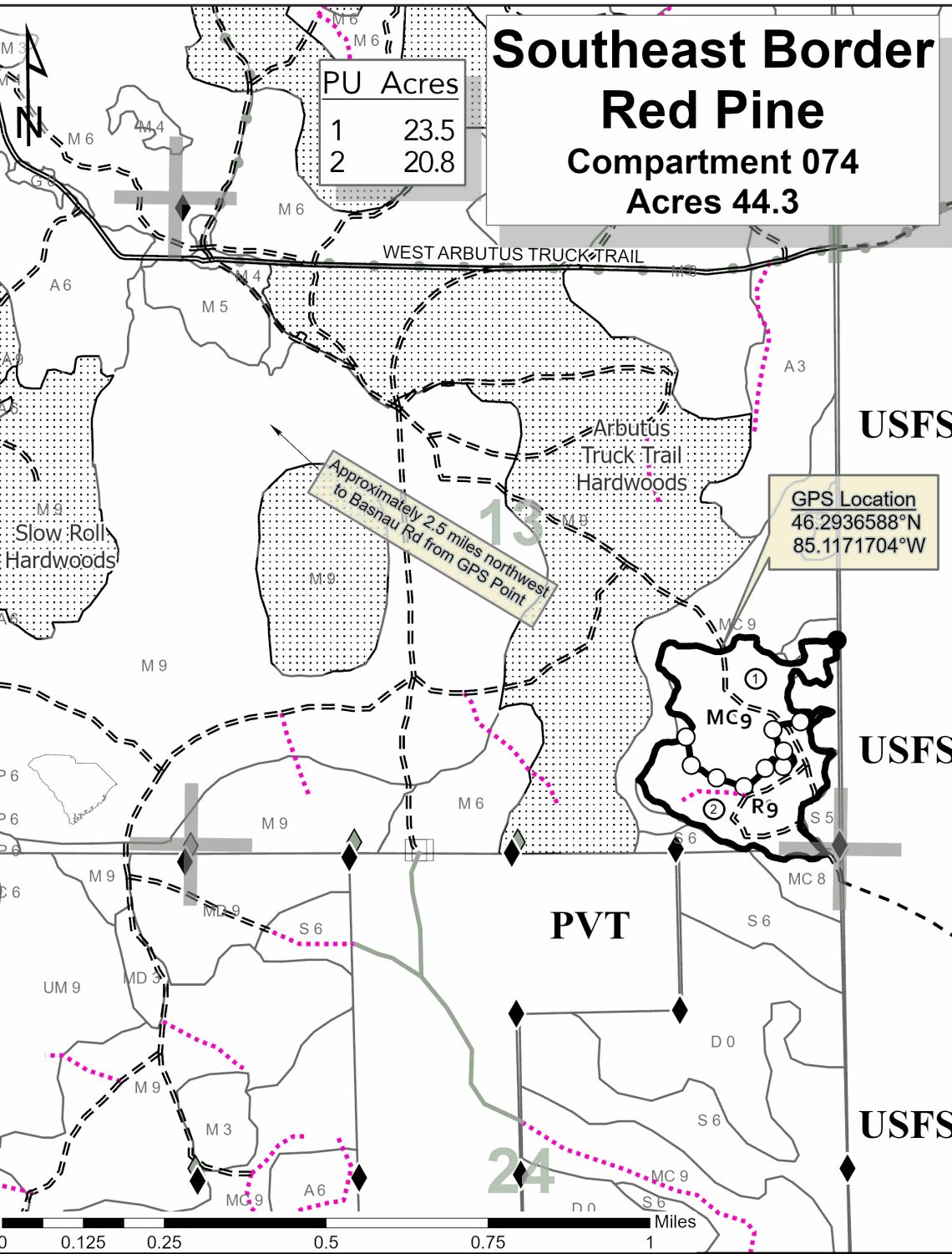
TIMBER SALE MAP

This information provided by authority of Part 525, 1994 PA 451, as amended.

Sale Number	Year
42-031	21
Date	Page of
9/22/2021	1 1

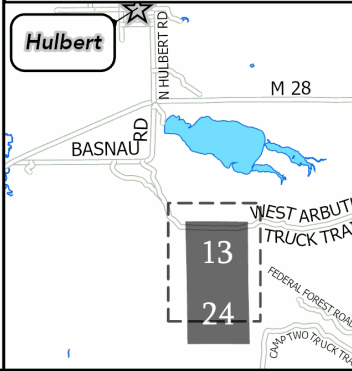
Forest Management Unit Newberry	County Chippewa	Mapped By L. Livermore
Township 45N	Range 07W	Cruised By Grossman Forestry
Section(s) and Subdivision(s) Section 13: SE Section 24: NENE		Scale 1:15,840

Cover Type				Density			
A = Aspen	H = Hemlock	N = Marsh	U = Upland Brush	0 = Non Stocked	5 = Pole Timber Medium		
B = Paper Birch	J = Jack Pine	O = Oak	UM = Upland Mixed	1 = Seedling Sapling Poor	6 = Pole Timber Well		
C = Cedar	L = Lowland Brush	P = Lowland Poplar	V = Bog or Marsh	2 = Seedling Sapling Medium	7 = Saw Timber Poor		
D = Treed Bog	LM = Lowland Mixed	Q = Mixed Swamp Conifer	W = White Pine	3 = Seedling Sapling Well	8 = Saw Timber Medium		
E = Swamp Hdwoods	M = Mpl, Bch, Brch	R = Red Pine	X = Non Stocked	4 = Pole Timber Poor	9 = Saw Timber Well		
F = Spruce Fir	MC = Mixed Conifer	S = Black Spruce	Z = Water				
G = Grass	MD = Mixed Deciduous	T = Tamarack					



- Against State (Red)
- Interior Payment Unit (Yellow)
- Private Line (Blue)
- ① Payment Unit
- PVT Private Ownership
- Recreational Trail
- 01 Section Numbers
- Section Corners
- ◆ Survey Corners
- Gate
- Secondary Forest Road
- == Forest Access Route
- - Gravel Road
- Private
- ⋯ Temporary Management Access
- ⋯ Nearby Timber Sale

Locator Map: 1:200,000
 [] - Main Map Extent



TIMBER SALE INFORMATION

Slow Roll Hardwoods (42-032-21)
 T45N, R07W, SEC. 14.
 Chippewa County (Advertised Price \$64,189.35)

SALE NOTE: All units of volume listed for this sale were estimated using the Inventory Manager computer program and the new Michigan taper model.

Roads may require the installation of equalization culverts for cross drainage or at natural drainage-ways. See Sale Spec 4.1.5 for additional information.

Harvesting is limited to the period of October 1 to April 1 because of wintering deer and providing forage.

A timber sale contract for this lump sum, sealed bid timber sale will be awarded to the responsible bidder offering the highest sealed bid price. All units of volume listed below were estimated using the Inventory Manager computer program and the new Michigan taper model. Bids must be at or above the following advertised price for each product and species:

<u>PRODUCTS & SPECIES</u>	<u>ESTIMATED UNITS*</u>	<u>ADVERTISED PRICE</u>
Sawtimber		
Red Maple	89.2 MBF	\$ 89.00 / MBF
Sugar Maple	100.6 MBF	\$ 175.00 / MBF
Pulpwood		
Balsam Fir	63 Cords	\$ 8.65 / Cord
Balsam Poplar	12 Cords	\$ 25.70 / Cord
Mixed Hardwood	106 Cords	\$ 8.95 / Cord
N. White Cedar	9 Cords	\$ 3.30 / Cord
Quaking Aspen	630 Cords	\$ 25.70 / Cord
Red Maple	1,234 Cords	\$ 8.95 / Cord
Sugar Maple	1,030 Cords	\$ 8.95 / Cord
White Spruce	30 Cords	\$ 12.00 / Cord

* The total volume is statistically estimated within plus (+) or minus (-) 5.34 percent. There are an estimated 3,512 cords on this timber sale, plus or minus 188 cords at the 95% confidence level. The estimated units are final and not subject to adjustment. Prospective bidders are urged to examine this timber and to make their own estimates of quantity and quality.

BOND AND PAYMENT SCHEDULE:

1. A bond in the amount of \$3,209.00 to insure faithful performance of the conditions of the contract will be deposited by the successful bidder within 21 days of the sale award.
2. Cutting in any sale or unit without the required advance payment would be considered a trespass.
3. Total payment must be paid in advance or according to the following schedule :
 - (a) Ten percent (10%) of the sale value must be paid within 21 days of the sale award.
 - (b) The 10% down payment will be credited towards the first unit cut.
 - (c) Payment for each of the following units must be made before cutting begins in that unit:

PAYMENT UNIT NUMBER	PERCENT OF TOTAL SALE VALUE
01	13.4%
02	17.7%
03	13.5%
04	3.9%
05	2.8%
06	13.7%
07	15.4%
08	19.6%

4. If no cutting takes place, the 10% down payment will not be refunded.
5. Operations on the contract issued will terminate on 06/30/2026.

SALE STATISTICS

Volumes were calculated in cubic feet using the Michigan taper model. Cubic foot volume includes all wood inside bark for the product indicated. For display purposes, cubic feet were converted to cords and MBF using a simple conversion factor, e.g. 79 cubic feet per cord and 185 cubic feet per MBF. The cubic foot volumes are precise; the cords and MBF volumes are not. Cubic foot volume cannot be directly converted to cords or boards with precision.

SALE VOLUMES

The total estimated sale volume may not equal the sum of the species/products due to the nature of statistical calculations associated with double sampling methodology.

VOLUME			STATISTICAL RANGE IN CORDS	
TOTAL CUBIC FEET	TOTAL CORDS	PERCENT ERROR	MINIMUM	MAXIMUM
277,468	3,512	5.34%	3,324	3,700

VDU VOLUMES

A VDU is a Volume Determination Unit. Volumes and their associated statistics are calculated at the VDU level and summarized to the sale level. There is often a one to one relationship between a VDU and a Payment Unit, but not always, depending on the cruise design. Refer to the VDU TO PAYMENT UNIT table.

	VOLUME			RANGE IN CORDS	
VDU	TOTAL CUBIC FEET	TOTAL CORDS	PERCENT ERROR	MINIMUM	MAXIMUM
70	63,332	802	9.82%	723	880
72	44,208	560	10.02%	504	616
75	169,929	2,151	7.49%	1,990	2,312
TOTAL:	277,468	3,512		3,216	3,808

VDU TO PAYMENT UNIT

When a VDU is associated with more than one Payment Unit (PU), the VDU volumes are assigned to the PU based on acres of the VDU within the PU.

VDU	VDU ACRES	PU	PU ACRES
70	47.9	6	22.5
		7	25.4
72	18.3	8	18.3
75	105.2	1	27.5
		2	36.3
		3	27.7
		4	7.9
		5	5.8
TOTAL:	171.4		171.4

DESCRIPTION OF TIMBER BY PAYMENT UNIT (PU)

PU	MARKET GROUP	PRODUCT	QUANTITY	UNIT	ACRES	ADVERTISE PRICE
1	Red Maple	Sawtimber	23.3	MBF	27.5	\$8,585.45
	Sugar Maple		5.0	MBF		
	Balsam Fir	Pulpwood	16	Cords		
	Mixed Hardwood		13	Cords		
	<i>Yellow Birch</i>	<i>Sawtimber</i>	0.2	<i>MBF</i>		
	<i>Beech</i>	<i>Pulpwood</i>	3	<i>Cords</i>		
	<i>Paper Birch</i>		5	<i>Cords</i>		
	<i>Yellow Birch</i>		5	<i>Cords</i>		
	N. White Cedar		2	Cords		
	Quaking Aspen		71	Cords		
	Red Maple		313	Cords		
	Sugar Maple		73	Cords		
	White Spruce		8	Cords		
2	Red Maple	Sawtimber	30.8	MBF	36.3	\$11,361.10
	Sugar Maple		6.6	MBF		
	Balsam Fir	Pulpwood	22	Cords		
	Mixed Hardwood		17	Cords		
	<i>Yellow Birch</i>	<i>Sawtimber</i>	0.3	<i>MBF</i>		
	<i>Beech</i>	<i>Pulpwood</i>	3	<i>Cords</i>		
	<i>Paper Birch</i>		7	<i>Cords</i>		
	<i>Yellow Birch</i>		6	<i>Cords</i>		
	N. White Cedar		4	Cords		
	Quaking Aspen		94	Cords		
	Red Maple		414	Cords		
	Sugar Maple		97	Cords		
	White Spruce		10	Cords		
3	Red Maple	Sawtimber	23.5	MBF	27.7	\$8,664.45
	Sugar Maple		5.0	MBF		
	Balsam Fir	Pulpwood	17	Cords		
	Mixed Hardwood		13	Cords		
	<i>Yellow Birch</i>	<i>Sawtimber</i>	0.2	<i>MBF</i>		
	<i>Beech</i>	<i>Pulpwood</i>	3	<i>Cords</i>		
	<i>Paper Birch</i>		5	<i>Cords</i>		
	<i>Yellow Birch</i>		5	<i>Cords</i>		
	N. White Cedar		2	Cords		
	Quaking Aspen		72	Cords		
	Red Maple		315	Cords		
	Sugar Maple		74	Cords		
	White Spruce		8	Cords		
4	Red Maple	Sawtimber	6.7	MBF	7.9	\$2,480.80
	Sugar Maple		1.4	MBF		
	Balsam Fir	Pulpwood	5	Cords		
	Mixed Hardwood		4	Cords		
	<i>Yellow Birch</i>	<i>Sawtimber</i>	0.1	<i>MBF</i>		
	<i>Beech</i>	<i>Pulpwood</i>	1	<i>Cords</i>		
	<i>Paper Birch</i>		2	<i>Cords</i>		
	<i>Yellow Birch</i>		1	<i>Cords</i>		
	N. White Cedar		1	Cords		
	Quaking Aspen		21	Cords		
	Red Maple		90	Cords		
	Sugar Maple		21	Cords		
	White Spruce		2	Cords		
5	Red Maple	Sawtimber	4.9	MBF	5.8	\$1,815.85
	Sugar Maple		1.1	MBF		
	Balsam Fir	Pulpwood	3	Cords		
	Mixed Hardwood		3	Cords		

DESCRIPTION OF TIMBER BY PAYMENT UNIT (PU), CON'T

PU	MARKET GROUP	PRODUCT	QUANTITY	UNIT	ACRES	ADVERTISE PRICE	
5 con't	<i>Beech</i>	<i>Pulpwood</i>	1	<i>Cords</i>			
	<i>Paper Birch</i>		1	<i>Cords</i>			
	<i>Yellow Birch</i>		1	<i>Cords</i>			
	Quaking Aspen		15	Cords			
	Red Maple		66	Cords			
	Sugar Maple		15	Cords			
	White Spruce		2	Cords			
6	Sugar Maple	Sawtimber	35.4	MBF	22.5	\$8,790.50	
	Mixed Hardwood	<i>Pulpwood</i>	8	Cords			
	<i>Beech</i>		5	<i>Cords</i>			
	<i>Ironwood</i>		3	<i>Cords</i>			
	Red Maple		9	Cords			
	Sugar Maple		273	Cords			
7	Sugar Maple	Sawtimber	39.9	MBF	25.4	\$9,900.20	
	Mixed Hardwood	<i>Pulpwood</i>	7	Cords			
	<i>Beech</i>		4	<i>Cords</i>			
	<i>Ironwood</i>		3	<i>Cords</i>			
	Red Maple		11	Cords			
	Sugar Maple		308	Cords			
8	Sugar Maple	Sawtimber	6.2	MBF	18.3	\$12,582.05	
	Balsam Poplar	<i>Pulpwood</i>	12	Cords			
	Mixed Hardwood		40	Cords			
	<i>American Elm</i>	<i>Sawtimber</i>	4.0	<i>MBF</i>			
	<i>American Elm</i>		<i>Pulpwood</i>	7			<i>Cords</i>
	<i>Black Cherry</i>			17			<i>Cords</i>
	<i>Ironwood</i>			8			<i>Cords</i>
	Quaking Aspen		357	Cords			
	Red Maple		16	Cords			
	Sugar Maple		169	Cords			
TOTAL:			189.8	MBF			
TOTAL:			3,113	Cords			

Sale Specific Conditions & Requirements

Sale Name: Slow Roll Hardwoods

Sale Number: 42-032-21 Seq#: 1

1 - Sale Area

1.2 - Boundaries

1.2.1 - Painted boundaries (9/19)

The sale boundary and Payment Unit boundaries are marked and identified by red and yellow paint. Exterior sale boundary lines against state are marked with red paint. Interior Payment Unit boundaries are marked with yellow paint. Retention patches are marked with red paint; no harvesting activities may occur within these areas. The painted boundary line trees are not Included Timber and are to be protected unless marked with orange paint. Yellow painted trees designating an interior Payment Unit boundary are only to be cut when all surrounding Payment Units have been paid.

2 - Timber Specifications

2.1 - Included Timber

2.1.1 - Clearcut unit(s) with unmerchantable trees (6/14)

Within Payment Unit(s) 8, cut all trees that are two (2) inches or more at DBH, except leave all conifer and any trees ringed in green paint. Retention pockets present within this Payment Unit.

2.1.3 - Cut tree marked unit(s) (12/08)

Within Payment Unit(s) 1-7, all trees are designated for cutting when marked with orange paint above and below stump height, regardless of merchantability. In addition, cut all aspen, beech, and balsam fir. Do not cut any trees ringed in green paint.

2.1.11 - Description of timber note (2/04)

Note that mixed hardwood pulp volumes include some minor sawlog volumes of elm and yellow birch.

4 - Transportation

4.1 - Construction

4.1.4 - Timber removed for construction (12/09)

Trees cut or damaged in the process of pre-approved road, landing or skid trail construction will be decked in an area separate from other Designated Timber and not removed until measured by the sale administrator. Payment will be made at the specified Purchase Unit Price.

4.1.5 - Culverts (5/14)

Roads may require the installation of equalization culverts for cross drainage or at natural drainage-ways. If culverts are needed in these locations, their placement will be specified by the sale administrator, and they shall be installed prior to hauling. The culverts shall be new, corrugated metal or plastic gauge. Culverts will be a minimum of 12 inches in diameter and 24 feet in length. If culverts are removed, fill shall be removed from wetland soils as specified. Soils shall be maintained and left in a non-erodible condition, with water bars, seed, fertilizer, mulch, and slash installed as directed by the sale administrator and as specified in the BMP manual.

4.1.6 - Road construction (1/09)

Construction of new roads or improvements of existing roads shall be done in such a way as to minimize the environmental and visual impacts. Merchantable trees shall be cut and utilized unless otherwise directed. Non-merchantable trees shall be severed and laid flat on the ground. Slash shall be scattered, and not left in windrows and kept a minimum of 10 feet back from the road edge. Stumps shall be set upright, not left on edge, and be moved at least 10 feet away from the road edge. Disturbed soil shall be feathered into the woods and not left in berms or windrows.

4.1.7 - Road closure (10/11)

All new roads built into the sale must be blocked to vehicle traffic upon completion of the sale. Overgrown roads that are reopened shall be considered new roads. In general, this will require constructing a four (4') foot high berm of stumps and logs covered with earth. These roads must be rendered impassable to cars and trucks. All stumps from road building and landing construction must be reserved to block any newly constructed roads upon completion of the sale. These stumps must be scattered along the road system to prohibit vehicular movement. Contact the sale administrator for specific details of

design and placement.

4.2 - Maintenance

4.2.2 - Fill material (4/07)

To maintain roads, fill material may be needed in areas where "holes" exist or may be expected to develop. This fill material should be placed before trucking begins.

4.2.4 - Grading (10/16)

For completion of the sale, state forest roads must be graded. In general, this will require a road grader or bulldozer to shape up the roads after forest products have been hauled off site. This includes cleaning of drainage areas, grading, crowning, and filling with gravel, if necessary. The grading equipment to be used must be approved by the Unit Manager or his/her representative.

5 - Operations

5.2 - Conduct of Operations

5.2.1 - Slash

5.2.1.8 - Slash height (12/08)

No slash or tree tops may exceed 36 inches in height.

5.2.2 - Hazard Trees/Snags

5.2.2.1 - Den trees (10/16)

Obvious hollow and/or den trees shall be protected and left standing unless they are a safety hazard.

5.2.3 - Operating Restrictions

5.2.3.1 - Operating restrictions (9/11)

Within Payment Unit(s) 1-8, unless changed by written agreement, cutting and skidding are limited to the period of October 1 to April 1. This restriction is because of wintering deer and providing forage.

5.2.32 - Decking/landing restoration (9/13)

All decking and landing areas must have the surface area restored to a condition equal to or better than before. This is to ensure the proper regeneration of the stand. Wood debris, chips, and "cookies" from trimmings must be removed or scattered away from landing and loading areas and may not be windrowed on the edge.

5.2.38 - No decking against live trees (2/04)

Cut products may not be decked against unmarked or designated leave trees.

5.4 - Soil Protection

5.4.2 - Skid trails (2/04)

Skid trails up and down slopes should be avoided. If however this is unavoidable, these trails will be left in a non-erodible condition using water bars, logs, and slash. Placing of slash on these skid trails while logging is ongoing may alleviate need for any further action. At the direction of the sale administrator, seed, fertilizer, and mulch may also be required.

5.8 - Protection of Endangered Species

5.8.5 - Protection of raptor nests (3/13)

All trees with raptor nests will be protected if found during harvesting operations. Notification will be made to the Unit Manager or his/her representative who will notify the Wildlife Biologist so an on-site evaluation and recommendation can be made, if necessary.

6 - Safety and Fire Prevention

6.2 - Signing

6.2.1 - Road posting (10/20)

The Purchaser is responsible for posting and maintaining caution signs on Kabelman Road prior to beginning operations. The road must be posted at appropriate distances from the Sale Area to warn of logging activity and truck traffic. Signs must be

removed when harvest operations are suspended or completed. The Purchaser will provide these signs.



TIMBER SALE MAP

This information provided by authority of Part 525, 1994 PA 451, as amended.

Forest Management Unit Newberry	County Luce	Mapped By A. Livermore	Date 09/24/2021	Page 1	of 1
Township 47N	Range 12W	Section(s) and Subdivision(s) NE1/4, NENW, SENW, NWSW, NENE, NESE, NWSE, SWSE sec. 14	Scale 1:15,840		
Cruised By Newberry DNR					

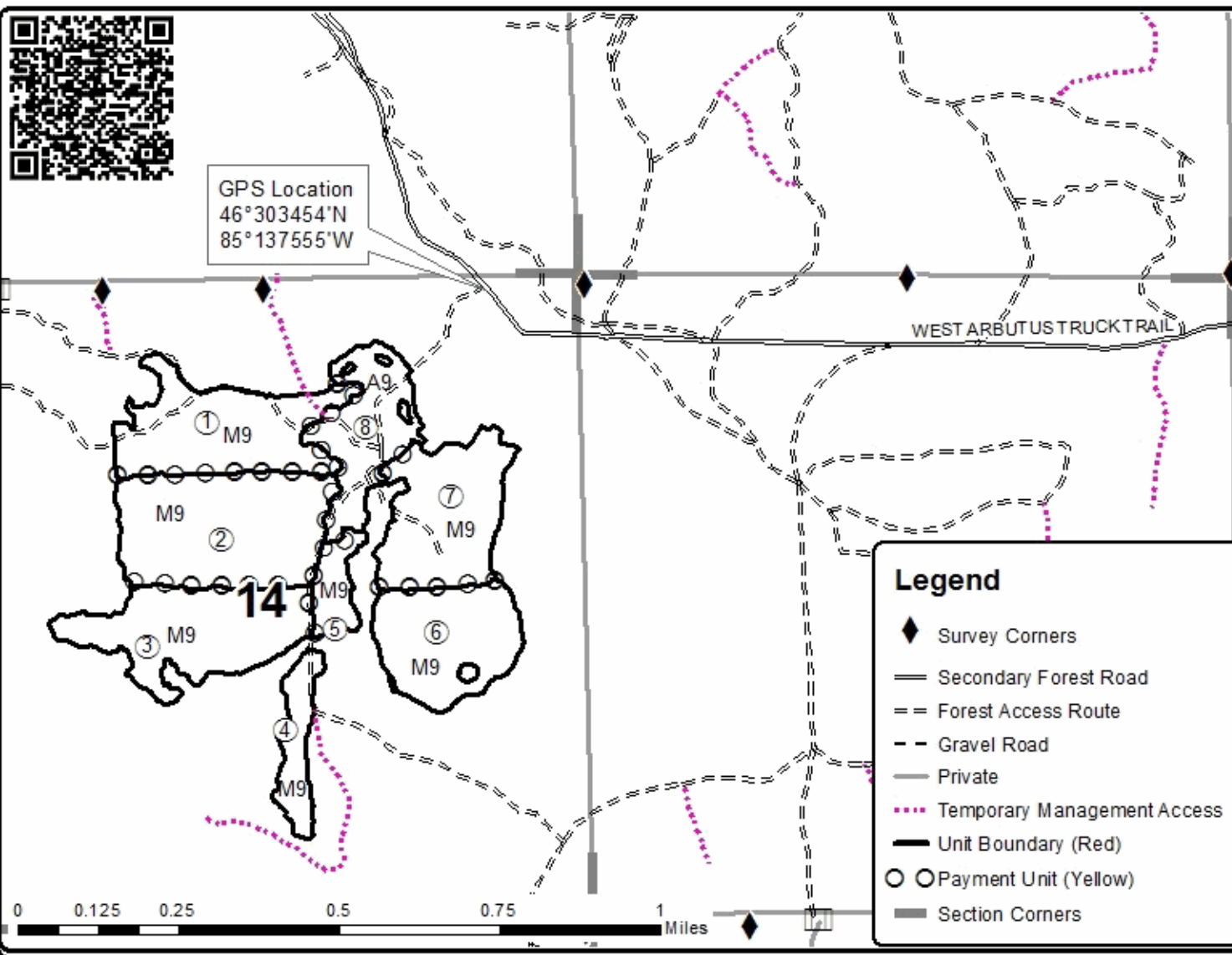
Cover Type				Density			
A = Aspen	H = Hemlock	N = Marsh	U = Upland Brush	0 = Non Stocked	5 = Pole Timber Medium		
B = Paper Birch	J = Jack Pine	O = Oak	UM = Upland Mixed	1 = Seedling Sapling Poor	6 = Pole Timber Well		
C = Cedar	L = Lowland Brush	P = Lowland Poplar	V = Bog or Marsh	2 = Seedling Sapling Medium	7 = Saw Timber Poor		
D = Treed Bog	LM = Lowland Mixed	Q = Mixed Swamp Conifer	W = White Pine	3 = Seedling Sapling Well	8 = Saw Timber Medium		
E = Swamp Hdwoods	M = Mpl. Bch, Brch	R = Red Pine	X = Non Stocked	4 = Pole Timber Poor	9 = Saw Timber Well		
F = Spruce Fir	MC = Mixed Conifer	S = Black Spruce	Z = Water				
G = Grass	MD = Mixed Deciduous	T = Tamarack					

PU	Acres	MBF	Cords
1	27.5	28.3	496
2	36.3	37.4	658
3	27.7	28.5	501
4	7.9	8.1	144
5	5.8	6	104
6	22.5	35.4	290
7	25.4	39.9	326
8	18.3	6.2	600

Slow Roll Hardwoods

Compartment 42074

171.4 Acres



Arbutus Truck Trail Hardwoods (42-030-21)
T45N, R07W, SEC. 11; T45N, R07W, SEC. 12; T45N, R07W, SEC. 13; Chippewa

In response to the notice of sale to be held 3:00 p.m. (local time) on June 23, 2022, I am hereby submitting my sealed bid (firm offer) for the following forest products to be cut. Bids for individual species must be at or above the advertised price. All non-responsive bid forms may be rejected.

<u>PRODUCTS & SPECIES</u>	<u>ESTIMATED VOLUME*</u>	<u>ADVERTISED PRICE</u>	<u>BID PRICE/UNIT</u>
Sawtimber			
Red Maple	232.1 MBF	\$ 89.00/MBF	\$ _____
Sugar Maple	125.9 MBF	\$ 175.00/MBF	\$ _____
Yellow Birch	3.4 MBF	\$ 79.00/MBF	\$ _____
Pulpwood			
Balsam Fir	108 Cords	\$ 8.65/Cord	\$ _____
Mixed Hardwood	5,692 Cords	\$ 8.95/Cord	\$ _____
Quaking Aspen	10 Cords	\$ 25.70/Cord	\$ _____

*The volumes are statistically estimated within plus (+) or minus (-) 3.76 percent at 95% confidence level. These estimated volumes are final and not subject to adjustment. Prospective bidders are urged to examine this timber and to make their own estimates of quantity and quality.

I understand that any or all bids may be rejected. All bids must be signed and all bid items must be bid or the bid form may be rejected. I also understand that consideration and awarding a contract will be based upon my past performance and ability to complete the contract based upon equipment and staffing subject to my control.

FEDERAL ID: _____ - _____ or SOCIAL SECURITY NUMBER: _____ - _____ - _____

Company or individual bidding: _____

Company representative's name: _____

Address: _____

City: _____ State: _____ Zip: _____

IF AVAILABLE, PLEASE PLACE THE PERSONALIZED LABEL FROM YOUR PROSPECTUS IN THE ABOVE BOX.

Individual or company representative's signature: _____ Date: _____

Phone number : _____ Email (optional): _____

THE WINNING BIDDER MUST COMPLETE THE VERIFICATION OF WORKER'S DISABILITY COMPENSATION ACT COMPLIANCE (ON REVERSE SIDE IF DOUBLE SIDED) WITHIN 21 DAYS OF SALE AWARD DATE



FOR DEPARTMENT USE ONLY	
Sale Number (XX - XXX - XX - XX)	
Forest Management Unit:	

TIMBER SALE VERIFICATION OF WORKER'S DISABILITY COMPENSATION ACT COMPLIANCE

As required by Act 317, P.A. 1969 (Worker's Compensation) and
Part 5 of Act 451 of 1994, as amended.

VERIFICATION OF WORKER'S DISABILITY COMPENSATION ACT COMPLIANCE

- This verification must be completed and submitted within 21 days of contract award and prior to the issuance of the timber sale contract.
- In addition, if boxes 2B or 2C are checked, then Notice of Exclusion or Certificate of Insurance must be submitted within twenty-one (21) days of the contract award and prior to the issuance of the timber sale contract.
- All information must be typed or printed except for written signatures.

Please Check Appropriate Categories:

1. My business is organized as (you **must** check one of the boxes below):
 - A. Sole Proprietorship (individual)
 - B. Partnership
 - C. Corporation
2. You **must** check one of the boxes below:
 - A. I certify my business is a sole proprietorship and it has no employees but the sole proprietor. I am not subject to the Worker's Compensation Laws.
 - B. I certify my business has satisfied its obligation to the Worker's Compensation Act through the use of an approved Notice of Exclusion (BWC-337, Rev. 5/96). I will provide a copy of the Notice of Exclusion within 21 days of the contract award. (For questions or a copy of the BWC-337, please call the Worker's Compensation Bureau at 517-322-1195).
 - C. I certify my business has a Worker's Compensation Policy. I will provide an original Certificate of Insurance within twenty-one (21) days of the contract award.
3. If you have checked item 2(A) or 2(B), you **must** indicate the number of **both** full-time and part-time employees, other than yourself, including family members and active partners (if none, you must enter "0").

_____ Full-time Employees

_____ Part-time Employees

Name of Business		Federal ID (or) Social Security No.	
Address		Telephone ()	
City	State	ZIP	

I hereby certify that the above information is true and correct. I agree to notify the Michigan DNR of any changes that occur in factors affecting my coverage during any of my present and future operations.

Signature of Owner or Authorized Representative

Title

Date

Please complete the "SEALED BID" information on the next page

Southeast Border Red Pine (42-031-21)
T45N, R07W, SEC. 13; T45N, R07W, SEC. 24; Chippewa COUNTY

In response to the notice of sale to be held 3:00 p.m. (local time) on June 23, 2022, I am hereby submitting my sealed bid (firm offer) for the following forest products to be cut. Bids for individual species must be at or above the advertised price. All non-responsive bid forms may be rejected.

<u>PRODUCTS & SPECIES</u>	<u>ESTIMATED VOLUME*</u>	<u>ADVERTISED PRICE</u>	<u>BID PRICE/UNIT</u>
Pulpwood			
B. T. Aspen	64 Cords	\$ 25.70/Cord	\$ _____
Balsam Fir	16 Cords	\$ 8.65/Cord	\$ _____
Hemlock	4 Cords	\$ 1.00/Cord	\$ _____
Mixed Hardwood	162 Cords	\$ 8.95/Cord	\$ _____
Mixed Spruce	31 Cords	\$ 12.00/Cord	\$ _____
N. White Cedar	9 Cords	\$ 3.30/Cord	\$ _____
Red Pine	412 Cords	\$ 43.25/Cord	\$ _____
White Pine	765 Cords	\$ 13.50/Cord	\$ _____

*The volumes are statistically estimated within plus (+) or minus (-) 7.02 percent at 95% confidence level. These estimated volumes are final and not subject to adjustment. Prospective bidders are urged to examine this timber and to make their own estimates of quantity and quality.

I understand that any or all bids may be rejected. All bids must be signed and all bid items must be bid or the bid form may be rejected. I also understand that consideration and awarding a contract will be based upon my past performance and ability to complete the contract based upon equipment and staffing subject to my control .

FEDERAL ID: ____ - ____ - ____ or SOCIAL SECURITY NUMBER: ____ - ____ - ____

Company or individual bidding: _____

Company representative's name: _____

Address: _____

City: _____ State: _____ Zip: _____

IF AVAILABLE, PLEASE PLACE THE PERSONALIZED LABEL FROM YOUR PROSPECTUS IN THE ABOVE BOX.

Individual or company representative's signature: _____ Date: _____

Phone number : _____ Email (optional): _____

THE WINNING BIDDER MUST COMPLETE THE VERIFICATION OF WORKER'S DISABILITY COMPENSATION ACT COMPLIANCE (ON REVERSE SIDE IF DOUBLE SIDED) WITHIN 21 DAYS OF SALE AWARD DATE



FOR DEPARTMENT USE ONLY	
Sale Number (XX - XXX - XX - XX)	
Forest Management Unit:	

TIMBER SALE VERIFICATION OF WORKER'S DISABILITY COMPENSATION ACT COMPLIANCE

As required by Act 317, P.A. 1969 (Worker's Compensation) and
Part 5 of Act 451 of 1994, as amended.

VERIFICATION OF WORKER'S DISABILITY COMPENSATION ACT COMPLIANCE

- This verification must be completed and submitted within 21 days of contract award and prior to the issuance of the timber sale contract.
- In addition, if boxes 2B or 2C are checked, then Notice of Exclusion or Certificate of Insurance must be submitted within twenty-one (21) days of the contract award and prior to the issuance of the timber sale contract.
- All information must be typed or printed except for written signatures.

Please Check Appropriate Categories:

1. My business is organized as (you **must** check one of the boxes below):
 - A. Sole Proprietorship (individual)
 - B. Partnership
 - C. Corporation
2. You **must** check one of the boxes below:
 - A. I certify my business is a sole proprietorship and it has no employees but the sole proprietor. I am not subject to the Worker's Compensation Laws.
 - B. I certify my business has satisfied its obligation to the Worker's Compensation Act through the use of an approved Notice of Exclusion (BWC-337, Rev. 5/96). I will provide a copy of the Notice of Exclusion within 21 days of the contract award. (For questions or a copy of the BWC-337, please call the Worker's Compensation Bureau at 517-322-1195).
 - C. I certify my business has a Worker's Compensation Policy. I will provide an original Certificate of Insurance within twenty-one (21) days of the contract award.
3. If you have checked item 2(A) or 2(B), you **must** indicate the number of **both** full-time and part-time employees, other than yourself, including family members and active partners (if none, you must enter "0").

_____ Full-time Employees

_____ Part-time Employees

Name of Business		Federal ID (or) Social Security No.	
Address		Telephone ()	
City	State	ZIP	

I hereby certify that the above information is true and correct. I agree to notify the Michigan DNR of any changes that occur in factors affecting my coverage during any of my present and future operations.

Signature of Owner or Authorized Representative

Title

Date

Please complete the "SEALED BID" information on the next page

Slow Roll Hardwoods (42-032-21)
T45N, R07W, SEC. 14; Chippewa COUNTY

In response to the notice of sale to be held 3:00 p.m. (local time) on June 23, 2022, I am hereby submitting my sealed bid (firm offer) for the following forest products to be cut. Bids for individual species must be at or above the advertised price. All non-responsive bid forms may be rejected.

<u>PRODUCTS & SPECIES</u>	<u>ESTIMATED VOLUME*</u>	<u>ADVERTISED PRICE</u>	<u>BID PRICE/UNIT</u>
Sawtimber			
Red Maple	89.2 MBF	\$ 89.00/MBF	\$ _____
Sugar Maple	100.6 MBF	\$ 175.00/MBF	\$ _____
Pulpwood			
Balsam Fir	63 Cords	\$ 8.65/Cord	\$ _____
Balsam Poplar	12 Cords	\$ 25.70/Cord	\$ _____
Mixed Hardwood	106 Cords	\$ 8.95/Cord	\$ _____
N. White Cedar	9 Cords	\$ 3.30/Cord	\$ _____
Quaking Aspen	630 Cords	\$ 25.70/Cord	\$ _____
Red Maple	1,234 Cords	\$ 8.95/Cord	\$ _____
Sugar Maple	1,030 Cords	\$ 8.95/Cord	\$ _____
White Spruce	30 Cords	\$ 12.00/Cord	\$ _____

*The volumes are statistically estimated within plus (+) or minus (-) 5.34 percent at 95% confidence level. These estimated volumes are final and not subject to adjustment. Prospective bidders are urged to examine this timber and to make their own estimates of quantity and quality.

I understand that any or all bids may be rejected. All bids must be signed and all bid items must be bid or the bid form may be rejected. I also understand that consideration and awarding a contract will be based upon my past performance and ability to complete the contract based upon equipment and staffing subject to my control.

FEDERAL ID: _____ - _____ or SOCIAL SECURITY NUMBER: _____ - _____ - _____

Company or individual bidding: _____

Company representative's name: _____

Address: _____

City: _____ State: _____ Zip: _____

IF AVAILABLE, PLEASE PLACE THE PERSONALIZED LABEL FROM YOUR PROSPECTUS IN THE ABOVE BOX.

Individual or company representative's signature: _____ Date: _____

Phone number : _____ Email (optional): _____

THE WINNING BIDDER MUST COMPLETE THE VERIFICATION OF WORKER'S DISABILITY COMPENSATION ACT COMPLIANCE (ON REVERSE SIDE IF DOUBLE SIDED) WITHIN 21 DAYS OF SALE AWARD DATE



FOR DEPARTMENT USE ONLY	
Sale Number (XX - XXX - XX - XX)	
Forest Management Unit:	

TIMBER SALE VERIFICATION OF WORKER'S DISABILITY COMPENSATION ACT COMPLIANCE

As required by Act 317, P.A. 1969 (Worker's Compensation) and
Part 5 of Act 451 of 1994, as amended.

VERIFICATION OF WORKER'S DISABILITY COMPENSATION ACT COMPLIANCE

- This verification must be completed and submitted within 21 days of contract award and prior to the issuance of the timber sale contract.
- In addition, if boxes 2B or 2C are checked, then Notice of Exclusion or Certificate of Insurance must be submitted within twenty-one (21) days of the contract award and prior to the issuance of the timber sale contract.
- All information must be typed or printed except for written signatures.

Please Check Appropriate Categories:

1. My business is organized as (you **must** check one of the boxes below):
 - A. Sole Proprietorship (individual)
 - B. Partnership
 - C. Corporation
2. You **must** check one of the boxes below:
 - A. I certify my business is a sole proprietorship and it has no employees but the sole proprietor. I am not subject to the Worker's Compensation Laws.
 - B. I certify my business has satisfied its obligation to the Worker's Compensation Act through the use of an approved Notice of Exclusion (BWC-337, Rev. 5/96). I will provide a copy of the Notice of Exclusion within 21 days of the contract award. (For questions or a copy of the BWC-337, please call the Worker's Compensation Bureau at 517-322-1195).
 - C. I certify my business has a Worker's Compensation Policy. I will provide an original Certificate of Insurance within twenty-one (21) days of the contract award.
3. If you have checked item 2(A) or 2(B), you **must** indicate the number of **both** full-time and part-time employees, other than yourself, including family members and active partners (if none, you must enter "0").

_____ Full-time Employees

_____ Part-time Employees

Name of Business		Federal ID (or) Social Security No.	
Address		Telephone ()	
City	State	ZIP	

I hereby certify that the above information is true and correct. I agree to notify the Michigan DNR of any changes that occur in factors affecting my coverage during any of my present and future operations.

Signature of Owner or Authorized Representative

Title

Date

Please complete the "SEALED BID" information on the next page