



**DEPARTMENT OF NATURAL RESOURCES  
STATE OF MICHIGAN  
TIMBER SALE PROSPECTUS #7022**

SCHEDULED SALE DATE AND TIME: 3:00 p.m. (local time) on July 14, 2022.

LOCATION: NEWBERRY MGMT UNIT, PO BOX 428, 5666 S STATE HWY M 123, NEWBERRY, MI 49868.

PROSPECTUS NOTE: The bidder is advised to inspect the sale area and review the location, estimated volumes, operating costs and contract terms of proposed sales. Please be aware that some landowners may request 60 days or more notice for access across their land.

Notice is hereby given that bids will be received by the Unit Manager, NEWBERRY MANAGEMENT UNIT, for certain timber on the following described lands:

Heater Hose Mix (42-021-21) / T47N, R11W, SEC. 12, SWNW,SW,E1/2SE.  
T47N, R11W, SEC. 13, SESE.

Luce County, Advertised Price \$23,885.25, 71.4 Acres, Hardwood, White Pine.

SALE NOTE: All units of volume listed for this sale were estimated using the Inventory Manager computer program and the new Michigan taper model.

Note that MBF has been combined with pulpwood to form cords in multiple species in the sale.

Within Payment Unit(s) 3-5, harvesting is not permitted during the period of April 15 to July 15 because of bark slippage.

A snowmobile trail is shown on the Timber Sale Map. See Sale Spec 5.2.41 for additional information.

A recreation site such as a trail, pathway, or campground is within the sale area or the vicinity. Certain restrictions/specifications may be applicable including time restrictions.

Hiking Kilt Pine (42-022-21) / T47N, R11W, SEC. 12, E1/2SW,SE.  
T47N, R11W, SEC. 13, NENW,N1/2NE,SWNE.

Luce County, Advertised Price \$163,098.85, 136.1 Acres, Red Pine, Jack Pine.

SALE NOTE: All units of volume listed for this sale were estimated using the Inventory Manager computer program and the new Michigan taper model.

An ORV trail or route and is shown on the Timber Sale Map. See Sale Spec 5.2.39 for restrictions.

A snowmobile trail is shown on the Timber Sale Map. See Sale Spec 5.2.41 for details.

A recreation site such as a trail, pathway, or campground is within the sale area or the vicinity. Certain restrictions/specifications may be applicable including time restrictions.

## BID INSTRUCTIONS (VER. 07/02/2018):

### 1. Scheduled Bid Location, Date, and Time (2/11)

Bids must be received by the Unit Manager, NEWBERRY OFFICE, PO Box 428 5666 S STATE HWY M 123, NEWBERRY, MI 49868, no later than 3:00 p.m. (local time) on July 14, 2022. For further information concerning this sale, contact Keith Magnusson at 906-291-0120 extension n/a.

### 2. Bidder's Qualifications (5/16)

Purchaser shall obtain workers compensation insurance to cover claims under Michigan's Worker's Disability Compensation Act of 1969 or similar employee benefit act of any other state applicable to an employee. If all or part of a timber sale was prepared by a private contractor, the contractor and that contractor's company are not permitted to bid on the timber sale contract. Bids will not be accepted from individuals or companies appearing on the DNR/FRD No-Bid List. This list contains the names of purchasers who previously failed to execute a contract within 21-days or who have a history of poor performance.

### 3. Preparation of Sealed Bids (5/16)

Bid Forms may be completed online thru Michigan DNR Timber Sale Online Bidding (OLB) at [www.michigan.gov/timberbidding](http://www.michigan.gov/timberbidding) or by completing the hardcopy Bid Form found in the Timber Sale Prospectus. Hardcopy Bid Forms shall be manually signed in ink. Registration in OLB is considered your 'signature' for all bids submitted thru that system. Bid prices must be entered for each species and product in the Bid Price column for all material subject to bidding and all fill-in blanks must be completed. If erasures or other changes appear on the hardcopy Bid Form, each erasure or change must be initialed by the person signing the bid.

### 4. Submission of Sealed Bids (5/16)

Bid forms may be obtained from the Unit Manager or thru OLB. Bids may be submitted hardcopy or thru OLB. All hardcopy bids must be submitted on the bid form and in an envelope clearly identified as described in this section. NOTE: Only one bid form per bid envelope. Sealed bids must be submitted to the Unit office designated in the prospectus and must be submitted at or prior to the time established in the prospectus. The envelope should show on the outside (a) the sale name or number and (b) the date and time of bid opening, as shown in the prospectus. Bids received after the time specified in the sale prospectus are late bids and will be rejected.

It is possible for a bidder to submit multiple bids on a single sale. For example, a bid may be submitted hardcopy and a bid may be submitted thru OLB. Or, two bidders from the same company could both submit bids on the same sale. If this were to happen, the State would accept all bids received and award the contract accordingly. All bidding and contractual requirements would apply to all bids received.

### 5. Public Opening of Sealed Bids (7/16)

If conditions permit, the sealed bids will be publicly opened and posted at the time and place set in the prospectus.

If a bidder, present at a bid opening, has submitted bids on more than one sale, that bidder may withdraw their unopened bid envelopes or announce the withdrawal of their online bid after being declared the successful bidder on one sale.

### 6. Award of Contract (1/11)

Award of the contract will be made to the Bidder whose bid, conforming to the prospectus, is most advantageous to the State of Michigan on the basis of total value at rates bid for the estimated quantities. The State reserves the right to reject any bid or waive any minor irregularity in bids received. A written award mailed (or otherwise furnished) to the successful Bidder shall be deemed to result in a binding contract without further action by either party.

### 7. Down Payment (1/11)

The Bidder to whom award is made must make a down payment within 21 days of the sale award. The amount of the down payment will be calculated as shown in the Bond and Payment Schedule of this prospectus. Only cash may be used to meet this requirement.

### 8. Performance Security (1/11)

As guarantee of faithful performance, a cash bond, certificate of deposit, surety bond or irrevocable letter of credit (LOC) is required within 21 days of the sale award. The amount of the performance security is shown in the Bond and

Payment Schedule of this prospectus. If an LOC or surety is used, the coverage must extend for at least 6 months beyond the contract expiration.

#### 9. Timber Sale Contract (7/18)

Additional conditions and requirements common to all timber sales are listed on the timber sale contract (R4031) and are available on line at [www.michigan.gov/timber](http://www.michigan.gov/timber). Contact the Unit Manager for additional information or a sample contract. Within 21 days of the date of the award letter, the bidder must sign the contract and provide the required down payment, performance security, and verification of worker's disability compensation. The down payment and performance security shall be in accordance with the provisions of the timber sale contract, in the sums stated in this prospectus. If these actions are not taken, then the Bidder, the Bidder's corporation, and the corporation's principals may not be permitted to bid on State timber sales for a period of 3 months after the first offense, 6 months after the second offense, and 1 year after the third offense. An offense will only be counted against the Bidder for 5 years. In addition, the Bidder certifies that if awarded this contract, the Bidder will complete the timber sale contract in accordance with its terms and any modifications thereof including requirements to purchase, cut, and remove the included timber by the expiration date.

Payment Unit values in the State Forest Timber Sale Contract are calculated based on the advertised value of the Payment Unit as a percentage of the total advertised value of the contract. The advertised value of each Payment Unit is given in the Description of Timber by Payment Unit table on the Timber Sale Information page. For example, if the value of Payment Unit 1 is advertised as \$1,500 and the total Timber Sale value is advertised as \$10,000, the contract price for Payment Unit 1 will be 15% of the total bid price ( $\$1,500/\$10,000 * 100$ ).

#### 10. Disclaimer of Estimates and Bidder's Warranty of Inspection (7/16)

Before submitting this bid, the Bidder is advised and cautioned to inspect the sale area, review the requirements of the sale contract, and take other steps as may be reasonably necessary to ascertain the location, estimated volumes, construction estimates, and operating costs of the proposed sale. Failure to do so will not relieve the Bidder from responsibility for completing the contract.

The Bidder warrants that this bid is submitted solely on the basis of the Bidder's examination and inspection of the quality and quantity of the timber offered for sale and the Bidder's opinion of the value thereof and the costs of recovery. No reliance should be placed on the State of Michigan's estimates of timber quality, quantity or costs of recovery. Bidder further acknowledges that the State of Michigan: (i) expressly disclaims any warranty of fitness of timber for any purpose; (ii) offers this timber as is without any warranty of quality (merchantability) or quantity and (iii) expressly disclaims any warranty as to the quantity or quality of timber sold.

#### 11. Certification and Chain-of-Custody (10/14)

Unless otherwise indicated in the contract under section 7 – Other Conditions of the Sale Specific Conditions & Requirements, the area encompassed by this timber sale is certified to the standards of the Forest Stewardship Council (FSC) - Certificate #SCS-FM/COC-00090N and the Sustainable Forestry Initiative (SFI) - Certificate #NSF-SFIS-5Y031-SF5. Forest products from this sale may be delivered to the mill as "FSC 100% and / or SFI certified" as long as the contractor hauling the forest products is chain-of-custody (COC) certified or covered under a COC certificate from the destination mill. The purchaser is responsible for maintaining COC after leaving the sale area.

#### 12. Good Neighbor Authority (GNA) Requirements (7/16)

If the name of this timber sales contains the acronym GNA, it is authorized by the Good Neighbor Authority (GNA) and covered by various agreements between the U.S. Forest Service and the State. The timber sale occurs on federal land and the following conditions apply:

GNA contracts on US Forest Service land will not be awarded to purchasers on the Federal list of excluded parties. The System for Award Management (SAM) will be checked for active excluded parties prior to award of contract. In addition, the Bidder to whom award is made must complete an Assurance Regarding Felony Conviction or Tax Delinquent Status for Corporate Applicants (AD-3031).

#### 13. Good Neighbor Authority (GNA) Requirements, con't (9/16)

Bidder certifies, by signing this bid form, that to the best of Bidder's knowledge that the following representations are accurate and complete.

- a. That the Bidder and its principals are not presently debarred, suspended, proposed for debarment, declared ineligible, or voluntary excluded from timber sales (covered transactions) by any Federal department or agency.
- b. That the Bidder and its principals have not within a 3-year period preceding this bid been convicted of or had a civil judgment rendered against them for commission of fraud or a criminal offense in connection with obtaining , attempting to obtain, or performing a public (Federal, State, or local) transaction or contract under a public transaction; violation of Federal or State antitrust statutes or commission of embezzlement, theft, forgery, bribery, falsification or destruction of records, making false statements, or receiving stolen property.
- c. That the Bidder and its principals are not presently indicted for or otherwise criminally or civilly charged by a governmental entity (Federal, State, or local) with commission of any of the offenses enumerated in paragraph b of this certification.
- d. That the Bidder and its principals have not within a 3-year period preceding this bid had one or more public transactions (Federal, State, or local) terminated for breach or default of a timber or forest product contract.

Bidders that cannot certify this requirement, in whole or in part, shall submit an explanation with their bid.

DAN EICHINGER  
Director

## TIMBER SALE INFORMATION

Heater Hose Mix (42-021-21)  
 T47N, R11W, SEC. 12; T47N, R11W, SEC. 13.  
 Luce County (Advertised Price \$23,885.25)

SALE NOTE: All units of volume listed for this sale were estimated using the Inventory Manager computer program and the new Michigan taper model.

Note that MBF has been combined with pulpwood to form cords in multiple species in the sale.

Within Payment Unit(s) 3-5, harvesting is not permitted during the period of April 15 to July 15 because of bark slippage.

A snowmobile trail is shown on the Timber Sale Map. See Sale Spec 5.2.41 for additional information.

A recreation site such as a trail, pathway, or campground is within the sale area or the vicinity. Certain restrictions/specifications may be applicable including time restrictions.

A timber sale contract for this lump sum, sealed bid timber sale will be awarded to the responsible bidder offering the highest sealed bid price. All units of volume listed below were estimated using the Inventory Manager computer program and the new Michigan taper model. Bids must be at or above the following advertised price for each product and species:

<u>PRODUCTS &amp; SPECIES</u>	<u>ESTIMATED UNITS*</u>	<u>ADVERTISED PRICE</u>
Sawtimber		
Paper Birch	3.7 MBF	\$ 40.00 / MBF
Red Maple	37.4 MBF	\$ 86.00 / MBF
Sugar Maple	14.2 MBF	\$ 175.00 / MBF
Pulpwood		
Balsam Fir	96 Cords	\$ 8.25 / Cord
Beech	18 Cords	\$ 8.95 / Cord
Black Cherry	53 Cords	\$ 8.95 / Cord
Mixed Aspen	279 Cords	\$ 24.00 / Cord
Paper Birch	25 Cords	\$ 8.35 / Cord
Red Maple	333 Cords	\$ 8.95 / Cord
Red Pine	3 Cords	\$ 48.10 / Cord
Sugar Maple	54 Cords	\$ 8.95 / Cord
White Pine	313 Cords	\$ 14.55 / Cord
White Spruce	129 Cords	\$ 11.95 / Cord

\* The total volume is statistically estimated within plus (+) or minus (-) 6.40 percent. There are an estimated 1,454 cords on this timber sale, plus or minus 93 cords at the 95% confidence level. The estimated units are final and not subject to adjustment. Prospective bidders are urged to examine this timber and to make their own estimates of quantity and quality.

### **BOND AND PAYMENT SCHEDULE:**

1. A bond in the amount of \$1,194.00 to insure faithful performance of the conditions of the contract will be deposited by the successful bidder within 21 days of the sale award.
2. Cutting in any sale or unit without the required advance payment would be considered a trespass.
3. Total payment must be paid in advance or according to the following schedule :
  - (a) Ten percent (10%) of the sale value must be paid within 21 days of the sale award.
  - (b) The 10% down payment will be credited towards the first unit cut.
  - (c) Payment for each of the following units must be made before cutting begins in that unit:

PAYMENT UNIT NUMBER	PERCENT OF TOTAL SALE VALUE
01	24.5%
02	15.8%
03	14.4%
04	27.7%
05	17.6%

4. If no cutting takes place, the 10% down payment will not be refunded.
5. Operations on the contract issued will terminate on 12/31/2025.

### **SALE STATISTICS**

Volumes were calculated in cubic feet using the Michigan taper model. Cubic foot volume includes all wood inside bark for the product indicated. For display purposes, cubic feet were converted to cords and MBF using a simple conversion factor, e.g. 79 cubic feet per cord and 185 cubic feet per MBF. The cubic foot volumes are precise; the cords and MBF volumes are not. Cubic foot volume cannot be directly converted to cords or boards with precision.

### SALE VOLUMES

The total estimated sale volume may not equal the sum of the species/products due to the nature of statistical calculations associated with double sampling methodology.

VOLUME			STATISTICAL RANGE IN CORDS	
TOTAL CUBIC FEET	TOTAL CORDS	PERCENT ERROR	MINIMUM	MAXIMUM
114,901	1,454	6.40%	1,361	1,548

### VDU VOLUMES

A VDU is a Volume Determination Unit. Volumes and their associated statistics are calculated at the VDU level and summarized to the sale level. There is often a one to one relationship between a VDU and a Payment Unit, but not always, depending on the cruise design. Refer to the VDU TO PAYMENT UNIT table.

VDU	VOLUME		PERCENT ERROR	RANGE IN CORDS	
	TOTAL CUBIC FEET	TOTAL CORDS		MINIMUM	MAXIMUM
33	50,381	638	11.80%	562	713
43	12,452	158	12.69%	138	178
60	32,622	413	11.09%	367	459
61	2,320	29	16.27%	25	34
62	17,126	217	10.23%	195	239
<b>TOTAL:</b>	<b>114,901</b>	<b>1,454</b>		<b>1,286</b>	<b>1,622</b>

### VDU TO PAYMENT UNIT

When a VDU is associated with more than one Payment Unit (PU), the VDU volumes are assigned to the PU based on acres of the VDU within the PU.

VDU	VDU ACRES	PU	PU ACRES
33	38.2	1	23.1
		2	15.1
43	12.2	3	12.2
60	13.2	4	13.2
61	1.4	4	1.4
62	6.4	5	6.4
<b>TOTAL:</b>	<b>71.4</b>		<b>71.4</b>

**DESCRIPTION OF TIMBER BY PAYMENT UNIT (PU)**

PU	MARKET GROUP	PRODUCT	QUANTITY	UNIT	ACRES	ADVERTISE PRICE
1	Red Maple	Sawtimber	3.1	MBF	23.1	\$5,845.10
	Balsam Fir	Pulpwood	5	Cords		
	<i>Balsam Fir</i>	<i>Sawtimber</i>	<i>0.4</i>	<i>MBF</i>		
	<i>Balsam Fir</i>	<i>Pulpwood</i>	<i>4</i>	<i>Cords</i>		
	Beech		2	Cords		
	<i>Beech</i>	<i>Sawtimber</i>	<i>0.8</i>	<i>MBF</i>		
	Black Cherry	Pulpwood	18	Cords		
	Mixed Aspen		85	Cords		
	<i>Quaking Aspen</i>	<i>Sawtimber</i>	<i>2.7</i>	<i>MBF</i>		
	<i>Quaking Aspen</i>	<i>Pulpwood</i>	<i>80</i>	<i>Cords</i>		
	Paper Birch		10	Cords		
	Red Maple		76	Cords		
	Red Pine		2	Cords		
	White Pine		132	Cords		
	<i>White Pine</i>	<i>Sawtimber</i>	<i>33.7</i>	<i>MBF</i>		
	<i>White Pine</i>	<i>Pulpwood</i>	<i>65</i>	<i>Cords</i>		
	White Spruce		45	Cords		
	<i>White Spruce</i>	<i>Sawtimber</i>	<i>2.2</i>	<i>MBF</i>		
	<i>White Spruce</i>	<i>Pulpwood</i>	<i>41</i>	<i>Cords</i>		
2	Red Maple	Sawtimber	2.0	MBF	15.1	\$3,781.65
	Balsam Fir	Pulpwood	3	Cords		
	<i>Balsam Fir</i>	<i>Sawtimber</i>	<i>0.2</i>	<i>MBF</i>		
	<i>Balsam Fir</i>	<i>Pulpwood</i>	<i>3</i>	<i>Cords</i>		
	Beech		1	Cords		
	<i>Beech</i>	<i>Sawtimber</i>	<i>0.6</i>	<i>MBF</i>		
	Black Cherry	Pulpwood	11	Cords		
	Mixed Aspen		55	Cords		
	<i>Quaking Aspen</i>	<i>Sawtimber</i>	<i>1.7</i>	<i>MBF</i>		
	<i>Quaking Aspen</i>	<i>Pulpwood</i>	<i>52</i>	<i>Cords</i>		
	Paper Birch		7	Cords		
	Red Maple		49	Cords		
	Red Pine		1	Cords		
	White Pine		87	Cords		
	<i>White Pine</i>	<i>Sawtimber</i>	<i>22.1</i>	<i>MBF</i>		
	<i>White Pine</i>	<i>Pulpwood</i>	<i>43</i>	<i>Cords</i>		
	White Spruce		29	Cords		
<i>White Spruce</i>	<i>Sawtimber</i>	<i>1.5</i>	<i>MBF</i>			
<i>White Spruce</i>	<i>Pulpwood</i>	<i>26</i>	<i>Cords</i>			
3	Paper Birch	Sawtimber	3.7	MBF	12.2	\$3,450.05
	Red Maple		7.5	MBF		
	Sugar Maple		8.1	MBF		
	Balsam Fir	Pulpwood	3	Cords		
	<i>Balsam Fir</i>		<i>3</i>	<i>Cords</i>		
	Beech		15	Cords		
	<i>Beech</i>		<i>15</i>	<i>Cords</i>		
	Mixed Aspen		18	Cords		
	<i>B. T. Aspen</i>		<i>18</i>	<i>Cords</i>		
	Paper Birch		8	Cords		
	Red Maple		42	Cords		
Sugar Maple		23	Cords			
4	Red Maple	Sawtimber	4.1	MBF	14.6	\$6,556.50
	Balsam Fir	Pulpwood	67	Cords		
	<i>Balsam Fir</i>		<i>67</i>	<i>Cords</i>		
	Black Cherry		16	Cords		
	Mixed Aspen		120	Cords		
	<i>Quaking Aspen</i>		<i>120</i>	<i>Cords</i>		

**DESCRIPTION OF TIMBER BY PAYMENT UNIT (PU), CON'T**

PU	MARKET GROUP	PRODUCT	QUANTITY	UNIT	ACRES	ADVERTISE PRICE
4 con't	Red Maple	Pulpwood	62	Cords		
	Sugar Maple		7	Cords		
	White Pine		93	Cords		
	<i>White Pine</i>	<i>Sawtimber</i>	27.7	<i>MBF</i>		
	<i>White Pine</i>	<i>Pulpwood</i>	38	<i>Cords</i>		
	White Spruce		55	Cords		
	<i>White Spruce</i>		55	<i>Cords</i>		
5	Red Maple	Sawtimber	20.7	MBF	6.4	\$4,213.40
	Sugar Maple		6.1	MBF		
	Balsam Fir	Pulpwood	18	Cords		
	<i>Balsam Fir</i>		18	<i>Cords</i>		
	Black Cherry		8	Cords		
	Red Maple		104	Cords		
	Sugar Maple		24	Cords		
	TOTAL:			55.3		
TOTAL:			1,301	Cords		



## Sale Specific Conditions & Requirements

**Sale Name: Heater Hose Mix**

**Sale Number: 42-021-21 Seq#: 1**

### 1 - Sale Area

#### 1.2 - Boundaries

##### 1.2.1 - Painted boundaries (9/19)

The sale boundary and Payment Unit boundaries are marked and identified by blue or red paint. Exterior sale boundary lines against private property are marked with blue paint. Exterior sale boundary lines against state are marked with red paint. Payment units 1 and 2 are separated by existing road. Interior Payment Unit boundaries are marked with red paint between Payment Units 4 and 5. The painted boundary line trees are not Included Timber and are to be protected unless marked with orange paint. Yellow and or red painted trees designating an interior Payment Unit boundary are only to be cut when all surrounding Payment Units have been paid.

### 2 - Timber Specifications

#### 2.1 - Included Timber

##### 2.1.1 - Clearcut unit(s) with unmerchantable trees (6/14)

Within Payment Unit(s) 1 and 2, cut all trees that are two (2) inches or more at DBH, except leave one (1) mature white pine per two (2) acres of varying sizes.

##### 2.1.3 - Cut tree marked unit(s) (12/08)

Within Payment Unit(s) 3, all trees are designated for cutting when marked with orange paint above and below stump height, regardless of merchantability. Also, cut all spruce, beech, balsam, and aspen.

##### 2.1.7 - Leave tree marked unit(s) (6/14)

Within Payment Unit(s) 4 and 5, cut all trees that are two (2) inches or more at DBH, except trees marked with green paint above and below stump height. Within Payment Unit 4 leave all white pine over 20" at DBH. Leave all spruce over 18" at DBH in both Payment Units 4 and 5.

##### 2.1.11 - Description of timber note (2/04)

Note that MBF has been combined with pulpwood to form cords in multiple species in the sale.

#### 2.2 - Utilization

##### 2.2.3 - Stump heights (4/07)

Stump heights within Payment Unit(s) 1 and 2 shall not exceed 12 inches for trees greater than 10 inches at DBH and 4 inches for trees smaller than 10 inches at DBH.

### 4 - Transportation

#### 4.1 - Construction

##### 4.1.4 - Timber removed for construction (12/09)

Trees cut or damaged in the process of pre-approved road, landing or skid trail construction will be decked in an area separate from other Designated Timber and not removed until measured by the sale administrator. Payment will be made at the specified Purchase Unit Price.

##### 4.1.6 - Road construction (1/09)

Construction of new roads or improvements of existing roads shall be done in such a way as to minimize the environmental and visual impacts. Merchantable trees shall be cut and utilized unless otherwise directed. Non-merchantable trees shall be severed and laid flat on the ground. Slash shall be scattered, and not left in windrows and kept a minimum of 10 feet back from the road edge. Stumps shall be set upright, not left on edge, and be moved at least 10 feet away from the road edge. Disturbed soil shall be feathered into the woods and not left in berms or windrows.

##### 4.1.7 - Road closure (10/11)

All new roads built into the sale must be blocked to vehicle traffic upon completion of the sale. Overgrown roads that are reopened shall be considered new roads. In general, this will require constructing a four (4') foot high berm of stumps and

logs covered with earth. These roads must be rendered impassable to cars and trucks. Contact the sale administrator for specific details of design and placement.

#### 4.2 - Maintenance

##### 4.2.4 - Grading (10/16)

For completion of the sale, state forest roads must be graded. In general, this will require a road grader or bulldozer to shape up the roads after forest products have been hauled off site. This includes cleaning of drainage areas, grading, crowning, and filling with gravel, if necessary. The grading equipment to be used must be approved by the Unit Manager or his/her representative.

##### 4.2.5 - Two wheel drive condition (2/04)

All existing trail roads on and adjacent to the sale area must be passable by two-wheel drive traffic for the duration of the sale.

### 5 - Operations

#### 5.2 - Conduct of Operations

##### 5.2.1 - Slash

###### 5.2.1.8 - Slash height (12/08)

No slash or tree tops may exceed 36 inches in height.

##### 5.2.2 - Hazard Trees/Snags

###### 5.2.2.1 - Den trees (10/16)

Obvious hollow and/or den trees shall be protected and left standing unless they are a safety hazard.

##### 5.2.3 - Operating Restrictions

###### 5.2.3.3 - Bark slippage restriction (3/09)

Within Payment Unit(s) 3-5, unless changed by written agreement, cutting and skidding are not permitted during the period of April 15 to July 15. This restriction is because of bark slippage.

##### 5.2.32 - Decking/landing restoration (9/13)

All decking and landing areas must have the surface area restored to a condition equal to or better than before. This is to ensure the proper regeneration of the stand. Wood debris, chips, and "cookies" from trimmings must be removed or scattered away from landing and loading areas and may not be windrowed on the edge.

##### 5.2.38 - No decking against live trees (2/04)

Cut products may not be decked against unmarked or designated leave trees.

##### 5.2.41 - Snowmobile trail protection (9/11)

The snowmobile trail and is shown on the Timber Sale Map. Do not cut or damage posts with orange trail markers or traffic control signs. If the trail is used, it must be maintained and restored to a condition equal to or better than before the sale. The road maintenance/restoration must be done prior to December 15. If the trail is used for hauling, it must be graded to the satisfaction of the Unit Manager or his/her representative prior to December 15. If the trail road is to be used for hauling during the snowmobile season, then a snow-covered base must be left on the trail. No decking of forest products will be permitted along the snowmobile trail.

#### 5.8 - Protection of Endangered Species

##### 5.8.5 - Protection of raptor nests (3/13)

All trees with raptor nests will be protected if found during harvesting operations. Notification will be made to the Unit Manager or his/her representative who will notify the Wildlife Biologist so an on-site evaluation and recommendation can be made, if necessary.

### 6 - Safety and Fire Prevention

#### 6.2 - Signing

##### 6.2.1 - Road posting (10/20)

The Purchaser is responsible for posting and maintaining caution signs on County Road 415 and 422 prior to beginning operations. The road must be posted at appropriate distances from the Sale Area to warn of logging activity and truck traffic. Signs must be removed when harvest operations are suspended or completed. The Purchaser will provide these signs.

#### 6.2.2 - Snowmobile trail posting (10/20)

The Purchaser is responsible for posting and maintaining caution signs on snowmobile trail prior to beginning operations during the snowmobile season (approximately December 1 to March 31). The trail must be posted at appropriate distances from the Sale Area to warn of logging activity and truck traffic. Signs must be removed when harvest operations are suspended or completed. The DNR will provide these signs.



# TIMBER SALE MAP

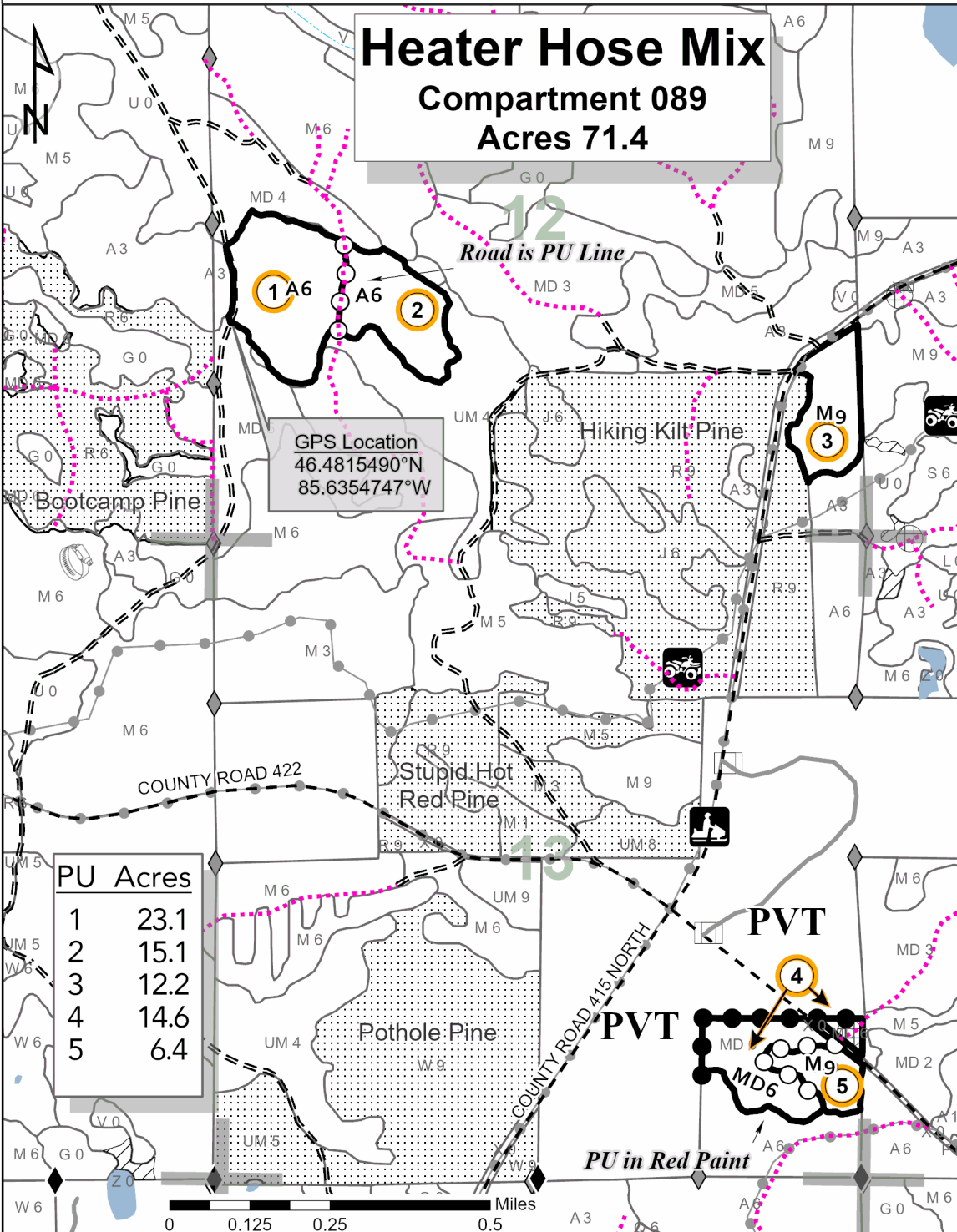
This information provided by authority of Part 525, 1994 PA 451, as amended.

Sale Number	Year
42-021	21

Forest Management Unit Newberry	County Luce	Mapped By L. Livermore	Date 9/23/2021	Page 1	of 1
Township 47N	Range 11W	Section(s) and Subdivision(s) <b>Section 12: SWNW,SW,E½SE Section 13: SESE</b>	Scale 1:15,840		

Cover Type				Density		
A = Aspen	H = Hemlock	N = Marsh	U = Upland Brush	0 = Non Stocked	5 = Pole Timber Medium	
B = Paper Birch	J = Jack Pine	O = Oak	UM = Upland Mixed	1 = Seedling Sapling Poor	6 = Pole Timber Well	
C = Cedar	L = Lowland Brush	P = Lowland Poplar	V = Bog or Marsh	2 = Seedling Sapling Medium	7 = Saw Timber Poor	
D = Tread Bog	LM = Lowland Mixed	Q = Mixed Swamp Conifer	W = White Pine	3 = Seedling Sapling Well	8 = Saw Timber Medium	
E = Swamp Hdwoods	M = Mpl, Bch, Brch	R = Red Pine	X = Non Stocked	4 = Pole Timber Poor	9 = Saw Timber Well	
F = Spruce Fir	MC = Mixed Conifer	S = Black Spruce	Z = Water			
G = Grass	MD = Mixed Deciduous	T = Tamarack				

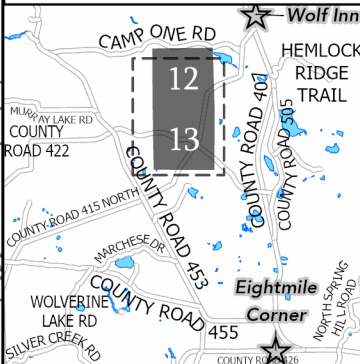
## Heater Hose Mix Compartment 089 Acres 71.4



- Payment Unit Label (1 - 5)
- Against State (Red)
- Payment Unit (Red or Road)
- Private Line (Blue)
- PVT Private Ownership
- ORV Trails
- Snowmobile Trails
- Recreational Trail
- Section Numbers
- Section Corners
- Survey Corners
- Gate (2 on map)
- Berms (3 on map)
- Intermittent Stream
- Lakes and Rivers
- Forest Access Route
- Gravel Road
- Private
- Temporary Management Access
- Nearby Timber Sale

PU	Acres
1	23.1
2	15.1
3	12.2
4	14.6
5	6.4

Locator Map: 1:200,000  
- Main Map Extent



## TIMBER SALE INFORMATION

### Hiking Kilt Pine (42-022-21)

T47N, R11W, SEC. 12; T47N, R11W, SEC. 13.  
Luce County (Advertised Price \$163,098.85)

SALE NOTE: All units of volume listed for this sale were estimated using the Inventory Manager computer program and the new Michigan taper model.

An ORV trail or route and is shown on the Timber Sale Map. See Sale Spec 5.2.39 for restrictions.

A snowmobile trail is shown on the Timber Sale Map. See Sale Spec 5.2.41 for details.

A recreation site such as a trail, pathway, or campground is within the sale area or the vicinity. Certain restrictions/specifications may be applicable including time restrictions.

A timber sale contract for this lump sum, sealed bid timber sale will be awarded to the responsible bidder offering the highest sealed bid price. All units of volume listed below were estimated using the Inventory Manager computer program and the new Michigan taper model. Bids must be at or above the following advertised price for each product and species:

<u>PRODUCTS &amp; SPECIES</u>	<u>ESTIMATED UNITS*</u>	<u>ADVERTISED PRICE</u>
Pulpwood		
Balsam Fir	10 Cords	\$ 8.25 / Cord
Beech	4 Cords	\$ 8.95 / Cord
Black Cherry	56 Cords	\$ 8.95 / Cord
Jack Pine	452 Cords	\$ 21.85 / Cord
Quaking Aspen	34 Cords	\$ 24.00 / Cord
Red Maple	116 Cords	\$ 8.95 / Cord
Red Pine	3,097 Cords	\$ 48.10 / Cord
Sugar Maple	21 Cords	\$ 8.95 / Cord
White Pine	108 Cords	\$ 14.55 / Cord
White Spruce	2 Cords	\$ 11.95 / Cord

\* The total volume is statistically estimated within plus (+) or minus (-) 4.31 percent. There are an estimated 4,138 cords on this timber sale, plus or minus 178 cords at the 95% confidence level. The estimated units are final and not subject to adjustment. Prospective bidders are urged to examine this timber and to make their own estimates of quantity and quality.

### **BOND AND PAYMENT SCHEDULE:**

1. A bond in the amount of \$8,155.00 to insure faithful performance of the conditions of the contract will be deposited by the successful bidder within 21 days of the sale award.
2. Cutting in any sale or unit without the required advance payment would be considered a trespass.
3. Total payment must be paid in advance or according to the following schedule :
  - (a) Ten percent (10%) of the sale value must be paid within 21 days of the sale award.
  - (b) The 10% down payment will be credited towards the first unit cut.
  - (c) Payment for each of the following units must be made before cutting begins in that unit:

PAYMENT UNIT NUMBER	PERCENT OF TOTAL SALE VALUE
01	1.7%
02	20.0%
03	15.2%
04	0.4%
05	7.0%
06	10.6%
07	2.6%
08	21.7%
09	4.8%
10	16.0%
11	0.0%

4. If no cutting takes place, the 10% down payment will not be refunded.
5. Operations on the contract issued will terminate on 12/31/2025.

### **SALE STATISTICS**

Volumes were calculated in cubic feet using the Michigan taper model. Cubic foot volume includes all wood inside bark for the product indicated. For display purposes, cubic feet were converted to cords and MBF using a simple conversion factor, e.g. 79 cubic feet per cord and 185 cubic feet per MBF. The cubic foot volumes are precise; the cords and MBF volumes are not. Cubic foot volume cannot be directly converted to cords or boards with precision.

### SALE VOLUMES

The total estimated sale volume may not equal the sum of the species/products due to the nature of statistical calculations associated with double sampling methodology.

VOLUME			STATISTICAL RANGE IN CORDS	
TOTAL CUBIC FEET	TOTAL CORDS	PERCENT ERROR	MINIMUM	MAXIMUM
326,907	4,138	4.31%	3,960	4,316

### VDU VOLUMES

A VDU is a Volume Determination Unit. Volumes and their associated statistics are calculated at the VDU level and summarized to the sale level. There is often a one to one relationship between a VDU and a Payment Unit, but not always, depending on the cruise design. Refer to the VDU TO PAYMENT UNIT table.

VDU	VOLUME			RANGE IN CORDS	
	TOTAL CUBIC FEET	TOTAL CORDS	PERCENT ERROR	MINIMUM	MAXIMUM
36	172	2	100.00%	0	4
37	10,375	131	30.62%	91	172
38	23,330	295	14.69%	252	339
39	210,544	2,665	5.53%	2,518	2,813
40	1,925	24	43.41%	14	35
42	71,031	899	8.52%	822	976
44	3,709	47	43.59%	26	67
68	5,821	74	18.90%	60	88
<b>TOTAL:</b>	<b>326,907</b>	<b>4,138</b>		<b>3,783</b>	<b>4,493</b>

### VDU TO PAYMENT UNIT

When a VDU is associated with more than one Payment Unit (PU), the VDU volumes are assigned to the PU based on acres of the VDU within the PU.

VDU	VDU ACRES	PU	PU ACRES
36	2.8	11	2.8
37	5.9	1	5.9
38	17.9	9	17.9
39	80.1	2	23.7
		3	18.0
		6	12.6
		8	25.8
40	2.0	4	2.0
42	22.7	5	6.9
		10	15.8
44	2.4	7	2.4
68	2.3	7	2.3
<b>TOTAL:</b>	<b>136.1</b>		<b>136.1</b>

**DESCRIPTION OF TIMBER BY PAYMENT UNIT (PU)**

PU	MARKET GROUP	PRODUCT	QUANTITY	UNIT	ACRES	ADVERTISE PRICE
1	Balsam Fir	Pulpwood	5	Cords	5.9	\$2,760.65
	Jack Pine		107	Cords		
	<i>Jack Pine</i>		107	<i>Cords</i>		
	Red Maple		5	Cords		
	<i>Red Maple</i>		5	<i>Cords</i>		
	Red Pine		7	Cords		
	<i>Red Pine</i>		2.9	<i>MBF</i>		
	<i>Red Pine</i>		1	<i>Cords</i>		
2	Balsam Fir	Pulpwood	1	Cords	23.7	\$32,589.85
	Beech		1	Cords		
	Black Cherry		12	Cords		
	Jack Pine		7	Cords		
	<i>Jack Pine</i>		7	<i>Cords</i>		
	Quaking Aspen		3	Cords		
	Red Maple		32	Cords		
	<i>Red Maple</i>		32	<i>Cords</i>		
	Red Pine		656	Cords		
	<i>Red Pine</i>		278.3	<i>MBF</i>		
	<i>Red Pine</i>		99	<i>Cords</i>		
	Sugar Maple		6	Cords		
	White Pine		23	Cords		
	<i>White Pine</i>		3.4	<i>MBF</i>		
	<i>White Pine</i>		16	<i>Cords</i>		
White Spruce	1	Cords				
3	Balsam Fir	Pulpwood	1	Cords	18.0	\$24,737.55
	Beech		1	Cords		
	Black Cherry		9	Cords		
	Jack Pine		6	Cords		
	<i>Jack Pine</i>		6	<i>Cords</i>		
	Quaking Aspen		2	Cords		
	Red Maple		24	Cords		
	<i>Red Maple</i>		24	<i>Cords</i>		
	Red Pine		498	Cords		
	<i>Red Pine</i>		211.4	<i>MBF</i>		
	<i>Red Pine</i>		75	<i>Cords</i>		
	Sugar Maple		5	Cords		
	White Pine		17	Cords		
	<i>White Pine</i>		2.6	<i>MBF</i>		
<i>White Pine</i>	12	<i>Cords</i>				
4	Black Cherry	Pulpwood	2	Cords	2.0	\$630.40
	Quaking Aspen		10	Cords		
	Red Maple		4	Cords		
	<i>Red Maple</i>		0.2	<i>MBF</i>		
	<i>Red Maple</i>		4	<i>Cords</i>		
	Red Pine		7	Cords		
	<i>Red Pine</i>		3.2	<i>MBF</i>		
<i>Red Pine</i>	1	<i>Cords</i>				
5	Jack Pine	Pulpwood	2	Cords	6.9	\$11,430.05
	<i>Jack Pine</i>		0.5	<i>MBF</i>		
	<i>Jack Pine</i>		1	<i>Cords</i>		
	Red Pine		234	Cords		
	<i>Red Pine</i>		100.8	<i>MBF</i>		
	<i>Red Pine</i>		32	<i>Cords</i>		
	White Pine		9	Cords		
	<i>White Pine</i>		3.2	<i>MBF</i>		
<i>White Pine</i>	3	<i>Cords</i>				

**DESCRIPTION OF TIMBER BY PAYMENT UNIT (PU), CON'T**

PU	MARKET GROUP	PRODUCT	QUANTITY	UNIT	ACRES	ADVERTISE PRICE	
6	Balsam Fir	Pulpwood	1	Cords	12.6	\$17,274.70	
	Beech		1	Cords			
	Black Cherry		6	Cords			
	Jack Pine		4	Cords			
	<i>Jack Pine</i>		4	<i>Cords</i>			
	Quaking Aspen		1	Cords			
	Red Maple		17	Cords			
	<i>Red Maple</i>		17	<i>Cords</i>			
	Red Pine		348	Cords			
	<i>Red Pine</i>		<i>Sawtimber</i>	148.0			<i>MBF</i>
	<i>Red Pine</i>		<i>Pulpwood</i>	52			<i>Cords</i>
	Sugar Maple		3	Cords			
	White Pine		12	Cords			
<i>White Pine</i>	<i>Sawtimber</i>	1.8	<i>MBF</i>				
<i>White Pine</i>	<i>Pulpwood</i>	8	<i>Cords</i>				
7	Black Cherry	Pulpwood	4	Cords	4.7	\$4,294.05	
	Jack Pine		43	Cords			
	<i>Jack Pine</i>		43	<i>Cords</i>			
	Quaking Aspen		4	Cords			
	Red Pine		67	Cords			
	<i>Red Pine</i>		<i>Sawtimber</i>	29.0			<i>MBF</i>
	<i>Red Pine</i>		<i>Pulpwood</i>	9			<i>Cords</i>
8	Balsam Fir	Pulpwood	2	Cords	25.8	\$35,426.55	
	Beech		1	Cords			
	Black Cherry		13	Cords			
	Jack Pine		8	Cords			
	<i>Jack Pine</i>		8	<i>Cords</i>			
	Quaking Aspen		3	Cords			
	Red Maple		34	Cords			
	<i>Red Maple</i>		34	<i>Cords</i>			
	Red Pine		713	Cords			
	<i>Red Pine</i>		<i>Sawtimber</i>	302.9			<i>MBF</i>
	<i>Red Pine</i>		<i>Pulpwood</i>	107			<i>Cords</i>
	Sugar Maple		7	Cords			
	White Pine		25	Cords			
	<i>White Pine</i>		<i>Sawtimber</i>	3.7			<i>MBF</i>
<i>White Pine</i>	<i>Pulpwood</i>	18	<i>Cords</i>				
White Spruce	1	Cords					
9	Black Cherry	Pulpwood	10	Cords	17.9	\$7,884.00	
	Jack Pine		272	Cords			
	<i>Jack Pine</i>		272	<i>Cords</i>			
	Quaking Aspen		11	Cords			
	Red Pine		33	Cords			
	<i>Red Pine</i>		<i>Sawtimber</i>	13.4			<i>MBF</i>
	<i>Red Pine</i>		<i>Pulpwood</i>	6			<i>Cords</i>
10	Jack Pine	Pulpwood	3	Cords	15.8	\$26,167.25	
	<i>Jack Pine</i>		<i>Sawtimber</i>	1.0			<i>MBF</i>
	<i>Jack Pine</i>		<i>Pulpwood</i>	1			<i>Cords</i>
	Red Pine		536	Cords			
	<i>Red Pine</i>		<i>Sawtimber</i>	230.9			<i>MBF</i>
	<i>Red Pine</i>		<i>Pulpwood</i>	74			<i>Cords</i>
	White Pine		22	Cords			
	<i>White Pine</i>		<i>Sawtimber</i>	7.3			<i>MBF</i>
	<i>White Pine</i>		<i>Pulpwood</i>	7			<i>Cords</i>
TOTAL:			3,902	Cords			



# Sale Specific Conditions & Requirements

**Sale Name: Hiking Kilt Pine**

**Sale Number: 42-022-21 Seq#: 1**

## 1 - Sale Area

### 1.2 - Boundaries

#### 1.2.1 - Painted boundaries (9/19)

The sale boundary and Payment Unit boundaries are marked and identified by blue, red, and yellow paint. Exterior sale boundary lines against private property are marked with blue paint. Exterior sale boundary lines against state are marked with red paint. Interior Payment Unit boundaries are marked with red and/or yellow paint. Retention patches are marked with red paint; no harvesting activities may occur within these areas. The painted boundary line trees are not Included Timber and are to be protected unless marked with orange paint. Yellow painted trees designating an interior Payment Unit boundary are only to be cut when all surrounding Payment Units have been paid.

## 2 - Timber Specifications

### 2.1 - Included Timber

#### 2.1.1 - Clearcut unit(s) with unmerchantable trees (6/14)

Within Payment Unit(s) 1-11, cut all trees that are two (2) inches or more at DBH.

#### 2.1.11 - Description of timber note (2/04)

Note that there are sawlog-sized trees in the sale, but they were all cruised as pulpwood.

### 2.2 - Utilization

#### 2.2.3 - Stump heights (4/07)

Stump heights within Payment Unit(s) 1-11, shall not exceed 10 inches for trees greater than 10 inches at DBH and 4 inches for trees smaller than 10 inches at DBH. This is to facilitate planting operations.

## 3 - Payments

### 3.3 - Pre-measured Sales

#### 3.3.4 - Dividing payment units (7/14)

Payment Unit(s) 2, 3, 6, and 8-10 may be divided at the request of the Purchaser and upon approval of the Unit Manager.

Dividing Payment Units is a contract modification which requires a Timber Sale Contract Amendment. There will be only one division per Payment Unit.

## 4 - Transportation

### 4.1 - Construction

#### 4.1.4 - Timber removed for construction (12/09)

Trees cut or damaged in the process of pre-approved road, landing or skid trail construction will be decked in an area separate from other Designated Timber and not removed until measured by the sale administrator. Payment will be made at the specified Purchase Unit Price.

#### 4.1.7 - Road closure (10/11)

All new roads built into the sale must be blocked to vehicle traffic upon completion of the sale. Overgrown roads that are reopened shall be considered new roads. In general, this will require constructing a four (4') foot high berm of stumps and logs covered with earth. These roads must be rendered impassable to cars and trucks. All stumps from road building and landing construction must be reserved to block any newly constructed roads upon completion of the sale. These stumps must be scattered along the road system to prohibit vehicular movement. Contact the sale administrator for specific details of design and placement.

### 4.2 - Maintenance

#### 4.2.4 - Grading (10/16)

For completion of the sale, state forest roads must be graded. In general, this will require a road grader or bulldozer to shape

up the roads after forest products have been hauled off site. This includes cleaning of drainage areas, grading, crowning, and filling with gravel, if necessary. The grading equipment to be used must be approved by the Unit Manager or his/her representative.

#### 4.2.5 - Two wheel drive condition (2/04)

All existing trail roads on and adjacent to the sale area must be passable by two-wheel drive traffic for the duration of the sale.

## 5 - Operations

### 5.2 - Conduct of Operations

#### 5.2.1 - Slash

##### 5.2.1.8 - Slash height (12/08)

No slash or tree tops may exceed 24 inches in height.

##### 5.2.1.11 - Slash for reforestation (3/21)

To facilitate reforestation, Payment Unit(s) 1-11 shall be left with slash evenly distributed. Bunched tops within the cutting area shall be broken up and scattered. Stumps shall be cut low to the ground. Processing sites shall not be left with a compacted layer of slash; tops from these sites shall be hauled back into the cut area and scattered.

##### 5.2.1.12 - Slash for prescribed burning (1/05)

To facilitate prescribed burning, slash shall be moved at least 10 feet inside the sale boundary. Slash cannot be piled or placed near residual trees.

#### 5.2.2 - Hazard Trees/Snags

##### 5.2.2.1 - Den trees (10/16)

Obvious hollow and/or den trees shall be protected and left standing unless they are a safety hazard.

#### 5.2.3 - Operating Restrictions

##### 5.2.3.6 - Bark beetle restriction (12/08)

In the event drought creates a high risk of pine bark beetle infestation, pine is not to be cut during the period March 1 through July 1, unless all portions of trees greater than two inches in diameter are removed from the sale area, reduced to chips, or treated to the satisfaction of the Unit Manager or his/her representative, within fifteen days of being severed from the stump. Pine log decks, pulpwood piles and treetops that are piled for chipping in the fall or winter within a 1/4 mile of susceptible sites must be removed before March 15. Residual slash must not be placed in piles or rows and must be spread over the site for quick drying. The Department of Natural Resources will exercise this specification if the risk of damage warrants.

##### 5.2.32 - Decking/landing restoration (9/13)

All decking and landing areas must have the surface area restored to a condition equal to or better than before. This is to ensure the proper regeneration of the stand. Wood debris, chips, and "cookies" from trimmings must be removed or scattered away from landing and loading areas and may not be windrowed on the edge.

##### 5.2.38 - No decking against live trees (2/04)

Cut products may not be decked against unmarked or designated leave trees.

##### 5.2.39 - ORV trail/route protection (4/18)

The ORV trail or route and is shown on the Timber Sale Map. Do not damage posts with orange ORV markers. All stumps within 5 feet of the trail must be cut flush with the ground. Maintain a 20-foot-wide slash, debris, and rut free zone daily using the ORV trail or route as the centerline. Do not run equipment down the ORV trail or route. Skidding across the trail or route may only occur in locations approved by the sale administrator.

##### 5.2.41 - Snowmobile trail protection (9/11)

The snowmobile trail is shown on the Timber Sale Map. Do not cut or damage posts with orange trail markers or traffic control signs. If the trail is used, it must be maintained and restored to a condition equal to or better than before the sale. The road maintenance/restoration must be done prior to December 15. If the trail is used for hauling, it must be graded to the satisfaction of the Unit Manager or his/her representative prior to December 15. If the trail road is to be used for hauling

during the snowmobile season, then a snow-covered base must be left on the trail. The snowmobile trail may only be crossed at right angles. Maintain a 20-foot-wide slash, debris, and rut free zone daily using the snowmobile trail as the centerline. No decking of forest products will be permitted along the snowmobile trail.

#### 5.8 - Protection of Endangered Species

##### 5.8.5 - Protection of raptor nests (3/13)

All trees with raptor nests will be protected if found during harvesting operations. Notification will be made to the Unit Manager or his/her representative who will notify the Wildlife Biologist so an on-site evaluation and recommendation can be made, if necessary.

### 6 - Safety and Fire Prevention

#### 6.2 - Signing

##### 6.2.1 - Road posting (10/20)

The Purchaser is responsible for posting and maintaining caution signs on County Road 415 prior to beginning operations. The road must be posted at appropriate distances from the Sale Area to warn of logging activity and truck traffic. Signs must be removed when harvest operations are suspended or completed. The Purchaser will provide these signs.

##### 6.2.2 - Snowmobile trail posting (10/20)

The Purchaser is responsible for posting and maintaining caution signs on snowmobile trail prior to beginning operations during the snowmobile season (approximately December 1 to March 31). The trail must be posted at appropriate distances from the Sale Area to warn of logging activity and truck traffic. Signs must be removed when harvest operations are suspended or completed. The DNR will provide these signs.

##### 6.2.3 - Recreational trail posting (10/20)

The Purchaser is responsible for posting and maintaining caution signs on the ORV Trail prior to beginning operations. The trail must be posted at appropriate distances from the Sale Area to warn of logging activity and truck traffic at both ends of the trail. Signs must be removed when harvest operations are suspended or completed. The DNR will provide these signs.

### 7 - Other Conditions

#### 7.5 - Loss

##### 7.5.1 - Deteriorating timber (7/09)

The sale area has received damage from windthrow and old age. The affected Payment Units are 1, 7 and 9. The Purchaser should harvest the wood as soon as possible. The Department of Natural Resources is held free of responsibility of any further damage or deterioration due to delay in harvesting.

Sale Number	Year
42-022	21

# TIMBER SALE MAP

This information provided by authority of Part 525, 1994 PA 451, as amended.

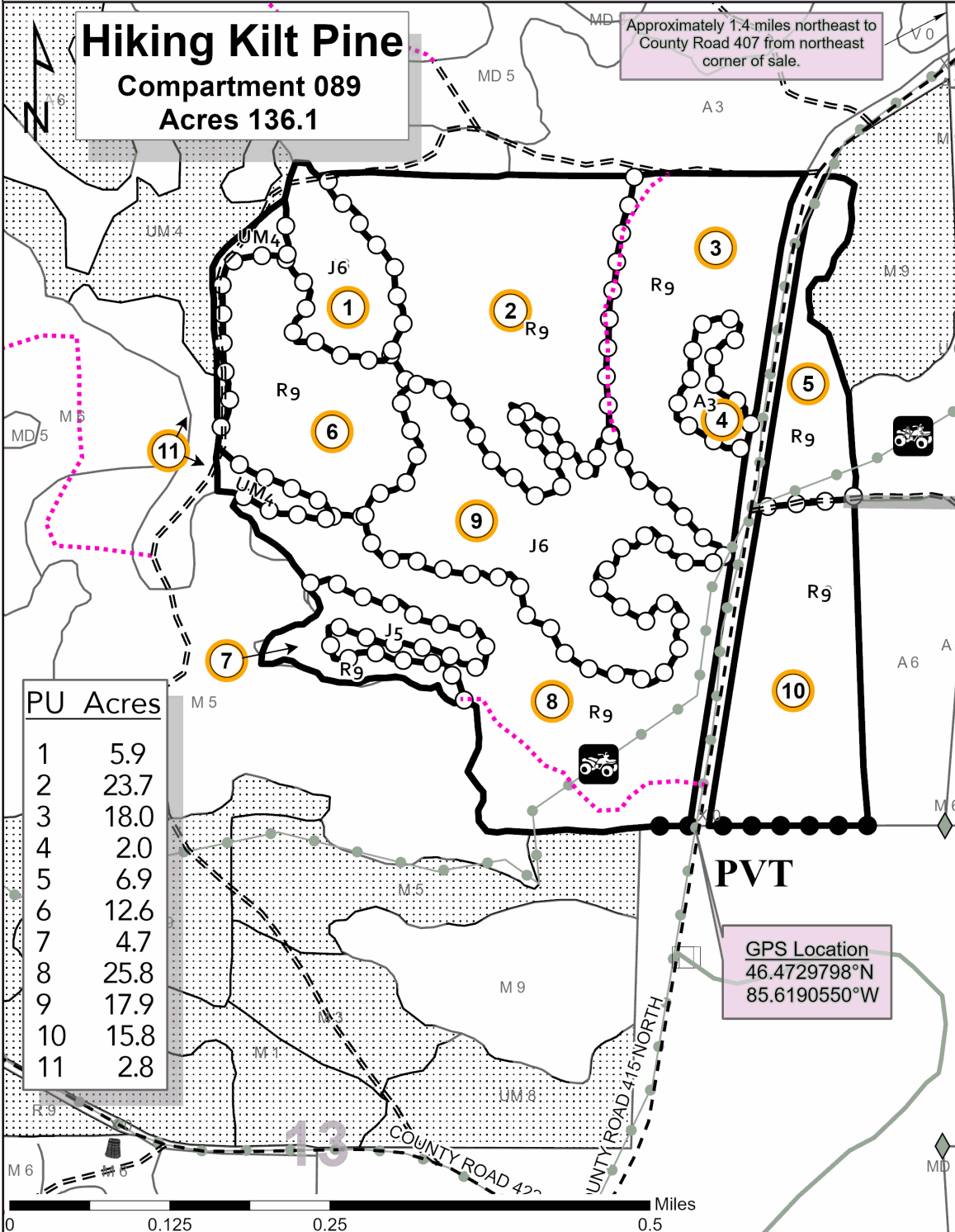
Forest Management Unit Newberry		County Luce	Mapped By L. Livermore	Date 9/21/2021	Page 1	of 1
Township 47N	Range 11W	Section(s) and Subdivision(s) Section 12: E½SW, SE Section 13: NENW, N½NE, SWNE		Scale 1:7,920		

### Cover Type

A = Aspen	H = Hemlock	N = Marsh	U = Upland Brush
B = Paper Birch	J = Jack Pine	O = Oak	UM = Upland Mixed
C = Cedar	L = Lowland Brush	P = Lowland Poplar	V = Bog or Marsh
D = Treed Bog	LM = Lowland Mixed	Q = Mixed Swamp Conifer	W = White Pine
E = Swamp Hdwoods	M = Mpl, Bch, Brch	R = Red Pine	X = Non Stocked
F = Spruce Fir	MC = Mixed Conifer	S = Black Spruce	Z = Water
G = Grass	MD = Mixed Deciduous	T = Tamarack	

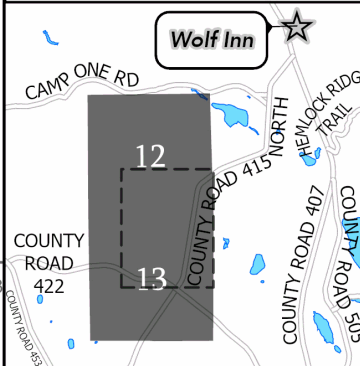
### Density

0 = Non Stocked	5 = Pole Timber Medium
1 = Seedling Sapling Poor	6 = Pole Timber Well
2 = Seedling Sapling Medium	7 = Saw Timber Poor
3 = Seedling Sapling Well	8 = Saw Timber Medium
4 = Pole Timber Poor	9 = Saw Timber Well



- Payment Unit Label
- Against State (Red)
- Payment Unit (Red / Yellow)
- Private Line (Blue)
- ORV Trails
- Recreational Trail
- Section Numbers
- Section Corners
- Gate
- Forest Access Route
- Gravel Road
- Private
- Temporary Management Access
- Nearby Timber Sale

Locator Map: 1:100,000  
- Main Map Extent



Heater Hose Mix (42-021-21)  
T47N, R11W, SEC. 12; T47N, R11W, SEC. 13; Luce COUNTY

In response to the notice of sale to be held 3:00 p.m. (local time) on July 14, 2022, I am hereby submitting my sealed bid ( firm offer) for the following forest products to be cut. Bids for individual species must be at or above the advertised price. All non-responsive bid forms may be rejected.

<u>PRODUCTS &amp; SPECIES</u>	<u>ESTIMATED VOLUME*</u>	<u>ADVERTISED PRICE</u>	<u>BID PRICE/UNIT</u>
<b>Sawtimber</b>			
Paper Birch	3.7 MBF	\$ 40.00/MBF	\$ _____
Red Maple	37.4 MBF	\$ 86.00/MBF	\$ _____
Sugar Maple	14.2 MBF	\$ 175.00/MBF	\$ _____
<b>Pulpwood</b>			
Balsam Fir	96 Cords	\$ 8.25/Cord	\$ _____
Beech	18 Cords	\$ 8.95/Cord	\$ _____
Black Cherry	53 Cords	\$ 8.95/Cord	\$ _____
Mixed Aspen	279 Cords	\$ 24.00/Cord	\$ _____
Paper Birch	25 Cords	\$ 8.35/Cord	\$ _____
Red Maple	333 Cords	\$ 8.95/Cord	\$ _____
Red Pine	3 Cords	\$ 48.10/Cord	\$ _____
Sugar Maple	54 Cords	\$ 8.95/Cord	\$ _____
White Pine	313 Cords	\$ 14.55/Cord	\$ _____
White Spruce	129 Cords	\$ 11.95/Cord	\$ _____

\*The volumes are statistically estimated within plus (+) or minus (-) 6.40 percent at 95% confidence level. These estimated volumes are final and not subject to adjustment. Prospective bidders are urged to examine this timber and to make their own estimates of quantity and quality.

I understand that any or all bids may be rejected. All bids must be signed and all bid items must be bid or the bid form may be rejected. I also understand that consideration and awarding a contract will be based upon my past performance and ability to complete the contract based upon equipment and staffing subject to my control.

FEDERAL ID: \_\_\_\_\_ or SOCIAL SECURITY NUMBER: \_\_\_\_\_

Company or individual bidding: \_\_\_\_\_

Company representative's name: \_\_\_\_\_

Address: \_\_\_\_\_

City: \_\_\_\_\_ State: \_\_\_\_\_ Zip: \_\_\_\_\_

IF AVAILABLE, PLEASE PLACE THE PERSONALIZED LABEL FROM YOUR PROSPECTUS IN THE ABOVE BOX.

Individual or company representative's signature: \_\_\_\_\_ Date: \_\_\_\_\_

Phone number : \_\_\_\_\_ Email (optional): \_\_\_\_\_

**THE WINNING BIDDER MUST COMPLETE THE VERIFICATION OF WORKER'S DISABILITY COMPENSATION ACT COMPLIANCE (ON REVERSE SIDE IF DOUBLE SIDED) WITHIN 21 DAYS OF SALE AWARD DATE**



<b>FOR DEPARTMENT USE ONLY</b>	
Sale Number (XX - XXX - XX - XX)	
Forest Management Unit:	

# TIMBER SALE VERIFICATION OF WORKER'S DISABILITY COMPENSATION ACT COMPLIANCE

As required by Act 317, P.A. 1969 (Worker's Compensation) and  
Part 5 of Act 451 of 1994, as amended.

## VERIFICATION OF WORKER'S DISABILITY COMPENSATION ACT COMPLIANCE

- This verification must be completed and submitted within 21 days of contract award and prior to the issuance of the timber sale contract.
- In addition, if boxes 2B or 2C are checked, then Notice of Exclusion or Certificate of Insurance must be submitted within twenty-one (21) days of the contract award and prior to the issuance of the timber sale contract.
- All information must be typed or printed except for written signatures.

Please Check Appropriate Categories:

1. My business is organized as (you **must** check one of the boxes below):
  - A.  Sole Proprietorship (individual)
  - B.  Partnership
  - C.  Corporation
2. You **must** check one of the boxes below:
  - A.  I certify my business is a sole proprietorship and it has no employees but the sole proprietor. I am not subject to the Worker's Compensation Laws.
  - B.  I certify my business has satisfied its obligation to the Worker's Compensation Act through the use of an approved Notice of Exclusion (BWC-337, Rev. 5/96). I will provide a copy of the Notice of Exclusion within 21 days of the contract award. (For questions or a copy of the BWC-337, please call the Worker's Compensation Bureau at 517-322-1195).
  - C.  I certify my business has a Worker's Compensation Policy. I will provide an original Certificate of Insurance within twenty-one (21) days of the contract award.
3. If you have checked item 2(A) or 2(B), you **must** indicate the number of **both** full-time and part-time employees, other than yourself, including family members and active partners (if none, you must enter "0").

\_\_\_\_\_ Full-time Employees

\_\_\_\_\_ Part-time Employees

Name of Business		Federal ID (or) Social Security No.	
Address		Telephone (       )	
City	State	ZIP	

*I hereby certify that the above information is true and correct. I agree to notify the Michigan DNR of any changes that occur in factors affecting my coverage during any of my present and future operations.*

\_\_\_\_\_  
Signature of Owner or Authorized Representative

\_\_\_\_\_  
Title

\_\_\_\_\_  
Date

Please complete the "SEALED BID" information on the next page

Hiking Kilt Pine (42-022-21)  
T47N, R11W, SEC. 12; T47N, R11W, SEC. 13; Luce COUNTY

In response to the notice of sale to be held 3:00 p.m. (local time) on July 14, 2022, I am hereby submitting my sealed bid ( firm offer) for the following forest products to be cut. Bids for individual species must be at or above the advertised price. All non-responsive bid forms may be rejected.

<u>PRODUCTS &amp; SPECIES</u>	<u>ESTIMATED VOLUME*</u>	<u>ADVERTISED PRICE</u>	<u>BID PRICE/UNIT</u>
Pulpwood			
Balsam Fir	10 Cords	\$ 8.25/Cord	\$ _____
Beech	4 Cords	\$ 8.95/Cord	\$ _____
Black Cherry	56 Cords	\$ 8.95/Cord	\$ _____
Jack Pine	452 Cords	\$ 21.85/Cord	\$ _____
Quaking Aspen	34 Cords	\$ 24.00/Cord	\$ _____
Red Maple	116 Cords	\$ 8.95/Cord	\$ _____
Red Pine	3,097 Cords	\$ 48.10/Cord	\$ _____
Sugar Maple	21 Cords	\$ 8.95/Cord	\$ _____
White Pine	108 Cords	\$ 14.55/Cord	\$ _____
White Spruce	2 Cords	\$ 11.95/Cord	\$ _____

\*The volumes are statistically estimated within plus (+) or minus (-) 4.31 percent at 95% confidence level. These estimated volumes are final and not subject to adjustment. Prospective bidders are urged to examine this timber and to make their own estimates of quantity and quality.

I understand that any or all bids may be rejected. All bids must be signed and all bid items must be bid or the bid form may be rejected. I also understand that consideration and awarding a contract will be based upon my past performance and ability to complete the contract based upon equipment and staffing subject to my control .

FEDERAL ID: \_\_\_\_ - \_\_\_\_ - \_\_\_\_ or SOCIAL SECURITY NUMBER: \_\_\_\_ - \_\_\_\_ - \_\_\_\_

Company or individual bidding: \_\_\_\_\_

Company representative's name: \_\_\_\_\_

Address: \_\_\_\_\_

City: \_\_\_\_\_ State: \_\_\_\_\_ Zip: \_\_\_\_\_

IF AVAILABLE, PLEASE PLACE THE PERSONALIZED LABEL FROM YOUR PROSPECTUS IN THE ABOVE BOX.

Individual or company representative's signature: \_\_\_\_\_ Date: \_\_\_\_\_

Phone number : \_\_\_\_\_ Email (optional): \_\_\_\_\_

**THE WINNING BIDDER MUST COMPLETE THE VERIFICATION OF WORKER'S DISABILITY COMPENSATION ACT COMPLIANCE (ON REVERSE SIDE IF DOUBLE SIDED) WITHIN 21 DAYS OF SALE AWARD DATE**



# TIMBER SALE VERIFICATION OF WORKER'S DISABILITY COMPENSATION ACT COMPLIANCE

As required by Act 317, P.A. 1969 (Worker's Compensation) and  
Part 5 of Act 451 of 1994, as amended.

FOR DEPARTMENT USE ONLY	
Sale Number (XX - XXX - XX - XX)	
Forest Management Unit:	

## VERIFICATION OF WORKER'S DISABILITY COMPENSATION ACT COMPLIANCE

- This verification must be completed and submitted within 21 days of contract award and prior to the issuance of the timber sale contract.
- In addition, if boxes 2B or 2C are checked, then Notice of Exclusion or Certificate of Insurance must be submitted within twenty-one (21) days of the contract award and prior to the issuance of the timber sale contract.
- All information must be typed or printed except for written signatures.

Please Check Appropriate Categories:

1. My business is organized as (you **must** check one of the boxes below):
  - A.  Sole Proprietorship (individual)
  - B.  Partnership
  - C.  Corporation
2. You **must** check one of the boxes below:
  - A.  I certify my business is a sole proprietorship and it has no employees but the sole proprietor. I am not subject to the Worker's Compensation Laws.
  - B.  I certify my business has satisfied its obligation to the Worker's Compensation Act through the use of an approved Notice of Exclusion (BWC-337, Rev. 5/96). I will provide a copy of the Notice of Exclusion within 21 days of the contract award. (For questions or a copy of the BWC-337, please call the Worker's Compensation Bureau at 517-322-1195).
  - C.  I certify my business has a Worker's Compensation Policy. I will provide an original Certificate of Insurance within twenty-one (21) days of the contract award.
3. If you have checked item 2(A) or 2(B), you **must** indicate the number of **both** full-time and part-time employees, other than yourself, including family members and active partners (if none, you must enter "0").

\_\_\_\_\_ Full-time Employees

\_\_\_\_\_ Part-time Employees

Name of Business		Federal ID (or) Social Security No.	
Address		Telephone (       )	
City	State	ZIP	

*I hereby certify that the above information is true and correct. I agree to notify the Michigan DNR of any changes that occur in factors affecting my coverage during any of my present and future operations.*

\_\_\_\_\_  
Signature of Owner or Authorized Representative

\_\_\_\_\_  
Title

\_\_\_\_\_  
Date

Please complete the "SEALED BID" information on the next page