



**DEPARTMENT OF NATURAL RESOURCES  
STATE OF MICHIGAN**

**TIMBER SALE PROSPECTUS #6926**

SCHEDULED SALE DATE AND TIME: 4:00 p.m. (local time) on October 14, 2021.

LOCATION: TRAVERSE CITY MGMT UNIT, 2122 M 37 SOUTH, TRAVERSE CITY, MI 49685.

PROSPECTUS NOTE: The bidder is advised to inspect the sale area and review the location, estimated volumes, operating costs and contract terms of proposed sales. Please be aware that some landowners may request 60 days or more notice for access across their land.

Notice is hereby given that bids will be received by the Unit Manager, TRAVERSE CITY MANAGEMENT UNIT, for certain timber on the following described lands:

Dell Hills Red Pine (61-033-21) / T25N, R10W, SEC. 26, NWSW.

Grand Traverse County, Advertised Price \$19,543.60, 19.2 Acres, Red Pine.

SALE NOTE: All units of volume listed for this sale were estimated using the Inventory Manager computer program and the new Michigan taper model.

Bowtie Red Pine (61-034-21) / T28N, R13W, SEC. 26, SESW, SE.

Leelanau County, Advertised Price \$59,298.45, 122.1 Acres, Red Pine, Hardwood.

SALE NOTE: All units of volume listed for this sale were estimated using the Inventory Manager computer program and the new Michigan taper model.

Sancho Mix (61-035-21) / T25N, R09W, SEC. 29, NWSW.

T25N, R09W, SEC. 30, N1/2SE, SWSE.

Grand Traverse County, Advertised Price \$33,780.95, 46.5 Acres, Hardwood, Red Pine.

SALE NOTE: All units of volume listed for this sale were estimated using the Inventory Manager computer program and the new Michigan taper model.

A recreation site such as a trail, pathway, or campground is within the sale area or the vicinity. Certain restrictions/specifications may be applicable including time restrictions.

Deer Creek Mix (61-038-21) / T25N, R10W, SEC. 35, SW, W1/2SE.

Grand Traverse County, Advertised Price \$48,559.25, 54.3 Acres, Aspen, Hardwood.

SALE NOTE: All units of volume listed for this sale were estimated using the Inventory Manager computer program and the new Michigan taper model.

A recreation site such as a trail, pathway, or campground is within the sale area or the vicinity. Certain restrictions/specifications may be applicable including time restrictions.

Town County Aspen (61-044-21) / T25N, R09W, SEC. 31, SWSW.

T25N, R10W, SEC. 36, SESE.

Grand Traverse County, Advertised Price \$7,290.15, 11.4 Acres, Aspen, Hardwood.

SALE NOTE: All units of volume listed for this sale were estimated using the Inventory Manager computer program and the new Michigan taper model.

BID INSTRUCTIONS (VER. 07/02/2018):

1. Scheduled Bid Location, Date, and Time (2/11)

Bids must be received by the Unit Manager, TRAVERSE CITY OFFICE, 2122 M 37 South, Traverse City, MI 49685, no later than 4:00 p.m. (local time) on October 14, 2021. For further information concerning this sale, contact David Lemmien at 231-922-6040.

2. Bidder's Qualifications (5/16)

Purchaser shall obtain workers compensation insurance to cover claims under Michigan's Worker's Disability Compensation Act of 1969 or similar employee benefit act of any other state applicable to an employee. If all or part of a timber sale was prepared by a private contractor, the contractor and that contractor's company are not permitted to bid on the timber sale contract. Bids will not be accepted from individuals or companies appearing on the DNR/FRD No-Bid List. This list contains the names of purchasers who previously failed to execute a contract within 21-days or who have a history of poor performance.

3. Preparation of Sealed Bids (5/16)

Bid Forms may be completed online thru Michigan DNR Timber Sale Online Bidding (OLB) at [www.michigan.gov/timberbidding](http://www.michigan.gov/timberbidding) or by completing the hardcopy Bid Form found in the Timber Sale Prospectus. Hardcopy Bid Forms shall be manually signed in ink. Registration in OLB is considered your 'signature' for all bids submitted thru that system. Bid prices must be entered for each species and product in the Bid Price column for all material subject to bidding and all fill-in blanks must be completed. If erasures or other changes appear on the hardcopy Bid Form, each erasure or change must be initialed by the person signing the bid.

4. Submission of Sealed Bids (5/16)

Bid forms may be obtained from the Unit Manager or thru OLB. Bids may be submitted hardcopy or thru OLB. All hardcopy bids must be submitted on the bid form and in an envelope clearly identified as described in this section. NOTE: Only one bid form per bid envelope. Sealed bids must be submitted to the Unit office designated in the prospectus and must be submitted at or prior to the time established in the prospectus. The envelope should show on the outside (a) the sale name or number and (b) the date and time of bid opening, as shown in the prospectus. Bids received after the time specified in the sale prospectus are late bids and will be rejected.

It is possible for a bidder to submit multiple bids on a single sale. For example, a bid may be submitted hardcopy and a bid may be submitted thru OLB. Or, two bidders from the same company could both submit bids on the same sale. If this were to happen, the State would accept all bids received and award the contract accordingly. All bidding and contractual requirements would apply to all bids received.

5. Public Opening of Sealed Bids (7/16)

If conditions permit, the sealed bids will be publicly opened and posted at the time and place set in the prospectus.

If a bidder, present at a bid opening, has submitted bids on more than one sale, that bidder may withdraw their unopened bid envelopes or announce the withdrawal of their online bid after being declared the successful bidder on one sale.

6. Award of Contract (1/11)

Award of the contract will be made to the Bidder whose bid, conforming to the prospectus, is most advantageous to the State of Michigan on the basis of total value at rates bid for the estimated quantities. The State reserves the right to reject any bid or waive any minor irregularity in bids received. A written award mailed (or otherwise furnished) to the successful Bidder shall be deemed to result in a binding contract without further action by either party.

7. Down Payment (1/11)

The Bidder to whom award is made must make a down payment within 21 days of the sale award. The amount of the down payment will be calculated as shown in the Bond and Payment Schedule of this prospectus. Only cash may be used to meet this requirement.

8. Performance Security (1/11)

As guarantee of faithful performance, a cash bond, certificate of deposit, surety bond or irrevocable letter of credit (LOC) is required within 21 days of the sale award. The amount of the performance security is shown in the Bond and

Payment Schedule of this prospectus. If an LOC or surety is used, the coverage must extend for at least 6 months beyond the contract expiration.

#### 9. Timber Sale Contract (7/18)

Additional conditions and requirements common to all timber sales are listed on the timber sale contract (R4031) and are available on line at [www.michigan.gov/timber](http://www.michigan.gov/timber). Contact the Unit Manager for additional information or a sample contract. Within 21 days of the date of the award letter, the bidder must sign the contract and provide the required down payment, performance security, and verification of worker's disability compensation. The down payment and performance security shall be in accordance with the provisions of the timber sale contract, in the sums stated in this prospectus. If these actions are not taken, then the Bidder, the Bidder's corporation, and the corporation's principals may not be permitted to bid on State timber sales for a period of 3 months after the first offense, 6 months after the second offense, and 1 year after the third offense. An offense will only be counted against the Bidder for 5 years. In addition, the Bidder certifies that if awarded this contract, the Bidder will complete the timber sale contract in accordance with its terms and any modifications thereof including requirements to purchase, cut, and remove the included timber by the expiration date.

Payment Unit values in the State Forest Timber Sale Contract are calculated based on the advertised value of the Payment Unit as a percentage of the total advertised value of the contract. The advertised value of each Payment Unit is given in the Description of Timber by Payment Unit table on the Timber Sale Information page. For example, if the value of Payment Unit 1 is advertised as \$1,500 and the total Timber Sale value is advertised as \$10,000, the contract price for Payment Unit 1 will be 15% of the total bid price ( $\$1,500/\$10,000 * 100$ ).

#### 10. Disclaimer of Estimates and Bidder's Warranty of Inspection (7/16)

Before submitting this bid, the Bidder is advised and cautioned to inspect the sale area, review the requirements of the sale contract, and take other steps as may be reasonably necessary to ascertain the location, estimated volumes, construction estimates, and operating costs of the proposed sale. Failure to do so will not relieve the Bidder from responsibility for completing the contract.

The Bidder warrants that this bid is submitted solely on the basis of the Bidder's examination and inspection of the quality and quantity of the timber offered for sale and the Bidder's opinion of the value thereof and the costs of recovery. No reliance should be placed on the State of Michigan's estimates of timber quality, quantity or costs of recovery. Bidder further acknowledges that the State of Michigan: (i) expressly disclaims any warranty of fitness of timber for any purpose; (ii) offers this timber as is without any warranty of quality (merchantability) or quantity and (iii) expressly disclaims any warranty as to the quantity or quality of timber sold.

#### 11. Certification and Chain-of-Custody (10/14)

Unless otherwise indicated in the contract under section 7 – Other Conditions of the Sale Specific Conditions & Requirements, the area encompassed by this timber sale is certified to the standards of the Forest Stewardship Council (FSC) - Certificate #SCS-FM/COC-00090N and the Sustainable Forestry Initiative (SFI) - Certificate #NSF-SFIS-5Y031-SF5. Forest products from this sale may be delivered to the mill as "FSC 100% and / or SFI certified" as long as the contractor hauling the forest products is chain-of-custody (COC) certified or covered under a COC certificate from the destination mill. The purchaser is responsible for maintaining COC after leaving the sale area.

#### 12. Good Neighbor Authority (GNA) Requirements (7/16)

If the name of this timber sales contains the acronym GNA, it is authorized by the Good Neighbor Authority (GNA) and covered by various agreements between the U.S. Forest Service and the State. The timber sale occurs on federal land and the following conditions apply:

GNA contracts on US Forest Service land will not be awarded to purchasers on the Federal list of excluded parties. The System for Award Management (SAM) will be checked for active excluded parties prior to award of contract. In addition, the Bidder to whom award is made must complete an Assurance Regarding Felony Conviction or Tax Delinquent Status for Corporate Applicants (AD-3031).

#### 13. Good Neighbor Authority (GNA) Requirements, con't (9/16)

Bidder certifies, by signing this bid form, that to the best of Bidder's knowledge that the following representations are accurate and complete.

- a. That the Bidder and its principals are not presently debarred, suspended, proposed for debarment, declared ineligible, or voluntary excluded from timber sales (covered transactions) by any Federal department or agency.
- b. That the Bidder and its principals have not within a 3-year period preceding this bid been convicted of or had a civil judgment rendered against them for commission of fraud or a criminal offense in connection with obtaining , attempting to obtain, or performing a public (Federal, State, or local) transaction or contract under a public transaction; violation of Federal or State antitrust statutes or commission of embezzlement, theft, forgery, bribery, falsification or destruction of records, making false statements, or receiving stolen property.
- c. That the Bidder and its principals are not presently indicted for or otherwise criminally or civilly charged by a governmental entity (Federal, State, or local) with commission of any of the offenses enumerated in paragraph b of this certification.
- d. That the Bidder and its principals have not within a 3-year period preceding this bid had one or more public transactions (Federal, State, or local) terminated for breach or default of a timber or forest product contract.

Bidders that cannot certify this requirement, in whole or in part, shall submit an explanation with their bid.

DAN EICHINGER  
Director

## TIMBER SALE INFORMATION

Dell Hills Red Pine (61-033-21)

T25N, R10W, SEC. 26.

Grand Traverse County (Advertised Price \$19,543.60)

SALE NOTE: All units of volume listed for this sale were estimated using the Inventory Manager computer program and the new Michigan taper model.

A timber sale contract for this lump sum, sealed bid timber sale will be awarded to the responsible bidder offering the highest sealed bid price. All units of volume listed below were estimated using the Inventory Manager computer program and the new Michigan taper model. Bids must be at or above the following advertised price for each product and species:

<u>PRODUCTS &amp; SPECIES</u>	<u>ESTIMATED UNITS*</u>	<u>ADVERTISED PRICE</u>
Sawtimber		
Red Pine	102.0 MBF	\$ 80.00 / MBF
Pulpwood		
Red Pine	382 Cords	\$ 29.80 / Cord

\* The total volume is statistically estimated within plus (+) or minus (-) 10.58 percent. There are an estimated 620 cords on this timber sale, plus or minus 66 cords at the 95% confidence level. The estimated units are final and not subject to adjustment. Prospective bidders are urged to examine this timber and to make their own estimates of quantity and quality.

### **BOND AND PAYMENT SCHEDULE:**

1. A bond in the amount of \$977.00 to insure faithful performance of the conditions of the contract will be deposited by the successful bidder within 21 days of the sale award.
2. Cutting in any sale or unit without the required advance payment would be considered a trespass.
3. Total payment must be paid in advance or according to the following schedule :
  - (a) Ten percent (10%) of the sale value must be paid within 21 days of the sale award.
  - (b) The remainder is due before cutting begins.
  - (c) Payment for each of the following units must be made before cutting begins in that unit:
 

PAYMENT UNIT NUMBER	PERCENT OF TOTAL SALE VALUE
01	100.0%
4. If no cutting takes place, the 10% down payment will not be refunded.
5. Operations on the contract issued will terminate on 06/30/2024.

### **SALE STATISTICS**

Volumes were calculated in cubic feet using the Michigan taper model. Cubic foot volume includes all wood inside bark for the product indicated. For display purposes, cubic feet were converted to cords and MBF using a simple conversion factor, e.g. 79 cubic feet per cord and 185 cubic feet per MBF. The cubic foot volumes are precise; the cords and MBF volumes are not. Cubic foot volume cannot be directly converted to cords or boards with precision.

### **SALE VOLUMES**

The total estimated sale volume may not equal the sum of the species/products due to the nature of statistical calculations associated with double sampling methodology.

VOLUME		STATISTICAL RANGE IN CORDS		
TOTAL CUBIC FEET	TOTAL CORDS	PERCENT ERROR	MINIMUM	MAXIMUM
49,008	620	10.58%	555	686

## VDU VOLUMES

A VDU is a Volume Determination Unit. Volumes and their associated statistics are calculated at the VDU level and summarized to the sale level. There is often a one to one relationship between a VDU and a Payment Unit, but not always, depending on the cruise design. Refer to the VDU TO PAYMENT UNIT table.

VDU	VOLUME		PERCENT ERROR	RANGE IN CORDS	
	TOTAL CUBIC FEET	TOTAL CORDS		MINIMUM	MAXIMUM
1	46,255	586	10.59%	523	648
<b>TOTAL:</b>	<b>46,255</b>	<b>586</b>		<b>523</b>	<b>648</b>

## VDU TO PAYMENT UNIT

When a VDU is associated with more than one Payment Unit (PU), the VDU volumes are assigned to the PU based on acres of the VDU within the PU.

VDU	VDU ACRES	PU	PU ACRES
1	19.2	1	19.2
<b>TOTAL:</b>	<b>19.2</b>		<b>19.2</b>

## DESCRIPTION OF TIMBER BY PAYMENT UNIT (PU)

PU	MARKET GROUP	PRODUCT	QUANTITY	UNIT	ACRES	ADVERTISE PRICE
1	Red Pine	Sawtimber	102.0	MBF	19.2	\$19,543.60
	Red Pine	Pulpwood	382	Cords		
TOTAL:			102.0	MBF		
TOTAL:			382	Cords		

# Sale Specific Conditions & Requirements

**Sale Name: Dell Hills Red Pine**

**Sale Number: 61-033-21 Seq#: 1**

## 1 - Sale Area

### 1.2 - Boundaries

#### 1.2.1 - Painted boundaries (9/19)

The sale boundary and Payment Unit boundaries are marked and identified by red and yellow paint. Exterior sale boundary lines against state are marked with red paint. Interior Payment Unit boundaries are marked with yellow paint. Retention patches are marked with red paint; no harvesting activities may occur within these areas. The painted boundary line trees are not Included Timber and are to be protected unless marked with orange paint. Yellow painted trees designate two separate sub-units within the sale - all red pine within these sub-units must be harvested and utilized, regardless of merchantability.

## 2 - Timber Specifications

### 2.1 - Included Timber

#### 2.1.3 - Cut tree marked unit(s) (12/08)

Within Payment Unit(s) 1, all trees are designated for cutting when marked with orange paint above and below stump height, regardless of merchantability. In addition, within sub-units 1A and 1B (delineated by yellow paint), all red pine must be harvested regardless of merchantability.

### 2.2 - Utilization

#### 2.2.3 - Stump heights (4/07)

Stump heights within the Sale Area shall not exceed 6 inches for all trees. This is to facilitate potential future planting operations more easily.

#### 2.2.6 - Roundwood operation required (3/21)

The skidding of whole trees or tree segments with limbs attached is prohibited within Payment Unit(s) 1. All products must be produced as roundwood and forwarded to existing roads or landing areas in final product length. Trees must be harvested with in-woods processor (feller bunching harvester will not be allow) to retain existing understory.

## 4 - Transportation

### 4.1 - Construction

#### 4.1.11 - Permits (2/12)

The Purchaser will secure any necessary permits that may be required.

#### 4.1.12 - No new roads (1/12)

No new roads will be permitted in any Payment Unit. All operations are limited to existing roads. Skid trails only will be allowed.

## 5 - Operations

### 5.2 - Conduct of Operations

#### 5.2.1 - Slash

##### 5.2.1.8 - Slash height (12/08)

No slash or tree tops may exceed 24 inches in height.

#### 5.2.2 - Hazard Trees/Snags

##### 5.2.2.1 - Den trees (10/16)

Obvious hollow and/or den trees shall be protected and left standing unless they are a safety hazard.

#### 5.2.3 - Operating Restrictions

##### 5.2.3.13 - Heterobasidion root disease (HRD) (7/19)

This plantation is at risk of infection by the root rot fungus, *Heterobasidion irregulare*. To prevent the spread of this disease, cutting operations within payment units 1 are restricted to the period of January 1st through March 31st. Cutting may only occur outside this period with written permission of the Unit Manager or with the application of a preventative pesticide. Consultation with a forest health specialist will determine if cutting can occur prior to January 1 without pesticide application, dependent upon current and forecasted snow cover. Cellu-Treat and RotStop C are currently the only EPA registered products available in the United States for the control of *Heterobasidion*. Both products are a water-soluble powder that must be applied to the stump, in accordance with the product label. Dye must be added to these products to provide visible evidence of adequate coverage. Application of these pesticides requires licensing by the Michigan Department of Agriculture and Rural Development. All applicators are required to: provide to the Sale Administrator notification of application per requirements in 40 CFR 170.120; and document and provide to the Sale Administrator annually, by December 31 and prior to closure of sale, the volume of product used and acres treated.

#### 5.4 - Soil Protection

##### 5.4.1 - Rutting restriction, general (7/16)

Operations are to cease immediately if equipment and weather conditions result in rutting of roads and/or skid trails which is 12 inches or greater in depth and 50 feet in length. The Unit Manager or his/her representative may restrict hauling and/or skidding if ruts exceed the specified depth. With the Unit Manager or his/her representative's approval, the Purchaser may return to the area when the risk of rutting has decreased.

### 6 - Safety and Fire Prevention

#### 6.2 - Signing

##### 6.2.1 - Road posting (10/20)

The Purchaser is responsible for posting and maintaining caution signs on Dell Road prior to beginning operations. The road must be posted at appropriate distances from the Sale Area to warn of logging activity and truck traffic. Signs must be removed when harvest operations are suspended or completed. The Purchaser will provide these signs.





# TIMBER SALE MAP

This information provided by authority of Part 525, 1994 PA 451, as amended.

Forest Management Unit Traverse City FMU	County Grand Traverse	Mapped By Patrick Cotant	Date 07/07/2021	Page 1	of 1
Township 25N	Range 10W	Section(s) and Subdivision(s) Sec 26 - NWSW	Scale 1:7,920		

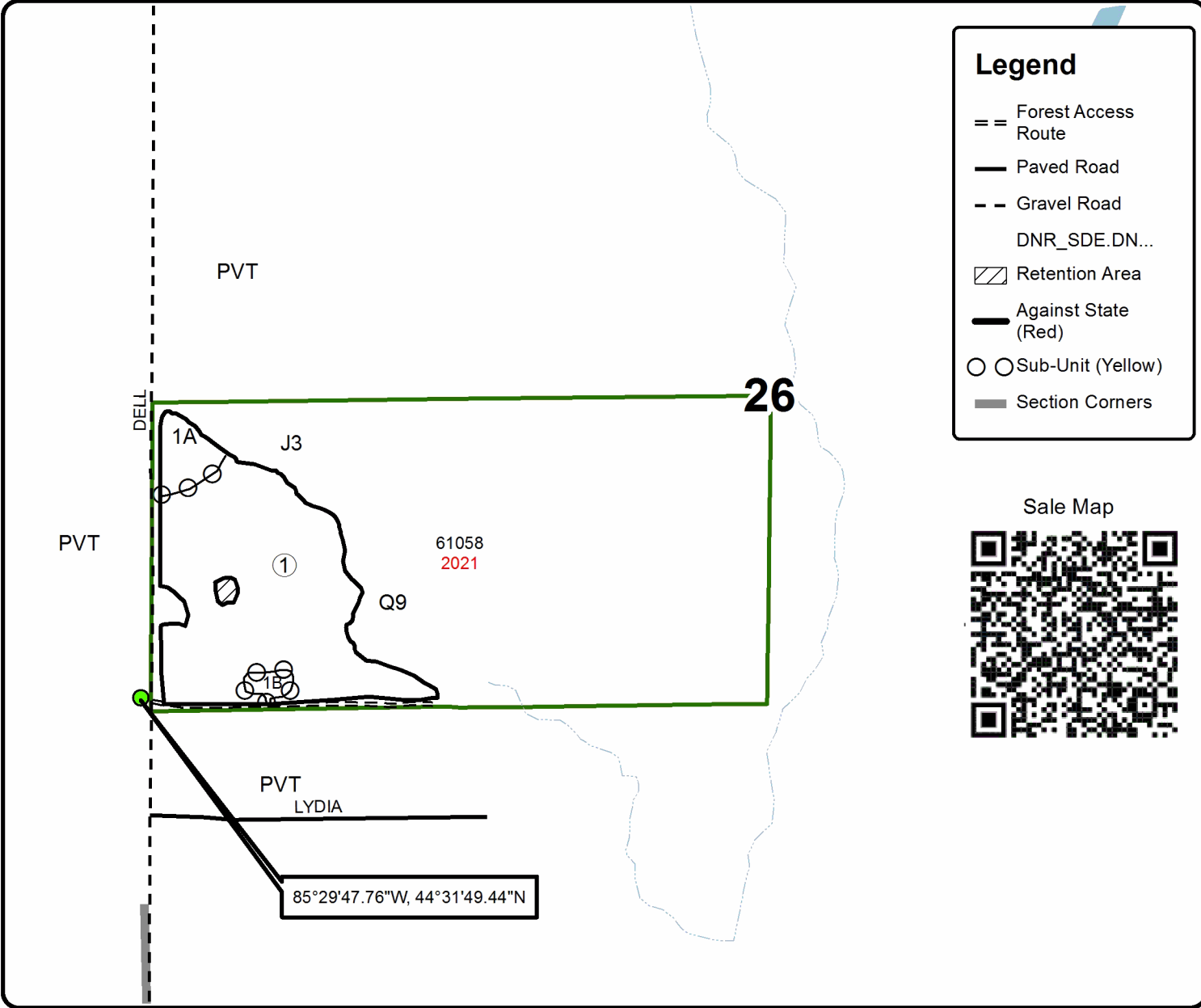
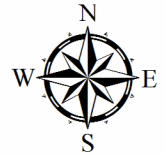
Cover Type				Density	
A = Aspen	H = Hemlock	N = Marsh	U = Upland Brush	0 = Non Stocked	5 = Pole Timber Medium
B = Paper Birch	J = Jack Pine	O = Oak	UM = Upland Mixed	1 = Seedling Sapling Poor	6 = Pole Timber Well
C = Cedar	L = Lowland Brush	P = Lowland Poplar	V = Bog or Marsh	2 = Seedling Sapling Medium	7 = Saw Timber Poor
D = Treed Bog	LM = Lowland Mixed	Q = Mixed Swamp Conifer	W = White Pine	3 = Seedling Sapling Well	8 = Saw Timber Medium
E = Swamp Hdwoods	M = Mpl, Bch, Brch	R = Red Pine	X = Non Stocked	4 = Pole Timber Poor	9 = Saw Timber Well
F = Spruce Fir	MC = Mixed Conifer	S = Black Spruce	Z = Water		
G = Grass	MD = Mixed Deciduous	T = Tamarack			

**PU Acres**  
1 19.2

## Dell Hills Red Pine

### Compartment 058

19.2 Acres





## TIMBER SALE INFORMATION

Bowtie Red Pine (61-034-21)  
T28N, R13W, SEC. 26.  
Leelanau County (Advertised Price \$59,298.45)

SALE NOTE: All units of volume listed for this sale were estimated using the Inventory Manager computer program and the new Michigan taper model.

A timber sale contract for this lump sum, sealed bid timber sale will be awarded to the responsible bidder offering the highest sealed bid price. All units of volume listed below were estimated using the Inventory Manager computer program and the new Michigan taper model. Bids must be at or above the following advertised price for each product and species:

<u>PRODUCTS &amp; SPECIES</u>	<u>ESTIMATED UNITS*</u>	<u>ADVERTISED PRICE</u>
<b>Sawtimber</b>		
B. T. Aspen	33.2 MBF	\$ 90.00 / MBF
Beech	6.7 MBF	\$ 63.00 / MBF
Black Cherry	14.3 MBF	\$ 153.00 / MBF
Red Maple	19.1 MBF	\$ 116.00 / MBF
Red Pine	44.5 MBF	\$ 80.00 / MBF
Sugar Maple	19.3 MBF	\$ 164.00 / MBF
White Pine	6.1 MBF	\$ 37.00 / MBF
<b>Pulpwood</b>		
Mixed Aspen	68 Cords	\$ 12.80 / Cord
Mixed Hardwood	267 Cords	\$ 12.35 / Cord
Red Pine	1,352 Cords	\$ 29.80 / Cord
Scotch Pine	2 Cords	\$ 10.65 / Cord
White Pine	4 Cords	\$ 13.80 / Cord

\* The total volume is statistically estimated within plus (+) or minus (-) 3.75 percent. There are an estimated 1,965 cords on this timber sale, plus or minus 74 cords at the 95% confidence level. The estimated units are final and not subject to adjustment. Prospective bidders are urged to examine this timber and to make their own estimates of quantity and quality.

### **BOND AND PAYMENT SCHEDULE:**

1. A bond in the amount of \$2,965.00 to insure faithful performance of the conditions of the contract will be deposited by the successful bidder within 21 days of the sale award.
2. Cutting in any sale or unit without the required advance payment would be considered a trespass.
3. Total payment must be paid in advance or according to the following schedule :
  - (a) Ten percent (10%) of the sale value must be paid within 21 days of the sale award.
  - (b) The 10% down payment will be credited towards the first unit cut.
  - (c) Payment for each of the following units must be made before cutting begins in that unit:
 

PAYMENT UNIT NUMBER	PERCENT OF TOTAL SALE VALUE
01	2.9%
02	10.4%
03	3.6%
04	8.3%
05	8.8%
06	60.3%
07	3.5%
08	2.2%
4. If no cutting takes place, the 10% down payment will not be refunded.
5. Operations on the contract issued will terminate on 12/31/2023.

### **SALE STATISTICS**

Volumes were calculated in cubic feet using the Michigan taper model. Cubic foot volume includes all wood inside bark for the product indicated. For display purposes, cubic feet were converted to cords and MBF using a simple conversion factor, e.g. 79 cubic feet per cord and 185 cubic feet per MBF. The cubic foot volumes are precise; the cords and MBF volumes are not. Cubic foot volume cannot be directly converted to cords or boards with precision.

## SALE VOLUMES

The total estimated sale volume may not equal the sum of the species/products due to the nature of statistical calculations associated with double sampling methodology.

VOLUME			STATISTICAL RANGE IN CORDS	
TOTAL CUBIC FEET	TOTAL CORDS	PERCENT ERROR	MINIMUM	MAXIMUM
155,249	1,965	3.75%	1,891	2,039

## VDU VOLUMES

A VDU is a Volume Determination Unit. Volumes and their associated statistics are calculated at the VDU level and summarized to the sale level. There is often a one to one relationship between a VDU and a Payment Unit, but not always, depending on the cruise design. Refer to the VDU TO PAYMENT UNIT table.

	VOLUME			RANGE IN CORDS	
VDU	TOTAL CUBIC FEET	TOTAL CORDS	PERCENT ERROR	MINIMUM	MAXIMUM
1	11,722	148	9.88%	134	163
2	10,678	135	23.69%	103	167
3	4,168	53	34.55%	35	71
4	5,576	71	31.06%	49	93
6	15,992	202	10.21%	182	223
12	99,060	1,254	4.21%	1,201	1,307
13	3,772	48	25.00%	36	60
213	5,602	71	22.21%	55	87
<b>TOTAL:</b>	<b>156,571</b>	<b>1,982</b>		<b>1,794</b>	<b>2,170</b>

## VDU TO PAYMENT UNIT

When a VDU is associated with more than one Payment Unit (PU), the VDU volumes are assigned to the PU based on acres of the VDU within the PU.

VDU	VDU ACRES	PU	PU ACRES
1	8.2	4	8.2
2	4.3	5	4.3
3	2.2	1	2.2
4	1.8	3	1.8
6	15.1	2	15.1
12	83.8	6	83.8
13	4.3	8	4.3
213	2.4	7	2.4
<b>TOTAL:</b>	<b>122.1</b>		<b>122.1</b>

**DESCRIPTION OF TIMBER BY PAYMENT UNIT (PU)**

PU	MARKET GROUP	PRODUCT	QUANTITY	UNIT	ACRES	ADVERTISE PRICE	
1	B. T. Aspen	Sawtimber	3.1	MBF	2.2	\$1,720.25	
	Beech		1.7	MBF			
	Black Cherry		0.4	MBF			
	Sugar Maple		5.5	MBF			
	Mixed Aspen		Pulpwood	1			Cords
	<i>B. T. Aspen</i>			1			Cords
	Mixed Hardwood			29			Cords
	<i>Beech</i>			6			Cords
	<i>Black Cherry</i>			2			Cords
<i>Sugar Maple</i>	21	Cords					
2	Red Pine	Sawtimber	17.8	MBF	15.1	\$6,188.80	
	Sugar Maple		1.2	MBF			
	Mixed Hardwood		Pulpwood	20			Cords
	<i>Black Cherry</i>			19			Cords
	<i>Sugar Maple</i>			1			Cords
	Red Pine			145			Cords
3	B. T. Aspen	Sawtimber	9.5	MBF	1.8	\$2,135.90	
	Black Cherry		3.0	MBF			
	Red Maple		2.6	MBF			
	Mixed Aspen		Pulpwood	31			Cords
	<i>B. T. Aspen</i>			11			Cords
	<i>Quaking Aspen</i>			20			Cords
	Mixed Hardwood			10			Cords
	<i>Black Cherry</i>			5			Cords
	<i>Red Maple</i>		4	Cords			
<i>Sugar Maple</i>	1	Cords					
4	Black Cherry	Sawtimber	5.8	MBF	8.2	\$4,935.15	
	Red Maple		1.0	MBF			
	Red Pine		8.4	MBF			
	Mixed Hardwood		Pulpwood	13			Cords
	<i>Black Cherry</i>			10			Cords
	<i>Ironwood</i>			2			Cords
	<i>Red Maple</i>			1			Cords
	Red Pine			104			Cords
5	B. T. Aspen	Sawtimber	19.7	MBF	4.3	\$5,216.65	
	Black Cherry		3.3	MBF			
	Red Maple		8.3	MBF			
	Red Pine		0.8	MBF			
	Sugar Maple		7.0	MBF			
	Mixed Aspen		Pulpwood	17			Cords
	<i>B. T. Aspen</i>			14			Cords
	<i>Quaking Aspen</i>			3			Cords
	Mixed Hardwood			37			Cords
	<i>Black Cherry</i>			4			Cords
	<i>Ironwood</i>			1			Cords
	<i>Red Maple</i>			24			Cords
	<i>Sugar Maple</i>			8			Cords
Red Pine	3	Cords					
6	Red Maple	Sawtimber	5.3	MBF	83.8	\$35,686.65	
	Red Pine		17.5	MBF			
	Sugar Maple		1.3	MBF			
	White Pine		6.1	MBF			
	Mixed Hardwood		Pulpwood	127			Cords
	<i>Black Cherry</i>			74			Cords
	<i>Red Maple</i>			49			Cords
	<i>Sugar Maple</i>			4			Cords

**DESCRIPTION OF TIMBER BY PAYMENT UNIT (PU), CON'T**

PU	MARKET GROUP	PRODUCT	QUANTITY	UNIT	ACRES	ADVERTISE PRICE
6 con't	Red Pine Scotch Pine White Pine	Pulpwood	1,060 2 4	Cords Cords Cords		
7	Black Cherry Sugar Maple Mixed Aspen <i>B. T. Aspen</i> Mixed Hardwood <i>Black Cherry</i> <i>Red Maple</i> <i>Sugar Maple</i> Red Pine	Sawtimber  Pulpwood	1.8 2.9 18 18 10 3 1 6 33	MBF MBF Cords <i>Cords</i> Cords <i>Cords</i> <i>Cords</i> <i>Cords</i> Cords	2.4	\$2,088.30
8	B. T. Aspen Beech Red Maple Sugar Maple Mixed Aspen <i>B. T. Aspen</i> Mixed Hardwood <i>Beech</i> <i>Red Maple</i> <i>Sugar Maple</i> Red Pine	Sawtimber  Pulpwood	0.9 5.0 1.9 1.4 1 1 21 7 2 12 7	MBF MBF MBF MBF Cords <i>Cords</i> Cords <i>Cords</i> <i>Cords</i> <i>Cords</i> Cords	4.3	\$1,326.75
TOTAL:			143.2	MBF		
TOTAL:			1,693	Cords		

# Sale Specific Conditions & Requirements

**Sale Name: Bowtie Red Pine**

**Sale Number: 61-034-21 Seq#: 1**

## 1 - Sale Area

### 1.2 - Boundaries

#### 1.2.1 - Painted boundaries (9/19)

The sale boundary and Payment Unit boundaries are marked and identified by blue, red, and yellow paint. Exterior sale boundary lines against private property are marked with blue paint. Exterior sale boundary lines against state land are marked with red paint. Interior Payment Unit boundaries are marked with yellow paint. The painted boundary line trees are not Included Timber and are to be protected unless marked with orange paint.

## 2 - Timber Specifications

### 2.1 - Included Timber

#### 2.1.1 - Clearcut unit(s) with unmerchantable trees (6/14)

Within Payment Unit(s) 3 and 7, cut all trees that are two (2) inches or more at DBH unless marked with green paint. Advanced maple regeneration (1 to 5" DBH) may be left standing if undamaged.

#### 2.1.3 - Cut tree marked unit(s) (12/08)

Within Payment Unit(s) 8, all trees are designated for cutting when marked with orange paint above and below stump height, regardless of merchantability.

#### 2.1.7 - Leave tree marked unit(s) (6/14)

Within Payment Unit(s) 1 and 5, cut all trees that are two (2) inches or more at DBH, except trees marked with green paint above and below stump height. Advanced maple regeneration (1 to 5" DBH) may be left standing if undamaged.

#### 2.1.8 - Designated plantation row unit(s) (12/08)

Within Payment Unit(s) 2, 4, and 6, all trees which meet minimum piece specifications in 2.2 Utilization, within designated plantation rows are designated for cutting. Designated plantation rows are every third row. Begin with the third row in from the outside of the plantation, then continue every third row. Because of the variability of row direction, it shall be the responsibility of the Purchaser to maintain the third row sequence.

### 2.2 - Utilization

#### 2.2.4 - Skidding length (2/14)

Skidding of unlimbed tops or lengths over 17 feet is not permissible within Payment Unit 8 unless approved by the Unit Manager or his/her representative.

## 3 - Payments

### 3.3 - Pre-measured Sales

#### 3.3.4 - Dividing payment units (7/14)

Payment Unit(s) 6 may be divided at the request of the Purchaser and upon approval of the Unit Manager. Dividing Payment Units is a contract modification which requires a Timber Sale Contract Amendment. There will be only one division per Payment Unit.

## 4 - Transportation

### 4.1 - Construction

#### 4.1.3 - Slash and earthen piles (8/04)

Piles or windrows of earth along roads and landings that have been widened or constructed shall be leveled. Slash from road maintenance or construction, including stumps, shall be dispersed throughout the sale as directed by the sale administrator.

#### 4.1.7 - Road closure (10/11)

All new roads built into the sale must be blocked to vehicle traffic upon completion of the sale. In general, this will require constructing a four (4') foot high berm of stumps and logs covered with earth. All stumps from road building and landing

construction must be reserved to block any newly constructed roads upon completion of the sale. These stumps must be scattered along the road system to prohibit vehicular movement. Contact the sale administrator for specific details of design and placement.

## **5 - Operations**

### **5.2 - Conduct of Operations**

#### **5.2.1 - Slash**

##### **5.2.1.8 - Slash height (12/08)**

No slash or tree tops may exceed 24 inches in height.

#### **5.2.3 - Operating Restrictions**

##### **5.2.3.3 - Bark slippage restriction (3/09)**

Within Payment Unit(s) 1, 2, 4, 6, and 8, unless changed by written agreement, cutting and skidding are not permitted during the period of April 15 to July 15. This restriction is because of bark slippage.

##### **5.2.3.6 - Bark beetle restriction (12/08)**

In the event drought creates a high risk of pine bark beetle infestation, pine is not to be cut during the period March 1 through July 1, unless all portions of trees greater than two inches in diameter are removed from the sale area, reduced to chips, or treated to the satisfaction of the Unit Manager or his/her representative, within fifteen days of being severed from the stump. Pine log decks, pulpwood piles and treetops that are piled for chipping in the fall or winter within a 1/4 mile of susceptible sites must be removed before March 15. Residual slash must not be placed in piles or rows and must be spread over the site for quick drying. The Department of Natural Resources will exercise this specification if the risk of damage warrants.

#### **5.2.4 - Dead and Down Creation**

##### **5.2.4.1 - Dead and down creation, marked trees (10/13)**

All trees marked with an orange "X" must be felled and left on site for wildlife. These trees have been taken off the timber tally.

##### **5.2.38 - No decking against live trees (2/04)**

Cut products may not be decked against unmarked or designated leave trees.

### **5.4 - Soil Protection**

#### **5.4.3 - Erosion control (12/08)**

Skid trails or haul roads may require erosion control structures or berms per direction of the Unit Manager or his/her representative.

## **6 - Safety and Fire Prevention**

### **6.2 - Signing**

#### **6.2.1 - Road posting (10/20)**

The Purchaser is responsible for posting and maintaining caution signs on Bright Road and Highway M-72 prior to beginning operations. The road must be posted at appropriate distances from the Sale Area to warn of logging activity and truck traffic. Signs must be removed when harvest operations are suspended or completed. The Purchaser will provide these signs.





# TIMBER SALE MAP

This information provided by authority of Part 525, 1994 PA 451, as amended.

Sale Number	Year
61-034	21

Forest Management Unit Traverse City	County Leelanau	Mapped By Tim Webb	Date 07/07/2021	Page 1	of 1
Township 28N	Range 13W	Section(s) and Subdivision(s) Sec. 26: SE1/4, SESW	Scale 1:7,920		

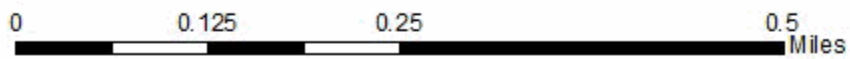
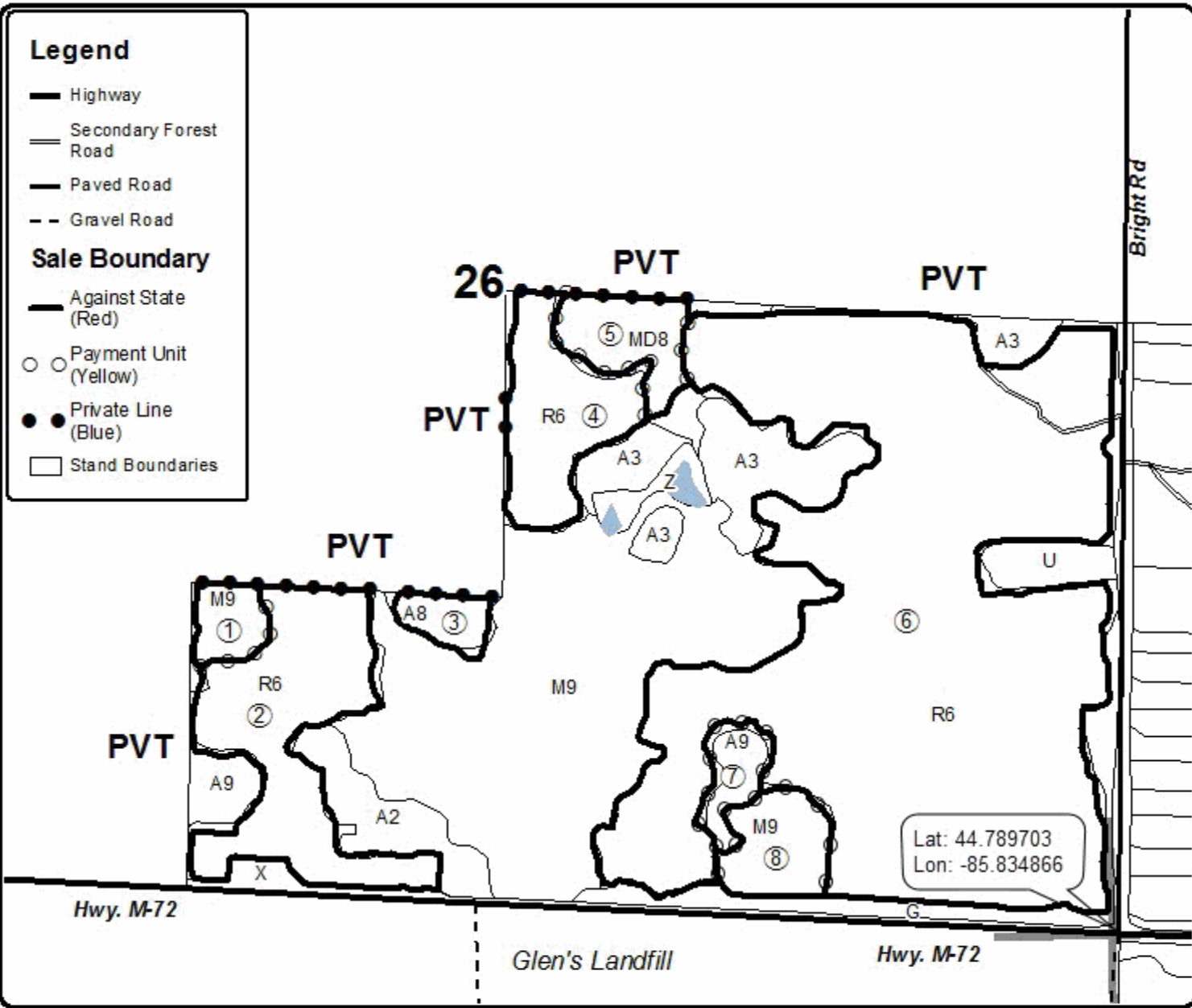
Cover Type				Density	
A = Aspen	H = Hemlock	N = Marsh	U = Upland Brush	0 = Non Stocked	5 = Pole Timber Medium
B = Paper Birch	J = Jack Pine	O = Oak	UM = Upland Mixed	1 = Seeding Sapling Poor	6 = Pole Timber Well
C = Cedar	L = Lowland Brush	P = Lowland Poplar	V = Bog or Marsh	2 = Seeding Sapling Medium	7 = Saw Timber Poor
D = Tread Bog	LM = Lowland Mixed	Q = Mixed Swamp Conifer	W = White Pine	3 = Seeding Sapling Well	8 = Saw Timber Medium
E = Swamp Hardwoods	M = Mpl. Ech. Birch	R = Red Pine	X = Non Stocked	4 = Pole Timber Poor	9 = Saw Timber Well
F = Spruce Fir	MC = Mixed Conifer	S = Black Spruce	Z = Water		
G = Cress	MD = Mixed Deciduous	T = Tamarack			

PU Acres	PU Acres	PU Acres
1 2.2	4 8.2	7 2.4
2 15.1	5 4.3	8 4.3
3 1.8	6 83.8	

## Bowtie Red Pine

### Compartment 2

122.1 Acres





## TIMBER SALE INFORMATION

Sancho Mix (61-035-21)

T25N, R09W, SEC. 29; T25N, R09W, SEC. 30.

Grand Traverse County (Advertised Price \$33,780.95)

SALE NOTE: All units of volume listed for this sale were estimated using the Inventory Manager computer program and the new Michigan taper model.

A recreation site such as a trail, pathway, or campground is within the sale area or the vicinity. Certain restrictions/specifications may be applicable including time restrictions.

A timber sale contract for this lump sum, sealed bid timber sale will be awarded to the responsible bidder offering the highest sealed bid price. All units of volume listed below were estimated using the Inventory Manager computer program and the new Michigan taper model. Bids must be at or above the following advertised price for each product and species:

<u>PRODUCTS &amp; SPECIES</u>	<u>ESTIMATED UNITS*</u>	<u>ADVERTISED PRICE</u>
Sawtimber		
B. T. Aspen	68.0 MBF	\$ 90.00 / MBF
Northern Pin Oak	58.0 MBF	\$ 70.00 / MBF
Red Pine	46.6 MBF	\$ 80.00 / MBF
White Oak	55.5 MBF	\$ 75.00 / MBF
White Pine	10.9 MBF	\$ 37.00 / MBF
Pulpwood		
B. T. Aspen	64 Cords	\$ 12.80 / Cord
Jack Pine	14 Cords	\$ 8.35 / Cord
Mixed Oak	190 Cords	\$ 12.30 / Cord
Red Maple	271 Cords	\$ 12.35 / Cord
Red Pine	229 Cords	\$ 29.80 / Cord
White Pine	135 Cords	\$ 13.80 / Cord

\* The total volume is statistically estimated within plus (+) or minus (-) 9.14 percent. There are an estimated 1,554 cords on this timber sale, plus or minus 142 cords at the 95% confidence level. The estimated units are final and not subject to adjustment. Prospective bidders are urged to examine this timber and to make their own estimates of quantity and quality.

### **BOND AND PAYMENT SCHEDULE:**

1. A bond in the amount of \$1,689.00 to insure faithful performance of the conditions of the contract will be deposited by the successful bidder within 21 days of the sale award.
2. Cutting in any sale or unit without the required advance payment would be considered a trespass.
3. Total payment must be paid in advance or according to the following schedule :
  - (a) Ten percent (10%) of the sale value must be paid within 21 days of the sale award.
  - (b) The 10% down payment will be credited towards the first unit cut.
  - (c) Payment for each of the following units must be made before cutting begins in that unit:

PAYMENT UNIT NUMBER	PERCENT OF TOTAL SALE VALUE
01	39.4%
02	33.7%
03	26.9%

4. If no cutting takes place, the 10% down payment will not be refunded.
5. Operations on the contract issued will terminate on 06/30/2024.

### **SALE STATISTICS**

Volumes were calculated in cubic feet using the Michigan taper model. Cubic foot volume includes all wood inside bark for the product indicated. For display purposes, cubic feet were converted to cords and MBF using a simple conversion factor, e.g. 79 cubic feet per cord and 185 cubic feet per MBF. The cubic foot volumes are precise; the cords and MBF volumes are not. Cubic foot volume cannot be directly converted to cords or boards with precision.

## SALE VOLUMES

The total estimated sale volume may not equal the sum of the species/products due to the nature of statistical calculations associated with double sampling methodology.

VOLUME			STATISTICAL RANGE IN CORDS	
TOTAL CUBIC FEET	TOTAL CORDS	PERCENT ERROR	MINIMUM	MAXIMUM
122,728	1,554	9.14%	1,411	1,696

## VDU VOLUMES

A VDU is a Volume Determination Unit. Volumes and their associated statistics are calculated at the VDU level and summarized to the sale level. There is often a one to one relationship between a VDU and a Payment Unit, but not always, depending on the cruise design. Refer to the VDU TO PAYMENT UNIT table.

	VOLUME			RANGE IN CORDS	
VDU	TOTAL CUBIC FEET	TOTAL CORDS	PERCENT ERROR	MINIMUM	MAXIMUM
97	46,544	589	18.69%	479	699
100	33,073	419	10.48%	375	463
108	29,544	374	8.41%	343	405
<b>TOTAL:</b>	<b>109,161</b>	<b>1,382</b>		<b>1,196</b>	<b>1,567</b>

## VDU TO PAYMENT UNIT

When a VDU is associated with more than one Payment Unit (PU), the VDU volumes are assigned to the PU based on acres of the VDU within the PU.

VDU	VDU ACRES	PU	PU ACRES
97	22.7	1	22.7
100	13.5	2	13.5
108	10.3	3	10.3
<b>TOTAL:</b>	<b>46.5</b>		<b>46.5</b>

**DESCRIPTION OF TIMBER BY PAYMENT UNIT (PU)**

PU	MARKET GROUP	PRODUCT	QUANTITY	UNIT	ACRES	ADVERTISE PRICE				
1	B. T. Aspen	Sawtimber	32.3	MBF	22.7	\$13,283.30				
	Northern Pin Oak		16.4	MBF						
	Red Pine		14.6	MBF						
	White Pine		7.3	MBF						
	B. T. Aspen	Pulpwood	37	Cords						
	Jack Pine		14	Cords						
	Mixed Oak		69	Cords						
	<i>Northern Pin Oak</i>		34	<i>Cords</i>						
	<i>White Oak</i>		35	<i>Cords</i>						
	Red Maple		132	Cords						
	<i>Red Maple</i>		132	<i>Cords</i>						
	Red Pine		126	Cords						
	White Pine		70	Cords						
	2		B. T. Aspen	Sawtimber			14.5	MBF	13.5	\$11,398.65
Northern Pin Oak		27.5	MBF							
Red Pine		15.9	MBF							
White Oak		36.2	MBF							
White Pine		3.6	MBF							
B. T. Aspen		Pulpwood	16	Cords						
Mixed Oak			49	Cords						
<i>Northern Pin Oak</i>			13	<i>Cords</i>						
<i>White Oak</i>			36	<i>Cords</i>						
Red Maple			41	Cords						
<i>Red Maple</i>			5.0	<i>MBF</i>						
<i>Red Maple</i>			31	<i>Cords</i>						
Red Pine			70	Cords						
White Pine			47	Cords						
3	B. T. Aspen		Sawtimber	21.2	MBF	10.3	\$9,099.00			
	Northern Pin Oak	14.1		MBF						
	Red Pine	16.1		MBF						
	White Oak	19.3		MBF						
	B. T. Aspen	Pulpwood	11	Cords						
	Mixed Oak		72	Cords						
	<i>Northern Pin Oak</i>		38	<i>Cords</i>						
	<i>White Oak</i>		34	<i>Cords</i>						
	Red Maple		98	Cords						
	<i>Red Maple</i>		98	<i>Cords</i>						
	Red Pine		33	Cords						
	White Pine		18	Cords						
	TOTAL:			239.0	MBF					
	TOTAL:			903	Cords					

## Sale Specific Conditions & Requirements

**Sale Name: Sancho Mix**

**Sale Number: 61-035-21 Seq#: 1**

### 1 - Sale Area

#### 1.2 - Boundaries

##### 1.2.1 - Painted boundaries (9/19)

The sale boundary and Payment Unit boundaries are marked and identified by blue, red, and yellow paint. Exterior sale boundary lines against private property are marked with blue paint. Exterior sale boundary lines against state are marked with red paint. Interior Payment Unit boundaries are marked with yellow paint. Retention patches are marked with red paint; no harvesting activities may occur within these areas. The painted boundary line trees are not Included Timber and are to be protected. Yellow painted trees designating an interior Payment Unit boundary are only to be cut when all surrounding Payment Units have been paid.

### 2 - Timber Specifications

#### 2.1 - Included Timber

##### 2.1.7 - Leave tree marked unit(s) (6/14)

Within Payment Unit(s) 1-3, all trees, which meet minimum piece specifications in 2.2 Utilization, are designated for cutting, except trees marked with green paint above and below stump height. In addition, no hemlock is to be harvested.

### 3 - Payments

#### 3.4 - Damaged Timber

##### 3.4.1 - Damaged timber (7/16)

General Condition and Requirement 3.4 Damaged Timber, defines liquidated damages for undesignated live merchantable trees which are cut or injured. In addition, extreme care should be taken to avoid damage to tree seedlings and saplings. Within the Sale Area, if more than 25% of the tree seedlings or saplings (1/4" to 4.5" DBH) within a specified portion of the Sale Area are damaged, liquidated damages will be assessed at \$100.00 per acre for all acreage within that specified portion of the Sale Area that was damaged.

No damage is acceptable to undesignated live merchantable trees. Within the Sale Area, if more than 10% of trees (> 4.5" DBH) within a specified area of the sale are damaged, liquidated damages will be assessed for all trees damaged. Rates will be in accordance with General Condition and Requirement 3.4 Damaged Timber.

### 4 - Transportation

#### 4.1 - Construction

##### 4.1.11 - Permits (2/12)

The Purchaser will secure any necessary permits that may be required.

##### 4.1.12 - No new roads (1/12)

No new roads will be permitted in any Payment Unit. All operations are limited to existing roads. Skid trails only will be allowed.

### 5 - Operations

#### 5.2 - Conduct of Operations

##### 5.2.1 - Slash

###### 5.2.1.8 - Slash height (12/08)

No slash or tree tops may exceed 24 inches in height.

##### 5.2.2 - Hazard Trees/Snags

###### 5.2.2.1 - Den trees (10/16)

Obvious hollow and/or den trees shall be protected and left standing unless they are a safety hazard.

### 5.2.3 - Operating Restrictions

#### 5.2.3.4 - Oak wilt restriction, no exceptions (1/18)

Within Payment Unit(s) 1-3, cutting, skidding, hauling within the sale and brushing of access roads to the sale are not permitted during the period of April 15 to July 15. No exceptions will be granted. This is necessary to reduce the spread of oak wilt.

### 5.2.4 - Dead and Down Creation

#### 5.2.4.4 - Dead and down creation, grouse (6/18)

To encourage grouse and other wildlife, in Payment Unit(s) 1-3, leave one, 12" diameter or larger log-length (8 foot minimum) piece on the ground for every 2 acres. These trees will be evenly scattered throughout the Payment Unit, preferably at least two chains from any roads, two-tracks, or trails open to vehicles.

#### 5.2.29 - Shrub protection (1/20)

Do not cut or damage hawthorn, witch-hazel, or junberry. These woody-shrub plants are highly beneficial to various wildlife species.

#### 5.2.39 - ORV trail/route protection (4/18)

The MCCCT trail is shown on the Timber Sale Map. Do not cut trees or damage posts with trail markers. All stumps within 5 feet of the trail must be cut flush with the ground. Maintain a 20-foot-wide slash, debris, and rut free zone daily using the trail route as the centerline. Use of the trail for skidding and/or hauling must be approved by the sale administrator.

### 5.4 - Soil Protection

#### 5.4.1 - Rutting restriction, general (7/16)

Operations are to cease immediately if equipment and weather conditions result in rutting of roads and/or skid trails which is 12 inches or greater in depth and 50 feet in length. The Unit Manager or his/her representative may restrict hauling and/or skidding if ruts exceed the specified depth. With the Unit Manager or his/her representative's approval, the Purchaser may return to the area when the risk of rutting has decreased.

## 6 - Safety and Fire Prevention

### 6.2 - Signing

#### 6.2.3 - Recreational trail posting (10/20)

The Purchaser is responsible for posting and maintaining caution signs on the MCCCT prior to beginning operations. The trail must be posted at appropriate distances from the Sale Area to warn of logging activity and truck traffic at both ends of the trail. Signs must be removed when harvest operations are suspended or completed. The Purchaser will provide these signs.



# TIMBER SALE MAP

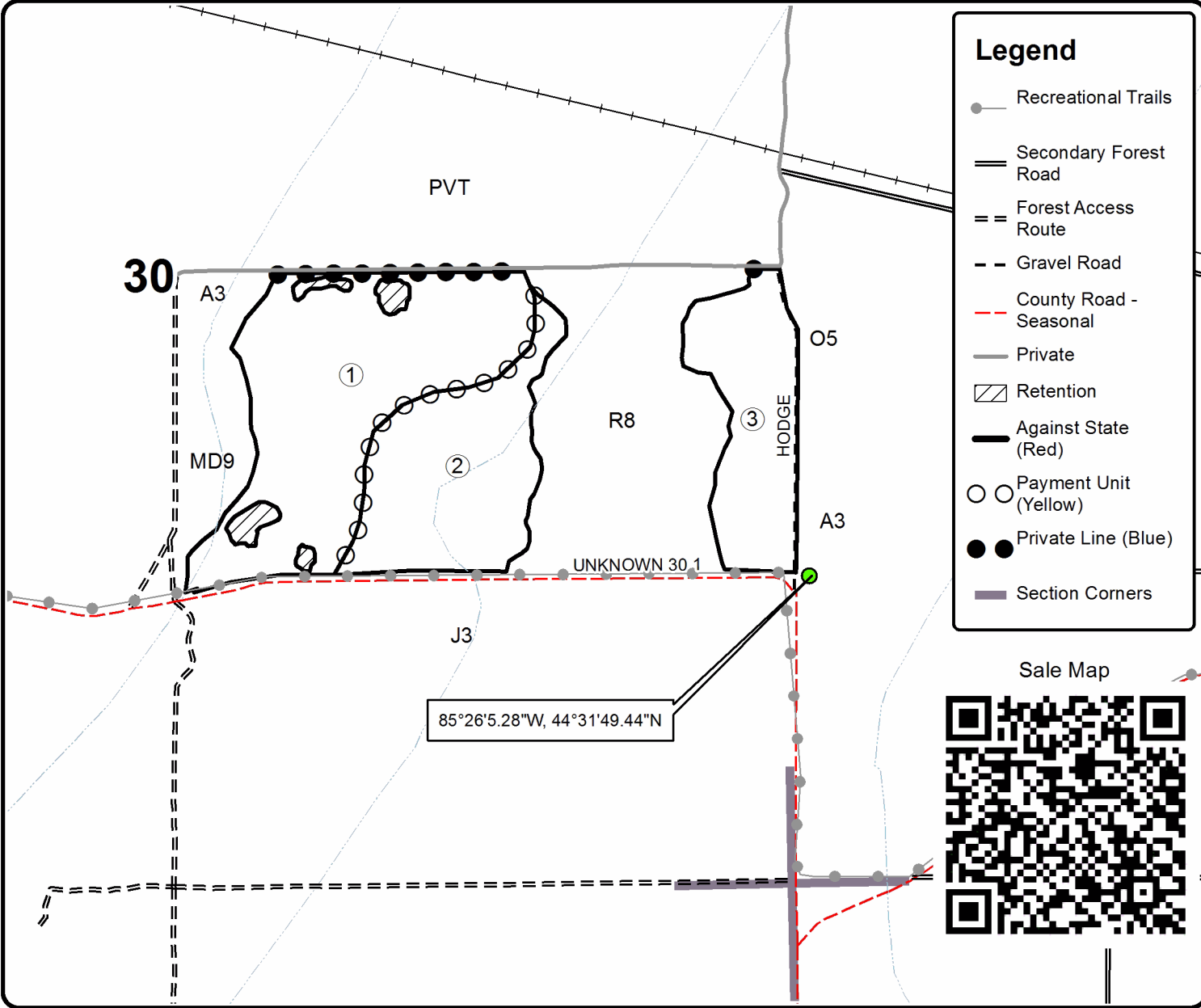
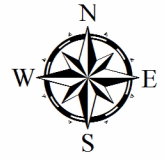
This information provided by authority of Part 525, 1994 PA 451, as amended.

Forest Management Unit Traverse City FMU	County Grand Traverse	Mapped By Patrick Cotant	Date 07/22/2021	Page 1	of 1
Township 25N	Range 9W	Section(s) and Subdivision(s) Sec 30 - N1/2SE	Scale 1:7,920		

Cover Type				Density	
A = Aspen	H = Hemlock	N = Marsh	U = Upland Brush	0 = Non Stocked	5 = Pole Timber Medium
B = Paper Birch	J = Jack Pine	O = Oak	UM = Upland Mixed	1 = Seedling Sapling Poor	6 = Pole Timber Well
C = Cedar	L = Lowland Brush	P = Lowland Poplar	V = Bog or Marsh	2 = Seedling Sapling Medium	7 = Saw Timber Poor
D = Treed Bog	LM = Lowland Mixed	Q = Mixed Swamp Conifer	W = White Pine	3 = Seedling Sapling Well	8 = Saw Timber Medium
E = Swamp Hdwoods	M = Mpl, Bch, Brch	R = Red Pine	X = Non Stocked	4 = Pole Timber Poor	9 = Saw Timber Well
F = Spruce Fir	MC = Mixed Conifer	S = Black Spruce	Z = Water		
G = Grass	MD = Mixed Deciduous	T = Tamarack			

PU	Acres
1	22.7
2	13.5
3	10.3

## Sancho Mix Compartment 058 46.5 Acres



85°26'5.28"W, 44°31'49.44"N



## TIMBER SALE INFORMATION

Deer Creek Mix (61-038-21)

T25N, R10W, SEC. 35.

Grand Traverse County (Advertised Price \$48,559.25)

SALE NOTE: All units of volume listed for this sale were estimated using the Inventory Manager computer program and the new Michigan taper model.

A recreation site such as a trail, pathway, or campground is within the sale area or the vicinity. Certain restrictions/specifications may be applicable including time restrictions.

A timber sale contract for this lump sum, sealed bid timber sale will be awarded to the responsible bidder offering the highest sealed bid price. All units of volume listed below were estimated using the Inventory Manager computer program and the new Michigan taper model. Bids must be at or above the following advertised price for each product and species:

<u>PRODUCTS &amp; SPECIES</u>	<u>ESTIMATED UNITS*</u>	<u>ADVERTISED PRICE</u>
Sawtimber		
B. T. Aspen	229.2 MBF	\$ 90.00 / MBF
Basswood	32.1 MBF	\$ 76.00 / MBF
Beech	17.4 MBF	\$ 63.00 / MBF
Red Maple	27.1 MBF	\$ 116.00 / MBF
Sugar Maple	51.2 MBF	\$ 164.00 / MBF
Pulpwood		
B. T. Aspen	552 Cords	\$ 12.80 / Cord
Balsam Fir	6 Cords	\$ 8.70 / Cord
Basswood	30 Cords	\$ 10.95 / Cord
Mixed Hardwood	427 Cords	\$ 12.35 / Cord
Red Oak	11 Cords	\$ 12.30 / Cord

\* The total volume is statistically estimated within plus (+) or minus (-) 6.58 percent. There are an estimated 1,937 cords on this timber sale, plus or minus 128 cords at the 95% confidence level. The estimated units are final and not subject to adjustment. Prospective bidders are urged to examine this timber and to make their own estimates of quantity and quality.

### **BOND AND PAYMENT SCHEDULE:**

1. A bond in the amount of \$2,428.00 to insure faithful performance of the conditions of the contract will be deposited by the successful bidder within 21 days of the sale award.
2. Cutting in any sale or unit without the required advance payment would be considered a trespass.
3. Total payment must be paid in advance or according to the following schedule :
  - (a) Ten percent (10%) of the sale value must be paid within 21 days of the sale award.
  - (b) The 10% down payment will be credited towards the first unit cut.
  - (c) Payment for each of the following units must be made before cutting begins in that unit:

PAYMENT UNIT NUMBER	PERCENT OF TOTAL SALE VALUE
01	33.8%
02	28.9%
03	37.3%

4. If no cutting takes place, the 10% down payment will not be refunded.
5. Operations on the contract issued will terminate on 12/31/2024.

### **SALE STATISTICS**

Volumes were calculated in cubic feet using the Michigan taper model. Cubic foot volume includes all wood inside bark for the product indicated. For display purposes, cubic feet were converted to cords and MBF using a simple conversion factor, e.g. 79 cubic feet per cord and 185 cubic feet per MBF. The cubic foot volumes are precise; the cords and MBF volumes are not. Cubic foot volume cannot be directly converted to cords or boards with precision.

## SALE VOLUMES

The total estimated sale volume may not equal the sum of the species/products due to the nature of statistical calculations associated with double sampling methodology.

VOLUME			STATISTICAL RANGE IN CORDS	
TOTAL CUBIC FEET	TOTAL CORDS	PERCENT ERROR	MINIMUM	MAXIMUM
153,028	1,937	6.58%	1,809	2,065

## VDU VOLUMES

A VDU is a Volume Determination Unit. Volumes and their associated statistics are calculated at the VDU level and summarized to the sale level. There is often a one to one relationship between a VDU and a Payment Unit, but not always, depending on the cruise design. Refer to the VDU TO PAYMENT UNIT table.

	VOLUME			RANGE IN CORDS	
VDU	TOTAL CUBIC FEET	TOTAL CORDS	PERCENT ERROR	MINIMUM	MAXIMUM
23	50,540	640	11.37%	567	713
26	13,381	169	29.30%	120	219
28	32,206	408	10.78%	364	452
29	41,052	520	11.69%	459	580
<b>TOTAL:</b>	<b>137,180</b>	<b>1,736</b>		<b>1,509</b>	<b>1,964</b>

## VDU TO PAYMENT UNIT

When a VDU is associated with more than one Payment Unit (PU), the VDU volumes are assigned to the PU based on acres of the VDU within the PU.

VDU	VDU ACRES	PU	PU ACRES
23	12.3	3	12.3
26	3.2	3	3.2
28	21.9	2	21.9
29	16.9	1	16.9
<b>TOTAL:</b>	<b>54.3</b>		<b>54.3</b>

**DESCRIPTION OF TIMBER BY PAYMENT UNIT (PU)**

PU	MARKET GROUP	PRODUCT	QUANTITY	UNIT	ACRES	ADVERTISE PRICE			
1	B. T. Aspen	Sawtimber	93.2	MBF	16.9	\$16,393.50			
	Basswood		11.5	MBF					
	Beech		11.1	MBF					
	Red Maple		19.2	MBF					
	Sugar Maple		8.0	MBF					
	B. T. Aspen	Pulpwood	61	Cords					
	Basswood		17	Cords					
	Mixed Hardwood		145	Cords					
	<i>Beech</i>		23	<i>Cords</i>					
	<i>Red Maple</i>		64	<i>Cords</i>					
	<i>Sugar Maple</i>		58	<i>Cords</i>					
	Red Oak		11	Cords					
	<i>Red Oak</i>	<i>Sawtimber</i>	4.4	<i>MBF</i>					
	<i>Red Oak</i>	<i>Pulpwood</i>	2	<i>Cords</i>					
2	B. T. Aspen	Sawtimber	14.8	MBF	21.9	\$14,051.55			
	Basswood		20.6	MBF					
	Beech		6.3	MBF					
	Red Maple		7.9	MBF					
	Sugar Maple		43.2	MBF					
	B. T. Aspen	Pulpwood	17	Cords					
	Basswood		13	Cords					
	Mixed Hardwood		194	Cords					
	<i>Beech</i>		7	<i>Cords</i>					
	<i>Red Maple</i>		29	<i>Cords</i>					
	<i>Sugar Maple</i>		158	<i>Cords</i>					
	3	B. T. Aspen	Sawtimber	121.2			MBF	15.5	\$18,114.20
		B. T. Aspen	Pulpwood	474			Cords		
Balsam Fir			6	Cords					
Mixed Hardwood			88	Cords					
<i>Black Cherry</i>		<i>Sawtimber</i>	3.8	<i>MBF</i>					
<i>Black Cherry</i>		<i>Pulpwood</i>	4	<i>Cords</i>					
<i>Red Maple</i>			70	<i>Cords</i>					
<i>Sugar Maple</i>			6	<i>Cords</i>					
TOTAL:			357.0	MBF					
TOTAL:			1,026	Cords					

## Sale Specific Conditions & Requirements

**Sale Name: Deer Creek Mix**

**Sale Number: 61-038-21 Seq#: 1**

### 1 - Sale Area

#### 1.2 - Boundaries

##### 1.2.1 - Painted boundaries (9/19)

The sale boundary and Payment Unit boundaries are marked and identified by red paint. Exterior sale boundary lines against state are marked with red paint. Interior Payment Unit boundary between Payment Units 2 and 3 is also marked with red paint. These red marked trees should not be harvested. Retention patches are marked with red paint; no harvesting activities may occur within these areas. The painted boundary line trees are not Included Timber and are to be protected.

### 2 - Timber Specifications

#### 2.1 - Included Timber

##### 2.1.1 - Clearcut unit(s) with unmerchantable trees (6/14)

Within Payment Unit(s) 3, cut all trees that are two (2) inches or more at DBH, except for balsam fir 4.5" at DBH and less should not be harvested.

##### 2.1.3 - Cut tree marked unit(s) (12/08)

Within Payment Unit(s) 2, all trees are designated for cutting when marked with orange paint above and below stump height, regardless of merchantability. In addition, all aspen and beech are designated for harvest.

##### 2.1.7 - Leave tree marked unit(s) (6/14)

Within Payment Unit(s) 1, all trees, which meet minimum piece specifications in 2.2 Utilization, are designated for cutting, except trees marked with green paint above and below stump height. In addition, no conifers or yellow birch are to be harvested.

#### 2.2 - Utilization

##### 2.2.3 - Stump heights (4/07)

Stump heights within the Sale Area shall not exceed 12 inches for trees greater than 10 inches at DBH and 4 inches for trees smaller than 10 inches at DBH.

##### 2.2.6 - Roundwood operation required (3/21)

The skidding of whole trees or tree segments with limbs attached is prohibited. All products must be produced as roundwood and forwarded to existing roads or landing areas in final product length. Trees must be harvested with in-woods processor (feller bunching harvester will not be allowed) to retain existing understory and to protect residual trees being retained.

##### 2.2.9 - No chipping permitted (12/08)

Within Payment Unit(s) 1, 2, and 3, all wood must be removed by whole tree, tree segment, or roundwood. No chipping is permitted.

### 3 - Payments

#### 3.4 - Damaged Timber

##### 3.4.1 - Damaged timber (7/16)

General Condition and Requirement 3.4 Damaged Timber, defines liquidated damages for undesignated live merchantable trees which are cut or injured. In addition, extreme care should be taken to avoid damage to tree seedlings and saplings. Within the Sale Area, if more than 25% of the tree seedlings or saplings (1/4" to 4.5" DBH) within a specified portion of the Sale Area are damaged, liquidated damages will be assessed at \$100 per acre for all acreage within that specified portion of the Sale Area that was damaged.

No damage is acceptable to undesignated live merchantable trees. Within the Sale Area, if more than 10% of trees (> 4.5" DBH) within a specified area of the sale are damaged, liquidated damages will be assessed for all trees damaged. Rates will be in accordance with General Condition and Requirement 3.4 Damaged Timber.

### 4 - Transportation

## 4.1 - Construction

### 4.1.11 - Permits (2/12)

The Purchaser will secure any necessary permits that may be required.

### 4.1.12 - No new roads (1/12)

No new roads will be permitted in any Payment Unit. All operations are limited to existing roads. Skid trails only will be allowed.

## 5 - Operations

### 5.2 - Conduct of Operations

#### 5.2.1 - Slash

##### 5.2.1.8 - Slash height (12/08)

No slash or tree tops may exceed 24 inches in height.

##### 5.2.1.10 - No slash in openings (5/10)

No brush or logging debris is to be left in the maintained wildlife opening which is indicated by G0 on the Timber Sale Map. Any damage to the opening shall be repaired according to specifications of the Unit Manager or his/her representative.

#### 5.2.3 - Operating Restrictions

##### 5.2.3.1 - Operating restrictions (9/11)

Within Payment Unit(s) 1, 2, and 3, unless changed by written agreement, cutting, skidding, and hauling are limited to dry summer or frozen winter conditions. The sale administrator must approve the commencing of sale operations after inspecting sites for operability. This restriction is because of the prevalence of sensitive soils, high water table in portions of Sale Area and access route that contains areas of clay and other sensitive soils.

##### 5.2.3.3 - Bark slippage restriction (3/09)

Within Payment Unit(s) 1 and 2, unless changed by written agreement, cutting and skidding are not permitted during the period of April 15 to July 15. This restriction is because of bark slippage.

#### 5.2.4 - Dead and Down Creation

##### 5.2.4.4 - Dead and down creation, grouse (6/18)

To encourage grouse and other wildlife, in Payment Unit(s) 3, leave one, 12" diameter or larger log-length (8 foot minimum) piece on the ground for every 2 acres. These will be evenly scattered throughout the Payment Unit. Each log must be clearly identified by a piece of blue flagging.

##### 5.2.29 - Shrub protection (1/20)

Do not cut or damage hawthorn, witch-hazel, dogwood, or juneberry. These woody-shrub plants are highly beneficial to various wildlife species.

##### 5.2.39 - ORV trail/route protection (4/18)

The MCCCT/ORV trail/route and is shown on the Timber Sale Map. Do not cut or damage trail markers or trees with markers affixed to them. All stumps within 5 feet of the trail must be cut flush with the ground. Maintain a 20-foot-wide slash, debris, and rut free zone daily using the ORV trail or route as the centerline. Do not run equipment down the ORV trail or route. Where the access road is shared with the trail, equipment will be allowed. Skidding across the trail or route may only occur in locations approved by the sale administrator.

##### 5.2.43 - Opening protection (2/21)

No activities are permitted in openings marked on the Timber Sale Map with the letter "G". Any damage to the openings shall be repaired according to specifications of the Unit Manager or his/her representative.

### 5.3 - Stream Protection

#### 5.3.1 - Operating near stream (7/04)

No tracked or wheeled vehicles shall be operated within 50 feet of creek. No crossings will be approved.

## 5.4 - Soil Protection

### 5.4.1 - Rutting restriction, general (7/16)

Operations are to cease immediately if equipment and weather conditions result in rutting of roads and/or skid trails which is 12 inches or greater in depth and 50 feet in length. The Unit Manager or his/her representative may restrict hauling and/or skidding if ruts exceed the specified depth. With the Unit Manager or his/her representative's approval, the Purchaser may return to the area when the risk of rutting has decreased.

## 6 - Safety and Fire Prevention

### 6.2 - Signing

#### 6.2.3 - Recreational trail posting (10/20)

The Purchaser is responsible for posting and maintaining caution signs on the MCCCT/ORV trail/route prior to beginning operations. The trail must be posted at appropriate distances from the Sale Area to warn of logging activity and truck traffic at both ends of the trail. Signs must be removed when harvest operations are suspended or completed. The Purchaser will provide these signs.



# TIMBER SALE MAP

This information provided by authority of Part 525, 1994 PA 451, as amended.

Forest Management Unit Traverse City FMU	County Grand Traverse	Mapped By Patrick Cotant	Date 07/28/2021	Page 1	of 1
Township 25N	Range 10W	Section(s) and Subdivision(s) Sec 35 - SW, W1/2SE	Scale 1:7,920		

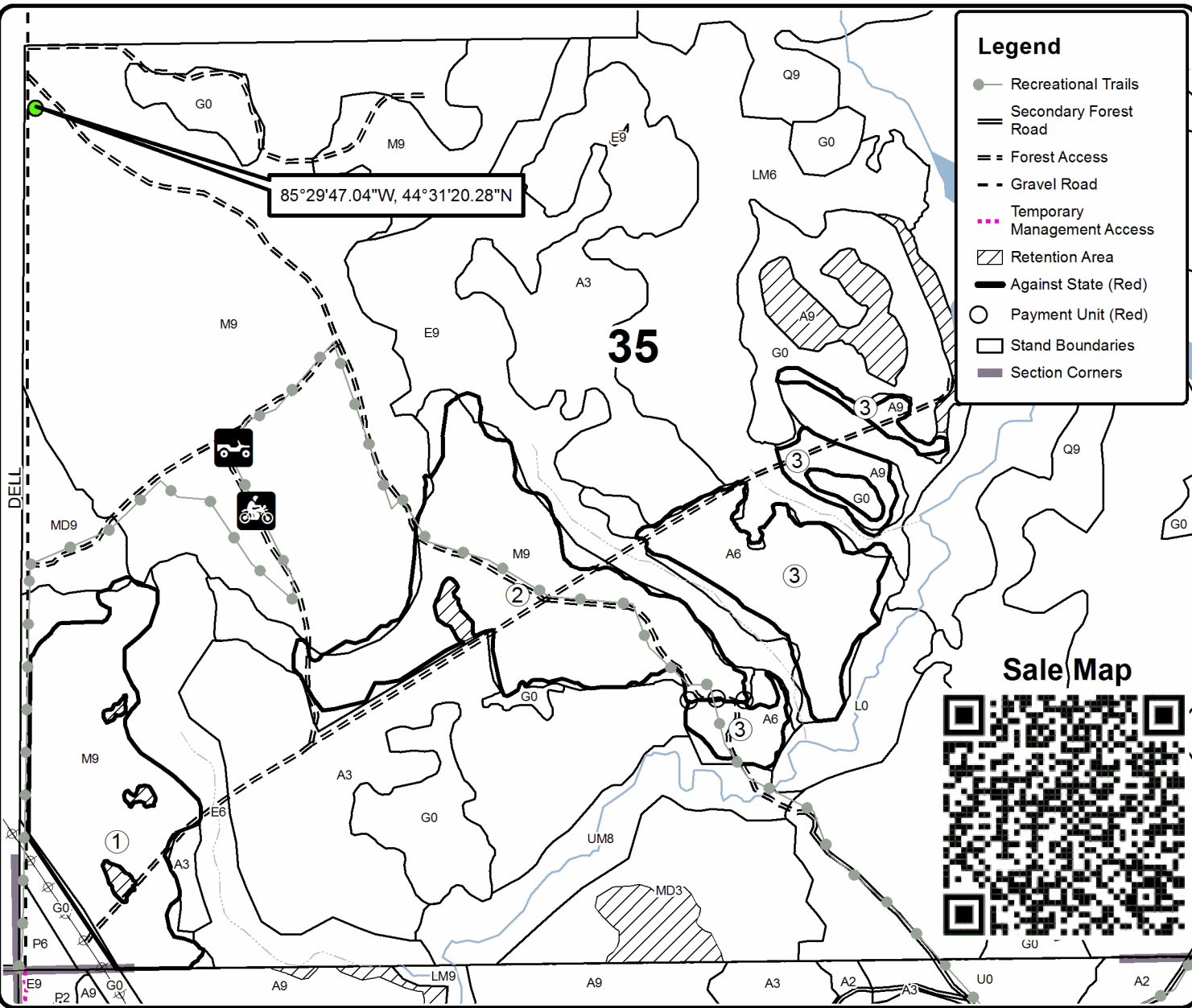
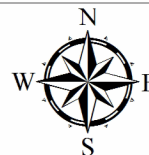
Cover Type				Density	
A = Aspen	H = Hemlock	N = Marsh	U = Upland Brush	0 = Non Stocked	5 = Pole Timber Medium
B = Paper Birch	J = Jack Pine	O = Oak	UM = Upland Mixed	1 = Seedling Sapling Poor	6 = Pole Timber Well
C = Cedar	L = Lowland Brush	P = Lowland Poplar	V = Bog or Marsh	2 = Seedling Sapling Medium	7 = Saw Timber Poor
D = Treed Bog	LM = Lowland Mixed	Q = Mixed Swamp Conifer	W = White Pine	3 = Seedling Sapling Well	8 = Saw Timber Medium
E = Swamp Hdwoods	M = Mpl, Bch, Brch	R = Red Pine	X = Non Stocked	4 = Pole Timber Poor	9 = Saw Timber Well
F = Spruce Fir	MC = Mixed Conifer	S = Black Spruce	Z = Water		
G = Grass	MD = Mixed Deciduous	T = Tamarack			

PU	Acres
1	16.9
2	21.9
3	15.5

## Deer Creek Mix

### Compartment 058

### 54.3 Acres



**Legend**

- Recreational Trails
- Secondary Forest Road
- Forest Access
- Gravel Road
- Temporary Management Access
- Retention Area
- Against State (Red)
- Payment Unit (Red)
- Stand Boundaries
- Section Corners

Sale Map







## TIMBER SALE INFORMATION

Town County Aspen (61-044-21)  
 T25N, R09W, SEC. 31; T25N, R10W, SEC. 36.  
 Grand Traverse County (Advertised Price \$7,290.15)

SALE NOTE: All units of volume listed for this sale were estimated using the Inventory Manager computer program and the new Michigan taper model.

A timber sale contract for this lump sum, sealed bid timber sale will be awarded to the responsible bidder offering the highest sealed bid price. All units of volume listed below were estimated using the Inventory Manager computer program and the new Michigan taper model. Bids must be at or above the following advertised price for each product and species:

<u>PRODUCTS &amp; SPECIES</u>	<u>ESTIMATED UNITS*</u>	<u>ADVERTISED PRICE</u>
Sawtimber		
Northern Pin Oak	10.0 MBF	\$ 70.00 / MBF
Red Maple	2.6 MBF	\$ 116.00 / MBF
White Oak	5.5 MBF	\$ 75.00 / MBF
Pulpwood		
B. T. Aspen	409 Cords	\$ 12.80 / Cord
Mixed Oak	27 Cords	\$ 12.30 / Cord
Red Maple	25 Cords	\$ 12.35 / Cord

\* The total volume is statistically estimated within plus (+) or minus (-) 16.74 percent. There are an estimated 464 cords on this timber sale, plus or minus 78 cords at the 95% confidence level. The estimated units are final and not subject to adjustment. Prospective bidders are urged to examine this timber and to make their own estimates of quantity and quality.

### **BOND AND PAYMENT SCHEDULE:**

1. A bond in the amount of \$365.00 to insure faithful performance of the conditions of the contract will be deposited by the successful bidder within 21 days of the sale award.
2. Cutting in any sale or unit without the required advance payment would be considered a trespass.
3. Total payment must be paid in advance or according to the following schedule :
  - (a) Ten percent (10%) of the sale value must be paid within 21 days of the sale award.
  - (b) The remainder is due before cutting begins.
  - (c) Payment for each of the following units must be made before cutting begins in that unit:
 

PAYMENT UNIT NUMBER	PERCENT OF TOTAL SALE VALUE
01	100.0%
4. If no cutting takes place, the 10% down payment will not be refunded.
5. Operations on the contract issued will terminate on 12/31/2023.

### **SALE STATISTICS**

Volumes were calculated in cubic feet using the Michigan taper model. Cubic foot volume includes all wood inside bark for the product indicated. For display purposes, cubic feet were converted to cords and MBF using a simple conversion factor, e.g. 79 cubic feet per cord and 185 cubic feet per MBF. The cubic foot volumes are precise; the cords and MBF volumes are not. Cubic foot volume cannot be directly converted to cords or boards with precision.

### **SALE VOLUMES**

The total estimated sale volume may not equal the sum of the species/products due to the nature of statistical calculations associated with double sampling methodology.

VOLUME		STATISTICAL RANGE IN CORDS		
TOTAL CUBIC FEET	TOTAL CORDS	PERCENT ERROR	MINIMUM	MAXIMUM
36,635	464	16.74%	386	541

**VDU VOLUMES**

A VDU is a Volume Determination Unit. Volumes and their associated statistics are calculated at the VDU level and summarized to the sale level. There is often a one to one relationship between a VDU and a Payment Unit, but not always, depending on the cruise design. Refer to the VDU TO PAYMENT UNIT table.

VDU	VOLUME		PERCENT ERROR	RANGE IN CORDS	
	TOTAL CUBIC FEET	TOTAL CORDS		MINIMUM	MAXIMUM
82	39,319	498	16.74%	414	581
<b>TOTAL:</b>	<b>39,319</b>	<b>498</b>		<b>414</b>	<b>581</b>

**VDU TO PAYMENT UNIT**

When a VDU is associated with more than one Payment Unit (PU), the VDU volumes are assigned to the PU based on acres of the VDU within the PU.

VDU	VDU ACRES	PU	PU ACRES
82	11.4	1	11.4
<b>TOTAL:</b>	<b>11.4</b>		<b>11.4</b>

**DESCRIPTION OF TIMBER BY PAYMENT UNIT (PU)**

PU	MARKET GROUP	PRODUCT	QUANTITY	UNIT	ACRES	ADVERTISE PRICE
1	Northern Pin Oak	Sawtimber	10.0	MBF	11.4	\$7,290.15
	Red Maple		2.6	MBF		
	White Oak		5.5	MBF		
	B. T. Aspen	Pulpwood	409	Cords		
	Mixed Oak		27	Cords		
	<i>Northern Pin Oak</i>		18	<i>Cords</i>		
	<i>White Oak</i>		9	<i>Cords</i>		
	Red Maple		25	Cords		
TOTAL:			18.1	MBF		
TOTAL:			461	Cords		

# Sale Specific Conditions & Requirements

**Sale Name: Town County Aspen**

**Sale Number: 61-044-21 Seq#: 1**

## 1 - Sale Area

### 1.2 - Boundaries

#### 1.2.1 - Painted boundaries (9/19)

The sale boundary and Payment Unit boundaries are marked and identified by red paint. Exterior sale boundary lines against state are marked with red paint. The painted boundary line trees are not Included Timber and are to be protected.

## 2 - Timber Specifications

### 2.1 - Included Timber

#### 2.1.1 - Clearcut unit(s) with unmerchantable trees (6/14)

Within Payment Unit(s) 1, cut all trees that are two (2) inches or more at DBH, except merchantable conifer trees.

### 2.2 - Utilization

#### 2.2.3 - Stump heights (4/07)

Stump heights within the Sale Area shall not exceed 12 inches for trees greater than 10 inches at DBH and 4 inches for trees smaller than 10 inches at DBH.

## 3 - Payments

### 3.4 - Damaged Timber

#### 3.4.1 - Damaged timber (7/16)

General Condition and Requirement 3.4 Damaged Timber, defines liquidated damages for undesignated live merchantable trees which are cut or injured. No damage is acceptable to undesignated live merchantable trees. Within the Sale Area, if more than 5% of trees (> 4.5" DBH) within a specified area of the sale are damaged, liquidated damages will be assessed for all trees damaged. Rates will be in accordance with General Condition and Requirement 3.4 Damaged Timber.

## 4 - Transportation

### 4.1 - Construction

#### 4.1.11 - Permits (2/12)

The Purchaser will secure any necessary highway and stream crossing permits that may be required.

#### 4.1.12 - No new roads (1/12)

No new roads will be permitted in any Payment Unit. All operations are limited to existing roads. Skid trails only will be allowed.

## 5 - Operations

### 5.2 - Conduct of Operations

#### 5.2.1 - Slash

##### 5.2.1.8 - Slash height (12/08)

No slash or tree tops may exceed 24 inches in height.

#### 5.2.2 - Hazard Trees/Snags

##### 5.2.2.1 - Den trees (10/16)

Obvious hollow and/or den trees shall be protected and left standing unless they are a safety hazard.

#### 5.2.4 - Dead and Down Creation

##### 5.2.4.2 - Dead and down creation, hare and grouse (1/14)

To improve habitat for snowshoe hare, grouse, and other species, the Purchaser is to leave two 14-inch diameter or larger

log size pieces on the ground for every two acres. The logs should be placed so they overlap. Note these pieces should have a minimum length of eight feet. They can be of any tree species and can be an un-merchantable piece of wood.

#### 5.2.29 - Shrub protection (1/20)

Do not cut or damage hawthorn, witch-hazel, or juneberry. These woody-shrub plants are highly beneficial to various wildlife species.

#### 5.2.41 - Snowmobile trail protection (9/11)

The snowmobile trail is shown on the Timber Sale Map. Do not cut or damage posts with orange trail markers or traffic control signs. If the trail is used for hauling, it must be graded to the satisfaction of the Unit Manager or his/her representative prior to December 1. Hauling will be the only sale operation to impact the trail as it is not located in or adjacent to the Sale Area. If the trail road is to be used for hauling during the snowmobile season, then a snow-covered base must be left on the trail. No decking of forest products will be permitted along the snowmobile trail.

### 5.4 - Soil Protection

#### 5.4.1 - Rutting restriction, general (7/16)

Operations are to cease immediately if equipment and weather conditions result in rutting of roads and/or skid trails which is 12 inches or greater in depth and 50 feet in length. The Unit Manager or his/her representative may restrict hauling and/or skidding if ruts exceed the specified depth. With the Unit Manager or his/her representative's approval, the Purchaser may return to the area when the risk of rutting has decreased.

## 6 - Safety and Fire Prevention

### 6.2 - Signing

#### 6.2.1 - Road posting (10/20)

The Purchaser is responsible for posting and maintaining caution signs on Town Line and County Line Roads prior to beginning operations. The road must be posted at appropriate distances from the Sale Area to warn of logging activity and truck traffic. Signs must be removed when harvest operations are suspended or completed.



Sale Number	Year
61-044	21

# TIMBER SALE MAP

This information provided by authority of Part 525, 1994 PA 451, as amended.

Forest Management Unit Traverse City FMU	County Grand Traverse	Mapped By Patrick Cotant	Date 08/04/2021	Page 1	of 1
Township 25N	Range 09W	Section(s) and Subdivision(s) Sec 31 - SWSW	Scale 1:7,920		

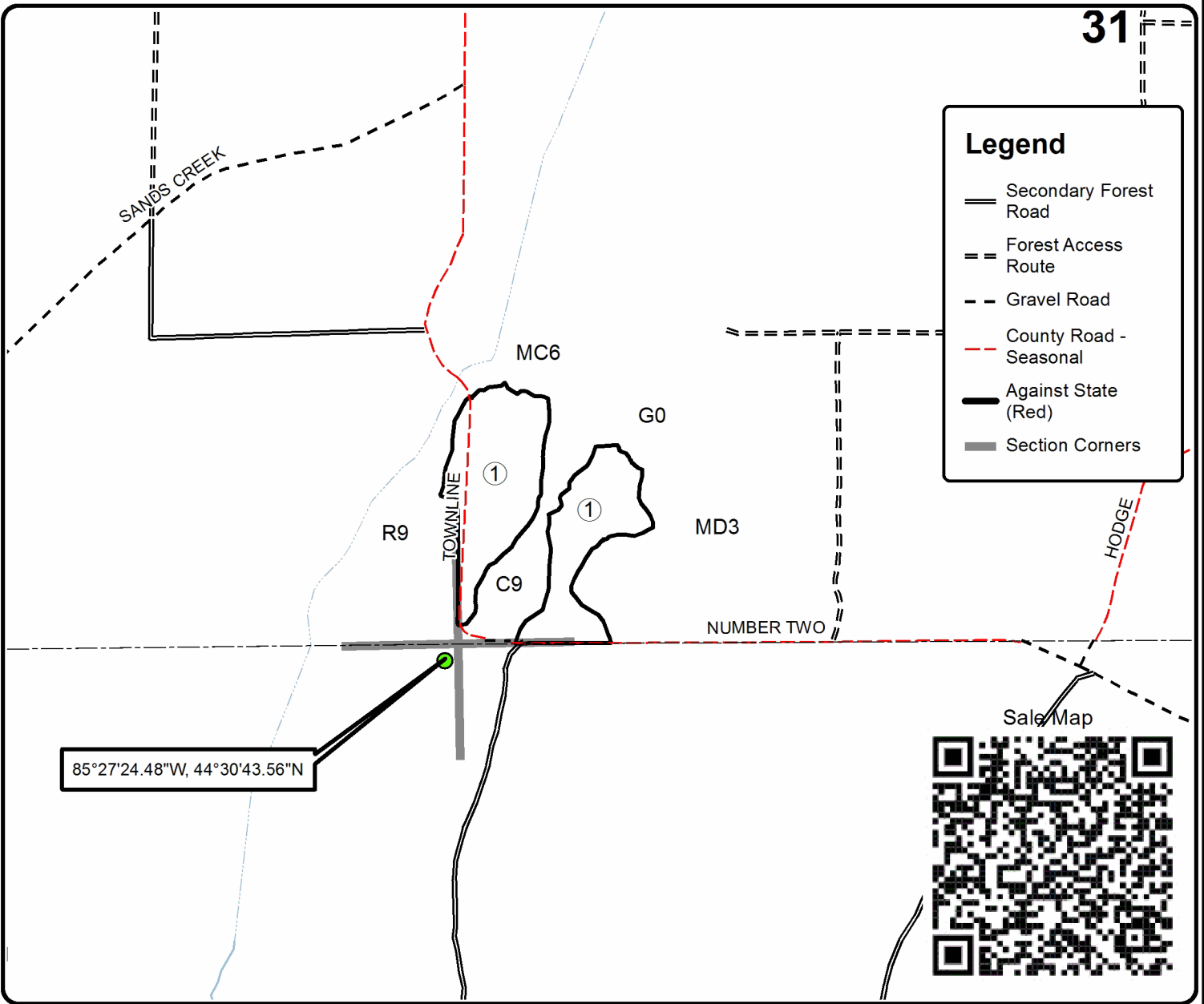
Cover Type				Density	
A = Aspen	H = Hemlock	N = Marsh	U = Upland Brush	0 = Non Stocked	5 = Pole Timber Medium
B = Paper Birch	J = Jack Pine	O = Oak	UM = Upland Mixed	1 = Seedling Sapling Poor	6 = Pole Timber Well
C = Cedar	L = Lowland Brush	P = Lowland Poplar	V = Bog or Marsh	2 = Seedling Sapling Medium	7 = Saw Timber Poor
D = Treed Bog	LM = Lowland Mixed	Q = Mixed Swamp Conifer	W = White Pine	3 = Seedling Sapling Well	8 = Saw Timber Medium
E = Swamp Hdwoods	M = Mpl, Bch, Brch	R = Red Pine	X = Non Stocked	4 = Pole Timber Poor	9 = Saw Timber Well
F = Spruce Fir	MC = Mixed Conifer	S = Black Spruce	Z = Water		
G = Grass	MD = Mixed Deciduous	T = Tamarack			

PU	Acres
1	11.4

## Town County Aspen

### Compartment 058

11.4 Acres



31

**Legend**

- Secondary Forest Road
- Forest Access Route
- Gravel Road
- County Road - Seasonal
- Against State (Red)
- Section Corners

85°27'24.48"W, 44°30'43.56"N





Dell Hills Red Pine (61-033-21)  
T25N, R10W, SEC. 26; Grand Traverse COUNTY

In response to the notice of sale to be held 4:00 p.m. (local time) on October 14, 2021, I am hereby submitting my sealed bid (firm offer) for the following forest products to be cut. Bids for individual species must be at or above the advertised price. All non-responsive bid forms may be rejected.

<u>PRODUCTS &amp; SPECIES</u>	<u>ESTIMATED VOLUME*</u>	<u>ADVERTISED PRICE</u>	<u>BID PRICE/UNIT</u>
Sawtimber			
Red Pine	102.0 MBF	\$ 80.00/MBF	\$ _____
Pulpwood			
Red Pine	382 Cords	\$ 29.80/Cord	\$ _____

\*The volumes are statistically estimated within plus (+) or minus (-) 10.58 percent at 95% confidence level. These estimated volumes are final and not subject to adjustment. Prospective bidders are urged to examine this timber and to make their own estimates of quantity and quality.

I understand that any or all bids may be rejected. All bids must be signed and all bid items must be bid or the bid form may be rejected. I also understand that consideration and awarding a contract will be based upon my past performance and ability to complete the contract based upon equipment and staffing subject to my control.

FEDERAL ID: \_\_\_\_ - \_\_\_\_ - \_\_\_\_ or SOCIAL SECURITY NUMBER: \_\_\_\_ - \_\_\_\_ - \_\_\_\_

Company or individual bidding: \_\_\_\_\_

Company representative's name: \_\_\_\_\_

Address: \_\_\_\_\_

City: \_\_\_\_\_ State: \_\_\_\_\_ Zip: \_\_\_\_\_

IF AVAILABLE, PLEASE PLACE THE PERSONALIZED LABEL FROM YOUR PROSPECTUS IN THE ABOVE BOX.

Individual or company representative's signature: \_\_\_\_\_ Date: \_\_\_\_\_  
Phone number : \_\_\_\_\_ Email (optional): \_\_\_\_\_

**THE WINNING BIDDER MUST COMPLETE THE VERIFICATION OF WORKER'S DISABILITY COMPENSATION ACT COMPLIANCE (ON REVERSE SIDE IF DOUBLE SIDED) WITHIN 21 DAYS OF SALE AWARD DATE**





Bowtie Red Pine (61-034-21)  
T28N, R13W, SEC. 26; Leelanau COUNTY

In response to the notice of sale to be held 4:00 p.m. (local time) on October 14, 2021, I am hereby submitting my sealed bid (firm offer) for the following forest products to be cut. Bids for individual species must be at or above the advertised price. All non-responsive bid forms may be rejected.

<u>PRODUCTS &amp; SPECIES</u>	<u>ESTIMATED VOLUME*</u>	<u>ADVERTISED PRICE</u>	<u>BID PRICE/UNIT</u>
<b>Sawtimber</b>			
B. T. Aspen	33.2 MBF	\$ 90.00/MBF	\$ _____
Beech	6.7 MBF	\$ 63.00/MBF	\$ _____
Black Cherry	14.3 MBF	\$ 153.00/MBF	\$ _____
Red Maple	19.1 MBF	\$ 116.00/MBF	\$ _____
Red Pine	44.5 MBF	\$ 80.00/MBF	\$ _____
Sugar Maple	19.3 MBF	\$ 164.00/MBF	\$ _____
White Pine	6.1 MBF	\$ 37.00/MBF	\$ _____
<b>Pulpwood</b>			
Mixed Aspen	68 Cords	\$ 12.80/Cord	\$ _____
Mixed Hardwood	267 Cords	\$ 12.35/Cord	\$ _____
Red Pine	1,352 Cords	\$ 29.80/Cord	\$ _____
Scotch Pine	2 Cords	\$ 10.65/Cord	\$ _____
White Pine	4 Cords	\$ 13.80/Cord	\$ _____

\*The volumes are statistically estimated within plus (+) or minus (-) 3.75 percent at 95% confidence level. These estimated volumes are final and not subject to adjustment. Prospective bidders are urged to examine this timber and to make their own estimates of quantity and quality.

I understand that any or all bids may be rejected. All bids must be signed and all bid items must be bid or the bid form may be rejected. I also understand that consideration and awarding a contract will be based upon my past performance and ability to complete the contract based upon equipment and staffing subject to my control.

FEDERAL ID: \_\_\_\_ - \_\_\_\_ - \_\_\_\_ or SOCIAL SECURITY NUMBER: \_\_\_\_ - \_\_\_\_ - \_\_\_\_

Company or individual bidding: \_\_\_\_\_

Company representative's name: \_\_\_\_\_

Address: \_\_\_\_\_

City: \_\_\_\_\_ State: \_\_\_\_\_ Zip: \_\_\_\_\_

IF AVAILABLE, PLEASE PLACE THE PERSONALIZED LABEL FROM YOUR PROSPECTUS IN THE ABOVE BOX.

Individual or company representative's signature: \_\_\_\_\_ Date: \_\_\_\_\_

Phone number : \_\_\_\_\_ Email (optional): \_\_\_\_\_

**THE WINNING BIDDER MUST COMPLETE THE VERIFICATION OF WORKER'S DISABILITY COMPENSATION ACT COMPLIANCE (ON REVERSE SIDE IF DOUBLE SIDED) WITHIN 21 DAYS OF SALE AWARD DATE**



FOR DEPARTMENT USE ONLY	
Sale Number (XX - XXX - XX - XX)	
Forest Management Unit:	

## TIMBER SALE VERIFICATION OF WORKER'S DISABILITY COMPENSATION ACT COMPLIANCE

As required by Act 317, P.A. 1969 (Worker's Compensation) and  
Part 5 of Act 451 of 1994, as amended.

### VERIFICATION OF WORKER'S DISABILITY COMPENSATION ACT COMPLIANCE

- This verification must be completed and submitted within 21 days of contract award and prior to the issuance of the timber sale contract.
- In addition, if boxes 2B or 2C are checked, then Notice of Exclusion or Certificate of Insurance must be submitted within twenty-one (21) days of the contract award and prior to the issuance of the timber sale contract.
- All information must be typed or printed except for written signatures.

Please Check Appropriate Categories:

1. My business is organized as (you **must** check one of the boxes below):
  - A.  Sole Proprietorship (individual)
  - B.  Partnership
  - C.  Corporation
2. You **must** check one of the boxes below:
  - A.  I certify my business is a sole proprietorship and it has no employees but the sole proprietor. I am not subject to the Worker's Compensation Laws.
  - B.  I certify my business has satisfied its obligation to the Worker's Compensation Act through the use of an approved Notice of Exclusion (BWC-337, Rev. 5/96). I will provide a copy of the Notice of Exclusion within 21 days of the contract award. (For questions or a copy of the BWC-337, please call the Worker's Compensation Bureau at 517-322-1195).
  - C.  I certify my business has a Worker's Compensation Policy. I will provide an original Certificate of Insurance within twenty-one (21) days of the contract award.
3. If you have checked item 2(A) or 2(B), you **must** indicate the number of **both** full-time and part-time employees, other than yourself, including family members and active partners (if none, you must enter "0").

\_\_\_\_\_ Full-time Employees

\_\_\_\_\_ Part-time Employees

Name of Business		Federal ID (or) Social Security No.	
Address		Telephone (       )	
City	State	ZIP	

*I hereby certify that the above information is true and correct. I agree to notify the Michigan DNR of any changes that occur in factors affecting my coverage during any of my present and future operations.*

\_\_\_\_\_  
Signature of Owner or Authorized Representative

\_\_\_\_\_  
Title

\_\_\_\_\_  
Date

Please complete the "SEALED BID" information on the next page

Sancho Mix (61-035-21)  
T25N, R09W, SEC. 29; T25N, R09W, SEC. 30; Grand Traverse COUNTY

In response to the notice of sale to be held 4:00 p.m. (local time) on October 14, 2021, I am hereby submitting my sealed bid (firm offer) for the following forest products to be cut. Bids for individual species must be at or above the advertised price. All non-responsive bid forms may be rejected.

<u>PRODUCTS &amp; SPECIES</u>	<u>ESTIMATED VOLUME*</u>	<u>ADVERTISED PRICE</u>	<u>BID PRICE/UNIT</u>
<b>Sawtimber</b>			
B. T. Aspen	68.0 MBF	\$ 90.00/MBF	\$ _____
Northern Pin Oak	58.0 MBF	\$ 70.00/MBF	\$ _____
Red Pine	46.6 MBF	\$ 80.00/MBF	\$ _____
White Oak	55.5 MBF	\$ 75.00/MBF	\$ _____
White Pine	10.9 MBF	\$ 37.00/MBF	\$ _____
<b>Pulpwood</b>			
B. T. Aspen	64 Cords	\$ 12.80/Cord	\$ _____
Jack Pine	14 Cords	\$ 8.35/Cord	\$ _____
Mixed Oak	190 Cords	\$ 12.30/Cord	\$ _____
Red Maple	271 Cords	\$ 12.35/Cord	\$ _____
Red Pine	229 Cords	\$ 29.80/Cord	\$ _____
White Pine	135 Cords	\$ 13.80/Cord	\$ _____

\*The volumes are statistically estimated within plus (+) or minus (-) 9.14 percent at 95% confidence level. These estimated volumes are final and not subject to adjustment. Prospective bidders are urged to examine this timber and to make their own estimates of quantity and quality.

I understand that any or all bids may be rejected. All bids must be signed and all bid items must be bid or the bid form may be rejected. I also understand that consideration and awarding a contract will be based upon my past performance and ability to complete the contract based upon equipment and staffing subject to my control.

FEDERAL ID: \_\_\_\_\_ or SOCIAL SECURITY NUMBER: \_\_\_\_\_

Company or individual bidding: \_\_\_\_\_

Company representative's name: \_\_\_\_\_

Address: \_\_\_\_\_

City: \_\_\_\_\_ State: \_\_\_\_\_ Zip: \_\_\_\_\_

IF AVAILABLE, PLEASE PLACE THE PERSONALIZED LABEL FROM YOUR PROSPECTUS IN THE ABOVE BOX.

Individual or company representative's signature: \_\_\_\_\_ Date: \_\_\_\_\_

Phone number : \_\_\_\_\_ Email (optional): \_\_\_\_\_

**THE WINNING BIDDER MUST COMPLETE THE VERIFICATION OF WORKER'S DISABILITY COMPENSATION ACT COMPLIANCE (ON REVERSE SIDE IF DOUBLE SIDED) WITHIN 21 DAYS OF SALE AWARD DATE**



Deer Creek Mix (61-038-21)  
T25N, R10W, SEC. 35; Grand Traverse COUNTY

In response to the notice of sale to be held 4:00 p.m. (local time) on October 14, 2021, I am hereby submitting my sealed bid (firm offer) for the following forest products to be cut. Bids for individual species must be at or above the advertised price. All non-responsive bid forms may be rejected.

<u>PRODUCTS &amp; SPECIES</u>	<u>ESTIMATED VOLUME*</u>	<u>ADVERTISED PRICE</u>	<u>BID PRICE/UNIT</u>
<b>Sawtimber</b>			
B. T. Aspen	229.2 MBF	\$ 90.00/MBF	\$ _____
Basswood	32.1 MBF	\$ 76.00/MBF	\$ _____
Beech	17.4 MBF	\$ 63.00/MBF	\$ _____
Red Maple	27.1 MBF	\$ 116.00/MBF	\$ _____
Sugar Maple	51.2 MBF	\$ 164.00/MBF	\$ _____
<b>Pulpwood</b>			
B. T. Aspen	552 Cords	\$ 12.80/Cord	\$ _____
Balsam Fir	6 Cords	\$ 8.70/Cord	\$ _____
Basswood	30 Cords	\$ 10.95/Cord	\$ _____
Mixed Hardwood	427 Cords	\$ 12.35/Cord	\$ _____
Red Oak	11 Cords	\$ 12.30/Cord	\$ _____

\*The volumes are statistically estimated within plus (+) or minus (-) 6.58 percent at 95% confidence level. These estimated volumes are final and not subject to adjustment. Prospective bidders are urged to examine this timber and to make their own estimates of quantity and quality.

I understand that any or all bids may be rejected. All bids must be signed and all bid items must be bid or the bid form may be rejected. I also understand that consideration and awarding a contract will be based upon my past performance and ability to complete the contract based upon equipment and staffing subject to my control.

FEDERAL ID: \_\_\_\_\_ or SOCIAL SECURITY NUMBER: \_\_\_\_\_

Company or individual bidding: \_\_\_\_\_

Company representative's name: \_\_\_\_\_

Address: \_\_\_\_\_

City: \_\_\_\_\_ State: \_\_\_\_\_ Zip: \_\_\_\_\_

IF AVAILABLE, PLEASE PLACE THE PERSONALIZED LABEL FROM YOUR PROSPECTUS IN THE ABOVE BOX.

Individual or company representative's signature: \_\_\_\_\_ Date: \_\_\_\_\_

Phone number : \_\_\_\_\_ Email (optional): \_\_\_\_\_

**THE WINNING BIDDER MUST COMPLETE THE VERIFICATION OF WORKER'S DISABILITY COMPENSATION ACT COMPLIANCE (ON REVERSE SIDE IF DOUBLE SIDED) WITHIN 21 DAYS OF SALE AWARD DATE**



<b>FOR DEPARTMENT USE ONLY</b>	
Sale Number (XX - XXX - XX - XX)	
Forest Management Unit:	

# TIMBER SALE VERIFICATION OF WORKER'S DISABILITY COMPENSATION ACT COMPLIANCE

As required by Act 317, P.A. 1969 (Worker's Compensation) and  
Part 5 of Act 451 of 1994, as amended.

## VERIFICATION OF WORKER'S DISABILITY COMPENSATION ACT COMPLIANCE

- This verification must be completed and submitted within 21 days of contract award and prior to the issuance of the timber sale contract.
- In addition, if boxes 2B or 2C are checked, then Notice of Exclusion or Certificate of Insurance must be submitted within twenty-one (21) days of the contract award and prior to the issuance of the timber sale contract.
- All information must be typed or printed except for written signatures.

Please Check Appropriate Categories:

1. My business is organized as (you **must** check one of the boxes below):
  - A.  Sole Proprietorship (individual)
  - B.  Partnership
  - C.  Corporation
2. You **must** check one of the boxes below:
  - A.  I certify my business is a sole proprietorship and it has no employees but the sole proprietor. I am not subject to the Worker's Compensation Laws.
  - B.  I certify my business has satisfied its obligation to the Worker's Compensation Act through the use of an approved Notice of Exclusion (BWC-337, Rev. 5/96). I will provide a copy of the Notice of Exclusion within 21 days of the contract award. (For questions or a copy of the BWC-337, please call the Worker's Compensation Bureau at 517-322-1195).
  - C.  I certify my business has a Worker's Compensation Policy. I will provide an original Certificate of Insurance within twenty-one (21) days of the contract award.
3. If you have checked item 2(A) or 2(B), you **must** indicate the number of **both** full-time and part-time employees, other than yourself, including family members and active partners (if none, you must enter "0").

\_\_\_\_\_ Full-time Employees

\_\_\_\_\_ Part-time Employees

Name of Business		Federal ID (or) Social Security No.	
Address		Telephone (       )	
City	State	ZIP	

*I hereby certify that the above information is true and correct. I agree to notify the Michigan DNR of any changes that occur in factors affecting my coverage during any of my present and future operations.*

\_\_\_\_\_  
Signature of Owner or Authorized Representative

\_\_\_\_\_  
Title

\_\_\_\_\_  
Date

Please complete the "SEALED BID" information on the next page

Town County Aspen (61-044-21)  
T25N, R09W, SEC. 31; T25N, R10W, SEC. 36; Grand Traverse COUNTY

In response to the notice of sale to be held 4:00 p.m. (local time) on October 14, 2021, I am hereby submitting my sealed bid (firm offer) for the following forest products to be cut. Bids for individual species must be at or above the advertised price. All non-responsive bid forms may be rejected.

<u>PRODUCTS &amp; SPECIES</u>	<u>ESTIMATED VOLUME*</u>	<u>ADVERTISED PRICE</u>	<u>BID PRICE/UNIT</u>
<b>Sawtimber</b>			
Northern Pin Oak	10.0 MBF	\$ 70.00/MBF	\$ _____
Red Maple	2.6 MBF	\$ 116.00/MBF	\$ _____
White Oak	5.5 MBF	\$ 75.00/MBF	\$ _____
<b>Pulpwood</b>			
B. T. Aspen	409 Cords	\$ 12.80/Cord	\$ _____
Mixed Oak	27 Cords	\$ 12.30/Cord	\$ _____
Red Maple	25 Cords	\$ 12.35/Cord	\$ _____

\*The volumes are statistically estimated within plus (+) or minus (-) 16.74 percent at 95% confidence level. These estimated volumes are final and not subject to adjustment. Prospective bidders are urged to examine this timber and to make their own estimates of quantity and quality.

I understand that any or all bids may be rejected. All bids must be signed and all bid items must be bid or the bid form may be rejected. I also understand that consideration and awarding a contract will be based upon my past performance and ability to complete the contract based upon equipment and staffing subject to my control.

FEDERAL ID: \_\_\_\_\_ - \_\_\_\_\_ or SOCIAL SECURITY NUMBER: \_\_\_\_\_ - \_\_\_\_\_ - \_\_\_\_\_

Company or individual bidding: \_\_\_\_\_

Company representative's name: \_\_\_\_\_

Address: \_\_\_\_\_

City: \_\_\_\_\_ State: \_\_\_\_\_ Zip: \_\_\_\_\_

IF AVAILABLE, PLEASE PLACE THE PERSONALIZED LABEL FROM YOUR PROSPECTUS IN THE ABOVE BOX.

Individual or company representative's signature: \_\_\_\_\_ Date: \_\_\_\_\_

Phone number : \_\_\_\_\_ Email (optional): \_\_\_\_\_

**THE WINNING BIDDER MUST COMPLETE THE VERIFICATION OF WORKER'S DISABILITY COMPENSATION ACT COMPLIANCE (ON REVERSE SIDE IF DOUBLE SIDED) WITHIN 21 DAYS OF SALE AWARD DATE**



FOR DEPARTMENT USE ONLY	
Sale Number (XX - XXX - XX - XX)	
Forest Management Unit:	

# TIMBER SALE VERIFICATION OF WORKER'S DISABILITY COMPENSATION ACT COMPLIANCE

As required by Act 317, P.A. 1969 (Worker's Compensation) and  
Part 5 of Act 451 of 1994, as amended.

## VERIFICATION OF WORKER'S DISABILITY COMPENSATION ACT COMPLIANCE

- This verification must be completed and submitted within 21 days of contract award and prior to the issuance of the timber sale contract.
- In addition, if boxes 2B or 2C are checked, then Notice of Exclusion or Certificate of Insurance must be submitted within twenty-one (21) days of the contract award and prior to the issuance of the timber sale contract.
- All information must be typed or printed except for written signatures.

Please Check Appropriate Categories:

1. My business is organized as (you **must** check one of the boxes below):
  - A.  Sole Proprietorship (individual)
  - B.  Partnership
  - C.  Corporation
2. You **must** check one of the boxes below:
  - A.  I certify my business is a sole proprietorship and it has no employees but the sole proprietor. I am not subject to the Worker's Compensation Laws.
  - B.  I certify my business has satisfied its obligation to the Worker's Compensation Act through the use of an approved Notice of Exclusion (BWC-337, Rev. 5/96). I will provide a copy of the Notice of Exclusion within 21 days of the contract award. (For questions or a copy of the BWC-337, please call the Worker's Compensation Bureau at 517-322-1195).
  - C.  I certify my business has a Worker's Compensation Policy. I will provide an original Certificate of Insurance within twenty-one (21) days of the contract award.
3. If you have checked item 2(A) or 2(B), you **must** indicate the number of **both** full-time and part-time employees, other than yourself, including family members and active partners (if none, you must enter "0").

\_\_\_\_\_ Full-time Employees

\_\_\_\_\_ Part-time Employees

Name of Business		Federal ID (or) Social Security No.	
Address		Telephone (       )	
City	State	ZIP	

*I hereby certify that the above information is true and correct. I agree to notify the Michigan DNR of any changes that occur in factors affecting my coverage during any of my present and future operations.*

\_\_\_\_\_  
Signature of Owner or Authorized Representative

\_\_\_\_\_  
Title

\_\_\_\_\_  
Date

Please complete the "SEALED BID" information on the next page