



**DEPARTMENT OF NATURAL RESOURCES
STATE OF MICHIGAN**

TIMBER SALE PROSPECTUS #6904

SCHEDULED SALE DATE AND TIME: 9:00 a.m. (local time) on October 7, 2021.

LOCATION: **BARAGA MGMT UNIT, 427 US 41 NORTH, BARAGA, MI 49908.**

PROSPECTUS NOTE: The bidder is advised to inspect the sale area and review the location, estimated volumes, operating costs and contract terms of proposed sales. Please be aware that some landowners may request 60 days or more notice for access across their land.

Notice is hereby given that bids will be received by the Unit Manager, BARAGA MANAGEMENT UNIT, for certain timber on the following described lands:

Elm River Block (11-007-21) / T52N, R36W, SEC. 11, NWNW.

T52N, R36W, SEC. 2 , W1/2NW,N1/2SW,SWSW.

T52N, R36W, SEC. 3 , NW,NE,E1/2SE.

Houghton County, Advertised Price \$72,367.40, 369.2 Acres, Hardwood, Sugar Maple.

SALE NOTE: All units of volume listed for this sale were estimated using the Inventory Manager computer program and the new Michigan taper model.

A recreation site such as a trail, pathway, or campground is within the sale area or the vicinity. Certain restrictions/specifications may be applicable including time restrictions.

Snake Eyes Mix (11-011-21) / T52N, R37W, SEC. 24, NW,NE,SW.

Ontonagon County, Advertised Price \$85,020.65, 303.4 Acres, Hardwood, Sugar Maple.

SALE NOTE: All units of volume listed for this sale were estimated using the Inventory Manager computer program and the new Michigan taper model.

Access may be through private land.

BID INSTRUCTIONS (VER. 07/02/2018):

1. Scheduled Bid Location, Date, and Time (2/11)

Bids must be received by the Unit Manager, BARAGA OFFICE, 427 US 41 North, Baraga, MI 49908, no later than 9:00 a.m. (local time) on October 7, 2021. For further information concerning this sale, contact Brad Carlson at 906-353-6651.

2. Bidder's Qualifications (5/16)

Purchaser shall obtain workers compensation insurance to cover claims under Michigan's Worker's Disability Compensation Act of 1969 or similar employee benefit act of any other state applicable to an employee. If all or part of a timber sale was prepared by a private contractor, the contractor and that contractor's company are not permitted to bid on the timber sale contract. Bids will not be accepted from individuals or companies appearing on the DNR/FRD No-Bid List. This list contains the names of purchasers who previously failed to execute a contract within 21-days or who have a history of poor performance.

3. Preparation of Sealed Bids (5/16)

Bid Forms may be completed online thru Michigan DNR Timber Sale Online Bidding (OLB) at www.michigan.gov/timberbidding or by completing the hardcopy Bid Form found in the Timber Sale Prospectus. Hardcopy Bid Forms shall be manually signed in ink. Registration in OLB is considered your 'signature' for all bids submitted thru that system. Bid prices must be entered for each species and product in the Bid Price column for all material subject to bidding and all fill-in blanks must be completed. If erasures or other changes appear on the hardcopy Bid Form, each erasure or change must be initialed by the person signing the bid.

4. Submission of Sealed Bids (5/16)

Bid forms may be obtained from the Unit Manager or thru OLB. Bids may be submitted hardcopy or thru OLB. All hardcopy bids must be submitted on the bid form and in an envelope clearly identified as described in this section. NOTE: Only one bid form per bid envelope. Sealed bids must be submitted to the Unit office designated in the prospectus and must be submitted at or prior to the time established in the prospectus. The envelope should show on the outside (a) the sale name or number and (b) the date and time of bid opening, as shown in the prospectus. Bids received after the time specified in the sale prospectus are late bids and will be rejected.

It is possible for a bidder to submit multiple bids on a single sale. For example, a bid may be submitted hardcopy and a bid may be submitted thru OLB. Or, two bidders from the same company could both submit bids on the same sale. If this were to happen, the State would accept all bids received and award the contract accordingly. All bidding and contractual requirements would apply to all bids received.

5. Public Opening of Sealed Bids (7/16)

If conditions permit, the sealed bids will be publicly opened and posted at the time and place set in the prospectus.

If a bidder, present at a bid opening, has submitted bids on more than one sale, that bidder may withdraw their unopened bid envelopes or announce the withdrawal of their online bid after being declared the successful bidder on one sale.

6. Award of Contract (1/11)

Award of the contract will be made to the Bidder whose bid, conforming to the prospectus, is most advantageous to the State of Michigan on the basis of total value at rates bid for the estimated quantities. The State reserves the right to reject any bid or waive any minor irregularity in bids received. A written award mailed (or otherwise furnished) to the successful Bidder shall be deemed to result in a binding contract without further action by either party.

7. Down Payment (1/11)

The Bidder to whom award is made must make a down payment within 21 days of the sale award. The amount of the down payment will be calculated as shown in the Bond and Payment Schedule of this prospectus. Only cash may be used to meet this requirement.

8. Performance Security (1/11)

As guarantee of faithful performance, a cash bond, certificate of deposit, surety bond or irrevocable letter of credit (LOC) is required within 21 days of the sale award. The amount of the performance security is shown in the Bond and

Payment Schedule of this prospectus. If an LOC or surety is used, the coverage must extend for at least 6 months beyond the contract expiration.

9. Timber Sale Contract (7/18)

Additional conditions and requirements common to all timber sales are listed on the timber sale contract (R4031) and are available on line at www.michigan.gov/timber. Contact the Unit Manager for additional information or a sample contract. Within 21 days of the date of the award letter, the bidder must sign the contract and provide the required down payment, performance security, and verification of worker's disability compensation. The down payment and performance security shall be in accordance with the provisions of the timber sale contract, in the sums stated in this prospectus. If these actions are not taken, then the Bidder, the Bidder's corporation, and the corporation's principals may not be permitted to bid on State timber sales for a period of 3 months after the first offense, 6 months after the second offense, and 1 year after the third offense. An offense will only be counted against the Bidder for 5 years. In addition, the Bidder certifies that if awarded this contract, the Bidder will complete the timber sale contract in accordance with its terms and any modifications thereof including requirements to purchase, cut, and remove the included timber by the expiration date.

Payment Unit values in the State Forest Timber Sale Contract are calculated based on the advertised value of the Payment Unit as a percentage of the total advertised value of the contract. The advertised value of each Payment Unit is given in the Description of Timber by Payment Unit table on the Timber Sale Information page. For example, if the value of Payment Unit 1 is advertised as \$1,500 and the total Timber Sale value is advertised as \$10,000, the contract price for Payment Unit 1 will be 15% of the total bid price ($\$1,500/\$10,000 * 100$).

10. Disclaimer of Estimates and Bidder's Warranty of Inspection (7/16)

Before submitting this bid, the Bidder is advised and cautioned to inspect the sale area, review the requirements of the sale contract, and take other steps as may be reasonably necessary to ascertain the location, estimated volumes, construction estimates, and operating costs of the proposed sale. Failure to do so will not relieve the Bidder from responsibility for completing the contract.

The Bidder warrants that this bid is submitted solely on the basis of the Bidder's examination and inspection of the quality and quantity of the timber offered for sale and the Bidder's opinion of the value thereof and the costs of recovery. No reliance should be placed on the State of Michigan's estimates of timber quality, quantity or costs of recovery. Bidder further acknowledges that the State of Michigan: (i) expressly disclaims any warranty of fitness of timber for any purpose; (ii) offers this timber as is without any warranty of quality (merchantability) or quantity and (iii) expressly disclaims any warranty as to the quantity or quality of timber sold.

11. Certification and Chain-of-Custody (10/14)

Unless otherwise indicated in the contract under section 7 – Other Conditions of the Sale Specific Conditions & Requirements, the area encompassed by this timber sale is certified to the standards of the Forest Stewardship Council (FSC) - Certificate #SCS-FM/COC-00090N and the Sustainable Forestry Initiative (SFI) - Certificate # NSF-SFIS-5Y031-SF5. Forest products from this sale may be delivered to the mill as "FSC 100% and / or SFI certified" as long as the contractor hauling the forest products is chain-of-custody (COC) certified or covered under a COC certificate from the destination mill. The purchaser is responsible for maintaining COC after leaving the sale area.

12. Good Neighbor Authority (GNA) Requirements (7/16)

If the name of this timber sales contains the acronym GNA, it is authorized by the Good Neighbor Authority (GNA) and covered by various agreements between the U.S. Forest Service and the State. The timber sale occurs on federal land and the following conditions apply:

GNA contracts on US Forest Service land will not be awarded to purchasers on the Federal list of excluded parties. The System for Award Management (SAM) will be checked for active excluded parties prior to award of contract. In addition, the Bidder to whom award is made must complete an Assurance Regarding Felony Conviction or Tax Delinquent Status for Corporate Applicants (AD-3031).

13. Good Neighbor Authority (GNA) Requirements, con't (9/16)

Bidder certifies, by signing this bid form, that to the best of Bidder's knowledge that the following representations are accurate and complete.

- a. That the Bidder and its principals are not presently debarred, suspended, proposed for debarment, declared ineligible, or voluntary excluded from timber sales (covered transactions) by any Federal department or agency.
- b. That the Bidder and its principals have not within a 3-year period preceding this bid been convicted of or had a civil judgment rendered against them for commission of fraud or a criminal offense in connection with obtaining , attempting to obtain, or performing a public (Federal, State, or local) transaction or contract under a public transaction; violation of Federal or State antitrust statutes or commission of embezzlement, theft, forgery, bribery, falsification or destruction of records, making false statements, or receiving stolen property.
- c. That the Bidder and its principals are not presently indicted for or otherwise criminally or civilly charged by a governmental entity (Federal, State, or local) with commission of any of the offenses enumerated in paragraph b of this certification.
- d. That the Bidder and its principals have not within a 3-year period preceding this bid had one or more public transactions (Federal, State, or local) terminated for breach or default of a timber or forest product contract.

Bidders that cannot certify this requirement, in whole or in part, shall submit an explanation with their bid.

DAN EICHINGER
Director

TIMBER SALE INFORMATION

Elm River Block (11-007-21)

T52N, R36W, SEC. 11; T52N, R36W, SEC. 2; T52N, R36W, SEC. 3.
Houghton County (Advertised Price \$72,367.40)

SALE NOTE: All units of volume listed for this sale were estimated using the Inventory Manager computer program and the new Michigan taper model.

A recreation site such as a trail, pathway, or campground is within the sale area or the vicinity. Certain restrictions/specifications may be applicable including time restrictions.

A timber sale contract for this lump sum, sealed bid timber sale will be awarded to the responsible bidder offering the highest sealed bid price. All units of volume listed below were estimated using the Inventory Manager computer program and the new Michigan taper model. Bids must be at or above the following advertised price for each product and species:

<u>PRODUCTS & SPECIES</u>	<u>ESTIMATED UNITS*</u>	<u>ADVERTISED PRICE</u>
Sawtimber		
Basswood	281.1 MBF	\$ 32.00 / MBF
Black Ash	7.9 MBF	\$ 19.00 / MBF
Red Maple	26.8 MBF	\$ 64.00 / MBF
Sugar Maple	404.4 MBF	\$ 130.00 / MBF
White Ash	28.2 MBF	\$ 31.00 / MBF
Yellow Birch	10.3 MBF	\$ 33.00 / MBF
Pulpwood		
Basswood	351 Cords	\$ 3.40 / Cord
Mixed Hardwood	1,518 Cords	\$ 4.30 / Cord

* The total volume is statistically estimated within plus (+) or minus (-) 3.72 percent. There are an estimated 3,749 cords on this timber sale, plus or minus 140 cords at the 95% confidence level. The estimated units are final and not subject to adjustment. Prospective bidders are urged to examine this timber and to make their own estimates of quantity and quality.

BOND AND PAYMENT SCHEDULE:

1. A bond in the amount of \$5,000.00 to insure faithful performance of the conditions of the contract will be deposited by the successful bidder within 21 days of the sale award.
2. Cutting in any sale or unit without the required advance payment would be considered a trespass.
3. Total payment must be paid in advance or according to the following schedule :
 - (a) Ten percent (10%) of the sale value must be paid within 21 days of the sale award.
 - (b) The 10% down payment will be credited towards the first unit cut.
 - (c) Payment for each of the following units must be made before cutting begins in that unit:

PAYMENT UNIT NUMBER	PERCENT OF TOTAL SALE VALUE
01	13.3%
02	13.9%
03	6.1%
04	8.8%
05	9.5%
06	7.9%
07	4.4%
08	19.1%
09	4.5%
10	12.5%

4. If no cutting takes place, the 10% down payment will not be refunded.
5. Operations on the contract issued will terminate on 06/30/2025.

SALE STATISTICS

Volumes were calculated in cubic feet using the Michigan taper model. Cubic foot volume includes all wood inside bark for the product indicated. For display purposes, cubic feet were converted to cords and MBF using a simple conversion factor, e.g. 79 cubic feet per cord and 185 cubic feet per MBF. The cubic foot volumes are precise; the cords and MBF volumes are not. Cubic foot volume cannot be directly converted to cords or boards with precision.

SALE VOLUMES

The total estimated sale volume may not equal the sum of the species/products due to the nature of statistical calculations associated with double sampling methodology.

VOLUME			STATISTICAL RANGE IN CORDS	
TOTAL CUBIC FEET	TOTAL CORDS	PERCENT ERROR	MINIMUM	MAXIMUM
296,196	3,749	3.72%	3,610	3,889

VDU VOLUMES

A VDU is a Volume Determination Unit. Volumes and their associated statistics are calculated at the VDU level and summarized to the sale level. There is often a one to one relationship between a VDU and a Payment Unit, but not always, depending on the cruise design. Refer to the VDU TO PAYMENT UNIT table.

	VOLUME			RANGE IN CORDS	
VDU	TOTAL CUBIC FEET	TOTAL CORDS	PERCENT ERROR	MINIMUM	MAXIMUM
1	31,387	397	10.69%	355	440
2	19,243	244	9.83%	220	268
3	40,049	507	8.76%	463	551
4	9,576	121	22.14%	94	148
5	20,246	256	13.18%	223	290
6	20,500	259	19.00%	210	309
7	31,982	405	12.89%	353	457
8	34,186	433	8.70%	395	470
9	38,573	488	7.73%	451	526
10	21,801	276	14.52%	236	316
TOTAL:	267,543	3,387		2,998	3,775

VDU TO PAYMENT UNIT

When a VDU is associated with more than one Payment Unit (PU), the VDU volumes are assigned to the PU based on acres of the VDU within the PU.

VDU	VDU ACRES	PU	PU ACRES
1	44.5	10	44.5
2	31.7	9	31.7
3	47.7	8	47.7
4	23.5	7	23.4
		8	0.1
5	40.3	6	40.3
6	36.4	5	36.4
7	30.0	1	0.1
		4	29.9
8	43.2	1	43.0
		2	0.2
9	46.3	2	46.3
10	25.6	3	25.6
TOTAL:	369.2		369.2

DESCRIPTION OF TIMBER BY PAYMENT UNIT (PU)

PU	MARKET GROUP	PRODUCT	QUANTITY	UNIT	ACRES	ADVERTISE PRICE
1	Basswood	Sawtimber	51.6	MBF	43.1	\$9,596.60
	Sugar Maple		54.3	MBF		
	Basswood	Pulpwood	71	Cords		
	Mixed Hardwood		150	Cords		
	<i>Red Maple</i>		5	<i>Cords</i>		
	<i>Sugar Maple</i>		145	<i>Cords</i>		
2	Basswood	Sawtimber	42.2	MBF	46.5	\$10,028.50
	Red Maple		0.7	MBF		
	Sugar Maple		55.9	MBF		
	White Ash		6.4	MBF		
	Yellow Birch		1.0	MBF		
	Basswood		Pulpwood	72		
	Mixed Hardwood	207		Cords		
	<i>Red Maple</i>	3		<i>Cords</i>		
	<i>Sugar Maple</i>	195		<i>Cords</i>		
	<i>White Ash</i>	6		<i>Cords</i>		
	<i>Yellow Birch</i>	3		<i>Cords</i>		
	3	Basswood	Sawtimber	42.9		
Sugar Maple		18.6		MBF		
Basswood		Pulpwood	31	Cords		
Mixed Hardwood			121	Cords		
<i>Ironwood</i>			3	<i>Cords</i>		
<i>Sugar Maple</i>			118	<i>Cords</i>		
4	Basswood	Sawtimber	48.8	MBF	29.9	\$6,390.60
	Black Ash		2.2	MBF		
	Sugar Maple		28.6	MBF		
	White Ash		4.2	MBF		
	Basswood	Pulpwood	89	Cords		
	Mixed Hardwood		148	Cords		
	<i>Black Ash</i>		2	<i>Cords</i>		
	<i>Sugar Maple</i>		145	<i>Cords</i>		
	<i>White Ash</i>		1	<i>Cords</i>		
5	Basswood	Sawtimber	36.2	MBF	36.4	\$6,846.70
	Red Maple		3.8	MBF		
	Sugar Maple		38.7	MBF		
	Basswood	Pulpwood	32	Cords		
	Mixed Hardwood		71	Cords		
	<i>Red Maple</i>		5	<i>Cords</i>		
<i>Sugar Maple</i>	66	<i>Cords</i>				
6	Basswood	Sawtimber	11.6	MBF	40.3	\$5,749.30
	Red Maple		4.8	MBF		
	Sugar Maple		33.1	MBF		
	White Ash		2.0	MBF		
	Yellow Birch		2.7	MBF		
	Basswood		Pulpwood	17		
	Mixed Hardwood	130		Cords		
	<i>Ironwood</i>	3		<i>Cords</i>		
	<i>Red Maple</i>	8		<i>Cords</i>		
	<i>Sugar Maple</i>	109		<i>Cords</i>		
	<i>White Ash</i>	1		<i>Cords</i>		
	<i>Yellow Birch</i>	9	<i>Cords</i>			
7	Basswood	Sawtimber	10.0	MBF	23.4	\$3,210.60
	Black Ash		2.2	MBF		
	Sugar Maple		19.8	MBF		
	Yellow Birch		1.4	MBF		

DESCRIPTION OF TIMBER BY PAYMENT UNIT (PU), CON'T

PU	MARKET GROUP	PRODUCT	QUANTITY	UNIT	ACRES	ADVERTISE PRICE
7 con't	Basswood	Pulpwood	4	Cords		
	Mixed Hardwood		50	Cords		
	<i>Sugar Maple</i>		44	<i>Cords</i>		
	<i>Yellow Birch</i>		6	<i>Cords</i>		
8	Basswood	Sawtimber	13.6	MBF	47.8	\$13,866.40
	Sugar Maple		90.6	MBF		
	White Ash		15.6	MBF		
	Yellow Birch		1.5	MBF		
	Basswood	Pulpwood	12	Cords		
	Mixed Hardwood		251	Cords		
	<i>Red Maple</i>		33	<i>Cords</i>		
	<i>Sugar Maple</i>		202	<i>Cords</i>		
	<i>White Ash</i>		8	<i>Cords</i>		
	<i>Yellow Birch</i>		8	<i>Cords</i>		
	9		Basswood	Sawtimber		
Black Ash		3.5	MBF			
Red Maple		5.5	MBF			
Sugar Maple		11.8	MBF			
Yellow Birch		1.9	MBF			
Basswood		Pulpwood	8	Cords		
Mixed Hardwood			158	Cords		
<i>Black Ash</i>			3	<i>Cords</i>		
<i>Red Maple</i>			45	<i>Cords</i>		
<i>Sugar Maple</i>			83	<i>Cords</i>		
<i>Yellow Birch</i>			27	<i>Cords</i>		
10	Basswood	Sawtimber	8.2	MBF	44.5	\$9,028.40
	Red Maple		12.0	MBF		
	Sugar Maple		53.0	MBF		
	Yellow Birch		1.8	MBF		
	Basswood	Pulpwood	15	Cords		
	Mixed Hardwood		232	Cords		
	<i>Red Maple</i>		54	<i>Cords</i>		
	<i>Sugar Maple</i>		155	<i>Cords</i>		
	<i>Yellow Birch</i>		23	<i>Cords</i>		
	TOTAL:			758.7		
TOTAL:			1,869	Cords		

Sale Specific Conditions & Requirements

Sale Name: Elm River Block

Sale Number: 11-007-21 Seq#: 1

1 - Sale Area

1.2 - Boundaries

1.2.1 - Painted boundaries (9/19)

The sale boundary and Payment Unit boundaries are marked and identified by blue and red paint. Exterior sale boundary lines against private property are marked with blue paint. Exterior sale boundary lines against state are marked with red paint. Interior Payment Unit boundaries are marked with red paint. The painted boundary line trees are not Included Timber and are to be protected unless marked with orange paint. Red painted trees designating an interior Payment Unit boundary are only to be cut when all surrounding Payment Units have been paid.

2 - Timber Specifications

2.1 - Included Timber

2.1.3 - Cut tree marked unit(s) (12/08)

Within Payment Unit(s) 1 - 10, all trees are designated for cutting when marked with orange paint above and below stump height, regardless of merchantability.

2.2 - Utilization

2.2.1 - Utilization (2/04)

All listed board foot volumes of sawlog size products in this contract have been determined using a top diameter inside bark of 10 inches.

2.2.3 - Stump heights (4/07)

Stump heights within the Sale Area shall not exceed 12 inches for trees greater than 10 inches at DBH and 4 inches for trees smaller than 10 inches at DBH. A written waiver of this requirement may be obtained if wet summer weather makes winter logging necessary.

2.2.4 - Skidding length (2/14)

Skidding of unlimbed tops or lengths over 17 feet is not permissible unless approved by the Unit Manager or his/her representative. Skidding of lengths over 17 feet is permissible if the timber sale administrator approves the method and machinery used. If at any point damage exceeds specification 3.4.1, all the remaining wood must be skid in lengths less than 17 feet.

2.2.7 - Uncut designated trees (2/04)

Liquidated damages of \$10.00 per tree will be assessed for every marked tree not cut.

2.2.8 - Utilization and removal (5/14)

All products meeting standards set forth in General Condition and Requirement 2.2 - Utilization must be removed from the Sale Area. This is because excessive woody debris inhibits regeneration.

2.2.11 - Chipping restriction (9/14)

If chipping occurs on this sale, then no woody debris present on the ground at the start of the sale may be chipped. In addition, brush or chips may not be stored or stockpiled on-site for more than 30 days.

3 - Payments

3.4 - Damaged Timber

3.4.1 - Damaged timber (7/16)

General Condition and Requirement 3.4 Damaged Timber, defines liquidated damages for undesignated live merchantable trees which are cut or injured. In addition, extreme care should be taken to avoid damage to tree seedlings and saplings.

4 - Transportation

4.1 - Construction

4.1.1 - Stream crossings, general (3/11)

All stream crossing structures will be temporary and therefore, shall be provided by the Purchaser, and must be removed upon completion of the sale. All permits for stream crossings will be provided by the DNR for crossings on state land.

4.1.3 - Slash and earthen piles (8/04)

Piles or windrows of earth along roads and landings that have been widened or constructed shall be leveled. Slash from road maintenance or construction, including stumps, shall be dispersed throughout the Sale Area, chipped, utilized, or otherwise removed from the sale.

4.1.5 - Culverts (5/14)

Roads may require the installation of culverts for cross drainage or at natural drainage-ways. If culverts are needed in these locations, their placement will be specified by the sale administrator, and they shall be installed prior to hauling. The culverts shall be new, corrugated metal or plastic gauge. Culverts will be a minimum of 12 inches in diameter and 24 feet in length. If culverts are removed, fill shall be removed from wetland soils as specified. Soils shall be maintained and left in a non-erodible condition, with water bars, seed, fertilizer, mulch, and slash installed as directed by the sale administrator and as specified in the BMP manual. Stream crossing permits, if needed, will be obtained by the DNR for crossings on state land.

4.1.6 - Road construction (1/09)

Construction of new roads or improvements of existing roads shall be done in such a way as to minimize the environmental and visual impacts. Merchantable trees shall be cut and utilized unless otherwise directed. Non-merchantable trees shall be severed and laid flat on the ground. Slash shall be scattered, and not left in windrows and kept a minimum of 10 feet back from the road edge, be chipped, utilized or otherwise removed from the sale. Stumps shall be set upright, not left on edge, and be moved at least 10 feet away from the road edge. Disturbed soil shall be feathered into the woods and not left in berms or windrows.

4.1.7 - Road closure (10/11)

All new roads built into the sale must be blocked to vehicle traffic upon completion of the sale. Overgrown roads that are reopened shall be considered new roads. In general, this will require constructing a four (4') foot high berm of stumps and logs covered with earth. Contact the sale administrator for specific details of design and placement.

4.2 - Maintenance

4.2.2 - Fill material (4/07)

To maintain roads, fill material may be needed in areas where "holes" exist or may be expected to develop. This fill material should be placed before trucking begins. Contact the sale administrator regarding the availability of onsite sand or gravel from adjacent State-owned lands.

4.2.4 - Grading (10/16)

For completion of the sale, state forest roads must be graded. In general, this will require a road grader or bulldozer to shape up the roads after forest products have been hauled off site. This includes cleaning of drainage areas, grading, crowning, and filling with gravel, if necessary. The grading equipment to be used must be approved by the Unit Manager or his/her representative.

4.2.5 - Two wheel drive condition (2/04)

All existing trail roads on and adjacent to the sale area must be passable by two-wheel drive traffic for the duration of the sale.

5 - Operations

5.2 - Conduct of Operations

5.2.1 - Slash

5.2.1.1 - Slash within sale area (9/16)

No trees are to be felled outside the sale area and all slash is to be kept at least 10 feet back from the red paint line. If sale boundary lines are along a public road or highway, then slash must be removed 50' from these lines per General Condition & Requirement 5.2.1.

5.2.2 - Hazard Trees/Snags

5.2.2.1 - Den trees (10/16)

Obvious hollow and/or den trees shall be protected and left standing unless they are a safety hazard.

5.2.3 - Operating Restrictions

5.2.3.2 - Operating restrictions (9/11)

Within Payment Unit(s) 1 - 10, unless changed by written agreement, all clean-up work must be completed by July 15 for the areas that were harvested during the previous operating season. This restriction is to allow the clean-up area to revegetate before the dry season.

5.2.3.3 - Bark slippage restriction (3/09)

Within Payment Unit(s) 1 - 10, unless changed by written agreement, cutting and skidding are not permitted during the period of April 15 to July 15. This restriction is because of bark slippage.

5.2.30 - Landing/road top soil protection (2/15)

Top soil on landings and new roads must be removed, stockpiled and saved. Upon completion of the timber sale, soil must be evenly distributed back over the area for revegetation. In addition, the area must be seeded and mulched per instructions of the sale administrator.

5.2.32 - Decking/landing restoration (9/13)

All decking and landing areas must have the surface area restored to a condition equal to or better than before. This is to ensure the proper regeneration of the stand. Wood debris, chips, and "cookies" from trimmings must be removed or scattered away from landing and loading areas and may not be windrowed on the edge.

5.2.38 - No decking against live trees (2/04)

Cut products may not be decked against unmarked or designated leave trees.

5.8 - Protection of Endangered Species

5.8.5 - Protection of raptor nests (3/13)

All trees with raptor nests will be protected if found during harvesting operations. Notification will be made to the Unit Manager or his/her representative who will notify the Wildlife Biologist so an on-site evaluation and recommendation can be made, if necessary.

6 - Safety and Fire Prevention

6.2 - Signing

6.2.1 - Road posting (10/20)

The Purchaser is responsible for posting and maintaining caution signs on the Elm River Tower Road prior to beginning operations. The road must be posted at appropriate distances from the Sale Area to warn of logging activity and truck traffic. Signs must be removed when harvest operations are suspended or completed. The Purchaser will provide these signs.

7 - Other Conditions

7.5 - Loss

7.5.1 - Deteriorating timber (7/09)

The sale area has received damage from Emerald Ash borer. The Purchaser should harvest the wood as soon as possible. The Department of Natural Resources is held free of responsibility of any further damage or deterioration due to delay in harvesting.

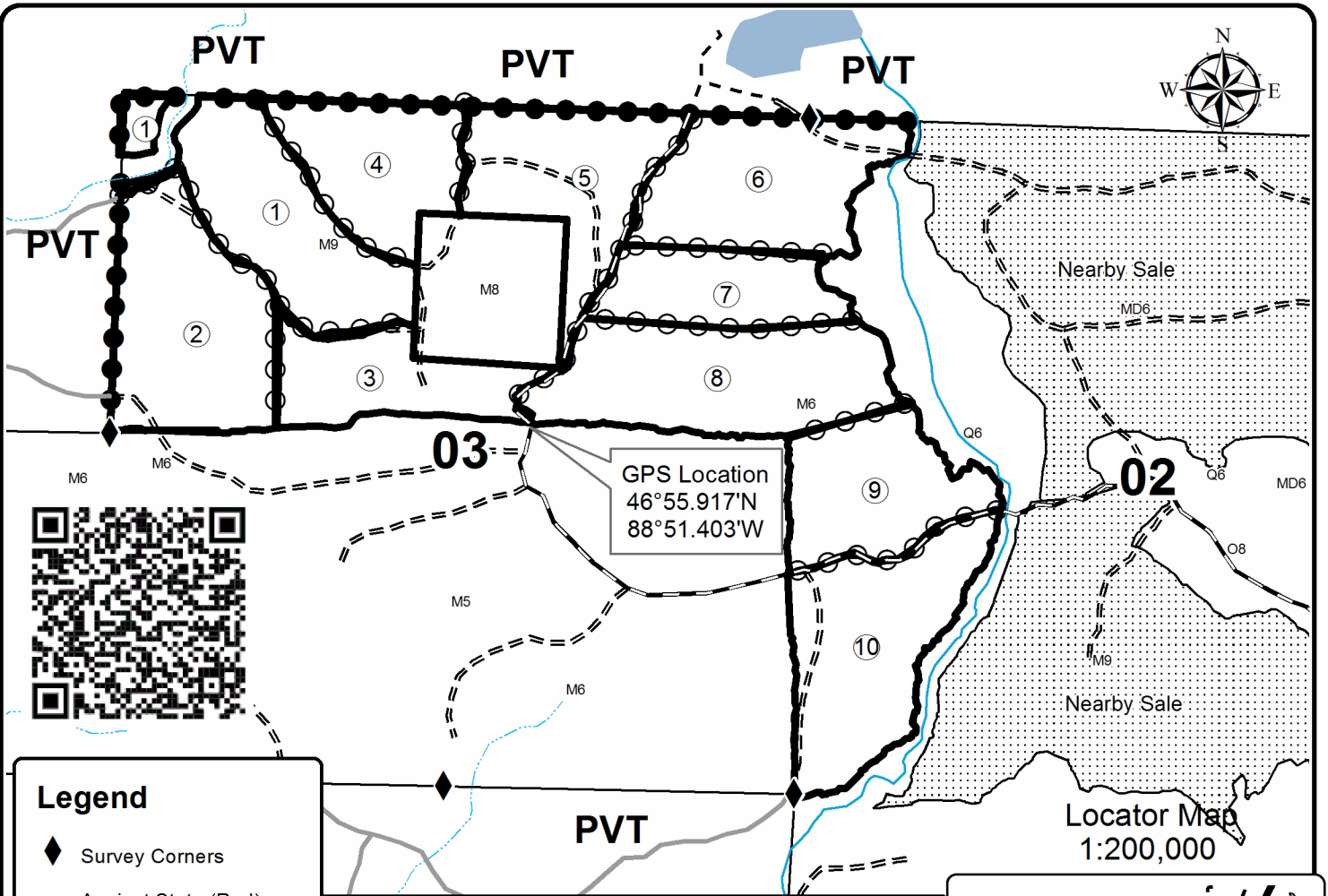


TIMBER SALE MAP

This information provided by authority of Part 525, 1994 PA 451, as amended.

Forest Management Unit Baraga		County Houghton	Mapped By Carlson	Date 6/29/21	Page 1	of 1
Township 52N	Range 36W	Section(s) and Subdivision(s) Sec 2 - W1/2NW, N1/2SW, SWSW; Sec 3 - NW, NE, E1/2SE; Sec 11 - NWNW		Scale 1:15,840		

Cover Type				Density	
A = Aspen	H = Hemlock	N = Marsh	U = Upland Brush	0 = Non Stocked	5 = Pole Timber Medium
B = Paper Birch	J = Jack Pine	O = Oak	UM = Upland Mixed	1 = Seedling Sapling Poor	6 = Pole Timber Well
C = Cedar	L = Lowland Brush	P = Lowland Poplar	V = Bog or Marsh	2 = Seedling Sapling Medium	7 = Saw Timber Poor
D = Tread Bog	LM = Lowland Mixed	Q = Mixed Swamp Conifer	W = White Pine	3 = Seedling Sapling Well	8 = Saw Timber Medium
E = Swamp Hdwoods	M = Mpl, Bch, Brch	R = Red Pine	X = Non Stocked	4 = Pole Timber Poor	9 = Saw Timber Well
F = Spruce Fir	MC = Mixed Conifer	S = Black Spruce	Z = Water		
G = Grass	MD = Mixed Deciduous	T = Tamarack			

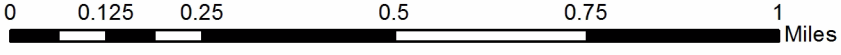
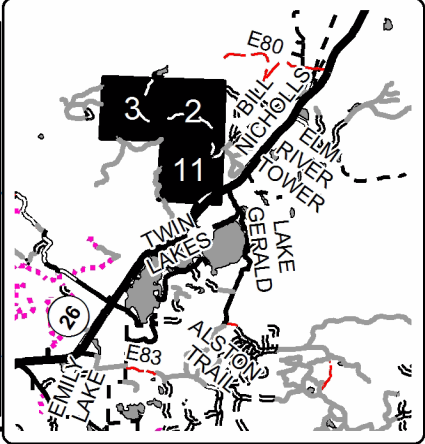


Legend

- ◆ Survey Corners
- Against State (Red)
- ⊙ Payment Unit (Red)
- Private Line (Blue)
- Primary Forest Road
- Secondary Forest Road
- == Forest Access Route
- - Gravel Road
- Private
- Lakes and Rivers
- ⋯ Nearby Timber Sales

Elm River Block
Houghton County, Compartment 32

UNIT	1	2	3	4	5	6	7	8	9	10	TOTALS
ACRES	43.1	46.5	25.6	29.9	36.4	40.3	23.4	47.8	31.7	44.5	369.2
Sawlogs MBF											
Basswood	8.2	16.0	13.6	10.0	11.6	36.2	49.0	51.6	42.0	42.9	281.1
Black Ash	0.0	3.5	0.0	2.2	0.0	0.0	2.2	0.0	0.0	0.0	7.9
Red Maple	12.0	5.5	0.0	0.0	4.8	3.8	0.0	0.0	0.7	0.0	26.8
Sugar Maple	53.0	11.8	90.5	19.9	33.1	38.7	28.7	54.5	55.6	18.6	404.4
White Ash	0.0	0.0	15.6	0.0	2.0	0.0	4.2	0.0	6.4	0.0	28.2
Yellow Birch	1.8	1.9	1.5	1.4	2.7	0.0	0.0	0.0	1.0	0.0	10.3
TOTAL	75.0	38.7	121.2	33.5	54.2	78.7	84.1	106.1	105.7	61.5	758.7
Pulpwood Cords											
Baswood	15	8	12	4	17	32	89	71	72	31	351
Mixed Hardwood	232	158	252	50	130	71	148	150	206	121	1518
TOTAL	247	166	264	54	147	103	237	221	278	152	1869



TIMBER SALE INFORMATION

Snake Eyes Mix (11-011-21)

T52N, R37W, SEC. 24.

Ontonagon County (Advertised Price \$85,020.65)

SALE NOTE: All units of volume listed for this sale were estimated using the Inventory Manager computer program and the new Michigan taper model.

Access may be through private land.

A timber sale contract for this lump sum, sealed bid timber sale will be awarded to the responsible bidder offering the highest sealed bid price. All units of volume listed below were estimated using the Inventory Manager computer program and the new Michigan taper model. Bids must be at or above the following advertised price for each product and species:

<u>PRODUCTS & SPECIES</u>	<u>ESTIMATED UNITS*</u>	<u>ADVERTISED PRICE</u>
Sawtimber		
Basswood	111.2 MBF	\$ 32.00 / MBF
Red Maple	33.8 MBF	\$ 64.00 / MBF
Red Oak	7.9 MBF	\$ 66.00 / MBF
Sugar Maple	457.2 MBF	\$ 130.00 / MBF
White Ash	119.0 MBF	\$ 31.00 / MBF
Yellow Birch	50.3 MBF	\$ 33.00 / MBF
Pulpwood		
Balsam Fir	12 Cords	\$ 1.90 / Cord
Basswood	376 Cords	\$ 3.40 / Cord
Mixed Aspen	110 Cords	\$ 11.00 / Cord
Mixed Hardwood	2,627 Cords	\$ 4.30 / Cord
Red Oak	9 Cords	\$ 17.55 / Cord
White Spruce	11 Cords	\$ 2.50 / Cord

* The total volume is statistically estimated within plus (+) or minus (-) 4.05 percent. There are an estimated 5,066 cords on this timber sale, plus or minus 205 cords at the 95% confidence level. The estimated units are final and not subject to adjustment. Prospective bidders are urged to examine this timber and to make their own estimates of quantity and quality.

BOND AND PAYMENT SCHEDULE:

1. A bond in the amount of \$7,500.00 to insure faithful performance of the conditions of the contract will be deposited by the successful bidder within 21 days of the sale award.
2. Cutting in any sale or unit without the required advance payment would be considered a trespass.
3. Total payment must be paid in advance or according to the following schedule :
 - (a) Ten percent (10%) of the sale value must be paid within 21 days of the sale award.
 - (b) The 10% down payment will be credited towards the first unit cut.
 - (c) Payment for each of the following units must be made before cutting begins in that unit:

PAYMENT UNIT NUMBER	PERCENT OF TOTAL SALE VALUE
01	30.2%
02	10.6%
03	8.6%
04	8.8%
05	11.5%
06	9.1%
07	15.0%
08	6.2%
4. If no cutting takes place, the 10% down payment will not be refunded.
5. Operations on the contract issued will terminate on 06/30/2024.

SALE STATISTICS

Volumes were calculated in cubic feet using the Michigan taper model. Cubic foot volume includes all wood inside bark for the product indicated. For display purposes, cubic feet were converted to cords and MBF using a simple conversion factor, e.g. 79 cubic feet per cord and 185 cubic feet per MBF. The cubic foot volumes are precise; the cords and MBF volumes are not. Cubic foot volume cannot be directly converted to cords or boards with precision.

SALE VOLUMES

The total estimated sale volume may not equal the sum of the species/products due to the nature of statistical calculations associated with double sampling methodology.

VOLUME			STATISTICAL RANGE IN CORDS	
TOTAL CUBIC FEET	TOTAL CORDS	PERCENT ERROR	MINIMUM	MAXIMUM
400,235	5,066	4.05%	4,861	5,272

VDU VOLUMES

A VDU is a Volume Determination Unit. Volumes and their associated statistics are calculated at the VDU level and summarized to the sale level. There is often a one to one relationship between a VDU and a Payment Unit, but not always, depending on the cruise design. Refer to the VDU TO PAYMENT UNIT table.

	VOLUME			RANGE IN CORDS	
VDU	TOTAL CUBIC FEET	TOTAL CORDS	PERCENT ERROR	MINIMUM	MAXIMUM
1	57,463	727	6.46%	680	774
2	144,831	1,833	7.99%	1,687	1,980
3	64,661	818	6.96%	762	875
4	77,332	979	8.08%	900	1,058
5	27,338	346	16.67%	288	404
TOTAL:	371,625	4,704		4,317	5,091

VDU TO PAYMENT UNIT

When a VDU is associated with more than one Payment Unit (PU), the VDU volumes are assigned to the PU based on acres of the VDU within the PU.

VDU	VDU ACRES	PU	PU ACRES
1	66.8	2	32.0
		5	34.8
2	48.8	1	48.8
3	80.2	3	39.7
		4	40.5
4	77.6	6	29.3
		7	48.3
5	30.0	8	30.0
TOTAL:	303.4		303.4

DESCRIPTION OF TIMBER BY PAYMENT UNIT (PU)

PU	MARKET GROUP	PRODUCT	QUANTITY	UNIT	ACRES	ADVERTISE PRICE	
1	Basswood	Sawtimber	44.9	MBF	48.8	\$25,690.40	
	Sugar Maple		116.8	MBF			
	White Ash		65.2	MBF			
	Yellow Birch		35.1	MBF			
	Basswood		Pulpwood	161			Cords
	Mixed Aspen	60		Cords			
	<i>B. T. Aspen</i>	34		Cords			
	<i>Balsam Poplar</i>	17		Cords			
	<i>Quaking Aspen</i>	9		Cords			
	Mixed Hardwood	1,089		Cords			
	<i>Black Ash</i>	12		Cords			
	<i>Ironwood</i>	12		Cords			
	<i>Sugar Maple</i>	657		Cords			
	<i>White Ash</i>	127		Cords			
	<i>Yellow Birch</i>	281	Cords				
2	Basswood	Sawtimber	9.9	MBF	32.0	\$9,000.60	
	Red Maple		5.6	MBF			
	Sugar Maple		54.9	MBF			
	White Ash		11.7	MBF			
	Yellow Birch		1.9	MBF			
	Basswood	Pulpwood	17	Cords			
	Mixed Hardwood		164	Cords			
	<i>Red Maple</i>		4	Cords			
	<i>Sugar Maple</i>		128	Cords			
	<i>White Ash</i>		10	Cords			
	<i>Yellow Birch</i>		22	Cords			
	3		Basswood	Sawtimber			11.0
Red Maple		10.7	MBF				
Red Oak		3.9	MBF				
Sugar Maple		34.0	MBF				
White Ash		12.5	MBF				
Yellow Birch		3.4	MBF				
Basswood		Pulpwood	36		Cords		
Mixed Hardwood			213		Cords		
<i>Black Ash</i>			3		Cords		
<i>Ironwood</i>			1		Cords		
<i>Red Maple</i>			28		Cords		
<i>Sugar Maple</i>			145		Cords		
<i>White Ash</i>			13		Cords		
<i>Yellow Birch</i>			23		Cords		
Red Oak	4	Cords					
4	Basswood	Sawtimber	11.3	MBF	40.5	\$7,488.75	
	Red Maple		11.0	MBF			
	Red Oak		4.0	MBF			
	Sugar Maple		34.6	MBF			
	White Ash		12.7	MBF			
	Yellow Birch		3.4	MBF			
	Basswood		Pulpwood	37			Cords
	Mixed Hardwood			219			Cords
	<i>Black Ash</i>			4			Cords
	<i>Ironwood</i>			2			Cords
	<i>Red Maple</i>			28			Cords
	<i>Sugar Maple</i>			147			Cords
	<i>White Ash</i>			14			Cords
	<i>Yellow Birch</i>			24			Cords
	Red Oak			5			Cords

DESCRIPTION OF TIMBER BY PAYMENT UNIT (PU), CON'T

PU	MARKET GROUP	PRODUCT	QUANTITY	UNIT	ACRES	ADVERTISE PRICE
5	Basswood	Sawtimber	10.7	MBF	34.8	\$9,780.10
	Red Maple		6.0	MBF		
	Sugar Maple		59.7	MBF		
	White Ash		12.8	MBF		
	Yellow Birch		2.1	MBF		
	Basswood	Pulpwood	18	Cords		
	Mixed Hardwood		178	Cords		
	<i>Red Maple</i>		5	<i>Cords</i>		
	<i>Sugar Maple</i>		139	<i>Cords</i>		
	<i>White Ash</i>		11	<i>Cords</i>		
	<i>Yellow Birch</i>		23	<i>Cords</i>		
6	Basswood	Sawtimber	8.8	MBF	29.3	\$7,721.70
	Sugar Maple		48.5	MBF		
	White Ash		1.5	MBF		
	Yellow Birch		1.7	MBF		
	Balsam Fir		Pulpwood	5		
	Basswood	40		Cords		
	Mixed Aspen	2		Cords		
	<i>Quaking Aspen</i>	2		<i>Cords</i>		
	Mixed Hardwood	200		Cords		
	<i>Black Ash</i>	2		<i>Cords</i>		
	<i>Red Maple</i>	2		<i>Cords</i>		
	<i>Sugar Maple</i>	177		<i>Cords</i>		
	<i>White Ash</i>	2		<i>Cords</i>		
	<i>Yellow Birch</i>	17		<i>Cords</i>		
	White Spruce	2	Cords			
7	Basswood	Sawtimber	14.6	MBF	48.3	\$12,722.60
	Sugar Maple		79.9	MBF		
	White Ash		2.6	MBF		
	Yellow Birch		2.7	MBF		
	Balsam Fir		Pulpwood	7		
	Basswood	67		Cords		
	Mixed Aspen	4		Cords		
	<i>Quaking Aspen</i>	4		<i>Cords</i>		
	Mixed Hardwood	327		Cords		
	<i>Black Ash</i>	3		<i>Cords</i>		
	<i>Red Maple</i>	3		<i>Cords</i>		
	<i>Sugar Maple</i>	292		<i>Cords</i>		
	<i>White Ash</i>	2		<i>Cords</i>		
	<i>Yellow Birch</i>	27	<i>Cords</i>			
White Spruce	3	Cords				
8	Red Maple	Sawtimber	0.5	MBF	30.0	\$5,294.10
	Sugar Maple		28.8	MBF		
	Mixed Aspen	Pulpwood	44	Cords		
	<i>Quaking Aspen</i>		44	<i>Cords</i>		
	Mixed Hardwood		237	Cords		
	<i>Red Maple</i>		16	<i>Cords</i>		
	<i>Sugar Maple</i>		201	<i>Cords</i>		
	<i>Yellow Birch</i>		20	<i>Cords</i>		
	White Spruce		6	Cords		
TOTAL:			779.4	MBF		
TOTAL:			3,145	Cords		

Sale Specific Conditions & Requirements

Sale Name: Snake Eyes Mix

Sale Number: 11-011-21 Seq#: 1

1 - Sale Area

1.2 - Boundaries

1.2.1 - Painted boundaries (9/19)

The sale boundary and Payment Unit boundaries are marked and identified by blue and red paint. Exterior sale boundary lines against private property are marked with blue paint. Exterior sale boundary lines against state are marked with red paint. Interior Payment Unit boundaries are marked with red paint. The painted boundary line trees are not Included timber and are to be protected unless marked with orange paint. Red painted trees designating an interior Payment Unit boundary are only to be cut when all surrounding Payment Units have been paid.

2 - Timber Specifications

2.1 - Included Timber

2.1.1 - Clearcut unit(s) with unmerchantable trees (6/14)

Within Payment Unit(s) 1, cut all species trees that are 4.6 inches or more at DBH, except hemlock, black cherry, cedar, oak, and white pine species. Also, reserve all sugar maple, red maple, yellow birch, basswood, and aspen stems over 22" at DBH.

2.1.3 - Cut tree marked unit(s) (12/08)

Within Payment Unit(s) 2 - 8, all trees are designated for cutting when marked with orange paint above and below stump height, regardless of merchantability.

2.2 - Utilization

2.2.1 - Utilization (2/04)

All listed board foot volumes of sawlog size products in this contract have been determined using a top diameter inside bark of 10 inches.

2.2.4 - Skidding length (2/14)

Skidding of lengths over 17 feet is permissible if the timber sale administrator approves the method and machinery used. If at any point damage exceeds specification 3.4.1, all the remaining wood must be skid in lengths less than 17 feet.

2.2.7 - Uncut designated trees (2/04)

Liquidated damages of \$10.00 per tree will be assessed for every marked tree not cut.

2.2.8 - Utilization and removal (5/14)

All products meeting standards set forth in General Condition and Requirement 2.2 - Utilization must be removed from the Sale Area. This is because excessive woody debris will inhibit regeneration.

3 - Payments

3.4 - Damaged Timber

3.4.1 - Damaged timber (7/16)

General Condition and Requirement 3.4 Damaged Timber, defines liquidated damages for undesignated live merchantable trees which are cut or injured. In addition, extreme care should be taken to avoid damage to tree seedlings and saplings.

4 - Transportation

4.1 - Construction

4.1.1 - Stream crossings, general (3/11)

All stream crossing structures will be temporary and therefore, shall be provided by the Purchaser, and must be removed upon completion of the sale. All permits for stream crossings will be provided by the DNR.

4.1.3 - Slash and earthen piles (8/04)

Piles or windrows of earth along roads and landings that have been widened or constructed shall be leveled. Slash from road maintenance or construction, including stumps, shall be dispersed throughout the Sale Area or chipped, utilized or otherwise

removed from the sale.

4.1.5 - Culverts (5/14)

Roads may require the installation of culverts for cross drainage or at natural drainage-ways. If culverts are needed in these locations, their placement will be specified by the sale administrator, and they shall be installed prior to hauling. The culverts shall be new, corrugated metal or plastic gauge. Culverts will be a minimum of 12 inches in diameter and 24 feet in length. If culverts are removed, fill shall be removed from wetland soils as specified. Soils shall be maintained and left in a non-erodible condition, with water bars, seed, fertilizer, mulch, and slash installed as directed by the sale administrator and as specified in the BMP manual. Stream crossing permits, if needed, will be obtained by the DNR.

4.1.6 - Road construction (1/09)

Construction of new roads or improvements of existing roads shall be done in such a way as to minimize the environmental and visual impacts. Merchantable trees shall be cut and utilized unless otherwise directed. Non-merchantable trees shall be severed and laid flat on the ground. Slash shall be scattered, and not left in windrows and kept a minimum of 10 feet back from the road edge or be chipped, utilized or otherwise removed from the sale. Stumps shall be set upright, not left on edge, and be moved at least 10 feet away from the road edge. Disturbed soil shall be feathered into the woods and not left in berms or windrows.

4.1.7 - Road closure (10/11)

All new roads built into the sale must be blocked to vehicle traffic upon completion of the sale. Overgrown roads that are reopened shall be considered new roads. Some existing roads may also need to be closed, see the Timber Sale Map for locations. In general, this will require constructing a four (4') foot high berm of stumps and logs covered with earth. These roads must be rendered impassable to cars and trucks. All stumps from road building and landing construction must be reserved to block any newly constructed roads upon completion of the sale. These stumps must be scattered along the road system to prohibit vehicular movement. Temporary berms may be required if no sale activity occurs for 30 or more consecutive days. Contact the sale administrator for specific details of design and placement.

4.2 - Maintenance

4.2.2 - Fill material (4/07)

To maintain roads, fill material may be needed in areas where "holes" exist or may be expected to develop. This fill material should be placed before trucking begins. Contact the sale administrator regarding the availability of onsite sand or gravel from adjacent State-owned lands.

4.2.4 - Grading (10/16)

For completion of the sale, state forest roads must be graded. In general, this will require a road grader or bulldozer to shape up the roads after forest products have been hauled off site. This includes cleaning of drainage areas, grading, crowning, and filling with gravel, if necessary. The grading equipment to be used must be approved by the Unit Manager or his/her representative.

5 - Operations

5.1 - Notification

5.1.1 - Pre-sale conference (10/16)

A pre-sale conference on site between the Purchaser and sale administrator is required prior to beginning any operations to determine landing and road locations. The Unit Manager or his/her representative must be contacted at least 10 days in advance to schedule the conference.

5.1.4 - Post-sale conference (10/16)

A post-sale conference on site between the Purchaser and sale administrator is required 5 days prior to the completion of active logging operations to determine clean-up and repair of landings, road edges, and the fulfillment of other contract specifications.

5.2 - Conduct of Operations

5.2.1 - Slash

5.2.1.8 - Slash height (12/08)

No slash or tree tops may exceed 24 inches in height.

5.2.1.11 - Slash for reforestation (5/07)

To facilitate reforestation, the Sale Area shall be left with slash evenly distributed. Bunched tops within the cutting area shall be broken up and scattered. Stumps shall be cut low to the ground. Processing sites shall not be left with a compacted layer of slash; tops from these sites shall be hauled back into the cut area and scattered.

5.2.2 - Hazard Trees/Snags

5.2.2.1 - Den trees (10/16)

Obvious hollow and/or den trees shall be protected and left standing unless they are a safety hazard.

5.2.3 - Operating Restrictions

5.2.3.2 - Operating restrictions (9/11)

Within Payment Unit(s) 1 - 8, all cleanup activities are to be completed by July 15 upon completion of a Payment Unit unless otherwise directed by the Unit Manager or his/her representative. This restriction is to let the area revegetate before the dry season.

5.2.3.3 - Bark slippage restriction (3/09)

Within Payment Unit(s) 2 - 8, unless changed by written agreement, cutting and skidding are not permitted during the period of April 15 to July 15. This restriction is because of bark slippage.

5.2.30 - Landing/road top soil protection (2/15)

Top soil on landings and new roads must be removed, stockpiled and saved. Upon completion of the timber sale, soil must be evenly distributed back over the area for revegetation. In addition, the area must be seeded and mulched per instructions of the sale administrator.

5.2.32 - Decking/landing restoration (9/13)

All decking and landing areas must have the surface area restored to a condition equal to or better than before. This is to ensure the proper regeneration of the stand. Wood debris, chips, and "cookies" from trimmings must be removed or scattered away from landing and loading areas and may not be windrowed on the edge.

5.2.38 - No decking against live trees (2/04)

Cut products may not be decked against unmarked or designated leave trees.

5.4 - Soil Protection

5.4.1 - Rutting restriction, general (7/16)

Operations are to cease immediately if equipment and weather conditions result in rutting of roads and/or skid trails which is 12 inches or greater in depth and 50 feet in length. The Unit Manager or his/her representative may restrict hauling and/or skidding if ruts exceed the specified depth. With the Unit Manager or his/her representative's approval, the Purchaser may return to the area when the risk of rutting has decreased.

5.8 - Protection of Endangered Species

5.8.5 - Protection of raptor nests (3/13)

All trees with raptor nests will be protected if found during harvesting operations. Notification will be made to the Unit Manager or his/her representative who will notify the Wildlife Biologist so an on-site evaluation and recommendation can be made, if necessary.

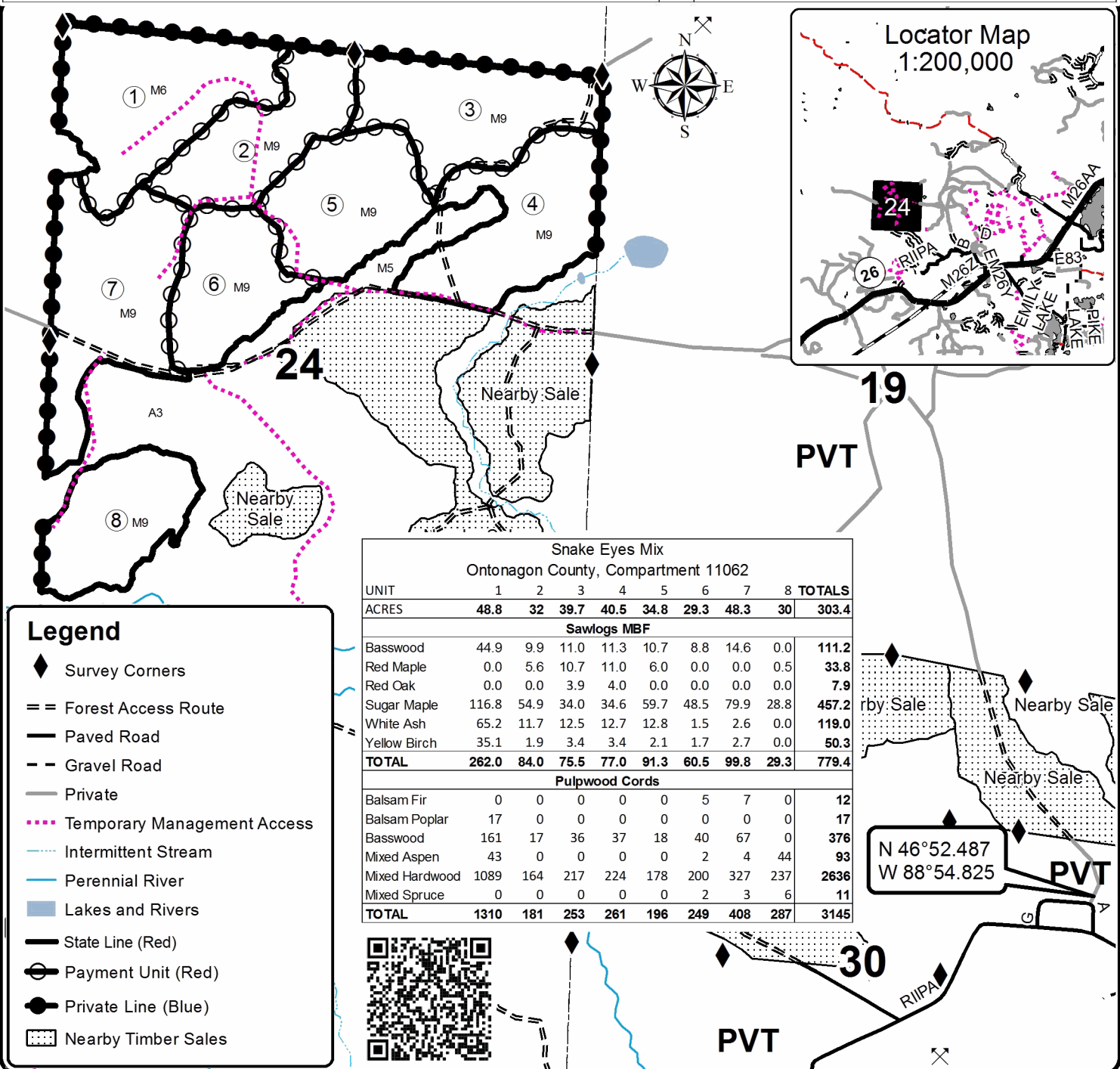


TIMBER SALE MAP

This information provided by authority of Part 525, 1994 PA 451, as amended.

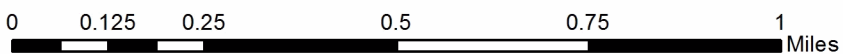
Forest Management Unit Baraga		County Ontonagon	Mapped By Ryan Mattila	Date 7/9/2021	Page 1	of 1
Township 52N	Range 37W	Section(s) and Subdivision(s) See Map		Scale 1:15,840		

Cover Type				Density			
A = Aspen	H = Hemlock	N = Marsh	U = Upland Brush	0 = Non Stocked	5 = Pole Timber Medium		
B = Paper Birch	J = Jack Pine	O = Oak	UM = Upland Mixed	1 = Seedling Sapling Poor	6 = Pole Timber Well		
C = Cedar	L = Lowland Brush	P = Lowland Poplar	V = Bog or Marsh	2 = Seedling Sapling Medium	7 = Saw Timber Poor		
D = Treed Bog	LM = Lowland Mixed	Q = Mixed Swamp Conifer	W = White Pine	3 = Seedling Sapling Well	8 = Saw Timber Medium		
E = Swamp Hdwoods	M = Mpl, Bch, Brch	R = Red Pine	X = Non Stocked	4 = Pole Timber Poor	9 = Saw Timber Well		
F = Spruce Fir	MC = Mixed Conifer	S = Black Spruce	Z = Water				
G = Grass	MD = Mixed Deciduous	T = Tamarack					



Legend

- ◆ Survey Corners
- == Forest Access Route
- Paved Road
- - Gravel Road
- Private
- ◆◆ Temporary Management Access
- Intermittent Stream
- Perennial River
- Lakes and Rivers
- State Line (Red)
- Payment Unit (Red)
- Private Line (Blue)
- ▨ Nearby Timber Sales



Elm River Block (11-007-21)
T52N, R36W, SEC. 11; T52N, R36W, SEC. 2; T52N, R36W, SEC. 3; Houghton

In response to the notice of sale to be held 9:00 a.m. (local time) on October 7, 2021, I am hereby submitting my sealed bid (firm offer) for the following forest products to be cut. Bids for individual species must be at or above the advertised price. All non-responsive bid forms may be rejected.

<u>PRODUCTS & SPECIES</u>	<u>ESTIMATED VOLUME*</u>	<u>ADVERTISED PRICE</u>	<u>BID PRICE/UNIT</u>
Sawtimber			
Basswood	281.1 MBF	\$ 32.00/MBF	\$ _____
Black Ash	7.9 MBF	\$ 19.00/MBF	\$ _____
Red Maple	26.8 MBF	\$ 64.00/MBF	\$ _____
Sugar Maple	404.4 MBF	\$ 130.00/MBF	\$ _____
White Ash	28.2 MBF	\$ 31.00/MBF	\$ _____
Yellow Birch	10.3 MBF	\$ 33.00/MBF	\$ _____
Pulpwood			
Basswood	351 Cords	\$ 3.40/Cord	\$ _____
Mixed Hardwood	1,518 Cords	\$ 4.30/Cord	\$ _____

*The volumes are statistically estimated within plus (+) or minus (-) 3.72 percent at 95% confidence level. These estimated volumes are final and not subject to adjustment. Prospective bidders are urged to examine this timber and to make their own estimates of quantity and quality.

I understand that any or all bids may be rejected. All bids must be signed and all bid items must be bid or the bid form may be rejected. I also understand that consideration and awarding a contract will be based upon my past performance and ability to complete the contract based upon equipment and staffing subject to my control .

FEDERAL ID: ____ - ____ - ____ or SOCIAL SECURITY NUMBER: ____ - ____ - ____

Company or individual bidding: _____

Company representative's name: _____

Address: _____

City: _____ State: _____ Zip: _____

IF AVAILABLE, PLEASE PLACE THE PERSONALIZED LABEL FROM YOUR PROSPECTUS IN THE ABOVE BOX.

Individual or company representative's signature : _____ Date: _____

Phone number : _____ Email (optional): _____

THE WINNING BIDDER MUST COMPLETE THE VERIFICATION OF WORKER'S DISABILITY COMPENSATION ACT COMPLIANCE (ON REVERSE SIDE IF DOUBLE SIDED) WITHIN 21 DAYS OF SALE AWARD DATE



FOR DEPARTMENT USE ONLY
Sale Number (XX - XXX - XX - XX)
Forest Management Unit:

TIMBER SALE VERIFICATION OF WORKER'S DISABILITY COMPENSATION ACT COMPLIANCE

*As required by Act 317, P.A. 1969 (Worker's Compensation) and
Part 5 of Act 451 of 1994, as amended.*

VERIFICATION OF WORKER'S DISABILITY COMPENSATION ACT COMPLIANCE

- This verification must be completed and submitted within 21 days of contract award and prior to the issuance of the timber sale contract.
- In addition, if boxes 2B or 2C are checked, then Notice of Exclusion or Certificate of Insurance must be submitted within twenty-one (21) days of the contract award and prior to the issuance of the timber sale contract.
- All information must be typed or printed except for written signatures.

Please Check Appropriate Categories:

1. My business is organized as (you **must** check one of the boxes below):
 - A. Sole Proprietorship (individual)
 - B. Partnership
 - C. Corporation

2. You **must** check one of the boxes below:
 - A. I certify my business is a sole proprietorship and it has no employees but the sole proprietor. I am not subject to the Worker's Compensation Laws.
 - B. I certify my business has satisfied its obligation to the Worker's Compensation Act through the use of an approved Notice of Exclusion (BWC-337, Rev. 5/96). I will provide a copy of the Notice of Exclusion within 21 days of the contract award. (For questions or a copy of the BWC-337, please call the Worker's Compensation Bureau at 517-322-1195).
 - C. I certify my business has a Worker's Compensation Policy. I will provide an original Certificate of Insurance within twenty-one (21) days of the contract award.

3. If you have checked item 2(A) or 2(B), you **must** indicate the number of **both** full-time and part-time employees, other than yourself, including family members and active partners (if none, you must enter "0").

_____ Full-time Employees

_____ Part-time Employees

Name of Business		Federal ID (or) Social Security No.	
Address		Telephone ()	
City	State	ZIP	

I hereby certify that the above information is true and correct. I agree to notify the Michigan DNR of any changes that occur in factors affecting my coverage during any of my present and future operations.

Signature of Owner or Authorized Representative

Title

Date

Please complete the "SEALED BID" information on the next page

Snake Eyes Mix (11-011-21)
T52N, R37W, SEC. 24; Ontonagon COUNTY

In response to the notice of sale to be held 9:00 a.m. (local time) on October 7, 2021, I am hereby submitting my sealed bid (firm offer) for the following forest products to be cut. Bids for individual species must be at or above the advertised price. All non-responsive bid forms may be rejected.

<u>PRODUCTS & SPECIES</u>	<u>ESTIMATED VOLUME*</u>	<u>ADVERTISED PRICE</u>	<u>BID PRICE/UNIT</u>
Sawtimber			
Basswood	111.2 MBF	\$ 32.00/MBF	\$ _____
Red Maple	33.8 MBF	\$ 64.00/MBF	\$ _____
Red Oak	7.9 MBF	\$ 66.00/MBF	\$ _____
Sugar Maple	457.2 MBF	\$ 130.00/MBF	\$ _____
White Ash	119.0 MBF	\$ 31.00/MBF	\$ _____
Yellow Birch	50.3 MBF	\$ 33.00/MBF	\$ _____
Pulpwood			
Balsam Fir	12 Cords	\$ 1.90/Cord	\$ _____
Basswood	376 Cords	\$ 3.40/Cord	\$ _____
Mixed Aspen	110 Cords	\$ 11.00/Cord	\$ _____
Mixed Hardwood	2,627 Cords	\$ 4.30/Cord	\$ _____
Red Oak	9 Cords	\$ 17.55/Cord	\$ _____
White Spruce	11 Cords	\$ 2.50/Cord	\$ _____

*The volumes are statistically estimated within plus (+) or minus (-) 4.05 percent at 95% confidence level. These estimated volumes are final and not subject to adjustment. Prospective bidders are urged to examine this timber and to make their own estimates of quantity and quality.

I understand that any or all bids may be rejected. All bids must be signed and all bid items must be bid or the bid form may be rejected. I also understand that consideration and awarding a contract will be based upon my past performance and ability to complete the contract based upon equipment and staffing subject to my control.

FEDERAL ID: ____ - ____ - ____ or SOCIAL SECURITY NUMBER: ____ - ____ - ____

Company or individual bidding: _____

Company representative's name: _____

Address: _____

City: _____ State: _____ Zip: _____

IF AVAILABLE, PLEASE PLACE THE PERSONALIZED LABEL FROM YOUR PROSPECTUS IN THE ABOVE BOX.

Individual or company representative's signature: _____ Date: _____

Phone number : _____ Email (optional): _____

THE WINNING BIDDER MUST COMPLETE THE VERIFICATION OF WORKER'S DISABILITY COMPENSATION ACT COMPLIANCE (ON REVERSE SIDE IF DOUBLE SIDED) WITHIN 21 DAYS OF SALE AWARD DATE



FOR DEPARTMENT USE ONLY	
Sale Number (XX - XXX - XX - XX)	
Forest Management Unit:	

TIMBER SALE VERIFICATION OF WORKER'S DISABILITY COMPENSATION ACT COMPLIANCE

As required by Act 317, P.A. 1969 (Worker's Compensation) and
Part 5 of Act 451 of 1994, as amended.

VERIFICATION OF WORKER'S DISABILITY COMPENSATION ACT COMPLIANCE

- This verification must be completed and submitted within 21 days of contract award and prior to the issuance of the timber sale contract.
- In addition, if boxes 2B or 2C are checked, then Notice of Exclusion or Certificate of Insurance must be submitted within twenty-one (21) days of the contract award and prior to the issuance of the timber sale contract.
- All information must be typed or printed except for written signatures.

Please Check Appropriate Categories:

1. My business is organized as (you **must** check one of the boxes below):
 - A. Sole Proprietorship (individual)
 - B. Partnership
 - C. Corporation
2. You **must** check one of the boxes below:
 - A. I certify my business is a sole proprietorship and it has no employees but the sole proprietor. I am not subject to the Worker's Compensation Laws.
 - B. I certify my business has satisfied its obligation to the Worker's Compensation Act through the use of an approved Notice of Exclusion (BWC-337, Rev. 5/96). I will provide a copy of the Notice of Exclusion within 21 days of the contract award. (For questions or a copy of the BWC-337, please call the Worker's Compensation Bureau at 517-322-1195).
 - C. I certify my business has a Worker's Compensation Policy. I will provide an original Certificate of Insurance within twenty-one (21) days of the contract award.
3. If you have checked item 2(A) or 2(B), you **must** indicate the number of **both** full-time and part-time employees, other than yourself, including family members and active partners (if none, you must enter "0").

_____ Full-time Employees

_____ Part-time Employees

Name of Business		Federal ID (or) Social Security No.	
Address		Telephone ()	
City	State	ZIP	

I hereby certify that the above information is true and correct. I agree to notify the Michigan DNR of any changes that occur in factors affecting my coverage during any of my present and future operations.

Signature of Owner or Authorized Representative

Title

Date

Please complete the "SEALED BID" information on the next page