



**DEPARTMENT OF NATURAL RESOURCES
STATE OF MICHIGAN**

TIMBER SALE PROSPECTUS #6873

SCHEDULED SALE DATE AND TIME: 10:00 a.m. (local time) on October 12, 2021.

LOCATION: ATLANTA MGMT UNIT, 13501 M 33, ATLANTA, MI 49709.

PROSPECTUS NOTE: The bidder is advised to inspect the sale area and review the location, estimated volumes, operating costs and contract terms of proposed sales. Please be aware that some landowners may request 60 days or more notice for access across their land.

Notice is hereby given that bids will be received by the Unit Manager, ATLANTA MANAGEMENT UNIT, for certain timber on the following described lands:

Snow Dog Mix (54-006-20) / T31N, R03E, SEC. 12, N1/2NW,SWSW.

T31N, R03E, SEC. 13, SENE,NESE,S1/2SE.

T31N, R03E, SEC. 24, N1/2NE.

Montmorency County, Advertised Price \$64,190.40, 115.5 Acres, Jack Pine, Red Pine.

SALE NOTE: A recreation site such as a trail, pathway, or campground is within the sale area or the vicinity. Certain restrictions/specifications may be applicable including time restrictions.

Miller Moat Aspen and HW (54-013-20) / T31N, R03E, SEC. 13, SWSW.

T31N, R03E, SEC. 14, SESE.

T31N, R03E, SEC. 23, SENW,NE.

T31N, R03E, SEC. 24, NWNW,S1/2NW,SWNE.

Montmorency County, Advertised Price \$185,876.75, 185.2 Acres, Aspen, Hardwood.

SALE NOTE: Access may be through private land.

Mossy Spruce (54-038-20) / T31N, R03E, SEC. 6 , SE.

T31N, R03E, SEC. 7 , NENE.

Montmorency County, Advertised Price \$7,542.10, 34.5 Acres, Spruce/Fir/Tamarack, N White Cedar.

SALE NOTE: A recreation site such as a trail, pathway, or campground is within the sale area or the vicinity. Certain restrictions/specifications may be applicable including time restrictions.

C26 TB Outwash Aspen Mix (54-044-20) / T30N, R04E, SEC. 5 , W1/2NW.

T30N, R04E, SEC. 6 , NE.

T31N, R04E, SEC. 31, SWSE.

Montmorency County, Advertised Price \$40,908.15, 62.5 Acres, Aspen, Spruce/Fir/Tamarack.

BID INSTRUCTIONS (VER. 07/02/2018):

1. Scheduled Bid Location, Date, and Time (2/11)

Bids must be received by the Unit Manager, ATLANTA OFFICE, 13501 M 33, ATLANTA, MI 49709, no later than 10:00 a.m. (local time) on October 12, 2021. For further information concerning this sale, contact Cody Stevens at 989-785-4251 extension 5240.

2. Bidder's Qualifications (5/16)

Purchaser shall obtain workers compensation insurance to cover claims under Michigan's Worker's Disability Compensation Act of 1969 or similar employee benefit act of any other state applicable to an employee. If all or part of a timber sale was prepared by a private contractor, the contractor and that contractor's company are not permitted to bid on the timber sale contract. Bids will not be accepted from individuals or companies appearing on the DNR/FRD No-Bid List. This list contains the names of purchasers who previously failed to execute a contract within 21-days or who have a history of poor performance.

3. Preparation of Sealed Bids (5/16)

Bid Forms may be completed online thru Michigan DNR Timber Sale Online Bidding (OLB) at www.michigan.gov/timberbidding or by completing the hardcopy Bid Form found in the Timber Sale Prospectus. Hardcopy Bid Forms shall be manually signed in ink. Registration in OLB is considered your 'signature' for all bids submitted thru that system. Bid prices must be entered for each species and product in the Bid Price column for all material subject to bidding and all fill-in blanks must be completed. If erasures or other changes appear on the hardcopy Bid Form, each erasure or change must be initialed by the person signing the bid.

4. Submission of Sealed Bids (5/16)

Bid forms may be obtained from the Unit Manager or thru OLB. Bids may be submitted hardcopy or thru OLB. All hardcopy bids must be submitted on the bid form and in an envelope clearly identified as described in this section. NOTE: Only one bid form per bid envelope. Sealed bids must be submitted to the Unit office designated in the prospectus and must be submitted at or prior to the time established in the prospectus. The envelope should show on the outside (a) the sale name or number and (b) the date and time of bid opening, as shown in the prospectus. Bids received after the time specified in the sale prospectus are late bids and will be rejected.

It is possible for a bidder to submit multiple bids on a single sale. For example, a bid may be submitted hardcopy and a bid may be submitted thru OLB. Or, two bidders from the same company could both submit bids on the same sale. If this were to happen, the State would accept all bids received and award the contract accordingly. All bidding and contractual requirements would apply to all bids received.

5. Public Opening of Sealed Bids (7/16)

If conditions permit, the sealed bids will be publicly opened and posted at the time and place set in the prospectus.

If a bidder, present at a bid opening, has submitted bids on more than one sale, that bidder may withdraw their unopened bid envelopes or announce the withdrawal of their online bid after being declared the successful bidder on one sale.

6. Award of Contract (1/11)

Award of the contract will be made to the Bidder whose bid, conforming to the prospectus, is most advantageous to the State of Michigan on the basis of total value at rates bid for the estimated quantities. The State reserves the right to reject any bid or waive any minor irregularity in bids received. A written award mailed (or otherwise furnished) to the successful Bidder shall be deemed to result in a binding contract without further action by either party.

7. Down Payment (1/11)

The Bidder to whom award is made must make a down payment within 21 days of the sale award. The amount of the down payment will be calculated as shown in the Bond and Payment Schedule of this prospectus. Only cash may be used to meet this requirement.

8. Performance Security (1/11)

As guarantee of faithful performance, a cash bond, certificate of deposit, surety bond or irrevocable letter of credit (LOC) is required within 21 days of the sale award. The amount of the performance security is shown in the Bond and

Payment Schedule of this prospectus. If an LOC or surety is used, the coverage must extend for at least 6 months beyond the contract expiration.

9. Timber Sale Contract (7/18)

Additional conditions and requirements common to all timber sales are listed on the timber sale contract (R4031) and are available on line at www.michigan.gov/timber. Contact the Unit Manager for additional information or a sample contract. Within 21 days of the date of the award letter, the bidder must sign the contract and provide the required down payment, performance security, and verification of worker's disability compensation. The down payment and performance security shall be in accordance with the provisions of the timber sale contract, in the sums stated in this prospectus. If these actions are not taken, then the Bidder, the Bidder's corporation, and the corporation's principals may not be permitted to bid on State timber sales for a period of 3 months after the first offense, 6 months after the second offense, and 1 year after the third offense. An offense will only be counted against the Bidder for 5 years. In addition, the Bidder certifies that if awarded this contract, the Bidder will complete the timber sale contract in accordance with its terms and any modifications thereof including requirements to purchase, cut, and remove the included timber by the expiration date.

Payment Unit values in the State Forest Timber Sale Contract are calculated based on the advertised value of the Payment Unit as a percentage of the total advertised value of the contract. The advertised value of each Payment Unit is given in the Description of Timber by Payment Unit table on the Timber Sale Information page. For example, if the value of Payment Unit 1 is advertised as \$1,500 and the total Timber Sale value is advertised as \$10,000, the contract price for Payment Unit 1 will be 15% of the total bid price ($\$1,500/\$10,000 * 100$).

10. Disclaimer of Estimates and Bidder's Warranty of Inspection (7/16)

Before submitting this bid, the Bidder is advised and cautioned to inspect the sale area, review the requirements of the sale contract, and take other steps as may be reasonably necessary to ascertain the location, estimated volumes, construction estimates, and operating costs of the proposed sale. Failure to do so will not relieve the Bidder from responsibility for completing the contract.

The Bidder warrants that this bid is submitted solely on the basis of the Bidder's examination and inspection of the quality and quantity of the timber offered for sale and the Bidder's opinion of the value thereof and the costs of recovery. No reliance should be placed on the State of Michigan's estimates of timber quality, quantity or costs of recovery. Bidder further acknowledges that the State of Michigan: (i) expressly disclaims any warranty of fitness of timber for any purpose; (ii) offers this timber as is without any warranty of quality (merchantability) or quantity and (iii) expressly disclaims any warranty as to the quantity or quality of timber sold.

11. Certification and Chain-of-Custody (10/14)

Unless otherwise indicated in the contract under section 7 – Other Conditions of the Sale Specific Conditions & Requirements, the area encompassed by this timber sale is certified to the standards of the Forest Stewardship Council (FSC) - Certificate #SCS-FM/COC-00090N and the Sustainable Forestry Initiative (SFI) - Certificate # NSF-SFIS-5Y031-SF5. Forest products from this sale may be delivered to the mill as "FSC 100% and / or SFI certified" as long as the contractor hauling the forest products is chain-of-custody (COC) certified or covered under a COC certificate from the destination mill. The purchaser is responsible for maintaining COC after leaving the sale area.

12. Good Neighbor Authority (GNA) Requirements (7/16)

If the name of this timber sales contains the acronym GNA, it is authorized by the Good Neighbor Authority (GNA) and covered by various agreements between the U.S. Forest Service and the State. The timber sale occurs on federal land and the following conditions apply:

GNA contracts on US Forest Service land will not be awarded to purchasers on the Federal list of excluded parties. The System for Award Management (SAM) will be checked for active excluded parties prior to award of contract. In addition, the Bidder to whom award is made must complete an Assurance Regarding Felony Conviction or Tax Delinquent Status for Corporate Applicants (AD-3031).

13. Good Neighbor Authority (GNA) Requirements, con't (9/16)

Bidder certifies, by signing this bid form, that to the best of Bidder's knowledge that the following representations are accurate and complete.

- a. That the Bidder and its principals are not presently debarred, suspended, proposed for debarment, declared ineligible, or voluntary excluded from timber sales (covered transactions) by any Federal department or agency.
- b. That the Bidder and its principals have not within a 3-year period preceding this bid been convicted of or had a civil judgment rendered against them for commission of fraud or a criminal offense in connection with obtaining , attempting to obtain, or performing a public (Federal, State, or local) transaction or contract under a public transaction; violation of Federal or State antitrust statutes or commission of embezzlement, theft, forgery, bribery, falsification or destruction of records, making false statements, or receiving stolen property.
- c. That the Bidder and its principals are not presently indicted for or otherwise criminally or civilly charged by a governmental entity (Federal, State, or local) with commission of any of the offenses enumerated in paragraph b of this certification.
- d. That the Bidder and its principals have not within a 3-year period preceding this bid had one or more public transactions (Federal, State, or local) terminated for breach or default of a timber or forest product contract.

Bidders that cannot certify this requirement, in whole or in part, shall submit an explanation with their bid.

DAN EICHINGER
Director

TIMBER SALE INFORMATION

Snow Dog Mix (54-006-20)

T31N, R03E, SEC. 12; T31N, R03E, SEC. 13; T31N, R03E, SEC. 24.
Montmorency County (Advertised Price \$64,190.40)

SALE NOTE: A recreation site such as a trail, pathway, or campground is within the sale area or the vicinity. Certain restrictions/specifications may be applicable including time restrictions.

A timber sale contract for this lump sum, sealed bid timber sale will be awarded to the responsible bidder offering the highest sealed bid price. All units of volume listed below were estimated using the T-Sale computer program and our traditional volume equations. Bids must be at or above the following advertised price for each product and species:

<u>PRODUCTS & SPECIES</u>	<u>ESTIMATED UNITS*</u>	<u>ADVERTISED PRICE</u>
Sawtimber		
Jack Pine	31.0 MBF	\$ 19.00 / MBF
Mixed Aspen	21.9 MBF	\$ 105.00 / MBF
Red Oak	6.2 MBF	\$ 174.00 / MBF
Red Pine	351.8 MBF	\$ 69.00 / MBF
White Pine	5.4 MBF	\$ 39.00 / MBF
Pulpwood		
Balsam Fir	66 Cords	\$ 20.10 / Cord
Black Spruce	206 Cords	\$ 6.60 / Cord
Jack Pine	885 Cords	\$ 11.85 / Cord
Mixed Aspen	235 Cords	\$ 27.55 / Cord
Mixed Hardwood	101 Cords	\$ 22.30 / Cord
Red Oak	126 Cords	\$ 38.40 / Cord
Red Pine	330 Cords	\$ 26.00 / Cord
White Pine	38 Cords	\$ 11.05 / Cord

* The total volume is statistically estimated within plus (+) or minus (-) 11.69 percent. There are an estimated 2,820 cords on this timber sale, plus or minus 330 cords at the 95% confidence level. The estimated units are final and not subject to adjustment. Prospective bidders are urged to examine this timber and to make their own estimates of quantity and quality.

BOND AND PAYMENT SCHEDULE:

1. A bond in the amount of \$3,210.00 to insure faithful performance of the conditions of the contract will be deposited by the successful bidder within 21 days of the sale award.
2. Cutting in any sale or unit without the required advance payment would be considered a trespass.
3. Total payment must be paid in advance or according to the following schedule :
 - (a) Ten percent (10%) of the sale value must be paid within 21 days of the sale award.
 - (b) The 10% down payment will be credited towards the first unit cut.
 - (c) Payment for each of the following units must be made before cutting begins in that unit:

PAYMENT UNIT NUMBER	PERCENT OF TOTAL SALE VALUE
01	8.5%
02	24.2%
03	20.6%
04	14.1%
05	17.6%
06	15.0%
4. If no cutting takes place, the 10% down payment will not be refunded.
5. Operations on the contract issued will terminate on 12/31/2023.

SALE STATISTICS

SALE VOLUMES

VOLUME			STATISTICAL RANGE IN CORDS	
TOTAL CUBIC FEET	TOTAL CORDS	PERCENT ERROR	MINIMUM	MAXIMUM
222,752	2,820	11.69%	2,490	3,149

VDU VOLUMES

A VDU is a Volume Determination Unit. Volumes and their associated statistics are calculated at the VDU level and summarized to the sale level. There is often a one to one relationship between a VDU and a Payment Unit, but not always, depending on the cruise design. Refer to the VDU TO PAYMENT UNIT table.

VDU	VOLUME		PERCENT ERROR	RANGE IN CORDS	
	TOTAL CUBIC FEET	TOTAL CORDS		MINIMUM	MAXIMUM
19	33,670	426	24.68%	321	531
25	71,116	900	17.02%	747	1,053
48	23,708	300	18.80%	244	357
64	94,302	1,194	12.92%	1,039	1,348
TOTAL:	222,796	2,820		2,351	3,289

VDU TO PAYMENT UNIT

When a VDU is associated with more than one Payment Unit (PU), the VDU volumes are assigned to the PU based on acres of the VDU within the PU.

VDU	VDU ACRES	PU	PU ACRES
19	24.3	1	24.3
25	21.8	2	11.8
		3	10.0
48	7.9	4	7.9
64	61.5	5	33.1
		6	28.4
TOTAL:	115.5		115.5

DESCRIPTION OF TIMBER BY PAYMENT UNIT (PU)

PU	MARKET GROUP	PRODUCT	QUANTITY	UNIT	ACRES	ADVERTISE PRICE
1	Jack Pine	Sawtimber	13.2	MBF	24.3	\$5,465.45
	Mixed Aspen		3.1	MBF		
	<i>Quaking Aspen</i>		3.1	<i>MBF</i>		
	Balsam Fir	Pulpwood	21	Cords		
	<i>Balsam Fir</i>	<i>Sawtimber</i>	1.5	<i>MBF</i>		
	<i>Balsam Fir</i>	<i>Pulpwood</i>	18	<i>Cords</i>		
	Black Spruce		200	Cords		
	<i>Black Spruce</i>	<i>Sawtimber</i>	7.1	<i>MBF</i>		
	<i>Black Spruce</i>	<i>Pulpwood</i>	186	<i>Cords</i>		
	Jack Pine		94	Cords		
	Mixed Aspen		47	Cords		
	<i>Quaking Aspen</i>		47	<i>Cords</i>		
	Mixed Hardwood		25	Cords		
	<i>Black Cherry</i>		2	<i>Cords</i>		
	<i>Paper Birch</i>		4	<i>Cords</i>		
	<i>Red Maple</i>		19	<i>Cords</i>		
	Red Oak		2	Cords		
	Red Pine		4	Cords		
2	Red Pine	Sawtimber	163.4	MBF	11.8	\$15,583.40
	Red Oak	Pulpwood	12	Cords		
	Red Pine		148	Cords		
3	Red Pine	Sawtimber	138.6	MBF	10.0	\$13,223.40
	Red Oak	Pulpwood	10	Cords		
	Red Pine		126	Cords		
4	Mixed Aspen	Sawtimber	18.8	MBF	7.9	\$9,022.85
	<i>B. T. Aspen</i>		18.8	<i>MBF</i>		
	Red Oak		0.9	MBF		
	Red Pine		5.2	MBF		
	White Pine		1.0	MBF		
	Balsam Fir	Pulpwood	4	Cords		
	<i>Balsam Fir</i>		4	<i>Cords</i>		
	Mixed Aspen		182	Cords		
	<i>B. T. Aspen</i>		182	<i>Cords</i>		
	Mixed Hardwood		40	Cords		
	<i>Red Maple</i>	<i>Sawtimber</i>	0.9	<i>MBF</i>		
	<i>Red Maple</i>	<i>Pulpwood</i>	38	<i>Cords</i>		
	Red Oak		6	Cords		
Red Pine		6	Cords			
White Pine		11	Cords			
5	Jack Pine	Sawtimber	9.6	MBF	33.1	\$11,287.90
	Red Oak		2.9	MBF		
	Red Pine		24.0	MBF		
	White Pine		2.4	MBF		
	Balsam Fir	Pulpwood	22	Cords		
	<i>Balsam Fir</i>	<i>Sawtimber</i>	0.4	<i>MBF</i>		
	<i>Balsam Fir</i>	<i>Pulpwood</i>	21	<i>Cords</i>		
	Black Spruce		3	Cords		
	<i>Black Spruce</i>	<i>Sawtimber</i>	0.4	<i>MBF</i>		
	<i>Black Spruce</i>	<i>Pulpwood</i>	2	<i>Cords</i>		
	Jack Pine		426	Cords		
	Mixed Aspen		3	Cords		
	<i>Quaking Aspen</i>		3	<i>Cords</i>		
	Mixed Hardwood		20	Cords		
	<i>Paper Birch</i>		3	<i>Cords</i>		
	<i>Red Maple</i>		17	<i>Cords</i>		
	Red Oak		52	Cords		

DESCRIPTION OF TIMBER BY PAYMENT UNIT (PU), CON'T

PU	MARKET GROUP	PRODUCT	QUANTITY	UNIT	ACRES	ADVERTISE PRICE
5 con't	Red Pine	Pulpwood	25	Cords		
	White Pine		15	Cords		
6	Jack Pine	Sawtimber	8.2	MBF	28.4	\$9,607.40
	Red Oak		2.4	MBF		
	Red Pine		20.6	MBF		
	White Pine		2.0	MBF		
	Balsam Fir	Pulpwood	19	Cords		
	<i>Balsam Fir</i>		<i>Sawtimber</i>	0.4		
	<i>Balsam Fir</i>	<i>Pulpwood</i>	18	<i>Cords</i>		
	Black Spruce	Sawtimber	3	Cords		
	<i>Black Spruce</i>		0.4	<i>MBF</i>		
	<i>Black Spruce</i>		2	<i>Cords</i>		
	Jack Pine	Pulpwood	365	Cords		
	Mixed Aspen		3	Cords		
	<i>Quaking Aspen</i>		3	<i>Cords</i>		
	Mixed Hardwood		16	Cords		
	<i>Paper Birch</i>		2	<i>Cords</i>		
	<i>Red Maple</i>		14	<i>Cords</i>		
	Red Oak		44	Cords		
	Red Pine		21	Cords		
	White Pine		12	Cords		
	TOTAL:			416.3		
TOTAL:			1,987	Cords		

Sale Specific Conditions & Requirements

Sale Name: Snow Dog Mix

Sale Number: 54-006-20 Seq#: 2

1 - Sale Area

1.2 - Boundaries

1.2.1 - Painted boundaries (9/19)

The sale boundary and Payment Unit boundaries are marked and identified by blue, red, and yellow paint. The north boundary of Payment Unit 5 is unpainted and identified by Brush Creek Truck Trail. The west boundary of Payment Unit 6 is unpainted and identified by Miller Creek Road. Exterior sale boundary lines against private property are marked with blue paint. Exterior sale boundary lines against state are marked with red paint. Interior Payment Unit boundaries are marked with yellow paint. Retention patches are marked with red paint; no harvesting activities may occur within these areas. The painted boundary line trees are not Included Timber and are to be protected, except for the boundaries of Payment Units 5 and 6 where they are adjacent to the planted red pine. Yellow painted trees designating an interior Payment Unit boundary are only to be cut when all surrounding Payment Units have been paid.

2 - Timber Specifications

2.1 - Included Timber

2.1.1 - Clearcut unit(s) with unmerchantable trees (6/14)

Within Payment Unit(s) 1-6, cut all trees that are two (2) inches or more at DBH, except do not cut any cedar trees.

2.2 - Utilization

2.2.2 - Chipping required (2/18)

Payment Units 2, 3, 5, and 6 must be chip harvested to facilitate subsequent planting operations. Chipping must be done within 3 months of severance from the stump. The Purchaser has the option to produce sawlogs or pulpwood bolts, but the remaining portion of the trees must be chipped and hauled. If market conditions limit the practicality of chipping, then trees greater than 4 inches at DBH must be cut to a 2-inch top or smaller. Sub-merchantable trees, and hardwood limbs that are 4 inches or greater where they attach to the stem, are to be cut/reduced to 4-foot lengths. Slash must be evenly dispersed throughout the Payment Unit, and not be more than 2 feet high. In all cases harvesting operations must allow for subsequent planting operations, as determined by the sale administrator. The requirement to retain approximately 1/6 to 1/3 of tree tops and limbs less than four inches in diameter is still applicable (G. C. & R. 2.2).

2.2.3 - Stump heights (4/07)

Stump heights within Payment Units 2, 3, 5, and 6 shall not exceed 6 inches for all trees. This is to facilitate planting operations.

4 - Transportation

4.1 - Construction

4.1.3 - Slash and earthen piles (8/04)

Piles or windrows of earth along roads and landings that have been widened or constructed shall be leveled. Slash from road maintenance or construction, including stumps, shall be dispersed throughout the sale.

4.1.6 - Road construction (1/09)

Construction of new roads or improvements of existing roads shall be done in such a way as to minimize the environmental and visual impacts. Merchantable trees shall be cut and utilized unless otherwise directed. Non-merchantable trees shall be severed and laid flat on the ground. Slash shall be scattered, and not left in windrows and kept a minimum of 10 feet back from the road edge. Stumps shall be set upright, not left on edge, and be moved at least 10 feet away from the road edge. Disturbed soil shall be feathered into the woods and not left in berms or windrows.

4.1.7 - Road closure (10/11)

All new roads built into the sale must be blocked to vehicle traffic upon completion of the sale. In general, this will require constructing a four (4') foot high berm of stumps and logs covered with earth. Contact the sale administrator for specific details of design and placement.

4.2 - Maintenance

4.2.5 - Two wheel drive condition (2/04)

All existing trail roads on and adjacent to the sale area must be passable by two-wheel drive traffic for the duration of the sale.

5 - Operations

5.1 - Notification

5.1.1 - Pre-sale conference (10/16)

A pre-sale conference on site between the Purchaser and sale administrator is required prior to beginning any operations to determine landing and road locations. The Unit Manager or his/her representative must be contacted at least 10 days in advance to schedule the conference.

5.1.3 - Well heads and natural gas pipelines (11/15)

The Purchaser is responsible for contacting the gas or pipeline company prior to operating equipment in the vicinity of well heads or natural gas pipelines.

5.1.4 - Post-sale conference (10/16)

A post-sale conference on site between the Purchaser and sale administrator is required 5 days prior to the completion of active logging operations to determine clean-up and repair of landings, road edges, and the fulfillment of other contract specifications.

5.2 - Conduct of Operations

5.2.2 - Hazard Trees/Snags

5.2.2.1 - Den trees (10/16)

Obvious hollow and/or den trees shall be protected and left standing unless they are a safety hazard.

5.2.3 - Operating Restrictions

5.2.3.5 - Oak wilt restriction (1/18)

Within Payment Unit(s) 2-4, unless changed by written agreement, cutting, skidding, hauling within the sale and brushing of access roads to the sale are not permitted during the period of April 15 to July 15. Operations may be allowed if specific steps are taken to prevent damaging uncut oak during the high risk period. Those steps may include completing all road brushing before April 15th and clearing a tree-length buffer along uncut oak cover before April 15th. This is necessary to reduce the spread of oak wilt. For more information, contact the Unit Manager or his/her representative.

5.2.3.6 - Bark beetle restriction (12/08)

In the event drought creates a high risk of pine bark beetle infestation, pine is not to be cut during the period March 1 through July 1, unless all portions of trees greater than two inches in diameter are removed from the sale area, reduced to chips, or treated to the satisfaction of the Unit Manager or his/her representative, within fifteen days of being severed from the stump. Pine log decks, pulpwood piles and treetops that are piled for chipping in the fall or winter within a 1/4 mile of susceptible sites must be removed before March 15. Residual slash must not be placed in piles or rows and must be spread over the site for quick drying. The Department of Natural Resources will exercise this specification if the risk of damage warrants.

5.2.3.11 - Coppice regeneration protection (4/10)

Timber harvesting in Payment Units 1 and 4 must be completed before significant deciduous regeneration occurs in that Payment Unit to minimize damage to the new regeneration. Any post harvest operations, such as chipping, must be completed before sprouting of regeneration occurs. If it is anticipated that chipping will be delayed, then tops shall be carried to one central location for later chipping. The Unit Manager or his/her representative may cease such operations if sprouting occurs before the operation is complete.

5.2.4 - Dead and Down Creation

5.2.4.6 - Dead and down creation, other (9/09)

To encourage cottontail rabbit populations, the Purchaser is to create one brush pile throughout Payment Unit 1 for every 2 acres. Each brush pile should be constructed from 6 treetops. Brush piles should be spread-out evenly throughout the

sale.

5.2.4.7 - Dead and down creation: hare, grouse, deer and other species (5/15)

To improve horizontal cover habitat for snowshoe hare, grouse, deer, and other species, the Purchaser is to push over 1 fully merchantable tree 12 inches at DBH or greater for every 2 acres in Payment Units 1 and 4. If pushing trees over proves to be impossible, then the Purchaser may cut and leave the tree with the base suspended off the ground. These trees should be tipped over with the root ball still attached so the base of the tree is suspended off the ground. The crown of the fallen tree should be at or near ground level after it is pushed over.

5.2.32 - Decking/landing restoration (9/13)

All decking and landing areas must have the surface area restored to a condition equal to or better than before. This is to ensure the proper regeneration of the stand. Wood debris, chips, and "cookies" from trimmings must be removed or scattered away from landing and loading areas and may not be windrowed on the edge.

5.2.38 - No decking against live trees (2/04)

Cut products may not be decked against unmarked or designated leave trees.

5.2.39 - ORV trail/route protection (4/18)

There is an ORV trail or route and is shown on the Timber Sale Map. Do not cut trees or damage posts with yellow ORV markers. All stumps within 5 feet of the trail must be cut flush with the ground. Maintain a 20-foot-wide slash, debris, and rut free zone daily using the ORV trail or route as the centerline. Do not run equipment down the ORV trail or route.

5.2.41 - Snowmobile trail protection (9/11)

There is a snowmobile trail and is shown on the Timber Sale Map. Do not cut or damage posts with orange trail markers or traffic control signs. If the trail is used, it must be maintained and restored to a condition equal to or better than before the sale. The road maintenance/restoration must be done prior to December 1. If the trail road is to be used for hauling during the snowmobile season, then a snow-covered base must be left on the trail. Maintain a 20-foot-wide slash, debris, and rut free zone daily using the snowmobile trail as the centerline. No decking of forest products will be permitted along the snowmobile trail. All stumps within 20 feet of the snowmobile trail must be cut at ground level. In addition, any trees cut within 5 feet of the trail must have the stumps removed and be disposed of according to the direction of the Unit Manager or his/her representative.

5.4 - Soil Protection

5.4.1 - Rutting restriction, general (7/16)

Operations are to cease immediately if equipment and weather conditions result in rutting of roads and/or skid trails which is 12 inches or greater in depth and 50 feet in length. The Unit Manager or his/her representative may restrict hauling and/or skidding if ruts exceed the specified depth. With the Unit Manager or his/her representative's approval, the Purchaser may return to the area when the risk of rutting has decreased.

5.8 - Protection of Endangered Species

5.8.5 - Protection of raptor nests (3/13)

All trees with raptor nests will be protected if found during harvesting operations. Notification will be made to the Unit Manager or his/her representative who will notify the Wildlife Biologist so an on-site evaluation and recommendation can be made, if necessary.

6 - Safety and Fire Prevention

6.2 - Signing

6.2.2 - Snowmobile trail posting (8/09)

The Purchaser is responsible for posting and maintaining caution signs on snowmobile trail 4 prior to beginning operations during the snowmobile season (approximately December 1 to March 31). The trail must be posted at appropriate distances from the Sale Area to warn of logging activity and truck traffic. Signs must be removed when harvest operations are suspended or completed. The Purchaser will provide these signs.

6.2.3 - Recreational trail posting (2/10)

The Purchaser is responsible for posting and maintaining caution signs on ATV trails prior to beginning operations. The trail must be posted at appropriate distances from the Sale Area to warn of logging activity and truck traffic at both ends of the trail. Signs must be removed when harvest operations are suspended or completed. The Purchaser will provide these signs.



TIMBER SALE MAP

This information provided by authority of Part 525, 1994 PA 451, as amended.

Sale Number	Year
54 - 006	20

Forest Management Unit Atlanta	County Montmorency	Mapped By Collin Zaremba	Date 03/05/2020	Page 1	of 2
Township 31N	Range 03E	Section(s) and Subdivision(s) Sec 12: N1/2NW,SWSW. Sec 13: SENE,NESE,S1/2SE. Sec 24: N1/2NE	Scale 1:15,840		

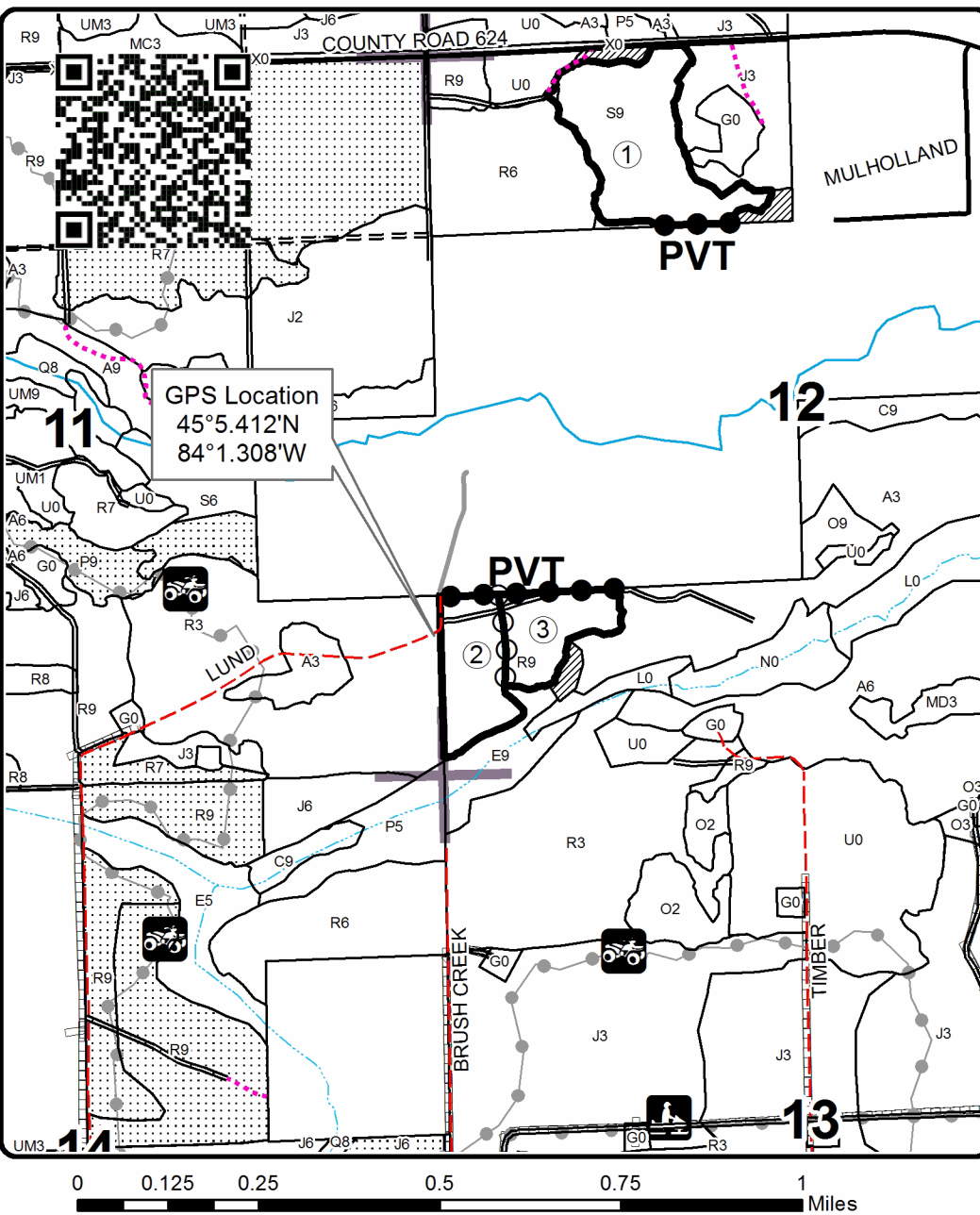
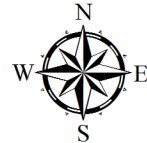
Cover Type				Density			
A = Aspen	H = Hemlock	N = Marsh	U = Upland Brush	0 = Non Stocked	5 = Pole Timber Medium		
B = Paper Birch	J = Jack Pine	O = Oak	UM = Upland Mixed	1 = Seedling Sapling Poor	6 = Pole Timber Well		
C = Cedar	L = Lowland Brush	P = Lowland Poplar	V = Bog or Marsh	2 = Seedling Sapling Medium	7 = Saw Timber Poor		
D = Tread Bog	LM = Lowland Mixed	Q = Mixed Swamp Conifer	W = White Pine	3 = Seedling Sapling Well	8 = Saw Timber Medium		
E = Swamp Hdwoods	M = Mpl, Bch, Brch	R = Red Pine	X = Non Stocked	4 = Pole Timber Poor	9 = Saw Timber Well		
F = Spruce Fir	MC = Mixed Conifer	S = Black Spruce	Z = Water				
G = Grass	MD = Mixed Deciduous	T = Tamarack					

PU	Acres	PU	Acres
1	24.3	4	7.9
2	11.8	5	33.1
3	10.0	6	28.4

Snow Dog Mix

Compartment 48

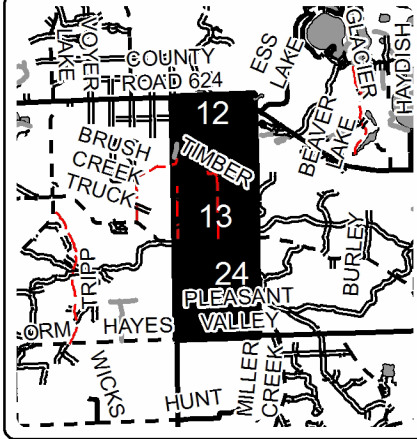
115.5 Acres



Legend

- Against State (Red)
- Payment Unit (Yellow)
- Private Line (Blue)
- Stand Boundaries
- Retention Area
- Nearby Timber Sales
- Secondary Forest Road
- Forest Access Route
- Paved Road
- Gravel Road
- County Road - Seasonal
- Private Road
- Temporary Management Access
- Recreational Trail
- Pipeline
- Intermittent Stream
- Perennial River
- Section Corners
- Payment Unit Number

Locator Map 1:150,000





TIMBER SALE MAP

This information provided by authority of Part 525, 1994 PA 451, as amended.

Sale Number	Year
54 - 006	20

Forest Management Unit Atlanta	County Montmorency	Mapped By Collin Zaremba	Date 03/05/2020	Page 2	of 2
Township 31N	Range 03E	Section(s) and Subdivision(s) Sec 12: N1/2NW,SWSW. Sec 13: SENE,NESE,S1/2SE. Sec 24: N1/2NE	Scale 1:15,840		

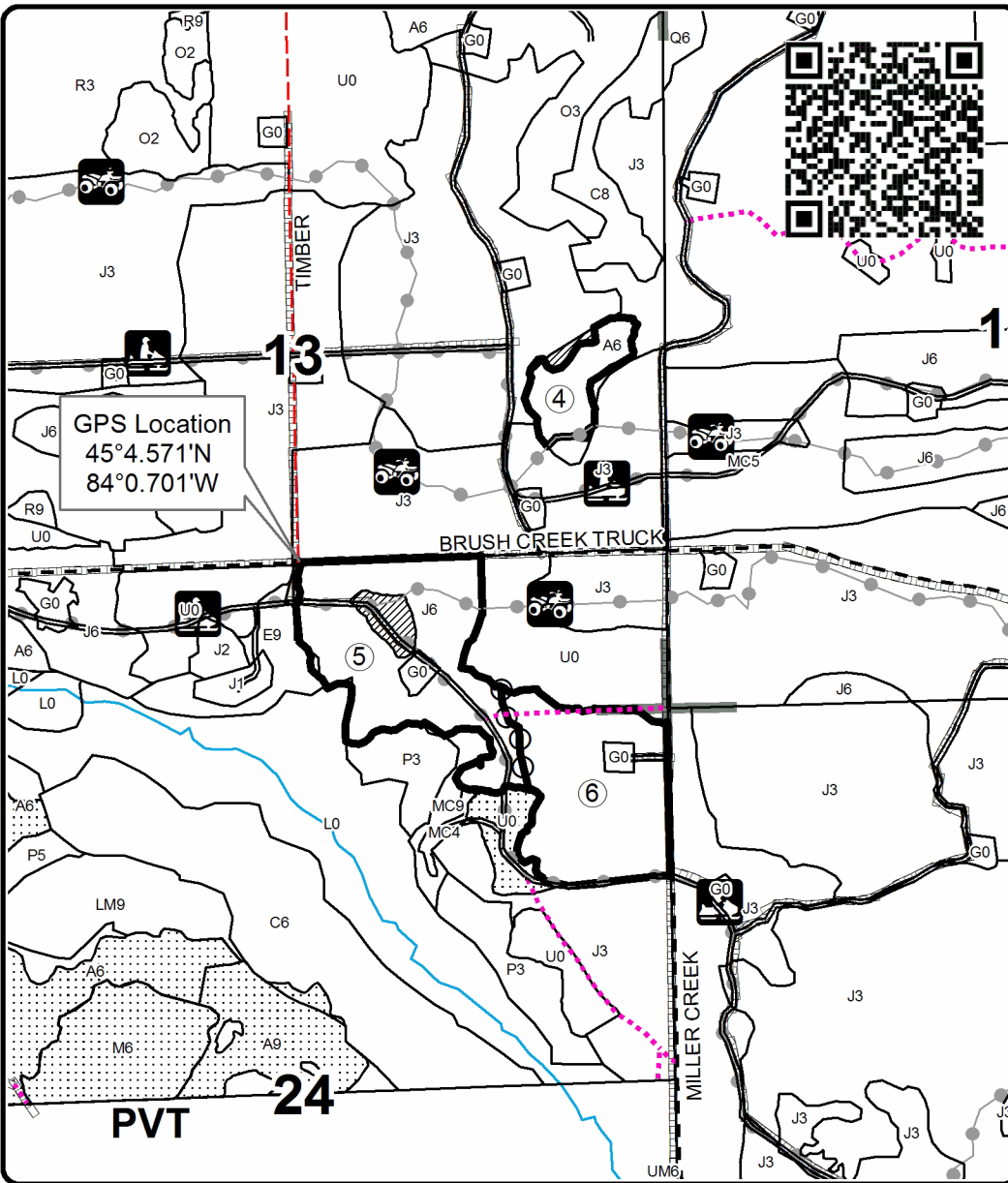
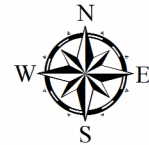
Cover Type				Density			
A = Aspen	H = Hemlock	N = Marsh	U = Upland Brush	0 = Non Stocked	5 = Pole Timber Medium		
B = Paper Birch	J = Jack Pine	O = Oak	UM = Upland Mixed	1 = Seedling Sapling Poor	6 = Pole Timber Well		
C = Cedar	L = Lowland Brush	P = Lowland Poplar	V = Bog or Marsh	2 = Seedling Sapling Medium	7 = Saw Timber Poor		
D = Treed Bog	LM = Lowland Mixed	Q = Mixed Swamp Conifer	W = White Pine	3 = Seedling Sapling Well	8 = Saw Timber Medium		
E = Swamp Hdwoods	M = Mpl, Bch, Brch	R = Red Pine	X = Non Stocked	4 = Pole Timber Poor	9 = Saw Timber Well		
F = Spruce Fir	MC = Mixed Conifer	S = Black Spruce	Z = Water				
G = Grass	MD = Mixed Deciduous	T = Tamarack					

PU	Acres	PU	Acres
1	24.3	4	7.9
2	11.8	5	33.1
3	10.0	6	28.4

Snow Dog Mix

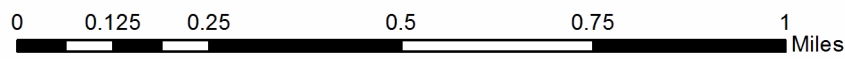
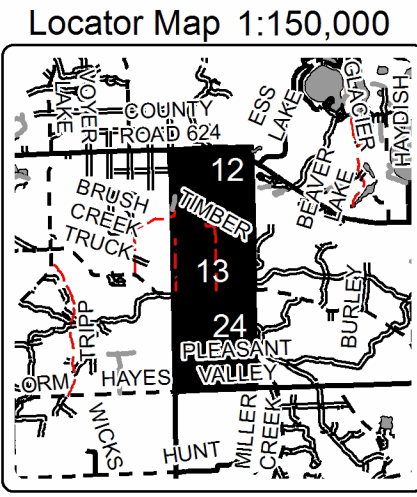
Compartment 48

115.5 Acres



Legend

- Against State (Red)
- ⊙ Payment Unit (Yellow)
- Stand Boundaries
- ▨ Retention Area
- ▤ Nearby Timber Sales
- Secondary Forest Road
- - Gravel Road
- - - County Road - Seasonal
- ⋯ Temporary Management Access
- Recreational Trail
- Perennial River
- Section Corners
- ▭ Pipeline
- Payment Unit Number



TIMBER SALE INFORMATION

Miller Moat Aspen and HW (54-013-20)

T31N, R03E, SEC. 13; T31N, R03E, SEC. 14; T31N, R03E, SEC. 23; T31N, R03E, SEC. 24.
Montmorency County (Advertised Price \$185,876.75)

SALE NOTE: Access may be through private land.

A timber sale contract for this lump sum, sealed bid timber sale will be awarded to the responsible bidder offering the highest sealed bid price. All units of volume listed below were estimated using the T-Sale computer program and our traditional volume equations. Bids must be at or above the following advertised price for each product and species:

<u>PRODUCTS & SPECIES</u>	<u>ESTIMATED UNITS*</u>	<u>ADVERTISED PRICE</u>
Sawtimber		
Basswood	41.8 MBF	\$ 52.00 / MBF
Mixed Aspen	130.0 MBF	\$ 124.00 / MBF
Red Maple	12.2 MBF	\$ 65.00 / MBF
Red Oak	7.6 MBF	\$ 206.00 / MBF
Sugar Maple	27.6 MBF	\$ 451.00 / MBF
Pulpwood		
Balsam Fir	761 Cords	\$ 23.75 / Cord
Basswood	288 Cords	\$ 7.15 / Cord
Black Spruce	163 Cords	\$ 7.75 / Cord
Mixed Aspen	3,139 Cords	\$ 32.55 / Cord
Mixed Hardwood	1,026 Cords	\$ 26.35 / Cord
Paper Birch	71 Cords	\$ 8.20 / Cord
Red Oak	35 Cords	\$ 45.40 / Cord

* The total volume is statistically estimated within plus (+) or minus (-) 8.45 percent. There are an estimated 5,919 cords on this timber sale, plus or minus 500 cords at the 95% confidence level. The estimated units are final and not subject to adjustment. Prospective bidders are urged to examine this timber and to make their own estimates of quantity and quality.

BOND AND PAYMENT SCHEDULE:

1. A bond in the amount of \$9,294.00 to insure faithful performance of the conditions of the contract will be deposited by the successful bidder within 21 days of the sale award.
2. Cutting in any sale or unit without the required advance payment would be considered a trespass.
3. Total payment must be paid in advance or according to the following schedule :
 - (a) Ten percent (10%) of the sale value must be paid within 21 days of the sale award.
 - (b) The 10% down payment will be credited towards the first unit cut.
 - (c) Payment for each of the following units must be made before cutting begins in that unit:

PAYMENT UNIT NUMBER	PERCENT OF TOTAL SALE VALUE
01	17.6%
02	18.7%
03	16.8%
04	11.5%
05	12.3%
06	7.1%
07	16.0%

4. If no cutting takes place, the 10% down payment will not be refunded.
5. Operations on the contract issued will terminate on 12/31/2023.

SALE STATISTICS

SALE VOLUMES

VOLUME		STATISTICAL RANGE IN CORDS		
TOTAL CUBIC FEET	TOTAL CORDS	PERCENT ERROR	MINIMUM	MAXIMUM
467,614	5,919	8.45%	5,419	6,419

VDU VOLUMES

A VDU is a Volume Determination Unit. Volumes and their associated statistics are calculated at the VDU level and summarized to the sale level. There is often a one to one relationship between a VDU and a Payment Unit, but not always, depending on the cruise design. Refer to the VDU TO PAYMENT UNIT table.

VDU	VOLUME		PERCENT ERROR	RANGE IN CORDS	
	TOTAL CUBIC FEET	TOTAL CORDS		MINIMUM	MAXIMUM
65	20,745	263	24.38%	199	327
77	65,941	835	18.24%	682	987
79	23,171	293	18.16%	240	347
80	266,878	3,378	11.34%	2,995	3,761
82	32,129	407	18.16%	333	481
83	58,768	744	26.93%	544	944
TOTAL:	467,633	5,919		4,993	6,846

VDU TO PAYMENT UNIT

When a VDU is associated with more than one Payment Unit (PU), the VDU volumes are assigned to the PU based on acres of the VDU within the PU.

VDU	VDU ACRES	PU	PU ACRES
65	12.9	4	12.9
77	26.1	5	23.3
		7	2.8
79	8.8	1	8.8
80	100.4	1	23.6
		2	33.8
		3	30.3
		4	12.7
82	19.2	6	19.2
83	17.8	7	17.8
TOTAL:	185.2		185.2

DESCRIPTION OF TIMBER BY PAYMENT UNIT (PU)

PU	MARKET GROUP	PRODUCT	QUANTITY	UNIT	ACRES	ADVERTISE PRICE			
1	Basswood	Sawtimber	2.3	MBF	32.4	\$32,685.80			
	Mixed Aspen		20.1	MBF					
	<i>B. T. Aspen</i>		7.0	<i>MBF</i>					
	<i>Quaking Aspen</i>		13.1	<i>MBF</i>					
	Red Maple		3.7	MBF					
	Red Oak		0.8	MBF					
	Sugar Maple		3.7	MBF					
	Balsam Fir	Pulpwood	143	Cords					
	<i>Balsam Fir</i>	<i>Sawtimber</i>	2.4	<i>MBF</i>					
	<i>Balsam Fir</i>	<i>Pulpwood</i>	138	<i>Cords</i>					
	Basswood		50	Cords					
	Black Spruce		42	Cords					
	<i>Black Spruce</i>	<i>Sawtimber</i>	4.8	<i>MBF</i>					
	<i>Black Spruce</i>	<i>Pulpwood</i>	32	<i>Cords</i>					
	Mixed Aspen		575	Cords					
	<i>B. T. Aspen</i>		129	<i>Cords</i>					
	<i>Quaking Aspen</i>		446	<i>Cords</i>					
	Mixed Hardwood		178	Cords					
	<i>Black Cherry</i>		1	<i>Cords</i>					
	<i>Ironwood</i>		1	<i>Cords</i>					
	<i>Red Maple</i>		101	<i>Cords</i>					
	<i>Sugar Maple</i>		73	<i>Cords</i>					
	<i>White Ash</i>		2	<i>Cords</i>					
	Paper Birch		35	Cords					
	<i>Paper Birch</i>	<i>Sawtimber</i>	1.5	<i>MBF</i>					
	<i>Paper Birch</i>	<i>Pulpwood</i>	32	<i>Cords</i>					
	Red Oak		5	Cords					
	2	Mixed Aspen	Sawtimber	21.2			MBF	33.8	\$34,857.05
		<i>B. T. Aspen</i>		7.3			<i>MBF</i>		
		<i>Quaking Aspen</i>		13.9			<i>MBF</i>		
Red Maple			3.2	MBF					
Red Oak			1.2	MBF					
Sugar Maple			2.4	MBF					
Balsam Fir		Pulpwood	182	Cords					
<i>Balsam Fir</i>		<i>Sawtimber</i>	2.3	<i>MBF</i>					
<i>Balsam Fir</i>		<i>Pulpwood</i>	177	<i>Cords</i>					
Basswood			11	Cords					
Black Spruce			51	Cords					
<i>Black Spruce</i>		<i>Sawtimber</i>	4.9	<i>MBF</i>					
<i>Black Spruce</i>		<i>Pulpwood</i>	41	<i>Cords</i>					
Mixed Aspen			633	Cords					
<i>B. T. Aspen</i>			95	<i>Cords</i>					
<i>Quaking Aspen</i>			538	<i>Cords</i>					
Mixed Hardwood			182	Cords					
<i>Black Cherry</i>			2	<i>Cords</i>					
<i>Ironwood</i>			1	<i>Cords</i>					
<i>Red Maple</i>			89	<i>Cords</i>					
<i>Sugar Maple</i>			87	<i>Cords</i>					
<i>White Ash</i>			3	<i>Cords</i>					
Paper Birch			16	Cords					
<i>Paper Birch</i>		<i>Sawtimber</i>	0.9	<i>MBF</i>					
<i>Paper Birch</i>	<i>Pulpwood</i>	14	<i>Cords</i>						
Red Oak		8	Cords						
3	Mixed Aspen	Sawtimber	19.1	MBF	30.3	\$31,267.70			
	<i>B. T. Aspen</i>		6.6	<i>MBF</i>					
	<i>Quaking Aspen</i>		12.5	<i>MBF</i>					

DESCRIPTION OF TIMBER BY PAYMENT UNIT (PU), CON'T

PU	MARKET GROUP	PRODUCT	QUANTITY	UNIT	ACRES	ADVERTISE PRICE
3 con't	Red Maple	Sawtimber	2.9	MBF		
	Red Oak		1.1	MBF		
	Sugar Maple		2.2	MBF		
	Balsam Fir	Pulpwood	162	Cords		
	<i>Balsam Fir</i>	<i>Sawtimber</i>	2.1	<i>MBF</i>		
	<i>Balsam Fir</i>	<i>Pulpwood</i>	158	<i>Cords</i>		
	Basswood		10	Cords		
	Black Spruce		45	Cords		
	<i>Black Spruce</i>	<i>Sawtimber</i>	4.5	<i>MBF</i>		
	<i>Black Spruce</i>	<i>Pulpwood</i>	36	<i>Cords</i>		
	Mixed Aspen		568	Cords		
	<i>B. T. Aspen</i>		85	<i>Cords</i>		
	<i>Quaking Aspen</i>		483	<i>Cords</i>		
	Mixed Hardwood		163	Cords		
	<i>Black Cherry</i>		2	<i>Cords</i>		
	<i>Ironwood</i>		1	<i>Cords</i>		
	<i>Red Maple</i>		79	<i>Cords</i>		
	<i>Sugar Maple</i>		78	<i>Cords</i>		
	<i>White Ash</i>		3	<i>Cords</i>		
	Paper Birch		15	Cords		
	<i>Paper Birch</i>	<i>Sawtimber</i>	0.8	<i>MBF</i>		
	<i>Paper Birch</i>	<i>Pulpwood</i>	13	<i>Cords</i>		
	Red Oak		7	Cords		
4	Mixed Aspen	Sawtimber	9.2	MBF	25.6	\$21,339.75
	<i>B. T. Aspen</i>		2.8	<i>MBF</i>		
	<i>Quaking Aspen</i>		6.4	<i>MBF</i>		
	Red Maple		1.2	MBF		
	Red Oak		2.4	MBF		
	Sugar Maple		0.9	MBF		
	Balsam Fir	Pulpwood	125	Cords		
	<i>Balsam Fir</i>	<i>Sawtimber</i>	0.9	<i>MBF</i>		
	<i>Balsam Fir</i>	<i>Pulpwood</i>	123	<i>Cords</i>		
	Basswood		11	Cords		
	Black Spruce		19	Cords		
	<i>Black Spruce</i>	<i>Sawtimber</i>	1.9	<i>MBF</i>		
	<i>Black Spruce</i>	<i>Pulpwood</i>	15	<i>Cords</i>		
	Mixed Aspen		420	Cords		
	<i>B. T. Aspen</i>		36	<i>Cords</i>		
	<i>Quaking Aspen</i>		384	<i>Cords</i>		
	Mixed Hardwood		72	Cords		
	<i>Black Cherry</i>		1	<i>Cords</i>		
	<i>Red Maple</i>		37	<i>Cords</i>		
	<i>Sugar Maple</i>		33	<i>Cords</i>		
	<i>White Ash</i>		1	<i>Cords</i>		
	Paper Birch		6	Cords		
	<i>Paper Birch</i>	<i>Sawtimber</i>	0.3	<i>MBF</i>		
<i>Paper Birch</i>	<i>Pulpwood</i>	5	<i>Cords</i>			
Red Oak		9	Cords			
5	Basswood	Sawtimber	2.4	MBF	23.3	\$22,816.50
	Mixed Aspen		10.2	MBF		
	<i>B. T. Aspen</i>		2.7	<i>MBF</i>		
	<i>Quaking Aspen</i>		7.5	<i>MBF</i>		
	Red Oak		1.9	MBF		
	Sugar Maple		2.4	MBF		
	Balsam Fir	Pulpwood	120	Cords		
	<i>Balsam Fir</i>	<i>Sawtimber</i>	5.5	<i>MBF</i>		

DESCRIPTION OF TIMBER BY PAYMENT UNIT (PU), CON'T

PU	MARKET GROUP	PRODUCT	QUANTITY	UNIT	ACRES	ADVERTISE PRICE
5 con't	<i>Balsam Fir</i>	<i>Pulpwood</i>	109	<i>Cords</i>		
	Basswood		37	Cords		
	Black Spruce		5	Cords		
	<i>Black Spruce</i>		5	<i>Cords</i>		
	Mixed Aspen		383	Cords		
	<i>B. T. Aspen</i>		42	<i>Cords</i>		
	<i>Quaking Aspen</i>		341	<i>Cords</i>		
	Mixed Hardwood		161	Cords		
	<i>American Elm</i>		4	<i>Cords</i>		
	<i>Beech</i>		4	<i>Cords</i>		
	<i>Ironwood</i>		4	<i>Cords</i>		
	<i>Red Maple</i>		29	<i>Cords</i>		
	<i>Sugar Maple</i>		117	<i>Cords</i>		
	<i>White Ash</i>		3	<i>Cords</i>		
	Red Oak		2	Cords		
6	Basswood	Sawtimber	36.8	MBF	19.2	\$13,142.80
	Mixed Aspen		1.3	MBF		
	<i>B. T. Aspen</i>		1.3	<i>MBF</i>		
	Red Maple		1.2	MBF		
	Sugar Maple		12.2	MBF		
	Basswood	Pulpwood	133	Cords		
	Mixed Aspen		5	Cords		
	<i>B. T. Aspen</i>		5	<i>Cords</i>		
	Mixed Hardwood		166	Cords		
	<i>Beech</i>	<i>Sawtimber</i>	2.8	<i>MBF</i>		
	<i>Beech</i>	<i>Pulpwood</i>	40	<i>Cords</i>		
	<i>Ironwood</i>		3	<i>Cords</i>		
	<i>Red Maple</i>		5	<i>Cords</i>		
	<i>Sugar Maple</i>		112	<i>Cords</i>		
	7	Basswood	Sawtimber	0.3		
Mixed Aspen			48.9	MBF		
<i>B. T. Aspen</i>			48.0	<i>MBF</i>		
<i>Quaking Aspen</i>			0.9	<i>MBF</i>		
Red Oak			0.2	MBF		
Sugar Maple			3.8	MBF		
Balsam Fir		Pulpwood	28	Cords		
<i>Balsam Fir</i>		<i>Sawtimber</i>	0.7	<i>MBF</i>		
<i>Balsam Fir</i>		<i>Pulpwood</i>	27	<i>Cords</i>		
Basswood			36	Cords		
Black Spruce			1	Cords		
<i>Black Spruce</i>			1	<i>Cords</i>		
Mixed Aspen			555	Cords		
<i>B. T. Aspen</i>			514	<i>Cords</i>		
<i>Quaking Aspen</i>			41	<i>Cords</i>		
Mixed Hardwood			104	Cords		
<i>Beech</i>		<i>Sawtimber</i>	0.6	<i>MBF</i>		
<i>American Elm</i>		<i>Pulpwood</i>	1	<i>Cords</i>		
<i>Beech</i>			14	<i>Cords</i>		
<i>Red Maple</i>			4	<i>Cords</i>		
<i>Sugar Maple</i>			84	<i>Cords</i>		
Red Oak			4	Cords		
TOTAL:			219.2	MBF		
TOTAL:			5,483	Cords		

Sale Specific Conditions & Requirements

Sale Name: Miller Moat Aspen and HW

Sale Number: 54-013-20 Seq#: 2

1 - Sale Area

1.2 - Boundaries

1.2.1 - Painted boundaries (9/19)

The sale boundary and Payment Unit boundaries are marked and identified by blue, red, and yellow paint. Exterior sale boundary lines against private property are marked with blue paint. Exterior sale boundary lines against state are marked with red paint. Retention patches are marked with red paint; no harvesting activities may occur within these areas. Interior Payment Unit boundaries are marked with yellow paint. The painted boundary line trees are not Included Timber and are to be protected. Yellow painted trees designating an interior Payment Unit boundary are only to be cut when all surrounding Payment Units have been paid.

2 - Timber Specifications

2.1 - Included Timber

2.1.1 - Clearcut unit(s) with unmerchantable trees (6/14)

Within Payment Unit(s) 1 - 5, and 7, cut all trees that are two (2) inches or more at DBH, except do not cut any pine in Payment Units 1 - 4, and do not cut any cedar or hemlock in any Payment Units.

2.1.3 - Cut tree marked unit(s) (12/08)

Within Payment Unit(s) 6, all trees are designated for cutting when marked with orange paint above and below stump height, regardless of merchantability.

2.2 - Utilization

2.2.6 - Roundwood operation required (5/07)

The skidding of whole trees or tree segments with limbs attached is prohibited within Payment Unit(s) 6. All products must be produced as roundwood and forwarded to existing roads or landing areas in final product length.

3 - Payments

3.3 - Pre-measured Sales

3.3.4 - Dividing payment units (7/14)

Payment Unit(s) greater than \$25,000 may be divided at the request of the Purchaser and upon approval of the Unit Manager. Dividing Payment Units is a contract modification which requires a Timber Sale Contract Amendment. There will be only one division per Payment Unit.

3.4 - Damaged Timber

3.4.1 - Damaged timber (7/16)

General Condition and Requirement 3.4 Damaged Timber, defines liquidated damages for undesignated live merchantable trees which are cut or injured.

No damage is acceptable to undesignated live merchantable trees. Within Payment Unit 6, if more than 5% of trees (> 4.5" DBH) within a specified area of the sale are damaged, liquidated damages will be assessed for all trees damaged. Rates will be in accordance with General Condition and Requirement 3.4 Damaged Timber.

4 - Transportation

4.1 - Construction

4.1.3 - Slash and earthen piles (8/04)

Piles or windrows of earth along roads and landings that have been widened or constructed shall be leveled. Slash from road maintenance or construction, including stumps, shall be dispersed throughout the sale.

4.1.6 - Road construction (1/09)

Construction of new roads or improvements of existing roads shall be done in such a way as to minimize the environmental

and visual impacts. Merchantable trees shall be cut and utilized unless otherwise directed. Non-merchantable trees shall be severed and laid flat on the ground. Slash shall be scattered, and not left in windrows and kept a minimum of 10 feet back from the road edge. Stumps shall be set upright, not left on edge, and be moved at least 10 feet away from the road edge. Disturbed soil shall be feathered into the woods and not left in berms or windrows.

4.1.7 - Road closure (10/11)

All new roads built into the sale must be blocked to vehicle traffic upon completion of the sale. Overgrown roads that are reopened shall be considered new roads. In general, this will require constructing a four (4') foot high berm of stumps and logs covered with earth. These roads must be rendered impassable to cars and trucks. Contact the sale administrator for specific details of design and placement.

4.2 - Maintenance

4.2.5 - Two wheel drive condition (2/04)

All existing trail roads on and adjacent to the sale area must be passable by two-wheel drive traffic for the duration of the sale.

4.4 - Access

4.4.1 - Private property access (3/11)

Permission for access across private land is the responsibility of the Purchaser. A copy of the written permission from the private landowner must be given to the Unit Manager within 30 days of the bid opening and prior to the beginning of operations.

5 - Operations

5.1 - Notification

5.1.1 - Pre-sale conference (10/16)

A pre-sale conference on site between the Purchaser and sale administrator is required prior to beginning any operations to determine landing and road locations. The Unit Manager or his/her representative must be contacted at least 10 days in advance to schedule the conference.

5.1.3 - Well heads and natural gas pipelines (11/15)

The Purchaser is responsible for contacting the gas or pipeline company prior to operating equipment in the vicinity of well heads or natural gas pipelines.

5.1.4 - Post-sale conference (10/16)

A post-sale conference on site between the Purchaser and sale administrator is required 5 days prior to the completion of active logging operations to determine clean-up and repair of landings, road edges, and the fulfillment of other contract specifications.

5.2 - Conduct of Operations

5.2.2 - Hazard Trees/Snags

5.2.2.1 - Den trees (10/16)

Obvious hollow and/or den trees shall be protected and left standing unless they are a safety hazard.

5.2.3 - Operating Restrictions

5.2.3.3 - Bark slippage restriction (3/09)

Within Payment Unit(s) 6, unless changed by written agreement, cutting and skidding are not permitted during the period of April 15 to July 15. This restriction is because of bark slippage.

5.2.3.11 - Coppice regeneration protection (4/10)

Timber harvesting in any Payment Unit must be completed before significant regeneration sprouting occurs in that Payment Unit to minimize damage to the new regeneration. Any post harvest operations, such as chipping, must be completed before sprouting of regeneration occurs. If it is anticipated that chipping will be delayed, then tops shall be carried to one central location or left unchipped. The Unit Manager or his/her representative may cease such operations if sprouting occurs before the operation is complete.

5.2.4 - Dead and Down Creation

5.2.4.7 - Dead and down creation: hare, grouse, deer and other species (5/15)

To improve horizontal cover habitat for snowshoe hare, grouse, deer, and other species, the Purchaser is to push over one 12-inch diameter or larger, tree for every two acres within Payment Units 5 and 7. Trees to be pushed over in Payment Units 1 - 4 are marked with green paint. These trees should be tipped over with the root ball still attached so the base of the tree is suspended off the ground. The crown of the fallen tree should be at or near ground level after it is pushed over. If the tree cannot be pushed over it can be hinge cut so that the base is still suspended off the ground.

5.2.32 - Decking/landing restoration (9/13)

All decking and landing areas must have the surface area restored to a condition equal to or better than before. This is to ensure the proper regeneration of the stand. Wood debris, chips, and "cookies" from trimmings must be removed or scattered away from landing and loading areas and may not be windrowed on the edge.

5.2.33 - Gas well re-vegetation (12/08)

In the event that the gas well is utilized for a landing, the site must be re-vegetated with a seeding mixture specified by the Unit Manager or his/her representative.

5.2.38 - No decking against live trees (2/04)

Cut products may not be decked against unmarked or designated leave trees.

5.4 - Soil Protection

5.4.1 - Rutting restriction, general (7/16)

Operations are to cease immediately if equipment and weather conditions result in rutting of roads and/or skid trails which is 12 inches or greater in depth and 50 feet in length. The Unit Manager or his/her representative may restrict hauling and/or skidding if ruts exceed the specified depth. With the Unit Manager or his/her representative's approval, the Purchaser may return to the area when the risk of rutting has decreased.

5.8 - Protection of Endangered Species

5.8.5 - Protection of raptor nests (3/13)

All trees with raptor nests will be protected if found during harvesting operations. Notification will be made to the Unit Manager or his/her representative who will notify the Wildlife Biologist so an on-site evaluation and recommendation can be made, if necessary.



TIMBER SALE MAP

This information provided by authority of Part 525, 1994 PA 451, as amended.

Sale Number	Year
54 - 013	20

Forest Management Unit Atlanta	County Montmorency	Mapped By Collin Zaremba	Date 07/01/2020	Page 1	of 1
Township 31N	Range 03E	Section(s) and Subdivision(s) Sec 13: SWSW, Sec 14: SESE, Sec 23: SENW,NE, Sec 24: NWNW/S1/2NW,SWNE	Scale 1:15,840		

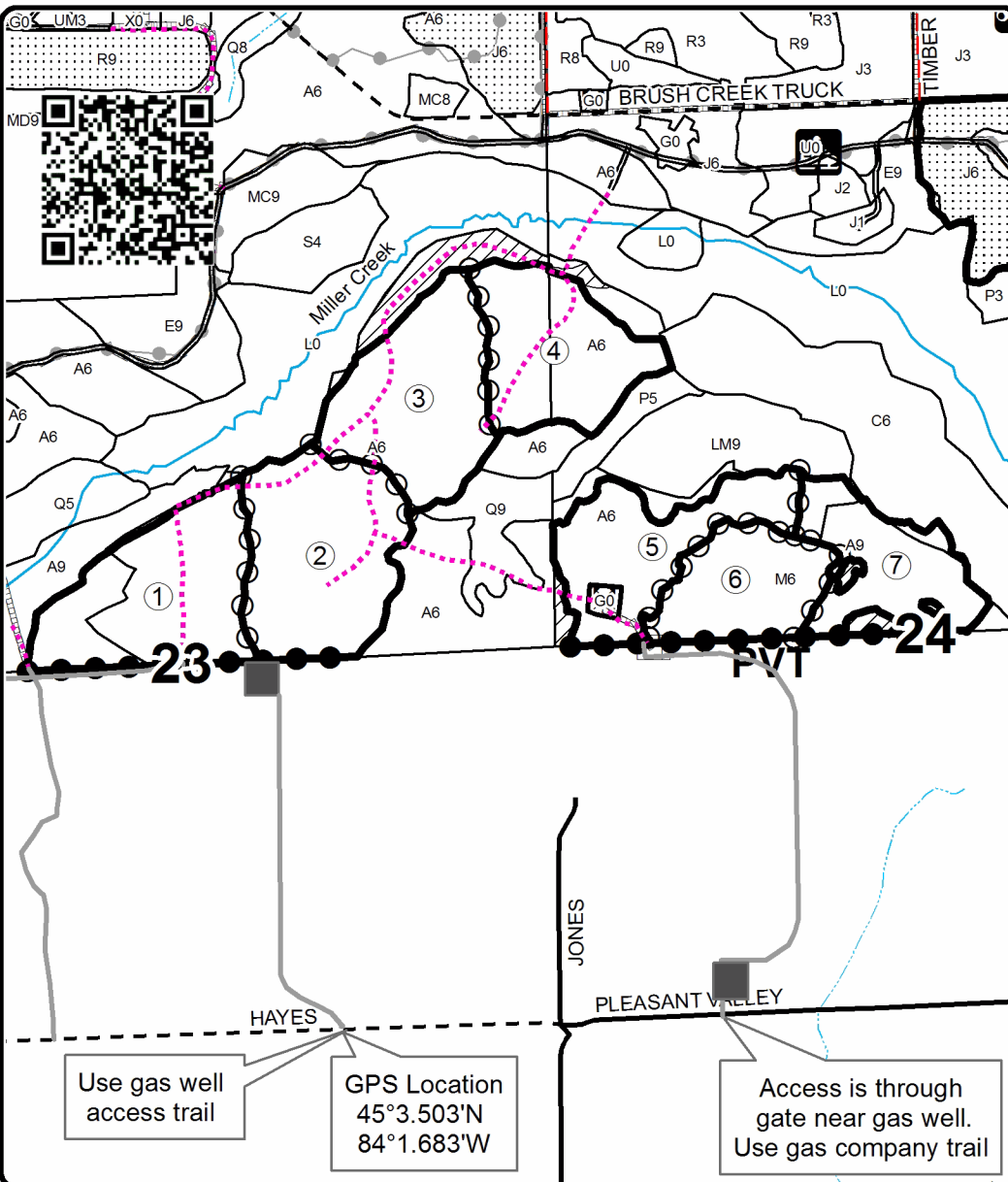
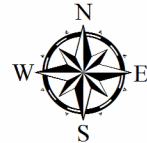
Cover Type				Density			
A = Aspen	H = Hemlock	N = Marsh	U = Upland Brush	0 = Non Stocked	5 = Pole Timber Medium		
B = Paper Birch	J = Jack Pine	O = Oak	UM = Upland Mixed	1 = Seedling Sapling Poor	6 = Pole Timber Well		
C = Cedar	L = Lowland Brush	P = Lowland Poplar	V = Bog or Marsh	2 = Seedling Sapling Medium	7 = Saw Timber Poor		
D = Treed Bog	LM = Lowland Mixed	Q = Mixed Swamp Conifer	W = White Pine	3 = Seedling Sapling Well	8 = Saw Timber Medium		
E = Swamp Hdwoods	M = Mpl, Bch, Brch	R = Red Pine	X = Non Stocked	4 = Pole Timber Poor	9 = Saw Timber Well		
F = Spruce Fir	MC = Mixed Conifer	S = Black Spruce	Z = Water				
G = Grass	MD = Mixed Deciduous	T = Tamarack					

PU	Acres	PU	Acres
1	32.4	5	23.3
2	33.8	6	19.2
3	30.3	7	20.6
4	25.6		

Miller Moat Aspen and HW

Compartment 48 and 49

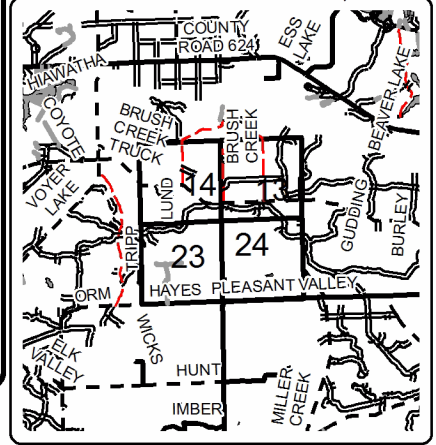
185.2 Acres



Legend

- Against State (Red)
- Payment Unit (Yellow)
- Private Line (Blue)
- Stand Boundaries
- Nearby Timber Sales
- Retention Area
- Secondary Forest Road
- Paved Road
- Gravel Road
- County Road - Seasonal
- Private Road
- Temporary Management Access
- Recreational Trail
- Intermittent Stream
- Perennial River
- Payment Unit Label
- Gas wells on private land
- Pipeline

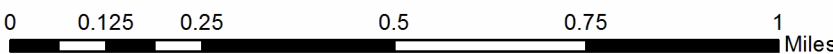
Locator Map 1:150,000



Use gas well access trail

GPS Location
45°3.503'N
84°1.683'W

Access is through gate near gas well. Use gas company trail



TIMBER SALE INFORMATION

Mossy Spruce (54-038-20)

T31N, R03E, SEC. 6; T31N, R03E, SEC. 7.

Montmorency County (Advertised Price \$7,542.10)

SALE NOTE: A recreation site such as a trail, pathway, or campground is within the sale area or the vicinity. Certain restrictions/specifications may be applicable including time restrictions.

A timber sale contract for this lump sum, sealed bid timber sale will be awarded to the responsible bidder offering the highest sealed bid price. All units of volume listed below were estimated using the T-Sale computer program and our traditional volume equations. Bids must be at or above the following advertised price for each product and species:

<u>PRODUCTS & SPECIES</u>	<u>ESTIMATED UNITS*</u>	<u>ADVERTISED PRICE</u>
Pulpwood		
Balsam Fir	90 Cords	\$ 20.10 / Cord
Black Spruce	399 Cords	\$ 6.60 / Cord
Jack Pine	3 Cords	\$ 11.85 / Cord
N. White Cedar	133 Cords	\$ 17.25 / Cord
Paper Birch	13 Cords	\$ 6.95 / Cord
Quaking Aspen	7 Cords	\$ 27.55 / Cord
Red Maple	7 Cords	\$ 22.30 / Cord
Red Oak	5 Cords	\$ 38.40 / Cord
Tamarack	22 Cords	\$ 6.30 / Cord

* The total volume is statistically estimated within plus (+) or minus (-) 16.12 percent. There are an estimated 676 cords on this timber sale, plus or minus 109 cords at the 95% confidence level. The estimated units are final and not subject to adjustment. Prospective bidders are urged to examine this timber and to make their own estimates of quantity and quality.

BOND AND PAYMENT SCHEDULE:

- A bond in the amount of \$377.00 to insure faithful performance of the conditions of the contract will be deposited by the successful bidder within 21 days of the sale award.
- Cutting in any sale or unit without the required advance payment would be considered a trespass.
- Total payment must be paid in advance or according to the following schedule :
 - Ten percent (10%) of the sale value must be paid within 21 days of the sale award.
 - The 10% down payment will be credited towards the first unit cut.
 - Payment for each of the following units must be made before cutting begins in that unit:

PAYMENT UNIT NUMBER	PERCENT OF TOTAL SALE VALUE
01	84.7%
02	15.3%
- If no cutting takes place, the 10% down payment will not be refunded.
- Operations on the contract issued will terminate on 12/31/2025.

SALE STATISTICS

SALE VOLUMES

VOLUME		STATISTICAL RANGE IN CORDS		
TOTAL CUBIC FEET	TOTAL CORDS	PERCENT ERROR	MINIMUM	MAXIMUM
53,440	676	16.12%	567	785

VDU VOLUMES

A VDU is a Volume Determination Unit. Volumes and their associated statistics are calculated at the VDU level and summarized to the sale level. There is often a one to one relationship between a VDU and a Payment Unit, but not always, depending on the cruise design. Refer to the VDU TO PAYMENT UNIT table.

VDU	VOLUME		PERCENT ERROR	RANGE IN CORDS	
	TOTAL CUBIC FEET	TOTAL CORDS		MINIMUM	MAXIMUM
38	45,907	581	18.38%	474	688
50	7,552	96	31.63%	65	126
TOTAL:	53,459	677		540	814

VDU TO PAYMENT UNIT

When a VDU is associated with more than one Payment Unit (PU), the VDU volumes are assigned to the PU based on acres of the VDU within the PU.

VDU	VDU ACRES	PU	PU ACRES
38	30.6	1	30.6
50	3.9	2	3.9
TOTAL:	34.5		34.5

DESCRIPTION OF TIMBER BY PAYMENT UNIT (PU)

PU	MARKET GROUP	PRODUCT	QUANTITY	UNIT	ACRES	ADVERTISE PRICE
1	Balsam Fir	Pulpwood	86	Cords	30.6	\$6,386.15
	Black Spruce		362	Cords		
	Black Spruce	Sawtimber	6.0	MBF		
	Black Spruce	Pulpwood	350	Cords		
	Jack Pine		3	Cords		
	N. White Cedar		103	Cords		
	N. White Cedar	Sawtimber	3.4	MBF		
	N. White Cedar	Pulpwood	96	Cords		
	Paper Birch		11	Cords		
	Red Maple		7	Cords		
	Red Oak		5	Cords		
	Tamarack		5	Cords		
	Tamarack		5	Cords		
	2	Balsam Fir	Pulpwood	4		
Black Spruce			37	Cords		
Black Spruce		Sawtimber	1.5	MBF		
Black Spruce		Pulpwood	34	Cords		
N. White Cedar			30	Cords		
N. White Cedar		Sawtimber	1.4	MBF		
N. White Cedar		Pulpwood	27	Cords		
Paper Birch			2	Cords		
Quaking Aspen			7	Cords		
Tamarack			17	Cords		
Tamarack		Sawtimber	0.9	MBF		
Tamarack	Pulpwood	15	Cords			
TOTAL:			679	Cords		

Sale Specific Conditions & Requirements

Sale Name: Mossy Spruce

Sale Number: 54-038-20 Seq#: 2

1 - Sale Area

1.2 - Boundaries

1.2.1 - Painted boundaries (9/19)

The sale boundary and Payment Unit boundaries are marked and identified by red paint. Exterior sale boundary lines against state are marked with red paint. The painted boundary line trees are not Included Timber and are to be protected.

2 - Timber Specifications

2.1 - Included Timber

2.1.1 - Clearcut unit(s) with unmerchantable trees (6/14)

Within Payment Unit(s) 1 and 2, cut all trees that are two (2) inches or more at DBH, except do not cut any white pine. Special protection trees identified in accordance with condition 3.4.2, within clearcutting unit boundaries, are not Included Timber and are to be protected.

3 - Payments

3.4 - Damaged Timber

3.4.2 - Special Protection Trees (4/14)

The Purchaser shall not cut live or dead special protection trees within cutting units or clearings. Special protection trees are white pine within the Sale Area. If the Purchaser's operations have cut or damaged special protection trees through carelessness, the Purchaser shall pay \$200 as fixed, agreed and liquidated damages for each special protection tree cut or damaged. Such payment does not constitute ownership of the undesignated timber.

4 - Transportation

4.1 - Construction

4.1.3 - Slash and earthen piles (8/04)

Piles or windrows of earth along roads and landings that have been widened or constructed shall be leveled. Slash from road maintenance or construction, including stumps, shall be dispersed throughout the sale.

4.1.6 - Road construction (1/09)

Improvements of existing roads shall be done in such a way as to minimize the environmental and visual impacts. Merchantable trees shall be cut and utilized unless otherwise directed. Non-merchantable trees shall be severed and laid flat on the ground. Slash shall be scattered, and not left in windrows and kept a minimum of 10 feet back from the road edge. Stumps shall be set upright, not left on edge, and be moved at least 10 feet away from the road edge. Disturbed soil shall be feathered into the woods and not left in berms or windrows.

4.1.12 - No new roads (1/12)

No new roads will be permitted in any Payment Unit. All operations are limited to existing roads. Skid trails only will be allowed.

4.2 - Maintenance

4.2.5 - Two wheel drive condition (2/04)

All existing trail roads on and adjacent to the sale area must be passable by two-wheel drive traffic for the duration of the sale.

5 - Operations

5.1 - Notification

5.1.1 - Pre-sale conference (10/16)

A pre-sale conference on site between the Purchaser and sale administrator is required prior to beginning any operations to

determine landing locations. The Unit Manager or his/her representative must be contacted at least 10 days in advance to schedule the conference.

5.1.4 - Post-sale conference (10/16)

A post-sale conference on site between the Purchaser and sale administrator is required 5 days prior to the completion of active logging operations to determine clean-up and repair of landings, road edges, and the fulfillment of other contract specifications.

5.2 - Conduct of Operations

5.2.1 - Slash

5.2.1.10 - No slash in openings (5/10)

No brush or logging debris is to be left in the maintained wildlife opening which is indicated by G0 on the Timber Sale Map. Any damage to the opening shall be repaired according to specifications of the Unit Manager or his/her representative.

5.2.2 - Hazard Trees/Snags

5.2.2.1 - Den trees (10/16)

Obvious hollow and/or den trees shall be protected and left standing unless they are a safety hazard.

5.2.3 - Operating Restrictions

5.2.3.5 - Oak wilt restriction (1/18)

Within Payment Unit(s) unless changed by written agreement, cutting, skidding, hauling within the sale and brushing of access roads to the sale are not permitted during the period of April 15 to July 15. Operations may be allowed if specific steps are taken to prevent damaging uncut oak during the high risk period. Those steps may include completing all road brushing before April 15th and clearing a tree-length buffer along uncut oak cover before April 15th. This is necessary to reduce the spread of oak wilt. For more information, contact the Unit Manager or his/her representative.

5.2.22 - Operating Caution

5.2.22.1 - Operating caution (6/11)

It is recommended, but not required, that within Payment Unit(s) 1 and 2, cutting, skidding, and hauling occur during dry summer or frozen winter conditions. The reason for the recommendation is because of wet and sensitive soils.

5.2.32 - Decking/landing restoration (9/13)

All decking and landing areas must have the surface area restored to a condition equal to or better than before. This is to ensure the proper regeneration of the stand. Wood debris, chips, and "cookies" from trimmings must be removed or scattered away from landing and loading areas and may not be windrowed on the edge.

5.2.38 - No decking against live trees (2/04)

Cut products may not be decked against unmarked or designated leave trees.

5.2.39 - ORV trail/route protection (4/18)

There is an ORV trail or route and is shown on the Timber Sale Map. Do not cut trees or damage posts with yellow ORV markers. All stumps within 5 feet of the trail must be cut flush with the ground. Maintain a 20-foot-wide slash, debris, and rut free zone daily using the ORV trail or route as the centerline. Do not run equipment down the ORV trail or route.

5.4 - Soil Protection

5.4.1 - Rutting restriction, general (7/16)

Operations are to cease immediately if equipment and weather conditions result in rutting of roads and/or skid trails which is 12 inches or greater in depth and 50 feet in length. The Unit Manager or his/her representative may restrict hauling and/or skidding if ruts exceed the specified depth. With the Unit Manager or his/her representative's approval, the Purchaser may return to the area when the risk of rutting has decreased.

5.8 - Protection of Endangered Species

5.8.5 - Protection of raptor nests (3/13)

All trees with raptor nests will be protected if found during harvesting operations. Notification will be made to the Unit

Manager or his/her representative who will notify the Wildlife Biologist so an on-site evaluation and recommendation can be made, if necessary.

6 - Safety and Fire Prevention

6.2 - Signing

6.2.1 - Road posting (9/09)

The Purchaser is responsible for posting and maintaining caution signs on forest roads prior to beginning operations. The road must be posted at appropriate distances from the Sale Area to warn of logging activity and truck traffic. Signs must be removed when harvest operations are suspended or completed. The Purchaser will provide these signs.



TIMBER SALE MAP

This information provided by authority of Part 525, 1994 PA 451, as amended.

Sale Number	Year
54 - 038	20

Forest Management Unit Atlanta	County Montmorency	Mapped By Collin Zaremba	Date 09/09/2020	Page 1	of 1
Township 31N	Range 03E	Section(s) and Subdivision(s) Sec 6: SE Sec 7: NENE	Cruised By Collin Zaremba		

Scale	1:15,840
-------	----------

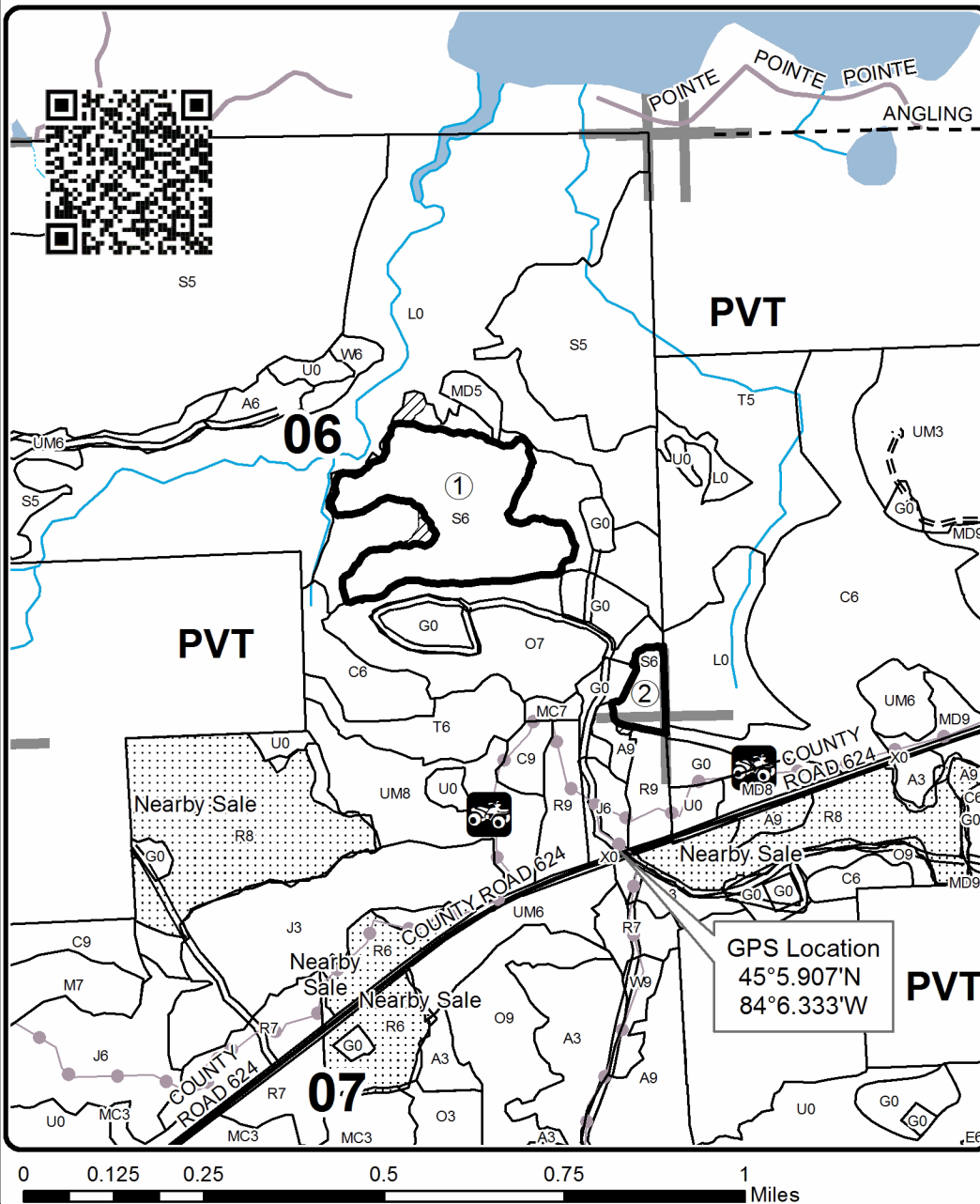
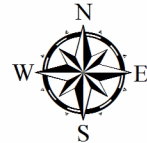
Cover Type				Density	
A = Aspen	H = Hemlock	N = Marsh	U = Upland Brush	0 = Non Stocked	5 = Pole Timber Medium
B = Paper Birch	J = Jack Pine	O = Oak	UM = Upland Mixed	1 = Seedling Sapling Poor	6 = Pole Timber Well
C = Cedar	L = Lowland Brush	P = Lowland Poplar	V = Bog or Marsh	2 = Seedling Sapling Medium	7 = Saw Timber Poor
D = Treed Bog	LM = Lowland Mixed	Q = Mixed Swamp Conifer	W = White Pine	3 = Seedling Sapling Well	8 = Saw Timber Medium
E = Swamp Hdwoods	M = Mpl, Bch, Brch	R = Red Pine	X = Non Stocked	4 = Pole Timber Poor	9 = Saw Timber Well
F = Spruce Fir	MC = Mixed Conifer	S = Black Spruce	Z = Water		
G = Grass	MD = Mixed Deciduous	T = Tamarack			

PU	Acres
1	30.6
2	3.9

Mossy Spruce

Compartment 52

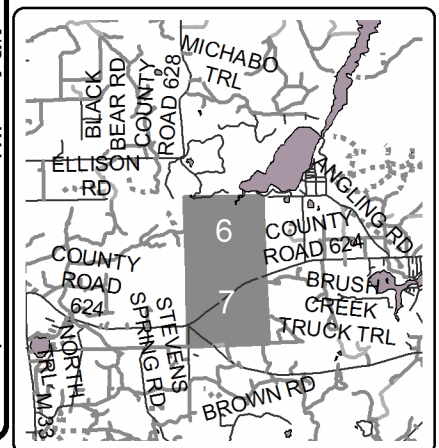
34.5 Acres



Legend

- Against State (Red)
- ▨ Retention Area
- ▤ Nearby Timber Sales
- ▭ Stand Boundaries
- Recreational Trail
- == Secondary Forest Road
- == Forest Access Route
- Paved Road
- - Gravel Road
- Private Road
- ⋯ Intermittent Stream
- Perennial River
- Lakes and Rivers
- Section Corners
- Payment Unit Number

Locator Map
1:150,000



TIMBER SALE INFORMATION

C26 TB Outwash Aspen Mix (54-044-20)

T30N, R04E, SEC. 5; T30N, R04E, SEC. 6; T31N, R04E, SEC. 31.
Montmorency County (Advertised Price \$40,908.15)

A timber sale contract for this lump sum, sealed bid timber sale will be awarded to the responsible bidder offering the highest sealed bid price. All units of volume listed below were estimated using the T-Sale computer program and our traditional volume equations. Bids must be at or above the following advertised price for each product and species:

<u>PRODUCTS & SPECIES</u>	<u>ESTIMATED UNITS*</u>	<u>ADVERTISED PRICE</u>
Sawtimber		
Quaking Aspen	117.2 MBF	\$ 105.00 / MBF
Red Maple	15.6 MBF	\$ 55.00 / MBF
Red Oak	6.5 MBF	\$ 174.00 / MBF
White Pine	2.7 MBF	\$ 39.00 / MBF
White Spruce	12.6 MBF	\$ 33.00 / MBF
Pulpwood		
Balsam Fir	283 Cords	\$ 20.10 / Cord
Mixed Aspen	610 Cords	\$ 27.55 / Cord
Mixed Hardwood	81 Cords	\$ 22.30 / Cord
Red Oak	38 Cords	\$ 38.40 / Cord
White Pine	11 Cords	\$ 11.05 / Cord
White Spruce	32 Cords	\$ 6.60 / Cord

* The total volume is statistically estimated within plus (+) or minus (-) 13.38 percent. There are an estimated 1,416 cords on this timber sale, plus or minus 190 cords at the 95% confidence level. The estimated units are final and not subject to adjustment. Prospective bidders are urged to examine this timber and to make their own estimates of quantity and quality.

BOND AND PAYMENT SCHEDULE:

1. A bond in the amount of \$2,045.00 to insure faithful performance of the conditions of the contract will be deposited by the successful bidder within 21 days of the sale award.
2. Cutting in any sale or unit without the required advance payment would be considered a trespass.
3. Total payment must be paid in advance or according to the following schedule :
 - (a) Ten percent (10%) of the sale value must be paid within 21 days of the sale award.
 - (b) The 10% down payment will be credited towards the first unit cut.
 - (c) Payment for each of the following units must be made before cutting begins in that unit:

PAYMENT UNIT NUMBER	PERCENT OF TOTAL SALE VALUE
01	29.0%
02	33.1%
03	37.9%
4. If no cutting takes place, the 10% down payment will not be refunded.
5. Operations on the contract issued will terminate on 12/31/2023.

SALE STATISTICS

SALE VOLUMES

VOLUME		STATISTICAL RANGE IN CORDS		
TOTAL CUBIC FEET	TOTAL CORDS	PERCENT ERROR	MINIMUM	MAXIMUM
111,900	1,416	13.38%	1,227	1,606

VDU VOLUMES

A VDU is a Volume Determination Unit. Volumes and their associated statistics are calculated at the VDU level and summarized to the sale level. There is often a one to one relationship between a VDU and a Payment Unit, but not always, depending on the cruise design. Refer to the VDU TO PAYMENT UNIT table.

VDU	VOLUME		PERCENT ERROR	RANGE IN CORDS	
	TOTAL CUBIC FEET	TOTAL CORDS		MINIMUM	MAXIMUM
10	33,820	428	24.72%	322	534
57	78,084	988	15.80%	832	1,145
TOTAL:	111,904	1,417		1,155	1,678

VDU TO PAYMENT UNIT

When a VDU is associated with more than one Payment Unit (PU), the VDU volumes are assigned to the PU based on acres of the VDU within the PU.

VDU	VDU ACRES	PU	PU ACRES
10	16.4	1	16.4
57	46.1	2	21.5
		3	24.6
TOTAL:	62.5		62.5

DESCRIPTION OF TIMBER BY PAYMENT UNIT (PU)

PU	MARKET GROUP	PRODUCT	QUANTITY	UNIT	ACRES	ADVERTISE PRICE
1	Quaking Aspen	Sawtimber	25.3	MBF	16.4	\$11,868.40
	Red Maple		6.8	MBF		
	Red Oak		4.4	MBF		
	White Pine		2.7	MBF		
	White Spruce		10.3	MBF		
	Balsam Fir	Pulpwood	98	Cords		
	<i>Balsam Fir</i>	<i>Sawtimber</i>	3.9	<i>MBF</i>		
	<i>Balsam Fir</i>	<i>Pulpwood</i>	90	<i>Cords</i>		
	Mixed Aspen		169	Cords		
	<i>Balsam Poplar</i>	<i>Sawtimber</i>	6.8	<i>MBF</i>		
	<i>Balsam Poplar</i>	<i>Pulpwood</i>	24	<i>Cords</i>		
	<i>Quaking Aspen</i>		131	<i>Cords</i>		
	Mixed Hardwood		20	Cords		
	<i>Black Cherry</i>		2	<i>Cords</i>		
	<i>Red Maple</i>		18	<i>Cords</i>		
	Red Oak		7	Cords		
	White Pine		11	Cords		
	White Spruce		25	Cords		
	2	Quaking Aspen	Sawtimber	42.9		
Red Maple			4.1	MBF		
Red Oak			1.0	MBF		
White Spruce			1.1	MBF		
Balsam Fir		Pulpwood	86	Cords		
<i>Balsam Fir</i>		<i>Sawtimber</i>	7.4	<i>MBF</i>		
<i>Balsam Fir</i>		<i>Pulpwood</i>	71	<i>Cords</i>		
Mixed Aspen			206	Cords		
<i>Balsam Poplar</i>		<i>Sawtimber</i>	3.9	<i>MBF</i>		
<i>Balsam Poplar</i>		<i>Pulpwood</i>	39	<i>Cords</i>		
<i>Quaking Aspen</i>			159	<i>Cords</i>		
Mixed Hardwood			28	Cords		
<i>Black Cherry</i>			1	<i>Cords</i>		
<i>Paper Birch</i>			5	<i>Cords</i>		
<i>Red Elm</i>			1	<i>Cords</i>		
<i>Red Maple</i>			21	<i>Cords</i>		
Red Oak			14	Cords		
White Spruce			3	Cords		
3		Quaking Aspen	Sawtimber	49.0	MBF	24.6
	Red Maple		4.7	MBF		
	Red Oak		1.1	MBF		
	White Spruce		1.2	MBF		
	Balsam Fir	Pulpwood	99	Cords		
	<i>Balsam Fir</i>	<i>Sawtimber</i>	8.4	<i>MBF</i>		
	<i>Balsam Fir</i>	<i>Pulpwood</i>	82	<i>Cords</i>		
	Mixed Aspen		235	Cords		
	<i>Balsam Poplar</i>	<i>Sawtimber</i>	4.5	<i>MBF</i>		
	<i>Balsam Poplar</i>	<i>Pulpwood</i>	44	<i>Cords</i>		
	<i>Quaking Aspen</i>		182	<i>Cords</i>		
	Mixed Hardwood		33	Cords		
	<i>Black Cherry</i>		2	<i>Cords</i>		
	<i>Paper Birch</i>		5	<i>Cords</i>		
	<i>Red Elm</i>		1	<i>Cords</i>		
	<i>Red Maple</i>		25	<i>Cords</i>		
	Red Oak		17	Cords		
	White Spruce		4	Cords		
	TOTAL:			154.6	MBF	

TOTAL:	1,055 Cords
--------	-------------

Sale Specific Conditions & Requirements

Sale Name: C26 TB Outwash Aspen Mix

Sale Number: 54-044-20 Seq#: 1

1 - Sale Area

1.2 - Boundaries

1.2.1 - Painted boundaries (9/19)

The sale boundary and Payment Unit boundaries are marked and identified by blue, red, and yellow paint. Exterior sale boundary lines against private property are marked with blue paint. Exterior sale boundary lines against state are marked with red paint. Interior Payment Unit boundaries are marked with yellow paint. Retention patches are marked with red paint; no harvesting activities may occur within these areas. The painted boundary line trees are not Included Timber and are to be protected. Yellow painted trees designating an interior Payment Unit boundary are only to be cut when all surrounding Payment Units have been paid.

2 - Timber Specifications

2.1 - Included Timber

2.1.1 - Clearcut unit(s) with unmerchantable trees (6/14)

Within Payment Unit(s) 1-3, cut all trees that are two (2) inches or more at DBH, except protect and do not cut green marked trees, red pine, or cedar in Payment Unit 1. Protect and do not cut pine or cedar in Payment Units 2 and 3. Special protection trees identified in accordance with condition 3.4.2, within clearcutting unit boundaries, are not Included Timber and are to be protected.

3 - Payments

3.4 - Damaged Timber

3.4.1 - Damaged timber (7/16)

General Condition and Requirement 3.4 Damaged Timber, defines liquidated damages for undesignated live merchantable trees which are cut or injured. In addition, extreme care should be taken to avoid damage to tree seedlings and saplings. Within the Sale Area, if more than 25% of the pine seedlings or saplings (1/4" to 4.5" DBH) within a specified portion of the Sale Area are damaged, liquidated damages will be assessed at \$150 per acre for all acreage within that specified portion of the Sale Area that was damaged.

No damage is acceptable to undesignated live merchantable trees. Within the Sale Area, if more than 5% of trees (> 4.5" DBH) within a specified area of the sale are damaged, liquidated damages will be assessed for all trees damaged. Rates will be in accordance with General Condition and Requirement 3.4 Damaged Timber.

3.4.2 - Special Protection Trees (4/14)

The Purchaser shall not cut live or dead special protection trees within cutting units or clearings. Special protection trees are marked with green paint and are 26 inches at DBH or greater. If the Purchaser's operations have cut or damaged special protection trees through carelessness, the Purchaser shall pay \$250 as fixed, agreed and liquidated damages for each special protection tree cut or damaged. Such payment does not constitute ownership of the undesignated timber.

4 - Transportation

4.1 - Construction

4.1.3 - Slash and earthen piles (8/04)

Piles or windrows of earth along roads and landings that have been widened or constructed shall be leveled. Slash from road maintenance or construction, including stumps, shall be dispersed throughout the sale.

4.1.6 - Road construction (1/09)

Improvements of existing roads shall be done in such a way as to minimize the environmental and visual impacts. Merchantable trees shall be cut and utilized unless otherwise directed. Non-merchantable trees shall be severed and laid flat on the ground. Slash shall be scattered, and not left in windrows and kept a minimum of 10 feet back from the road edge. Stumps shall be set upright, not left on edge, and be moved at least 10 feet away from the road edge. Disturbed soil shall be feathered into the woods and not left in berms or windrows.

4.1.12 - No new roads (1/12)

No new roads will be permitted in any Payment Unit. All operations are limited to existing roads. Skid trails only will be allowed.

5 - Operations

5.1 - Notification

5.1.1 - Pre-sale conference (10/16)

A pre-sale conference on site between the Purchaser and sale administrator is required prior to beginning any operations within a Payment Unit to determine landing and road locations. The Unit Manager or his/her representative must be contacted at least 5 days in advance to schedule the conference.

5.1.4 - Post-sale conference (10/16)

A post-sale conference on site between the Purchaser and sale administrator is required 5 days prior to the completion of active logging operations to determine clean-up and repair of landings, road edges, and the fulfillment of other contract specifications.

5.2 - Conduct of Operations

5.2.2 - Hazard Trees/Snags

5.2.2.1 - Den trees (10/16)

Obvious hollow and/or den trees shall be protected and left standing unless they are a safety hazard.

5.2.3 - Operating Restrictions

5.2.3.11 - Coppice regeneration protection (4/10)

Timber harvesting in any Payment Unit must be completed before significant tree sprouting occurs in that Payment Unit to minimize damage to the new regeneration. Any post harvest operations, such as chipping, must be completed before sprouting of regeneration occurs. If it is anticipated that chipping will be delayed, then tops shall be carried to one central location for chipping later. The Unit Manager or his/her representative may cease such operations if sprouting occurs before the operation is complete.

5.2.4 - Dead and Down Creation

5.2.4.1 - Dead and down creation, marked trees (10/13)

Within Payment Units 2 and 3 trees marked with a band of pink paint must be left standing until all designated merchantable timber has been cut and taken to the landing. At which time, they are to be cut, felled, and left on the ground.

5.2.4.7 - Dead and down creation: hare, grouse, deer and other species (5/15)

To improve horizontal cover habitat for snowshoe hare, grouse, deer, and other species, the Purchaser is to push over trees marked with a pink band of paint in Payment Unit 1. These pink banded trees should be left standing until all designated merchantable timber has been cut and forwarded to the landing. Once the forwarding requirement is met, the Purchaser is required to push over the pink banded trees. These trees should be tipped over with the root ball still attached so the base of the tree is suspended off the ground. The crown of the fallen tree should be at or near ground level after it is pushed over.

5.2.32 - Decking/landing restoration (9/13)

All decking and landing areas must have the surface area restored to a condition equal to or better than before. This is to ensure the proper regeneration of the stand. Wood debris, chips, and "cookies" from trimmings must be removed or scattered away from landing and loading areas and may not be windrowed on the edge.

5.2.38 - No decking against live trees (2/04)

Cut products may not be decked against unmarked or designated leave trees.

5.4 - Soil Protection

5.4.1 - Rutting restriction, general (7/16)

Operations are to cease immediately if equipment and weather conditions result in rutting of roads and/or skid trails which is

12 inches or greater in depth and 50 feet in length. The Unit Manager or his/her representative may restrict hauling and/or skidding if ruts exceed the specified depth. With the Unit Manager or his/her representative's approval, the Purchaser may return to the area when the risk of rutting has decreased.

5.8 - Protection of Endangered Species

5.8.5 - Protection of raptor nests (3/13)

All trees with raptor nests will be protected if found during harvesting operations. Notification will be made to the Unit Manager or his/her representative who will notify the Wildlife Biologist so an on-site evaluation and recommendation can be made, if necessary.

6 - Safety and Fire Prevention

6.2 - Signing

6.2.1 - Road posting (10/20)

The Purchaser is responsible for posting and maintaining caution signs on forest roads prior to beginning operations. The road must be posted at appropriate distances from the Sale Area to warn of logging activity and truck traffic. Signs must be removed when harvest operations are suspended or completed. The Purchaser will provide these signs.



Sale Number	Year
54-044	21

TIMBER SALE MAP

This information provided by authority of Part 525, 1994 PA 451, as amended.

Forest Management Unit Atlanta	County Montmorency	Mapped By D. Parris	Date 10/26/2020	Page 1	of 1
Township 30N 31N	Range 04E 04E	Section(s) and Subdivision(s) T30N R04E Sec. 5 W1/2NW; Sec. 6 NE T31N R04E Sec. 31 SWSE	Scale 1:7,920		

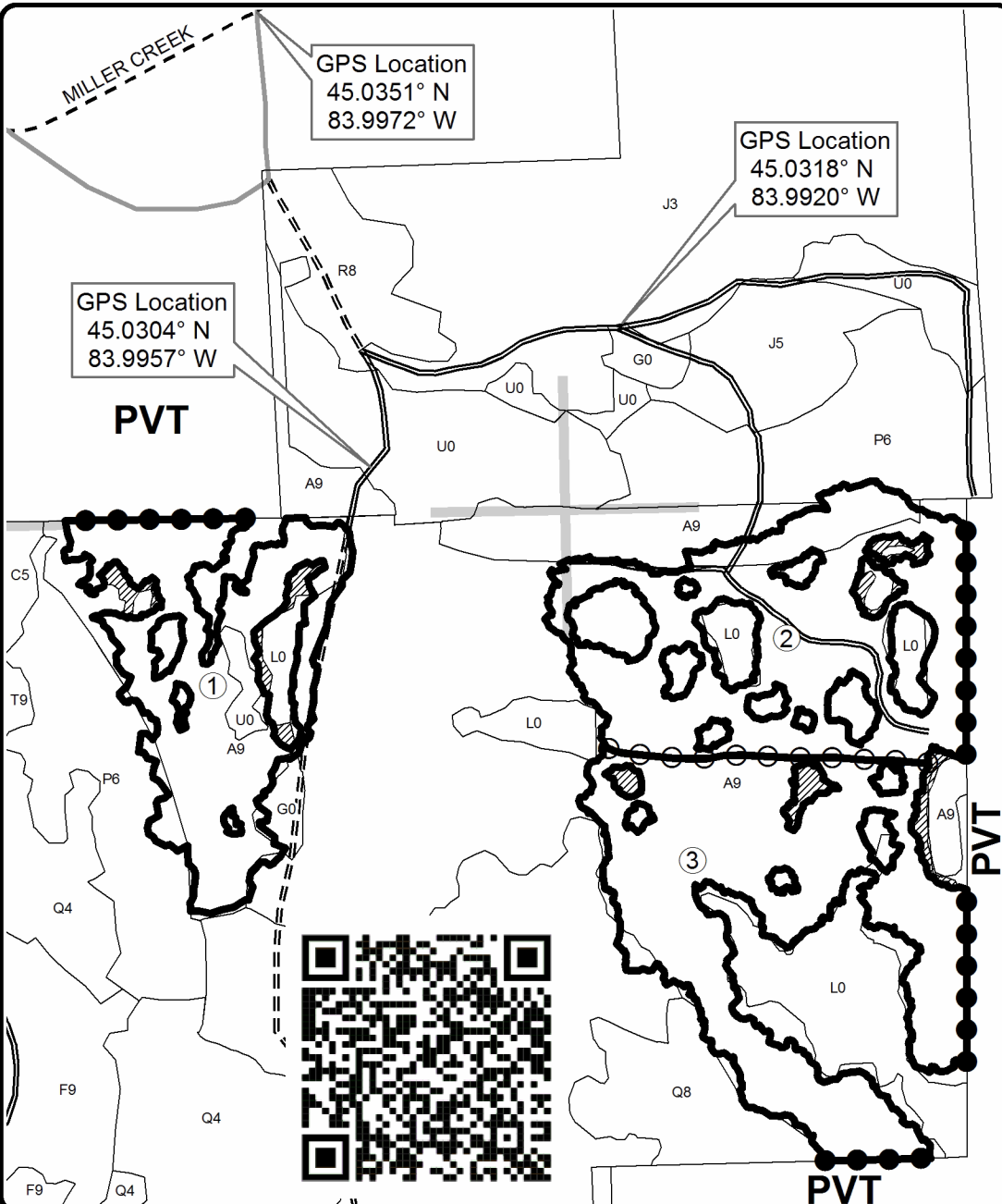
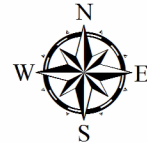
Cover Type				Density	
A = Aspen	H = Hemlock	N = Marsh	U = Upland Brush	0 = Non Stocked	5 = Pole Timber Medium
B = Paper Birch	J = Jack Pine	O = Oak	UM = Upland Mixed	1 = Seedling Sapling Poor	6 = Pole Timber Well
C = Cedar	L = Lowland Brush	P = Lowland Poplar	V = Bog or Marsh	2 = Seedling Sapling Medium	7 = Saw Timber Poor
D = Tread Bog	LM = Lowland Mixed	Q = Mixed Swamp Conifer	W = White Pine	3 = Seedling Sapling Well	8 = Saw Timber Medium
E = Swamp Hdwoods	M = Mpl, Bch, Brch	R = Red Pine	X = Non Stocked	4 = Pole Timber Poor	9 = Saw Timber Well
F = Spruce Fir	MC = Mixed Conifer	S = Black Spruce	Z = Water		
G = Grass	MD = Mixed Deciduous	T = Tamarack			

PU	Acres
1	16.4
2	21.5
3	24.6

C26 TB Outwash Aspen Mix

Compartment 26

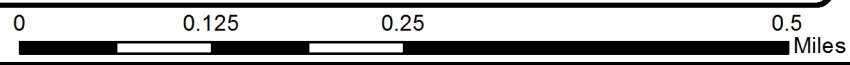
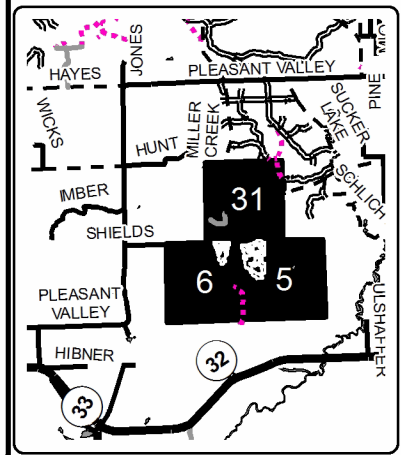
62.5 Acres



Legend

- Against State (Red)
- Payment Unit (Yellow)
- Private Line (Blue)
- Payment Unit
- Retention Area (Red)
- Stand Boundaries
- Secondary Forest Road
- Forest Access Route
- Gravel Road
- Private
- Section Corners

Locator Map
1:150,000



C26 TB Outwash Aspen Mix (54-044-20)
T30N, R04E, SEC. 5; T30N, R04E, SEC. 6; T31N, R04E, SEC. 31; Montmorency

In response to the notice of sale to be held 10:00 a.m. (local time) on October 12, 2021, I am hereby submitting my sealed bid (firm offer) for the following forest products to be cut. Bids for individual species must be at or above the advertised price. All non-responsive bid forms may be rejected.

<u>PRODUCTS & SPECIES</u>	<u>ESTIMATED VOLUME*</u>	<u>ADVERTISED PRICE</u>	<u>BID PRICE/UNIT</u>
Sawtimber			
Quaking Aspen	117.2 MBF	\$ 105.00/MBF	\$ _____
Red Maple	15.6 MBF	\$ 55.00/MBF	\$ _____
Red Oak	6.5 MBF	\$ 174.00/MBF	\$ _____
White Pine	2.7 MBF	\$ 39.00/MBF	\$ _____
White Spruce	12.6 MBF	\$ 33.00/MBF	\$ _____
Pulpwood			
Balsam Fir	283 Cords	\$ 20.10/Cord	\$ _____
Mixed Aspen	610 Cords	\$ 27.55/Cord	\$ _____
Mixed Hardwood	81 Cords	\$ 22.30/Cord	\$ _____
Red Oak	38 Cords	\$ 38.40/Cord	\$ _____
White Pine	11 Cords	\$ 11.05/Cord	\$ _____
White Spruce	32 Cords	\$ 6.60/Cord	\$ _____

*The volumes are statistically estimated within plus (+) or minus (-) 13.38 percent at 95% confidence level. These estimated volumes are final and not subject to adjustment. Prospective bidders are urged to examine this timber and to make their own estimates of quantity and quality.

I understand that any or all bids may be rejected. All bids must be signed and all bid items must be bid or the bid form may be rejected. I also understand that consideration and awarding a contract will be based upon my past performance and ability to complete the contract based upon equipment and staffing subject to my control.

FEDERAL ID: _____ or SOCIAL SECURITY NUMBER: _____

Company or individual bidding: _____

Company representative's name: _____

Address: _____

City: _____ State: _____ Zip: _____

IF AVAILABLE, PLEASE PLACE THE PERSONALIZED LABEL FROM YOUR PROSPECTUS IN THE ABOVE BOX.

Individual or company representative's signature: _____ Date: _____

Phone number : _____ Email (optional): _____

THE WINNING BIDDER MUST COMPLETE THE VERIFICATION OF WORKER'S DISABILITY COMPENSATION ACT COMPLIANCE (ON REVERSE SIDE IF DOUBLE SIDED) WITHIN 21 DAYS OF SALE AWARD DATE



FOR DEPARTMENT USE ONLY	
Sale Number (XX - XXX - XX - XX)	
Forest Management Unit:	

TIMBER SALE VERIFICATION OF WORKER'S DISABILITY COMPENSATION ACT COMPLIANCE

As required by Act 317, P.A. 1969 (Worker's Compensation) and
Part 5 of Act 451 of 1994, as amended.

VERIFICATION OF WORKER'S DISABILITY COMPENSATION ACT COMPLIANCE

- This verification must be completed and submitted within 21 days of contract award and prior to the issuance of the timber sale contract.
- In addition, if boxes 2B or 2C are checked, then Notice of Exclusion or Certificate of Insurance must be submitted within twenty-one (21) days of the contract award and prior to the issuance of the timber sale contract.
- All information must be typed or printed except for written signatures.

Please Check Appropriate Categories:

1. My business is organized as (you **must** check one of the boxes below):
 - A. Sole Proprietorship (individual)
 - B. Partnership
 - C. Corporation
2. You **must** check one of the boxes below:
 - A. I certify my business is a sole proprietorship and it has no employees but the sole proprietor. I am not subject to the Worker's Compensation Laws.
 - B. I certify my business has satisfied its obligation to the Worker's Compensation Act through the use of an approved Notice of Exclusion (BWC-337, Rev. 5/96). I will provide a copy of the Notice of Exclusion within 21 days of the contract award. (For questions or a copy of the BWC-337, please call the Worker's Compensation Bureau at 517-322-1195).
 - C. I certify my business has a Worker's Compensation Policy. I will provide an original Certificate of Insurance within twenty-one (21) days of the contract award.
3. If you have checked item 2(A) or 2(B), you **must** indicate the number of **both** full-time and part-time employees, other than yourself, including family members and active partners (if none, you must enter "0").

_____ Full-time Employees

_____ Part-time Employees

Name of Business		Federal ID (or) Social Security No.	
Address		Telephone ()	
City	State	ZIP	

I hereby certify that the above information is true and correct. I agree to notify the Michigan DNR of any changes that occur in factors affecting my coverage during any of my present and future operations.

Signature of Owner or Authorized Representative

Title

Date

Please complete the "SEALED BID" information on the next page

Snow Dog Mix (54-006-20)

T31N, R03E, SEC. 12; T31N, R03E, SEC. 13; T31N, R03E, SEC. 24; Montmorency

In response to the notice of sale to be held 10:00 a.m. (local time) on October 12, 2021, I am hereby submitting my sealed bid (firm offer) for the following forest products to be cut. Bids for individual species must be at or above the advertised price. All non-responsive bid forms may be rejected.

<u>PRODUCTS & SPECIES</u>	<u>ESTIMATED VOLUME*</u>	<u>ADVERTISED PRICE</u>	<u>BID PRICE/UNIT</u>
Sawtimber			
Jack Pine	31.0 MBF	\$ 19.00/MBF	\$ _____
Mixed Aspen	21.9 MBF	\$ 105.00/MBF	\$ _____
Red Oak	6.2 MBF	\$ 174.00/MBF	\$ _____
Red Pine	351.8 MBF	\$ 69.00/MBF	\$ _____
White Pine	5.4 MBF	\$ 39.00/MBF	\$ _____
Pulpwood			
Balsam Fir	66 Cords	\$ 20.10/Cord	\$ _____
Black Spruce	206 Cords	\$ 6.60/Cord	\$ _____
Jack Pine	885 Cords	\$ 11.85/Cord	\$ _____
Mixed Aspen	235 Cords	\$ 27.55/Cord	\$ _____
Mixed Hardwood	101 Cords	\$ 22.30/Cord	\$ _____
Red Oak	126 Cords	\$ 38.40/Cord	\$ _____
Red Pine	330 Cords	\$ 26.00/Cord	\$ _____
White Pine	38 Cords	\$ 11.05/Cord	\$ _____

*The volumes are statistically estimated within plus (+) or minus (-) 11.69 percent at 95% confidence level. These estimated volumes are final and not subject to adjustment. Prospective bidders are urged to examine this timber and to make their own estimates of quantity and quality.

I understand that any or all bids may be rejected. All bids must be signed and all bid items must be bid or the bid form may be rejected. I also understand that consideration and awarding a contract will be based upon my past performance and ability to complete the contract based upon equipment and staffing subject to my control.

FEDERAL ID: _____ - _____ or SOCIAL SECURITY NUMBER: _____ - _____ - _____

Company or individual bidding: _____

Company representative's name: _____

Address: _____

City: _____ State: _____ Zip: _____

IF AVAILABLE, PLEASE PLACE THE PERSONALIZED LABEL FROM YOUR PROSPECTUS IN THE ABOVE BOX.

Individual or company representative's signature: _____ Date: _____

Phone number : _____ Email (optional): _____

THE WINNING BIDDER MUST COMPLETE THE VERIFICATION OF WORKER'S DISABILITY COMPENSATION ACT COMPLIANCE (ON REVERSE SIDE IF DOUBLE SIDED) WITHIN 21 DAYS OF SALE AWARD DATE



FOR DEPARTMENT USE ONLY	
Sale Number (XX - XXX - XX - XX)	
Forest Management Unit:	

TIMBER SALE VERIFICATION OF WORKER'S DISABILITY COMPENSATION ACT COMPLIANCE

As required by Act 317, P.A. 1969 (Worker's Compensation) and
Part 5 of Act 451 of 1994, as amended.

VERIFICATION OF WORKER'S DISABILITY COMPENSATION ACT COMPLIANCE

- This verification must be completed and submitted within 21 days of contract award and prior to the issuance of the timber sale contract.
- In addition, if boxes 2B or 2C are checked, then Notice of Exclusion or Certificate of Insurance must be submitted within twenty-one (21) days of the contract award and prior to the issuance of the timber sale contract.
- All information must be typed or printed except for written signatures.

Please Check Appropriate Categories:

1. My business is organized as (you **must** check one of the boxes below):
 - A. Sole Proprietorship (individual)
 - B. Partnership
 - C. Corporation
2. You **must** check one of the boxes below:
 - A. I certify my business is a sole proprietorship and it has no employees but the sole proprietor. I am not subject to the Worker's Compensation Laws.
 - B. I certify my business has satisfied its obligation to the Worker's Compensation Act through the use of an approved Notice of Exclusion (BWC-337, Rev. 5/96). I will provide a copy of the Notice of Exclusion within 21 days of the contract award. (For questions or a copy of the BWC-337, please call the Worker's Compensation Bureau at 517-322-1195).
 - C. I certify my business has a Worker's Compensation Policy. I will provide an original Certificate of Insurance within twenty-one (21) days of the contract award.
3. If you have checked item 2(A) or 2(B), you **must** indicate the number of **both** full-time and part-time employees, other than yourself, including family members and active partners (if none, you must enter "0").

_____ Full-time Employees

_____ Part-time Employees

Name of Business		Federal ID (or) Social Security No.	
Address		Telephone ()	
City	State	ZIP	

I hereby certify that the above information is true and correct. I agree to notify the Michigan DNR of any changes that occur in factors affecting my coverage during any of my present and future operations.

Signature of Owner or Authorized Representative

Title

Date

Please complete the "SEALED BID" information on the next page

Miller Moat Aspen and HW (54-013-20)
T31N, R03E, SEC. 13; T31N, R03E, SEC. 14; T31N, R03E, SEC. 23; T31N, R03E,

In response to the notice of sale to be held 10:00 a.m. (local time) on October 12, 2021, I am hereby submitting my sealed bid (firm offer) for the following forest products to be cut. Bids for individual species must be at or above the advertised price. All non-responsive bid forms may be rejected.

<u>PRODUCTS & SPECIES</u>	<u>ESTIMATED VOLUME*</u>	<u>ADVERTISED PRICE</u>	<u>BID PRICE/UNIT</u>
Sawtimber			
Basswood	41.8 MBF	\$ 52.00/MBF	\$ _____
Mixed Aspen	130.0 MBF	\$ 124.00/MBF	\$ _____
Red Maple	12.2 MBF	\$ 65.00/MBF	\$ _____
Red Oak	7.6 MBF	\$ 206.00/MBF	\$ _____
Sugar Maple	27.6 MBF	\$ 451.00/MBF	\$ _____
Pulpwood			
Balsam Fir	761 Cords	\$ 23.75/Cord	\$ _____
Basswood	288 Cords	\$ 7.15/Cord	\$ _____
Black Spruce	163 Cords	\$ 7.75/Cord	\$ _____
Mixed Aspen	3,139 Cords	\$ 32.55/Cord	\$ _____
Mixed Hardwood	1,026 Cords	\$ 26.35/Cord	\$ _____
Paper Birch	71 Cords	\$ 8.20/Cord	\$ _____
Red Oak	35 Cords	\$ 45.40/Cord	\$ _____

*The volumes are statistically estimated within plus (+) or minus (-) 8.45 percent at 95% confidence level. These estimated volumes are final and not subject to adjustment. Prospective bidders are urged to examine this timber and to make their own estimates of quantity and quality.

I understand that any or all bids may be rejected. All bids must be signed and all bid items must be bid or the bid form may be rejected. I also understand that consideration and awarding a contract will be based upon my past performance and ability to complete the contract based upon equipment and staffing subject to my control.

FEDERAL ID: ____ - ____ - ____ or SOCIAL SECURITY NUMBER: ____ - ____ - ____

Company or individual bidding: _____

Company representative's name: _____

Address: _____

City: _____ State: _____ Zip: _____

IF AVAILABLE, PLEASE PLACE THE PERSONALIZED LABEL FROM YOUR PROSPECTUS IN THE ABOVE BOX.

Individual or company representative's signature: _____ Date: _____

Phone number : _____ Email (optional): _____

THE WINNING BIDDER MUST COMPLETE THE VERIFICATION OF WORKER'S DISABILITY COMPENSATION ACT COMPLIANCE (ON REVERSE SIDE IF DOUBLE SIDED) WITHIN 21 DAYS OF SALE AWARD DATE



FOR DEPARTMENT USE ONLY	
Sale Number (XX - XXX - XX - XX)	
Forest Management Unit:	

TIMBER SALE VERIFICATION OF WORKER'S DISABILITY COMPENSATION ACT COMPLIANCE

As required by Act 317, P.A. 1969 (Worker's Compensation) and
Part 5 of Act 451 of 1994, as amended.

VERIFICATION OF WORKER'S DISABILITY COMPENSATION ACT COMPLIANCE

- This verification must be completed and submitted within 21 days of contract award and prior to the issuance of the timber sale contract.
- In addition, if boxes 2B or 2C are checked, then Notice of Exclusion or Certificate of Insurance must be submitted within twenty-one (21) days of the contract award and prior to the issuance of the timber sale contract.
- All information must be typed or printed except for written signatures.

Please Check Appropriate Categories:

1. My business is organized as (you **must** check one of the boxes below):
 - A. Sole Proprietorship (individual)
 - B. Partnership
 - C. Corporation
2. You **must** check one of the boxes below:
 - A. I certify my business is a sole proprietorship and it has no employees but the sole proprietor. I am not subject to the Worker's Compensation Laws.
 - B. I certify my business has satisfied its obligation to the Worker's Compensation Act through the use of an approved Notice of Exclusion (BWC-337, Rev. 5/96). I will provide a copy of the Notice of Exclusion within 21 days of the contract award. (For questions or a copy of the BWC-337, please call the Worker's Compensation Bureau at 517-322-1195).
 - C. I certify my business has a Worker's Compensation Policy. I will provide an original Certificate of Insurance within twenty-one (21) days of the contract award.
3. If you have checked item 2(A) or 2(B), you **must** indicate the number of **both** full-time and part-time employees, other than yourself, including family members and active partners (if none, you must enter "0").

_____ Full-time Employees

_____ Part-time Employees

Name of Business		Federal ID (or) Social Security No.	
Address		Telephone ()	
City	State	ZIP	

I hereby certify that the above information is true and correct. I agree to notify the Michigan DNR of any changes that occur in factors affecting my coverage during any of my present and future operations.

Signature of Owner or Authorized Representative

Title

Date

Please complete the "SEALED BID" information on the next page

Mossy Spruce (54-038-20)
T31N, R03E, SEC. 6; T31N, R03E, SEC. 7; Montmorency COUNTY

In response to the notice of sale to be held 10:00 a.m. (local time) on October 12, 2021, I am hereby submitting my sealed bid (firm offer) for the following forest products to be cut. Bids for individual species must be at or above the advertised price. All non-responsive bid forms may be rejected.

<u>PRODUCTS & SPECIES</u>	<u>ESTIMATED VOLUME*</u>	<u>ADVERTISED PRICE</u>	<u>BID PRICE/UNIT</u>
<u>Pulpwood</u>			
Balsam Fir	90 Cords	\$ 20.10/Cord	\$ _____
Black Spruce	399 Cords	\$ 6.60/Cord	\$ _____
Jack Pine	3 Cords	\$ 11.85/Cord	\$ _____
N. White Cedar	133 Cords	\$ 17.25/Cord	\$ _____
Paper Birch	13 Cords	\$ 6.95/Cord	\$ _____
Quaking Aspen	7 Cords	\$ 27.55/Cord	\$ _____
Red Maple	7 Cords	\$ 22.30/Cord	\$ _____
Red Oak	5 Cords	\$ 38.40/Cord	\$ _____
Tamarack	22 Cords	\$ 6.30/Cord	\$ _____

*The volumes are statistically estimated within plus (+) or minus (-) 16.12 percent at 95% confidence level. These estimated volumes are final and not subject to adjustment. Prospective bidders are urged to examine this timber and to make their own estimates of quantity and quality.

I understand that any or all bids may be rejected. All bids must be signed and all bid items must be bid or the bid form may be rejected. I also understand that consideration and awarding a contract will be based upon my past performance and ability to complete the contract based upon equipment and staffing subject to my control.

FEDERAL ID: ____ - ____ - ____ or SOCIAL SECURITY NUMBER: ____ - ____ - ____

Company or individual bidding: _____

Company representative's name: _____

Address: _____

City: _____ State: _____ Zip: _____

IF AVAILABLE, PLEASE PLACE THE PERSONALIZED LABEL FROM YOUR PROSPECTUS IN THE ABOVE BOX.

Individual or company representative's signature: _____ Date: _____

Phone number : _____ Email (optional): _____

THE WINNING BIDDER MUST COMPLETE THE VERIFICATION OF WORKER'S DISABILITY COMPENSATION ACT COMPLIANCE (ON REVERSE SIDE IF DOUBLE SIDED) WITHIN 21 DAYS OF SALE AWARD DATE



FOR DEPARTMENT USE ONLY	
Sale Number (XX - XXX - XX - XX)	
Forest Management Unit:	

TIMBER SALE VERIFICATION OF WORKER'S DISABILITY COMPENSATION ACT COMPLIANCE

As required by Act 317, P.A. 1969 (Worker's Compensation) and
Part 5 of Act 451 of 1994, as amended.

VERIFICATION OF WORKER'S DISABILITY COMPENSATION ACT COMPLIANCE

- This verification must be completed and submitted within 21 days of contract award and prior to the issuance of the timber sale contract.
- In addition, if boxes 2B or 2C are checked, then Notice of Exclusion or Certificate of Insurance must be submitted within twenty-one (21) days of the contract award and prior to the issuance of the timber sale contract.
- All information must be typed or printed except for written signatures.

Please Check Appropriate Categories:

1. My business is organized as (you **must** check one of the boxes below):
 - A. Sole Proprietorship (individual)
 - B. Partnership
 - C. Corporation
2. You **must** check one of the boxes below:
 - A. I certify my business is a sole proprietorship and it has no employees but the sole proprietor. I am not subject to the Worker's Compensation Laws.
 - B. I certify my business has satisfied its obligation to the Worker's Compensation Act through the use of an approved Notice of Exclusion (BWC-337, Rev. 5/96). I will provide a copy of the Notice of Exclusion within 21 days of the contract award. (For questions or a copy of the BWC-337, please call the Worker's Compensation Bureau at 517-322-1195).
 - C. I certify my business has a Worker's Compensation Policy. I will provide an original Certificate of Insurance within twenty-one (21) days of the contract award.
3. If you have checked item 2(A) or 2(B), you **must** indicate the number of **both** full-time and part-time employees, other than yourself, including family members and active partners (if none, you must enter "0").

_____ Full-time Employees

_____ Part-time Employees

Name of Business		Federal ID (or) Social Security No.	
Address		Telephone ()	
City	State	ZIP	

I hereby certify that the above information is true and correct. I agree to notify the Michigan DNR of any changes that occur in factors affecting my coverage during any of my present and future operations.

Signature of Owner or Authorized Representative

Title

Date

Please complete the "SEALED BID" information on the next page