



**DEPARTMENT OF NATURAL RESOURCES
STATE OF MICHIGAN**

TIMBER SALE PROSPECTUS #6927

SCHEDULED SALE DATE AND TIME: 3:00 p.m. (local time) on October 13, 2021.

LOCATION: ESCANABA MGMT UNIT, 6833 HWY'S 2, 41 & M-35, GLADSTONE, MI 49837.

PROSPECTUS NOTE: The bidder is advised to inspect the sale area and review the location, estimated volumes, operating costs and contract terms of proposed sales. Please be aware that some landowners may request 60 days or more notice for access across their land.

Notice is hereby given that bids will be received by the Unit Manager, ESCANABA MANAGEMENT UNIT, for certain timber on the following described lands:

Burke Creek Divide (33-029-21) / T34N, R28W, SEC. 5 , NW,NWNE,NWSW.

T34N, R28W, SEC. 6 , NENW,N1/2NE,SENE.

Menominee County, Advertised Price \$28,320.30, 92.3 Acres, Hardwood, Spruce/Fir/Tamarack.

SALE NOTE: All units of volume listed for this sale were estimated using the Inventory Manager computer program and the new Michigan taper model.

Access may be through private land.

Carney Hardwood (33-030-21) / T37N, R27W, SEC. 17, W1/2SW.

T37N, R27W, SEC. 18, SESE.

Menominee County, Advertised Price \$11,252.75, 47.8 Acres, Hardwood, Sugar Maple.

SALE NOTE: All units of volume listed for this sale were estimated using the Inventory Manager computer program and the new Michigan taper model.

West Talbot SBW (33-031-21) / T36N, R27W, SEC. 14, SWSW.

T36N, R27W, SEC. 15, SWNW,W1/2SW,N1/2SE,SWSE.

T36N, R27W, SEC. 22, NENW,NWNE.

Menominee County, Advertised Price \$20,592.55, 86.9 Acres, Hardwood, N White Cedar.

SALE NOTE: This sale requires the Purchaser to haul and spread 100 cubic yards of gravel. Gravel is available near the Sale Area. Payment Units 1-9 can be accessed through state land, but Payment Units 10 and 11 will need to be accessed through private property. The spruce budworm and the eastern larch beetle have caused some balsam fir, spruce and tamarack mortality.

All units of volume listed for this sale were estimated using the Inventory Manager computer program and the new Michigan taper model.

Access may be through private land.

BID INSTRUCTIONS (VER. 07/02/2018):

1. Scheduled Bid Location, Date, and Time (2/11)

Bids must be received by the Unit Manager, ESCANABA OFFICE, 6833 Hwy's 2, 41 & M-35, Gladstone, MI 49837, no later than 3:00 p.m. (local time) on October 13, 2021. For further information concerning this sale, contact Eric Thompson at 906-789-8231.

2. Bidder's Qualifications (5/16)

Purchaser shall obtain workers compensation insurance to cover claims under Michigan's Worker's Disability Compensation Act of 1969 or similar employee benefit act of any other state applicable to an employee. If all or part of a timber sale was prepared by a private contractor, the contractor and that contractor's company are not permitted to bid on the timber sale contract. Bids will not be accepted from individuals or companies appearing on the DNR/FRD No-Bid List. This list contains the names of purchasers who previously failed to execute a contract within 21-days or who have a history of poor performance.

3. Preparation of Sealed Bids (5/16)

Bid Forms may be completed online thru Michigan DNR Timber Sale Online Bidding (OLB) at www.michigan.gov/timberbidding or by completing the hardcopy Bid Form found in the Timber Sale Prospectus. Hardcopy Bid Forms shall be manually signed in ink. Registration in OLB is considered your 'signature' for all bids submitted thru that system. Bid prices must be entered for each species and product in the Bid Price column for all material subject to bidding and all fill-in blanks must be completed. If erasures or other changes appear on the hardcopy Bid Form, each erasure or change must be initialed by the person signing the bid.

4. Submission of Sealed Bids (5/16)

Bid forms may be obtained from the Unit Manager or thru OLB. Bids may be submitted hardcopy or thru OLB. All hardcopy bids must be submitted on the bid form and in an envelope clearly identified as described in this section. NOTE: Only one bid form per bid envelope. Sealed bids must be submitted to the Unit office designated in the prospectus and must be submitted at or prior to the time established in the prospectus. The envelope should show on the outside (a) the sale name or number and (b) the date and time of bid opening, as shown in the prospectus. Bids received after the time specified in the sale prospectus are late bids and will be rejected.

It is possible for a bidder to submit multiple bids on a single sale. For example, a bid may be submitted hardcopy and a bid may be submitted thru OLB. Or, two bidders from the same company could both submit bids on the same sale. If this were to happen, the State would accept all bids received and award the contract accordingly. All bidding and contractual requirements would apply to all bids received.

5. Public Opening of Sealed Bids (7/16)

If conditions permit, the sealed bids will be publicly opened and posted at the time and place set in the prospectus.

If a bidder, present at a bid opening, has submitted bids on more than one sale, that bidder may withdraw their unopened bid envelopes or announce the withdrawal of their online bid after being declared the successful bidder on one sale.

6. Award of Contract (1/11)

Award of the contract will be made to the Bidder whose bid, conforming to the prospectus, is most advantageous to the State of Michigan on the basis of total value at rates bid for the estimated quantities. The State reserves the right to reject any bid or waive any minor irregularity in bids received. A written award mailed (or otherwise furnished) to the successful Bidder shall be deemed to result in a binding contract without further action by either party.

7. Down Payment (1/11)

The Bidder to whom award is made must make a down payment within 21 days of the sale award. The amount of the down payment will be calculated as shown in the Bond and Payment Schedule of this prospectus. Only cash may be used to meet this requirement.

8. Performance Security (1/11)

As guarantee of faithful performance, a cash bond, certificate of deposit, surety bond or irrevocable letter of credit (LOC) is required within 21 days of the sale award. The amount of the performance security is shown in the Bond and

Payment Schedule of this prospectus. If an LOC or surety is used, the coverage must extend for at least 6 months beyond the contract expiration.

9. Timber Sale Contract (7/18)

Additional conditions and requirements common to all timber sales are listed on the timber sale contract (R4031) and are available on line at www.michigan.gov/timber. Contact the Unit Manager for additional information or a sample contract. Within 21 days of the date of the award letter, the bidder must sign the contract and provide the required down payment, performance security, and verification of worker's disability compensation. The down payment and performance security shall be in accordance with the provisions of the timber sale contract, in the sums stated in this prospectus. If these actions are not taken, then the Bidder, the Bidder's corporation, and the corporation's principals may not be permitted to bid on State timber sales for a period of 3 months after the first offense, 6 months after the second offense, and 1 year after the third offense. An offense will only be counted against the Bidder for 5 years. In addition, the Bidder certifies that if awarded this contract, the Bidder will complete the timber sale contract in accordance with its terms and any modifications thereof including requirements to purchase, cut, and remove the included timber by the expiration date.

Payment Unit values in the State Forest Timber Sale Contract are calculated based on the advertised value of the Payment Unit as a percentage of the total advertised value of the contract. The advertised value of each Payment Unit is given in the Description of Timber by Payment Unit table on the Timber Sale Information page. For example, if the value of Payment Unit 1 is advertised as \$1,500 and the total Timber Sale value is advertised as \$10,000, the contract price for Payment Unit 1 will be 15% of the total bid price ($\$1,500/\$10,000 * 100$).

10. Disclaimer of Estimates and Bidder's Warranty of Inspection (7/16)

Before submitting this bid, the Bidder is advised and cautioned to inspect the sale area, review the requirements of the sale contract, and take other steps as may be reasonably necessary to ascertain the location, estimated volumes, construction estimates, and operating costs of the proposed sale. Failure to do so will not relieve the Bidder from responsibility for completing the contract.

The Bidder warrants that this bid is submitted solely on the basis of the Bidder's examination and inspection of the quality and quantity of the timber offered for sale and the Bidder's opinion of the value thereof and the costs of recovery. No reliance should be placed on the State of Michigan's estimates of timber quality, quantity or costs of recovery. Bidder further acknowledges that the State of Michigan: (i) expressly disclaims any warranty of fitness of timber for any purpose; (ii) offers this timber as is without any warranty of quality (merchantability) or quantity and (iii) expressly disclaims any warranty as to the quantity or quality of timber sold.

11. Certification and Chain-of-Custody (10/14)

Unless otherwise indicated in the contract under section 7 – Other Conditions of the Sale Specific Conditions & Requirements, the area encompassed by this timber sale is certified to the standards of the Forest Stewardship Council (FSC) - Certificate #SCS-FM/COC-00090N and the Sustainable Forestry Initiative (SFI) - Certificate # NSF-SFIS-5Y031-SF5. Forest products from this sale may be delivered to the mill as "FSC 100% and / or SFI certified" as long as the contractor hauling the forest products is chain-of-custody (COC) certified or covered under a COC certificate from the destination mill. The purchaser is responsible for maintaining COC after leaving the sale area.

12. Good Neighbor Authority (GNA) Requirements (7/16)

If the name of this timber sales contains the acronym GNA, it is authorized by the Good Neighbor Authority (GNA) and covered by various agreements between the U.S. Forest Service and the State. The timber sale occurs on federal land and the following conditions apply:

GNA contracts on US Forest Service land will not be awarded to purchasers on the Federal list of excluded parties. The System for Award Management (SAM) will be checked for active excluded parties prior to award of contract. In addition, the Bidder to whom award is made must complete an Assurance Regarding Felony Conviction or Tax Delinquent Status for Corporate Applicants (AD-3031).

13. Good Neighbor Authority (GNA) Requirements, con't (9/16)

Bidder certifies, by signing this bid form, that to the best of Bidder's knowledge that the following representations are accurate and complete.

- a. That the Bidder and its principals are not presently debarred, suspended, proposed for debarment, declared ineligible, or voluntary excluded from timber sales (covered transactions) by any Federal department or agency.
- b. That the Bidder and its principals have not within a 3-year period preceding this bid been convicted of or had a civil judgment rendered against them for commission of fraud or a criminal offense in connection with obtaining , attempting to obtain, or performing a public (Federal, State, or local) transaction or contract under a public transaction; violation of Federal or State antitrust statutes or commission of embezzlement, theft, forgery, bribery, falsification or destruction of records, making false statements, or receiving stolen property.
- c. That the Bidder and its principals are not presently indicted for or otherwise criminally or civilly charged by a governmental entity (Federal, State, or local) with commission of any of the offenses enumerated in paragraph b of this certification.
- d. That the Bidder and its principals have not within a 3-year period preceding this bid had one or more public transactions (Federal, State, or local) terminated for breach or default of a timber or forest product contract.

Bidders that cannot certify this requirement, in whole or in part, shall submit an explanation with their bid.

DAN EICHINGER
Director

TIMBER SALE INFORMATION

Burke Creek Divide (33-029-21)
 T34N, R28W, SEC. 5; T34N, R28W, SEC. 6.
 Menominee County (Advertised Price \$28,320.30)

SALE NOTE: All units of volume listed for this sale were estimated using the Inventory Manager computer program and the new Michigan taper model.

Access may be through private land.

A timber sale contract for this lump sum, sealed bid timber sale will be awarded to the responsible bidder offering the highest sealed bid price. All units of volume listed below were estimated using the Inventory Manager computer program and the new Michigan taper model. Bids must be at or above the following advertised price for each product and species:

<u>PRODUCTS & SPECIES</u>	<u>ESTIMATED UNITS*</u>	<u>ADVERTISED PRICE</u>
Sawtimber		
Basswood	7.0 MBF	\$ 33.00 / MBF
Black Ash	18.0 MBF	\$ 47.00 / MBF
Northern Pin Oak	2.8 MBF	\$ 78.00 / MBF
Paper Birch	6.7 MBF	\$ 56.00 / MBF
Red Maple	16.8 MBF	\$ 75.00 / MBF
White Oak	1.9 MBF	\$ 76.00 / MBF
Pulpwood		
Balsam Fir	241 Cords	\$ 12.70 / Cord
Mixed Aspen	506 Cords	\$ 17.00 / Cord
Mixed Hardwood	492 Cords	\$ 15.30 / Cord
Mixed Oak	10 Cords	\$ 17.30 / Cord
Mixed Spruce	247 Cords	\$ 12.65 / Cord
N. White Cedar	36 Cords	\$ 9.45 / Cord
Red Pine	21 Cords	\$ 42.60 / Cord
Tamarack	35 Cords	\$ 11.00 / Cord
White Pine	61 Cords	\$ 18.65 / Cord

* The total volume is statistically estimated within plus (+) or minus (-) 6.67 percent. There are an estimated 1,748 cords on this timber sale, plus or minus 117 cords at the 95% confidence level. The estimated units are final and not subject to adjustment. Prospective bidders are urged to examine this timber and to make their own estimates of quantity and quality.

BOND AND PAYMENT SCHEDULE:

1. A bond in the amount of \$1,416.00 to insure faithful performance of the conditions of the contract will be deposited by the successful bidder within 21 days of the sale award.
2. Cutting in any sale or unit without the required advance payment would be considered a trespass.
3. Total payment must be paid in advance or according to the following schedule :
 - (a) Ten percent (10%) of the sale value must be paid within 21 days of the sale award.
 - (b) The 10% down payment will be credited towards the first unit cut.
 - (c) Payment for each of the following units must be made before cutting begins in that unit:

PAYMENT UNIT NUMBER	PERCENT OF TOTAL SALE VALUE
01	10.4%
02	15.1%
03	17.8%
04	1.0%
05	7.4%
06	21.6%
07	13.8%
08	12.9%
4. If no cutting takes place, the 10% down payment will not be refunded.
5. Operations on the contract issued will terminate on 09/30/2024.

SALE STATISTICS

Volumes were calculated in cubic feet using the Michigan taper model. Cubic foot volume includes all wood inside bark for the product indicated. For display purposes, cubic feet were converted to cords and MBF using a simple conversion factor, e.g. 79 cubic feet per cord and 185 cubic feet per MBF. The cubic foot volumes are precise; the cords and MBF volumes are not. Cubic foot volume cannot be directly converted to cords or boards with precision.

SALE VOLUMES

The total estimated sale volume may not equal the sum of the species/products due to the nature of statistical calculations associated with double sampling methodology.

VOLUME			STATISTICAL RANGE IN CORDS	
TOTAL CUBIC FEET	TOTAL CORDS	PERCENT ERROR	MINIMUM	MAXIMUM
138,103	1,748	6.67%	1,631	1,865

VDU VOLUMES

A VDU is a Volume Determination Unit. Volumes and their associated statistics are calculated at the VDU level and summarized to the sale level. There is often a one to one relationship between a VDU and a Payment Unit, but not always, depending on the cruise design. Refer to the VDU TO PAYMENT UNIT table.

VDU	VOLUME			RANGE IN CORDS	
	TOTAL CUBIC FEET	TOTAL CORDS	PERCENT ERROR	MINIMUM	MAXIMUM
5	9,859	125	25.76%	93	157
7	22,624	286	22.97%	221	352
9	26,790	339	16.29%	284	394
12	1,764	22	44.92%	12	32
13	11,084	140	20.60%	111	169
18	48,774	617	9.56%	558	676
20	17,849	226	11.02%	201	251
TOTAL:	138,745	1,756		1,480	2,032

VDU TO PAYMENT UNIT

When a VDU is associated with more than one Payment Unit (PU), the VDU volumes are assigned to the PU based on acres of the VDU within the PU.

VDU	VDU ACRES	PU	PU ACRES
5	6.2	1	6.2
7	13.5	2	13.5
9	18.5	3	18.5
12	4.8	4	4.8
13	9.5	5	9.5
18	28.6	6	17.4
		7	11.2
20	11.2	8	11.2
TOTAL:	92.3		92.3

DESCRIPTION OF TIMBER BY PAYMENT UNIT (PU)

PU	MARKET GROUP	PRODUCT	QUANTITY	UNIT	ACRES	ADVERTISE PRICE
1	Northern Pin Oak	Sawtimber	2.8	MBF	6.2	\$2,955.70
	Red Maple		2.1	MBF		
	White Oak		1.9	MBF		
	Balsam Fir	Pulpwood	11	Cords		
	Mixed Hardwood		5	Cords		
	<i>Ironwood</i>		3	<i>Cords</i>		
	<i>Red Maple</i>		2	<i>Cords</i>		
	Mixed Oak		10	Cords		
	<i>Northern Pin Oak</i>		8	<i>Cords</i>		
	<i>White Oak</i>		2	<i>Cords</i>		
	Mixed Spruce		7	Cords		
	<i>White Spruce</i>		7	<i>Cords</i>		
	Red Pine		21	Cords		
	White Pine		57	Cords		
2	Black Ash	Sawtimber	12.5	MBF	13.5	\$4,288.45
	Red Maple		1.7	MBF		
	Balsam Fir	Pulpwood	47	Cords		
	Mixed Hardwood		116	Cords		
	<i>American Elm</i>		4	<i>Cords</i>		
	<i>Black Ash</i>		93	<i>Cords</i>		
	<i>Paper Birch</i>		8	<i>Cords</i>		
	<i>Red Maple</i>		11	<i>Cords</i>		
	Mixed Spruce		95	Cords		
	<i>Black Spruce</i>		95	<i>Cords</i>		
	3	Black Ash	Sawtimber	5.5		
Paper Birch			5.2	MBF		
Red Maple			2.8	MBF		
Balsam Fir		Pulpwood	51	Cords		
Mixed Aspen			8	Cords		
<i>Quaking Aspen</i>			8	<i>Cords</i>		
Mixed Hardwood			159	Cords		
<i>American Elm</i>			1	<i>Cords</i>		
<i>Black Ash</i>			122	<i>Cords</i>		
<i>Black Cherry</i>			6	<i>Cords</i>		
<i>Paper Birch</i>			24	<i>Cords</i>		
<i>Red Maple</i>			6	<i>Cords</i>		
Mixed Spruce			48	Cords		
<i>Black Spruce</i>			25	<i>Cords</i>		
<i>White Spruce</i>			23	<i>Cords</i>		
N. White Cedar			36	Cords		
Tamarack			10	Cords		
4	Balsam Fir	Pulpwood	21	Cords	4.8	\$292.00
	Mixed Spruce		2	Cords		
	<i>White Spruce</i>		2	<i>Cords</i>		
5	Paper Birch	Sawtimber	1.5	MBF	9.5	\$2,101.20
	Red Maple		1.9	MBF		
	Balsam Fir	Pulpwood	45	Cords		
	Mixed Aspen		17	Cords		
	<i>Quaking Aspen</i>		17	<i>Cords</i>		
	Mixed Hardwood		44	Cords		
	<i>Black Cherry</i>		5	<i>Cords</i>		
	<i>Paper Birch</i>		6	<i>Cords</i>		
	<i>Red Maple</i>		22	<i>Cords</i>		
	<i>White Ash</i>		11	<i>Cords</i>		
	Mixed Spruce		20	Cords		
	<i>Black Spruce</i>		9	<i>Cords</i>		

DESCRIPTION OF TIMBER BY PAYMENT UNIT (PU), CON'T

PU	MARKET GROUP	PRODUCT	QUANTITY	UNIT	ACRES	ADVERTISE PRICE
5 con't	<i>White Spruce</i>	<i>Pulpwood</i>	11	<i>Cords</i>		
	Tamarack		8	<i>Cords</i>		
6	Basswood	Sawtimber	3.7	MBF	17.4	\$6,083.25
	Red Maple		1.9	MBF		
	Balsam Fir	<i>Pulpwood</i>	23	<i>Cords</i>		
	Mixed Aspen		245	<i>Cords</i>		
	<i>B. T. Aspen</i>		72	<i>Cords</i>		
	<i>Quaking Aspen</i>		173	<i>Cords</i>		
	Mixed Hardwood		62	<i>Cords</i>		
	<i>Basswood</i>		10	<i>Cords</i>		
	<i>Beech</i>		2	<i>Cords</i>		
	<i>Black Ash</i>		2	<i>Cords</i>		
	<i>Black Cherry</i>		2	<i>Cords</i>		
	<i>Ironwood</i>		5	<i>Cords</i>		
	<i>Paper Birch</i>		3	<i>Cords</i>		
	<i>Red Maple</i>		34	<i>Cords</i>		
	<i>White Ash</i>		4	<i>Cords</i>		
	Mixed Spruce		21	<i>Cords</i>		
	<i>Black Spruce</i>		3	<i>Cords</i>		
	<i>White Spruce</i>		18	<i>Cords</i>		
	Tamarack		10	<i>Cords</i>		
	White Pine		2	<i>Cords</i>		
7	Basswood		Sawtimber	2.4	MBF	11.2
	Red Maple		1.2	MBF		
	Balsam Fir	<i>Pulpwood</i>	14	<i>Cords</i>		
	Mixed Aspen		158	<i>Cords</i>		
	<i>B. T. Aspen</i>		46	<i>Cords</i>		
	<i>Quaking Aspen</i>		112	<i>Cords</i>		
	Mixed Hardwood		39	<i>Cords</i>		
	<i>Basswood</i>		6	<i>Cords</i>		
	<i>Beech</i>		2	<i>Cords</i>		
	<i>Black Ash</i>		1	<i>Cords</i>		
	<i>Black Cherry</i>		1	<i>Cords</i>		
	<i>Ironwood</i>		3	<i>Cords</i>		
	<i>Paper Birch</i>		2	<i>Cords</i>		
	<i>Red Maple</i>		22	<i>Cords</i>		
	<i>White Ash</i>		2	<i>Cords</i>		
	Mixed Spruce		14	<i>Cords</i>		
	<i>Black Spruce</i>		2	<i>Cords</i>		
	<i>White Spruce</i>		12	<i>Cords</i>		
	Tamarack		7	<i>Cords</i>		
	White Pine		2	<i>Cords</i>		
8	Basswood		Sawtimber	0.9	MBF	11.2
	Red Maple		5.2	MBF		
	Balsam Fir	<i>Pulpwood</i>	29	<i>Cords</i>		
	Mixed Aspen		78	<i>Cords</i>		
	<i>Quaking Aspen</i>		78	<i>Cords</i>		
	Mixed Hardwood		67	<i>Cords</i>		
	<i>Basswood</i>		13	<i>Cords</i>		
	<i>Black Ash</i>		8	<i>Cords</i>		
	<i>Ironwood</i>		2	<i>Cords</i>		
	<i>Red Maple</i>		43	<i>Cords</i>		
	<i>Sugar Maple</i>		1	<i>Cords</i>		
	Mixed Spruce		40	<i>Cords</i>		
	<i>Black Spruce</i>		8	<i>Cords</i>		
	<i>White Spruce</i>		32	<i>Cords</i>		

TOTAL:	53.2	MBF
--------	------	-----

TOTAL:	1,649	Cords
--------	-------	-------

Sale Specific Conditions & Requirements

Sale Name: Burke Creek Divide

Sale Number: 33-029-21 Seq#: 1

1 - Sale Area

1.2 - Boundaries

1.2.1 - Painted boundaries (9/19)

The sale boundary and Payment Unit boundaries are marked and identified by blue, red, and yellow paint. Exterior sale boundary lines against private property are marked with blue paint. Exterior sale boundary lines against state are marked with red paint. Interior Payment Unit boundaries are marked with yellow paint. The painted boundary line trees are not Included Timber and are to be protected. Yellow painted trees designating an interior Payment Unit boundary are only to be cut when all surrounding Payment Units have been paid for.

2 - Timber Specifications

2.1 - Included Timber

2.1.2 - Clearcut unit(s) w/o unmerchantable trees (8/11)

Within Payment Unit(s) 1-3 and 5-8, cut all trees which meet minimum piece specifications in 2.2 Utilization, with the following exceptions.

- Within Payment Unit 1, do not cut trees marked with green paint.
- Within Payment Unit 2, do not cut hemlock and cedar.
- Within Payment Unit 3, do not cut hemlock.
- Within Payment Unit 5, do not cut hemlock, cedar, and pine.
- Within Payment Units 6 and 7, do not cut hemlock, sugar maple, oak, beech, white pine, and trees marked with green paint.
- Within Payment Unit 8, do not cut hemlock, cedar, and trees marked with green paint.

2.1.4 - Designated timber unit(s) (6/17)

Within Payment Unit(s) 4, all balsam fir and spruce are designated for cutting which meet minimum piece specifications in 2.2 - Utilization.

2.1.9 - Harvest exception (12/08)

Do not cut any cedar trees within Payment Units 2 and 8, other than those that are necessary to remove in order to operate within the sale area. Every effort must be made to preserve the existing cedar and to leave an intact stand upon sale completion. All cut cedar shall be piled separately by products and scaled in the woods unless other scaling arrangements are agreed to by the Unit Manager or his/her representative. The stumpage price for cedar in these Payment Units shall be \$45.00 per cord.

2.2 - Utilization

2.2.4 - Skidding length (2/14)

Skidding of unlimbed tops or lengths over 17 feet is not permissible within Payment Units 2 and 4.

3 - Payments

3.3 - Pre-measured Sales

3.3.4 - Dividing payment units (7/14)

Payment Unit(s) \$18,000 in value or greater may be divided at the request of the Purchaser and upon approval of the Unit Manager. Dividing Payment Units is a contract modification which requires a Timber Sale Contract Amendment. There will be only one division per Payment Unit.

4 - Transportation

4.1 - Construction

4.1.8 - Road work (1) (8/07)

The following road work is required: the Purchaser must haul and spread 120 cubic yards of pit run gravel onto the access road going into Payment Units 1-5. The locations for the gravel will be identified during the pre-sale meeting. The roadwork

must be completed prior to any hauling taking place in Payment Units 1-5. Gravel is available from a state pit about 4 miles away, off the Snakey Lake Road.

4.2 - Maintenance

4.2.1 - Hauling restriction (12/08)

Hauling may be restricted on forest roads by the Unit Manager or his/her representative. The restriction may occur during spring breakup or during other wet weather conditions.

4.2.4 - Grading (10/16)

For completion of the sale, state forest roads must be graded. In general, this will require a road grader or bulldozer to shape up the roads after forest products have been hauled off site. This includes cleaning of drainage areas, grading, crowning, and filling with gravel, if necessary. The grading equipment to be used must be approved by the Unit Manager or his/her representative.

4.4 - Access

4.4.1 - Private property access (3/11)

Permission for access across private land into Payment Units 6-8, is the responsibility of the Purchaser. Contact Dan 906-399-0879 or Dustin 906-399-1828 for the landowner contact information.

5 - Operations

5.2 - Conduct of Operations

5.2.3 - Operating Restrictions

5.2.3.1 - Operating restrictions (9/11)

Within Payment Unit(s) 2 and 3, cutting and skidding are limited to the period of December 1 to March 31, unless there is an extended dry or frozen period and the sale administrator allows harvesting during that time period. This restriction is because of low wet ground within both Payment Units.

5.2.22 - Operating Caution

5.2.22.1 - Operating caution (6/11)

It is recommended, but not required, that within Payment Unit(s) 5 and 8, cutting and skidding occur during dry summer or frozen winter conditions. The reason for the recommendation is because of some low wet ground within both Payment Units. A large portion of each Payment Unit can be harvested during a dry summer.

6 - Safety and Fire Prevention

6.2 - Signing

6.2.1 - Road posting (10/20)

The Purchaser is responsible for posting and maintaining caution signs on the forest road going back to Payment Units 1-5, prior to beginning operations. The road must be posted at appropriate distances from the Sale Area to warn of logging activity and truck traffic. Signs must be removed when harvest operations are suspended or completed. The Purchaser will provide these signs.

7 - Other Conditions

7.5 - Loss

7.5.1 - Deteriorating timber (7/09)

The sale area has received damage from the spruce budworm and the eastern larch beetle. The bugs have caused some balsam fir, spruce, and tamarack mortality. The Purchaser should harvest the wood as soon as possible. The Department of Natural Resources is held free of responsibility of any further damage or deterioration due to delay in harvesting.



TIMBER SALE MAP

This information provided by authority of Part 525, 1994 PA 451, as amended.

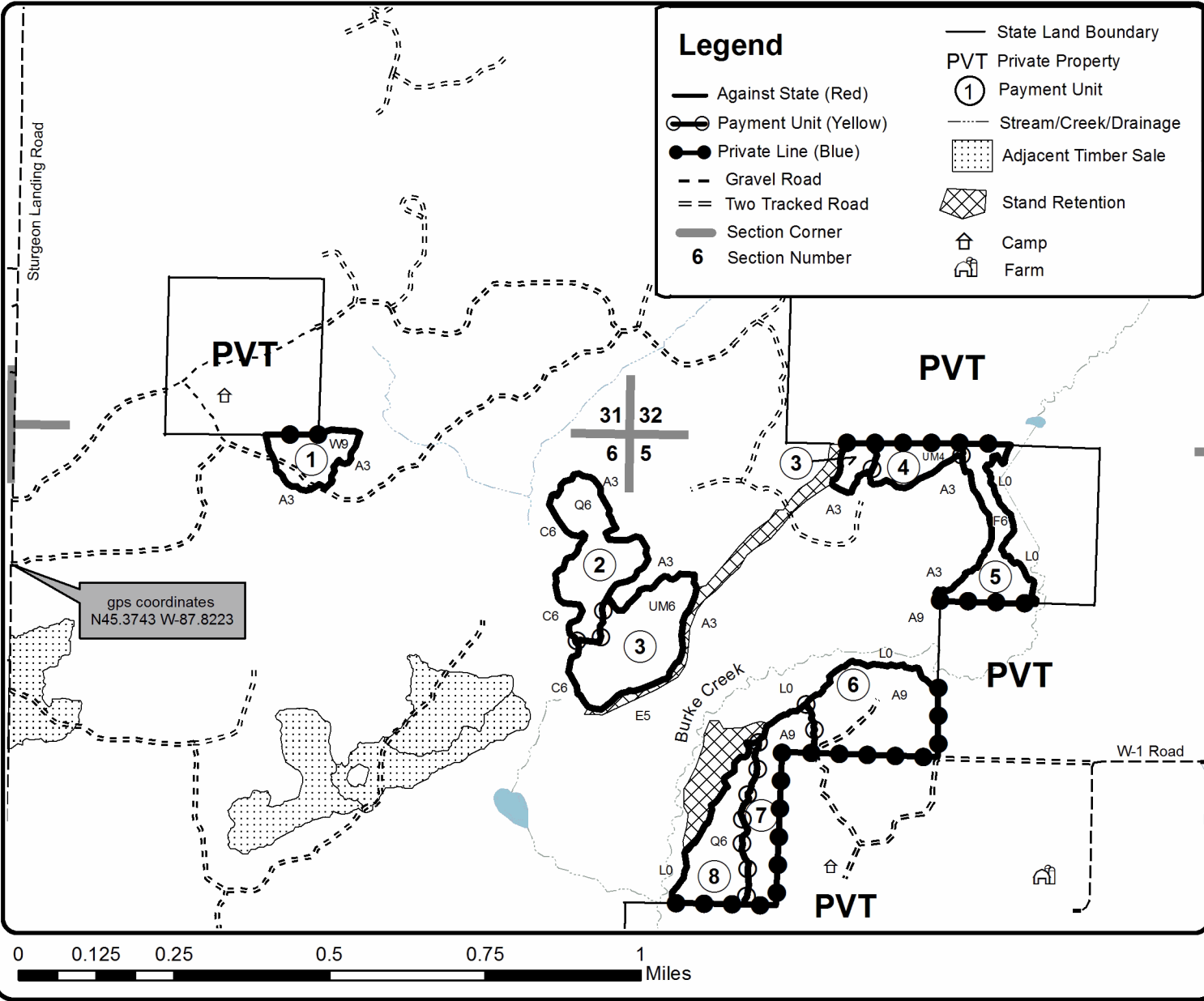
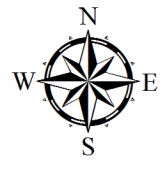
Sale Number	Year
33-029	21

Forest Management Unit	County	Mapped By	Date	Page	of
Escanaba Management Unit	Menominee County	Beudo	6/14/2021	1	1
Township	Range	Section(s) and Subdivision(s)	Scale		
34N	28W	Sec 5 - NW, NWNE, NWSW; Sec 6 - NENW, N1/2NE, SENE.	1:15,840		

Cover Type				Density	
A = Aspen	H = Hemlock	N = Marsh	U = Upland Brush	0 = Non Stocked	5 = Pole Timber Medium
B = Paper Birch	J = Jack Pine	O = Oak	UM = Upland Mixed	1 = Seedling Sapling Poor	6 = Pole Timber Well
C = Cedar	L = Lowland Brush	P = Lowland Poplar	V = Bog or Marsh	2 = Seedling Sapling Medium	7 = Saw Timber Poor
D = Treed Bog	LM = Lowland Mixed	Q = Mixed Swamp Conifer	W = White Pine	3 = Seedling Sapling Well	8 = Saw Timber Medium
E = Swamp Hdwoods	M = Mpl, Bch, Brch	R = Red Pine	X = Non Stocked	4 = Pole Timber Poor	9 = Saw Timber Well
F = Spruce Fir	MC = Mixed Conifer	S = Black Spruce	Z = Water		
G = Grass	MD = Mixed Deciduous	T = Tamarack			

PU	Acres	PU	Acres
1	6.2	5	9.5
2	13.5	6	17.4
3	18.5	7	11.2
4	4.8	8	11.2

Burke Creek Divide
Compartment 29
92.3 Acres



TIMBER SALE INFORMATION

Carney Hardwood (33-030-21)

T37N, R27W, SEC. 17; T37N, R27W, SEC. 18.
Menominee County (Advertised Price \$11,252.75)

SALE NOTE: All units of volume listed for this sale were estimated using the Inventory Manager computer program and the new Michigan taper model.

A timber sale contract for this lump sum, sealed bid timber sale will be awarded to the responsible bidder offering the highest sealed bid price. All units of volume listed below were estimated using the Inventory Manager computer program and the new Michigan taper model. Bids must be at or above the following advertised price for each product and species:

<u>PRODUCTS & SPECIES</u>	<u>ESTIMATED UNITS*</u>	<u>ADVERTISED PRICE</u>
Sawtimber		
Basswood	14.2 MBF	\$ 33.00 / MBF
Beech	5.5 MBF	\$ 31.00 / MBF
Green Ash	11.5 MBF	\$ 31.00 / MBF
Red Maple	1.2 MBF	\$ 75.00 / MBF
Sugar Maple	39.9 MBF	\$ 114.00 / MBF
White Ash	20.6 MBF	\$ 31.00 / MBF
White Oak	4.7 MBF	\$ 76.00 / MBF
Pulpwood		
Balsam Fir	39 Cords	\$ 12.70 / Cord
Mixed Aspen	19 Cords	\$ 17.00 / Cord
Mixed Hardwood	236 Cords	\$ 15.30 / Cord
White Oak	9 Cords	\$ 17.30 / Cord
White Spruce	3 Cords	\$ 12.65 / Cord

* The total volume is statistically estimated within plus (+) or minus (-) 9.62 percent. There are an estimated 531 cords on this timber sale, plus or minus 51 cords at the 95% confidence level. The estimated units are final and not subject to adjustment. Prospective bidders are urged to examine this timber and to make their own estimates of quantity and quality.

BOND AND PAYMENT SCHEDULE:

1. A bond in the amount of \$563.00 to insure faithful performance of the conditions of the contract will be deposited by the successful bidder within 21 days of the sale award.
2. Cutting in any sale or unit without the required advance payment would be considered a trespass.
3. Total payment must be paid in advance or according to the following schedule :
 - (a) Ten percent (10%) of the sale value must be paid within 21 days of the sale award.
 - (b) The 10% down payment will be credited towards the first unit cut.
 - (c) Payment for each of the following units must be made before cutting begins in that unit:

PAYMENT UNIT NUMBER	PERCENT OF TOTAL SALE VALUE
01	41.4%
02	20.1%
03	17.6%
04	20.9%

4. If no cutting takes place, the 10% down payment will not be refunded.
5. Operations on the contract issued will terminate on 09/30/2024.

SALE STATISTICS

Volumes were calculated in cubic feet using the Michigan taper model. Cubic foot volume includes all wood inside bark for the product indicated. For display purposes, cubic feet were converted to cords and MBF using a simple conversion factor, e.g. 79 cubic feet per cord and 185 cubic feet per MBF. The cubic foot volumes are precise; the cords and MBF volumes are not. Cubic foot volume cannot be directly converted to cords or boards with precision.

SALE VOLUMES

The total estimated sale volume may not equal the sum of the species/products due to the nature of statistical calculations associated with double sampling methodology.

VOLUME			STATISTICAL RANGE IN CORDS	
TOTAL CUBIC FEET	TOTAL CORDS	PERCENT ERROR	MINIMUM	MAXIMUM
41,919	531	9.62%	480	582

VDU VOLUMES

A VDU is a Volume Determination Unit. Volumes and their associated statistics are calculated at the VDU level and summarized to the sale level. There is often a one to one relationship between a VDU and a Payment Unit, but not always, depending on the cruise design. Refer to the VDU TO PAYMENT UNIT table.

	VOLUME			RANGE IN CORDS	
VDU	TOTAL CUBIC FEET	TOTAL CORDS	PERCENT ERROR	MINIMUM	MAXIMUM
25	39,483	500	9.63%	452	548
TOTAL:	39,483	500		452	548

VDU TO PAYMENT UNIT

When a VDU is associated with more than one Payment Unit (PU), the VDU volumes are assigned to the PU based on acres of the VDU within the PU.

VDU	VDU ACRES	PU	PU ACRES
25	47.8	1	19.9
		2	9.6
		3	8.3
		4	10.0
TOTAL:	47.8		47.8

DESCRIPTION OF TIMBER BY PAYMENT UNIT (PU)

PU	MARKET GROUP	PRODUCT	QUANTITY	UNIT	ACRES	ADVERTISE PRICE	
1	Basswood	Sawtimber	5.8	MBF	19.9	\$4,657.10	
	Beech		2.2	MBF			
	Green Ash		4.8	MBF			
	Red Maple		0.5	MBF			
	Sugar Maple		16.7	MBF			
	White Ash		8.6	MBF			
	White Oak		2.0	MBF			
	Balsam Fir		Pulpwood	16			Cords
	Mixed Aspen			7			Cords
	<i>B. T. Aspen</i>			3			<i>Cords</i>
	<i>Quaking Aspen</i>	4		<i>Cords</i>			
	Mixed Hardwood	99		Cords			
	<i>Basswood</i>	15		<i>Cords</i>			
	<i>Beech</i>	11		<i>Cords</i>			
	<i>Green Ash</i>	3		<i>Cords</i>			
	<i>Ironwood</i>	1		<i>Cords</i>			
	<i>Red Maple</i>	2		<i>Cords</i>			
	<i>Sugar Maple</i>	47	<i>Cords</i>				
	<i>White Ash</i>	20	<i>Cords</i>				
	White Oak	3	Cords				
2	Basswood	Sawtimber	2.9	MBF	9.6	\$2,259.55	
	Beech		1.1	MBF			
	Green Ash		2.3	MBF			
	Red Maple		0.2	MBF			
	Sugar Maple		8.0	MBF			
	White Ash		4.1	MBF			
	White Oak		0.9	MBF			
	Balsam Fir		Pulpwood	8			Cords
	Mixed Aspen			4			Cords
	<i>B. T. Aspen</i>			2			<i>Cords</i>
	<i>Balsam Poplar</i>	1		<i>Cords</i>			
	<i>Quaking Aspen</i>	1		<i>Cords</i>			
	Mixed Hardwood	47		Cords			
	<i>Basswood</i>	7		<i>Cords</i>			
	<i>Beech</i>	5		<i>Cords</i>			
	<i>Green Ash</i>	2		<i>Cords</i>			
	<i>Ironwood</i>	1		<i>Cords</i>			
	<i>Sugar Maple</i>	22	<i>Cords</i>				
	<i>White Ash</i>	10	<i>Cords</i>				
	White Oak	2	Cords				
White Spruce	1	Cords					
3	Basswood	Sawtimber	2.5	MBF	8.3	\$1,980.95	
	Beech		1.0	MBF			
	Green Ash		2.0	MBF			
	Red Maple		0.2	MBF			
	Sugar Maple		6.9	MBF			
	White Ash		3.6	MBF			
	White Oak		0.8	MBF			
	Balsam Fir		Pulpwood	7			Cords
	Mixed Aspen			4			Cords
	<i>B. T. Aspen</i>			2			<i>Cords</i>
	<i>Balsam Poplar</i>	1		<i>Cords</i>			
	<i>Quaking Aspen</i>	1		<i>Cords</i>			
	Mixed Hardwood	41		Cords			
	<i>Basswood</i>	6		<i>Cords</i>			
	<i>Beech</i>	5		<i>Cords</i>			

DESCRIPTION OF TIMBER BY PAYMENT UNIT (PU), CON'T

PU	MARKET GROUP	PRODUCT	QUANTITY	UNIT	ACRES	ADVERTISE PRICE	
3 con't	<i>Green Ash</i>	<i>Pulpwood</i>	2	<i>Cords</i>			
	<i>Ironwood</i>		1	<i>Cords</i>			
	<i>Sugar Maple</i>		19	<i>Cords</i>			
	<i>White Ash</i>		8	<i>Cords</i>			
	White Oak		2	Cords			
	White Spruce		1	Cords			
4	Basswood	Sawtimber	3.0	MBF	10.0	\$2,355.15	
	Beech		1.2	MBF			
	Green Ash		2.4	MBF			
	Red Maple		0.3	MBF			
	Sugar Maple		8.3	MBF			
	White Ash		4.3	MBF			
	White Oak		1.0	MBF			
	Balsam Fir		Pulpwood	8			Cords
	Mixed Aspen			4			Cords
	<i>B. T. Aspen</i>			2			<i>Cords</i>
	<i>Balsam Poplar</i>			1			<i>Cords</i>
	<i>Quaking Aspen</i>			1			<i>Cords</i>
	Mixed Hardwood			49			Cords
	<i>Basswood</i>			8			<i>Cords</i>
	<i>Beech</i>	5		<i>Cords</i>			
	<i>Green Ash</i>	2		<i>Cords</i>			
	<i>Ironwood</i>	1		<i>Cords</i>			
	<i>Sugar Maple</i>	23		<i>Cords</i>			
	<i>White Ash</i>	10		<i>Cords</i>			
	White Oak	2		Cords			
	White Spruce	1	Cords				
	TOTAL:			97.6	MBF		
	TOTAL:			306	Cords		

Sale Specific Conditions & Requirements

Sale Name: Carney Hardwood

Sale Number: 33-030-21 Seq#: 1

1 - Sale Area

1.2 - Boundaries

1.2.1 - Painted boundaries (9/19)

The sale boundary and Payment Unit boundaries are marked and identified by blue, red, and yellow paint. Exterior sale boundary lines against private property are marked with blue paint. Exterior sale boundary lines against state are marked with red paint. Interior Payment Unit boundaries are marked with yellow paint. The painted boundary line trees are not Included Timber and are to be protected unless marked with orange paint. Yellow painted trees designating an interior Payment Unit boundary are only to be cut when all surrounding Payment Units have been paid for.

2 - Timber Specifications

2.1 - Included Timber

2.1.3 - Cut tree marked unit(s) (12/08)

Within Payment Unit(s) 1-4, all trees are designated for cutting when marked with orange paint above and below stump height, regardless of merchantability.

Also, within these Payment Units cut all merchantable aspen, balm of gilead, spruce, and balsam fir.

2.2 - Utilization

2.2.4 - Skidding length (2/14)

Skidding of unlimbed tops or lengths over 17 feet is not permissible.

3 - Payments

3.3 - Pre-measured Sales

3.3.4 - Dividing payment units (7/14)

Payment Unit(s) \$18,000 in value or greater may be divided at the request of the Purchaser and upon approval of the Unit Manager. Dividing Payment Units is a contract modification which requires a Timber Sale Contract Amendment. There will be only one division per Payment Unit.

4 - Transportation

4.1 - Construction

4.1.8 - Road work (1) (8/07)

The following road work is required: the Purchaser must haul and spread 120 cubic yards of gravel onto the access road back to the sale off the DeTemple Road. All roadwork must be completed prior to any hauling taking place. Gravel is available from a state pit, about seven miles from the sale. The gravel pit is west of the DeTemple Road off G-18.

4.2 - Maintenance

4.2.1 - Hauling restriction (12/08)

Hauling may be restricted on forest roads by the Unit Manager or his/her representative. The restriction may occur during spring breakup or during other wet weather conditions.

4.2.4 - Grading (10/16)

For completion of the sale, state forest roads must be graded. In general, this will require a road grader or bulldozer to shape up the roads after forest products have been hauled off site. This includes cleaning of drainage areas, grading, crowning, and filling with gravel, if necessary. The grading equipment to be used must be approved by the Unit Manager or his/her representative.

5 - Operations

5.2 - Conduct of Operations

5.2.3 - Operating Restrictions

5.2.3.3 - Bark slippage restriction (3/09)

Within Payment Unit(s) 1-4, unless changed by written agreement, cutting and skidding are not permitted during the period of April 15 to July 15. This restriction is because of bark slippage.



TIMBER SALE MAP

This information provided by authority of Part 525, 1994 PA 451, as amended.

Sale Number	Year
33-030	21

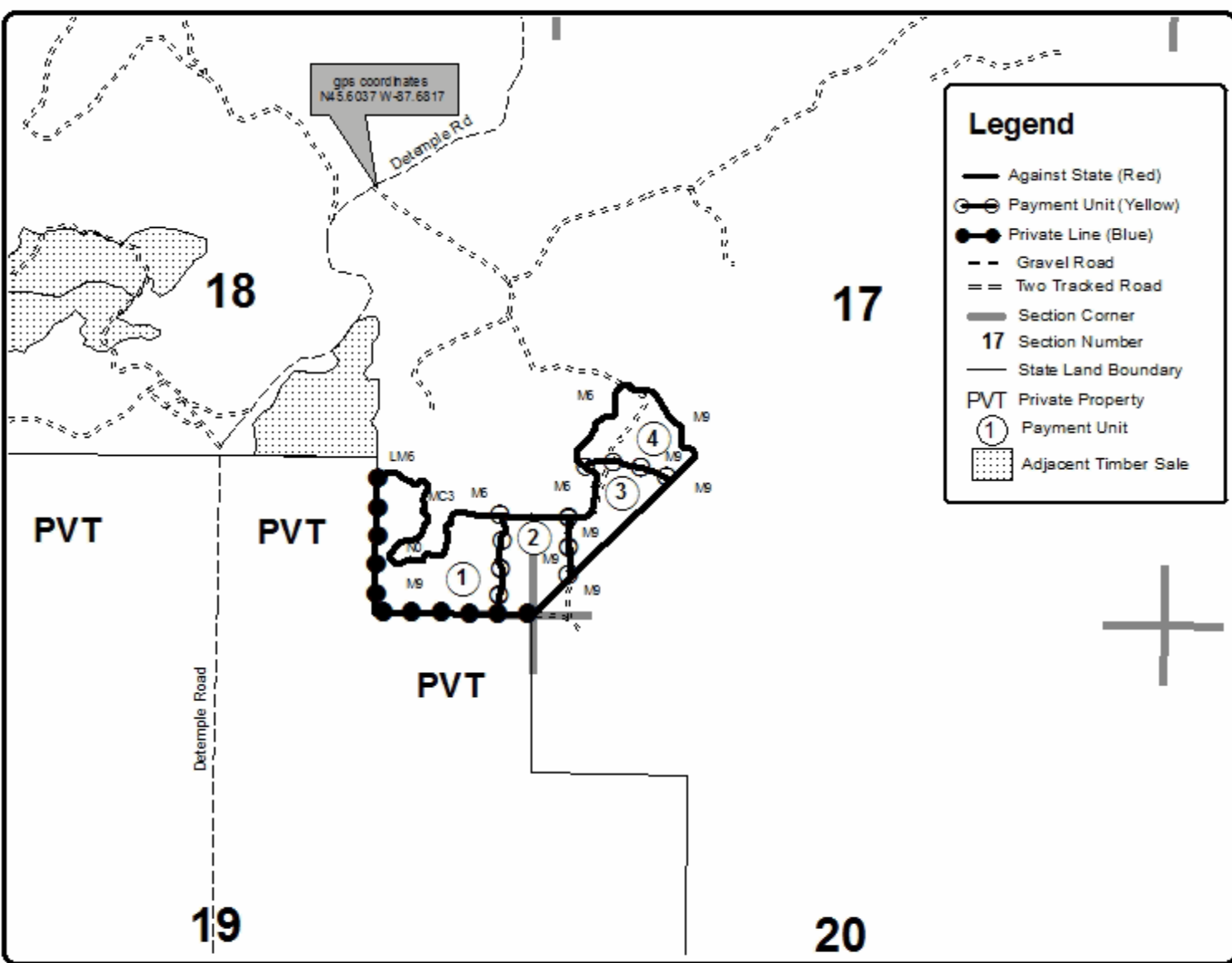
Forest Management Unit	County	Mapped By	Date	Page	of
Escanaba Management Unit	Menominee County	Beudo	7/20/2021	1	1
		Cruised By			
		Salter, Beudo			

Township	Range	Section(s) and Subdivision(s)	Scale
37N	27W	Sec 17 - W1/2SW; Sec 18 - SESE.	1:15,840

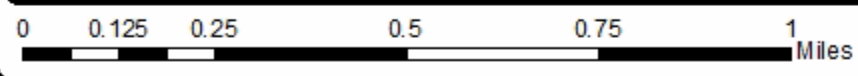
Cover Type				Density	
A = Aspen	H = Hemlock	N = Marsh	U = Upland Brush	0 = Non Stocked	5 = Pole Timber Medium
B = Paper Birch	J = Jack Pine	O = Oak	UM = Upland Mixed	1 = Seeding Sapling Poor	6 = Pole Timber Well
C = Cedar	L = Lowland Brush	P = Lowland Poplar	V = Bog or Marsh	2 = Seeding Sapling Medium	7 = Saw Timber Poor
D = Treed Bog	LM = Lowland Mixed	Q = Mixed Swamp Conifer	W = White Pine	3 = Seeding Sapling Well	8 = Saw Timber Medium
E = Swamp Hardwoods	M = Mpl. Ech. Birch	R = Red Pine	X = Non Stocked	4 = Pole Timber Poor	9 = Saw Timber Well
F = Spruce Fir	MC = Mixed Conifer	S = Black Spruce	Z = Water		
G = Creas	MD = Mixed Deciduous	T = Tamarack			

PU	Acres
1	19.9
2	9.6
3	8.3
4	10.0

Carney Hardwood
Compartment 3
47.8 Acres



Legend	
	Against State (Red)
	Payment Unit (Yellow)
	Private Line (Blue)
	Gravel Road
	Two Tracked Road
	Section Corner
17	Section Number
	State Land Boundary
PVT	Private Property
	Payment Unit
	Adjacent Timber Sale



TIMBER SALE INFORMATION

West Talbot SBW (33-031-21)

T36N, R27W, SEC. 14; T36N, R27W, SEC. 15; T36N, R27W, SEC. 22.
Menominee County (Advertised Price \$20,592.55)

SALE NOTE: This sale requires the Purchaser to haul and spread 100 cubic yards of gravel. Gravel is available near the Sale Area. Payment Units 1-9 can be accessed through state land, but Payment Units 10 and 11 will need to be accessed through private property. The spruce budworm and the eastern larch beetle have caused some balsam fir, spruce and tamarack mortality. All units of volume listed for this sale were estimated using the Inventory Manager computer program and the new Michigan taper model.

Access may be through private land.

A timber sale contract for this lump sum, sealed bid timber sale will be awarded to the responsible bidder offering the highest sealed bid price. All units of volume listed below were estimated using the Inventory Manager computer program and the new Michigan taper model. Bids must be at or above the following advertised price for each product and species:

<u>PRODUCTS & SPECIES</u>	<u>ESTIMATED UNITS*</u>	<u>ADVERTISED PRICE</u>
Sawtimber		
Basswood	11.5 MBF	\$ 33.00 / MBF
Black Ash	19.6 MBF	\$ 31.00 / MBF
Paper Birch	3.0 MBF	\$ 56.00 / MBF
Red Maple	46.3 MBF	\$ 75.00 / MBF
Sugar Maple	9.4 MBF	\$ 114.00 / MBF
White Ash	1.0 MBF	\$ 31.00 / MBF
Pulpwood		
Balsam Fir	67 Cords	\$ 12.70 / Cord
Balsam Poplar	38 Cords	\$ 17.00 / Cord
Mixed Hardwood	638 Cords	\$ 15.30 / Cord
Mixed Spruce	75 Cords	\$ 12.65 / Cord
N. White Cedar	154 Cords	\$ 9.45 / Cord
Quaking Aspen	68 Cords	\$ 17.00 / Cord
Tamarack	4 Cords	\$ 11.00 / Cord

* The total volume is statistically estimated within plus (+) or minus (-) 7.30 percent. There are an estimated 1,356 cords on this timber sale, plus or minus 99 cords at the 95% confidence level. The estimated units are final and not subject to adjustment. Prospective bidders are urged to examine this timber and to make their own estimates of quantity and quality.

BOND AND PAYMENT SCHEDULE:

1. A bond in the amount of \$1,030.00 to insure faithful performance of the conditions of the contract will be deposited by the successful bidder within 21 days of the sale award.
2. Cutting in any sale or unit without the required advance payment would be considered a trespass.
3. Total payment must be paid in advance or according to the following schedule :
 - (a) Ten percent (10%) of the sale value must be paid within 21 days of the sale award.
 - (b) The 10% down payment will be credited towards the first unit cut.
 - (c) Payment for each of the following units must be made before cutting begins in that unit:

PAYMENT UNIT NUMBER	PERCENT OF TOTAL SALE VALUE
01	33.9%
02	3.1%
03	7.0%
04	10.8%
05	4.2%
06	3.8%
07	7.5%
08	8.9%
09	3.2%
10	7.3%
11	10.3%

4. If no cutting takes place, the 10% down payment will not be refunded.
5. Operations on the contract issued will terminate on 09/30/2024.

SALE STATISTICS

Volumes were calculated in cubic feet using the Michigan taper model. Cubic foot volume includes all wood inside bark for the product indicated. For display purposes, cubic feet were converted to cords and MBF using a simple conversion factor, e.g. 79 cubic feet per cord and 185 cubic feet per MBF. The cubic foot volumes are precise; the cords and MBF volumes are not. Cubic foot volume cannot be directly converted to cords or boards with precision.

SALE VOLUMES

The total estimated sale volume may not equal the sum of the species/products due to the nature of statistical calculations associated with double sampling methodology.

VOLUME			STATISTICAL RANGE IN CORDS	
TOTAL CUBIC FEET	TOTAL CORDS	PERCENT ERROR	MINIMUM	MAXIMUM
107,141	1,356	7.30%	1,257	1,455

VDU VOLUMES

A VDU is a Volume Determination Unit. Volumes and their associated statistics are calculated at the VDU level and summarized to the sale level. There is often a one to one relationship between a VDU and a Payment Unit, but not always, depending on the cruise design. Refer to the VDU TO PAYMENT UNIT table.

VDU	VOLUME			RANGE IN CORDS	
	TOTAL CUBIC FEET	TOTAL CORDS	PERCENT ERROR	MINIMUM	MAXIMUM
43	28,446	360	17.54%	297	423
44	2,379	30	10.21%	27	33
45	5,791	73	32.62%	49	97
46	8,391	106	5.69%	100	112
53	3,920	50	21.74%	39	60
55	3,704	47	20.09%	37	56
66	10,010	127	12.00%	112	142
68	12,282	155	11.34%	138	173
69	3,372	43	23.92%	32	53
78	7,767	98	32.37%	66	130
79	15,575	197	23.50%	151	243
TOTAL:	101,635	1,287		1,049	1,524

VDU TO PAYMENT UNIT

When a VDU is associated with more than one Payment Unit (PU), the VDU volumes are assigned to the PU based on acres of the VDU within the PU.

VDU	VDU ACRES	PU	PU ACRES
43	22.7	1	22.7
44	3.2	2	3.2
45	6.2	3	6.2
46	9.4	4	9.4
53	8.6	5	8.6
55	4.3	6	4.3
66	5.4	7	5.4
68	4.9	8	4.9
69	3.0	9	3.0
78	10.5	10	10.5
79	8.7	11	8.7
TOTAL:	86.9		86.9

DESCRIPTION OF TIMBER BY PAYMENT UNIT (PU)

PU	MARKET GROUP	PRODUCT	QUANTITY	UNIT	ACRES	ADVERTISE PRICE
1	Basswood	Sawtimber	1.5	MBF	22.7	\$6,950.25
	Black Ash		15.1	MBF		
	Paper Birch		1.8	MBF		
	Red Maple		31.6	MBF		
	Balsam Fir	Pulpwood	7	Cords		
	Mixed Hardwood		249	Cords		
	<i>Basswood</i>		2	<i>Cords</i>		
	<i>Black Ash</i>		134	<i>Cords</i>		
	<i>Black Cherry</i>		5	<i>Cords</i>		
	<i>Paper Birch</i>		14	<i>Cords</i>		
	<i>Red Maple</i>		85	<i>Cords</i>		
	<i>Sugar Maple</i>		9	<i>Cords</i>		
	Mixed Spruce		5	Cords		
	<i>Black Spruce</i>		5	<i>Cords</i>		
2	Basswood	Sawtimber	1.7	MBF	3.2	\$642.90
	Sugar Maple		2.4	MBF		
	Balsam Fir	Pulpwood	9	Cords		
	Mixed Hardwood		13	Cords		
	<i>Basswood</i>		1	<i>Cords</i>		
	<i>Sugar Maple</i>		12	<i>Cords</i>		
3	Black Ash	Sawtimber	1.1	MBF	6.2	\$1,442.25
	Paper Birch		1.2	MBF		
	Red Maple		7.5	MBF		
	Balsam Fir	Pulpwood	4	Cords		
	Mixed Hardwood		42	Cords		
	<i>Black Ash</i>		15	<i>Cords</i>		
	<i>Paper Birch</i>		2	<i>Cords</i>		
	<i>Red Maple</i>		25	<i>Cords</i>		
N. White Cedar	9	Cords				
4	Basswood	Sawtimber	3.7	MBF	9.4	\$2,224.30
	Red Maple		4.6	MBF		
	Sugar Maple		4.7	MBF		
	Balsam Fir	Pulpwood	1	Cords		
	Mixed Hardwood		79	Cords		
	<i>Basswood</i>		20	<i>Cords</i>		
	<i>Red Maple</i>		20	<i>Cords</i>		
	<i>Sugar Maple</i>		39	<i>Cords</i>		
	5		Basswood	Sawtimber		
Red Maple		0.5	MBF			
Sugar Maple		0.8	MBF			
Balsam Fir		Pulpwood	2	Cords		
Mixed Hardwood			44	Cords		
<i>Basswood</i>			28	<i>Cords</i>		
<i>Red Maple</i>			2	<i>Cords</i>		
<i>Sugar Maple</i>	14	<i>Cords</i>				
6	Basswood	Sawtimber	3.7	MBF	4.3	\$790.60
	Red Maple		0.6	MBF		
	Sugar Maple		0.5	MBF		
	White Ash		1.0	MBF		
	Mixed Hardwood	Pulpwood	35	Cords		
	<i>Basswood</i>		27	<i>Cords</i>		
	<i>Red Maple</i>		2	<i>Cords</i>		
	<i>Sugar Maple</i>		5	<i>Cords</i>		
	<i>White Ash</i>		1	<i>Cords</i>		
	7		Balsam Fir	Pulpwood		

DESCRIPTION OF TIMBER BY PAYMENT UNIT (PU), CON'T

PU	MARKET GROUP	PRODUCT	QUANTITY	UNIT	ACRES	ADVERTISE PRICE				
7 con't	Mixed Hardwood	Pulpwood	32	Cords						
	<i>Black Ash</i>		29	<i>Cords</i>						
	<i>Red Maple</i>		3	<i>Cords</i>						
	Mixed Spruce		11	Cords						
	<i>White Spruce</i>		11	<i>Cords</i>						
	N. White Cedar		59	Cords						
	Quaking Aspen		13	Cords						
	8		Black Ash	Sawtimber			0.9	MBF	4.9	\$1,837.75
Balsam Poplar		Pulpwood	10	Cords						
Mixed Hardwood			13	Cords						
<i>Black Ash</i>			8	<i>Cords</i>						
<i>Red Maple</i>			5	<i>Cords</i>						
Mixed Spruce			31	Cords						
<i>Black Spruce</i>			26	<i>Cords</i>						
<i>White Spruce</i>			5	<i>Cords</i>						
N. White Cedar			84	Cords						
Quaking Aspen			15	Cords						
9			Black Ash	Sawtimber	1.8	MBF	3.0	\$666.40		
	Red Maple		Pulpwood	0.4	MBF					
	Balsam Fir	3		Cords						
	Mixed Hardwood	32		Cords						
	<i>Black Ash</i>	30		<i>Cords</i>						
	<i>Paper Birch</i>	1		<i>Cords</i>						
	<i>Red Maple</i>	1		<i>Cords</i>						
	N. White Cedar	2		Cords						
	Quaking Aspen	2		Cords						
	10	Black Ash		Sawtimber	0.7	MBF			10.5	\$1,503.00
Balsam Fir		Pulpwood		7	Cords					
Balsam Poplar			28	Cords						
Mixed Hardwood			41	Cords						
<i>Black Ash</i>			26	<i>Cords</i>						
<i>Paper Birch</i>			9	<i>Cords</i>						
<i>Red Maple</i>			6	<i>Cords</i>						
Mixed Spruce			14	Cords						
<i>Black Spruce</i>			9	<i>Cords</i>						
<i>White Spruce</i>			5	<i>Cords</i>						
Quaking Aspen			4	Cords						
Tamarack			4	Cords						
11			Red Maple	Sawtimber	1.1	MBF	8.7	\$2,131.10		
			Sugar Maple	Pulpwood	1.0	MBF				
	Balsam Fir		23		Cords					
	Mixed Hardwood	58	Cords							
	<i>Basswood</i>	14	<i>Cords</i>							
	<i>Red Maple</i>	23	<i>Cords</i>							
	<i>Sugar Maple</i>	17	<i>Cords</i>							
	<i>Yellow Birch</i>	4	<i>Cords</i>							
	Mixed Spruce	14	Cords							
	<i>White Spruce</i>	14	<i>Cords</i>							
	Quaking Aspen	34	Cords							
TOTAL:			90.8		MBF					
TOTAL:			1,044	Cords						

Sale Specific Conditions & Requirements

Sale Name: West Talbot SBW

Sale Number: 33-031-21 Seq#: 1

1 - Sale Area

1.2 - Boundaries

1.2.1 - Painted boundaries (9/19)

The sale boundary and Payment Unit boundaries are marked and identified by blue, red, and yellow paint. Exterior sale boundary lines against private property are marked with blue paint. Exterior sale boundary lines against state are marked with red paint. Interior Payment Unit boundaries are marked with yellow paint. Retention patches are marked with red paint; no harvesting activities may occur within these areas. The painted boundary line trees are not Included Timber and are to be protected unless marked with orange paint. Yellow painted trees designating an interior Payment Unit boundary are only to be cut when all surrounding Payment Units have been paid for.

2 - Timber Specifications

2.1 - Included Timber

2.1.1 - Clearcut unit(s) with unmerchantable trees (6/14)

Within Payment Unit(s) 1 and 3, cut all trees that are four (4) inches or more at DBH, with the following exceptions:

- Within Payment Unit 1, do not cut cedar and pine.

- Within Payment Unit 3, do not cut hemlock and pine. In addition, only cut cedar less than nine (9) inches at DBH.

Within Payment Units 7-11A, cut all trees that are three (3) inches or more at DBH, except within Payment Units 10 and 11A, do not cut cedar.

2.1.3 - Cut tree marked unit(s) (12/08)

Within Payment Unit(s) 2, 4-6, and 11B, all trees are designated for cutting when marked with orange paint above and below stump height, regardless of merchantability.

2.1.9 - Harvest exception (12/08)

Do not cut any cedar trees in Payment Units 1, 10, and 11A, other than those that are necessary to remove in order to operate within the sale area. Every effort must be made to preserve the existing cedar and to leave an intact stand upon sale completion. All cut cedar shall be piled separately by products and scaled in the woods unless other scaling arrangements are agreed to by the Unit Manager or his/her representative. Stumpage price for cedar shall be \$40.00 per cord.

2.2 - Utilization

2.2.4 - Skidding length (2/14)

Skidding of unlimbed tops or lengths over 17 feet is not permissible within Payment Units 2, 4, 5, and 11B.

3 - Payments

3.3 - Pre-measured Sales

3.3.4 - Dividing payment units (7/14)

Payment Unit(s) \$18,000 in value or greater may be divided at the request of the Purchaser and upon approval of the Unit Manager. Dividing Payment Units is a contract modification which requires a Timber Sale Contract Amendment. There will be only one division per Payment Unit.

4 - Transportation

4.1 - Construction

4.1.8 - Road work (1) (8/07)

The following road work is required: the Purchaser must haul and spread 100 cubic yards of gravel on the main access road, north of Payment Unit 8. All the roadwork must be completed prior to any hauling taking place on this portion of the access road. Gravel is available from a state pit just north of Payment Unit 8 along the access road.

4.2 - Maintenance

4.2.1 - Hauling restriction (12/08)

Hauling may be restricted on forest roads by the Unit Manager or his/her representative. The restriction may occur during spring breakup or during other wet weather conditions.

4.2.4 - Grading (10/16)

For completion of the sale, state forest roads must be graded. In general, this will require a road grader or bulldozer to shape up the roads after forest products have been hauled off site. This includes cleaning of drainage areas, grading, crowning, and filling with gravel, if necessary. The grading equipment to be used must be approved by the Unit Manager or his/her representative.

4.4 - Access

4.4.1 - Private property access (3/11)

Permission for access across private land is the responsibility of the Purchaser. To access Payment Units 10 and 11 the Purchaser must cross private land. The landowner will need to be contacted to obtain permission to cross their property. You may contact Dan (906-399-0879) or Dustin (906-399-1828) at the Stephenson Field Office to obtain the landowners contact information.

Payment Units 1-9, can be accessed through state land coming in from the north/northwest off Zemba Lane/Klatt Road. The other option is to obtain permission from the landowners south of the Sale Area, where there is a road that connects with O-1 and Number 26 Lanes.

The best access into Payment Units 1 and 4 is through private property as well, this landowner hasn't been contacted by the DNR. The landowner has allowed access for past timber sales on state land.

4.4.2 - Alternate route on private property (2/04)

It is the Purchaser's responsibility to obtain access across private land for any routes other than the route shown on the Timber Sale Map.

5 - Operations

5.2 - Conduct of Operations

5.2.3 - Operating Restrictions

5.2.3.1 - Operating restrictions (9/11)

Within Payment Unit(s) 1 and 7-10, cutting and skidding are limited to the period of December 1 to March 31, unless there is an extended dry or frozen period and the sale administrator allows harvesting during that period of time. This restriction is because of low wet ground throughout these Payment Units.

5.2.3.3 - Bark slippage restriction (3/09)

Within Payment Unit(s) 2, 4-6, and 11B, unless changed by written agreement, cutting and skidding are not permitted during the period of April 15 to July 15. This restriction is because of bark slippage.

5.2.22 - Operating Caution

5.2.22.1 - Operating caution (6/11)

It is recommended, but not required, that within Payment Unit(s) 3 and 11A, cutting and skidding occur during dry summer or frozen winter conditions. The reason for the recommendation is because of some low wet ground areas within each of the Payment Units.

7 - Other Conditions

7.5 - Loss

7.5.1 - Deteriorating timber (7/09)

The sale area has received damage from the spruce budworm and the eastern larch beetle. The pests are causing spruce, balsam fir and tamarack mortality. The Purchaser should harvest the wood as soon as possible. The Department of Natural Resources is held free of responsibility of any further damage or deterioration due to delay in harvesting.

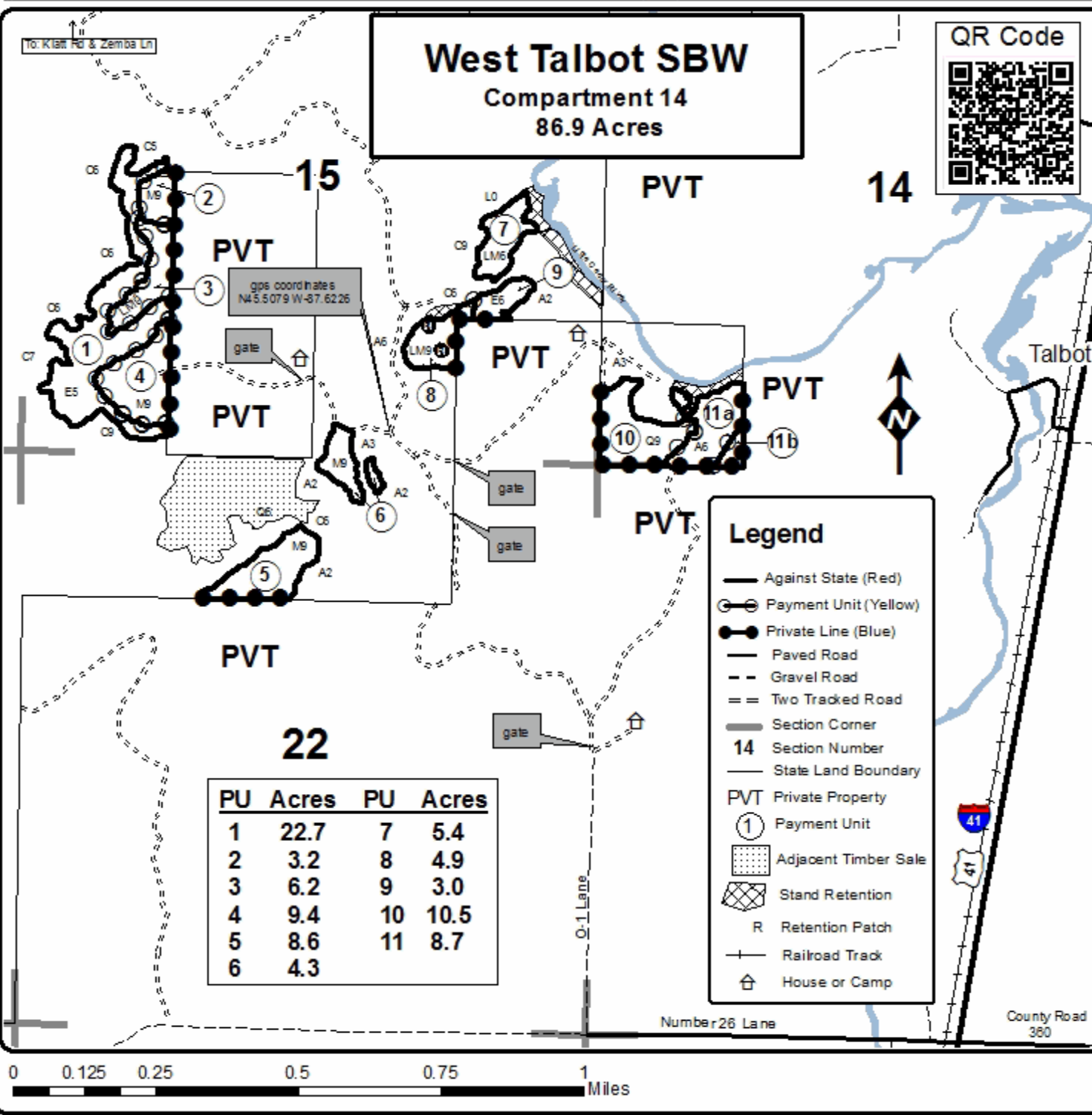


TIMBER SALE MAP

This information provided by authority of Part 525, 1994 PA 451, as amended.

Forest Management Unit	County	Mapped By	Date	Page	of
Escanaba Management Unit	Menominee County	Beudo	7/23/2021	1	1
Township	Range	Section(s) and Subdivision(s)	Scale		
36N	27W	Sec 14 - SWSW; Sec 15 - SWNW, W 1/2SW, N 1/2SE, SWSE; Sec 22 - NENW, NWNE.	1:15,840		

Cover Type				Density	
A = Aspen	H = Hemlock	N = Marsh	U = Upland Brush	0 = Non Stocked	5 = Pole Timber Medium
B = Paper Birch	J = Jack Pine	O = Oak	UM = Upland Mixed	1 = Seeding Sapling Poor	6 = Pole Timber Well
C = Cedar	L = Lowland Brush	P = Lowland Poplar	V = Bog or Marsh	2 = Seeding Sapling Medium	7 = Saw Timber Poor
D = Treed Bog	LM = Lowland Mixed	Q = Mixed Swamp Conifer	W = White Pine	3 = Seeding Sapling Well	8 = Saw Timber Medium
E = Swamp Hardwoods	M = Mpl. Ech. Birch	R = Red Pine	X = Non Stocked	4 = Pole Timber Poor	9 = Saw Timber Well
F = Spruce Fir	MC = Mixed Conifer	S = Black Spruce	Z = Water		
G = Creas	MD = Mixed Deciduous	T = Tamarack			



Burke Creek Divide (33-029-21)
T34N, R28W, SEC. 5; T34N, R28W, SEC. 6; Menominee COUNTY

In response to the notice of sale to be held 3:00 p.m. (local time) on October 13, 2021, I am hereby submitting my sealed bid (firm offer) for the following forest products to be cut. Bids for individual species must be at or above the advertised price. All non-responsive bid forms may be rejected.

<u>PRODUCTS & SPECIES</u>	<u>ESTIMATED VOLUME*</u>	<u>ADVERTISED PRICE</u>	<u>BID PRICE/UNIT</u>
Sawtimber			
Basswood	7.0 MBF	\$ 33.00/MBF	\$ _____
Black Ash	18.0 MBF	\$ 47.00/MBF	\$ _____
Northern Pin Oak	2.8 MBF	\$ 78.00/MBF	\$ _____
Paper Birch	6.7 MBF	\$ 56.00/MBF	\$ _____
Red Maple	16.8 MBF	\$ 75.00/MBF	\$ _____
White Oak	1.9 MBF	\$ 76.00/MBF	\$ _____
Pulpwood			
Balsam Fir	241 Cords	\$ 12.70/Cord	\$ _____
Mixed Aspen	506 Cords	\$ 17.00/Cord	\$ _____
Mixed Hardwood	492 Cords	\$ 15.30/Cord	\$ _____
Mixed Oak	10 Cords	\$ 17.30/Cord	\$ _____
Mixed Spruce	247 Cords	\$ 12.65/Cord	\$ _____
N. White Cedar	36 Cords	\$ 9.45/Cord	\$ _____
Red Pine	21 Cords	\$ 42.60/Cord	\$ _____
Tamarack	35 Cords	\$ 11.00/Cord	\$ _____
White Pine	61 Cords	\$ 18.65/Cord	\$ _____

*The volumes are statistically estimated within plus (+) or minus (-) 6.67 percent at 95% confidence level. These estimated volumes are final and not subject to adjustment. Prospective bidders are urged to examine this timber and to make their own estimates of quantity and quality.

I understand that any or all bids may be rejected. All bids must be signed and all bid items must be bid or the bid form may be rejected. I also understand that consideration and awarding a contract will be based upon my past performance and ability to complete the contract based upon equipment and staffing subject to my control.

FEDERAL ID: ____ - ____ - ____ or SOCIAL SECURITY NUMBER: ____ - ____ - ____

Company or individual bidding: _____

Company representative's name: _____

Address: _____

City: _____ State: _____ Zip: _____

IF AVAILABLE, PLEASE PLACE THE PERSONALIZED LABEL FROM YOUR PROSPECTUS IN THE ABOVE BOX.

Individual or company representative's signature: _____ Date: _____

Phone number : _____ Email (optional): _____

THE WINNING BIDDER MUST COMPLETE THE VERIFICATION OF WORKER'S DISABILITY COMPENSATION ACT COMPLIANCE (ON REVERSE SIDE IF DOUBLE SIDED) WITHIN 21 DAYS OF SALE AWARD DATE



FOR DEPARTMENT USE ONLY	
Sale Number (XX - XXX - XX - XX)	
Forest Management Unit:	

TIMBER SALE VERIFICATION OF WORKER'S DISABILITY COMPENSATION ACT COMPLIANCE

As required by Act 317, P.A. 1969 (Worker's Compensation) and
Part 5 of Act 451 of 1994, as amended.

VERIFICATION OF WORKER'S DISABILITY COMPENSATION ACT COMPLIANCE

- This verification must be completed and submitted within 21 days of contract award and prior to the issuance of the timber sale contract.
- In addition, if boxes 2B or 2C are checked, then Notice of Exclusion or Certificate of Insurance must be submitted within twenty-one (21) days of the contract award and prior to the issuance of the timber sale contract.
- All information must be typed or printed except for written signatures.

Please Check Appropriate Categories:

1. My business is organized as (you **must** check one of the boxes below):
 - A. Sole Proprietorship (individual)
 - B. Partnership
 - C. Corporation
2. You **must** check one of the boxes below:
 - A. I certify my business is a sole proprietorship and it has no employees but the sole proprietor. I am not subject to the Worker's Compensation Laws.
 - B. I certify my business has satisfied its obligation to the Worker's Compensation Act through the use of an approved Notice of Exclusion (BWC-337, Rev. 5/96). I will provide a copy of the Notice of Exclusion within 21 days of the contract award. (For questions or a copy of the BWC-337, please call the Worker's Compensation Bureau at 517-322-1195).
 - C. I certify my business has a Worker's Compensation Policy. I will provide an original Certificate of Insurance within twenty-one (21) days of the contract award.
3. If you have checked item 2(A) or 2(B), you **must** indicate the number of **both** full-time and part-time employees, other than yourself, including family members and active partners (if none, you must enter "0").

_____ Full-time Employees

_____ Part-time Employees

Name of Business		Federal ID (or) Social Security No.	
Address		Telephone ()	
City	State	ZIP	

I hereby certify that the above information is true and correct. I agree to notify the Michigan DNR of any changes that occur in factors affecting my coverage during any of my present and future operations.

Signature of Owner or Authorized Representative

Title

Date

Please complete the "SEALED BID" information on the next page

Carney Hardwood (33-030-21)
T37N, R27W, SEC. 17; T37N, R27W, SEC. 18; Menominee COUNTY

In response to the notice of sale to be held 3:00 p.m. (local time) on October 13, 2021, I am hereby submitting my sealed bid (firm offer) for the following forest products to be cut. Bids for individual species must be at or above the advertised price. All non-responsive bid forms may be rejected.

<u>PRODUCTS & SPECIES</u>	<u>ESTIMATED VOLUME*</u>	<u>ADVERTISED PRICE</u>	<u>BID PRICE/UNIT</u>
Sawtimber			
Basswood	14.2 MBF	\$ 33.00/MBF	\$ _____
Beech	5.5 MBF	\$ 31.00/MBF	\$ _____
Green Ash	11.5 MBF	\$ 31.00/MBF	\$ _____
Red Maple	1.2 MBF	\$ 75.00/MBF	\$ _____
Sugar Maple	39.9 MBF	\$ 114.00/MBF	\$ _____
White Ash	20.6 MBF	\$ 31.00/MBF	\$ _____
White Oak	4.7 MBF	\$ 76.00/MBF	\$ _____
Pulpwood			
Balsam Fir	39 Cords	\$ 12.70/Cord	\$ _____
Mixed Aspen	19 Cords	\$ 17.00/Cord	\$ _____
Mixed Hardwood	236 Cords	\$ 15.30/Cord	\$ _____
White Oak	9 Cords	\$ 17.30/Cord	\$ _____
White Spruce	3 Cords	\$ 12.65/Cord	\$ _____

*The volumes are statistically estimated within plus (+) or minus (-) 9.62 percent at 95% confidence level. These estimated volumes are final and not subject to adjustment. Prospective bidders are urged to examine this timber and to make their own estimates of quantity and quality.

I understand that any or all bids may be rejected. All bids must be signed and all bid items must be bid or the bid form may be rejected. I also understand that consideration and awarding a contract will be based upon my past performance and ability to complete the contract based upon equipment and staffing subject to my control.

FEDERAL ID: ____ - ____ - ____ or SOCIAL SECURITY NUMBER: ____ - ____ - ____

Company or individual bidding: _____

Company representative's name: _____

Address: _____

City: _____ State: _____ Zip: _____

IF AVAILABLE, PLEASE PLACE THE PERSONALIZED LABEL FROM YOUR PROSPECTUS IN THE ABOVE BOX.

Individual or company representative's signature: _____ Date: _____

Phone number : _____ Email (optional): _____

THE WINNING BIDDER MUST COMPLETE THE VERIFICATION OF WORKER'S DISABILITY COMPENSATION ACT COMPLIANCE (ON REVERSE SIDE IF DOUBLE SIDED) WITHIN 21 DAYS OF SALE AWARD DATE



TIMBER SALE VERIFICATION OF WORKER'S DISABILITY COMPENSATION ACT COMPLIANCE

As required by Act 317, P.A. 1969 (Worker's Compensation) and
Part 5 of Act 451 of 1994, as amended.

FOR DEPARTMENT USE ONLY	
Sale Number (XX - XXX - XX - XX)	
Forest Management Unit:	

VERIFICATION OF WORKER'S DISABILITY COMPENSATION ACT COMPLIANCE

- This verification must be completed and submitted within 21 days of contract award and prior to the issuance of the timber sale contract.
- In addition, if boxes 2B or 2C are checked, then Notice of Exclusion or Certificate of Insurance must be submitted within twenty-one (21) days of the contract award and prior to the issuance of the timber sale contract.
- All information must be typed or printed except for written signatures.

Please Check Appropriate Categories:

1. My business is organized as (you **must** check one of the boxes below):
 - A. Sole Proprietorship (individual)
 - B. Partnership
 - C. Corporation
2. You **must** check one of the boxes below:
 - A. I certify my business is a sole proprietorship and it has no employees but the sole proprietor. I am not subject to the Worker's Compensation Laws.
 - B. I certify my business has satisfied its obligation to the Worker's Compensation Act through the use of an approved Notice of Exclusion (BWC-337, Rev. 5/96). I will provide a copy of the Notice of Exclusion within 21 days of the contract award. (For questions or a copy of the BWC-337, please call the Worker's Compensation Bureau at 517-322-1195).
 - C. I certify my business has a Worker's Compensation Policy. I will provide an original Certificate of Insurance within twenty-one (21) days of the contract award.
3. If you have checked item 2(A) or 2(B), you **must** indicate the number of **both** full-time and part-time employees, other than yourself, including family members and active partners (if none, you must enter "0").

_____ Full-time Employees

_____ Part-time Employees

Name of Business		Federal ID (or) Social Security No.	
Address		Telephone ()	
City	State	ZIP	

I hereby certify that the above information is true and correct. I agree to notify the Michigan DNR of any changes that occur in factors affecting my coverage during any of my present and future operations.

Signature of Owner or Authorized Representative

Title

Date

Please complete the "SEALED BID" information on the next page

West Talbot SBW (33-031-21)

T36N, R27W, SEC. 14; T36N, R27W, SEC. 15; T36N, R27W, SEC. 22; Menominee

In response to the notice of sale to be held 3:00 p.m. (local time) on October 13, 2021, I am hereby submitting my sealed bid (firm offer) for the following forest products to be cut. Bids for individual species must be at or above the advertised price. All non-responsive bid forms may be rejected.

<u>PRODUCTS & SPECIES</u>	<u>ESTIMATED VOLUME*</u>	<u>ADVERTISED PRICE</u>	<u>BID PRICE/UNIT</u>
Sawtimber			
Basswood	11.5 MBF	\$ 33.00/MBF	\$ _____
Black Ash	19.6 MBF	\$ 31.00/MBF	\$ _____
Paper Birch	3.0 MBF	\$ 56.00/MBF	\$ _____
Red Maple	46.3 MBF	\$ 75.00/MBF	\$ _____
Sugar Maple	9.4 MBF	\$ 114.00/MBF	\$ _____
White Ash	1.0 MBF	\$ 31.00/MBF	\$ _____
Pulpwood			
Balsam Fir	67 Cords	\$ 12.70/Cord	\$ _____
Balsam Poplar	38 Cords	\$ 17.00/Cord	\$ _____
Mixed Hardwood	638 Cords	\$ 15.30/Cord	\$ _____
Mixed Spruce	75 Cords	\$ 12.65/Cord	\$ _____
N. White Cedar	154 Cords	\$ 9.45/Cord	\$ _____
Quaking Aspen	68 Cords	\$ 17.00/Cord	\$ _____
Tamarack	4 Cords	\$ 11.00/Cord	\$ _____

*The volumes are statistically estimated within plus (+) or minus (-) 7.30 percent at 95% confidence level. These estimated volumes are final and not subject to adjustment. Prospective bidders are urged to examine this timber and to make their own estimates of quantity and quality.

I understand that any or all bids may be rejected. All bids must be signed and all bid items must be bid or the bid form may be rejected. I also understand that consideration and awarding a contract will be based upon my past performance and ability to complete the contract based upon equipment and staffing subject to my control.

FEDERAL ID: _____ - _____ or SOCIAL SECURITY NUMBER: _____ - _____ - _____

Company or individual bidding: _____

Company representative's name: _____

Address: _____

City: _____ State: _____ Zip: _____

IF AVAILABLE, PLEASE PLACE THE PERSONALIZED LABEL FROM YOUR PROSPECTUS IN THE ABOVE BOX.

Individual or company representative's signature: _____ Date: _____

Phone number : _____ Email (optional): _____

THE WINNING BIDDER MUST COMPLETE THE VERIFICATION OF WORKER'S DISABILITY COMPENSATION ACT COMPLIANCE (ON REVERSE SIDE IF DOUBLE SIDED) WITHIN 21 DAYS OF SALE AWARD DATE



FOR DEPARTMENT USE ONLY	
Sale Number (XX - XXX - XX - XX)	
Forest Management Unit:	

TIMBER SALE VERIFICATION OF WORKER'S DISABILITY COMPENSATION ACT COMPLIANCE

As required by Act 317, P.A. 1969 (Worker's Compensation) and
Part 5 of Act 451 of 1994, as amended.

VERIFICATION OF WORKER'S DISABILITY COMPENSATION ACT COMPLIANCE

- This verification must be completed and submitted within 21 days of contract award and prior to the issuance of the timber sale contract.
- In addition, if boxes 2B or 2C are checked, then Notice of Exclusion or Certificate of Insurance must be submitted within twenty-one (21) days of the contract award and prior to the issuance of the timber sale contract.
- All information must be typed or printed except for written signatures.

Please Check Appropriate Categories:

1. My business is organized as (you **must** check one of the boxes below):
 - A. Sole Proprietorship (individual)
 - B. Partnership
 - C. Corporation
2. You **must** check one of the boxes below:
 - A. I certify my business is a sole proprietorship and it has no employees but the sole proprietor. I am not subject to the Worker's Compensation Laws.
 - B. I certify my business has satisfied its obligation to the Worker's Compensation Act through the use of an approved Notice of Exclusion (BWC-337, Rev. 5/96). I will provide a copy of the Notice of Exclusion within 21 days of the contract award. (For questions or a copy of the BWC-337, please call the Worker's Compensation Bureau at 517-322-1195).
 - C. I certify my business has a Worker's Compensation Policy. I will provide an original Certificate of Insurance within twenty-one (21) days of the contract award.
3. If you have checked item 2(A) or 2(B), you **must** indicate the number of **both** full-time and part-time employees, other than yourself, including family members and active partners (if none, you must enter "0").

_____ Full-time Employees

_____ Part-time Employees

Name of Business		Federal ID (or) Social Security No.	
Address		Telephone ()	
City	State	ZIP	

I hereby certify that the above information is true and correct. I agree to notify the Michigan DNR of any changes that occur in factors affecting my coverage during any of my present and future operations.

Signature of Owner or Authorized Representative

Title

Date

Please complete the "SEALED BID" information on the next page