



**DEPARTMENT OF NATURAL RESOURCES
STATE OF MICHIGAN**

TIMBER SALE PROSPECTUS #6872

SCHEDULED SALE DATE AND TIME: 10:00 a.m. (local time) on October 19, 2021.

LOCATION: ATLANTA MGMT UNIT, 13501 M 33, ATLANTA, MI 49709.

PROSPECTUS NOTE: The bidder is advised to inspect the sale area and review the location, estimated volumes, operating costs and contract terms of proposed sales. Please be aware that some landowners may request 60 days or more notice for access across their land.

Notice is hereby given that bids will be received by the Unit Manager, ATLANTA MANAGEMENT UNIT, for certain timber on the following described lands:

Bear Bait Babe (54-030-20) / T33N, R02E, SEC. 17, E1/2SW,SWSE.

T33N, R02E, SEC. 18, N1/2NE,SENE.

Presque Isle County, Advertised Price \$23,063.60, 42.7 Acres, Aspen, Spruce/Fir/Tamarack.

SALE NOTE: The forest roads providing access into Payment Units 1 and 2 will require brushing, minor improvements and fill material to make them viable haul routes. The Unit Manager or his/her representative must approve the type of fill material used prior to placement. In general, suitable fill material includes clean cobble and/or crushed rock.

Permission Mix (54-039-20) / T34N, R03E, SEC. 28, S1/2NW,SESE.

T34N, R03E, SEC. 32, N1/2SE,SESE.

Presque Isle County, Advertised Price \$15,060.35, 46.9 Acres, Hardwood, Spruce/Fir/Tamarack.

SALE NOTE: Access required through private land. Contact Dan Natzke at 989 590 1102 or at natzked@michigan.gov for access information.

Access may be through private land.

Beaver Dam Mix (54-040-20) / T34N, R03E, SEC. 34, E1/2NE,NESE.

T34N, R03E, SEC. 35, SWNW,NWSW,S1/2SW.

Presque Isle County, Advertised Price \$19,818.60, 76.7 Acres, Spruce/Fir/Tamarack, Aspen.

BID INSTRUCTIONS (VER. 07/02/2018):

1. Scheduled Bid Location, Date, and Time (2/11)

Bids must be received by the Unit Manager, ATLANTA OFFICE, 13501 M 33, ATLANTA, MI 49709, no later than 10:00 a.m. (local time) on October 19, 2021. For further information concerning this sale, contact Cody Stevens at 989-785-4251 extension 5240.

2. Bidder's Qualifications (5/16)

Purchaser shall obtain workers compensation insurance to cover claims under Michigan's Worker's Disability Compensation Act of 1969 or similar employee benefit act of any other state applicable to an employee. If all or part of a timber sale was prepared by a private contractor, the contractor and that contractor's company are not permitted to bid on the timber sale contract. Bids will not be accepted from individuals or companies appearing on the DNR/FRD No-Bid List. This list contains the names of purchasers who previously failed to execute a contract within 21-days or who have a history of poor performance.

3. Preparation of Sealed Bids (5/16)

Bid Forms may be completed online thru Michigan DNR Timber Sale Online Bidding (OLB) at www.michigan.gov/timberbidding or by completing the hardcopy Bid Form found in the Timber Sale Prospectus. Hardcopy Bid Forms shall be manually signed in ink. Registration in OLB is considered your 'signature' for all bids submitted thru that system. Bid prices must be entered for each species and product in the Bid Price column for all material subject to bidding and all fill-in blanks must be completed. If erasures or other changes appear on the hardcopy Bid Form, each erasure or change must be initialed by the person signing the bid.

4. Submission of Sealed Bids (5/16)

Bid forms may be obtained from the Unit Manager or thru OLB. Bids may be submitted hardcopy or thru OLB. All hardcopy bids must be submitted on the bid form and in an envelope clearly identified as described in this section. NOTE: Only one bid form per bid envelope. Sealed bids must be submitted to the Unit office designated in the prospectus and must be submitted at or prior to the time established in the prospectus. The envelope should show on the outside (a) the sale name or number and (b) the date and time of bid opening, as shown in the prospectus. Bids received after the time specified in the sale prospectus are late bids and will be rejected.

It is possible for a bidder to submit multiple bids on a single sale. For example, a bid may be submitted hardcopy and a bid may be submitted thru OLB. Or, two bidders from the same company could both submit bids on the same sale. If this were to happen, the State would accept all bids received and award the contract accordingly. All bidding and contractual requirements would apply to all bids received.

5. Public Opening of Sealed Bids (7/16)

If conditions permit, the sealed bids will be publicly opened and posted at the time and place set in the prospectus.

If a bidder, present at a bid opening, has submitted bids on more than one sale, that bidder may withdraw their unopened bid envelopes or announce the withdrawal of their online bid after being declared the successful bidder on one sale.

6. Award of Contract (1/11)

Award of the contract will be made to the Bidder whose bid, conforming to the prospectus, is most advantageous to the State of Michigan on the basis of total value at rates bid for the estimated quantities. The State reserves the right to reject any bid or waive any minor irregularity in bids received. A written award mailed (or otherwise furnished) to the successful Bidder shall be deemed to result in a binding contract without further action by either party.

7. Down Payment (1/11)

The Bidder to whom award is made must make a down payment within 21 days of the sale award. The amount of the down payment will be calculated as shown in the Bond and Payment Schedule of this prospectus. Only cash may be used to meet this requirement.

8. Performance Security (1/11)

As guarantee of faithful performance, a cash bond, certificate of deposit, surety bond or irrevocable letter of credit (LOC) is required within 21 days of the sale award. The amount of the performance security is shown in the Bond and

Payment Schedule of this prospectus. If an LOC or surety is used, the coverage must extend for at least 6 months beyond the contract expiration.

9. Timber Sale Contract (7/18)

Additional conditions and requirements common to all timber sales are listed on the timber sale contract (R4031) and are available on line at www.michigan.gov/timber. Contact the Unit Manager for additional information or a sample contract. Within 21 days of the date of the award letter, the bidder must sign the contract and provide the required down payment, performance security, and verification of worker's disability compensation. The down payment and performance security shall be in accordance with the provisions of the timber sale contract, in the sums stated in this prospectus. If these actions are not taken, then the Bidder, the Bidder's corporation, and the corporation's principals may not be permitted to bid on State timber sales for a period of 3 months after the first offense, 6 months after the second offense, and 1 year after the third offense. An offense will only be counted against the Bidder for 5 years. In addition, the Bidder certifies that if awarded this contract, the Bidder will complete the timber sale contract in accordance with its terms and any modifications thereof including requirements to purchase, cut, and remove the included timber by the expiration date.

Payment Unit values in the State Forest Timber Sale Contract are calculated based on the advertised value of the Payment Unit as a percentage of the total advertised value of the contract. The advertised value of each Payment Unit is given in the Description of Timber by Payment Unit table on the Timber Sale Information page. For example, if the value of Payment Unit 1 is advertised as \$1,500 and the total Timber Sale value is advertised as \$10,000, the contract price for Payment Unit 1 will be 15% of the total bid price ($\$1,500/\$10,000 * 100$).

10. Disclaimer of Estimates and Bidder's Warranty of Inspection (7/16)

Before submitting this bid, the Bidder is advised and cautioned to inspect the sale area, review the requirements of the sale contract, and take other steps as may be reasonably necessary to ascertain the location, estimated volumes, construction estimates, and operating costs of the proposed sale. Failure to do so will not relieve the Bidder from responsibility for completing the contract.

The Bidder warrants that this bid is submitted solely on the basis of the Bidder's examination and inspection of the quality and quantity of the timber offered for sale and the Bidder's opinion of the value thereof and the costs of recovery. No reliance should be placed on the State of Michigan's estimates of timber quality, quantity or costs of recovery. Bidder further acknowledges that the State of Michigan: (i) expressly disclaims any warranty of fitness of timber for any purpose; (ii) offers this timber as is without any warranty of quality (merchantability) or quantity and (iii) expressly disclaims any warranty as to the quantity or quality of timber sold.

11. Certification and Chain-of-Custody (10/14)

Unless otherwise indicated in the contract under section 7 – Other Conditions of the Sale Specific Conditions & Requirements, the area encompassed by this timber sale is certified to the standards of the Forest Stewardship Council (FSC) - Certificate #SCS-FM/COC-00090N and the Sustainable Forestry Initiative (SFI) - Certificate #NSF-SFIS-5Y031-SF5. Forest products from this sale may be delivered to the mill as "FSC 100% and / or SFI certified" as long as the contractor hauling the forest products is chain-of-custody (COC) certified or covered under a COC certificate from the destination mill. The purchaser is responsible for maintaining COC after leaving the sale area.

12. Good Neighbor Authority (GNA) Requirements (7/16)

If the name of this timber sales contains the acronym GNA, it is authorized by the Good Neighbor Authority (GNA) and covered by various agreements between the U.S. Forest Service and the State. The timber sale occurs on federal land and the following conditions apply:

GNA contracts on US Forest Service land will not be awarded to purchasers on the Federal list of excluded parties. The System for Award Management (SAM) will be checked for active excluded parties prior to award of contract. In addition, the Bidder to whom award is made must complete an Assurance Regarding Felony Conviction or Tax Delinquent Status for Corporate Applicants (AD-3031).

13. Good Neighbor Authority (GNA) Requirements, con't (9/16)

Bidder certifies, by signing this bid form, that to the best of Bidder's knowledge that the following representations are accurate and complete.

- a. That the Bidder and its principals are not presently debarred, suspended, proposed for debarment, declared ineligible, or voluntary excluded from timber sales (covered transactions) by any Federal department or agency.
- b. That the Bidder and its principals have not within a 3-year period preceding this bid been convicted of or had a civil judgment rendered against them for commission of fraud or a criminal offense in connection with obtaining , attempting to obtain, or performing a public (Federal, State, or local) transaction or contract under a public transaction; violation of Federal or State antitrust statutes or commission of embezzlement, theft, forgery, bribery, falsification or destruction of records, making false statements, or receiving stolen property.
- c. That the Bidder and its principals are not presently indicted for or otherwise criminally or civilly charged by a governmental entity (Federal, State, or local) with commission of any of the offenses enumerated in paragraph b of this certification.
- d. That the Bidder and its principals have not within a 3-year period preceding this bid had one or more public transactions (Federal, State, or local) terminated for breach or default of a timber or forest product contract.

Bidders that cannot certify this requirement, in whole or in part, shall submit an explanation with their bid.

DAN EICHINGER
Director

TIMBER SALE INFORMATION

Bear Bait Babe (54-030-20)

T33N, R02E, SEC. 17; T33N, R02E, SEC. 18.
Presque Isle County (Advertised Price \$23,063.60)

SALE NOTE: The forest roads providing access into Payment Units 1 and 2 will require brushing, minor improvements and fill material to make them viable haul routes. The Unit Manager or his/her representative must approve the type of fill material used prior to placement. In general, suitable fill material includes clean cobble and/or crushed rock.

A timber sale contract for this lump sum, sealed bid timber sale will be awarded to the responsible bidder offering the highest sealed bid price. All units of volume listed below were estimated using the T-Sale computer program and our traditional volume equations. Bids must be at or above the following advertised price for each product and species:

<u>PRODUCTS & SPECIES</u>	<u>ESTIMATED UNITS*</u>	<u>ADVERTISED PRICE</u>
Sawtimber		
Mixed Aspen	39.9 MBF	\$ 103.00 / MBF
Red Maple	1.4 MBF	\$ 55.00 / MBF
Red Oak	3.1 MBF	\$ 173.00 / MBF
Pulpwood		
Balsam Fir	54 Cords	\$ 17.05 / Cord
Jack Pine	64 Cords	\$ 11.85 / Cord
Mixed Aspen	448 Cords	\$ 26.80 / Cord
Mixed Hardwood	69 Cords	\$ 21.80 / Cord
Mixed Spruce	38 Cords	\$ 10.40 / Cord
Paper Birch	2 Cords	\$ 10.85 / Cord
Red Oak	68 Cords	\$ 37.70 / Cord
Tamarack	18 Cords	\$ 6.30 / Cord
White Pine	5 Cords	\$ 11.40 / Cord

* The total volume is statistically estimated within plus (+) or minus (-) 29.59 percent. There are an estimated 856 cords on this timber sale, plus or minus 253 cords at the 95% confidence level. The estimated units are final and not subject to adjustment. Prospective bidders are urged to examine this timber and to make their own estimates of quantity and quality.

BOND AND PAYMENT SCHEDULE:

1. A bond in the amount of \$1,153.00 to insure faithful performance of the conditions of the contract will be deposited by the successful bidder within 21 days of the sale award.
2. Cutting in any sale or unit without the required advance payment would be considered a trespass.
3. Total payment must be paid in advance or according to the following schedule :
 - (a) Ten percent (10%) of the sale value must be paid within 21 days of the sale award.
 - (b) The 10% down payment will be credited towards the first unit cut.
 - (c) Payment for each of the following units must be made before cutting begins in that unit:

PAYMENT UNIT NUMBER	PERCENT OF TOTAL SALE VALUE
01	74.3%
02	15.4%
03	10.3%
4. If no cutting takes place, the 10% down payment will not be refunded.
5. Operations on the contract issued will terminate on 12/31/2023.

SALE STATISTICS

SALE VOLUMES

VOLUME		STATISTICAL RANGE IN CORDS		
TOTAL CUBIC FEET	TOTAL CORDS	PERCENT ERROR	MINIMUM	MAXIMUM
67,630	856	29.59%	603	1,109

VDU VOLUMES

A VDU is a Volume Determination Unit. Volumes and their associated statistics are calculated at the VDU level and summarized to the sale level. There is often a one to one relationship between a VDU and a Payment Unit, but not always, depending on the cruise design. Refer to the VDU TO PAYMENT UNIT table.

VDU	VOLUME		PERCENT ERROR	RANGE IN CORDS	
	TOTAL CUBIC FEET	TOTAL CORDS		MINIMUM	MAXIMUM
35	50,070	634	32.62%	427	841
64	10,231	130	27.62%	94	165
66	7,331	93	45.76%	50	135
TOTAL:	67,632	856		571	1,141

VDU TO PAYMENT UNIT

When a VDU is associated with more than one Payment Unit (PU), the VDU volumes are assigned to the PU based on acres of the VDU within the PU.

VDU	VDU ACRES	PU	PU ACRES
35	19.8	1	19.8
64	13.3	2	13.3
66	9.6	3	9.6
TOTAL:	42.7		42.7

DESCRIPTION OF TIMBER BY PAYMENT UNIT (PU)

PU	MARKET GROUP	PRODUCT	QUANTITY	UNIT	ACRES	ADVERTISE PRICE
1	Mixed Aspen	Sawtimber	39.2	MBF	19.8	\$17,146.75
	<i>B. T. Aspen</i>		31.3	<i>MBF</i>		
	<i>Quaking Aspen</i>		7.9	<i>MBF</i>		
	Red Maple		1.4	MBF		
	Balsam Fir	Pulpwood	41	Cords		
	<i>Balsam Fir</i>	<i>Sawtimber</i>	2.7	<i>MBF</i>		
	<i>Balsam Fir</i>	<i>Pulpwood</i>	36	<i>Cords</i>		
	Jack Pine		10	Cords		
	<i>Jack Pine</i>		10	<i>Cords</i>		
	Mixed Aspen		401	Cords		
	<i>B. T. Aspen</i>		300	<i>Cords</i>		
	<i>Quaking Aspen</i>		101	<i>Cords</i>		
	Mixed Hardwood		44	Cords		
	<i>Red Maple</i>		44	<i>Cords</i>		
	Mixed Spruce		38	Cords		
	<i>Black Spruce</i>	<i>Sawtimber</i>	1.7	<i>MBF</i>		
	<i>White Spruce</i>		0.8	<i>MBF</i>		
	<i>Black Spruce</i>	<i>Pulpwood</i>	14	<i>Cords</i>		
	<i>White Spruce</i>		19	<i>Cords</i>		
	Tamarack		18	Cords		
	<i>European Larch</i>	<i>Sawtimber</i>	0.8	<i>MBF</i>		
	<i>European Larch</i>	<i>Pulpwood</i>	16	<i>Cords</i>		
	2	Mixed Aspen	Sawtimber	0.7		
<i>Quaking Aspen</i>			0.7	<i>MBF</i>		
Red Oak			1.9	MBF		
Balsam Fir		Pulpwood	13	Cords		
<i>Balsam Fir</i>			13	<i>Cords</i>		
Jack Pine			13	Cords		
<i>Jack Pine</i>			13	<i>Cords</i>		
Mixed Aspen			36	Cords		
<i>B. T. Aspen</i>			8	<i>Cords</i>		
<i>Quaking Aspen</i>			28	<i>Cords</i>		
Mixed Hardwood			22	Cords		
<i>American Elm</i>		<i>Sawtimber</i>	1.5	<i>MBF</i>		
<i>American Elm</i>		<i>Pulpwood</i>	4	<i>Cords</i>		
<i>Red Maple</i>			15	<i>Cords</i>		
Paper Birch			2	Cords		
Red Oak			33	Cords		
White Pine		5	Cords			
3	Red Oak	Sawtimber	1.2	MBF	9.6	\$2,373.15
	Jack Pine	Pulpwood	41	Cords		
	<i>Jack Pine</i>	<i>Sawtimber</i>	0.4	<i>MBF</i>		
	<i>Jack Pine</i>	<i>Pulpwood</i>	40	<i>Cords</i>		
	Mixed Aspen		11	Cords		
	<i>Quaking Aspen</i>		11	<i>Cords</i>		
	Mixed Hardwood		3	Cords		
	<i>Red Maple</i>		3	<i>Cords</i>		
Red Oak		35	Cords			
TOTAL:			44.4	MBF		
TOTAL:			766	Cords		

Sale Specific Conditions & Requirements

Sale Name: Bear Bait Babe

Sale Number: 54-030-20 Seq#: 1

1 - Sale Area

1.2 - Boundaries

1.2.1 - Painted boundaries (9/19)

The sale boundary and Payment Unit boundaries are marked and identified by red paint. County Road 634 serves as the unpainted southern sale boundary for Payment Unit 3. This location is shown on the Timber Sale Map. Exterior sale boundary lines against state are marked with red paint. Interior retention islands are marked with red painted X's. Boundary excluded retention areas are shown on the Timber Sale Map. No harvesting activities may occur within these areas. The red painted boundary line trees are not Included Timber and are to be protected.

2 - Timber Specifications

2.1 - Included Timber

2.1.1 - Clearcut unit(s) with unmerchantable trees (6/14)

Within Payment Unit(s) 1 - 3, cut all trees that are two (2) inches or more at DBH, with the following exceptions:

- Within Payment Unit 1, do not cut red pine, white pine, and the two trees ringed with green paint.
- Within Payment Unit 2, do not cut red pine, white oak, and trees marked with green paint.
- Within Payment Unit 3, do not cut red pine, white pine, and white oak.

Special protection trees identified in accordance with condition 3.4.2, within clearcutting unit boundaries, are not Included Timber and are to be protected.

2.1.11 - Description of timber note (2/04)

Note that within Payment Units 1-2 are a few scattered, higher quality northern red oak trees.

2.2 - Utilization

2.2.10 - No chipping tops and limbs (8/16)

Within Payment Unit(s) 2 and 3, chipping of limbs or tops is not permitted. Limbs and the remaining top must be left on site and scattered. Focus placing limbs and tops over freshly cut oak stumps. This is meant to blockade some oak regeneration from deer browse.

3 - Payments

3.4 - Damaged Timber

3.4.1 - Damaged timber (7/16)

General Condition and Requirement 3.4 Damaged Timber, defines liquidated damages for undesignated live merchantable trees which are cut or injured. In addition, reasonable care should be taken to avoid damage to red and white pine seedlings and saplings within Payment Units 1 - 3.

Within Payment Units 1 - 3, if more than 50% of the red and white pine seedlings or saplings (1/4" to 4.5" DBH) within a specified portion of the Sale Area are damaged, liquidated damages will be assessed at \$300 per acre for all acreage within that specified portion of the Sale Area that was damaged. Seedlings and saplings cut cleanly in skid rows for operability will not be counted as damaged timber.

No damage is acceptable to undesignated live merchantable trees and designated retention areas. Within the Sale Area, if more than 5% of trees (> 4.5" DBH) within a specified area of the sale are damaged, liquidated damages will be assessed for all trees damaged. Rates will be in accordance with General Condition and Requirement 3.4 Damaged Timber.

3.4.2 - Special Protection Trees (4/14)

The Purchaser shall not cut live or dead special protection trees within cutting units or clearings. Special protection trees are located within Payment Unit 1 and include one Legacy hybrid oak tree ringed with green paint and 2 - 3 Legacy white pine trees (not painted green). Legacy trees are defined as having some of the following characteristics: twenty six (26) inches or more at DBH, fire scars, broken tops/crowns, etc. If the Purchaser's operations have cut or damaged special protection trees through carelessness, the Purchaser shall pay \$500.00 as fixed, agreed and liquidated damages for each special protection tree

cut or damaged. Such payment does not constitute ownership of the undesignated timber.

4 - Transportation

4.1 - Construction

4.1.3 - Slash and earthen piles (8/04)

Piles or windrows of earth along roads and landings that have been widened or constructed shall be leveled. Slash from road maintenance or construction, including stumps, shall be dispersed throughout the sale.

4.1.6 - Road construction (1/09)

Improvements of existing roads shall be done in such a way as to minimize the environmental and visual impacts. Merchantable trees shall be cut and utilized unless otherwise directed. Non-merchantable trees shall be severed and laid flat on the ground. Slash shall be scattered, and not left in windrows and kept a minimum of 10 feet back from the road edge. Stumps shall be set upright, not left on edge, and be moved at least 10 feet away from the road edge. Disturbed soil shall be feathered into the woods and not left in berms or windrows.

4.1.7 - Road closure (10/11)

Overgrown roads that are reopened shall be considered new roads. These roads must be rendered impassable to cars and trucks. Some existing roads may also need to be closed, as directed by the sale administrator. In general, this will require constructing a four (4') foot high berm of stumps and logs covered with earth. Stumps and brush must be placed along the remainder of the trail. All stumps from road building and landing construction must be reserved to block any newly constructed roads upon completion of the sale. These stumps must be scattered along the road system to prohibit vehicular movement. Contact the sale administrator for details of design and placement.

4.1.12 - No new roads (1/12)

No new roads will be permitted in any Payment Unit. All operations are limited to existing roads. Skid trails only will be allowed.

4.2 - Maintenance

4.2.2 - Fill material (4/07)

To maintain roads, fill material may be needed in areas where "holes" exist or may be expected to develop. This fill material should be placed before trucking begins. The forest roads providing access into Payment Units 1 and 2 will require brushing, minor improvements, and fill material to make them viable haul routes. The Unit Manager or his/her representative must approve the type of fill material used prior to placement. In general, suitable fill material includes clean cobble and/or crushed rock.

4.2.5 - Two wheel drive condition (2/04)

All existing trail roads on and adjacent to the sale area must be passable by two-wheel drive traffic for the duration of the sale.

5 - Operations

5.1 - Notification

5.1.1 - Pre-sale conference (10/16)

A pre-sale conference between the Purchaser and sale administrator is required prior to beginning any operations to determine landing and road locations. The Unit Manager or his/her representative must be contacted at least 5 days in advance to schedule this conference.

5.1.3 - Well heads and natural gas pipelines (11/15)

The Purchaser is responsible for contacting the gas or pipeline company 30 days prior to operating equipment in the vicinity of well heads or natural gas pipelines. An underground gas pipeline is located along the northern right-of-way (ROW) of County Rd 634. This ROW is the southern boundary of Payment Unit 3. The pipeline also travels underneath the south end of the forest road providing access into Payment Unit 2. Contact Lambda Energy Gathering LLC at 1-800-258-3219 or DTE Energy at 1-800-363-9541. Written permission is required before harvest operations begin and must be submitted to the Unit Manager.

5.1.4 - Post-sale conference (10/16)

A post-sale conference on site between the Purchaser and sale administrator is required 5 days prior to the completion of

active logging operations to determine clean-up and repair of landings, road edges, and the fulfillment of other contract specifications.

5.1.6 - Utility R.O.W. (4/19)

It is the responsibility of the Purchaser to obtain permission from the utility company to utilize the power line R.O.W. for operations. The powerline corridor is briefly located in the southeast portion of Payment Unit 3.

5.2 - Conduct of Operations

5.2.1 - Slash

5.2.1.10 - No slash in openings (5/10)

No brush or logging debris is to be left in the maintained wildlife openings which is indicated by G0 on the Timber Sale Map. These openings are located next to Payment Units 1 and 2. Any damage to the opening shall be repaired according to specifications of the Unit Manager or his/her representative.

5.2.2 - Hazard Trees/Snags

5.2.2.1 - Den trees (10/16)

Obvious hollow and/or den trees shall be protected and left standing unless they are a safety hazard.

5.2.3 - Operating Restrictions

5.2.3.11 - Coppice regeneration protection (4/10)

Any post harvest operations within the Sale Area must be completed before sprouting of regeneration occurs. The Unit Manager or his/her representative may cease such operations if sprouting occurs before the operation is complete.

5.2.4 - Dead and Down Creation

5.2.4.3 - Dead and down creation, dead trees (6/07)

Except as provided for in General Condition and Requirement 5.2.2, no dead trees, standing or down, are to be cut, skidded, or processed.

5.2.4.4 - Dead and down creation, grouse (6/18)

To encourage grouse and other wildlife, in Payment Unit(s) 1 - 3, leave one, twelve (12) inch or larger diameter (or largest diameter trees within stand) whole tree on the ground for every 2 acres, preferably of a hardwood species such as oak or maple. These trees will be evenly scattered throughout Payment Units and preferably placed at least two chains from any road, two-track, or trail open to vehicles.

5.2.32 - Decking/landing restoration (9/13)

All decking and landing areas must have the surface area restored to a condition equal to or better than before. This is to ensure the proper regeneration of the stand. Wood debris, earthen mounds, chips, and "cookies" from trimmings must be removed or scattered away from landing and loading areas and may not be windrowed on the edge.

5.2.38 - No decking against live trees (2/04)

Cut products may not be decked against unmarked or designated leave trees.

5.4 - Soil Protection

5.4.1 - Rutting restriction, general (7/16)

Operations are to cease immediately if equipment and weather conditions result in rutting of roads and/or skid trails which is 12 inches or greater in depth and 50 feet in length. The Unit Manager or his/her representative may restrict hauling and/or skidding if ruts exceed the specified depth. With the Unit Manager or his/her representative's approval, the Purchaser may return to the area when the risk of rutting has decreased.

5.8 - Protection of Endangered Species

5.8.5 - Protection of raptor nests (3/13)

All trees with raptor nests will be protected if found during harvesting operations. Notification will be made to the Unit Manager or his/her representative who will notify the Wildlife Biologist so an on-site evaluation and recommendation can be made, if necessary.

6 - Safety and Fire Prevention

6.2 - Signing

6.2.1 - Road posting (9/09)

The Purchaser is responsible for posting and maintaining caution signs on haul routes prior to beginning operations. The road must be posted at appropriate distances from the Sale Area to warn of logging activity and truck traffic. Signs must be removed when harvest operations are suspended or completed. The Purchaser shall provide these signs.



Sale Number	Year
54 - 030	20

TIMBER SALE MAP

This information provided by authority of Part 525, 1994 PA 451, as amended.

Forest Management Unit Atlanta Management Unit	County Presque Isle	Mapped By J. St. Pierre	Date 8/21/2020	Page 1	of 2
Township 33N		Range 02E		Section(s) and Subdivision(s) Sec.17 E1/2SW, SWSE Sec.18 N1/2NE, SENE	

Scale
1:7,920

Cover Type

A = Aspen	H = Hemlock	N = Marsh	U = Upland Brush
B = Paper Birch	J = Jack Pine	O = Oak	UM = Upland Mixed
C = Cedar	L = Lowland Brush	P = Lowland Poplar	V = Bog or Marsh
D = Treed Bog	LM = Lowland Mixed	Q = Mixed Swamp Conifer	W = White Pine
E = Swamp Hdwoods	M = Mpl, Bch, Brch	R = Red Pine	X = Non Stocked
F = Spruce Fir	MC = Mixed Conifer	S = Black Spruce	Z = Water
G = Grass	MD = Mixed Deciduous	T = Tamarack	

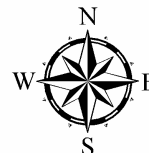
Density

0 = Non Stocked	5 = Pole Timber Medium
1 = Seedling Sapling Poor	6 = Pole Timber Well
2 = Seedling Sapling Medium	7 = Saw Timber Poor
3 = Seedling Sapling Well	8 = Saw Timber Medium
4 = Pole Timber Poor	9 = Saw Timber Well

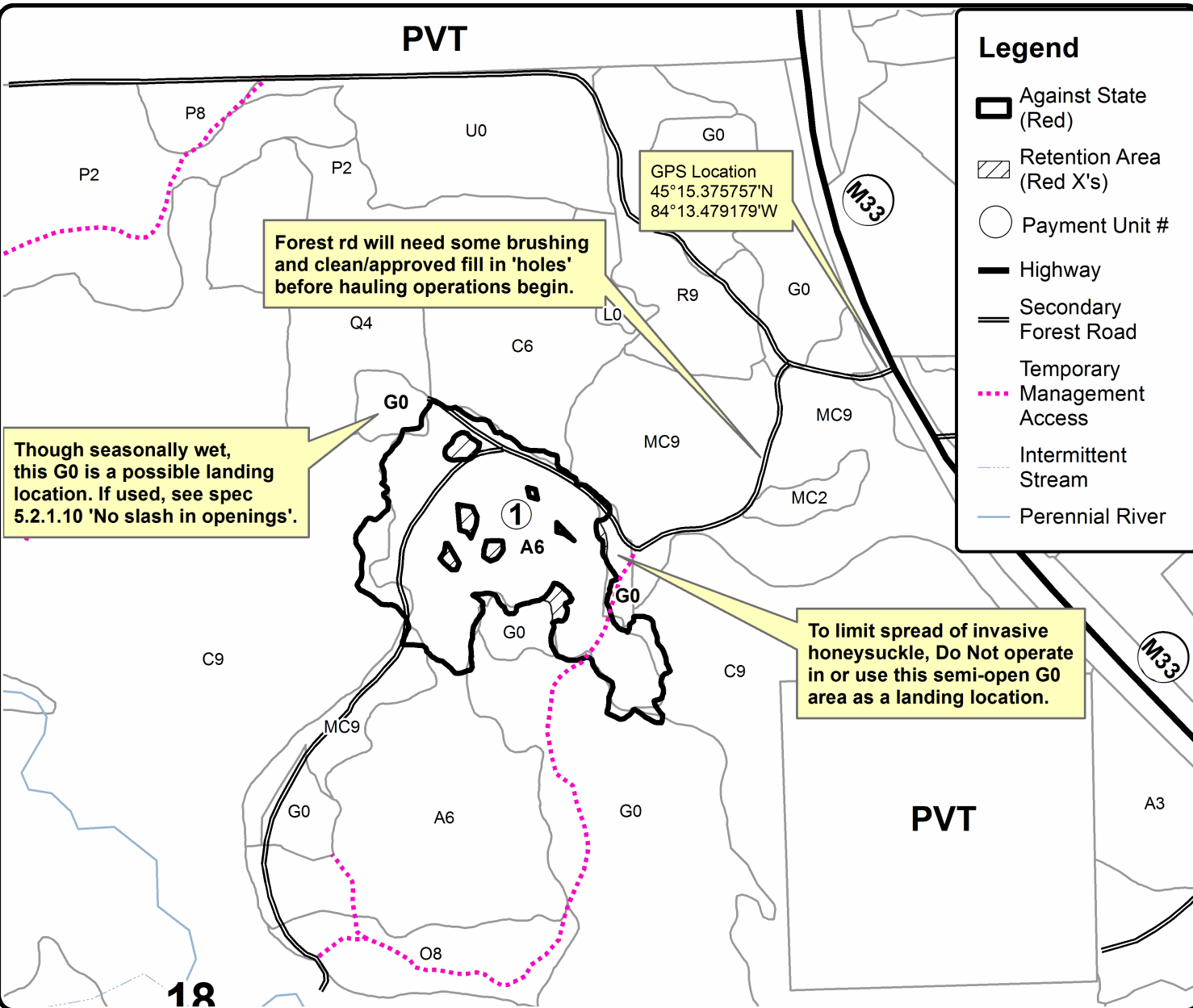
PU Acres

1	19.8
2	13.3
3	9.6

Bear Bait Babe Compartment 118 42.7 Acres



PVT



18





Sale Number	Year
54 - 030	20

TIMBER SALE MAP

This information provided by authority of Part 525, 1994 PA 451, as amended.

Forest Management Unit Atlanta Management Unit	County Presque Isle	Mapped By J. St. Pierre	Date 8/21/2020	Page 2	of 2
Township 33N	Range 02E	Section(s) and Subdivision(s) Sec.17 E1/2SW, SWSE Sec.18 N1/2NE, SENE	Scale 1:7,920		

Cover Type

A = Aspen	H = Hemlock	N = Marsh	U = Upland Brush
B = Paper Birch	J = Jack Pine	O = Oak	UM = Upland Mixed
C = Cedar	L = Lowland Brush	P = Lowland Poplar	V = Bog or Marsh
D = Treed Bog	LM = Lowland Mixed	Q = Mixed Swamp Conifer	W = White Pine
E = Swamp Hdwoods	M = Mpl, Bch, Brch	R = Red Pine	X = Non Stocked
F = Spruce Fir	MC = Mixed Conifer	S = Black Spruce	Z = Water
G = Grass	MD = Mixed Deciduous	T = Tamarack	

Density

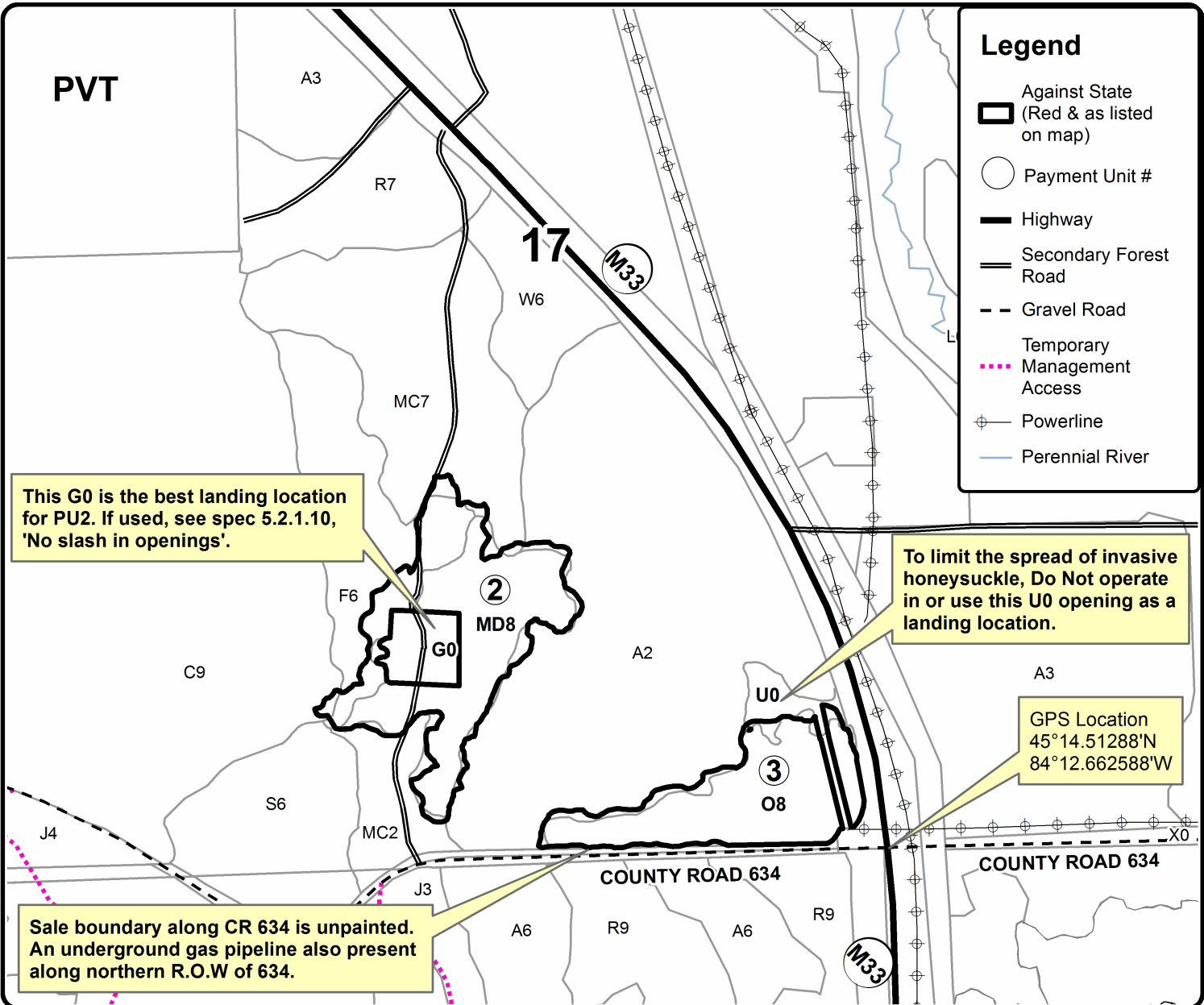
0 = Non Stocked	5 = Pole Timber Medium
1 = Seedling Sapling Poor	6 = Pole Timber Well
2 = Seedling Sapling Medium	7 = Saw Timber Poor
3 = Seedling Sapling Well	8 = Saw Timber Medium
4 = Pole Timber Poor	9 = Saw Timber Well

PU	Acres
1	19.8
2	13.3
3	9.6

Bear Bait Babe

Compartment 118

42.7 Acres



Legend

- Against State (Red & as listed on map)
- Payment Unit #
- Highway
- Secondary Forest Road
- Gravel Road
- Temporary Management Access
- Powerline
- Perennial River

This G0 is the best landing location for PU2. If used, see spec 5.2.1.10, 'No slash in openings'.

To limit the spread of invasive honeysuckle, Do Not operate in or use this U0 opening as a landing location.

GPS Location
45°14.51288'N
84°12.662588'W

Sale boundary along CR 634 is unpainted. An underground gas pipeline also present along northern R.O.W of 634.

TIMBER SALE INFORMATION

Permission Mix (54-039-20)

T34N, R03E, SEC. 28; T34N, R03E, SEC. 32.

Presque Isle County (Advertised Price \$15,060.35)

SALE NOTE: Access required through private land. Contact Dan Natzke at 989 590 1102 or at natzked@michigan.gov for access information.

Access may be through private land.

A timber sale contract for this lump sum, sealed bid timber sale will be awarded to the responsible bidder offering the highest sealed bid price. All units of volume listed below were estimated using the T-Sale computer program and our traditional volume equations. Bids must be at or above the following advertised price for each product and species:

<u>PRODUCTS & SPECIES</u>	<u>ESTIMATED UNITS*</u>	<u>ADVERTISED PRICE</u>
Sawtimber		
Red Maple	46.6 MBF	\$ 40.00 / MBF
Pulpwood		
Balsam Fir	203 Cords	\$ 12.40 / Cord
Mixed Aspen	235 Cords	\$ 19.50 / Cord
Mixed Hardwood	359 Cords	\$ 15.85 / Cord
Mixed Oak	4 Cords	\$ 27.45 / Cord
Mixed Spruce	36 Cords	\$ 7.55 / Cord
White Pine	3 Cords	\$ 8.30 / Cord

* The total volume is statistically estimated within plus (+) or minus (-) 17.80 percent. There are an estimated 932 cords on this timber sale, plus or minus 166 cords at the 95% confidence level. The estimated units are final and not subject to adjustment. Prospective bidders are urged to examine this timber and to make their own estimates of quantity and quality.

BOND AND PAYMENT SCHEDULE:

1. A bond in the amount of \$753.00 to insure faithful performance of the conditions of the contract will be deposited by the successful bidder within 21 days of the sale award.
2. Cutting in any sale or unit without the required advance payment would be considered a trespass.
3. Total payment must be paid in advance or according to the following schedule :
 - (a) Ten percent (10%) of the sale value must be paid within 21 days of the sale award.
 - (b) The 10% down payment will be credited towards the first unit cut.
 - (c) Payment for each of the following units must be made before cutting begins in that unit:

PAYMENT UNIT NUMBER	PERCENT OF TOTAL SALE VALUE
01	49.2%
02	13.2%
03	37.6%
4. If no cutting takes place, the 10% down payment will not be refunded.
5. Operations on the contract issued will terminate on 12/31/2025.

SALE STATISTICS

SALE VOLUMES

VOLUME		STATISTICAL RANGE IN CORDS		
TOTAL CUBIC FEET	TOTAL CORDS	PERCENT ERROR	MINIMUM	MAXIMUM
73,625	932	17.80%	766	1,098

VDU VOLUMES

A VDU is a Volume Determination Unit. Volumes and their associated statistics are calculated at the VDU level and summarized to the sale level. There is often a one to one relationship between a VDU and a Payment Unit, but not always, depending on the cruise design. Refer to the VDU TO PAYMENT UNIT table.

VDU	VOLUME		PERCENT ERROR	RANGE IN CORDS	
	TOTAL CUBIC FEET	TOTAL CORDS		MINIMUM	MAXIMUM
5	36,838	466	29.80%	327	605
67	27,358	346	24.82%	260	432
106	9,401	119	19.92%	95	143
TOTAL:	73,596	932		683	1,180

VDU TO PAYMENT UNIT

When a VDU is associated with more than one Payment Unit (PU), the VDU volumes are assigned to the PU based on acres of the VDU within the PU.

VDU	VDU ACRES	PU	PU ACRES
5	21.5	1	21.5
67	20.8	3	20.8
106	4.6	2	4.6
TOTAL:	46.9		46.9

DESCRIPTION OF TIMBER BY PAYMENT UNIT (PU)

PU	MARKET GROUP	PRODUCT	QUANTITY	UNIT	ACRES	ADVERTISE PRICE
1	Red Maple	Sawtimber	31.7	MBF	21.5	\$7,411.75
	Balsam Fir	Pulpwood	108	Cords		
	Mixed Aspen		51	Cords		
	<i>B. T. Aspen</i>	<i>Sawtimber</i>	1.6	<i>MBF</i>		
	<i>B. T. Aspen</i>	<i>Pulpwood</i>	14	<i>Cords</i>		
	<i>Quaking Aspen</i>		34	<i>Cords</i>		
	Mixed Hardwood		235	Cords		
	<i>Paper Birch</i>	<i>Sawtimber</i>	2.6	<i>MBF</i>		
	<i>Beech</i>	<i>Pulpwood</i>	2	<i>Cords</i>		
	<i>Paper Birch</i>		11	<i>Cords</i>		
	<i>Red Maple</i>		217	<i>Cords</i>		
	Mixed Spruce		8	Cords		
	<i>White Spruce</i>	<i>Sawtimber</i>	1.8	<i>MBF</i>		
	<i>White Spruce</i>	<i>Pulpwood</i>	4	<i>Cords</i>		
	White Pine		3	Cords		
2	Balsam Fir	Pulpwood	44	Cords	4.6	\$1,982.15
	Mixed Aspen		62	Cords		
	<i>Quaking Aspen</i>	<i>Sawtimber</i>	0.9	<i>MBF</i>		
	<i>Balsam Poplar</i>	<i>Pulpwood</i>	26	<i>Cords</i>		
	<i>Quaking Aspen</i>		34	<i>Cords</i>		
	Mixed Hardwood		6	Cords		
	<i>Paper Birch</i>	<i>Sawtimber</i>	0.6	<i>MBF</i>		
	<i>Paper Birch</i>	<i>Pulpwood</i>	2	<i>Cords</i>		
	<i>Red Maple</i>		3	<i>Cords</i>		
	Mixed Oak		4	Cords		
	<i>Red Oak</i>	<i>Sawtimber</i>	1.4	<i>MBF</i>		
	<i>Red Oak</i>	<i>Pulpwood</i>	1	<i>Cords</i>		
	Mixed Spruce		3	Cords		
	<i>White Spruce</i>		3	<i>Cords</i>		
	3	Red Maple	Sawtimber	14.9		
Balsam Fir		Pulpwood	51	Cords		
Mixed Aspen			122	Cords		
<i>B. T. Aspen</i>		<i>Sawtimber</i>	1.1	<i>MBF</i>		
<i>Quaking Aspen</i>			0.6	<i>MBF</i>		
<i>B. T. Aspen</i>		<i>Pulpwood</i>	7	<i>Cords</i>		
<i>Quaking Aspen</i>			112	<i>Cords</i>		
Mixed Hardwood			118	Cords		
<i>Paper Birch</i>			16	<i>Cords</i>		
<i>Red Maple</i>			102	<i>Cords</i>		
Mixed Spruce			25	Cords		
<i>Black Spruce</i>		<i>Sawtimber</i>	2.8	<i>MBF</i>		
<i>White Spruce</i>			1.7	<i>MBF</i>		
<i>Black Spruce</i>		<i>Pulpwood</i>	11	<i>Cords</i>		
<i>White Spruce</i>			5	<i>Cords</i>		
TOTAL:			46.6	MBF		
TOTAL:			840	Cords		

Sale Specific Conditions & Requirements

Sale Name: Permission Mix

Sale Number: 54-039-20 Seq#: 2

1 - Sale Area

1.2 - Boundaries

1.2.1 - Painted boundaries (9/19)

The sale boundaries are marked and identified by blue and red paint. Exterior sale boundary lines against private property are marked with blue paint. Exterior sale boundary lines against state are marked with red paint. A portion of Walter Highway and a well opening also represent exterior sale boundary lines. Retention patches are marked with red paint or are separated from the Sale Area by areas too wet to harvest; no harvesting activities may occur within these areas. The painted boundary line trees are not Included Timber and are to be protected.

2 - Timber Specifications

2.1 - Included Timber

2.1.2 - Clearcut unit(s) w/o unmerchantable trees (8/11)

Within Payment Unit(s) 1-3, cut all trees which meet minimum piece specifications in 2.2 Utilization with the following exceptions. Within Payment Unit 1, do not cut red pine. Within Payment Unit 1 and 2, do not cut green marked trees. These are special protection trees identified in accordance with condition 3.4.2, within clearcutting unit boundaries, are not Included Timber and are to be protected.

2.1.15 - Hazard trees near roads (7/13)

Cut and remove all standing dead trees within 100 feet of the cleared portion of Walter Highway. These trees must be scattered back into the Sale Area.

2.2 - Utilization

2.2.6 - Roundwood operation required (5/07)

The skidding of whole trees or tree segments with limbs attached is prohibited. All products must be produced as roundwood and forwarded to existing roads or landing areas in final product length. This is to protect soil and established advanced regeneration.

3 - Payments

3.4 - Damaged Timber

3.4.1 - Damaged timber (7/16)

General Condition and Requirement 3.4 Damaged Timber, defines liquidated damages for undesignated live merchantable trees which are cut or injured. In addition, extreme care should be taken to avoid damage to tree seedlings and saplings. Within the Sale Area, if more than 50% of the tree seedlings or saplings (1/4" to 4.5" DBH) within a specified portion of the Sale Area are damaged, liquidated damages will be assessed at \$200 per acre for all acreage within that specified portion of the Sale Area that was damaged.

3.4.2 - Special Protection Trees (4/14)

The Purchaser shall not cut live or dead special protection trees within cutting units or clearings. Special protection trees are marked with green paint in Payment Units 1 and 2 and are red pine in Payment Unit 1. If the Purchaser's operations have cut or damaged special protection trees through carelessness, the Purchaser shall pay \$200 per sawlog sized tree and \$100 per pole sized tree as fixed, agreed and liquidated damages for each special protection tree cut or damaged. Such payment does not constitute ownership of the undesignated timber.

4 - Transportation

4.1 - Construction

4.1.3 - Slash and earthen piles (8/04)

Piles or windrows of earth along roads and landings that have been widened or constructed shall be leveled. Slash from road maintenance or construction, including stumps, shall be dispersed throughout the sale.

4.1.6 - Road construction (1/09)

Improvements of existing roads shall be done in such a way as to minimize the environmental and visual impacts. Merchantable trees shall be cut and utilized unless otherwise directed. Non-merchantable trees shall be severed and laid flat on the ground. Slash shall be scattered, and not left in windrows and kept a minimum of 10 feet back from the road edge. Stumps shall be set upright, not left on edge, and be moved at least 10 feet away from the road edge. Disturbed soil shall be feathered into the woods and not left in berms or windrows.

4.1.12 - No new roads (1/12)

No new roads will be permitted in any Payment Unit. All operations are limited to existing roads. Skid trails only will be allowed.

4.2 - Maintenance

4.2.2 - Fill material (4/07)

To maintain roads, fill material may be needed in areas where "holes" exist or may be expected to develop. This fill material should be placed before trucking begins. Fill material shall consist of cobbles, gravel, and crushed rock only. Fill material shall not contain clay or organic material.

4.2.5 - Two wheel drive condition (2/04)

All existing trail roads on and adjacent to the sale area must be passable by two-wheel drive traffic for the duration of the sale.

4.4 - Access

4.4.1 - Private property access (3/11)

Permission for access across private land has been obtained by the DNR. Should the Purchaser desire to cross private land, a copy of the written permission from the private land-owner may be required by the DNR.

5 - Operations

5.1 - Notification

5.1.1 - Pre-sale conference (10/16)

A pre-sale conference on site between the Purchaser and sale administrator is required prior to beginning any operations to determine landing and road locations.

5.1.3 - Well heads and natural gas pipelines (11/15)

The Purchaser is responsible for contacting the gas or pipeline company 30 days prior to operating equipment in the vicinity of well heads or natural gas pipelines.

5.1.4 - Post-sale conference (10/16)

A post-sale conference on site between the Purchaser and sale administrator is required 5 days prior to the completion of active logging operations to determine clean-up and repair of landings, road edges, and the fulfillment of other contract specifications.

5.2 - Conduct of Operations

5.2.2 - Hazard Trees/Snags

5.2.2.1 - Den trees (10/16)

Obvious hollow and/or den trees shall be protected and left standing unless they are a safety hazard.

5.2.3 - Operating Restrictions

5.2.3.2 - Operating restrictions (9/11)

Within Payment Unit(s) operations shall occur only under firm, dry or frozen ground conditions. This restriction is because of wet areas throughout the sale.

5.2.3.11 - Coppice regeneration protection (4/10)

All timber harvesting operations in any Payment Unit must be completed before significant deciduous sprouting occurs to minimize damage to the new regeneration. Remove all severed merchantable timber products to the landing within 30 calendar days of severing or cutting stems. If the Purchaser damages sprouting regeneration due to slow operations,

liquidated damages will be assessed at \$200 per acre for all acreage within the specified portion of the Sale Area that was damaged.

Once harvest operations are complete within the Payment Unit, the Purchaser shall haul or chip all decked timber products within 60 days and the landing restored immediately thereafter.

5.2.3.12 - Hunting operating restriction (1/18)

No Payment Unit may be started during the period of September 29 thru December 31 without permission of the Unit Manager or his/her representative.

5.2.4 - Dead and Down Creation

5.2.4.6 - Dead and down creation, other (9/09)

To create habitat for hare, grouse, and other species, brush piles must be left every 3-6 chains along the wetland edge of all Payment Units. Brush should be arranged in such a way as to form a cavity inside the pile. These piles may be at the same location as a pushed-over grouse tree.

5.2.4.7 - Dead and down creation: hare, grouse, deer and other species (5/15)

To improve horizontal cover habitat for snowshoe hare, grouse, deer, and other species, the Purchaser is to push over trees indicated with orange paint. These trees should be tipped over with the root ball still attached so the base of the tree is suspended off the ground. The crown of the fallen tree should be at or near ground level after it is pushed over. If it is impossible or impractical to push these trees over, they may be severed or partially severed at the stump. Whenever possible the stem of the tree should rest above ground level.

5.2.32 - Decking/landing restoration (9/13)

All decking and landing areas must have the surface area restored to a condition equal to or better than before. This is to ensure the proper regeneration of the stand. Wood debris, chips, and "cookies" from trimmings must be removed or scattered away from landing and loading areas and may not be windrowed on the edge.

5.2.38 - No decking against live trees (2/04)

Cut products may not be decked against unmarked or designated leave trees.

5.4 - Soil Protection

5.4.1 - Rutting restriction, general (7/16)

Operations are to cease immediately if equipment and weather conditions result in rutting of roads and/or skid trails which is 12 inches or greater in depth and 50 feet in length. The Unit Manager or his/her representative may restrict hauling and/or skidding if ruts exceed the specified depth. With the Unit Manager or his/her representative's approval, the Purchaser may return to the area when the risk of rutting has decreased.

5.8 - Protection of Endangered Species

5.8.5 - Protection of raptor nests (3/13)

All trees with raptor nests will be protected if found during harvesting operations. Notification will be made to the Unit Manager or his/her representative who will notify the Wildlife Biologist so an on-site evaluation and recommendation can be made, if necessary.



TIMBER SALE MAP

This information provided by authority of Part 525, 1994 PA 451, as amended.

Sale Number	Year
54 - 039	20

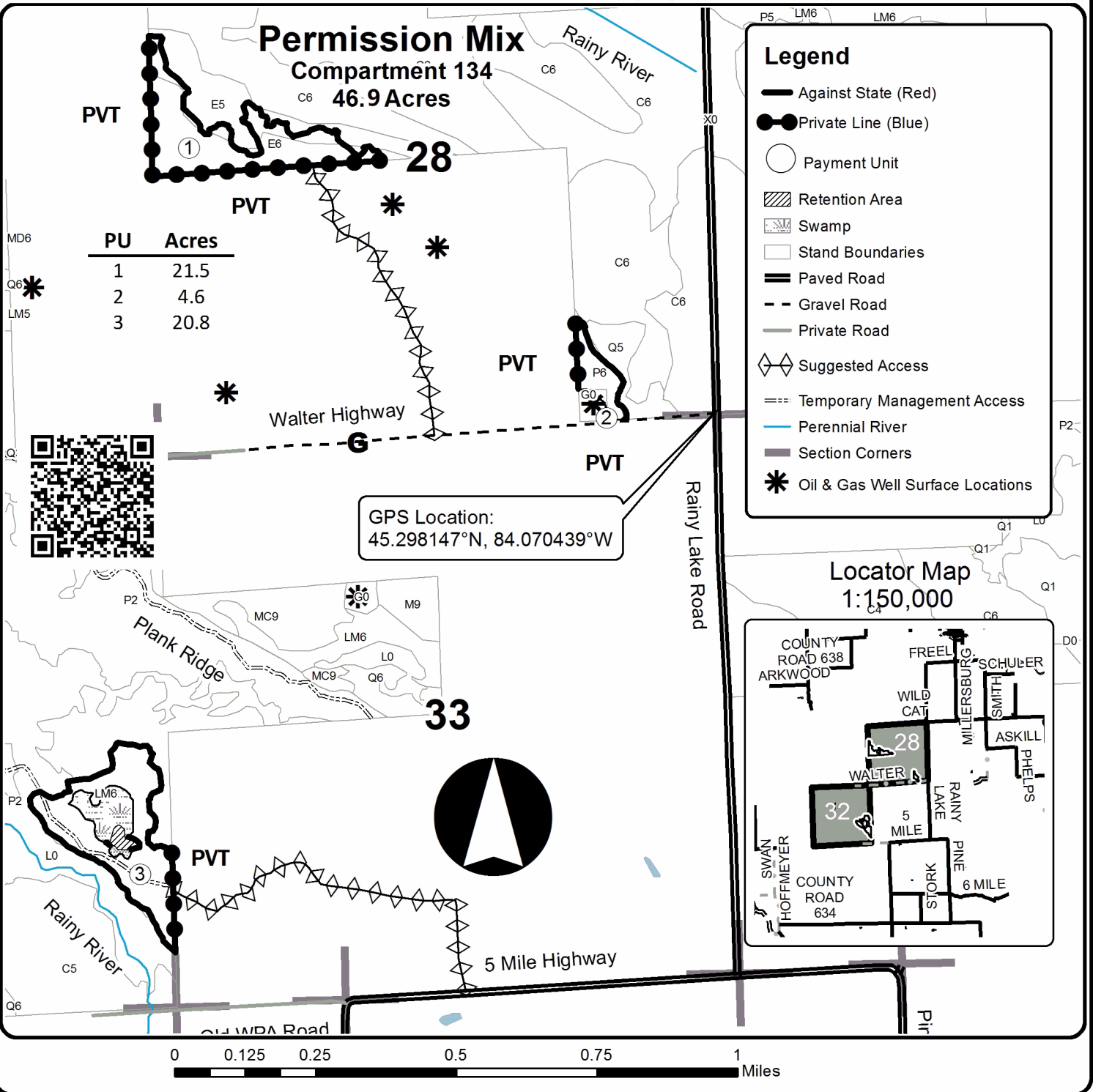
Forest Management Unit Atanta Management Unit	County Presque Isle County	Mapped By Natzke	Date 10/13/2020	Page 1	of 1
Township 34N	Range 03E	Section(s) and Subdivision(s) S.28 S2NW, SESE; S.32 N2SE, SESE	Scale 1:15,840		
Cruised By Natzke					

Cover Type

A = Aspen	H = Hemlock	N = Marsh	U = Upland Brush
B = Paper Birch	J = Jack Pine	O = Oak	UM = Upland Mixed
C = Cedar	L = Lowland Brush	P = Lowland Poplar	V = Bog or Marsh
D = Tread Bog	LM = Lowland Mixed	Q = Mixed Swamp Conifer	W = White Pine
E = Swamp Hdwoods	M = Mpl, Bch, Brch	R = Red Pine	X = Non Stocked
F = Spruce Fir	MC = Mixed Conifer	S = Black Spruce	Z = Water
G = Grass	MD = Mixed Deciduous	T = Tamarack	

Density

0 = Non Stocked	5 = Pole Timber Medium
1 = Seedling Sapling Poor	6 = Pole Timber Well
2 = Seedling Sapling Medium	7 = Saw Timber Poor
3 = Seedling Sapling Well	8 = Saw Timber Medium
4 = Pole Timber Poor	9 = Saw Timber Well



TIMBER SALE INFORMATION

Beaver Dam Mix (54-040-20)
 T34N, R03E, SEC. 34; T34N, R03E, SEC. 35.
 Presque Isle County (Advertised Price \$19,818.60)

A timber sale contract for this lump sum, sealed bid timber sale will be awarded to the responsible bidder offering the highest sealed bid price. All units of volume listed below were estimated using the T-Sale computer program and our traditional volume equations. Bids must be at or above the following advertised price for each product and species:

<u>PRODUCTS & SPECIES</u>	<u>ESTIMATED UNITS*</u>	<u>ADVERTISED PRICE</u>
Sawtimber		
Red Maple	9.5 MBF	\$ 40.00 / MBF
Red Pine	30.8 MBF	\$ 51.00 / MBF
White Pine	65.8 MBF	\$ 29.00 / MBF
Pulpwood		
Balsam Fir	147 Cords	\$ 12.40 / Cord
Jack Pine	49 Cords	\$ 8.60 / Cord
Mixed Aspen	319 Cords	\$ 19.50 / Cord
Mixed Hardwood	163 Cords	\$ 15.85 / Cord
Mixed Spruce	401 Cords	\$ 7.55 / Cord
N. White Cedar	8 Cords	\$ 12.55 / Cord
Red Oak	1 Cords	\$ 27.45 / Cord
Red Pine	34 Cords	\$ 17.80 / Cord
Tamarack	3 Cords	\$ 4.55 / Cord
White Pine	137 Cords	\$ 8.30 / Cord

* The total volume is statistically estimated within plus (+) or minus (-) 13.96 percent. There are an estimated 1,480 cords on this timber sale, plus or minus 207 cords at the 95% confidence level. The estimated units are final and not subject to adjustment. Prospective bidders are urged to examine this timber and to make their own estimates of quantity and quality.

BOND AND PAYMENT SCHEDULE:

- A bond in the amount of \$991.00 to insure faithful performance of the conditions of the contract will be deposited by the successful bidder within 21 days of the sale award.
- Cutting in any sale or unit without the required advance payment would be considered a trespass.
- Total payment must be paid in advance or according to the following schedule :
 - Ten percent (10%) of the sale value must be paid within 21 days of the sale award.
 - The 10% down payment will be credited towards the first unit cut.
 - Payment for each of the following units must be made before cutting begins in that unit:

PAYMENT UNIT NUMBER	PERCENT OF TOTAL SALE VALUE
01	7.2%
02	30.6%
03	62.2%

- If no cutting takes place, the 10% down payment will not be refunded.
- Operations on the contract issued will terminate on 12/31/2025.

SALE STATISTICS

SALE VOLUMES

VOLUME		STATISTICAL RANGE IN CORDS		
TOTAL CUBIC FEET	TOTAL CORDS	PERCENT ERROR	MINIMUM	MAXIMUM
116,914	1,480	13.96%	1,273	1,687

VDU VOLUMES

A VDU is a Volume Determination Unit. Volumes and their associated statistics are calculated at the VDU level and summarized to the sale level. There is often a one to one relationship between a VDU and a Payment Unit, but not always, depending on the cruise design. Refer to the VDU TO PAYMENT UNIT table.

VDU	VOLUME		PERCENT ERROR	RANGE IN CORDS	
	TOTAL CUBIC FEET	TOTAL CORDS		MINIMUM	MAXIMUM
23	28,298	358	24.03%	272	444
28	12,032	152	44.08%	85	219
30	10,641	135	20.37%	107	162
31	17,080	216	22.69%	167	265
38	11,716	148	56.94%	64	233
111	6,620	84	50.10%	42	126
143	9,670	122	24.91%	92	153
220	7,047	89	42.56%	51	127
223	13,793	175	53.15%	82	267
TOTAL:	116,896	1,480		962	1,997

VDU TO PAYMENT UNIT

When a VDU is associated with more than one Payment Unit (PU), the VDU volumes are assigned to the PU based on acres of the VDU within the PU.

VDU	VDU ACRES	PU	PU ACRES
23	26.3	2	24.6
		3	1.7
28	4.1	3	4.1
30	5.9	3	5.9
31	11.8	3	11.8
38	7.3	3	7.3
111	5.2	3	5.2
143	5.9	2	3.3
		3	2.6
220	2.9	1	2.9
223	7.3	3	7.3
TOTAL:	76.7		76.7

DESCRIPTION OF TIMBER BY PAYMENT UNIT (PU)

PU	MARKET GROUP	PRODUCT	QUANTITY	UNIT	ACRES	ADVERTISE PRICE			
1	Balsam Fir	Pulpwood	13	Cords	2.9	\$1,424.70			
	Mixed Aspen		55	Cords					
	<i>Quaking Aspen</i>	<i>Sawtimber</i>	2.1	<i>MBF</i>					
	<i>Quaking Aspen</i>	<i>Pulpwood</i>	51	<i>Cords</i>					
	Mixed Spruce		12	Cords					
	<i>White Spruce</i>	<i>Sawtimber</i>	0.6	<i>MBF</i>					
	<i>Black Spruce</i>	<i>Pulpwood</i>	2	<i>Cords</i>					
	<i>White Spruce</i>		9	<i>Cords</i>					
	N. White Cedar		8	Cords					
	2	Red Maple	Sawtimber	1.5			MBF	27.9	\$6,061.95
White Pine			2.1	MBF					
Balsam Fir		Pulpwood	77	Cords					
Jack Pine			9	Cords					
<i>Jack Pine</i>		<i>Sawtimber</i>	0.2	<i>MBF</i>					
<i>Jack Pine</i>		<i>Pulpwood</i>	9	<i>Cords</i>					
Mixed Aspen			173	Cords					
<i>B. T. Aspen</i>		<i>Sawtimber</i>	5.1	<i>MBF</i>					
<i>Quaking Aspen</i>			3.0	<i>MBF</i>					
<i>B. T. Aspen</i>		<i>Pulpwood</i>	54	<i>Cords</i>					
<i>Quaking Aspen</i>			103	<i>Cords</i>					
Mixed Hardwood			61	Cords					
<i>Paper Birch</i>		<i>Sawtimber</i>	3.3	<i>MBF</i>					
<i>American Elm</i>		<i>Pulpwood</i>	1	<i>Cords</i>					
<i>Paper Birch</i>			15	<i>Cords</i>					
<i>Red Maple</i>			38	<i>Cords</i>					
Mixed Spruce			72	Cords					
<i>Black Spruce</i>		<i>Sawtimber</i>	1.8	<i>MBF</i>					
<i>White Spruce</i>			1.0	<i>MBF</i>					
<i>Black Spruce</i>		<i>Pulpwood</i>	60	<i>Cords</i>					
<i>White Spruce</i>			6	<i>Cords</i>					
White Pine			3	Cords					
3		Red Maple	Sawtimber	8.0	MBF	45.9	\$12,346.75		
		Red Pine		30.8	MBF				
		White Pine		63.7	MBF				
		Balsam Fir	Pulpwood	57	Cords				
	Jack Pine		39	Cords					
	<i>Jack Pine</i>	<i>Sawtimber</i>	2.1	<i>MBF</i>					
	<i>Jack Pine</i>	<i>Pulpwood</i>	35	<i>Cords</i>					
	Mixed Aspen		91	Cords					
	<i>B. T. Aspen</i>	<i>Sawtimber</i>	0.3	<i>MBF</i>					
	<i>Quaking Aspen</i>		0.2	<i>MBF</i>					
	<i>B. T. Aspen</i>	<i>Pulpwood</i>	7	<i>Cords</i>					
	<i>Quaking Aspen</i>		83	<i>Cords</i>					
	Mixed Hardwood		103	Cords					
	<i>Paper Birch</i>	<i>Sawtimber</i>	0.8	<i>MBF</i>					
	<i>Paper Birch</i>	<i>Pulpwood</i>	3	<i>Cords</i>					
	<i>Red Maple</i>		98	<i>Cords</i>					
	Mixed Spruce		318	Cords					
	<i>Black Spruce</i>	<i>Sawtimber</i>	18.4	<i>MBF</i>					
	<i>White Spruce</i>		0.1	<i>MBF</i>					
	<i>Black Spruce</i>	<i>Pulpwood</i>	281	<i>Cords</i>					
	Red Oak		1	Cords					
	Red Pine		34	Cords					
	Tamarack		3	Cords					
	White Pine		134	Cords					

TOTAL:	106.1	MBF
--------	-------	-----

TOTAL:	1,263	Cords
--------	-------	-------

Sale Specific Conditions & Requirements

Sale Name: Beaver Dam Mix

Sale Number: 54-040-20 Seq#: 2

1 - Sale Area

1.2 - Boundaries

1.2.1 - Painted boundaries (9/19)

The sale boundaries and Payment Unit boundaries are marked and identified by blue, yellow, and red paint. Exterior sale boundary lines against private property are marked with blue paint. Exterior sale boundary lines against state are marked with red paint. Interior Payment Unit boundaries are marked with yellow paint. Yellow painted trees designating an interior Payment Unit boundary are only to be cut when all surrounding Payment Units have been paid. The painted boundary line trees are not Included Timber and are to be protected. Some areas are too wet to harvest. The largest areas are represented on the sale map and do not count toward harvestable acreage. These areas are not marked with paint. It is the Purchaser's responsibility to identify and avoid operating in these areas.

2 - Timber Specifications

2.1 - Included Timber

2.1.2 - Clearcut unit(s) w/o unmerchantable trees (8/11)

Within Payment Unit(s) 1-3, cut all trees which meet minimum piece specifications in 2.2 Utilization with the following exceptions. Within Payment Unit 1 and 2, do not cut green marked trees. These are special protection trees identified in accordance with condition 3.4.2, within clearcutting unit boundaries, therefore are not Included Timber and are to be protected.

2.2 - Utilization

2.2.6 - Roundwood operation required (5/07)

The skidding of whole trees or tree segments with limbs attached is prohibited within Payment Unit(s) 1 and 2. All products must be produced as roundwood and forwarded to existing roads or landing areas in final product length. This is to protect soil and established advanced regeneration.

3 - Payments

3.3 - Pre-measured Sales

3.3.4 - Dividing payment units (7/14)

Payment Unit(s) exceeding \$25,000 in value may be divided at the request of the Purchaser and upon approval of the Unit Manager. Dividing Payment Units is a contract modification which requires a Timber Sale Contract Amendment. There will be only one division per Payment Unit.

3.4 - Damaged Timber

3.4.1 - Damaged timber (7/16)

General Condition and Requirement 3.4 Damaged Timber, defines liquidated damages for undesignated live merchantable trees which are cut or injured. In addition, extreme care should be taken to avoid damage to tree seedlings and saplings. Within the Sale Area, if more than 50% of the tree seedlings or saplings (1/4" to 4.5" DBH) within a specified portion of the Sale Area are damaged, liquidated damages will be assessed at \$200 per acre for all acreage within that specified portion of the Sale Area that was damaged.

3.4.2 - Special Protection Trees (4/14)

The Purchaser shall not cut live or dead special protection trees within cutting units or clearings. Special protection trees are marked with green paint in Payment Units 1 & 2. If the Purchaser's operations have cut or damaged special protection trees through carelessness, the Purchaser shall pay \$200 per sawlog sized tree and \$100 per pole sized tree as fixed, agreed and liquidated damages for each special protection tree cut or damaged. Such payment does not constitute ownership of the undesignated timber.

4 - Transportation

4.1 - Construction

4.1.3 - Slash and earthen piles (8/04)

Piles or windrows of earth along roads and landings that have been widened or constructed shall be leveled. Slash from road maintenance or construction, including stumps, shall be dispersed throughout the sale.

4.1.4 - Timber removed for construction (12/09)

Trees cut or damaged in the process of pre-approved road, landing or skid trail construction will be decked in an area separate from other Designated Timber and not removed until measured by the sale administrator. Payment will be made at the specified Purchase Unit Price.

4.1.6 - Road construction (1/09)

Construction of new roads or improvements of existing roads shall be done in such a way as to minimize the environmental and visual impacts. Merchantable trees shall be cut and utilized unless otherwise directed. Non-merchantable trees shall be severed and laid flat on the ground. Slash shall be scattered, and not left in windrows and kept a minimum of 10 feet back from the road edge. Stumps shall be set upright, not left on edge, and be moved at least 10 feet away from the road edge. Disturbed soil shall be feathered into the woods and not left in berms or windrows.

4.1.7 - Road closure (10/11)

All new roads built into the sale must be blocked to vehicle traffic upon completion of the sale. Overgrown roads that are reopened shall be considered new roads. In general, this will require constructing a four (4') foot high berm of stumps and logs covered with earth. These roads must be rendered impassable to cars and trucks. Stumps from road building and landing construction may be reserved to block any newly constructed roads upon completion of the sale. These stumps may be scattered along the road system to prohibit vehicular movement. Temporary berms may be required if no sale activity occurs for 30 or more consecutive days. Contact the sale administrator for specific details of design and placement.

4.2 - Maintenance

4.2.2 - Fill material (4/07)

To maintain roads, fill material may be needed in areas where "holes" exist or may be expected to develop. This fill material should be placed before trucking begins. Fill material shall consist of cobbles, gravel, and crushed rock only. Fill material shall not contain clay or organic material.

4.2.5 - Two wheel drive condition (2/04)

All existing trail roads on and adjacent to the sale area must be passable by two-wheel drive traffic for the duration of the sale.

5 - Operations

5.1 - Notification

5.1.1 - Pre-sale conference (10/16)

A pre-sale conference on site between the Purchaser and sale administrator is required prior to beginning any operations to determine landing and road locations.

5.1.4 - Post-sale conference (10/16)

A post-sale conference on site between the Purchaser and sale administrator is required 5 days prior to the completion of active logging operations to determine clean-up and repair of landings, road edges, and the fulfillment of other contract specifications.

5.2 - Conduct of Operations

5.2.2 - Hazard Trees/Snags

5.2.2.1 - Den trees (10/16)

Obvious hollow and/or den trees shall be protected and left standing unless they are a safety hazard.

5.2.3 - Operating Restrictions

5.2.3.2 - Operating restrictions (9/11)

Within Payment Unit(s) operations shall occur only under firm, dry or frozen ground conditions. This restriction is because of wet areas throughout the sale.

5.2.3.11 - Coppice regeneration protection (4/10)

All timber harvesting operations in any Payment Unit must be completed before significant deciduous sprouting occurs to minimize damage to the new regeneration. Remove all severed merchantable timber products to the landing within 30 calendar days of severing or cutting stems. If the Purchaser damages sprouting regeneration due to slow operations, liquidated damages will be assessed at \$200 per acre for all acreage within the specified portion of the Sale Area that was damaged.

Once harvest operations are complete within the Payment Unit, the Purchaser shall haul or chip all decked timber products within 60 days and the landing restored immediately thereafter.

5.2.4 - Dead and Down Creation

5.2.4.6 - Dead and down creation, other (9/09)

To create habitat for hare, grouse, and other species, brush piles must be left every 3-6 chains along the wetland edge of all Payment Units. Brush should be arranged in such a way as to form a cavity inside the pile. These piles may be at the same location as a pushed-over grouse tree.

5.2.4.7 - Dead and down creation: hare, grouse, deer and other species (5/15)

To improve horizontal cover habitat for snowshoe hare, grouse, deer, and other species, the Purchaser is to push over trees indicated with orange paint. These trees should be tipped over with the root ball still attached so the base of the tree is suspended off the ground. The crown of the fallen tree should be at or near ground level after it is pushed over. If it is impossible or impractical to push these trees over, they may be severed or partially severed at the stump. Whenever possible the stem of the tree should rest above ground level.

5.2.17 - Timber Mats and Interlocking Composite Mats (3/18)

Some roads or skid trails may require extra protection such as that afforded by timber mats, interlocking composite mats, or another approved system. Approximately 350 feet of road or trail will need extra protection at locations shown on the Timber Sale Map. If available, mats may be borrowed from the DNR. A Timber Sale Contract Supplement will be used to document the Purchaser's use of the DNR's mats. Contact the sale administrator regarding availability and pick-up. Timber mats are available from various field offices. Composite mats are only available from the Grayling field office. The Purchaser is responsible for picking up and hauling the mats to and from the site. The composite mats will require DNR staff onsite for installation and removal. Contact the sale administrator to schedule at least 30 days before desired install/removal date. All mats must be cleaned prior to drop off. This may include, but is not limited to, power washing and brushing to remove mud and debris. A charge of \$400.00 per timber mat and \$2,000.00 per composite mat will be assessed for all damaged or non-returned mats. Damage for the crane/timber mats is defined as three or more broken cants. Damage for the composite mats is defined as cracked or broken mats.

5.2.32 - Decking/landing restoration (9/13)

All decking and landing areas must have the surface area restored to a condition equal to or better than before. This is to ensure the proper regeneration of the stand. Wood debris, chips, and "cookies" from trimmings must be removed or scattered away from landing and loading areas and may not be windrowed on the edge.

5.2.38 - No decking against live trees (2/04)

Cut products may not be decked against unmarked or designated leave trees.

5.4 - Soil Protection

5.4.1 - Rutting restriction, general (7/16)

Operations are to cease immediately if equipment and weather conditions result in rutting of roads and/or skid trails which is 12 inches or greater in depth and 50 feet in length. The Unit Manager or his/her representative may restrict hauling and/or skidding if ruts exceed the specified depth. With the Unit Manager or his/her representative's approval, the Purchaser may return to the area when the risk of rutting has decreased.

5.8 - Protection of Endangered Species

5.8.5 - Protection of raptor nests (3/13)

All trees with raptor nests will be protected if found during harvesting operations. Notification will be made to the Unit Manager or his/her representative who will notify the Wildlife Biologist so an on-site evaluation and recommendation can be made, if necessary.

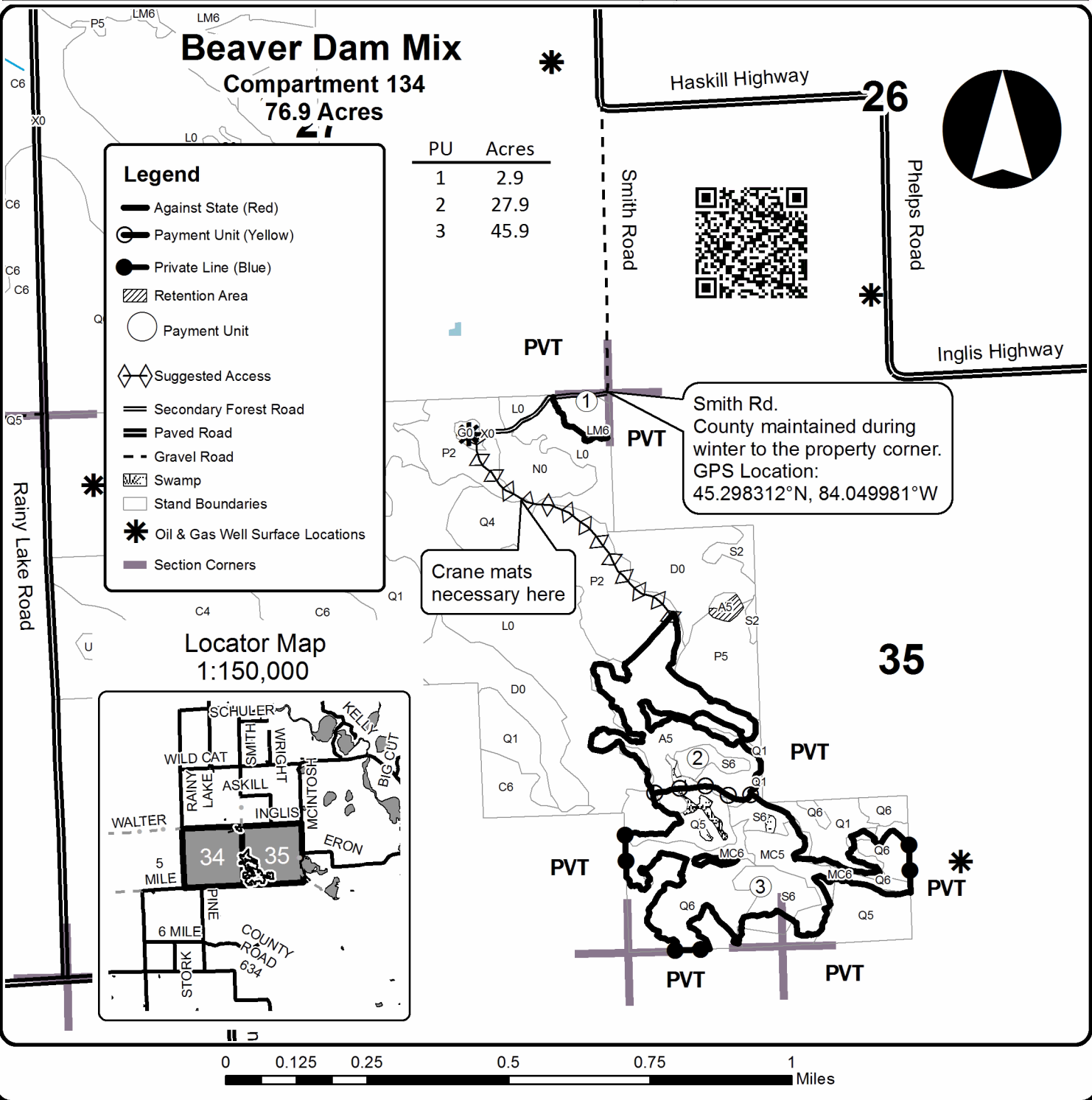


TIMBER SALE MAP

This information provided by authority of Part 525, 1994 PA 451, as amended.

Forest Management Unit Atanta Management Unit		County Presque Isle County	Mapped By Natzke	Date 10/13/2020	Page 1	of 1
Township 34N	Range 03E	Section(s) and Subdivision(s) S.34 E2NE, NESE; S.35 SWNW, SW		Scale 1:15,840		

Cover Type				Density	
A = Aspen	H = Hemlock	N = Marsh	U = Upland Brush	0 = Non Stocked	5 = Pole Timber Medium
B = Paper Birch	J = Jack Pine	O = Oak	UM = Upland Mixed	1 = Seedling Sapling Poor	6 = Pole Timber Well
C = Cedar	L = Lowland Brush	P = Lowland Poplar	V = Bog or Marsh	2 = Seedling Sapling Medium	7 = Saw Timber Poor
D = Tread Bog	LM = Lowland Mixed	Q = Mixed Swamp Conifer	W = White Pine	3 = Seedling Sapling Well	8 = Saw Timber Medium
E = Swamp Hdwoods	M = Mpl, Bch, Brch	R = Red Pine	X = Non Stocked	4 = Pole Timber Poor	9 = Saw Timber Well
F = Spruce Fir	MC = Mixed Conifer	S = Black Spruce	Z = Water		
G = Grass	MD = Mixed Deciduous	T = Tamarack			



Bear Bait Babe (54-030-20)
T33N, R02E, SEC. 17; T33N, R02E, SEC. 18; Presque Isle COUNTY

In response to the notice of sale to be held 10:00 a.m. (local time) on October 19, 2021, I am hereby submitting my sealed bid (firm offer) for the following forest products to be cut. Bids for individual species must be at or above the advertised price. All non-responsive bid forms may be rejected.

<u>PRODUCTS & SPECIES</u>	<u>ESTIMATED VOLUME*</u>	<u>ADVERTISED PRICE</u>	<u>BID PRICE/UNIT</u>
Sawtimber			
Mixed Aspen	39.9 MBF	\$ 103.00/MBF	\$ _____
Red Maple	1.4 MBF	\$ 55.00/MBF	\$ _____
Red Oak	3.1 MBF	\$ 173.00/MBF	\$ _____
Pulpwood			
Balsam Fir	54 Cords	\$ 17.05/Cord	\$ _____
Jack Pine	64 Cords	\$ 11.85/Cord	\$ _____
Mixed Aspen	448 Cords	\$ 26.80/Cord	\$ _____
Mixed Hardwood	69 Cords	\$ 21.80/Cord	\$ _____
Mixed Spruce	38 Cords	\$ 10.40/Cord	\$ _____
Paper Birch	2 Cords	\$ 10.85/Cord	\$ _____
Red Oak	68 Cords	\$ 37.70/Cord	\$ _____
Tamarack	18 Cords	\$ 6.30/Cord	\$ _____
White Pine	5 Cords	\$ 11.40/Cord	\$ _____

*The volumes are statistically estimated within plus (+) or minus (-) 29.59 percent at 95% confidence level. These estimated volumes are final and not subject to adjustment. Prospective bidders are urged to examine this timber and to make their own estimates of quantity and quality.

I understand that any or all bids may be rejected. All bids must be signed and all bid items must be bid or the bid form may be rejected. I also understand that consideration and awarding a contract will be based upon my past performance and ability to complete the contract based upon equipment and staffing subject to my control.

FEDERAL ID: ____ - ____ - ____ or SOCIAL SECURITY NUMBER: ____ - ____ - ____

Company or individual bidding: _____

Company representative's name: _____

Address: _____

City: _____ State: _____ Zip: _____

IF AVAILABLE, PLEASE PLACE THE PERSONALIZED LABEL FROM YOUR PROSPECTUS IN THE ABOVE BOX.

Individual or company representative's signature: _____ Date: _____

Phone number : _____ Email (optional): _____

THE WINNING BIDDER MUST COMPLETE THE VERIFICATION OF WORKER'S DISABILITY COMPENSATION ACT COMPLIANCE (ON REVERSE SIDE IF DOUBLE SIDED) WITHIN 21 DAYS OF SALE AWARD DATE



FOR DEPARTMENT USE ONLY	
Sale Number (XX – XXX – XX – XX)	
Forest Management Unit:	

TIMBER SALE VERIFICATION OF WORKER'S DISABILITY COMPENSATION ACT COMPLIANCE

As required by Act 317, P.A. 1969 (Worker's Compensation) and
Part 5 of Act 451 of 1994, as amended.

VERIFICATION OF WORKER'S DISABILITY COMPENSATION ACT COMPLIANCE

- This verification must be completed and submitted within 21 days of contract award and prior to the issuance of the timber sale contract.
- In addition, if boxes 2B or 2C are checked, then Notice of Exclusion or Certificate of Insurance must be submitted within twenty-one (21) days of the contract award and prior to the issuance of the timber sale contract.
- All information must be typed or printed except for written signatures.

Please Check Appropriate Categories:

1. My business is organized as (you **must** check one of the boxes below):
 - A. Sole Proprietorship (individual)
 - B. Partnership
 - C. Corporation
2. You **must** check one of the boxes below:
 - A. I certify my business is a sole proprietorship and it has no employees but the sole proprietor. I am not subject to the Worker's Compensation Laws.
 - B. I certify my business has satisfied its obligation to the Worker's Compensation Act through the use of an approved Notice of Exclusion (BWC-337, Rev. 5/96). I will provide a copy of the Notice of Exclusion within 21 days of the contract award. (For questions or a copy of the BWC-337, please call the Worker's Compensation Bureau at 517-322-1195).
 - C. I certify my business has a Worker's Compensation Policy. I will provide an original Certificate of Insurance within twenty-one (21) days of the contract award.
3. If you have checked item 2(A) or 2(B), you **must** indicate the number of **both** full-time and part-time employees, other than yourself, including family members and active partners (if none, you must enter "0").

_____ Full-time Employees

_____ Part-time Employees

Name of Business		Federal ID (or) Social Security No.	
Address		Telephone ()	
City	State	ZIP	

I hereby certify that the above information is true and correct. I agree to notify the Michigan DNR of any changes that occur in factors affecting my coverage during any of my present and future operations.

Signature of Owner or Authorized Representative

Title

Date

Please complete the "SEALED BID" information on the next page

Permission Mix (54-039-20)
T34N, R03E, SEC. 28; T34N, R03E, SEC. 32; Presque Isle COUNTY

In response to the notice of sale to be held 10:00 a.m. (local time) on October 19, 2021, I am hereby submitting my sealed bid (firm offer) for the following forest products to be cut. Bids for individual species must be at or above the advertised price. All non-responsive bid forms may be rejected.

<u>PRODUCTS & SPECIES</u>	<u>ESTIMATED VOLUME*</u>	<u>ADVERTISED PRICE</u>	<u>BID PRICE/UNIT</u>
Sawtimber			
Red Maple	46.6 MBF	\$ 40.00/MBF	\$ _____
Pulpwood			
Balsam Fir	203 Cords	\$ 12.40/Cord	\$ _____
Mixed Aspen	235 Cords	\$ 19.50/Cord	\$ _____
Mixed Hardwood	359 Cords	\$ 15.85/Cord	\$ _____
Mixed Oak	4 Cords	\$ 27.45/Cord	\$ _____
Mixed Spruce	36 Cords	\$ 7.55/Cord	\$ _____
White Pine	3 Cords	\$ 8.30/Cord	\$ _____

*The volumes are statistically estimated within plus (+) or minus (-) 17.80 percent at 95% confidence level. These estimated volumes are final and not subject to adjustment. Prospective bidders are urged to examine this timber and to make their own estimates of quantity and quality.

I understand that any or all bids may be rejected. All bids must be signed and all bid items must be bid or the bid form may be rejected. I also understand that consideration and awarding a contract will be based upon my past performance and ability to complete the contract based upon equipment and staffing subject to my control.

FEDERAL ID: _____ or SOCIAL SECURITY NUMBER: _____

Company or individual bidding: _____

Company representative's name: _____

Address: _____

City: _____ State: _____ Zip: _____

IF AVAILABLE, PLEASE PLACE THE PERSONALIZED LABEL FROM YOUR PROSPECTUS IN THE ABOVE BOX.

Individual or company representative's signature: _____ Date: _____

Phone number : _____ Email (optional): _____

THE WINNING BIDDER MUST COMPLETE THE VERIFICATION OF WORKER'S DISABILITY COMPENSATION ACT COMPLIANCE (ON REVERSE SIDE IF DOUBLE SIDED) WITHIN 21 DAYS OF SALE AWARD DATE



FOR DEPARTMENT USE ONLY
Sale Number (XX - XXX - XX - XX)
Forest Management Unit:

TIMBER SALE VERIFICATION OF WORKER'S DISABILITY COMPENSATION ACT COMPLIANCE

*As required by Act 317, P.A. 1969 (Worker's Compensation) and
Part 5 of Act 451 of 1994, as amended.*

VERIFICATION OF WORKER'S DISABILITY COMPENSATION ACT COMPLIANCE

- This verification must be completed and submitted within 21 days of contract award and prior to the issuance of the timber sale contract.
- In addition, if boxes 2B or 2C are checked, then Notice of Exclusion or Certificate of Insurance must be submitted within twenty-one (21) days of the contract award and prior to the issuance of the timber sale contract.
- All information must be typed or printed except for written signatures.

Please Check Appropriate Categories:

1. My business is organized as (you **must** check one of the boxes below):
 - A. Sole Proprietorship (individual)
 - B. Partnership
 - C. Corporation

2. You **must** check one of the boxes below:
 - A. I certify my business is a sole proprietorship and it has no employees but the sole proprietor. I am not subject to the Worker's Compensation Laws.
 - B. I certify my business has satisfied its obligation to the Worker's Compensation Act through the use of an approved Notice of Exclusion (BWC-337, Rev. 5/96). I will provide a copy of the Notice of Exclusion within 21 days of the contract award. (For questions or a copy of the BWC-337, please call the Worker's Compensation Bureau at 517-322-1195).
 - C. I certify my business has a Worker's Compensation Policy. I will provide an original Certificate of Insurance within twenty-one (21) days of the contract award.

3. If you have checked item 2(A) or 2(B), you **must** indicate the number of **both** full-time and part-time employees, other than yourself, including family members and active partners (if none, you must enter "0").

_____ Full-time Employees

_____ Part-time Employees

Name of Business		Federal ID (or) Social Security No.	
Address		Telephone ()	
City	State	ZIP	

I hereby certify that the above information is true and correct. I agree to notify the Michigan DNR of any changes that occur in factors affecting my coverage during any of my present and future operations.

Signature of Owner or Authorized Representative

Title

Date

Please complete the "SEALED BID" information on the next page

Beaver Dam Mix (54-040-20)
T34N, R03E, SEC. 34; T34N, R03E, SEC. 35; Presque Isle COUNTY

In response to the notice of sale to be held 10:00 a.m. (local time) on October 19, 2021, I am hereby submitting my sealed bid (firm offer) for the following forest products to be cut. Bids for individual species must be at or above the advertised price. All non-responsive bid forms may be rejected.

<u>PRODUCTS & SPECIES</u>	<u>ESTIMATED VOLUME*</u>	<u>ADVERTISED PRICE</u>	<u>BID PRICE/UNIT</u>
Sawtimber			
Red Maple	9.5 MBF	\$ 40.00/MBF	\$ _____
Red Pine	30.8 MBF	\$ 51.00/MBF	\$ _____
White Pine	65.8 MBF	\$ 29.00/MBF	\$ _____
Pulpwood			
Balsam Fir	147 Cords	\$ 12.40/Cord	\$ _____
Jack Pine	49 Cords	\$ 8.60/Cord	\$ _____
Mixed Aspen	319 Cords	\$ 19.50/Cord	\$ _____
Mixed Hardwood	163 Cords	\$ 15.85/Cord	\$ _____
Mixed Spruce	401 Cords	\$ 7.55/Cord	\$ _____
N. White Cedar	8 Cords	\$ 12.55/Cord	\$ _____
Red Oak	1 Cords	\$ 27.45/Cord	\$ _____
Red Pine	34 Cords	\$ 17.80/Cord	\$ _____
Tamarack	3 Cords	\$ 4.55/Cord	\$ _____
White Pine	137 Cords	\$ 8.30/Cord	\$ _____

*The volumes are statistically estimated within plus (+) or minus (-) 13.96 percent at 95% confidence level. These estimated volumes are final and not subject to adjustment. Prospective bidders are urged to examine this timber and to make their own estimates of quantity and quality.

I understand that any or all bids may be rejected. All bids must be signed and all bid items must be bid or the bid form may be rejected. I also understand that consideration and awarding a contract will be based upon my past performance and ability to complete the contract based upon equipment and staffing subject to my control.

FEDERAL ID: _____ or SOCIAL SECURITY NUMBER: _____

Company or individual bidding: _____

Company representative's name: _____

Address: _____

City: _____ State: _____ Zip: _____

IF AVAILABLE, PLEASE PLACE THE PERSONALIZED LABEL FROM YOUR PROSPECTUS IN THE ABOVE BOX.

Individual or company representative's signature: _____ Date: _____

Phone number : _____ Email (optional): _____

THE WINNING BIDDER MUST COMPLETE THE VERIFICATION OF WORKER'S DISABILITY COMPENSATION ACT COMPLIANCE (ON REVERSE SIDE IF DOUBLE SIDED) WITHIN 21 DAYS OF SALE AWARD DATE



FOR DEPARTMENT USE ONLY	
Sale Number (XX - XXX - XX - XX)	
Forest Management Unit:	

TIMBER SALE VERIFICATION OF WORKER'S DISABILITY COMPENSATION ACT COMPLIANCE

As required by Act 317, P.A. 1969 (Worker's Compensation) and
Part 5 of Act 451 of 1994, as amended.

VERIFICATION OF WORKER'S DISABILITY COMPENSATION ACT COMPLIANCE

- This verification must be completed and submitted within 21 days of contract award and prior to the issuance of the timber sale contract.
- In addition, if boxes 2B or 2C are checked, then Notice of Exclusion or Certificate of Insurance must be submitted within twenty-one (21) days of the contract award and prior to the issuance of the timber sale contract.
- All information must be typed or printed except for written signatures.

Please Check Appropriate Categories:

1. My business is organized as (you **must** check one of the boxes below):
 - A. Sole Proprietorship (individual)
 - B. Partnership
 - C. Corporation
2. You **must** check one of the boxes below:
 - A. I certify my business is a sole proprietorship and it has no employees but the sole proprietor. I am not subject to the Worker's Compensation Laws.
 - B. I certify my business has satisfied its obligation to the Worker's Compensation Act through the use of an approved Notice of Exclusion (BWC-337, Rev. 5/96). I will provide a copy of the Notice of Exclusion within 21 days of the contract award. (For questions or a copy of the BWC-337, please call the Worker's Compensation Bureau at 517-322-1195).
 - C. I certify my business has a Worker's Compensation Policy. I will provide an original Certificate of Insurance within twenty-one (21) days of the contract award.
3. If you have checked item 2(A) or 2(B), you **must** indicate the number of **both** full-time and part-time employees, other than yourself, including family members and active partners (if none, you must enter "0").

_____ Full-time Employees

_____ Part-time Employees

Name of Business		Federal ID (or) Social Security No.	
Address		Telephone ()	
City	State	ZIP	

I hereby certify that the above information is true and correct. I agree to notify the Michigan DNR of any changes that occur in factors affecting my coverage during any of my present and future operations.

Signature of Owner or Authorized Representative

Title

Date

Please complete the "SEALED BID" information on the next page