



**DEPARTMENT OF NATURAL RESOURCES
STATE OF MICHIGAN**

TIMBER SALE PROSPECTUS #6874

SCHEDULED SALE DATE AND TIME: 10:00 a.m. (local time) on November 23, 2021.

LOCATION: ATLANTA MGMT UNIT, 13501 M 33, ATLANTA, MI 49709.

PROSPECTUS NOTE: The bidder is advised to inspect the sale area and review the location, estimated volumes, operating costs and contract terms of proposed sales. Please be aware that some landowners may request 60 days or more notice for access across their land.

Notice is hereby given that bids will be received by the Unit Manager, ATLANTA MANAGEMENT UNIT, for certain timber on the following described lands:

Glennie Ridge Mix (54-012-20) / T31N, R07E, SEC. 17, SWSE.

T31N, R07E, SEC. 20, N1/2NE.

Alpena County, Advertised Price \$10,584.55, 24.2 Acres, Aspen, Hardwood.

Andor Down Under (54-014-20) / T29N, R06E, SEC. 17, SESW.

T29N, R06E, SEC. 20, N1/2NW,NWNE.

Alpena County, Advertised Price \$34,669.35, 45.3 Acres, Aspen, Red Oak.

SALE NOTE: A recreation site such as a trail, pathway, or campground is within the sale area or the vicinity. Certain restrictions/specifications may be applicable including time restrictions.

Aspen Cottage (54-016-20) / T30N, R07E, SEC. 11, SENW,SW.

T30N, R07E, SEC. 14, NW,N1/2SW.

T30N, R07E, SEC. 15, E1/2NE,NESE.

Alpena County, Advertised Price \$98,472.50, 161.4 Acres, Aspen, Hardwood.

SALE NOTE: This sale is off of Dann Road in Alpena County. Some road work may be required as this is a somewhat wet area.

Raspberry Red Pine (54-028-20) / T29N, R09E, SEC. 19, NWSW.

Alpena County, Advertised Price \$11,108.80, 20.3 Acres, Red Pine, White Pine.

Thick N Thorny Aspen (54-031-20) / T29N, R08E, SEC. 25, SESW.

T29N, R08E, SEC. 36, NENW,NE.

Alpena County, Advertised Price \$27,917.85, 36.5 Acres, Aspen, Hardwood.

Reserved Red Pine (54-035-20) / T30N, R07E, SEC. 11, NE.

T30N, R07E, SEC. 12, W1/2NW.

T30N, R07E, SEC. 14, SENE.

T30N, R07E, SEC. 2, W1/2NE, E1/2SW, W1/2SE.

T31N, R07E, SEC. 34, SESE.

Alpena County, Advertised Price \$147,017.20, 116.1 Acres, Red Pine, White Pine.

SALE NOTE: All units of volume listed for this sale were estimated using the Inventory Manager computer program and the new Michigan taper model.

A recreation site such as a trail, pathway, or campground is within the sale area or the vicinity. Certain restrictions/specifications may be applicable including time restrictions. Access may be through other public land.

BID INSTRUCTIONS (VER. 07/02/2018):

1. Scheduled Bid Location, Date, and Time (2/11)

Bids must be received by the Unit Manager, ATLANTA OFFICE, 13501 M 33, ATLANTA, MI 49709, no later than 10:00 a.m. (local time) on November 23, 2021. For further information concerning this sale, contact Cody Stevens at 989-785-4251 extension 5240.

2. Bidder's Qualifications (5/16)

Purchaser shall obtain workers compensation insurance to cover claims under Michigan's Worker's Disability Compensation Act of 1969 or similar employee benefit act of any other state applicable to an employee. If all or part of a timber sale was prepared by a private contractor, the contractor and that contractor's company are not permitted to bid on the timber sale contract. Bids will not be accepted from individuals or companies appearing on the DNR/FRD No-Bid List. This list contains the names of purchasers who previously failed to execute a contract within 21-days or who have a history of poor performance.

3. Preparation of Sealed Bids (5/16)

Bid Forms may be completed online thru Michigan DNR Timber Sale Online Bidding (OLB) at www.michigan.gov/timberbidding or by completing the hardcopy Bid Form found in the Timber Sale Prospectus. Hardcopy Bid Forms shall be manually signed in ink. Registration in OLB is considered your 'signature' for all bids submitted thru that system. Bid prices must be entered for each species and product in the Bid Price column for all material subject to bidding and all fill-in blanks must be completed. If erasures or other changes appear on the hardcopy Bid Form, each erasure or change must be initialed by the person signing the bid.

4. Submission of Sealed Bids (5/16)

Bid forms may be obtained from the Unit Manager or thru OLB. Bids may be submitted hardcopy or thru OLB. All hardcopy bids must be submitted on the bid form and in an envelope clearly identified as described in this section. NOTE: Only one bid form per bid envelope. Sealed bids must be submitted to the Unit office designated in the prospectus and must be submitted at or prior to the time established in the prospectus. The envelope should show on the outside (a) the sale name or number and (b) the date and time of bid opening, as shown in the prospectus. Bids received after the time specified in the sale prospectus are late bids and will be rejected.

It is possible for a bidder to submit multiple bids on a single sale. For example, a bid may be submitted hardcopy and a bid may be submitted thru OLB. Or, two bidders from the same company could both submit bids on the same sale. If this were to happen, the State would accept all bids received and award the contract accordingly. All bidding and contractual requirements would apply to all bids received.

5. Public Opening of Sealed Bids (7/16)

If conditions permit, the sealed bids will be publicly opened and posted at the time and place set in the prospectus.

If a bidder, present at a bid opening, has submitted bids on more than one sale, that bidder may withdraw their unopened bid envelopes or announce the withdrawal of their online bid after being declared the successful bidder on one sale.

6. Award of Contract (1/11)

Award of the contract will be made to the Bidder whose bid, conforming to the prospectus, is most advantageous to the State of Michigan on the basis of total value at rates bid for the estimated quantities. The State reserves the right to reject any bid or waive any minor irregularity in bids received. A written award mailed (or otherwise furnished) to the successful Bidder shall be deemed to result in a binding contract without further action by either party.

7. Down Payment (1/11)

The Bidder to whom award is made must make a down payment within 21 days of the sale award. The amount of the down payment will be calculated as shown in the Bond and Payment Schedule of this prospectus. Only cash may be used to meet this requirement.

8. Performance Security (1/11)

As guarantee of faithful performance, a cash bond, certificate of deposit, surety bond or irrevocable letter of credit (LOC) is required within 21 days of the sale award. The amount of the performance security is shown in the Bond and

Payment Schedule of this prospectus. If an LOC or surety is used, the coverage must extend for at least 6 months beyond the contract expiration.

9. Timber Sale Contract (7/18)

Additional conditions and requirements common to all timber sales are listed on the timber sale contract (R4031) and are available on line at www.michigan.gov/timber. Contact the Unit Manager for additional information or a sample contract. Within 21 days of the date of the award letter, the bidder must sign the contract and provide the required down payment, performance security, and verification of worker's disability compensation. The down payment and performance security shall be in accordance with the provisions of the timber sale contract, in the sums stated in this prospectus. If these actions are not taken, then the Bidder, the Bidder's corporation, and the corporation's principals may not be permitted to bid on State timber sales for a period of 3 months after the first offense, 6 months after the second offense, and 1 year after the third offense. An offense will only be counted against the Bidder for 5 years. In addition, the Bidder certifies that if awarded this contract, the Bidder will complete the timber sale contract in accordance with its terms and any modifications thereof including requirements to purchase, cut, and remove the included timber by the expiration date.

Payment Unit values in the State Forest Timber Sale Contract are calculated based on the advertised value of the Payment Unit as a percentage of the total advertised value of the contract. The advertised value of each Payment Unit is given in the Description of Timber by Payment Unit table on the Timber Sale Information page. For example, if the value of Payment Unit 1 is advertised as \$1,500 and the total Timber Sale value is advertised as \$10,000, the contract price for Payment Unit 1 will be 15% of the total bid price ($\$1,500/\$10,000 * 100$).

10. Disclaimer of Estimates and Bidder's Warranty of Inspection (7/16)

Before submitting this bid, the Bidder is advised and cautioned to inspect the sale area, review the requirements of the sale contract, and take other steps as may be reasonably necessary to ascertain the location, estimated volumes, construction estimates, and operating costs of the proposed sale. Failure to do so will not relieve the Bidder from responsibility for completing the contract.

The Bidder warrants that this bid is submitted solely on the basis of the Bidder's examination and inspection of the quality and quantity of the timber offered for sale and the Bidder's opinion of the value thereof and the costs of recovery. No reliance should be placed on the State of Michigan's estimates of timber quality, quantity or costs of recovery. Bidder further acknowledges that the State of Michigan: (i) expressly disclaims any warranty of fitness of timber for any purpose; (ii) offers this timber as is without any warranty of quality (merchantability) or quantity and (iii) expressly disclaims any warranty as to the quantity or quality of timber sold.

11. Certification and Chain-of-Custody (10/14)

Unless otherwise indicated in the contract under section 7 – Other Conditions of the Sale Specific Conditions & Requirements, the area encompassed by this timber sale is certified to the standards of the Forest Stewardship Council (FSC) - Certificate #SCS-FM/COC-00090N and the Sustainable Forestry Initiative (SFI) - Certificate #NSF-SFIS-5Y031-SF5. Forest products from this sale may be delivered to the mill as "FSC 100% and / or SFI certified" as long as the contractor hauling the forest products is chain-of-custody (COC) certified or covered under a COC certificate from the destination mill. The purchaser is responsible for maintaining COC after leaving the sale area.

12. Good Neighbor Authority (GNA) Requirements (7/16)

If the name of this timber sales contains the acronym GNA, it is authorized by the Good Neighbor Authority (GNA) and covered by various agreements between the U.S. Forest Service and the State. The timber sale occurs on federal land and the following conditions apply:

GNA contracts on US Forest Service land will not be awarded to purchasers on the Federal list of excluded parties. The System for Award Management (SAM) will be checked for active excluded parties prior to award of contract. In addition, the Bidder to whom award is made must complete an Assurance Regarding Felony Conviction or Tax Delinquent Status for Corporate Applicants (AD-3031).

13. Good Neighbor Authority (GNA) Requirements, con't (9/16)

Bidder certifies, by signing this bid form, that to the best of Bidder's knowledge that the following representations are accurate and complete.

- a. That the Bidder and its principals are not presently debarred, suspended, proposed for debarment, declared ineligible, or voluntary excluded from timber sales (covered transactions) by any Federal department or agency.
- b. That the Bidder and its principals have not within a 3-year period preceding this bid been convicted of or had a civil judgment rendered against them for commission of fraud or a criminal offense in connection with obtaining , attempting to obtain, or performing a public (Federal, State, or local) transaction or contract under a public transaction; violation of Federal or State antitrust statutes or commission of embezzlement, theft, forgery, bribery, falsification or destruction of records, making false statements, or receiving stolen property.
- c. That the Bidder and its principals are not presently indicted for or otherwise criminally or civilly charged by a governmental entity (Federal, State, or local) with commission of any of the offenses enumerated in paragraph b of this certification.
- d. That the Bidder and its principals have not within a 3-year period preceding this bid had one or more public transactions (Federal, State, or local) terminated for breach or default of a timber or forest product contract.

Bidders that cannot certify this requirement, in whole or in part, shall submit an explanation with their bid.

DAN EICHINGER
Director

TIMBER SALE INFORMATION

Glennie Ridge Mix (54-012-20)
 T31N, R07E, SEC. 17; T31N, R07E, SEC. 20.
 Alpena County (Advertised Price \$10,584.55)

A timber sale contract for this lump sum, sealed bid timber sale will be awarded to the responsible bidder offering the highest sealed bid price. All units of volume listed below were estimated using the T-Sale computer program and our traditional volume equations. Bids must be at or above the following advertised price for each product and species:

<u>PRODUCTS & SPECIES</u>	<u>ESTIMATED UNITS*</u>	<u>ADVERTISED PRICE</u>
Sawtimber		
Mixed Aspen	10.7 MBF	\$ 105.00 / MBF
Red Maple	9.0 MBF	\$ 52.00 / MBF
Red Oak	4.3 MBF	\$ 166.00 / MBF
Pulpwood		
Balsam Fir	27 Cords	\$ 16.35 / Cord
Mixed Aspen	151 Cords	\$ 26.65 / Cord
Mixed Spruce	53 Cords	\$ 7.40 / Cord
Paper Birch	23 Cords	\$ 11.50 / Cord
Red Maple	104 Cords	\$ 22.30 / Cord
Red Oak	22 Cords	\$ 37.50 / Cord
White Pine	1 Cords	\$ 12.75 / Cord

* The total volume is statistically estimated within plus (+) or minus (-) 20.77 percent. There are an estimated 435 cords on this timber sale, plus or minus 90 cords at the 95% confidence level. The estimated units are final and not subject to adjustment. Prospective bidders are urged to examine this timber and to make their own estimates of quantity and quality.

BOND AND PAYMENT SCHEDULE:

1. A bond in the amount of \$529.00 to insure faithful performance of the conditions of the contract will be deposited by the successful bidder within 21 days of the sale award.
2. Cutting in any sale or unit without the required advance payment would be considered a trespass.
3. Total payment must be paid in advance or according to the following schedule :
 - (a) Ten percent (10%) of the sale value must be paid within 21 days of the sale award.
 - (b) The 10% down payment will be credited towards the first unit cut.
 - (c) Payment for each of the following units must be made before cutting begins in that unit:

PAYMENT UNIT NUMBER	PERCENT OF TOTAL SALE VALUE
01	17.4%
02	25.0%
03	38.0%
04	19.6%
4. If no cutting takes place, the 10% down payment will not be refunded.
5. Operations on the contract issued will terminate on 06/30/2024.

SALE STATISTICS

SALE VOLUMES

VOLUME		PERCENT ERROR	STATISTICAL RANGE IN CORDS	
TOTAL CUBIC FEET	TOTAL CORDS		MINIMUM	MAXIMUM
34,376	435	20.77%	345	526

VDU VOLUMES

A VDU is a Volume Determination Unit. Volumes and their associated statistics are calculated at the VDU level and summarized to the sale level. There is often a one to one relationship between a VDU and a Payment Unit, but not always, depending on the cruise design. Refer to the VDU TO PAYMENT UNIT table.

VDU	VOLUME		PERCENT ERROR	RANGE IN CORDS	
	TOTAL CUBIC FEET	TOTAL CORDS		MINIMUM	MAXIMUM
1	9,283	118	35.51%	76	159
4	18,652	236	35.63%	152	320
81	6,415	81	35.97%	52	110
TOTAL:	34,349	435		280	590

VDU TO PAYMENT UNIT

When a VDU is associated with more than one Payment Unit (PU), the VDU volumes are assigned to the PU based on acres of the VDU within the PU.

VDU	VDU ACRES	PU	PU ACRES
1	5.6	4	5.6
4	14.2	2	5.7
		3	8.5
81	4.4	1	4.4
TOTAL:	24.2		24.2

DESCRIPTION OF TIMBER BY PAYMENT UNIT (PU)

PU	MARKET GROUP	PRODUCT	QUANTITY	UNIT	ACRES	ADVERTISE PRICE
1	Mixed Aspen	Sawtimber	1.4	MBF	4.4	\$1,840.50
	<i>Quaking Aspen</i>		1.4	<i>MBF</i>		
	Red Maple		2.2	MBF		
	Balsam Fir	Pulpwood	6	Cords		
	Mixed Aspen		29	Cords		
	<i>Quaking Aspen</i>		29	<i>Cords</i>		
	Mixed Spruce		3	Cords		
	<i>White Spruce</i>	<i>Sawtimber</i>	0.4	<i>MBF</i>		
	<i>White Spruce</i>	<i>Pulpwood</i>	2	<i>Cords</i>		
	Paper Birch		12	Cords		
	<i>Paper Birch</i>	<i>Sawtimber</i>	1.0	<i>MBF</i>		
	<i>Paper Birch</i>	<i>Pulpwood</i>	10	<i>Cords</i>		
	Red Maple		24	Cords		
	White Pine		1	Cords		
2	Mixed Aspen	Sawtimber	3.7	MBF	5.7	\$2,647.15
	<i>B. T. Aspen</i>		3.7	<i>MBF</i>		
	Red Maple		1.8	MBF		
	Red Oak		1.5	MBF		
	Balsam Fir	Pulpwood	6	Cords		
	Mixed Aspen		43	Cords		
	<i>B. T. Aspen</i>		33	<i>Cords</i>		
	<i>Quaking Aspen</i>		10	<i>Cords</i>		
	Mixed Spruce		1	Cords		
	<i>White Spruce</i>	<i>Sawtimber</i>	0.2	<i>MBF</i>		
	<i>White Spruce</i>	<i>Pulpwood</i>	1	<i>Cords</i>		
	Paper Birch		2	Cords		
	<i>Paper Birch</i>		2	<i>Cords</i>		
	Red Maple		17	Cords		
Red Oak		7	Cords			
3	Mixed Aspen	Sawtimber	5.6	MBF	8.5	\$4,012.70
	<i>B. T. Aspen</i>		5.6	<i>MBF</i>		
	Red Maple		2.7	MBF		
	Red Oak		2.2	MBF		
	Balsam Fir	Pulpwood	10	Cords		
	Mixed Aspen		66	Cords		
	<i>B. T. Aspen</i>		50	<i>Cords</i>		
	<i>Quaking Aspen</i>		16	<i>Cords</i>		
	Mixed Spruce		1	Cords		
	<i>White Spruce</i>	<i>Sawtimber</i>	0.2	<i>MBF</i>		
	<i>White Spruce</i>	<i>Pulpwood</i>	1	<i>Cords</i>		
	Paper Birch		3	Cords		
	<i>Paper Birch</i>		3	<i>Cords</i>		
	Red Maple		26	Cords		
Red Oak		10	Cords			
4	Red Maple	Sawtimber	2.3	MBF	5.6	\$2,076.80
	Red Oak		0.6	MBF		
	Balsam Fir	Pulpwood	5	Cords		
	Mixed Aspen		13	Cords		
	<i>B. T. Aspen</i>		2	<i>Cords</i>		
	<i>Quaking Aspen</i>		11	<i>Cords</i>		
	Mixed Spruce		47	Cords		
	<i>Black Spruce</i>	<i>Sawtimber</i>	3.4	<i>MBF</i>		
	<i>White Spruce</i>		0.3	<i>MBF</i>		
	<i>Black Spruce</i>	<i>Pulpwood</i>	35	<i>Cords</i>		
	<i>White Spruce</i>		4	<i>Cords</i>		
	Paper Birch		6	Cords		

DESCRIPTION OF TIMBER BY PAYMENT UNIT (PU), CON'T

PU	MARKET GROUP	PRODUCT	QUANTITY	UNIT	ACRES	ADVERTISE PRICE
4 con't	<i>Paper Birch</i>	<i>Sawtimber</i>	0.3	<i>MBF</i>		
	<i>Paper Birch</i>	<i>Pulpwood</i>	5	<i>Cords</i>		
	Red Maple		37	Cords		
	Red Oak		5	Cords		
TOTAL:			24.0	MBF		
TOTAL:			380	Cords		

Sale Specific Conditions & Requirements

Sale Name: Glennie Ridge Mix

Sale Number: 54-012-20 Seq#: 2

1 - Sale Area

1.2 - Boundaries

1.2.1 - Painted boundaries (9/19)

The sale boundary and Payment Unit boundaries are marked and identified by red and yellow paint. Exterior sale boundary lines against state are marked with red paint. The western-most boundaries of Payment Units 1 and 2 are Glennie Road. Interior Payment Unit boundaries are marked with yellow paint. Retention patches are marked with red paint, no harvesting activities may occur within these areas. The painted boundary line trees are not Included Timber and are to be protected. Yellow painted trees designating an interior Payment Unit boundary are only to be cut when all surrounding Payment Units have been paid.

2 - Timber Specifications

2.1 - Included Timber

2.1.1 - Clearcut unit(s) with unmerchantable trees (6/14)

Within Payment Unit(s) 2 and 3, cut all trees that are two (2) inches or more at DBH, except do not cut any red or white pine of any size.

2.1.2 - Clearcut unit(s) w/o unmerchantable trees (8/11)

Within Payment Unit(s) 1 and 4, cut all trees which meet minimum piece specifications in 2.2 Utilization. Trees 4.5 inches and less at DBH are to be protected.

2.2 - Utilization

2.2.6 - Roundwood operation required (5/07)

The skidding of whole trees or tree segments with limbs attached is prohibited within Payment Unit(s) 1-4. All products must be produced as roundwood and forwarded to existing roads or landing areas in final product length.

3 - Payments

3.4 - Damaged Timber

3.4.1 - Damaged timber (7/16)

General Condition and Requirement 3.4 Damaged Timber, defines liquidated damages for undesignated live merchantable trees which are cut or injured. In addition, extreme care should be taken to avoid damage to tree seedlings and saplings. Within Payment Units 1 and 4, if more than 25% of the tree seedlings or saplings (1/4" to 4.5" DBH) within a specified portion of the Sale Area are damaged, liquidated damages will be assessed at \$200 per acre for all acreage within that specified portion of the Sale Area that was damaged.

Within Payment Units 2 and 3, if more than 25% of the pine, oak, and spruce tree seedlings or saplings (1/4" to 4.5" DBH) within a specified portion of the Sale Area are damaged, liquidated damages will be assessed at \$100 per acre for all acreage within that specified portion of the Sale Area that was damaged.

No damage is acceptable to undesignated live merchantable trees. Within the Sale Area, if more than 5% of undesignated live merchantable trees (> 4.5" DBH) within a specified area of the sale are damaged, liquidated damages will be assessed for all trees damaged. Rates will be in accordance with General Condition and Requirement 3.4 Damaged Timber.

4 - Transportation

4.1 - Construction

4.1.3 - Slash and earthen piles (8/04)

Piles or windrows of earth along roads and landings that have been widened or constructed shall be leveled. Slash from road maintenance or construction, including stumps, shall be dispersed throughout the sale.

4.1.12 - No new roads (1/12)

No new roads will be permitted in any Payment Unit. All operations are limited to existing roads. Skid trails only will be

allowed.

5 - Operations

5.1 - Notification

5.1.1 - Pre-sale conference (10/16)

A pre-sale conference on site between the Purchaser and sale administrator is required prior to beginning any operations within a Payment Unit to determine landing and road locations. The Unit Manager or his/her representative must be contacted at least 5 days in advance to schedule the conference.

5.1.4 - Post-sale conference (10/16)

A post-sale conference on site between the Purchaser and sale administrator is required 5 days prior to the completion of active logging operations to determine clean-up and repair of landings, road edges, and the fulfillment of other contract specifications.

5.2 - Conduct of Operations

5.2.2 - Hazard Trees/Snags

5.2.2.1 - Den trees (10/16)

Obvious hollow and/or den trees shall be protected and left standing unless they are a safety hazard.

5.2.3 - Operating Restrictions

5.2.3.5 - Oak wilt restriction (1/18)

Within Payment Unit(s) 1-4, unless changed by written agreement, cutting, skidding, hauling within the sale and brushing of access roads to the sale are not permitted during the period of April 15 to July 15. Operations may be allowed if specific steps are taken to prevent damaging uncut oak during the high risk period. Those steps may include completing all road brushing before April 15th and clearing a tree-length buffer along uncut oak cover before April 15th. This is necessary to reduce the spread of oak wilt. For more information, contact the Unit Manager or his/her representative.

5.2.3.11 - Coppice regeneration protection (4/10)

To promote deciduous tree regeneration, timber harvesting in any Payment Unit must be completed before significant sprouting occurs in that Payment Unit to minimize damage to the new regeneration. Any post harvest operations, such as chipping, must be completed before sprouting of regeneration occurs. If it is anticipated that chipping will be delayed, then tops shall be carried to one central location or left unchipped. The Unit Manager or his/her representative may cease such operations if sprouting occurs before the operation is complete.

5.2.4 - Dead and Down Creation

5.2.4.4 - Dead and down creation, grouse (6/18)

To encourage grouse and other wildlife, in Payment Unit(s) 1-4 leave one, 12" diameter or larger log-length (8 foot minimum) piece on the ground for every 2 acres. The log length should be from a hardwood species such as aspen, oak, or maple. These logs will be evenly scattered throughout the Payment Unit, preferably at least two chains from any roads, two-tracks, or trails open to vehicles.

5.2.17 - Timber Mats and Interlocking Composite Mats (3/18)

Some roads or skid trails may require extra protection such as that afforded by timber mats, interlocking composite mats, or another approved system. Two stretches of approximately 50 feet of skid trail through 2 separate drainages need extra protection at locations shown on the Timber Sale Map. If available, mats may be borrowed from the DNR. A Timber Sale Contract Supplement will be used to document the Purchaser's use of the DNR's mats. Contact the sale administrator regarding availability and pick-up. Timber mats are available from various field offices. Composite mats are only available from the Grayling field office. The Purchaser is responsible for picking up and hauling the mats to and from the site. The composite mats will require DNR staff onsite for installation and removal. Contact the sale administrator to schedule at least 30 days before desired install/removal date. All mats must be cleaned prior to drop off. This may include, but is not limited to, power washing and brushing to remove mud and debris. A charge of \$400.00 per timber mat and \$2,000.00 per composite mat will be assessed for all damaged or non-returned mats. Damage for the crane/timber mats is defined as three or more broken cants. Damage for the composite mats is defined as cracked or broken mats. Corduroy (Slash) can be used in place of timber or composite maps if approved by the Unit Manager or his/her representative. If approved, all corduroy must be

removed from low ground areas and dispersed throughout the sale after it has been used for protection against rutting.

5.2.22 - Operating Caution

5.2.22.1 - Operating caution (6/11)

It is recommended, but not required, that within Payment Unit(s) 1 and 4, cutting and skidding occur during dry summer or frozen winter conditions. The reason for the recommendation is due to the presence of seasonally saturated soils.

5.2.32 - Decking/landing restoration (9/13)

All decking and landing areas must have the surface area restored to a condition equal to or better than before. This is to ensure the proper regeneration of the stand. Wood debris, chips, and "cookies" from trimmings must be removed or scattered away from landing and loading areas and may not be windrowed on the edge.

5.2.38 - No decking against live trees (2/04)

Cut products may not be decked against unmarked or designated leave trees.

5.4 - Soil Protection

5.4.1 - Rutting restriction, general (7/16)

Operations are to cease immediately if equipment and weather conditions result in rutting of roads and/or skid trails which is 12 inches or greater in depth and 50 feet in length. The Unit Manager or his/her representative may restrict hauling and/or skidding if ruts exceed the specified depth. With the Unit Manager or his/her representative's approval, the Purchaser may return to the area when the risk of rutting has decreased.

5.4.2 - Skid trails (2/04)

Skid trails up and down slopes should be avoided. If however this is unavoidable, these trails will be left in a non-erodible condition using water bars, logs, and slash. Placing of slash on these skid trails while logging is ongoing may alleviate need for any further action. At the direction of the sale administrator, seed, fertilizer, and mulch may also be required.

5.4.4 - Slope protection (9/19)

Skid trails and roads on slopes shall be water barred with slash from the sale as soon as use is complete to prevent erosion.

5.4.5 - Soil caution (11/04)

Care must be taken to minimize soil damage due to the sandy soils.

5.8 - Protection of Endangered Species

5.8.5 - Protection of raptor nests (3/13)

All trees with raptor nests will be protected if found during harvesting operations. Notification will be made to the Unit Manager or his/her representative who will notify the Wildlife Biologist so an on-site evaluation and recommendation can be made, if necessary.



TIMBER SALE MAP

This information provided by authority of Part 525, 1994 PA 451, as amended.

Forest Management Unit Atlanta		County Alpena	Mapped By D. Parris		Date 7/16/2020	Page 1 of 1	
		Cruised By D. Parris					
Township 31N	Range 07E	Section(s) and Subdivision(s) Sec. 17 SWSE, Sec. 20 N2NE			Scale 1:7,920		

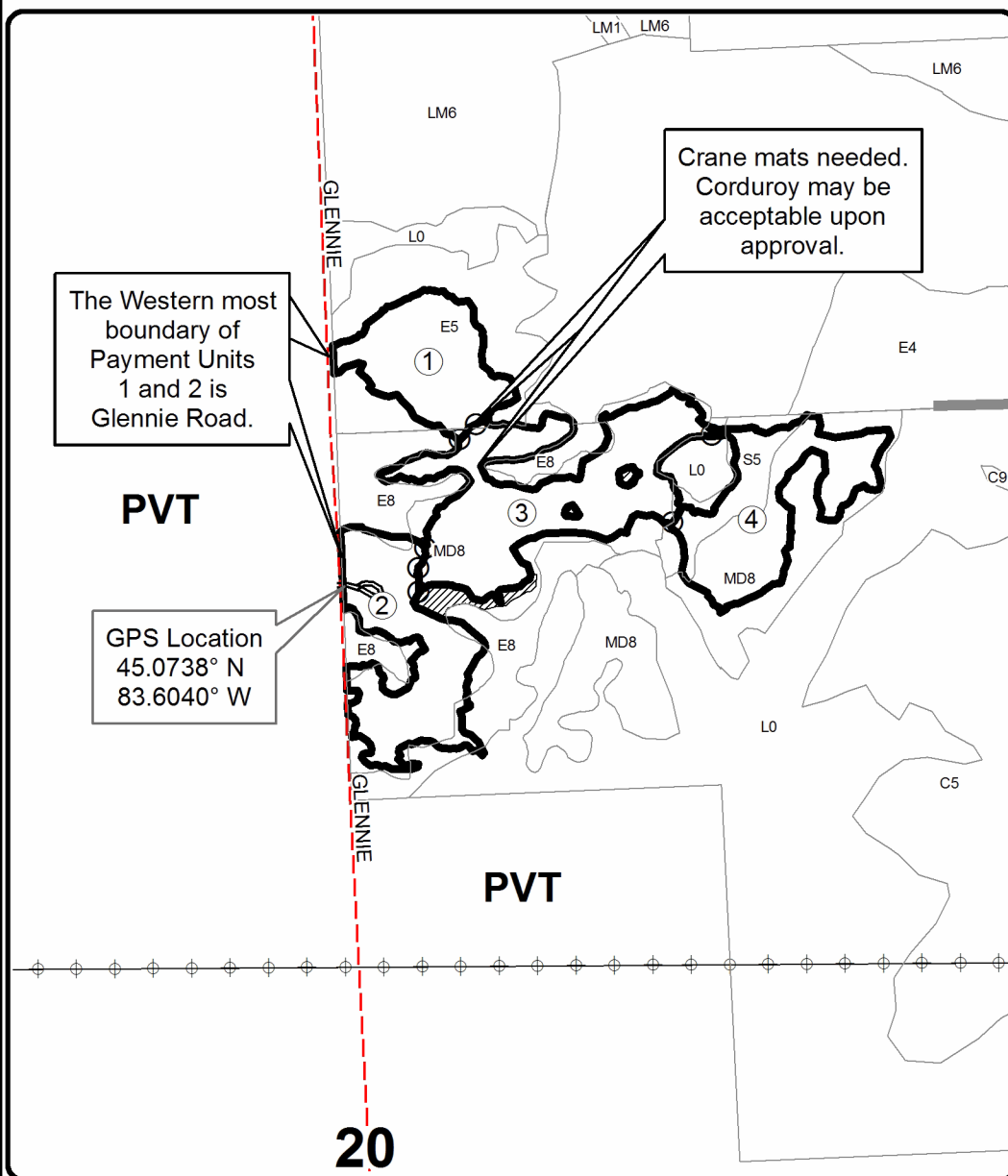
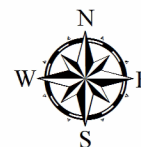
Cover Type				Density			
A = Aspen	H = Hemlock	N = Marsh	U = Upland Brush	0 = Non Stocked	5 = Pole Timber Medium		
B = Paper Birch	J = Jack Pine	O = Oak	UM = Upland Mixed	1 = Seedling Sapling Poor	6 = Pole Timber Well		
C = Cedar	L = Lowland Brush	P = Lowland Poplar	V = Bog or Marsh	2 = Seedling Sapling Medium	7 = Saw Timber Poor		
D = Treed Bog	LM = Lowland Mixed	Q = Mixed Swamp Conifer	W = White Pine	3 = Seedling Sapling Well	8 = Saw Timber Medium		
E = Swamp Hdwoods	M = Mpl, Bch, Brch	R = Red Pine	X = Non Stocked	4 = Pole Timber Poor	9 = Saw Timber Well		
F = Spruce Fir	MC = Mixed Conifer	S = Black Spruce	Z = Water				
G = Grass	MD = Mixed Deciduous	T = Tamarack					

PU	Acres	PU	Acres
1	4.4	3	8.5
2	5.7	4	5.6

Glennie Ridge Mix

Compartment 103

24.2 Acres

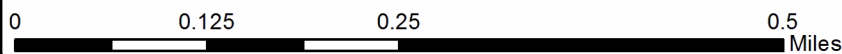
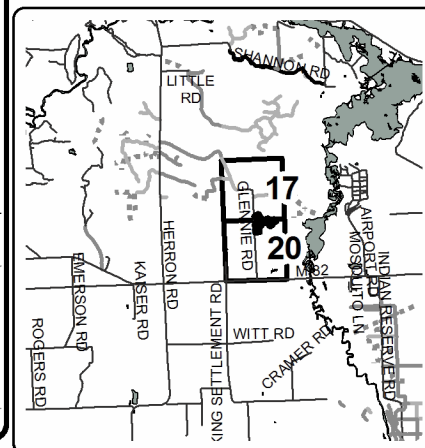


Legend

- Against State (Red)
- ⊙ Payment Unit (Yellow)
- Stand Boundaries
- ▨ Retention Area
- Payment Unit
- Secondary Forest Road
- - - County Road - Seasonal
- ⊕ Powerline
- Section Corners



Locator Map
1:200,000



TIMBER SALE INFORMATION

Andor Down Under (54-014-20)
T29N, R06E, SEC. 17; T29N, R06E, SEC. 20.
Alpena County (Advertised Price \$34,669.35)

SALE NOTE: A recreation site such as a trail, pathway, or campground is within the sale area or the vicinity. Certain restrictions/specifications may be applicable including time restrictions.

A timber sale contract for this lump sum, sealed bid timber sale will be awarded to the responsible bidder offering the highest sealed bid price. All units of volume listed below were estimated using the T-Sale computer program and our traditional volume equations. Bids must be at or above the following advertised price for each product and species:

<u>PRODUCTS & SPECIES</u>	<u>ESTIMATED UNITS*</u>	<u>ADVERTISED PRICE</u>
Sawtimber		
B. T. Aspen	24.8 MBF	\$ 105.00 / MBF
Basswood	14.8 MBF	\$ 46.00 / MBF
Red Oak	55.7 MBF	\$ 166.00 / MBF
Sugar Maple	2.9 MBF	\$ 403.00 / MBF
Pulpwood		
Mixed Aspen	341 Cords	\$ 26.65 / Cord
Mixed Hardwood	215 Cords	\$ 22.30 / Cord
Red Oak	189 Cords	\$ 37.50 / Cord

* The total volume is statistically estimated within plus (+) or minus (-) 15.91 percent. There are an estimated 955 cords on this timber sale, plus or minus 152 cords at the 95% confidence level. The estimated units are final and not subject to adjustment. Prospective bidders are urged to examine this timber and to make their own estimates of quantity and quality.

BOND AND PAYMENT SCHEDULE:

1. A bond in the amount of \$1,733.00 to insure faithful performance of the conditions of the contract will be deposited by the successful bidder within 21 days of the sale award.
2. Cutting in any sale or unit without the required advance payment would be considered a trespass.
3. Total payment must be paid in advance or according to the following schedule :
 - (a) Ten percent (10%) of the sale value must be paid within 21 days of the sale award.
 - (b) The 10% down payment will be credited towards the first unit cut.
 - (c) Payment for each of the following units must be made before cutting begins in that unit:

PAYMENT UNIT NUMBER	PERCENT OF TOTAL SALE VALUE
01	13.2%
02	20.4%
03	57.2%
04	9.2%
4. If no cutting takes place, the 10% down payment will not be refunded.
5. Operations on the contract issued will terminate on 06/30/2024.

SALE STATISTICS

SALE VOLUMES

VOLUME		STATISTICAL RANGE IN CORDS		
TOTAL CUBIC FEET	TOTAL CORDS	PERCENT ERROR	MINIMUM	MAXIMUM
75,462	955	15.91%	803	1,107

VDU VOLUMES

A VDU is a Volume Determination Unit. Volumes and their associated statistics are calculated at the VDU level and summarized to the sale level. There is often a one to one relationship between a VDU and a Payment Unit, but not always, depending on the cruise design. Refer to the VDU TO PAYMENT UNIT table.

VDU	VOLUME		PERCENT ERROR	RANGE IN CORDS	
	TOTAL CUBIC FEET	TOTAL CORDS		MINIMUM	MAXIMUM
1	7,616	96	31.37%	66	127
14	42,470	538	16.98%	446	629
15	25,391	321	18.28%	263	380
TOTAL:	75,477	955		775	1,136

VDU TO PAYMENT UNIT

When a VDU is associated with more than one Payment Unit (PU), the VDU volumes are assigned to the PU based on acres of the VDU within the PU.

VDU	VDU ACRES	PU	PU ACRES
1	5.4	4	5.4
14	17.4	3	16.5
		4	0.9
15	22.5	1	8.9
		2	13.6
TOTAL:	45.3		45.3

DESCRIPTION OF TIMBER BY PAYMENT UNIT (PU)

PU	MARKET GROUP	PRODUCT	QUANTITY	UNIT	ACRES	ADVERTISE PRICE
1	Basswood	Sawtimber	5.9	MBF	8.9	\$4,591.25
	Red Oak		8.7	MBF		
	Sugar Maple		0.6	MBF		
	Mixed Aspen	Pulpwood	19	Cords		
	<i>Quaking Aspen</i>		19	Cords		
	Mixed Hardwood		50	Cords		
	<i>Basswood</i>		27	Cords		
	<i>Beech</i>		9	Cords		
	<i>Sugar Maple</i>		14	Cords		
	Red Oak		27	Cords		
2	Basswood	Sawtimber	8.9	MBF	13.6	\$7,080.80
	Red Oak		13.3	MBF		
	Sugar Maple		1.0	MBF		
	Mixed Aspen	Pulpwood	28	Cords		
	<i>Quaking Aspen</i>		28	Cords		
	Mixed Hardwood		78	Cords		
	<i>Basswood</i>		42	Cords		
	<i>Beech</i>		14	Cords		
	<i>Ironwood</i>		1	Cords		
	<i>Sugar Maple</i>		21	Cords		
	Red Oak		42	Cords		
3	B. T. Aspen	Sawtimber	23.5	MBF	16.5	\$19,806.00
	Red Oak		32.0	MBF		
	Sugar Maple		1.2	MBF		
	Mixed Aspen	Pulpwood	220	Cords		
	<i>B. T. Aspen</i>		216	Cords		
	<i>Quaking Aspen</i>		4	Cords		
	Mixed Hardwood		63	Cords		
	<i>Red Maple</i>	Sawtimber	0.6	MBF		
	<i>Basswood</i>	Pulpwood	7	Cords		
	<i>Beech</i>		3	Cords		
	<i>Red Maple</i>		11	Cords		
	<i>Sugar Maple</i>		41	Cords		
	Red Oak		114	Cords		
4	B. T. Aspen	Sawtimber	1.3	MBF	6.3	\$3,191.30
	Red Oak		1.7	MBF		
	Sugar Maple		0.1	MBF		
	Mixed Aspen	Pulpwood	74	Cords		
	<i>B. T. Aspen</i>		12	Cords		
	<i>Balsam Poplar</i>		6	Cords		
	<i>Quaking Aspen</i>		56	Cords		
	Mixed Hardwood		24	Cords		
	<i>Beech</i>		1	Cords		
	<i>Green Ash</i>		17	Cords		
	<i>Red Maple</i>		4	Cords		
	<i>Sugar Maple</i>		2	Cords		
	Red Oak		6	Cords		
TOTAL:			98.2	MBF		
TOTAL:			745	Cords		

Sale Specific Conditions & Requirements

Sale Name: Andor Down Under

Sale Number: 54-014-20 Seq#: 2

1 - Sale Area

1.2 - Boundaries

1.2.1 - Painted boundaries (9/19)

The sale boundary and Payment Unit boundaries are marked and identified by blue, red, and green paint. Exterior sale boundary lines against private property are marked with blue paint. Exterior sale boundary lines against state are marked with red paint. Interior Payment Unit boundaries are marked with green paint. Retention patches are marked with red paint, no harvesting activities may occur within these areas. The painted boundary line trees are not Included Timber and are to be protected. Green painted trees designating an interior Payment Unit boundary are only to be cut when all surrounding Payment Units have been paid.

2 - Timber Specifications

2.1 - Included Timber

2.1.1 - Clearcut unit(s) with unmerchantable trees (6/14)

Within Payment Unit(s) 3 and 4, cut all trees that are two (2) inches or more at DBH, except special protection trees marked with a green ring running completely around the tree. In addition, within Payment Unit 3 do not cut any pine and within Payment Unit 4 do not cut any white pine or cedar.

2.1.3 - Cut tree marked unit(s) (12/08)

Within Payment Unit(s) 1 and 2, all trees are designated for cutting when marked with yellow paint above and below stump height, regardless of merchantability. All beech and ash trees are designated for harvesting, except for beech trees marked with green paint. Green marked beech are leave trees and are to be protected.

2.2 - Utilization

2.2.6 - Roundwood operation required (5/07)

The skidding of whole trees or tree segments with limbs attached is prohibited within Payment Unit(s) 1 and 2. All products must be produced as roundwood and forwarded to existing roads or landing areas in final product length.

3 - Payments

3.4 - Damaged Timber

3.4.1 - Damaged timber (7/16)

General Condition and Requirement 3.4 Damaged Timber, defines liquidated damages for undesignated live merchantable trees which are cut or injured. In addition, extreme care should be taken to avoid damage to tree seedlings and saplings. Within Payment Units 3 and 4, if more than 25% of the white pine and white spruce seedlings or saplings (1/4" to 4.5" DBH) within a specified portion of the Sale Area are damaged, liquidated damages will be assessed at \$50 per acre for all acreage within that specified portion of the Sale Area that was damaged.

No damage is acceptable to undesignated live merchantable trees. Within the Sale Area, if more than 5% of trees (> 4.5" DBH) within a specified area of the sale are damaged, liquidated damages will be assessed for all trees damaged. Rates will be in accordance with General Condition and Requirement 3.4 Damaged Timber.

3.4.2 - Special Protection Trees (4/14)

The Purchaser shall not cut live or dead special protection trees within cutting units or clearings. Special protection trees are within Payment Units 3 and 4 and are marked with a green paint ring running completely around the tree. If the Purchaser's operations have cut or damaged special protection trees through carelessness, the Purchaser shall pay \$250 per tree as fixed, agreed and liquidated damages for each special protection tree cut or damaged. Such payment does not constitute ownership of the undesignated timber.

4 - Transportation

4.1 - Construction

4.1.3 - Slash and earthen piles (8/04)

Piles or windrows of earth along roads and landings that have been widened or constructed shall be leveled. Slash from road maintenance or construction, including stumps, shall be dispersed throughout the sale.

4.1.6 - Road construction (1/09)

Improvements of existing roads shall be done in such a way as to minimize the environmental and visual impacts. Merchantable trees shall be cut and utilized unless otherwise directed. Non-merchantable trees shall be severed and laid flat on the ground. Slash shall be scattered, and not left in windrows and kept a minimum of 10 feet back from the road edge. Stumps shall be set upright, not left on edge, and be moved at least 10 feet away from the road edge. Disturbed soil shall be feathered into the woods and not left in berms or windrows.

4.1.7 - Road closure (10/11)

Overgrown roads that are reopened shall be considered new roads. Some existing roads may also need to be closed. In general, this will require constructing a four (4') foot high berm of stumps and logs covered with earth. Stumps and brush must be placed along the remainder of the trail. These roads must be rendered impassable to cars and trucks. All stumps from road building and landing construction must be reserved to block any newly constructed roads upon completion of the sale. These stumps must be scattered along the road system to prohibit vehicular movement. Temporary berms may be required if no sale activity occurs for 30 or more consecutive days. Contact the sale administrator for specific details of design and placement.

4.1.12 - No new roads (1/12)

No new roads will be permitted in any Payment Unit. All operations are limited to existing roads. Skid trails only will be allowed.

4.2 - Maintenance

4.2.5 - Two wheel drive condition (2/04)

All existing trail roads on and adjacent to the sale area must be passable by two-wheel drive traffic for the duration of the sale.

5 - Operations

5.1 - Notification

5.1.1 - Pre-sale conference (10/16)

A pre-sale conference on site between the Purchaser and sale administrator is required prior to beginning any operations in a Payment Unit to determine landing and road locations. The Unit Manager or his/her representative must be contacted at least 5 days in advance to schedule the conference.

5.1.3 - Well heads and natural gas pipelines (11/15)

The Purchaser is responsible for contacting the gas or pipeline company 30 days prior to operating equipment in the vicinity of well heads or natural gas pipelines. Contact Riverside Energy Michigan, LLC at (231) 995-4111.

5.1.4 - Post-sale conference (10/16)

A post-sale conference on site between the Purchaser and sale administrator is required 5 days prior to the completion of active logging operations to determine clean-up and repair of landings, road edges, and the fulfillment of other contract specifications.

5.2 - Conduct of Operations

5.2.2 - Hazard Trees/Snags

5.2.2.1 - Den trees (10/16)

Obvious hollow and/or den trees shall be protected and left standing unless they are a safety hazard.

5.2.3 - Operating Restrictions

5.2.3.4 - Oak wilt restriction, no exceptions (1/18)

Within Payment Unit(s) 1 and 2, cutting, skidding, hauling within the sale and brushing of access roads to the sale are not permitted during the period of April 15 to July 15. No exceptions will be granted. This is necessary to reduce the spread of oak wilt. This spec is also necessary to prevent bark slippage on residual trees.

5.2.3.5 - Oak wilt restriction (1/18)

Within Payment Unit(s) 3 and 4, unless changed by written agreement, cutting, skidding, hauling within the sale and brushing of access roads to the sale are not permitted during the period of April 15 to July 15. Operations may be allowed if specific steps are taken to prevent damaging uncut oak during the high risk period. Those steps may include completing all road brushing before April 15th and clearing a tree-length buffer along uncut oak cover before April 15th. This is necessary to reduce the spread of oak wilt. For more information, contact the Unit Manager or his/her representative.

5.2.3.11 - Coppice regeneration protection (4/10)

Timber harvesting in Payment Units 3 and 4 must be completed before significant tree sprouting occurs in these Payment Units to minimize damage to the new regeneration. Any post-harvest operations, such as chipping, must be completed before sprouting of regeneration occurs. If it is anticipated that chipping will be delayed, then tops shall be carried to one central location or left unchipped. The Unit Manager or his/her representative may cease such operations if sprouting occurs before the operation is complete.

5.2.4 - Dead and Down Creation

5.2.4.4 - Dead and down creation, grouse (6/18)

To encourage grouse and other wildlife, in Payment Unit(s) 3, leave one, 12" diameter or larger log-length (8 foot minimum) piece on the ground for every 2 acres, preferably a hardwood species such as oak or maple or if no hardwoods are present, a pine species (white or red). These trees will be evenly scattered throughout the Payment Unit, preferably at least two chains from any roads, two-tracks, or trails open to vehicles. This can be an unmerchantable piece or a full tree.

5.2.4.7 - Dead and down creation: hare, grouse, deer and other species (5/15)

To improve horizontal cover habitat for snowshoe hare, grouse, deer, and other species, the Purchaser is to push over one deciduous tree 12 inches in DBH or greater for every 2 acres in Payment Unit 4. These trees should be tipped over with the root ball still attached so the base of the tree is suspended off the ground. The crown of the fallen tree should be at or near ground level after it is pushed over. These pushed over trees will preferably be at least 2 chains away from any roads, two-tracks, or trails open to vehicles.

5.2.22 - Operating Caution

5.2.22.1 - Operating caution (6/11)

It is recommended, but not required, that within Payment Unit(s) 4, cutting, skidding, and hauling occur during dry summer or frozen winter conditions. The reason for the recommendation is because of the presence of seasonally saturated soils.

5.2.32 - Decking/landing restoration (9/13)

All decking and landing areas must have the surface area restored to a condition equal to or better than before. This is to ensure the proper regeneration of the stand. Wood debris, chips, and "cookies" from trimmings must be removed or scattered away from landing and loading areas and may not be windrowed on the edge.

5.2.33 - Gas well re-vegetation (12/08)

In the event that the gas well is utilized for a landing, the site must be re-vegetated with a seeding mixture specified by the Unit Manager or his/her representative.

5.2.38 - No decking against live trees (2/04)

Cut products may not be decked against unmarked or designated leave trees.

5.4 - Soil Protection

5.4.1 - Rutting restriction, general (7/16)

Operations are to cease immediately if equipment and weather conditions result in rutting of roads and/or skid trails which is 12 inches or greater in depth and 50 feet in length. The Unit Manager or his/her representative may restrict hauling and/or skidding if ruts exceed the specified depth. With the Unit Manager or his/her representative's approval, the Purchaser may return to the area when the risk of rutting has decreased.

5.4.3 - Erosion control (12/08)

Skid trails or haul roads may require erosion control structures or berms per direction of the Unit Manager or his/her representative.

5.8 - Protection of Endangered Species

5.8.5 - Protection of raptor nests (3/13)

All trees with raptor nests will be protected if found during harvesting operations. Notification will be made to the Unit Manager or his/her representative who will notify the Wildlife Biologist so an on-site evaluation and recommendation can be made, if necessary.

6 - Safety and Fire Prevention

6.2 - Signing

6.2.1 - Road posting (9/09)

The Purchaser is responsible for posting and maintaining caution signs on forest roads prior to beginning operations. The road must be posted at appropriate distances from the Sale Area to warn of logging activity and truck traffic. Signs must be removed when harvest operations are suspended or completed. The Purchaser will provide these signs.

7 - Other Conditions

7.5 - Loss

7.5.1 - Deteriorating timber (7/09)

The sale area has received damage from Emerald Ash Borer and Beech Bark Disease. The Purchaser should harvest the wood as soon as possible. The Department of Natural Resources is held free of responsibility of any further damage or deterioration due to delay in harvesting.



TIMBER SALE MAP

This information provided by authority of Part 525, 1994 PA 451, as amended.

Forest Management Unit Atlanta		County Alpena	Mapped By D. Parris	Date 7/16/20	Page 1	of 1
Township 29N	Range 06E	Section(s) and Subdivision(s) Sec. 17 SESW; Sec. 20 N2NW, NWNE		Scale 1:7,920		

Cover Type				Density	
A = Aspen	H = Hemlock	N = Marsh	U = Upland Brush	0 = Non Stocked	5 = Pole Timber Medium
B = Paper Birch	J = Jack Pine	O = Oak	UM = Upland Mixed	1 = Seedling Sapling Poor	6 = Pole Timber Well
C = Cedar	L = Lowland Brush	P = Lowland Poplar	V = Bog or Marsh	2 = Seedling Sapling Medium	7 = Saw Timber Poor
D = Treed Bog	LM = Lowland Mixed	Q = Mixed Swamp Conifer	W = White Pine	3 = Seedling Sapling Well	8 = Saw Timber Medium
E = Swamp Hdwoods	M = Mpl, Bch, Brch	R = Red Pine	X = Non Stocked	4 = Pole Timber Poor	9 = Saw Timber Well
F = Spruce Fir	MC = Mixed Conifer	S = Black Spruce	Z = Water		
G = Grass	MD = Mixed Deciduous	T = Tamarack			

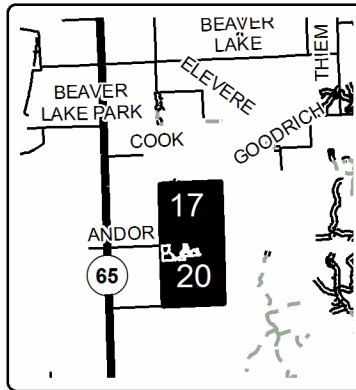
Andor Down Under

Compartment 81

45.3 Acres

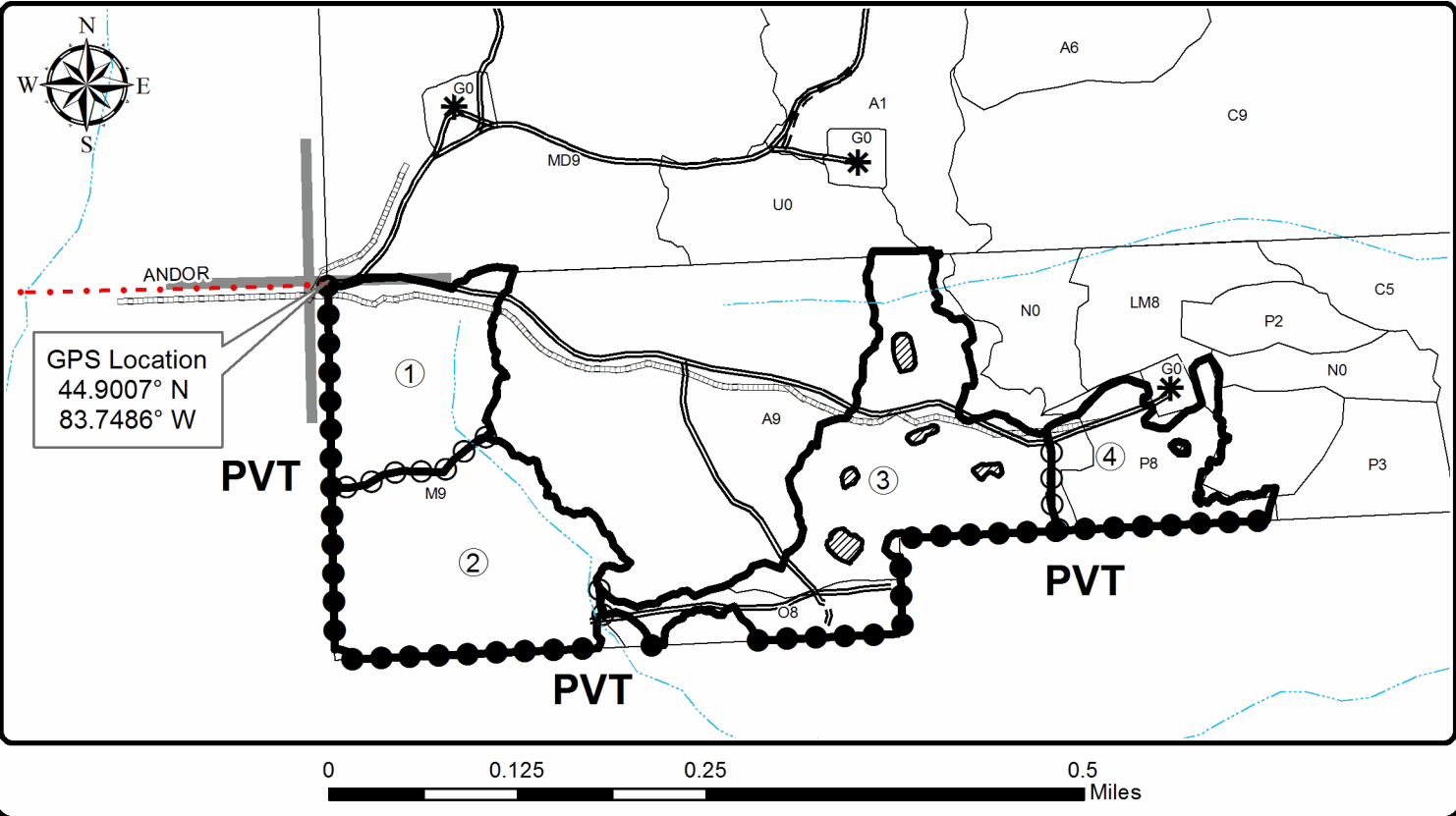
PU	Acres	PU	Acres
1	8.9	3	16.5
2	13.6	4	6.3

Locator Map
1:200,000



Legend

- Against State (Red)
- Payment Unit (Green)
- Private Line (Blue)
- Stand Boundaries
- Retention Area
- Payment Unit
- Well Pad
- DNR - Secondary Forest Road
- DNR - Forest Access Route
- County - Gravel Road
- Intermittent Stream
- Pipeline
- Section Corners



TIMBER SALE INFORMATION

Aspen Cottage (54-016-20)

T30N, R07E, SEC. 11; T30N, R07E, SEC. 14; T30N, R07E, SEC. 15.
Alpena County (Advertised Price \$98,472.50)

SALE NOTE: This sale is off of Dann Road in Alpena County. Some road work may be required as this is a somewhat wet area.

A timber sale contract for this lump sum, sealed bid timber sale will be awarded to the responsible bidder offering the highest sealed bid price. All units of volume listed below were estimated using the T-Sale computer program and our traditional volume equations. Bids must be at or above the following advertised price for each product and species:

<u>PRODUCTS & SPECIES</u>	<u>ESTIMATED UNITS*</u>	<u>ADVERTISED PRICE</u>
Sawtimber		
Mixed Aspen	156.3 MBF	\$ 105.00 / MBF
Red Maple	90.1 MBF	\$ 52.00 / MBF
Pulpwood		
Balsam Fir	697 Cords	\$ 16.35 / Cord
Bl/R/Hybrid Oak	16 Cords	\$ 37.50 / Cord
Mixed Aspen	1,835 Cords	\$ 26.65 / Cord
Mixed Hardwood	677 Cords	\$ 22.30 / Cord
Red Pine	13 Cords	\$ 26.70 / Cord
White Pine	34 Cords	\$ 12.75 / Cord
White Spruce	81 Cords	\$ 7.40 / Cord

* The estimated units are final and not subject to adjustment. Prospective bidders are urged to examine this timber and to make their own estimates of quantity and quality.

BOND AND PAYMENT SCHEDULE:

- A bond in the amount of \$4,924.00 to insure faithful performance of the conditions of the contract will be deposited by the successful bidder within 21 days of the sale award.
- Cutting in any sale or unit without the required advance payment would be considered a trespass.
- Total payment must be paid in advance or according to the following schedule :
 - Ten percent (10%) of the sale value must be paid within 21 days of the sale award.
 - The 10% down payment will be credited towards the first unit cut.
 - Payment for each of the following units must be made before cutting begins in that unit:

PAYMENT UNIT NUMBER	PERCENT OF TOTAL SALE VALUE
01	30.0%
02	1.4%
03	32.7%
04	35.9%
- If no cutting takes place, the 10% down payment will not be refunded.
- Operations on the contract issued will terminate on 06/30/2026.

SALE STATISTICS

SALE VOLUMES

VOLUME		STATISTICAL RANGE IN CORDS		
TOTAL CUBIC FEET	TOTAL CORDS	PERCENT ERROR	MINIMUM	MAXIMUM
303,637	3,844	8.37%	3,522	4,165

VDU VOLUMES

A VDU is a Volume Determination Unit. Volumes and their associated statistics are calculated at the VDU level and summarized to the sale level. There is often a one to one relationship between a VDU and a Payment Unit, but not always, depending on the cruise design. Refer to the VDU TO PAYMENT UNIT table.

VDU	VOLUME		PERCENT ERROR	RANGE IN CORDS	
	TOTAL CUBIC FEET	TOTAL CORDS		MINIMUM	MAXIMUM
30	13,944	177	44.73%	98	255
61	78,439	993	14.57%	848	1,138
68	205,384	2,600	9.88%	2,343	2,857
102	5,838	74	50.20%	37	111
TOTAL:	303,605	3,843		3,326	4,361

VDU TO PAYMENT UNIT

When a VDU is associated with more than one Payment Unit (PU), the VDU volumes are assigned to the PU based on acres of the VDU within the PU.

VDU	VDU ACRES	PU	PU ACRES
30	9.6	1	9.6
61	48.6	1	48.6
68	100.6	3	48.0
		4	52.6
102	2.6	2	2.6
TOTAL:	161.4		161.4

DESCRIPTION OF TIMBER BY PAYMENT UNIT (PU)

PU	MARKET GROUP	PRODUCT	QUANTITY	UNIT	ACRES	ADVERTISE PRICE			
1	Mixed Aspen	Sawtimber	43.8	MBF	58.2	\$29,588.55			
	<i>B. T. Aspen</i>		1.3	<i>MBF</i>					
	<i>Balsam Poplar</i>		1.8	<i>MBF</i>					
	<i>Quaking Aspen</i>		40.7	<i>MBF</i>					
	Red Maple		46.8	MBF					
	Balsam Fir	Pulpwood	179	Cords					
	<i>Balsam Fir</i>	<i>Sawtimber</i>	5.0	<i>MBF</i>					
	<i>Balsam Fir</i>	<i>Pulpwood</i>	169	<i>Cords</i>					
	BI/R/Hybrid Oak		16	Cords					
	Mixed Aspen		484	Cords					
	<i>B. T. Aspen</i>		30	<i>Cords</i>					
	<i>Balsam Poplar</i>		20	<i>Cords</i>					
	<i>Quaking Aspen</i>		434	<i>Cords</i>					
	Mixed Hardwood		257	Cords					
	<i>Paper Birch</i>	<i>Sawtimber</i>	1.4	<i>MBF</i>					
	<i>Paper Birch</i>	<i>Pulpwood</i>	16	<i>Cords</i>					
	<i>Red Elm</i>		2	<i>Cords</i>					
	<i>Red Maple</i>		236	<i>Cords</i>					
	White Spruce		54	Cords					
	<i>White Spruce</i>	<i>Sawtimber</i>	6.1	<i>MBF</i>					
	<i>White Spruce</i>	<i>Pulpwood</i>	42	<i>Cords</i>					
	2	Red Maple	Sawtimber	1.8			MBF	2.6	\$1,385.60
		Balsam Fir	Pulpwood	4			Cords		
<i>Balsam Fir</i>			4	<i>Cords</i>					
Mixed Hardwood			20	Cords					
<i>Red Maple</i>			20	<i>Cords</i>					
Red Pine			13	Cords					
<i>Red Pine</i>		<i>Sawtimber</i>	5.0	<i>MBF</i>					
<i>Red Pine</i>		<i>Pulpwood</i>	3	<i>Cords</i>					
White Pine			34	Cords					
<i>White Pine</i>		<i>Sawtimber</i>	5.1	<i>MBF</i>					
<i>White Pine</i>	<i>Pulpwood</i>	24	<i>Cords</i>						
3	Mixed Aspen	Sawtimber	53.7	MBF	48.0	\$32,169.65			
	<i>B. T. Aspen</i>		25.0	<i>MBF</i>					
	<i>Quaking Aspen</i>		28.7	<i>MBF</i>					
	Red Maple		19.8	MBF					
	Balsam Fir	Pulpwood	245	Cords					
	<i>Balsam Fir</i>	<i>Sawtimber</i>	0.7	<i>MBF</i>					
	<i>Balsam Fir</i>	<i>Pulpwood</i>	244	<i>Cords</i>					
	Mixed Aspen		644	Cords					
	<i>B. T. Aspen</i>		149	<i>Cords</i>					
	<i>Balsam Poplar</i>		25	<i>Cords</i>					
	<i>Quaking Aspen</i>		470	<i>Cords</i>					
	Mixed Hardwood		190	Cords					
	<i>American Elm</i>		7	<i>Cords</i>					
	<i>Black Ash</i>		1	<i>Cords</i>					
	<i>Paper Birch</i>		1	<i>Cords</i>					
	<i>Red Maple</i>		181	<i>Cords</i>					
	White Spruce		13	Cords					
	<i>White Spruce</i>	<i>Sawtimber</i>	2.3	<i>MBF</i>					
	<i>White Spruce</i>	<i>Pulpwood</i>	8	<i>Cords</i>					
	4	Mixed Aspen	Sawtimber	58.8			MBF	52.6	\$35,312.35
<i>B. T. Aspen</i>			27.3	<i>MBF</i>					
<i>Quaking Aspen</i>			31.5	<i>MBF</i>					
Red Maple			21.7	MBF					
Balsam Fir		Pulpwood	268	Cords					

DESCRIPTION OF TIMBER BY PAYMENT UNIT (PU), CON'T

PU	MARKET GROUP	PRODUCT	QUANTITY	UNIT	ACRES	ADVERTISE PRICE
4 con't	<i>Balsam Fir</i>	<i>Sawtimber</i>	0.7	<i>MBF</i>		
	<i>Balsam Fir</i>	<i>Pulpwood</i>	267	<i>Cords</i>		
	Mixed Aspen		707	<i>Cords</i>		
	<i>B. T. Aspen</i>		163	<i>Cords</i>		
	<i>Balsam Poplar</i>		28	<i>Cords</i>		
	<i>Quaking Aspen</i>		516	<i>Cords</i>		
	Mixed Hardwood		210	<i>Cords</i>		
	<i>American Elm</i>		8	<i>Cords</i>		
	<i>Black Ash</i>		2	<i>Cords</i>		
	<i>Paper Birch</i>		2	<i>Cords</i>		
	<i>Red Maple</i>		198	<i>Cords</i>		
	White Spruce		14	<i>Cords</i>		
	<i>White Spruce</i>	<i>Sawtimber</i>	2.6	<i>MBF</i>		
	<i>White Spruce</i>	<i>Pulpwood</i>	9	<i>Cords</i>		
	TOTAL:			246.4	MBF	
TOTAL:			3,352	Cords		

Sale Specific Conditions & Requirements

Sale Name: Aspen Cottage

Sale Number: 54-016-20 Seq#: 3

1 - Sale Area

1.2 - Boundaries

1.2.1 - Painted boundaries (9/19)

The sale boundary and Payment Unit boundaries are marked and identified by red, blue, green, and yellow paint. Exterior sale boundary lines against state are marked with red paint. Exterior sale boundary lines against private property are marked with blue paint. Interior Payment Unit boundaries are marked with yellow paint. Interior retention pockets are marked with green paint; no harvesting activities may occur within these areas. The painted boundary line trees are not included timber and are to be protected unless marked with orange paint. Yellow painted trees designating an interior Payment Unit boundary are only to be cut when all surrounding Payment Units have been paid.

2 - Timber Specifications

2.1 - Included Timber

2.1.2 - Clearcut unit(s) w/o unmerchantable trees (8/11)

Within Payment Unit(s) 1, 3 & 4, cut all trees which meet minimum piece specifications in 2.2 Utilization, except do not cut cedar, hemlock, or green painted trees.

2.1.3 - Cut tree marked unit(s) (12/08)

Within Payment Unit(s) 2, red oak and pine trees are designated for cutting when marked with yellow paint above and below stump height, regardless of merchantability. In addition, cut all other trees that are four (4) inches or more at DBH, except do not cut green painted trees.

3 - Payments

3.3 - Pre-measured Sales

3.3.4 - Dividing payment units (7/14)

Payment Unit(s) 1, 3, & 4 may be divided at the request of the Purchaser and upon approval of the Unit Manager. Dividing Payment Units is a contract modification which requires a Timber Sale Contract Amendment. There will be only one division per Payment Unit.

3.4 - Damaged Timber

3.4.1 - Damaged timber (7/16)

General Condition and Requirement 3.4 Damaged Timber, defines liquidated damages for undesignated live merchantable trees which are cut or injured. In addition, extreme care should be taken to avoid damage to tree seedlings and saplings.

4 - Transportation

4.1 - Construction

4.1.3 - Slash and earthen piles (8/04)

Piles or windrows of earth along roads and landings that have been widened or constructed shall be leveled. Slash from road maintenance or construction, including stumps, shall be dispersed throughout the sale.

4.1.5 - Culverts (5/14)

Roads may require the installation of culverts for cross drainage or at natural drainage-ways. If culverts are needed in these locations, their placement will be specified by the sale administrator and they shall be installed prior to hauling. The culverts shall be new, corrugated metal or plastic gauge. Culverts will be a minimum of 12 inches in diameter and 24 feet in length. If culverts are removed, fill shall be removed from wetland soils as specified. Soils shall be maintained and left in a non-erodible condition, with water bars, seed, fertilizer, mulch, and slash installed as directed by the sale administrator and as specified in the BMP manual. Stream crossing permits, if needed, will be obtained by the DNR.

4.1.6 - Road construction (1/09)

Construction of new roads or improvements of existing roads shall be done in such a way as to minimize the environmental

and visual impacts. Merchantable trees shall be cut and utilized unless otherwise directed. Non-merchantable trees shall be severed and laid flat on the ground. Slash shall be scattered, and not left in windrows and kept a minimum of 10 feet back from the road edge. Stumps shall be set upright, not left on edge, and be moved at least 10 feet away from the road edge. Disturbed soil shall be feathered into the woods and not left in berms or windrows.

4.1.7 - Road closure (10/11)

All new roads built into the sale must be blocked to vehicle traffic upon completion of the sale. Overgrown roads that are reopened shall be considered new roads. In general, this will require constructing a four (4') foot high berm of stumps and logs covered with earth. These roads must be rendered impassable to cars and trucks. Contact the sale administrator for specific details of design and placement.

4.2 - Maintenance

4.2.5 - Two wheel drive condition (2/04)

All existing trail roads on and adjacent to the sale area must be passable by two-wheel drive traffic for the duration of the sale.

5 - Operations

5.1 - Notification

5.1.1 - Pre-sale conference (10/16)

A pre-sale conference on site between the Purchaser and sale administrator is required prior to beginning any operations to determine landing and road locations. The Unit Manager or his/her representative must be contacted at least 5 days in advance to schedule the conference.

5.1.4 - Post-sale conference (10/16)

A post-sale conference on site between the Purchaser and sale administrator is required 5 days prior to the completion of active logging operations to determine clean-up and repair of landings, road edges, and the fulfillment of other contract specifications.

5.2 - Conduct of Operations

5.2.2 - Hazard Trees/Snags

5.2.2.1 - Den trees (10/16)

Obvious hollow and/or den trees shall be protected and left standing unless they are a safety hazard.

5.2.3 - Operating Restrictions

5.2.3.11 - Coppice regeneration protection (4/10)

Timber harvesting in any Payment Unit must be completed before significant tree sprouting occurs in that Payment Unit so as to minimize damage to the new regeneration. Any post harvest operations must be completed before sprouting of regeneration occurs. The Unit Manager or his/her representative may cease such operations if sprouting occurs before the operation is complete.

5.2.4 - Dead and Down Creation

5.2.4.7 - Dead and down creation: hare, grouse, deer and other species (5/15)

To improve horizontal cover habitat for snowshoe hare, grouse, deer, and other species, the Purchaser is to push over one 10 inch DBH or larger tree for every 2 acres throughout the sale. These trees should be tipped over with the root ball still attached so the base of the tree is suspended off the ground. The crown of the fallen tree should be at or near ground level after it is pushed over. If the trees cannot possibly be pushed over the trees may be cut and left with the base still attached or suspended off the ground.

5.2.22 - Operating Caution

5.2.22.1 - Operating caution (6/11)

It is recommended, but not required, that within Payment Unit(s) 1-4, cutting, skidding, and hauling do not occur during the period of March 15 to June 30. The reason for the recommendation is to protect sensitive soils.

5.2.32 - Decking/landing restoration (9/13)

All decking and landing areas must have the surface area restored to a condition equal to or better than before. This is to ensure the proper regeneration of the stand. Wood debris, chips and "cookies" from trimmings must be removed or scattered away from landing and loading areas and may not be windrowed on the edge.

5.2.38 - No decking against live trees (2/04)

Cut products may not be decked against unmarked or designated leave trees.

5.4 - Soil Protection

5.4.1 - Rutting restriction, general (7/16)

Operations are to cease immediately if equipment and weather conditions result in rutting of roads and/or skid trails which is 12 inches or greater in depth and 50 feet in length. The Unit Manager or his/her representative may restrict hauling and/or skidding if ruts exceed the specified depth. With the Unit Manager or his/her representative's approval, the Purchaser may return to the area when the risk of rutting has decreased.

5.4.6 - Wet area protection (5/10)

No harvesting operations, including skidding and felling, are to take place within areas over 50 ft wide with significantly ponded water. All equipment should be kept out of these areas. Within 100 feet of these areas, equipment should only be used when the soil is in a dry or frozen condition. Care must be taken by the Purchaser to identify and avoid operating in these areas of the timber sale.

5.8 - Protection of Endangered Species

5.8.5 - Protection of raptor nests (3/13)

All trees with raptor nests will be protected if found during harvesting operations. Notification will be made to the Unit Manager or his/her representative who will notify the Wildlife Biologist so an on-site evaluation and recommendation can be made, if necessary.



TIMBER SALE MAP

This information provided by authority of Part 525, 1994 PA 451, as amended.

Sale Number	Year
54-016	2020

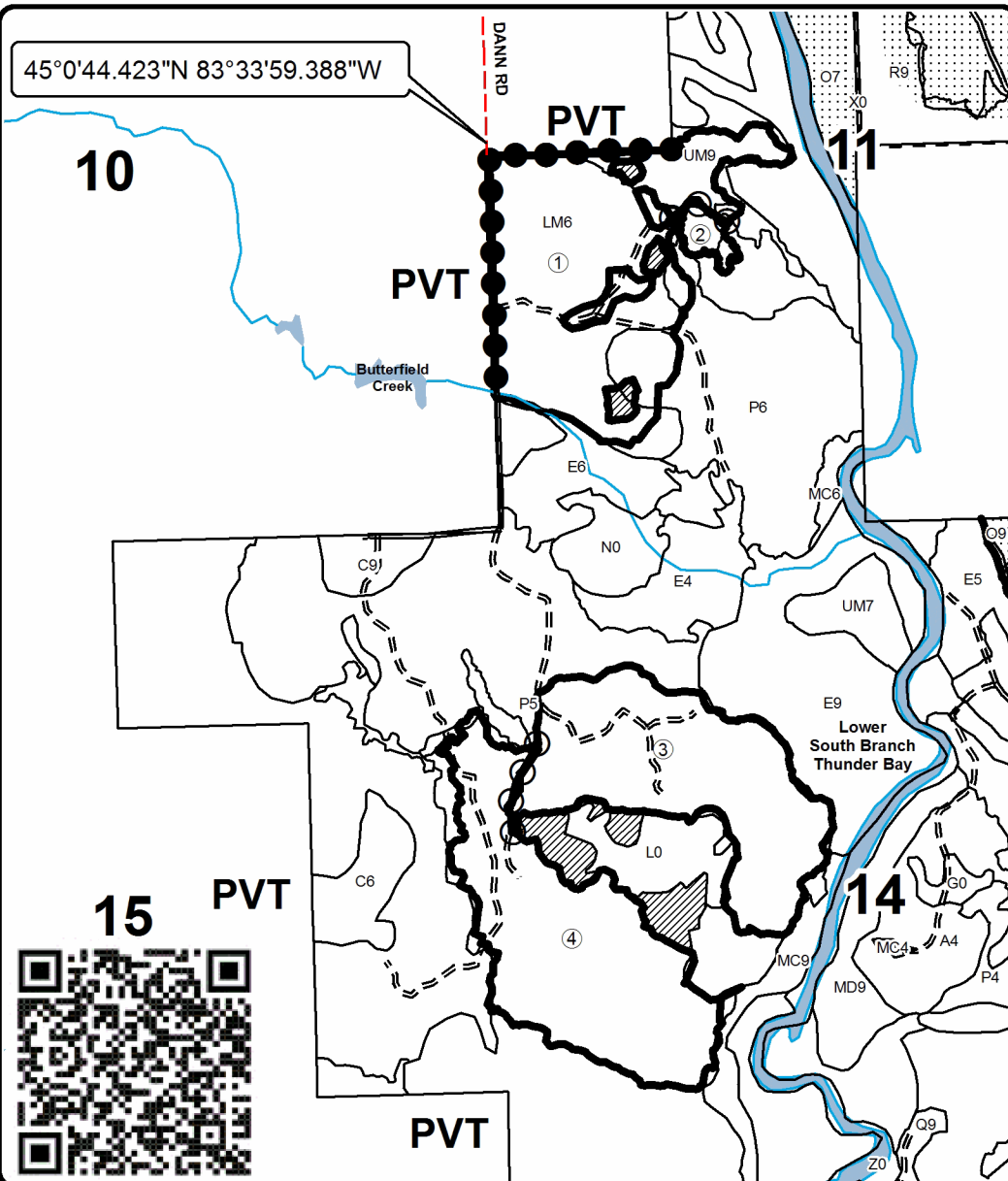
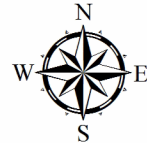
Forest Management Unit Atlanta	County Alpena	Mapped By Doug Tyran	Date 09/28/2020	Page 1	of 1
Township 30N	Range 07E	Section(s) and Subdivision(s) 11: SENW, SW; 14: NW, N1/2SW; 15: E1/2NE, NESE	Scale 1:15,840		

Cover Type				Density			
A = Aspen	H = Hemlock	N = Marsh	U = Upland Brush	0 = Non Stocked	5 = Pole Timber Medium		
B = Paper Birch	J = Jack Pine	O = Oak	UM = Upland Mixed	1 = Seedling Sapling Poor	6 = Pole Timber Well		
C = Cedar	L = Lowland Brush	P = Lowland Poplar	V = Bog or Marsh	2 = Seedling Sapling Medium	7 = Saw Timber Poor		
D = Treed Bog	LM = Lowland Mixed	Q = Mixed Swamp Conifer	W = White Pine	3 = Seedling Sapling Well	8 = Saw Timber Medium		
E = Swamp Hdwoods	M = Mpl, Bch, Brch	R = Red Pine	X = Non Stocked	4 = Pole Timber Poor	9 = Saw Timber Well		
F = Spruce Fir	MC = Mixed Conifer	S = Black Spruce	Z = Water				
G = Grass	MD = Mixed Deciduous	T = Tamarack					

PU	Acres	PU	Acres
1	58.2	3	48.0
2	2.6	4	52.6

Aspen Cottage

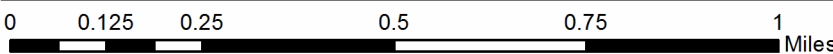
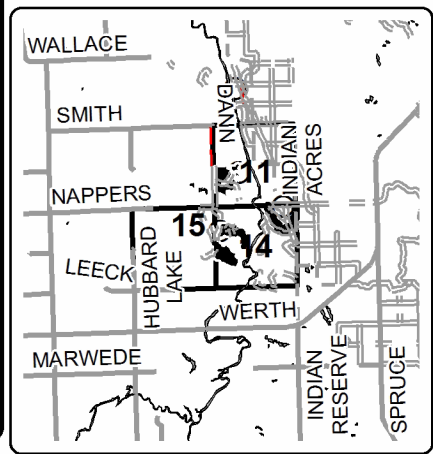
Compartment 88
161.4 Acres



Legend

- Against State (Red)
- Payment Unit (Yellow)
- Private Line (Blue)
- Retention Area
- Nearby Timber Sales
- Stand Boundaries
- Lakes and Rivers
- Primary Forest Road
- Secondary Forest Road
- Forest Access Route
- Paved Road
- Gravel Road
- County Road - Seasonal
- Private Road
- Payment Unit Label

Locator Map 1:150,000



TIMBER SALE INFORMATION

Raspberry Red Pine (54-028-20)
T29N, R09E, SEC. 19.
Alpena County (Advertised Price \$11,108.80)

A timber sale contract for this lump sum, sealed bid timber sale will be awarded to the responsible bidder offering the highest sealed bid price. All units of volume listed below were estimated using the T-Sale computer program and our traditional volume equations. Bids must be at or above the following advertised price for each product and species:

<u>PRODUCTS & SPECIES</u>	<u>ESTIMATED UNITS*</u>	<u>ADVERTISED PRICE</u>
Sawtimber		
Red Pine	95.0 MBF	\$ 70.00 / MBF
Pulpwood		
Balsam Fir	5 Cords	\$ 16.35 / Cord
Jack Pine	5 Cords	\$ 11.05 / Cord
Red Pine	159 Cords	\$ 26.70 / Cord
White Pine	6 Cords	\$ 12.75 / Cord

* The total volume is statistically estimated within plus (+) or minus (-) 25.47 percent. There are an estimated 366 cords on this timber sale, plus or minus 93 cords at the 95% confidence level. The estimated units are final and not subject to adjustment. Prospective bidders are urged to examine this timber and to make their own estimates of quantity and quality.

BOND AND PAYMENT SCHEDULE:

1. A bond in the amount of \$555.00 to insure faithful performance of the conditions of the contract will be deposited by the successful bidder within 21 days of the sale award.
2. Cutting in any sale or unit without the required advance payment would be considered a trespass.
3. Total payment must be paid in advance or according to the following schedule :
 - (a) Ten percent (10%) of the sale value must be paid within 21 days of the sale award.
 - (b) The remainder is due before cutting begins.
 - (c) Payment for each of the following units must be made before cutting begins in that unit:

PAYMENT UNIT NUMBER	PERCENT OF TOTAL SALE VALUE
01	100.0%
4. If no cutting takes place, the 10% down payment will not be refunded.
5. Operations on the contract issued will terminate on 06/30/2024.

SALE STATISTICS

SALE VOLUMES

VOLUME		STATISTICAL RANGE IN CORDS		
TOTAL CUBIC FEET	TOTAL CORDS	PERCENT ERROR	MINIMUM	MAXIMUM
28,878	366	25.47%	272	459

VDU VOLUMES

A VDU is a Volume Determination Unit. Volumes and their associated statistics are calculated at the VDU level and summarized to the sale level. There is often a one to one relationship between a VDU and a Payment Unit, but not always, depending on the cruise design. Refer to the VDU TO PAYMENT UNIT table.

VDU	VOLUME			RANGE IN CORDS	
	TOTAL CUBIC FEET	TOTAL CORDS	PERCENT ERROR	MINIMUM	MAXIMUM
38	28,875	366	25.47%	272	459
TOTAL:	28,875	366		272	459

VDU TO PAYMENT UNIT

When a VDU is associated with more than one Payment Unit (PU), the VDU volumes are assigned to the PU based on acres of the VDU within the PU.

VDU	VDU ACRES	PU	PU ACRES
38	20.3	1	20.3
TOTAL:	20.3		20.3

DESCRIPTION OF TIMBER BY PAYMENT UNIT (PU)

PU	MARKET GROUP	PRODUCT	QUANTITY	UNIT	ACRES	ADVERTISE PRICE
1	Red Pine	Sawtimber	95.0	MBF	20.3	\$11,108.80
	Balsam Fir	Pulpwood	5	Cords		
	Jack Pine		5	Cords		
	Red Pine		159	Cords		
	White Pine		6	Cords		
	<i>White Pine</i>	<i>Sawtimber</i>	2.0	<i>MBF</i>		
	<i>White Pine</i>	<i>Pulpwood</i>	2	<i>Cords</i>		
TOTAL:			95.0	MBF		
TOTAL:			175	Cords		

Sale Specific Conditions & Requirements

Sale Name: Raspberry Red Pine

Sale Number: 54-028-20 Seq#: 2

1 - Sale Area

1.2 - Boundaries

1.2.1 - Painted boundaries (9/19)

The sale boundary and Payment Unit boundaries are marked and identified by blue and red paint. Exterior sale boundary lines against private property are marked with blue paint. Exterior sale boundary lines against state are marked with red paint. The painted boundary line trees are not Included Timber and are to be protected unless marked with orange paint.

2 - Timber Specifications

2.1 - Included Timber

2.1.3 - Cut tree marked unit(s) (12/08)

Within Payment Unit(s) 1, all trees are designated for cutting when marked with orange paint above and below stump height, regardless of merchantability.

2.2 - Utilization

2.2.6 - Roundwood operation required (5/07)

The skidding of whole trees or tree segments with limbs attached is prohibited. All products must be produced as roundwood and forwarded to existing roads or landing areas in final product length.

3 - Payments

3.3 - Pre-measured Sales

3.3.4 - Dividing payment units (7/14)

Payment Unit(s) greater than \$25,000 in value may be divided at the request of the Purchaser and upon approval of the Unit Manager. Dividing Payment Units is a contract modification which requires a Timber Sale Contract Amendment. There will be only one division per Payment Unit.

3.4 - Damaged Timber

3.4.1 - Damaged timber (7/16)

General Condition and Requirement 3.4 Damaged Timber, defines liquidated damages for undesignated live merchantable trees which are cut or injured.

No damage is acceptable to undesignated live merchantable trees. Within the Sale Area, if more than 5 % of trees (> 4.5" DBH) within a specified area of the sale are damaged, liquidated damages will be assessed for all trees damaged. Rates will be in accordance with General Condition and Requirement 3.4 Damaged Timber.

4 - Transportation

4.1 - Construction

4.1.3 - Slash and earthen piles (8/04)

Piles or windrows of earth along roads and landings that have been widened or constructed shall be leveled. Slash from road maintenance or construction, including stumps, shall be dispersed throughout the sale.

4.1.12 - No new roads (1/12)

No new roads will be permitted. All operations are limited to existing roads. Skid trails only will be allowed.

4.2 - Maintenance

4.2.5 - Two wheel drive condition (2/04)

All existing trail roads on and adjacent to the sale area must be passable by two-wheel drive traffic for the duration of the sale.

5 - Operations

5.1 - Notification

5.1.1 - Pre-sale conference (10/16)

A pre-sale conference on site between the Purchaser and sale administrator is required prior to beginning any operations to determine landing and road locations. The Unit Manager or his/her representative must be contacted at least 10 days in advance to schedule the conference.

5.1.4 - Post-sale conference (10/16)

A post-sale conference on site between the Purchaser and sale administrator is required 5 days prior to the completion of active logging operations to determine clean-up and repair of landings, road edges, and the fulfillment of other contract specifications.

5.2 - Conduct of Operations

5.2.3 - Operating Restrictions

5.2.3.3 - Bark slippage restriction (3/09)

Within Payment Unit(s) 1, unless changed by written agreement, cutting and skidding are not permitted during the period of April 15 to July 15. This restriction is because of bark slippage.

5.2.3.6 - Bark beetle restriction (12/08)

In the event drought creates a high risk of pine bark beetle infestation, pine is not to be cut during the period March 1 through July 1, unless all portions of trees greater than two inches in diameter are removed from the sale area, reduced to chips, or treated to the satisfaction of the Unit Manager or his/her representative, within fifteen days of being severed from the stump. Pine log decks, pulpwood piles and treetops that are piled for chipping in the fall or winter within a 1/4 mile of susceptible sites must be removed before March 15. Residual slash must not be placed in piles or rows and must be spread over the site for quick drying. The Department of Natural Resources will exercise this specification if the risk of damage warrants.

5.2.31 - Landing locations (9/13)

Recommended landing areas are marked on the Timber Sale Map. Landings must be confined to these designated sites unless otherwise authorized by the Unit Manager or his/her representative.

5.2.32 - Decking/landing restoration (9/13)

All decking and landing areas must have the surface area restored to a condition equal to or better than before. This is to ensure the proper regeneration of the stand. Wood debris, chips, and "cookies" from trimmings must be removed or scattered away from landing and loading areas and may not be windrowed on the edge.

5.2.38 - No decking against live trees (2/04)

Cut products may not be decked against unmarked or designated leave trees.

5.4 - Soil Protection

5.4.1 - Rutting restriction, general (7/16)

Operations are to cease immediately if equipment and weather conditions result in rutting of roads and/or skid trails which is 12 inches or greater in depth and 50 feet in length. The Unit Manager or his/her representative may restrict hauling and/or skidding if ruts exceed the specified depth. With the Unit Manager or his/her representative's approval, the Purchaser may return to the area when the risk of rutting has decreased.

5.8 - Protection of Endangered Species

5.8.5 - Protection of raptor nests (3/13)

All trees with raptor nests will be protected if found during harvesting operations. Notification will be made to the Unit Manager or his/her representative who will notify the Wildlife Biologist so an on-site evaluation and recommendation can be made, if necessary.



TIMBER SALE MAP

This information provided by authority of Part 525, 1994 PA 451, as amended.

Forest Management Unit Atlanta	County Alpena	Mapped By Collin Zaremba	Date 07/16/2020	Page 1	of 1
Township 29N		Range 09E		Section(s) and Subdivision(s) Section 19 NWSW	

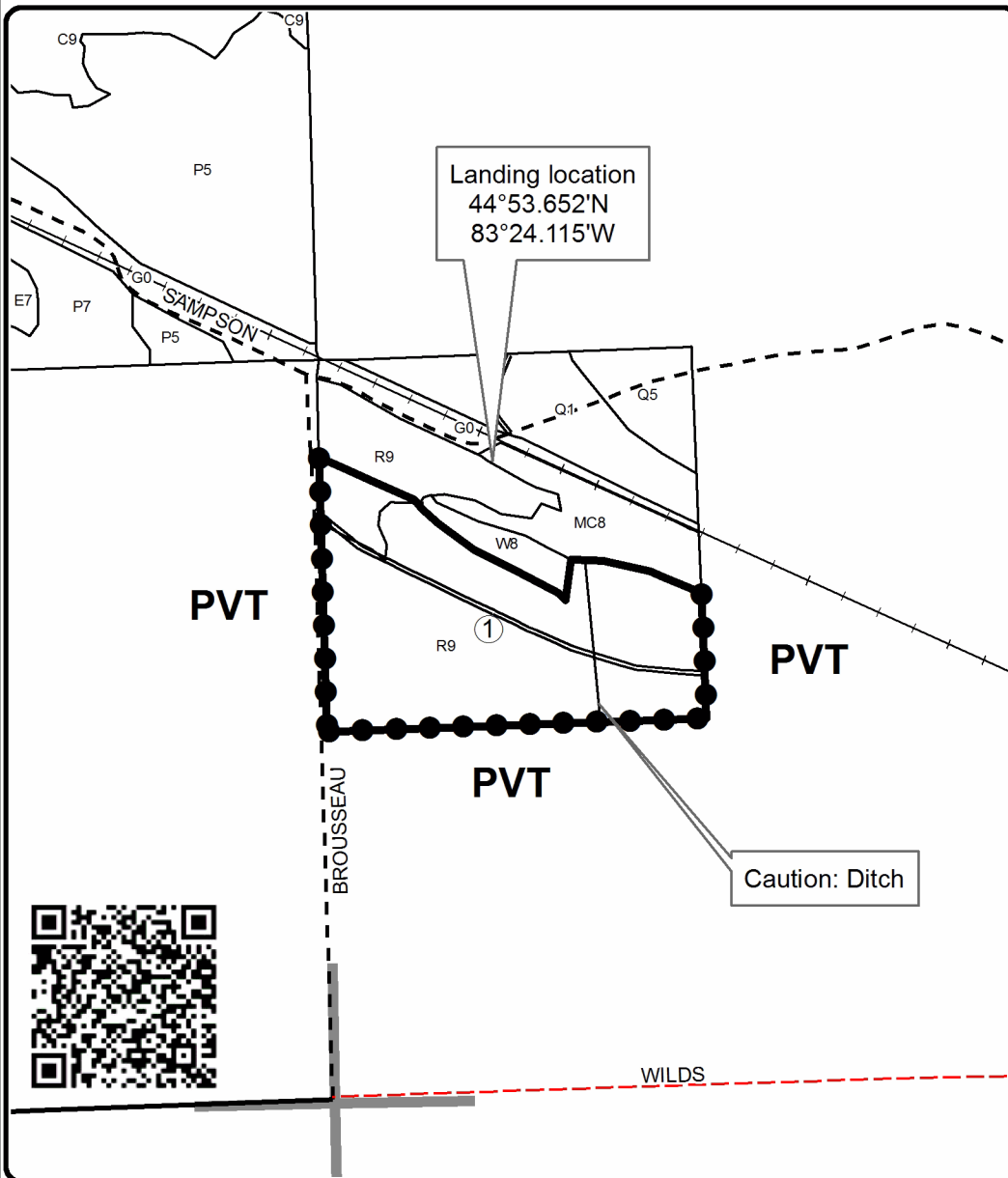
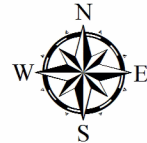
Cruised By Collin Zaremba	Scale 1:7,920
------------------------------	------------------

Cover Type				Density			
A = Aspen	H = Hemlock	N = Marsh	U = Upland Brush	0 = Non Stocked	5 = Pole Timber Medium		
B = Paper Birch	J = Jack Pine	O = Oak	UM = Upland Mixed	1 = Seedling Sapling Poor	6 = Pole Timber Well		
C = Cedar	L = Lowland Brush	P = Lowland Poplar	V = Bog or Marsh	2 = Seedling Sapling Medium	7 = Saw Timber Poor		
D = Treed Bog	LM = Lowland Mixed	Q = Mixed Swamp Conifer	W = White Pine	3 = Seedling Sapling Well	8 = Saw Timber Medium		
E = Swamp Hdwoods	M = Mpl, Bch, Brch	R = Red Pine	X = Non Stocked	4 = Pole Timber Poor	9 = Saw Timber Well		
F = Spruce Fir	MC = Mixed Conifer	S = Black Spruce	Z = Water				
G = Grass	MD = Mixed Deciduous	T = Tamarack					

PU Acres
1 20.3

Raspberry Red Pine

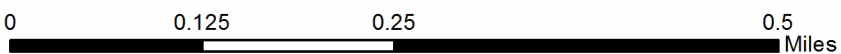
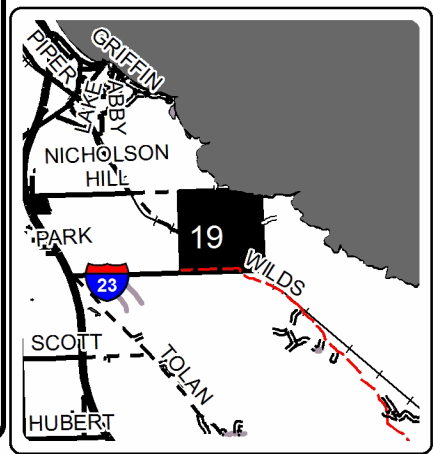
Compartment 84
20.3 Acres



Legend

- Against State (Red)
- Private Line (Blue)
- Stand Boundaries
- Primary Forest Road
- Secondary Forest Road
- == Forest Access Route
- Paved Road
- - Gravel Road
- - - County Road - Seasonal
- Private Road
- Section Corners
- Payment Unit Number

Locator Map
1:150,000



TIMBER SALE INFORMATION

Thick N Thorny Aspen (54-031-20)
T29N, R08E, SEC. 25; T29N, R08E, SEC. 36.
Alpena County (Advertised Price \$27,917.85)

A timber sale contract for this lump sum, sealed bid timber sale will be awarded to the responsible bidder offering the highest sealed bid price. All units of volume listed below were estimated using the T-Sale computer program and our traditional volume equations. Bids must be at or above the following advertised price for each product and species:

<u>PRODUCTS & SPECIES</u>	<u>ESTIMATED UNITS*</u>	<u>ADVERTISED PRICE</u>
Sawtimber		
Mixed Aspen	47.2 MBF	\$ 105.00 / MBF
Red Oak	1.2 MBF	\$ 166.00 / MBF
Sugar Maple	9.1 MBF	\$ 403.00 / MBF
Pulpwood		
Balsam Fir	4 Cords	\$ 16.35 / Cord
Basswood	66 Cords	\$ 7.20 / Cord
Mixed Aspen	559 Cords	\$ 26.65 / Cord
Mixed Hardwood	133 Cords	\$ 22.30 / Cord
Paper Birch	21 Cords	\$ 11.50 / Cord
Red Oak	12 Cords	\$ 37.50 / Cord

* The total volume is statistically estimated within plus (+) or minus (-) 21.19 percent. There are an estimated 888 cords on this timber sale, plus or minus 188 cords at the 95% confidence level. The estimated units are final and not subject to adjustment. Prospective bidders are urged to examine this timber and to make their own estimates of quantity and quality.

BOND AND PAYMENT SCHEDULE:

1. A bond in the amount of \$1,396.00 to insure faithful performance of the conditions of the contract will be deposited by the successful bidder within 21 days of the sale award.
2. Cutting in any sale or unit without the required advance payment would be considered a trespass.
3. Total payment must be paid in advance or according to the following schedule :
 - (a) Ten percent (10%) of the sale value must be paid within 21 days of the sale award.
 - (b) The 10% down payment will be credited towards the first unit cut.
 - (c) Payment for each of the following units must be made before cutting begins in that unit:

PAYMENT UNIT NUMBER	PERCENT OF TOTAL SALE VALUE
01	36.7%
02	23.7%
03	39.6%

4. If no cutting takes place, the 10% down payment will not be refunded.
5. Operations on the contract issued will terminate on 06/30/2024.

SALE STATISTICS

SALE VOLUMES

VOLUME		STATISTICAL RANGE IN CORDS		
TOTAL CUBIC FEET	TOTAL CORDS	PERCENT ERROR	MINIMUM	MAXIMUM
70,183	888	21.19%	700	1,077

VDU VOLUMES

A VDU is a Volume Determination Unit. Volumes and their associated statistics are calculated at the VDU level and summarized to the sale level. There is often a one to one relationship between a VDU and a Payment Unit, but not always, depending on the cruise design. Refer to the VDU TO PAYMENT UNIT table.

VDU	VOLUME		PERCENT ERROR	RANGE IN CORDS	
	TOTAL CUBIC FEET	TOTAL CORDS		MINIMUM	MAXIMUM
60	43,205	547	26.61%	401	692
65	26,994	342	29.36%	241	442
TOTAL:	70,199	889		643	1,134

VDU TO PAYMENT UNIT

When a VDU is associated with more than one Payment Unit (PU), the VDU volumes are assigned to the PU based on acres of the VDU within the PU.

VDU	VDU ACRES	PU	PU ACRES
60	26.3	1	16.0
		2	10.3
65	10.2	3	10.2
TOTAL:	36.5		36.5

DESCRIPTION OF TIMBER BY PAYMENT UNIT (PU)

PU	MARKET GROUP	PRODUCT	QUANTITY	UNIT	ACRES	ADVERTISE PRICE
1	Mixed Aspen	Sawtimber	15.9	MBF	16.0	\$10,247.85
	<i>B. T. Aspen</i>		6.3	<i>MBF</i>		
	<i>Quaking Aspen</i>		9.6	<i>MBF</i>		
	Red Oak		0.7	MBF		
	Sugar Maple		2.5	MBF		
	Balsam Fir	Pulpwood	2	Cords		
	Basswood		11	Cords		
	<i>Basswood</i>	<i>Sawtimber</i>	0.9	<i>MBF</i>		
	<i>Basswood</i>	<i>Pulpwood</i>	9	<i>Cords</i>		
	Mixed Aspen		223	Cords		
	<i>B. T. Aspen</i>		58	<i>Cords</i>		
	<i>Quaking Aspen</i>		165	<i>Cords</i>		
	Mixed Hardwood		51	Cords		
	<i>Red Maple</i>	<i>Sawtimber</i>	1.2	<i>MBF</i>		
	<i>Black Cherry</i>	<i>Pulpwood</i>	7	<i>Cords</i>		
	<i>Ironwood</i>		1	<i>Cords</i>		
	<i>Paper Birch</i>		9	<i>Cords</i>		
	<i>Red Maple</i>		23	<i>Cords</i>		
	<i>Sugar Maple</i>		7	<i>Cords</i>		
	<i>White Ash</i>		2	<i>Cords</i>		
Red Oak		7	Cords			
2	Mixed Aspen	Sawtimber	10.2	MBF	10.3	\$6,616.25
	<i>B. T. Aspen</i>		4.1	<i>MBF</i>		
	<i>Quaking Aspen</i>		6.1	<i>MBF</i>		
	Red Oak		0.5	MBF		
	Sugar Maple		1.6	MBF		
	Balsam Fir	Pulpwood	2	Cords		
	Basswood		7	Cords		
	<i>Basswood</i>	<i>Sawtimber</i>	0.5	<i>MBF</i>		
	<i>Basswood</i>	<i>Pulpwood</i>	6	<i>Cords</i>		
	Mixed Aspen		143	Cords		
	<i>B. T. Aspen</i>		37	<i>Cords</i>		
	<i>Quaking Aspen</i>		106	<i>Cords</i>		
	Mixed Hardwood		33	Cords		
	<i>Red Maple</i>	<i>Sawtimber</i>	0.7	<i>MBF</i>		
	<i>Black Cherry</i>	<i>Pulpwood</i>	4	<i>Cords</i>		
	<i>Ironwood</i>		1	<i>Cords</i>		
	<i>Paper Birch</i>		6	<i>Cords</i>		
	<i>Red Maple</i>		15	<i>Cords</i>		
	<i>Sugar Maple</i>		5	<i>Cords</i>		
	<i>White Ash</i>		1	<i>Cords</i>		
Red Oak		5	Cords			
3	Mixed Aspen	Sawtimber	21.1	MBF	10.2	\$10,789.95
	<i>B. T. Aspen</i>		16.6	<i>MBF</i>		
	<i>Quaking Aspen</i>		4.5	<i>MBF</i>		
	Sugar Maple		5.0	MBF		
	Basswood	Pulpwood	48	Cords		
	<i>Basswood</i>	<i>Sawtimber</i>	1.8	<i>MBF</i>		
	<i>Basswood</i>	<i>Pulpwood</i>	44	<i>Cords</i>		
	Mixed Aspen		193	Cords		
	<i>B. T. Aspen</i>		126	<i>Cords</i>		
	<i>Quaking Aspen</i>		67	<i>Cords</i>		
	Mixed Hardwood		48	Cords		
	<i>Paper Birch</i>	<i>Sawtimber</i>	0.9	<i>MBF</i>		
	<i>Red Maple</i>		0.9	<i>MBF</i>		
	<i>Ironwood</i>	<i>Pulpwood</i>	4	<i>Cords</i>		

DESCRIPTION OF TIMBER BY PAYMENT UNIT (PU), CON'T

PU	MARKET GROUP	PRODUCT	QUANTITY	UNIT	ACRES	ADVERTISE PRICE
3 con't	<i>Paper Birch</i>	<i>Pulpwood</i>	4	<i>Cords</i>		
	<i>Red Maple</i>		19	<i>Cords</i>		
	<i>Sugar Maple</i>		17	<i>Cords</i>		
TOTAL:			57.5	MBF		
TOTAL:			773	Cords		

Sale Specific Conditions & Requirements

Sale Name: Thick N Thorny Aspen

Sale Number: 54-031-20 Seq#: 2

1 - Sale Area

1.2 - Boundaries

1.2.1 - Painted boundaries (9/19)

The sale boundary and Payment Unit boundaries are marked and identified by red and yellow paint. Exterior sale boundary lines against state are marked with red paint. Interior Payment Unit boundaries are marked with yellow paint. Retention patches are marked with red paint; no harvesting activities may occur within these areas. The painted boundary line trees are not Included Timber and are to be protected. Yellow painted trees designating an interior Payment Unit boundary are only to be cut when all surrounding Payment Units have been paid.

2 - Timber Specifications

2.1 - Included Timber

2.1.1 - Clearcut unit(s) with unmerchantable trees (6/14)

Within Payment Unit(s) 1-3, cut all trees that are two (2) inches or more at DBH, except do not cut any cedar.

3 - Payments

3.4 - Damaged Timber

3.4.1 - Damaged timber (7/16)

General Condition and Requirement 3.4 Damaged Timber, defines liquidated damages for undesignated live merchantable trees which are cut or injured.

No damage is acceptable to undesignated live merchantable trees. Within the Sale Area, if more than 5% of trees (> 4.5" DBH) within a specified area of the sale are damaged, liquidated damages will be assessed for all trees damaged. Rates will be in accordance with General Condition and Requirement 3.4 Damaged Timber.

4 - Transportation

4.1 - Construction

4.1.3 - Slash and earthen piles (8/04)

Piles or windrows of earth along roads and landings that have been widened or constructed shall be leveled. Slash from road maintenance or construction, including stumps, shall be dispersed throughout the sale.

4.1.6 - Road construction (1/09)

Construction of new roads or improvements of existing roads shall be done in such a way as to minimize the environmental and visual impacts. Merchantable trees shall be cut and utilized unless otherwise directed. Non-merchantable trees shall be severed and laid flat on the ground. Slash shall be scattered, and not left in windrows and kept a minimum of 10 feet back from the road edge. Stumps shall be set upright, not left on edge, and be moved at least 10 feet away from the road edge. Disturbed soil shall be feathered into the woods and not left in berms or windrows.

4.1.7 - Road closure (10/11)

All new roads built into the sale must be blocked to vehicle traffic upon completion of the sale. Overgrown roads that are reopened shall be considered new roads. One road will require limestone blocks to be placed at the entrance of the road. These roads must be rendered impassable to cars and trucks. Contact the sale administrator for specific details of design and placement.

4.2 - Maintenance

4.2.5 - Two wheel drive condition (2/04)

All existing trail roads on and adjacent to the sale area must be passable by two-wheel drive traffic for the duration of the sale.

5 - Operations

5.1 - Notification

5.1.1 - Pre-sale conference (10/16)

A pre-sale conference on site between the Purchaser and sale administrator is required prior to beginning any operations to determine landing and road locations. The Unit Manager or his/her representative must be contacted at least 10 days in advance to schedule the conference.

5.1.4 - Post-sale conference (10/16)

A post-sale conference on site between the Purchaser and sale administrator is required 5 days prior to the completion of active logging operations to determine clean-up and repair of landings, road edges, and the fulfillment of other contract specifications.

5.2 - Conduct of Operations

5.2.2 - Hazard Trees/Snags

5.2.2.1 - Den trees (10/16)

Obvious hollow and/or den trees shall be protected and left standing unless they are a safety hazard.

5.2.3 - Operating Restrictions

5.2.3.11 - Coppice regeneration protection (4/10)

Timber harvesting in any Payment Unit must be completed before significant deciduous sprouting occurs in that Payment Unit to minimize damage to the new regeneration. Any post-harvest operations, such as chipping, must be completed within 30 days of severing cut stems. If it is anticipated that chipping will be delayed, then tops shall be carried to one central location or left unchipped. The Unit Manager or his/her representative may cease such operations if sprouting occurs before the operation is complete.

5.2.4 - Dead and Down Creation

5.2.4.6 - Dead and down creation, other (9/09)

To encourage cottontail rabbit populations, the Purchaser is to create one brush pile throughout the sale for every 2 acres. Each brush pile should be constructed from 6 treetops. Brush piles should be spread-out evenly throughout the sale.

5.2.4.7 - Dead and down creation: hare, grouse, deer and other species (5/15)

To improve horizontal cover habitat for snowshoe hare, grouse, deer, and other species, the Purchaser is to push over one 12-inch DBH or larger tree for every 2 acres. These trees should be tipped over with the root ball still attached so the base of the tree is suspended off the ground. The crown of the fallen tree should be at or near ground level after it is pushed over. If the tree cannot be pushed it may be hinge cut so that the base of the tree is still suspended off the ground.

5.2.17 - Timber Mats and Interlocking Composite Mats (3/18)

The road leading into Payment Units 1 and 2 will require extra protection such as that afforded by timber mats, interlocking composite mats, or another approved system. If available, mats may be borrowed from the DNR. A Timber Sale Contract Supplement will be used to document the Purchaser's use of the DNR's mats. Contact the sale administrator regarding availability and pick-up. Timber mats are available from various field offices. Composite mats are only available from the Grayling field office. The Purchaser is responsible for picking up and hauling the mats to and from the site. The composite mats will require DNR staff onsite for installation and removal. Contact the sale administrator to schedule at least 30 days before desired install/removal date. All mats must be cleaned prior to drop off. This may include, but is not limited to, power washing and brushing to remove mud and debris. A charge of \$400.00 per timber mat and \$2,000.00 per composite mat will be assessed for all damaged or non-returned mats. Damage for the crane/timber mats is defined as three or more broken cants. Damage for the composite mats is defined as cracked or broken mats.

5.2.32 - Decking/landing restoration (9/13)

All decking and landing areas must have the surface area restored to a condition equal to or better than before. This is to ensure the proper regeneration of the stand. Wood debris, chips, and "cookies" from trimmings must be removed or scattered away from landing and loading areas and may not be windrowed on the edge.

5.2.38 - No decking against live trees (2/04)

Cut products may not be decked against unmarked or designated leave trees.

5.4 - Soil Protection

5.4.1 - Rutting restriction, general (7/16)

Operations are to cease immediately if equipment and weather conditions result in rutting of roads and/or skid trails greater than 12 inches or greater in depth and 50 feet in length. The Unit Manager or his/her representative may restrict hauling and/or skidding if ruts exceed the specified depth. With the Unit Manager or his/her representative's approval, the Purchaser may return to the area when the risk of rutting has decreased.

5.8 - Protection of Endangered Species

5.8.5 - Protection of raptor nests (3/13)

All trees with raptor nests will be protected if found during harvesting operations. Notification will be made to the Unit Manager or his/her representative who will notify the Wildlife Biologist so an on-site evaluation and recommendation can be made, if necessary.



TIMBER SALE MAP

This information provided by authority of Part 525, 1994 PA 451, as amended.

Sale Number	Year
54 - 031	20

Forest Management Unit Atlanta	County Alpena	Mapped By Collin Zaremba	Date 08/12/2020	Page 1	of 1
Township 29N		Range 08E		Section(s) and Subdivision(s) Sec 25: SESW; Sec 36: NENW,NE	

Scale	1:15,840
-------	----------

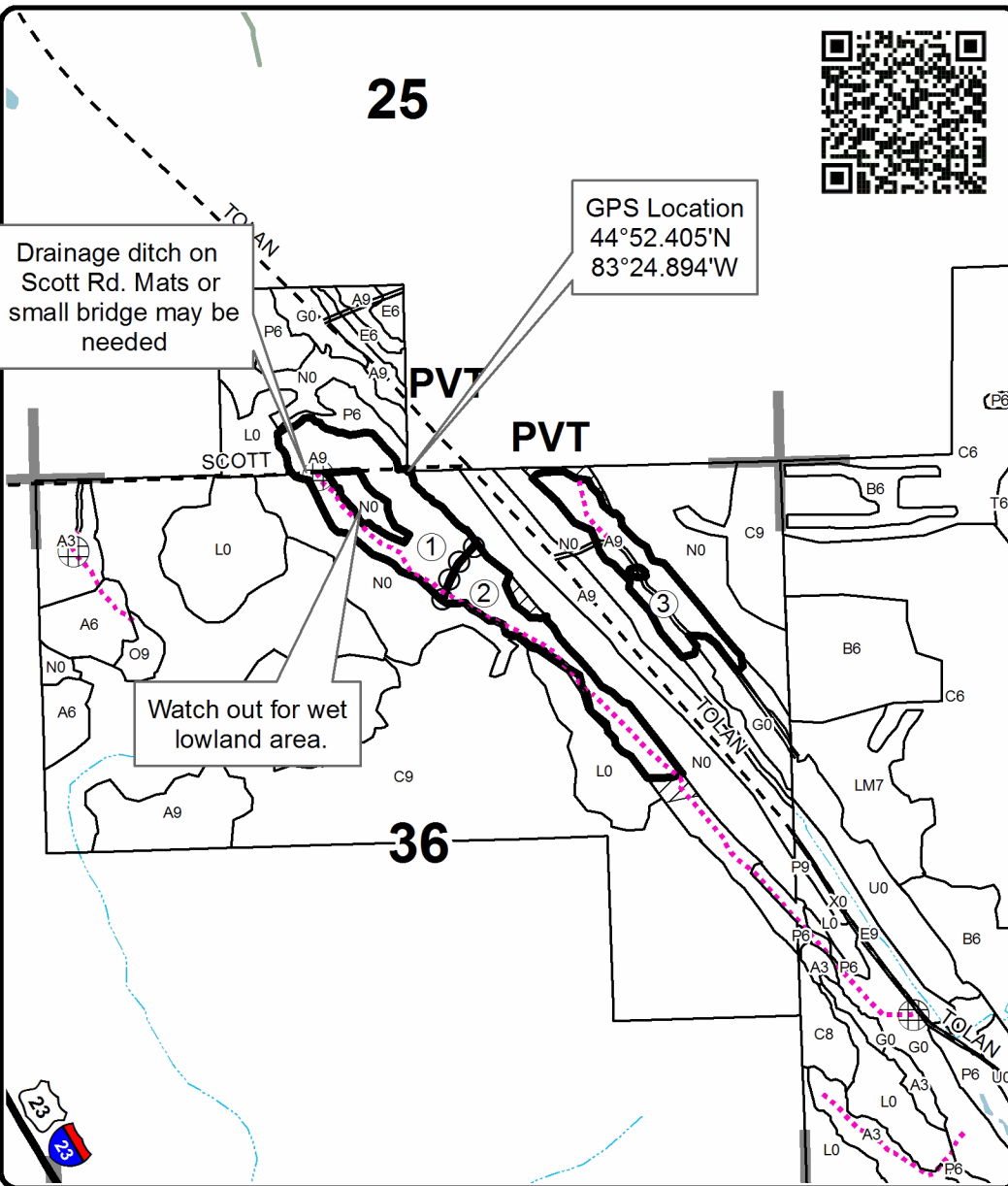
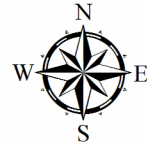
Cover Type				Density			
A = Aspen	H = Hemlock	N = Marsh	U = Upland Brush	0 = Non Stocked	5 = Pole Timber Medium		
B = Paper Birch	J = Jack Pine	O = Oak	UM = Upland Mixed	1 = Seedling Sapling Poor	6 = Pole Timber Well		
C = Cedar	L = Lowland Brush	P = Lowland Poplar	V = Bog or Marsh	2 = Seedling Sapling Medium	7 = Saw Timber Poor		
D = Treed Bog	LM = Lowland Mixed	Q = Mixed Swamp Conifer	W = White Pine	3 = Seedling Sapling Well	8 = Saw Timber Medium		
E = Swamp Hdwoods	M = Mpl, Bch, Brch	R = Red Pine	X = Non Stocked	4 = Pole Timber Poor	9 = Saw Timber Well		
F = Spruce Fir	MC = Mixed Conifer	S = Black Spruce	Z = Water				
G = Grass	MD = Mixed Deciduous	T = Tamarack					

PU	Acres
1	16
2	10.3
3	10.2

Thick N Thorny Aspen

Compartment 84

36.5 Acres

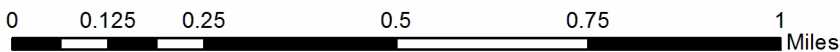
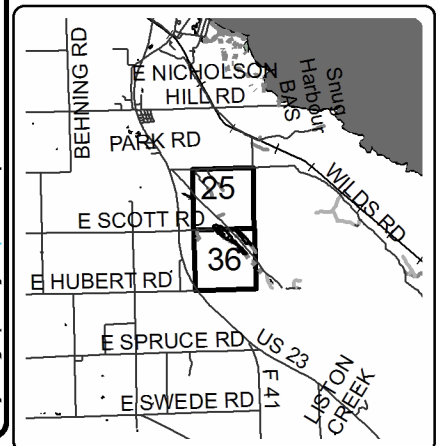


Legend

- Against State (Red)
- Payment Unit (Yellow)
- Stand Boundaries
- Retention Area
- Highway
- Secondary Forest Road
- Gravel Road
- Private
- Temporary Management Access
- Intermittent Stream
- Lakes and Rivers
- Section Corners
- Payment Unit Number
- Berms

Locator Map

1:200,000



TIMBER SALE INFORMATION

Reserved Red Pine (54-035-20)

T30N, R07E, SEC. 11; T30N, R07E, SEC. 12; T30N, R07E, SEC. 14; T30N, R07E, SEC. 2; T31N, R07E, SEC. 34.
Alpena County (Advertised Price \$147,017.20)

SALE NOTE: All units of volume listed for this sale were estimated using the Inventory Manager computer program and the new Michigan taper model.

A recreation site such as a trail, pathway, or campground is within the sale area or the vicinity. Certain restrictions/specifications may be applicable including time restrictions. Access may be through other public land.

A timber sale contract for this lump sum, sealed bid timber sale will be awarded to the responsible bidder offering the highest sealed bid price. All units of volume listed below were estimated using the Inventory Manager computer program and the new Michigan taper model. Bids must be at or above the following advertised price for each product and species:

<u>PRODUCTS & SPECIES</u>	<u>ESTIMATED UNITS*</u>	<u>ADVERTISED PRICE</u>
Sawtimber		
B. T. Aspen	2.2 MBF	\$ 105.00 / MBF
Bl/R/Hybrid Oak	35.5 MBF	\$ 61.00 / MBF
Red Maple	5.3 MBF	\$ 52.00 / MBF
Red Oak	44.4 MBF	\$ 166.00 / MBF
Red Pine	1,228.7 MBF	\$ 70.00 / MBF
White Pine	101.3 MBF	\$ 37.00 / MBF
Pulpwood		
Black Spruce	4 Cords	\$ 7.40 / Cord
Mixed Aspen	43 Cords	\$ 26.65 / Cord
Mixed Hardwood	137 Cords	\$ 22.30 / Cord
Mixed Oak	289 Cords	\$ 37.50 / Cord
Red Pine	949 Cords	\$ 26.70 / Cord
Scotch Pine	32 Cords	\$ 21.20 / Cord
White Pine	481 Cords	\$ 12.75 / Cord

* The total volume is statistically estimated within plus (+) or minus (-) 3.57 percent. There are an estimated 4,974 cords on this timber sale, plus or minus 178 cords at the 95% confidence level. The estimated units are final and not subject to adjustment. Prospective bidders are urged to examine this timber and to make their own estimates of quantity and quality.

BOND AND PAYMENT SCHEDULE:

1. A bond in the amount of \$7,351.00 to insure faithful performance of the conditions of the contract will be deposited by the successful bidder within 21 days of the sale award.
2. Cutting in any sale or unit without the required advance payment would be considered a trespass.
3. Total payment must be paid in advance or according to the following schedule :
 - (a) Ten percent (10%) of the sale value must be paid within 21 days of the sale award.
 - (b) The 10% down payment will be credited towards the first unit cut.
 - (c) Payment for each of the following units must be made before cutting begins in that unit:

PAYMENT UNIT NUMBER	PERCENT OF TOTAL SALE VALUE
01	15.3%
02	17.0%
03	16.2%
04	5.6%
05	5.1%
06	5.2%
07	11.8%
08	9.3%
09	11.8%
10	2.7%

4. If no cutting takes place, the 10% down payment will not be refunded.
5. Operations on the contract issued will terminate on 06/30/2024.

SALE STATISTICS

Volumes were calculated in cubic feet using the Michigan taper model. Cubic foot volume includes all wood inside bark for the product indicated. For display purposes, cubic feet were converted to cords and MBF using a simple conversion factor, e.g. 79 cubic feet per cord and 185 cubic feet per MBF. The cubic foot volumes are precise; the cords and MBF volumes are not. Cubic foot volume cannot be directly converted to cords or boards with precision.

SALE VOLUMES

The total estimated sale volume may not equal the sum of the species/products due to the nature of statistical calculations associated with double sampling methodology.

VOLUME			STATISTICAL RANGE IN CORDS	
TOTAL CUBIC FEET	TOTAL CORDS	PERCENT ERROR	MINIMUM	MAXIMUM
392,929	4,974	3.57%	4,796	5,152

VDU VOLUMES

A VDU is a Volume Determination Unit. Volumes and their associated statistics are calculated at the VDU level and summarized to the sale level. There is often a one to one relationship between a VDU and a Payment Unit, but not always, depending on the cruise design. Refer to the VDU TO PAYMENT UNIT table.

VDU	VOLUME			RANGE IN CORDS	
	TOTAL CUBIC FEET	TOTAL CORDS	PERCENT ERROR	MINIMUM	MAXIMUM
3	15,568	197	16.38%	165	229
10	186,088	2,356	5.04%	2,237	2,474
23	35,838	454	9.97%	408	499
24	46,721	591	8.20%	543	640
29	22,890	290	7.79%	267	312
43	10,078	128	22.99%	98	157
61	59,481	753	11.89%	663	842
TOTAL:	376,664	4,768		4,382	5,154

VDU TO PAYMENT UNIT

When a VDU is associated with more than one Payment Unit (PU), the VDU volumes are assigned to the PU based on acres of the VDU within the PU.

VDU	VDU ACRES	PU	PU ACRES
3	10.8	4	10.8
10	38.4	1	12.1
		2	13.5
		3	12.8
23	22.6	5	11.2
		6	11.4
24	13.1	7	9.0
		8	4.1
29	9.2	7	1.1
		8	8.1
43	5.1	10	5.1
61	16.9	7	3.0
		9	13.9
TOTAL:	116.1		116.1

DESCRIPTION OF TIMBER BY PAYMENT UNIT (PU)

PU	MARKET GROUP	PRODUCT	QUANTITY	UNIT	ACRES	ADVERTISE PRICE			
1	Red Maple	Sawtimber	1.4	MBF	12.1	\$22,476.00			
	Red Oak		7.6	MBF					
	Red Pine		204.8	MBF					
	White Pine		23.2	MBF					
	Mixed Aspen		Pulpwood	3			Cords		
	<i>B. T. Aspen</i>			3			<i>Cords</i>		
	Mixed Hardwood			18			Cords		
	<i>Red Maple</i>			18			<i>Cords</i>		
	Mixed Oak			17			Cords		
	<i>Red Oak</i>			17			<i>Cords</i>		
	Red Pine			135			Cords		
	Scotch Pine			3			Cords		
	<i>Scotch Pine</i>			3			<i>Cords</i>		
	White Pine			91			Cords		
2	Red Maple	Sawtimber		1.7	MBF	13.5	\$25,148.85		
	Red Oak			8.5	MBF				
	Red Pine			228.7	MBF				
	White Pine			25.9	MBF				
	Mixed Aspen		Pulpwood	3	Cords				
	<i>B. T. Aspen</i>			3	<i>Cords</i>				
	Mixed Hardwood			20	Cords				
	<i>Red Maple</i>			20	<i>Cords</i>				
	Mixed Oak			19	Cords				
	<i>Red Oak</i>			19	<i>Cords</i>				
	Red Pine			152	Cords				
	Scotch Pine			4	Cords				
	<i>Scotch Pine</i>			4	<i>Cords</i>				
	White Pine			102	Cords				
3	Red Maple	Sawtimber		1.5	MBF	12.8	\$23,816.40		
	Red Oak			8.1	MBF				
	Red Pine			216.7	MBF				
	White Pine			24.5	MBF				
	Mixed Aspen		Pulpwood	3	Cords				
	<i>B. T. Aspen</i>			3	<i>Cords</i>				
	Mixed Hardwood			19	Cords				
	<i>Red Maple</i>			19	<i>Cords</i>				
	Mixed Oak			18	Cords				
	<i>Red Oak</i>			18	<i>Cords</i>				
	Red Pine			143	Cords				
	Scotch Pine			4	Cords				
	<i>Scotch Pine</i>			4	<i>Cords</i>				
	White Pine			97	Cords				
4	Red Oak	Sawtimber		19.1	MBF	10.8	\$8,173.35		
	Red Pine			19.1	MBF				
	White Pine			1.0	MBF				
	Mixed Hardwood			Pulpwood	4			Cords	
	<i>Red Maple</i>		4		<i>Cords</i>				
	Mixed Oak		58		Cords				
	<i>Red Oak</i>		58		<i>Cords</i>				
	Red Pine		33		Cords				
	Scotch Pine		21		Cords				
	<i>Scotch Pine</i>		Sawtimber		7.0			<i>MBF</i>	
	<i>Scotch Pine</i>				Pulpwood			7	<i>Cords</i>
	White Pine							3	Cords
5	B. T. Aspen	Sawtimber	0.8		MBF	11.2	\$7,500.40		
	BI/R/Hybrid Oak		17.6		MBF				

DESCRIPTION OF TIMBER BY PAYMENT UNIT (PU), CON'T

PU	MARKET GROUP	PRODUCT	QUANTITY	UNIT	ACRES	ADVERTISE PRICE
5 con't	Red Maple	Sawtimber	0.3	MBF		
	Red Pine		24.6	MBF		
	Mixed Aspen	Pulpwood	2	Cords		
	<i>B. T. Aspen</i>		2	<i>Cords</i>		
	Mixed Hardwood		3	Cords		
	<i>Red Maple</i>		3	<i>Cords</i>		
	Mixed Oak		84	Cords		
	<i>BI/R/Hybrid Oak</i>		84	<i>Cords</i>		
Red Pine		50	Cords			
6	B. T. Aspen	Sawtimber	0.8	MBF	11.4	\$7,626.90
	BI/R/Hybrid Oak		17.9	MBF		
	Red Maple		0.4	MBF		
	Red Pine		25.0	MBF		
	Mixed Aspen	Pulpwood	2	Cords		
	<i>B. T. Aspen</i>		2	<i>Cords</i>		
	Mixed Hardwood		3	Cords		
	<i>Red Maple</i>		3	<i>Cords</i>		
	Mixed Oak		86	Cords		
	<i>BI/R/Hybrid Oak</i>		86	<i>Cords</i>		
	Red Pine		50	Cords		
7	B. T. Aspen	Sawtimber	0.1	MBF	13.1	\$17,390.80
	Red Oak		0.2	MBF		
	Red Pine		181.4	MBF		
	White Pine		10.0	MBF		
	Black Spruce	Pulpwood	1	Cords		
	Mixed Aspen		7	Cords		
	<i>B. T. Aspen</i>		1	<i>Cords</i>		
	<i>Quaking Aspen</i>		6	<i>Cords</i>		
	Mixed Hardwood		14	Cords		
	<i>Paper Birch</i>		1	<i>Cords</i>		
	<i>Red Maple</i>		13	<i>Cords</i>		
	Red Pine		116	Cords		
	White Pine		53	Cords		
8	B. T. Aspen	Sawtimber	0.5	MBF	12.2	\$13,613.90
	Red Pine		142.4	MBF		
	White Pine		10.8	MBF		
	Mixed Aspen	Pulpwood	12	Cords		
	<i>B. T. Aspen</i>		7	<i>Cords</i>		
	<i>Quaking Aspen</i>		5	<i>Cords</i>		
	Mixed Hardwood		6	Cords		
	<i>Red Maple</i>		6	<i>Cords</i>		
	Mixed Oak		3	Cords		
	<i>BI/R/Hybrid Oak</i>		3	<i>Cords</i>		
	Red Pine		86	Cords		
White Pine		26	Cords			
9	Red Oak	Sawtimber	0.9	MBF	13.9	\$17,331.30
	Red Pine		154.7	MBF		
	White Pine		5.9	MBF		
	Black Spruce	Pulpwood	3	Cords		
	Mixed Aspen		11	Cords		
	<i>Quaking Aspen</i>		11	<i>Cords</i>		
	Mixed Hardwood		48	Cords		
	<i>Paper Birch</i>		5	<i>Cords</i>		
	<i>Red Maple</i>		43	<i>Cords</i>		
	Mixed Oak		2	Cords		
	<i>Red Oak</i>		2	<i>Cords</i>		

DESCRIPTION OF TIMBER BY PAYMENT UNIT (PU), CON'T

PU	MARKET GROUP	PRODUCT	QUANTITY	UNIT	ACRES	ADVERTISE PRICE
9 con't	Red Pine	Pulpwood	123	Cords		
	White Pine		109	Cords		
10	Red Pine	Sawtimber	31.3	MBF	5.1	\$3,939.30
	Mixed Hardwood	Pulpwood	2	Cords		
	<i>Red Maple</i>		2	<i>Cords</i>		
	Mixed Oak		2	Cords		
	<i>Red Oak</i>		2	<i>Cords</i>		
	Red Pine		61	Cords		
TOTAL:			1,417.4	MBF		
TOTAL:			1,935	Cords		

Sale Specific Conditions & Requirements

Sale Name: Reserved Red Pine

Sale Number: 54-035-20 Seq#: 1

1 - Sale Area

1.2 - Boundaries

1.2.1 - Painted boundaries (9/19)

The sale boundary and Payment Unit boundaries are marked and identified by red and green paint. Exterior sale boundary lines against state are marked with red paint. Interior Payment Unit boundaries are marked with green paint. Retention patches are marked with red paint; no harvesting activities may occur within these areas. The painted boundary line trees are not Included Timber and are to be protected unless marked with orange paint. Green painted trees designating an interior Payment Unit boundary are only to be cut when all surrounding Payment Units have been paid.

2 - Timber Specifications

2.1 - Included Timber

2.1.1 - Clearcut unit(s) with unmerchantable trees (6/14)

Within Payment Unit(s) 1-3 and 7-9, cut all trees that are two (2) inches or more at DBH, except protect and do not cut trees marked in pink paint in Payment Unit 9. Special protection trees identified in accordance with condition 3.4.2, within clearcutting unit boundaries, are not Included Timber and are to be protected.

2.1.3 - Cut tree marked unit(s) (12/08)

Within Payment Unit(s) 4-6 and 10, all trees are designated for cutting when marked with yellow paint above and below stump height, regardless of merchantability.

2.2 - Utilization

2.2.2 - Chipping required (2/18)

Payment Units 1-3 and 7-9 must be chip harvested to facilitate subsequent planting operations. The Purchaser has the option to produce sawlogs or pulpwood bolts, but the remaining portion of the trees must be chipped and hauled. If market conditions limit the practicality of chipping, chipping is not required if the following conditions are met. Trees greater than 4 inches at DBH must be cut to a 2-inch top or smaller. Sub-merchantable trees, and hardwood limbs 4 inches or greater where they attach to the stem, are to be cut/reduced to 4-foot lengths. Slash must be evenly dispersed throughout the Payment Unit, and not be more than 2 feet high. In all cases harvesting operations must allow for subsequent planting operations, as determined by the Sale Administrator. The requirement to retain approximately 1/6 to 1/3 of tree tops and limbs less than four inches in diameter is still applicable (G. C. & R. 2.2).

2.2.3 - Stump heights (4/07)

Stump heights within Payment Unit(s) 1-3 and 7-9 shall not exceed 6 inches for all trees. This is in order to facilitate planting operations.

2.2.6 - Roundwood operation required (5/07)

The skidding of whole trees or tree segments with limbs attached is prohibited within Payment Unit(s) 4-6 and 10. All products must be produced as roundwood and forwarded to existing roads or landing areas in final product length.

3 - Payments

3.3 - Pre-measured Sales

3.3.4 - Dividing payment units (7/14)

Payment Unit(s) \$25,000 in value or greater may be divided at the request of the Purchaser and upon approval of the Unit Manager. Dividing Payment Units is a contract modification which requires a Timber Sale Contract Amendment. There will be only one division per Payment Unit.

3.4 - Damaged Timber

3.4.1 - Damaged timber (7/16)

General Condition and Requirement 3.4 Damaged Timber, defines liquidated damages for undesignated live merchantable

trees which are cut or injured.

No damage is acceptable to undesignated live merchantable trees. Within the Sale Area, if more than 5 % of trees (> 4.5" DBH) within a specified area of the sale are damaged, liquidated damages will be assessed for all trees damaged. Rates will be in accordance with General Condition and Requirement 3.4 Damaged Timber.

3.4.2 - Special Protection Trees (4/14)

The Purchaser shall not cut live or dead special protection trees within cutting units or clearings. Special protection trees are located in Payment Unit 9 and are marked with pink paint. If the Purchaser's operations have cut or damaged special protection trees through carelessness, the Purchaser shall pay \$200 as fixed, agreed and liquidated damages for each special protection tree cut or damaged. Such payment does not constitute ownership of the undesignated timber.

4 - Transportation

4.1 - Construction

4.1.3 - Slash and earthen piles (8/04)

Piles or windrows of earth along roads and landings that have been widened or constructed shall be leveled. Slash from road maintenance or construction, including stumps, shall be dispersed throughout the sale.

4.1.6 - Road construction (1/09)

Improvements of existing roads shall be done in such a way as to minimize the environmental and visual impacts. Merchantable trees shall be cut and utilized unless otherwise directed. Non-merchantable trees shall be severed and laid flat on the ground. Slash shall be scattered, and not left in windrows and kept a minimum of 10 feet back from the road edge. Stumps shall be set upright, not left on edge, and be moved at least 10 feet away from the road edge. Disturbed soil shall be feathered into the woods and not left in berms or windrows.

4.1.8 - Road work (1) (8/07)

The following road work is required. Before running logging trucks on the snowmobile trail for hauling wood from Payment Units 5-9, adequate amounts of 3 minus crushed limestone must be placed in the snowmobile trail, as determined by the sale administrator, to prevent the breakdown and rutting of the trail. If rutting begins in the snowmobile trail during hauling operations, in areas other than where 3 minus limestone was previously placed, all hauling must cease on the deteriorating portion of trail until 3-minus stone is placed and the sale administrator grants permission to continue hauling.

4.1.12 - No new roads (1/12)

No new roads will be permitted in any Payment Unit. All operations are limited to existing roads. Skid trails only will be allowed.

5 - Operations

5.1 - Notification

5.1.1 - Pre-sale conference (10/16)

A pre-sale conference on site between the Purchaser and sale administrator is required prior to beginning any operations a Payment Unit to determine landing and road locations. The Unit Manager or his/her representative must be contacted at least 5 days in advance to schedule the conference.

5.1.4 - Post-sale conference (10/16)

A post-sale conference on site between the Purchaser and sale administrator is required 5 days prior to the completion of active logging operations to determine clean-up and repair of landings, road edges, and the fulfillment of other contract specifications.

5.2 - Conduct of Operations

5.2.3 - Operating Restrictions

5.2.3.1 - Operating restrictions (9/11)

Within Payment Unit(s) 5-9, if operations occur during the December 1 to March 31 period, all wood must be decked at least 20 feet back from the centerline of the snowmobile trail. The snowmobile trail may not be used for any timber sale operations/hauling on weekends from 5:00 p.m. Friday evening through 6:00 a.m. Monday morning unless approved by the Unit Manager or his/her representative. This restriction is because the snowmobile trail is used heavily during weekends.

5.2.3.4 - Oak wilt restriction, no exceptions (1/18)

Within Payment Unit(s) 4-6 and 10, cutting, skidding, and hauling within the sale and brushing of access roads to the sale are not permitted during the period of April 15 to July 15. No exceptions will be granted. This is necessary to reduce the spread of oak wilt. This is also necessary to prevent bark slippage.

5.2.3.5 - Oak wilt restriction (1/18)

Within Payment Unit(s) 1-3 and 7-9, unless changed by written agreement, cutting, skidding, hauling within the sale and brushing of access roads to the sale are not permitted during the period of April 15 to July 15. Operations may be allowed if specific steps are taken to prevent damaging uncut oak during the high risk period. Those steps may include completing all road brushing before April 15th and clearing a tree-length buffer along uncut oak cover before April 15th. This is necessary to reduce the spread of oak wilt. For more information, contact the Unit Manager or his/her representative.

5.2.3.6 - Bark beetle restriction (12/08)

In the event drought creates a high risk of pine bark beetle infestation, pine is not to be cut during the period March 1 through July 1, unless all portions of trees greater than two inches in diameter are removed from the sale area, reduced to chips, or treated to the satisfaction of the Unit Manager or his/her representative, within fifteen days of being severed from the stump. Pine log decks, pulpwood piles and treetops that are piled for chipping in the fall or winter within a 1/4 mile of susceptible sites must be removed before March 15. Residual slash must not be placed in piles or rows and must be spread over the site for quick drying. The Department of Natural Resources will exercise this specification if the risk of damage warrants.

5.2.32 - Decking/landing restoration (9/13)

All decking and landing areas must have the surface area restored to a condition equal to or better than before. This is to ensure the proper regeneration of the stand. Wood debris, chips, and "cookies" from trimmings must be removed or scattered away from landing and loading areas and may not be windrowed on the edge.

5.2.38 - No decking against live trees (2/04)

Cut products may not be decked against unmarked or designated leave trees.

5.2.41 - Snowmobile trail protection (9/11)

The LP 461 snowmobile trail is shown on the Timber Sale Map. Do not cut or damage posts with orange trail markers or traffic control signs. If the trail is used, it must be maintained and restored to a condition equal to or better than before the sale. The road maintenance/restoration must be done prior to December 1. If the trail is used for hauling, it must be graded to the satisfaction of the Unit Manager or his/her representative prior to December 1. If the trail road is to be used for hauling during the snowmobile season, then a snow-covered base must be left on the trail. The snowmobile trail may only be crossed at right angles. Maintain a 20-foot-wide slash, debris, and rut free zone daily using the snowmobile trail as the centerline. No decking of forest products will be permitted along the snowmobile trail. All stumps within 20 feet of the snowmobile trail must be cut at ground level. In addition, any trees cut within 5 feet of the trail must have the stumps removed and be disposed of according to the direction of the Unit Manager or his/her representative.

5.4 - Soil Protection

5.4.1 - Rutting restriction, general (7/16)

Operations are to cease immediately if equipment and weather conditions result in rutting of roads and/or skid trails which is 12 inches or greater in depth and 50 feet in length. The Unit Manager or his/her representative may restrict hauling and/or skidding if ruts exceed the specified depth. With the Unit Manager or his/her representative's approval, the Purchaser may return to the area when the risk of rutting has decreased.

5.8 - Protection of Endangered Species

5.8.5 - Protection of raptor nests (3/13)

All trees with raptor nests will be protected if found during harvesting operations. Notification will be made to the Unit Manager or his/her representative who will notify the Wildlife Biologist so an on-site evaluation and recommendation can be made, if necessary.

6 - Safety and Fire Prevention

6.2 - Signing

6.2.1 - Road posting (10/20)

The Purchaser is responsible for posting and maintaining caution signs on forest roads prior to beginning operations. The road must be posted at appropriate distances from the Sale Area to warn of logging activity and truck traffic. Signs must be removed when harvest operations are suspended or completed. The Purchaser will provide these signs.

6.2.2 - Snowmobile trail posting (10/20)

The Purchaser is responsible for posting and maintaining caution signs on snowmobile trail LP461 prior to beginning operations during the snowmobile season (approximately December 1 to March 31). The trail must be posted at appropriate distances from the Sale Area to warn of logging activity and truck traffic. Signs must be removed when harvest operations are suspended or completed. The Purchaser will provide these signs.



TIMBER SALE MAP

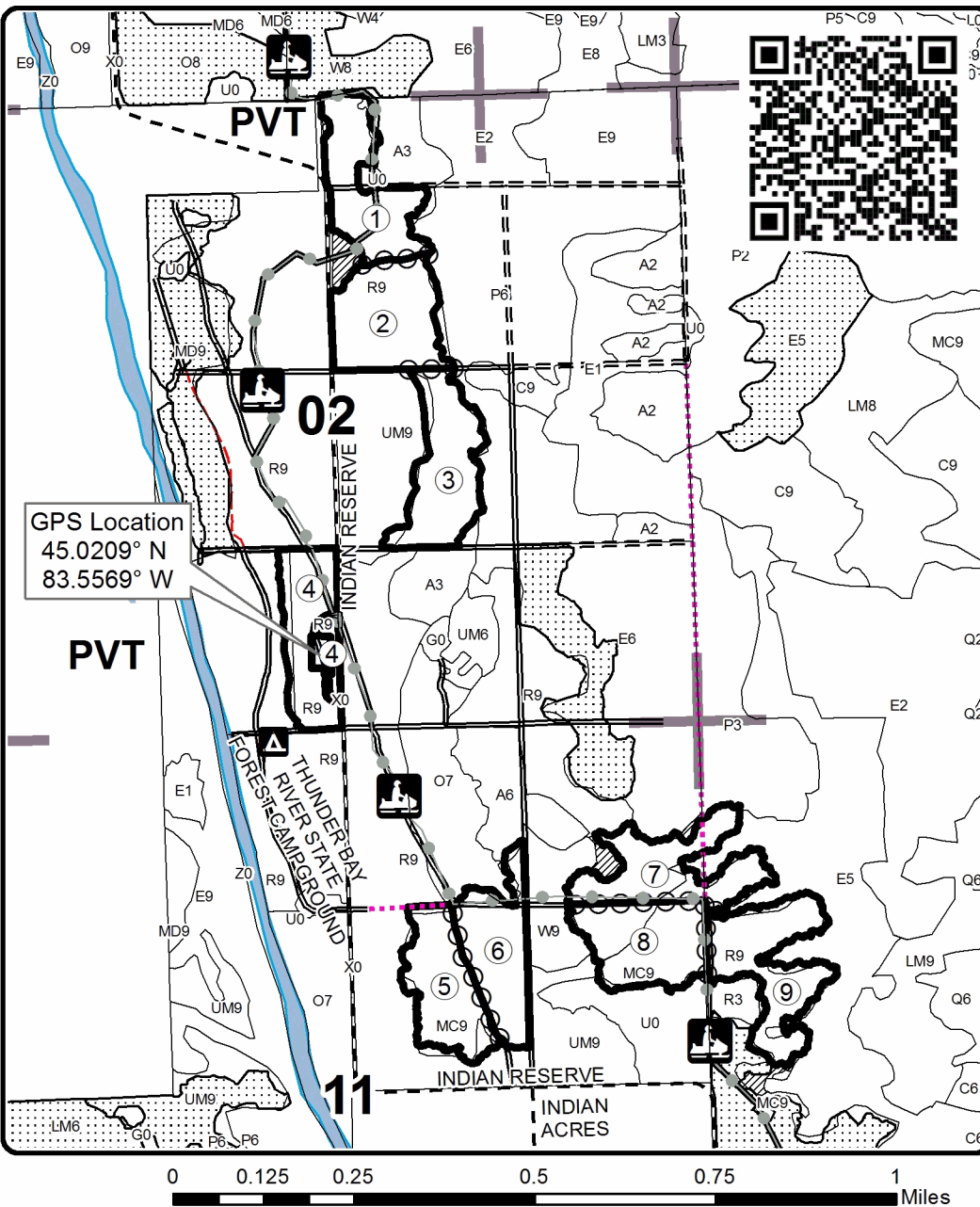
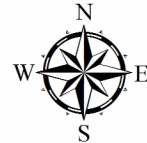
This information provided by authority of Part 525, 1994 PA 451, as amended.

Forest Management Unit Atlanta		County Alpena	Mapped By D. Parris	Date 09/30/20	Page 1	of 2
Township 30N	Range 07E	Section(s) and Subdivision(s) Sec. 2 W1/2NE, E1/2SW, W1/2SE Sec. 11 NE, Sec. 12 W1/2NW, Sec. 14 SESE;		Scale 1:15,840		

Cover Type				Density			
A = Aspen	H = Hemlock	N = Marsh	U = Upland Brush	0 = Non Stocked	5 = Pole Timber Medium		
B = Paper Birch	J = Jack Pine	O = Oak	UM = Upland Mixed	1 = Seedling Sapling Poor	6 = Pole Timber Well		
C = Cedar	L = Lowland Brush	P = Lowland Poplar	V = Bog or Marsh	2 = Seedling Sapling Medium	7 = Saw Timber Poor		
D = Treed Bog	LM = Lowland Mixed	Q = Mixed Swamp Conifer	W = White Pine	3 = Seedling Sapling Well	8 = Saw Timber Medium		
E = Swamp Hdwoods	M = Mpl, Bch, Brch	R = Red Pine	X = Non Stocked	4 = Pole Timber Poor	9 = Saw Timber Well		
F = Spruce Fir	MC = Mixed Conifer	S = Black Spruce	Z = Water				
G = Grass	MD = Mixed Deciduous	T = Tamarack					

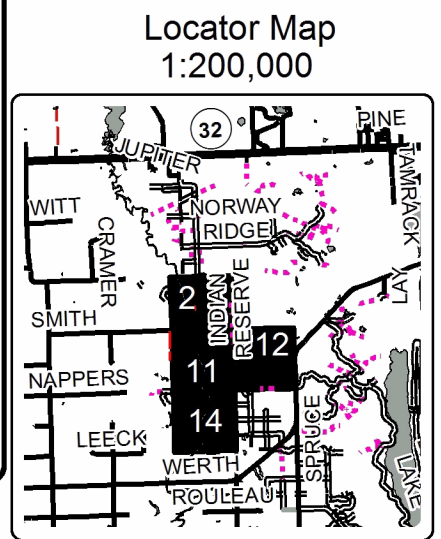
PU	Acres	PU	Acres
1	12.1	6	11.4
2	13.5	7	13.1
3	12.8	8	12.2
4	10.8	9	13.9
5	11.2	10	5.1

Reserved Red Pine Compartment 88 116.1 Acres



Legend

- Against State (Red)
- ⊙ Payment Unit (Green)
- Payment Unit
- ▨ Retention Area (Red)
- Stand Boundaries
- ▤ Nearby Timber Sales
- ▲ State Forest Campgrounds
- Recreational Trail
- Secondary Forest Road
- == Forest Access Route
- - Gravel Road
- - County Road - Seasonal
- ⋯ Temporary Management Access
- Perennial River
- Lakes and Rivers
- Section Corners





TIMBER SALE MAP

This information provided by authority of Part 525, 1994 PA 451, as amended.

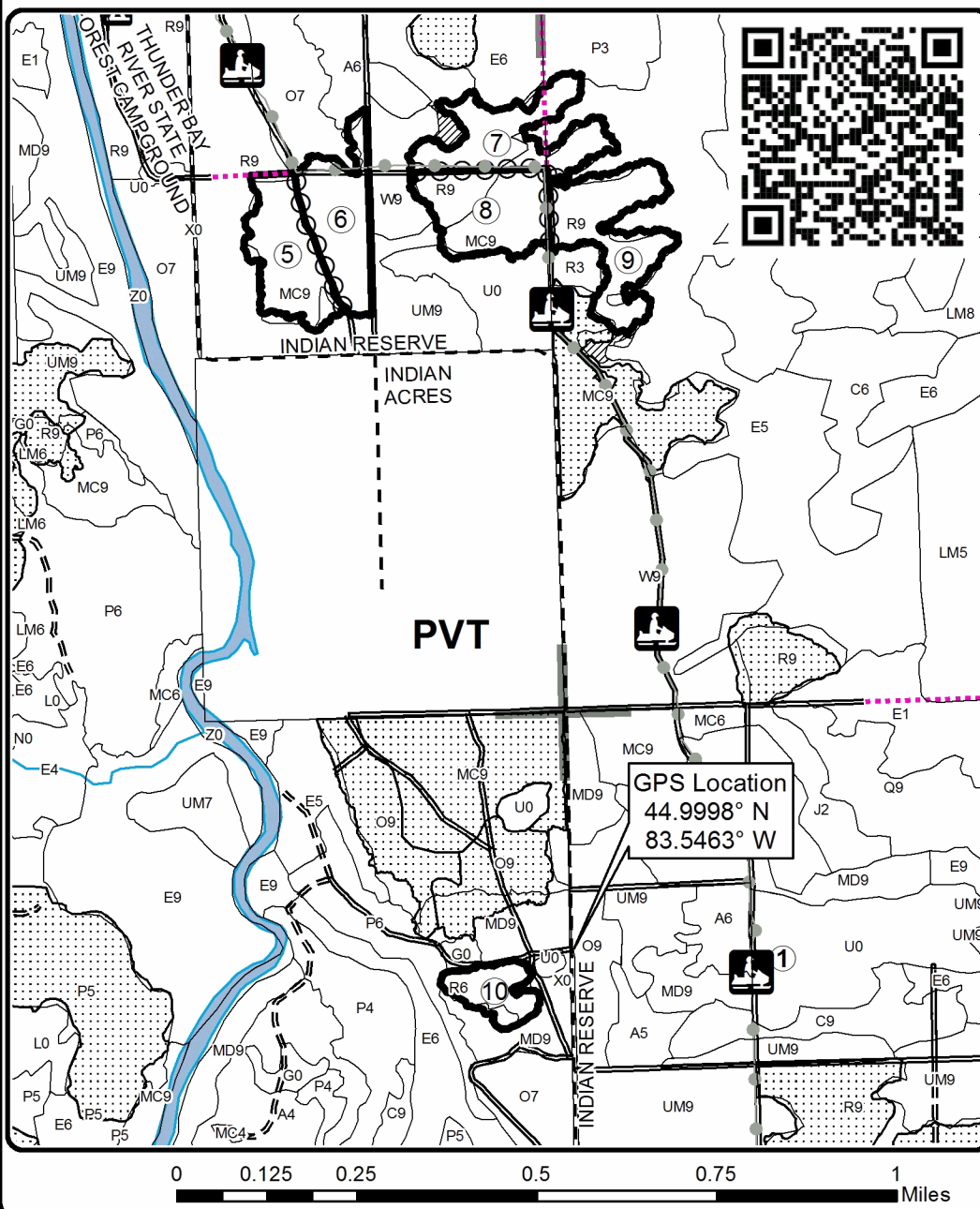
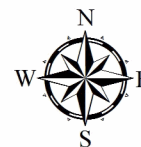
Sale Number	Year
54-035	20

Forest Management Unit Atlanta	County Alpena	Mapped By D. Parris	Date 09/30/20	Page 2	of 2
Township 30N	Range 07E	Section(s) and Subdivision(s) Sec. 2 W1/2NE, E1/2SW, W1/2SE Sec. 11 NE, Sec. 12 W1/2NW, Sec. 14 SESE;	Scale 1:15,840		

Cover Type				Density			
A = Aspen	H = Hemlock	N = Marsh	U = Upland Brush	0 = Non Stocked	5 = Pole Timber Medium		
B = Paper Birch	J = Jack Pine	O = Oak	UM = Upland Mixed	1 = Seedling Sapling Poor	6 = Pole Timber Well		
C = Cedar	L = Lowland Brush	P = Lowland Poplar	V = Bog or Marsh	2 = Seedling Sapling Medium	7 = Saw Timber Poor		
D = Treed Bog	LM = Lowland Mixed	Q = Mixed Swamp Conifer	W = White Pine	3 = Seedling Sapling Well	8 = Saw Timber Medium		
E = Swamp Hdwoods	M = Mpl, Bch, Brch	R = Red Pine	X = Non Stocked	4 = Pole Timber Poor	9 = Saw Timber Well		
F = Spruce Fir	MC = Mixed Conifer	S = Black Spruce	Z = Water				
G = Grass	MD = Mixed Deciduous	T = Tamarack					

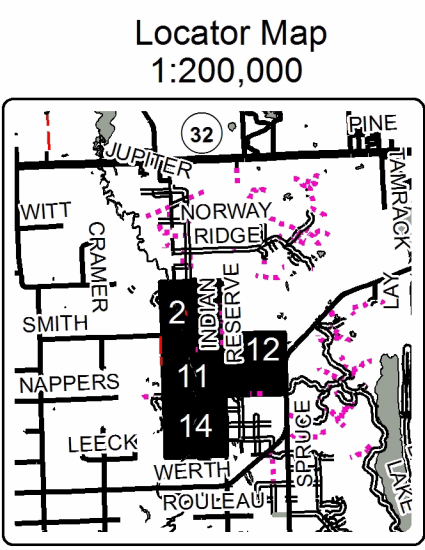
PU	Acres	PU	Acres
1	12.1	6	11.4
2	13.5	7	13.1
3	12.8	8	12.2
4	10.8	9	13.9
5	11.2	10	5.1

Reserved Red Pine Compartment 88 116.1 Acres



Legend

- Against State (Red)
- Payment Unit (Green)
- Payment Unit
- Retention Area (Red)
- Stand Boundaries
- Nearby Timber Sales
- State Forest Campgrounds
- Recreational Trail
- Secondary Forest Road
- Forest Access Route
- Gravel Road
- Temporary Management Access
- Perennial River
- Lakes and Rivers
- Section Corners



Reserved Red Pine (54-035-20)

T30N, R07E, SEC. 11; T30N, R07E, SEC. 12; T30N, R07E, SEC. 14; T30N, R07E,

In response to the notice of sale to be held 10:00 a.m. (local time) on November 23, 2021, I am hereby submitting my sealed bid (firm offer) for the following forest products to be cut. Bids for individual species must be at or above the advertised price. All non-responsive bid forms may be rejected.

<u>PRODUCTS & SPECIES</u>	<u>ESTIMATED VOLUME*</u>	<u>ADVERTISED PRICE</u>	<u>BID PRICE/UNIT</u>
Sawtimber			
B. T. Aspen	2.2 MBF	\$ 105.00/MBF	\$ _____
Bl/R/Hybrid Oak	35.5 MBF	\$ 61.00/MBF	\$ _____
Red Maple	5.3 MBF	\$ 52.00/MBF	\$ _____
Red Oak	44.4 MBF	\$ 166.00/MBF	\$ _____
Red Pine	1,228.7 MBF	\$ 70.00/MBF	\$ _____
White Pine	101.3 MBF	\$ 37.00/MBF	\$ _____
Pulpwood			
Black Spruce	4 Cords	\$ 7.40/Cord	\$ _____
Mixed Aspen	43 Cords	\$ 26.65/Cord	\$ _____
Mixed Hardwood	137 Cords	\$ 22.30/Cord	\$ _____
Mixed Oak	289 Cords	\$ 37.50/Cord	\$ _____
Red Pine	949 Cords	\$ 26.70/Cord	\$ _____
Scotch Pine	32 Cords	\$ 21.20/Cord	\$ _____
White Pine	481 Cords	\$ 12.75/Cord	\$ _____

*The volumes are statistically estimated within plus (+) or minus (-) 3.57 percent at 95% confidence level. These estimated volumes are final and not subject to adjustment. Prospective bidders are urged to examine this timber and to make their own estimates of quantity and quality.

I understand that any or all bids may be rejected. All bids must be signed and all bid items must be bid or the bid form may be rejected. I also understand that consideration and awarding a contract will be based upon my past performance and ability to complete the contract based upon equipment and staffing subject to my control.

FEDERAL ID: _____ - _____ or SOCIAL SECURITY NUMBER: _____ - _____ - _____

Company or individual bidding: _____

Company representative's name: _____

Address: _____

City: _____ State: _____ Zip: _____

IF AVAILABLE, PLEASE PLACE THE PERSONALIZED LABEL FROM YOUR PROSPECTUS IN THE ABOVE BOX.

Individual or company representative's signature: _____ Date: _____

Phone number : _____ Email (optional): _____

THE WINNING BIDDER MUST COMPLETE THE VERIFICATION OF WORKER'S DISABILITY COMPENSATION ACT COMPLIANCE (ON REVERSE SIDE IF DOUBLE SIDED) WITHIN 21 DAYS OF SALE AWARD DATE



FOR DEPARTMENT USE ONLY	
Sale Number (XX - XXX - XX - XX)	
Forest Management Unit:	

TIMBER SALE VERIFICATION OF WORKER'S DISABILITY COMPENSATION ACT COMPLIANCE

As required by Act 317, P.A. 1969 (Worker's Compensation) and
Part 5 of Act 451 of 1994, as amended.

VERIFICATION OF WORKER'S DISABILITY COMPENSATION ACT COMPLIANCE

- This verification must be completed and submitted within 21 days of contract award and prior to the issuance of the timber sale contract.
- In addition, if boxes 2B or 2C are checked, then Notice of Exclusion or Certificate of Insurance must be submitted within twenty-one (21) days of the contract award and prior to the issuance of the timber sale contract.
- All information must be typed or printed except for written signatures.

Please Check Appropriate Categories:

1. My business is organized as (you **must** check one of the boxes below):
 - A. Sole Proprietorship (individual)
 - B. Partnership
 - C. Corporation
2. You **must** check one of the boxes below:
 - A. I certify my business is a sole proprietorship and it has no employees but the sole proprietor. I am not subject to the Worker's Compensation Laws.
 - B. I certify my business has satisfied its obligation to the Worker's Compensation Act through the use of an approved Notice of Exclusion (BWC-337, Rev. 5/96). I will provide a copy of the Notice of Exclusion within 21 days of the contract award. (For questions or a copy of the BWC-337, please call the Worker's Compensation Bureau at 517-322-1195).
 - C. I certify my business has a Worker's Compensation Policy. I will provide an original Certificate of Insurance within twenty-one (21) days of the contract award.
3. If you have checked item 2(A) or 2(B), you **must** indicate the number of **both** full-time and part-time employees, other than yourself, including family members and active partners (if none, you must enter "0").

_____ Full-time Employees

_____ Part-time Employees

Name of Business		Federal ID (or) Social Security No.	
Address		Telephone ()	
City	State	ZIP	

I hereby certify that the above information is true and correct. I agree to notify the Michigan DNR of any changes that occur in factors affecting my coverage during any of my present and future operations.

Signature of Owner or Authorized Representative

Title

Date

Please complete the "SEALED BID" information on the next page

Andor Down Under (54-014-20)
T29N, R06E, SEC. 17; T29N, R06E, SEC. 20; Alpena COUNTY

In response to the notice of sale to be held 10:00 a.m. (local time) on November 23, 2021, I am hereby submitting my sealed bid (firm offer) for the following forest products to be cut. Bids for individual species must be at or above the advertised price. All non-responsive bid forms may be rejected.

<u>PRODUCTS & SPECIES</u>	<u>ESTIMATED VOLUME*</u>	<u>ADVERTISED PRICE</u>	<u>BID PRICE/UNIT</u>
Sawtimber			
B. T. Aspen	24.8 MBF	\$ 105.00/MBF	\$ _____
Basswood	14.8 MBF	\$ 46.00/MBF	\$ _____
Red Oak	55.7 MBF	\$ 166.00/MBF	\$ _____
Sugar Maple	2.9 MBF	\$ 403.00/MBF	\$ _____
Pulpwood			
Mixed Aspen	341 Cords	\$ 26.65/Cord	\$ _____
Mixed Hardwood	215 Cords	\$ 22.30/Cord	\$ _____
Red Oak	189 Cords	\$ 37.50/Cord	\$ _____

*The volumes are statistically estimated within plus (+) or minus (-) 15.91 percent at 95% confidence level. These estimated volumes are final and not subject to adjustment. Prospective bidders are urged to examine this timber and to make their own estimates of quantity and quality.

I understand that any or all bids may be rejected. All bids must be signed and all bid items must be bid or the bid form may be rejected. I also understand that consideration and awarding a contract will be based upon my past performance and ability to complete the contract based upon equipment and staffing subject to my control.

FEDERAL ID: _____ or SOCIAL SECURITY NUMBER: _____
 Company or individual bidding: _____
 Company representative's name: _____
 Address: _____
 City: _____ State: _____ Zip: _____

IF AVAILABLE, PLEASE PLACE THE PERSONALIZED LABEL FROM YOUR PROSPECTUS IN THE ABOVE BOX.

Individual or company representative's signature: _____ Date: _____
Phone number : _____ Email (optional): _____

THE WINNING BIDDER MUST COMPLETE THE VERIFICATION OF WORKER'S DISABILITY COMPENSATION ACT COMPLIANCE (ON REVERSE SIDE IF DOUBLE SIDED) WITHIN 21 DAYS OF SALE AWARD DATE



FOR DEPARTMENT USE ONLY
Sale Number (XX - XXX - XX - XX)
Forest Management Unit:

TIMBER SALE VERIFICATION OF WORKER'S DISABILITY COMPENSATION ACT COMPLIANCE

*As required by Act 317, P.A. 1969 (Worker's Compensation) and
Part 5 of Act 451 of 1994, as amended.*

VERIFICATION OF WORKER'S DISABILITY COMPENSATION ACT COMPLIANCE

- This verification must be completed and submitted within 21 days of contract award and prior to the issuance of the timber sale contract.
- In addition, if boxes 2B or 2C are checked, then Notice of Exclusion or Certificate of Insurance must be submitted within twenty-one (21) days of the contract award and prior to the issuance of the timber sale contract.
- All information must be typed or printed except for written signatures.

Please Check Appropriate Categories:

1. My business is organized as (you **must** check one of the boxes below):
 - A. Sole Proprietorship (individual)
 - B. Partnership
 - C. Corporation
2. You **must** check one of the boxes below:
 - A. I certify my business is a sole proprietorship and it has no employees but the sole proprietor. I am not subject to the Worker's Compensation Laws.
 - B. I certify my business has satisfied its obligation to the Worker's Compensation Act through the use of an approved Notice of Exclusion (BWC-337, Rev. 5/96). I will provide a copy of the Notice of Exclusion within 21 days of the contract award. (For questions or a copy of the BWC-337, please call the Worker's Compensation Bureau at 517-322-1195).
 - C. I certify my business has a Worker's Compensation Policy. I will provide an original Certificate of Insurance within twenty-one (21) days of the contract award.
3. If you have checked item 2(A) or 2(B), you **must** indicate the number of **both** full-time and part-time employees, other than yourself, including family members and active partners (if none, you must enter "0").

_____ Full-time Employees

_____ Part-time Employees

Name of Business		Federal ID (or) Social Security No.	
Address		Telephone ()	
City	State	ZIP	

I hereby certify that the above information is true and correct. I agree to notify the Michigan DNR of any changes that occur in factors affecting my coverage during any of my present and future operations.

Signature of Owner or Authorized Representative

Title

Date

Please complete the "SEALED BID" information on the next page

Glennie Ridge Mix (54-012-20)
T31N, R07E, SEC. 17; T31N, R07E, SEC. 20; Alpena COUNTY

In response to the notice of sale to be held 10:00 a.m. (local time) on November 23, 2021, I am hereby submitting my sealed bid (firm offer) for the following forest products to be cut. Bids for individual species must be at or above the advertised price. All non-responsive bid forms may be rejected.

<u>PRODUCTS & SPECIES</u>	<u>ESTIMATED VOLUME*</u>	<u>ADVERTISED PRICE</u>	<u>BID PRICE/UNIT</u>
Sawtimber			
Mixed Aspen	10.7 MBF	\$ 105.00/MBF	\$ _____
Red Maple	9.0 MBF	\$ 52.00/MBF	\$ _____
Red Oak	4.3 MBF	\$ 166.00/MBF	\$ _____
Pulpwood			
Balsam Fir	27 Cords	\$ 16.35/Cord	\$ _____
Mixed Aspen	151 Cords	\$ 26.65/Cord	\$ _____
Mixed Spruce	53 Cords	\$ 7.40/Cord	\$ _____
Paper Birch	23 Cords	\$ 11.50/Cord	\$ _____
Red Maple	104 Cords	\$ 22.30/Cord	\$ _____
Red Oak	22 Cords	\$ 37.50/Cord	\$ _____
White Pine	1 Cords	\$ 12.75/Cord	\$ _____

*The volumes are statistically estimated within plus (+) or minus (-) 20.77 percent at 95% confidence level. These estimated volumes are final and not subject to adjustment. Prospective bidders are urged to examine this timber and to make their own estimates of quantity and quality.

I understand that any or all bids may be rejected. All bids must be signed and all bid items must be bid or the bid form may be rejected. I also understand that consideration and awarding a contract will be based upon my past performance and ability to complete the contract based upon equipment and staffing subject to my control.

FEDERAL ID: _____ or SOCIAL SECURITY NUMBER: _____

Company or individual bidding: _____

Company representative's name: _____

Address: _____

City: _____ State: _____ Zip: _____

IF AVAILABLE, PLEASE PLACE THE PERSONALIZED LABEL FROM YOUR PROSPECTUS IN THE ABOVE BOX.

Individual or company representative's signature: _____ Date: _____

Phone number : _____ Email (optional): _____

THE WINNING BIDDER MUST COMPLETE THE VERIFICATION OF WORKER'S DISABILITY COMPENSATION ACT COMPLIANCE (ON REVERSE SIDE IF DOUBLE SIDED) WITHIN 21 DAYS OF SALE AWARD DATE



TIMBER SALE VERIFICATION OF WORKER'S DISABILITY COMPENSATION ACT COMPLIANCE

As required by Act 317, P.A. 1969 (Worker's Compensation) and
Part 5 of Act 451 of 1994, as amended.

FOR DEPARTMENT USE ONLY	
Sale Number (XX - XXX - XX - XX)	
Forest Management Unit:	

VERIFICATION OF WORKER'S DISABILITY COMPENSATION ACT COMPLIANCE

- This verification must be completed and submitted within 21 days of contract award and prior to the issuance of the timber sale contract.
- In addition, if boxes 2B or 2C are checked, then Notice of Exclusion or Certificate of Insurance must be submitted within twenty-one (21) days of the contract award and prior to the issuance of the timber sale contract.
- All information must be typed or printed except for written signatures.

Please Check Appropriate Categories:

1. My business is organized as (you **must** check one of the boxes below):
 - A. Sole Proprietorship (individual)
 - B. Partnership
 - C. Corporation
2. You **must** check one of the boxes below:
 - A. I certify my business is a sole proprietorship and it has no employees but the sole proprietor. I am not subject to the Worker's Compensation Laws.
 - B. I certify my business has satisfied its obligation to the Worker's Compensation Act through the use of an approved Notice of Exclusion (BWC-337, Rev. 5/96). I will provide a copy of the Notice of Exclusion within 21 days of the contract award. (For questions or a copy of the BWC-337, please call the Worker's Compensation Bureau at 517-322-1195).
 - C. I certify my business has a Worker's Compensation Policy. I will provide an original Certificate of Insurance within twenty-one (21) days of the contract award.
3. If you have checked item 2(A) or 2(B), you **must** indicate the number of **both** full-time and part-time employees, other than yourself, including family members and active partners (if none, you must enter "0").

_____ Full-time Employees

_____ Part-time Employees

Name of Business		Federal ID (or) Social Security No.	
Address		Telephone ()	
City	State	ZIP	

I hereby certify that the above information is true and correct. I agree to notify the Michigan DNR of any changes that occur in factors affecting my coverage during any of my present and future operations.

Signature of Owner or Authorized Representative

Title

Date

Please complete the "SEALED BID" information on the next page

Thick N Thorny Aspen (54-031-20)
T29N, R08E, SEC. 25; T29N, R08E, SEC. 36; Alpena COUNTY

In response to the notice of sale to be held 10:00 a.m. (local time) on November 23, 2021, I am hereby submitting my sealed bid (firm offer) for the following forest products to be cut. Bids for individual species must be at or above the advertised price. All non-responsive bid forms may be rejected.

<u>PRODUCTS & SPECIES</u>	<u>ESTIMATED VOLUME*</u>	<u>ADVERTISED PRICE</u>	<u>BID PRICE/UNIT</u>
Sawtimber			
Mixed Aspen	47.2 MBF	\$ 105.00/MBF	\$ _____
Red Oak	1.2 MBF	\$ 166.00/MBF	\$ _____
Sugar Maple	9.1 MBF	\$ 403.00/MBF	\$ _____
Pulpwood			
Balsam Fir	4 Cords	\$ 16.35/Cord	\$ _____
Basswood	66 Cords	\$ 7.20/Cord	\$ _____
Mixed Aspen	559 Cords	\$ 26.65/Cord	\$ _____
Mixed Hardwood	133 Cords	\$ 22.30/Cord	\$ _____
Paper Birch	21 Cords	\$ 11.50/Cord	\$ _____
Red Oak	12 Cords	\$ 37.50/Cord	\$ _____

*The volumes are statistically estimated within plus (+) or minus (-) 21.19 percent at 95% confidence level. These estimated volumes are final and not subject to adjustment. Prospective bidders are urged to examine this timber and to make their own estimates of quantity and quality.

I understand that any or all bids may be rejected. All bids must be signed and all bid items must be bid or the bid form may be rejected. I also understand that consideration and awarding a contract will be based upon my past performance and ability to complete the contract based upon equipment and staffing subject to my control.

FEDERAL ID: ____ - ____ - ____ or SOCIAL SECURITY NUMBER: ____ - ____ - ____

Company or individual bidding: _____

Company representative's name: _____

Address: _____

City: _____ State: _____ Zip: _____

IF AVAILABLE, PLEASE PLACE THE PERSONALIZED LABEL FROM YOUR PROSPECTUS IN THE ABOVE BOX.

Individual or company representative's signature: _____ Date: _____

Phone number : _____ Email (optional): _____

THE WINNING BIDDER MUST COMPLETE THE VERIFICATION OF WORKER'S DISABILITY COMPENSATION ACT COMPLIANCE (ON REVERSE SIDE IF DOUBLE SIDED) WITHIN 21 DAYS OF SALE AWARD DATE



FOR DEPARTMENT USE ONLY
Sale Number (XX - XXX - XX - XX)
Forest Management Unit:

TIMBER SALE VERIFICATION OF WORKER'S DISABILITY COMPENSATION ACT COMPLIANCE

*As required by Act 317, P.A. 1969 (Worker's Compensation) and
Part 5 of Act 451 of 1994, as amended.*

VERIFICATION OF WORKER'S DISABILITY COMPENSATION ACT COMPLIANCE

- This verification must be completed and submitted within 21 days of contract award and prior to the issuance of the timber sale contract.
- In addition, if boxes 2B or 2C are checked, then Notice of Exclusion or Certificate of Insurance must be submitted within twenty-one (21) days of the contract award and prior to the issuance of the timber sale contract.
- All information must be typed or printed except for written signatures.

Please Check Appropriate Categories:

1. My business is organized as (you **must** check one of the boxes below):
 - A. Sole Proprietorship (individual)
 - B. Partnership
 - C. Corporation
2. You **must** check one of the boxes below:
 - A. I certify my business is a sole proprietorship and it has no employees but the sole proprietor. I am not subject to the Worker's Compensation Laws.
 - B. I certify my business has satisfied its obligation to the Worker's Compensation Act through the use of an approved Notice of Exclusion (BWC-337, Rev. 5/96). I will provide a copy of the Notice of Exclusion within 21 days of the contract award. (For questions or a copy of the BWC-337, please call the Worker's Compensation Bureau at 517-322-1195).
 - C. I certify my business has a Worker's Compensation Policy. I will provide an original Certificate of Insurance within twenty-one (21) days of the contract award.
3. If you have checked item 2(A) or 2(B), you **must** indicate the number of **both** full-time and part-time employees, other than yourself, including family members and active partners (if none, you must enter "0").

_____ Full-time Employees

_____ Part-time Employees

Name of Business		Federal ID (or) Social Security No.	
Address		Telephone ()	
City	State	ZIP	

I hereby certify that the above information is true and correct. I agree to notify the Michigan DNR of any changes that occur in factors affecting my coverage during any of my present and future operations.

Signature of Owner or Authorized Representative

Title

Date

Please complete the "SEALED BID" information on the next page

Raspberry Red Pine (54-028-20)
T29N, R09E, SEC. 19; Alpena COUNTY

In response to the notice of sale to be held 10:00 a.m. (local time) on November 23, 2021, I am hereby submitting my sealed bid (firm offer) for the following forest products to be cut. Bids for individual species must be at or above the advertised price. All non-responsive bid forms may be rejected.

<u>PRODUCTS & SPECIES</u>	<u>ESTIMATED VOLUME*</u>	<u>ADVERTISED PRICE</u>	<u>BID PRICE/UNIT</u>
Sawtimber			
Red Pine	95.0 MBF	\$ 70.00/MBF	\$ _____
Pulpwood			
Balsam Fir	5 Cords	\$ 16.35/Cord	\$ _____
Jack Pine	5 Cords	\$ 11.05/Cord	\$ _____
Red Pine	159 Cords	\$ 26.70/Cord	\$ _____
White Pine	6 Cords	\$ 12.75/Cord	\$ _____

*The volumes are statistically estimated within plus (+) or minus (-) 25.47 percent at 95% confidence level. These estimated volumes are final and not subject to adjustment. Prospective bidders are urged to examine this timber and to make their own estimates of quantity and quality.

I understand that any or all bids may be rejected. All bids must be signed and all bid items must be bid or the bid form may be rejected. I also understand that consideration and awarding a contract will be based upon my past performance and ability to complete the contract based upon equipment and staffing subject to my control.

FEDERAL ID: ____ - ____ or SOCIAL SECURITY NUMBER: ____ - ____ - ____

Company or individual bidding: _____

Company representative's name: _____

Address: _____

City: _____ State: _____ Zip: _____

IF AVAILABLE, PLEASE PLACE THE PERSONALIZED LABEL FROM YOUR PROSPECTUS IN THE ABOVE BOX.

Individual or company representative's signature: _____ Date: _____

Phone number : _____ Email (optional): _____

THE WINNING BIDDER MUST COMPLETE THE VERIFICATION OF WORKER'S DISABILITY COMPENSATION ACT COMPLIANCE (ON REVERSE SIDE IF DOUBLE SIDED) WITHIN 21 DAYS OF SALE AWARD DATE



FOR DEPARTMENT USE ONLY
Sale Number (XX - XXX - XX - XX)
Forest Management Unit:

TIMBER SALE VERIFICATION OF WORKER'S DISABILITY COMPENSATION ACT COMPLIANCE

*As required by Act 317, P.A. 1969 (Worker's Compensation) and
Part 5 of Act 451 of 1994, as amended.*

VERIFICATION OF WORKER'S DISABILITY COMPENSATION ACT COMPLIANCE

- This verification must be completed and submitted within 21 days of contract award and prior to the issuance of the timber sale contract.
- In addition, if boxes 2B or 2C are checked, then Notice of Exclusion or Certificate of Insurance must be submitted within twenty-one (21) days of the contract award and prior to the issuance of the timber sale contract.
- All information must be typed or printed except for written signatures.

Please Check Appropriate Categories:

1. My business is organized as (you **must** check one of the boxes below):
 - A. Sole Proprietorship (individual)
 - B. Partnership
 - C. Corporation
2. You **must** check one of the boxes below:
 - A. I certify my business is a sole proprietorship and it has no employees but the sole proprietor. I am not subject to the Worker's Compensation Laws.
 - B. I certify my business has satisfied its obligation to the Worker's Compensation Act through the use of an approved Notice of Exclusion (BWC-337, Rev. 5/96). I will provide a copy of the Notice of Exclusion within 21 days of the contract award. (For questions or a copy of the BWC-337, please call the Worker's Compensation Bureau at 517-322-1195).
 - C. I certify my business has a Worker's Compensation Policy. I will provide an original Certificate of Insurance within twenty-one (21) days of the contract award.
3. If you have checked item 2(A) or 2(B), you **must** indicate the number of **both** full-time and part-time employees, other than yourself, including family members and active partners (if none, you must enter "0").

_____ Full-time Employees

_____ Part-time Employees

Name of Business		Federal ID (or) Social Security No.	
Address		Telephone ()	
City	State	ZIP	

I hereby certify that the above information is true and correct. I agree to notify the Michigan DNR of any changes that occur in factors affecting my coverage during any of my present and future operations.

Signature of Owner or Authorized Representative

Title

Date

Please complete the "SEALED BID" information on the next page

Aspen Cottage (54-016-20)

T30N, R07E, SEC. 11; T30N, R07E, SEC. 14; T30N, R07E, SEC. 15; Alpena

In response to the notice of sale to be held 10:00 a.m. (local time) on November 23, 2021, I am hereby submitting my sealed bid (firm offer) for the following forest products to be cut. Bids for individual species must be at or above the advertised price. All non-responsive bid forms may be rejected.

<u>PRODUCTS & SPECIES</u>	<u>ESTIMATED VOLUME*</u>	<u>ADVERTISED PRICE</u>	<u>BID PRICE/UNIT</u>
Sawtimber			
Mixed Aspen	156.3 MBF	\$ 105.00/MBF	\$ _____
Red Maple	90.1 MBF	\$ 52.00/MBF	\$ _____
Pulpwood			
Balsam Fir	697 Cords	\$ 16.35/Cord	\$ _____
Bl/R/Hybrid Oak	16 Cords	\$ 37.50/Cord	\$ _____
Mixed Aspen	1,835 Cords	\$ 26.65/Cord	\$ _____
Mixed Hardwood	677 Cords	\$ 22.30/Cord	\$ _____
Red Pine	13 Cords	\$ 26.70/Cord	\$ _____
White Pine	34 Cords	\$ 12.75/Cord	\$ _____
White Spruce	81 Cords	\$ 7.40/Cord	\$ _____

*These estimated volumes are final and not subject to adjustment. Prospective bidders are urged to examine this timber and to make their own estimates of quantity and quality.

I understand that any or all bids may be rejected. All bids must be signed and all bid items must be bid or the bid form may be rejected. I also understand that consideration and awarding a contract will be based upon my past performance and ability to complete the contract based upon equipment and staffing subject to my control.

FEDERAL ID: ____ - ____ - ____ or SOCIAL SECURITY NUMBER: ____ - ____ - ____

Company or individual bidding: _____

Company representative's name: _____

Address: _____

City: _____ State: _____ Zip: _____

IF AVAILABLE, PLEASE PLACE THE PERSONALIZED LABEL FROM YOUR PROSPECTUS IN THE ABOVE BOX.

Individual or company representative's signature: _____ Date: _____

Phone number : _____ Email (optional): _____

THE WINNING BIDDER MUST COMPLETE THE VERIFICATION OF WORKER'S DISABILITY COMPENSATION ACT COMPLIANCE (ON REVERSE SIDE IF DOUBLE SIDED) WITHIN 21 DAYS OF SALE AWARD DATE



FOR DEPARTMENT USE ONLY	
Sale Number (XX - XXX - XX - XX)	
Forest Management Unit:	

TIMBER SALE VERIFICATION OF WORKER'S DISABILITY COMPENSATION ACT COMPLIANCE

As required by Act 317, P.A. 1969 (Worker's Compensation) and
Part 5 of Act 451 of 1994, as amended.

VERIFICATION OF WORKER'S DISABILITY COMPENSATION ACT COMPLIANCE

- This verification must be completed and submitted within 21 days of contract award and prior to the issuance of the timber sale contract.
- In addition, if boxes 2B or 2C are checked, then Notice of Exclusion or Certificate of Insurance must be submitted within twenty-one (21) days of the contract award and prior to the issuance of the timber sale contract.
- All information must be typed or printed except for written signatures.

Please Check Appropriate Categories:

1. My business is organized as (you **must** check one of the boxes below):
 - A. Sole Proprietorship (individual)
 - B. Partnership
 - C. Corporation
2. You **must** check one of the boxes below:
 - A. I certify my business is a sole proprietorship and it has no employees but the sole proprietor. I am not subject to the Worker's Compensation Laws.
 - B. I certify my business has satisfied its obligation to the Worker's Compensation Act through the use of an approved Notice of Exclusion (BWC-337, Rev. 5/96). I will provide a copy of the Notice of Exclusion within 21 days of the contract award. (For questions or a copy of the BWC-337, please call the Worker's Compensation Bureau at 517-322-1195).
 - C. I certify my business has a Worker's Compensation Policy. I will provide an original Certificate of Insurance within twenty-one (21) days of the contract award.
3. If you have checked item 2(A) or 2(B), you **must** indicate the number of **both** full-time and part-time employees, other than yourself, including family members and active partners (if none, you must enter "0").

_____ Full-time Employees

_____ Part-time Employees

Name of Business		Federal ID (or) Social Security No.	
Address		Telephone ()	
City	State	ZIP	

I hereby certify that the above information is true and correct. I agree to notify the Michigan DNR of any changes that occur in factors affecting my coverage during any of my present and future operations.

Signature of Owner or Authorized Representative

Title

Date

Please complete the "SEALED BID" information on the next page