



**DEPARTMENT OF NATURAL RESOURCES  
STATE OF MICHIGAN**

**TIMBER SALE PROSPECTUS #6977**

SCHEDULED SALE DATE AND TIME: 10:00 a.m. (local time) on December 6, 2021.

LOCATION: SAULT STE MARIE MGMT UNIT, P.O. BOX 798, 4131 S. M-129, SAULT STE MARIE, MI 49783.

PROSPECTUS NOTE: The bidder is advised to inspect the sale area and review the location, estimated volumes, operating costs and contract terms of proposed sales. Please be aware that some landowners may request 60 days or more notice for access across their land.

Notice is hereby given that bids will be received by the Unit Manager, SAULT STE MARIE MANAGEMENT UNIT, for certain timber on the following described lands:

Dickenson Creek Mix (45-003-21) / T41N, R07E, SEC. 14, N1/2SE.

T41N, R07E, SEC. 15, SWNW,NWSW.

T41N, R07E, SEC. 16, SENW,SENE,NESW,S1/2SW,NESE.

T41N, R07E, SEC. 17, SENW,N1/2SW,SWSW.

T41N, R07E, SEC. 18, SWNE,N1/2SE,SESE.

T41N, R07E, SEC. 21, NW.

Chippewa County, Advertised Price \$63,617.10, 221.3 Acres, Aspen, Spruce/Fir/Tamarack.

SALE NOTE: All units of volume listed for this sale were estimated using the Inventory Manager computer program and the new Michigan taper model.

A recreation site such as a trail, pathway, or campground is within the sale area or the vicinity. Certain restrictions/specifications may be applicable including time restrictions.

D.I. Rock Bottom Mix (45-007-21) / T42N, R06E, SEC. 23, S1/2SW.

T42N, R06E, SEC. 26, NWNW,E1/2NE.

Chippewa County, Advertised Price \$9,863.80, 95.5 Acres, Hardwood, Aspen.

Jingle Bell Mix (45-012-21) / T42N, R01W, SEC. 1, NWNW,S1/2NW,SWNE,W1/2SW.

T42N, R01W, SEC. 11, E1/2NE.

T42N, R01W, SEC. 12, NW.

T42N, R01W, SEC. 2, E1/2NE,E1/2SE.

Mackinac County, Advertised Price \$48,174.05, 136.1 Acres, Aspen, Hardwood.

SALE NOTE: All units of volume listed for this sale were estimated using the Inventory Manager computer program and the new Michigan taper model.

A recreation site such as a trail, pathway, or campground is within the sale area or the vicinity. Certain restrictions/specifications may be applicable including time restrictions. Access may be through private or other public land.

## BID INSTRUCTIONS (VER. 07/02/2018):

### 1. Scheduled Bid Location, Date, and Time (2/11)

Bids must be received by the Unit Manager, SAULT STE MARIE OFFICE, P.O. Box 798 4131 S. M-129, Sault Ste Marie, MI 49783, no later than 10:00 a.m. (local time) on December 6, 2021. For further information concerning this sale, contact Josh Brinks at 906-203-0210 extension .

### 2. Bidder's Qualifications (5/16)

Purchaser shall obtain workers compensation insurance to cover claims under Michigan's Worker's Disability Compensation Act of 1969 or similar employee benefit act of any other state applicable to an employee. If all or part of a timber sale was prepared by a private contractor, the contractor and that contractor's company are not permitted to bid on the timber sale contract. Bids will not be accepted from individuals or companies appearing on the DNR/FRD No-Bid List. This list contains the names of purchasers who previously failed to execute a contract within 21-days or who have a history of poor performance.

### 3. Preparation of Sealed Bids (5/16)

Bid Forms may be completed online thru Michigan DNR Timber Sale Online Bidding (OLB) at [www.michigan.gov/timberbidding](http://www.michigan.gov/timberbidding) or by completing the hardcopy Bid Form found in the Timber Sale Prospectus . Hardcopy Bid Forms shall be manually signed in ink. Registration in OLB is considered your 'signature' for all bids submitted thru that system. Bid prices must be entered for each species and product in the Bid Price column for all material subject to bidding and all fill-in blanks must be completed. If erasures or other changes appear on the hardcopy Bid Form, each erasure or change must be initialed by the person signing the bid.

### 4. Submission of Sealed Bids (5/16)

Bid forms may be obtained from the Unit Manager or thru OLB. Bids may be submitted hardcopy or thru OLB. All hardcopy bids must be submitted on the bid form and in an envelope clearly identified as described in this section. NOTE: Only one bid form per bid envelope. Sealed bids must be submitted to the Unit office designated in the prospectus and must be submitted at or prior to the time established in the prospectus. The envelope should show on the outside (a) the sale name or number and (b) the date and time of bid opening, as shown in the prospectus. Bids received after the time specified in the sale prospectus are late bids and will be rejected.

It is possible for a bidder to submit multiple bids on a single sale. For example, a bid may be submitted hardcopy and a bid may be submitted thru OLB. Or, two bidders from the same company could both submit bids on the same sale. If this were to happen, the State would accept all bids received and award the contract accordingly. All bidding and contractual requirements would apply to all bids received.

### 5. Public Opening of Sealed Bids (7/16)

If conditions permit, the sealed bids will be publicly opened and posted at the time and place set in the prospectus.

If a bidder, present at a bid opening, has submitted bids on more than one sale, that bidder may withdraw their unopened bid envelopes or announce the withdrawal of their online bid after being declared the successful bidder on one sale.

### 6. Award of Contract (1/11)

Award of the contract will be made to the Bidder whose bid, conforming to the prospectus, is most advantageous to the State of Michigan on the basis of total value at rates bid for the estimated quantities. The State reserves the right to reject any bid or waive any minor irregularity in bids received. A written award mailed (or otherwise furnished) to the successful Bidder shall be deemed to result in a binding contract without further action by either party.

### 7. Down Payment (1/11)

The Bidder to whom award is made must make a down payment within 21 days of the sale award. The amount of the down payment will be calculated as shown in the Bond and Payment Schedule of this prospectus. Only cash may be used to meet this requirement.

### 8. Performance Security (1/11)

As guarantee of faithful performance, a cash bond, certificate of deposit, surety bond or irrevocable letter of credit (LOC) is required within 21 days of the sale award. The amount of the performance security is shown in the Bond and

Payment Schedule of this prospectus. If an LOC or surety is used, the coverage must extend for at least 6 months beyond the contract expiration.

#### 9. Timber Sale Contract (7/18)

Additional conditions and requirements common to all timber sales are listed on the timber sale contract (R4031) and are available on line at [www.michigan.gov/timber](http://www.michigan.gov/timber). Contact the Unit Manager for additional information or a sample contract. Within 21 days of the date of the award letter, the bidder must sign the contract and provide the required down payment, performance security, and verification of worker's disability compensation. The down payment and performance security shall be in accordance with the provisions of the timber sale contract, in the sums stated in this prospectus. If these actions are not taken, then the Bidder, the Bidder's corporation, and the corporation's principals may not be permitted to bid on State timber sales for a period of 3 months after the first offense, 6 months after the second offense, and 1 year after the third offense. An offense will only be counted against the Bidder for 5 years. In addition, the Bidder certifies that if awarded this contract, the Bidder will complete the timber sale contract in accordance with its terms and any modifications thereof including requirements to purchase, cut, and remove the included timber by the expiration date.

Payment Unit values in the State Forest Timber Sale Contract are calculated based on the advertised value of the Payment Unit as a percentage of the total advertised value of the contract. The advertised value of each Payment Unit is given in the Description of Timber by Payment Unit table on the Timber Sale Information page. For example, if the value of Payment Unit 1 is advertised as \$1,500 and the total Timber Sale value is advertised as \$10,000, the contract price for Payment Unit 1 will be 15% of the total bid price ( $\$1,500/\$10,000 * 100$ ).

#### 10. Disclaimer of Estimates and Bidder's Warranty of Inspection (7/16)

Before submitting this bid, the Bidder is advised and cautioned to inspect the sale area, review the requirements of the sale contract, and take other steps as may be reasonably necessary to ascertain the location, estimated volumes, construction estimates, and operating costs of the proposed sale. Failure to do so will not relieve the Bidder from responsibility for completing the contract.

The Bidder warrants that this bid is submitted solely on the basis of the Bidder's examination and inspection of the quality and quantity of the timber offered for sale and the Bidder's opinion of the value thereof and the costs of recovery. No reliance should be placed on the State of Michigan's estimates of timber quality, quantity or costs of recovery. Bidder further acknowledges that the State of Michigan: (i) expressly disclaims any warranty of fitness of timber for any purpose; (ii) offers this timber as is without any warranty of quality (merchantability) or quantity and (iii) expressly disclaims any warranty as to the quantity or quality of timber sold.

#### 11. Certification and Chain-of-Custody (10/14)

Unless otherwise indicated in the contract under section 7 – Other Conditions of the Sale Specific Conditions & Requirements, the area encompassed by this timber sale is certified to the standards of the Forest Stewardship Council (FSC) - Certificate #SCS-FM/COC-00090N and the Sustainable Forestry Initiative (SFI) - Certificate #NSF-SFIS-5Y031-SF5. Forest products from this sale may be delivered to the mill as "FSC 100% and / or SFI certified" as long as the contractor hauling the forest products is chain-of-custody (COC) certified or covered under a COC certificate from the destination mill. The purchaser is responsible for maintaining COC after leaving the sale area.

#### 12. Good Neighbor Authority (GNA) Requirements (7/16)

If the name of this timber sales contains the acronym GNA, it is authorized by the Good Neighbor Authority (GNA) and covered by various agreements between the U.S. Forest Service and the State. The timber sale occurs on federal land and the following conditions apply:

GNA contracts on US Forest Service land will not be awarded to purchasers on the Federal list of excluded parties. The System for Award Management (SAM) will be checked for active excluded parties prior to award of contract. In addition, the Bidder to whom award is made must complete an Assurance Regarding Felony Conviction or Tax Delinquent Status for Corporate Applicants (AD-3031).

#### 13. Good Neighbor Authority (GNA) Requirements, con't (9/16)

Bidder certifies, by signing this bid form, that to the best of Bidder's knowledge that the following representations are accurate and complete.

- a. That the Bidder and its principals are not presently debarred, suspended, proposed for debarment, declared ineligible, or voluntary excluded from timber sales (covered transactions) by any Federal department or agency.
- b. That the Bidder and its principals have not within a 3-year period preceding this bid been convicted of or had a civil judgment rendered against them for commission of fraud or a criminal offense in connection with obtaining , attempting to obtain, or performing a public (Federal, State, or local) transaction or contract under a public transaction; violation of Federal or State antitrust statutes or commission of embezzlement, theft, forgery, bribery, falsification or destruction of records, making false statements, or receiving stolen property.
- c. That the Bidder and its principals are not presently indicted for or otherwise criminally or civilly charged by a governmental entity (Federal, State, or local) with commission of any of the offenses enumerated in paragraph b of this certification.
- d. That the Bidder and its principals have not within a 3-year period preceding this bid had one or more public transactions (Federal, State, or local) terminated for breach or default of a timber or forest product contract.

Bidders that cannot certify this requirement, in whole or in part, shall submit an explanation with their bid.

DAN EICHINGER  
Director

## TIMBER SALE INFORMATION

### Dickenson Creek Mix (45-003-21)

T41N, R07E, SEC. 14; T41N, R07E, SEC. 15; T41N, R07E, SEC. 16; T41N, R07E, SEC. 17; T41N, R07E, SEC. 18; T41N, R07E, SEC. 21.

SALE NOTE: All units of volume listed for this sale were estimated using the Inventory Manager computer program and the new Michigan taper model.

A recreation site such as a trail, pathway, or campground is within the sale area or the vicinity. Certain restrictions/specifications may be applicable including time restrictions.

A timber sale contract for this lump sum, sealed bid timber sale will be awarded to the responsible bidder offering the highest sealed bid price. All units of volume listed below were estimated using the Inventory Manager computer program and the new Michigan taper model. Bids must be at or above the following advertised price for each product and species:

<u>PRODUCTS &amp; SPECIES</u>	<u>ESTIMATED UNITS*</u>	<u>ADVERTISED PRICE</u>
Sawtimber		
Beech	1.2 MBF	\$ 16.00 / MBF
Paper Birch	4.9 MBF	\$ 17.00 / MBF
Red Maple	0.6 MBF	\$ 51.00 / MBF
Sugar Maple	107.6 MBF	\$ 164.00 / MBF
White Ash	8.1 MBF	\$ 20.00 / MBF
Yellow Birch	0.7 MBF	\$ 21.00 / MBF
Pulpwood		
Balsam Fir	477 Cords	\$ 4.55 / Cord
Mixed Aspen	2,650 Cords	\$ 8.90 / Cord
Mixed Hardwood	293 Cords	\$ 6.45 / Cord
Mixed Spruce	740 Cords	\$ 9.35 / Cord
N. White Cedar	1,108 Cords	\$ 2.50 / Cord
Paper Birch	79 Cords	\$ 5.05 / Cord
Red Pine	266 Cords	\$ 25.40 / Cord
White Pine	171 Cords	\$ 6.85 / Cord

\* The total volume is statistically estimated within plus (+) or minus (-) 4.50 percent. There are an estimated 5,997 cords on this timber sale, plus or minus 270 cords at the 95% confidence level. The estimated units are final and not subject to adjustment. Prospective bidders are urged to examine this timber and to make their own estimates of quantity and quality.

### **BOND AND PAYMENT SCHEDULE:**

1. A bond in the amount of \$4,453.00 to insure faithful performance of the conditions of the contract will be deposited by the successful bidder within 21 days of the sale award.
2. Cutting in any sale or unit without the required advance payment would be considered a trespass.
3. Total payment must be paid in advance or according to the following schedule:
  - (a) Ten percent (10%) of the sale value must be paid within 21 days of the sale award.
  - (b) The 10% down payment will be credited towards the first unit cut.
  - (c) Payment for each of the following units must be made before cutting begins in that unit:

PAYMENT UNIT NUMBER	PERCENT OF TOTAL SALE VALUE
01	17.8%
02	14.8%
03	2.0%
04	7.0%
05	24.1%
06	6.7%
07	15.0%
08	12.6%

4. If no cutting takes place, the 10% down payment will not be refunded.
5. Operations on the contract issued will terminate on 06/30/2025.

### **SALE STATISTICS**

Volumes were calculated in cubic feet using the Michigan taper model. Cubic foot volume includes all wood inside bark for the product indicated. For display purposes, cubic feet were converted to cords and MBF using a simple conversion factor, e.g. 79 cubic feet per cord and 185 cubic feet per MBF. The cubic foot volumes are precise; the cords and MBF volumes are not. Cubic foot volume cannot be directly converted to cords or boards with precision.

### SALE VOLUMES

The total estimated sale volume may not equal the sum of the species/products due to the nature of statistical calculations associated with double sampling methodology.

VOLUME			STATISTICAL RANGE IN CORDS	
TOTAL CUBIC FEET	TOTAL CORDS	PERCENT ERROR	MINIMUM	MAXIMUM
473,796	5,997	4.50%	5,727	6,268

### VDU VOLUMES

A VDU is a Volume Determination Unit. Volumes and their associated statistics are calculated at the VDU level and summarized to the sale level. There is often a one to one relationship between a VDU and a Payment Unit, but not always, depending on the cruise design. Refer to the VDU TO PAYMENT UNIT table.

VDU	VOLUME		PERCENT ERROR	RANGE IN CORDS	
	TOTAL CUBIC FEET	TOTAL CORDS		MINIMUM	MAXIMUM
6	172,360	2,182	6.97%	2,030	2,334
7	11,173	141	19.69%	114	169
36	213,356	2,701	7.55%	2,497	2,905
64	8,822	112	14.34%	96	128
94	28,908	366	19.22%	296	436
115	23,234	294	14.39%	252	336
641	18,890	239	14.21%	205	273
<b>TOTAL:</b>	<b>476,742</b>	<b>6,035</b>		<b>5,488</b>	<b>6,581</b>

### VDU TO PAYMENT UNIT

When a VDU is associated with more than one Payment Unit (PU), the VDU volumes are assigned to the PU based on acres of the VDU within the PU.

VDU	VDU ACRES	PU	PU ACRES
6	69.4	1	37.9
		2	31.5
7	8.4	3	8.4
		7	43.1
36	79.6	8	36.5
		5	14.7
64	14.7	6	21.0
94	21.0	4	16.1
115	16.1	5	12.1
641	12.1		
<b>TOTAL:</b>	<b>221.3</b>		<b>221.3</b>

**DESCRIPTION OF TIMBER BY PAYMENT UNIT (PU)**

PU	MARKET GROUP	PRODUCT	QUANTITY	UNIT	ACRES	ADVERTISE PRICE
1	Paper Birch	Sawtimber	2.1	MBF	37.9	\$11,327.10
	Balsam Fir	Pulpwood	113	Cords		
	Mixed Aspen		444	Cords		
	<i>B. T. Aspen</i>		7	<i>Cords</i>		
	<i>Balsam Poplar</i>		16	<i>Cords</i>		
	<i>Quaking Aspen</i>		421	<i>Cords</i>		
	Mixed Hardwood		20	Cords		
	<i>Red Maple</i>		14	<i>Cords</i>		
	<i>Sugar Maple</i>		6	<i>Cords</i>		
	Mixed Spruce		203	Cords		
	<i>White Spruce</i>		203	<i>Cords</i>		
	N. White Cedar		149	Cords		
	Paper Birch		21	Cords		
	Red Pine		145	Cords		
	White Pine		93	Cords		
2	Paper Birch	Sawtimber	1.7	MBF	31.5	\$9,415.80
	Balsam Fir	Pulpwood	94	Cords		
	Mixed Aspen		368	Cords		
	<i>B. T. Aspen</i>		5	<i>Cords</i>		
	<i>Balsam Poplar</i>		13	<i>Cords</i>		
	<i>Quaking Aspen</i>		350	<i>Cords</i>		
	Mixed Hardwood		17	Cords		
	<i>Red Maple</i>		12	<i>Cords</i>		
	<i>Sugar Maple</i>		5	<i>Cords</i>		
	Mixed Spruce		168	Cords		
	<i>White Spruce</i>		168	<i>Cords</i>		
	N. White Cedar		124	Cords		
	Paper Birch		17	Cords		
	Red Pine		121	Cords		
	White Pine		78	Cords		
3	Red Maple	Sawtimber	0.6	MBF	8.4	\$1,286.70
	Sugar Maple		0.6	MBF		
	Balsam Fir	Pulpwood	18	Cords		
	Mixed Aspen		112	Cords		
	<i>Balsam Poplar</i>		4	<i>Cords</i>		
	<i>Quaking Aspen</i>		108	<i>Cords</i>		
	Mixed Hardwood		5	Cords		
	<i>Black Ash</i>		1	<i>Cords</i>		
	<i>Red Maple</i>		3	<i>Cords</i>		
	<i>Sugar Maple</i>		1	<i>Cords</i>		
	Mixed Spruce		5	Cords		
	<i>White Spruce</i>		5	<i>Cords</i>		
	4	Paper Birch	Sawtimber	1.1		
Sugar Maple			13.4	MBF		
White Ash			8.1	MBF		
Mixed Aspen		Pulpwood	170	Cords		
<i>Balsam Poplar</i>			74	<i>Cords</i>		
<i>Quaking Aspen</i>			96	<i>Cords</i>		
Mixed Hardwood			54	Cords		
<i>Beech</i>			2	<i>Cords</i>		
<i>Black Ash</i>			3	<i>Cords</i>		
<i>Sugar Maple</i>			43	<i>Cords</i>		
<i>White Ash</i>			6	<i>Cords</i>		
Mixed Spruce			25	Cords		
<i>White Spruce</i>			25	<i>Cords</i>		
Paper Birch			1	Cords		

**DESCRIPTION OF TIMBER BY PAYMENT UNIT (PU), CON'T**

PU	MARKET GROUP	PRODUCT	QUANTITY	UNIT	ACRES	ADVERTISE PRICE
5	Beech	Sawtimber	1.2	MBF	26.8	\$15,285.50
	Sugar Maple		86.1	MBF		
	Yellow Birch		0.7	MBF		
	Mixed Aspen	Pulpwood	1	Cords		
	<i>Balsam Poplar</i>		1	Cords		
	Mixed Hardwood		174	Cords		
	<i>Beech</i>		5	Cords		
	<i>Ironwood</i>		7	Cords		
	<i>Sugar Maple</i>		161	Cords		
	<i>Yellow Birch</i>		1	Cords		
6	Sugar Maple	Sawtimber	7.5	MBF	21.0	\$4,271.45
	Balsam Fir	Pulpwood	4	Cords		
	Mixed Aspen		243	Cords		
	<i>Balsam Poplar</i>		23	Cords		
	<i>Quaking Aspen</i>		220	Cords		
	Mixed Hardwood		16	Cords		
	<i>Beech</i>		6	Cords		
	<i>Ironwood</i>		4	Cords		
	<i>Sugar Maple</i>		6	Cords		
	Mixed Spruce		81	Cords		
	<i>White Spruce</i>		81	Cords		
7	Balsam Fir	Pulpwood	134	Cords	43.1	\$9,513.50
	Mixed Aspen		711	Cords		
	<i>B. T. Aspen</i>		53	Cords		
	<i>Balsam Poplar</i>		35	Cords		
	<i>Quaking Aspen</i>		623	Cords		
	Mixed Hardwood		4	Cords		
	<i>Red Maple</i>		4	Cords		
	Mixed Spruce		140	Cords		
	<i>Black Spruce</i>		53	Cords		
	<i>White Spruce</i>		87	Cords		
	N. White Cedar		452	Cords		
Paper Birch		22	Cords			
8	Balsam Fir	Pulpwood	114	Cords	36.5	\$8,038.65
	Mixed Aspen		601	Cords		
	<i>B. T. Aspen</i>		44	Cords		
	<i>Balsam Poplar</i>		30	Cords		
	<i>Quaking Aspen</i>		527	Cords		
	Mixed Hardwood		3	Cords		
	<i>Red Maple</i>		3	Cords		
	Mixed Spruce		118	Cords		
	<i>Black Spruce</i>		45	Cords		
	<i>White Spruce</i>		73	Cords		
	N. White Cedar		383	Cords		
Paper Birch		18	Cords			
TOTAL:			123.1	MBF		
TOTAL:			5,784	Cords		



# Sale Specific Conditions & Requirements

**Sale Name: Dickenson Creek Mix**

**Sale Number: 45-003-21 Seq#: 1**

## 1 - Sale Area

### 1.2 - Boundaries

#### 1.2.1 - Painted boundaries (9/19)

The sale boundary and Payment Unit boundaries are marked and identified by blue, red, and yellow paint. Exterior sale boundary lines against private property are marked with blue paint. Exterior sale boundary lines against state are marked with red paint. Interior Payment Unit boundaries are marked with yellow paint. Retention patches are marked with red paint, no harvesting activities may occur within these areas. The painted boundary line trees are not Included Timber and are to be protected unless marked with orange paint. Yellow painted trees designating an interior Payment Unit boundary are only to be cut when all surrounding Payment Units have been paid.

## 2 - Timber Specifications

### 2.1 - Included Timber

#### 2.1.1 - Clearcut unit(s) with unmerchantable trees (6/14)

Within Payment Unit(s) 1-4, 5b, and 6, cut all trees that are two (2) inches or more at DBH. Within Payment Units 3 and 4, do not cut oak, cedar, pine, hemlock, or yellow birch. Within Payment Unit 6, do not cut oak, hemlock, pine, yellow birch, cedar, and sugar maple except those maples marked with orange paint.

#### 2.1.7 - Leave tree marked unit(s) (6/14)

Within Payment Unit(s) 5a, cut all trees that are two (2) inches or more at DBH, except trees marked with green paint.

Within Payment Unit 7 and 8, cut all trees that are two (2) inches or more at DBH, except those trees marked with blue paint and do not cut any oak, pine, hemlock, or yellow birch.

## 3 - Payments

### 3.3 - Pre-measured Sales

#### 3.3.4 - Dividing payment units (7/14)

Payment Unit(s) 1-8 may be divided at the request of the Purchaser and upon approval of the Unit Manager. Dividing Payment Units is a contract modification which requires a Timber Sale Contract Amendment. There will be only one division per Payment Unit.

## 4 - Transportation

### 4.1 - Construction

#### 4.1.6 - Road construction (1/09)

Construction of new roads or improvements of existing roads shall be done in such a way as to minimize the environmental and visual impacts. Merchantable trees shall be cut and utilized unless otherwise directed. Non-merchantable trees shall be severed and laid flat on the ground. Slash shall be scattered, and not left in windrows and kept a minimum of 10 feet back from the road edge. Stumps shall be set upright, not left on edge, and be moved at least 10 feet away from the road edge. Disturbed soil shall be feathered into the woods and not left in berms or windrows.

#### 4.1.7 - Road closure (10/11)

All new roads built into the sale must be blocked to vehicle traffic upon completion of the sale. Overgrown roads that are reopened shall be considered new roads. Some existing roads may also need to be closed, see the Timber Sale Map for locations. In general, this will require constructing a four (4') foot high berm of stumps and logs covered with earth. Stumps and brush must be placed along the remainder of the trail. These roads must be rendered impassable to cars and trucks. All stumps from road building and landing construction must be reserved to block any newly constructed roads upon completion of the sale. These stumps must be scattered along the road system to prohibit vehicular movement. Contact the sale administrator for specific details of design and placement.

### 4.2 - Maintenance

#### 4.2.4 - Grading (10/16)

For completion of the sale, state forest roads must be graded. In general, this will require a road grader or bulldozer to shape up the roads after forest products have been hauled off site. This includes cleaning of drainage areas, grading, crowning and filling with gravel, if necessary. The grading equipment to be used must be approved by the Unit Manager or his/her representative.

#### 4.2.5 - Two wheel drive condition (2/04)

All existing trail roads on and adjacent to the sale area must be passable by two-wheel drive traffic for the duration of the sale.

### 5 - Operations

#### 5.2 - Conduct of Operations

##### 5.2.2 - Hazard Trees/Snags

###### 5.2.2.1 - Den trees (10/16)

Obvious hollow and/or den trees shall be protected and left standing unless they are a safety hazard.

##### 5.2.3 - Operating Restrictions

###### 5.2.3.1 - Operating restrictions (9/11)

Within Payment Unit(s) 1-7, unless changed by written agreement, cutting, skidding, and hauling are limited to the period of December 1 to March 31. This restriction is because deer yard.

##### 5.2.32 - Decking/landing restoration (9/13)

All decking and landing areas must have the surface area restored to a condition equal to or better than before. This is to ensure the proper regeneration of the stand. Wood debris, chips, and "cookies" from trimmings must be removed or scattered away from landing and loading areas and may not be windrowed on the edge.

##### 5.2.38 - No decking against live trees (2/04)

Cut products may not be decked against unmarked or designated leave trees.

##### 5.2.41 - Snowmobile trail protection (9/11)

The snowmobile trail is shown on the Timber Sale Map. Do not cut or damage posts with orange trail markers or traffic control signs. The snowmobile trail may not be used for any timber sale operations from December 1 to March 31. The only portion of trail that may be used is from Bass Cove Road to Clear Lake Road.

#### 5.8 - Protection of Endangered Species

##### 5.8.5 - Protection of raptor nests (3/13)

All trees with raptor nests will be protected if found during harvesting operations. Notification will be made to the Unit Manager or his/her representative who will notify the Wildlife Biologist so an on-site evaluation and recommendation can be made, if necessary.

### 6 - Safety and Fire Prevention

#### 6.2 - Signing

##### 6.2.1 - Road posting (10/20)

The Purchaser is responsible for posting and maintaining caution signs on Bass Cove Road prior to beginning operations. The road must be posted at appropriate distances from the Sale Area to warn of logging activity and truck traffic. Signs must be removed when harvest operations are suspended or completed. The Purchaser will provide these signs.

##### 6.2.2 - Snowmobile trail posting (10/20)

The Purchaser is responsible for posting and maintaining caution signs on the snowmobile trail prior to beginning operations during the snowmobile season (approximately December 1 to March 31). The trail must be posted at appropriate distances from the Sale Area to warn of logging activity and truck traffic. Signs must be removed when harvest operations are suspended or completed. The Purchaser will provide these signs.

##### 6.2.3 - Recreational trail posting (10/20)

The Purchaser is responsible for posting and maintaining caution signs on the ORV trail prior to beginning operations. The

trail must be posted at appropriate distances from the Sale Area to warn of logging activity and truck traffic at both ends of the trail. Signs must be removed when harvest operations are suspended or completed. The Purchaser will provide these signs.



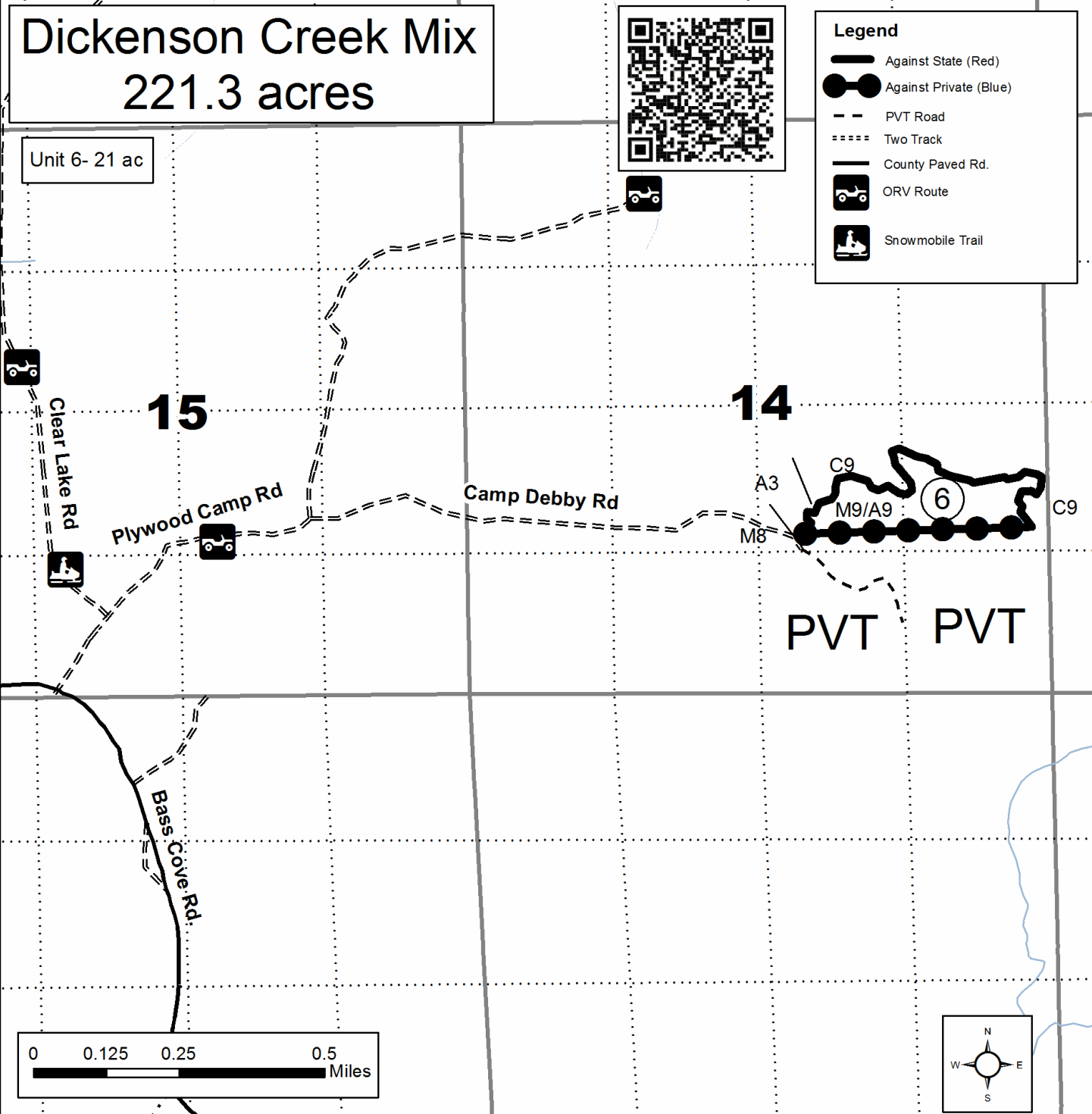
# TIMBER SALE MAP

This information provided by authority of Part 525, 1994 PA 451, as amended.

Forest Management Unit Sault Ste. Marie	County Chippewa	Mapped By Brinks	Date 09/23/21	Page 3	of 3
		Cruised By UMLMWS			

Township T41N	Range R07E	Section(s) and Subdivision(s) Sec. 14- N1/2SE	Scale 1:15,840 1 inch= 1/4 mile
------------------	---------------	--	------------------------------------

Cover Type				Density	
A = Aspen	H = Hemlock	N = Marsh	U = Upland Brush	0 = Non Stocked	5 = Pole Timber Medium
B = Paper Birch	J = Jack Pine	O = Oak	UM = Upland Mixed	1 = Seedling Sapling Poor	6 = Pole Timber Well
C = Cedar	L = Lowland Brush	P = Lowland Poplar	V = Bog or Marsh	2 = Seedling Sapling Medium	7 = Saw Timber Poor
D = Treed Bog	LM = Lowland Mixed	Q = Mixed Swamp Conifer	W = White Pine	3 = Seedling Sapling Well	8 = Saw Timber Medium
E = Swamp Hdwoods	M = Mpl, Bch, Brch	R = Red Pine	X = Non Stocked	4 = Pole Timber Poor	9 = Saw Timber Well
F = Spruce Fir	MC = Mixed Conifer	S = Black Spruce	Z = Water		
G = Grass	MD = Mixed Deciduous	T = Tamarack			



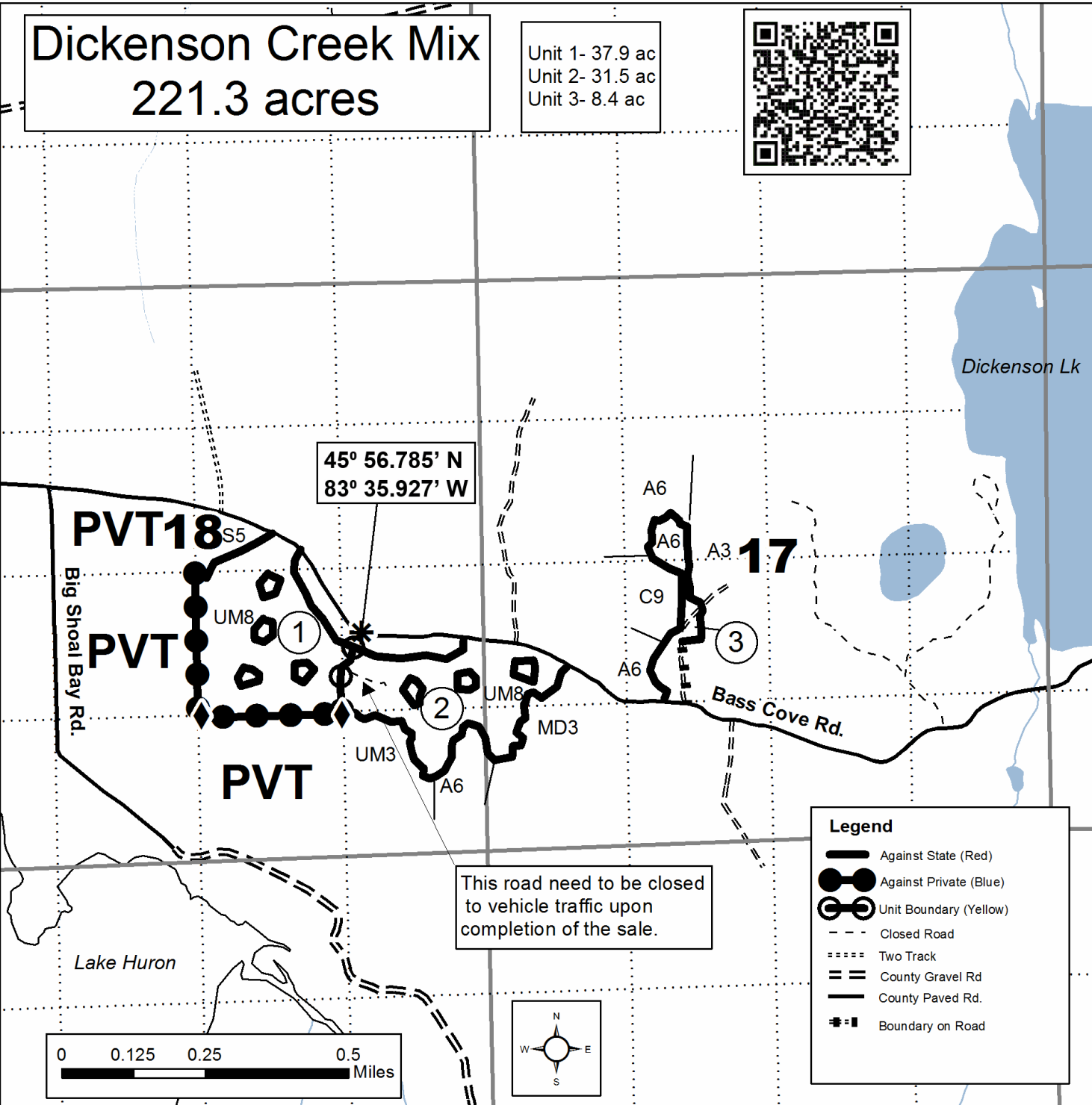


### TIMBER SALE MAP

This information provided by authority of Part 525, 1994 PA 451, as amended.

Forest Management Unit Sault Ste. Marie	County Chippewa	Mapped By Brinks	Date 9/23/21	Page 1	of 3
Township T41N	Range R07E	Section(s) and Subdivision(s) Sec. 17- SENW, NESW, W1/2SW Sec. 18- SWNE, N1/2SE, SESE	Cruised By UMLMWS		
			Scale 1:15,840 1 inch= 1/4 mile		

Cover Type				Density	
A = Aspen	H = Hemlock	N = Marsh	U = Upland Brush	0 = Non Stocked	5 = Pole Timber Medium
B = Paper Birch	J = Jack Pine	O = Oak	UM = Upland Mixed	1 = Seedling Sapling Poor	6 = Pole Timber Well
C = Cedar	L = Lowland Brush	P = Lowland Poplar	V = Bog or Marsh	2 = Seedling Sapling Medium	7 = Saw Timber Poor
D = Treed Bog	LM = Lowland Mixed	Q = Mixed Swamp Conifer	W = White Pine	3 = Seedling Sapling Well	8 = Saw Timber Medium
E = Swamp Hdwoods	M = Mpl, Bch, Brch	R = Red Pine	X = Non Stocked	4 = Pole Timber Poor	9 = Saw Timber Well
F = Spruce Fir	MC = Mixed Conifer	S = Black Spruce	Z = Water		
G = Grass	MD = Mixed Deciduous	T = Tamarack			





### TIMBER SALE MAP

This information provided by authority of Part 525, 1994 PA 451, as amended.

Forest Management Unit Sault Ste. Marie	County Chippewa	Mapped By Brinks	Date 9/23/2021	Page 2	of 3
Township T41N	Range R07E	Cruised By UMLMWS	Scale 1:15,840 1 inch= 1/4 mile		
Section(s) and Subdivision(s) Sec 15- SWNW, NWSW Sec 16- SENW, NESW, SENE, NESE, S1/2SW Sec 23- NW					

#### Cover Type

A = Aspen	H = Hemlock	N = Marsh	U = Upland Brush
B = Paper Birch	J = Jack Pine	O = Oak	UM = Upland Mixed
C = Cedar	L = Lowland Brush	P = Lowland Poplar	V = Bog or Marsh
D = Tread Bog	LM = Lowland Mixed	Q = Mixed Swamp Conifer	W = White Pine
E = Swamp Hdwoods	M = Mpl, Bch, Brch	R = Red Pine	X = Non Stocked
F = Spruce Fir	MC = Mixed Conifer	S = Black Spruce	Z = Water
G = Grass	MD = Mixed Deciduous	T = Tamarack	

#### Density

0 = Non Stocked	5 = Pole Timber Medium
1 = Seedling Sapling Poor	6 = Pole Timber Well
2 = Seedling Sapling Medium	7 = Saw Timber Poor
3 = Seedling Sapling Well	8 = Saw Timber Medium
4 = Pole Timber Poor	9 = Saw Timber Well

## Dickenson Creek Mix

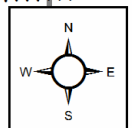
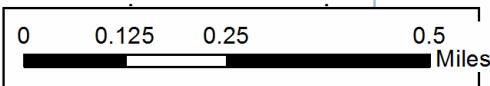
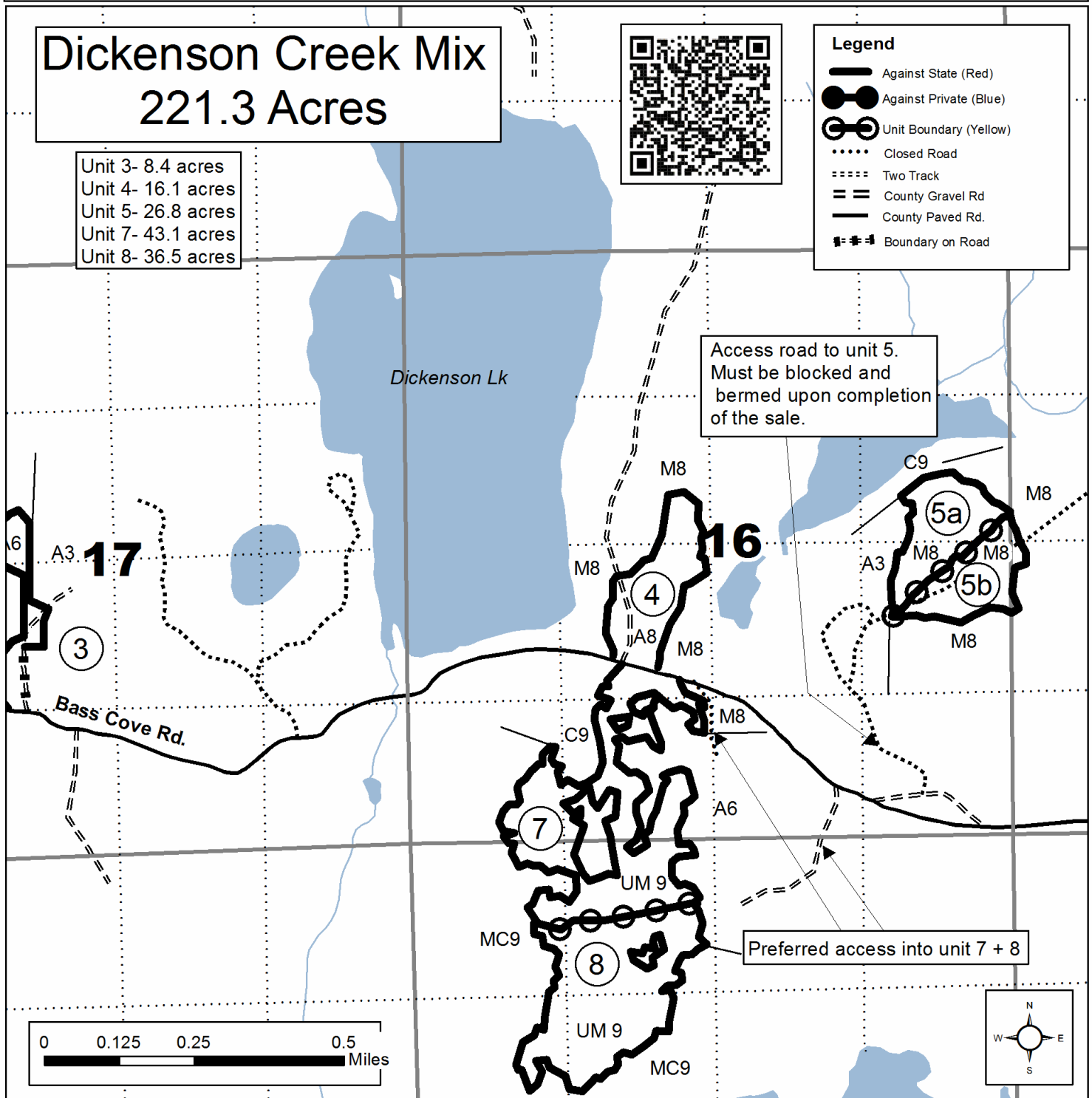
### 221.3 Acres

- Unit 3- 8.4 acres
- Unit 4- 16.1 acres
- Unit 5- 26.8 acres
- Unit 7- 43.1 acres
- Unit 8- 36.5 acres



#### Legend

- Against State (Red)
- Against Private (Blue)
- Unit Boundary (Yellow)
- Closed Road
- Two Track
- County Gravel Rd
- County Paved Rd.
- Boundary on Road



## TIMBER SALE INFORMATION

D.I. Rock Bottom Mix (45-007-21)  
 T42N, R06E, SEC. 23; T42N, R06E, SEC. 26.  
 Chippewa County (Advertised Price \$9,863.80)

A timber sale contract for this lump sum, sealed bid timber sale will be awarded to the responsible bidder offering the highest sealed bid price. All units of volume listed below were estimated using the T-Sale computer program and our traditional volume equations. Bids must be at or above the following advertised price for each product and species:

<u>PRODUCTS &amp; SPECIES</u>	<u>ESTIMATED UNITS*</u>	<u>ADVERTISED PRICE</u>
Sawtimber		
Basswood	11.4 MBF	\$ 25.00 / MBF
Paper Birch	1.5 MBF	\$ 17.00 / MBF
Red Oak	3.9 MBF	\$ 60.00 / MBF
Sugar Maple	20.0 MBF	\$ 164.00 / MBF
Pulpwood		
Balsam Fir	19 Cords	\$ 4.55 / Cord
Mixed Aspen	235 Cords	\$ 8.90 / Cord
Mixed Hardwood	389 Cords	\$ 6.45 / Cord
Paper Birch	99 Cords	\$ 5.05 / Cord
Red Oak	5 Cords	\$ 9.65 / Cord
White Spruce	86 Cords	\$ 9.35 / Cord

\* The total volume is statistically estimated within plus (+) or minus (-) 10.78 percent. There are an estimated 908 cords on this timber sale, plus or minus 98 cords at the 95% confidence level. The estimated units are final and not subject to adjustment. Prospective bidders are urged to examine this timber and to make their own estimates of quantity and quality.

### **BOND AND PAYMENT SCHEDULE:**

1. A bond in the amount of \$690.00 to insure faithful performance of the conditions of the contract will be deposited by the successful bidder within 21 days of the sale award.
2. Cutting in any sale or unit without the required advance payment would be considered a trespass.
3. Total payment must be paid in advance or according to the following schedule :
  - (a) Ten percent (10%) of the sale value must be paid within 21 days of the sale award.
  - (b) The 10% down payment will be credited towards the first unit cut.
  - (c) Payment for each of the following units must be made before cutting begins in that unit:
 

PAYMENT UNIT NUMBER	PERCENT OF TOTAL SALE VALUE
01	30.4%
02	23.3%
03	8.7%
04	27.9%
05	9.7%
4. If no cutting takes place, the 10% down payment will not be refunded.
5. Operations on the contract issued will terminate on 12/31/2024.

### **SALE STATISTICS**

#### **SALE VOLUMES**

VOLUME		STATISTICAL RANGE IN CORDS		
TOTAL CUBIC FEET	TOTAL CORDS	PERCENT ERROR	MINIMUM	MAXIMUM
71,741	908	10.78%	810	1,006

**VDU VOLUMES**

A VDU is a Volume Determination Unit. Volumes and their associated statistics are calculated at the VDU level and summarized to the sale level. There is often a one to one relationship between a VDU and a Payment Unit, but not always, depending on the cruise design. Refer to the VDU TO PAYMENT UNIT table.

VDU	VOLUME		PERCENT ERROR	RANGE IN CORDS	
	TOTAL CUBIC FEET	TOTAL CORDS		MINIMUM	MAXIMUM
3	9,930	126	27.99%	91	161
4	31,063	393	18.22%	322	465
7	9,053	115	17.42%	95	135
12	8,769	111	14.25%	95	127
32	12,932	164	22.20%	127	200
<b>TOTAL:</b>	<b>71,748</b>	<b>908</b>		<b>729</b>	<b>1,087</b>

**VDU TO PAYMENT UNIT**

When a VDU is associated with more than one Payment Unit (PU), the VDU volumes are assigned to the PU based on acres of the VDU within the PU.

VDU	VDU ACRES	PU	PU ACRES
3	17.7	1	17.7
4	38.0	4	38.0
7	13.0	3	13.0
12	5.2	5	5.2
32	21.6	2	21.6
<b>TOTAL:</b>	<b>95.5</b>		<b>95.5</b>



**DESCRIPTION OF TIMBER BY PAYMENT UNIT (PU)**

PU	MARKET GROUP	PRODUCT	QUANTITY	UNIT	ACRES	ADVERTISE PRICE
1	Sugar Maple	Sawtimber	14.0	MBF	17.7	\$2,997.60
	Mixed Aspen	Pulpwood	31	Cords		
	<i>Quaking Aspen</i>		31	Cords		
	Mixed Hardwood		66	Cords		
	<i>Beech</i>		25	Cords		
	<i>Ironwood</i>		22	Cords		
	<i>Sugar Maple</i>		19	Cords		
2	Basswood	Sawtimber	11.4	MBF	21.6	\$2,302.80
	Paper Birch	Pulpwood	1.5	MBF		
	Red Oak		3.9	MBF		
	Sugar Maple		6.0	MBF		
	Mixed Hardwood		111	Cords		
	<i>Basswood</i>		13	Cords		
	<i>Beech</i>		5	Cords		
	<i>Black Ash</i>		17	Cords		
	<i>Ironwood</i>		28	Cords		
	<i>Sugar Maple</i>		48	Cords		
	Paper Birch		2	Cords		
	Red Oak		5	Cords		
	3		Balsam Fir	Pulpwood		
Mixed Aspen		58	Cords			
<i>Quaking Aspen</i>		58	Cords			
Mixed Hardwood		29	Cords			
<i>Ironwood</i>		1	Cords			
<i>Sugar Maple</i>		28	Cords			
Paper Birch		18	Cords			
White Spruce		3	Cords			
4	Balsam Fir	Pulpwood	12	Cords	38.0	\$2,749.10
	Mixed Aspen		65	Cords		
	<i>Quaking Aspen</i>		65	Cords		
	Mixed Hardwood		175	Cords		
	<i>Ironwood</i>		5	Cords		
	<i>Sugar Maple</i>		170	Cords		
	Paper Birch		77	Cords		
	White Spruce		64	Cords		
5	Mixed Aspen	Pulpwood	81	Cords	5.2	\$960.25
	<i>Balsam Poplar</i>		2	Cords		
	<i>Quaking Aspen</i>		79	Cords		
	Mixed Hardwood		8	Cords		
	<i>Ironwood</i>		3	Cords		
	<i>Sugar Maple</i>		4	Cords		
	<i>White Ash</i>		1	Cords		
	Paper Birch		2	Cords		
White Spruce	19	Cords				
TOTAL:			36.8	MBF		
TOTAL:			833	Cords		

## Sale Specific Conditions & Requirements

**Sale Name: D.I. Rock Bottom Mix**

**Sale Number: 45-007-21 Seq#: 1**

### 1 - Sale Area

#### 1.2 - Boundaries

##### 1.2.1 - Painted boundaries (9/19)

The sale boundary and Payment Unit boundaries are marked and identified by blue, red, and yellow paint. Exterior sale boundary lines against private property are marked with blue paint. Exterior sale boundary lines against state are marked with red paint. Interior Payment Unit boundaries are marked with yellow paint. The painted boundary line and Payment Unit line trees are not Included Timber and are not to be cut.

### 2 - Timber Specifications

#### 2.1 - Included Timber

##### 2.1.1 - Clearcut unit(s) with unmerchantable trees (6/14)

Within Payment Unit(s) 3-5, cut all trees that are two (2) inches or more at DBH, except cedar, oak, hemlock, yellow birch, and pine.

##### 2.1.3 - Cut tree marked unit(s) (12/08)

Within Payment Unit(s) 1 and 2, all trees are designated for cutting when marked with orange paint above and below stump height, regardless of merchantability.

### 4 - Transportation

#### 4.1 - Construction

##### 4.1.6 - Road construction (1/09)

Construction of new roads or improvements of existing roads shall be done in such a way as to minimize the environmental and visual impacts. Merchantable trees shall be cut and utilized unless otherwise directed. Non-merchantable trees shall be severed and laid flat on the ground. Slash shall be scattered, and not left in windrows and kept a minimum of 10 feet back from the road edge. Stumps shall be set upright, not left on edge, and be moved at least 10 feet away from the road edge. Disturbed soil shall be feathered into the woods and not left in berms or windrows.

##### 4.1.7 - Road closure (10/11)

All new roads built into the sale must be blocked to vehicle traffic upon completion of the sale. All stumps from road building and landing construction must be reserved to block any newly constructed roads upon completion of the sale. These stumps must be scattered along the road system to prohibit vehicular movement. Contact the sale administrator for specific details of design and placement.

#### 4.2 - Maintenance

##### 4.2.1 - Hauling restriction (12/08)

Hauling may be restricted on forest roads by the Unit Manager or his/her representative. The restriction may occur during spring break up or wet weather conditions.

##### 4.2.2 - Fill material (4/07)

To maintain roads, fill material may be needed in areas where "holes" exist or may be expected to develop. This fill material should be placed before trucking begins. Contact the sale administrator regarding the availability of onsite sand or gravel from adjacent State-owned lands.

##### 4.2.4 - Grading (10/16)

For completion of the sale, state forest roads must be graded. In general, this will require a road grader or bulldozer to shape up the roads after forest products have been hauled off site. This includes cleaning of drainage areas, grading, crowning, and filling with gravel, if necessary. The grading equipment to be used must be approved by the Unit Manager or his/her representative.

#### 4.4 - Access

#### 4.4.1 - Private property access (3/11)

Permission for access across private land is the responsibility of the Purchaser. Should the Purchaser desire to cross private land, a copy of the written permission from the private land-owner may be required by the DNR. This permission should allow the DNR to access the sale to administer the contract.

### 5 - Operations

#### 5.2 - Conduct of Operations

##### 5.2.2 - Hazard Trees/Snags

###### 5.2.2.1 - Den trees (10/16)

Obvious hollow and/or den trees shall be protected and left standing unless they are a safety hazard.

##### 5.2.3 - Operating Restrictions

###### 5.2.3.3 - Bark slippage restriction (3/09)

Within Payment Unit(s) 1 and 2, unless changed by written agreement, cutting and skidding are not permitted during the period of May 1 to July 15. This restriction is because of bark slippage.

##### 5.2.41 - Snowmobile trail protection (9/11)

The snowmobile trail is shown on the Timber Sale Map. Do not cut or damage posts with orange trail markers or traffic control signs. If the trail is used, it must be maintained and restored to a condition equal to or better than before the sale. If the trail is used for hauling, it must be graded to the satisfaction of the Unit Manager or his/her representative prior to December 1. If the trail road is to be used for hauling during the snowmobile season, then a snow-covered base must be left on the trail. No decking of forest products will be permitted along the snowmobile trail.

#### 5.8 - Protection of Endangered Species

##### 5.8.5 - Protection of raptor nests (3/13)

All trees with raptor nests will be protected if found during harvesting operations. Notification will be made to the Unit Manager or his/her representative who will notify the Wildlife Biologist so an on-site evaluation and recommendation can be made, if necessary.

### 6 - Safety and Fire Prevention

#### 6.2 - Signing

##### 6.2.1 - Road posting (10/20)

The Purchaser is responsible for posting and maintaining caution signs on haul roads prior to beginning operations. The road must be posted at appropriate distances from the Sale Area to warn of logging activity and truck traffic. Signs must be removed when harvest operations are suspended or completed. The Purchaser must provide the signs, however the DNR may have some to loan.

##### 6.2.2 - Snowmobile trail posting (10/20)

The Purchaser is responsible for posting and maintaining caution signs on the snowmobile trail prior to beginning operations during the snowmobile season (approximately December 1 to March 31). The trail must be posted at appropriate distances from the Sale Area to warn of logging activity and truck traffic. Signs must be removed when harvest operations are suspended or completed. The Purchaser will provide these signs.

##### 6.2.3 - Recreational trail posting (10/20)

The Purchaser is responsible for posting and maintaining caution signs on the trail and route prior to beginning operations. The trail must be posted at appropriate distances from the Sale Area to warn of logging activity and truck traffic at both ends of the trail. Signs must be removed when harvest operations are suspended or completed. The Purchaser will provide these signs.

### 7 - Other Conditions

#### 7.5 - Loss

##### 7.5.1 - Deteriorating timber (7/09)

The sale area has received damage from Beech Bark Disease and/or Emerald Ash Borer. The Purchaser should harvest the

wood as soon as possible. The Department of Natural Resources is held free of responsibility of any further damage or deterioration due to delay in harvesting.

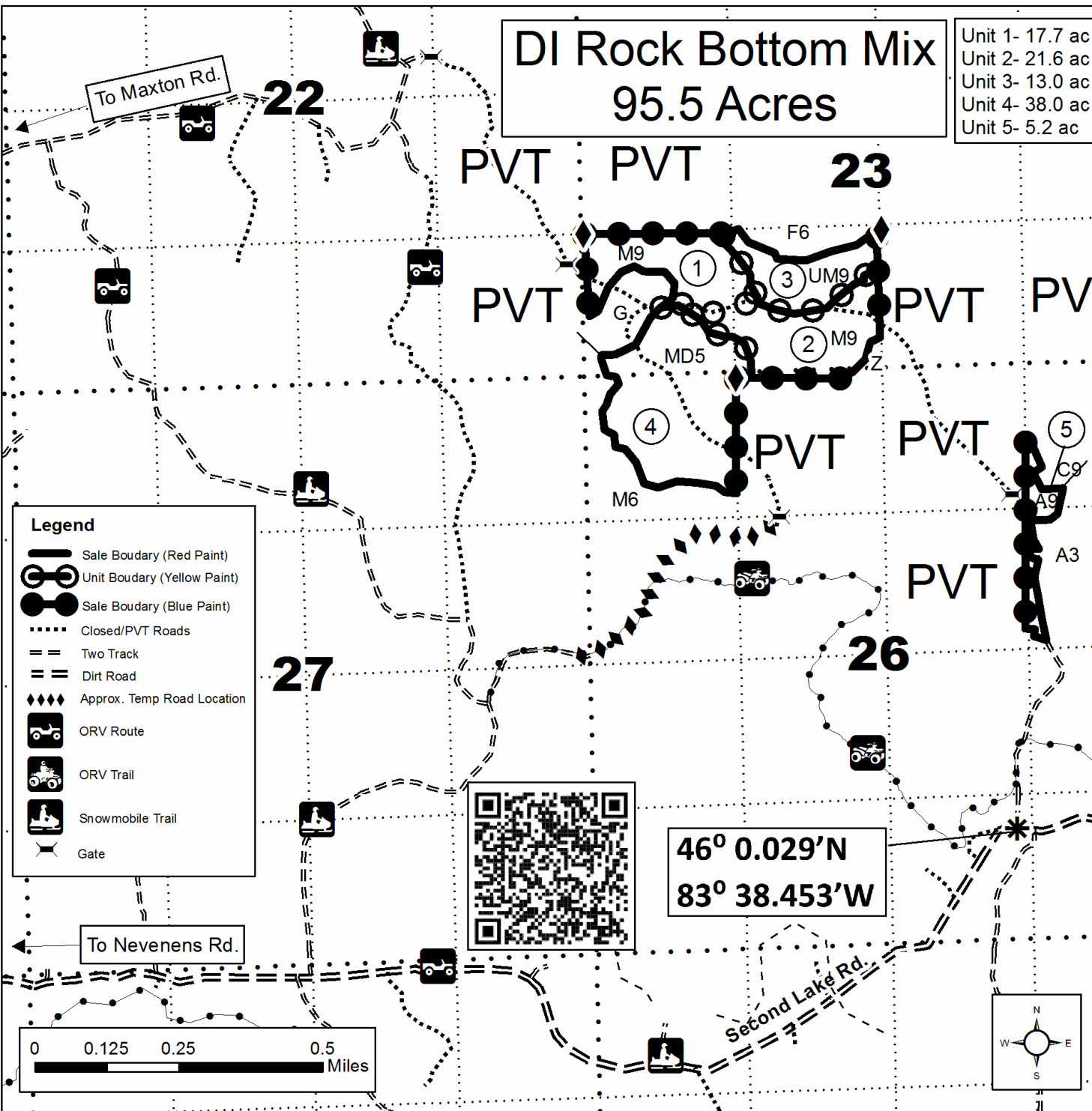


### TIMBER SALE MAP

This information provided by authority of Part 525, 1994 PA 451, as amended.

Forest Management Unit Sault Ste. Marie		County Chippewa	Mapped By Brinks	Date 08/19/2021	Page 1	of 1
Township T42N	Range R06E	Section(s) and Subdivision(s) Sec. 23- S1/2SW		Scale 1:15,840 1 inch= 1/4 mile		

Cover Type				Density	
A = Aspen	H = Hemlock	N = Marsh	U = Upland Brush	0 = Non Stocked	5 = Pole Timber Medium
B = Paper Birch	J = Jack Pine	O = Oak	UM = Upland Mixed	1 = Seedling Sapling Poor	6 = Pole Timber Well
C = Cedar	L = Lowland Brush	P = Lowland Poplar	V = Bog or Marsh	2 = Seedling Sapling Medium	7 = Saw Timber Poor
D = Treed Bog	LM = Lowland Mixed	Q = Mixed Swamp Conifer	W = White Pine	3 = Seedling Sapling Well	8 = Saw Timber Medium
E = Swamp Hdwoods	M = Mpl, Bch, Brch	R = Red Pine	X = Non Stocked	4 = Pole Timber Poor	9 = Saw Timber Well
F = Spruce Fir	MC = Mixed Conifer	S = Black Spruce	Z = Water		
G = Grass	MD = Mixed Deciduous	T = Tamarack			





## TIMBER SALE INFORMATION

### Jingle Bell Mix (45-012-21)

T42N, R01W, SEC. 1; T42N, R01W, SEC. 11; T42N, R01W, SEC. 12; T42N, R01W, SEC. 2.  
Mackinac County (Advertised Price \$48,174.05)

SALE NOTE: All units of volume listed for this sale were estimated using the Inventory Manager computer program and the new Michigan taper model.

A recreation site such as a trail, pathway, or campground is within the sale area or the vicinity. Certain restrictions/specifications may be applicable including time restrictions. Access may be through private or other public land.

A timber sale contract for this lump sum, sealed bid timber sale will be awarded to the responsible bidder offering the highest sealed bid price. All units of volume listed below were estimated using the Inventory Manager computer program and the new Michigan taper model. Bids must be at or above the following advertised price for each product and species:

<u>PRODUCTS &amp; SPECIES</u>	<u>ESTIMATED UNITS*</u>	<u>ADVERTISED PRICE</u>
Sawtimber		
Red Maple	88.1 MBF	\$ 71.00 / MBF
Sugar Maple	6.8 MBF	\$ 270.00 / MBF
Pulpwood		
Balsam Fir	655 Cords	\$ 9.75 / Cord
Mixed Aspen	1,523 Cords	\$ 16.40 / Cord
Mixed Hardwood	665 Cords	\$ 10.05 / Cord
Mixed Spruce	70 Cords	\$ 10.00 / Cord
N. White Cedar	125 Cords	\$ 4.55 / Cord
Paper Birch	78 Cords	\$ 8.00 / Cord
Tamarack	41 Cords	\$ 3.50 / Cord

\* The total volume is statistically estimated within plus (+) or minus (-) 6.47 percent. There are an estimated 3,387 cords on this timber sale, plus or minus 219 cords at the 95% confidence level. The estimated units are final and not subject to adjustment. Prospective bidders are urged to examine this timber and to make their own estimates of quantity and quality.

### **BOND AND PAYMENT SCHEDULE:**

1. A bond in the amount of \$3,372.00 to insure faithful performance of the conditions of the contract will be deposited by the successful bidder within 21 days of the sale award.
2. Cutting in any sale or unit without the required advance payment would be considered a trespass.
3. Total payment must be paid in advance or according to the following schedule :
  - (a) Ten percent (10%) of the sale value must be paid within 21 days of the sale award.
  - (b) The 10% down payment will be credited towards the first unit cut.
  - (c) Payment for each of the following units must be made before cutting begins in that unit:

PAYMENT UNIT NUMBER	PERCENT OF TOTAL SALE VALUE
01	23.7%
02	3.7%
03	2.4%
04	3.7%
05	2.3%
06	34.9%
07	29.3%

4. If no cutting takes place, the 10% down payment will not be refunded.
5. Operations on the contract issued will terminate on 06/30/2025.

### **SALE STATISTICS**

Volumes were calculated in cubic feet using the Michigan taper model. Cubic foot volume includes all wood inside bark for the product indicated. For display purposes, cubic feet were converted to cords and MBF using a simple conversion factor, e.g. 79 cubic feet per cord and 185 cubic feet per MBF. The cubic foot volumes are precise; the cords and MBF volumes are not. Cubic foot volume cannot be directly converted to cords or boards with precision.

## SALE VOLUMES

The total estimated sale volume may not equal the sum of the species/products due to the nature of statistical calculations associated with double sampling methodology.

VOLUME			STATISTICAL RANGE IN CORDS	
TOTAL CUBIC FEET	TOTAL CORDS	PERCENT ERROR	MINIMUM	MAXIMUM
267,581	3,387	6.47%	3,168	3,606

## VDU VOLUMES

A VDU is a Volume Determination Unit. Volumes and their associated statistics are calculated at the VDU level and summarized to the sale level. There is often a one to one relationship between a VDU and a Payment Unit, but not always, depending on the cruise design. Refer to the VDU TO PAYMENT UNIT table.

	VOLUME			RANGE IN CORDS	
VDU	TOTAL CUBIC FEET	TOTAL CORDS	PERCENT ERROR	MINIMUM	MAXIMUM
8	63,876	809	9.82%	729	888
10	15,143	192	19.79%	154	230
15	15,772	200	12.41%	175	224
22	169,482	2,145	9.27%	1,946	2,344
<b>TOTAL:</b>	<b>264,272</b>	<b>3,345</b>		<b>3,004</b>	<b>3,686</b>

## VDU TO PAYMENT UNIT

When a VDU is associated with more than one Payment Unit (PU), the VDU volumes are assigned to the PU based on acres of the VDU within the PU.

VDU	VDU ACRES	PU	PU ACRES
8	34.5	1	34.5
10	8.5	2	8.5
15	32.4	3	9.1
		4	14.4
		5	8.9
22	60.7	6	33.0
		7	27.7
<b>TOTAL:</b>	<b>136.1</b>		<b>136.1</b>



## DESCRIPTION OF TIMBER BY PAYMENT UNIT (PU)

PU	MARKET GROUP	PRODUCT	QUANTITY	UNIT	ACRES	ADVERTISE PRICE
1	Red Maple	Sawtimber	72.4	MBF	34.5	\$11,425.55
	Balsam Fir	Pulpwood	86	Cords		
	Mixed Aspen		23	Cords		
	<i>Balsam Poplar</i>		13	Cords		
	<i>Quaking Aspen</i>		10	Cords		
	Mixed Hardwood		410	Cords		
	<i>Black Ash</i>		7	Cords		
	<i>Red Maple</i>		403	Cords		
	Mixed Spruce		50	Cords		
	<i>Black Spruce</i>		16	Cords		
	<i>White Spruce</i>		34	Cords		
	N. White Cedar		39	Cords		
	Paper Birch		16	Cords		
	Tamarack		41	Cords		
2	Red Maple	Sawtimber	7.6	MBF	8.5	\$1,797.80
	Balsam Fir	Pulpwood	12	Cords		
	Mixed Aspen		6	Cords		
	<i>Balsam Poplar</i>		6	Cords		
	Mixed Hardwood		30	Cords		
	<i>Red Maple</i>		30	Cords		
	Mixed Spruce		7	Cords		
	<i>White Spruce</i>		7	Cords		
	N. White Cedar		86	Cords		
	Paper Birch		35	Cords		
3	Red Maple	Sawtimber	1.9	MBF	9.1	\$1,139.10
	Sugar Maple		1.9	MBF		
	Balsam Fir	Pulpwood	4	Cords		
	Mixed Hardwood		44	Cords		
	<i>Red Maple</i>		14	Cords		
	<i>Sugar Maple</i>		30	Cords		
	Mixed Spruce		1	Cords		
	<i>White Spruce</i>		1	Cords		
4	Red Maple	Sawtimber	3.0	MBF	14.4	\$1,794.95
	Sugar Maple		3.0	MBF		
	Balsam Fir	Pulpwood	6	Cords		
	Mixed Hardwood		69	Cords		
	<i>Red Maple</i>		22	Cords		
	<i>Sugar Maple</i>		47	Cords		
	Mixed Spruce		2	Cords		
	<i>White Spruce</i>		2	Cords		
5	Red Maple	Sawtimber	1.9	MBF	8.9	\$1,129.05
	Sugar Maple		1.9	MBF		
	Balsam Fir	Pulpwood	4	Cords		
	Mixed Hardwood		43	Cords		
	<i>Red Maple</i>		14	Cords		
	<i>Sugar Maple</i>		29	Cords		
	Mixed Spruce		1	Cords		
	<i>White Spruce</i>		1	Cords		
6	Red Maple	Sawtimber	0.7	MBF	33.0	\$16,794.65
	Balsam Fir	Pulpwood	295	Cords		
	Mixed Aspen		812	Cords		
	<i>B. T. Aspen</i>		41	Cords		
	<i>Balsam Poplar</i>		150	Cords		
	<i>Quaking Aspen</i>		621	Cords		
	Mixed Hardwood		38	Cords		
	<i>American Elm</i>		7	Cords		

**DESCRIPTION OF TIMBER BY PAYMENT UNIT (PU), CON'T**

PU	MARKET GROUP	PRODUCT	QUANTITY	UNIT	ACRES	ADVERTISE PRICE
6 con't	<i>Red Maple</i>	<i>Pulpwood</i>	26	<i>Cords</i>		
	<i>Sugar Maple</i>		5	<i>Cords</i>		
	Mixed Spruce		5	<i>Cords</i>		
	<i>Black Spruce</i>		5	<i>Cords</i>		
	Paper Birch		15	<i>Cords</i>		
7	Red Maple	Sawtimber	0.6	MBF	27.7	\$14,092.95
	Balsam Fir	Pulpwood	248	<i>Cords</i>		
	Mixed Aspen		682	<i>Cords</i>		
	<i>B. T. Aspen</i>		34	<i>Cords</i>		
	<i>Balsam Poplar</i>		126	<i>Cords</i>		
	<i>Quaking Aspen</i>		522	<i>Cords</i>		
	Mixed Hardwood		31	<i>Cords</i>		
	<i>American Elm</i>		6	<i>Cords</i>		
	<i>Red Maple</i>		21	<i>Cords</i>		
	<i>Sugar Maple</i>		4	<i>Cords</i>		
	Mixed Spruce		4	<i>Cords</i>		
	<i>Black Spruce</i>		4	<i>Cords</i>		
	Paper Birch		12	<i>Cords</i>		
	TOTAL:			94.9		
TOTAL:			3,157	<i>Cords</i>		

## Sale Specific Conditions & Requirements

**Sale Name: Jingle Bell Mix**

**Sale Number: 45-012-21 Seq#: 1**

### 1 - Sale Area

#### 1.2 - Boundaries

##### 1.2.1 - Painted boundaries (9/19)

The sale boundary and Payment Unit boundaries are marked and identified by blue and red paint. Exterior sale boundary lines against private property are marked with blue paint. Exterior sale boundary lines against state are marked with red paint. Interior Payment Unit boundaries are marked with a double red slash. Retention patches are marked with dots of red paint. The painted boundary line trees are not Included Timber and are to be protected unless marked with orange paint.

### 2 - Timber Specifications

#### 2.1 - Included Timber

##### 2.1.1 - Clearcut unit(s) with unmerchantable trees (6/14)

Within Payment Unit(s) 1 and 2, cut all trees that are two (2) inches or more at DBH, except white pine, yellow birch, and hemlock. Within Payment Unit(s) 6 and 7, cut all trees that are two (2) inches or more at DBH, except oak, pine, hemlock, yellow birch, and cedar.

##### 2.1.3 - Cut tree marked unit(s) (12/08)

Within Payment Unit(s) 3, 4, and 5, all trees are designated for cutting when marked with orange paint above and below stump height, regardless of merchantability.

#### 2.2 - Utilization

##### 2.2.4 - Skidding length (2/14)

Skidding of unlimbed tops or lengths over 17 feet is not permissible in Payment Units 3-5 unless approved by the Unit Manager or his/her representative.

### 3 - Payments

#### 3.3 - Pre-measured Sales

##### 3.3.4 - Dividing payment units (7/14)

Payment Unit(s) 1, 6, and 7 may be divided at the request of the Purchaser and upon approval of the Unit Manager. Dividing Payment Units is a contract modification which requires a Timber Sale Contract Amendment. There will be only one division per Payment Unit.

### 4 - Transportation

#### 4.1 - Construction

##### 4.1.6 - Road construction (1/09)

Construction of new roads or improvements of existing roads shall be done in such a way as to minimize the environmental and visual impacts. Merchantable trees shall be cut and utilized unless otherwise directed. Non-merchantable trees shall be severed and laid flat on the ground. Slash shall be scattered, and not left in windrows and kept a minimum of 10 feet back from the road edge. Stumps shall be set upright, not left on edge, and be moved at least 10 feet away from the road edge. Disturbed soil shall be feathered into the woods and not left in berms or windrows.

##### 4.1.7 - Road closure (10/11)

All new roads built into the sale must be blocked to vehicle traffic upon completion of the sale. Overgrown roads that are reopened shall be considered new roads. In general, this will require constructing a four (4') foot high berm of stumps and logs covered with earth. Stumps and brush must be placed along the remainder of the trail. These roads must be rendered impassable to cars and trucks. All stumps from road building and landing construction must be reserved to block any newly constructed roads upon completion of the sale. These stumps must be scattered along the road system to prohibit vehicular movement. Contact the sale administrator for specific details of design and placement.

## 4.2 - Maintenance

### 4.2.4 - Grading (10/16)

For completion of the sale, state forest roads must be graded. In general, this will require a road grader or bulldozer to shape up the roads after forest products have been hauled off site. This includes cleaning of drainage areas, grading, crowning, and filling with gravel, if necessary. The grading equipment to be used must be approved by the Unit Manager or his/her representative.

## 4.4 - Access

### 4.4.1 - Private property access (3/11)

Permission for access across private land is the responsibility of the Purchaser. Should the Purchaser desire to cross private land, a copy of the written permission from the private land-owner may be required by the DNR. This permission must include access for the DNR to administer the sale.

## 5 - Operations

### 5.2 - Conduct of Operations

#### 5.2.2 - Hazard Trees/Snags

##### 5.2.2.1 - Den trees (10/16)

Obvious hollow and/or den trees shall be protected and left standing unless they are a safety hazard.

#### 5.2.3 - Operating Restrictions

##### 5.2.3.3 - Bark slippage restriction (3/09)

Within Payment Unit(s) 3, 4, and 5, unless changed by written agreement, cutting and skidding are not permitted during the period of May 1 to July 15. This restriction is because of bark slippage.

#### 5.2.4 - Dead and Down Creation

##### 5.2.4.2 - Dead and down creation, hare and grouse (1/14)

To improve habitat for snowshoe hare, grouse, and other species, the Purchaser is to leave one pile of slash on the ground for every two acres within Payment Units 1, 6, and 7. They should be placed along the lowland and conifer edges around the perimeter of the Payment Unit. These piles should be approximately 6 feet tall and 12 feet in diameter.

#### 5.2.17 - Timber Mats and Interlocking Composite Mats (10/20)

Some roads or skid trails may require extra protection such as that afforded by timber mats, interlocking composite mats, or another approved system. If available, mats may be borrowed from the DNR. A Timber Sale Contract Supplement will be used to document the Purchaser's use of the DNR's mats. Contact the sale administrator regarding availability and pick-up. Timber mats are available from various field offices. Composite mats are only available from the Grayling field office and the Marquette ICC. The Purchaser is responsible for picking up and hauling the mats to and from the site. The composite mats will require DNR staff onsite for installation and removal. Contact the sale administrator to schedule at least 30 days before desired install/removal date. All mats must be cleaned prior to drop off. This may include, but is not limited to, power washing and brushing to remove mud and debris. A charge of \$700.00 per timber mat and \$2,000.00 per composite mat will be assessed for all damaged or non-returned mats. Damage for the crane/timber mats is defined as three or more broken cants. Damage for the composite mats is defined as cracked or broken mats.

#### 5.2.22 - Operating Caution

##### 5.2.22.1 - Operating caution (6/11)

It is recommended, but not required, that within Payment Unit(s) 1-7, cutting, skidding, and hauling occur during dry summer or frozen winter conditions. The reason for the recommendation is because poorly drained soils and wet access roads.

#### 5.2.32 - Decking/landing restoration (9/13)

All decking and landing areas must have the surface area restored to a condition equal to or better than before. This is to ensure the proper regeneration of the stand. Wood debris, chips, and "cookies" from trimmings must be removed or scattered away from landing and loading areas and may not be windrowed on the edge.

#### 5.2.38 - No decking against live trees (2/04)

Cut products may not be decked against unmarked or designated leave trees.

#### 5.2.41 - Snowmobile trail protection (9/11)

The snowmobile trail is shown on the Timber Sale Map. Do not cut or damage posts with orange trail markers or traffic control signs. If the trail is used, it must be maintained and restored to a condition equal to or better than before the sale. The road maintenance/restoration must be done prior to December 1. If the trail road is to be used for hauling during the snowmobile season, then a snow-covered base must be left on the trail. The snowmobile trail may only be crossed at right angles. Maintain a 20-foot-wide slash, debris, and rut free zone daily using the snowmobile trail as the centerline. No decking of forest products will be permitted along the snowmobile trail. All stumps within 5 feet of the snowmobile trail must be cut at ground level.

### 5.8 - Protection of Endangered Species

#### 5.8.5 - Protection of raptor nests (3/13)

All trees with raptor nests will be protected if found during harvesting operations. Notification will be made to the Unit Manager or his/her representative who will notify the Wildlife Biologist so an on-site evaluation and recommendation can be made, if necessary.

## 6 - Safety and Fire Prevention

### 6.2 - Signing

#### 6.2.2 - Snowmobile trail posting (10/20)

The Purchaser is responsible for posting and maintaining caution signs on the snowmobile trail prior to beginning operations during the snowmobile season (approximately December 1 to March 31). The trail must be posted at appropriate distances from the Sale Area to warn of logging activity and truck traffic. Signs must be removed when harvest operations are suspended or completed. The Purchaser will provide these signs.



D.I. Rock Bottom Mix (45-007-21)  
T42N, R06E, SEC. 23; T42N, R06E, SEC. 26; Chippewa COUNTY

In response to the notice of sale to be held 10:00 a.m. (local time) on December 6, 2021, I am hereby submitting my sealed bid (firm offer) for the following forest products to be cut. Bids for individual species must be at or above the advertised price. All non-responsive bid forms may be rejected.

<u>PRODUCTS &amp; SPECIES</u>	<u>ESTIMATED VOLUME*</u>	<u>ADVERTISED PRICE</u>	<u>BID PRICE/UNIT</u>
<b>Sawtimber</b>			
Basswood	11.4 MBF	\$ 25.00/MBF	\$ _____
Paper Birch	1.5 MBF	\$ 17.00/MBF	\$ _____
Red Oak	3.9 MBF	\$ 60.00/MBF	\$ _____
Sugar Maple	20.0 MBF	\$ 164.00/MBF	\$ _____
<b>Pulpwood</b>			
Balsam Fir	19 Cords	\$ 4.55/Cord	\$ _____
Mixed Aspen	235 Cords	\$ 8.90/Cord	\$ _____
Mixed Hardwood	389 Cords	\$ 6.45/Cord	\$ _____
Paper Birch	99 Cords	\$ 5.05/Cord	\$ _____
Red Oak	5 Cords	\$ 9.65/Cord	\$ _____
White Spruce	86 Cords	\$ 9.35/Cord	\$ _____

\*The volumes are statistically estimated within plus (+) or minus (-) 10.78 percent at 95% confidence level. These estimated volumes are final and not subject to adjustment. Prospective bidders are urged to examine this timber and to make their own estimates of quantity and quality.

I understand that any or all bids may be rejected. All bids must be signed and all bid items must be bid or the bid form may be rejected. I also understand that consideration and awarding a contract will be based upon my past performance and ability to complete the contract based upon equipment and staffing subject to my control.

FEDERAL ID: \_\_\_\_\_ - \_\_\_\_\_ or SOCIAL SECURITY NUMBER: \_\_\_\_\_ - \_\_\_\_\_ - \_\_\_\_\_

Company or individual bidding: \_\_\_\_\_

Company representative's name: \_\_\_\_\_

Address: \_\_\_\_\_

City: \_\_\_\_\_ State: \_\_\_\_\_ Zip: \_\_\_\_\_

IF AVAILABLE, PLEASE PLACE THE PERSONALIZED LABEL FROM YOUR PROSPECTUS IN THE ABOVE BOX.

Individual or company representative's signature: \_\_\_\_\_ Date: \_\_\_\_\_

Phone number : \_\_\_\_\_ Email (optional): \_\_\_\_\_

**THE WINNING BIDDER MUST COMPLETE THE VERIFICATION OF WORKER'S DISABILITY COMPENSATION ACT COMPLIANCE (ON REVERSE SIDE IF DOUBLE SIDED) WITHIN 21 DAYS OF SALE AWARD DATE**



<b>FOR DEPARTMENT USE ONLY</b>
Sale Number (XX - XXX - XX - XX)
Forest Management Unit:

## TIMBER SALE VERIFICATION OF WORKER'S DISABILITY COMPENSATION ACT COMPLIANCE

*As required by Act 317, P.A. 1969 (Worker's Compensation) and  
Part 5 of Act 451 of 1994, as amended.*

### VERIFICATION OF WORKER'S DISABILITY COMPENSATION ACT COMPLIANCE

- This verification must be completed and submitted within 21 days of contract award and prior to the issuance of the timber sale contract.
- In addition, if boxes 2B or 2C are checked, then Notice of Exclusion or Certificate of Insurance must be submitted within twenty-one (21) days of the contract award and prior to the issuance of the timber sale contract.
- All information must be typed or printed except for written signatures.

Please Check Appropriate Categories:

1. My business is organized as (you **must** check one of the boxes below):
  - A.  Sole Proprietorship (individual)
  - B.  Partnership
  - C.  Corporation
2. You **must** check one of the boxes below:
  - A.  I certify my business is a sole proprietorship and it has no employees but the sole proprietor. I am not subject to the Worker's Compensation Laws.
  - B.  I certify my business has satisfied its obligation to the Worker's Compensation Act through the use of an approved Notice of Exclusion (BWC-337, Rev. 5/96). I will provide a copy of the Notice of Exclusion within 21 days of the contract award. (For questions or a copy of the BWC-337, please call the Worker's Compensation Bureau at 517-322-1195).
  - C.  I certify my business has a Worker's Compensation Policy. I will provide an original Certificate of Insurance within twenty-one (21) days of the contract award.
3. If you have checked item 2(A) or 2(B), you **must** indicate the number of **both** full-time and part-time employees, other than yourself, including family members and active partners (if none, you must enter "0").

\_\_\_\_\_ Full-time Employees

\_\_\_\_\_ Part-time Employees

Name of Business		Federal ID (or) Social Security No.	
Address		Telephone (       )	
City	State	ZIP	

*I hereby certify that the above information is true and correct. I agree to notify the Michigan DNR of any changes that occur in factors affecting my coverage during any of my present and future operations.*

\_\_\_\_\_  
Signature of Owner or Authorized Representative

\_\_\_\_\_  
Title

\_\_\_\_\_  
Date

**Please complete the "SEALED BID" information on the next page**



Dickenson Creek Mix (45-003-21)

T41N, R07E, SEC. 14; T41N, R07E, SEC. 15; T41N, R07E, SEC. 16; T41N, R07E,

In response to the notice of sale to be held 10:00 a.m. (local time) on December 6, 2021, I am hereby submitting my sealed bid (firm offer) for the following forest products to be cut. Bids for individual species must be at or above the advertised price. All non-responsive bid forms may be rejected.

<u>PRODUCTS &amp; SPECIES</u>	<u>ESTIMATED VOLUME*</u>	<u>ADVERTISED PRICE</u>	<u>BID PRICE/UNIT</u>
<b>Sawtimber</b>			
Beech	1.2 MBF	\$ 16.00/MBF	\$ _____
Paper Birch	4.9 MBF	\$ 17.00/MBF	\$ _____
Red Maple	0.6 MBF	\$ 51.00/MBF	\$ _____
Sugar Maple	107.6 MBF	\$ 164.00/MBF	\$ _____
White Ash	8.1 MBF	\$ 20.00/MBF	\$ _____
Yellow Birch	0.7 MBF	\$ 21.00/MBF	\$ _____
<b>Pulpwood</b>			
Balsam Fir	477 Cords	\$ 4.55/Cord	\$ _____
Mixed Aspen	2,650 Cords	\$ 8.90/Cord	\$ _____
Mixed Hardwood	293 Cords	\$ 6.45/Cord	\$ _____
Mixed Spruce	740 Cords	\$ 9.35/Cord	\$ _____
N. White Cedar	1,108 Cords	\$ 2.50/Cord	\$ _____
Paper Birch	79 Cords	\$ 5.05/Cord	\$ _____
Red Pine	266 Cords	\$ 25.40/Cord	\$ _____
White Pine	171 Cords	\$ 6.85/Cord	\$ _____

\*The volumes are statistically estimated within plus (+) or minus (-) 4.50 percent at 95% confidence level. These estimated volumes are final and not subject to adjustment. Prospective bidders are urged to examine this timber and to make their own estimates of quantity and quality.

I understand that any or all bids may be rejected. All bids must be signed and all bid items must be bid or the bid form may be rejected. I also understand that consideration and awarding a contract will be based upon my past performance and ability to complete the contract based upon equipment and staffing subject to my control.

FEDERAL ID: \_\_\_\_\_ - \_\_\_\_\_ or SOCIAL SECURITY NUMBER: \_\_\_\_\_ - \_\_\_\_\_ - \_\_\_\_\_

Company or individual bidding: \_\_\_\_\_

Company representative's name: \_\_\_\_\_

Address: \_\_\_\_\_

City: \_\_\_\_\_ State: \_\_\_\_\_ Zip: \_\_\_\_\_

IF AVAILABLE, PLEASE PLACE THE PERSONALIZED LABEL FROM YOUR PROSPECTUS IN THE ABOVE BOX.

Individual or company representative's signature: \_\_\_\_\_ Date: \_\_\_\_\_

Phone number : \_\_\_\_\_ Email (optional): \_\_\_\_\_

**THE WINNING BIDDER MUST COMPLETE THE VERIFICATION OF WORKER'S DISABILITY COMPENSATION ACT COMPLIANCE (ON REVERSE SIDE IF DOUBLE SIDED) WITHIN 21 DAYS OF SALE AWARD DATE**



Jingle Bell Mix (45-012-21)

T42N, R01W, SEC. 1; T42N, R01W, SEC. 11; T42N, R01W, SEC. 12; T42N, R01W,

In response to the notice of sale to be held 10:00 a.m. (local time) on December 6, 2021, I am hereby submitting my sealed bid (firm offer) for the following forest products to be cut. Bids for individual species must be at or above the advertised price. All non-responsive bid forms may be rejected.

<u>PRODUCTS &amp; SPECIES</u>	<u>ESTIMATED VOLUME*</u>	<u>ADVERTISED PRICE</u>	<u>BID PRICE/UNIT</u>
<b>Sawtimber</b>			
Red Maple	88.1 MBF	\$ 71.00/MBF	\$ _____
Sugar Maple	6.8 MBF	\$ 270.00/MBF	\$ _____
<b>Pulpwood</b>			
Balsam Fir	655 Cords	\$ 9.75/Cord	\$ _____
Mixed Aspen	1,523 Cords	\$ 16.40/Cord	\$ _____
Mixed Hardwood	665 Cords	\$ 10.05/Cord	\$ _____
Mixed Spruce	70 Cords	\$ 10.00/Cord	\$ _____
N. White Cedar	125 Cords	\$ 4.55/Cord	\$ _____
Paper Birch	78 Cords	\$ 8.00/Cord	\$ _____
Tamarack	41 Cords	\$ 3.50/Cord	\$ _____

\*The volumes are statistically estimated within plus (+) or minus (-) 6.47 percent at 95% confidence level. These estimated volumes are final and not subject to adjustment. Prospective bidders are urged to examine this timber and to make their own estimates of quantity and quality.

I understand that any or all bids may be rejected. All bids must be signed and all bid items must be bid or the bid form may be rejected. I also understand that consideration and awarding a contract will be based upon my past performance and ability to complete the contract based upon equipment and staffing subject to my control.

FEDERAL ID: \_\_\_\_ - \_\_\_\_ - \_\_\_\_ or SOCIAL SECURITY NUMBER: \_\_\_\_ - \_\_\_\_ - \_\_\_\_

Company or individual bidding: \_\_\_\_\_

Company representative's name: \_\_\_\_\_

Address: \_\_\_\_\_

City: \_\_\_\_\_ State: \_\_\_\_\_ Zip: \_\_\_\_\_

IF AVAILABLE, PLEASE PLACE THE PERSONALIZED LABEL FROM YOUR PROSPECTUS IN THE ABOVE BOX.

Individual or company representative's signature: \_\_\_\_\_ Date: \_\_\_\_\_

Phone number : \_\_\_\_\_ Email (optional): \_\_\_\_\_

**THE WINNING BIDDER MUST COMPLETE THE VERIFICATION OF WORKER'S DISABILITY COMPENSATION ACT COMPLIANCE (ON REVERSE SIDE IF DOUBLE SIDED) WITHIN 21 DAYS OF SALE AWARD DATE**



<b>FOR DEPARTMENT USE ONLY</b>
Sale Number (XX - XXX - XX - XX)
Forest Management Unit:

## TIMBER SALE VERIFICATION OF WORKER'S DISABILITY COMPENSATION ACT COMPLIANCE

*As required by Act 317, P.A. 1969 (Worker's Compensation) and  
Part 5 of Act 451 of 1994, as amended.*

### VERIFICATION OF WORKER'S DISABILITY COMPENSATION ACT COMPLIANCE

- This verification must be completed and submitted within 21 days of contract award and prior to the issuance of the timber sale contract.
- In addition, if boxes 2B or 2C are checked, then Notice of Exclusion or Certificate of Insurance must be submitted within twenty-one (21) days of the contract award and prior to the issuance of the timber sale contract.
- All information must be typed or printed except for written signatures.

Please Check Appropriate Categories:

1. My business is organized as (you **must** check one of the boxes below):
  - A.  Sole Proprietorship (individual)
  - B.  Partnership
  - C.  Corporation
2. You **must** check one of the boxes below:
  - A.  I certify my business is a sole proprietorship and it has no employees but the sole proprietor. I am not subject to the Worker's Compensation Laws.
  - B.  I certify my business has satisfied its obligation to the Worker's Compensation Act through the use of an approved Notice of Exclusion (BWC-337, Rev. 5/96). I will provide a copy of the Notice of Exclusion within 21 days of the contract award. (For questions or a copy of the BWC-337, please call the Worker's Compensation Bureau at 517-322-1195).
  - C.  I certify my business has a Worker's Compensation Policy. I will provide an original Certificate of Insurance within twenty-one (21) days of the contract award.
3. If you have checked item 2(A) or 2(B), you **must** indicate the number of **both** full-time and part-time employees, other than yourself, including family members and active partners (if none, you must enter "0").

\_\_\_\_\_ Full-time Employees

\_\_\_\_\_ Part-time Employees

Name of Business		Federal ID (or) Social Security No.	
Address		Telephone (       )	
City	State	ZIP	

*I hereby certify that the above information is true and correct. I agree to notify the Michigan DNR of any changes that occur in factors affecting my coverage during any of my present and future operations.*

\_\_\_\_\_  
Signature of Owner or Authorized Representative

\_\_\_\_\_  
Title

\_\_\_\_\_  
Date

**Please complete the "SEALED BID" information on the next page**