



**DEPARTMENT OF NATURAL RESOURCES  
STATE OF MICHIGAN**

**TIMBER SALE PROSPECTUS #7001**

SCHEDULED SALE DATE AND TIME: 10:00 a.m. (local time) on January 24, 2022.

LOCATION: SE REGION-WILD, 3580 STATE PARK DRIVE, BAY CITY, MI 48706.

PROSPECTUS NOTE: The bidder is advised to inspect the sale area and review the location, estimated volumes, operating costs and contract terms of proposed sales. Please be aware that some landowners may request 60 days or more notice for access across their land.

Notice is hereby given that bids will be received by the Game Area Manager, CASS CITY FIELD OFFICE, for certain timber on the following described lands:

Verona Maple Mix (55-136-21) / T15N, R14E, SEC. 4, NW, W1/2NE.

T15N, R14E, SEC. 5, NENE.

T16N, R14E, SEC. 28, NESW, W1/2SE.

Huron County, Advertised Price \$33,330.55, 121.9 Acres, Hardwood, Aspen.

SALE NOTE: All units of volume listed for this sale were estimated using the Inventory Manager computer program and the new Michigan taper model.

Access may be through other public land.

## BID INSTRUCTIONS (VER. 07/02/2018):

### 1. Scheduled Bid Location, Date, and Time (2/11)

Bids must be received by the Unit Manager, BAY CITY OFFICE, 3580 State Park Drive, Bay City, MI 48706, no later than 10:00 a.m. (local time) on January 24, 2022. For further information concerning this sale, contact Don Bonnette at 989-385-5616.

### 2. Bidder's Qualifications (5/16)

Purchaser shall obtain workers compensation insurance to cover claims under Michigan's Worker's Disability Compensation Act of 1969 or similar employee benefit act of any other state applicable to an employee. If all or part of a timber sale was prepared by a private contractor, the contractor and that contractor's company are not permitted to bid on the timber sale contract. Bids will not be accepted from individuals or companies appearing on the DNR/FRD No-Bid List. This list contains the names of purchasers who previously failed to execute a contract within 21-days or who have a history of poor performance.

### 3. Preparation of Sealed Bids (5/16)

Bid Forms may be completed online thru Michigan DNR Timber Sale Online Bidding (OLB) at [www.michigan.gov/timberbidding](http://www.michigan.gov/timberbidding) or by completing the hardcopy Bid Form found in the Timber Sale Prospectus. Hardcopy Bid Forms shall be manually signed in ink. Registration in OLB is considered your 'signature' for all bids submitted thru that system. Bid prices must be entered for each species and product in the Bid Price column for all material subject to bidding and all fill-in blanks must be completed. If erasures or other changes appear on the hardcopy Bid Form, each erasure or change must be initialed by the person signing the bid.

### 4. Submission of Sealed Bids (5/16)

Bid forms may be obtained from the Unit Manager or thru OLB. Bids may be submitted hardcopy or thru OLB. All hardcopy bids must be submitted on the bid form and in an envelope clearly identified as described in this section. NOTE: Only one bid form per bid envelope. Sealed bids must be submitted to the Unit office designated in the prospectus and must be submitted at or prior to the time established in the prospectus. The envelope should show on the outside (a) the sale name or number and (b) the date and time of bid opening, as shown in the prospectus. Bids received after the time specified in the sale prospectus are late bids and will be rejected.

It is possible for a bidder to submit multiple bids on a single sale. For example, a bid may be submitted hardcopy and a bid may be submitted thru OLB. Or, two bidders from the same company could both submit bids on the same sale. If this were to happen, the State would accept all bids received and award the contract accordingly. All bidding and contractual requirements would apply to all bids received.

### 5. Public Opening of Sealed Bids (7/16)

If conditions permit, the sealed bids will be publicly opened and posted at the time and place set in the prospectus.

If a bidder, present at a bid opening, has submitted bids on more than one sale, that bidder may withdraw their unopened bid envelopes or announce the withdrawal of their online bid after being declared the successful bidder on one sale.

### 6. Award of Contract (1/11)

Award of the contract will be made to the Bidder whose bid, conforming to the prospectus, is most advantageous to the State of Michigan on the basis of total value at rates bid for the estimated quantities. The State reserves the right to reject any bid or waive any minor irregularity in bids received. A written award mailed (or otherwise furnished) to the successful Bidder shall be deemed to result in a binding contract without further action by either party.

### 7. Down Payment (1/11)

The Bidder to whom award is made must make a down payment within 21 days of the sale award. The amount of the down payment will be calculated as shown in the Bond and Payment Schedule of this prospectus. Only cash may be used to meet this requirement.

### 8. Performance Security (1/11)

As guarantee of faithful performance, a cash bond, certificate of deposit, surety bond or irrevocable letter of credit (LOC) is required within 21 days of the sale award. The amount of the performance security is shown in the Bond and

Payment Schedule of this prospectus. If an LOC or surety is used, the coverage must extend for at least 6 months beyond the contract expiration.

#### 9. Timber Sale Contract (7/18)

Additional conditions and requirements common to all timber sales are listed on the timber sale contract (R4031) and are available on line at [www.michigan.gov/timber](http://www.michigan.gov/timber). Contact the Unit Manager for additional information or a sample contract. Within 21 days of the date of the award letter, the bidder must sign the contract and provide the required down payment, performance security, and verification of worker's disability compensation. The down payment and performance security shall be in accordance with the provisions of the timber sale contract, in the sums stated in this prospectus. If these actions are not taken, then the Bidder, the Bidder's corporation, and the corporation's principals may not be permitted to bid on State timber sales for a period of 3 months after the first offense, 6 months after the second offense, and 1 year after the third offense. An offense will only be counted against the Bidder for 5 years. In addition, the Bidder certifies that if awarded this contract, the Bidder will complete the timber sale contract in accordance with its terms and any modifications thereof including requirements to purchase, cut, and remove the included timber by the expiration date.

Payment Unit values in the State Forest Timber Sale Contract are calculated based on the advertised value of the Payment Unit as a percentage of the total advertised value of the contract. The advertised value of each Payment Unit is given in the Description of Timber by Payment Unit table on the Timber Sale Information page. For example, if the value of Payment Unit 1 is advertised as \$1,500 and the total Timber Sale value is advertised as \$10,000, the contract price for Payment Unit 1 will be 15% of the total bid price ( $\$1,500/\$10,000 * 100$ ).

#### 10. Disclaimer of Estimates and Bidder's Warranty of Inspection (7/16)

Before submitting this bid, the Bidder is advised and cautioned to inspect the sale area, review the requirements of the sale contract, and take other steps as may be reasonably necessary to ascertain the location, estimated volumes, construction estimates, and operating costs of the proposed sale. Failure to do so will not relieve the Bidder from responsibility for completing the contract.

The Bidder warrants that this bid is submitted solely on the basis of the Bidder's examination and inspection of the quality and quantity of the timber offered for sale and the Bidder's opinion of the value thereof and the costs of recovery. No reliance should be placed on the State of Michigan's estimates of timber quality, quantity or costs of recovery. Bidder further acknowledges that the State of Michigan: (i) expressly disclaims any warranty of fitness of timber for any purpose; (ii) offers this timber as is without any warranty of quality (merchantability) or quantity and (iii) expressly disclaims any warranty as to the quantity or quality of timber sold.

#### 11. Certification and Chain-of-Custody (10/14)

Unless otherwise indicated in the contract under section 7 – Other Conditions of the Sale Specific Conditions & Requirements, the area encompassed by this timber sale is certified to the standards of the Forest Stewardship Council (FSC) - Certificate #SCS-FM/COC-00090N and the Sustainable Forestry Initiative (SFI) - Certificate #NSF-SFIS-5Y031-SF5. Forest products from this sale may be delivered to the mill as "FSC 100% and / or SFI certified" as long as the contractor hauling the forest products is chain-of-custody (COC) certified or covered under a COC certificate from the destination mill. The purchaser is responsible for maintaining COC after leaving the sale area.

#### 12. Good Neighbor Authority (GNA) Requirements (7/16)

If the name of this timber sales contains the acronym GNA, it is authorized by the Good Neighbor Authority (GNA) and covered by various agreements between the U.S. Forest Service and the State. The timber sale occurs on federal land and the following conditions apply:

GNA contracts on US Forest Service land will not be awarded to purchasers on the Federal list of excluded parties. The System for Award Management (SAM) will be checked for active excluded parties prior to award of contract. In addition, the Bidder to whom award is made must complete an Assurance Regarding Felony Conviction or Tax Delinquent Status for Corporate Applicants (AD-3031).

#### 13. Good Neighbor Authority (GNA) Requirements, con't (9/16)

Bidder certifies, by signing this bid form, that to the best of Bidder's knowledge that the following representations are accurate and complete.

- a. That the Bidder and its principals are not presently debarred, suspended, proposed for debarment, declared ineligible, or voluntary excluded from timber sales (covered transactions) by any Federal department or agency.
- b. That the Bidder and its principals have not within a 3-year period preceding this bid been convicted of or had a civil judgment rendered against them for commission of fraud or a criminal offense in connection with obtaining , attempting to obtain, or performing a public (Federal, State, or local) transaction or contract under a public transaction; violation of Federal or State antitrust statutes or commission of embezzlement, theft, forgery, bribery, falsification or destruction of records, making false statements, or receiving stolen property.
- c. That the Bidder and its principals are not presently indicted for or otherwise criminally or civilly charged by a governmental entity (Federal, State, or local) with commission of any of the offenses enumerated in paragraph b of this certification.
- d. That the Bidder and its principals have not within a 3-year period preceding this bid had one or more public transactions (Federal, State, or local) terminated for breach or default of a timber or forest product contract.

Bidders that cannot certify this requirement, in whole or in part, shall submit an explanation with their bid.

DAN EICHINGER  
Director

## TIMBER SALE INFORMATION

### Verona Maple Mix (55-136-21)

T15N, R14E, SEC. 4; T15N, R14E, SEC. 5; T16N, R14E, SEC. 28.  
Huron County (Advertised Price \$33,330.55)

SALE NOTE: All units of volume listed for this sale were estimated using the Inventory Manager computer program and the new Michigan taper model.

Access may be through other public land.

A timber sale contract for this lump sum, sealed bid timber sale will be awarded to the responsible bidder offering the highest sealed bid price. All units of volume listed below were estimated using the Inventory Manager computer program and the new Michigan taper model. Bids must be at or above the following advertised price for each product and species:

<u>PRODUCTS &amp; SPECIES</u>	<u>ESTIMATED UNITS*</u>	<u>ADVERTISED PRICE</u>
Sawtimber		
American Elm	31.2 MBF	\$ 26.00 / MBF
Basswood	3.4 MBF	\$ 29.00 / MBF
Green Ash	14.9 MBF	\$ 25.00 / MBF
Mixed Aspen	105.1 MBF	\$ 26.00 / MBF
Paper Birch	22.8 MBF	\$ 26.00 / MBF
Silver Maple	560.6 MBF	\$ 27.00 / MBF
Pulpwood		
Mixed Aspen	193 Cords	\$ 8.25 / Cord
Mixed Hardwood	264 Cords	\$ 8.80 / Cord
Silver Maple	1,256 Cords	\$ 7.70 / Cord

\* The total volume is statistically estimated within plus (+) or minus (-) 7.38 percent. There are an estimated 3,339 cords on this timber sale, plus or minus 247 cords at the 95% confidence level. The estimated units are final and not subject to adjustment. Prospective bidders are urged to examine this timber and to make their own estimates of quantity and quality.

### **BOND AND PAYMENT SCHEDULE:**

1. A bond in the amount of \$1,667.00 to insure faithful performance of the conditions of the contract will be deposited by the successful bidder within 21 days of the sale award.
2. Cutting in any sale or unit without the required advance payment would be considered a trespass.
3. Total payment must be paid in advance or according to the following schedule :
  - (a) Ten percent (10%) of the sale value must be paid within 21 days of the sale award.
  - (b) The 10% down payment will be credited towards the first unit cut.
  - (c) Payment for each of the following units must be made before cutting begins in that unit:

PAYMENT UNIT NUMBER	PERCENT OF TOTAL SALE VALUE
01	10.9%
02	12.7%
03	6.1%
04	25.3%
05	23.3%
06	21.7%

4. If no cutting takes place, the 10% down payment will not be refunded.
5. Operations on the contract issued will terminate on 03/01/2024.

### **SALE STATISTICS**

Volumes were calculated in cubic feet using the Michigan taper model. Cubic foot volume includes all wood inside bark for the product indicated. For display purposes, cubic feet were converted to cords and MBF using a simple conversion factor, e.g. 79 cubic feet per cord and 185 cubic feet per MBF. The cubic foot volumes are precise; the cords and MBF volumes are not. Cubic foot volume cannot be directly converted to cords or boards with precision.

## SALE VOLUMES

The total estimated sale volume may not equal the sum of the species/products due to the nature of statistical calculations associated with double sampling methodology.

VOLUME			STATISTICAL RANGE IN CORDS	
TOTAL CUBIC FEET	TOTAL CORDS	PERCENT ERROR	MINIMUM	MAXIMUM
263,767	3,339	7.38%	3,092	3,585

## VDU VOLUMES

A VDU is a Volume Determination Unit. Volumes and their associated statistics are calculated at the VDU level and summarized to the sale level. There is often a one to one relationship between a VDU and a Payment Unit, but not always, depending on the cruise design. Refer to the VDU TO PAYMENT UNIT table.

	VOLUME			RANGE IN CORDS	
VDU	TOTAL CUBIC FEET	TOTAL CORDS	PERCENT ERROR	MINIMUM	MAXIMUM
297	59,064	748	10.84%	667	829
369	176,887	2,239	9.15%	2,034	2,444
411	16,073	203	43.22%	116	291
<b>TOTAL:</b>	<b>252,023</b>	<b>3,190</b>		<b>2,816</b>	<b>3,564</b>

## VDU TO PAYMENT UNIT

When a VDU is associated with more than one Payment Unit (PU), the VDU volumes are assigned to the PU based on acres of the VDU within the PU.

VDU	VDU ACRES	PU	PU ACRES
297	37.3	1	17.2
		2	20.1
369	73.9	4	26.6
		5	24.5
		6	22.8
411	10.7	3	10.7
<b>TOTAL:</b>	<b>121.9</b>		<b>121.9</b>

**DESCRIPTION OF TIMBER BY PAYMENT UNIT (PU)**

PU	MARKET GROUP	PRODUCT	QUANTITY	UNIT	ACRES	ADVERTISE PRICE	
1	American Elm	Sawtimber	6.1	MBF	17.2	\$3,641.25	
	Basswood		1.6	MBF			
	Mixed Aspen		45.5	MBF			
	<i>Cottonwood</i>		31.4	<i>MBF</i>			
	<i>Quaking Aspen</i>		14.1	<i>MBF</i>			
	Paper Birch		10.5	MBF			
	Silver Maple		14.9	MBF			
	Mixed Aspen		Pulpwood	61			Cords
	<i>Balsam Poplar</i>			3			<i>Cords</i>
	<i>Cottonwood</i>			16			<i>Cords</i>
	<i>Quaking Aspen</i>	42		<i>Cords</i>			
	Mixed Hardwood	88		Cords			
	<i>American Elm</i>	35		<i>Cords</i>			
	<i>Basswood</i>	1		<i>Cords</i>			
	<i>Black Cherry</i>	7		<i>Cords</i>			
	<i>Green Ash</i>	31		<i>Cords</i>			
	<i>Paper Birch</i>	12		<i>Cords</i>			
	<i>Red Maple</i>	2	<i>Cords</i>				
	Silver Maple	39	Cords				
	2	American Elm	Sawtimber	7.3			MBF
Basswood		1.8		MBF			
Mixed Aspen		53.2		MBF			
<i>Cottonwood</i>		36.8		<i>MBF</i>			
<i>Quaking Aspen</i>		16.4		<i>MBF</i>			
Paper Birch		12.3		MBF			
Silver Maple		17.4		MBF			
Mixed Aspen		Pulpwood		68	Cords		
<i>Balsam Poplar</i>				3	<i>Cords</i>		
<i>Cottonwood</i>				18	<i>Cords</i>		
<i>Quaking Aspen</i>			47	<i>Cords</i>			
Mixed Hardwood			103	Cords			
<i>American Elm</i>			39	<i>Cords</i>			
<i>Basswood</i>			2	<i>Cords</i>			
<i>Black Cherry</i>			9	<i>Cords</i>			
<i>Green Ash</i>			36	<i>Cords</i>			
<i>Paper Birch</i>			14	<i>Cords</i>			
<i>Red Maple</i>		3	<i>Cords</i>				
Silver Maple		45	Cords				
3		Silver Maple	Sawtimber	39.0	MBF	10.7	\$2,029.80
	Mixed Hardwood	Pulpwood	6	Cords			
	<i>American Elm</i>		6	<i>Cords</i>			
	Silver Maple		120	Cords			
4	American Elm	Sawtimber	6.4	MBF	26.6	\$8,427.45	
	Green Ash		5.4	MBF			
	Mixed Aspen		2.3	MBF			
	<i>Cottonwood</i>		2.3	<i>MBF</i>			
	Silver Maple		176.1	MBF			
	Mixed Aspen	Pulpwood	23	Cords			
	<i>Cottonwood</i>		1	<i>Cords</i>			
	<i>Quaking Aspen</i>		22	<i>Cords</i>			
	Mixed Hardwood		24	Cords			
	<i>American Elm</i>		14	<i>Cords</i>			
	<i>Box Elder</i>		5	<i>Cords</i>			
	<i>Green Ash</i>		5	<i>Cords</i>			
	Silver Maple		378	Cords			
	5		American Elm	Sawtimber			5.9

**DESCRIPTION OF TIMBER BY PAYMENT UNIT (PU), CON'T**

PU	MARKET GROUP	PRODUCT	QUANTITY	UNIT	ACRES	ADVERTISE PRICE	
5 con't	Green Ash	Sawtimber	4.9	MBF			
	Mixed Aspen		2.1	MBF			
	<i>Cottonwood</i>		2.1	<i>MBF</i>			
	Silver Maple		162.2	MBF			
	Mixed Aspen	Pulpwood	21	Cords			
	<i>Cottonwood</i>		1	<i>Cords</i>			
	<i>Quaking Aspen</i>		20	<i>Cords</i>			
	Mixed Hardwood		23	Cords			
	<i>American Elm</i>		13	<i>Cords</i>			
	<i>Box Elder</i>		5	<i>Cords</i>			
	<i>Green Ash</i>		5	<i>Cords</i>			
	Silver Maple		349	Cords			
	6		American Elm	Sawtimber			5.5
Green Ash			4.6		MBF		
Mixed Aspen		2.0	MBF				
<i>Cottonwood</i>			2.0	<i>MBF</i>			
Silver Maple			151.0	MBF			
Mixed Aspen		Pulpwood	20	Cords			
<i>Cottonwood</i>			1	<i>Cords</i>			
<i>Quaking Aspen</i>			19	<i>Cords</i>			
Mixed Hardwood			20	Cords			
<i>American Elm</i>			12	<i>Cords</i>			
<i>Box Elder</i>			4	<i>Cords</i>			
<i>Green Ash</i>			4	<i>Cords</i>			
Silver Maple			325	Cords			
TOTAL:			738.0	MBF			
TOTAL:			1,713	Cords			



# Sale Specific Conditions & Requirements

**Sale Name: Verona Maple Mix**

**Sale Number: 55-136-21 Seq#: 2**

## 1 - Sale Area

### 1.2 - Boundaries

#### 1.2.1 - Painted boundaries (9/19)

The sale boundary and Payment Unit boundaries are marked and identified by blue, red, and yellow paint. Exterior sale boundary lines against private property are marked with blue paint. Exterior sale boundary lines against state are marked with red paint. Interior Payment Unit boundaries are marked with yellow paint. The painted boundary line trees are not Included Timber and are to be protected. Yellow painted trees designating an interior Payment Unit boundary are only to be cut when all surrounding Payment Units have been paid.

## 2 - Timber Specifications

### 2.1 - Included Timber

#### 2.1.1 - Clearcut unit(s) with unmerchantable trees (6/14)

Within Payment Unit(s) 1 and 2, cut all trees that are two (2) inches or more at DBH, except apple, white pine, cedar, and trees marked with green paint. Within Payment Units 3-6, cut all maple and elm greater than 4 inches at DBH and less than 18 inches at DBH and all other trees that are four (4) inches or more at DBH, except apple and trees marked with green paint. Special protection trees identified in accordance with condition 3.4.2, within clearcutting unit boundaries, are not Included Timber and are to be protected.

### 2.2 - Utilization

#### 2.2.3 - Stump heights (4/07)

Stump heights within the Sale Area shall not exceed 6 inches for all trees.

#### 2.2.4 - Skidding length (2/14)

Skidding of unlimbed tops is not permissible.

#### 2.2.10 - No chipping tops and limbs (8/16)

Within Payment Unit(s) 1-6, chipping of the bole, 2-inches in diameter or greater, is allowed. Chipping of limbs or portions of the tree less than 2-inches in diameter is not permitted. Limbs and the remaining top must be left on site and scattered.

## 3 - Payments

### 3.4 - Damaged Timber

#### 3.4.2 - Special Protection Trees (4/14)

The Purchaser shall not cut live or dead special protection trees within cutting units or clearings. Special protection trees are maple and elm greater than or equal to 18 inches at DBH, apple and trees marked with green paint. If the Purchaser's operations have cut or damaged special protection trees through carelessness, the Purchaser shall pay \$200 as fixed, agreed and liquidated damages for each special protection tree cut or damaged. Such payment does not constitute ownership of the undesignated timber.

### 3.6 - Payment Unit Cutting Schedule

#### 3.6.1 - Order of cutting (1/09)

Payment Units shall be cut in numerical order unless weather and ground conditions suggest otherwise.

#### 3.6.2 - One active unit (12/08)

Each Payment Unit must be completed to the satisfaction of the Unit Manager or his/her representative before the next unit may be opened. The Purchaser must give a one week notice before finishing a Payment Unit to allow for inspection.

## 4 - Transportation

### 4.1 - Construction

#### 4.1.3 - Slash and earthen piles (8/04)

Piles or windrows of earth along roads and landings that have been widened or constructed shall be leveled. Slash from road maintenance or construction, including stumps, shall be dispersed throughout the sale.

#### 4.1.11 - Permits (2/12)

The Purchaser will secure any necessary temporary driveway permits that may be required.

#### 4.1.12 - No new roads (1/12)

No new roads will be permitted in any Payment Unit. Skid trails only will be allowed.

### 4.2 - Maintenance

#### 4.2.4 - Grading (10/16)

For completion of the sale, skid trails must be graded. In general, this will require a bulldozer to shape up the skid trails after forest products have been hauled off site. This includes cleaning of drainage areas, grading, crowning, and filling with gravel, if necessary. The grading equipment to be used must be approved by the Unit Manager or his/her representative.

## 5 - Operations

### 5.1 - Notification

#### 5.1.1 - Pre-sale conference (10/16)

A pre-sale conference between the Purchaser and sale administrator is required prior to beginning any operations to determine landing and skid trail locations. The Unit Manager or his/her representative must be contacted at least 10 days in advance to schedule the conference.

### 5.2 - Conduct of Operations

#### 5.2.1 - Slash

##### 5.2.1.8 - Slash height (12/08)

No slash or tree tops may exceed 24 inches in height.

##### 5.2.1.10 - No slash in openings (5/10)

No brush or logging debris is to be left in any farmed field or opening which is indicated by G0 or U0 on the Timber Sale Map. Any damage to the opening shall be repaired according to specifications of the Unit Manager or his/her representative.

##### 5.2.1.11 - Slash for reforestation (3/21)

To facilitate reforestation, the Sale Area shall be left with slash evenly distributed. Bunched tops within the cutting area shall be broken up and scattered. Stumps shall be cut low to the ground. Processing sites shall not be left with a compacted layer of slash; tops from these sites shall be hauled back into the cut area and scattered.

#### 5.2.2 - Hazard Trees/Snags

##### 5.2.2.1 - Den trees (10/16)

Obvious hollow and/or den trees shall be protected and left standing unless they are a safety hazard. All standing dead trees (snags) shall be protected and left standing unless they are a safety hazard.

#### 5.2.3 - Operating Restrictions

##### 5.2.3.1 - Operating restrictions (9/11)

Within Payment Unit(s) 1-6 cutting, skidding, and hauling are not permitted during the period of March 15 to July 15 and is limited to dry or frozen ground conditions at any other time. The sale administrator will determine what constitutes dry or frozen ground conditions. This restriction is due to poorly drained soils throughout the Sale Area.

##### 5.2.3.12 - Hunting operating restriction (1/18)

No Payment Unit may be started during the period of September 25 - October 10 or November 1 - November 30 without permission of the Unit Manager or his/her representative.

#### 5.2.31 - Landing locations (9/13)

The location of landings will be determined in the pre-sale conference. Landings must be confined to these designated sites

unless otherwise authorized by the Unit Manager or his/her representative. In general, landings are limited to a "T" turnaround which will accommodate a truck with a 50-foot trailer.

#### 5.2.32 - Decking/landing restoration (9/13)

All decking and landing areas must have the surface area restored to a condition equal to or better than before. This is to ensure the proper regeneration of the stand. Wood debris, chips, and "cookies" from trimmings must be removed from landing and loading areas and scattered within the sale boundaries and may not be windrowed on the edge.

#### 5.2.37 - No decking areas (12/08)

No decking is allowed in any designated parking area. No equipment storage is allowed in any designated parking area.

#### 5.2.38 - No decking against live trees (2/04)

Cut products may not be decked against unmarked or designated leave trees.

### 5.4 - Soil Protection

#### 5.4.1 - Rutting restriction, general (7/16)

Operations are to cease immediately if equipment and weather conditions result in rutting of the Sale Area, roads and/or skid trails which are 12 inches or greater in depth and 50 feet in length. The Unit Manager or his/her representative may restrict hauling and/or skidding if ruts exceed the specified depth. With the Unit Manager or his/her representative's approval, the Purchaser may return to the area when the risk of rutting has decreased.

#### 5.4.5 - Soil caution (11/04)

Care must be taken to minimize soil damage due to poor soil drainage throughout the sale. Care must also be taken when operating around designated leave trees to minimize damage to shallow roots.

#### 5.4.6 - Wet area protection (5/10)

No harvesting operations, including skidding and felling, are to take place within any vernal pond areas or drainages. When harvesting occurs, there should be no disturbance to the vernal pond depression. All equipment, trees, and tops should be kept out of this area. Within 100 feet of the pond, equipment should only be used when the soil is in a dry or frozen condition. Care must be taken by the Purchaser to identify and avoid operating in these areas of the timber sale.

### 5.8 - Protection of Endangered Species

#### 5.8.5 - Protection of raptor nests (3/13)

All trees with raptor nests will be protected if found during harvesting operations. Notification will be made to the Unit Manager or his/her representative who will notify the Wildlife Biologist so an on-site evaluation and recommendation can be made, if necessary.

## 7 - Other Conditions

### 7.2 - Extensions

#### 7.2.5 - Weather related extension (1/13)

If weather conditions during the operating period of this contract prevent harvesting, this sale may qualify for a weather related extension. If approved, the normal extension fee would be waived. To qualify, there must be a documented attempt each year to harvest in the difficult portion of the sale.

### 7.10 - Certified Timber

#### 7.10.1 - Non-certified timber (2/16)

The area encompassed by this timber sale is not certified to the standards of the Forest Stewardship Council (FSC) or the Sustainable Forestry Initiative (SFI). Forest products from this sale may not be delivered to the mill as "FSC and / or SFI certified". The lands within this sale are managed as a State Game Area.



# TIMBER SALE MAP

This information provided by authority of Part 525, 1994 PA 451, as amended.

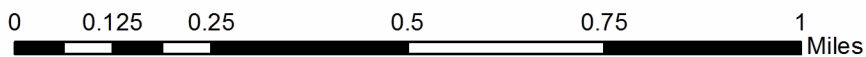
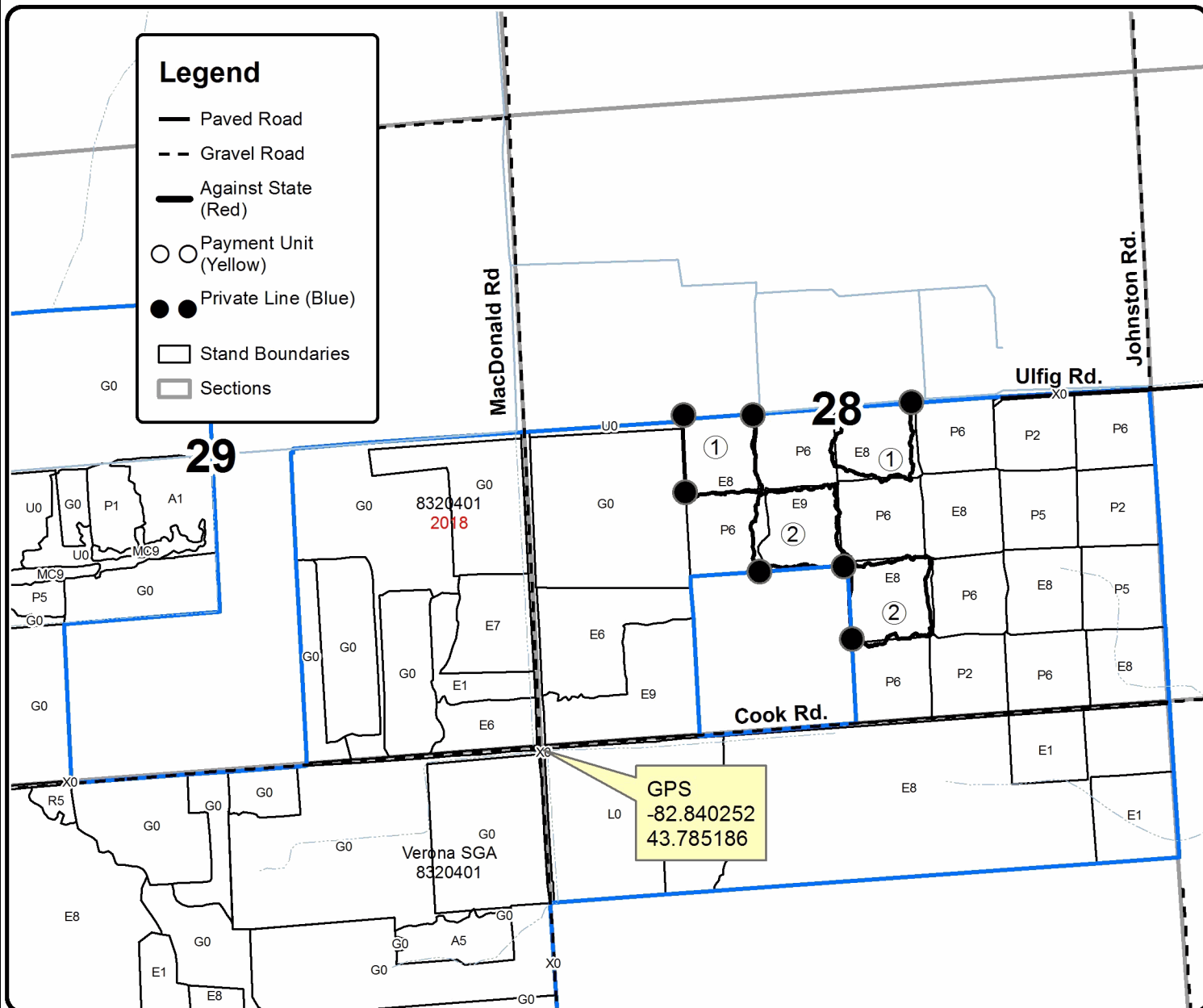
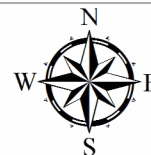
Forest Management Unit Verona State Game Area	County Huron	Mapped By Bonnette	Date 09/03/2021	Page 1	of 2
Township 16N	Range 14E	Section(s) and Subdivision(s) Sec. 28 NESW,W1/2SE	Scale 1:15,480		

Cover Type				Density	
A = Aspen	H = Hemlock	N = Marsh	U = Upland Brush	0 = Non Stocked	5 = Pole Timber Medium
B = Paper Birch	J = Jack Pine	O = Oak	UM = Upland Mixed	1 = Seedling Sapling Poor	6 = Pole Timber Well
C = Cedar	L = Lowland Brush	P = Lowland Poplar	V = Bog or Marsh	2 = Seedling Sapling Medium	7 = Saw Timber Poor
D = Treed Bog	LM = Lowland Mixed	Q = Mixed Swamp Conifer	W = White Pine	3 = Seedling Sapling Well	8 = Saw Timber Medium
E = Swamp Hdwoods	M = Mpl, Bch, Brch	R = Red Pine	X = Non Stocked	4 = Pole Timber Poor	9 = Saw Timber Well
F = Spruce Fir	MC = Mixed Conifer	S = Black Spruce	Z = Water		
G = Grass	MD = Mixed Deciduous	T = Tamarack			

PU	Acres	PU	Acres
1	17.2	4	26.6
2	20.1	5	24.5
3	10.7	6	22.8

## Verona Maple Mix

121.9 Acres





# TIMBER SALE MAP

This information provided by authority of Part 525, 1994 PA 451, as amended.

Sale Number	Year
55-136-21	2021

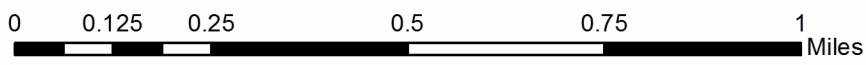
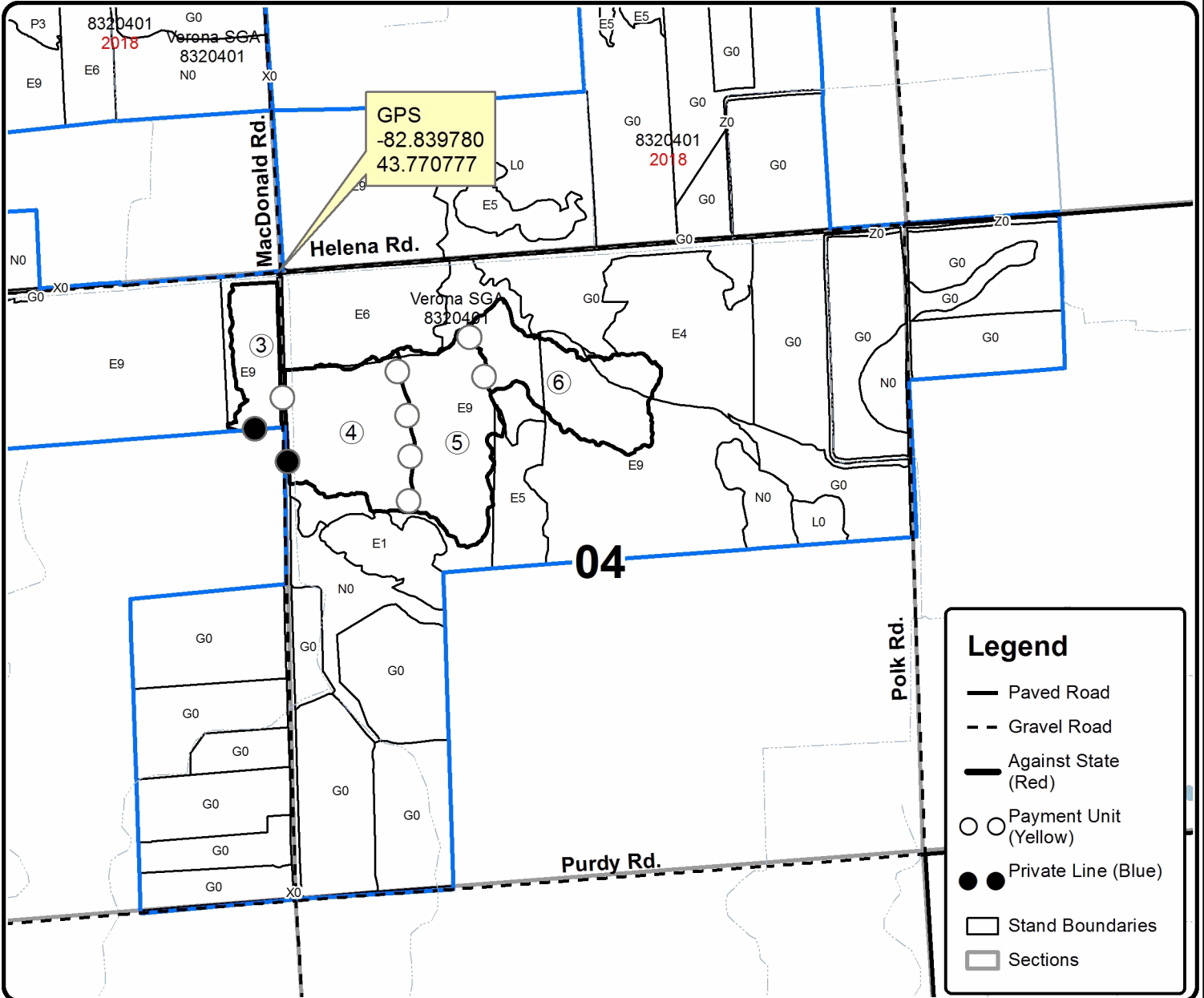
Forest Management Unit	County	Mapped By	Bonnette	Date	Page	of
Verona State Game Area	Huron	Cruised By	Bonnette	09/03/2021	2	2
Township	Range	Section(s) and Subdivision(s)	Scale			
16N	14E	Sec. 28 NESW,W1/2SE	1:15,480			

Cover Type				Density	
A = Aspen	H = Hemlock	N = Marsh	U = Upland Brush	0 = Non Stocked	5 = Pole Timber Medium
B = Paper Birch	J = Jack Pine	O = Oak	UM = Upland Mixed	1 = Seedling Sapling Poor	6 = Pole Timber Well
C = Cedar	L = Lowland Brush	P = Lowland Poplar	V = Bog or Marsh	2 = Seedling Sapling Medium	7 = Saw Timber Poor
D = Treed Bog	LM = Lowland Mixed	Q = Mixed Swamp Conifer	W = White Pine	3 = Seedling Sapling Well	8 = Saw Timber Medium
E = Swamp Hdwoods	M = Mpl. Bch, Brch	R = Red Pine	X = Non Stocked	4 = Pole Timber Poor	9 = Saw Timber Well
F = Spruce Fir	MC = Mixed Conifer	S = Black Spruce	Z = Water		
G = Grass	MD = Mixed Deciduous	T = Tamarack			

PU	Acres	PU	Acres
1	17.2	4	26.6
2	20.1	5	24.5
3	10.7	6	22.8

## Verona Maple Mix

121.9 Acres





Verona Maple Mix (55-136-21)

T15N, R14E, SEC. 4; T15N, R14E, SEC. 5; T16N, R14E, SEC. 28; Huron COUNTY

In response to the notice of sale to be held 10:00 a.m. (local time) on January 24, 2022, I am hereby submitting my sealed bid (firm offer) for the following forest products to be cut. Bids for individual species must be at or above the advertised price. All non-responsive bid forms may be rejected.

<u>PRODUCTS &amp; SPECIES</u>	<u>ESTIMATED VOLUME*</u>	<u>ADVERTISED PRICE</u>	<u>BID PRICE/UNIT</u>
<b>Sawtimber</b>			
American Elm	31.2 MBF	\$ 26.00/MBF	\$ _____
Basswood	3.4 MBF	\$ 29.00/MBF	\$ _____
Green Ash	14.9 MBF	\$ 25.00/MBF	\$ _____
Mixed Aspen	105.1 MBF	\$ 26.00/MBF	\$ _____
Paper Birch	22.8 MBF	\$ 26.00/MBF	\$ _____
Silver Maple	560.6 MBF	\$ 27.00/MBF	\$ _____
<b>Pulpwood</b>			
Mixed Aspen	193 Cords	\$ 8.25/Cord	\$ _____
Mixed Hardwood	264 Cords	\$ 8.80/Cord	\$ _____
Silver Maple	1,256 Cords	\$ 7.70/Cord	\$ _____

\*The volumes are statistically estimated within plus (+) or minus (-) 7.38 percent at 95% confidence level. These estimated volumes are final and not subject to adjustment. Prospective bidders are urged to examine this timber and to make their own estimates of quantity and quality.

I understand that any or all bids may be rejected. All bids must be signed and all bid items must be bid or the bid form may be rejected. I also understand that consideration and awarding a contract will be based upon my past performance and ability to complete the contract based upon equipment and staffing subject to my control.

FEDERAL ID: \_\_\_\_ - \_\_\_\_ - \_\_\_\_ or SOCIAL SECURITY NUMBER: \_\_\_\_ - \_\_\_\_ - \_\_\_\_

Company or individual bidding: \_\_\_\_\_

Company representative's name: \_\_\_\_\_

Address: \_\_\_\_\_

City: \_\_\_\_\_ State: \_\_\_\_\_ Zip: \_\_\_\_\_

IF AVAILABLE, PLEASE PLACE THE PERSONALIZED LABEL FROM YOUR PROSPECTUS IN THE ABOVE BOX.

Individual or company representative's signature: \_\_\_\_\_ Date: \_\_\_\_\_

Phone number : \_\_\_\_\_ Email (optional): \_\_\_\_\_

**THE WINNING BIDDER MUST COMPLETE THE VERIFICATION OF WORKER'S DISABILITY COMPENSATION ACT COMPLIANCE (ON REVERSE SIDE IF DOUBLE SIDED) WITHIN 21 DAYS OF SALE AWARD DATE**



<b>FOR DEPARTMENT USE ONLY</b>
Sale Number (XX - XXX - XX - XX)
Forest Management Unit:

## TIMBER SALE VERIFICATION OF WORKER'S DISABILITY COMPENSATION ACT COMPLIANCE

*As required by Act 317, P.A. 1969 (Worker's Compensation) and  
Part 5 of Act 451 of 1994, as amended.*

### VERIFICATION OF WORKER'S DISABILITY COMPENSATION ACT COMPLIANCE

- This verification must be completed and submitted within 21 days of contract award and prior to the issuance of the timber sale contract.
- In addition, if boxes 2B or 2C are checked, then Notice of Exclusion or Certificate of Insurance must be submitted within twenty-one (21) days of the contract award and prior to the issuance of the timber sale contract.
- All information must be typed or printed except for written signatures.

Please Check Appropriate Categories:

1. My business is organized as (you **must** check one of the boxes below):
  - A.  Sole Proprietorship (individual)
  - B.  Partnership
  - C.  Corporation
2. You **must** check one of the boxes below:
  - A.  I certify my business is a sole proprietorship and it has no employees but the sole proprietor. I am not subject to the Worker's Compensation Laws.
  - B.  I certify my business has satisfied its obligation to the Worker's Compensation Act through the use of an approved Notice of Exclusion (BWC-337, Rev. 5/96). I will provide a copy of the Notice of Exclusion within 21 days of the contract award. (For questions or a copy of the BWC-337, please call the Worker's Compensation Bureau at 517-322-1195).
  - C.  I certify my business has a Worker's Compensation Policy. I will provide an original Certificate of Insurance within twenty-one (21) days of the contract award.
3. If you have checked item 2(A) or 2(B), you **must** indicate the number of **both** full-time and part-time employees, other than yourself, including family members and active partners (if none, you must enter "0").

\_\_\_\_\_ Full-time Employees

\_\_\_\_\_ Part-time Employees

Name of Business		Federal ID (or) Social Security No.	
Address		Telephone (       )	
City	State	ZIP	

*I hereby certify that the above information is true and correct. I agree to notify the Michigan DNR of any changes that occur in factors affecting my coverage during any of my present and future operations.*

\_\_\_\_\_  
Signature of Owner or Authorized Representative

\_\_\_\_\_  
Title

\_\_\_\_\_  
Date

**Please complete the "SEALED BID" information on the next page**