



**DEPARTMENT OF NATURAL RESOURCES
STATE OF MICHIGAN**

TIMBER SALE PROSPECTUS #6998

SCHEDULED SALE DATE AND TIME: 3:00 p.m. (local time) on February 24, 2022.

LOCATION: NEWBERRY MGMT UNIT, 5666 S STATE HWY M 123, NEWBERRY, MI 49868.

PROSPECTUS NOTE: The bidder is advised to inspect the sale area and review the location, estimated volumes, operating costs and contract terms of proposed sales. Please be aware that some landowners may request 60 days or more notice for access across their land.

Notice is hereby given that bids will be received by the Unit Manager, NEWBERRY MANAGEMENT UNIT, for certain timber on the following described lands:

Chevy Camp Lowlands (42-011-21) / T47N, R11W, SEC. 1 , NW,NE.

Luce County, Advertised Price \$39,121.05, 120.9 Acres, Spruce/Fir/Tamarack, Hardwood.

SALE NOTE: All units of volume listed for this sale were estimated using the Inventory Manager computer program and the new Michigan taper model.

Road work may be needed on this sale. See Sale Spec 4.2.3 for details.

Harvesting is limited to the period of December 15 to April 01 because of the low ground nature of the sale.

Some roads or skid trails require extra protection such as that afforded by interlocking composite mats or another approved system. See Sale Spec. 5.2.17 for additional information.

There is a snowmobile trail shown on the Timber Sale Map. See Sale Spec. 5.2.41 for restrictions.

Skid trails up and down slopes should be avoided. See Sale Spec. 5.4.2 for additional information.

Attwood Mix (42-013-21) / T47N, R08W, SEC. 20, E1/2NW,NWNE,S1/2NE,N1/2SE.

Luce County, Advertised Price \$26,049.10, 67.6 Acres, Hardwood, N White Cedar.

SALE NOTE: All units of volume listed for this sale were estimated using the Inventory Manager computer program and the new Michigan taper model.

Roads may require the installation of culverts for cross drainage or at natural drainage-ways. See Sale Spec. 4.1.5 for details.

Road maintenance may be needed. See Sale Spec. 4.2.3 for additional information.

Harvesting is not permitted during the period of March 31 to December 15 because of the low ground nature and wet soil types within the Sale Area.

A snowmobile trail is shown on the Timber Sale Map. See Sale Spec. 5.2.41 for restrictions.

A recreation site such as a trail, pathway, or campground is within the sale area or the vicinity. Certain restrictions/specifications may be applicable including time restrictions.

Basnau Bend Timber (42-029-21) / T45N, R07W, SEC. 10, NENW,NE,NESE.
T45N, R07W, SEC. 11, S1/2NW.

Chippewa County, Advertised Price \$26,635.65, 66.4 Acres, Hardwood, White Pine.

SALE NOTE: All units of volume listed for this sale were estimated using the Inventory Manager computer program and the new Michigan taper model.

Payment Unit 1 is an optional unit. Removing this Payment Unit from the sale is a contract modification which requires a Timber Sale Contract Amendment.

Note that species products have been combined into mixed categories, see volume breakdowns.

No new roads will be permitted in any Payment Unit. See Sale Spec. 4.1.12 for details.

Harvesting is limited to the period of December 15 to March 31 because of wintering deer and low ground nature of the sale.

Three Tundra Mix (42-035-21) / T46N, R09W, SEC. 10, NWSW.
T46N, R09W, SEC. 9 , E1/2NW,NWNE,S1/2NE,N1/2SW.
T46N, R09W, SEC. 9 , N1/2SE.

Luce County, Advertised Price \$47,459.10, 113.5 Acres, Jack Pine, Spruce/Fir/Tamarack.

SALE NOTE: All units of volume listed for this sale were estimated using the Inventory Manager computer program and the new Michigan taper model.

Note that species with sawlogs were converted to pulpwood within the sale. See Timber Market Groupings.

Road maintenance is required. See Sale Spec. 4.2.3 for details.

Within Payment Unit(s) 3-6, harvesting is limited to the period of December 15 to March 31 because of the low ground nature of the Payment Units. If a dry summer allows access, a written waiver can be requested per the Administrator or Unit Manager.

Some roads or skid trails may require extra protection such as that afforded by timber mats . See Sale Spec. 5.2.17 for specifics.

A snowmobile trail is shown on the Timber Sale Map. See Sale Spec. 5.2.41 for restrictions.

A recreation site such as a trail, pathway, or campground is within the sale area or the vicinity. Certain restrictions/specifications may be applicable including time restrictions.

BID INSTRUCTIONS (VER. 07/02/2018):

1. Scheduled Bid Location, Date, and Time (2/11)

Bids must be received by the Unit Manager, NEWBERRY OFFICE, 5666 S STATE HWY M 123, NEWBERRY, MI 49868, no later than 3:00 p.m. (local time) on February 24, 2022. For further information concerning this sale, contact Keith Magnusson at 906-291-0120 extension n/a.

2. Bidder's Qualifications (5/16)

Purchaser shall obtain workers compensation insurance to cover claims under Michigan's Worker's Disability Compensation Act of 1969 or similar employee benefit act of any other state applicable to an employee. If all or part of a timber sale was prepared by a private contractor, the contractor and that contractor's company are not permitted to bid on the timber sale contract. Bids will not be accepted from individuals or companies appearing on the DNR/FRD No-Bid List. This list contains the names of purchasers who previously failed to execute a contract within 21-days or who have a history of poor performance.

3. Preparation of Sealed Bids (5/16)

Bid Forms may be completed online thru Michigan DNR Timber Sale Online Bidding (OLB) at www.michigan.gov/timberbidding or by completing the hardcopy Bid Form found in the Timber Sale Prospectus. Hardcopy Bid Forms shall be manually signed in ink. Registration in OLB is considered your 'signature' for all bids submitted thru that system. Bid prices must be entered for each species and product in the Bid Price column for all material subject to bidding and all fill-in blanks must be completed. If erasures or other changes appear on the hardcopy Bid Form, each erasure or change must be initialed by the person signing the bid.

4. Submission of Sealed Bids (5/16)

Bid forms may be obtained from the Unit Manager or thru OLB. Bids may be submitted hardcopy or thru OLB. All hardcopy bids must be submitted on the bid form and in an envelope clearly identified as described in this section. NOTE: Only one bid form per bid envelope. Sealed bids must be submitted to the Unit office designated in the prospectus and must be submitted at or prior to the time established in the prospectus. The envelope should show on the outside (a) the sale name or number and (b) the date and time of bid opening, as shown in the prospectus. Bids received after the time specified in the sale prospectus are late bids and will be rejected.

It is possible for a bidder to submit multiple bids on a single sale. For example, a bid may be submitted hardcopy and a bid may be submitted thru OLB. Or, two bidders from the same company could both submit bids on the same sale. If this were to happen, the State would accept all bids received and award the contract accordingly. All bidding and contractual requirements would apply to all bids received.

5. Public Opening of Sealed Bids (7/16)

If conditions permit, the sealed bids will be publicly opened and posted at the time and place set in the prospectus.

If a bidder, present at a bid opening, has submitted bids on more than one sale, that bidder may withdraw their unopened bid envelopes or announce the withdrawal of their online bid after being declared the successful bidder on one sale.

6. Award of Contract (1/11)

Award of the contract will be made to the Bidder whose bid, conforming to the prospectus, is most advantageous to the State of Michigan on the basis of total value at rates bid for the estimated quantities. The State reserves the right to reject any bid or waive any minor irregularity in bids received. A written award mailed (or otherwise furnished) to the successful Bidder shall be deemed to result in a binding contract without further action by either party.

7. Down Payment (1/11)

The Bidder to whom award is made must make a down payment within 21 days of the sale award. The amount of the down payment will be calculated as shown in the Bond and Payment Schedule of this prospectus. Only cash may be used to meet this requirement.

8. Performance Security (1/11)

As guarantee of faithful performance, a cash bond, certificate of deposit, surety bond or irrevocable letter of credit (LOC) is required within 21 days of the sale award. The amount of the performance security is shown in the Bond and

Payment Schedule of this prospectus. If an LOC or surety is used, the coverage must extend for at least 6 months beyond the contract expiration.

9. Timber Sale Contract (7/18)

Additional conditions and requirements common to all timber sales are listed on the timber sale contract (R4031) and are available on line at www.michigan.gov/timber. Contact the Unit Manager for additional information or a sample contract. Within 21 days of the date of the award letter, the bidder must sign the contract and provide the required down payment, performance security, and verification of worker's disability compensation. The down payment and performance security shall be in accordance with the provisions of the timber sale contract, in the sums stated in this prospectus. If these actions are not taken, then the Bidder, the Bidder's corporation, and the corporation's principals may not be permitted to bid on State timber sales for a period of 3 months after the first offense, 6 months after the second offense, and 1 year after the third offense. An offense will only be counted against the Bidder for 5 years. In addition, the Bidder certifies that if awarded this contract, the Bidder will complete the timber sale contract in accordance with its terms and any modifications thereof including requirements to purchase, cut, and remove the included timber by the expiration date.

Payment Unit values in the State Forest Timber Sale Contract are calculated based on the advertised value of the Payment Unit as a percentage of the total advertised value of the contract. The advertised value of each Payment Unit is given in the Description of Timber by Payment Unit table on the Timber Sale Information page. For example, if the value of Payment Unit 1 is advertised as \$1,500 and the total Timber Sale value is advertised as \$10,000, the contract price for Payment Unit 1 will be 15% of the total bid price ($\$1,500/\$10,000 * 100$).

10. Disclaimer of Estimates and Bidder's Warranty of Inspection (7/16)

Before submitting this bid, the Bidder is advised and cautioned to inspect the sale area, review the requirements of the sale contract, and take other steps as may be reasonably necessary to ascertain the location, estimated volumes, construction estimates, and operating costs of the proposed sale. Failure to do so will not relieve the Bidder from responsibility for completing the contract.

The Bidder warrants that this bid is submitted solely on the basis of the Bidder's examination and inspection of the quality and quantity of the timber offered for sale and the Bidder's opinion of the value thereof and the costs of recovery. No reliance should be placed on the State of Michigan's estimates of timber quality, quantity or costs of recovery. Bidder further acknowledges that the State of Michigan: (i) expressly disclaims any warranty of fitness of timber for any purpose; (ii) offers this timber as is without any warranty of quality (merchantability) or quantity and (iii) expressly disclaims any warranty as to the quantity or quality of timber sold.

11. Certification and Chain-of-Custody (10/14)

Unless otherwise indicated in the contract under section 7 – Other Conditions of the Sale Specific Conditions & Requirements, the area encompassed by this timber sale is certified to the standards of the Forest Stewardship Council (FSC) - Certificate #SCS-FM/COC-00090N and the Sustainable Forestry Initiative (SFI) - Certificate #NSF-SFIS-5Y031-SF5. Forest products from this sale may be delivered to the mill as "FSC 100% and / or SFI certified" as long as the contractor hauling the forest products is chain-of-custody (COC) certified or covered under a COC certificate from the destination mill. The purchaser is responsible for maintaining COC after leaving the sale area.

12. Good Neighbor Authority (GNA) Requirements (7/16)

If the name of this timber sales contains the acronym GNA, it is authorized by the Good Neighbor Authority (GNA) and covered by various agreements between the U.S. Forest Service and the State. The timber sale occurs on federal land and the following conditions apply:

GNA contracts on US Forest Service land will not be awarded to purchasers on the Federal list of excluded parties. The System for Award Management (SAM) will be checked for active excluded parties prior to award of contract. In addition, the Bidder to whom award is made must complete an Assurance Regarding Felony Conviction or Tax Delinquent Status for Corporate Applicants (AD-3031).

13. Good Neighbor Authority (GNA) Requirements, con't (9/16)

Bidder certifies, by signing this bid form, that to the best of Bidder's knowledge that the following representations are accurate and complete.

- a. That the Bidder and its principals are not presently debarred, suspended, proposed for debarment, declared ineligible, or voluntary excluded from timber sales (covered transactions) by any Federal department or agency.
- b. That the Bidder and its principals have not within a 3-year period preceding this bid been convicted of or had a civil judgment rendered against them for commission of fraud or a criminal offense in connection with obtaining , attempting to obtain, or performing a public (Federal, State, or local) transaction or contract under a public transaction; violation of Federal or State antitrust statutes or commission of embezzlement, theft, forgery, bribery, falsification or destruction of records, making false statements, or receiving stolen property.
- c. That the Bidder and its principals are not presently indicted for or otherwise criminally or civilly charged by a governmental entity (Federal, State, or local) with commission of any of the offenses enumerated in paragraph b of this certification.
- d. That the Bidder and its principals have not within a 3-year period preceding this bid had one or more public transactions (Federal, State, or local) terminated for breach or default of a timber or forest product contract.

Bidders that cannot certify this requirement, in whole or in part, shall submit an explanation with their bid.

DAN EICHINGER
Director

TIMBER SALE INFORMATION

Chevy Camp Lowlands (42-011-21)
T47N, R11W, SEC. 1.
Luce County (Advertised Price \$39,121.05)

SALE NOTE: All units of volume listed for this sale were estimated using the Inventory Manager computer program and the new Michigan taper model.

Road work may be needed on this sale. See Sale Spec 4.2.3 for details.

Harvesting is limited to the period of December 15 to April 01 because of the low ground nature of the sale.

Some roads or skid trails require extra protection such as that afforded by interlocking composite mats or another approved system . See Sale Spec. 5.2.17 for additional information.

There is a snowmobile trail shown on the Timber Sale Map. See Sale Spec. 5.2.41 for restrictions.

Skid trails up and down slopes should be avoided. See Sale Spec. 5.4.2 for additional information.

A timber sale contract for this lump sum, sealed bid timber sale will be awarded to the responsible bidder offering the highest sealed bid price. All units of volume listed below were estimated using the Inventory Manager computer program and the new Michigan taper model. Bids must be at or above the following advertised price for each product and species:

<u>PRODUCTS & SPECIES</u>	<u>ESTIMATED UNITS*</u>	<u>ADVERTISED PRICE</u>
Pulpwood		
Balsam Fir	31 Cords	\$ 9.30 / Cord
Mixed Hardwood	794 Cords	\$ 11.20 / Cord
Mixed Spruce	1,275 Cords	\$ 20.30 / Cord
N. White Cedar	655 Cords	\$ 4.85 / Cord
Quaking Aspen	14 Cords	\$ 20.15 / Cord
Tamarack	7 Cords	\$ 3.55 / Cord
White Pine	45 Cords	\$ 12.75 / Cord

* The total volume is statistically estimated within plus (+) or minus (-) 4.89 percent. There are an estimated 3,321 cords on this timber sale, plus or minus 163 cords at the 95% confidence level. The estimated units are final and not subject to adjustment. Prospective bidders are urged to examine this timber and to make their own estimates of quantity and quality.

BOND AND PAYMENT SCHEDULE:

1. A bond in the amount of \$1,956.00 to insure faithful performance of the conditions of the contract will be deposited by the successful bidder within 21 days of the sale award.
2. Cutting in any sale or unit without the required advance payment would be considered a trespass.
3. Total payment must be paid in advance or according to the following schedule :
 - (a) Ten percent (10%) of the sale value must be paid within 21 days of the sale award.
 - (b) The 10% down payment will be credited towards the first unit cut.
 - (c) Payment for each of the following units must be made before cutting begins in that unit:

<u>PAYMENT UNIT NUMBER</u>	<u>PERCENT OF TOTAL SALE VALUE</u>
01	4.4%
02	19.2%
03	16.3%
04	5.2%
05	21.6%
06	32.5%
07	0.8%
4. If no cutting takes place, the 10% down payment will not be refunded.
5. Operations on the contract issued will terminate on 06/30/2026.

SALE STATISTICS

Volumes were calculated in cubic feet using the Michigan taper model. Cubic foot volume includes all wood inside bark for the product indicated. For display purposes, cubic feet were converted to cords and MBF using a simple conversion factor, e.g. 79 cubic feet per cord and 185 cubic feet per MBF. The cubic foot volumes are precise; the cords and MBF volumes are not. Cubic foot volume cannot be directly converted to cords or boards with precision.

SALE VOLUMES

The total estimated sale volume may not equal the sum of the species/products due to the nature of statistical calculations associated with double sampling methodology.

VOLUME			STATISTICAL RANGE IN CORDS	
TOTAL CUBIC FEET	TOTAL CORDS	PERCENT ERROR	MINIMUM	MAXIMUM
262,353	3,321	4.89%	3,158	3,483

VDU VOLUMES

A VDU is a Volume Determination Unit. Volumes and their associated statistics are calculated at the VDU level and summarized to the sale level. There is often a one to one relationship between a VDU and a Payment Unit, but not always, depending on the cruise design. Refer to the VDU TO PAYMENT UNIT table.

	VOLUME			RANGE IN CORDS	
VDU	TOTAL CUBIC FEET	TOTAL CORDS	PERCENT ERROR	MINIMUM	MAXIMUM
1	68,481	867	8.42%	794	940
4	70,929	898	7.86%	827	968
6	51,410	651	12.14%	572	730
27	30,556	387	13.69%	334	440
101	1,597	20	23.69%	15	25
TOTAL:	222,973	2,822		2,542	3,103

VDU TO PAYMENT UNIT

When a VDU is associated with more than one Payment Unit (PU), the VDU volumes are assigned to the PU based on acres of the VDU within the PU.

VDU	VDU ACRES	PU	PU ACRES
1	31.7	6	31.5
		7	0.2
4	35.1	3	0.1
		4	6.8
		5	28.2
6	29.7	1	5.5
		2	24.2
27	10.4	3	10.4
101	14.0	7	14.0
TOTAL:	120.9		120.9

DESCRIPTION OF TIMBER BY PAYMENT UNIT (PU)

PU	MARKET GROUP	PRODUCT	QUANTITY	UNIT	ACRES	ADVERTISE PRICE
1	Balsam Fir	Pulpwood	4	Cords	5.5	\$1,720.35
	Mixed Hardwood		37	Cords		
	<i>Paper Birch</i>		18	<i>Cords</i>		
	<i>Red Maple</i>		16	<i>Cords</i>		
	<i>Yellow Birch</i>		3	<i>Cords</i>		
	Mixed Spruce		53	Cords		
	<i>Black Spruce</i>		44	<i>Cords</i>		
	<i>White Spruce</i>		9	<i>Cords</i>		
	N. White Cedar		18	Cords		
	Tamarack		1	Cords		
	White Pine		8	Cords		
2	Balsam Fir	Pulpwood	15	Cords	24.2	\$7,497.60
	Mixed Hardwood		161	Cords		
	<i>Paper Birch</i>		77	<i>Cords</i>		
	<i>Red Maple</i>		71	<i>Cords</i>		
	<i>Yellow Birch</i>		13	<i>Cords</i>		
	Mixed Spruce		230	Cords		
	<i>Black Spruce</i>		191	<i>Cords</i>		
	<i>White Spruce</i>		39	<i>Cords</i>		
	N. White Cedar		81	Cords		
	Tamarack		6	Cords		
	White Pine		37	Cords		
3	Mixed Hardwood	Pulpwood	1	Cords	10.5	\$6,391.70
	<i>Red Maple</i>		1	<i>Cords</i>		
	Mixed Spruce		277	Cords		
	<i>Black Spruce</i>		277	<i>Cords</i>		
	N. White Cedar		98	Cords		
Quaking Aspen	14	Cords				
4	Mixed Hardwood	Pulpwood	72	Cords	6.8	\$2,042.70
	<i>Black Ash</i>		3	<i>Cords</i>		
	<i>Red Maple</i>		69	<i>Cords</i>		
	Mixed Spruce		48	Cords		
	<i>Black Spruce</i>		43	<i>Cords</i>		
	<i>White Spruce</i>		5	<i>Cords</i>		
	N. White Cedar		54	Cords		
5	Mixed Hardwood	Pulpwood	297	Cords	28.2	\$8,462.20
	<i>Black Ash</i>		12	<i>Cords</i>		
	<i>Red Maple</i>		285	<i>Cords</i>		
	Mixed Spruce		199	Cords		
	<i>Black Spruce</i>		177	<i>Cords</i>		
	<i>White Spruce</i>		22	<i>Cords</i>		
	N. White Cedar		226	Cords		
6	Balsam Fir	Pulpwood	12	Cords	31.5	\$12,705.55
	Mixed Hardwood		205	Cords		
	<i>Paper Birch</i>		32	<i>Cords</i>		
	<i>Red Maple</i>		173	<i>Cords</i>		
	Mixed Spruce		465	Cords		
	<i>Black Spruce</i>		465	<i>Cords</i>		
	N. White Cedar		177	Cords		
7	Mixed Hardwood	Pulpwood	21	Cords	14.2	\$300.95
	<i>Red Maple</i>		21	<i>Cords</i>		
	Mixed Spruce		3	Cords		
	<i>Black Spruce</i>		3	<i>Cords</i>		
	N. White Cedar		1	Cords		
TOTAL:			2,821	Cords		

Sale Specific Conditions & Requirements

Sale Name: Chevy Camp Lowlands

Sale Number: 42-011-21 Seq#: 1

1 - Sale Area

1.2 - Boundaries

1.2.1 - Painted boundaries (9/19)

The sale boundary and Payment Unit boundaries are marked and identified by blue, red, and yellow paint. Exterior sale boundary lines against private property are marked with blue paint. Exterior sale boundary lines against state are marked with red paint. Interior Payment Unit boundaries are marked with yellow paint. Retention patches are marked with red paint; no harvesting activities may occur within these areas. The painted boundary line trees are not Included Timber and are to be protected unless marked with orange paint. Yellow painted trees designating an interior Payment Unit boundary are only to be cut when all surrounding Payment Units have been paid.

2 - Timber Specifications

2.1 - Included Timber

2.1.1 - Clearcut unit(s) with unmerchantable trees (6/14)

Within Payment Unit(s) 1-7, cut all trees that are two (2) inches or more at DBH, except within Payment Units 3-5, push over any cedar ringed in green paint and within Payment Units 1-7, leave white pine over 16" at DBH and all hemlock.

3 - Payments

3.3 - Pre-measured Sales

3.3.4 - Dividing payment units (7/14)

Payment Unit(s) may be divided at the request of the Purchaser and upon approval of the Unit Manager. Dividing Payment Units is a contract modification which requires a Timber Sale Contract Amendment. There will be only one division per Payment Unit.

4 - Transportation

4.1 - Construction

4.1.4 - Timber removed for construction (12/09)

Trees cut or damaged in the process of pre-approved road, landing or skid trail construction will be decked in an area separate from other Designated Timber and not removed until measured by the sale administrator. Payment will be made at the specified Purchase Unit Price.

4.1.6 - Road construction (1/09)

Construction of new roads or improvements of existing roads shall be done in such a way as to minimize the environmental and visual impacts. Merchantable trees shall be cut and utilized unless otherwise directed. Non-merchantable trees shall be severed and laid flat on the ground. Slash shall be scattered, and not left in windrows and kept a minimum of 10 feet back from the road edge. Stumps shall be set upright, not left on edge, and be moved at least 10 feet away from the road edge. Disturbed soil shall be feathered into the woods and not left in berms or windrows.

4.1.7 - Road closure (10/11)

All new roads built into the sale must be blocked to vehicle traffic upon completion of the sale. Overgrown roads that are reopened shall be considered new roads. In general, this will require constructing double earthen berms at strategic locations. These roads must be rendered impassable to cars and trucks. All stumps from road building and landing construction must be reserved to block any newly constructed roads upon completion of the sale. These stumps must be scattered along the road system to prohibit vehicular movement. Temporary berms may be required if no sale activity occurs for 30 or more consecutive days. Contact the sale administrator for specific details of design and placement.

4.2 - Maintenance

4.2.2 - Fill material (4/07)

To maintain roads, fill material may be needed in areas where "holes" exist or may be expected to develop. This fill material

should be placed before trucking begins. Contact the sale administrator regarding the availability of onsite sand or gravel from adjacent State-owned lands.

4.2.3 - Road maintenance (8/13)

The following road maintenance may be needed. The road must be maintained and graded. This includes cleaning of drainage areas, grading, crowning, and filling with gravel, if necessary. Damages will be assessed if grading/repair does not occur. Provide a description of the road maintenance here.

5 - Operations

5.2 - Conduct of Operations

5.2.1 - Slash

5.2.1.8 - Slash height (12/08)

No slash or tree tops may exceed 36 inches in height.

5.2.2 - Hazard Trees/Snags

5.2.2.1 - Den trees (10/16)

Obvious hollow and/or den trees shall be protected and left standing unless they are a safety hazard.

5.2.3 - Operating Restrictions

5.2.3.1 - Operating restrictions (9/11)

Within Payment Unit(s) 1-7, unless changed by written agreement, cutting, skidding and hauling are limited to the period of December 15 to April 1. This restriction is because of the low ground nature of the sale.

5.2.17 - Timber Mats and Interlocking Composite Mats (10/20)

Some roads or skid trails require extra protection such as that afforded by interlocking composite mats or another approved system. If available, mats may be borrowed from the DNR. A Timber Sale Contract Supplement will be used to document the Purchaser's use of the DNR's mats. Contact the sale administrator regarding availability and pick-up. Composite mats are only available from the Grayling field office and the Marquette ICC. The Purchaser is responsible for picking up and hauling the mats to and from the site. The composite mats will require DNR staff onsite for installation and removal. Contact the sale administrator to schedule at least 30 days before desired install/removal date. All mats must be cleaned prior to drop off. This may include, but is not limited to, power washing and brushing to remove mud and debris. A charge of \$2,000.00 per composite mat will be assessed for all damaged or non-returned mats. Damage for the composite mats is defined as cracked or broken mats.

5.2.32 - Decking/landing restoration (9/13)

All decking and landing areas must have the surface area restored to a condition equal to or better than before. This is to ensure the proper regeneration of the stand. Wood debris, chips, and "cookies" from trimmings must be removed or scattered away from landing and loading areas and may not be windrowed on the edge.

5.2.38 - No decking against live trees (2/04)

Cut products may not be decked against unmarked or designated leave trees.

5.2.41 - Snowmobile trail protection (9/11)

The snowmobile trail is shown on the Timber Sale Map. Do not cut or damage posts with orange trail markers or traffic control signs. If the trail is used for hauling, it must be graded to the satisfaction of the Unit Manager or his/her representative prior to December 1. If the trail road is to be used for hauling during the snowmobile season, then a snow-covered base must be left on the trail. No decking of forest products will be permitted along the snowmobile trail.

5.4 - Soil Protection

5.4.1 - Rutting restriction, general (7/16)

Operations are to cease immediately if equipment and weather conditions result in rutting of roads and/or skid trails which is 12 inches or greater in depth and 50 feet in length. The Unit Manager or his/her representative may restrict hauling and/or skidding if ruts exceed the specified depth. With the Unit Manager or his/her representative's approval, the Purchaser may return to the area when the risk of rutting has decreased.

5.4.2 - Skid trails (2/04)

Skid trails up and down slopes should be avoided. If however this is unavoidable, these trails will be left in a non-erodible condition using water bars, logs, and slash. Placing of slash on these skid trails while logging is ongoing may alleviate need for any further action. At the direction of the sale administrator, seed, fertilizer, and mulch may also be required.

5.8 - Protection of Endangered Species

5.8.5 - Protection of raptor nests (3/13)

All trees with raptor nests will be protected if found during harvesting operations. Notification will be made to the Unit Manager or his/her representative who will notify the Wildlife Biologist so an on-site evaluation and recommendation can be made, if necessary.

6 - Safety and Fire Prevention

6.2 - Signing

6.2.1 - Road posting (10/20)

The Purchaser is responsible for posting and maintaining caution signs on County Road 415 prior to beginning operations. The road must be posted at appropriate distances from the Sale Area to warn of logging activity and truck traffic. Signs must be removed when harvest operations are suspended or completed. The Purchaser will provide these signs.

6.2.2 - Snowmobile trail posting (10/20)

The Purchaser is responsible for posting and maintaining caution signs on snowmobile trail prior to beginning operations during the snowmobile season (approximately December 1 to March 31). The trail must be posted at appropriate distances from the Sale Area to warn of logging activity and truck traffic. Signs must be removed when harvest operations are suspended or completed. The DNR will provide these signs.

7 - Other Conditions

7.2 - Extensions

7.2.5 - Weather related extension (1/13)

If weather conditions during the operating period of this contract prevent harvesting, this sale may qualify for a weather related extension. If approved, the normal extension fee would be waived. To qualify, there must be a documented attempt each year to harvest in the difficult portion of the sale.



TIMBER SALE MAP

This information provided by authority of Part 525, 1994 PA 451, as amended.

Forest Management Unit Newberry	County Luce	Mapped By Livermore	Date 2/01/2021	Page 1	Year 2021
Township 47N	Range 11W	Section(s) and Subdivision(s) Section 01: NW¼, NE¼	Scale 1:15,840		

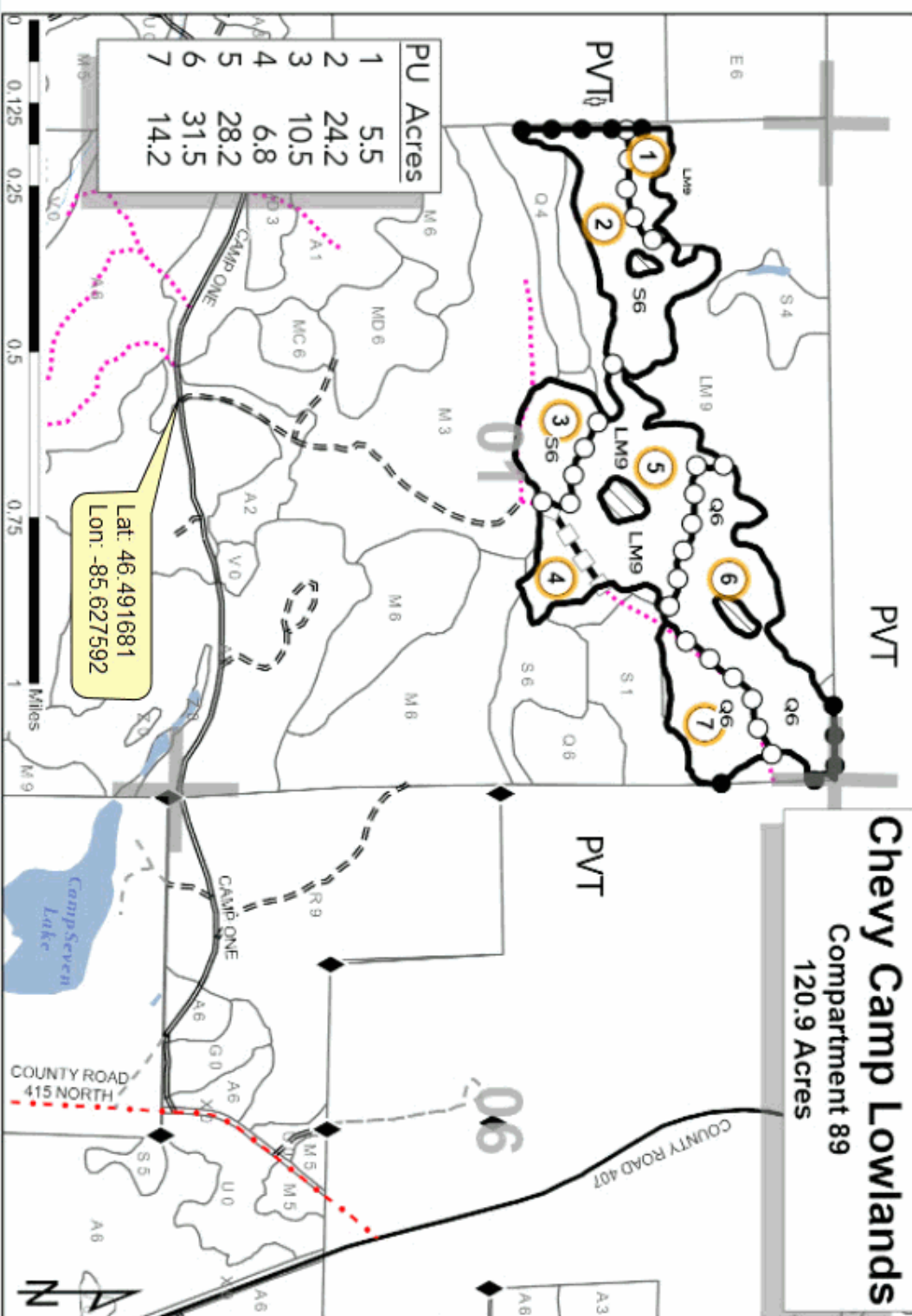
Cover Type	Density
------------	---------

- | | |
|--|--|
| <ul style="list-style-type: none"> A = Aspen B = Paper Birch C = Cedar D = Tread Bog E = Swamp Hardwoods F = Spruce Fir G = Grass | <ul style="list-style-type: none"> H = Hemlock J = Jack Pine L = Lowland Brush LM = Lowland Mixed M = Mpl. Bdr. Birch MC = Mixed Conifer MD = Mixed Deciduous N = Marsh O = Oak P = Lowland Poplar Q = Mixed Swamp Conifer R = Red Pine S = Black Spruce T = Tamarack U = Upland Brush UM = Upland Mixed V = Bog or Marsh W = White Pine X = Non Stocked Z = Water |
|--|--|

- | | |
|---|---|
| <ul style="list-style-type: none"> 0 = Non Stocked 1 = Seeding Sapling Poor 2 = Seeding Sapling Medium 3 = Seeding Sapling Well 4 = Pole Timber Poor | <ul style="list-style-type: none"> 5 = Pole Timber Medium 6 = Pole Timber Well 7 = Saw Timber Poor 8 = Saw Timber Medium 9 = Saw Timber Well |
|---|---|

Chey Camp Lowlands

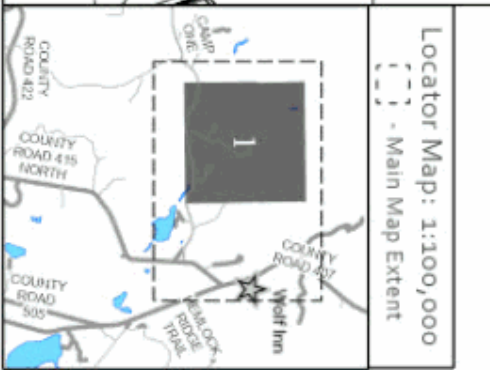
Compartment 89
120.9 Acres



Lat: 46.491681
Lon: -85.627592



- Against State (Red)
- Payment Unit (Yellow)
- Private Line (Blue)
- Payment Unit (No Point | Road or Fire Lane)
- Payment Unit Label
- PVT Private Ownership
- Section Area
- Section Numbers
- Section Corners
- Survey Corners
- Intermittent Stream
- Lakes and Rivers
- Rejection Area
- DNR - Primary Forest Road
- DNR - Secondary Forest Road
- DNR - Forest Access Route
- Federal / State Highway
- Federal / State / County - Paved Road
- Federal / State - DIT / Gravel Road
- County - Gravel Road
- County - Dirt Road (Seasonal)
- Private - Paved Road
- Private - DIT / Gravel Road
- DNR - Management Access
- DNR - Temporary Management Access



TIMBER SALE INFORMATION

Attwood Mix (42-013-21)

T47N, R08W, SEC. 20.

Luce County (Advertised Price \$26,049.10)

SALE NOTE: All units of volume listed for this sale were estimated using the Inventory Manager computer program and the new Michigan taper model.

Roads may require the installation of culverts for cross drainage or at natural drainage-ways. See Sale Spec. 4.1.5 for details.

Road maintenance may be needed. See Sale Spec. 4.2.3 for additional information.

Harvesting is not permitted during the period of March 31 to December 15 because of the low ground nature and wet soil types within the Sale Area.

A snowmobile trail is shown on the Timber Sale Map. See Sale Spec. 5.2.41 for restrictions.

A recreation site such as a trail, pathway, or campground is within the sale area or the vicinity. Certain restrictions/specifications may be applicable including time restrictions.

A timber sale contract for this lump sum, sealed bid timber sale will be awarded to the responsible bidder offering the highest sealed bid price. All units of volume listed below were estimated using the Inventory Manager computer program and the new Michigan taper model. Bids must be at or above the following advertised price for each product and species:

<u>PRODUCTS & SPECIES</u>	<u>ESTIMATED UNITS*</u>	<u>ADVERTISED PRICE</u>
Sawtimber		
Paper Birch	4.0 MBF	\$ 34.00 / MBF
Red Maple	62.5 MBF	\$ 77.00 / MBF
Sugar Maple	5.7 MBF	\$ 303.00 / MBF
Pulpwood		
Balsam Fir	306 Cords	\$ 9.30 / Cord
Mixed Hardwood	1,035 Cords	\$ 11.20 / Cord
Mixed Spruce	106 Cords	\$ 20.30 / Cord
N. White Cedar	574 Cords	\$ 4.85 / Cord

* The total volume is statistically estimated within plus (+) or minus (-) 4.43 percent. There are an estimated 2,237 cords on this timber sale, plus or minus 99 cords at the 95% confidence level. The estimated units are final and not subject to adjustment. Prospective bidders are urged to examine this timber and to make their own estimates of quantity and quality.

BOND AND PAYMENT SCHEDULE:

1. A bond in the amount of \$1,302.00 to insure faithful performance of the conditions of the contract will be deposited by the successful bidder within 21 days of the sale award.
2. Cutting in any sale or unit without the required advance payment would be considered a trespass.
3. Total payment must be paid in advance or according to the following schedule :
 - (a) Ten percent (10%) of the sale value must be paid within 21 days of the sale award.
 - (b) The 10% down payment will be credited towards the first unit cut.
 - (c) Payment for each of the following units must be made before cutting begins in that unit:

PAYMENT UNIT NUMBER	PERCENT OF TOTAL SALE VALUE
01	48.4%
02	51.6%
4. If no cutting takes place, the 10% down payment will not be refunded.
5. Operations on the contract issued will terminate on 06/30/2026.

SALE STATISTICS

Volumes were calculated in cubic feet using the Michigan taper model. Cubic foot volume includes all wood inside bark for the product indicated. For display purposes, cubic feet were converted to cords and MBF using a simple conversion factor, e.g. 79 cubic feet per cord and 185 cubic feet per MBF. The cubic foot volumes are precise; the cords and MBF volumes are not. Cubic foot volume cannot be directly converted to cords or boards with precision.

SALE VOLUMES

The total estimated sale volume may not equal the sum of the species/products due to the nature of statistical calculations associated with double sampling methodology.

VOLUME			STATISTICAL RANGE IN CORDS	
TOTAL CUBIC FEET	TOTAL CORDS	PERCENT ERROR	MINIMUM	MAXIMUM
176,712	2,237	4.43%	2,138	2,336

VDU VOLUMES

A VDU is a Volume Determination Unit. Volumes and their associated statistics are calculated at the VDU level and summarized to the sale level. There is often a one to one relationship between a VDU and a Payment Unit, but not always, depending on the cruise design. Refer to the VDU TO PAYMENT UNIT table.

	VOLUME			RANGE IN CORDS	
VDU	TOTAL CUBIC FEET	TOTAL CORDS	PERCENT ERROR	MINIMUM	MAXIMUM
14	115,595	1,463	6.08%	1,374	1,552
71	55,306	700	5.52%	661	739
TOTAL:	170,901	2,163		2,036	2,291

VDU TO PAYMENT UNIT

When a VDU is associated with more than one Payment Unit (PU), the VDU volumes are assigned to the PU based on acres of the VDU within the PU.

VDU	VDU ACRES	PU	PU ACRES
14	41.9	2	41.9
71	25.7	1	25.7
TOTAL:	67.6		67.6

DESCRIPTION OF TIMBER BY PAYMENT UNIT (PU)

PU	MARKET GROUP	PRODUCT	QUANTITY	UNIT	ACRES	ADVERTISE PRICE
1	Red Maple	Sawtimber	55.9	MBF	25.7	\$12,614.40
	Sugar Maple		5.7	MBF		
	Balsam Fir	Pulpwood	85	Cords		
	Mixed Hardwood		461	Cords		
	<i>Black Cherry</i>		5	<i>Cords</i>		
	<i>Paper Birch</i>		4	<i>Cords</i>		
	<i>Red Maple</i>		338	<i>Cords</i>		
	<i>Sugar Maple</i>		68	<i>Cords</i>		
	<i>Yellow Birch</i>		46	<i>Cords</i>		
	Mixed Spruce		31	Cords		
	<i>Black Spruce</i>		7	<i>Cords</i>		
	<i>White Spruce</i>		24	<i>Cords</i>		
	2	Paper Birch	Sawtimber	4.0		
Red Maple			6.6	MBF		
Balsam Fir		Pulpwood	221	Cords		
Mixed Hardwood			574	Cords		
<i>Black Ash</i>			9	<i>Cords</i>		
<i>Black Cherry</i>			5	<i>Cords</i>		
<i>Paper Birch</i>			45	<i>Cords</i>		
<i>Red Maple</i>			454	<i>Cords</i>		
<i>Sugar Maple</i>			14	<i>Cords</i>		
<i>Yellow Birch</i>			47	<i>Cords</i>		
Mixed Spruce			75	Cords		
<i>Black Spruce</i>			32	<i>Cords</i>		
<i>White Spruce</i>			43	<i>Cords</i>		
N. White Cedar			574	Cords		
TOTAL:			72.2	MBF		
TOTAL:			2,021	Cords		

Sale Specific Conditions & Requirements

Sale Name: Attwood Mix

Sale Number: 42-013-21 Seq#: 1

1 - Sale Area

1.2 - Boundaries

1.2.1 - Painted boundaries (9/19)

The sale boundary and Payment Unit boundaries are marked and identified by red and yellow paint. Exterior sale boundary lines against state are marked with red paint. Interior Payment Unit boundaries are marked with yellow paint. Retention patches are marked with red paint; no harvesting activities may occur within these areas. The painted boundary line trees are not Included Timber and are to be protected unless marked with orange paint. Yellow painted trees designating an interior Payment Unit boundary are only to be cut when all surrounding Payment Units have been paid.

2 - Timber Specifications

2.1 - Included Timber

2.1.2 - Clearcut unit(s) w/o unmerchantable trees (8/11)

Within Payment Unit(s) 2, cut all trees which meet minimum piece specifications in 2.2 Utilization, except leave all hemlock. See spec 5.2.4.2.

2.1.7 - Leave tree marked unit(s) (6/14)

Within Payment Unit(s) 1, cut all trees that are two (2) inches or more at DBH, except trees marked with green paint above and below stump height. Leave all hemlock.

3 - Payments

3.3 - Pre-measured Sales

3.3.4 - Dividing payment units (7/14)

Payment Unit(s) 1 and 2 may be divided at the request of the Purchaser and upon approval of the Unit Manager. Dividing Payment Units is a contract modification which requires a Timber Sale Contract Amendment. There will be only one division per Payment Unit.

4 - Transportation

4.1 - Construction

4.1.4 - Timber removed for construction (12/09)

Trees cut or damaged in the process of pre-approved road, landing or skid trail construction will be decked in an area separate from other Designated Timber and not removed until measured by the sale administrator. Payment will be made at the specified Purchase Unit Price.

4.1.5 - Culverts (5/14)

Roads may require the installation of culverts for cross drainage or at natural drainage-ways. If culverts are needed in these locations, their placement will be specified by the sale administrator, and they shall be installed prior to hauling. The culverts shall be new, corrugated metal or plastic gauge. Culverts will be a minimum of 12 inches in diameter and 24 feet in length. If culverts are removed, fill shall be removed from wetland soils as specified. Soils shall be maintained and left in a non-erodible condition, with water bars, seed, fertilizer, mulch, and slash installed as directed by the sale administrator and as specified in the BMP manual. Stream crossing permits, if needed, will be obtained by the DNR.

4.1.6 - Road construction (1/09)

Construction of new roads or improvements of existing roads shall be done in such a way as to minimize the environmental and visual impacts. Merchantable trees shall be cut and utilized unless otherwise directed. Non-merchantable trees shall be severed and laid flat on the ground. Slash shall be scattered, and not left in windrows and kept a minimum of 10 feet back from the road edge. Stumps shall be set upright, not left on edge, and be moved at least 10 feet away from the road edge. Disturbed soil shall be feathered into the woods and not left in berms or windrows.

4.1.7 - Road closure (10/11)

All new roads built into the sale must be blocked to vehicle traffic upon completion of the sale. Overgrown roads that are reopened shall be considered new roads. In general, this will require constructing a four (4') foot high berm of stumps and logs covered with earth. These roads must be rendered impassable to cars and trucks. Contact the sale administrator for specific details of design and placement.

4.2 - Maintenance

4.2.2 - Fill material (4/07)

To maintain roads, fill material may be needed in areas where "holes" exist or may be expected to develop. This fill material should be placed before trucking begins. Purchaser will supply the gravel.

4.2.3 - Road maintenance (8/13)

The following road maintenance may be needed: grading and gravel placement on state forest roads. Contact sale Administrator of the Unit Manager for details.

5 - Operations

5.2 - Conduct of Operations

5.2.1 - Slash

5.2.1.8 - Slash height (12/08)

No slash or tree tops may exceed 36 inches in height.

5.2.2 - Hazard Trees/Snags

5.2.2.1 - Den trees (10/16)

Obvious hollow and/or den trees shall be protected and left standing unless they are a safety hazard.

5.2.3 - Operating Restrictions

5.2.3.1 - Operating restrictions (9/11)

Within Payment Unit(s) 1 and 2, unless changed by written agreement, cutting, skidding, and hauling are not permitted during the period of March 31 to December 15. This restriction is because of the low ground nature and wet soil types within the Sale Area.

5.2.4 - Dead and Down Creation

5.2.4.2 - Dead and down creation, hare and grouse (1/14)

To improve habitat for snowshoe hare, grouse, and other species, the Purchaser is to leave 4 linear brush piles a tree length long, consisting of 8-12" spruce or balsam on the ground for every 100-200 feet along the Payment Unit line between Payment Unit 1 and 2. They should be sized and positioned per the sale administrator's instructions once cutting begins.

5.2.32 - Decking/landing restoration (9/13)

All decking and landing areas must have the surface area restored to a condition equal to or better than before. This is to ensure the proper regeneration of the stand. Wood debris, chips, and "cookies" from trimmings must be removed or scattered away from landing and loading areas and may not be windrowed on the edge.

5.2.38 - No decking against live trees (2/04)

Cut products may not be decked against unmarked or designated leave trees.

5.2.41 - Snowmobile trail protection (9/11)

The snowmobile trail is shown on the Timber Sale Map. Do not cut or damage posts with orange trail markers or traffic control signs. If the trail is used, it must be maintained and restored to a condition equal to or better than before the sale. The road maintenance/restoration must be done prior to December 15. If the trail is used for hauling, it must be graded to the satisfaction of the Unit Manager or his/her representative prior to December 15. If the trail road is to be used for hauling during the snowmobile season, then a snow-covered base must be left on the trail. Maintain a 20-foot-wide slash, debris, and rut free zone daily using the snowmobile trail as the centerline. No decking of forest products will be permitted along the snowmobile trail.

5.4 - Soil Protection

5.4.2 - Skid trails (2/04)

Skid trails up and down slopes should be avoided. If however this is unavoidable, these trails will be left in a non-erodible condition using water bars, logs, and slash. Placing of slash on these skid trails while logging is ongoing may alleviate need for any further action. At the direction of the sale administrator, seed, fertilizer, and mulch may also be required.

5.8 - Protection of Endangered Species

5.8.5 - Protection of raptor nests (3/13)

All trees with raptor nests will be protected if found during harvesting operations. Notification will be made to the Unit Manager or his/her representative who will notify the Wildlife Biologist so an on-site evaluation and recommendation can be made, if necessary.

6 - Safety and Fire Prevention

6.2 - Signing

6.2.1 - Road posting (10/20)

The Purchaser is responsible for posting and maintaining caution signs on the Charcoal Grade prior to beginning operations. The road must be posted at appropriate distances from the Sale Area to warn of logging activity and truck traffic. Signs must be removed when harvest operations are suspended or completed. The Purchaser will provide these signs.

6.2.2 - Snowmobile trail posting (10/20)

The Purchaser is responsible for posting and maintaining caution signs on snowmobile trail prior to beginning operations during the snowmobile season (approximately December 1 to March 31). The trail must be posted at appropriate distances from the Sale Area to warn of logging activity and truck traffic. Signs must be removed when harvest operations are suspended or completed. The Purchaser will provide these signs.

7 - Other Conditions

7.2 - Extensions

7.2.5 - Weather related extension (1/13)

If weather conditions during the operating period of this contract prevent harvesting, this sale may qualify for a weather related extension. If approved, the normal extension fee would be waived. To qualify, there must be a documented attempt each year to harvest in the difficult portion of the sale.



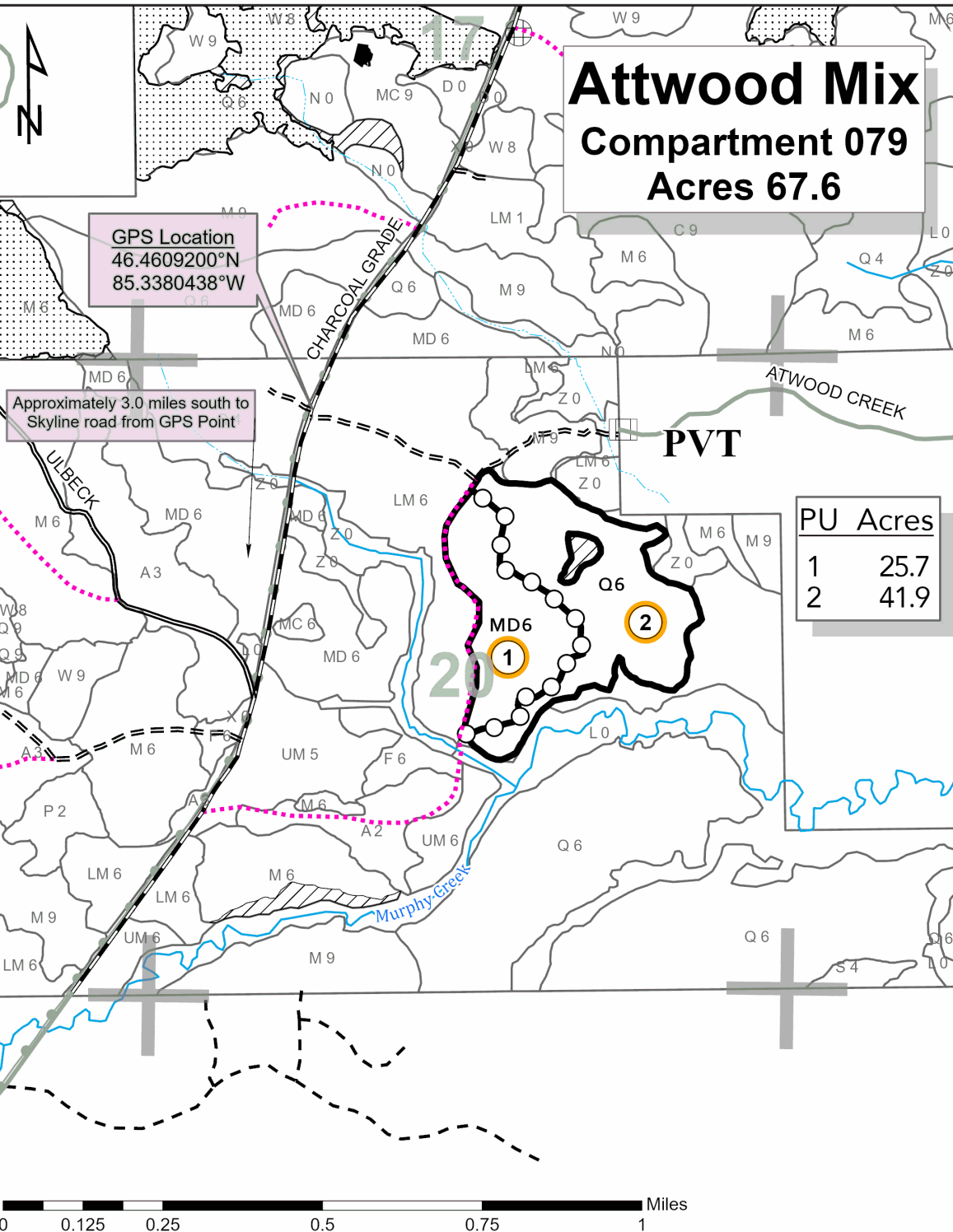
TIMBER SALE MAP

This information provided by authority of Part 525, 1994 PA 451, as amended.

Sale Number	Year
42-013	21

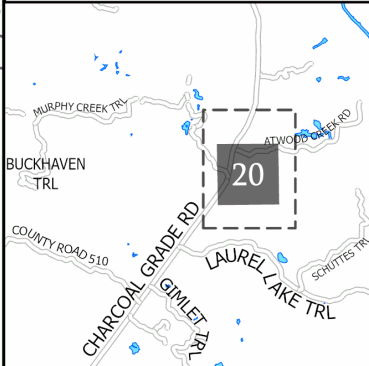
Forest Management Unit Newberry	County Luce	Mapped By L. Livermore	Date 9/22/2021	Page 1	of 1
Township 47N	Range 08W	Section(s) and Subdivision(s) Section 20: E½NW,NWNE,S½NE,N½SE	Scale 1:15,840		

Cover Type				Density	
A = Aspen	H = Hemlock	N = Marsh	U = Upland Brush	0 = Non Stocked	5 = Pole Timber Medium
B = Paper Birch	J = Jack Pine	O = Oak	UM = Upland Mixed	1 = Seedling Sapling Poor	6 = Pole Timber Well
C = Cedar	L = Lowland Brush	P = Lowland Poplar	V = Bog or Marsh	2 = Seedling Sapling Medium	7 = Saw Timber Poor
D = Treed Bog	LM = Lowland Mixed	Q = Mixed Swamp Conifer	W = White Pine	3 = Seedling Sapling Well	8 = Saw Timber Medium
E = Swamp Hdwoods	M = Mpl, Bch, Brch	R = Red Pine	X = Non Stocked	4 = Pole Timber Poor	9 = Saw Timber Well
F = Spruce Fir	MC = Mixed Conifer	S = Black Spruce	Z = Water		
G = Grass	MD = Mixed Deciduous	T = Tamarack			



- Payment Unit Label
- Against State (Red)
- Payment Unit (Yellow)
- PVT** Private Ownership
- Recreational Trail
- 01** Section Numbers
- Section Corners
- Gate
- Berms
- Intermittent Stream
- Perennial River
- Lakes and Rivers
- Primary Forest Road
- Secondary Forest Road
- Forest Access Route
- Gravel Road
- Private
- Temporary Management Access
- Nearby Timber Sale

Locator Map: 1:200,000
 - Main Map Extent



TIMBER SALE INFORMATION

Basnau Bend Timber (42-029-21)
 T45N, R07W, SEC. 10; T45N, R07W, SEC. 11.
 Chippewa County (Advertised Price \$26,635.65)

SALE NOTE: All units of volume listed for this sale were estimated using the Inventory Manager computer program and the new Michigan taper model.

Payment Unit 1 is an optional unit. Removing this Payment Unit from the sale is a contract modification which requires a Timber Sale Contract Amendment.

Note that species products have been combined into mixed categories, see volume breakdowns.

No new roads will be permitted in any Payment Unit. See Sale Spec. 4.1.12 for details.

Harvesting is limited to the period of December 15 to March 31 because of wintering deer and low ground nature of the sale.

A timber sale contract for this lump sum, sealed bid timber sale will be awarded to the responsible bidder offering the highest sealed bid price. All units of volume listed below were estimated using the Inventory Manager computer program and the new Michigan taper model. Bids must be at or above the following advertised price for each product and species:

<u>PRODUCTS & SPECIES</u>	<u>ESTIMATED UNITS*</u>	<u>ADVERTISED PRICE</u>
Sawtimber		
Red Maple	64.2 MBF	\$ 77.00 / MBF
Sugar Maple	9.0 MBF	\$ 303.00 / MBF
Pulpwood		
Balsam Fir	102 Cords	\$ 9.30 / Cord
Mixed Hardwood	697 Cords	\$ 11.20 / Cord
Mixed Spruce	177 Cords	\$ 20.30 / Cord
Quaking Aspen	114 Cords	\$ 20.15 / Cord
Red Pine	9 Cords	\$ 39.80 / Cord
Tamarack	17 Cords	\$ 3.55 / Cord
White Pine	306 Cords	\$ 12.75 / Cord

* The total volume is statistically estimated within plus (+) or minus (-) 7.16 percent. There are an estimated 1,831 cords on this timber sale, plus or minus 131 cords at the 95% confidence level. The estimated units are final and not subject to adjustment. Prospective bidders are urged to examine this timber and to make their own estimates of quantity and quality.

BOND AND PAYMENT SCHEDULE:

1. A bond in the amount of \$1,332.00 to insure faithful performance of the conditions of the contract will be deposited by the successful bidder within 21 days of the sale award.
2. Cutting in any sale or unit without the required advance payment would be considered a trespass.
3. Total payment must be paid in advance or according to the following schedule :
 - (a) Ten percent (10%) of the sale value must be paid within 21 days of the sale award.
 - (b) The 10% down payment will be credited towards the first unit cut.
 - (c) Payment for each of the following units must be made before cutting begins in that unit:

PAYMENT UNIT NUMBER	PERCENT OF TOTAL SALE VALUE
01	11.4%
02	12.0%
03	8.7%
04	25.4%
05	42.5%

4. If no cutting takes place, the 10% down payment will not be refunded.
5. Operations on the contract issued will terminate on 06/30/2026.

SALE STATISTICS

Volumes were calculated in cubic feet using the Michigan taper model. Cubic foot volume includes all wood inside bark for the product indicated. For display purposes, cubic feet were converted to cords and MBF using a simple conversion factor, e.g. 79 cubic feet per cord and 185 cubic feet per MBF. The cubic foot volumes are precise; the cords and MBF volumes are not. Cubic foot volume cannot be directly converted to cords or boards with precision.

SALE VOLUMES

The total estimated sale volume may not equal the sum of the species/products due to the nature of statistical calculations associated with double sampling methodology.

VOLUME			STATISTICAL RANGE IN CORDS	
TOTAL CUBIC FEET	TOTAL CORDS	PERCENT ERROR	MINIMUM	MAXIMUM
144,676	1,831	7.16%	1,700	1,963

VDU VOLUMES

A VDU is a Volume Determination Unit. Volumes and their associated statistics are calculated at the VDU level and summarized to the sale level. There is often a one to one relationship between a VDU and a Payment Unit, but not always, depending on the cruise design. Refer to the VDU TO PAYMENT UNIT table.

	VOLUME			RANGE IN CORDS	
VDU	TOTAL CUBIC FEET	TOTAL CORDS	PERCENT ERROR	MINIMUM	MAXIMUM
15	26,984	342	17.35%	282	401
20	15,716	199	17.89%	163	235
22	35,408	448	13.22%	389	507
29	42,372	536	13.91%	462	611
48	11,878	150	16.43%	126	175
TOTAL:	132,357	1,675		1,422	1,929

VDU TO PAYMENT UNIT

When a VDU is associated with more than one Payment Unit (PU), the VDU volumes are assigned to the PU based on acres of the VDU within the PU.

VDU	VDU ACRES	PU	PU ACRES
15	7.7	1	7.7
20	8.2	2	8.2
22	15.9	4	15.9
29	20.8	5	20.8
48	13.8	3	13.8
TOTAL:	66.4		66.4

DESCRIPTION OF TIMBER BY PAYMENT UNIT (PU)

PU	MARKET GROUP	PRODUCT	QUANTITY	UNIT	ACRES	ADVERTISE PRICE	
1	Balsam Fir	Pulpwood	13	Cords	7.7	\$3,042.70	
	Mixed Hardwood		88	Cords			
	<i>Paper Birch</i>		23	<i>Cords</i>			
	<i>Red Maple</i>		65	<i>Cords</i>			
	Mixed Spruce		16	Cords			
	<i>Black Spruce</i>		6	<i>Cords</i>			
	<i>White Spruce</i>		10	<i>Cords</i>			
	Quaking Aspen		11	Cords			
	White Pine		109	Cords			
	<i>White Pine</i>		Sawtimber	34.6			MBF
	<i>White Pine</i>		Pulpwood	40			Cords
2	Red Maple	Sawtimber	7.7	MBF	8.2	\$3,208.35	
	Balsam Fir	Pulpwood	7	Cords			
	Mixed Hardwood		54	Cords			
	<i>Paper Birch</i>		12	<i>Cords</i>			
	<i>Red Maple</i>		42	<i>Cords</i>			
	Mixed Spruce		13	Cords			
	<i>White Spruce</i>		13	<i>Cords</i>			
	Quaking Aspen		36	Cords			
	White Pine		75	Cords			
	<i>White Pine</i>		Sawtimber	24.8			MBF
	<i>White Pine</i>		Pulpwood	25			Cords
3	Balsam Fir		Pulpwood	18	Cords	13.8	\$2,328.55
	Mixed Hardwood	8		Cords			
	<i>Paper Birch</i>	3		<i>Cords</i>			
	<i>Red Maple</i>	5		<i>Cords</i>			
	Mixed Spruce	84		Cords			
	<i>Black Spruce</i>	84		<i>Cords</i>			
	Tamarack	17		Cords			
	White Pine	24		Cords			
	<i>White Pine</i>	Sawtimber		7.4	MBF		
	<i>White Pine</i>	Pulpwood		9	Cords		
	4	Red Maple		Sawtimber	10.8		
Balsam Fir		Pulpwood	56	Cords			
Mixed Hardwood			171	Cords			
<i>Paper Birch</i>			57	<i>Cords</i>			
<i>Red Maple</i>			86	<i>Cords</i>			
<i>Yellow Birch</i>			28	<i>Cords</i>			
Mixed Spruce			39	Cords			
<i>Black Spruce</i>			32	<i>Cords</i>			
<i>White Spruce</i>			7	<i>Cords</i>			
Quaking Aspen			54	Cords			
Red Pine			9	Cords			
<i>Red Pine</i>			Sawtimber	4.0	MBF		
<i>Red Pine</i>			Pulpwood	1	Cords		
White Pine			98	Cords			
<i>White Pine</i>	Sawtimber		41.1	MBF			
<i>White Pine</i>	Pulpwood	16	Cords				
5	Red Maple	Sawtimber	45.7	MBF	20.8	\$11,300.95	
	Sugar Maple	Pulpwood	9.0	MBF			
	Balsam Fir		8	Cords			
	Mixed Hardwood		376	Cords			
	<i>Beech</i>		31	<i>Cords</i>			
	<i>Red Maple</i>		301	<i>Cords</i>			
	<i>Sugar Maple</i>		33	<i>Cords</i>			
	<i>Yellow Birch</i>		11	<i>Cords</i>			

DESCRIPTION OF TIMBER BY PAYMENT UNIT (PU), CON'T

PU	MARKET GROUP	PRODUCT	QUANTITY	UNIT	ACRES	ADVERTISE PRICE
5 con't	Mixed Spruce	Pulpwood	25	Cords		
	<i>White Spruce</i>		25	<i>Cords</i>		
	Quaking Aspen		13	Cords		
TOTAL:			73.2	MBF		
TOTAL:			1,422	Cords		

Sale Specific Conditions & Requirements

Sale Name: Basnau Bend Timber

Sale Number: 42-029-21 Seq#: 1

1 - Sale Area

1.2 - Boundaries

1.2.1 - Painted boundaries (9/19)

The sale boundary and Payment Unit boundaries are marked and identified by blue, red, and yellow paint. Exterior sale boundary lines against private property are marked with blue paint. Exterior sale boundary lines against state are marked with red paint. Interior Payment Unit boundaries are marked with yellow paint. Yellow painted trees designating an interior Payment Unit boundary are only to be cut when all surrounding Payment Units have been paid.

2 - Timber Specifications

2.1 - Included Timber

2.1.1 - Clearcut unit(s) with unmerchantable trees (6/14)

Within Payment Unit(s) 1 and 3, cut all trees that are two (2) inches or more at DBH, except for cedar and hemlock which is to be left for wintering deer. Payment Unit 1 is an optional Payment Unit. Removing this Payment Unit from the sale is a contract modification which requires a Timber Sale Contract Amendment.

2.1.7 - Leave tree marked unit(s) (6/14)

Within Payment Unit(s) 2, 4, and 5, cut all trees that are two (2) inches or more at DBH, except trees marked with green paint above and below stump height. In addition:

- Within Payment Unit 2, leave all white pine over 18" at DBH and all cedar and hemlock;
- Within Payment Unit 4, leave all cedar and hemlock;
- Within Payment Unit 5, leave all white pine, cedar, and hemlock.

2.1.11 - Description of timber note (2/04)

Note that species products have been combined into mixed categories, see volume breakdowns.

4 - Transportation

4.1 - Construction

4.1.4 - Timber removed for construction (12/09)

Trees cut or damaged in the process of pre-approved road, landing or skid trail construction will be decked in an area separate from other Designated Timber and not removed until measured by the sale administrator. Payment will be made at the specified Purchase Unit Price.

4.1.12 - No new roads (1/12)

No new roads will be permitted in any Payment Unit. All operations are limited to existing roads. Back-in spurs and skid trails will be allowed.

4.2 - Maintenance

4.2.4 - Grading (10/16)

For completion of the sale, state forest roads must be graded. In general, this will require a road grader or bulldozer to shape up the roads after forest products have been hauled off site. This includes cleaning of drainage areas, grading, crowning, and filling with gravel, if necessary. The grading equipment to be used must be approved by the Unit Manager or his/her representative.

5 - Operations

5.2 - Conduct of Operations

5.2.1 - Slash

5.2.1.8 - Slash height (12/08)

No slash or tree tops may exceed 36 inches in height.

5.2.2 - Hazard Trees/Snags

5.2.2.1 - Den trees (10/16)

Obvious hollow and/or den trees shall be protected and left standing unless they are a safety hazard.

5.2.3 - Operating Restrictions

5.2.3.1 - Operating restrictions (9/11)

Within Payment Unit(s) 1-5, unless changed by written agreement, cutting, skidding, and hauling are limited to the period of December 15 to March 31. This restriction is because of wintering deer and low ground nature of the sale.

5.2.3.3 - Bark slippage restriction (3/09)

Within Payment Unit(s) 4 and 5, unless changed by written agreement, cutting and skidding are not permitted during the period of April 15 to July 15. This restriction is because of bark slippage.

5.2.32 - Decking/landing restoration (9/13)

All decking and landing areas must have the surface area restored to a condition equal to or better than before. This is to ensure the proper regeneration of the stand. Wood debris, chips, and "cookies" from trimmings must be removed or scattered away from landing and loading areas and may not be windrowed on the edge.

5.2.38 - No decking against live trees (2/04)

Cut products may not be decked against unmarked or designated leave trees.

5.8 - Protection of Endangered Species

5.8.5 - Protection of raptor nests (3/13)

All trees with raptor nests will be protected if found during harvesting operations. Notification will be made to the Unit Manager or his/her representative who will notify the Wildlife Biologist so an on-site evaluation and recommendation can be made, if necessary.

6 - Safety and Fire Prevention

6.2 - Signing

6.2.1 - Road posting (10/20)

The Purchaser is responsible for posting and maintaining caution signs on Basnau and Kabelman Roads prior to beginning operations. The road must be posted at appropriate distances from the Sale Area to warn of logging activity and truck traffic. Signs must be removed when harvest operations are suspended or completed. The Purchaser will provide these signs.

7 - Other Conditions

7.2 - Extensions

7.2.5 - Weather related extension (1/13)

If weather conditions during the operating period of this contract prevent harvesting, this sale may qualify for a weather related extension. If approved, the normal extension fee would be waived. To qualify, there must be a documented attempt each year to harvest in the difficult portion of the sale.

TIMBER SALE INFORMATION

Three Tundra Mix (42-035-21)
 T46N, R09W, SEC. 10; T46N, R09W, SEC. 9.
 Luce County (Advertised Price \$47,459.10)

SALE NOTE: All units of volume listed for this sale were estimated using the Inventory Manager computer program and the new Michigan taper model.

Note that species with sawlogs were converted to pulpwood within the sale. See Timber Market Groupings.

Road maintenance is required. See Sale Spec. 4.2.3 for details.

Within Payment Unit(s) 3-6, harvesting is limited to the period of December 15 to March 31 because of the low ground nature of the Payment Units. If a dry summer allows access, a written waiver can be requested per the Administrator or Unit Manager.

Some roads or skid trails may require extra protection such as that afforded by timber mats. See Sale Spec. 5.2.17 for specifics.

A snowmobile trail is shown on the Timber Sale Map. See Sale Spec. 5.2.41 for restrictions.

A recreation site such as a trail, pathway, or campground is within the sale area or the vicinity. Certain restrictions/specifications may be applicable including time restrictions.

A timber sale contract for this lump sum, sealed bid timber sale will be awarded to the responsible bidder offering the highest sealed bid price. All units of volume listed below were estimated using the Inventory Manager computer program and the new Michigan taper model. Bids must be at or above the following advertised price for each product and species:

<u>PRODUCTS & SPECIES</u>	<u>ESTIMATED UNITS*</u>	<u>ADVERTISED PRICE</u>
Sawtimber		
Paper Birch	3.0 MBF	\$ 34.00 / MBF
Pulpwood		
Balsam Fir	40 Cords	\$ 9.30 / Cord
Black Spruce	897 Cords	\$ 20.30 / Cord
Jack Pine	1,296 Cords	\$ 17.40 / Cord
Paper Birch	4 Cords	\$ 9.60 / Cord
Red Pine	89 Cords	\$ 39.80 / Cord
Tamarack	95 Cords	\$ 3.55 / Cord
White Pine	181 Cords	\$ 12.75 / Cord

* The total volume is statistically estimated within plus (+) or minus (-) 6.78 percent. There are an estimated 2,647 cords on this timber sale, plus or minus 180 cords at the 95% confidence level. The estimated units are final and not subject to adjustment. Prospective bidders are urged to examine this timber and to make their own estimates of quantity and quality.

BOND AND PAYMENT SCHEDULE:

1. A bond in the amount of \$2,373.00 to insure faithful performance of the conditions of the contract will be deposited by the successful bidder within 21 days of the sale award.
2. Cutting in any sale or unit without the required advance payment would be considered a trespass.
3. Total payment must be paid in advance or according to the following schedule :
 - (a) Ten percent (10%) of the sale value must be paid within 21 days of the sale award.
 - (b) The 10% down payment will be credited towards the first unit cut.

(c) Payment for each of the following units must be made before cutting begins in that unit:

PAYMENT UNIT NUMBER	PERCENT OF TOTAL SALE VALUE
01	3.8%
02	23.6%
03	17.0%
04	15.2%
05	16.0%
06	24.4%

4. If no cutting takes place, the 10% down payment will not be refunded.
5. Operations on the contract issued will terminate on 06/30/2026.

SALE STATISTICS

Volumes were calculated in cubic feet using the Michigan taper model. Cubic foot volume includes all wood inside bark for the product indicated. For display purposes, cubic feet were converted to cords and MBF using a simple conversion factor, e.g. 79 cubic feet per cord and 185 cubic feet per MBF. The cubic foot volumes are precise; the cords and MBF volumes are not. Cubic foot volume cannot be directly converted to cords or boards with precision.

SALE VOLUMES

The total estimated sale volume may not equal the sum of the species/products due to the nature of statistical calculations associated with double sampling methodology.

VOLUME			STATISTICAL RANGE IN CORDS	
TOTAL CUBIC FEET	TOTAL CORDS	PERCENT ERROR	MINIMUM	MAXIMUM
209,130	2,647	6.78%	2,468	2,827

VDU VOLUMES

A VDU is a Volume Determination Unit. Volumes and their associated statistics are calculated at the VDU level and summarized to the sale level. There is often a one to one relationship between a VDU and a Payment Unit, but not always, depending on the cruise design. Refer to the VDU TO PAYMENT UNIT table.

	VOLUME			RANGE IN CORDS	
VDU	TOTAL CUBIC FEET	TOTAL CORDS	PERCENT ERROR	MINIMUM	MAXIMUM
15	201,900	2,556	6.92%	2,379	2,733
24	5,571	71	27.49%	51	90
TOTAL:	207,471	2,626		2,430	2,822

VDU TO PAYMENT UNIT

When a VDU is associated with more than one Payment Unit (PU), the VDU volumes are assigned to the PU based on acres of the VDU within the PU.

VDU	VDU ACRES	PU	PU ACRES
15	110.7	2	27.2
		3	19.5
		4	17.5
		5	18.5
		6	28.0
24	2.8	1	2.8
TOTAL:	113.5		113.5

DESCRIPTION OF TIMBER BY PAYMENT UNIT (PU)

PU	MARKET GROUP	PRODUCT	QUANTITY	UNIT	ACRES	ADVERTISE PRICE
1	Black Spruce	Pulpwood	8	Cords	2.8	\$1,824.00
	Jack Pine		4	Cords		
	<i>Jack Pine</i>		4	<i>Cords</i>		
	Red Pine		40	Cords		
2	Paper Birch	Sawtimber	0.7	MBF	27.2	\$11,187.85
	Balsam Fir	Pulpwood	10	Cords		
	Black Spruce		218	Cords		
	Jack Pine		317	Cords		
	<i>Jack Pine</i>	<i>Sawtimber</i>	2.5	<i>MBF</i>		
	<i>Jack Pine</i>	<i>Pulpwood</i>	312	<i>Cords</i>		
	Paper Birch		1	Cords		
	Red Pine		12	Cords		
	Tamarack		23	Cords		
	White Pine		44	Cords		
3	Paper Birch	Sawtimber	0.5	MBF	19.5	\$8,072.55
	Balsam Fir	Pulpwood	7	Cords		
	Black Spruce		157	Cords		
	Jack Pine		228	Cords		
	<i>Jack Pine</i>	<i>Sawtimber</i>	1.8	<i>MBF</i>		
	<i>Jack Pine</i>	<i>Pulpwood</i>	224	<i>Cords</i>		
	Paper Birch		1	Cords		
	Red Pine		9	Cords		
	Tamarack		17	Cords		
	White Pine		32	Cords		
4	Paper Birch	Sawtimber	0.5	MBF	17.5	\$7,235.70
	Balsam Fir	Pulpwood	6	Cords		
	Black Spruce		141	Cords		
	Jack Pine		204	Cords		
	<i>Jack Pine</i>	<i>Sawtimber</i>	1.6	<i>MBF</i>		
	<i>Jack Pine</i>	<i>Pulpwood</i>	201	<i>Cords</i>		
	Paper Birch		1	Cords		
	Red Pine		8	Cords		
	Tamarack		15	Cords		
	White Pine		29	Cords		
5	Paper Birch	Sawtimber	0.5	MBF	18.5	\$7,615.10
	Balsam Fir	Pulpwood	7	Cords		
	Black Spruce		149	Cords		
	Jack Pine		215	Cords		
	<i>Jack Pine</i>	<i>Sawtimber</i>	1.7	<i>MBF</i>		
	<i>Jack Pine</i>	<i>Pulpwood</i>	212	<i>Cords</i>		
	Paper Birch		1	Cords		
	Red Pine		8	Cords		
	Tamarack		16	Cords		
	White Pine		30	Cords		
6	Paper Birch	Sawtimber	0.8	MBF	28.0	\$11,506.50
	Balsam Fir	Pulpwood	10	Cords		
	Black Spruce		224	Cords		
	Jack Pine		327	Cords		
	<i>Jack Pine</i>	<i>Sawtimber</i>	2.7	<i>MBF</i>		
	<i>Jack Pine</i>	<i>Pulpwood</i>	322	<i>Cords</i>		
	Red Pine		12	Cords		
	Tamarack		24	Cords		
	White Pine		46	Cords		
	TOTAL:			3.0		

TOTAL:	2,601	Cords
--------	-------	-------

Sale Specific Conditions & Requirements

Sale Name: Three Tundra Mix

Sale Number: 42-035-21 Seq#: 1

1 - Sale Area

1.2 - Boundaries

1.2.1 - Painted boundaries (9/19)

The sale boundary and Payment Unit boundaries are marked and identified by blue, red, and green paint. Exterior sale boundary lines against private property are marked with blue paint. Exterior sale boundary lines against state are marked with red paint. Interior Payment Unit boundaries are marked with green paint. Retention patches are marked with red paint; no harvesting activities may occur within these areas. The painted boundary line trees are not Included Timber and are to be protected unless marked with orange paint. Green painted trees designating an interior Payment Unit boundary are only to be cut when all surrounding Payment Units have been paid.

2 - Timber Specifications

2.1 - Included Timber

2.1.1 - Clearcut unit(s) with unmerchantable trees (6/14)

Within Payment Unit(s) 1-6, cut all trees that are two (2) inches or more at DBH, except within Payment Unit 1, leave any trees along road with reflectors attached and leave all white pine.

Within Payment Units 2-6 leave all white pine over 20". Retention pockets marked in red within these Payment Units and are not to be entered or harvested.

2.1.11 - Description of timber note (2/04)

Note that species with sawlogs were converted to pulpwood within the sale. See Timber Market Groupings.

2.2 - Utilization

2.2.3 - Stump heights (4/07)

Stump heights within Payment Unit(s) 1-3 shall not exceed 10 inches for trees greater than 10 inches at DBH and 4 inches for trees smaller than 10 inches at DBH. This is to facilitate reforestation operations. A written waiver of this requirement may be obtained if wet summer weather makes winter logging necessary.

4 - Transportation

4.1 - Construction

4.1.4 - Timber removed for construction (12/09)

Trees cut or damaged in the process of pre-approved road, landing or skid trail construction will be decked in an area separate from other Designated Timber and not removed until measured by the sale administrator. Payment will be made at the specified Purchase Unit Price.

4.1.5 - Culverts (5/14)

Roads may require the installation of equalization culverts for cross drainage or at natural drainage-ways. If culverts are needed in these locations, their placement will be specified by the sale administrator, and they shall be installed prior to hauling. The culverts shall be new, corrugated metal or plastic gauge. Culverts will be a minimum of 12 inches in diameter and 24 feet in length. If culverts are removed, fill shall be removed from wetland soils as specified. Soils shall be maintained and left in a non-erodible condition, with water bars, seed, fertilizer, mulch, and slash installed as directed by the sale administrator and as specified in the BMP manual.

4.1.6 - Road construction (1/09)

Construction of new roads or improvements of existing roads shall be done in such a way as to minimize the environmental and visual impacts. Merchantable trees shall be cut and utilized unless otherwise directed. Non-merchantable trees shall be severed and laid flat on the ground. Slash shall be scattered, and not left in windrows and kept a minimum of 10 feet back from the road edge. Stumps shall be set upright, not left on edge, and be moved at least 10 feet away from the road edge. Disturbed soil shall be feathered into the woods and not left in berms or windrows.

4.1.7 - Road closure (10/11)

All new roads built into the sale must be blocked to vehicle traffic upon completion of the sale. Overgrown roads that are reopened shall be considered new roads. In general, this will require constructing double earthen berms at strategic locations. These roads must be rendered impassable to cars and trucks. All stumps from road building and landing construction must be reserved to block any newly constructed roads upon completion of the sale. These stumps must be scattered along the road system to prohibit vehicular movement. Contact the sale administrator for specific details of design and placement.

4.2 - Maintenance

4.2.2 - Fill material (4/07)

To maintain roads, fill material may be needed in areas where "holes" exist or may be expected to develop. This fill material should be placed before trucking begins. Contact the sale administrator regarding the availability of onsite sand or gravel from adjacent State-owned lands.

4.2.3 - Road maintenance (8/13)

The following road maintenance is required: Within 30 days of completion of hauling, or if no hauling occurs for 60 days, the road must be maintained and graded. This includes cleaning of drainage areas, grading, crowning, and filling with gravel, if necessary. Damages will be assessed if grading/repair does not occur. The Charcoal Grade will need to have 200 yards of gravel placed before or during hauling to fill areas affected by logging activity.

4.2.4 - Grading (10/16)

For completion of the sale, state forest roads must be graded. In general, this will require a road grader or bulldozer to shape up the roads after forest products have been hauled off site. This includes cleaning of drainage areas, grading, crowning, and filling with gravel, if necessary. The grading equipment to be used must be approved by the Unit Manager or his/her representative.

5 - Operations

5.2 - Conduct of Operations

5.2.1 - Slash

5.2.1.8 - Slash height (12/08)

No slash or tree tops may exceed 24 inches in height.

5.2.1.11 - Slash for reforestation (3/21)

To facilitate reforestation, the Sale Area or Payment Unit(s) 1-3 shall be left with slash evenly distributed. Bunched tops within the cutting area shall be broken up and scattered. Stumps shall be cut low to the ground. Processing sites shall not be left with a compacted layer of slash; tops from these sites shall be hauled back into the cut area and scattered.

5.2.2 - Hazard Trees/Snags

5.2.2.1 - Den trees (10/16)

Obvious hollow and/or den trees shall be protected and left standing unless they are a safety hazard.

5.2.3 - Operating Restrictions

5.2.3.1 - Operating restrictions (9/11)

Within Payment Unit(s) 3-6, unless changed by written agreement, cutting, skidding, and hauling are limited to the period of December 15 to March 31. This restriction is because of the low ground nature of the Payment Units. If a dry summer allows access, a written waiver can be requested per the Administrator or Unit Manager.

5.2.3.6 - Bark beetle restriction (12/08)

In the event drought creates a high risk of pine bark beetle infestation, pine is not to be cut during the period March 1 through July 1, unless all portions of trees greater than two inches in diameter are removed from the sale area, reduced to chips, or treated to the satisfaction of the Unit Manager or his/her representative, within fifteen days of being severed from the stump. Pine log decks, pulpwood piles and treetops that are piled for chipping in the fall or winter within a 1/4 mile of susceptible sites must be removed before March 15. Residual slash must not be placed in piles or rows and must be spread over the site for quick drying. The Department of Natural Resources will exercise this specification if the risk of damage warrants.

5.2.17 - Timber Mats and Interlocking Composite Mats (10/20)

Some roads or skid trails may require extra protection such as that afforded by timber mats, interlocking composite mats, or another approved system. If available, mats may be borrowed from the DNR. A Timber Sale Contract Supplement will be used to document the Purchaser's use of the DNR's mats. Contact the sale administrator regarding availability and pick-up. Timber mats are available from various field offices. Composite mats are only available from the Grayling field office and the Marquette ICC. The Purchaser is responsible for picking up and hauling the mats to and from the site. The composite mats will require DNR staff onsite for installation and removal. Contact the sale administrator to schedule at least 30 days before desired install/removal date. All mats must be cleaned prior to drop off. This may include, but is not limited to, power washing and brushing to remove mud and debris. A charge of \$700.00 per timber mat and \$2,000.00 per composite mat will be assessed for all damaged or non-returned mats. Damage for the crane/timber mats is defined as three or more broken cants. Damage for the composite mats is defined as cracked or broken mats.

5.2.32 - Decking/landing restoration (9/13)

All decking and landing areas must have the surface area restored to a condition equal to or better than before. This is to ensure the proper regeneration of the stand. Wood debris, chips, and "cookies" from trimmings must be removed or scattered away from landing and loading areas and may not be windrowed on the edge.

5.2.38 - No decking against live trees (2/04)

Cut products may not be decked against unmarked or designated leave trees.

5.2.41 - Snowmobile trail protection (9/11)

The snowmobile trail is shown on the Timber Sale Map. Do not cut or damage posts with orange trail markers or traffic control signs. If the trail is used, it must be maintained and restored to a condition equal to or better than before the sale. The road maintenance/restoration must be done prior to December 15. If the trail is used for hauling, it must be graded to the satisfaction of the Unit Manager or his/her representative prior to December 15. If the trail road is to be used for hauling during the snowmobile season, then a snow-covered base must be left on the trail. Maintain a 20-foot-wide slash, debris, and rut free zone daily using the snowmobile trail as the centerline. No decking of forest products will be permitted along the snowmobile trail. All stumps within 10 feet of the trail must be cut flush to ground level.

5.4 - Soil Protection

5.4.2 - Skid trails (2/04)

Skid trails up and down slopes should be avoided. If however this is unavoidable, these trails will be left in a non-erodible condition using water bars, logs, and slash. Placing of slash on these skid trails while logging is ongoing may alleviate need for any further action. At the direction of the sale administrator, seed, fertilizer, and mulch may also be required.

5.8 - Protection of Endangered Species

5.8.5 - Protection of raptor nests (3/13)

All trees with raptor nests will be protected if found during harvesting operations. Notification will be made to the Unit Manager or his/her representative who will notify the Wildlife Biologist so an on-site evaluation and recommendation can be made, if necessary.

6 - Safety and Fire Prevention

6.2 - Signing

6.2.1 - Road posting (10/20)

The Purchaser is responsible for posting and maintaining caution signs on Charcoal Grade prior to beginning operations. The road must be posted at appropriate distances from the Sale Area to warn of logging activity and truck traffic. Signs must be removed when harvest operations are suspended or completed. The Purchaser will provide these signs.

6.2.2 - Snowmobile trail posting (10/20)

The Purchaser is responsible for posting and maintaining caution signs on snowmobile trail prior to beginning operations during the snowmobile season (approximately December 1 to March 31). The trail must be posted at appropriate distances from the Sale Area to warn of logging activity and truck traffic. Signs must be removed when harvest operations are suspended or completed. The DNR will provide these signs.

7 - Other Conditions

7.2 - Extensions

7.2.5 - Weather related extension (1/13)

If weather conditions during the operating period of this contract prevent harvesting, this sale may qualify for a weather related extension. If approved, the normal extension fee would be waived. To qualify, there must be a documented attempt each year to harvest in the difficult portion of the sale.



TIMBER SALE MAP

This information provided by authority of Part 525, 1994 PA 451, as amended.

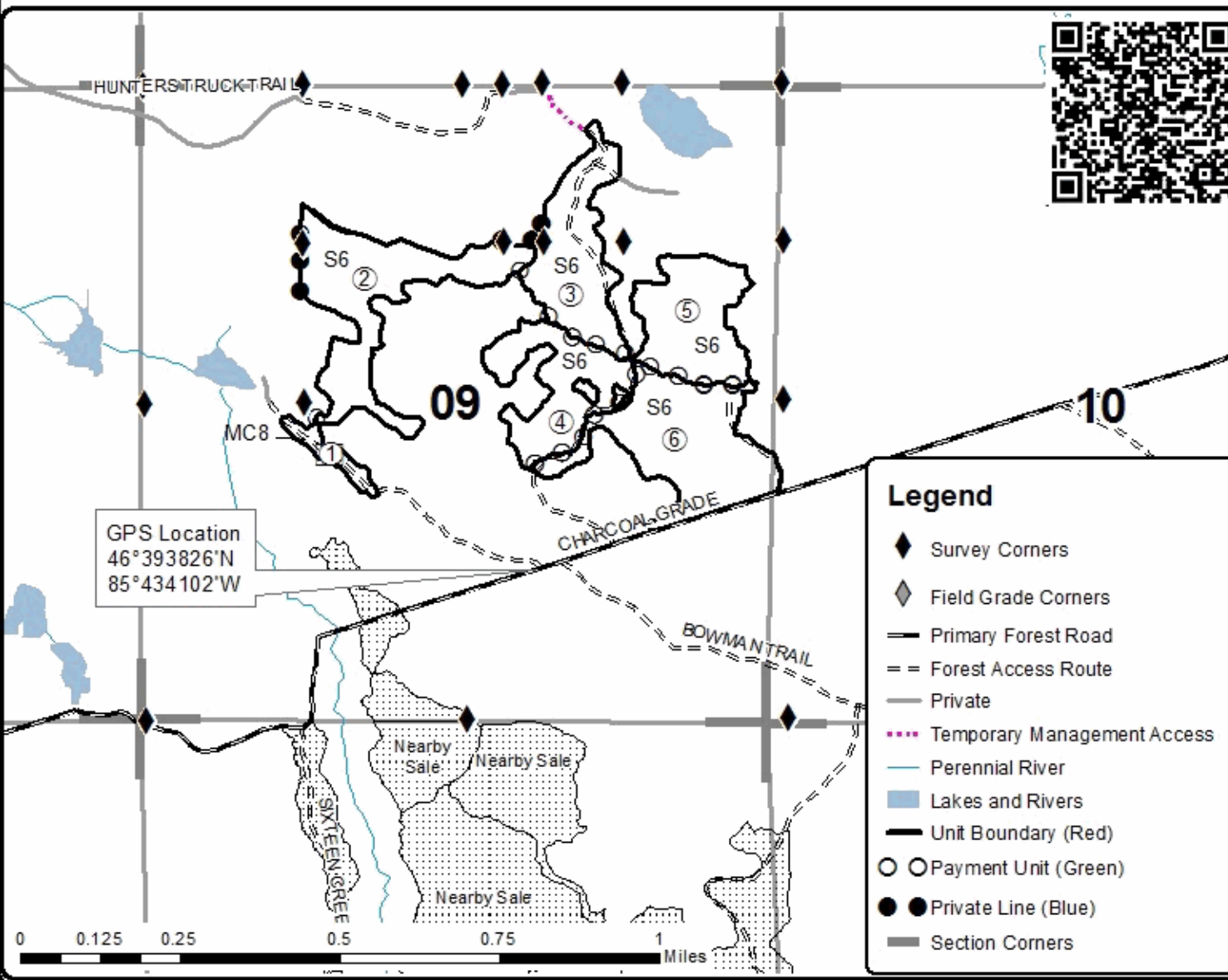
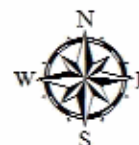
Forest Management Unit Newberry	County Luce	Mapped By A. Livermore	Date 09/21/2021	Page 1	of 1
Township 46N	Range 09W	Section(s) and Subdivision(s) 1, 2, 3, 4, 5, 6, 7, 8, 9, 10, 11, 12, 13, 14, 15, 16, 17, 18, 19, 20, 21, 22, 23, 24, 25, 26, 27, 28, 29, 30, 31, 32, 33, 34, 35, 36, 37, 38, 39, 40, 41, 42, 43, 44, 45, 46, 47, 48, 49, 50, 51, 52, 53, 54, 55, 56, 57, 58, 59, 60, 61, 62, 63, 64, 65, 66, 67, 68, 69, 70, 71, 72, 73, 74, 75, 76, 77, 78, 79, 80, 81, 82, 83, 84, 85, 86, 87, 88, 89, 90, 91, 92, 93, 94, 95, 96, 97, 98, 99, 100, 101, 102, 103, 104, 105, 106, 107, 108, 109, 110, 111, 112, 113, 114, 115, 116, 117, 118, 119, 120, 121, 122, 123, 124, 125, 126, 127, 128, 129, 130, 131, 132, 133, 134, 135, 136, 137, 138, 139, 140, 141, 142, 143, 144, 145, 146, 147, 148, 149, 150, 151, 152, 153, 154, 155, 156, 157, 158, 159, 160, 161, 162, 163, 164, 165, 166, 167, 168, 169, 170, 171, 172, 173, 174, 175, 176, 177, 178, 179, 180, 181, 182, 183, 184, 185, 186, 187, 188, 189, 190, 191, 192, 193, 194, 195, 196, 197, 198, 199, 200, 201, 202, 203, 204, 205, 206, 207, 208, 209, 210, 211, 212, 213, 214, 215, 216, 217, 218, 219, 220, 221, 222, 223, 224, 225, 226, 227, 228, 229, 230, 231, 232, 233, 234, 235, 236, 237, 238, 239, 240, 241, 242, 243, 244, 245, 246, 247, 248, 249, 250, 251, 252, 253, 254, 255, 256, 257, 258, 259, 260, 261, 262, 263, 264, 265, 266, 267, 268, 269, 270, 271, 272, 273, 274, 275, 276, 277, 278, 279, 280, 281, 282, 283, 284, 285, 286, 287, 288, 289, 290, 291, 292, 293, 294, 295, 296, 297, 298, 299, 300, 301, 302, 303, 304, 305, 306, 307, 308, 309, 310, 311, 312, 313, 314, 315, 316, 317, 318, 319, 320, 321, 322, 323, 324, 325, 326, 327, 328, 329, 330, 331, 332, 333, 334, 335, 336, 337, 338, 339, 340, 341, 342, 343, 344, 345, 346, 347, 348, 349, 350, 351, 352, 353, 354, 355, 356, 357, 358, 359, 360, 361, 362, 363, 364, 365, 366, 367, 368, 369, 370, 371, 372, 373, 374, 375, 376, 377, 378, 379, 380, 381, 382, 383, 384, 385, 386, 387, 388, 389, 390, 391, 392, 393, 394, 395, 396, 397, 398, 399, 400, 401, 402, 403, 404, 405, 406, 407, 408, 409, 410, 411, 412, 413, 414, 415, 416, 417, 418, 419, 420, 421, 422, 423, 424, 425, 426, 427, 428, 429, 430, 431, 432, 433, 434, 435, 436, 437, 438, 439, 440, 441, 442, 443, 444, 445, 446, 447, 448, 449, 450, 451, 452, 453, 454, 455, 456, 457, 458, 459, 460, 461, 462, 463, 464, 465, 466, 467, 468, 469, 470, 471, 472, 473, 474, 475, 476, 477, 478, 479, 480, 481, 482, 483, 484, 485, 486, 487, 488, 489, 490, 491, 492, 493, 494, 495, 496, 497, 498, 499, 500, 501, 502, 503, 504, 505, 506, 507, 508, 509, 510, 511, 512, 513, 514, 515, 516, 517, 518, 519, 520, 521, 522, 523, 524, 525, 526, 527, 528, 529, 530, 531, 532, 533, 534, 535, 536, 537, 538, 539, 540, 541, 542, 543, 544, 545, 546, 547, 548, 549, 550, 551, 552, 553, 554, 555, 556, 557, 558, 559, 560, 561, 562, 563, 564, 565, 566, 567, 568, 569, 570, 571, 572, 573, 574, 575, 576, 577, 578, 579, 580, 581, 582, 583, 584, 585, 586, 587, 588, 589, 590, 591, 592, 593, 594, 595, 596, 597, 598, 599, 600, 601, 602, 603, 604, 605, 606, 607, 608, 609, 610, 611, 612, 613, 614, 615, 616, 617, 618, 619, 620, 621, 622, 623, 624, 625, 626, 627, 628, 629, 630, 631, 632, 633, 634, 635, 636, 637, 638, 639, 640, 641, 642, 643, 644, 645, 646, 647, 648, 649, 650, 651, 652, 653, 654, 655, 656, 657, 658, 659, 660, 661, 662, 663, 664, 665, 666, 667, 668, 669, 670, 671, 672, 673, 674, 675, 676, 677, 678, 679, 680, 681, 682, 683, 684, 685, 686, 687, 688, 689, 690, 691, 692, 693, 694, 695, 696, 697, 698, 699, 700, 701, 702, 703, 704, 705, 706, 707, 708, 709, 710, 711, 712, 713, 714, 715, 716, 717, 718, 719, 720, 721, 722, 723, 724, 725, 726, 727, 728, 729, 730, 731, 732, 733, 734, 735, 736, 737, 738, 739, 740, 741, 742, 743, 744, 745, 746, 747, 748, 749, 750, 751, 752, 753, 754, 755, 756, 757, 758, 759, 760, 761, 762, 763, 764, 765, 766, 767, 768, 769, 770, 771, 772, 773, 774, 775, 776, 777, 778, 779, 780, 781, 782, 783, 784, 785, 786, 787, 788, 789, 790, 791, 792, 793, 794, 795, 796, 797, 798, 799, 800, 801, 802, 803, 804, 805, 806, 807, 808, 809, 810, 811, 812, 813, 814, 815, 816, 817, 818, 819, 820, 821, 822, 823, 824, 825, 826, 827, 828, 829, 830, 831, 832, 833, 834, 835, 836, 837, 838, 839, 840, 841, 842, 843, 844, 845, 846, 847, 848, 849, 850, 851, 852, 853, 854, 855, 856, 857, 858, 859, 860, 861, 862, 863, 864, 865, 866, 867, 868, 869, 870, 871, 872, 873, 874, 875, 876, 877, 878, 879, 880, 881, 882, 883, 884, 885, 886, 887, 888, 889, 890, 891, 892, 893, 894, 895, 896, 897, 898, 899, 900, 901, 902, 903, 904, 905, 906, 907, 908, 909, 910, 911, 912, 913, 914, 915, 916, 917, 918, 919, 920, 921, 922, 923, 924, 925, 926, 927, 928, 929, 930, 931, 932, 933, 934, 935, 936, 937, 938, 939, 940, 941, 942, 943, 944, 945, 946, 947, 948, 949, 950, 951, 952, 953, 954, 955, 956, 957, 958, 959, 960, 961, 962, 963, 964, 965, 966, 967, 968, 969, 970, 971, 972, 973, 974, 975, 976, 977, 978, 979, 980, 981, 982, 983, 984, 985, 986, 987, 988, 989, 990, 991, 992, 993, 994, 995, 996, 997, 998, 999, 1000	Scale 1:15,840		

Cover Type				Density			
A = Aspen	H = Hemlock	N = Marsh	U = Upland Brush	0 = Non Stocked	5 = Pole Timber Medium		
B = Paper Birch	J = Jack Pine	O = Oak	UM = Upland Mixed	1 = Seedling Sapling Poor	6 = Pole Timber Well		
C = Cedar	L = Lowland Brush	P = Lowland Poplar	V = Bog or Marsh	2 = Seedling Sapling Medium	7 = Saw Timber Poor		
D = Treed Bog	LM = Lowland Mixed	Q = Mixed Swamp Conifer	W = White Pine	3 = Seedling Sapling Well	8 = Saw Timber Medium		
E = Swamp Hdwoods	M = Mpl, Bch, Brch	R = Red Pine	X = Non Stocked	4 = Pole Timber Poor	9 = Saw Timber Well		
F = Spruce Fir	MC = Mixed Conifer	S = Black Spruce	Z = Water				
G = Grass	MD = Mixed Deciduous	T = Tamarack					

PU	Acres	Cords
1	2.8	72
2	27.2	626
3	19.5	452
4	17.5	405
5	18.5	427
6	28	645

Three Tundra Mix

Compartment 42114
113.5 Acres



Chevy Camp Lowlands (42-011-21)
T47N, R11W, SEC. 1; Luce COUNTY

In response to the notice of sale to be held 3:00 p.m. (local time) on February 24, 2022, I am hereby submitting my sealed bid (firm offer) for the following forest products to be cut. Bids for individual species must be at or above the advertised price. All non-responsive bid forms may be rejected.

<u>PRODUCTS & SPECIES</u>	<u>ESTIMATED VOLUME*</u>	<u>ADVERTISED PRICE</u>	<u>BID PRICE/UNIT</u>
Pulpwood			
Balsam Fir	31 Cords	\$ 9.30/Cord	\$ _____
Mixed Hardwood	794 Cords	\$ 11.20/Cord	\$ _____
Mixed Spruce	1,275 Cords	\$ 20.30/Cord	\$ _____
N. White Cedar	655 Cords	\$ 4.85/Cord	\$ _____
Quaking Aspen	14 Cords	\$ 20.15/Cord	\$ _____
Tamarack	7 Cords	\$ 3.55/Cord	\$ _____
White Pine	45 Cords	\$ 12.75/Cord	\$ _____

*The volumes are statistically estimated within plus (+) or minus (-) 4.89 percent at 95% confidence level. These estimated volumes are final and not subject to adjustment. Prospective bidders are urged to examine this timber and to make their own estimates of quantity and quality.

I understand that any or all bids may be rejected. All bids must be signed and all bid items must be bid or the bid form may be rejected. I also understand that consideration and awarding a contract will be based upon my past performance and ability to complete the contract based upon equipment and staffing subject to my control.

FEDERAL ID: ___ - ___ - ___ or SOCIAL SECURITY NUMBER: ___ - ___ - ___

Company or individual bidding: _____

Company representative's name: _____

Address: _____

City: _____ State: _____ Zip: _____

IF AVAILABLE, PLEASE PLACE THE PERSONALIZED LABEL FROM YOUR PROSPECTUS IN THE ABOVE BOX.

Individual or company representative's signature: _____ Date: _____

Phone number : _____ Email (optional): _____

THE WINNING BIDDER MUST COMPLETE THE VERIFICATION OF WORKER'S DISABILITY COMPENSATION ACT COMPLIANCE (ON REVERSE SIDE IF DOUBLE SIDED) WITHIN 21 DAYS OF SALE AWARD DATE



FOR DEPARTMENT USE ONLY	
Sale Number (XX - XXX - XX - XX)	
Forest Management Unit:	

TIMBER SALE VERIFICATION OF WORKER'S DISABILITY COMPENSATION ACT COMPLIANCE

As required by Act 317, P.A. 1969 (Worker's Compensation) and
Part 5 of Act 451 of 1994, as amended.

VERIFICATION OF WORKER'S DISABILITY COMPENSATION ACT COMPLIANCE

- This verification must be completed and submitted within 21 days of contract award and prior to the issuance of the timber sale contract.
- In addition, if boxes 2B or 2C are checked, then Notice of Exclusion or Certificate of Insurance must be submitted within twenty-one (21) days of the contract award and prior to the issuance of the timber sale contract.
- All information must be typed or printed except for written signatures.

Please Check Appropriate Categories:

1. My business is organized as (you **must** check one of the boxes below):
 - A. Sole Proprietorship (individual)
 - B. Partnership
 - C. Corporation
2. You **must** check one of the boxes below:
 - A. I certify my business is a sole proprietorship and it has no employees but the sole proprietor. I am not subject to the Worker's Compensation Laws.
 - B. I certify my business has satisfied its obligation to the Worker's Compensation Act through the use of an approved Notice of Exclusion (BWC-337, Rev. 5/96). I will provide a copy of the Notice of Exclusion within 21 days of the contract award. (For questions or a copy of the BWC-337, please call the Worker's Compensation Bureau at 517-322-1195).
 - C. I certify my business has a Worker's Compensation Policy. I will provide an original Certificate of Insurance within twenty-one (21) days of the contract award.
3. If you have checked item 2(A) or 2(B), you **must** indicate the number of **both** full-time and part-time employees, other than yourself, including family members and active partners (if none, you must enter "0").

_____ Full-time Employees

_____ Part-time Employees

Name of Business		Federal ID (or) Social Security No.	
Address		Telephone ()	
City	State	ZIP	

I hereby certify that the above information is true and correct. I agree to notify the Michigan DNR of any changes that occur in factors affecting my coverage during any of my present and future operations.

Signature of Owner or Authorized Representative

Title

Date

Please complete the "SEALED BID" information on the next page

Attwood Mix (42-013-21)
T47N, R08W, SEC. 20; Luce COUNTY

In response to the notice of sale to be held 3:00 p.m. (local time) on February 24, 2022, I am hereby submitting my sealed bid (firm offer) for the following forest products to be cut. Bids for individual species must be at or above the advertised price. All non-responsive bid forms may be rejected.

<u>PRODUCTS & SPECIES</u>	<u>ESTIMATED VOLUME*</u>	<u>ADVERTISED PRICE</u>	<u>BID PRICE/UNIT</u>
Sawtimber			
Paper Birch	4.0 MBF	\$ 34.00/MBF	\$ _____
Red Maple	62.5 MBF	\$ 77.00/MBF	\$ _____
Sugar Maple	5.7 MBF	\$ 303.00/MBF	\$ _____
Pulpwood			
Balsam Fir	306 Cords	\$ 9.30/Cord	\$ _____
Mixed Hardwood	1,035 Cords	\$ 11.20/Cord	\$ _____
Mixed Spruce	106 Cords	\$ 20.30/Cord	\$ _____
N. White Cedar	574 Cords	\$ 4.85/Cord	\$ _____

*The volumes are statistically estimated within plus (+) or minus (-) 4.43 percent at 95% confidence level. These estimated volumes are final and not subject to adjustment. Prospective bidders are urged to examine this timber and to make their own estimates of quantity and quality.

I understand that any or all bids may be rejected. All bids must be signed and all bid items must be bid or the bid form may be rejected. I also understand that consideration and awarding a contract will be based upon my past performance and ability to complete the contract based upon equipment and staffing subject to my control.

FEDERAL ID: _____ or SOCIAL SECURITY NUMBER: _____

Company or individual bidding: _____

Company representative's name: _____

Address: _____

City: _____ State: _____ Zip: _____

IF AVAILABLE, PLEASE PLACE THE PERSONALIZED LABEL FROM YOUR PROSPECTUS IN THE ABOVE BOX.

Individual or company representative's signature: _____ Date: _____

Phone number : _____ Email (optional): _____

THE WINNING BIDDER MUST COMPLETE THE VERIFICATION OF WORKER'S DISABILITY COMPENSATION ACT COMPLIANCE (ON REVERSE SIDE IF DOUBLE SIDED) WITHIN 21 DAYS OF SALE AWARD DATE

Basnau Bend Timber (42-029-21)
T45N, R07W, SEC. 10; T45N, R07W, SEC. 11; Chippewa COUNTY

In response to the notice of sale to be held 3:00 p.m. (local time) on February 24, 2022, I am hereby submitting my sealed bid (firm offer) for the following forest products to be cut. Bids for individual species must be at or above the advertised price. All non-responsive bid forms may be rejected.

<u>PRODUCTS & SPECIES</u>	<u>ESTIMATED VOLUME*</u>	<u>ADVERTISED PRICE</u>	<u>BID PRICE/UNIT</u>
Sawtimber			
Red Maple	64.2 MBF	\$ 77.00/MBF	\$ _____
Sugar Maple	9.0 MBF	\$ 303.00/MBF	\$ _____
Pulpwood			
Balsam Fir	102 Cords	\$ 9.30/Cord	\$ _____
Mixed Hardwood	697 Cords	\$ 11.20/Cord	\$ _____
Mixed Spruce	177 Cords	\$ 20.30/Cord	\$ _____
Quaking Aspen	114 Cords	\$ 20.15/Cord	\$ _____
Red Pine	9 Cords	\$ 39.80/Cord	\$ _____
Tamarack	17 Cords	\$ 3.55/Cord	\$ _____
White Pine	306 Cords	\$ 12.75/Cord	\$ _____

*The volumes are statistically estimated within plus (+) or minus (-) 7.16 percent at 95% confidence level. These estimated volumes are final and not subject to adjustment. Prospective bidders are urged to examine this timber and to make their own estimates of quantity and quality.

I understand that any or all bids may be rejected. All bids must be signed and all bid items must be bid or the bid form may be rejected. I also understand that consideration and awarding a contract will be based upon my past performance and ability to complete the contract based upon equipment and staffing subject to my control.

FEDERAL ID: ____ - ____ - ____ or SOCIAL SECURITY NUMBER: ____ - ____ - ____

Company or individual bidding: _____

Company representative's name: _____

Address: _____

City: _____ State: _____ Zip: _____

IF AVAILABLE, PLEASE PLACE THE PERSONALIZED LABEL FROM YOUR PROSPECTUS IN THE ABOVE BOX.

Individual or company representative's signature: _____ Date: _____

Phone number : _____ Email (optional): _____

THE WINNING BIDDER MUST COMPLETE THE VERIFICATION OF WORKER'S DISABILITY COMPENSATION ACT COMPLIANCE (ON REVERSE SIDE IF DOUBLE SIDED) WITHIN 21 DAYS OF SALE AWARD DATE

Three Tundra Mix (42-035-21)
T46N, R09W, SEC. 10; T46N, R09W, SEC. 9; Luce COUNTY

In response to the notice of sale to be held 3:00 p.m. (local time) on February 24, 2022, I am hereby submitting my sealed bid (firm offer) for the following forest products to be cut. Bids for individual species must be at or above the advertised price. All non-responsive bid forms may be rejected.

<u>PRODUCTS & SPECIES</u>	<u>ESTIMATED VOLUME*</u>	<u>ADVERTISED PRICE</u>	<u>BID PRICE/UNIT</u>
Sawtimber			
Paper Birch	3.0 MBF	\$ 34.00/MBF	\$ _____
Pulpwood			
Balsam Fir	40 Cords	\$ 9.30/Cord	\$ _____
Black Spruce	897 Cords	\$ 20.30/Cord	\$ _____
Jack Pine	1,296 Cords	\$ 17.40/Cord	\$ _____
Paper Birch	4 Cords	\$ 9.60/Cord	\$ _____
Red Pine	89 Cords	\$ 39.80/Cord	\$ _____
Tamarack	95 Cords	\$ 3.55/Cord	\$ _____
White Pine	181 Cords	\$ 12.75/Cord	\$ _____

*The volumes are statistically estimated within plus (+) or minus (-) 6.78 percent at 95% confidence level. These estimated volumes are final and not subject to adjustment. Prospective bidders are urged to examine this timber and to make their own estimates of quantity and quality.

I understand that any or all bids may be rejected. All bids must be signed and all bid items must be bid or the bid form may be rejected. I also understand that consideration and awarding a contract will be based upon my past performance and ability to complete the contract based upon equipment and staffing subject to my control.

FEDERAL ID: ____ - ____ - ____ or SOCIAL SECURITY NUMBER: ____ - ____ - ____

Company or individual bidding: _____

Company representative's name: _____

Address: _____

City: _____ State: _____ Zip: _____

IF AVAILABLE, PLEASE PLACE THE PERSONALIZED LABEL FROM YOUR PROSPECTUS IN THE ABOVE BOX.

Individual or company representative's signature: _____ Date: _____

Phone number : _____ Email (optional): _____

THE WINNING BIDDER MUST COMPLETE THE VERIFICATION OF WORKER'S DISABILITY COMPENSATION ACT COMPLIANCE (ON REVERSE SIDE IF DOUBLE SIDED) WITHIN 21 DAYS OF SALE AWARD DATE



FOR DEPARTMENT USE ONLY	
Sale Number (XX - XXX - XX - XX)	
Forest Management Unit:	

TIMBER SALE VERIFICATION OF WORKER'S DISABILITY COMPENSATION ACT COMPLIANCE

As required by Act 317, P.A. 1969 (Worker's Compensation) and
Part 5 of Act 451 of 1994, as amended.

VERIFICATION OF WORKER'S DISABILITY COMPENSATION ACT COMPLIANCE

- This verification must be completed and submitted within 21 days of contract award and prior to the issuance of the timber sale contract.
- In addition, if boxes 2B or 2C are checked, then Notice of Exclusion or Certificate of Insurance must be submitted within twenty-one (21) days of the contract award and prior to the issuance of the timber sale contract.
- All information must be typed or printed except for written signatures.

Please Check Appropriate Categories:

1. My business is organized as (you **must** check one of the boxes below):
 - A. Sole Proprietorship (individual)
 - B. Partnership
 - C. Corporation
2. You **must** check one of the boxes below:
 - A. I certify my business is a sole proprietorship and it has no employees but the sole proprietor. I am not subject to the Worker's Compensation Laws.
 - B. I certify my business has satisfied its obligation to the Worker's Compensation Act through the use of an approved Notice of Exclusion (BWC-337, Rev. 5/96). I will provide a copy of the Notice of Exclusion within 21 days of the contract award. (For questions or a copy of the BWC-337, please call the Worker's Compensation Bureau at 517-322-1195).
 - C. I certify my business has a Worker's Compensation Policy. I will provide an original Certificate of Insurance within twenty-one (21) days of the contract award.
3. If you have checked item 2(A) or 2(B), you **must** indicate the number of **both** full-time and part-time employees, other than yourself, including family members and active partners (if none, you must enter "0").

_____ Full-time Employees

_____ Part-time Employees

Name of Business		Federal ID (or) Social Security No.	
Address		Telephone ()	
City	State	ZIP	

I hereby certify that the above information is true and correct. I agree to notify the Michigan DNR of any changes that occur in factors affecting my coverage during any of my present and future operations.

Signature of Owner or Authorized Representative

Title

Date

Please complete the "SEALED BID" information on the next page