



**DEPARTMENT OF NATURAL RESOURCES  
STATE OF MICHIGAN  
TIMBER SALE PROSPECTUS #7044**

SCHEDULED SALE DATE AND TIME: 1:00 p.m. (local time) on May 16, 2022.

LOCATION: **GWINN MGMT UNIT, 410 WEST M 35, GWINN, MI 49841.**

PROSPECTUS NOTE: The bidder is advised to inspect the sale area and review the location, estimated volumes, operating costs and contract terms of proposed sales. Please be aware that some landowners may request 60 days or more notice for access across their land.

Notice is hereby given that bids will be received by the Unit Manager, GWINN MANAGEMENT UNIT, for certain timber on the following described lands:

Mars Maple Landing (32-004-21) / T45N, R22W, SEC. 10, N1/2NW, SENW, N1/2NE, SWNE.

T45N, R22W, SEC. 15, NW, SWNE, N1/2SW, SWSW, N1/2SE.

T45N, R22W, SEC. 16, E1/2NE, NESE.

T45N, R22W, SEC. 2, W1/2NW.

T45N, R22W, SEC. 3, S1/2NW, E1/2NE, SW, NESE, S1/2SE.

T45N, R22W, SEC. 4, E1/2SE.

Alger County, Advertised Price \$168,095.60, 396.2 Acres, Hardwood, Spruce/Fir/Tamarack.

SALE NOTE: This sale was cruised with the new timber cruise program and may be different from what producers are used to. It is highly advised that producers cruise the wood themselves to get accurate numbers for volumes present in this sale.

Access may be through other public land.

Horseshoe Hideaway (32-021-21) / T47N, R23W, SEC. 27, SWSE.

T47N, R23W, SEC. 28, SWSE.

T47N, R23W, SEC. 33, N1/2NE.

T47N, R23W, SEC. 34, NENW, NWNE.

T47N, R23W, SEC. 35, SW, W1/2SE.

Marquette County, Advertised Price \$53,832.70, 90.2 Acres, Hardwood, Aspen.

SALE NOTE: All units of volume listed for this sale were estimated using the Inventory Manager computer program and the new Michigan taper model.

Review specification 4.1.8 regarding road work required.

Loud Creaky Maple (32-023-21) / T45N, R21W, SEC. 11, NWSW, S1/2SW, SE.

T45N, R21W, SEC. 13, NW, SW.

T45N, R21W, SEC. 14, NW, NE, N1/2SW, SWSW, E1/2SE.

T45N, R21W, SEC. 15, SENE, E1/2SE.

Alger County, Advertised Price \$215,562.50, 443.1 Acres, Aspen, Hardwood.

SALE NOTE: All units of volume listed for this sale were estimated using the Inventory Manager computer program and the new Michigan taper model.

Access may be through private land.

## BID INSTRUCTIONS (VER. 07/02/2018):

### 1. Scheduled Bid Location, Date, and Time (2/11)

Bids must be received by the Unit Manager, GWINN OFFICE, 410 WEST M 35, GWINN, MI 49841, no later than 1:00 p.m. (local time) on May 16, 2022. For further information concerning this sale, contact Kristen Matson at 906-346-9201 extension 103.

### 2. Bidder's Qualifications (5/16)

Purchaser shall obtain workers compensation insurance to cover claims under Michigan's Worker's Disability Compensation Act of 1969 or similar employee benefit act of any other state applicable to an employee. If all or part of a timber sale was prepared by a private contractor, the contractor and that contractor's company are not permitted to bid on the timber sale contract. Bids will not be accepted from individuals or companies appearing on the DNR/FRD No-Bid List. This list contains the names of purchasers who previously failed to execute a contract within 21-days or who have a history of poor performance.

### 3. Preparation of Sealed Bids (5/16)

Bid Forms may be completed online thru Michigan DNR Timber Sale Online Bidding (OLB) at [www.michigan.gov/timberbidding](http://www.michigan.gov/timberbidding) or by completing the hardcopy Bid Form found in the Timber Sale Prospectus. Hardcopy Bid Forms shall be manually signed in ink. Registration in OLB is considered your 'signature' for all bids submitted thru that system. Bid prices must be entered for each species and product in the Bid Price column for all material subject to bidding and all fill-in blanks must be completed. If erasures or other changes appear on the hardcopy Bid Form, each erasure or change must be initialed by the person signing the bid.

### 4. Submission of Sealed Bids (5/16)

Bid forms may be obtained from the Unit Manager or thru OLB. Bids may be submitted hardcopy or thru OLB. All hardcopy bids must be submitted on the bid form and in an envelope clearly identified as described in this section. NOTE: Only one bid form per bid envelope. Sealed bids must be submitted to the Unit office designated in the prospectus and must be submitted at or prior to the time established in the prospectus. The envelope should show on the outside (a) the sale name or number and (b) the date and time of bid opening, as shown in the prospectus. Bids received after the time specified in the sale prospectus are late bids and will be rejected.

It is possible for a bidder to submit multiple bids on a single sale. For example, a bid may be submitted hardcopy and a bid may be submitted thru OLB. Or, two bidders from the same company could both submit bids on the same sale. If this were to happen, the State would accept all bids received and award the contract accordingly. All bidding and contractual requirements would apply to all bids received.

### 5. Public Opening of Sealed Bids (7/16)

If conditions permit, the sealed bids will be publicly opened and posted at the time and place set in the prospectus.

If a bidder, present at a bid opening, has submitted bids on more than one sale, that bidder may withdraw their unopened bid envelopes or announce the withdrawal of their online bid after being declared the successful bidder on one sale.

### 6. Award of Contract (1/11)

Award of the contract will be made to the Bidder whose bid, conforming to the prospectus, is most advantageous to the State of Michigan on the basis of total value at rates bid for the estimated quantities. The State reserves the right to reject any bid or waive any minor irregularity in bids received. A written award mailed (or otherwise furnished) to the successful Bidder shall be deemed to result in a binding contract without further action by either party.

### 7. Down Payment (1/11)

The Bidder to whom award is made must make a down payment within 21 days of the sale award. The amount of the down payment will be calculated as shown in the Bond and Payment Schedule of this prospectus. Only cash may be used to meet this requirement.

### 8. Performance Security (1/11)

As guarantee of faithful performance, a cash bond, certificate of deposit, surety bond or irrevocable letter of credit (LOC) is required within 21 days of the sale award. The amount of the performance security is shown in the Bond and

Payment Schedule of this prospectus. If an LOC or surety is used, the coverage must extend for at least 6 months beyond the contract expiration.

#### 9. Timber Sale Contract (7/18)

Additional conditions and requirements common to all timber sales are listed on the timber sale contract (R4031) and are available on line at [www.michigan.gov/timber](http://www.michigan.gov/timber). Contact the Unit Manager for additional information or a sample contract. Within 21 days of the date of the award letter, the bidder must sign the contract and provide the required down payment, performance security, and verification of worker's disability compensation. The down payment and performance security shall be in accordance with the provisions of the timber sale contract, in the sums stated in this prospectus. If these actions are not taken, then the Bidder, the Bidder's corporation, and the corporation's principals may not be permitted to bid on State timber sales for a period of 3 months after the first offense, 6 months after the second offense, and 1 year after the third offense. An offense will only be counted against the Bidder for 5 years. In addition, the Bidder certifies that if awarded this contract, the Bidder will complete the timber sale contract in accordance with its terms and any modifications thereof including requirements to purchase, cut, and remove the included timber by the expiration date.

Payment Unit values in the State Forest Timber Sale Contract are calculated based on the advertised value of the Payment Unit as a percentage of the total advertised value of the contract. The advertised value of each Payment Unit is given in the Description of Timber by Payment Unit table on the Timber Sale Information page. For example, if the value of Payment Unit 1 is advertised as \$1,500 and the total Timber Sale value is advertised as \$10,000, the contract price for Payment Unit 1 will be 15% of the total bid price ( $\$1,500/\$10,000 * 100$ ).

#### 10. Disclaimer of Estimates and Bidder's Warranty of Inspection (7/16)

Before submitting this bid, the Bidder is advised and cautioned to inspect the sale area, review the requirements of the sale contract, and take other steps as may be reasonably necessary to ascertain the location, estimated volumes, construction estimates, and operating costs of the proposed sale. Failure to do so will not relieve the Bidder from responsibility for completing the contract.

The Bidder warrants that this bid is submitted solely on the basis of the Bidder's examination and inspection of the quality and quantity of the timber offered for sale and the Bidder's opinion of the value thereof and the costs of recovery. No reliance should be placed on the State of Michigan's estimates of timber quality, quantity or costs of recovery. Bidder further acknowledges that the State of Michigan: (i) expressly disclaims any warranty of fitness of timber for any purpose; (ii) offers this timber as is without any warranty of quality (merchantability) or quantity and (iii) expressly disclaims any warranty as to the quantity or quality of timber sold.

#### 11. Certification and Chain-of-Custody (10/14)

Unless otherwise indicated in the contract under section 7 – Other Conditions of the Sale Specific Conditions & Requirements, the area encompassed by this timber sale is certified to the standards of the Forest Stewardship Council (FSC) - Certificate #SCS-FM/COC-00090N and the Sustainable Forestry Initiative (SFI) - Certificate #NSF-SFIS-5Y031-SF5. Forest products from this sale may be delivered to the mill as "FSC 100% and / or SFI certified" as long as the contractor hauling the forest products is chain-of-custody (COC) certified or covered under a COC certificate from the destination mill. The purchaser is responsible for maintaining COC after leaving the sale area.

#### 12. Good Neighbor Authority (GNA) Requirements (7/16)

If the name of this timber sales contains the acronym GNA, it is authorized by the Good Neighbor Authority (GNA) and covered by various agreements between the U.S. Forest Service and the State. The timber sale occurs on federal land and the following conditions apply:

GNA contracts on US Forest Service land will not be awarded to purchasers on the Federal list of excluded parties. The System for Award Management (SAM) will be checked for active excluded parties prior to award of contract. In addition, the Bidder to whom award is made must complete an Assurance Regarding Felony Conviction or Tax Delinquent Status for Corporate Applicants (AD-3031).

#### 13. Good Neighbor Authority (GNA) Requirements, con't (9/16)

Bidder certifies, by signing this bid form, that to the best of Bidder's knowledge that the following representations are accurate and complete.

- a. That the Bidder and its principals are not presently debarred, suspended, proposed for debarment, declared ineligible, or voluntary excluded from timber sales (covered transactions) by any Federal department or agency.
- b. That the Bidder and its principals have not within a 3-year period preceding this bid been convicted of or had a civil judgment rendered against them for commission of fraud or a criminal offense in connection with obtaining , attempting to obtain, or performing a public (Federal, State, or local) transaction or contract under a public transaction; violation of Federal or State antitrust statutes or commission of embezzlement, theft, forgery, bribery, falsification or destruction of records, making false statements, or receiving stolen property.
- c. That the Bidder and its principals are not presently indicted for or otherwise criminally or civilly charged by a governmental entity (Federal, State, or local) with commission of any of the offenses enumerated in paragraph b of this certification.
- d. That the Bidder and its principals have not within a 3-year period preceding this bid had one or more public transactions (Federal, State, or local) terminated for breach or default of a timber or forest product contract.

Bidders that cannot certify this requirement, in whole or in part, shall submit an explanation with their bid.

DAN EICHINGER  
Director

## TIMBER SALE INFORMATION

### Mars Maple Landing (32-004-21)

T45N, R22W, SEC. 10; T45N, R22W, SEC. 15; T45N, R22W, SEC. 16; T45N, R22W, SEC. 2; T45N, R22W, SEC. 3; T45N, R22W, SEC. 4.

SALE NOTE: This sale was cruised with the new timber cruise program and may be different from what producers are used to . It is highly advised that producers cruise the wood themselves to get accurate numbers for volumes present in this sale.

Access may be through other public land.

A timber sale contract for this lump sum, sealed bid timber sale will be awarded to the responsible bidder offering the highest sealed bid price. All units of volume listed below were estimated using the Inventory Manager computer program and the new Michigan taper model. Bids must be at or above the following advertised price for each product and species:

| <u>PRODUCTS &amp; SPECIES</u> | <u>ESTIMATED UNITS*</u> | <u>ADVERTISED PRICE</u> |
|-------------------------------|-------------------------|-------------------------|
| Sawtimber                     |                         |                         |
| Beech                         | 37.6 MBF                | \$ 29.00 / MBF          |
| Black Cherry                  | 4.4 MBF                 | \$ 75.00 / MBF          |
| Red Maple                     | 448.4 MBF               | \$ 110.00 / MBF         |
| Sugar Maple                   | 270.5 MBF               | \$ 196.00 / MBF         |
| White Spruce                  | 7.7 MBF                 | \$ 27.00 / MBF          |
| Yellow Birch                  | 19.8 MBF                | \$ 26.00 / MBF          |
| Pulpwood                      |                         |                         |
| Balsam Fir                    | 336 Cords               | \$ 10.25 / Cord         |
| Mixed Hardwood                | 4,746 Cords             | \$ 11.55 / Cord         |
| Mixed Spruce                  | 354 Cords               | \$ 11.15 / Cord         |
| N. White Cedar                | 115 Cords               | \$ 6.30 / Cord          |
| Quaking Aspen                 | 39 Cords                | \$ 17.40 / Cord         |

\* The total volume is statistically estimated within plus (+) or minus (-) 3.12 percent. There are an estimated 7,786 cords on this timber sale, plus or minus 243 cords at the 95% confidence level. The estimated units are final and not subject to adjustment. Prospective bidders are urged to examine this timber and to make their own estimates of quantity and quality.

### **BOND AND PAYMENT SCHEDULE:**

1. A bond in the amount of \$8,405.00 to insure faithful performance of the conditions of the contract will be deposited by the successful bidder within 21 days of the sale award.
2. Cutting in any sale or unit without the required advance payment would be considered a trespass.
3. Total payment must be paid in advance or according to the following schedule :
  - (a) Ten percent (10%) of the sale value must be paid within 21 days of the sale award.
  - (b) The 10% down payment will be credited towards the first unit cut.
  - (c) Payment for each of the following units must be made before cutting begins in that unit:

| PAYMENT UNIT NUMBER | PERCENT OF TOTAL SALE VALUE |
|---------------------|-----------------------------|
| 01                  | 5.9%                        |
| 02                  | 6.1%                        |
| 03                  | 9.4%                        |
| 04                  | 10.0%                       |
| 05                  | 3.4%                        |
| 06                  | 5.1%                        |
| 07                  | 6.1%                        |
| 08                  | 4.9%                        |
| 09                  | 10.7%                       |
| 10                  | 8.0%                        |
| 11                  | 10.0%                       |
| 12                  | 1.2%                        |
| 13                  | 2.7%                        |
| 14                  | 2.6%                        |
| 15                  | 4.5%                        |
| 16                  | 5.6%                        |
| 17                  | 3.8%                        |

4. If no cutting takes place, the 10% down payment will not be refunded.
5. Operations on the contract issued will terminate on 08/31/2026.

## SALE STATISTICS

Volumes were calculated in cubic feet using the Michigan taper model. Cubic foot volume includes all wood inside bark for the product indicated. For display purposes, cubic feet were converted to cords and MBF using a simple conversion factor, e.g. 79 cubic feet per cord and 185 cubic feet per MBF. The cubic foot volumes are precise; the cords and MBF volumes are not. Cubic foot volume cannot be directly converted to cords or boards with precision.

## **SALE VOLUMES**

The total estimated sale volume may not equal the sum of the species/products due to the nature of statistical calculations associated with double sampling methodology.

| VOLUME           |             |               | STATISTICAL RANGE IN CORDS |         |
|------------------|-------------|---------------|----------------------------|---------|
| TOTAL CUBIC FEET | TOTAL CORDS | PERCENT ERROR | MINIMUM                    | MAXIMUM |
| 615,102          | 7,786       | 3.12%         | 7,543                      | 8,030   |

## **VDU VOLUMES**

A VDU is a Volume Determination Unit. Volumes and their associated statistics are calculated at the VDU level and summarized to the sale level. There is often a one to one relationship between a VDU and a Payment Unit, but not always, depending on the cruise design. Refer to the VDU TO PAYMENT UNIT table.

|               | VOLUME           |              |               | RANGE IN CORDS |              |
|---------------|------------------|--------------|---------------|----------------|--------------|
| VDU           | TOTAL CUBIC FEET | TOTAL CORDS  | PERCENT ERROR | MINIMUM        | MAXIMUM      |
| 1             | 125,002          | 1,582        | 9.44%         | 1,433          | 1,732        |
| 2             | 69,871           | 884          | 10.21%        | 794            | 975          |
| 3             | 109,947          | 1,392        | 6.59%         | 1,300          | 1,484        |
| 4             | 116,899          | 1,480        | 5.96%         | 1,392          | 1,568        |
| 5             | 98,414           | 1,246        | 6.52%         | 1,165          | 1,327        |
| 6             | 48,519           | 614          | 5.23%         | 582            | 646          |
| 7             | 41,373           | 524          | 13.18%        | 455            | 593          |
| 8             | 5,075            | 64           | 23.34%        | 49             | 79           |
| <b>TOTAL:</b> | <b>615,102</b>   | <b>7,786</b> |               | <b>7,169</b>   | <b>8,403</b> |

**VDU TO PAYMENT UNIT**

When a VDU is associated with more than one Payment Unit (PU), the VDU volumes are assigned to the PU based on acres of the VDU within the PU.

| VDU           | VDU ACRES    | PU | PU ACRES     |
|---------------|--------------|----|--------------|
| 1             | 116.7        | 2  | 19.5         |
|               |              | 3  | 30.0         |
|               |              | 4  | 32.1         |
|               |              | 7  | 19.5         |
|               |              | 8  | 15.6         |
| 2             | 58.8         | 1  | 24.1         |
|               |              | 5  | 13.9         |
|               |              | 6  | 20.8         |
| 3             | 61.7         | 12 | 6.8          |
|               |              | 13 | 15.2         |
|               |              | 14 | 14.7         |
|               |              | 15 | 25.0         |
|               |              | 9  | 33.0         |
| 4             | 58.0         | 10 | 25.0         |
|               |              | 11 | 53.8         |
| 5             | 53.8         | 16 | 22.4         |
| 6             | 22.4         | 17 | 21.0         |
| 7             | 21.0         | 11 | 3.8          |
| 8             | 3.8          |    |              |
| <b>TOTAL:</b> | <b>396.2</b> |    | <b>396.2</b> |

**DESCRIPTION OF TIMBER BY PAYMENT UNIT (PU)**

| PU                  | MARKET GROUP        | PRODUCT                               | QUANTITY                              | UNIT                                  | ACRES | ADVERTISE PRICE |      |             |      |             |
|---------------------|---------------------|---------------------------------------|---------------------------------------|---------------------------------------|-------|-----------------|------|-------------|------|-------------|
| 1                   | Beech               | Sawtimber<br><br><br><br><br>Pulpwood | 5.5                                   | MBF                                   | 24.1  | \$9,976.30      |      |             |      |             |
|                     | Red Maple           |                                       | 61.2                                  | MBF                                   |       |                 |      |             |      |             |
|                     | Sugar Maple         |                                       | 9.2                                   | MBF                                   |       |                 |      |             |      |             |
|                     | White Spruce        |                                       | 3.2                                   | MBF                                   |       |                 |      |             |      |             |
|                     | Balsam Fir          |                                       | 4                                     | Cords                                 |       |                 |      |             |      |             |
|                     | Mixed Hardwood      |                                       | 98                                    | Cords                                 |       |                 |      |             |      |             |
|                     | <i>Beech</i>        |                                       | 22                                    | <i>Cords</i>                          |       |                 |      |             |      |             |
|                     | <i>Red Maple</i>    |                                       | 41                                    | <i>Cords</i>                          |       |                 |      |             |      |             |
|                     | <i>Sugar Maple</i>  |                                       | 35                                    | <i>Cords</i>                          |       |                 |      |             |      |             |
|                     | Mixed Spruce        |                                       | 2                                     | Cords                                 |       |                 |      |             |      |             |
|                     | <i>White Spruce</i> |                                       | 2                                     | <i>Cords</i>                          |       |                 |      |             |      |             |
| 2                   | Beech               | Sawtimber<br><br><br><br><br>Pulpwood | 4.0                                   | MBF                                   | 19.5  | \$10,248.25     |      |             |      |             |
|                     | Red Maple           |                                       | 23.2                                  | MBF                                   |       |                 |      |             |      |             |
|                     | Sugar Maple         |                                       | 31.8                                  | MBF                                   |       |                 |      |             |      |             |
|                     | Balsam Fir          |                                       | 3                                     | Cords                                 |       |                 |      |             |      |             |
|                     | Mixed Hardwood      |                                       | 114                                   | Cords                                 |       |                 |      |             |      |             |
|                     | <i>Beech</i>        |                                       | 9                                     | <i>Cords</i>                          |       |                 |      |             |      |             |
|                     | <i>Red Maple</i>    |                                       | 48                                    | <i>Cords</i>                          |       |                 |      |             |      |             |
|                     | <i>Sugar Maple</i>  |                                       | 57                                    | <i>Cords</i>                          |       |                 |      |             |      |             |
|                     | 3                   |                                       | Beech                                 | Sawtimber<br><br><br><br><br>Pulpwood |       |                 | 6.2  | MBF         | 30.0 | \$15,741.90 |
|                     |                     |                                       | Red Maple                             |                                       |       |                 | 35.7 | MBF         |      |             |
|                     |                     |                                       | Sugar Maple                           |                                       |       |                 | 48.9 | MBF         |      |             |
| Balsam Fir          |                     | 4                                     | Cords                                 |                                       |       |                 |      |             |      |             |
| Mixed Hardwood      |                     | 174                                   | Cords                                 |                                       |       |                 |      |             |      |             |
| <i>Beech</i>        |                     | 13                                    | <i>Cords</i>                          |                                       |       |                 |      |             |      |             |
| <i>Red Maple</i>    |                     | 73                                    | <i>Cords</i>                          |                                       |       |                 |      |             |      |             |
| <i>Sugar Maple</i>  |                     | 88                                    | <i>Cords</i>                          |                                       |       |                 |      |             |      |             |
| 4                   |                     | Beech                                 | Sawtimber<br><br><br><br><br>Pulpwood |                                       | 6.8   | MBF             | 32.1 | \$16,819.70 |      |             |
|                     |                     | Red Maple                             |                                       |                                       | 38.2  | MBF             |      |             |      |             |
|                     |                     | Sugar Maple                           |                                       |                                       | 52.2  | MBF             |      |             |      |             |
|                     | Balsam Fir          | 4                                     |                                       | Cords                                 |       |                 |      |             |      |             |
|                     | Mixed Hardwood      | 186                                   |                                       | Cords                                 |       |                 |      |             |      |             |
|                     | <i>Beech</i>        | 14                                    |                                       | <i>Cords</i>                          |       |                 |      |             |      |             |
|                     | <i>Red Maple</i>    | 78                                    |                                       | <i>Cords</i>                          |       |                 |      |             |      |             |
|                     | <i>Sugar Maple</i>  | 94                                    |                                       | <i>Cords</i>                          |       |                 |      |             |      |             |
|                     | 5                   | Beech                                 |                                       | Sawtimber<br><br><br><br><br>Pulpwood | 3.2   | MBF             |      |             | 13.9 | \$5,730.65  |
|                     |                     | Red Maple                             |                                       |                                       | 35.2  | MBF             |      |             |      |             |
|                     |                     | Sugar Maple                           |                                       |                                       | 5.3   | MBF             |      |             |      |             |
| White Spruce        |                     | 1.8                                   | MBF                                   |                                       |       |                 |      |             |      |             |
| Balsam Fir          |                     | 2                                     | Cords                                 |                                       |       |                 |      |             |      |             |
| Mixed Hardwood      |                     | 56                                    | Cords                                 |                                       |       |                 |      |             |      |             |
| <i>Beech</i>        |                     | 13                                    | <i>Cords</i>                          |                                       |       |                 |      |             |      |             |
| <i>Red Maple</i>    |                     | 23                                    | <i>Cords</i>                          |                                       |       |                 |      |             |      |             |
| <i>Sugar Maple</i>  |                     | 20                                    | <i>Cords</i>                          |                                       |       |                 |      |             |      |             |
| Mixed Spruce        |                     | 1                                     | Cords                                 |                                       |       |                 |      |             |      |             |
| <i>White Spruce</i> |                     | 1                                     | <i>Cords</i>                          |                                       |       |                 |      |             |      |             |
| 6                   | Beech               | Sawtimber<br><br><br><br><br>Pulpwood | 4.7                                   | MBF                                   | 20.8  | \$8,597.45      |      |             |      |             |
|                     | Red Maple           |                                       | 52.7                                  | MBF                                   |       |                 |      |             |      |             |
|                     | Sugar Maple         |                                       | 8.0                                   | MBF                                   |       |                 |      |             |      |             |
|                     | White Spruce        |                                       | 2.7                                   | MBF                                   |       |                 |      |             |      |             |
|                     | Balsam Fir          |                                       | 3                                     | Cords                                 |       |                 |      |             |      |             |
|                     | Mixed Hardwood      |                                       | 84                                    | Cords                                 |       |                 |      |             |      |             |
|                     | <i>Beech</i>        |                                       | 19                                    | <i>Cords</i>                          |       |                 |      |             |      |             |
|                     | <i>Red Maple</i>    |                                       | 35                                    | <i>Cords</i>                          |       |                 |      |             |      |             |
|                     | <i>Sugar Maple</i>  |                                       | 30                                    | <i>Cords</i>                          |       |                 |      |             |      |             |
|                     | Mixed Spruce        |                                       | 2                                     | Cords                                 |       |                 |      |             |      |             |



## DESCRIPTION OF TIMBER BY PAYMENT UNIT (PU), CON'T

| PU      | MARKET GROUP   | PRODUCT                       | QUANTITY   | UNIT   | ACRES | ADVERTISE PRICE |
|---------|--|-------------------------------|--|--|-------|-----------------|
| 6 con't | <i>White Spruce</i>  | <i>Pulpwood</i>               | 2  | <i>Cords</i>   |       |                 |
| 7       | Beech<br>Red Maple<br>Sugar Maple<br>Balsam Fir<br>Mixed Hardwood<br><i>Beech</i><br><i>Red Maple</i><br><i>Sugar Maple</i>  | Sawtimber<br><br><br>Pulpwood | 4.0<br>23.2<br>31.8<br>3<br>114<br>9<br>48<br>57   | MBF<br>MBF<br>MBF<br>Cords<br>Cords<br><i>Cords</i><br><i>Cords</i><br><i>Cords</i>  | 19.5  | \$10,248.25     |
| 8       | Beech<br>Red Maple<br>Sugar Maple<br>Balsam Fir<br>Mixed Hardwood<br><i>Beech</i><br><i>Red Maple</i><br><i>Sugar Maple</i>  | Sawtimber<br><br><br>Pulpwood | 3.2<br>18.6<br>25.4<br>2<br>91<br>7<br>38<br>46  | MBF<br>MBF<br>MBF<br>Cords<br>Cords<br><i>Cords</i><br><i>Cords</i><br><i>Cords</i>  | 15.6  | \$8,188.75      |
| 9       | Black Cherry<br>Red Maple<br>Sugar Maple<br>Mixed Hardwood<br><i>Beech</i><br><i>Black Ash</i><br><i>Black Cherry</i><br><i>Red Maple</i><br><i>Sugar Maple</i><br>Mixed Spruce<br><i>Black Spruce</i>   | Sawtimber<br><br><br>Pulpwood | 2.5<br>48.1<br>25.3<br>633<br>241<br>3<br>2<br>280<br>107<br>5<br>5                                | MBF<br>MBF<br>MBF<br>Cords<br><i>Cords</i><br><i>Cords</i><br><i>Cords</i><br><i>Cords</i><br><i>Cords</i><br>Cords<br><i>Cords</i>  | 33.0  | \$17,804.20     |
| 10      | Black Cherry<br>Red Maple<br>Sugar Maple<br>Mixed Hardwood<br><i>Beech</i><br><i>Black Ash</i><br><i>Black Cherry</i><br><i>Red Maple</i><br><i>Sugar Maple</i><br>Mixed Spruce<br><i>Black Spruce</i>   | Sawtimber<br><br><br>Pulpwood | 1.9<br>36.4<br>19.1<br>478<br>182<br>2<br>2<br>212<br>80<br>3<br>3                                 | MBF<br>MBF<br>MBF<br>Cords<br><i>Cords</i><br><i>Cords</i><br><i>Cords</i><br><i>Cords</i><br><i>Cords</i><br>Cords<br><i>Cords</i>  | 25.0  | \$13,444.45     |
| 11      | Red Maple<br>Sugar Maple<br>Yellow Birch<br>Balsam Fir<br>Mixed Hardwood<br><i>Beech</i><br><i>Black Ash</i><br><i>Black Cherry</i><br><i>Red Maple</i><br><i>Sugar Maple</i><br><i>Yellow Birch</i><br>Mixed Spruce<br><i>Black Spruce</i><br>N. White Cedar<br>Quaking Aspen | Sawtimber<br><br><br>Pulpwood | 9.3<br>10.6<br>8.6<br>164<br>782<br>19<br>145<br>3<br>366<br>103<br>146<br>151<br>151<br>115<br>21 | MBF<br>MBF<br>MBF<br>Cords<br>Cords<br><i>Cords</i><br><i>Cords</i><br><i>Cords</i><br><i>Cords</i><br><i>Cords</i><br><i>Cords</i><br>Cords<br><i>Cords</i><br>Cords<br>Cords | 57.6  | \$16,810.85     |
| 12      | Red Maple  | Sawtimber                     | 3.9  | MBF  | 6.8   | \$2,051.70      |

**DESCRIPTION OF TIMBER BY PAYMENT UNIT (PU), CON'T**

| PU                  | MARKET GROUP        | PRODUCT   | QUANTITY     | UNIT         | ACRES | ADVERTISE PRICE |
|---------------------|---------------------|-----------|--------------|--------------|-------|-----------------|
| 12 con't            | Yellow Birch        | Sawtimber | 0.8          | MBF          |       |                 |
|                     | Balsam Fir          | Pulpwood  | 7            | Cords        |       |                 |
|                     | Mixed Hardwood      |           | 118          | Cords        |       |                 |
|                     | <i>Basswood</i>     |           | 1            | <i>Cords</i> |       |                 |
|                     | <i>Beech</i>        |           | 4            | <i>Cords</i> |       |                 |
|                     | <i>Black Ash</i>    |           | 16           | <i>Cords</i> |       |                 |
|                     | <i>Red Maple</i>    |           | 75           | <i>Cords</i> |       |                 |
|                     | <i>Sugar Maple</i>  |           | 1            | <i>Cords</i> |       |                 |
|                     | <i>Yellow Birch</i> |           | 21           | <i>Cords</i> |       |                 |
|                     | Mixed Spruce        |           | 15           | Cords        |       |                 |
|                     | <i>Black Spruce</i> |           | 15           | <i>Cords</i> |       |                 |
| 13                  | Red Maple           | Sawtimber | 8.7          | MBF          | 15.2  | \$4,573.40      |
|                     | Yellow Birch        |           | 1.8          | MBF          |       |                 |
|                     | Balsam Fir          | Pulpwood  | 16           | Cords        |       |                 |
|                     | Mixed Hardwood      |           | 263          | Cords        |       |                 |
|                     | <i>Basswood</i>     |           | 2            | <i>Cords</i> |       |                 |
|                     | <i>Beech</i>        |           | 8            | <i>Cords</i> |       |                 |
|                     | <i>Black Ash</i>    |           | 36           | <i>Cords</i> |       |                 |
|                     | <i>Red Maple</i>    |           | 168          | <i>Cords</i> |       |                 |
|                     | <i>Sugar Maple</i>  |           | 3            | <i>Cords</i> |       |                 |
|                     | <i>Yellow Birch</i> |           | 46           | <i>Cords</i> |       |                 |
|                     | Mixed Spruce        |           | 33           | Cords        |       |                 |
| <i>Black Spruce</i> |                     | 33        | <i>Cords</i> |              |       |                 |
| 14                  | Red Maple           | Sawtimber | 8.5          | MBF          | 14.7  | \$4,437.60      |
|                     | Yellow Birch        |           | 1.8          | MBF          |       |                 |
|                     | Balsam Fir          | Pulpwood  | 15           | Cords        |       |                 |
|                     | Mixed Hardwood      |           | 255          | Cords        |       |                 |
|                     | <i>Basswood</i>     |           | 2            | <i>Cords</i> |       |                 |
|                     | <i>Beech</i>        |           | 8            | <i>Cords</i> |       |                 |
|                     | <i>Black Ash</i>    |           | 35           | <i>Cords</i> |       |                 |
|                     | <i>Red Maple</i>    |           | 162          | <i>Cords</i> |       |                 |
|                     | <i>Sugar Maple</i>  |           | 3            | <i>Cords</i> |       |                 |
|                     | <i>Yellow Birch</i> |           | 45           | <i>Cords</i> |       |                 |
|                     | Mixed Spruce        |           | 32           | Cords        |       |                 |
| <i>Black Spruce</i> |                     | 32        | <i>Cords</i> |              |       |                 |
| 15                  | Red Maple           | Sawtimber | 14.4         | MBF          | 25.0  | \$7,531.35      |
|                     | Yellow Birch        |           | 3.0          | MBF          |       |                 |
|                     | Balsam Fir          | Pulpwood  | 26           | Cords        |       |                 |
|                     | Mixed Hardwood      |           | 432          | Cords        |       |                 |
|                     | <i>Basswood</i>     |           | 3            | <i>Cords</i> |       |                 |
|                     | <i>Beech</i>        |           | 13           | <i>Cords</i> |       |                 |
|                     | <i>Black Ash</i>    |           | 59           | <i>Cords</i> |       |                 |
|                     | <i>Red Maple</i>    |           | 276          | <i>Cords</i> |       |                 |
|                     | <i>Sugar Maple</i>  |           | 5            | <i>Cords</i> |       |                 |
|                     | <i>Yellow Birch</i> |           | 76           | <i>Cords</i> |       |                 |
|                     | Mixed Spruce        |           | 55           | Cords        |       |                 |
| <i>Black Spruce</i> |                     | 55        | <i>Cords</i> |              |       |                 |
| 16                  | Red Maple           | Sawtimber | 31.1         | MBF          | 22.4  | \$9,421.35      |
|                     | Yellow Birch        |           | 3.8          | MBF          |       |                 |
|                     | Balsam Fir          | Pulpwood  | 12           | Cords        |       |                 |
|                     | Mixed Hardwood      |           | 481          | Cords        |       |                 |
|                     | <i>Beech</i>        |           | 149          | <i>Cords</i> |       |                 |
|                     | <i>Black Ash</i>    |           | 23           | <i>Cords</i> |       |                 |
|                     | <i>Red Maple</i>    |           | 245          | <i>Cords</i> |       |                 |
|                     | <i>Yellow Birch</i> |           | 64           | <i>Cords</i> |       |                 |
|                     | Mixed Spruce        |           | 20           | Cords        |       |                 |

**DESCRIPTION OF TIMBER BY PAYMENT UNIT (PU), CON'T**

| PU       | MARKET GROUP        | PRODUCT         | QUANTITY | UNIT         | ACRES | ADVERTISE PRICE |
|----------|---------------------|-----------------|----------|--------------|-------|-----------------|
| 16 con't | <i>Black Spruce</i> | <i>Pulpwood</i> | 20       | <i>Cords</i> |       |                 |
| 17       | Sugar Maple         | Sawtimber       | 2.9      | MBF          | 21.0  | \$6,469.45      |
|          | Balsam Fir          | Pulpwood        | 71       | Cords        |       |                 |
|          | Mixed Hardwood      |                 | 387      | Cords        |       |                 |
|          | <i>Black Ash</i>    |                 | 189      | <i>Cords</i> |       |                 |
|          | <i>Red Maple</i>    |                 | 39       | <i>Cords</i> |       |                 |
|          | <i>Sugar Maple</i>  |                 | 7        | <i>Cords</i> |       |                 |
|          | <i>Yellow Birch</i> |                 | 152      | <i>Cords</i> |       |                 |
|          | Mixed Spruce        |                 | 35       | Cords        |       |                 |
|          | <i>Black Spruce</i> |                 | 35       | <i>Cords</i> |       |                 |
|          | Quaking Aspen       |                 | 18       | Cords        |       |                 |
| TOTAL:   |                     |                 | 788.4    | MBF          |       |                 |
| TOTAL:   |                     |                 | 5,590    | Cords        |       |                 |

## Sale Specific Conditions & Requirements

**Sale Name: Mars Maple Landing**

**Sale Number: 32-004-21 Seq#: 1**

### 1 - Sale Area

#### 1.2 - Boundaries

##### 1.2.1 - Painted boundaries (9/19)

The sale boundary and Payment Unit boundaries are marked and identified by blue, red and yellow paint. Exterior sale boundary lines against private property are marked with blue paint. Exterior sale boundary lines against state are marked with red paint. Interior Payment Unit boundaries are marked with yellow paint. The painted boundary line trees are not Included Timber and are to be protected unless marked with orange paint.

### 2 - Timber Specifications

#### 2.1 - Included Timber

##### 2.1.1 - Clearcut unit(s) with unmerchantable trees (6/14)

Within Payment Unit(s) 11-17, cut all trees that are two (2) inches or more at DBH except Payment Unit(s) 11, leave hemlock, cedar, and yellow birch unless they are marked with orange paint.

Payment Unit(s) 12 and 14, leave hemlock, cedar, and yellow birch.

Payment Unit(s) 13 and 15, leave hemlock, cedar, yellow birch that are greater than 24" stump diameter, and any trees marked in green paint.

Payment Unit(s) 16 and 17, leave hemlock, cedar, white pine and any trees marked with green paint.

##### 2.1.2 - Clearcut unit(s) w/o unmerchantable trees (8/11)

Within Payment Unit(s) 9-10, cut all trees which meet minimum piece specifications in 2.2 Utilization except Payment Unit(s) 9-10, leave black cherry, hemlock, cedar, yellow birch and any beech resistant to beech bark disease that is greater than 24" stump diameter.

##### 2.1.3 - Cut tree marked unit(s) (12/08)

Within Payment Unit(s) 1-8, all trees are designated for cutting when marked with orange paint above and below stump height, regardless of merchantability.

### 3 - Payments

#### 3.4 - Damaged Timber

##### 3.4.1 - Damaged timber (7/16)

General Condition and Requirement 3.4 Damaged Timber, defines liquidated damages for undesignated live merchantable trees which are cut or injured. In addition, extreme care should be taken to avoid damage to tree seedlings and saplings.

Within the sale area, if more than 10% of the tree seedlings or saplings (1/4" to 4.5" DBH) within a specified portion of the sale area are damaged, liquidated damages will be assessed at \$200 per acre for all acreage within that specified portion of the sale area that was damaged.

No damage is acceptable to undesignated live merchantable trees. Within the sale area, if more than 5% of trees (> 4.5" DBH) within a specified area of the sale are damaged, liquidated damages will be assessed for all trees damaged. Rates will be in accordance with General Condition and Requirement 3.4 Damaged.

### 4 - Transportation

#### 4.1 - Construction

##### 4.1.3 - Slash and earthen piles (8/04)

Piles or windrows of earth along roads and landings that have been widened or constructed shall be leveled. Slash from road maintenance or construction, including stumps, shall be scattered, and not left in windrows, and kept a minimum of 10 feet back from the road edge.

##### 4.1.4 - Timber removed for construction (12/09)

Trees cut or damaged in the process of pre-approved road, landing or skid trail construction will be decked in an area separate from other Designated Timber and not removed until measured by the sale administrator. Payment will be made at the specified Purchase Unit Price.

#### 4.1.6 - Road construction (1/09)

Construction of new roads or improvements of existing roads shall be done in such a way as to minimize the environmental and visual impacts. Merchantable trees shall be cut and utilized unless otherwise directed. Non-merchantable trees shall be severed and laid flat on the ground. Slash shall be scattered, and not left in windrows and kept a minimum of 10 feet back from the road edge. Stumps shall be set upright, not left on edge, and be moved at least 10 feet away from the road edge. Disturbed soil shall be feathered into the woods and not left in berms or windrows.

#### 4.1.7 - Road closure (10/11)

All new roads built into the sale must be blocked to vehicle traffic upon completion of the sale. Overgrown roads that are reopened shall be considered new roads. In general, this will require constructing a four (4') foot high berm of stumps and logs covered with earth. Contact the sale administrator for specific details of design and placement.

#### 4.1.8 - Road work (1) (8/07)

The following road work is required: 300 yards of gravel will be spread in holes on state forest roads. Contact the sale administrator for the specifics on where to put the gravel.

### 4.2 - Maintenance

#### 4.2.2 - Fill material (4/07)

To maintain roads, fill material may be needed in areas where "holes" exist or may be expected to develop. This fill material should be placed before trucking begins. Contact the sale administrator regarding the availability of onsite sand or gravel from adjacent State-owned lands.

#### 4.2.4 - Grading (10/16)

For completion of the sale, state forest roads must be graded. In general, this will require a road grader or bull dozer to shape up the roads after forest products have been hauled off site. This includes cleaning of drainage areas, grading, crowning and filling with gravel, if necessary. The grading equipment to be used must be approved by the Unit Manager or his/her representative.

## 5 - Operations

### 5.1 - Notification

#### 5.1.1 - Pre-sale conference (10/16)

A pre-sale conference between the Purchaser and sale administrator is required prior to beginning any operations. The Unit Manager or his/her representative must be contacted at least 3 days in advance to schedule the conference.

### 5.2 - Conduct of Operations

#### 5.2.1 - Slash

##### 5.2.1.11 - Slash for reforestation (3/21)

To facilitate reforestation, the Sale Area shall be left with slash evenly distributed. Bunched tops within the cutting area shall be broken up and scattered. Stumps shall be cut low to the ground. Processing sites shall not be left with a compacted layer of slash; tops from these sites shall be hauled back into the cut area and scattered.

#### 5.2.2 - Hazard Trees/Snags

##### 5.2.2.1 - Den trees (10/16)

Obvious hollow and/or den trees shall be protected and left standing unless they are a safety hazard.

#### 5.2.3 - Operating Restrictions

##### 5.2.3.1 - Operating restrictions (9/11)

Within Payment Unit(s) 11-15 and 17, unless changed by written agreement, cutting, skidding, and hauling are. This restriction is because of wet access and wet payment units.

##### 5.2.3.3 - Bark slippage restriction (3/09)

Within Payment Unit(s) 1-8, unless changed by written agreement, cutting and skidding are not permitted during the period of April 15 to July 15. This restriction is because of bark slippage.

#### 5.2.17 - Timber Mats and Interlocking Composite Mats (10/20)

Some roads or skid trails may require extra protection such as that afforded by timber mats, interlocking composite mats, or another approved system. If available, mats may be borrowed from the DNR. A Timber Sale Contract Supplement will be used to document the Purchaser's use of the DNR's mats. Contact the sale administrator regarding availability and pick-up. Timber mats are available from various field offices. Composite mats are only available from the Grayling field office and the Marquette ICC. The Purchaser is responsible for picking up and hauling the mats to and from the site. The composite mats will require DNR staff onsite for installation and removal. Contact the sale administrator to schedule at least 30 days before desired install/removal date. All mats must be cleaned prior to drop off. This may include, but is not limited to, power washing and brushing to remove mud and debris. A charge of \$700.00 per timber mat and \$2,000.00 per composite mat will be assessed for all damaged or non-returned mats. Damage for the crane/timber mats is defined as three or more broken cants. Damage for the composite mats is defined as cracked or broken mats.

#### 5.2.22 - Operating Caution

##### 5.2.22.1 - Operating caution (6/11)

It is recommended, but not required, that within Payment Unit(s)

7-10, and 16, cutting, skidding, and hauling occur during dry summer or frozen winter conditions. The reason for the recommendation is because of wet road access or wet payment units.

#### 5.2.32 - Decking/landing restoration (9/13)

All decking and landing areas must have the surface area restored to a condition equal to or better than before. This is to ensure the proper regeneration of the stand. Wood debris, chips and "cookies" from trimmings must be removed or scattered away from landing and loading areas and may not be windrowed on the edge.

#### 5.2.38 - No decking against live trees (2/04)

Cut products may not be decked against unmarked or designated leave trees.

### 5.4 - Soil Protection

#### 5.4.1 - Rutting restriction, general (7/16)

Operations are to cease immediately if equipment and weather conditions result in rutting of roads which is 12 inches or greater in depth and 50 feet in length. The Unit Manager or his/her representative may restrict hauling and/or skidding if ruts exceed the specified depth. With the Unit Manager or his/her representative's approval, the Purchaser may return to the area when the risk of rutting has decreased.

### 5.8 - Protection of Endangered Species

#### 5.8.5 - Protection of raptor nests (3/13)

All trees with raptor nests will be protected if found during harvesting operations. Notification will be made to the Unit Manager or his/her representative who will notify the Wildlife Biologist so an on-site evaluation and recommendation can be made, if necessary.

## 6 - Safety and Fire Prevention

### 6.2 - Signing

#### 6.2.1 - Road posting (10/20)

The Purchaser is responsible for posting and maintaining caution signs on Ladoga Road prior to beginning operations. The road must be posted at appropriate distances from the sale area to warn of logging activity and truck traffic. Signs must be removed when harvest operations are suspended or completed. The Purchaser will provide these signs.

## 7 - Other Conditions

### 7.5 - Loss

#### 7.5.1 - Deteriorating timber (7/09)

The sale area has received damage from Spruce Budworm and Emerald Ash Borer. The Purchaser should harvest the wood as soon as possible. The Department of Natural Resources is held free of responsibility of any further damage or

deterioration due to delay in harvesting.



# TIMBER SALE MAP

This information provided by authority of Part 525, 1994 PA 451, as amended.

|             |      |
|-------------|------|
| Sale Number | Year |
| 32-004      | 21   |

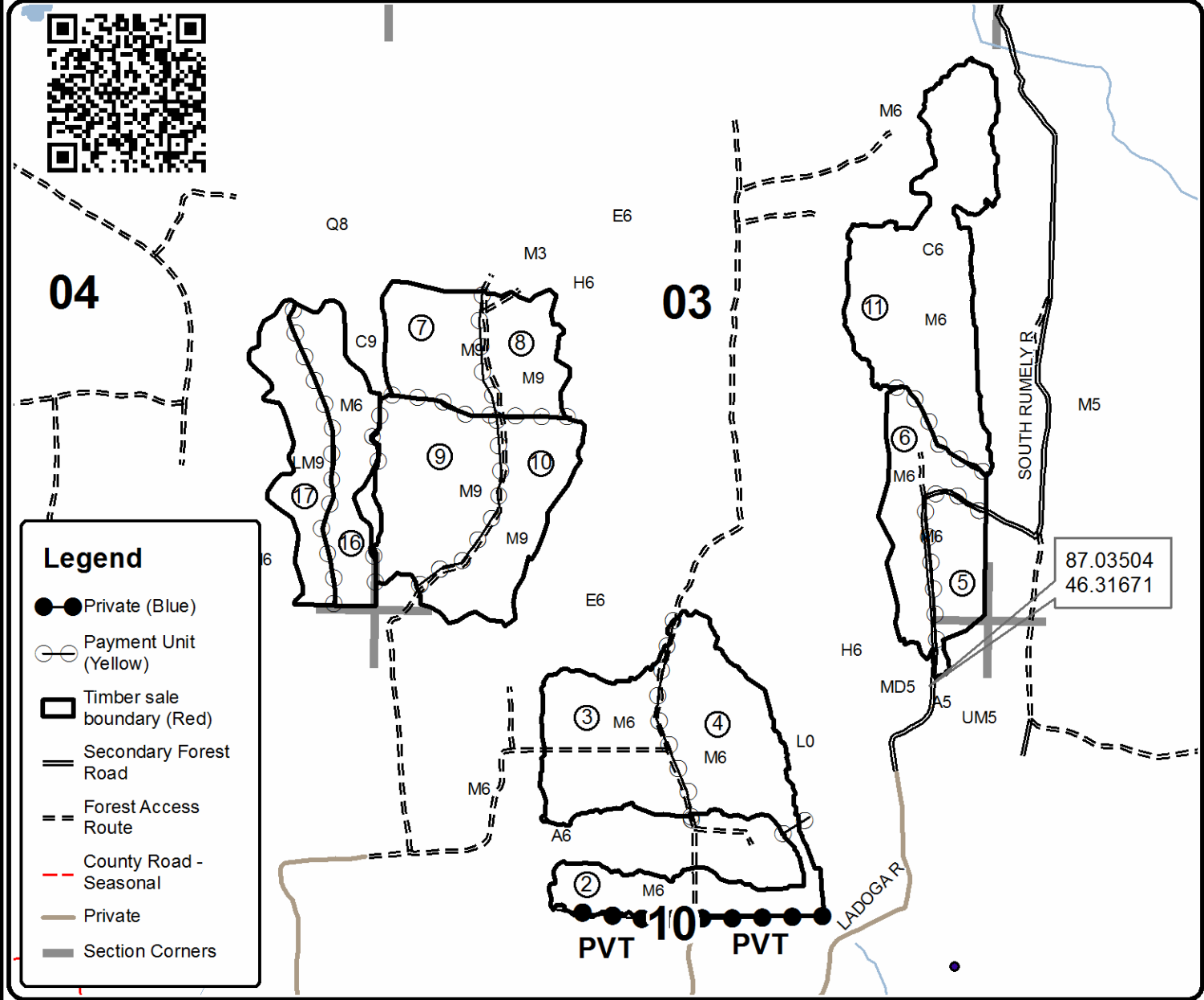
|                            |        |           |         |      |    |
|----------------------------|--------|-----------|---------|------|----|
| Forest Management Unit     | County | Mapped By | Date    | Page | of |
| Gwinn Management Unit      | Alger  | Holodnick | 4/14/21 | 1    | 2  |
| Cruised By                 |        |           |         |      |    |
| Holodnick/Gould/Contractor |        |           |         |      |    |

|          |       |                               |          |
|----------|-------|-------------------------------|----------|
| Township | Range | Section(s) and Subdivision(s) | Scale    |
| 45N      | 22W   | Sections 2,3,4,10, 15, and 16 | 1:15,840 |

| Cover Type        |                      |                         |                   | Density                     |                        |
|-------------------|----------------------|-------------------------|-------------------|-----------------------------|------------------------|
| A = Aspen         | H = Hemlock          | N = Marsh               | U = Upland Brush  | 0 = Non Stocked             | 5 = Pole Timber Medium |
| B = Paper Birch   | J = Jack Pine        | O = Oak                 | UM = Upland Mixed | 1 = Seedling Sapling Poor   | 6 = Pole Timber Well   |
| C = Cedar         | L = Lowland Brush    | P = Lowland Poplar      | V = Bog or Marsh  | 2 = Seedling Sapling Medium | 7 = Saw Timber Poor    |
| D = Tread Bog     | LM = Lowland Mixed   | Q = Mixed Swamp Conifer | W = White Pine    | 3 = Seedling Sapling Well   | 8 = Saw Timber Medium  |
| E = Swamp Hdwoods | M = Mpl, Bch, Brch   | R = Red Pine            | X = Non Stocked   | 4 = Pole Timber Poor        | 9 = Saw Timber Well    |
| F = Spruce Fir    | MC = Mixed Conifer   | S = Black Spruce        | Z = Water         |                             |                        |
| G = Grass         | MD = Mixed Deciduous | T = Tamarack            |                   |                             |                        |

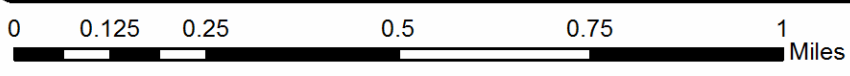
| PU | Acres | PU  | Acres |
|----|-------|-----|-------|
| 1) | 24.1  | 4)  | 32.1  |
| 2) | 19.5  | 5)  | 13.9  |
| 3) | 30    | 6)  | 20.8  |
|    |       | 7)  | 19.5  |
|    |       | 8)  | 15.6  |
|    |       | 9)  | 33    |
|    |       | 10) | 25    |
|    |       | 11) | 57.6  |
|    |       | 12) | 6.8   |
|    |       | 13) | 15.2  |
|    |       | 14) | 14.7  |
|    |       | 15) | 25    |
|    |       | 16) | 22.4  |
|    |       | 17) | 21    |

**Mars Maple Landing**  
 Compartment 101 & 102  
 396.2 Acres



**Legend**

- Private (Blue)
- Payment Unit (Yellow)
- ▭ Timber sale boundary (Red)
- ▬ Secondary Forest Road
- ▬ Forest Access Route
- ▬ County Road - Seasonal
- ▬ Private
- ▬ Section Corners







|             |      |
|-------------|------|
| Sale Number | Year |
| 32-004      | 21   |

# TIMBER SALE MAP

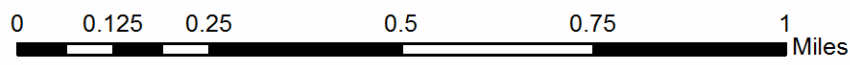
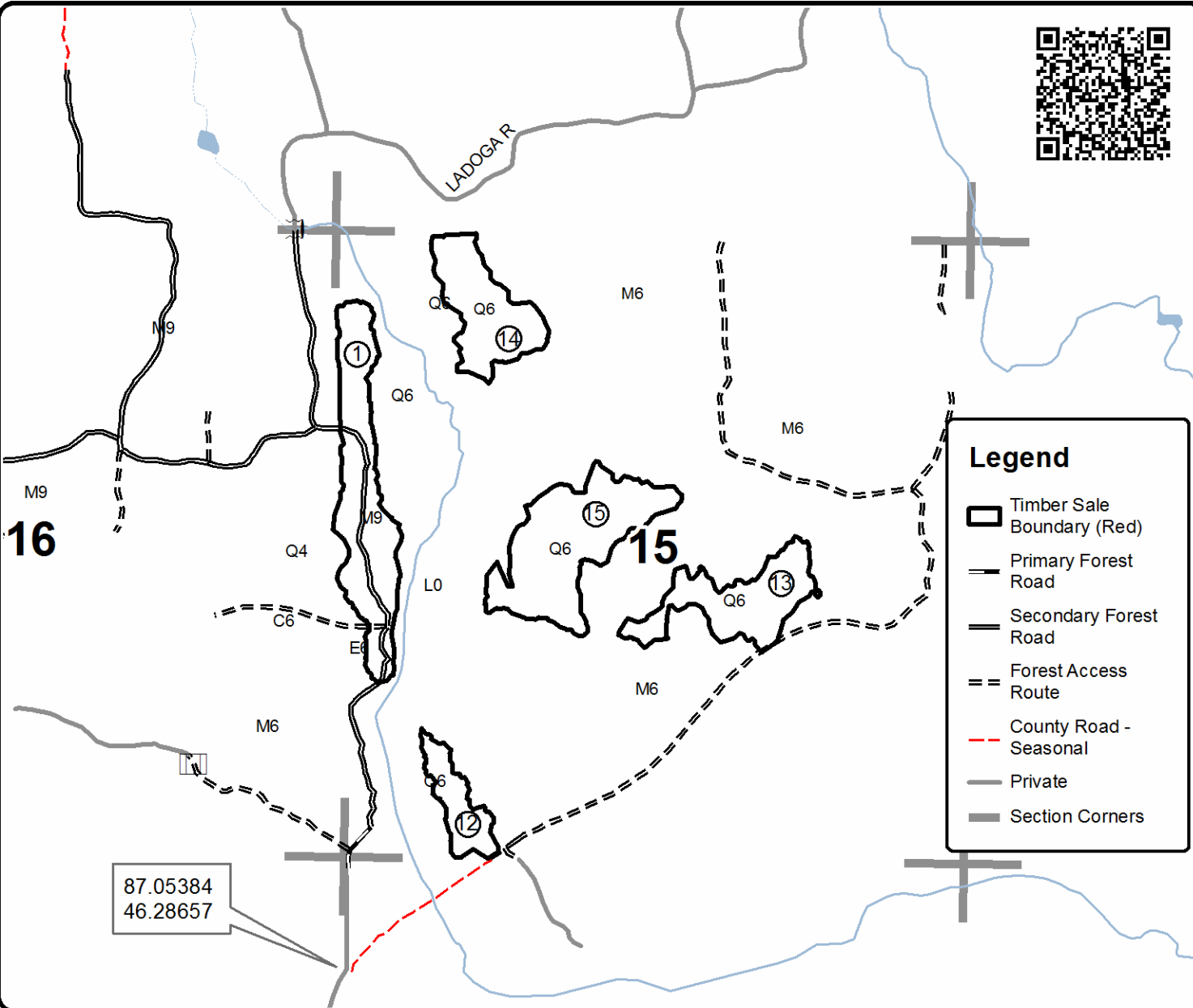
This information provided by authority of Part 525, 1994 PA 451, as amended.

|                        |        |                                 |          |      |    |
|------------------------|--------|---------------------------------|----------|------|----|
| Forest Management Unit | County | Mapped By                       | Date     | Page | of |
| Gwinn Management Unit  | Alger  | Holodnick                       | 4/14/21  | 2    | 2  |
| Township               | Range  | Section(s) and Subdivision(s)   | Scale    |      |    |
| 45N                    | 22W    | Sections 2, 3, 4, 10, 15 and 16 | 1:15,840 |      |    |

| Cover Type        |                      |                         |                   | Density                     |                        |
|-------------------|----------------------|-------------------------|-------------------|-----------------------------|------------------------|
| A = Aspen         | H = Hemlock          | N = Marsh               | U = Upland Brush  | 0 = Non Stocked             | 5 = Pole Timber Medium |
| B = Paper Birch   | J = Jack Pine        | O = Oak                 | UM = Upland Mixed | 1 = Seedling Sapling Poor   | 6 = Pole Timber Well   |
| C = Cedar         | L = Lowland Brush    | P = Lowland Poplar      | V = Bog or Marsh  | 2 = Seedling Sapling Medium | 7 = Saw Timber Poor    |
| D = Treed Bog     | LM = Lowland Mixed   | Q = Mixed Swamp Conifer | W = White Pine    | 3 = Seedling Sapling Well   | 8 = Saw Timber Medium  |
| E = Swamp Hdwoods | M = Mpl, Bch, Brch   | R = Red Pine            | X = Non Stocked   | 4 = Pole Timber Poor        | 9 = Saw Timber Well    |
| F = Spruce Fir    | MC = Mixed Conifer   | S = Black Spruce        | Z = Water         |                             |                        |
| G = Grass         | MD = Mixed Deciduous | T = Tamarack            |                   |                             |                        |

| PU | Acres | PU  | Acres |
|----|-------|-----|-------|
| 1) | 24.1  | 4)  | 32.1  |
| 2) | 19.5  | 5)  | 13.9  |
| 3) | 30    | 6)  | 20.8  |
|    |       | 7)  | 19.5  |
|    |       | 8)  | 15.6  |
|    |       | 9)  | 33    |
|    |       | 10) | 25    |
|    |       | 11) | 57.6  |
|    |       | 12) | 6.8   |
|    |       | 13) | 15.2  |
|    |       | 14) | 14.7  |
|    |       | 15) | 25    |
|    |       | 16) | 22.4  |
|    |       | 17) | 21    |

**Mars Maple Landing**  
 Compartment 101 & 102  
 396.2 Acres





## TIMBER SALE INFORMATION

### Horseshoe Hideaway (32-021-21)

T47N, R23W, SEC. 27; T47N, R23W, SEC. 28; T47N, R23W, SEC. 33; T47N, R23W, SEC. 34; T47N, R23W, SEC. 35.  
Marquette County (Advertised Price \$53,832.70)

SALE NOTE: All units of volume listed for this sale were estimated using the Inventory Manager computer program and the new Michigan taper model.

Review specification 4.1.8 regarding road work required.

A timber sale contract for this lump sum, sealed bid timber sale will be awarded to the responsible bidder offering the highest sealed bid price. All units of volume listed below were estimated using the Inventory Manager computer program and the new Michigan taper model. Bids must be at or above the following advertised price for each product and species:

| <u>PRODUCTS &amp; SPECIES</u> | <u>ESTIMATED UNITS*</u> | <u>ADVERTISED PRICE</u> |
|-------------------------------|-------------------------|-------------------------|
| Sawtimber                     |                         |                         |
| Black Cherry                  | 38.8 MBF                | \$ 75.00 / MBF          |
| Red Maple                     | 51.4 MBF                | \$ 110.00 / MBF         |
| Sugar Maple                   | 61.2 MBF                | \$ 196.00 / MBF         |
| Pulpwood                      |                         |                         |
| Balsam Fir                    | 26 Cords                | \$ 10.25 / Cord         |
| Mixed Aspen                   | 212 Cords               | \$ 17.40 / Cord         |
| Mixed Hardwood                | 2,493 Cords             | \$ 11.55 / Cord         |
| White Spruce                  | 47 Cords                | \$ 11.15 / Cord         |

\* The total volume is statistically estimated within plus (+) or minus (-) 5.30 percent. There are an estimated 3,129 cords on this timber sale, plus or minus 166 cords at the 95% confidence level. The estimated units are final and not subject to adjustment. Prospective bidders are urged to examine this timber and to make their own estimates of quantity and quality.

### **BOND AND PAYMENT SCHEDULE:**

1. A bond in the amount of \$5,383.00 to insure faithful performance of the conditions of the contract will be deposited by the successful bidder within 21 days of the sale award.
2. Cutting in any sale or unit without the required advance payment would be considered a trespass.
3. Total payment must be paid in advance or according to the following schedule :
  - (a) Ten percent (10%) of the sale value must be paid within 21 days of the sale award.
  - (b) The 10% down payment will be credited towards the first unit cut.
  - (c) Payment for each of the following units must be made before cutting begins in that unit:
 

| PAYMENT UNIT NUMBER | PERCENT OF TOTAL SALE VALUE |
|---------------------|-----------------------------|
| 01                  | 4.9%                        |
| 02                  | 5.7%                        |
| 03                  | 40.5%                       |
| 04                  | 48.9%                       |
4. If no cutting takes place, the 10% down payment will not be refunded.
5. Operations on the contract issued will terminate on 08/31/2025.

### **SALE STATISTICS**

Volumes were calculated in cubic feet using the Michigan taper model. Cubic foot volume includes all wood inside bark for the product indicated. For display purposes, cubic feet were converted to cords and MBF using a simple conversion factor, e.g. 79 cubic feet per cord and 185 cubic feet per MBF. The cubic foot volumes are precise; the cords and MBF volumes are not. Cubic foot volume cannot be directly converted to cords or boards with precision.

### **SALE VOLUMES**

The total estimated sale volume may not equal the sum of the species/products due to the nature of statistical calculations associated with double sampling methodology.

| VOLUME           |             | STATISTICAL RANGE IN CORDS |         |         |
|------------------|-------------|----------------------------|---------|---------|
| TOTAL CUBIC FEET | TOTAL CORDS | PERCENT ERROR              | MINIMUM | MAXIMUM |
| 247,171          | 3,129       | 5.30%                      | 2,963   | 3,295   |

**VDU VOLUMES**

A VDU is a Volume Determination Unit. Volumes and their associated statistics are calculated at the VDU level and summarized to the sale level. There is often a one to one relationship between a VDU and a Payment Unit, but not always, depending on the cruise design. Refer to the VDU TO PAYMENT UNIT table.

| VDU           | VOLUME           |              | PERCENT ERROR | RANGE IN CORDS |              |
|---------------|------------------|--------------|---------------|----------------|--------------|
|               | TOTAL CUBIC FEET | TOTAL CORDS  |               | MINIMUM        | MAXIMUM      |
| 1             | 215,568          | 2,729        | 5.92%         | 2,567          | 2,890        |
| 2             | 13,905           | 176          | 10.04%        | 158            | 194          |
| 3             | 17,698           | 224          | 15.12%        | 190            | 258          |
| <b>TOTAL:</b> | <b>247,171</b>   | <b>3,129</b> |               | <b>2,916</b>   | <b>3,342</b> |

**VDU TO PAYMENT UNIT**

When a VDU is associated with more than one Payment Unit (PU), the VDU volumes are assigned to the PU based on acres of the VDU within the PU.

| VDU           | VDU ACRES   | PU | PU ACRES    |
|---------------|-------------|----|-------------|
| 1             | 73.4        | 3  | 33.2        |
|               |             | 4  | 40.2        |
| 2             | 9.1         | 2  | 9.1         |
| 3             | 7.7         | 1  | 7.7         |
| <b>TOTAL:</b> | <b>90.2</b> |    | <b>90.2</b> |

**DESCRIPTION OF TIMBER BY PAYMENT UNIT (PU)**

| PU                   | MARKET GROUP         | PRODUCT   | QUANTITY     | UNIT         | ACRES | ADVERTISE PRICE |      |     |      |             |
|----------------------|----------------------|-----------|--------------|--------------|-------|-----------------|------|-----|------|-------------|
| 1                    | Balsam Fir           | Pulpwood  | 18           | Cords        | 7.7   | \$2,631.60      |      |     |      |             |
|                      | Mixed Aspen          |           | 12           | Cords        |       |                 |      |     |      |             |
|                      | <i>B. T. Aspen</i>   |           | 4            | <i>Cords</i> |       |                 |      |     |      |             |
|                      | <i>Quaking Aspen</i> |           | 8            | <i>Cords</i> |       |                 |      |     |      |             |
|                      | Mixed Hardwood       |           | 188          | Cords        |       |                 |      |     |      |             |
|                      | <i>Red Maple</i>     |           | 158          | <i>Cords</i> |       |                 |      |     |      |             |
|                      | <i>Sugar Maple</i>   |           | 30           | <i>Cords</i> |       |                 |      |     |      |             |
|                      | White Spruce         |           | 6            | Cords        |       |                 |      |     |      |             |
| 2                    | Red Maple            | Sawtimber | 4.5          | MBF          | 9.1   | \$3,062.25      |      |     |      |             |
|                      | Sugar Maple          |           | 4.2          | MBF          |       |                 |      |     |      |             |
|                      | Mixed Hardwood       | Pulpwood  | 151          | Cords        |       |                 |      |     |      |             |
|                      | <i>Red Maple</i>     |           | 48           | <i>Cords</i> |       |                 |      |     |      |             |
|                      | <i>Sugar Maple</i>   |           | 103          | <i>Cords</i> |       |                 |      |     |      |             |
| 3                    | Black Cherry         | Sawtimber | 17.6         | MBF          | 33.2  | \$21,777.35     |      |     |      |             |
|                      | Red Maple            |           | 21.2         | MBF          |       |                 |      |     |      |             |
|                      | Sugar Maple          |           | 25.8         | MBF          |       |                 |      |     |      |             |
|                      | Balsam Fir           | Pulpwood  | 4            | Cords        |       |                 |      |     |      |             |
|                      | Mixed Aspen          |           | 90           | Cords        |       |                 |      |     |      |             |
|                      | <i>Quaking Aspen</i> |           | 90           | <i>Cords</i> |       |                 |      |     |      |             |
|                      | Mixed Hardwood       |           | 974          | Cords        |       |                 |      |     |      |             |
|                      | <i>Black Cherry</i>  |           | 162          | <i>Cords</i> |       |                 |      |     |      |             |
|                      | <i>Ironwood</i>      |           | 2            | <i>Cords</i> |       |                 |      |     |      |             |
|                      | <i>Red Maple</i>     |           | 494          | <i>Cords</i> |       |                 |      |     |      |             |
|                      | <i>Sugar Maple</i>   |           | 316          | <i>Cords</i> |       |                 |      |     |      |             |
|                      | White Spruce         |           | 19           | Cords        |       |                 |      |     |      |             |
|                      | 4                    |           | Black Cherry | Sawtimber    |       |                 | 21.2 | MBF | 40.2 | \$26,361.50 |
|                      |                      |           | Red Maple    |              |       |                 | 25.7 | MBF |      |             |
| Sugar Maple          |                      | 31.2      | MBF          |              |       |                 |      |     |      |             |
| Balsam Fir           |                      | Pulpwood  | 4            | Cords        |       |                 |      |     |      |             |
| Mixed Aspen          |                      |           | 110          | Cords        |       |                 |      |     |      |             |
| <i>Quaking Aspen</i> |                      |           | 110          | <i>Cords</i> |       |                 |      |     |      |             |
| Mixed Hardwood       |                      |           | 1,180        | Cords        |       |                 |      |     |      |             |
| <i>Black Cherry</i>  |                      |           | 196          | <i>Cords</i> |       |                 |      |     |      |             |
| <i>Ironwood</i>      |                      |           | 3            | <i>Cords</i> |       |                 |      |     |      |             |
| <i>Red Maple</i>     |                      |           | 598          | <i>Cords</i> |       |                 |      |     |      |             |
| <i>Sugar Maple</i>   |                      |           | 383          | <i>Cords</i> |       |                 |      |     |      |             |
| White Spruce         |                      |           | 22           | Cords        |       |                 |      |     |      |             |
| TOTAL:               |                      |           | 151.4        | MBF          |       |                 |      |     |      |             |
| TOTAL:               |                      |           | 2,778        | Cords        |       |                 |      |     |      |             |

# Sale Specific Conditions & Requirements

**Sale Name: Horseshoe Hideaway**

**Sale Number: 32-021-21 Seq#: 1**

## 1 - Sale Area

### 1.2 - Boundaries

#### 1.2.1 - Painted boundaries (9/19)

The sale boundary and Payment Unit boundaries are marked and identified by blue, red, and yellow paint. Exterior sale boundary lines against private property are marked with blue paint. Exterior sale boundary lines against state are marked with red paint. Payment Unit boundaries are marked with yellow paint. Retention patches are marked with red paint; no harvesting activities may occur within these areas. Yellow painted trees designating a Payment Unit boundary are only to be cut when all surrounding Payment Units have been paid.

## 2 - Timber Specifications

### 2.1 - Included Timber

#### 2.1.1 - Clearcut unit(s) with unmerchantable trees (6/14)

Within Payment Unit(s) 1, 3, and 4, cut all trees that are four (4) inches or more at DBH, except:

- Within Payment Unit 1, do not cut paper birch, yellow birch, hemlock, cedar, white pine, or trees marked in green paint.
- Within Payment Units 3 and 4, do not cut maple that are greater than 24" at stump height, cedar, yellow birch, hemlock, white pine, red pine, and oak.

#### 2.1.3 - Cut tree marked unit(s) (12/08)

Within Payment Unit(s) 2, all trees are designated for cutting when marked with orange paint above and below stump height, regardless of merchantability.

### 2.2 - Utilization

#### 2.2.6 - Roundwood operation required (3/21)

The skidding of whole trees or tree segments with limbs attached is prohibited within Payment Unit 2. All products must be produced as roundwood and forwarded to existing roads or landing areas in final product length.

## 3 - Payments

### 3.4 - Damaged Timber

#### 3.4.1 - Damaged timber (7/16)

General Condition and Requirement 3.4 Damaged Timber, defines liquidated damages for undesignated live merchantable trees which are cut or injured. In addition, extreme care should be taken to avoid damage to tree seedlings and saplings. No damage is acceptable to undesignated live merchantable trees. Within the Sale Area, if more than 10% of trees (> 4.5" DBH) within a specified area of the sale are damaged, liquidated damages will be assessed for all trees damaged. Rates will be in accordance with General Condition and Requirement 3.4 Damaged Timber.

## 4 - Transportation

### 4.1 - Construction

#### 4.1.3 - Slash and earthen piles (8/04)

Piles or windrows of earth along roads and landings that have been widened or constructed shall be leveled. Slash from road maintenance or construction, including stumps, shall be dispersed throughout the sale.

#### 4.1.4 - Timber removed for construction (12/09)

Trees cut or damaged in the process of pre-approved road, landing or skid trail construction will be decked in an area separate from other Designated Timber and not removed until measured by the sale administrator. Payment will be made at the specified Purchase Unit Price.

#### 4.1.6 - Road construction (1/09)

Construction of new roads or improvements of existing roads shall be done in such a way as to minimize the environmental and visual impacts. Merchantable trees shall be cut and utilized unless otherwise directed. Non-merchantable trees shall be

severed and laid flat on the ground. Slash shall be scattered, and not left in windrows and kept a minimum of 10 feet back from the road edge. Stumps shall be set upright, not left on edge, and be moved at least 10 feet away from the road edge. Disturbed soil shall be feathered into the woods and not left in berms or windrows.

#### 4.1.7 - Road closure (10/11)

All new roads built into the sale must be blocked to vehicle traffic upon completion of the sale. Overgrown roads that are reopened shall be considered new roads. In general, this will require berms, stumps, slash, tops, and rocks to be placed at strategic locations. All stumps from road building and landing construction must be reserved to block any newly constructed roads upon completion of the sale. These stumps must be scattered along the road system to prohibit vehicular movement. Contact the sale administrator for specific details of design and placement.

#### 4.1.8 - Road work (1) (8/07)

The following road work is required: the Purchaser is responsible for hauling and spreading approximately 200 yards of gravel along the haul route to this timber sale. Contact forester Jason Caron for more specifics regarding this road work.

#### 4.1.12 - No new roads (1/12)

No new roads will be permitted within Payment Unit 2. Skid trails only will be allowed.

### 4.2 - Maintenance

#### 4.2.1 - Hauling restriction (12/08)

Hauling may be restricted on forest roads by the sale representative. The restriction may occur during spring break up or wet weather conditions.

#### 4.2.4 - Grading (10/16)

For completion of the sale, state forest roads must be graded. In general, this will require a road grader or bulldozer to shape up the roads after forest products have been hauled off site. This includes cleaning of drainage areas, grading, crowning, and filling with gravel, if necessary. The grading equipment to be used must be approved by the Unit Manager or his/her representative.

## 5 - Operations

### 5.1 - Notification

#### 5.1.1 - Pre-sale conference (10/16)

A pre-sale conference between the Purchaser and sale administrator is required prior to beginning any operations. The sale representative must be contacted at least 3 business days in advance to schedule the conference.

### 5.2 - Conduct of Operations

#### 5.2.1 - Slash

##### 5.2.1.11 - Slash for reforestation (3/21)

To facilitate reforestation, sale area shall be left with slash evenly distributed. Bunched tops within the cutting area shall be broken up and scattered. Stumps shall be cut low to the ground. Processing sites shall not be left with a compacted layer of slash; tops from these sites shall be hauled back into the cut area and scattered.

#### 5.2.2 - Hazard Trees/Snags

##### 5.2.2.1 - Den trees (10/16)

Obvious hollow and/or den trees shall be protected and left standing unless they are a safety hazard.

#### 5.2.3 - Operating Restrictions

##### 5.2.3.1 - Operating restrictions (9/11)

Within Payment Unit(s) 1-4, unless changed by written agreement, cutting, skidding, and hauling are limited to the period of January 1 to March 31. This restriction is due to wet ground conditions.

#### 5.2.17 - Timber Mats and Interlocking Composite Mats (10/20)

Some roads or skid trails may require extra protection such as that afforded by timber mats. If available, mats may be borrowed from the DNR. A Timber Sale Contract Supplement will be used to document the Purchaser's use of the DNR's mats. Contact the sale administrator regarding availability and pick-up. Timber mats are available from various field offices.

The Purchaser is responsible for picking up and hauling the mats to and from the site. Contact the sale administrator to schedule at least 30 days before desired install/removal date. All mats must be cleaned prior to drop off. This may include but is not limited to power washing and brushing to remove mud and debris. A charge of \$700.00 per timber mat will be assessed for all damaged or non-returned mats. Damage for the crane/timber mats is defined as three or more broken cants.

#### 5.2.32 - Decking/landing restoration (9/13)

All decking and landing areas must have the surface area restored to a condition equal to or better than before. This is to ensure the proper regeneration of the stand. Wood debris, chips, and "cookies" from trimmings must be removed or scattered away from landing and loading areas and may not be windrowed on the edge.

#### 5.2.38 - No decking against live trees (2/04)

Cut products may not be decked against unmarked or designated leave trees.

### 5.4 - Soil Protection

#### 5.4.1 - Rutting restriction, general (7/16)

Operations are to cease immediately if equipment and weather conditions result in rutting of roads and/or skid trails which is 12 inches or greater in depth and 50 feet in length. The Unit Manager or his/her representative may restrict hauling and/or skidding if ruts exceed the specified depth. With the Unit Manager or his/her representative's approval, the Purchaser may return to the area when the risk of rutting has decreased.

### 5.8 - Protection of Endangered Species

#### 5.8.5 - Protection of raptor nests (3/13)

All trees with raptor nests will be protected if found during harvesting operations. Notification will be made to the Unit Manager or his/her representative who will notify the Wildlife Biologist so an on-site evaluation and recommendation can be made, if necessary.

## 6 - Safety and Fire Prevention

### 6.2 - Signing

#### 6.2.1 - Road posting (10/20)

The Purchaser is responsible for posting and maintaining caution signs on prior to beginning operations. The road must be posted at appropriate distances from the Sale Area to warn of logging activity and truck traffic. Signs must be removed when harvest operations are suspended or completed. The Purchaser will provide these signs.





# TIMBER SALE MAP

This information provided by authority of Part 525, 1994 PA 451, as amended.

|             |      |
|-------------|------|
| Sale Number | Year |
| 32 - 021    | 2021 |

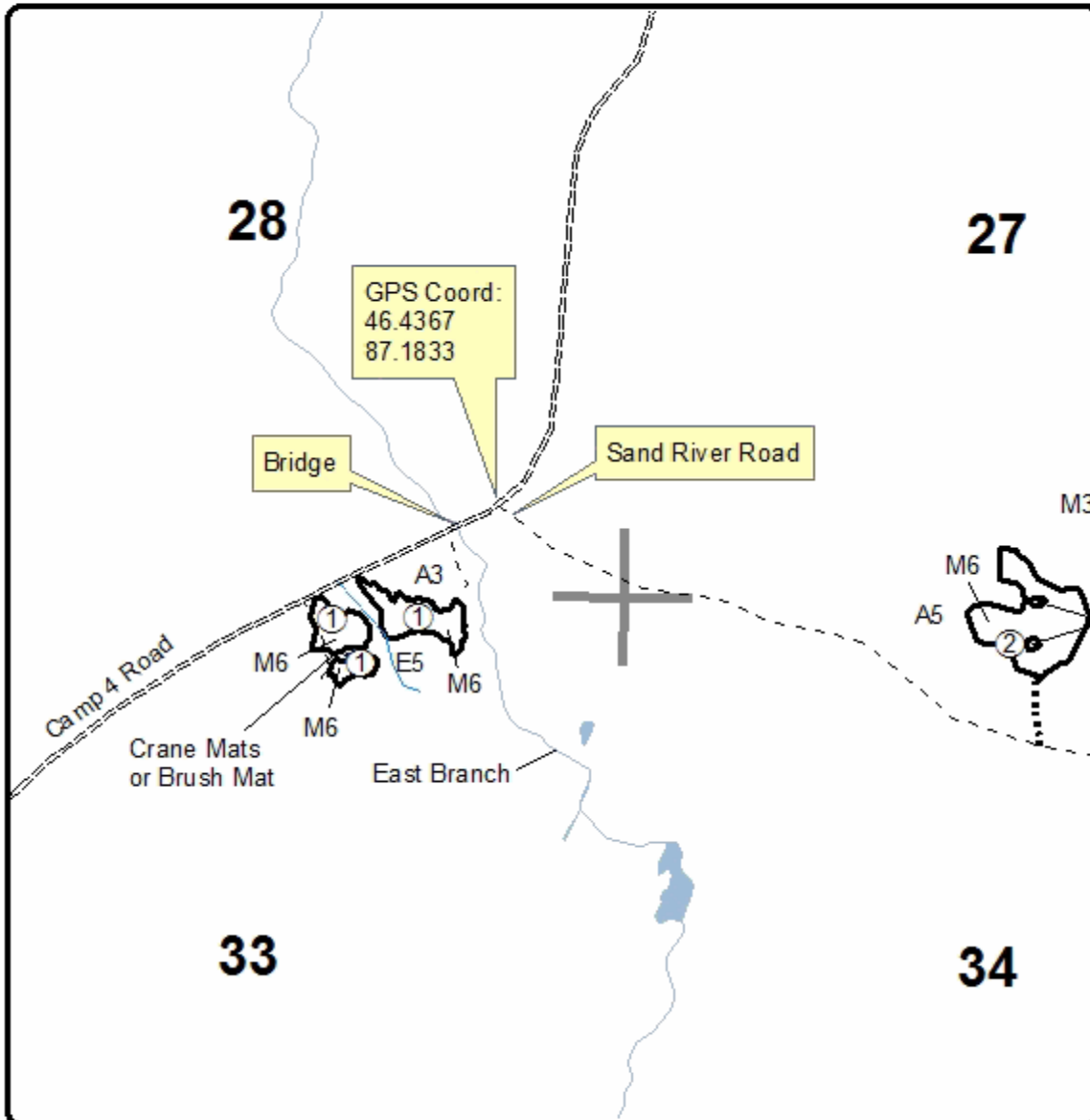
|                        |           |                               |          |      |    |
|------------------------|-----------|-------------------------------|----------|------|----|
| Forest Management Unit | County    | Mapped By                     | Date     | Page | of |
| Gwinn                  | Marquette | Caron                         | 9/27/21  | 2    | 2  |
| Township               | Range     | Section(s) and Subdivision(s) | Scale    |      |    |
| 47N                    | 23W       | Sections 27, 28, 33, 34, & 35 | 1:15,840 |      |    |

| Cover Type          |                      |                         |                   | Density                    |                        |
|---------------------|----------------------|-------------------------|-------------------|----------------------------|------------------------|
| A = Aspen           | H = Hemlock          | N = Marsh               | U = Upland Brush  | 0 = Non Stocked            | 5 = Pole Timber Medium |
| B = Paper Birch     | J = Jack Pine        | O = Oak                 | UM = Upland Mixed | 1 = Seeding Sapling Poor   | 6 = Pole Timber Well   |
| C = Cedar           | L = Lowland Brush    | P = Lowland Poplar      | V = Bog or Marsh  | 2 = Seeding Sapling Medium | 7 = Saw Timber Poor    |
| D = Tread Bog       | LM = Lowland Mixed   | Q = Mixed Swamp Conifer | W = White Pine    | 3 = Seeding Sapling Well   | 8 = Saw Timber Medium  |
| E = Swamp Hardwoods | M = Mpl. Ech. Birch  | R = Red Pine            | X = Non Stocked   | 4 = Pole Timber Poor       | 9 = Saw Timber Well    |
| F = Spruce Fir      | MC = Mixed Conifer   | S = Black Spruce        | Z = Water         |                            |                        |
| G = Creas           | MD = Mixed Deciduous | T = Tamarack            |                   |                            |                        |

| PU | Acres |
|----|-------|
| 1  | 7.7   |
| 2  | 9.1   |

## Horseshoe Hideaway

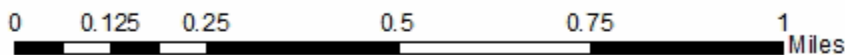
Compartment 287 & 291  
90.2 Acres



**Legend**

- Intermittent Stream
- .... Skid Trail
- - Poor Dirt Road
- == Gravel Road
- Against State (Red)
- Section Corners

QR Code for Avenza Map





# TIMBER SALE MAP

This information provided by authority of Part 525, 1994 PA 451 as amended.

|             |      |
|-------------|------|
| Sale Number | Year |
| 32 - 021    | 2021 |

|                        |           |                               |          |      |    |
|------------------------|-----------|-------------------------------|----------|------|----|
| Forest Management Unit | County    | Mapped By                     | Date     | Page | of |
| Gwinn                  | Marquette | Caron                         | 9/27/21  | 1    | 2  |
| Township               | Range     | Section(s) and Subdivision(s) | Scale    |      |    |
| 47N                    | 23W       | Sections 33, 34, & 35         | 1:15,840 |      |    |

| Cover Type          |                      |                         |                   | Density                    |                        |
|---------------------|----------------------|-------------------------|-------------------|----------------------------|------------------------|
| A = Aspen           | H = Hemlock          | N = Marsh               | U = Upland Brush  | 0 = Non Stocked            | 5 = Pole Timber Medium |
| B = Paper Birch     | J = Jack Pine        | O = Oak                 | UM = Upland Mixed | 1 = Seeding Sapling Poor   | 6 = Pole Timber Well   |
| C = Cedar           | L = Lowland Brush    | P = Lowland Poplar      | V = Bog or Marsh  | 2 = Seeding Sapling Medium | 7 = Saw Timber Poor    |
| D = Tread Bog       | LM = Lowland Mixed   | Q = Mixed Swamp Conifer | W = White Pine    | 3 = Seeding Sapling Well   | 8 = Saw Timber Medium  |
| E = Swamp Hardwoods | M = Mpl. Ech. Birch  | R = Red Pine            | X = Non Stocked   | 4 = Pole Timber Poor       | 9 = Saw Timber Well    |
| F = Spruce Fir      | MC = Mixed Conifer   | S = Black Spruce        | Z = Water         |                            |                        |
| C = Cress           | MD = Mixed Deciduous | T = Tamarack            |                   |                            |                        |

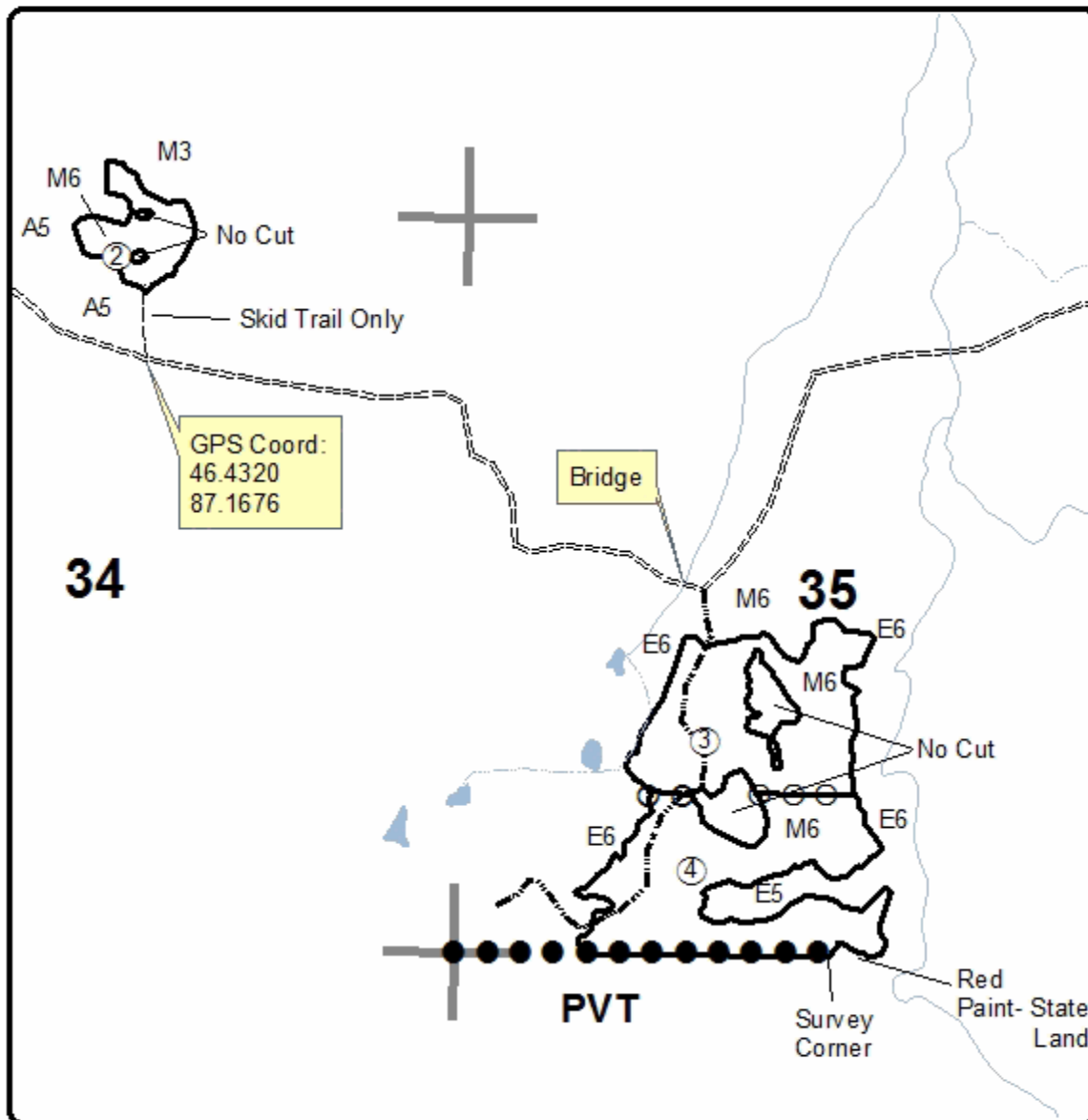
### PU Acres

|   |      |
|---|------|
| 1 | 7.7  |
| 2 | 9.1  |
| 3 | 33.2 |
| 4 | 40.2 |

## Horseshoe Hideaway

Compartment 287 & 291

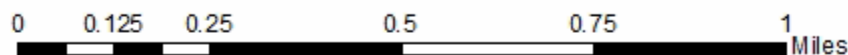
90.2 Acres



### Legend

- Skid Trail
- == Gravel Road
- Poor Dirt Road
- Against State (Red)
- Payment Unit (Yellow)
- Private Line (Blue)
- Section Corners

QR Code for Avenza Map



## TIMBER SALE INFORMATION

### Loud Creaky Maple (32-023-21)

T45N, R21W, SEC. 11; T45N, R21W, SEC. 13; T45N, R21W, SEC. 14; T45N, R21W, SEC. 15.  
Alger County (Advertised Price \$215,562.50)

SALE NOTE: All units of volume listed for this sale were estimated using the Inventory Manager computer program and the new Michigan taper model.

Access may be through private land.

A timber sale contract for this lump sum, sealed bid timber sale will be awarded to the responsible bidder offering the highest sealed bid price. All units of volume listed below were estimated using the Inventory Manager computer program and the new Michigan taper model. Bids must be at or above the following advertised price for each product and species:

| <u>PRODUCTS &amp; SPECIES</u> | <u>ESTIMATED UNITS*</u> | <u>ADVERTISED PRICE</u> |
|-------------------------------|-------------------------|-------------------------|
| <b>Sawtimber</b>              |                         |                         |
| Balsam Fir                    | 2.3 MBF                 | \$ 22.00 / MBF          |
| Balsam Poplar                 | 4.3 MBF                 | \$ 35.00 / MBF          |
| Basswood                      | 104.6 MBF               | \$ 56.00 / MBF          |
| Ironwood                      | 0.6 MBF                 | \$ 39.00 / MBF          |
| Quaking Aspen                 | 66.8 MBF                | \$ 74.00 / MBF          |
| Red Maple                     | 186.9 MBF               | \$ 110.00 / MBF         |
| Sugar Maple                   | 558.8 MBF               | \$ 196.00 / MBF         |
| White Spruce                  | 2.8 MBF                 | \$ 27.00 / MBF          |
| <b>Pulpwood</b>               |                         |                         |
| B. T. Aspen                   | 118 Cords               | \$ 17.40 / Cord         |
| Balsam Fir                    | 124 Cords               | \$ 10.25 / Cord         |
| Balsam Poplar                 | 22 Cords                | \$ 17.40 / Cord         |
| Black Spruce                  | 11 Cords                | \$ 11.15 / Cord         |
| Mixed Hardwood                | 2,335 Cords             | \$ 11.55 / Cord         |
| Quaking Aspen                 | 2,493 Cords             | \$ 17.40 / Cord         |
| White Spruce                  | 18 Cords                | \$ 11.15 / Cord         |

\* The total volume is statistically estimated within plus (+) or minus (-) 4.11 percent. There are an estimated 7,123 cords on this timber sale, plus or minus 293 cords at the 95% confidence level. The estimated units are final and not subject to adjustment. Prospective bidders are urged to examine this timber and to make their own estimates of quantity and quality.

### **BOND AND PAYMENT SCHEDULE:**

1. A bond in the amount of \$10,778.00 to insure faithful performance of the conditions of the contract will be deposited by the successful bidder within 21 days of the sale award.
2. Cutting in any sale or unit without the required advance payment would be considered a trespass.
3. Total payment must be paid in advance or according to the following schedule :
  - (a) Ten percent (10%) of the sale value must be paid within 21 days of the sale award.
  - (b) The 10% down payment will be credited towards the first unit cut.

(c) Payment for each of the following units must be made before cutting begins in that unit:

| PAYMENT UNIT NUMBER | PERCENT OF TOTAL SALE VALUE |
|---------------------|-----------------------------|
| 01                  | 2.2%                        |
| 02                  | 2.6%                        |
| 03                  | 3.1%                        |
| 04                  | 1.8%                        |
| 05                  | 2.0%                        |
| 06                  | 2.3%                        |
| 07                  | 6.1%                        |
| 08                  | 5.7%                        |
| 09                  | 6.8%                        |
| 10                  | 3.4%                        |
| 11                  | 11.6%                       |
| 12                  | 11.7%                       |
| 13                  | 6.3%                        |
| 14                  | 6.8%                        |
| 15                  | 7.4%                        |
| 16                  | 6.3%                        |
| 17                  | 7.8%                        |
| 18                  | 1.9%                        |
| 19                  | 1.5%                        |
| 20                  | 2.7%                        |

4. If no cutting takes place, the 10% down payment will not be refunded.

5. Operations on the contract issued will terminate on 08/31/2026.

**SALE STATISTICS**

Volumes were calculated in cubic feet using the Michigan taper model. Cubic foot volume includes all wood inside bark for the product indicated. For display purposes, cubic feet were converted to cords and MBF using a simple conversion factor, e.g. 79 cubic feet per cord and 185 cubic feet per MBF. The cubic foot volumes are precise; the cords and MBF volumes are not. Cubic foot volume cannot be directly converted to cords or boards with precision.

**SALE VOLUMES**

The total estimated sale volume may not equal the sum of the species/products due to the nature of statistical calculations associated with double sampling methodology.

| VOLUME           |             | STATISTICAL RANGE IN CORDS |         |         |
|------------------|-------------|----------------------------|---------|---------|
| TOTAL CUBIC FEET | TOTAL CORDS | PERCENT ERROR              | MINIMUM | MAXIMUM |
| 562,738          | 7,123       | 4.11%                      | 6,830   | 7,417   |

**VDU VOLUMES**

A VDU is a Volume Determination Unit. Volumes and their associated statistics are calculated at the VDU level and summarized to the sale level. There is often a one to one relationship between a VDU and a Payment Unit, but not always, depending on the cruise design. Refer to the VDU TO PAYMENT UNIT table.

| VDU           | VOLUME           |              |               | RANGE IN CORDS |              |
|---------------|------------------|--------------|---------------|----------------|--------------|
|               | TOTAL CUBIC FEET | TOTAL CORDS  | PERCENT ERROR | MINIMUM        | MAXIMUM      |
| 1             | 187,234          | 2,370        | 7.96%         | 2,181          | 2,559        |
| 2             | 31,594           | 400          | 9.55%         | 362            | 438          |
| 3             | 23,310           | 295          | 16.62%        | 246            | 344          |
| 4             | 67,101           | 849          | 10.71%        | 758            | 940          |
| 5             | 203,848          | 2,580        | 6.85%         | 2,403          | 2,757        |
| 7             | 17,911           | 227          | 20.58%        | 180            | 273          |
| 8             | 13,502           | 171          | 21.52%        | 134            | 208          |
| 9             | 18,238           | 231          | 25.71%        | 172            | 290          |
| <b>TOTAL:</b> | <b>562,738</b>   | <b>7,123</b> |               | <b>6,437</b>   | <b>7,810</b> |

**VDU TO PAYMENT UNIT**

When a VDU is associated with more than one Payment Unit (PU), the VDU volumes are assigned to the PU based on acres of the VDU within the PU.

| VDU           | VDU ACRES    | PU | PU ACRES     |
|---------------|--------------|----|--------------|
| 1             | 170.5        | 7  | 21.5         |
|               |              | 8  | 20.1         |
|               |              | 11 | 40.9         |
|               |              | 12 | 41.7         |
|               |              | 13 | 22.1         |
|               |              | 14 | 24.2         |
|               |              | 9  | 17.7         |
| 2             | 26.5         | 10 | 8.8          |
| 3             | 35.3         | 5  | 16.1         |
|               |              | 6  | 19.2         |
| 4             | 77.6         | 1  | 17.9         |
|               |              | 2  | 20.8         |
|               |              | 3  | 24.4         |
|               |              | 4  | 14.5         |
| 5             | 104.7        | 15 | 36.0         |
|               |              | 16 | 30.8         |
|               |              | 17 | 37.9         |
| 7             | 9.3          | 20 | 9.3          |
| 8             | 9.7          | 19 | 9.7          |
| 9             | 9.5          | 18 | 9.5          |
| <b>TOTAL:</b> | <b>443.1</b> |    | <b>443.1</b> |

**DESCRIPTION OF TIMBER BY PAYMENT UNIT (PU)**

| PU                 | MARKET GROUP       | PRODUCT      | QUANTITY | UNIT | ACRES | ADVERTISE PRICE |              |
|--------------------|--------------------|--------------|----------|------|-------|-----------------|--------------|
| 1                  | Basswood           | Sawtimber    | 0.5      | MBF  | 17.9  | \$4,829.50      |              |
|                    | Quaking Aspen      |              | 11.4     | MBF  |       |                 |              |
|                    | Red Maple          |              | 6.1      | MBF  |       |                 |              |
|                    | Sugar Maple        |              | 9.1      | MBF  |       |                 |              |
|                    | Mixed Hardwood     |              | Pulpwood | 94   |       |                 | Cords        |
|                    | <i>Basswood</i>    |              |          | 1    |       |                 | <i>Cords</i> |
|                    | <i>Ironwood</i>    |              |          | 1    |       |                 | <i>Cords</i> |
|                    | <i>Red Maple</i>   |              |          | 9    |       |                 | <i>Cords</i> |
|                    | <i>Sugar Maple</i> |              |          | 83   |       |                 | <i>Cords</i> |
|                    | Quaking Aspen      |              |          | 24   |       |                 | Cords        |
| 2                  | Basswood           | Sawtimber    | 0.6      | MBF  | 20.8  | \$5,615.15      |              |
|                    | Quaking Aspen      |              | 13.2     | MBF  |       |                 |              |
|                    | Red Maple          |              | 7.1      | MBF  |       |                 |              |
|                    | Sugar Maple        |              | 10.6     | MBF  |       |                 |              |
|                    | Mixed Hardwood     |              | Pulpwood | 109  |       |                 | Cords        |
|                    | <i>Basswood</i>    |              |          | 2    |       |                 | <i>Cords</i> |
|                    | <i>Ironwood</i>    |              |          | 1    |       |                 | <i>Cords</i> |
|                    | <i>Red Maple</i>   |              |          | 10   |       |                 | <i>Cords</i> |
|                    | <i>Sugar Maple</i> |              |          | 96   |       |                 | <i>Cords</i> |
|                    | Quaking Aspen      |              |          | 28   |       |                 | Cords        |
| 3                  | Basswood           | Sawtimber    | 0.7      | MBF  | 24.4  | \$6,589.60      |              |
|                    | Quaking Aspen      |              | 15.6     | MBF  |       |                 |              |
|                    | Red Maple          |              | 8.3      | MBF  |       |                 |              |
|                    | Sugar Maple        |              | 12.4     | MBF  |       |                 |              |
|                    | Mixed Hardwood     |              | Pulpwood | 128  |       |                 | Cords        |
|                    | <i>Basswood</i>    |              |          | 2    |       |                 | <i>Cords</i> |
|                    | <i>Ironwood</i>    |              |          | 1    |       |                 | <i>Cords</i> |
|                    | <i>Red Maple</i>   |              |          | 12   |       |                 | <i>Cords</i> |
|                    | <i>Sugar Maple</i> |              |          | 113  |       |                 | <i>Cords</i> |
|                    | Quaking Aspen      |              |          | 33   |       |                 | Cords        |
| 4                  | Basswood           | Sawtimber    | 0.4      | MBF  | 14.5  | \$3,918.40      |              |
|                    | Quaking Aspen      |              | 9.2      | MBF  |       |                 |              |
|                    | Red Maple          |              | 4.9      | MBF  |       |                 |              |
|                    | Sugar Maple        |              | 7.4      | MBF  |       |                 |              |
|                    | Mixed Hardwood     |              | Pulpwood | 76   |       |                 | Cords        |
|                    | <i>Basswood</i>    |              |          | 1    |       |                 | <i>Cords</i> |
|                    | <i>Ironwood</i>    |              |          | 1    |       |                 | <i>Cords</i> |
|                    | <i>Red Maple</i>   |              |          | 7    |       |                 | <i>Cords</i> |
|                    | <i>Sugar Maple</i> |              |          | 67   |       |                 | <i>Cords</i> |
|                    | Quaking Aspen      |              |          | 20   |       |                 | Cords        |
| 5                  | Balsam Poplar      | Sawtimber    | 0.7      | MBF  | 16.1  | \$4,208.95      |              |
|                    | Basswood           |              | 6.8      | MBF  |       |                 |              |
|                    | Quaking Aspen      |              | 1.8      | MBF  |       |                 |              |
|                    | Red Maple          |              | 1.1      | MBF  |       |                 |              |
|                    | Sugar Maple        |              | 13.9     | MBF  |       |                 |              |
|                    | White Spruce       |              | 1.3      | MBF  |       |                 |              |
|                    | Balsam Fir         |              | Pulpwood | 1    |       |                 | Cords        |
|                    | Mixed Hardwood     |              |          | 66   |       |                 | Cords        |
|                    | <i>Basswood</i>    |              |          | 8    |       |                 | <i>Cords</i> |
|                    | <i>Red Maple</i>   |              |          | 1    |       |                 | <i>Cords</i> |
| <i>Sugar Maple</i> | 57                 | <i>Cords</i> |          |      |       |                 |              |
| Quaking Aspen      | 1                  | Cords        |          |      |       |                 |              |
| 6                  | Balsam Poplar      | Sawtimber    | 0.7      | MBF  | 19.2  | \$5,039.25      |              |
|                    | Basswood           |              | 8.1      | MBF  |       |                 |              |
|                    | Quaking Aspen      |              | 2.1      | MBF  |       |                 |              |
|                    | Red Maple          |              | 1.3      | MBF  |       |                 |              |

**DESCRIPTION OF TIMBER BY PAYMENT UNIT (PU), CON'T**

| PU      | MARKET GROUP       | PRODUCT   | QUANTITY | UNIT         | ACRES | ADVERTISE PRICE |
|---------|--------------------|-----------|----------|--------------|-------|-----------------|
| 6 con't | Sugar Maple        | Sawtimber | 16.6     | MBF          |       |                 |
|         | White Spruce       |           | 1.5      | MBF          |       |                 |
|         | Balsam Fir         | Pulpwood  | 1        | Cords        |       |                 |
|         | Balsam Poplar      |           | 1        | Cords        |       |                 |
|         | Mixed Hardwood     |           | 79       | Cords        |       |                 |
|         | <i>Basswood</i>    |           | 10       | <i>Cords</i> |       |                 |
|         | <i>Red Maple</i>   |           | 1        | <i>Cords</i> |       |                 |
|         | <i>Sugar Maple</i> |           | 68       | <i>Cords</i> |       |                 |
|         | Quaking Aspen      |           | 1        | Cords        |       |                 |
|         | White Spruce       |           | 1        | Cords        |       |                 |
| 7       | Balsam Fir         | Sawtimber | 0.3      | MBF          | 21.5  | \$13,106.35     |
|         | Balsam Poplar      |           | 0.4      | MBF          |       |                 |
|         | Basswood           |           | 10.6     | MBF          |       |                 |
|         | Quaking Aspen      |           | 1.7      | MBF          |       |                 |
|         | Red Maple          |           | 17.5     | MBF          |       |                 |
|         | Sugar Maple        |           | 45.7     | MBF          |       |                 |
|         | Mixed Hardwood     | Pulpwood  | 120      | Cords        |       |                 |
|         | <i>Basswood</i>    |           | 6        | <i>Cords</i> |       |                 |
|         | <i>Beech</i>       |           | 1        | <i>Cords</i> |       |                 |
|         | <i>Ironwood</i>    |           | 1        | <i>Cords</i> |       |                 |
|         | <i>Red Maple</i>   |           | 43       | <i>Cords</i> |       |                 |
|         | <i>Sugar Maple</i> |           | 69       | <i>Cords</i> |       |                 |
|         | Quaking Aspen      |           | 5        | Cords        |       |                 |
|         | White Spruce       |           | 1        | Cords        |       |                 |
| 8       | Balsam Fir         | Sawtimber | 0.3      | MBF          | 20.1  | \$12,266.40     |
|         | Balsam Poplar      |           | 0.3      | MBF          |       |                 |
|         | Basswood           |           | 9.9      | MBF          |       |                 |
|         | Quaking Aspen      |           | 1.6      | MBF          |       |                 |
|         | Red Maple          |           | 16.4     | MBF          |       |                 |
|         | Sugar Maple        |           | 42.7     | MBF          |       |                 |
|         | Mixed Hardwood     | Pulpwood  | 113      | Cords        |       |                 |
|         | <i>Basswood</i>    |           | 6        | <i>Cords</i> |       |                 |
|         | <i>Beech</i>       |           | 1        | <i>Cords</i> |       |                 |
|         | <i>Ironwood</i>    |           | 1        | <i>Cords</i> |       |                 |
|         | <i>Red Maple</i>   |           | 40       | <i>Cords</i> |       |                 |
|         | <i>Sugar Maple</i> |           | 65       | <i>Cords</i> |       |                 |
|         | Quaking Aspen      |           | 5        | Cords        |       |                 |
|         | White Spruce       |           | 1        | Cords        |       |                 |
| 9       | Ironwood           | Sawtimber | 0.4      | MBF          | 17.7  | \$14,693.60     |
|         | Red Maple          |           | 8.6      | MBF          |       |                 |
|         | Sugar Maple        |           | 65.0     | MBF          |       |                 |
|         | Balsam Fir         | Pulpwood  | 1        | Cords        |       |                 |
|         | Mixed Hardwood     |           | 85       | Cords        |       |                 |
|         | <i>Ironwood</i>    |           | 1        | <i>Cords</i> |       |                 |
|         | <i>Red Maple</i>   |           | 7        | <i>Cords</i> |       |                 |
|         | <i>Sugar Maple</i> |           | 77       | <i>Cords</i> |       |                 |
| 10      | Ironwood           | Sawtimber | 0.2      | MBF          | 8.8   | \$7,296.70      |
|         | Red Maple          |           | 4.3      | MBF          |       |                 |
|         | Sugar Maple        |           | 32.3     | MBF          |       |                 |
|         | Mixed Hardwood     | Pulpwood  | 42       | Cords        |       |                 |
|         | <i>Red Maple</i>   |           | 3        | <i>Cords</i> |       |                 |
|         | <i>Sugar Maple</i> |           | 39       | <i>Cords</i> |       |                 |
| 11      | Balsam Fir         | Sawtimber | 0.6      | MBF          | 40.9  | \$24,914.05     |
|         | Balsam Poplar      |           | 0.7      | MBF          |       |                 |
|         | Basswood           |           | 20.1     | MBF          |       |                 |
|         | Quaking Aspen      |           | 3.2      | MBF          |       |                 |

**DESCRIPTION OF TIMBER BY PAYMENT UNIT (PU), CON'T**

| PU       | MARKET GROUP       | PRODUCT   | QUANTITY | UNIT         | ACRES | ADVERTISE PRICE |
|----------|--------------------|-----------|----------|--------------|-------|-----------------|
| 11 con't | Red Maple          | Sawtimber | 33.3     | MBF          |       |                 |
|          | Sugar Maple        |           | 86.9     | MBF          |       |                 |
|          | Mixed Hardwood     | Pulpwood  | 228      | Cords        |       |                 |
|          | <i>Basswood</i>    |           | 12       | <i>Cords</i> |       |                 |
|          | <i>Beech</i>       |           | 2        | <i>Cords</i> |       |                 |
|          | <i>Ironwood</i>    |           | 2        | <i>Cords</i> |       |                 |
|          | <i>Red Maple</i>   |           | 81       | <i>Cords</i> |       |                 |
|          | <i>Sugar Maple</i> |           | 131      | <i>Cords</i> |       |                 |
|          | Quaking Aspen      |           | 10       | Cords        |       |                 |
|          | White Spruce       |           | 1        | Cords        |       |                 |
| 12       | Balsam Fir         | Sawtimber | 0.5      | MBF          | 41.7  | \$25,445.05     |
|          | Balsam Poplar      |           | 0.7      | MBF          |       |                 |
|          | Basswood           |           | 20.4     | MBF          |       |                 |
|          | Quaking Aspen      |           | 3.3      | MBF          |       |                 |
|          | Red Maple          |           | 33.9     | MBF          |       |                 |
|          | Sugar Maple        |           | 88.6     | MBF          |       |                 |
|          | Mixed Hardwood     | Pulpwood  | 236      | Cords        |       |                 |
|          | <i>Basswood</i>    |           | 12       | <i>Cords</i> |       |                 |
|          | <i>Beech</i>       |           | 3        | <i>Cords</i> |       |                 |
|          | <i>Ironwood</i>    |           | 4        | <i>Cords</i> |       |                 |
|          | <i>Red Maple</i>   |           | 83       | <i>Cords</i> |       |                 |
|          | <i>Sugar Maple</i> |           | 134      | <i>Cords</i> |       |                 |
|          | Quaking Aspen      |           | 11       | Cords        |       |                 |
|          | White Spruce       |           | 1        | Cords        |       |                 |
| 13       | Balsam Fir         | Sawtimber | 0.3      | MBF          | 22.1  | \$13,503.95     |
|          | Balsam Poplar      |           | 0.4      | MBF          |       |                 |
|          | Basswood           |           | 10.9     | MBF          |       |                 |
|          | Quaking Aspen      |           | 1.8      | MBF          |       |                 |
|          | Red Maple          |           | 18.0     | MBF          |       |                 |
|          | Sugar Maple        |           | 47.0     | MBF          |       |                 |
|          | Mixed Hardwood     | Pulpwood  | 124      | Cords        |       |                 |
|          | <i>Basswood</i>    |           | 7        | <i>Cords</i> |       |                 |
|          | <i>Beech</i>       |           | 1        | <i>Cords</i> |       |                 |
|          | <i>Ironwood</i>    |           | 1        | <i>Cords</i> |       |                 |
|          | <i>Red Maple</i>   |           | 44       | <i>Cords</i> |       |                 |
|          | <i>Sugar Maple</i> |           | 71       | <i>Cords</i> |       |                 |
|          | Quaking Aspen      |           | 6        | Cords        |       |                 |
|          | White Spruce       |           | 1        | Cords        |       |                 |
| 14       | Balsam Fir         | Sawtimber | 0.3      | MBF          | 24.2  | \$14,743.80     |
|          | Balsam Poplar      |           | 0.4      | MBF          |       |                 |
|          | Basswood           |           | 11.9     | MBF          |       |                 |
|          | Quaking Aspen      |           | 1.9      | MBF          |       |                 |
|          | Red Maple          |           | 19.7     | MBF          |       |                 |
|          | Sugar Maple        |           | 51.4     | MBF          |       |                 |
|          | Mixed Hardwood     | Pulpwood  | 135      | Cords        |       |                 |
|          | <i>Basswood</i>    |           | 7        | <i>Cords</i> |       |                 |
|          | <i>Beech</i>       |           | 1        | <i>Cords</i> |       |                 |
|          | <i>Ironwood</i>    |           | 1        | <i>Cords</i> |       |                 |
|          | <i>Red Maple</i>   |           | 48       | <i>Cords</i> |       |                 |
|          | <i>Sugar Maple</i> |           | 78       | <i>Cords</i> |       |                 |
|          | Quaking Aspen      |           | 6        | Cords        |       |                 |
|          | White Spruce       |           | 1        | Cords        |       |                 |
| 15       | Red Maple          | Sawtimber | 2.2      | MBF          | 36.0  | \$15,950.55     |
|          | Sugar Maple        |           | 4.8      | MBF          |       |                 |
|          | B. T. Aspen        | Pulpwood  | 38       | Cords        |       |                 |
|          | Balsam Fir         |           | 24       | Cords        |       |                 |



**DESCRIPTION OF TIMBER BY PAYMENT UNIT (PU), CON'T**

| PU                  | MARKET GROUP        | PRODUCT   | QUANTITY  | UNIT         | ACRES | ADVERTISE PRICE |
|---------------------|---------------------|-----------|-----------|--------------|-------|-----------------|
| 15 con't            | Balsam Poplar       | Pulpwood  | 4         | Cords        |       |                 |
|                     | Black Spruce        |           | 4         | Cords        |       |                 |
|                     | Mixed Hardwood      |           | 189       | Cords        |       |                 |
|                     | <i>Basswood</i>     |           | 3         | <i>Cords</i> |       |                 |
|                     | <i>Black Cherry</i> |           | 36        | <i>Cords</i> |       |                 |
|                     | <i>Paper Birch</i>  |           | 3         | <i>Cords</i> |       |                 |
|                     | <i>Red Maple</i>    |           | 89        | <i>Cords</i> |       |                 |
|                     | <i>Sugar Maple</i>  |           | 54        | <i>Cords</i> |       |                 |
|                     | <i>Yellow Birch</i> |           | 4         | <i>Cords</i> |       |                 |
|                     | Quaking Aspen       |           | 662       | Cords        |       |                 |
|                     | White Spruce        |           | 4         | Cords        |       |                 |
| 16                  | Red Maple           | Sawtimber | 1.9       | MBF          | 30.8  | \$13,669.20     |
|                     | Sugar Maple         | Pulpwood  | 4.1       | MBF          |       |                 |
|                     | B. T. Aspen         |           | 32        | Cords        |       |                 |
|                     | Balsam Fir          |           | 21        | Cords        |       |                 |
|                     | Balsam Poplar       |           | 4         | Cords        |       |                 |
|                     | Black Spruce        |           | 3         | Cords        |       |                 |
|                     | Mixed Hardwood      |           | 162       | Cords        |       |                 |
|                     | <i>Basswood</i>     |           | 3         | <i>Cords</i> |       |                 |
|                     | <i>Black Cherry</i> |           | 31        | <i>Cords</i> |       |                 |
|                     | <i>Paper Birch</i>  |           | 2         | <i>Cords</i> |       |                 |
|                     | <i>Red Maple</i>    |           | 76        | <i>Cords</i> |       |                 |
|                     | <i>Sugar Maple</i>  |           | 46        | <i>Cords</i> |       |                 |
|                     | <i>Yellow Birch</i> |           | 4         | <i>Cords</i> |       |                 |
|                     | Quaking Aspen       |           | 567       | Cords        |       |                 |
|                     | White Spruce        |           | 4         | Cords        |       |                 |
|                     | 17                  |           | Red Maple | Sawtimber    |       |                 |
| Sugar Maple         |                     | Pulpwood  | 5.0       | MBF          |       |                 |
| B. T. Aspen         |                     |           | 40        | Cords        |       |                 |
| Balsam Fir          |                     |           | 26        | Cords        |       |                 |
| Balsam Poplar       |                     |           | 4         | Cords        |       |                 |
| Black Spruce        |                     |           | 4         | Cords        |       |                 |
| Mixed Hardwood      |                     |           | 201       | Cords        |       |                 |
| <i>Basswood</i>     |                     |           | 4         | <i>Cords</i> |       |                 |
| <i>Black Cherry</i> |                     |           | 37        | <i>Cords</i> |       |                 |
| <i>Paper Birch</i>  |                     |           | 3         | <i>Cords</i> |       |                 |
| <i>Red Maple</i>    |                     |           | 95        | <i>Cords</i> |       |                 |
| <i>Sugar Maple</i>  |                     |           | 57        | <i>Cords</i> |       |                 |
| <i>Yellow Birch</i> |                     |           | 5         | <i>Cords</i> |       |                 |
| Quaking Aspen       |                     |           | 698       | Cords        |       |                 |
| White Spruce        | 3                   | Cords     |           |              |       |                 |
| 18                  | Sugar Maple         | Sawtimber | 0.9       | MBF          | 9.5   | \$4,051.85      |
|                     | B. T. Aspen         | Pulpwood  | 8         | Cords        |       |                 |
|                     | Balsam Fir          |           | 10        | Cords        |       |                 |
|                     | Mixed Hardwood      |           | 57        | Cords        |       |                 |
|                     | <i>Black Cherry</i> |           | 5         | <i>Cords</i> |       |                 |
|                     | <i>Red Maple</i>    |           | 22        | <i>Cords</i> |       |                 |
|                     | <i>Sugar Maple</i>  |           | 30        | <i>Cords</i> |       |                 |
|                     | Quaking Aspen       |           | 171       | Cords        |       |                 |
| 19                  | Balsam Poplar       | Pulpwood  | 9         | Cords        | 9.7   | \$3,166.50      |
|                     | Mixed Hardwood      |           | 6         | Cords        |       |                 |
|                     | <i>Sugar Maple</i>  |           | 6         | <i>Cords</i> |       |                 |
|                     | Quaking Aspen       |           | 169       | Cords        |       |                 |
| 20                  | Basswood            | Sawtimber | 3.7       | MBF          | 9.3   | \$5,743.75      |
|                     | Sugar Maple         | Pulpwood  | 14.4      | MBF          |       |                 |
|                     | Balsam Fir          |           | 40        | Cords        |       |                 |

**DESCRIPTION OF TIMBER BY PAYMENT UNIT (PU), CON'T**

| PU       | MARKET GROUP        | PRODUCT  | QUANTITY | UNIT         | ACRES | ADVERTISE PRICE |
|----------|---------------------|----------|----------|--------------|-------|-----------------|
| 20 con't | Mixed Hardwood      | Pulpwood | 85       | Cords        |       |                 |
|          | <i>Basswood</i>     |          | 16       | <i>Cords</i> |       |                 |
|          | <i>Black Cherry</i> |          | 10       | <i>Cords</i> |       |                 |
|          | <i>Sugar Maple</i>  |          | 59       | <i>Cords</i> |       |                 |
|          | Quaking Aspen       |          | 76       | Cords        |       |                 |
| TOTAL:   |                     |          | 927.1    | MBF          |       |                 |
| TOTAL:   |                     |          | 5,121    | Cords        |       |                 |

# Sale Specific Conditions & Requirements

**Sale Name: Loud Creaky Maple**

**Sale Number: 32-023-21 Seq#: 1**

## 1 - Sale Area

### 1.2 - Boundaries

#### 1.2.1 - Painted boundaries (9/19)

The sale boundary and Payment Unit boundaries are marked and identified by blue, red, and yellow paint. Exterior sale boundary lines against private property are marked with blue paint. Exterior sale boundary lines against state are marked with red paint. Interior Payment Unit boundaries are marked with yellow paint. The painted boundary line trees are not Included Timber and are to be protected unless marked with orange paint.

## 2 - Timber Specifications

### 2.1 - Included Timber

#### 2.1.1 - Clearcut unit(s) with unmerchantable trees (6/14)

Within Payment Unit(s) 15-18 and 20, cut all species trees that are two (2) inches or more at DBH, except:

- Within Payment Unit(s) 15-17, leave hemlock, cedar, white pine, elm, and oak.
- Within Payment Unit(s) 20, leave hemlock, cedar, spruce, basswood, elm, oak, and black cherry.

#### 2.1.3 - Cut tree marked unit(s) (12/08)

Within Payment Unit(s) 1-14 and 19, all trees are designated for cutting when marked with orange paint above and below stump height, regardless of merchantability. In addition, in Payment Unit 19, cut all aspen.

## 3 - Payments

### 3.4 - Damaged Timber

#### 3.4.1 - Damaged timber (7/16)

General Condition and Requirement 3.4 Damaged Timber, defines liquidated damages for undesignated live merchantable trees which are cut or injured. In addition, extreme care should be taken to avoid damage to tree seedlings and saplings. Within the Sale Area, if more than 10% of the tree seedlings or saplings (1/4" to 4.5" DBH) within a specified portion of the Sale Area are damaged, liquidated damages will be assessed at \$200 per acre for all acreage within that specified portion of the Sale Area that was damaged.

No damage is acceptable to undesignated live merchantable trees. Within the Sale Area, if more than 5% of trees (> 4.5" DBH) within a specified area of the sale are damaged, liquidated damages will be assessed for all trees damaged. Rates will be in accordance with General Condition and Requirement 3.4 Damaged Timber.

## 4 - Transportation

### 4.1 - Construction

#### 4.1.3 - Slash and earthen piles (8/04)

Piles or windrows of earth along roads and landings that have been widened or constructed shall be leveled. Slash from road maintenance or construction, including stumps, shall be scattered, and not left in windrows, and kept a minimum of 10 feet back from the road edge.

#### 4.1.4 - Timber removed for construction (12/09)

Trees cut or damaged in the process of pre-approved road, landing or skid trail construction will be decked in an area separate from other Designated Timber and not removed until measured by the sale administrator. Payment will be made at the specified Purchase Unit Price.

#### 4.1.6 - Road construction (1/09)

Construction of new roads or improvements of existing roads shall be done in such a way as to minimize the environmental and visual impacts. Merchantable trees shall be cut and utilized unless otherwise directed. Non-merchantable trees shall be severed and laid flat on the ground. Slash shall be scattered, and not left in windrows and kept a minimum of 10 feet back from the road edge. Stumps shall be set upright, not left on edge, and be moved at least 10 feet away from the road edge. Disturbed soil shall be feathered into the woods and not left in berms or windrows.

#### 4.1.7 - Road closure (10/11)

All new roads built into the sale must be blocked to vehicle traffic upon completion of the sale. Overgrown roads that are reopened shall be considered new roads. In general, this will require constructing a four (4') foot high berm of stumps and logs covered with earth. Contact the sale administrator for specific details of design and placement.

#### 4.1.8 - Road work (1) (8/07)

The following road work is required: 300 yards of gravel will be spread in holes on state forest roads. Contact the sale administrator for the specifics on where to put the gravel.

### 4.2 - Maintenance

#### 4.2.2 - Fill material (4/07)

To maintain roads, fill material may be needed in areas where "holes" exist or may be expected to develop. This fill material should be placed before trucking begins. Contact the sale administrator regarding the availability of onsite sand or gravel from adjacent State-owned lands.

#### 4.2.4 - Grading (10/16)

For completion of the sale, state forest roads must be graded. In general, this will require a road grader or bulldozer to shape up the roads after forest products have been hauled off site. This includes cleaning of drainage areas, grading, crowning, and filling with gravel, if necessary. The grading equipment to be used must be approved by the Unit Manager or his/her representative.

### 4.4 - Access

#### 4.4.1 - Private property access (3/11)

Permission for access across private land is the responsibility of the Purchaser for Payment Units 9-14.

## 5 - Operations

### 5.1 - Notification

#### 5.1.1 - Pre-sale conference (10/16)

A pre-sale conference between the Purchaser and sale administrator is required prior to beginning any operations. The Unit Manager or his/her representative must be contacted at least 3 days in advance to schedule the conference.

### 5.2 - Conduct of Operations

#### 5.2.1 - Slash

##### 5.2.1.11 - Slash for reforestation (3/21)

To facilitate reforestation, the Sale Area shall be left with slash evenly distributed. Bunched tops within the cutting area shall be broken up and scattered. Stumps shall be cut low to the ground. Processing sites shall not be left with a compacted layer of slash; tops from these sites shall be hauled back into the cut area and scattered.

#### 5.2.2 - Hazard Trees/Snags

##### 5.2.2.1 - Den trees (10/16)

Obvious hollow and/or den trees shall be protected and left standing unless they are a safety hazard.

#### 5.2.3 - Operating Restrictions

##### 5.2.3.3 - Bark slippage restriction (3/09)

Within Payment Unit(s) 1-14, unless changed by written agreement, cutting and skidding are not permitted during the period of April 15 to July 15. This restriction is because of bark slippage.

#### 5.2.32 - Decking/landing restoration (9/13)

All decking and landing areas must have the surface area restored to a condition equal to or better than before. This is to ensure the proper regeneration of the stand. Wood debris, chips, and "cookies" from trimmings must be removed or scattered away from landing and loading areas and may not be windrowed on the edge.

#### 5.2.37 - No decking areas (12/08)

No decking is allowed within 50 feet of Johnson Creek Road and Loud Spur Road without permission of County Road

Commission.

5.2.38 - No decking against live trees (2/04)

Cut products may not be decked against unmarked or designated leave trees.

5.4 - Soil Protection

5.4.1 - Rutting restriction, general (7/16)

Operations are to cease immediately if equipment and weather conditions result in rutting of roads and/or skid trails which is 12 inches or greater in depth and 50 feet in length. The Unit Manager or his/her representative may restrict hauling and/or skidding if ruts exceed the specified depth. With the Unit Manager or his/her representative's approval, the Purchaser may return to the area when the risk of rutting has decreased.

5.8 - Protection of Endangered Species

5.8.5 - Protection of raptor nests (3/13)

All trees with raptor nests will be protected if found during harvesting operations. Notification will be made to the Unit Manager or his/her representative who will notify the Wildlife Biologist so an on-site evaluation and recommendation can be made, if necessary.

**6 - Safety and Fire Prevention**

6.2 - Signing

6.2.1 - Road posting (10/20)

The Purchaser is responsible for posting and maintaining caution signs on Loud Spur Road and Johnson Creek Road prior to beginning operations. The road must be posted at appropriate distances from the Sale Area to warn of logging activity and truck traffic. Signs must be removed when harvest operations are suspended or completed. The Purchaser will provide these signs.



# TIMBER SALE MAP

This information provided by authority of Part 525, 1994 PA 451, as amended.

|                                 |              |  |                             |                   |           |         |
|---------------------------------|--------------|--|-----------------------------|-------------------|-----------|---------|
| Forest Management Unit<br>Gwinn |              | County<br>Alger  | Mapped By<br>Pete Holodnick | Date<br>09/08/21  | Page<br>1 | of<br>1 |
| Township<br>45N                 | Range<br>21W | Section(s) and Subdivision(s)<br>Sections 11, 13, 14, and 15 |                             | Scale<br>1:15,840 |           |         |

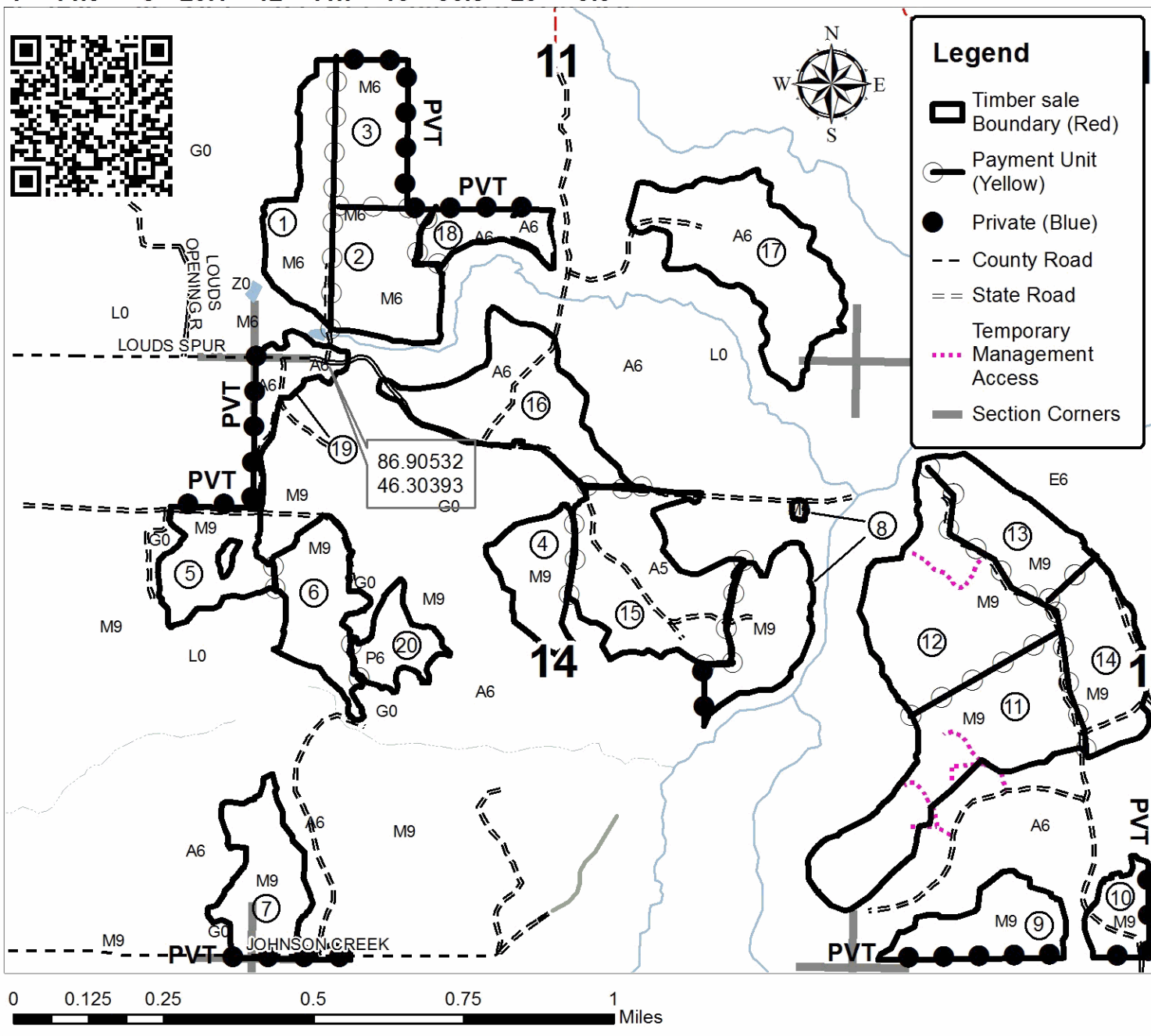
| Cover Type        |                      |                         |                   | Density                     |                        |
|-------------------|----------------------|-------------------------|-------------------|-----------------------------|------------------------|
| A = Aspen         | H = Hemlock          | N = Marsh               | U = Upland Brush  | 0 = Non Stocked             | 5 = Pole Timber Medium |
| B = Paper Birch   | J = Jack Pine        | O = Oak                 | UM = Upland Mixed | 1 = Seedling Sapling Poor   | 6 = Pole Timber Well   |
| C = Cedar         | L = Lowland Brush    | P = Lowland Poplar      | V = Bog or Marsh  | 2 = Seedling Sapling Medium | 7 = Saw Timber Poor    |
| D = Treed Bog     | LM = Lowland Mixed   | Q = Mixed Swamp Conifer | W = White Pine    | 3 = Seedling Sapling Well   | 8 = Saw Timber Medium  |
| E = Swamp Hdwoods | M = Mpl, Bch, Brch   | R = Red Pine            | X = Non Stocked   | 4 = Pole Timber Poor        | 9 = Saw Timber Well    |
| F = Spruce Fir    | MC = Mixed Conifer   | S = Black Spruce        | Z = Water         |                             |                        |
| G = Grass         | MD = Mixed Deciduous | T = Tamarack            |                   |                             |                        |

| PU | Acres | PU | Acres | PU | Acres | PU | Acres | PU | Acres |
|----|-------|----|-------|----|-------|----|-------|----|-------|
| 1  | 17.9  | 5  | 16.1  | 9  | 17.7  | 13 | 22.1  | 17 | 37.9  |
| 2  | 20.8  | 6  | 19.2  | 10 | 8.8   | 14 | 24.2  | 18 | 9.5   |
| 3  | 24.4  | 7  | 21.5  | 11 | 40.9  | 15 | 36.0  | 19 | 9.7   |
| 4  | 14.5  | 8  | 20.1  | 12 | 41.7  | 16 | 30.8  | 20 | 9.3   |

## Loud Creaky Maple

### Compartment 98

443.1 Acres



Mars Maple Landing (32-004-21)  
T45N, R22W, SEC. 10; T45N, R22W, SEC. 15; T45N, R22W, SEC. 16; T45N,

In response to the notice of sale to be held 1:00 p.m. (local time) on May 16, 2022, I am hereby submitting my sealed bid ( firm offer) for the following forest products to be cut. Bids for individual species must be at or above the advertised price. All non-responsive bid forms may be rejected.

| <u>PRODUCTS &amp; SPECIES</u> | <u>ESTIMATED VOLUME*</u> | <u>ADVERTISED PRICE</u> | <u>BID PRICE/UNIT</u> |
|-------------------------------|--------------------------|-------------------------|-----------------------|
| <b>Sawtimber</b>              |                          |                         |                       |
| Beech                         | 37.6 MBF                 | \$ 29.00/MBF            | \$ _____              |
| Black Cherry                  | 4.4 MBF                  | \$ 75.00/MBF            | \$ _____              |
| Red Maple                     | 448.4 MBF                | \$ 110.00/MBF           | \$ _____              |
| Sugar Maple                   | 270.5 MBF                | \$ 196.00/MBF           | \$ _____              |
| White Spruce                  | 7.7 MBF                  | \$ 27.00/MBF            | \$ _____              |
| Yellow Birch                  | 19.8 MBF                 | \$ 26.00/MBF            | \$ _____              |
| <b>Pulpwood</b>               |                          |                         |                       |
| Balsam Fir                    | 336 Cords                | \$ 10.25/Cord           | \$ _____              |
| Mixed Hardwood                | 4,746 Cords              | \$ 11.55/Cord           | \$ _____              |
| Mixed Spruce                  | 354 Cords                | \$ 11.15/Cord           | \$ _____              |
| N. White Cedar                | 115 Cords                | \$ 6.30/Cord            | \$ _____              |
| Quaking Aspen                 | 39 Cords                 | \$ 17.40/Cord           | \$ _____              |

\*The volumes are statistically estimated within plus (+) or minus (-) 3.12 percent at 95% confidence level. These estimated volumes are final and not subject to adjustment. Prospective bidders are urged to examine this timber and to make their own estimates of quantity and quality.

I understand that any or all bids may be rejected. All bids must be signed and all bid items must be bid or the bid form may be rejected. I also understand that consideration and awarding a contract will be based upon my past performance and ability to complete the contract based upon equipment and staffing subject to my control .

FEDERAL ID: \_\_\_\_\_ or SOCIAL SECURITY NUMBER: \_\_\_\_\_

Company or individual bidding: \_\_\_\_\_

Company representative's name: \_\_\_\_\_

Address: \_\_\_\_\_

City: \_\_\_\_\_ State: \_\_\_\_\_ Zip: \_\_\_\_\_

IF AVAILABLE, PLEASE PLACE THE PERSONALIZED LABEL FROM YOUR PROSPECTUS IN THE ABOVE BOX.

Individual or company representative's signature: \_\_\_\_\_ Date: \_\_\_\_\_

Phone number : \_\_\_\_\_ Email (optional): \_\_\_\_\_

**THE WINNING BIDDER MUST COMPLETE THE VERIFICATION OF WORKER'S DISABILITY COMPENSATION ACT COMPLIANCE (ON REVERSE SIDE IF DOUBLE SIDED) WITHIN 21 DAYS OF SALE AWARD DATE**





Loud Creaky Maple (32-023-21)

T45N, R21W, SEC. 11; T45N, R21W, SEC. 13; T45N, R21W, SEC. 14; T45N,

In response to the notice of sale to be held 1:00 p.m. (local time) on May 16, 2022, I am hereby submitting my sealed bid ( firm offer) for the following forest products to be cut. Bids for individual species must be at or above the advertised price. All non-responsive bid forms may be rejected.

| <u>PRODUCTS &amp; SPECIES</u> | <u>ESTIMATED VOLUME*</u> | <u>ADVERTISED PRICE</u> | <u>BID PRICE/UNIT</u> |
|-------------------------------|--------------------------|-------------------------|-----------------------|
| <b>Sawtimber</b>              |                          |                         |                       |
| Balsam Fir                    | 2.3 MBF                  | \$ 22.00/MBF            | \$ _____              |
| Balsam Poplar                 | 4.3 MBF                  | \$ 35.00/MBF            | \$ _____              |
| Basswood                      | 104.6 MBF                | \$ 56.00/MBF            | \$ _____              |
| Ironwood                      | 0.6 MBF                  | \$ 39.00/MBF            | \$ _____              |
| Quaking Aspen                 | 66.8 MBF                 | \$ 74.00/MBF            | \$ _____              |
| Red Maple                     | 186.9 MBF                | \$ 110.00/MBF           | \$ _____              |
| Sugar Maple                   | 558.8 MBF                | \$ 196.00/MBF           | \$ _____              |
| White Spruce                  | 2.8 MBF                  | \$ 27.00/MBF            | \$ _____              |
| <b>Pulpwood</b>               |                          |                         |                       |
| B. T. Aspen                   | 118 Cords                | \$ 17.40/Cord           | \$ _____              |
| Balsam Fir                    | 124 Cords                | \$ 10.25/Cord           | \$ _____              |
| Balsam Poplar                 | 22 Cords                 | \$ 17.40/Cord           | \$ _____              |
| Black Spruce                  | 11 Cords                 | \$ 11.15/Cord           | \$ _____              |
| Mixed Hardwood                | 2,335 Cords              | \$ 11.55/Cord           | \$ _____              |
| Quaking Aspen                 | 2,493 Cords              | \$ 17.40/Cord           | \$ _____              |
| White Spruce                  | 18 Cords                 | \$ 11.15/Cord           | \$ _____              |

\*The volumes are statistically estimated within plus (+) or minus (-) 4.11 percent at 95% confidence level. These estimated volumes are final and not subject to adjustment. Prospective bidders are urged to examine this timber and to make their own estimates of quantity and quality.

I understand that any or all bids may be rejected. All bids must be signed and all bid items must be bid or the bid form may be rejected. I also understand that consideration and awarding a contract will be based upon my past performance and ability to complete the contract based upon equipment and staffing subject to my control.

FEDERAL ID: \_\_\_\_ - \_\_\_\_ - \_\_\_\_ or SOCIAL SECURITY NUMBER: \_\_\_\_ - \_\_\_\_ - \_\_\_\_

Company or individual bidding: \_\_\_\_\_

Company representative's name: \_\_\_\_\_

Address: \_\_\_\_\_

City: \_\_\_\_\_ State: \_\_\_\_\_ Zip: \_\_\_\_\_

IF AVAILABLE, PLEASE PLACE THE PERSONALIZED LABEL FROM YOUR PROSPECTUS IN THE ABOVE BOX.

Individual or company representative's signature: \_\_\_\_\_ Date: \_\_\_\_\_

Phone number : \_\_\_\_\_ Email (optional): \_\_\_\_\_

**THE WINNING BIDDER MUST COMPLETE THE VERIFICATION OF WORKER'S DISABILITY COMPENSATION ACT COMPLIANCE (ON REVERSE SIDE IF DOUBLE SIDED) WITHIN 21 DAYS OF SALE AWARD DATE**



| FOR DEPARTMENT USE ONLY          |  |
|----------------------------------|--|
| Sale Number (XX - XXX - XX - XX) |  |
| Forest Management Unit:          |  |

## TIMBER SALE VERIFICATION OF WORKER'S DISABILITY COMPENSATION ACT COMPLIANCE

As required by Act 317, P.A. 1969 (Worker's Compensation) and  
Part 5 of Act 451 of 1994, as amended.

### VERIFICATION OF WORKER'S DISABILITY COMPENSATION ACT COMPLIANCE

- This verification must be completed and submitted within 21 days of contract award and prior to the issuance of the timber sale contract.
- In addition, if boxes 2B or 2C are checked, then Notice of Exclusion or Certificate of Insurance must be submitted within twenty-one (21) days of the contract award and prior to the issuance of the timber sale contract.
- All information must be typed or printed except for written signatures.

Please Check Appropriate Categories:

1. My business is organized as (you **must** check one of the boxes below):
  - A.  Sole Proprietorship (individual)
  - B.  Partnership
  - C.  Corporation
2. You **must** check one of the boxes below:
  - A.  I certify my business is a sole proprietorship and it has no employees but the sole proprietor. I am not subject to the Worker's Compensation Laws.
  - B.  I certify my business has satisfied its obligation to the Worker's Compensation Act through the use of an approved Notice of Exclusion (BWC-337, Rev. 5/96). I will provide a copy of the Notice of Exclusion within 21 days of the contract award. (For questions or a copy of the BWC-337, please call the Worker's Compensation Bureau at 517-322-1195).
  - C.  I certify my business has a Worker's Compensation Policy. I will provide an original Certificate of Insurance within twenty-one (21) days of the contract award.
3. If you have checked item 2(A) or 2(B), you **must** indicate the number of **both** full-time and part-time employees, other than yourself, including family members and active partners (if none, you must enter "0").

\_\_\_\_\_ Full-time Employees

\_\_\_\_\_ Part-time Employees

|                  |       |                                     |  |
|------------------|-------|-------------------------------------|--|
| Name of Business |       | Federal ID (or) Social Security No. |  |
| Address          |       | Telephone<br>(       )              |  |
| City             | State | ZIP                                 |  |

*I hereby certify that the above information is true and correct. I agree to notify the Michigan DNR of any changes that occur in factors affecting my coverage during any of my present and future operations.*

\_\_\_\_\_  
Signature of Owner or Authorized Representative

\_\_\_\_\_  
Title

\_\_\_\_\_  
Date

Please complete the "SEALED BID" information on the next page

Horseshoe Hideaway (32-021-21)  
T47N, R23W, SEC. 27; T47N, R23W, SEC. 28; T47N, R23W, SEC. 33; T47N,

In response to the notice of sale to be held 1:00 p.m. (local time) on May 16, 2022, I am hereby submitting my sealed bid ( firm offer) for the following forest products to be cut. Bids for individual species must be at or above the advertised price. All non-responsive bid forms may be rejected.

| <u>PRODUCTS &amp; SPECIES</u> | <u>ESTIMATED VOLUME*</u> | <u>ADVERTISED PRICE</u> | <u>BID PRICE/UNIT</u> |
|-------------------------------|--------------------------|-------------------------|-----------------------|
| <b>Sawtimber</b>              |                          |                         |                       |
| Black Cherry                  | 38.8 MBF                 | \$ 75.00/MBF            | \$ _____              |
| Red Maple                     | 51.4 MBF                 | \$ 110.00/MBF           | \$ _____              |
| Sugar Maple                   | 61.2 MBF                 | \$ 196.00/MBF           | \$ _____              |
| <b>Pulpwood</b>               |                          |                         |                       |
| Balsam Fir                    | 26 Cords                 | \$ 10.25/Cord           | \$ _____              |
| Mixed Aspen                   | 212 Cords                | \$ 17.40/Cord           | \$ _____              |
| Mixed Hardwood                | 2,493 Cords              | \$ 11.55/Cord           | \$ _____              |
| White Spruce                  | 47 Cords                 | \$ 11.15/Cord           | \$ _____              |

\*The volumes are statistically estimated within plus (+) or minus (-) 5.30 percent at 95% confidence level. These estimated volumes are final and not subject to adjustment. Prospective bidders are urged to examine this timber and to make their own estimates of quantity and quality.

I understand that any or all bids may be rejected. All bids must be signed and all bid items must be bid or the bid form may be rejected. I also understand that consideration and awarding a contract will be based upon my past performance and ability to complete the contract based upon equipment and staffing subject to my control .

FEDERAL ID: \_\_\_\_\_ or SOCIAL SECURITY NUMBER: \_\_\_\_\_

Company or individual bidding: \_\_\_\_\_

Company representative's name: \_\_\_\_\_

Address: \_\_\_\_\_

City: \_\_\_\_\_ State: \_\_\_\_\_ Zip: \_\_\_\_\_

IF AVAILABLE, PLEASE PLACE THE PERSONALIZED LABEL FROM YOUR PROSPECTUS IN THE ABOVE BOX.

Individual or company representative's signature: \_\_\_\_\_ Date: \_\_\_\_\_  
Phone number : \_\_\_\_\_ Email (optional): \_\_\_\_\_

**THE WINNING BIDDER MUST COMPLETE THE VERIFICATION OF WORKER'S DISABILITY COMPENSATION ACT COMPLIANCE (ON REVERSE SIDE IF DOUBLE SIDED) WITHIN 21 DAYS OF SALE AWARD DATE**



|                                  |
|----------------------------------|
| <b>FOR DEPARTMENT USE ONLY</b>   |
| Sale Number (XX - XXX - XX - XX) |
| Forest Management Unit:          |

# TIMBER SALE VERIFICATION OF WORKER'S DISABILITY COMPENSATION ACT COMPLIANCE

As required by Act 317, P.A. 1969 (Worker's Compensation) and  
Part 5 of Act 451 of 1994, as amended.

## VERIFICATION OF WORKER'S DISABILITY COMPENSATION ACT COMPLIANCE

- This verification must be completed and submitted within 21 days of contract award and prior to the issuance of the timber sale contract.
- In addition, if boxes 2B or 2C are checked, then Notice of Exclusion or Certificate of Insurance must be submitted within twenty-one (21) days of the contract award and prior to the issuance of the timber sale contract.
- All information must be typed or printed except for written signatures.

Please Check Appropriate Categories:

1. My business is organized as (you **must** check one of the boxes below):
  - A.  Sole Proprietorship (individual)
  - B.  Partnership
  - C.  Corporation
2. You **must** check one of the boxes below:
  - A.  I certify my business is a sole proprietorship and it has no employees but the sole proprietor. I am not subject to the Worker's Compensation Laws.
  - B.  I certify my business has satisfied its obligation to the Worker's Compensation Act through the use of an approved Notice of Exclusion (BWC-337, Rev. 5/96). I will provide a copy of the Notice of Exclusion within 21 days of the contract award. (For questions or a copy of the BWC-337, please call the Worker's Compensation Bureau at 517-322-1195).
  - C.  I certify my business has a Worker's Compensation Policy. I will provide an original Certificate of Insurance within twenty-one (21) days of the contract award.
3. If you have checked item 2(A) or 2(B), you **must** indicate the number of **both** full-time and part-time employees, other than yourself, including family members and active partners (if none, you must enter "0").

\_\_\_\_\_ Full-time Employees

\_\_\_\_\_ Part-time Employees

|                  |       |                                     |  |
|------------------|-------|-------------------------------------|--|
| Name of Business |       | Federal ID (or) Social Security No. |  |
| Address          |       | Telephone<br>(       )              |  |
| City             | State | ZIP                                 |  |

*I hereby certify that the above information is true and correct. I agree to notify the Michigan DNR of any changes that occur in factors affecting my coverage during any of my present and future operations.*

\_\_\_\_\_  
Signature of Owner or Authorized Representative

\_\_\_\_\_  
Title

\_\_\_\_\_  
Date

**Please complete the "SEALED BID" information on the next page**