



**DEPARTMENT OF NATURAL RESOURCES  
STATE OF MICHIGAN  
TIMBER SALE PROSPECTUS #6984**

SCHEDULED SALE DATE AND TIME: 3:00 p.m. (local time) on May 25, 2022.

LOCATION: **BALDWIN OFFICE, 2468 W 24TH STREET, BALDWIN, MI 49304.**

PROSPECTUS NOTE: The bidder is advised to inspect the sale area and review the location, estimated volumes, operating costs and contract terms of proposed sales. Please be aware that some landowners may request 60 days or more notice for access across their land.

Notice is hereby given that bids will be received by the Unit Manager, CADILLAC MANAGEMENT UNIT, for certain timber on the following described lands:

Northeast Missaukee Aspen (63-011-21) / T24N, R05W, SEC. 5 , NW,NWNE,NWSW,S1/2SW,W1/2SE.

Missaukee County, Advertised Price \$34,095.05, 91.3 Acres, Aspen, Hardwood.

SALE NOTE: All units of volume listed for this sale were estimated using the Inventory Manager computer program and the new Michigan taper model.

A recreation site such as a trail, pathway, or campground is within the sale area or the vicinity. Certain restrictions/specifications may be applicable including time restrictions.

Grass Lake Oak (63-016-21) / T24N, R05W, SEC. 4 , W1/2NW,S1/2SW.

T24N, R05W, SEC. 5 , E1/2NE,E1/2SE.

Missaukee County, Advertised Price \$90,114.30, 101.2 Acres, Hardwood, Red Oak.

SALE NOTE: All units of volume listed for this sale were estimated using the Inventory Manager computer program and the new Michigan taper model.

A recreation site such as a trail, pathway, or campground is within the sale area or the vicinity. Certain restrictions/specifications may be applicable including time restrictions.

80 Pine (63-025-21) / T24N, R05W, SEC. 16, N1/2NW,SENW.

T24N, R05W, SEC. 17, NW,NE.

T24N, R05W, SEC. 8 , NENW,N1/2NE.

T24N, R05W, SEC. 9 , NWNW,S1/2NW,NWSW.

Missaukee County, Advertised Price \$68,905.65, 115.7 Acres, Red Pine, Aspen.

SALE NOTE: All units of volume listed for this sale were estimated using the Inventory Manager computer program and the new Michigan taper model.

## BID INSTRUCTIONS (VER. 07/02/2018):

### 1. Scheduled Bid Location, Date, and Time (2/11)

Bids must be received by the Unit Manager, BALDWIN OFFICE, 2468 W 24th Street, Baldwin, MI 49304, no later than 3:00 p.m. (local time) on May 25, 2022. For further information concerning this sale, contact Joe Ventimglia at 231-878-0047 extension .

### 2. Bidder's Qualifications (5/16)

Purchaser shall obtain workers compensation insurance to cover claims under Michigan's Worker's Disability Compensation Act of 1969 or similar employee benefit act of any other state applicable to an employee. If all or part of a timber sale was prepared by a private contractor, the contractor and that contractor's company are not permitted to bid on the timber sale contract. Bids will not be accepted from individuals or companies appearing on the DNR/FRD No-Bid List. This list contains the names of purchasers who previously failed to execute a contract within 21-days or who have a history of poor performance.

### 3. Preparation of Sealed Bids (5/16)

Bid Forms may be completed online thru Michigan DNR Timber Sale Online Bidding (OLB) at [www.michigan.gov/timberbidding](http://www.michigan.gov/timberbidding) or by completing the hardcopy Bid Form found in the Timber Sale Prospectus . Hardcopy Bid Forms shall be manually signed in ink. Registration in OLB is considered your 'signature' for all bids submitted thru that system. Bid prices must be entered for each species and product in the Bid Price column for all material subject to bidding and all fill-in blanks must be completed. If erasures or other changes appear on the hardcopy Bid Form, each erasure or change must be initialed by the person signing the bid.

### 4. Submission of Sealed Bids (5/16)

Bid forms may be obtained from the Unit Manager or thru OLB. Bids may be submitted hardcopy or thru OLB. All hardcopy bids must be submitted on the bid form and in an envelope clearly identified as described in this section. NOTE: Only one bid form per bid envelope. Sealed bids must be submitted to the Unit office designated in the prospectus and must be submitted at or prior to the time established in the prospectus. The envelope should show on the outside (a) the sale name or number and (b) the date and time of bid opening, as shown in the prospectus. Bids received after the time specified in the sale prospectus are late bids and will be rejected.

It is possible for a bidder to submit multiple bids on a single sale. For example, a bid may be submitted hardcopy and a bid may be submitted thru OLB. Or, two bidders from the same company could both submit bids on the same sale. If this were to happen, the State would accept all bids received and award the contract accordingly. All bidding and contractual requirements would apply to all bids received.

### 5. Public Opening of Sealed Bids (7/16)

If conditions permit, the sealed bids will be publicly opened and posted at the time and place set in the prospectus.

If a bidder, present at a bid opening, has submitted bids on more than one sale, that bidder may withdraw their unopened bid envelopes or announce the withdrawal of their online bid after being declared the successful bidder on one sale.

### 6. Award of Contract (1/11)

Award of the contract will be made to the Bidder whose bid, conforming to the prospectus, is most advantageous to the State of Michigan on the basis of total value at rates bid for the estimated quantities. The State reserves the right to reject any bid or waive any minor irregularity in bids received. A written award mailed (or otherwise furnished) to the successful Bidder shall be deemed to result in a binding contract without further action by either party.

### 7. Down Payment (1/11)

The Bidder to whom award is made must make a down payment within 21 days of the sale award. The amount of the down payment will be calculated as shown in the Bond and Payment Schedule of this prospectus. Only cash may be used to meet this requirement.

### 8. Performance Security (1/11)

As guarantee of faithful performance, a cash bond, certificate of deposit, surety bond or irrevocable letter of credit (LOC) is required within 21 days of the sale award. The amount of the performance security is shown in the Bond and

Payment Schedule of this prospectus. If an LOC or surety is used, the coverage must extend for at least 6 months beyond the contract expiration.

#### 9. Timber Sale Contract (7/18)

Additional conditions and requirements common to all timber sales are listed on the timber sale contract (R4031) and are available on line at [www.michigan.gov/timber](http://www.michigan.gov/timber). Contact the Unit Manager for additional information or a sample contract. Within 21 days of the date of the award letter, the bidder must sign the contract and provide the required down payment, performance security, and verification of worker's disability compensation. The down payment and performance security shall be in accordance with the provisions of the timber sale contract, in the sums stated in this prospectus. If these actions are not taken, then the Bidder, the Bidder's corporation, and the corporation's principals may not be permitted to bid on State timber sales for a period of 3 months after the first offense, 6 months after the second offense, and 1 year after the third offense. An offense will only be counted against the Bidder for 5 years. In addition, the Bidder certifies that if awarded this contract, the Bidder will complete the timber sale contract in accordance with its terms and any modifications thereof including requirements to purchase, cut, and remove the included timber by the expiration date.

Payment Unit values in the State Forest Timber Sale Contract are calculated based on the advertised value of the Payment Unit as a percentage of the total advertised value of the contract. The advertised value of each Payment Unit is given in the Description of Timber by Payment Unit table on the Timber Sale Information page. For example, if the value of Payment Unit 1 is advertised as \$1,500 and the total Timber Sale value is advertised as \$10,000, the contract price for Payment Unit 1 will be 15% of the total bid price ( $\$1,500/\$10,000 * 100$ ).

#### 10. Disclaimer of Estimates and Bidder's Warranty of Inspection (7/16)

Before submitting this bid, the Bidder is advised and cautioned to inspect the sale area, review the requirements of the sale contract, and take other steps as may be reasonably necessary to ascertain the location, estimated volumes, construction estimates, and operating costs of the proposed sale. Failure to do so will not relieve the Bidder from responsibility for completing the contract.

The Bidder warrants that this bid is submitted solely on the basis of the Bidder's examination and inspection of the quality and quantity of the timber offered for sale and the Bidder's opinion of the value thereof and the costs of recovery. No reliance should be placed on the State of Michigan's estimates of timber quality, quantity or costs of recovery. Bidder further acknowledges that the State of Michigan: (i) expressly disclaims any warranty of fitness of timber for any purpose; (ii) offers this timber as is without any warranty of quality (merchantability) or quantity and (iii) expressly disclaims any warranty as to the quantity or quality of timber sold.

#### 11. Certification and Chain-of-Custody (10/14)

Unless otherwise indicated in the contract under section 7 – Other Conditions of the Sale Specific Conditions & Requirements, the area encompassed by this timber sale is certified to the standards of the Forest Stewardship Council (FSC) - Certificate #SCS-FM/COC-00090N and the Sustainable Forestry Initiative (SFI) - Certificate #NSF-SFIS-5Y031-SF5. Forest products from this sale may be delivered to the mill as "FSC 100% and / or SFI certified" as long as the contractor hauling the forest products is chain-of-custody (COC) certified or covered under a COC certificate from the destination mill. The purchaser is responsible for maintaining COC after leaving the sale area.

#### 12. Good Neighbor Authority (GNA) Requirements (7/16)

If the name of this timber sales contains the acronym GNA, it is authorized by the Good Neighbor Authority (GNA) and covered by various agreements between the U.S. Forest Service and the State. The timber sale occurs on federal land and the following conditions apply:

GNA contracts on US Forest Service land will not be awarded to purchasers on the Federal list of excluded parties. The System for Award Management (SAM) will be checked for active excluded parties prior to award of contract. In addition, the Bidder to whom award is made must complete an Assurance Regarding Felony Conviction or Tax Delinquent Status for Corporate Applicants (AD-3031).

#### 13. Good Neighbor Authority (GNA) Requirements, con't (9/16)

Bidder certifies, by signing this bid form, that to the best of Bidder's knowledge that the following representations are accurate and complete.

- a. That the Bidder and its principals are not presently debarred, suspended, proposed for debarment, declared ineligible, or voluntary excluded from timber sales (covered transactions) by any Federal department or agency.
- b. That the Bidder and its principals have not within a 3-year period preceding this bid been convicted of or had a civil judgment rendered against them for commission of fraud or a criminal offense in connection with obtaining , attempting to obtain, or performing a public (Federal, State, or local) transaction or contract under a public transaction; violation of Federal or State antitrust statutes or commission of embezzlement, theft, forgery, bribery, falsification or destruction of records, making false statements, or receiving stolen property.
- c. That the Bidder and its principals are not presently indicted for or otherwise criminally or civilly charged by a governmental entity (Federal, State, or local) with commission of any of the offenses enumerated in paragraph b of this certification.
- d. That the Bidder and its principals have not within a 3-year period preceding this bid had one or more public transactions (Federal, State, or local) terminated for breach or default of a timber or forest product contract.

Bidders that cannot certify this requirement, in whole or in part, shall submit an explanation with their bid.

DAN EICHINGER  
Director

## TIMBER SALE INFORMATION

Northeast Missaukee Aspen (63-011-21)  
 T24N, R05W, SEC. 5.  
 Missaukee County (Advertised Price \$34,095.05)

SALE NOTE: All units of volume listed for this sale were estimated using the Inventory Manager computer program and the new Michigan taper model.

A recreation site such as a trail, pathway, or campground is within the sale area or the vicinity. Certain restrictions/specifications may be applicable including time restrictions.

A timber sale contract for this lump sum, sealed bid timber sale will be awarded to the responsible bidder offering the highest sealed bid price. All units of volume listed below were estimated using the Inventory Manager computer program and the new Michigan taper model. Bids must be at or above the following advertised price for each product and species:

<u>PRODUCTS &amp; SPECIES</u>	<u>ESTIMATED UNITS*</u>	<u>ADVERTISED PRICE</u>
<b>Sawtimber</b>		
Mixed Aspen	142.6 MBF	\$ 64.00 / MBF
Red Maple	13.9 MBF	\$ 41.00 / MBF
Red Oak	45.9 MBF	\$ 116.00 / MBF
Red Pine	44.0 MBF	\$ 67.00 / MBF
White Oak	11.7 MBF	\$ 56.00 / MBF
White Pine	4.9 MBF	\$ 46.00 / MBF
<b>Pulpwood</b>		
Bl/R/Hybrid Oak	23 Cords	\$ 18.10 / Cord
Black Cherry	134 Cords	\$ 12.40 / Cord
Mixed Aspen	529 Cords	\$ 15.35 / Cord
Red Maple	250 Cords	\$ 12.40 / Cord
Red Oak	64 Cords	\$ 18.10 / Cord
White Oak	24 Cords	\$ 18.10 / Cord
White Pine	39 Cords	\$ 9.10 / Cord

\* The total volume is statistically estimated within plus (+) or minus (-) 7.30 percent. There are an estimated 1,662 cords on this timber sale, plus or minus 121 cords at the 95% confidence level. The estimated units are final and not subject to adjustment. Prospective bidders are urged to examine this timber and to make their own estimates of quantity and quality.

### **BOND AND PAYMENT SCHEDULE:**

1. A bond in the amount of \$1,705.00 to insure faithful performance of the conditions of the contract will be deposited by the successful bidder within 21 days of the sale award.
2. Cutting in any sale or unit without the required advance payment would be considered a trespass.
3. Total payment must be paid in advance or according to the following schedule :
  - (a) Ten percent (10%) of the sale value must be paid within 21 days of the sale award.
  - (b) The 10% down payment will be credited towards the first unit cut.
  - (c) Payment for each of the following units must be made before cutting begins in that unit:
 

PAYMENT UNIT NUMBER	PERCENT OF TOTAL SALE VALUE
01	12.4%
02	39.9%
03	33.0%
04	14.7%
4. If no cutting takes place, the 10% down payment will not be refunded.
5. Operations on the contract issued will terminate on 06/30/2024.

### **SALE STATISTICS**

Volumes were calculated in cubic feet using the Michigan taper model. Cubic foot volume includes all wood inside bark for the product indicated. For display purposes, cubic feet were converted to cords and MBF using a simple conversion factor, e.g. 79 cubic feet per cord and 185 cubic feet per MBF. The cubic foot volumes are precise; the cords and MBF volumes are not. Cubic foot volume cannot be directly converted to cords or boards with precision.

## SALE VOLUMES

The total estimated sale volume may not equal the sum of the species/products due to the nature of statistical calculations associated with double sampling methodology.

VOLUME			STATISTICAL RANGE IN CORDS	
TOTAL CUBIC FEET	TOTAL CORDS	PERCENT ERROR	MINIMUM	MAXIMUM
131,259	1,662	7.30%	1,540	1,783

## VDU VOLUMES

A VDU is a Volume Determination Unit. Volumes and their associated statistics are calculated at the VDU level and summarized to the sale level. There is often a one to one relationship between a VDU and a Payment Unit, but not always, depending on the cruise design. Refer to the VDU TO PAYMENT UNIT table.

	VOLUME			RANGE IN CORDS	
VDU	TOTAL CUBIC FEET	TOTAL CORDS	PERCENT ERROR	MINIMUM	MAXIMUM
46	20,169	255	22.64%	198	313
83	44,807	567	10.83%	506	629
85	45,059	570	12.55%	499	642
89	21,224	269	18.57%	219	319
<b>TOTAL:</b>	<b>131,259</b>	<b>1,662</b>		<b>1,421</b>	<b>1,902</b>

## VDU TO PAYMENT UNIT

When a VDU is associated with more than one Payment Unit (PU), the VDU volumes are assigned to the PU based on acres of the VDU within the PU.

VDU	VDU ACRES	PU	PU ACRES
46	37.1	1	37.1
83	19.2	2	19.2
85	18.9	3	18.9
89	16.1	4	16.1
<b>TOTAL:</b>	<b>91.3</b>		<b>91.3</b>

**DESCRIPTION OF TIMBER BY PAYMENT UNIT (PU)**

PU	MARKET GROUP	PRODUCT	QUANTITY	UNIT	ACRES	ADVERTISE PRICE			
1	Mixed Aspen	Sawtimber	23.2	MBF	37.1	\$4,223.25			
	<i>Quaking Aspen</i>		23.2	<i>MBF</i>					
	Red Maple		1.1	MBF					
	Red Oak		0.5	MBF					
	White Oak		2.8	MBF					
	BI/R/Hybrid Oak	Pulpwood	9	Cords					
	<i>BI/R/Hybrid Oak</i>		9	<i>Cords</i>					
	Black Cherry		51	Cords					
	<i>Black Cherry</i>	Sawtimber	5.1	<i>MBF</i>					
	<i>Black Cherry</i>	Pulpwood	41	<i>Cords</i>					
	Mixed Aspen		83	Cords					
	<i>Quaking Aspen</i>		83	<i>Cords</i>					
	Red Maple		3	Cords					
	Red Oak		4	Cords					
	White Oak		7	Cords					
	White Pine		19	Cords					
	<i>White Pine</i>		19	<i>Cords</i>					
2	Mixed Aspen	Sawtimber	34.3	MBF	19.2	\$13,612.85			
	<i>Quaking Aspen</i>		34.3	<i>MBF</i>					
	Red Oak		39.1	MBF					
	Red Pine		27.0	MBF					
	White Oak		8.9	MBF					
	White Pine		3.9	MBF					
	Black Cherry	Pulpwood	13	Cords					
	<i>Black Cherry</i>		13	<i>Cords</i>					
	Mixed Aspen		117	Cords					
	<i>Quaking Aspen</i>		117	<i>Cords</i>					
	Red Maple		90	Cords					
	Red Oak		48	Cords					
	White Oak		17	Cords					
	White Pine		16	Cords					
	<i>Red Pine</i>		5	<i>Cords</i>					
	<i>White Pine</i>		11	<i>Cords</i>					
	3	Mixed Aspen	Sawtimber	51.8			MBF	18.9	\$11,243.55
<i>Quaking Aspen</i>			51.8	<i>MBF</i>					
Red Maple			12.8	MBF					
Red Oak			6.3	MBF					
Red Pine			17.0	MBF					
White Pine			1.0	MBF					
Black Cherry		Pulpwood	46	Cords					
<i>Black Cherry</i>			46	<i>Cords</i>					
Mixed Aspen			177	Cords					
<i>Quaking Aspen</i>			177	<i>Cords</i>					
Red Maple			157	Cords					
Red Oak			12	Cords					
White Pine			4	Cords					
<i>Red Pine</i>			1	<i>Cords</i>					
<i>White Pine</i>			3	<i>Cords</i>					
4		Mixed Aspen	Sawtimber	33.3	MBF	16.1	\$5,015.40		
		<i>Quaking Aspen</i>		33.3	<i>MBF</i>				
	BI/R/Hybrid Oak	Pulpwood	14	Cords					
	<i>BI/R/Hybrid Oak</i>	Sawtimber	2.6	<i>MBF</i>					
	<i>BI/R/Hybrid Oak</i>	Pulpwood	9	<i>Cords</i>					
	Black Cherry		24	Cords					
	<i>Black Cherry</i>	Sawtimber	6.3	<i>MBF</i>					
	<i>Black Cherry</i>	Pulpwood	11	<i>Cords</i>					

**DESCRIPTION OF TIMBER BY PAYMENT UNIT (PU), CON'T**

PU	MARKET GROUP	PRODUCT	QUANTITY	UNIT	ACRES	ADVERTISE PRICE
4 con't	Mixed Aspen	Pulpwood	152	Cords		
	<i>Quaking Aspen</i>		152	<i>Cords</i>		
TOTAL:			263.0	MBF		
TOTAL:			1,063	Cords		



## Sale Specific Conditions & Requirements

**Sale Name: Northeast Missaukee Aspen**

**Sale Number: 63-011-21 Seq#: 1**

### 1 - Sale Area

#### 1.2 - Boundaries

##### 1.2.1 - Painted boundaries (9/19)

The sale boundary and Payment Unit boundaries are marked and identified by red paint. Exterior sale boundary lines against state are marked with red paint. North line in Payment Unit 1 is County Line Road.

### 2 - Timber Specifications

#### 2.1 - Included Timber

##### 2.1.1 - Clearcut unit(s) with unmerchantable trees (6/14)

Within Payment Unit(s) 1, 2, and 4, cut all trees that are two (2) inches or more at DBH, except leave all green and blue marked trees in Payment Unit 2.

##### 2.1.2 - Clearcut unit(s) w/o unmerchantable trees (8/11)

Within Payment Unit(s) 3, cut all trees which meet minimum piece specifications in 2.2 Utilization, except leave all white oak regardless of size and any white pine greater than 15 inches in diameter.

#### 2.2 - Utilization

##### 2.2.2 - Chipping required (2/18)

Payment Unit 1 must be chip harvested to facilitate subsequent planting operations. The Purchaser has the option to produce sawlogs or pulpwood bolts, but the remaining portion of the trees must be chipped and hauled. If market conditions limit the practicality of chipping, tops and slash must be arranged in a way that will not inhibit future planting operations, as directed by the sale administrator. The requirement to retain approximately 1/6 to 1/3 of tree tops and limbs less than four inches in diameter is still applicable (G. C. & R. 2.2).

##### 2.2.3 - Stump heights (4/07)

Stump heights within Payment Unit 1 shall not exceed 6 inches for all trees. This is to facilitate planting operations.

### 4 - Transportation

#### 4.1 - Construction

##### 4.1.12 - No new roads (1/12)

No new roads will be permitted in any Payment Unit. All operations are limited to existing roads. Skid trails only will be allowed.

#### 4.2 - Maintenance

##### 4.2.5 - Two wheel drive condition (2/04)

All existing trail roads on and adjacent to the sale area must be passable by two-wheel drive traffic for the duration of the sale.

### 5 - Operations

#### 5.1 - Notification

##### 5.1.1 - Pre-sale conference (10/16)

A pre-sale conference on site between the Purchaser and sale administrator is required prior to beginning any operations to determine landing and road locations. The Unit Manager or his/her representative must be contacted at least 3 days in advance to schedule the conference.

#### 5.2 - Conduct of Operations

##### 5.2.4 - Dead and Down Creation

#### 5.2.4.2 - Dead and down creation, hare and grouse (1/14)

To improve habitat for snowshoe hare, grouse, and other species, the Purchaser is to leave two 10-inch diameter or larger log size pieces on the ground for every 4 acres. This applies only to Payment Units 2-4. They should be scattered throughout the sale or positioned per the sale administrators' instructions. If possible, the logs or trees should be felled so they overlap. Note these pieces should have a minimum length of five feet. They can be of any tree species and can be an un-merchantable piece of wood or a full tree.

#### 5.2.39 - ORV trail/route protection (4/18)

Snowmobile and ORV route travels through Payment Units 2 and 3 as shown on Timber Sale Map. Do not cut trees or damage posts with yellow ORV markers. All stumps within 5 feet of the trail must be cut flush with the ground. Maintain a 20-foot-wide slash, debris, and rut free zone daily using the ORV trail or route as the centerline. Do not run equipment down the ORV trail or route. Skidding across the trail or route may only occur in locations approved by the sale administrator.

#### 5.2.41 - Snowmobile trail protection (9/11)

The snowmobile trail runs through Payment Units 2 and 3 as shown on Timber Sale Map. Do not cut or damage posts with orange trail markers or traffic control signs. If the trail is used, it must be maintained and restored to a condition equal to or better than before the sale. If the trail road is to be used for hauling during the snowmobile season, then a snow-covered base must be left on the trail. The snowmobile trail may only be crossed at right angles. Maintain a 20-foot-wide slash, debris, and rut free zone daily using the snowmobile trail as the centerline. All stumps within 20 feet of the snowmobile trail must be cut at ground level. In addition, any trees cut within 5 feet of the trail must have the stumps removed and be disposed of according to the direction of the Unit Manager or his/her representative.

## 6 - Safety and Fire Prevention

### 6.2 - Signing

#### 6.2.2 - Snowmobile trail posting (10/20)

The Purchaser is responsible for posting and maintaining caution signs on the snowmobile trail prior to beginning operations during the snowmobile season (approximately December 1 to March 31). The trail must be posted at appropriate distances from the Sale Area to warn of logging activity and truck traffic. Signs must be removed when harvest operations are suspended or completed. The Purchaser will provide these signs.

#### 6.2.3 - Recreational trail posting (10/20)

The Purchaser is responsible for posting and maintaining caution signs on the ORV route prior to beginning operations. The trail must be posted at appropriate distances from the Sale Area to warn of logging activity and truck traffic at both ends of the trail. Signs must be removed when harvest operations are suspended or completed. The Purchaser will provide these signs.

## 99 - Unique

### SKIP

#### 99.1 - Unique Sale Condition (5/19)

Note Payment Unit 1 is very low cords per acre and has many sub-merchantable trees required to cut. The purpose of this harvest is to prep site for future red pine planting.



# TIMBER SALE MAP

This information provided by authority of Part 525, 1994 PA 451, as amended.

Forest Management Unit Cadillac		County Missaukee	Mapped By Ventimiglia	Date 07/13/21	Page 1	of 1
Township 24N	Range 05W	Section(s) and Subdivision(s) Section 5 Various		Scale 1:15,840		

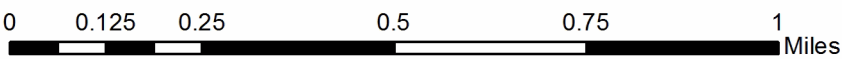
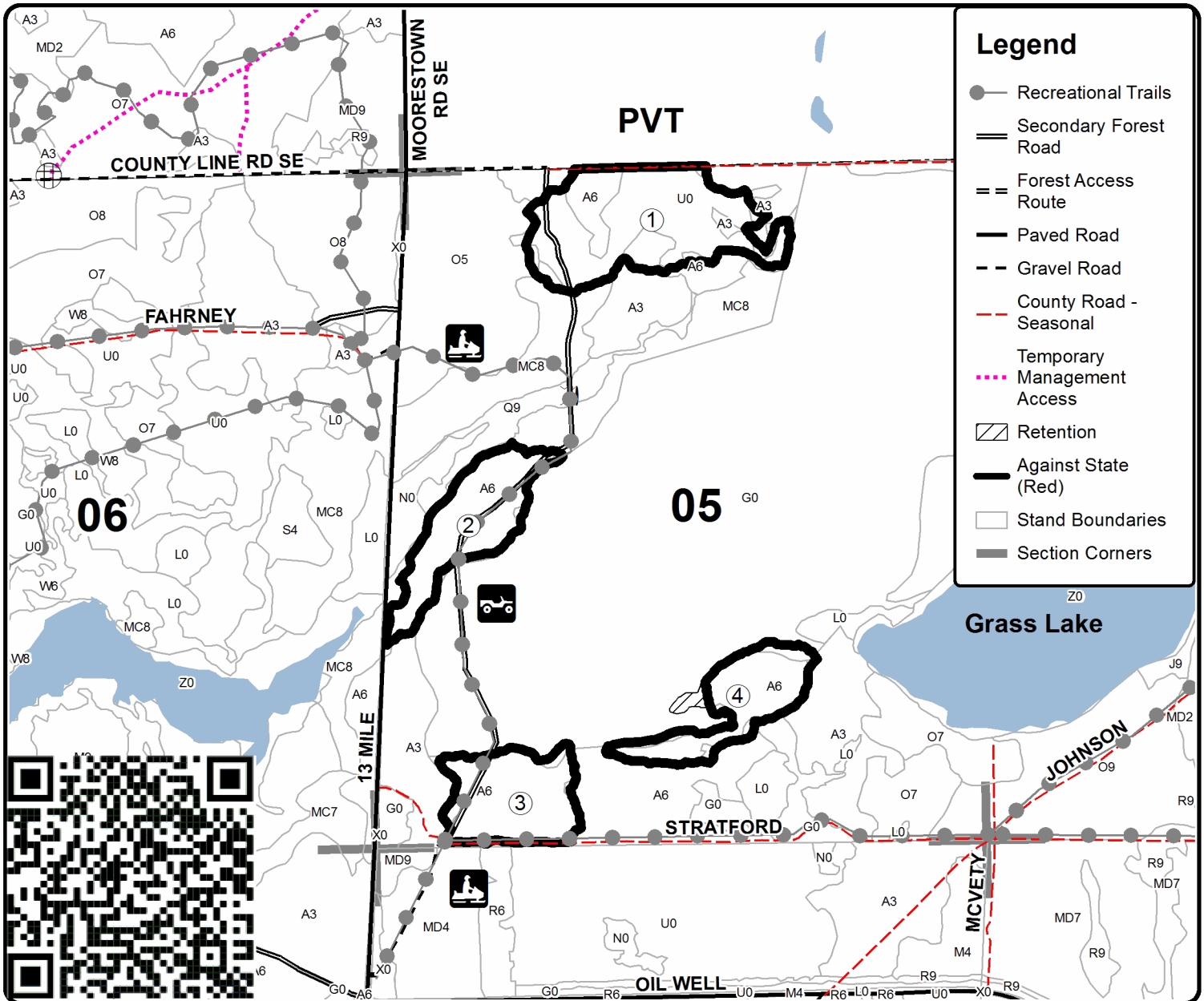
Cover Type				Density	
A = Aspen	H = Hemlock	N = Marsh	U = Upland Brush	0 = Non Stocked	5 = Pole Timber Medium
B = Paper Birch	J = Jack Pine	O = Oak	UM = Upland Mixed	1 = Seedling Sapling Poor	6 = Pole Timber Well
C = Cedar	L = Lowland Brush	P = Lowland Poplar	V = Bog or Marsh	2 = Seedling Sapling Medium	7 = Saw Timber Poor
D = Treed Bog	LM = Lowland Mixed	Q = Mixed Swamp Conifer	W = White Pine	3 = Seedling Sapling Well	8 = Saw Timber Medium
E = Swamp Hdwoods	M = Mpl, Bch, Brch	R = Red Pine	X = Non Stocked	4 = Pole Timber Poor	9 = Saw Timber Well
F = Spruce Fir	MC = Mixed Conifer	S = Black Spruce	Z = Water		
G = Grass	MD = Mixed Deciduous	T = Tamarack			

PU	Acres	PU	Acres
1	37.1	4	16.1
2	19.2		
3	18.9		

## Northeast Missaukee Aspen

### Compartment 80

### 91.3 Acres





## TIMBER SALE INFORMATION

Grass Lake Oak (63-016-21)  
 T24N, R05W, SEC. 4; T24N, R05W, SEC. 5.  
 Missaukee County (Advertised Price \$90,114.30)

SALE NOTE: All units of volume listed for this sale were estimated using the Inventory Manager computer program and the new Michigan taper model.

A recreation site such as a trail, pathway, or campground is within the sale area or the vicinity. Certain restrictions/specifications may be applicable including time restrictions.

A timber sale contract for this lump sum, sealed bid timber sale will be awarded to the responsible bidder offering the highest sealed bid price. All units of volume listed below were estimated using the Inventory Manager computer program and the new Michigan taper model. Bids must be at or above the following advertised price for each product and species:

<u>PRODUCTS &amp; SPECIES</u>	<u>ESTIMATED UNITS*</u>	<u>ADVERTISED PRICE</u>
Sawtimber		
Mixed Aspen	132.7 MBF	\$ 78.00 / MBF
Red Maple	169.9 MBF	\$ 50.00 / MBF
Red Oak	335.0 MBF	\$ 142.00 / MBF
Red Pine	14.0 MBF	\$ 82.00 / MBF
White Pine	14.6 MBF	\$ 56.00 / MBF
Pulpwood		
Black Cherry	15 Cords	\$ 15.15 / Cord
Mixed Aspen	277 Cords	\$ 18.75 / Cord
Red Maple	695 Cords	\$ 15.15 / Cord
Red Oak	227 Cords	\$ 22.15 / Cord
White Pine	68 Cords	\$ 11.10 / Cord

\* The total volume is statistically estimated within plus (+) or minus (-) 8.08 percent. There are an estimated 2,762 cords on this timber sale, plus or minus 223 cords at the 95% confidence level. The estimated units are final and not subject to adjustment. Prospective bidders are urged to examine this timber and to make their own estimates of quantity and quality.

### **BOND AND PAYMENT SCHEDULE:**

1. A bond in the amount of \$4,506.00 to insure faithful performance of the conditions of the contract will be deposited by the successful bidder within 21 days of the sale award.
2. Cutting in any sale or unit without the required advance payment would be considered a trespass.
3. Total payment must be paid in advance or according to the following schedule :
  - (a) Ten percent (10%) of the sale value must be paid within 21 days of the sale award.
  - (b) The 10% down payment will be credited towards the first unit cut.
  - (c) Payment for each of the following units must be made before cutting begins in that unit:

PAYMENT UNIT NUMBER	PERCENT OF TOTAL SALE VALUE
01	37.2%
02	25.0%
03	14.8%
04	23.0%

4. If no cutting takes place, the 10% down payment will not be refunded.
5. Operations on the contract issued will terminate on 06/30/2025.

### **SALE STATISTICS**

Volumes were calculated in cubic feet using the Michigan taper model. Cubic foot volume includes all wood inside bark for the product indicated. For display purposes, cubic feet were converted to cords and MBF using a simple conversion factor, e.g. 79 cubic feet per cord and 185 cubic feet per MBF. The cubic foot volumes are precise; the cords and MBF volumes are not. Cubic foot volume cannot be directly converted to cords or boards with precision.

## SALE VOLUMES

The total estimated sale volume may not equal the sum of the species/products due to the nature of statistical calculations associated with double sampling methodology.

VOLUME			STATISTICAL RANGE IN CORDS	
TOTAL CUBIC FEET	TOTAL CORDS	PERCENT ERROR	MINIMUM	MAXIMUM
218,199	2,762	8.08%	2,539	2,985

## VDU VOLUMES

A VDU is a Volume Determination Unit. Volumes and their associated statistics are calculated at the VDU level and summarized to the sale level. There is often a one to one relationship between a VDU and a Payment Unit, but not always, depending on the cruise design. Refer to the VDU TO PAYMENT UNIT table.

	VOLUME			RANGE IN CORDS	
VDU	TOTAL CUBIC FEET	TOTAL CORDS	PERCENT ERROR	MINIMUM	MAXIMUM
92	74,368	941	9.37%	853	1,030
94	143,831	1,821	11.27%	1,615	2,026
<b>TOTAL:</b>	<b>218,199</b>	<b>2,762</b>		<b>2,469</b>	<b>3,056</b>

## VDU TO PAYMENT UNIT

When a VDU is associated with more than one Payment Unit (PU), the VDU volumes are assigned to the PU based on acres of the VDU within the PU.

VDU	VDU ACRES	PU	PU ACRES
92	36.1	3	14.1
		4	22.0
94	65.1	1	38.9
		2	26.2
<b>TOTAL:</b>	<b>101.2</b>		<b>101.2</b>

**DESCRIPTION OF TIMBER BY PAYMENT UNIT (PU)**

PU	MARKET GROUP	PRODUCT	QUANTITY	UNIT	ACRES	ADVERTISE PRICE	
1	Mixed Aspen	Sawtimber	69.0	MBF	38.9	\$33,486.15	
	<i>B. T. Aspen</i>		69.0	<i>MBF</i>			
	Red Maple		74.1	MBF			
	Red Oak		108.6	MBF			
	Black Cherry		Pulpwood	9			Cords
	Mixed Aspen			117			Cords
	<i>B. T. Aspen</i>			117			<i>Cords</i>
	Red Maple			305			Cords
	Red Oak			84			Cords
	White Pine			15			Cords
	<i>White Pine</i>			15			<i>Cords</i>
2	Mixed Aspen	Sawtimber		46.5	MBF	26.2	\$22,572.85
	<i>B. T. Aspen</i>			46.5	<i>MBF</i>		
	Red Maple			50.0	MBF		
	Red Oak			73.2	MBF		
	Black Cherry		Pulpwood	6	Cords		
	Mixed Aspen			79	Cords		
	<i>B. T. Aspen</i>			79	<i>Cords</i>		
	Red Maple			205	Cords		
	Red Oak			57	Cords		
	White Pine			10	Cords		
	<i>White Pine</i>			10	<i>Cords</i>		
3	Mixed Aspen	Sawtimber		6.7	MBF	14.1	\$13,312.00
	<i>B. T. Aspen</i>			6.7	<i>MBF</i>		
	Red Maple			17.9	MBF		
	Red Oak			59.8	MBF		
	Red Pine		5.5	MBF			
	White Pine		5.7	MBF			
	Mixed Aspen		Pulpwood	32	Cords		
	<i>B. T. Aspen</i>			32	<i>Cords</i>		
	Red Maple			72	Cords		
	Red Oak			34	Cords		
	White Pine			17	Cords		
	<i>Jack Pine</i>			3	<i>Cords</i>		
	<i>Red Pine</i>			2	<i>Cords</i>		
<i>White Pine</i>	12	<i>Cords</i>					
4	Mixed Aspen	Sawtimber		10.5	MBF	22.0	\$20,743.30
	<i>B. T. Aspen</i>			10.5	<i>MBF</i>		
	Red Maple			27.9	MBF		
	Red Oak			93.4	MBF		
	Red Pine			8.5	MBF		
	White Pine		8.9	MBF			
	Mixed Aspen		Pulpwood	49	Cords		
	<i>B. T. Aspen</i>			49	<i>Cords</i>		
	Red Maple			113	Cords		
	Red Oak			52	Cords		
	White Pine			26	Cords		
	<i>Jack Pine</i>			4	<i>Cords</i>		
	<i>Red Pine</i>			4	<i>Cords</i>		
<i>White Pine</i>	18	<i>Cords</i>					
TOTAL:				666.2	MBF		
TOTAL:				1,282	Cords		

## Sale Specific Conditions & Requirements

**Sale Name: Grass Lake Oak**

**Sale Number: 63-016-21 Seq#: 1**

### 1 - Sale Area

#### 1.2 - Boundaries

##### 1.2.1 - Painted boundaries (9/19)

The sale boundary and Payment Unit boundaries are marked and identified by yellow and red paint. Exterior sale boundary lines against state are marked with red paint. Interior Payment Unit lines for Payment Units 1 and 2 are marked in yellow. The snowmobile trail will be considered the interior Payment Unit line for Payment Units 3 and 4. The painted boundary line trees are not Included Timber and are to be protected.

### 2 - Timber Specifications

#### 2.1 - Included Timber

##### 2.1.2 - Clearcut unit(s) w/o unmerchantable trees (8/11)

Within Payment Unit(s) 1 and 2, cut all trees which meet minimum piece specifications in 2.2 Utilization, except leave all white/red pine 10 inches in diameter and greater and all white oak.

##### 2.1.5 - Overstory removal unit(s) (8/11)

Within Payment Unit(s) 3 and 4, all trees which meet minimum piece specifications in 2.2 Utilization, are designated for cutting, except leave all white oak regardless of size and all white pine 15 inches in diameter or greater.

### 3 - Payments

#### 3.3 - Pre-measured Sales

##### 3.3.4 - Dividing payment units (7/14)

Payment Unit(s) may be divided at the request of the Purchaser and upon approval of the Unit Manager. Dividing Payment Units is a contract modification which requires a Timber Sale Contract Amendment. There will be only one division per Payment Unit.

### 4 - Transportation

#### 4.1 - Construction

##### 4.1.12 - No new roads (1/12)

No new roads will be permitted in any Payment Unit. All operations are limited to existing roads. Skid trails only will be allowed.

#### 4.2 - Maintenance

##### 4.2.5 - Two wheel drive condition (2/04)

All existing trail roads on and adjacent to the sale area must be passable by two-wheel drive traffic for the duration of the sale.

### 5 - Operations

#### 5.1 - Notification

##### 5.1.1 - Pre-sale conference (10/16)

A pre-sale conference on site between the Purchaser and sale administrator is required prior to beginning a Payment Unit to determine landing and road locations. The Unit Manager or his/her representative must be contacted at least 3 days in advance to schedule the conference.

#### 5.2 - Conduct of Operations

##### 5.2.2 - Hazard Trees/Snags

##### 5.2.2.1 - Den trees (10/16)



Obvious hollow and/or den trees shall be protected and left standing unless they are a safety hazard.

### 5.2.3 - Operating Restrictions

#### 5.2.3.5 - Oak wilt restriction (1/18)

Within the Sale Area, unless changed by written agreement, cutting, skidding, hauling within the sale and brushing of access roads to the sale are not permitted during the period of April 15 to July 15. Operations may be allowed if specific steps are taken to prevent damaging uncut oak during the high risk period. Those steps may include completing all road brushing before April 15th and clearing a tree-length buffer along uncut oak cover before April 15th. This is necessary to reduce the spread of oak wilt. For more information, contact the Unit Manager or his/her representative.

#### 5.2.39 - ORV trail/route protection (4/18)

The ORV route enters Payment Units 3 and 4 as shown on Timber Sale Map. Do not cut trees or damage posts with yellow ORV markers. All stumps within 5 feet of the trail must be cut flush with the ground. Maintain a 20-foot-wide slash, debris, and rut free zone daily using the ORV trail or route as the centerline. Do not run equipment down the ORV trail or route. Skidding across the trail or route may only occur in locations approved by the sale administrator.

#### 5.2.41 - Snowmobile trail protection (9/11)

The snowmobile trail enters Payment Units 3 and 4 as shown on the Timber Sale Map. Do not cut or damage posts with orange trail markers or traffic control signs. If the trail is used, it must be maintained and restored to a condition equal to or better than before the sale. If the trail road is to be used for hauling during the snowmobile season, then a snow-covered base must be left on the trail. The snowmobile trail may only be crossed at right angles. Maintain a 20-foot-wide slash, debris, and rut free zone daily using the snowmobile trail as the centerline. All stumps within 20 feet of the snowmobile trail must be cut at ground level. In addition, any trees cut within 5 feet of the trail must have the stumps removed and be disposed of according to the direction of the Unit Manager or his/her representative.

### 5.4 - Soil Protection

#### 5.4.1 - Rutting restriction, general (7/16)

Operations are to cease immediately if equipment and weather conditions result in rutting of roads and/or skid trails which is 12 inches or greater in depth and 50 feet in length. The Unit Manager or his/her representative may restrict hauling and/or skidding if ruts exceed the specified depth. With the Unit Manager or his/her representative's approval, the Purchaser may return to the area when the risk of rutting has decreased.

## 6 - Safety and Fire Prevention

### 6.2 - Signing

#### 6.2.1 - Road posting (10/20)

The Purchaser is responsible for posting and maintaining caution signs on timber access roads near landing prior to beginning operations. The road must be posted at appropriate distances from the Sale Area to warn of logging activity and truck traffic. Signs must be removed when harvest operations are suspended or completed. The Purchaser will provide these signs.

#### 6.2.2 - Snowmobile trail posting (10/20)

The Purchaser is responsible for posting and maintaining caution signs on snowmobile trail(see Timber Sale Map) prior to beginning operations during the snowmobile season (approximately December 1 to March 31). The trail must be posted at appropriate distances from the Sale Area to warn of logging activity and truck traffic. Signs must be removed when harvest operations are suspended or completed. The Purchaser will provide these signs.

#### 6.2.3 - Recreational trail posting (10/20)

The Purchaser is responsible for posting and maintaining caution signs on ORV route on south end of Payment Unit 3 and 4, prior to beginning operations. The trail must be posted at appropriate distances from the Sale Area to warn of logging activity and truck traffic at both ends of the trail. Signs must be removed when harvest operations are suspended or completed. The Purchaser will provide these signs.



Sale Number	Year
63-016-21	21

# TIMBER SALE MAP

This information provided by authority of Part 525, 1994 PA 451, as amended.

Forest Management Unit Cadillac	County Missaukee	Mapped By Ventimiglia	Date 08/06/21	Page 1	of 1
Township 24N	Range 05W	Section(s) and Subdivision(s) Section 4 and 5	Scale 1:15,840		

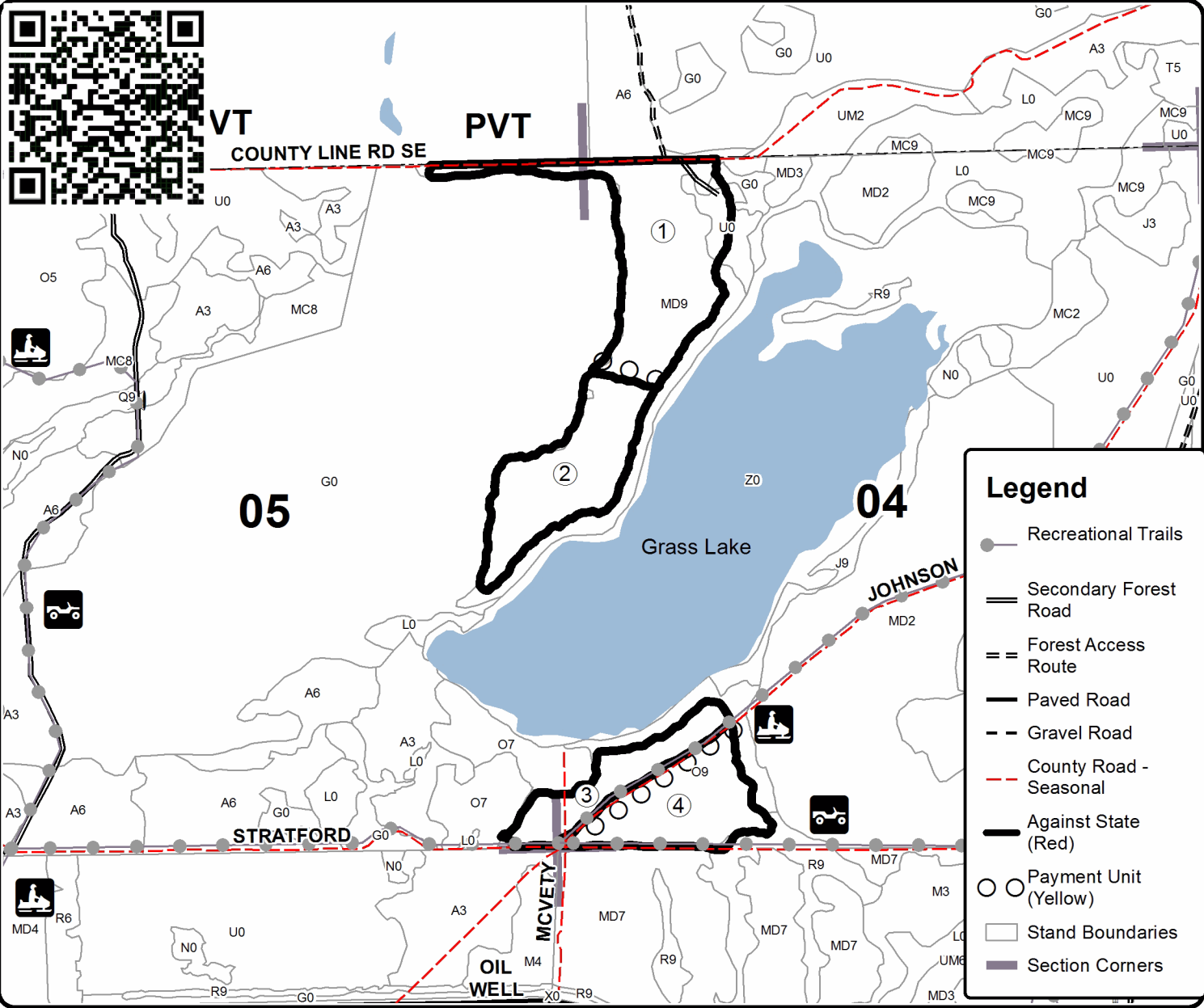
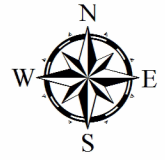
Cover Type				Density	
A = Aspen	H = Hemlock	N = Marsh	U = Upland Brush	0 = Non Stocked	5 = Pole Timber Medium
B = Paper Birch	J = Jack Pine	O = Oak	UM = Upland Mixed	1 = Seedling Sapling Poor	6 = Pole Timber Well
C = Cedar	L = Lowland Brush	P = Lowland Poplar	V = Bog or Marsh	2 = Seedling Sapling Medium	7 = Saw Timber Poor
D = Treed Bog	LM = Lowland Mixed	Q = Mixed Swamp Conifer	W = White Pine	3 = Seedling Sapling Well	8 = Saw Timber Medium
E = Swamp Hdwoods	M = Mpl, Bch, Brch	R = Red Pine	X = Non Stocked	4 = Pole Timber Poor	9 = Saw Timber Well
F = Spruce Fir	MC = Mixed Conifer	S = Black Spruce	Z = Water		
G = Grass	MD = Mixed Deciduous	T = Tamarack			

PU	Acres	PU	Acres
1	38.9	4	22
2	26.2		
3	14.1		

## Grass Lake Oak

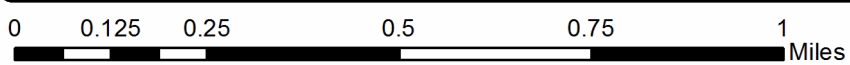
### Compartment 80

101.2 Acres



### Legend

- Recreational Trails
- == Secondary Forest Road
- == Forest Access Route
- Paved Road
- - Gravel Road
- - - County Road - Seasonal
- Against State (Red)
- ○ Payment Unit (Yellow)
- Stand Boundaries
- Section Corners



## TIMBER SALE INFORMATION

80 Pine (63-025-21)

T24N, R05W, SEC. 16; T24N, R05W, SEC. 17; T24N, R05W, SEC. 8; T24N, R05W, SEC. 9.  
Missaukee County (Advertised Price \$68,905.65)

SALE NOTE: All units of volume listed for this sale were estimated using the Inventory Manager computer program and the new Michigan taper model.

A timber sale contract for this lump sum, sealed bid timber sale will be awarded to the responsible bidder offering the highest sealed bid price. All units of volume listed below were estimated using the Inventory Manager computer program and the new Michigan taper model. Bids must be at or above the following advertised price for each product and species:

<u>PRODUCTS &amp; SPECIES</u>	<u>ESTIMATED UNITS*</u>	<u>ADVERTISED PRICE</u>
Sawtimber		
B. T. Aspen	5.9 MBF	\$ 78.00 / MBF
Black Cherry	2.0 MBF	\$ 142.00 / MBF
Jack Pine	2.2 MBF	\$ 19.00 / MBF
Red Pine	265.5 MBF	\$ 82.00 / MBF
Pulpwood		
B. T. Aspen	32 Cords	\$ 18.75 / Cord
Black Cherry	3 Cords	\$ 15.15 / Cord
Jack Pine	24 Cords	\$ 9.55 / Cord
Red Pine	1,272 Cords	\$ 35.75 / Cord

\* The total volume is statistically estimated within plus (+) or minus (-) 7.39 percent. There are an estimated 1,912 cords on this timber sale, plus or minus 141 cords at the 95% confidence level. The estimated units are final and not subject to adjustment. Prospective bidders are urged to examine this timber and to make their own estimates of quantity and quality.

### **BOND AND PAYMENT SCHEDULE:**

1. A bond in the amount of \$5,512.00 to insure faithful performance of the conditions of the contract will be deposited by the successful bidder within 21 days of the sale award.
2. Cutting in any sale or unit without the required advance payment would be considered a trespass.
3. Total payment must be paid in advance or according to the following schedule :
  - (a) Ten percent (10%) of the sale value must be paid within 21 days of the sale award.
  - (b) The 10% down payment will be credited towards the first unit cut.
  - (c) Payment for each of the following units must be made before cutting begins in that unit:
 

PAYMENT UNIT NUMBER	PERCENT OF TOTAL SALE VALUE
01	18.8%
02	22.0%
03	28.1%
04	8.8%
05	22.3%
4. If no cutting takes place, the 10% down payment will not be refunded.
5. Operations on the contract issued will terminate on 06/30/2024.

### **SALE STATISTICS**

Volumes were calculated in cubic feet using the Michigan taper model. Cubic foot volume includes all wood inside bark for the product indicated. For display purposes, cubic feet were converted to cords and MBF using a simple conversion factor, e.g. 79 cubic feet per cord and 185 cubic feet per MBF. The cubic foot volumes are precise; the cords and MBF volumes are not. Cubic foot volume cannot be directly converted to cords or boards with precision.

### **SALE VOLUMES**

The total estimated sale volume may not equal the sum of the species/products due to the nature of statistical calculations associated with double sampling methodology.

VOLUME		STATISTICAL RANGE IN CORDS		
TOTAL CUBIC FEET	TOTAL CORDS	PERCENT ERROR	MINIMUM	MAXIMUM
151,052	1,912	7.39%	1,771	2,053

## VDU VOLUMES

A VDU is a Volume Determination Unit. Volumes and their associated statistics are calculated at the VDU level and summarized to the sale level. There is often a one to one relationship between a VDU and a Payment Unit, but not always, depending on the cruise design. Refer to the VDU TO PAYMENT UNIT table.

VDU	VOLUME		PERCENT ERROR	RANGE IN CORDS	
	TOTAL CUBIC FEET	TOTAL CORDS		MINIMUM	MAXIMUM
5	6,100	77	20.00%	62	93
6	102,825	1,302	9.72%	1,175	1,428
35	7,383	93	5.26%	89	98
47	13,226	167	33.33%	112	223
84	21,517	272	9.09%	248	297
<b>TOTAL:</b>	<b>151,052</b>	<b>1,912</b>		<b>1,685</b>	<b>2,139</b>

## VDU TO PAYMENT UNIT

When a VDU is associated with more than one Payment Unit (PU), the VDU volumes are assigned to the PU based on acres of the VDU within the PU.

VDU	VDU ACRES	PU	PU ACRES
5	4.9	4	4.9
6	99.5	1	27.1
		2	31.8
		3	40.6
35	3.7	4	3.7
47	3.1	5	3.1
84	4.5	5	4.5
<b>TOTAL:</b>	<b>115.7</b>		<b>115.7</b>

**DESCRIPTION OF TIMBER BY PAYMENT UNIT (PU)**

PU	MARKET GROUP	PRODUCT	QUANTITY	UNIT	ACRES	ADVERTISE PRICE
1	B. T. Aspen	Sawtimber	1.6	MBF	27.1	\$12,957.15
	Black Cherry		0.5	MBF		
	Red Pine		31.6	MBF		
	B. T. Aspen	Pulpwood	9	Cords		
	Black Cherry		1	Cords		
	Jack Pine		5	Cords		
	Red Pine		278	Cords		
2	B. T. Aspen	Sawtimber	1.9	MBF	31.8	\$15,180.50
	Black Cherry		0.6	MBF		
	Red Pine		37.1	MBF		
	B. T. Aspen	Pulpwood	10	Cords		
	Black Cherry		1	Cords		
	Jack Pine		5	Cords		
	Red Pine		326	Cords		
3	B. T. Aspen	Sawtimber	2.4	MBF	40.6	\$19,355.60
	Black Cherry		0.9	MBF		
	Red Pine		47.3	MBF		
	B. T. Aspen	Pulpwood	13	Cords		
	Black Cherry		1	Cords		
	Jack Pine		7	Cords		
	Red Pine		415	Cords		
4	Red Pine	Pulpwood	170	Cords	8.6	\$6,077.50
5	Jack Pine	Sawtimber	2.2	MBF	7.6	\$15,334.90
	Red Pine		149.5	MBF		
	Jack Pine	Pulpwood	7	Cords		
	Red Pine		83	Cords		
TOTAL:			275.6	MBF		
TOTAL:			1,331	Cords		

## Sale Specific Conditions & Requirements

**Sale Name: 80 Pine**

**Sale Number: 63-025-21 Seq#: 1**

### 1 - Sale Area

#### 1.2 - Boundaries

##### 1.2.1 - Painted boundaries (9/19)

The sale boundary and Payment Unit boundaries are marked and identified by red and yellow paint. Exterior sale boundary lines against state are marked with red paint. Interior Payment Unit boundaries are marked with yellow paint. Retention patches are marked with red paint; no harvesting activities may occur within these areas. The painted boundary line trees are not Included Timber and are to be protected unless marked with orange paint. Yellow painted trees designating an interior Payment Unit boundary are only to be cut when all surrounding Payment Units have been paid.

### 2 - Timber Specifications

#### 2.1 - Included Timber

##### 2.1.1 - Clearcut unit(s) with unmerchantable trees (6/14)

Within Payment Unit(s) 5, cut all trees that are two (2) inches or more at DBH.

##### 2.1.8 - Designated plantation row unit(s) (12/08)

Within Payment Unit(s) 1-4, all trees which meet minimum piece specifications in 2.2 Utilization, within designated plantation rows are designated for cutting. Designated plantation rows are every third row. Begin with the third-row in from the outside of the plantation, then continue every third row. Because of the variability of row direction, it shall be the responsibility of the producer to maintain the third row sequence.

#### 2.2 - Utilization

##### 2.2.4 - Skidding length (2/14)

Skidding of unlimbed tops is not permissible within Payment Units 1-4. Tree length skidding is required, unless approved by the Unit Manager or his/her representative.

### 3 - Payments

#### 3.3 - Pre-measured Sales

##### 3.3.4 - Dividing payment units (7/14)

Payment Unit(s) may be divided at the request of the Purchaser and upon approval of the Unit Manager. Dividing Payment Units is a contract modification which requires a Timber Sale Contract Amendment.

### 4 - Transportation

#### 4.1 - Construction

##### 4.1.3 - Slash and earthen piles (8/04)

Piles or windrows of earth along roads and landings that have been widened or constructed shall be leveled. Slash from road maintenance or construction, including stumps, shall be dispersed throughout the sale, chipped, utilized, or otherwise removed from the sale.

##### 4.1.12 - No new roads (1/12)

No new roads will be permitted in any Payment Unit. All operations are limited to existing roads. Skid trails only will be allowed.

#### 4.2 - Maintenance

##### 4.2.5 - Two wheel drive condition (2/04)

All existing trail roads on and adjacent to the sale area must be passable by two-wheel drive traffic for the duration of the sale.

### 5 - Operations

## 5.1 - Notification

### 5.1.3 - Well heads and natural gas pipelines (11/15)

The Purchaser is responsible for contacting the gas or pipeline company 30 days prior to operating equipment in the vicinity of well heads or natural gas pipelines. Written permission is required before harvest operations begin and must be submitted to the Unit Manager.

## 5.2 - Conduct of Operations

### 5.2.2 - Hazard Trees/Snags

#### 5.2.2.1 - Den trees (10/16)

Obvious hollow and/or den trees shall be protected and left standing unless they are a safety hazard.

#### 5.2.38 - No decking against live trees (2/04)

Cut products may not be decked against unmarked or designated leave trees.

## 5.4 - Soil Protection

### 5.4.1 - Rutting restriction, general (7/16)

Operations are to cease immediately if equipment and weather conditions result in rutting of roads and/or skid trails which is 12 inches or greater in depth and 50 feet in length. The Unit Manager or his/her representative may restrict hauling and/or skidding if ruts exceed the specified depth. With the Unit Manager or his/her representative's approval, the Purchaser may return to the area when the risk of rutting has decreased.

## 5.8 - Protection of Endangered Species

### 5.8.5 - Protection of raptor nests (3/13)

All trees with raptor nests will be protected if found during harvesting operations. Notification will be made to the Unit Manager or his/her representative who will notify the Wildlife Biologist so an on-site evaluation and recommendation can be made, if necessary.

## 6 - Safety and Fire Prevention

### 6.2 - Signing

#### 6.2.1 - Road posting (10/20)

The Purchaser is responsible for posting and maintaining caution signs on sale associated roads prior to beginning operations. The road must be posted approximately 200 feet from the Sale Area to warn of logging activity and truck traffic. Signs must be removed when harvest operations are suspended or completed. The Purchaser will provide these signs.



# TIMBER SALE MAP

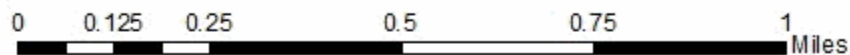
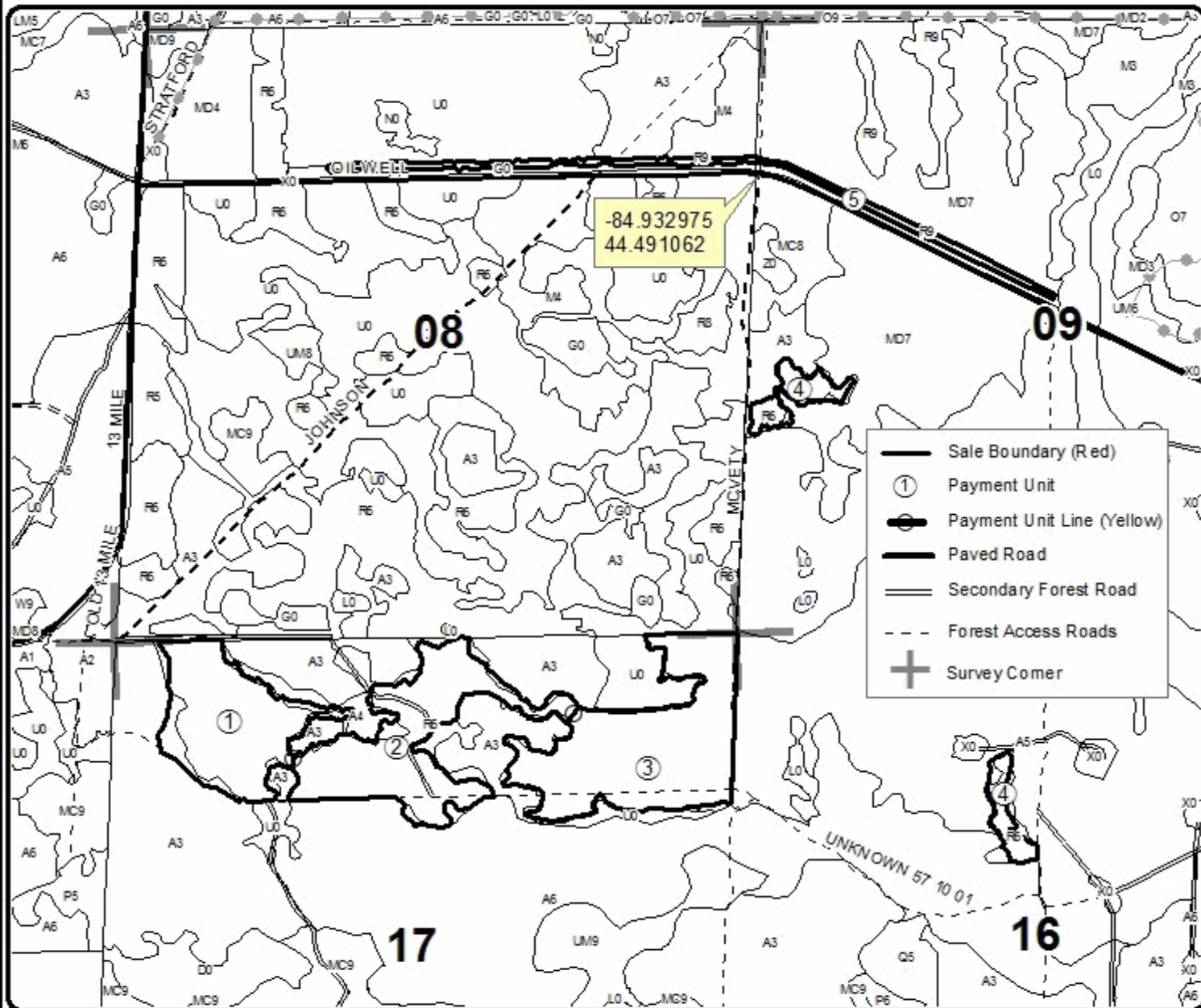
This information provided by authority of Part 525, 1994 PA 451, as amended.

Forest Management Unit Cadillac / Manton	County Missaukee	Mapped By M. Edison	Date 9/24/2021	Page 1	of 1
Township 24N	Range 5W	Section(s) and Subdivision(s) 8, 9, 16, 17	Scale 1:15,840		

Cover Type				Density	
A = Aspen	H = Hemlock	N = Marsh	U = Upland Brush	0 = Non Stocked	5 = Pole Timber Medium
B = Paper Birch	J = Jack Pine	O = Oak	UM = Upland Mixed	1 = Seeding Sapling Poor	6 = Pole Timber Well
C = Cedar	L = Lowland Brush	P = Lowland Poplar	V = Bog or Marsh	2 = Seeding Sapling Medium	7 = Saw Timber Poor
D = Tread Bog	LM = Lowland Mixed	Q = Mixed Swamp Conifer	W = White Pine	3 = Seeding Sapling Well	8 = Saw Timber Medium
E = Swamp Hardwoods	M = Mpl. Ech. Birch	R = Red Pine	X = Non Stocked	4 = Pole Timber Poor	9 = Saw Timber Well
F = Spruce Fir	MC = Mixed Conifer	S = Black Spruce	Z = Water		
G = Cress	MD = Mixed Deciduous	T = Tamarack			

PU	Acres	PU	Acres
1	27.1	4	8.6
2	31.8	5	7.6
3	40.6		

**80 Pine**  
**Compartment 80**  
**115.7 Acres**





Northeast Missaukee Aspen (63-011-21)  
T24N, R05W, SEC. 5; Missaukee COUNTY

In response to the notice of sale to be held 3:00 p.m. (local time) on May 25, 2022, I am hereby submitting my sealed bid ( firm offer) for the following forest products to be cut. Bids for individual species must be at or above the advertised price. All non-responsive bid forms may be rejected.

<u>PRODUCTS &amp; SPECIES</u>	<u>ESTIMATED VOLUME*</u>	<u>ADVERTISED PRICE</u>	<u>BID PRICE/UNIT</u>
<b>Sawtimber</b>			
Mixed Aspen	142.6 MBF	\$ 64.00/MBF	\$ _____
Red Maple	13.9 MBF	\$ 41.00/MBF	\$ _____
Red Oak	45.9 MBF	\$ 116.00/MBF	\$ _____
Red Pine	44.0 MBF	\$ 67.00/MBF	\$ _____
White Oak	11.7 MBF	\$ 56.00/MBF	\$ _____
White Pine	4.9 MBF	\$ 46.00/MBF	\$ _____
<b>Pulpwood</b>			
Bl/R/Hybrid Oak	23 Cords	\$ 18.10/Cord	\$ _____
Black Cherry	134 Cords	\$ 12.40/Cord	\$ _____
Mixed Aspen	529 Cords	\$ 15.35/Cord	\$ _____
Red Maple	250 Cords	\$ 12.40/Cord	\$ _____
Red Oak	64 Cords	\$ 18.10/Cord	\$ _____
White Oak	24 Cords	\$ 18.10/Cord	\$ _____
White Pine	39 Cords	\$ 9.10/Cord	\$ _____

\*The volumes are statistically estimated within plus (+) or minus (-) 7.30 percent at 95% confidence level. These estimated volumes are final and not subject to adjustment. Prospective bidders are urged to examine this timber and to make their own estimates of quantity and quality.

I understand that any or all bids may be rejected. All bids must be signed and all bid items must be bid or the bid form may be rejected. I also understand that consideration and awarding a contract will be based upon my past performance and ability to complete the contract based upon equipment and staffing subject to my control.

FEDERAL ID: \_\_\_\_\_ or SOCIAL SECURITY NUMBER: \_\_\_\_\_

Company or individual bidding: \_\_\_\_\_

Company representative's name: \_\_\_\_\_

Address: \_\_\_\_\_

City: \_\_\_\_\_ State: \_\_\_\_\_ Zip: \_\_\_\_\_

IF AVAILABLE, PLEASE PLACE THE PERSONALIZED LABEL FROM YOUR PROSPECTUS IN THE ABOVE BOX.

Individual or company representative's signature: \_\_\_\_\_ Date: \_\_\_\_\_

Phone number : \_\_\_\_\_ Email (optional): \_\_\_\_\_

**THE WINNING BIDDER MUST COMPLETE THE VERIFICATION OF WORKER'S DISABILITY COMPENSATION ACT COMPLIANCE (ON REVERSE SIDE IF DOUBLE SIDED) WITHIN 21 DAYS OF SALE AWARD DATE**



## TIMBER SALE VERIFICATION OF WORKER'S DISABILITY COMPENSATION ACT COMPLIANCE

As required by Act 317, P.A. 1969 (Worker's Compensation) and  
Part 5 of Act 451 of 1994, as amended.

FOR DEPARTMENT USE ONLY	
Sale Number (XX - XXX - XX - XX)	
Forest Management Unit:	

### VERIFICATION OF WORKER'S DISABILITY COMPENSATION ACT COMPLIANCE

- This verification must be completed and submitted within 21 days of contract award and prior to the issuance of the timber sale contract.
- In addition, if boxes 2B or 2C are checked, then Notice of Exclusion or Certificate of Insurance must be submitted within twenty-one (21) days of the contract award and prior to the issuance of the timber sale contract.
- All information must be typed or printed except for written signatures.

Please Check Appropriate Categories:

- My business is organized as (you **must** check one of the boxes below):
  - Sole Proprietorship (individual)
  - Partnership
  - Corporation
- You **must** check one of the boxes below:
  - I certify my business is a sole proprietorship and it has no employees but the sole proprietor. I am not subject to the Worker's Compensation Laws.
  - I certify my business has satisfied its obligation to the Worker's Compensation Act through the use of an approved Notice of Exclusion (BWC-337, Rev. 5/96). I will provide a copy of the Notice of Exclusion within 21 days of the contract award. (For questions or a copy of the BWC-337, please call the Worker's Compensation Bureau at 517-322-1195).
  - I certify my business has a Worker's Compensation Policy. I will provide an original Certificate of Insurance within twenty-one (21) days of the contract award.
- If you have checked item 2(A) or 2(B), you **must** indicate the number of **both** full-time and part-time employees, other than yourself, including family members and active partners (if none, you must enter "0").

\_\_\_\_\_ Full-time Employees

\_\_\_\_\_ Part-time Employees

Name of Business		Federal ID (or) Social Security No.	
Address		Telephone (       )	
City	State	ZIP	

*I hereby certify that the above information is true and correct. I agree to notify the Michigan DNR of any changes that occur in factors affecting my coverage during any of my present and future operations.*

\_\_\_\_\_  
Signature of Owner or Authorized Representative

\_\_\_\_\_  
Title

\_\_\_\_\_  
Date

Please complete the "SEALED BID" information on the next page

Grass Lake Oak (63-016-21)  
T24N, R05W, SEC. 4; T24N, R05W, SEC. 5; Missaukee COUNTY

In response to the notice of sale to be held 3:00 p.m. (local time) on May 25, 2022, I am hereby submitting my sealed bid ( firm offer) for the following forest products to be cut. Bids for individual species must be at or above the advertised price. All non-responsive bid forms may be rejected.

<u>PRODUCTS &amp; SPECIES</u>	<u>ESTIMATED VOLUME*</u>	<u>ADVERTISED PRICE</u>	<u>BID PRICE/UNIT</u>
<b>Sawtimber</b>			
Mixed Aspen	132.7 MBF	\$ 78.00/MBF	\$ _____
Red Maple	169.9 MBF	\$ 50.00/MBF	\$ _____
Red Oak	335.0 MBF	\$ 142.00/MBF	\$ _____
Red Pine	14.0 MBF	\$ 82.00/MBF	\$ _____
White Pine	14.6 MBF	\$ 56.00/MBF	\$ _____
<b>Pulpwood</b>			
Black Cherry	15 Cords	\$ 15.15/Cord	\$ _____
Mixed Aspen	277 Cords	\$ 18.75/Cord	\$ _____
Red Maple	695 Cords	\$ 15.15/Cord	\$ _____
Red Oak	227 Cords	\$ 22.15/Cord	\$ _____
White Pine	68 Cords	\$ 11.10/Cord	\$ _____

\*The volumes are statistically estimated within plus (+) or minus (-) 8.08 percent at 95% confidence level. These estimated volumes are final and not subject to adjustment. Prospective bidders are urged to examine this timber and to make their own estimates of quantity and quality.

I understand that any or all bids may be rejected. All bids must be signed and all bid items must be bid or the bid form may be rejected. I also understand that consideration and awarding a contract will be based upon my past performance and ability to complete the contract based upon equipment and staffing subject to my control.

FEDERAL ID: \_\_\_\_\_ or SOCIAL SECURITY NUMBER: \_\_\_\_\_

Company or individual bidding: \_\_\_\_\_

Company representative's name: \_\_\_\_\_

Address: \_\_\_\_\_

City: \_\_\_\_\_ State: \_\_\_\_\_ Zip: \_\_\_\_\_

IF AVAILABLE, PLEASE PLACE THE PERSONALIZED LABEL FROM YOUR PROSPECTUS IN THE ABOVE BOX.

Individual or company representative's signature: \_\_\_\_\_ Date: \_\_\_\_\_

Phone number : \_\_\_\_\_ Email (optional): \_\_\_\_\_

**THE WINNING BIDDER MUST COMPLETE THE VERIFICATION OF WORKER'S DISABILITY COMPENSATION ACT COMPLIANCE (ON REVERSE SIDE IF DOUBLE SIDED) WITHIN 21 DAYS OF SALE AWARD DATE**



FOR DEPARTMENT USE ONLY	
Sale Number (XX - XXX - XX - XX)	
Forest Management Unit:	

# TIMBER SALE VERIFICATION OF WORKER'S DISABILITY COMPENSATION ACT COMPLIANCE

As required by Act 317, P.A. 1969 (Worker's Compensation) and  
Part 5 of Act 451 of 1994, as amended.

## VERIFICATION OF WORKER'S DISABILITY COMPENSATION ACT COMPLIANCE

- This verification must be completed and submitted within 21 days of contract award and prior to the issuance of the timber sale contract.
- In addition, if boxes 2B or 2C are checked, then Notice of Exclusion or Certificate of Insurance must be submitted within twenty-one (21) days of the contract award and prior to the issuance of the timber sale contract.
- All information must be typed or printed except for written signatures.

Please Check Appropriate Categories:

1. My business is organized as (you **must** check one of the boxes below):
  - A.  Sole Proprietorship (individual)
  - B.  Partnership
  - C.  Corporation
2. You **must** check one of the boxes below:
  - A.  I certify my business is a sole proprietorship and it has no employees but the sole proprietor. I am not subject to the Worker's Compensation Laws.
  - B.  I certify my business has satisfied its obligation to the Worker's Compensation Act through the use of an approved Notice of Exclusion (BWC-337, Rev. 5/96). I will provide a copy of the Notice of Exclusion within 21 days of the contract award. (For questions or a copy of the BWC-337, please call the Worker's Compensation Bureau at 517-322-1195).
  - C.  I certify my business has a Worker's Compensation Policy. I will provide an original Certificate of Insurance within twenty-one (21) days of the contract award.
3. If you have checked item 2(A) or 2(B), you **must** indicate the number of **both** full-time and part-time employees, other than yourself, including family members and active partners (if none, you must enter "0").

\_\_\_\_\_ Full-time Employees

\_\_\_\_\_ Part-time Employees

Name of Business		Federal ID (or) Social Security No.	
Address		Telephone (       )	
City	State	ZIP	

*I hereby certify that the above information is true and correct. I agree to notify the Michigan DNR of any changes that occur in factors affecting my coverage during any of my present and future operations.*

\_\_\_\_\_  
Signature of Owner or Authorized Representative

\_\_\_\_\_  
Title

\_\_\_\_\_  
Date

Please complete the "SEALED BID" information on the next page

80 Pine (63-025-21)

T24N, R05W, SEC. 16; T24N, R05W, SEC. 17; T24N, R05W, SEC. 8; T24N, R05W,

In response to the notice of sale to be held 3:00 p.m. (local time) on May 25, 2022, I am hereby submitting my sealed bid ( firm offer) for the following forest products to be cut. Bids for individual species must be at or above the advertised price. All non-responsive bid forms may be rejected.

<u>PRODUCTS &amp; SPECIES</u>	<u>ESTIMATED VOLUME*</u>	<u>ADVERTISED PRICE</u>	<u>BID PRICE/UNIT</u>
<b>Sawtimber</b>			
B. T. Aspen	5.9 MBF	\$ 78.00/MBF	\$ _____
Black Cherry	2.0 MBF	\$ 142.00/MBF	\$ _____
Jack Pine	2.2 MBF	\$ 19.00/MBF	\$ _____
Red Pine	265.5 MBF	\$ 82.00/MBF	\$ _____
<b>Pulpwood</b>			
B. T. Aspen	32 Cords	\$ 18.75/Cord	\$ _____
Black Cherry	3 Cords	\$ 15.15/Cord	\$ _____
Jack Pine	24 Cords	\$ 9.55/Cord	\$ _____
Red Pine	1,272 Cords	\$ 35.75/Cord	\$ _____

\*The volumes are statistically estimated within plus (+) or minus (-) 7.39 percent at 95% confidence level. These estimated volumes are final and not subject to adjustment. Prospective bidders are urged to examine this timber and to make their own estimates of quantity and quality.

I understand that any or all bids may be rejected. All bids must be signed and all bid items must be bid or the bid form may be rejected. I also understand that consideration and awarding a contract will be based upon my past performance and ability to complete the contract based upon equipment and staffing subject to my control.

FEDERAL ID: \_\_\_\_ - \_\_\_\_ - \_\_\_\_ or SOCIAL SECURITY NUMBER: \_\_\_\_ - \_\_\_\_ - \_\_\_\_

Company or individual bidding: \_\_\_\_\_

Company representative's name: \_\_\_\_\_

Address: \_\_\_\_\_

City: \_\_\_\_\_ State: \_\_\_\_\_ Zip: \_\_\_\_\_

IF AVAILABLE, PLEASE PLACE THE PERSONALIZED LABEL FROM YOUR PROSPECTUS IN THE ABOVE BOX.

Individual or company representative's signature: \_\_\_\_\_ Date: \_\_\_\_\_

Phone number : \_\_\_\_\_ Email (optional): \_\_\_\_\_

**THE WINNING BIDDER MUST COMPLETE THE VERIFICATION OF WORKER'S DISABILITY COMPENSATION ACT COMPLIANCE (ON REVERSE SIDE IF DOUBLE SIDED) WITHIN 21 DAYS OF SALE AWARD DATE**



<b>FOR DEPARTMENT USE ONLY</b>
Sale Number (XX – XXX – XX – XX)
Forest Management Unit:

## TIMBER SALE VERIFICATION OF WORKER'S DISABILITY COMPENSATION ACT COMPLIANCE

*As required by Act 317, P.A. 1969 (Worker's Compensation) and  
Part 5 of Act 451 of 1994, as amended.*

### VERIFICATION OF WORKER'S DISABILITY COMPENSATION ACT COMPLIANCE

- This verification must be completed and submitted within 21 days of contract award and prior to the issuance of the timber sale contract.
- In addition, if boxes 2B or 2C are checked, then Notice of Exclusion or Certificate of Insurance must be submitted within twenty-one (21) days of the contract award and prior to the issuance of the timber sale contract.
- All information must be typed or printed except for written signatures.

Please Check Appropriate Categories:

1. My business is organized as (you **must** check one of the boxes below):
  - A.  Sole Proprietorship (individual)
  - B.  Partnership
  - C.  Corporation
  
2. You **must** check one of the boxes below:
  - A.  I certify my business is a sole proprietorship and it has no employees but the sole proprietor. I am not subject to the Worker's Compensation Laws.
  - B.  I certify my business has satisfied its obligation to the Worker's Compensation Act through the use of an approved Notice of Exclusion (BWC-337, Rev. 5/96). I will provide a copy of the Notice of Exclusion within 21 days of the contract award. (For questions or a copy of the BWC-337, please call the Worker's Compensation Bureau at 517-322-1195).
  - C.  I certify my business has a Worker's Compensation Policy. I will provide an original Certificate of Insurance within twenty-one (21) days of the contract award.
  
3. If you have checked item 2(A) or 2(B), you **must** indicate the number of **both** full-time and part-time employees, other than yourself, including family members and active partners (if none, you must enter "0").

\_\_\_\_\_ Full-time Employees

\_\_\_\_\_ Part-time Employees

Name of Business		Federal ID (or) Social Security No.	
Address		Telephone (       )	
City	State	ZIP	

*I hereby certify that the above information is true and correct. I agree to notify the Michigan DNR of any changes that occur in factors affecting my coverage during any of my present and future operations.*

\_\_\_\_\_  
Signature of Owner or Authorized Representative

\_\_\_\_\_  
Title

\_\_\_\_\_  
Date

**Please complete the "SEALED BID" information on the next page**