



**DEPARTMENT OF NATURAL RESOURCES
STATE OF MICHIGAN
TIMBER SALE PROSPECTUS #7069**

SCHEDULED SALE DATE AND TIME: 10:00 a.m. (local time) on May 26, 2022.

LOCATION: GLADWIN MGMT UNIT, 801 NORTH SILVERLEAF, GLADWIN, MI 48624.

PROSPECTUS NOTE: The bidder is advised to inspect the sale area and review the location, estimated volumes, operating costs and contract terms of proposed sales. Please be aware that some landowners may request 60 days or more notice for access across their land.

Notice is hereby given that bids will be received by the Unit Manager, GLADWIN MANAGEMENT UNIT, for certain timber on the following described lands:

GSGI Harvest (73-010-21) / T18N, R03W, SEC. 5 , S1/2SW,SWSE.

T19N, R02W, SEC. 7 , E1/2SW,W1/2SE.

Gladwin County, Advertised Price \$88,400.50, 87.6 Acres, Aspen, Hardwood.

SALE NOTE: All units of volume listed for this sale were estimated using the Inventory Manager computer program and the new Michigan taper model.

See sale spec 7.10.1 for information on State Game Area.

See sale spec 4.4.3 for information on access gates.

See sale spec 5.2.40 for information on trail protection.

Access may be through other public land.

Calf Burner Aspen (73-011-21) / T20N, R03W, SEC. 14, NESW,SE.

Clare County, Advertised Price \$126,406.65, 101.5 Acres, Aspen, Hardwood.

SALE NOTE: All units of volume listed for this sale were estimated using the Inventory Manager computer program and the new Michigan taper model.

BID INSTRUCTIONS (VER. 07/02/2018):

1. Scheduled Bid Location, Date, and Time (2/11)

Bids must be received by the Unit Manager, GLADWIN OFFICE, 801 NORTH SILVERLEAF, GLADWIN, MI 48624, no later than 10:00 a.m. (local time) on May 26, 2022. For further information concerning this sale, contact Patrick Mohney at 989-426-9205 extension 7640.

2. Bidder's Qualifications (5/16)

Purchaser shall obtain workers compensation insurance to cover claims under Michigan's Worker's Disability Compensation Act of 1969 or similar employee benefit act of any other state applicable to an employee. If all or part of a timber sale was prepared by a private contractor, the contractor and that contractor's company are not permitted to bid on the timber sale contract. Bids will not be accepted from individuals or companies appearing on the DNR/FRD No-Bid List. This list contains the names of purchasers who previously failed to execute a contract within 21-days or who have a history of poor performance.

3. Preparation of Sealed Bids (5/16)

Bid Forms may be completed online thru Michigan DNR Timber Sale Online Bidding (OLB) at www.michigan.gov/timberbidding or by completing the hardcopy Bid Form found in the Timber Sale Prospectus. Hardcopy Bid Forms shall be manually signed in ink. Registration in OLB is considered your 'signature' for all bids submitted thru that system. Bid prices must be entered for each species and product in the Bid Price column for all material subject to bidding and all fill-in blanks must be completed. If erasures or other changes appear on the hardcopy Bid Form, each erasure or change must be initialed by the person signing the bid.

4. Submission of Sealed Bids (5/16)

Bid forms may be obtained from the Unit Manager or thru OLB. Bids may be submitted hardcopy or thru OLB. All hardcopy bids must be submitted on the bid form and in an envelope clearly identified as described in this section. NOTE: Only one bid form per bid envelope. Sealed bids must be submitted to the Unit office designated in the prospectus and must be submitted at or prior to the time established in the prospectus. The envelope should show on the outside (a) the sale name or number and (b) the date and time of bid opening, as shown in the prospectus. Bids received after the time specified in the sale prospectus are late bids and will be rejected.

It is possible for a bidder to submit multiple bids on a single sale. For example, a bid may be submitted hardcopy and a bid may be submitted thru OLB. Or, two bidders from the same company could both submit bids on the same sale. If this were to happen, the State would accept all bids received and award the contract accordingly. All bidding and contractual requirements would apply to all bids received.

5. Public Opening of Sealed Bids (7/16)

If conditions permit, the sealed bids will be publicly opened and posted at the time and place set in the prospectus.

If a bidder, present at a bid opening, has submitted bids on more than one sale, that bidder may withdraw their unopened bid envelopes or announce the withdrawal of their online bid after being declared the successful bidder on one sale.

6. Award of Contract (1/11)

Award of the contract will be made to the Bidder whose bid, conforming to the prospectus, is most advantageous to the State of Michigan on the basis of total value at rates bid for the estimated quantities. The State reserves the right to reject any bid or waive any minor irregularity in bids received. A written award mailed (or otherwise furnished) to the successful Bidder shall be deemed to result in a binding contract without further action by either party.

7. Down Payment (1/11)

The Bidder to whom award is made must make a down payment within 21 days of the sale award. The amount of the down payment will be calculated as shown in the Bond and Payment Schedule of this prospectus. Only cash may be used to meet this requirement.

8. Performance Security (1/11)

As guarantee of faithful performance, a cash bond, certificate of deposit, surety bond or irrevocable letter of credit (LOC) is required within 21 days of the sale award. The amount of the performance security is shown in the Bond and

Payment Schedule of this prospectus. If an LOC or surety is used, the coverage must extend for at least 6 months beyond the contract expiration.

9. Timber Sale Contract (7/18)

Additional conditions and requirements common to all timber sales are listed on the timber sale contract (R4031) and are available on line at www.michigan.gov/timber. Contact the Unit Manager for additional information or a sample contract. Within 21 days of the date of the award letter, the bidder must sign the contract and provide the required down payment, performance security, and verification of worker's disability compensation. The down payment and performance security shall be in accordance with the provisions of the timber sale contract, in the sums stated in this prospectus. If these actions are not taken, then the Bidder, the Bidder's corporation, and the corporation's principals may not be permitted to bid on State timber sales for a period of 3 months after the first offense, 6 months after the second offense, and 1 year after the third offense. An offense will only be counted against the Bidder for 5 years. In addition, the Bidder certifies that if awarded this contract, the Bidder will complete the timber sale contract in accordance with its terms and any modifications thereof including requirements to purchase, cut, and remove the included timber by the expiration date.

Payment Unit values in the State Forest Timber Sale Contract are calculated based on the advertised value of the Payment Unit as a percentage of the total advertised value of the contract. The advertised value of each Payment Unit is given in the Description of Timber by Payment Unit table on the Timber Sale Information page. For example, if the value of Payment Unit 1 is advertised as \$1,500 and the total Timber Sale value is advertised as \$10,000, the contract price for Payment Unit 1 will be 15% of the total bid price ($\$1,500/\$10,000 * 100$).

10. Disclaimer of Estimates and Bidder's Warranty of Inspection (7/16)

Before submitting this bid, the Bidder is advised and cautioned to inspect the sale area, review the requirements of the sale contract, and take other steps as may be reasonably necessary to ascertain the location, estimated volumes, construction estimates, and operating costs of the proposed sale. Failure to do so will not relieve the Bidder from responsibility for completing the contract.

The Bidder warrants that this bid is submitted solely on the basis of the Bidder's examination and inspection of the quality and quantity of the timber offered for sale and the Bidder's opinion of the value thereof and the costs of recovery. No reliance should be placed on the State of Michigan's estimates of timber quality, quantity or costs of recovery. Bidder further acknowledges that the State of Michigan: (i) expressly disclaims any warranty of fitness of timber for any purpose; (ii) offers this timber as is without any warranty of quality (merchantability) or quantity and (iii) expressly disclaims any warranty as to the quantity or quality of timber sold.

11. Certification and Chain-of-Custody (10/14)

Unless otherwise indicated in the contract under section 7 – Other Conditions of the Sale Specific Conditions & Requirements, the area encompassed by this timber sale is certified to the standards of the Forest Stewardship Council (FSC) - Certificate #SCS-FM/COC-00090N and the Sustainable Forestry Initiative (SFI) - Certificate # NSF-SFIS-5Y031-SF5. Forest products from this sale may be delivered to the mill as "FSC 100% and / or SFI certified" as long as the contractor hauling the forest products is chain-of-custody (COC) certified or covered under a COC certificate from the destination mill. The purchaser is responsible for maintaining COC after leaving the sale area.

12. Good Neighbor Authority (GNA) Requirements (7/16)

If the name of this timber sales contains the acronym GNA, it is authorized by the Good Neighbor Authority (GNA) and covered by various agreements between the U.S. Forest Service and the State. The timber sale occurs on federal land and the following conditions apply:

GNA contracts on US Forest Service land will not be awarded to purchasers on the Federal list of excluded parties. The System for Award Management (SAM) will be checked for active excluded parties prior to award of contract. In addition, the Bidder to whom award is made must complete an Assurance Regarding Felony Conviction or Tax Delinquent Status for Corporate Applicants (AD-3031).

13. Good Neighbor Authority (GNA) Requirements, con't (9/16)

Bidder certifies, by signing this bid form, that to the best of Bidder's knowledge that the following representations are accurate and complete.

- a. That the Bidder and its principals are not presently debarred, suspended, proposed for debarment, declared ineligible, or voluntary excluded from timber sales (covered transactions) by any Federal department or agency.
- b. That the Bidder and its principals have not within a 3-year period preceding this bid been convicted of or had a civil judgment rendered against them for commission of fraud or a criminal offense in connection with obtaining , attempting to obtain, or performing a public (Federal, State, or local) transaction or contract under a public transaction; violation of Federal or State antitrust statutes or commission of embezzlement, theft, forgery, bribery, falsification or destruction of records, making false statements, or receiving stolen property.
- c. That the Bidder and its principals are not presently indicted for or otherwise criminally or civilly charged by a governmental entity (Federal, State, or local) with commission of any of the offenses enumerated in paragraph b of this certification.
- d. That the Bidder and its principals have not within a 3-year period preceding this bid had one or more public transactions (Federal, State, or local) terminated for breach or default of a timber or forest product contract.

Bidders that cannot certify this requirement, in whole or in part, shall submit an explanation with their bid.

DAN EICHINGER
Director

TIMBER SALE INFORMATION

GSGI Harvest (73-010-21)

T18N, R03W, SEC. 5; T19N, R02W, SEC. 7.
Gladwin County (Advertised Price \$88,400.50)

SALE NOTE: All units of volume listed for this sale were estimated using the Inventory Manager computer program and the new Michigan taper model.

See sale spec 7.10.1 for information on State Game Area.

See sale spec 4.4.3 for information on access gates.

See sale spec 5.2.40 for information on trail protection.

Access may be through other public land.

A timber sale contract for this lump sum, sealed bid timber sale will be awarded to the responsible bidder offering the highest sealed bid price. All units of volume listed below were estimated using the Inventory Manager computer program and the new Michigan taper model. Bids must be at or above the following advertised price for each product and species:

<u>PRODUCTS & SPECIES</u>	<u>ESTIMATED UNITS*</u>	<u>ADVERTISED PRICE</u>
Sawtimber		
BI/R/Hybrid Oak	1.4 MBF	\$ 70.00 / MBF
Black Cherry	16.4 MBF	\$ 135.00 / MBF
Mixed Aspen	429.5 MBF	\$ 65.00 / MBF
Red Maple	36.6 MBF	\$ 37.00 / MBF
Red Oak	9.5 MBF	\$ 140.00 / MBF
Red Pine	7.1 MBF	\$ 102.00 / MBF
Sugar Maple	38.6 MBF	\$ 301.00 / MBF
White Pine	47.5 MBF	\$ 60.00 / MBF
Pulpwood		
Jack Pine	43 Cords	\$ 15.40 / Cord
Mixed Aspen	1,618 Cords	\$ 19.25 / Cord
Mixed Hardwood	292 Cords	\$ 15.60 / Cord
Mixed Oak	87 Cords	\$ 16.30 / Cord
N. White Cedar	4 Cords	\$ 14.00 / Cord
Red Pine	44 Cords	\$ 42.00 / Cord
White Pine	38 Cords	\$ 16.00 / Cord

* The total volume is statistically estimated within plus (+) or minus (-) 5.58 percent. There are an estimated 3,174 cords on this timber sale, plus or minus 177 cords at the 95% confidence level. The estimated units are final and not subject to adjustment. Prospective bidders are urged to examine this timber and to make their own estimates of quantity and quality.

BOND AND PAYMENT SCHEDULE:

1. A bond in the amount of \$8,840.00 to insure faithful performance of the conditions of the contract will be deposited by the successful bidder within 21 days of the sale award.
2. Cutting in any sale or unit without the required advance payment would be considered a trespass.
3. Total payment must be paid in advance or according to the following schedule :
 - (a) Ten percent (10%) of the sale value must be paid within 21 days of the sale award.
 - (b) The 10% down payment will be credited towards the first unit cut.
 - (c) Payment for each of the following units must be made before cutting begins in that unit:

PAYMENT UNIT NUMBER	PERCENT OF TOTAL SALE VALUE
01	3.4%
02	30.7%
03	32.9%
04	21.4%
05	7.6%
06	4.0%

4. If no cutting takes place, the 10% down payment will not be refunded.
5. Operations on the contract issued will terminate on 03/31/2025.

SALE STATISTICS

Volumes were calculated in cubic feet using the Michigan taper model. Cubic foot volume includes all wood inside bark for the product indicated. For display purposes, cubic feet were converted to cords and MBF using a simple conversion factor, e.g. 79 cubic feet per cord and 185 cubic feet per MBF. The cubic foot volumes are precise; the cords and MBF volumes are not. Cubic foot volume cannot be directly converted to cords or boards with precision.

SALE VOLUMES

The total estimated sale volume may not equal the sum of the species/products due to the nature of statistical calculations associated with double sampling methodology.

VOLUME			STATISTICAL RANGE IN CORDS	
TOTAL CUBIC FEET	TOTAL CORDS	PERCENT ERROR	MINIMUM	MAXIMUM
250,719	3,174	5.58%	2,996	3,351

VDU VOLUMES

A VDU is a Volume Determination Unit. Volumes and their associated statistics are calculated at the VDU level and summarized to the sale level. There is often a one to one relationship between a VDU and a Payment Unit, but not always, depending on the cruise design. Refer to the VDU TO PAYMENT UNIT table.

	VOLUME			RANGE IN CORDS	
VDU	TOTAL CUBIC FEET	TOTAL CORDS	PERCENT ERROR	MINIMUM	MAXIMUM
20	32,232	408	14.33%	350	466
23	6,179	78	30.43%	54	102
30	212,308	2,687	6.16%	2,522	2,853
TOTAL:	250,719	3,174		2,926	3,422

VDU TO PAYMENT UNIT

When a VDU is associated with more than one Payment Unit (PU), the VDU volumes are assigned to the PU based on acres of the VDU within the PU.

VDU	VDU ACRES	PU	PU ACRES
20	28.4	5	18.6
		6	9.8
23	2.2	1	2.2
30	57.0	2	20.6
		3	22.1
		4	14.3
TOTAL:	87.6		87.6

DESCRIPTION OF TIMBER BY PAYMENT UNIT (PU)

PU	MARKET GROUP	PRODUCT	QUANTITY	UNIT	ACRES	ADVERTISE PRICE			
1	Mixed Aspen	Sawtimber	5.7	MBF	2.2	\$3,038.95			
	<i>B. T. Aspen</i>		5.7	<i>MBF</i>					
	Red Pine		7.1	MBF					
	Mixed Aspen	Pulpwood	5	Cords					
	<i>B. T. Aspen</i>		5	<i>Cords</i>					
	Red Pine		44	Cords					
2	Mixed Aspen	Sawtimber	136.2	MBF	20.6	\$27,145.85			
	<i>B. T. Aspen</i>		112.0	<i>MBF</i>					
	<i>Quaking Aspen</i>		24.2	<i>MBF</i>					
	Red Maple		7.4	MBF					
	Red Oak		2.4	MBF					
	Sugar Maple		14.0	MBF					
	White Pine		17.2	MBF					
	Jack Pine	Pulpwood	8	Cords					
	<i>Jack Pine</i>	<i>Sawtimber</i>	1.7	<i>MBF</i>					
	<i>Jack Pine</i>	<i>Pulpwood</i>	5	<i>Cords</i>					
	Mixed Aspen		547	Cords					
	<i>B. T. Aspen</i>		415	<i>Cords</i>					
	<i>Quaking Aspen</i>		132	<i>Cords</i>					
	Mixed Hardwood		70	Cords					
	<i>Basswood</i>		11	<i>Cords</i>					
	<i>Ironwood</i>		2	<i>Cords</i>					
	<i>Red Maple</i>		36	<i>Cords</i>					
	<i>Sugar Maple</i>		19	<i>Cords</i>					
	<i>White Ash</i>		2	<i>Cords</i>					
	Mixed Oak		27	Cords					
	<i>Red Oak</i>		27	<i>Cords</i>					
	N. White Cedar		2	Cords					
	<i>N. White Cedar</i>	<i>Sawtimber</i>	0.4	<i>MBF</i>					
	<i>N. White Cedar</i>	<i>Pulpwood</i>	1	<i>Cords</i>					
	White Pine		14	Cords					
	3	Mixed Aspen	Sawtimber	146.2			MBF	22.1	\$29,051.50
<i>B. T. Aspen</i>			120.2	<i>MBF</i>					
<i>Quaking Aspen</i>			26.0	<i>MBF</i>					
Red Maple			8.0	MBF					
Red Oak			2.6	MBF					
Sugar Maple			14.9	MBF					
White Pine			18.4	MBF					
Jack Pine		Pulpwood	10	Cords					
<i>Jack Pine</i>		<i>Sawtimber</i>	1.8	<i>MBF</i>					
<i>Jack Pine</i>		<i>Pulpwood</i>	6	<i>Cords</i>					
Mixed Aspen			586	Cords					
<i>B. T. Aspen</i>			444	<i>Cords</i>					
<i>Quaking Aspen</i>			142	<i>Cords</i>					
Mixed Hardwood			74	Cords					
<i>Basswood</i>			11	<i>Cords</i>					
<i>Ironwood</i>			2	<i>Cords</i>					
<i>Red Maple</i>			39	<i>Cords</i>					
<i>Sugar Maple</i>			20	<i>Cords</i>					
<i>White Ash</i>			2	<i>Cords</i>					
Mixed Oak			29	Cords					
<i>Red Oak</i>			29	<i>Cords</i>					
N. White Cedar			1	Cords					
<i>N. White Cedar</i>		<i>Sawtimber</i>	0.3	<i>MBF</i>					
White Pine		Pulpwood	14	Cords					
4		Mixed Aspen	Sawtimber	94.6	MBF	14.3	\$18,882.60		

DESCRIPTION OF TIMBER BY PAYMENT UNIT (PU), CON'T

PU	MARKET GROUP	PRODUCT	QUANTITY	UNIT	ACRES	ADVERTISE PRICE
4 con't	<i>B. T. Aspen</i>	<i>Sawtimber</i>	77.8	<i>MBF</i>		
	<i>Quaking Aspen</i>		16.8	<i>MBF</i>		
	Red Maple		5.2	MBF		
	Red Oak		1.7	MBF		
	Sugar Maple		9.7	MBF		
	White Pine		11.9	MBF		
	Jack Pine	Pulpwood	6	Cords		
	<i>Jack Pine</i>	<i>Sawtimber</i>	1.2	<i>MBF</i>		
	<i>Jack Pine</i>	<i>Pulpwood</i>	4	<i>Cords</i>		
	Mixed Aspen		380	Cords		
	<i>B. T. Aspen</i>		288	<i>Cords</i>		
	<i>Quaking Aspen</i>		92	<i>Cords</i>		
	Mixed Hardwood		49	Cords		
	<i>Basswood</i>		8	<i>Cords</i>		
	<i>Ironwood</i>		1	<i>Cords</i>		
	<i>Red Maple</i>		25	<i>Cords</i>		
	<i>Sugar Maple</i>		13	<i>Cords</i>		
	<i>White Ash</i>		2	<i>Cords</i>		
	Mixed Oak		19	Cords		
	<i>Red Oak</i>		19	<i>Cords</i>		
	N. White Cedar		2	Cords		
	<i>N. White Cedar</i>	<i>Sawtimber</i>	0.3	<i>MBF</i>		
	<i>N. White Cedar</i>	<i>Pulpwood</i>	1	<i>Cords</i>		
	White Pine		10	Cords		
5	BI/R/Hybrid Oak	Sawtimber	0.9	MBF	18.6	\$6,758.60
	Black Cherry		10.7	MBF		
	Mixed Aspen		30.7	MBF		
	<i>Balsam Poplar</i>		4.0	<i>MBF</i>		
	<i>Quaking Aspen</i>		26.7	<i>MBF</i>		
	Red Maple		10.5	MBF		
	Red Oak		1.8	MBF		
	Jack Pine	Pulpwood	13	Cords		
	<i>Jack Pine</i>	<i>Sawtimber</i>	3.9	<i>MBF</i>		
	<i>Jack Pine</i>	<i>Pulpwood</i>	5	<i>Cords</i>		
	Mixed Aspen		66	Cords		
	<i>Balsam Poplar</i>		18	<i>Cords</i>		
	<i>Quaking Aspen</i>		48	<i>Cords</i>		
	Mixed Hardwood		65	Cords		
	<i>Black Cherry</i>		28	<i>Cords</i>		
	<i>Paper Birch</i>		4	<i>Cords</i>		
	<i>Red Maple</i>		33	<i>Cords</i>		
	Mixed Oak		8	Cords		
	<i>BI/R/Hybrid Oak</i>		4	<i>Cords</i>		
	<i>Red Oak</i>		4	<i>Cords</i>		
6	BI/R/Hybrid Oak	Sawtimber	0.5	MBF	9.8	\$3,537.00
	Black Cherry		5.7	MBF		
	Mixed Aspen		16.1	MBF		
	<i>Balsam Poplar</i>		2.1	<i>MBF</i>		
	<i>Quaking Aspen</i>		14.0	<i>MBF</i>		
	Red Maple		5.5	MBF		
	Red Oak		1.0	MBF		
	Jack Pine	Pulpwood	6	Cords		
	<i>Jack Pine</i>	<i>Sawtimber</i>	2.1	<i>MBF</i>		
	<i>Jack Pine</i>	<i>Pulpwood</i>	2	<i>Cords</i>		
	Mixed Aspen		34	Cords		
	<i>Balsam Poplar</i>		9	<i>Cords</i>		

DESCRIPTION OF TIMBER BY PAYMENT UNIT (PU), CON'T

PU	MARKET GROUP	PRODUCT	QUANTITY	UNIT	ACRES	ADVERTISE PRICE
6 con't	<i>Quaking Aspen</i>	<i>Pulpwood</i>	25	<i>Cords</i>		
	Mixed Hardwood		34	<i>Cords</i>		
	<i>Black Cherry</i>		14	<i>Cords</i>		
	<i>Paper Birch</i>		2	<i>Cords</i>		
	<i>Red Maple</i>		18	<i>Cords</i>		
	Mixed Oak		4	<i>Cords</i>		
	<i>BI/R/Hybrid Oak</i>		2	<i>Cords</i>		
	<i>Red Oak</i>		2	<i>Cords</i>		
TOTAL:			586.6	MBF		
TOTAL:			2,127	Cords		

Sale Specific Conditions & Requirements

Sale Name: GSGL Harvest

Sale Number: 73-010-21 Seq#: 1

1 - Sale Area

1.2 - Boundaries

1.2.1 - Painted boundaries (9/19)

The sale boundary and Payment Unit boundaries are marked and identified by blue, red, and yellow paint. Exterior sale boundary lines against private property are marked with blue paint. Exterior sale boundary lines against state are marked with red paint. Interior Payment Unit boundaries are marked with yellow paint. Yellow painted trees designating an interior Payment Unit boundary are only to be cut when all surrounding Payment Units have been paid.

2 - Timber Specifications

2.1 - Included Timber

2.1.1 - Clearcut unit(s) with unmerchantable trees (6/14)

Within Payment Unit(s) 2-6, cut all trees that are two (2) inches or more at DBH, except in Payment Units 2-4 do not cut trees marked with green paint above and below stump height. In addition, within Payment Units 5 and 6 do not cut any cedar, beech, or oak greater than 18 at DBH. Lastly in the southwest section of Payment Unit 5 are planted oak sapling in white tubes that must not be disturbed during the harvesting process.

2.1.3 - Cut tree marked unit(s) (12/08)

Within Payment Unit(s) 1, all trees are designated for cutting when marked with orange paint above and below stump height, regardless of merchantability.

3 - Payments

3.4 - Damaged Timber

3.4.1 - Damaged timber (7/16)

General Condition and Requirement 3.4 Damaged Timber, defines liquidated damages for undesignated live merchantable trees which are cut or injured. No damage is acceptable to undesignated live merchantable trees. Within the Sale Area, if more than 5% of trees (> 4.5" DBH) within a specified area of the sale are damaged, liquidated damages will be assessed for all trees damaged. Rates will be in accordance with General Condition and Requirement 3.4 Damaged Timber.

4 - Transportation

4.1 - Construction

4.1.12 - No new roads (1/12)

No new roads will be permitted in any Payment Unit. All operations are limited to existing roads. Skid trails only will be allowed.

4.2 - Maintenance

4.2.5 - Two wheel drive condition (2/04)

All existing trail roads on and adjacent to the sale area must be passable by two-wheel drive traffic for the duration of the sale.

4.4 - Access

4.4.3 - Access gate (12/08)

The access gate must be locked at the completion of each day unless otherwise approved by the Unit Manager or his/her representative.

5 - Operations

5.2 - Conduct of Operations

5.2.2 - Hazard Trees/Snags

5.2.2.1 - Den trees (10/16)

Obvious hollow and/or den trees shall be protected and left standing unless they are a safety hazard.

5.2.3 - Operating Restrictions

5.2.3.5 - Oak wilt restriction (1/18)

Within Payment Unit(s) 2-6 unless changed by written agreement, cutting, skidding, hauling within the sale and brushing of access roads to the sale are not permitted during the period of April 15 to July 15. Operations may be allowed if specific steps are taken to prevent damaging uncut oak during the high risk period. Those steps may include completing all road brushing before April 15th and clearing a tree-length buffer along uncut oak cover before April 15th. This is necessary to reduce the spread of oak wilt. For more information, contact the Unit Manager or his/her representative.

5.2.3.6 - Bark beetle restriction (12/08)

In the event drought creates a high risk of pine bark beetle infestation, pine is not to be cut during the period March 1 through July 1, unless all portions of trees greater than two inches in diameter are removed from the sale area, reduced to chips, or treated to the satisfaction of the Unit Manager or his/her representative, within fifteen days of being severed from the stump. Pine log decks, pulpwood piles and treetops that are piled for chipping in the fall or winter within a 1/4 mile of susceptible sites must be removed before March 15. Residual slash must not be placed in piles or rows and must be spread over the site for quick drying. The Department of Natural Resources will exercise this specification if the risk of damage warrants.

5.2.4 - Dead and Down Creation

5.2.4.4 - Dead and down creation, grouse (6/18)

To encourage grouse and other wildlife, in Payment Unit(s) 2-4 leave one 12" or larger diameter whole tree on the ground for every 3 acres. Trees should be scattered throughout the Sale Area and at least two chains from any roads, two-tracks, or trails open to vehicles, or positioned per the sale administrator's instructions. Stumps must be at least 3 feet tall.

5.2.22 - Operating Caution

5.2.22.1 - Operating caution (6/11)

It is recommended, but not required, that within Payment Unit(s) 5 and 6, cutting, skidding, and hauling occur during dry summer or frozen winter conditions. The reason for the recommendation is because the Payment Units have areas of low wet ground.

5.2.40 - Pathway protection (10/10)

Old two-tracks exist in the Payment Units and are maintained by the Michigan Wildlife Division for use as hunting and walking trails. Trails must be kept clear of debris and the surface maintained in a smooth condition to facilitate public use when harvest is complete.

5.4 - Soil Protection

5.4.1 - Rutting restriction, general (7/16)

Operations are to cease immediately if equipment and weather conditions result in rutting of roads and/or skid trails which is 12 inches or greater in depth and 50 feet in length. The Unit Manager or his/her representative may restrict hauling and/or skidding if ruts exceed the specified depth. With the Unit Manager or his/her representative's approval, the Purchaser may return to the area when the risk of rutting has decreased.

5.4.6 - Wet area protection (5/10)

No harvesting operations, including skidding and felling, are to take place within the vernal pond areas or drainages. Care must be taken by the Purchaser to identify and avoid operating in these areas of the timber sale.

7 - Other Conditions

7.10 - Certified Timber

7.10.1 - Non-certified timber (2/16)

The area encompassed by this timber sale is not certified to the standards of the Forest Stewardship Council (FSC) or the Sustainable Forestry Initiative (SFI). Forest products from this sale may not be delivered to the mill as "FSC and / or SFI

certified". The lands within this sale are managed as a State Game Area.



TIMBER SALE MAP

This information provided by authority of Part 525, 1994 PA 451, as amended.

Forest Management Unit	County	Mapped By	Date	Page	of
Gladwin Management Unit	Gladwin/Clare	Steven Nyhoff	09/29/2021	1	2
Township	Range	Section(s) and Subdivision(s)	Scale		
18 & 19N	3 & 2W	Sec 5 S1/2SW, SWSE; Sec 7 E1/2SW, W1/2SE	1:15,840		

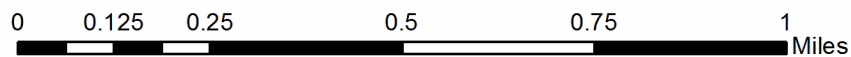
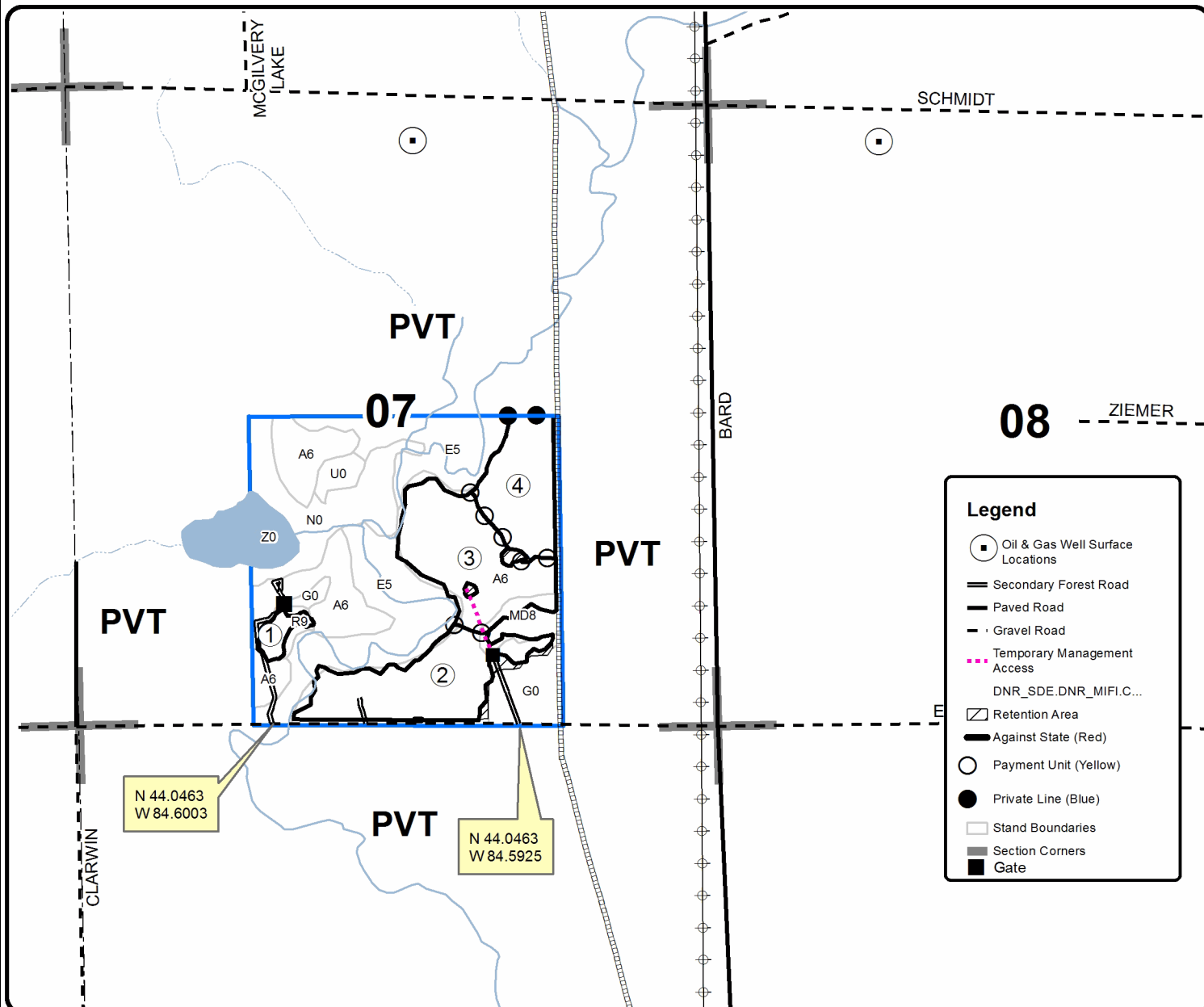
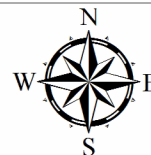
Cover Type				Density	
A = Aspen	H = Hemlock	N = Marsh	U = Upland Brush	0 = Non Stocked	5 = Pole Timber Medium
B = Paper Birch	J = Jack Pine	O = Oak	UM = Upland Mixed	1 = Seedling Sapling Poor	6 = Pole Timber Well
C = Cedar	L = Lowland Brush	P = Lowland Poplar	V = Bog or Marsh	2 = Seedling Sapling Medium	7 = Saw Timber Poor
D = Treed Bog	LM = Lowland Mixed	Q = Mixed Swamp Conifer	W = White Pine	3 = Seedling Sapling Well	8 = Saw Timber Medium
E = Swamp Hdwoods	M = Mpl, Bch, Brch	R = Red Pine	X = Non Stocked	4 = Pole Timber Poor	9 = Saw Timber Well
F = Spruce Fir	MC = Mixed Conifer	S = Black Spruce	Z = Water		
G = Grass	MD = Mixed Deciduous	T = Tamarack			

PU	Acres	PU	Acres
1	2.2	4	14.3
2	20.6	5	18.6
3	22.1	6	9.8

GSGL Harvest

Compartment 8260801

87.6 Acres





Sale Number	Year
73 - 010	21

TIMBER SALE MAP

This information provided by authority of Part 525, 1994 PA 451, as amended.

Forest Management Unit	County	Mapped By	Date	Page	of
Gladwin Management Unit	Gladwin/Clare	Steven Nyhoff	09/29/2021	2	2
Township	Range	Section(s) and Subdivision(s)	Scale		
18 & 19N	3 & 2W	Sec 5 S1/2SW, SWSE; Sec 7 E1/2SW, W1/2SE	1:15,840		

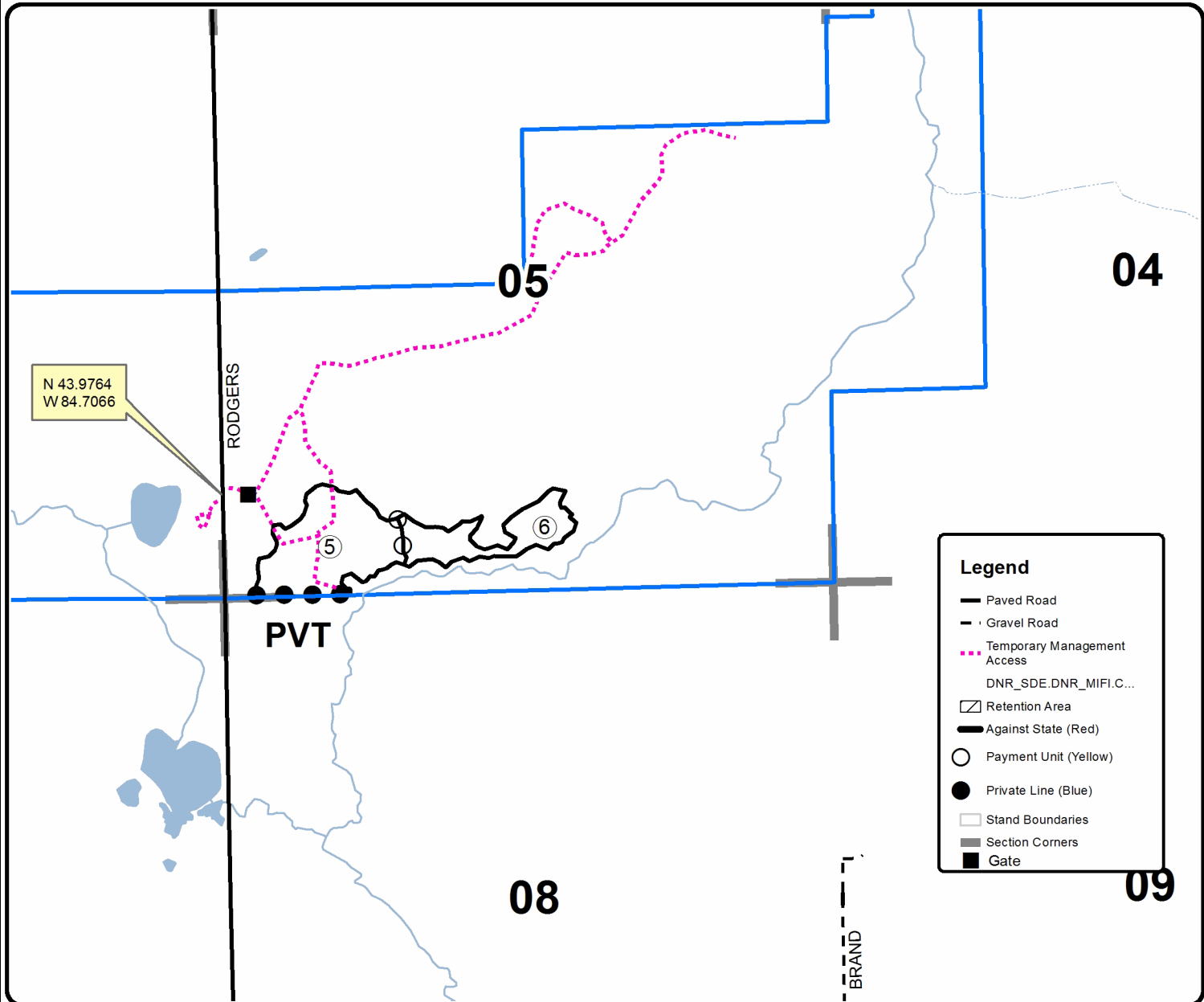
Cover Type				Density	
A = Aspen	H = Hemlock	N = Marsh	U = Upland Brush	0 = Non Stocked	5 = Pole Timber Medium
B = Paper Birch	J = Jack Pine	O = Oak	UM = Upland Mixed	1 = Seedling Sapling Poor	6 = Pole Timber Well
C = Cedar	L = Lowland Brush	P = Lowland Poplar	V = Bog or Marsh	2 = Seedling Sapling Medium	7 = Saw Timber Poor
D = Treed Bog	LM = Lowland Mixed	Q = Mixed Swamp Conifer	W = White Pine	3 = Seedling Sapling Well	8 = Saw Timber Medium
E = Swamp Hdwoods	M = Mpl, Bch, Brch	R = Red Pine	X = Non Stocked	4 = Pole Timber Poor	9 = Saw Timber Well
F = Spruce Fir	MC = Mixed Conifer	S = Black Spruce	Z = Water		
G = Grass	MD = Mixed Deciduous	T = Tamarack			

PU	Acres	PU	Acres
1	2.2	4	14.3
2	20.6	5	18.6
3	22.1	6	9.8

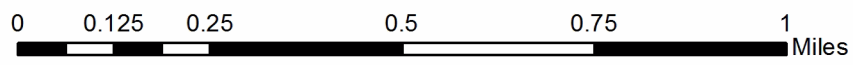
GSSL Harvest

Compartment 8260801

87.6 Acres



Legend	
	Paved Road
	Gravel Road
	Temporary Management Access
	DNR_SDE.DNR_MIFI.C...
	Retention Area
	Against State (Red)
	Payment Unit (Yellow)
	Private Line (Blue)
	Stand Boundaries
	Section Corners
	Gate



TIMBER SALE INFORMATION

Calf Burner Aspen (73-011-21)

T20N, R03W, SEC. 14.

Clare County (Advertised Price \$126,406.65)

SALE NOTE: All units of volume listed for this sale were estimated using the Inventory Manager computer program and the new Michigan taper model.

A timber sale contract for this lump sum, sealed bid timber sale will be awarded to the responsible bidder offering the highest sealed bid price. All units of volume listed below were estimated using the Inventory Manager computer program and the new Michigan taper model. Bids must be at or above the following advertised price for each product and species:

<u>PRODUCTS & SPECIES</u>	<u>ESTIMATED UNITS*</u>		<u>ADVERTISED PRICE</u>
Sawtimber			
Mixed Aspen	613.0	MBF	\$ 65.00 / MBF
Mixed Oak	43.9	MBF	\$ 70.00 / MBF
Red Maple	81.9	MBF	\$ 37.00 / MBF
Pulpwood			
Black Cherry	99	Cords	\$ 15.60 / Cord
Mixed Aspen	3,001	Cords	\$ 19.25 / Cord
Mixed Oak	167	Cords	\$ 16.30 / Cord
Paper Birch	60	Cords	\$ 15.25 / Cord
Red Maple	1,111	Cords	\$ 15.60 / Cord
White Pine	11	Cords	\$ 16.00 / Cord

* The total volume is statistically estimated within plus (+) or minus (-) 4.98 percent. There are an estimated 5,860 cords on this timber sale, plus or minus 292 cords at the 95% confidence level. The estimated units are final and not subject to adjustment. Prospective bidders are urged to examine this timber and to make their own estimates of quantity and quality.

BOND AND PAYMENT SCHEDULE:

1. A bond in the amount of \$6,320.00 to insure faithful performance of the conditions of the contract will be deposited by the successful bidder within 21 days of the sale award.
2. Cutting in any sale or unit without the required advance payment would be considered a trespass.
3. Total payment must be paid in advance or according to the following schedule :
 - (a) Ten percent (10%) of the sale value must be paid within 21 days of the sale award.
 - (b) The 10% down payment will be credited towards the first unit cut.
 - (c) Payment for each of the following units must be made before cutting begins in that unit:

PAYMENT UNIT NUMBER	PERCENT OF TOTAL SALE VALUE
01	51.3%
02	20.6%
03	28.1%
4. If no cutting takes place, the 10% down payment will not be refunded.
5. Operations on the contract issued will terminate on 06/30/2024.

SALE STATISTICS

Volumes were calculated in cubic feet using the Michigan taper model. Cubic foot volume includes all wood inside bark for the product indicated. For display purposes, cubic feet were converted to cords and MBF using a simple conversion factor, e.g. 79 cubic feet per cord and 185 cubic feet per MBF. The cubic foot volumes are precise; the cords and MBF volumes are not. Cubic foot volume cannot be directly converted to cords or boards with precision.

SALE VOLUMES

The total estimated sale volume may not equal the sum of the species/products due to the nature of statistical calculations associated with double sampling methodology.

VOLUME		STATISTICAL RANGE IN CORDS		
TOTAL CUBIC FEET	TOTAL CORDS	PERCENT ERROR	MINIMUM	MAXIMUM
462,946	5,860	4.98%	5,568	6,152

VDU VOLUMES

A VDU is a Volume Determination Unit. Volumes and their associated statistics are calculated at the VDU level and summarized to the sale level. There is often a one to one relationship between a VDU and a Payment Unit, but not always, depending on the cruise design. Refer to the VDU TO PAYMENT UNIT table.

VDU	VOLUME		PERCENT ERROR	RANGE IN CORDS	
	TOTAL CUBIC FEET	TOTAL CORDS		MINIMUM	MAXIMUM
160	64,492	816	10.41%	731	901
161	116,678	1,477	14.80%	1,258	1,696
164	281,776	3,567	4.90%	3,392	3,741
TOTAL:	462,946	5,860		5,382	6,338

VDU TO PAYMENT UNIT

When a VDU is associated with more than one Payment Unit (PU), the VDU volumes are assigned to the PU based on acres of the VDU within the PU.

VDU	VDU ACRES	PU	PU ACRES
160	23.4	2	22.5
		3	0.9
161	23.2	3	23.2
164	54.9	1	47.3
		2	7.6
TOTAL:	101.5		101.5

DESCRIPTION OF TIMBER BY PAYMENT UNIT (PU)

PU	MARKET GROUP	PRODUCT	QUANTITY	UNIT	ACRES	ADVERTISE PRICE		
1	Mixed Aspen	Sawtimber	296.4	MBF	47.3	\$64,837.85		
	<i>B. T. Aspen</i>		198.7	<i>MBF</i>				
	<i>Quaking Aspen</i>		97.7	<i>MBF</i>				
	Mixed Oak		12.1	MBF				
	<i>Bl/R/Hybrid Oak</i>		12.1	<i>MBF</i>				
	Red Maple		57.8	MBF				
	Black Cherry		Pulpwood	22			Cords	
	Mixed Aspen			1,665			Cords	
	<i>B. T. Aspen</i>			1,115			<i>Cords</i>	
	<i>Quaking Aspen</i>			550			<i>Cords</i>	
	Mixed Oak			28			Cords	
	<i>Bl/R/Hybrid Oak</i>			28			<i>Cords</i>	
	Paper Birch			52			Cords	
	Red Maple			564			Cords	
	White Pine			9			Cords	
	<i>White Pine</i>			Sawtimber			2.5	<i>MBF</i>
	<i>White Pine</i>						Pulpwood	4
	2	Mixed Aspen	Sawtimber	113.3				MBF
<i>B. T. Aspen</i>		44.0		<i>MBF</i>				
<i>Quaking Aspen</i>		69.3		<i>MBF</i>				
Mixed Oak		23.8		MBF				
<i>Bl/R/Hybrid Oak</i>		18.7		<i>MBF</i>				
<i>White Oak</i>		5.1		<i>MBF</i>				
Red Maple		23.5		MBF				
Black Cherry		Pulpwood		64	Cords			
Mixed Aspen				402	Cords			
<i>B. T. Aspen</i>				268	<i>Cords</i>			
<i>Quaking Aspen</i>				134	<i>Cords</i>			
Mixed Oak				96	Cords			
<i>Bl/R/Hybrid Oak</i>				87	<i>Cords</i>			
<i>White Oak</i>				9	<i>Cords</i>			
Paper Birch				8	Cords			
Red Maple				367	Cords			
White Pine				2	Cords			
<i>White Pine</i>			Sawtimber	0.4	<i>MBF</i>			
<i>White Pine</i>	Pulpwood	1		<i>Cords</i>				
3		Mixed Aspen	Sawtimber	203.3	MBF	24.1	\$35,487.90	
	<i>B. T. Aspen</i>	163.3		<i>MBF</i>				
	<i>Quaking Aspen</i>	40.0		<i>MBF</i>				
	Mixed Oak	8.0		MBF				
	<i>Bl/R/Hybrid Oak</i>	5.0		<i>MBF</i>				
	<i>White Oak</i>	3.0		<i>MBF</i>				
	Red Maple	0.6		MBF				
	Black Cherry	Pulpwood		13	Cords			
	Mixed Aspen			934	Cords			
	<i>B. T. Aspen</i>			878	<i>Cords</i>			
	<i>Quaking Aspen</i>			56	<i>Cords</i>			
	Mixed Oak			43	Cords			
	<i>Bl/R/Hybrid Oak</i>			40	<i>Cords</i>			
	<i>White Oak</i>			3	<i>Cords</i>			
	Red Maple		180	Cords				
TOTAL:			738.8	MBF				
TOTAL:			4,449	Cords				

Sale Specific Conditions & Requirements

Sale Name: Calf Burner Aspen

Sale Number: 73-011-21 Seq#: 1

1 - Sale Area

1.2 - Boundaries

1.2.1 - Painted boundaries (9/19)

The sale boundary and Payment Unit boundaries are marked and identified by blue, red, and yellow paint. Exterior sale boundary lines against private property are marked with blue paint. Exterior sale boundary lines against state are marked with red paint. Interior Payment Unit boundaries are marked with yellow paint. Retention patches are marked with red paint; no harvesting activities may occur within these areas. The painted boundary line trees are not Included Timber and are to be protected unless marked with orange paint. Yellow painted trees designating an interior Payment Unit boundary are only to be cut when all surrounding Payment Units have been paid.

2 - Timber Specifications

2.1 - Included Timber

2.1.1 - Clearcut unit(s) with unmerchantable trees (6/14)

Within Payment Unit(s) 1-3, cut all trees that are two (2) inches or more at DBH.

3 - Payments

3.3 - Pre-measured Sales

3.3.4 - Dividing payment units (7/14)

Payment Unit(s) may be divided at the request of the Purchaser and upon approval of the Unit Manager. Dividing Payment Units is a contract modification which requires a Timber Sale Contract Amendment. There will be only one division per Payment Unit.

4 - Transportation

4.1 - Construction

4.1.6 - Road construction (1/09)

Construction of new roads or improvements of existing roads shall be done in such a way as to minimize the environmental and visual impacts. Merchantable trees shall be cut and utilized unless otherwise directed. Non-merchantable trees shall be severed and laid flat on the ground. Slash shall be scattered, and not left in windrows and kept a minimum of 10 feet back from the road edge. Stumps shall be set upright, not left on edge, and be moved at least 10 feet away from the road edge. Disturbed soil shall be feathered into the woods and not left in berms or windrows.

4.1.7 - Road closure (10/11)

All new roads built into the sale must be blocked to vehicle traffic upon completion of the sale. Overgrown roads that are reopened shall be considered new roads. Some existing roads may also need to be closed, contact sale administrator for details. In general, this will require constructing a four (4') foot high berm of stumps and logs covered with earth. Stumps and brush must be placed along the remainder of the trail. These roads must be rendered impassable to cars and trucks. Contact the sale administrator for specific details of design and placement.

5 - Operations

5.1 - Notification

5.1.1 - Pre-sale conference (10/16)

A pre-sale conference between the Purchaser and sale administrator is required prior to beginning any operations to determine landing and road locations. The Unit Manager or his/her representative must be contacted at least 3 business days in advance to schedule the conference.

5.2 - Conduct of Operations

5.2.1 - Slash

5.2.1.10 - No slash in openings (5/10)

No brush or logging debris is to be left in the maintained wildlife opening which is indicated by G0 on the Timber Sale Map. Any damage to the opening shall be repaired according to specifications of the Unit Manager or his/her representative.

5.2.2 - Hazard Trees/Snags

5.2.2.1 - Den trees (10/16)

Obvious hollow and/or den trees shall be protected and left standing unless they are a safety hazard.

5.2.3 - Operating Restrictions

5.2.3.5 - Oak wilt restriction (1/18)

Within Payment Unit 1-3, unless changed by written agreement, cutting, skidding, hauling within the sale and brushing of access roads to the sale are not permitted during the period of April 15 to July 15. Operations may be allowed if specific steps are taken to prevent damaging uncut oak during the high risk period. Those steps may include completing all road brushing before April 15th and clearing a tree-length buffer along uncut oak cover before April 15th. This is necessary to reduce the spread of oak wilt. For more information, contact the Unit Manager or his/her representative.

5.2.4 - Dead and Down Creation

5.2.4.4 - Dead and down creation, grouse (6/18)

To encourage grouse and other wildlife, in Payment Unit(s) 1-3, leave one, 12" diameter or larger log-length (8 foot minimum) piece on the ground for every 2 acres. These will be evenly scattered throughout the Payment Unit. This can be an unmerchantable piece or a full tree.

5.2.32 - Decking/landing restoration (9/13)

All decking and landing areas must have the surface area restored to a condition equal to or better than before. This is to ensure the proper regeneration of the stand. Wood debris, chips, and "cookies" from trimmings must be removed or scattered away from landing and loading areas and may not be windrowed on the edge.

5.4 - Soil Protection

5.4.2 - Skid trails (2/04)

Skid trails up and down slopes should be avoided. If however this is unavoidable, these trails will be left in a non-erodible condition using water bars, logs, and slash. Placing of slash on these skid trails while logging is ongoing may alleviate need for any further action. At the direction of the sale administrator, seed, fertilizer, and mulch may also be required.

6 - Safety and Fire Prevention

6.2 - Signing

6.2.1 - Road posting (10/20)

The Purchaser is responsible for posting and maintaining caution signs on Meredith Grade Road prior to beginning operations. The road must be posted at appropriate distances from the Sale Area to warn of logging activity and truck traffic. Signs must be removed when harvest operations are suspended or completed.



TIMBER SALE MAP

This information provided by authority of Part 525, 1994 PA 451, as amended.

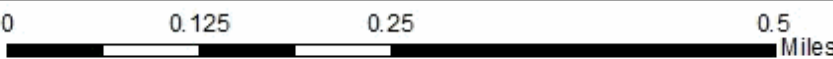
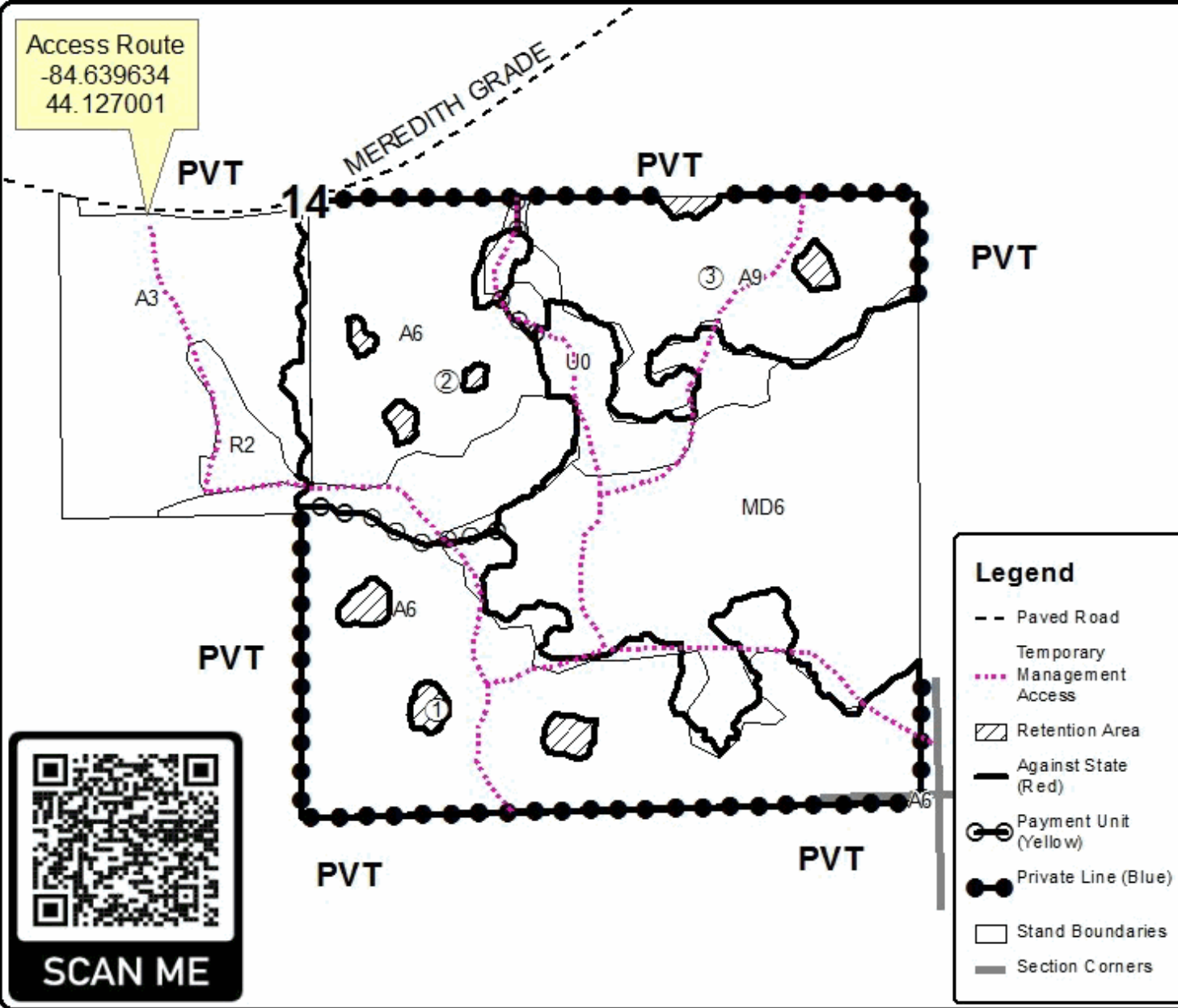
Sale Number	Year
73 - 011	21

Forest Management Unit	County	Mapped By	Date	Page	of
Gladwin Management Unit	Clare	Behrmann	09/14/2021	1	1
Township	Range	Section(s) and Subdivision(s)	Scale		
20N	03W	Sec 14 SE	1:7,920		

Cover Type				Density	
A = Aspen	H = Hemlock	N = Marsh	U = Upland Brush	0 = Non Stocked	5 = Pole Timber Medium
B = Paper Birch	J = Jack Pine	O = Oak	UM = Upland Mixed	1 = Seedling Sapling Poor	6 = Pole Timber Well
C = Cedar	L = Lowland Erush	P = Lowland Poplar	V = Bog or Marsh	2 = Seedling Sapling Medium	7 = Saw Timber Poor
D = Troad Bog	LM = Lowland Mixed	Q = Mixed Swamp Conifer	W = White Pine	3 = Seedling Sapling Well	8 = Saw Timber Medium
E = Swamp Hdwoods	M = Mpl, Boh, Brch	R = Red Pine	X = Non Stocked	4 = Pole Timber Poor	9 = Saw Timber Well
F = Spruce Fir	MC = Mixed Conifer	S = Black Spruce	Z = Water		
G = Grass	MD = Mixed Deciduous	T = Tamarack			

PU	Acres
1	47.3
2	30.1
3	24.1

Calf Burner Aspen Compartment 2 101.5 Acres



Calf Burner Aspen (73-011-21)
T20N, R03W, SEC. 14; Clare COUNTY

In response to the notice of sale to be held 10:00 a.m. (local time) on May 26, 2022, I am hereby submitting my sealed bid (firm offer) for the following forest products to be cut. Bids for individual species must be at or above the advertised price. All non-responsive bid forms may be rejected.

<u>PRODUCTS & SPECIES</u>	<u>ESTIMATED VOLUME*</u>	<u>ADVERTISED PRICE</u>	<u>BID PRICE/UNIT</u>
Sawtimber			
Mixed Aspen	613.0 MBF	\$ 65.00/MBF	\$ _____
Mixed Oak	43.9 MBF	\$ 70.00/MBF	\$ _____
Red Maple	81.9 MBF	\$ 37.00/MBF	\$ _____
Pulpwood			
Black Cherry	99 Cords	\$ 15.60/Cord	\$ _____
Mixed Aspen	3,001 Cords	\$ 19.25/Cord	\$ _____
Mixed Oak	167 Cords	\$ 16.30/Cord	\$ _____
Paper Birch	60 Cords	\$ 15.25/Cord	\$ _____
Red Maple	1,111 Cords	\$ 15.60/Cord	\$ _____
White Pine	11 Cords	\$ 16.00/Cord	\$ _____

*The volumes are statistically estimated within plus (+) or minus (-) 4.98 percent at 95% confidence level. These estimated volumes are final and not subject to adjustment. Prospective bidders are urged to examine this timber and to make their own estimates of quantity and quality.

I understand that any or all bids may be rejected. All bids must be signed and all bid items must be bid or the bid form may be rejected. I also understand that consideration and awarding a contract will be based upon my past performance and ability to complete the contract based upon equipment and staffing subject to my control.

FEDERAL ID: ____ - ____ - ____ or SOCIAL SECURITY NUMBER: ____ - ____ - ____

Company or individual bidding: _____

Company representative's name: _____

Address: _____

City: _____ State: _____ Zip: _____

IF AVAILABLE, PLEASE PLACE THE PERSONALIZED LABEL FROM YOUR PROSPECTUS IN THE ABOVE BOX.

Individual or company representative's signature: _____ Date: _____

Phone number : _____ Email (optional): _____

THE WINNING BIDDER MUST COMPLETE THE VERIFICATION OF WORKER'S DISABILITY COMPENSATION ACT COMPLIANCE (ON REVERSE SIDE IF DOUBLE SIDED) WITHIN 21 DAYS OF SALE AWARD DATE



FOR DEPARTMENT USE ONLY	
Sale Number (XX - XXX - XX - XX)	
Forest Management Unit:	

TIMBER SALE VERIFICATION OF WORKER'S DISABILITY COMPENSATION ACT COMPLIANCE

As required by Act 317, P.A. 1969 (Worker's Compensation) and
Part 5 of Act 451 of 1994, as amended.

VERIFICATION OF WORKER'S DISABILITY COMPENSATION ACT COMPLIANCE

- This verification must be completed and submitted within 21 days of contract award and prior to the issuance of the timber sale contract.
- In addition, if boxes 2B or 2C are checked, then Notice of Exclusion or Certificate of Insurance must be submitted within twenty-one (21) days of the contract award and prior to the issuance of the timber sale contract.
- All information must be typed or printed except for written signatures.

Please Check Appropriate Categories:

1. My business is organized as (you **must** check one of the boxes below):
 - A. Sole Proprietorship (individual)
 - B. Partnership
 - C. Corporation
2. You **must** check one of the boxes below:
 - A. I certify my business is a sole proprietorship and it has no employees but the sole proprietor. I am not subject to the Worker's Compensation Laws.
 - B. I certify my business has satisfied its obligation to the Worker's Compensation Act through the use of an approved Notice of Exclusion (BWC-337, Rev. 5/96). I will provide a copy of the Notice of Exclusion within 21 days of the contract award. (For questions or a copy of the BWC-337, please call the Worker's Compensation Bureau at 517-322-1195).
 - C. I certify my business has a Worker's Compensation Policy. I will provide an original Certificate of Insurance within twenty-one (21) days of the contract award.
3. If you have checked item 2(A) or 2(B), you **must** indicate the number of **both** full-time and part-time employees, other than yourself, including family members and active partners (if none, you must enter "0").

_____ Full-time Employees

_____ Part-time Employees

Name of Business		Federal ID (or) Social Security No.	
Address		Telephone ()	
City	State	ZIP	

I hereby certify that the above information is true and correct. I agree to notify the Michigan DNR of any changes that occur in factors affecting my coverage during any of my present and future operations.

Signature of Owner or Authorized Representative

Title

Date

Please complete the "SEALED BID" information on the next page

GSGL Harvest (73-010-21)
T18N, R03W, SEC. 5; T19N, R02W, SEC. 7; Gladwin COUNTY

In response to the notice of sale to be held 10:00 a.m. (local time) on May 26, 2022, I am hereby submitting my sealed bid (firm offer) for the following forest products to be cut. Bids for individual species must be at or above the advertised price. All non-responsive bid forms may be rejected.

<u>PRODUCTS & SPECIES</u>	<u>ESTIMATED VOLUME*</u>	<u>ADVERTISED PRICE</u>	<u>BID PRICE/UNIT</u>
Sawtimber			
Bl/R/Hybrid Oak	1.4 MBF	\$ 70.00/MBF	\$ _____
Black Cherry	16.4 MBF	\$ 135.00/MBF	\$ _____
Mixed Aspen	429.5 MBF	\$ 65.00/MBF	\$ _____
Red Maple	36.6 MBF	\$ 37.00/MBF	\$ _____
Red Oak	9.5 MBF	\$ 140.00/MBF	\$ _____
Red Pine	7.1 MBF	\$ 102.00/MBF	\$ _____
Sugar Maple	38.6 MBF	\$ 301.00/MBF	\$ _____
White Pine	47.5 MBF	\$ 60.00/MBF	\$ _____
Pulpwood			
Jack Pine	43 Cords	\$ 15.40/Cord	\$ _____
Mixed Aspen	1,618 Cords	\$ 19.25/Cord	\$ _____
Mixed Hardwood	292 Cords	\$ 15.60/Cord	\$ _____
Mixed Oak	87 Cords	\$ 16.30/Cord	\$ _____
N. White Cedar	4 Cords	\$ 14.00/Cord	\$ _____
Red Pine	44 Cords	\$ 42.00/Cord	\$ _____
White Pine	38 Cords	\$ 16.00/Cord	\$ _____

*The volumes are statistically estimated within plus (+) or minus (-) 5.58 percent at 95% confidence level. These estimated volumes are final and not subject to adjustment. Prospective bidders are urged to examine this timber and to make their own estimates of quantity and quality.

I understand that any or all bids may be rejected. All bids must be signed and all bid items must be bid or the bid form may be rejected. I also understand that consideration and awarding a contract will be based upon my past performance and ability to complete the contract based upon equipment and staffing subject to my control.

FEDERAL ID: ____ - ____ - ____ or SOCIAL SECURITY NUMBER: ____ - ____ - ____

Company or individual bidding: _____

Company representative's name: _____

Address: _____

City: _____ State: _____ Zip: _____

IF AVAILABLE, PLEASE PLACE THE PERSONALIZED LABEL FROM YOUR PROSPECTUS IN THE ABOVE BOX.

Individual or company representative's signature: _____ Date: _____

Phone number : _____ Email (optional): _____

THE WINNING BIDDER MUST COMPLETE THE VERIFICATION OF WORKER'S DISABILITY COMPENSATION ACT COMPLIANCE (ON REVERSE SIDE IF DOUBLE SIDED) WITHIN 21 DAYS OF SALE AWARD DATE



FOR DEPARTMENT USE ONLY	
Sale Number (XX - XXX - XX - XX)	
Forest Management Unit:	

TIMBER SALE VERIFICATION OF WORKER'S DISABILITY COMPENSATION ACT COMPLIANCE

As required by Act 317, P.A. 1969 (Worker's Compensation) and
Part 5 of Act 451 of 1994, as amended.

VERIFICATION OF WORKER'S DISABILITY COMPENSATION ACT COMPLIANCE

- This verification must be completed and submitted within 21 days of contract award and prior to the issuance of the timber sale contract.
- In addition, if boxes 2B or 2C are checked, then Notice of Exclusion or Certificate of Insurance must be submitted within twenty-one (21) days of the contract award and prior to the issuance of the timber sale contract.
- All information must be typed or printed except for written signatures.

Please Check Appropriate Categories:

1. My business is organized as (you **must** check one of the boxes below):
 - A. Sole Proprietorship (individual)
 - B. Partnership
 - C. Corporation
2. You **must** check one of the boxes below:
 - A. I certify my business is a sole proprietorship and it has no employees but the sole proprietor. I am not subject to the Worker's Compensation Laws.
 - B. I certify my business has satisfied its obligation to the Worker's Compensation Act through the use of an approved Notice of Exclusion (BWC-337, Rev. 5/96). I will provide a copy of the Notice of Exclusion within 21 days of the contract award. (For questions or a copy of the BWC-337, please call the Worker's Compensation Bureau at 517-322-1195).
 - C. I certify my business has a Worker's Compensation Policy. I will provide an original Certificate of Insurance within twenty-one (21) days of the contract award.
3. If you have checked item 2(A) or 2(B), you **must** indicate the number of **both** full-time and part-time employees, other than yourself, including family members and active partners (if none, you must enter "0").

_____ Full-time Employees

_____ Part-time Employees

Name of Business		Federal ID (or) Social Security No.	
Address		Telephone ()	
City	State	ZIP	

I hereby certify that the above information is true and correct. I agree to notify the Michigan DNR of any changes that occur in factors affecting my coverage during any of my present and future operations.

Signature of Owner or Authorized Representative

Title

Date

Please complete the "SEALED BID" information on the next page