



**DEPARTMENT OF NATURAL RESOURCES
STATE OF MICHIGAN
TIMBER SALE PROSPECTUS #7071**

SCHEDULED SALE DATE AND TIME: **9:00 a.m. (local time) on July 25, 2022.**

LOCATION: **GRAYLING MGMT UNIT, 1955 HARTWICK PINES ROAD, GRAYLING, MI 49738.**

PROSPECTUS NOTE: The bidder is advised to inspect the sale area and review the location, estimated volumes, operating costs and contract terms of proposed sales. Please be aware that some landowners may request 60 days or more notice for access across their land.

Notice is hereby given that bids will be received by the Unit Manager, GRAYLING MANAGEMENT UNIT, for certain timber on the following described lands:

Trippy Removal (72-010-21) / T25N, R02W, SEC. 9 , W1/2NW,W1/2SW.

Crawford County, Advertised Price \$25,353.75, 50.3 Acres, Hardwood, Red Pine.

SALE NOTE: All units of volume listed for this sale were estimated using the Inventory Manager computer program and the new Michigan taper model.

- See sale spec 5.8.1 for information on Kirtland's Warbler habitat restrictions.
- See sale spec 5.2.3.4 for information on oak wilt restrictions.

Overstory removal with advanced regeneration that must be protected.

Roundhouse Oak (72-011-21) / T25N, R02W, SEC. 14, W1/2SW.

T25N, R02W, SEC. 15, SENE,E1/2SE.

T25N, R02W, SEC. 16, SWSW.

T25N, R02W, SEC. 20, NENE.

T25N, R02W, SEC. 21, W1/2NW.

Crawford County, Advertised Price \$108,095.05, 119.9 Acres, Hardwood, Red Oak.

SALE NOTE: All units of volume listed for this sale were estimated using the Inventory Manager computer program and the new Michigan taper model.

- See sale spec 5.2.3.4 and 5.2.3.5 for oak wilt restrictions.
- See sale spec 2.2.2 and 2.2.3 for information on stump heights and chipping.

Massasauga Mix (72-023-21) / T24N, R08E, SEC. 6 , N1/2NW,NWNE.
T25N, R08E, SEC. 31, S1/2SW.

Iosco County, Advertised Price \$33,777.65, 61.5 Acres, Hardwood, Jack Pine.

SALE NOTE: All units of volume listed for this sale were estimated using the Inventory Manager computer program and the new Michigan taper model.

Please note southern sale boundary is in the middle of a steep slope.

Bidders are encouraged to evaluate accessibility prior to bidding.

The sale is located in a Formerly Used Defense Sites area.

Sale Area is accessed from the West by sandy and overgrown Forest Service roads .

See sale spec 4.4.5 for information on access through Federal land.

Grayling Field Office will provide operational permit to winning bidder .

See sale spec 5.2.4.6 for information on the creation of Eastern Massasuaga Rattlesnake habitat.

Access may be through other public land.

Roberts Rd XCS (72-031-21) / T28N, R03W, SEC. 31, NE,SE.

Crawford County, Advertised Price \$17,325.35, 35.7 Acres, Aspen, Hardwood.

SALE NOTE: All units of volume listed for this sale were estimated using the Inventory Manager computer program and the new Michigan taper model.

See sale spec 5.2.3.1 for information on operating restrictions due to ski trail.

A recreation site such as a trail, pathway, or campground is within the sale area or the vicinity. Certain restrictions/specifications may be applicable including time restrictions.

Fill Your Hands Aspen (72-034-21) / T25N, R01W, SEC. 7 , NWSW.

T25N, R02W, SEC. 11, SE.

T25N, R02W, SEC. 12, SWSW,N1/2SE,SWSE.

Crawford County, Advertised Price \$47,363.15, 85.3 Acres, Aspen, White Pine.

SALE NOTE: All units of volume listed for this sale were estimated using the Inventory Manager computer program and the new Michigan taper model.

It is recommended but, not required that lowland areas in the sale be harvested during dry summer or frozen winter conditions to minimize soil compaction/rutting.

See sale spec 5.2.17 for information on potential need of timber or composite mats.

BID INSTRUCTIONS (VER. 07/02/2018):

1. Scheduled Bid Location, Date, and Time (2/11)

Bids must be received by the Unit Manager, GRAYLING OFFICE, 1955 HARTWICK PINES ROAD, GRAYLING, MI 49738, no later than 9:00 a.m. (local time) on July 25, 2022. For further information concerning this sale, contact Thomas Barnes at 989-348-6371 extension 7440.

2. Bidder's Qualifications (5/16)

Purchaser shall obtain workers compensation insurance to cover claims under Michigan's Worker's Disability Compensation Act of 1969 or similar employee benefit act of any other state applicable to an employee. If all or part of a timber sale was prepared by a private contractor, the contractor and that contractor's company are not permitted to bid on the timber sale contract. Bids will not be accepted from individuals or companies appearing on the DNR/FRD No-Bid List. This list contains the names of purchasers who previously failed to execute a contract within 21-days or who have a history of poor performance.

3. Preparation of Sealed Bids (5/16)

Bid Forms may be completed online thru Michigan DNR Timber Sale Online Bidding (OLB) at www.michigan.gov/timberbidding or by completing the hardcopy Bid Form found in the Timber Sale Prospectus. Hardcopy Bid Forms shall be manually signed in ink. Registration in OLB is considered your 'signature' for all bids submitted thru that system. Bid prices must be entered for each species and product in the Bid Price column for all material subject to bidding and all fill-in blanks must be completed. If erasures or other changes appear on the hardcopy Bid Form, each erasure or change must be initialed by the person signing the bid.

4. Submission of Sealed Bids (5/16)

Bid forms may be obtained from the Unit Manager or thru OLB. Bids may be submitted hardcopy or thru OLB. All hardcopy bids must be submitted on the bid form and in an envelope clearly identified as described in this section. NOTE: Only one bid form per bid envelope. Sealed bids must be submitted to the Unit office designated in the prospectus and must be submitted at or prior to the time established in the prospectus. The envelope should show on the outside (a) the sale name or number and (b) the date and time of bid opening, as shown in the prospectus. Bids received after the time specified in the sale prospectus are late bids and will be rejected.

It is possible for a bidder to submit multiple bids on a single sale. For example, a bid may be submitted hardcopy and a bid may be submitted thru OLB. Or, two bidders from the same company could both submit bids on the same sale. If this were to happen, the State would accept all bids received and award the contract accordingly. All bidding and contractual requirements would apply to all bids received.

5. Public Opening of Sealed Bids (7/16)

If conditions permit, the sealed bids will be publicly opened and posted at the time and place set in the prospectus.

If a bidder, present at a bid opening, has submitted bids on more than one sale, that bidder may withdraw their unopened bid envelopes or announce the withdrawal of their online bid after being declared the successful bidder on one sale.

6. Award of Contract (1/11)

Award of the contract will be made to the Bidder whose bid, conforming to the prospectus, is most advantageous to the State of Michigan on the basis of total value at rates bid for the estimated quantities. The State reserves the right to reject any bid or waive any minor irregularity in bids received. A written award mailed (or otherwise furnished) to the successful Bidder shall be deemed to result in a binding contract without further action by either party.

7. Down Payment (1/11)

The Bidder to whom award is made must make a down payment within 21 days of the sale award. The amount of the down payment will be calculated as shown in the Bond and Payment Schedule of this prospectus. Only cash may be used to meet this requirement.

8. Performance Security (1/11)

As guarantee of faithful performance, a cash bond, certificate of deposit, surety bond or irrevocable letter of credit (LOC) is required within 21 days of the sale award. The amount of the performance security is shown in the Bond and

Payment Schedule of this prospectus. If an LOC or surety is used, the coverage must extend for at least 6 months beyond the contract expiration.

9. Timber Sale Contract (7/18)

Additional conditions and requirements common to all timber sales are listed on the timber sale contract (R4031) and are available on line at www.michigan.gov/timber. Contact the Unit Manager for additional information or a sample contract. Within 21 days of the date of the award letter, the bidder must sign the contract and provide the required down payment, performance security, and verification of worker's disability compensation. The down payment and performance security shall be in accordance with the provisions of the timber sale contract, in the sums stated in this prospectus. If these actions are not taken, then the Bidder, the Bidder's corporation, and the corporation's principals may not be permitted to bid on State timber sales for a period of 3 months after the first offense, 6 months after the second offense, and 1 year after the third offense. An offense will only be counted against the Bidder for 5 years. In addition, the Bidder certifies that if awarded this contract, the Bidder will complete the timber sale contract in accordance with its terms and any modifications thereof including requirements to purchase, cut, and remove the included timber by the expiration date.

Payment Unit values in the State Forest Timber Sale Contract are calculated based on the advertised value of the Payment Unit as a percentage of the total advertised value of the contract. The advertised value of each Payment Unit is given in the Description of Timber by Payment Unit table on the Timber Sale Information page. For example, if the value of Payment Unit 1 is advertised as \$1,500 and the total Timber Sale value is advertised as \$10,000, the contract price for Payment Unit 1 will be 15% of the total bid price ($\$1,500/\$10,000 * 100$).

10. Disclaimer of Estimates and Bidder's Warranty of Inspection (7/16)

Before submitting this bid, the Bidder is advised and cautioned to inspect the sale area, review the requirements of the sale contract, and take other steps as may be reasonably necessary to ascertain the location, estimated volumes, construction estimates, and operating costs of the proposed sale. Failure to do so will not relieve the Bidder from responsibility for completing the contract.

The Bidder warrants that this bid is submitted solely on the basis of the Bidder's examination and inspection of the quality and quantity of the timber offered for sale and the Bidder's opinion of the value thereof and the costs of recovery. No reliance should be placed on the State of Michigan's estimates of timber quality, quantity or costs of recovery. Bidder further acknowledges that the State of Michigan: (i) expressly disclaims any warranty of fitness of timber for any purpose; (ii) offers this timber as is without any warranty of quality (merchantability) or quantity and (iii) expressly disclaims any warranty as to the quantity or quality of timber sold.

11. Certification and Chain-of-Custody (10/14)

Unless otherwise indicated in the contract under section 7 – Other Conditions of the Sale Specific Conditions & Requirements, the area encompassed by this timber sale is certified to the standards of the Forest Stewardship Council (FSC) - Certificate #SCS-FM/COC-00090N and the Sustainable Forestry Initiative (SFI) - Certificate # NSF-SFIS-5Y031-SF5. Forest products from this sale may be delivered to the mill as "FSC 100% and / or SFI certified" as long as the contractor hauling the forest products is chain-of-custody (COC) certified or covered under a COC certificate from the destination mill. The purchaser is responsible for maintaining COC after leaving the sale area.

12. Good Neighbor Authority (GNA) Requirements (7/16)

If the name of this timber sales contains the acronym GNA, it is authorized by the Good Neighbor Authority (GNA) and covered by various agreements between the U.S. Forest Service and the State. The timber sale occurs on federal land and the following conditions apply:

GNA contracts on US Forest Service land will not be awarded to purchasers on the Federal list of excluded parties. The System for Award Management (SAM) will be checked for active excluded parties prior to award of contract. In addition, the Bidder to whom award is made must complete an Assurance Regarding Felony Conviction or Tax Delinquent Status for Corporate Applicants (AD-3031).

13. Good Neighbor Authority (GNA) Requirements, con't (9/16)

Bidder certifies, by signing this bid form, that to the best of Bidder's knowledge that the following representations are accurate and complete.

- a. That the Bidder and its principals are not presently debarred, suspended, proposed for debarment, declared ineligible, or voluntary excluded from timber sales (covered transactions) by any Federal department or agency.
- b. That the Bidder and its principals have not within a 3-year period preceding this bid been convicted of or had a civil judgment rendered against them for commission of fraud or a criminal offense in connection with obtaining , attempting to obtain, or performing a public (Federal, State, or local) transaction or contract under a public transaction; violation of Federal or State antitrust statutes or commission of embezzlement, theft, forgery, bribery, falsification or destruction of records, making false statements, or receiving stolen property.
- c. That the Bidder and its principals are not presently indicted for or otherwise criminally or civilly charged by a governmental entity (Federal, State, or local) with commission of any of the offenses enumerated in paragraph b of this certification.
- d. That the Bidder and its principals have not within a 3-year period preceding this bid had one or more public transactions (Federal, State, or local) terminated for breach or default of a timber or forest product contract.

Bidders that cannot certify this requirement, in whole or in part, shall submit an explanation with their bid.

DAN EICHINGER
Director

TIMBER SALE INFORMATION

Trippy Removal (72-010-21)

T25N, R02W, SEC. 9.

Crawford County (Advertised Price \$25,353.75)

SALE NOTE: All units of volume listed for this sale were estimated using the Inventory Manager computer program and the new Michigan taper model.

- See sale spec 5.8.1 for information on Kirtland's Warbler habitat restrictions.

- See sale spec 5.2.3.4 for information on oak wilt restrictions.

Overstory removal with advanced regeneration that must be protected.

A timber sale contract for this lump sum, sealed bid timber sale will be awarded to the responsible bidder offering the highest sealed bid price. All units of volume listed below were estimated using the Inventory Manager computer program and the new Michigan taper model. Bids must be at or above the following advertised price for each product and species:

<u>PRODUCTS & SPECIES</u>	<u>ESTIMATED UNITS*</u>	<u>ADVERTISED PRICE</u>
Sawtimber		
Red Oak	54.4 MBF	\$ 141.00 / MBF
Red Pine	57.1 MBF	\$ 89.00 / MBF
White Oak	53.4 MBF	\$ 64.00 / MBF
White Pine	13.5 MBF	\$ 63.00 / MBF
Pulpwood		
B. T. Aspen	26 Cords	\$ 25.70 / Cord
Mixed Oak	172 Cords	\$ 24.65 / Cord
Red Maple	32 Cords	\$ 26.90 / Cord
Red Pine	39 Cords	\$ 32.40 / Cord
White Pine	63 Cords	\$ 20.65 / Cord

* The total volume is statistically estimated within plus (+) or minus (-) 6.09 percent. There are an estimated 751 cords on this timber sale, plus or minus 46 cords at the 95% confidence level. The estimated units are final and not subject to adjustment. Prospective bidders are urged to examine this timber and to make their own estimates of quantity and quality.

BOND AND PAYMENT SCHEDULE:

1. A bond in the amount of \$1,268.00 to insure faithful performance of the conditions of the contract will be deposited by the successful bidder within 21 days of the sale award.
2. Cutting in any sale or unit without the required advance payment would be considered a trespass.
3. Total payment must be paid in advance or according to the following schedule:
 - (a) Ten percent (10%) of the sale value must be paid within 21 days of the sale award.
 - (b) The 10% down payment will be credited towards the first unit cut.
 - (c) Payment for each of the following units must be made before cutting begins in that unit:

<u>PAYMENT UNIT NUMBER</u>	<u>PERCENT OF TOTAL SALE VALUE</u>
01	71.3%
02	28.7%
4. If no cutting takes place, the 10% down payment will not be refunded.
5. Operations on the contract issued will terminate on 09/30/2024.

SALE STATISTICS

Volumes were calculated in cubic feet using the Michigan taper model. Cubic foot volume includes all wood inside bark for the product indicated. For display purposes, cubic feet were converted to cords and MBF using a simple conversion factor, e.g. 79 cubic feet per cord and 185 cubic feet per MBF. The cubic foot volumes are precise; the cords and MBF volumes are not. Cubic foot volume cannot be directly converted to cords or boards with precision.

SALE VOLUMES

The total estimated sale volume may not equal the sum of the species/products due to the nature of statistical calculations associated with double sampling methodology.

VOLUME			STATISTICAL RANGE IN CORDS	
TOTAL CUBIC FEET	TOTAL CORDS	PERCENT ERROR	MINIMUM	MAXIMUM
59,348	751	6.09%	705	797

VDU VOLUMES

A VDU is a Volume Determination Unit. Volumes and their associated statistics are calculated at the VDU level and summarized to the sale level. There is often a one to one relationship between a VDU and a Payment Unit, but not always, depending on the cruise design. Refer to the VDU TO PAYMENT UNIT table.

	VOLUME			RANGE IN CORDS	
VDU	TOTAL CUBIC FEET	TOTAL CORDS	PERCENT ERROR	MINIMUM	MAXIMUM
10	40,618	514	7.76%	474	554
33	18,729	237	9.51%	215	260
TOTAL:	59,348	751		689	814

VDU TO PAYMENT UNIT

When a VDU is associated with more than one Payment Unit (PU), the VDU volumes are assigned to the PU based on acres of the VDU within the PU.

VDU	VDU ACRES	PU	PU ACRES
10	40.8	1	40.8
33	9.5	2	9.5
TOTAL:	50.3		50.3

DESCRIPTION OF TIMBER BY PAYMENT UNIT (PU)

PU	MARKET GROUP	PRODUCT	QUANTITY	UNIT	ACRES	ADVERTISE PRICE			
1	Red Oak	Sawtimber	38.3	MBF	40.8	\$18,086.40			
	Red Pine		57.1	MBF					
	White Oak		27.2	MBF					
	White Pine		13.5	MBF					
	Mixed Oak	Pulpwood	101	Cords					
	Red Oak		42	Cords					
	White Oak		59	Cords					
	Red Pine		39	Cords					
	White Pine		61	Cords					
2	Red Oak	Sawtimber	16.1	MBF	9.5	\$7,267.35			
	White Oak	Sawtimber	26.2	MBF					
	B. T. Aspen	Pulpwood	26	Cords					
	B. T. Aspen	Sawtimber	5.0	MBF					
	B. T. Aspen	Pulpwood	16	Cords					
	Mixed Oak		71	Cords					
	Red Oak		32	Cords					
	White Oak		39	Cords					
	Red Maple		32	Cords					
	White Pine		2	Cords					
	TOTAL:			178.4			MBF		
	TOTAL:			332			Cords		

Sale Specific Conditions & Requirements

Sale Name: Trippy Removal

Sale Number: 72-010-21 Seq#: 2

1 - Sale Area

1.2 - Boundaries

1.2.1 - Painted boundaries (9/19)

The sale boundary and Payment Unit boundaries are marked and identified by blue and red paint or are unmarked and identified by existing roads. Exterior sale boundary lines against private property are marked with blue paint. Exterior sale boundary lines against state are marked with red paint. Interior Payment Unit boundary between Payment Units 1 and 2 is unmarked and identified by Pere Cheney Road. Retention patches are marked with red paint; no harvesting activities may occur within these areas. The painted boundary line trees are not Included Timber and are to be protected.

2 - Timber Specifications

2.1 - Included Timber

2.1.5 - Overstory removal unit(s) (8/11)

Within Payment Unit(s) 1 and 2, all trees which meet minimum piece specifications in 2.2 Utilization, are designated for cutting, except do not cut trees marked with green paint. Do not cut red pine in Payment Unit 2.

Special protection area identified in accordance with condition 3.4.3, within Payment Unit 2 boundaries, is not Included Timber and is to be protected.

3 - Payments

3.3 - Pre-measured Sales

3.3.4 - Dividing payment units (7/14)

Payment Unit(s) may be divided at the request of the Purchaser and upon approval of the Unit Manager. Dividing Payment Units is a contract modification which requires a Timber Sale Contract Amendment.

3.4 - Damaged Timber

3.4.1 - Damaged timber (7/16)

General Condition and Requirement 3.4 Damaged Timber, defines liquidated damages for undesignated live merchantable trees which are cut or injured. In addition, extreme care should be taken to avoid damage to tree seedlings and saplings. Within the Sale Area, if more than 30% of the tree seedlings or saplings (1/4" to 4.5" DBH) within a specified portion of the Sale Area are damaged, liquidated damages will be assessed at \$300 per acre for all acreage within that specified portion of the Sale Area that was damaged. Seedlings and saplings cut cleanly in skid trails will not be counted as damaged timber. No damage is acceptable to undesignated live merchantable trees. Rates will be in accordance with General Condition and Requirement 3.4 Damaged Timber.

3.4.3 - Special Protection Areas (8/11)

The Purchaser shall protect special protection areas from damage by the Purchaser's operations. Special protection areas are marked with a red boundary line and designated as retention. The Purchaser shall not cut live or dead trees within special protection area. If the Purchaser's operations have cut or damaged special protection areas through carelessness, the Purchaser shall pay \$2000 as fixed, agreed, and liquidated damages for each acre or part thereof cut or damaged. Such payment does not constitute ownership of the undesignated timber.

4 - Transportation

4.1 - Construction

4.1.6 - Road construction (1/09)

Construction of new roads or improvements of existing roads shall be done in such a way as to minimize the environmental and visual impacts. Merchantable trees shall be cut and utilized unless otherwise directed. Non-merchantable trees shall be severed and laid flat on the ground. Slash shall be scattered, and not left in windrows and kept a minimum of 10 feet back from the road edge. Stumps shall be set upright, not left on edge, and be moved at least 10 feet away from the road edge. Disturbed soil shall be feathered into the woods and not left in berms or windrows.

4.1.7 - Road closure (10/11)

All new roads built into the sale must be blocked to vehicle traffic upon completion of the sale. Overgrown roads that are reopened shall be considered new roads. In general, this will require constructing a four (4') foot high berm of stumps and logs covered with earth. Stumps and brush must be placed along the remainder of the trail. These roads must be rendered impassable to cars and trucks. All stumps from road building and landing construction must be reserved to block any newly constructed roads upon completion of the sale. These stumps must be scattered along the road system to prohibit vehicular movement. Contact the sale administrator for specific details of design and placement.

4.1.11 - Permits (2/12)

The Purchaser will secure any necessary permits that may be required.

5 - Operations

5.2 - Conduct of Operations

5.2.3 - Operating Restrictions

5.2.3.4 - Oak wilt restriction, no exceptions (1/18)

Within Payment Unit(s) 1 and 2, cutting and skidding within the sale and brushing of access roads to the sale are not permitted during the period of April 15 to July 15. No exceptions will be granted. Hauling may be permitted if access roads are brushed prior to restricted period. This is necessary to reduce the spread of oak wilt.

5.2.32 - Decking/landing restoration (9/13)

All decking and landing areas must have the surface area restored to a condition equal to or better than before. This is to ensure the proper regeneration of the stand. Wood debris, chips, and "cookies" from trimmings must be removed or scattered away from landing and loading areas and may not be windrowed on the edge.

5.2.38 - No decking against live trees (2/04)

Cut products may not be decked against unmarked or designated leave trees.

5.7 - Protection of Historical Sites

5.7.1 - Historical sites (7/12)

The Purchaser shall not cut live or dead trees or operate equipment within historical sites. Historical sites are marked with a red boundary line. The Purchaser shall protect historical sites from damage by the Purchaser's operations. If Purchaser's operations have cut or damaged historical sites through carelessness, the Purchaser shall pay \$2000 as fixed, agreed and liquidated damages for each acre or part thereof cut or damaged.

5.7.2 - Potential historical site(s) (9/06)

The State Historic Preservation Office has identified the potential for a historic site within the boundary of this timber sale. Note that if the site is discovered during operations, General Condition and Requirement 5.7 - Protection of Historical Sites will apply.

5.8 - Protection of Endangered Species

5.8.1 - Kirtland's warbler (1) (10/12)

This sale is adjacent to a young jack pine stand which may be used by the endangered Kirtland's Warbler. The Department reserves the right to temporarily restrict all harvesting operations in a buffer zone of up to 500 feet if it is determined that Warbler territory has been established in the adjacent stand. The restricted period, if put into effect, would apply from May 1 to August 15.

6 - Safety and Fire Prevention

6.2 - Signing

6.2.1 - Road posting (10/20)

The Purchaser is responsible for posting and maintaining caution signs on Pere Cheney Road prior to beginning operations. The road must be posted at appropriate distances from the Sale Area to warn of logging activity and truck traffic. Signs must be removed when harvest operations are suspended or completed. The Purchaser will provide these signs.



TIMBER SALE MAP

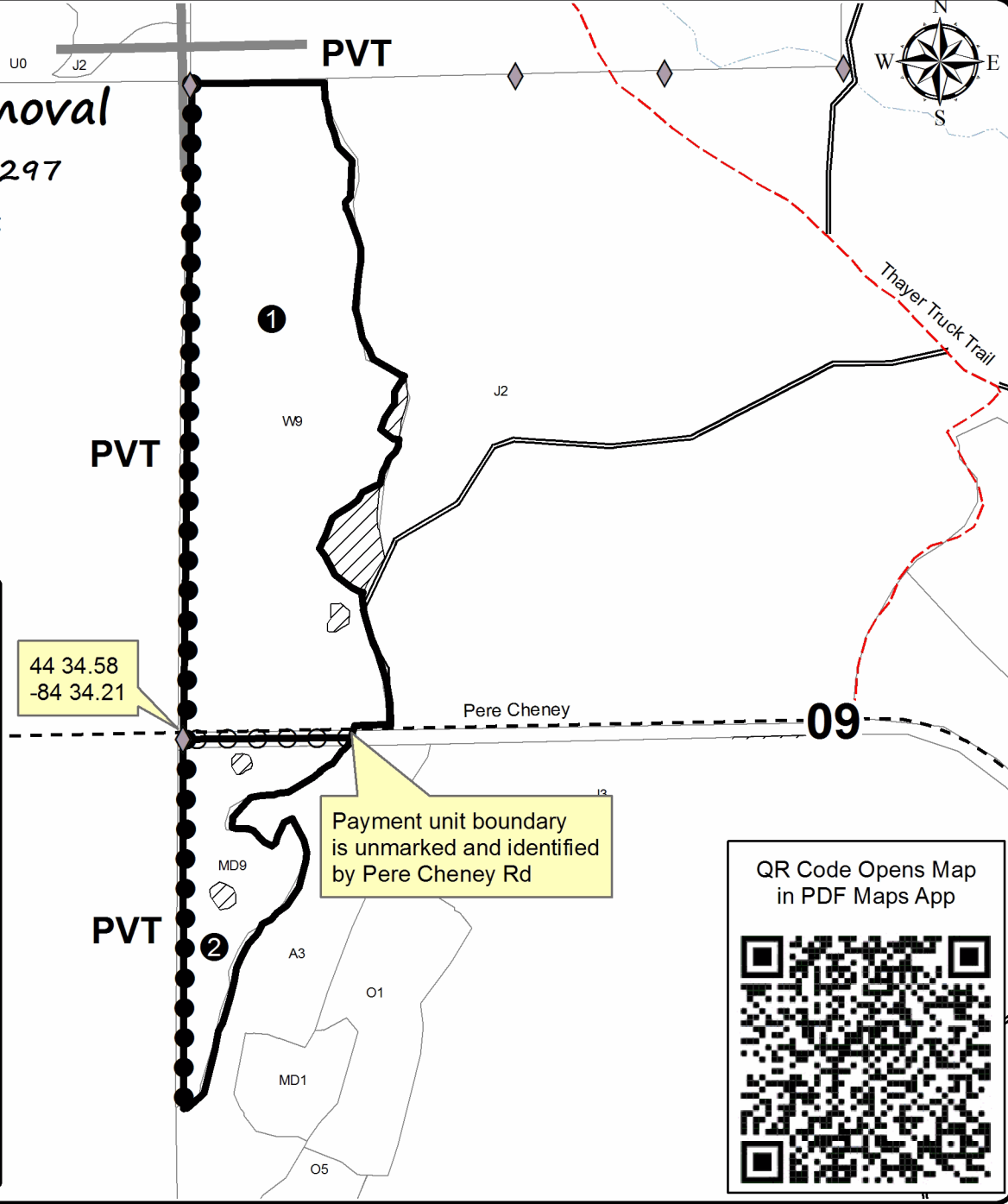
This information provided by authority of Part 525, 1994 PA 451, as amended.

Forest Management Unit Grayling		County Crawford	Mapped By Scott McClarren	Date 10/1/2021	Page 1	of 1
Township 25N	Range 02W	Section(s) and Subdivision(s) Sec 9. W1/2NW, W1/2SW		Scale 1:7,920		

Cover Type				Density	
A = Aspen	H = Hemlock	N = Marsh	U = Upland Brush	0 = Non Stocked	5 = Pole Timber Medium
B = Paper Birch	J = Jack Pine	O = Oak	UM = Upland Mixed	1 = Seedling Sapling Poor	6 = Pole Timber Well
C = Cedar	L = Lowland Brush	P = Lowland Poplar	V = Bog or Marsh	2 = Seedling Sapling Medium	7 = Saw Timber Poor
D = Treed Bog	LM = Lowland Mixed	Q = Mixed Swamp Conifer	W = White Pine	3 = Seedling Sapling Well	8 = Saw Timber Medium
E = Swamp Hdwoods	M = Mpl, Bch, Brch	R = Red Pine	X = Non Stocked	4 = Pole Timber Poor	9 = Saw Timber Well
F = Spruce Fir	MC = Mixed Conifer	S = Black Spruce	Z = Water		
G = Grass	MD = Mixed Deciduous	T = Tamarack			

Trippy Removal
Compartment 297
50.3 Acres

PU	Acres
1	40.8
2	9.5



Legend

- Against State (Red)
- Payment Unit (unmarked)
- Private Line (Blue)
- ▨ Retention Area
- Stand Boundaries
- Secondary Forest Road
- - Gravel Road
- - County Road - Seasonal
- Section Corners
- ◇ Field Grade Corners
- ① PU Label

Payment unit boundary is unmarked and identified by Pere Cheney Rd

QR Code Opens Map in PDF Maps App



TIMBER SALE INFORMATION

Roundhouse Oak (72-011-21)

T25N, R02W, SEC. 14; T25N, R02W, SEC. 15; T25N, R02W, SEC. 16; T25N, R02W, SEC. 20; T25N, R02W, SEC. 21.
Crawford County (Advertised Price \$108,095.05)

SALE NOTE: All units of volume listed for this sale were estimated using the Inventory Manager computer program and the new Michigan taper model.

- See sale spec 5.2.3.4 and 5.2.3.5 for oak wilt restrictions.
- See sale spec 2.2.2 and 2.2.3 for information on stump heights and chipping.

A timber sale contract for this lump sum, sealed bid timber sale will be awarded to the responsible bidder offering the highest sealed bid price. All units of volume listed below were estimated using the Inventory Manager computer program and the new Michigan taper model. Bids must be at or above the following advertised price for each product and species:

<u>PRODUCTS & SPECIES</u>	<u>ESTIMATED UNITS*</u>	<u>ADVERTISED PRICE</u>
Sawtimber		
Red Oak	371.5 MBF	\$ 141.00 / MBF
Red Pine	47.7 MBF	\$ 89.00 / MBF
White Oak	52.1 MBF	\$ 64.00 / MBF
White Pine	8.6 MBF	\$ 63.00 / MBF
Pulpwood		
Mixed Aspen	93 Cords	\$ 25.70 / Cord
Mixed Hardwood	851 Cords	\$ 26.90 / Cord
Mixed Oak	824 Cords	\$ 24.65 / Cord
Red Pine	33 Cords	\$ 32.40 / Cord
White Pine	45 Cords	\$ 20.65 / Cord

* The total volume is statistically estimated within plus (+) or minus (-) 4.39 percent. There are an estimated 3,074 cords on this timber sale, plus or minus 135 cords at the 95% confidence level. The estimated units are final and not subject to adjustment. Prospective bidders are urged to examine this timber and to make their own estimates of quantity and quality.

BOND AND PAYMENT SCHEDULE:

1. A bond in the amount of \$5,405.00 to insure faithful performance of the conditions of the contract will be deposited by the successful bidder within 21 days of the sale award.
2. Cutting in any sale or unit without the required advance payment would be considered a trespass.
3. Total payment must be paid in advance or according to the following schedule :
 - (a) Ten percent (10%) of the sale value must be paid within 21 days of the sale award.
 - (b) The 10% down payment will be credited towards the first unit cut.
 - (c) Payment for each of the following units must be made before cutting begins in that unit:

PAYMENT UNIT NUMBER	PERCENT OF TOTAL SALE VALUE
01	6.3%
02	27.4%
03	36.7%
04	11.9%
05	17.7%

4. If no cutting takes place, the 10% down payment will not be refunded.
5. Operations on the contract issued will terminate on 09/30/2024.

SALE STATISTICS

Volumes were calculated in cubic feet using the Michigan taper model. Cubic foot volume includes all wood inside bark for the product indicated. For display purposes, cubic feet were converted to cords and MBF using a simple conversion factor, e.g. 79 cubic feet per cord and 185 cubic feet per MBF. The cubic foot volumes are precise; the cords and MBF volumes are not. Cubic foot volume cannot be directly converted to cords or boards with precision.

SALE VOLUMES

The total estimated sale volume may not equal the sum of the species/products due to the nature of statistical calculations associated with double sampling methodology.

VOLUME			STATISTICAL RANGE IN CORDS	
TOTAL CUBIC FEET	TOTAL CORDS	PERCENT ERROR	MINIMUM	MAXIMUM
242,867	3,074	4.39%	2,939	3,209

VDU VOLUMES

A VDU is a Volume Determination Unit. Volumes and their associated statistics are calculated at the VDU level and summarized to the sale level. There is often a one to one relationship between a VDU and a Payment Unit, but not always, depending on the cruise design. Refer to the VDU TO PAYMENT UNIT table.

	VOLUME			RANGE IN CORDS	
VDU	TOTAL CUBIC FEET	TOTAL CORDS	PERCENT ERROR	MINIMUM	MAXIMUM
53	89,633	1,135	6.88%	1,057	1,213
60	135,276	1,712	5.99%	1,610	1,815
61	17,957	227	17.72%	187	268
TOTAL:	242,867	3,074		2,853	3,295

VDU TO PAYMENT UNIT

When a VDU is associated with more than one Payment Unit (PU), the VDU volumes are assigned to the PU based on acres of the VDU within the PU.

VDU	VDU ACRES	PU	PU ACRES
53	46.2	4	18.6
		5	27.6
60	63.4	2	27.1
		3	36.3
61	10.3	1	10.3
TOTAL:	119.9		119.9

DESCRIPTION OF TIMBER BY PAYMENT UNIT (PU)

PU	MARKET GROUP	PRODUCT	QUANTITY	UNIT	ACRES	ADVERTISE PRICE
1	Red Oak	Sawtimber	10.6	MBF	10.3	\$6,774.90
	<i>B/R/Hybrid Oak</i>		2.0	<i>MBF</i>		
	<i>Red Oak</i>		8.6	<i>MBF</i>		
	Red Pine		14.2	MBF		
	White Pine		6.3	MBF		
	Mixed Aspen	Pulpwood	10	Cords		
	<i>B. T. Aspen</i>		<i>Sawtimber</i>	2.1		
	<i>B. T. Aspen</i>	<i>Pulpwood</i>	6	<i>Cords</i>		
	Mixed Hardwood		36	Cords		
	<i>Red Maple</i>	<i>Sawtimber</i>	1.7	<i>MBF</i>		
	<i>Red Maple</i>	<i>Pulpwood</i>	33	<i>Cords</i>		
	Mixed Oak		45	Cords		
	<i>B/R/Hybrid Oak</i>		22	<i>Cords</i>		
	<i>Red Oak</i>		23	<i>Cords</i>		
	Red Pine		25	Cords		
	White Pine		23	Cords		
	<i>Jack Pine</i>		3	<i>Cords</i>		
	<i>White Pine</i>		20	<i>Cords</i>		
2	Red Oak	Sawtimber	137.2	MBF	27.1	\$29,637.30
	<i>Red Oak</i>		137.2	<i>MBF</i>		
	Red Pine		10.7	MBF		
	White Oak		15.6	MBF		
	White Pine		0.6	MBF		
	Mixed Aspen	Pulpwood	3	Cords		
	<i>B. T. Aspen</i>		3	<i>Cords</i>		
	Mixed Hardwood		43	Cords		
	<i>Red Maple</i>	<i>Sawtimber</i>	1.7	<i>MBF</i>		
	<i>Red Maple</i>	<i>Pulpwood</i>	40	<i>Cords</i>		
	Mixed Oak		277	Cords		
	<i>Red Oak</i>		227	<i>Cords</i>		
	<i>White Oak</i>		50	<i>Cords</i>		
	Red Pine		3	Cords		
	White Pine		7	Cords		
<i>White Pine</i>		7	<i>Cords</i>			
3	Red Oak	Sawtimber	183.8	MBF	36.3	\$39,766.25
	<i>Red Oak</i>		183.8	<i>MBF</i>		
	Red Pine		14.4	MBF		
	White Oak		20.8	MBF		
	White Pine		0.7	MBF		
	Mixed Aspen	Pulpwood	4	Cords		
	<i>B. T. Aspen</i>		4	<i>Cords</i>		
	Mixed Hardwood		58	Cords		
	<i>Red Maple</i>	<i>Sawtimber</i>	2.3	<i>MBF</i>		
	<i>Red Maple</i>	<i>Pulpwood</i>	53	<i>Cords</i>		
	Mixed Oak		373	Cords		
	<i>Red Oak</i>		305	<i>Cords</i>		
	<i>White Oak</i>		68	<i>Cords</i>		
	Red Pine		4	Cords		
	White Pine		10	Cords		
<i>White Pine</i>		10	<i>Cords</i>			
4	Red Oak	Sawtimber	16.1	MBF	18.6	\$12,815.50
	<i>Red Oak</i>		16.1	<i>MBF</i>		
	Red Pine		3.4	MBF		
	White Oak		6.3	MBF		
	White Pine		0.4	MBF		
	Mixed Aspen	Pulpwood	30	Cords		

DESCRIPTION OF TIMBER BY PAYMENT UNIT (PU), CON'T

PU	MARKET GROUP	PRODUCT	QUANTITY	UNIT	ACRES	ADVERTISE PRICE			
4 con't	<i>B. T. Aspen</i>	<i>Sawtimber</i>	0.9	<i>MBF</i>					
	<i>Quaking Aspen</i>		4.5	<i>MBF</i>					
	<i>Quaking Aspen</i>	<i>Pulpwood</i>	19	<i>Cords</i>					
	Mixed Hardwood		287	<i>Cords</i>					
	<i>Black Cherry</i>	<i>Sawtimber</i>	0.2	<i>MBF</i>					
	<i>Red Maple</i>		23.6	<i>MBF</i>					
	<i>Black Cherry</i>	<i>Pulpwood</i>	5	<i>Cords</i>					
	<i>Red Maple</i>		235	<i>Cords</i>					
	Mixed Oak		52	<i>Cords</i>					
	<i>Red Oak</i>		29	<i>Cords</i>					
	<i>White Oak</i>		23	<i>Cords</i>					
	White Pine		2	<i>Cords</i>					
	<i>White Pine</i>		2	<i>Cords</i>					
	5	Red Oak	Sawtimber	23.8	MBF	27.6	\$19,101.10		
<i>Red Oak</i>			23.8	<i>MBF</i>					
Red Pine			5.0	MBF					
White Oak			9.4	MBF					
White Pine			0.6	MBF					
Mixed Aspen		Pulpwood	46	Cords					
<i>B. T. Aspen</i>		<i>Sawtimber</i>	1.4	<i>MBF</i>					
<i>Quaking Aspen</i>			6.6	<i>MBF</i>					
<i>B. T. Aspen</i>		<i>Pulpwood</i>	1	<i>Cords</i>					
<i>Quaking Aspen</i>			29	<i>Cords</i>					
Mixed Hardwood			427	<i>Cords</i>					
<i>Black Cherry</i>		<i>Sawtimber</i>	0.3	<i>MBF</i>					
<i>Red Maple</i>			35.1	<i>MBF</i>					
<i>Black Cherry</i>		<i>Pulpwood</i>	7	<i>Cords</i>					
<i>Red Maple</i>			349	<i>Cords</i>					
Mixed Oak			77	<i>Cords</i>					
<i>Red Oak</i>			42	<i>Cords</i>					
<i>White Oak</i>			35	<i>Cords</i>					
Red Pine			1	<i>Cords</i>					
White Pine			3	<i>Cords</i>					
<i>White Pine</i>			3	<i>Cords</i>					
TOTAL:			479.9	MBF					
TOTAL:			1,846	Cords					

Sale Specific Conditions & Requirements

Sale Name: Roundhouse Oak

Sale Number: 72-011-21 Seq#: 2

1 - Sale Area

1.2 - Boundaries

1.2.1 - Painted boundaries (9/19)

The sale boundary and Payment Unit boundaries are marked and identified by blue, red, and yellow paint or unmarked and identified by existing roads or recently harvested stand boundaries. Exterior sale boundary lines against private property are marked with blue paint. Exterior sale boundary lines against state are marked with red paint except, the west boundary of Payment Unit 4 is unmarked and identified by the recently cut stand as labeled on the Timber Sale Map. Interior Payment Unit boundaries are marked with yellow paint except, between Payment Units 4 and 5 the boundary is unmarked and identified by an unnamed forest road. Retention patches are marked with red paint; no harvesting activities may occur within these areas. The painted boundary line trees are not Included Timber and are to be protected. Yellow painted trees designating an interior Payment Unit boundary are only to be cut when all surrounding Payment Units have been paid.

2 - Timber Specifications

2.1 - Included Timber

2.1.1 - Clearcut unit(s) with unmerchantable trees (6/14)

Within Payment Unit(s) 1, 4, and 5, cut all trees that are two (2) inches or more at DBH, except for within Payment Unit 1 leave all white oak and within Payment Units 4 and 5 leave all green marked trees.

2.1.5 - Overstory removal unit(s) (8/11)

Within Payment Unit(s) 2 and 3, all trees which meet minimum piece specifications in 2.2 Utilization, are designated for cutting, except do not cut trees marked with green paint.

2.2 - Utilization

2.2.2 - Chipping required (2/18)

Payment Units 4 and 5 must be chip harvested to facilitate subsequent planting operations. The Purchaser has the option to produce sawlogs or pulpwood bolts, but the remaining portion of the trees must be chipped and hauled. Products may be produced as roundwood and forwarded to decking areas in final product length, but the tops must be left intact and skidded to the landing for chipping to minimize the amount of residual slash. If market conditions limit the practicality of chipping, tops and slash must be arranged in a way that will not inhibit future planting operations, as directed by the sale administrator. A chipping exemption can be obtained if proposed operations are determined to be suitable for planting by reforestation staff. This exemption must be granted in writing. The requirement to retain approximately 1/6 to 1/3 of tree tops and limbs less than four inches in diameter is still applicable (G. C. & R. 2.2).

2.2.3 - Stump heights (4/07)

Stump heights within Payment Unit(s) 4 and 5 shall not exceed 6 inches for all trees. This is to facilitate planting operations.

3 - Payments

3.4 - Damaged Timber

3.4.1 - Damaged timber (7/16)

General Condition and Requirement 3.4 Damaged Timber, defines liquidated damages for undesignated live merchantable trees which are cut or injured. In addition, extreme care should be taken to avoid damage to tree seedlings and saplings in Payment Units 2 and 3.

Within Payment Units 2 and 3, if more than 30% of the tree seedlings or saplings (1/4" to 4.5" DBH) within a specified portion of the Sale Area are damaged, liquidated damages will be assessed at \$300 per acre for all acreage within that specified portion of the Sale Area that was damaged. Saplings cut cleanly in skid trails will not be counted as residual damage.

No damage is acceptable to undesignated live merchantable trees. Rates will be in accordance with General Condition and Requirement 3.4 Damaged Timber.

4 - Transportation

4.1 - Construction

4.1.6 - Road construction (1/09)

Construction of new roads or improvements of existing roads shall be done in such a way as to minimize the environmental and visual impacts. Merchantable trees shall be cut and utilized unless otherwise directed. Non-merchantable trees shall be severed and laid flat on the ground. Slash shall be scattered, and not left in windrows and kept a minimum of 10 feet back from the road edge. Stumps shall be set upright, not left on edge, and be moved at least 10 feet away from the road edge. Disturbed soil shall be feathered into the woods and not left in berms or windrows.

4.1.7 - Road closure (10/11)

All new roads built into the sale must be blocked to vehicle traffic upon completion of the sale. Overgrown roads that are reopened shall be considered new roads. In general, this will require constructing a four (4') foot high berm of stumps and logs covered with earth. Stumps and brush must be placed along the remainder of the trail. These roads must be rendered impassable to cars and trucks. All stumps from road building and landing construction must be reserved to block any newly constructed roads upon completion of the sale. These stumps must be scattered along the road system to prohibit vehicular movement. Contact the sale administrator for specific details of design and placement.

4.1.11 - Permits (2/12)

The Purchaser will secure any necessary permits that may be required.

5 - Operations

5.2 - Conduct of Operations

5.2.2 - Hazard Trees/Snags

5.2.2.1 - Den trees (10/16)

Obvious hollow and/or den trees shall be protected and left standing unless they are a safety hazard.

5.2.3 - Operating Restrictions

5.2.3.4 - Oak wilt restriction, no exceptions (1/18)

Within Payment Unit(s) 1-3, cutting and skidding within the sale and brushing of access roads to the sale are not permitted during the period of April 15 to July 15. No exceptions will be granted. Hauling may be permitted if access roads are brushed prior to restricted period. This is necessary to reduce the spread of oak wilt.

5.2.3.5 - Oak wilt restriction (1/18)

Within Payment Unit(s) 4 and 5, unless changed by written agreement, cutting, skidding, hauling within the sale and brushing of access roads to the sale are not permitted during the period of April 15 to July 15. Operations may be allowed if specific steps are taken to prevent damaging uncut oak during the high risk period. Those steps may include completing all road brushing before April 15th and clearing a tree-length buffer along uncut oak cover before April 15th. This is necessary to reduce the spread of oak wilt. For more information, contact the Unit Manager or his/her representative.

5.2.29 - Shrub protection (1/20)

In Payment Units 2 and 3, reasonable care should be taken to avoid cutting or damaging hawthorn, witch-hazel, or junberry. These woody-shrub plants are highly beneficial to various wildlife species.

5.2.32 - Decking/landing restoration (9/13)

All decking and landing areas must have the surface area restored to a condition equal to or better than before. This is to ensure the proper regeneration of the stand. Wood debris, chips, and "cookies" from trimmings must be removed or scattered away from landing and loading areas and may not be windrowed on the edge.

5.8 - Protection of Endangered Species

5.8.3 - Red shoulder hawk or goshawk (2/16)

In the event that an active red shoulder hawk or goshawk nest is found, the contract may be amended to protect the nest site until the nest is determined to be inactive. The value of the trees in this excluded area will be refunded or credited to the Purchaser. The nest will be buffered with a five-chain radius (eight acre) protection area, centered on the nest tree, in which there will be no cutting or new roads constructed. Avoid human disturbance, including loading and skidding, in the protection area.

An additional zone of five chains (ten chains centered on the active nest tree) will be established in which there is no management activity from March 15 to July 15 (NLP). Limit biomass harvesting and chipping operations within this ten-chain zone, retain the maximum one-third of residues per the Woody Biomass Harvesting Guidelines (Michigan DNR 2010). Nests determined to be inactive will be protected with a one-chain no-harvest buffer.

6 - Safety and Fire Prevention

6.2 - Signing

6.2.1 - Road posting (10/20)

The Purchaser is responsible for posting and maintaining caution signs on Durant Castle Road and 7 Mile Road prior to beginning operations. The road must be posted at appropriate distances from the Sale Area to warn of logging activity and truck traffic. Signs must be removed when harvest operations are suspended or completed. The Purchaser will provide these signs.



TIMBER SALE MAP

This information provided by authority of Part 525, 1994 PA 451, as amended.

Forest Management Unit Grayling	County Crawford	Mapped By Scott McClarren	Date 10/05/2021	Page 1	of 2
Township 25N	Range 02W	Section(s) and Subdivision(s) Sec. 14 W1/2SW, Sec. 16 SWSW, Sec. 15 SENE, E1/2SE, Sec. 20 NENE, Sec. 21 W1/2NW	Scale 1:7,920		

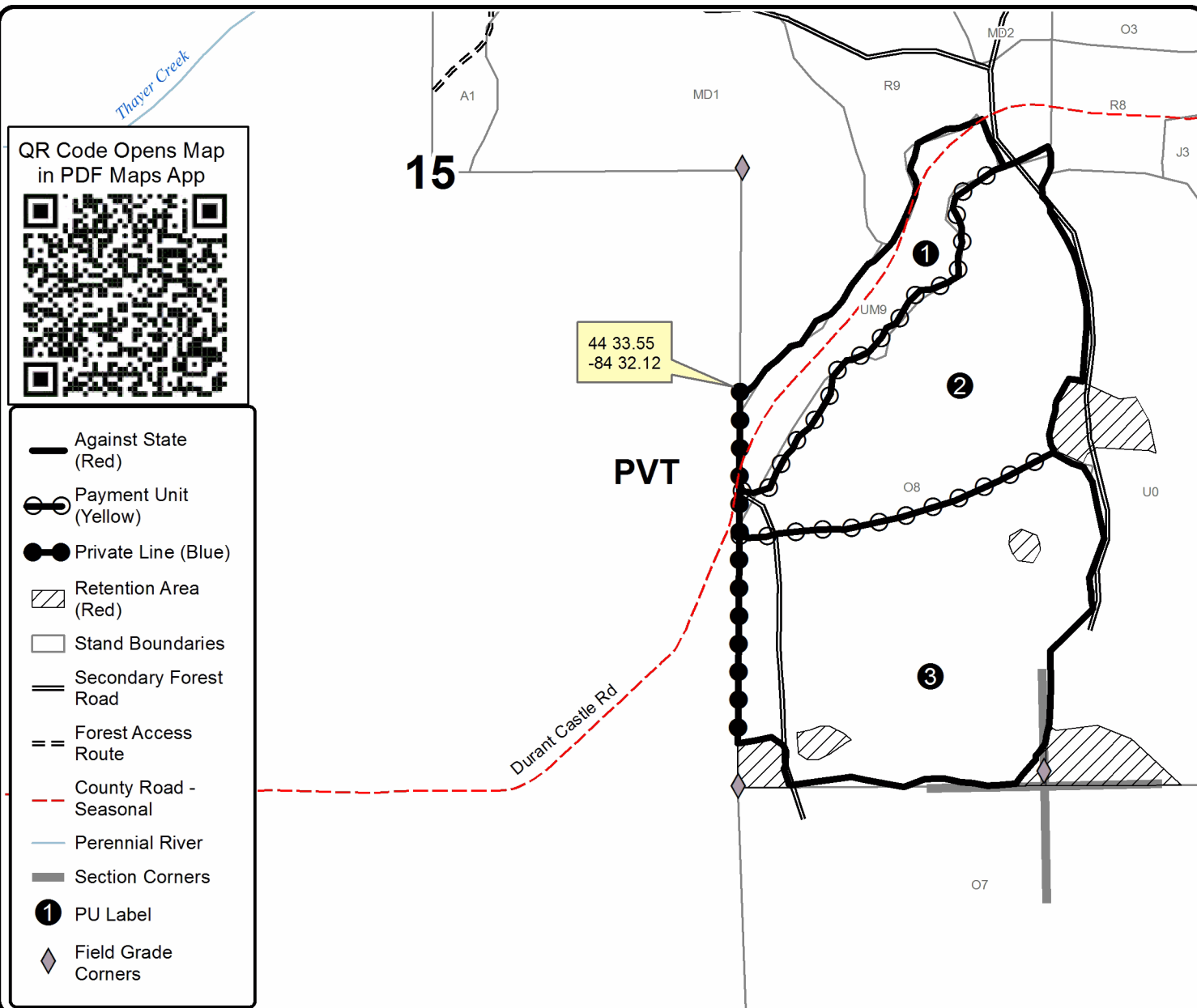
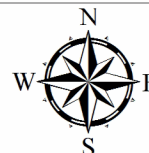
Cover Type				Density	
A = Aspen	H = Hemlock	N = Marsh	U = Upland Brush	0 = Non Stocked	5 = Pole Timber Medium
B = Paper Birch	J = Jack Pine	O = Oak	UM = Upland Mixed	1 = Seedling Sapling Poor	6 = Pole Timber Well
C = Cedar	L = Lowland Brush	P = Lowland Poplar	V = Bog or Marsh	2 = Seedling Sapling Medium	7 = Saw Timber Poor
D = Treed Bog	LM = Lowland Mixed	Q = Mixed Swamp Conifer	W = White Pine	3 = Seedling Sapling Well	8 = Saw Timber Medium
E = Swamp Hdwoods	M = Mpl. Bch, Brch	R = Red Pine	X = Non Stocked	4 = Pole Timber Poor	9 = Saw Timber Well
F = Spruce Fir	MC = Mixed Conifer	S = Black Spruce	Z = Water		
G = Grass	MD = Mixed Deciduous	T = Tamarack			

PU	Acres	PU	Acres
1	10.3	4	18.6
2	27.1	5	27.6
3	36.3		

Roundhouse Oak

Compartment 297

119.9 Acres



QR Code Opens Map in PDF Maps App

- Against State (Red)
- Payment Unit (Yellow)
- Private Line (Blue)
- Retention Area (Red)
- Stand Boundaries
- Secondary Forest Road
- Forest Access Route
- County Road - Seasonal
- Perennial River
- Section Corners
- PU Label
- Field Grade Corners





TIMBER SALE MAP

This information provided by authority of Part 525, 1994 PA 451, as amended.

Forest Management Unit Grayling		County Crawford	Mapped By Scott McClarren	Date 10/05/2021	Page 2	of 2
Township 25N	Range 02W	Section(s) and Subdivision(s) Sec. 14 W1/2SW, Sec. 16 SWSW, Sec.15 SENE, E1/2SE, Sec. 20 NENE, Sec. 21 W1/2NW		Scale 1:7,920		

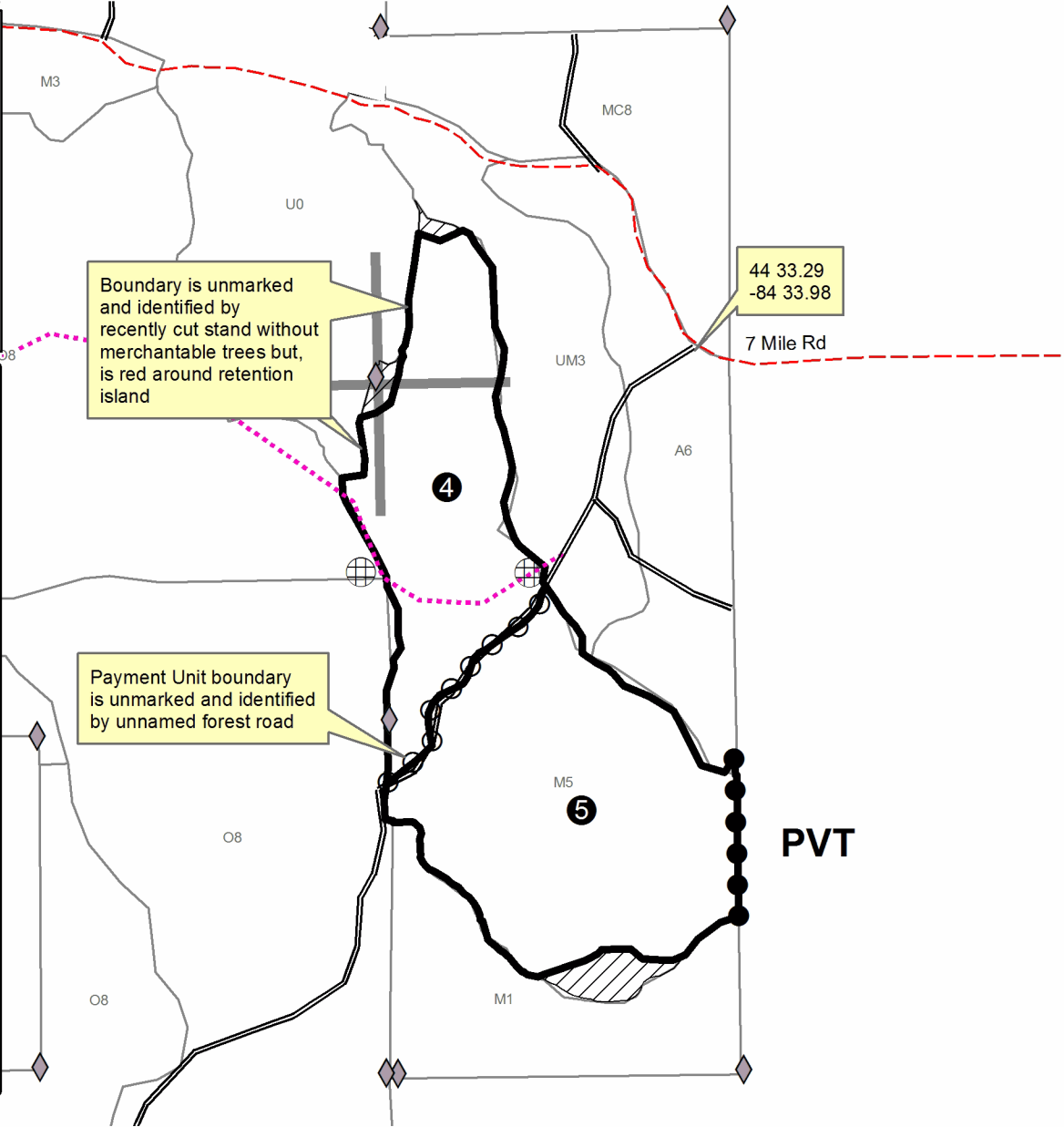
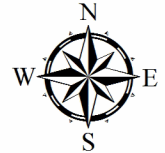
Cover Type				Density	
A = Aspen	H = Hemlock	N = Marsh	U = Upland Brush	0 = Non Stocked	5 = Pole Timber Medium
B = Paper Birch	J = Jack Pine	O = Oak	UM = Upland Mixed	1 = Seedling Sapling Poor	6 = Pole Timber Well
C = Cedar	L = Lowland Brush	P = Lowland Poplar	V = Bog or Marsh	2 = Seedling Sapling Medium	7 = Saw Timber Poor
D = Treed Bog	LM = Lowland Mixed	Q = Mixed Swamp Conifer	W = White Pine	3 = Seedling Sapling Well	8 = Saw Timber Medium
E = Swamp Hdwoods	M = Mpl, Bch, Brch	R = Red Pine	X = Non Stocked	4 = Pole Timber Poor	9 = Saw Timber Well
F = Spruce Fir	MC = Mixed Conifer	S = Black Spruce	Z = Water		
G = Grass	MD = Mixed Deciduous	T = Tamarack			

PU	Acres	PU	Acres
1	10.3	4	18.6
2	27.1	5	27.6
3	36.3		

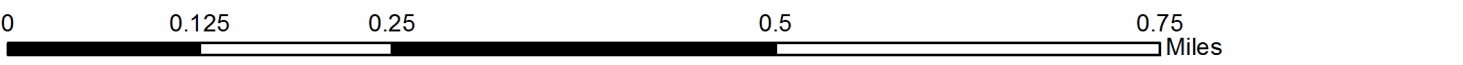
Roundhouse Oak

Compartment 297

119.9 Acres



- Against State (Red/Unmarked)
- Payment Unit (Unmarked Road)
- Private Line (Blue)
- Retention Area (Red)
- Stand Boundaries
- Secondary Forest Road
- County Road - Seasonal
- Temporary Management Access
- Section Corners
- Berms
- Field Grade Corners
- PU Label



TIMBER SALE INFORMATION

Massasauga Mix (72-023-21)
T24N, R08E, SEC. 6; T25N, R08E, SEC. 31.
Iosco County (Advertised Price \$33,777.65)

SALE NOTE: All units of volume listed for this sale were estimated using the Inventory Manager computer program and the new Michigan taper model.

Please note southern sale boundary is in the middle of a steep slope.
Bidders are encouraged to evaluate accessibility prior to bidding.
The sale is located in a Formerly Used Defense Sites area.
Sale Area is accessed from the West by sandy and overgrown Forest Service roads .
See sale spec 4.4.5 for information on access through Federal land.
Grayling Field Office will provide operational permit to winning bidder .
See sale spec 5.2.4.6 for information on the creation of Eastern Massasuaga Rattlesnake habitat.

Access may be through other public land.

A timber sale contract for this lump sum, sealed bid timber sale will be awarded to the responsible bidder offering the highest sealed bid price. All units of volume listed below were estimated using the Inventory Manager computer program and the new Michigan taper model. Bids must be at or above the following advertised price for each product and species:

<u>PRODUCTS & SPECIES</u>	<u>ESTIMATED UNITS*</u>	<u>ADVERTISED PRICE</u>
Sawtimber		
B. T. Aspen	4.2 MBF	\$ 51.00 / MBF
BI/R/Hybrid Oak	59.6 MBF	\$ 103.00 / MBF
Jack Pine	38.5 MBF	\$ 32.00 / MBF
White Oak	8.6 MBF	\$ 64.00 / MBF
White Pine	24.6 MBF	\$ 63.00 / MBF
Pulpwood		
B. T. Aspen	7 Cords	\$ 25.70 / Cord
BI/R/Hybrid Oak	402 Cords	\$ 24.65 / Cord
Jack Pine	407 Cords	\$ 16.15 / Cord
Red Maple	25 Cords	\$ 26.90 / Cord
Red Pine	7 Cords	\$ 32.40 / Cord
White Oak	53 Cords	\$ 24.65 / Cord
White Pine	253 Cords	\$ 20.65 / Cord

* The total volume is statistically estimated within plus (+) or minus (-) 6.32 percent. There are an estimated 1,470 cords on this timber sale, plus or minus 93 cords at the 95% confidence level. The estimated units are final and not subject to adjustment. Prospective bidders are urged to examine this timber and to make their own estimates of quantity and quality.

BOND AND PAYMENT SCHEDULE:

1. A bond in the amount of \$1,689.00 to insure faithful performance of the conditions of the contract will be deposited by the successful bidder within 21 days of the sale award.
2. Cutting in any sale or unit without the required advance payment would be considered a trespass.
3. Total payment must be paid in advance or according to the following schedule :
 - (a) Ten percent (10%) of the sale value must be paid within 21 days of the sale award.
 - (b) The 10% down payment will be credited towards the first unit cut.
 - (c) Payment for each of the following units must be made before cutting begins in that unit:

PAYMENT UNIT NUMBER	PERCENT OF TOTAL SALE VALUE
01	60.5%
02	39.5%
4. If no cutting takes place, the 10% down payment will not be refunded.
5. Operations on the contract issued will terminate on 09/30/2024.

SALE STATISTICS

Volumes were calculated in cubic feet using the Michigan taper model. Cubic foot volume includes all wood inside bark for the product indicated. For display purposes, cubic feet were converted to cords and MBF using a simple conversion factor, e.g. 79 cubic feet per cord and 185 cubic feet per MBF. The cubic foot volumes are precise; the cords and MBF volumes are not. Cubic foot volume cannot be directly converted to cords or boards with precision.

SALE VOLUMES

The total estimated sale volume may not equal the sum of the species/products due to the nature of statistical calculations associated with double sampling methodology.

VOLUME			STATISTICAL RANGE IN CORDS	
TOTAL CUBIC FEET	TOTAL CORDS	PERCENT ERROR	MINIMUM	MAXIMUM
116,093	1,470	6.32%	1,377	1,562

VDU VOLUMES

A VDU is a Volume Determination Unit. Volumes and their associated statistics are calculated at the VDU level and summarized to the sale level. There is often a one to one relationship between a VDU and a Payment Unit, but not always, depending on the cruise design. Refer to the VDU TO PAYMENT UNIT table.

VDU	VOLUME			RANGE IN CORDS	
	TOTAL CUBIC FEET	TOTAL CORDS	PERCENT ERROR	MINIMUM	MAXIMUM
8	116,093	1,470	6.32%	1,377	1,562
TOTAL:	116,093	1,470		1,377	1,562

VDU TO PAYMENT UNIT

When a VDU is associated with more than one Payment Unit (PU), the VDU volumes are assigned to the PU based on acres of the VDU within the PU.

VDU	VDU ACRES	PU	PU ACRES
8	61.5	1	37.3
		2	24.2
TOTAL:	61.5		61.5

DESCRIPTION OF TIMBER BY PAYMENT UNIT (PU)

PU	MARKET GROUP	PRODUCT	QUANTITY	UNIT	ACRES	ADVERTISE PRICE				
1	B. T. Aspen	Sawtimber	2.5	MBF	37.3	\$20,450.70				
	BI/R/Hybrid Oak		36.1	MBF						
	Jack Pine		23.3	MBF						
	White Oak		5.2	MBF						
	White Pine		14.9	MBF						
	B. T. Aspen	Pulpwood	4	Cords						
	BI/R/Hybrid Oak		244	Cords						
	Jack Pine		247	Cords						
	Red Maple		15	Cords						
	Red Pine		4	Cords						
	White Oak		32	Cords						
	White Pine		153	Cords						
	2		B. T. Aspen	Sawtimber			1.7	MBF	24.2	\$13,326.95
			BI/R/Hybrid Oak				23.5	MBF		
Jack Pine		15.2	MBF							
White Oak		3.4	MBF							
White Pine		9.7	MBF							
B. T. Aspen		Pulpwood	3	Cords						
BI/R/Hybrid Oak			158	Cords						
Jack Pine			160	Cords						
Red Maple			10	Cords						
Red Pine			3	Cords						
White Oak			21	Cords						
White Pine			100	Cords						
TOTAL:			135.5	MBF						
TOTAL:			1,154	Cords						

Sale Specific Conditions & Requirements

Sale Name: Massasauga Mix

Sale Number: 72-023-21 Seq#: 2

1 - Sale Area

1.2 - Boundaries

1.2.1 - Painted boundaries (9/19)

The sale boundary and Payment Unit boundaries are marked and identified by red and yellow paint; except the western sale boundary is unmarked and identified by the powerline ROW as identified on the map. Exterior sale boundary lines against state are marked with red paint. Interior Payment Unit boundaries are marked with yellow paint. Retention patches are marked with red paint; no harvesting activities may occur within these areas. The painted boundary line trees are not Included Timber and are to be protected. Yellow painted trees designating an interior Payment Unit boundary are only to be cut when all surrounding Payment Units have been paid.

2 - Timber Specifications

2.1 - Included Timber

2.1.1 - Clearcut unit(s) with unmerchantable trees (6/14)

Within Payment Unit(s) 1 and 2, cut all trees that are two (2) inches or more at DBH, except do not cut any trees 26 inches or more at DBH. Special protection trees identified in accordance with condition 3.4.2, within clearcutting unit boundaries, are not Included Timber and are to be protected.

3 - Payments

3.3 - Pre-measured Sales

3.3.4 - Dividing payment units (7/14)

Payment Unit(s) may be divided at the request of the Purchaser and upon approval of the Unit Manager. Dividing Payment Units is a contract modification which requires a Timber Sale Contract Amendment. There will be only one division per Payment Unit.

3.4 - Damaged Timber

3.4.2 - Special Protection Trees (4/14)

The Purchaser shall not cut live or dead special protection trees within cutting units or clearings. Special protection trees are any tree greater than 26 inches at DBH. If the Purchaser's operations have cut or damaged special protection trees through carelessness, the Purchaser shall pay \$300.00 as fixed, agreed and liquidated damages for each special protection tree cut or damaged. Such payment does not constitute ownership of the undesignated timber.

4 - Transportation

4.1 - Construction

4.1.3 - Slash and earthen piles (8/04)

Piles or windrows of earth along roads and landings that have been widened or constructed shall be leveled. Slash from road maintenance or construction, including stumps, shall be used in and along earthen berms for road closure at completion of sale.

4.1.6 - Road construction (1/09)

Construction of new roads or improvements of existing roads shall be done in such a way as to minimize the environmental and visual impacts. Merchantable trees shall be cut and utilized unless otherwise directed. Non-merchantable trees shall be severed and laid flat on the ground. Slash shall be scattered, and not left in windrows and kept a minimum of 10 feet back from the road edge. Stumps shall be set upright, not left on edge, and be moved at least 10 feet away from the road edge. Disturbed soil shall be feathered into the woods and not left in berms or windrows.

4.1.7 - Road closure (10/11)

All new roads built into the sale must be blocked to vehicle traffic upon completion of sale. Overgrown roads that are reopened shall be considered new roads. In general, this will require constructing double earthen berms at strategic locations. Stumps and brush must be placed along the remainder of the trail. These roads must be rendered impassable to cars and

trucks. All stumps from road building and landing construction must be reserved to block any newly constructed roads upon completion of the sale. These stumps must be scattered along the road system to prohibit vehicular movement. Temporary berms may be required if no sale activity occurs for 30 or more consecutive days. Contact the sale administrator for specific details of design and placement.

4.1.11 - Permits (2/12)

The Purchaser will secure any necessary permits that may be required.

4.4 - Access

4.4.5 - Federal property access (3/11)

Permission for access across federal land is the responsibility of the Purchaser.

5 - Operations

5.1 - Notification

5.1.1 - Pre-sale conference (10/16)

A pre-sale conference on site between the Purchaser and sale administrator is required prior to beginning any operations to determine landing and road locations. The Unit Manager or his/her representative must be contacted at least 5 days in advance to schedule the conference.

5.2 - Conduct of Operations

5.2.2 - Hazard Trees/Snags

5.2.2.1 - Den trees (10/16)

Obvious hollow and/or den trees shall be protected and left standing unless they are a safety hazard.

5.2.3 - Operating Restrictions

5.2.3.1 - Operating restrictions (9/11)

Within Payment Unit(s) 1 and 2, unless changed by written agreement, cutting, skidding, and hauling are limited to dry summer/fall or frozen winter conditions to avoid any soil compaction or rutting in efforts to protect Eastern Massasauga habitat. This restriction is because this area lies within a Massasauga CCA Management Area.

5.2.3.5 - Oak wilt restriction (1/18)

Within Payment Unit(s) 1 and 2, unless changed by written agreement, cutting, skidding, hauling within the sale and brushing of access roads to the sale are not permitted during the period of April 15 to July 15. Operations may be allowed if specific steps are taken to prevent damaging uncut oak during the high risk period. Those steps may include completing all road brushing before April 15th and clearing a tree-length buffer along uncut oak cover before April 15th. This is necessary to reduce the spread of oak wilt. For more information, contact the Unit Manager or his/her representative.

5.2.4 - Dead and Down Creation

5.2.4.6 - Dead and down creation, other (9/09)

To create habitat for Eastern Massasauga brush piles in Payment Units 1 and 2, construct 1 brush pile per 2 acres. Brush piles shall be constructed of 8 to 12 tops. Locations of brush piles should be scattered evenly throughout the Payment Units.

5.2.29 - Shrub protection (1/20)

Reasonable care should be taken to avoid cutting or damaging hawthorn and junberry. These woody-shrub plants are highly beneficial to various wildlife species.

5.2.32 - Decking/landing restoration (9/13)

All decking and landing areas must have the surface area restored to a condition equal to or better than before. This is to ensure the proper regeneration of the stand. Wood debris, chips, and "cookies" from trimmings must be removed or scattered away from landing and loading areas and may not be windrowed on the edge.

5.4 - Soil Protection

5.4.1 - Rutting restriction, general (7/16)

Operations are to cease immediately if equipment and weather conditions result in rutting of roads and/or skid trails which is 12 inches or greater in depth and 50 feet in length. The Unit Manager or his/her representative may restrict hauling and/or skidding if ruts exceed the specified depth. With the Unit Manager or his/her representative's approval, the Purchaser may return to the area when the risk of rutting has decreased.

6 - Safety and Fire Prevention

6.2 - Signing

6.2.1 - Road posting (10/20)

The Purchaser is responsible for posting and maintaining caution signs on USFS 4431 prior to beginning operations. The road must be posted at appropriate distances from the Sale Area to warn of logging activity and truck traffic. Signs must be removed when harvest operations are suspended or completed. The Purchaser will provide these signs.

SKIP

6.4 - Unexploded ordinance (7/15)

Be aware that the sale area could contain UXO (unexploded ordinances). Do not touch, or drive over any metal objects. If any objects are found, please flag the area and notify the Unit Manager or his/her representative, so that they can make arrangements with the Military.



Sale Number	Year
72-023	21

TIMBER SALE MAP

This information provided by authority of Part 525, 1994 PA 451, as amended.

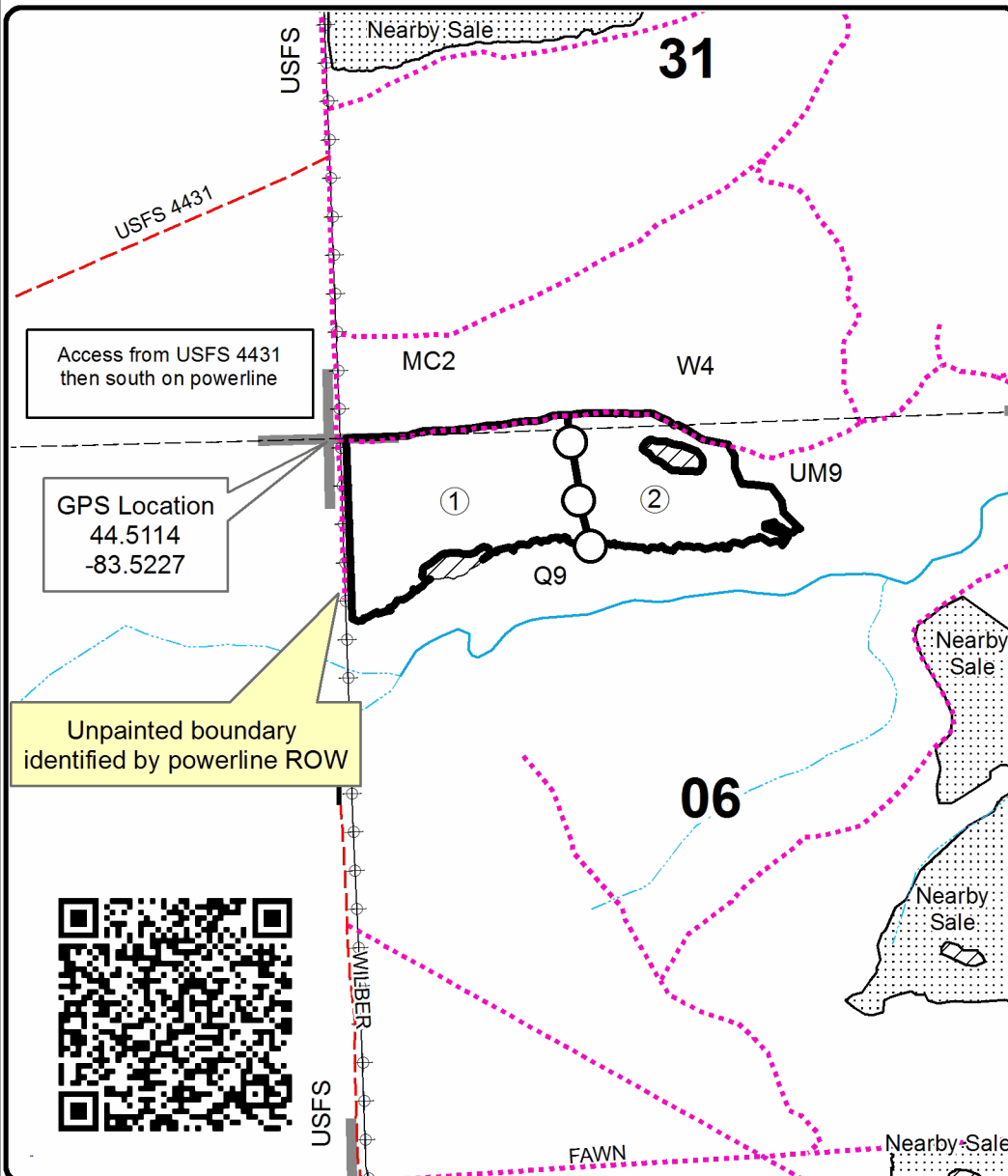
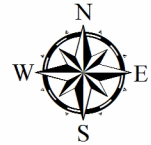
Forest Management Unit Grayling	County Iosco and Alcona	Mapped By Price	Date 10/05/21	Page 1	of 1
Township 25N & 24N	Range 08E	Section(s) and Subdivision(s) 25N Sec 31 S1/2SW, 24N Sec 6 N1/2NW, NWNE	Scale 1:15,840		

Cover Type				Density			
A = Aspen	H = Hemlock	N = Marsh	U = Upland Brush	0 = Non Stocked	5 = Pole Timber Medium		
B = Paper Birch	J = Jack Pine	O = Oak	UM = Upland Mixed	1 = Seedling Sapling Poor	6 = Pole Timber Well		
C = Cedar	L = Lowland Brush	P = Lowland Poplar	V = Bog or Marsh	2 = Seedling Sapling Medium	7 = Saw Timber Poor		
D = Treed Bog	LM = Lowland Mixed	Q = Mixed Swamp Conifer	W = White Pine	3 = Seedling Sapling Well	8 = Saw Timber Medium		
E = Swamp Hdwoods	M = Mpl, Bch, Brch	R = Red Pine	X = Non Stocked	4 = Pole Timber Poor	9 = Saw Timber Well		
F = Spruce Fir	MC = Mixed Conifer	S = Black Spruce	Z = Water				
G = Grass	MD = Mixed Deciduous	T = Tamarack					

PU	Acres
1	37.3
2	24.2

Massasauga Mix

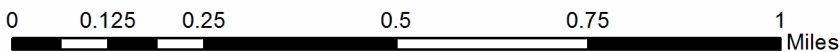
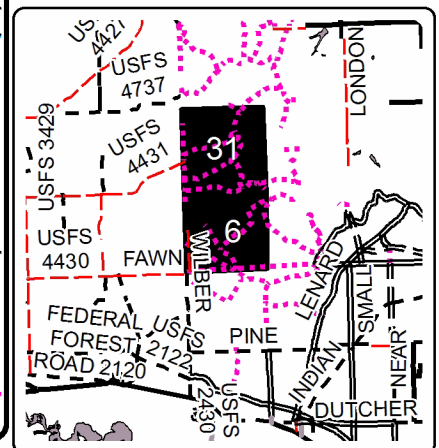
Compartment 66
61.5 Acres



Legend

- Against State (Red)
- Payment Unit (Yellow)
- Retention Area
- Nearby Timber Sales
- Paved Road
- County Road - Seasonal
- Temporary Management Access
- Intermittent Stream
- Perennial River
- Section Corners
- Payment Unit

Locator Map 1:150,000



TIMBER SALE INFORMATION

Roberts Rd XCS (72-031-21)
T28N, R03W, SEC. 31.
Crawford County (Advertised Price \$17,325.35)

SALE NOTE: All units of volume listed for this sale were estimated using the Inventory Manager computer program and the new Michigan taper model.

See sale spec 5.2.3.1 for information on operating restrictions due to ski trail.

A recreation site such as a trail, pathway, or campground is within the sale area or the vicinity. Certain restrictions/specifications may be applicable including time restrictions.

A timber sale contract for this lump sum, sealed bid timber sale will be awarded to the responsible bidder offering the highest sealed bid price. All units of volume listed below were estimated using the Inventory Manager computer program and the new Michigan taper model. Bids must be at or above the following advertised price for each product and species:

<u>PRODUCTS & SPECIES</u>	<u>ESTIMATED UNITS*</u>	<u>ADVERTISED PRICE</u>
Sawtimber		
Beech	17.4 MBF	\$ 38.00 / MBF
Red Maple	18.3 MBF	\$ 29.00 / MBF
Sugar Maple	43.0 MBF	\$ 90.00 / MBF
White Pine	22.4 MBF	\$ 34.00 / MBF
Pulpwood		
Basswood	17 Cords	\$ 6.50 / Cord
Jack Pine	91 Cords	\$ 8.80 / Cord
Misc. Species 2	15 Cords	\$ 1.50 / Cord
Mixed Aspen	360 Cords	\$ 14.05 / Cord
Mixed Hardwood	307 Cords	\$ 14.65 / Cord
White Pine	90 Cords	\$ 11.25 / Cord

* The total volume is statistically estimated within plus (+) or minus (-) 10.72 percent. There are an estimated 1,083 cords on this timber sale, plus or minus 116 cords at the 95% confidence level. The estimated units are final and not subject to adjustment. Prospective bidders are urged to examine this timber and to make their own estimates of quantity and quality.

BOND AND PAYMENT SCHEDULE:

1. A bond in the amount of \$1,000.00 to insure faithful performance of the conditions of the contract will be deposited by the successful bidder within 21 days of the sale award.
2. Cutting in any sale or unit without the required advance payment would be considered a trespass.
3. Total payment must be paid in advance or according to the following schedule :
 - (a) Ten percent (10%) of the sale value must be paid within 21 days of the sale award.
 - (b) The 10% down payment will be credited towards the first unit cut.
 - (c) Payment for each of the following units must be made before cutting begins in that unit:

PAYMENT UNIT NUMBER	PERCENT OF TOTAL SALE VALUE
01	6.7%
02	37.7%
03	55.6%

4. If no cutting takes place, the 10% down payment will not be refunded.
5. Operations on the contract issued will terminate on 09/30/2024.

SALE STATISTICS

Volumes were calculated in cubic feet using the Michigan taper model. Cubic foot volume includes all wood inside bark for the product indicated. For display purposes, cubic feet were converted to cords and MBF using a simple conversion factor, e.g. 79 cubic feet per cord and 185 cubic feet per MBF. The cubic foot volumes are precise; the cords and MBF volumes are not. Cubic foot volume cannot be directly converted to cords or boards with precision.

SALE VOLUMES

The total estimated sale volume may not equal the sum of the species/products due to the nature of statistical calculations associated with double sampling methodology.

VOLUME			STATISTICAL RANGE IN CORDS	
TOTAL CUBIC FEET	TOTAL CORDS	PERCENT ERROR	MINIMUM	MAXIMUM
85,544	1,083	10.72%	967	1,199

VDU VOLUMES

A VDU is a Volume Determination Unit. Volumes and their associated statistics are calculated at the VDU level and summarized to the sale level. There is often a one to one relationship between a VDU and a Payment Unit, but not always, depending on the cruise design. Refer to the VDU TO PAYMENT UNIT table.

	VOLUME			RANGE IN CORDS	
VDU	TOTAL CUBIC FEET	TOTAL CORDS	PERCENT ERROR	MINIMUM	MAXIMUM
11	10,617	134	42.71%	77	192
18	39,205	496	12.76%	433	560
20	35,722	452	17.40%	374	531
TOTAL:	85,544	1,083		883	1,282

VDU TO PAYMENT UNIT

When a VDU is associated with more than one Payment Unit (PU), the VDU volumes are assigned to the PU based on acres of the VDU within the PU.

VDU	VDU ACRES	PU	PU ACRES
11	8.5	1	8.5
18	16.9	2	8.6
		3	8.3
20	10.3	2	3.3
		3	7.0
TOTAL:	35.7		35.7

DESCRIPTION OF TIMBER BY PAYMENT UNIT (PU)

PU	MARKET GROUP	PRODUCT	QUANTITY	UNIT	ACRES	ADVERTISE PRICE			
1	Jack Pine	Pulpwood	91	Cords	8.5	\$1,160.50			
	Misc. Species 2		15	Cords					
	Mixed Aspen		24	Cords					
	<i>B. T. Aspen</i>		10	<i>Cords</i>					
	<i>Quaking Aspen</i>		14	<i>Cords</i>					
2	Beech	Sawtimber	5.6	MBF	11.9	\$6,536.50			
	Red Maple		6.7	MBF					
	Sugar Maple		13.8	MBF					
	White Pine		11.4	MBF					
	Basswood		Pulpwood	5			Cords		
	<i>Basswood</i>			<i>Sawtimber</i>			0.5	<i>MBF</i>	
	<i>Basswood</i>		<i>Pulpwood</i>	4			<i>Cords</i>		
	Mixed Aspen		Sawtimber	156			Cords		
	<i>B. T. Aspen</i>			26			<i>Cords</i>		
	<i>Quaking Aspen</i>			130			<i>Cords</i>		
	Mixed Hardwood	120		Cords					
	<i>Black Cherry</i>	<i>Pulpwood</i>		1.0			<i>MBF</i>		
	<i>Beech</i>	16		<i>Cords</i>					
	<i>Black Cherry</i>	4		<i>Cords</i>					
	<i>Ironwood</i>	3		<i>Cords</i>					
	<i>Red Maple</i>	52		<i>Cords</i>					
	<i>Sugar Maple</i>	43		<i>Cords</i>					
	White Pine	46	Cords						
	3	Beech	Sawtimber	11.8			MBF	15.3	\$9,628.35
		Red Maple		11.6			MBF		
Sugar Maple		29.2		MBF					
White Pine		11.0		MBF					
Basswood		Pulpwood		12	Cords				
<i>Basswood</i>				<i>Sawtimber</i>	1.0	<i>MBF</i>			
<i>Basswood</i>		<i>Pulpwood</i>		10	<i>Cords</i>				
Mixed Aspen		Sawtimber		180	Cords				
<i>B. T. Aspen</i>				55	<i>Cords</i>				
<i>Quaking Aspen</i>				125	<i>Cords</i>				
Mixed Hardwood			187	Cords					
<i>Black Cherry</i>			<i>Pulpwood</i>	0.9	<i>MBF</i>				
<i>Beech</i>			34	<i>Cords</i>					
<i>Black Cherry</i>			4	<i>Cords</i>					
<i>Ironwood</i>			6	<i>Cords</i>					
<i>Red Maple</i>			59	<i>Cords</i>					
<i>Sugar Maple</i>			82	<i>Cords</i>					
White Pine		44	Cords						
TOTAL:			101.1	MBF					
TOTAL:			880	Cords					

Sale Specific Conditions & Requirements

Sale Name: Roberts Rd XCS

Sale Number: 72-031-21 Seq#: 2

1 - Sale Area

1.2 - Boundaries

1.2.1 - Painted boundaries (9/19)

The sale boundary and Payment Unit boundaries are marked and identified by red paint and designated unpainted boundaries. Exterior sale boundary lines against state are marked with red paint in addition to unpainted boundaries designated as the I-75 ROW fence, the cleared powerline corridor along Roberts Road, and the grassy opening within Payment Unit 1, as shown on the Timber Sale Map. An interior Payment Unit boundary between Payment Unit's 2 and 3 is unpainted and designated as the ski trail indicated on the Timber Sale Map. The painted boundary line trees are not Included Timber and are to be protected.

2 - Timber Specifications

2.1 - Included Timber

2.1.1 - Clearcut unit(s) with unmerchantable trees (6/14)

Within Payment Unit(s) 2 and 3, cut all trees that are two (2) inches or more at DBH, except spruce, hemlock and trees marked with green paint. Dead beech is designated for cutting unless it is also marked with green paint.

2.1.2 - Clearcut unit(s) w/o unmerchantable trees (8/11)

Within Payment Unit(s) 1, cut all jack pine and aspen trees which meet minimum piece specifications in 2.2 Utilization. Also cut standing dead jack pine that the top has not broke out of.

2.1.11 - Description of timber note (2/04)

Note that Misc. Species 2 = standing dead jack pine that the top has not broke out of. Note also that there may be barbed wire embedded in trees in the southwest panhandle of Payment Unit 3.

2.1.15 - Hazard trees near roads (11/20)

Cut and remove all standing dead trees within a tree length of the cleared portion of the mapped ski trails unless the snag is marked with green paint. These trees may be utilized or must be moved at least 20 feet from the ski trail edge.

2.2 - Utilization

2.2.3 - Stump heights (4/07)

Stump heights within the Sale Area shall not exceed 12 inches for trees less than 24 inches in diameter. Trees and multiple-stem clumps larger than that may have stumps up to 18 inches tall. Stumps on the steep hillsides may be left up to 18 inches tall, as measured from the downhill side.

3 - Payments

3.3 - Pre-measured Sales

3.3.4 - Dividing payment units (7/14)

Payment Unit(s) 2 and 3 may be divided at the request of the Purchaser and upon approval of the Unit Manager. Dividing Payment Units is a contract modification which requires a Timber Sale Contract Amendment.

3.4 - Damaged Timber

3.4.1 - Damaged timber (7/16)

General Condition and Requirement 3.4 Damaged Timber, defines liquidated damages for undesignated live merchantable trees which are cut or injured. In addition, reasonable care should be taken to avoid damage to tree seedlings and saplings in Payment Unit 1.

Within Payment Unit 1, if more than 25% of the tree seedlings or saplings (1/4" to 4.5" DBH) within a specified portion of the Sale Area are damaged, liquidated damages will be assessed at \$500 per acre for all acreage within that specified portion of the Sale Area that was damaged. Operational paths will have to be cut through areas with dense regen. Provided those paths are cut cleanly, not leaving bent/broken stems, they will not count as damaged areas.

No damage is acceptable to undesignated live merchantable trees. Within the Sale Area, if more than 10% of trees (> 4.5"

DBH) within a specified area of the sale are damaged, liquidated damages will be assessed for all trees damaged. Rates will be in accordance with General Condition and Requirement 3.4 Damaged Timber, or at a rate of \$50 per sawtimber tree and \$20 per pole sized tree, whichever is greater.

4 - Transportation

4.1 - Construction

4.1.3 - Slash and earthen piles (8/04)

Piles or windrows of earth along roads and landings that have been widened or constructed shall be leveled. Slash from road maintenance or construction, including stumps, shall be chipped, utilized, or dispersed into the sale.

4.1.6 - Road construction (1/09)

Construction of new roads or improvements of existing roads shall be done in such a way as to minimize the environmental and visual impacts. Merchantable trees shall be cut and utilized unless otherwise directed. Non-merchantable trees shall be severed and laid flat on the ground. Slash shall be chipped, utilized, or scattered a minimum of 10 feet back from the road edge. Stumps shall be set upright, not left on edge, and be moved at least 10 feet away from the road edge. Disturbed soil shall be feathered into the woods and not left in berms or windrows.

4.1.7 - Road closure (10/11)

All new roads built into the sale must be blocked to vehicle traffic upon completion of the sale. Overgrown roads that are reopened shall be considered new roads. In general, this will require constructing a four (4') foot high berm of stumps and logs covered with earth. Stumps and brush must also be placed along the first 50 feet of trail behind the berms. These roads must be rendered impassable to cars and trucks. Contact the sale administrator for specific details of design and placement.

4.1.11 - Permits (2/12)

The Purchaser will secure any necessary permits that may be required.

5 - Operations

5.1 - Notification

5.1.1 - Pre-sale conference (10/16)

A pre-sale conference on site between the Purchaser and sale administrator is required prior to beginning any operations. The Unit Manager or his/her representative must be contacted at least 5 days in advance to schedule the conference.

5.1.4 - Post-sale conference (10/16)

A post-sale conference on site between the Purchaser and sale administrator is required prior to the completion of active logging operations to determine clean-up and repair of landings, road edges, and the fulfillment of other contract specifications.

5.2 - Conduct of Operations

5.2.1 - Slash

5.2.1.13 - Dispose of slash as directed (12/05)

Slash is to be disposed of as directed by the sale administrator, i.e.: flattening taller slash piles near the ski trails.

5.2.2 - Hazard Trees/Snags

5.2.2.1 - Den trees (10/16)

Obvious hollow and/or den trees shall be protected and left standing unless they are a safety hazard.

5.2.3 - Operating Restrictions

5.2.3.1 - Operating restrictions (9/11)

Within Payment Unit(s) 1-3, cutting and skidding are not permitted during the ski trail grooming season. This restriction is needed to protect the groomed trail surface during the winter. In addition, snow-free conditions will facilitate equipment operations on the steeper slopes.

5.2.4 - Dead and Down Creation

5.2.4.2 - Dead and down creation, hare and grouse (1/14)

To improve habitat for snowshoe hare, grouse, and other species, the Purchaser is to leave two 12-inch diameter or larger

log size pieces on the ground for every two acres. They should be scattered throughout the Sale Area, except do not place them within 20 feet of the ski trail edge. If possible, the logs or trees should be felled so they overlap. Note these pieces should have a minimum length of 8 feet. They can be of any tree species and can be an un-merchantable piece of wood.

5.2.18 - Equipment requirements (1/09)

A tracked harvester, preferably with an extendable boom, will be needed to cut the steeper slopes. This includes 6 to 8-wheeled harvesters with tracks installed around the tires.

5.2.29 - Shrub protection (1/20)

Do not cut or damage hawthorn, juneberry, pear, and apple. These woody-shrub plants are highly beneficial to various wildlife species.

5.2.38 - No decking against live trees (2/04)

Cut products may not be decked against unmarked or designated leave trees.

5.2.40 - Pathway protection (10/10)

The Forbush lease trails are groomed for cross country skiing and are shown on the Timber Sale Map. Do not damage posts with pathway signs. Maintain a 20-foot-wide slash, debris, and rut free zone daily, using the pathway as the centerline. Stumps at the ski trail edge must be cut flush except where the slope increases. Where the slope limits equipment operations, cut stumps as low as possible. Harvesting equipment may only cross the ski trails in locations approved by the sale administrator. Unauthorized crossings will be assessed \$300 per crossing and may result in operations being shut down. The terrain and existing ski trail density will necessitate using a portion of the ski trail for haul route access. That portion used for hauling must be graded to remove any ruts.

5.2.43 - Opening protection (2/21)

No activities are permitted in the opening within Payment Unit 1 that is marked on the Timber Sale Map with the letter "G". This former disturbed ground is filling in with native warm season grasses. Any damage to the openings shall be repaired according to specifications of the Unit Manager or his/her representative.

5.4 - Soil Protection

5.4.1 - Rutting restriction, general (7/16)

Operations are to cease immediately if equipment and weather conditions result in rutting of roads and/or skid trails which is 12 inches or greater in depth and 50 feet in length. The Unit Manager or his/her representative may restrict hauling and/or skidding if ruts exceed the specified depth. With the Unit Manager or his/her representative's approval, the Purchaser may return to the area when the risk of rutting has decreased.

5.4.4 - Slope protection (9/19)

Skid trails and roads on slopes shall be water barred with slash as soon as use is complete to prevent erosion.

5.5 - Protection of Improvements

5.5.3 - Protection of improvements detail (10/13)

The following are specific protection measures for this sale. Protect the I-75 ROW fence. The fence has deadfalls on it from the beech breaking up but avoid doing additional damage during harvest operations.

6 - Safety and Fire Prevention

6.2 - Signing

6.2.1 - Road posting (10/20)

The Purchaser is responsible for posting and maintaining caution signs on the woods road haul route prior to beginning operations. The road must be posted where the haul route leaves the county road to warn of logging activity and truck traffic. Signs must be removed when harvest operations are suspended or completed. The Purchaser will provide these signs.

6.2.3 - Recreational trail posting (10/20)

The Purchaser is responsible for posting and maintaining caution signs on the ski trail prior to beginning operations. The trail must be posted at appropriate distances from the Sale Area to warn of logging activity and truck traffic at both ends of the trail. Signs must be removed when harvest operations are suspended or completed. The Purchaser will provide these signs.

7 - Other Conditions

7.5 - Loss

7.5.1 - Deteriorating timber (7/09)

The sale area has received damage from age-related decline and mortality in the aspen, and beech bark disease. The Purchaser should harvest the wood as soon as possible. The Department of Natural Resources is held free of responsibility of any further damage or deterioration due to delay in harvesting.



TIMBER SALE MAP

This information provided by authority of Part 525, 1994 PA 451, as amended.

Sale Number	Year
72 - 031	21

Forest Management Unit Graying	County Crawford	Mapped By Charlebois	Date 09/30/2021	Page 1	of 2
Township 28N	Range 03W	Section(s) and Subdivision(s) Section 31: E1/2	Scale 1:7,920		

Cover Type				Density			
A = Aspen	H = Hemlock	N = Marsh	U = Upland Brush	0 = Non Stocked	5 = Pole Timber Medium		
B = Paper Birch	J = Jack Pine	O = Oak	UM = Upland Mixed	1 = Seedling Sapling Poor	6 = Pole Timber Well		
C = Cedar	L = Lowland Brush	P = Lowland Poplar	V = Bog or Marsh	2 = Seedling Sapling Medium	7 = Saw Timber Poor		
D = Treed Bog	LM = Lowland Mixed	Q = Mixed Swamp Conifer	W = White Pine	3 = Seedling Sapling Well	8 = Saw Timber Medium		
E = Swamp Hdwoods	M = Mpl, Bch, Brch	R = Red Pine	X = Non Stocked	4 = Pole Timber Poor	9 = Saw Timber Well		
	MC = Mixed Conifer						

Roberts Rd XCS
Compartment 216
35.7 Acres

PU	Acres
1	8.5
2	11.9
3	15.3

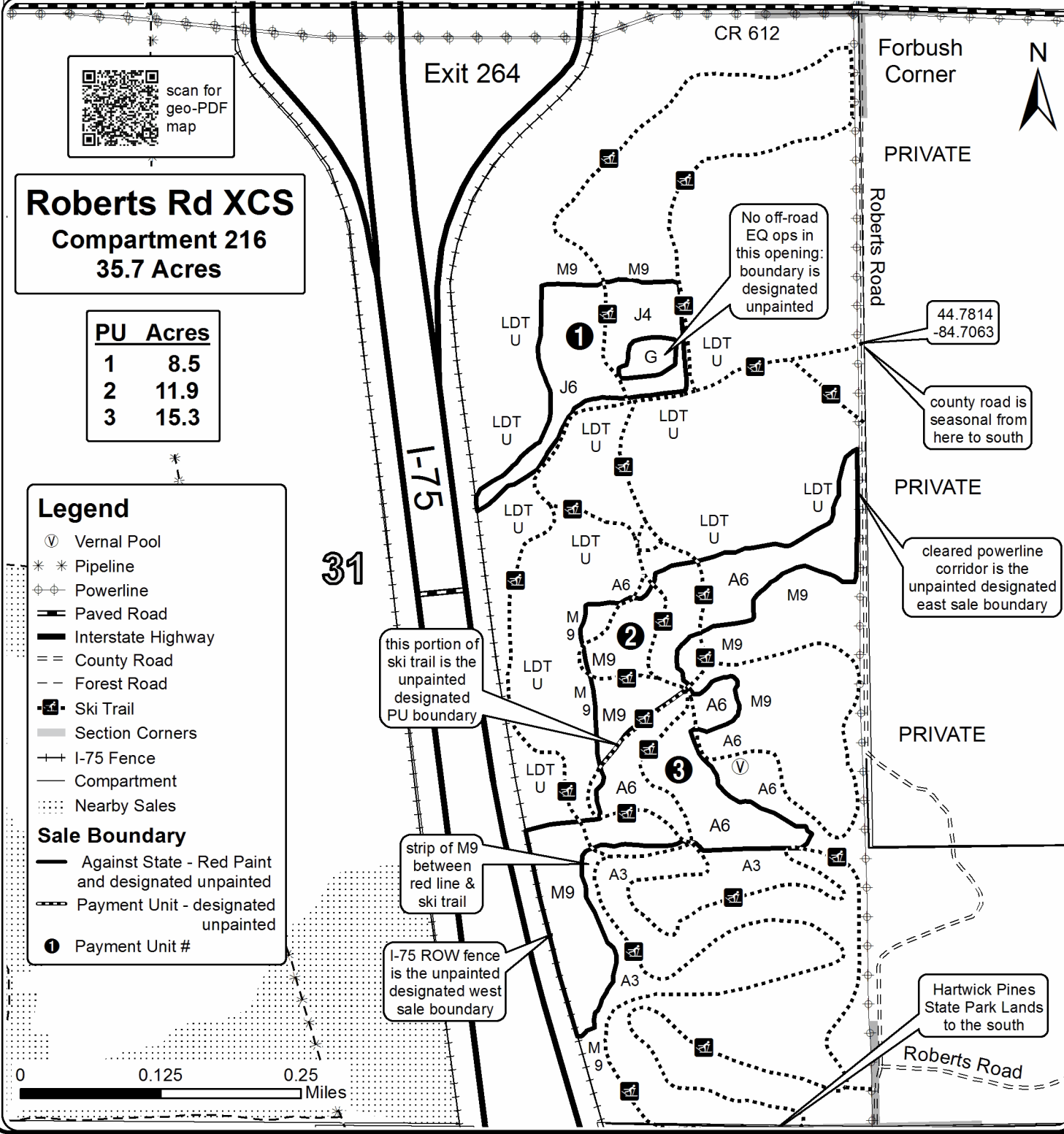
Legend

- ⊙ Vernal Pool
- * * Pipeline
- ⊕ Powerline
- ▬ Paved Road
- ▬ Interstate Highway
- ▬ County Road
- ▬ Forest Road
- ⊠ Ski Trail
- ▬ Section Corners
- ⊕ I-75 Fence
- ▬ Compartment
- ⋯ Nearby Sales

Sale Boundary

- ▬ Against State - Red Paint and designated unpainted
- ▬ Payment Unit - designated unpainted

① Payment Unit #





TIMBER SALE MAP

This information provided by authority of Part 525, 1994 PA 451, as amended.

Forest Management Unit Graying		County Crawford	Mapped By Charlebois	Date 09/30/2021	Page 2	of 2
Township 28N	Range 03W	Section(s) and Subdivision(s) Section 31: E1/2		Scale 1:7,920		

Cover Type

A = Aspen	H = Hemlock	N = Marsh	U = Upland Brush
B = Paper Birch	J = Jack Pine	O = Oak	UM = Upland Mixed
C = Cedar	L = Lowland Brush	P = Lowland Poplar	V = Bog or Marsh
D = Treed Bog	LM = Lowland Mixed	Q = Mixed Swamp Conifer	W = White Pine
E = Swamp Hdwoods	M = Mpl, Bch, Brch	R = Red Pine	X = Non Stocked
	MC = Mixed Conifer		

Density

0 = Non Stocked	5 = Pole Timber Medium
1 = Seedling Sapling Poor	6 = Pole Timber Well
2 = Seedling Sapling Medium	7 = Saw Timber Poor
3 = Seedling Sapling Well	8 = Saw Timber Medium
4 = Pole Timber Poor	9 = Saw Timber Well



scan for geo-PDF map

Roberts Rd XCS
Compartment 216
35.7 Acres

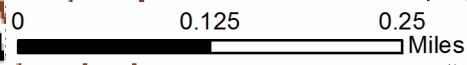
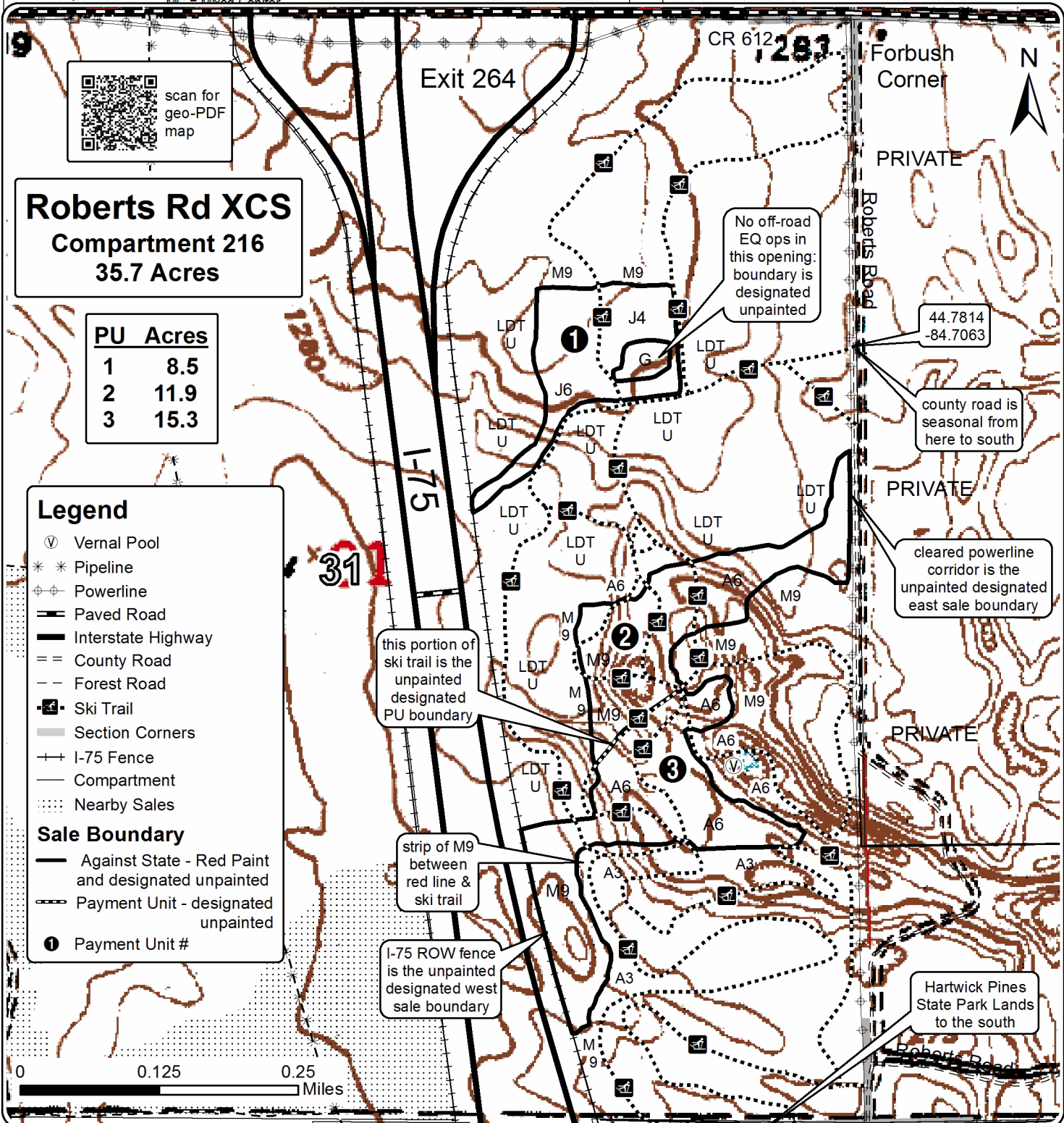
PU	Acres
1	8.5
2	11.9
3	15.3

Legend

- ⊕ Vernal Pool
- * * Pipeline
- ⊕ Powerline
- ▬ Paved Road
- ▬ Interstate Highway
- ▬ County Road
- ▬ Forest Road
- ⊕ Ski Trail
- ▬ Section Corners
- ▬ I-75 Fence
- ▬ Compartment
- ⋯ Nearby Sales

Sale Boundary

- ▬ Against State - Red Paint and designated unpainted
- ▬ Payment Unit - designated unpainted
- ① Payment Unit #



TIMBER SALE INFORMATION

Fill Your Hands Aspen (72-034-21)

T25N, R01W, SEC. 7; T25N, R02W, SEC. 11; T25N, R02W, SEC. 12.
Crawford County (Advertised Price \$47,363.15)

SALE NOTE: All units of volume listed for this sale were estimated using the Inventory Manager computer program and the new Michigan taper model.

It is recommended but, not required that lowland areas in the sale be harvested during dry summer or frozen winter conditions to minimize soil compaction/rutting.

See sale spec 5.2.17 for information on potential need of timber or composite mats.

A timber sale contract for this lump sum, sealed bid timber sale will be awarded to the responsible bidder offering the highest sealed bid price. All units of volume listed below were estimated using the Inventory Manager computer program and the new Michigan taper model. Bids must be at or above the following advertised price for each product and species:

<u>PRODUCTS & SPECIES</u>	<u>ESTIMATED UNITS*</u>	<u>ADVERTISED PRICE</u>
Sawtimber		
BI/R/Hybrid Oak	4.7 MBF	\$ 103.00 / MBF
Quaking Aspen	197.3 MBF	\$ 48.00 / MBF
Red Maple	7.1 MBF	\$ 54.00 / MBF
Red Pine	19.8 MBF	\$ 89.00 / MBF
White Pine	22.8 MBF	\$ 63.00 / MBF
Pulpwood		
BI/R/Hybrid Oak	18 Cords	\$ 24.65 / Cord
Black Cherry	8 Cords	\$ 26.90 / Cord
Black Spruce	102 Cords	\$ 12.65 / Cord
Jack Pine	7 Cords	\$ 16.15 / Cord
Mixed Aspen	939 Cords	\$ 25.70 / Cord
Paper Birch	23 Cords	\$ 19.10 / Cord
Red Maple	119 Cords	\$ 26.90 / Cord
Red Pine	16 Cords	\$ 32.40 / Cord
Tamarack	36 Cords	\$ 5.85 / Cord
White Pine	158 Cords	\$ 20.65 / Cord

* The total volume is statistically estimated within plus (+) or minus (-) 6.97 percent. There are an estimated 1,836 cords on this timber sale, plus or minus 128 cords at the 95% confidence level. The estimated units are final and not subject to adjustment. Prospective bidders are urged to examine this timber and to make their own estimates of quantity and quality.

BOND AND PAYMENT SCHEDULE:

1. A bond in the amount of \$2,368.00 to insure faithful performance of the conditions of the contract will be deposited by the successful bidder within 21 days of the sale award.
2. Cutting in any sale or unit without the required advance payment would be considered a trespass.
3. Total payment must be paid in advance or according to the following schedule :
 - (a) Ten percent (10%) of the sale value must be paid within 21 days of the sale award.
 - (b) The 10% down payment will be credited towards the first unit cut.
 - (c) Payment for each of the following units must be made before cutting begins in that unit:

PAYMENT UNIT NUMBER	PERCENT OF TOTAL SALE VALUE
01	71.5%
02	28.5%
4. If no cutting takes place, the 10% down payment will not be refunded.
5. Operations on the contract issued will terminate on 03/31/2026.

SALE STATISTICS

Volumes were calculated in cubic feet using the Michigan taper model. Cubic foot volume includes all wood inside bark for the product indicated. For display purposes, cubic feet were converted to cords and MBF using a simple conversion factor, e.g. 79 cubic feet per cord and 185 cubic feet per MBF. The cubic foot volumes are precise; the cords and MBF volumes are not. Cubic foot volume cannot be directly converted to cords or boards with precision.

SALE VOLUMES

The total estimated sale volume may not equal the sum of the species/products due to the nature of statistical calculations associated with double sampling methodology.

VOLUME			STATISTICAL RANGE IN CORDS	
TOTAL CUBIC FEET	TOTAL CORDS	PERCENT ERROR	MINIMUM	MAXIMUM
145,032	1,836	6.97%	1,708	1,964

VDU VOLUMES

A VDU is a Volume Determination Unit. Volumes and their associated statistics are calculated at the VDU level and summarized to the sale level. There is often a one to one relationship between a VDU and a Payment Unit, but not always, depending on the cruise design. Refer to the VDU TO PAYMENT UNIT table.

	VOLUME			RANGE IN CORDS	
VDU	TOTAL CUBIC FEET	TOTAL CORDS	PERCENT ERROR	MINIMUM	MAXIMUM
62	145,032	1,836	6.98%	1,708	1,964
TOTAL:	145,032	1,836		1,708	1,964

VDU TO PAYMENT UNIT

When a VDU is associated with more than one Payment Unit (PU), the VDU volumes are assigned to the PU based on acres of the VDU within the PU.

VDU	VDU ACRES	PU	PU ACRES
62	85.3	1	61.0
		2	24.3
TOTAL:	85.3		85.3

DESCRIPTION OF TIMBER BY PAYMENT UNIT (PU)

PU	MARKET GROUP	PRODUCT	QUANTITY	UNIT	ACRES	ADVERTISE PRICE
1	BI/R/Hybrid Oak	Sawtimber	3.4	MBF	61.0	\$33,879.60
	Quaking Aspen		141.1	MBF		
	Red Maple		5.1	MBF		
	Red Pine		14.2	MBF		
	White Pine		16.3	MBF		
	BI/R/Hybrid Oak	Pulpwood	13	Cords		
	Black Cherry		6	Cords		
	Black Spruce		73	Cords		
	<i>Balsam Fir</i>		24	<i>Cords</i>		
	<i>Black Spruce</i>		49	<i>Cords</i>		
	Jack Pine		5	Cords		
	Mixed Aspen		672	Cords		
	<i>Balsam Poplar</i>	<i>Sawtimber</i>	3.9	<i>MBF</i>		
	<i>Balsam Poplar</i>	<i>Pulpwood</i>	8	<i>Cords</i>		
	<i>Quaking Aspen</i>		656	<i>Cords</i>		
	Paper Birch		16	Cords		
	Red Maple		85	Cords		
	Red Pine		11	Cords		
	Tamarack		26	Cords		
	White Pine		113	Cords		
2	BI/R/Hybrid Oak	Sawtimber	1.3	MBF	24.3	\$13,483.55
	Quaking Aspen		56.2	MBF		
	Red Maple		2.0	MBF		
	Red Pine		5.6	MBF		
	White Pine		6.5	MBF		
	BI/R/Hybrid Oak	Pulpwood	5	Cords		
	Black Cherry		2	Cords		
	Black Spruce		29	Cords		
	<i>Balsam Fir</i>		9	<i>Cords</i>		
	<i>Black Spruce</i>		20	<i>Cords</i>		
	Jack Pine		2	Cords		
	Mixed Aspen		267	Cords		
	<i>Balsam Poplar</i>	<i>Sawtimber</i>	1.5	<i>MBF</i>		
	<i>Balsam Poplar</i>	<i>Pulpwood</i>	3	<i>Cords</i>		
	<i>Quaking Aspen</i>		261	<i>Cords</i>		
	Paper Birch		7	Cords		
	Red Maple		34	Cords		
	Red Pine		5	Cords		
	Tamarack		10	Cords		
	White Pine		45	Cords		
TOTAL:			251.7	MBF		
TOTAL:			1,426	Cords		

Sale Specific Conditions & Requirements

Sale Name: Fill Your Hands Aspen

Sale Number: 72-034-21 Seq#: 2

1 - Sale Area

1.2 - Boundaries

1.2.1 - Painted boundaries (9/19)

The sale boundary and Payment Unit boundaries are marked and identified by red paint. Exterior sale boundary lines against state are marked with red paint. Retention patches are marked with red paint; no harvesting activities may occur within these areas. The painted boundary line trees are not Included Timber and are to be protected.

2 - Timber Specifications

2.1 - Included Timber

2.1.1 - Clearcut unit(s) with unmerchantable trees (6/14)

Within Payment Unit(s) 1 and 2, cut all trees that are two (2) inches or more at DBH, except do not cut any trees marked with green paint or with a DBH of 26 inches or greater. Special protection trees identified in accordance with condition 3.4.2, within clearcutting unit boundaries, are not Included Timber and are to be protected.

2.1.11 - Description of timber note (2/04)

Note that Black Spruce Pulpwood contains 33 cords of balsam fir, and Mixed Aspen Pulpwood includes 45 cords of balsam poplar (BAM) pulpwood.

3 - Payments

3.3 - Pre-measured Sales

3.3.4 - Dividing payment units (7/14)

Payment Unit(s) 1 may be divided at the request of the Purchaser and upon approval of the Unit Manager. Dividing Payment Units is a contract modification which requires a Timber Sale Contract Amendment. There will be only one division per Payment Unit.

3.4 - Damaged Timber

3.4.2 - Special Protection Trees (4/14)

The Purchaser shall not cut live or dead special protection trees within cutting units or clearings. Special protection trees are any red or white pine in the Sale Area with a DBH of 26 inches or greater. If the Purchaser's operations have cut or damaged special protection trees through carelessness, the Purchaser shall pay \$300 as fixed, agreed and liquidated damages for each special protection tree cut or damaged. Such payment does not constitute ownership of the undesignated timber.

4 - Transportation

4.1 - Construction

4.1.3 - Slash and earthen piles (8/04)

Piles or windrows of earth along roads and landings that have been widened or constructed shall be leveled. Slash from road maintenance or construction, including stumps, shall be utilized upon completion of the sale to close roads.

4.1.6 - Road construction (1/09)

Construction of new roads or improvements of existing roads shall be done in such a way as to minimize the environmental and visual impacts. Merchantable trees shall be cut and utilized unless otherwise directed. Non-merchantable trees shall be severed and laid flat on the ground. Slash shall be scattered, and not left in windrows and kept a minimum of 10 feet back from the road edge. Stumps shall be set upright, not left on edge, and be moved at least 10 feet away from the road edge. Disturbed soil shall be feathered into the woods and not left in berms or windrows.

4.1.7 - Road closure (10/11)

All new roads built into the sale must be blocked to vehicle traffic upon completion of the sale. Overgrown roads that are reopened shall be considered new roads. In general, this will require constructing a four (4') foot high berm of stumps and logs covered with earth. Stumps and brush must be placed along the remainder of the trail. These roads must be rendered

impassable to cars and trucks. All stumps from road building and landing construction must be reserved to block any newly constructed roads upon completion of the sale. These stumps must be scattered along the road system to prohibit vehicular movement. Temporary berms may be required if no sale activity occurs for 30 or more consecutive days. Contact the sale administrator for specific details of design and placement.

4.1.11 - Permits (2/12)

The Purchaser will secure any necessary permits that may be required.

4.2 - Maintenance

4.2.5 - Two wheel drive condition (2/04)

All existing trail roads on and adjacent to the sale area must be passable by two-wheel drive traffic for the duration of the sale.

5 - Operations

5.2 - Conduct of Operations

5.2.4 - Dead and Down Creation

5.2.4.4 - Dead and down creation, grouse (6/18)

To encourage grouse and other wildlife, in Payment Unit(s) 1 and 2 leave one 12" or larger diameter (or largest diameter trees within stand) whole tree on the ground for every 2 acres, preferably a hardwood species such as oak or maple.

These will be evenly scattered throughout the Payment Unit. These trees will be evenly scattered throughout the Payment Unit, preferably at least two chains from any roads, two-tracks, or trails open to vehicles.

5.2.16 - Equipment recommended (11/18)

If harvesting operations occur when ground conditions are not dry or frozen, low ground pressure equipment is recommended but not required due to wet or sensitive soils present within the Sale Area.

5.2.17 - Timber Mats and Interlocking Composite Mats (10/20)

Some roads or skid trails may require extra protection such as that afforded by timber mats, interlocking composite mats, or another approved system. Approximately 40 feet of road or trail will need extra protection at locations shown on the Timber Sale Map. If available, mats may be borrowed from the DNR. A Timber Sale Contract Supplement will be used to document the Purchaser's use of the DNR's mats. Contact the sale administrator regarding availability and pick-up. Timber mats are available from various field offices. Composite mats are only available from the Grayling field office and the Marquette ICC. The Purchaser is responsible for picking up and hauling the mats to and from the site. The composite mats will require DNR staff onsite for installation and removal. Contact the sale administrator to schedule at least 30 days before desired install/removal date. All mats must be cleaned prior to drop off. This may include, but is not limited to, power washing and brushing to remove mud and debris. A charge of \$700.00 per timber mat and \$2,000.00 per composite mat will be assessed for all damaged or non-returned mats. Damage for the crane/timber mats is defined as three or more broken cants. Damage for the composite mats is defined as cracked or broken mats.

5.2.22 - Operating Caution

5.2.22.2 - Operating caution (6/11)

It is recommended, but not required, that within Payment Unit(s) 1 and 2, cutting, skidding, and hauling occur during dry summer or frozen winter conditions. The reason for the recommendation seasonally wet sensitive soils present in the Sale Area.

5.2.29 - Shrub protection (1/20)

Reasonable care shall be taken to not cut or damage hawthorn, dogwood, or serviceberry. These woody-shrub plants are highly beneficial to various wildlife species.

5.2.32 - Decking/landing restoration (9/13)

All decking and landing areas must have the surface area restored to a condition equal to or better than before. This is to ensure the proper regeneration of the stand. Wood debris, chips, and "cookies" from trimmings must be removed or scattered away from landing and loading areas and may not be windrowed on the edge.

5.4 - Soil Protection

5.4.1 - Rutting restriction, general (7/16)

Operations are to cease immediately if equipment and weather conditions result in rutting of roads and/or skid trails which is 6 inches or greater in depth and 25 feet in length. The Unit Manager or his/her representative may restrict hauling and/or skidding if ruts exceed the specified depth. With the Unit Manager or his/her representative's approval, the Purchaser may return to the area when the risk of rutting has decreased.

5.4.2 - Skid trails (2/04)

Skid trails up and down slopes should be avoided. If however this is unavoidable, these trails will be left in a non-erodible condition using water bars, logs, and slash. Placing of slash on these skid trails while logging is ongoing may alleviate need for any further action. At the direction of the sale administrator, seed, fertilizer, and mulch may also be required.

5.4.7 - Rutting restriction, Riparian Management Zone (RMZ) (1/09)

Within the Riparian Management Zone (RMZ), operations are to cease immediately if equipment and weather conditions result in rutting of roads and skid trails which is 6 inches or greater in depth and 25 feet in length. The Unit Manager or his/her representative may restrict hauling and/or skidding if ruts exceed the specified depth. With the Unit Manager or his/her representative's approval, the Purchaser may return to the area when the risk of rutting has decreased.

6 - Safety and Fire Prevention

6.2 - Signing

6.2.1 - Road posting (10/20)

The Purchaser is responsible for posting and maintaining caution signs on South Branch Road prior to beginning operations. The road must be posted at appropriate distances from the Sale Area to warn of logging activity and truck traffic. Signs must be removed when harvest operations are suspended or completed. The Purchaser will provide these signs.

7 - Other Conditions

7.2 - Extensions

7.2.5 - Weather related extension (1/13)

If weather conditions during the operating period of this contract prevent harvesting, this sale may qualify for a weather related extension. If approved, the normal extension fee would be waived. To qualify, there must be a documented attempt each year to harvest in the difficult portion of the sale.



TIMBER SALE MAP

This information provided by authority of Part 525, 1994 PA 451, as amended.

Sale Number	Year
72-034	21

Forest Management Unit Grayling Management Unit	County Crawford	Mapped By Price, Nellis	Date 10/06/2021	Page 1	of 1
Cruised By Price					

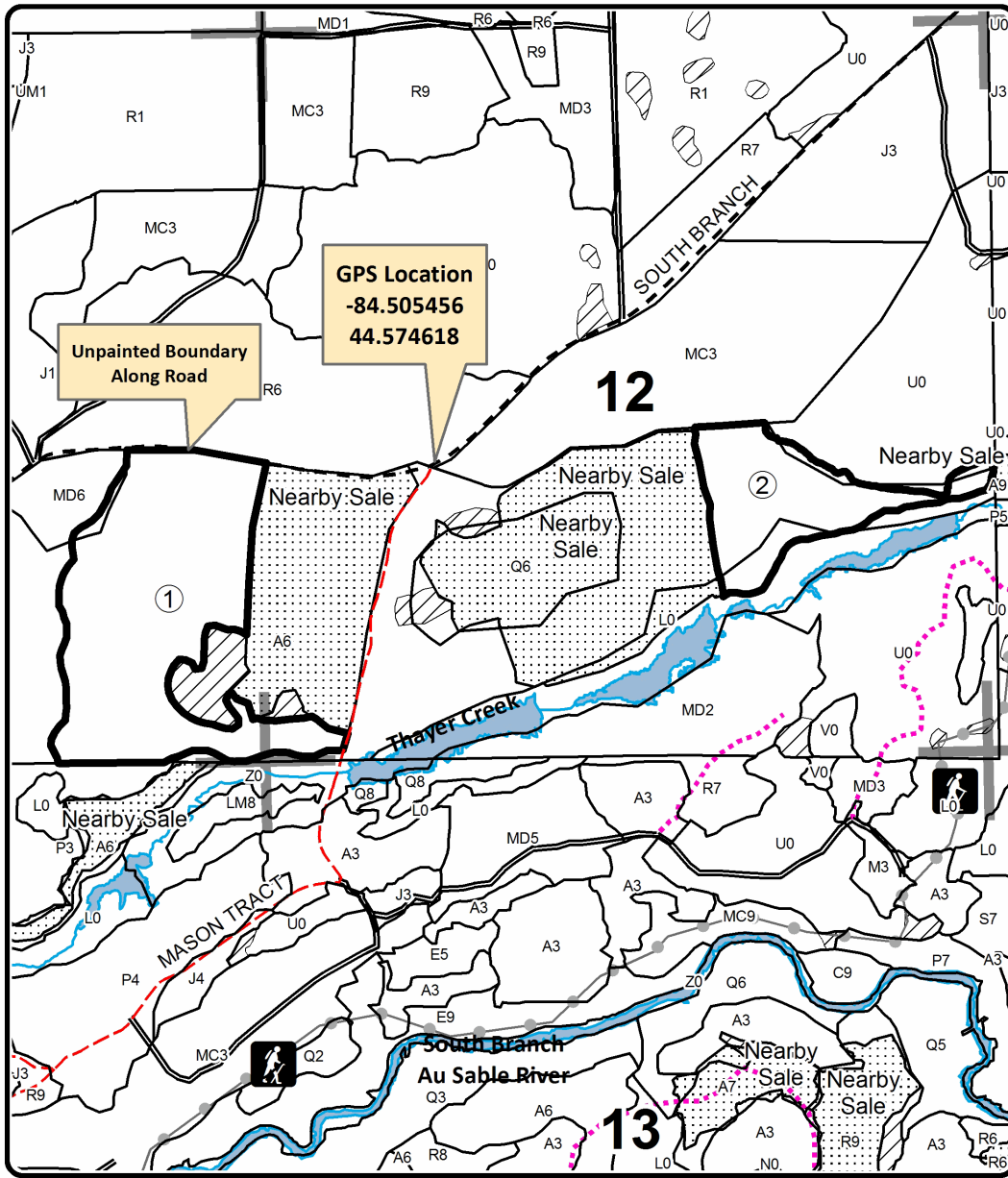
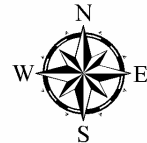
Township 25N	Range 02W	Section(s) and Subdivision(s) Sec. 11 SE & Sec. 12 SWSW, N1/2SE, SWSE	Scale 1:15,840
-----------------	--------------	--	-------------------

Cover Type				Density	
A = Aspen	H = Hemlock	N = Marsh	U = Upland Brush	0 = Non Stocked	5 = Pole Timber Medium
B = Paper Birch	J = Jack Pine	O = Oak	UM = Upland Mixed	1 = Seedling Sapling Poor	6 = Pole Timber Well
C = Cedar	L = Lowland Brush	P = Lowland Poplar	V = Bog or Marsh	2 = Seedling Sapling Medium	7 = Saw Timber Poor
D = Treed Bog	LM = Lowland Mixed	Q = Mixed Swamp Conifer	W = White Pine	3 = Seedling Sapling Well	8 = Saw Timber Medium
E = Swamp Hdwoods	M = Mpl, Bch, Brch	R = Red Pine	X = Non Stocked	4 = Pole Timber Poor	9 = Saw Timber Well
F = Spruce Fir	MC = Mixed Conifer	S = Black Spruce	Z = Water		
G = Grass	MD = Mixed Deciduous	T = Tamarack			

PU	Acres
1	61.0
2	24.3

Fill Your Hands Aspen

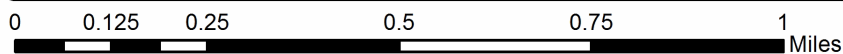
Compartment 298
85.3 Acres



Legend

- Sale Boundary (Red)
- Retention Area (Red)
- Payment Unit
- Stand Boundaries
- Recreational Trail
- Secondary Forest Road
- Gravel Road
- County Road - Seasonal
- Temporary Management Access
- Perennial River
- Lakes and Rivers
- Nearby Timber Sales
- Section Corners

Avenza PDF Map





Sale Number	Year
72-034	21

TIMBER SALE MAP

This information provided by authority of Part 525, 1994 PA 451, as amended.

Forest Management Unit		County	Mapped By	Price	Date	Page	of
Grayling		Crawford	Cruised By	Price	10/06/2021	1	1
Township	Range	Section(s) and Subdivision(s)			Scale		
25N	02W	SEC 11 SE & SEC 12 SWSW,N1/2SE,SW5E			1:15,840		

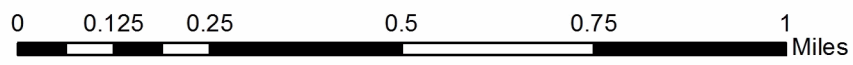
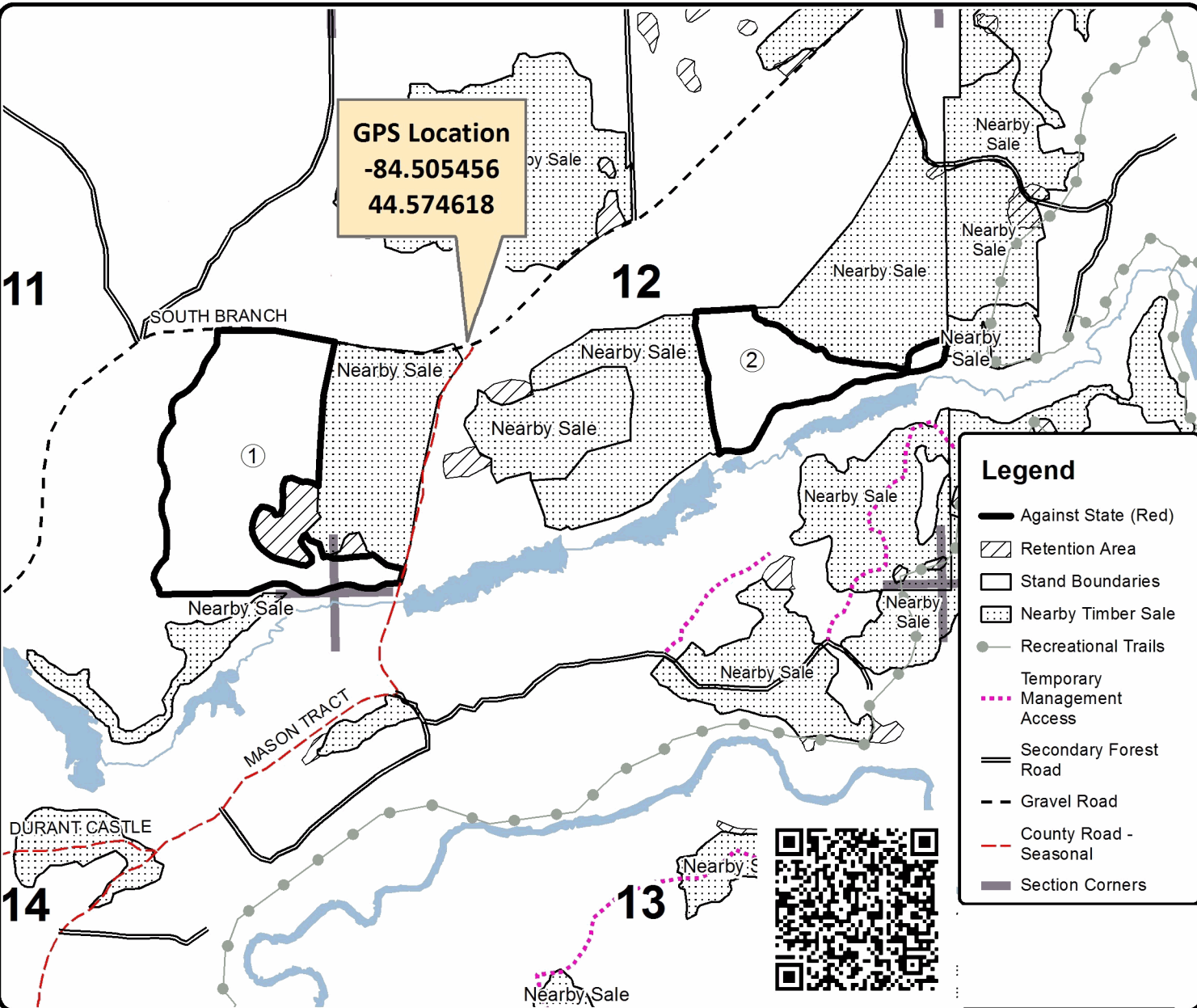
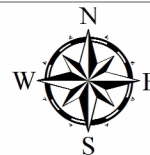
Cover Type				Density			
A = Aspen	H = Hemlock	N = Marsh	U = Upland Brush	0 = Non Stocked	5 = Pole Timber Medium		
B = Paper Birch	J = Jack Pine	O = Oak	UM = Upland Mixed	1 = Seedling Sapling Poor	6 = Pole Timber Well		
C = Cedar	L = Lowland Brush	P = Lowland Poplar	V = Bog or Marsh	2 = Seedling Sapling Medium	7 = Saw Timber Poor		
D = Treed Bog	LM = Lowland Mixed	Q = Mixed Swamp Conifer	W = White Pine	3 = Seedling Sapling Well	8 = Saw Timber Medium		
E = Swamp Hdwoods	M = Mpl, Bch, Brch	R = Red Pine	X = Non Stocked	4 = Pole Timber Poor	9 = Saw Timber Well		
F = Spruce Fir	MC = Mixed Conifer	S = Black Spruce	Z = Water				
G = Grass	MD = Mixed Deciduous	T = Tamarack					

PU	Acres
1	61.0
2	24.3

Fill Your Hands Aspen

Compartment 298

85.3 Acres



Massasauga Mix (72-023-21)
T24N, R08E, SEC. 6; T25N, R08E, SEC. 31; Iosco COUNTY

In response to the notice of sale to be held 9:00 a.m. (local time) on July 25, 2022, I am hereby submitting my sealed bid (firm offer) for the following forest products to be cut. Bids for individual species must be at or above the advertised price. All non-responsive bid forms may be rejected.

<u>PRODUCTS & SPECIES</u>	<u>ESTIMATED VOLUME*</u>	<u>ADVERTISED PRICE</u>	<u>BID PRICE/UNIT</u>
Sawtimber			
B. T. Aspen	4.2 MBF	\$ 51.00/MBF	\$ _____
Bl/R/Hybrid Oak	59.6 MBF	\$ 103.00/MBF	\$ _____
Jack Pine	38.5 MBF	\$ 32.00/MBF	\$ _____
White Oak	8.6 MBF	\$ 64.00/MBF	\$ _____
White Pine	24.6 MBF	\$ 63.00/MBF	\$ _____
Pulpwood			
B. T. Aspen	7 Cords	\$ 25.70/Cord	\$ _____
Bl/R/Hybrid Oak	402 Cords	\$ 24.65/Cord	\$ _____
Jack Pine	407 Cords	\$ 16.15/Cord	\$ _____
Red Maple	25 Cords	\$ 26.90/Cord	\$ _____
Red Pine	7 Cords	\$ 32.40/Cord	\$ _____
White Oak	53 Cords	\$ 24.65/Cord	\$ _____
White Pine	253 Cords	\$ 20.65/Cord	\$ _____

*The volumes are statistically estimated within plus (+) or minus (-) 6.32 percent at 95% confidence level. These estimated volumes are final and not subject to adjustment. Prospective bidders are urged to examine this timber and to make their own estimates of quantity and quality.

I understand that any or all bids may be rejected. All bids must be signed and all bid items must be bid or the bid form may be rejected. I also understand that consideration and awarding a contract will be based upon my past performance and ability to complete the contract based upon equipment and staffing subject to my control.

FEDERAL ID: ____ - ____ - ____ or SOCIAL SECURITY NUMBER: ____ - ____ - ____

Company or individual bidding: _____

Company representative's name: _____

Address: _____

City: _____ State: _____ Zip: _____

IF AVAILABLE, PLEASE PLACE THE PERSONALIZED LABEL FROM YOUR PROSPECTUS IN THE ABOVE BOX.

Individual or company representative's signature: _____ Date: _____

Phone number : _____ Email (optional): _____

THE WINNING BIDDER MUST COMPLETE THE VERIFICATION OF WORKER'S DISABILITY COMPENSATION ACT COMPLIANCE (ON REVERSE SIDE IF DOUBLE SIDED) WITHIN 21 DAYS OF SALE AWARD DATE



FOR DEPARTMENT USE ONLY	
Sale Number (XX - XXX - XX - XX)	
Forest Management Unit:	

TIMBER SALE VERIFICATION OF WORKER'S DISABILITY COMPENSATION ACT COMPLIANCE

As required by Act 317, P.A. 1969 (Worker's Compensation) and
Part 5 of Act 451 of 1994, as amended.

VERIFICATION OF WORKER'S DISABILITY COMPENSATION ACT COMPLIANCE

- This verification must be completed and submitted within 21 days of contract award and prior to the issuance of the timber sale contract.
- In addition, if boxes 2B or 2C are checked, then Notice of Exclusion or Certificate of Insurance must be submitted within twenty-one (21) days of the contract award and prior to the issuance of the timber sale contract.
- All information must be typed or printed except for written signatures.

Please Check Appropriate Categories:

1. My business is organized as (you **must** check one of the boxes below):
 - A. Sole Proprietorship (individual)
 - B. Partnership
 - C. Corporation
2. You **must** check one of the boxes below:
 - A. I certify my business is a sole proprietorship and it has no employees but the sole proprietor. I am not subject to the Worker's Compensation Laws.
 - B. I certify my business has satisfied its obligation to the Worker's Compensation Act through the use of an approved Notice of Exclusion (BWC-337, Rev. 5/96). I will provide a copy of the Notice of Exclusion within 21 days of the contract award. (For questions or a copy of the BWC-337, please call the Worker's Compensation Bureau at 517-322-1195).
 - C. I certify my business has a Worker's Compensation Policy. I will provide an original Certificate of Insurance within twenty-one (21) days of the contract award.
3. If you have checked item 2(A) or 2(B), you **must** indicate the number of **both** full-time and part-time employees, other than yourself, including family members and active partners (if none, you must enter "0").

_____ Full-time Employees

_____ Part-time Employees

Name of Business		Federal ID (or) Social Security No.	
Address		Telephone ()	
City	State	ZIP	

I hereby certify that the above information is true and correct. I agree to notify the Michigan DNR of any changes that occur in factors affecting my coverage during any of my present and future operations.

Signature of Owner or Authorized Representative

Title

Date

Please complete the "SEALED BID" information on the next page

Roundhouse Oak (72-011-21)
T25N, R02W, SEC. 14; T25N, R02W, SEC. 15; T25N, R02W, SEC. 16; T25N,

In response to the notice of sale to be held 9:00 a.m. (local time) on July 25, 2022, I am hereby submitting my sealed bid (firm offer) for the following forest products to be cut. Bids for individual species must be at or above the advertised price. All non-responsive bid forms may be rejected.

<u>PRODUCTS & SPECIES</u>	<u>ESTIMATED VOLUME*</u>	<u>ADVERTISED PRICE</u>	<u>BID PRICE/UNIT</u>
Sawtimber			
Red Oak	371.5 MBF	\$ 141.00/MBF	\$ _____
Red Pine	47.7 MBF	\$ 89.00/MBF	\$ _____
White Oak	52.1 MBF	\$ 64.00/MBF	\$ _____
White Pine	8.6 MBF	\$ 63.00/MBF	\$ _____
Pulpwood			
Mixed Aspen	93 Cords	\$ 25.70/Cord	\$ _____
Mixed Hardwood	851 Cords	\$ 26.90/Cord	\$ _____
Mixed Oak	824 Cords	\$ 24.65/Cord	\$ _____
Red Pine	33 Cords	\$ 32.40/Cord	\$ _____
White Pine	45 Cords	\$ 20.65/Cord	\$ _____

*The volumes are statistically estimated within plus (+) or minus (-) 4.39 percent at 95% confidence level. These estimated volumes are final and not subject to adjustment. Prospective bidders are urged to examine this timber and to make their own estimates of quantity and quality.

I understand that any or all bids may be rejected. All bids must be signed and all bid items must be bid or the bid form may be rejected. I also understand that consideration and awarding a contract will be based upon my past performance and ability to complete the contract based upon equipment and staffing subject to my control.

FEDERAL ID: ____ - ____ - ____ or SOCIAL SECURITY NUMBER: ____ - ____ - ____

Company or individual bidding: _____

Company representative's name: _____

Address: _____

City: _____ State: _____ Zip: _____

IF AVAILABLE, PLEASE PLACE THE PERSONALIZED LABEL FROM YOUR PROSPECTUS IN THE ABOVE BOX.

Individual or company representative's signature: _____ Date: _____

Phone number : _____ Email (optional): _____

THE WINNING BIDDER MUST COMPLETE THE VERIFICATION OF WORKER'S DISABILITY COMPENSATION ACT COMPLIANCE (ON REVERSE SIDE IF DOUBLE SIDED) WITHIN 21 DAYS OF SALE AWARD DATE



FOR DEPARTMENT USE ONLY
Sale Number (XX - XXX - XX - XX)
Forest Management Unit:

TIMBER SALE VERIFICATION OF WORKER'S DISABILITY COMPENSATION ACT COMPLIANCE

*As required by Act 317, P.A. 1969 (Worker's Compensation) and
Part 5 of Act 451 of 1994, as amended.*

VERIFICATION OF WORKER'S DISABILITY COMPENSATION ACT COMPLIANCE

- This verification must be completed and submitted within 21 days of contract award and prior to the issuance of the timber sale contract.
- In addition, if boxes 2B or 2C are checked, then Notice of Exclusion or Certificate of Insurance must be submitted within twenty-one (21) days of the contract award and prior to the issuance of the timber sale contract.
- All information must be typed or printed except for written signatures.

Please Check Appropriate Categories:

1. My business is organized as (you **must** check one of the boxes below):
 - A. Sole Proprietorship (individual)
 - B. Partnership
 - C. Corporation
2. You **must** check one of the boxes below:
 - A. I certify my business is a sole proprietorship and it has no employees but the sole proprietor. I am not subject to the Worker's Compensation Laws.
 - B. I certify my business has satisfied its obligation to the Worker's Compensation Act through the use of an approved Notice of Exclusion (BWC-337, Rev. 5/96). I will provide a copy of the Notice of Exclusion within 21 days of the contract award. (For questions or a copy of the BWC-337, please call the Worker's Compensation Bureau at 517-322-1195).
 - C. I certify my business has a Worker's Compensation Policy. I will provide an original Certificate of Insurance within twenty-one (21) days of the contract award.
3. If you have checked item 2(A) or 2(B), you **must** indicate the number of **both** full-time and part-time employees, other than yourself, including family members and active partners (if none, you must enter "0").

_____ Full-time Employees

_____ Part-time Employees

Name of Business		Federal ID (or) Social Security No.	
Address		Telephone ()	
City	State	ZIP	

I hereby certify that the above information is true and correct. I agree to notify the Michigan DNR of any changes that occur in factors affecting my coverage during any of my present and future operations.

Signature of Owner or Authorized Representative

Title

Date

Please complete the "SEALED BID" information on the next page

Trippy Removal (72-010-21)
T25N, R02W, SEC. 9; Crawford COUNTY

In response to the notice of sale to be held 9:00 a.m. (local time) on July 25, 2022, I am hereby submitting my sealed bid (firm offer) for the following forest products to be cut. Bids for individual species must be at or above the advertised price. All non-responsive bid forms may be rejected.

<u>PRODUCTS & SPECIES</u>	<u>ESTIMATED VOLUME*</u>	<u>ADVERTISED PRICE</u>	<u>BID PRICE/UNIT</u>
Sawtimber			
Red Oak	54.4 MBF	\$ 141.00/MBF	\$ _____
Red Pine	57.1 MBF	\$ 89.00/MBF	\$ _____
White Oak	53.4 MBF	\$ 64.00/MBF	\$ _____
White Pine	13.5 MBF	\$ 63.00/MBF	\$ _____
Pulpwood			
B. T. Aspen	26 Cords	\$ 25.70/Cord	\$ _____
Mixed Oak	172 Cords	\$ 24.65/Cord	\$ _____
Red Maple	32 Cords	\$ 26.90/Cord	\$ _____
Red Pine	39 Cords	\$ 32.40/Cord	\$ _____
White Pine	63 Cords	\$ 20.65/Cord	\$ _____

*The volumes are statistically estimated within plus (+) or minus (-) 6.09 percent at 95% confidence level. These estimated volumes are final and not subject to adjustment. Prospective bidders are urged to examine this timber and to make their own estimates of quantity and quality.

I understand that any or all bids may be rejected. All bids must be signed and all bid items must be bid or the bid form may be rejected. I also understand that consideration and awarding a contract will be based upon my past performance and ability to complete the contract based upon equipment and staffing subject to my control.

FEDERAL ID: ____ - ____ - ____ or SOCIAL SECURITY NUMBER: ____ - ____ - ____

Company or individual bidding: _____

Company representative's name: _____

Address: _____

City: _____ State: _____ Zip: _____

IF AVAILABLE, PLEASE PLACE THE PERSONALIZED LABEL FROM YOUR PROSPECTUS IN THE ABOVE BOX.

Individual or company representative's signature: _____ Date: _____

Phone number : _____ Email (optional): _____

THE WINNING BIDDER MUST COMPLETE THE VERIFICATION OF WORKER'S DISABILITY COMPENSATION ACT COMPLIANCE (ON REVERSE SIDE IF DOUBLE SIDED) WITHIN 21 DAYS OF SALE AWARD DATE



FOR DEPARTMENT USE ONLY	
Sale Number (XX - XXX - XX - XX)	
Forest Management Unit:	

TIMBER SALE VERIFICATION OF WORKER'S DISABILITY COMPENSATION ACT COMPLIANCE

As required by Act 317, P.A. 1969 (Worker's Compensation) and
Part 5 of Act 451 of 1994, as amended.

VERIFICATION OF WORKER'S DISABILITY COMPENSATION ACT COMPLIANCE

- This verification must be completed and submitted within 21 days of contract award and prior to the issuance of the timber sale contract.
- In addition, if boxes 2B or 2C are checked, then Notice of Exclusion or Certificate of Insurance must be submitted within twenty-one (21) days of the contract award and prior to the issuance of the timber sale contract.
- All information must be typed or printed except for written signatures.

Please Check Appropriate Categories:

1. My business is organized as (you **must** check one of the boxes below):
 - A. Sole Proprietorship (individual)
 - B. Partnership
 - C. Corporation
2. You **must** check one of the boxes below:
 - A. I certify my business is a sole proprietorship and it has no employees but the sole proprietor. I am not subject to the Worker's Compensation Laws.
 - B. I certify my business has satisfied its obligation to the Worker's Compensation Act through the use of an approved Notice of Exclusion (BWC-337, Rev. 5/96). I will provide a copy of the Notice of Exclusion within 21 days of the contract award. (For questions or a copy of the BWC-337, please call the Worker's Compensation Bureau at 517-322-1195).
 - C. I certify my business has a Worker's Compensation Policy. I will provide an original Certificate of Insurance within twenty-one (21) days of the contract award.
3. If you have checked item 2(A) or 2(B), you **must** indicate the number of **both** full-time and part-time employees, other than yourself, including family members and active partners (if none, you must enter "0").

_____ Full-time Employees

_____ Part-time Employees

Name of Business		Federal ID (or) Social Security No.	
Address		Telephone ()	
City	State	ZIP	

I hereby certify that the above information is true and correct. I agree to notify the Michigan DNR of any changes that occur in factors affecting my coverage during any of my present and future operations.

Signature of Owner or Authorized Representative

Title

Date

Please complete the "SEALED BID" information on the next page

Fill Your Hands Aspen (72-034-21)
T25N, R01W, SEC. 7; T25N, R02W, SEC. 11; T25N, R02W, SEC. 12; Crawford

In response to the notice of sale to be held 9:00 a.m. (local time) on July 25, 2022, I am hereby submitting my sealed bid (firm offer) for the following forest products to be cut. Bids for individual species must be at or above the advertised price. All non-responsive bid forms may be rejected.

<u>PRODUCTS & SPECIES</u>	<u>ESTIMATED VOLUME*</u>	<u>ADVERTISED PRICE</u>	<u>BID PRICE/UNIT</u>
Sawtimber			
Bl/R/Hybrid Oak	4.7 MBF	\$ 103.00/MBF	\$ _____
Quaking Aspen	197.3 MBF	\$ 48.00/MBF	\$ _____
Red Maple	7.1 MBF	\$ 54.00/MBF	\$ _____
Red Pine	19.8 MBF	\$ 89.00/MBF	\$ _____
White Pine	22.8 MBF	\$ 63.00/MBF	\$ _____
Pulpwood			
Bl/R/Hybrid Oak	18 Cords	\$ 24.65/Cord	\$ _____
Black Cherry	8 Cords	\$ 26.90/Cord	\$ _____
Black Spruce	102 Cords	\$ 12.65/Cord	\$ _____
Jack Pine	7 Cords	\$ 16.15/Cord	\$ _____
Mixed Aspen	939 Cords	\$ 25.70/Cord	\$ _____
Paper Birch	23 Cords	\$ 19.10/Cord	\$ _____
Red Maple	119 Cords	\$ 26.90/Cord	\$ _____
Red Pine	16 Cords	\$ 32.40/Cord	\$ _____
Tamarack	36 Cords	\$ 5.85/Cord	\$ _____
White Pine	158 Cords	\$ 20.65/Cord	\$ _____

*The volumes are statistically estimated within plus (+) or minus (-) 6.97 percent at 95% confidence level. These estimated volumes are final and not subject to adjustment. Prospective bidders are urged to examine this timber and to make their own estimates of quantity and quality.

I understand that any or all bids may be rejected. All bids must be signed and all bid items must be bid or the bid form may be rejected. I also understand that consideration and awarding a contract will be based upon my past performance and ability to complete the contract based upon equipment and staffing subject to my control.

FEDERAL ID: ____ - ____ - ____ or SOCIAL SECURITY NUMBER: ____ - ____ - ____

Company or individual bidding: _____

Company representative's name: _____

Address: _____

City: _____ State: _____ Zip: _____

IF AVAILABLE, PLEASE PLACE THE PERSONALIZED LABEL FROM YOUR PROSPECTUS IN THE ABOVE BOX.

Individual or company representative's signature: _____ Date: _____

Phone number : _____ Email (optional): _____

THE WINNING BIDDER MUST COMPLETE THE VERIFICATION OF WORKER'S DISABILITY COMPENSATION ACT COMPLIANCE (ON REVERSE SIDE IF DOUBLE SIDED) WITHIN 21 DAYS OF SALE AWARD DATE



FOR DEPARTMENT USE ONLY	
Sale Number (XX - XXX - XX - XX)	
Forest Management Unit:	

TIMBER SALE VERIFICATION OF WORKER'S DISABILITY COMPENSATION ACT COMPLIANCE

As required by Act 317, P.A. 1969 (Worker's Compensation) and
Part 5 of Act 451 of 1994, as amended.

VERIFICATION OF WORKER'S DISABILITY COMPENSATION ACT COMPLIANCE

- This verification must be completed and submitted within 21 days of contract award and prior to the issuance of the timber sale contract.
- In addition, if boxes 2B or 2C are checked, then Notice of Exclusion or Certificate of Insurance must be submitted within twenty-one (21) days of the contract award and prior to the issuance of the timber sale contract.
- All information must be typed or printed except for written signatures.

Please Check Appropriate Categories:

1. My business is organized as (you **must** check one of the boxes below):
 - A. Sole Proprietorship (individual)
 - B. Partnership
 - C. Corporation
2. You **must** check one of the boxes below:
 - A. I certify my business is a sole proprietorship and it has no employees but the sole proprietor. I am not subject to the Worker's Compensation Laws.
 - B. I certify my business has satisfied its obligation to the Worker's Compensation Act through the use of an approved Notice of Exclusion (BWC-337, Rev. 5/96). I will provide a copy of the Notice of Exclusion within 21 days of the contract award. (For questions or a copy of the BWC-337, please call the Worker's Compensation Bureau at 517-322-1195).
 - C. I certify my business has a Worker's Compensation Policy. I will provide an original Certificate of Insurance within twenty-one (21) days of the contract award.
3. If you have checked item 2(A) or 2(B), you **must** indicate the number of **both** full-time and part-time employees, other than yourself, including family members and active partners (if none, you must enter "0").

_____ Full-time Employees

_____ Part-time Employees

Name of Business		Federal ID (or) Social Security No.	
Address		Telephone ()	
City	State	ZIP	

I hereby certify that the above information is true and correct. I agree to notify the Michigan DNR of any changes that occur in factors affecting my coverage during any of my present and future operations.

Signature of Owner or Authorized Representative

Title

Date

Please complete the "SEALED BID" information on the next page

Roberts Rd XCS (72-031-21)
T28N, R03W, SEC. 31; Crawford COUNTY

In response to the notice of sale to be held 9:00 a.m. (local time) on July 25, 2022, I am hereby submitting my sealed bid (firm offer) for the following forest products to be cut. Bids for individual species must be at or above the advertised price. All non-responsive bid forms may be rejected.

<u>PRODUCTS & SPECIES</u>	<u>ESTIMATED VOLUME*</u>	<u>ADVERTISED PRICE</u>	<u>BID PRICE/UNIT</u>
Sawtimber			
Beech	17.4 MBF	\$ 38.00/MBF	\$ _____
Red Maple	18.3 MBF	\$ 29.00/MBF	\$ _____
Sugar Maple	43.0 MBF	\$ 90.00/MBF	\$ _____
White Pine	22.4 MBF	\$ 34.00/MBF	\$ _____
Pulpwood			
Basswood	17 Cords	\$ 6.50/Cord	\$ _____
Jack Pine	91 Cords	\$ 8.80/Cord	\$ _____
Misc. Species 2	15 Cords	\$ 1.50/Cord	\$ _____
Mixed Aspen	360 Cords	\$ 14.05/Cord	\$ _____
Mixed Hardwood	307 Cords	\$ 14.65/Cord	\$ _____
White Pine	90 Cords	\$ 11.25/Cord	\$ _____

*The volumes are statistically estimated within plus (+) or minus (-) 10.72 percent at 95% confidence level. These estimated volumes are final and not subject to adjustment. Prospective bidders are urged to examine this timber and to make their own estimates of quantity and quality.

I understand that any or all bids may be rejected. All bids must be signed and all bid items must be bid or the bid form may be rejected. I also understand that consideration and awarding a contract will be based upon my past performance and ability to complete the contract based upon equipment and staffing subject to my control.

FEDERAL ID: _____ - _____ or SOCIAL SECURITY NUMBER: _____ - _____ - _____

Company or individual bidding: _____

Company representative's name: _____

Address: _____

City: _____ State: _____ Zip: _____

IF AVAILABLE, PLEASE PLACE THE PERSONALIZED LABEL FROM YOUR PROSPECTUS IN THE ABOVE BOX.

Individual or company representative's signature: _____ Date: _____

Phone number : _____ Email (optional): _____

THE WINNING BIDDER MUST COMPLETE THE VERIFICATION OF WORKER'S DISABILITY COMPENSATION ACT COMPLIANCE (ON REVERSE SIDE IF DOUBLE SIDED) WITHIN 21 DAYS OF SALE AWARD DATE



FOR DEPARTMENT USE ONLY	
Sale Number (XX - XXX - XX - XX)	
Forest Management Unit:	

TIMBER SALE VERIFICATION OF WORKER'S DISABILITY COMPENSATION ACT COMPLIANCE

As required by Act 317, P.A. 1969 (Worker's Compensation) and
Part 5 of Act 451 of 1994, as amended.

VERIFICATION OF WORKER'S DISABILITY COMPENSATION ACT COMPLIANCE

- This verification must be completed and submitted within 21 days of contract award and prior to the issuance of the timber sale contract.
- In addition, if boxes 2B or 2C are checked, then Notice of Exclusion or Certificate of Insurance must be submitted within twenty-one (21) days of the contract award and prior to the issuance of the timber sale contract.
- All information must be typed or printed except for written signatures.

Please Check Appropriate Categories:

1. My business is organized as (you **must** check one of the boxes below):
 - A. Sole Proprietorship (individual)
 - B. Partnership
 - C. Corporation
2. You **must** check one of the boxes below:
 - A. I certify my business is a sole proprietorship and it has no employees but the sole proprietor. I am not subject to the Worker's Compensation Laws.
 - B. I certify my business has satisfied its obligation to the Worker's Compensation Act through the use of an approved Notice of Exclusion (BWC-337, Rev. 5/96). I will provide a copy of the Notice of Exclusion within 21 days of the contract award. (For questions or a copy of the BWC-337, please call the Worker's Compensation Bureau at 517-322-1195).
 - C. I certify my business has a Worker's Compensation Policy. I will provide an original Certificate of Insurance within twenty-one (21) days of the contract award.
3. If you have checked item 2(A) or 2(B), you **must** indicate the number of **both** full-time and part-time employees, other than yourself, including family members and active partners (if none, you must enter "0").

_____ Full-time Employees

_____ Part-time Employees

Name of Business		Federal ID (or) Social Security No.	
Address		Telephone ()	
City	State	ZIP	

I hereby certify that the above information is true and correct. I agree to notify the Michigan DNR of any changes that occur in factors affecting my coverage during any of my present and future operations.

Signature of Owner or Authorized Representative

Title

Date

Please complete the "SEALED BID" information on the next page