



**DEPARTMENT OF NATURAL RESOURCES
STATE OF MICHIGAN
TIMBER SALE PROSPECTUS #7117**

SCHEDULED SALE DATE AND TIME: 9:00 a.m. (local time) on October 20, 2022.

LOCATION: BARAGA MGMT UNIT, 427 US 41 NORTH, BARAGA, MI 49908.

PROSPECTUS NOTE: Contact Dan McNamee 906-235-5830 for questions regarding timber sales 12-007-22 Hazel Tango, 12-008-22 Ramshackle Shack or 12-014-22 Sleeping Hawk.

The bidder is advised to inspect the sale area and review the location, estimated volumes, operating costs and contract terms of proposed sales. Please be aware that some landowners may request 60 days or more notice for access across their land.

Notice is hereby given that bids will be received by the Unit Manager, CRYSTAL FALLS MANAGEMENT UNIT, for certain timber on the following described lands:

Hazel Tango (12-007-22) / T44N, R28W, SEC. 25, NWSW.

T44N, R28W, SEC. 26, SE.

T44N, R28W, SEC. 27, W1/2SE.

T44N, R28W, SEC. 34, N1/2NW,NWNE.

T44N, R28W, SEC. 35, S1/2NW,NE,N1/2SW,NESE.

Dickinson County, Advertised Price \$221,954.20, 175.4 Acres, Aspen, Spruce/Fir/Tamarack.

Ramshackle Shack (12-008-22) / T40N, R28W, SEC. 29, N1/2SE,SWSE.

T40N, R28W, SEC. 29, S1/2NW,S1/2NE,N1/2SW,SESW.

T40N, R28W, SEC. 33, NENW,NWNE.

Dickinson County, Advertised Price \$88,185.85, 136.6 Acres, Aspen, Hardwood.

SALE NOTE: A recreation site such as a trail, pathway, or campground is within the sale area or the vicinity. Certain restrictions/specifications may be applicable including time restrictions.

Sleeping Hawk (12-014-22) / T40N, R30W, SEC. 2 , N1/2NW,NWNE,S1/2NE,SWSW.

T40N, R30W, SEC. 3 , E1/2SE.

T41N, R29W, SEC. 31, SESW,SWSE.

Dickinson County, Advertised Price \$47,635.70, 90.8 Acres, Aspen, Hardwood.

SALE NOTE: All units of volume listed for this sale were estimated using the Inventory Manager computer program and the new Michigan taper model.

Access may be through private or other public land.

BID INSTRUCTIONS (VER. 07/02/2018):

1. Scheduled Bid Location, Date, and Time (2/11)

Bids must be received by the Unit Manager, BARAGA OFFICE, 427 US 41 North, Baraga, MI 49908, no later than 9:00 a.m. (local time) on October 20, 2022. For further information concerning this sale, contact Brad Carlson at 906-353-6651.

2. Bidder's Qualifications (5/16)

Purchaser shall obtain workers compensation insurance to cover claims under Michigan's Worker's Disability Compensation Act of 1969 or similar employee benefit act of any other state applicable to an employee. If all or part of a timber sale was prepared by a private contractor, the contractor and that contractor's company are not permitted to bid on the timber sale contract. Bids will not be accepted from individuals or companies appearing on the DNR/FRD No-Bid List. This list contains the names of purchasers who previously failed to execute a contract within 21-days or who have a history of poor performance.

3. Preparation of Sealed Bids (5/16)

Bid Forms may be completed online thru Michigan DNR Timber Sale Online Bidding (OLB) at www.michigan.gov/timberbidding or by completing the hardcopy Bid Form found in the Timber Sale Prospectus. Hardcopy Bid Forms shall be manually signed in ink. Registration in OLB is considered your 'signature' for all bids submitted thru that system. Bid prices must be entered for each species and product in the Bid Price column for all material subject to bidding and all fill-in blanks must be completed. If erasures or other changes appear on the hardcopy Bid Form, each erasure or change must be initialed by the person signing the bid.

4. Submission of Sealed Bids (5/16)

Bid forms may be obtained from the Unit Manager or thru OLB. Bids may be submitted hardcopy or thru OLB. All hardcopy bids must be submitted on the bid form and in an envelope clearly identified as described in this section. NOTE: Only one bid form per bid envelope. Sealed bids must be submitted to the Unit office designated in the prospectus and must be submitted at or prior to the time established in the prospectus. The envelope should show on the outside (a) the sale name or number and (b) the date and time of bid opening, as shown in the prospectus. Bids received after the time specified in the sale prospectus are late bids and will be rejected.

It is possible for a bidder to submit multiple bids on a single sale. For example, a bid may be submitted hardcopy and a bid may be submitted thru OLB. Or, two bidders from the same company could both submit bids on the same sale. If this were to happen, the State would accept all bids received and award the contract accordingly. All bidding and contractual requirements would apply to all bids received.

5. Public Opening of Sealed Bids (7/16)

If conditions permit, the sealed bids will be publicly opened and posted at the time and place set in the prospectus.

If a bidder, present at a bid opening, has submitted bids on more than one sale, that bidder may withdraw their unopened bid envelopes or announce the withdrawal of their online bid after being declared the successful bidder on one sale.

6. Award of Contract (1/11)

Award of the contract will be made to the Bidder whose bid, conforming to the prospectus, is most advantageous to the State of Michigan on the basis of total value at rates bid for the estimated quantities. The State reserves the right to reject any bid or waive any minor irregularity in bids received. A written award mailed (or otherwise furnished) to the successful Bidder shall be deemed to result in a binding contract without further action by either party.

7. Down Payment (1/11)

The Bidder to whom award is made must make a down payment within 21 days of the sale award. The amount of the down payment will be calculated as shown in the Bond and Payment Schedule of this prospectus. Only cash may be used to meet this requirement.

8. Performance Security (1/11)

As guarantee of faithful performance, a cash bond, certificate of deposit, surety bond or irrevocable letter of credit (LOC) is required within 21 days of the sale award. The amount of the performance security is shown in the Bond and

Payment Schedule of this prospectus. If an LOC or surety is used, the coverage must extend for at least 6 months beyond the contract expiration.

9. Timber Sale Contract (7/18)

Additional conditions and requirements common to all timber sales are listed on the timber sale contract (R4031) and are available on line at www.michigan.gov/timber. Contact the Unit Manager for additional information or a sample contract. Within 21 days of the date of the award letter, the bidder must sign the contract and provide the required down payment, performance security, and verification of worker's disability compensation. The down payment and performance security shall be in accordance with the provisions of the timber sale contract, in the sums stated in this prospectus. If these actions are not taken, then the Bidder, the Bidder's corporation, and the corporation's principals may not be permitted to bid on State timber sales for a period of 3 months after the first offense, 6 months after the second offense, and 1 year after the third offense. An offense will only be counted against the Bidder for 5 years. In addition, the Bidder certifies that if awarded this contract, the Bidder will complete the timber sale contract in accordance with its terms and any modifications thereof including requirements to purchase, cut, and remove the included timber by the expiration date.

Payment Unit values in the State Forest Timber Sale Contract are calculated based on the advertised value of the Payment Unit as a percentage of the total advertised value of the contract. The advertised value of each Payment Unit is given in the Description of Timber by Payment Unit table on the Timber Sale Information page. For example, if the value of Payment Unit 1 is advertised as \$1,500 and the total Timber Sale value is advertised as \$10,000, the contract price for Payment Unit 1 will be 15% of the total bid price ($\$1,500/\$10,000 * 100$).

10. Disclaimer of Estimates and Bidder's Warranty of Inspection (7/16)

Before submitting this bid, the Bidder is advised and cautioned to inspect the sale area, review the requirements of the sale contract, and take other steps as may be reasonably necessary to ascertain the location, estimated volumes, construction estimates, and operating costs of the proposed sale. Failure to do so will not relieve the Bidder from responsibility for completing the contract.

The Bidder warrants that this bid is submitted solely on the basis of the Bidder's examination and inspection of the quality and quantity of the timber offered for sale and the Bidder's opinion of the value thereof and the costs of recovery. No reliance should be placed on the State of Michigan's estimates of timber quality, quantity or costs of recovery. Bidder further acknowledges that the State of Michigan: (i) expressly disclaims any warranty of fitness of timber for any purpose; (ii) offers this timber as is without any warranty of quality (merchantability) or quantity and (iii) expressly disclaims any warranty as to the quantity or quality of timber sold.

11. Certification and Chain-of-Custody (10/14)

Unless otherwise indicated in the contract under section 7 – Other Conditions of the Sale Specific Conditions & Requirements, the area encompassed by this timber sale is certified to the standards of the Forest Stewardship Council (FSC) - Certificate #SCS-FM/COC-00090N and the Sustainable Forestry Initiative (SFI) - Certificate #NSF-SFIS-5Y031-SF5. Forest products from this sale may be delivered to the mill as "FSC 100% and / or SFI certified" as long as the contractor hauling the forest products is chain-of-custody (COC) certified or covered under a COC certificate from the destination mill. The purchaser is responsible for maintaining COC after leaving the sale area.

12. Good Neighbor Authority (GNA) Requirements (7/16)

If the name of this timber sales contains the acronym GNA, it is authorized by the Good Neighbor Authority (GNA) and covered by various agreements between the U.S. Forest Service and the State. The timber sale occurs on federal land and the following conditions apply:

GNA contracts on US Forest Service land will not be awarded to purchasers on the Federal list of excluded parties. The System for Award Management (SAM) will be checked for active excluded parties prior to award of contract. In addition, the Bidder to whom award is made must complete an Assurance Regarding Felony Conviction or Tax Delinquent Status for Corporate Applicants (AD-3031).

13. Good Neighbor Authority (GNA) Requirements, con't (9/16)

Bidder certifies, by signing this bid form, that to the best of Bidder's knowledge that the following representations are accurate and complete.

- a. That the Bidder and its principals are not presently debarred, suspended, proposed for debarment, declared ineligible, or voluntary excluded from timber sales (covered transactions) by any Federal department or agency.
- b. That the Bidder and its principals have not within a 3-year period preceding this bid been convicted of or had a civil judgment rendered against them for commission of fraud or a criminal offense in connection with obtaining , attempting to obtain, or performing a public (Federal, State, or local) transaction or contract under a public transaction; violation of Federal or State antitrust statutes or commission of embezzlement, theft, forgery, bribery, falsification or destruction of records, making false statements, or receiving stolen property.
- c. That the Bidder and its principals are not presently indicted for or otherwise criminally or civilly charged by a governmental entity (Federal, State, or local) with commission of any of the offenses enumerated in paragraph b of this certification.
- d. That the Bidder and its principals have not within a 3-year period preceding this bid had one or more public transactions (Federal, State, or local) terminated for breach or default of a timber or forest product contract.

Bidders that cannot certify this requirement, in whole or in part, shall submit an explanation with their bid.

DAN EICHINGER
Director

TIMBER SALE INFORMATION

Hazel Tango (12-007-22)

T44N, R28W, SEC. 25; T44N, R28W, SEC. 26; T44N, R28W, SEC. 27; T44N, R28W, SEC. 34; T44N, R28W, SEC. 35.
Dickinson County (Advertised Price \$221,954.20)

A timber sale contract for this lump sum, sealed bid timber sale will be awarded to the responsible bidder offering the highest sealed bid price. All units of volume listed below were estimated using the Inventory Manager computer program and the new Michigan taper model. Bids must be at or above the following advertised price for each product and species:

<u>PRODUCTS & SPECIES</u>	<u>ESTIMATED UNITS*</u>	<u>ADVERTISED PRICE</u>
Sawtimber		
Sugar Maple	44.2 MBF	\$ 167.00 / MBF
Pulpwood		
Balsam Fir	1,230 Cords	\$ 4.40 / Cord
Balsam Poplar	306 Cords	\$ 20.40 / Cord
Basswood	134 Cords	\$ 4.50 / Cord
Mixed Hardwood	1,216 Cords	\$ 10.60 / Cord
Mixed Spruce	272 Cords	\$ 6.35 / Cord
Quaking Aspen	9,190 Cords	\$ 20.40 / Cord
Tamarack	106 Cords	\$ 2.10 / Cord

* The total volume is statistically estimated within plus (+) or minus (-) 9.87 percent. There are an estimated 6,039 cords on this timber sale, plus or minus 596 cords at the 95% confidence level. The estimated units are final and not subject to adjustment. Prospective bidders are urged to examine this timber and to make their own estimates of quantity and quality.

BOND AND PAYMENT SCHEDULE:

1. A bond in the amount of \$17,756.00 to insure faithful performance of the conditions of the contract will be deposited by the successful bidder within 21 days of the sale award.
2. Cutting in any sale or unit without the required advance payment would be considered a trespass.
3. Total payment must be paid in advance or according to the following schedule :
 - (a) Ten percent (10%) of the sale value must be paid within 21 days of the sale award.
 - (b) The 10% down payment will be credited towards the first unit cut.
 - (c) Payment for each of the following units must be made before cutting begins in that unit:

PAYMENT UNIT NUMBER	PERCENT OF TOTAL SALE VALUE
01	17.2%
02	2.4%
03	35.6%
04	10.9%
05	18.1%
06	15.8%
4. If no cutting takes place, the 10% down payment will not be refunded.
5. Operations on the contract issued will terminate on 06/30/2026.

SALE STATISTICS

Volumes were calculated in cubic feet using the Michigan taper model. Cubic foot volume includes all wood inside bark for the product indicated. For display purposes, cubic feet were converted to cords and MBF using a simple conversion factor, e.g. 79 cubic feet per cord and 185 cubic feet per MBF. The cubic foot volumes are precise; the cords and MBF volumes are not. Cubic foot volume cannot be directly converted to cords or boards with precision.

SALE VOLUMES

The total estimated sale volume may not equal the sum of the species/products due to the nature of statistical calculations associated with double sampling methodology.

VOLUME			STATISTICAL RANGE IN CORDS	
TOTAL CUBIC FEET	TOTAL CORDS	PERCENT ERROR	MINIMUM	MAXIMUM
477,104	6,039	9.87%	5,443	6,636

VDU VOLUMES

A VDU is a Volume Determination Unit. Volumes and their associated statistics are calculated at the VDU level and summarized to the sale level. There is often a one to one relationship between a VDU and a Payment Unit, but not always, depending on the cruise design. Refer to the VDU TO PAYMENT UNIT table.

VDU	VOLUME		PERCENT ERROR	RANGE IN CORDS	
	TOTAL CUBIC FEET	TOTAL CORDS		MINIMUM	MAXIMUM
7	84,263	1,067	25.68%	793	1,341
35	158,718	2,009	24.01%	1,527	2,492
44	57,889	733	18.73%	595	870
52	16,880	214	0.00%	214	214
55	159,353	2,017	14.97%	1,715	2,319
TOTAL:	477,104	6,039		4,844	7,235

VDU TO PAYMENT UNIT

When a VDU is associated with more than one Payment Unit (PU), the VDU volumes are assigned to the PU based on acres of the VDU within the PU.

VDU	VDU ACRES	PU	PU ACRES
7	29.5	1	29.5
35	60.3	5	32.2
		6	28.1
44	19.9	4	19.9
52	18.1	2	18.1
55	47.6	3	47.6
TOTAL:	175.4		175.4

DESCRIPTION OF TIMBER BY PAYMENT UNIT (PU)

PU	MARKET GROUP	PRODUCT	QUANTITY	UNIT	ACRES	ADVERTISE PRICE	
1	Balsam Fir	Pulpwood	336	Cords	29.5	\$38,106.50	
	Balsam Poplar		40	Cords			
	Basswood		16	Cords			
	<i>Basswood</i>		16	<i>Cords</i>			
	Mixed Hardwood		184	Cords			
	<i>American Elm</i>		58	<i>Cords</i>			
	<i>Black Cherry</i>		40	<i>Cords</i>			
	<i>Sugar Maple</i>		86	<i>Cords</i>			
	Mixed Spruce		14	Cords			
	<i>White Spruce</i>		14	<i>Cords</i>			
	Quaking Aspen		1,652	Cords			
2	Balsam Poplar	Pulpwood	112	Cords	18.1	\$5,414.50	
	Mixed Spruce		98	Cords			
	<i>Black Spruce</i>		98	<i>Cords</i>			
	Quaking Aspen		112	Cords			
	Tamarack		106	Cords			
3	Sugar Maple	Sawtimber	32.2	MBF	47.6	\$79,113.60	
	Balsam Fir	Pulpwood	214	Cords			
	Mixed Hardwood		596	Cords			
	<i>Black Cherry</i>		108	<i>Cords</i>			
	<i>Red Maple</i>		172	<i>Cords</i>			
	<i>Sugar Maple</i>		316	<i>Cords</i>			
	Mixed Spruce		60	Cords			
	<i>White Spruce</i>		60	<i>Cords</i>			
	Quaking Aspen		3,240	Cords			
4	Sugar Maple	Sawtimber	4.4	MBF	19.9	\$24,147.40	
	Balsam Fir	Pulpwood	80	Cords			
	Balsam Poplar		34	Cords			
	Basswood		118	Cords			
	<i>Basswood</i>		<i>Sawtimber</i>	3.8			<i>MBF</i>
	<i>Basswood</i>		<i>Pulpwood</i>	110			<i>Cords</i>
	Mixed Hardwood		224	Cords			
	<i>Sugar Maple</i>		162	<i>Cords</i>			
	<i>White Ash</i>		62	<i>Cords</i>			
	Quaking Aspen		954	Cords			
5	Sugar Maple		Sawtimber	4.1	MBF	32.2	\$40,143.05
	Balsam Fir	Pulpwood	320	Cords			
	Balsam Poplar		64	Cords			
	Mixed Hardwood		113	Cords			
	<i>Black Cherry</i>		63	<i>Cords</i>			
	<i>Red Maple</i>		36	<i>Cords</i>			
	<i>Sugar Maple</i>		14	<i>Cords</i>			
	Mixed Spruce		53	Cords			
	<i>White Spruce</i>		53	<i>Cords</i>			
	Quaking Aspen		1,726	Cords			
6	Sugar Maple		Sawtimber	3.5	MBF	28.1	\$35,029.15
	Balsam Fir	Pulpwood	280	Cords			
	Balsam Poplar		56	Cords			
	Mixed Hardwood		99	Cords			
	<i>Black Cherry</i>		55	<i>Cords</i>			
	<i>Red Maple</i>		32	<i>Cords</i>			
	<i>Sugar Maple</i>		12	<i>Cords</i>			
	Mixed Spruce		47	Cords			
	<i>White Spruce</i>		47	<i>Cords</i>			
	Quaking Aspen		1,506	Cords			

TOTAL:	44.2	MBF
--------	------	-----

TOTAL:	12,454	Cords
--------	--------	-------

Sale Specific Conditions & Requirements

Sale Name: Hazel Tango

Sale Number: 12-007-22 Seq#: 1

1 - Sale Area

1.2 - Boundaries

1.2.1 - Painted boundaries (9/19)

The sale boundary and Payment Unit boundaries are marked and identified by blue, red and yellow paint. Exterior sale boundary lines against private property are marked with blue paint. Exterior sale boundary lines against state are marked with red paint. Interior Payment Unit boundaries are marked with yellow paint. The painted boundary line trees are not Included Timber and are to be protected unless marked with orange paint. Yellow painted trees designating an interior Payment Unit boundary are only to be cut when all surrounding Payment Units have been paid.

2 - Timber Specifications

2.1 - Included Timber

2.1.1 - Clearcut unit(s) with unmerchantable trees (6/14)

Within Payment Unit(s) 1-6, cut all trees that are two (2) inches or more at DBH except red pine, white pine, cedar, and oak (if found).

In addition, leave scattered live clumps of submerchantable spruce & fir, where available.

3 - Payments

3.3 - Pre-measured Sales

3.3.4 - Dividing payment units (7/14)

Payment Unit(s) 3 may be divided at the request of the Purchaser and upon approval of the Unit Manager. Dividing Payment Units is a contract modification which requires a Timber Sale Contract Amendment. There will be only one division per Payment Unit.

4 - Transportation

4.1 - Construction

4.1.4 - Timber removed for construction (12/09)

Trees cut or damaged in the process of pre-approved road, landing or skid trail construction will be decked in an area separate from other Designated Timber and not removed until measured by the sale administrator. Payment will be made at the specified Purchase Unit Price.

4.2 - Maintenance

4.2.1 - Hauling restriction (12/08)

Hauling may be restricted on forest roads by the Unit Manager or his/her representative. The restriction may occur during spring breakup or prolonged wet weather conditions.

4.2.4 - Grading (10/16)

For completion of the sale, state forest roads must be graded. In general, this will require a road grader or bull dozer to shape up the roads after forest products have been hauled off site. This includes cleaning of drainage areas, grading, crowning and filling with gravel, if necessary. The grading equipment to be used must be approved by the Unit Manager or his/her representative.

4.3 - Public Right-of-Way

4.3.2 - County R-O-W (12/06)

The county must be contacted prior to decking along the county road R-O-W. This applies to the Aimone Road. Dickinson County Road Commission may require a permit.

4.4 - Access

4.4.2 - Alternate route on private property (2/04)

It is the Purchaser's responsibility to obtain access across private land for any routes other than the route shown on the Timber Sale Map.

5 - Operations

5.2 - Conduct of Operations

5.2.4 - Dead and Down Creation

5.2.4.4 - Dead and down creation, grouse (6/18)

To encourage grouse and other wildlife, in Payment Unit(s) 1-6 leave two piles of loosely piled brush/tops, at a minimum of 10 feet long x 4 feet tall, for every unit. These trees will be evenly scattered throughout the unit, preferably at least two chains from any roads, two-tracks, or trails open to vehicles.

5.2.22 - Operating Caution

5.2.22.1 - Operating caution (6/11)

It is recommended, but not required, that within Payment Unit(s) 2, cutting and skidding occur during dry summer or frozen winter conditions. The reason for the recommendation is because of wet soils, particularly on the south side of Aimone Road.

5.2.32 - Decking/landing restoration (9/13)

All decking and landing areas must have the surface area restored to a condition equal to or better than before. This is to ensure the proper regeneration of the stand. Wood debris, chips and "cookies" from trimmings must be removed or scattered away from landing and loading areas and may not be windrowed on the edge.

5.4 - Soil Protection

5.4.1 - Rutting restriction, general (7/16)

Operations are to cease immediately if equipment and weather conditions result in rutting of roads and/or skid trails which is 12 inches or greater in depth and 50 feet in length. The Unit Manager or his/her representative may restrict hauling and/or skidding if ruts exceed the specified depth. With the Unit Manager or his/her representative's approval, the Purchaser may return to the area when the risk of rutting has decreased.

6 - Safety and Fire Prevention

6.2 - Signing

6.2.1 - Road posting (10/20)

The Purchaser is responsible for posting and maintaining caution signs on Aimone Road prior to beginning operations. The road must be posted at appropriate distances from the sale area to warn of logging activity and truck traffic. Signs must be removed when harvest operations are suspended or completed. The Purchaser will provide these signs.



TIMBER SALE MAP

This information provided by authority of Part 525, 1994 PA 451, as amended.

Sale Number	Year
007	2022

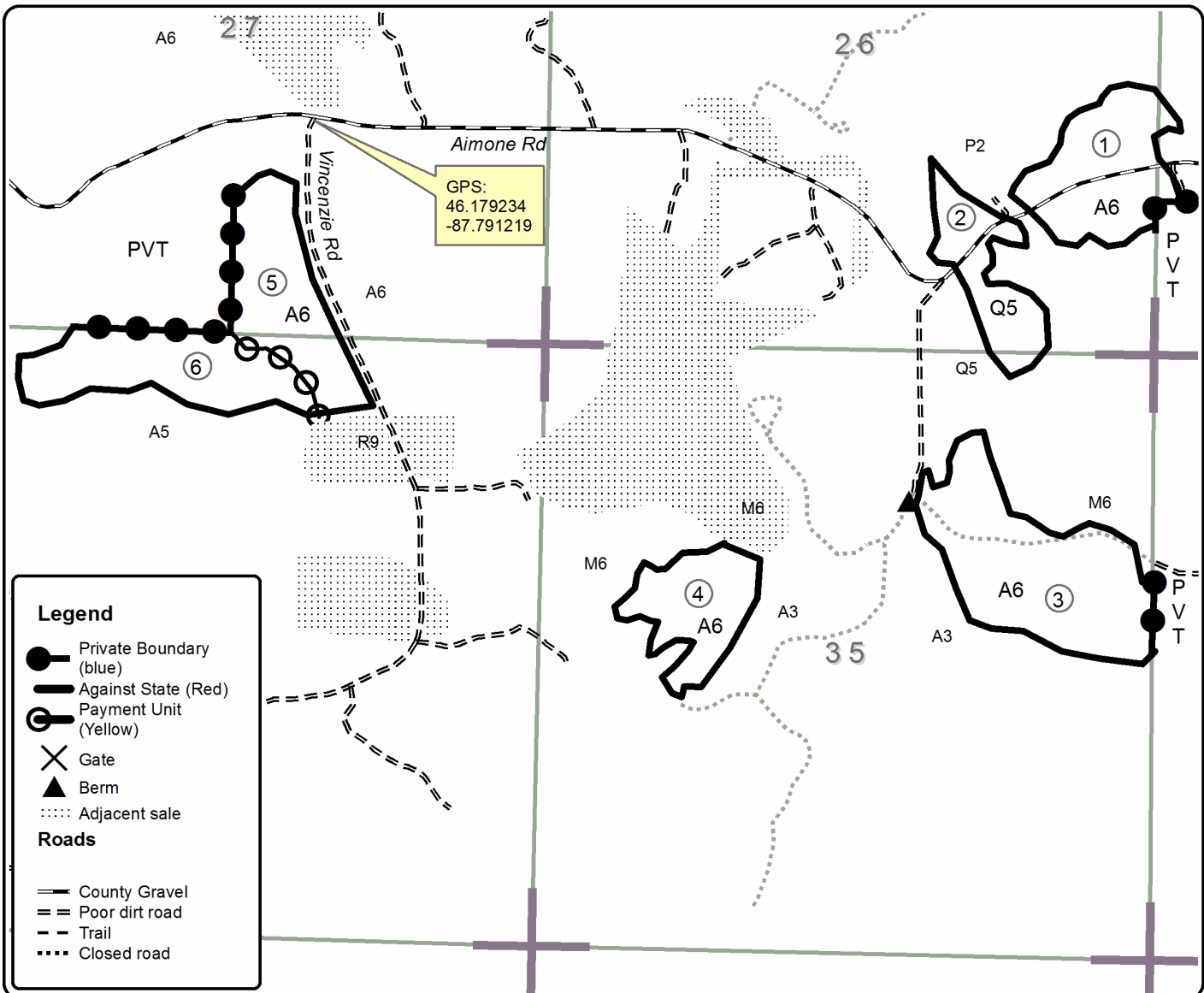
Forest Management Unit Crystal Falls Management Unit	County Dickinson Co.	Mapped By Debbie Goupell	Date 8/3/22	Page 1	of 1
Township 44N	Range 28W	Section(s) and Subdivision(s) S25: NWSW S26: SE1/4 S27: W1/2SE S34:N1/2NW,NWNE S35:S1/2NW,N1/2SW, NE1/4	Scale 1:15,840		

Cover Type				Density	
A = Aspen	H = Hemlock	N = Marsh	U = Upland Brush	0 = Non Stocked	5 = Pole Timber Medium
B = Paper Birch	J = Jack Pine	O = Oak	UM = Upland Mixed	1 = Seedling Sapling Poor	6 = Pole Timber Well
C = Cedar	L = Lowland Brush	P = Lowland Poplar	V = Bog or Marsh	2 = Seedling Sapling Medium	7 = Saw Timber Poor
D = Tread Bog	LM = Lowland Mixed	Q = Mixed Swamp Conifer	W = White Pine	3 = Seedling Sapling Well	8 = Saw Timber Medium
E = Swamp Hdwoods	M = Mpl, Bch, Brch	R = Red Pine	X = Non Stocked	4 = Pole Timber Poor	9 = Saw Timber Well
F = Spruce Fir	MC = Mixed Conifer	S = Black Spruce	Z = Water		
G = Grass	MD = Mixed Deciduous	T = Tamarack			

Unit	Acres	Unit	Acres
1	29.5	4	19.9
2	18.1	5	32.2
3	47.6	6	28.1

Hazel Tango

Compartment 34
175.4 Acres



TIMBER SALE INFORMATION

Ramshackle Shack (12-008-22)
T40N, R28W, SEC. 29; T40N, R28W, SEC. 33.
Dickinson County (Advertised Price \$88,185.85)

SALE NOTE: A recreation site such as a trail, pathway, or campground is within the sale area or the vicinity. Certain restrictions/specifications may be applicable including time restrictions.

A timber sale contract for this lump sum, sealed bid timber sale will be awarded to the responsible bidder offering the highest sealed bid price. All units of volume listed below were estimated using the Inventory Manager computer program and the new Michigan taper model. Bids must be at or above the following advertised price for each product and species:

<u>PRODUCTS & SPECIES</u>	<u>ESTIMATED UNITS*</u>	<u>ADVERTISED PRICE</u>
Sawtimber		
Paper Birch	24.4 MBF	\$ 84.00 / MBF
Red Maple	45.2 MBF	\$ 91.00 / MBF
Sugar Maple	2.4 MBF	\$ 167.00 / MBF
Pulpwood		
Balsam Fir	404 Cords	\$ 4.40 / Cord
Black Spruce	19 Cords	\$ 6.35 / Cord
Mixed Hardwood	512 Cords	\$ 10.60 / Cord
Quaking Aspen	3,642 Cords	\$ 20.40 / Cord

* The total volume is statistically estimated within plus (+) or minus (-) 10.79 percent. There are an estimated 4,610 cords on this timber sale, plus or minus 498 cords at the 95% confidence level. The estimated units are final and not subject to adjustment. Prospective bidders are urged to examine this timber and to make their own estimates of quantity and quality.

BOND AND PAYMENT SCHEDULE:

1. A bond in the amount of \$8,819.00 to insure faithful performance of the conditions of the contract will be deposited by the successful bidder within 21 days of the sale award.
2. Cutting in any sale or unit without the required advance payment would be considered a trespass.
3. Total payment must be paid in advance or according to the following schedule :
 - (a) Ten percent (10%) of the sale value must be paid within 21 days of the sale award.
 - (b) The 10% down payment will be credited towards the first unit cut.
 - (c) Payment for each of the following units must be made before cutting begins in that unit:

PAYMENT UNIT NUMBER	PERCENT OF TOTAL SALE VALUE
01	29.9%
02	34.4%
03	20.6%
04	15.1%
4. If no cutting takes place, the 10% down payment will not be refunded.
5. Operations on the contract issued will terminate on 06/30/2026.

SALE STATISTICS

Volumes were calculated in cubic feet using the Michigan taper model. Cubic foot volume includes all wood inside bark for the product indicated. For display purposes, cubic feet were converted to cords and MBF using a simple conversion factor, e.g. 79 cubic feet per cord and 185 cubic feet per MBF. The cubic foot volumes are precise; the cords and MBF volumes are not. Cubic foot volume cannot be directly converted to cords or boards with precision.

SALE VOLUMES

The total estimated sale volume may not equal the sum of the species/products due to the nature of statistical calculations associated with double sampling methodology.

VOLUME		STATISTICAL RANGE IN CORDS		
TOTAL CUBIC FEET	TOTAL CORDS	PERCENT ERROR	MINIMUM	MAXIMUM
364,220	4,610	10.79%	4,113	5,108

VDU VOLUMES

A VDU is a Volume Determination Unit. Volumes and their associated statistics are calculated at the VDU level and summarized to the sale level. There is often a one to one relationship between a VDU and a Payment Unit, but not always, depending on the cruise design. Refer to the VDU TO PAYMENT UNIT table.

VDU	VOLUME		PERCENT ERROR	RANGE IN CORDS	
	TOTAL CUBIC FEET	TOTAL CORDS		MINIMUM	MAXIMUM
21	54,207	686	23.97%	522	851
39	193,589	2,450	15.61%	2,068	2,833
44	116,424	1,474	15.64%	1,243	1,704
TOTAL:	364,220	4,610		3,833	5,388

VDU TO PAYMENT UNIT

When a VDU is associated with more than one Payment Unit (PU), the VDU volumes are assigned to the PU based on acres of the VDU within the PU.

VDU	VDU ACRES	PU	PU ACRES
21	29.7	4	29.7
39	61.3	2	38.3
		3	23.0
44	45.6	1	45.6
TOTAL:	136.6		136.6

DESCRIPTION OF TIMBER BY PAYMENT UNIT (PU)

PU	MARKET GROUP	PRODUCT	QUANTITY	UNIT	ACRES	ADVERTISE PRICE
1	Red Maple	Sawtimber	2.8	MBF	45.6	\$26,344.00
	Sugar Maple		2.4	MBF		
	Balsam Fir	Pulpwood	215	Cords		
	Mixed Hardwood		146	Cords		
	<i>Balsam Poplar</i>		100	<i>Cords</i>		
	<i>Red Maple</i>		33	<i>Cords</i>		
	<i>Sugar Maple</i>		13	<i>Cords</i>		
	Quaking Aspen		1,137	Cords		
2	Red Maple	Sawtimber	14.4	MBF	38.3	\$30,311.60
	Balsam Fir	Pulpwood	118	Cords		
	Mixed Hardwood		60	Cords		
	<i>Balsam Poplar</i>		16	<i>Cords</i>		
	<i>Paper Birch</i>		16	<i>Cords</i>		
	<i>Red Maple</i>		28	<i>Cords</i>		
	Quaking Aspen		1,365	Cords		
	3	Red Maple	Sawtimber	8.6		
Balsam Fir		Pulpwood	71	Cords		
Mixed Hardwood			35	Cords		
<i>Balsam Poplar</i>			9	<i>Cords</i>		
<i>Paper Birch</i>			9	<i>Cords</i>		
<i>Red Maple</i>			17	<i>Cords</i>		
Quaking Aspen			820	Cords		
4		Paper Birch	Sawtimber	24.4	MBF	29.7
	Red Maple		19.4	MBF		
	Black Spruce	Pulpwood	19	Cords		
	Mixed Hardwood		271	Cords		
	<i>Balsam Poplar</i>		15	<i>Cords</i>		
	<i>Basswood</i>		4	<i>Cords</i>		
	<i>Black Ash</i>		13	<i>Cords</i>		
	<i>Paper Birch</i>		99	<i>Cords</i>		
	<i>Red Maple</i>		140	<i>Cords</i>		
	Quaking Aspen		320	Cords		
	TOTAL:			72.0	MBF	
TOTAL:			4,577	Cords		

Sale Specific Conditions & Requirements

Sale Name: Ramshackle Shack

Sale Number: 12-008-22 Seq#: 1

1 - Sale Area

1.2 - Boundaries

1.2.1 - Painted boundaries (9/19)

The sale boundary and Payment Unit boundaries are marked and identified by blue, and red paint. Exterior sale boundary lines against private property are marked with blue paint. Exterior sale boundary lines against state are marked with red paint. Retention patches are marked with red paint; no harvesting activities may occur within these areas. The painted boundary line trees are not Included Timber and are to be protected unless marked with orange paint.

2 - Timber Specifications

2.1 - Included Timber

2.1.1 - Clearcut unit(s) with unmerchantable trees (6/14)

Within Payment Unit(s) 1, 2, 3, and 4, cut all species trees that are two (2) inches or more at DBH except Cedar, Pine, Hemlock, Oak and Cherry. In addition in Units 1, 2 and 3 leave sub-merchantable Conifer patches 10-20 foot diameter where possible. In Unit 4 do not cut 1 stick Spruce/Fir.

3 - Payments

3.3 - Pre-measured Sales

3.3.4 - Dividing payment units (7/14)

Payment Unit(s) 1 and 2 may be divided at the request of the Purchaser and upon approval of the Unit Manager. Dividing Payment Units is a contract modification which requires a Timber Sale Contract Amendment. There will be only one division per Payment Unit.

4 - Transportation

4.1 - Construction

4.1.7 - Road closure (10/11)

All new roads built into the sale must be blocked to vehicle traffic upon completion of the sale. Overgrown roads that are reopened shall be considered new roads. In general, this will require constructing a four (4') foot high berm of stumps and logs covered with earth. These roads must be rendered impassable to cars and trucks. Temporary berms may be required if no sale activity occurs for 30 or more consecutive days. Contact the sale administrator for specific details of design and placement.

4.2 - Maintenance

4.2.1 - Hauling restriction (12/08)

Hauling may be restricted on forest roads by the Unit Manager or his/her representative. The restriction may occur during spring breakup or during wet weather conditions. This is to protect roads from damage during these times.

5 - Operations

5.2 - Conduct of Operations

5.2.1 - Slash

5.2.1.13 - Dispose of slash as directed (12/05)

Slash is to be disposed of as directed by the Sale Administrator.

5.2.32 - Decking/landing restoration (9/13)

All decking and landing areas must have the surface area restored to a condition equal to or better than before. This is to ensure the proper regeneration of the stand. Wood debris, chips and "cookies" from trimmings must be removed or scattered away from landing and loading areas and may not be windrowed on the edge.

5.2.38 - No decking against live trees (2/04)

Cut products may not be decked against unmarked or designated leave trees.

5.2.39 - ORV trail/route protection (4/18)

The ORV trail or route and is shown on the Timber Sale Map. Do not cut trees or damage posts with yellow ORV markers. All stumps within 5 feet of the trail must be cut flush with the ground. Maintain a 20 foot wide slash, debris, and rut free zone daily using the ORV trail or route as the centerline.

5.2.41 - Snowmobile trail protection (9/11)

The Cassidy Creek Road is also a snowmobile trail and is shown on the Timber Sale Map. Do not cut or damage posts with orange trail markers or traffic control signs. If the trail is used, it must be maintained and restored to a condition equal to or better than before the sale. The road maintenance/restoration must be done prior to December 1. If the trail is used for hauling, it must be graded to the satisfaction of the Unit Manager or his/her representative prior to December 1st. If the trail road is to be used for hauling during the snowmobile season, then a snow covered base 4 inches minimum must be left on the trail.

5.4 - Soil Protection

5.4.1 - Rutting restriction, general (7/16)

Operations are to cease immediately if equipment and weather conditions result in rutting of roads and/or skid trails which is 12 inches or greater in depth and 50 feet in length. The Unit Manager or his/her representative may restrict hauling and/or skidding if ruts exceed the specified depth. With the Unit Manager or his/her representative's approval, the Purchaser may return to the area when the risk of rutting has decreased.

6 - Safety and Fire Prevention

6.2 - Signing

6.2.1 - Road posting (10/20)

The Purchaser is responsible for posting and maintaining caution signs on Cassidy Creek prior to beginning operations. The road must be posted at appropriate distances from the sale area to warn of logging activity and truck traffic. Signs must be removed when harvest operations are suspended or completed. The Purchaser will provide these signs.

6.2.2 - Snowmobile trail posting (10/20)

The Purchaser is responsible for posting and maintaining caution signs on Cassidy Creek Road prior to beginning operations during the snowmobile season (approximately December 1 to March 31). The trail must be posted at appropriate distances from the sale area to warn of logging activity and truck traffic. Signs must be removed when harvest operations are suspended or completed. The Purchaser will provide these signs.

6.2.3 - Recreational trail posting (10/20)

The Purchaser is responsible for posting and maintaining caution signs on ORV trail prior to beginning operations. The trail must be posted at appropriate distances from the sale area to warn of logging activity and truck traffic at both ends of the trail. Signs must be removed when harvest operations are suspended or completed. The Purchaser will provide these signs.



Sale Number	Year
12-008-22	2022

TIMBER SALE MAP

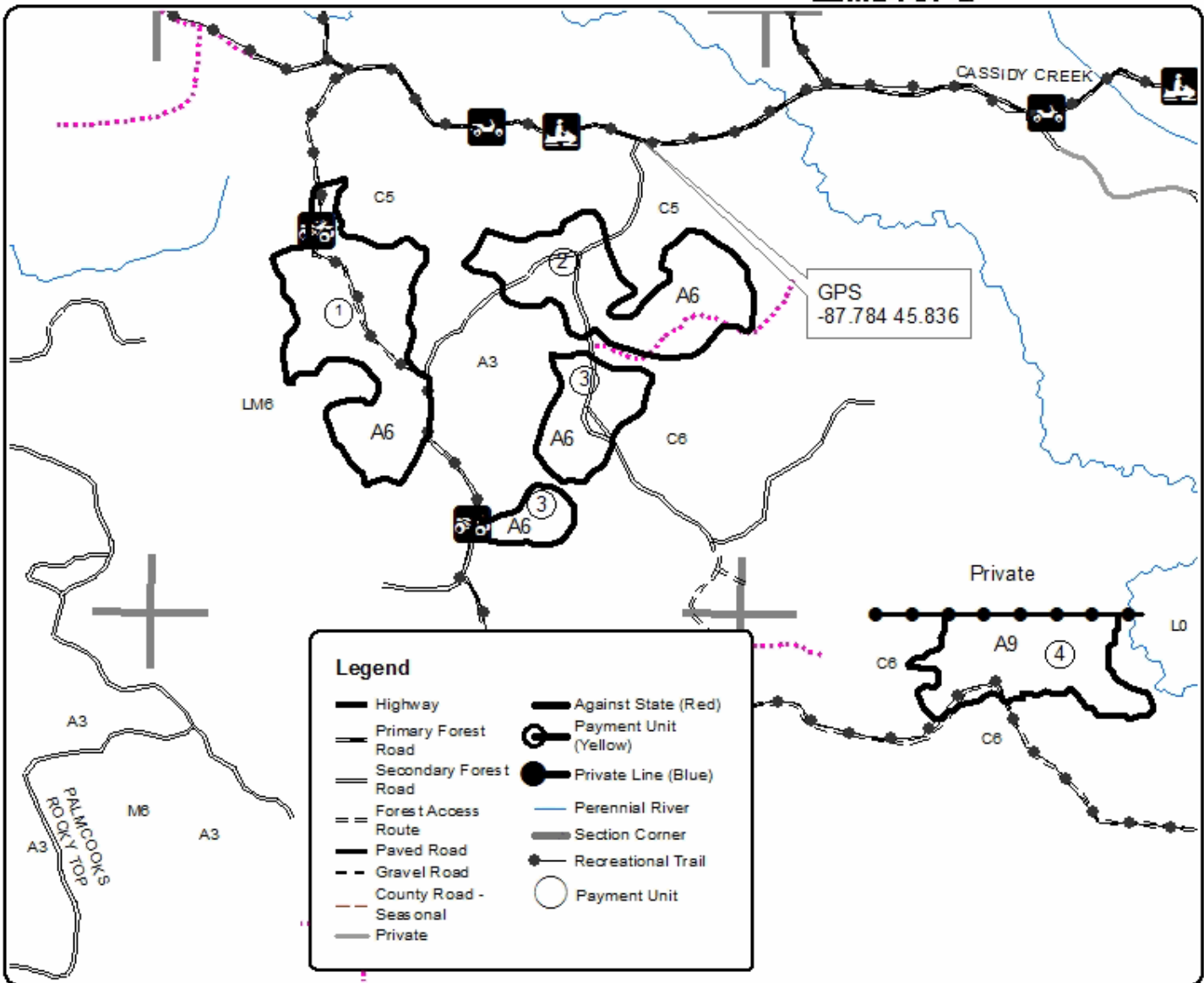
This information provided by authority of Part 525, 1994 PA 451, as amended.

Forest Management Unit Crystal Falls Management Unit	County Dickinson Co.	Mapped By Dickie Goupell	Date 3-9-2022	Page 1	of 1
Township 40N	Range 28W	Section(s) and Subdivision(s) Sec 29 N1/2SE, SW SE, S1/2 NW, S1/2NE, N1/2 SW, SESW, 33 NENW, NWNE	Scale 1:15,840		

Cover Type				Density	
A = Aspen	H = Hemlock	N = Marsh	U = Upland Brush	0 = Non Stocked	5 = Pole Timber Medium
B = Paper Birch	J = Jack Pine	O = Oak	UM = Upland Mixed	1 = Seedling Sapling Poor	6 = Pole Timber Well
C = Cedar	L = Lowland Brush	P = Lowland Poplar	V = Bog or Marsh	2 = Seedling Sapling Medium	7 = Saw Timber Poor
D = Tread Bog	LM = Lowland Mixed	Q = Mixed Swamp Conifer	W = White Pine	3 = Seedling Sapling Well	8 = Saw Timber Medium
E = Swamp Hdwoods	M = Mpl, Bch, Birch	R = Red Pine	X = Non Stocked	4 = Pole Timber Poor	9 = Saw Timber Well
F = Spruce Fir	MC = Mixed Conifer	S = Black Spruce	Z = Water		
G = Grass	MD = Mixed Deciduous	T = Tamarack			

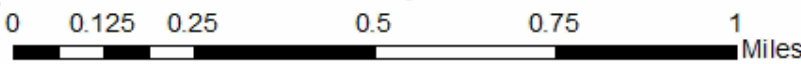
PU	Acres
1	45.6
2	38.3
3	23.0
4	29.7

Ramshackle Shack Compartment 109 Acres 136.6



Legend

Highway	Against State (Red)
Primary Forest Road	Payment Unit (Yellow)
Secondary Forest Road	Private Line (Blue)
Forest Access Route	Perennial River
Paved Road	Section Corner
Gravel Road	Recreational Trail
County Road - Seasonal	Payment Unit
Private	



TIMBER SALE INFORMATION

Sleeping Hawk (12-014-22)

T40N, R30W, SEC. 2; T40N, R30W, SEC. 3; T41N, R29W, SEC. 31.
Dickinson County (Advertised Price \$47,635.70)

SALE NOTE: All units of volume listed for this sale were estimated using the Inventory Manager computer program and the new Michigan taper model.

Access may be through private or other public land.

A timber sale contract for this lump sum, sealed bid timber sale will be awarded to the responsible bidder offering the highest sealed bid price. All units of volume listed below were estimated using the Inventory Manager computer program and the new Michigan taper model. Bids must be at or above the following advertised price for each product and species:

<u>PRODUCTS & SPECIES</u>	<u>ESTIMATED UNITS*</u>	<u>ADVERTISED PRICE</u>
Sawtimber		
Basswood	2.7 MBF	\$ 36.00 / MBF
Sugar Maple	11.8 MBF	\$ 167.00 / MBF
Pulpwood		
Balsam Fir	133 Cords	\$ 4.40 / Cord
Mixed Aspen	1,951 Cords	\$ 20.40 / Cord
Mixed Hardwood	451 Cords	\$ 10.60 / Cord
Mixed Spruce	54 Cords	\$ 6.35 / Cord
Tamarack	28 Cords	\$ 2.10 / Cord

* The total volume is statistically estimated within plus (+) or minus (-) 15.37 percent. There are an estimated 2,608 cords on this timber sale, plus or minus 401 cords at the 95% confidence level. The estimated units are final and not subject to adjustment. Prospective bidders are urged to examine this timber and to make their own estimates of quantity and quality.

BOND AND PAYMENT SCHEDULE:

1. A bond in the amount of \$4,764.00 to insure faithful performance of the conditions of the contract will be deposited by the successful bidder within 21 days of the sale award.
2. Cutting in any sale or unit without the required advance payment would be considered a trespass.
3. Total payment must be paid in advance or according to the following schedule :
 - (a) Ten percent (10%) of the sale value must be paid within 21 days of the sale award.
 - (b) The 10% down payment will be credited towards the first unit cut.
 - (c) Payment for each of the following units must be made before cutting begins in that unit:

PAYMENT UNIT NUMBER	PERCENT OF TOTAL SALE VALUE
01	49.8%
02	43.3%
03	6.9%
4. If no cutting takes place, the 10% down payment will not be refunded.
5. Operations on the contract issued will terminate on 06/30/2026.

SALE STATISTICS

Volumes were calculated in cubic feet using the Michigan taper model. Cubic foot volume includes all wood inside bark for the product indicated. For display purposes, cubic feet were converted to cords and MBF using a simple conversion factor, e.g. 79 cubic feet per cord and 185 cubic feet per MBF. The cubic foot volumes are precise; the cords and MBF volumes are not. Cubic foot volume cannot be directly converted to cords or boards with precision.

SALE VOLUMES

The total estimated sale volume may not equal the sum of the species/products due to the nature of statistical calculations associated with double sampling methodology.

VOLUME		STATISTICAL RANGE IN CORDS		
TOTAL CUBIC FEET	TOTAL CORDS	PERCENT ERROR	MINIMUM	MAXIMUM
206,011	2,608	15.37%	2,207	3,009

VDU VOLUMES

A VDU is a Volume Determination Unit. Volumes and their associated statistics are calculated at the VDU level and summarized to the sale level. There is often a one to one relationship between a VDU and a Payment Unit, but not always, depending on the cruise design. Refer to the VDU TO PAYMENT UNIT table.

VDU	VOLUME		PERCENT ERROR	RANGE IN CORDS	
	TOTAL CUBIC FEET	TOTAL CORDS		MINIMUM	MAXIMUM
2	88,588	1,121	22.45%	870	1,373
13	98,383	1,245	25.59%	927	1,564
83	19,040	241	37.06%	152	330
TOTAL:	206,011	2,608		1,948	3,268

VDU TO PAYMENT UNIT

When a VDU is associated with more than one Payment Unit (PU), the VDU volumes are assigned to the PU based on acres of the VDU within the PU.

VDU	VDU ACRES	PU	PU ACRES
2	42.5	1	42.5
13	36.9	2	36.9
83	11.4	3	11.4
TOTAL:	90.8		90.8

DESCRIPTION OF TIMBER BY PAYMENT UNIT (PU)

PU	MARKET GROUP	PRODUCT	QUANTITY	UNIT	ACRES	ADVERTISE PRICE
1	Basswood	Sawtimber	2.7	MBF	42.5	\$23,727.55
	Sugar Maple		11.8	MBF		
	Mixed Aspen	Pulpwood	978	Cords		
	<i>B. T. Aspen</i>		370	<i>Cords</i>		
	<i>Quaking Aspen</i>		608	<i>Cords</i>		
	Mixed Hardwood		151	Cords		
	<i>Basswood</i>		3	<i>Cords</i>		
	<i>Red Maple</i>		43	<i>Cords</i>		
	<i>Sugar Maple</i>		105	<i>Cords</i>		
	Mixed Spruce		17	Cords		
	<i>White Spruce</i>		17	<i>Cords</i>		
	2		Balsam Fir	Pulpwood		
Mixed Aspen		841	Cords			
<i>B. T. Aspen</i>		215	<i>Cords</i>			
<i>Quaking Aspen</i>		626	<i>Cords</i>			
Mixed Hardwood		277	Cords			
<i>Paper Birch</i>		58	<i>Cords</i>			
<i>Red Maple</i>		219	<i>Cords</i>			
3		Balsam Fir	Pulpwood		15	Cords
	Mixed Aspen	132		Cords		
	<i>Quaking Aspen</i>	132		<i>Cords</i>		
	Mixed Hardwood	23		Cords		
	<i>Balsam Poplar</i>	12		<i>Cords</i>		
	<i>Red Maple</i>	11		<i>Cords</i>		
	Mixed Spruce	37		Cords		
	<i>Black Spruce</i>	7		<i>Cords</i>		
	<i>White Spruce</i>	30		<i>Cords</i>		
	Tamarack	28		Cords		
TOTAL:			14.5	MBF		
TOTAL:			2,617	Cords		

Sale Specific Conditions & Requirements

Sale Name: Sleeping Hawk

Sale Number: 12-014-22 Seq#: 1

1 - Sale Area

1.2 - Boundaries

1.2.1 - Painted boundaries (9/19)

The sale boundary and Payment Unit boundaries are marked and identified by blue and red paint. Exterior sale boundary lines against private property are marked with blue paint. Exterior sale boundary lines against state are marked with red paint. East line of Payment Unit 1 is un-painted and is designated by a power line break. The painted boundary line trees are not Included Timber and are to be protected unless marked with orange paint.

2 - Timber Specifications

2.1 - Included Timber

2.1.1 - Clearcut unit(s) with unmerchantable trees (6/14)

Within Payment Unit(s) 1, and 3, cut all trees that are two (2) inches or more at DBH, except cedar, pine, hemlock, and oak. In addition, do not cut cherry in Payment Unit 3.

2.1.2 - Clearcut unit(s) w/o unmerchantable trees (8/11)

Within Payment Unit(s) 2, cut all trees which meet minimum piece specifications in 2.2 Utilization, except hemlock, pine, and oak if present.

4 - Transportation

4.1 - Construction

4.1.12 - No new roads (1/12)

No new roads will be permitted in any Payment Unit. All operations are limited to existing roads. Skid trails only will be allowed.

4.2 - Maintenance

4.2.5 - Two wheel drive condition (2/04)

All existing trail roads on and adjacent to the sale area must be passable by two-wheel drive traffic for the duration of the sale.

4.4 - Access

4.4.1 - Private property access (3/11)

Permission for access across private land is the responsibility of the Purchaser. Should the Purchaser desire to cross private land, a copy of the written permission from the private landowner may be required by the DNR.

5 - Operations

5.2 - Conduct of Operations

5.2.1 - Slash

5.2.1.13 - Dispose of slash as directed (12/05)

Slash is to be disposed of as directed by the sale administrator.

5.2.3 - Operating Restrictions

5.2.3.1 - Operating restrictions (9/11)

Within Payment Unit(s) 1 and 4, unless changed by written agreement, cutting, skidding, and hauling are limited to the period of frozen or dry conditions only. This restriction is because of wet areas.

5.2.32 - Decking/landing restoration (9/13)

All decking and landing areas must have the surface area restored to a condition equal to or better than before. This is to

ensure the proper regeneration of the stand. Wood debris, chips, and "cookies" from trimmings must be removed or scattered away from landing and loading areas and may not be windrowed on the edge.

5.2.38 - No decking against live trees (2/04)

Cut products may not be decked against unmarked or designated leave trees.

5.4 - Soil Protection

5.4.1 - Rutting restriction, general (7/16)

Operations are to cease immediately if equipment and weather conditions result in rutting of roads and/or skid trails which is 12 inches or greater in depth and 50 feet in length. The Unit Manager or his/her representative may restrict hauling and/or skidding if ruts exceed the specified depth. With the Unit Manager or his/her representative's approval, the Purchaser may return to the area when the risk of rutting has decreased.

6 - Safety and Fire Prevention

6.2 - Signing

6.2.1 - Road posting (10/20)

The Purchaser is responsible for posting and maintaining caution signs on Carney Lake Road prior to beginning operations. The road must be posted at appropriate distances from the Sale Area to warn of logging activity and truck traffic. Signs must be removed when harvest operations are suspended or completed. The Purchaser will provide these signs.



TIMBER SALE MAP

This information provided by authority of Part 525, 1994 PA 451, as amended.

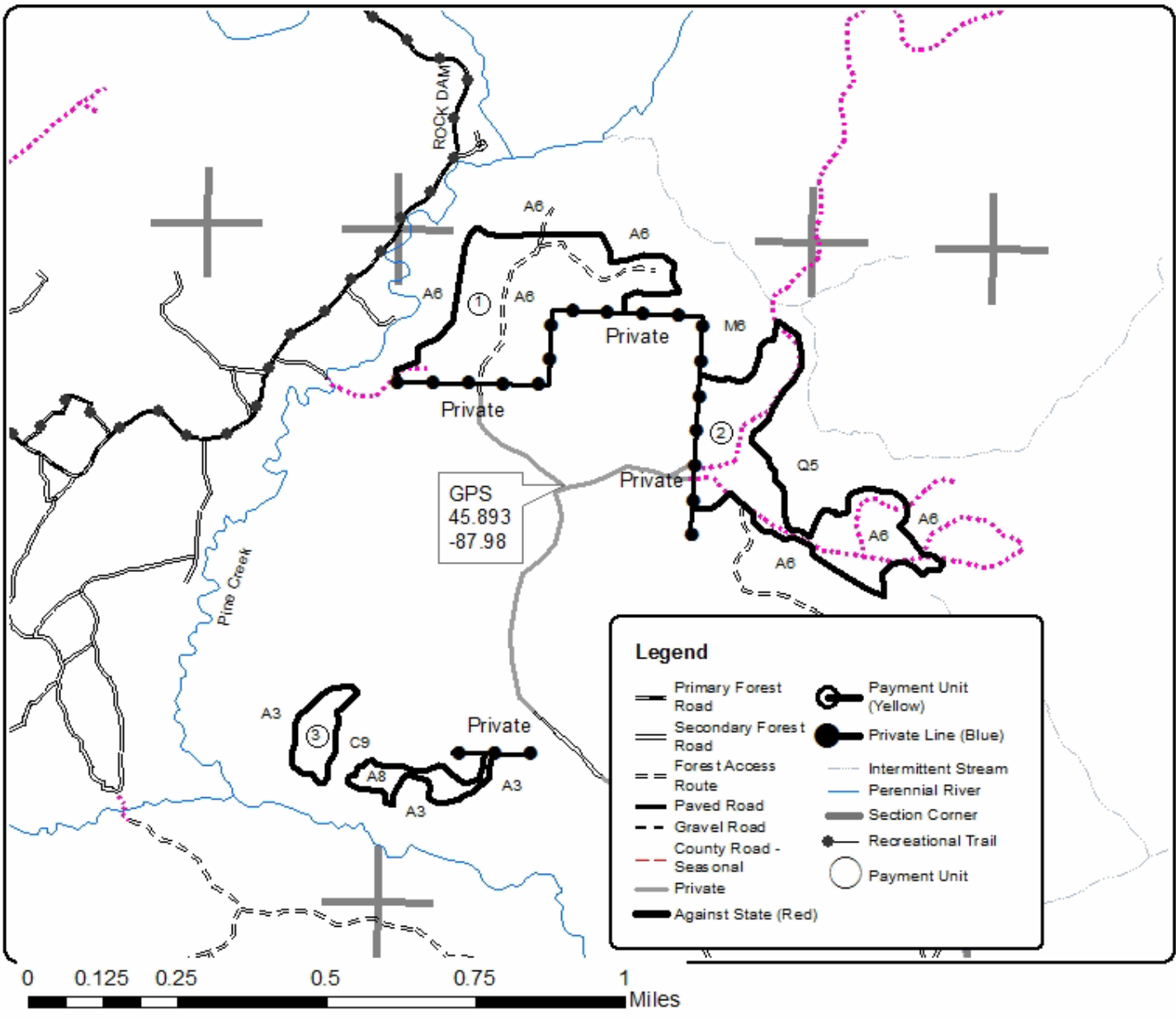
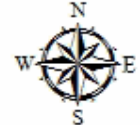
Sale Number	Year
12-014-22	2022

Forest Management Unit Crystal Falls Management Unit	County Dickinson Co.	Mapped By Dickie Goupell	Date 3-9-2022	Page 1	of 1
Township 40N & 41N	Range 30W & 29W	Section(s) and Subdivision(s) SEC 2 N1/2NW, NWNE, S1/2NE, SWSW SEC 3 E1/2SE SEC 31 SESW, SWSE	Scale 1:15,840		

Cover Type			Density	
A = Aspen	H = Hemlock	N = Marsh	U = Upland Brush	0 = Non Stocked
B = Paper Birch	J = Jack Pine	O = Oak	UM = Upland Mixed	1 = Seedling Sapling Poor
C = Cedar	L = Lowland Brush	P = Lowland Poplar	V = Bog or Marsh	2 = Seedling Sapling Medium
D = Tread Bog	LM = Lowland Mixed	Q = Mixed Swamp Conifer	W = White Pine	3 = Seedling Sapling Well
E = Swamp Hdwoods	M = Mpl, Bch, Birch	R = Red Pine	X = Non Stocked	4 = Pole Timber Poor
F = Spruce Fir	MC = Mixed Conifer	S = Black Spruce	Z = Water	5 = Pole Timber Medium
G = Grass	MD = Mixed Deciduous	T = Tamarack		6 = Pole Timber Well
				7 = Saw Timber Poor
				8 = Saw Timber Medium
				9 = Saw Timber Well

PU	Acres
1	42.5
2	36.9
3	11.4

Sleeping Hawk Compartment 101 Acres 103.5



Hazel Tango (12-007-22)

T44N, R28W, SEC. 25; T44N, R28W, SEC. 26; T44N, R28W, SEC. 27; T44N,

In response to the notice of sale to be held 9:00 a.m. (local time) on October 20, 2022, I am hereby submitting my sealed bid (firm offer) for the following forest products to be cut. Bids for individual species must be at or above the advertised price. All non-responsive bid forms may be rejected.

<u>PRODUCTS & SPECIES</u>	<u>ESTIMATED VOLUME*</u>	<u>ADVERTISED PRICE</u>	<u>BID PRICE/UNIT</u>
Sawtimber			
Sugar Maple	44.2 MBF	\$ 167.00/MBF	\$ _____
Pulpwood			
Balsam Fir	1,230 Cords	\$ 4.40/Cord	\$ _____
Balsam Poplar	306 Cords	\$ 20.40/Cord	\$ _____
Basswood	134 Cords	\$ 4.50/Cord	\$ _____
Mixed Hardwood	1,216 Cords	\$ 10.60/Cord	\$ _____
Mixed Spruce	272 Cords	\$ 6.35/Cord	\$ _____
Quaking Aspen	9,190 Cords	\$ 20.40/Cord	\$ _____
Tamarack	106 Cords	\$ 2.10/Cord	\$ _____

*The volumes are statistically estimated within plus (+) or minus (-) 9.87 percent at 95% confidence level. These estimated volumes are final and not subject to adjustment. Prospective bidders are urged to examine this timber and to make their own estimates of quantity and quality.

I understand that any or all bids may be rejected. All bids must be signed and all bid items must be bid or the bid form may be rejected. I also understand that consideration and awarding a contract will be based upon my past performance and ability to complete the contract based upon equipment and staffing subject to my control.

FEDERAL ID: ____ - ____ - ____ or SOCIAL SECURITY NUMBER: ____ - ____ - ____

Company or individual bidding: _____

Company representative's name: _____

Address: _____

City: _____ State: _____ Zip: _____

IF AVAILABLE, PLEASE PLACE THE PERSONALIZED LABEL FROM YOUR PROSPECTUS IN THE ABOVE BOX.

Individual or company representative's signature: _____ Date: _____

Phone number : _____ Email (optional): _____

THE WINNING BIDDER MUST COMPLETE THE VERIFICATION OF WORKER'S DISABILITY COMPENSATION ACT COMPLIANCE (ON REVERSE SIDE IF DOUBLE SIDED) WITHIN 21 DAYS OF SALE AWARD DATE



FOR DEPARTMENT USE ONLY
Sale Number (XX – XXX – XX – XX)
Forest Management Unit:

TIMBER SALE VERIFICATION OF WORKER'S DISABILITY COMPENSATION ACT COMPLIANCE

*As required by Act 317, P.A. 1969 (Worker's Compensation) and
Part 5 of Act 451 of 1994, as amended.*

VERIFICATION OF WORKER'S DISABILITY COMPENSATION ACT COMPLIANCE

- This verification must be completed and submitted within 21 days of contract award and prior to the issuance of the timber sale contract.
- In addition, if boxes 2B or 2C are checked, then Notice of Exclusion or Certificate of Insurance must be submitted within twenty-one (21) days of the contract award and prior to the issuance of the timber sale contract.
- All information must be typed or printed except for written signatures.

Please Check Appropriate Categories:

1. My business is organized as (you **must** check one of the boxes below):
 - A. Sole Proprietorship (individual)
 - B. Partnership
 - C. Corporation
2. You **must** check one of the boxes below:
 - A. I certify my business is a sole proprietorship and it has no employees but the sole proprietor. I am not subject to the Worker's Compensation Laws.
 - B. I certify my business has satisfied its obligation to the Worker's Compensation Act through the use of an approved Notice of Exclusion (BWC-337, Rev. 5/96). I will provide a copy of the Notice of Exclusion within 21 days of the contract award. (For questions or a copy of the BWC-337, please call the Worker's Compensation Bureau at 517-322-1195).
 - C. I certify my business has a Worker's Compensation Policy. I will provide an original Certificate of Insurance within twenty-one (21) days of the contract award.
3. If you have checked item 2(A) or 2(B), you **must** indicate the number of **both** full-time and part-time employees, other than yourself, including family members and active partners (if none, you must enter "0").

_____ Full-time Employees

_____ Part-time Employees

Name of Business		Federal ID (or) Social Security No.	
Address		Telephone ()	
City	State	ZIP	

I hereby certify that the above information is true and correct. I agree to notify the Michigan DNR of any changes that occur in factors affecting my coverage during any of my present and future operations.

Signature of Owner or Authorized Representative

Title

Date

Please complete the "SEALED BID" information on the next page

Sleeping Hawk (12-014-22)

T40N, R30W, SEC. 2; T40N, R30W, SEC. 3; T41N, R29W, SEC. 31; Dickinson

In response to the notice of sale to be held 9:00 a.m. (local time) on October 20, 2022, I am hereby submitting my sealed bid (firm offer) for the following forest products to be cut. Bids for individual species must be at or above the advertised price. All non-responsive bid forms may be rejected.

<u>PRODUCTS & SPECIES</u>	<u>ESTIMATED VOLUME*</u>	<u>ADVERTISED PRICE</u>	<u>BID PRICE/UNIT</u>
Sawtimber			
Basswood	2.7 MBF	\$ 36.00/MBF	\$ _____
Sugar Maple	11.8 MBF	\$ 167.00/MBF	\$ _____
Pulpwood			
Balsam Fir	133 Cords	\$ 4.40/Cord	\$ _____
Mixed Aspen	1,951 Cords	\$ 20.40/Cord	\$ _____
Mixed Hardwood	451 Cords	\$ 10.60/Cord	\$ _____
Mixed Spruce	54 Cords	\$ 6.35/Cord	\$ _____
Tamarack	28 Cords	\$ 2.10/Cord	\$ _____

*The volumes are statistically estimated within plus (+) or minus (-) 15.37 percent at 95% confidence level. These estimated volumes are final and not subject to adjustment. Prospective bidders are urged to examine this timber and to make their own estimates of quantity and quality.

I understand that any or all bids may be rejected. All bids must be signed and all bid items must be bid or the bid form may be rejected. I also understand that consideration and awarding a contract will be based upon my past performance and ability to complete the contract based upon equipment and staffing subject to my control.

FEDERAL ID: _____ or SOCIAL SECURITY NUMBER: _____

Company or individual bidding: _____

Company representative's name: _____

Address: _____

City: _____ State: _____ Zip: _____

IF AVAILABLE, PLEASE PLACE THE PERSONALIZED LABEL FROM YOUR PROSPECTUS IN THE ABOVE BOX.

Individual or company representative's signature: _____ Date: _____

Phone number : _____ Email (optional): _____

THE WINNING BIDDER MUST COMPLETE THE VERIFICATION OF WORKER'S DISABILITY COMPENSATION ACT COMPLIANCE (ON REVERSE SIDE IF DOUBLE SIDED) WITHIN 21 DAYS OF SALE AWARD DATE



FOR DEPARTMENT USE ONLY	
Sale Number (XX - XXX - XX - XX)	
Forest Management Unit:	

TIMBER SALE VERIFICATION OF WORKER'S DISABILITY COMPENSATION ACT COMPLIANCE

As required by Act 317, P.A. 1969 (Worker's Compensation) and
Part 5 of Act 451 of 1994, as amended.

VERIFICATION OF WORKER'S DISABILITY COMPENSATION ACT COMPLIANCE

- This verification must be completed and submitted within 21 days of contract award and prior to the issuance of the timber sale contract.
- In addition, if boxes 2B or 2C are checked, then Notice of Exclusion or Certificate of Insurance must be submitted within twenty-one (21) days of the contract award and prior to the issuance of the timber sale contract.
- All information must be typed or printed except for written signatures.

Please Check Appropriate Categories:

1. My business is organized as (you **must** check one of the boxes below):
 - A. Sole Proprietorship (individual)
 - B. Partnership
 - C. Corporation
2. You **must** check one of the boxes below:
 - A. I certify my business is a sole proprietorship and it has no employees but the sole proprietor. I am not subject to the Worker's Compensation Laws.
 - B. I certify my business has satisfied its obligation to the Worker's Compensation Act through the use of an approved Notice of Exclusion (BWC-337, Rev. 5/96). I will provide a copy of the Notice of Exclusion within 21 days of the contract award. (For questions or a copy of the BWC-337, please call the Worker's Compensation Bureau at 517-322-1195).
 - C. I certify my business has a Worker's Compensation Policy. I will provide an original Certificate of Insurance within twenty-one (21) days of the contract award.
3. If you have checked item 2(A) or 2(B), you **must** indicate the number of **both** full-time and part-time employees, other than yourself, including family members and active partners (if none, you must enter "0").

_____ Full-time Employees

_____ Part-time Employees

Name of Business		Federal ID (or) Social Security No.	
Address		Telephone ()	
City	State	ZIP	

I hereby certify that the above information is true and correct. I agree to notify the Michigan DNR of any changes that occur in factors affecting my coverage during any of my present and future operations.

Signature of Owner or Authorized Representative

Title

Date

Please complete the "SEALED BID" information on the next page

Ramshackle Shack (12-008-22)
T40N, R28W, SEC. 29; T40N, R28W, SEC. 33; Dickinson COUNTY

In response to the notice of sale to be held 9:00 a.m. (local time) on October 20, 2022, I am hereby submitting my sealed bid (firm offer) for the following forest products to be cut. Bids for individual species must be at or above the advertised price. All non-responsive bid forms may be rejected.

<u>PRODUCTS & SPECIES</u>	<u>ESTIMATED VOLUME*</u>	<u>ADVERTISED PRICE</u>	<u>BID PRICE/UNIT</u>
Sawtimber			
Paper Birch	24.4 MBF	\$ 84.00/MBF	\$ _____
Red Maple	45.2 MBF	\$ 91.00/MBF	\$ _____
Sugar Maple	2.4 MBF	\$ 167.00/MBF	\$ _____
Pulpwood			
Balsam Fir	404 Cords	\$ 4.40/Cord	\$ _____
Black Spruce	19 Cords	\$ 6.35/Cord	\$ _____
Mixed Hardwood	512 Cords	\$ 10.60/Cord	\$ _____
Quaking Aspen	3,642 Cords	\$ 20.40/Cord	\$ _____

*The volumes are statistically estimated within plus (+) or minus (-) 10.79 percent at 95% confidence level. These estimated volumes are final and not subject to adjustment. Prospective bidders are urged to examine this timber and to make their own estimates of quantity and quality.

I understand that any or all bids may be rejected. All bids must be signed and all bid items must be bid or the bid form may be rejected. I also understand that consideration and awarding a contract will be based upon my past performance and ability to complete the contract based upon equipment and staffing subject to my control.

FEDERAL ID: _____ or SOCIAL SECURITY NUMBER: _____

Company or individual bidding: _____

Company representative's name: _____

Address: _____

City: _____ State: _____ Zip: _____

IF AVAILABLE, PLEASE PLACE THE PERSONALIZED LABEL FROM YOUR PROSPECTUS IN THE ABOVE BOX.

Individual or company representative's signature: _____ Date: _____

Phone number : _____ Email (optional): _____

THE WINNING BIDDER MUST COMPLETE THE VERIFICATION OF WORKER'S DISABILITY COMPENSATION ACT COMPLIANCE (ON REVERSE SIDE IF DOUBLE SIDED) WITHIN 21 DAYS OF SALE AWARD DATE



TIMBER SALE VERIFICATION OF WORKER'S DISABILITY COMPENSATION ACT COMPLIANCE

As required by Act 317, P.A. 1969 (Worker's Compensation) and
Part 5 of Act 451 of 1994, as amended.

FOR DEPARTMENT USE ONLY	
Sale Number (XX - XXX - XX - XX)	
Forest Management Unit:	

VERIFICATION OF WORKER'S DISABILITY COMPENSATION ACT COMPLIANCE

- This verification must be completed and submitted within 21 days of contract award and prior to the issuance of the timber sale contract.
- In addition, if boxes 2B or 2C are checked, then Notice of Exclusion or Certificate of Insurance must be submitted within twenty-one (21) days of the contract award and prior to the issuance of the timber sale contract.
- All information must be typed or printed except for written signatures.

Please Check Appropriate Categories:

1. My business is organized as (you **must** check one of the boxes below):
 - A. Sole Proprietorship (individual)
 - B. Partnership
 - C. Corporation
2. You **must** check one of the boxes below:
 - A. I certify my business is a sole proprietorship and it has no employees but the sole proprietor. I am not subject to the Worker's Compensation Laws.
 - B. I certify my business has satisfied its obligation to the Worker's Compensation Act through the use of an approved Notice of Exclusion (BWC-337, Rev. 5/96). I will provide a copy of the Notice of Exclusion within 21 days of the contract award. (For questions or a copy of the BWC-337, please call the Worker's Compensation Bureau at 517-322-1195).
 - C. I certify my business has a Worker's Compensation Policy. I will provide an original Certificate of Insurance within twenty-one (21) days of the contract award.
3. If you have checked item 2(A) or 2(B), you **must** indicate the number of **both** full-time and part-time employees, other than yourself, including family members and active partners (if none, you must enter "0").

_____ Full-time Employees

_____ Part-time Employees

Name of Business		Federal ID (or) Social Security No.	
Address		Telephone ()	
City	State	ZIP	

I hereby certify that the above information is true and correct. I agree to notify the Michigan DNR of any changes that occur in factors affecting my coverage during any of my present and future operations.

Signature of Owner or Authorized Representative

Title

Date

Please complete the "SEALED BID" information on the next page