



**DEPARTMENT OF NATURAL RESOURCES
STATE OF MICHIGAN
TIMBER SALE PROSPECTUS #7140**

SCHEDULED SALE DATE AND TIME: **9:00 a.m. (local time) on December 1, 2022.**

LOCATION: **BARAGA MGMT UNIT, 427 US 41 NORTH, BARAGA, MI 49908.**

PROSPECTUS NOTE: Contact Dan McNamee 906-235-5830 for questions regarding timber sales 12-007-22 Hazel Tango, 12-055-22 Comp 123 Aspen or 12-056-22 Panola Plains Pine.

The bidder is advised to inspect the sale area and review the location, estimated volumes, operating costs and contract terms of proposed sales. Please be aware that some landowners may request 60 days or more notice for access across their land.

Notice is hereby given that bids will be received by the Unit Manager, CRYSTAL FALLS MANAGEMENT UNIT, for certain timber on the following described lands:

Hazel Tango (12-007-22) / T44N, R28W, SEC. 25, NWSW.

T44N, R28W, SEC. 26, SE.

T44N, R28W, SEC. 27, W1/2SE.

T44N, R28W, SEC. 34, N1/2NW,NWNE.

T44N, R28W, SEC. 35, S1/2NW,NE,N1/2SW,NESE.

Dickinson County, Advertised Price \$100,916.00, 175.4 Acres, Aspen, Spruce/Fir/Tamarack.

Comp 123 Aspen (12-055-22) / T44N, R33W, SEC. 12, N1/2NE.

T45N, R33W, SEC. 36, SENW,SWNE,SE.

Iron County, Advertised Price \$19,646.80, 58.3 Acres, Aspen, Spruce/Fir/Tamarack.

SALE NOTE: A recreation site such as a trail, pathway, or campground is within the sale area or the vicinity. Certain restrictions/specifications may be applicable including time restrictions.

Panola Plains Pine (12-056-22) / T42N, R32W, SEC. 16, N1/2NE.

T42N, R32W, SEC. 8, NESE.

T42N, R32W, SEC. 9, SENW,SW,SWSE.

Iron County, Advertised Price \$78,497.00, 137.1 Acres, Jack Pine, Red Pine.

BID INSTRUCTIONS (VER. 10/10/2022):

1. Scheduled Bid Location, Date, and Time (2/11)

Bids must be received by the Unit Manager, BARAGA OFFICE, 427 US 41 North, Baraga, MI 49908, no later than 9:00 a.m. (local time) on December 1, 2022. For further information concerning this sale, contact Brad Carlson at 906-353-6651.

2. Bidder's Qualifications (10/22)

If all or part of a timber sale was prepared by a private contractor, the contractor and that contractor's company are not permitted to bid on the timber sale. A person must be 18 years of age or older to purchase timber. Permanent employees of the Department of Natural Resources or members of their immediate household may not bid. Former employees, in the permanent or seasonal class, may not bid until 3 months after the last day of active duty. Bids will not be accepted from individuals or companies appearing on the DNR/FRD No-Bid List. This list contains the names of purchasers who previously failed to execute a contract within 21-days or who have a history of poor performance.

3. Preparation of Sealed Bids (5/16)

Bid Forms may be completed online thru Michigan DNR Timber Sale Online Bidding (OLB) at www.michigan.gov/timberbidding or by completing the hardcopy Bid Form found in the Timber Sale Prospectus. Hardcopy Bid Forms shall be manually signed in ink. Registration in OLB is considered your 'signature' for all bids submitted thru that system. Bid prices must be entered for each species and product in the Bid Price column for all material subject to bidding and all fill-in blanks must be completed. If erasures or other changes appear on the hardcopy Bid Form, each erasure or change must be initialed by the person signing the bid.

4. Submission of Sealed Bids (5/16)

Bid forms may be obtained from the Unit Manager or thru OLB. Bids may be submitted hardcopy or thru OLB. All hardcopy bids must be submitted on the bid form and in an envelope clearly identified as described in this section. NOTE: Only one bid form per bid envelope. Sealed bids must be submitted to the Unit office designated in the prospectus and must be submitted at or prior to the time established in the prospectus. The envelope should show on the outside (a) the sale name or number and (b) the date and time of bid opening, as shown in the prospectus. Bids received after the time specified in the sale prospectus are late bids and will be rejected.

It is possible for a bidder to submit multiple bids on a single sale. For example, a bid may be submitted hardcopy and a bid may be submitted thru OLB. Or, two bidders from the same company could both submit bids on the same sale. If this were to happen, the State would accept all bids received and award the contract accordingly. All bidding and contractual requirements would apply to all bids received.

5. Public Opening of Sealed Bids (7/16)

If conditions permit, the sealed bids will be publicly opened and posted at the time and place set in the prospectus.

If a bidder, present at a bid opening, has submitted bids on more than one sale, that bidder may withdraw their unopened bid envelopes or announce the withdrawal of their online bid after being declared the successful bidder on one sale.

6. Award of Contract (1/11)

Award of the contract will be made to the Bidder whose bid, conforming to the prospectus, is most advantageous to the State of Michigan on the basis of total value at rates bid for the estimated quantities. The State reserves the right to reject any bid or waive any minor irregularity in bids received. A written award mailed (or otherwise furnished) to the successful Bidder shall be deemed to result in a binding contract without further action by either party.

7. Down Payment (1/11)

The Bidder to whom award is made must make a down payment within 21 days of the sale award. The amount of the down payment will be calculated as shown in the Bond and Payment Schedule of this prospectus. Only cash may be used to meet this requirement.

8. Performance Security (1/11)

As guarantee of faithful performance, a cash bond, certificate of deposit, surety bond or irrevocable letter of credit (LOC) is required within 21 days of the sale award. The amount of the performance security is shown in the Bond and

Payment Schedule of this prospectus. If an LOC or surety is used, the coverage must extend for at least 6 months beyond the contract expiration.

9. Worker's Compensation (10/22)

Purchaser shall obtain worker's compensation insurance to cover claims under Michigan's Worker's Disability Compensation Act of 1969 or similar employee benefit act of any other state applicable to an employee. Verification of Worker's Disability Compensation Act Compliance must be completed and submitted within 21 days of contract award and prior to the issuance of the timber sale contract. In addition, if applicable, Notice of Exclusion or Certificate of Insurance must also be submitted.

10. Timber Sale Contract (10/22)

Additional conditions and requirements common to all timber sales are listed on the timber sale contract (R4031) and are available on line at www.michigan.gov/timber. Contact the Unit Manager for additional information or a sample contract. Within 21 days of the date of the award letter, the bidder must sign the contract and provide the required down payment, performance security, and verification of worker's disability compensation. The down payment and performance security shall be in accordance with the provisions of the timber sale contract, in the sums stated in this prospectus. If these actions are not taken, then the Bidder, the Bidder's corporation, and the corporation's principals may not be permitted to bid on State timber sales for a period of 3 months after the first offense, 6 months after the second offense, and 1 year after the third offense. An offense will only be counted against the Bidder for 5 years. In addition, the Bidder certifies that if awarded this contract, the Bidder will complete the timber sale contract in accordance with its terms and any modifications thereof including requirements to purchase, cut, and remove the included timber by the expiration date.

Payment Unit values in the State Forest Timber Sale Contract are calculated based on the advertised value of the Payment Unit as a percentage of the total advertised value of the contract. The advertised value of each Payment Unit is given in the Description of Timber by Payment Unit table on the Timber Sale Information page. For example, if the value of Payment Unit 1 is advertised as \$1,500 and the total Timber Sale value is advertised as \$10,000, the contract price for Payment Unit 1 will be 15% of the total bid price ($\$1,500/\$10,000 * 100$).

11. Disclaimer of Estimates and Bidder's Warranty of Inspection (10/22)

Before submitting this bid, the Bidder is advised and cautioned to inspect the sale area, review the requirements of the sale contract, and take other steps as may be reasonably necessary to ascertain the location, estimated volumes, construction estimates, and operating costs of the proposed sale. Failure to do so will not relieve the Bidder from responsibility for completing the contract.

The Bidder warrants that this bid is submitted solely on the basis of the Bidder's examination and inspection of the quality and quantity of the timber offered for sale and the Bidder's opinion of the value thereof and the costs of recovery. No reliance should be placed on the State of Michigan's estimates of timber quality, quantity or costs of recovery. Bidder further acknowledges that the State of Michigan: (i) expressly disclaims any warranty of fitness of timber for any purpose; (ii) offers this timber as is without any warranty of quality (merchantability) or quantity and (iii) expressly disclaims any warranty as to the quantity or quality of timber sold.

12. Certification and Chain-of-Custody (10/22)

Unless otherwise indicated in the contract under section 7 – Other Conditions of the Sale Specific Conditions & Requirements, the area encompassed by this timber sale is certified to the standards of the Forest Stewardship Council (FSC) - Certificate #SCS-FM/COC-00090N and the Sustainable Forestry Initiative (SFI) - Certificate #NSF-SFIS-5Y031-SF5. Forest products from this sale may be delivered to the mill as "FSC 100% and / or SFI certified" as long as the contractor hauling the forest products is chain-of-custody (COC) certified or covered under a COC certificate from the destination mill. The purchaser is responsible for maintaining COC after leaving the sale area.

13. Good Neighbor Authority (GNA) Requirements (10/22)

If the name of this timber sales contains the acronym GNA, it is authorized by the Good Neighbor Authority (GNA) and covered by various agreements between the U.S. Forest Service and the State. The timber sale occurs on federal land and the following conditions apply:

GNA contracts on US Forest Service land will not be awarded to purchasers on the Federal list of excluded parties. The System for Award Management (SAM) will be checked for active excluded parties prior to award of contract. In

addition, the Bidder to whom award is made must complete an Assurance Regarding Felony Conviction or Tax Delinquent Status for Corporate Applicants (AD-3031).

14. Good Neighbor Authority (GNA) Requirements, con't (10/22)

Bidder certifies, by signing this bid form, that to the best of Bidder's knowledge that the following representations are accurate and complete.

- a. That the Bidder and its principals are not presently debarred, suspended, proposed for debarment, declared ineligible, or voluntary excluded from timber sales (covered transactions) by any Federal department or agency.
- b. That the Bidder and its principals have not within a 3-year period preceding this bid been convicted of or had a civil judgment rendered against them for commission of fraud or a criminal offense in connection with obtaining , attempting to obtain, or performing a public (Federal, State, or local) transaction or contract under a public transaction; violation of Federal or State antitrust statutes or commission of embezzlement, theft, forgery, bribery, falsification or destruction of records, making false statements, or receiving stolen property.
- c. That the Bidder and its principals are not presently indicted for or otherwise criminally or civilly charged by a governmental entity (Federal, State, or local) with commission of any of the offenses enumerated in paragraph b of this certification.
- d. That the Bidder and its principals have not within a 3-year period preceding this bid had one or more public transactions (Federal, State, or local) terminated for breach or default of a timber or forest product contract.

Bidders that cannot certify this requirement, in whole or in part, shall submit an explanation with their bid.

DAN EICHINGER
Director

TIMBER SALE INFORMATION

Hazel Tango (12-007-22)

T44N, R28W, SEC. 25; T44N, R28W, SEC. 26; T44N, R28W, SEC. 27; T44N, R28W, SEC. 34; T44N, R28W, SEC. 35.
Dickinson County (Advertised Price \$100,916.00)

A timber sale contract for this lump sum, sealed bid timber sale will be awarded to the responsible bidder offering the highest sealed bid price. All units of volume listed below were estimated using the Inventory Manager computer program and the new Michigan taper model. Bids must be at or above the following advertised price for each product and species:

<u>PRODUCTS & SPECIES</u>	<u>ESTIMATED UNITS*</u>	<u>ADVERTISED PRICE</u>
Sawtimber		
Sugar Maple	22.1 MBF	\$ 154.00 / MBF
Pulpwood		
Balsam Fir	615 Cords	\$ 4.25 / Cord
Balsam Poplar	153 Cords	\$ 18.25 / Cord
Basswood	67 Cords	\$ 5.40 / Cord
Mixed Hardwood	608 Cords	\$ 11.30 / Cord
Mixed Spruce	136 Cords	\$ 5.50 / Cord
Quaking Aspen	4,595 Cords	\$ 18.25 / Cord
Tamarack	53 Cords	\$ 5.05 / Cord

* The total volume is statistically estimated within plus (+) or minus (-) 9.87 percent. There are an estimated 6,039 cords on this timber sale, plus or minus 596 cords at the 95% confidence level. The estimated units are final and not subject to adjustment. Prospective bidders are urged to examine this timber and to make their own estimates of quantity and quality.

BOND AND PAYMENT SCHEDULE:

1. A bond in the amount of \$8,073.00 to insure faithful performance of the conditions of the contract will be deposited by the successful bidder within 21 days of the sale award.
2. Cutting in any sale or unit without the required advance payment would be considered a trespass.
3. Total payment must be paid in advance or according to the following schedule :
 - (a) Ten percent (10%) of the sale value must be paid within 21 days of the sale award.
 - (b) The 10% down payment will be credited towards the first unit cut.
 - (c) Payment for each of the following units must be made before cutting begins in that unit:

PAYMENT UNIT NUMBER	PERCENT OF TOTAL SALE VALUE
01	17.1%
02	2.6%
03	35.7%
04	11.0%
05	17.9%
06	15.7%
4. If no cutting takes place, the 10% down payment will not be refunded.
5. Operations on the contract issued will terminate on 06/30/2026.

SALE STATISTICS

Volumes were calculated in cubic feet using the Michigan taper model. Cubic foot volume includes all wood inside bark for the product indicated. For display purposes, cubic feet were converted to cords and MBF using a simple conversion factor, e.g. 79 cubic feet per cord and 185 cubic feet per MBF. The cubic foot volumes are precise; the cords and MBF volumes are not. Cubic foot volume cannot be directly converted to cords or boards with precision.

SALE VOLUMES

The total estimated sale volume may not equal the sum of the species/products due to the nature of statistical calculations associated with double sampling methodology.

VOLUME			STATISTICAL RANGE IN CORDS	
TOTAL CUBIC FEET	TOTAL CORDS	PERCENT ERROR	MINIMUM	MAXIMUM
477,104	6,039	9.87%	5,443	6,636

VDU VOLUMES

A VDU is a Volume Determination Unit. Volumes and their associated statistics are calculated at the VDU level and summarized to the sale level. There is often a one to one relationship between a VDU and a Payment Unit, but not always, depending on the cruise design. Refer to the VDU TO PAYMENT UNIT table.

VDU	VOLUME		PERCENT ERROR	RANGE IN CORDS	
	TOTAL CUBIC FEET	TOTAL CORDS		MINIMUM	MAXIMUM
7	84,263	1,067	25.68%	793	1,341
35	158,718	2,009	24.01%	1,527	2,492
44	57,889	733	18.73%	595	870
52	16,880	214	0.00%	214	214
55	159,353	2,017	14.97%	1,715	2,319
TOTAL:	477,104	6,039		4,844	7,235

VDU TO PAYMENT UNIT

When a VDU is associated with more than one Payment Unit (PU), the VDU volumes are assigned to the PU based on acres of the VDU within the PU.

VDU	VDU ACRES	PU	PU ACRES
7	29.5	1	29.5
35	60.3	5	32.2
		6	28.1
44	19.9	4	19.9
52	18.1	2	18.1
55	47.6	3	47.6
TOTAL:	175.4		175.4

DESCRIPTION OF TIMBER BY PAYMENT UNIT (PU)

PU	MARKET GROUP	PRODUCT	QUANTITY	UNIT	ACRES	ADVERTISE PRICE	
1	Balsam Fir	Pulpwood	168	Cords	29.5	\$17,274.80	
	Balsam Poplar		20	Cords			
	Basswood		8	Cords			
	<i>Basswood</i>		8	<i>Cords</i>			
	Mixed Hardwood		92	Cords			
	<i>American Elm</i>		29	<i>Cords</i>			
	<i>Black Cherry</i>		20	<i>Cords</i>			
	<i>Sugar Maple</i>		43	<i>Cords</i>			
	Mixed Spruce		7	Cords			
	<i>White Spruce</i>		7	<i>Cords</i>			
	Quaking Aspen		826	Cords			
2	Balsam Poplar	Pulpwood	56	Cords	18.1	\$2,581.15	
	Mixed Spruce		49	Cords			
	<i>Black Spruce</i>		49	<i>Cords</i>			
	Quaking Aspen		56	Cords			
	Tamarack		53	Cords			
3	Sugar Maple	Sawtimber	16.1	MBF	47.6	\$36,031.55	
	Balsam Fir	Pulpwood	107	Cords			
	Mixed Hardwood		298	Cords			
	<i>Black Cherry</i>		54	<i>Cords</i>			
	<i>Red Maple</i>		86	<i>Cords</i>			
	<i>Sugar Maple</i>		158	<i>Cords</i>			
	Mixed Spruce		30	Cords			
	<i>White Spruce</i>		30	<i>Cords</i>			
	Quaking Aspen		1,620	Cords			
4	Sugar Maple	Sawtimber	2.2	MBF	19.9	\$11,108.50	
	Balsam Fir	Pulpwood	40	Cords			
	Balsam Poplar		17	Cords			
	Basswood		59	Cords			
	<i>Basswood</i>		<i>Sawtimber</i>	1.9			<i>MBF</i>
	<i>Basswood</i>		<i>Pulpwood</i>	55			<i>Cords</i>
	Mixed Hardwood		112	Cords			
	<i>Sugar Maple</i>		81	<i>Cords</i>			
	<i>White Ash</i>		31	<i>Cords</i>			
	Quaking Aspen		477	Cords			
5	Sugar Maple	Sawtimber	2.0	MBF	32.2	\$18,114.35	
	Balsam Fir	Pulpwood	160	Cords			
	Balsam Poplar		32	Cords			
	Mixed Hardwood		57	Cords			
	<i>Black Cherry</i>		32	<i>Cords</i>			
	<i>Red Maple</i>		18	<i>Cords</i>			
	<i>Sugar Maple</i>		7	<i>Cords</i>			
	Mixed Spruce		27	Cords			
	<i>White Spruce</i>		27	<i>Cords</i>			
	Quaking Aspen		863	Cords			
6	Sugar Maple	Sawtimber	1.8	MBF	28.1	\$15,805.65	
	Balsam Fir	Pulpwood	140	Cords			
	Balsam Poplar		28	Cords			
	Mixed Hardwood		49	Cords			
	<i>Black Cherry</i>		27	<i>Cords</i>			
	<i>Red Maple</i>		16	<i>Cords</i>			
	<i>Sugar Maple</i>		6	<i>Cords</i>			
	Mixed Spruce		23	Cords			
	<i>White Spruce</i>		23	<i>Cords</i>			
	Quaking Aspen		753	Cords			

TOTAL:	22.1	MBF
--------	------	-----

TOTAL:	6,227	Cords
--------	-------	-------

Sale Specific Conditions & Requirements

Sale Name: Hazel Tango

Sale Number: 12-007-22 Seq#: 2

1 - Sale Area

1.2 - Boundaries

1.2.1 - Painted boundaries (9/19)

The sale boundary and Payment Unit boundaries are marked and identified by blue, red and yellow paint. Exterior sale boundary lines against private property are marked with blue paint. Exterior sale boundary lines against state are marked with red paint. Interior Payment Unit boundaries are marked with yellow paint. The painted boundary line trees are not Included Timber and are to be protected unless marked with orange paint. Yellow painted trees designating an interior Payment Unit boundary are only to be cut when all surrounding Payment Units have been paid.

2 - Timber Specifications

2.1 - Included Timber

2.1.1 - Clearcut unit(s) with unmerchantable trees (6/14)

Within Payment Unit(s) 1-6, cut all trees that are two (2) inches or more at DBH except red pine, white pine, cedar, and oak (if found).

In addition, leave scattered live clumps of submerchantable spruce & fir, where available.

3 - Payments

3.3 - Pre-measured Sales

3.3.4 - Dividing payment units (7/14)

Payment Unit(s) 3 may be divided at the request of the Purchaser and upon approval of the Unit Manager. Dividing Payment Units is a contract modification which requires a Timber Sale Contract Amendment. There will be only one division per Payment Unit.

4 - Transportation

4.1 - Construction

4.1.4 - Timber removed for construction (12/09)

Trees cut or damaged in the process of pre-approved road, landing or skid trail construction will be decked in an area separate from other Designated Timber and not removed until measured by the sale administrator. Payment will be made at the specified Purchase Unit Price.

4.2 - Maintenance

4.2.1 - Hauling restriction (12/08)

Hauling may be restricted on forest roads by the Unit Manager or his/her representative. The restriction may occur during spring breakup or prolonged wet weather conditions.

4.2.4 - Grading (10/16)

For completion of the sale, state forest roads must be graded. In general, this will require a road grader or bull dozer to shape up the roads after forest products have been hauled off site. This includes cleaning of drainage areas, grading, crowning and filling with gravel, if necessary. The grading equipment to be used must be approved by the Unit Manager or his/her representative.

4.3 - Public Right-of-Way

4.3.2 - County R-O-W (12/06)

The county must be contacted prior to decking along the county road R-O-W. This applies to the Aimone Road. Dickinson County Road Commission may require a permit.

4.4 - Access

4.4.2 - Alternate route on private property (2/04)

It is the Purchaser's responsibility to obtain access across private land for any routes other than the route shown on the Timber Sale Map.

5 - Operations

5.2 - Conduct of Operations

5.2.4 - Dead and Down Creation

5.2.4.4 - Dead and down creation, grouse (6/18)

To encourage grouse and other wildlife, in Payment Unit(s) 1-6 leave two piles of loosely piled brush/tops, at a minimum of 10 feet long x 4 feet tall, for every unit. These trees will be evenly scattered throughout the unit, preferably at least two chains from any roads, two-tracks, or trails open to vehicles.

5.2.22 - Operating Caution

5.2.22.1 - Operating caution (6/11)

It is recommended, but not required, that within Payment Unit(s) 2, cutting and skidding occur during dry summer or frozen winter conditions. The reason for the recommendation is because of wet soils, particularly on the south side of Aimone Road.

5.2.32 - Decking/landing restoration (9/13)

All decking and landing areas must have the surface area restored to a condition equal to or better than before. This is to ensure the proper regeneration of the stand. Wood debris, chips and "cookies" from trimmings must be removed or scattered away from landing and loading areas and may not be windrowed on the edge.

5.4 - Soil Protection

5.4.1 - Rutting restriction, general (7/16)

Operations are to cease immediately if equipment and weather conditions result in rutting of roads and/or skid trails which is 12 inches or greater in depth and 50 feet in length. The Unit Manager or his/her representative may restrict hauling and/or skidding if ruts exceed the specified depth. With the Unit Manager or his/her representative's approval, the Purchaser may return to the area when the risk of rutting has decreased.

6 - Safety and Fire Prevention

6.2 - Signing

6.2.1 - Road posting (10/20)

The Purchaser is responsible for posting and maintaining caution signs on Aimone Road prior to beginning operations. The road must be posted at appropriate distances from the sale area to warn of logging activity and truck traffic. Signs must be removed when harvest operations are suspended or completed. The Purchaser will provide these signs.



TIMBER SALE MAP

This information provided by authority of Part 525, 1994 PA 451, as amended.

Sale Number	Year
007	2022

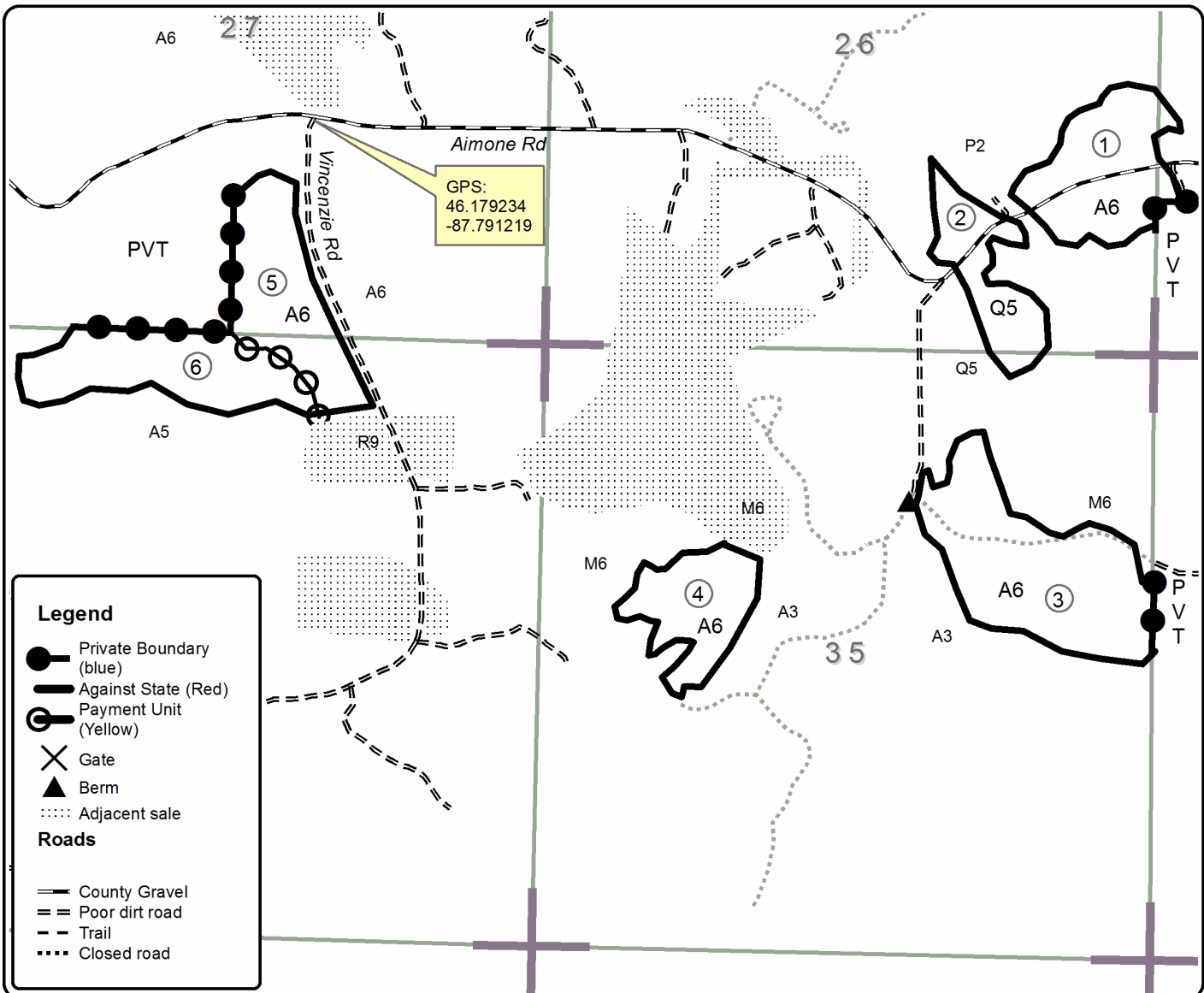
Forest Management Unit	County	Mapped By	Date	Page	of
Crystal Falls Management Unit	Dickinson Co.	Debbie Goupell	8/3/22	1	1
Township	Range	Section(s) and Subdivision(s)	Scale		
44N	28W	S25: NWSW S26: SE1/4 S27: W1/2SE S34:N1/2NW,NWNE S35:S1/2NW,N1/2SW, NE1/4	1:15,840		

Cover Type				Density	
A = Aspen	H = Hemlock	N = Marsh	U = Upland Brush	0 = Non Stocked	5 = Pole Timber Medium
B = Paper Birch	J = Jack Pine	O = Oak	UM = Upland Mixed	1 = Seedling Sapling Poor	6 = Pole Timber Well
C = Cedar	L = Lowland Brush	P = Lowland Poplar	V = Bog or Marsh	2 = Seedling Sapling Medium	7 = Saw Timber Poor
D = Treed Bog	LM = Lowland Mixed	Q = Mixed Swamp Conifer	W = White Pine	3 = Seedling Sapling Well	8 = Saw Timber Medium
E = Swamp Hdwoods	M = Mpl, Bch, Brch	R = Red Pine	X = Non Stocked	4 = Pole Timber Poor	9 = Saw Timber Well
F = Spruce Fir	MC = Mixed Conifer	S = Black Spruce	Z = Water		
G = Grass	MD = Mixed Deciduous	T = Tamarack			

Unit	Acres	Unit	Acres
1	29.5	4	19.9
2	18.1	5	32.2
3	47.6	6	28.1

Hazel Tango

Compartment 34
175.4 Acres



Legend

- Private Boundary (blue)
- Against State (Red)
- Payment Unit (Yellow)
- ✕ Gate
- ▲ Berm
- ⋯ Adjacent sale

Roads

- County Gravel
- == Poor dirt road
- - Trail
- ⋯ Closed road



TIMBER SALE INFORMATION

Comp 123 Aspen (12-055-22)
 T44N, R33W, SEC. 12; T45N, R33W, SEC. 36.
 Iron County (Advertised Price \$19,646.80)

SALE NOTE: A recreation site such as a trail, pathway, or campground is within the sale area or the vicinity. Certain restrictions/specifications may be applicable including time restrictions.

A timber sale contract for this lump sum, sealed bid timber sale will be awarded to the responsible bidder offering the highest sealed bid price. All units of volume listed below were estimated using the Inventory Manager computer program and the new Michigan taper model. Bids must be at or above the following advertised price for each product and species:

<u>PRODUCTS & SPECIES</u>	<u>ESTIMATED UNITS*</u>	<u>ADVERTISED PRICE</u>
Sawtimber		
Red Maple	6.6 MBF	\$ 78.00 / MBF
Sugar Maple	1.9 MBF	\$ 154.00 / MBF
Pulpwood		
Balsam Fir	167 Cords	\$ 4.25 / Cord
Mixed Hardwood	158 Cords	\$ 11.30 / Cord
Paper Birch	50 Cords	\$ 4.25 / Cord
Quaking Aspen	877 Cords	\$ 18.25 / Cord
White Spruce	23 Cords	\$ 5.50 / Cord

* The total volume is statistically estimated within plus (+) or minus (-) 4.92 percent. There are an estimated 1,270 cords on this timber sale, plus or minus 63 cords at the 95% confidence level. The estimated units are final and not subject to adjustment. Prospective bidders are urged to examine this timber and to make their own estimates of quantity and quality.

BOND AND PAYMENT SCHEDULE:

1. A bond in the amount of \$1,500.00 to insure faithful performance of the conditions of the contract will be deposited by the successful bidder within 21 days of the sale award.
2. Cutting in any sale or unit without the required advance payment would be considered a trespass.
3. Total payment must be paid in advance or according to the following schedule :
 - (a) Ten percent (10%) of the sale value must be paid within 21 days of the sale award.
 - (b) The 10% down payment will be credited towards the first unit cut.
 - (c) Payment for each of the following units must be made before cutting begins in that unit:

PAYMENT UNIT NUMBER	PERCENT OF TOTAL SALE VALUE
01	69.5%
02	30.5%
4. If no cutting takes place, the 10% down payment will not be refunded.
5. Operations on the contract issued will terminate on 06/30/2025.

SALE STATISTICS

Volumes were calculated in cubic feet using the Michigan taper model. Cubic foot volume includes all wood inside bark for the product indicated. For display purposes, cubic feet were converted to cords and MBF using a simple conversion factor, e.g. 79 cubic feet per cord and 185 cubic feet per MBF. The cubic foot volumes are precise; the cords and MBF volumes are not. Cubic foot volume cannot be directly converted to cords or boards with precision.

SALE VOLUMES

The total estimated sale volume may not equal the sum of the species/products due to the nature of statistical calculations associated with double sampling methodology.

VOLUME		STATISTICAL RANGE IN CORDS		
TOTAL CUBIC FEET	TOTAL CORDS	PERCENT ERROR	MINIMUM	MAXIMUM
100,358	1,270	4.92%	1,208	1,333

VDU VOLUMES

A VDU is a Volume Determination Unit. Volumes and their associated statistics are calculated at the VDU level and summarized to the sale level. There is often a one to one relationship between a VDU and a Payment Unit, but not always, depending on the cruise design. Refer to the VDU TO PAYMENT UNIT table.

VDU	VOLUME		PERCENT ERROR	RANGE IN CORDS	
	TOTAL CUBIC FEET	TOTAL CORDS		MINIMUM	MAXIMUM
22	73,418	929	12.06%	817	1,041
48	26,940	341	19.77%	274	408
TOTAL:	100,358	1,270		1,091	1,450

VDU TO PAYMENT UNIT

When a VDU is associated with more than one Payment Unit (PU), the VDU volumes are assigned to the PU based on acres of the VDU within the PU.

VDU	VDU ACRES	PU	PU ACRES
22	40.5	1	40.5
48	17.8	2	17.8
TOTAL:	58.3		58.3

DESCRIPTION OF TIMBER BY PAYMENT UNIT (PU)

PU	MARKET GROUP	PRODUCT	QUANTITY	UNIT	ACRES	ADVERTISE PRICE
1	Red Maple	Sawtimber	5.3	MBF	40.5	\$13,648.55
	Sugar Maple		1.9	MBF		
	Balsam Fir	Pulpwood	161	Cords		
	Mixed Hardwood		126	Cords		
	<i>Black Cherry</i>		9	<i>Cords</i>		
	<i>Red Maple</i>		74	<i>Cords</i>		
	<i>Sugar Maple</i>		43	<i>Cords</i>		
	Paper Birch		32	Cords		
	Quaking Aspen		582	Cords		
	White Spruce		14	Cords		
2	Red Maple	Sawtimber	1.3	MBF	17.8	\$5,998.25
	Balsam Fir	Pulpwood	6	Cords		
	Mixed Hardwood		32	Cords		
	<i>Black Cherry</i>		9	<i>Cords</i>		
	<i>Red Maple</i>		23	<i>Cords</i>		
	Paper Birch		18	Cords		
	Quaking Aspen		295	Cords		
	White Spruce		9	Cords		
TOTAL:			8.5	MBF		
TOTAL:			1,275	Cords		

Sale Specific Conditions & Requirements

Sale Name: Comp 123 Aspen

Sale Number: 12-055-22 Seq#: 1

1 - Sale Area

1.2 - Boundaries

1.2.1 - Painted boundaries (9/19)

The sale boundary lines against private property are marked with blue paint. Sale boundary lines against state land are marked with double red paint dots.

2 - Timber Specifications

2.1 - Included Timber

2.1.2 - Clearcut unit(s) w/o unmerchantable trees (8/11)

Within Payment Unit(s) 1 and 2, cut all aspen, red maple, white birch, cherry, spruce, and balsam fir trees which meet minimum piece specifications in 2.2 Utilization (one 100" piece to a top diameter inside bark of 4 inches). Do not cut trees marked with green paint. No other tree species may be cut.

2.2 - Utilization

2.2.3 - Stump heights (4/07)

Stump heights within the Sale Area shall not exceed 12 inches for trees greater than 10 inches DBH and 4 inches for trees smaller than 10 inches DBH.

2.2.11 - Chipping restriction (9/14)

If chipping occurs on this sale, no woody debris present on the ground at the start of the sale may be chipped. Chip piles must be removed within 60 days of the sale expiration. In addition, after chip pile removal, residual chip depth at the landing may not exceed 4 inches.

3 - Payments

3.4 - Damaged Timber

3.4.1 - Damaged timber (7/16)

General Condition and Requirement 3.4 Damaged Timber, defines liquidated damages for undesignated live merchantable trees which are cut or injured. In addition, extreme care should be taken to avoid damage to tree seedlings and saplings. No damage is acceptable to undesignated live merchantable or sapling sized trees. Liquidated damages will be assessed for all trees damaged. Rates will be in accordance with General Condition and Requirement 3.4 Damaged Timber.

4 - Transportation

4.1 - Construction

4.1.3 - Slash and earthen piles (8/04)

Piles or windrows of earth along roads and landings that have been widened or constructed shall be leveled. Slash from road maintenance or construction, including stumps, shall be dispersed throughout the sale, chipped, utilized or otherwise removed from the sale.

4.1.6 - Road construction (1/09)

Improvements of existing roads shall be done in such a way as to minimize the environmental and visual impacts. Merchantable trees shall be cut and utilized unless otherwise directed. Non-merchantable trees shall be severed and laid flat on the ground. Slash shall be scattered, and not left in windrows. Stumps shall be set upright, not left on edge, and be moved at least 5 feet away from the road edge. Disturbed soil shall be feathered into the woods and not left in berms or windrows.

4.1.7 - Road closure (10/11)

Any existing, closed road that is reopened must be blocked to vehicle traffic within 60 days of the sale expiration. In general, this will require scattering stumps and brush in the road course. These roads must be made impassable to ORVs. Contact the sale administrator for specific design and placement.

4.1.12 - No new roads (1/12)

No new roads will be permitted. All operations are limited to existing roads. Existing overgrown roads may be opened up and utilized with approval from the sale administrator.

4.2 - Maintenance

4.2.5 - Two wheel drive condition (2/04)

All existing trail roads on and adjacent to the sale area must be passable by two-wheel drive traffic for the duration of the sale.

5 - Operations

5.2 - Conduct of Operations

5.2.1 - Slash

5.2.1.8 - Slash height (12/08)

No slash or tree tops may exceed 24 inches in height.

5.2.1.11 - Slash for reforestation (3/21)

To facilitate reforestation, the Sale Area shall be left with slash evenly distributed. Bunched tops within the cutting area shall be broken up and scattered. Stumps shall be cut low to the ground. Processing sites shall not be left with a compacted layer of slash; tops from these sites shall be hauled back into the cut area and scattered.

5.2.2 - Hazard Trees/Snags

5.2.2.1 - Den trees (10/16)

Obvious hollow and/or den trees shall be protected and left standing unless they are a safety hazard.

5.2.3 - Operating Restrictions

5.2.3.1 - Operating restrictions (9/11)

Within Payment Unit(s) 1 and 2, unless changed by written agreement, cutting, skidding, and hauling are not permitted from March 1 to May 15, or from October 1 to December 1. This restriction is to avoid resource damage during spring break up/autumn woods and road conditions. If prolonged wet weather conditions occur throughout the operating season, the sale administrator may suspend operations until favorable weather and ground conditions are present.

5.2.38 - No decking against live trees (2/04)

Cut products may not be decked against unmarked or designated leave trees.

5.2.41 - Snowmobile trail protection (9/11)

The DNR Road is a snowmobile trail as shown on the Timber Sale Map. Do not cut or damage posts with orange trail markers or traffic control signs. If the trail/road is to be used for hauling during the snowmobile season, a snow covered base must be left on the trail. No decking of forest products will be permitted along the snowmobile trail after December 1..

5.4 - Soil Protection

5.4.1 - Rutting restriction, general (7/16)

Operations are to cease immediately if equipment and weather conditions result in rutting of roads and/or skid trails which is 12 inches or greater in depth and 50 feet in length. The Unit Manager or his/her representative may restrict hauling and/or skidding if ruts exceed the specified depth. With the Unit Manager or his/her representative's approval, the Purchaser may return to the area when the risk of rutting has decreased.

5.8 - Protection of Endangered Species

5.8.5 - Protection of raptor nests (3/13)

All trees with raptor nests will be protected if found during harvesting operations. Notification will be made to the Unit Manager or his/her representative who will notify the Wildlife Biologist so an on-site evaluation and recommendation can be made, if necessary.



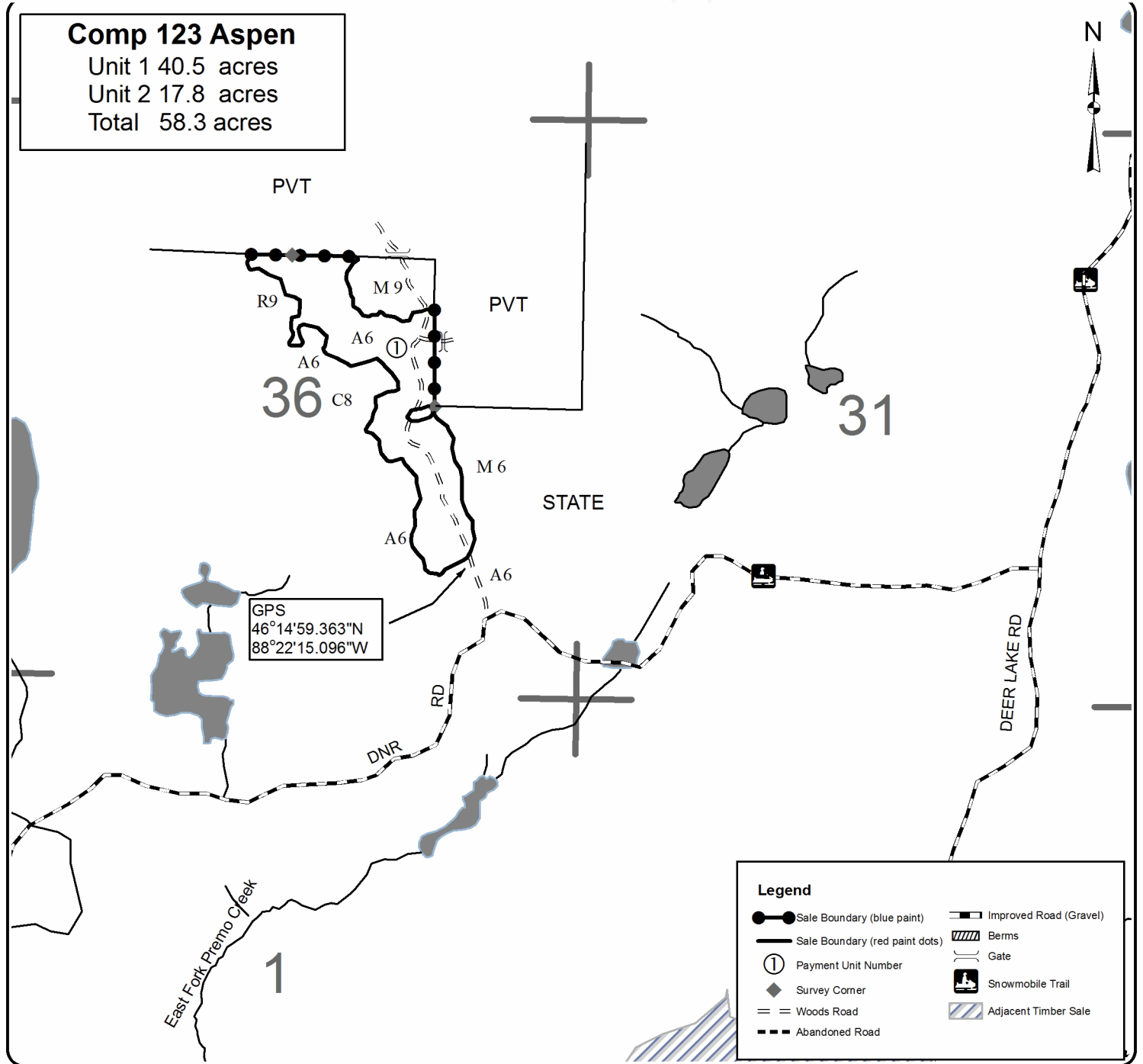
TIMBER SALE MAP

This information provided by authority of Part 525, 1994 PA 451, as amended.

Forest Management Unit CRYSTAL FALLS		County IRON	Mapped By Rice		Date 8/24/22	Page 1	of 2
Township 45/44N	Range 33W	Section(s) and Subdivision(s) T45N R33W sec 36: SENW,SWNE,SE1/4 T44N R33W sec12: N1/2NE			Scale 4 inches = 1 mile		
Cruised By Rice							

Cover Type				Density	
A = Aspen	H = Hemlock	N = Marsh	U = Upland Brush	0 = Non Stocked	5 = Pole Timber Medium
B = Paper Birch	J = Jack Pine	O = Oak	UM = Upland Mixed	1 = Seedling Sapling Poor	6 = Pole Timber Well
C = Cedar	L = Lowland Brush	P = Lowland Poplar	V = Bog or Marsh	2 = Seedling Sapling Medium	7 = Saw Timber Poor
D = Treed Bog	LM = Lowland Mixed	Q = Mixed Swamp Conifer	W = White Pine	3 = Seedling Sapling Well	8 = Saw Timber Medium
E = Swamp Hdwoods	M = Mpl, Bch, Brch	R = Red Pine	X = Non Stocked	4 = Pole Timber Poor	9 = Saw Timber Well
F = Spruce Fir	MC = Mixed Conifer	S = Black Spruce	Z = Water		
G = Grass	MD = Mixed Deciduous	T = Tamarack			

Comp 123 Aspen
 Unit 1 40.5 acres
 Unit 2 17.8 acres
 Total 58.3 acres





TIMBER SALE MAP

This information provided by authority of Part 525, 1994 PA 451, as amended.

Forest Management Unit CRYSTAL FALLS	County IRON	Mapped By Rice	Date 8/24/22	Page 2	of 2
		Cruised By Rice			

Township 45/44N	Range 33W	Section(s) and Subdivision(s) T45N R33W sec 36: SENW,SWNE,SE1/4 T44N R33W sec12: N1/2NE	Scale 4 inches = 1 mile
--------------------	--------------	--	----------------------------

Cover Type

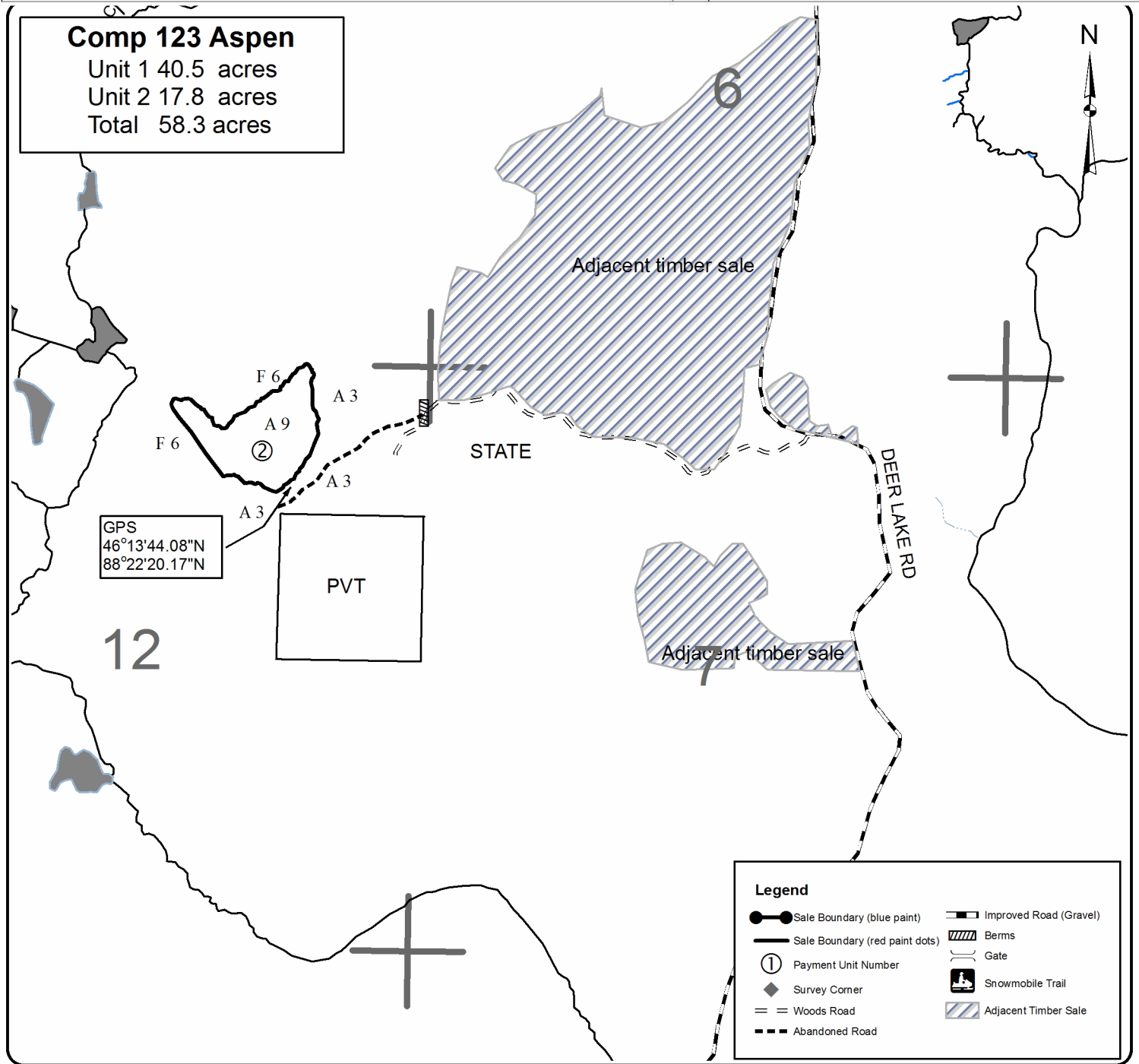
A = Aspen	H = Hemlock	N = Marsh	U = Upland Brush
B = Paper Birch	J = Jack Pine	O = Oak	UM = Upland Mixed
C = Cedar	L = Lowland Brush	P = Lowland Poplar	V = Bog or Marsh
D = Treed Bog	LM = Lowland Mixed	Q = Mixed Swamp Conifer	W = White Pine
E = Swamp Hdwoods	M = Mpl, Bch, Brch	R = Red Pine	X = Non Stocked
F = Spruce Fir	MC = Mixed Conifer	S = Black Spruce	Z = Water
G = Grass	MD = Mixed Deciduous	T = Tamarack	

Density

0 = Non Stocked	5 = Pole Timber Medium
1 = Seedling Sapling Poor	6 = Pole Timber Well
2 = Seedling Sapling Medium	7 = Saw Timber Poor
3 = Seedling Sapling Well	8 = Saw Timber Medium
4 = Pole Timber Poor	9 = Saw Timber Well

Comp 123 Aspen

Unit 1 40.5 acres
 Unit 2 17.8 acres
 Total 58.3 acres



TIMBER SALE INFORMATION

Panola Plains Pine (12-056-22)
T42N, R32W, SEC. 16; T42N, R32W, SEC. 8; T42N, R32W, SEC. 9.
Iron County (Advertised Price \$78,497.00)

A timber sale contract for this lump sum, sealed bid timber sale will be awarded to the responsible bidder offering the highest sealed bid price. All units of volume listed below were estimated using the Inventory Manager computer program and the new Michigan taper model. Bids must be at or above the following advertised price for each product and species:

<u>PRODUCTS & SPECIES</u>	<u>ESTIMATED UNITS*</u>	<u>ADVERTISED PRICE</u>
Sawtimber		
Red Pine	42.0 MBF	\$ 83.00 / MBF
Pulpwood		
Jack Pine	2,251 Cords	\$ 25.20 / Cord
Red Maple	4 Cords	\$ 11.30 / Cord
Red Pine	602 Cords	\$ 30.30 / Cord

* The total volume is statistically estimated within plus (+) or minus (-) 9.64 percent. There are an estimated 2,967 cords on this timber sale, plus or minus 286 cords at the 95% confidence level. The estimated units are final and not subject to adjustment. Prospective bidders are urged to examine this timber and to make their own estimates of quantity and quality.

BOND AND PAYMENT SCHEDULE:

1. A bond in the amount of \$5,495.00 to insure faithful performance of the conditions of the contract will be deposited by the successful bidder within 21 days of the sale award.
2. Cutting in any sale or unit without the required advance payment would be considered a trespass.
3. Total payment must be paid in advance or according to the following schedule :
 - (a) Ten percent (10%) of the sale value must be paid within 21 days of the sale award.
 - (b) The 10% down payment will be credited towards the first unit cut.
 - (c) Payment for each of the following units must be made before cutting begins in that unit:

PAYMENT UNIT NUMBER	PERCENT OF TOTAL SALE VALUE
01	13.8%
02	27.3%
03	32.6%
04	10.7%
05	6.1%
06	9.5%
4. If no cutting takes place, the 10% down payment will not be refunded.
5. Operations on the contract issued will terminate on 06/30/2025.

SALE STATISTICS

Volumes were calculated in cubic feet using the Michigan taper model. Cubic foot volume includes all wood inside bark for the product indicated. For display purposes, cubic feet were converted to cords and MBF using a simple conversion factor, e.g. 79 cubic feet per cord and 185 cubic feet per MBF. The cubic foot volumes are precise; the cords and MBF volumes are not. Cubic foot volume cannot be directly converted to cords or boards with precision.

SALE VOLUMES

The total estimated sale volume may not equal the sum of the species/products due to the nature of statistical calculations associated with double sampling methodology.

VOLUME		STATISTICAL RANGE IN CORDS		
TOTAL CUBIC FEET	TOTAL CORDS	PERCENT ERROR	MINIMUM	MAXIMUM
234,418	2,967	9.64%	2,681	3,254

VDU VOLUMES

A VDU is a Volume Determination Unit. Volumes and their associated statistics are calculated at the VDU level and summarized to the sale level. There is often a one to one relationship between a VDU and a Payment Unit, but not always, depending on the cruise design. Refer to the VDU TO PAYMENT UNIT table.

VDU	VOLUME		PERCENT ERROR	RANGE IN CORDS	
	TOTAL CUBIC FEET	TOTAL CORDS		MINIMUM	MAXIMUM
72	13,133	166	27.50%	121	212
73	8,907	113	56.13%	49	176
75	80,382	1,017	10.08%	915	1,120
77	21,883	277	32.35%	187	367
78	90,818	1,150	16.61%	959	1,341
81	19,295	244	32.56%	165	324
TOTAL:	234,418	2,967		2,396	3,539

VDU TO PAYMENT UNIT

When a VDU is associated with more than one Payment Unit (PU), the VDU volumes are assigned to the PU based on acres of the VDU within the PU.

VDU	VDU ACRES	PU	PU ACRES
72	10.9	5	10.9
73	4.4	1	4.4
75	34.4	3	34.4
77	20.3	4	20.3
78	51.9	1	13.5
		2	38.4
81	15.2	6	15.2
TOTAL:	137.1		137.1

DESCRIPTION OF TIMBER BY PAYMENT UNIT (PU)

PU	MARKET GROUP	PRODUCT	QUANTITY	UNIT	ACRES	ADVERTISE PRICE
1	Red Pine	Sawtimber	5.1	MBF	17.9	\$10,840.50
	Jack Pine	Pulpwood	322	Cords		
	Red Pine		76	Cords		
2	Jack Pine	Pulpwood	851	Cords	38.4	\$21,445.20
3	Jack Pine	Pulpwood	1,018	Cords	34.4	\$25,653.60
4	Red Pine	Sawtimber	15.8	MBF	20.3	\$8,364.40
	Jack Pine	Pulpwood	37	Cords		
	Red Pine		202	Cords		
5	Red Pine	Sawtimber	10.8	MBF	10.9	\$4,763.30
	Jack Pine	Pulpwood	23	Cords		
	Red Maple		4	Cords		
	Red Pine		107	Cords		
6	Red Pine	Sawtimber	10.3	MBF	15.2	\$7,430.00
	Red Pine	Pulpwood	217	Cords		
TOTAL:			42.0	MBF		
TOTAL:			2,857	Cords		

Sale Specific Conditions & Requirements

Sale Name: Panola Plains Pine

Sale Number: 12-056-22 Seq#: 1

1 - Sale Area

1.2 - Boundaries

1.2.1 - Painted boundaries (9/19)

The sale boundary and Payment Unit boundaries are marked and identified by blue and red paint. Exterior sale boundary lines against private property are marked with blue paint. Exterior sale boundary lines against state are marked with red paint. Interior Payment Unit boundaries are marked with red slashes. The painted boundary line trees are not Included Timber and are to be protected unless marked with orange paint. Trees marked with red slashes, designating an interior Payment Unit boundary are only to be cut when all surrounding Payment Units have been paid.

2 - Timber Specifications

2.1 - Included Timber

2.1.2 - Clearcut unit(s) w/o unmerchantable trees (8/11)

Within Payment Unit(s) 1, 2 and 3, cut all trees which meet minimum piece specifications in 2.2 Utilization except red and white pine and oak. In Payment Unit 1, cut all red pine marked with orange paint.

2.1.3 - Cut tree marked unit(s) (12/08)

Within Payment Unit(s) 4, 5 and 6, all trees are designated for cutting when marked with orange paint above and below stump height, regardless of merchantability. In addition to trees marked with orange paint, cut all jack pine and aspen with one or more pulpwood stick.

2.2 - Utilization

2.2.3 - Stump heights (4/07)

Stump heights within Payment Unit(s) 1, 2 and 3 shall not exceed 6 inches for all trees.

2.2.10 - No chipping tops and limbs (8/16)

Within Payment Unit(s) 1, 2 and 3, chipping of limbs or tops is not permitted. Limbs and the remaining top must be left on site and scattered.

4 - Transportation

4.1 - Construction

4.1.6 - Road construction (1/09)

Construction of new roads or improvements of existing roads shall be done in such a way as to minimize the environmental and visual impacts. Merchantable trees shall be cut and utilized unless otherwise directed. Non-merchantable trees shall be severed and laid flat on the ground. Slash shall be scattered, and not left in windrows and kept a minimum of 10 feet back from the road edge. Stumps shall be set upright, not left on edge, and be moved at least 10 feet away from the road edge. Disturbed soil shall be feathered into the woods and not left in berms or windrows.

4.1.7 - Road closure (10/11)

All new roads built into the sale must be blocked to vehicle traffic upon completion of the sale. Overgrown roads that are reopened shall be considered new roads. In general, this will require constructing a four (4') foot high berm of stumps and logs covered with earth. Contact the sale administrator for specific details of design and placement.

4.2 - Maintenance

4.2.4 - Grading (10/16)

For completion of the sale, state forest roads must be graded. In general, this will require a road grader or bull dozer to shape up the roads after forest products have been hauled off site. This includes cleaning of drainage areas, grading, crowning and filling with gravel, if necessary. The grading equipment to be used must be approved by the Unit Manager or his/her representative.

5 - Operations

5.2 - Conduct of Operations

5.2.1 - Slash

5.2.1.8 - Slash height (12/08)

No slash or tree tops may exceed 36 inches in height.

5.2.38 - No decking against live trees (2/04)

Cut products may not be decked against unmarked or designated leave trees.

5.4 - Soil Protection

5.4.1 - Rutting restriction, general (7/16)

Operations are to cease immediately if equipment and weather conditions result in rutting of roads and/or skid trails which is 12 inches or greater in depth and 50 feet in length. The Unit Manager or his/her representative may restrict hauling and/or skidding if ruts exceed the specified depth. With the Unit Manager or his/her representative's approval, the Purchaser may return to the area when the risk of rutting has decreased.

5.8 - Protection of Endangered Species

5.8.5 - Protection of raptor nests (3/13)

All trees with raptor nests will be protected if found during harvesting operations. Notification will be made to the Unit Manager or his/her representative who will notify the Wildlife Biologist so an on-site evaluation and recommendation can be made, if necessary.

6 - Safety and Fire Prevention

6.2 - Signing

6.2.1 - Road posting (10/20)

The Purchaser is responsible for posting and maintaining caution signs on all haul roads prior to beginning operations. The road must be posted approximately 350 feet from the sale area to warn of logging activity and truck traffic. Signs must be removed when harvest operations are suspended or completed. The Purchaser will provide these signs.

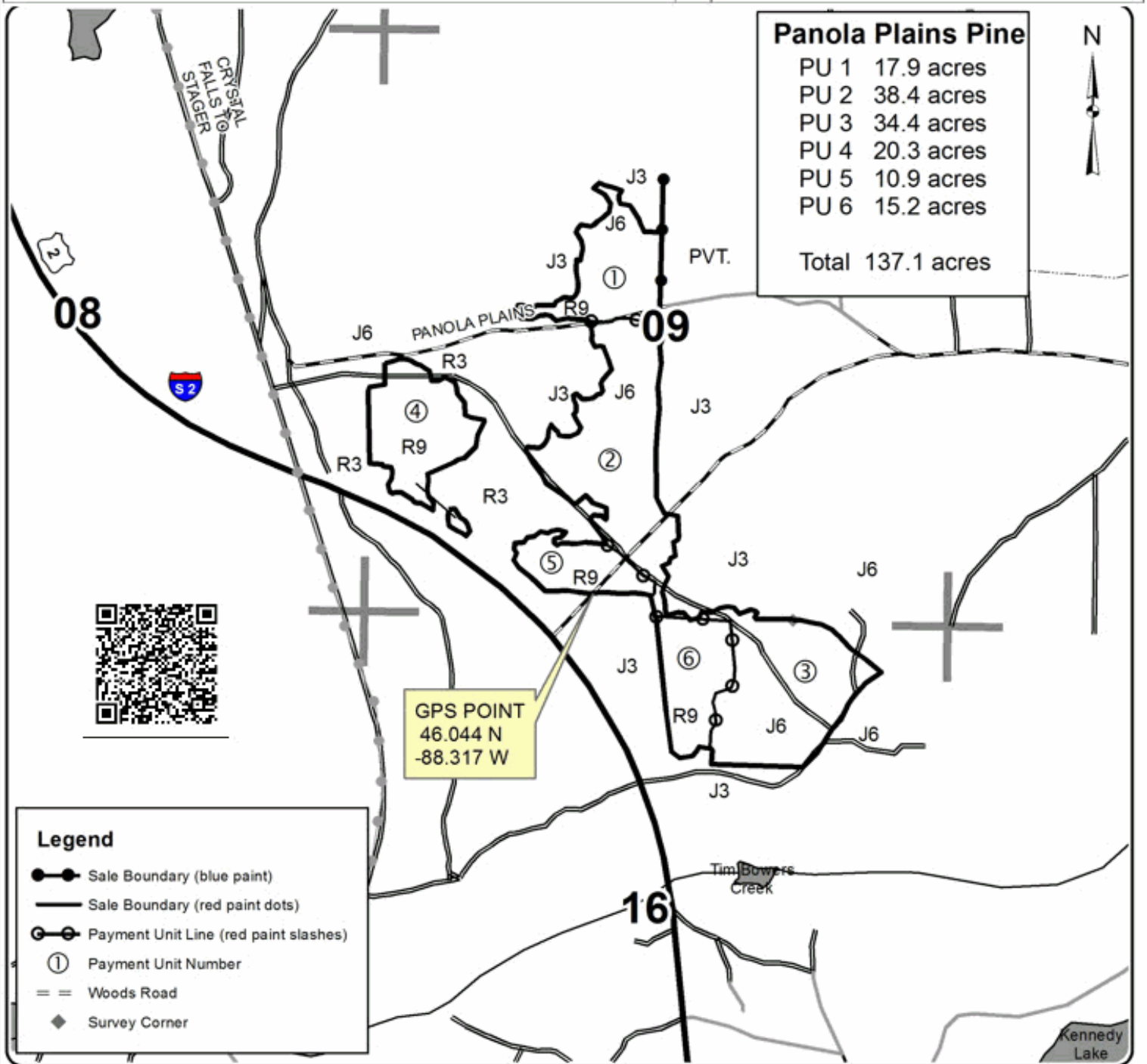


TIMBER SALE MAP

This information provided by authority of Part 525, 1994 PA 451, as amended.

Forest Management Unit Crystal Falls		County Iron	Mapped By Scott Sebero	Date 08/04/2022	Page 1	of 1
Township 42N	Range 32W	Section(s) and Subdivision(s) 8 NESE, 9 SENW, SW, SWSE, 16 N1/2NE		Scale 4 inches = 1 mile		
Cruised By Scott Sebero						

Cover Type				Density	
A = Aspen	H = Hemlock	N = Marsh	U = Upland Brush	0 = Non Stocked	5 = Pole Timber Medium
B = Paper Birch	J = Jack Pine	O = Oak	UM = Upland Mixed	1 = Seedling Sapling Poor	6 = Pole Timber Well
C = Cedar	L = Lowland Brush	P = Lowland Poplar	V = Bog or Marsh	2 = Seedling Sapling Medium	7 = Saw Timber Poor
D = Tread Bog	LM = Lowland Mixed	Q = Mixed Swamp Conifer	W = White Pine	3 = Seedling Sapling Well	8 = Saw Timber Medium
E = Swamp Hdwoods	M = Mpl, Bch, Brch	R = Red Pine	X = Non Stocked	4 = Pole Timber Poor	9 = Saw Timber Well
F = Spruce Fir	MC = Mixed Conifer	S = Black Spruce	Z = Water		
G = Grass	MD = Mixed Deciduous	T = Tamarack			



Comp 123 Aspen (12-055-22)
T44N, R33W, SEC. 12; T45N, R33W, SEC. 36; Iron COUNTY

In response to the notice of sale to be held 9:00 a.m. (local time) on December 1, 2022, I am hereby submitting my sealed bid (firm offer) for the following forest products to be cut. Bids for individual species must be at or above the advertised price. All non-responsive bid forms may be rejected.

<u>PRODUCTS & SPECIES</u>	<u>ESTIMATED VOLUME*</u>	<u>ADVERTISED PRICE</u>	<u>BID PRICE/UNIT</u>
Sawtimber			
Red Maple	6.6 MBF	\$ 78.00/MBF	\$ _____
Sugar Maple	1.9 MBF	\$ 154.00/MBF	\$ _____
Pulpwood			
Balsam Fir	167 Cords	\$ 4.25/Cord	\$ _____
Mixed Hardwood	158 Cords	\$ 11.30/Cord	\$ _____
Paper Birch	50 Cords	\$ 4.25/Cord	\$ _____
Quaking Aspen	877 Cords	\$ 18.25/Cord	\$ _____
White Spruce	23 Cords	\$ 5.50/Cord	\$ _____

*The volumes are statistically estimated within plus (+) or minus (-) 4.92 percent at 95% confidence level. These estimated volumes are final and not subject to adjustment. Prospective bidders are urged to examine this timber and to make their own estimates of quantity and quality.

I understand that any or all bids may be rejected. All bids must be signed and all bid items must be bid or the bid form may be rejected. I also understand that consideration and awarding a contract will be based upon my past performance and ability to complete the contract based upon equipment and staffing subject to my control.

FEDERAL ID: _____ or SOCIAL SECURITY NUMBER: _____
 Company or individual bidding: _____
 Company representative's name: _____
 Address: _____
 City: _____ State: _____ Zip: _____

IF AVAILABLE, PLEASE PLACE THE PERSONALIZED LABEL FROM YOUR PROSPECTUS IN THE ABOVE BOX.

Individual or company representative's signature: _____ Date: _____
Phone number : _____ Email (optional): _____

THE WINNING BIDDER MUST COMPLETE THE VERIFICATION OF WORKER'S DISABILITY COMPENSATION ACT COMPLIANCE (ON REVERSE SIDE IF DOUBLE SIDED) WITHIN 21 DAYS OF SALE AWARD DATE

Panola Plains Pine (12-056-22)

T42N, R32W, SEC. 16; T42N, R32W, SEC. 8; T42N, R32W, SEC. 9; Iron COUNTY

In response to the notice of sale to be held 9:00 a.m. (local time) on December 1, 2022, I am hereby submitting my sealed bid (firm offer) for the following forest products to be cut. Bids for individual species must be at or above the advertised price. All non-responsive bid forms may be rejected.

<u>PRODUCTS & SPECIES</u>	<u>ESTIMATED VOLUME*</u>	<u>ADVERTISED PRICE</u>	<u>BID PRICE/UNIT</u>
Sawtimber			
Red Pine	42.0 MBF	\$ 83.00/MBF	\$ _____
Pulpwood			
Jack Pine	2,251 Cords	\$ 25.20/Cord	\$ _____
Red Maple	4 Cords	\$ 11.30/Cord	\$ _____
Red Pine	602 Cords	\$ 30.30/Cord	\$ _____

*The volumes are statistically estimated within plus (+) or minus (-) 9.64 percent at 95% confidence level. These estimated volumes are final and not subject to adjustment. Prospective bidders are urged to examine this timber and to make their own estimates of quantity and quality.

I understand that any or all bids may be rejected. All bids must be signed and all bid items must be bid or the bid form may be rejected. I also understand that consideration and awarding a contract will be based upon my past performance and ability to complete the contract based upon equipment and staffing subject to my control.

FEDERAL ID: _____ - _____ or SOCIAL SECURITY NUMBER: _____ - _____ - _____

Company or individual bidding: _____

Company representative's name: _____

Address: _____

City: _____ State: _____ Zip: _____

IF AVAILABLE, PLEASE PLACE THE PERSONALIZED LABEL FROM YOUR PROSPECTUS IN THE ABOVE BOX.

Individual or company representative's signature: _____ Date: _____

Phone number : _____ Email (optional): _____

THE WINNING BIDDER MUST COMPLETE THE VERIFICATION OF WORKER'S DISABILITY COMPENSATION ACT COMPLIANCE (ON REVERSE SIDE IF DOUBLE SIDED) WITHIN 21 DAYS OF SALE AWARD DATE



FOR DEPARTMENT USE ONLY	
Sale Number (XX - XXX - XX - XX)	
Forest Management Unit:	

TIMBER SALE VERIFICATION OF WORKER'S DISABILITY COMPENSATION ACT COMPLIANCE

As required by Act 317, P.A. 1969 (Worker's Compensation) and
Part 5 of Act 451 of 1994, as amended.

VERIFICATION OF WORKER'S DISABILITY COMPENSATION ACT COMPLIANCE

- This verification must be completed and submitted within 21 days of contract award and prior to the issuance of the timber sale contract.
- In addition, if boxes 2B or 2C are checked, then Notice of Exclusion or Certificate of Insurance must be submitted within twenty-one (21) days of the contract award and prior to the issuance of the timber sale contract.
- All information must be typed or printed except for written signatures.

Please Check Appropriate Categories:

1. My business is organized as (you **must** check one of the boxes below):
 - A. Sole Proprietorship (individual)
 - B. Partnership
 - C. Corporation
2. You **must** check one of the boxes below:
 - A. I certify my business is a sole proprietorship and it has no employees but the sole proprietor. I am not subject to the Worker's Compensation Laws.
 - B. I certify my business has satisfied its obligation to the Worker's Compensation Act through the use of an approved Notice of Exclusion (BWC-337, Rev. 5/96). I will provide a copy of the Notice of Exclusion within 21 days of the contract award. (For questions or a copy of the BWC-337, please call the Worker's Compensation Bureau at 517-322-1195).
 - C. I certify my business has a Worker's Compensation Policy. I will provide an original Certificate of Insurance within twenty-one (21) days of the contract award.
3. If you have checked item 2(A) or 2(B), you **must** indicate the number of **both** full-time and part-time employees, other than yourself, including family members and active partners (if none, you must enter "0").

_____ Full-time Employees

_____ Part-time Employees

Name of Business		Federal ID (or) Social Security No.	
Address		Telephone ()	
City	State	ZIP	

I hereby certify that the above information is true and correct. I agree to notify the Michigan DNR of any changes that occur in factors affecting my coverage during any of my present and future operations.

Signature of Owner or Authorized Representative

Title

Date

Please complete the "SEALED BID" information on the next page

Hazel Tango (12-007-22)

T44N, R28W, SEC. 25; T44N, R28W, SEC. 26; T44N, R28W, SEC. 27; T44N,

In response to the notice of sale to be held 9:00 a.m. (local time) on December 1, 2022, I am hereby submitting my sealed bid (firm offer) for the following forest products to be cut. Bids for individual species must be at or above the advertised price. All non-responsive bid forms may be rejected.

<u>PRODUCTS & SPECIES</u>	<u>ESTIMATED VOLUME*</u>	<u>ADVERTISED PRICE</u>	<u>BID PRICE/UNIT</u>
Sawtimber			
Sugar Maple	22.1 MBF	\$ 154.00/MBF	\$ _____
Pulpwood			
Balsam Fir	615 Cords	\$ 4.25/Cord	\$ _____
Balsam Poplar	153 Cords	\$ 18.25/Cord	\$ _____
Basswood	67 Cords	\$ 5.40/Cord	\$ _____
Mixed Hardwood	608 Cords	\$ 11.30/Cord	\$ _____
Mixed Spruce	136 Cords	\$ 5.50/Cord	\$ _____
Quaking Aspen	4,595 Cords	\$ 18.25/Cord	\$ _____
Tamarack	53 Cords	\$ 5.05/Cord	\$ _____

*The volumes are statistically estimated within plus (+) or minus (-) 9.87 percent at 95% confidence level. These estimated volumes are final and not subject to adjustment. Prospective bidders are urged to examine this timber and to make their own estimates of quantity and quality.

I understand that any or all bids may be rejected. All bids must be signed and all bid items must be bid or the bid form may be rejected. I also understand that consideration and awarding a contract will be based upon my past performance and ability to complete the contract based upon equipment and staffing subject to my control.

FEDERAL ID: ____ - ____ - ____ or SOCIAL SECURITY NUMBER: ____ - ____ - ____

Company or individual bidding: _____

Company representative's name: _____

Address: _____

City: _____ State: _____ Zip: _____

IF AVAILABLE, PLEASE PLACE THE PERSONALIZED LABEL FROM YOUR PROSPECTUS IN THE ABOVE BOX.

Individual or company representative's signature: _____ Date: _____

Phone number : _____ Email (optional): _____

THE WINNING BIDDER MUST COMPLETE THE VERIFICATION OF WORKER'S DISABILITY COMPENSATION ACT COMPLIANCE (ON REVERSE SIDE IF DOUBLE SIDED) WITHIN 21 DAYS OF SALE AWARD DATE

