



**DEPARTMENT OF NATURAL RESOURCES
STATE OF MICHIGAN
TIMBER SALE PROSPECTUS #7186**

SCHEDULED SALE DATE AND TIME: 9:00 a.m. (local time) on January 31, 2023.

LOCATION: GAYLORD MGMT UNIT, 1732 WEST M 32, GAYLORD, MI 49735.

PROSPECTUS NOTE: All bid openings for the Gaylord Management Unit (Gaylord Field Office and Indian River Field Office) will be held at the Gaylord Field Office regardless of sale location within the unit. All payments and contract executions will now be handled through the Gaylord Field Office. The Indian River Field Office will no longer accept payments or hard paper copies of timber sale bids. Payments for all contracts, use permits, bonds, etc. should be sent to the Gaylord Field Office.

The bidder is advised to inspect the sale area and review the location, estimated volumes, operating costs and contract terms of proposed sales. Please be aware that some landowners may request 60 days or more notice for access across their land.

Notice is hereby given that bids will be received by the Unit Manager, GAYLORD MANAGEMENT UNIT, for certain timber on the following described lands:

Farewell Red Pine (52-101-23) / T35N, R01E, SEC. 15, SWNE,SE.

Cheboygan County, Advertised Price \$37,954.10, 34.1 Acres, Red Pine, Hardwood.

SALE NOTE: Stump height and slash specs to facilitate future planting. Recreational trail present.

A recreation site such as a trail, pathway, or campground is within the sale area or the vicinity. Certain restrictions/specifications may be applicable including time restrictions.

Mentor Mix (52-105-22) / T34N, R03W, SEC. 22, SESW.

T34N, R03W, SEC. 26, NWNW,SENE,SWNE,N1/2SW,W1/2SE.

T34N, R03W, SEC. 27, NENW,S1/2NW,NE,N1/2SE.

Cheboygan County, Advertised Price \$167,949.65, 201.1 Acres, Hardwood, Aspen.

SALE NOTE: Recreational trails present. Extensive brushing will be needed on road to units 6 and 7.

A recreation site such as a trail, pathway, or campground is within the sale area or the vicinity. Certain restrictions/specifications may be applicable including time restrictions.

Sandy Aspen (52-113-22) / T36N, R01E, SEC. 31, SENE,E1/2SE.

T36N, R01E, SEC. 32, W1/2SW.

Cheboygan County, Advertised Price \$33,497.20, 47.4 Acres, Aspen.

SALE NOTE: This sale has a 4" spec; short wood operation recommended in order to protect submerchantable trees and shrubs. Access/soils are generally very sandy; winter harvest recommended. Some saturated soils and potential for vernal ponds. There is trace sugar maple and white ash pulpwood that was not picked up on the cruise.

Mandy Hardwood (52-114-22) / T34N, R03W, SEC. 30, S1/2NW,SWNE,E1/2SW,NWSE.

Cheboygan County, Advertised Price \$129,673.70, 99.0 Acres, Hardwood, Sugar Maple.

SALE NOTE: Seasonal restriction. Hiking trail present in sale.

A recreation site such as a trail, pathway, or campground is within the sale area or the vicinity. Certain restrictions/specifications may be applicable including time restrictions.

BID INSTRUCTIONS (VER. 10/10/2022):

1. Scheduled Bid Location, Date, and Time (2/11)

Bids must be received by the Unit Manager, GAYLORD OFFICE, 1732 West M 32, Gaylord, MI 49735, no later than 9:00 a.m. (local time) on January 31, 2023. For further information concerning this sale, contact Lucas Merrick at 989-732-3541 extension 5440.

2. Bidder's Qualifications (10/22)

If all or part of a timber sale was prepared by a private contractor, the contractor and that contractor's company are not permitted to bid on the timber sale. A person must be 18 years of age or older to purchase timber. Permanent employees of the Department of Natural Resources or members of their immediate household may not bid. Former employees, in the permanent or seasonal class, may not bid until 3 months after the last day of active duty. Bids will not be accepted from individuals or companies appearing on the DNR/FRD No-Bid List. This list contains the names of purchasers who previously failed to execute a contract within 21-days or who have a history of poor performance.

3. Preparation of Sealed Bids (5/16)

Bid Forms may be completed online thru Michigan DNR Timber Sale Online Bidding (OLB) at www.michigan.gov/timberbidding or by completing the hardcopy Bid Form found in the Timber Sale Prospectus. Hardcopy Bid Forms shall be manually signed in ink. Registration in OLB is considered your 'signature' for all bids submitted thru that system. Bid prices must be entered for each species and product in the Bid Price column for all material subject to bidding and all fill-in blanks must be completed. If erasures or other changes appear on the hardcopy Bid Form, each erasure or change must be initialed by the person signing the bid.

4. Submission of Sealed Bids (5/16)

Bid forms may be obtained from the Unit Manager or thru OLB. Bids may be submitted hardcopy or thru OLB. All hardcopy bids must be submitted on the bid form and in an envelope clearly identified as described in this section. NOTE: Only one bid form per bid envelope. Sealed bids must be submitted to the Unit office designated in the prospectus and must be submitted at or prior to the time established in the prospectus. The envelope should show on the outside (a) the sale name or number and (b) the date and time of bid opening, as shown in the prospectus. Bids received after the time specified in the sale prospectus are late bids and will be rejected.

It is possible for a bidder to submit multiple bids on a single sale. For example, a bid may be submitted hardcopy and a bid may be submitted thru OLB. Or, two bidders from the same company could both submit bids on the same sale. If this were to happen, the State would accept all bids received and award the contract accordingly. All bidding and contractual requirements would apply to all bids received.

5. Public Opening of Sealed Bids (7/16)

If conditions permit, the sealed bids will be publicly opened and posted at the time and place set in the prospectus.

If a bidder, present at a bid opening, has submitted bids on more than one sale, that bidder may withdraw their unopened bid envelopes or announce the withdrawal of their online bid after being declared the successful bidder on one sale.

6. Award of Contract (1/11)

Award of the contract will be made to the Bidder whose bid, conforming to the prospectus, is most advantageous to the State of Michigan on the basis of total value at rates bid for the estimated quantities. The State reserves the right to reject any bid or waive any minor irregularity in bids received. A written award mailed (or otherwise furnished) to the successful Bidder shall be deemed to result in a binding contract without further action by either party.

7. Down Payment (1/11)

The Bidder to whom award is made must make a down payment within 21 days of the sale award. The amount of the down payment will be calculated as shown in the Bond and Payment Schedule of this prospectus. Only cash may be used to meet this requirement.

8. Performance Security (1/11)

As guarantee of faithful performance, a cash bond, certificate of deposit, surety bond or irrevocable letter of credit (LOC) is required within 21 days of the sale award. The amount of the performance security is shown in the Bond and

Payment Schedule of this prospectus. If an LOC or surety is used, the coverage must extend for at least 6 months beyond the contract expiration.

9. Worker's Compensation (10/22)

Purchaser shall obtain worker's compensation insurance to cover claims under Michigan's Worker's Disability Compensation Act of 1969 or similar employee benefit act of any other state applicable to an employee. Verification of Worker's Disability Compensation Act Compliance must be completed and submitted within 21 days of contract award and prior to the issuance of the timber sale contract. In addition, if applicable, Notice of Exclusion or Certificate of Insurance must also be submitted.

10. Timber Sale Contract (10/22)

Additional conditions and requirements common to all timber sales are listed on the timber sale contract (R4031) and are available on line at www.michigan.gov/timber. Contact the Unit Manager for additional information or a sample contract. Within 21 days of the date of the award letter, the bidder must sign the contract and provide the required down payment, performance security, and verification of worker's disability compensation. The down payment and performance security shall be in accordance with the provisions of the timber sale contract, in the sums stated in this prospectus. If these actions are not taken, then the Bidder, the Bidder's corporation, and the corporation's principals may not be permitted to bid on State timber sales for a period of 3 months after the first offense, 6 months after the second offense, and 1 year after the third offense. An offense will only be counted against the Bidder for 5 years. In addition, the Bidder certifies that if awarded this contract, the Bidder will complete the timber sale contract in accordance with its terms and any modifications thereof including requirements to purchase, cut, and remove the included timber by the expiration date.

Payment Unit values in the State Forest Timber Sale Contract are calculated based on the advertised value of the Payment Unit as a percentage of the total advertised value of the contract. The advertised value of each Payment Unit is given in the Description of Timber by Payment Unit table on the Timber Sale Information page. For example, if the value of Payment Unit 1 is advertised as \$1,500 and the total Timber Sale value is advertised as \$10,000, the contract price for Payment Unit 1 will be 15% of the total bid price ($\$1,500/\$10,000 * 100$).

11. Disclaimer of Estimates and Bidder's Warranty of Inspection (10/22)

Before submitting this bid, the Bidder is advised and cautioned to inspect the sale area, review the requirements of the sale contract, and take other steps as may be reasonably necessary to ascertain the location, estimated volumes, construction estimates, and operating costs of the proposed sale. Failure to do so will not relieve the Bidder from responsibility for completing the contract.

The Bidder warrants that this bid is submitted solely on the basis of the Bidder's examination and inspection of the quality and quantity of the timber offered for sale and the Bidder's opinion of the value thereof and the costs of recovery. No reliance should be placed on the State of Michigan's estimates of timber quality, quantity or costs of recovery. Bidder further acknowledges that the State of Michigan: (i) expressly disclaims any warranty of fitness of timber for any purpose; (ii) offers this timber as is without any warranty of quality (merchantability) or quantity and (iii) expressly disclaims any warranty as to the quantity or quality of timber sold.

12. Certification and Chain-of-Custody (10/22)

Unless otherwise indicated in the contract under section 7 – Other Conditions of the Sale Specific Conditions & Requirements, the area encompassed by this timber sale is certified to the standards of the Forest Stewardship Council (FSC) - Certificate #SCS-FM/COC-00090N and the Sustainable Forestry Initiative (SFI) - Certificate #NSF-SFIS-5Y031-SF5. Forest products from this sale may be delivered to the mill as "FSC 100% and / or SFI certified" as long as the contractor hauling the forest products is chain-of-custody (COC) certified or covered under a COC certificate from the destination mill. The purchaser is responsible for maintaining COC after leaving the sale area.

13. Good Neighbor Authority (GNA) Requirements (10/22)

If the name of this timber sales contains the acronym GNA, it is authorized by the Good Neighbor Authority (GNA) and covered by various agreements between the U.S. Forest Service and the State. The timber sale occurs on federal land and the following conditions apply:

GNA contracts on US Forest Service land will not be awarded to purchasers on the Federal list of excluded parties. The System for Award Management (SAM) will be checked for active excluded parties prior to award of contract. In

addition, the Bidder to whom award is made must complete an Assurance Regarding Felony Conviction or Tax Delinquent Status for Corporate Applicants (AD-3031).

14. Good Neighbor Authority (GNA) Requirements, con't (10/22)

Bidder certifies, by signing this bid form, that to the best of Bidder's knowledge that the following representations are accurate and complete.

- a. That the Bidder and its principals are not presently debarred, suspended, proposed for debarment, declared ineligible, or voluntary excluded from timber sales (covered transactions) by any Federal department or agency.
- b. That the Bidder and its principals have not within a 3-year period preceding this bid been convicted of or had a civil judgment rendered against them for commission of fraud or a criminal offense in connection with obtaining , attempting to obtain, or performing a public (Federal, State, or local) transaction or contract under a public transaction; violation of Federal or State antitrust statutes or commission of embezzlement, theft, forgery, bribery, falsification or destruction of records, making false statements, or receiving stolen property.
- c. That the Bidder and its principals are not presently indicted for or otherwise criminally or civilly charged by a governmental entity (Federal, State, or local) with commission of any of the offenses enumerated in paragraph b of this certification.
- d. That the Bidder and its principals have not within a 3-year period preceding this bid had one or more public transactions (Federal, State, or local) terminated for breach or default of a timber or forest product contract.

Bidders that cannot certify this requirement, in whole or in part, shall submit an explanation with their bid.

DAN EICHINGER
Director

TIMBER SALE INFORMATION

Farewell Red Pine (52-101-23)

T35N, R01E, SEC. 15.

Cheboygan County (Advertised Price \$37,954.10)

SALE NOTE: Stump height and slash specs to facilitate future planting. Recreational trail present.

A recreation site such as a trail, pathway, or campground is within the sale area or the vicinity. Certain restrictions/specifications may be applicable including time restrictions.

A timber sale contract for this lump sum, sealed bid timber sale will be awarded to the responsible bidder offering the highest sealed bid price. All units of volume listed below were estimated using the Inventory Manager computer program and the new Michigan taper model. Bids must be at or above the following advertised price for each product and species:

<u>PRODUCTS & SPECIES</u>	<u>ESTIMATED UNITS*</u>	<u>ADVERTISED PRICE</u>
Sawtimber		
Red Oak	21.9 MBF	\$ 79.00 / MBF
Red Pine	142.3 MBF	\$ 140.00 / MBF
White Oak	1.9 MBF	\$ 109.00 / MBF
White Pine	1.8 MBF	\$ 60.00 / MBF
Pulpwood		
Mixed Oak	43 Cords	\$ 38.55 / Cord
Red Pine	279 Cords	\$ 51.15 / Cord
White Pine	2 Cords	\$ 29.20 / Cord

* The total volume is statistically estimated within plus (+) or minus (-) 22.22 percent. There are an estimated 709 cords on this timber sale, plus or minus 158 cords at the 95% confidence level. The estimated units are final and not subject to adjustment. Prospective bidders are urged to examine this timber and to make their own estimates of quantity and quality.

BOND AND PAYMENT SCHEDULE:

1. A bond in the amount of \$1,898.00 to insure faithful performance of the conditions of the contract will be deposited by the successful bidder within 21 days of the sale award.
2. Cutting in any sale or unit without the required advance payment would be considered a trespass.
3. Total payment must be paid in advance or according to the following schedule :
 - (a) Ten percent (10%) of the sale value must be paid within 21 days of the sale award.
 - (b) The remainder is due before cutting begins.
 - (c) Payment for each of the following units must be made before cutting begins in that unit:

PAYMENT UNIT NUMBER	PERCENT OF TOTAL SALE VALUE
01	100.0%
4. If no cutting takes place, the 10% down payment will not be refunded.
5. Operations on the contract issued will terminate on 12/31/2025.

SALE STATISTICS

Volumes were calculated in cubic feet using the Michigan taper model. Cubic foot volume includes all wood inside bark for the product indicated. For display purposes, cubic feet were converted to cords and MBF using a simple conversion factor, e.g. 79 cubic feet per cord and 185 cubic feet per MBF. The cubic foot volumes are precise; the cords and MBF volumes are not. Cubic foot volume cannot be directly converted to cords or boards with precision.

SALE VOLUMES

The total estimated sale volume may not equal the sum of the species/products due to the nature of statistical calculations associated with double sampling methodology.

VOLUME		STATISTICAL RANGE IN CORDS		
TOTAL CUBIC FEET	TOTAL CORDS	PERCENT ERROR	MINIMUM	MAXIMUM
56,005	709	22.22%	551	866

VDU VOLUMES

A VDU is a Volume Determination Unit. Volumes and their associated statistics are calculated at the VDU level and summarized to the sale level. There is often a one to one relationship between a VDU and a Payment Unit, but not always, depending on the cruise design. Refer to the VDU TO PAYMENT UNIT table.

VDU	VOLUME		PERCENT ERROR	RANGE IN CORDS	
	TOTAL CUBIC FEET	TOTAL CORDS		MINIMUM	MAXIMUM
40	56,005	709	22.22%	551	866
TOTAL:	56,005	709		551	866

VDU TO PAYMENT UNIT

When a VDU is associated with more than one Payment Unit (PU), the VDU volumes are assigned to the PU based on acres of the VDU within the PU.

VDU	VDU ACRES	PU	PU ACRES
40	34.1	1	34.1
TOTAL:	34.1		34.1

DESCRIPTION OF TIMBER BY PAYMENT UNIT (PU)

PU	MARKET GROUP	PRODUCT	QUANTITY	UNIT	ACRES	ADVERTISE PRICE
1	Red Oak	Sawtimber	21.9	MBF	34.1	\$37,954.10
	Red Pine		142.3	MBF		
	White Oak		1.9	MBF		
	White Pine		1.8	MBF		
	Mixed Oak	Pulpwood	43	Cords		
	<i>Red Oak</i>		37	<i>Cords</i>		
	<i>White Oak</i>		6	<i>Cords</i>		
	Red Pine		279	Cords		
	White Pine		2	Cords		
TOTAL:			167.9	MBF		
TOTAL:			324	Cords		

Sale Specific Conditions & Requirements

Sale Name: Farewell Red Pine

Sale Number: 52-101-23 Seq#: 1

1 - Sale Area

1.2 - Boundaries

1.2.1 - Painted boundaries (9/19)

The sale boundary is marked and identified by red paint, along with roads. Exterior sale boundary lines against state are marked with red paint. The western boundary is unmarked and identified by Arrow Road. The northern boundary is unmarked and identified by an unnamed road.

2 - Timber Specifications

2.1 - Included Timber

2.1.1 - Clearcut unit(s) with unmerchantable trees (6/14)

Within Payment Unit(s) 1, cut all trees that are two (2) inches or more at DBH.

2.2 - Utilization

2.2.2 - Chipping required (2/18)

This area must be chip harvested to facilitate future silvicultural activities. The Purchaser has the option to produce sawlogs or pulpwood bolts, but the remaining portion of the trees must be chipped and hauled. If market conditions limit the practicality of chipping, tops and slash must be arranged in a way that will not inhibit future planting operations, as directed by the sale administrator. A chipping exemption can be obtained if proposed operations are determined to be suitable for planting by reforestation staff. This exemption must be granted in writing. The requirement to retain approximately 1/6 to 1/3 of tree tops and limbs less than four inches in diameter is still applicable (G. C. & R. 2.2).

2.2.3 - Stump heights (4/07)

Stump heights within the Sale Area shall not exceed 12 inches for trees greater than 10 inches DBH and 4 inches for trees smaller than 10 inches DBH. This is in order to facilitate planting operations. A written waiver of this requirement may be obtained if wet summer weather makes winter logging necessary.

3 - Payments

3.3 - Pre-measured Sales

3.3.4 - Dividing payment units (7/14)

Payment Unit(s) 1 may be divided at the request of the Purchaser and upon approval of the Unit Manager. Dividing Payment Units is a contract modification which requires a Timber Sale Contract Amendment. There will be only one division per Payment Unit.

4 - Transportation

4.2 - Maintenance

4.2.5 - Two wheel drive condition (2/04)

All existing trail roads on and adjacent to the sale area must be passable by two-wheel drive traffic for the duration of the sale.

5 - Operations

5.1 - Notification

5.1.1 - Pre-sale conference (10/16)

A pre-sale conference on site between the Purchaser and sale administrator is required prior to beginning any operations to determine landing and road locations. The Unit Manager or his/her representative must be contacted at least 3 days in advance to schedule the conference.

5.2 - Conduct of Operations

5.2.2 - Hazard Trees/Snags

5.2.2.1 - Den trees (10/16)

Obvious hollow and/or den trees shall be protected and left standing unless they are a safety hazard.

5.2.3 - Operating Restrictions

5.2.3.6 - Bark beetle restriction (12/08)

In the event drought creates a high risk of pine bark beetle infestation, pine is not to be cut during the period March 1 through July 1, unless all portions of trees greater than two inches in diameter are removed from the sale area, reduced to chips, or treated to the satisfaction of the Unit Manager or his/her representative, within fifteen days of being severed from the stump. Pine log decks, pulpwood piles and treetops that are piled for chipping in the fall or winter within a 1/4 mile of susceptible sites must be removed before March 15. Residual slash must not be placed in piles or rows and must be spread over the site for quick drying. The Department of Natural Resources will exercise this specification if the risk of damage warrants.

5.2.39 - ORV trail/route protection (4/18)

The motorcycle trail is shown on the Timber Sale Map. Do not cut trees or damage posts with yellow ORV markers. Trees with yellow ORV markers shall be cut off above the markers and at least 5 feet above ground. All stumps within 5 feet of the trail must be cut flush with the ground or at least 5 feet above ground level. Maintain a 20 foot wide slash, debris, and rut free zone daily using the ORV trail or route as the centerline. Do not run equipment down the ORV trail or route. Skidding across the trail or route may only occur in locations approved by the sale administrator.

5.4 - Soil Protection

5.4.1 - Rutting restriction, general (7/16)

Operations are to cease immediately if equipment and weather conditions result in rutting of roads and/or skid trails which is 12 inches or greater in depth and 50 feet in length. The Unit Manager or his/her representative may restrict hauling and/or skidding if ruts exceed the specified depth. With the Unit Manager or his/her representative's approval, the Purchaser may return to the area when the risk of rutting has decreased.

5.8 - Protection of Endangered Species

5.8.5 - Protection of raptor nests (3/13)

All trees with raptor nests will be protected if found during harvesting operations. Notification will be made to the Unit Manager or his/her representative who will notify the Wildlife Biologist so an on-site evaluation and recommendation can be made, if necessary.

6 - Safety and Fire Prevention

6.2 - Signing

6.2.3 - Recreational trail posting (10/20)

The Purchaser is responsible for posting and maintaining caution signs on the motorcycle trail prior to beginning operations. The trail must be posted at appropriate distances from the sale area to warn of logging activity and truck traffic at both ends of the trail. Signs must be removed when harvest operations are suspended or completed. The Purchaser will provide these signs.



TIMBER SALE MAP

This information provided by authority of Part 525, 1994 PA 451, as amended.

Forest Management Unit	County	Mapped By	Date	Page	of
GFMU - Indian River Field Office	Cheboygan	Harig	10/12/2022	1	1
Township	Range	Section(s) and Subdivision(s)	Scale		
35N	01E	Section 15: SE1/4, SWNE	1:15,840		

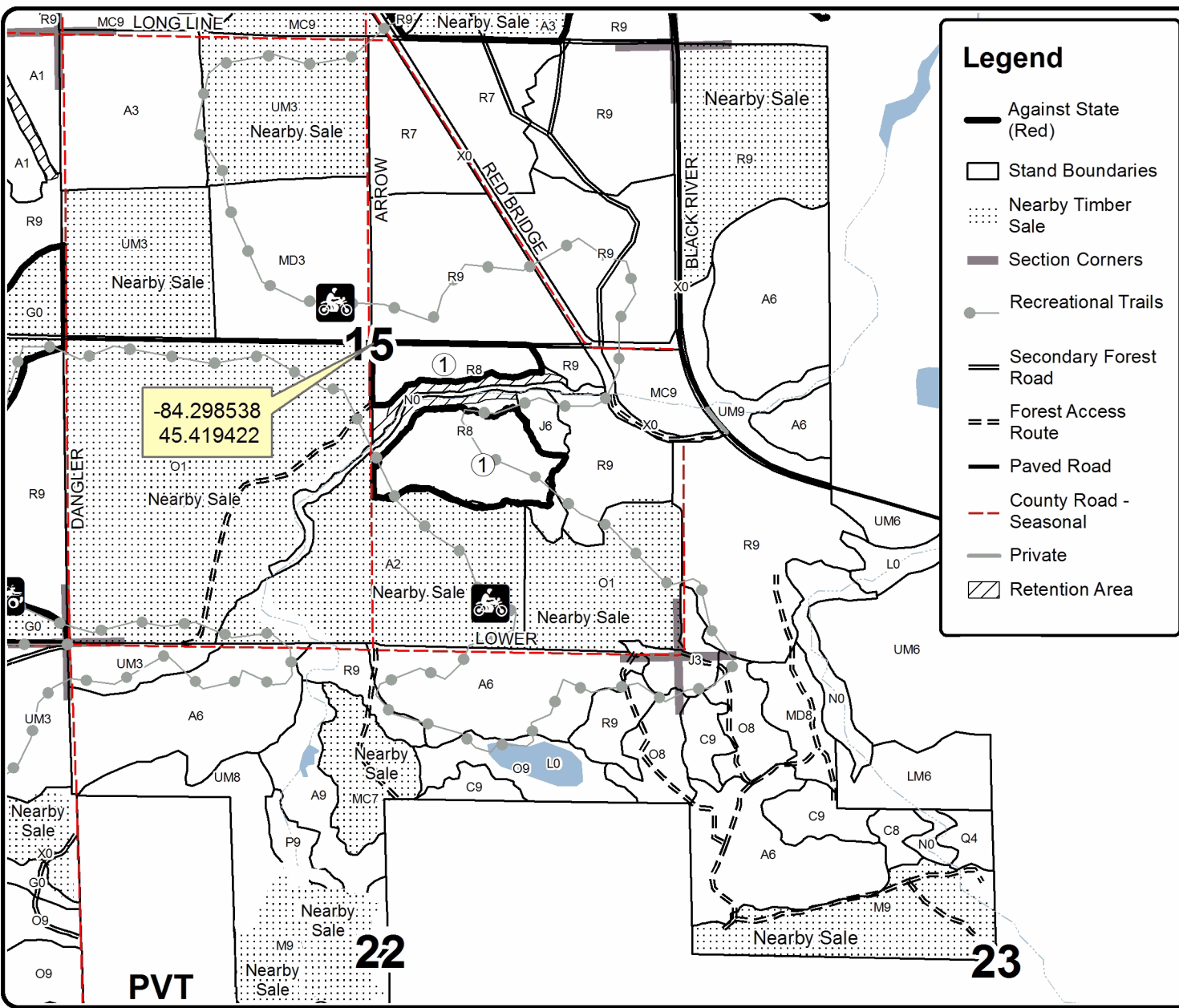
Cover Type				Density	
A = Aspen	H = Hemlock	N = Marsh	U = Upland Brush	0 = Non Stocked	5 = Pole Timber Medium
B = Paper Birch	J = Jack Pine	O = Oak	UM = Upland Mixed	1 = Seedling Sapling Poor	6 = Pole Timber Well
C = Cedar	L = Lowland Brush	P = Lowland Poplar	V = Bog or Marsh	2 = Seedling Sapling Medium	7 = Saw Timber Poor
D = Treed Bog	LM = Lowland Mixed	Q = Mixed Swamp Conifer	W = White Pine	3 = Seedling Sapling Well	8 = Saw Timber Medium
E = Swamp Hdwoods	M = Mpl, Bch, Brch	R = Red Pine	X = Non Stocked	4 = Pole Timber Poor	9 = Saw Timber Well
F = Spruce Fir	MC = Mixed Conifer	S = Black Spruce	Z = Water		
G = Grass	MD = Mixed Deciduous	T = Tamarack			

PU Acres
1 34.1

Farewell Red Pine

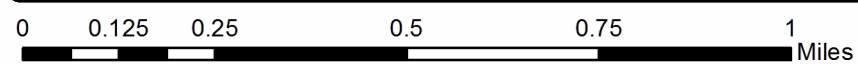
Compartment 208

34.1 Acres



Legend

- Against State (Red)
- Stand Boundaries
- Nearby Timber Sale
- Section Corners
- Recreational Trails
- Secondary Forest Road
- Forest Access Route
- Paved Road
- County Road - Seasonal
- Private
- Retention Area



TIMBER SALE INFORMATION

Mentor Mix (52-105-22)

T34N, R03W, SEC. 22; T34N, R03W, SEC. 26; T34N, R03W, SEC. 27.
Cheboygan County (Advertised Price \$167,949.65)

SALE NOTE: Recreational trails present. Extensive brushing will be needed on road to units 6 and 7.

A recreation site such as a trail, pathway, or campground is within the sale area or the vicinity. Certain restrictions/specifications may be applicable including time restrictions.

A timber sale contract for this lump sum, sealed bid timber sale will be awarded to the responsible bidder offering the highest sealed bid price. All units of volume listed below were estimated using the Inventory Manager computer program and the new Michigan taper model. Bids must be at or above the following advertised price for each product and species:

<u>PRODUCTS & SPECIES</u>	<u>ESTIMATED UNITS*</u>	<u>ADVERTISED PRICE</u>
Sawtimber		
Basswood	179.2 MBF	\$ 61.00 / MBF
Mixed Aspen	254.1 MBF	\$ 55.00 / MBF
Red Maple	39.2 MBF	\$ 88.00 / MBF
Red Oak	11.5 MBF	\$ 79.00 / MBF
Red Pine	23.4 MBF	\$ 140.00 / MBF
Sugar Maple	246.5 MBF	\$ 301.00 / MBF
White Pine	5.6 MBF	\$ 44.00 / MBF
Pulpwood		
Balsam Fir	19 Cords	\$ 16.55 / Cord
Basswood	784 Cords	\$ 13.10 / Cord
Jack Pine	4 Cords	\$ 19.55 / Cord
Mixed Aspen	558 Cords	\$ 19.95 / Cord
Mixed Hardwood	2,105 Cords	\$ 16.55 / Cord
Red Pine	83 Cords	\$ 51.15 / Cord
White Pine	3 Cords	\$ 29.20 / Cord

* The total volume is statistically estimated within plus (+) or minus (-) 14.59 percent. There are an estimated 5,408 cords on this timber sale, plus or minus 789 cords at the 95% confidence level. The estimated units are final and not subject to adjustment. Prospective bidders are urged to examine this timber and to make their own estimates of quantity and quality.

BOND AND PAYMENT SCHEDULE:

1. A bond in the amount of \$8,397.00 to insure faithful performance of the conditions of the contract will be deposited by the successful bidder within 21 days of the sale award.
2. Cutting in any sale or unit without the required advance payment would be considered a trespass.
3. Total payment must be paid in advance or according to the following schedule:
 - (a) Ten percent (10%) of the sale value must be paid within 21 days of the sale award.
 - (b) The 10% down payment will be credited towards the first unit cut.
 - (c) Payment for each of the following units must be made before cutting begins in that unit:

PAYMENT UNIT NUMBER	PERCENT OF TOTAL SALE VALUE
01	3.3%
02	6.8%
03	14.0%
04	3.9%
05	8.0%
06	31.5%
07	32.5%
4. If no cutting takes place, the 10% down payment will not be refunded.
5. Operations on the contract issued will terminate on 03/31/2026.

SALE STATISTICS

Volumes were calculated in cubic feet using the Michigan taper model. Cubic foot volume includes all wood inside bark for the product indicated. For display purposes, cubic feet were converted to cords and MBF using a simple conversion factor, e.g. 79 cubic feet per cord and 185 cubic feet per MBF. The cubic foot volumes are precise; the cords and MBF volumes are not. Cubic foot volume cannot be directly converted to cords or boards with precision.

SALE VOLUMES

The total estimated sale volume may not equal the sum of the species/products due to the nature of statistical calculations associated with double sampling methodology.

VOLUME			STATISTICAL RANGE IN CORDS	
TOTAL CUBIC FEET	TOTAL CORDS	PERCENT ERROR	MINIMUM	MAXIMUM
427,256	5,408	14.59%	4,619	6,198

VDU VOLUMES

A VDU is a Volume Determination Unit. Volumes and their associated statistics are calculated at the VDU level and summarized to the sale level. There is often a one to one relationship between a VDU and a Payment Unit, but not always, depending on the cruise design. Refer to the VDU TO PAYMENT UNIT table.

	VOLUME			RANGE IN CORDS	
VDU	TOTAL CUBIC FEET	TOTAL CORDS	PERCENT ERROR	MINIMUM	MAXIMUM
3	21,447	271	57.10%	116	426
5	38,113	482	23.14%	371	594
16	23,398	296	44.72%	164	429
86	248,005	3,139	20.72%	2,489	3,790
87	96,294	1,219	18.35%	995	1,443
TOTAL:	427,256	5,408		4,135	6,681

VDU TO PAYMENT UNIT

When a VDU is associated with more than one Payment Unit (PU), the VDU volumes are assigned to the PU based on acres of the VDU within the PU.

VDU	VDU ACRES	PU	PU ACRES
3	11.9	1	11.9
5	25.4	5	25.4
16	37.2	4	37.2
86	77.1	6	37.9
		7	39.2
87	49.5	2	16.2
		3	33.3
TOTAL:	201.1		201.1

DESCRIPTION OF TIMBER BY PAYMENT UNIT (PU)

PU	MARKET GROUP	PRODUCT	QUANTITY	UNIT	ACRES	ADVERTISE PRICE
1	Mixed Aspen	Sawtimber	24.5	MBF	11.9	\$5,504.05
	<i>B. T. Aspen</i>		24.5	<i>MBF</i>		
	Red Maple		4.7	MBF		
	Balsam Fir	Pulpwood	17	Cords		
	<i>Balsam Fir</i>	<i>Sawtimber</i>	1.9	<i>MBF</i>		
	<i>Balsam Fir</i>	<i>Pulpwood</i>	13	<i>Cords</i>		
	Mixed Aspen		103	Cords		
	<i>B. T. Aspen</i>		103	<i>Cords</i>		
	Mixed Hardwood		85	Cords		
	<i>Black Cherry</i>		4	<i>Cords</i>		
	<i>Red Maple</i>		75	<i>Cords</i>		
	<i>Sugar Maple</i>		6	<i>Cords</i>		
	2	Basswood	Sawtimber	30.8		
Mixed Aspen			3.4	MBF		
<i>Quaking Aspen</i>			3.4	<i>MBF</i>		
Red Maple			4.0	MBF		
Red Pine			2.1	MBF		
Sugar Maple			15.0	MBF		
White Pine			1.8	MBF		
Balsam Fir		Pulpwood	1	Cords		
<i>Balsam Fir</i>			1	<i>Cords</i>		
Basswood			79	Cords		
Mixed Aspen			8	Cords		
<i>Quaking Aspen</i>			8	<i>Cords</i>		
Mixed Hardwood			172	Cords		
<i>Beech</i>			2	<i>Cords</i>		
<i>Ironwood</i>			6	<i>Cords</i>		
<i>Red Maple</i>			27	<i>Cords</i>		
<i>Sugar Maple</i>			137	<i>Cords</i>		
White Pine		1	Cords			
3	Basswood	Sawtimber	63.4	MBF	33.3	\$23,448.40
	Mixed Aspen		7.0	MBF		
	<i>Quaking Aspen</i>		7.0	<i>MBF</i>		
	Red Maple		8.1	MBF		
	Red Pine		4.3	MBF		
	Sugar Maple		30.9	MBF		
	White Pine		3.8	MBF		
	Balsam Fir	Pulpwood	1	Cords		
	<i>Balsam Fir</i>		1	<i>Cords</i>		
	Basswood		161	Cords		
	Mixed Aspen		16	Cords		
	<i>Quaking Aspen</i>		16	<i>Cords</i>		
	Mixed Hardwood		354	Cords		
	<i>Beech</i>		3	<i>Cords</i>		
	<i>Ironwood</i>		11	<i>Cords</i>		
	<i>Red Maple</i>		57	<i>Cords</i>		
<i>Sugar Maple</i>		283	<i>Cords</i>			
Red Pine		1	Cords			
White Pine		2	Cords			
4	Mixed Aspen	Sawtimber	7.3	MBF	37.2	\$6,535.15
	<i>B. T. Aspen</i>		7.3	<i>MBF</i>		
	Red Pine		4.9	MBF		
	Jack Pine	Pulpwood	4	Cords		
	Mixed Aspen		211	Cords		
	<i>B. T. Aspen</i>		211	<i>Cords</i>		
Mixed Hardwood		67	Cords			

DESCRIPTION OF TIMBER BY PAYMENT UNIT (PU), CON'T

PU	MARKET GROUP	PRODUCT	QUANTITY	UNIT	ACRES	ADVERTISE PRICE	
4 con't	<i>Black Cherry</i>	<i>Pulpwood</i>	22	<i>Cords</i>			
	<i>Ironwood</i>		18	<i>Cords</i>			
	<i>Red Maple</i>		17	<i>Cords</i>			
	<i>Sugar Maple</i>		10	<i>Cords</i>			
	Red Pine		1	<i>Cords</i>			
5	Basswood	Sawtimber	24.2	MBF	25.4	\$13,442.80	
	Mixed Aspen		5.3	MBF			
	<i>Quaking Aspen</i>		5.3	<i>MBF</i>			
	Red Maple		17.8	MBF			
	Red Pine		3.1	MBF			
	Sugar Maple		14.8	MBF			
	Basswood		Pulpwood	38			<i>Cords</i>
	Mixed Aspen			6			<i>Cords</i>
	<i>Quaking Aspen</i>			6			<i>Cords</i>
	Mixed Hardwood			275			<i>Cords</i>
	<i>Beech</i>			5			<i>Cords</i>
	<i>Red Maple</i>			45			<i>Cords</i>
	<i>Sugar Maple</i>			225			<i>Cords</i>
	Red Pine			1			<i>Cords</i>
	6			Basswood			Sawtimber
Mixed Aspen		101.6	MBF				
<i>B. T. Aspen</i>		101.6	<i>MBF</i>				
Red Maple		2.3	MBF				
Red Oak		5.7	MBF				
Red Pine		4.4	MBF				
Sugar Maple		91.3	MBF				
Basswood		Pulpwood	249	<i>Cords</i>			
Mixed Aspen			105	<i>Cords</i>			
<i>B. T. Aspen</i>			105	<i>Cords</i>			
Mixed Hardwood			566	<i>Cords</i>			
<i>Beech</i>			35	<i>Cords</i>			
<i>Ironwood</i>			18	<i>Cords</i>			
<i>Red Maple</i>			36	<i>Cords</i>			
<i>Red Oak</i>			11	<i>Cords</i>			
<i>Sugar Maple</i>			466	<i>Cords</i>			
Red Pine			39	<i>Cords</i>			
7	Basswood	Sawtimber	30.9	MBF	39.2	\$54,745.70	
	Mixed Aspen		105.0	MBF			
	<i>B. T. Aspen</i>		105.0	<i>MBF</i>			
	Red Maple		2.3	MBF			
	Red Oak		5.8	MBF			
	Red Pine		4.6	MBF			
	Sugar Maple		94.5	MBF			
	Basswood		Pulpwood	257			<i>Cords</i>
	Mixed Aspen			109			<i>Cords</i>
	<i>B. T. Aspen</i>			109			<i>Cords</i>
	Mixed Hardwood			586			<i>Cords</i>
	<i>Beech</i>			36			<i>Cords</i>
	<i>Ironwood</i>			19			<i>Cords</i>
	<i>Red Maple</i>			38			<i>Cords</i>
	<i>Red Oak</i>			11			<i>Cords</i>
	<i>Sugar Maple</i>			482			<i>Cords</i>
	Red Pine			41			<i>Cords</i>
TOTAL:			759.5	MBF			

TOTAL:	3,556 Cords
--------	-------------

Sale Specific Conditions & Requirements

Sale Name: Mentor Mix

Sale Number: 52-105-22 Seq#: 2

1 - Sale Area

1.2 - Boundaries

1.2.1 - Painted boundaries (9/19)

The sale boundary and Payment Unit boundaries are marked and identified by blue, red and yellow paint. Exterior sale boundary lines against private property are marked with blue paint. Exterior sale boundary lines against state are marked with red paint. Interior Payment Unit boundaries are marked with yellow paint. Regeneration patches are marked with green paint. The painted boundary line trees are not Included Timber and are to be protected unless marked with orange paint. Yellow painted trees designating an interior Payment Unit boundary are only to be cut when all surrounding Payment Units have been paid.

2 - Timber Specifications

2.1 - Included Timber

2.1.1 - Clearcut unit(s) with unmerchantable trees (6/14)

Within Payment Unit(s) 1, 4, 6 and 7, cut all trees that are two (2) inches or more at DBH except trees marked with green paint and junberry. Do not cut elm or oak in unit 4. Do not cut oak 8" DBH or less in units 6 and 7.

2.1.3 - Cut tree marked unit(s) (12/08)

Within Payment Unit(s) 2, 3 and 5, all trees are designated for cutting when marked with orange paint above and below stump height, regardless of merchantability. Regen gaps are identified with green paint. All trees 6' feet or taller must be cut within the gaps regardless of merchantability.

2.2 - Utilization

2.2.6 - Roundwood operation required (3/21)

The skidding of whole trees or tree segments with limbs attached is prohibited within Payment Units 2, 3 and 5. All products must be produced as roundwood and forwarded to existing roads or landing areas in final product length. Trees must be harvested with in-woods processor (feller bunching harvester will not be allow) in order to retain existing understory.

3 - Payments

3.3 - Pre-measured Sales

3.3.4 - Dividing payment units (7/14)

Payment Unit(s) may be divided at the request of the Purchaser and upon approval of the Unit Manager. Dividing Payment Units is a contract modification which requires a Timber Sale Contract Amendment. There will be only one division per Payment Unit.

3.4 - Damaged Timber

3.4.1 - Damaged timber (7/16)

General Condition and Requirement 3.4 Damaged Timber, defines liquidated damages for undesignated live merchantable trees which are cut or injured. No damage is acceptable to undesignated live merchantable trees. Within Payment Units 2, 3 and 5, if more than 5% of trees (> 4.5" DBH) within a specified area of the sale are damaged, liquidated damages will be assessed for all trees damaged. Rates will be in accordance with General Condition and Requirement 3.4 Damaged Timber.

4 - Transportation

4.1 - Construction

4.1.4 - Timber removed for construction (12/09)

Trees cut or damaged in the process of pre-approved road, landing or skid trail construction will be decked in an area separate from other Designated Timber and not removed until measured by the sale administrator. Payment will be made at the specified Purchase Unit Price.

4.1.7 - Road closure (10/11)

All new roads built into the sale must be blocked to vehicle traffic upon completion of the sale. Overgrown roads that are reopened shall be considered new roads. In general, this will require constructing a four (4') foot high berm of stumps and logs covered with earth. These roads must be rendered impassable to cars and trucks. All stumps from road building and landing construction must be reserved to block any newly constructed roads upon completion of the sale. These stumps must be scattered along the road system to prohibit vehicular movement. Contact the sale administrator for specific details of design and placement.

4.2 - Maintenance

4.2.5 - Two wheel drive condition (2/04)

All existing trail roads on and adjacent to the sale area must be passable by two-wheel drive traffic for the duration of the sale.

5 - Operations

5.1 - Notification

5.1.1 - Pre-sale conference (10/16)

A pre-sale conference on site between the Purchaser and sale administrator is required prior to beginning any operations to determine landing and road locations. The Unit Manager or his/her representative must be contacted at least 3 days in advance to schedule the conference.

5.2 - Conduct of Operations

5.2.2 - Hazard Trees/Snags

5.2.2.1 - Den trees (10/16)

Obvious hollow and/or den trees shall be protected and left standing unless they are a safety hazard.

5.2.3 - Operating Restrictions

5.2.3.3 - Bark slippage restriction (3/09)

Within Payment Unit(s) 2, 3 and 5, unless changed by written agreement, cutting and skidding are not permitted during the period of April 15 to July 15. This restriction is because of bark slippage.

5.2.38 - No decking against live trees (2/04)

Cut products may not be decked against unmarked or designated leave trees.

5.2.39 - ORV trail/route protection (4/18)

The ORV trail is shown on the Timber Sale Map. Do not cut trees or damage posts with yellow ORV markers. Trees with yellow ORV markers shall be cut off above the markers and at least 5 feet above ground. All stumps within 5 feet of the trail must be cut off at least 5 feet above ground level. Maintain a 20 foot wide slash, debris, and rut free zone daily using the ORV trail or route as the centerline. Do not run equipment down the ORV trail or route. Skidding across the trail or route may only occur in locations approved by the sale administrator.

5.2.41 - Snowmobile trail protection (9/11)

The snowmobile trail is shown on the Timber Sale Map. Do not cut or damage posts with orange trail markers or traffic control signs. If the trail is used for hauling, it must be graded to the satisfaction of the Unit Manager or his/her representative prior to December 1st. If the trail road is to be used for hauling during the snowmobile season, then a snow covered base must be left on the trail. The snowmobile trail may only be crossed at right angles. Maintain a 20 foot wide slash, debris, and rut free zone daily using the snowmobile trail as the centerline. No decking of forest products will be permitted along the snowmobile trail. All stumps within 10 feet of the snowmobile trail must be cut at ground level.

5.4 - Soil Protection

5.4.1 - Rutting restriction, general (7/16)

Operations are to cease immediately if equipment and weather conditions result in rutting of roads and/or skid trails which is 12 inches or greater in depth and 50 feet in length. The Unit Manager or his/her representative may restrict hauling and/or skidding if ruts exceed the specified depth. With the Unit Manager or his/her representative's approval, the Purchaser may return to the area when the risk of rutting has decreased.

5.8 - Protection of Endangered Species

5.8.5 - Protection of raptor nests (3/13)

All trees with raptor nests will be protected if found during harvesting operations. Notification will be made to the Unit Manager or his/her representative who will notify the Wildlife Biologist so an on-site evaluation and recommendation can be made, if necessary.

6 - Safety and Fire Prevention

6.2 - Signing

6.2.2 - Snowmobile trail posting (10/20)

The Purchaser is responsible for posting and maintaining caution signs on the snowmobile trail prior to beginning operations during the snowmobile season (approximately December 1 to March 31). The trail must be posted at appropriate distances from the sale area to warn of logging activity and truck traffic. Signs must be removed when harvest operations are suspended or completed. The Purchaser will provide these signs.

6.2.3 - Recreational trail posting (10/20)

The Purchaser is responsible for posting and maintaining caution signs on the motorcycle trail prior to beginning operations. The trail must be posted at appropriate distances from the sale area to warn of logging activity and truck traffic at both ends of the trail. Signs must be removed when harvest operations are suspended or completed. The Purchaser will provide these signs.



TIMBER SALE MAP

This information provided by authority of Part 525, 1994 PA 451, as amended.

Forest Management Unit	County	Mapped By	S. Harig	Date	9/2/2022	Page	1	of	1
GFMU - Indian River Field Office	Cheboygan	Cruised By	Contractor						
Township	Range	Section(s) and Subdivision(s)	Scale						
34N	03W	Sections 22, 26 and 27	1:15,840						

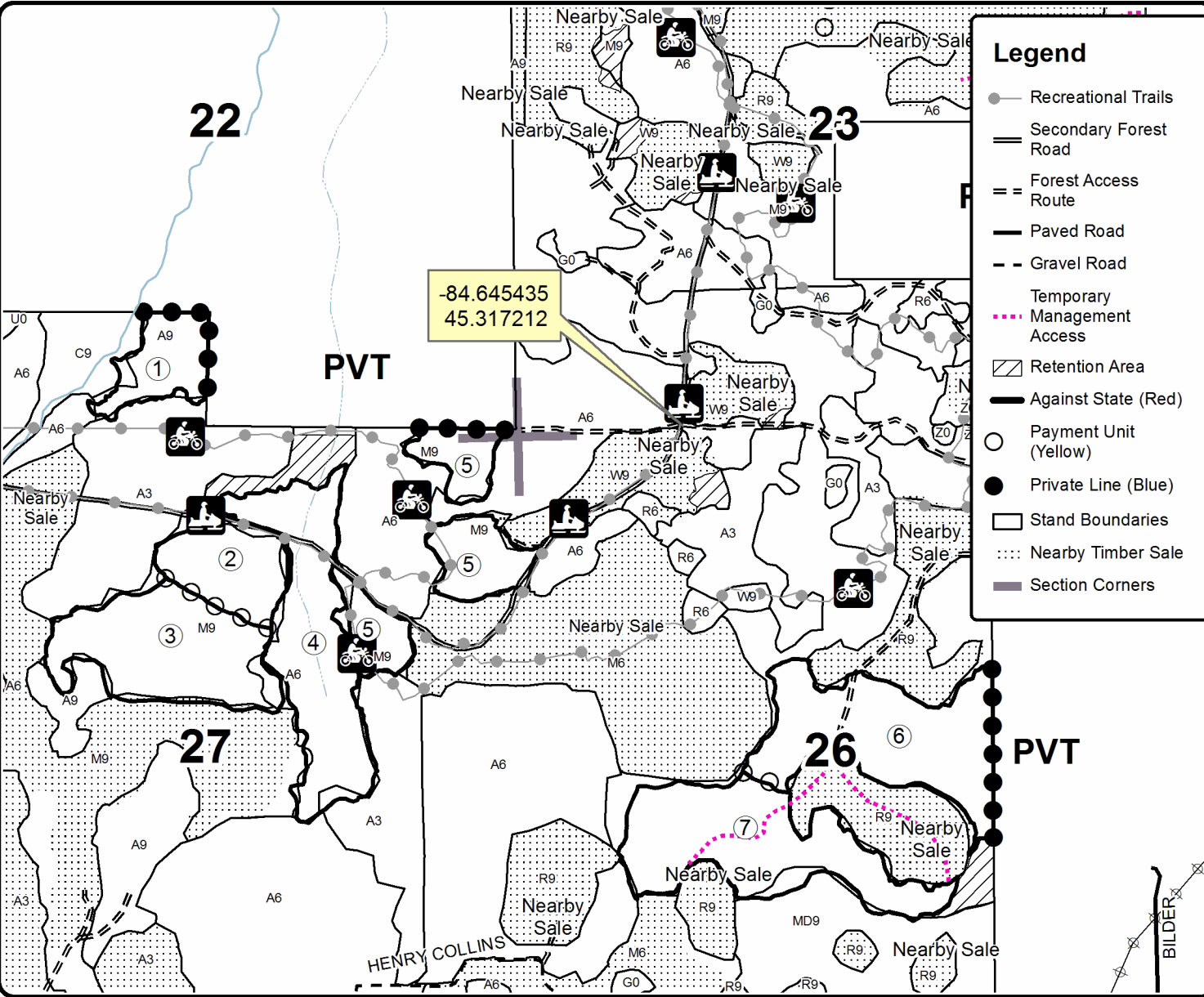
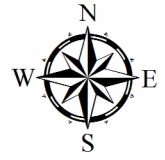
Cover Type				Density	
A = Aspen	H = Hemlock	N = Marsh	U = Upland Brush	0 = Non Stocked	5 = Pole Timber Medium
B = Paper Birch	J = Jack Pine	O = Oak	UM = Upland Mixed	1 = Seedling Sapling Poor	6 = Pole Timber Well
C = Cedar	L = Lowland Brush	P = Lowland Poplar	V = Bog or Marsh	2 = Seedling Sapling Medium	7 = Saw Timber Poor
D = Treed Bog	LM = Lowland Mixed	Q = Mixed Swamp Conifer	W = White Pine	3 = Seedling Sapling Well	8 = Saw Timber Medium
E = Swamp Hdwoods	M = Mpl. Bch, Brch	R = Red Pine	X = Non Stocked	4 = Pole Timber Poor	9 = Saw Timber Well
F = Spruce Fir	MC = Mixed Conifer	S = Black Spruce	Z = Water		
G = Grass	MD = Mixed Deciduous	T = Tamarack			

PU	Acres	PU	Acres
1	11.9	5	25.4
2	16.2	6	37.9
3	33.3	7	39.2
4	37.2		

Mentor Mix

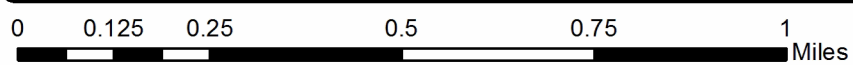
Compartment 154

201.1 Acres



Legend

- Recreational Trails
- Secondary Forest Road
- Forest Access Route
- Paved Road
- Gravel Road
- Temporary Management Access
- Retention Area
- Against State (Red)
- Payment Unit (Yellow)
- Private Line (Blue)
- Stand Boundaries
- Nearby Timber Sale
- Section Corners



TIMBER SALE INFORMATION

Sandy Aspen (52-113-22)

T36N, R01E, SEC. 31; T36N, R01E, SEC. 32.
Cheboygan County (Advertised Price \$33,497.20)

SALE NOTE: This sale has a 4" spec; short wood operation recommended in order to protect submerchantable trees and shrubs. Access/soils are generally very sandy; winter harvest recommended. Some saturated soils and potential for vernal ponds. There is trace sugar maple and white ash pulpwood that was not picked up on the cruise.

A timber sale contract for this lump sum, sealed bid timber sale will be awarded to the responsible bidder offering the highest sealed bid price. All units of volume listed below were estimated using the Inventory Manager computer program and the new Michigan taper model. Bids must be at or above the following advertised price for each product and species:

<u>PRODUCTS & SPECIES</u>	<u>ESTIMATED UNITS*</u>	<u>ADVERTISED PRICE</u>
Sawtimber		
Mixed Aspen	19.7 MBF	\$ 73.00 / MBF
Pulpwood		
Balsam Fir	296 Cords	\$ 21.65 / Cord
Mixed Aspen	792 Cords	\$ 26.10 / Cord
Red Maple	230 Cords	\$ 21.65 / Cord

* The total volume is statistically estimated within plus (+) or minus (-) 15.51 percent. There are an estimated 1,550 cords on this timber sale, plus or minus 241 cords at the 95% confidence level. The estimated units are final and not subject to adjustment. Prospective bidders are urged to examine this timber and to make their own estimates of quantity and quality.

BOND AND PAYMENT SCHEDULE:

1. A bond in the amount of \$1,675.00 to insure faithful performance of the conditions of the contract will be deposited by the successful bidder within 21 days of the sale award.
2. Cutting in any sale or unit without the required advance payment would be considered a trespass.
3. Total payment must be paid in advance or according to the following schedule :
 - (a) Ten percent (10%) of the sale value must be paid within 21 days of the sale award.
 - (b) The remainder is due before cutting begins.
 - (c) Payment for each of the following units must be made before cutting begins in that unit:

PAYMENT UNIT NUMBER	PERCENT OF TOTAL SALE VALUE
01	100.0%
4. If no cutting takes place, the 10% down payment will not be refunded.
5. Operations on the contract issued will terminate on 03/31/2027.

SALE STATISTICS

Volumes were calculated in cubic feet using the Michigan taper model. Cubic foot volume includes all wood inside bark for the product indicated. For display purposes, cubic feet were converted to cords and MBF using a simple conversion factor, e.g. 79 cubic feet per cord and 185 cubic feet per MBF. The cubic foot volumes are precise; the cords and MBF volumes are not. Cubic foot volume cannot be directly converted to cords or boards with precision.

SALE VOLUMES

The total estimated sale volume may not equal the sum of the species/products due to the nature of statistical calculations associated with double sampling methodology.

VOLUME		STATISTICAL RANGE IN CORDS		
TOTAL CUBIC FEET	TOTAL CORDS	PERCENT ERROR	MINIMUM	MAXIMUM
122,488	1,550	15.51%	1,310	1,791

VDU VOLUMES

A VDU is a Volume Determination Unit. Volumes and their associated statistics are calculated at the VDU level and summarized to the sale level. There is often a one to one relationship between a VDU and a Payment Unit, but not always, depending on the cruise design. Refer to the VDU TO PAYMENT UNIT table.

VDU	VOLUME		PERCENT ERROR	RANGE IN CORDS	
	TOTAL CUBIC FEET	TOTAL CORDS		MINIMUM	MAXIMUM
8	98,356	1,245	17.18%	1,031	1,459
17	24,131	305	33.37%	204	407
TOTAL:	122,488	1,550		1,235	1,866

VDU TO PAYMENT UNIT

When a VDU is associated with more than one Payment Unit (PU), the VDU volumes are assigned to the PU based on acres of the VDU within the PU.

VDU	VDU ACRES	PU	PU ACRES
8	35.1	1	35.1
17	12.3	1	12.3
TOTAL:	47.4		47.4

DESCRIPTION OF TIMBER BY PAYMENT UNIT (PU)

PU	MARKET GROUP	PRODUCT	QUANTITY	UNIT	ACRES	ADVERTISE PRICE			
1	Mixed Aspen	Sawtimber	19.7	MBF	47.4	\$33,497.20			
	<i>B. T. Aspen</i>		11.7	<i>MBF</i>					
	<i>Quaking Aspen</i>		8.0	<i>MBF</i>					
	Balsam Fir	Pulpwood	296	Cords					
	<i>Balsam Fir</i>	<i>Sawtimber</i>	3.2	<i>MBF</i>					
	<i>Balsam Fir</i>	<i>Pulpwood</i>	290	<i>Cords</i>					
	Mixed Aspen		792	Cords					
	<i>B. T. Aspen</i>		385	<i>Cords</i>					
	<i>Quaking Aspen</i>		407	<i>Cords</i>					
	Red Maple		230	Cords					
	<i>Red Maple</i>	<i>Sawtimber</i>	10.4	<i>MBF</i>					
	<i>Red Maple</i>	<i>Pulpwood</i>	209	<i>Cords</i>					
	TOTAL:			19.7			MBF		
	TOTAL:			1,318			Cords		

Sale Specific Conditions & Requirements

Sale Name: Sandy Aspen

Sale Number: 52-113-22 Seq#: 2

1 - Sale Area

1.2 - Boundaries

1.2.1 - Painted boundaries (9/19)

The sale boundary is marked and identified by red paint. Exterior sale boundary lines against state are marked with red paint. The painted boundary line trees are not Included Timber and are to be protected.

2 - Timber Specifications

2.1 - Included Timber

2.1.2 - Clearcut unit(s) w/o unmerchantable trees (8/11)

Within Payment Unit(s) 1, cut all trees which meet minimum piece specifications in 2.2 Utilization, expect do not cut any oak, birch, pine, spruce, or cedar. Trees marked with teal paint are to be hinge cut and/or jackstrawed together to create hare habitat. The locations of these trees have been identified on the Timber Sale Map.

4 - Transportation

4.2 - Maintenance

4.2.5 - Two wheel drive condition (2/04)

All existing trail roads on and adjacent to the sale area must be passable by two-wheel drive traffic for the duration of the sale.

5 - Operations

5.2 - Conduct of Operations

5.2.3 - Operating Restrictions

5.2.3.5 - Oak wilt restriction (1/18)

Within Payment Unit(s) 1, unless changed by written agreement, cutting, skidding, hauling within the sale and brushing of access roads to the sale are not permitted during the period of April 15 to July 15. Operations may be allowed if specific steps are taken to prevent damaging uncut oak during the high risk period. Those steps may include completing all road brushing before April 15th and clearing a tree-length buffer along uncut oak cover before April 15th. This is necessary to reduce the spread of oak wilt. For more information, contact the Unit Manager or his/her representative.

5.2.4 - Dead and Down Creation

5.2.4.2 - Dead and down creation, hare and grouse (1/14)

To improve habitat for snowshoe hare, grouse, and other species, the Purchaser is to leave two trees, nine (9) inches or larger in diameter on the ground for every two acres. They should be scattered throughout the sale or positioned per the sale administrators instructions. Note these pieces should have a minimum length of five feet. They can be of any tree species and can be an un-merchantable piece of wood or a full tree.

5.2.22 - Operating Caution

5.2.22.1 - Operating caution (6/11)

It is recommended, but not required, that within Payment Unit(s) 1, cutting, skidding, and hauling occur during frozen winter conditions. The reason for the recommendation is to minimize soil damage within the sale area and for ease of truck ingress and egress along extremely sandy roads (Red Bridge Road and Waveland Road).

5.4 - Soil Protection

5.4.5 - Soil caution (11/04)

Care must be taken to minimize soil damage due to the sandy soils. This includes operating along the haul route.

5.4.6 - Wet area protection (5/10)

No harvesting operations, including skidding and felling, are to take place within any vernal pond areas if identified within the sale area. Care must be taken by the Purchaser to identify and avoid operating in these areas of the timber sale. None are known to occur within the sale area, but the potential exists.

5.8 - Protection of Endangered Species

5.8.5 - Protection of raptor nests (3/13)

All trees with raptor nests will be protected if found during harvesting operations. Notification will be made to the Unit Manager or his/her representative who will notify the Wildlife Biologist so an on-site evaluation and recommendation can be made, if necessary.

6 - Safety and Fire Prevention

6.2 - Signing

6.2.1 - Road posting (10/20)

The Purchaser is responsible for posting and maintaining caution signs on haul routes prior to beginning operations. The road must be posted at appropriate distances from the sale area to warn of logging activity and truck traffic. Signs must be removed when harvest operations are suspended or completed. The Purchaser will provide these signs.



TIMBER SALE MAP

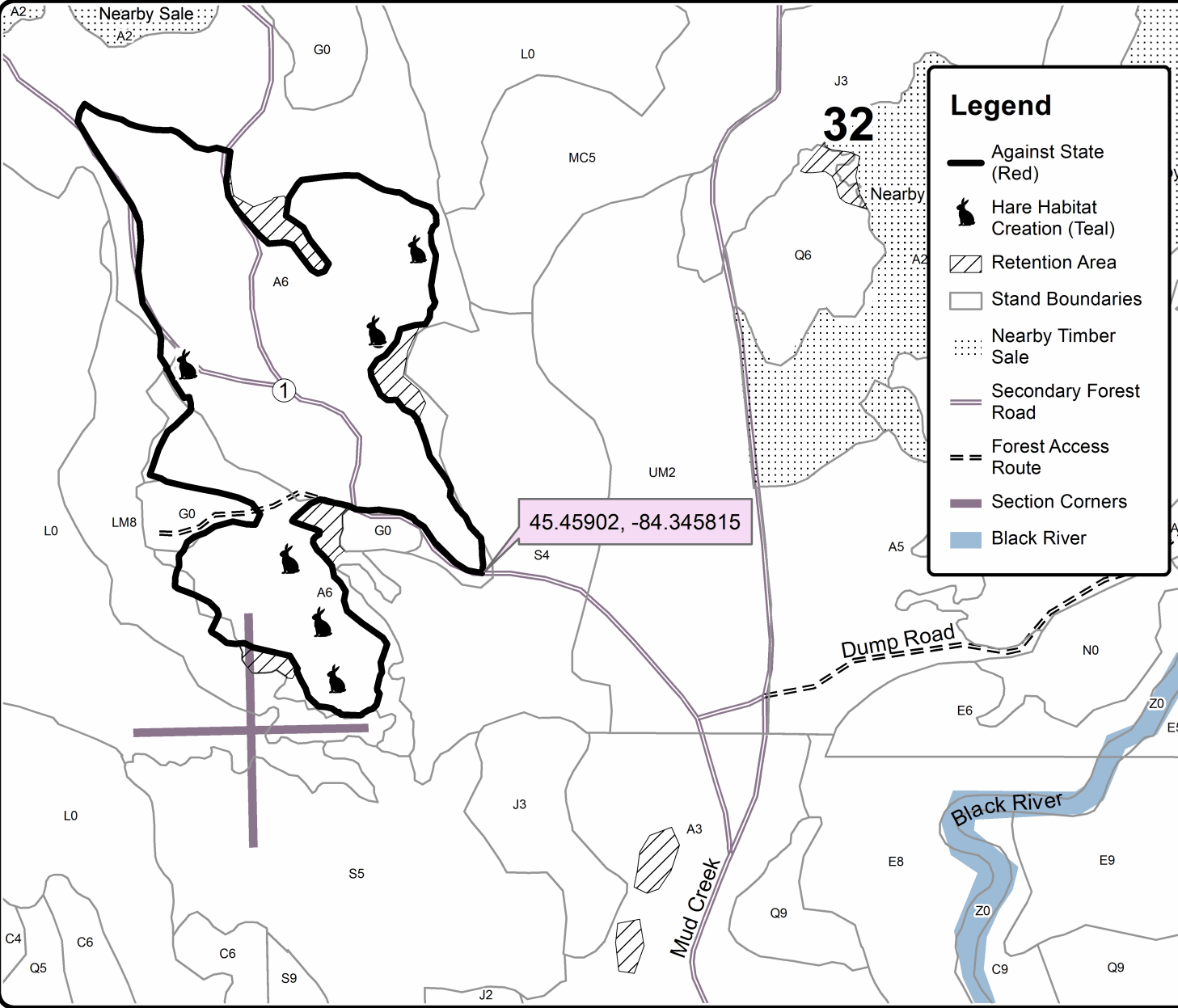
This information provided by authority of Part 525, 1994 PA 451, as amended.

Forest Management Unit Gaylord	County Cheboygan	Mapped By TSP	Date 07/20/2022	Page 1	of 1
Township 36N	Range 01E	Section(s) and Subdivision(s) 31: SENE, E1/2SE; 32: W1/2SW	Scale 1:7,920		

Cover Type				Density	
A = Aspen	H = Hemlock	N = Marsh	U = Upland Brush	0 = Non Stocked	5 = Pole Timber Medium
B = Paper Birch	J = Jack Pine	O = Oak	UM = Upland Mixed	1 = Seedling Sapling Poor	6 = Pole Timber Well
C = Cedar	L = Lowland Brush	P = Lowland Poplar	V = Bog or Marsh	2 = Seedling Sapling Medium	7 = Saw Timber Poor
D = Treed Bog	LM = Lowland Mixed	Q = Mixed Swamp Conifer	W = White Pine	3 = Seedling Sapling Well	8 = Saw Timber Medium
E = Swamp Hdwoods	M = Mpl, Bch, Brch	R = Red Pine	X = Non Stocked	4 = Pole Timber Poor	9 = Saw Timber Well
F = Spruce Fir	MC = Mixed Conifer	S = Black Spruce	Z = Water		
G = Grass	MD = Mixed Deciduous	T = Tamarack			

PU Acres
1 47.4

Sandy Aspen
Compartment 204
47.4 Acres



TIMBER SALE INFORMATION

Mandy Hardwood (52-114-22)

T34N, R03W, SEC. 30.

Cheboygan County (Advertised Price \$129,673.70)

SALE NOTE: Seasonal restriction. Hiking trail present in sale.

A recreation site such as a trail, pathway, or campground is within the sale area or the vicinity. Certain restrictions/specifications may be applicable including time restrictions.

A timber sale contract for this lump sum, sealed bid timber sale will be awarded to the responsible bidder offering the highest sealed bid price. All units of volume listed below were estimated using the Inventory Manager computer program and the new Michigan taper model. Bids must be at or above the following advertised price for each product and species:

<u>PRODUCTS & SPECIES</u>	<u>ESTIMATED UNITS*</u>	<u>ADVERTISED PRICE</u>
Sawtimber		
Basswood	304.5 MBF	\$ 61.00 / MBF
Quaking Aspen	4.7 MBF	\$ 55.00 / MBF
Red Maple	30.3 MBF	\$ 88.00 / MBF
Sugar Maple	302.4 MBF	\$ 301.00 / MBF
Pulpwood		
Basswood	313 Cords	\$ 13.10 / Cord
Mixed Hardwood	785 Cords	\$ 16.55 / Cord
Quaking Aspen	3 Cords	\$ 19.95 / Cord

* The total volume is statistically estimated within plus (+) or minus (-) 10.80 percent. There are an estimated 2,679 cords on this timber sale, plus or minus 290 cords at the 95% confidence level. The estimated units are final and not subject to adjustment. Prospective bidders are urged to examine this timber and to make their own estimates of quantity and quality.

BOND AND PAYMENT SCHEDULE:

1. A bond in the amount of \$6,484.00 to insure faithful performance of the conditions of the contract will be deposited by the successful bidder within 21 days of the sale award.
2. Cutting in any sale or unit without the required advance payment would be considered a trespass.
3. Total payment must be paid in advance or according to the following schedule :
 - (a) Ten percent (10%) of the sale value must be paid within 21 days of the sale award.
 - (b) The 10% down payment will be credited towards the first unit cut.
 - (c) Payment for each of the following units must be made before cutting begins in that unit:

PAYMENT UNIT NUMBER	PERCENT OF TOTAL SALE VALUE
01	26.7%
02	47.1%
03	26.2%
4. If no cutting takes place, the 10% down payment will not be refunded.
5. Operations on the contract issued will terminate on 12/31/2025.

SALE STATISTICS

Volumes were calculated in cubic feet using the Michigan taper model. Cubic foot volume includes all wood inside bark for the product indicated. For display purposes, cubic feet were converted to cords and MBF using a simple conversion factor, e.g. 79 cubic feet per cord and 185 cubic feet per MBF. The cubic foot volumes are precise; the cords and MBF volumes are not. Cubic foot volume cannot be directly converted to cords or boards with precision.

SALE VOLUMES

The total estimated sale volume may not equal the sum of the species/products due to the nature of statistical calculations associated with double sampling methodology.

VOLUME		STATISTICAL RANGE IN CORDS		
TOTAL CUBIC FEET	TOTAL CORDS	PERCENT ERROR	MINIMUM	MAXIMUM
211,649	2,679	10.80%	2,390	2,969

VDU VOLUMES

A VDU is a Volume Determination Unit. Volumes and their associated statistics are calculated at the VDU level and summarized to the sale level. There is often a one to one relationship between a VDU and a Payment Unit, but not always, depending on the cruise design. Refer to the VDU TO PAYMENT UNIT table.

VDU	VOLUME		PERCENT ERROR	RANGE IN CORDS	
	TOTAL CUBIC FEET	TOTAL CORDS		MINIMUM	MAXIMUM
16	211,649	2,679	10.81%	2,390	2,969
TOTAL:	211,649	2,679		2,390	2,969

VDU TO PAYMENT UNIT

When a VDU is associated with more than one Payment Unit (PU), the VDU volumes are assigned to the PU based on acres of the VDU within the PU.

VDU	VDU ACRES	PU	PU ACRES
16	99.0	1	26.5
		2	46.6
		3	25.9
TOTAL:	99.0		99.0

DESCRIPTION OF TIMBER BY PAYMENT UNIT (PU)

PU	MARKET GROUP	PRODUCT	QUANTITY	UNIT	ACRES	ADVERTISE PRICE
1	Basswood	Sawtimber	81.5	MBF	26.5	\$34,686.00
	Quaking Aspen		1.3	MBF		
	Red Maple		8.1	MBF		
	Sugar Maple		80.9	MBF		
	Basswood	Pulpwood	84	Cords		
	Mixed Hardwood		209	Cords		
	<i>Beech</i>	<i>Sawtimber</i>	0.7	<i>MBF</i>		
	<i>Beech</i>	<i>Pulpwood</i>	9	<i>Cords</i>		
	<i>Ironwood</i>		7	<i>Cords</i>		
	<i>Red Maple</i>		12	<i>Cords</i>		
	<i>Sugar Maple</i>		180	<i>Cords</i>		
	Quaking Aspen		1	Cords		
	2	Basswood	Sawtimber	143.3		
Quaking Aspen			2.2	MBF		
Red Maple			14.3	MBF		
Sugar Maple			142.4	MBF		
Basswood		Pulpwood	147	Cords		
Mixed Hardwood			370	Cords		
<i>Beech</i>		<i>Sawtimber</i>	1.4	<i>MBF</i>		
<i>Beech</i>		<i>Pulpwood</i>	15	<i>Cords</i>		
<i>Ironwood</i>			14	<i>Cords</i>		
<i>Red Maple</i>			20	<i>Cords</i>		
<i>Sugar Maple</i>			318	<i>Cords</i>		
Quaking Aspen			1	Cords		
3		Basswood	Sawtimber	79.7	MBF	25.9
	Quaking Aspen		1.2	MBF		
	Red Maple		7.9	MBF		
	Sugar Maple		79.1	MBF		
	Basswood	Pulpwood	82	Cords		
	Mixed Hardwood		205	Cords		
	<i>Beech</i>	<i>Sawtimber</i>	0.7	<i>MBF</i>		
	<i>Beech</i>	<i>Pulpwood</i>	9	<i>Cords</i>		
	<i>Ironwood</i>		7	<i>Cords</i>		
	<i>Red Maple</i>		12	<i>Cords</i>		
	<i>Sugar Maple</i>		176	<i>Cords</i>		
	Quaking Aspen		1	Cords		
	TOTAL:			641.9	MBF	
TOTAL:			1,100	Cords		

Sale Specific Conditions & Requirements

Sale Name: Mandy Hardwood

Sale Number: 52-114-22 Seq#: 2

1 - Sale Area

1.2 - Boundaries

1.2.1 - Painted boundaries (9/19)

The sale boundary and Payment Unit boundaries are marked and identified by red, green and yellow paint. Exterior sale boundary lines against state are marked with red paint. Interior Payment Unit boundaries are marked with yellow paint. Regen gap boundaries are marked with green paint. The painted boundary line trees are not Included Timber and are to be protected unless marked with orange paint.

2 - Timber Specifications

2.1 - Included Timber

2.1.3 - Cut tree marked unit(s) (12/08)

Within Payment Unit(s) 1, 2 and 3, all trees are designated for cutting when marked with orange paint above and below stump height, regardless of merchantability. ALSO, cut all trees greater than 2" (inches) DBH within the green painted regen gaps.

2.2 - Utilization

2.2.6 - Roundwood operation required (3/21)

The skidding of whole trees or tree segments with limbs attached is prohibited. All products must be produced as roundwood and forwarded to existing roads or landing areas in final product length. Trees must be harvested with in-woods processor (feller bunching harvester will not be allow) in order to retain existing understory.

3 - Payments

3.3 - Pre-measured Sales

3.3.4 - Dividing payment units (7/14)

Payment Unit(s) 1, 2 and 3 may be divided at the request of the Purchaser and upon approval of the Unit Manager. Dividing Payment Units is a contract modification which requires a Timber Sale Contract Amendment. There will be only one division per Payment Unit.

3.4 - Damaged Timber

3.4.1 - Damaged timber (7/16)

General Condition and Requirement 3.4 Damaged Timber, defines liquidated damages for undesignated live merchantable trees which are cut or injured. No damage is acceptable to undesignated live merchantable trees. Within the sale area, if more than 5% of trees (> 4.5" DBH) within a specified area of the sale are damaged, liquidated damages will be assessed for all trees damaged. Rates will be in accordance with General Condition and Requirement 3.4 Damaged Timber.

4 - Transportation

4.1 - Construction

4.1.7 - Road closure (10/11)

All new roads built into the sale must be blocked to vehicle traffic upon completion of the sale. In general, this will require constructing a four (4') foot high berm of stumps and logs covered with earth. Stumps and brush must be placed along the remainder of the trail. These roads must be rendered impassable to cars and trucks. All stumps from road building and landing construction must be reserved to block any newly constructed roads upon completion of the sale. These stumps must be scattered along the road system to prohibit vehicular movement. Contact the sale administrator for specific details of design and placement.

4.2 - Maintenance

4.2.5 - Two wheel drive condition (2/04)

All existing trail roads on and adjacent to the sale area must be passable by two-wheel drive traffic for the duration of the

sale.

5 - Operations

5.1 - Notification

5.1.1 - Pre-sale conference (10/16)

A pre-sale conference on site between the Purchaser and sale administrator is required prior to beginning any operations to determine landing and road locations. The Unit Manager or his/her representative must be contacted at least 3 days in advance to schedule the conference.

5.2 - Conduct of Operations

5.2.1 - Slash

5.2.1.13 - Dispose of slash as directed (12/05)

Slash is to be disposed of as directed by the Sale Administrator.

5.2.2 - Hazard Trees/Snags

5.2.2.1 - Den trees (10/16)

Obvious hollow and/or den trees shall be protected and left standing unless they are a safety hazard.

5.2.3 - Operating Restrictions

5.2.3.3 - Bark slippage restriction (3/09)

Within Payment Unit(s) 1, 2 and 3, unless changed by written agreement, cutting and skidding are not permitted during the period of April 15 to July 15. This restriction is because of bark slippage.

5.2.29 - Shrub protection (1/20)

Do not cut or damage hawthorn, witch-hazel, dogwood or juneberry. These woody-shrub plants are highly beneficial to various wildlife species.

5.2.38 - No decking against live trees (2/04)

Cut products may not be decked against unmarked or designated leave trees.

5.2.39 - ORV trail/route protection (4/18)

The motor cycle trail is shown on the Timber Sale Map. Do not cut trees or damage posts with markers. Trees with markers shall be cut off above the markers and at least 5 feet above ground. All stumps within 5 feet of the trail must be cut flush with the ground. Maintain a 20 foot wide slash, debris, and rut free zone daily using the trail as the centerline. Do not run equipment down the trail. Skidding across the trail or route may only occur in locations approved by the sale administrator.

5.2.40 - Pathway protection (10/10)

The hiking trail is shown on the Timber Sale Map. Do not cut trees or damage posts with blue pathway markers. Maintain a 20-foot wide slash, debris, and rut free zone daily, using the pathway as the centerline. Do not run equipment down the pathway. Skidding across the trail may only occur in locations approved by the sale administrator.

5.2.41 - Snowmobile trail protection (9/11)

The snowmobile trail is shown on the Timber Sale Map. Do not cut or damage posts with orange trail markers or traffic control signs. If the trail is used for hauling, it must be graded to the satisfaction of the Unit Manager or his/her representative prior to December 1st. The snowmobile trail may not be used for any timber sale operations from December 1 to March 31. Maintain a 20 foot wide slash, debris, and rut free zone daily using the snowmobile trail as the centerline. No decking of forest products will be permitted along the snowmobile trail. All stumps within 10 feet of the snowmobile trail must be cut at ground level.

5.4 - Soil Protection

5.4.1 - Rutting restriction, general (7/16)

Operations are to cease immediately if equipment and weather conditions result in rutting of roads and/or skid trails which is 12 inches or greater in depth and 50 feet in length. The Unit Manager or his/her representative may restrict hauling and/or skidding if ruts exceed the specified depth. With the Unit Manager or his/her representative's approval, the Purchaser may return to the area when the risk of rutting has decreased.

5.8 - Protection of Endangered Species

5.8.5 - Protection of raptor nests (3/13)

All trees with raptor nests will be protected if found during harvesting operations. Notification will be made to the Unit Manager or his/her representative who will notify the Wildlife Biologist so an on-site evaluation and recommendation can be made, if necessary.

6 - Safety and Fire Prevention

6.2 - Signing

6.2.3 - Recreational trail posting (10/20)

The Purchaser is responsible for posting and maintaining caution signs on the snowmobile, cycle, and hiking trails prior to beginning operations. The trail must be posted at appropriate distances from the sale area to warn of logging activity and truck traffic at both ends of the trail. Signs must be removed when harvest operations are suspended or completed. The Purchaser will provide these signs.



TIMBER SALE MAP

This information provided by authority of Part 525, 1994 PA 451, as amended.

Sale Number	Year
52-114	22

Forest Management Unit	County	Mapped By	Date	Page	of
GFMU - Indian River FO	Cheboygan	Harig	8/10/2022	1	1
Township	Range	Section(s) and Subdivision(s)	Scale		
34N	03W	Section 30: S1/2NW, SWNE, E1/2SW, NWSE	1:15,840		

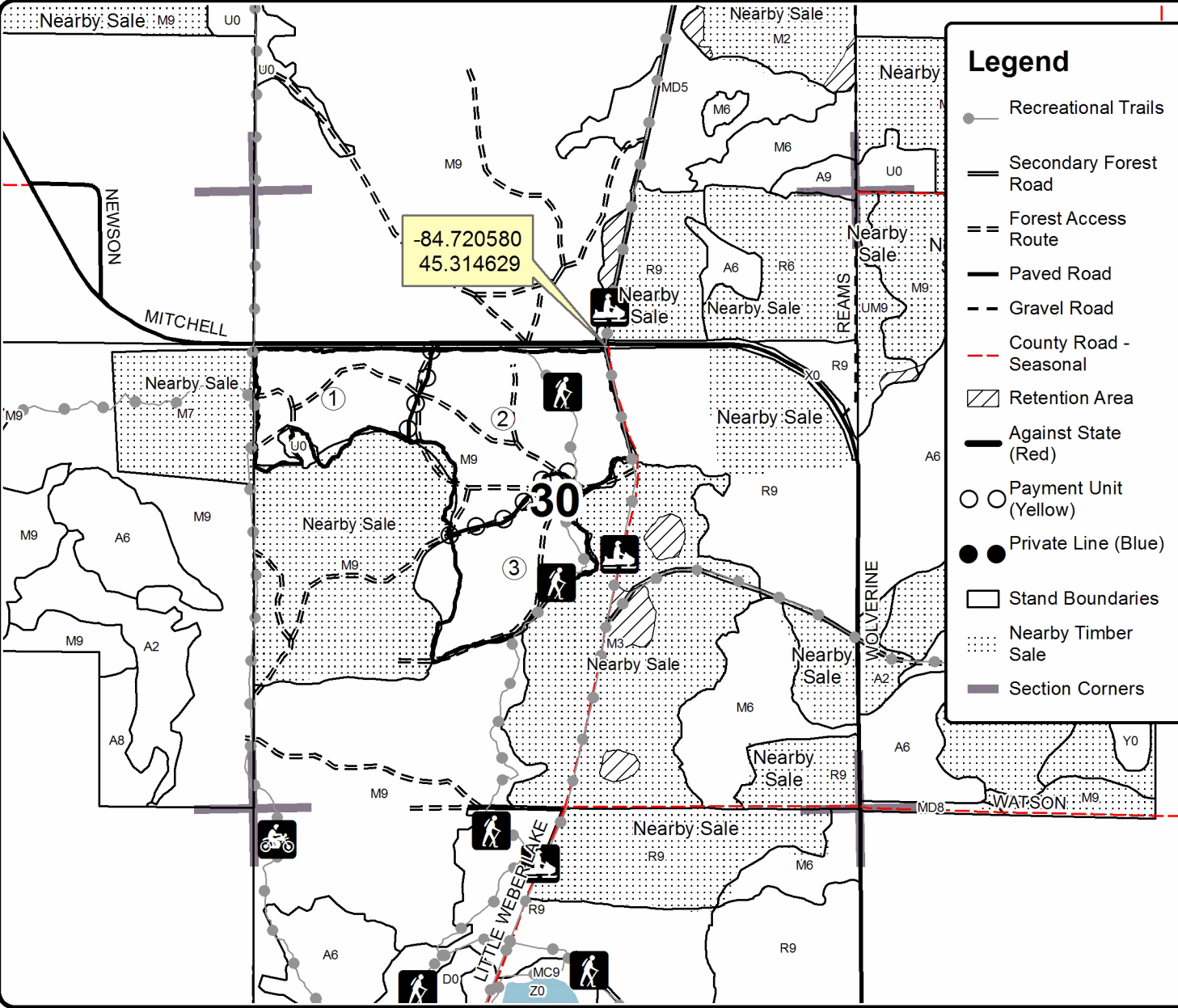
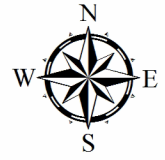
Cover Type				Density	
A = Aspen	H = Hemlock	N = Marsh	U = Upland Brush	0 = Non Stocked	5 = Pole Timber Medium
B = Paper Birch	J = Jack Pine	O = Oak	UM = Upland Mixed	1 = Seedling Sapling Poor	6 = Pole Timber Well
C = Cedar	L = Lowland Brush	P = Lowland Poplar	V = Bog or Marsh	2 = Seedling Sapling Medium	7 = Saw Timber Poor
D = Treed Bog	LM = Lowland Mixed	Q = Mixed Swamp Conifer	W = White Pine	3 = Seedling Sapling Well	8 = Saw Timber Medium
E = Swamp Hdwoods	M = Mpl, Bch, Brch	R = Red Pine	X = Non Stocked	4 = Pole Timber Poor	9 = Saw Timber Well
F = Spruce Fir	MC = Mixed Conifer	S = Black Spruce	Z = Water		
G = Grass	MD = Mixed Deciduous	T = Tamarack			

PU	Acres
1	26.5
2	46.6
3	25.9

Mandy Hardwood

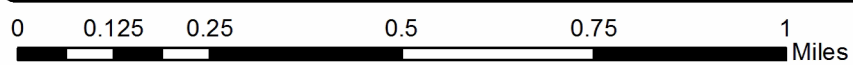
Compartment 144

99 Acres



Legend

- Recreational Trails
- Secondary Forest Road
- Forest Access Route
- Paved Road
- Gravel Road
- County Road - Seasonal
- Retention Area
- Against State (Red)
- Payment Unit (Yellow)
- Private Line (Blue)
- Stand Boundaries
- Nearby Timber Sale
- Section Corners



Farewell Red Pine (52-101-23)
T35N, R01E, SEC. 15; Cheboygan COUNTY

In response to the notice of sale to be held 9:00 a.m. (local time) on January 31, 2023, I am hereby submitting my sealed bid (firm offer) for the following forest products to be cut. Bids for individual species must be at or above the advertised price. All non-responsive bid forms may be rejected.

<u>PRODUCTS & SPECIES</u>	<u>ESTIMATED VOLUME*</u>	<u>ADVERTISED PRICE</u>	<u>BID PRICE/UNIT</u>
Sawtimber			
Red Oak	21.9 MBF	\$ 79.00/MBF	\$ _____
Red Pine	142.3 MBF	\$ 140.00/MBF	\$ _____
White Oak	1.9 MBF	\$ 109.00/MBF	\$ _____
White Pine	1.8 MBF	\$ 60.00/MBF	\$ _____
Pulpwood			
Mixed Oak	43 Cords	\$ 38.55/Cord	\$ _____
Red Pine	279 Cords	\$ 51.15/Cord	\$ _____
White Pine	2 Cords	\$ 29.20/Cord	\$ _____

*The volumes are statistically estimated within plus (+) or minus (-) 22.22 percent at 95% confidence level. These estimated volumes are final and not subject to adjustment. Prospective bidders are urged to examine this timber and to make their own estimates of quantity and quality.

I understand that any or all bids may be rejected. All bids must be signed and all bid items must be bid or the bid form may be rejected. I also understand that consideration and awarding a contract will be based upon my past performance and ability to complete the contract based upon equipment and staffing subject to my control.

FEDERAL ID: _____ or SOCIAL SECURITY NUMBER: _____

Company or individual bidding: _____

Company representative's name: _____

Address: _____

City: _____ State: _____ Zip: _____

IF AVAILABLE, PLEASE PLACE THE PERSONALIZED LABEL FROM YOUR PROSPECTUS IN THE ABOVE BOX.

Individual or company representative's signature: _____ Date: _____

Phone number : _____ Email (optional): _____

THE WINNING BIDDER MUST COMPLETE THE VERIFICATION OF WORKER'S DISABILITY COMPENSATION ACT COMPLIANCE (ON REVERSE SIDE IF DOUBLE SIDED) WITHIN 21 DAYS OF SALE AWARD DATE



FOR DEPARTMENT USE ONLY
Sale Number (XX - XXX - XX - XX)
Forest Management Unit:

TIMBER SALE VERIFICATION OF WORKER'S DISABILITY COMPENSATION ACT COMPLIANCE

*As required by Act 317, P.A. 1969 (Worker's Compensation) and
Part 5 of Act 451 of 1994, as amended.*

VERIFICATION OF WORKER'S DISABILITY COMPENSATION ACT COMPLIANCE

- This verification must be completed and submitted within 21 days of contract award and prior to the issuance of the timber sale contract.
- In addition, if boxes 2B or 2C are checked, then Notice of Exclusion or Certificate of Insurance must be submitted within twenty-one (21) days of the contract award and prior to the issuance of the timber sale contract.
- All information must be typed or printed except for written signatures.

Please Check Appropriate Categories:

1. My business is organized as (you **must** check one of the boxes below):
 - A. Sole Proprietorship (individual)
 - B. Partnership
 - C. Corporation

2. You **must** check one of the boxes below:
 - A. I certify my business is a sole proprietorship and it has no employees but the sole proprietor. I am not subject to the Worker's Compensation Laws.
 - B. I certify my business has satisfied its obligation to the Worker's Compensation Act through the use of an approved Notice of Exclusion (BWC-337, Rev. 5/96). I will provide a copy of the Notice of Exclusion within 21 days of the contract award. (For questions or a copy of the BWC-337, please call the Worker's Compensation Bureau at 517-322-1195).
 - C. I certify my business has a Worker's Compensation Policy. I will provide an original Certificate of Insurance within twenty-one (21) days of the contract award.

3. If you have checked item 2(A) or 2(B), you **must** indicate the number of **both** full-time and part-time employees, other than yourself, including family members and active partners (if none, you must enter "0").

_____ Full-time Employees

_____ Part-time Employees

Name of Business		Federal ID (or) Social Security No.	
Address		Telephone ()	
City	State	ZIP	

I hereby certify that the above information is true and correct. I agree to notify the Michigan DNR of any changes that occur in factors affecting my coverage during any of my present and future operations.

Signature of Owner or Authorized Representative

Title

Date

Please complete the "SEALED BID" information on the next page

Mandy Hardwood (52-114-22)
T34N, R03W, SEC. 30; Cheboygan COUNTY

In response to the notice of sale to be held 9:00 a.m. (local time) on January 31, 2023, I am hereby submitting my sealed bid (firm offer) for the following forest products to be cut. Bids for individual species must be at or above the advertised price. All non-responsive bid forms may be rejected.

<u>PRODUCTS & SPECIES</u>	<u>ESTIMATED VOLUME*</u>	<u>ADVERTISED PRICE</u>	<u>BID PRICE/UNIT</u>
Sawtimber			
Basswood	304.5 MBF	\$ 61.00/MBF	\$ _____
Quaking Aspen	4.7 MBF	\$ 55.00/MBF	\$ _____
Red Maple	30.3 MBF	\$ 88.00/MBF	\$ _____
Sugar Maple	302.4 MBF	\$ 301.00/MBF	\$ _____
Pulpwood			
Basswood	313 Cords	\$ 13.10/Cord	\$ _____
Mixed Hardwood	785 Cords	\$ 16.55/Cord	\$ _____
Quaking Aspen	3 Cords	\$ 19.95/Cord	\$ _____

*The volumes are statistically estimated within plus (+) or minus (-) 10.80 percent at 95% confidence level. These estimated volumes are final and not subject to adjustment. Prospective bidders are urged to examine this timber and to make their own estimates of quantity and quality.

I understand that any or all bids may be rejected. All bids must be signed and all bid items must be bid or the bid form may be rejected. I also understand that consideration and awarding a contract will be based upon my past performance and ability to complete the contract based upon equipment and staffing subject to my control.

FEDERAL ID: _____ or SOCIAL SECURITY NUMBER: _____

Company or individual bidding: _____

Company representative's name: _____

Address: _____

City: _____ State: _____ Zip: _____

IF AVAILABLE, PLEASE PLACE THE PERSONALIZED LABEL FROM YOUR PROSPECTUS IN THE ABOVE BOX.

Individual or company representative's signature: _____ Date: _____

Phone number : _____ Email (optional): _____

THE WINNING BIDDER MUST COMPLETE THE VERIFICATION OF WORKER'S DISABILITY COMPENSATION ACT COMPLIANCE (ON REVERSE SIDE IF DOUBLE SIDED) WITHIN 21 DAYS OF SALE AWARD DATE



FOR DEPARTMENT USE ONLY

Sale Number (XX - XXX - XX - XX)

Forest Management Unit:

**TIMBER SALE
VERIFICATION OF WORKER'S DISABILITY
COMPENSATION ACT COMPLIANCE**

*As required by Act 317, P.A. 1969 (Worker's Compensation) and
Part 5 of Act 451 of 1994, as amended.*

VERIFICATION OF WORKER'S DISABILITY COMPENSATION ACT COMPLIANCE

- This verification must be completed and submitted within 21 days of contract award and prior to the issuance of the timber sale contract.
- In addition, if boxes 2B or 2C are checked, then Notice of Exclusion or Certificate of Insurance must be submitted within twenty-one (21) days of the contract award and prior to the issuance of the timber sale contract.
- All information must be typed or printed except for written signatures.

Please Check Appropriate Categories:

1. My business is organized as (you **must** check one of the boxes below):
 - A. Sole Proprietorship (individual)
 - B. Partnership
 - C. Corporation
2. You **must** check one of the boxes below:
 - A. I certify my business is a sole proprietorship and it has no employees but the sole proprietor. I am not subject to the Worker's Compensation Laws.
 - B. I certify my business has satisfied its obligation to the Worker's Compensation Act through the use of an approved Notice of Exclusion (BWC-337, Rev. 5/96). I will provide a copy of the Notice of Exclusion within 21 days of the contract award. (For questions or a copy of the BWC-337, please call the Worker's Compensation Bureau at 517-322-1195).
 - C. I certify my business has a Worker's Compensation Policy. I will provide an original Certificate of Insurance within twenty-one (21) days of the contract award.
3. If you have checked item 2(A) or 2(B), you **must** indicate the number of **both** full-time and part-time employees, other than yourself, including family members and active partners (if none, you must enter "0").

_____ Full-time Employees

_____ Part-time Employees

Name of Business		Federal ID (or) Social Security No.	
Address		Telephone ()	
City	State	ZIP	

I hereby certify that the above information is true and correct. I agree to notify the Michigan DNR of any changes that occur in factors affecting my coverage during any of my present and future operations.

Signature of Owner or Authorized Representative

Title

Date

Please complete the "SEALED BID" information on the next page

Sandy Aspen (52-113-22)
T36N, R01E, SEC. 31; T36N, R01E, SEC. 32; Cheboygan COUNTY

In response to the notice of sale to be held 9:00 a.m. (local time) on January 31, 2023, I am hereby submitting my sealed bid (firm offer) for the following forest products to be cut. Bids for individual species must be at or above the advertised price. All non-responsive bid forms may be rejected.

<u>PRODUCTS & SPECIES</u>	<u>ESTIMATED VOLUME*</u>	<u>ADVERTISED PRICE</u>	<u>BID PRICE/UNIT</u>
Sawtimber			
Mixed Aspen	19.7 MBF	\$ 73.00/MBF	\$ _____
Pulpwood			
Balsam Fir	296 Cords	\$ 21.65/Cord	\$ _____
Mixed Aspen	792 Cords	\$ 26.10/Cord	\$ _____
Red Maple	230 Cords	\$ 21.65/Cord	\$ _____

*The volumes are statistically estimated within plus (+) or minus (-) 15.51 percent at 95% confidence level. These estimated volumes are final and not subject to adjustment. Prospective bidders are urged to examine this timber and to make their own estimates of quantity and quality.

I understand that any or all bids may be rejected. All bids must be signed and all bid items must be bid or the bid form may be rejected. I also understand that consideration and awarding a contract will be based upon my past performance and ability to complete the contract based upon equipment and staffing subject to my control.

FEDERAL ID: _____ - _____ or SOCIAL SECURITY NUMBER: _____ - _____ - _____

Company or individual bidding: _____

Company representative's name: _____

Address: _____

City: _____ State: _____ Zip: _____

IF AVAILABLE, PLEASE PLACE THE PERSONALIZED LABEL FROM YOUR PROSPECTUS IN THE ABOVE BOX.

Individual or company representative's signature: _____ Date: _____

Phone number : _____ Email (optional): _____

THE WINNING BIDDER MUST COMPLETE THE VERIFICATION OF WORKER'S DISABILITY COMPENSATION ACT COMPLIANCE (ON REVERSE SIDE IF DOUBLE SIDED) WITHIN 21 DAYS OF SALE AWARD DATE



FOR DEPARTMENT USE ONLY	
Sale Number (XX - XXX - XX - XX)	
Forest Management Unit:	

TIMBER SALE VERIFICATION OF WORKER'S DISABILITY COMPENSATION ACT COMPLIANCE

As required by Act 317, P.A. 1969 (Worker's Compensation) and
Part 5 of Act 451 of 1994, as amended.

VERIFICATION OF WORKER'S DISABILITY COMPENSATION ACT COMPLIANCE

- This verification must be completed and submitted within 21 days of contract award and prior to the issuance of the timber sale contract.
- In addition, if boxes 2B or 2C are checked, then Notice of Exclusion or Certificate of Insurance must be submitted within twenty-one (21) days of the contract award and prior to the issuance of the timber sale contract.
- All information must be typed or printed except for written signatures.

Please Check Appropriate Categories:

1. My business is organized as (you **must** check one of the boxes below):
 - A. Sole Proprietorship (individual)
 - B. Partnership
 - C. Corporation
2. You **must** check one of the boxes below:
 - A. I certify my business is a sole proprietorship and it has no employees but the sole proprietor. I am not subject to the Worker's Compensation Laws.
 - B. I certify my business has satisfied its obligation to the Worker's Compensation Act through the use of an approved Notice of Exclusion (BWC-337, Rev. 5/96). I will provide a copy of the Notice of Exclusion within 21 days of the contract award. (For questions or a copy of the BWC-337, please call the Worker's Compensation Bureau at 517-322-1195).
 - C. I certify my business has a Worker's Compensation Policy. I will provide an original Certificate of Insurance within twenty-one (21) days of the contract award.
3. If you have checked item 2(A) or 2(B), you **must** indicate the number of **both** full-time and part-time employees, other than yourself, including family members and active partners (if none, you must enter "0").

_____ Full-time Employees

_____ Part-time Employees

Name of Business		Federal ID (or) Social Security No.	
Address		Telephone ()	
City	State	ZIP	

I hereby certify that the above information is true and correct. I agree to notify the Michigan DNR of any changes that occur in factors affecting my coverage during any of my present and future operations.

Signature of Owner or Authorized Representative

Title

Date

Please complete the "SEALED BID" information on the next page

Mentor Mix (52-105-22)

T34N, R03W, SEC. 22; T34N, R03W, SEC. 26; T34N, R03W, SEC. 27; Cheboygan

In response to the notice of sale to be held 9:00 a.m. (local time) on January 31, 2023, I am hereby submitting my sealed bid (firm offer) for the following forest products to be cut. Bids for individual species must be at or above the advertised price. All non-responsive bid forms may be rejected.

<u>PRODUCTS & SPECIES</u>	<u>ESTIMATED VOLUME*</u>	<u>ADVERTISED PRICE</u>	<u>BID PRICE/UNIT</u>
Sawtimber			
Basswood	179.2 MBF	\$ 61.00/MBF	\$ _____
Mixed Aspen	254.1 MBF	\$ 55.00/MBF	\$ _____
Red Maple	39.2 MBF	\$ 88.00/MBF	\$ _____
Red Oak	11.5 MBF	\$ 79.00/MBF	\$ _____
Red Pine	23.4 MBF	\$ 140.00/MBF	\$ _____
Sugar Maple	246.5 MBF	\$ 301.00/MBF	\$ _____
White Pine	5.6 MBF	\$ 44.00/MBF	\$ _____
Pulpwood			
Balsam Fir	19 Cords	\$ 16.55/Cord	\$ _____
Basswood	784 Cords	\$ 13.10/Cord	\$ _____
Jack Pine	4 Cords	\$ 19.55/Cord	\$ _____
Mixed Aspen	558 Cords	\$ 19.95/Cord	\$ _____
Mixed Hardwood	2,105 Cords	\$ 16.55/Cord	\$ _____
Red Pine	83 Cords	\$ 51.15/Cord	\$ _____
White Pine	3 Cords	\$ 29.20/Cord	\$ _____

*The volumes are statistically estimated within plus (+) or minus (-) 14.59 percent at 95% confidence level. These estimated volumes are final and not subject to adjustment. Prospective bidders are urged to examine this timber and to make their own estimates of quantity and quality.

I understand that any or all bids may be rejected. All bids must be signed and all bid items must be bid or the bid form may be rejected. I also understand that consideration and awarding a contract will be based upon my past performance and ability to complete the contract based upon equipment and staffing subject to my control.

FEDERAL ID: _____ - _____ or SOCIAL SECURITY NUMBER: _____ - _____ - _____

Company or individual bidding: _____

Company representative's name: _____

Address: _____

City: _____ State: _____ Zip: _____

IF AVAILABLE, PLEASE PLACE THE PERSONALIZED LABEL FROM YOUR PROSPECTUS IN THE ABOVE BOX.

Individual or company representative's signature: _____ Date: _____

Phone number : _____ Email (optional): _____

THE WINNING BIDDER MUST COMPLETE THE VERIFICATION OF WORKER'S DISABILITY COMPENSATION ACT COMPLIANCE (ON REVERSE SIDE IF DOUBLE SIDED) WITHIN 21 DAYS OF SALE AWARD DATE



FOR DEPARTMENT USE ONLY
Sale Number (XX - XXX - XX - XX)
Forest Management Unit:

TIMBER SALE VERIFICATION OF WORKER'S DISABILITY COMPENSATION ACT COMPLIANCE

*As required by Act 317, P.A. 1969 (Worker's Compensation) and
Part 5 of Act 451 of 1994, as amended.*

VERIFICATION OF WORKER'S DISABILITY COMPENSATION ACT COMPLIANCE

- This verification must be completed and submitted within 21 days of contract award and prior to the issuance of the timber sale contract.
- In addition, if boxes 2B or 2C are checked, then Notice of Exclusion or Certificate of Insurance must be submitted within twenty-one (21) days of the contract award and prior to the issuance of the timber sale contract.
- All information must be typed or printed except for written signatures.

Please Check Appropriate Categories:

1. My business is organized as (you **must** check one of the boxes below):
 - A. Sole Proprietorship (individual)
 - B. Partnership
 - C. Corporation

2. You **must** check one of the boxes below:
 - A. I certify my business is a sole proprietorship and it has no employees but the sole proprietor. I am not subject to the Worker's Compensation Laws.
 - B. I certify my business has satisfied its obligation to the Worker's Compensation Act through the use of an approved Notice of Exclusion (BWC-337, Rev. 5/96). I will provide a copy of the Notice of Exclusion within 21 days of the contract award. (For questions or a copy of the BWC-337, please call the Worker's Compensation Bureau at 517-322-1195).
 - C. I certify my business has a Worker's Compensation Policy. I will provide an original Certificate of Insurance within twenty-one (21) days of the contract award.

3. If you have checked item 2(A) or 2(B), you **must** indicate the number of **both** full-time and part-time employees, other than yourself, including family members and active partners (if none, you must enter "0").

_____ Full-time Employees

_____ Part-time Employees

Name of Business		Federal ID (or) Social Security No.	
Address		Telephone ()	
City	State	ZIP	

I hereby certify that the above information is true and correct. I agree to notify the Michigan DNR of any changes that occur in factors affecting my coverage during any of my present and future operations.

Signature of Owner or Authorized Representative

Title

Date

Please complete the "SEALED BID" information on the next page