



**DEPARTMENT OF NATURAL RESOURCES
STATE OF MICHIGAN
TIMBER SALE PROSPECTUS #7164**

SCHEDULED SALE DATE AND TIME: 3:00 p.m. (local time) on December 8, 2022.

LOCATION: NEWBERRY MGMT UNIT, PO BOX 428, 5666 S STATE HWY M 123, NEWBERRY, MI 49868.

PROSPECTUS NOTE: The bidder is advised to inspect the sale area and review the location, estimated volumes, operating costs and contract terms of proposed sales. Please be aware that some landowners may request 60 days or more notice for access across their land.

Notice is hereby given that bids will be received by the Unit Manager, NEWBERRY MANAGEMENT UNIT, for certain timber on the following described lands:

Where's the Deer 2.0 (42-013-22) / T45N, R07W, SEC. 7 , W1/2SW.

T45N, R08W, SEC. 11, N1/2NE.

T45N, R08W, SEC. 12, SE.

T45N, R08W, SEC. 2 , SENW,S1/2NE,NESW,N1/2SE,SWSE.

Luce County, Advertised Price \$11,009.35, 139.1 Acres, Hardwood, Spruce/Fir/Tamarack.

SALE NOTE: This sale was previously reduced by approximately 25% due to a prior "no bid" from Prospectus 6800 on January 28, 2021.

No chipping is permitted on this sale.

The county must be contacted prior to constructing roads off of the county road R-O-W. Permits from the Luce County Road Commission may be necessary.

It is the responsibility of the Purchaser to obtain permission from the utility company to utilize the power line R.O.W. for operations.

Harvesting is limited to the period of December 1 to April 1 due to wet ground conditions as well as deer wintering in the area.

Some roads or skid trails may require extra protection such as that afforded by timber mats , interlocking composite mats, or another approved system. See Sale Spec. 5.2.17 for additional information.

Attwood Mix (42-013-21) / T47N, R08W, SEC. 20, E1/2NW,NWNE,S1/2NE,N1/2SE.

Luce County, Advertised Price \$14,607.05, 67.6 Acres, Hardwood, N White Cedar.

SALE NOTE: Sale reduced by approximately 25%, as it was a "no bid" sale from 2-24-22.

All units of volume listed for this sale were estimated using the Inventory Manager computer program and the new Michigan taper model.

Roads may require the installation of culverts for cross drainage or at natural drainage-ways. See Sale Spec. 4.1.5 for details.

Road maintenance may be needed. See Sale Spec. 4.2.3 for additional information.

Harvesting is not permitted during the period of March 31 to December 15 because of the low ground nature and wet soil types within the Sale Area.

A snowmobile trail is shown on the Timber Sale Map. See Sale Spec. 5.2.41 for restrictions.

A recreation site such as a trail, pathway, or campground is within the sale area or the vicinity. Certain restrictions/specifications may be applicable including time restrictions.

Sixteen Creek Swamp and Ridges (42-019-21) / T46N, R09W, SEC. 7 , NENE,N1/2SE.

T46N, R09W, SEC. 8 , NW,W1/2NE,SW,S1/2SE.

Luce County, Advertised Price \$29,885.90, 209.7 Acres, N White Cedar, Hardwood.

SALE NOTE: Sale has been reduced by approximately 25%, as it previously went "no bid" on 3-10-22.

All units of volume listed for this sale were estimated using the Inventory Manager computer program and new Michigan taper model.

Payment Units 1-8 are optional to harvest due to potential access issues. Removing any or all of these Payment Units is a contract modification which requires a Timber Sale Contract Amendment.

Roads may require the installation of culverts for cross drainage or at natural drainage-ways. See Sale Spec. 4.1.5 for details.

Harvesting is limited to the period of December 31 to March 31 because of the low ground nature of the sale and winter conditions that will be necessary to harvest the sale.

Some roads or skid trails require extra protection such as that afforded by interlocking composite mats or another approved system. See Sale Spec. 5.2.17 for additional information.

A snowmobile trail and is shown on the Timber Sale Map. See Sale Spec. 5.2.41 for restrictions.

A recreation site such as a trail, pathway, or campground is within the sale area or the vicinity. Certain restrictions/specifications may be applicable including time restrictions.

Who Let the Cows Out (42-028-21) / T45N, R10W, SEC. 4 , SWNW.

T45N, R10W, SEC. 5 , NWNW,SENE.

T45N, R10W, SEC. 6 , SENE.

Luce County, Advertised Price \$7,854.40, 44.6 Acres, Spruce/Fir/Tamarack, N White Cedar.

SALE NOTE: This sale has been reduced by approximately 45% due to "NO BID" on 1-20-22. All units of volume listed for this sale were estimated using the Inventory Manager computer program and the new Michigan taper model.

Permission for access across private land is the responsibility of the Purchaser. A copy of written permission must be provided to the DNR (Newberry Unit) prior to bid opening. If this permission is not provided, the bid will be rejected.

Note that mixed Aspen includes quaking and big tooth. Mixed Hardwoods includes red maple, ironwood and paper birch.

The sale area cannot be accessed without permission from the adjacent landowner bordering the sale. See Sale Spec. 4.4.4 and 4.4.3 for specifics.

Within Payment Unit(s) #'s 2 and 3, harvesting is limited to the period of December 15 to April 1 because of low, wet ground.

Access may be through private land.

BID INSTRUCTIONS (VER. 10/10/2022):

1. Scheduled Bid Location, Date, and Time (2/11)

Bids must be received by the Unit Manager, NEWBERRY OFFICE, PO Box 428 5666 S STATE HWY M 123, NEWBERRY, MI 49868, no later than 3:00 p.m. (local time) on December 8, 2022. For further information concerning this sale, contact Keith Magnusson at 906-291-0120 extension n/a.

2. Bidder's Qualifications (10/22)

If all or part of a timber sale was prepared by a private contractor, the contractor and that contractor's company are not permitted to bid on the timber sale. A person must be 18 years of age or older to purchase timber. Permanent employees of the Department of Natural Resources or members of their immediate household may not bid. Former employees, in the permanent or seasonal class, may not bid until 3 months after the last day of active duty. Bids will not be accepted from individuals or companies appearing on the DNR/FRD No-Bid List. This list contains the names of purchasers who previously failed to execute a contract within 21-days or who have a history of poor performance.

3. Preparation of Sealed Bids (5/16)

Bid Forms may be completed online thru Michigan DNR Timber Sale Online Bidding (OLB) at www.michigan.gov/timberbidding or by completing the hardcopy Bid Form found in the Timber Sale Prospectus. Hardcopy Bid Forms shall be manually signed in ink. Registration in OLB is considered your 'signature' for all bids submitted thru that system. Bid prices must be entered for each species and product in the Bid Price column for all material subject to bidding and all fill-in blanks must be completed. If erasures or other changes appear on the hardcopy Bid Form, each erasure or change must be initialed by the person signing the bid.

4. Submission of Sealed Bids (5/16)

Bid forms may be obtained from the Unit Manager or thru OLB. Bids may be submitted hardcopy or thru OLB. All hardcopy bids must be submitted on the bid form and in an envelope clearly identified as described in this section. NOTE: Only one bid form per bid envelope. Sealed bids must be submitted to the Unit office designated in the prospectus and must be submitted at or prior to the time established in the prospectus. The envelope should show on the outside (a) the sale name or number and (b) the date and time of bid opening, as shown in the prospectus. Bids received after the time specified in the sale prospectus are late bids and will be rejected.

It is possible for a bidder to submit multiple bids on a single sale. For example, a bid may be submitted hardcopy and a bid may be submitted thru OLB. Or, two bidders from the same company could both submit bids on the same sale. If this were to happen, the State would accept all bids received and award the contract accordingly. All bidding and contractual requirements would apply to all bids received.

5. Public Opening of Sealed Bids (7/16)

If conditions permit, the sealed bids will be publicly opened and posted at the time and place set in the prospectus.

If a bidder, present at a bid opening, has submitted bids on more than one sale, that bidder may withdraw their unopened bid envelopes or announce the withdrawal of their online bid after being declared the successful bidder on one sale.

6. Award of Contract (1/11)

Award of the contract will be made to the Bidder whose bid, conforming to the prospectus, is most advantageous to the State of Michigan on the basis of total value at rates bid for the estimated quantities. The State reserves the right to reject any bid or waive any minor irregularity in bids received. A written award mailed (or otherwise furnished) to the successful Bidder shall be deemed to result in a binding contract without further action by either party.

7. Down Payment (1/11)

The Bidder to whom award is made must make a down payment within 21 days of the sale award. The amount of the down payment will be calculated as shown in the Bond and Payment Schedule of this prospectus. Only cash may be used to meet this requirement.

8. Performance Security (1/11)

As guarantee of faithful performance, a cash bond, certificate of deposit, surety bond or irrevocable letter of credit (LOC) is required within 21 days of the sale award. The amount of the performance security is shown in the Bond and

Payment Schedule of this prospectus. If an LOC or surety is used, the coverage must extend for at least 6 months beyond the contract expiration.

9. Worker's Compensation (10/22)

Purchaser shall obtain worker's compensation insurance to cover claims under Michigan's Worker's Disability Compensation Act of 1969 or similar employee benefit act of any other state applicable to an employee. Verification of Worker's Disability Compensation Act Compliance must be completed and submitted within 21 days of contract award and prior to the issuance of the timber sale contract. In addition, if applicable, Notice of Exclusion or Certificate of Insurance must also be submitted.

10. Timber Sale Contract (10/22)

Additional conditions and requirements common to all timber sales are listed on the timber sale contract (R4031) and are available on line at www.michigan.gov/timber. Contact the Unit Manager for additional information or a sample contract. Within 21 days of the date of the award letter, the bidder must sign the contract and provide the required down payment, performance security, and verification of worker's disability compensation. The down payment and performance security shall be in accordance with the provisions of the timber sale contract, in the sums stated in this prospectus. If these actions are not taken, then the Bidder, the Bidder's corporation, and the corporation's principals may not be permitted to bid on State timber sales for a period of 3 months after the first offense, 6 months after the second offense, and 1 year after the third offense. An offense will only be counted against the Bidder for 5 years. In addition, the Bidder certifies that if awarded this contract, the Bidder will complete the timber sale contract in accordance with its terms and any modifications thereof including requirements to purchase, cut, and remove the included timber by the expiration date.

Payment Unit values in the State Forest Timber Sale Contract are calculated based on the advertised value of the Payment Unit as a percentage of the total advertised value of the contract. The advertised value of each Payment Unit is given in the Description of Timber by Payment Unit table on the Timber Sale Information page. For example, if the value of Payment Unit 1 is advertised as \$1,500 and the total Timber Sale value is advertised as \$10,000, the contract price for Payment Unit 1 will be 15% of the total bid price ($\$1,500/\$10,000 * 100$).

11. Disclaimer of Estimates and Bidder's Warranty of Inspection (10/22)

Before submitting this bid, the Bidder is advised and cautioned to inspect the sale area, review the requirements of the sale contract, and take other steps as may be reasonably necessary to ascertain the location, estimated volumes, construction estimates, and operating costs of the proposed sale. Failure to do so will not relieve the Bidder from responsibility for completing the contract.

The Bidder warrants that this bid is submitted solely on the basis of the Bidder's examination and inspection of the quality and quantity of the timber offered for sale and the Bidder's opinion of the value thereof and the costs of recovery. No reliance should be placed on the State of Michigan's estimates of timber quality, quantity or costs of recovery. Bidder further acknowledges that the State of Michigan: (i) expressly disclaims any warranty of fitness of timber for any purpose; (ii) offers this timber as is without any warranty of quality (merchantability) or quantity and (iii) expressly disclaims any warranty as to the quantity or quality of timber sold.

12. Certification and Chain-of-Custody (10/22)

Unless otherwise indicated in the contract under section 7 – Other Conditions of the Sale Specific Conditions & Requirements, the area encompassed by this timber sale is certified to the standards of the Forest Stewardship Council (FSC) - Certificate #SCS-FM/COC-00090N and the Sustainable Forestry Initiative (SFI) - Certificate #NSF-SFIS-5Y031-SF5. Forest products from this sale may be delivered to the mill as "FSC 100% and / or SFI certified" as long as the contractor hauling the forest products is chain-of-custody (COC) certified or covered under a COC certificate from the destination mill. The purchaser is responsible for maintaining COC after leaving the sale area.

13. Good Neighbor Authority (GNA) Requirements (10/22)

If the name of this timber sales contains the acronym GNA, it is authorized by the Good Neighbor Authority (GNA) and covered by various agreements between the U.S. Forest Service and the State. The timber sale occurs on federal land and the following conditions apply:

GNA contracts on US Forest Service land will not be awarded to purchasers on the Federal list of excluded parties. The System for Award Management (SAM) will be checked for active excluded parties prior to award of contract. In

addition, the Bidder to whom award is made must complete an Assurance Regarding Felony Conviction or Tax Delinquent Status for Corporate Applicants (AD-3031).

14. Good Neighbor Authority (GNA) Requirements, con't (10/22)

Bidder certifies, by signing this bid form, that to the best of Bidder's knowledge that the following representations are accurate and complete.

- a. That the Bidder and its principals are not presently debarred, suspended, proposed for debarment, declared ineligible, or voluntary excluded from timber sales (covered transactions) by any Federal department or agency.
- b. That the Bidder and its principals have not within a 3-year period preceding this bid been convicted of or had a civil judgment rendered against them for commission of fraud or a criminal offense in connection with obtaining , attempting to obtain, or performing a public (Federal, State, or local) transaction or contract under a public transaction; violation of Federal or State antitrust statutes or commission of embezzlement, theft, forgery, bribery, falsification or destruction of records, making false statements, or receiving stolen property.
- c. That the Bidder and its principals are not presently indicted for or otherwise criminally or civilly charged by a governmental entity (Federal, State, or local) with commission of any of the offenses enumerated in paragraph b of this certification.
- d. That the Bidder and its principals have not within a 3-year period preceding this bid had one or more public transactions (Federal, State, or local) terminated for breach or default of a timber or forest product contract.

Bidders that cannot certify this requirement, in whole or in part, shall submit an explanation with their bid.

DAN EICHINGER
Director

TIMBER SALE INFORMATION

Where's the Deer 2.0 (42-013-22)

T45N, R07W, SEC. 7; T45N, R08W, SEC. 11; T45N, R08W, SEC. 12; T45N, R08W, SEC. 2.
Luce County (Advertised Price \$11,009.35)

SALE NOTE: This sale was previously reduced by approximately 25% due to a prior "no bid" from Prospectus 6800 on January 28, 2021.

No chipping is permitted on this sale.

The county must be contacted prior to constructing roads off of the county road R-O-W. Permits from the Luce County Road Commission may be necessary.

It is the responsibility of the Purchaser to obtain permission from the utility company to utilize the power line R.O.W. for operations.

Harvesting is limited to the period of December 1 to April 1 due to wet ground conditions as well as deer wintering in the area.

Some roads or skid trails may require extra protection such as that afforded by timber mats, interlocking composite mats, or another approved system. See Sale Spec. 5.2.17 for additional information.

A timber sale contract for this lump sum, sealed bid timber sale will be awarded to the responsible bidder offering the highest sealed bid price. All units of volume listed below were estimated using the T-Sale computer program and our traditional volume equations. Bids must be at or above the following advertised price for each product and species:

<u>PRODUCTS & SPECIES</u>	<u>ESTIMATED UNITS*</u>	<u>ADVERTISED PRICE</u>
Sawtimber		
Red Maple	8.4 MBF	\$ 53.00 / MBF
Pulpwood		
Balsam Fir	215 Cords	\$ 4.90 / Cord
Black Spruce	364 Cords	\$ 6.35 / Cord
Mixed Hardwood	842 Cords	\$ 6.85 / Cord
Quaking Aspen	101 Cords	\$ 12.25 / Cord
Tamarack	134 Cords	\$ 1.45 / Cord

* The total volume is statistically estimated within plus (+) or minus (-) 10.66 percent. There are an estimated 1,676 cords on this timber sale, plus or minus 179 cords at the 95% confidence level. The estimated units are final and not subject to adjustment. Prospective bidders are urged to examine this timber and to make their own estimates of quantity and quality.

BOND AND PAYMENT SCHEDULE:

1. A bond in the amount of \$1,101.00 to insure faithful performance of the conditions of the contract will be deposited by the successful bidder within 21 days of the sale award.
2. Cutting in any sale or unit without the required advance payment would be considered a trespass.
3. Total payment must be paid in advance or according to the following schedule:
 - (a) Ten percent (10%) of the sale value must be paid within 21 days of the sale award.
 - (b) The 10% down payment will be credited towards the first unit cut.
 - (c) Payment for each of the following units must be made before cutting begins in that unit:

PAYMENT UNIT NUMBER	PERCENT OF TOTAL SALE VALUE
01	16.6%
02	7.8%
03	6.8%
04	31.8%
05	21.3%
06	8.3%
07	7.4%
4. If no cutting takes place, the 10% down payment will not be refunded.
5. Operations on the contract issued will terminate on 06/30/2026.

SALE STATISTICS

SALE VOLUMES

VOLUME			STATISTICAL RANGE IN CORDS	
TOTAL CUBIC FEET	TOTAL CORDS	PERCENT ERROR	MINIMUM	MAXIMUM
132,418	1,676	10.66%	1,498	1,855

VDU VOLUMES

A VDU is a Volume Determination Unit. Volumes and their associated statistics are calculated at the VDU level and summarized to the sale level. There is often a one to one relationship between a VDU and a Payment Unit, but not always, depending on the cruise design. Refer to the VDU TO PAYMENT UNIT table.

	VOLUME			RANGE IN CORDS	
VDU	TOTAL CUBIC FEET	TOTAL CORDS	PERCENT ERROR	MINIMUM	MAXIMUM
23	0	0	17.05%	0	0
39	0	0	25.13%	0	0
41	0	0	15.42%	0	0
TOTAL:	0	0		0	0

VDU TO PAYMENT UNIT

When a VDU is associated with more than one Payment Unit (PU), the VDU volumes are assigned to the PU based on acres of the VDU within the PU.

VDU	VDU ACRES	PU	PU ACRES
23	35.2	6	18.6
		7	16.6
39	22.2	5	22.2
41	81.7	1	21.6
		2	10.2
		3	8.6
		4	41.3
TOTAL:	139.1		139.1

DESCRIPTION OF TIMBER BY PAYMENT UNIT (PU)

PU	MARKET GROUP	PRODUCT	QUANTITY	UNIT	ACRES	ADVERTISE PRICE
1	Red Maple	Sawtimber	2.2	MBF	21.6	\$1,827.75
	Balsam Fir	Pulpwood	26	Cords		
	Black Spruce		62	Cords		
	Mixed Hardwood		163	Cords		
	<i>Paper Birch</i>		26	<i>Cords</i>		
	<i>Red Maple</i>		137	<i>Cords</i>		
	Quaking Aspen		6	Cords		
2	Red Maple	Sawtimber	1.0	MBF	10.2	\$860.15
	Balsam Fir	Pulpwood	12	Cords		
	Black Spruce		29	Cords		
	Mixed Hardwood		77	Cords		
	<i>Paper Birch</i>		12	<i>Cords</i>		
	<i>Red Maple</i>		65	<i>Cords</i>		
	Quaking Aspen		3	Cords		
3	Red Maple	Sawtimber	0.9	MBF	8.6	\$744.30
	Balsam Fir	Pulpwood	10	Cords		
	Black Spruce		25	Cords		
	Mixed Hardwood		66	Cords		
	<i>Paper Birch</i>		11	<i>Cords</i>		
	<i>Red Maple</i>		55	<i>Cords</i>		
	Quaking Aspen		3	Cords		
4	Red Maple	Sawtimber	4.3	MBF	41.3	\$3,502.00
	Balsam Fir	Pulpwood	49	Cords		
	Black Spruce		117	Cords		
	Mixed Hardwood		313	Cords		
	<i>Paper Birch</i>		51	<i>Cords</i>		
	<i>Red Maple</i>		262	<i>Cords</i>		
	Quaking Aspen		12	Cords		
5	Balsam Fir	Pulpwood	25	Cords	22.2	\$2,344.00
	Black Spruce		2	Cords		
	Mixed Hardwood		208	Cords		
	<i>American Elm</i>		24	<i>Cords</i>		
	<i>Green Ash</i>		5	<i>Cords</i>		
	<i>Paper Birch</i>		19	<i>Cords</i>		
	<i>Red Maple</i>		144	<i>Cords</i>		
	<i>White Ash</i>		16	<i>Cords</i>		
	Quaking Aspen		64	Cords		
6	Balsam Fir	Pulpwood	49	Cords	18.6	\$915.40
	Black Spruce		68	Cords		
	Mixed Hardwood		8	Cords		
	<i>Paper Birch</i>		5	<i>Cords</i>		
	<i>Red Maple</i>		3	<i>Cords</i>		
	Quaking Aspen		7	Cords		
	Tamarack		71	Cords		
7	Balsam Fir	Pulpwood	44	Cords	16.6	\$815.75
	Black Spruce		61	Cords		
	Mixed Hardwood		7	Cords		
	<i>Paper Birch</i>		5	<i>Cords</i>		
	<i>Red Maple</i>		2	<i>Cords</i>		
	Quaking Aspen		6	Cords		
	Tamarack		63	Cords		
TOTAL:			8.4	MBF		
TOTAL:			1,656	Cords		

Sale Specific Conditions & Requirements

Sale Name: Where's the Deer 2.0

Sale Number: 42-013-22 Seq#: 2

1 - Sale Area

1.2 - Boundaries

1.2.1 - Painted boundaries (9/19)

The sale boundary and Payment Unit boundaries are marked and identified by red and yellow paint. Exterior sale boundary lines against state are marked with red paint. Interior Payment Unit boundaries are marked with yellow paint. Retention patches are marked with red paint; no harvesting activities may occur within these areas. Yellow painted trees designating an interior Payment Unit boundary are only to be cut when all surrounding Payment Units have been paid.

2 - Timber Specifications

2.1 - Included Timber

2.1.2 - Clearcut unit(s) w/o unmerchantable trees (8/11)

Within Payment Unit(s) 1-7, cut all trees which meet minimum piece specifications in 2.2 Utilization, except do not cut any cedar, hemlock, white pine, and trees marked with green paint.

Note: Do not cut any sub-merchantable tree species and leave as much of this sub-canopy intact. Limit equipment tracking to the same area as much as possible, as to not knock over sub-merchantable trees. See sale condition 2.1.9 for additional information.

2.1.9 - Harvest exception (12/08)

Do not cut any cedar or white pine trees other than those that are necessary to remove in order to operate within the sale area. Every effort must be made to preserve the existing hemlock and to leave an intact stand upon sale completion. All cut cedar and white pine shall be piled separately by products and scaled in the woods unless other scaling arrangements are agreed to by the Unit Manager or his/her representative. Stumpage price for cedar and white pine will be \$50.00 per cord for cedar and \$100.00 per cord for white pine. Do not cut any hemlock for operability reasons.

2.1.11 - Description of timber note (2/04)

Note that Payment Unit 3 is optional to harvest due to a potential active hawk nest. This will be discussed further at the time the sale is harvested and the nest can once again be evaluated.

2.2 - Utilization

2.2.9 - No chipping permitted (12/08)

Within Payment Unit(s) 1 - 7, no chipping is permitted.

4 - Transportation

4.1 - Construction

4.1.3 - Slash and earthen piles (8/04)

Piles or windrows of earth along roads and landings that have been widened or constructed shall be leveled. Slash from road maintenance or construction, including stumps, shall be dispersed throughout the sale.

4.1.6 - Road construction (1/09)

Construction of new roads or improvements of existing roads shall be done in such a way as to minimize the environmental and visual impacts. Merchantable trees shall be cut and utilized unless otherwise directed. Non-merchantable trees shall be severed and laid flat on the ground. Slash shall be scattered, and not left in windrows and kept a minimum of 10 feet back from the road edge. Stumps shall be set upright, not left on edge, and be moved at least 10 feet away from the road edge. Disturbed soil shall be feathered into the woods and not left in berms or windrows.

4.1.7 - Road closure (10/11)

All new roads built into the sale must be blocked to vehicle traffic upon completion of the sale.

4.3 - Public Right-of-Way

4.3.2 - County R-O-W (12/06)

The county must be contacted prior to constructing roads off of the county road R-O-W. Permits from the Luce County Road Commission may be necessary.

5 - Operations

5.1 - Notification

5.1.1 - Pre-sale conference (10/16)

A pre-sale conference between the Purchaser and sale administrator is required prior to beginning any operations within Payment Unit 3 to determine the activity of a raptor nest that was found during sale prep.

5.1.6 - Utility R.O.W. (4/19)

It is the responsibility of the Purchaser to obtain permission from the utility company to utilize the power line R.O.W. for operations.

5.2 - Conduct of Operations

5.2.1 - Slash

5.2.1.8 - Slash height (12/08)

No slash or tree tops may exceed 36 inches in height.

5.2.2 - Hazard Trees/Snags

5.2.2.1 - Den trees (10/16)

Obvious hollow and/or den trees shall be protected and left standing unless they are a safety hazard.

5.2.3 - Operating Restrictions

5.2.3.1 - Operating restrictions (9/11)

Within Payment Unit(s) 1-7, unless changed by written agreement, cutting, skidding, and hauling are limited to the period of December 1 to April 1. This restriction is because of the wet ground of the site as well as deer wintering in the area.

5.2.17 - Timber Mats and Interlocking Composite Mats (3/18)

Some roads or skid trails may require extra protection such as that afforded by timber mats, interlocking composite mats, or another approved system. If available, mats may be borrowed from the DNR. A Timber Sale Contract Supplement will be used to document the Purchaser's use of the DNR's mats. Contact the sale administrator regarding availability and pick-up. The Purchaser is responsible for picking up and hauling the mats to and from the site. The composite mats will require DNR staff onsite for installation and removal. Contact the sale administrator to schedule at least 30 days before desired install/removal date. All mats must be cleaned prior to drop off. This may include, but is not limited to, power washing and brushing to remove mud and debris. A charge of \$400.00 per timber mat and \$2,000.00 per composite mat will be assessed for all damaged or non-returned mats. Damage for the crane/timber mats is defined as three or more broken cants. Damage for the composite mats is defined as cracked or broken mats.

5.2.32 - Decking/landing restoration (9/13)

All decking and landing areas must have the surface area restored to a condition equal to or better than before. This is to ensure the proper regeneration of the stand. Wood debris, chips and "cookies" from trimmings must be removed or scattered away from landing and loading areas and may not be windrowed on the edge.

5.2.38 - No decking against live trees (2/04)

Cut products may not be decked against unmarked or designated leave trees.

5.4 - Soil Protection

5.4.1 - Rutting restriction, general (7/16)

Operations are to cease immediately if equipment and weather conditions result in rutting of roads and/or skid trails which is 12 inches or greater in depth and 50 feet in length. The Unit Manager or his/her representative may restrict hauling and/or skidding if ruts exceed the specified depth. With the Unit Manager or his/her representative's approval, the Purchaser may return to the area when the risk of rutting has decreased.

5.4.5 - Soil caution (11/04)

Care must be taken to minimize soil damage due to the wet soil types. Tracked equipment is likely necessary for harvesting to take place.

5.8 - Protection of Endangered Species

5.8.5 - Protection of raptor nests (3/13)

All trees with raptor nests will be protected if found during harvesting operations. Notification will be made to the Unit Manager or his/her representative who will notify the Wildlife Biologist so an on-site evaluation and recommendation can be made, if necessary. There was a raptor nest found in Payment Unit 3 during the time the sale was prepped. This nest site will be evaluated at the time the sale is harvested to determine activity and whether or not to exclude this unit from the sale.

6 - Safety and Fire Prevention

6.2 - Signing

6.2.1 - Road posting (9/09)

The Purchaser is responsible for posting and maintaining caution signs on County Road 381 prior to beginning operations. The road must be posted 200 feet from the sale area to warn of logging activity and truck traffic. Signs must be removed when harvest operations are suspended or completed. The Purchaser will provide these signs.



TIMBER SALE MAP

This information provided by authority of Part 525, 1994 PA 451, as amended.

Sale Number	Year
42-004-20	20

Forest Management Unit Newberry	County Luce	Mapped By Livermore	Date 3/25/2020	Page 1	of 2
Township 45N	Range 08W	Section(s) and Subdivision(s) Section 02: SENW, S½NE, NESW, N½SE, SWSE	Scale 1:15,840		

Cover Type				Density		
A = Aspen	H = Hemlock	N = Marsh	U = Upland Brush	0 = Non Stocked	5 = Pole Timber Medium	
B = Paper Birch	J = Jack Pine	O = Oak	UM = Upland Mixed	1 = Seedling Sapling Poor	6 = Pole Timber Well	
C = Cedar	L = Lowland Brush	P = Lowland Poplar	V = Bog or Marsh	2 = Seedling Sapling Medium	7 = Saw Timber Poor	
D = Tread Bog	LM = Lowland Mixed	Q = Mixed Swamp Conifer	W = White Pine	3 = Seedling Sapling Well	8 = Saw Timber Medium	
E = Swamp Hdwoods	M = Mpl, Bch, Brch	R = Red Pine	X = Non Stocked	4 = Pole Timber Poor	9 = Saw Timber Well	
F = Spruce Fir	MC = Mixed Conifer	S = Black Spruce	Z = Water			
G = Grass	MD = Mixed Deciduous	T = Tamarack				

Where's the Deer?

Compartment 132

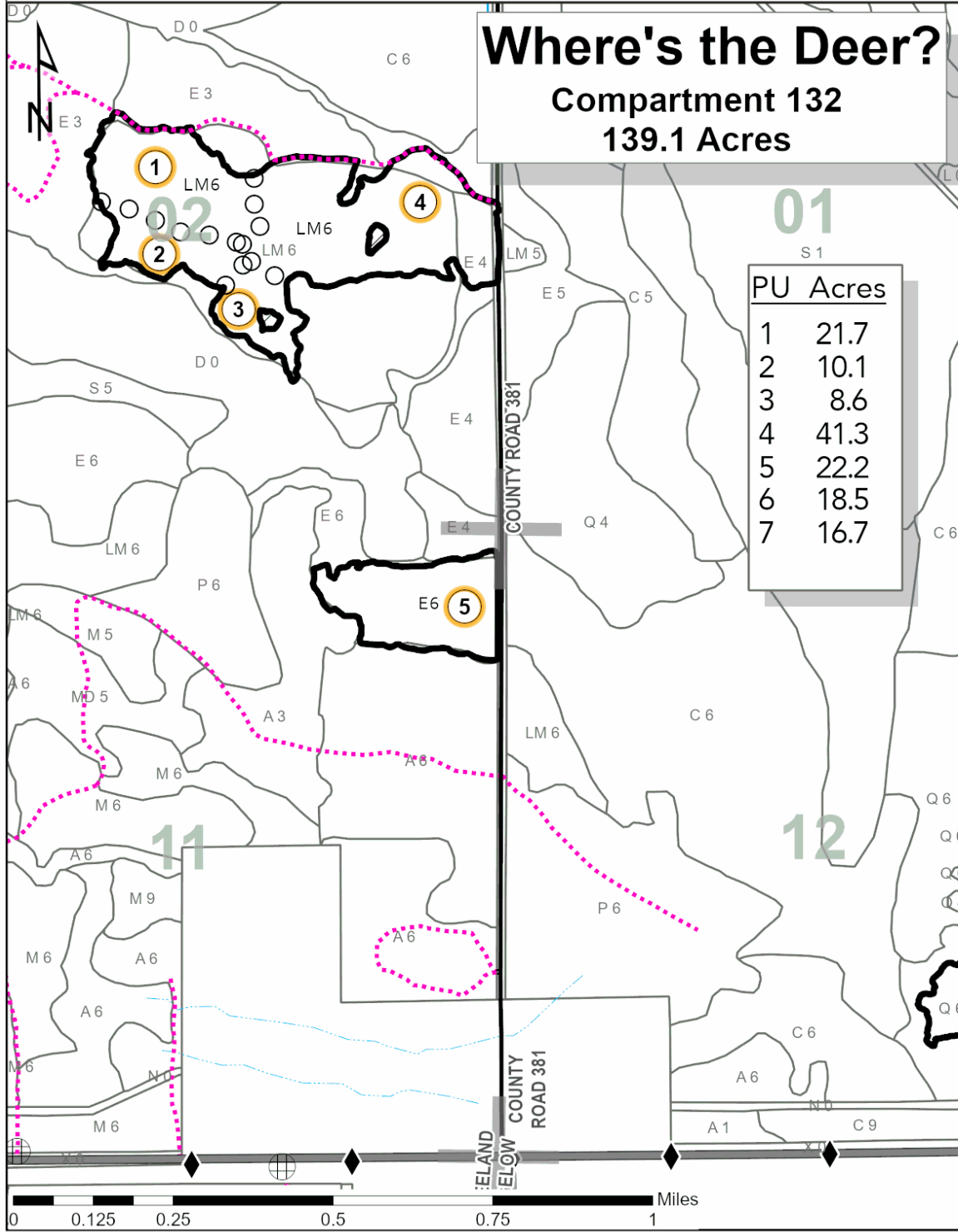
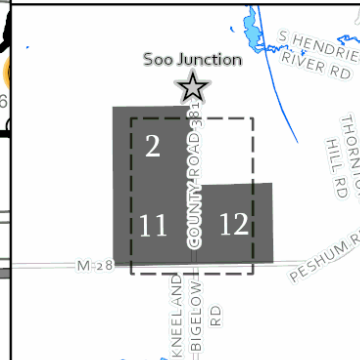
139.1 Acres



PU	Acres
1	21.7
2	10.1
3	8.6
4	41.3
5	22.2
6	18.5
7	16.7

- Against State (Red)
- Payment Unit (Green)
- Retention Area
- Payment Unit Label
- 01** Section Numbers
- Section Corners
- Survey Corners
- Berms
- Highways
- Primary Forest Road
- Secondary Forest Road
- Forest Access Route
- Paved Road
- Gravel Road
- County Road - Seasonal
- Private
- DNR - Management Access
- Temporary Management Access
- Intermittent Stream
- Perennial River

Locator Map: 1:150,000
 - Main Map Extent





TIMBER SALE MAP

This information provided by authority of Part 525, 1994 PA 451, as amended.

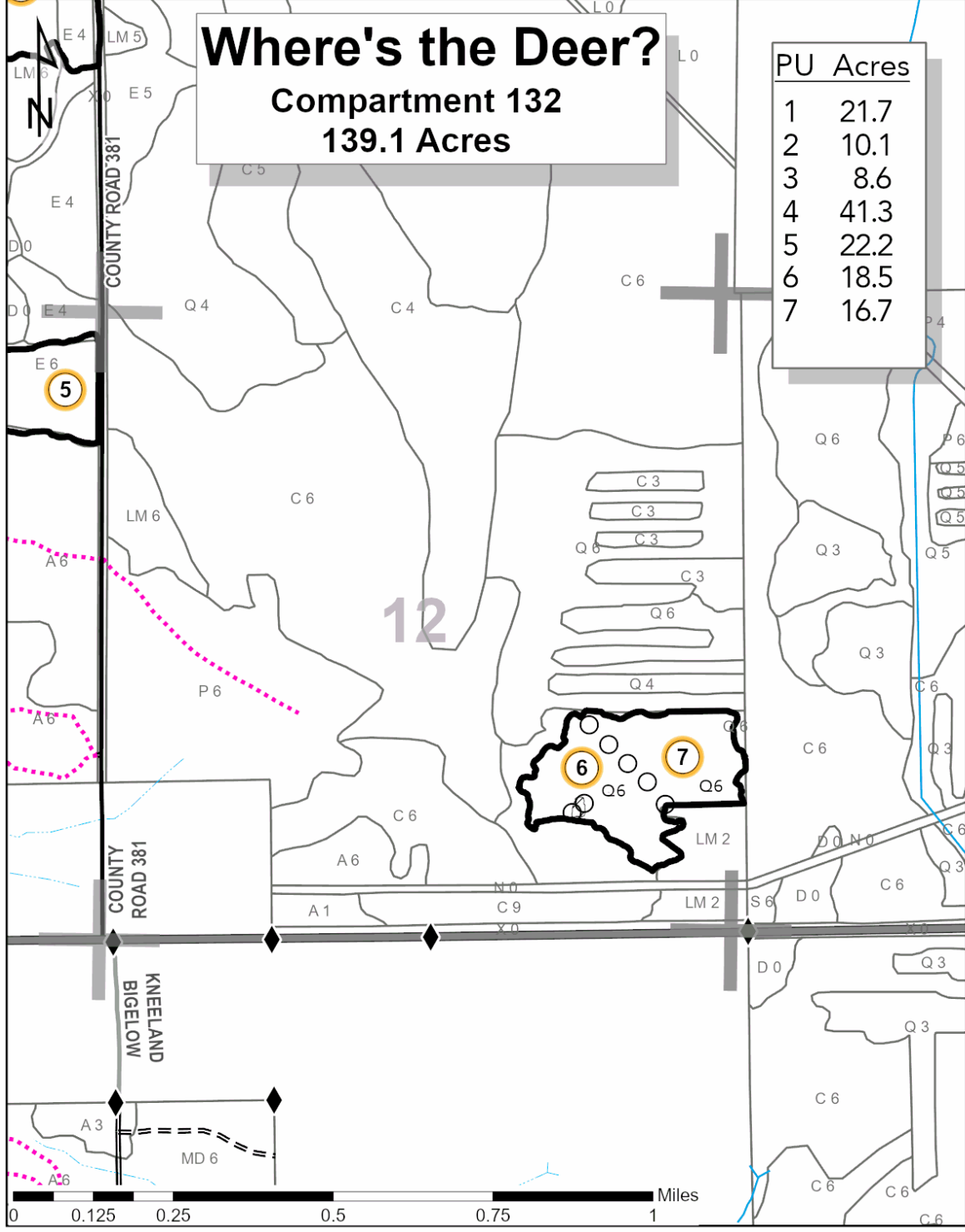
Sale Number	Year
42-004-20	20

Forest Management Unit Newberry	County Luce	Mapped By Livermore	Date 3/25/2020	Page 2	of 2
Township 45N	Range 08W	Section(s) and Subdivision(s) Section 02: SENW, S½NE, NESW, N½SE, SWSE	Cruised By Kriehn, Livermore		
Scale 1:15,840					

Cover Type				Density	
A = Aspen	H = Hemlock	N = Marsh	U = Upland Brush	0 = Non Stocked	5 = Pole Timber Medium
B = Paper Birch	J = Jack Pine	O = Oak	UM = Upland Mixed	1 = Seedling Sapling Poor	6 = Pole Timber Well
C = Cedar	L = Lowland Brush	P = Lowland Poplar	V = Bog or Marsh	2 = Seedling Sapling Medium	7 = Saw Timber Poor
D = Tread Bog	LM = Lowland Mixed	Q = Mixed Swamp Conifer	W = White Pine	3 = Seedling Sapling Well	8 = Saw Timber Medium
E = Swamp Hdwoods	M = Mpl, Bch, Brch	R = Red Pine	X = Non Stocked	4 = Pole Timber Poor	9 = Saw Timber Well
F = Spruce Fir	MC = Mixed Conifer	S = Black Spruce	Z = Water		
G = Grass	MD = Mixed Deciduous	T = Tamarack			

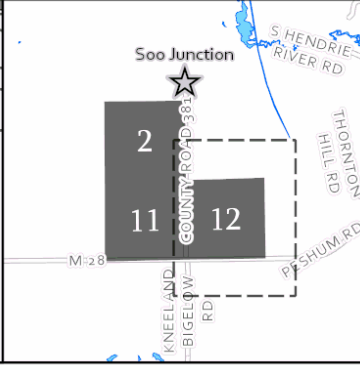
Where's the Deer?
Compartment 132
139.1 Acres

PU	Acres
1	21.7
2	10.1
3	8.6
4	41.3
5	22.2
6	18.5
7	16.7



- Against State (Red)
- Payment Unit (Green)
- Retention Area
- Payment Unit Label
- Section Numbers
- Section Corners
- Survey Corners
- Highways
- Primary Forest Road
- Secondary Forest Road
- Forest Access Route
- Paved Road
- Gravel Road
- County Road - Seasonal
- Private
- DNR - Management Access
- Temporary Management Access
- Intermittent Stream
- Perennial River

Locator Map: 1:150,000
 - Main Map Extent



TIMBER SALE INFORMATION

Attwood Mix (42-013-21)

T47N, R08W, SEC. 20.

Luce County (Advertised Price \$14,607.05)

SALE NOTE: Sale reduced by approximately 25%, as it was a "no bid" sale from 2-24-22.

All units of volume listed for this sale were estimated using the Inventory Manager computer program and the new Michigan taper model.

Roads may require the installation of culverts for cross drainage or at natural drainage-ways. See Sale Spec. 4.1.5 for details.

Road maintenance may be needed. See Sale Spec. 4.2.3 for additional information.

Harvesting is not permitted during the period of March 31 to December 15 because of the low ground nature and wet soil types within the Sale Area.

A snowmobile trail is shown on the Timber Sale Map. See Sale Spec. 5.2.41 for restrictions.

A recreation site such as a trail, pathway, or campground is within the sale area or the vicinity. Certain restrictions/specifications may be applicable including time restrictions.

A timber sale contract for this lump sum, sealed bid timber sale will be awarded to the responsible bidder offering the highest sealed bid price. All units of volume listed below were estimated using the Inventory Manager computer program and the new Michigan taper model. Bids must be at or above the following advertised price for each product and species:

<u>PRODUCTS & SPECIES</u>	<u>ESTIMATED UNITS*</u>	<u>ADVERTISED PRICE</u>
Sawtimber		
Paper Birch	4.0 MBF	\$ 23.00 / MBF
Red Maple	62.5 MBF	\$ 53.00 / MBF
Sugar Maple	5.7 MBF	\$ 139.00 / MBF
Pulpwood		
Balsam Fir	306 Cords	\$ 4.90 / Cord
Mixed Hardwood	1,035 Cords	\$ 6.85 / Cord
Mixed Spruce	106 Cords	\$ 6.35 / Cord
N. White Cedar	574 Cords	\$ 2.00 / Cord

* The total volume is statistically estimated within plus (+) or minus (-) 4.43 percent. There are an estimated 2,237 cords on this timber sale, plus or minus 99 cords at the 95% confidence level. The estimated units are final and not subject to adjustment. Prospective bidders are urged to examine this timber and to make their own estimates of quantity and quality.

BOND AND PAYMENT SCHEDULE:

1. A bond in the amount of \$730.00 to insure faithful performance of the conditions of the contract will be deposited by the successful bidder within 21 days of the sale award.
2. Cutting in any sale or unit without the required advance payment would be considered a trespass.
3. Total payment must be paid in advance or according to the following schedule :
 - (a) Ten percent (10%) of the sale value must be paid within 21 days of the sale award.
 - (b) The 10% down payment will be credited towards the first unit cut.
 - (c) Payment for each of the following units must be made before cutting begins in that unit:

PAYMENT UNIT NUMBER	PERCENT OF TOTAL SALE VALUE
01	51.5%
02	48.5%
4. If no cutting takes place, the 10% down payment will not be refunded.
5. Operations on the contract issued will terminate on 06/30/2026.

SALE STATISTICS

Volumes were calculated in cubic feet using the Michigan taper model. Cubic foot volume includes all wood inside bark for the product indicated. For display purposes, cubic feet were converted to cords and MBF using a simple conversion factor, e.g. 79 cubic feet per cord and 185 cubic feet per MBF. The cubic foot volumes are precise; the cords and MBF volumes are not. Cubic foot volume cannot be directly converted to cords or boards with precision.

SALE VOLUMES

The total estimated sale volume may not equal the sum of the species/products due to the nature of statistical calculations associated with double sampling methodology.

VOLUME			STATISTICAL RANGE IN CORDS	
TOTAL CUBIC FEET	TOTAL CORDS	PERCENT ERROR	MINIMUM	MAXIMUM
176,712	2,237	4.43%	2,138	2,336

VDU VOLUMES

A VDU is a Volume Determination Unit. Volumes and their associated statistics are calculated at the VDU level and summarized to the sale level. There is often a one to one relationship between a VDU and a Payment Unit, but not always, depending on the cruise design. Refer to the VDU TO PAYMENT UNIT table.

	VOLUME			RANGE IN CORDS	
VDU	TOTAL CUBIC FEET	TOTAL CORDS	PERCENT ERROR	MINIMUM	MAXIMUM
14	116,917	1,480	6.08%	1,390	1,570
71	59,795	757	5.52%	715	799
TOTAL:	176,712	2,237		2,105	2,369

VDU TO PAYMENT UNIT

When a VDU is associated with more than one Payment Unit (PU), the VDU volumes are assigned to the PU based on acres of the VDU within the PU.

VDU	VDU ACRES	PU	PU ACRES
14	41.9	2	41.9
71	25.7	1	25.7
TOTAL:	67.6		67.6

DESCRIPTION OF TIMBER BY PAYMENT UNIT (PU)

PU	MARKET GROUP	PRODUCT	QUANTITY	UNIT	ACRES	ADVERTISE PRICE
1	Red Maple	Sawtimber	55.9	MBF	25.7	\$7,526.20
	Sugar Maple		5.7	MBF		
	Balsam Fir	Pulpwood	85	Cords		
	Mixed Hardwood		461	Cords		
	<i>Black Cherry</i>		5	<i>Cords</i>		
	<i>Paper Birch</i>		4	<i>Cords</i>		
	<i>Red Maple</i>		338	<i>Cords</i>		
	<i>Sugar Maple</i>		68	<i>Cords</i>		
	<i>Yellow Birch</i>		46	<i>Cords</i>		
	Mixed Spruce		31	Cords		
	<i>Black Spruce</i>		7	<i>Cords</i>		
	<i>White Spruce</i>		24	<i>Cords</i>		
	2	Paper Birch	Sawtimber	4.0		
Red Maple			6.6	MBF		
Balsam Fir		Pulpwood	221	Cords		
Mixed Hardwood			574	Cords		
<i>Black Ash</i>			9	<i>Cords</i>		
<i>Black Cherry</i>			5	<i>Cords</i>		
<i>Paper Birch</i>			45	<i>Cords</i>		
<i>Red Maple</i>			454	<i>Cords</i>		
<i>Sugar Maple</i>			14	<i>Cords</i>		
<i>Yellow Birch</i>			47	<i>Cords</i>		
Mixed Spruce			75	Cords		
<i>Black Spruce</i>			32	<i>Cords</i>		
<i>White Spruce</i>			43	<i>Cords</i>		
N. White Cedar			574	Cords		
TOTAL:			72.2	MBF		
TOTAL:			2,021	Cords		

Sale Specific Conditions & Requirements

Sale Name: Attwood Mix

Sale Number: 42-013-21 Seq#: 2

1 - Sale Area

1.2 - Boundaries

1.2.1 - Painted boundaries (9/19)

The sale boundary and Payment Unit boundaries are marked and identified by red and yellow paint. Exterior sale boundary lines against state are marked with red paint. Interior Payment Unit boundaries are marked with yellow paint. Retention patches are marked with red paint; no harvesting activities may occur within these areas. The painted boundary line trees are not Included Timber and are to be protected unless marked with orange paint. Yellow painted trees designating an interior Payment Unit boundary are only to be cut when all surrounding Payment Units have been paid.

2 - Timber Specifications

2.1 - Included Timber

2.1.2 - Clearcut unit(s) w/o unmerchantable trees (8/11)

Within Payment Unit(s) 2, cut all trees which meet minimum piece specifications in 2.2 Utilization, except leave all hemlock. See spec 5.2.4.2.

2.1.7 - Leave tree marked unit(s) (6/14)

Within Payment Unit(s) 1, cut all trees that are two (2) inches or more at DBH, except trees marked with green paint above and below stump height. Leave all hemlock.

3 - Payments

3.3 - Pre-measured Sales

3.3.4 - Dividing payment units (7/14)

Payment Unit(s) 1 and 2 may be divided at the request of the Purchaser and upon approval of the Unit Manager. Dividing Payment Units is a contract modification which requires a Timber Sale Contract Amendment. There will be only one division per Payment Unit.

4 - Transportation

4.1 - Construction

4.1.4 - Timber removed for construction (12/09)

Trees cut or damaged in the process of pre-approved road, landing or skid trail construction will be decked in an area separate from other Designated Timber and not removed until measured by the sale administrator. Payment will be made at the specified Purchase Unit Price.

4.1.5 - Culverts (5/14)

Roads may require the installation of culverts for cross drainage or at natural drainage-ways. If culverts are needed in these locations, their placement will be specified by the sale administrator, and they shall be installed prior to hauling. The culverts shall be new, corrugated metal or plastic gauge. Culverts will be a minimum of 12 inches in diameter and 24 feet in length. If culverts are removed, fill shall be removed from wetland soils as specified. Soils shall be maintained and left in a non-erodible condition, with water bars, seed, fertilizer, mulch, and slash installed as directed by the sale administrator and as specified in the BMP manual. Stream crossing permits, if needed, will be obtained by the DNR.

4.1.6 - Road construction (1/09)

Construction of new roads or improvements of existing roads shall be done in such a way as to minimize the environmental and visual impacts. Merchantable trees shall be cut and utilized unless otherwise directed. Non-merchantable trees shall be severed and laid flat on the ground. Slash shall be scattered, and not left in windrows and kept a minimum of 10 feet back from the road edge. Stumps shall be set upright, not left on edge, and be moved at least 10 feet away from the road edge. Disturbed soil shall be feathered into the woods and not left in berms or windrows.

4.1.7 - Road closure (10/11)

All new roads built into the sale must be blocked to vehicle traffic upon completion of the sale. Overgrown roads that are reopened shall be considered new roads. In general, this will require constructing a four (4') foot high berm of stumps and logs covered with earth. These roads must be rendered impassable to cars and trucks. Contact the sale administrator for specific details of design and placement.

4.2 - Maintenance

4.2.2 - Fill material (4/07)

To maintain roads, fill material may be needed in areas where "holes" exist or may be expected to develop. This fill material should be placed before trucking begins. Purchaser will supply the gravel.

4.2.3 - Road maintenance (8/13)

The following road maintenance may be needed: grading and gravel placement on state forest roads. Contact sale Administrator of the Unit Manager for details.

5 - Operations

5.2 - Conduct of Operations

5.2.1 - Slash

5.2.1.8 - Slash height (12/08)

No slash or tree tops may exceed 36 inches in height.

5.2.2 - Hazard Trees/Snags

5.2.2.1 - Den trees (10/16)

Obvious hollow and/or den trees shall be protected and left standing unless they are a safety hazard.

5.2.3 - Operating Restrictions

5.2.3.1 - Operating restrictions (9/11)

Within Payment Unit(s) 1 and 2, unless changed by written agreement, cutting, skidding, and hauling are not permitted during the period of March 31 to December 15. This restriction is because of the low ground nature and wet soil types within the Sale Area.

5.2.4 - Dead and Down Creation

5.2.4.2 - Dead and down creation, hare and grouse (1/14)

To improve habitat for snowshoe hare, grouse, and other species, the Purchaser is to leave 4 linear brush piles a tree length long, consisting of 8-12" spruce or balsam on the ground for every 100-200 feet along the Payment Unit line between Payment Unit 1 and 2. They should be sized and positioned per the sale administrator's instructions once cutting begins.

5.2.32 - Decking/landing restoration (9/13)

All decking and landing areas must have the surface area restored to a condition equal to or better than before. This is to ensure the proper regeneration of the stand. Wood debris, chips, and "cookies" from trimmings must be removed or scattered away from landing and loading areas and may not be windrowed on the edge.

5.2.38 - No decking against live trees (2/04)

Cut products may not be decked against unmarked or designated leave trees.

5.2.41 - Snowmobile trail protection (9/11)

The snowmobile trail is shown on the Timber Sale Map. Do not cut or damage posts with orange trail markers or traffic control signs. If the trail is used, it must be maintained and restored to a condition equal to or better than before the sale. The road maintenance/restoration must be done prior to December 15. If the trail is used for hauling, it must be graded to the satisfaction of the Unit Manager or his/her representative prior to December 15. If the trail road is to be used for hauling during the snowmobile season, then a snow-covered base must be left on the trail. Maintain a 20-foot-wide slash, debris, and rut free zone daily using the snowmobile trail as the centerline. No decking of forest products will be permitted along the snowmobile trail.

5.4 - Soil Protection

5.4.2 - Skid trails (2/04)

Skid trails up and down slopes should be avoided. If however this is unavoidable, these trails will be left in a non-erodible condition using water bars, logs, and slash. Placing of slash on these skid trails while logging is ongoing may alleviate need for any further action. At the direction of the sale administrator, seed, fertilizer, and mulch may also be required.

5.8 - Protection of Endangered Species

5.8.5 - Protection of raptor nests (3/13)

All trees with raptor nests will be protected if found during harvesting operations. Notification will be made to the Unit Manager or his/her representative who will notify the Wildlife Biologist so an on-site evaluation and recommendation can be made, if necessary.

6 - Safety and Fire Prevention

6.2 - Signing

6.2.1 - Road posting (10/20)

The Purchaser is responsible for posting and maintaining caution signs on the Charcoal Grade prior to beginning operations. The road must be posted at appropriate distances from the Sale Area to warn of logging activity and truck traffic. Signs must be removed when harvest operations are suspended or completed. The Purchaser will provide these signs.

6.2.2 - Snowmobile trail posting (10/20)

The Purchaser is responsible for posting and maintaining caution signs on snowmobile trail prior to beginning operations during the snowmobile season (approximately December 1 to March 31). The trail must be posted at appropriate distances from the Sale Area to warn of logging activity and truck traffic. Signs must be removed when harvest operations are suspended or completed. The Purchaser will provide these signs.

7 - Other Conditions

7.2 - Extensions

7.2.5 - Weather related extension (1/13)

If weather conditions during the operating period of this contract prevent harvesting, this sale may qualify for a weather related extension. If approved, the normal extension fee would be waived. To qualify, there must be a documented attempt each year to harvest in the difficult portion of the sale.



TIMBER SALE MAP

This information provided by authority of Part 525, 1994 PA 451, as amended.

Sale Number	Year
42-013	21

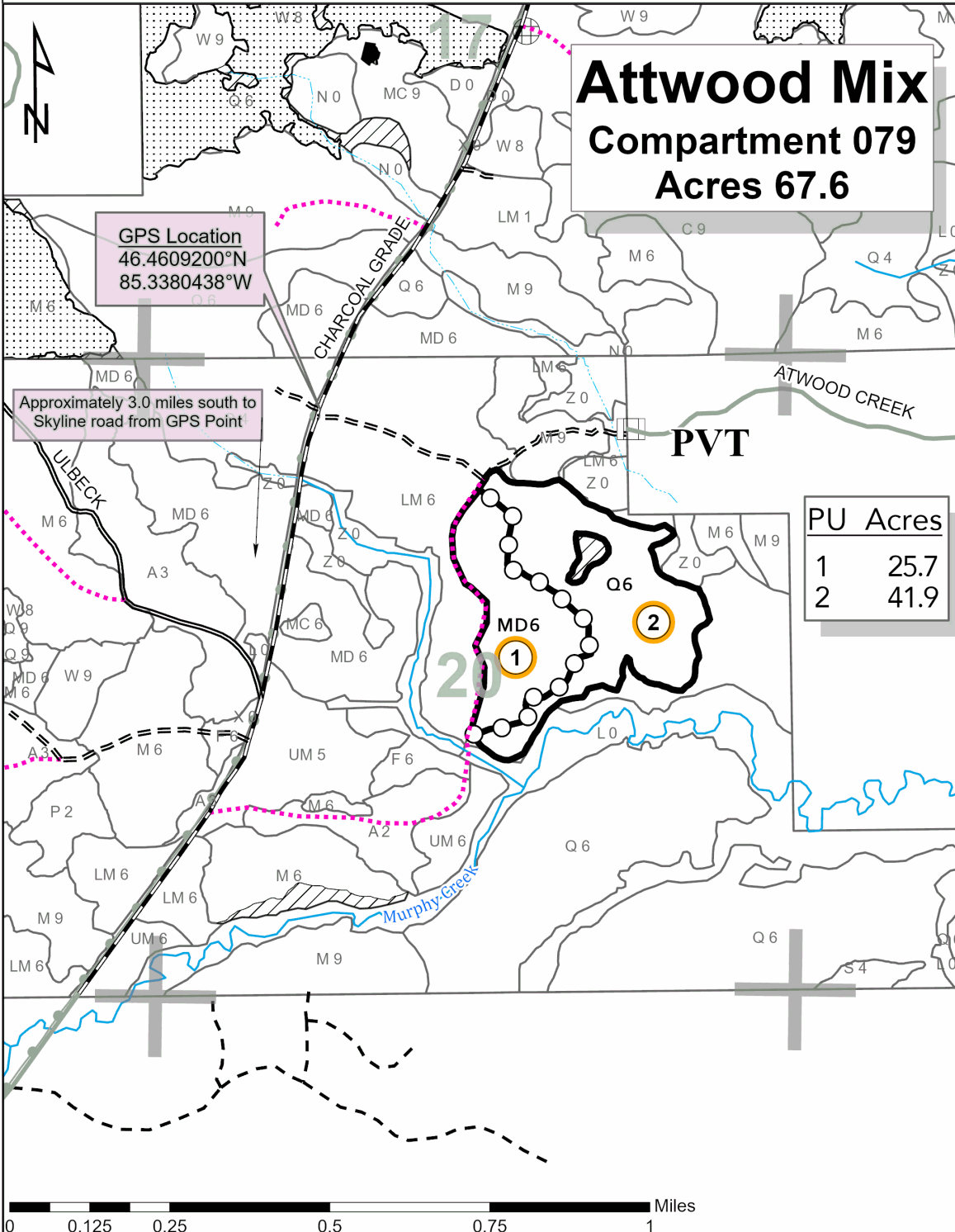
Forest Management Unit Newberry	County Luce	Mapped By L. Livermore	Date 9/22/2021	Page 1	of 1
Township 47N	Range 08W	Section(s) and Subdivision(s) Section 20: E½NW,NWNE,S½NE,N½SE	Scale 1:15,840		

Cover Type

A = Aspen	H = Hemlock	N = Marsh	U = Upland Brush
B = Paper Birch	J = Jack Pine	O = Oak	UM = Upland Mixed
C = Cedar	L = Lowland Brush	P = Lowland Poplar	V = Bog or Marsh
D = Treed Bog	LM = Lowland Mixed	Q = Mixed Swamp Conifer	W = White Pine
E = Swamp Hdwoods	M = Mpl, Bch, Brch	R = Red Pine	X = Non Stocked
F = Spruce Fir	MC = Mixed Conifer	S = Black Spruce	Z = Water
G = Grass	MD = Mixed Deciduous	T = Tamarack	

Density

0 = Non Stocked	5 = Pole Timber Medium
1 = Seedling Sapling Poor	6 = Pole Timber Well
2 = Seedling Sapling Medium	7 = Saw Timber Poor
3 = Seedling Sapling Well	8 = Saw Timber Medium
4 = Pole Timber Poor	9 = Saw Timber Well



Attwood Mix
Compartment 079
Acres 67.6

GPS Location
46.4609200°N
85.3380438°W

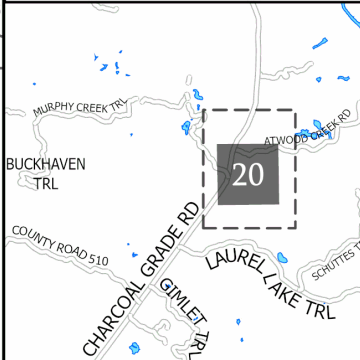
Approximately 3.0 miles south to
Skyline road from GPS Point

PU	Acres
1	25.7
2	41.9



- Payment Unit Label
- Against State (Red)
- Payment Unit (Yellow)
- PVT** Private Ownership
- Recreational Trail
- 01** Section Numbers
- Section Corners
- Gate
- Berms
- Intermittent Stream
- Perennial River
- Lakes and Rivers
- Primary Forest Road
- Secondary Forest Road
- Forest Access Route
- Gravel Road
- Private
- Temporary Management Access
- Nearby Timber Sale

Locator Map: 1:200,000
[] - Main Map Extent



TIMBER SALE INFORMATION

Sixteen Creek Swamp and Ridges (42-019-21)

T46N, R09W, SEC. 7; T46N, R09W, SEC. 8.

Luce County (Advertised Price \$29,885.90)

SALE NOTE: Sale has been reduced by approximately 25%, as it previously went "no bid" on 3-10-22.

All units of volume listed for this sale were estimated using the Inventory Manager computer program and new Michigan taper model.

Payment Units 1-8 are optional to harvest due to potential access issues. Removing any or all of these Payment Units is a contract modification which requires a Timber Sale Contract Amendment.

Roads may require the installation of culverts for cross drainage or at natural drainage-ways. See Sale Spec. 4.1.5 for details.

Harvesting is limited to the period of December 31 to March 31 because of the low ground nature of the sale and winter conditions that will be necessary to harvest the sale.

Some roads or skid trails require extra protection such as that afforded by interlocking composite mats or another approved system. See Sale Spec. 5.2.17 for additional information.

A snowmobile trail and is shown on the Timber Sale Map. See Sale Spec. 5.2.41 for restrictions.

A recreation site such as a trail, pathway, or campground is within the sale area or the vicinity. Certain restrictions/specifications may be applicable including time restrictions.

A timber sale contract for this lump sum, sealed bid timber sale will be awarded to the responsible bidder offering the highest sealed bid price. All units of volume listed below were estimated using the Inventory Manager computer program and the new Michigan taper model. Bids must be at or above the following advertised price for each product and species:

<u>PRODUCTS & SPECIES</u>	<u>ESTIMATED UNITS*</u>	<u>ADVERTISED PRICE</u>
Sawtimber		
Red Maple	8.0 MBF	\$ 53.00 / MBF
Pulpwood		
B. T. Aspen	29 Cords	\$ 12.25 / Cord
Balsam Fir	114 Cords	\$ 4.90 / Cord
Black Spruce	351 Cords	\$ 6.35 / Cord
N. White Cedar	2,810 Cords	\$ 2.00 / Cord
Paper Birch	532 Cords	\$ 4.40 / Cord
Red Maple	1,765 Cords	\$ 6.85 / Cord
White Pine	532 Cords	\$ 8.70 / Cord
White Spruce	77 Cords	\$ 6.35 / Cord
Yellow Birch	168 Cords	\$ 6.85 / Cord

* The total volume is statistically estimated within plus (+) or minus (-) 4.55 percent. There are an estimated 7,103 cords on this timber sale, plus or minus 323 cords at the 95% confidence level. The estimated units are final and not subject to adjustment. Prospective bidders are urged to examine this timber and to make their own estimates of quantity and quality.

BOND AND PAYMENT SCHEDULE:

1. A bond in the amount of \$1,494.00 to insure faithful performance of the conditions of the contract will be deposited by the successful bidder within 21 days of the sale award.
2. Cutting in any sale or unit without the required advance payment would be considered a trespass.
3. Total payment must be paid in advance or according to the following schedule :
 - (a) Ten percent (10%) of the sale value must be paid within 21 days of the sale award.
 - (b) The 10% down payment will be credited towards the first unit cut.

(c) Payment for each of the following units must be made before cutting begins in that unit:

PAYMENT UNIT NUMBER	PERCENT OF TOTAL SALE VALUE
01	10.5%
02	11.3%
03	16.0%
04	8.9%
05	13.3%
06	5.0%
07	8.9%
08	10.2%
09	2.8%
10	2.3%
11	10.8%

4. If no cutting takes place, the 10% down payment will not be refunded.

5. Operations on the contract issued will terminate on 06/30/2026.

SALE STATISTICS

Volumes were calculated in cubic feet using the Michigan taper model. Cubic foot volume includes all wood inside bark for the product indicated. For display purposes, cubic feet were converted to cords and MBF using a simple conversion factor, e.g. 79 cubic feet per cord and 185 cubic feet per MBF. The cubic foot volumes are precise; the cords and MBF volumes are not. Cubic foot volume cannot be directly converted to cords or boards with precision.

SALE VOLUMES

The total estimated sale volume may not equal the sum of the species/products due to the nature of statistical calculations associated with double sampling methodology.

VOLUME		STATISTICAL RANGE IN CORDS		
TOTAL CUBIC FEET	TOTAL CORDS	PERCENT ERROR	MINIMUM	MAXIMUM
561,127	7,103	4.55%	6,779	7,426

VDU VOLUMES

A VDU is a Volume Determination Unit. Volumes and their associated statistics are calculated at the VDU level and summarized to the sale level. There is often a one to one relationship between a VDU and a Payment Unit, but not always, depending on the cruise design. Refer to the VDU TO PAYMENT UNIT table.

VDU	VOLUME		PERCENT ERROR	RANGE IN CORDS	
	TOTAL CUBIC FEET	TOTAL CORDS		MINIMUM	MAXIMUM
48	29,080	368	15.15%	312	424
51	6,020	76	35.78%	49	103
57	122,183	1,547	8.71%	1,412	1,681
58	98,112	1,242	9.56%	1,123	1,361
61	298,903	3,784	6.91%	3,522	4,045
70	6,830	86	14.85%	74	99
TOTAL:	561,127	7,103		6,492	7,714

VDU TO PAYMENT UNIT

When a VDU is associated with more than one Payment Unit (PU), the VDU volumes are assigned to the PU based on acres of the VDU within the PU.

VDU	VDU ACRES	PU	PU ACRES
48	16.0	11	16.0
51	5.2	10	5.2
57	39.5	7	18.4
		8	21.1
58	40.3	5	29.3
		6	11.0
61	103.5	1	23.3
		2	25.0
		3	35.5
		4	19.7
70	5.2	9	5.2
TOTAL:	209.7		209.7

DESCRIPTION OF TIMBER BY PAYMENT UNIT (PU)

PU	MARKET GROUP	PRODUCT	QUANTITY	UNIT	ACRES	ADVERTISE PRICE
1	Balsam Fir	Pulpwood	14	Cords	23.3	\$3,142.20
	Black Spruce		29	Cords		
	N. White Cedar		456	Cords		
	Paper Birch		68	Cords		
	Red Maple		223	Cords		
	Yellow Birch		22	Cords		
	2		Balsam Fir	Pulpwood		
Black Spruce		31	Cords			
N. White Cedar		489	Cords			
Paper Birch		73	Cords			
Red Maple		239	Cords			
Yellow Birch		24	Cords			
3		Balsam Fir	Pulpwood		21	Cords
	Black Spruce	44		Cords		
	N. White Cedar	695		Cords		
	Paper Birch	105		Cords		
	Red Maple	339		Cords		
	Yellow Birch	33		Cords		
	4	Balsam Fir		Pulpwood	11	Cords
Black Spruce		24	Cords			
N. White Cedar		385	Cords			
Paper Birch		58	Cords			
Red Maple		188	Cords			
Yellow Birch		19	Cords			
5		Red Maple	Sawtimber		5.8	MBF
	Black Spruce	Pulpwood	38	Cords		
	N. White Cedar		25	Cords		
	Paper Birch		92	Cords		
	Red Maple		326	Cords		
	White Pine		36	Cords		
	<i>White Pine</i>		36	<i>Cords</i>		
	White Spruce		38	Cords		
	Yellow Birch		28	Cords		
	6		Red Maple	Sawtimber	2.2	MBF
Black Spruce		Pulpwood	14	Cords		
N. White Cedar			9	Cords		
Paper Birch			34	Cords		
Red Maple			123	Cords		
White Pine			13	Cords		
<i>White Pine</i>			13	<i>Cords</i>		
White Spruce			14	Cords		
Yellow Birch			10	Cords		
7	Balsam Fir	Pulpwood	22	Cords	18.4	\$2,662.05
	Black Spruce		74	Cords		
	N. White Cedar		349	Cords		
	Paper Birch		44	Cords		
	Red Maple		148	Cords		
	White Spruce		12	Cords		
	Yellow Birch		15	Cords		
8	Balsam Fir	Pulpwood	25	Cords	21.1	\$3,036.95
	Black Spruce		84	Cords		
	N. White Cedar		400	Cords		
	Paper Birch		51	Cords		
	Red Maple		169	Cords		
	White Spruce		13	Cords		

DESCRIPTION OF TIMBER BY PAYMENT UNIT (PU), CON'T

PU	MARKET GROUP	PRODUCT	QUANTITY	UNIT	ACRES	ADVERTISE PRICE
8 con't	Yellow Birch	Pulpwood	17	Cords		
9	B. T. Aspen	Pulpwood	29	Cords	5.2	\$849.40
	Balsam Fir		7	Cords		
	Black Spruce		6	Cords		
	Paper Birch		7	Cords		
	Red Maple		5	Cords		
	White Pine		41	Cords		
	<i>White Pine</i>	<i>Sawtimber</i>	15.7	<i>MBF</i>		
	<i>White Pine</i>	<i>Pulpwood</i>	10	<i>Cords</i>		
10	N. White Cedar	Pulpwood	2	Cords	5.2	\$687.60
	Red Maple		2	Cords		
	White Pine		77	Cords		
	<i>White Pine</i>	<i>Sawtimber</i>	33.4	<i>MBF</i>		
	<i>White Pine</i>	<i>Pulpwood</i>	10	<i>Cords</i>		
11	Black Spruce	Pulpwood	7	Cords	16.0	\$3,240.50
	Red Maple		3	Cords		
	White Pine		365	Cords		
	<i>White Pine</i>	<i>Sawtimber</i>	151.5	<i>MBF</i>		
	<i>White Pine</i>	<i>Pulpwood</i>	62	<i>Cords</i>		
TOTAL:			8.0	MBF		
TOTAL:			6,378	Cords		

Sale Specific Conditions & Requirements

Sale Name: Sixteen Creek Swamp and Ridges

Sale Number: 42-019-21 Seq#: 2

1 - Sale Area

1.2 - Boundaries

1.2.1 - Painted boundaries (9/19)

The sale boundary and Payment Unit boundaries are marked and identified by blue, red, and yellow paint. Exterior sale boundary lines against private property are marked with blue paint. Exterior sale boundary lines against state are marked with red paint. Interior Payment Unit boundaries are marked with yellow paint. Retention patches are marked with red paint; no harvesting activities may occur within these areas. The painted boundary line trees are not Included Timber and are to be protected. Yellow painted trees designating an interior Payment Unit boundary are only to be cut when all surrounding Payment Units have been paid.

2 - Timber Specifications

2.1 - Included Timber

2.1.2 - Clearcut unit(s) w/o unmerchantable trees (8/11)

Within Payment Unit(s) 1-8, cut all trees which meet minimum piece specifications in 2.2 Utilization, except do not cut any hemlock. In addition, within Payment Units 1-4, 7, and 8 do not cut any white pine and within Payment Units 5 and 6 do not cut white pine over 20" at DBH. Hemlock to be cut for maneuverability only and will be decked separate and scaled before leaving the sale. Hemlock will be purchased at \$40 per cord.

Payment Units 1-8 are optional to harvest due to potential access issues. Removing any or all these Payment Units is a contract modification which requires a Timber Sale Contract Amendment.

2.1.7 - Leave tree marked unit(s) (6/14)

Within Payment Unit(s) 9-11, cut all trees that are two (2) inches or more at DBH, except trees marked with green paint above and below stump height. Do not cut any hemlock in these Payment Units.

2.1.11 - Description of timber note (2/04)

Note that white pine MBF converted to cords.

2.2 - Utilization

2.2.3 - Stump heights (4/07)

Stump heights within Payment Unit(s) 9-11 shall not exceed 12 inches for trees greater than 10 inches at DBH and 4 inches for trees smaller than 10 inches at DBH. This is to facilitate reforestation operations.

3 - Payments

3.3 - Pre-measured Sales

3.3.4 - Dividing payment units (7/14)

Payment Unit(s) 1-5 may be divided at the request of the Purchaser and upon approval of the Unit Manager. Dividing Payment Units is a contract modification which requires a Timber Sale Contract Amendment. There will be only one division per Payment Unit.

4 - Transportation

4.1 - Construction

4.1.4 - Timber removed for construction (12/09)

Trees cut or damaged in the process of pre-approved road, landing or skid trail construction will be decked in an area separate from other Designated Timber and not removed until measured by the sale administrator. Payment will be made at the specified Purchase Unit Price.

4.1.5 - Culverts (5/14)

Roads may require the installation of culverts for cross drainage or at natural drainage-ways. If culverts are needed in these locations, their placement will be specified by the sale administrator, and they shall be installed prior to hauling. The culverts

shall be new, corrugated metal or plastic gauge. Culverts will be a minimum of 12 inches in diameter and 24 feet in length. If culverts are removed, fill shall be removed from wetland soils as specified. Soils shall be maintained and left in a non-erodible condition, with water bars, seed, fertilizer, mulch, and slash installed as directed by the sale administrator, and as specified in the BMP manual. Stream crossing permits, if needed, will be obtained by the DNR.

4.1.6 - Road construction (1/09)

Construction of new roads or improvements of existing roads shall be done in such a way as to minimize the environmental and visual impacts. Merchantable trees shall be cut and utilized unless otherwise directed. Non-merchantable trees shall be severed and laid flat on the ground. Slash shall be scattered, and not left in windrows and kept a minimum of 10 feet back from the road edge. Stumps shall be set upright, not left on edge, and be moved at least 10 feet away from the road edge. Disturbed soil shall be feathered into the woods and not left in berms or windrows.

4.1.7 - Road closure (10/11)

All new roads built into the sale must be blocked to vehicle traffic upon completion of the sale. Overgrown roads that are reopened shall be considered new roads. In general, this will require constructing a four (4') foot high berm of stumps and logs covered with earth. All stumps from road building and landing construction must be reserved to block any newly constructed roads upon completion of the sale. These stumps must be scattered along the road system to prohibit vehicular movement. Contact the sale administrator for specific details of design and placement.

5 - Operations

5.1 - Notification

5.1.1 - Pre-sale conference (10/16)

A pre-sale conference on site or over the phone between the Purchaser and sale administrator is required prior to beginning any operations to discuss access, landing areas and road locations. The Unit Manager or his/her representative must be contacted at least 10 days in advance to schedule the conference.

5.2 - Conduct of Operations

5.2.1 - Slash

5.2.1.8 - Slash height (12/08)

No slash or tree tops may exceed 36 inches in height.

5.2.2 - Hazard Trees/Snags

5.2.2.1 - Den trees (10/16)

Obvious hollow and/or den trees shall be protected and left standing unless they are a safety hazard.

5.2.3 - Operating Restrictions

5.2.3.1 - Operating restrictions (9/11)

Within Payment Unit(s) 1-9, unless changed by written agreement, cutting, skidding and hauling are limited to the period of December 31 to March 31. This restriction is because of the low ground nature of the sale and winter conditions that will be necessary to log the sale.

5.2.4 - Dead and Down Creation

5.2.4.7 - Dead and down creation: hare, grouse, deer and other species (5/15)

To improve horizontal cover habitat for snowshoe hare, grouse, deer, and other species, the Purchaser is to push over 2-5 trees to create 2 linear brush piles for hare habitat in each Payment Unit. Each tree should be left tree length long and should be at least 8"-12" at DBH. The brush/limbs from the tree should be at least 6' high. These brush piles should be located between Payment Unit's 1-3, 5, and 6. These trees should be tipped over with the root ball still attached so the base of the tree is suspended off the ground. The crown of the fallen tree should be at or near ground level after it is pushed over. Contact the sale administrator for details.

5.2.17 - Timber Mats and Interlocking Composite Mats (10/20)

Some roads or skid trails require extra protection such as that afforded by interlocking composite mats or another approved system. If available, mats may be borrowed from the DNR. A Timber Sale Contract Supplement will be used to document the Purchaser's use of the DNR's mats. Contact the sale administrator regarding availability and pick-up. Composite mats

are only available from the Grayling field office and the Marquette ICC. The Purchaser is responsible for picking up and hauling the mats to and from the site. The composite mats will require DNR staff onsite for installation and removal. Contact the sale administrator to schedule at least 30 days before desired install/removal date. All mats must be cleaned prior to drop off. This may include, but is not limited to, power washing and brushing to remove mud and debris. A charge of \$2,000.00 per composite mat will be assessed for all damaged or non-returned mats. Damage for the composite mats is defined as cracked or broken mats.

5.2.32 - Decking/landing restoration (9/13)

All decking and landing areas must have the surface area restored to a condition equal to or better than before. This is to ensure the proper regeneration of the stand. Wood debris, chips, and "cookies" from trimmings must be removed or scattered away from landing and loading areas and may not be windrowed on the edge.

5.2.38 - No decking against live trees (2/04)

Cut products may not be decked against unmarked or designated leave trees.

5.2.41 - Snowmobile trail protection (9/11)

The snowmobile trail and is shown on the Timber Sale Map. Do not cut or damage posts with orange trail markers or traffic control signs. If the trail is used, it must be maintained and restored to a condition equal to or better than before the sale. The road maintenance/restoration must be done prior to December 15. If the trail is used for hauling, it must be graded to the satisfaction of the Unit Manager or his/her representative prior to December 15. If the trail road is to be used for hauling during the snowmobile season, then a snow-covered base must be left on the trail. The snowmobile trail may only be crossed at right angles. Maintain a 20-foot-wide slash, debris, and rut free zone daily using the snowmobile trail as the centerline.

5.4 - Soil Protection

5.4.2 - Skid trails (2/04)

Skid trails up and down slopes should be avoided. If however this is unavoidable, these trails will be left in a non-erodible condition using water bars, logs, and slash. Placing of slash on these skid trails while logging is ongoing may alleviate need for any further action. At the direction of the sale administrator, seed, fertilizer, and mulch may also be required.

5.4.3 - Erosion control (12/08)

Skid trails or haul roads may require erosion control structures or berms per direction of the Unit Manager or his/her representative.

5.8 - Protection of Endangered Species

5.8.5 - Protection of raptor nests (3/13)

All trees with raptor nests will be protected if found during harvesting operations. Notification will be made to the Unit Manager or his/her representative who will notify the Wildlife Biologist so an on-site evaluation and recommendation can be made, if necessary.

6 - Safety and Fire Prevention

6.2 - Signing

6.2.1 - Road posting (10/20)

The Purchaser is responsible for posting and maintaining caution signs on the Charcoal Grade prior to beginning operations. The road must be posted at appropriate distances from the Sale Area to warn of logging activity and truck traffic. Signs must be removed when harvest operations are suspended or completed. The Purchaser will provide these signs.

6.2.2 - Snowmobile trail posting (10/20)

The Purchaser is responsible for posting and maintaining caution signs on snowmobile trail prior to beginning operations during the snowmobile season (approximately December 1 to March 31). The trail must be posted at appropriate distances from the Sale Area to warn of logging activity and truck traffic. Signs must be removed when harvest operations are suspended or completed. The DNR will provide these signs.

7 - Other Conditions

7.2 - Extensions

7.2.5 - Weather related extension (1/13)

If weather conditions during the operating period of this contract prevent harvesting, this sale may qualify for a weather related extension. If approved, the normal extension fee would be waived. To qualify, there must be a documented attempt each year to harvest in the difficult portion of the sale.

Sale Number	Year
42-019	21

TIMBER SALE MAP

This information provided by authority of Part 525, 1994 PA 451, as amended.

Forest Management Unit Newberry		County Luce	Mapped By L. Livermore	Date 9/28/2021	Page 1	of 1
Township 46N	Range 09W	Section(s) and Subdivision(s) Section 07: NENE, N½SE Section 08: NW, W½NE, SW, S1/2SE		Scale 1:15,840		

Cover Type

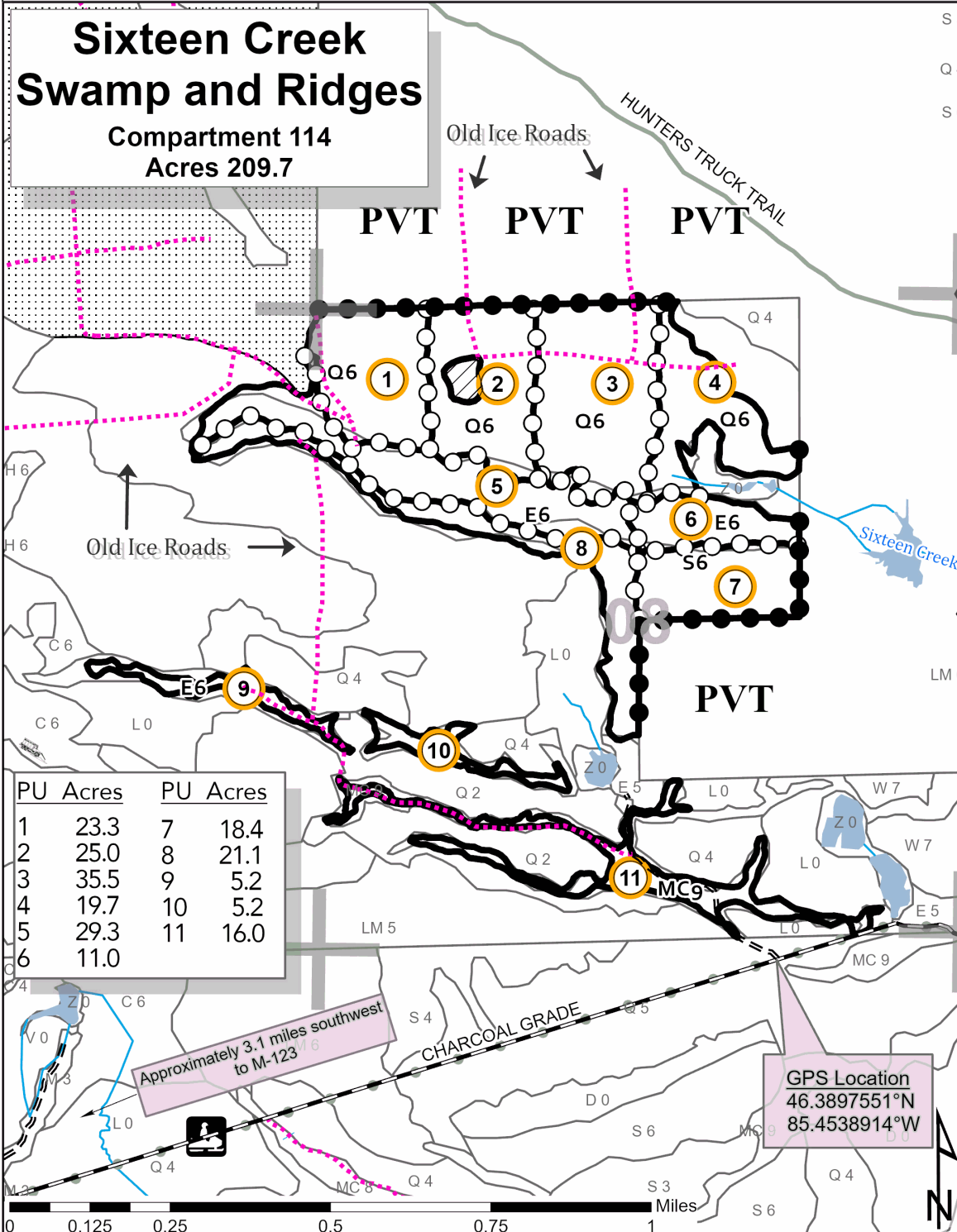
A = Aspen	H = Hemlock	N = Marsh	U = Upland Brush
B = Paper Birch	J = Jack Pine	O = Oak	UM = Upland Mixed
C = Cedar	L = Lowland Brush	P = Lowland Poplar	V = Bog or Marsh
D = Treed Bog	LM = Lowland Mixed	Q = Mixed Swamp Conifer	W = White Pine
E = Swamp Hdwoods	M = Mpl, Bch, Brch	R = Red Pine	X = Non Stocked
F = Spruce Fir	MC = Mixed Conifer	S = Black Spruce	Z = Water
G = Grass	MD = Mixed Deciduous	T = Tamarack	

Density

0 = Non Stocked	5 = Pole Timber Medium
1 = Seedling Sapling Poor	6 = Pole Timber Well
2 = Seedling Sapling Medium	7 = Saw Timber Poor
3 = Seedling Sapling Well	8 = Saw Timber Medium
4 = Pole Timber Poor	9 = Saw Timber Well

Sixteen Creek Swamp and Ridges

Compartment 114
Acres 209.7



PU	Acres	PU	Acres
1	23.3	7	18.4
2	25.0	8	21.1
3	35.5	9	5.2
4	19.7	10	5.2
5	29.3	11	16.0
6	11.0		

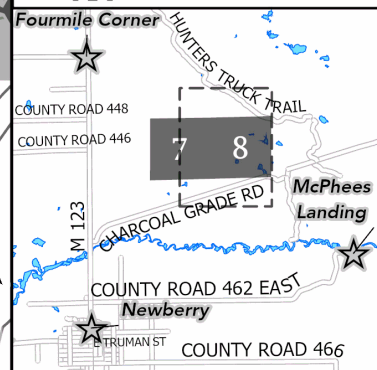
Approximately 3.1 miles southwest to M-123

GPS Location
46.3897551°N
85.4538914°W



- Payment Unit Label
- Against State (Red)
- Payment Unit (Yellow)
- Private Line (Blue)
- PVT** Private Ownership
- Snowmobile Trails
- Recreational Trail
- 01** Section Numbers
- Section Corners
- Survey Corners
- Drain
- Intermittent Stream
- Perennial River
- Lakes and Rivers
- Retention Area
- Primary Forest Road
- Forest Access Route
- Private
- Temporary Management Access
- Proposed Access
- Nearby Sale

Locator Map: 1:200,000
- Main Map Extent



TIMBER SALE INFORMATION

Who Let the Cows Out (42-028-21)

T45N, R10W, SEC. 4; T45N, R10W, SEC. 5; T45N, R10W, SEC. 6.
Luce County (Advertised Price \$7,854.40)

SALE NOTE: This sale has been reduced by approximately 45% due to "NO BID" on 1-20-22. All units of volume listed for this sale were estimated using the Inventory Manager computer program and the new Michigan taper model.

Permission for access across private land is the responsibility of the Purchaser. A copy of written permission must be provided to the DNR (Newberry Unit) prior to bid opening. If this permission is not provided, the bid will be rejected.

Note that mixed Aspen includes quaking and big tooth. Mixed Hardwoods includes red maple, ironwood and paper birch.

The sale area cannot be accessed without permission from the adjacent landowner bordering the sale. See Sale Spec. 4.4.4 and 4.4.3 for specifics.

Within Payment Unit(s) #'s 2 and 3, harvesting is limited to the period of December 15 to April 1 because of low, wet ground.

Access may be through private land.

A timber sale contract for this lump sum, sealed bid timber sale will be awarded to the responsible bidder offering the highest sealed bid price. All units of volume listed below were estimated using the Inventory Manager computer program and the new Michigan taper model. Bids must be at or above the following advertised price for each product and species:

<u>PRODUCTS & SPECIES</u>	<u>ESTIMATED UNITS*</u>	<u>ADVERTISED PRICE</u>
Sawtimber		
Basswood	2.0 MBF	\$ 39.00 / MBF
Red Maple	0.9 MBF	\$ 98.00 / MBF
Pulpwood		
Balsam Fir	67 Cords	\$ 9.00 / Cord
Black Spruce	329 Cords	\$ 11.60 / Cord
Mixed Aspen	74 Cords	\$ 22.45 / Cord
Mixed Hardwood	11 Cords	\$ 12.55 / Cord
N. White Cedar	241 Cords	\$ 3.65 / Cord
Paper Birch	30 Cords	\$ 8.05 / Cord
Tamarack	129 Cords	\$ 2.70 / Cord

* The total volume is statistically estimated within plus (+) or minus (-) 12.32 percent. There are an estimated 884 cords on this timber sale, plus or minus 109 cords at the 95% confidence level. The estimated units are final and not subject to adjustment. Prospective bidders are urged to examine this timber and to make their own estimates of quantity and quality.

BOND AND PAYMENT SCHEDULE:

1. A bond in the amount of \$393.00 to insure faithful performance of the conditions of the contract will be deposited by the successful bidder within 21 days of the sale award.
2. Cutting in any sale or unit without the required advance payment would be considered a trespass.
3. Total payment must be paid in advance or according to the following schedule :
 - (a) Ten percent (10%) of the sale value must be paid within 21 days of the sale award.
 - (b) The 10% down payment will be credited towards the first unit cut.
 - (c) Payment for each of the following units must be made before cutting begins in that unit:

PAYMENT UNIT NUMBER	PERCENT OF TOTAL SALE VALUE
01	20.8%
02	8.0%
03	71.2%
4. If no cutting takes place, the 10% down payment will not be refunded.
5. Operations on the contract issued will terminate on 06/30/2026.

SALE STATISTICS

Volumes were calculated in cubic feet using the Michigan taper model. Cubic foot volume includes all wood inside bark for the product indicated. For display purposes, cubic feet were converted to cords and MBF using a simple conversion factor, e.g. 79 cubic feet per cord and 185 cubic feet per MBF. The cubic foot volumes are precise; the cords and MBF volumes are not. Cubic foot volume cannot be directly converted to cords or boards with precision.

SALE VOLUMES

The total estimated sale volume may not equal the sum of the species/products due to the nature of statistical calculations associated with double sampling methodology.

VOLUME			STATISTICAL RANGE IN CORDS	
TOTAL CUBIC FEET	TOTAL CORDS	PERCENT ERROR	MINIMUM	MAXIMUM
69,833	884	12.32%	775	993

VDU VOLUMES

A VDU is a Volume Determination Unit. Volumes and their associated statistics are calculated at the VDU level and summarized to the sale level. There is often a one to one relationship between a VDU and a Payment Unit, but not always, depending on the cruise design. Refer to the VDU TO PAYMENT UNIT table.

VDU	VOLUME			RANGE IN CORDS	
	TOTAL CUBIC FEET	TOTAL CORDS	PERCENT ERROR	MINIMUM	MAXIMUM
1	56,707	718	14.10%	617	819
4	5,561	70	37.21%	44	97
5	7,564	96	32.08%	65	126
TOTAL:	69,833	884		726	1,042

VDU TO PAYMENT UNIT

When a VDU is associated with more than one Payment Unit (PU), the VDU volumes are assigned to the PU based on acres of the VDU within the PU.

VDU	VDU ACRES	PU	PU ACRES
1	29.9	3	29.9
4	7.2	1	7.2
5	7.5	2	7.5
TOTAL:	44.6		44.6

DESCRIPTION OF TIMBER BY PAYMENT UNIT (PU)

PU	MARKET GROUP	PRODUCT	QUANTITY	UNIT	ACRES	ADVERTISE PRICE
1	Basswood	Sawtimber	2.0	MBF	7.2	\$1,633.35
	Red Maple		0.9	MBF		
	Balsam Fir	Pulpwood	3	Cords		
	Mixed Aspen		58	Cords		
	<i>B. T. Aspen</i>		37	<i>Cords</i>		
	<i>Quaking Aspen</i>		21	<i>Cords</i>		
	Mixed Hardwood		11	Cords		
	<i>Basswood</i>		5	<i>Cords</i>		
	<i>Ironwood</i>		3	<i>Cords</i>		
	<i>Red Maple</i>		3	<i>Cords</i>		
	2	Black Spruce	Pulpwood	24		
Mixed Aspen			6	Cords		
<i>B. T. Aspen</i>			6	<i>Cords</i>		
N. White Cedar			56	Cords		
Tamarack			5	Cords		
3	Balsam Fir	Pulpwood	64	Cords	29.9	\$5,590.05
	Black Spruce		305	Cords		
	Mixed Aspen		10	Cords		
	<i>Quaking Aspen</i>		10	<i>Cords</i>		
	N. White Cedar		185	Cords		
	Paper Birch		30	Cords		
	Tamarack		124	Cords		
TOTAL:			2.9	MBF		
TOTAL:			881	Cords		

Sale Specific Conditions & Requirements

Sale Name: Who Let the Cows Out

Sale Number: 42-028-21 Seq#: 3

1 - Sale Area

1.2 - Boundaries

1.2.1 - Painted boundaries (9/19)

The sale boundary and Payment Unit boundaries are marked and identified by blue and red paint. Exterior sale boundary lines against private property are marked with blue paint. Exterior sale boundary lines against state are marked with red paint. The painted boundary line trees are not Included Timber and are to be protected unless marked with orange paint.

2 - Timber Specifications

2.1 - Included Timber

2.1.2 - Clearcut unit(s) w/o unmerchantable trees (8/11)

Within Payment Unit(s) 2 and 3, cut all trees which meet minimum piece specifications in 2.2 Utilization. Leave all hemlock and sub-merchantable balsam fir. Areas with higher densities of cedar have been marked with green or blue paint above and below stump height. These trees marked with green or blue paint above and below stump height should be retained as retention.

2.1.3 - Cut tree marked unit(s) (12/08)

Within Payment Unit(s) 1, all trees are designated for cutting when marked with orange paint above and below stump height, regardless of merchantability. Additionally, cut all aspen, except for aspen marked with green pain.

2.1.11 - Description of timber note (2/04)

Note that mixed aspen includes quaking and big tooth. Mixed Hardwoods includes red maple, ironwood, and paper birch.

4 - Transportation

4.1 - Construction

4.1.4 - Timber removed for construction (12/09)

Trees cut or damaged in the process of pre-approved road, landing or skid trail construction will be decked in an area separate from other Designated Timber and not removed until measured by the sale administrator. Payment will be made at the specified Purchase Unit Price.

4.1.6 - Road construction (1/09)

Construction of new roads or improvements of existing roads shall be done in such a way as to minimize the environmental and visual impacts. Merchantable trees shall be cut and utilized unless otherwise directed. Non-merchantable trees shall be severed and laid flat on the ground. Slash shall be scattered, and not left in windrows and kept a minimum of 10 feet back from the road edge. Stumps shall be set upright, not left on edge, and be moved at least 10 feet away from the road edge. Disturbed soil shall be feathered into the woods and not left in berms or windrows.

4.1.7 - Road closure (10/11)

All new roads built into the sale must be blocked to vehicle traffic within 30 days of completion of hauling. Overgrown roads that are reopened shall be considered new roads. In general, this will require constructing double earthen berms at strategic locations. These roads must be rendered impassable to cars and trucks. Temporary berms may be required if no sale activity occurs for 30 or more consecutive days. Contact the sale administrator for specific details of design and placement.

4.4 - Access

4.4.1 - Private property access (3/11)

Permission for access across private land is the responsibility of the Purchaser. A copy of written permission must be provided to the DNR - Newberry FMU prior to bid opening. If this permission is not provided, the bid will be rejected.

4.4.3 - Access gate (12/08)

The gate on main access road must be closed upon entry and exiting. There is livestock with the Sale Area during certain times of year.

4.4.4 - Restricted access (10/05)

The Sale Area cannot be accessed without permission from the adjacent landowner bordering the sale. Cattle fencing will need to be removed in certain locations to access the Sale Area with equipment.

5 - Operations

5.1 - Notification

5.1.1 - Pre-sale conference (10/16)

A pre-sale conference between the Purchaser and sale administrator is required prior to beginning any operations to discuss access into the sale. There is a gate and fencing to consider when accessing the sale. The Unit Manager or his/her representative must be contacted at least 10 days in advance to schedule the conference.

5.2 - Conduct of Operations

5.2.1 - Slash

5.2.1.8 - Slash height (12/08)

No slash or tree tops may exceed 36 inches in height.

5.2.2 - Hazard Trees/Snags

5.2.2.1 - Den trees (10/16)

Obvious hollow and/or den trees shall be protected and left standing unless they are a safety hazard.

5.2.3 - Operating Restrictions

5.2.3.1 - Operating restrictions (9/11)

Within Payment Unit(s) 2 and 3, unless changed by written agreement, cutting, skidding and hauling are limited to the period of December 15 to April 1. This restriction is because of low, wet ground.

5.2.32 - Decking/landing restoration (9/13)

All decking and landing areas must have the surface area restored to a condition equal to or better than before. This is to ensure the proper regeneration of the stand. Wood debris, chips, and "cookies" from trimmings must be removed or scattered away from landing and loading areas and may not be windrowed on the edge.

5.2.38 - No decking against live trees (2/04)

Cut products may not be decked against unmarked or designated leave trees.

5.4 - Soil Protection

5.4.1 - Rutting restriction, general (7/16)

Operations are to cease immediately if equipment and weather conditions result in rutting of roads and/or skid trails which is 12 inches or greater in depth and 50 feet in length. The Unit Manager or his/her representative may restrict hauling and/or skidding if ruts exceed the specified depth. With the Unit Manager or his/her representative's approval, the Purchaser may return to the area when the risk of rutting has decreased.

5.4.7 - Rutting restriction, Riparian Management Zone (RMZ) (1/09)

Within the Riparian Management Zone (RMZ), as shown on the attached Timber Sale Map, operations are to cease immediately if equipment and weather conditions result in rutting of roads and skid trails which is 6 inches or greater in depth and 25 feet in length. Within the Riparian Management Zone (RMZ), as shown on the attached Timber Sale Map, operations are to cease immediately if equipment and weather conditions result in rutting of roads which is 6 inches or greater in depth and 25 feet in length. In addition, operations are to cease immediately if equipment and weather conditions result in rutting of skid trails which is 6 inches or greater in depth and 25 feet in length. The Unit Manager or his/her representative may restrict hauling and/or skidding if ruts exceed the specified depth. With the Unit Manager or his/her representative's approval, the Purchaser may return to the area when the risk of rutting has decreased.

5.8 - Protection of Endangered Species

5.8.5 - Protection of raptor nests (3/13)

All trees with raptor nests will be protected if found during harvesting operations. Notification will be made to the Unit

Manager or his/her representative who will notify the Wildlife Biologist so an on-site evaluation and recommendation can be made, if necessary.

7 - Other Conditions

7.2 - Extensions

7.2.5 - Weather related extension (1/13)

If weather conditions during the operating period of this contract prevent harvesting, this sale may qualify for a weather related extension. If approved, the normal extension fee would be waived. To qualify, there must be a documented attempt each year to harvest in the difficult portion of the sale.



TIMBER SALE MAP

This information provided by authority of Part 525, 1994 PA 451, as amended.

Forest Management Unit Newberry	County Luce	Mapped By Kriehn	Date 9/22/2021	Page 1	of 1
Township 45N	Range 10W	Section(s) and Subdivision(s) Section 4: SWNW; Section 5: NWNW,SENE; Section 6: SENE	Scale 1:15,840		

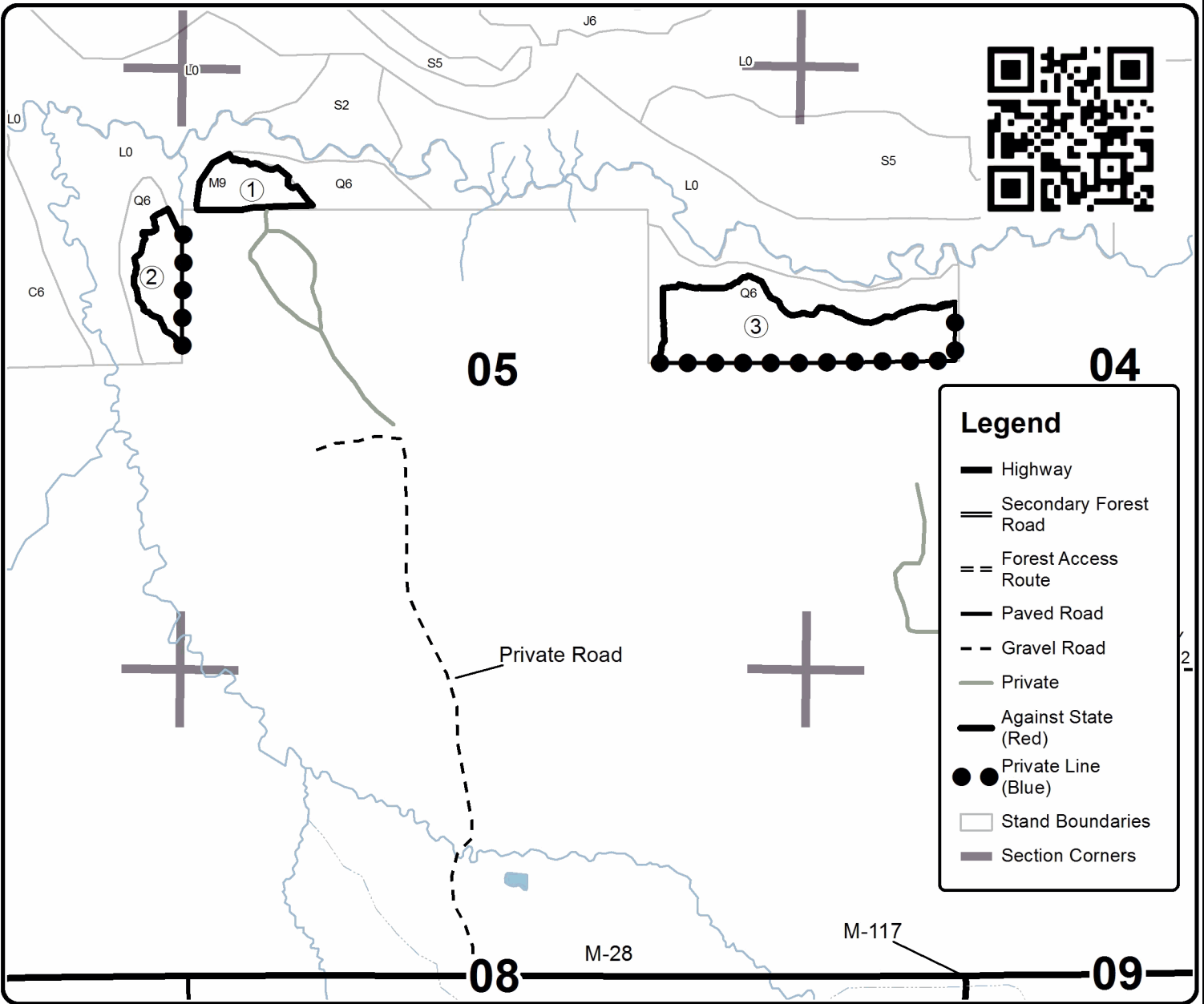
Cover Type				Density	
A = Aspen	H = Hemlock	N = Marsh	U = Upland Brush	0 = Non Stocked	5 = Pole Timber Medium
B = Paper Birch	J = Jack Pine	O = Oak	UM = Upland Mixed	1 = Seedling Sapling Poor	6 = Pole Timber Well
C = Cedar	L = Lowland Brush	P = Lowland Poplar	V = Bog or Marsh	2 = Seedling Sapling Medium	7 = Saw Timber Poor
D = Treed Bog	LM = Lowland Mixed	Q = Mixed Swamp Conifer	W = White Pine	3 = Seedling Sapling Well	8 = Saw Timber Medium
E = Swamp Hdwoods	M = Mpl, Bch, Brch	R = Red Pine	X = Non Stocked	4 = Pole Timber Poor	9 = Saw Timber Well
F = Spruce Fir	MC = Mixed Conifer	S = Black Spruce	Z = Water		
G = Grass	MD = Mixed Deciduous	T = Tamarack			

PU	Acres
1	7.2
2	7.5
3	29.9

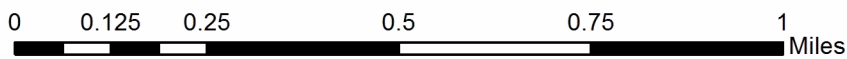
Who Let the Cows Out

Compartment 106

44.6 Acres



Legend	
	Highway
	Secondary Forest Road
	Forest Access Route
	Paved Road
	Gravel Road
	Private
	Against State (Red)
	Private Line (Blue)
	Stand Boundaries
	Section Corners



Who Let the Cows Out (42-028-21)

T45N, R10W, SEC. 4; T45N, R10W, SEC. 5; T45N, R10W, SEC. 6; Luce COUNTY

In response to the notice of sale to be held 3:00 p.m. (local time) on December 8, 2022, I am hereby submitting my sealed bid (firm offer) for the following forest products to be cut. Bids for individual species must be at or above the advertised price. All non-responsive bid forms may be rejected.

<u>PRODUCTS & SPECIES</u>	<u>ESTIMATED VOLUME*</u>	<u>ADVERTISED PRICE</u>	<u>BID PRICE/UNIT</u>
Sawtimber			
Basswood	2.0 MBF	\$ 39.00/MBF	\$ _____
Red Maple	0.9 MBF	\$ 98.00/MBF	\$ _____
Pulpwood			
Balsam Fir	67 Cords	\$ 9.00/Cord	\$ _____
Black Spruce	329 Cords	\$ 11.60/Cord	\$ _____
Mixed Aspen	74 Cords	\$ 22.45/Cord	\$ _____
Mixed Hardwood	11 Cords	\$ 12.55/Cord	\$ _____
N. White Cedar	241 Cords	\$ 3.65/Cord	\$ _____
Paper Birch	30 Cords	\$ 8.05/Cord	\$ _____
Tamarack	129 Cords	\$ 2.70/Cord	\$ _____

*The volumes are statistically estimated within plus (+) or minus (-) 12.32 percent at 95% confidence level. These estimated volumes are final and not subject to adjustment. Prospective bidders are urged to examine this timber and to make their own estimates of quantity and quality.

I understand that any or all bids may be rejected. All bids must be signed and all bid items must be bid or the bid form may be rejected. I also understand that consideration and awarding a contract will be based upon my past performance and ability to complete the contract based upon equipment and staffing subject to my control.

FEDERAL ID: ____ - ____ - ____ or SOCIAL SECURITY NUMBER: ____ - ____ - ____

Company or individual bidding: _____

Company representative's name: _____

Address: _____

City: _____ State: _____ Zip: _____

IF AVAILABLE, PLEASE PLACE THE PERSONALIZED LABEL FROM YOUR PROSPECTUS IN THE ABOVE BOX.

Individual or company representative's signature: _____ Date: _____

Phone number : _____ Email (optional): _____

THE WINNING BIDDER MUST COMPLETE THE VERIFICATION OF WORKER'S DISABILITY COMPENSATION ACT COMPLIANCE (ON REVERSE SIDE IF DOUBLE SIDED) WITHIN 21 DAYS OF SALE AWARD DATE



TIMBER SALE VERIFICATION OF WORKER'S DISABILITY COMPENSATION ACT COMPLIANCE

As required by Act 317, P.A. 1969 (Worker's Compensation) and
Part 5 of Act 451 of 1994, as amended.

FOR DEPARTMENT USE ONLY	
Sale Number (XX - XXX - XX - XX)	
Forest Management Unit:	

VERIFICATION OF WORKER'S DISABILITY COMPENSATION ACT COMPLIANCE

- This verification must be completed and submitted within 21 days of contract award and prior to the issuance of the timber sale contract.
- In addition, if boxes 2B or 2C are checked, then Notice of Exclusion or Certificate of Insurance must be submitted within twenty-one (21) days of the contract award and prior to the issuance of the timber sale contract.
- All information must be typed or printed except for written signatures.

Please Check Appropriate Categories:

1. My business is organized as (you **must** check one of the boxes below):
 - A. Sole Proprietorship (individual)
 - B. Partnership
 - C. Corporation
2. You **must** check one of the boxes below:
 - A. I certify my business is a sole proprietorship and it has no employees but the sole proprietor. I am not subject to the Worker's Compensation Laws.
 - B. I certify my business has satisfied its obligation to the Worker's Compensation Act through the use of an approved Notice of Exclusion (BWC-337, Rev. 5/96). I will provide a copy of the Notice of Exclusion within 21 days of the contract award. (For questions or a copy of the BWC-337, please call the Worker's Compensation Bureau at 517-322-1195).
 - C. I certify my business has a Worker's Compensation Policy. I will provide an original Certificate of Insurance within twenty-one (21) days of the contract award.
3. If you have checked item 2(A) or 2(B), you **must** indicate the number of **both** full-time and part-time employees, other than yourself, including family members and active partners (if none, you must enter "0").

_____ Full-time Employees

_____ Part-time Employees

Name of Business		Federal ID (or) Social Security No.	
Address		Telephone ()	
City	State	ZIP	

I hereby certify that the above information is true and correct. I agree to notify the Michigan DNR of any changes that occur in factors affecting my coverage during any of my present and future operations.

Signature of Owner or Authorized Representative

Title

Date

Please complete the "SEALED BID" information on the next page

Sixteen Creek Swamp and Ridges (42-019-21)
T46N, R09W, SEC. 7; T46N, R09W, SEC. 8; Luce COUNTY

In response to the notice of sale to be held 3:00 p.m. (local time) on December 8, 2022, I am hereby submitting my sealed bid (firm offer) for the following forest products to be cut. Bids for individual species must be at or above the advertised price. All non-responsive bid forms may be rejected.

<u>PRODUCTS & SPECIES</u>	<u>ESTIMATED VOLUME*</u>	<u>ADVERTISED PRICE</u>	<u>BID PRICE/UNIT</u>
Sawtimber			
Red Maple	8.0 MBF	\$ 53.00/MBF	\$ _____
Pulpwood			
B. T. Aspen	29 Cords	\$ 12.25/Cord	\$ _____
Balsam Fir	114 Cords	\$ 4.90/Cord	\$ _____
Black Spruce	351 Cords	\$ 6.35/Cord	\$ _____
N. White Cedar	2,810 Cords	\$ 2.00/Cord	\$ _____
Paper Birch	532 Cords	\$ 4.40/Cord	\$ _____
Red Maple	1,765 Cords	\$ 6.85/Cord	\$ _____
White Pine	532 Cords	\$ 8.70/Cord	\$ _____
White Spruce	77 Cords	\$ 6.35/Cord	\$ _____
Yellow Birch	168 Cords	\$ 6.85/Cord	\$ _____

*The volumes are statistically estimated within plus (+) or minus (-) 4.55 percent at 95% confidence level. These estimated volumes are final and not subject to adjustment. Prospective bidders are urged to examine this timber and to make their own estimates of quantity and quality.

I understand that any or all bids may be rejected. All bids must be signed and all bid items must be bid or the bid form may be rejected. I also understand that consideration and awarding a contract will be based upon my past performance and ability to complete the contract based upon equipment and staffing subject to my control.

FEDERAL ID: _____ or SOCIAL SECURITY NUMBER: _____ Company or individual bidding: _____ Company representative's name: _____ Address: _____ City: _____ State: _____ Zip: _____

IF AVAILABLE, PLEASE PLACE THE PERSONALIZED LABEL FROM YOUR PROSPECTUS IN THE ABOVE BOX.

Individual or company representative's signature: _____ Date: _____

Phone number : _____ Email (optional): _____

THE WINNING BIDDER MUST COMPLETE THE VERIFICATION OF WORKER'S DISABILITY COMPENSATION ACT COMPLIANCE (ON REVERSE SIDE IF DOUBLE SIDED) WITHIN 21 DAYS OF SALE AWARD DATE



FOR DEPARTMENT USE ONLY
Sale Number (XX - XXX - XX - XX)
Forest Management Unit:

TIMBER SALE VERIFICATION OF WORKER'S DISABILITY COMPENSATION ACT COMPLIANCE

*As required by Act 317, P.A. 1969 (Worker's Compensation) and
Part 5 of Act 451 of 1994, as amended.*

VERIFICATION OF WORKER'S DISABILITY COMPENSATION ACT COMPLIANCE

- This verification must be completed and submitted within 21 days of contract award and prior to the issuance of the timber sale contract.
- In addition, if boxes 2B or 2C are checked, then Notice of Exclusion or Certificate of Insurance must be submitted within twenty-one (21) days of the contract award and prior to the issuance of the timber sale contract.
- All information must be typed or printed except for written signatures.

Please Check Appropriate Categories:

1. My business is organized as (you **must** check one of the boxes below):
 - A. Sole Proprietorship (individual)
 - B. Partnership
 - C. Corporation
2. You **must** check one of the boxes below:
 - A. I certify my business is a sole proprietorship and it has no employees but the sole proprietor. I am not subject to the Worker's Compensation Laws.
 - B. I certify my business has satisfied its obligation to the Worker's Compensation Act through the use of an approved Notice of Exclusion (BWC-337, Rev. 5/96). I will provide a copy of the Notice of Exclusion within 21 days of the contract award. (For questions or a copy of the BWC-337, please call the Worker's Compensation Bureau at 517-322-1195).
 - C. I certify my business has a Worker's Compensation Policy. I will provide an original Certificate of Insurance within twenty-one (21) days of the contract award.
3. If you have checked item 2(A) or 2(B), you **must** indicate the number of **both** full-time and part-time employees, other than yourself, including family members and active partners (if none, you must enter "0").

_____ Full-time Employees

_____ Part-time Employees

Name of Business		Federal ID (or) Social Security No.	
Address		Telephone ()	
City	State	ZIP	

I hereby certify that the above information is true and correct. I agree to notify the Michigan DNR of any changes that occur in factors affecting my coverage during any of my present and future operations.

Signature of Owner or Authorized Representative

Title

Date

Please complete the "SEALED BID" information on the next page

Where's the Deer 2.0 (42-013-22)

T45N, R07W, SEC. 7; T45N, R08W, SEC. 11; T45N, R08W, SEC. 12; T45N, R08W,

In response to the notice of sale to be held 3:00 p.m. (local time) on December 8, 2022, I am hereby submitting my sealed bid (firm offer) for the following forest products to be cut. Bids for individual species must be at or above the advertised price. All non-responsive bid forms may be rejected.

<u>PRODUCTS & SPECIES</u>	<u>ESTIMATED VOLUME*</u>	<u>ADVERTISED PRICE</u>	<u>BID PRICE/UNIT</u>
Sawtimber			
Red Maple	8.4 MBF	\$ 53.00/MBF	\$ _____
Pulpwood			
Balsam Fir	215 Cords	\$ 4.90/Cord	\$ _____
Black Spruce	364 Cords	\$ 6.35/Cord	\$ _____
Mixed Hardwood	842 Cords	\$ 6.85/Cord	\$ _____
Quaking Aspen	101 Cords	\$ 12.25/Cord	\$ _____
Tamarack	134 Cords	\$ 1.45/Cord	\$ _____

*The volumes are statistically estimated within plus (+) or minus (-) 10.66 percent at 95% confidence level. These estimated volumes are final and not subject to adjustment. Prospective bidders are urged to examine this timber and to make their own estimates of quantity and quality.

I understand that any or all bids may be rejected. All bids must be signed and all bid items must be bid or the bid form may be rejected. I also understand that consideration and awarding a contract will be based upon my past performance and ability to complete the contract based upon equipment and staffing subject to my control.

FEDERAL ID: _____ - _____ or SOCIAL SECURITY NUMBER: _____ - _____ - _____

Company or individual bidding: _____

Company representative's name: _____

Address: _____

City: _____ State: _____ Zip: _____

IF AVAILABLE, PLEASE PLACE THE PERSONALIZED LABEL FROM YOUR PROSPECTUS IN THE ABOVE BOX.

Individual or company representative's signature: _____ Date: _____

Phone number : _____ Email (optional): _____

THE WINNING BIDDER MUST COMPLETE THE VERIFICATION OF WORKER'S DISABILITY COMPENSATION ACT COMPLIANCE (ON REVERSE SIDE IF DOUBLE SIDED) WITHIN 21 DAYS OF SALE AWARD DATE



FOR DEPARTMENT USE ONLY
Sale Number (XX - XXX - XX - XX)
Forest Management Unit:

TIMBER SALE VERIFICATION OF WORKER'S DISABILITY COMPENSATION ACT COMPLIANCE

*As required by Act 317, P.A. 1969 (Worker's Compensation) and
Part 5 of Act 451 of 1994, as amended.*

VERIFICATION OF WORKER'S DISABILITY COMPENSATION ACT COMPLIANCE

- This verification must be completed and submitted within 21 days of contract award and prior to the issuance of the timber sale contract.
- In addition, if boxes 2B or 2C are checked, then Notice of Exclusion or Certificate of Insurance must be submitted within twenty-one (21) days of the contract award and prior to the issuance of the timber sale contract.
- All information must be typed or printed except for written signatures.

Please Check Appropriate Categories:

1. My business is organized as (you **must** check one of the boxes below):
 - A. Sole Proprietorship (individual)
 - B. Partnership
 - C. Corporation

2. You **must** check one of the boxes below:
 - A. I certify my business is a sole proprietorship and it has no employees but the sole proprietor. I am not subject to the Worker's Compensation Laws.
 - B. I certify my business has satisfied its obligation to the Worker's Compensation Act through the use of an approved Notice of Exclusion (BWC-337, Rev. 5/96). I will provide a copy of the Notice of Exclusion within 21 days of the contract award. (For questions or a copy of the BWC-337, please call the Worker's Compensation Bureau at 517-322-1195).
 - C. I certify my business has a Worker's Compensation Policy. I will provide an original Certificate of Insurance within twenty-one (21) days of the contract award.

3. If you have checked item 2(A) or 2(B), you **must** indicate the number of **both** full-time and part-time employees, other than yourself, including family members and active partners (if none, you must enter "0").

_____ Full-time Employees

_____ Part-time Employees

Name of Business		Federal ID (or) Social Security No.	
Address		Telephone ()	
City	State	ZIP	

I hereby certify that the above information is true and correct. I agree to notify the Michigan DNR of any changes that occur in factors affecting my coverage during any of my present and future operations.

Signature of Owner or Authorized Representative

Title

Date

Please complete the "SEALED BID" information on the next page

Attwood Mix (42-013-21)
T47N, R08W, SEC. 20; Luce COUNTY

In response to the notice of sale to be held 3:00 p.m. (local time) on December 8, 2022, I am hereby submitting my sealed bid (firm offer) for the following forest products to be cut. Bids for individual species must be at or above the advertised price. All non-responsive bid forms may be rejected.

<u>PRODUCTS & SPECIES</u>	<u>ESTIMATED VOLUME*</u>	<u>ADVERTISED PRICE</u>	<u>BID PRICE/UNIT</u>
Sawtimber			
Paper Birch	4.0 MBF	\$ 23.00/MBF	\$ _____
Red Maple	62.5 MBF	\$ 53.00/MBF	\$ _____
Sugar Maple	5.7 MBF	\$ 139.00/MBF	\$ _____
Pulpwood			
Balsam Fir	306 Cords	\$ 4.90/Cord	\$ _____
Mixed Hardwood	1,035 Cords	\$ 6.85/Cord	\$ _____
Mixed Spruce	106 Cords	\$ 6.35/Cord	\$ _____
N. White Cedar	574 Cords	\$ 2.00/Cord	\$ _____

*The volumes are statistically estimated within plus (+) or minus (-) 4.43 percent at 95% confidence level. These estimated volumes are final and not subject to adjustment. Prospective bidders are urged to examine this timber and to make their own estimates of quantity and quality.

I understand that any or all bids may be rejected. All bids must be signed and all bid items must be bid or the bid form may be rejected. I also understand that consideration and awarding a contract will be based upon my past performance and ability to complete the contract based upon equipment and staffing subject to my control.

FEDERAL ID: _____ or SOCIAL SECURITY NUMBER: _____

Company or individual bidding: _____

Company representative's name: _____

Address: _____

City: _____ State: _____ Zip: _____

IF AVAILABLE, PLEASE PLACE THE PERSONALIZED LABEL FROM YOUR PROSPECTUS IN THE ABOVE BOX.

Individual or company representative's signature: _____ Date: _____
Phone number : _____ Email (optional): _____

THE WINNING BIDDER MUST COMPLETE THE VERIFICATION OF WORKER'S DISABILITY COMPENSATION ACT COMPLIANCE (ON REVERSE SIDE IF DOUBLE SIDED) WITHIN 21 DAYS OF SALE AWARD DATE



FOR DEPARTMENT USE ONLY	
Sale Number (XX - XXX - XX - XX)	
Forest Management Unit:	

TIMBER SALE VERIFICATION OF WORKER'S DISABILITY COMPENSATION ACT COMPLIANCE

As required by Act 317, P.A. 1969 (Worker's Compensation) and
Part 5 of Act 451 of 1994, as amended.

VERIFICATION OF WORKER'S DISABILITY COMPENSATION ACT COMPLIANCE

- This verification must be completed and submitted within 21 days of contract award and prior to the issuance of the timber sale contract.
- In addition, if boxes 2B or 2C are checked, then Notice of Exclusion or Certificate of Insurance must be submitted within twenty-one (21) days of the contract award and prior to the issuance of the timber sale contract.
- All information must be typed or printed except for written signatures.

Please Check Appropriate Categories:

1. My business is organized as (you **must** check one of the boxes below):
 - A. Sole Proprietorship (individual)
 - B. Partnership
 - C. Corporation
2. You **must** check one of the boxes below:
 - A. I certify my business is a sole proprietorship and it has no employees but the sole proprietor. I am not subject to the Worker's Compensation Laws.
 - B. I certify my business has satisfied its obligation to the Worker's Compensation Act through the use of an approved Notice of Exclusion (BWC-337, Rev. 5/96). I will provide a copy of the Notice of Exclusion within 21 days of the contract award. (For questions or a copy of the BWC-337, please call the Worker's Compensation Bureau at 517-322-1195).
 - C. I certify my business has a Worker's Compensation Policy. I will provide an original Certificate of Insurance within twenty-one (21) days of the contract award.
3. If you have checked item 2(A) or 2(B), you **must** indicate the number of **both** full-time and part-time employees, other than yourself, including family members and active partners (if none, you must enter "0").

_____ Full-time Employees

_____ Part-time Employees

Name of Business		Federal ID (or) Social Security No.	
Address		Telephone ()	
City	State	ZIP	

I hereby certify that the above information is true and correct. I agree to notify the Michigan DNR of any changes that occur in factors affecting my coverage during any of my present and future operations.

Signature of Owner or Authorized Representative

Title

Date

Please complete the "SEALED BID" information on the next page