



**DEPARTMENT OF NATURAL RESOURCES
STATE OF MICHIGAN
TIMBER SALE PROSPECTUS #7057**

SCHEDULED SALE DATE AND TIME: 4:00 p.m. (local time) on October 4, 2022.

LOCATION: TRAVERSE CITY MGMT UNIT, 2122 M 37 SOUTH, TRAVERSE CITY, MI 49685.

PROSPECTUS NOTE: Effective immediately: all bid openings for the Traverse City Management Unit (Kalkaska Field Office and Traverse City Field Office) will be held at the Traverse City Field Office regardless of sale location within the unit. All payments will now be handled through the Traverse City Field Office. The Kalkaska Field Office will no longer accept payments or hard paper copies of timber sale bids. Payments for all contracts, use permits, bonds, etc. should be sent to the Traverse City Field Office.

The bidder is advised to inspect the sale area and review the location, estimated volumes, operating costs and contract terms of proposed sales. Please be aware that some landowners may request 60 days or more notice for access across their land.

Notice is hereby given that bids will be received by the Unit Manager, TRAVERSE CITY MANAGEMENT UNIT, for certain timber on the following described lands:

Speed Bump Hardwoods (61-122-22) / T27N, R05W, SEC. 10, NENE.

T27N, R05W, SEC. 11, N1/2NW,NWNE.

T27N, R05W, SEC. 2, N1/2NW,W1/2NE,SW,NWSE,S1/2SE.

T27N, R05W, SEC. 3, SESW,SE.

Kalkaska County, Advertised Price \$412,748.20, 289.9 Acres, Hardwood, Red Oak.

SALE NOTE: Payment Units 2-7 have the oak wilt restriction with no exceptions applied to them.

A recreation site such as a trail, pathway, or campground is within the sale area or the vicinity. Certain restrictions/specifications may be applicable including time restrictions.

Ground Out Mix (61-131-22) / T25N, R06W, SEC. 21, SESW.

T25N, R06W, SEC. 28, NENW,NWNE.

Kalkaska County, Advertised Price \$13,598.90, 32.6 Acres, Jack Pine, Hardwood.

South Ridge Oak (61-612-22) / T25N, R05W, SEC. 4, NENE.

T26N, R05W, SEC. 33, SESW,SE.

T26N, R05W, SEC. 34, SWSW.

Kalkaska County, Advertised Price \$10,748.25, 81.5 Acres, Hardwood, Red Oak.

SALE NOTE: All units of volume listed for this sale were estimated using the Inventory Manager computer program and the new Michigan taper model.

- See sale spec 7.10.1 for information on non-certified timber.

- See sale specs 2.2.2 and 2.2.3 for information on chipping and stump height requirements.

- See sale spec 5.2.3.4 for information on oak wilt requirements.

Access may be through other public land.

Big Money Jack (61-613-22) / T26N, R05W, SEC. 32, S1/2NE,N1/2SE,SESE.

T26N, R05W, SEC. 33, SWNW,W1/2SW.

Kalkaska County, Advertised Price \$6,867.45, 97.6 Acres, Jack Pine, Hardwood.

SALE NOTE: All units of volume listed for this sale were estimated using the Inventory Manager computer program and the new Michigan taper model.

- See sale spec 7.10.1 for information on non-certified timber.
- See sale specs 2.2.2 and 2.2.3 for information on chipping and stump heights.
- See sale spec 5.2.3.5 for information on oak wilt restrictions.
- See sale spec 5.2.3.7 for information on military training timing.
- See sale spec 5.2.22.1 for information on operating cautions due to sandy soils.

Howling Red Pine (61-619-22) / T26N, R05W, SEC. 30, NWSW,S1/2SW.

T26N, R05W, SEC. 31, NWNE.

T26N, R06W, SEC. 25, NESW,S1/2SW,SE.

T26N, R06W, SEC. 36, NENW,S1/2NW,NE.

Kalkaska County, Advertised Price \$349,486.55, 357.0 Acres, Red Pine, Jack Pine.

SALE NOTE: Payment Unit 10 will need crane mats for access through State land. An alternate route through private land can be obtained by Purchaser to avoid using crane mats to access the unit.

A recreation site such as a trail, pathway, or campground is within the sale area or the vicinity. Certain restrictions/specifications may be applicable including time restrictions.

BID INSTRUCTIONS (VER. 07/02/2018):

1. Scheduled Bid Location, Date, and Time (2/11)

Bids must be received by the Unit Manager, TRAVERSE CITY OFFICE, 2122 M 37 South, Traverse City, MI 49685, no later than 4:00 p.m. (local time) on October 4, 2022. For further information concerning this sale, contact David Fisher at 231-745-4651.

2. Bidder's Qualifications (5/16)

Purchaser shall obtain workers compensation insurance to cover claims under Michigan's Worker's Disability Compensation Act of 1969 or similar employee benefit act of any other state applicable to an employee. If all or part of a timber sale was prepared by a private contractor, the contractor and that contractor's company are not permitted to bid on the timber sale contract. Bids will not be accepted from individuals or companies appearing on the DNR/FRD No-Bid List. This list contains the names of purchasers who previously failed to execute a contract within 21-days or who have a history of poor performance.

3. Preparation of Sealed Bids (5/16)

Bid Forms may be completed online thru Michigan DNR Timber Sale Online Bidding (OLB) at www.michigan.gov/timberbidding or by completing the hardcopy Bid Form found in the Timber Sale Prospectus. Hardcopy Bid Forms shall be manually signed in ink. Registration in OLB is considered your 'signature' for all bids submitted thru that system. Bid prices must be entered for each species and product in the Bid Price column for all material subject to bidding and all fill-in blanks must be completed. If erasures or other changes appear on the hardcopy Bid Form, each erasure or change must be initialed by the person signing the bid.

4. Submission of Sealed Bids (5/16)

Bid forms may be obtained from the Unit Manager or thru OLB. Bids may be submitted hardcopy or thru OLB. All hardcopy bids must be submitted on the bid form and in an envelope clearly identified as described in this section. NOTE: Only one bid form per bid envelope. Sealed bids must be submitted to the Unit office designated in the prospectus and must be submitted at or prior to the time established in the prospectus. The envelope should show on the outside (a) the sale name or number and (b) the date and time of bid opening, as shown in the prospectus. Bids received after the time specified in the sale prospectus are late bids and will be rejected.

It is possible for a bidder to submit multiple bids on a single sale. For example, a bid may be submitted hardcopy and a bid may be submitted thru OLB. Or, two bidders from the same company could both submit bids on the same sale. If this were to happen, the State would accept all bids received and award the contract accordingly. All bidding and contractual requirements would apply to all bids received.

5. Public Opening of Sealed Bids (7/16)

If conditions permit, the sealed bids will be publicly opened and posted at the time and place set in the prospectus.

If a bidder, present at a bid opening, has submitted bids on more than one sale, that bidder may withdraw their unopened bid envelopes or announce the withdrawal of their online bid after being declared the successful bidder on one sale.

6. Award of Contract (1/11)

Award of the contract will be made to the Bidder whose bid, conforming to the prospectus, is most advantageous to the State of Michigan on the basis of total value at rates bid for the estimated quantities. The State reserves the right to reject any bid or waive any minor irregularity in bids received. A written award mailed (or otherwise furnished) to the successful Bidder shall be deemed to result in a binding contract without further action by either party.

7. Down Payment (1/11)

The Bidder to whom award is made must make a down payment within 21 days of the sale award. The amount of the down payment will be calculated as shown in the Bond and Payment Schedule of this prospectus. Only cash may be used to meet this requirement.

8. Performance Security (1/11)

As guarantee of faithful performance, a cash bond, certificate of deposit, surety bond or irrevocable letter of credit (LOC) is required within 21 days of the sale award. The amount of the performance security is shown in the Bond and

Payment Schedule of this prospectus. If an LOC or surety is used, the coverage must extend for at least 6 months beyond the contract expiration.

9. Timber Sale Contract (7/18)

Additional conditions and requirements common to all timber sales are listed on the timber sale contract (R4031) and are available on line at www.michigan.gov/timber. Contact the Unit Manager for additional information or a sample contract. Within 21 days of the date of the award letter, the bidder must sign the contract and provide the required down payment, performance security, and verification of worker's disability compensation. The down payment and performance security shall be in accordance with the provisions of the timber sale contract, in the sums stated in this prospectus. If these actions are not taken, then the Bidder, the Bidder's corporation, and the corporation's principals may not be permitted to bid on State timber sales for a period of 3 months after the first offense, 6 months after the second offense, and 1 year after the third offense. An offense will only be counted against the Bidder for 5 years. In addition, the Bidder certifies that if awarded this contract, the Bidder will complete the timber sale contract in accordance with its terms and any modifications thereof including requirements to purchase, cut, and remove the included timber by the expiration date.

Payment Unit values in the State Forest Timber Sale Contract are calculated based on the advertised value of the Payment Unit as a percentage of the total advertised value of the contract. The advertised value of each Payment Unit is given in the Description of Timber by Payment Unit table on the Timber Sale Information page. For example, if the value of Payment Unit 1 is advertised as \$1,500 and the total Timber Sale value is advertised as \$10,000, the contract price for Payment Unit 1 will be 15% of the total bid price ($\$1,500/\$10,000 * 100$).

10. Disclaimer of Estimates and Bidder's Warranty of Inspection (7/16)

Before submitting this bid, the Bidder is advised and cautioned to inspect the sale area, review the requirements of the sale contract, and take other steps as may be reasonably necessary to ascertain the location, estimated volumes, construction estimates, and operating costs of the proposed sale. Failure to do so will not relieve the Bidder from responsibility for completing the contract.

The Bidder warrants that this bid is submitted solely on the basis of the Bidder's examination and inspection of the quality and quantity of the timber offered for sale and the Bidder's opinion of the value thereof and the costs of recovery. No reliance should be placed on the State of Michigan's estimates of timber quality, quantity or costs of recovery. Bidder further acknowledges that the State of Michigan: (i) expressly disclaims any warranty of fitness of timber for any purpose; (ii) offers this timber as is without any warranty of quality (merchantability) or quantity and (iii) expressly disclaims any warranty as to the quantity or quality of timber sold.

11. Certification and Chain-of-Custody (10/14)

Unless otherwise indicated in the contract under section 7 – Other Conditions of the Sale Specific Conditions & Requirements, the area encompassed by this timber sale is certified to the standards of the Forest Stewardship Council (FSC) - Certificate #SCS-FM/COC-00090N and the Sustainable Forestry Initiative (SFI) - Certificate #NSF-SFIS-5Y031-SF5. Forest products from this sale may be delivered to the mill as "FSC 100% and / or SFI certified" as long as the contractor hauling the forest products is chain-of-custody (COC) certified or covered under a COC certificate from the destination mill. The purchaser is responsible for maintaining COC after leaving the sale area.

12. Good Neighbor Authority (GNA) Requirements (7/16)

If the name of this timber sales contains the acronym GNA, it is authorized by the Good Neighbor Authority (GNA) and covered by various agreements between the U.S. Forest Service and the State. The timber sale occurs on federal land and the following conditions apply:

GNA contracts on US Forest Service land will not be awarded to purchasers on the Federal list of excluded parties. The System for Award Management (SAM) will be checked for active excluded parties prior to award of contract. In addition, the Bidder to whom award is made must complete an Assurance Regarding Felony Conviction or Tax Delinquent Status for Corporate Applicants (AD-3031).

13. Good Neighbor Authority (GNA) Requirements, con't (9/16)

Bidder certifies, by signing this bid form, that to the best of Bidder's knowledge that the following representations are accurate and complete.

- a. That the Bidder and its principals are not presently debarred, suspended, proposed for debarment, declared ineligible, or voluntary excluded from timber sales (covered transactions) by any Federal department or agency.
- b. That the Bidder and its principals have not within a 3-year period preceding this bid been convicted of or had a civil judgment rendered against them for commission of fraud or a criminal offense in connection with obtaining , attempting to obtain, or performing a public (Federal, State, or local) transaction or contract under a public transaction; violation of Federal or State antitrust statutes or commission of embezzlement, theft, forgery, bribery, falsification or destruction of records, making false statements, or receiving stolen property.
- c. That the Bidder and its principals are not presently indicted for or otherwise criminally or civilly charged by a governmental entity (Federal, State, or local) with commission of any of the offenses enumerated in paragraph b of this certification.
- d. That the Bidder and its principals have not within a 3-year period preceding this bid had one or more public transactions (Federal, State, or local) terminated for breach or default of a timber or forest product contract.

Bidders that cannot certify this requirement, in whole or in part, shall submit an explanation with their bid.

DAN EICHINGER
Director

TIMBER SALE INFORMATION

Speed Bump Hardwoods (61-122-22)

T27N, R05W, SEC. 10; T27N, R05W, SEC. 11; T27N, R05W, SEC. 2; T27N, R05W, SEC. 3.

Kalkaska County (Advertised Price \$412,748.20)

SALE NOTE: Payment Units 2-7 have the oak wilt restriction with no exceptions applied to them.

A recreation site such as a trail, pathway, or campground is within the sale area or the vicinity. Certain restrictions/specifications may be applicable including time restrictions.

A timber sale contract for this lump sum, sealed bid timber sale will be awarded to the responsible bidder offering the highest sealed bid price. All units of volume listed below were estimated using the Inventory Manager computer program and the new Michigan taper model. Bids must be at or above the following advertised price for each product and species:

<u>PRODUCTS & SPECIES</u>	<u>ESTIMATED UNITS*</u>	<u>ADVERTISED PRICE</u>
Sawtimber		
B. T. Aspen	68.6 MBF	\$ 94.00 / MBF
Basswood	29.9 MBF	\$ 89.00 / MBF
Black Cherry	66.6 MBF	\$ 131.00 / MBF
Paper Birch	6.8 MBF	\$ 32.00 / MBF
Red Maple	547.3 MBF	\$ 123.00 / MBF
Red Oak	642.9 MBF	\$ 112.00 / MBF
Red Pine	29.1 MBF	\$ 91.00 / MBF
Sugar Maple	749.9 MBF	\$ 223.00 / MBF
White Pine	84.3 MBF	\$ 47.00 / MBF
White Spruce	71.2 MBF	\$ 31.00 / MBF
Pulpwood		
B. T. Aspen	71 Cords	\$ 16.40 / Cord
Misc. Species 1	24 Cords	\$ 8.25 / Cord
Mixed Hardwood	3,577 Cords	\$ 16.60 / Cord
Red Oak	495 Cords	\$ 17.90 / Cord
Red Pine	41 Cords	\$ 37.10 / Cord
White Pine	254 Cords	\$ 19.25 / Cord
White Spruce	214 Cords	\$ 15.50 / Cord

* The total volume is statistically estimated within plus (+) or minus (-) 8.79 percent. There are an estimated 10,225 cords on this timber sale, plus or minus 899 cords at the 95% confidence level. The estimated units are final and not subject to adjustment. Prospective bidders are urged to examine this timber and to make their own estimates of quantity and quality.

BOND AND PAYMENT SCHEDULE:

1. A bond in the amount of \$20,637.00 to insure faithful performance of the conditions of the contract will be deposited by the successful bidder within 21 days of the sale award.
2. Cutting in any sale or unit without the required advance payment would be considered a trespass.
3. Total payment must be paid in advance or according to the following schedule :
 - (a) Ten percent (10%) of the sale value must be paid within 21 days of the sale award.
 - (b) The 10% down payment will be credited towards the first unit cut.
 - (c) Payment for each of the following units must be made before cutting begins in that unit:

PAYMENT UNIT NUMBER	PERCENT OF TOTAL SALE VALUE
01	4.4%
02	15.8%
03	15.7%
04	14.1%
05	26.0%
06	12.4%
07	11.6%

4. If no cutting takes place, the 10% down payment will not be refunded.
5. Operations on the contract issued will terminate on 12/31/2025.

SALE STATISTICS

Volumes were calculated in cubic feet using the Michigan taper model. Cubic foot volume includes all wood inside bark for the product indicated. For display purposes, cubic feet were converted to cords and MBF using a simple conversion factor, e.g. 79 cubic feet per cord and 185 cubic feet per MBF. The cubic foot volumes are precise; the cords and MBF volumes are not. Cubic foot volume cannot be directly converted to cords or boards with precision.

SALE VOLUMES

The total estimated sale volume may not equal the sum of the species/products due to the nature of statistical calculations associated with double sampling methodology.

VOLUME			STATISTICAL RANGE IN CORDS	
TOTAL CUBIC FEET	TOTAL CORDS	PERCENT ERROR	MINIMUM	MAXIMUM
807,780	10,225	8.79%	9,326	11,124

VDU VOLUMES

A VDU is a Volume Determination Unit. Volumes and their associated statistics are calculated at the VDU level and summarized to the sale level. There is often a one to one relationship between a VDU and a Payment Unit, but not always, depending on the cruise design. Refer to the VDU TO PAYMENT UNIT table.

VDU	VOLUME		PERCENT ERROR	RANGE IN CORDS	
	TOTAL CUBIC FEET	TOTAL CORDS		MINIMUM	MAXIMUM
37	74,096	938	33.15%	627	1,249
39	259,036	3,279	8.60%	2,997	3,561
41	408,191	5,167	12.12%	4,541	5,793
639	66,457	841	36.95%	530	1,152
TOTAL:	807,780	10,225		8,695	11,755

VDU TO PAYMENT UNIT

When a VDU is associated with more than one Payment Unit (PU), the VDU volumes are assigned to the PU based on acres of the VDU within the PU.

VDU	VDU ACRES	PU	PU ACRES
37	15.6	1	15.6
39	131.8	2	45.2
		3	47.3
		4	39.3
		5	67.0
41	129.2	6	32.1
		7	30.1
		2	4.8
639	13.3	3	3.9
		4	4.6
		TOTAL:	289.9

DESCRIPTION OF TIMBER BY PAYMENT UNIT (PU)

PU	MARKET GROUP	PRODUCT	QUANTITY	UNIT	ACRES	ADVERTISE PRICE
1	Black Cherry	Sawtimber	17.9	MBF	15.6	\$18,314.30
	White Pine		84.3	MBF		
	White Spruce		71.2	MBF		
	Mixed Hardwood	Pulpwood	96	Cords		
	<i>Black Cherry</i>		74	<i>Cords</i>		
	<i>Sugar Maple</i>		22	<i>Cords</i>		
	White Pine		254	Cords		
	White Spruce		214	Cords		
2	Basswood	Sawtimber	10.4	MBF	50.0	\$65,329.70
	Black Cherry		13.7	MBF		
	Red Maple		70.3	MBF		
	Sugar Maple		190.1	MBF		
	Mixed Hardwood	Pulpwood	697	Cords		
	<i>Beech</i>	<i>Sawtimber</i>	1.1	<i>MBF</i>		
	<i>Basswood</i>	<i>Pulpwood</i>	6	<i>Cords</i>		
	<i>Beech</i>		4	<i>Cords</i>		
	<i>Black Cherry</i>		17	<i>Cords</i>		
	<i>Red Maple</i>		122	<i>Cords</i>		
	<i>Sugar Maple</i>		546	<i>Cords</i>		
	3	Basswood	Sawtimber	10.3		
Black Cherry			13.9	MBF		
Red Maple			70.0	MBF		
Sugar Maple			187.9	MBF		
Mixed Hardwood		Pulpwood	701	Cords		
<i>Beech</i>		<i>Sawtimber</i>	1.1	<i>MBF</i>		
<i>Basswood</i>		<i>Pulpwood</i>	5	<i>Cords</i>		
<i>Beech</i>			4	<i>Cords</i>		
<i>Black Cherry</i>			18	<i>Cords</i>		
<i>Red Maple</i>			120	<i>Cords</i>		
<i>Sugar Maple</i>			552	<i>Cords</i>		
4		Basswood	Sawtimber	9.2	MBF	43.9
	Black Cherry		12.1	MBF		
	Red Maple		62.4	MBF		
	Sugar Maple		169.6	MBF		
	Mixed Hardwood	Pulpwood	617	Cords		
	<i>Beech</i>	<i>Sawtimber</i>	1.0	<i>MBF</i>		
	<i>Basswood</i>	<i>Pulpwood</i>	5	<i>Cords</i>		
	<i>Beech</i>		4	<i>Cords</i>		
	<i>Black Cherry</i>		15	<i>Cords</i>		
	<i>Red Maple</i>		109	<i>Cords</i>		
	<i>Sugar Maple</i>		482	<i>Cords</i>		
	5	B. T. Aspen	Sawtimber	35.6	MBF	
Black Cherry			4.7	MBF		
Paper Birch			3.5	MBF		
Red Maple			178.7	MBF		
Red Oak			333.4	MBF		
Red Pine			15.1	MBF		
Sugar Maple			104.9	MBF		
B. T. Aspen		Pulpwood	36	Cords		
Misc. Species 1			12	Cords		
Mixed Hardwood			760	Cords		
<i>Beech</i>			68	<i>Cords</i>		
<i>Black Cherry</i>			15	<i>Cords</i>		
<i>Paper Birch</i>			5	<i>Cords</i>		
<i>Red Maple</i>			399	<i>Cords</i>		
<i>Sugar Maple</i>			273	<i>Cords</i>		

DESCRIPTION OF TIMBER BY PAYMENT UNIT (PU), CON'T

PU	MARKET GROUP	PRODUCT	QUANTITY	UNIT	ACRES	ADVERTISE PRICE	
5 con't	Red Oak	Pulpwood	257	Cords			
	Red Pine		21	Cords			
6	B. T. Aspen	Sawtimber	17.0	MBF	32.1	\$51,187.70	
	Black Cherry		2.2	MBF			
	Paper Birch		1.7	MBF			
	Red Maple		85.6	MBF			
	Red Oak		159.7	MBF			
	Red Pine		7.2	MBF			
	Sugar Maple		50.3	MBF			
	B. T. Aspen		Pulpwood	18			Cords
	Misc. Species 1			6			Cords
	Mixed Hardwood			364			Cords
	<i>Beech</i>	32		<i>Cords</i>			
	<i>Black Cherry</i>	7		<i>Cords</i>			
	<i>Paper Birch</i>	2		<i>Cords</i>			
	<i>Red Maple</i>	192		<i>Cords</i>			
	<i>Sugar Maple</i>	131	<i>Cords</i>				
	Red Oak		123	Cords			
	Red Pine		10	Cords			
7	B. T. Aspen	Sawtimber	16.0	MBF	30.1	\$48,041.90	
	Black Cherry		2.1	MBF			
	Paper Birch		1.6	MBF			
	Red Maple		80.3	MBF			
	Red Oak		149.8	MBF			
	Red Pine		6.8	MBF			
	Sugar Maple		47.1	MBF			
	B. T. Aspen		Pulpwood	17			Cords
	Misc. Species 1			6			Cords
	Mixed Hardwood			342			Cords
	<i>Beech</i>	30		<i>Cords</i>			
	<i>Black Cherry</i>	7		<i>Cords</i>			
	<i>Paper Birch</i>	2		<i>Cords</i>			
	<i>Red Maple</i>	180		<i>Cords</i>			
	<i>Sugar Maple</i>	123	<i>Cords</i>				
	Red Oak		115	Cords			
	Red Pine		10	Cords			
TOTAL:			2,296.6	MBF			
TOTAL:			4,676	Cords			

Sale Specific Conditions & Requirements

Sale Name: Speed Bump Hardwoods

Sale Number: 61-122-22 Seq#: 1

1 - Sale Area

1.2 - Boundaries

1.2.1 - Painted boundaries (9/19)

The sale boundary and Payment Unit boundaries are marked and identified by red and yellow paint. Exterior sale boundary lines against state are marked with red paint. Interior Payment Unit boundaries are marked with yellow paint. Regen gaps are marked with pink paint. The painted boundary line trees are not Included Timber and are to be protected unless marked with orange paint.

2 - Timber Specifications

2.1 - Included Timber

2.1.1 - Clearcut unit(s) with unmerchantable trees (6/14)

Within Payment Unit(s) 1, cut all trees that are two (2) inches or more at DBH, except sugar maple less than 6 inches at DBH or trees marked with green paint.

2.1.3 - Cut tree marked unit(s) (12/08)

Within Payment Unit(s) 2-4, all trees are designated for cutting when marked with orange paint above and below stump height, regardless of merchantability. In addition, cut all aspen, beech, and ironwood except for those marked with an orange 'X'. Regen gaps are marked in pink paint and are shown on the Timber Sale Map. Within regen gap boundaries, cut all trees greater than 4 feet tall, except do not cut any hemlock.

2.1.7 - Leave tree marked unit(s) (6/14)

Within Payment Unit(s) 5-7, cut all trees that are 4 feet or taller, except do not cut white pine, hemlock, white oak, yellow birch, and trees marked with green paint above and below stump height. Also, do not cut any sugar maple less than 4 inches in diameter.

2.1.11 - Description of timber note (2/04)

Note that Misc. Species 1 = dead oak.

2.2 - Utilization

2.2.4 - Skidding length (2/14)

Skidding of unlimbed tops or lengths over 17 feet is not permissible in Payment Units 2-4 unless approved by the Unit Manager or his/her representative.

3 - Payments

3.3 - Pre-measured Sales

3.3.4 - Dividing payment units (7/14)

Payment Unit(s) with a value greater than \$15,000 may be divided at the request of the Purchaser and upon approval of the Unit Manager. Dividing Payment Units is a contract modification which requires a Timber Sale Contract Amendment. There will be only one division per Payment Unit.

3.4 - Damaged Timber

3.4.1 - Damaged timber (7/16)

General Condition and Requirement 3.4 Damaged Timber, defines liquidated damages for undesignated live merchantable trees which are cut or injured.

No damage is acceptable to undesignated live merchantable trees. Within the Sale Area, if more than 10% of trees (> 4.5" DBH) within a specified area of the sale are damaged, liquidated damages will be assessed for all trees damaged. Rates will be in accordance with General Condition and Requirement 3.4 Damaged Timber.

4 - Transportation

4.1 - Construction

4.1.6 - Road construction (1/09)

Construction of new roads or improvements of existing roads shall be done in such a way as to minimize the environmental and visual impacts. Merchantable trees shall be cut and utilized unless otherwise directed. Non-merchantable trees shall be severed and laid flat on the ground. Slash shall be scattered, and not left in windrows and kept a minimum of 10 feet back from the road edge. Stumps shall be set upright, not left on edge, and be moved at least 10 feet away from the road edge. Disturbed soil shall be feathered into the woods and not left in berms or windrows.

4.1.7 - Road closure (10/11)

All new roads built into the sale must be blocked to vehicle traffic within 30 days of completion of hauling. Overgrown roads that are reopened shall be considered new roads. In general, this will require constructing a four (4') foot high berm of stumps and logs covered with earth. These roads must be rendered impassable to cars and trucks. Temporary berms may be required if no sale activity occurs for 30 or more consecutive days. Contact the sale administrator for specific details of design and placement.

4.2 - Maintenance

4.2.1 - Hauling restriction (12/08)

Hauling may be restricted on forest roads by the Unit Manager or his/her representative. The restriction may occur during spring break up or during wet weather conditions.

5 - Operations

5.2 - Conduct of Operations

5.2.1 - Slash

5.2.1.8 - Slash height (12/08)

No slash or tree tops may exceed 24 inches in height.

5.2.1.10 - No slash in openings (5/10)

No brush or logging debris is to be left in the maintained wildlife opening which is indicated by G0 on the Timber Sale Map to the west of Payment Units 1 and 2. Any damage to the opening shall be repaired according to specifications of the Unit Manager or his/her representative.

5.2.3 - Operating Restrictions

5.2.3.4 - Oak wilt restriction, no exceptions (1/18)

Within Payment Unit(s) 2-7, cutting, skidding, and hauling within the sale and brushing of access roads to the sale are not permitted during the period of April 15 to July 15. No exceptions will be granted. This is necessary to reduce the spread of oak wilt.

5.2.21 - Chains (6/11)

Within Payment Units 5-7; to help promote scarification, it is required that rubber wheeled harvesters and forwarders run with chains if the sale is cut by a round-wood crew. If the sale is whole tree harvested with grapple skidders the chains will not be needed.

If the Purchaser shows that they can adequately scarify the site without chains this specification can be waived by the sale administrator. Contact the sale administrator for further details.

5.2.32 - Decking/landing restoration (9/13)

All decking and landing areas must have the surface area restored to a condition equal to or better than before. This is to ensure the proper regeneration of the stand. Wood debris, chips, and "cookies" from trimmings must be removed or scattered away from landing and loading areas and may not be windrowed on the edge.

5.2.37 - No decking areas (12/08)

No decking is allowed within the wildlife opening (G0) to the west of Payment Units 1 and 2.

5.2.38 - No decking against live trees (2/04)

Cut products may not be decked against unmarked or designated leave trees.

5.2.41 - Snowmobile trail protection (9/11)

The snowmobile trail is shown on the Timber Sale Map. Do not cut or damage posts with orange trail markers or traffic control signs. If the trail is used, it must be maintained and restored to a condition equal to or better than before the sale. If the trail road is to be used for hauling during the snowmobile season, then a snow-covered base must be left on the trail. Maintain a 20-foot-wide slash, debris, and rut free zone daily using the snowmobile trail as the centerline. No decking of forest products will be permitted along the snowmobile trail. All stumps within 20 feet of the snowmobile trail must be cut at ground level. In addition, any trees cut within 5 feet of the trail must have the stumps removed and be disposed of according to the direction of the Unit Manager or his/her representative.

5.4 - Soil Protection

5.4.1 - Rutting restriction, general (7/16)

The Unit Manager or his/her representative may restrict hauling and/or skidding if ruts exceed the specified depth. With the Unit Manager or his/her representative's approval, the Purchaser may return to the area when the risk of rutting has decreased.

5.8 - Protection of Endangered Species

5.8.5 - Protection of raptor nests (3/13)

All trees with raptor nests will be protected if found during harvesting operations. Notification will be made to the Unit Manager or his/her representative who will notify the Wildlife Biologist so an on-site evaluation and recommendation can be made, if necessary.

6 - Safety and Fire Prevention

6.2 - Signing

6.2.1 - Road posting (10/20)

The Purchaser is responsible for posting and maintaining caution signs on roads used for hauling prior to beginning operations. The road must be posted at appropriate distances from the Sale Area to warn of logging activity and truck traffic. Signs must be removed when harvest operations are suspended or completed. The Purchaser will provide these signs.

6.2.2 - Snowmobile trail posting (10/20)

The Purchaser is responsible for posting and maintaining caution signs on the snowmobile trail prior to beginning operations during the snowmobile season (approximately December 1 to March 31). The trail must be posted at appropriate distances from the Sale Area to warn of logging activity and truck traffic. Signs must be removed when harvest operations are suspended or completed. The Purchaser will provide these signs.



TIMBER SALE MAP

This information provided by authority of Part 525, 1994 PA 451, as amended

Forest Management Unit Traverse City	County Kalkaska	Maped By Crigler	Date 7/5/2022	Page 1	of 1	Sale Number 61-122	Year 22
---	--------------------	---------------------	------------------	-----------	---------	-----------------------	------------

Township 27N	Range 05W	Section(s) and Subdivision(s) Section 2 & 3	Scale 1:15,840	Density 1.15,840
-----------------	--------------	--	-------------------	---------------------

Cover Type	
A = Aspen	H = Hemlock
B = Paper Birch	J = Jack Pine
C = Cedar	L = Lowland Bush
D = Tread Bog	LM = Lowland Mixed
E = Swamp Hardwoods	M = Mj1, Bch, Rich
F = Spruce Fir	MC = Mixed Conifer
G = Grass	MD = Mixed Deciduous
N = Marsh	U = Upland Brush
O = Oak	UM = Upland Mixed
P = Lowland Poplar	V = Bog or Marsh
Q = Mixed Swamp Conifer	W = White Pine
R = Red Pine	X = Non Stocked
S = Black Spruce	Z = Water
T = Tamarack	

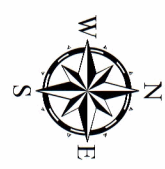
Density	
0 = Non Stocked	5 = Pole Timber Medium
1 = Seeding Sapling Poor	6 = Pole Timber Well
2 = Seeding Sapling Medium	7 = Saw Timber Poor
3 = Seeding Sapling Well	8 = Saw Timber Medium
4 = Pole Timber Poor	9 = Saw Timber Well

Speed Bump Hardwoods

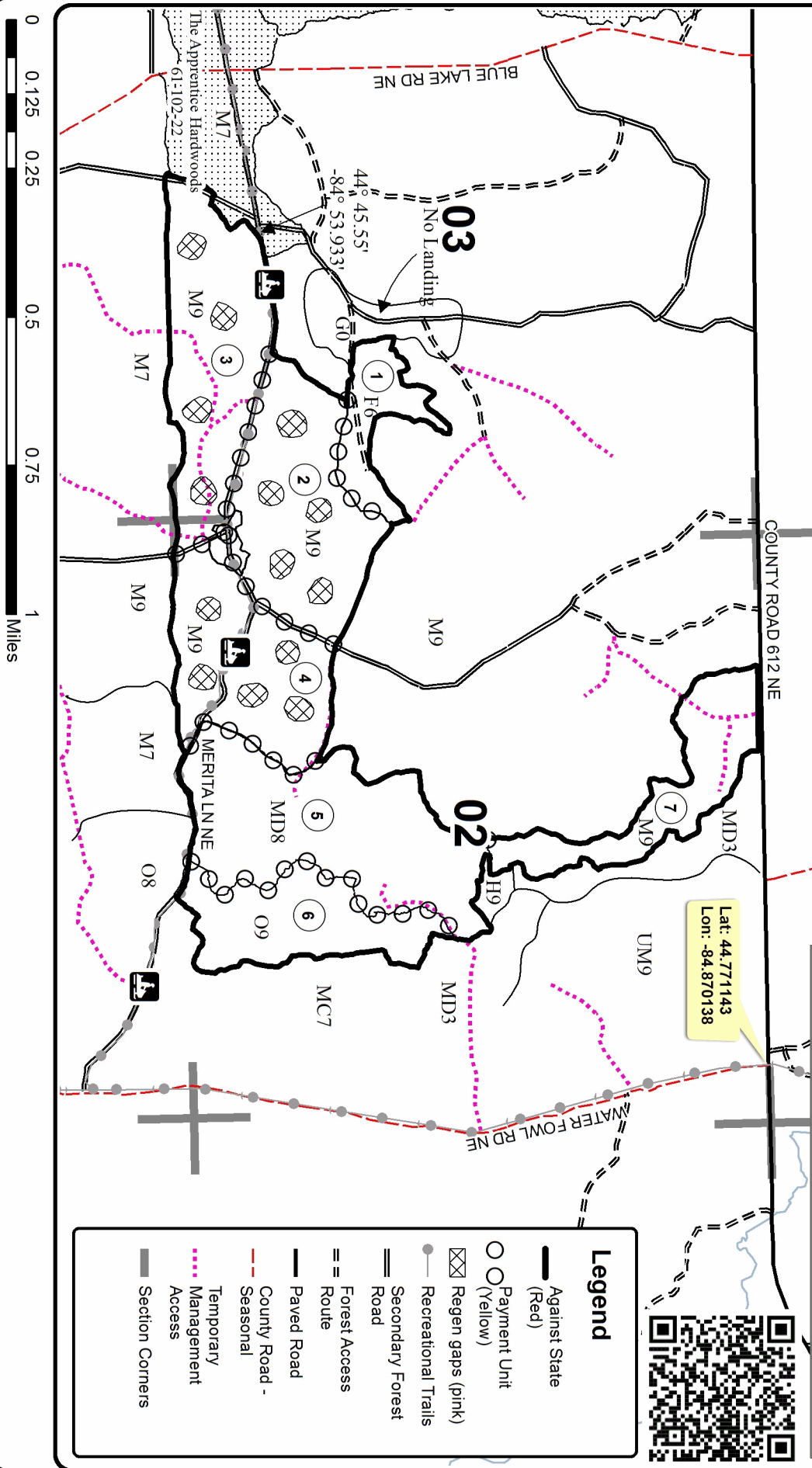
Compartment 110

289.9 acres

PU	Acres	PU	Acres
1	15.6	5	67
2	50.0	6	32.1
3	51.2	7	30.1
4	43.9		



Lat: 44.771143
Lon: -84.870138



Legend	
	Against State (Red)
	Payment Unit (Yellow)
	Regen gaps (pink)
	Recreational Trails
	Secondary Forest Road
	Forest Access Route
	Paved Road
	County Road - Seasonal
	Temporary Management Access
	Section Corners



TIMBER SALE INFORMATION

Ground Out Mix (61-131-22)

T25N, R06W, SEC. 21; T25N, R06W, SEC. 28.
Kalkaska County (Advertised Price \$13,598.90)

A timber sale contract for this lump sum, sealed bid timber sale will be awarded to the responsible bidder offering the highest sealed bid price. All units of volume listed below were estimated using the Inventory Manager computer program and the new Michigan taper model. Bids must be at or above the following advertised price for each product and species:

<u>PRODUCTS & SPECIES</u>	<u>ESTIMATED UNITS*</u>	<u>ADVERTISED PRICE</u>
Sawtimber		
BI/R/Hybrid Oak	33.8 MBF	\$ 58.00 / MBF
Jack Pine	13.0 MBF	\$ 31.00 / MBF
Red Pine	26.6 MBF	\$ 91.00 / MBF
White Pine	32.7 MBF	\$ 47.00 / MBF
Pulpwood		
BI/R/Hybrid Oak	39 Cords	\$ 17.90 / Cord
Jack Pine	285 Cords	\$ 15.20 / Cord
Red Maple	41 Cords	\$ 16.60 / Cord
Red Pine	8 Cords	\$ 37.10 / Cord
White Pine	66 Cords	\$ 19.25 / Cord

* The total volume is statistically estimated within plus (+) or minus (-) 26.03 percent. There are an estimated 706 cords on this timber sale, plus or minus 184 cords at the 95% confidence level. The estimated units are final and not subject to adjustment. Prospective bidders are urged to examine this timber and to make their own estimates of quantity and quality.

BOND AND PAYMENT SCHEDULE:

1. A bond in the amount of \$680.00 to insure faithful performance of the conditions of the contract will be deposited by the successful bidder within 21 days of the sale award.
2. Cutting in any sale or unit without the required advance payment would be considered a trespass.
3. Total payment must be paid in advance or according to the following schedule :
 - (a) Ten percent (10%) of the sale value must be paid within 21 days of the sale award.
 - (b) The remainder is due before cutting begins.
 - (c) Payment for each of the following units must be made before cutting begins in that unit:

PAYMENT UNIT NUMBER	PERCENT OF TOTAL SALE VALUE
01	100.0%
4. If no cutting takes place, the 10% down payment will not be refunded.
5. Operations on the contract issued will terminate on 12/31/2024.

SALE STATISTICS

Volumes were calculated in cubic feet using the Michigan taper model. Cubic foot volume includes all wood inside bark for the product indicated. For display purposes, cubic feet were converted to cords and MBF using a simple conversion factor, e.g. 79 cubic feet per cord and 185 cubic feet per MBF. The cubic foot volumes are precise; the cords and MBF volumes are not. Cubic foot volume cannot be directly converted to cords or boards with precision.

SALE VOLUMES

The total estimated sale volume may not equal the sum of the species/products due to the nature of statistical calculations associated with double sampling methodology.

VOLUME		STATISTICAL RANGE IN CORDS		
TOTAL CUBIC FEET	TOTAL CORDS	PERCENT ERROR	MINIMUM	MAXIMUM
55,778	706	26.03%	522	890

VDU VOLUMES

A VDU is a Volume Determination Unit. Volumes and their associated statistics are calculated at the VDU level and summarized to the sale level. There is often a one to one relationship between a VDU and a Payment Unit, but not always, depending on the cruise design. Refer to the VDU TO PAYMENT UNIT table.

VDU	VOLUME		PERCENT ERROR	RANGE IN CORDS	
	TOTAL CUBIC FEET	TOTAL CORDS		MINIMUM	MAXIMUM
83	55,778	706	26.04%	522	890
TOTAL:	55,778	706		522	890

VDU TO PAYMENT UNIT

When a VDU is associated with more than one Payment Unit (PU), the VDU volumes are assigned to the PU based on acres of the VDU within the PU.

VDU	VDU ACRES	PU	PU ACRES
83	32.6	1	32.6
TOTAL:	32.6		32.6

DESCRIPTION OF TIMBER BY PAYMENT UNIT (PU)

PU	MARKET GROUP	PRODUCT	QUANTITY	UNIT	ACRES	ADVERTISE PRICE
1	BI/R/Hybrid Oak	Sawtimber	33.8	MBF	32.6	\$13,598.90
	Jack Pine		13.0	MBF		
	Red Pine		26.6	MBF		
	White Pine		32.7	MBF		
	BI/R/Hybrid Oak	Pulpwood	39	Cords		
	Jack Pine		285	Cords		
	Red Maple		41	Cords		
	Red Pine		8	Cords		
	White Pine		66	Cords		
TOTAL:			106.1	MBF		
TOTAL:			439	Cords		

Sale Specific Conditions & Requirements

Sale Name: Ground Out Mix

Sale Number: 61-131-22 Seq#: 1

1 - Sale Area

1.2 - Boundaries

1.2.1 - Painted boundaries (9/19)

The sale boundary is marked and identified with red paint. Exterior sale boundary lines against state are marked with red paint. The painted boundary line trees are not Included Timber and are to be protected.

2 - Timber Specifications

2.1 - Included Timber

2.1.1 - Clearcut unit(s) with unmerchantable trees (6/14)

Within Payment Unit(s) 1, cut all trees that are two (2) inches or more at DBH, except do not cut white pine less than 6 inches at DBH, any white oak, or any trees marked with green paint.

2.2 - Utilization

2.2.3 - Stump heights (4/07)

Stump heights within the Sale Area shall not exceed 12 inches for trees greater than 10 inches DBH and 6 inches for trees smaller than 10 inches DBH.

3 - Payments

3.3 - Pre-measured Sales

3.3.4 - Dividing payment units (7/14)

Payment Unit(s) 1 may be divided at the request of the Purchaser and upon approval of the Unit Manager. Dividing Payment Units is a contract modification which requires a Timber Sale Contract Amendment. There will be only one division per Payment Unit.

3.4 - Damaged Timber

3.4.1 - Damaged timber (7/16)

General Condition and Requirement 3.4 Damaged Timber, defines liquidated damages for undesignated live merchantable trees which are cut or injured. In addition, extreme care should be taken to avoid damage to white pine seedlings and saplings.

Within the sale area, if more than 20% of the tree seedlings or saplings (1/4" to 4.5" DBH) within a specified portion of the sale area are damaged, liquidated damages will be assessed at \$200 per acre for all acreage within that specified portion of the sale area that was damaged.

No damage is acceptable to undesignated live merchantable trees. Within the sale area, if more than 10 % of trees (> 4.5" DBH) within a specified area of the sale are damaged, liquidated damages will be assessed for all trees damaged. Rates will be in accordance with General Condition and Requirement 3.4 Damaged Timber.

4 - Transportation

4.1 - Construction

4.1.6 - Road construction (1/09)

Construction of new roads or improvements of existing roads shall be done in such a way as to minimize the environmental and visual impacts. Merchantable trees shall be cut and utilized unless otherwise directed. Non-merchantable trees shall be severed and laid flat on the ground. Slash shall be scattered, and not left in windrows and kept a minimum of 10 feet back from the road edge. Stumps shall be set upright, not left on edge, and be moved at least 10 feet away from the road edge. Disturbed soil shall be feathered into the woods and not left in berms or windrows.

4.1.7 - Road closure (10/11)

All new roads built into the sale must be blocked to vehicle traffic within 30 days of completion of hauling. Overgrown roads that are reopened shall be considered new roads. In general, this will require constructing a four (4') foot high berm of stumps and logs covered with earth. Stumps and brush must be placed along the remainder of the trail. These roads must be rendered impassable to cars and trucks. Contact the sale administrator for specific details of design and placement.

4.2 - Maintenance

4.2.1 - Hauling restriction (12/08)

Hauling may be restricted on forest roads by the Unit Manager or his/her representative. The restriction may occur during spring breakup or during wet weather conditions.

5 - Operations

5.2 - Conduct of Operations

5.2.1 - Slash

5.2.1.8 - Slash height (12/08)

No slash or tree tops may exceed 24 inches in height.

5.2.3 - Operating Restrictions

5.2.3.5 - Oak wilt restriction (1/18)

Within Payment Unit 1 unless changed by written agreement, cutting, skidding, hauling within the sale and brushing of access roads to the sale are not permitted during the period of April 15 to July 15. Operations may be allowed if specific steps are taken to prevent damaging uncut oak during the high risk period. Those steps may include completing all road brushing before April 15th and clearing a tree-length buffer along uncut oak cover before April 15th. This is necessary to reduce the spread of oak wilt. For more information, contact the Unit Manager or his/her representative.

5.2.32 - Decking/landing restoration (9/13)

All decking and landing areas must have the surface area restored to a condition equal to or better than before. This is to ensure the proper regeneration of the stand. Wood debris, chips and "cookies" from trimmings must be removed or scattered away from landing and loading areas and may not be windrowed on the edge.

5.4 - Soil Protection

5.4.1 - Rutting restriction, general (7/16)

Operations are to cease immediately if equipment and weather conditions result in rutting of roads and/or skid trails which is 12 inches or greater in depth and 50 feet in length. The Unit Manager or his/her representative may restrict hauling and/or skidding if ruts exceed the specified depth. With the Unit Manager or his/her representative's approval, the Purchaser may return to the area when the risk of rutting has decreased.

5.8 - Protection of Endangered Species

5.8.5 - Protection of raptor nests (3/13)

All trees with raptor nests will be protected if found during harvesting operations. Notification will be made to the Unit Manager or his/her representative who will notify the Wildlife Biologist so an on-site evaluation and recommendation can be made, if necessary.

6 - Safety and Fire Prevention

6.2 - Signing

6.2.1 - Road posting (10/20)

The Purchaser is responsible for posting and maintaining caution signs on Naples Rd or other road used for hauling prior to beginning operations. The road must be posted at appropriate distances from the sale area to warn of logging activity and truck traffic. Signs must be removed when harvest operations are suspended or completed. The Purchaser will provide these signs.



TIMBER SALE MAP

This information provided by authority of Part 525, 1994 PA 451, as amended.

Forest Management Unit Traverse City	County Kalkaska	Mapped By Crigier	Date 07/27/2022	Page 1	of 1
Township 25N	Range 06W	Section(s) and Subdivision(s) Section 28	Scale 1:15,840		

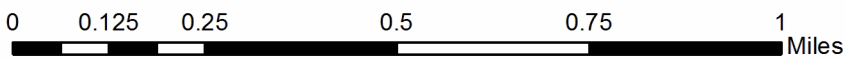
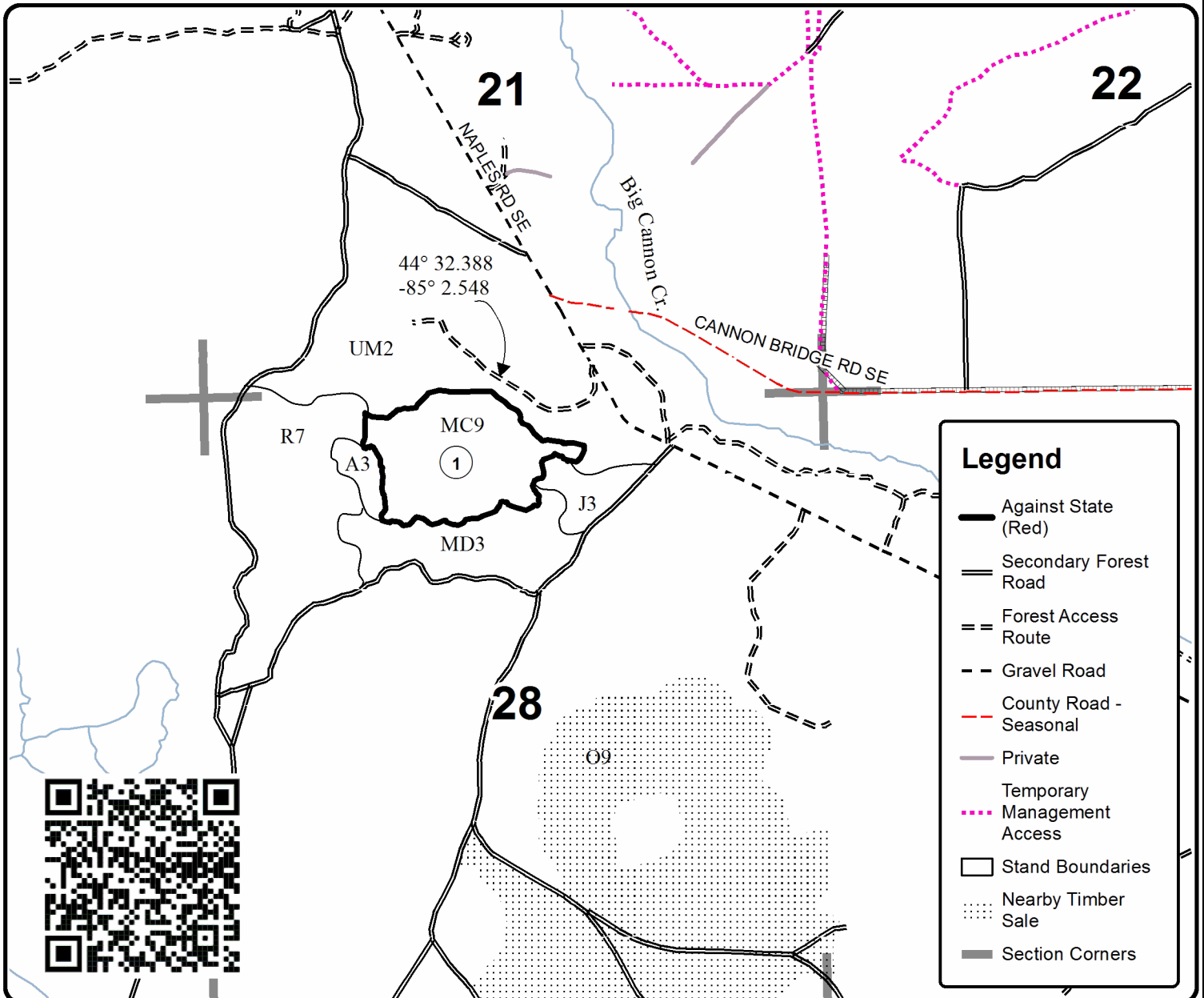
Cover Type				Density	
A = Aspen	H = Hemlock	N = Marsh	U = Upland Brush	0 = Non Stocked	5 = Pole Timber Medium
B = Paper Birch	J = Jack Pine	O = Oak	UM = Upland Mixed	1 = Seedling Sapling Poor	6 = Pole Timber Well
C = Cedar	L = Lowland Brush	P = Lowland Poplar	V = Bog or Marsh	2 = Seedling Sapling Medium	7 = Saw Timber Poor
D = Treed Bog	LM = Lowland Mixed	Q = Mixed Swamp Conifer	W = White Pine	3 = Seedling Sapling Well	8 = Saw Timber Medium
E = Swamp Hdwoods	M = Mpl, Bch, Brch	R = Red Pine	X = Non Stocked	4 = Pole Timber Poor	9 = Saw Timber Well
F = Spruce Fir	MC = Mixed Conifer	S = Black Spruce	Z = Water		
G = Grass	MD = Mixed Deciduous	T = Tamarack			

PU	Acres
1	32.6

Ground Out Mix

Compartment 146

32.6 Acres



TIMBER SALE INFORMATION

South Ridge Oak (61-612-22)
 T25N, R05W, SEC. 4; T26N, R05W, SEC. 33; T26N, R05W, SEC. 34.
 Kalkaska County (Advertised Price \$10,748.25)

SALE NOTE: All units of volume listed for this sale were estimated using the Inventory Manager computer program and the new Michigan taper model.

- See sale spec 7.10.1 for information on non-certified timber.
- See sale specs 2.2.2 and 2.2.3 for information on chipping and stump height requirements.
- See sale spec 5.2.3.4 for information on oak wilt requirements.

Access may be through other public land.

A timber sale contract for this lump sum, sealed bid timber sale will be awarded to the responsible bidder offering the highest sealed bid price. All units of volume listed below were estimated using the Inventory Manager computer program and the new Michigan taper model. Bids must be at or above the following advertised price for each product and species:

<u>PRODUCTS & SPECIES</u>	<u>ESTIMATED UNITS*</u>	<u>ADVERTISED PRICE</u>
Sawtimber		
Misc. Species 1	10.8 MBF	\$ 17.00 / MBF
Mixed Oak	77.4 MBF	\$ 26.00 / MBF
Red Oak	57.5 MBF	\$ 51.00 / MBF
Red Pine	4.4 MBF	\$ 41.00 / MBF
White Oak	21.9 MBF	\$ 25.00 / MBF
Pulpwood		
Jack Pine	7 Cords	\$ 6.90 / Cord
Misc. Species 1	10 Cords	\$ 3.25 / Cord
Mixed Hardwood	82 Cords	\$ 7.55 / Cord
Mixed Oak	473 Cords	\$ 8.15 / Cord
Red Pine	20 Cords	\$ 16.85 / Cord

* The total volume is statistically estimated within plus (+) or minus (-) 12.80 percent. There are an estimated 923 cords on this timber sale, plus or minus 118 cords at the 95% confidence level. The estimated units are final and not subject to adjustment. Prospective bidders are urged to examine this timber and to make their own estimates of quantity and quality.

BOND AND PAYMENT SCHEDULE:

1. A bond in the amount of \$537.00 to insure faithful performance of the conditions of the contract will be deposited by the successful bidder within 21 days of the sale award.
2. Cutting in any sale or unit without the required advance payment would be considered a trespass.
3. Total payment must be paid in advance or according to the following schedule :
 - (a) Ten percent (10%) of the sale value must be paid within 21 days of the sale award.
 - (b) The 10% down payment will be credited towards the first unit cut.
 - (c) Payment for each of the following units must be made before cutting begins in that unit:

PAYMENT UNIT NUMBER	PERCENT OF TOTAL SALE VALUE
01	66.0%
02	34.0%
4. If no cutting takes place, the 10% down payment will not be refunded.
5. Operations on the contract issued will terminate on 12/31/2025.

SALE STATISTICS

Volumes were calculated in cubic feet using the Michigan taper model. Cubic foot volume includes all wood inside bark for the product indicated. For display purposes, cubic feet were converted to cords and MBF using a simple conversion factor, e.g. 79 cubic feet per cord and 185 cubic feet per MBF. The cubic foot volumes are precise; the cords and MBF volumes are not. Cubic foot volume cannot be directly converted to cords or boards with precision.

SALE VOLUMES

The total estimated sale volume may not equal the sum of the species/products due to the nature of statistical calculations associated with double sampling methodology.

VOLUME			STATISTICAL RANGE IN CORDS	
TOTAL CUBIC FEET	TOTAL CORDS	PERCENT ERROR	MINIMUM	MAXIMUM
72,946	923	12.80%	805	1,042

VDU VOLUMES

A VDU is a Volume Determination Unit. Volumes and their associated statistics are calculated at the VDU level and summarized to the sale level. There is often a one to one relationship between a VDU and a Payment Unit, but not always, depending on the cruise design. Refer to the VDU TO PAYMENT UNIT table.

	VOLUME			RANGE IN CORDS	
VDU	TOTAL CUBIC FEET	TOTAL CORDS	PERCENT ERROR	MINIMUM	MAXIMUM
70	44,845	568	19.41%	457	678
86	28,101	356	12.04%	313	399
TOTAL:	72,946	923		770	1,076

VDU TO PAYMENT UNIT

When a VDU is associated with more than one Payment Unit (PU), the VDU volumes are assigned to the PU based on acres of the VDU within the PU.

VDU	VDU ACRES	PU	PU ACRES
70	26.2	1	26.2
86	55.3	1	2.0
		2	53.3
TOTAL:	81.5		81.5

DESCRIPTION OF TIMBER BY PAYMENT UNIT (PU)

PU	MARKET GROUP	PRODUCT	QUANTITY	UNIT	ACRES	ADVERTISE PRICE	
1	Misc. Species 1	Sawtimber	0.4	MBF	28.2	\$7,093.95	
	Mixed Oak		11.4	MBF			
	<i>B/R/Hybrid Oak</i>		6.6	<i>MBF</i>			
	<i>Northern Pin Oak</i>		4.8	<i>MBF</i>			
	Red Oak		57.5	MBF			
	Red Pine		0.2	MBF			
	White Oak		12.3	MBF			
	Jack Pine		Pulpwood	5			Cords
	Mixed Hardwood			82			Cords
	<i>Black Cherry</i>			7			<i>Cords</i>
	<i>Red Maple</i>			75			<i>Cords</i>
	Mixed Oak			340			Cords
	<i>B/R/Hybrid Oak</i>			6			<i>Cords</i>
	<i>Northern Pin Oak</i>			12			<i>Cords</i>
	<i>Red Oak</i>			288			<i>Cords</i>
	<i>White Oak</i>			34			<i>Cords</i>
	Red Pine			7			Cords
	2			Misc. Species 1			Sawtimber
Mixed Oak		66.0		MBF			
<i>B/R/Hybrid Oak</i>		0.3	<i>MBF</i>				
<i>Northern Pin Oak</i>		65.7	<i>MBF</i>				
Red Pine		4.2	MBF				
White Oak		9.6	MBF				
Jack Pine		Pulpwood	2	Cords			
Misc. Species 1			10	Cords			
Mixed Oak			133	Cords			
<i>B/R/Hybrid Oak</i>			16	<i>Cords</i>			
<i>Northern Pin Oak</i>			97	<i>Cords</i>			
<i>White Oak</i>			20	<i>Cords</i>			
Red Pine			13	Cords			
TOTAL:			172.0	MBF			
TOTAL:			592	Cords			

Sale Specific Conditions & Requirements

Sale Name: South Ridge Oak

Sale Number: 61-612-22 Seq#: 2

1 - Sale Area

1.2 - Boundaries

1.2.1 - Painted boundaries (9/19)

The sale boundary and Payment Unit boundaries are marked and identified by red paint. Exterior sale boundary lines against state are marked with red paint. The Interior Payment Unit boundary is designated by Portage Creek Road. The painted boundary line trees are not Included Timber and are to be protected.

2 - Timber Specifications

2.1 - Included Timber

2.1.2 - Clearcut unit(s) w/o unmerchantable trees (8/11)

Within Payment Unit(s) 1, cut all trees which meet minimum piece specifications in 2.2 Utilization, except do not cut white pine or trees marked with green paint. There is a pocket of 15-year-old aspen (~1 acre) in the southern part of the Payment Unit. Do not cut or damage this pocket of regeneration. Contact sale administrator with any questions.

2.1.5 - Overstory removal unit(s) (8/11)

Within Payment Unit(s) 2, all trees with a DBH of greater than 6 inches, which meet minimum piece specifications in 2.2 Utilization, are designated for cutting, except do not cut white pine or trees marked with green paint.

2.1.11 - Description of timber note (2/04)

Note that Misc. Species 1 = dead oak.

2.2 - Utilization

2.2.2 - Chipping required (2/18)

Payment Units 1 and 2 must be chip harvested to meet National Guard requirements. However, the chipping requirement could be waived with military approval if chip markets are depressed. The Purchaser has the option to produce sawlogs or pulpwood bolts, but the remaining portion of the trees must be chipped and hauled. Products may be produced as roundwood and forwarded to decking areas in final product length, but the tops must be left intact and skidded to the landing for chipping to minimize the amount of residual slash or tops must be ran over and broken down as to not interfere with National Guard training. The requirement to retain approximately 1/6 to 1/3 of tree tops and limbs less than four inches in diameter does not apply (G. C. & R. 2.2). This is because this sale is not on certified land.

2.2.3 - Stump heights (4/07)

Stump heights within the Sale Area shall not exceed 6 inches for all trees. This is to facilitate military requirements.

3 - Payments

3.4 - Damaged Timber

3.4.1 - Damaged timber (7/16)

General Condition and Requirement 3.4 Damaged Timber, defines liquidated damages for undesignated live merchantable trees which are cut or injured. In addition, extreme care should be taken to avoid damage to tree seedlings and saplings. Within the Sale Area, if more than 20% of the tree seedlings or saplings (1/4" to 4.5" DBH) within a specified portion of the Sale Area are damaged, liquidated damages will be assessed at \$300 per acre for all acreage within that specified portion of the Sale Area that was damaged.

No damage is acceptable to undesignated live merchantable trees. Within the Sale Area, if more than 10% of trees (> 4.5" DBH) within a specified area of the sale are damaged, liquidated damages will be assessed for all trees damaged. Rates will be in accordance with General Condition and Requirement 3.4 Damaged Timber.

4 - Transportation

4.1 - Construction

4.1.6 - Road construction (1/09)

Improvements of existing roads shall be done in such a way as to minimize the environmental and visual impacts. Merchantable trees shall be cut and utilized unless otherwise directed. Non-merchantable trees shall be severed and laid flat on the ground. Slash shall be scattered, and not left in windrows and kept a minimum of 10 feet back from the road edge. Stumps shall be set upright, not left on edge, and be moved at least 10 feet away from the road edge. Disturbed soil shall be feathered into the woods and not left in berms or windrows.

4.1.12 - No new roads (1/12)

No new roads will be permitted in any Payment Unit. All operations are limited to existing roads. Skid trails only will be allowed.

5 - Operations

5.1 - Notification

5.1.5 - National Guard notification (2/15)

This sale is upon lands utilized for training by the Michigan National Guard - Camp Grayling. A minimum of five (5) business days prior to opening this sale, the producer must request that the sale administrator contact the military for information regarding training plans that may impact sale operations.

5.2 - Conduct of Operations

5.2.2 - Hazard Trees/Snags

5.2.2.1 - Den trees (10/16)

Obvious hollow and/or den trees shall be protected and left standing unless they are a safety hazard.

5.2.3 - Operating Restrictions

5.2.3.4 - Oak wilt restriction, no exceptions (1/18)

Within Payment Unit 1 and 2, cutting, skidding, hauling within the sale and brushing of access roads to the sale are not permitted during the period of April 15 to July 15. No exceptions will be granted. This is necessary to reduce the spread of oak wilt.

5.2.3.7 - National Guard training restriction (1/09)

Operations on this contract may not be allowed during National Guard training operations. Typically, the restricted period is from May 1 to October 31. The contractor must check with the Unit Manager who will coordinate the cutting schedule with the Military. All harvest equipment and timber products must be removed from the Sale Area during the period of May 1 to October 31.

5.2.32 - Decking/landing restoration (9/13)

All decking and landing areas must have the surface area restored to a condition equal to or better than before. This is to ensure the proper regeneration of the stand. Wood debris, chips, and "cookies" from trimmings must be removed or scattered away from landing and loading areas and may not be windrowed on the edge.

5.4 - Soil Protection

5.4.1 - Rutting restriction, general (7/16)

The Unit Manager or his/her representative may restrict hauling and/or skidding if ruts exceed the specified depth. With the Unit Manager or his/her representative's approval, the Purchaser may return to the area when the risk of rutting has decreased.

5.4.4 - Slope protection (9/19)

Skid trails and roads on slopes shall be water barred with slash and stumps as soon as use is complete to prevent erosion.

5.8 - Protection of Endangered Species

5.8.1 - Kirtland's warbler (1) (10/12)

This sale is adjacent to a young jack pine stand which may be used by the endangered Kirtland's Warbler. The Department reserves the right to temporarily restrict all harvesting operations in a buffer zone of up to 500 feet if it is determined that Warbler territory has been established in the adjacent stand. The restricted period, if put into effect, would apply from May 1 to August 15.

5.8.5 - Protection of raptor nests (3/13)

All trees with raptor nests will be protected if found during harvesting operations. Notification will be made to the Unit Manager or his/her representative who will notify the Wildlife Biologist so an on-site evaluation and recommendation can be made, if necessary.

6 - Safety and Fire Prevention

6.2 - Signing

6.2.1 - Road posting (10/20)

The Purchaser is responsible for posting and maintaining caution signs on Portage Creek Road prior to beginning operations. The road must be posted at appropriate distances from the Sale Area to warn of logging activity and truck traffic. Signs must be removed when harvest operations are suspended or completed. The Purchaser will provide these signs.

SKIP

6.4 - Unexploded ordinance (7/15)

Be aware that the sale area could contain UXO (unexploded ordinances). Do not touch, or drive over any metal objects. If any objects are found, please flag the area and notify the Unit Manager or his/her representative, so that they can make arrangements with the Military.

7 - Other Conditions

7.10 - Certified Timber

7.10.1 - Non-certified timber (2/16)

The area encompassed by this timber sale is not certified to the standards of the Forest Stewardship Council (FSC) or the Sustainable Forestry Initiative (SFI). Forest products from this sale may not be delivered to the mill as "FSC and / or SFI certified". The lands within this sale are managed for military training.



TIMBER SALE MAP

This information provided by authority of Part 525, 1994 PA 451, as amended.

Sale Number	Year
61-612	22

Forest Management Unit	County	Mapped By	Date	Page	of
Traverse City	Kalkaska	Crugier	02/23/2022	1	1
		Cruised By			
		Crugier			

Township	Range	Section(s) and Subdivision(s)	Scale
26N	05W	SEC: SE1/4	1:15,840

Cover Type				Density	
A = Aspen	H = Hemlock	N = Marsh	U = Upland Brush	0 = Non Stocked	5 = Pole Timber Medium
B = Paper Birch	J = Jack Pine	O = Oak	UM = Upland Mixed	1 = Seedling Sapling Poor	6 = Pole Timber Well
C = Cedar	L = Lowland Brush	P = Lowland Poplar	V = Bog or Marsh	2 = Seedling Sapling Medium	7 = Saw Timber Poor
D = Treed Bog	LM = Lowland Mixed	Q = Mixed Swamp Conifer	W = White Pine	3 = Seedling Sapling Well	8 = Saw Timber Medium
E = Swamp Hdwoods	M = Mpl, Bch, Brch	R = Red Pine	X = Non Stocked	4 = Pole Timber Poor	9 = Saw Timber Well
F = Spruce Fir	MC = Mixed Conifer	S = Black Spruce	Z = Water		
G = Grass	MD = Mixed Deciduous	T = Tamarack			

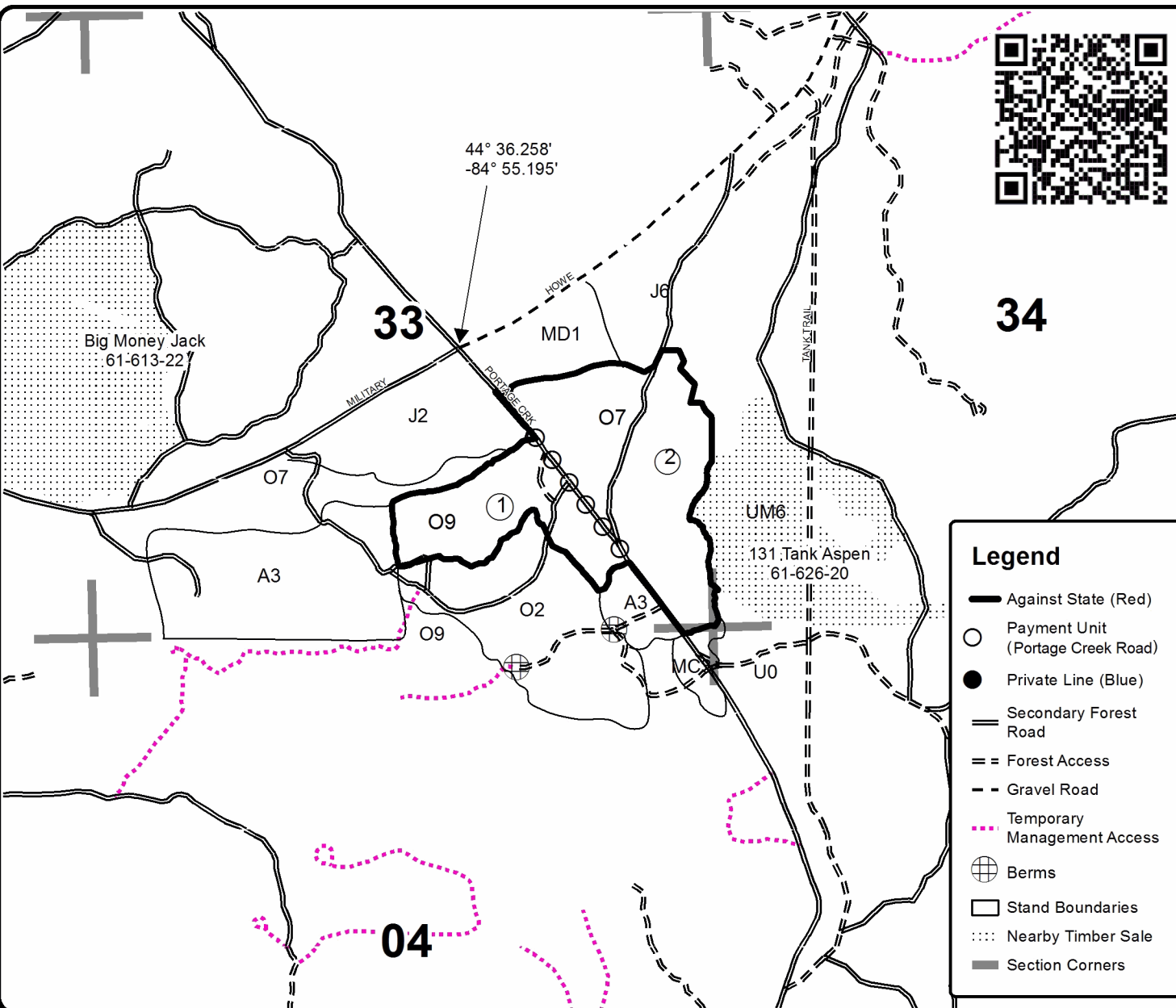
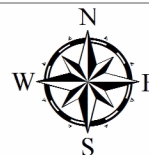
PU Acres

1	28.2
2	53.3

South Ridge Oak

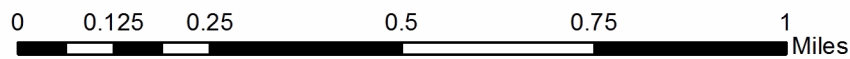
Compartment 132

81.5 Acres



Legend

- Against State (Red)
- Payment Unit (Portage Creek Road)
- Private Line (Blue)
- Secondary Forest Road
- Forest Access
- Gravel Road
- Temporary Management Access
- Berms
- Stand Boundaries
- Nearby Timber Sale
- Section Corners



TIMBER SALE INFORMATION

Big Money Jack (61-613-22)
T26N, R05W, SEC. 32; T26N, R05W, SEC. 33.
Kalkaska County (Advertised Price \$6,867.45)

SALE NOTE: All units of volume listed for this sale were estimated using the Inventory Manager computer program and the new Michigan taper model.

- See sale spec 7.10.1 for information on non-certified timber.
- See sale specs 2.2.2 and 2.2.3 for information on chipping and stump heights.
- See sale spec 5.2.3.5 for information on oak wilt restrictions.
- See sale spec 5.2.3.7 for information on military training timing.
- See sale spec 5.2.22.1 for information on operating cautions due to sandy soils.

A timber sale contract for this lump sum, sealed bid timber sale will be awarded to the responsible bidder offering the highest sealed bid price. All units of volume listed below were estimated using the Inventory Manager computer program and the new Michigan taper model. Bids must be at or above the following advertised price for each product and species:

<u>PRODUCTS & SPECIES</u>	<u>ESTIMATED UNITS*</u>	<u>ADVERTISED PRICE</u>
Pulpwood		
Black Cherry	3 Cords	\$ 7.55 / Cord
Jack Pine	992 Cords	\$ 6.90 / Cord

* The total volume is statistically estimated within plus (+) or minus (-) 7.30 percent. There are an estimated 973 cords on this timber sale, plus or minus 71 cords at the 95% confidence level. The estimated units are final and not subject to adjustment. Prospective bidders are urged to examine this timber and to make their own estimates of quantity and quality.

BOND AND PAYMENT SCHEDULE:

1. A bond in the amount of \$687.00 to insure faithful performance of the conditions of the contract will be deposited by the successful bidder within 21 days of the sale award.
2. Cutting in any sale or unit without the required advance payment would be considered a trespass.
3. Total payment must be paid in advance or according to the following schedule :
 - (a) Ten percent (10%) of the sale value must be paid within 21 days of the sale award.
 - (b) The 10% down payment will be credited towards the first unit cut.
 - (c) Payment for each of the following units must be made before cutting begins in that unit:

PAYMENT UNIT NUMBER	PERCENT OF TOTAL SALE VALUE
01	56.3%
02	43.7%

4. If no cutting takes place, the 10% down payment will not be refunded.
5. Operations on the contract issued will terminate on 06/30/2024.

SALE STATISTICS

Volumes were calculated in cubic feet using the Michigan taper model. Cubic foot volume includes all wood inside bark for the product indicated. For display purposes, cubic feet were converted to cords and MBF using a simple conversion factor, e.g. 79 cubic feet per cord and 185 cubic feet per MBF. The cubic foot volumes are precise; the cords and MBF volumes are not. Cubic foot volume cannot be directly converted to cords or boards with precision.

SALE VOLUMES

The total estimated sale volume may not equal the sum of the species/products due to the nature of statistical calculations associated with double sampling methodology.

VOLUME		STATISTICAL RANGE IN CORDS		
TOTAL CUBIC FEET	TOTAL CORDS	PERCENT ERROR	MINIMUM	MAXIMUM
76,874	973	7.30%	902	1,044

VDU VOLUMES

A VDU is a Volume Determination Unit. Volumes and their associated statistics are calculated at the VDU level and summarized to the sale level. There is often a one to one relationship between a VDU and a Payment Unit, but not always, depending on the cruise design. Refer to the VDU TO PAYMENT UNIT table.

VDU	VOLUME		PERCENT ERROR	RANGE IN CORDS	
	TOTAL CUBIC FEET	TOTAL CORDS		MINIMUM	MAXIMUM
77	76,874	973	7.31%	902	1,044
TOTAL:	76,874	973		902	1,044

VDU TO PAYMENT UNIT

When a VDU is associated with more than one Payment Unit (PU), the VDU volumes are assigned to the PU based on acres of the VDU within the PU.

VDU	VDU ACRES	PU	PU ACRES
77	97.6	1	54.9
		2	42.7
TOTAL:	97.6		97.6

DESCRIPTION OF TIMBER BY PAYMENT UNIT (PU)

PU	MARKET GROUP	PRODUCT	QUANTITY	UNIT	ACRES	ADVERTISE PRICE
1	Black Cherry	Pulpwood	2	Cords	54.9	\$3,865.30
	Jack Pine		558	Cords		
2	Black Cherry	Pulpwood	1	Cords	42.7	\$3,002.15
	Jack Pine		434	Cords		
TOTAL:			995	Cords		

Sale Specific Conditions & Requirements

Sale Name: Big Money Jack

Sale Number: 61-613-22 Seq#: 2

1 - Sale Area

1.2 - Boundaries

1.2.1 - Painted boundaries (9/19)

The sale boundary and Payment Unit boundary are marked and identified by red and yellow paint. Exterior sale boundary lines against state are marked with red paint. The interior Payment Unit boundary is marked with yellow paint. Retention patches are marked with red paint; no harvesting activities may occur within these areas. The red painted boundary line trees are not Included Timber and are to be protected. Yellow painted trees designating an interior Payment Unit boundary are only to be cut when both Payment Units have been paid.

2 - Timber Specifications

2.1 - Included Timber

2.1.1 - Clearcut unit(s) with unmerchantable trees (6/14)

Within Payment Unit(s) 1 and 2, cut all trees that are one (1) inch or more at DBH, except white oak.

2.2 - Utilization

2.2.2 - Chipping required (2/18)

Payment Units 1 and 2 must be chip harvested to meet National Guard requirements. However, the chipping requirement could be waived with military approval if chip markets are depressed. Products may be produced as roundwood and forwarded to decking areas in final product length, but the tops must be left intact and skidded to the landing for chipping to minimize the amount of residual slash or the tops must be run over and broken down so that slash does not interfere with future military training. The requirement to retain approximately 1/6 to 1/3 of tree tops and limbs less than four inches in diameter does not apply (G. C. & R. 2.2). This is because this sale is not certified.

2.2.3 - Stump heights (4/07)

Stump heights within the Sale Area shall not exceed 6 inches for all trees. This is to facilitate military requirements.

4 - Transportation

4.1 - Construction

4.1.6 - Road construction (1/09)

Improvements of existing roads shall be done in such a way as to minimize the environmental and visual impacts.

Merchantable trees shall be cut and utilized unless otherwise directed. Non-merchantable trees shall be severed and laid flat on the ground. Slash shall be chipped, utilized, or otherwise removed from the sale. Stumps shall be set upright, not left on edge, and be moved at least 10 feet away from the road edge. Disturbed soil shall be feathered into the woods and not left in berms or windrows.

4.1.12 - No new roads (1/12)

No new roads will be permitted in any Payment Unit. Skid trails only will be allowed.

5 - Operations

5.1 - Notification

5.1.5 - National Guard notification (2/15)

This sale is upon lands utilized for training by the Michigan National Guard - Camp Grayling. A minimum of five (5) business days prior to opening this sale, the producer must request that the sale administrator contact the military for information regarding training plans that may impact sale operations.

5.2 - Conduct of Operations

5.2.2 - Hazard Trees/Snags

5.2.2.1 - Den trees (10/16)

Obvious hollow and/or den trees shall be protected and left standing unless they are a safety hazard.

5.2.3 - Operating Restrictions

5.2.3.5 - Oak wilt restriction (1/18)

Within Payment Units 1 and 2, unless changed by written agreement, cutting, skidding, hauling within the sale and brushing of access roads to the sale are not permitted during the period of April 15 to July 15. Operations may be allowed if specific steps are taken to prevent damaging uncut oak during the high risk period. Those steps may include completing all road brushing before April 15th and clearing a tree-length buffer along uncut oak cover before April 15th. This is necessary to reduce the spread of oak wilt. For more information, contact the Unit Manager or his/her representative.

5.2.3.6 - Bark beetle restriction (12/08)

In the event drought creates a high risk of pine bark beetle infestation, pine is not to be cut during the period March 1 through July 1, unless all portions of trees greater than two inches in diameter are removed from the sale area, reduced to chips, or treated to the satisfaction of the Unit Manager or his/her representative, within fifteen days of being severed from the stump. Pine log decks, pulpwood piles and treetops that are piled for chipping in the fall or winter within a 1/4 mile of susceptible sites must be removed before March 15. Residual slash must not be placed in piles or rows and must be spread over the site for quick drying. The Department of Natural Resources will exercise this specification if the risk of damage warrants.

5.2.3.7 - National Guard training restriction (1/09)

Operations on this contract may not be allowed during National Guard training operations. Typically, the restricted period is from May 1 to October 31. The contractor must check with the Sale Administrator who will coordinate the cutting schedule with the military. All harvest equipment and timber products must be removed from the Sale Area during the period of May 1 to October 31.

5.2.22 - Operating Caution

5.2.22.1 - Operating caution (6/11)

It is recommended, but not required, that within Payment Unit(s) 1 and 2, hauling occur during frozen winter conditions. The reason for the recommendation is because the area of Military Road adjacent to the Sale Area is very sandy.

5.2.32 - Decking/landing restoration (9/13)

All decking and landing areas must have the surface area restored to a condition equal to or better than before. This is to ensure the proper regeneration of the stand. Wood debris, chips, and "cookies" from trimmings must be removed or scattered away from landing and loading areas and may not be windrowed on the edge.

5.2.38 - No decking against live trees (2/04)

Cut products may not be decked against unmarked or designated leave trees.

5.4 - Soil Protection

5.4.1 - Rutting restriction, general (7/16)

Operations are to cease immediately if equipment and weather conditions result in rutting of roads and/or skid trails which is 12 inches or greater in depth and 50 feet in length. The Unit Manager or his/her representative may restrict hauling and/or skidding if ruts exceed the specified depth. With the Unit Manager or his/her representative's approval, the Purchaser may return to the area when the risk of rutting has decreased.

5.8 - Protection of Endangered Species

5.8.1 - Kirtland's warbler (1) (10/12)

This sale is adjacent to a young jack pine stand which may be used by the endangered Kirtland's Warbler. The Department reserves the right to temporarily restrict all harvesting operations in a buffer zone of up to 500 feet if it is determined that Warbler territory has been established in the adjacent stand. The restricted period, if put into effect, would apply from May 1 to August 15.

5.8.5 - Protection of raptor nests (3/13)

All trees with raptor nests will be protected if found during harvesting operations. Notification will be made to the Unit Manager or his/her representative who will notify the Wildlife Biologist so an on-site evaluation and recommendation can be made, if necessary.

6 - Safety and Fire Prevention

SKIP

6.4 - Unexploded ordinance (7/15)

Be aware that the sale area could contain UXO (unexploded ordinances). Do not touch, or drive over any metal objects. If any objects are found, please flag the area and notify the Unit Manager or his/her representative, so that they can make arrangements with the Military.

7 - Other Conditions

7.10 - Certified Timber

7.10.1 - Non-certified timber (2/16)

The area encompassed by this timber sale is not certified to the standards of the Forest Stewardship Council (FSC) or the Sustainable Forestry Initiative (SFI). Forest products from this sale may not be delivered to the mill as "FSC and / or SFI certified". The lands within this sale are managed for military training.



TIMBER SALE MAP

This information provided by authority of Part 525, 1994 PA 451, as amended.

Forest Management Unit Traverse City	County Kalkaska	Mapped By Armstrong	Date 2/23/22	Page 1	of 1
Township 26N	Range 5W	Section(s) and Subdivision(s) Sec. 32: S1/2NE, N1/2SE, SESE Sec. 33: SWNW, W1/2SW	Scale 1:15,840		

Cover Type				Density	
A = Aspen	H = Hemlock	N = Marsh	U = Upland Brush	0 = Non Stocked	5 = Pole Timber Medium
B = Paper Birch	J = Jack Pine	O = Oak	UM = Upland Mixed	1 = Seedling Sapling Poor	6 = Pole Timber Well
C = Cedar	L = Lowland Brush	P = Lowland Poplar	V = Bog or Marsh	2 = Seedling Sapling Medium	7 = Saw Timber Poor
D = Treed Bog	LM = Lowland Mixed	Q = Mixed Swamp Conifer	W = White Pine	3 = Seedling Sapling Well	8 = Saw Timber Medium
E = Swamp Hdwoods	M = Mpl, Bch, Brch	R = Red Pine	X = Non Stocked	4 = Pole Timber Poor	9 = Saw Timber Well
F = Spruce Fir	MC = Mixed Conifer	S = Black Spruce	Z = Water		
G = Grass	MD = Mixed Deciduous	T = Tamarack			

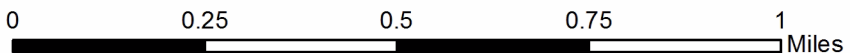
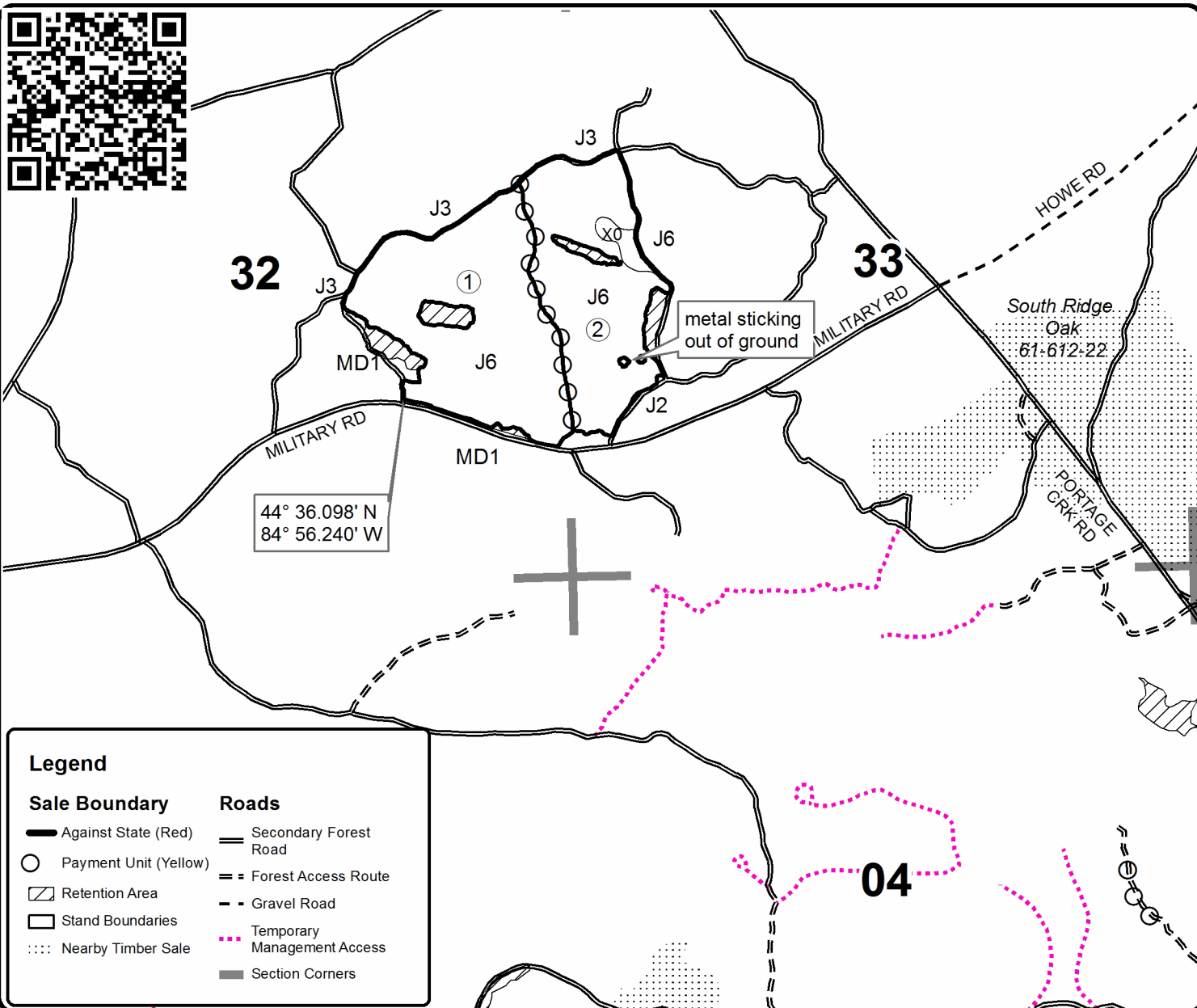
PU Acres

1	54.9
2	42.7

Big Money Jack

Compartment 132

97.6 Acres



Legend	
Sale Boundary	Roads
— Against State (Red)	— Secondary Forest Road
○ Payment Unit (Yellow)	== Forest Access Route
▨ Retention Area	- - Gravel Road
□ Stand Boundaries	⋯ Temporary Management Access
⋯ Nearby Timber Sale	■ Section Corners

TIMBER SALE INFORMATION

Howling Red Pine (61-619-22)

T26N, R05W, SEC. 30; T26N, R05W, SEC. 31; T26N, R06W, SEC. 25; T26N, R06W, SEC. 36.
Kalkaska County (Advertised Price \$349,486.55)

SALE NOTE: Payment Unit 10 will need crane mats for access through State land. An alternate route through private land can be obtained by Purchaser to avoid using crane mats to access the unit.

A recreation site such as a trail, pathway, or campground is within the sale area or the vicinity. Certain restrictions/specifications may be applicable including time restrictions.

A timber sale contract for this lump sum, sealed bid timber sale will be awarded to the responsible bidder offering the highest sealed bid price. All units of volume listed below were estimated using the Inventory Manager computer program and the new Michigan taper model. Bids must be at or above the following advertised price for each product and species:

<u>PRODUCTS & SPECIES</u>	<u>ESTIMATED UNITS*</u>		<u>ADVERTISED PRICE</u>
Sawtimber			
Jack Pine	46.4	MBF	\$ 45.00 / MBF
Paper Birch	6.6	MBF	\$ 47.00 / MBF
Red Maple	37.8	MBF	\$ 178.00 / MBF
Red Oak	4.2	MBF	\$ 163.00 / MBF
Red Pine	433.9	MBF	\$ 132.00 / MBF
White Pine	5.8	MBF	\$ 68.00 / MBF
Pulpwood			
B. T. Aspen	21	Cords	\$ 23.90 / Cord
Black Cherry	13	Cords	\$ 24.10 / Cord
Jack Pine	426	Cords	\$ 22.15 / Cord
Paper Birch	17	Cords	\$ 17.80 / Cord
Red Maple	298	Cords	\$ 24.10 / Cord
Red Oak	13	Cords	\$ 26.05 / Cord
Red Pine	4,870	Cords	\$ 54.00 / Cord
White Pine	34	Cords	\$ 28.00 / Cord

* The total volume is statistically estimated within plus (+) or minus (-) 8.70 percent. There are an estimated 6,792 cords on this timber sale, plus or minus 591 cords at the 95% confidence level. The estimated units are final and not subject to adjustment. Prospective bidders are urged to examine this timber and to make their own estimates of quantity and quality.

BOND AND PAYMENT SCHEDULE:

1. A bond in the amount of \$17,474.00 to insure faithful performance of the conditions of the contract will be deposited by the successful bidder within 21 days of the sale award.
2. Cutting in any sale or unit without the required advance payment would be considered a trespass.
3. Total payment must be paid in advance or according to the following schedule :
 - (a) Ten percent (10%) of the sale value must be paid within 21 days of the sale award.
 - (b) The 10% down payment will be credited towards the first unit cut.
 - (c) Payment for each of the following units must be made before cutting begins in that unit:

PAYMENT UNIT NUMBER	PERCENT OF TOTAL SALE VALUE
01	1.8%
02	13.9%
03	9.5%
04	12.5%
05	9.2%
06	12.4%
07	4.6%
08	10.3%
09	10.2%
10	15.6%

4. If no cutting takes place, the 10% down payment will not be refunded.
5. Operations on the contract issued will terminate on 12/31/2025.

SALE STATISTICS

Volumes were calculated in cubic feet using the Michigan taper model. Cubic foot volume includes all wood inside bark for the product indicated. For display purposes, cubic feet were converted to cords and MBF using a simple conversion factor, e.g. 79 cubic feet per cord and 185 cubic feet per MBF. The cubic foot volumes are precise; the cords and MBF volumes are not. Cubic foot volume cannot be directly converted to cords or boards with precision.

SALE VOLUMES

The total estimated sale volume may not equal the sum of the species/products due to the nature of statistical calculations associated with double sampling methodology.

VOLUME			STATISTICAL RANGE IN CORDS	
TOTAL CUBIC FEET	TOTAL CORDS	PERCENT ERROR	MINIMUM	MAXIMUM
536,539	6,792	8.70%	6,200	7,383

VDU VOLUMES

A VDU is a Volume Determination Unit. Volumes and their associated statistics are calculated at the VDU level and summarized to the sale level. There is often a one to one relationship between a VDU and a Payment Unit, but not always, depending on the cruise design. Refer to the VDU TO PAYMENT UNIT table.

VDU	VOLUME		PERCENT ERROR	RANGE IN CORDS	
	TOTAL CUBIC FEET	TOTAL CORDS		MINIMUM	MAXIMUM
9	115,778	1,466	14.09%	1,259	1,672
18	116,968	1,481	11.61%	1,309	1,652
21	71,993	911	21.95%	711	1,111
23	11,545	146	43.98%	82	210
25	50,769	643	49.92%	322	963
33	91,347	1,156	20.98%	914	1,399
109	8,528	108	64.53%	38	178
209	12,741	161	51.74%	78	245
309	1,932	24	293.23%	47	96
409	54,937	695	17.97%	570	820
TOTAL:	536,539	6,792		5,236	8,347

VDU TO PAYMENT UNIT

When a VDU is associated with more than one Payment Unit (PU), the VDU volumes are assigned to the PU based on acres of the VDU within the PU.

VDU	VDU ACRES	PU	PU ACRES
9	96.9	5	41.2
		6	55.7
18	101.9	3	44.2
		4	57.7
21	27.5	2	27.5
23	10.9	1	10.9
25	24.7	9	24.7
33	42.2	10	42.2
109	10.7	7	10.7
209	5.6	7	5.6
309	1.3	7	1.3
409	35.3	8	35.3
TOTAL:	357.0		357.0

DESCRIPTION OF TIMBER BY PAYMENT UNIT (PU)

PU	MARKET GROUP	PRODUCT	QUANTITY	UNIT	ACRES	ADVERTISE PRICE	
1	Jack Pine	Pulpwood	55	Cords	10.9	\$6,294.25	
	Red Pine		94	Cords			
2	Red Pine	Sawtimber	21.6	MBF	27.5	\$48,686.05	
	Jack Pine	Pulpwood	19	Cords			
	Red Pine		841	Cords			
3	Jack Pine	Sawtimber	3.2	MBF	44.2	\$33,317.20	
	Red Pine	Pulpwood	15.1	MBF			
	Jack Pine		40	Cords			
	Red Pine		561	Cords			
4	Jack Pine	Sawtimber	4.1	MBF	57.7	\$43,518.70	
	Red Pine	Pulpwood	19.7	MBF			
	Jack Pine		52	Cords			
	Red Pine		733	Cords			
5	Jack Pine	Sawtimber	5.1	MBF	41.2	\$32,128.40	
	Red Pine	Pulpwood	15.6	MBF			
	Jack Pine		38	Cords			
	Red Pine		537	Cords			
6	Jack Pine	Sawtimber	6.9	MBF	55.7	\$43,410.70	
	Red Pine	Pulpwood	21.2	MBF			
	Jack Pine		52	Cords			
	Red Pine		725	Cords			
7	Jack Pine	Sawtimber	0.7	MBF	17.6	\$15,929.50	
	Red Pine	Pulpwood	9.2	MBF			
	B. T. Aspen		7	Cords			
	Jack Pine		2	Cords			
	Red Pine		268	Cords			
8	Jack Pine	Sawtimber	7.2	MBF	35.3	\$35,922.25	
	Red Pine	Pulpwood	76.2	MBF			
	Jack Pine		73	Cords			
	Red Maple		9	Cords			
	Red Pine		439	Cords			
9	Jack Pine	Sawtimber	4.1	MBF	24.7	\$35,566.65	
	Red Oak	Pulpwood	4.2	MBF			
	Red Pine		34.3	MBF			
	White Pine		5.8	MBF			
	B. T. Aspen		7	Cords			
	Black Cherry		2	Cords			
	<i>Black Cherry</i>		<i>Sawtimber</i>	<i>0.6</i>			<i>MBF</i>
	<i>Black Cherry</i>		<i>Pulpwood</i>	<i>1</i>			<i>Cords</i>
	Jack Pine			21			Cords
	Red Maple			27			Cords
	Red Oak			4			Cords
	Red Pine			516			Cords
	White Pine			17			Cords
10	Jack Pine	Sawtimber	15.1	MBF	42.2	\$54,712.85	
	Paper Birch	Pulpwood	6.6	MBF			
	Red Maple		37.8	MBF			
	Red Pine		221.0	MBF			
	B. T. Aspen		7	Cords			
	Black Cherry		11	Cords			
	<i>Black Cherry</i>		<i>11</i>	<i>Cords</i>			
	Jack Pine		74	Cords			
	Paper Birch		17	Cords			
	Red Maple		262	Cords			
Red Oak	9	Cords					

DESCRIPTION OF TIMBER BY PAYMENT UNIT (PU), CON'T

PU	MARKET GROUP	PRODUCT	QUANTITY	UNIT	ACRES	ADVERTISE PRICE
10 con't	Red Pine	Pulpwood	156	Cords		
	White Pine		17	Cords		
TOTAL:			534.7	MBF		
TOTAL:			5,692	Cords		

Sale Specific Conditions & Requirements

Sale Name: Howling Red Pine

Sale Number: 61-619-22 Seq#: 1

1 - Sale Area

1.2 - Boundaries

1.2.1 - Painted boundaries (9/19)

The sale boundary and Payment Unit boundaries are marked and identified by blue, red and yellow paint. Exterior sale boundary lines against private property are marked with blue paint. Exterior sale boundary lines against state are marked with red paint. Interior Payment Unit boundaries are marked with yellow paint. Retention patches are marked with red paint; no harvesting activities may occur within these areas. The painted boundary line trees are not Included Timber and are to be protected unless marked with orange paint.

2 - Timber Specifications

2.1 - Included Timber

2.1.1 - Clearcut unit(s) with unmerchantable trees (6/14)

Within Payment Unit(s) 2 and 9, cut all trees that are two (2) inches or more at DBH.

2.1.3 - Cut tree marked unit(s) (12/08)

Within Payment Unit(s) 1 & 3-8, all trees are designated for cutting when marked with orange paint above and below stump height, regardless of merchantability. In addition to marked trees, cut all jack pine and aspen.

2.1.7 - Leave tree marked unit(s) (6/14)

Within Payment Unit(s) 10, all trees greater than 6 inches at DBH are designated for cutting, except do not cut white oak and trees marked with green paint above and below stump height.

2.2 - Utilization

2.2.2 - Chipping required (2/18)

Payment Unit 2, 9 and 10 must be chip harvested to facilitate subsequent planting operations and within Payment Units 9 and 10 to meet National Guard requirements. Products may be produced as roundwood and forwarded to decking areas in final product length, but the tops must be left intact and skidded to the landing for chipping in order to minimize the amount of residual slash. The requirement to retain approximately 1/6 to 1/3 of tree tops and limbs less than four inches in diameter is still applicable (G. C. & R. 2.2).

2.2.3 - Stump heights (4/07)

Stump heights within the Sale Area shall not exceed 6 inches for all trees. This is in order to facilitate planting operations.

2.2.6 - Roundwood operation required (3/21)

The skidding of whole trees or tree segments with limbs attached is prohibited within Payment Unit(s) 1, 3-8, and 10. All products must be produced as roundwood and forwarded to existing roads or landing areas in final product length.

3 - Payments

3.3 - Pre-measured Sales

3.3.4 - Dividing payment units (7/14)

Payment Unit(s) greater than \$25,000 may be divided at the request of the Purchaser and upon approval of the Unit Manager. Dividing Payment Units is a contract modification which requires a Timber Sale Contract Amendment. There will be only one division per Payment Unit.

3.4 - Damaged Timber

3.4.1 - Damaged timber (7/16)

General Condition and Requirement 3.4 Damaged Timber, defines liquidated damages for undesignated live merchantable trees which are cut or injured.

No damage is acceptable to undesignated live merchantable trees. Within the sale area, if more than 10% of trees (> 4.5"

DBH) within a specified area of the sale are damaged, liquidated damages will be assessed for all trees damaged. Rates will be in accordance with General Condition and Requirement 3.4 Damaged Timber.

4 - Transportation

4.1 - Construction

4.1.3 - Slash and earthen piles (8/04)

Piles or windrows of earth along roads and landings that have been widened or constructed shall be leveled. Slash from road maintenance or construction, including stumps, shall be dispersed throughout the sale.

4.1.11 - Permits (2/12)

The Purchaser will secure any necessary county road permits that may be required.

4.1.12 - No new roads (1/12)

No new roads will be permitted in any Payment Units. All operations are limited to existing roads and forest access roads. Skid trails only will be allowed.

4.2 - Maintenance

4.2.5 - Two wheel drive condition (2/04)

All existing trail roads on and adjacent to the sale area must be passable by two-wheel drive traffic for the duration of the sale.

4.4 - Access

4.4.2 - Alternate route on private property (2/04)

It is the Purchaser's responsibility to obtain access across private land for any routes other than the route shown on the Timber Sale Map.

5 - Operations

5.1 - Notification

5.1.1 - Pre-sale conference (10/16)

A pre-sale conference on site between the Purchaser and sale administrator is required prior to beginning any operations to determine landing and road locations. The Unit Manager or his/her representative must be contacted at least 5 days in advance to schedule the conference.

5.2 - Conduct of Operations

5.2.1 - Slash

5.2.1.8 - Slash height (12/08)

No slash or tree tops within Payment Units 1 & 3-8 may exceed 24 inches in height.

5.2.3 - Operating Restrictions

5.2.3.3 - Bark slippage restriction (3/09)

Within Payment Unit(s) 1 and 3-8, unless changed by written agreement, cutting and skidding are not permitted during the period of April 15 to July 15. This restriction is because of bark slippage.

5.2.3.4 - Oak wilt restriction, no exceptions (1/18)

Within Payment Unit(s) 10 cutting, skidding, hauling within the sale and brushing of access roads to the sale are not permitted during the period of April 15 to July 15. No exceptions will be granted. This is necessary to reduce the spread of oak wilt.

5.2.3.7 - National Guard training restriction (1/09)

Operations on this contract may not be allowed during National Guard training operations. Typically, the restricted period is from May 1 to October 31. The contractor must check with the Unit Manager who will coordinate the cutting schedule with the Military. This restriction only applies to Payment Units 9 and 10.

5.2.17 - Timber Mats and Interlocking Composite Mats (10/20)

Some roads or skid trails may require extra protection such as that afforded by timber mats, interlocking composite mats, or another approved system. Approximately 300 feet of road or trail will need extra protection to access Payment Unit 10 from Payment Unit 8. If available, mats may be borrowed from the DNR. A Timber Sale Contract Supplement will be used to document the Purchaser's use of the DNR's mats. Contact the sale administrator regarding availability and pick-up. Timber mats are available from various field offices. Composite mats are only available from the Grayling field office and the Marquette ICC. The Purchaser is responsible for picking up and hauling the mats to and from the site. The composite mats will require DNR staff onsite for installation and removal. Contact the sale administrator to schedule at least 30 days before desired install/removal date. All mats must be cleaned prior to drop off. This may include, but is not limited to, power washing and brushing to remove mud and debris. A charge of \$700.00 per timber mat and \$2,000.00 per composite mat will be assessed for all damaged or non-returned mats. Damage for the crane/timber mats is defined as three or more broken cants. Damage for the composite mats is defined as cracked or broken mats.

5.2.20 - Equipment width (2/04)

Equipment used must be capable of moving through cut rows without damaging residual trees. Extra trees will not be marked to get equipment down pine rows.

5.2.32 - Decking/landing restoration (9/13)

All decking and landing areas must have the surface area restored to a condition equal to or better than before. This is to ensure the proper regeneration of the stand. Wood debris, chips and "cookies" from trimmings must be removed or scattered away from landing and loading areas and may not be windrowed on the edge.

5.4 - Soil Protection

5.4.1 - Rutting restriction, general (7/16)

Operations are to cease immediately if equipment and weather conditions result in rutting of roads and/or skid trails which is 12 inches or greater in depth and 50 feet in length. The Unit Manager or his/her representative may restrict hauling and/or skidding if ruts exceed the specified depth. With the Unit Manager or his/her representative's approval, the Purchaser may return to the area when the risk of rutting has decreased.

5.8 - Protection of Endangered Species

5.8.5 - Protection of raptor nests (3/13)

All trees with raptor nests will be protected if found during harvesting operations. Notification will be made to the Unit Manager or his/her representative who will notify the Wildlife Biologist so an on-site evaluation and recommendation can be made, if necessary.

6 - Safety and Fire Prevention

6.2 - Signing

6.2.1 - Road posting (10/20)

The Purchaser is responsible for posting and maintaining caution signs on all county and state roads prior to beginning operations. The road must be posted at appropriate distances from the sale area to warn of logging activity and truck traffic. Signs must be removed when harvest operations are suspended or completed. The Purchaser will provide these signs.

7 - Other Conditions

7.3 - Contract Modifications

7.3.3 - Modification for reforestation (8/05)

When contractual work of Purchaser has been accepted for any Payment Unit identified on Sale Area Map, Payment Unit will be eliminated from the Sale Area on written notice so that reforestation operations can begin.

7.10 - Certified Timber

7.10.1 - Non-certified timber (2/16)

The area encompassed by this timber sale is not certified to the standards of the Forest Stewardship Council (FSC) or the Sustainable Forestry Initiative (SFI). Forest products from this sale may not be delivered to the mill as "FSC and / or SFI certified". Payment Units 9 and 10 are managed for military training.



TIMBER SALE MAP

This information provided by authority of Part 525, 1994 PA 451, as amended.

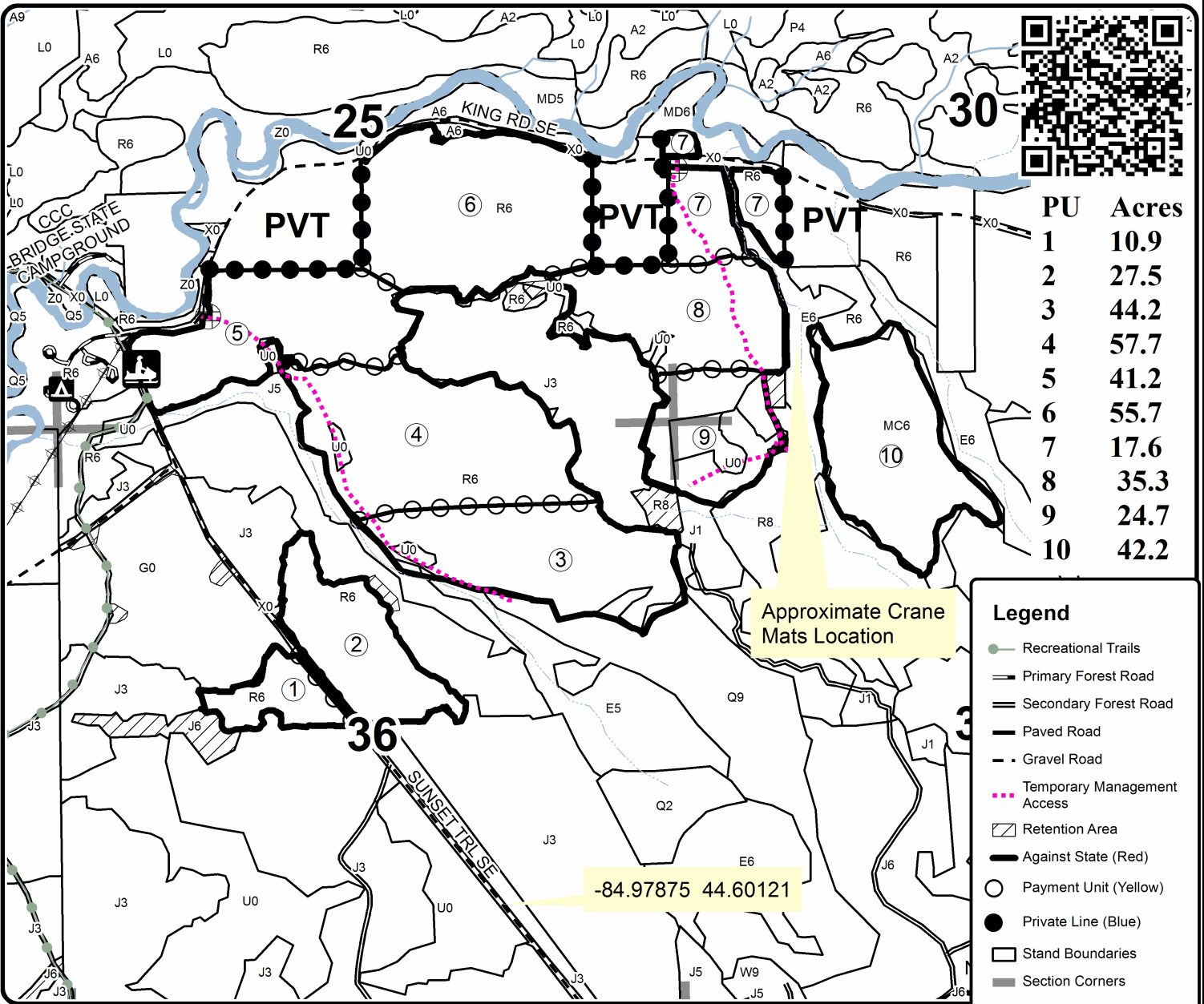
Forest Management Unit	County	Mapped By	Date	Page	of
Traverse City Management Unit	Kalkaska County	Tom Peterson	5/31/2022	1	1
Township	Range	Section(s) and Subdivision(s)	Scale		
26N	05W & 06W	05W - Sections 30 & 31 / 06W - Sections 25 & 36	1:15,840		

Cover Type				Density	
A = Aspen	H = Hemlock	N = Marsh	U = Upland Brush	0 = Non Stocked	5 = Pole Timber Medium
B = Paper Birch	J = Jack Pine	O = Oak	UM = Upland Mixed	1 = Seedling Sapling Poor	6 = Pole Timber Well
C = Cedar	L = Lowland Brush	P = Lowland Poplar	V = Bog or Marsh	2 = Seedling Sapling Medium	7 = Saw Timber Poor
D = Treed Bog	LM = Lowland Mixed	Q = Mixed Swamp Conifer	W = White Pine	3 = Seedling Sapling Well	8 = Saw Timber Medium
E = Swamp Hdwoods	M = Mpl, Bch, Brch	R = Red Pine	X = Non Stocked	4 = Pole Timber Poor	9 = Saw Timber Well
F = Spruce Fir	MC = Mixed Conifer	S = Black Spruce	Z = Water		
G = Grass	MD = Mixed Deciduous	T = Tamarack			

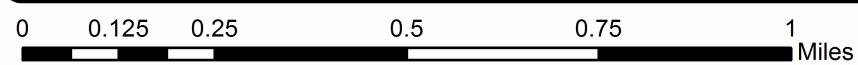
Howling Red Pine

Compartment 61132

357.0 Acres



-84.97875 44.60121



Howling Red Pine (61-619-22)
T26N, R05W, SEC. 30; T26N, R05W, SEC. 31; T26N, R06W, SEC. 25; T26N,

In response to the notice of sale to be held 4:00 p.m. (local time) on October 4, 2022, I am hereby submitting my sealed bid (firm offer) for the following forest products to be cut. Bids for individual species must be at or above the advertised price. All non-responsive bid forms may be rejected.

<u>PRODUCTS & SPECIES</u>	<u>ESTIMATED VOLUME*</u>	<u>ADVERTISED PRICE</u>	<u>BID PRICE/UNIT</u>
Sawtimber			
Jack Pine	46.4 MBF	\$ 45.00/MBF	\$ _____
Paper Birch	6.6 MBF	\$ 47.00/MBF	\$ _____
Red Maple	37.8 MBF	\$ 178.00/MBF	\$ _____
Red Oak	4.2 MBF	\$ 163.00/MBF	\$ _____
Red Pine	433.9 MBF	\$ 132.00/MBF	\$ _____
White Pine	5.8 MBF	\$ 68.00/MBF	\$ _____
Pulpwood			
B. T. Aspen	21 Cords	\$ 23.90/Cord	\$ _____
Black Cherry	13 Cords	\$ 24.10/Cord	\$ _____
Jack Pine	426 Cords	\$ 22.15/Cord	\$ _____
Paper Birch	17 Cords	\$ 17.80/Cord	\$ _____
Red Maple	298 Cords	\$ 24.10/Cord	\$ _____
Red Oak	13 Cords	\$ 26.05/Cord	\$ _____
Red Pine	4,870 Cords	\$ 54.00/Cord	\$ _____
White Pine	34 Cords	\$ 28.00/Cord	\$ _____

*The volumes are statistically estimated within plus (+) or minus (-) 8.70 percent at 95% confidence level. These estimated volumes are final and not subject to adjustment. Prospective bidders are urged to examine this timber and to make their own estimates of quantity and quality.

I understand that any or all bids may be rejected. All bids must be signed and all bid items must be bid or the bid form may be rejected. I also understand that consideration and awarding a contract will be based upon my past performance and ability to complete the contract based upon equipment and staffing subject to my control .

FEDERAL ID: _____ - _____ or SOCIAL SECURITY NUMBER: _____ - _____ - _____

Company or individual bidding: _____

Company representative's name: _____

Address: _____

City: _____ State: _____ Zip: _____

IF AVAILABLE, PLEASE PLACE THE PERSONALIZED LABEL FROM YOUR PROSPECTUS IN THE ABOVE BOX.

Individual or company representative's signature: _____ Date: _____

Phone number : _____ Email (optional): _____

THE WINNING BIDDER MUST COMPLETE THE VERIFICATION OF WORKER'S DISABILITY COMPENSATION ACT COMPLIANCE (ON REVERSE SIDE IF DOUBLE SIDED) WITHIN 21 DAYS OF SALE AWARD DATE



TIMBER SALE VERIFICATION OF WORKER'S DISABILITY COMPENSATION ACT COMPLIANCE

As required by Act 317, P.A. 1969 (Worker's Compensation) and
Part 5 of Act 451 of 1994, as amended.

FOR DEPARTMENT USE ONLY	
Sale Number (XX - XXX - XX - XX)	
Forest Management Unit:	

VERIFICATION OF WORKER'S DISABILITY COMPENSATION ACT COMPLIANCE

- This verification must be completed and submitted within 21 days of contract award and prior to the issuance of the timber sale contract.
- In addition, if boxes 2B or 2C are checked, then Notice of Exclusion or Certificate of Insurance must be submitted within twenty-one (21) days of the contract award and prior to the issuance of the timber sale contract.
- All information must be typed or printed except for written signatures.

Please Check Appropriate Categories:

1. My business is organized as (you **must** check one of the boxes below):
 - A. Sole Proprietorship (individual)
 - B. Partnership
 - C. Corporation
2. You **must** check one of the boxes below:
 - A. I certify my business is a sole proprietorship and it has no employees but the sole proprietor. I am not subject to the Worker's Compensation Laws.
 - B. I certify my business has satisfied its obligation to the Worker's Compensation Act through the use of an approved Notice of Exclusion (BWC-337, Rev. 5/96). I will provide a copy of the Notice of Exclusion within 21 days of the contract award. (For questions or a copy of the BWC-337, please call the Worker's Compensation Bureau at 517-322-1195).
 - C. I certify my business has a Worker's Compensation Policy. I will provide an original Certificate of Insurance within twenty-one (21) days of the contract award.
3. If you have checked item 2(A) or 2(B), you **must** indicate the number of **both** full-time and part-time employees, other than yourself, including family members and active partners (if none, you must enter "0").

_____ Full-time Employees

_____ Part-time Employees

Name of Business		Federal ID (or) Social Security No.	
Address		Telephone ()	
City	State	ZIP	

I hereby certify that the above information is true and correct. I agree to notify the Michigan DNR of any changes that occur in factors affecting my coverage during any of my present and future operations.

Signature of Owner or Authorized Representative

Title

Date

Please complete the "SEALED BID" information on the next page

Speed Bump Hardwoods (61-122-22)

T27N, R05W, SEC. 10; T27N, R05W, SEC. 11; T27N, R05W, SEC. 2; T27N, R05W,

In response to the notice of sale to be held 4:00 p.m. (local time) on October 4, 2022, I am hereby submitting my sealed bid (firm offer) for the following forest products to be cut. Bids for individual species must be at or above the advertised price. All non-responsive bid forms may be rejected.

<u>PRODUCTS & SPECIES</u>	<u>ESTIMATED VOLUME*</u>	<u>ADVERTISED PRICE</u>	<u>BID PRICE/UNIT</u>
Sawtimber			
B. T. Aspen	68.6 MBF	\$ 94.00/MBF	\$ _____
Basswood	29.9 MBF	\$ 89.00/MBF	\$ _____
Black Cherry	66.6 MBF	\$ 131.00/MBF	\$ _____
Paper Birch	6.8 MBF	\$ 32.00/MBF	\$ _____
Red Maple	547.3 MBF	\$ 123.00/MBF	\$ _____
Red Oak	642.9 MBF	\$ 112.00/MBF	\$ _____
Red Pine	29.1 MBF	\$ 91.00/MBF	\$ _____
Sugar Maple	749.9 MBF	\$ 223.00/MBF	\$ _____
White Pine	84.3 MBF	\$ 47.00/MBF	\$ _____
White Spruce	71.2 MBF	\$ 31.00/MBF	\$ _____
Pulpwood			
B. T. Aspen	71 Cords	\$ 16.40/Cord	\$ _____
Misc. Species 1	24 Cords	\$ 8.25/Cord	\$ _____
Mixed Hardwood	3,577 Cords	\$ 16.60/Cord	\$ _____
Red Oak	495 Cords	\$ 17.90/Cord	\$ _____
Red Pine	41 Cords	\$ 37.10/Cord	\$ _____
White Pine	254 Cords	\$ 19.25/Cord	\$ _____
White Spruce	214 Cords	\$ 15.50/Cord	\$ _____

*The volumes are statistically estimated within plus (+) or minus (-) 8.79 percent at 95% confidence level. These estimated volumes are final and not subject to adjustment. Prospective bidders are urged to examine this timber and to make their own estimates of quantity and quality.

I understand that any or all bids may be rejected. All bids must be signed and all bid items must be bid or the bid form may be rejected. I also understand that consideration and awarding a contract will be based upon my past performance and ability to complete the contract based upon equipment and staffing subject to my control.

FEDERAL ID: _____ or SOCIAL SECURITY NUMBER: _____

Company or individual bidding: _____

Company representative's name: _____

Address: _____

City: _____ State: _____ Zip: _____

IF AVAILABLE, PLEASE PLACE THE PERSONALIZED LABEL FROM YOUR PROSPECTUS IN THE ABOVE BOX.

Individual or company representative's signature: _____ Date: _____

Phone number : _____ Email (optional): _____

THE WINNING BIDDER MUST COMPLETE THE VERIFICATION OF WORKER'S DISABILITY COMPENSATION ACT COMPLIANCE (ON REVERSE SIDE IF DOUBLE SIDED) WITHIN 21 DAYS OF SALE AWARD DATE



TIMBER SALE VERIFICATION OF WORKER'S DISABILITY COMPENSATION ACT COMPLIANCE

As required by Act 317, P.A. 1969 (Worker's Compensation) and
Part 5 of Act 451 of 1994, as amended.

FOR DEPARTMENT USE ONLY	
Sale Number (XX - XXX - XX - XX)	
Forest Management Unit:	

VERIFICATION OF WORKER'S DISABILITY COMPENSATION ACT COMPLIANCE

- This verification must be completed and submitted within 21 days of contract award and prior to the issuance of the timber sale contract.
- In addition, if boxes 2B or 2C are checked, then Notice of Exclusion or Certificate of Insurance must be submitted within twenty-one (21) days of the contract award and prior to the issuance of the timber sale contract.
- All information must be typed or printed except for written signatures.

Please Check Appropriate Categories:

1. My business is organized as (you **must** check one of the boxes below):
 - A. Sole Proprietorship (individual)
 - B. Partnership
 - C. Corporation
2. You **must** check one of the boxes below:
 - A. I certify my business is a sole proprietorship and it has no employees but the sole proprietor. I am not subject to the Worker's Compensation Laws.
 - B. I certify my business has satisfied its obligation to the Worker's Compensation Act through the use of an approved Notice of Exclusion (BWC-337, Rev. 5/96). I will provide a copy of the Notice of Exclusion within 21 days of the contract award. (For questions or a copy of the BWC-337, please call the Worker's Compensation Bureau at 517-322-1195).
 - C. I certify my business has a Worker's Compensation Policy. I will provide an original Certificate of Insurance within twenty-one (21) days of the contract award.
3. If you have checked item 2(A) or 2(B), you **must** indicate the number of **both** full-time and part-time employees, other than yourself, including family members and active partners (if none, you must enter "0").

_____ Full-time Employees

_____ Part-time Employees

Name of Business		Federal ID (or) Social Security No.	
Address		Telephone ()	
City	State	ZIP	

I hereby certify that the above information is true and correct. I agree to notify the Michigan DNR of any changes that occur in factors affecting my coverage during any of my present and future operations.

Signature of Owner or Authorized Representative

Title

Date

Please complete the "SEALED BID" information on the next page

South Ridge Oak (61-612-22)

T25N, R05W, SEC. 4; T26N, R05W, SEC. 33; T26N, R05W, SEC. 34; Kalkaska

In response to the notice of sale to be held 4:00 p.m. (local time) on October 4, 2022, I am hereby submitting my sealed bid (firm offer) for the following forest products to be cut. Bids for individual species must be at or above the advertised price. All non-responsive bid forms may be rejected.

<u>PRODUCTS & SPECIES</u>	<u>ESTIMATED VOLUME*</u>	<u>ADVERTISED PRICE</u>	<u>BID PRICE/UNIT</u>
Sawtimber			
Misc. Species 1	10.8 MBF	\$ 17.00/MBF	\$ _____
Mixed Oak	77.4 MBF	\$ 26.00/MBF	\$ _____
Red Oak	57.5 MBF	\$ 51.00/MBF	\$ _____
Red Pine	4.4 MBF	\$ 41.00/MBF	\$ _____
White Oak	21.9 MBF	\$ 25.00/MBF	\$ _____
Pulpwood			
Jack Pine	7 Cords	\$ 6.90/Cord	\$ _____
Misc. Species 1	10 Cords	\$ 3.25/Cord	\$ _____
Mixed Hardwood	82 Cords	\$ 7.55/Cord	\$ _____
Mixed Oak	473 Cords	\$ 8.15/Cord	\$ _____
Red Pine	20 Cords	\$ 16.85/Cord	\$ _____

*The volumes are statistically estimated within plus (+) or minus (-) 12.80 percent at 95% confidence level. These estimated volumes are final and not subject to adjustment. Prospective bidders are urged to examine this timber and to make their own estimates of quantity and quality.

I understand that any or all bids may be rejected. All bids must be signed and all bid items must be bid or the bid form may be rejected. I also understand that consideration and awarding a contract will be based upon my past performance and ability to complete the contract based upon equipment and staffing subject to my control.

FEDERAL ID: _____ or SOCIAL SECURITY NUMBER: _____

Company or individual bidding: _____

Company representative's name: _____

Address: _____

City: _____ State: _____ Zip: _____

IF AVAILABLE, PLEASE PLACE THE PERSONALIZED LABEL FROM YOUR PROSPECTUS IN THE ABOVE BOX.

Individual or company representative's signature: _____ Date: _____

Phone number : _____ Email (optional): _____

THE WINNING BIDDER MUST COMPLETE THE VERIFICATION OF WORKER'S DISABILITY COMPENSATION ACT COMPLIANCE (ON REVERSE SIDE IF DOUBLE SIDED) WITHIN 21 DAYS OF SALE AWARD DATE



FOR DEPARTMENT USE ONLY	
Sale Number (XX - XXX - XX - XX)	
Forest Management Unit:	

TIMBER SALE VERIFICATION OF WORKER'S DISABILITY COMPENSATION ACT COMPLIANCE

As required by Act 317, P.A. 1969 (Worker's Compensation) and
Part 5 of Act 451 of 1994, as amended.

VERIFICATION OF WORKER'S DISABILITY COMPENSATION ACT COMPLIANCE

- This verification must be completed and submitted within 21 days of contract award and prior to the issuance of the timber sale contract.
- In addition, if boxes 2B or 2C are checked, then Notice of Exclusion or Certificate of Insurance must be submitted within twenty-one (21) days of the contract award and prior to the issuance of the timber sale contract.
- All information must be typed or printed except for written signatures.

Please Check Appropriate Categories:

1. My business is organized as (you **must** check one of the boxes below):
 - A. Sole Proprietorship (individual)
 - B. Partnership
 - C. Corporation
2. You **must** check one of the boxes below:
 - A. I certify my business is a sole proprietorship and it has no employees but the sole proprietor. I am not subject to the Worker's Compensation Laws.
 - B. I certify my business has satisfied its obligation to the Worker's Compensation Act through the use of an approved Notice of Exclusion (BWC-337, Rev. 5/96). I will provide a copy of the Notice of Exclusion within 21 days of the contract award. (For questions or a copy of the BWC-337, please call the Worker's Compensation Bureau at 517-322-1195).
 - C. I certify my business has a Worker's Compensation Policy. I will provide an original Certificate of Insurance within twenty-one (21) days of the contract award.
3. If you have checked item 2(A) or 2(B), you **must** indicate the number of **both** full-time and part-time employees, other than yourself, including family members and active partners (if none, you must enter "0").

_____ Full-time Employees

_____ Part-time Employees

Name of Business		Federal ID (or) Social Security No.	
Address		Telephone ()	
City	State	ZIP	

I hereby certify that the above information is true and correct. I agree to notify the Michigan DNR of any changes that occur in factors affecting my coverage during any of my present and future operations.

Signature of Owner or Authorized Representative

Title

Date

Please complete the "SEALED BID" information on the next page

Big Money Jack (61-613-22)
T26N, R05W, SEC. 32; T26N, R05W, SEC. 33; Kalkaska COUNTY

In response to the notice of sale to be held 4:00 p.m. (local time) on October 4, 2022, I am hereby submitting my sealed bid (firm offer) for the following forest products to be cut. Bids for individual species must be at or above the advertised price. All non-responsive bid forms may be rejected.

<u>PRODUCTS & SPECIES</u>	<u>ESTIMATED VOLUME*</u>	<u>ADVERTISED PRICE</u>	<u>BID PRICE/UNIT</u>
Pulpwood			
Black Cherry	3 Cords	\$ 7.55/Cord	\$ _____
Jack Pine	992 Cords	\$ 6.90/Cord	\$ _____

*The volumes are statistically estimated within plus (+) or minus (-) 7.30 percent at 95% confidence level. These estimated volumes are final and not subject to adjustment. Prospective bidders are urged to examine this timber and to make their own estimates of quantity and quality.

I understand that any or all bids may be rejected. All bids must be signed and all bid items must be bid or the bid form may be rejected. I also understand that consideration and awarding a contract will be based upon my past performance and ability to complete the contract based upon equipment and staffing subject to my control .

FEDERAL ID: ____ - ____ - ____ or SOCIAL SECURITY NUMBER: ____ - ____ - ____

Company or individual bidding: _____

Company representative's name: _____

Address: _____

City: _____ State: _____ Zip: _____

IF AVAILABLE, PLEASE PLACE THE PERSONALIZED LABEL FROM YOUR PROSPECTUS IN THE ABOVE BOX.

Individual or company representative's signature: _____ Date: _____
Phone number : _____ Email (optional): _____

THE WINNING BIDDER MUST COMPLETE THE VERIFICATION OF WORKER'S DISABILITY COMPENSATION ACT COMPLIANCE (ON REVERSE SIDE IF DOUBLE SIDED) WITHIN 21 DAYS OF SALE AWARD DATE



FOR DEPARTMENT USE ONLY
Sale Number (XX - XXX - XX - XX)
Forest Management Unit:

TIMBER SALE VERIFICATION OF WORKER'S DISABILITY COMPENSATION ACT COMPLIANCE

*As required by Act 317, P.A. 1969 (Worker's Compensation) and
Part 5 of Act 451 of 1994, as amended.*

VERIFICATION OF WORKER'S DISABILITY COMPENSATION ACT COMPLIANCE

- This verification must be completed and submitted within 21 days of contract award and prior to the issuance of the timber sale contract.
- In addition, if boxes 2B or 2C are checked, then Notice of Exclusion or Certificate of Insurance must be submitted within twenty-one (21) days of the contract award and prior to the issuance of the timber sale contract.
- All information must be typed or printed except for written signatures.

Please Check Appropriate Categories:

1. My business is organized as (you **must** check one of the boxes below):
 - A. Sole Proprietorship (individual)
 - B. Partnership
 - C. Corporation
2. You **must** check one of the boxes below:
 - A. I certify my business is a sole proprietorship and it has no employees but the sole proprietor. I am not subject to the Worker's Compensation Laws.
 - B. I certify my business has satisfied its obligation to the Worker's Compensation Act through the use of an approved Notice of Exclusion (BWC-337, Rev. 5/96). I will provide a copy of the Notice of Exclusion within 21 days of the contract award. (For questions or a copy of the BWC-337, please call the Worker's Compensation Bureau at 517-322-1195).
 - C. I certify my business has a Worker's Compensation Policy. I will provide an original Certificate of Insurance within twenty-one (21) days of the contract award.
3. If you have checked item 2(A) or 2(B), you **must** indicate the number of **both** full-time and part-time employees, other than yourself, including family members and active partners (if none, you must enter "0").

_____ Full-time Employees

_____ Part-time Employees

Name of Business		Federal ID (or) Social Security No.	
Address		Telephone ()	
City	State	ZIP	

I hereby certify that the above information is true and correct. I agree to notify the Michigan DNR of any changes that occur in factors affecting my coverage during any of my present and future operations.

Signature of Owner or Authorized Representative

Title

Date

Please complete the "SEALED BID" information on the next page

Ground Out Mix (61-131-22)
T25N, R06W, SEC. 21; T25N, R06W, SEC. 28; Kalkaska COUNTY

In response to the notice of sale to be held 4:00 p.m. (local time) on October 4, 2022, I am hereby submitting my sealed bid (firm offer) for the following forest products to be cut. Bids for individual species must be at or above the advertised price. All non-responsive bid forms may be rejected.

<u>PRODUCTS & SPECIES</u>	<u>ESTIMATED VOLUME*</u>	<u>ADVERTISED PRICE</u>	<u>BID PRICE/UNIT</u>
Sawtimber			
Bl/R/Hybrid Oak	33.8 MBF	\$ 58.00/MBF	\$ _____
Jack Pine	13.0 MBF	\$ 31.00/MBF	\$ _____
Red Pine	26.6 MBF	\$ 91.00/MBF	\$ _____
White Pine	32.7 MBF	\$ 47.00/MBF	\$ _____
Pulpwood			
Bl/R/Hybrid Oak	39 Cords	\$ 17.90/Cord	\$ _____
Jack Pine	285 Cords	\$ 15.20/Cord	\$ _____
Red Maple	41 Cords	\$ 16.60/Cord	\$ _____
Red Pine	8 Cords	\$ 37.10/Cord	\$ _____
White Pine	66 Cords	\$ 19.25/Cord	\$ _____

*The volumes are statistically estimated within plus (+) or minus (-) 26.03 percent at 95% confidence level. These estimated volumes are final and not subject to adjustment. Prospective bidders are urged to examine this timber and to make their own estimates of quantity and quality.

I understand that any or all bids may be rejected. All bids must be signed and all bid items must be bid or the bid form may be rejected. I also understand that consideration and awarding a contract will be based upon my past performance and ability to complete the contract based upon equipment and staffing subject to my control.

FEDERAL ID: ____ - ____ - ____ or SOCIAL SECURITY NUMBER: ____ - ____ - ____

Company or individual bidding: _____

Company representative's name: _____

Address: _____

City: _____ State: _____ Zip: _____

IF AVAILABLE, PLEASE PLACE THE PERSONALIZED LABEL FROM YOUR PROSPECTUS IN THE ABOVE BOX.

Individual or company representative's signature: _____ Date: _____

Phone number : _____ Email (optional): _____

THE WINNING BIDDER MUST COMPLETE THE VERIFICATION OF WORKER'S DISABILITY COMPENSATION ACT COMPLIANCE (ON REVERSE SIDE IF DOUBLE SIDED) WITHIN 21 DAYS OF SALE AWARD DATE



FOR DEPARTMENT USE ONLY	
Sale Number (XX - XXX - XX - XX)	
Forest Management Unit:	

TIMBER SALE VERIFICATION OF WORKER'S DISABILITY COMPENSATION ACT COMPLIANCE

As required by Act 317, P.A. 1969 (Worker's Compensation) and
Part 5 of Act 451 of 1994, as amended.

VERIFICATION OF WORKER'S DISABILITY COMPENSATION ACT COMPLIANCE

- This verification must be completed and submitted within 21 days of contract award and prior to the issuance of the timber sale contract.
- In addition, if boxes 2B or 2C are checked, then Notice of Exclusion or Certificate of Insurance must be submitted within twenty-one (21) days of the contract award and prior to the issuance of the timber sale contract.
- All information must be typed or printed except for written signatures.

Please Check Appropriate Categories:

1. My business is organized as (you **must** check one of the boxes below):
 - A. Sole Proprietorship (individual)
 - B. Partnership
 - C. Corporation
2. You **must** check one of the boxes below:
 - A. I certify my business is a sole proprietorship and it has no employees but the sole proprietor. I am not subject to the Worker's Compensation Laws.
 - B. I certify my business has satisfied its obligation to the Worker's Compensation Act through the use of an approved Notice of Exclusion (BWC-337, Rev. 5/96). I will provide a copy of the Notice of Exclusion within 21 days of the contract award. (For questions or a copy of the BWC-337, please call the Worker's Compensation Bureau at 517-322-1195).
 - C. I certify my business has a Worker's Compensation Policy. I will provide an original Certificate of Insurance within twenty-one (21) days of the contract award.
3. If you have checked item 2(A) or 2(B), you **must** indicate the number of **both** full-time and part-time employees, other than yourself, including family members and active partners (if none, you must enter "0").

_____ Full-time Employees

_____ Part-time Employees

Name of Business		Federal ID (or) Social Security No.	
Address		Telephone ()	
City	State	ZIP	

I hereby certify that the above information is true and correct. I agree to notify the Michigan DNR of any changes that occur in factors affecting my coverage during any of my present and future operations.

Signature of Owner or Authorized Representative

Title

Date

Please complete the "SEALED BID" information on the next page