



**DEPARTMENT OF NATURAL RESOURCES
STATE OF MICHIGAN
TIMBER SALE PROSPECTUS #7145**

SCHEDULED SALE DATE AND TIME: 9:00 a.m. (local time) on December 22, 2022.

LOCATION: BARAGA MGMT UNIT, 427 US 41 NORTH, BARAGA, MI 49908.

PROSPECTUS NOTE: Contact Dan McNamee 906-235-5830 for questions regarding timber sales 12-011-22 Sandy Curves, 12-052-22 Parks Farm Mix or 12-060-22 Moccasin Lake Aspen.

The bidder is advised to inspect the sale area and review the location, estimated volumes, operating costs and contract terms of proposed sales. Please be aware that some landowners may request 60 days or more notice for access across their land.

Notice is hereby given that bids will be received by the Unit Manager, CRYSTAL FALLS MANAGEMENT UNIT, for certain timber on the following described lands:

Sandy Curves (12-011-22) / T42N, R28W, SEC. 1 , NWNW,S1/2NW,E1/2NE.

T42N, R28W, SEC. 2 , E1/2NW.

T43N, R28W, SEC. 36, S1/2SW,SWSE.

Dickinson County, Advertised Price \$33,634.85, 86.3 Acres, Aspen, Hardwood.

SALE NOTE: Due to the wet soils, Payment Units 4 and 5 will be scaled.

Parks Farm Mix (12-052-22) / T44N, R34W, SEC. 17, NE,N1/2SE.

T44N, R34W, SEC. 8 , SENE,E1/2SE.

Iron County, Advertised Price \$31,279.60, 111.6 Acres, Hardwood, Aspen.

SALE NOTE: Access may be through private land.

Moccasin Lake Aspen (12-060-22) / T44N, R32W, SEC. 13, SWNW,SW.

Iron County, Advertised Price \$20,284.15, 49.7 Acres, Aspen, Hardwood.

SALE NOTE: Written access permission from non-industrial landowner(s) must accompany timber sale bids.

Access may be through private land.

BID INSTRUCTIONS (VER. 10/10/2022):

1. Scheduled Bid Location, Date, and Time (2/11)

Bids must be received by the Unit Manager, BARAGA OFFICE, 427 US 41 North, Baraga, MI 49908, no later than 9:00 a.m. (local time) on December 22, 2022. For further information concerning this sale, contact Brad Carlson at 906-353-6651.

2. Bidder's Qualifications (10/22)

If all or part of a timber sale was prepared by a private contractor, the contractor and that contractor's company are not permitted to bid on the timber sale. A person must be 18 years of age or older to purchase timber. Permanent employees of the Department of Natural Resources or members of their immediate household may not bid. Former employees, in the permanent or seasonal class, may not bid until 3 months after the last day of active duty. Bids will not be accepted from individuals or companies appearing on the DNR/FRD No-Bid List. This list contains the names of purchasers who previously failed to execute a contract within 21-days or who have a history of poor performance.

3. Preparation of Sealed Bids (5/16)

Bid Forms may be completed online thru Michigan DNR Timber Sale Online Bidding (OLB) at www.michigan.gov/timberbidding or by completing the hardcopy Bid Form found in the Timber Sale Prospectus. Hardcopy Bid Forms shall be manually signed in ink. Registration in OLB is considered your 'signature' for all bids submitted thru that system. Bid prices must be entered for each species and product in the Bid Price column for all material subject to bidding and all fill-in blanks must be completed. If erasures or other changes appear on the hardcopy Bid Form, each erasure or change must be initialed by the person signing the bid.

4. Submission of Sealed Bids (5/16)

Bid forms may be obtained from the Unit Manager or thru OLB. Bids may be submitted hardcopy or thru OLB. All hardcopy bids must be submitted on the bid form and in an envelope clearly identified as described in this section. NOTE: Only one bid form per bid envelope. Sealed bids must be submitted to the Unit office designated in the prospectus and must be submitted at or prior to the time established in the prospectus. The envelope should show on the outside (a) the sale name or number and (b) the date and time of bid opening, as shown in the prospectus. Bids received after the time specified in the sale prospectus are late bids and will be rejected.

It is possible for a bidder to submit multiple bids on a single sale. For example, a bid may be submitted hardcopy and a bid may be submitted thru OLB. Or, two bidders from the same company could both submit bids on the same sale. If this were to happen, the State would accept all bids received and award the contract accordingly. All bidding and contractual requirements would apply to all bids received.

5. Public Opening of Sealed Bids (7/16)

If conditions permit, the sealed bids will be publicly opened and posted at the time and place set in the prospectus.

If a bidder, present at a bid opening, has submitted bids on more than one sale, that bidder may withdraw their unopened bid envelopes or announce the withdrawal of their online bid after being declared the successful bidder on one sale.

6. Award of Contract (1/11)

Award of the contract will be made to the Bidder whose bid, conforming to the prospectus, is most advantageous to the State of Michigan on the basis of total value at rates bid for the estimated quantities. The State reserves the right to reject any bid or waive any minor irregularity in bids received. A written award mailed (or otherwise furnished) to the successful Bidder shall be deemed to result in a binding contract without further action by either party.

7. Down Payment (1/11)

The Bidder to whom award is made must make a down payment within 21 days of the sale award. The amount of the down payment will be calculated as shown in the Bond and Payment Schedule of this prospectus. Only cash may be used to meet this requirement.

8. Performance Security (1/11)

As guarantee of faithful performance, a cash bond, certificate of deposit, surety bond or irrevocable letter of credit (LOC) is required within 21 days of the sale award. The amount of the performance security is shown in the Bond and

Payment Schedule of this prospectus. If an LOC or surety is used, the coverage must extend for at least 6 months beyond the contract expiration.

9. Worker's Compensation (10/22)

Purchaser shall obtain worker's compensation insurance to cover claims under Michigan's Worker's Disability Compensation Act of 1969 or similar employee benefit act of any other state applicable to an employee. Verification of Worker's Disability Compensation Act Compliance must be completed and submitted within 21 days of contract award and prior to the issuance of the timber sale contract. In addition, if applicable, Notice of Exclusion or Certificate of Insurance must also be submitted.

10. Timber Sale Contract (10/22)

Additional conditions and requirements common to all timber sales are listed on the timber sale contract (R4031) and are available on line at www.michigan.gov/timber. Contact the Unit Manager for additional information or a sample contract. Within 21 days of the date of the award letter, the bidder must sign the contract and provide the required down payment, performance security, and verification of worker's disability compensation. The down payment and performance security shall be in accordance with the provisions of the timber sale contract, in the sums stated in this prospectus. If these actions are not taken, then the Bidder, the Bidder's corporation, and the corporation's principals may not be permitted to bid on State timber sales for a period of 3 months after the first offense, 6 months after the second offense, and 1 year after the third offense. An offense will only be counted against the Bidder for 5 years. In addition, the Bidder certifies that if awarded this contract, the Bidder will complete the timber sale contract in accordance with its terms and any modifications thereof including requirements to purchase, cut, and remove the included timber by the expiration date.

Payment Unit values in the State Forest Timber Sale Contract are calculated based on the advertised value of the Payment Unit as a percentage of the total advertised value of the contract. The advertised value of each Payment Unit is given in the Description of Timber by Payment Unit table on the Timber Sale Information page. For example, if the value of Payment Unit 1 is advertised as \$1,500 and the total Timber Sale value is advertised as \$10,000, the contract price for Payment Unit 1 will be 15% of the total bid price ($\$1,500/\$10,000 * 100$).

11. Disclaimer of Estimates and Bidder's Warranty of Inspection (10/22)

Before submitting this bid, the Bidder is advised and cautioned to inspect the sale area, review the requirements of the sale contract, and take other steps as may be reasonably necessary to ascertain the location, estimated volumes, construction estimates, and operating costs of the proposed sale. Failure to do so will not relieve the Bidder from responsibility for completing the contract.

The Bidder warrants that this bid is submitted solely on the basis of the Bidder's examination and inspection of the quality and quantity of the timber offered for sale and the Bidder's opinion of the value thereof and the costs of recovery. No reliance should be placed on the State of Michigan's estimates of timber quality, quantity or costs of recovery. Bidder further acknowledges that the State of Michigan: (i) expressly disclaims any warranty of fitness of timber for any purpose; (ii) offers this timber as is without any warranty of quality (merchantability) or quantity and (iii) expressly disclaims any warranty as to the quantity or quality of timber sold.

12. Certification and Chain-of-Custody (10/22)

Unless otherwise indicated in the contract under section 7 – Other Conditions of the Sale Specific Conditions & Requirements, the area encompassed by this timber sale is certified to the standards of the Forest Stewardship Council (FSC) - Certificate #SCS-FM/COC-00090N and the Sustainable Forestry Initiative (SFI) - Certificate #NSF-SFIS-5Y031-SF5. Forest products from this sale may be delivered to the mill as "FSC 100% and / or SFI certified" as long as the contractor hauling the forest products is chain-of-custody (COC) certified or covered under a COC certificate from the destination mill. The purchaser is responsible for maintaining COC after leaving the sale area.

13. Good Neighbor Authority (GNA) Requirements (10/22)

If the name of this timber sales contains the acronym GNA, it is authorized by the Good Neighbor Authority (GNA) and covered by various agreements between the U.S. Forest Service and the State. The timber sale occurs on federal land and the following conditions apply:

GNA contracts on US Forest Service land will not be awarded to purchasers on the Federal list of excluded parties. The System for Award Management (SAM) will be checked for active excluded parties prior to award of contract. In

addition, the Bidder to whom award is made must complete an Assurance Regarding Felony Conviction or Tax Delinquent Status for Corporate Applicants (AD-3031).

14. Good Neighbor Authority (GNA) Requirements, con't (10/22)

Bidder certifies, by signing this bid form, that to the best of Bidder's knowledge that the following representations are accurate and complete.

- a. That the Bidder and its principals are not presently debarred, suspended, proposed for debarment, declared ineligible, or voluntary excluded from timber sales (covered transactions) by any Federal department or agency.
- b. That the Bidder and its principals have not within a 3-year period preceding this bid been convicted of or had a civil judgment rendered against them for commission of fraud or a criminal offense in connection with obtaining , attempting to obtain, or performing a public (Federal, State, or local) transaction or contract under a public transaction; violation of Federal or State antitrust statutes or commission of embezzlement, theft, forgery, bribery, falsification or destruction of records, making false statements, or receiving stolen property.
- c. That the Bidder and its principals are not presently indicted for or otherwise criminally or civilly charged by a governmental entity (Federal, State, or local) with commission of any of the offenses enumerated in paragraph b of this certification.
- d. That the Bidder and its principals have not within a 3-year period preceding this bid had one or more public transactions (Federal, State, or local) terminated for breach or default of a timber or forest product contract.

Bidders that cannot certify this requirement, in whole or in part, shall submit an explanation with their bid.

DAN EICHINGER
Director

TIMBER SALE INFORMATION

Sandy Curves (12-011-22)

T42N, R28W, SEC. 1; T42N, R28W, SEC. 2; T43N, R28W, SEC. 36.
Dickinson County (Advertised Price \$33,634.85)

SALE NOTE: Due to the wet soils, Payment Units 4 and 5 will be scaled.

A timber sale contract for this mixed, sealed bid timber sale will be awarded to the responsible bidder offering the highest sealed bid price. All units of volume listed below were estimated using the Inventory Manager computer program and the new Michigan taper model. Bids must be at or above the following advertised price for each product and species:

<u>PRODUCTS & SPECIES</u>	<u>ESTIMATED UNITS*</u>	<u>ADVERTISED PRICE</u>
Sawtimber		
Sugar Maple	14.4 MBF	\$ 223.00 / MBF
Pulpwood		
Balsam Fir	174 Cords	\$ 4.45 / Cord
Basswood	5 Cords	\$ 5.85 / Cord
Mixed Hardwood	432 Cords	\$ 8.70 / Cord
Mixed Spruce	82 Cords	\$ 5.70 / Cord
Quaking Aspen	1,212 Cords	\$ 20.85 / Cord
Tamarack	34 Cords	\$ 3.65 / Cord

* The total volume is statistically estimated within plus (+) or minus (-) 26.95 percent. There are an estimated 1,890 cords on this timber sale, plus or minus 510 cords at the 95% confidence level. The estimated units are final and not subject to adjustment. Prospective bidders are urged to examine this timber and to make their own estimates of quantity and quality.

BOND AND PAYMENT SCHEDULE:

1. A bond in the amount of \$1,682.00 to insure faithful performance of the conditions of the contract will be deposited by the successful bidder within 21 days of the sale award.
2. Cutting in any sale or unit without the required advance payment would be considered a trespass.
3. Total payment must be paid in advance or according to the following schedule :
 - (a) Ten percent (10%) of the sale value must be paid within 21 days of the sale award.
 - (b) The 10% down payment will be credited towards the first unit cut.
 - (c) Payment for each of the following units must be made before cutting begins in that unit:

PAYMENT UNIT NUMBER	PERCENT OF TOTAL SALE VALUE
01	47.4%
02	40.3%
03	3.6%
04	8.0%
05	0.7%
4. If no cutting takes place, the 10% down payment will not be refunded.
5. Operations on the contract issued will terminate on 06/30/2025.

SALE STATISTICS

Volumes were calculated in cubic feet using the Michigan taper model. Cubic foot volume includes all wood inside bark for the product indicated. For display purposes, cubic feet were converted to cords and MBF using a simple conversion factor, e.g. 79 cubic feet per cord and 185 cubic feet per MBF. The cubic foot volumes are precise; the cords and MBF volumes are not. Cubic foot volume cannot be directly converted to cords or boards with precision.

SALE VOLUMES

The total estimated sale volume may not equal the sum of the species/products due to the nature of statistical calculations associated with double sampling methodology.

VOLUME		STATISTICAL RANGE IN CORDS		
TOTAL CUBIC FEET	TOTAL CORDS	PERCENT ERROR	MINIMUM	MAXIMUM
149,338	1,890	26.95%	1,381	2,400

VDU VOLUMES

A VDU is a Volume Determination Unit. Volumes and their associated statistics are calculated at the VDU level and summarized to the sale level. There is often a one to one relationship between a VDU and a Payment Unit, but not always, depending on the cruise design. Refer to the VDU TO PAYMENT UNIT table.

VDU	VOLUME		PERCENT ERROR	RANGE IN CORDS	
	TOTAL CUBIC FEET	TOTAL CORDS		MINIMUM	MAXIMUM
26	4,293	54	0.00%	54	54
35	66,468	841	41.86%	489	1,194
37	58,560	741	29.46%	523	960
38	2,968	38	35.10%	24	51
39	1,466	19	225.03%	23	60
42	15,583	197	0.00%	197	197
TOTAL:	149,338	1,890		1,265	2,516

VDU TO PAYMENT UNIT

When a VDU is associated with more than one Payment Unit (PU), the VDU volumes are assigned to the PU based on acres of the VDU within the PU.

VDU	VDU ACRES	PU	PU ACRES
26	7.2	5	7.2
35	26.5	1	26.5
37	24.8	2	24.8
38	8.9	3	8.9
39	4.4	3	4.4
42	14.5	4	14.5
TOTAL:	86.3		86.3

DESCRIPTION OF TIMBER BY PAYMENT UNIT (PU)

PU	MARKET GROUP	PRODUCT	QUANTITY	UNIT	ACRES	ADVERTISE PRICE	
1	Balsam Fir	Pulpwood	105	Cords	26.5	\$15,954.75	
	Mixed Hardwood		74	Cords			
	<i>Balsam Poplar</i>		14	<i>Cords</i>			
	<i>Black Cherry</i>		21	<i>Cords</i>			
	<i>Red Maple</i>		39	<i>Cords</i>			
	Mixed Spruce		29	Cords			
	<i>Black Spruce</i>		11	<i>Cords</i>			
	<i>White Spruce</i>		18	<i>Cords</i>			
	Quaking Aspen		704	Cords			
	2		Sugar Maple	Sawtimber			10.8
Balsam Fir		Pulpwood	69	Cords			
Mixed Hardwood			197	Cords			
<i>Balsam Poplar</i>			32	<i>Cords</i>			
<i>Sugar Maple</i>			165	<i>Cords</i>			
Mixed Spruce			33	Cords			
<i>White Spruce</i>			33	<i>Cords</i>			
Quaking Aspen			428	Cords			
3			Sugar Maple	Sawtimber	3.6	MBF	13.3
	Basswood		Pulpwood	5	Cords		
	<i>Basswood</i>	<i>Sawtimber</i>		1.8	<i>MBF</i>		
	<i>Basswood</i>	<i>Pulpwood</i>		1	<i>Cords</i>		
	Mixed Hardwood	44		Cords			
	<i>Sugar Maple</i>	44		<i>Cords</i>			
4	Mixed Hardwood	Pulpwood		117	Cords	14.5	\$2,685.90
	<i>Balsam Poplar</i>		64	<i>Cords</i>			
	<i>Black Ash</i>		53	<i>Cords</i>			
	Quaking Aspen		80	Cords			
	5		Mixed Spruce	Pulpwood	20		
<i>Black Spruce</i>		20	<i>Cords</i>				
Tamarack		34	Cords				
TOTAL:			14.4	MBF			
TOTAL:			1,939	Cords			

Sale Specific Conditions & Requirements

Sale Name: Sandy Curves

Sale Number: 12-011-22 Seq#: 1

1 - Sale Area

1.2 - Boundaries

1.2.1 - Painted boundaries (9/19)

The sale boundary and Payment Unit boundaries are marked and identified by blue, red and yellow paint. Exterior sale boundary lines against private property are marked with blue paint. Exterior sale boundary lines against state are marked with red paint. Interior Payment Unit boundaries are marked with yellow paint. The painted boundary line trees are not Included Timber and are to be protected unless marked with orange paint. Yellow painted trees designating an interior Payment Unit boundary are only to be cut when all surrounding Payment Units have been paid.

2 - Timber Specifications

2.1 - Included Timber

2.1.1 - Clearcut unit(s) with unmerchantable trees (6/14)

Within Payment Unit(s) 1, 2, 4, and 5, cut all trees that are two (2) inches or more at DBH, except do not cut cedar, hemlock, and pine. In addition, within Payment Units 1 and 2, leave conifers measuring less than 6 inches in diameter at stump height. Also, within Payment Unit 4, do not cut any conifers.

2.1.3 - Cut tree marked unit(s) (12/08)

Within Payment Unit(s) 3, all trees are designated for cutting when marked with orange paint above and below stump height, regardless of merchantability.

3 - Payments

3.2 - Scaled Sales

3.2.1 - Scale location (2/04)

Forest products will be placed for measurement roadside. This applies to the scaled Payment Units 4 and 5. Scaled volumes will be invoiced at contract prices.

3.4 - Damaged Timber

3.4.1 - Damaged timber (7/16)

General Condition and Requirement 3.4 Damaged Timber, defines liquidated damages for undesignated live merchantable trees which are cut or injured. No damage is acceptable to undesignated live merchantable trees. Within the sale area, if more than 10% of trees (> 4.5" DBH) within a specified area of the sale are damaged, liquidated damages will be assessed for all trees damaged. Rates will be in accordance with General Condition and Requirement 3.4 Damaged Timber.

4 - Transportation

4.1 - Construction

4.1.6 - Road construction (1/09)

Construction of new roads or improvements of existing roads shall be done in such a way as to minimize the environmental and visual impacts. Merchantable trees shall be cut and utilized unless otherwise directed. Non-merchantable trees shall be severed and laid flat on the ground. Slash shall be scattered, and not left in windrows and kept a minimum of 10 feet back from the road edge. Stumps shall be set upright, not left on edge, and be moved at least 10 feet away from the road edge. Disturbed soil shall be feathered into the woods and not left in berms or windrows.

4.2 - Maintenance

4.2.5 - Two wheel drive condition (2/04)

All existing trail roads on and adjacent to the sale area must be passable by two-wheel drive traffic for the duration of the sale.

4.3 - Public Right-of-Way

4.3.2 - County R-O-W (12/06)

The county must be contacted prior to harvesting in the county road R-O-W. Contact the Dickinson County Road Commission. This applies to the Lantz County Road.

4.4 - Access

4.4.2 - Alternate route on private property (2/04)

It is the Purchaser's responsibility to obtain access across private land for any routes other than the route shown on the Timber Sale Map.

5 - Operations

5.2 - Conduct of Operations

5.2.1 - Slash

5.2.1.13 - Dispose of slash as directed (12/05)

Slash is to be disposed of as directed by the Sale Administrator.

5.4 - Soil Protection

5.4.1 - Rutting restriction, general (7/16)

Operations are to cease immediately if equipment and weather conditions result in rutting of roads and/or skid trails which is 12 inches or greater in depth and 50 feet in length. The Unit Manager or his/her representative may restrict hauling and/or skidding if ruts exceed the specified depth. With the Unit Manager or his/her representative's approval, the Purchaser may return to the area when the risk of rutting has decreased.

5.4.5 - Soil caution (11/04)

Care must be taken to minimize soil damage due to the wet soils.

6 - Safety and Fire Prevention

6.2 - Signing

6.2.1 - Road posting (10/20)

The Purchaser is responsible for posting and maintaining caution signs on Lantz road prior to beginning operations. The road must be posted at appropriate distances from the sale area to warn of logging activity and truck traffic. Signs must be removed when harvest operations are suspended or completed. The Purchaser will provide these signs.



Sale Number	Year
12 - 011	22

TIMBER SALE MAP

This information provided by authority of Part 525, 1994 PA 451, as amended.

Forest Management Unit Crystal Falls	County Dickinson	Mapped By Andy Church	Date 09/13/2022	Page 1	of 1
Township 42N & 43N	Range 28W	Section(s) and Subdivision(s) 43N 28W: Sec 36 S1/2SW,SWSE 42N 28W: Sec1 NWNW,S1/2NW,E1/2NE; Sec 2 E1/2NW	Scale 1:15,840		

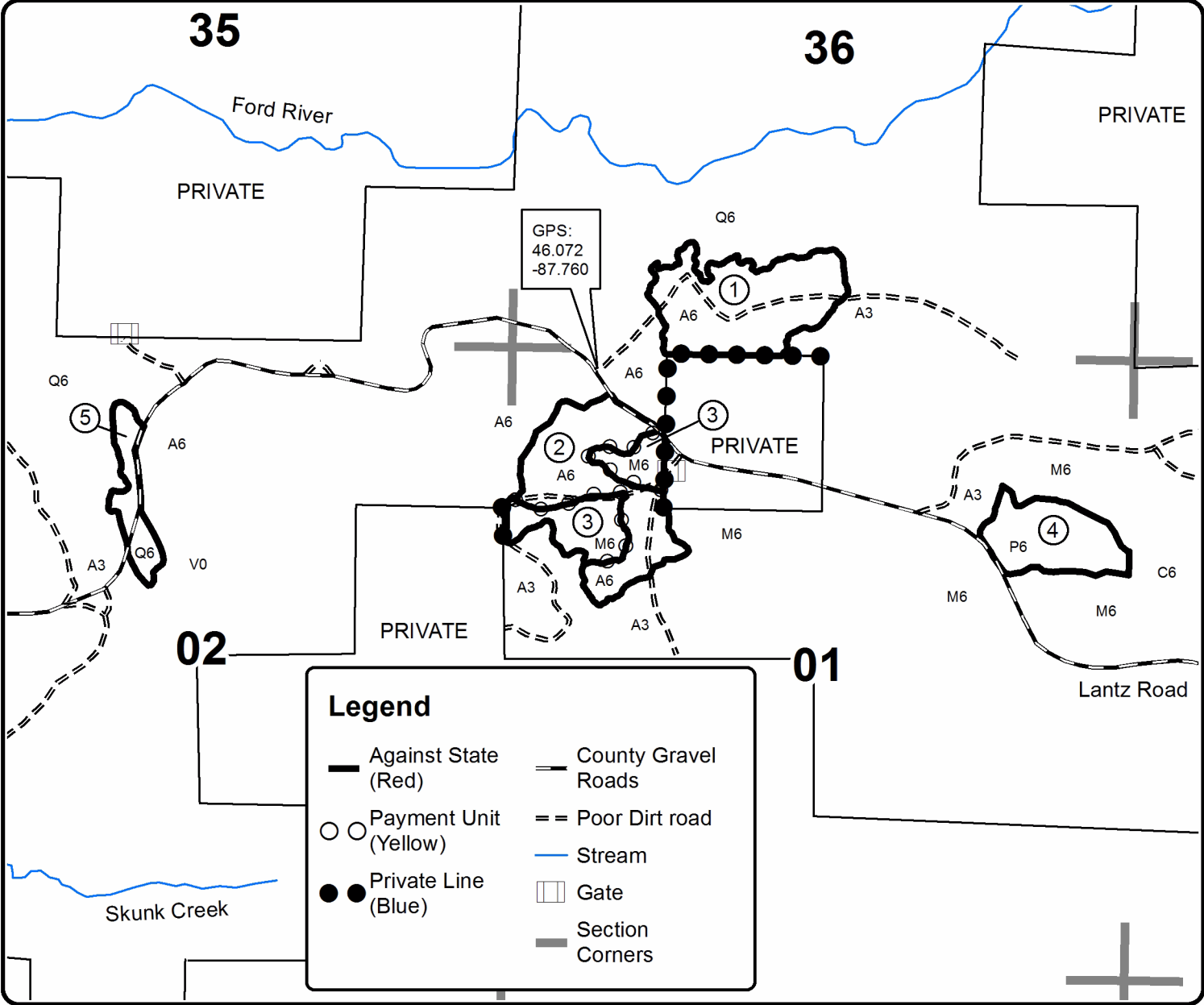
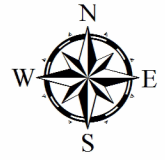
Cover Type				Density	
A = Aspen	H = Hemlock	N = Marsh	U = Upland Brush	0 = Non Stocked	5 = Pole Timber Medium
B = Paper Birch	J = Jack Pine	O = Oak	UM = Upland Mixed	1 = Seedling Sapling Poor	6 = Pole Timber Well
C = Cedar	L = Lowland Brush	P = Lowland Poplar	V = Bog or Marsh	2 = Seedling Sapling Medium	7 = Saw Timber Poor
D = Treed Bog	LM = Lowland Mixed	Q = Mixed Swamp Conifer	W = White Pine	3 = Seedling Sapling Well	8 = Saw Timber Medium
E = Swamp Hdwoods	M = Mpl, Bch, Brch	R = Red Pine	X = Non Stocked	4 = Pole Timber Poor	9 = Saw Timber Well
F = Spruce Fir	MC = Mixed Conifer	S = Black Spruce	Z = Water		
G = Grass	MD = Mixed Deciduous	T = Tamarack			

PU	Acres	PU	Acres
1	26.5	4	14.5
2	24.8	5	7.2
3	13.3		

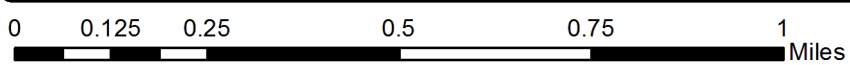
Sandy Curves Compartment 063 86.3 Acres



QR code for GeoRef PDF



Legend	
	Against State (Red)
	Payment Unit (Yellow)
	Private Line (Blue)
	County Gravel Roads
	Poor Dirt road
	Stream
	Gate
	Section Corners



TIMBER SALE INFORMATION

Parks Farm Mix (12-052-22)
T44N, R34W, SEC. 17; T44N, R34W, SEC. 8.
Iron County (Advertised Price \$31,279.60)

SALE NOTE: Access may be through private land.

A timber sale contract for this lump sum, sealed bid timber sale will be awarded to the responsible bidder offering the highest sealed bid price. All units of volume listed below were estimated using the Inventory Manager computer program and the new Michigan taper model. Bids must be at or above the following advertised price for each product and species:

<u>PRODUCTS & SPECIES</u>	<u>ESTIMATED UNITS*</u>	<u>ADVERTISED PRICE</u>
Sawtimber		
Black Cherry	4.0 MBF	\$ 73.00 / MBF
Red Maple	14.6 MBF	\$ 110.00 / MBF
Sugar Maple	35.0 MBF	\$ 223.00 / MBF
Pulpwood		
Balsam Fir	105 Cords	\$ 4.45 / Cord
Mixed Hardwood	751 Cords	\$ 8.70 / Cord
Quaking Aspen	698 Cords	\$ 20.85 / Cord
Tamarack	3 Cords	\$ 3.65 / Cord
White Spruce	2 Cords	\$ 5.70 / Cord

* The total volume is statistically estimated within plus (+) or minus (-) 12.16 percent. There are an estimated 1,688 cords on this timber sale, plus or minus 205 cords at the 95% confidence level. The estimated units are final and not subject to adjustment. Prospective bidders are urged to examine this timber and to make their own estimates of quantity and quality.

BOND AND PAYMENT SCHEDULE:

1. A bond in the amount of \$2,000.00 to insure faithful performance of the conditions of the contract will be deposited by the successful bidder within 21 days of the sale award.
2. Cutting in any sale or unit without the required advance payment would be considered a trespass.
3. Total payment must be paid in advance or according to the following schedule :
 - (a) Ten percent (10%) of the sale value must be paid within 21 days of the sale award.
 - (b) The 10% down payment will be credited towards the first unit cut.
 - (c) Payment for each of the following units must be made before cutting begins in that unit:

PAYMENT UNIT NUMBER	PERCENT OF TOTAL SALE VALUE
01	26.5%
02	49.5%
03	24.0%
4. If no cutting takes place, the 10% down payment will not be refunded.
5. Operations on the contract issued will terminate on 06/30/2025.

SALE STATISTICS

Volumes were calculated in cubic feet using the Michigan taper model. Cubic foot volume includes all wood inside bark for the product indicated. For display purposes, cubic feet were converted to cords and MBF using a simple conversion factor, e.g. 79 cubic feet per cord and 185 cubic feet per MBF. The cubic foot volumes are precise; the cords and MBF volumes are not. Cubic foot volume cannot be directly converted to cords or boards with precision.

SALE VOLUMES

The total estimated sale volume may not equal the sum of the species/products due to the nature of statistical calculations associated with double sampling methodology.

VOLUME		STATISTICAL RANGE IN CORDS		
TOTAL CUBIC FEET	TOTAL CORDS	PERCENT ERROR	MINIMUM	MAXIMUM
133,391	1,688	12.16%	1,483	1,894

VDU VOLUMES

A VDU is a Volume Determination Unit. Volumes and their associated statistics are calculated at the VDU level and summarized to the sale level. There is often a one to one relationship between a VDU and a Payment Unit, but not always, depending on the cruise design. Refer to the VDU TO PAYMENT UNIT table.

VDU	VOLUME		PERCENT ERROR	RANGE IN CORDS	
	TOTAL CUBIC FEET	TOTAL CORDS		MINIMUM	MAXIMUM
34	63,751	807	17.96%	662	952
39	65,087	824	9.72%	744	904
41	4,554	58	72.78%	16	100
TOTAL:	133,391	1,688		1,422	1,955

VDU TO PAYMENT UNIT

When a VDU is associated with more than one Payment Unit (PU), the VDU volumes are assigned to the PU based on acres of the VDU within the PU.

VDU	VDU ACRES	PU	PU ACRES
34	70.6	1	35.0
		3	35.6
39	37.4	2	37.4
41	3.6	1	3.6
TOTAL:	111.6		111.6

DESCRIPTION OF TIMBER BY PAYMENT UNIT (PU)

PU	MARKET GROUP	PRODUCT	QUANTITY	UNIT	ACRES	ADVERTISE PRICE
1	Black Cherry	Sawtimber	2.3	MBF	38.6	\$8,298.00
	Red Maple		8.2	MBF		
	Sugar Maple		17.9	MBF		
	Mixed Hardwood	Pulpwood	372	Cords		
	<i>Black Cherry</i>		21	Cords		
	<i>Red Maple</i>		80	Cords		
	<i>Sugar Maple</i>		271	Cords		
2	Balsam Fir	Pulpwood	105	Cords	37.4	\$15,460.50
	Mixed Hardwood		48	Cords		
	<i>Black Cherry</i>		3	Cords		
	<i>Red Maple</i>		45	Cords		
	Quaking Aspen		698	Cords		
	Tamarack		3	Cords		
	White Spruce		2	Cords		
3	Black Cherry	Sawtimber	1.7	MBF	35.6	\$7,521.10
	Red Maple		6.4	MBF		
	Sugar Maple		17.1	MBF		
	Mixed Hardwood	Pulpwood	331	Cords		
	<i>Black Cherry</i>		14	Cords		
	<i>Red Maple</i>		56	Cords		
	<i>Sugar Maple</i>		261	Cords		
TOTAL:			53.6	MBF		
TOTAL:			1,559	Cords		

Sale Specific Conditions & Requirements

Sale Name: Parks Farm Mix

Sale Number: 12-052-22 Seq#: 1

1 - Sale Area

1.2 - Boundaries

1.2.1 - Painted boundaries (9/19)

The sale boundary lines against private property are marked with blue paint. Sale boundary lines against state land are marked with double red paint dots. Interior Payment Unit boundaries are marked with double red paint slashes. The painted boundary line trees are not Included Timber and are to be protected.

2 - Timber Specifications

2.1 - Included Timber

2.1.2 - Clearcut unit(s) w/o unmerchantable trees (8/11)

Within Payment Unit(s) 2, cut all aspen, red maple, white birch, cherry, spruce, balsam fir, and tamarack trees which meet minimum piece specifications in 2.2 Utilization (one 100" piece to a top diameter inside bark of 4 inches), except do not cut trees marked with green paint.

2.1.3 - Cut tree marked unit(s) (12/08)

Within Payment Unit(s) 1 and 3, all trees are designated for cutting when marked with orange paint above and below stump height, regardless of merchantability.

2.2 - Utilization

2.2.3 - Stump heights (4/07)

Stump heights within the Sale Area shall not exceed 12 inches for trees greater than 10 inches DBH and 4 inches for trees smaller than 10 inches DBH.

2.2.11 - Chipping restriction (9/14)

If chipping occurs on this sale, then no woody debris present on the ground at the start of the sale may be chipped. Chip piles must be removed within 60 days of the sale expiration. In addition, after chip pile removal, residual chip depth at the landing may not exceed 4 inches.

3 - Payments

3.4 - Damaged Timber

3.4.1 - Damaged timber (7/16)

General Condition and Requirement 3.4 Damaged Timber, defines liquidated damages for undesignated live merchantable trees which are cut or injured. In addition, extreme care should be taken to avoid damage to tree seedlings and saplings. There are areas of advanced maple regeneration throughout the Sale Area. These saplings should be protected from damage. No damage is acceptable to undesignated live merchantable trees. Within the sale area, if more than 10 % of trees (> 4.5" DBH) within a specified area of the sale are damaged, liquidated damages will be assessed for all trees damaged.

4 - Transportation

4.1 - Construction

4.1.3 - Slash and earthen piles (8/04)

Piles or windrows of earth along roads and landings that have been widened or constructed shall be leveled. Slash from road maintenance or construction, including stumps, shall be dispersed throughout the sale.

4.1.6 - Road construction (1/09)

Improvements of existing roads shall be done in such a way as to minimize the environmental and visual impacts. Merchantable trees shall be cut and utilized unless otherwise directed. Non-merchantable trees shall be severed and laid flat on the ground. Slash shall be scattered, and not left in windrows. Stumps shall be set upright, not left on edge, and be moved at least 5 feet away from the road edge. Disturbed soil shall be feathered into the woods and not left in berms or windrows.

4.1.7 - Road closure (10/11)

Overgrown roads that are reopened shall be blocked to vehicle traffic within 60 days of the sale expiration. In general, this will require constructing an earthen berm minimum 4 feet high. These roads must be made impassable to ORVs. Contact the sale administrator for specific design and placement.

4.1.12 - No new roads (1/12)

No new roads will be permitted. All operations are limited to existing roads. Existing overgrown roads may be opened up and utilized with approval from the sale administrator.

4.2 - Maintenance

4.2.5 - Two wheel drive condition (2/04)

All existing trail roads on and adjacent to the sale area must be passable by two-wheel drive traffic for the duration of the sale.

4.4 - Access

4.4.1 - Private property access (3/11)

Permission for access across private land has been verbally obtained by the DNR for utilizing the Lyme Timberlands road system. It is the responsibility of the Purchaser to obtain any road use agreement that may be required from Lyme Timberlands.

5 - Operations

5.2 - Conduct of Operations

5.2.1 - Slash

5.2.1.8 - Slash height (12/08)

No slash or tree tops may exceed 24 inches in height.

5.2.1.11 - Slash for reforestation (3/21)

To facilitate reforestation, the Sale Area shall be left with slash evenly distributed. Bunched tops within the cutting area shall be broken up and scattered. Stumps shall be cut low to the ground. Processing sites shall not be left with a compacted layer of slash; tops from these sites shall be hauled back into the cut area and scattered.

5.2.2 - Hazard Trees/Snags

5.2.2.1 - Den trees (10/16)

Obvious hollow and/or den trees shall be protected and left standing unless they are a safety hazard.

5.2.3 - Operating Restrictions

5.2.3.1 - Operating restrictions (9/11)

Within Payment Unit(s) 1 - 3, cutting, skidding, and hauling are not permitted from March 1 to December 15. This restriction is to avoid resource damage during non frozen conditions. If prolonged warm weather conditions occur, the sale administrator may suspend operations until favorable weather and ground conditions are present.

5.2.38 - No decking against live trees (2/04)

Cut products may not be decked against unmarked or designated leave trees.

5.4 - Soil Protection

5.4.1 - Rutting restriction, general (7/16)

Operations are to cease immediately if equipment and weather conditions result in rutting of roads and/or skid trails which is 12 inches or greater in depth and 50 feet in length. The Unit Manager or his/her representative may restrict hauling and/or skidding if ruts exceed the specified depth. With the Unit Manager or his/her representative's approval, the Purchaser may return to the area when the risk of rutting has decreased.

5.4.6 - Wet area protection (5/10)

No harvesting operations, including skidding and felling, are to take place within any vernal pond areas or drainages. When harvesting occurs, there should be no disturbance to the vernal pond depression. All equipment, trees and tops should be kept

out of this area. Within 100 feet of the pond, equipment should only be used when the soil is in a dry or frozen condition. Care must be taken by the Purchaser to identify and avoid operating in these areas of the timber sale.

5.8 - Protection of Endangered Species

5.8.5 - Protection of raptor nests (3/13)

All trees with raptor nests will be protected if found during harvesting operations. Notification will be made to the Unit Manager or his/her representative who will notify the Wildlife Biologist so an on-site evaluation and recommendation can be made, if necessary.



TIMBER SALE MAP

This information provided by authority of Part 525, 1994 PA 451, as amended.

Forest Management Unit CRYSSAL FALLS		County IRON	Mapped By Rice	Date 08/23/22	Page 1	of 1
Township 44N	Range 34W	Section(s) and Subdivision(s) sec 8: SENE, E1/2SE sec17: NE1/4,N1/2SE		Scale 4 inches = 1 mile		

Cover Type

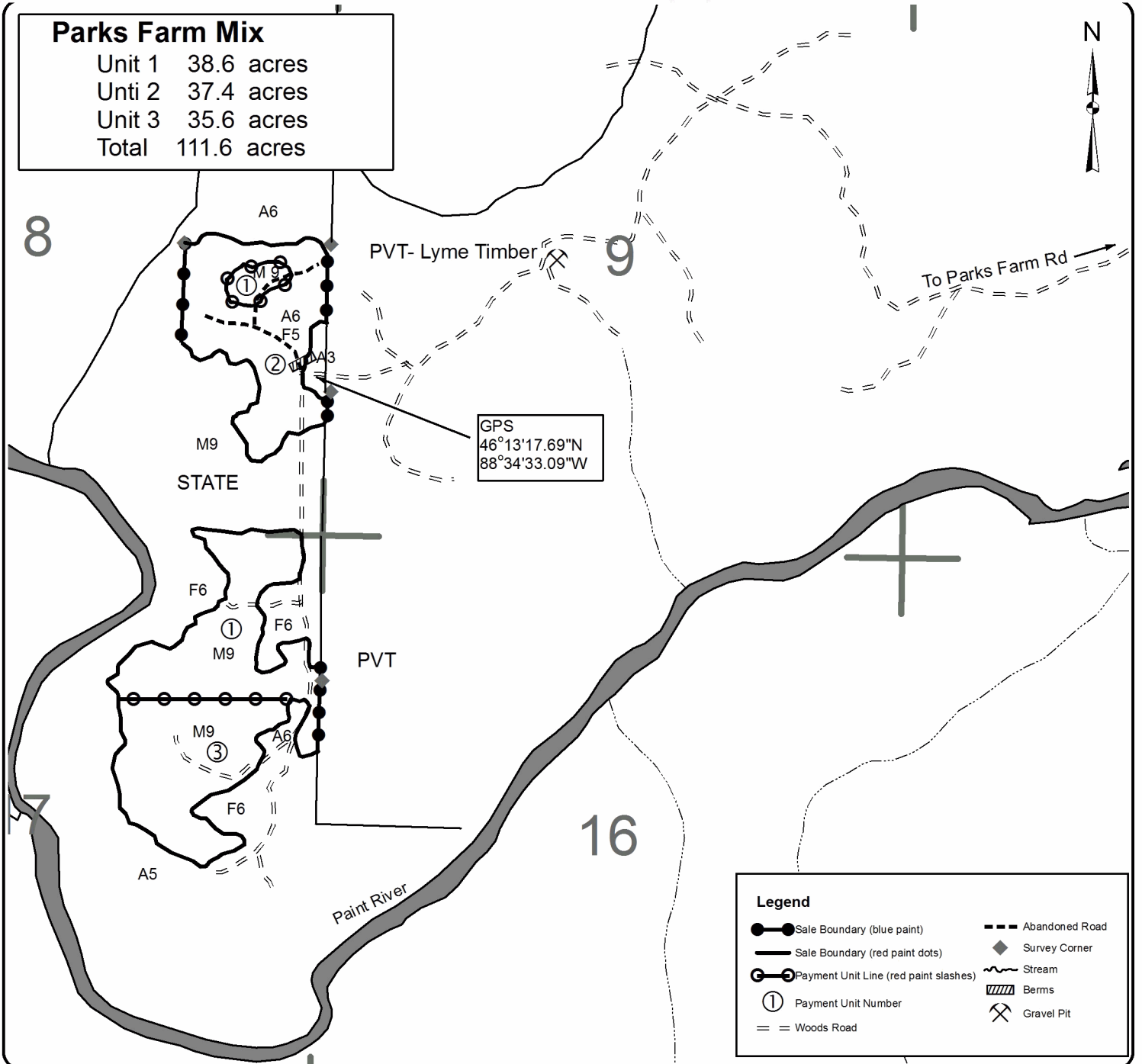
A = Aspen	H = Hemlock	N = Marsh	U = Upland Brush
B = Paper Birch	J = Jack Pine	O = Oak	UM = Upland Mixed
C = Cedar	L = Lowland Brush	P = Lowland Poplar	V = Bog or Marsh
D = Treed Bog	LM = Lowland Mixed	Q = Mixed Swamp Conifer	W = White Pine
E = Swamp Hdwoods	M = Mpl, Bch, Brch	R = Red Pine	X = Non Stocked
F = Spruce Fir	MC = Mixed Conifer	S = Black Spruce	Z = Water
G = Grass	MD = Mixed Deciduous	T = Tamarack	

Density

0 = Non Stocked	5 = Pole Timber Medium
1 = Seedling Sapling Poor	6 = Pole Timber Well
2 = Seedling Sapling Medium	7 = Saw Timber Poor
3 = Seedling Sapling Well	8 = Saw Timber Medium
4 = Pole Timber Poor	9 = Saw Timber Well

Parks Farm Mix

Unit 1	38.6 acres
Unit 2	37.4 acres
Unit 3	35.6 acres
Total	111.6 acres



Legend

Sale Boundary (blue paint)	Abandoned Road
Sale Boundary (red paint dots)	Survey Corner
Payment Unit Line (red paint slashes)	Stream
Payment Unit Number	Berms
Woods Road	Gravel Pit

TIMBER SALE INFORMATION

Moccasin Lake Aspen (12-060-22)
T44N, R32W, SEC. 13.
Iron County (Advertised Price \$20,284.15)

SALE NOTE: Written access permission from non-industrial landowner(s) must accompany timber sale bids.

Access may be through private land.

A timber sale contract for this lump sum, sealed bid timber sale will be awarded to the responsible bidder offering the highest sealed bid price. All units of volume listed below were estimated using the Inventory Manager computer program and the new Michigan taper model. Bids must be at or above the following advertised price for each product and species:

<u>PRODUCTS & SPECIES</u>	<u>ESTIMATED UNITS*</u>	<u>ADVERTISED PRICE</u>
Sawtimber		
Red Maple	5.0 MBF	\$ 110.00 / MBF
Pulpwood		
Balsam Fir	27 Cords	\$ 4.45 / Cord
Paper Birch	24 Cords	\$ 3.75 / Cord
Quaking Aspen	896 Cords	\$ 20.85 / Cord
Red Maple	68 Cords	\$ 8.70 / Cord
White Spruce	44 Cords	\$ 5.70 / Cord

* The total volume is statistically estimated within plus (+) or minus (-) 13.85 percent. There are an estimated 1,047 cords on this timber sale, plus or minus 145 cords at the 95% confidence level. The estimated units are final and not subject to adjustment. Prospective bidders are urged to examine this timber and to make their own estimates of quantity and quality.

BOND AND PAYMENT SCHEDULE:

1. A bond in the amount of \$1,500.00 to insure faithful performance of the conditions of the contract will be deposited by the successful bidder within 21 days of the sale award.
2. Cutting in any sale or unit without the required advance payment would be considered a trespass.
3. Total payment must be paid in advance or according to the following schedule :
 - (a) Ten percent (10%) of the sale value must be paid within 21 days of the sale award.
 - (b) The remainder is due before cutting begins.
 - (c) Payment for each of the following units must be made before cutting begins in that unit:

PAYMENT UNIT NUMBER	PERCENT OF TOTAL SALE VALUE
01	100.0%
4. If no cutting takes place, the 10% down payment will not be refunded.
5. Operations on the contract issued will terminate on 06/30/2025.

SALE STATISTICS

Volumes were calculated in cubic feet using the Michigan taper model. Cubic foot volume includes all wood inside bark for the product indicated. For display purposes, cubic feet were converted to cords and MBF using a simple conversion factor, e.g. 79 cubic feet per cord and 185 cubic feet per MBF. The cubic foot volumes are precise; the cords and MBF volumes are not. Cubic foot volume cannot be directly converted to cords or boards with precision.

SALE VOLUMES

The total estimated sale volume may not equal the sum of the species/products due to the nature of statistical calculations associated with double sampling methodology.

VOLUME		STATISTICAL RANGE IN CORDS		
TOTAL CUBIC FEET	TOTAL CORDS	PERCENT ERROR	MINIMUM	MAXIMUM
82,722	1,047	13.85%	902	1,192

VDU VOLUMES

A VDU is a Volume Determination Unit. Volumes and their associated statistics are calculated at the VDU level and summarized to the sale level. There is often a one to one relationship between a VDU and a Payment Unit, but not always, depending on the cruise design. Refer to the VDU TO PAYMENT UNIT table.

VDU	VOLUME		PERCENT ERROR	RANGE IN CORDS	
	TOTAL CUBIC FEET	TOTAL CORDS		MINIMUM	MAXIMUM
57	79,701	1,009	15.38%	854	1,164
87	3,021	38	47.11%	20	56
TOTAL:	82,722	1,047		874	1,220

VDU TO PAYMENT UNIT

When a VDU is associated with more than one Payment Unit (PU), the VDU volumes are assigned to the PU based on acres of the VDU within the PU.

VDU	VDU ACRES	PU	PU ACRES
57	48.1	1	48.1
87	1.6	1	1.6
TOTAL:	49.7		49.7

DESCRIPTION OF TIMBER BY PAYMENT UNIT (PU)

PU	MARKET GROUP	PRODUCT	QUANTITY	UNIT	ACRES	ADVERTISE PRICE
1	Red Maple	Sawtimber	5.0	MBF	49.7	\$20,284.15
	Balsam Fir	Pulpwood	27	Cords		
	Paper Birch		24	Cords		
	Quaking Aspen		896	Cords		
	Red Maple		68	Cords		
	White Spruce		44	Cords		
TOTAL:			5.0	MBF		
TOTAL:			1,059	Cords		

Sale Specific Conditions & Requirements

Sale Name: Moccasin Lake Aspen

Sale Number: 12-060-22 Seq#: 1

1 - Sale Area

1.2 - Boundaries

1.2.1 - Painted boundaries (9/19)

The sale boundary lines against private property are marked with blue paint. Sale boundary lines against state land are marked with double red paint dots. Painted boundary line trees are not included timber and may not be cut.

2 - Timber Specifications

2.1 - Included Timber

2.1.2 - Clearcut unit(s) w/o unmerchantable trees (8/11)

Within Payment Unit(s) 1, cut all aspen, red maple, white birch, spruce, and balsam fir trees which meet minimum piece specifications in 2.2 Utilization (one 100" piece to a top diameter inside bark of 4 inches), except do not cut trees marked with green paint.

2.2 - Utilization

2.2.3 - Stump heights (4/07)

Stump heights within the Sale Area shall not exceed 12 inches for trees greater than 10 inches DBH and 4 inches for trees smaller than 10 inches DBH.

2.2.11 - Chipping restriction (9/14)

If chipping occurs on this sale, no woody debris present on the ground at the start of the sale may be chipped. Chip piles must be removed within 60 days of the sale expiration. In addition, after chip pile removal, residual chip depth at the landing may not exceed 4 inches.

3 - Payments

3.4 - Damaged Timber

3.4.1 - Damaged timber (7/16)

General Condition and Requirement 3.4 Damaged Timber, defines liquidated damages for undesignated live merchantable trees which are cut or injured. Extreme care should be taken to avoid damage to tree seedlings and saplings. There are areas of well stocked maple saplings throughout the Sale Area. This advanced regeneration must be protected from damage. No damage is acceptable to undesignated live merchantable trees. Within the sale area, if more than 10 % of trees (> 4.5" DBH) within a specified area of the sale are damaged, liquidated damages will be assessed for all trees damaged. Rates will be in accordance with General Condition and Requirement 3.4 Damaged Timber.

4 - Transportation

4.1 - Construction

4.1.3 - Slash and earthen piles (8/04)

Piles or windrows of earth along roads and landings that have been widened or constructed shall be leveled. Slash from road maintenance or construction, including stumps, shall be dispersed throughout the sale, chipped, utilized or otherwise removed from the sale.

4.1.6 - Road construction (1/09)

Improvements of existing roads shall be done in such a way as to minimize the environmental and visual impacts. Merchantable trees shall be cut and utilized unless otherwise directed. Non-merchantable trees shall be severed and laid flat on the ground. Slash shall be scattered, and not left in windrows. Stumps shall be set upright, not left on edge, and be moved at least 5 feet away from the road edge. Disturbed soil shall be feathered into the woods and not left in berms or windrows.

4.1.7 - Road closure (10/11)

Overgrown roads that are reopened must be blocked to vehicle traffic within 60 days of the sale expiration. In general, this will require constructing a berm/s of dirt, stumps, slash and/or rocks. These roads must be made impassable to ORVs.

Contact the sale administrator for specific design and placement.

4.1.12 - No new roads (1/12)

No new roads will be permitted. All operations are limited to existing roads. Existing overgrown roads may be opened up and utilized with approval from the sale administrator.

4.2 - Maintenance

4.2.5 - Two wheel drive condition (2/04)

All existing trail roads on and adjacent to the sale area must be passable by two-wheel drive traffic for the duration of the sale.

4.4 - Access

4.4.1 - Private property access (3/11)

Permission for access across private land has been verbally obtained by the DNR from the private landowner to the west of the sale area. A copy of written permission from the private (non-industrial) landowner(s) must be submitted with the timber sale bid. In addition, access must be obtained from WE Energies, and potentially Lyme Timberlands, dependent on the access route. Road use agreements may be required from both of these landowners. It is the responsibility of the Purchaser to obtain any necessary use agreement(s).

5 - Operations

5.2 - Conduct of Operations

5.2.1 - Slash

5.2.1.8 - Slash height (12/08)

No slash or tree tops may exceed 24 inches in height.

5.2.1.11 - Slash for reforestation (3/21)

To facilitate reforestation, the Sale Area shall be left with slash evenly distributed. Bunched tops within the cutting area shall be broken up and scattered. Stumps shall be cut low to the ground. Processing sites shall not be left with a compacted layer of slash; tops from these sites shall be hauled back into the cut area and scattered.

5.2.2 - Hazard Trees/Snags

5.2.2.1 - Den trees (10/16)

Obvious hollow and/or den trees shall be protected and left standing unless they are a safety hazard.

5.2.3 - Operating Restrictions

5.2.3.1 - Operating restrictions (9/11)

Within Payment Unit(s) 1, cutting, skidding, and hauling are not permitted from March 1 to December 15. This restriction is to avoid non frozen woods and road conditions. If prolonged warm weather conditions occur throughout the operating season, the sale administrator may suspend operations until favorable weather and ground conditions are present.

5.2.38 - No decking against live trees (2/04)

Cut products may not be decked against unmarked or designated leave trees.

5.4 - Soil Protection

5.4.1 - Rutting restriction, general (7/16)

Operations are to cease immediately if equipment and weather conditions result in rutting of roads and/or skid trails which is 12 inches or greater in depth and 50 feet in length. The Unit Manager or his/her representative may restrict hauling and/or skidding if ruts exceed the specified depth. With the Unit Manager or his/her representative's approval, the Purchaser may return to the area when the risk of rutting has decreased.

5.4.6 - Wet area protection (5/10)

No harvesting operations, including skidding and felling, are to take place within the vernal pond areas or drainages. When harvesting occurs, there should be no disturbance to any vernal pond depression. All equipment, trees and tops should be kept out of this area. Within 100 feet of the pond, equipment should only be used when the soil is in a dry or frozen condition.

Care must be taken by the Purchaser to identify and avoid operating in these areas of the timber sale.

5.8 - Protection of Endangered Species

5.8.5 - Protection of raptor nests (3/13)

All trees with raptor nests will be protected if found during harvesting operations. Notification will be made to the Unit Manager or his/her representative who will notify the Wildlife Biologist so an on-site evaluation and recommendation can be made, if necessary.



TIMBER SALE MAP

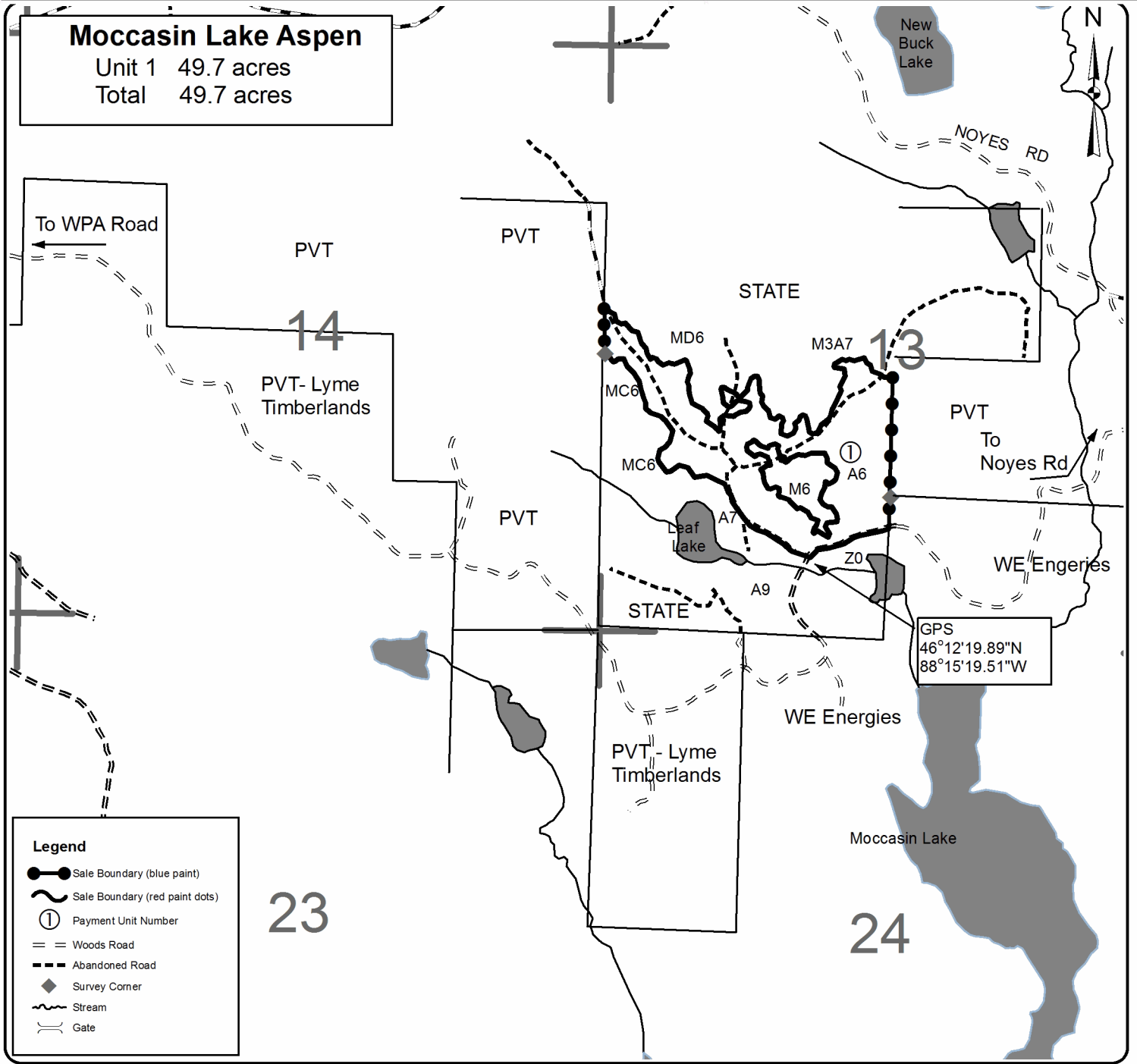
This information provided by authority of Part 525, 1994 PA 451, as amended.

Sale Number	Year
12 - 060	2022

Forest Management Unit CRYSTAL FALLS	County IRON	Mapped By Rice	Date 09/19/22	Page 1	of 1
Township 44N	Range 32W	Section(s) and Subdivision(s) sec13: SWNW,SW1/4	Scale 4 inches = 1 mile		

Cover Type				Density	
A = Aspen	H = Hemlock	N = Marsh	U = Upland Brush	0 = Non Stocked	5 = Pole Timber Medium
B = Paper Birch	J = Jack Pine	O = Oak	UM = Upland Mixed	1 = Seedling Sapling Poor	6 = Pole Timber Well
C = Cedar	L = Lowland Brush	P = Lowland Poplar	V = Bog or Marsh	2 = Seedling Sapling Medium	7 = Saw Timber Poor
D = Tread Bog	LM = Lowland Mixed	Q = Mixed Swamp Conifer	W = White Pine	3 = Seedling Sapling Well	8 = Saw Timber Medium
E = Swamp Hdwoods	M = Mpl, Bch, Brch	R = Red Pine	X = Non Stocked	4 = Pole Timber Poor	9 = Saw Timber Well
F = Spruce Fir	MC = Mixed Conifer	S = Black Spruce	Z = Water		
G = Grass	MD = Mixed Deciduous	T = Tamarack			

Moccasin Lake Aspen
 Unit 1 49.7 acres
 Total 49.7 acres



GPS
 46°12'19.89"N
 88°15'19.51"W

Legend

- Sale Boundary (blue paint)
- Sale Boundary (red paint dots)
- Payment Unit Number
- Woods Road
- Abandoned Road
- Survey Corner
- Stream
- Gate

Parks Farm Mix (12-052-22)
T44N, R34W, SEC. 17; T44N, R34W, SEC. 8; Iron COUNTY

In response to the notice of sale to be held 9:00 a.m. (local time) on December 22, 2022, I am hereby submitting my sealed bid (firm offer) for the following forest products to be cut. Bids for individual species must be at or above the advertised price. All non-responsive bid forms may be rejected.

<u>PRODUCTS & SPECIES</u>	<u>ESTIMATED VOLUME*</u>	<u>ADVERTISED PRICE</u>	<u>BID PRICE/UNIT</u>
Sawtimber			
Black Cherry	4.0 MBF	\$ 73.00/MBF	\$ _____
Red Maple	14.6 MBF	\$ 110.00/MBF	\$ _____
Sugar Maple	35.0 MBF	\$ 223.00/MBF	\$ _____
Pulpwood			
Balsam Fir	105 Cords	\$ 4.45/Cord	\$ _____
Mixed Hardwood	751 Cords	\$ 8.70/Cord	\$ _____
Quaking Aspen	698 Cords	\$ 20.85/Cord	\$ _____
Tamarack	3 Cords	\$ 3.65/Cord	\$ _____
White Spruce	2 Cords	\$ 5.70/Cord	\$ _____

*The volumes are statistically estimated within plus (+) or minus (-) 12.16 percent at 95% confidence level. These estimated volumes are final and not subject to adjustment. Prospective bidders are urged to examine this timber and to make their own estimates of quantity and quality.

I understand that any or all bids may be rejected. All bids must be signed and all bid items must be bid or the bid form may be rejected. I also understand that consideration and awarding a contract will be based upon my past performance and ability to complete the contract based upon equipment and staffing subject to my control.

FEDERAL ID: ____ - ____ - ____ or SOCIAL SECURITY NUMBER: ____ - ____ - ____

Company or individual bidding: _____

Company representative's name: _____

Address: _____

City: _____ State: _____ Zip: _____

IF AVAILABLE, PLEASE PLACE THE PERSONALIZED LABEL FROM YOUR PROSPECTUS IN THE ABOVE BOX.

Individual or company representative's signature: _____ Date: _____

Phone number : _____ Email (optional): _____

THE WINNING BIDDER MUST COMPLETE THE VERIFICATION OF WORKER'S DISABILITY COMPENSATION ACT COMPLIANCE (ON REVERSE SIDE IF DOUBLE SIDED) WITHIN 21 DAYS OF SALE AWARD DATE



FOR DEPARTMENT USE ONLY	
Sale Number (XX - XXX - XX - XX)	
Forest Management Unit:	

TIMBER SALE VERIFICATION OF WORKER'S DISABILITY COMPENSATION ACT COMPLIANCE

As required by Act 317, P.A. 1969 (Worker's Compensation) and
Part 5 of Act 451 of 1994, as amended.

VERIFICATION OF WORKER'S DISABILITY COMPENSATION ACT COMPLIANCE

- This verification must be completed and submitted within 21 days of contract award and prior to the issuance of the timber sale contract.
- In addition, if boxes 2B or 2C are checked, then Notice of Exclusion or Certificate of Insurance must be submitted within twenty-one (21) days of the contract award and prior to the issuance of the timber sale contract.
- All information must be typed or printed except for written signatures.

Please Check Appropriate Categories:

1. My business is organized as (you **must** check one of the boxes below):
 - A. Sole Proprietorship (individual)
 - B. Partnership
 - C. Corporation
2. You **must** check one of the boxes below:
 - A. I certify my business is a sole proprietorship and it has no employees but the sole proprietor. I am not subject to the Worker's Compensation Laws.
 - B. I certify my business has satisfied its obligation to the Worker's Compensation Act through the use of an approved Notice of Exclusion (BWC-337, Rev. 5/96). I will provide a copy of the Notice of Exclusion within 21 days of the contract award. (For questions or a copy of the BWC-337, please call the Worker's Compensation Bureau at 517-322-1195).
 - C. I certify my business has a Worker's Compensation Policy. I will provide an original Certificate of Insurance within twenty-one (21) days of the contract award.
3. If you have checked item 2(A) or 2(B), you **must** indicate the number of **both** full-time and part-time employees, other than yourself, including family members and active partners (if none, you must enter "0").

_____ Full-time Employees

_____ Part-time Employees

Name of Business		Federal ID (or) Social Security No.	
Address		Telephone ()	
City	State	ZIP	

I hereby certify that the above information is true and correct. I agree to notify the Michigan DNR of any changes that occur in factors affecting my coverage during any of my present and future operations.

Signature of Owner or Authorized Representative

Title

Date

Please complete the "SEALED BID" information on the next page

Sandy Curves (12-011-22)

T42N, R28W, SEC. 1; T42N, R28W, SEC. 2; T43N, R28W, SEC. 36; Dickinson

In response to the notice of sale to be held 9:00 a.m. (local time) on December 22, 2022, I am hereby submitting my sealed bid (firm offer) for the following forest products to be cut. Bids for individual species must be at or above the advertised price. All non-responsive bid forms may be rejected.

<u>PRODUCTS & SPECIES</u>	<u>ESTIMATED VOLUME*</u>	<u>ADVERTISED PRICE</u>	<u>BID PRICE/UNIT</u>
Sawtimber			
Sugar Maple	14.4 MBF	\$ 223.00/MBF	\$ _____
Pulpwood			
Balsam Fir	174 Cords	\$ 4.45/Cord	\$ _____
Basswood	5 Cords	\$ 5.85/Cord	\$ _____
Mixed Hardwood	432 Cords	\$ 8.70/Cord	\$ _____
Mixed Spruce	82 Cords	\$ 5.70/Cord	\$ _____
Quaking Aspen	1,212 Cords	\$ 20.85/Cord	\$ _____
Tamarack	34 Cords	\$ 3.65/Cord	\$ _____

*The volumes are statistically estimated within plus (+) or minus (-) 26.95 percent at 95% confidence level. These estimated volumes are final and not subject to adjustment. Prospective bidders are urged to examine this timber and to make their own estimates of quantity and quality.

I understand that any or all bids may be rejected. All bids must be signed and all bid items must be bid or the bid form may be rejected. I also understand that consideration and awarding a contract will be based upon my past performance and ability to complete the contract based upon equipment and staffing subject to my control.

FEDERAL ID: _____ or SOCIAL SECURITY NUMBER: _____

Company or individual bidding: _____

Company representative's name: _____

Address: _____

City: _____ State: _____ Zip: _____

IF AVAILABLE, PLEASE PLACE THE PERSONALIZED LABEL FROM YOUR PROSPECTUS IN THE ABOVE BOX.

Individual or company representative's signature: _____ Date: _____

Phone number : _____ Email (optional): _____

THE WINNING BIDDER MUST COMPLETE THE VERIFICATION OF WORKER'S DISABILITY COMPENSATION ACT COMPLIANCE (ON REVERSE SIDE IF DOUBLE SIDED) WITHIN 21 DAYS OF SALE AWARD DATE



TIMBER SALE VERIFICATION OF WORKER'S DISABILITY COMPENSATION ACT COMPLIANCE

As required by Act 317, P.A. 1969 (Worker's Compensation) and
Part 5 of Act 451 of 1994, as amended.

FOR DEPARTMENT USE ONLY	
Sale Number (XX - XXX - XX - XX)	
Forest Management Unit:	

VERIFICATION OF WORKER'S DISABILITY COMPENSATION ACT COMPLIANCE

- This verification must be completed and submitted within 21 days of contract award and prior to the issuance of the timber sale contract.
- In addition, if boxes 2B or 2C are checked, then Notice of Exclusion or Certificate of Insurance must be submitted within twenty-one (21) days of the contract award and prior to the issuance of the timber sale contract.
- All information must be typed or printed except for written signatures.

Please Check Appropriate Categories:

1. My business is organized as (you **must** check one of the boxes below):
 - A. Sole Proprietorship (individual)
 - B. Partnership
 - C. Corporation
2. You **must** check one of the boxes below:
 - A. I certify my business is a sole proprietorship and it has no employees but the sole proprietor. I am not subject to the Worker's Compensation Laws.
 - B. I certify my business has satisfied its obligation to the Worker's Compensation Act through the use of an approved Notice of Exclusion (BWC-337, Rev. 5/96). I will provide a copy of the Notice of Exclusion within 21 days of the contract award. (For questions or a copy of the BWC-337, please call the Worker's Compensation Bureau at 517-322-1195).
 - C. I certify my business has a Worker's Compensation Policy. I will provide an original Certificate of Insurance within twenty-one (21) days of the contract award.
3. If you have checked item 2(A) or 2(B), you **must** indicate the number of **both** full-time and part-time employees, other than yourself, including family members and active partners (if none, you must enter "0").

_____ Full-time Employees

_____ Part-time Employees

Name of Business		Federal ID (or) Social Security No.	
Address		Telephone ()	
City	State	ZIP	

I hereby certify that the above information is true and correct. I agree to notify the Michigan DNR of any changes that occur in factors affecting my coverage during any of my present and future operations.

Signature of Owner or Authorized Representative

Title

Date

Please complete the "SEALED BID" information on the next page

Moccasin Lake Aspen (12-060-22)
T44N, R32W, SEC. 13; Iron COUNTY

In response to the notice of sale to be held 9:00 a.m. (local time) on December 22, 2022, I am hereby submitting my sealed bid (firm offer) for the following forest products to be cut. Bids for individual species must be at or above the advertised price. All non-responsive bid forms may be rejected.

<u>PRODUCTS & SPECIES</u>	<u>ESTIMATED VOLUME*</u>	<u>ADVERTISED PRICE</u>	<u>BID PRICE/UNIT</u>
Sawtimber			
Red Maple	5.0 MBF	\$ 110.00/MBF	\$ _____
Pulpwood			
Balsam Fir	27 Cords	\$ 4.45/Cord	\$ _____
Paper Birch	24 Cords	\$ 3.75/Cord	\$ _____
Quaking Aspen	896 Cords	\$ 20.85/Cord	\$ _____
Red Maple	68 Cords	\$ 8.70/Cord	\$ _____
White Spruce	44 Cords	\$ 5.70/Cord	\$ _____

*The volumes are statistically estimated within plus (+) or minus (-) 13.85 percent at 95% confidence level. These estimated volumes are final and not subject to adjustment. Prospective bidders are urged to examine this timber and to make their own estimates of quantity and quality.

I understand that any or all bids may be rejected. All bids must be signed and all bid items must be bid or the bid form may be rejected. I also understand that consideration and awarding a contract will be based upon my past performance and ability to complete the contract based upon equipment and staffing subject to my control.

FEDERAL ID: _____ - _____ or SOCIAL SECURITY NUMBER: _____ - _____ - _____

Company or individual bidding: _____

Company representative's name: _____

Address: _____

City: _____ State: _____ Zip: _____

IF AVAILABLE, PLEASE PLACE THE PERSONALIZED LABEL FROM YOUR PROSPECTUS IN THE ABOVE BOX.

Individual or company representative's signature: _____ Date: _____

Phone number : _____ Email (optional): _____

THE WINNING BIDDER MUST COMPLETE THE VERIFICATION OF WORKER'S DISABILITY COMPENSATION ACT COMPLIANCE (ON REVERSE SIDE IF DOUBLE SIDED) WITHIN 21 DAYS OF SALE AWARD DATE



FOR DEPARTMENT USE ONLY
Sale Number (XX - XXX - XX - XX)
Forest Management Unit:

TIMBER SALE VERIFICATION OF WORKER'S DISABILITY COMPENSATION ACT COMPLIANCE

*As required by Act 317, P.A. 1969 (Worker's Compensation) and
Part 5 of Act 451 of 1994, as amended.*

VERIFICATION OF WORKER'S DISABILITY COMPENSATION ACT COMPLIANCE

- This verification must be completed and submitted within 21 days of contract award and prior to the issuance of the timber sale contract.
- In addition, if boxes 2B or 2C are checked, then Notice of Exclusion or Certificate of Insurance must be submitted within twenty-one (21) days of the contract award and prior to the issuance of the timber sale contract.
- All information must be typed or printed except for written signatures.

Please Check Appropriate Categories:

1. My business is organized as (you **must** check one of the boxes below):
 - A. Sole Proprietorship (individual)
 - B. Partnership
 - C. Corporation

2. You **must** check one of the boxes below:
 - A. I certify my business is a sole proprietorship and it has no employees but the sole proprietor. I am not subject to the Worker's Compensation Laws.
 - B. I certify my business has satisfied its obligation to the Worker's Compensation Act through the use of an approved Notice of Exclusion (BWC-337, Rev. 5/96). I will provide a copy of the Notice of Exclusion within 21 days of the contract award. (For questions or a copy of the BWC-337, please call the Worker's Compensation Bureau at 517-322-1195).
 - C. I certify my business has a Worker's Compensation Policy. I will provide an original Certificate of Insurance within twenty-one (21) days of the contract award.

3. If you have checked item 2(A) or 2(B), you **must** indicate the number of **both** full-time and part-time employees, other than yourself, including family members and active partners (if none, you must enter "0").

_____ Full-time Employees

_____ Part-time Employees

Name of Business		Federal ID (or) Social Security No.	
Address		Telephone ()	
City	State	ZIP	

I hereby certify that the above information is true and correct. I agree to notify the Michigan DNR of any changes that occur in factors affecting my coverage during any of my present and future operations.

Signature of Owner or Authorized Representative

Title

Date

Please complete the "SEALED BID" information on the next page