



**DEPARTMENT OF NATURAL RESOURCES
STATE OF MICHIGAN
TIMBER SALE PROSPECTUS #7198**

SCHEDULED SALE DATE AND TIME: 3:00 p.m. (local time) on February 16, 2023.

LOCATION: ESCANABA MGMT UNIT, 6833 HWY'S 2, 41 & M-35, GLADSTONE, MI 49837.

PROSPECTUS NOTE: The bidder is advised to inspect the sale area and review the location, estimated volumes, operating costs and contract terms of proposed sales. Please be aware that some landowners may request 60 days or more notice for access across their land.

Notice is hereby given that bids will be received by the Unit Manager, ESCANABA MANAGEMENT UNIT, for certain timber on the following described lands:

DeHaas Jumble (33-021-23) / T37N, R27W, SEC. 5 , SWNW.

T37N, R27W, SEC. 6 , S1/2NW,NENE,S1/2NE,SW,SE.

Menominee County, Advertised Price \$55,113.90, 163.0 Acres, Hardwood, Aspen.

Big Buck Hardwood (33-022-23) / T37N, R27W, SEC. 4 , NW,SWNE.

T37N, R27W, SEC. 5 , S1/2NW,S1/2NE,E1/2SW,N1/2SE.

T37N, R27W, SEC. 5 , SWSE.

T37N, R27W, SEC. 8 , NENE.

T37N, R27W, SEC. 9 , NWNW.

Menominee County, Advertised Price \$43,485.10, 113.6 Acres, Hardwood, Aspen.

Schuster Split (33-023-23) / T36N, R25W, SEC. 21, SESE.

T36N, R25W, SEC. 28, N1/2NW,SWNW,NE,NWSW,S1/2SW.

T36N, R25W, SEC. 28, NESE.

T36N, R25W, SEC. 29, SENE,SESE.

T36N, R25W, SEC. 33, N1/2NW.

Menominee County, Advertised Price \$62,954.75, 85.6 Acres, Hardwood, N White Cedar.

SALE NOTE: The access gate leading back to Payment Unit 6 will be left unlocked while the sale is out for bidding.

A recreation site such as a trail, pathway, or campground is within the sale area or the vicinity. Certain restrictions/specifications may be applicable including time restrictions.

BID INSTRUCTIONS (VER. 10/10/2022):

1. Scheduled Bid Location, Date, and Time (2/11)

Bids must be received by the Unit Manager, ESCANABA OFFICE, 6833 Hwy's 2, 41 & M-35, Gladstone, MI 49837, no later than 3:00 p.m. (local time) on February 16, 2023. For further information concerning this sale, contact Eric Thompson at 906-789-8231.

2. Bidder's Qualifications (10/22)

If all or part of a timber sale was prepared by a private contractor, the contractor and that contractor's company are not permitted to bid on the timber sale. A person must be 18 years of age or older to purchase timber. Permanent employees of the Department of Natural Resources or members of their immediate household may not bid. Former employees, in the permanent or seasonal class, may not bid until 3 months after the last day of active duty. Bids will not be accepted from individuals or companies appearing on the DNR/FRD No-Bid List. This list contains the names of purchasers who previously failed to execute a contract within 21-days or who have a history of poor performance.

3. Preparation of Sealed Bids (5/16)

Bid Forms may be completed online thru Michigan DNR Timber Sale Online Bidding (OLB) at www.michigan.gov/timberbidding or by completing the hardcopy Bid Form found in the Timber Sale Prospectus. Hardcopy Bid Forms shall be manually signed in ink. Registration in OLB is considered your 'signature' for all bids submitted thru that system. Bid prices must be entered for each species and product in the Bid Price column for all material subject to bidding and all fill-in blanks must be completed. If erasures or other changes appear on the hardcopy Bid Form, each erasure or change must be initialed by the person signing the bid.

4. Submission of Sealed Bids (5/16)

Bid forms may be obtained from the Unit Manager or thru OLB. Bids may be submitted hardcopy or thru OLB. All hardcopy bids must be submitted on the bid form and in an envelope clearly identified as described in this section. NOTE: Only one bid form per bid envelope. Sealed bids must be submitted to the Unit office designated in the prospectus and must be submitted at or prior to the time established in the prospectus. The envelope should show on the outside (a) the sale name or number and (b) the date and time of bid opening, as shown in the prospectus. Bids received after the time specified in the sale prospectus are late bids and will be rejected.

It is possible for a bidder to submit multiple bids on a single sale. For example, a bid may be submitted hardcopy and a bid may be submitted thru OLB. Or, two bidders from the same company could both submit bids on the same sale. If this were to happen, the State would accept all bids received and award the contract accordingly. All bidding and contractual requirements would apply to all bids received.

5. Public Opening of Sealed Bids (7/16)

If conditions permit, the sealed bids will be publicly opened and posted at the time and place set in the prospectus.

If a bidder, present at a bid opening, has submitted bids on more than one sale, that bidder may withdraw their unopened bid envelopes or announce the withdrawal of their online bid after being declared the successful bidder on one sale.

6. Award of Contract (1/11)

Award of the contract will be made to the Bidder whose bid, conforming to the prospectus, is most advantageous to the State of Michigan on the basis of total value at rates bid for the estimated quantities. The State reserves the right to reject any bid or waive any minor irregularity in bids received. A written award mailed (or otherwise furnished) to the successful Bidder shall be deemed to result in a binding contract without further action by either party.

7. Down Payment (1/11)

The Bidder to whom award is made must make a down payment within 21 days of the sale award. The amount of the down payment will be calculated as shown in the Bond and Payment Schedule of this prospectus. Only cash may be used to meet this requirement.

8. Performance Security (1/11)

As guarantee of faithful performance, a cash bond, certificate of deposit, surety bond or irrevocable letter of credit (LOC) is required within 21 days of the sale award. The amount of the performance security is shown in the Bond and

Payment Schedule of this prospectus. If an LOC or surety is used, the coverage must extend for at least 6 months beyond the contract expiration.

9. Worker's Compensation (10/22)

Purchaser shall obtain worker's compensation insurance to cover claims under Michigan's Worker's Disability Compensation Act of 1969 or similar employee benefit act of any other state applicable to an employee. Verification of Worker's Disability Compensation Act Compliance must be completed and submitted within 21 days of contract award and prior to the issuance of the timber sale contract. In addition, if applicable, Notice of Exclusion or Certificate of Insurance must also be submitted.

10. Timber Sale Contract (10/22)

Additional conditions and requirements common to all timber sales are listed on the timber sale contract (R4031) and are available on line at www.michigan.gov/timber. Contact the Unit Manager for additional information or a sample contract. Within 21 days of the date of the award letter, the bidder must sign the contract and provide the required down payment, performance security, and verification of worker's disability compensation. The down payment and performance security shall be in accordance with the provisions of the timber sale contract, in the sums stated in this prospectus. If these actions are not taken, then the Bidder, the Bidder's corporation, and the corporation's principals may not be permitted to bid on State timber sales for a period of 3 months after the first offense, 6 months after the second offense, and 1 year after the third offense. An offense will only be counted against the Bidder for 5 years. In addition, the Bidder certifies that if awarded this contract, the Bidder will complete the timber sale contract in accordance with its terms and any modifications thereof including requirements to purchase, cut, and remove the included timber by the expiration date.

Payment Unit values in the State Forest Timber Sale Contract are calculated based on the advertised value of the Payment Unit as a percentage of the total advertised value of the contract. The advertised value of each Payment Unit is given in the Description of Timber by Payment Unit table on the Timber Sale Information page. For example, if the value of Payment Unit 1 is advertised as \$1,500 and the total Timber Sale value is advertised as \$10,000, the contract price for Payment Unit 1 will be 15% of the total bid price ($\$1,500/\$10,000 * 100$).

11. Disclaimer of Estimates and Bidder's Warranty of Inspection (10/22)

Before submitting this bid, the Bidder is advised and cautioned to inspect the sale area, review the requirements of the sale contract, and take other steps as may be reasonably necessary to ascertain the location, estimated volumes, construction estimates, and operating costs of the proposed sale. Failure to do so will not relieve the Bidder from responsibility for completing the contract.

The Bidder warrants that this bid is submitted solely on the basis of the Bidder's examination and inspection of the quality and quantity of the timber offered for sale and the Bidder's opinion of the value thereof and the costs of recovery. No reliance should be placed on the State of Michigan's estimates of timber quality, quantity or costs of recovery. Bidder further acknowledges that the State of Michigan: (i) expressly disclaims any warranty of fitness of timber for any purpose; (ii) offers this timber as is without any warranty of quality (merchantability) or quantity and (iii) expressly disclaims any warranty as to the quantity or quality of timber sold.

12. Certification and Chain-of-Custody (10/22)

Unless otherwise indicated in the contract under section 7 – Other Conditions of the Sale Specific Conditions & Requirements, the area encompassed by this timber sale is certified to the standards of the Forest Stewardship Council (FSC) - Certificate #SCS-FM/COC-00090N and the Sustainable Forestry Initiative (SFI) - Certificate # NSF-SFIS-5Y031-SF5. Forest products from this sale may be delivered to the mill as "FSC 100% and / or SFI certified" as long as the contractor hauling the forest products is chain-of-custody (COC) certified or covered under a COC certificate from the destination mill. The purchaser is responsible for maintaining COC after leaving the sale area.

13. Good Neighbor Authority (GNA) Requirements (10/22)

If the name of this timber sales contains the acronym GNA, it is authorized by the Good Neighbor Authority (GNA) and covered by various agreements between the U.S. Forest Service and the State. The timber sale occurs on federal land and the following conditions apply:

GNA contracts on US Forest Service land will not be awarded to purchasers on the Federal list of excluded parties. The System for Award Management (SAM) will be checked for active excluded parties prior to award of contract. In

addition, the Bidder to whom award is made must complete an Assurance Regarding Felony Conviction or Tax Delinquent Status for Corporate Applicants (AD-3031).

14. Good Neighbor Authority (GNA) Requirements, con't (10/22)

Bidder certifies, by signing this bid form, that to the best of Bidder's knowledge that the following representations are accurate and complete.

- a. That the Bidder and its principals are not presently debarred, suspended, proposed for debarment, declared ineligible, or voluntary excluded from timber sales (covered transactions) by any Federal department or agency.
- b. That the Bidder and its principals have not within a 3-year period preceding this bid been convicted of or had a civil judgment rendered against them for commission of fraud or a criminal offense in connection with obtaining, attempting to obtain, or performing a public (Federal, State, or local) transaction or contract under a public transaction; violation of Federal or State antitrust statutes or commission of embezzlement, theft, forgery, bribery, falsification or destruction of records, making false statements, or receiving stolen property.
- c. That the Bidder and its principals are not presently indicted for or otherwise criminally or civilly charged by a governmental entity (Federal, State, or local) with commission of any of the offenses enumerated in paragraph b of this certification.
- d. That the Bidder and its principals have not within a 3-year period preceding this bid had one or more public transactions (Federal, State, or local) terminated for breach or default of a timber or forest product contract.

Bidders that cannot certify this requirement, in whole or in part, shall submit an explanation with their bid.

SHANNON LOTT, Acting
Director

TIMBER SALE INFORMATION

DeHaas Jumble (33-021-23)

T37N, R27W, SEC. 5; T37N, R27W, SEC. 6.
Menominee County (Advertised Price \$55,113.90)

A timber sale contract for this lump sum, sealed bid timber sale will be awarded to the responsible bidder offering the highest sealed bid price. All units of volume listed below were estimated using the Inventory Manager computer program and the new Michigan taper model. Bids must be at or above the following advertised price for each product and species:

<u>PRODUCTS & SPECIES</u>	<u>ESTIMATED UNITS*</u>	<u>ADVERTISED PRICE</u>
Sawtimber		
American Elm	1.2 MBF	\$ 72.00 / MBF
Basswood	55.5 MBF	\$ 40.00 / MBF
Paper Birch	1.5 MBF	\$ 87.00 / MBF
Red Maple	1.4 MBF	\$ 214.00 / MBF
Sugar Maple	11.2 MBF	\$ 263.00 / MBF
Pulpwood		
Balsam Fir	294 Cords	\$ 16.25 / Cord
Mixed Aspen	679 Cords	\$ 31.15 / Cord
Mixed Hardwood	636 Cords	\$ 22.25 / Cord
Mixed Spruce	242 Cords	\$ 18.85 / Cord
N. White Cedar	27 Cords	\$ 9.00 / Cord
Tamarack	36 Cords	\$ 30.30 / Cord
White Pine	83 Cords	\$ 41.65 / Cord

* The total volume is statistically estimated within plus (+) or minus (-) 11.35 percent. There are an estimated 2,141 cords on this timber sale, plus or minus 243 cords at the 95% confidence level. The estimated units are final and not subject to adjustment. Prospective bidders are urged to examine this timber and to make their own estimates of quantity and quality.

BOND AND PAYMENT SCHEDULE:

1. A bond in the amount of \$2,756.00 to insure faithful performance of the conditions of the contract will be deposited by the successful bidder within 21 days of the sale award.
2. Cutting in any sale or unit without the required advance payment would be considered a trespass.
3. Total payment must be paid in advance or according to the following schedule :
 - (a) Ten percent (10%) of the sale value must be paid within 21 days of the sale award.
 - (b) The 10% down payment will be credited towards the first unit cut.
 - (c) Payment for each of the following units must be made before cutting begins in that unit:

PAYMENT UNIT NUMBER	PERCENT OF TOTAL SALE VALUE
01	19.8%
02	3.1%
03	11.2%
04	5.6%
05	6.4%
06	14.2%
07	11.7%
08	3.7%
09	1.5%
10	13.6%
11	9.2%

4. If no cutting takes place, the 10% down payment will not be refunded.
5. Operations on the contract issued will terminate on 09/30/2025.

SALE STATISTICS

Volumes were calculated in cubic feet using the Michigan taper model. Cubic foot volume includes all wood inside bark for the product indicated. For display purposes, cubic feet were converted to cords and MBF using a simple conversion factor, e.g. 79 cubic feet per cord and 185 cubic feet per MBF. The cubic foot volumes are precise; the cords and MBF volumes are not. Cubic foot volume cannot be directly converted to cords or boards with precision.

SALE VOLUMES

The total estimated sale volume may not equal the sum of the species/products due to the nature of statistical calculations associated with double sampling methodology.

VOLUME			STATISTICAL RANGE IN CORDS	
TOTAL CUBIC FEET	TOTAL CORDS	PERCENT ERROR	MINIMUM	MAXIMUM
169,125	2,141	11.35%	1,898	2,384

VDU VOLUMES

A VDU is a Volume Determination Unit. Volumes and their associated statistics are calculated at the VDU level and summarized to the sale level. There is often a one to one relationship between a VDU and a Payment Unit, but not always, depending on the cruise design. Refer to the VDU TO PAYMENT UNIT table.

	VOLUME			RANGE IN CORDS	
VDU	TOTAL CUBIC FEET	TOTAL CORDS	PERCENT ERROR	MINIMUM	MAXIMUM
3	30,304	384	23.08%	295	472
5	14,910	189	51.06%	92	285
6	5,621	71	111.46%	8	150
9	9,620	122	44.40%	68	176
15	37,204	471	18.90%	382	560
16	7,334	93	100.04%	0	186
17	3,887	49	76.17%	12	87
18	18,229	231	34.01%	152	309
19	42,015	532	21.04%	420	644
TOTAL:	169,125	2,141		1,413	2,869

VDU TO PAYMENT UNIT

When a VDU is associated with more than one Payment Unit (PU), the VDU volumes are assigned to the PU based on acres of the VDU within the PU.

VDU	VDU ACRES	PU	PU ACRES
3	19.3	1	19.3
5	19.5	3	19.5
6	5.0	2	5.0
9	8.6	4	8.6
15	23.0	10	13.7
		11	9.3
16	8.7	8	8.7
17	3.2	9	3.2
18	29.8	7	29.8
19	45.9	5	14.2
		6	31.7
TOTAL:	163.0		163.0

DESCRIPTION OF TIMBER BY PAYMENT UNIT (PU)

PU	MARKET GROUP	PRODUCT	QUANTITY	UNIT	ACRES	ADVERTISE PRICE
1	Basswood	Sawtimber	13.6	MBF	19.3	\$10,828.85
	Sugar Maple		1.4	MBF		
	Balsam Fir	Pulpwood	48	Cords		
	Mixed Aspen		251	Cords		
	<i>B. T. Aspen</i>		10	Cords		
	<i>Quaking Aspen</i>		241	Cords		
	Mixed Hardwood		55	Cords		
	<i>American Elm</i>		4	Cords		
	<i>Basswood</i>		16	Cords		
	<i>Beech</i>		3	Cords		
	<i>Ironwood</i>		3	Cords		
	<i>Sugar Maple</i>		14	Cords		
	<i>White Ash</i>		15	Cords		
	Mixed Spruce		5	Cords		
	<i>White Spruce</i>		5	Cords		
2	Mixed Spruce	Pulpwood	5	Cords	5.0	\$1,722.35
	<i>Black Spruce</i>		5	Cords		
	N. White Cedar		21	Cords		
	Tamarack		31	Cords		
	White Pine		12	Cords		
3	Basswood	Sawtimber	2.1	MBF	19.5	\$6,168.25
	Balsam Fir	Pulpwood	46	Cords		
	Mixed Aspen		44	Cords		
	<i>Quaking Aspen</i>		44	Cords		
	Mixed Hardwood		15	Cords		
	<i>Balsam Poplar</i>		2	Cords		
	<i>Basswood</i>		4	Cords		
	<i>Red Maple</i>		9	Cords		
	Mixed Spruce		31	Cords		
	<i>Black Spruce</i>		3	Cords		
	<i>White Spruce</i>		28	Cords		
	Tamarack		3	Cords		
	White Pine		71	Cords		
4	Basswood	Sawtimber	7.4	MBF	8.6	\$3,105.80
	Sugar Maple		2.1	MBF		
	Balsam Fir	Pulpwood	2	Cords		
	Mixed Hardwood		100	Cords		
	<i>Basswood</i>		34	Cords		
	<i>Ironwood</i>		9	Cords		
	<i>Sugar Maple</i>		15	Cords		
	<i>White Ash</i>		42	Cords		
	5	Basswood	Sawtimber	2.5		
Red Maple			0.2	MBF		
Sugar Maple			0.5	MBF		
Balsam Fir		Pulpwood	29	Cords		
Mixed Aspen			42	Cords		
<i>B. T. Aspen</i>			2	Cords		
<i>Quaking Aspen</i>			40	Cords		
Mixed Hardwood			39	Cords		
<i>American Elm</i>			2	Cords		
<i>Balsam Poplar</i>			4	Cords		
<i>Basswood</i>			2	Cords		
<i>Black Ash</i>			9	Cords		
<i>Black Cherry</i>			5	Cords		
<i>Paper Birch</i>			1	Cords		
<i>Red Maple</i>			5	Cords		

DESCRIPTION OF TIMBER BY PAYMENT UNIT (PU), CON'T

PU	MARKET GROUP	PRODUCT	QUANTITY	UNIT	ACRES	ADVERTISE PRICE	
5 con't	<i>Sugar Maple</i>	<i>Pulpwood</i>	4	<i>Cords</i>			
	<i>White Ash</i>		7	<i>Cords</i>			
	Mixed Spruce		33	<i>Cords</i>			
	<i>Black Spruce</i>		2	<i>Cords</i>			
	<i>White Spruce</i>		31	<i>Cords</i>			
6	Basswood	Sawtimber	5.5	MBF	31.7	\$7,850.40	
	Red Maple	Pulpwood	0.3	MBF			
	Sugar Maple		1.0	MBF			
	Balsam Fir		64	<i>Cords</i>			
	Mixed Aspen		92	<i>Cords</i>			
	<i>B. T. Aspen</i>		3	<i>Cords</i>			
	<i>Quaking Aspen</i>		89	<i>Cords</i>			
	Mixed Hardwood		90	<i>Cords</i>			
	<i>American Elm</i>		4	<i>Cords</i>			
	<i>Balsam Poplar</i>		10	<i>Cords</i>			
	<i>Basswood</i>		5	<i>Cords</i>			
	<i>Black Ash</i>		21	<i>Cords</i>			
	<i>Black Cherry</i>		12	<i>Cords</i>			
	<i>Paper Birch</i>		3	<i>Cords</i>			
	<i>Red Maple</i>		11	<i>Cords</i>			
	<i>Sugar Maple</i>		8	<i>Cords</i>			
	<i>White Ash</i>		16	<i>Cords</i>			
	Mixed Spruce		74	<i>Cords</i>			
	<i>Black Spruce</i>		5	<i>Cords</i>			
	<i>White Spruce</i>		69	<i>Cords</i>			
7	Basswood		Sawtimber	14.3	MBF	29.8	\$6,426.45
	Sugar Maple	Pulpwood	6.2	MBF			
	Mixed Aspen		4	<i>Cords</i>			
	<i>Quaking Aspen</i>		4	<i>Cords</i>			
	Mixed Hardwood		180	<i>Cords</i>			
	<i>Basswood</i>		43	<i>Cords</i>			
	<i>Ironwood</i>		11	<i>Cords</i>			
	<i>Sugar Maple</i>		52	<i>Cords</i>			
	<i>White Ash</i>		74	<i>Cords</i>			
	Mixed Spruce		5	<i>Cords</i>			
	<i>White Spruce</i>		5	<i>Cords</i>			
	8		American Elm	Sawtimber	1.2		
Red Maple			Pulpwood	0.9	MBF		
Balsam Fir		4		<i>Cords</i>			
Mixed Aspen		3		<i>Cords</i>			
<i>Quaking Aspen</i>		3		<i>Cords</i>			
Mixed Hardwood		69		<i>Cords</i>			
<i>American Elm</i>		1		<i>Cords</i>			
<i>Black Ash</i>		56		<i>Cords</i>			
<i>Black Cherry</i>		1		<i>Cords</i>			
<i>Red Maple</i>		4		<i>Cords</i>			
<i>Sugar Maple</i>		1		<i>Cords</i>			
<i>Yellow Birch</i>		6		<i>Cords</i>			
N. White Cedar		6		<i>Cords</i>			
9		Mixed Spruce		Pulpwood	41	<i>Cords</i>	3.2
	<i>Black Spruce</i>	41			<i>Cords</i>		
	Tamarack	2	<i>Cords</i>				
10	Basswood	Sawtimber	6.0	MBF	13.7	\$7,513.70	
	Paper Birch	Pulpwood	0.9	MBF			
	Balsam Fir		60	<i>Cords</i>			
	Mixed Aspen		145	<i>Cords</i>			

DESCRIPTION OF TIMBER BY PAYMENT UNIT (PU), CON'T

PU	MARKET GROUP	PRODUCT	QUANTITY	UNIT	ACRES	ADVERTISE PRICE
10 con't	<i>Quaking Aspen</i>	<i>Pulpwood</i>	145	<i>Cords</i>		
	Mixed Hardwood		52	Cords		
	<i>American Elm</i>		5	<i>Cords</i>		
	<i>Basswood</i>		27	<i>Cords</i>		
	<i>Black Cherry</i>		13	<i>Cords</i>		
	<i>Ironwood</i>		2	<i>Cords</i>		
	<i>Paper Birch</i>		2	<i>Cords</i>		
	<i>White Ash</i>		3	<i>Cords</i>		
	Mixed Spruce		29	Cords		
	<i>White Spruce</i>		29	<i>Cords</i>		
11	Basswood	Sawtimber	4.1	MBF	9.3	\$5,094.30
	Paper Birch		0.6	MBF		
	Balsam Fir	Pulpwood	41	Cords		
	Mixed Aspen		98	Cords		
	<i>Quaking Aspen</i>		98	<i>Cords</i>		
	Mixed Hardwood		36	Cords		
	<i>American Elm</i>		3	<i>Cords</i>		
	<i>Basswood</i>		19	<i>Cords</i>		
	<i>Black Cherry</i>		9	<i>Cords</i>		
	<i>Ironwood</i>		1	<i>Cords</i>		
	<i>Paper Birch</i>		2	<i>Cords</i>		
	<i>White Ash</i>		2	<i>Cords</i>		
	Mixed Spruce		19	Cords		
	<i>White Spruce</i>		19	<i>Cords</i>		
	TOTAL:			70.8		
TOTAL:			1,997	Cords		

Sale Specific Conditions & Requirements

Sale Name: DeHaas Jumble

Sale Number: 33-021-23 Seq#: 1

1 - Sale Area

1.2 - Boundaries

1.2.1 - Painted boundaries (9/19)

The sale boundary and Payment Unit boundaries are marked and identified by blue, red and yellow paint. Exterior sale boundary lines against private property are marked with blue paint. Exterior sale boundary lines against state are marked with red paint. Interior Payment Unit boundaries are marked with yellow paint. The painted boundary line trees are not Included Timber and are to be protected unless marked with orange paint. Yellow painted trees designating an interior Payment Unit boundary are only to be cut when all surrounding Payment Units have been paid for.

2 - Timber Specifications

2.1 - Included Timber

2.1.1 - Clearcut unit(s) with unmerchantable trees (6/14)

Within Payment Unit(s) 1, 2, 3, 5, 6, and 8 - 11, cut all trees that are three (3) inches or more at DBH, except do not cut cherry and trees marked with green paint within Payment Unit 3.

2.1.3 - Cut tree marked unit(s) (12/08)

Within Payment Unit(s) 4 and 7, all trees are designated for cutting when marked with orange paint above and below stump height, regardless of merchantability. In addition, cut all ironwood, spruce, balsam fir, aspen and balm greater than three (3) inches at DBH.

2.2 - Utilization

2.2.4 - Skidding length (2/14)

Skidding of unlimbed tops or lengths over 17 feet is not permissible within Payment Units 4 and 7.

3 - Payments

3.3 - Pre-measured Sales

3.3.4 - Dividing payment units (7/14)

Payment Unit(s) \$18,000 in value or greater may be divided at the request of the Purchaser and upon approval of the Unit Manager. Dividing Payment Units is a contract modification which requires a Timber Sale Contract Amendment. There will be only one division per Payment Unit.

4 - Transportation

4.2 - Maintenance

4.2.1 - Hauling restriction (12/08)

Hauling may be restricted on forest roads by the Unit Manager or his/her representative. The restriction may occur during spring breakup or during other wet weather conditions.

4.2.4 - Grading (10/16)

For completion of the sale, state forest roads must be graded. In general, this will require a road grader or bull dozer to shape up the roads after forest products have been hauled off site. This includes cleaning of drainage areas, grading, crowning and filling with gravel, if necessary. The grading equipment to be used must be approved by the Unit Manager or his/her representative.

5 - Operations

5.2 - Conduct of Operations

5.2.3 - Operating Restrictions

5.2.3.1 - Operating restrictions (9/11)

Within Payment Unit(s) 2, 8, and 9, cutting and skidding are limited to the period of December 1st to March 31st, unless there is an extended dry or frozen period of time and the sale administrator allows harvesting during that period of time. This restriction is because of lower wet ground within each of the Payment Units.

5.2.22 - Operating Caution

5.2.22.1 - Operating caution (6/11)

It is recommended, but not required, that within Payment Unit(s) 3, 5, and 6, cutting and skidding occur during dry summer or frozen winter conditions. The reason for the recommendation is because there is some pockets of low wet ground within each of the Payment Units.

6 - Safety and Fire Prevention

6.2 - Signing

6.2.1 - Road posting (10/20)

The Purchaser is responsible for posting and maintaining caution signs on the West Branch of the DeTemple Road prior to beginning operations. The road must be posted at appropriate distances from the sale area to warn of logging activity and truck traffic. Signs must be removed when harvest operations are suspended or completed. The Purchaser will provide these signs.

7 - Other Conditions

7.5 - Loss

7.5.1 - Deteriorating timber (7/09)

The sale area has received damage from spruce budworm, eastern larch beetle, and emerald ash borer in the area. The Purchaser should harvest the wood as soon as possible. The Department of Natural Resources is held free of responsibility of any further damage or deterioration due to delay in harvesting.

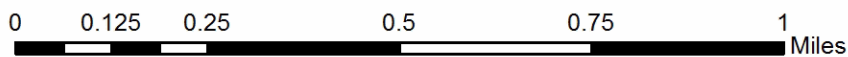
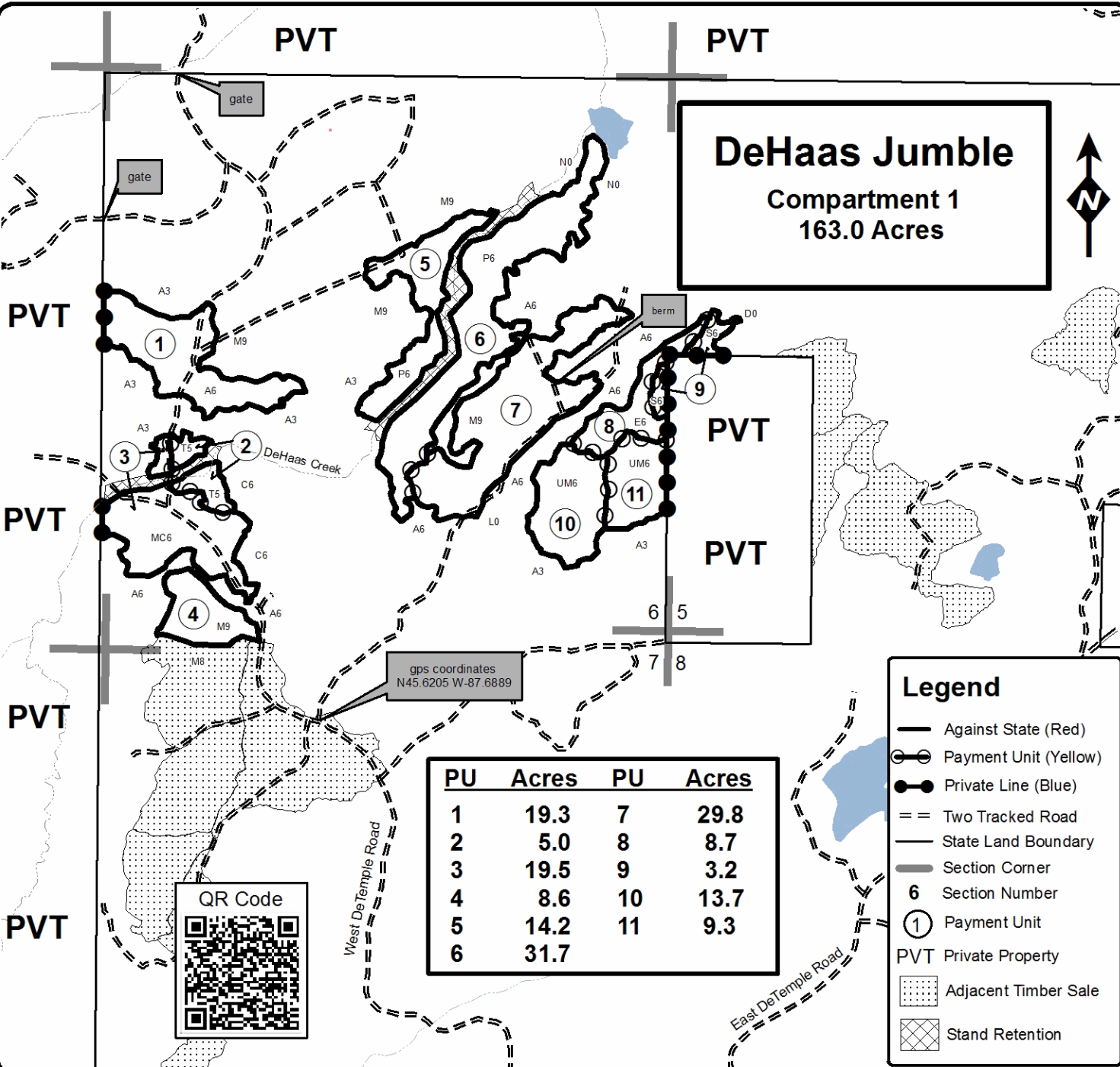


TIMBER SALE MAP

This information provided by authority of Part 525, 1994 PA 451, as amended.

Forest Management Unit Escanaba Management Unit	County Menominee County	Mapped By Beudo	Date 11/17/2022	Page 1	of 1
Township 37N	Range 27W	Section(s) and Subdivision(s) Sec 5 - SWNW; Sec 6 - S1/2NW, NENE, S1/2NE, SW, SE.	Scale 1:15,840		

Cover Type				Density	
A = Aspen	H = Hemlock	N = Marsh	U = Upland Brush	0 = Non Stocked	5 = Pole Timber Medium
B = Paper Birch	J = Jack Pine	O = Oak	UM = Upland Mixed	1 = Seedling Sapling Poor	6 = Pole Timber Well
C = Cedar	L = Lowland Brush	P = Lowland Poplar	V = Bog or Marsh	2 = Seedling Sapling Medium	7 = Saw Timber Poor
D = Treed Bog	LM = Lowland Mixed	Q = Mixed Swamp Conifer	W = White Pine	3 = Seedling Sapling Well	8 = Saw Timber Medium
E = Swamp Hdwoods	M = Mpl, Bch, Brch	R = Red Pine	X = Non Stocked	4 = Pole Timber Poor	9 = Saw Timber Well
F = Spruce Fir	MC = Mixed Conifer	S = Black Spruce	Z = Water		
G = Grass	MD = Mixed Deciduous	T = Tamarack			



TIMBER SALE INFORMATION

Big Buck Hardwood (33-022-23)

T37N, R27W, SEC. 4; T37N, R27W, SEC. 5; T37N, R27W, SEC. 8; T37N, R27W, SEC. 9.
Menominee County (Advertised Price \$43,485.10)

A timber sale contract for this lump sum, sealed bid timber sale will be awarded to the responsible bidder offering the highest sealed bid price. All units of volume listed below were estimated using the Inventory Manager computer program and the new Michigan taper model. Bids must be at or above the following advertised price for each product and species:

<u>PRODUCTS & SPECIES</u>	<u>ESTIMATED UNITS*</u>	<u>ADVERTISED PRICE</u>
Sawtimber		
Basswood	19.1 MBF	\$ 40.00 / MBF
Black Cherry	0.6 MBF	\$ 115.00 / MBF
Paper Birch	1.5 MBF	\$ 87.00 / MBF
Red Maple	12.1 MBF	\$ 214.00 / MBF
Sugar Maple	16.5 MBF	\$ 263.00 / MBF
White Ash	14.1 MBF	\$ 102.00 / MBF
Yellow Birch	1.0 MBF	\$ 44.00 / MBF
Pulpwood		
Balsam Fir	93 Cords	\$ 16.25 / Cord
Mixed Aspen	544 Cords	\$ 31.15 / Cord
Mixed Hardwood	662 Cords	\$ 22.25 / Cord
Mixed Spruce	39 Cords	\$ 18.85 / Cord
N. White Cedar	21 Cords	\$ 9.00 / Cord

* The total volume is statistically estimated within plus (+) or minus (-) 15.07 percent. There are an estimated 1,470 cords on this timber sale, plus or minus 222 cords at the 95% confidence level. The estimated units are final and not subject to adjustment. Prospective bidders are urged to examine this timber and to make their own estimates of quantity and quality.

BOND AND PAYMENT SCHEDULE:

1. A bond in the amount of \$2,174.00 to insure faithful performance of the conditions of the contract will be deposited by the successful bidder within 21 days of the sale award.
2. Cutting in any sale or unit without the required advance payment would be considered a trespass.
3. Total payment must be paid in advance or according to the following schedule :
 - (a) Ten percent (10%) of the sale value must be paid within 21 days of the sale award.
 - (b) The 10% down payment will be credited towards the first unit cut.
 - (c) Payment for each of the following units must be made before cutting begins in that unit:

PAYMENT UNIT NUMBER	PERCENT OF TOTAL SALE VALUE
01	6.4%
02	2.4%
03	13.7%
04	38.5%
05	7.0%
06	5.6%
07	3.7%
08	12.0%
09	3.2%
10	1.9%
11	5.6%

4. If no cutting takes place, the 10% down payment will not be refunded.
5. Operations on the contract issued will terminate on 09/30/2025.

SALE STATISTICS

Volumes were calculated in cubic feet using the Michigan taper model. Cubic foot volume includes all wood inside bark for the product indicated. For display purposes, cubic feet were converted to cords and MBF using a simple conversion factor, e.g. 79 cubic feet per cord and 185 cubic feet per MBF. The cubic foot volumes are precise; the cords and MBF volumes are not. Cubic foot volume cannot be directly converted to cords or boards with precision.

SALE VOLUMES

The total estimated sale volume may not equal the sum of the species/products due to the nature of statistical calculations associated with double sampling methodology.

VOLUME			STATISTICAL RANGE IN CORDS	
TOTAL CUBIC FEET	TOTAL CORDS	PERCENT ERROR	MINIMUM	MAXIMUM
116,167	1,470	15.07%	1,249	1,692

VDU VOLUMES

A VDU is a Volume Determination Unit. Volumes and their associated statistics are calculated at the VDU level and summarized to the sale level. There is often a one to one relationship between a VDU and a Payment Unit, but not always, depending on the cruise design. Refer to the VDU TO PAYMENT UNIT table.

	VOLUME			RANGE IN CORDS	
VDU	TOTAL CUBIC FEET	TOTAL CORDS	PERCENT ERROR	MINIMUM	MAXIMUM
26	4,552	58	27.19%	42	73
31	4,322	55	74.08%	14	95
34	18,369	233	33.41%	155	310
39	3,096	39	80.96%	7	71
42	39,491	500	28.69%	356	643
45	6,881	87	128.10%	24	199
46	13,304	168	28.05%	121	216
47	3,328	42	48.67%	22	63
48	7,812	99	72.91%	27	171
49	6,649	84	55.43%	38	131
68	8,362	106	52.88%	50	162
TOTAL:	116,167	1,470		807	2,134

VDU TO PAYMENT UNIT

When a VDU is associated with more than one Payment Unit (PU), the VDU volumes are assigned to the PU based on acres of the VDU within the PU.

VDU	VDU ACRES	PU	PU ACRES
26	7.0	1	7.0
31	6.3	2	6.3
34	22.9	3	22.9
39	7.0	10	7.0
42	23.1	4	23.1
45	4.7	7	4.7
46	7.9	8	7.9
47	3.0	9	3.0
48	9.6	5	9.6
49	13.3	6	13.3
68	8.8	11	8.8
TOTAL:	113.6		113.6

DESCRIPTION OF TIMBER BY PAYMENT UNIT (PU)

PU	MARKET GROUP	PRODUCT	QUANTITY	UNIT	ACRES	ADVERTISE PRICE
1	Basswood	Sawtimber	1.0	MBF	7.0	\$2,767.95
	Red Maple		0.7	MBF		
	Sugar Maple		6.3	MBF		
	Mixed Hardwood	Pulpwood	41	Cords		
	<i>Basswood</i>		3	<i>Cords</i>		
	<i>Red Maple</i>		7	<i>Cords</i>		
	<i>Sugar Maple</i>		31	<i>Cords</i>		
	N. White Cedar		1	Cords		
2	Mixed Hardwood	Pulpwood	47	Cords	6.3	\$1,045.75
	<i>Black Ash</i>		35	<i>Cords</i>		
	<i>Paper Birch</i>		6	<i>Cords</i>		
	<i>Red Maple</i>		6	<i>Cords</i>		
3	Basswood	Sawtimber	7.4	MBF	22.9	\$5,966.00
	Red Maple		2.2	MBF		
	Sugar Maple		0.4	MBF		
	White Ash		12.9	MBF		
	Balsam Fir	Pulpwood	20	Cords		
	Mixed Aspen		8	Cords		
	<i>B. T. Aspen</i>		4	<i>Cords</i>		
	<i>Quaking Aspen</i>		4	<i>Cords</i>		
	Mixed Hardwood		144	Cords		
	<i>Basswood</i>		23	<i>Cords</i>		
	<i>Black Ash</i>		21	<i>Cords</i>		
	<i>Ironwood</i>		1	<i>Cords</i>		
	<i>Paper Birch</i>		4	<i>Cords</i>		
	<i>Red Maple</i>		34	<i>Cords</i>		
	<i>Sugar Maple</i>		29	<i>Cords</i>		
	<i>White Ash</i>		32	<i>Cords</i>		
4	Red Maple	Sawtimber	1.9	MBF	23.1	\$16,769.80
	Balsam Fir	Pulpwood	51	Cords		
	Mixed Aspen		431	Cords		
	<i>Quaking Aspen</i>		431	<i>Cords</i>		
	Mixed Hardwood		88	Cords		
	<i>Basswood</i>		5	<i>Cords</i>		
	<i>Black Ash</i>		17	<i>Cords</i>		
	<i>Ironwood</i>		6	<i>Cords</i>		
	<i>Paper Birch</i>		18	<i>Cords</i>		
	<i>Red Maple</i>		14	<i>Cords</i>		
	<i>Sugar Maple</i>		17	<i>Cords</i>		
	<i>White Ash</i>		11	<i>Cords</i>		
	Mixed Spruce		8	Cords		
	<i>White Spruce</i>		8	<i>Cords</i>		
	5		Red Maple	Sawtimber		
Sugar Maple		1.4	MBF			
Yellow Birch		1.0	MBF			
Balsam Fir		Pulpwood	14	Cords		
Mixed Hardwood			62	Cords		
<i>Balsam Poplar</i>			4	<i>Cords</i>		
<i>Black Ash</i>			23	<i>Cords</i>		
<i>Ironwood</i>			3	<i>Cords</i>		
<i>Red Maple</i>			13	<i>Cords</i>		
<i>Sugar Maple</i>			1	<i>Cords</i>		
<i>Yellow Birch</i>			18	<i>Cords</i>		
Mixed Spruce			4	Cords		
<i>Black Spruce</i>	4	<i>Cords</i>				
6	Basswood	Sawtimber	1.0	MBF	13.3	\$2,429.60

DESCRIPTION OF TIMBER BY PAYMENT UNIT (PU), CON'T

PU	MARKET GROUP	PRODUCT	QUANTITY	UNIT	ACRES	ADVERTISE PRICE
6 con't	Red Maple	Sawtimber	0.6	MBF		
	Sugar Maple		3.0	MBF		
	Mixed Hardwood	Pulpwood	56	Cords		
	<i>Basswood</i>		1	<i>Cords</i>		
	<i>Black Ash</i>		3	<i>Cords</i>		
	<i>Red Maple</i>		6	<i>Cords</i>		
	<i>Sugar Maple</i>		46	<i>Cords</i>		
	Mixed Spruce		12	Cords		
	<i>White Spruce</i>		12	<i>Cords</i>		
7	Mixed Hardwood	Pulpwood	64	Cords	4.7	\$1,604.00
	<i>Basswood</i>		4	<i>Cords</i>		
	<i>Black Ash</i>		60	<i>Cords</i>		
	N. White Cedar		20	Cords		
8	Basswood	Sawtimber	2.4	MBF	7.9	\$5,201.00
	Black Cherry		0.6	MBF		
	Red Maple		0.7	MBF		
	Sugar Maple		3.1	MBF		
	Balsam Fir	Pulpwood	8	Cords		
	Mixed Aspen		97	Cords		
	<i>B. T. Aspen</i>		7	<i>Cords</i>		
	<i>Quaking Aspen</i>		90	<i>Cords</i>		
	Mixed Hardwood		32	Cords		
	<i>Basswood</i>		3	<i>Cords</i>		
	<i>Black Ash</i>		3	<i>Cords</i>		
	<i>Black Cherry</i>		3	<i>Cords</i>		
	<i>Red Maple</i>		9	<i>Cords</i>		
	<i>Sugar Maple</i>		14	<i>Cords</i>		
	Mixed Spruce		11	Cords		
	<i>Black Spruce</i>		11	<i>Cords</i>		
9	Basswood	Sawtimber	3.4	MBF	3.0	\$1,386.15
	Sugar Maple		2.3	MBF		
	Mixed Hardwood	Pulpwood	29	Cords		
	<i>Basswood</i>		10	<i>Cords</i>		
	<i>Beech</i>		8	<i>Cords</i>		
<i>Sugar Maple</i>		11	<i>Cords</i>			
10	Red Maple	Sawtimber	0.8	MBF	7.0	\$825.10
	Mixed Hardwood	Pulpwood	26	Cords		
	<i>Black Ash</i>		20	<i>Cords</i>		
	<i>Red Maple</i>		6	<i>Cords</i>		
	Mixed Spruce		4	Cords		
<i>Black Spruce</i>		4	<i>Cords</i>			
11	Basswood	Sawtimber	3.9	MBF	8.8	\$2,453.55
	Paper Birch		1.5	MBF		
	Red Maple		0.8	MBF		
	White Ash		1.2	MBF		
	Mixed Aspen	Pulpwood	8	Cords		
	<i>B. T. Aspen</i>		4	<i>Cords</i>		
	<i>Quaking Aspen</i>		4	<i>Cords</i>		
	Mixed Hardwood		73	Cords		
	<i>Basswood</i>		13	<i>Cords</i>		
	<i>Beech</i>		4	<i>Cords</i>		
	<i>Paper Birch</i>		7	<i>Cords</i>		
	<i>Red Maple</i>		12	<i>Cords</i>		
	<i>Sugar Maple</i>		36	<i>Cords</i>		
	<i>White Ash</i>		1	<i>Cords</i>		

TOTAL:	64.9	MBF
--------	------	-----

TOTAL:	1,359	Cords
--------	-------	-------

Sale Specific Conditions & Requirements

Sale Name: Big Buck Hardwood

Sale Number: 33-022-23 Seq#: 1

1 - Sale Area

1.2 - Boundaries

1.2.1 - Painted boundaries (9/19)

The sale boundary and Payment Unit boundaries are marked and identified by blue, red and yellow paint. Exterior sale boundary lines against private property are marked with blue paint. Exterior sale boundary lines against state are marked with red paint. Interior Payment Unit boundaries are marked with yellow paint. Retention patches are marked with red paint; no harvesting activities may occur within these areas. The painted boundary line trees are not Included Timber and are to be protected unless marked with orange paint. Yellow painted trees designating an interior Payment Unit boundary are only to be cut when all surrounding Payment Units have been paid for.

2 - Timber Specifications

2.1 - Included Timber

2.1.1 - Clearcut unit(s) with unmerchantable trees (6/14)

Within Payment Unit(s) 2, 4, 5, 7, 8, and 10, cut all trees that are three (3) inches or more at DBH, with the following exceptions.

Do not cut cedar and hemlock within Payment Units 2 and 5.

Do not cut cedar and trees marked with green paint within Payment Unit 10.

2.1.3 - Cut tree marked unit(s) (12/08)

Within Payment Unit(s) 1, 3, 6, 9, and 11, all trees are designated for cutting when marked with orange paint above and below stump height, regardless of merchantability.

In addition, within Payment Units 1, 3, 6, and 9, cut all ironwood, spruce, balsam fir, aspen, and balm greater than three (3) inches at DBH.

2.1.9 - Harvest exception (12/08)

Do not cut any cedar trees within Payment Units 2 and 5, other than those that are necessary to remove in order to operate within the sale area. Every effort must be made to preserve the existing cedar and to leave an intact stand upon sale completion. All cut cedar shall be piled separately by products and scaled in the woods unless other scaling arrangements are agreed to by the Unit Manager or his/her representative. Stumpage price for cedar shall be \$45.00 per cord.

2.2 - Utilization

2.2.4 - Skidding length (2/14)

Skidding of unlimbed tops or lengths over 17 feet is not permissible within Payment Units 1, 3, 6, 9, and 11.

3 - Payments

3.3 - Pre-measured Sales

3.3.4 - Dividing payment units (7/14)

Payment Unit(s) greater than \$18,000 in value may be divided at the request of the Purchaser and upon approval of the Unit Manager. Dividing Payment Units is a contract modification which requires a Timber Sale Contract Amendment. There will be only one division per Payment Unit.

4 - Transportation

4.2 - Maintenance

4.2.1 - Hauling restriction (12/08)

Hauling may be restricted on forest roads by the Unit Manager or his/her representative. The restriction may occur during spring breakup or during other wet weather conditions.

4.2.4 - Grading (10/16)

For completion of the sale, state forest roads must be graded. In general, this will require a road grader or bull dozer to shape up the roads after forest products have been hauled off site. This includes cleaning of drainage areas, grading, crowning and filling with gravel, if necessary. The grading equipment to be used must be approved by the Unit Manager or his/her representative.

5 - Operations

5.2 - Conduct of Operations

5.2.3 - Operating Restrictions

5.2.3.1 - Operating restrictions (9/11)

Within Payment Unit(s) 2, 5, 7, and 10, cutting and skidding are limited to the period of December 1st to March 31st, unless there is an extended dry or frozen period and sale administrator allows harvesting during that period of time. This restriction is because of low wet ground throughout these Payment Units.

5.2.3.3 - Bark slippage restriction (3/09)

Within Payment Unit(s) 1, 3, 6, 9, and 11, cutting and skidding are not permitted during the period of April 15 to July 15. This restriction is because of bark slippage.

6 - Safety and Fire Prevention

6.2 - Signing

6.2.1 - Road posting (10/20)

The Purchaser is responsible for posting and maintaining caution signs on the East Branch of the DeTemple Road prior to beginning operations. The road must be posted at appropriate distances from the sale area to warn of logging activity and truck traffic. Signs must be removed when harvest operations are suspended or completed. The Purchaser will provide these signs.

7 - Other Conditions

7.5 - Loss

7.5.1 - Deteriorating timber (7/09)

The sale area has received damage from the spruce budworm, eastern larch beetle, and the emerald ash borer is in the area. The Purchaser should harvest the wood as soon as possible. The Department of Natural Resources is held free of responsibility of any further damage or deterioration due to delay in harvesting.



TIMBER SALE MAP

This information provided by authority of Part 525, 1994 PA 451, as amended.

Forest Management Unit Escanaba Management Unit	County Menominee County	Mapped By Beudo	Date 11/18/2022	Page 1	of 1
Township 37N	Range 27W	Section(s) and Subdivision(s) Sec 4 - NW, SWNE; Sec 5 - S1/2NW, S1/2NE, E1/2SW, N1/2SE, SWSE; Sec 8 - NENE; Sec 9 - NWNW.	Scale 1:15,840		

Cover Type

A = Aspen	H = Hemlock	N = Marsh	U = Upland Brush
B = Paper Birch	J = Jack Pine	O = Oak	UM = Upland Mixed
C = Cedar	L = Lowland Brush	P = Lowland Poplar	V = Bog or Marsh
D = Treed Bog	LM = Lowland Mixed	Q = Mixed Swamp Conifer	W = White Pine
E = Swamp Hdwoods	M = Mpl, Bch, Brch	R = Red Pine	X = Non Stocked
F = Spruce Fir	MC = Mixed Conifer	S = Black Spruce	Z = Water
G = Grass	MD = Mixed Deciduous	T = Tamarack	

Density

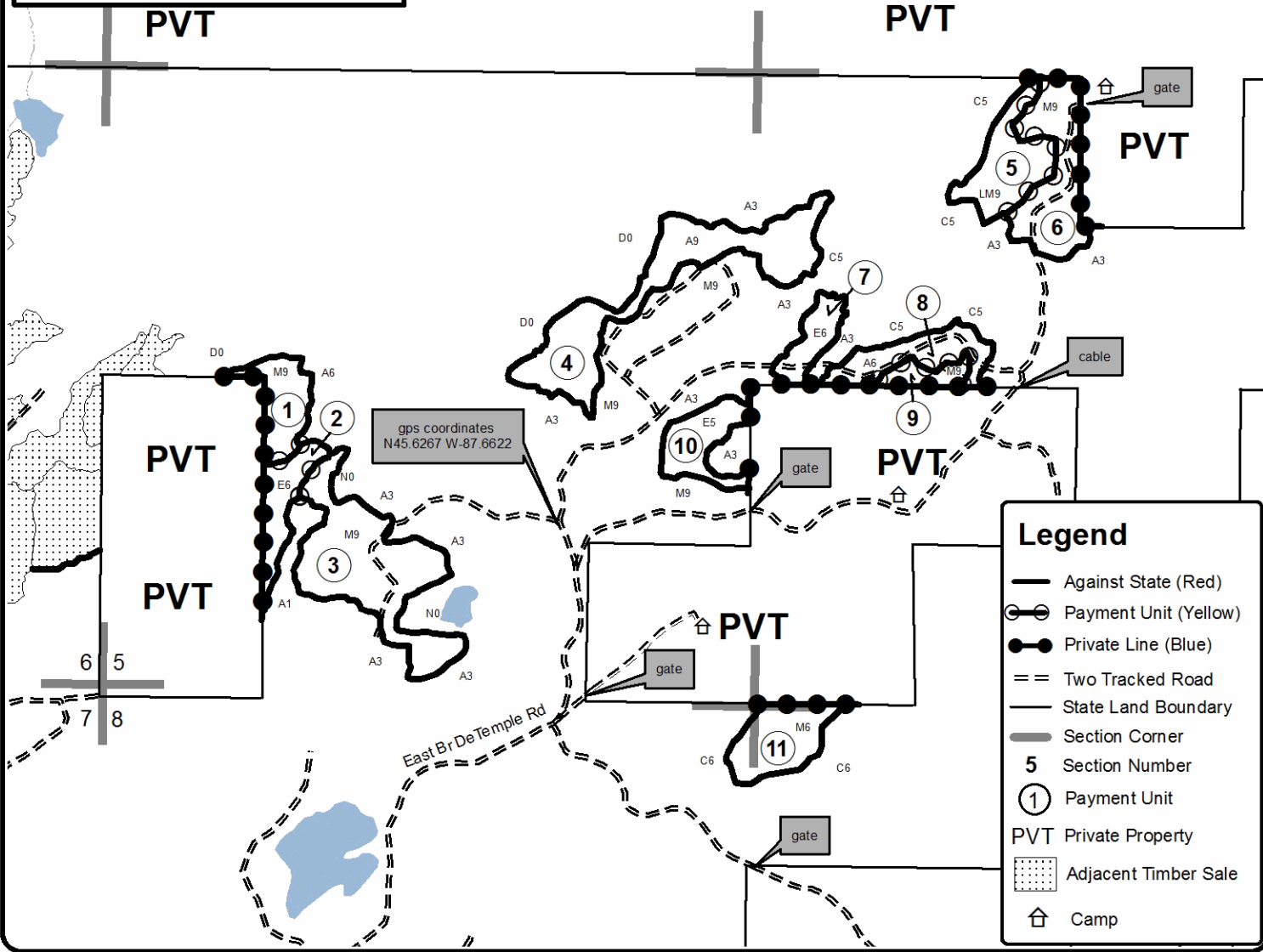
0 = Non Stocked	5 = Pole Timber Medium
1 = Seedling Sapling Poor	6 = Pole Timber Well
2 = Seedling Sapling Medium	7 = Saw Timber Poor
3 = Seedling Sapling Well	8 = Saw Timber Medium
4 = Pole Timber Poor	9 = Saw Timber Well

PU	Acres	PU	Acres
1	7.0	7	4.7
2	6.3	8	7.9
3	22.9	9	3.0
4	23.1	10	7.0
5	9.6	11	8.8
6	13.3		

Big Buck Hardwood

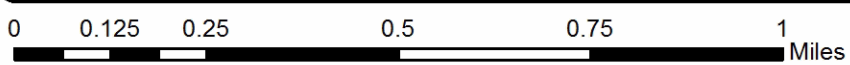
Compartments 1 & 2

113.6 Acres



Legend

- Against State (Red)
- Payment Unit (Yellow)
- Private Line (Blue)
- Two Tracked Road
- State Land Boundary
- Section Corner
- 5** Section Number
- 1 Payment Unit
- PVT Private Property
- Adjacent Timber Sale
- Camp



TIMBER SALE INFORMATION

Schuster Split (33-023-23)

T36N, R25W, SEC. 21; T36N, R25W, SEC. 28; T36N, R25W, SEC. 29; T36N, R25W, SEC. 33.
Menominee County (Advertised Price \$62,954.75)

SALE NOTE: The access gate leading back to Payment Unit 6 will be left unlocked while the sale is out for bidding.

A recreation site such as a trail, pathway, or campground is within the sale area or the vicinity. Certain restrictions/specifications may be applicable including time restrictions.

A timber sale contract for this lump sum, sealed bid timber sale will be awarded to the responsible bidder offering the highest sealed bid price. All units of volume listed below were estimated using the Inventory Manager computer program and the new Michigan taper model. Bids must be at or above the following advertised price for each product and species:

<u>PRODUCTS & SPECIES</u>	<u>ESTIMATED UNITS*</u>	<u>ADVERTISED PRICE</u>
Sawtimber		
Basswood	11.0 MBF	\$ 75.00 / MBF
Paper Birch	2.6 MBF	\$ 81.00 / MBF
Red Maple	72.0 MBF	\$ 201.00 / MBF
Sugar Maple	5.2 MBF	\$ 246.00 / MBF
Yellow Birch	2.6 MBF	\$ 68.00 / MBF
Pulpwood		
Balsam Fir	30 Cords	\$ 15.25 / Cord
Mixed Aspen	110 Cords	\$ 29.20 / Cord
Mixed Hardwood	1,139 Cords	\$ 20.85 / Cord
Mixed Spruce	31 Cords	\$ 17.70 / Cord
N. White Cedar	257 Cords	\$ 8.45 / Cord
Red Pine	196 Cords	\$ 63.55 / Cord
White Pine	87 Cords	\$ 39.05 / Cord

* The total volume is statistically estimated within plus (+) or minus (-) 14.67 percent. There are an estimated 2,019 cords on this timber sale, plus or minus 296 cords at the 95% confidence level. The estimated units are final and not subject to adjustment. Prospective bidders are urged to examine this timber and to make their own estimates of quantity and quality.

BOND AND PAYMENT SCHEDULE:

1. A bond in the amount of \$3,148.00 to insure faithful performance of the conditions of the contract will be deposited by the successful bidder within 21 days of the sale award.
2. Cutting in any sale or unit without the required advance payment would be considered a trespass.
3. Total payment must be paid in advance or according to the following schedule :
 - (a) Ten percent (10%) of the sale value must be paid within 21 days of the sale award.
 - (b) The 10% down payment will be credited towards the first unit cut.
 - (c) Payment for each of the following units must be made before cutting begins in that unit:

PAYMENT UNIT NUMBER	PERCENT OF TOTAL SALE VALUE
01	6.5%
02	5.1%
03	33.6%
04	19.8%
05	6.4%
06	28.6%

4. If no cutting takes place, the 10% down payment will not be refunded.
5. Operations on the contract issued will terminate on 06/30/2026.

SALE STATISTICS

Volumes were calculated in cubic feet using the Michigan taper model. Cubic foot volume includes all wood inside bark for the product indicated. For display purposes, cubic feet were converted to cords and MBF using a simple conversion factor, e.g. 79 cubic feet per cord and 185 cubic feet per MBF. The cubic foot volumes are precise; the cords and MBF volumes are not. Cubic foot volume cannot be directly converted to cords or boards with precision.

SALE VOLUMES

The total estimated sale volume may not equal the sum of the species/products due to the nature of statistical calculations associated with double sampling methodology.

VOLUME			STATISTICAL RANGE IN CORDS	
TOTAL CUBIC FEET	TOTAL CORDS	PERCENT ERROR	MINIMUM	MAXIMUM
159,509	2,019	14.67%	1,723	2,315

VDU VOLUMES

A VDU is a Volume Determination Unit. Volumes and their associated statistics are calculated at the VDU level and summarized to the sale level. There is often a one to one relationship between a VDU and a Payment Unit, but not always, depending on the cruise design. Refer to the VDU TO PAYMENT UNIT table.

	VOLUME			RANGE IN CORDS	
VDU	TOTAL CUBIC FEET	TOTAL CORDS	PERCENT ERROR	MINIMUM	MAXIMUM
3	14,534	184	44.91%	101	267
5	10,116	128	44.92%	71	186
13	15,504	196	17.99%	161	232
20	9,599	122	115.26%	19	262
22	38,443	487	16.79%	405	568
31	71,313	903	27.53%	654	1,151
TOTAL:	159,509	2,019		1,373	2,665

VDU TO PAYMENT UNIT

When a VDU is associated with more than one Payment Unit (PU), the VDU volumes are assigned to the PU based on acres of the VDU within the PU.

VDU	VDU ACRES	PU	PU ACRES
3	10.9	1	10.9
5	8.7	2	8.7
13	12.5	4	12.5
20	4.1	5	4.1
22	16.3	6	16.3
31	33.1	3	33.1
TOTAL:	85.6		85.6

DESCRIPTION OF TIMBER BY PAYMENT UNIT (PU)

PU	MARKET GROUP	PRODUCT	QUANTITY	UNIT	ACRES	ADVERTISE PRICE
1	Red Maple	Sawtimber	1.6	MBF	10.9	\$4,122.85
	Balsam Fir	Pulpwood	10	Cords		
	Mixed Hardwood		175	Cords		
	<i>Black Ash</i>		121	Cords		
	<i>Green Ash</i>		30	Cords		
	<i>Paper Birch</i>		17	Cords		
	<i>Red Maple</i>		5	Cords		
	<i>Yellow Birch</i>		2	Cords		
	2	Red Maple	Sawtimber	3.1		
Balsam Fir		Pulpwood	18	Cords		
Mixed Aspen			35	Cords		
<i>Quaking Aspen</i>			35	Cords		
Mixed Hardwood			50	Cords		
<i>Balsam Poplar</i>			6	Cords		
<i>Black Ash</i>			5	Cords		
<i>Green Ash</i>			21	Cords		
<i>Paper Birch</i>			3	Cords		
<i>Red Maple</i>			15	Cords		
Mixed Spruce			9	Cords		
<i>White Spruce</i>			9	Cords		
N. White Cedar			8	Cords		
3		Red Maple	Sawtimber	31.0	MBF	33.1
	Yellow Birch		2.6	MBF		
	Mixed Hardwood	Pulpwood	596	Cords		
	<i>Black Ash</i>		90	Cords		
	<i>Green Ash</i>		346	Cords		
	<i>Paper Birch</i>		9	Cords		
	<i>Red Maple</i>		135	Cords		
	<i>Yellow Birch</i>		16	Cords		
	Mixed Spruce		16	Cords		
	<i>Black Spruce</i>		16	Cords		
	N. White Cedar		238	Cords		
4	Red Pine	Pulpwood	196	Cords	12.5	\$12,455.80
5	Basswood	Sawtimber	11.0	MBF	4.1	\$4,054.65
	Red Maple		1.8	MBF		
	Sugar Maple		5.2	MBF		
	Mixed Hardwood	Pulpwood	60	Cords		
	<i>American Elm</i>		3	Cords		
	<i>Balsam Poplar</i>		9	Cords		
	<i>Basswood</i>		7	Cords		
	<i>Black Ash</i>		15	Cords		
	<i>Green Ash</i>		4	Cords		
	<i>Ironwood</i>		1	Cords		
	<i>Paper Birch</i>		7	Cords		
	<i>Red Maple</i>		4	Cords		
	<i>Sugar Maple</i>		10	Cords		
	Mixed Spruce		5	Cords		
	<i>White Spruce</i>		5	Cords		
N. White Cedar		11	Cords			
White Pine		4	Cords			
6	Paper Birch	Sawtimber	2.6	MBF	16.3	\$18,003.75
	Red Maple		34.5	MBF		
	Balsam Fir	Pulpwood	2	Cords		
	Mixed Aspen		75	Cords		
	<i>B. T. Aspen</i>		75	Cords		
	Mixed Hardwood		258	Cords		

DESCRIPTION OF TIMBER BY PAYMENT UNIT (PU), CON'T

PU	MARKET GROUP	PRODUCT	QUANTITY	UNIT	ACRES	ADVERTISE PRICE
6 con't	<i>Beech</i>	<i>Pulpwood</i>	1	<i>Cords</i>		
	<i>Paper Birch</i>		37	<i>Cords</i>		
	<i>Red Maple</i>		220	<i>Cords</i>		
	Mixed Spruce		1	<i>Cords</i>		
	<i>White Spruce</i>		1	<i>Cords</i>		
	White Pine		83	<i>Cords</i>		
TOTAL:			93.4	MBF		
TOTAL:			1,850	Cords		

Sale Specific Conditions & Requirements

Sale Name: Schuster Split

Sale Number: 33-023-23 Seq#: 1

1 - Sale Area

1.2 - Boundaries

1.2.1 - Painted boundaries (9/19)

The sale boundary is marked and identified by blue and red paint. Exterior sale boundary lines against private property are marked with blue paint. Exterior sale boundary lines against state are marked with red paint. Retention patches are marked with red paint; no harvesting activities may occur within these areas. The painted boundary line trees are not Included Timber and are to be protected unless marked with orange paint.

2 - Timber Specifications

2.1 - Included Timber

2.1.1 - Clearcut unit(s) with unmerchantable trees (6/14)

Within Payment Unit(s) 1, 3, and 5, cut all trees that are three (3) inches or more at DBH, except do not cut any hemlock. In addition, the following exceptions apply:

- Within Payment Unit 1, do not cut cedar. Also, do not cut yellow birch marked with green paint.
- Within Payment Unit 3, do not cut any pine.
- Within Payment Unit 5, do not cut red pine.

2.1.2 - Clearcut unit(s) w/o unmerchantable trees (8/11)

Within Payment Unit(s) 2 and 6, cut all trees which meet minimum piece specifications in 2.2 Utilization, except do not cut hemlock. In addition, within Payment Unit 6, do not cut cedar or any trees marked with green paint.

2.1.3 - Cut tree marked unit(s) (12/08)

Within Payment Unit(s) 4, all trees are designated for cutting when marked with orange paint above and below stump height, regardless of merchantability. In addition, cut all balsam fir, spruce, and white pine greater than four (4) inches at DBH.

2.1.9 - Harvest exception (12/08)

Do not cut any cedar trees within Payment Unit 1 other than those that are necessary to remove in order to operate within the sale area. Every effort must be made to preserve the existing cedar and to leave an intact stand upon sale completion. All cut cedar shall be piled separately by products and scaled in the woods unless other scaling arrangements are agreed to by the Unit Manager or his/her representative. Stumpage price for cedar shall be \$45.00 per cord.

2.2 - Utilization

2.2.4 - Skidding length (2/14)

Skidding of unlimbed tops or lengths over 17 feet is not permissible within Payment Unit 4.

3 - Payments

3.3 - Pre-measured Sales

3.3.4 - Dividing payment units (7/14)

Payment Unit(s) \$18,000 in value or greater may be divided at the request of the Purchaser and upon approval of the Unit Manager. Dividing Payment Units is a contract modification which requires a Timber Sale Contract Amendment. There will be only one division per Payment Unit.

4 - Transportation

4.2 - Maintenance

4.2.1 - Hauling restriction (12/08)

Hauling may be restricted on forest roads by the Unit Manager or his/her representative. The restriction may occur during spring breakup or during other wet weather conditions.

4.2.4 - Grading (10/16)

For completion of the sale, state forest roads must be graded. In general, this will require a road grader or bull dozer to shape up the roads after forest products have been hauled off site. This includes cleaning of drainage areas, grading, crowning and filling with gravel, if necessary. The grading equipment to be used must be approved by the Unit Manager or his/her representative.

4.4 - Access

4.4.3 - Access gate (12/08)

The access gate must be locked at the completion of each day unless otherwise approved by the Unit Manager or his/her representative.

5 - Operations

5.2 - Conduct of Operations

5.2.3 - Operating Restrictions

5.2.3.1 - Operating restrictions (9/11)

Within Payment Unit(s) 1, 2, and 3, cutting and skidding are limited to the period of December 1st to March 31st, unless there is an extended dry or frozen period and the sale administrator allows harvesting during that period of time. This restriction is because of low wet ground within each of the Payment Units. During a dry summer, a portion of Payment Units 2 and 3 could be harvested.

5.2.3.3 - Bark slippage restriction (3/09)

Within Payment Unit(s) 4, unless changed by written agreement, cutting and skidding are not permitted during the period of April 15 to July 15. This restriction is because of bark slippage.

5.2.22 - Operating Caution

5.2.22.1 - Operating caution (6/11)

It is recommended, but not required, that within Payment Unit(s) 5 and 6, cutting and skidding occur during dry summer or frozen winter conditions. The reason for the recommendation is because of pockets of low wet ground within each Payment Unit.

6 - Safety and Fire Prevention

6.2 - Signing

6.2.1 - Road posting (10/20)

The Purchaser is responsible for posting and maintaining caution signs on the Schuster and Westman Dam Roads prior to beginning operations. The road must be posted at appropriate distances from the sale area to warn of logging activity and truck traffic. Signs must be removed when harvest operations are suspended or completed. The Purchaser will provide these signs.



TIMBER SALE MAP

This information provided by authority of Part 525, 1994 PA 451, as amended.

Forest Management Unit Escanaba Management Unit	County Menominee County	Mapped By Beaudo	Date 12/14/2022	Page 1	of 1
Township 36N	Range 25W	Section(s) and Subdivision(s) Sec 21 - SESE; Sec 28 - N1/2NW, SWNW, NE, NWSW, S1/2SW, NESE; Sec 29 - SENE, SESE; Sec 33 - N1/2NW.	Scale 1:15,840		

Cover Type

A = Aspen	H = Hemlock	N = Marsh	U = Upland Brush
B = Paper Birch	J = Jack Pine	O = Oak	UM = Upland Mixed
C = Cedar	L = Lowland Brush	P = Lowland Poplar	V = Bog or Marsh
D = Treed Bog	LM = Lowland Mixed	Q = Mixed Swamp Conifer	W = White Pine
E = Swamp Hdwoods	M = Mpl, Bch, Brch	R = Red Pine	X = Non Stocked
F = Spruce Fir	MC = Mixed Conifer	S = Black Spruce	Z = Water
G = Grass	MD = Mixed Deciduous	T = Tamarack	

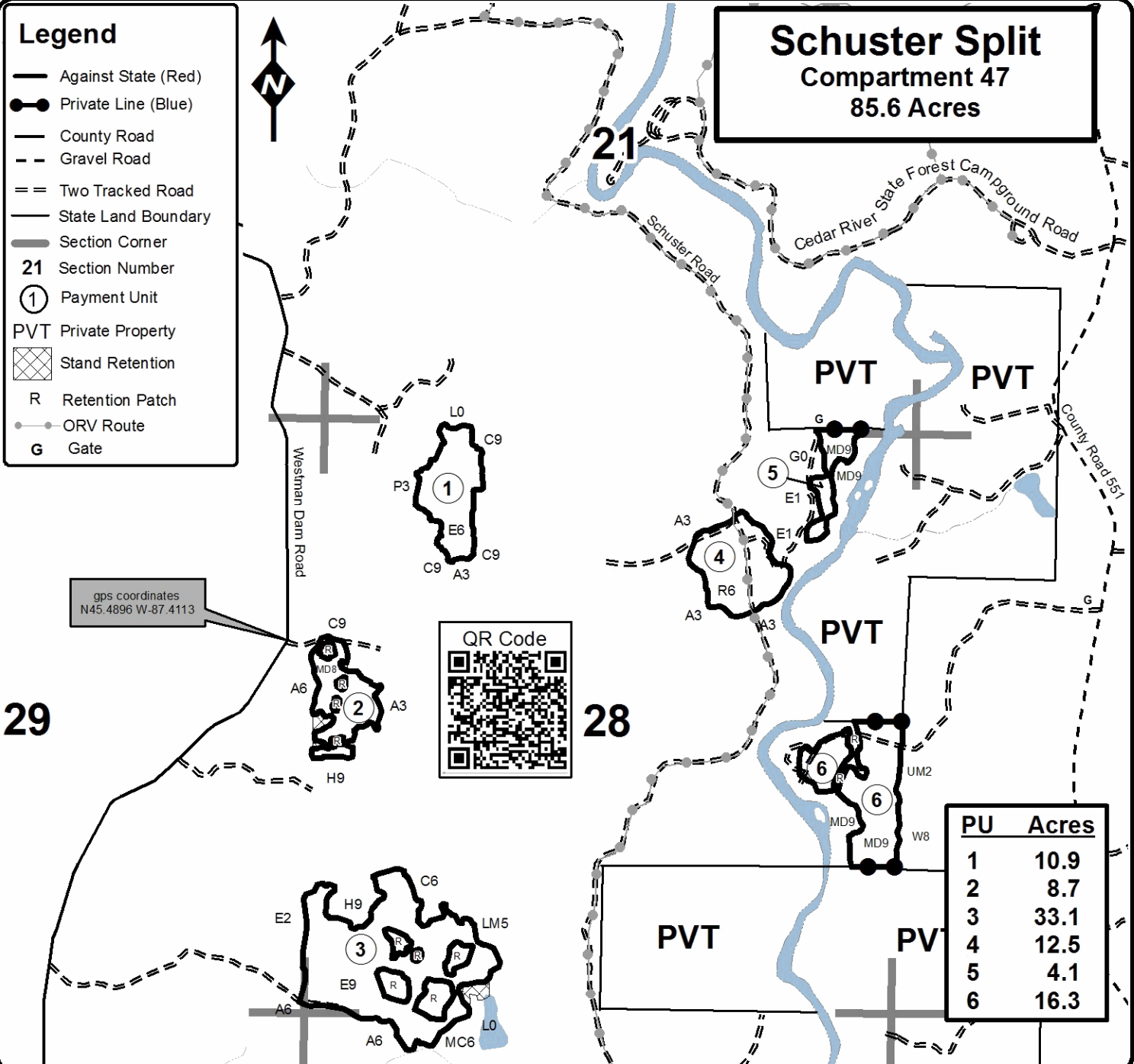
Density

0 = Non Stocked	5 = Pole Timber Medium
1 = Seedling Sapling Poor	6 = Pole Timber Well
2 = Seedling Sapling Medium	7 = Saw Timber Poor
3 = Seedling Sapling Well	8 = Saw Timber Medium
4 = Pole Timber Poor	9 = Saw Timber Well

Legend

- Against State (Red)
- Private Line (Blue)
- County Road
- Gravel Road
- Two Tracked Road
- State Land Boundary
- Section Corner
- 21** Section Number
- Payment Unit
- PVT Private Property
- Stand Retention
- R Retention Patch
- ORV Route
- G Gate

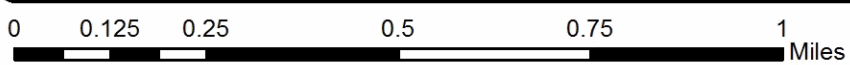
Schuster Split
Compartment 47
85.6 Acres



gps coordinates
 N45.4896 W-87.4113



PU	Acres
1	10.9
2	8.7
3	33.1
4	12.5
5	4.1
6	16.3



DeHaas Jumble (33-021-23)
T37N, R27W, SEC. 5; T37N, R27W, SEC. 6; Menominee COUNTY

In response to the notice of sale to be held 3:00 p.m. (local time) on February 16, 2023, I am hereby submitting my sealed bid (firm offer) for the following forest products to be cut. Bids for individual species must be at or above the advertised price. All non-responsive bid forms may be rejected.

<u>PRODUCTS & SPECIES</u>	<u>ESTIMATED VOLUME*</u>	<u>ADVERTISED PRICE</u>	<u>BID PRICE/UNIT</u>
Sawtimber			
American Elm	1.2 MBF	\$ 72.00/MBF	\$ _____
Basswood	55.5 MBF	\$ 40.00/MBF	\$ _____
Paper Birch	1.5 MBF	\$ 87.00/MBF	\$ _____
Red Maple	1.4 MBF	\$ 214.00/MBF	\$ _____
Sugar Maple	11.2 MBF	\$ 263.00/MBF	\$ _____
Pulpwood			
Balsam Fir	294 Cords	\$ 16.25/Cord	\$ _____
Mixed Aspen	679 Cords	\$ 31.15/Cord	\$ _____
Mixed Hardwood	636 Cords	\$ 22.25/Cord	\$ _____
Mixed Spruce	242 Cords	\$ 18.85/Cord	\$ _____
N. White Cedar	27 Cords	\$ 9.00/Cord	\$ _____
Tamarack	36 Cords	\$ 30.30/Cord	\$ _____
White Pine	83 Cords	\$ 41.65/Cord	\$ _____

*The volumes are statistically estimated within plus (+) or minus (-) 11.35 percent at 95% confidence level. These estimated volumes are final and not subject to adjustment. Prospective bidders are urged to examine this timber and to make their own estimates of quantity and quality.

I understand that any or all bids may be rejected. All bids must be signed and all bid items must be bid or the bid form may be rejected. I also understand that consideration and awarding a contract will be based upon my past performance and ability to complete the contract based upon equipment and staffing subject to my control.

FEDERAL ID: ____ - ____ - ____ or SOCIAL SECURITY NUMBER: ____ - ____ - ____

Company or individual bidding: _____

Company representative's name: _____

Address: _____

City: _____ State: _____ Zip: _____

IF AVAILABLE, PLEASE PLACE THE PERSONALIZED LABEL FROM YOUR PROSPECTUS IN THE ABOVE BOX.

Individual or company representative's signature: _____ Date: _____

Phone number : _____ Email (optional): _____

THE WINNING BIDDER MUST COMPLETE THE VERIFICATION OF WORKER'S DISABILITY COMPENSATION ACT COMPLIANCE (ON REVERSE SIDE IF DOUBLE SIDED) WITHIN 21 DAYS OF SALE AWARD DATE



FOR DEPARTMENT USE ONLY	
Sale Number (XX - XXX - XX - XX)	
Forest Management Unit:	

TIMBER SALE VERIFICATION OF WORKER'S DISABILITY COMPENSATION ACT COMPLIANCE

As required by Act 317, P.A. 1969 (Worker's Compensation) and
Part 5 of Act 451 of 1994, as amended.

VERIFICATION OF WORKER'S DISABILITY COMPENSATION ACT COMPLIANCE

- This verification must be completed and submitted within 21 days of contract award and prior to the issuance of the timber sale contract.
- In addition, if boxes 2B or 2C are checked, then Notice of Exclusion or Certificate of Insurance must be submitted within twenty-one (21) days of the contract award and prior to the issuance of the timber sale contract.
- All information must be typed or printed except for written signatures.

Please Check Appropriate Categories:

1. My business is organized as (you **must** check one of the boxes below):
 - A. Sole Proprietorship (individual)
 - B. Partnership
 - C. Corporation
2. You **must** check one of the boxes below:
 - A. I certify my business is a sole proprietorship and it has no employees but the sole proprietor. I am not subject to the Worker's Compensation Laws.
 - B. I certify my business has satisfied its obligation to the Worker's Compensation Act through the use of an approved Notice of Exclusion (BWC-337, Rev. 5/96). I will provide a copy of the Notice of Exclusion within 21 days of the contract award. (For questions or a copy of the BWC-337, please call the Worker's Compensation Bureau at 517-322-1195).
 - C. I certify my business has a Worker's Compensation Policy. I will provide an original Certificate of Insurance within twenty-one (21) days of the contract award.
3. If you have checked item 2(A) or 2(B), you **must** indicate the number of **both** full-time and part-time employees, other than yourself, including family members and active partners (if none, you must enter "0").

_____ Full-time Employees

_____ Part-time Employees

Name of Business		Federal ID (or) Social Security No.	
Address		Telephone ()	
City	State	ZIP	

I hereby certify that the above information is true and correct. I agree to notify the Michigan DNR of any changes that occur in factors affecting my coverage during any of my present and future operations.

Signature of Owner or Authorized Representative

Title

Date

Please complete the "SEALED BID" information on the next page

Big Buck Hardwood (33-022-23)

T37N, R27W, SEC. 4; T37N, R27W, SEC. 5; T37N, R27W, SEC. 8; T37N, R27W,

In response to the notice of sale to be held 3:00 p.m. (local time) on February 16, 2023, I am hereby submitting my sealed bid (firm offer) for the following forest products to be cut. Bids for individual species must be at or above the advertised price. All non-responsive bid forms may be rejected.

<u>PRODUCTS & SPECIES</u>	<u>ESTIMATED VOLUME*</u>	<u>ADVERTISED PRICE</u>	<u>BID PRICE/UNIT</u>
Sawtimber			
Basswood	19.1 MBF	\$ 40.00/MBF	\$ _____
Black Cherry	0.6 MBF	\$ 115.00/MBF	\$ _____
Paper Birch	1.5 MBF	\$ 87.00/MBF	\$ _____
Red Maple	12.1 MBF	\$ 214.00/MBF	\$ _____
Sugar Maple	16.5 MBF	\$ 263.00/MBF	\$ _____
White Ash	14.1 MBF	\$ 102.00/MBF	\$ _____
Yellow Birch	1.0 MBF	\$ 44.00/MBF	\$ _____
Pulpwood			
Balsam Fir	93 Cords	\$ 16.25/Cord	\$ _____
Mixed Aspen	544 Cords	\$ 31.15/Cord	\$ _____
Mixed Hardwood	662 Cords	\$ 22.25/Cord	\$ _____
Mixed Spruce	39 Cords	\$ 18.85/Cord	\$ _____
N. White Cedar	21 Cords	\$ 9.00/Cord	\$ _____

*The volumes are statistically estimated within plus (+) or minus (-) 15.07 percent at 95% confidence level. These estimated volumes are final and not subject to adjustment. Prospective bidders are urged to examine this timber and to make their own estimates of quantity and quality.

I understand that any or all bids may be rejected. All bids must be signed and all bid items must be bid or the bid form may be rejected. I also understand that consideration and awarding a contract will be based upon my past performance and ability to complete the contract based upon equipment and staffing subject to my control.

FEDERAL ID: ____ - ____ - ____ or SOCIAL SECURITY NUMBER: ____ - ____ - ____

Company or individual bidding: _____

Company representative's name: _____

Address: _____

City: _____ State: _____ Zip: _____

IF AVAILABLE, PLEASE PLACE THE PERSONALIZED LABEL FROM YOUR PROSPECTUS IN THE ABOVE BOX.

Individual or company representative's signature: _____ Date: _____

Phone number : _____ Email (optional): _____

THE WINNING BIDDER MUST COMPLETE THE VERIFICATION OF WORKER'S DISABILITY COMPENSATION ACT COMPLIANCE (ON REVERSE SIDE IF DOUBLE SIDED) WITHIN 21 DAYS OF SALE AWARD DATE



FOR DEPARTMENT USE ONLY	
Sale Number (XX - XXX - XX - XX)	
Forest Management Unit:	

TIMBER SALE VERIFICATION OF WORKER'S DISABILITY COMPENSATION ACT COMPLIANCE

As required by Act 317, P.A. 1969 (Worker's Compensation) and
Part 5 of Act 451 of 1994, as amended.

VERIFICATION OF WORKER'S DISABILITY COMPENSATION ACT COMPLIANCE

- This verification must be completed and submitted within 21 days of contract award and prior to the issuance of the timber sale contract.
- In addition, if boxes 2B or 2C are checked, then Notice of Exclusion or Certificate of Insurance must be submitted within twenty-one (21) days of the contract award and prior to the issuance of the timber sale contract.
- All information must be typed or printed except for written signatures.

Please Check Appropriate Categories:

1. My business is organized as (you **must** check one of the boxes below):
 - A. Sole Proprietorship (individual)
 - B. Partnership
 - C. Corporation
2. You **must** check one of the boxes below:
 - A. I certify my business is a sole proprietorship and it has no employees but the sole proprietor. I am not subject to the Worker's Compensation Laws.
 - B. I certify my business has satisfied its obligation to the Worker's Compensation Act through the use of an approved Notice of Exclusion (BWC-337, Rev. 5/96). I will provide a copy of the Notice of Exclusion within 21 days of the contract award. (For questions or a copy of the BWC-337, please call the Worker's Compensation Bureau at 517-322-1195).
 - C. I certify my business has a Worker's Compensation Policy. I will provide an original Certificate of Insurance within twenty-one (21) days of the contract award.
3. If you have checked item 2(A) or 2(B), you **must** indicate the number of **both** full-time and part-time employees, other than yourself, including family members and active partners (if none, you must enter "0").

_____ Full-time Employees

_____ Part-time Employees

Name of Business		Federal ID (or) Social Security No.	
Address		Telephone ()	
City	State	ZIP	

I hereby certify that the above information is true and correct. I agree to notify the Michigan DNR of any changes that occur in factors affecting my coverage during any of my present and future operations.

Signature of Owner or Authorized Representative

Title

Date

Please complete the "SEALED BID" information on the next page

Schuster Split (33-023-23)

T36N, R25W, SEC. 21; T36N, R25W, SEC. 28; T36N, R25W, SEC. 29; T36N,

In response to the notice of sale to be held 3:00 p.m. (local time) on February 16, 2023, I am hereby submitting my sealed bid (firm offer) for the following forest products to be cut. Bids for individual species must be at or above the advertised price. All non-responsive bid forms may be rejected.

<u>PRODUCTS & SPECIES</u>	<u>ESTIMATED VOLUME*</u>	<u>ADVERTISED PRICE</u>	<u>BID PRICE/UNIT</u>
Sawtimber			
Basswood	11.0 MBF	\$ 75.00/MBF	\$ _____
Paper Birch	2.6 MBF	\$ 81.00/MBF	\$ _____
Red Maple	72.0 MBF	\$ 201.00/MBF	\$ _____
Sugar Maple	5.2 MBF	\$ 246.00/MBF	\$ _____
Yellow Birch	2.6 MBF	\$ 68.00/MBF	\$ _____
Pulpwood			
Balsam Fir	30 Cords	\$ 15.25/Cord	\$ _____
Mixed Aspen	110 Cords	\$ 29.20/Cord	\$ _____
Mixed Hardwood	1,139 Cords	\$ 20.85/Cord	\$ _____
Mixed Spruce	31 Cords	\$ 17.70/Cord	\$ _____
N. White Cedar	257 Cords	\$ 8.45/Cord	\$ _____
Red Pine	196 Cords	\$ 63.55/Cord	\$ _____
White Pine	87 Cords	\$ 39.05/Cord	\$ _____

*The volumes are statistically estimated within plus (+) or minus (-) 14.67 percent at 95% confidence level. These estimated volumes are final and not subject to adjustment. Prospective bidders are urged to examine this timber and to make their own estimates of quantity and quality.

I understand that any or all bids may be rejected. All bids must be signed and all bid items must be bid or the bid form may be rejected. I also understand that consideration and awarding a contract will be based upon my past performance and ability to complete the contract based upon equipment and staffing subject to my control.

FEDERAL ID: ____ - ____ - ____ or SOCIAL SECURITY NUMBER: ____ - ____ - ____

Company or individual bidding: _____

Company representative's name: _____

Address: _____

City: _____ State: _____ Zip: _____

IF AVAILABLE, PLEASE PLACE THE PERSONALIZED LABEL FROM YOUR PROSPECTUS IN THE ABOVE BOX.

Individual or company representative's signature: _____ Date: _____

Phone number : _____ Email (optional): _____

THE WINNING BIDDER MUST COMPLETE THE VERIFICATION OF WORKER'S DISABILITY COMPENSATION ACT COMPLIANCE (ON REVERSE SIDE IF DOUBLE SIDED) WITHIN 21 DAYS OF SALE AWARD DATE



FOR DEPARTMENT USE ONLY	
Sale Number (XX - XXX - XX - XX)	
Forest Management Unit:	

TIMBER SALE VERIFICATION OF WORKER'S DISABILITY COMPENSATION ACT COMPLIANCE

As required by Act 317, P.A. 1969 (Worker's Compensation) and
Part 5 of Act 451 of 1994, as amended.

VERIFICATION OF WORKER'S DISABILITY COMPENSATION ACT COMPLIANCE

- This verification must be completed and submitted within 21 days of contract award and prior to the issuance of the timber sale contract.
- In addition, if boxes 2B or 2C are checked, then Notice of Exclusion or Certificate of Insurance must be submitted within twenty-one (21) days of the contract award and prior to the issuance of the timber sale contract.
- All information must be typed or printed except for written signatures.

Please Check Appropriate Categories:

1. My business is organized as (you **must** check one of the boxes below):
 - A. Sole Proprietorship (individual)
 - B. Partnership
 - C. Corporation
2. You **must** check one of the boxes below:
 - A. I certify my business is a sole proprietorship and it has no employees but the sole proprietor. I am not subject to the Worker's Compensation Laws.
 - B. I certify my business has satisfied its obligation to the Worker's Compensation Act through the use of an approved Notice of Exclusion (BWC-337, Rev. 5/96). I will provide a copy of the Notice of Exclusion within 21 days of the contract award. (For questions or a copy of the BWC-337, please call the Worker's Compensation Bureau at 517-322-1195).
 - C. I certify my business has a Worker's Compensation Policy. I will provide an original Certificate of Insurance within twenty-one (21) days of the contract award.
3. If you have checked item 2(A) or 2(B), you **must** indicate the number of **both** full-time and part-time employees, other than yourself, including family members and active partners (if none, you must enter "0").

_____ Full-time Employees

_____ Part-time Employees

Name of Business		Federal ID (or) Social Security No.	
Address		Telephone ()	
City	State	ZIP	

I hereby certify that the above information is true and correct. I agree to notify the Michigan DNR of any changes that occur in factors affecting my coverage during any of my present and future operations.

Signature of Owner or Authorized Representative

Title

Date

Please complete the "SEALED BID" information on the next page