



**DEPARTMENT OF NATURAL RESOURCES  
STATE OF MICHIGAN  
TIMBER SALE PROSPECTUS #7152**

**SCHEDULED SALE DATE AND TIME: 3:00 p.m. (local time) on February 22, 2023.**

**LOCATION: BALDWIN OFFICE, 2468 W 24TH STREET, BALDWIN, MI 49304.**

**PROSPECTUS NOTE:** The bidder is advised to inspect the sale area and review the location, estimated volumes, operating costs and contract terms of proposed sales. Please be aware that some landowners may request 60 days or more notice for access across their land.

Notice is hereby given that bids will be received by the Unit Manager, CADILLAC MANAGEMENT UNIT, for certain timber on the following described lands:

**Something New Oak** (63-012-22) / T23N, R08W, SEC. 24, NWNW,S1/2NW,SWNE,E1/2SW,N1/2SE.

Missaukee County, Advertised Price \$75,518.35, 62.7 Acres, Hardwood, Red Oak.

SALE NOTE: A recreation site such as a trail, pathway, or campground is within the sale area or the vicinity. Certain restrictions/specifications may be applicable including time restrictions.

**Deuces Wild** (63-013-22) / T23N, R08W, SEC. 26, S1/2NW,S1/2NE,N1/2SW,N1/2SE.

T23N, R08W, SEC. 26, SESE.

Missaukee County, Advertised Price \$149,995.10, 79.6 Acres, Red Oak, Hardwood.

SALE NOTE: A recreation site such as a trail, pathway, or campground is within the sale area or the vicinity. Certain restrictions/specifications may be applicable including time restrictions. Access may be through other public land.

**Back Blast Mix** (63-015-22) / T21N, R06W, SEC. 26, NW,SWNE,E1/2SE.

T21N, R06W, SEC. 35, NENE,E1/2SW,W1/2SE.

Missaukee County, Advertised Price \$52,713.30, 112.2 Acres, Aspen, Hardwood.

## BID INSTRUCTIONS (VER. 10/10/2022):

### 1. Scheduled Bid Location, Date, and Time (2/11)

Bids must be received by the Unit Manager, BALDWIN OFFICE, 2468 W 24th Street, Baldwin, MI 49304, no later than 3:00 p.m. (local time) on February 22, 2023. For further information concerning this sale, contact David Fisher at 231-745-4651 extension 6946.

### 2. Bidder's Qualifications (10/22)

If all or part of a timber sale was prepared by a private contractor, the contractor and that contractor's company are not permitted to bid on the timber sale. A person must be 18 years of age or older to purchase timber. Permanent employees of the Department of Natural Resources or members of their immediate household may not bid. Former employees, in the permanent or seasonal class, may not bid until 3 months after the last day of active duty. Bids will not be accepted from individuals or companies appearing on the DNR/FRD No-Bid List. This list contains the names of purchasers who previously failed to execute a contract within 21-days or who have a history of poor performance.

### 3. Preparation of Sealed Bids (5/16)

Bid Forms may be completed online thru Michigan DNR Timber Sale Online Bidding (OLB) at [www.michigan.gov/timberbidding](http://www.michigan.gov/timberbidding) or by completing the hardcopy Bid Form found in the Timber Sale Prospectus. Hardcopy Bid Forms shall be manually signed in ink. Registration in OLB is considered your 'signature' for all bids submitted thru that system. Bid prices must be entered for each species and product in the Bid Price column for all material subject to bidding and all fill-in blanks must be completed. If erasures or other changes appear on the hardcopy Bid Form, each erasure or change must be initialed by the person signing the bid.

### 4. Submission of Sealed Bids (5/16)

Bid forms may be obtained from the Unit Manager or thru OLB. Bids may be submitted hardcopy or thru OLB. All hardcopy bids must be submitted on the bid form and in an envelope clearly identified as described in this section. NOTE: Only one bid form per bid envelope. Sealed bids must be submitted to the Unit office designated in the prospectus and must be submitted at or prior to the time established in the prospectus. The envelope should show on the outside (a) the sale name or number and (b) the date and time of bid opening, as shown in the prospectus. Bids received after the time specified in the sale prospectus are late bids and will be rejected.

It is possible for a bidder to submit multiple bids on a single sale. For example, a bid may be submitted hardcopy and a bid may be submitted thru OLB. Or, two bidders from the same company could both submit bids on the same sale. If this were to happen, the State would accept all bids received and award the contract accordingly. All bidding and contractual requirements would apply to all bids received.

### 5. Public Opening of Sealed Bids (7/16)

If conditions permit, the sealed bids will be publicly opened and posted at the time and place set in the prospectus.

If a bidder, present at a bid opening, has submitted bids on more than one sale, that bidder may withdraw their unopened bid envelopes or announce the withdrawal of their online bid after being declared the successful bidder on one sale.

### 6. Award of Contract (1/11)

Award of the contract will be made to the Bidder whose bid, conforming to the prospectus, is most advantageous to the State of Michigan on the basis of total value at rates bid for the estimated quantities. The State reserves the right to reject any bid or waive any minor irregularity in bids received. A written award mailed (or otherwise furnished) to the successful Bidder shall be deemed to result in a binding contract without further action by either party.

### 7. Down Payment (1/11)

The Bidder to whom award is made must make a down payment within 21 days of the sale award. The amount of the down payment will be calculated as shown in the Bond and Payment Schedule of this prospectus. Only cash may be used to meet this requirement.

### 8. Performance Security (1/11)

As guarantee of faithful performance, a cash bond, certificate of deposit, surety bond or irrevocable letter of credit (LOC) is required within 21 days of the sale award. The amount of the performance security is shown in the Bond and

Payment Schedule of this prospectus. If an LOC or surety is used, the coverage must extend for at least 6 months beyond the contract expiration.

#### 9. Worker's Compensation (10/22)

Purchaser shall obtain worker's compensation insurance to cover claims under Michigan's Worker's Disability Compensation Act of 1969 or similar employee benefit act of any other state applicable to an employee. Verification of Worker's Disability Compensation Act Compliance must be completed and submitted within 21 days of contract award and prior to the issuance of the timber sale contract. In addition, if applicable, Notice of Exclusion or Certificate of Insurance must also be submitted.

#### 10. Timber Sale Contract (10/22)

Additional conditions and requirements common to all timber sales are listed on the timber sale contract (R4031) and are available on line at [www.michigan.gov/timber](http://www.michigan.gov/timber). Contact the Unit Manager for additional information or a sample contract. Within 21 days of the date of the award letter, the bidder must sign the contract and provide the required down payment, performance security, and verification of worker's disability compensation. The down payment and performance security shall be in accordance with the provisions of the timber sale contract, in the sums stated in this prospectus. If these actions are not taken, then the Bidder, the Bidder's corporation, and the corporation's principals may not be permitted to bid on State timber sales for a period of 3 months after the first offense, 6 months after the second offense, and 1 year after the third offense. An offense will only be counted against the Bidder for 5 years. In addition, the Bidder certifies that if awarded this contract, the Bidder will complete the timber sale contract in accordance with its terms and any modifications thereof including requirements to purchase, cut, and remove the included timber by the expiration date.

Payment Unit values in the State Forest Timber Sale Contract are calculated based on the advertised value of the Payment Unit as a percentage of the total advertised value of the contract. The advertised value of each Payment Unit is given in the Description of Timber by Payment Unit table on the Timber Sale Information page. For example, if the value of Payment Unit 1 is advertised as \$1,500 and the total Timber Sale value is advertised as \$10,000, the contract price for Payment Unit 1 will be 15% of the total bid price ( $\$1,500/\$10,000 * 100$ ).

#### 11. Disclaimer of Estimates and Bidder's Warranty of Inspection (10/22)

Before submitting this bid, the Bidder is advised and cautioned to inspect the sale area, review the requirements of the sale contract, and take other steps as may be reasonably necessary to ascertain the location, estimated volumes, construction estimates, and operating costs of the proposed sale. Failure to do so will not relieve the Bidder from responsibility for completing the contract.

The Bidder warrants that this bid is submitted solely on the basis of the Bidder's examination and inspection of the quality and quantity of the timber offered for sale and the Bidder's opinion of the value thereof and the costs of recovery. No reliance should be placed on the State of Michigan's estimates of timber quality, quantity or costs of recovery. Bidder further acknowledges that the State of Michigan: (i) expressly disclaims any warranty of fitness of timber for any purpose; (ii) offers this timber as is without any warranty of quality (merchantability) or quantity and (iii) expressly disclaims any warranty as to the quantity or quality of timber sold.

#### 12. Certification and Chain-of-Custody (10/22)

Unless otherwise indicated in the contract under section 7 – Other Conditions of the Sale Specific Conditions & Requirements, the area encompassed by this timber sale is certified to the standards of the Forest Stewardship Council (FSC) - Certificate #SCS-FM/COC-00090N and the Sustainable Forestry Initiative (SFI) - Certificate #NSF-SFIS-5Y031-SF5. Forest products from this sale may be delivered to the mill as "FSC 100% and / or SFI certified" as long as the contractor hauling the forest products is chain-of-custody (COC) certified or covered under a COC certificate from the destination mill. The purchaser is responsible for maintaining COC after leaving the sale area.

#### 13. Good Neighbor Authority (GNA) Requirements (10/22)

If the name of this timber sales contains the acronym GNA, it is authorized by the Good Neighbor Authority (GNA) and covered by various agreements between the U.S. Forest Service and the State. The timber sale occurs on federal land and the following conditions apply:

GNA contracts on US Forest Service land will not be awarded to purchasers on the Federal list of excluded parties. The System for Award Management (SAM) will be checked for active excluded parties prior to award of contract. In

addition, the Bidder to whom award is made must complete an Assurance Regarding Felony Conviction or Tax Delinquent Status for Corporate Applicants (AD-3031).

14. Good Neighbor Authority (GNA) Requirements, con't (10/22)

Bidder certifies, by signing this bid form, that to the best of Bidder's knowledge that the following representations are accurate and complete.

- a. That the Bidder and its principals are not presently debarred, suspended, proposed for debarment, declared ineligible, or voluntary excluded from timber sales (covered transactions) by any Federal department or agency.
- b. That the Bidder and its principals have not within a 3-year period preceding this bid been convicted of or had a civil judgment rendered against them for commission of fraud or a criminal offense in connection with obtaining , attempting to obtain, or performing a public (Federal, State, or local) transaction or contract under a public transaction; violation of Federal or State antitrust statutes or commission of embezzlement, theft, forgery, bribery, falsification or destruction of records, making false statements, or receiving stolen property.
- c. That the Bidder and its principals are not presently indicted for or otherwise criminally or civilly charged by a governmental entity (Federal, State, or local) with commission of any of the offenses enumerated in paragraph b of this certification.
- d. That the Bidder and its principals have not within a 3-year period preceding this bid had one or more public transactions (Federal, State, or local) terminated for breach or default of a timber or forest product contract.

Bidders that cannot certify this requirement, in whole or in part, shall submit an explanation with their bid.

SHANNON LOTT, Acting  
Director

## TIMBER SALE INFORMATION

Something New Oak (63-012-22)  
T23N, R08W, SEC. 24.  
Missaukee County (Advertised Price \$75,518.35)

SALE NOTE: A recreation site such as a trail, pathway, or campground is within the sale area or the vicinity. Certain restrictions/specifications may be applicable including time restrictions.

A timber sale contract for this lump sum, sealed bid timber sale will be awarded to the responsible bidder offering the highest sealed bid price. All units of volume listed below were estimated using the Inventory Manager computer program and the new Michigan taper model. Bids must be at or above the following advertised price for each product and species:

<u>PRODUCTS &amp; SPECIES</u>	<u>ESTIMATED UNITS*</u>	<u>ADVERTISED PRICE</u>
Sawtimber		
B. T. Aspen	28.3 MBF	\$ 94.00 / MBF
Red Maple	44.9 MBF	\$ 87.00 / MBF
Red Oak	255.1 MBF	\$ 169.00 / MBF
Red Pine	27.4 MBF	\$ 86.00 / MBF
White Oak	165.3 MBF	\$ 51.00 / MBF
Pulpwood		
B. T. Aspen	27 Cords	\$ 27.90 / Cord
Red Maple	189 Cords	\$ 20.25 / Cord
Red Oak	231 Cords	\$ 24.85 / Cord
Red Pine	35 Cords	\$ 41.35 / Cord
White Oak	127 Cords	\$ 24.85 / Cord
White Pine	7 Cords	\$ 18.45 / Cord

\* The total volume is statistically estimated within plus (+) or minus (-) 18.38 percent. There are an estimated 1,813 cords on this timber sale, plus or minus 333 cords at the 95% confidence level. The estimated units are final and not subject to adjustment. Prospective bidders are urged to examine this timber and to make their own estimates of quantity and quality.

### **BOND AND PAYMENT SCHEDULE:**

1. A bond in the amount of \$3,776.00 to insure faithful performance of the conditions of the contract will be deposited by the successful bidder within 21 days of the sale award.
2. Cutting in any sale or unit without the required advance payment would be considered a trespass.
3. Total payment must be paid in advance or according to the following schedule :
  - (a) Ten percent (10%) of the sale value must be paid within 21 days of the sale award.
  - (b) The 10% down payment will be credited towards the first unit cut.
  - (c) Payment for each of the following units must be made before cutting begins in that unit:
 

PAYMENT UNIT NUMBER	PERCENT OF TOTAL SALE VALUE
01	20.6%
02	79.4%
4. If no cutting takes place, the 10% down payment will not be refunded.
5. Operations on the contract issued will terminate on 03/31/2025.

### **SALE STATISTICS**

Volumes were calculated in cubic feet using the Michigan taper model. Cubic foot volume includes all wood inside bark for the product indicated. For display purposes, cubic feet were converted to cords and MBF using a simple conversion factor, e.g. 79 cubic feet per cord and 185 cubic feet per MBF. The cubic foot volumes are precise; the cords and MBF volumes are not. Cubic foot volume cannot be directly converted to cords or boards with precision.

### **SALE VOLUMES**

The total estimated sale volume may not equal the sum of the species/products due to the nature of statistical calculations associated with double sampling methodology.

VOLUME		STATISTICAL RANGE IN CORDS		
TOTAL CUBIC FEET	TOTAL CORDS	PERCENT ERROR	MINIMUM	MAXIMUM
143,223	1,813	18.38%	1,480	2,146

**VDU VOLUMES**

A VDU is a Volume Determination Unit. Volumes and their associated statistics are calculated at the VDU level and summarized to the sale level. There is often a one to one relationship between a VDU and a Payment Unit, but not always, depending on the cruise design. Refer to the VDU TO PAYMENT UNIT table.

VDU	VOLUME		PERCENT ERROR	RANGE IN CORDS	
	TOTAL CUBIC FEET	TOTAL CORDS		MINIMUM	MAXIMUM
14	22,976	291	75.89%	70	512
26	120,247	1,522	19.99%	1,218	1,826
<b>TOTAL:</b>	<b>143,223</b>	<b>1,813</b>		<b>1,288</b>	<b>2,338</b>

**VDU TO PAYMENT UNIT**

When a VDU is associated with more than one Payment Unit (PU), the VDU volumes are assigned to the PU based on acres of the VDU within the PU.

VDU	VDU ACRES	PU	PU ACRES
14	10.9	1	10.9
26	51.8	2	51.8
<b>TOTAL:</b>	<b>62.7</b>		<b>62.7</b>

**DESCRIPTION OF TIMBER BY PAYMENT UNIT (PU)**

PU	MARKET GROUP	PRODUCT	QUANTITY	UNIT	ACRES	ADVERTISE PRICE			
1	Red Maple	Sawtimber	5.5	MBF	10.9	\$15,575.00			
	Red Oak		74.0	MBF					
	White Oak		29.8	MBF					
	Red Maple	Pulpwood	6	Cords					
	Red Oak		9	Cords					
	White Oak		24	Cords					
	White Pine		7	Cords					
	2	B. T. Aspen	Sawtimber	28.3			MBF	51.8	\$59,943.35
Red Maple			39.4	MBF					
Red Oak			181.1	MBF					
Red Pine			27.4	MBF					
White Oak			135.5	MBF					
B. T. Aspen		Pulpwood	27	Cords					
Red Maple			183	Cords					
Red Oak			222	Cords					
Red Pine			35	Cords					
White Oak			103	Cords					
<b>TOTAL:</b>			521.0	MBF					
<b>TOTAL:</b>			616	Cords					

# Sale Specific Conditions & Requirements

**Sale Name: Something New Oak**

**Sale Number: 63-012-22 Seq#: 1**

## 1 - Sale Area

### 1.2 - Boundaries

#### 1.2.1 - Painted boundaries (9/19)

The sale boundary and Payment Unit boundaries are marked and identified by blue and red paint. Exterior sale boundary lines against private property are marked with blue paint. Exterior sale boundary lines against state are marked with red paint.

## 2 - Timber Specifications

### 2.1 - Included Timber

#### 2.1.2 - Clearcut unit(s) w/o unmerchantable trees (8/11)

Within Payment Unit(s) 1 and 2, cut all treestrees which meet minimum piece specifications in 2.2 Utilization except in Unit 2, do not cut green marked trees.

## 4 - Transportation

### 4.1 - Construction

#### 4.1.12 - No new roads (1/12)

No new roads will be permitted in any Payment Unit. . All operations are limited to existing roads. Skid trails only will be allowed.

### 4.2 - Maintenance

#### 4.2.5 - Two wheel drive condition (2/04)

All existing trail roads on and adjacent to the sale area must be passable by two-wheel drive traffic for the duration of the sale.

## 5 - Operations

### 5.1 - Notification

#### 5.1.1 - Pre-sale conference (10/16)

A pre-sale conference on site between the Purchaser and sale administrator is required prior to beginning any operations. The Unit Manager or his/her representative must be contacted at least 5 days in advance to schedule the conference.

#### 5.1.4 - Post-sale conference (10/16)

A post-sale conference on site between the Purchaser and sale administrator is required 5 days prior to the completion of active logging operations to determine clean-up and repair of landings, road edges, and the fulfillment of other contract specifications.

### 5.2 - Conduct of Operations

#### 5.2.1 - Slash

##### 5.2.1.1 - Slash within sale area (9/16)

No trees are to be felled outside the sale area and all slash is to be kept at least 10 feet back from the red or blue paint line. If sale boundary lines are along a public road or highway, then slash must be removed 50' from these lines per General Condition & Requirement 5.2.1.

##### 5.2.1.8 - Slash height (12/08)

No slash or tree tops may exceed 18 inches in height.

#### 5.2.3 - Operating Restrictions

##### 5.2.3.4 - Oak wilt restriction, no exceptions (1/18)

Within Payment Unit(s) 1 and 2, cutting, skidding, hauling within the sale and brushing of access roads to the sale are not

permitted during the period of April 15 to July 15. No exceptions will be granted. This is necessary to reduce the spread of oak wilt.

#### 5.2.4 - Dead and Down Creation

##### 5.2.4.4 - Dead and down creation, grouse (6/18)

To encourage grouse and other wildlife, in Payment Unit(s) 1 and 2, leave one, 12" diameter or larger log-length (8 foot minimum) piece on the ground for every 2 acres. These will be evenly scattered throughout the unit. This can be an unmerchantable piece or a full tree.

##### 5.2.38 - No decking against live trees (2/04)

Cut products may not be decked against unmarked or designated leave trees.

##### 5.2.41 - Snowmobile trail protection (9/11)

The LP 651 is a snowmobile trail and is shown on the Timber Sale Map. Do not cut or damage posts with orange trail markers or traffic control signs. If the trail is used, it must be maintained and restored to a condition equal to or better than before the sale. If the trail is used for hauling, it must be graded to the satisfaction of the Unit Manager or his/her representative prior to December 1st. If the trail road is to be used for hauling during the snowmobile season, then a snow covered base must be left on the trail. Maintain a 20 foot wide slash, debris, and rut free zone daily using the snowmobile trail as the centerline. No decking of forest products will be permitted along the snowmobile trail. All stumps within 20 feet of the snowmobile trail must be cut at ground level.

#### 5.4 - Soil Protection

##### 5.4.1 - Rutting restriction, general (7/16)

Operations are to cease immediately if equipment and weather conditions result in rutting of roads and/or skid trails which is 12 inches or greater in depth and 50 feet in length. The Unit Manager or his/her representative may restrict hauling and/or skidding if ruts exceed the specified depth. With the Unit Manager or his/her representative's approval, the Purchaser may return to the area when the risk of rutting has decreased.

### 6 - Safety and Fire Prevention

#### 6.2 - Signing

##### 6.2.2 - Snowmobile trail posting (10/20)

The Purchaser is responsible for posting and maintaining caution signs on snowmobile LP 651 prior to beginning operations during the snowmobile season (approximately December 1 to March 31). The trail must be posted at appropriate distances from the sale area to warn of logging activity and truck traffic. Signs must be removed when harvest operations are suspended or completed. The Purchaser will provide these signs.

### 7 - Other Conditions

#### 7.3 - Contract Modifications

##### 7.3.2 - Modification for oak wilt (2/05)

Within the sale area, there may be patches of oak wilt. If oak wilt is identified within the sale area, this contract may be modified. The following modifications could occur: time of cutting, species to cut, volume to harvest, or various others dealing with the treatment of oak wilt. If a species is not specified in this contract, it shall be paid for at the average price received for that species and product.





# TIMBER SALE MAP

This information provided by authority of Part 525, 1994 PA 451, as amended.

Sale Number	Year
63-012	22

Forest Management Unit	County	Mapped By	Date	Page	of
Cadillac Management Unit	Missaukee	Tweedale	08/25/2022	1	1
		Cruised By			
		Tweedale			

Township	Range	Section(s) and Subdivision(s)	Scale
23N	08W	Sec. 24 NWNW, S1/2NW, E 1/2SW, N1/2SE	1:15,840

Cover Type				Density	
A = Aspen	H = Hemlock	N = Marsh	U = Upland Brush	0 = Non Stocked	5 = Pole Timber Medium
B = Paper Birch	J = Jack Pine	O = Oak	UM = Upland Mixed	1 = Seeding Sapling Poor	6 = Pole Timber Well
C = Cedar	L = Lowland Brush	P = Lowland Poplar	V = Bog or Marsh	2 = Seeding Sapling Medium	7 = Saw Timber Poor
D = Tread Bog	LM = Lowland Mixed	Q = Mixed Swamp Conifer	W = White Pine	3 = Seeding Sapling Well	8 = Saw Timber Medium
E = Swamp Hdwoods	M = Mpl, Bch, Bach	R = Red Pine	X = Non Stocked	4 = Pole Timber Poor	9 = Saw Timber Well
F = Spruce Fir	MC = Mixed Conifer	S = Black Spruce	Z = Water		
G = Grass	MD = Mixed Deciduous	T = Tamarack			

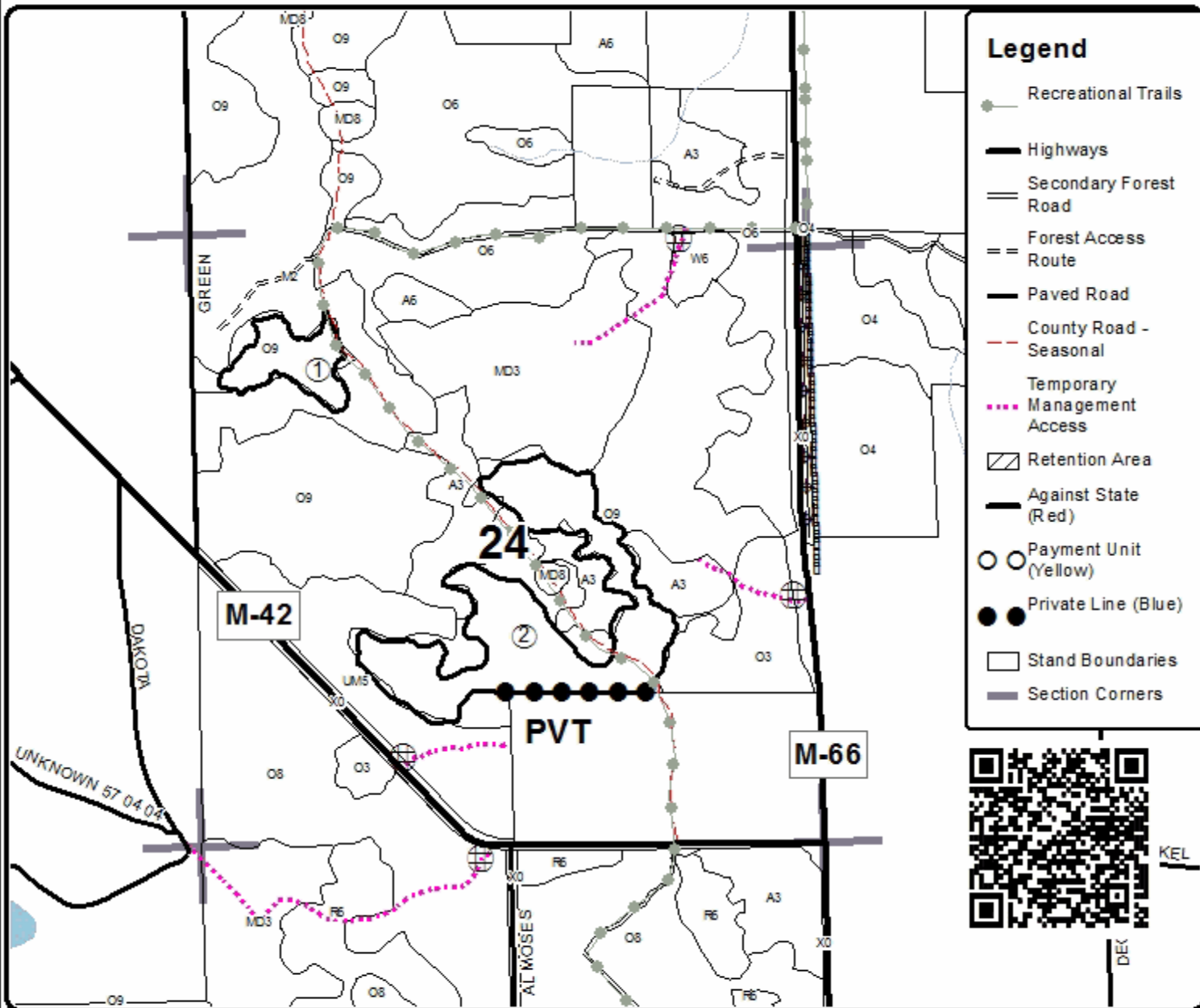
### PU Acres

1	10.9
2	51.8

## Something New Oak

### Compartment 63112

### 62.7 Acres



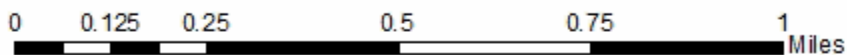
### Legend

- Recreational Trails
- Highways
- Secondary Forest Road
- Forest Access Route
- Paved Road
- County Road - Seasonal
- Temporary Management Access
- Retention Area
- Against State (Red)
- Payment Unit (Yellow)
- Private Line (Blue)
- Stand Boundaries
- Section Corners



KEL

DEK





## TIMBER SALE INFORMATION

Deuces Wild (63-013-22)

T23N, R08W, SEC. 26.

Missaukee County (Advertised Price \$149,995.10)

SALE NOTE: A recreation site such as a trail, pathway, or campground is within the sale area or the vicinity. Certain restrictions/specifications may be applicable including time restrictions. Access may be through other public land.

A timber sale contract for this lump sum, sealed bid timber sale will be awarded to the responsible bidder offering the highest sealed bid price. All units of volume listed below were estimated using the Inventory Manager computer program and the new Michigan taper model. Bids must be at or above the following advertised price for each product and species:

<u>PRODUCTS &amp; SPECIES</u>	<u>ESTIMATED UNITS*</u>	<u>ADVERTISED PRICE</u>
<b>Sawtimber</b>		
B. T. Aspen	26.5 MBF	\$ 73.00 / MBF
Black Cherry	5.6 MBF	\$ 155.00 / MBF
Red Maple	29.3 MBF	\$ 67.00 / MBF
Red Oak	868.2 MBF	\$ 130.00 / MBF
Red Pine	32.4 MBF	\$ 66.00 / MBF
Sugar Maple	8.4 MBF	\$ 209.00 / MBF
White Oak	40.5 MBF	\$ 39.00 / MBF
<b>Pulpwood</b>		
B. T. Aspen	134 Cords	\$ 21.45 / Cord
Beech	12 Cords	\$ 15.60 / Cord
Black Cherry	2 Cords	\$ 15.60 / Cord
Red Maple	298 Cords	\$ 15.60 / Cord
Red Oak	945 Cords	\$ 19.10 / Cord
Red Pine	7 Cords	\$ 31.80 / Cord
Sugar Maple	17 Cords	\$ 15.60 / Cord
White Oak	32 Cords	\$ 19.10 / Cord

\* The total volume is statistically estimated within plus (+) or minus (-) 12.03 percent. There are an estimated 3,538 cords on this timber sale, plus or minus 426 cords at the 95% confidence level. The estimated units are final and not subject to adjustment. Prospective bidders are urged to examine this timber and to make their own estimates of quantity and quality.

### **BOND AND PAYMENT SCHEDULE:**

1. A bond in the amount of \$7,500.00 to insure faithful performance of the conditions of the contract will be deposited by the successful bidder within 21 days of the sale award.
2. Cutting in any sale or unit without the required advance payment would be considered a trespass.
3. Total payment must be paid in advance or according to the following schedule :
  - (a) Ten percent (10%) of the sale value must be paid within 21 days of the sale award.
  - (b) The 10% down payment will be credited towards the first unit cut.
  - (c) Payment for each of the following units must be made before cutting begins in that unit:
 

PAYMENT UNIT NUMBER	PERCENT OF TOTAL SALE VALUE
01	52.7%
02	33.5%
03	13.8%
4. If no cutting takes place, the 10% down payment will not be refunded.
5. Operations on the contract issued will terminate on 03/31/2025.

### **SALE STATISTICS**

Volumes were calculated in cubic feet using the Michigan taper model. Cubic foot volume includes all wood inside bark for the product indicated. For display purposes, cubic feet were converted to cords and MBF using a simple conversion factor, e.g. 79 cubic feet per cord and 185 cubic feet per MBF. The cubic foot volumes are precise; the cords and MBF volumes are not. Cubic foot volume cannot be directly converted to cords or boards with precision.

## SALE VOLUMES

The total estimated sale volume may not equal the sum of the species/products due to the nature of statistical calculations associated with double sampling methodology.

VOLUME			STATISTICAL RANGE IN CORDS	
TOTAL CUBIC FEET	TOTAL CORDS	PERCENT ERROR	MINIMUM	MAXIMUM
279,469	3,538	12.03%	3,112	3,963

## VDU VOLUMES

A VDU is a Volume Determination Unit. Volumes and their associated statistics are calculated at the VDU level and summarized to the sale level. There is often a one to one relationship between a VDU and a Payment Unit, but not always, depending on the cruise design. Refer to the VDU TO PAYMENT UNIT table.

	VOLUME			RANGE IN CORDS	
VDU	TOTAL CUBIC FEET	TOTAL CORDS	PERCENT ERROR	MINIMUM	MAXIMUM
36	101,368	1,283	18.29%	1,048	1,518
40	145,149	1,837	20.78%	1,456	2,219
42	32,952	417	18.37%	340	494
<b>TOTAL:</b>	<b>279,469</b>	<b>3,538</b>		<b>2,844</b>	<b>4,231</b>

## VDU TO PAYMENT UNIT

When a VDU is associated with more than one Payment Unit (PU), the VDU volumes are assigned to the PU based on acres of the VDU within the PU.

VDU	VDU ACRES	PU	PU ACRES
36	31.2	2	31.2
40	40.5	1	40.5
42	7.9	3	7.9
<b>TOTAL:</b>	<b>79.6</b>		<b>79.6</b>

**DESCRIPTION OF TIMBER BY PAYMENT UNIT (PU)**

PU	MARKET GROUP	PRODUCT	QUANTITY	UNIT	ACRES	ADVERTISE PRICE	
1	B. T. Aspen	Sawtimber	26.5	MBF	40.5	\$79,006.30	
	Black Cherry		5.6	MBF			
	Red Maple		25.1	MBF			
	Red Oak		468.2	MBF			
	<i>Red Oak</i>		468.2	<i>MBF</i>			
	White Oak	13.8	MBF				
	B. T. Aspen	Pulpwood	16	Cords			
	Black Cherry		2	Cords			
	Red Maple		169	Cords			
	Red Oak		510	Cords			
	<i>Red Oak</i>		510	<i>Cords</i>			
	Sugar Maple		10	Cords			
	White Oak		11	Cords			
	2		Red Oak	Sawtimber			273.5
<i>BI/R/Hybrid Oak</i>			5.5		<i>MBF</i>		
<i>Red Oak</i>		268.0	<i>MBF</i>				
Red Pine		32.4	MBF				
White Oak		26.7	MBF				
B. T. Aspen		Pulpwood	118	Cords			
Beech			7	Cords			
Red Maple			81	Cords			
Red Oak			369	Cords			
<i>BI/R/Hybrid Oak</i>			4	<i>Cords</i>			
<i>Red Oak</i>			365	<i>Cords</i>			
Red Pine			7	Cords			
White Oak			21	Cords			
3			Red Maple	Sawtimber	4.2	MBF	7.9
	Red Oak	126.5	MBF				
	<i>Red Oak</i>	126.5	<i>MBF</i>				
	Sugar Maple	8.4	MBF				
	Beech	Pulpwood	5	Cords			
	Red Maple		48	Cords			
	Red Oak		66	Cords			
	<i>Red Oak</i>		66	<i>Cords</i>			
	Sugar Maple		7	Cords			
TOTAL:			1,010.9	MBF			
TOTAL:			1,447	Cords			

## Sale Specific Conditions & Requirements

**Sale Name: Deuces Wild**

**Sale Number: 63-013-22 Seq#: 1**

### 1 - Sale Area

#### 1.2 - Boundaries

##### 1.2.1 - Painted boundaries (9/19)

The sale boundary and Payment Unit boundaries are marked and identified by red paint. Exterior sale boundary lines against state are marked with red paint. Retention patches are marked with red paint; no harvesting activities may occur within these areas. The painted boundary line trees are not Included Timber and are to be protected.

### 2 - Timber Specifications

#### 2.1 - Included Timber

##### 2.1.2 - Clearcut unit(s) w/o unmerchantable trees (8/11)

Within Payment Unit(s) 1,2 and 3, cut all trees which meet minimum piece specifications in 2.2 Utilization except White Pine. Additionally, UNIT 3, DO NOT CUT WHITE OAK.

### 3 - Payments

#### 3.3 - Pre-measured Sales

##### 3.3.4 - Dividing payment units (7/14)

Payment Unit(s) 1 and 2 may be divided at the request of the Purchaser and upon approval of the Unit Manager. Dividing Payment Units is a contract modification which requires a Timber Sale Contract Amendment. There will be only one division per Payment Unit.

### 4 - Transportation

#### 4.1 - Construction

##### 4.1.6 - Road construction (1/09)

Construction of new roads or improvements of existing roads shall be done in such a way as to minimize the environmental and visual impacts. Merchantable trees shall be cut and utilized unless otherwise directed. Non-merchantable trees shall be severed and laid flat on the ground. Slash shall be scattered, and not left in windrows and kept a minimum of 10 feet back from the road edge. Stumps shall be set upright, not left on edge, and be moved at least 10 feet away from the road edge. Disturbed soil shall be feathered into the woods and not left in berms or windrows.

##### 4.1.7 - Road closure (10/11)

All new roads built into the sale must be blocked to vehicle traffic within 30 days of completion of hauling. Overgrown roads that are reopened shall be considered new roads. In general, this will require constructing a four (4') foot high berm of stumps and logs covered with earth. Stumps and brush must be placed along the remainder of the trail. These roads must be rendered impassable to cars and trucks. All stumps from road building and landing construction must be reserved to block any newly constructed roads upon completion of the sale. These stumps must be scattered along the road system to prohibit vehicular movement.

### 5 - Operations

#### 5.1 - Notification

##### 5.1.1 - Pre-sale conference (10/16)

A pre-sale conference on site between the Purchaser and sale administrator is required prior to beginning any operations to determine landing and road locations. The Unit Manager or his/her representative must be contacted at least 5 days in advance to schedule the conference.

##### 5.1.4 - Post-sale conference (10/16)

A post-sale conference on site between the Purchaser and sale administrator is required 5 days prior to the completion of active logging operations to determine clean-up and repair of landings, road edges, and the fulfillment of other contract

specifications.

## 5.2 - Conduct of Operations

### 5.2.1 - Slash

#### 5.2.1.8 - Slash height (12/08)

No slash or tree tops may exceed 24 inches in height.

### 5.2.3 - Operating Restrictions

#### 5.2.3.5 - Oak wilt restriction (1/18)

1, 2 and 3 unless changed by written agreement, cutting, skidding, hauling within the sale and brushing of access roads to the sale are not permitted during the period of April 15 to July 15. Operations may be allowed if specific steps are taken to prevent damaging uncut oak during the high risk period. Those steps may include completing all road brushing before April 15th and clearing a tree-length buffer along uncut oak cover before April 15th. This is necessary to reduce the spread of oak wilt. For more information, contact the Unit Manager or his/her representative.

### 5.2.4 - Dead and Down Creation

#### 5.2.4.4 - Dead and down creation, grouse (6/18)

To encourage grouse and other wildlife, in Payment Unit(s) 1, 2 and 3 leave one, 12" diameter or larger log-length (8 foot minimum) piece on the ground for every 2 acres. These will be evenly scattered throughout the unit. This can be an unmerchantable piece or a full tree.

## 5.4 - Soil Protection

### 5.4.1 - Rutting restriction, general (7/16)

Operations are to cease immediately if equipment and weather conditions result in rutting of roads and/or skid trails which is 12 inches or greater in depth and 50 feet in length. The Unit Manager or his/her representative may restrict hauling and/or skidding if ruts exceed the specified depth. With the Unit Manager or his/her representative's approval, the Purchaser may return to the area when the risk of rutting has decreased.



# TIMBER SALE MAP

This information provided by authority of Part 525, 1994 PA 451, as amended.

Sale Number	Year
63-013	22

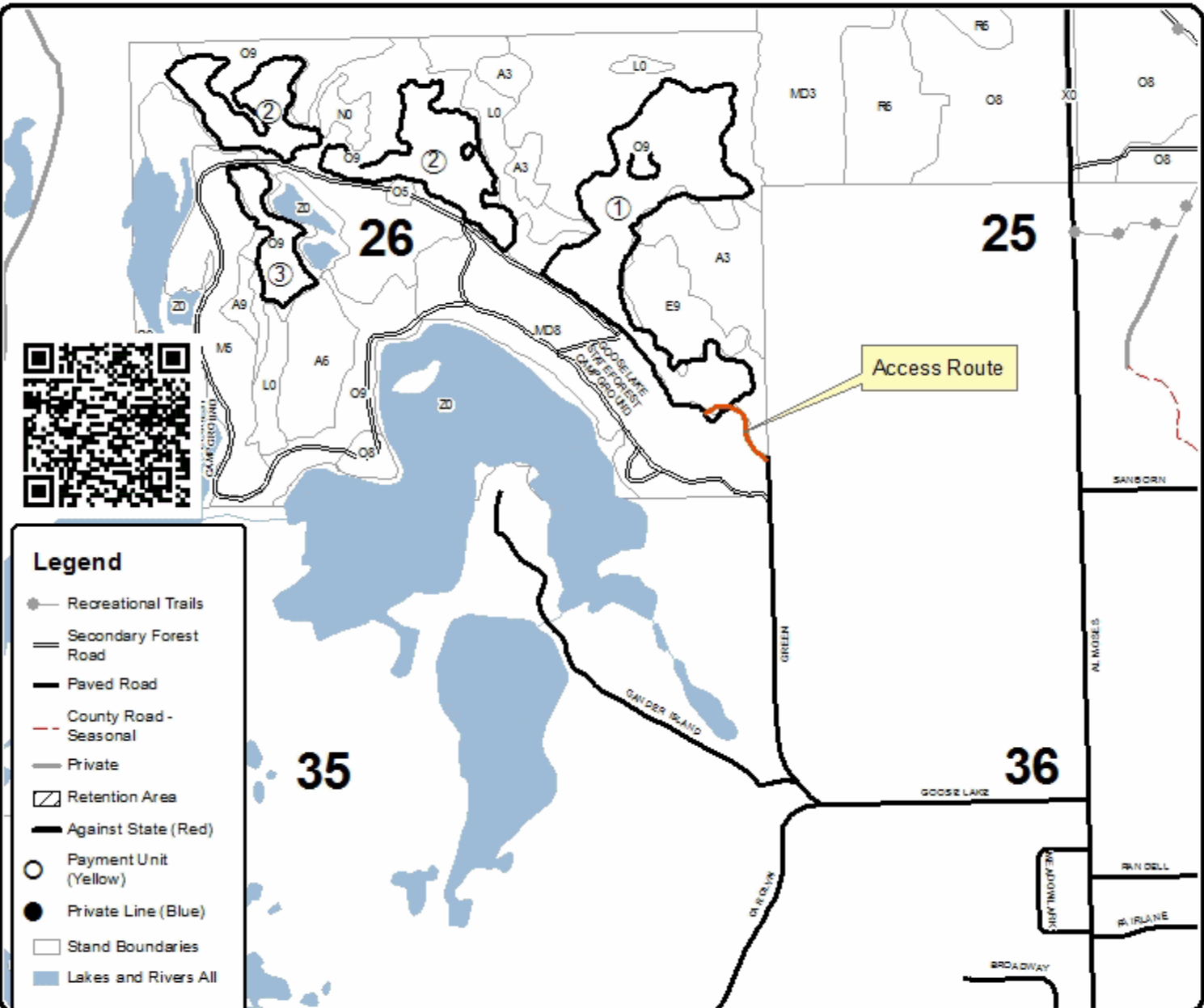
Forest Management Unit	County	Mapped By	Tweedale	Date	Page	of
Cadillac Management Unit	Missaukee	Cruised By	Tweedale	08/26/2022	1	1

Township	Range	Section(s) and Subdivision(s)	Scale
23N	08W	Sec. 26 SESE, S1/2NW, S1/2NE, N1/2SW, N1/2SE	1:15,840

Cover Type				Density	
A = Aspen	H = Hemlock	N = Marsh	U = Upland Brush	0 = Non Stocked	5 = Pole Timber Medium
B = Paper Birch	J = Jack Pine	O = Oak	UM = Upland Mixed	1 = Seeding Sapling Poor	6 = Pole Timber Well
C = Cedar	L = Lowland Brush	P = Lowland Poplar	V = Bog or Marsh	2 = Seeding Sapling Medium	7 = Saw Timber Poor
D = Tread Bog	LM = Lowland Mixed	Q = Mixed Swamp Conifer	W = White Pine	3 = Seeding Sapling Well	8 = Saw Timber Medium
E = Swamp Hdwoods	M = Mpl, Bch, Bach	R = Red Pine	X = Non Stocked	4 = Pole Timber Poor	9 = Saw Timber Well
F = Spruce Fir	MC = Mixed Conifer	S = Black Spruce	Z = Water		
G = Grass	MD = Mixed Deciduous	T = Tamarack			

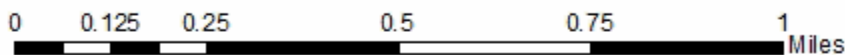
PU	Acres
1	40.5
2	31.2
3	7.9

**Deuces Wild**  
 Compartment 63112  
 79.6 Acres



**Legend**

- Recreational Trails
- Secondary Forest Road
- Paved Road
- County Road - Seasonal
- Private
- Retention Area
- Against State (Red)
- Payment Unit (Yellow)
- Private Line (Blue)
- Stand Boundaries
- Lakes and Rivers All





## TIMBER SALE INFORMATION

### Back Blast Mix (63-015-22)

T21N, R06W, SEC. 26; T21N, R06W, SEC. 35.  
Missaukee County (Advertised Price \$52,713.30)

A timber sale contract for this lump sum, sealed bid timber sale will be awarded to the responsible bidder offering the highest sealed bid price. All units of volume listed below were estimated using the Inventory Manager computer program and the new Michigan taper model. Bids must be at or above the following advertised price for each product and species:

<u>PRODUCTS &amp; SPECIES</u>	<u>ESTIMATED UNITS*</u>	<u>ADVERTISED PRICE</u>
<b>Sawtimber</b>		
B. T. Aspen	65.5 MBF	\$ 94.00 / MBF
Black Cherry	16.8 MBF	\$ 202.00 / MBF
Jack Pine	22.2 MBF	\$ 26.00 / MBF
Red Maple	18.1 MBF	\$ 87.00 / MBF
Red Oak	29.3 MBF	\$ 169.00 / MBF
White Pine	50.4 MBF	\$ 79.00 / MBF
<b>Pulpwood</b>		
B. T. Aspen	715 Cords	\$ 27.90 / Cord
Balsam Fir	18 Cords	\$ 24.15 / Cord
Jack Pine	138 Cords	\$ 12.95 / Cord
Misc. Species 1	193 Cords	\$ 3.25 / Cord
Mixed Hardwood	121 Cords	\$ 20.25 / Cord
Mixed Oak	185 Cords	\$ 24.85 / Cord
White Pine	121 Cords	\$ 18.45 / Cord

\* The total volume is statistically estimated within plus (+) or minus (-) 13.88 percent. There are an estimated 2,010 cords on this timber sale, plus or minus 279 cords at the 95% confidence level. The estimated units are final and not subject to adjustment. Prospective bidders are urged to examine this timber and to make their own estimates of quantity and quality.

### **BOND AND PAYMENT SCHEDULE:**

1. A bond in the amount of \$2,636.00 to insure faithful performance of the conditions of the contract will be deposited by the successful bidder within 21 days of the sale award.
2. Cutting in any sale or unit without the required advance payment would be considered a trespass.
3. Total payment must be paid in advance or according to the following schedule :
  - (a) Ten percent (10%) of the sale value must be paid within 21 days of the sale award.
  - (b) The 10% down payment will be credited towards the first unit cut.
  - (c) Payment for each of the following units must be made before cutting begins in that unit:

PAYMENT UNIT NUMBER	PERCENT OF TOTAL SALE VALUE
01	3.0%
02	22.2%
03	25.5%
04	32.2%
05	9.7%
06	7.4%

4. If no cutting takes place, the 10% down payment will not be refunded.
5. Operations on the contract issued will terminate on 03/31/2026.

### **SALE STATISTICS**

Volumes were calculated in cubic feet using the Michigan taper model. Cubic foot volume includes all wood inside bark for the product indicated. For display purposes, cubic feet were converted to cords and MBF using a simple conversion factor, e.g. 79 cubic feet per cord and 185 cubic feet per MBF. The cubic foot volumes are precise; the cords and MBF volumes are not. Cubic foot volume cannot be directly converted to cords or boards with precision.

## SALE VOLUMES

The total estimated sale volume may not equal the sum of the species/products due to the nature of statistical calculations associated with double sampling methodology.

VOLUME			STATISTICAL RANGE IN CORDS	
TOTAL CUBIC FEET	TOTAL CORDS	PERCENT ERROR	MINIMUM	MAXIMUM
158,813	2,010	13.88%	1,731	2,289

## VDU VOLUMES

A VDU is a Volume Determination Unit. Volumes and their associated statistics are calculated at the VDU level and summarized to the sale level. There is often a one to one relationship between a VDU and a Payment Unit, but not always, depending on the cruise design. Refer to the VDU TO PAYMENT UNIT table.

	VOLUME			RANGE IN CORDS	
VDU	TOTAL CUBIC FEET	TOTAL CORDS	PERCENT ERROR	MINIMUM	MAXIMUM
55	22,803	289	49.26%	146	431
58	33,619	426	29.88%	298	553
70	68,619	869	17.61%	716	1,022
105	10,422	132	45.65%	72	192
114	23,350	296	49.03%	151	441
<b>TOTAL:</b>	<b>158,813</b>	<b>2,010</b>		<b>1,383</b>	<b>2,638</b>

## VDU TO PAYMENT UNIT

When a VDU is associated with more than one Payment Unit (PU), the VDU volumes are assigned to the PU based on acres of the VDU within the PU.

VDU	VDU ACRES	PU	PU ACRES
55	17.4	1	17.4
58	28.7	3	28.7
70	51.3	4	39.4
		5	11.9
105	6.2	6	6.2
114	8.6	2	8.6
<b>TOTAL:</b>	<b>112.2</b>		<b>112.2</b>

## DESCRIPTION OF TIMBER BY PAYMENT UNIT (PU)

PU	MARKET GROUP	PRODUCT	QUANTITY	UNIT	ACRES	ADVERTISE PRICE
1	B. T. Aspen	Pulpwood	22	Cords	17.4	\$1,564.75
	Misc. Species 1		183	Cords		
	<i>Misc. Species 1</i>	<i>Sawtimber</i>	91.3	<i>MBF</i>		
	Mixed Hardwood	Pulpwood	9	Cords		
	<i>Red Maple</i>		9	<i>Cords</i>		
	Mixed Oak		7	Cords		
	<i>BI/R/Hybrid Oak</i>	<i>Sawtimber</i>	1.7	<i>MBF</i>		
	<i>BI/R/Hybrid Oak</i>	<i>Pulpwood</i>	4	<i>Cords</i>		
2	B. T. Aspen	Sawtimber	41.6	MBF	8.6	\$11,716.05
	Red Maple		16.4	MBF		
	Red Oak		25.1	MBF		
	B. T. Aspen	Pulpwood	43	Cords		
	Misc. Species 1		10	Cords		
	<i>Misc. Species 1</i>	<i>Sawtimber</i>	4.3	<i>MBF</i>		
	<i>Misc. Species 1</i>	<i>Pulpwood</i>	1	<i>Cords</i>		
	Mixed Hardwood		14	Cords		
	<i>Red Maple</i>		14	<i>Cords</i>		
	Mixed Oak		25	Cords		
	<i>BI/R/Hybrid Oak</i>	<i>Sawtimber</i>	4.9	<i>MBF</i>		
	<i>BI/R/Hybrid Oak</i>	<i>Pulpwood</i>	3	<i>Cords</i>		
	<i>Red Oak</i>		12	<i>Cords</i>		
3	B. T. Aspen	Sawtimber	11.2	MBF	28.7	\$13,454.60
	Black Cherry		12.9	MBF		
	Jack Pine		6.0	MBF		
	Red Maple		1.7	MBF		
	B. T. Aspen	Pulpwood	234	Cords		
	Jack Pine		25	Cords		
	Mixed Hardwood		69	Cords		
	<i>Black Cherry</i>		59	<i>Cords</i>		
	<i>Red Maple</i>		10	<i>Cords</i>		
	Mixed Oak		50	Cords		
	<i>BI/R/Hybrid Oak</i>	<i>Sawtimber</i>	5.4	<i>MBF</i>		
	<i>BI/R/Hybrid Oak</i>	<i>Pulpwood</i>	21	<i>Cords</i>		
	<i>Red Oak</i>		15	<i>Cords</i>		
	<i>White Oak</i>		3	<i>Cords</i>		
4	B. T. Aspen	Sawtimber	9.8	MBF	39.4	\$16,941.65
	Black Cherry		3.0	MBF		
	Jack Pine		9.4	MBF		
	White Pine		24.7	MBF		
	B. T. Aspen	Pulpwood	309	Cords		
	Jack Pine		75	Cords		
	Mixed Hardwood		17	Cords		
	<i>Black Cherry</i>		4	<i>Cords</i>		
	<i>Red Maple</i>		13	<i>Cords</i>		
	Mixed Oak		66	Cords		
	<i>Red Oak</i>		66	<i>Cords</i>		
	White Pine		89	Cords		
5	B. T. Aspen	Sawtimber	2.9	MBF	11.9	\$5,111.25
	Black Cherry		0.9	MBF		
	Jack Pine		2.9	MBF		
	White Pine		7.5	MBF		
	B. T. Aspen	Pulpwood	93	Cords		
	Jack Pine		23	Cords		
	Mixed Hardwood		5	Cords		
	<i>Black Cherry</i>		1	<i>Cords</i>		
	<i>Red Maple</i>		4	<i>Cords</i>		

**DESCRIPTION OF TIMBER BY PAYMENT UNIT (PU), CON'T**

PU	MARKET GROUP	PRODUCT	QUANTITY	UNIT	ACRES	ADVERTISE PRICE
5 con't	Mixed Oak	Pulpwood	20	Cords		
	<i>Red Oak</i>		20	<i>Cords</i>		
	White Pine		27	Cords		
6	Jack Pine	Sawtimber	3.9	MBF	6.2	\$3,925.00
	Red Oak		4.2	MBF		
	White Pine		18.2	MBF		
	B. T. Aspen	Pulpwood	14	Cords		
	Balsam Fir		18	Cords		
	<i>Balsam Fir</i>	<i>Sawtimber</i>	1.6	<i>MBF</i>		
	<i>Balsam Fir</i>	<i>Pulpwood</i>	15	<i>Cords</i>		
	Jack Pine		15	Cords		
	Mixed Hardwood		7	Cords		
	<i>Red Maple</i>		7	<i>Cords</i>		
	Mixed Oak		17	Cords		
	<i>Red Oak</i>		17	<i>Cords</i>		
	White Pine		5	Cords		
	TOTAL:			202.3		
TOTAL:			1,491	Cords		

## Sale Specific Conditions & Requirements

**Sale Name: Back Blast Mix**

**Sale Number: 63-015-22 Seq#: 1**

### 1 - Sale Area

#### 1.2 - Boundaries

##### 1.2.1 - Painted boundaries (9/19)

The sale boundary and Payment Unit boundaries are marked and identified by blue and red paint. Exterior sale boundary lines against private property are marked with blue paint. Exterior sale boundary lines against state are marked with red paint. Interior Payment Unit boundaries are marked with red paint. The painted boundary line trees are not Included Timber and are to be protected.

### 2 - Timber Specifications

#### 2.1 - Included Timber

##### 2.1.1 - Clearcut unit(s) with unmerchantable trees (6/14)

Within Payment Unit(s) 1-6, cut all trees that are two (2) inches or more at DBH, except do not cut any white pine over 14 inches at DBH.

##### 2.1.11 - Description of timber note (2/04)

Note that Misc. Species 1 is dead oak, which is designated for cutting.

### 3 - Payments

#### 3.3 - Pre-measured Sales

##### 3.3.4 - Dividing payment units (7/14)

Payment Unit(s) may be divided at the request of the Purchaser and upon approval of the Unit Manager. Dividing Payment Units is a contract modification which requires a Timber Sale Contract Amendment. There will be only one division per Payment Unit.

#### 3.6 - Payment Unit Cutting Schedule

##### 3.6.1 - Order of cutting (1/09)

Payment Unit 1 shall be cut first, prior to any other units. This is due to dead and deteriorating timber within Payment Unit 1.

### 4 - Transportation

#### 4.1 - Construction

##### 4.1.12 - No new roads (1/12)

No new roads will be permitted in any Payment Unit. All operations are limited to existing roads. Skid trails only will be allowed.

#### 4.2 - Maintenance

##### 4.2.5 - Two wheel drive condition (2/04)

All existing trail roads on and adjacent to the sale area must be passable by two-wheel drive traffic for the duration of the sale.

#### 4.4 - Access

##### 4.4.2 - Alternate route on private property (2/04)

It is the Purchaser's responsibility to obtain access across private land for any routes other than the route shown on the Timber Sale Map.

### 5 - Operations

#### 5.1 - Notification

### 5.1.3 - Well heads and natural gas pipelines (11/15)

The Purchaser is responsible for contacting the gas or pipeline company 30 days prior to operating equipment in the vicinity of well heads or natural gas pipelines.

## 5.2 - Conduct of Operations

### 5.2.1 - Slash

#### 5.2.1.10 - No slash in openings (5/10)

No brush or logging debris is to be left in any natural or oil and gas openings within the sale area. Any damage to the opening shall be repaired according to specifications of the Unit Manager or his/her representative.

### 5.2.2 - Hazard Trees/Snags

#### 5.2.2.1 - Den trees (10/16)

Obvious hollow and/or den trees shall be protected and left standing unless they are a safety hazard.

### 5.2.3 - Operating Restrictions

#### 5.2.3.4 - Oak wilt restriction, no exceptions (1/18)

Within Payment Unit(s) 1 - 6, cutting, skidding, and hauling within the sale and brushing of access roads to the sale are not permitted during the period of April 15 to July 15. No exceptions will be granted. This is necessary to reduce the spread of oak wilt.

#### 5.2.38 - No decking against live trees (2/04)

Cut products may not be decked against unmarked or designated leave trees.

#### 5.2.43 - Opening protection (2/21)

No activities are permitted in openings marked on the Timber Sale Map with the letter "G". Any damage to the openings shall be repaired according to specifications of the Unit Manager or his/her representative.

## 5.4 - Soil Protection

### 5.4.1 - Rutting restriction, general (7/16)

Operations are to cease immediately if equipment and weather conditions result in rutting of roads and/or skid trails which is 12 inches or greater in depth and 50 feet in length. The Unit Manager or his/her representative may restrict hauling and/or skidding if ruts exceed the specified depth. With the Unit Manager or his/her representative's approval, the Purchaser may return to the area when the risk of rutting has decreased.

### 5.4.5 - Soil caution (11/04)

Care must be taken to minimize soil damage due to the sandy and wetter area soils.

### 5.4.6 - Wet area protection (5/10)

No harvesting operations, including skidding and felling, are to take place within any drainages. All equipment, trees and tops should be kept out of these areas. Care must be taken by the Purchaser to identify and avoid operating in these areas of the timber sale.

## 5.8 - Protection of Endangered Species

### 5.8.5 - Protection of raptor nests (3/13)

All trees with raptor nests will be protected if found during harvesting operations. Notification will be made to the Unit Manager or his/her representative who will notify the Wildlife Biologist so an on-site evaluation and recommendation can be made, if necessary.

## 7 - Other Conditions

### 7.5 - Loss

#### 7.5.1 - Deteriorating timber (7/09)

The sale area has received damage from oak wilt and/or oak decline. The Purchaser should harvest the wood as soon as possible. The Department of Natural Resources is held free of responsibility of any further damage or deterioration due to delay in harvesting.





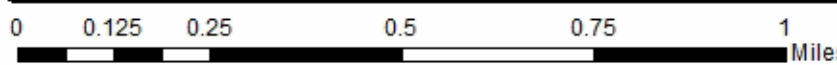
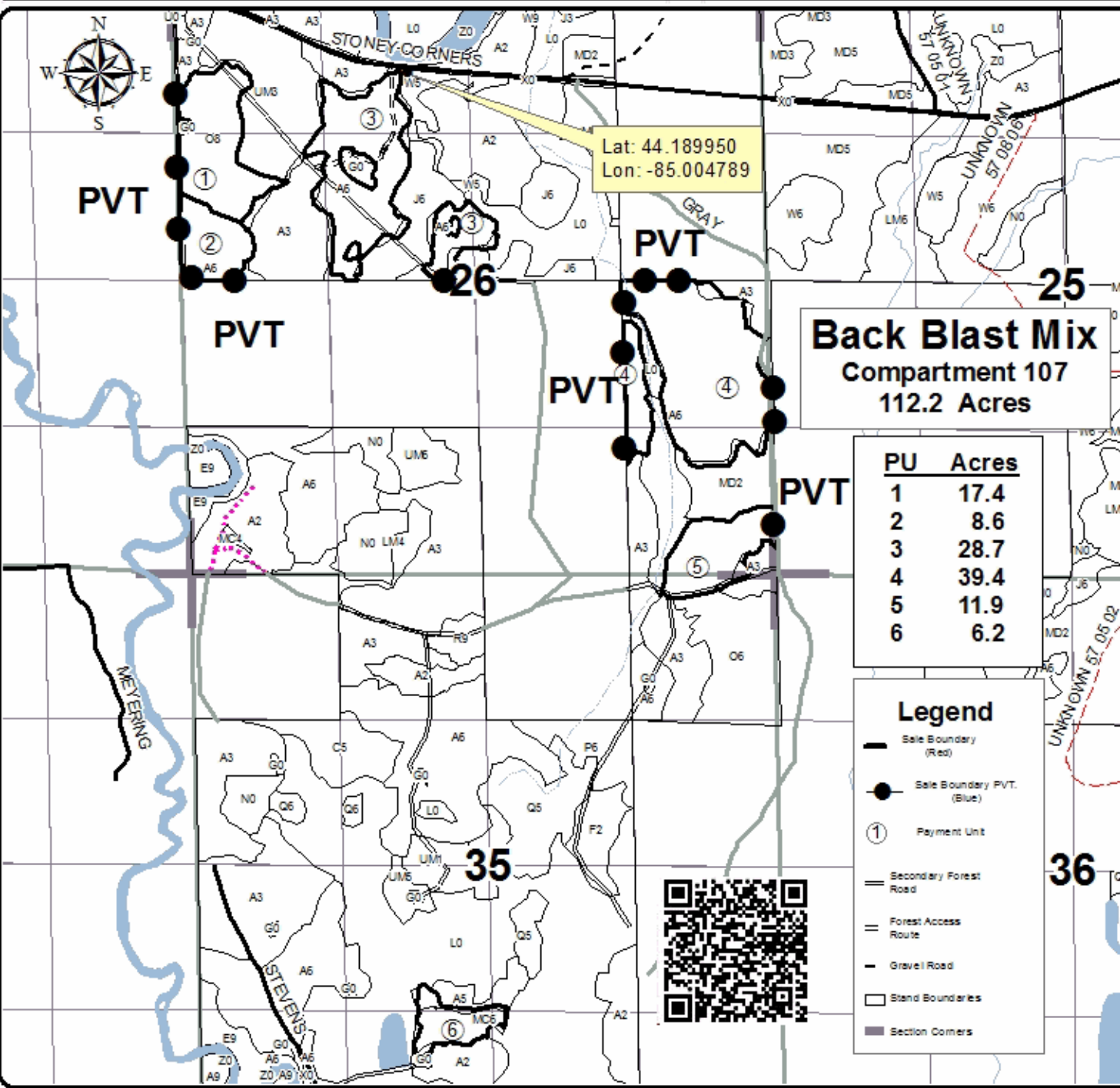
# TIMBER SALE MAP

This information provided by authority of Part 525, 1994 PA 451, as amended.

Sale Number	Year
63 - 015	22

Forest Management Unit Cadillac / Manton	County Missaukee	Mapped By M. Edison	Date 09/ 23/ 2022	Page 1	of 1
Township 21N 21N		Section(s) and Subdivision(s) Sec 26: NW, SWNE, E1/2SE Sec 35: NENE, E1/2SW, W1/2SE		Scale 1:15,840	

Cover Type				Density	
A = Aspen	H = Hemlock	N = Marsh	U = Upland Brush	0 = Non Stocked	6 = Pole Timber Medium
B = Paper Birch	J = Jack Pine	O = Oak	UM = Upland Mixed	1 = Seedling Sapling Poor	6 = Pole Timber Well
C = Cedar	L = Lowland Brush	P = Lowland Poplar	V = Bog or Marsh	2 = Seedling Sapling Medium	7 = Saw Timber Poor
D = Tread Bog	LM = Lowland Mixed	Q = Mixed Swamp Conifer	W = White Pine	3 = Seedling Sapling Well	8 = Saw Timber Medium
E = Swamp Hdwoods	M = Mpl, Boh, Brch	R = Red Pine	X = Non Stocked	4 = Pole Timber Poor	9 = Saw Timber Well
F = Spruce Fir	MC = Mixed Conifer	S = Black Spruce	Z = Water		
G = Grass	MD = Mixed Deciduous	T = Tamarack			





Back Blast Mix (63-015-22)  
T21N, R06W, SEC. 26; T21N, R06W, SEC. 35; Missaukee COUNTY

In response to the notice of sale to be held 3:00 p.m. (local time) on February 22, 2023, I am hereby submitting my sealed bid (firm offer) for the following forest products to be cut. Bids for individual species must be at or above the advertised price. All non-responsive bid forms may be rejected.

<u>PRODUCTS &amp; SPECIES</u>	<u>ESTIMATED VOLUME*</u>	<u>ADVERTISED PRICE</u>	<u>BID PRICE/UNIT</u>
<b>Sawtimber</b>			
B. T. Aspen	65.5 MBF	\$ 94.00/MBF	\$ _____
Black Cherry	16.8 MBF	\$ 202.00/MBF	\$ _____
Jack Pine	22.2 MBF	\$ 26.00/MBF	\$ _____
Red Maple	18.1 MBF	\$ 87.00/MBF	\$ _____
Red Oak	29.3 MBF	\$ 169.00/MBF	\$ _____
White Pine	50.4 MBF	\$ 79.00/MBF	\$ _____
<b>Pulpwood</b>			
B. T. Aspen	715 Cords	\$ 27.90/Cord	\$ _____
Balsam Fir	18 Cords	\$ 24.15/Cord	\$ _____
Jack Pine	138 Cords	\$ 12.95/Cord	\$ _____
Misc. Species 1	193 Cords	\$ 3.25/Cord	\$ _____
Mixed Hardwood	121 Cords	\$ 20.25/Cord	\$ _____
Mixed Oak	185 Cords	\$ 24.85/Cord	\$ _____
White Pine	121 Cords	\$ 18.45/Cord	\$ _____

\*The volumes are statistically estimated within plus (+) or minus (-) 13.88 percent at 95% confidence level. These estimated volumes are final and not subject to adjustment. Prospective bidders are urged to examine this timber and to make their own estimates of quantity and quality.

I understand that any or all bids may be rejected. All bids must be signed and all bid items must be bid or the bid form may be rejected. I also understand that consideration and awarding a contract will be based upon my past performance and ability to complete the contract based upon equipment and staffing subject to my control.

FEDERAL ID: \_\_\_\_\_ or SOCIAL SECURITY NUMBER: \_\_\_\_\_

Company or individual bidding: \_\_\_\_\_

Company representative's name: \_\_\_\_\_

Address: \_\_\_\_\_

City: \_\_\_\_\_ State: \_\_\_\_\_ Zip: \_\_\_\_\_

IF AVAILABLE, PLEASE PLACE THE PERSONALIZED LABEL FROM YOUR PROSPECTUS IN THE ABOVE BOX.

Individual or company representative's signature: \_\_\_\_\_ Date: \_\_\_\_\_

Phone number : \_\_\_\_\_ Email (optional): \_\_\_\_\_

**THE WINNING BIDDER MUST COMPLETE THE VERIFICATION OF WORKER'S DISABILITY COMPENSATION ACT COMPLIANCE (ON REVERSE SIDE IF DOUBLE SIDED) WITHIN 21 DAYS OF SALE AWARD DATE**



FOR DEPARTMENT USE ONLY	
Sale Number (XX - XXX - XX - XX)	
Forest Management Unit:	

## TIMBER SALE VERIFICATION OF WORKER'S DISABILITY COMPENSATION ACT COMPLIANCE

As required by Act 317, P.A. 1969 (Worker's Compensation) and  
Part 5 of Act 451 of 1994, as amended.

### VERIFICATION OF WORKER'S DISABILITY COMPENSATION ACT COMPLIANCE

- This verification must be completed and submitted within 21 days of contract award and prior to the issuance of the timber sale contract.
- In addition, if boxes 2B or 2C are checked, then Notice of Exclusion or Certificate of Insurance must be submitted within twenty-one (21) days of the contract award and prior to the issuance of the timber sale contract.
- All information must be typed or printed except for written signatures.

Please Check Appropriate Categories:

- My business is organized as (you **must** check one of the boxes below):
  - Sole Proprietorship (individual)
  - Partnership
  - Corporation
- You **must** check one of the boxes below:
  - I certify my business is a sole proprietorship and it has no employees but the sole proprietor. I am not subject to the Worker's Compensation Laws.
  - I certify my business has satisfied its obligation to the Worker's Compensation Act through the use of an approved Notice of Exclusion (BWC-337, Rev. 5/96). I will provide a copy of the Notice of Exclusion within 21 days of the contract award. (For questions or a copy of the BWC-337, please call the Worker's Compensation Bureau at 517-322-1195).
  - I certify my business has a Worker's Compensation Policy. I will provide an original Certificate of Insurance within twenty-one (21) days of the contract award.
- If you have checked item 2(A) or 2(B), you **must** indicate the number of **both** full-time and part-time employees, other than yourself, including family members and active partners (if none, you must enter "0").

\_\_\_\_\_ Full-time Employees

\_\_\_\_\_ Part-time Employees

Name of Business		Federal ID (or) Social Security No.	
Address		Telephone (       )	
City	State	ZIP	

*I hereby certify that the above information is true and correct. I agree to notify the Michigan DNR of any changes that occur in factors affecting my coverage during any of my present and future operations.*

\_\_\_\_\_  
Signature of Owner or Authorized Representative

\_\_\_\_\_  
Title

\_\_\_\_\_  
Date

Please complete the "SEALED BID" information on the next page

Something New Oak (63-012-22)  
T23N, R08W, SEC. 24; Missaukee COUNTY

In response to the notice of sale to be held 3:00 p.m. (local time) on February 22, 2023, I am hereby submitting my sealed bid (firm offer) for the following forest products to be cut. Bids for individual species must be at or above the advertised price. All non-responsive bid forms may be rejected.

<u>PRODUCTS &amp; SPECIES</u>	<u>ESTIMATED VOLUME*</u>	<u>ADVERTISED PRICE</u>	<u>BID PRICE/UNIT</u>
<b>Sawtimber</b>			
B. T. Aspen	28.3 MBF	\$ 94.00/MBF	\$ _____
Red Maple	44.9 MBF	\$ 87.00/MBF	\$ _____
Red Oak	255.1 MBF	\$ 169.00/MBF	\$ _____
Red Pine	27.4 MBF	\$ 86.00/MBF	\$ _____
White Oak	165.3 MBF	\$ 51.00/MBF	\$ _____
<b>Pulpwood</b>			
B. T. Aspen	27 Cords	\$ 27.90/Cord	\$ _____
Red Maple	189 Cords	\$ 20.25/Cord	\$ _____
Red Oak	231 Cords	\$ 24.85/Cord	\$ _____
Red Pine	35 Cords	\$ 41.35/Cord	\$ _____
White Oak	127 Cords	\$ 24.85/Cord	\$ _____
White Pine	7 Cords	\$ 18.45/Cord	\$ _____

\*The volumes are statistically estimated within plus (+) or minus (-) 18.38 percent at 95% confidence level. These estimated volumes are final and not subject to adjustment. Prospective bidders are urged to examine this timber and to make their own estimates of quantity and quality.

I understand that any or all bids may be rejected. All bids must be signed and all bid items must be bid or the bid form may be rejected. I also understand that consideration and awarding a contract will be based upon my past performance and ability to complete the contract based upon equipment and staffing subject to my control.

FEDERAL ID: \_\_\_\_\_ or SOCIAL SECURITY NUMBER: \_\_\_\_\_

Company or individual bidding: \_\_\_\_\_

Company representative's name: \_\_\_\_\_

Address: \_\_\_\_\_

City: \_\_\_\_\_ State: \_\_\_\_\_ Zip: \_\_\_\_\_

IF AVAILABLE, PLEASE PLACE THE PERSONALIZED LABEL FROM YOUR PROSPECTUS IN THE ABOVE BOX.

Individual or company representative's signature: \_\_\_\_\_ Date: \_\_\_\_\_

Phone number : \_\_\_\_\_ Email (optional): \_\_\_\_\_

**THE WINNING BIDDER MUST COMPLETE THE VERIFICATION OF WORKER'S DISABILITY COMPENSATION ACT COMPLIANCE (ON REVERSE SIDE IF DOUBLE SIDED) WITHIN 21 DAYS OF SALE AWARD DATE**



<b>FOR DEPARTMENT USE ONLY</b>
Sale Number (XX - XXX - XX - XX)
Forest Management Unit:

## TIMBER SALE VERIFICATION OF WORKER'S DISABILITY COMPENSATION ACT COMPLIANCE

*As required by Act 317, P.A. 1969 (Worker's Compensation) and  
Part 5 of Act 451 of 1994, as amended.*

### VERIFICATION OF WORKER'S DISABILITY COMPENSATION ACT COMPLIANCE

- This verification must be completed and submitted within 21 days of contract award and prior to the issuance of the timber sale contract.
- In addition, if boxes 2B or 2C are checked, then Notice of Exclusion or Certificate of Insurance must be submitted within twenty-one (21) days of the contract award and prior to the issuance of the timber sale contract.
- All information must be typed or printed except for written signatures.

Please Check Appropriate Categories:

1. My business is organized as (you **must** check one of the boxes below):
  - A.  Sole Proprietorship (individual)
  - B.  Partnership
  - C.  Corporation
  
2. You **must** check one of the boxes below:
  - A.  I certify my business is a sole proprietorship and it has no employees but the sole proprietor. I am not subject to the Worker's Compensation Laws.
  - B.  I certify my business has satisfied its obligation to the Worker's Compensation Act through the use of an approved Notice of Exclusion (BWC-337, Rev. 5/96). I will provide a copy of the Notice of Exclusion within 21 days of the contract award. (For questions or a copy of the BWC-337, please call the Worker's Compensation Bureau at 517-322-1195).
  - C.  I certify my business has a Worker's Compensation Policy. I will provide an original Certificate of Insurance within twenty-one (21) days of the contract award.
  
3. If you have checked item 2(A) or 2(B), you **must** indicate the number of **both** full-time and part-time employees, other than yourself, including family members and active partners (if none, you must enter "0").

\_\_\_\_\_ Full-time Employees

\_\_\_\_\_ Part-time Employees

Name of Business		Federal ID (or) Social Security No.	
Address		Telephone (       )	
City	State	ZIP	

*I hereby certify that the above information is true and correct. I agree to notify the Michigan DNR of any changes that occur in factors affecting my coverage during any of my present and future operations.*

\_\_\_\_\_  
Signature of Owner or Authorized Representative

\_\_\_\_\_  
Title

\_\_\_\_\_  
Date

**Please complete the "SEALED BID" information on the next page**

Deuces Wild (63-013-22)  
T23N, R08W, SEC. 26; Missaukee COUNTY

In response to the notice of sale to be held 3:00 p.m. (local time) on February 22, 2023, I am hereby submitting my sealed bid (firm offer) for the following forest products to be cut. Bids for individual species must be at or above the advertised price. All non-responsive bid forms may be rejected.

<u>PRODUCTS &amp; SPECIES</u>	<u>ESTIMATED VOLUME*</u>	<u>ADVERTISED PRICE</u>	<u>BID PRICE/UNIT</u>
<b>Sawtimber</b>			
B. T. Aspen	26.5 MBF	\$ 73.00/MBF	\$ _____
Black Cherry	5.6 MBF	\$ 155.00/MBF	\$ _____
Red Maple	29.3 MBF	\$ 67.00/MBF	\$ _____
Red Oak	868.2 MBF	\$ 130.00/MBF	\$ _____
Red Pine	32.4 MBF	\$ 66.00/MBF	\$ _____
Sugar Maple	8.4 MBF	\$ 209.00/MBF	\$ _____
White Oak	40.5 MBF	\$ 39.00/MBF	\$ _____
<b>Pulpwood</b>			
B. T. Aspen	134 Cords	\$ 21.45/Cord	\$ _____
Beech	12 Cords	\$ 15.60/Cord	\$ _____
Black Cherry	2 Cords	\$ 15.60/Cord	\$ _____
Red Maple	298 Cords	\$ 15.60/Cord	\$ _____
Red Oak	945 Cords	\$ 19.10/Cord	\$ _____
Red Pine	7 Cords	\$ 31.80/Cord	\$ _____
Sugar Maple	17 Cords	\$ 15.60/Cord	\$ _____
White Oak	32 Cords	\$ 19.10/Cord	\$ _____

\*The volumes are statistically estimated within plus (+) or minus (-) 12.03 percent at 95% confidence level. These estimated volumes are final and not subject to adjustment. Prospective bidders are urged to examine this timber and to make their own estimates of quantity and quality.

I understand that any or all bids may be rejected. All bids must be signed and all bid items must be bid or the bid form may be rejected. I also understand that consideration and awarding a contract will be based upon my past performance and ability to complete the contract based upon equipment and staffing subject to my control.

FEDERAL ID: \_\_\_\_ - \_\_\_\_ - \_\_\_\_ or SOCIAL SECURITY NUMBER: \_\_\_\_ - \_\_\_\_ - \_\_\_\_

Company or individual bidding: \_\_\_\_\_

Company representative's name: \_\_\_\_\_

Address: \_\_\_\_\_

City: \_\_\_\_\_ State: \_\_\_\_\_ Zip: \_\_\_\_\_

IF AVAILABLE, PLEASE PLACE THE PERSONALIZED LABEL FROM YOUR PROSPECTUS IN THE ABOVE BOX.

Individual or company representative's signature: \_\_\_\_\_ Date: \_\_\_\_\_

Phone number : \_\_\_\_\_ Email (optional): \_\_\_\_\_

**THE WINNING BIDDER MUST COMPLETE THE VERIFICATION OF WORKER'S DISABILITY COMPENSATION ACT COMPLIANCE (ON REVERSE SIDE IF DOUBLE SIDED) WITHIN 21 DAYS OF SALE AWARD DATE**



<b>FOR DEPARTMENT USE ONLY</b>
Sale Number (XX – XXX – XX – XX)
Forest Management Unit:

## TIMBER SALE VERIFICATION OF WORKER'S DISABILITY COMPENSATION ACT COMPLIANCE

*As required by Act 317, P.A. 1969 (Worker's Compensation) and  
Part 5 of Act 451 of 1994, as amended.*

### VERIFICATION OF WORKER'S DISABILITY COMPENSATION ACT COMPLIANCE

- This verification must be completed and submitted within 21 days of contract award and prior to the issuance of the timber sale contract.
- In addition, if boxes 2B or 2C are checked, then Notice of Exclusion or Certificate of Insurance must be submitted within twenty-one (21) days of the contract award and prior to the issuance of the timber sale contract.
- All information must be typed or printed except for written signatures.

Please Check Appropriate Categories:

1. My business is organized as (you **must** check one of the boxes below):
  - A.  Sole Proprietorship (individual)
  - B.  Partnership
  - C.  Corporation
2. You **must** check one of the boxes below:
  - A.  I certify my business is a sole proprietorship and it has no employees but the sole proprietor. I am not subject to the Worker's Compensation Laws.
  - B.  I certify my business has satisfied its obligation to the Worker's Compensation Act through the use of an approved Notice of Exclusion (BWC-337, Rev. 5/96). I will provide a copy of the Notice of Exclusion within 21 days of the contract award. (For questions or a copy of the BWC-337, please call the Worker's Compensation Bureau at 517-322-1195).
  - C.  I certify my business has a Worker's Compensation Policy. I will provide an original Certificate of Insurance within twenty-one (21) days of the contract award.
3. If you have checked item 2(A) or 2(B), you **must** indicate the number of **both** full-time and part-time employees, other than yourself, including family members and active partners (if none, you must enter "0").

\_\_\_\_\_ Full-time Employees

\_\_\_\_\_ Part-time Employees

Name of Business		Federal ID (or) Social Security No.	
Address		Telephone (       )	
City	State	ZIP	

*I hereby certify that the above information is true and correct. I agree to notify the Michigan DNR of any changes that occur in factors affecting my coverage during any of my present and future operations.*

\_\_\_\_\_  
Signature of Owner or Authorized Representative

\_\_\_\_\_  
Title

\_\_\_\_\_  
Date

**Please complete the "SEALED BID" information on the next page**