



**DEPARTMENT OF NATURAL RESOURCES  
STATE OF MICHIGAN  
TIMBER SALE PROSPECTUS #7248**

SCHEDULED SALE DATE AND TIME: 2:00 p.m. (local time) on May 10, 2023.

LOCATION: SHINGLETON MGMT UNIT, PO BOX 67, M 28 WEST, SHINGLETON, MI 49884.

PROSPECTUS NOTE: The bidder is advised to inspect the sale area and review the location, estimated volumes, operating costs and contract terms of proposed sales. Please be aware that some landowners may request 60 days or more notice for access across their land.

Notice is hereby given that bids will be received by the Unit Manager, SHINGLETON MANAGEMENT UNIT, for certain timber on the following described lands:

Land of Bugs Hardwood (41-016-22) / T46N, R17W, SEC. 23, NESE,S1/2SE.

T46N, R17W, SEC. 26, NWNE.

Alger County, Advertised Price \$32,382.40, 90.9 Acres, Hardwood, Sugar Maple.

SALE NOTE: Harvesting is limited to the period of October 15 thru April 15 because the sale is within a deeryard.

Mysterious White Pipes Pine (41-018-22) / T43N, R15W, SEC. 16, SWNW,E1/2SW.

T43N, R15W, SEC. 17, NENE,S1/2NE.

T43N, R15W, SEC. 4 , NWNW.

T43N, R15W, SEC. 9 , NENW,W1/2NE.

Schoolcraft County, Advertised Price \$116,430.65, 116.4 Acres, Red Pine, White Pine.

SALE NOTE: The county must be contacted prior to crossing or harvesting in the county road R-O-W. This applies to Payment Units 1, 2, 3 and 5 and County Road 448.

Snowmobile Trail 2 is shown on the Timber Sale Map. See Sale Spec 5.2.41 for restrictions.

A recreation site such as a trail, pathway, or campground is within the sale area or the vicinity. Certain restrictions/specifications may be applicable including time restrictions.

Garden Grade GEMS 2022 (41-019-22) / T40N, R18W, SEC. 1 , N1/2NW, SENW, W1/2NE, SWSW.

T40N, R18W, SEC. 10, NENE, SE.

T40N, R18W, SEC. 11, N1/2NW, SWSW, NESE.

T40N, R18W, SEC. 12, NW.

T40N, R18W, SEC. 13, NENW, SWNW, W1/2NE, N1/2SW, SESW.

T40N, R18W, SEC. 13, SE.

T40N, R18W, SEC. 14, N1/2NW, NWNE, S1/2NE.

T40N, R18W, SEC. 2 , S1/2NW, N1/2NE, SWNE, N1/2SW, NWSE.

T40N, R18W, SEC. 23, N1/2NE.

T40N, R18W, SEC. 24, N1/2NW, SWNW.

Delta County, Advertised Price \$135,139.65, 287.2 Acres, Aspen, Spruce/Fir/Tamarack.

SALE NOTE: Payment Unit 9 will require the installation of 2 culverts or portable bridges. See Sale Spec 4.1.2 for details.

Road work is required on this sale. See Sale Spec 4.1.8 for additional information.

It is the responsibility of the Purchaser to obtain permission from the utility company to utilize the power line R.O.W. for operations.

The Cooks Garden Grade is a snowmobile trail and is shown on the Timber Sale Map. See Sale Spec 5.2.41 for restrictions.

A recreation site such as a trail, pathway, or campground is within the sale area or the vicinity. Certain restrictions/specifications may be applicable including time restrictions.

## BID INSTRUCTIONS (VER. 10/10/2022):

### 1. Scheduled Bid Location, Date, and Time (2/11)

Bids must be received by the Unit Manager, SHINGLETON OFFICE, PO Box 67 M 28 West, Shingleton, MI 49884, no later than 2:00 p.m. (local time) on May 10, 2023. For further information concerning this sale, contact Robert Burnham at 906-420-1645 extension n/a.

### 2. Bidder's Qualifications (10/22)

If all or part of a timber sale was prepared by a private contractor, the contractor and that contractor's company are not permitted to bid on the timber sale. A person must be 18 years of age or older to purchase timber. Permanent employees of the Department of Natural Resources or members of their immediate household may not bid. Former employees, in the permanent or seasonal class, may not bid until 3 months after the last day of active duty. Bids will not be accepted from individuals or companies appearing on the DNR/FRD No-Bid List. This list contains the names of purchasers who previously failed to execute a contract within 21-days or who have a history of poor performance.

### 3. Preparation of Sealed Bids (5/16)

Bid Forms may be completed online thru Michigan DNR Timber Sale Online Bidding (OLB) at [www.michigan.gov/timberbidding](http://www.michigan.gov/timberbidding) or by completing the hardcopy Bid Form found in the Timber Sale Prospectus. Hardcopy Bid Forms shall be manually signed in ink. Registration in OLB is considered your 'signature' for all bids submitted thru that system. Bid prices must be entered for each species and product in the Bid Price column for all material subject to bidding and all fill-in blanks must be completed. If erasures or other changes appear on the hardcopy Bid Form, each erasure or change must be initialed by the person signing the bid.

### 4. Submission of Sealed Bids (5/16)

Bid forms may be obtained from the Unit Manager or thru OLB. Bids may be submitted hardcopy or thru OLB. All hardcopy bids must be submitted on the bid form and in an envelope clearly identified as described in this section. NOTE: Only one bid form per bid envelope. Sealed bids must be submitted to the Unit office designated in the prospectus and must be submitted at or prior to the time established in the prospectus. The envelope should show on the outside (a) the sale name or number and (b) the date and time of bid opening, as shown in the prospectus. Bids received after the time specified in the sale prospectus are late bids and will be rejected.

It is possible for a bidder to submit multiple bids on a single sale. For example, a bid may be submitted hardcopy and a bid may be submitted thru OLB. Or, two bidders from the same company could both submit bids on the same sale. If this were to happen, the State would accept all bids received and award the contract accordingly. All bidding and contractual requirements would apply to all bids received.

### 5. Public Opening of Sealed Bids (7/16)

If conditions permit, the sealed bids will be publicly opened and posted at the time and place set in the prospectus.

If a bidder, present at a bid opening, has submitted bids on more than one sale, that bidder may withdraw their unopened bid envelopes or announce the withdrawal of their online bid after being declared the successful bidder on one sale.

### 6. Award of Contract (1/11)

Award of the contract will be made to the Bidder whose bid, conforming to the prospectus, is most advantageous to the State of Michigan on the basis of total value at rates bid for the estimated quantities. The State reserves the right to reject any bid or waive any minor irregularity in bids received. A written award mailed (or otherwise furnished) to the successful Bidder shall be deemed to result in a binding contract without further action by either party.

### 7. Down Payment (1/11)

The Bidder to whom award is made must make a down payment within 21 days of the sale award. The amount of the down payment will be calculated as shown in the Bond and Payment Schedule of this prospectus. Only cash may be used to meet this requirement.

### 8. Performance Security (1/11)

As guarantee of faithful performance, a cash bond, certificate of deposit, surety bond or irrevocable letter of credit (LOC) is required within 21 days of the sale award. The amount of the performance security is shown in the Bond and

Payment Schedule of this prospectus. If an LOC or surety is used, the coverage must extend for at least 6 months beyond the contract expiration.

#### 9. Worker's Compensation (10/22)

Purchaser shall obtain worker's compensation insurance to cover claims under Michigan's Worker's Disability Compensation Act of 1969 or similar employee benefit act of any other state applicable to an employee. Verification of Worker's Disability Compensation Act Compliance must be completed and submitted within 21 days of contract award and prior to the issuance of the timber sale contract. In addition, if applicable, Notice of Exclusion or Certificate of Insurance must also be submitted.

#### 10. Timber Sale Contract (10/22)

Additional conditions and requirements common to all timber sales are listed on the timber sale contract (R4031) and are available on line at [www.michigan.gov/timber](http://www.michigan.gov/timber). Contact the Unit Manager for additional information or a sample contract. Within 21 days of the date of the award letter, the bidder must sign the contract and provide the required down payment, performance security, and verification of worker's disability compensation. The down payment and performance security shall be in accordance with the provisions of the timber sale contract, in the sums stated in this prospectus. If these actions are not taken, then the Bidder, the Bidder's corporation, and the corporation's principals may not be permitted to bid on State timber sales for a period of 3 months after the first offense, 6 months after the second offense, and 1 year after the third offense. An offense will only be counted against the Bidder for 5 years. In addition, the Bidder certifies that if awarded this contract, the Bidder will complete the timber sale contract in accordance with its terms and any modifications thereof including requirements to purchase, cut, and remove the included timber by the expiration date.

Payment Unit values in the State Forest Timber Sale Contract are calculated based on the advertised value of the Payment Unit as a percentage of the total advertised value of the contract. The advertised value of each Payment Unit is given in the Description of Timber by Payment Unit table on the Timber Sale Information page. For example, if the value of Payment Unit 1 is advertised as \$1,500 and the total Timber Sale value is advertised as \$10,000, the contract price for Payment Unit 1 will be 15% of the total bid price ( $\$1,500/\$10,000 * 100$ ).

#### 11. Disclaimer of Estimates and Bidder's Warranty of Inspection (10/22)

Before submitting this bid, the Bidder is advised and cautioned to inspect the sale area, review the requirements of the sale contract, and take other steps as may be reasonably necessary to ascertain the location, estimated volumes, construction estimates, and operating costs of the proposed sale. Failure to do so will not relieve the Bidder from responsibility for completing the contract.

The Bidder warrants that this bid is submitted solely on the basis of the Bidder's examination and inspection of the quality and quantity of the timber offered for sale and the Bidder's opinion of the value thereof and the costs of recovery. No reliance should be placed on the State of Michigan's estimates of timber quality, quantity or costs of recovery. Bidder further acknowledges that the State of Michigan: (i) expressly disclaims any warranty of fitness of timber for any purpose; (ii) offers this timber as is without any warranty of quality (merchantability) or quantity and (iii) expressly disclaims any warranty as to the quantity or quality of timber sold.

#### 12. Certification and Chain-of-Custody (10/22)

Unless otherwise indicated in the contract under section 7 – Other Conditions of the Sale Specific Conditions & Requirements, the area encompassed by this timber sale is certified to the standards of the Forest Stewardship Council (FSC) - Certificate #SCS-FM/COC-00090N and the Sustainable Forestry Initiative (SFI) - Certificate #NSF-SFIS-5Y031-SF5. Forest products from this sale may be delivered to the mill as "FSC 100% and / or SFI certified" as long as the contractor hauling the forest products is chain-of-custody (COC) certified or covered under a COC certificate from the destination mill. The purchaser is responsible for maintaining COC after leaving the sale area.

#### 13. Good Neighbor Authority (GNA) Requirements (10/22)

If the name of this timber sales contains the acronym GNA, it is authorized by the Good Neighbor Authority (GNA) and covered by various agreements between the U.S. Forest Service and the State. The timber sale occurs on federal land and the following conditions apply:

GNA contracts on US Forest Service land will not be awarded to purchasers on the Federal list of excluded parties. The System for Award Management (SAM) will be checked for active excluded parties prior to award of contract. In

addition, the Bidder to whom award is made must complete an Assurance Regarding Felony Conviction or Tax Delinquent Status for Corporate Applicants (AD-3031).

14. Good Neighbor Authority (GNA) Requirements, con't (10/22)

Bidder certifies, by signing this bid form, that to the best of Bidder's knowledge that the following representations are accurate and complete.

- a. That the Bidder and its principals are not presently debarred, suspended, proposed for debarment, declared ineligible, or voluntary excluded from timber sales (covered transactions) by any Federal department or agency.
- b. That the Bidder and its principals have not within a 3-year period preceding this bid been convicted of or had a civil judgment rendered against them for commission of fraud or a criminal offense in connection with obtaining , attempting to obtain, or performing a public (Federal, State, or local) transaction or contract under a public transaction; violation of Federal or State antitrust statutes or commission of embezzlement, theft, forgery, bribery, falsification or destruction of records, making false statements, or receiving stolen property.
- c. That the Bidder and its principals are not presently indicted for or otherwise criminally or civilly charged by a governmental entity (Federal, State, or local) with commission of any of the offenses enumerated in paragraph b of this certification.
- d. That the Bidder and its principals have not within a 3-year period preceding this bid had one or more public transactions (Federal, State, or local) terminated for breach or default of a timber or forest product contract.

Bidders that cannot certify this requirement, in whole or in part, shall submit an explanation with their bid.

SHANNON LOTT, Acting  
Director



# TIMBER SALE INFORMATION

Land of Bugs Hardwood (41-016-22)  
 T46N, R17W, SEC. 23; T46N, R17W, SEC. 26.  
 Alger County (Advertised Price \$32,382.40)

SALE NOTE: Harvesting is limited to the period of October 15 thru April 15 because the sale is within a deeryard.

A timber sale contract for this lump sum, sealed bid timber sale will be awarded to the responsible bidder offering the highest sealed bid price. All units of volume listed below were estimated using the Inventory Manager computer program and the new Michigan taper model. Bids must be at or above the following advertised price for each product and species:

<u>PRODUCTS &amp; SPECIES</u>	<u>ESTIMATED UNITS*</u>	<u>ADVERTISED PRICE</u>
Sawtimber		
Basswood	36.8 MBF	\$ 89.00 / MBF
Black Cherry	8.8 MBF	\$ 109.00 / MBF
Red Maple	4.6 MBF	\$ 97.00 / MBF
Sugar Maple	82.8 MBF	\$ 290.00 / MBF
Pulpwood		
Balsam Fir	11 Cords	\$ 10.70 / Cord
Mixed Hardwood	243 Cords	\$ 14.70 / Cord

\* The total volume is statistically estimated within plus (+) or minus (-) 16.17 percent. There are an estimated 677 cords on this timber sale, plus or minus 109 cords at the 95% confidence level. The estimated units are final and not subject to adjustment. Prospective bidders are urged to examine this timber and to make their own estimates of quantity and quality.

**BOND AND PAYMENT SCHEDULE:**

1. A bond in the amount of \$1,619.00 to insure faithful performance of the conditions of the contract will be deposited by the successful bidder within 21 days of the sale award.
  2. Cutting in any sale or unit without the required advance payment would be considered a trespass.
  3. Total payment must be paid in advance or according to the following schedule :
    - (a) Ten percent (10%) of the sale value must be paid within 21 days of the sale award.
    - (b) The 10% down payment will be credited towards the first unit cut.
    - (c) Payment for each of the following units must be made before cutting begins in that unit:
- | PAYMENT UNIT NUMBER | PERCENT OF TOTAL SALE VALUE |
|---------------------|-----------------------------|
| 01                  | 29.5%                       |
| 02                  | 31.8%                       |
| 03                  | 38.7%                       |
4. If no cutting takes place, the 10% down payment will not be refunded.
  5. Operations on the contract issued will terminate on 06/30/2025.

**SALE STATISTICS**

Volumes were calculated in cubic feet using the Michigan taper model. Cubic foot volume includes all wood inside bark for the product indicated. For display purposes, cubic feet were converted to cords and MBF using a simple conversion factor, e.g. 79 cubic feet per cord and 185 cubic feet per MBF. The cubic foot volumes are precise; the cords and MBF volumes are not. Cubic foot volume cannot be directly converted to cords or boards with precision.

**SALE VOLUMES**

The total estimated sale volume may not equal the sum of the species/products due to the nature of statistical calculations associated with double sampling methodology.

VOLUME		STATISTICAL RANGE IN CORDS		
TOTAL CUBIC FEET	TOTAL CORDS	PERCENT ERROR	MINIMUM	MAXIMUM
53,449	677	16.17%	567	786

**VDU VOLUMES**

A VDU is a Volume Determination Unit. Volumes and their associated statistics are calculated at the VDU level and summarized to the sale level. There is often a one to one relationship between a VDU and a Payment Unit, but not always, depending on the cruise design. Refer to the VDU TO PAYMENT UNIT table.

VDU	VOLUME		PERCENT ERROR	RANGE IN CORDS	
	TOTAL CUBIC FEET	TOTAL CORDS		MINIMUM	MAXIMUM
1	14,652	185	31.78%	127	244
2	23,065	292	27.90%	210	373
3	15,732	199	23.91%	152	247
<b>TOTAL:</b>	<b>53,449</b>	<b>677</b>		<b>489</b>	<b>865</b>

**VDU TO PAYMENT UNIT**

When a VDU is associated with more than one Payment Unit (PU), the VDU volumes are assigned to the PU based on acres of the VDU within the PU.

VDU	VDU ACRES	PU	PU ACRES
1	31.1	1	31.1
2	35.1	1	0.3
		2	34.7
		3	0.1
3	24.7	2	0.1
		3	24.6
<b>TOTAL:</b>	<b>90.9</b>		<b>90.9</b>

**DESCRIPTION OF TIMBER BY PAYMENT UNIT (PU)**

PU	MARKET GROUP	PRODUCT	QUANTITY	UNIT	ACRES	ADVERTISE PRICE
1	Basswood	Sawtimber	10.2	MBF	31.4	\$9,544.00
	Black Cherry		4.1	MBF		
	Sugar Maple		25.4	MBF		
	Balsam Fir	Pulpwood	11	Cords		
	Mixed Hardwood		48	Cords		
	<i>Basswood</i>		9	<i>Cords</i>		
	<i>Black Cherry</i>		2	<i>Cords</i>		
	<i>Sugar Maple</i>		37	<i>Cords</i>		
2	Basswood	Sawtimber	22.5	MBF	34.8	\$10,291.70
	Black Cherry		4.7	MBF		
	Sugar Maple		21.9	MBF		
	Mixed Hardwood	Pulpwood	97	Cords		
	<i>Basswood</i>		11	<i>Cords</i>		
	<i>Beech</i>		2	<i>Cords</i>		
	<i>Black Cherry</i>		17	<i>Cords</i>		
	<i>Sugar Maple</i>		67	<i>Cords</i>		
3	Basswood	Sawtimber	4.1	MBF	24.7	\$12,546.70
	Red Maple		4.6	MBF		
	Sugar Maple		35.5	MBF		
	Mixed Hardwood	Pulpwood	98	Cords		
	<i>Basswood</i>		8	<i>Cords</i>		
	<i>Ironwood</i>		5	<i>Cords</i>		
	<i>Red Maple</i>		10	<i>Cords</i>		
	<i>Sugar Maple</i>		75	<i>Cords</i>		
<b>TOTAL:</b>			133.0	MBF		
<b>TOTAL:</b>			254	Cords		



# Sale Specific Conditions & Requirements

**Sale Name: Land of Bugs Hardwood**

**Sale Number: 41-016-22 Seq#: 1**

## 1 - Sale Area

### 1.2 - Boundaries

#### 1.2.1 - Painted boundaries (9/19)

Exterior sale boundary lines against private property are marked with blue paint. Exterior sale boundary lines against state are marked with red paint. Interior Payment Unit boundaries are marked with yellow paint. Retention patches are marked with red paint; no harvesting activities may occur within these areas. The painted boundary line trees are not Included Timber and are to be protected unless marked with orange paint.

## 2 - Timber Specifications

### 2.1 - Included Timber

#### 2.1.3 - Cut tree marked unit(s) (12/08)

Within Payment Unit(s) 1-3, all trees are designated for cutting when marked with orange paint above and below stump height, regardless of merchantability.

## 3 - Payments

### 3.3 - Pre-measured Sales

#### 3.3.4 - Dividing payment units (7/14)

Payment Unit(s) over \$20,000 may be divided at the request of the Purchaser and upon approval of the Unit Manager.

Dividing Payment Units is a contract modification which requires a Timber Sale Contract Amendment. There will be only one division per Payment Unit.

## 4 - Transportation

### 4.1 - Construction

#### 4.1.3 - Slash and earthen piles (8/04)

Piles or windrows of earth along roads and landings that have been widened or constructed shall be leveled. Slash from road maintenance or construction, including stumps, shall be dispersed throughout the sale.

#### 4.1.4 - Timber removed for construction (12/09)

Trees cut or damaged in the process of pre-approved road, landing or skid trail construction will be decked in an area separate from other Designated Timber and not removed until measured by the sale administrator. Payment will be made at the specified Purchase Unit Price.

#### 4.1.6 - Road construction (1/09)

Construction of new roads or improvements of existing roads shall be done in such a way as to minimize the environmental and visual impacts. Merchantable trees shall be cut and utilized unless otherwise directed. Non-merchantable trees shall be severed and laid flat on the ground. Slash shall be scattered, and not left in windrows and kept a minimum of 10 feet back from the road edge. Stumps shall be set upright, not left on edge, and be moved at least 10 feet away from the road edge. Disturbed soil shall be feathered into the woods and not left in berms or windrows.

#### 4.1.7 - Road closure (10/11)

All new roads built into the sale must be blocked to vehicle traffic upon completion of the sale. Overgrown roads that are reopened shall be considered new roads. In general, this will require constructing a four (4') foot high berm of stumps and logs covered with earth. Stumps and brush must be placed along the remainder of the trail. These roads must be rendered impassable to cars and trucks. All stumps from road building and landing construction must be reserved to block any newly constructed roads upon completion of the sale. These stumps must be scattered along the road system to prohibit vehicular movement. Contact the sale administrator for specific details of design and placement.

### 4.2 - Maintenance

#### 4.2.4 - Grading (10/16)

For completion of the sale, state forest roads must be graded. In general, this will require a road grader or bull dozer to shape up the roads after forest products have been hauled off site. This includes cleaning of drainage areas, grading, crowning and filling with gravel, if necessary. The grading equipment to be used must be approved by the Unit Manager or his/her representative.

## **5 - Operations**

### **5.2 - Conduct of Operations**

#### **5.2.2 - Hazard Trees/Snags**

##### **5.2.2.1 - Den trees (10/16)**

Obvious hollow and/or den trees shall be protected and left standing unless they are a safety hazard.

#### **5.2.3 - Operating Restrictions**

##### **5.2.3.1 - Operating restrictions (9/11)**

Within Payment Unit(s) 1-3, unless changed by written agreement, cutting, skidding, and hauling are limited to the period of October 15 thru April 15. This restriction is because the sale is within a deer yard.

##### **5.2.32 - Decking/landing restoration (9/13)**

All decking and landing areas must have the surface area restored to a condition equal to or better than before. This is to ensure the proper regeneration of the stand. Wood debris, chips and "cookies" from trimmings must be removed or scattered away from landing and loading areas and may not be windrowed on the edge.

##### **5.2.38 - No decking against live trees (2/04)**

Cut products may not be decked against unmarked or designated leave trees.

### **5.8 - Protection of Endangered Species**

#### **5.8.3 - Red shoulder hawk or goshawk (2/16)**

In the event that an active red shoulder hawk or goshawk nest is found, the contract may be amended to protect the nest site until the nest is determined to be inactive. The value of the trees in this excluded area will be refunded or credited to the Purchaser. The nest will be buffered with a five-chain radius (eight acre) protection area, centered on the nest tree, in which there will be no cutting or new roads constructed. Avoid human disturbance, including loading and skidding, in the protection area.

An additional zone of five chains (ten chains centered on the active nest tree) will be established in which there is no management activity from April 1 to July 30 (UP). Limit biomass harvesting and chipping operations within this ten-chain zone, retain the maximum one-third of residues per the Woody Biomass Harvesting Guidelines (Michigan DNR 2010). Nests determined to be inactive will be protected with a one-chain no-harvest buffer.

## **6 - Safety and Fire Prevention**

### **6.2 - Signing**

#### **6.2.1 - Road posting (10/20)**

The Purchaser is responsible for posting and maintaining caution signs on Star Siding Road prior to beginning operations. The road must be posted at appropriate distances from the sale area to warn of logging activity and truck traffic. Signs must be removed when harvest operations are suspended or completed. The Purchaser will provide these signs.



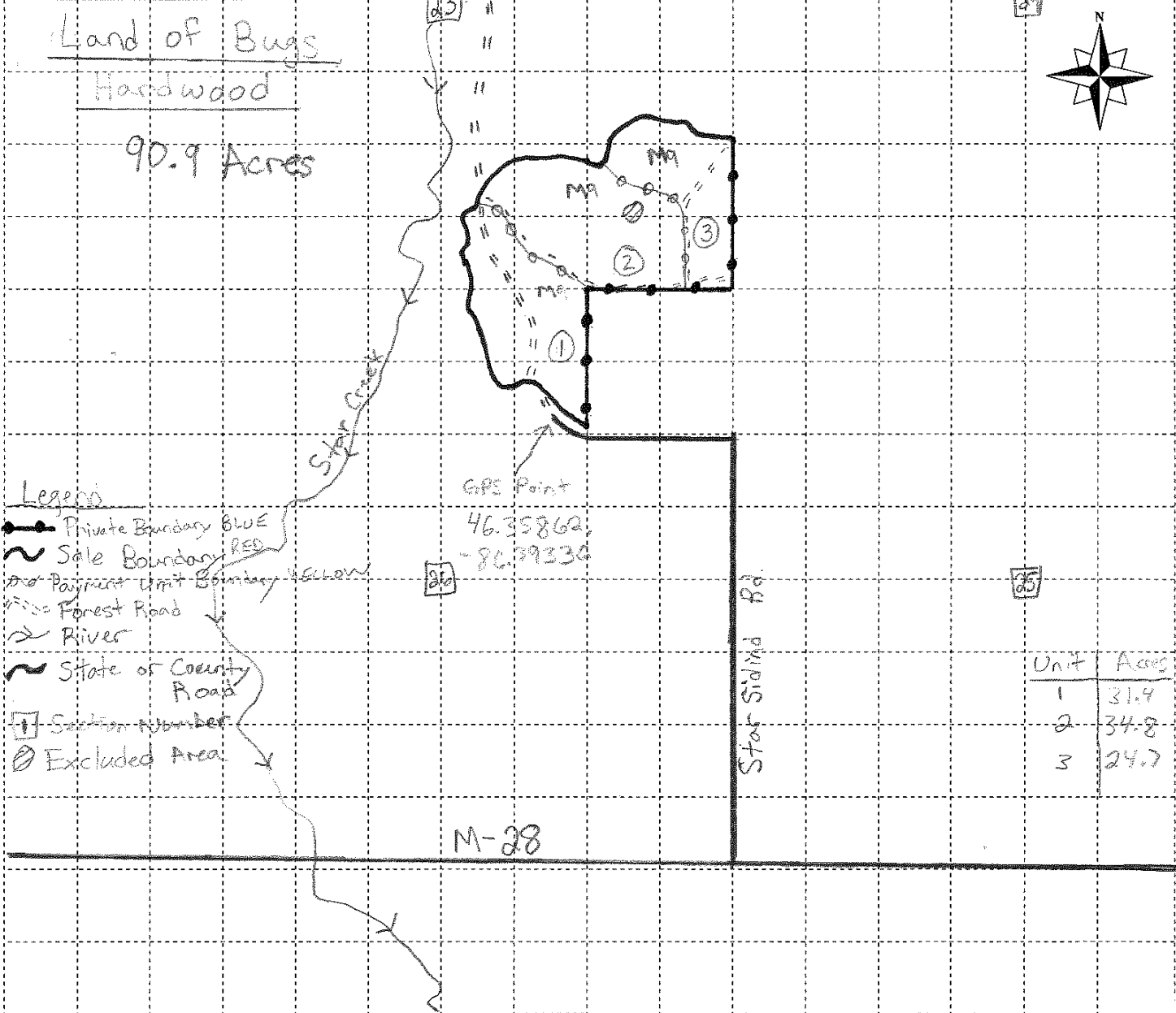
# TIMBER SALE MAP

This information provided by authority of Part 5, 1994 PA 451, as amended.

Sale Number	Year
41-016-22	2022

Forest Management Unit Shingleton	County Alger	Mapped By Kyle Gould	Date 8/30/22	Page 1	of 1
Compartment Number 41189	Township 46N	Range 17W	Section(s) and Subdivision(s) 23 NESE, S1/2SW, 26 NWNE	Scale: = 1 mile	

Cover Type				Density	
A = Aspen	J = Jack Pine	O = Oak	U = Upland Brush	0 = Non Stocked	5 = Pole Timber Medium
B = Paper Birch	K = Rock	P = Lowland Poplar	UM = Upland Mix Forest	1 = Seedling Sapling Poor	6 = Pole Timber Well
C = Cedar	L = Lowland Brush	Q = Mixed Swamp Conifer	V = Bog or Marsh	2 = Seedling Sapling Medium	7 = Saw Timber Poor
D = Treed Bog	LM = Lowland Mix Forest	R = Red Pine	W = White Pine	3 = Seedling Sapling Well	8 = Saw Timber Medium
E = Swamp Hardwoods	M = Maple, Beech, Birch	S = Black Spruce	X = Non Stocked	4 = Pole Timber Poor	9 = Saw Timber Well
F = Spruce/Fir	MC = Mixed Conifer	T = Tamarack	Y = Sand		
G = Grass	MD = Mixed Deciduous		Z = Water		
H = Hemlock	N = Marsh				





## TIMBER SALE INFORMATION

### Mysterious White Pipes Pine (41-018-22)

T43N, R15W, SEC. 16; T43N, R15W, SEC. 17; T43N, R15W, SEC. 4; T43N, R15W, SEC. 9.  
Schoolcraft County (Advertised Price \$116,430.65)

SALE NOTE: The county must be contacted prior to crossing or harvesting in the county road R-O-W. This applies to Payment Units 1, 2, 3 and 5 and County Road 448.

Snowmobile Trail 2 is shown on the Timber Sale Map. See Sale Spec 5.2.41 for restrictions.

A recreation site such as a trail, pathway, or campground is within the sale area or the vicinity. Certain restrictions/specifications may be applicable including time restrictions.

A timber sale contract for this lump sum, sealed bid timber sale will be awarded to the responsible bidder offering the highest sealed bid price. All units of volume listed below were estimated using the Inventory Manager computer program and the new Michigan taper model. Bids must be at or above the following advertised price for each product and species:

<u>PRODUCTS &amp; SPECIES</u>	<u>ESTIMATED UNITS*</u>	<u>ADVERTISED PRICE</u>
Pulpwood		
Balsam Fir	7 Cords	\$ 10.70 / Cord
Black Spruce	40 Cords	\$ 19.30 / Cord
Jack Pine	60 Cords	\$ 27.65 / Cord
Mixed Aspen	15 Cords	\$ 24.05 / Cord
Mixed Hardwood	20 Cords	\$ 14.70 / Cord
Red Pine	1,630 Cords	\$ 64.80 / Cord
White Pine	300 Cords	\$ 24.20 / Cord
White Spruce	20 Cords	\$ 19.30 / Cord

\* The total volume is statistically estimated within plus (+) or minus (-) 15.75 percent. There are an estimated 1,925 cords on this timber sale, plus or minus 303 cords at the 95% confidence level. The estimated units are final and not subject to adjustment. Prospective bidders are urged to examine this timber and to make their own estimates of quantity and quality.

### **BOND AND PAYMENT SCHEDULE:**

1. A bond in the amount of \$5,822.00 to insure faithful performance of the conditions of the contract will be deposited by the successful bidder within 21 days of the sale award.
2. Cutting in any sale or unit without the required advance payment would be considered a trespass.
3. Total payment must be paid in advance or according to the following schedule :
  - (a) Ten percent (10%) of the sale value must be paid within 21 days of the sale award.
  - (b) The 10% down payment will be credited towards the first unit cut.
  - (c) Payment for each of the following units must be made before cutting begins in that unit:
 

PAYMENT UNIT NUMBER	PERCENT OF TOTAL SALE VALUE
01	25.4%
02	18.7%
03	14.0%
04	2.5%
05	27.9%
06	11.5%
4. If no cutting takes place, the 10% down payment will not be refunded.
5. Operations on the contract issued will terminate on 06/30/2026.

### **SALE STATISTICS**

Volumes were calculated in cubic feet using the Michigan taper model. Cubic foot volume includes all wood inside bark for the product indicated. For display purposes, cubic feet were converted to cords and MBF using a simple conversion factor, e.g. 79 cubic feet per cord and 185 cubic feet per MBF. The cubic foot volumes are precise; the cords and MBF volumes are not. Cubic foot volume cannot be directly converted to cords or boards with precision.

**SALE VOLUMES**

The total estimated sale volume may not equal the sum of the species/products due to the nature of statistical calculations associated with double sampling methodology.

VOLUME			STATISTICAL RANGE IN CORDS	
TOTAL CUBIC FEET	TOTAL CORDS	PERCENT ERROR	MINIMUM	MAXIMUM
152,103	1,925	15.75%	1,622	2,229

**VDU VOLUMES**

A VDU is a Volume Determination Unit. Volumes and their associated statistics are calculated at the VDU level and summarized to the sale level. There is often a one to one relationship between a VDU and a Payment Unit, but not always, depending on the cruise design. Refer to the VDU TO PAYMENT UNIT table.

	VOLUME			RANGE IN CORDS	
VDU	TOTAL CUBIC FEET	TOTAL CORDS	PERCENT ERROR	MINIMUM	MAXIMUM
1	35,541	450	26.85%	329	571
2	26,228	332	37.33%	208	456
3	29,195	370	27.70%	267	472
4	4,195	53	90.27%	5	101
5	39,920	505	34.61%	330	680
6	17,023	215	24.53%	163	268
<b>TOTAL:</b>	<b>152,103</b>	<b>1,925</b>		<b>1,303</b>	<b>2,548</b>

**VDU TO PAYMENT UNIT**

When a VDU is associated with more than one Payment Unit (PU), the VDU volumes are assigned to the PU based on acres of the VDU within the PU.

VDU	VDU ACRES	PU	PU ACRES
1	16.9	1	16.9
2	16.6	2	16.6
3	17.6	3	17.6
4	10.8	4	10.8
5	28.6	5	28.6
6	25.9	6	25.9
<b>TOTAL:</b>	<b>116.4</b>		<b>116.4</b>

**DESCRIPTION OF TIMBER BY PAYMENT UNIT (PU)**

PU	MARKET GROUP	PRODUCT	QUANTITY	UNIT	ACRES	ADVERTISE PRICE
1	Mixed Aspen	Pulpwood	5	Cords	16.9	\$29,578.05
	<i>Quaking Aspen</i>		5	<i>Cords</i>		
	Red Pine		413	Cords		
	White Pine		105	Cords		
	White Spruce		8	Cords		
2	Balsam Fir	Pulpwood	3	Cords	16.6	\$21,764.00
	Mixed Hardwood		7	Cords		
	<i>Red Maple</i>		7	<i>Cords</i>		
	Red Pine		311	Cords		
	White Pine		61	Cords		
3	Balsam Fir	Pulpwood	4	Cords	17.6	\$16,272.45
	Black Spruce		35	Cords		
	Jack Pine		47	Cords		
	Mixed Aspen		10	Cords		
	<i>B. T. Aspen</i>		10	<i>Cords</i>		
	Mixed Hardwood		13	Cords		
	<i>Red Maple</i>		2	<i>Cords</i>		
	<i>Sugar Maple</i>		11	<i>Cords</i>		
	Red Pine		178	Cords		
	White Pine		85	Cords		
	White Spruce		12	Cords		
4	Jack Pine	Pulpwood	13	Cords	10.8	\$2,886.65
	Red Pine		39	Cords		
5	Black Spruce	Pulpwood	5	Cords	28.6	\$32,541.70
	Red Pine		488	Cords		
	White Pine		34	Cords		
6	Red Pine	Pulpwood	201	Cords	25.9	\$13,387.80
	White Pine		15	Cords		
TOTAL:			2,092	Cords		

## Sale Specific Conditions & Requirements

Sale Name: Mysterious White Pipes Pine

Sale Number: 41-018-22 Seq#: 2

### 1 - Sale Area

#### 1.2 - Boundaries

##### 1.2.1 - Painted boundaries (9/19)

The sale boundary and Payment Unit boundaries are marked and identified by blue, red and yellow paint. Exterior sale boundary lines against private property are marked with blue paint. Exterior sale boundary lines against state are marked with red paint. Interior Payment Unit boundaries are marked with yellow paint. The painted boundary line trees are not Included Timber and are to be protected unless marked with orange paint.

### 2 - Timber Specifications

#### 2.1 - Included Timber

##### 2.1.1 - Clearcut unit(s) with unmerchantable trees (6/14)

Within Payment Unit(s) 1, 2 and 5, cut all trees that are 2 inches or more at DBH. Cut all trees live or dead that are greater than 15 feet in height.

##### 2.1.3 - Cut tree marked unit(s) (12/08)

Within Payment Unit(s) 4 and 6, all trees are designated for cutting when marked with orange paint above and below stump height, regardless of merchantability.

##### 2.1.7 - Leave tree marked unit(s) (6/14)

Within Payment Unit(s) 3, all trees, which meet minimum piece specifications in 2.2 Utilization, are designated for cutting except trees marked with green paint above and below stump height and hemlock.

#### 2.2 - Utilization

##### 2.2.3 - Stump heights (4/07)

Stump heights within Payment Unit(s) 1, 2 and 5 shall not exceed 12 inches for trees greater than 10 inches DBH and 4 inches for trees smaller than 10 inches DBH. This is in order to facilitate planting operations.

### 3 - Payments

#### 3.3 - Pre-measured Sales

##### 3.3.4 - Dividing payment units (7/14)

Payment Unit(s) with a value greater than \$20,000 may be divided at the request of the Purchaser and upon approval of the Unit Manager. Dividing Payment Units is a contract modification which requires a Timber Sale Contract Amendment.

### 4 - Transportation

#### 4.1 - Construction

##### 4.1.3 - Slash and earthen piles (8/04)

Piles or windrows of earth along roads and landings that have been widened or constructed shall be leveled. Slash from road maintenance or construction, including stumps, shall be dispersed throughout the sale.

##### 4.1.6 - Road construction (1/09)

Construction of new roads or improvements of existing roads shall be done in such a way as to minimize the environmental and visual impacts. Merchantable trees shall be cut and utilized unless otherwise directed. Non-merchantable trees shall be severed and laid flat on the ground. Slash shall be scattered, and not left in windrows and kept a minimum of 10 feet back from the road edge. Stumps shall be set upright, not left on edge, and be moved at least 10 feet away from the road edge. Disturbed soil shall be feathered into the woods and not left in berms or windrows.

##### 4.1.7 - Road closure (10/11)

All new roads built into the sale must be blocked to vehicle traffic upon completion of the sale. All new roads built into the sale must be blocked to vehicle traffic within 30 days of completion of hauling. Overgrown roads that are reopened shall be



considered new roads. In general, this will require constructing a four (4') foot high berm of stumps and logs covered with earth. Contact the sale administrator for specific details of design and placement.

#### 4.2 - Maintenance

##### 4.2.4 - Grading (10/16)

For completion of the sale, state forest roads must be graded. In general, this will require a road grader or bull dozer to shape up the roads after forest products have been hauled off site. This includes cleaning of drainage areas, grading, crowning and filling with gravel, if necessary. The grading equipment to be used must be approved by the Unit Manager or his/her representative.

#### 4.3 - Public Right-of-Way

##### 4.3.2 - County R-O-W (12/06)

The county must be contacted prior to crossing or harvesting in the county road R-O-W. This applies to Payment Units 1, 2, 3 and 5 and County Road 448.

### 5 - Operations

#### 5.2 - Conduct of Operations

##### 5.2.1 - Slash

###### 5.2.1.11 - Slash for reforestation (3/21)

##### 5.2.3 - Operating Restrictions

###### 5.2.3.6 - Bark beetle restriction (12/08)

In the event drought creates a high risk of pine bark beetle infestation, pine is not to be cut during the period March 1 through July 1, unless all portions of trees greater than two inches in diameter are removed from the sale area, reduced to chips, or treated to the satisfaction of the Unit Manager or his/her representative, within fifteen days of being severed from the stump. Pine log decks, pulpwood piles and treetops that are piled for chipping in the fall or winter within a 1/4 mile of susceptible sites must be removed before March 15. Residual slash must not be placed in piles or rows and must be spread over the site for quick drying. The Department of Natural Resources will exercise this specification if the risk of damage warrants.

###### 5.2.32 - Decking/landing restoration (9/13)

All decking and landing areas must have the surface area restored to a condition equal to or better than before. This is to ensure the proper regeneration of the stand. Wood debris, chips and "cookies" from trimmings must be removed or scattered away from landing and loading areas and may not be windrowed on the edge.

###### 5.2.37 - No decking areas (12/08)

No decking is allowed outside the sale boundaries in Units 3, 4 and 5. In addition, no operations including skidding can occur outside these sale boundaries.

###### 5.2.38 - No decking against live trees (2/04)

Cut products may not be decked against unmarked or designated leave trees.

###### 5.2.41 - Snowmobile trail protection (9/11)

Snowmobile Trail 2 is shown on the Timber Sale Map. Do not cut or damage posts with orange trail markers or traffic control signs. If the trail is used, it must be maintained and restored to a condition equal to or better than before the sale. The road maintenance/restoration must be done prior to December 1. The snowmobile trail may not be used for any timber sale operations from December 1 to March 31. All stumps within 20 feet of the snowmobile trail must be cut at ground level.

#### 5.7 - Protection of Historical Sites

##### 5.7.1 - Historical sites (7/12)

The Purchaser shall not cut live or dead trees or operate equipment within historical sites. Historical sites are excluded with red paint lines in Units 3, 4 and 5. The Purchaser shall protect historical sites from damage by the Purchaser's operations. If Purchaser's operations have cut or damaged historical sites through carelessness, the Purchaser shall pay \$2000 as fixed, agreed and liquidated damages for each acre or part thereof cut or damaged.

## 5.8 - Protection of Endangered Species

### 5.8.3 - Red shoulder hawk or goshawk (2/16)

In the event that an active red shoulder hawk or goshawk nest is found, the contract may be amended to protect the nest site until the nest is determined to be inactive. The value of the trees in this excluded area will be refunded or credited to the Purchaser. The nest will be buffered with a five-chain radius (eight acre) protection area, centered on the nest tree, in which there will be no cutting or new roads constructed. Avoid human disturbance, including loading and skidding, in the protection area.

An additional zone of five chains (ten chains centered on the active nest tree) will be established in which there is no management activity from April 1 to July 30 (UP). Limit biomass harvesting and chipping operations within this ten-chain zone, retain the maximum one-third of residues per the Woody Biomass Harvesting Guidelines (Michigan DNR 2010). Nests determined to be inactive will be protected with a one-chain no-harvest buffer.

## 6 - Safety and Fire Prevention

### 6.2 - Signing

#### 6.2.1 - Road posting (10/20)

The Purchaser is responsible for posting and maintaining caution signs on County Rd 448 and Old Camp Manistique Roads prior to beginning operations. The road must be posted at appropriate distances from the sale area to warn of logging activity and truck traffic. Signs must be removed when harvest operations are suspended or completed. The Purchaser will provide these signs.

#### 6.2.2 - Snowmobile trail posting (10/20)

The Purchaser is responsible for posting and maintaining caution signs on snowmobile trail prior to beginning operations during the snowmobile season (approximately December 1 to March 31). The trail must be posted at appropriate distances from the sale area to warn of logging activity and truck traffic. Signs must be removed when harvest operations are suspended or completed. The Purchaser will provide these signs.

## 7 - Other Conditions

### 7.3 - Contract Modifications

#### 7.3.3 - Modification for reforestation (8/05)

When contractual work of Purchaser has been accepted for any Payment Unit identified on Sale Area Map, Payment Unit will be eliminated from the Sale Area on written notice so that reforestation operations can begin.



# TIMBER SALE MAP

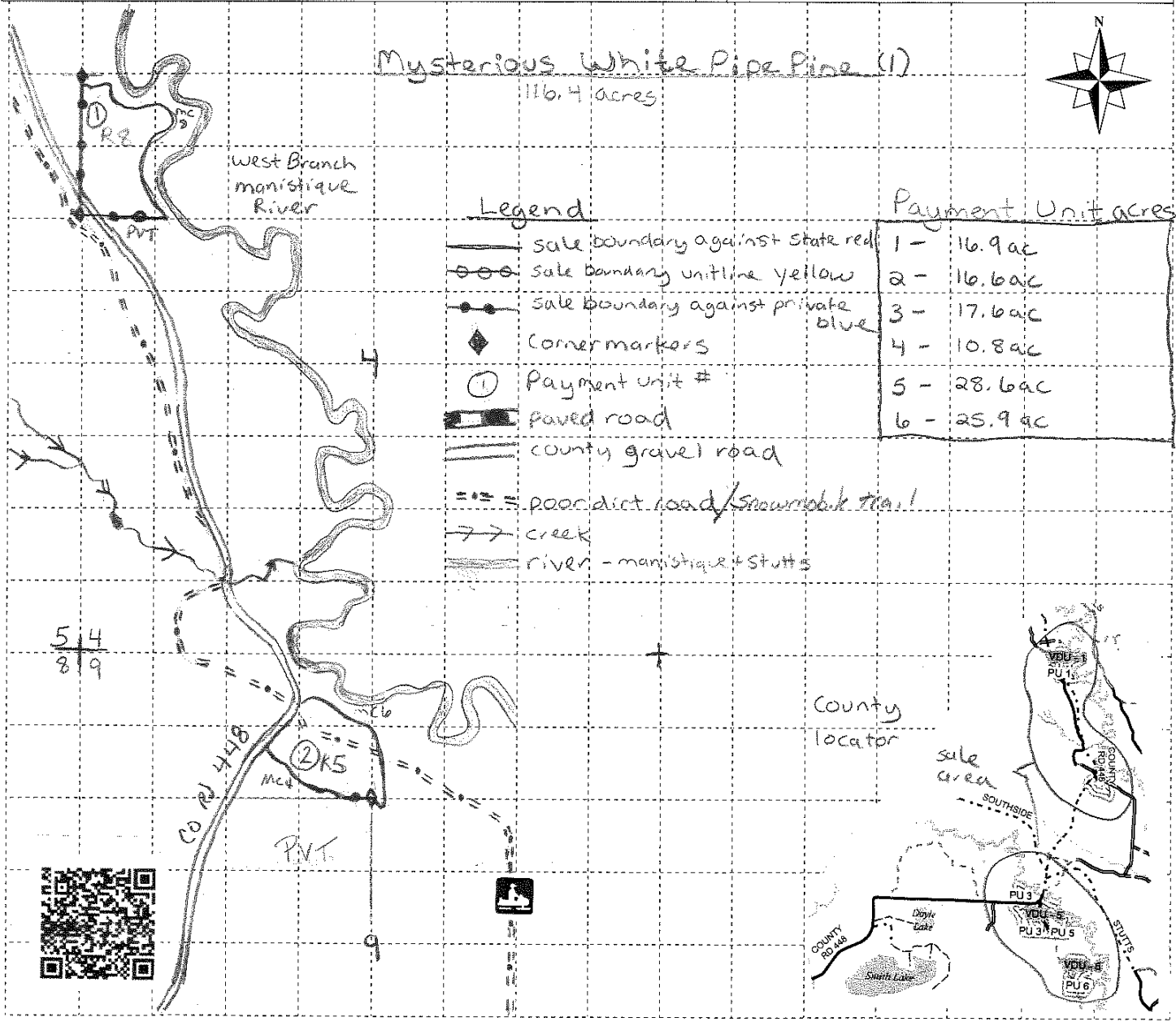
This information provided by authority of Part 5, 1994 PA 451, as amended.

Sale Number	Year
41-18-22	22

Forest Management Unit Shingleton	County Schoolcraft	Mapped By S.Clark	Date 9-12-22	Page 1	of 2
Compartment Number 51	Township 43N	Range 15W	Section(s) and Subdivision(s) Sec 4 NWNW, Sec 9 NENW, W1/2NE	Scale: [---4---] = 1 mile	

Cover Type			
A = Aspen	J = Jack Pine	O = Oak	U = Upland Brush
B = Paper Birch	K = Rock	P = Lowland Poplar	UM = Upland Mix Forest
C = Cedar	L = Lowland Brush	Q = Mixed Swamp Conifer	V = Bog or Marsh
D = Treed Bog	LM = Lowland Mix Forest	R = Red Pine	W = White Pine
E = Swamp Hardwoods	Forest	S = Black Spruce	X = Non Stocked
F = Spruce/Fir	M = Maple, Beech, Birch	T = Tamarack	Y = Sand
G = Grass	MC = Mixed Conifer	Z = Water	
H = Hemlock	MD = Mixed Deciduous		
	N = Marsh		

Density	
0 = Non Stocked	5 = Pole Timber Medium
1 = Seeding Sapling Poor	6 = Pole Timber Well
2 = Seeding Sapling Medium	7 = Saw Timber Poor
3 = Seeding Sapling Well	8 = Saw Timber Medium
4 = Pole Timber Poor	9 = Saw Timber Well





# TIMBER SALE MAP

This information provided by authority of Part 5, 1994 PA 451, as amended.

Sale Number	Year
41-18-22	22

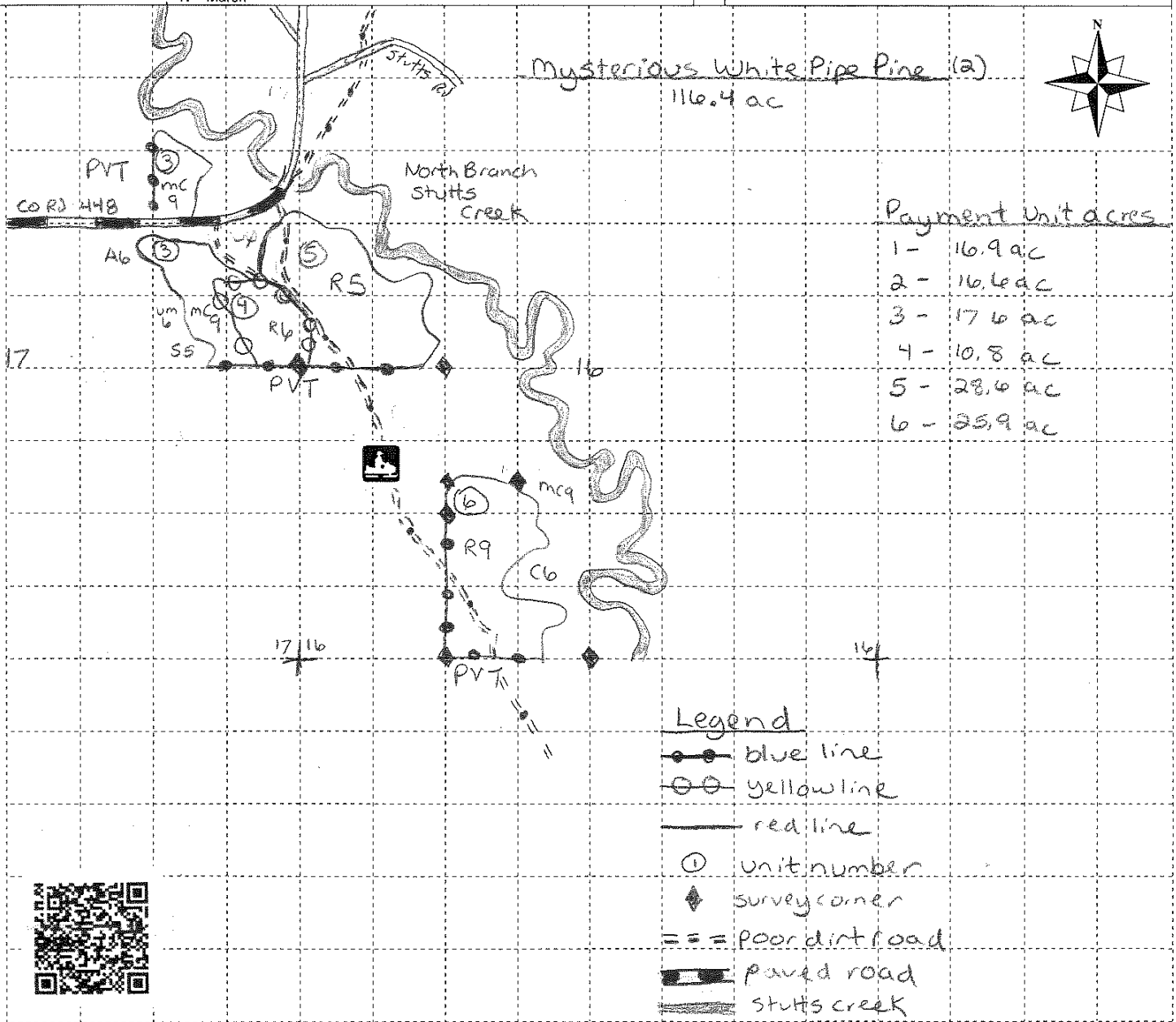
Forest Management Unit Shingleton		County Schoolcraft	Mapped By S.Clark Cruised By S.Clark	Date 9-12-22	Page of 2 of 2
Compartment Number 51	Township 43N	Range 15W	Section(s) and Subdivision(s) S-16 SWNW, E1/2SW, S-17 NENE, S1/2NE	Scale: [...4.....] = 1 mile	

### Cover Type

A = Aspen	J = Jack Pine	O = Oak	U = Upland Brush
B = Paper Birch	K = Rock	P = Lowland Poplar	UM = Upland Mix Forest
C = Cedar	L = Lowland Brush	Q = Mixed Swamp Conifer	V = Bog or Marsh
D = Treed Bog	LM = Lowland Mix	R = Red Pine	W = White Pine
E = Swamp Hardwoods	Forest	S = Black Spruce	X = Non Stocked
F = Spruce/Fir	M = Maple, Beech, Birch	T = Tamarack	Y = Sand
G = Grass	MC = Mixed Conifer		Z = Water
H = Hemlock	MD = Mixed Deciduous		
	N = Marsh		

### Density

0 = Non Stocked	5 = Pole Timber Medium
1 = Seedling Sapling Poor	6 = Pole Timber Well
2 = Seedling Sapling Medium	7 = Saw Timber Poor
3 = Seedling Sapling Well	8 = Saw Timber Medium
4 = Pole Timber Poor	9 = Saw Timber Well



## TIMBER SALE INFORMATION

### Garden Grade GEMS 2022 (41-019-22)

T40N, R18W, SEC. 1; T40N, R18W, SEC. 10; T40N, R18W, SEC. 11; T40N, R18W, SEC. 12; T40N, R18W, SEC. 13; T40N, R18W, SEC. 14; T40N, R18W, SEC. 2; T40N, R18W, SEC. 23; T40N, R18W, SEC. 24.

SALE NOTE: Payment Unit 9 will require the installation of 2 culverts or portable bridges. See Sale Spec 4.1.2 for details.

Road work is required on this sale. See Sale Spec 4.1.8 for additional information.

It is the responsibility of the Purchaser to obtain permission from the utility company to utilize the power line R.O.W. for operations.

The Cooks Garden Grade is a snowmobile trail and is shown on the Timber Sale Map. See Sale Spec 5.2.41 for restrictions.

A recreation site such as a trail, pathway, or campground is within the sale area or the vicinity. Certain restrictions/specifications may be applicable including time restrictions.

A timber sale contract for this lump sum, sealed bid timber sale will be awarded to the responsible bidder offering the highest sealed bid price. All units of volume listed below were estimated using the Inventory Manager computer program and the new Michigan taper model. Bids must be at or above the following advertised price for each product and species:

<u>PRODUCTS &amp; SPECIES</u>	<u>ESTIMATED UNITS*</u>	<u>ADVERTISED PRICE</u>
Sawtimber		
Basswood	2.6 MBF	\$ 89.00 / MBF
Paper Birch	3.4 MBF	\$ 117.00 / MBF
Red Maple	18.6 MBF	\$ 97.00 / MBF
Sugar Maple	3.7 MBF	\$ 290.00 / MBF
Pulpwood		
Balsam Fir	666 Cords	\$ 10.70 / Cord
Jack Pine	83 Cords	\$ 27.65 / Cord
Mixed Aspen	2,837 Cords	\$ 24.05 / Cord
Mixed Hardwood	1,343 Cords	\$ 14.70 / Cord
Mixed Spruce	903 Cords	\$ 19.30 / Cord
N. White Cedar	78 Cords	\$ 4.70 / Cord
Red Pine	71 Cords	\$ 64.80 / Cord
Tamarack	29 Cords	\$ 2.05 / Cord
White Pine	487 Cords	\$ 24.20 / Cord

\* The total volume is statistically estimated within plus (+) or minus (-) 11.55 percent. There are an estimated 6,427 cords on this timber sale, plus or minus 743 cords at the 95% confidence level. The estimated units are final and not subject to adjustment. Prospective bidders are urged to examine this timber and to make their own estimates of quantity and quality.

### **BOND AND PAYMENT SCHEDULE:**

1. A bond in the amount of \$6,757.00 to insure faithful performance of the conditions of the contract will be deposited by the successful bidder within 21 days of the sale award.
2. Cutting in any sale or unit without the required advance payment would be considered a trespass.
3. Total payment must be paid in advance or according to the following schedule:
  - (a) Ten percent (10%) of the sale value must be paid within 21 days of the sale award.
  - (b) The 10% down payment will be credited towards the first unit cut.

(c) Payment for each of the following units must be made before cutting begins in that unit:

PAYMENT UNIT NUMBER	PERCENT OF TOTAL SALE VALUE
01	7.1%
02	7.0%
03	4.8%
04	1.0%
05	1.5%
06	1.5%
07	7.4%
08	1.8%
09	11.5%
10	1.8%
11	9.0%
12	5.6%
13	4.7%
14	6.9%
15	5.9%
16	5.7%
17	2.7%
18	2.3%
19	2.5%
20	7.4%
21	1.9%

4. If no cutting takes place, the 10% down payment will not be refunded.

5. Operations on the contract issued will terminate on 06/30/2026.

**SALE STATISTICS**

Volumes were calculated in cubic feet using the Michigan taper model. Cubic foot volume includes all wood inside bark for the product indicated. For display purposes, cubic feet were converted to cords and MBF using a simple conversion factor, e.g. 79 cubic feet per cord and 185 cubic feet per MBF. The cubic foot volumes are precise; the cords and MBF volumes are not. Cubic foot volume cannot be directly converted to cords or boards with precision.

**SALE VOLUMES**

The total estimated sale volume may not equal the sum of the species/products due to the nature of statistical calculations associated with double sampling methodology.

VOLUME		STATISTICAL RANGE IN CORDS		
TOTAL CUBIC FEET	TOTAL CORDS	PERCENT ERROR	MINIMUM	MAXIMUM
507,735	6,427	11.55%	5,684	7,170

**VDU VOLUMES**

A VDU is a Volume Determination Unit. Volumes and their associated statistics are calculated at the VDU level and summarized to the sale level. There is often a one to one relationship between a VDU and a Payment Unit, but not always, depending on the cruise design. Refer to the VDU TO PAYMENT UNIT table.

VDU	VOLUME			RANGE IN CORDS	
	TOTAL CUBIC FEET	TOTAL CORDS	PERCENT ERROR	MINIMUM	MAXIMUM
1	371,216	4,699	13.48%	4,065	5,333
2	28,354	359	73.65%	95	623
30	10,959	139	25.98%	103	175
52	42,904	543	28.79%	387	699
71	9,233	117	53.78%	54	180
76	5,811	74	117.06%	13	160
405	32,627	413	40.83%	244	582
429	6,631	84	51.41%	41	127
<b>TOTAL:</b>	<b>507,735</b>	<b>6,427</b>		<b>4,976</b>	<b>7,878</b>

**VDU TO PAYMENT UNIT**

When a VDU is associated with more than one Payment Unit (PU), the VDU volumes are assigned to the PU based on acres of the VDU within the PU.

VDU	VDU ACRES	PU	PU ACRES
1	212.3	2	20.4
		3	14.0
		7	21.6
		8	5.1
		9	33.4
		12	16.1
		14	20.0
		15	17.0
		16	16.4
		17	7.7
		18	6.5
		19	7.1
		20	21.4
		21	5.6
2	6.1	13	6.1
30	6.3	10	6.3
52	25.6	11	25.6
71	4.1	6	4.1
76	4.1	5	4.1
405	20.1	1	20.1
429	8.6	4	8.6
<b>TOTAL:</b>	<b>287.2</b>		<b>287.2</b>

## DESCRIPTION OF TIMBER BY PAYMENT UNIT (PU)

PU	MARKET GROUP	PRODUCT	QUANTITY	UNIT	ACRES	ADVERTISE PRICE	
1	Balsam Fir	Pulpwood	24	Cords	20.1	\$9,570.65	
	Mixed Aspen		79	Cords			
	<i>Quaking Aspen</i>		79	Cords			
	Mixed Hardwood		40	Cords			
	<i>Paper Birch</i>		9	Cords			
	<i>Red Maple</i>		31	Cords			
	Mixed Spruce		109	Cords			
	<i>White Spruce</i>		109	Cords			
	Red Pine		12	Cords			
	White Pine		163	Cords			
2	Paper Birch	Sawtimber	0.3	MBF	20.4	\$9,519.50	
	Red Maple		0.4	MBF			
	Balsam Fir	Pulpwood	58	Cords			
	Jack Pine		8	Cords			
	Mixed Aspen		260	Cords			
	<i>B. T. Aspen</i>		86	Cords			
	<i>Quaking Aspen</i>		174	Cords			
	Mixed Hardwood		89	Cords			
	<i>Black Ash</i>		1	Cords			
	<i>Black Cherry</i>		8	Cords			
	<i>Paper Birch</i>		10	Cords			
	<i>Red Maple</i>		68	Cords			
	<i>Red Oak</i>		1	Cords			
	<i>Sugar Maple</i>		1	Cords			
	Mixed Spruce		32	Cords			
	<i>Black Spruce</i>		9	Cords			
	<i>White Spruce</i>		23	Cords			
	Red Pine		5	Cords			
	Tamarack		2	Cords			
	White Pine		4	Cords			
3	Paper Birch		Sawtimber	0.2	MBF	14.0	\$6,550.20
	Red Maple			0.3	MBF		
	Balsam Fir	Pulpwood	40	Cords			
	Jack Pine		5	Cords			
	Mixed Aspen		178	Cords			
	<i>B. T. Aspen</i>		59	Cords			
	<i>Quaking Aspen</i>		119	Cords			
	Mixed Hardwood		62	Cords			
	<i>Black Ash</i>		1	Cords			
	<i>Black Cherry</i>		5	Cords			
	<i>Paper Birch</i>		7	Cords			
	<i>Red Maple</i>		47	Cords			
	<i>Red Oak</i>		1	Cords			
	<i>Sugar Maple</i>		1	Cords			
	Mixed Spruce		21	Cords			
	<i>Black Spruce</i>		6	Cords			
	<i>White Spruce</i>		15	Cords			
Red Pine	4		Cords				
Tamarack	1		Cords				
White Pine	3	Cords					
4	Balsam Fir	Pulpwood	5	Cords	8.6	\$1,362.70	
	Mixed Hardwood		25	Cords			
	<i>Black Cherry</i>		9	Cords			
	<i>Red Maple</i>		8	Cords			
	<i>Sugar Maple</i>		8	Cords			
	Mixed Spruce		35	Cords			



**DESCRIPTION OF TIMBER BY PAYMENT UNIT (PU), CON'T**

PU	MARKET GROUP	PRODUCT	QUANTITY	UNIT	ACRES	ADVERTISE PRICE
4 con't	<i>White Spruce</i>	<i>Pulpwood</i>	35	<i>Cords</i>		
	White Pine		11	Cords		
5	Basswood	Sawtimber	2.6	MBF	4.1	\$2,069.40
	Sugar Maple	Pulpwood	3.7	MBF		
	Balsam Fir		18	Cords		
	Mixed Hardwood		35	Cords		
	<i>Basswood</i>		1	<i>Cords</i>		
	<i>Sugar Maple</i>		34	<i>Cords</i>		
	Mixed Spruce		3	Cords		
	<i>White Spruce</i>		3	<i>Cords</i>		
6	Red Maple		Sawtimber	4.6	MBF	4.1
	Balsam Fir	Pulpwood	2	Cords		
	Mixed Aspen	11	Cords			
	<i>Quaking Aspen</i>	11	<i>Cords</i>			
	Mixed Hardwood	86	Cords			
	<i>Paper Birch</i>	9	<i>Cords</i>			
	<i>Red Maple</i>	77	<i>Cords</i>			
	7	Paper Birch	Sawtimber	0.3	MBF	
Red Maple		Pulpwood	0.4	MBF		
Balsam Fir			62	Cords		
Jack Pine			8	Cords		
Mixed Aspen			276	Cords		
<i>B. T. Aspen</i>			92	<i>Cords</i>		
<i>Quaking Aspen</i>			184	<i>Cords</i>		
Mixed Hardwood			94	Cords		
<i>Black Ash</i>			1	<i>Cords</i>		
<i>Black Cherry</i>			8	<i>Cords</i>		
<i>Paper Birch</i>			11	<i>Cords</i>		
<i>Red Maple</i>			72	<i>Cords</i>		
<i>Red Oak</i>			1	<i>Cords</i>		
<i>Sugar Maple</i>			1	<i>Cords</i>		
Mixed Spruce			34	Cords		
<i>Black Spruce</i>			10	<i>Cords</i>		
<i>White Spruce</i>			24	<i>Cords</i>		
Red Pine			5	Cords		
Tamarack			2	Cords		
White Pine			4	Cords		
8	Paper Birch		Sawtimber	0.1	MBF	5.1
	Red Maple	Pulpwood	0.1	MBF		
	Balsam Fir		15	Cords		
	Jack Pine		2	Cords		
	Mixed Aspen		66	Cords		
	<i>B. T. Aspen</i>		22	<i>Cords</i>		
	<i>Quaking Aspen</i>		44	<i>Cords</i>		
	Mixed Hardwood		22	Cords		
	<i>Black Cherry</i>		2	<i>Cords</i>		
	<i>Paper Birch</i>		3	<i>Cords</i>		
	<i>Red Maple</i>		17	<i>Cords</i>		
	Mixed Spruce		8	Cords		
	<i>Black Spruce</i>		2	<i>Cords</i>		
	<i>White Spruce</i>		6	<i>Cords</i>		
	Red Pine		1	Cords		
	Tamarack		1	Cords		
	White Pine		1	Cords		
9	Paper Birch		Sawtimber	0.6	MBF	33.4
	Red Maple		0.6	MBF		

**DESCRIPTION OF TIMBER BY PAYMENT UNIT (PU), CON'T**

PU	MARKET GROUP	PRODUCT	QUANTITY	UNIT	ACRES	ADVERTISE PRICE
9 con't	Balsam Fir	Pulpwood	94	Cords		
	Jack Pine		14	Cords		
	Mixed Aspen		425	Cords		
	<i>B. T. Aspen</i>		140	Cords		
	<i>Quaking Aspen</i>		285	Cords		
	Mixed Hardwood		148	Cords		
	<i>Black Ash</i>		5	Cords		
	<i>Black Cherry</i>		14	Cords		
	<i>Paper Birch</i>		17	Cords		
	<i>Red Maple</i>		107	Cords		
	<i>Red Oak</i>		3	Cords		
	<i>Sugar Maple</i>		2	Cords		
	Mixed Spruce		52	Cords		
	<i>Black Spruce</i>		15	Cords		
	<i>White Spruce</i>		37	Cords		
	Red Pine		8	Cords		
	Tamarack		3	Cords		
White Pine	7	Cords				
10	Mixed Aspen	Pulpwood	18	Cords	6.3	\$2,451.60
	<i>Quaking Aspen</i>		18	Cords		
	Mixed Hardwood		23	Cords		
	<i>Red Maple</i>		23	Cords		
	Mixed Spruce		62	Cords		
	<i>Black Spruce</i>		62	Cords		
	White Pine		20	Cords		
11	Red Maple	Sawtimber	10.1	MBF	25.6	\$12,114.20
	Balsam Fir	Pulpwood	12	Cords		
	Mixed Aspen		10	Cords		
	<i>Quaking Aspen</i>		10	Cords		
	Mixed Hardwood		145	Cords		
	<i>Paper Birch</i>		38	Cords		
	<i>Red Maple</i>		107	Cords		
	Mixed Spruce		132	Cords		
	<i>Black Spruce</i>		132	Cords		
	Tamarack		6	Cords		
White Pine	251		Cords			
12	Paper Birch	Sawtimber	0.3	MBF	16.1	\$7,514.65
	Red Maple	Pulpwood	0.3	MBF		
	Balsam Fir		46	Cords		
	Jack Pine		6	Cords		
	Mixed Aspen		205	Cords		
	<i>B. T. Aspen</i>		68	Cords		
	<i>Quaking Aspen</i>		137	Cords		
	Mixed Hardwood		71	Cords		
	<i>Black Ash</i>		1	Cords		
	<i>Black Cherry</i>		6	Cords		
	<i>Paper Birch</i>		8	Cords		
	<i>Red Maple</i>		54	Cords		
	<i>Red Oak</i>		1	Cords		
	<i>Sugar Maple</i>		1	Cords		
	Mixed Spruce		25	Cords		
	<i>Black Spruce</i>		7	Cords		
	<i>White Spruce</i>		18	Cords		
	Red Pine		4	Cords		
	Tamarack		2	Cords		
	White Pine		3	Cords		

## DESCRIPTION OF TIMBER BY PAYMENT UNIT (PU), CON'T

PU	MARKET GROUP	PRODUCT	QUANTITY	UNIT	ACRES	ADVERTISE PRICE	
13	Mixed Aspen	Pulpwood	7	Cords	6.1	\$6,314.15	
	<i>Quaking Aspen</i>		7	<i>Cords</i>			
	Mixed Hardwood		59	Cords			
	<i>Paper Birch</i>		20	<i>Cords</i>			
	<i>Red Maple</i>		39	<i>Cords</i>			
	Mixed Spruce		231	Cords			
	<i>Black Spruce</i>		231	<i>Cords</i>			
	N. White Cedar		78	Cords			
	Red Pine		7	Cords			
14	Paper Birch	Sawtimber	0.3	MBF	20.0	\$9,378.60	
	Red Maple		0.4	MBF			
	Balsam Fir	Pulpwood	57	Cords			
	Jack Pine		8	Cords			
	Mixed Aspen		256	Cords			
	<i>B. T. Aspen</i>		85	<i>Cords</i>			
	<i>Quaking Aspen</i>		171	<i>Cords</i>			
	Mixed Hardwood		88	Cords			
	<i>Black Ash</i>		1	<i>Cords</i>			
	<i>Black Cherry</i>		8	<i>Cords</i>			
	<i>Paper Birch</i>		10	<i>Cords</i>			
	<i>Red Maple</i>		67	<i>Cords</i>			
	<i>Red Oak</i>		1	<i>Cords</i>			
	<i>Sugar Maple</i>		1	<i>Cords</i>			
	Mixed Spruce		31	Cords			
	<i>Black Spruce</i>		9	<i>Cords</i>			
	<i>White Spruce</i>		22	<i>Cords</i>			
	Red Pine		5	Cords			
	Tamarack		2	Cords			
	White Pine		4	Cords			
15	Paper Birch		Sawtimber	0.3	MBF	17.0	\$7,973.90
	Red Maple			0.3	MBF		
	Balsam Fir	Pulpwood	48	Cords			
	Jack Pine		7	Cords			
	Mixed Aspen		217	Cords			
	<i>B. T. Aspen</i>		72	<i>Cords</i>			
	<i>Quaking Aspen</i>		145	<i>Cords</i>			
	Mixed Hardwood		75	Cords			
	<i>Black Ash</i>		1	<i>Cords</i>			
	<i>Black Cherry</i>		6	<i>Cords</i>			
	<i>Paper Birch</i>		9	<i>Cords</i>			
	<i>Red Maple</i>		57	<i>Cords</i>			
	<i>Red Oak</i>		1	<i>Cords</i>			
	<i>Sugar Maple</i>		1	<i>Cords</i>			
	Mixed Spruce		27	Cords			
	<i>Black Spruce</i>		8	<i>Cords</i>			
	<i>White Spruce</i>		19	<i>Cords</i>			
	Red Pine		4	Cords			
	Tamarack		2	Cords			
	White Pine		4	Cords			
16	Paper Birch		Sawtimber	0.3	MBF	16.4	\$7,660.30
	Red Maple			0.3	MBF		
	Balsam Fir	Pulpwood	47	Cords			
	Jack Pine		6	Cords			
	Mixed Aspen		210	Cords			
	<i>B. T. Aspen</i>		70	<i>Cords</i>			
	<i>Quaking Aspen</i>		140	<i>Cords</i>			

## DESCRIPTION OF TIMBER BY PAYMENT UNIT (PU), CON'T

PU	MARKET GROUP	PRODUCT	QUANTITY	UNIT	ACRES	ADVERTISE PRICE				
16 con't	Mixed Hardwood	Pulpwood	72	Cords						
	<i>Black Ash</i>		1	<i>Cords</i>						
	<i>Black Cherry</i>		6	<i>Cords</i>						
	<i>Paper Birch</i>		8	<i>Cords</i>						
	<i>Red Maple</i>		55	<i>Cords</i>						
	<i>Red Oak</i>		1	<i>Cords</i>						
	<i>Sugar Maple</i>		1	<i>Cords</i>						
	Mixed Spruce		25	Cords						
	<i>Black Spruce</i>		7	<i>Cords</i>						
	<i>White Spruce</i>		18	<i>Cords</i>						
	Red Pine		4	Cords						
	Tamarack		2	Cords						
	White Pine		3	Cords						
	17		Paper Birch	Sawtimber			0.1	MBF	7.7	\$3,632.15
Red Maple			0.1	MBF						
Balsam Fir		Pulpwood	22	Cords						
Jack Pine			3	Cords						
Mixed Aspen			99	Cords						
<i>B. T. Aspen</i>			33	<i>Cords</i>						
<i>Quaking Aspen</i>			66	<i>Cords</i>						
Mixed Hardwood			34	Cords						
<i>Black Ash</i>			1	<i>Cords</i>						
<i>Black Cherry</i>			3	<i>Cords</i>						
<i>Paper Birch</i>			4	<i>Cords</i>						
<i>Red Maple</i>			26	<i>Cords</i>						
Mixed Spruce			12	Cords						
<i>Black Spruce</i>			3	<i>Cords</i>						
<i>White Spruce</i>			9	<i>Cords</i>						
Red Pine			2	Cords						
Tamarack			1	Cords						
White Pine			2	Cords						
18			Paper Birch	Sawtimber	0.1	MBF	6.5	\$3,049.55		
			Red Maple		0.1	MBF				
	Balsam Fir		Pulpwood	19	Cords					
	Jack Pine	3		Cords						
	Mixed Aspen	83		Cords						
	<i>B. T. Aspen</i>	28		<i>Cords</i>						
	<i>Quaking Aspen</i>	55		<i>Cords</i>						
	Mixed Hardwood	27		Cords						
	<i>Black Cherry</i>	2		<i>Cords</i>						
	<i>Paper Birch</i>	3		<i>Cords</i>						
	<i>Red Maple</i>	22		<i>Cords</i>						
	Mixed Spruce	10		Cords						
	<i>Black Spruce</i>	3		<i>Cords</i>						
	<i>White Spruce</i>	7		<i>Cords</i>						
	Red Pine	2		Cords						
	Tamarack	1		Cords						
	White Pine	1		Cords						
	19	Paper Birch		Sawtimber	0.1	MBF			7.1	\$3,330.75
Red Maple				0.1	MBF					
Balsam Fir		Pulpwood	20	Cords						
Jack Pine			3	Cords						
Mixed Aspen			91	Cords						
<i>B. T. Aspen</i>			30	<i>Cords</i>						
<i>Quaking Aspen</i>			61	<i>Cords</i>						
Mixed Hardwood			31	Cords						

**DESCRIPTION OF TIMBER BY PAYMENT UNIT (PU), CON'T**

PU	MARKET GROUP	PRODUCT	QUANTITY	UNIT	ACRES	ADVERTISE PRICE
19 con't	<i>Black Cherry</i>	<i>Pulpwood</i>	3	<i>Cords</i>		
	<i>Paper Birch</i>		4	<i>Cords</i>		
	<i>Red Maple</i>		24	<i>Cords</i>		
	Mixed Spruce		11	<i>Cords</i>		
	<i>Black Spruce</i>		3	<i>Cords</i>		
	<i>White Spruce</i>		8	<i>Cords</i>		
	Red Pine		2	<i>Cords</i>		
	Tamarack		1	<i>Cords</i>		
	White Pine		1	<i>Cords</i>		
	20		Paper Birch	Sawtimber		
Red Maple		0.4	MBF			
Balsam Fir		Pulpwood	61	<i>Cords</i>		
Jack Pine			8	<i>Cords</i>		
Mixed Aspen			274	<i>Cords</i>		
<i>B. T. Aspen</i>			91	<i>Cords</i>		
<i>Quaking Aspen</i>			183	<i>Cords</i>		
Mixed Hardwood			93	<i>Cords</i>		
<i>Black Ash</i>			1	<i>Cords</i>		
<i>Black Cherry</i>			8	<i>Cords</i>		
<i>Paper Birch</i>			11	<i>Cords</i>		
<i>Red Maple</i>			71	<i>Cords</i>		
<i>Red Oak</i>			1	<i>Cords</i>		
<i>Sugar Maple</i>			1	<i>Cords</i>		
Mixed Spruce			34	<i>Cords</i>		
<i>Black Spruce</i>			10	<i>Cords</i>		
<i>White Spruce</i>			24	<i>Cords</i>		
Red Pine			5	<i>Cords</i>		
Tamarack			2	<i>Cords</i>		
White Pine			4	<i>Cords</i>		
21	Paper Birch	Sawtimber	0.1	MBF	5.6	\$2,597.05
	Red Maple		0.1	MBF		
	Balsam Fir	Pulpwood	16	<i>Cords</i>		
	Jack Pine		2	<i>Cords</i>		
	Mixed Aspen		72	<i>Cords</i>		
	<i>B. T. Aspen</i>		24	<i>Cords</i>		
	<i>Quaking Aspen</i>		48	<i>Cords</i>		
	Mixed Hardwood		24	<i>Cords</i>		
	<i>Black Cherry</i>		2	<i>Cords</i>		
	<i>Paper Birch</i>		3	<i>Cords</i>		
	<i>Red Maple</i>		19	<i>Cords</i>		
	Mixed Spruce		9	<i>Cords</i>		
	<i>Black Spruce</i>		3	<i>Cords</i>		
	<i>White Spruce</i>		6	<i>Cords</i>		
	Red Pine		1	<i>Cords</i>		
	Tamarack		1	<i>Cords</i>		
	White Pine		1	<i>Cords</i>		
TOTAL:			28.3	MBF		
TOTAL:			6,497	Cords		

## Sale Specific Conditions & Requirements

Sale Name: Garden Grade GEMS 2022

Sale Number: 41-019-22 Seq#: 2

### 1 - Sale Area

#### 1.2 - Boundaries

##### 1.2.1 - Painted boundaries (9/19)

The sale boundary and Payment Unit boundaries are marked and identified by blue, red and yellow paint. Exterior sale boundary lines against private property are marked with blue paint. Exterior sale boundary lines against state are marked with red paint. Interior Payment Unit boundaries are marked with yellow paint. The painted boundary line trees are not Included Timber and are to be protected unless marked with orange paint. Yellow painted trees designating an interior Payment Unit boundary are only to be cut when all surrounding Payment Units have been paid.

### 2 - Timber Specifications

#### 2.1 - Included Timber

##### 2.1.1 - Clearcut unit(s) with unmerchantable trees (6/14)

Within Payment Unit(s) 1-4 and 6-21, cut all deciduous trees that are two (2) inches or more at DBH, and all conifer trees that are four (4) inches or more at DBH, except do not cut hemlock, oak, serviceberry, and dogwood. In addition, do not cut any cedar except within Payment Unit 13, where cedar is designated for cutting. Special protection trees identified in accordance with condition 3.4.2, within clearcutting unit boundaries, are not Included Timber and are to be protected.

##### 2.1.3 - Cut tree marked unit(s) (12/08)

Within Payment Unit(s) 5, all trees are designated for cutting when marked with orange paint above and below stump height, regardless of merchantability.

### 3 - Payments

#### 3.3 - Pre-measured Sales

##### 3.3.4 - Dividing payment units (7/14)

Payment Unit(s) with a value greater than \$20,000 may be divided at the request of the Purchaser and upon approval of the Unit Manager. Dividing Payment Units is a contract modification which requires a Timber Sale Contract Amendment.

#### 3.4 - Damaged Timber

##### 3.4.2 - Special Protection Trees (4/14)

The Purchaser shall not cut live or dead special protection trees within cutting units or clearings. Special protection trees are hemlock. If the Purchaser's operations have cut or damaged special protection trees through carelessness, the Purchaser shall pay \$100 as fixed, agreed and liquidated damages for each special protection tree cut or damaged. Such payment does not constitute ownership of the undesignated timber.

### 4 - Transportation

#### 4.1 - Construction

##### 4.1.1 - Stream crossings, general (3/11)

All stream crossing structures will be temporary and therefore, shall be provided by the Purchaser, and must be removed upon completion of the sale. All permits for stream crossings will be provided by the DNR.

##### 4.1.2 - Stream crossings, specific (3/11)

Payment Unit 9 will require the installation of 2 culverts or portable bridges. This installation will be performed in accordance with the specifications on the appropriate permits which shall be provided by the DNR. Contact the sale administrator to allow time for the permitting process. All work will be at the expense of the Purchaser.

##### 4.1.3 - Slash and earthen piles (8/04)

Piles or windrows of earth along roads and landings that have been widened or constructed shall be leveled. Slash from road maintenance or construction, including stumps, shall be dispersed throughout the sale.

#### 4.1.4 - Timber removed for construction (12/09)

Trees cut or damaged in the process of pre-approved road, landing or skid trail construction will be decked in an area separate from other Designated Timber and not removed until measured by the sale administrator. Payment will be made at the specified Purchase Unit Price.

#### 4.1.6 - Road construction (1/09)

Construction of new roads or improvements of existing roads shall be done in such a way as to minimize the environmental and visual impacts. Merchantable trees shall be cut and utilized unless otherwise directed. Non-merchantable trees shall be severed and laid flat on the ground. Slash shall be scattered, and not left in windrows and kept a minimum of 10 feet back from the road edge. Stumps shall be set upright, not left on edge, and be moved at least 10 feet away from the road edge. Disturbed soil shall be feathered into the woods and not left in berms or windrows.

#### 4.1.7 - Road closure (10/11)

All new roads built into the sale must be blocked to vehicle traffic upon completion of the sale. Overgrown roads that are reopened shall be considered new roads. In general, this will require constructing a four (4') foot high berm of stumps and logs covered with earth. Stumps and brush must be placed along the remainder of the trail. These roads must be rendered impassable to cars and trucks. All stumps from road building and landing construction must be reserved to block any newly constructed roads upon completion of the sale. These stumps must be scattered along the road system to prohibit vehicular movement. Contact the sale administrator for specific details of design and placement.

#### 4.1.8 - Road work (1) (8/07)

The following road work is required: A new road must be built to provide access into Payment Unit 5. Design and specifications will be covered at the pre-sale conference. The road will be left open following construction to provide hunter access.

#### 4.1.11 - Permits (2/12)

The DNR will secure any necessary highway and stream crossing permits that may be required. Contact the sale administrator to allow time for permitting.

### 4.2 - Maintenance

#### 4.2.4 - Grading (10/16)

For completion of the sale, state forest roads must be graded. In general, this will require a road grader or bull dozer to shape up the roads after forest products have been hauled off site. This includes cleaning of drainage areas, grading, crowning and filling with gravel, if necessary. The grading equipment to be used must be approved by the Unit Manager or his/her representative.

### 4.4 - Access

#### 4.4.3 - Access gate (12/08)

Access gate(s) must be locked at the completion of each day unless otherwise approved by the Unit Manager or his/her representative.

## 5 - Operations

### 5.1 - Notification

#### 5.1.6 - Utility R.O.W. (4/19)

It is the responsibility of the Purchaser to obtain permission from the utility company to utilize the power line R.O.W. for operations.

### 5.2 - Conduct of Operations

#### 5.2.2 - Hazard Trees/Snags

##### 5.2.2.1 - Den trees (10/16)

Obvious hollow and/or den trees shall be protected and left standing unless they are a safety hazard.

#### 5.2.4 - Dead and Down Creation

##### 5.2.4.4 - Dead and down creation, grouse (6/18)

To encourage grouse and other wildlife, in Payment Unit(s) 1-4, 6-9, 12 and 14-21, leave a minimum of one, 8-inch diameter tree per acre. These trees are to be cut at 4 feet above the ground and the tree is to be left where it falls adjacent the stump. These trees will be evenly scattered throughout the unit, preferably at least two chains from any roads, two-tracks, or trails open to vehicles.

#### 5.2.29 - Shrub protection (1/20)

Do not cut or damage dogwood or juneberry. These woody-shrub plants are highly beneficial to various wildlife species.

#### 5.2.32 - Decking/landing restoration (9/13)

All decking and landing areas must have the surface area restored to a condition equal to or better than before. This is to ensure the proper regeneration of the stand. Wood debris, chips and "cookies" from trimmings must be removed or scattered away from landing and loading areas and may not be windrowed on the edge.

#### 5.2.38 - No decking against live trees (2/04)

Cut products may not be decked against unmarked or designated leave trees.

#### 5.2.41 - Snowmobile trail protection (9/11)

The Cooks Garden Grade is a snowmobile trail and is shown on the Timber Sale Map. Do not cut or damage posts with orange trail markers or traffic control signs. If the trail is used, it must be maintained and restored to a condition equal to or better than before the sale. The road maintenance/restoration must be done prior to December 1. If the trail road is to be used for hauling during the snowmobile season, then a snow covered base must be left on the trail. Maintain a 20 foot wide slash, debris, and rut free zone daily using the snowmobile trail as the centerline. No decking of forest products will be permitted along the snowmobile trail. All stumps within 20 feet of the snowmobile trail must be cut at ground level.

### 5.7 - Protection of Historical Sites

#### 5.7.1 - Historical sites (7/12)

The Purchaser shall not cut live or dead trees or operate equipment within historical sites. Historical sites are located near Payment Unit 9. Contact the sale administrator for the exact location. The Purchaser shall protect historical sites from damage by the Purchaser's operations. If Purchaser's operations have cut or damaged historical sites through carelessness, the Purchaser shall pay \$1,000 as fixed, agreed and liquidated damages for each acre or part thereof cut or damaged.

### 5.8 - Protection of Endangered Species

#### 5.8.3 - Red shoulder hawk or goshawk (2/16)

In the event that an active red shoulder hawk or goshawk nest is found, the contract may be amended to protect the nest site until the nest is determined to be inactive. The value of the trees in this excluded area will be refunded or credited to the Purchaser. The nest will be buffered with a five-chain radius (eight acre) protection area, centered on the nest tree, in which there will be no cutting or new roads constructed. Avoid human disturbance, including loading and skidding, in the protection area.

An additional zone of five chains (ten chains centered on the active nest tree) will be established in which there is no management activity from April 1 to July 30. Limit biomass harvesting and chipping operations within this ten-chain zone, retain the maximum one-third of residues per the Woody Biomass Harvesting Guidelines (Michigan DNR 2010). Nests determined to be inactive will be protected with a one-chain no-harvest buffer.

## 6 - Safety and Fire Prevention

### 6.2 - Signing

#### 6.2.2 - Snowmobile trail posting (10/20)

The Purchaser is responsible for posting and maintaining caution signs on Cooks Garden Grade prior to beginning operations during the snowmobile season (approximately December 1 to March 31). The trail must be posted to warn of logging activity and truck traffic. Signs must be removed when harvest operations are suspended or completed. The Purchaser will provide these signs.







# TIMBER SALE MAP

This information provided by authority of Part 525, 1994 PA 451, as amended.

Sale Number	Year
019	22

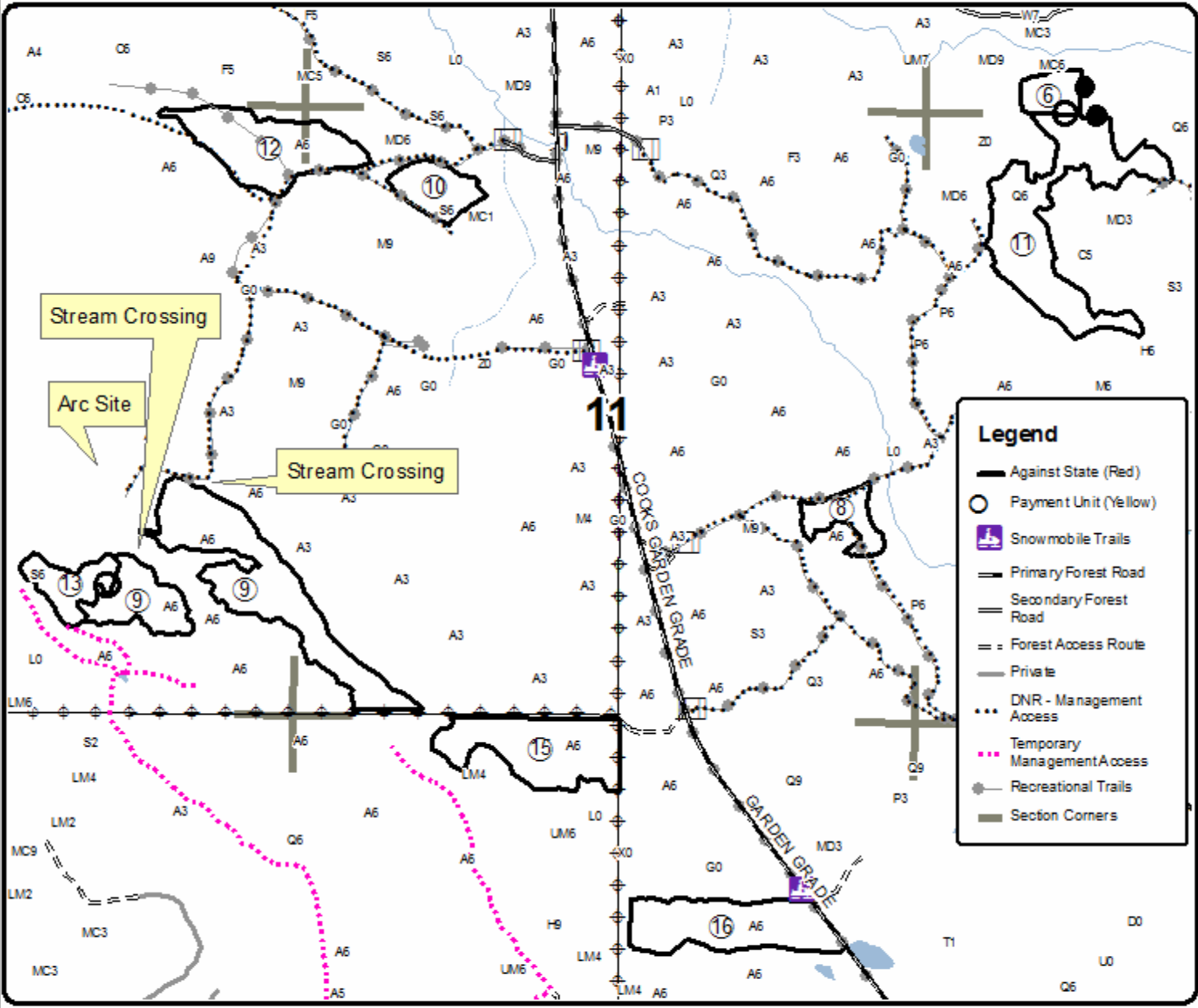
Forest Management Unit	County	Mapped By	Date	Page	of
Shingleton Management Unit	Delta	Petelius	09/29/2022	2	3
Township	Range	Section(s) and Subdivision(s)	Scale		
40N	18W	Section 1, 2, 10-14, 23, 24	1:15,840		

Cover Type				Density			
A = Aspen	H = Hemlock	N = Marsh	U = Upland Brush	0 = Non Stocked	5 = Pole Timber Medium		
B = Paper Birch	J = Jack Pine	O = Oak	UM = Upland Mixed	1 = Seeding Sapling Poor	6 = Pole Timber Well		
C = Cedar	L = Lowland Brush	P = Lowland Poplar	V = Bog or Marsh	2 = Seeding Sapling Medium	7 = Saw Timber Poor		
D = Tread Bog	LM = Lowland Mixed	Q = Mixed Swamp Conifer	W = White Pine	3 = Seeding Sapling Well	8 = Saw Timber Medium		
E = Swamp Hardwoods	M = Mpl, Boh, Birch	R = Red Pine	X = Non Stocked	4 = Pole Timber Poor	9 = Saw Timber Well		
F = Spruce Fir	MC = Mixed Conifer	S = Black Spruce	Z = Water				
G = Grass	MD = Mixed Deciduous	T = Tamarack					

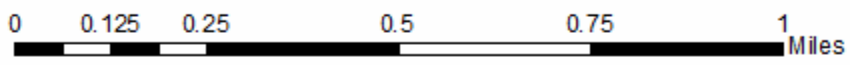
PU	Acres	PU	Acres	PU	Acres
6	4.1	10	6.3	13	6.1
8	5.1	11	25.6	15	17.0
9	33.4	12	16.1	16	16.4

## Garden Grade GEMS 2022

287.2 acres



Legend	
	Against State (Red)
	Payment Unit (Yellow)
	Snowmobile Trails
	Primary Forest Road
	Secondary Forest Road
	Forest Access Route
	Private
	DNR - Management Access
	Temporary Management Access
	Recreational Trails
	Section Corners





Sale Number	Year
019	22

# TIMBER SALE MAP

This information provided by authority of Part 525, 1994 PA 451, as amended.

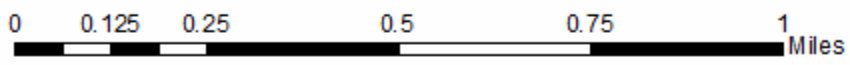
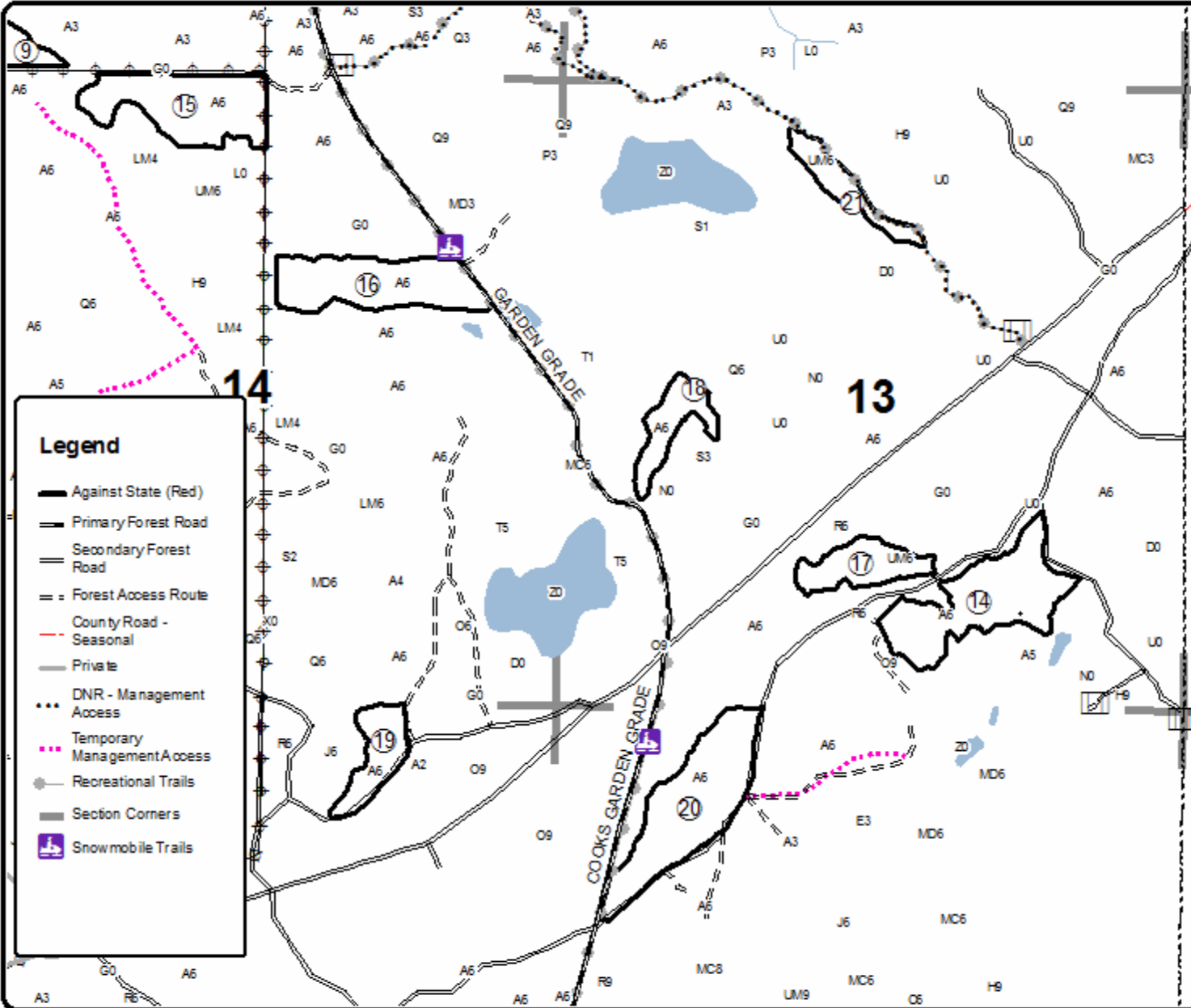
Forest Management Unit	County	Mapped By	Date	Page	of
Shingleton Management Unit	Delta	Petreluis	09/29/2022	3	3
Township	Range	Section(s) and Subdivision(s)	Scale		
40N	18W	Section 1, 2, 10-14, 23, 24	1:15,840		

Cover Type				Density	
A = Aspen	H = Hemlock	N = Marsh	U = Upland Brush	0 = Non Stocked	5 = Pole Timber Medium
B = Paper Birch	J = Jack Pine	O = Oak	UM = Upland Mixed	1 = Seeding Sapling Poor	6 = Pole Timber Well
C = Cedar	L = Lowland Brush	P = Lowland Poplar	V = Bog or Marsh	2 = Seeding Sapling Medium	7 = Saw Timber Poor
D = Tread Bog	LM = Lowland Mixed	Q = Mixed Swamp Conifer	W = White Pine	3 = Seeding Sapling Well	8 = Saw Timber Medium
E = Swamp Hdwoods	M = Mpl, Boh, Bich	R = Red Pine	X = Non Stocked	4 = Pole Timber Poor	9 = Saw Timber Well
F = Spruce Fir	MC = Mixed Conifer	S = Black Spruce	Z = Water		
G = Grass	MD = Mixed Deciduous	T = Tamarack			

PU	Acres	PU	Acres	PU	Acres
14	20.0	17	7.7	20	21.4
15	17	18	6.5	21	5.6
16	16.4	19	7.1		

## Garden Grade GEMS 2022

287.2 acres





Land of Bugs Hardwood (41-016-22)  
T46N, R17W, SEC. 23; T46N, R17W, SEC. 26; Alger COUNTY

In response to the notice of sale to be held 2:00 p.m. (local time) on May 10, 2023, I am hereby submitting my sealed bid ( firm offer) for the following forest products to be cut. Bids for individual species must be at or above the advertised price. All non-responsive bid forms may be rejected.

<u>PRODUCTS &amp; SPECIES</u>	<u>ESTIMATED VOLUME*</u>	<u>ADVERTISED PRICE</u>	<u>BID PRICE/UNIT</u>
<b>Sawtimber</b>			
Basswood	36.8 MBF	\$ 89.00/MBF	\$ _____
Black Cherry	8.8 MBF	\$ 109.00/MBF	\$ _____
Red Maple	4.6 MBF	\$ 97.00/MBF	\$ _____
Sugar Maple	82.8 MBF	\$ 290.00/MBF	\$ _____
<b>Pulpwood</b>			
Balsam Fir	11 Cords	\$ 10.70/Cord	\$ _____
Mixed Hardwood	243 Cords	\$ 14.70/Cord	\$ _____

\*The volumes are statistically estimated within plus (+) or minus (-) 16.17 percent at 95% confidence level. These estimated volumes are final and not subject to adjustment. Prospective bidders are urged to examine this timber and to make their own estimates of quantity and quality.

I understand that any or all bids may be rejected. All bids must be signed and all bid items must be bid or the bid form may be rejected. I also understand that consideration and awarding a contract will be based upon my past performance and ability to complete the contract based upon equipment and staffing subject to my control.

FEDERAL ID: \_\_\_\_\_ - \_\_\_\_\_ or SOCIAL SECURITY NUMBER: \_\_\_\_\_ - \_\_\_\_\_ - \_\_\_\_\_

Company or individual bidding: \_\_\_\_\_

Company representative's name: \_\_\_\_\_

Address: \_\_\_\_\_

City: \_\_\_\_\_ State: \_\_\_\_\_ Zip: \_\_\_\_\_

IF AVAILABLE, PLEASE PLACE THE PERSONALIZED LABEL FROM YOUR PROSPECTUS IN THE ABOVE BOX.

Individual or company representative's signature: \_\_\_\_\_ Date: \_\_\_\_\_

Phone number : \_\_\_\_\_ Email (optional): \_\_\_\_\_

**THE WINNING BIDDER MUST COMPLETE THE VERIFICATION OF WORKER'S DISABILITY COMPENSATION ACT COMPLIANCE (ON REVERSE SIDE IF DOUBLE SIDED) WITHIN 21 DAYS OF SALE AWARD DATE**



Mysterious White Pipes Pine (41-018-22)

T43N, R15W, SEC. 16; T43N, R15W, SEC. 17; T43N, R15W, SEC. 4; T43N, R15W,

In response to the notice of sale to be held 2:00 p.m. (local time) on May 10, 2023, I am hereby submitting my sealed bid ( firm offer) for the following forest products to be cut. Bids for individual species must be at or above the advertised price. All non-responsive bid forms may be rejected.

<u>PRODUCTS &amp; SPECIES</u>	<u>ESTIMATED VOLUME*</u>	<u>ADVERTISED PRICE</u>	<u>BID PRICE/UNIT</u>
<u>Pulpwood</u>			
Balsam Fir	7 Cords	\$ 10.70/Cord	\$ _____
Black Spruce	40 Cords	\$ 19.30/Cord	\$ _____
Jack Pine	60 Cords	\$ 27.65/Cord	\$ _____
Mixed Aspen	15 Cords	\$ 24.05/Cord	\$ _____
Mixed Hardwood	20 Cords	\$ 14.70/Cord	\$ _____
Red Pine	1,630 Cords	\$ 64.80/Cord	\$ _____
White Pine	300 Cords	\$ 24.20/Cord	\$ _____
White Spruce	20 Cords	\$ 19.30/Cord	\$ _____

\*The volumes are statistically estimated within plus (+) or minus (-) 15.75 percent at 95% confidence level. These estimated volumes are final and not subject to adjustment. Prospective bidders are urged to examine this timber and to make their own estimates of quantity and quality.

I understand that any or all bids may be rejected. All bids must be signed and all bid items must be bid or the bid form may be rejected. I also understand that consideration and awarding a contract will be based upon my past performance and ability to complete the contract based upon equipment and staffing subject to my control .

FEDERAL ID: \_\_\_\_ - \_\_\_\_ - \_\_\_\_ or SOCIAL SECURITY NUMBER: \_\_\_\_ - \_\_\_\_ - \_\_\_\_

Company or individual bidding: \_\_\_\_\_

Company representative's name: \_\_\_\_\_

Address: \_\_\_\_\_

City: \_\_\_\_\_ State: \_\_\_\_\_ Zip: \_\_\_\_\_

IF AVAILABLE, PLEASE PLACE THE PERSONALIZED LABEL FROM YOUR PROSPECTUS IN THE ABOVE BOX.

Individual or company representative's signature: \_\_\_\_\_ Date: \_\_\_\_\_

Phone number : \_\_\_\_\_ Email (optional): \_\_\_\_\_

**THE WINNING BIDDER MUST COMPLETE THE VERIFICATION OF WORKER'S DISABILITY COMPENSATION ACT COMPLIANCE (ON REVERSE SIDE IF DOUBLE SIDED) WITHIN 21 DAYS OF SALE AWARD DATE**



<b>FOR DEPARTMENT USE ONLY</b>	
Sale Number (XX - XXX - XX - XX)	
Forest Management Unit:	

# TIMBER SALE VERIFICATION OF WORKER'S DISABILITY COMPENSATION ACT COMPLIANCE

As required by Act 317, P.A. 1969 (Worker's Compensation) and  
Part 5 of Act 451 of 1994, as amended.

## VERIFICATION OF WORKER'S DISABILITY COMPENSATION ACT COMPLIANCE

- This verification must be completed and submitted within 21 days of contract award and prior to the issuance of the timber sale contract.
- In addition, if boxes 2B or 2C are checked, then Notice of Exclusion or Certificate of Insurance must be submitted within twenty-one (21) days of the contract award and prior to the issuance of the timber sale contract.
- All information must be typed or printed except for written signatures.

Please Check Appropriate Categories:

1. My business is organized as (you **must** check one of the boxes below):
  - A.  Sole Proprietorship (individual)
  - B.  Partnership
  - C.  Corporation
2. You **must** check one of the boxes below:
  - A.  I certify my business is a sole proprietorship and it has no employees but the sole proprietor. I am not subject to the Worker's Compensation Laws.
  - B.  I certify my business has satisfied its obligation to the Worker's Compensation Act through the use of an approved Notice of Exclusion (BWC-337, Rev. 5/96). I will provide a copy of the Notice of Exclusion within 21 days of the contract award. (For questions or a copy of the BWC-337, please call the Worker's Compensation Bureau at 517-322-1195).
  - C.  I certify my business has a Worker's Compensation Policy. I will provide an original Certificate of Insurance within twenty-one (21) days of the contract award.
3. If you have checked item 2(A) or 2(B), you **must** indicate the number of **both** full-time and part-time employees, other than yourself, including family members and active partners (if none, you must enter "0").

\_\_\_\_\_ Full-time Employees

\_\_\_\_\_ Part-time Employees

Name of Business		Federal ID (or) Social Security No.	
Address		Telephone (       )	
City	State	ZIP	

*I hereby certify that the above information is true and correct. I agree to notify the Michigan DNR of any changes that occur in factors affecting my coverage during any of my present and future operations.*

\_\_\_\_\_  
Signature of Owner or Authorized Representative

\_\_\_\_\_  
Title

\_\_\_\_\_  
Date

Please complete the "SEALED BID" information on the next page



Garden Grade GEMS 2022 (41-019-22)

T40N, R18W, SEC. 1; T40N, R18W, SEC. 10; T40N, R18W, SEC. 11; T40N, R18W,

In response to the notice of sale to be held 2:00 p.m. (local time) on May 10, 2023, I am hereby submitting my sealed bid ( firm offer) for the following forest products to be cut. Bids for individual species must be at or above the advertised price. All non-responsive bid forms may be rejected.

<u>PRODUCTS &amp; SPECIES</u>	<u>ESTIMATED VOLUME*</u>	<u>ADVERTISED PRICE</u>	<u>BID PRICE/UNIT</u>
<b>Sawtimber</b>			
Basswood	2.6 MBF	\$ 89.00/MBF	\$ _____
Paper Birch	3.4 MBF	\$ 117.00/MBF	\$ _____
Red Maple	18.6 MBF	\$ 97.00/MBF	\$ _____
Sugar Maple	3.7 MBF	\$ 290.00/MBF	\$ _____
<b>Pulpwood</b>			
Balsam Fir	666 Cords	\$ 10.70/Cord	\$ _____
Jack Pine	83 Cords	\$ 27.65/Cord	\$ _____
Mixed Aspen	2,837 Cords	\$ 24.05/Cord	\$ _____
Mixed Hardwood	1,343 Cords	\$ 14.70/Cord	\$ _____
Mixed Spruce	903 Cords	\$ 19.30/Cord	\$ _____
N. White Cedar	78 Cords	\$ 4.70/Cord	\$ _____
Red Pine	71 Cords	\$ 64.80/Cord	\$ _____
Tamarack	29 Cords	\$ 2.05/Cord	\$ _____
White Pine	487 Cords	\$ 24.20/Cord	\$ _____

\*The volumes are statistically estimated within plus (+) or minus (-) 11.55 percent at 95% confidence level. These estimated volumes are final and not subject to adjustment. Prospective bidders are urged to examine this timber and to make their own estimates of quantity and quality.

I understand that any or all bids may be rejected. All bids must be signed and all bid items must be bid or the bid form may be rejected. I also understand that consideration and awarding a contract will be based upon my past performance and ability to complete the contract based upon equipment and staffing subject to my control.

FEDERAL ID: \_\_\_\_\_ - \_\_\_\_\_ or SOCIAL SECURITY NUMBER: \_\_\_\_\_ - \_\_\_\_\_ - \_\_\_\_\_

Company or individual bidding: \_\_\_\_\_

Company representative's name: \_\_\_\_\_

Address: \_\_\_\_\_

City: \_\_\_\_\_ State: \_\_\_\_\_ Zip: \_\_\_\_\_

IF AVAILABLE, PLEASE PLACE THE PERSONALIZED LABEL FROM YOUR PROSPECTUS IN THE ABOVE BOX.

Individual or company representative's signature: \_\_\_\_\_ Date: \_\_\_\_\_

Phone number : \_\_\_\_\_ Email (optional): \_\_\_\_\_

**THE WINNING BIDDER MUST COMPLETE THE VERIFICATION OF WORKER'S DISABILITY COMPENSATION ACT COMPLIANCE (ON REVERSE SIDE IF DOUBLE SIDED) WITHIN 21 DAYS OF SALE AWARD DATE**

