



**DEPARTMENT OF NATURAL RESOURCES  
STATE OF MICHIGAN  
TIMBER SALE PROSPECTUS #7109**

SCHEDULED SALE DATE AND TIME: **4:00 p.m. (local time) on June 13, 2023.**

LOCATION: **TRAVERSE CITY MGMT UNIT, 2122 M 37 SOUTH, TRAVERSE CITY, MI 49685.**

PROSPECTUS NOTE: Effective immediately: all bid openings for the Traverse City Management Unit (Kalkaska Field Office and Traverse City Field Office) will be held at the Traverse City Field Office regardless of sale location within the unit. All payments will now be handled through the Traverse City Field Office. The Kalkaska Field Office will no longer accept payments or hard paper copies of timber sale bids. Payments for all contracts, use permits, bonds, etc. should be sent to the Traverse City Field Office.

The bidder is advised to inspect the sale area and review the location, estimated volumes, operating costs and contract terms of proposed sales. Please be aware that some landowners may request 60 days or more notice for access across their land.

Notice is hereby given that bids will be received by the Unit Manager, TRAVERSE CITY MANAGEMENT UNIT, for certain timber on the following described lands:

Happy Trails Red Pine (61-021-22) / T28N, R14W, SEC. 34, SENW,NESW,N1/2SE.

Leelanau County, Advertised Price \$197,668.35, 89.4 Acres, Red Pine.

SALE NOTE: A recreation site such as a trail, pathway, or campground is within the sale area or the vicinity. Certain restrictions/specifications may be applicable including time restrictions.

Carmean Road Mix (61-049-22) / T26N, R13W, SEC. 5, SWNW,NWSW.

T26N, R13W, SEC. 6, S1/2NE,NESE,S1/2SE.

T26N, R13W, SEC. 7, NENW,NWNE.

Benzie County, Advertised Price \$161,268.85, 103.3 Acres, Red Pine, Aspen.

SALE NOTE: A recreation site such as a trail, pathway, or campground is within the sale area or the vicinity. Certain restrictions/specifications may be applicable including time restrictions.

Adios Aspen (61-055-22) / T26N, R13W, SEC. 16, S1/2NW,SW,NWSE,S1/2SE.

T26N, R13W, SEC. 17, NESW,SE.

Benzie County, Advertised Price \$91,003.55, 134.8 Acres, Aspen, Hardwood.

## BID INSTRUCTIONS (VER. 10/10/2022):

### 1. Scheduled Bid Location, Date, and Time (2/11)

Bids must be received by the Unit Manager, TRAVERSE CITY OFFICE, 2122 M 37 South, Traverse City, MI 49685, no later than 4:00 p.m. (local time) on June 13, 2023. For further information concerning this sale, contact David Fisher at 231-745-4651.

### 2. Bidder's Qualifications (10/22)

If all or part of a timber sale was prepared by a private contractor, the contractor and that contractor's company are not permitted to bid on the timber sale. A person must be 18 years of age or older to purchase timber. Permanent employees of the Department of Natural Resources or members of their immediate household may not bid. Former employees, in the permanent or seasonal class, may not bid until 3 months after the last day of active duty. Bids will not be accepted from individuals or companies appearing on the DNR/FRD No-Bid List. This list contains the names of purchasers who previously failed to execute a contract within 21-days or who have a history of poor performance.

### 3. Preparation of Sealed Bids (5/16)

Bid Forms may be completed online thru Michigan DNR Timber Sale Online Bidding (OLB) at [www.michigan.gov/timberbidding](http://www.michigan.gov/timberbidding) or by completing the hardcopy Bid Form found in the Timber Sale Prospectus. Hardcopy Bid Forms shall be manually signed in ink. Registration in OLB is considered your 'signature' for all bids submitted thru that system. Bid prices must be entered for each species and product in the Bid Price column for all material subject to bidding and all fill-in blanks must be completed. If erasures or other changes appear on the hardcopy Bid Form, each erasure or change must be initialed by the person signing the bid.

### 4. Submission of Sealed Bids (5/16)

Bid forms may be obtained from the Unit Manager or thru OLB. Bids may be submitted hardcopy or thru OLB. All hardcopy bids must be submitted on the bid form and in an envelope clearly identified as described in this section. NOTE: Only one bid form per bid envelope. Sealed bids must be submitted to the Unit office designated in the prospectus and must be submitted at or prior to the time established in the prospectus. The envelope should show on the outside (a) the sale name or number and (b) the date and time of bid opening, as shown in the prospectus. Bids received after the time specified in the sale prospectus are late bids and will be rejected.

It is possible for a bidder to submit multiple bids on a single sale. For example, a bid may be submitted hardcopy and a bid may be submitted thru OLB. Or, two bidders from the same company could both submit bids on the same sale. If this were to happen, the State would accept all bids received and award the contract accordingly. All bidding and contractual requirements would apply to all bids received.

### 5. Public Opening of Sealed Bids (7/16)

If conditions permit, the sealed bids will be publicly opened and posted at the time and place set in the prospectus.

If a bidder, present at a bid opening, has submitted bids on more than one sale, that bidder may withdraw their unopened bid envelopes or announce the withdrawal of their online bid after being declared the successful bidder on one sale.

### 6. Award of Contract (1/11)

Award of the contract will be made to the Bidder whose bid, conforming to the prospectus, is most advantageous to the State of Michigan on the basis of total value at rates bid for the estimated quantities. The State reserves the right to reject any bid or waive any minor irregularity in bids received. A written award mailed (or otherwise furnished) to the successful Bidder shall be deemed to result in a binding contract without further action by either party.

### 7. Down Payment (1/11)

The Bidder to whom award is made must make a down payment within 21 days of the sale award. The amount of the down payment will be calculated as shown in the Bond and Payment Schedule of this prospectus. Only cash may be used to meet this requirement.

### 8. Performance Security (1/11)

As guarantee of faithful performance, a cash bond, certificate of deposit, surety bond or irrevocable letter of credit (LOC) is required within 21 days of the sale award. The amount of the performance security is shown in the Bond and

Payment Schedule of this prospectus. If an LOC or surety is used, the coverage must extend for at least 6 months beyond the contract expiration.

#### 9. Worker's Compensation (10/22)

Purchaser shall obtain worker's compensation insurance to cover claims under Michigan's Worker's Disability Compensation Act of 1969 or similar employee benefit act of any other state applicable to an employee. Verification of Worker's Disability Compensation Act Compliance must be completed and submitted within 21 days of contract award and prior to the issuance of the timber sale contract. In addition, if applicable, Notice of Exclusion or Certificate of Insurance must also be submitted.

#### 10. Timber Sale Contract (10/22)

Additional conditions and requirements common to all timber sales are listed on the timber sale contract (R4031) and are available on line at [www.michigan.gov/timber](http://www.michigan.gov/timber). Contact the Unit Manager for additional information or a sample contract. Within 21 days of the date of the award letter, the bidder must sign the contract and provide the required down payment, performance security, and verification of worker's disability compensation. The down payment and performance security shall be in accordance with the provisions of the timber sale contract, in the sums stated in this prospectus. If these actions are not taken, then the Bidder, the Bidder's corporation, and the corporation's principals may not be permitted to bid on State timber sales for a period of 3 months after the first offense, 6 months after the second offense, and 1 year after the third offense. An offense will only be counted against the Bidder for 5 years. In addition, the Bidder certifies that if awarded this contract, the Bidder will complete the timber sale contract in accordance with its terms and any modifications thereof including requirements to purchase, cut, and remove the included timber by the expiration date.

Payment Unit values in the State Forest Timber Sale Contract are calculated based on the advertised value of the Payment Unit as a percentage of the total advertised value of the contract. The advertised value of each Payment Unit is given in the Description of Timber by Payment Unit table on the Timber Sale Information page. For example, if the value of Payment Unit 1 is advertised as \$1,500 and the total Timber Sale value is advertised as \$10,000, the contract price for Payment Unit 1 will be 15% of the total bid price ( $\$1,500/\$10,000 * 100$ ).

#### 11. Disclaimer of Estimates and Bidder's Warranty of Inspection (10/22)

Before submitting this bid, the Bidder is advised and cautioned to inspect the sale area, review the requirements of the sale contract, and take other steps as may be reasonably necessary to ascertain the location, estimated volumes, construction estimates, and operating costs of the proposed sale. Failure to do so will not relieve the Bidder from responsibility for completing the contract.

The Bidder warrants that this bid is submitted solely on the basis of the Bidder's examination and inspection of the quality and quantity of the timber offered for sale and the Bidder's opinion of the value thereof and the costs of recovery. No reliance should be placed on the State of Michigan's estimates of timber quality, quantity or costs of recovery. Bidder further acknowledges that the State of Michigan: (i) expressly disclaims any warranty of fitness of timber for any purpose; (ii) offers this timber as is without any warranty of quality (merchantability) or quantity and (iii) expressly disclaims any warranty as to the quantity or quality of timber sold.

#### 12. Certification and Chain-of-Custody (10/22)

Unless otherwise indicated in the contract under section 7 – Other Conditions of the Sale Specific Conditions & Requirements, the area encompassed by this timber sale is certified to the standards of the Forest Stewardship Council (FSC) - Certificate #SCS-FM/COC-00090N and the Sustainable Forestry Initiative (SFI) - Certificate #NSF-SFIS-5Y031-SF5. Forest products from this sale may be delivered to the mill as "FSC 100% and / or SFI certified" as long as the contractor hauling the forest products is chain-of-custody (COC) certified or covered under a COC certificate from the destination mill. The purchaser is responsible for maintaining COC after leaving the sale area.

#### 13. Good Neighbor Authority (GNA) Requirements (10/22)

If the name of this timber sales contains the acronym GNA, it is authorized by the Good Neighbor Authority (GNA) and covered by various agreements between the U.S. Forest Service and the State. The timber sale occurs on federal land and the following conditions apply:

GNA contracts on US Forest Service land will not be awarded to purchasers on the Federal list of excluded parties. The System for Award Management (SAM) will be checked for active excluded parties prior to award of contract. In

addition, the Bidder to whom award is made must complete an Assurance Regarding Felony Conviction or Tax Delinquent Status for Corporate Applicants (AD-3031).

14. Good Neighbor Authority (GNA) Requirements, con't (10/22)

Bidder certifies, by signing this bid form, that to the best of Bidder's knowledge that the following representations are accurate and complete.

- a. That the Bidder and its principals are not presently debarred, suspended, proposed for debarment, declared ineligible, or voluntary excluded from timber sales (covered transactions) by any Federal department or agency.
- b. That the Bidder and its principals have not within a 3-year period preceding this bid been convicted of or had a civil judgment rendered against them for commission of fraud or a criminal offense in connection with obtaining , attempting to obtain, or performing a public (Federal, State, or local) transaction or contract under a public transaction; violation of Federal or State antitrust statutes or commission of embezzlement, theft, forgery, bribery, falsification or destruction of records, making false statements, or receiving stolen property.
- c. That the Bidder and its principals are not presently indicted for or otherwise criminally or civilly charged by a governmental entity (Federal, State, or local) with commission of any of the offenses enumerated in paragraph b of this certification.
- d. That the Bidder and its principals have not within a 3-year period preceding this bid had one or more public transactions (Federal, State, or local) terminated for breach or default of a timber or forest product contract.

Bidders that cannot certify this requirement, in whole or in part, shall submit an explanation with their bid.

SHANNON LOTT, Acting  
Director

## TIMBER SALE INFORMATION

Happy Trails Red Pine (61-021-22)  
 T28N, R14W, SEC. 34.  
 Leelanau County (Advertised Price \$197,668.35)

SALE NOTE: A recreation site such as a trail, pathway, or campground is within the sale area or the vicinity. Certain restrictions/specifications may be applicable including time restrictions.

A timber sale contract for this lump sum, sealed bid timber sale will be awarded to the responsible bidder offering the highest sealed bid price. All units of volume listed below were estimated using the Inventory Manager computer program and the new Michigan taper model. Bids must be at or above the following advertised price for each product and species:

<u>PRODUCTS &amp; SPECIES</u>	<u>ESTIMATED UNITS*</u>	<u>ADVERTISED PRICE</u>
Sawtimber		
Red Pine	386.8 MBF	\$ 141.00 / MBF
Pulpwood		
Red Pine	2,333 Cords	\$ 61.35 / Cord

\* The total volume is statistically estimated within plus (+) or minus (-) 4.13 percent. There are an estimated 3,239 cords on this timber sale, plus or minus 134 cords at the 95% confidence level. The estimated units are final and not subject to adjustment. Prospective bidders are urged to examine this timber and to make their own estimates of quantity and quality.

### **BOND AND PAYMENT SCHEDULE:**

1. A bond in the amount of \$9,883.00 to insure faithful performance of the conditions of the contract will be deposited by the successful bidder within 21 days of the sale award.
2. Cutting in any sale or unit without the required advance payment would be considered a trespass.
3. Total payment must be paid in advance or according to the following schedule :
  - (a) Ten percent (10%) of the sale value must be paid within 21 days of the sale award.
  - (b) The 10% down payment will be credited towards the first unit cut.
  - (c) Payment for each of the following units must be made before cutting begins in that unit:
 

PAYMENT UNIT NUMBER	PERCENT OF TOTAL SALE VALUE
01	74.0%
02	6.5%
03	19.5%
4. If no cutting takes place, the 10% down payment will not be refunded.
5. Operations on the contract issued will terminate on 09/30/2025.

### **SALE STATISTICS**

Volumes were calculated in cubic feet using the Michigan taper model. Cubic foot volume includes all wood inside bark for the product indicated. For display purposes, cubic feet were converted to cords and MBF using a simple conversion factor, e.g. 79 cubic feet per cord and 185 cubic feet per MBF. The cubic foot volumes are precise; the cords and MBF volumes are not. Cubic foot volume cannot be directly converted to cords or boards with precision.

### **SALE VOLUMES**

The total estimated sale volume may not equal the sum of the species/products due to the nature of statistical calculations associated with double sampling methodology.

VOLUME		STATISTICAL RANGE IN CORDS		
TOTAL CUBIC FEET	TOTAL CORDS	PERCENT ERROR	MINIMUM	MAXIMUM
255,906	3,239	4.13%	3,105	3,373

## VDU VOLUMES

A VDU is a Volume Determination Unit. Volumes and their associated statistics are calculated at the VDU level and summarized to the sale level. There is often a one to one relationship between a VDU and a Payment Unit, but not always, depending on the cruise design. Refer to the VDU TO PAYMENT UNIT table.

VDU	VOLUME		PERCENT ERROR	RANGE IN CORDS	
	TOTAL CUBIC FEET	TOTAL CORDS		MINIMUM	MAXIMUM
7	189,867	2,403	5.43%	2,273	2,534
17	16,467	208	5.08%	198	219
23	49,572	627	4.48%	599	656
<b>TOTAL:</b>	<b>255,906</b>	<b>3,239</b>		<b>3,070</b>	<b>3,409</b>

## VDU TO PAYMENT UNIT

When a VDU is associated with more than one Payment Unit (PU), the VDU volumes are assigned to the PU based on acres of the VDU within the PU.

VDU	VDU ACRES	PU	PU ACRES
7	37.2	1	37.2
17	12.4	2	12.4
23	39.8	3	39.8
<b>TOTAL:</b>	<b>89.4</b>		<b>89.4</b>

## DESCRIPTION OF TIMBER BY PAYMENT UNIT (PU)

PU	MARKET GROUP	PRODUCT	QUANTITY	UNIT	ACRES	ADVERTISE PRICE
1	Red Pine	Sawtimber	386.8	MBF	37.2	\$146,441.10
	Red Pine	Pulpwood	1,498	Cords		
2	Red Pine	Pulpwood	208	Cords	12.4	\$12,760.80
3	Red Pine	Pulpwood	627	Cords	39.8	\$38,466.45
TOTAL:			386.8	MBF		
TOTAL:			2,333	Cords		

## Sale Specific Conditions & Requirements

**Sale Name: Happy Trails Red Pine**

**Sale Number: 61-021-22 Seq#: 1**

### 1 - Sale Area

#### 1.2 - Boundaries

##### 1.2.1 - Painted boundaries (9/19)

The sale boundary is marked and identified by red paint. The painted boundary line trees are not Included Timber and are to be protected.

### 2 - Timber Specifications

#### 2.1 - Included Timber

##### 2.1.1 - Clearcut unit(s) with unmerchantable trees (6/14)

Within Payment Unit(s) 1, cut all trees that are one (1) inch or more at DBH

##### 2.1.8 - Designated plantation row unit(s) (12/08)

Within Payment Unit(s) 2 and 3, all red pine trees which meet minimum piece specifications in 2.2 Utilization, within designated plantation rows are designated for cutting. Designated plantation rows begin with the third row in from the outside of the plantation, then continue every third row. Any other trees which must be cut to facilitate the removal of red pine must be lopped to within 3 feet of ground level and left on site.

##### 2.1.11 - Description of timber note (2/04)

Note that Payment Unit 1 includes a trace amount of jack pine and mixed hardwood pulpwood to be harvested.

#### 2.2 - Utilization

##### 2.2.2 - Chipping required (2/18)

Payment Unit 1 must be chip harvested to facilitate subsequent planting operations. The Purchaser has the option to produce sawlogs or pulpwood bolts, but the remaining portion of the trees must be chipped. A chipping exemption can be obtained if proposed operations are determined to be suitable for planting by reforestation staff. This exemption must be granted in writing. The requirement to retain approximately 1/6 to 1/3 of tree tops and limbs less than four inches in diameter is still applicable (G. C. & R. 2.2).

##### 2.2.3 - Stump heights (4/07)

Stump heights within Payment Unit 1 shall not exceed 6 inches for all trees. This is in order to facilitate planting operations.

##### 2.2.4 - Skidding length (2/14)

Skidding of unlimbed tops or lengths over 17 feet is not permissible within Payment Units 2 and 3, unless approved by the Unit Manager or his/her representative.

### 3 - Payments

#### 3.3 - Pre-measured Sales

##### 3.3.4 - Dividing payment units (7/14)

Payment Unit(s) 1 may be divided at the request of the Purchaser and upon approval of the Unit Manager. Dividing Payment Units is a contract modification which requires a Timber Sale Contract Amendment. There will be only one division allowed.

### 4 - Transportation

#### 4.1 - Construction

##### 4.1.3 - Slash and earthen piles (8/04)

Piles or windrows of earth along roads and landings that have been widened or constructed shall be leveled. Slash from road maintenance or construction, including stumps, shall be chipped, utilized or dispersed throughout the sale.

##### 4.1.12 - No new roads (1/12)

No new roads will be permitted in any Payment Unit. All operations are limited to existing roads. Skid trails only will be allowed.

## 4.2 - Maintenance

### 4.2.3 - Road maintenance (8/13)

The following road maintenance is required: Within 30 days of completion of hauling, or if no hauling occurs for 30 days, the road must be maintained and graded. This includes cleaning of drainage areas, grading, crowning and filling with gravel if necessary. Damages will be assessed if grading/repair does not occur.

## 5 - Operations

### 5.2 - Conduct of Operations

#### 5.2.1 - Slash

##### 5.2.1.8 - Slash height (12/08)

No slash or tree tops may exceed 24 inches in height.

#### 5.2.3 - Operating Restrictions

##### 5.2.3.3 - Bark slippage restriction (3/09)

Within Payment Unit(s) 2 and 3, unless changed by written agreement, cutting and skidding are not permitted during the period of April 15 to July 15. This restriction is because of bark slippage.

##### 5.2.3.6 - Bark beetle restriction (12/08)

In the event drought creates a high risk of pine bark beetle infestation, pine is not to be cut during the period March 1 through July 1, unless all portions of trees greater than two inches in diameter are removed from the sale area, reduced to chips, or treated to the satisfaction of the Unit Manager or his/her representative, within fifteen days of being severed from the stump. Pine log decks, pulpwood piles and treetops that are piled for chipping in the fall or winter within a 1/4 mile of susceptible sites must be removed before March 15. Residual slash must not be placed in piles or rows and must be spread over the site for quick drying. The Department of Natural Resources will exercise this specification if the risk of damage warrants.

##### 5.2.38 - No decking against live trees (2/04)

Cut products may not be decked against unmarked or designated leave trees.

##### 5.2.40 - Pathway protection (10/10)

The Shore to Shore riding/hiking trail is shown on the Timber Sale Map. Do not cut trees or damage posts with blue pathway markers. Maintain a 20-foot wide slash, debris, and rut free zone daily, using the pathway as the centerline. No decking of harvested timber will be allowed within 20 feet of the pathway. The trail must be graded periodically during the sale operation. In addition, if an organized trail ride is to occur while the sale is active, the sale administrator has the authority to limit harvest and hauling activities on the day of the ride. The sale administrator will provide at least 1 week notice if this is to occur.

### 5.4 - Soil Protection

#### 5.4.3 - Erosion control (12/08)

Skid trails or haul roads may require erosion control structures or berms per direction of the Unit Manager or his/her representative.

### 5.8 - Protection of Endangered Species

#### 5.8.5 - Protection of raptor nests (3/13)

All trees with raptor nests will be protected if found during harvesting operations. Notification will be made to the Unit Manager or his/her representative who will notify the Wildlife Biologist so an on-site evaluation and recommendation can be made, if necessary.

## 6 - Safety and Fire Prevention

### 6.2 - Signing

#### 6.2.3 - Recreational trail posting (10/20)

The Purchaser is responsible for posting and maintaining caution signs on the Shore to Shore Trail prior to beginning



operations. The trail must be posted at appropriate distances from the sale area to warn of logging activity and truck traffic at both ends of the trail. Signs must be removed when harvest operations are suspended or completed. The Purchaser will provide these signs.



Sale Number	Year
61-021	22

# TIMBER SALE MAP

This information provided by authority of Part 525, 1994 PA 451 as amended.

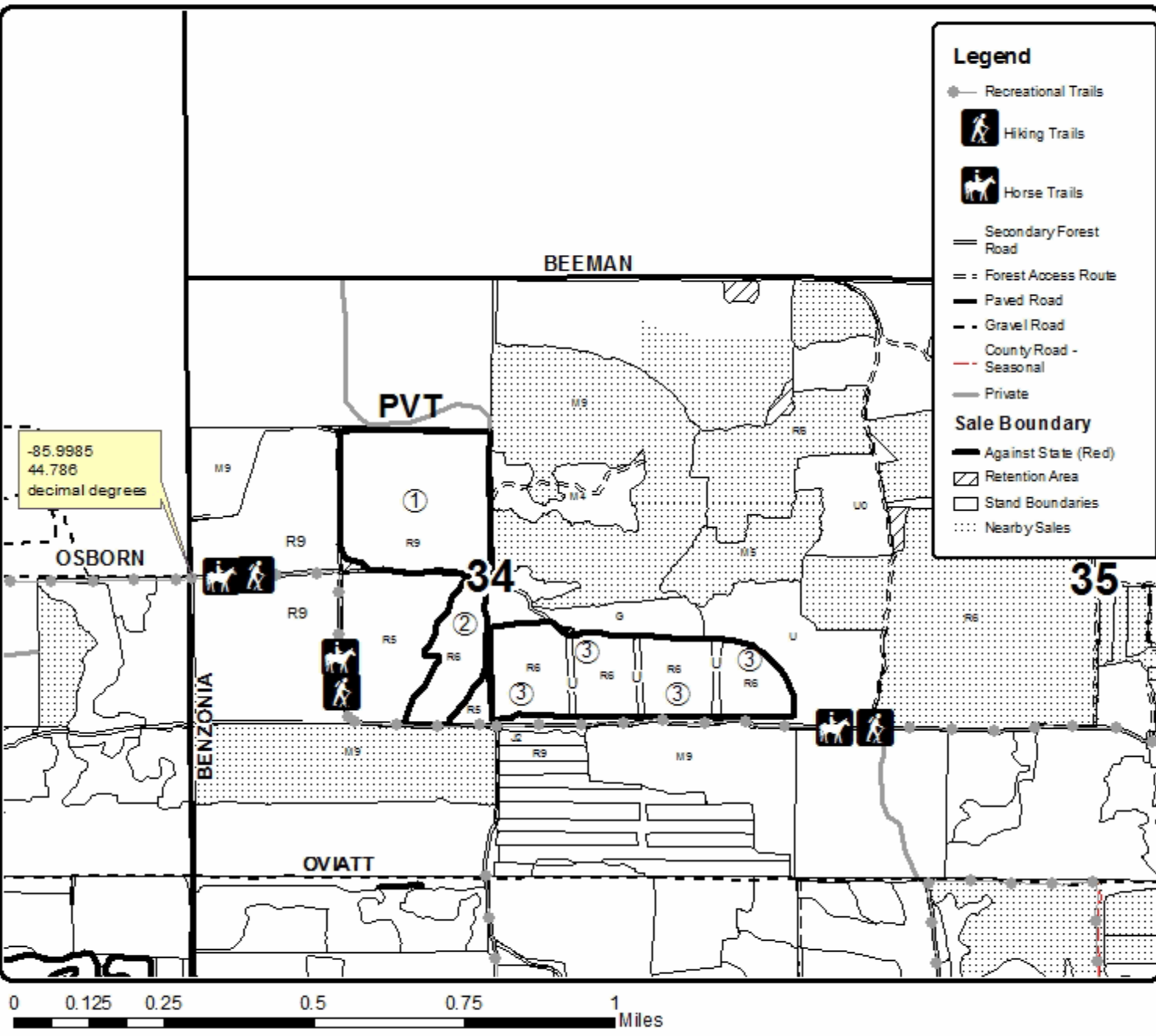
Forest Management Unit Traverse City	County Leelanau	Mapped By Tim Webb	Date 05/31/2022	Page 1	of 1
Township 28N	Range 14W	Section(s) and Subdivision(s) Sec. 34: SENW,NESW,N1/2SE	Scale 1:15,840		

Cover Type				Density	
A = Aspen	H = Hemlock	N = Marsh	U = Upland Brush	0 = Non Stocked	5 = Pole Timber Medium
B = Paper Birch	J = Jack Pine	O = Oak	UM = Upland Mixed	1 = Seedling Sapling Poor	6 = Pole Timber Well
C = Cedar	L = Lowland Brush	P = Lowland Poplar	V = Bog or Marsh	2 = Seedling Sapling Medium	7 = Saw Timber Poor
D = Treed Bog	LM = Lowland Mixed	Q = Mixed Swamp Conifer	W = White Pine	3 = Seedling Sapling Well	8 = Saw Timber Medium
E = Swamp Hardwoods	M = Mpl. Ech. Birch	R = Red Pine	X = Non Stocked	4 = Pole Timber Poor	9 = Saw Timber Well
F = Spruce Fir	MC = Mixed Conifer	S = Black Spruce	Z = Water		
G = Creas	MD = Mixed Deciduous	T = Tamarack			

PU	Acres
1	37.2
2	12.4
3	39.8

## Happy Trails Red Pine

Compartment 61003  
89.4 Acres



## TIMBER SALE INFORMATION

Carmean Road Mix (61-049-22)  
 T26N, R13W, SEC. 5; T26N, R13W, SEC. 6; T26N, R13W, SEC. 7.  
 Benzie County (Advertised Price \$161,268.85)

SALE NOTE: A recreation site such as a trail, pathway, or campground is within the sale area or the vicinity. Certain restrictions/specifications may be applicable including time restrictions.

A timber sale contract for this lump sum, sealed bid timber sale will be awarded to the responsible bidder offering the highest sealed bid price. All units of volume listed below were estimated using the Inventory Manager computer program and the new Michigan taper model. Bids must be at or above the following advertised price for each product and species:

<u>PRODUCTS &amp; SPECIES</u>	<u>ESTIMATED UNITS*</u>	<u>ADVERTISED PRICE</u>
Sawtimber		
B. T. Aspen	95.7 MBF	\$ 138.00 / MBF
Beech	2.6 MBF	\$ 146.00 / MBF
Black Cherry	4.5 MBF	\$ 183.00 / MBF
Red Maple	4.5 MBF	\$ 154.00 / MBF
Red Pine	175.3 MBF	\$ 133.00 / MBF
Sugar Maple	23.2 MBF	\$ 324.00 / MBF
Pulpwood		
B. T. Aspen	104 Cords	\$ 23.90 / Cord
Mixed Hardwood	168 Cords	\$ 28.05 / Cord
Red Pine	1,879 Cords	\$ 57.55 / Cord

\* The total volume is statistically estimated within plus (+) or minus (-) 20.13 percent. There are an estimated 2,837 cords on this timber sale, plus or minus 571 cords at the 95% confidence level. The estimated units are final and not subject to adjustment. Prospective bidders are urged to examine this timber and to make their own estimates of quantity and quality.

### **BOND AND PAYMENT SCHEDULE:**

1. A bond in the amount of \$8,063.00 to insure faithful performance of the conditions of the contract will be deposited by the successful bidder within 21 days of the sale award.
2. Cutting in any sale or unit without the required advance payment would be considered a trespass.
3. Total payment must be paid in advance or according to the following schedule :
  - (a) Ten percent (10%) of the sale value must be paid within 21 days of the sale award.
  - (b) The 10% down payment will be credited towards the first unit cut.
  - (c) Payment for each of the following units must be made before cutting begins in that unit:
 

PAYMENT UNIT NUMBER	PERCENT OF TOTAL SALE VALUE
01	55.1%
02	3.1%
03	14.1%
04	9.8%
05	6.9%
06	5.9%
07	5.1%
4. If no cutting takes place, the 10% down payment will not be refunded.
5. Operations on the contract issued will terminate on 09/30/2025.

### **SALE STATISTICS**

Volumes were calculated in cubic feet using the Michigan taper model. Cubic foot volume includes all wood inside bark for the product indicated. For display purposes, cubic feet were converted to cords and MBF using a simple conversion factor, e.g. 79 cubic feet per cord and 185 cubic feet per MBF. The cubic foot volumes are precise; the cords and MBF volumes are not. Cubic foot volume cannot be directly converted to cords or boards with precision.

## SALE VOLUMES

The total estimated sale volume may not equal the sum of the species/products due to the nature of statistical calculations associated with double sampling methodology.

VOLUME			STATISTICAL RANGE IN CORDS	
TOTAL CUBIC FEET	TOTAL CORDS	PERCENT ERROR	MINIMUM	MAXIMUM
224,130	2,837	20.13%	2,266	3,408

## VDU VOLUMES

A VDU is a Volume Determination Unit. Volumes and their associated statistics are calculated at the VDU level and summarized to the sale level. There is often a one to one relationship between a VDU and a Payment Unit, but not always, depending on the cruise design. Refer to the VDU TO PAYMENT UNIT table.

	VOLUME			RANGE IN CORDS	
VDU	TOTAL CUBIC FEET	TOTAL CORDS	PERCENT ERROR	MINIMUM	MAXIMUM
3	120,862	1,530	18.78%	1,243	1,817
12	14,650	185	61.75%	71	300
14	14,976	190	30.14%	132	247
17	13,965	177	55.03%	79	274
18	38,035	481	23.40%	369	594
20	21,643	274	29.81%	192	356
<b>TOTAL:</b>	<b>224,130</b>	<b>2,837</b>		<b>2,086</b>	<b>3,588</b>

## VDU TO PAYMENT UNIT

When a VDU is associated with more than one Payment Unit (PU), the VDU volumes are assigned to the PU based on acres of the VDU within the PU.

VDU	VDU ACRES	PU	PU ACRES
3	25.5	1	25.5
12	3.8	6	3.8
14	24.8	5	24.8
17	6.3	7	6.3
18	36.8	2	6.6
		3	30.2
20	6.1	4	6.1
<b>TOTAL:</b>	<b>103.3</b>		<b>103.3</b>

**DESCRIPTION OF TIMBER BY PAYMENT UNIT (PU)**

PU	MARKET GROUP	PRODUCT	QUANTITY	UNIT	ACRES	ADVERTISE PRICE
1	Black Cherry	Sawtimber	4.5	MBF	25.5	\$88,927.10
	Red Pine		132.6	MBF		
	Mixed Hardwood	Pulpwood	3	Cords		
	<i>Black Cherry</i>		3	<i>Cords</i>		
	Red Pine		1,223	Cords		
2	Red Pine	Sawtimber	4.5	MBF	6.6	\$4,972.30
	Red Pine	Pulpwood	76	Cords		
3	Red Pine	Sawtimber	20.5	MBF	30.2	\$22,696.35
	Red Pine	Pulpwood	347	Cords		
4	Red Pine	Sawtimber	17.7	MBF	6.1	\$15,763.25
	Red Pine	Pulpwood	233	Cords		
5	Sugar Maple	Sawtimber	23.2	MBF	24.8	\$11,163.30
	Mixed Hardwood	Pulpwood	130	Cords		
	<i>Ironwood</i>	<i>Sawtimber</i>	0.2	<i>MBF</i>		
	<i>Basswood</i>	<i>Pulpwood</i>	3	<i>Cords</i>		
	<i>Ironwood</i>		2	<i>Cords</i>		
	<i>Red Maple</i>		9	<i>Cords</i>		
	<i>Sugar Maple</i>		116	<i>Cords</i>		
6	B. T. Aspen	Sawtimber	48.0	MBF	3.8	\$9,444.20
	Beech		2.6	MBF		
	Red Maple		3.4	MBF		
	B. T. Aspen	Pulpwood	45	Cords		
	Mixed Hardwood		30	Cords		
	<i>Beech</i>		19	<i>Cords</i>		
	<i>Ironwood</i>		3	<i>Cords</i>		
	<i>Red Maple</i>		8	<i>Cords</i>		
	7	B. T. Aspen	Sawtimber	47.7		
Red Maple			1.1	MBF		
B. T. Aspen		Pulpwood	59	Cords		
Mixed Hardwood			5	Cords		
<i>Red Maple</i>			5	<i>Cords</i>		
TOTAL:			305.8	MBF		
TOTAL:			2,151	Cords		

# Sale Specific Conditions & Requirements

**Sale Name: Carmean Road Mix**

**Sale Number: 61-049-22 Seq#: 1**

## 1 - Sale Area

### 1.2 - Boundaries

#### 1.2.1 - Painted boundaries (9/19)

The sale boundary and Payment Unit boundaries are marked and identified by blue, red and yellow paint. Exterior sale boundary lines against private property are marked with blue paint. Exterior sale boundary lines against state land are marked with red paint. Interior Payment Unit boundaries are marked with yellow paint. The painted boundary line trees are not Included Timber and are to be protected unless marked with orange paint.

## 2 - Timber Specifications

### 2.1 - Included Timber

#### 2.1.1 - Clearcut unit(s) with unmerchantable trees (6/14)

Within Payment Unit(s) 1 and 4, cut all trees that are one inch or more at DBH.

#### 2.1.3 - Cut tree marked unit(s) (12/08)

Within Payment Unit(s) 2, 3, 5, and 7, all trees are designated for cutting when marked with orange paint above and below stump height, regardless of merchantability.

#### 2.1.7 - Leave tree marked unit(s) (6/14)

Within Payment Unit(s) 6, cut all trees that are two (2) inches or more at DBH except for trees marked with green paint above and below stump height and any conifers.

### 2.2 - Utilization

#### 2.2.2 - Chipping required (2/18)

Payment units 1 and 4 must be chip harvested to facilitate subsequent planting operations. The Purchaser has the option to produce sawlogs or pulpwood bolts, but the remaining portion of the trees must be chipped. A chipping exemption can be obtained if proposed operations are determined to be suitable for planting by reforestation staff. This exemption must be granted in writing. The requirement to retain approximately 1/6 to 1/3 of tree tops and limbs less than four inches in diameter is still applicable (G. C. & R. 2.2).

#### 2.2.3 - Stump heights (4/07)

Stump heights within Payment Units 1 and 4 shall not exceed 6 inches for all trees. This is in order to facilitate planting operations.

#### 2.2.4 - Skidding length (2/14)

Within payment units 2, 3, 5, and 7 skidding of unlimbed tops or lengths over 17 feet is not permissible unless approved by the Unit Manager or his/her representative.

## 4 - Transportation

### 4.1 - Construction

#### 4.1.3 - Slash and earthen piles (8/04)

Piles or windrows of earth along roads and landings that have been widened or constructed shall be leveled. Slash from road maintenance or construction, including stumps, shall be dispersed throughout the sale.

#### 4.1.12 - No new roads (1/12)

No new roads will be permitted in any Payment Unit. All operations are limited to existing roads. Skid trails only will be allowed.

## 5 - Operations

### 5.2 - Conduct of Operations

#### 5.2.1 - Slash

#### 5.2.1.8 - Slash height (12/08)

No slash or tree tops may exceed 24 inches in height.

### 5.2.3 - Operating Restrictions

#### 5.2.3.3 - Bark slippage restriction (3/09)

Within Payment Unit(s) 2, 3, 5, and 7, unless changed by written agreement, cutting and skidding are not permitted during the period of April 15 to July 15. This restriction is because of bark slippage.

#### 5.2.3.6 - Bark beetle restriction (12/08)

In the event drought creates a high risk of pine bark beetle infestation, pine is not to be cut during the period March 1 through July 1, unless all portions of trees greater than two inches in diameter are removed from the sale area, reduced to chips, or treated to the satisfaction of the Unit Manager or his/her representative, within fifteen days of being severed from the stump. Pine log decks, pulpwood piles and treetops that are piled for chipping in the fall or winter within a 1/4 mile of susceptible sites must be removed before March 15. Residual slash must not be placed in piles or rows and must be spread over the site for quick drying. The Department of Natural Resources will exercise this specification if the risk of damage warrants.

### 5.2.4 - Dead and Down Creation

#### 5.2.4.1 - Dead and down creation, marked trees (10/13)

All trees marked with an orange "X" must be felled and left on site for wildlife. These trees have been taken off the timber tally.

#### 5.2.38 - No decking against live trees (2/04)

Cut products may not be decked against unmarked or designated leave trees.

#### 5.2.41 - Snowmobile trail protection (9/11)

The Platte River snowmobile trail is shown on the Timber Sale Map. Do not cut or damage posts with orange trail markers or traffic control signs. If the trail is used, it must be maintained and restored to a condition equal to or better than before the sale. The road maintenance/restoration must be done prior to December 1. If the trail road is to be used for hauling during the snowmobile season, then a snow covered base must be left on the trail. Maintain a 20 foot wide slash, debris, and rut free zone daily using the snowmobile trail as the centerline. No decking of forest products will be permitted along the snowmobile trail between December 1 and March 31. All stumps within 20 feet of the snowmobile trail must be cut at ground level. In addition, any trees cut within 5 feet of the trail must have the stumps removed and be disposed of according to the direction of the Unit Manager or his/her representative.

### 5.3 - Stream Protection

#### 5.3.1 - Operating near stream (7/04)

No tracked or wheeled vehicles shall be operated within 100 feet of the Platte River except on existing county roads and bridges.

### 5.4 - Soil Protection

#### 5.4.3 - Erosion control (12/08)

Skid trails or haul roads may require erosion control structures or berms per direction of the Unit Manager or his/her representative.

## 6 - Safety and Fire Prevention

### 6.2 - Signing

#### 6.2.1 - Road posting (10/20)

The Purchaser is responsible for posting and maintaining caution signs on Maple City Highway, Carmean Road and Fewins Road prior to beginning operations. The road must be posted at appropriate distances from the sale area to warn of logging activity and truck traffic. Signs must be removed when harvest operations are suspended or completed. The Purchaser will provide these signs.

#### 6.2.2 - Snowmobile trail posting (10/20)

The Purchaser is responsible for posting and maintaining caution signs on the Platte River snowmobile trail prior to beginning

operations during the snowmobile season (approximately December 1 to March 31). The trail must be posted at appropriate distances from the sale area to warn of logging activity and truck traffic. Signs must be removed when harvest operations are suspended or completed. The Purchaser will provide these signs.





# TIMBER SALE MAP

This information provided by authority of Part 525, 1994 PA 451, as amended.

Sale Number	Year
61-049	22

Forest Management Unit Traverse City	County Benzie	Mapped By Tim Webb	Date 08/29/2022	Page 1	of 1
Township 26N	Range 13W	Section(s) and Subdivision(s) Sec. 5: SWNW,NWSW; Sec. 6: S1/2NE,NESE,S1/2SE; Sec. 7: NENW,NWNE	Scale 1:15,840		

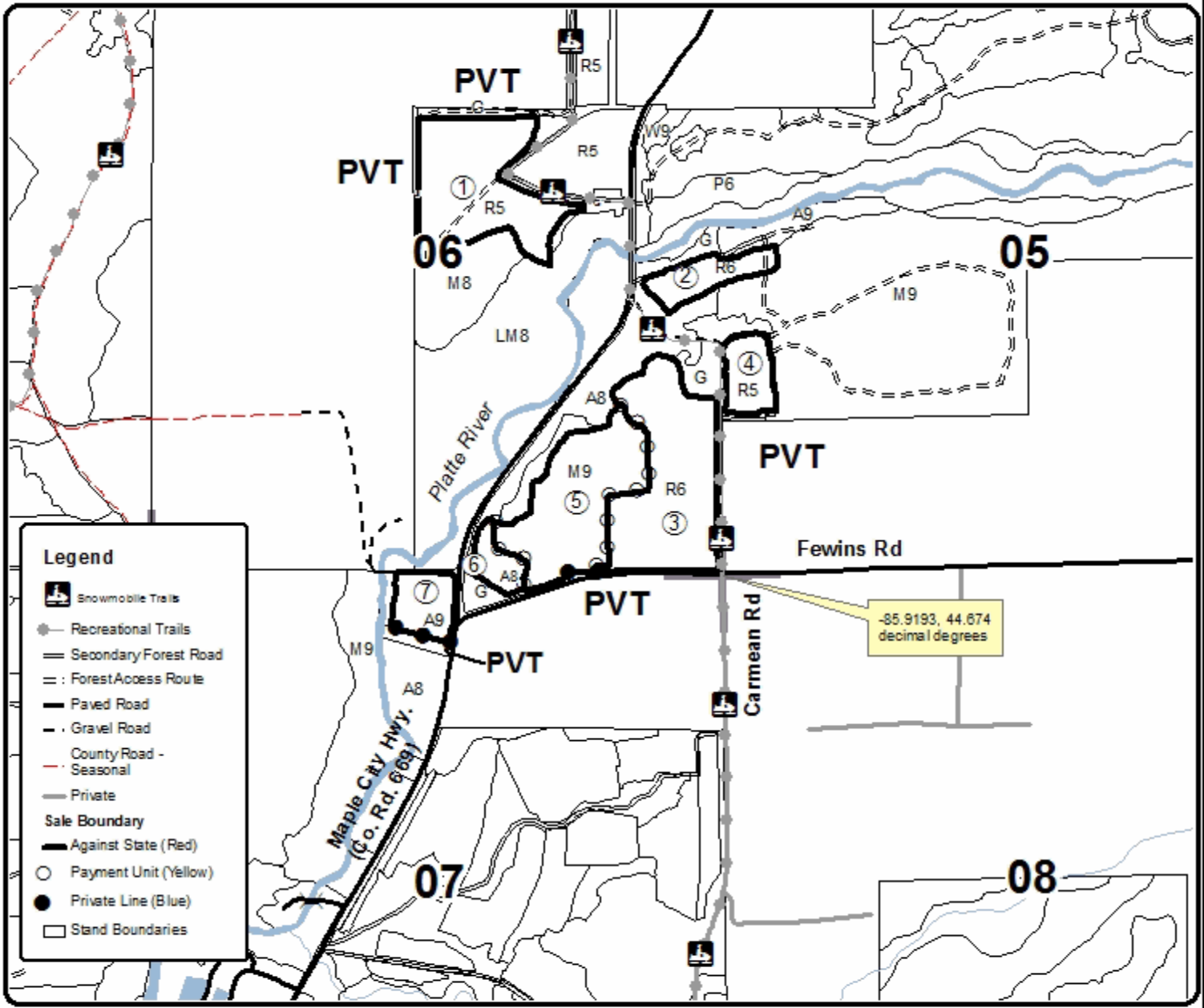
Cover Type				Density	
A = Aspen	H = Hemlock	N = Marsh	U = Upland Brush	0 = Non Stocked	5 = Pole Timber Medium
B = Paper Birch	J = Jack Pine	O = Oak	UM = Upland Mixed	1 = Seeding Sapling Poor	6 = Pole Timber Well
C = Cedar	L = Lowland Brush	P = Lowland Poplar	V = Bog or Marsh	2 = Seeding Sapling Medium	7 = Saw Timber Poor
D = Tread Bog	LM = Lowland Mixed	Q = Mixed Swamp Conifer	W = White Pine	3 = Seeding Sapling Well	8 = Saw Timber Medium
E = Swamp Hdwoods	M = Mpl, Bch, Bach	R = Red Pine	X = Non Stocked	4 = Pole Timber Poor	9 = Saw Timber Well
F = Spruce Fir	MC = Mixed Conifer	S = Black Spruce	Z = Water		
G = Grass	MD = Mixed Deciduous	T = Tamarack			

PU	Acres	PU	Acres
1	25.5	5	24.8
2	6.6	6	3.8
3	30.2	7	6.3
4	6.1		

## Carmean Road Mix

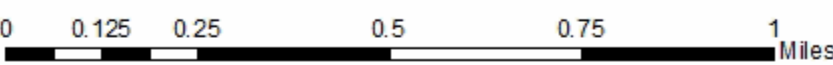
### Compartment 61013

103.3 Acres



**Legend**

- Snowmobile Trails
- Recreational Trails
- Secondary Forest Road
- Forest Access Route
- Paved Road
- Gravel Road
- County Road - Seasonal
- Private
- Sale Boundary**
- Against State (Red)
- Payment Unit (Yellow)
- Private Line (Blue)
- Stand Boundaries





## TIMBER SALE INFORMATION

Adios Aspen (61-055-22)

T26N, R13W, SEC. 16; T26N, R13W, SEC. 17.  
Benzie County (Advertised Price \$91,003.55)

A timber sale contract for this lump sum, sealed bid timber sale will be awarded to the responsible bidder offering the highest sealed bid price. All units of volume listed below were estimated using the Inventory Manager computer program and the new Michigan taper model. Bids must be at or above the following advertised price for each product and species:

<u>PRODUCTS &amp; SPECIES</u>	<u>ESTIMATED UNITS*</u>	<u>ADVERTISED PRICE</u>
<b>Sawtimber</b>		
Basswood	6.5 MBF	\$ 125.00 / MBF
Black Cherry	21.9 MBF	\$ 183.00 / MBF
Mixed Aspen	237.7 MBF	\$ 138.00 / MBF
Red Maple	33.5 MBF	\$ 154.00 / MBF
Red Oak	6.2 MBF	\$ 119.00 / MBF
Sugar Maple	0.3 MBF	\$ 324.00 / MBF
White Pine	87.5 MBF	\$ 75.00 / MBF
<b>Pulpwood</b>		
Basswood	25 Cords	\$ 21.85 / Cord
Mixed Aspen	960 Cords	\$ 23.90 / Cord
Mixed Hardwood	328 Cords	\$ 28.05 / Cord
Red Oak	32 Cords	\$ 27.55 / Cord
White Pine	259 Cords	\$ 28.00 / Cord

\* The total volume is statistically estimated within plus (+) or minus (-) 13.00 percent. There are an estimated 2,470 cords on this timber sale, plus or minus 321 cords at the 95% confidence level. The estimated units are final and not subject to adjustment. Prospective bidders are urged to examine this timber and to make their own estimates of quantity and quality.

### **BOND AND PAYMENT SCHEDULE:**

1. A bond in the amount of \$4,550.00 to insure faithful performance of the conditions of the contract will be deposited by the successful bidder within 21 days of the sale award.
2. Cutting in any sale or unit without the required advance payment would be considered a trespass.
3. Total payment must be paid in advance or according to the following schedule :
  - (a) Ten percent (10%) of the sale value must be paid within 21 days of the sale award.
  - (b) The 10% down payment will be credited towards the first unit cut.
  - (c) Payment for each of the following units must be made before cutting begins in that unit:
 

PAYMENT UNIT NUMBER	PERCENT OF TOTAL SALE VALUE
01	12.4%
02	12.9%
03	26.6%
04	18.7%
05	2.8%
06	11.4%
07	15.2%
4. If no cutting takes place, the 10% down payment will not be refunded.
5. Operations on the contract issued will terminate on 09/30/2025.

### **SALE STATISTICS**

Volumes were calculated in cubic feet using the Michigan taper model. Cubic foot volume includes all wood inside bark for the product indicated. For display purposes, cubic feet were converted to cords and MBF using a simple conversion factor, e.g. 79 cubic feet per cord and 185 cubic feet per MBF. The cubic foot volumes are precise; the cords and MBF volumes are not. Cubic foot volume cannot be directly converted to cords or boards with precision.

## SALE VOLUMES

The total estimated sale volume may not equal the sum of the species/products due to the nature of statistical calculations associated with double sampling methodology.

VOLUME			STATISTICAL RANGE IN CORDS	
TOTAL CUBIC FEET	TOTAL CORDS	PERCENT ERROR	MINIMUM	MAXIMUM
195,138	2,470	13.00%	2,149	2,791

## VDU VOLUMES

A VDU is a Volume Determination Unit. Volumes and their associated statistics are calculated at the VDU level and summarized to the sale level. There is often a one to one relationship between a VDU and a Payment Unit, but not always, depending on the cruise design. Refer to the VDU TO PAYMENT UNIT table.

	VOLUME			RANGE IN CORDS	
VDU	TOTAL CUBIC FEET	TOTAL CORDS	PERCENT ERROR	MINIMUM	MAXIMUM
114	23,796	301	32.48%	203	399
122	49,474	626	18.19%	512	740
124	72,632	919	17.10%	762	1,077
134	23,663	300	65.88%	102	497
136	25,572	324	58.06%	136	512
<b>TOTAL:</b>	<b>195,138</b>	<b>2,470</b>		<b>1,716</b>	<b>3,224</b>

## VDU TO PAYMENT UNIT

When a VDU is associated with more than one Payment Unit (PU), the VDU volumes are assigned to the PU based on acres of the VDU within the PU.

VDU	VDU ACRES	PU	PU ACRES
114	10.7	1	10.7
122	35.8	4	31.1
		5	4.7
124	67.6	2	22.0
		3	45.6
134	10.5	6	10.5
136	10.2	7	10.2
<b>TOTAL:</b>	<b>134.8</b>		<b>134.8</b>

**DESCRIPTION OF TIMBER BY PAYMENT UNIT (PU)**

PU	MARKET GROUP	PRODUCT	QUANTITY	UNIT	ACRES	ADVERTISE PRICE
1	Black Cherry	Sawtimber	5.3	MBF	10.7	\$11,271.75
	Mixed Aspen		10.1	MBF		
	<i>B. T. Aspen</i>		10.1	<i>MBF</i>		
	Red Maple		15.0	MBF		
	Red Oak		6.2	MBF		
	White Pine		16.7	MBF		
	Mixed Aspen		Pulpwood	84		
	<i>B. T. Aspen</i>	32		<i>Cords</i>		
	<i>Quaking Aspen</i>	52		<i>Cords</i>		
	Mixed Hardwood	49		Cords		
	<i>Black Cherry</i>	2		<i>Cords</i>		
	<i>Red Maple</i>	47		<i>Cords</i>		
	Red Oak	14		Cords		
	White Pine	30	Cords			
2	Basswood	Sawtimber	2.1	MBF	22.0	\$11,701.10
	Black Cherry		1.7	MBF		
	Mixed Aspen		38.3	MBF		
	<i>B. T. Aspen</i>		17.0	<i>MBF</i>		
	<i>Quaking Aspen</i>		21.3	<i>MBF</i>		
	Red Maple		5.6	MBF		
	White Pine		10.9	MBF		
	Basswood	Pulpwood	8	Cords		
	Mixed Aspen		66	Cords		
	<i>B. T. Aspen</i>		19	<i>Cords</i>		
	<i>Quaking Aspen</i>		47	<i>Cords</i>		
	Mixed Hardwood		40	Cords		
	<i>Black Cherry</i>		4	<i>Cords</i>		
	<i>Red Maple</i>		36	<i>Cords</i>		
White Pine	46	Cords				
3	Basswood	Sawtimber	4.4	MBF	45.6	\$24,252.90
	Black Cherry		3.6	MBF		
	Mixed Aspen		79.3	MBF		
	<i>B. T. Aspen</i>		35.1	<i>MBF</i>		
	<i>Quaking Aspen</i>		44.2	<i>MBF</i>		
	Red Maple		11.5	MBF		
	White Pine		22.5	MBF		
	Basswood	Pulpwood	17	Cords		
	Mixed Aspen		135	Cords		
	<i>B. T. Aspen</i>		39	<i>Cords</i>		
	<i>Quaking Aspen</i>		96	<i>Cords</i>		
	Mixed Hardwood		85	Cords		
	<i>Black Cherry</i>		9	<i>Cords</i>		
	<i>Red Maple</i>		76	<i>Cords</i>		
White Pine	95	Cords				
4	Black Cherry	Sawtimber	3.6	MBF	31.1	\$17,026.80
	Mixed Aspen		30.3	MBF		
	<i>Quaking Aspen</i>		30.3	<i>MBF</i>		
	Sugar Maple		0.3	MBF		
	White Pine	21.6	MBF			
	Mixed Aspen	Pulpwood	309	Cords		
	<i>B. T. Aspen</i>		47	<i>Cords</i>		
	<i>Quaking Aspen</i>		262	<i>Cords</i>		
	Mixed Hardwood		86	Cords		
	<i>Black Cherry</i>		11	<i>Cords</i>		
	<i>Red Maple</i>		67	<i>Cords</i>		
<i>Sugar Maple</i>	8		<i>Cords</i>			

**DESCRIPTION OF TIMBER BY PAYMENT UNIT (PU), CON'T**

PU	MARKET GROUP	PRODUCT	QUANTITY	UNIT	ACRES	ADVERTISE PRICE
4 con't	White Pine	Pulpwood	24	Cords		
5	Black Cherry	Sawtimber	0.5	MBF	4.7	\$2,573.75
	Mixed Aspen		4.6	MBF		
	<i>Quaking Aspen</i>		4.6	<i>MBF</i>		
	White Pine		3.3	MBF		
	Mixed Aspen	Pulpwood	47	Cords		
	<i>B. T. Aspen</i>		7	<i>Cords</i>		
	<i>Quaking Aspen</i>		40	<i>Cords</i>		
	Mixed Hardwood		13	Cords		
	<i>Black Cherry</i>		2	<i>Cords</i>		
	<i>Red Maple</i>		10	<i>Cords</i>		
	<i>Sugar Maple</i>		1	<i>Cords</i>		
	White Pine		4	Cords		
6	Black Cherry	Sawtimber	3.5	MBF	10.5	\$10,348.00
	Mixed Aspen		20.6	MBF		
	<i>B. T. Aspen</i>		8.1	<i>MBF</i>		
	<i>Quaking Aspen</i>		12.5	<i>MBF</i>		
	White Pine		12.5	MBF		
	Mixed Aspen	Pulpwood	180	Cords		
	<i>B. T. Aspen</i>		173	<i>Cords</i>		
	<i>Quaking Aspen</i>		7	<i>Cords</i>		
	Mixed Hardwood		24	Cords		
	<i>Black Cherry</i>		2	<i>Cords</i>		
	<i>Ironwood</i>		17	<i>Cords</i>		
	<i>Red Maple</i>		5	<i>Cords</i>		
	White Pine		34	Cords		
7	Black Cherry	Sawtimber	3.7	MBF	10.2	\$13,829.25
	Mixed Aspen		54.5	MBF		
	<i>B. T. Aspen</i>		49.9	<i>MBF</i>		
	<i>Quaking Aspen</i>		4.6	<i>MBF</i>		
	Red Maple		1.4	MBF		
	Mixed Aspen	Pulpwood	139	Cords		
	<i>B. T. Aspen</i>		122	<i>Cords</i>		
	<i>Quaking Aspen</i>		17	<i>Cords</i>		
	Mixed Hardwood		31	Cords		
	<i>Black Cherry</i>		9	<i>Cords</i>		
	<i>Red Maple</i>		22	<i>Cords</i>		
	Red Oak		18	Cords		
	White Pine		26	Cords		
TOTAL:			393.6	MBF		
TOTAL:			1,604	Cords		

## Sale Specific Conditions & Requirements

**Sale Name: Adios Aspen**

**Sale Number: 61-055-22 Seq#: 1**

### 1 - Sale Area

#### 1.2 - Boundaries

##### 1.2.1 - Painted boundaries (9/19)

The sale boundary and Payment Unit boundaries are marked and identified by blue, red and yellow paint. Exterior sale boundary lines against private property are marked with blue paint. Exterior sale boundary lines against state land are marked with red paint. Interior Payment Unit boundaries are marked with yellow paint. Retention patches are marked with double red paint marks; no harvesting activities may occur within these areas.

### 2 - Timber Specifications

#### 2.1 - Included Timber

##### 2.1.1 - Clearcut unit(s) with unmerchantable trees (6/14)

Within Payment Unit(s) 1, 6, and 7, cut all trees that are two (2) inches or more at DBH except for any hemlock, cedar, elm, or any trees marked with green paint. In addition, within payment unit 6, do not cut any oak.

##### 2.1.3 - Cut tree marked unit(s) (12/08)

Within Payment Unit(s) 2, 3, 4 and 5, all trees are designated for cutting when marked with orange paint above and below stump height, regardless of merchantability. In addition, cut all aspen greater than two inches dbh unless marked with green paint.

#### 2.2 - Utilization

##### 2.2.4 - Skidding length (2/14)

Skidding of unlimbed tops or lengths over 17 feet is not permissible within payment units 2, 3, 4 and 5.

### 4 - Transportation

#### 4.1 - Construction

##### 4.1.3 - Slash and earthen piles (8/04)

Piles or windrows of earth along roads and landings that have been widened or constructed shall be leveled. Slash from road maintenance or construction, including stumps, shall be dispersed throughout the sale.

##### 4.1.12 - No new roads (1/12)

No new roads will be permitted in any Payment Unit. All operations are limited to existing roads. Skid trails only will be allowed.

### 5 - Operations

#### 5.2 - Conduct of Operations

##### 5.2.1 - Slash

###### 5.2.1.8 - Slash height (12/08)

No slash or tree tops may exceed 24 inches in height.

##### 5.2.3 - Operating Restrictions

###### 5.2.3.4 - Oak wilt restriction, no exceptions (1/18)

Within all Payment Units cutting, skidding, hauling within the sale and brushing of access roads to the sale are not permitted during the period of April 15 to July 15. No exceptions will be granted. This is necessary to reduce the spread of oak wilt.

###### 5.2.3.6 - Bark beetle restriction (12/08)

In the event drought creates a high risk of pine bark beetle infestation, pine is not to be cut during the period March 1 through July 1, unless all portions of trees greater than two inches in diameter are removed from the sale area, reduced to

chips, or treated to the satisfaction of the Unit Manager or his/her representative, within fifteen days of being severed from the stump. Pine log decks, pulpwood piles and treetops that are piled for chipping in the fall or winter within a 1/4 mile of susceptible sites must be removed before March 15. Residual slash must not be placed in piles or rows and must be spread over the site for quick drying. The Department of Natural Resources will exercise this specification if the risk of damage warrants.

#### 5.2.4 - Dead and Down Creation

##### 5.2.4.6 - Dead and down creation, other (9/09)

To create grouse habitat, designated trees must be cut at about 4.5' (feet) above ground level and left on site. These trees are to be felled and left with the lower part of the bole of the tree touching the stump. The slash height requirement does not apply to these drumming logs and the tops should be left intact. Within Payment Units 6 and 7, the producer must select one tree per acre with a DBH over 10" (inches) to leave on site. Within Payment Unit 1, trees to be left have been marked with an orange "X".

#### 5.2.17 - Timber Mats and Interlocking Composite Mats (10/20)

Some roads or skid trails may require extra protection such as that afforded by timber mats, interlocking composite mats, or another approved system. If available, mats may be borrowed from the DNR. A Timber Sale Contract Supplement will be used to document the Purchaser's use of the DNR's mats. Contact the sale administrator regarding availability and pick-up. Timber mats are available from various field offices. Composite mats are only available from the Grayling field office and the Marquette ICC. The Purchaser is responsible for picking up and hauling the mats to and from the site. The composite mats will require DNR staff onsite for installation and removal. Contact the sale administrator to schedule at least 30 days before desired install/removal date. All mats must be cleaned prior to drop off. This may include, but is not limited to, power washing and brushing to remove mud and debris. A charge of \$700.00 per timber mat and \$2,000.00 per composite mat will be assessed for all damaged or non-returned mats. Damage for the crane/timber mats is defined as three or more broken cants. Damage for the composite mats is defined as cracked or broken mats.

#### 5.2.38 - No decking against live trees (2/04)

Cut products may not be decked against unmarked or designated leave trees.

### 5.3 - Stream Protection

#### 5.3.1 - Operating near stream (7/04)

No tracked or wheeled vehicles shall be operated within 50 feet of Brundage Creek. No crossings will be approved.

### 5.4 - Soil Protection

#### 5.4.3 - Erosion control (12/08)

Skid trails or haul roads may require erosion control structures or berms per direction of the Unit Manager or his/her representative.

#### 5.4.6 - Wet area protection (5/10)

No harvesting operations, including skidding and felling, are to take place within lowlands adjacent to unit 1 (LM9 type to south), unit 2 (Q8 type to south), or units 4 and 5 (Q8, L0 and C9 types between units) [Exception: at the discretion of the timber sale administrator, a forwarding route may be allowed at the narrowest gap between units 4 and 5 if site conditions and operating methods are adequate to prevent rutting across this drainage. See specification 5.2.17 regarding availability of timber mats and interlocking composite mats.] Care must be taken by the Purchaser to identify and avoid operating in these areas of the timber sale.

## 6 - Safety and Fire Prevention

### 6.2 - Signing

#### 6.2.1 - Road posting (10/20)

The Purchaser is responsible for posting and maintaining caution signs on Hulbert and Lamb roads prior to beginning operations. The road must be posted at appropriate distances from the sale area to warn of logging activity and truck traffic. Signs must be removed when harvest operations are suspended or completed. The Purchaser will provide these signs.





# TIMBER SALE MAP

This information provided by authority of Part 525, 1994 PA 451, as amended.

Sale Number	Year
61-055	22

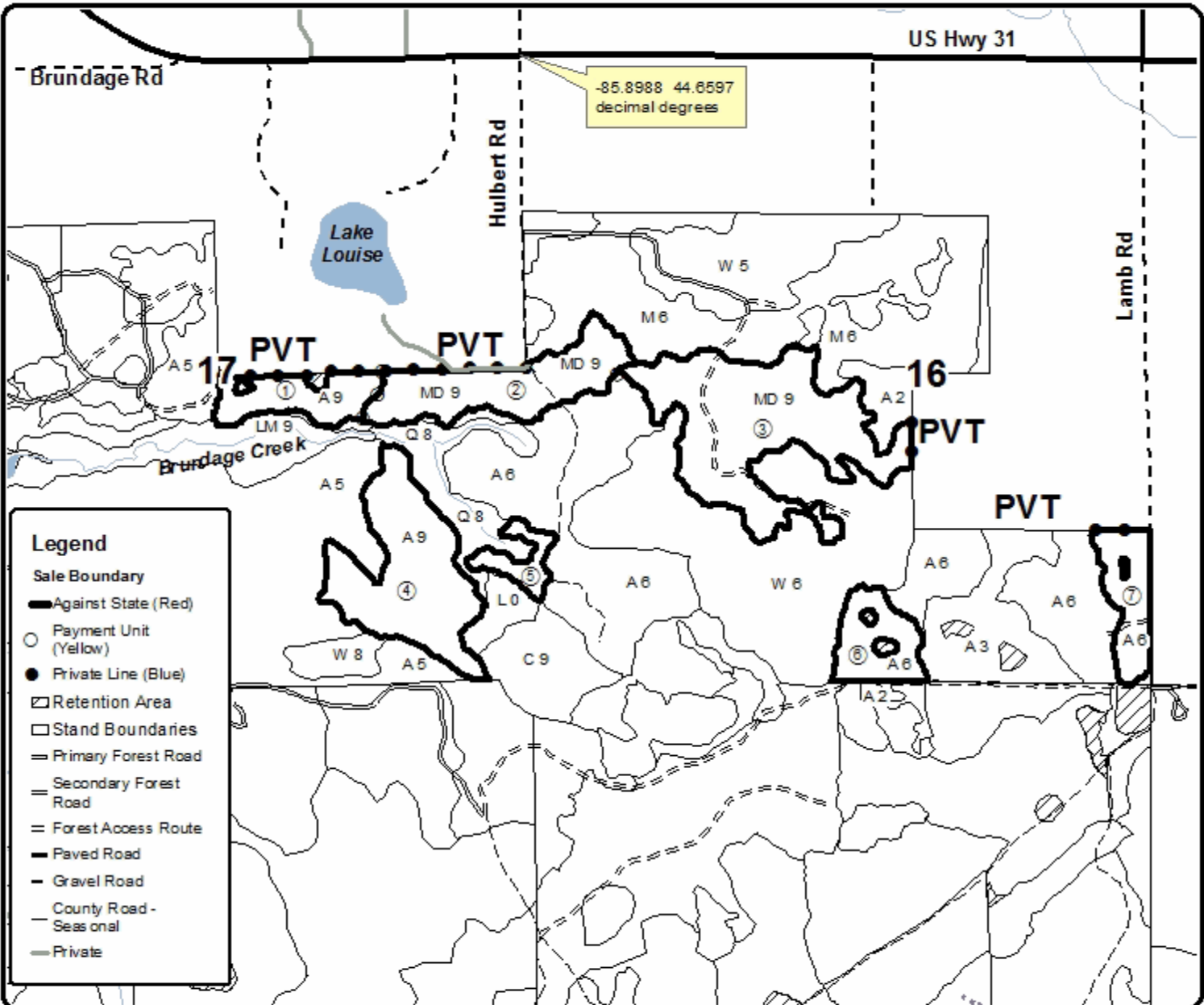
Forest Management Unit	County	Mapped By	Date	Page	of
Traverse City	Benzie	Tim Webb	09/20/2022	1	1
		Cruised By			
		Webb, Allen, contractors			

Township	Range	Section(s) and Subdivision(s)	Scale
26N	13W	S.16: S1/2NW,SW,NWSE,S1/2SE; S.17: NESW,SE	1:15,840

Cover Type				Density	
A = Aspen	H = Hemlock	N = Marsh	U = Upland Brush	0 = Non Stocked	5 = Pole Timber Medium
B = Paper Birch	J = Jack Pine	O = Oak	UM = Upland Mixed	1 = Seeding Sapling Poor	6 = Pole Timber Well
C = Cedar	L = Lowland Brush	P = Lowland Poplar	V = Bog or Marsh	2 = Seeding Sapling Medium	7 = Saw Timber Poor
D = Tread Bog	LM = Lowland Mixed	Q = Mixed Swamp Conifer	W = White Pine	3 = Seeding Sapling Well	8 = Saw Timber Medium
E = Swamp Hdwoods	M = Mpl, Bch, Bach	R = Red Pine	X = Non Stocked	4 = Pole Timber Poor	9 = Saw Timber Well
F = Spruce Fir	MC = Mixed Conifer	S = Black Spruce	Z = Water		
G = Grass	MD = Mixed Deciduous	T = Tamarack			

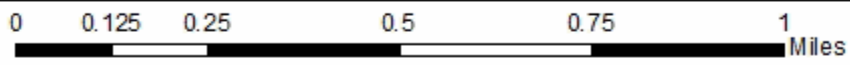
PU	Acres	PU	Acres
1	10.7	5	4.7
2	22.0	6	10.5
3	45.6	7	10.2
4	31.1		

**Adios Aspen**  
 Compartment 61013  
 134.8 acres



**Legend**

- Sale Boundary
- Against State (Red)
- Payment Unit (Yellow)
- Private Line (Blue)
- ▭ Retention Area
- ▭ Stand Boundaries
- ▬ Primary Forest Road
- ▬ Secondary Forest Road
- ▬ Forest Access Route
- ▬ Paved Road
- ▬ Gravel Road
- ▬ County Road - Seasonal
- ▬ Private





Happy Trails Red Pine (61-021-22)  
T28N, R14W, SEC. 34; Leelanau COUNTY

In response to the notice of sale to be held 4:00 p.m. (local time) on June 13, 2023, I am hereby submitting my sealed bid ( firm offer) for the following forest products to be cut. Bids for individual species must be at or above the advertised price. All non-responsive bid forms may be rejected.

<u>PRODUCTS &amp; SPECIES</u>	<u>ESTIMATED VOLUME*</u>	<u>ADVERTISED PRICE</u>	<u>BID PRICE/UNIT</u>
Sawtimber Red Pine	386.8 MBF	\$ 141.00/MBF	\$ _____
Pulpwood Red Pine	2,333 Cords	\$ 61.35/Cord	\$ _____

\*The volumes are statistically estimated within plus (+) or minus (-) 4.13 percent at 95% confidence level. These estimated volumes are final and not subject to adjustment. Prospective bidders are urged to examine this timber and to make their own estimates of quantity and quality.

I understand that any or all bids may be rejected. All bids must be signed and all bid items must be bid or the bid form may be rejected. I also understand that consideration and awarding a contract will be based upon my past performance and ability to complete the contract based upon equipment and staffing subject to my control .

FEDERAL ID: \_\_\_\_ - \_\_\_\_ - \_\_\_\_ or SOCIAL SECURITY NUMBER: \_\_\_\_ - \_\_\_\_ - \_\_\_\_

Company or individual bidding: \_\_\_\_\_

Company representative's name: \_\_\_\_\_

Address: \_\_\_\_\_

City: \_\_\_\_\_ State: \_\_\_\_\_ Zip: \_\_\_\_\_

IF AVAILABLE, PLEASE PLACE THE PERSONALIZED LABEL FROM YOUR PROSPECTUS IN THE ABOVE BOX.

Individual or company representative's signature: \_\_\_\_\_ Date: \_\_\_\_\_

Phone number : \_\_\_\_\_ Email (optional): \_\_\_\_\_

**THE WINNING BIDDER MUST COMPLETE THE VERIFICATION OF WORKER'S DISABILITY COMPENSATION ACT COMPLIANCE (ON REVERSE SIDE IF DOUBLE SIDED) WITHIN 21 DAYS OF SALE AWARD DATE**



<b>FOR DEPARTMENT USE ONLY</b>
Sale Number (XX - XXX - XX - XX)
Forest Management Unit:

## TIMBER SALE VERIFICATION OF WORKER'S DISABILITY COMPENSATION ACT COMPLIANCE

*As required by Act 317, P.A. 1969 (Worker's Compensation) and  
Part 5 of Act 451 of 1994, as amended.*

### VERIFICATION OF WORKER'S DISABILITY COMPENSATION ACT COMPLIANCE

- This verification must be completed and submitted within 21 days of contract award and prior to the issuance of the timber sale contract.
- In addition, if boxes 2B or 2C are checked, then Notice of Exclusion or Certificate of Insurance must be submitted within twenty-one (21) days of the contract award and prior to the issuance of the timber sale contract.
- All information must be typed or printed except for written signatures.

Please Check Appropriate Categories:

1. My business is organized as (you **must** check one of the boxes below):
  - A.  Sole Proprietorship (individual)
  - B.  Partnership
  - C.  Corporation
2. You **must** check one of the boxes below:
  - A.  I certify my business is a sole proprietorship and it has no employees but the sole proprietor. I am not subject to the Worker's Compensation Laws.
  - B.  I certify my business has satisfied its obligation to the Worker's Compensation Act through the use of an approved Notice of Exclusion (BWC-337, Rev. 5/96). I will provide a copy of the Notice of Exclusion within 21 days of the contract award. (For questions or a copy of the BWC-337, please call the Worker's Compensation Bureau at 517-322-1195).
  - C.  I certify my business has a Worker's Compensation Policy. I will provide an original Certificate of Insurance within twenty-one (21) days of the contract award.
3. If you have checked item 2(A) or 2(B), you **must** indicate the number of **both** full-time and part-time employees, other than yourself, including family members and active partners (if none, you must enter "0").

\_\_\_\_\_ Full-time Employees

\_\_\_\_\_ Part-time Employees

Name of Business		Federal ID (or) Social Security No.	
Address		Telephone (       )	
City	State	ZIP	

*I hereby certify that the above information is true and correct. I agree to notify the Michigan DNR of any changes that occur in factors affecting my coverage during any of my present and future operations.*

\_\_\_\_\_  
Signature of Owner or Authorized Representative

\_\_\_\_\_  
Title

\_\_\_\_\_  
Date

**Please complete the "SEALED BID" information on the next page**

Carmean Road Mix (61-049-22)

T26N, R13W, SEC. 5; T26N, R13W, SEC. 6; T26N, R13W, SEC. 7; Benzie

In response to the notice of sale to be held 4:00 p.m. (local time) on June 13, 2023, I am hereby submitting my sealed bid ( firm offer) for the following forest products to be cut. Bids for individual species must be at or above the advertised price. All non-responsive bid forms may be rejected.

<u>PRODUCTS &amp; SPECIES</u>	<u>ESTIMATED VOLUME*</u>	<u>ADVERTISED PRICE</u>	<u>BID PRICE/UNIT</u>
<b>Sawtimber</b>			
B. T. Aspen	95.7 MBF	\$ 138.00/MBF	\$ _____
Beech	2.6 MBF	\$ 146.00/MBF	\$ _____
Black Cherry	4.5 MBF	\$ 183.00/MBF	\$ _____
Red Maple	4.5 MBF	\$ 154.00/MBF	\$ _____
Red Pine	175.3 MBF	\$ 133.00/MBF	\$ _____
Sugar Maple	23.2 MBF	\$ 324.00/MBF	\$ _____
<b>Pulpwood</b>			
B. T. Aspen	104 Cords	\$ 23.90/Cord	\$ _____
Mixed Hardwood	168 Cords	\$ 28.05/Cord	\$ _____
Red Pine	1,879 Cords	\$ 57.55/Cord	\$ _____

\*The volumes are statistically estimated within plus (+) or minus (-) 20.13 percent at 95% confidence level. These estimated volumes are final and not subject to adjustment. Prospective bidders are urged to examine this timber and to make their own estimates of quantity and quality.

I understand that any or all bids may be rejected. All bids must be signed and all bid items must be bid or the bid form may be rejected. I also understand that consideration and awarding a contract will be based upon my past performance and ability to complete the contract based upon equipment and staffing subject to my control.

FEDERAL ID: \_\_\_\_ - \_\_\_\_ - \_\_\_\_ or SOCIAL SECURITY NUMBER: \_\_\_\_ - \_\_\_\_ - \_\_\_\_

Company or individual bidding: \_\_\_\_\_

Company representative's name: \_\_\_\_\_

Address: \_\_\_\_\_

City: \_\_\_\_\_ State: \_\_\_\_\_ Zip: \_\_\_\_\_

IF AVAILABLE, PLEASE PLACE THE PERSONALIZED LABEL FROM YOUR PROSPECTUS IN THE ABOVE BOX.

Individual or company representative's signature: \_\_\_\_\_ Date: \_\_\_\_\_

Phone number : \_\_\_\_\_ Email (optional): \_\_\_\_\_

**THE WINNING BIDDER MUST COMPLETE THE VERIFICATION OF WORKER'S DISABILITY COMPENSATION ACT COMPLIANCE (ON REVERSE SIDE IF DOUBLE SIDED) WITHIN 21 DAYS OF SALE AWARD DATE**



<b>FOR DEPARTMENT USE ONLY</b>
Sale Number (XX - XXX - XX - XX)
Forest Management Unit:

## TIMBER SALE VERIFICATION OF WORKER'S DISABILITY COMPENSATION ACT COMPLIANCE

*As required by Act 317, P.A. 1969 (Worker's Compensation) and  
Part 5 of Act 451 of 1994, as amended.*

### VERIFICATION OF WORKER'S DISABILITY COMPENSATION ACT COMPLIANCE

- This verification must be completed and submitted within 21 days of contract award and prior to the issuance of the timber sale contract.
- In addition, if boxes 2B or 2C are checked, then Notice of Exclusion or Certificate of Insurance must be submitted within twenty-one (21) days of the contract award and prior to the issuance of the timber sale contract.
- All information must be typed or printed except for written signatures.

Please Check Appropriate Categories:

1. My business is organized as (you **must** check one of the boxes below):
  - A.  Sole Proprietorship (individual)
  - B.  Partnership
  - C.  Corporation
2. You **must** check one of the boxes below:
  - A.  I certify my business is a sole proprietorship and it has no employees but the sole proprietor. I am not subject to the Worker's Compensation Laws.
  - B.  I certify my business has satisfied its obligation to the Worker's Compensation Act through the use of an approved Notice of Exclusion (BWC-337, Rev. 5/96). I will provide a copy of the Notice of Exclusion within 21 days of the contract award. (For questions or a copy of the BWC-337, please call the Worker's Compensation Bureau at 517-322-1195).
  - C.  I certify my business has a Worker's Compensation Policy. I will provide an original Certificate of Insurance within twenty-one (21) days of the contract award.
3. If you have checked item 2(A) or 2(B), you **must** indicate the number of **both** full-time and part-time employees, other than yourself, including family members and active partners (if none, you must enter "0").

\_\_\_\_\_ Full-time Employees

\_\_\_\_\_ Part-time Employees

Name of Business		Federal ID (or) Social Security No.	
Address		Telephone (       )	
City	State	ZIP	

*I hereby certify that the above information is true and correct. I agree to notify the Michigan DNR of any changes that occur in factors affecting my coverage during any of my present and future operations.*

\_\_\_\_\_  
Signature of Owner or Authorized Representative

\_\_\_\_\_  
Title

\_\_\_\_\_  
Date

**Please complete the "SEALED BID" information on the next page**

Adios Aspen (61-055-22)  
T26N, R13W, SEC. 16; T26N, R13W, SEC. 17; Benzie COUNTY

In response to the notice of sale to be held 4:00 p.m. (local time) on June 13, 2023, I am hereby submitting my sealed bid ( firm offer) for the following forest products to be cut. Bids for individual species must be at or above the advertised price. All non-responsive bid forms may be rejected.

<u>PRODUCTS &amp; SPECIES</u>	<u>ESTIMATED VOLUME*</u>	<u>ADVERTISED PRICE</u>	<u>BID PRICE/UNIT</u>
<b>Sawtimber</b>			
Basswood	6.5 MBF	\$ 125.00/MBF	\$ _____
Black Cherry	21.9 MBF	\$ 183.00/MBF	\$ _____
Mixed Aspen	237.7 MBF	\$ 138.00/MBF	\$ _____
Red Maple	33.5 MBF	\$ 154.00/MBF	\$ _____
Red Oak	6.2 MBF	\$ 119.00/MBF	\$ _____
Sugar Maple	0.3 MBF	\$ 324.00/MBF	\$ _____
White Pine	87.5 MBF	\$ 75.00/MBF	\$ _____
<b>Pulpwood</b>			
Basswood	25 Cords	\$ 21.85/Cord	\$ _____
Mixed Aspen	960 Cords	\$ 23.90/Cord	\$ _____
Mixed Hardwood	328 Cords	\$ 28.05/Cord	\$ _____
Red Oak	32 Cords	\$ 27.55/Cord	\$ _____
White Pine	259 Cords	\$ 28.00/Cord	\$ _____

\*The volumes are statistically estimated within plus (+) or minus (-) 13.00 percent at 95% confidence level. These estimated volumes are final and not subject to adjustment. Prospective bidders are urged to examine this timber and to make their own estimates of quantity and quality.

I understand that any or all bids may be rejected. All bids must be signed and all bid items must be bid or the bid form may be rejected. I also understand that consideration and awarding a contract will be based upon my past performance and ability to complete the contract based upon equipment and staffing subject to my control.

FEDERAL ID: \_\_\_\_ - \_\_\_\_ - \_\_\_\_ or SOCIAL SECURITY NUMBER: \_\_\_\_ - \_\_\_\_ - \_\_\_\_

Company or individual bidding: \_\_\_\_\_

Company representative's name: \_\_\_\_\_

Address: \_\_\_\_\_

City: \_\_\_\_\_ State: \_\_\_\_\_ Zip: \_\_\_\_\_

IF AVAILABLE, PLEASE PLACE THE PERSONALIZED LABEL FROM YOUR PROSPECTUS IN THE ABOVE BOX.

Individual or company representative's signature: \_\_\_\_\_ Date: \_\_\_\_\_

Phone number : \_\_\_\_\_ Email (optional): \_\_\_\_\_

**THE WINNING BIDDER MUST COMPLETE THE VERIFICATION OF WORKER'S DISABILITY COMPENSATION ACT COMPLIANCE (ON REVERSE SIDE IF DOUBLE SIDED) WITHIN 21 DAYS OF SALE AWARD DATE**



<b>FOR DEPARTMENT USE ONLY</b>	
Sale Number (XX - XXX - XX - XX)	
Forest Management Unit:	

# TIMBER SALE VERIFICATION OF WORKER'S DISABILITY COMPENSATION ACT COMPLIANCE

As required by Act 317, P.A. 1969 (Worker's Compensation) and  
Part 5 of Act 451 of 1994, as amended.

## VERIFICATION OF WORKER'S DISABILITY COMPENSATION ACT COMPLIANCE

- This verification must be completed and submitted within 21 days of contract award and prior to the issuance of the timber sale contract.
- In addition, if boxes 2B or 2C are checked, then Notice of Exclusion or Certificate of Insurance must be submitted within twenty-one (21) days of the contract award and prior to the issuance of the timber sale contract.
- All information must be typed or printed except for written signatures.

Please Check Appropriate Categories:

1. My business is organized as (you **must** check one of the boxes below):
  - A.  Sole Proprietorship (individual)
  - B.  Partnership
  - C.  Corporation
2. You **must** check one of the boxes below:
  - A.  I certify my business is a sole proprietorship and it has no employees but the sole proprietor. I am not subject to the Worker's Compensation Laws.
  - B.  I certify my business has satisfied its obligation to the Worker's Compensation Act through the use of an approved Notice of Exclusion (BWC-337, Rev. 5/96). I will provide a copy of the Notice of Exclusion within 21 days of the contract award. (For questions or a copy of the BWC-337, please call the Worker's Compensation Bureau at 517-322-1195).
  - C.  I certify my business has a Worker's Compensation Policy. I will provide an original Certificate of Insurance within twenty-one (21) days of the contract award.
3. If you have checked item 2(A) or 2(B), you **must** indicate the number of **both** full-time and part-time employees, other than yourself, including family members and active partners (if none, you must enter "0").

\_\_\_\_\_ Full-time Employees

\_\_\_\_\_ Part-time Employees

Name of Business		Federal ID (or) Social Security No.	
Address		Telephone (       )	
City	State	ZIP	

*I hereby certify that the above information is true and correct. I agree to notify the Michigan DNR of any changes that occur in factors affecting my coverage during any of my present and future operations.*

\_\_\_\_\_  
Signature of Owner or Authorized Representative

\_\_\_\_\_  
Title

\_\_\_\_\_  
Date

Please complete the "SEALED BID" information on the next page