



**DEPARTMENT OF NATURAL RESOURCES  
STATE OF MICHIGAN  
TIMBER SALE PROSPECTUS #7221**

SCHEDULED SALE DATE AND TIME: 3:00 p.m. (local time) on June 15, 2023.

LOCATION: NEWBERRY MGMT UNIT, PO BOX 428, 5666 S STATE HWY M 123, NEWBERRY, MI 49868.

PROSPECTUS NOTE: The bidder is advised to inspect the sale area and review the location, estimated volumes, operating costs and contract terms of proposed sales. Please be aware that some landowners may request 60 days or more notice for access across their land.

Notice is hereby given that bids will be received by the Unit Manager, NEWBERRY MANAGEMENT UNIT, for certain timber on the following described lands:

Over the Bridge Mix (42-019-22) / T46N, R11W, SEC. 8 , E1/2NW,NWNE,S1/2NE.

T46N, R11W, SEC. 9 , S1/2NW.

Luce County, Advertised Price \$29,072.80, 70.9 Acres, Hardwood, Spruce/Fir/Tamarack.

SALE NOTE: Road maintenance is required on this sale. See Sale Spec 4.2.3 for additional information.

Within Payment Unit(s) # 1 and 5, harvesting is not permitted during the period of April 15 to July 15 because of bark slippage.

It is recommended, but not required, that within Payment Unit 2, harvesting occur during dry summer or frozen winter conditions because of lower ground nature of the Unit.

Swamp Lakes Mix (42-029-22) / T49N, R08W, SEC. 30, NW,W1/2SE.

T49N, R08W, SEC. 31, NWNE.

Luce County, Advertised Price \$44,222.20, 86.4 Acres, Hardwood, White Pine.

SALE NOTE: Note that Mixed Hardwood includes red maple, paper birch, yellow birch and beech.

No new roads will be permitted in any Payment Unit. All operations are limited to existing roads. Skid trails and back in spurs will only be allowed.

Road maintenance is required on this sale. See Sale Spec 4.2.3 for details.

It is the Purchaser's responsibility to obtain access across private land for any routes other than the route shown on the Timber Sale Map.

It is recommended, but not required, that within Payment Unit(s) 1- 3, harvesting occur during dry summer or frozen winter conditions because some low areas within the Units.

The North Country Trail is shown on the Timber Sale Map. See Sale Spec 5.2.40 for restrictions.

A recreation site such as a trail, pathway, or campground is within the sale area or the vicinity. Certain restrictions/specifications may be applicable including time restrictions. Access may be through private or other public land.

Blue September Rain (42-037-22) / T45N, R07W, SEC. 30, SWSE.

T45N, R07W, SEC. 31, NW,N1/2NE,SWNE,NESW,NWSE.

Chippewa County, Advertised Price \$122,804.05, 142.4 Acres, Hardwood, Spruce/Fir/Tamarack.

SALE NOTE: Roads may require the installation of culverts for cross drainage or at natural drainage-ways.  
See Sale Spec 4.1.5 for additional information.

Road maintenance is required on this sale. See Sale Spec 4.2.3 for details.

Within Payment Unit(s) 3, 4, and 7, harvesting is not permitted during the period of April 15 to July 15 because of bark slippage.

## BID INSTRUCTIONS (VER. 10/10/2022):

### 1. Scheduled Bid Location, Date, and Time (2/11)

Bids must be received by the Unit Manager, NEWBERRY OFFICE, PO Box 428 5666 S STATE HWY M 123, NEWBERRY, MI 49868, no later than 3:00 p.m. (local time) on June 15, 2023. For further information concerning this sale, contact Keith Magnusson at 906-291-0120 extension n/a.

### 2. Bidder's Qualifications (10/22)

If all or part of a timber sale was prepared by a private contractor, the contractor and that contractor's company are not permitted to bid on the timber sale. A person must be 18 years of age or older to purchase timber. Permanent employees of the Department of Natural Resources or members of their immediate household may not bid. Former employees, in the permanent or seasonal class, may not bid until 3 months after the last day of active duty. Bids will not be accepted from individuals or companies appearing on the DNR/FRD No-Bid List. This list contains the names of purchasers who previously failed to execute a contract within 21-days or who have a history of poor performance.

### 3. Preparation of Sealed Bids (5/16)

Bid Forms may be completed online thru Michigan DNR Timber Sale Online Bidding (OLB) at [www.michigan.gov/timberbidding](http://www.michigan.gov/timberbidding) or by completing the hardcopy Bid Form found in the Timber Sale Prospectus. Hardcopy Bid Forms shall be manually signed in ink. Registration in OLB is considered your 'signature' for all bids submitted thru that system. Bid prices must be entered for each species and product in the Bid Price column for all material subject to bidding and all fill-in blanks must be completed. If erasures or other changes appear on the hardcopy Bid Form, each erasure or change must be initialed by the person signing the bid.

### 4. Submission of Sealed Bids (5/16)

Bid forms may be obtained from the Unit Manager or thru OLB. Bids may be submitted hardcopy or thru OLB. All hardcopy bids must be submitted on the bid form and in an envelope clearly identified as described in this section. NOTE: Only one bid form per bid envelope. Sealed bids must be submitted to the Unit office designated in the prospectus and must be submitted at or prior to the time established in the prospectus. The envelope should show on the outside (a) the sale name or number and (b) the date and time of bid opening, as shown in the prospectus. Bids received after the time specified in the sale prospectus are late bids and will be rejected.

It is possible for a bidder to submit multiple bids on a single sale. For example, a bid may be submitted hardcopy and a bid may be submitted thru OLB. Or, two bidders from the same company could both submit bids on the same sale. If this were to happen, the State would accept all bids received and award the contract accordingly. All bidding and contractual requirements would apply to all bids received.

### 5. Public Opening of Sealed Bids (7/16)

If conditions permit, the sealed bids will be publicly opened and posted at the time and place set in the prospectus.

If a bidder, present at a bid opening, has submitted bids on more than one sale, that bidder may withdraw their unopened bid envelopes or announce the withdrawal of their online bid after being declared the successful bidder on one sale.

### 6. Award of Contract (1/11)

Award of the contract will be made to the Bidder whose bid, conforming to the prospectus, is most advantageous to the State of Michigan on the basis of total value at rates bid for the estimated quantities. The State reserves the right to reject any bid or waive any minor irregularity in bids received. A written award mailed (or otherwise furnished) to the successful Bidder shall be deemed to result in a binding contract without further action by either party.

### 7. Down Payment (1/11)

The Bidder to whom award is made must make a down payment within 21 days of the sale award. The amount of the down payment will be calculated as shown in the Bond and Payment Schedule of this prospectus. Only cash may be used to meet this requirement.

### 8. Performance Security (1/11)

As guarantee of faithful performance, a cash bond, certificate of deposit, surety bond or irrevocable letter of credit (LOC) is required within 21 days of the sale award. The amount of the performance security is shown in the Bond and

Payment Schedule of this prospectus. If an LOC or surety is used, the coverage must extend for at least 6 months beyond the contract expiration.

#### 9. Worker's Compensation (10/22)

Purchaser shall obtain worker's compensation insurance to cover claims under Michigan's Worker's Disability Compensation Act of 1969 or similar employee benefit act of any other state applicable to an employee. Verification of Worker's Disability Compensation Act Compliance must be completed and submitted within 21 days of contract award and prior to the issuance of the timber sale contract. In addition, if applicable, Notice of Exclusion or Certificate of Insurance must also be submitted.

#### 10. Timber Sale Contract (10/22)

Additional conditions and requirements common to all timber sales are listed on the timber sale contract (R4031) and are available on line at [www.michigan.gov/timber](http://www.michigan.gov/timber). Contact the Unit Manager for additional information or a sample contract. Within 21 days of the date of the award letter, the bidder must sign the contract and provide the required down payment, performance security, and verification of worker's disability compensation. The down payment and performance security shall be in accordance with the provisions of the timber sale contract, in the sums stated in this prospectus. If these actions are not taken, then the Bidder, the Bidder's corporation, and the corporation's principals may not be permitted to bid on State timber sales for a period of 3 months after the first offense, 6 months after the second offense, and 1 year after the third offense. An offense will only be counted against the Bidder for 5 years. In addition, the Bidder certifies that if awarded this contract, the Bidder will complete the timber sale contract in accordance with its terms and any modifications thereof including requirements to purchase, cut, and remove the included timber by the expiration date.

Payment Unit values in the State Forest Timber Sale Contract are calculated based on the advertised value of the Payment Unit as a percentage of the total advertised value of the contract. The advertised value of each Payment Unit is given in the Description of Timber by Payment Unit table on the Timber Sale Information page. For example, if the value of Payment Unit 1 is advertised as \$1,500 and the total Timber Sale value is advertised as \$10,000, the contract price for Payment Unit 1 will be 15% of the total bid price ( $\$1,500/\$10,000 * 100$ ).

#### 11. Disclaimer of Estimates and Bidder's Warranty of Inspection (10/22)

Before submitting this bid, the Bidder is advised and cautioned to inspect the sale area, review the requirements of the sale contract, and take other steps as may be reasonably necessary to ascertain the location, estimated volumes, construction estimates, and operating costs of the proposed sale. Failure to do so will not relieve the Bidder from responsibility for completing the contract.

The Bidder warrants that this bid is submitted solely on the basis of the Bidder's examination and inspection of the quality and quantity of the timber offered for sale and the Bidder's opinion of the value thereof and the costs of recovery. No reliance should be placed on the State of Michigan's estimates of timber quality, quantity or costs of recovery. Bidder further acknowledges that the State of Michigan: (i) expressly disclaims any warranty of fitness of timber for any purpose; (ii) offers this timber as is without any warranty of quality (merchantability) or quantity and (iii) expressly disclaims any warranty as to the quantity or quality of timber sold.

#### 12. Certification and Chain-of-Custody (10/22)

Unless otherwise indicated in the contract under section 7 – Other Conditions of the Sale Specific Conditions & Requirements, the area encompassed by this timber sale is certified to the standards of the Forest Stewardship Council (FSC) - Certificate #SCS-FM/COC-00090N and the Sustainable Forestry Initiative (SFI) - Certificate #NSF-SFIS-5Y031-SF5. Forest products from this sale may be delivered to the mill as "FSC 100% and / or SFI certified" as long as the contractor hauling the forest products is chain-of-custody (COC) certified or covered under a COC certificate from the destination mill. The purchaser is responsible for maintaining COC after leaving the sale area.

#### 13. Good Neighbor Authority (GNA) Requirements (10/22)

If the name of this timber sales contains the acronym GNA, it is authorized by the Good Neighbor Authority (GNA) and covered by various agreements between the U.S. Forest Service and the State. The timber sale occurs on federal land and the following conditions apply:

GNA contracts on US Forest Service land will not be awarded to purchasers on the Federal list of excluded parties. The System for Award Management (SAM) will be checked for active excluded parties prior to award of contract. In

addition, the Bidder to whom award is made must complete an Assurance Regarding Felony Conviction or Tax Delinquent Status for Corporate Applicants (AD-3031).

14. Good Neighbor Authority (GNA) Requirements, con't (10/22)

Bidder certifies, by signing this bid form, that to the best of Bidder's knowledge that the following representations are accurate and complete.

- a. That the Bidder and its principals are not presently debarred, suspended, proposed for debarment, declared ineligible, or voluntary excluded from timber sales (covered transactions) by any Federal department or agency.
- b. That the Bidder and its principals have not within a 3-year period preceding this bid been convicted of or had a civil judgment rendered against them for commission of fraud or a criminal offense in connection with obtaining , attempting to obtain, or performing a public (Federal, State, or local) transaction or contract under a public transaction; violation of Federal or State antitrust statutes or commission of embezzlement, theft, forgery, bribery, falsification or destruction of records, making false statements, or receiving stolen property.
- c. That the Bidder and its principals are not presently indicted for or otherwise criminally or civilly charged by a governmental entity (Federal, State, or local) with commission of any of the offenses enumerated in paragraph b of this certification.
- d. That the Bidder and its principals have not within a 3-year period preceding this bid had one or more public transactions (Federal, State, or local) terminated for breach or default of a timber or forest product contract.

Bidders that cannot certify this requirement, in whole or in part, shall submit an explanation with their bid.

SHANNON LOTT, Acting  
Director



# TIMBER SALE INFORMATION

Over the Bridge Mix (42-019-22)  
 T46N, R11W, SEC. 8; T46N, R11W, SEC. 9.  
 Luce County (Advertised Price \$29,072.80)

SALE NOTE: Road maintenance is required on this sale. See Sale Spec 4.2.3 for additional information.

Within Payment Unit(s) # 1 and 5, harvesting is not permitted during the period of April 15 to July 15 because of bark slippage.

It is recommended, but not required, that within Payment Unit 2, harvesting occur during dry summer or frozen winter conditions because of lower ground nature of the Unit.

A timber sale contract for this lump sum, sealed bid timber sale will be awarded to the responsible bidder offering the highest sealed bid price. All units of volume listed below were estimated using the Inventory Manager computer program and the new Michigan taper model. Bids must be at or above the following advertised price for each product and species:

<u>PRODUCTS &amp; SPECIES</u>	<u>ESTIMATED UNITS*</u>	<u>ADVERTISED PRICE</u>
Sawtimber		
Red Maple	43.8 MBF	\$ 131.00 / MBF
Pulpwood		
Balsam Fir	104 Cords	\$ 12.40 / Cord
Mixed Hardwood	1,204 Cords	\$ 17.15 / Cord
Mixed Spruce	82 Cords	\$ 14.40 / Cord
N. White Cedar	36 Cords	\$ 6.00 / Cord

\* The total volume is statistically estimated within plus (+) or minus (-) 13.83 percent. There are an estimated 1,537 cords on this timber sale, plus or minus 213 cords at the 95% confidence level. The estimated units are final and not subject to adjustment. Prospective bidders are urged to examine this timber and to make their own estimates of quantity and quality.

**BOND AND PAYMENT SCHEDULE:**

1. A bond in the amount of \$1,454.00 to insure faithful performance of the conditions of the contract will be deposited by the successful bidder within 21 days of the sale award.
  2. Cutting in any sale or unit without the required advance payment would be considered a trespass.
  3. Total payment must be paid in advance or according to the following schedule :
    - (a) Ten percent (10%) of the sale value must be paid within 21 days of the sale award.
    - (b) The 10% down payment will be credited towards the first unit cut.
    - (c) Payment for each of the following units must be made before cutting begins in that unit:
- | PAYMENT UNIT NUMBER | PERCENT OF TOTAL SALE VALUE |
|---------------------|-----------------------------|
| 01                  | 9.6%                        |
| 02                  | 42.1%                       |
| 03                  | 23.2%                       |
| 04                  | 15.7%                       |
| 05                  | 9.4%                        |
4. If no cutting takes place, the 10% down payment will not be refunded.
  5. Operations on the contract issued will terminate on 06/30/2026.

**SALE STATISTICS**

Volumes were calculated in cubic feet using the Michigan taper model. Cubic foot volume includes all wood inside bark for the product indicated. For display purposes, cubic feet were converted to cords and MBF using a simple conversion factor, e.g. 79 cubic feet per cord and 185 cubic feet per MBF. The cubic foot volumes are precise; the cords and MBF volumes are not. Cubic foot volume cannot be directly converted to cords or boards with precision.

**SALE VOLUMES**

The total estimated sale volume may not equal the sum of the species/products due to the nature of statistical calculations associated with double sampling methodology.

VOLUME		STATISTICAL RANGE IN CORDS		
TOTAL CUBIC FEET	TOTAL CORDS	PERCENT ERROR	MINIMUM	MAXIMUM
121,389	1,537	13.83%	1,324	1,749

## VDU VOLUMES

A VDU is a Volume Determination Unit. Volumes and their associated statistics are calculated at the VDU level and summarized to the sale level. There is often a one to one relationship between a VDU and a Payment Unit, but not always, depending on the cruise design. Refer to the VDU TO PAYMENT UNIT table.

VDU	VOLUME		PERCENT ERROR	RANGE IN CORDS	
	TOTAL CUBIC FEET	TOTAL CORDS		MINIMUM	MAXIMUM
32	11,334	143	36.31%	91	196
37	9,945	126	36.37%	80	172
38	24,259	307	15.91%	258	356
39	23,604	299	31.63%	204	393
42	52,247	661	15.61%	558	765
<b>TOTAL:</b>	<b>121,389</b>	<b>1,537</b>		<b>1,192</b>	<b>1,881</b>

## VDU TO PAYMENT UNIT

When a VDU is associated with more than one Payment Unit (PU), the VDU volumes are assigned to the PU based on acres of the VDU within the PU.

VDU	VDU ACRES	PU	PU ACRES
32	14.4	1	14.4
37	10.1	5	10.1
38	15.1	4	15.1
39	11.5	3	11.5
42	19.8	2	19.8
<b>TOTAL:</b>	<b>70.9</b>		<b>70.9</b>



**DESCRIPTION OF TIMBER BY PAYMENT UNIT (PU)**

PU	MARKET GROUP	PRODUCT	QUANTITY	UNIT	ACRES	ADVERTISE PRICE
1	Red Maple	Sawtimber	3.7	MBF	14.4	\$2,789.00
	Balsam Fir	Pulpwood	2	Cords		
	Mixed Hardwood		122	Cords		
	<i>Black Cherry</i>		2	<i>Cords</i>		
	<i>Red Maple</i>		118	<i>Cords</i>		
	<i>Yellow Birch</i>		2	<i>Cords</i>		
	Mixed Spruce		13	Cords		
	<i>White Spruce</i>		13	<i>Cords</i>		
	2	Red Maple	Sawtimber	7.6		
Balsam Fir		Pulpwood	51	Cords		
Mixed Hardwood			614	Cords		
<i>Beech</i>			4	<i>Cords</i>		
<i>Black Cherry</i>			40	<i>Cords</i>		
<i>Red Maple</i>			570	<i>Cords</i>		
Mixed Spruce			6	Cords		
<i>White Spruce</i>			6	<i>Cords</i>		
3		Red Maple	Sawtimber	19.3	MBF	11.5
	Balsam Fir	Pulpwood	21	Cords		
	Mixed Hardwood		226	Cords		
	<i>Black Cherry</i>	<i>Sawtimber</i>	0.7	<i>MBF</i>		
	<i>Beech</i>	<i>Pulpwood</i>	3	<i>Cords</i>		
	<i>Black Cherry</i>		3	<i>Cords</i>		
	<i>Red Maple</i>		213	<i>Cords</i>		
	<i>Yellow Birch</i>		6	<i>Cords</i>		
	Mixed Spruce		5	Cords		
	<i>White Spruce</i>		5	<i>Cords</i>		
	4	Red Maple	Sawtimber	6.3	MBF	
Balsam Fir		Pulpwood	20	Cords		
Mixed Hardwood			143	Cords		
<i>Yellow Birch</i>		<i>Sawtimber</i>	1.4	<i>MBF</i>		
<i>Black Cherry</i>		<i>Pulpwood</i>	2	<i>Cords</i>		
<i>Red Maple</i>			117	<i>Cords</i>		
<i>Sugar Maple</i>			2	<i>Cords</i>		
<i>Yellow Birch</i>			19	<i>Cords</i>		
Mixed Spruce			58	Cords		
<i>Black Spruce</i>			54	<i>Cords</i>		
<i>White Spruce</i>			4	<i>Cords</i>		
N. White Cedar			36	Cords		
5		Red Maple	Sawtimber	6.9	MBF	10.1
	Balsam Fir	Pulpwood	10	Cords		
	Mixed Hardwood		99	Cords		
	<i>Black Cherry</i>		1	<i>Cords</i>		
	<i>Red Maple</i>		92	<i>Cords</i>		
	<i>Sugar Maple</i>		6	<i>Cords</i>		
TOTAL:			43.8	MBF		
TOTAL:			1,426	Cords		

## Sale Specific Conditions & Requirements

**Sale Name: Over the Bridge Mix**

**Sale Number: 42-019-22 Seq#: 1**

### 1 - Sale Area

#### 1.2 - Boundaries

##### 1.2.1 - Painted boundaries (9/19)

The sale boundary and Payment Unit boundaries are marked and identified by blue, red and yellow paint. Exterior sale boundary lines against private property are marked with blue paint. Exterior sale boundary lines against state are marked with red paint. Interior Payment Unit boundaries are marked with yellow paint. The painted boundary line trees are not Included Timber and are to be protected unless marked with orange paint. Yellow painted trees designating an interior Payment Unit boundary are only to be cut when all surrounding Payment Units have been paid.

### 2 - Timber Specifications

#### 2.1 - Included Timber

##### 2.1.1 - Clearcut unit(s) with unmerchantable trees (6/14)

Within Payment Unit(s) # 2, cut all trees that are two (2) inches or more at DBH, except leave ALL White pine greater than 18".

Leave ALL Hemlock.

##### 2.1.3 - Cut tree marked unit(s) (12/08)

Within Payment Unit(s) #'s 1 and 5, all trees are designated for cutting when marked with orange paint above and below stump height, regardless of merchantability.

Within Unit(s) 1 and 5, cut all fir, spruce, aspen, and beech. Leave All Trees marked in Green Paint as they were marked for wildlife and stand diversity. Leave all Hemlock.

##### 2.1.7 - Leave tree marked unit(s) (6/14)

Within Payment Unit(s) # 3 and 4, cut all trees that are two (2) inches or more at DBH, except trees marked with green paint above and below stump height.

Within PU 3 leave White Pine greater than 18".

Within PU 4 Leave all white pine and hemlock. Leave all paper and yellow birch.

### 4 - Transportation

#### 4.1 - Construction

##### 4.1.4 - Timber removed for construction (12/09)

Trees cut or damaged in the process of pre-approved road, landing or skid trail construction will be decked in an area separate from other Designated Timber and not removed until measured by the sale administrator. Payment will be made at the specified Purchase Unit Price.

##### 4.1.6 - Road construction (1/09)

Construction of new roads or improvements of existing roads shall be done in such a way as to minimize the environmental and visual impacts. Merchantable trees shall be cut and utilized unless otherwise directed. Non-merchantable trees shall be severed and laid flat on the ground. Slash shall be scattered, and not left in windrows and kept a minimum of 10 feet back from the road edge. Stumps shall be set upright, not left on edge, and be moved at least 10 feet away from the road edge. Disturbed soil shall be feathered into the woods and not left in berms or windrows.

##### 4.1.7 - Road closure (10/11)

All new roads built into the sale must be blocked to vehicle traffic within 30 days of completion of hauling. Overgrown roads that are reopened shall be considered new roads. In general, this will require constructing a four (4') foot high berm of stumps and logs covered with earth. These roads must be rendered impassable to cars and trucks. All stumps from road building and

landing construction must be reserved to block any newly constructed roads upon completion of the sale. These stumps must be scattered along the road system to prohibit vehicular movement. Contact the sale administrator for specific details of design and placement.

#### 4.2 - Maintenance

##### 4.2.1 - Hauling restriction (12/08)

Hauling may be restricted on forest roads by the Unit Manager or his/her representative. The restriction may occur during wet weather conditions.

##### 4.2.3 - Road maintenance (8/13)

The following road maintenance is required: Within 30 days of completion of hauling, or if no hauling occurs for 30 days, the road must be maintained and graded. This includes cleaning of drainage areas, grading, crowning and filling with gravel, if necessary. Damages will be assessed if grading/repair does not occur.

##### 4.2.4 - Grading (10/16)

For completion of the sale, state forest roads must be graded. In general, this will require a road grader or bull dozer to shape up the roads after forest products have been hauled off site. This includes cleaning of drainage areas, grading, crowning and filling with gravel, if necessary. The grading equipment to be used must be approved by the Unit Manager or his/her representative.

##### 4.2.5 - Two wheel drive condition (2/04)

All existing trail roads on and adjacent to the sale area must be passable by two-wheel drive traffic for the duration of the sale.

### 5 - Operations

#### 5.2 - Conduct of Operations

##### 5.2.1 - Slash

###### 5.2.1.8 - Slash height (12/08)

No slash or tree tops may exceed 36 inches in height.

##### 5.2.2 - Hazard Trees/Snags

###### 5.2.2.1 - Den trees (10/16)

Obvious hollow and/or den trees shall be protected and left standing unless they are a safety hazard.

##### 5.2.3 - Operating Restrictions

###### 5.2.3.3 - Bark slippage restriction (3/09)

Within Payment Unit(s) # 1 and 5, unless changed by written agreement, cutting and skidding are not permitted during the period of April 15 to July 15. This restriction is because of bark slippage.

##### 5.2.22 - Operating Caution

###### 5.2.22.1 - Operating caution (6/11)

It is recommended, but not required, that within Payment Unit(s) # 2, cutting, skidding and hauling occur during dry summer or frozen winter conditions. The reason for the recommendation is because of lower ground nature of some the areas of sale.

##### 5.2.32 - Decking/landing restoration (9/13)

All decking and landing areas must have the surface area restored to a condition equal to or better than before. This is to ensure the proper regeneration of the stand. Wood debris, chips and "cookies" from trimmings must be removed or scattered away from landing and loading areas and may not be windrowed on the edge.

##### 5.2.38 - No decking against live trees (2/04)

Cut products may not be decked against unmarked or designated leave trees.

#### 5.4 - Soil Protection

##### 5.4.1 - Rutting restriction, general (7/16)

Operations are to cease immediately if equipment and weather conditions result in rutting of roads and/or skid trails which is 12 inches or greater in depth and 50 feet in length. The Unit Manager or his/her representative may restrict hauling and/or skidding if ruts exceed the specified depth. With the Unit Manager or his/her representative's approval, the Purchaser may return to the area when the risk of rutting has decreased.

#### 5.8 - Protection of Endangered Species

##### 5.8.5 - Protection of raptor nests (3/13)

All trees with raptor nests will be protected if found during harvesting operations. Notification will be made to the Unit Manager or his/her representative who will notify the Wildlife Biologist so an on-site evaluation and recommendation can be made, if necessary.

### **6 - Safety and Fire Prevention**

#### 6.2 - Signing

##### 6.2.1 - Road posting (10/20)

The Purchaser is responsible for posting and maintaining caution signs on County Road 442 prior to beginning operations. The road must be posted at appropriate distances from the sale area to warn of logging activity and truck traffic. Signs must be removed when harvest operations are suspended or completed. The Purchaser will provide these signs.



# TIMBER SALE MAP

This information provided by authority of Part 525, 1994 PA 451, as amended.

Forest Management Unit Newberry	County Luce	Mapped By L. Livermore	Date 9/22/2021	Page 1	of 1
Cruised By Contractor					

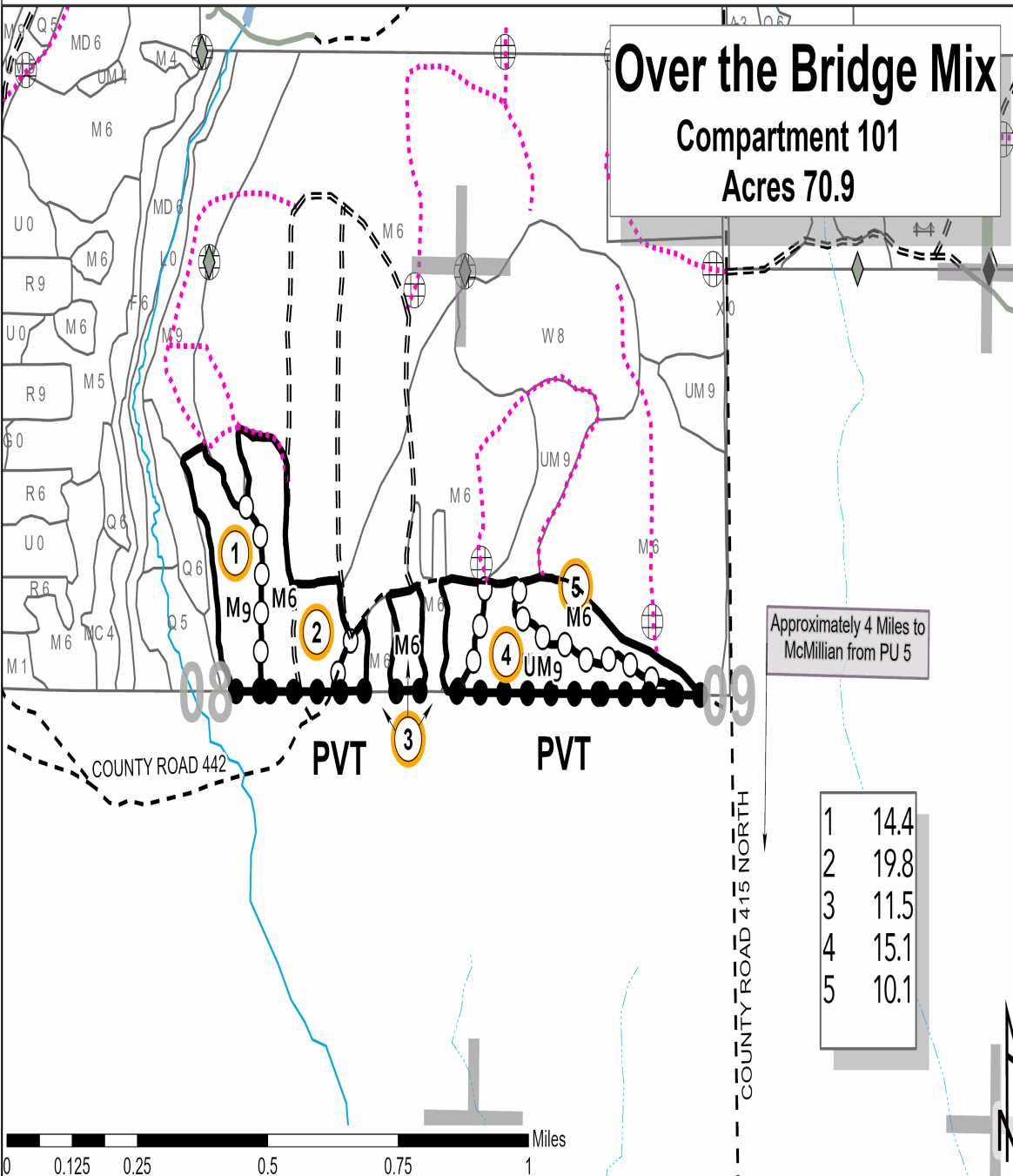
Township 46N	Range 11W	Section(s) and Subdivision(s) Section 08: E½NW, NWNE, S½NE Section 09: S½NW	Scale 1:15,840
-----------------	--------------	--	-------------------

Cover Type				Density			
A = Aspen	H = Hemlock	N = Marsh	U = Upland Brush	0 = Non Stocked	5 = Pole Timber Medium		
B = Paper Birch	J = Jack Pine	O = Oak	UM = Upland Mixed	1 = Seedling Sapling Poor	6 = Pole Timber Well		
C = Cedar	L = Lowland Brush	P = Lowland Poplar	V = Bog or Marsh	2 = Seedling Sapling Medium	7 = Saw Timber Poor		
D = Treed Bog	LM = Lowland Mixed	Q = Mixed Swamp Conifer	W = White Pine	3 = Seedling Sapling Well	8 = Saw Timber Medium		
E = Swamp Hdwoods	M = Mpl, Bch, Brch	R = Red Pine	X = Non Stocked	4 = Pole Timber Poor	9 = Saw Timber Well		
F = Spruce Fir	MC = Mixed Conifer	S = Black Spruce	Z = Water				
G = Grass	MD = Mixed Deciduous	T = Tamarack					



- Against State (Red)
- Payment Unit (Yellow)
- Private Line (Blue)
- Payment Unit Label
- PVT Private Ownership
- 01 Section Numbers
- Section Corners
- ◆ Survey Corners
- ◆ Field Grade Corners
- ⊕ Berms
- ~ Intermittent Stream
- ~ Perennial River
- ~ Lakes and Rivers
- ▨ Retention Area
- Highway
- Primary Forest Road
- Secondary Forest Road
- Forest Access Route
- Paved Road
- - Gravel Road
- - County Road - Seasonal
- Private
- · · Temporary Management Access

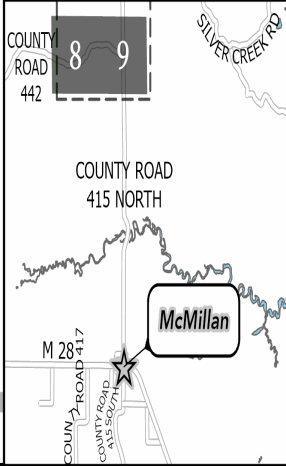
**Over the Bridge Mix**  
**Compartment 101**  
**Acres 70.9**



Approximately 4 Miles to McMillan from PU 5

1	14.4
2	19.8
3	11.5
4	15.1
5	10.1

Locator Map: 1:200,000  
 [ ] - Main Map Extent





## TIMBER SALE INFORMATION

Swamp Lakes Mix (42-029-22)  
 T49N, R08W, SEC. 30; T49N, R08W, SEC. 31.  
 Luce County (Advertised Price \$44,222.20)

SALE NOTE: Note that Mixed Hardwood includes red maple, paper birch, yellow birch and beech.

No new roads will be permitted in any Payment Unit. All operations are limited to existing roads. Skid trails and back in spurs will only be allowed.

Road maintenance is required on this sale. See Sale Spec 4.2.3 for details.

It is the Purchaser's responsibility to obtain access across private land for any routes other than the route shown on the Timber Sale Map.

It is recommended, but not required, that within Payment Unit(s) 1- 3, harvesting occur during dry summer or frozen winter conditions because some low areas within the Units.

The North Country Trail is shown on the Timber Sale Map. See Sale Spec 5.2.40 for restrictions.

A recreation site such as a trail, pathway, or campground is within the sale area or the vicinity. Certain restrictions/specifications may be applicable including time restrictions. Access may be through private or other public land.

A timber sale contract for this lump sum, sealed bid timber sale will be awarded to the responsible bidder offering the highest sealed bid price. All units of volume listed below were estimated using the Inventory Manager computer program and the new Michigan taper model. Bids must be at or above the following advertised price for each product and species:

<u>PRODUCTS &amp; SPECIES</u>	<u>ESTIMATED UNITS*</u>	<u>ADVERTISED PRICE</u>
Sawtimber		
Red Maple	77.9 MBF	\$ 131.00 / MBF
Yellow Birch	11.6 MBF	\$ 165.00 / MBF
Pulpwood		
B. T. Aspen	75 Cords	\$ 31.60 / Cord
Balsam Fir	120 Cords	\$ 12.40 / Cord
Jack Pine	11 Cords	\$ 34.30 / Cord
Mixed Hardwood	643 Cords	\$ 17.15 / Cord
N. White Cedar	15 Cords	\$ 6.00 / Cord
Red Pine	38 Cords	\$ 73.55 / Cord
White Pine	619 Cords	\$ 22.15 / Cord
White Spruce	17 Cords	\$ 14.40 / Cord

\* The total volume is statistically estimated within plus (+) or minus (-) 13.63 percent. There are an estimated 1,757 cords on this timber sale, plus or minus 240 cords at the 95% confidence level. The estimated units are final and not subject to adjustment. Prospective bidders are urged to examine this timber and to make their own estimates of quantity and quality.

**BOND AND PAYMENT SCHEDULE:**

1. A bond in the amount of \$2,211.00 to insure faithful performance of the conditions of the contract will be deposited by the successful bidder within 21 days of the sale award.
2. Cutting in any sale or unit without the required advance payment would be considered a trespass.
3. Total payment must be paid in advance or according to the following schedule :
  - (a) Ten percent (10%) of the sale value must be paid within 21 days of the sale award.
  - (b) The 10% down payment will be credited towards the first unit cut.
  - (c) Payment for each of the following units must be made before cutting begins in that unit:

PAYMENT UNIT NUMBER	PERCENT OF TOTAL SALE VALUE
01	42.2%
02	27.2%
03	30.6%

4. If no cutting takes place, the 10% down payment will not be refunded.
5. Operations on the contract issued will terminate on 12/31/2026.

## SALE STATISTICS

Volumes were calculated in cubic feet using the Michigan taper model. Cubic foot volume includes all wood inside bark for the product indicated. For display purposes, cubic feet were converted to cords and MBF using a simple conversion factor, e.g. 79 cubic feet per cord and 185 cubic feet per MBF. The cubic foot volumes are precise; the cords and MBF volumes are not. Cubic foot volume cannot be directly converted to cords or boards with precision.

## **SALE VOLUMES**

The total estimated sale volume may not equal the sum of the species/products due to the nature of statistical calculations associated with double sampling methodology.

VOLUME			STATISTICAL RANGE IN CORDS	
TOTAL CUBIC FEET	TOTAL CORDS	PERCENT ERROR	MINIMUM	MAXIMUM
138,769	1,757	13.63%	1,517	1,996

## **VDU VOLUMES**

A VDU is a Volume Determination Unit. Volumes and their associated statistics are calculated at the VDU level and summarized to the sale level. There is often a one to one relationship between a VDU and a Payment Unit, but not always, depending on the cruise design. Refer to the VDU TO PAYMENT UNIT table.

	VOLUME			RANGE IN CORDS	
VDU	TOTAL CUBIC FEET	TOTAL CORDS	PERCENT ERROR	MINIMUM	MAXIMUM
14	58,394	739	21.35%	581	897
22	80,375	1,017	11.98%	895	1,139
<b>TOTAL:</b>	<b>138,769</b>	<b>1,757</b>		<b>1,477</b>	<b>2,036</b>

## **VDU TO PAYMENT UNIT**

When a VDU is associated with more than one Payment Unit (PU), the VDU volumes are assigned to the PU based on acres of the VDU within the PU.

VDU	VDU ACRES	PU	PU ACRES
14	25.9	1	25.9
22	60.5	2	28.4
		3	32.1
<b>TOTAL:</b>	<b>86.4</b>		<b>86.4</b>



**DESCRIPTION OF TIMBER BY PAYMENT UNIT (PU)**

PU	MARKET GROUP	PRODUCT	QUANTITY	UNIT	ACRES	ADVERTISE PRICE
1	Red Maple	Sawtimber	1.1	MBF	25.9	\$18,651.05
	B. T. Aspen	Pulpwood	18	Cords		
	Balsam Fir		27	Cords		
	Jack Pine		11	Cords		
	Mixed Hardwood		42	Cords		
	<i>Paper Birch</i>		12	<i>Cords</i>		
	<i>Red Maple</i>		30	<i>Cords</i>		
	Red Pine		38	Cords		
	White Pine		619	Cords		
	<i>White Pine</i>	<i>Sawtimber</i>	177.1	<i>MBF</i>		
	<i>White Pine</i>	<i>Pulpwood</i>	265	<i>Cords</i>		
	2	Red Maple	Sawtimber	36.1		
Yellow Birch			5.4	MBF		
B. T. Aspen		Pulpwood	27	Cords		
Balsam Fir			44	Cords		
Mixed Hardwood			282	Cords		
<i>Beech</i>		<i>Sawtimber</i>	7.6	<i>MBF</i>		
<i>Paper Birch</i>			0.7	<i>MBF</i>		
<i>Beech</i>		<i>Pulpwood</i>	33	<i>Cords</i>		
<i>Paper Birch</i>			31	<i>Cords</i>		
<i>Red Maple</i>			188	<i>Cords</i>		
<i>Yellow Birch</i>			14	<i>Cords</i>		
N. White Cedar			7	Cords		
White Spruce			8	Cords		
3		Red Maple	Sawtimber	40.7	MBF	32.1
	Yellow Birch		6.2	MBF		
	B. T. Aspen	Pulpwood	30	Cords		
	Balsam Fir		49	Cords		
	Mixed Hardwood		318	Cords		
	<i>Beech</i>	<i>Sawtimber</i>	8.5	<i>MBF</i>		
	<i>Paper Birch</i>		0.7	<i>MBF</i>		
	<i>Beech</i>	<i>Pulpwood</i>	38	<i>Cords</i>		
	<i>Paper Birch</i>		35	<i>Cords</i>		
	<i>Red Maple</i>		212	<i>Cords</i>		
	<i>Yellow Birch</i>		15	<i>Cords</i>		
	N. White Cedar		8	Cords		
	White Spruce		9	Cords		
TOTAL:			89.5	MBF		
TOTAL:			1,537	Cords		

## Sale Specific Conditions & Requirements

**Sale Name: Swamp Lakes Mix**

**Sale Number: 42-029-22 Seq#: 1**

### 1 - Sale Area

#### 1.2 - Boundaries

##### 1.2.1 - Painted boundaries (9/19)

The sale boundary and Payment Unit boundaries are marked and identified by blue, red and yellow paint. Exterior sale boundary lines against private property are marked with blue paint. Exterior sale boundary lines against state are marked with red paint. Interior Payment Unit boundaries are marked with yellow paint. Yellow painted trees designating an interior Payment Unit boundary are only to be cut when all surrounding Payment Units have been paid.

### 2 - Timber Specifications

#### 2.1 - Included Timber

##### 2.1.7 - Leave tree marked unit(s) (6/14)

Within Payment Unit(s) 1-3, all trees, which meet minimum piece specifications in 2.2 Utilization, are designated for cutting, except trees marked with green paint above and below stump height. In addition, do not cut any hemlock in Payment Unit 1. Also, do not cut any hemlock or white pine in Payment Units 2 & 3.

##### 2.1.11 - Description of timber note (2/04)

Note that Mixed Hardwood includes: red maple, paper birch, yellow birch and beech.

### 3 - Payments

#### 3.3 - Pre-measured Sales

##### 3.3.4 - Dividing payment units (7/14)

Payment Unit(s) may be divided at the request of the Purchaser and upon approval of the Unit Manager. Dividing Payment Units is a contract modification which requires a Timber Sale Contract Amendment. Only one division per payment unit allowed.

### 4 - Transportation

#### 4.1 - Construction

##### 4.1.4 - Timber removed for construction (12/09)

Trees cut or damaged in the process of pre-approved road, landing or skid trail construction will be decked in an area separate from other Designated Timber and not removed until measured by the sale administrator. Payment will be made at the specified Purchase Unit Price.

##### 4.1.12 - No new roads (1/12)

No new roads will be permitted in any Payment Unit. All operations are limited to existing roads. Skid trails and back in spurs will only be allowed.

#### 4.2 - Maintenance

##### 4.2.1 - Hauling restriction (12/08)

Hauling may be restricted on forest roads by the Unit Manager or his/her representative. The restriction may occur during wet weather conditions.

##### 4.2.2 - Fill material (4/07)

To maintain roads, fill material may be needed in areas where "holes" exist or may be expected to develop. This fill material should be placed before trucking begins.

##### 4.2.3 - Road maintenance (8/13)

The following road maintenance is required: Within 60 days of completion of hauling, the road must be maintained and graded. This includes cleaning of drainage areas, grading, crowning and filling with gravel, if necessary. Damages will be assessed if grading/repair does not occur.

#### 4.2.4 - Grading (10/16)

For completion of the sale, state forest roads must be graded. In general, this will require a road grader or bull dozer to shape up the roads after forest products have been hauled off site. This includes cleaning of drainage areas, grading, crowning and filling with gravel, if necessary. The grading equipment to be used must be approved by the Unit Manager or his/her representative.

#### 4.4 - Access

##### 4.4.2 - Alternate route on private property (2/04)

It is the Purchaser's responsibility to obtain access across private land for any routes other than the route shown on the Timber Sale Map.

### 5 - Operations

#### 5.2 - Conduct of Operations

##### 5.2.1 - Slash

###### 5.2.1.8 - Slash height (12/08)

No slash or tree tops may exceed 36 inches in height.

##### 5.2.2 - Hazard Trees/Snags

###### 5.2.2.1 - Den trees (10/16)

Obvious hollow and/or den trees shall be protected and left standing unless they are a safety hazard.

##### 5.2.22 - Operating Caution

###### 5.2.22.1 - Operating caution (6/11)

It is recommended, but not required, that within Payment Unit(s) 1-3, cutting, skidding, and hauling occur during dry summer or frozen winter conditions. The reason for the recommendation is because some low areas within the units. Swamp Lakes road can be very wet during the spring months from snow melt and in the summer during after heavy rainfall events. This makes the road susceptible to rutting and damage from hauling.

##### 5.2.32 - Decking/landing restoration (9/13)

All decking and landing areas must have the surface area restored to a condition equal to or better than before. This is to ensure the proper regeneration of the stand. Wood debris, chips and "cookies" from trimmings must be removed or scattered away from landing and loading areas and may not be windrowed on the edge.

##### 5.2.38 - No decking against live trees (2/04)

Cut products may not be decked against unmarked or designated leave trees.

##### 5.2.40 - Pathway protection (10/10)

The North Country Trail is shown on the Timber Sale Map. Do not cut trees or damage posts with blue pathway markers. Maintain a 20-foot wide slash, debris, and rut free zone daily, using the pathway as the centerline. Skidding across the trail may only occur in locations approved by the sale administrator.

#### 5.4 - Soil Protection

##### 5.4.1 - Rutting restriction, general (7/16)

Operations are to cease immediately if equipment and weather conditions result in rutting of roads and/or skid trails which is 12 inches or greater in depth and 50 feet in length. The Unit Manager or his/her representative may restrict hauling and/or skidding if ruts exceed the specified depth. With the Unit Manager or his/her representative's approval, the Purchaser may return to the area when the risk of rutting has decreased.

#### 5.8 - Protection of Endangered Species

##### 5.8.5 - Protection of raptor nests (3/13)

All trees with raptor nests will be protected if found during harvesting operations. Notification will be made to the Unit Manager or his/her representative who will notify the Wildlife Biologist so an on-site evaluation and recommendation can be made, if necessary.

## **6 - Safety and Fire Prevention**

### **6.2 - Signing**

#### **6.2.1 - Road posting (10/20)**

The Purchaser is responsible for posting and maintaining caution signs on County Road 500 & Swamp Lakes Road prior to beginning operations. The road must be posted at appropriate distances from the sale area to warn of logging activity and truck traffic. Signs must be removed when harvest operations are suspended or completed. The Purchaser will provide these signs.

#### **6.2.3 - Recreational trail posting (10/20)**

The Purchaser is responsible for posting and maintaining caution signs on the North Country Trail prior to beginning operations. The trail must be posted at appropriate distances from the sale area to warn of logging activity and truck traffic at both ends of the trail. Signs must be removed when harvest operations are suspended or completed. The DNR will provide these signs.





## TIMBER SALE INFORMATION

### Blue September Rain (42-037-22)

T45N, R07W, SEC. 30; T45N, R07W, SEC. 31.  
Chippewa County (Advertised Price \$122,804.05)

SALE NOTE: Roads may require the installation of culverts for cross drainage or at natural drainage-ways. See Sale Spec 4.1.5 for additional information.

Road maintenance is required on this sale. See Sale Spec 4.2.3 for details.

Within Payment Unit(s) 3, 4, and 7, harvesting is not permitted during the period of April 15 to July 15 because of bark slippage.

A timber sale contract for this lump sum, sealed bid timber sale will be awarded to the responsible bidder offering the highest sealed bid price. All units of volume listed below were estimated using the Inventory Manager computer program and the new Michigan taper model. Bids must be at or above the following advertised price for each product and species:

<u>PRODUCTS &amp; SPECIES</u>	<u>ESTIMATED UNITS*</u>	<u>ADVERTISED PRICE</u>
Sawtimber		
Red Maple	101.9 MBF	\$ 131.00 / MBF
Sugar Maple	101.5 MBF	\$ 347.00 / MBF
Pulpwood		
Balsam Fir	990 Cords	\$ 12.40 / Cord
Mixed Hardwood	1,547 Cords	\$ 17.15 / Cord
Mixed Spruce	189 Cords	\$ 14.40 / Cord
Quaking Aspen	1,035 Cords	\$ 31.60 / Cord

\* The total volume is statistically estimated within plus (+) or minus (-) 10.32 percent. There are an estimated 4,216 cords on this timber sale, plus or minus 435 cords at the 95% confidence level. The estimated units are final and not subject to adjustment. Prospective bidders are urged to examine this timber and to make their own estimates of quantity and quality.

### **BOND AND PAYMENT SCHEDULE:**

1. A bond in the amount of \$6,140.00 to insure faithful performance of the conditions of the contract will be deposited by the successful bidder within 21 days of the sale award.
2. Cutting in any sale or unit without the required advance payment would be considered a trespass.
3. Total payment must be paid in advance or according to the following schedule :
  - (a) Ten percent (10%) of the sale value must be paid within 21 days of the sale award.
  - (b) The 10% down payment will be credited towards the first unit cut.
  - (c) Payment for each of the following units must be made before cutting begins in that unit:
 

PAYMENT UNIT NUMBER	PERCENT OF TOTAL SALE VALUE
01	20.7%
02	21.1%
03	16.6%
04	1.1%
05	22.0%
06	13.9%
07	4.6%
4. If no cutting takes place, the 10% down payment will not be refunded.
5. Operations on the contract issued will terminate on 12/31/2026.

### **SALE STATISTICS**

Volumes were calculated in cubic feet using the Michigan taper model. Cubic foot volume includes all wood inside bark for the product indicated. For display purposes, cubic feet were converted to cords and MBF using a simple conversion factor, e.g. 79 cubic feet per cord and 185 cubic feet per MBF. The cubic foot volumes are precise; the cords and MBF volumes are not. Cubic foot volume cannot be directly converted to cords or boards with precision.

## SALE VOLUMES

The total estimated sale volume may not equal the sum of the species/products due to the nature of statistical calculations associated with double sampling methodology.

VOLUME			STATISTICAL RANGE IN CORDS	
TOTAL CUBIC FEET	TOTAL CORDS	PERCENT ERROR	MINIMUM	MAXIMUM
333,039	4,216	10.32%	3,780	4,651

## VDU VOLUMES

A VDU is a Volume Determination Unit. Volumes and their associated statistics are calculated at the VDU level and summarized to the sale level. There is often a one to one relationship between a VDU and a Payment Unit, but not always, depending on the cruise design. Refer to the VDU TO PAYMENT UNIT table.

	VOLUME			RANGE IN CORDS	
VDU	TOTAL CUBIC FEET	TOTAL CORDS	PERCENT ERROR	MINIMUM	MAXIMUM
36	4,945	63	47.40%	33	92
37	78,669	996	16.52%	831	1,160
39	21,553	273	19.46%	220	326
40	150,612	1,906	13.70%	1,645	2,168
52	61,662	781	25.66%	580	981
53	15,597	197	51.51%	96	299
<b>TOTAL:</b>	<b>333,039</b>	<b>4,216</b>		<b>3,405</b>	<b>5,026</b>

## VDU TO PAYMENT UNIT

When a VDU is associated with more than one Payment Unit (PU), the VDU volumes are assigned to the PU based on acres of the VDU within the PU.

VDU	VDU ACRES	PU	PU ACRES
36	6.5	4	6.5
37	23.6	5	23.6
39	19.5	3	19.5
40	58.8	1	29.1
		2	29.7
52	23.2	6	23.2
53	10.8	7	10.8
<b>TOTAL:</b>	<b>142.4</b>		<b>142.4</b>



**DESCRIPTION OF TIMBER BY PAYMENT UNIT (PU)**

PU	MARKET GROUP	PRODUCT	QUANTITY	UNIT	ACRES	ADVERTISE PRICE
1	Red Maple	Sawtimber	19.2	MBF	29.1	\$25,414.80
	Sugar Maple		23.9	MBF		
	Balsam Fir	Pulpwood	255	Cords		
	Mixed Hardwood		418	Cords		
	<i>Beech</i>		11	Cords		
	<i>Black Cherry</i>		63	Cords		
	<i>Paper Birch</i>		8	Cords		
	<i>Red Maple</i>		175	Cords		
	<i>æberry (Juneberry)</i>		3	Cords		
	<i>Sugar Maple</i>		158	Cords		
	Mixed Spruce		27	Cords		
	<i>White Spruce</i>		27	Cords		
	Quaking Aspen		123	Cords		
	2	Red Maple	Sawtimber	19.6		
Sugar Maple			24.3	MBF		
Balsam Fir		Pulpwood	261	Cords		
Mixed Hardwood			428	Cords		
<i>Beech</i>			12	Cords		
<i>Black Cherry</i>			64	Cords		
<i>Paper Birch</i>			9	Cords		
<i>Red Maple</i>			179	Cords		
<i>æberry (Juneberry)</i>			3	Cords		
<i>Sugar Maple</i>			161	Cords		
Mixed Spruce			28	Cords		
<i>White Spruce</i>			28	Cords		
Quaking Aspen			125	Cords		
3		Red Maple	Sawtimber	24.8	MBF	19.5
	Sugar Maple		44.1	MBF		
	Balsam Fir	Pulpwood	4	Cords		
	Mixed Hardwood		106	Cords		
	<i>Black Cherry</i>	Sawtimber	2.3	MBF		
	<i>Black Cherry</i>	Pulpwood	1	Cords		
	<i>Red Maple</i>		30	Cords		
	<i>Sugar Maple</i>		70	Cords		
4	Red Maple	Sawtimber	2.6	MBF	6.5	\$1,309.70
	Balsam Fir	Pulpwood	9	Cords		
	Mixed Hardwood		50	Cords		
	<i>Red Maple</i>		40	Cords		
	<i>Sugar Maple</i>		10	Cords		
5	Red Maple	Sawtimber	9.6	MBF	23.6	\$27,040.05
	Sugar Maple		9.2	MBF		
	Balsam Fir	Pulpwood	208	Cords		
	Mixed Hardwood		263	Cords		
	<i>Black Cherry</i>		53	Cords		
	<i>Ironwood</i>		6	Cords		
	<i>Paper Birch</i>		5	Cords		
	<i>Red Maple</i>		158	Cords		
	<i>Sugar Maple</i>		41	Cords		
	Mixed Spruce		56	Cords		
	<i>White Spruce</i>		56	Cords		
Quaking Aspen		465	Cords			
6	Red Maple	Sawtimber	0.7	MBF	23.2	\$17,042.55
	Balsam Fir	Pulpwood	247	Cords		
	Mixed Hardwood		151	Cords		
	<i>Paper Birch</i>	Sawtimber	1.5	MBF		
	<i>American Elm</i>	Pulpwood	6	Cords		

**DESCRIPTION OF TIMBER BY PAYMENT UNIT (PU), CON'T**

PU	MARKET GROUP	PRODUCT	QUANTITY	UNIT	ACRES	ADVERTISE PRICE
6 con't	<i>Beech</i>	<i>Pulpwood</i>	5	<i>Cords</i>		
	<i>Black Cherry</i>		60	<i>Cords</i>		
	<i>Paper Birch</i>		3	<i>Cords</i>		
	<i>Red Maple</i>		58	<i>Cords</i>		
	<i>Sugar Maple</i>		11	<i>Cords</i>		
	<i>White Ash</i>		5	<i>Cords</i>		
	Mixed Spruce		78	Cords		
	<i>Black Spruce</i>		13	<i>Cords</i>		
	<i>White Spruce</i>		65	<i>Cords</i>		
	Quaking Aspen		322	Cords		
7	Red Maple	Sawtimber	25.4	MBF	10.8	\$5,648.45
	Balsam Fir	Pulpwood	6	Cords		
	Mixed Hardwood		131	Cords		
	<i>Red Maple</i>		131	<i>Cords</i>		
TOTAL:			203.4	MBF		
TOTAL:			3,761	Cords		

# Sale Specific Conditions & Requirements

**Sale Name: Blue September Rain**

**Sale Number: 42-037-22 Seq#: 1**

## 1 - Sale Area

### 1.2 - Boundaries

#### 1.2.1 - Painted boundaries (9/19)

The sale boundary and Payment Unit boundaries are marked and identified by red and green paint. Exterior sale boundary lines against state are marked with red paint. Interior Payment Unit boundaries are marked with green paint. Retention patches are marked with red paint; no harvesting activities may occur within these areas. The painted boundary line trees are not Included Timber and are to be protected unless marked with blue paint. Green painted trees designating an interior Payment Unit boundary are only to be cut when all surrounding Payment Units have been paid.

## 2 - Timber Specifications

### 2.1 - Included Timber

#### 2.1.2 - Clearcut unit(s) w/o unmerchantable trees (8/11)

Within Payment Unit(s) 1, 2, 5, and 6, cut all trees which meet minimum piece specifications in 2.2 Utilization, with the following exceptions:

- Within Payment Units 1 and 2, do not cut hemlock and white pine.
- Within Payment Unit 5, do not cut spruce over 18" at DBH or any hemlock.
- Within Payment Unit 6, do not cut spruce over 18" at DBH or any white pine or hemlock.

#### 2.1.3 - Cut tree marked unit(s) (12/08)

Within Payment Unit(s) 3, 4, and 7, all trees are designated for cutting when marked with blue paint above and below stump height, regardless of merchantability. In addition, all balsam under 12 inches at DBH are designated for cutting.

## 3 - Payments

### 3.3 - Pre-measured Sales

#### 3.3.4 - Dividing payment units (7/14)

Payment Unit(s) may be divided at the request of the Purchaser and upon approval of the Unit Manager. Dividing Payment Units is a contract modification which requires a Timber Sale Contract Amendment. There will be only one division per Payment Unit.

## 4 - Transportation

### 4.1 - Construction

#### 4.1.3 - Slash and earthen piles (8/04)

Piles or windrows of earth along roads and landings that have been widened or constructed shall be leveled. Slash from road maintenance or construction, including stumps, shall be dispersed throughout the sale.

#### 4.1.4 - Timber removed for construction (12/09)

Trees cut or damaged in the process of pre-approved road, landing or skid trail construction will be decked in an area separate from other Designated Timber and not removed until measured by the sale administrator. Payment will be made at the specified Purchase Unit Price.

#### 4.1.5 - Culverts (5/14)

Roads may require the installation of culverts for cross drainage or at natural drainage-ways. If culverts are needed in these locations, their placement will be specified by the sale administrator and they shall be installed prior to hauling. The culverts shall be new, corrugated metal or plastic gauge. Culverts will be a minimum of 12 inches in diameter and 24 feet in length. If culverts are removed, fill shall be removed from wetland soils as specified. Soils shall be maintained and left in a non-erodible condition, with water bars, seed, fertilizer, mulch, and slash installed as directed by the sale administrator and as specified in the BMP manual. Stream crossing permits, if needed, will be obtained by the DNR.

#### 4.1.6 - Road construction (1/09)

Improvements of existing roads shall be done in such a way as to minimize the environmental and visual impacts. Merchantable trees shall be cut and utilized unless otherwise directed. Non-merchantable trees shall be severed and laid flat on the ground. Slash shall be scattered, and not left in windrows and kept a minimum of 10 feet back from the road edge. Stumps shall be set upright, not left on edge, and be moved at least 10 feet away from the road edge. Disturbed soil shall be feathered into the woods and not left in berms or windrows.

#### 4.1.7 - Road closure (10/11)

All new roads built into the sale must be blocked to vehicle traffic within 30 days of completion of hauling. Overgrown roads that are reopened shall be considered new roads. Some existing roads may also need to be closed, see the Timber Sale Map for locations. In general, this will require constructing a four (4') foot high berm of stumps and logs covered with earth. Stumps and brush must be placed along the remainder of the trail. These roads must be rendered impassable to cars and trucks. Temporary berms may be required if no sale activity occurs for 30 or more consecutive days. Contact the sale administrator for specific details of design and placement.

### 4.2 - Maintenance

#### 4.2.2 - Fill material (4/07)

To maintain roads, fill material may be needed in areas where "holes" exist or may be expected to develop. This fill material should be placed before trucking begins. Contact the sale administrator regarding the availability of onsite sand or gravel from adjacent State-owned lands.

#### 4.2.3 - Road maintenance (8/13)

The following road maintenance is required: Within 30 days of completion of hauling, or if no hauling occurs for 30 days, the road must be maintained and graded. This includes cleaning of drainage areas, grading, crowning and filling with gravel, if necessary. Damages will be assessed if grading/repair does not occur.

#### 4.2.4 - Grading (10/16)

For completion of the sale, state forest roads must be graded. In general, this will require a road grader or bull dozer to shape up the roads after forest products have been hauled off site. This includes cleaning of drainage areas, grading, crowning and filling with gravel, if necessary. The grading equipment to be used must be approved by the Unit Manager or his/her representative.

## 5 - Operations

### 5.2 - Conduct of Operations

#### 5.2.1 - Slash

##### 5.2.1.8 - Slash height (12/08)

No slash or tree tops may exceed 36 inches in height.

#### 5.2.2 - Hazard Trees/Snags

##### 5.2.2.1 - Den trees (10/16)

Obvious hollow and/or den trees shall be protected and left standing unless they are a safety hazard.

#### 5.2.3 - Operating Restrictions

##### 5.2.3.3 - Bark slippage restriction (3/09)

Within Payment Unit(s) 3, 4, and 7, unless changed by written agreement, cutting and skidding are not permitted during the period of April 15 to July 15. This restriction is because of bark slippage.

#### 5.2.32 - Decking/landing restoration (9/13)

All decking and landing areas must have the surface area restored to a condition equal to or better than before. This is to ensure the proper regeneration of the stand. Wood debris, chips and "cookies" from trimmings must be removed or scattered away from landing and loading areas and may not be windrowed on the edge.

#### 5.2.38 - No decking against live trees (2/04)

Cut products may not be decked against unmarked or designated leave trees.

### 5.4 - Soil Protection

#### 5.4.1 - Rutting restriction, general (7/16)

Operations are to cease immediately if equipment and weather conditions result in rutting of roads and/or skid trails which is 12 inches or greater in depth and 50 feet in length. The Unit Manager or his/her representative may restrict hauling and/or skidding if ruts exceed the specified depth. With the Unit Manager or his/her representative's approval, the Purchaser may return to the area when the risk of rutting has decreased.

#### 5.8 - Protection of Endangered Species

##### 5.8.5 - Protection of raptor nests (3/13)

All trees with raptor nests will be protected if found during harvesting operations. Notification will be made to the Unit Manager or his/her representative who will notify the Wildlife Biologist so an on-site evaluation and recommendation can be made, if necessary.

### **6 - Safety and Fire Prevention**

#### 6.2 - Signing

##### 6.2.1 - Road posting (10/20)

The Purchaser is responsible for posting and maintaining caution signs on logging roads prior to beginning operations. The road must be posted approximately 350 feet from the sale area to warn of logging activity and truck traffic. Signs must be removed when harvest operations are suspended or completed. The Purchaser will provide these signs.

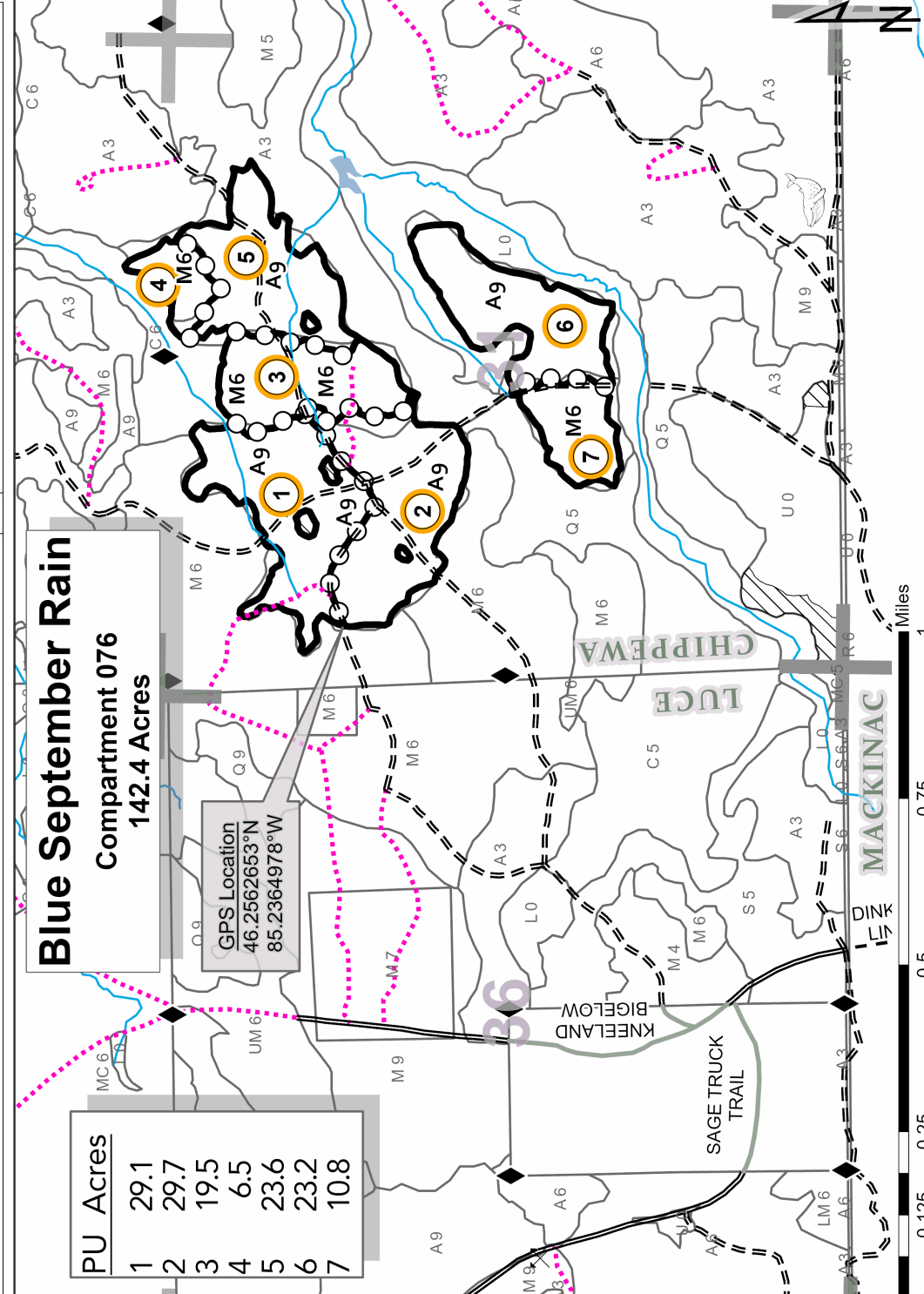


# TIMBER SALE MAP

This information provided by authority of Part 525, 1994 PA 451, as amended.

Forest Management Unit Newberry	County Chippewa	Maped By L. Livermore	Sale Number 42-037	Year 22
Range 07W	Section(s) and Subdivision(s) Section 30: SWSE Section 31: NW, N½NE, SWNE, NESW, NWSE	Cruised By Flatt, Livermore, Plato	Date 9/19/2022	Page of 1 1
Township 45N	Scale 1:15,840	Density		

Cover Type	
A = Aspen	H = Hemlock
B = Paper Birch	J = Jack Pine
C = Cedar	L = Lowland Brush
D = Treed Bog	LM = Lowland Mixed
E = Swamp Hdwoods	M = Mpl, Bch, Birch
F = Spruce Fir	MC = Mixed Conifer
G = Grass	MD = Mixed Deciduous
	N = Marsh
	O = Oak
	P = Lowland Poplar
	Q = Mixed Swamp Conifer
	R = Red Pine
	S = Black Spruce
	T = Tamarack
	U = Upland Brush
	UM = Upland Mixed
	V = Bog or Marsh
	W = White Pine
	X = Non Stocked
	Z = Water



PU	Acres
1	29.1
2	29.7
3	19.5
4	6.5
5	23.6
6	23.2
7	10.8

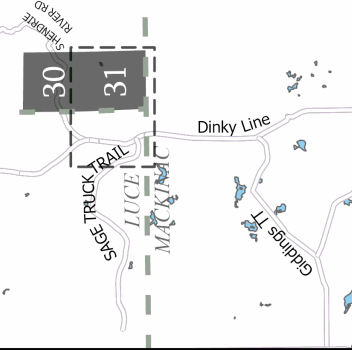
**Blue September Rain**  
**Compartment 076**  
**142.4 Acres**

GPS Location  
 46.2562653°N  
 85.2364978°W



- Against State (Red)
- Payment Unit (Green)
- Payment Unit Label
- 01 Section Numbers
- ▬ Section Corners
- ▬ Survey Corners
- ✕ OFS Minerals
- ~ Perennial River
- ~ Lakes and Rivers
- ▨ Retention Area
- ▬ Highway
- ▬ Primary Forest Road
- ▬ Secondary Forest Road
- ▬ Forest Access Route
- ▬ Paved Road
- ▬ Gravel Road
- ▬ County Road - Seasonal
- ▬ Private
- ⋯ Temporary Management Access

Locator Map: 1:200,000  
 - Main Map Extent



Over the Bridge Mix (42-019-22)  
T46N, R11W, SEC. 8; T46N, R11W, SEC. 9; Luce COUNTY

In response to the notice of sale to be held 3:00 p.m. (local time) on June 15, 2023, I am hereby submitting my sealed bid ( firm offer) for the following forest products to be cut. Bids for individual species must be at or above the advertised price. All non-responsive bid forms may be rejected.

<u>PRODUCTS &amp; SPECIES</u>	<u>ESTIMATED VOLUME*</u>	<u>ADVERTISED PRICE</u>	<u>BID PRICE/UNIT</u>
Sawtimber			
Red Maple	43.8 MBF	\$ 131.00/MBF	\$ _____
Pulpwood			
Balsam Fir	104 Cords	\$ 12.40/Cord	\$ _____
Mixed Hardwood	1,204 Cords	\$ 17.15/Cord	\$ _____
Mixed Spruce	82 Cords	\$ 14.40/Cord	\$ _____
N. White Cedar	36 Cords	\$ 6.00/Cord	\$ _____

\*The volumes are statistically estimated within plus (+) or minus (-) 13.83 percent at 95% confidence level. These estimated volumes are final and not subject to adjustment. Prospective bidders are urged to examine this timber and to make their own estimates of quantity and quality.

I understand that any or all bids may be rejected. All bids must be signed and all bid items must be bid or the bid form may be rejected. I also understand that consideration and awarding a contract will be based upon my past performance and ability to complete the contract based upon equipment and staffing subject to my control .

FEDERAL ID: \_\_\_\_ - \_\_\_\_ or SOCIAL SECURITY NUMBER: \_\_\_\_ - \_\_\_\_ - \_\_\_\_

Company or individual bidding: \_\_\_\_\_

Company representative's name: \_\_\_\_\_

Address: \_\_\_\_\_

City: \_\_\_\_\_ State: \_\_\_\_\_ Zip: \_\_\_\_\_

IF AVAILABLE, PLEASE PLACE THE PERSONALIZED LABEL FROM YOUR PROSPECTUS IN THE ABOVE BOX.

Individual or company representative's signature: \_\_\_\_\_ Date: \_\_\_\_\_

Phone number : \_\_\_\_\_ Email (optional): \_\_\_\_\_

**THE WINNING BIDDER MUST COMPLETE THE VERIFICATION OF WORKER'S DISABILITY COMPENSATION ACT COMPLIANCE (ON REVERSE SIDE IF DOUBLE SIDED) WITHIN 21 DAYS OF SALE AWARD DATE**



<b>FOR DEPARTMENT USE ONLY</b>
Sale Number (XX - XXX - XX - XX)
Forest Management Unit:

## TIMBER SALE VERIFICATION OF WORKER'S DISABILITY COMPENSATION ACT COMPLIANCE

*As required by Act 317, P.A. 1969 (Worker's Compensation) and  
Part 5 of Act 451 of 1994, as amended.*

### VERIFICATION OF WORKER'S DISABILITY COMPENSATION ACT COMPLIANCE

- This verification must be completed and submitted within 21 days of contract award and prior to the issuance of the timber sale contract.
- In addition, if boxes 2B or 2C are checked, then Notice of Exclusion or Certificate of Insurance must be submitted within twenty-one (21) days of the contract award and prior to the issuance of the timber sale contract.
- All information must be typed or printed except for written signatures.

Please Check Appropriate Categories:

1. My business is organized as (you **must** check one of the boxes below):
  - A.  Sole Proprietorship (individual)
  - B.  Partnership
  - C.  Corporation
2. You **must** check one of the boxes below:
  - A.  I certify my business is a sole proprietorship and it has no employees but the sole proprietor. I am not subject to the Worker's Compensation Laws.
  - B.  I certify my business has satisfied its obligation to the Worker's Compensation Act through the use of an approved Notice of Exclusion (BWC-337, Rev. 5/96). I will provide a copy of the Notice of Exclusion within 21 days of the contract award. (For questions or a copy of the BWC-337, please call the Worker's Compensation Bureau at 517-322-1195).
  - C.  I certify my business has a Worker's Compensation Policy. I will provide an original Certificate of Insurance within twenty-one (21) days of the contract award.
3. If you have checked item 2(A) or 2(B), you **must** indicate the number of **both** full-time and part-time employees, other than yourself, including family members and active partners (if none, you must enter "0").

\_\_\_\_\_ Full-time Employees

\_\_\_\_\_ Part-time Employees

Name of Business		Federal ID (or) Social Security No.	
Address		Telephone (       )	
City	State	ZIP	

*I hereby certify that the above information is true and correct. I agree to notify the Michigan DNR of any changes that occur in factors affecting my coverage during any of my present and future operations.*

\_\_\_\_\_  
Signature of Owner or Authorized Representative

\_\_\_\_\_  
Title

\_\_\_\_\_  
Date

**Please complete the "SEALED BID" information on the next page**



Swamp Lakes Mix (42-029-22)  
T49N, R08W, SEC. 30; T49N, R08W, SEC. 31; Luce COUNTY

In response to the notice of sale to be held 3:00 p.m. (local time) on June 15, 2023, I am hereby submitting my sealed bid ( firm offer) for the following forest products to be cut. Bids for individual species must be at or above the advertised price. All non-responsive bid forms may be rejected.

<u>PRODUCTS &amp; SPECIES</u>	<u>ESTIMATED VOLUME*</u>	<u>ADVERTISED PRICE</u>	<u>BID PRICE/UNIT</u>
<b>Sawtimber</b>			
Red Maple	77.9 MBF	\$ 131.00/MBF	\$ _____
Yellow Birch	11.6 MBF	\$ 165.00/MBF	\$ _____
<b>Pulpwood</b>			
B. T. Aspen	75 Cords	\$ 31.60/Cord	\$ _____
Balsam Fir	120 Cords	\$ 12.40/Cord	\$ _____
Jack Pine	11 Cords	\$ 34.30/Cord	\$ _____
Mixed Hardwood	643 Cords	\$ 17.15/Cord	\$ _____
N. White Cedar	15 Cords	\$ 6.00/Cord	\$ _____
Red Pine	38 Cords	\$ 73.55/Cord	\$ _____
White Pine	619 Cords	\$ 22.15/Cord	\$ _____
White Spruce	17 Cords	\$ 14.40/Cord	\$ _____

\*The volumes are statistically estimated within plus (+) or minus (-) 13.63 percent at 95% confidence level. These estimated volumes are final and not subject to adjustment. Prospective bidders are urged to examine this timber and to make their own estimates of quantity and quality.

I understand that any or all bids may be rejected. All bids must be signed and all bid items must be bid or the bid form may be rejected. I also understand that consideration and awarding a contract will be based upon my past performance and ability to complete the contract based upon equipment and staffing subject to my control.

FEDERAL ID: \_\_\_\_\_ - \_\_\_\_\_ or SOCIAL SECURITY NUMBER: \_\_\_\_\_ - \_\_\_\_\_ - \_\_\_\_\_

Company or individual bidding: \_\_\_\_\_

Company representative's name: \_\_\_\_\_

Address: \_\_\_\_\_

City: \_\_\_\_\_ State: \_\_\_\_\_ Zip: \_\_\_\_\_

IF AVAILABLE, PLEASE PLACE THE PERSONALIZED LABEL FROM YOUR PROSPECTUS IN THE ABOVE BOX.

Individual or company representative's signature: \_\_\_\_\_ Date: \_\_\_\_\_

Phone number : \_\_\_\_\_ Email (optional): \_\_\_\_\_

**THE WINNING BIDDER MUST COMPLETE THE VERIFICATION OF WORKER'S DISABILITY COMPENSATION ACT COMPLIANCE (ON REVERSE SIDE IF DOUBLE SIDED) WITHIN 21 DAYS OF SALE AWARD DATE**



Blue September Rain (42-037-22)  
T45N, R07W, SEC. 30; T45N, R07W, SEC. 31; Chippewa COUNTY

In response to the notice of sale to be held 3:00 p.m. (local time) on June 15, 2023, I am hereby submitting my sealed bid ( firm offer) for the following forest products to be cut. Bids for individual species must be at or above the advertised price. All non-responsive bid forms may be rejected.

<u>PRODUCTS &amp; SPECIES</u>	<u>ESTIMATED VOLUME*</u>	<u>ADVERTISED PRICE</u>	<u>BID PRICE/UNIT</u>
<b>Sawtimber</b>			
Red Maple	101.9 MBF	\$ 131.00/MBF	\$ _____
Sugar Maple	101.5 MBF	\$ 347.00/MBF	\$ _____
<b>Pulpwood</b>			
Balsam Fir	990 Cords	\$ 12.40/Cord	\$ _____
Mixed Hardwood	1,547 Cords	\$ 17.15/Cord	\$ _____
Mixed Spruce	189 Cords	\$ 14.40/Cord	\$ _____
Quaking Aspen	1,035 Cords	\$ 31.60/Cord	\$ _____

\*The volumes are statistically estimated within plus (+) or minus (-) 10.32 percent at 95% confidence level. These estimated volumes are final and not subject to adjustment. Prospective bidders are urged to examine this timber and to make their own estimates of quantity and quality.

I understand that any or all bids may be rejected. All bids must be signed and all bid items must be bid or the bid form may be rejected. I also understand that consideration and awarding a contract will be based upon my past performance and ability to complete the contract based upon equipment and staffing subject to my control.

FEDERAL ID: \_\_\_\_\_ - \_\_\_\_\_ or SOCIAL SECURITY NUMBER: \_\_\_\_\_ - \_\_\_\_\_ - \_\_\_\_\_

Company or individual bidding: \_\_\_\_\_

Company representative's name: \_\_\_\_\_

Address: \_\_\_\_\_

City: \_\_\_\_\_ State: \_\_\_\_\_ Zip: \_\_\_\_\_

IF AVAILABLE, PLEASE PLACE THE PERSONALIZED LABEL FROM YOUR PROSPECTUS IN THE ABOVE BOX.

Individual or company representative's signature: \_\_\_\_\_ Date: \_\_\_\_\_

Phone number : \_\_\_\_\_ Email (optional): \_\_\_\_\_

**THE WINNING BIDDER MUST COMPLETE THE VERIFICATION OF WORKER'S DISABILITY COMPENSATION ACT COMPLIANCE (ON REVERSE SIDE IF DOUBLE SIDED) WITHIN 21 DAYS OF SALE AWARD DATE**



<b>FOR DEPARTMENT USE ONLY</b>
Sale Number (XX - XXX - XX - XX)
Forest Management Unit:

## TIMBER SALE VERIFICATION OF WORKER'S DISABILITY COMPENSATION ACT COMPLIANCE

*As required by Act 317, P.A. 1969 (Worker's Compensation) and  
Part 5 of Act 451 of 1994, as amended.*

### VERIFICATION OF WORKER'S DISABILITY COMPENSATION ACT COMPLIANCE

- This verification must be completed and submitted within 21 days of contract award and prior to the issuance of the timber sale contract.
- In addition, if boxes 2B or 2C are checked, then Notice of Exclusion or Certificate of Insurance must be submitted within twenty-one (21) days of the contract award and prior to the issuance of the timber sale contract.
- All information must be typed or printed except for written signatures.

Please Check Appropriate Categories:

1. My business is organized as (you **must** check one of the boxes below):
  - A.  Sole Proprietorship (individual)
  - B.  Partnership
  - C.  Corporation
  
2. You **must** check one of the boxes below:
  - A.  I certify my business is a sole proprietorship and it has no employees but the sole proprietor. I am not subject to the Worker's Compensation Laws.
  - B.  I certify my business has satisfied its obligation to the Worker's Compensation Act through the use of an approved Notice of Exclusion (BWC-337, Rev. 5/96). I will provide a copy of the Notice of Exclusion within 21 days of the contract award. (For questions or a copy of the BWC-337, please call the Worker's Compensation Bureau at 517-322-1195).
  - C.  I certify my business has a Worker's Compensation Policy. I will provide an original Certificate of Insurance within twenty-one (21) days of the contract award.
  
3. If you have checked item 2(A) or 2(B), you **must** indicate the number of **both** full-time and part-time employees, other than yourself, including family members and active partners (if none, you must enter "0").

\_\_\_\_\_ Full-time Employees

\_\_\_\_\_ Part-time Employees

Name of Business		Federal ID (or) Social Security No.	
Address		Telephone (       )	
City	State	ZIP	

*I hereby certify that the above information is true and correct. I agree to notify the Michigan DNR of any changes that occur in factors affecting my coverage during any of my present and future operations.*

\_\_\_\_\_  
Signature of Owner or Authorized Representative

\_\_\_\_\_  
Title

\_\_\_\_\_  
Date

**Please complete the "SEALED BID" information on the next page**