



**DEPARTMENT OF NATURAL RESOURCES  
STATE OF MICHIGAN  
TIMBER SALE PROSPECTUS #7238**

SCHEDULED SALE DATE AND TIME: 10:00 a.m. (local time) on June 22, 2023.

LOCATION: GLADWIN MGMT UNIT, 801 NORTH SILVERLEAF, GLADWIN, MI 48624.

PROSPECTUS NOTE: The bidder is advised to inspect the sale area and review the location, estimated volumes, operating costs and contract terms of proposed sales. Please be aware that some landowners may request 60 days or more notice for access across their land.

Notice is hereby given that bids will be received by the Unit Manager, GLADWIN MANAGEMENT UNIT, for certain timber on the following described lands:

Wirtz 30 (73-006-22) / T19N, R01E, SEC. 16, SESW,S1/2SE.  
T19N, R01E, SEC. 9 , NENW,S1/2NW,N1/2SW.  
T19N, R01W, SEC. 1 , NW,NWNE,S1/2NE,NESE,S1/2SE.  
T19N, R01W, SEC. 12, N1/2NE,SENE.  
T20N, R01W, SEC. 35, SESE.  
T20N, R01W, SEC. 36, SWSW.

Gladwin County, Advertised Price \$132,051.25, 164.0 Acres, Aspen, Hardwood.

SALE NOTE: Many of the units have wet areas and are restricted to dry or frozen conditions. Access to unit 8 is through a gate that will need to be locked at the end of each work day.

A recreation site such as a trail, pathway, or campground is within the sale area or the vicinity. Certain restrictions/specifications may be applicable including time restrictions.

Middle C36 (73-010-22) / T19N, R01E, SEC. 10, NESE.  
T19N, R01E, SEC. 11, W1/2NW,NWSW.  
T19N, R01E, SEC. 22, N1/2NE,SESW.  
T19N, R01E, SEC. 26, NESW.  
T19N, R01E, SEC. 27, E1/2NW.

Gladwin County, Advertised Price \$128,936.25, 118.3 Acres, Hardwood, Aspen.

SALE NOTE: Portions of this sale are wet and are restricted to dry/frozen conditions. There are also unit that are restricted to the dormancy period because of age of the trees and concerns about regeneration. The access to units 7, 8, and 9 across private land is possible. The current land owner indicates they are willing to let a logger cross using their easement.

A recreation site such as a trail, pathway, or campground is within the sale area or the vicinity. Certain restrictions/specifications may be applicable including time restrictions. Access may be through private or other public land.

## BID INSTRUCTIONS (VER. 10/10/2022):

### 1. Scheduled Bid Location, Date, and Time (2/11)

Bids must be received by the Unit Manager, GLADWIN OFFICE, 801 NORTH SILVERLEAF, GLADWIN, MI 48624, no later than 10:00 a.m. (local time) on June 22, 2023. For further information concerning this sale, contact Blair Tweedale at 989-426-9205 extension 7640.

### 2. Bidder's Qualifications (10/22)

If all or part of a timber sale was prepared by a private contractor, the contractor and that contractor's company are not permitted to bid on the timber sale. A person must be 18 years of age or older to purchase timber. Permanent employees of the Department of Natural Resources or members of their immediate household may not bid. Former employees, in the permanent or seasonal class, may not bid until 3 months after the last day of active duty. Bids will not be accepted from individuals or companies appearing on the DNR/FRD No-Bid List. This list contains the names of purchasers who previously failed to execute a contract within 21-days or who have a history of poor performance.

### 3. Preparation of Sealed Bids (5/16)

Bid Forms may be completed online thru Michigan DNR Timber Sale Online Bidding (OLB) at [www.michigan.gov/timberbidding](http://www.michigan.gov/timberbidding) or by completing the hardcopy Bid Form found in the Timber Sale Prospectus. Hardcopy Bid Forms shall be manually signed in ink. Registration in OLB is considered your 'signature' for all bids submitted thru that system. Bid prices must be entered for each species and product in the Bid Price column for all material subject to bidding and all fill-in blanks must be completed. If erasures or other changes appear on the hardcopy Bid Form, each erasure or change must be initialed by the person signing the bid.

### 4. Submission of Sealed Bids (5/16)

Bid forms may be obtained from the Unit Manager or thru OLB. Bids may be submitted hardcopy or thru OLB. All hardcopy bids must be submitted on the bid form and in an envelope clearly identified as described in this section. NOTE: Only one bid form per bid envelope. Sealed bids must be submitted to the Unit office designated in the prospectus and must be submitted at or prior to the time established in the prospectus. The envelope should show on the outside (a) the sale name or number and (b) the date and time of bid opening, as shown in the prospectus. Bids received after the time specified in the sale prospectus are late bids and will be rejected.

It is possible for a bidder to submit multiple bids on a single sale. For example, a bid may be submitted hardcopy and a bid may be submitted thru OLB. Or, two bidders from the same company could both submit bids on the same sale. If this were to happen, the State would accept all bids received and award the contract accordingly. All bidding and contractual requirements would apply to all bids received.

### 5. Public Opening of Sealed Bids (7/16)

If conditions permit, the sealed bids will be publicly opened and posted at the time and place set in the prospectus.

If a bidder, present at a bid opening, has submitted bids on more than one sale, that bidder may withdraw their unopened bid envelopes or announce the withdrawal of their online bid after being declared the successful bidder on one sale.

### 6. Award of Contract (1/11)

Award of the contract will be made to the Bidder whose bid, conforming to the prospectus, is most advantageous to the State of Michigan on the basis of total value at rates bid for the estimated quantities. The State reserves the right to reject any bid or waive any minor irregularity in bids received. A written award mailed (or otherwise furnished) to the successful Bidder shall be deemed to result in a binding contract without further action by either party.

### 7. Down Payment (1/11)

The Bidder to whom award is made must make a down payment within 21 days of the sale award. The amount of the down payment will be calculated as shown in the Bond and Payment Schedule of this prospectus. Only cash may be used to meet this requirement.

### 8. Performance Security (1/11)

As guarantee of faithful performance, a cash bond, certificate of deposit, surety bond or irrevocable letter of credit (LOC) is required within 21 days of the sale award. The amount of the performance security is shown in the Bond and

Payment Schedule of this prospectus. If an LOC or surety is used, the coverage must extend for at least 6 months beyond the contract expiration.

#### 9. Worker's Compensation (10/22)

Purchaser shall obtain worker's compensation insurance to cover claims under Michigan's Worker's Disability Compensation Act of 1969 or similar employee benefit act of any other state applicable to an employee. Verification of Worker's Disability Compensation Act Compliance must be completed and submitted within 21 days of contract award and prior to the issuance of the timber sale contract. In addition, if applicable, Notice of Exclusion or Certificate of Insurance must also be submitted.

#### 10. Timber Sale Contract (10/22)

Additional conditions and requirements common to all timber sales are listed on the timber sale contract (R4031) and are available on line at [www.michigan.gov/timber](http://www.michigan.gov/timber). Contact the Unit Manager for additional information or a sample contract. Within 21 days of the date of the award letter, the bidder must sign the contract and provide the required down payment, performance security, and verification of worker's disability compensation. The down payment and performance security shall be in accordance with the provisions of the timber sale contract, in the sums stated in this prospectus. If these actions are not taken, then the Bidder, the Bidder's corporation, and the corporation's principals may not be permitted to bid on State timber sales for a period of 3 months after the first offense, 6 months after the second offense, and 1 year after the third offense. An offense will only be counted against the Bidder for 5 years. In addition, the Bidder certifies that if awarded this contract, the Bidder will complete the timber sale contract in accordance with its terms and any modifications thereof including requirements to purchase, cut, and remove the included timber by the expiration date.

Payment Unit values in the State Forest Timber Sale Contract are calculated based on the advertised value of the Payment Unit as a percentage of the total advertised value of the contract. The advertised value of each Payment Unit is given in the Description of Timber by Payment Unit table on the Timber Sale Information page. For example, if the value of Payment Unit 1 is advertised as \$1,500 and the total Timber Sale value is advertised as \$10,000, the contract price for Payment Unit 1 will be 15% of the total bid price ( $\$1,500/\$10,000 * 100$ ).

#### 11. Disclaimer of Estimates and Bidder's Warranty of Inspection (10/22)

Before submitting this bid, the Bidder is advised and cautioned to inspect the sale area, review the requirements of the sale contract, and take other steps as may be reasonably necessary to ascertain the location, estimated volumes, construction estimates, and operating costs of the proposed sale. Failure to do so will not relieve the Bidder from responsibility for completing the contract.

The Bidder warrants that this bid is submitted solely on the basis of the Bidder's examination and inspection of the quality and quantity of the timber offered for sale and the Bidder's opinion of the value thereof and the costs of recovery. No reliance should be placed on the State of Michigan's estimates of timber quality, quantity or costs of recovery. Bidder further acknowledges that the State of Michigan: (i) expressly disclaims any warranty of fitness of timber for any purpose; (ii) offers this timber as is without any warranty of quality (merchantability) or quantity and (iii) expressly disclaims any warranty as to the quantity or quality of timber sold.

#### 12. Certification and Chain-of-Custody (10/22)

Unless otherwise indicated in the contract under section 7 – Other Conditions of the Sale Specific Conditions & Requirements, the area encompassed by this timber sale is certified to the standards of the Forest Stewardship Council (FSC) - Certificate #SCS-FM/COC-00090N and the Sustainable Forestry Initiative (SFI) - Certificate #NSF-SFIS-5Y031-SF5. Forest products from this sale may be delivered to the mill as "FSC 100% and / or SFI certified" as long as the contractor hauling the forest products is chain-of-custody (COC) certified or covered under a COC certificate from the destination mill. The purchaser is responsible for maintaining COC after leaving the sale area.

#### 13. Good Neighbor Authority (GNA) Requirements (10/22)

If the name of this timber sales contains the acronym GNA, it is authorized by the Good Neighbor Authority (GNA) and covered by various agreements between the U.S. Forest Service and the State. The timber sale occurs on federal land and the following conditions apply:

GNA contracts on US Forest Service land will not be awarded to purchasers on the Federal list of excluded parties. The System for Award Management (SAM) will be checked for active excluded parties prior to award of contract. In

addition, the Bidder to whom award is made must complete an Assurance Regarding Felony Conviction or Tax Delinquent Status for Corporate Applicants (AD-3031).

14. Good Neighbor Authority (GNA) Requirements, con't (10/22)

Bidder certifies, by signing this bid form, that to the best of Bidder's knowledge that the following representations are accurate and complete.

- a. That the Bidder and its principals are not presently debarred, suspended, proposed for debarment, declared ineligible, or voluntary excluded from timber sales (covered transactions) by any Federal department or agency.
- b. That the Bidder and its principals have not within a 3-year period preceding this bid been convicted of or had a civil judgment rendered against them for commission of fraud or a criminal offense in connection with obtaining , attempting to obtain, or performing a public (Federal, State, or local) transaction or contract under a public transaction; violation of Federal or State antitrust statutes or commission of embezzlement, theft, forgery, bribery, falsification or destruction of records, making false statements, or receiving stolen property.
- c. That the Bidder and its principals are not presently indicted for or otherwise criminally or civilly charged by a governmental entity (Federal, State, or local) with commission of any of the offenses enumerated in paragraph b of this certification.
- d. That the Bidder and its principals have not within a 3-year period preceding this bid had one or more public transactions (Federal, State, or local) terminated for breach or default of a timber or forest product contract.

Bidders that cannot certify this requirement, in whole or in part, shall submit an explanation with their bid.

SHANNON LOTT, Acting  
Director

## TIMBER SALE INFORMATION

Wirtz 30 (73-006-22)

T19N, R01E, SEC. 16; T19N, R01E, SEC. 9; T19N, R01W, SEC. 1; T19N, R01W, SEC. 12; T20N, R01W, SEC. 35; T20N, R01W, SEC. 36.

SALE NOTE: Many of the units have wet areas and are restricted to dry or frozen conditions. Access to unit 8 is through a gate that will need to be locked at the end of each work day.

A recreation site such as a trail, pathway, or campground is within the sale area or the vicinity. Certain restrictions/specifications may be applicable including time restrictions.

A timber sale contract for this lump sum, sealed bid timber sale will be awarded to the responsible bidder offering the highest sealed bid price. All units of volume listed below were estimated using the Inventory Manager computer program and the new Michigan taper model. Bids must be at or above the following advertised price for each product and species:

<u>PRODUCTS &amp; SPECIES</u>	<u>ESTIMATED UNITS*</u>		<u>ADVERTISED PRICE</u>
<b>Sawtimber</b>			
Black/Red (Hybrid) Oak	8.2	MBF	\$ 79.00 / MBF
Mixed Aspen	188.4	MBF	\$ 78.00 / MBF
Red Maple	145.0	MBF	\$ 60.00 / MBF
Red Oak	20.5	MBF	\$ 150.00 / MBF
Red Pine	64.4	MBF	\$ 113.00 / MBF
White Pine	220.8	MBF	\$ 68.00 / MBF
<b>Pulpwood</b>			
Jack Pine	41	Cords	\$ 25.15 / Cord
Mixed Aspen	1,394	Cords	\$ 32.95 / Cord
Mixed Hardwood	920	Cords	\$ 19.80 / Cord
Mixed Oak	104	Cords	\$ 16.45 / Cord
Red Pine	126	Cords	\$ 50.70 / Cord
White Pine	308	Cords	\$ 30.40 / Cord

\* The total volume is statistically estimated within plus (+) or minus (-) 9.02 percent. There are an estimated 4,402 cords on this timber sale, plus or minus 397 cords at the 95% confidence level. The estimated units are final and not subject to adjustment. Prospective bidders are urged to examine this timber and to make their own estimates of quantity and quality.

### **BOND AND PAYMENT SCHEDULE:**

1. A bond in the amount of \$6,603.00 to insure faithful performance of the conditions of the contract will be deposited by the successful bidder within 21 days of the sale award.
2. Cutting in any sale or unit without the required advance payment would be considered a trespass.
3. Total payment must be paid in advance or according to the following schedule :
  - (a) Ten percent (10%) of the sale value must be paid within 21 days of the sale award.
  - (b) The 10% down payment will be credited towards the first unit cut.
  - (c) Payment for each of the following units must be made before cutting begins in that unit:

PAYMENT UNIT NUMBER	PERCENT OF TOTAL SALE VALUE
01	12.4%
02	11.4%
03	4.9%
04	13.8%
05	5.7%
06	5.9%
07	4.8%
08	12.0%
09	3.2%
10	7.9%
11	16.3%
12	1.7%

4. If no cutting takes place, the 10% down payment will not be refunded.
5. Operations on the contract issued will terminate on 03/31/2026.

### **SALE STATISTICS**

Volumes were calculated in cubic feet using the Michigan taper model. Cubic foot volume includes all wood inside bark for the product indicated. For display purposes, cubic feet were converted to cords and MBF using a simple conversion factor, e.g. 79 cubic feet per cord and 185 cubic feet per MBF. The cubic foot volumes are precise; the cords and MBF volumes are not. Cubic foot volume cannot be directly converted to cords or boards with precision.

### SALE VOLUMES

The total estimated sale volume may not equal the sum of the species/products due to the nature of statistical calculations associated with double sampling methodology.

VOLUME			STATISTICAL RANGE IN CORDS	
TOTAL CUBIC FEET	TOTAL CORDS	PERCENT ERROR	MINIMUM	MAXIMUM
347,748	4,402	9.02%	4,005	4,799

### VDU VOLUMES

A VDU is a Volume Determination Unit. Volumes and their associated statistics are calculated at the VDU level and summarized to the sale level. There is often a one to one relationship between a VDU and a Payment Unit, but not always, depending on the cruise design. Refer to the VDU TO PAYMENT UNIT table.

VDU	VOLUME		PERCENT ERROR	RANGE IN CORDS	
	TOTAL CUBIC FEET	TOTAL CORDS		MINIMUM	MAXIMUM
6	41,946	531	14.15%	456	606
8	40,062	507	31.33%	348	666
12	17,959	227	23.75%	173	281
18	42,827	542	19.97%	434	650
19	23,273	295	51.31%	143	446
24	17,470	221	36.13%	141	301
27	9,736	123	71.77%	35	212
30	11,478	145	71.77%	41	250
35	10,965	139	46.69%	74	204
38	29,752	377	22.45%	292	461
258	11,908	151	32.92%	101	200
259	25,927	328	38.85%	201	456
291	59,147	749	25.39%	559	939
293	5,299	67	109.61%	6	141
<b>TOTAL:</b>	<b>347,748</b>	<b>4,402</b>		<b>2,992</b>	<b>5,812</b>

**VDU TO PAYMENT UNIT**

When a VDU is associated with more than one Payment Unit (PU), the VDU volumes are assigned to the PU based on acres of the VDU within the PU.

VDU	VDU ACRES	PU	PU ACRES
6	15.0	1	15.0
8	13.8	2	13.8
12	5.9	3	5.9
18	15.6	4	15.6
19	9.2	5	9.2
24	10.6	6	10.6
27	4.8	7	4.8
30	5.4	7	5.4
35	6.0	9	6.0
38	15.0	10	15.0
258	5.1	8	5.1
259	26.2	8	26.2
291	25.2	11	25.2
293	6.2	12	6.2
<b>TOTAL:</b>	<b>164.0</b>		<b>164.0</b>

**DESCRIPTION OF TIMBER BY PAYMENT UNIT (PU)**

PU	MARKET GROUP	PRODUCT	QUANTITY	UNIT	ACRES	ADVERTISE PRICE	
1	Black/Red (Hybrid)	Sawtimber	8.2	MBF	15.0	\$16,410.20	
	Mixed Aspen		17.5	MBF			
	<i>B. T. Aspen</i>		16.4	<i>MBF</i>			
	<i>Quaking Aspen</i>		1.1	<i>MBF</i>			
	Red Maple		1.5	MBF			
	White Pine		70.3	MBF			
	Mixed Aspen		Pulpwood	200			Cords
	<i>B. T. Aspen</i>			196			<i>Cords</i>
	<i>Quaking Aspen</i>			4			<i>Cords</i>
	Mixed Hardwood			3			Cords
	<i>Red Maple</i>			3			<i>Cords</i>
	Mixed Oak			16			Cords
	<i>/Red (Hybrid) Oak</i>			16			<i>Cords</i>
	White Pine			86			Cords
2	Mixed Aspen	Sawtimber	12.5	MBF	13.8	\$14,991.10	
	<i>B. T. Aspen</i>		12.5	<i>MBF</i>			
	Red Maple		4.0	MBF			
	Mixed Aspen		Pulpwood	358			Cords
	<i>B. T. Aspen</i>			342			<i>Cords</i>
	<i>Quaking Aspen</i>			16			<i>Cords</i>
	Mixed Hardwood			100			Cords
<i>Red Maple</i>	100	<i>Cords</i>					
3	Red Maple	Sawtimber	3.5	MBF	5.9	\$6,517.90	
	White Pine		25.7	MBF			
	Mixed Aspen		Pulpwood	106			Cords
	<i>B. T. Aspen</i>			37			<i>Cords</i>
	<i>Quaking Aspen</i>			69			<i>Cords</i>
	Mixed Hardwood			14			Cords
	<i>Red Maple</i>			14			<i>Cords</i>
	White Pine			26			Cords
4	Mixed Aspen	Sawtimber	41.0	MBF	15.6	\$18,194.05	
	<i>B. T. Aspen</i>		41.0	<i>MBF</i>			
	Red Maple		4.6	MBF			
	Red Pine		2.8	MBF			
	White Pine		4.8	MBF			
	Mixed Aspen		Pulpwood	377			Cords
	<i>B. T. Aspen</i>			344			<i>Cords</i>
	<i>Quaking Aspen</i>			33			<i>Cords</i>
	Mixed Hardwood			58			Cords
	<i>Red Maple</i>			58			<i>Cords</i>
	Red Pine			1			Cords
	White Pine			15			Cords
	5			Mixed Aspen			Sawtimber
<i>B. T. Aspen</i>		9.5	<i>MBF</i>				
<i>Quaking Aspen</i>		14.2	<i>MBF</i>				
Red Maple		6.7	MBF				
White Pine		3.4	MBF				
Mixed Aspen		Pulpwood	127	Cords			
<i>B. T. Aspen</i>			29	<i>Cords</i>			
<i>Quaking Aspen</i>			98	<i>Cords</i>			
Mixed Hardwood			45	Cords			
<i>Black Cherry</i>			8	<i>Cords</i>			
<i>Red Maple</i>			37	<i>Cords</i>			
White Pine			1	Cords			
6			Mixed Aspen	Sawtimber	24.5	MBF	
	<i>B. T. Aspen</i>	24.5	<i>MBF</i>				



## DESCRIPTION OF TIMBER BY PAYMENT UNIT (PU), CON'T

PU	MARKET GROUP	PRODUCT	QUANTITY	UNIT	ACRES	ADVERTISE PRICE
6 con't	Red Maple	Sawtimber	0.7	MBF		
	White Pine		2.3	MBF		
	Mixed Aspen	Pulpwood	152	Cords		
	<i>B. T. Aspen</i>		151	<i>Cords</i>		
	<i>Quaking Aspen</i>		1	<i>Cords</i>		
	Mixed Hardwood		21	Cords		
	<i>Paper Birch</i>		4	<i>Cords</i>		
	<i>Red Maple</i>		17	<i>Cords</i>		
	White Pine		7	Cords		
7	Mixed Aspen	Sawtimber	2.6	MBF	10.2	\$6,285.50
	<i>B. T. Aspen</i>		2.6	<i>MBF</i>		
	Red Maple		38.9	MBF		
	White Pine		10.4	MBF		
	Mixed Aspen	Pulpwood	2	Cords		
	<i>B. T. Aspen</i>		2	<i>Cords</i>		
	Mixed Hardwood		138	Cords		
	<i>Paper Birch</i>	<i>Sawtimber</i>	0.9	<i>MBF</i>		
	<i>Black Cherry</i>	<i>Pulpwood</i>	5	<i>Cords</i>		
	<i>Paper Birch</i>		4	<i>Cords</i>		
	<i>Red Maple</i>		127	<i>Cords</i>		
	White Pine		8	Cords		
8	Red Maple	Sawtimber	21.9	MBF	31.3	\$15,909.45
	Red Pine		30.6	MBF		
	White Pine		61.1	MBF		
	Mixed Aspen	Pulpwood	3	Cords		
	<i>B. T. Aspen</i>		3	<i>Cords</i>		
	Mixed Hardwood		83	Cords		
	<i>Paper Birch</i>	<i>Sawtimber</i>	1.0	<i>MBF</i>		
	<i>Paper Birch</i>	<i>Pulpwood</i>	1	<i>Cords</i>		
	<i>Red Maple</i>		80	<i>Cords</i>		
	Red Pine		50	Cords		
	White Pine		89	Cords		
9	Red Maple	Sawtimber	3.4	MBF	6.0	\$4,248.05
	Red Pine		8.4	MBF		
	White Pine		8.6	MBF		
	Jack Pine	Pulpwood	41	Cords		
	Mixed Hardwood		24	Cords		
	<i>Paper Birch</i>		5	<i>Cords</i>		
	<i>Red Maple</i>		19	<i>Cords</i>		
	Red Pine		15	Cords		
	White Pine		8	Cords		
10	Mixed Aspen	Sawtimber	26.7	MBF	15.0	\$10,488.60
	<i>Quaking Aspen</i>		26.7	<i>MBF</i>		
	Red Maple		23.1	MBF		
	White Pine		30.0	MBF		
	Mixed Aspen	Pulpwood	32	Cords		
	<i>Quaking Aspen</i>		32	<i>Cords</i>		
	Mixed Hardwood		100	Cords		
	<i>Paper Birch</i>	<i>Sawtimber</i>	2.7	<i>MBF</i>		
	<i>Paper Birch</i>	<i>Pulpwood</i>	5	<i>Cords</i>		
	<i>Red Maple</i>		89	<i>Cords</i>		
	<i>Rock Elm</i>		1	<i>Cords</i>		
	White Pine		64	Cords		
11	Mixed Aspen	Sawtimber	23.6	MBF	25.2	\$21,445.30
	<i>B. T. Aspen</i>		15.1	<i>MBF</i>		
	<i>Quaking Aspen</i>		8.5	<i>MBF</i>		

**DESCRIPTION OF TIMBER BY PAYMENT UNIT (PU), CON'T**

PU	MARKET GROUP	PRODUCT	QUANTITY	UNIT	ACRES	ADVERTISE PRICE
11 con't	Red Maple	Sawtimber	35.5	MBF		
	Red Oak		20.5	MBF		
	Red Pine		22.6	MBF		
	White Pine		4.2	MBF		
	Mixed Aspen	Pulpwood	18	Cords		
	<i>B. T. Aspen</i>		9	<i>Cords</i>		
	<i>Quaking Aspen</i>		9	<i>Cords</i>		
	Mixed Hardwood		321	Cords		
	<i>Paper Birch</i>	<i>Sawtimber</i>	4.0	<i>MBF</i>		
	<i>Paper Birch</i>	<i>Pulpwood</i>	23	<i>Cords</i>		
	<i>Red Maple</i>		290	<i>Cords</i>		
	Mixed Oak		88	Cords		
	<i>Red Oak</i>		88	<i>Cords</i>		
	Red Pine		60	Cords		
White Pine		4	Cords			
12	Mixed Aspen	Sawtimber	16.3	MBF	6.2	\$2,226.85
	<i>Quaking Aspen</i>		16.3	<i>MBF</i>		
	Red Maple		1.2	MBF		
	Mixed Aspen	Pulpwood	19	Cords		
	<i>Quaking Aspen</i>		19	<i>Cords</i>		
	Mixed Hardwood		13	Cords		
	<i>Paper Birch</i>	<i>Sawtimber</i>	1.5	<i>MBF</i>		
	<i>Paper Birch</i>	<i>Pulpwood</i>	3	<i>Cords</i>		
	<i>Red Maple</i>		7	<i>Cords</i>		
TOTAL:			647.3	MBF		
TOTAL:			2,893	Cords		

## Sale Specific Conditions & Requirements

**Sale Name: Wirtz 30**

**Sale Number: 73-006-22 Seq#: 1**

### 1 - Sale Area

#### 1.2 - Boundaries

##### 1.2.1 - Painted boundaries (9/19)

The sale boundary and Payment Unit boundaries are marked and identified by blue, red and yellow paint. Exterior sale boundary lines against private property are marked with blue paint. Exterior sale boundary lines against state are marked with red paint. Interior boundaries are marked with yellow paint. Retention patches are marked with red paint; no harvesting activities may occur within these areas. Yellow painted trees designating an interior boundary are only to be cut when all surrounding Payment Units have been paid.

### 2 - Timber Specifications

#### 2.1 - Included Timber

##### 2.1.1 - Clearcut unit(s) with unmerchantable trees (6/14)

Within Payment Unit(s) 1, 2, 3, 4, 5, and 11, cut all trees that are two (2) inches or more at DBH except do not cut trees marked with green paint above and below stump height. In addition, do not cut any pines that are greater than 26 inches at DBH.

##### 2.1.3 - Cut tree marked unit(s) (12/08)

Within Payment Unit(s) 8 and 10, all trees are designated for cutting when marked with orange paint above and below stump height, regardless of merchantability.

##### 2.1.4 - Designated timber unit(s) (6/17)

Within Payment Unit(s) 6, 7, and 9, all hardwood trees are designated for cutting that are two (2) inches at DBH regardless of merchantability. In addition, cut all trees marked with orange paint above and below stump height regardless of merchantability.

##### 2.1.5 - Overstory removal unit(s) (8/11)

Within Payment Unit(s) 12, all species/ trees with DBH equal to or greater than 6 inches which meet minimum piece specifications in 2.2 Utilization, are designated for cutting except do not harvest conifer or trees marked with green paint above and below stump height.

##### 2.1.16 - Timber along county or forest roads (6/14)

Cut and remove all trees that are Two (2) inches or more at DBH between the yellow painted trees and M-30 and Second Dam road. This applies to units 10 and 12.

### 3 - Payments

#### 3.4 - Damaged Timber

##### 3.4.1 - Damaged timber (7/16)

General Condition and Requirement 3.4 Damaged Timber, defines liquidated damages for undesignated live merchantable trees which are cut or injured. In addition, extreme care should be taken to avoid damage to tree seedlings and saplings.

Within units 6, 7, 8, 9, 10, and 12, if more than 25% of the undesignated tree seedlings or saplings (1/4" to 4.5" DBH) within a specified portion of the sale area are damaged, liquidated damages will be assessed at \$300 per acre for all acreage within that specified portion of the sale area that was damaged.

No damage is acceptable to undesignated live merchantable trees. Within the sale area, if more than 5% of trees (> 4.5" DBH) within a specified area of the sale are damaged, liquidated damages will be assessed for all trees damaged. Rates will be in accordance with General Condition and Requirement 3.4 Damaged Timber.

### 4 - Transportation

#### 4.1 - Construction

#### 4.1.7 - Road closure (10/11)

All new roads built into the sale must be blocked to vehicle traffic upon completion of the sale. Overgrown roads that are reopened shall be considered new roads. Stumps and brush must be placed along the trail to rendered them impassable to cars and trucks.

#### 4.2 - Maintenance

##### 4.2.5 - Two wheel drive condition (2/04)

All existing trail roads on and adjacent to the sale area must be passable by two-wheel drive traffic for the duration of the sale.

#### 4.4 - Access

##### 4.4.3 - Access gate (12/08)

The access gate into unit 8 must be locked at the completion of each day unless otherwise approved by the Unit Manager or his/her representative.

### 5 - Operations

#### 5.2 - Conduct of Operations

##### 5.2.2 - Hazard Trees/Snags

###### 5.2.2.1 - Den trees (10/16)

Obvious hollow and/or den trees shall be protected and left standing unless they are a safety hazard.

##### 5.2.3 - Operating Restrictions

###### 5.2.3.1 - Operating restrictions (9/11)

Within Payment Unit(s) 2, 3, 4, 5, 7, 8, 9, 10, and 11, unless changed by written agreement, cutting, skidding, and hauling are limited to dry or frozen conditions between 07/15 to 03/31 This restriction is because the soils are seasonably wet and prone to rutting.

###### 5.2.3.3 - Bark slippage restriction (3/09)

Within Payment Unit(s) 6, 7, 8, 9, 10, and 12, unless changed by written agreement, cutting and skidding are not permitted during the period of April 15 to July 15. This restriction is because of bark slippage.

###### 5.2.3.5 - Oak wilt restriction (1/18)

Within Payment Unit(s) 7, 8, and 10 unless changed by written agreement, cutting, skidding, hauling within the sale and brushing of access roads to the sale are not permitted during the period of April 15 to July 15. Operations may be allowed if specific steps are taken to prevent damaging uncut oak during the high risk period. Those steps may include completing all road brushing before April 15th and clearing a tree-length buffer along uncut oak cover before April 15th. This is necessary to reduce the spread of oak wilt. For more information, contact the Unit Manager or his/her representative.

###### 5.2.3.6 - Bark beetle restriction (12/08)

In the event drought creates a high risk of pine bark beetle infestation, pine is not to be cut during the period March 1 through July 1, unless all portions of trees greater than two inches in diameter are removed from the sale area, reduced to chips, or treated to the satisfaction of the Unit Manager or his/her representative, within fifteen days of being severed from the stump. Pine log decks, pulpwood piles and treetops that are piled for chipping in the fall or winter within a 1/4 mile of susceptible sites must be removed before March 15. Residual slash must not be placed in piles or rows and must be spread over the site for quick drying. The Department of Natural Resources will exercise this specification if the risk of damage warrants.

##### 5.2.4 - Dead and Down Creation

###### 5.2.4.4 - Dead and down creation, grouse (6/18)

To encourage grouse and other wildlife, in Payment Unit(s) 1, 2, 3, 4, 5, and 11 leave one 12" or larger diameter whole tree on the ground for every 3 acres. Trees should scattered throughout the sale and at least two chains from any roads, two-tracks, or trails open to vehicles, or positioned per the sale administrators instructions. Stumps must be at least 3 feet tall.

#### 5.2.40 - Pathway protection (10/10)

The Midland to Mackinac is a hiking, trail and is shown on the Timber Sale Map. Do not cut trees or damage posts with blue pathway markers. Maintain a 10-foot wide slash, debris, and rut free zone daily, using the pathway as the centerline.

#### 5.4 - Soil Protection

##### 5.4.1 - Rutting restriction, general (7/16)

Operations are to cease immediately if equipment and weather conditions result in rutting of roads and/or skid trails which is 12 inches or greater in depth and 50 feet in length. The Unit Manager or his/her representative may restrict hauling and/or skidding if ruts exceed the specified depth. With the Unit Manager or his/her representative's approval, the Purchaser may return to the area when the risk of rutting has decreased.

### 6 - Safety and Fire Prevention

#### 6.2 - Signing

##### 6.2.1 - Road posting (10/20)

The Purchaser is responsible for posting and maintaining caution signs on M-30 prior to beginning operations. The road must be posted at appropriate distances from the sale area to warn of logging activity and truck traffic. Signs must be removed when harvest operations are suspended or completed. The Purchaser will provide these signs.



# TIMBER SALE MAP

This information provided by authority of Part 525, 1994 PA 451, as amended.

Forest Management Unit Gladwin Management Unit	County Gladwin	Mapped By Steven Nyhoff	Date 09/30/2022	Page 1	of 2
Township 19 & 20N	Range 1E & 1W	Section(s) and Subdivision(s) Various	Scale 1:15,840		

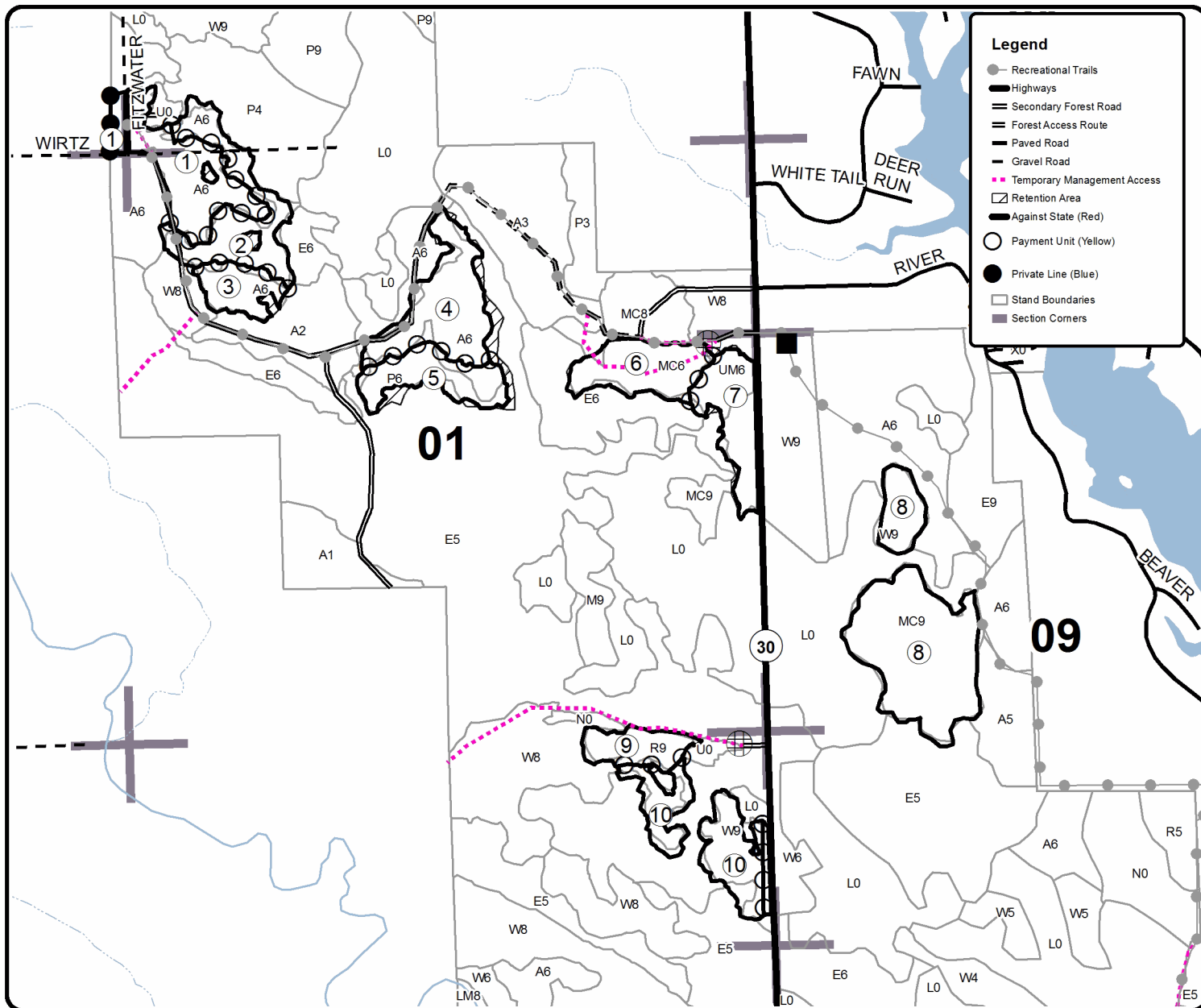
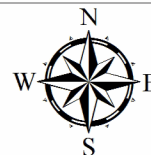
Cover Type				Density	
A = Aspen	H = Hemlock	N = Marsh	U = Upland Brush	0 = Non Stocked	5 = Pole Timber Medium
B = Paper Birch	J = Jack Pine	O = Oak	UM = Upland Mixed	1 = Seedling Sapling Poor	6 = Pole Timber Well
C = Cedar	L = Lowland Brush	P = Lowland Poplar	V = Bog or Marsh	2 = Seedling Sapling Medium	7 = Saw Timber Poor
D = Treed Bog	LM = Lowland Mixed	Q = Mixed Swamp Conifer	W = White Pine	3 = Seedling Sapling Well	8 = Saw Timber Medium
E = Swamp Hdwoods	M = Mpl, Bch, Brch	R = Red Pine	X = Non Stocked	4 = Pole Timber Poor	9 = Saw Timber Well
F = Spruce Fir	MC = Mixed Conifer	S = Black Spruce	Z = Water		
G = Grass	MD = Mixed Deciduous	T = Tamarack			

PU	Acres	PU	Acres	PU	Acres
1	15.4	5	9.2	9	6.0
2	13.8	6	10.6	10	15.0
3	5.9	7	10.2	11	6.7
4	15.8	8	31.3	12	25.4

## Wirtz 30

### Compartment 36

165.3 Acres





# TIMBER SALE MAP

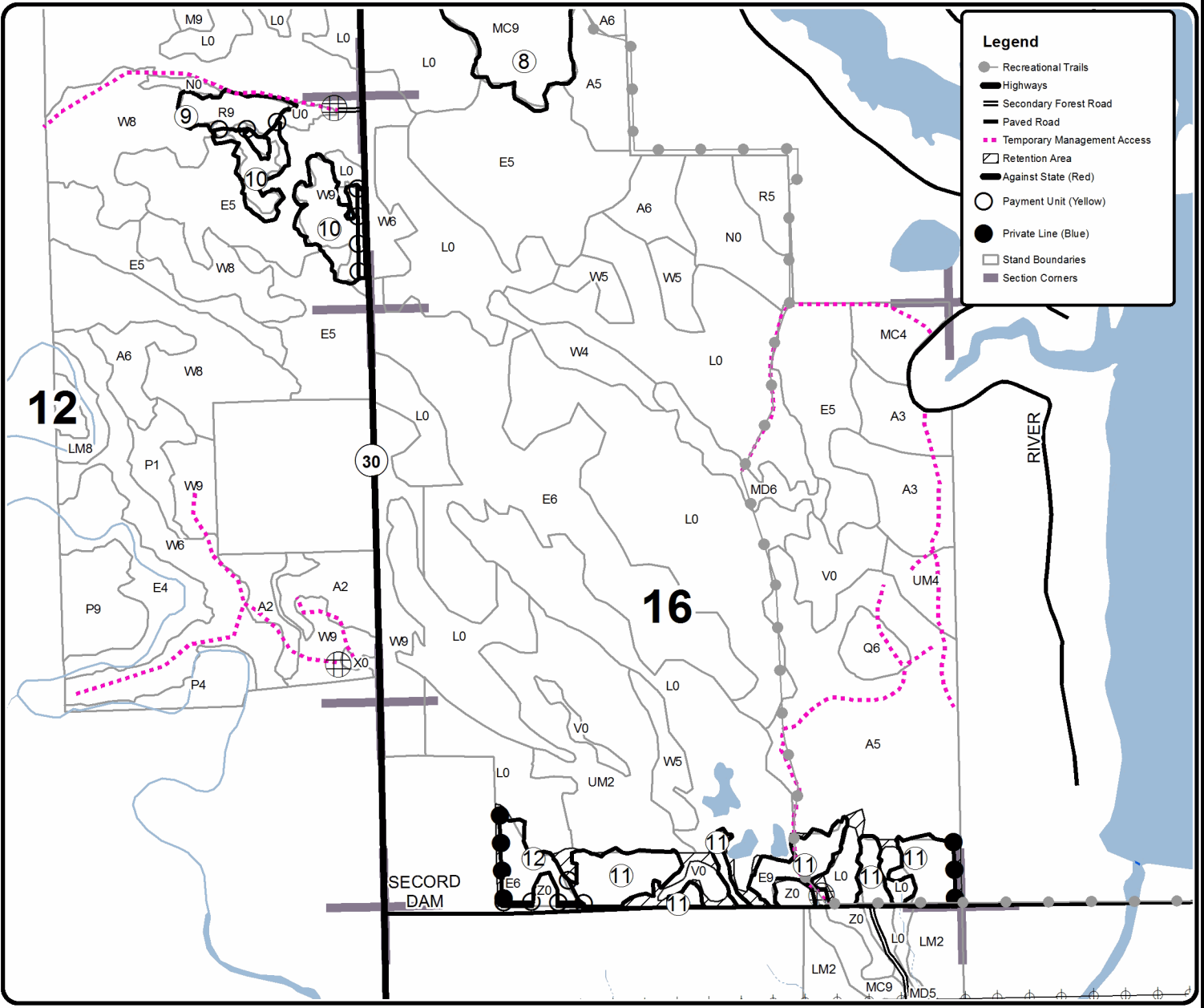
This information provided by authority of Part 525, 1994 PA 451, as amended.

Forest Management Unit	County	Mapped By	Date	Page	of
Gladwin Management Unit	Gladwin	Steven Nyhoff	09/30/2022	2	2
Township	Range	Section(s) and Subdivision(s)	Scale		
19 & 20N	1E & 1W	Various	1:15,840		

Cover Type				Density	
A = Aspen	H = Hemlock	N = Marsh	U = Upland Brush	0 = Non Stocked	5 = Pole Timber Medium
B = Paper Birch	J = Jack Pine	O = Oak	UM = Upland Mixed	1 = Seedling Sapling Poor	6 = Pole Timber Well
C = Cedar	L = Lowland Brush	P = Lowland Poplar	V = Bog or Marsh	2 = Seedling Sapling Medium	7 = Saw Timber Poor
D = Treed Bog	LM = Lowland Mixed	Q = Mixed Swamp Conifer	W = White Pine	3 = Seedling Sapling Well	8 = Saw Timber Medium
E = Swamp Hdwoods	M = Mpl, Bch, Brch	R = Red Pine	X = Non Stocked	4 = Pole Timber Poor	9 = Saw Timber Well
F = Spruce Fir	MC = Mixed Conifer	S = Black Spruce	Z = Water		
G = Grass	MD = Mixed Deciduous	T = Tamarack			

PU	Acres	PU	Acres	PU	Acres
1	15.4	5	9.2	9	6.0
2	13.8	6	10.6	10	15.0
3	5.9	7	10.2	11	6.7
4	15.8	8	31.3	12	25.4

**Wirtz 30**  
**Compartment 36**  
**165.3 Acres**







## TIMBER SALE INFORMATION

Middle C36 (73-010-22)

T19N, R01E, SEC. 10; T19N, R01E, SEC. 11; T19N, R01E, SEC. 22; T19N, R01E, SEC. 26; T19N, R01E, SEC. 27.  
Gladwin County (Advertised Price \$128,936.25)

SALE NOTE: Portions of this sale are wet and are restricted to dry/frozen conditions. There are also unit that are restricted to the dormancy period because of age of the trees and concerns about regeneration. The access to units 7, 8, and 9 across private land is possible. The current land owner indicates they are willing to let a logger cross using their easement.

A recreation site such as a trail, pathway, or campground is within the sale area or the vicinity. Certain restrictions/specifications may be applicable including time restrictions. Access may be through private or other public land.

A timber sale contract for this lump sum, sealed bid timber sale will be awarded to the responsible bidder offering the highest sealed bid price. All units of volume listed below were estimated using the Inventory Manager computer program and the new Michigan taper model. Bids must be at or above the following advertised price for each product and species:

<u>PRODUCTS &amp; SPECIES</u>	<u>ESTIMATED UNITS*</u>		<u>ADVERTISED PRICE</u>
<b>Sawtimber</b>			
Black/Red (Hybrid) Oak	298.1	MBF	\$ 79.00 / MBF
Mixed Aspen	203.3	MBF	\$ 78.00 / MBF
Red Maple	61.9	MBF	\$ 60.00 / MBF
Red Pine	12.5	MBF	\$ 113.00 / MBF
White Pine	198.2	MBF	\$ 68.00 / MBF
<b>Pulpwood</b>			
Balsam Fir	5	Cords	\$ 35.05 / Cord
Black/Red (Hybrid) Oak	633	Cords	\$ 16.45 / Cord
Mixed Aspen	1,095	Cords	\$ 32.95 / Cord
Mixed Hardwood	137	Cords	\$ 19.80 / Cord
Red Maple	655	Cords	\$ 19.80 / Cord
Red Pine	63	Cords	\$ 50.70 / Cord
White Pine	177	Cords	\$ 30.40 / Cord

\* The total volume is statistically estimated within plus (+) or minus (-) 11.79 percent. There are an estimated 4,471 cords on this timber sale, plus or minus 528 cords at the 95% confidence level. The estimated units are final and not subject to adjustment. Prospective bidders are urged to examine this timber and to make their own estimates of quantity and quality.

### **BOND AND PAYMENT SCHEDULE:**

1. A bond in the amount of \$6,447.00 to insure faithful performance of the conditions of the contract will be deposited by the successful bidder within 21 days of the sale award.
2. Cutting in any sale or unit without the required advance payment would be considered a trespass.
3. Total payment must be paid in advance or according to the following schedule :
  - (a) Ten percent (10%) of the sale value must be paid within 21 days of the sale award.
  - (b) The 10% down payment will be credited towards the first unit cut.
  - (c) Payment for each of the following units must be made before cutting begins in that unit:

PAYMENT UNIT NUMBER	PERCENT OF TOTAL SALE VALUE
01	12.8%
02	14.5%
03	9.1%
04	2.5%
05	9.2%
06	6.5%
07	5.0%
08	16.1%
09	19.9%
10	4.4%

4. If no cutting takes place, the 10% down payment will not be refunded.
5. Operations on the contract issued will terminate on 06/30/2025.

### **SALE STATISTICS**

Volumes were calculated in cubic feet using the Michigan taper model. Cubic foot volume includes all wood inside bark for the product indicated. For display purposes, cubic feet were converted to cords and MBF using a simple conversion factor, e.g. 79 cubic feet per cord and 185 cubic feet per MBF. The cubic foot volumes are precise; the cords and MBF volumes are not. Cubic foot volume cannot be directly converted to cords or boards with precision.

### SALE VOLUMES

The total estimated sale volume may not equal the sum of the species/products due to the nature of statistical calculations associated with double sampling methodology.

VOLUME			STATISTICAL RANGE IN CORDS	
TOTAL CUBIC FEET	TOTAL CORDS	PERCENT ERROR	MINIMUM	MAXIMUM
353,248	4,471	11.79%	3,944	4,999

### VDU VOLUMES

A VDU is a Volume Determination Unit. Volumes and their associated statistics are calculated at the VDU level and summarized to the sale level. There is often a one to one relationship between a VDU and a Payment Unit, but not always, depending on the cruise design. Refer to the VDU TO PAYMENT UNIT table.

VDU	VOLUME			RANGE IN CORDS	
	TOTAL CUBIC FEET	TOTAL CORDS	PERCENT ERROR	MINIMUM	MAXIMUM
167	87,112	1,103	27.18%	803	1,402
172	26,424	334	32.43%	226	443
177	10,762	136	76.02%	33	240
178	33,023	418	32.46%	282	554
207	16,092	204	35.12%	132	275
209	15,503	196	28.83%	140	253
225	17,455	221	72.90%	60	382
226	133,098	1,685	15.73%	1,420	1,950
244	13,779	174	52.58%	83	266
<b>TOTAL:</b>	<b>353,248</b>	<b>4,471</b>		<b>3,178</b>	<b>5,765</b>

### VDU TO PAYMENT UNIT

When a VDU is associated with more than one Payment Unit (PU), the VDU volumes are assigned to the PU based on acres of the VDU within the PU.

VDU	VDU ACRES	PU	PU ACRES
167	22.0	1	10.3
		2	11.7
172	9.3	3	9.3
177	3.0	4	3.0
178	17.7	5	17.7
207	6.5	6	6.5
209	9.9	6	9.9
225	10.1	7	10.1
226	33.1	8	14.8
		9	18.3
244	6.7	10	6.7
<b>TOTAL:</b>	<b>118.3</b>		<b>118.3</b>

**DESCRIPTION OF TIMBER BY PAYMENT UNIT (PU)**

PU	MARKET GROUP	PRODUCT	QUANTITY	UNIT	ACRES	ADVERTISE PRICE					
1	Black/Red (Hybrid)	Sawtimber	7.6	MBF	10.3	\$16,446.05					
	Mixed Aspen		49.7	MBF							
	<i>B. T. Aspen</i>		29.2	<i>MBF</i>							
	<i>Quaking Aspen</i>		20.5	<i>MBF</i>							
	Red Maple		4.3	MBF							
	White Pine		38.4	MBF							
	Balsam Fir		Pulpwood	2			Cords				
	Black/Red (Hybrid)			18			Cords				
	Mixed Aspen			183			Cords				
	<i>B. T. Aspen</i>			81			<i>Cords</i>				
	<i>Quaking Aspen</i>			102			<i>Cords</i>				
	Mixed Hardwood			3			Cords				
	<i>Black Cherry</i>			3			<i>Cords</i>				
	Red Maple			66			Cords				
	White Pine			44			Cords				
	2			Black/Red (Hybrid)			Sawtimber	8.6	MBF	11.7	\$18,674.40
Mixed Aspen		56.5	MBF								
<i>B. T. Aspen</i>		33.2	<i>MBF</i>								
<i>Quaking Aspen</i>		23.3	<i>MBF</i>								
Red Maple		4.8	MBF								
White Pine		43.7	MBF								
Balsam Fir		Pulpwood	3	Cords							
Black/Red (Hybrid)			20	Cords							
Mixed Aspen			207	Cords							
<i>B. T. Aspen</i>			92	<i>Cords</i>							
<i>Quaking Aspen</i>			115	<i>Cords</i>							
Mixed Hardwood			4	Cords							
<i>Black Cherry</i>			4	<i>Cords</i>							
Red Maple			76	Cords							
White Pine			49	Cords							
3			Black/Red (Hybrid)	Sawtimber	11.0	MBF		9.3	\$11,683.70		
	Mixed Aspen	17.8	MBF								
	<i>B. T. Aspen</i>	14.5	<i>MBF</i>								
	<i>Quaking Aspen</i>	3.3	<i>MBF</i>								
	Red Maple	10.6	MBF								
	Red Pine	12.5	MBF								
	White Pine	10.7	MBF								
	Black/Red (Hybrid)	Pulpwood	9		Cords						
	Mixed Aspen		51		Cords						
	<i>B. T. Aspen</i>		49		<i>Cords</i>						
	<i>Quaking Aspen</i>		2		<i>Cords</i>						
	Red Maple		30		Cords						
	Red Pine		63		Cords						
	White Pine		34		Cords						
	4		Mixed Aspen		Sawtimber	6.3	MBF			3.0	\$3,284.65
			<i>B. T. Aspen</i>			6.3	<i>MBF</i>				
Red Maple			10.0	MBF							
White Pine		4.9	MBF								
Black/Red (Hybrid)		Pulpwood	17	Cords							
Mixed Aspen			20	Cords							
<i>B. T. Aspen</i>			20	<i>Cords</i>							
Red Maple			45	Cords							
White Pine	1	Cords									
5	Black/Red (Hybrid)	Sawtimber	26.6	MBF	17.7	\$11,860.05					
	Mixed Aspen		15.3	MBF							
	<i>B. T. Aspen</i>		15.3	<i>MBF</i>							

**DESCRIPTION OF TIMBER BY PAYMENT UNIT (PU), CON'T**

PU	MARKET GROUP	PRODUCT	QUANTITY	UNIT	ACRES	ADVERTISE PRICE
5 con't	Red Maple	Sawtimber	5.8	MBF		
	White Pine		47.8	MBF		
	Black/Red (Hybrid)	Pulpwood	29	Cords		
	Mixed Aspen		56	Cords		
	<i>B. T. Aspen</i>		56	<i>Cords</i>		
	Mixed Hardwood		6	Cords		
	<i>Paper Birch</i>		6	<i>Cords</i>		
	Red Maple		103	Cords		
	White Pine		16	Cords		
6	Black/Red (Hybrid)	Sawtimber	22.4	MBF	16.4	\$8,431.75
	Red Maple		6.4	MBF		
	Black/Red (Hybrid)	Pulpwood	139	Cords		
	Mixed Aspen		28	Cords		
	<i>Quaking Aspen</i>		28	<i>Cords</i>		
	Mixed Hardwood		66	Cords		
	<i>Black Cherry</i>		19	<i>Cords</i>		
	<i>Paper Birch</i>		47	<i>Cords</i>		
	Red Maple		89	Cords		
7	Black/Red (Hybrid)	Sawtimber	28.6	MBF	10.1	\$6,421.75
	Mixed Aspen		2.7	MBF		
	<i>B. T. Aspen</i>		2.7	<i>MBF</i>		
	Black/Red (Hybrid)	Pulpwood	54	Cords		
	Mixed Aspen		71	Cords		
	<i>B. T. Aspen</i>		71	<i>Cords</i>		
	Mixed Hardwood		12	Cords		
	<i>Black Cherry</i>		12	<i>Cords</i>		
	White Pine		16	Cords		
8	Black/Red (Hybrid)	Sawtimber	86.4	MBF	14.8	\$20,758.35
	Mixed Aspen		19.5	MBF		
	<i>B. T. Aspen</i>		19.5	<i>MBF</i>		
	Red Maple		8.9	MBF		
	White Pine		23.6	MBF		
	Black/Red (Hybrid)	Pulpwood	152	Cords		
	Mixed Aspen		157	Cords		
	<i>B. T. Aspen</i>		157	<i>Cords</i>		
	Mixed Hardwood		18	Cords		
	<i>Paper Birch</i>		18	<i>Cords</i>		
	Red Maple		101	Cords		
White Pine		8	Cords			
9	Black/Red (Hybrid)	Sawtimber	106.9	MBF	18.3	\$25,649.95
	Mixed Aspen		24.2	MBF		
	<i>B. T. Aspen</i>		24.2	<i>MBF</i>		
	Red Maple		11.1	MBF		
	White Pine		29.1	MBF		
	Black/Red (Hybrid)	Pulpwood	187	Cords		
	Mixed Aspen		194	Cords		
	<i>B. T. Aspen</i>		194	<i>Cords</i>		
	Mixed Hardwood		23	Cords		
	<i>Paper Birch</i>		23	<i>Cords</i>		
	Red Maple		125	Cords		
White Pine		9	Cords			
10	Mixed Aspen	Sawtimber	11.3	MBF	6.7	\$5,725.60
	<i>B. T. Aspen</i>		7.6	<i>MBF</i>		
	<i>Quaking Aspen</i>		3.7	<i>MBF</i>		
	Black/Red (Hybrid)	Pulpwood	8	Cords		
	Mixed Aspen		128	Cords		

**DESCRIPTION OF TIMBER BY PAYMENT UNIT (PU), CON'T**

PU	MARKET GROUP	PRODUCT	QUANTITY	UNIT	ACRES	ADVERTISE PRICE
10 con't	<i>B. T. Aspen</i>	<i>Pulpwood</i>	125	<i>Cords</i>		
	<i>Quaking Aspen</i>		3	<i>Cords</i>		
	Mixed Hardwood		5	Cords		
	<i>Paper Birch</i>		5	<i>Cords</i>		
	Red Maple		20	Cords		
TOTAL:			774.0	MBF		
TOTAL:			2,765	Cords		

# Sale Specific Conditions & Requirements

**Sale Name: Middle C36**

**Sale Number: 73-010-22 Seq#: 1**

## 1 - Sale Area

### 1.2 - Boundaries

#### 1.2.1 - Painted boundaries (9/19)

The sale boundary and Payment Unit boundaries are marked and identified by blue, red and yellow paint. Exterior sale boundary lines against private property are marked with blue paint. Exterior sale boundary lines against state are marked with red paint. Interior Payment Unit boundaries are marked with yellow paint. Yellow painted trees designating an interior Payment Unit boundary are only to be cut when all surrounding Payment Units have been paid.

## 2 - Timber Specifications

### 2.1 - Included Timber

#### 2.1.1 - Clearcut unit(s) with unmerchantable trees (6/14)

Within Payment Unit(s) 1, 2, 3, 4, 6, 7, 8, 9, and 10, cut all trees that are two (2) inches or more at DBH except do not cut any trees marked with green paint above and below stump height and within unit 6 do not cut any pine.

#### 2.1.4 - Designated timber unit(s) (6/17)

Within Payment Unit(s) 5, all hardwood trees are designated for cutting which are two (2) inches or more at DBH regardless of merchantability. In addition, cut all tree marked with orange paint above and below stump height regardless of merchantability.

## 3 - Payments

### 3.3 - Pre-measured Sales

#### 3.3.4 - Dividing payment units (7/14)

Payment Unit(s) 1, 2, 8, and 9 may be divided at the request of the Purchaser and upon approval of the Unit Manager.

Dividing Payment Units is a contract modification which requires a Timber Sale Contract Amendment. There will be only one division per Payment Unit.

### 3.4 - Damaged Timber

#### 3.4.1 - Damaged timber (7/16)

General Condition and Requirement 3.4 Damaged Timber, defines liquidated damages for undesignated live merchantable trees which are cut or injured. In addition, extreme care should be taken to avoid damage to tree seedlings and saplings.

Within unit 5, if more than 25% of the tree seedlings or saplings (1/4" to 4.5" DBH) within a specified portion of the sale area are damaged, liquidated damages will be assessed at \$300 per acre for all acreage within that specified portion of the sale area that was damaged.

No damage is acceptable to undesignated live merchantable trees. Within the sale area, if more than 5% of trees (> 4.5" DBH) within a specified area of the sale are damaged, liquidated damages will be assessed for all trees damaged. Rates will be in accordance with General Condition and Requirement 3.4 Damaged Timber.

## 4 - Transportation

### 4.4 - Access

#### 4.4.1 - Private property access (3/11)

Permission for access across private land is the responsibility of the Purchaser.

## 5 - Operations

### 5.2 - Conduct of Operations

#### 5.2.2 - Hazard Trees/Snags

#### 5.2.2.1 - Den trees (10/16)

Obvious hollow and/or den trees shall be protected and left standing unless they are a safety hazard.

#### 5.2.3 - Operating Restrictions

##### 5.2.3.1 - Operating restrictions (9/11)

Within Payment Unit(s) 7, 8, and 9, cutting, skidding, and hauling are not permitted during the period of 04/01 to 09/30. This restriction is because of concerns about regeneration.

##### 5.2.3.3 - Bark slippage restriction (3/09)

Within Payment Unit(s) 5, unless changed by written agreement, cutting and skidding are not permitted during the period of April 15 to July 15. This restriction is because of bark slippage.

##### 5.2.3.6 - Bark beetle restriction (12/08)

In the event drought creates a high risk of pine bark beetle infestation, pine is not to be cut during the period March 1 through July 1, unless all portions of trees greater than two inches in diameter are removed from the sale area, reduced to chips, or treated to the satisfaction of the Unit Manager or his/her representative, within fifteen days of being severed from the stump. Pine log decks, pulpwood piles and treetops that are piled for chipping in the fall or winter within a 1/4 mile of susceptible sites must be removed before March 15. Residual slash must not be placed in piles or rows and must be spread over the site for quick drying. The Department of Natural Resources will exercise this specification if the risk of damage warrants.

#### 5.2.4 - Dead and Down Creation

##### 5.2.4.4 - Dead and down creation, grouse (6/18)

To encourage grouse and other wildlife, in Payment Unit(s) 1, 2, 3, 6, 8, 9, and 10 leave one 12" or larger diameter whole tree on the ground for every 3 acres. Trees should be scattered throughout the sale and at least two chains from any roads, two-tracks, or trails open to vehicles, or positioned per the sale administrators instructions. Stumps must be at least 3 feet tall.

#### 5.2.22 - Operating Caution

##### 5.2.22.1 - Operating caution (6/11)

It is recommended, but not required, that within Payment Unit(s) 4, 5, and 10, cutting, skidding, and hauling occur during dry summer or frozen winter conditions. The reason for the recommendation is because units are seasonally wet.

#### 5.2.40 - Pathway protection (10/10)

The Midland to Mackinac is a hiking trail and is shown on the Timber Sale Map. Do not cut trees or damage posts with blue pathway markers. Maintain a 20-foot wide slash, debris, and rut free zone daily, using the pathway as the centerline.

#### 5.4 - Soil Protection

##### 5.4.1 - Rutting restriction, general (7/16)

Operations are to cease immediately if equipment and weather conditions result in rutting of roads and/or skid trails which is 12 inches or greater in depth and 50 feet in length. The Unit Manager or his/her representative may restrict hauling and/or skidding if ruts exceed the specified depth. With the Unit Manager or his/her representative's approval, the Purchaser may return to the area when the risk of rutting has decreased.



# TIMBER SALE MAP

This information provided by authority of Part 525, 1994 PA 451, as amended.

Forest Management Unit Gladwin Management Unit	County Gladwin	Mapped By Steven Nyhoff	Date 09/30/2022	Page 1	of 3
Township 19N	Range 1E	Section(s) and Subdivision(s) Various	Scale 1:15,840		

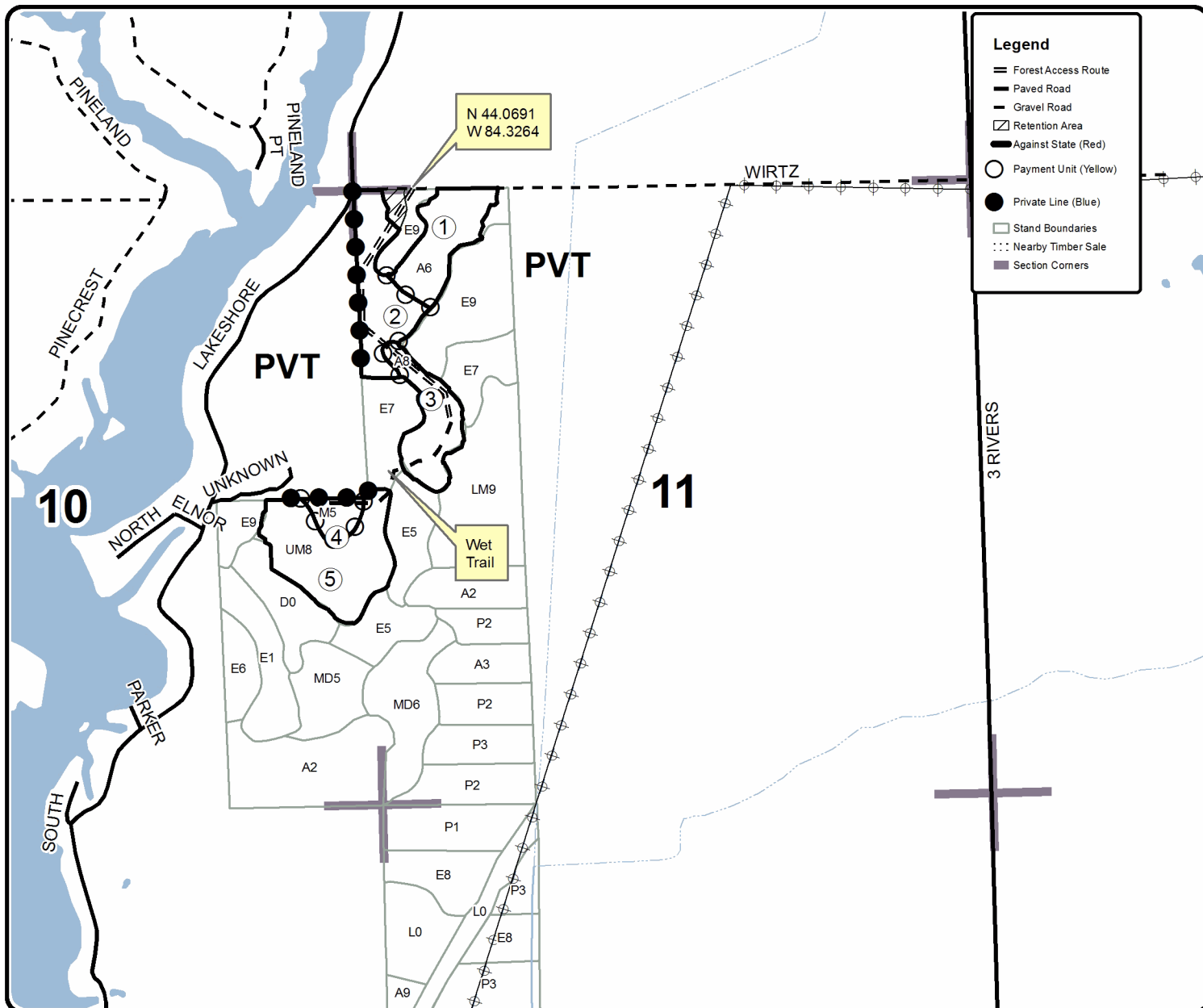
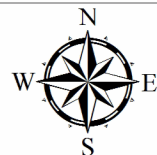
Cover Type				Density	
A = Aspen	H = Hemlock	N = Marsh	U = Upland Brush	0 = Non Stocked	5 = Pole Timber Medium
B = Paper Birch	J = Jack Pine	O = Oak	UM = Upland Mixed	1 = Seedling Sapling Poor	6 = Pole Timber Well
C = Cedar	L = Lowland Brush	P = Lowland Poplar	V = Bog or Marsh	2 = Seedling Sapling Medium	7 = Saw Timber Poor
D = Treed Bog	LM = Lowland Mixed	Q = Mixed Swamp Conifer	W = White Pine	3 = Seedling Sapling Well	8 = Saw Timber Medium
E = Swamp Hdwoods	M = Mpl, Bch, Brch	R = Red Pine	X = Non Stocked	4 = Pole Timber Poor	9 = Saw Timber Well
F = Spruce Fir	MC = Mixed Conifer	S = Black Spruce	Z = Water		
G = Grass	MD = Mixed Deciduous	T = Tamarack			

PU	Acres	PU	Acres	PU	Acres
1	10.3	5	17.7	9	18.3
2	11.7	6	16.4	10	6.7
3	9.3	7	10.1		
4	3.0	8	14.8		

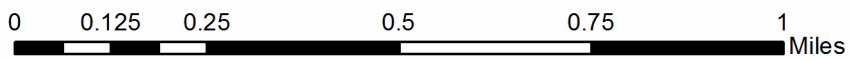
## Middle C36

### Compartment 36

118.3 Acres



Legend	
	Forest Access Route
	Paved Road
	Gravel Road
	Retention Area
	Against State (Red)
	Payment Unit (Yellow)
	Private Line (Blue)
	Stand Boundaries
	Nearby Timber Sale
	Section Corners







# TIMBER SALE MAP

This information provided by authority of Part 525, 1994 PA 451, as amended.

Sale Number	Year
73 - 010	22

Forest Management Unit	County	Mapped By	Date	Page	of
Gladwin Management Unit	Gladwin	Steven Nyhoff	09/30/2022	2	3
Township	Range	Section(s) and Subdivision(s)	Scale		
19N	1E	Various	1:15,840		

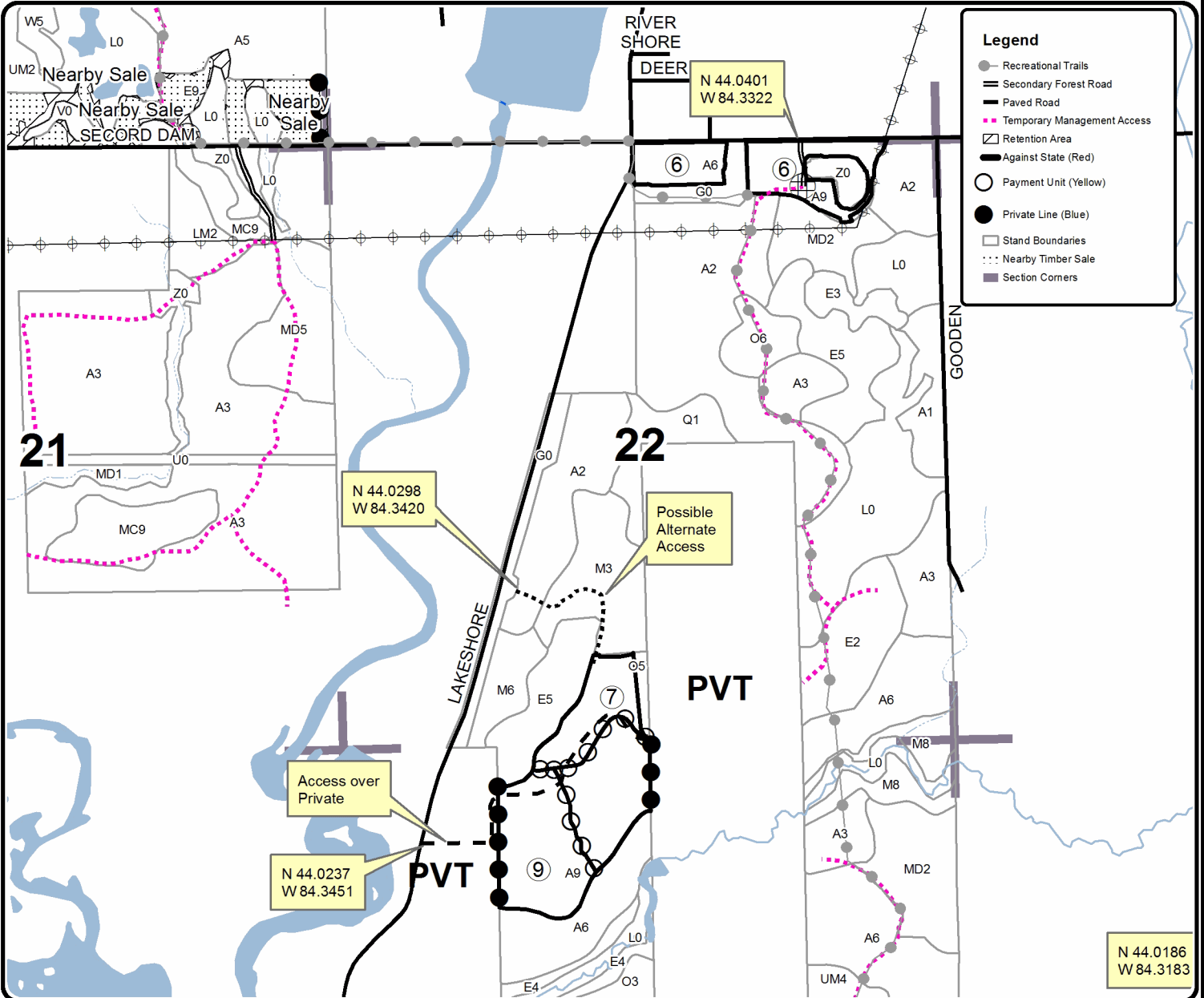
Cover Type				Density			
A = Aspen	H = Hemlock	N = Marsh	U = Upland Brush	0 = Non Stocked	5 = Pole Timber Medium		
B = Paper Birch	J = Jack Pine	O = Oak	UM = Upland Mixed	1 = Seedling Sapling Poor	6 = Pole Timber Well		
C = Cedar	L = Lowland Brush	P = Lowland Poplar	V = Bog or Marsh	2 = Seedling Sapling Medium	7 = Saw Timber Poor		
D = Treed Bog	LM = Lowland Mixed	Q = Mixed Swamp Conifer	W = White Pine	3 = Seedling Sapling Well	8 = Saw Timber Medium		
E = Swamp Hdwoods	M = Mpl, Bch, Brch	R = Red Pine	X = Non Stocked	4 = Pole Timber Poor	9 = Saw Timber Well		
F = Spruce Fir	MC = Mixed Conifer	S = Black Spruce	Z = Water				
G = Grass	MD = Mixed Deciduous	T = Tamarack					

PU	Acres	PU	Acres	PU	Acres
1	10.3	5	17.7	9	18.3
2	11.7	6	16.4	10	6.7
3	9.3	7	10.1		
4	3.0	8	14.8		

## Middle C36

### Compartment 36

118.3 Acres





# TIMBER SALE MAP

This information provided by authority of Part 525, 1994 PA 451, as amended.

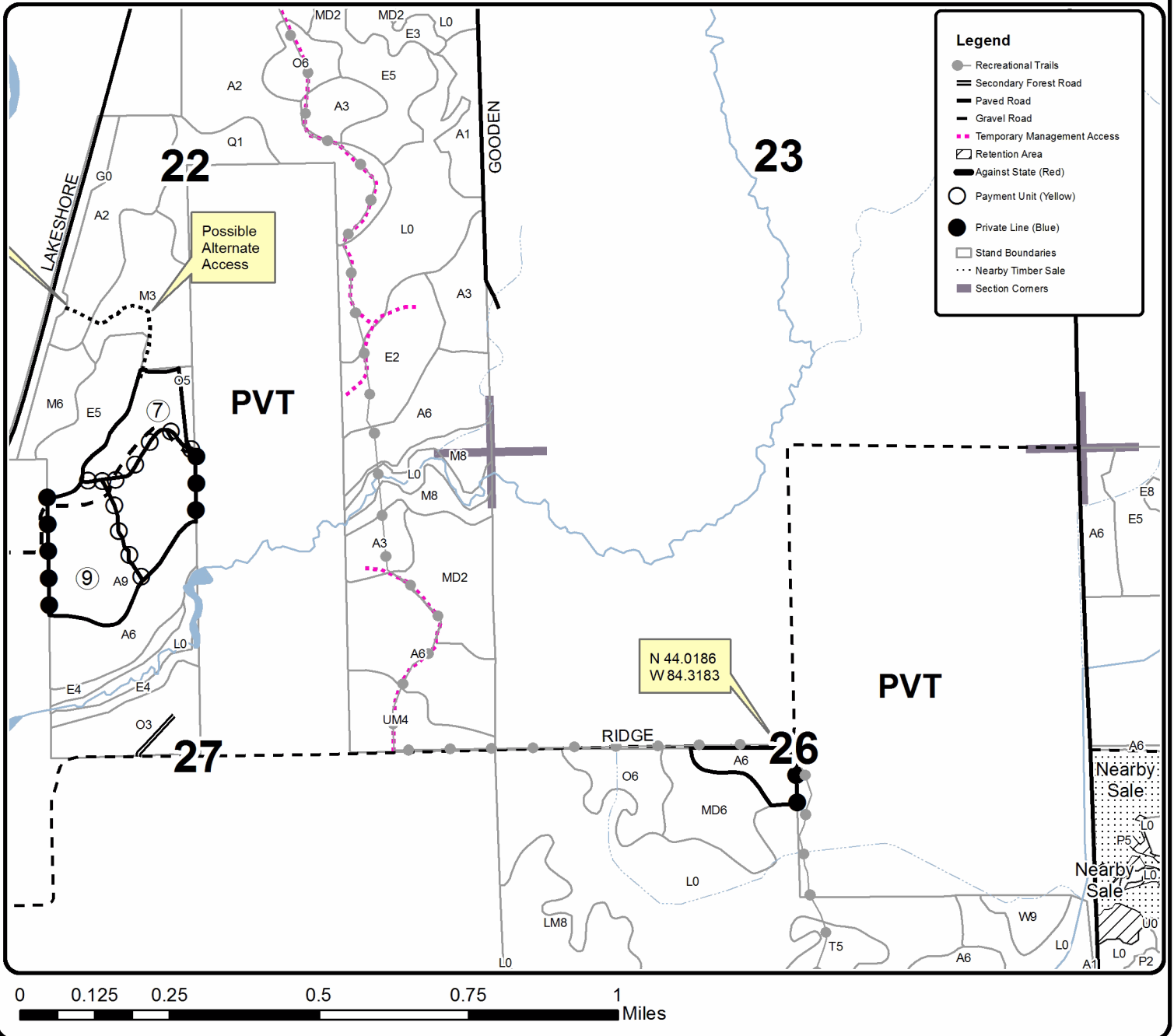
Sale Number	Year
73 - 010	22

Forest Management Unit	County	Mapped By	Date	Page	of
Gladwin Management Unit	Gladwin	Steven Nyhoff	09/30/2022	3	3
Township	Range	Section(s) and Subdivision(s)	Scale		
19N	1E	Various	1:15,840		

Cover Type				Density	
A = Aspen	H = Hemlock	N = Marsh	U = Upland Brush	0 = Non Stocked	5 = Pole Timber Medium
B = Paper Birch	J = Jack Pine	O = Oak	UM = Upland Mixed	1 = Seedling Sapling Poor	6 = Pole Timber Well
C = Cedar	L = Lowland Brush	P = Lowland Poplar	V = Bog or Marsh	2 = Seedling Sapling Medium	7 = Saw Timber Poor
D = Treed Bog	LM = Lowland Mixed	Q = Mixed Swamp Conifer	W = White Pine	3 = Seedling Sapling Well	8 = Saw Timber Medium
E = Swamp Hdwoods	M = Mpl. Bch. Brch	R = Red Pine	X = Non Stocked	4 = Pole Timber Poor	9 = Saw Timber Well
F = Spruce Fir	MC = Mixed Conifer	S = Black Spruce	Z = Water		
G = Grass	MD = Mixed Deciduous	T = Tamarack			

PU	Acres	PU	Acres	PU	Acres
1	10.3	5	17.7	9	18.3
2	11.7	6	16.4	10	6.7
3	9.3	7	10.1		
4	3.0	8	14.8		

## Middle C36 Compartment 36 118.3 Acres



Wirtz 30 (73-006-22)

T19N, R01E, SEC. 16; T19N, R01E, SEC. 9; T19N, R01W, SEC. 1; T19N, R01W,

In response to the notice of sale to be held 10:00 a.m. (local time) on June 22, 2023, I am hereby submitting my sealed bid ( firm offer) for the following forest products to be cut. Bids for individual species must be at or above the advertised price. All non-responsive bid forms may be rejected.

<u>PRODUCTS &amp; SPECIES</u>	<u>ESTIMATED VOLUME*</u>	<u>ADVERTISED PRICE</u>	<u>BID PRICE/UNIT</u>
<b>Sawtimber</b>			
Black/Red (Hybrid) Oak	8.2 MBF	\$ 79.00/MBF	\$ _____
Mixed Aspen	188.4 MBF	\$ 78.00/MBF	\$ _____
Red Maple	145.0 MBF	\$ 60.00/MBF	\$ _____
Red Oak	20.5 MBF	\$ 150.00/MBF	\$ _____
Red Pine	64.4 MBF	\$ 113.00/MBF	\$ _____
White Pine	220.8 MBF	\$ 68.00/MBF	\$ _____
<b>Pulpwood</b>			
Jack Pine	41 Cords	\$ 25.15/Cord	\$ _____
Mixed Aspen	1,394 Cords	\$ 32.95/Cord	\$ _____
Mixed Hardwood	920 Cords	\$ 19.80/Cord	\$ _____
Mixed Oak	104 Cords	\$ 16.45/Cord	\$ _____
Red Pine	126 Cords	\$ 50.70/Cord	\$ _____
White Pine	308 Cords	\$ 30.40/Cord	\$ _____

\*The volumes are statistically estimated within plus (+) or minus (-) 9.02 percent at 95% confidence level. These estimated volumes are final and not subject to adjustment. Prospective bidders are urged to examine this timber and to make their own estimates of quantity and quality.

I understand that any or all bids may be rejected. All bids must be signed and all bid items must be bid or the bid form may be rejected. I also understand that consideration and awarding a contract will be based upon my past performance and ability to complete the contract based upon equipment and staffing subject to my control.

FEDERAL ID: \_\_\_\_ - \_\_\_\_ - \_\_\_\_ or SOCIAL SECURITY NUMBER: \_\_\_\_ - \_\_\_\_ - \_\_\_\_

Company or individual bidding: \_\_\_\_\_

Company representative's name: \_\_\_\_\_

Address: \_\_\_\_\_

City: \_\_\_\_\_ State: \_\_\_\_\_ Zip: \_\_\_\_\_

IF AVAILABLE, PLEASE PLACE THE PERSONALIZED LABEL FROM YOUR PROSPECTUS IN THE ABOVE BOX.

Individual or company representative's signature: \_\_\_\_\_ Date: \_\_\_\_\_

Phone number : \_\_\_\_\_ Email (optional): \_\_\_\_\_

**THE WINNING BIDDER MUST COMPLETE THE VERIFICATION OF WORKER'S DISABILITY COMPENSATION ACT COMPLIANCE (ON REVERSE SIDE IF DOUBLE SIDED) WITHIN 21 DAYS OF SALE AWARD DATE**



<b>FOR DEPARTMENT USE ONLY</b>
Sale Number (XX - XXX - XX - XX)
Forest Management Unit:

## TIMBER SALE VERIFICATION OF WORKER'S DISABILITY COMPENSATION ACT COMPLIANCE

*As required by Act 317, P.A. 1969 (Worker's Compensation) and  
Part 5 of Act 451 of 1994, as amended.*

### VERIFICATION OF WORKER'S DISABILITY COMPENSATION ACT COMPLIANCE

- This verification must be completed and submitted within 21 days of contract award and prior to the issuance of the timber sale contract.
- In addition, if boxes 2B or 2C are checked, then Notice of Exclusion or Certificate of Insurance must be submitted within twenty-one (21) days of the contract award and prior to the issuance of the timber sale contract.
- All information must be typed or printed except for written signatures.

Please Check Appropriate Categories:

1. My business is organized as (you **must** check one of the boxes below):
  - A.  Sole Proprietorship (individual)
  - B.  Partnership
  - C.  Corporation
2. You **must** check one of the boxes below:
  - A.  I certify my business is a sole proprietorship and it has no employees but the sole proprietor. I am not subject to the Worker's Compensation Laws.
  - B.  I certify my business has satisfied its obligation to the Worker's Compensation Act through the use of an approved Notice of Exclusion (BWC-337, Rev. 5/96). I will provide a copy of the Notice of Exclusion within 21 days of the contract award. (For questions or a copy of the BWC-337, please call the Worker's Compensation Bureau at 517-322-1195).
  - C.  I certify my business has a Worker's Compensation Policy. I will provide an original Certificate of Insurance within twenty-one (21) days of the contract award.
3. If you have checked item 2(A) or 2(B), you **must** indicate the number of **both** full-time and part-time employees, other than yourself, including family members and active partners (if none, you must enter "0").

\_\_\_\_\_ Full-time Employees

\_\_\_\_\_ Part-time Employees

Name of Business		Federal ID (or) Social Security No.	
Address		Telephone (       )	
City	State	ZIP	

*I hereby certify that the above information is true and correct. I agree to notify the Michigan DNR of any changes that occur in factors affecting my coverage during any of my present and future operations.*

\_\_\_\_\_  
Signature of Owner or Authorized Representative

\_\_\_\_\_  
Title

\_\_\_\_\_  
Date

**Please complete the "SEALED BID" information on the next page**

Middle C36 (73-010-22)

T19N, R01E, SEC. 10; T19N, R01E, SEC. 11; T19N, R01E, SEC. 22; T19N, R01E,

In response to the notice of sale to be held 10:00 a.m. (local time) on June 22, 2023, I am hereby submitting my sealed bid ( firm offer) for the following forest products to be cut. Bids for individual species must be at or above the advertised price. All non-responsive bid forms may be rejected.

<u>PRODUCTS &amp; SPECIES</u>	<u>ESTIMATED VOLUME*</u>	<u>ADVERTISED PRICE</u>	<u>BID PRICE/UNIT</u>
<b>Sawtimber</b>			
Black/Red (Hybrid) Oak	298.1 MBF	\$ 79.00/MBF	\$ _____
Mixed Aspen	203.3 MBF	\$ 78.00/MBF	\$ _____
Red Maple	61.9 MBF	\$ 60.00/MBF	\$ _____
Red Pine	12.5 MBF	\$ 113.00/MBF	\$ _____
White Pine	198.2 MBF	\$ 68.00/MBF	\$ _____
<b>Pulpwood</b>			
Balsam Fir	5 Cords	\$ 35.05/Cord	\$ _____
Black/Red (Hybrid) Oak	633 Cords	\$ 16.45/Cord	\$ _____
Mixed Aspen	1,095 Cords	\$ 32.95/Cord	\$ _____
Mixed Hardwood	137 Cords	\$ 19.80/Cord	\$ _____
Red Maple	655 Cords	\$ 19.80/Cord	\$ _____
Red Pine	63 Cords	\$ 50.70/Cord	\$ _____
White Pine	177 Cords	\$ 30.40/Cord	\$ _____

\*The volumes are statistically estimated within plus (+) or minus (-) 11.79 percent at 95% confidence level. These estimated volumes are final and not subject to adjustment. Prospective bidders are urged to examine this timber and to make their own estimates of quantity and quality.

I understand that any or all bids may be rejected. All bids must be signed and all bid items must be bid or the bid form may be rejected. I also understand that consideration and awarding a contract will be based upon my past performance and ability to complete the contract based upon equipment and staffing subject to my control.

FEDERAL ID: \_\_\_\_ - \_\_\_\_ - \_\_\_\_ or SOCIAL SECURITY NUMBER: \_\_\_\_ - \_\_\_\_ - \_\_\_\_

Company or individual bidding: \_\_\_\_\_

Company representative's name: \_\_\_\_\_

Address: \_\_\_\_\_

City: \_\_\_\_\_ State: \_\_\_\_\_ Zip: \_\_\_\_\_

IF AVAILABLE, PLEASE PLACE THE PERSONALIZED LABEL FROM YOUR PROSPECTUS IN THE ABOVE BOX.

Individual or company representative's signature: \_\_\_\_\_ Date: \_\_\_\_\_

Phone number : \_\_\_\_\_ Email (optional): \_\_\_\_\_

**THE WINNING BIDDER MUST COMPLETE THE VERIFICATION OF WORKER'S DISABILITY COMPENSATION ACT COMPLIANCE (ON REVERSE SIDE IF DOUBLE SIDED) WITHIN 21 DAYS OF SALE AWARD DATE**



<b>FOR DEPARTMENT USE ONLY</b>
Sale Number (XX - XXX - XX - XX)
Forest Management Unit:

## TIMBER SALE VERIFICATION OF WORKER'S DISABILITY COMPENSATION ACT COMPLIANCE

*As required by Act 317, P.A. 1969 (Worker's Compensation) and  
Part 5 of Act 451 of 1994, as amended.*

### VERIFICATION OF WORKER'S DISABILITY COMPENSATION ACT COMPLIANCE

- This verification must be completed and submitted within 21 days of contract award and prior to the issuance of the timber sale contract.
- In addition, if boxes 2B or 2C are checked, then Notice of Exclusion or Certificate of Insurance must be submitted within twenty-one (21) days of the contract award and prior to the issuance of the timber sale contract.
- All information must be typed or printed except for written signatures.

Please Check Appropriate Categories:

1. My business is organized as (you **must** check one of the boxes below):
  - A.  Sole Proprietorship (individual)
  - B.  Partnership
  - C.  Corporation
  
2. You **must** check one of the boxes below:
  - A.  I certify my business is a sole proprietorship and it has no employees but the sole proprietor. I am not subject to the Worker's Compensation Laws.
  - B.  I certify my business has satisfied its obligation to the Worker's Compensation Act through the use of an approved Notice of Exclusion (BWC-337, Rev. 5/96). I will provide a copy of the Notice of Exclusion within 21 days of the contract award. (For questions or a copy of the BWC-337, please call the Worker's Compensation Bureau at 517-322-1195).
  - C.  I certify my business has a Worker's Compensation Policy. I will provide an original Certificate of Insurance within twenty-one (21) days of the contract award.
  
3. If you have checked item 2(A) or 2(B), you **must** indicate the number of **both** full-time and part-time employees, other than yourself, including family members and active partners (if none, you must enter "0").

\_\_\_\_\_ Full-time Employees

\_\_\_\_\_ Part-time Employees

Name of Business		Federal ID (or) Social Security No.	
Address		Telephone (       )	
City	State	ZIP	

*I hereby certify that the above information is true and correct. I agree to notify the Michigan DNR of any changes that occur in factors affecting my coverage during any of my present and future operations.*

\_\_\_\_\_  
Signature of Owner or Authorized Representative

\_\_\_\_\_  
Title

\_\_\_\_\_  
Date

**Please complete the "SEALED BID" information on the next page**