



**DEPARTMENT OF NATURAL RESOURCES
STATE OF MICHIGAN
TIMBER SALE PROSPECTUS #7230**

SCHEDULED SALE DATE AND TIME: 10:00 a.m. (local time) on June 27, 2023.

LOCATION: ATLANTA MGMT UNIT, 13501 M 33, ATLANTA, MI 49709.

PROSPECTUS NOTE: The bidder is advised to inspect the sale area and review the location, estimated volumes, operating costs and contract terms of proposed sales. Please be aware that some landowners may request 60 days or more notice for access across their land.

Notice is hereby given that bids will be received by the Unit Manager, ATLANTA MANAGEMENT UNIT, for certain timber on the following described lands:

Second Try Koenig Rd RP (54-008-22) / T33N, R04E, SEC. 28, SWSW.

T33N, R04E, SEC. 32, SENE.

T33N, R04E, SEC. 33, NWNW,S1/2NW,NE,N1/2SW.

Presque Isle County, Advertised Price \$131,567.90, 120.1 Acres, Red Pine, Aspen.

C128 North (54-025-22) / T33N, R04E, SEC. 20, S1/2SE.

T33N, R04E, SEC. 29, N1/2NE,SWNE.

Presque Isle County, Advertised Price \$73,902.60, 84.7 Acres, Aspen, Hardwood.

C128 South and Central (54-026-22) / T33N, R04E, SEC. 28, W1/2SW.

T33N, R04E, SEC. 29, E1/2SE.

T33N, R04E, SEC. 32, N1/2NE,E1/2SE.

T33N, R04E, SEC. 33, SWNW,SW.

Presque Isle County, Advertised Price \$111,158.05, 116.6 Acres, Hardwood, Aspen.

BID INSTRUCTIONS (VER. 10/10/2022):

1. Scheduled Bid Location, Date, and Time (2/11)

Bids must be received by the Unit Manager, ATLANTA OFFICE, 13501 M 33, ATLANTA, MI 49709, no later than 10:00 a.m. (local time) on June 27, 2023. For further information concerning this sale, contact Cody Stevens at 989-785-4251 extension 5240.

2. Bidder's Qualifications (10/22)

If all or part of a timber sale was prepared by a private contractor, the contractor and that contractor's company are not permitted to bid on the timber sale. A person must be 18 years of age or older to purchase timber. Permanent employees of the Department of Natural Resources or members of their immediate household may not bid. Former employees, in the permanent or seasonal class, may not bid until 3 months after the last day of active duty. Bids will not be accepted from individuals or companies appearing on the DNR/FRD No-Bid List. This list contains the names of purchasers who previously failed to execute a contract within 21-days or who have a history of poor performance.

3. Preparation of Sealed Bids (5/16)

Bid Forms may be completed online thru Michigan DNR Timber Sale Online Bidding (OLB) at www.michigan.gov/timberbidding or by completing the hardcopy Bid Form found in the Timber Sale Prospectus. Hardcopy Bid Forms shall be manually signed in ink. Registration in OLB is considered your 'signature' for all bids submitted thru that system. Bid prices must be entered for each species and product in the Bid Price column for all material subject to bidding and all fill-in blanks must be completed. If erasures or other changes appear on the hardcopy Bid Form, each erasure or change must be initialed by the person signing the bid.

4. Submission of Sealed Bids (5/16)

Bid forms may be obtained from the Unit Manager or thru OLB. Bids may be submitted hardcopy or thru OLB. All hardcopy bids must be submitted on the bid form and in an envelope clearly identified as described in this section. NOTE: Only one bid form per bid envelope. Sealed bids must be submitted to the Unit office designated in the prospectus and must be submitted at or prior to the time established in the prospectus. The envelope should show on the outside (a) the sale name or number and (b) the date and time of bid opening, as shown in the prospectus. Bids received after the time specified in the sale prospectus are late bids and will be rejected.

It is possible for a bidder to submit multiple bids on a single sale. For example, a bid may be submitted hardcopy and a bid may be submitted thru OLB. Or, two bidders from the same company could both submit bids on the same sale. If this were to happen, the State would accept all bids received and award the contract accordingly. All bidding and contractual requirements would apply to all bids received.

5. Public Opening of Sealed Bids (7/16)

If conditions permit, the sealed bids will be publicly opened and posted at the time and place set in the prospectus.

If a bidder, present at a bid opening, has submitted bids on more than one sale, that bidder may withdraw their unopened bid envelopes or announce the withdrawal of their online bid after being declared the successful bidder on one sale.

6. Award of Contract (1/11)

Award of the contract will be made to the Bidder whose bid, conforming to the prospectus, is most advantageous to the State of Michigan on the basis of total value at rates bid for the estimated quantities. The State reserves the right to reject any bid or waive any minor irregularity in bids received. A written award mailed (or otherwise furnished) to the successful Bidder shall be deemed to result in a binding contract without further action by either party.

7. Down Payment (1/11)

The Bidder to whom award is made must make a down payment within 21 days of the sale award. The amount of the down payment will be calculated as shown in the Bond and Payment Schedule of this prospectus. Only cash may be used to meet this requirement.

8. Performance Security (1/11)

As guarantee of faithful performance, a cash bond, certificate of deposit, surety bond or irrevocable letter of credit (LOC) is required within 21 days of the sale award. The amount of the performance security is shown in the Bond and

Payment Schedule of this prospectus. If an LOC or surety is used, the coverage must extend for at least 6 months beyond the contract expiration.

9. Worker's Compensation (10/22)

Purchaser shall obtain worker's compensation insurance to cover claims under Michigan's Worker's Disability Compensation Act of 1969 or similar employee benefit act of any other state applicable to an employee. Verification of Worker's Disability Compensation Act Compliance must be completed and submitted within 21 days of contract award and prior to the issuance of the timber sale contract. In addition, if applicable, Notice of Exclusion or Certificate of Insurance must also be submitted.

10. Timber Sale Contract (10/22)

Additional conditions and requirements common to all timber sales are listed on the timber sale contract (R4031) and are available on line at www.michigan.gov/timber. Contact the Unit Manager for additional information or a sample contract. Within 21 days of the date of the award letter, the bidder must sign the contract and provide the required down payment, performance security, and verification of worker's disability compensation. The down payment and performance security shall be in accordance with the provisions of the timber sale contract, in the sums stated in this prospectus. If these actions are not taken, then the Bidder, the Bidder's corporation, and the corporation's principals may not be permitted to bid on State timber sales for a period of 3 months after the first offense, 6 months after the second offense, and 1 year after the third offense. An offense will only be counted against the Bidder for 5 years. In addition, the Bidder certifies that if awarded this contract, the Bidder will complete the timber sale contract in accordance with its terms and any modifications thereof including requirements to purchase, cut, and remove the included timber by the expiration date.

Payment Unit values in the State Forest Timber Sale Contract are calculated based on the advertised value of the Payment Unit as a percentage of the total advertised value of the contract. The advertised value of each Payment Unit is given in the Description of Timber by Payment Unit table on the Timber Sale Information page. For example, if the value of Payment Unit 1 is advertised as \$1,500 and the total Timber Sale value is advertised as \$10,000, the contract price for Payment Unit 1 will be 15% of the total bid price ($\$1,500/\$10,000 * 100$).

11. Disclaimer of Estimates and Bidder's Warranty of Inspection (10/22)

Before submitting this bid, the Bidder is advised and cautioned to inspect the sale area, review the requirements of the sale contract, and take other steps as may be reasonably necessary to ascertain the location, estimated volumes, construction estimates, and operating costs of the proposed sale. Failure to do so will not relieve the Bidder from responsibility for completing the contract.

The Bidder warrants that this bid is submitted solely on the basis of the Bidder's examination and inspection of the quality and quantity of the timber offered for sale and the Bidder's opinion of the value thereof and the costs of recovery. No reliance should be placed on the State of Michigan's estimates of timber quality, quantity or costs of recovery. Bidder further acknowledges that the State of Michigan: (i) expressly disclaims any warranty of fitness of timber for any purpose; (ii) offers this timber as is without any warranty of quality (merchantability) or quantity and (iii) expressly disclaims any warranty as to the quantity or quality of timber sold.

12. Certification and Chain-of-Custody (10/22)

Unless otherwise indicated in the contract under section 7 – Other Conditions of the Sale Specific Conditions & Requirements, the area encompassed by this timber sale is certified to the standards of the Forest Stewardship Council (FSC) - Certificate #SCS-FM/COC-00090N and the Sustainable Forestry Initiative (SFI) - Certificate #NSF-SFIS-5Y031-SF5. Forest products from this sale may be delivered to the mill as "FSC 100% and / or SFI certified" as long as the contractor hauling the forest products is chain-of-custody (COC) certified or covered under a COC certificate from the destination mill. The purchaser is responsible for maintaining COC after leaving the sale area.

13. Good Neighbor Authority (GNA) Requirements (10/22)

If the name of this timber sales contains the acronym GNA, it is authorized by the Good Neighbor Authority (GNA) and covered by various agreements between the U.S. Forest Service and the State. The timber sale occurs on federal land and the following conditions apply:

GNA contracts on US Forest Service land will not be awarded to purchasers on the Federal list of excluded parties. The System for Award Management (SAM) will be checked for active excluded parties prior to award of contract. In

addition, the Bidder to whom award is made must complete an Assurance Regarding Felony Conviction or Tax Delinquent Status for Corporate Applicants (AD-3031).

14. Good Neighbor Authority (GNA) Requirements, con't (10/22)

Bidder certifies, by signing this bid form, that to the best of Bidder's knowledge that the following representations are accurate and complete.

- a. That the Bidder and its principals are not presently debarred, suspended, proposed for debarment, declared ineligible, or voluntary excluded from timber sales (covered transactions) by any Federal department or agency.
- b. That the Bidder and its principals have not within a 3-year period preceding this bid been convicted of or had a civil judgment rendered against them for commission of fraud or a criminal offense in connection with obtaining , attempting to obtain, or performing a public (Federal, State, or local) transaction or contract under a public transaction; violation of Federal or State antitrust statutes or commission of embezzlement, theft, forgery, bribery, falsification or destruction of records, making false statements, or receiving stolen property.
- c. That the Bidder and its principals are not presently indicted for or otherwise criminally or civilly charged by a governmental entity (Federal, State, or local) with commission of any of the offenses enumerated in paragraph b of this certification.
- d. That the Bidder and its principals have not within a 3-year period preceding this bid had one or more public transactions (Federal, State, or local) terminated for breach or default of a timber or forest product contract.

Bidders that cannot certify this requirement, in whole or in part, shall submit an explanation with their bid.

SHANNON LOTT, Acting
Director

TIMBER SALE INFORMATION

Second Try Koenig Rd RP (54-008-22)
 T33N, R04E, SEC. 28; T33N, R04E, SEC. 32; T33N, R04E, SEC. 33.
 Presque Isle County (Advertised Price \$131,567.90)

A timber sale contract for this lump sum, sealed bid timber sale will be awarded to the responsible bidder offering the highest sealed bid price. All units of volume listed below were estimated using the Inventory Manager computer program and the new Michigan taper model. Bids must be at or above the following advertised price for each product and species:

<u>PRODUCTS & SPECIES</u>	<u>ESTIMATED UNITS*</u>	<u>ADVERTISED PRICE</u>
Sawtimber		
B. T. Aspen	3.6 MBF	\$ 124.00 / MBF
Black/Red (Hybrid) Oak	22.1 MBF	\$ 180.00 / MBF
Red Pine	38.3 MBF	\$ 191.00 / MBF
Pulpwood		
B. T. Aspen	119 Cords	\$ 36.20 / Cord
Jack Pine	22 Cords	\$ 18.95 / Cord
Mixed Hardwood	8 Cords	\$ 38.75 / Cord
Mixed Oak	59 Cords	\$ 40.50 / Cord
Red Pine	1,479 Cords	\$ 76.00 / Cord

* The total volume is statistically estimated within plus (+) or minus (-) 11.84 percent. There are an estimated 1,835 cords on this timber sale, plus or minus 217 cords at the 95% confidence level. The estimated units are final and not subject to adjustment. Prospective bidders are urged to examine this timber and to make their own estimates of quantity and quality.

BOND AND PAYMENT SCHEDULE:

1. A bond in the amount of \$6,578.00 to insure faithful performance of the conditions of the contract will be deposited by the successful bidder within 21 days of the sale award.
 2. Cutting in any sale or unit without the required advance payment would be considered a trespass.
 3. Total payment must be paid in advance or according to the following schedule :
 - (a) Ten percent (10%) of the sale value must be paid within 21 days of the sale award.
 - (b) The 10% down payment will be credited towards the first unit cut.
 - (c) Payment for each of the following units must be made before cutting begins in that unit:
- | PAYMENT UNIT NUMBER | PERCENT OF TOTAL SALE VALUE |
|---------------------|-----------------------------|
| 01 | 10.3% |
| 02 | 30.0% |
| 03 | 1.5% |
| 04 | 15.3% |
| 05 | 16.7% |
| 06 | 21.4% |
| 07 | 4.8% |
4. If no cutting takes place, the 10% down payment will not be refunded.
 5. Operations on the contract issued will terminate on 12/31/2025.

SALE STATISTICS

Volumes were calculated in cubic feet using the Michigan taper model. Cubic foot volume includes all wood inside bark for the product indicated. For display purposes, cubic feet were converted to cords and MBF using a simple conversion factor, e.g. 79 cubic feet per cord and 185 cubic feet per MBF. The cubic foot volumes are precise; the cords and MBF volumes are not. Cubic foot volume cannot be directly converted to cords or boards with precision.

SALE VOLUMES

The total estimated sale volume may not equal the sum of the species/products due to the nature of statistical calculations associated with double sampling methodology.

VOLUME		PERCENT ERROR	STATISTICAL RANGE IN CORDS	
TOTAL CUBIC FEET	TOTAL CORDS		MINIMUM	MAXIMUM
144,954	1,835	11.84%	1,617	2,052

VDU VOLUMES

A VDU is a Volume Determination Unit. Volumes and their associated statistics are calculated at the VDU level and summarized to the sale level. There is often a one to one relationship between a VDU and a Payment Unit, but not always, depending on the cruise design. Refer to the VDU TO PAYMENT UNIT table.

VDU	VOLUME		PERCENT ERROR	RANGE IN CORDS	
	TOTAL CUBIC FEET	TOTAL CORDS		MINIMUM	MAXIMUM
29	75,592	957	19.00%	775	1,139
37	14,269	181	27.32%	131	230
57	11,139	141	47.76%	74	208
64	2,592	33	879.68%	256	321
67	41,363	524	21.91%	409	638
TOTAL:	144,954	1,835		1,133	2,537

VDU TO PAYMENT UNIT

When a VDU is associated with more than one Payment Unit (PU), the VDU volumes are assigned to the PU based on acres of the VDU within the PU.

VDU	VDU ACRES	PU	PU ACRES
29	70.0	4	20.0
		5	21.9
		6	28.1
37	11.5	1	11.5
57	8.6	7	8.6
64	2.0	3	2.0
67	28.0	2	28.0
TOTAL:	120.1		120.1

DESCRIPTION OF TIMBER BY PAYMENT UNIT (PU)

PU	MARKET GROUP	PRODUCT	QUANTITY	UNIT	ACRES	ADVERTISE PRICE
1	Red Pine	Sawtimber	6.3	MBF	11.5	\$13,596.30
	Mixed Oak	Pulpwood	2	Cords		
	<i>Red Oak</i>		2	<i>Cords</i>		
	Red Pine		162	Cords		
2	Black/Red (Hybrid)	Sawtimber	9.2	MBF	28.0	\$39,386.60
	Red Pine		6.2	MBF		
	Jack Pine	Pulpwood	22	Cords		
	Mixed Hardwood		6	Cords		
	<i>Red Maple</i>		6	<i>Cords</i>		
	Mixed Oak		10	Cords		
	<i>/Red (Hybrid) Oak</i>		10	<i>Cords</i>		
	Red Pine		467	Cords		
3	B. T. Aspen	Sawtimber	0.5	MBF	2.0	\$1,951.70
	Black/Red (Hybrid)		6.9	MBF		
	B. T. Aspen	Pulpwood	6	Cords		
	Mixed Oak		5	Cords		
	<i>/Red (Hybrid) Oak</i>		5	<i>Cords</i>		
	Red Pine		3	Cords		
4	Red Pine	Sawtimber	7.4	MBF	20.0	\$20,116.50
	B. T. Aspen	Pulpwood	3	Cords		
	Mixed Oak		5	Cords		
	<i>/Red (Hybrid) Oak</i>		5	<i>Cords</i>		
	Red Pine		242	Cords		
5	Red Pine	Sawtimber	8.1	MBF	21.9	\$21,998.20
	B. T. Aspen	Pulpwood	3	Cords		
	Mixed Oak		5	Cords		
	<i>/Red (Hybrid) Oak</i>		5	<i>Cords</i>		
	Red Pine		265	Cords		
6	Red Pine	Sawtimber	10.3	MBF	28.1	\$28,195.10
	B. T. Aspen	Pulpwood	4	Cords		
	Mixed Oak		6	Cords		
	<i>/Red (Hybrid) Oak</i>		6	<i>Cords</i>		
	Red Pine		340	Cords		
	7	B. T. Aspen	Sawtimber	3.1		
Black/Red (Hybrid)			6.0	MBF		
B. T. Aspen		Pulpwood	103	Cords		
Mixed Hardwood			2	Cords		
<i>Black Cherry</i>			1	<i>Cords</i>		
<i>Red Maple</i>			1	<i>Cords</i>		
Mixed Oak			26	Cords		
<i>White Oak</i>		<i>Sawtimber</i>	0.6	<i>MBF</i>		
<i>/Red (Hybrid) Oak</i>		<i>Pulpwood</i>	22	<i>Cords</i>		
<i>White Oak</i>			3	<i>Cords</i>		
TOTAL:			64.0	MBF		
TOTAL:			1,687	Cords		

Sale Specific Conditions & Requirements

Sale Name: Second Try Koenig Rd RP

Sale Number: 54-008-22 Seq#: 2

1 - Sale Area

1.2 - Boundaries

1.2.1 - Painted boundaries (9/19)

The sale boundary and Payment Unit boundaries are marked and identified by red, blue, and yellow paint. Exterior sale boundary lines against state are marked with red paint, with the exception of the Payment Unit 2 east sale boundary adjacent to Royston Road, which is unpainted and identified by the road edge. Exterior sale boundary lines against private are marked with blue paint. Interior Payment Unit boundaries are marked with yellow paint. The painted boundary line trees are not Included Timber and are to be protected. Yellow painted trees designate an interior Payment Unit boundary can be cut once all surrounding Payment Units have been paid.

2 - Timber Specifications

2.1 - Included Timber

2.1.1 - Clearcut unit(s) with unmerchantable trees (6/14)

Within Payment Unit(s) 3 and 7, cut all trees that are two (2) inches or more at DBH.

Note: See spec 5.2.4.7 - 'Dead and down creation' for instructions on orange marked trees.

2.1.3 - Cut tree marked unit(s) (12/08)

Within Payment Unit(s) 4-6, all trees are designated for cutting when marked with orange paint above and below stump height, regardless of merchantability. Trees with orange dots or slashes represent cut trees. Note that orange dots on cut trees indicate direction of travel within rows for harvest equipment. Dots are being used to assist operations and minimize damage to residual trees. In addition to orange painted trees, cut all jack pine.

2.1.8 - Designated plantation row unit(s) (12/08)

Within Payment Unit(s) 1 and 2, all jack pine which meet minimum piece specifications are designated for cutting. In addition, all trees which meet minimum piece specifications in 2.2 Utilization, within designated plantation rows are designated for cutting. Designated plantation rows begin with the third row in from the outside of the plantation, then continue every third row. Because of the variability of row direction, it shall be the responsibility of the producer to maintain the third-row sequence.

2.2 - Utilization

2.2.5 - Limbed tree skidding (1/09)

The skidding of whole trees or tree segments with limbs attached is prohibited within Payment Units 1, 2, and 4-6.

3 - Payments

3.3 - Pre-measured Sales

3.3.4 - Dividing payment units (7/14)

Payment Unit(s) may be divided at the request of the Purchaser and upon approval of the Unit Manager. Dividing Payment Units is a contract modification which requires a Timber Sale Contract Amendment. Payment Units valued over \$25,000 may be divided. There will be only one division per Payment Unit.

3.4 - Damaged Timber

3.4.1 - Damaged timber (7/16)

General Condition and Requirement 3.4 Damaged Timber, defines liquidated damages for undesignated live merchantable trees which are cut or injured.

No damage is acceptable to undesignated live merchantable trees. Within the sale area, if more than 5% of trees (> 4.5" DBH) within a specified area of the sale are damaged, liquidated damages will be assessed for all trees damaged. Rates will be in accordance with General Condition and Requirement 3.4 Damaged Timber.

4 - Transportation

4.1 - Construction

4.1.3 - Slash and earthen piles (8/04)

Piles or windrows of earth along roads and landings that have been widened or constructed shall be leveled. Slash from road maintenance or construction, including stumps, shall be chipped, utilized or otherwise removed from the sale.

4.1.6 - Road construction (1/09)

Construction or improvements of existing roads shall be done in such a way as to minimize the environmental and visual impacts. Merchantable trees shall be cut and utilized unless otherwise directed. Non-merchantable trees shall be severed and laid flat on the ground. Slash shall be scattered, and not left in windrows and kept a minimum of 10 feet back from the road edge. Stumps shall be set upright, not left on edge, and be moved at least 10 feet away from the road edge. Disturbed soil shall be feathered into the woods and not left in berms or windrows. A new temporary access road through the south end of Payment Unit 6 and into Payment Unit 7 may need to be established to shorten forwarding and trucking distances. At the south line of Payment Unit 6, orange arrows pointing up on cut trees designate the new road route into Payment Unit 7.

4.1.7 - Road closure (10/11)

All new roads built into the sale must be blocked to vehicle traffic upon completion of the sale. Overgrown roads that are reopened shall be considered new roads. In general, this will require constructing a four (4') foot high berm of stumps and logs covered with earth. Stumps and brush must be placed along the remainder of the trail. These roads must be rendered impassable to cars and trucks. Contact the sale administrator for specific details of design and placement.

4.2 - Maintenance

4.2.5 - Two wheel drive condition (2/04)

All existing trail roads on and adjacent to the sale area must be passable by two-wheel drive traffic for the duration of the sale.

5 - Operations

5.1 - Notification

5.1.1 - Pre-sale conference (10/16)

A pre-sale conference between the Purchaser and sale administrator is required prior to beginning any operations to determine landing and road locations. The Unit Manager or his/her representative must be contacted at least 5 days in advance to schedule the conference.

5.1.4 - Post-sale conference (10/16)

A post-sale conference on site between the Purchaser and sale administrator is required 5 days prior to the completion of active logging operations to determine clean-up and repair of landings, road edges, and the fulfillment of other contract specifications.

5.2 - Conduct of Operations

5.2.1 - Slash

5.2.1.10 - No slash in openings (5/10)

No brush or logging debris is to be left in the maintained wildlife openings which are indicated by U0 on the Timber Sale Map. Any damage to the opening shall be repaired according to specifications of the Unit Manager or his/her representative.

5.2.2 - Hazard Trees/Snags

5.2.2.1 - Den trees (10/16)

Obvious hollow and/or den trees shall be protected and left standing unless they are a safety hazard.

5.2.3 - Operating Restrictions

5.2.3.3 - Bark slippage restriction (3/09)

Within Payment Unit(s) 1-2 and 4-6, unless changed by written agreement, cutting and skidding are not permitted during

the period of April 15 to July 15. This restriction is because of bark slippage.

5.2.3.4 - Oak wilt restriction, no exceptions (1/18)

Within Payment Unit(s) 1-7 cutting, skidding, hauling within the sale and brushing of access roads to the sale are not permitted during the period of April 15 to July 15. No exceptions will be granted. This is necessary to reduce the spread of oak wilt.

5.2.3.6 - Bark beetle restriction (12/08)

In the event drought creates a high risk of pine bark beetle infestation, pine is not to be cut during the period March 1 through July 1, unless all portions of trees greater than two inches in diameter are removed from the sale area, reduced to chips, or treated to the satisfaction of the Unit Manager or his/her representative, within fifteen days of being severed from the stump. Pine log decks, pulpwood piles and treetops that are piled for chipping in the fall or winter within a 1/4 mile of susceptible sites must be removed before March 15. Residual slash must not be placed in piles or rows and must be spread over the site for quick drying. The Department of Natural Resources will exercise this specification if the risk of damage warrants.

5.2.3.11 - Coppice regeneration protection (4/10)

Timber harvesting in Payment Units 3 and 7 must be completed within 60 days of severing/cutting stem(s) to minimize damage to deciduous regeneration. Some regeneration damage will be allowed for trucking and forwarding if landings are located in these Payment Units. Forwarding and trucking routes must be kept to a minimum and not go beyond a reasonable width of 15 feet. Landings must not be excessively large (over 1/2 acre) within these units.

5.2.4 - Dead and Down Creation

5.2.4.7 - Dead and down creation: hare, grouse, deer and other species (5/15)

To improve horizontal cover habitat for snowshoe hare, grouse, deer, and other species, the Purchaser is to push over all orange painted trees in Payment Unit 7. These trees should be tipped over with the root ball still attached so the base of the tree is suspended off the ground. The crown of the fallen tree should be at or near ground level after it is pushed over. If it is impractical to push the trees over, they may be cut or partially cut and pushed over.

5.2.31 - Landing locations (9/13)

Landing locations are shown on the Timber Sale Map. Landings must be confined to these designated sites unless otherwise authorized by the Unit Manager or his/her representative. For landings established within Payment Units 3 or 7, forwarding and trucking routes must be kept to a minimum and not go beyond a reasonable width (15ft). Landings must not be excessively large (over 1/2 acre) within these units to maximize natural regeneration.

5.2.32 - Decking/landing restoration (9/13)

All decking and landing areas must have the surface area restored to a condition equal to or better than before. This is to ensure the proper regeneration of the stand.

5.2.38 - No decking against live trees (2/04)

Cut products may not be decked against unmarked or designated leave trees.

5.4 - Soil Protection

5.4.1 - Rutting restriction, general (7/16)

Operations are to cease immediately if equipment and weather conditions result in rutting of roads and/or skid trails which is 12 inches or greater in depth and 50 feet in length. The Unit Manager or his/her representative may restrict hauling and/or skidding if ruts exceed the specified depth. With the Unit Manager or his/her representative's approval, the Purchaser may return to the area when the risk of rutting has decreased.

5.8 - Protection of Endangered Species

5.8.5 - Protection of raptor nests (3/13)

All trees with raptor nests will be protected if found during harvesting operations. Notification will be made to the Unit Manager or his/her representative who will notify the Wildlife Biologist so an on-site evaluation and recommendation can be made, if necessary.



TIMBER SALE MAP

54 - 008

2022

This information provided by authority of Part 525, 1994 PA 451, as amended.

Forest Management Unit
Atlanta Management Unit

County
Presque Isle

Mapped By
Coy
Cruised By
Coy

Date
08/03/2022

Page
1
of
1

Township
33N

Range
04E

Section(s) and Subdivision(s)
28- SWSW 32- SENE 33- NWNW,S1/2NW,NE,N1/2SW

1:15,840

Cover Type

A = Aspen	J = Jack Pine	O = Oak	U = Upland Brush
B = Paper Birch	K = Rock	P = Lowland Poplar	UM = Upland Mix Forest
C = Cedar	L = Lowland Brush	Q = Mixed Swamp Conifer	V = Bog or Marsh
D = Treed Bog	LM = Lowland Mix Forest	R = Red Pine	W = White Pine
E = Swamp Hardwoods	M = Maple, Beech, Birch	S = Black Spruce	X = Non Stocked
F = Spruce/Fir	MC = Mixed Conifer	T = Tamarack	Y = Sand
G = Grass	MD = Mixed Deciduous		Z = Water
H = Hemlock	N = Marsh		

Density

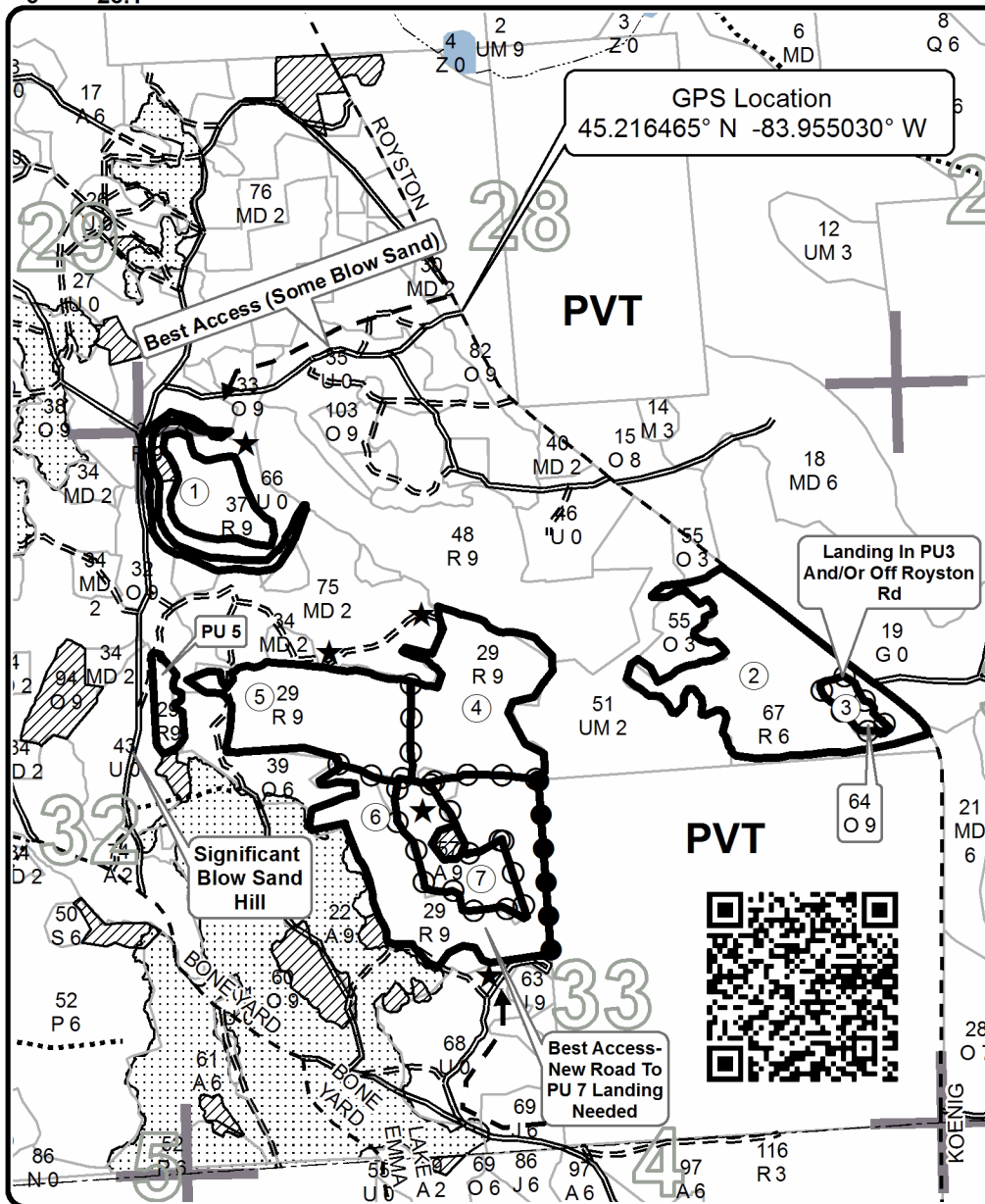
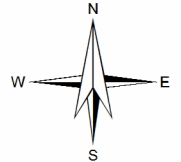
0 = Non Stocked	5 = Pole Timber Medium
1 = Seedling Sapling Poor	6 = Pole Timber Well
2 = Seedling Sapling Medium	7 = Saw Timber Poor
3 = Seedling Sapling Well	8 = Saw Timber Medium
4 = Pole Timber Poor	9 = Saw Timber Well

PU	Acres	PU	Acres
1	11.5	7	8.6
2	28.0		
3	2.0		
4	20.0		
5	21.9		
6	28.1		

Second Try Koenig Rd RP

Compartment 128

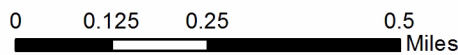
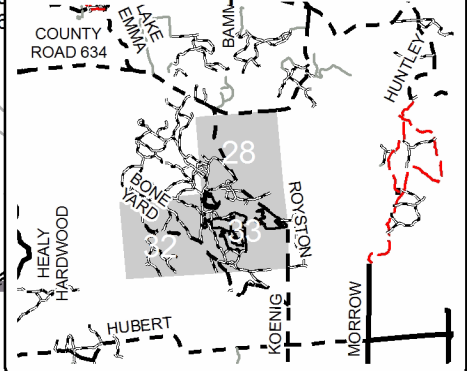
120.1 Acres



Legend

- Against State (Red)
- Private Line (Blue)
- Payment Unit Line (Yellow)
- Retention Area (Red)
- Nearby Timber Sales
- Stand Boundaries
- Payment Unit
- Landing
- Secondary Road
- Forest Access Route
- Gravel Road
- Temporary Access
- Perennial River
- Lakes
- Section Corner

Locator Map 1:150,000



TIMBER SALE INFORMATION

C128 North (54-025-22)

T33N, R04E, SEC. 20; T33N, R04E, SEC. 29.

Presque Isle County (Advertised Price \$73,902.60)

A timber sale contract for this lump sum, sealed bid timber sale will be awarded to the responsible bidder offering the highest sealed bid price. All units of volume listed below were estimated using the Inventory Manager computer program and the new Michigan taper model. Bids must be at or above the following advertised price for each product and species:

<u>PRODUCTS & SPECIES</u>	<u>ESTIMATED UNITS*</u>	<u>ADVERTISED PRICE</u>
Sawtimber		
B. T. Aspen	12.9 MBF	\$ 104.00 / MBF
Mixed Oak	67.2 MBF	\$ 150.00 / MBF
Red Pine	35.4 MBF	\$ 159.00 / MBF
Pulpwood		
Black Spruce	4 Cords	\$ 19.90 / Cord
Jack Pine	8 Cords	\$ 15.75 / Cord
Mixed Aspen	952 Cords	\$ 30.15 / Cord
Mixed Oak	445 Cords	\$ 33.75 / Cord
Red Maple	155 Cords	\$ 32.30 / Cord
Red Pine	125 Cords	\$ 63.35 / Cord

* The total volume is statistically estimated within plus (+) or minus (-) 15.51 percent. There are an estimated 1,991 cords on this timber sale, plus or minus 309 cords at the 95% confidence level. The estimated units are final and not subject to adjustment. Prospective bidders are urged to examine this timber and to make their own estimates of quantity and quality.

BOND AND PAYMENT SCHEDULE:

1. A bond in the amount of \$3,695.00 to insure faithful performance of the conditions of the contract will be deposited by the successful bidder within 21 days of the sale award.
2. Cutting in any sale or unit without the required advance payment would be considered a trespass.
3. Total payment must be paid in advance or according to the following schedule :
 - (a) Ten percent (10%) of the sale value must be paid within 21 days of the sale award.
 - (b) The 10% down payment will be credited towards the first unit cut.
 - (c) Payment for each of the following units must be made before cutting begins in that unit:

PAYMENT UNIT NUMBER	PERCENT OF TOTAL SALE VALUE
01	20.0%
02	35.0%
03	20.3%
04	24.7%
4. If no cutting takes place, the 10% down payment will not be refunded.
5. Operations on the contract issued will terminate on 06/30/2026.

SALE STATISTICS

Volumes were calculated in cubic feet using the Michigan taper model. Cubic foot volume includes all wood inside bark for the product indicated. For display purposes, cubic feet were converted to cords and MBF using a simple conversion factor, e.g. 79 cubic feet per cord and 185 cubic feet per MBF. The cubic foot volumes are precise; the cords and MBF volumes are not. Cubic foot volume cannot be directly converted to cords or boards with precision.

SALE VOLUMES

The total estimated sale volume may not equal the sum of the species/products due to the nature of statistical calculations associated with double sampling methodology.

VOLUME		STATISTICAL RANGE IN CORDS		
TOTAL CUBIC FEET	TOTAL CORDS	PERCENT ERROR	MINIMUM	MAXIMUM
157,306	1,991	15.51%	1,682	2,300

VDU VOLUMES

A VDU is a Volume Determination Unit. Volumes and their associated statistics are calculated at the VDU level and summarized to the sale level. There is often a one to one relationship between a VDU and a Payment Unit, but not always, depending on the cruise design. Refer to the VDU TO PAYMENT UNIT table.

VDU	VOLUME		PERCENT ERROR	RANGE IN CORDS	
	TOTAL CUBIC FEET	TOTAL CORDS		MINIMUM	MAXIMUM
4	2,332	30	175.13%	22	81
5	133,781	1,693	13.63%	1,463	1,924
8	6,232	79	89.61%	8	150
47	9,818	124	71.52%	35	213
104	5,143	65	108.52%	6	136
TOTAL:	157,306	1,991		1,478	2,504

VDU TO PAYMENT UNIT

When a VDU is associated with more than one Payment Unit (PU), the VDU volumes are assigned to the PU based on acres of the VDU within the PU.

VDU	VDU ACRES	PU	PU ACRES
4	2.5	2	2.5
5	69.6	1	13.4
		2	23.9
		3	13.0
		4	19.3
8	7.0	1	6.9
		3	0.1
47	4.4	3	3.0
		4	1.4
104	1.2	2	1.2
TOTAL:	84.7		84.7

DESCRIPTION OF TIMBER BY PAYMENT UNIT (PU)

PU	MARKET GROUP	PRODUCT	QUANTITY	UNIT	ACRES	ADVERTISE PRICE
1	B. T. Aspen	Sawtimber	2.2	MBF	20.3	\$14,777.90
	Mixed Oak		17.2	MBF		
	<i>/Red (Hybrid) Oak</i>		15.9	<i>MBF</i>		
	<i>Red Oak</i>		0.6	<i>MBF</i>		
	<i>White Oak</i>		0.7	<i>MBF</i>		
	Red Pine		6.7	MBF		
	Jack Pine	Pulpwood	1	Cords		
	Mixed Aspen		189	Cords		
	<i>B. T. Aspen</i>		181	<i>Cords</i>		
	<i>Quaking Aspen</i>		8	<i>Cords</i>		
	Mixed Oak		93	Cords		
	<i>/Red (Hybrid) Oak</i>		90	<i>Cords</i>		
	<i>White Oak</i>		3	<i>Cords</i>		
	Red Maple		38	Cords		
	<i>Red Maple</i>	<i>Sawtimber</i>	0.2	<i>MBF</i>		
	<i>Red Maple</i>	<i>Pulpwood</i>	38	<i>Cords</i>		
	Red Pine		13	Cords		
2	B. T. Aspen	Sawtimber	3.8	MBF	27.6	\$25,864.50
	Mixed Oak		13.2	MBF		
	<i>/Red (Hybrid) Oak</i>		12.0	<i>MBF</i>		
	<i>Red Oak</i>		1.2	<i>MBF</i>		
	Red Pine		14.0	MBF		
	Black Spruce	Pulpwood	4	Cords		
	<i>Black Spruce</i>	<i>Sawtimber</i>	0.5	<i>MBF</i>		
	<i>Black Spruce</i>	<i>Pulpwood</i>	3	<i>Cords</i>		
	Jack Pine		4	Cords		
	Mixed Aspen		323	Cords		
	<i>B. T. Aspen</i>		310	<i>Cords</i>		
	<i>Quaking Aspen</i>		13	<i>Cords</i>		
	Mixed Oak		130	Cords		
	<i>/Red (Hybrid) Oak</i>		128	<i>Cords</i>		
	<i>Red Oak</i>		1	<i>Cords</i>		
	<i>White Oak</i>		1	<i>Cords</i>		
	Red Maple		42	Cords		
	<i>Red Maple</i>	<i>Sawtimber</i>	0.5	<i>MBF</i>		
	<i>Red Maple</i>	<i>Pulpwood</i>	41	<i>Cords</i>		
Red Pine		89	Cords			
3	B. T. Aspen	Sawtimber	3.3	MBF	16.1	\$15,011.55
	Mixed Oak		20.2	MBF		
	<i>/Red (Hybrid) Oak</i>		18.4	<i>MBF</i>		
	<i>Red Oak</i>		0.6	<i>MBF</i>		
	<i>White Oak</i>		1.2	<i>MBF</i>		
	Red Pine		6.6	MBF		
	Jack Pine	Pulpwood	1	Cords		
	Mixed Aspen		178	Cords		
	<i>B. T. Aspen</i>		171	<i>Cords</i>		
	<i>Quaking Aspen</i>		7	<i>Cords</i>		
	Mixed Oak		102	Cords		
	<i>/Red (Hybrid) Oak</i>		97	<i>Cords</i>		
	<i>White Oak</i>		5	<i>Cords</i>		
	Red Maple		35	Cords		
	<i>Red Maple</i>	<i>Sawtimber</i>	0.2	<i>MBF</i>		
<i>Red Maple</i>	<i>Pulpwood</i>	35	<i>Cords</i>			
Red Pine		10	Cords			
4	B. T. Aspen	Sawtimber	3.6	MBF	20.7	\$18,248.65
	Mixed Oak		16.6	MBF		

DESCRIPTION OF TIMBER BY PAYMENT UNIT (PU), CON'T

PU	MARKET GROUP	PRODUCT	QUANTITY	UNIT	ACRES	ADVERTISE PRICE
4 con't	<i>/Red (Hybrid) Oak</i>	<i>Sawtimber</i>	15.2	<i>MBF</i>		
	<i>Red Oak</i>		0.9	<i>MBF</i>		
	<i>White Oak</i>		0.5	<i>MBF</i>		
	Red Pine		8.1	MBF		
	Jack Pine	Pulpwood	2	Cords		
	Mixed Aspen		262	Cords		
	<i>B. T. Aspen</i>		251	<i>Cords</i>		
	<i>Quaking Aspen</i>		11	<i>Cords</i>		
	Mixed Oak		120	Cords		
	<i>/Red (Hybrid) Oak</i>		116	<i>Cords</i>		
	<i>Red Oak</i>		1	<i>Cords</i>		
	<i>White Oak</i>		3	<i>Cords</i>		
	Red Maple		40	Cords		
	<i>Red Maple</i>	<i>Sawtimber</i>	0.3	<i>MBF</i>		
	<i>Red Maple</i>	<i>Pulpwood</i>	39	<i>Cords</i>		
	Red Pine		13	Cords		
	TOTAL:			115.5	MBF	
TOTAL:			1,689	Cords		

Sale Specific Conditions & Requirements

Sale Name: C128 North

Sale Number: 54-025-22 Seq#: 2

1 - Sale Area

1.2 - Boundaries

1.2.1 - Painted boundaries (9/19)

The sale boundary and Payment Unit boundaries are marked and identified by blue, red and yellow paint. Exterior sale boundary lines against private property are marked with blue paint. Exterior sale boundary lines against state are marked with red paint. Interior Payment Unit boundaries are marked with yellow paint. Retention patches are marked with red paint; no harvesting activities may occur within these areas. The painted boundary line trees are not Included Timber and are to be protected. Yellow painted trees designating an interior Payment Unit boundary are only to be cut when all surrounding Payment Units have been paid.

2 - Timber Specifications

2.1 - Included Timber

2.1.1 - Clearcut unit(s) with unmerchantable trees (6/14)

Within Payment Unit(s) 1-4, cut all trees that are two (2) inches or more at DBH, except do not cut or damage white pine and trees marked with green paint. Special protection trees identified in accordance with condition 3.4.2, within clearcutting unit boundaries, are not Included Timber and are to be protected.

3 - Payments

3.3 - Pre-measured Sales

3.3.4 - Dividing payment units (7/14)

Payment Unit(s) \$25,000 in value or greater may be divided at the request of the Purchaser and upon approval of the Unit Manager. Dividing Payment Units is a contract modification which requires a Timber Sale Contract Amendment. There will be only one division per Payment Unit.

3.4 - Damaged Timber

3.4.1 - Damaged timber (7/16)

General Condition and Requirement 3.4 Damaged Timber, defines liquidated damages for undesignated live merchantable trees which are cut or injured. In addition, extreme care should be taken to avoid damage to specified tree seedlings and saplings.

Within the Sale Area, if more than 25% of the pine seedlings or saplings (1/4" to 4.5" DBH) within a specified portion of the Sale Area are damaged, liquidated damages will be assessed at \$150 per acre for all acreage within that specified portion of the Sale Area that was damaged.

No damage is acceptable to undesignated live merchantable trees. Within the Sale Area, if more than 5% of trees (> 4.5" DBH) within a specified area of the sale are damaged, liquidated damages will be assessed for all trees damaged. Rates will be in accordance with General Condition and Requirement 3.4 Damaged Timber.

3.4.2 - Special Protection Trees (4/14)

The Purchaser shall not cut live or dead special protection trees within cutting units or clearings. Special protection trees are marked with green paint. If the Purchaser's operations have cut or damaged special protection trees through carelessness, the Purchaser shall pay \$200 as fixed, agreed and liquidated damages for each special protection tree cut or damaged. Such payment does not constitute ownership of the undesignated timber.

4 - Transportation

4.1 - Construction

4.1.3 - Slash and earthen piles (8/04)

Piles or windrows of earth along roads and landings that have been widened or constructed shall be leveled. Slash from road

maintenance or construction, including stumps, shall be dispersed throughout the sale.

4.1.6 - Road construction (1/09)

Improvements of existing roads shall be done in such a way as to minimize the environmental and visual impacts. Merchantable trees shall be cut and utilized unless otherwise directed. Non-merchantable trees shall be severed and laid flat on the ground. Slash shall be scattered, and not left in windrows and kept a minimum of 10 feet back from the road edge. Stumps shall be set upright, not left on edge, and be moved at least 10 feet away from the road edge. Disturbed soil shall be feathered into the woods and not left in berms or windrows.

4.1.12 - No new roads (1/12)

No new roads will be permitted in any Payment Unit. All operations are limited to existing roads. Skid trails only will be allowed.

5 - Operations

5.1 - Notification

5.1.1 - Pre-sale conference (10/16)

A pre-sale conference on site between the Purchaser and sale administrator is required prior to beginning any operations to determine landing and road locations. The Unit Manager or his/her representative must be contacted at least 5 days in advance to schedule the conference.

5.1.4 - Post-sale conference (10/16)

A post-sale conference on site between the Purchaser and sale administrator is required 5 days prior to the completion of active logging operations to determine clean-up and repair of landings, road edges, and the fulfillment of other contract specifications.

5.2 - Conduct of Operations

5.2.2 - Hazard Trees/Snags

5.2.2.1 - Den trees (10/16)

Obvious hollow and/or den trees shall be protected and left standing unless they are a safety hazard.

5.2.3 - Operating Restrictions

5.2.3.5 - Oak wilt restriction (1/18)

Within Payment Unit(s) 1-4, unless changed by written agreement, cutting, skidding, hauling within the sale and brushing of access roads to the sale are not permitted during the period of April 15 to July 15. Operations may be allowed if specific steps are taken to prevent damaging uncut oak during the high risk period. Those steps may include completing all road brushing before April 15th and clearing a tree-length buffer along uncut oak cover before April 15th. This is necessary to reduce the spread of oak wilt. For more information, contact the Unit Manager or his/her representative.

5.2.3.11 - Coppice regeneration protection (4/10)

Timber harvesting in any Payment Unit must be completed before significant tree sprouting occurs in that Payment Unit so as to minimize damage to the new regeneration. Any post harvest operations, such as chipping, must be completed before sprouting of regeneration occurs. If it is anticipated that chipping will be delayed, then tops shall be carried to one central location or left unchipped. The Unit Manager or his/her representative may cease such operations if sprouting occurs before the operation is complete.

5.2.4 - Dead and Down Creation

5.2.4.7 - Dead and down creation: hare, grouse, deer and other species (5/15)

To improve horizontal cover habitat for snowshoe hare, grouse, deer, and other species, the Purchaser is to push over all purple ringed trees after all designated wood has been forwarded from a Payment Unit. These trees should be tipped over with the root ball still attached so the base of the tree is suspended off the ground. The crown of the fallen tree should be at or near ground level after it is pushed over.

5.2.32 - Decking/landing restoration (9/13)

All decking and landing areas must have the surface area restored to a condition equal to or better than before. This is to ensure the proper regeneration of the stand. Wood debris, chips and "cookies" from trimmings must be removed or scattered

away from landing and loading areas and may not be windrowed on the edge.

5.2.38 - No decking against live trees (2/04)

Cut products may not be decked against unmarked or designated leave trees.

5.4 - Soil Protection

5.4.1 - Rutting restriction, general (7/16)

Operations are to cease immediately if equipment and weather conditions result in rutting of roads and/or skid trails which are 12 inches or greater in depth and 50 feet in length. The Unit Manager or his/her representative may restrict hauling and/or skidding if ruts exceed the specified depth. With the Unit Manager or his/her representative's approval, the Purchaser may return to the area when the risk of rutting has decreased.

5.4.2 - Skid trails (2/04)

Skid trails up and down slopes should be avoided. If however this is unavoidable, these trails will be left in a non-erodible condition using water bars, logs, and slash. Placing of slash on these skid trails while logging is ongoing may alleviate need for any further action. At the direction of the sale administrator, seed, fertilizer, and mulch may also be required.

5.4.5 - Soil caution (11/04)

Care must be taken to minimize soil damage due to the sandy soils.

5.8 - Protection of Endangered Species

5.8.5 - Protection of raptor nests (3/13)

All trees with raptor nests will be protected if found during harvesting operations. Notification will be made to the Unit Manager or his/her representative who will notify the Wildlife Biologist so an on-site evaluation and recommendation can be made, if necessary.

6 - Safety and Fire Prevention

6.2 - Signing

6.2.1 - Road posting (10/20)

The Purchaser is responsible for posting and maintaining caution signs on forest roads prior to beginning operations. The road must be posted at appropriate distances from the Sale Area to warn of logging activity and truck traffic. Signs must be removed when harvest operations are suspended or completed. The Purchaser will provide these signs.



TIMBER SALE MAP

This information provided by authority of Part 525, 1994 PA 451, as amended.

Sale Number	Year
54-025	22

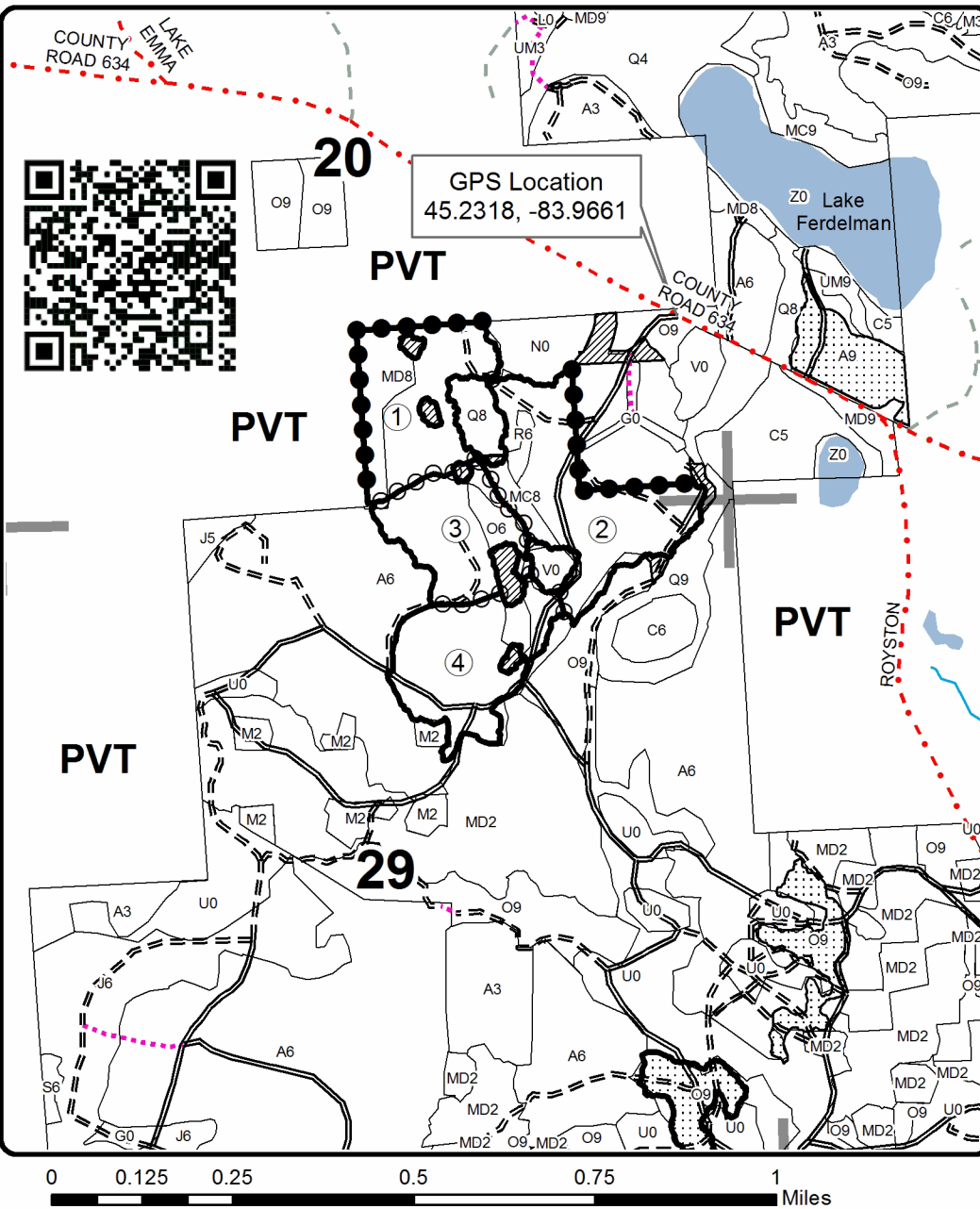
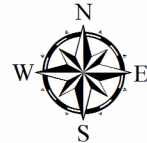
Forest Management Unit Atlanta	County Presque Isle	Mapped By D. Parris	Date 09/26/2022	Page 1	of 1
Township 33N		Range 04E		Section(s) and Subdivision(s) Sec 20 S1/2SE; Sec 29 N1/2NE, SWNE	

Scale	1:15,840
-------	----------

Cover Type				Density			
A = Aspen	H = Hemlock	N = Marsh	U = Upland Brush	0 = Non Stocked	5 = Pole Timber Medium		
B = Paper Birch	J = Jack Pine	O = Oak	UM = Upland Mixed	1 = Seedling Sapling Poor	6 = Pole Timber Well		
C = Cedar	L = Lowland Brush	P = Lowland Poplar	V = Bog or Marsh	2 = Seedling Sapling Medium	7 = Saw Timber Poor		
D = Tread Bog	LM = Lowland Mixed	Q = Mixed Swamp Conifer	W = White Pine	3 = Seedling Sapling Well	8 = Saw Timber Medium		
E = Swamp Hdwoods	M = Mpl, Bch, Brch	R = Red Pine	X = Non Stocked	4 = Pole Timber Poor	9 = Saw Timber Well		
F = Spruce Fir	MC = Mixed Conifer	S = Black Spruce	Z = Water				
G = Grass	MD = Mixed Deciduous	T = Tamarack					

PU	Acres
1	20.3
2	27.6
3	16.1
4	20.7

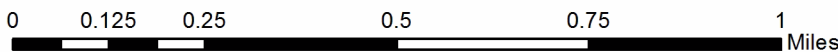
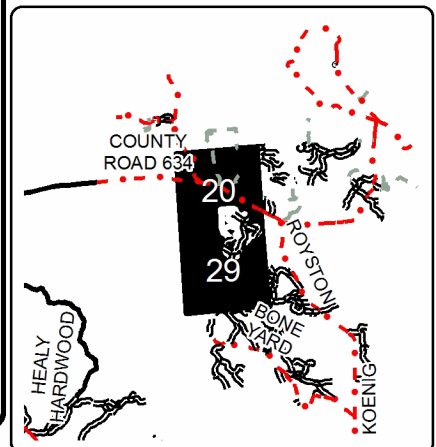
C128 North Compartment 128 84.7 Acres



Legend

- Against State (Red)
- Payment Unit (Yellow)
- Private Line (Blue)
- Retention Area (Red)
- Nearby Timber Sales
- Retention
- Stand Boundaries
- Payment Unit
- DNR - Secondary Forest Road
- DNR - Forest Access Route
- County - Gravel Road
- Private - Dirt / Gravel Road
- Temporary Management Access
- Perennial River
- Lakes and Rivers
- Section Corners

Locator Map 1:150,000



TIMBER SALE INFORMATION

C128 South and Central (54-026-22)

T33N, R04E, SEC. 28; T33N, R04E, SEC. 29; T33N, R04E, SEC. 32; T33N, R04E, SEC. 33.
Presque Isle County (Advertised Price \$111,158.05)

A timber sale contract for this lump sum, sealed bid timber sale will be awarded to the responsible bidder offering the highest sealed bid price. All units of volume listed below were estimated using the Inventory Manager computer program and the new Michigan taper model. Bids must be at or above the following advertised price for each product and species:

<u>PRODUCTS & SPECIES</u>	<u>ESTIMATED UNITS*</u>	<u>ADVERTISED PRICE</u>
Sawtimber		
Mixed Aspen	97.1 MBF	\$ 104.00 / MBF
Mixed Oak	243.2 MBF	\$ 150.00 / MBF
Red Maple	6.9 MBF	\$ 98.00 / MBF
Pulpwood		
Balsam Fir	73 Cords	\$ 37.20 / Cord
Jack Pine	4 Cords	\$ 15.75 / Cord
Mixed Aspen	929 Cords	\$ 30.15 / Cord
Mixed Oak	704 Cords	\$ 33.75 / Cord
Paper Birch	4 Cords	\$ 16.30 / Cord
Red Maple	279 Cords	\$ 32.30 / Cord
White Spruce	14 Cords	\$ 19.90 / Cord

* The total volume is statistically estimated within plus (+) or minus (-) 12.22 percent. There are an estimated 2,908 cords on this timber sale, plus or minus 356 cords at the 95% confidence level. The estimated units are final and not subject to adjustment. Prospective bidders are urged to examine this timber and to make their own estimates of quantity and quality.

BOND AND PAYMENT SCHEDULE:

1. A bond in the amount of \$5,558.00 to insure faithful performance of the conditions of the contract will be deposited by the successful bidder within 21 days of the sale award.
2. Cutting in any sale or unit without the required advance payment would be considered a trespass.
3. Total payment must be paid in advance or according to the following schedule :
 - (a) Ten percent (10%) of the sale value must be paid within 21 days of the sale award.
 - (b) The 10% down payment will be credited towards the first unit cut.
 - (c) Payment for each of the following units must be made before cutting begins in that unit:

<u>PAYMENT UNIT NUMBER</u>	<u>PERCENT OF TOTAL SALE VALUE</u>
01	2.3%
02	6.6%
03	5.5%
04	20.4%
05	14.0%
06	24.2%
07	27.0%

4. If no cutting takes place, the 10% down payment will not be refunded.
5. Operations on the contract issued will terminate on 12/31/2025.

SALE STATISTICS

Volumes were calculated in cubic feet using the Michigan taper model. Cubic foot volume includes all wood inside bark for the product indicated. For display purposes, cubic feet were converted to cords and MBF using a simple conversion factor, e.g. 79 cubic feet per cord and 185 cubic feet per MBF. The cubic foot volumes are precise; the cords and MBF volumes are not. Cubic foot volume cannot be directly converted to cords or boards with precision.

SALE VOLUMES

The total estimated sale volume may not equal the sum of the species/products due to the nature of statistical calculations associated with double sampling methodology.

<u>VOLUME</u>		<u>PERCENT ERROR</u>	<u>STATISTICAL RANGE IN CORDS</u>	
<u>TOTAL CUBIC FEET</u>	<u>TOTAL CORDS</u>		<u>MINIMUM</u>	<u>MAXIMUM</u>
229,702	2,908	12.22%	2,552	3,263

VDU VOLUMES

A VDU is a Volume Determination Unit. Volumes and their associated statistics are calculated at the VDU level and summarized to the sale level. There is often a one to one relationship between a VDU and a Payment Unit, but not always, depending on the cruise design. Refer to the VDU TO PAYMENT UNIT table.

VDU	VOLUME		PERCENT ERROR	RANGE IN CORDS	
	TOTAL CUBIC FEET	TOTAL CORDS		MINIMUM	MAXIMUM
22	34,399	435	25.84%	323	548
38	29,462	373	41.34%	219	527
52	13,019	165	88.99%	18	311
60	96,091	1,216	17.23%	1,007	1,426
61	50,109	634	24.96%	476	793
109	6,622	84	31.41%	58	110
TOTAL:	229,702	2,908		2,100	3,715

VDU TO PAYMENT UNIT

When a VDU is associated with more than one Payment Unit (PU), the VDU volumes are assigned to the PU based on acres of the VDU within the PU.

VDU	VDU ACRES	PU	PU ACRES
22	18.5	5	18.5
38	20.6	2	11.3
		3	9.3
52	3.6	6	3.6
60	47.1	4	19.9
		6	0.2
		7	27.0
61	18.7	4	0.6
		6	18.1
109	8.1	1	8.1
TOTAL:	116.6		116.6

DESCRIPTION OF TIMBER BY PAYMENT UNIT (PU)

PU	MARKET GROUP	PRODUCT	QUANTITY	UNIT	ACRES	ADVERTISE PRICE	
1	Mixed Oak	Sawtimber	5.1	MBF	8.1	\$2,604.80	
	/Red (Hybrid) Oak		4.5	MBF			
	White Oak		0.6	MBF			
	Red Maple		0.7	MBF			
	Jack Pine		Pulpwood	4			Cords
	Mixed Oak			42			Cords
	/Red (Hybrid) Oak			41			Cords
	White Oak			1			Cords
	Red Maple			9			Cords
2	Mixed Aspen	Sawtimber	2.2	MBF	11.3	\$7,325.30	
	B. T. Aspen		2.2	MBF			
	Mixed Oak		22.3	MBF			
	/Red (Hybrid) Oak		21.9	MBF			
	White Oak		0.4	MBF			
	Mixed Aspen		Pulpwood	4			Cords
	B. T. Aspen			4			Cords
	Mixed Oak			76			Cords
	/Red (Hybrid) Oak			72			Cords
	White Oak			4			Cords
Red Maple	33	Cords					
3	Mixed Aspen	Sawtimber	1.9	MBF	9.3	\$6,080.15	
	B. T. Aspen		1.9	MBF			
	Mixed Oak		18.4	MBF			
	/Red (Hybrid) Oak		18.1	MBF			
	White Oak		0.3	MBF			
	Mixed Aspen		Pulpwood	3			Cords
	B. T. Aspen			3			Cords
	Mixed Oak			64			Cords
	/Red (Hybrid) Oak			60			Cords
White Oak	4	Cords					
Red Maple	27	Cords					
4	Mixed Aspen	Sawtimber	18.1	MBF	20.5	\$22,725.15	
	B. T. Aspen		16.9	MBF			
	Quaking Aspen		1.2	MBF			
	Mixed Oak		71.3	MBF			
	/Red (Hybrid) Oak		68.8	MBF			
	White Oak		2.5	MBF			
	Red Maple		1.2	MBF			
	Balsam Fir		Pulpwood	2			Cords
	Balsam Fir			2			Cords
	Mixed Aspen			81			Cords
	B. T. Aspen			66			Cords
	Balsam Poplar			1			Cords
	Quaking Aspen			14			Cords
	Mixed Oak			192			Cords
	/Red (Hybrid) Oak			175			Cords
White Oak	17	Cords					
Red Maple	32	Cords					
5	Mixed Aspen	Sawtimber	18.2	MBF	18.5	\$15,594.80	
	B. T. Aspen		18.2	MBF			
	Mixed Oak		16.1	MBF			
	/Red (Hybrid) Oak		16.1	MBF			
	Red Maple		0.4	MBF			
	Mixed Aspen		Pulpwood	298			Cords
	B. T. Aspen			298			Cords
Mixed Oak	46	Cords					

DESCRIPTION OF TIMBER BY PAYMENT UNIT (PU), CON'T

PU	MARKET GROUP	PRODUCT	QUANTITY	UNIT	ACRES	ADVERTISE PRICE	
5 con't	/Red (Hybrid) Oak	Pulpwood	46	Cords			
	Red Maple		22	Cords			
6	Mixed Aspen	Sawtimber	33.5	MBF	21.9	\$26,941.25	
	B. T. Aspen		5.4	MBF			
	Quaking Aspen		28.1	MBF			
	Mixed Oak		13.8	MBF			
	/Red (Hybrid) Oak		13.8	MBF			
	Red Maple		3.1	MBF			
	Balsam Fir		Pulpwood	71			Cords
	Balsam Fir			Sawtimber			1.3
	Balsam Fir		Pulpwood	68			Cords
	Mixed Aspen			447			Cords
	B. T. Aspen			88			Cords
	Balsam Poplar			24			Cords
	Quaking Aspen			335			Cords
	Mixed Oak			24			Cords
	/Red (Hybrid) Oak			24			Cords
	Paper Birch			4			Cords
	Red Maple			118			Cords
	White Spruce			14			Cords
	White Spruce		Sawtimber	0.8			MBF
	White Spruce		Pulpwood	12			Cords
7	Mixed Aspen	Sawtimber	23.2	MBF	27.0	\$29,886.60	
	B. T. Aspen		22.6	MBF			
	Quaking Aspen		0.6	MBF			
	Mixed Oak		96.2	MBF			
	/Red (Hybrid) Oak		92.7	MBF			
	White Oak		3.5	MBF			
	Red Maple		1.5	MBF			
	Mixed Aspen		Pulpwood	96			Cords
	B. T. Aspen			86			Cords
	Quaking Aspen			10			Cords
	Mixed Oak			260			Cords
	/Red (Hybrid) Oak			236			Cords
	White Oak			24			Cords
	Red Maple			38			Cords
TOTAL:			347.2	MBF			
TOTAL:			2,007	Cords			

Sale Specific Conditions & Requirements

Sale Name: C128 South and Central

Sale Number: 54-026-22 Seq#: 2

1 - Sale Area

1.2 - Boundaries

1.2.1 - Painted boundaries (9/19)

The sale boundary and Payment Unit boundaries are marked and identified by blue, red and yellow paint. Exterior sale boundary lines against private property are marked with blue paint. Exterior sale boundary lines against state are marked with red paint. Interior Payment Unit boundaries are marked with yellow paint. Retention patches are marked with red paint; no harvesting activities may occur within these areas. The painted boundary line trees are not Included Timber and are to be protected. Yellow painted trees designating an interior Payment Unit boundary are only to be cut when all surrounding Payment Units have been paid.

2 - Timber Specifications

2.1 - Included Timber

2.1.1 - Clearcut unit(s) with unmerchantable trees (6/14)

Within Payment Unit(s) 1-7, cut all trees that are two (2) inches or more at DBH, except do not cut or damage red pine, white pine, or trees marked with green paint. In addition, red pine and white pine marked with orange paint are included timber. Special protection trees identified in accordance with condition 3.4.2, within clearcutting unit boundaries, are not Included Timber and are to be protected.

3 - Payments

3.3 - Pre-measured Sales

3.3.4 - Dividing payment units (7/14)

Payment Unit(s) \$25,000 in value or greater may be divided at the request of the Purchaser and upon approval of the Unit Manager. Dividing Payment Units is a contract modification which requires a Timber Sale Contract Amendment. There will be only one division per Payment Unit.

3.4 - Damaged Timber

3.4.1 - Damaged timber (7/16)

General Condition and Requirement 3.4 Damaged Timber, defines liquidated damages for undesignated live merchantable trees which are cut or injured. In addition, extreme care should be taken to avoid damage to specified tree seedlings and saplings.

Within the Sale Area, if more than 25% of the pine seedlings or saplings (1/4" to 4.5" DBH) within a specified portion of the Sale Area are damaged, liquidated damages will be assessed at \$150 per acre for all acreage within that specified portion of the Sale Area that was damaged.

No damage is acceptable to undesignated live merchantable trees. Within the Sale Area, if more than 5% of trees (> 4.5" DBH) within a specified area of the sale are damaged, liquidated damages will be assessed for all trees damaged. Rates will be in accordance with General Condition and Requirement 3.4 Damaged Timber.

3.4.2 - Special Protection Trees (4/14)

The Purchaser shall not cut live or dead special protection trees within cutting units or clearings. Special protection trees are marked with green paint. If the Purchaser's operations have cut or damaged special protection trees through carelessness, the Purchaser shall pay \$200 as fixed, agreed and liquidated damages for each special protection tree cut or damaged. Such payment does not constitute ownership of the undesignated timber.

4 - Transportation

4.1 - Construction

4.1.3 - Slash and earthen piles (8/04)

Piles or windrows of earth along roads and landings that have been widened or constructed shall be leveled. Slash from road maintenance or construction, including stumps, shall be dispersed throughout the sale.

4.1.6 - Road construction (1/09)

Improvements of existing roads shall be done in such a way as to minimize the environmental and visual impacts. Merchantable trees shall be cut and utilized unless otherwise directed. Non-merchantable trees shall be severed and laid flat on the ground. Slash shall be scattered, and not left in windrows and kept a minimum of 10 feet back from the road edge. Stumps shall be set upright, not left on edge, and be moved at least 10 feet away from the road edge. Disturbed soil shall be feathered into the woods and not left in berms or windrows.

4.1.12 - No new roads (1/12)

No new roads will be permitted in any Payment Unit. All operations are limited to existing roads. Skid trails will only be allowed.

5 - Operations

5.1 - Notification

5.1.1 - Pre-sale conference (10/16)

A pre-sale conference on site between the Purchaser and sale administrator is required prior to beginning any operations to determine landing and road locations. The Unit Manager or his/her representative must be contacted at least 5 days in advance to schedule the conference.

5.1.4 - Post-sale conference (10/16)

A post-sale conference on site between the Purchaser and sale administrator is required 5 days prior to the completion of active logging operations to determine clean-up and repair of landings, road edges, and the fulfillment of other contract specifications.

5.2 - Conduct of Operations

5.2.1 - Slash

5.2.1.10 - No slash in openings (5/10)

No brush or logging debris is to be left in openings which are indicated by "G0" and/or "U0" on the Timber Sale Map. Use of these areas for the decking of wood must be pre-approved. Any damage to the opening shall be repaired according to specifications of the Unit Manager or his/her representative.

5.2.2 - Hazard Trees/Snags

5.2.2.1 - Den trees (10/16)

Obvious hollow and/or den trees shall be protected and left standing unless they are a safety hazard.

5.2.3 - Operating Restrictions

5.2.3.4 - Oak wilt restriction, no exceptions (1/18)

Within Payment Unit(s) 1-3, cutting, skidding, and hauling within the sale and brushing of access roads to the sale are not permitted during the period of April 15 to July 15. No exceptions will be granted. This is necessary to reduce the spread of oak wilt.

5.2.3.5 - Oak wilt restriction (1/18)

Within Payment Unit(s) 4-7, unless changed by written agreement, cutting, skidding, hauling within the sale and brushing of access roads to the sale are not permitted during the period of April 15 to July 15. Operations may be allowed if specific steps are taken to prevent damaging uncut oak during the high risk period. Those steps may include completing all road brushing before April 15th and clearing a tree-length buffer along uncut oak cover before April 15th. This is necessary to reduce the spread of oak wilt. For more information, contact the Unit Manager or his/her representative.

5.2.3.11 - Coppice regeneration protection (4/10)

Timber harvesting in any Payment Unit must be completed before significant tree sprouting occurs in that Payment Unit so as to minimize damage to the new regeneration. Any post harvest operations, such as chipping, must be completed before sprouting of regeneration occurs. If it is anticipated that chipping will be delayed, then tops shall be carried to one central location or left unchipped. The Unit Manager or his/her representative may cease such operations if sprouting

occurs before the operation is complete.

5.2.4 - Dead and Down Creation

5.2.4.7 - Dead and down creation: hare, grouse, deer and other species (5/15)

To improve horizontal cover habitat for snowshoe hare, grouse, deer, and other species, the Purchaser is to push over all purple ringed trees after all designated wood has been forwarded from a Payment Unit. These trees should be tipped over with the root ball still attached so the base of the tree is suspended off the ground. The crown of the fallen tree should be at or near ground level after it is pushed over.

5.2.32 - Decking/landing restoration (9/13)

All decking and landing areas must have the surface area restored to a condition equal to or better than before. This is to ensure the proper regeneration of the stand. Wood debris, chips and "cookies" from trimmings must be removed or scattered away from landing and loading areas and may not be windrowed on the edge.

5.2.38 - No decking against live trees (2/04)

Cut products may not be decked against unmarked or designated leave trees.

5.4 - Soil Protection

5.4.2 - Skid trails (2/04)

Skid trails up and down slopes should be avoided. If however this is unavoidable, these trails will be left in a non-erodible condition using water bars, logs, and slash. Placing of slash on these skid trails while logging is ongoing may alleviate need for any further action. At the direction of the sale administrator, seed, fertilizer, and mulch may also be required.

5.4.5 - Soil caution (11/04)

Care must be taken to minimize soil damage due to the sandy soils.

5.8 - Protection of Endangered Species

5.8.5 - Protection of raptor nests (3/13)

All trees with raptor nests will be protected if found during harvesting operations. Notification will be made to the Unit Manager or his/her representative who will notify the Wildlife Biologist so an on-site evaluation and recommendation can be made, if necessary.

6 - Safety and Fire Prevention

6.2 - Signing

6.2.1 - Road posting (10/20)

The Purchaser is responsible for posting and maintaining caution signs on forest roads prior to beginning operations. The road must be posted at appropriate distances from the Sale Area to warn of logging activity and truck traffic. Signs must be removed when harvest operations are suspended or completed. The Purchaser will provide these signs.



TIMBER SALE MAP

This information provided by authority of Part 525, 1994 PA 451, as amended.

Sale Number	Year
54-026	22

Forest Management Unit Atlanta	County Presque Isle	Mapped By D. Parris	Date 09/27/2022	Page 1	of 1
Township 33N	Range 04E	Section(s) and Subdivision(s) Sec 28 W1/2SW; Sec 29 E1/2SE, Sec 32 N1/2NE, E1/2SE; Sec 33 SWNW, SW	Scale 1:15,840		

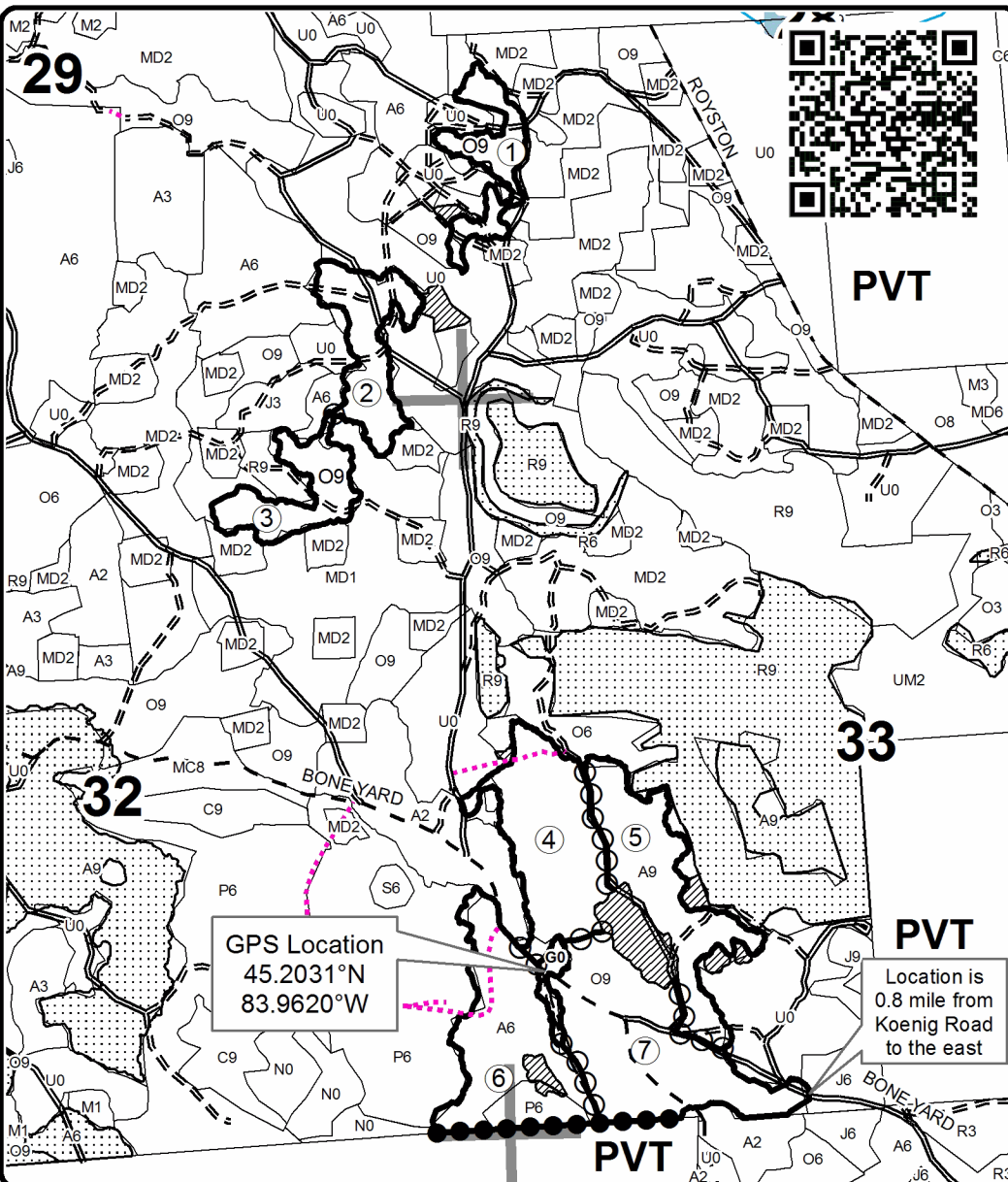
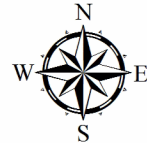
Cover Type				Density			
A = Aspen	H = Hemlock	N = Marsh	U = Upland Brush	0 = Non Stocked	5 = Pole Timber Medium		
B = Paper Birch	J = Jack Pine	O = Oak	UM = Upland Mixed	1 = Seedling Sapling Poor	6 = Pole Timber Well		
C = Cedar	L = Lowland Brush	P = Lowland Poplar	V = Bog or Marsh	2 = Seedling Sapling Medium	7 = Saw Timber Poor		
D = Treed Bog	LM = Lowland Mixed	Q = Mixed Swamp Conifer	W = White Pine	3 = Seedling Sapling Well	8 = Saw Timber Medium		
E = Swamp Hdwoods	M = Mpl, Bch, Brch	R = Red Pine	X = Non Stocked	4 = Pole Timber Poor	9 = Saw Timber Well		
F = Spruce Fir	MC = Mixed Conifer	S = Black Spruce	Z = Water				
G = Grass	MD = Mixed Deciduous	T = Tamarack					

PU	Acres	PU	Acres
1	8.1	5	18.5
2	11.3	6	21.9
3	9.3	7	27.0
4	20.5		

C128 South and Central

Compartment 128

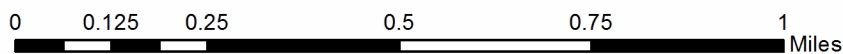
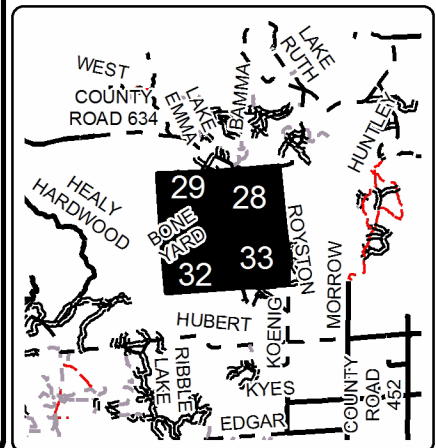
116.6 Acres



Legend

- Against State (Red)
- ⊖ Payment Unit (Yellow)
- Private Line (Blue)
- ▨ Retention Area (Red)
- ⋯ Nearby Timber Sales
- Payment Unit
- Stand Boundaries
- DNR - Secondary Forest Road
- == DNR - Forest Access Route
- - County - Gravel Road
- ⋯ Temporary Management Access
- Lakes and Rivers
- Section Corners

Locator Map
1:200,000



C128 North (54-025-22)
T33N, R04E, SEC. 20; T33N, R04E, SEC. 29; Presque Isle COUNTY

In response to the notice of sale to be held 10:00 a.m. (local time) on June 27, 2023, I am hereby submitting my sealed bid (firm offer) for the following forest products to be cut. Bids for individual species must be at or above the advertised price. All non-responsive bid forms may be rejected.

<u>PRODUCTS & SPECIES</u>	<u>ESTIMATED VOLUME*</u>	<u>ADVERTISED PRICE</u>	<u>BID PRICE/UNIT</u>
Sawtimber			
B. T. Aspen	12.9 MBF	\$ 104.00/MBF	\$ _____
Mixed Oak	67.2 MBF	\$ 150.00/MBF	\$ _____
Red Pine	35.4 MBF	\$ 159.00/MBF	\$ _____
Pulpwood			
Black Spruce	4 Cords	\$ 19.90/Cord	\$ _____
Jack Pine	8 Cords	\$ 15.75/Cord	\$ _____
Mixed Aspen	952 Cords	\$ 30.15/Cord	\$ _____
Mixed Oak	445 Cords	\$ 33.75/Cord	\$ _____
Red Maple	155 Cords	\$ 32.30/Cord	\$ _____
Red Pine	125 Cords	\$ 63.35/Cord	\$ _____

*The volumes are statistically estimated within plus (+) or minus (-) 15.51 percent at 95% confidence level. These estimated volumes are final and not subject to adjustment. Prospective bidders are urged to examine this timber and to make their own estimates of quantity and quality.

I understand that any or all bids may be rejected. All bids must be signed and all bid items must be bid or the bid form may be rejected. I also understand that consideration and awarding a contract will be based upon my past performance and ability to complete the contract based upon equipment and staffing subject to my control.

FEDERAL ID: ____ - ____ - ____ or SOCIAL SECURITY NUMBER: ____ - ____ - ____

Company or individual bidding: _____

Company representative's name: _____

Address: _____

City: _____ State: _____ Zip: _____

IF AVAILABLE, PLEASE PLACE THE PERSONALIZED LABEL FROM YOUR PROSPECTUS IN THE ABOVE BOX.

Individual or company representative's signature: _____ Date: _____

Phone number : _____ Email (optional): _____

THE WINNING BIDDER MUST COMPLETE THE VERIFICATION OF WORKER'S DISABILITY COMPENSATION ACT COMPLIANCE (ON REVERSE SIDE IF DOUBLE SIDED) WITHIN 21 DAYS OF SALE AWARD DATE



FOR DEPARTMENT USE ONLY	
Sale Number (XX - XXX - XX - XX)	
Forest Management Unit:	

TIMBER SALE VERIFICATION OF WORKER'S DISABILITY COMPENSATION ACT COMPLIANCE

As required by Act 317, P.A. 1969 (Worker's Compensation) and
Part 5 of Act 451 of 1994, as amended.

VERIFICATION OF WORKER'S DISABILITY COMPENSATION ACT COMPLIANCE

- This verification must be completed and submitted within 21 days of contract award and prior to the issuance of the timber sale contract.
- In addition, if boxes 2B or 2C are checked, then Notice of Exclusion or Certificate of Insurance must be submitted within twenty-one (21) days of the contract award and prior to the issuance of the timber sale contract.
- All information must be typed or printed except for written signatures.

Please Check Appropriate Categories:

1. My business is organized as (you **must** check one of the boxes below):
 - A. Sole Proprietorship (individual)
 - B. Partnership
 - C. Corporation
2. You **must** check one of the boxes below:
 - A. I certify my business is a sole proprietorship and it has no employees but the sole proprietor. I am not subject to the Worker's Compensation Laws.
 - B. I certify my business has satisfied its obligation to the Worker's Compensation Act through the use of an approved Notice of Exclusion (BWC-337, Rev. 5/96). I will provide a copy of the Notice of Exclusion within 21 days of the contract award. (For questions or a copy of the BWC-337, please call the Worker's Compensation Bureau at 517-322-1195).
 - C. I certify my business has a Worker's Compensation Policy. I will provide an original Certificate of Insurance within twenty-one (21) days of the contract award.
3. If you have checked item 2(A) or 2(B), you **must** indicate the number of **both** full-time and part-time employees, other than yourself, including family members and active partners (if none, you must enter "0").

_____ Full-time Employees

_____ Part-time Employees

Name of Business		Federal ID (or) Social Security No.	
Address		Telephone ()	
City	State	ZIP	

I hereby certify that the above information is true and correct. I agree to notify the Michigan DNR of any changes that occur in factors affecting my coverage during any of my present and future operations.

Signature of Owner or Authorized Representative

Title

Date

Please complete the "SEALED BID" information on the next page

Second Try Koenig Rd RP (54-008-22)
T33N, R04E, SEC. 28; T33N, R04E, SEC. 32; T33N, R04E, SEC. 33; Presque Isle

In response to the notice of sale to be held 10:00 a.m. (local time) on June 27, 2023, I am hereby submitting my sealed bid (firm offer) for the following forest products to be cut. Bids for individual species must be at or above the advertised price. All non-responsive bid forms may be rejected.

<u>PRODUCTS & SPECIES</u>	<u>ESTIMATED VOLUME*</u>	<u>ADVERTISED PRICE</u>	<u>BID PRICE/UNIT</u>
Sawtimber			
B. T. Aspen	3.6 MBF	\$ 124.00/MBF	\$ _____
Black/Red (Hybrid) Oak	22.1 MBF	\$ 180.00/MBF	\$ _____
Red Pine	38.3 MBF	\$ 191.00/MBF	\$ _____
Pulpwood			
B. T. Aspen	119 Cords	\$ 36.20/Cord	\$ _____
Jack Pine	22 Cords	\$ 18.95/Cord	\$ _____
Mixed Hardwood	8 Cords	\$ 38.75/Cord	\$ _____
Mixed Oak	59 Cords	\$ 40.50/Cord	\$ _____
Red Pine	1,479 Cords	\$ 76.00/Cord	\$ _____

*The volumes are statistically estimated within plus (+) or minus (-) 11.84 percent at 95% confidence level. These estimated volumes are final and not subject to adjustment. Prospective bidders are urged to examine this timber and to make their own estimates of quantity and quality.

I understand that any or all bids may be rejected. All bids must be signed and all bid items must be bid or the bid form may be rejected. I also understand that consideration and awarding a contract will be based upon my past performance and ability to complete the contract based upon equipment and staffing subject to my control.

FEDERAL ID: ___ - ___ - ___ or SOCIAL SECURITY NUMBER: ___ - ___ - ___

Company or individual bidding: _____

Company representative's name: _____

Address: _____

City: _____ State: _____ Zip: _____

IF AVAILABLE, PLEASE PLACE THE PERSONALIZED LABEL FROM YOUR PROSPECTUS IN THE ABOVE BOX.

Individual or company representative's signature: _____ Date: _____

Phone number : _____ Email (optional): _____

THE WINNING BIDDER MUST COMPLETE THE VERIFICATION OF WORKER'S DISABILITY COMPENSATION ACT COMPLIANCE (ON REVERSE SIDE IF DOUBLE SIDED) WITHIN 21 DAYS OF SALE AWARD DATE



FOR DEPARTMENT USE ONLY
Sale Number (XX - XXX - XX - XX)
Forest Management Unit:

TIMBER SALE VERIFICATION OF WORKER'S DISABILITY COMPENSATION ACT COMPLIANCE

*As required by Act 317, P.A. 1969 (Worker's Compensation) and
Part 5 of Act 451 of 1994, as amended.*

VERIFICATION OF WORKER'S DISABILITY COMPENSATION ACT COMPLIANCE

- This verification must be completed and submitted within 21 days of contract award and prior to the issuance of the timber sale contract.
- In addition, if boxes 2B or 2C are checked, then Notice of Exclusion or Certificate of Insurance must be submitted within twenty-one (21) days of the contract award and prior to the issuance of the timber sale contract.
- All information must be typed or printed except for written signatures.

Please Check Appropriate Categories:

1. My business is organized as (you **must** check one of the boxes below):
 - A. Sole Proprietorship (individual)
 - B. Partnership
 - C. Corporation
2. You **must** check one of the boxes below:
 - A. I certify my business is a sole proprietorship and it has no employees but the sole proprietor. I am not subject to the Worker's Compensation Laws.
 - B. I certify my business has satisfied its obligation to the Worker's Compensation Act through the use of an approved Notice of Exclusion (BWC-337, Rev. 5/96). I will provide a copy of the Notice of Exclusion within 21 days of the contract award. (For questions or a copy of the BWC-337, please call the Worker's Compensation Bureau at 517-322-1195).
 - C. I certify my business has a Worker's Compensation Policy. I will provide an original Certificate of Insurance within twenty-one (21) days of the contract award.
3. If you have checked item 2(A) or 2(B), you **must** indicate the number of **both** full-time and part-time employees, other than yourself, including family members and active partners (if none, you must enter "0").

_____ Full-time Employees

_____ Part-time Employees

Name of Business		Federal ID (or) Social Security No.	
Address		Telephone ()	
City	State	ZIP	

I hereby certify that the above information is true and correct. I agree to notify the Michigan DNR of any changes that occur in factors affecting my coverage during any of my present and future operations.

Signature of Owner or Authorized Representative

Title

Date

Please complete the "SEALED BID" information on the next page

C128 South and Central (54-026-22)

T33N, R04E, SEC. 28; T33N, R04E, SEC. 29; T33N, R04E, SEC. 32; T33N, R04E,

In response to the notice of sale to be held 10:00 a.m. (local time) on June 27, 2023, I am hereby submitting my sealed bid (firm offer) for the following forest products to be cut. Bids for individual species must be at or above the advertised price. All non-responsive bid forms may be rejected.

<u>PRODUCTS & SPECIES</u>	<u>ESTIMATED VOLUME*</u>	<u>ADVERTISED PRICE</u>	<u>BID PRICE/UNIT</u>
Sawtimber			
Mixed Aspen	97.1 MBF	\$ 104.00/MBF	\$ _____
Mixed Oak	243.2 MBF	\$ 150.00/MBF	\$ _____
Red Maple	6.9 MBF	\$ 98.00/MBF	\$ _____
Pulpwood			
Balsam Fir	73 Cords	\$ 37.20/Cord	\$ _____
Jack Pine	4 Cords	\$ 15.75/Cord	\$ _____
Mixed Aspen	929 Cords	\$ 30.15/Cord	\$ _____
Mixed Oak	704 Cords	\$ 33.75/Cord	\$ _____
Paper Birch	4 Cords	\$ 16.30/Cord	\$ _____
Red Maple	279 Cords	\$ 32.30/Cord	\$ _____
White Spruce	14 Cords	\$ 19.90/Cord	\$ _____

*The volumes are statistically estimated within plus (+) or minus (-) 12.22 percent at 95% confidence level. These estimated volumes are final and not subject to adjustment. Prospective bidders are urged to examine this timber and to make their own estimates of quantity and quality.

I understand that any or all bids may be rejected. All bids must be signed and all bid items must be bid or the bid form may be rejected. I also understand that consideration and awarding a contract will be based upon my past performance and ability to complete the contract based upon equipment and staffing subject to my control.

FEDERAL ID: _____ or SOCIAL SECURITY NUMBER: _____

Company or individual bidding: _____

Company representative's name: _____

Address: _____

City: _____ State: _____ Zip: _____

IF AVAILABLE, PLEASE PLACE THE PERSONALIZED LABEL FROM YOUR PROSPECTUS IN THE ABOVE BOX.

Individual or company representative's signature: _____ Date: _____

Phone number : _____ Email (optional): _____

THE WINNING BIDDER MUST COMPLETE THE VERIFICATION OF WORKER'S DISABILITY COMPENSATION ACT COMPLIANCE (ON REVERSE SIDE IF DOUBLE SIDED) WITHIN 21 DAYS OF SALE AWARD DATE



FOR DEPARTMENT USE ONLY
Sale Number (XX - XXX - XX - XX)
Forest Management Unit:

TIMBER SALE VERIFICATION OF WORKER'S DISABILITY COMPENSATION ACT COMPLIANCE

*As required by Act 317, P.A. 1969 (Worker's Compensation) and
Part 5 of Act 451 of 1994, as amended.*

VERIFICATION OF WORKER'S DISABILITY COMPENSATION ACT COMPLIANCE

- This verification must be completed and submitted within 21 days of contract award and prior to the issuance of the timber sale contract.
- In addition, if boxes 2B or 2C are checked, then Notice of Exclusion or Certificate of Insurance must be submitted within twenty-one (21) days of the contract award and prior to the issuance of the timber sale contract.
- All information must be typed or printed except for written signatures.

Please Check Appropriate Categories:

1. My business is organized as (you **must** check one of the boxes below):
 - A. Sole Proprietorship (individual)
 - B. Partnership
 - C. Corporation
2. You **must** check one of the boxes below:
 - A. I certify my business is a sole proprietorship and it has no employees but the sole proprietor. I am not subject to the Worker's Compensation Laws.
 - B. I certify my business has satisfied its obligation to the Worker's Compensation Act through the use of an approved Notice of Exclusion (BWC-337, Rev. 5/96). I will provide a copy of the Notice of Exclusion within 21 days of the contract award. (For questions or a copy of the BWC-337, please call the Worker's Compensation Bureau at 517-322-1195).
 - C. I certify my business has a Worker's Compensation Policy. I will provide an original Certificate of Insurance within twenty-one (21) days of the contract award.
3. If you have checked item 2(A) or 2(B), you **must** indicate the number of **both** full-time and part-time employees, other than yourself, including family members and active partners (if none, you must enter "0").

_____ Full-time Employees

_____ Part-time Employees

Name of Business		Federal ID (or) Social Security No.	
Address		Telephone ()	
City	State	ZIP	

I hereby certify that the above information is true and correct. I agree to notify the Michigan DNR of any changes that occur in factors affecting my coverage during any of my present and future operations.

Signature of Owner or Authorized Representative

Title

Date

Please complete the "SEALED BID" information on the next page