



**DEPARTMENT OF NATURAL RESOURCES  
STATE OF MICHIGAN  
TIMBER SALE PROSPECTUS #7182**

SCHEDULED SALE DATE AND TIME: 2:00 p.m. (local time) on July 10, 2023.

LOCATION: **GWINN MGMT UNIT, 410 WEST M 35, GWINN, MI 49841.**

PROSPECTUS NOTE: The bidder is advised to inspect the sale area and review the location, estimated volumes, operating costs and contract terms of proposed sales. Please be aware that some landowners may request 60 days or more notice for access across their land.

Notice is hereby given that bids will be received by the Unit Manager, GWINN MANAGEMENT UNIT, for certain timber on the following described lands:

Newlywed Mix (32-014-22) / T50N, R28W, SEC. 16, NE.

Marquette County, Advertised Price \$27,708.40, 115.3 Acres, Hardwood, White Pine.

SALE NOTE: Sale is located off old AAA check with Marquette County Road Commission to see if road can be bonded for spring operations.

Huber North (32-017-22) / T45N, R23W, SEC. 20, N1/2NE, SENE, E1/2SE.

T45N, R23W, SEC. 21, W1/2NW, SW, S1/2SE.

T45N, R23W, SEC. 22, NW, N1/2SW.

T45N, R23W, SEC. 28, NENW.

Marquette County, Advertised Price \$77,660.10, 145.1 Acres, Hardwood, Spruce/Fir/Tamarack.

SALE NOTE: Note that a lot of the mapped road grids are significantly grown in but could be re-opened for access across units. There are numerous cross drainage ditches accessing the sale area, contact the sale administrator to discuss access options.

Access may be through other public land.

Porky Pulp (32-021-22) / T46N, R28W, SEC. 18, NW, NWNE, S1/2NE, NWSE.

Marquette County, Advertised Price \$35,137.50, 107.6 Acres, Spruce/Fir/Tamarack, Aspen.

SALE NOTE: Access may be through private land.

Thomas Lake Twig Eaters (32-020-20) / T48N, R30W, SEC. 18, N1/2NW, SENW, W1/2NE.

T48N, R30W, SEC. 7, SENE, E1/2SE.

Marquette County, Advertised Price \$52,946.95, 112.9 Acres, Hardwood, Sugar Maple.

SALE NOTE: Sale contains rugged and rocky ground. Purchaser is encouraged to walk through all Payment Units before bidding. There is a creek crossing on private land on the access road that may need work. Review specification 2.2.6 - Round wood operation required. Review specification 5.2.22.1 - Operating Caution.

A recreation site such as a trail, pathway, or campground is within the sale area or the vicinity. Certain restrictions/specifications may be applicable including time restrictions. Access may be through private land.

## BID INSTRUCTIONS (VER. 10/10/2022):

### 1. Scheduled Bid Location, Date, and Time (2/11)

Bids must be received by the Unit Manager, GWINN OFFICE, 410 WEST M 35, GWINN, MI 49841, no later than 2:00 p.m. (local time) on July 10, 2023. For further information concerning this sale, contact Kristen Matson at 906-346-9201 extension 103.

### 2. Bidder's Qualifications (10/22)

If all or part of a timber sale was prepared by a private contractor, the contractor and that contractor's company are not permitted to bid on the timber sale. A person must be 18 years of age or older to purchase timber. Permanent employees of the Department of Natural Resources or members of their immediate household may not bid. Former employees, in the permanent or seasonal class, may not bid until 3 months after the last day of active duty. Bids will not be accepted from individuals or companies appearing on the DNR/FRD No-Bid List. This list contains the names of purchasers who previously failed to execute a contract within 21-days or who have a history of poor performance.

### 3. Preparation of Sealed Bids (5/16)

Bid Forms may be completed online thru Michigan DNR Timber Sale Online Bidding (OLB) at [www.michigan.gov/timberbidding](http://www.michigan.gov/timberbidding) or by completing the hardcopy Bid Form found in the Timber Sale Prospectus. Hardcopy Bid Forms shall be manually signed in ink. Registration in OLB is considered your 'signature' for all bids submitted thru that system. Bid prices must be entered for each species and product in the Bid Price column for all material subject to bidding and all fill-in blanks must be completed. If erasures or other changes appear on the hardcopy Bid Form, each erasure or change must be initialed by the person signing the bid.

### 4. Submission of Sealed Bids (5/16)

Bid forms may be obtained from the Unit Manager or thru OLB. Bids may be submitted hardcopy or thru OLB. All hardcopy bids must be submitted on the bid form and in an envelope clearly identified as described in this section. NOTE: Only one bid form per bid envelope. Sealed bids must be submitted to the Unit office designated in the prospectus and must be submitted at or prior to the time established in the prospectus. The envelope should show on the outside (a) the sale name or number and (b) the date and time of bid opening, as shown in the prospectus. Bids received after the time specified in the sale prospectus are late bids and will be rejected.

It is possible for a bidder to submit multiple bids on a single sale. For example, a bid may be submitted hardcopy and a bid may be submitted thru OLB. Or, two bidders from the same company could both submit bids on the same sale. If this were to happen, the State would accept all bids received and award the contract accordingly. All bidding and contractual requirements would apply to all bids received.

### 5. Public Opening of Sealed Bids (7/16)

If conditions permit, the sealed bids will be publicly opened and posted at the time and place set in the prospectus.

If a bidder, present at a bid opening, has submitted bids on more than one sale, that bidder may withdraw their unopened bid envelopes or announce the withdrawal of their online bid after being declared the successful bidder on one sale.

### 6. Award of Contract (1/11)

Award of the contract will be made to the Bidder whose bid, conforming to the prospectus, is most advantageous to the State of Michigan on the basis of total value at rates bid for the estimated quantities. The State reserves the right to reject any bid or waive any minor irregularity in bids received. A written award mailed (or otherwise furnished) to the successful Bidder shall be deemed to result in a binding contract without further action by either party.

### 7. Down Payment (1/11)

The Bidder to whom award is made must make a down payment within 21 days of the sale award. The amount of the down payment will be calculated as shown in the Bond and Payment Schedule of this prospectus. Only cash may be used to meet this requirement.

### 8. Performance Security (1/11)

As guarantee of faithful performance, a cash bond, certificate of deposit, surety bond or irrevocable letter of credit (LOC) is required within 21 days of the sale award. The amount of the performance security is shown in the Bond and

Payment Schedule of this prospectus. If an LOC or surety is used, the coverage must extend for at least 6 months beyond the contract expiration.

#### 9. Worker's Compensation (10/22)

Purchaser shall obtain worker's compensation insurance to cover claims under Michigan's Worker's Disability Compensation Act of 1969 or similar employee benefit act of any other state applicable to an employee. Verification of Worker's Disability Compensation Act Compliance must be completed and submitted within 21 days of contract award and prior to the issuance of the timber sale contract. In addition, if applicable, Notice of Exclusion or Certificate of Insurance must also be submitted.

#### 10. Timber Sale Contract (10/22)

Additional conditions and requirements common to all timber sales are listed on the timber sale contract (R4031) and are available on line at [www.michigan.gov/timber](http://www.michigan.gov/timber). Contact the Unit Manager for additional information or a sample contract. Within 21 days of the date of the award letter, the bidder must sign the contract and provide the required down payment, performance security, and verification of worker's disability compensation. The down payment and performance security shall be in accordance with the provisions of the timber sale contract, in the sums stated in this prospectus. If these actions are not taken, then the Bidder, the Bidder's corporation, and the corporation's principals may not be permitted to bid on State timber sales for a period of 3 months after the first offense, 6 months after the second offense, and 1 year after the third offense. An offense will only be counted against the Bidder for 5 years. In addition, the Bidder certifies that if awarded this contract, the Bidder will complete the timber sale contract in accordance with its terms and any modifications thereof including requirements to purchase, cut, and remove the included timber by the expiration date.

Payment Unit values in the State Forest Timber Sale Contract are calculated based on the advertised value of the Payment Unit as a percentage of the total advertised value of the contract. The advertised value of each Payment Unit is given in the Description of Timber by Payment Unit table on the Timber Sale Information page. For example, if the value of Payment Unit 1 is advertised as \$1,500 and the total Timber Sale value is advertised as \$10,000, the contract price for Payment Unit 1 will be 15% of the total bid price ( $\$1,500/\$10,000 * 100$ ).

#### 11. Disclaimer of Estimates and Bidder's Warranty of Inspection (10/22)

Before submitting this bid, the Bidder is advised and cautioned to inspect the sale area, review the requirements of the sale contract, and take other steps as may be reasonably necessary to ascertain the location, estimated volumes, construction estimates, and operating costs of the proposed sale. Failure to do so will not relieve the Bidder from responsibility for completing the contract.

The Bidder warrants that this bid is submitted solely on the basis of the Bidder's examination and inspection of the quality and quantity of the timber offered for sale and the Bidder's opinion of the value thereof and the costs of recovery. No reliance should be placed on the State of Michigan's estimates of timber quality, quantity or costs of recovery. Bidder further acknowledges that the State of Michigan: (i) expressly disclaims any warranty of fitness of timber for any purpose; (ii) offers this timber as is without any warranty of quality (merchantability) or quantity and (iii) expressly disclaims any warranty as to the quantity or quality of timber sold.

#### 12. Certification and Chain-of-Custody (10/22)

Unless otherwise indicated in the contract under section 7 – Other Conditions of the Sale Specific Conditions & Requirements, the area encompassed by this timber sale is certified to the standards of the Forest Stewardship Council (FSC) - Certificate #SCS-FM/COC-00090N and the Sustainable Forestry Initiative (SFI) - Certificate #NSF-SFIS-5Y031-SF5. Forest products from this sale may be delivered to the mill as "FSC 100% and / or SFI certified" as long as the contractor hauling the forest products is chain-of-custody (COC) certified or covered under a COC certificate from the destination mill. The purchaser is responsible for maintaining COC after leaving the sale area.

#### 13. Good Neighbor Authority (GNA) Requirements (10/22)

If the name of this timber sales contains the acronym GNA, it is authorized by the Good Neighbor Authority (GNA) and covered by various agreements between the U.S. Forest Service and the State. The timber sale occurs on federal land and the following conditions apply:

GNA contracts on US Forest Service land will not be awarded to purchasers on the Federal list of excluded parties. The System for Award Management (SAM) will be checked for active excluded parties prior to award of contract. In

addition, the Bidder to whom award is made must complete an Assurance Regarding Felony Conviction or Tax Delinquent Status for Corporate Applicants (AD-3031).

14. Good Neighbor Authority (GNA) Requirements, con't (10/22)

Bidder certifies, by signing this bid form, that to the best of Bidder's knowledge that the following representations are accurate and complete.

- a. That the Bidder and its principals are not presently debarred, suspended, proposed for debarment, declared ineligible, or voluntary excluded from timber sales (covered transactions) by any Federal department or agency.
- b. That the Bidder and its principals have not within a 3-year period preceding this bid been convicted of or had a civil judgment rendered against them for commission of fraud or a criminal offense in connection with obtaining , attempting to obtain, or performing a public (Federal, State, or local) transaction or contract under a public transaction; violation of Federal or State antitrust statutes or commission of embezzlement, theft, forgery, bribery, falsification or destruction of records, making false statements, or receiving stolen property.
- c. That the Bidder and its principals are not presently indicted for or otherwise criminally or civilly charged by a governmental entity (Federal, State, or local) with commission of any of the offenses enumerated in paragraph b of this certification.
- d. That the Bidder and its principals have not within a 3-year period preceding this bid had one or more public transactions (Federal, State, or local) terminated for breach or default of a timber or forest product contract.

Bidders that cannot certify this requirement, in whole or in part, shall submit an explanation with their bid.

SHANNON LOTT, Acting  
Director

## TIMBER SALE INFORMATION

Newlywed Mix (32-014-22)

T50N, R28W, SEC. 16.

Marquette County (Advertised Price \$27,708.40)

SALE NOTE: Sale is located off old AAA check with Marquette County Road Commission to see if road can be bonded for spring operations.

A timber sale contract for this lump sum, sealed bid timber sale will be awarded to the responsible bidder offering the highest sealed bid price. All units of volume listed below were estimated using the Inventory Manager computer program and the new Michigan taper model. Bids must be at or above the following advertised price for each product and species:

<u>PRODUCTS &amp; SPECIES</u>	<u>ESTIMATED UNITS*</u>	<u>ADVERTISED PRICE</u>
Sawtimber		
Paper Birch	1.2 MBF	\$ 65.00 / MBF
Red Maple	14.6 MBF	\$ 137.00 / MBF
Sugar Maple	11.4 MBF	\$ 174.00 / MBF
White Pine	13.3 MBF	\$ 60.00 / MBF
Pulpwood		
Balsam Fir	106 Cords	\$ 16.15 / Cord
Jack Pine	15 Cords	\$ 45.30 / Cord
Mixed Hardwood	704 Cords	\$ 16.00 / Cord
Paper Birch	139 Cords	\$ 21.80 / Cord
White Pine	170 Cords	\$ 25.70 / Cord
White Spruce	78 Cords	\$ 23.00 / Cord

\* The total volume is statistically estimated within plus (+) or minus (-) 11.71 percent. There are an estimated 1,301 cords on this timber sale, plus or minus 152 cords at the 95% confidence level. The estimated units are final and not subject to adjustment. Prospective bidders are urged to examine this timber and to make their own estimates of quantity and quality.

### **BOND AND PAYMENT SCHEDULE:**

1. A bond in the amount of \$1,385.00 to insure faithful performance of the conditions of the contract will be deposited by the successful bidder within 21 days of the sale award.
2. Cutting in any sale or unit without the required advance payment would be considered a trespass.
3. Total payment must be paid in advance or according to the following schedule :
  - (a) Ten percent (10%) of the sale value must be paid within 21 days of the sale award.
  - (b) The 10% down payment will be credited towards the first unit cut.
  - (c) Payment for each of the following units must be made before cutting begins in that unit:

PAYMENT UNIT NUMBER	PERCENT OF TOTAL SALE VALUE
01	11.0%
02	24.2%
03	25.3%
04	39.5%

4. If no cutting takes place, the 10% down payment will not be refunded.
5. Operations on the contract issued will terminate on 08/31/2026.

### **SALE STATISTICS**

Volumes were calculated in cubic feet using the Michigan taper model. Cubic foot volume includes all wood inside bark for the product indicated. For display purposes, cubic feet were converted to cords and MBF using a simple conversion factor, e.g. 79 cubic feet per cord and 185 cubic feet per MBF. The cubic foot volumes are precise; the cords and MBF volumes are not. Cubic foot volume cannot be directly converted to cords or boards with precision.

### **SALE VOLUMES**

The total estimated sale volume may not equal the sum of the species/products due to the nature of statistical calculations associated with double sampling methodology.

VOLUME		STATISTICAL RANGE IN CORDS		
TOTAL CUBIC FEET	TOTAL CORDS	PERCENT ERROR	MINIMUM	MAXIMUM
102,786	1,301	11.71%	1,149	1,454

**VDU VOLUMES**

A VDU is a Volume Determination Unit. Volumes and their associated statistics are calculated at the VDU level and summarized to the sale level. There is often a one to one relationship between a VDU and a Payment Unit, but not always, depending on the cruise design. Refer to the VDU TO PAYMENT UNIT table.

VDU	VOLUME		PERCENT ERROR	RANGE IN CORDS	
	TOTAL CUBIC FEET	TOTAL CORDS		MINIMUM	MAXIMUM
17	17,537	222	37.80%	138	306
20	52,874	669	15.01%	569	770
22	18,969	240	24.87%	180	300
28	13,406	170	42.20%	98	241
<b>TOTAL:</b>	<b>102,786</b>	<b>1,301</b>		<b>985</b>	<b>1,617</b>

**VDU TO PAYMENT UNIT**

When a VDU is associated with more than one Payment Unit (PU), the VDU volumes are assigned to the PU based on acres of the VDU within the PU.

VDU	VDU ACRES	PU	PU ACRES
17	22.3	3	22.3
20	54.0	3	8.9
		4	45.1
22	21.4	2	21.4
28	17.6	1	17.6
<b>TOTAL:</b>	<b>115.3</b>		<b>115.3</b>

**DESCRIPTION OF TIMBER BY PAYMENT UNIT (PU)**

PU	MARKET GROUP	PRODUCT	QUANTITY	UNIT	ACRES	ADVERTISE PRICE
1	Paper Birch	Sawtimber	1.2	MBF	17.6	\$3,041.35
	White Pine		2.5	MBF		
	Balsam Fir	Pulpwood	11	Cords		
	Mixed Hardwood		102	Cords		
	<i>Red Maple</i>		100	Cords		
	<i>Sugar Maple</i>		2	Cords		
	Paper Birch		26	Cords		
	White Pine		17	Cords		
2	Red Maple	Sawtimber	8.3	MBF	21.4	\$6,692.20
	Sugar Maple		11.4	MBF		
	Balsam Fir	Pulpwood	10	Cords		
	Mixed Hardwood		193	Cords		
	<i>Red Maple</i>		73	Cords		
	<i>Sugar Maple</i>		120	Cords		
	White Spruce		14	Cords		
	3	Red Maple	Sawtimber	1.0		
White Pine			7.4	MBF		
Balsam Fir		Pulpwood	17	Cords		
Jack Pine			2	Cords		
Mixed Hardwood			104	Cords		
<i>Red Maple</i>			88	Cords		
<i>Red Oak</i>			16	Cords		
Paper Birch			57	Cords		
White Pine			109	Cords		
White Spruce			16	Cords		
4		Red Maple	Sawtimber	5.3	MBF	45.1
	White Pine		3.4	MBF		
	Balsam Fir	Pulpwood	68	Cords		
	Jack Pine		13	Cords		
	Mixed Hardwood		305	Cords		
	<i>Red Maple</i>		276	Cords		
	<i>Red Oak</i>		28	Cords		
	<i>Sugar Maple</i>		1	Cords		
	Paper Birch		56	Cords		
	White Pine		44	Cords		
	White Spruce		48	Cords		
	TOTAL:			40.5	MBF	
TOTAL:			1,212	Cords		

## Sale Specific Conditions & Requirements

**Sale Name: Newlywed MIX**

**Sale Number: 32-014-22 Seq#: 1**

### 1 - Sale Area

#### 1.2 - Boundaries

##### 1.2.1 - Painted boundaries (9/19)

The sale boundary and Payment Unit boundaries are marked and identified by blue, red, and yellow paint. Exterior sale boundary lines against private are marked with blue paint. Exterior sale boundary lines against state are marked with red paint. Interior Payment Unit boundaries are marked with yellow paint. The painted boundary line trees are not Included Timber and are to be protected unless marked with orange paint.

### 2 - Timber Specifications

#### 2.1 - Included Timber

##### 2.1.3 - Cut tree marked unit(s) (12/08)

Within Payment Unit(s) 1, 3, 4, all trees are designated for cutting when marked with orange paint above and below stump height, regardless of merchantability. Also Cut all maple, aspen, paper birch, spruce, fir and jack pine.

##### 2.1.7 - Leave tree marked unit(s) (6/14)

Within Payment Unit(s) 2, all trees, which meet minimum piece specifications in 2.2 Utilization, are designated for cutting except cedar, hemlock, white pine, oak and yellow birch and trees marked with green paint above and below stump height.

##### 2.1.9 - Harvest exception (12/08)

Do not cut any Hemlock trees other than those that are necessary to remove in order to operate within the sale area. Every effort must be made to preserve the existing Hemlock and to leave an intact stand upon sale completion. All cut Hemlock shall be piled separately by products and scaled in the woods unless other scaling arrangements are agreed to by the Unit Manager or his/her representative. Stumpage price for Hemlock shall be \$60.00 per cord for pulpwood, and [\$200.00] per cord for bolts and sawlogs. This applies to Unit 1 and 4 no hemlock may be cut in any other unit.

#### 2.2 - Utilization

##### 2.2.4 - Skidding length (2/14)

Skidding of unlimbed tops or lengths over 17 feet is not permissible. unless approved by the Unit Manager or his/her representative.

##### 2.2.6 - Roundwood operation required (3/21)

The skidding of whole trees or tree segments with limbs attached is prohibited. All products must be produced as roundwood and forwarded to existing roads or landing areas in final product length.

### 3 - Payments

#### 3.4 - Damaged Timber

##### 3.4.1 - Damaged timber (7/16)

General Condition and Requirement 3.4 Damaged Timber, defines liquidated damages for undesignated live merchantable trees which are cut or injured. In addition, extreme care should be taken to avoid damage to tree seedlings and saplings.

Within the sale area, if more than 35% of the oak, hemlock and white pine or saplings (1/4" to 4.5" DBH) within a specified portion of the sale area are damaged, liquidated damages will be assessed at \$200 per acre for all acreage within that specified portion of the sale area that was damaged. This will not apply to sapling damaged accessing designated trees or skid trails.

No damage is acceptable to undesignated live merchantable trees. Within the sale area, if more than 5% of trees (> 4.5" DBH) within a specified area of the sale are damaged, liquidated damages will be assessed for all trees damaged. Rates will be in accordance with General Condition and Requirement 3.4 Damaged Timber.

### 4 - Transportation



## 4.1 - Construction

### 4.1.3 - Slash and earthen piles (8/04)

Piles or windrows of earth along roads and landings that have been widened or constructed shall be leveled. Slash from road maintenance or construction, including stumps, shall be dispersed throughout the sale.

### 4.1.4 - Timber removed for construction (12/09)

Trees cut or damaged in the process of pre-approved road, landing or skid trail construction will be decked in an area separate from other Designated Timber and not removed until measured by the sale administrator. Payment will be made at the specified Purchase Unit Price.

### 4.1.6 - Road construction (1/09)

Construction of new roads or improvements of existing roads shall be done in such a way as to minimize the environmental and visual impacts. Merchantable trees shall be cut and utilized unless otherwise directed. Non-merchantable trees shall be severed and laid flat on the ground. Slash shall be scattered, and not left in windrows and kept a minimum of 10 feet back from the road edge. Stumps shall be set upright, not left on edge, and be moved at least 10 feet away from the road edge. Disturbed soil shall be feathered into the woods and not left in berms or windrows.

### 4.1.7 - Road closure (10/11)

All new roads built into the sale must be blocked to vehicle traffic upon completion of the sale. Overgrown roads that are reopened shall be considered new roads. In general, this will require constructing a four (4') foot high berm of stumps and logs covered with earth. Contact the sale administrator for specific details of design and placement.

## 4.2 - Maintenance

### 4.2.3 - Road maintenance (8/13)

The following road maintenance may be needed: Within 60 days of completion of hauling, or if no hauling occurs for 60 days, the road must be maintained and graded. This includes cleaning of drainage areas, grading, crowning and filling with gravel, if necessary. Damages will be assessed if grading/repair does not occur.

### 4.2.4 - Grading (10/16)

For completion of the sale, state forest roads must be graded. In general, this will require a road grader or bull dozer to shape up the roads after forest products have been hauled off site. This includes cleaning of drainage areas, grading, crowning and filling with gravel, if necessary. The grading equipment to be used must be approved by the Unit Manager or his/her representative.

## 5 - Operations

### 5.1 - Notification

#### 5.1.1 - Pre-sale conference (10/16)

A pre-sale conference between the Purchaser and sale administrator is required prior to beginning any operations. The Unit Manager or his/her representative must be contacted at least 3 business days in advance to schedule the conference.

### 5.2 - Conduct of Operations

#### 5.2.1 - Slash

##### 5.2.1.11 - Slash for reforestation (3/21)

To facilitate reforestation, Payment Units 1, 2, 3, and 4 shall be left with slash evenly distributed. Bunched tops within the cutting area shall be broken up and scattered. Stumps shall be cut low to the ground. Processing sites shall not be left with a compacted layer of slash; tops from these sites shall be hauled back into the cut area and scattered.

#### 5.2.2 - Hazard Trees/Snags

##### 5.2.2.1 - Den trees (10/16)

Obvious hollow and/or den trees shall be protected and left standing unless they are a safety hazard.

#### 5.2.3 - Operating Restrictions

##### 5.2.3.3 - Bark slippage restriction (3/09)

Within Payment Unit(s) 1, 3, and 4, unless changed by written agreement, cutting and skidding are not permitted during the period of April 15 to July 15. This restriction is because of bark slippage.

#### 5.2.32 - Decking/landing restoration (9/13)

All decking and landing areas must have the surface area restored to a condition equal to or better than before. This is to ensure the proper regeneration of the stand. Wood debris, chips and "cookies" from trimmings must be removed or scattered away from landing and loading areas and may not be windrowed on the edge.

#### 5.2.37 - No decking areas (12/08)

No decking is allowed within 50 feet of Old CR AAA without permission of the County and Unit Manager or his/her representative.

#### 5.2.38 - No decking against live trees (2/04)

Cut products may not be decked against unmarked or designated leave trees.

### 5.4 - Soil Protection

#### 5.4.1 - Rutting restriction, general (7/16)

Operations are to cease immediately if equipment and weather conditions result in rutting of roads and/or skid trails which is 12 inches or greater in depth and 50 feet in length. The Unit Manager or his/her representative may restrict hauling and/or skidding if ruts exceed the specified depth. With the Unit Manager or his/her representative's approval, the Purchaser may return to the area when the risk of rutting has decreased.

### 5.8 - Protection of Endangered Species

#### 5.8.5 - Protection of raptor nests (3/13)

All trees with raptor nests will be protected if found during harvesting operations. Notification will be made to the Unit Manager or his/her representative who will notify the Wildlife Biologist so an on-site evaluation and recommendation can be made, if necessary.

## 6 - Safety and Fire Prevention

### 6.2 - Signing

#### 6.2.1 - Road posting (10/20)

The Purchaser is responsible for posting and maintaining caution signs on Old County Road AAA prior to beginning operations. The road must be posted at appropriate distances from the sale area to warn of logging activity and truck traffic. Signs must be removed when harvest operations are suspended or completed. The Purchaser will provide these signs.



# TIMBER SALE MAP

This information provided by authority of Part 525, 1994 PA 451, as amended.

Forest Management Unit Gwinn FMU	County Marquette	Mapped By Rick Hill	Date 8/13/22	Page 1	of 1
Township 50N	Range 28W	Section(s) and Subdivision(s) section 16	Scale 1:15,840		

Cover Type				Density			
A = Aspen	H = Hemlock	N = Marsh	U = Upland Brush	0 = Non Stocked	5 = Pole Timber Medium		
B = Paper Birch	J = Jack Pine	O = Oak	UM = Upland Mixed	1 = Seedling Sapling Poor	6 = Pole Timber Well		
C = Cedar	L = Lowland Brush	P = Lowland Poplar	V = Bog or Marsh	2 = Seedling Sapling Medium	7 = Saw Timber Poor		
D = Tread Bog	LM = Lowland Mixed	Q = Mixed Swamp Conifer	W = White Pine	3 = Seedling Sapling Well	8 = Saw Timber Medium		
E = Swamp Hdwoods	M = Mpl, Boh, Broh	R = Red Pine	X = Non Stocked	4 = Pole Timber Poor	9 = Saw Timber Well		
F = Spruce Fir	MC = Mixed Conifer	S = Black Spruce	Z = Water				
G = Grass	MD = Mixed Deciduous	T = Tamarack					

PU	Acres	PU	Acres
1	17.6	3	31.4
2	21.4	4	45.2

**Newlywed Mix**  
 Compartment 206  
 115.4 Acres



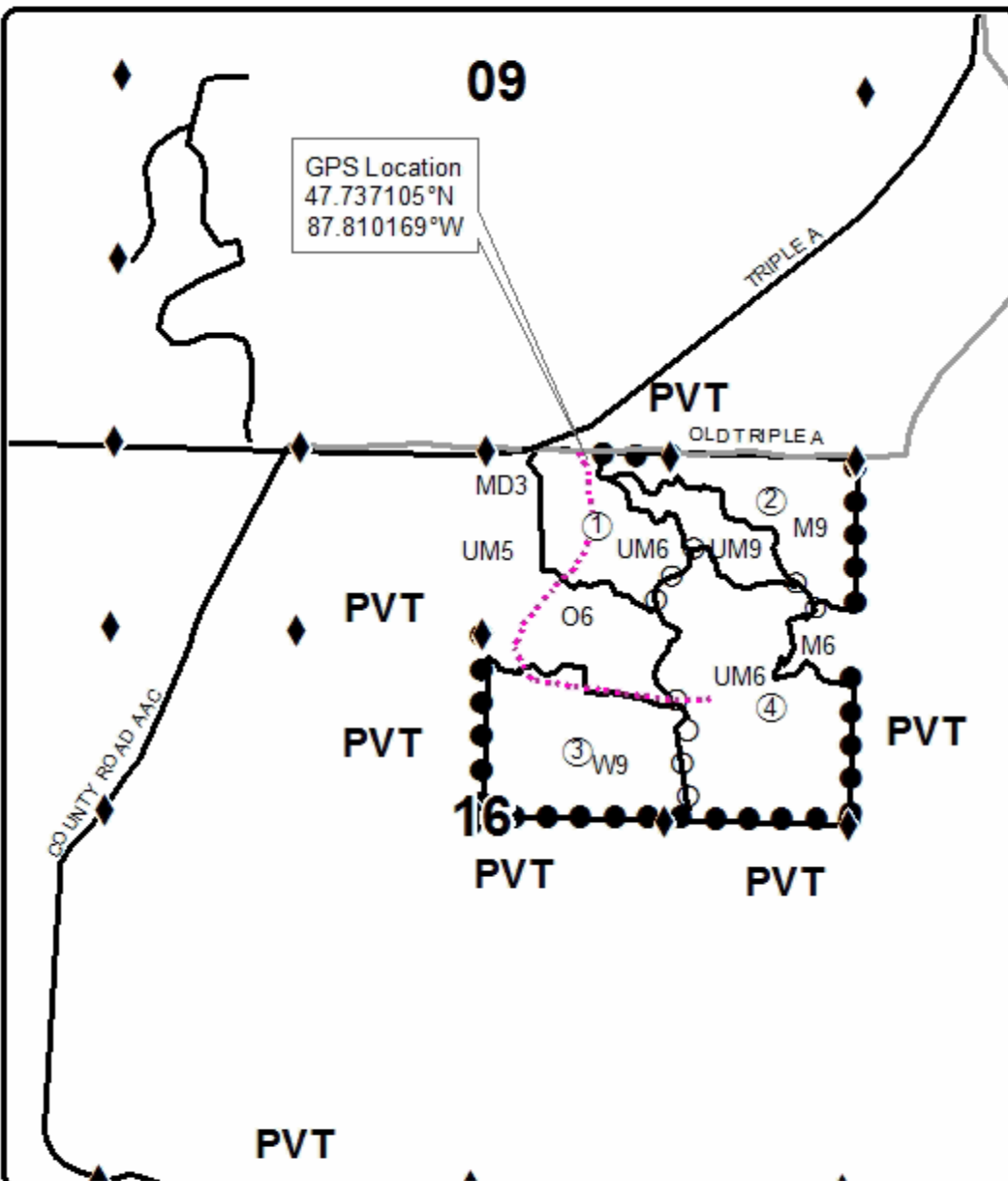
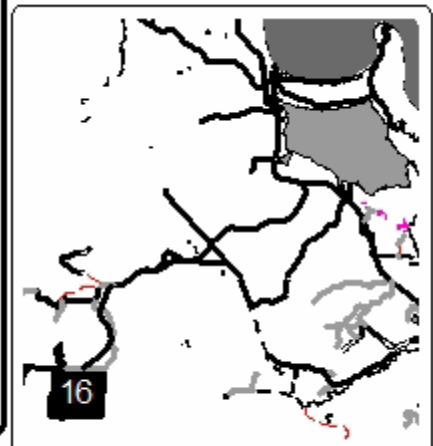
**Legend**

- Temporary Management Access (dashed pink line)
- Survey Corners (black diamond)
- Paved Road (thick black line)
- Private (thin grey line)
- Payment Unit (Yellow) (yellow circle)
- Private Line (Blue) (blue circle)
- Against State (Red) (red outline)

QR Code for PDF Maps



Locator Map  
1:250,000





## TIMBER SALE INFORMATION

### Huber North (32-017-22)

T45N, R23W, SEC. 20; T45N, R23W, SEC. 21; T45N, R23W, SEC. 22; T45N, R23W, SEC. 28.  
Marquette County (Advertised Price \$77,660.10)

SALE NOTE: Note that a lot of the mapped road grids are significantly grown in but could be re-opened for access across units. There are numerous cross drainage ditches accessing the sale area, contact the sale administrator to discuss access options.

Access may be through other public land.

A timber sale contract for this lump sum, sealed bid timber sale will be awarded to the responsible bidder offering the highest sealed bid price. All units of volume listed below were estimated using the Inventory Manager computer program and the new Michigan taper model. Bids must be at or above the following advertised price for each product and species:

<u>PRODUCTS &amp; SPECIES</u>	<u>ESTIMATED UNITS*</u>	<u>ADVERTISED PRICE</u>
Sawtimber		
Basswood	15.6 MBF	\$ 35.00 / MBF
Black Cherry	5.8 MBF	\$ 75.00 / MBF
Red Maple	84.5 MBF	\$ 137.00 / MBF
Sugar Maple	21.5 MBF	\$ 174.00 / MBF
Yellow Birch	21.6 MBF	\$ 30.00 / MBF
Pulpwood		
Balsam Fir	285 Cords	\$ 16.15 / Cord
Mixed Hardwood	2,478 Cords	\$ 16.00 / Cord
Mixed Spruce	473 Cords	\$ 23.00 / Cord
Quaking Aspen	43 Cords	\$ 26.25 / Cord
Tamarack	149 Cords	\$ 29.90 / Cord

\* The total volume is statistically estimated within plus (+) or minus (-) 10.94 percent. There are an estimated 3,876 cords on this timber sale, plus or minus 424 cords at the 95% confidence level. The estimated units are final and not subject to adjustment. Prospective bidders are urged to examine this timber and to make their own estimates of quantity and quality.

### **BOND AND PAYMENT SCHEDULE:**

1. A bond in the amount of \$3,883.00 to insure faithful performance of the conditions of the contract will be deposited by the successful bidder within 21 days of the sale award.
2. Cutting in any sale or unit without the required advance payment would be considered a trespass.
3. Total payment must be paid in advance or according to the following schedule :
  - (a) Ten percent (10%) of the sale value must be paid within 21 days of the sale award.
  - (b) The 10% down payment will be credited towards the first unit cut.
  - (c) Payment for each of the following units must be made before cutting begins in that unit:
 

PAYMENT UNIT NUMBER	PERCENT OF TOTAL SALE VALUE
01	8.6%
02	10.9%
03	8.3%
04	20.7%
05	7.5%
06	13.8%
07	22.1%
08	8.1%
4. If no cutting takes place, the 10% down payment will not be refunded.
5. Operations on the contract issued will terminate on 08/31/2026.

### **SALE STATISTICS**

Volumes were calculated in cubic feet using the Michigan taper model. Cubic foot volume includes all wood inside bark for the product indicated. For display purposes, cubic feet were converted to cords and MBF using a simple conversion factor, e.g. 79 cubic feet per cord and 185 cubic feet per MBF. The cubic foot volumes are precise; the cords and MBF volumes are not. Cubic foot volume cannot be directly converted to cords or boards with precision.

## SALE VOLUMES

The total estimated sale volume may not equal the sum of the species/products due to the nature of statistical calculations associated with double sampling methodology.

VOLUME			STATISTICAL RANGE IN CORDS	
TOTAL CUBIC FEET	TOTAL CORDS	PERCENT ERROR	MINIMUM	MAXIMUM
306,176	3,876	10.94%	3,451	4,300

## VDU VOLUMES

A VDU is a Volume Determination Unit. Volumes and their associated statistics are calculated at the VDU level and summarized to the sale level. There is often a one to one relationship between a VDU and a Payment Unit, but not always, depending on the cruise design. Refer to the VDU TO PAYMENT UNIT table.

	VOLUME			RANGE IN CORDS	
VDU	TOTAL CUBIC FEET	TOTAL CORDS	PERCENT ERROR	MINIMUM	MAXIMUM
1	25,674	325	60.03%	130	520
2	33,121	419	33.51%	279	560
3	21,349	270	27.00%	197	343
4	34,511	437	39.54%	264	610
5	19,251	244	22.61%	189	299
6	32,228	408	34.09%	269	547
7	80,552	1,020	21.15%	804	1,235
8	59,492	753	22.53%	583	923
<b>TOTAL:</b>	<b>306,176</b>	<b>3,876</b>		<b>2,715</b>	<b>5,036</b>

## VDU TO PAYMENT UNIT

When a VDU is associated with more than one Payment Unit (PU), the VDU volumes are assigned to the PU based on acres of the VDU within the PU.

VDU	VDU ACRES	PU	PU ACRES
1	6.9	1	6.9
2	15.4	2	15.4
3	8.1	3	8.1
4	17.7	6	17.7
5	13.5	5	13.5
6	26.0	8	26.0
7	34.4	7	34.4
8	23.1	4	23.1
<b>TOTAL:</b>	<b>145.1</b>		<b>145.1</b>

**DESCRIPTION OF TIMBER BY PAYMENT UNIT (PU)**

PU	MARKET GROUP	PRODUCT	QUANTITY	UNIT	ACRES	ADVERTISE PRICE
1	Red Maple	Sawtimber	15.4	MBF	6.9	\$6,691.80
	Yellow Birch		6.7	MBF		
	Mixed Hardwood	Pulpwood	258	Cords		
	<i>Red Maple</i>		216	<i>Cords</i>		
	<i>Sugar Maple</i>		5	<i>Cords</i>		
	<i>Yellow Birch</i>		37	<i>Cords</i>		
	Mixed Spruce		11	Cords		
	<i>White Spruce</i>		11	<i>Cords</i>		
2	Black Cherry	Sawtimber	1.4	MBF	15.4	\$8,437.75
	Red Maple		12.2	MBF		
	Yellow Birch		1.4	MBF		
	Balsam Fir	Pulpwood	9	Cords		
	Mixed Hardwood		373	Cords		
	<i>Black Cherry</i>		15	<i>Cords</i>		
	<i>Red Maple</i>		347	<i>Cords</i>		
	<i>Sugar Maple</i>		3	<i>Cords</i>		
	<i>Yellow Birch</i>		8	<i>Cords</i>		
	Mixed Spruce		22	Cords		
	<i>Black Spruce</i>		22	<i>Cords</i>		
	3	Black Cherry	Sawtimber	4.4		
Red Maple			15.8	MBF		
Sugar Maple			2.0	MBF		
Yellow Birch			2.1	MBF		
Balsam Fir		Pulpwood	9	Cords		
Mixed Hardwood			212	Cords		
<i>Black Cherry</i>			5	<i>Cords</i>		
<i>Red Maple</i>			84	<i>Cords</i>		
<i>Sugar Maple</i>			107	<i>Cords</i>		
<i>Yellow Birch</i>			16	<i>Cords</i>		
4	Red Maple	Sawtimber	30.1	MBF	23.1	\$16,048.90
	Sugar Maple		6.8	MBF		
	Balsam Fir	Pulpwood	20	Cords		
	Mixed Hardwood		598	Cords		
	<i>Paper Birch</i>		10	<i>Cords</i>		
	<i>Red Maple</i>		467	<i>Cords</i>		
	<i>Sugar Maple</i>		121	<i>Cords</i>		
	Mixed Spruce		37	Cords		
	<i>White Spruce</i>		37	<i>Cords</i>		
	5	Red Maple	Sawtimber	2.2		
Sugar Maple			12.7	MBF		
Balsam Fir		Pulpwood	2	Cords		
Mixed Hardwood			197	Cords		
<i>Black Ash</i>			3	<i>Cords</i>		
<i>Ironwood</i>			2	<i>Cords</i>		
<i>Red Maple</i>			76	<i>Cords</i>		
<i>Sugar Maple</i>			116	<i>Cords</i>		
Mixed Spruce			4	Cords		
<i>White Spruce</i>			4	<i>Cords</i>		
6	Mixed Hardwood	Pulpwood	28	Cords	17.7	\$10,722.10
	<i>Red Maple</i>		28	<i>Cords</i>		
	Mixed Spruce		253	Cords		
	<i>Black Spruce</i>		253	<i>Cords</i>		
	Tamarack		149	Cords		
7	Red Maple	Sawtimber	8.8	MBF	34.4	\$17,242.10
	Yellow Birch		11.4	MBF		

**DESCRIPTION OF TIMBER BY PAYMENT UNIT (PU), CON'T**

PU	MARKET GROUP	PRODUCT	QUANTITY	UNIT	ACRES	ADVERTISE PRICE
7 con't	Balsam Fir	Pulpwood	145	Cords		
	Mixed Hardwood		621	Cords		
	<i>Black Ash</i>		40	<i>Cords</i>		
	<i>Paper Birch</i>		33	<i>Cords</i>		
	<i>Red Maple</i>		388	<i>Cords</i>		
	<i>Sugar Maple</i>		24	<i>Cords</i>		
	<i>Yellow Birch</i>		136	<i>Cords</i>		
	Mixed Spruce		136	Cords		
	<i>Black Spruce</i>		136	<i>Cords</i>		
	Quaking Aspen		11	Cords		
8	Basswood	Sawtimber	15.6	MBF	26.0	\$6,287.00
	Balsam Fir	Pulpwood	100	Cords		
	Mixed Hardwood		191	Cords		
	<i>Basswood</i>		21	<i>Cords</i>		
	<i>Black Ash</i>		48	<i>Cords</i>		
	<i>Red Maple</i>		96	<i>Cords</i>		
	<i>Sugar Maple</i>		26	<i>Cords</i>		
	Mixed Spruce		10	Cords		
	<i>White Spruce</i>		10	<i>Cords</i>		
	Quaking Aspen		32	Cords		
TOTAL:			149.0	MBF		
TOTAL:			3,428	Cords		



## Sale Specific Conditions & Requirements

**Sale Name: Huber North**

**Sale Number: 32-017-22 Seq#: 1**

### 1 - Sale Area

#### 1.2 - Boundaries

##### 1.2.1 - Painted boundaries (9/19)

The sale boundary and Payment Unit boundaries are marked and identified by blue and red paint. Exterior sale boundary lines against private are marked with blue paint. Exterior sale boundary lines against state and Interior Payment Unit boundaries are marked with red paint. The painted boundary line trees are not Included Timber and are to be protected unless marked with orange paint.

### 2 - Timber Specifications

#### 2.1 - Included Timber

##### 2.1.1 - Clearcut unit(s) with unmerchantable trees (6/14)

Within Payment Unit(s) 6, 7, and 8, cut all trees that are two (2) inches or more at DBH except cedar, hemlock, and pine. In addition, within:

Payment Unit 6 and 8 - Leave yellow birch.

##### 2.1.3 - Cut tree marked unit(s) (12/08)

Within Payment Unit(s) 5, all trees are designated for cutting when marked with orange paint above and below stump height, regardless of merchantability. In addition, within Payment Unit 5, all merchantable spruce/fir is designated for cutting.

##### 2.1.7 - Leave tree marked unit(s) (6/14)

Within Payment Unit(s) 1, 2, 3, and 4, cut all trees that are two (2) inches or more at DBH except cedar, hemlock, pine, and trees marked with green paint above and below stump height. In addition, within:

Payment Unit 4 - leave aspen, black cherry, yellow birch, and trees over a 24" diameter at the stump.

#### 2.2 - Utilization

##### 2.2.4 - Skidding length (2/14)

Within Payment Unit 1, 2, 3, 4, and 5, skidding of unlimbed tops or lengths over 17 feet is not permissible unless approved by the Unit Manager or his/her representative.

### 3 - Payments

#### 3.4 - Damaged Timber

##### 3.4.1 - Damaged timber (7/16)

General Condition and Requirement 3.4 Damaged Timber, defines liquidated damages for undesignated live merchantable trees which are cut or injured. In addition, extreme care should be taken to avoid damage to tree seedlings and saplings within Payment Unit 5.

No damage is acceptable to undesignated live merchantable trees. Within the sale area, if more than 5% of trees (> 4.5" DBH) within a specified area of the sale are damaged, liquidated damages will be assessed for all trees damaged. Rates will be in accordance with General Condition and Requirement 3.4 Damaged Timber.

### 4 - Transportation

#### 4.1 - Construction

##### 4.1.3 - Slash and earthen piles (8/04)

Piles or windrows of earth along roads and landings that have been widened or constructed shall be leveled. Slash from road maintenance or construction, including stumps, shall be dispersed throughout the sale.

#### 4.1.4 - Timber removed for construction (12/09)

Trees cut or damaged in the process of pre-approved road, landing or skid trail construction will be decked in an area separate from other Designated Timber and not removed until measured by the sale administrator. Payment will be made at the specified Purchase Unit Price.

#### 4.1.6 - Road construction (1/09)

Construction of new roads or improvements of existing roads shall be done in such a way as to minimize the environmental and visual impacts. Merchantable trees shall be cut and utilized unless otherwise directed. Non-merchantable trees shall be severed and laid flat on the ground. Slash shall be scattered, and not left in windrows and kept a minimum of 10 feet back from the road edge. Stumps shall be set upright, not left on edge, and be moved at least 10 feet away from the road edge. Disturbed soil shall be feathered into the woods and not left in berms or windrows.

#### 4.1.7 - Road closure (10/11)

All new roads built into the sale must be blocked to vehicle traffic upon completion of the sale. Overgrown roads that are reopened shall be considered new roads. In general, this will require constructing a four (4') foot high berm of stumps and logs covered with earth. Contact the sale administrator for specific details of design and placement.

### 4.2 - Maintenance

#### 4.2.2 - Fill material (4/07)

To maintain roads, fill material may be needed in areas where "holes" exist or may be expected to develop. This fill material should be placed before trucking begins. Depending on the time of year, multiple areas may require fill material for access across the sale area. Contact the sale administrator regarding the availability of onsite sand or gravel from adjacent State-owned lands.

#### 4.2.4 - Grading (10/16)

For completion of the sale, state forest roads must be graded. In general, this will require a road grader or bull dozer to shape up the roads after forest products have been hauled off site. This includes cleaning of drainage areas, grading, crowning and filling with gravel, if necessary. The grading equipment to be used must be approved by the Unit Manager or his/her representative.

### 4.4 - Access

#### 4.4.1 - Private property access (3/11)

Permission for access across private land is the responsibility of the Purchaser. Access will be from the north across Lyme Timber property.

## 5 - Operations

### 5.1 - Notification

#### 5.1.1 - Pre-sale conference (10/16)

A pre-sale conference between the Purchaser and sale administrator is required prior to beginning any operations. The Unit Manager or his/her representative must be contacted at least 3 business days in advance to schedule the conference.

### 5.2 - Conduct of Operations

#### 5.2.1 - Slash

##### 5.2.1.11 - Slash for reforestation (3/21)

To facilitate reforestation, Payment Units 6, 7, and 8 shall be left with slash evenly distributed. Bunched tops within the cutting area shall be broken up and scattered. Stumps shall be cut low to the ground. Processing sites shall not be left with a compacted layer of slash; tops from these sites shall be hauled back into the cut area and scattered.

#### 5.2.2 - Hazard Trees/Snags

##### 5.2.2.1 - Den trees (10/16)

Obvious hollow and/or den trees shall be protected and left standing unless they are a safety hazard.

#### 5.2.3 - Operating Restrictions

#### 5.2.3.3 - Bark slippage restriction (3/09)

Within Payment Unit(s) 5, unless changed by written agreement, cutting and skidding are not permitted during the period of April 15 to July 15. This restriction is because of bark slippage.

#### 5.2.17 - Timber Mats and Interlocking Composite Mats (10/20)

Some roads or skid trails may require extra protection such as that afforded by timber mats. If available, mats may be borrowed from the DNR. A Timber Sale Contract Supplement will be used to document the Purchaser's use of the DNR's mats. Contact the sale administrator regarding availability and pick-up. Timber mats are available from various field offices. The Purchaser is responsible for picking up and hauling the mats to and from the site. Contact the sale administrator to schedule at least 30 days before desired install/removal date. All mats must be cleaned prior to drop off. This may include, but is not limited to, power washing and brushing to remove mud and debris. A charge of \$700.00 per timber mat will be assessed for all damaged or non-returned mats. Damage for the crane/timber mats is defined as three or more broken cants.

#### 5.2.22 - Operating Caution

##### 5.2.22.1 - Operating caution (6/11)

It is recommended, but not required, that within Payment Unit(s) 3, 4, 5, 6, 7, and 8, cutting, skidding, and hauling occur during dry summer or frozen winter conditions. The reason for the recommendation is due to soft ground within Payment Units and/or soft ground access to Payment Units.

#### 5.2.32 - Decking/landing restoration (9/13)

All decking and landing areas must have the surface area restored to a condition equal to or better than before. This is to ensure the proper regeneration of the stand. Wood debris, chips and "cookies" from trimmings must be removed or scattered away from landing and loading areas and may not be windrowed on the edge.

#### 5.2.38 - No decking against live trees (2/04)

Cut products may not be decked against unmarked or designated leave trees.

### 5.4 - Soil Protection

#### 5.4.1 - Rutting restriction, general (7/16)

Operations are to cease immediately if equipment and weather conditions result in rutting of roads and/or skid trails which is 12 inches or greater in depth and 50 feet in length. The Unit Manager or his/her representative may restrict hauling and/or skidding if ruts exceed the specified depth. With the Unit Manager or his/her representative's approval, the Purchaser may return to the area when the risk of rutting has decreased.

#### 5.4.2 - Skid trails (2/04)

Skid trails up and down slopes should be avoided. If however this is unavoidable, these trails will be left in a non-erodible condition using water bars, logs, and slash. Placing of slash on these skid trails while logging is ongoing may alleviate need for any further action. At the direction of the sale administrator, seed, fertilizer, and mulch may also be required.

### 5.8 - Protection of Endangered Species

#### 5.8.5 - Protection of raptor nests (3/13)

All trees with raptor nests will be protected if found during harvesting operations. Notification will be made to the Unit Manager or his/her representative who will notify the Wildlife Biologist so an on-site evaluation and recommendation can be made, if necessary.

## 6 - Safety and Fire Prevention

### 6.2 - Signing

#### 6.2.1 - Road posting (10/20)

The Purchaser is responsible for posting and maintaining caution signs on Carlshend Road / County Road 456 from both directions and any forest access roads used prior to beginning operations. The road must be posted at appropriate distances from the sale area to warn of logging activity and truck traffic. Signs must be removed when harvest operations are suspended or completed. The Purchaser will provide these signs.

## 7 - Other Conditions

### 7.5 - Loss

7.5.1 - Deteriorating timber (7/09)

The sale area has received damage from decline in black ash. The Purchaser should harvest the wood as soon as possible. The Department of Natural Resources is held free of responsibility of any further damage or deterioration due to delay in harvesting.



Sale Number	Year
32-017	22

# TIMBER SALE MAP

This information provided by authority of Part 525, 1994 PA 451, as amended.

Forest Management Unit	County	Mapped By	Date	Page	of
Gwinn Management Unit	Marquette	Brolin	09/25/2022	1	1
Township	Range	Section(s) and Subdivision(s)	Scale		
45N	23W	Sections 20, 21, 22, and 28	1:15,840		

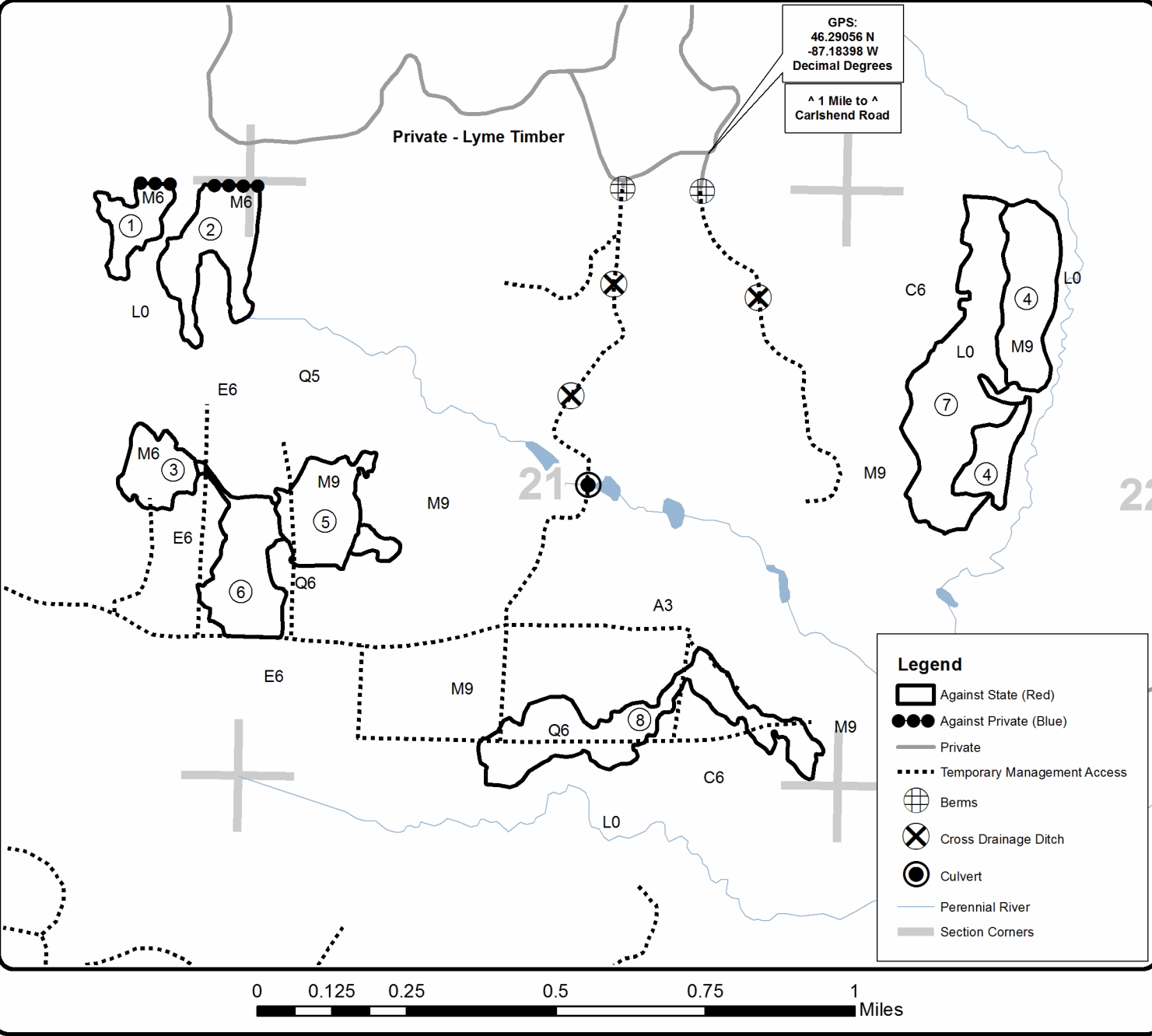
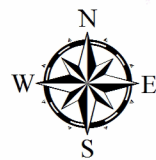
Cover Type				Density	
A = Aspen	H = Hemlock	N = Marsh	U = Upland Brush	0 = Non Stocked	5 = Pole Timber Medium
B = Paper Birch	J = Jack Pine	O = Oak	UM = Upland Mixed	1 = Seedling Sapling Poor	6 = Pole Timber Well
C = Cedar	L = Lowland Brush	P = Lowland Poplar	V = Bog or Marsh	2 = Seedling Sapling Medium	7 = Saw Timber Poor
D = Treed Bog	LM = Lowland Mixed	Q = Mixed Swamp Conifer	W = White Pine	3 = Seedling Sapling Well	8 = Saw Timber Medium
E = Swamp Hdwoods	M = Mpl. Bch, Brch	R = Red Pine	X = Non Stocked	4 = Pole Timber Poor	9 = Saw Timber Well
F = Spruce Fir	MC = Mixed Conifer	S = Black Spruce	Z = Water		
G = Grass	MD = Mixed Deciduous	T = Tamarack			

PU Acres	PU Acres
1 6.9	5 13.5
2 15.4	6 17.7
3 8.1	7 34.4
4 23.1	8 26.0

## Huber North Compartments 2 and 3 145.1 Acres



QR code for PDF Maps app





## TIMBER SALE INFORMATION

Porky Pulp (32-021-22)

T46N, R28W, SEC. 18.

Marquette County (Advertised Price \$35,137.50)

SALE NOTE: Access may be through private land.

A timber sale contract for this lump sum, sealed bid timber sale will be awarded to the responsible bidder offering the highest sealed bid price. All units of volume listed below were estimated using the Inventory Manager computer program and the new Michigan taper model. Bids must be at or above the following advertised price for each product and species:

<u>PRODUCTS &amp; SPECIES</u>	<u>ESTIMATED UNITS*</u>	<u>ADVERTISED PRICE</u>
Pulpwood		
Balsam Fir	197 Cords	\$ 16.15 / Cord
Jack Pine	33 Cords	\$ 45.30 / Cord
Mixed Spruce	505 Cords	\$ 23.00 / Cord
Paper Birch	16 Cords	\$ 21.80 / Cord
Quaking Aspen	557 Cords	\$ 26.25 / Cord
Red Maple	18 Cords	\$ 16.00 / Cord
Tamarack	120 Cords	\$ 29.90 / Cord

\* The total volume is statistically estimated within plus (+) or minus (-) 9.48 percent. There are an estimated 1,505 cords on this timber sale, plus or minus 143 cords at the 95% confidence level. The estimated units are final and not subject to adjustment. Prospective bidders are urged to examine this timber and to make their own estimates of quantity and quality.

### **BOND AND PAYMENT SCHEDULE:**

1. A bond in the amount of \$1,757.00 to insure faithful performance of the conditions of the contract will be deposited by the successful bidder within 21 days of the sale award.
2. Cutting in any sale or unit without the required advance payment would be considered a trespass.
3. Total payment must be paid in advance or according to the following schedule :
  - (a) Ten percent (10%) of the sale value must be paid within 21 days of the sale award.
  - (b) The 10% down payment will be credited towards the first unit cut.
  - (c) Payment for each of the following units must be made before cutting begins in that unit:
 

PAYMENT UNIT NUMBER	PERCENT OF TOTAL SALE VALUE
01	46.8%
02	53.2%
4. If no cutting takes place, the 10% down payment will not be refunded.
5. Operations on the contract issued will terminate on 08/31/2026.

### **SALE STATISTICS**

Volumes were calculated in cubic feet using the Michigan taper model. Cubic foot volume includes all wood inside bark for the product indicated. For display purposes, cubic feet were converted to cords and MBF using a simple conversion factor, e.g. 79 cubic feet per cord and 185 cubic feet per MBF. The cubic foot volumes are precise; the cords and MBF volumes are not. Cubic foot volume cannot be directly converted to cords or boards with precision.

### **SALE VOLUMES**

The total estimated sale volume may not equal the sum of the species/products due to the nature of statistical calculations associated with double sampling methodology.

VOLUME		STATISTICAL RANGE IN CORDS		
TOTAL CUBIC FEET	TOTAL CORDS	PERCENT ERROR	MINIMUM	MAXIMUM
118,893	1,505	9.48%	1,362	1,648

**VDU VOLUMES**

A VDU is a Volume Determination Unit. Volumes and their associated statistics are calculated at the VDU level and summarized to the sale level. There is often a one to one relationship between a VDU and a Payment Unit, but not always, depending on the cruise design. Refer to the VDU TO PAYMENT UNIT table.

VDU	VOLUME		PERCENT ERROR	RANGE IN CORDS	
	TOTAL CUBIC FEET	TOTAL CORDS		MINIMUM	MAXIMUM
1	118,893	1,505	9.48%	1,362	1,648
<b>TOTAL:</b>	<b>118,893</b>	<b>1,505</b>		<b>1,362</b>	<b>1,648</b>

**VDU TO PAYMENT UNIT**

When a VDU is associated with more than one Payment Unit (PU), the VDU volumes are assigned to the PU based on acres of the VDU within the PU.

VDU	VDU ACRES	PU	PU ACRES
1	107.6	1	50.5
		2	57.1
<b>TOTAL:</b>	<b>107.6</b>		<b>107.6</b>

**DESCRIPTION OF TIMBER BY PAYMENT UNIT (PU)**

PU	MARKET GROUP	PRODUCT	QUANTITY	UNIT	ACRES	ADVERTISE PRICE
1	Balsam Fir	Pulpwood	92	Cords	50.5	\$16,444.35
	Jack Pine		15	Cords		
	Mixed Spruce		237	Cords		
	<i>Black Spruce</i>		210	Cords		
	<i>White Spruce</i>		27	Cords		
	Paper Birch		8	Cords		
	Quaking Aspen		261	Cords		
	Red Maple		8	Cords		
	Tamarack		56	Cords		
	2		Balsam Fir	Pulpwood		
Jack Pine		18	Cords			
Mixed Spruce		268	Cords			
<i>Black Spruce</i>		238	Cords			
<i>White Spruce</i>		30	Cords			
Paper Birch		8	Cords			
Quaking Aspen		296	Cords			
Red Maple		10	Cords			
Tamarack		64	Cords			
<b>TOTAL:</b>			1,446		Cords	



## Sale Specific Conditions & Requirements

**Sale Name: Porky Pulp**

**Sale Number: 32-021-22 Seq#: 1**

### 1 - Sale Area

#### 1.2 - Boundaries

##### 1.2.1 - Painted boundaries (9/19)

The sale boundary and Payment Unit boundaries are marked and identified by red and green paint. Exterior sale boundary lines against state are marked with red paint. Interior Payment Unit boundaries are marked with green paint. The painted boundary line trees are not Included Timber and are to be protected.

### 2 - Timber Specifications

#### 2.1 - Included Timber

##### 2.1.1 - Clearcut unit(s) with unmerchantable trees (6/14)

Within Payment Unit(s) 1 and 2, cut all trees that are 2 inches or more at DBH, except do not cut red pine and white pine.

### 4 - Transportation

#### 4.1 - Construction

##### 4.1.3 - Slash and earthen piles (8/04)

Piles or windrows of earth along roads and landings that have been widened or constructed shall be leveled. Slash from road maintenance or construction, including stumps, shall be dispersed throughout the sale.

##### 4.1.4 - Timber removed for construction (12/09)

Trees cut or damaged in the process of pre-approved road, landing or skid trail construction will be decked in an area separate from other Designated Timber and not removed until measured by the sale administrator. Payment will be made at the specified Purchase Unit Price.

##### 4.1.5 - Culverts (5/14)

Roads may require the installation of culverts for cross drainage or at natural drainage-ways for constructing a winter road into the sale. If culverts are needed in these locations, they shall be installed prior to hauling. Culverts will be a minimum of 12 inches in diameter and 20 feet in length.

##### 4.1.6 - Road construction (1/09)

Construction of new roads or improvements of existing roads shall be done in such a way as to minimize the environmental and visual impacts. Merchantable trees shall be cut and utilized unless otherwise directed. Non-merchantable trees shall be severed and laid flat on the ground. Slash shall be scattered, and not left in windrows and kept a minimum of 10 feet back from the road edge. Stumps shall be set upright, not left on edge, and be moved at least 10 feet away from the road edge. Disturbed soil shall be feathered into the woods and not left in berms or windrows.

##### 4.1.7 - Road closure (10/11)

All new roads built into the sale must be blocked to vehicle traffic upon completion of the sale. Overgrown roads that are reopened shall be considered new roads. In general, this will require constructing a four (4') foot high berm of stumps and logs covered with earth. Contact the sale administrator for specific details of design and placement.

#### 4.2 - Maintenance

##### 4.2.2 - Fill material (4/07)

To maintain roads, fill material may be needed in areas where "holes" exist or may be expected to develop. This fill material should be placed before trucking begins.

##### 4.2.4 - Grading (10/16)

For completion of the sale, state forest roads must be graded. In general, this will require a road grader or bull dozer to shape up the roads after forest products have been hauled off site. This includes cleaning of drainage areas, grading, crowning and filling with gravel, if necessary. The grading equipment to be used must be approved by the Unit Manager or his/her representative.

#### 4.4 - Access

##### 4.4.1 - Private property access (3/11)

Permission for access across private land has been granted by easement. Contact DNR for more details.

### 5 - Operations

#### 5.1 - Notification

##### 5.1.1 - Pre-sale conference (10/16)

A pre-sale conference between the Purchaser and sale administrator is required prior to beginning any operations. The Unit Manager or his/her representative must be contacted at least 3 business days in advance to schedule the conference.

#### 5.2 - Conduct of Operations

##### 5.2.1 - Slash

###### 5.2.1.11 - Slash for reforestation (3/21)

To facilitate reforestation, Payment Units 1 and 2 shall be left with slash evenly distributed. Bunched tops within the cutting area shall be broken up and scattered. Stumps shall be cut low to the ground. Processing sites shall not be left with a compacted layer of slash; tops from these sites shall be hauled back into the cut area and scattered.

##### 5.2.2 - Hazard Trees/Snags

###### 5.2.2.1 - Den trees (10/16)

Obvious hollow and/or den trees shall be protected and left standing unless they are a safety hazard.

##### 5.2.3 - Operating Restrictions

###### 5.2.3.1 - Operating restrictions (9/11)

Within Payment Unit(s) 1 and 2, unless changed by written agreement, cutting, skidding, and hauling are limited to frozen winter conditions (typically from December 15 to March 15). This restriction is due to soft, saturated ground for access and operability within the Payment Unit area.

###### 5.2.32 - Decking/landing restoration (9/13)

All decking and landing areas must have the surface area restored to a condition equal to or better than before. This is to ensure the proper regeneration of the stand. Wood debris, chips and "cookies" from trimmings must be removed or scattered away from landing and loading areas and may not be windrowed on the edge.

###### 5.2.38 - No decking against live trees (2/04)

Cut products may not be decked against unmarked or designated leave trees.

#### 5.4 - Soil Protection

##### 5.4.1 - Rutting restriction, general (7/16)

Operations are to cease immediately if equipment and weather conditions result in rutting of roads and/or skid trails which is 12 inches or greater in depth and 50 feet in length. The Unit Manager or his/her representative may restrict hauling and/or skidding if ruts exceed the specified depth. With the Unit Manager or his/her representative's approval, the Purchaser may return to the area when the risk of rutting has decreased.

##### 5.4.2 - Skid trails (2/04)

Skid trails up and down slopes should be avoided. If however this is unavoidable, these trails will be left in a non-erodible condition using water bars, logs, and slash. Placing of slash on these skid trails while logging is ongoing may alleviate need for any further action. At the direction of the sale administrator, seed, fertilizer, and mulch may also be required.

#### 5.8 - Protection of Endangered Species

##### 5.8.5 - Protection of raptor nests (3/13)

All trees with raptor nests will be protected if found during harvesting operations. Notification will be made to the Unit Manager or his/her representative who will notify the Wildlife Biologist so an on-site evaluation and recommendation can be made, if necessary.

## **6 - Safety and Fire Prevention**

### 6.2 - Signing

#### 6.2.1 - Road posting (10/20)

The Purchaser is responsible for posting and maintaining caution signs on County Road CD and access roads prior to beginning operations. The road must be posted at appropriate distances from the sale area to warn of logging activity and truck traffic. Signs must be removed when harvest operations are suspended or completed. The Purchaser will provide these signs.

## **7 - Other Conditions**

### 7.5 - Loss

#### 7.5.1 - Deteriorating timber (7/09)

The sale area has received damage from Spruce Budworm. The Purchaser should harvest the wood as soon as possible. The Department of Natural Resources is held free of responsibility of any further damage or deterioration due to delay in harvesting.



# TIMBER SALE MAP

This information provided by authority of Part 525, 1994 PA 451, as amended.

Sale Number	Year
32- 021	22

Forest Management Unit Gwinn FMU	County Marquette	Mapped By Rick Hill	Date 4/7/2022	Page 1	of 1
Township 46N	Range 28W	Section(s) and Subdivision(s) 18	Scale 1:15,840		

Cover Type				Density			
A = Aspen	H = Hemlock	N = Marsh	U = Upland Brush	0 = Non Stocked	5 = Pole Timber Medium		
D = Paper Birch	J = Jack Pine	O = Oak	UM = Upland Mixed	1 = Seedling Sapling Poor	6 = Pole Timber Well		
C = Cedar	L = Lowland Brush	P = Lowland Poplar	V = Bog or Marsh	2 = Seedling Sapling Medium	7 = Saw Timber Poor		
D = Treed Bog	LM = Lowland Mixed	Q = Mixed Swam Conifer	W = White Pine	3 = Seedling Sapling Well	8 = Saw Timber Medium		
E = Swamp Hdwoods	M = Mpl. Oak, Birch	R = Red Pine	X = Non Stocked	4 = Pole Timber Poor	9 = Saw Timber Well		
F = Spruce Fir	MC = Mixed Conifer	S = Black Spruce	Z = Water				
G = Grass	MD = Mixed Deciduous	T = Tamarack					

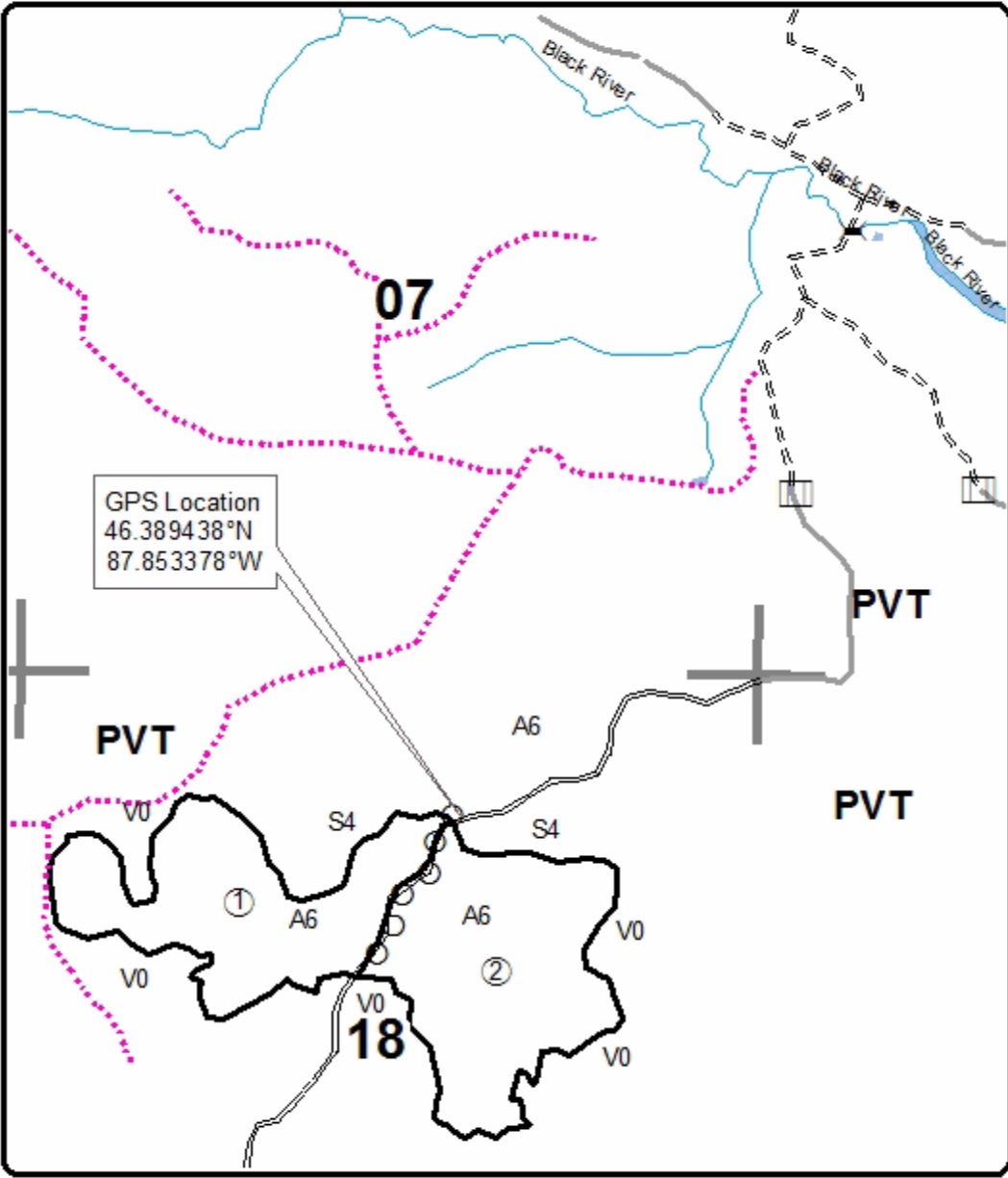
PU	Acres
1	50.5
2	57.1



## Porky Pulp Compartment 221 107.6 Acres

### Legend

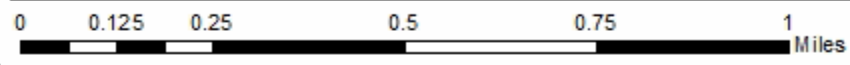
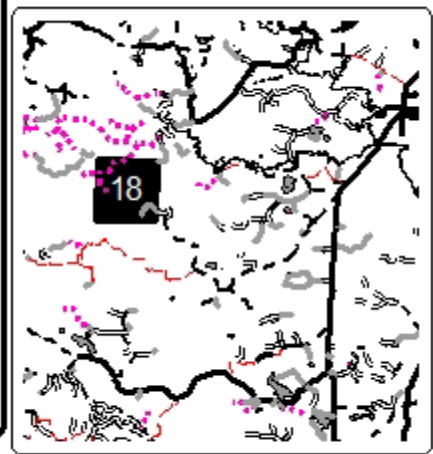
- Secondary Forest Road
- = = Forest Access Route
- Private
- ⋯ Temporary Management Access
- Perennial River
- Lakes and Rivers
- Against State (Red)
- Payment Unit (Green)
- Section Corners



QR Code for PDF Map



Locator Map  
1:200,000



## TIMBER SALE INFORMATION

Thomas Lake Twig Eaters (32-020-20)  
T48N, R30W, SEC. 18; T48N, R30W, SEC. 7.  
Marquette County (Advertised Price \$52,946.95)

SALE NOTE: Sale contains rugged and rocky ground. Purchaser is encouraged to walk through all Payment Units before bidding. There is a creek crossing on private land on the access road that may need work.

Review specification 2.2.6 - Round wood operation required.

Review specification 5.2.22.1 - Operating Caution.

A recreation site such as a trail, pathway, or campground is within the sale area or the vicinity. Certain restrictions/specifications may be applicable including time restrictions. Access may be through private land.

A timber sale contract for this lump sum, sealed bid timber sale will be awarded to the responsible bidder offering the highest sealed bid price. All units of volume listed below were estimated using the T-Sale computer program and our traditional volume equations. Bids must be at or above the following advertised price for each product and species:

<u>PRODUCTS &amp; SPECIES</u>	<u>ESTIMATED UNITS*</u>	<u>ADVERTISED PRICE</u>
Sawtimber		
Red Maple	25.0 MBF	\$ 137.00 / MBF
Sugar Maple	132.0 MBF	\$ 174.00 / MBF
Pulpwood		
Balsam Fir	41 Cords	\$ 16.15 / Cord
Mixed Hardwood	1,600 Cords	\$ 16.00 / Cord
Paper Birch	6 Cords	\$ 21.80 / Cord
White Spruce	7 Cords	\$ 23.00 / Cord

\* The estimated units are final and not subject to adjustment. Prospective bidders are urged to examine this timber and to make their own estimates of quantity and quality.

### **BOND AND PAYMENT SCHEDULE:**

1. A bond in the amount of \$5,295.00 to insure faithful performance of the conditions of the contract will be deposited by the successful bidder within 21 days of the sale award.
2. Cutting in any sale or unit without the required advance payment would be considered a trespass.
3. Total payment must be paid in advance or according to the following schedule :
  - (a) Ten percent (10%) of the sale value must be paid within 21 days of the sale award.
  - (b) The 10% down payment will be credited towards the first unit cut.

(c) Payment for each of the following units must be made before cutting begins in that unit:

PAYMENT UNIT NUMBER	PERCENT OF TOTAL SALE VALUE
01	6.2%
02	22.2%
03	23.3%
04	3.5%
05	35.1%
06	9.7%

4. If no cutting takes place, the 10% down payment will not be refunded.
5. Operations on the contract issued will terminate on 08/31/2026.

### **SALE STATISTICS**

#### **SALE VOLUMES**

VOLUME		STATISTICAL RANGE IN CORDS		
TOTAL CUBIC FEET	TOTAL CORDS	PERCENT ERROR	MINIMUM	MAXIMUM
155,418	1,967	8.78%	1,795	2,140

## VDU VOLUMES

A VDU is a Volume Determination Unit. Volumes and their associated statistics are calculated at the VDU level and summarized to the sale level. There is often a one to one relationship between a VDU and a Payment Unit, but not always, depending on the cruise design. Refer to the VDU TO PAYMENT UNIT table.

VDU	VOLUME		PERCENT ERROR	RANGE IN CORDS	
	TOTAL CUBIC FEET	TOTAL CORDS		MINIMUM	MAXIMUM
1	0	0	24.26%	0	0
2	0	0	17.30%	0	0
3	0	0	17.86%	0	0
4	0	0	17.79%	0	0
5	0	0	16.69%	0	0
6	0	0	26.03%	0	0
<b>TOTAL:</b>	<b>0</b>	<b>0</b>		<b>0</b>	<b>0</b>

## VDU TO PAYMENT UNIT

When a VDU is associated with more than one Payment Unit (PU), the VDU volumes are assigned to the PU based on acres of the VDU within the PU.

VDU	VDU ACRES	PU	PU ACRES
1	5.6	1	5.6
2	16.4	2	16.4
3	21.6	3	21.6
4	4.8	4	4.8
5	48.3	5	48.3
6	16.2	6	16.2
<b>TOTAL:</b>	<b>112.9</b>		<b>112.9</b>

**DESCRIPTION OF TIMBER BY PAYMENT UNIT (PU)**

PU	MARKET GROUP	PRODUCT	QUANTITY	UNIT	ACRES	ADVERTISE PRICE
1	Sugar Maple	Sawtimber	8.9	MBF	5.6	\$3,277.20
	Balsam Fir	Pulpwood	4	Cords		
	Mixed Hardwood		104	Cords		
	<i>Sugar Maple</i>		104	Cords		
2	Red Maple	Sawtimber	2.7	MBF	16.4	\$11,755.50
	Sugar Maple		34.8	MBF		
	Balsam Fir	Pulpwood	16	Cords		
	Mixed Hardwood		317	Cords		
	<i>Red Maple</i>		5	Cords		
<i>Sugar Maple</i>		312	Cords			
3	Red Maple	Sawtimber	3.7	MBF	21.6	\$12,318.75
	Sugar Maple		34.2	MBF		
	Balsam Fir	Pulpwood	15	Cords		
	Mixed Hardwood		343	Cords		
	<i>Black Cherry</i>		9	Cords		
	<i>Ironwood</i>		2	Cords		
	<i>Red Maple</i>		14	Cords		
	<i>Sugar Maple</i>		318	Cords		
	Paper Birch		6	Cords		
	4	Sugar Maple	Sawtimber	4.3		
Balsam Fir		Pulpwood	1	Cords		
Mixed Hardwood			67	Cords		
<i>Black Cherry</i>			4	Cords		
<i>Red Maple</i>			16	Cords		
<i>Sugar Maple</i>			47	Cords		
5	Red Maple	Sawtimber	11.4	MBF	48.3	\$18,598.15
	Sugar Maple		42.4	MBF		
	Balsam Fir	Pulpwood	5	Cords		
	Mixed Hardwood		590	Cords		
	<i>Black Cherry</i>		3	Cords		
	<i>Red Maple</i>		169	Cords		
	<i>Sugar Maple</i>		418	Cords		
White Spruce		6	Cords			
6	Red Maple	Sawtimber	7.2	MBF	16.2	\$5,161.00
	Sugar Maple		7.4	MBF		
	Mixed Hardwood	Pulpwood	179	Cords		
	<i>Black Cherry</i>		8	Cords		
	<i>Red Maple</i>		75	Cords		
	<i>Sugar Maple</i>		96	Cords		
White Spruce		1	Cords			
TOTAL:			157.0	MBF		
TOTAL:			1,654	Cords		

## Sale Specific Conditions & Requirements

Sale Name: Thomas Lake Twig Eaters

Sale Number: 32-020-20 Seq#: 2

### 1 - Sale Area

#### 1.2 - Boundaries

##### 1.2.1 - Painted boundaries (9/19)

The sale boundary and Payment Unit boundaries are marked and identified by blue, red, and green paint. Exterior sale boundary lines against private property are marked with blue paint. Exterior sale boundary lines against state are marked with red paint. Payment Unit boundaries are marked with green paint. Retention patches are marked with red paint; no harvesting activities may occur within these areas. The painted boundary line trees are not Included Timber and are to be protected.

### 2 - Timber Specifications

#### 2.1 - Included Timber

##### 2.1.1 - Clearcut unit(s) with unmerchantable trees (6/14)

Within Payment Unit(s) 1-6, cut all trees that are four (4) inches or more at DBH, except do not cut white pine, red pine, oak, yellow birch, cedar, and hemlock. Do not cut maple that is greater than 24" at DBH. Also, do not cut trees marked with yellow paint above and below stump height.

#### 2.2 - Utilization

##### 2.2.6 - Roundwood operation required (5/07)

The skidding of whole trees or tree segments with limbs attached is prohibited within Payment Unit(s) 1-6. All products must be produced as roundwood and forwarded to existing roads or landing areas in final product length.

### 3 - Payments

#### 3.4 - Damaged Timber

##### 3.4.1 - Damaged timber (7/16)

General Condition and Requirement 3.4 Damaged Timber, defines liquidated damages for undesignated live merchantable trees which are cut or injured. In addition, extreme care should be taken to avoid damage to tree seedlings and saplings. Within the Sale Area, if more than 20% of the tree seedlings or saplings (1/4" to 4.5" DBH) within a specified portion of the Sale Area are damaged, liquidated damages will be assessed at \$300 per acre for all acreage within that specified portion of the Sale Area that was damaged.

No damage is acceptable to undesignated live merchantable trees. Within the Sale Area, if more than 5% of trees (> 4.5" DBH) within a specified area of the sale are damaged, liquidated damages will be assessed for all trees damaged. Rates will be in accordance with General Condition and Requirement 3.4 Damaged Timber.

### 4 - Transportation

#### 4.1 - Construction

##### 4.1.3 - Slash and earthen piles (8/04)

Piles or windrows of earth along roads and landings that have been widened or constructed shall be leveled. Slash from road maintenance or construction, including stumps, shall be stock piled and used for road closure purposes.

##### 4.1.4 - Timber removed for construction (12/09)

Trees cut or damaged in the process of pre-approved road, landing or skid trail construction will be decked in an area separate from other Designated Timber and not removed until measured by the sale administrator. Payment will be made at the specified Purchase Unit Price.

##### 4.1.6 - Road construction (1/09)

Construction of new roads or improvements of existing roads shall be done in such a way as to minimize the environmental and visual impacts. Merchantable trees shall be cut and utilized unless otherwise directed. Non-merchantable trees shall be severed and laid flat on the ground. Slash shall be scattered, and not left in windrows and kept a minimum of 10 feet back from the road edge. Stumps shall be set upright, not left on edge, and be moved at least 10 feet away from the road edge.



Disturbed soil shall be feathered into the woods and not left in berms or windrows.

#### 4.1.7 - Road closure (10/11)

All new roads built into the sale must be blocked to vehicle traffic upon completion of the sale. Overgrown roads that are reopened shall be considered new roads. In general, this will require berms, stumps, tops, and rocks to be placed in specified areas. All stumps from road building and landing construction must be reserved to block any newly constructed roads upon completion of the sale. Note: Two access roads within the timber sale will require rock berms. Contact the sale administrator for specific details of design and placement.

### 4.2 - Maintenance

#### 4.2.4 - Grading (10/16)

For completion of the sale, state forest roads must be graded. In general, this will require a road grader or bulldozer to shape up the roads after forest products have been hauled off site. This includes cleaning of drainage areas, grading, crowning, and filling with gravel, if necessary. The grading equipment to be used must be approved by the Unit Manager or his/her representative.

### 4.4 - Access

#### 4.4.1 - Private property access (3/11)

Permission for access across private land is the responsibility of the Purchaser. Contact contract administrator or Unit Manager for landowner contact information.

#### 4.4.3 - Access gate (12/08)

A private gate exists to access this timber sale. Contact contract administrator or Unit Manager for access information.

## 5 - Operations

### 5.1 - Notification

#### 5.1.1 - Pre-sale conference (10/16)

A pre-sale conference on site between the Purchaser and sale administrator is required prior to beginning any operations. The sale administrator must be contacted at least 3 business days in advance to schedule the conference.

### 5.2 - Conduct of Operations

#### 5.2.2 - Hazard Trees/Snags

##### 5.2.2.1 - Den trees (10/16)

Obvious hollow and/or den trees shall be protected and left standing unless they are a safety hazard.

#### 5.2.17 - Timber Mats and Interlocking Composite Mats (3/18)

Two skid trails within this timber sale will require timber/crane mats. The locations are shown on the Timber Sale Map. The span to access these two Payment Units are as follows: Access to Payment Unit 4 = 65'. Access to Payment Unit 6 = 75'. If available, crane mats may be borrowed from the DNR. A Timber Sale Contract Supplement will be used to document the Purchaser's use of the DNR's crane mats. Contact the sale administrator regarding availability and pick-up. The Purchaser is responsible for picking up and hauling the crane mats to and from the site. Contact the sale administrator to schedule at least 30 days before desired install/removal date. All mats must be cleaned prior to drop off. This may include, but is not limited to, power washing and brushing to remove mud and debris. A charge of \$800.00 per timber mat will be assessed for all damaged or non-returned mats. Damage for the crane/timber mats is defined as three or more broken cants.

#### 5.2.22 - Operating Caution

##### 5.2.22.1 - Operating caution (6/11)

It is recommended, but not required, that within Payment Unit(s) 1-6, cutting, skidding, and hauling occur during dry summer or frozen winter conditions. The reason for the recommendation is due to clay soils within the Sale Area.

#### 5.2.32 - Decking/landing restoration (9/13)

All decking and landing areas must have the surface area restored to a condition equal to or better than before. This is to ensure the proper regeneration of the stand. Wood debris, chips, and "cookies" from trimmings must be removed or scattered away from landing and loading areas and may not be windrowed on the edge.

#### 5.2.38 - No decking against live trees (2/04)

Cut products may not be decked against unmarked or designated leave trees.

#### 5.2.41 - Snowmobile trail protection (9/11)

A portion of the Nelligan Road is also a snowmobile trail. Do not cut or damage posts with orange trail markers or traffic control signs. If the trail road is to be used for hauling during the snowmobile season, then a snow-covered base must be left on the trail.

### 5.4 - Soil Protection

#### 5.4.1 - Rutting restriction, general (7/16)

Operations are to cease immediately if equipment and weather conditions result in rutting of roads and/or skid trails which is 12 inches or greater in depth and 50 feet in length. The Unit Manager or his/her representative may restrict hauling and/or skidding if ruts exceed the specified depth. With the Unit Manager or his/her representative's approval, the Purchaser may return to the area when the risk of rutting has decreased.

#### 5.4.2 - Skid trails (2/04)

Skid trails up and down slopes should be avoided. If however this is unavoidable, these trails will be left in a non-erodible condition using water bars, logs, and slash. Placing of slash on these skid trails while logging is ongoing may alleviate need for any further action. At the direction of the sale administrator, seed, fertilizer, and mulch may also be required.

#### 5.4.4 - Slope protection (9/19)

Skid trails and roads on slopes shall be water barred with slash and stumps as soon as use is complete to prevent erosion.

### 5.8 - Protection of Endangered Species

#### 5.8.5 - Protection of raptor nests (3/13)

All trees with raptor nests will be protected if found during harvesting operations. Notification will be made to the Unit Manager or his/her representative who will notify the Wildlife Biologist so an on-site evaluation and recommendation can be made, if necessary.

## 6 - Safety and Fire Prevention

### 6.2 - Signing

#### 6.2.1 - Road posting (9/09)

The Purchaser is responsible for posting and maintaining caution signs on haul roads prior to beginning operations. The road must be posted at appropriate distances from the Sale Area to warn of logging activity and truck traffic. Signs must be removed when harvest operations are suspended or completed. The Purchaser will provide these signs.

#### 6.2.2 - Snowmobile trail posting (8/09)

The Purchaser is responsible for posting and maintaining caution signs on the snowmobile trail prior to beginning operations during the snowmobile season (approximately December 1 to March 31). The trail must be posted to warn of logging activity and truck traffic. Signs must be removed when harvest operations are suspended or completed. The Purchaser will provide these signs.



# TIMBER SALE MAP

This information provided by authority of Part 525, 1994 PA 451, as amended.

Sale Number	Year
32 - 020 - 20	2020

Forest Management Unit Gwinn	County Marquette	Mapped By Jason Caron	Date 9 - 28 - 20	Page 1	of 1
Township 48N	Range 30W	Section(s) and Subdivision(s) Sections 7 & 18	Scale 1:15,840		

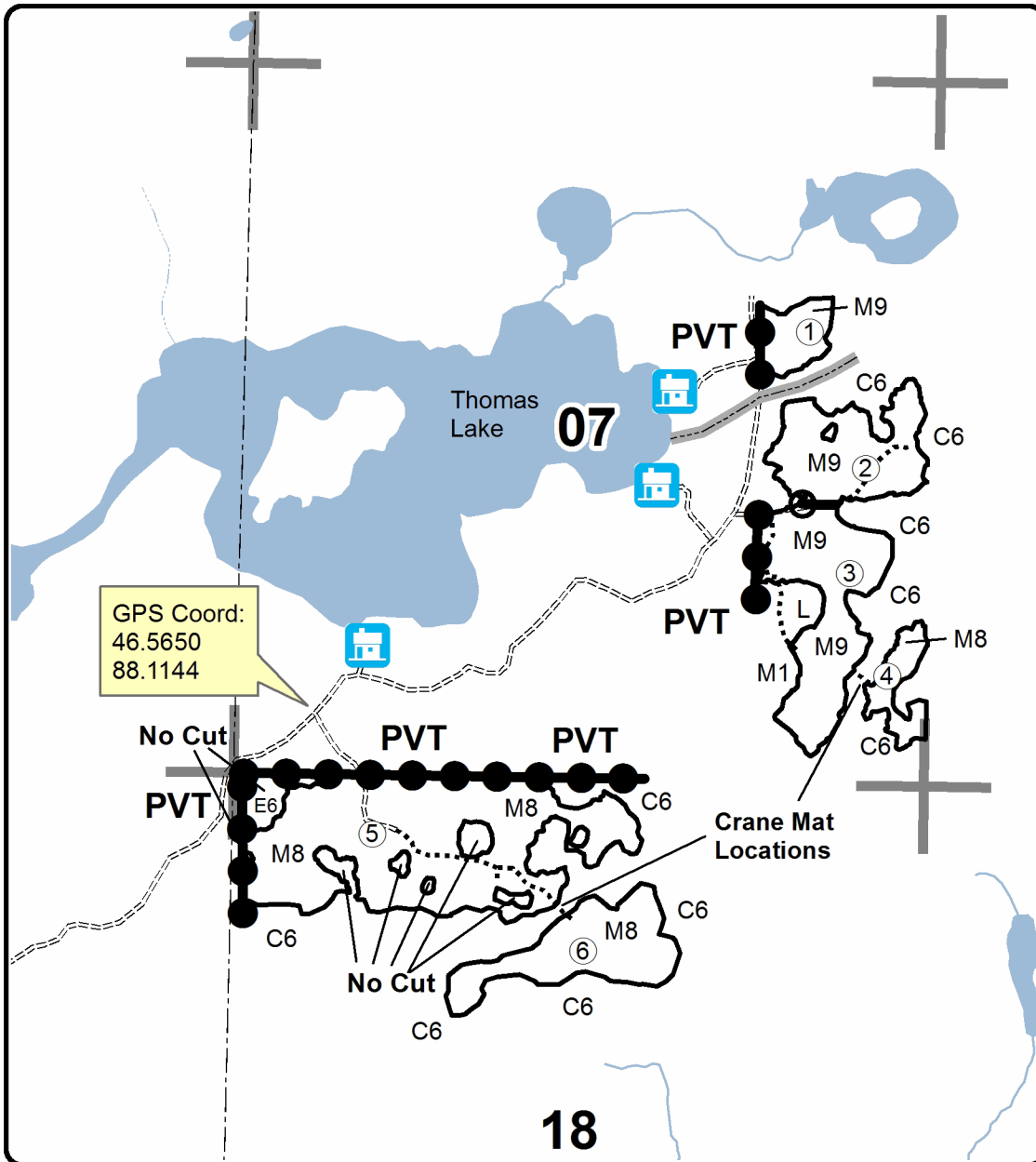
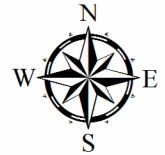
Cover Type				Density	
A = Aspen	H = Hemlock	N = Marsh	U = Upland Brush	0 = Non Stocked	5 = Pole Timber Medium
B = Paper Birch	J = Jack Pine	O = Oak	UM = Upland Mixed	1 = Seedling Sapling Poor	6 = Pole Timber Well
C = Cedar	L = Lowland Brush	P = Lowland Poplar	V = Bog or Marsh	2 = Seedling Sapling Medium	7 = Saw Timber Poor
D = Treed Bog	LM = Lowland Mixed	Q = Mixed Swamp Conifer	W = White Pine	3 = Seedling Sapling Well	8 = Saw Timber Medium
E = Swamp Hdwoods	M = Mpl, Bch, Brch	R = Red Pine	X = Non Stocked	4 = Pole Timber Poor	9 = Saw Timber Well
F = Spruce Fir	MC = Mixed Conifer	S = Black Spruce	Z = Water		
G = Grass	MD = Mixed Deciduous	T = Tamarack			

PU	Acres	PU	Acres
1	5.6	4	4.8
2	16.4	5	48.3
3	21.6	6	16.2

## Thomas Lake Twig Eaters

### Compartment 217

112.9 Acres

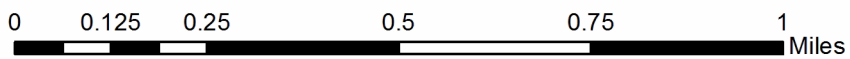


GPS Coord:  
46.5650  
88.1144

### Legend

- Camp
- Stream
- Poor Dirt Road
- Skid Trail
- Against State (Red)
- Payment Unit (Green)
- Private Line (Blue)
- Section Corners

QR Code for PDF Maps





Thomas Lake Twig Eaters (32-020-20)  
T48N, R30W, SEC. 18; T48N, R30W, SEC. 7; Marquette COUNTY

In response to the notice of sale to be held 2:00 p.m. (local time) on July 10, 2023, I am hereby submitting my sealed bid ( firm offer) for the following forest products to be cut. Bids for individual species must be at or above the advertised price. All non-responsive bid forms may be rejected.

<u>PRODUCTS &amp; SPECIES</u>	<u>ESTIMATED VOLUME*</u>	<u>ADVERTISED PRICE</u>	<u>BID PRICE/UNIT</u>
<b>Sawtimber</b>			
Red Maple	25.0 MBF	\$ 137.00/MBF	\$ _____
Sugar Maple	132.0 MBF	\$ 174.00/MBF	\$ _____
<b>Pulpwood</b>			
Balsam Fir	41 Cords	\$ 16.15/Cord	\$ _____
Mixed Hardwood	1,600 Cords	\$ 16.00/Cord	\$ _____
Paper Birch	6 Cords	\$ 21.80/Cord	\$ _____
White Spruce	7 Cords	\$ 23.00/Cord	\$ _____

\*These estimated volumes are final and not subject to adjustment. Prospective bidders are urged to examine this timber and to make their own estimates of quantity and quality.

I understand that any or all bids may be rejected. All bids must be signed and all bid items must be bid or the bid form may be rejected. I also understand that consideration and awarding a contract will be based upon my past performance and ability to complete the contract based upon equipment and staffing subject to my control.

FEDERAL ID: \_\_\_\_ - \_\_\_\_ - \_\_\_\_ or SOCIAL SECURITY NUMBER: \_\_\_\_ - \_\_\_\_ - \_\_\_\_

Company or individual bidding: \_\_\_\_\_

Company representative's name: \_\_\_\_\_

Address: \_\_\_\_\_

City: \_\_\_\_\_ State: \_\_\_\_\_ Zip: \_\_\_\_\_

IF AVAILABLE, PLEASE PLACE THE PERSONALIZED LABEL FROM YOUR PROSPECTUS IN THE ABOVE BOX.

Individual or company representative's signature: \_\_\_\_\_ Date: \_\_\_\_\_

Phone number : \_\_\_\_\_ Email (optional): \_\_\_\_\_

**THE WINNING BIDDER MUST COMPLETE THE VERIFICATION OF WORKER'S DISABILITY COMPENSATION ACT COMPLIANCE (ON REVERSE SIDE IF DOUBLE SIDED) WITHIN 21 DAYS OF SALE AWARD DATE**



# TIMBER SALE VERIFICATION OF WORKER'S DISABILITY COMPENSATION ACT COMPLIANCE

As required by Act 317, P.A. 1969 (Worker's Compensation) and  
Part 5 of Act 451 of 1994, as amended.

<b>FOR DEPARTMENT USE ONLY</b>	
Sale Number (XX - XXX - XX - XX)	
Forest Management Unit:	

### VERIFICATION OF WORKER'S DISABILITY COMPENSATION ACT COMPLIANCE

- This verification must be completed and submitted within 21 days of contract award and prior to the issuance of the timber sale contract.
- In addition, if boxes 2B or 2C are checked, then Notice of Exclusion or Certificate of Insurance must be submitted within twenty-one (21) days of the contract award and prior to the issuance of the timber sale contract.
- All information must be typed or printed except for written signatures.

Please Check Appropriate Categories:

1. My business is organized as (you **must** check one of the boxes below):
  - A.  Sole Proprietorship (individual)
  - B.  Partnership
  - C.  Corporation
2. You **must** check one of the boxes below:
  - A.  I certify my business is a sole proprietorship and it has no employees but the sole proprietor. I am not subject to the Worker's Compensation Laws.
  - B.  I certify my business has satisfied its obligation to the Worker's Compensation Act through the use of an approved Notice of Exclusion (BWC-337, Rev. 5/96). I will provide a copy of the Notice of Exclusion within 21 days of the contract award. (For questions or a copy of the BWC-337, please call the Worker's Compensation Bureau at 517-322-1195).
  - C.  I certify my business has a Worker's Compensation Policy. I will provide an original Certificate of Insurance within twenty-one (21) days of the contract award.
3. If you have checked item 2(A) or 2(B), you **must** indicate the number of **both** full-time and part-time employees, other than yourself, including family members and active partners (if none, you must enter "0").

\_\_\_\_\_ Full-time Employees

\_\_\_\_\_ Part-time Employees

Name of Business		Federal ID (or) Social Security No.	
Address		Telephone (      )	
City	State	ZIP	

*I hereby certify that the above information is true and correct. I agree to notify the Michigan DNR of any changes that occur in factors affecting my coverage during any of my present and future operations.*

\_\_\_\_\_  
Signature of Owner or Authorized Representative

\_\_\_\_\_  
Title

\_\_\_\_\_  
Date

Please complete the "SEALED BID" information on the next page

Huber North (32-017-22)

T45N, R23W, SEC. 20; T45N, R23W, SEC. 21; T45N, R23W, SEC. 22; T45N,

In response to the notice of sale to be held 2:00 p.m. (local time) on July 10, 2023, I am hereby submitting my sealed bid ( firm offer) for the following forest products to be cut. Bids for individual species must be at or above the advertised price. All non-responsive bid forms may be rejected.

<u>PRODUCTS &amp; SPECIES</u>	<u>ESTIMATED VOLUME*</u>	<u>ADVERTISED PRICE</u>	<u>BID PRICE/UNIT</u>
<b>Sawtimber</b>			
Basswood	15.6 MBF	\$ 35.00/MBF	\$ _____
Black Cherry	5.8 MBF	\$ 75.00/MBF	\$ _____
Red Maple	84.5 MBF	\$ 137.00/MBF	\$ _____
Sugar Maple	21.5 MBF	\$ 174.00/MBF	\$ _____
Yellow Birch	21.6 MBF	\$ 30.00/MBF	\$ _____
<b>Pulpwood</b>			
Balsam Fir	285 Cords	\$ 16.15/Cord	\$ _____
Mixed Hardwood	2,478 Cords	\$ 16.00/Cord	\$ _____
Mixed Spruce	473 Cords	\$ 23.00/Cord	\$ _____
Quaking Aspen	43 Cords	\$ 26.25/Cord	\$ _____
Tamarack	149 Cords	\$ 29.90/Cord	\$ _____

\*The volumes are statistically estimated within plus (+) or minus (-) 10.94 percent at 95% confidence level. These estimated volumes are final and not subject to adjustment. Prospective bidders are urged to examine this timber and to make their own estimates of quantity and quality.

I understand that any or all bids may be rejected. All bids must be signed and all bid items must be bid or the bid form may be rejected. I also understand that consideration and awarding a contract will be based upon my past performance and ability to complete the contract based upon equipment and staffing subject to my control.

FEDERAL ID: \_\_\_\_\_ or SOCIAL SECURITY NUMBER: \_\_\_\_\_

Company or individual bidding: \_\_\_\_\_

Company representative's name: \_\_\_\_\_

Address: \_\_\_\_\_

City: \_\_\_\_\_ State: \_\_\_\_\_ Zip: \_\_\_\_\_

IF AVAILABLE, PLEASE PLACE THE PERSONALIZED LABEL FROM YOUR PROSPECTUS IN THE ABOVE BOX.

Individual or company representative's signature: \_\_\_\_\_ Date: \_\_\_\_\_

Phone number : \_\_\_\_\_ Email (optional): \_\_\_\_\_

**THE WINNING BIDDER MUST COMPLETE THE VERIFICATION OF WORKER'S DISABILITY COMPENSATION ACT COMPLIANCE (ON REVERSE SIDE IF DOUBLE SIDED) WITHIN 21 DAYS OF SALE AWARD DATE**



# TIMBER SALE VERIFICATION OF WORKER'S DISABILITY COMPENSATION ACT COMPLIANCE

As required by Act 317, P.A. 1969 (Worker's Compensation) and  
Part 5 of Act 451 of 1994, as amended.

FOR DEPARTMENT USE ONLY	
Sale Number (XX - XXX - XX - XX)	
Forest Management Unit:	

## VERIFICATION OF WORKER'S DISABILITY COMPENSATION ACT COMPLIANCE

- This verification must be completed and submitted within 21 days of contract award and prior to the issuance of the timber sale contract.
- In addition, if boxes 2B or 2C are checked, then Notice of Exclusion or Certificate of Insurance must be submitted within twenty-one (21) days of the contract award and prior to the issuance of the timber sale contract.
- All information must be typed or printed except for written signatures.

Please Check Appropriate Categories:

1. My business is organized as (you **must** check one of the boxes below):
  - A.  Sole Proprietorship (individual)
  - B.  Partnership
  - C.  Corporation
2. You **must** check one of the boxes below:
  - A.  I certify my business is a sole proprietorship and it has no employees but the sole proprietor. I am not subject to the Worker's Compensation Laws.
  - B.  I certify my business has satisfied its obligation to the Worker's Compensation Act through the use of an approved Notice of Exclusion (BWC-337, Rev. 5/96). I will provide a copy of the Notice of Exclusion within 21 days of the contract award. (For questions or a copy of the BWC-337, please call the Worker's Compensation Bureau at 517-322-1195).
  - C.  I certify my business has a Worker's Compensation Policy. I will provide an original Certificate of Insurance within twenty-one (21) days of the contract award.
3. If you have checked item 2(A) or 2(B), you **must** indicate the number of **both** full-time and part-time employees, other than yourself, including family members and active partners (if none, you must enter "0").

\_\_\_\_\_ Full-time Employees

\_\_\_\_\_ Part-time Employees

Name of Business		Federal ID (or) Social Security No.	
Address		Telephone (       )	
City	State	ZIP	

*I hereby certify that the above information is true and correct. I agree to notify the Michigan DNR of any changes that occur in factors affecting my coverage during any of my present and future operations.*

\_\_\_\_\_  
Signature of Owner or Authorized Representative

\_\_\_\_\_  
Title

\_\_\_\_\_  
Date

Please complete the "SEALED BID" information on the next page



Newlywed Mix (32-014-22)  
T50N, R28W, SEC. 16; Marquette COUNTY

In response to the notice of sale to be held 2:00 p.m. (local time) on July 10, 2023, I am hereby submitting my sealed bid ( firm offer) for the following forest products to be cut. Bids for individual species must be at or above the advertised price. All non-responsive bid forms may be rejected.

<u>PRODUCTS &amp; SPECIES</u>	<u>ESTIMATED VOLUME*</u>	<u>ADVERTISED PRICE</u>	<u>BID PRICE/UNIT</u>
<b>Sawtimber</b>			
Paper Birch	1.2 MBF	\$ 65.00/MBF	\$ _____
Red Maple	14.6 MBF	\$ 137.00/MBF	\$ _____
Sugar Maple	11.4 MBF	\$ 174.00/MBF	\$ _____
White Pine	13.3 MBF	\$ 60.00/MBF	\$ _____
<b>Pulpwood</b>			
Balsam Fir	106 Cords	\$ 16.15/Cord	\$ _____
Jack Pine	15 Cords	\$ 45.30/Cord	\$ _____
Mixed Hardwood	704 Cords	\$ 16.00/Cord	\$ _____
Paper Birch	139 Cords	\$ 21.80/Cord	\$ _____
White Pine	170 Cords	\$ 25.70/Cord	\$ _____
White Spruce	78 Cords	\$ 23.00/Cord	\$ _____

\*The volumes are statistically estimated within plus (+) or minus (-) 11.71 percent at 95% confidence level. These estimated volumes are final and not subject to adjustment. Prospective bidders are urged to examine this timber and to make their own estimates of quantity and quality.

I understand that any or all bids may be rejected. All bids must be signed and all bid items must be bid or the bid form may be rejected. I also understand that consideration and awarding a contract will be based upon my past performance and ability to complete the contract based upon equipment and staffing subject to my control.

FEDERAL ID: \_\_\_\_\_ or SOCIAL SECURITY NUMBER: \_\_\_\_\_

Company or individual bidding: \_\_\_\_\_

Company representative's name: \_\_\_\_\_

Address: \_\_\_\_\_

City: \_\_\_\_\_ State: \_\_\_\_\_ Zip: \_\_\_\_\_

IF AVAILABLE, PLEASE PLACE THE PERSONALIZED LABEL FROM YOUR PROSPECTUS IN THE ABOVE BOX.

Individual or company representative's signature: \_\_\_\_\_ Date: \_\_\_\_\_

Phone number : \_\_\_\_\_ Email (optional): \_\_\_\_\_

**THE WINNING BIDDER MUST COMPLETE THE VERIFICATION OF WORKER'S DISABILITY COMPENSATION ACT COMPLIANCE (ON REVERSE SIDE IF DOUBLE SIDED) WITHIN 21 DAYS OF SALE AWARD DATE**



FOR DEPARTMENT USE ONLY	
Sale Number (XX - XXX - XX - XX)	
Forest Management Unit:	

## TIMBER SALE VERIFICATION OF WORKER'S DISABILITY COMPENSATION ACT COMPLIANCE

As required by Act 317, P.A. 1969 (Worker's Compensation) and  
Part 5 of Act 451 of 1994, as amended.

### VERIFICATION OF WORKER'S DISABILITY COMPENSATION ACT COMPLIANCE

- This verification must be completed and submitted within 21 days of contract award and prior to the issuance of the timber sale contract.
- In addition, if boxes 2B or 2C are checked, then Notice of Exclusion or Certificate of Insurance must be submitted within twenty-one (21) days of the contract award and prior to the issuance of the timber sale contract.
- All information must be typed or printed except for written signatures.

Please Check Appropriate Categories:

1. My business is organized as (you **must** check one of the boxes below):
  - A.  Sole Proprietorship (individual)
  - B.  Partnership
  - C.  Corporation
2. You **must** check one of the boxes below:
  - A.  I certify my business is a sole proprietorship and it has no employees but the sole proprietor. I am not subject to the Worker's Compensation Laws.
  - B.  I certify my business has satisfied its obligation to the Worker's Compensation Act through the use of an approved Notice of Exclusion (BWC-337, Rev. 5/96). I will provide a copy of the Notice of Exclusion within 21 days of the contract award. (For questions or a copy of the BWC-337, please call the Worker's Compensation Bureau at 517-322-1195).
  - C.  I certify my business has a Worker's Compensation Policy. I will provide an original Certificate of Insurance within twenty-one (21) days of the contract award.
3. If you have checked item 2(A) or 2(B), you **must** indicate the number of **both** full-time and part-time employees, other than yourself, including family members and active partners (if none, you must enter "0").

\_\_\_\_\_ Full-time Employees

\_\_\_\_\_ Part-time Employees

Name of Business		Federal ID (or) Social Security No.	
Address		Telephone (       )	
City	State	ZIP	

*I hereby certify that the above information is true and correct. I agree to notify the Michigan DNR of any changes that occur in factors affecting my coverage during any of my present and future operations.*

\_\_\_\_\_  
Signature of Owner or Authorized Representative

\_\_\_\_\_  
Title

\_\_\_\_\_  
Date

Please complete the "SEALED BID" information on the next page

Porky Pulp (32-021-22)  
T46N, R28W, SEC. 18; Marquette COUNTY

In response to the notice of sale to be held 2:00 p.m. (local time) on July 10, 2023, I am hereby submitting my sealed bid ( firm offer) for the following forest products to be cut. Bids for individual species must be at or above the advertised price. All non-responsive bid forms may be rejected.

<u>PRODUCTS &amp; SPECIES</u>	<u>ESTIMATED VOLUME*</u>	<u>ADVERTISED PRICE</u>	<u>BID PRICE/UNIT</u>
Pulpwood			
Balsam Fir	197 Cords	\$ 16.15/Cord	\$ _____
Jack Pine	33 Cords	\$ 45.30/Cord	\$ _____
Mixed Spruce	505 Cords	\$ 23.00/Cord	\$ _____
Paper Birch	16 Cords	\$ 21.80/Cord	\$ _____
Quaking Aspen	557 Cords	\$ 26.25/Cord	\$ _____
Red Maple	18 Cords	\$ 16.00/Cord	\$ _____
Tamarack	120 Cords	\$ 29.90/Cord	\$ _____

\*The volumes are statistically estimated within plus (+) or minus (-) 9.48 percent at 95% confidence level. These estimated volumes are final and not subject to adjustment. Prospective bidders are urged to examine this timber and to make their own estimates of quantity and quality.

I understand that any or all bids may be rejected. All bids must be signed and all bid items must be bid or the bid form may be rejected. I also understand that consideration and awarding a contract will be based upon my past performance and ability to complete the contract based upon equipment and staffing subject to my control.

FEDERAL ID: \_\_\_ - \_\_\_ - \_\_\_\_\_ or SOCIAL SECURITY NUMBER: \_\_\_ - \_\_\_ - \_\_\_\_\_

Company or individual bidding: \_\_\_\_\_

Company representative's name: \_\_\_\_\_

Address: \_\_\_\_\_

City: \_\_\_\_\_ State: \_\_\_\_\_ Zip: \_\_\_\_\_

IF AVAILABLE, PLEASE PLACE THE PERSONALIZED LABEL FROM YOUR PROSPECTUS IN THE ABOVE BOX.

Individual or company representative's signature: \_\_\_\_\_ Date: \_\_\_\_\_

Phone number : \_\_\_\_\_ Email (optional): \_\_\_\_\_

**THE WINNING BIDDER MUST COMPLETE THE VERIFICATION OF WORKER'S DISABILITY COMPENSATION ACT COMPLIANCE (ON REVERSE SIDE IF DOUBLE SIDED) WITHIN 21 DAYS OF SALE AWARD DATE**



# TIMBER SALE VERIFICATION OF WORKER'S DISABILITY COMPENSATION ACT COMPLIANCE

As required by Act 317, P.A. 1969 (Worker's Compensation) and  
Part 5 of Act 451 of 1994, as amended.

FOR DEPARTMENT USE ONLY	
Sale Number (XX - XXX - XX - XX)	
Forest Management Unit:	

## VERIFICATION OF WORKER'S DISABILITY COMPENSATION ACT COMPLIANCE

- This verification must be completed and submitted within 21 days of contract award and prior to the issuance of the timber sale contract.
- In addition, if boxes 2B or 2C are checked, then Notice of Exclusion or Certificate of Insurance must be submitted within twenty-one (21) days of the contract award and prior to the issuance of the timber sale contract.
- All information must be typed or printed except for written signatures.

Please Check Appropriate Categories:

1. My business is organized as (you **must** check one of the boxes below):
  - A.  Sole Proprietorship (individual)
  - B.  Partnership
  - C.  Corporation
2. You **must** check one of the boxes below:
  - A.  I certify my business is a sole proprietorship and it has no employees but the sole proprietor. I am not subject to the Worker's Compensation Laws.
  - B.  I certify my business has satisfied its obligation to the Worker's Compensation Act through the use of an approved Notice of Exclusion (BWC-337, Rev. 5/96). I will provide a copy of the Notice of Exclusion within 21 days of the contract award. (For questions or a copy of the BWC-337, please call the Worker's Compensation Bureau at 517-322-1195).
  - C.  I certify my business has a Worker's Compensation Policy. I will provide an original Certificate of Insurance within twenty-one (21) days of the contract award.
3. If you have checked item 2(A) or 2(B), you **must** indicate the number of **both** full-time and part-time employees, other than yourself, including family members and active partners (if none, you must enter "0").

\_\_\_\_\_ Full-time Employees

\_\_\_\_\_ Part-time Employees

Name of Business		Federal ID (or) Social Security No.	
Address		Telephone (       )	
City	State	ZIP	

*I hereby certify that the above information is true and correct. I agree to notify the Michigan DNR of any changes that occur in factors affecting my coverage during any of my present and future operations.*

\_\_\_\_\_  
Signature of Owner or Authorized Representative

\_\_\_\_\_  
Title

\_\_\_\_\_  
Date

Please complete the "SEALED BID" information on the next page