



**DEPARTMENT OF NATURAL RESOURCES  
STATE OF MICHIGAN  
TIMBER SALE PROSPECTUS #7260**

SCHEDULED SALE DATE AND TIME: 2:00 p.m. (local time) on July 12, 2023.

LOCATION: SHINGLETON MGMT UNIT, PO BOX 67, M 28 WEST, SHINGLETON, MI 49884.

PROSPECTUS NOTE: The bidder is advised to inspect the sale area and review the location, estimated volumes, operating costs and contract terms of proposed sales. Please be aware that some landowners may request 60 days or more notice for access across their land.

Notice is hereby given that bids will be received by the Unit Manager, SHINGLETON MANAGEMENT UNIT, for certain timber on the following described lands:

C-142 Pine (41-015-22) / T48N, R15W, SEC. 19, NESE.

T48N, R15W, SEC. 20, NW,NWNE,S1/2NE,N1/2SW,SESW.

T48N, R15W, SEC. 20, W1/2SE.

T48N, R15W, SEC. 28, W1/2SW.

T48N, R15W, SEC. 29, NENW,N1/2NE,S1/2SW,SE.

Alger County, Advertised Price \$195,258.45, 358.8 Acres, Red Pine, Spruce/Fir/Tamarack.

SALE NOTE: H-58 and the Adams Trail are snowmobile trails. See Sale Spec 5.2.41 for restrictions.

Maple is designated but will need to be scaled at the landing before it can be removed. White pine can only be cut when needed for operability. Maple and white pine will be invoiced at the district average price when its cut.

A recreation site such as a trail, pathway, or campground is within the sale area or the vicinity. Certain restrictions/specifications may be applicable including time restrictions.

C-104 Contract (41-017-22) / T49N, R13W, SEC. 27, S1/2NW,SENE,SW,NWSE,S1/2SE.

T49N, R13W, SEC. 28, E1/2SE.

T49N, R13W, SEC. 34, N1/2NW,NESE.

T49N, R13W, SEC. 35, SW,SE.

Alger County, Advertised Price \$233,061.30, 435.6 Acres, Jack Pine, Spruce/Fir/Tamarack.

SALE NOTE: The County must be contacted prior to crossing or harvesting in the County Road R-O-W. This applies to Payment Units 9 and 13 and the Old Seney Road.

Permission for access across private land and other public land is the responsibility of the Purchaser. The other public landowner is Burt Township.

Within Payment Unit(s) 4, 9 and 13, harvesting is limited to frozen conditions (generally December 1 to March 31) due to sensitive soils.

Within Payment Unit(s) 5, 7 and 10, harvesting is not permitted during the period of April 15 to July 15 because of bark slippage.

The Old Seney Road is a snowmobile trail and is shown on the Timber Sale Map. See Sale Spec 5.2.41 for restrictions.

A recreation site such as a trail, pathway, or campground is within the sale area or the vicinity. Certain restrictions/specifications may be applicable including time restrictions. Access may be through other public land.

## BID INSTRUCTIONS (VER. 10/10/2022):

### 1. Scheduled Bid Location, Date, and Time (2/11)

Bids must be received by the Unit Manager, SHINGLETON OFFICE, PO Box 67 M 28 West, Shingleton, MI 49884, no later than 2:00 p.m. (local time) on July 12, 2023. For further information concerning this sale, contact Robert Burnham at 906-420-1645 extension n/a.

### 2. Bidder's Qualifications (10/22)

If all or part of a timber sale was prepared by a private contractor, the contractor and that contractor's company are not permitted to bid on the timber sale. A person must be 18 years of age or older to purchase timber. Permanent employees of the Department of Natural Resources or members of their immediate household may not bid. Former employees, in the permanent or seasonal class, may not bid until 3 months after the last day of active duty. Bids will not be accepted from individuals or companies appearing on the DNR/FRD No-Bid List. This list contains the names of purchasers who previously failed to execute a contract within 21-days or who have a history of poor performance.

### 3. Preparation of Sealed Bids (5/16)

Bid Forms may be completed online thru Michigan DNR Timber Sale Online Bidding (OLB) at [www.michigan.gov/timberbidding](http://www.michigan.gov/timberbidding) or by completing the hardcopy Bid Form found in the Timber Sale Prospectus. Hardcopy Bid Forms shall be manually signed in ink. Registration in OLB is considered your 'signature' for all bids submitted thru that system. Bid prices must be entered for each species and product in the Bid Price column for all material subject to bidding and all fill-in blanks must be completed. If erasures or other changes appear on the hardcopy Bid Form, each erasure or change must be initialed by the person signing the bid.

### 4. Submission of Sealed Bids (5/16)

Bid forms may be obtained from the Unit Manager or thru OLB. Bids may be submitted hardcopy or thru OLB. All hardcopy bids must be submitted on the bid form and in an envelope clearly identified as described in this section. NOTE: Only one bid form per bid envelope. Sealed bids must be submitted to the Unit office designated in the prospectus and must be submitted at or prior to the time established in the prospectus. The envelope should show on the outside (a) the sale name or number and (b) the date and time of bid opening, as shown in the prospectus. Bids received after the time specified in the sale prospectus are late bids and will be rejected.

It is possible for a bidder to submit multiple bids on a single sale. For example, a bid may be submitted hardcopy and a bid may be submitted thru OLB. Or, two bidders from the same company could both submit bids on the same sale. If this were to happen, the State would accept all bids received and award the contract accordingly. All bidding and contractual requirements would apply to all bids received.

### 5. Public Opening of Sealed Bids (7/16)

If conditions permit, the sealed bids will be publicly opened and posted at the time and place set in the prospectus.

If a bidder, present at a bid opening, has submitted bids on more than one sale, that bidder may withdraw their unopened bid envelopes or announce the withdrawal of their online bid after being declared the successful bidder on one sale.

### 6. Award of Contract (1/11)

Award of the contract will be made to the Bidder whose bid, conforming to the prospectus, is most advantageous to the State of Michigan on the basis of total value at rates bid for the estimated quantities. The State reserves the right to reject any bid or waive any minor irregularity in bids received. A written award mailed (or otherwise furnished) to the successful Bidder shall be deemed to result in a binding contract without further action by either party.

### 7. Down Payment (1/11)

The Bidder to whom award is made must make a down payment within 21 days of the sale award. The amount of the down payment will be calculated as shown in the Bond and Payment Schedule of this prospectus. Only cash may be used to meet this requirement.

### 8. Performance Security (1/11)

As guarantee of faithful performance, a cash bond, certificate of deposit, surety bond or irrevocable letter of credit (LOC) is required within 21 days of the sale award. The amount of the performance security is shown in the Bond and

Payment Schedule of this prospectus. If an LOC or surety is used, the coverage must extend for at least 6 months beyond the contract expiration.

#### 9. Worker's Compensation (10/22)

Purchaser shall obtain worker's compensation insurance to cover claims under Michigan's Worker's Disability Compensation Act of 1969 or similar employee benefit act of any other state applicable to an employee. Verification of Worker's Disability Compensation Act Compliance must be completed and submitted within 21 days of contract award and prior to the issuance of the timber sale contract. In addition, if applicable, Notice of Exclusion or Certificate of Insurance must also be submitted.

#### 10. Timber Sale Contract (10/22)

Additional conditions and requirements common to all timber sales are listed on the timber sale contract (R4031) and are available on line at [www.michigan.gov/timber](http://www.michigan.gov/timber). Contact the Unit Manager for additional information or a sample contract. Within 21 days of the date of the award letter, the bidder must sign the contract and provide the required down payment, performance security, and verification of worker's disability compensation. The down payment and performance security shall be in accordance with the provisions of the timber sale contract, in the sums stated in this prospectus. If these actions are not taken, then the Bidder, the Bidder's corporation, and the corporation's principals may not be permitted to bid on State timber sales for a period of 3 months after the first offense, 6 months after the second offense, and 1 year after the third offense. An offense will only be counted against the Bidder for 5 years. In addition, the Bidder certifies that if awarded this contract, the Bidder will complete the timber sale contract in accordance with its terms and any modifications thereof including requirements to purchase, cut, and remove the included timber by the expiration date.

Payment Unit values in the State Forest Timber Sale Contract are calculated based on the advertised value of the Payment Unit as a percentage of the total advertised value of the contract. The advertised value of each Payment Unit is given in the Description of Timber by Payment Unit table on the Timber Sale Information page. For example, if the value of Payment Unit 1 is advertised as \$1,500 and the total Timber Sale value is advertised as \$10,000, the contract price for Payment Unit 1 will be 15% of the total bid price ( $\$1,500/\$10,000 * 100$ ).

#### 11. Disclaimer of Estimates and Bidder's Warranty of Inspection (10/22)

Before submitting this bid, the Bidder is advised and cautioned to inspect the sale area, review the requirements of the sale contract, and take other steps as may be reasonably necessary to ascertain the location, estimated volumes, construction estimates, and operating costs of the proposed sale. Failure to do so will not relieve the Bidder from responsibility for completing the contract.

The Bidder warrants that this bid is submitted solely on the basis of the Bidder's examination and inspection of the quality and quantity of the timber offered for sale and the Bidder's opinion of the value thereof and the costs of recovery. No reliance should be placed on the State of Michigan's estimates of timber quality, quantity or costs of recovery. Bidder further acknowledges that the State of Michigan: (i) expressly disclaims any warranty of fitness of timber for any purpose; (ii) offers this timber as is without any warranty of quality (merchantability) or quantity and (iii) expressly disclaims any warranty as to the quantity or quality of timber sold.

#### 12. Certification and Chain-of-Custody (10/22)

Unless otherwise indicated in the contract under section 7 – Other Conditions of the Sale Specific Conditions & Requirements, the area encompassed by this timber sale is certified to the standards of the Forest Stewardship Council (FSC) - Certificate #SCS-FM/COC-00090N and the Sustainable Forestry Initiative (SFI) - Certificate #NSF-SFIS-5Y031-SF5. Forest products from this sale may be delivered to the mill as "FSC 100% and / or SFI certified" as long as the contractor hauling the forest products is chain-of-custody (COC) certified or covered under a COC certificate from the destination mill. The purchaser is responsible for maintaining COC after leaving the sale area.

#### 13. Good Neighbor Authority (GNA) Requirements (10/22)

If the name of this timber sales contains the acronym GNA, it is authorized by the Good Neighbor Authority (GNA) and covered by various agreements between the U.S. Forest Service and the State. The timber sale occurs on federal land and the following conditions apply:

GNA contracts on US Forest Service land will not be awarded to purchasers on the Federal list of excluded parties. The System for Award Management (SAM) will be checked for active excluded parties prior to award of contract. In

addition, the Bidder to whom award is made must complete an Assurance Regarding Felony Conviction or Tax Delinquent Status for Corporate Applicants (AD-3031).

14. Good Neighbor Authority (GNA) Requirements, con't (10/22)

Bidder certifies, by signing this bid form, that to the best of Bidder's knowledge that the following representations are accurate and complete.

- a. That the Bidder and its principals are not presently debarred, suspended, proposed for debarment, declared ineligible, or voluntary excluded from timber sales (covered transactions) by any Federal department or agency.
- b. That the Bidder and its principals have not within a 3-year period preceding this bid been convicted of or had a civil judgment rendered against them for commission of fraud or a criminal offense in connection with obtaining , attempting to obtain, or performing a public (Federal, State, or local) transaction or contract under a public transaction; violation of Federal or State antitrust statutes or commission of embezzlement, theft, forgery, bribery, falsification or destruction of records, making false statements, or receiving stolen property.
- c. That the Bidder and its principals are not presently indicted for or otherwise criminally or civilly charged by a governmental entity (Federal, State, or local) with commission of any of the offenses enumerated in paragraph b of this certification.
- d. That the Bidder and its principals have not within a 3-year period preceding this bid had one or more public transactions (Federal, State, or local) terminated for breach or default of a timber or forest product contract.

Bidders that cannot certify this requirement, in whole or in part, shall submit an explanation with their bid.

SHANNON LOTT, Acting  
Director

# TIMBER SALE INFORMATION

## C-142 Pine (41-015-22)

T48N, R15W, SEC. 19; T48N, R15W, SEC. 20; T48N, R15W, SEC. 28; T48N, R15W, SEC. 29.  
Alger County (Advertised Price \$195,258.45)

SALE NOTE: H-58 and the Adams Trail are snowmobile trails. See Sale Spec 5.2.41 for restrictions.

Maple is designated but will need to be scaled at the landing before it can be removed. White pine can only be cut when needed for operability. Maple and white pine will be invoiced at the district average price when its cut.

A recreation site such as a trail, pathway, or campground is within the sale area or the vicinity. Certain restrictions/specifications may be applicable including time restrictions.

A timber sale contract for this lump sum, sealed bid timber sale will be awarded to the responsible bidder offering the highest sealed bid price. All units of volume listed below were estimated using the Inventory Manager computer program and the new Michigan taper model. Bids must be at or above the following advertised price for each product and species:

<u>PRODUCTS &amp; SPECIES</u>	<u>ESTIMATED UNITS*</u>	<u>ADVERTISED PRICE</u>
Pulpwood		
Balsam Fir	269 Cords	\$ 14.85 / Cord
Jack Pine	17 Cords	\$ 32.10 / Cord
Red Pine	2,024 Cords	\$ 89.90 / Cord
White Pine	41 Cords	\$ 29.60 / Cord
White Spruce	326 Cords	\$ 23.15 / Cord

\* The total volume is statistically estimated within plus (+) or minus (-) 9.46 percent. There are an estimated 2,663 cords on this timber sale, plus or minus 252 cords at the 95% confidence level. The estimated units are final and not subject to adjustment. Prospective bidders are urged to examine this timber and to make their own estimates of quantity and quality.

### **BOND AND PAYMENT SCHEDULE:**

1. A bond in the amount of \$9,763.00 to insure faithful performance of the conditions of the contract will be deposited by the successful bidder within 21 days of the sale award.
2. Cutting in any sale or unit without the required advance payment would be considered a trespass.
3. Total payment must be paid in advance or according to the following schedule:
  - (a) Ten percent (10%) of the sale value must be paid within 21 days of the sale award.
  - (b) The 10% down payment will be credited towards the first unit cut.

(c) Payment for each of the following units must be made before cutting begins in that unit:

<u>PAYMENT UNIT NUMBER</u>	<u>PERCENT OF TOTAL SALE VALUE</u>
01	6.7%
02	13.1%
03	12.5%
04	13.5%
05	15.1%
06	12.0%
07	5.8%
08	9.9%
09	3.3%
10	2.2%
11	5.9%

4. If no cutting takes place, the 10% down payment will not be refunded.
5. Operations on the contract issued will terminate on 06/30/2026.

### **SALE STATISTICS**

Volumes were calculated in cubic feet using the Michigan taper model. Cubic foot volume includes all wood inside bark for the product indicated. For display purposes, cubic feet were converted to cords and MBF using a simple conversion factor, e.g. 79 cubic feet per cord and 185 cubic feet per MBF. The cubic foot volumes are precise; the cords and MBF volumes are not. Cubic foot volume cannot be directly converted to cords or boards with precision.

## SALE VOLUMES

The total estimated sale volume may not equal the sum of the species/products due to the nature of statistical calculations associated with double sampling methodology.

VOLUME			STATISTICAL RANGE IN CORDS	
TOTAL CUBIC FEET	TOTAL CORDS	PERCENT ERROR	MINIMUM	MAXIMUM
210,357	2,663	9.46%	2,411	2,915

## VDU VOLUMES

A VDU is a Volume Determination Unit. Volumes and their associated statistics are calculated at the VDU level and summarized to the sale level. There is often a one to one relationship between a VDU and a Payment Unit, but not always, depending on the cruise design. Refer to the VDU TO PAYMENT UNIT table.

	VOLUME			RANGE IN CORDS	
VDU	TOTAL CUBIC FEET	TOTAL CORDS	PERCENT ERROR	MINIMUM	MAXIMUM
16	13,640	173	28.62%	123	222
20	113,037	1,431	14.31%	1,226	1,636
25	10,497	133	48.74%	68	198
34	16,895	214	31.73%	146	282
40	6,332	80	53.21%	38	123
57	3,799	48	67.31%	16	80
63	35,451	449	20.55%	357	541
69	10,706	136	69.32%	42	229
<b>TOTAL:</b>	<b>210,357</b>	<b>2,663</b>		<b>2,015</b>	<b>3,311</b>

## VDU TO PAYMENT UNIT

When a VDU is associated with more than one Payment Unit (PU), the VDU volumes are assigned to the PU based on acres of the VDU within the PU.

VDU	VDU ACRES	PU	PU ACRES
16	27.1	5	26.8
		6	0.3
20	190.8	1	19.6
		2	38.3
		3	36.5
		4	39.7
		5	22.8
		6	33.9
25	16.6	6	1.0
		7	15.6
34	27.4	8	27.4
40	9.9	9	9.9
57	9.3	10	9.3
63	63.6	11	63.6
69	14.1	11	14.1
<b>TOTAL:</b>	<b>358.8</b>		<b>358.8</b>

**DESCRIPTION OF TIMBER BY PAYMENT UNIT (PU)**

PU	MARKET GROUP	PRODUCT	QUANTITY	UNIT	ACRES	ADVERTISE PRICE
1	Red Pine White Pine	Pulpwood	144 4	Cords Cords	19.6	\$13,064.00
2	Red Pine White Pine	Pulpwood	281 8	Cords Cords	38.3	\$25,498.70
3	Red Pine White Pine	Pulpwood	268 8	Cords Cords	36.5	\$24,330.00
4	Red Pine White Pine	Pulpwood	291 9	Cords Cords	39.7	\$26,427.30
5	Red Pine White Pine	Pulpwood	329 5	Cords Cords	49.6	\$29,725.10
6	Red Pine White Pine	Pulpwood	259 7	Cords Cords	35.2	\$23,491.30
7	Red Pine	Pulpwood	125	Cords	15.6	\$11,237.50
8	Red Pine	Pulpwood	214	Cords	27.4	\$19,238.60
9	Jack Pine Red Pine	Pulpwood	17 65	Cords Cords	9.9	\$6,389.20
10	Red Pine	Pulpwood	48	Cords	9.3	\$4,315.20
11	Balsam Fir White Spruce	Pulpwood	269 326	Cords Cords	77.7	\$11,541.55
TOTAL:			2,677	Cords		

## Sale Specific Conditions & Requirements

**Sale Name: C-142 Pine**

**Sale Number: 41-015-22 Seq#: 1**

### 1 - Sale Area

#### 1.2 - Boundaries

##### 1.2.1 - Painted boundaries (9/19)

The sale boundary and Payment Unit boundaries are marked and identified by blue, red and yellow paint. Exterior sale boundary lines against private property are marked with blue paint. Exterior sale boundary lines against state are marked with red paint. Interior Payment Unit boundaries are marked with yellow paint. The painted boundary line trees are not Included Timber and are to be protected unless marked with orange paint.

### 2 - Timber Specifications

#### 2.1 - Included Timber

##### 2.1.3 - Cut tree marked unit(s) (12/08)

Within Payment Unit(s) 1-10, all trees are designated for cutting when marked with orange paint above and below stump height, regardless of merchantability.

##### 2.1.4 - Designated timber unit(s) (6/17)

Within Payment Unit(s) 11, all spruce and fir trees are designated for cutting which meet minimum piece specifications in 2.2 - Utilization. Maple is also designated but will need to be scaled at the landing before it can be removed. White pine can only be cut when needed for operability. Maple and white pine will be invoiced at the district average price when its cut.

#### 2.2 - Utilization

##### 2.2.3 - Stump heights (4/07)

Stump heights within the Sale Area shall not exceed 12 inches for trees greater than 10 inches DBH and 4 inches for trees smaller than 10 inches DBH. This is in order to facilitate planting operations.

### 3 - Payments

#### 3.3 - Pre-measured Sales

##### 3.3.4 - Dividing payment units (7/14)

Payment Unit(s) exceeding \$20,000 may be divided at the request of the Purchaser and upon approval of the Unit Manager. Dividing Payment Units is a contract modification which requires a Timber Sale Contract Amendment.

### 4 - Transportation

#### 4.1 - Construction

##### 4.1.3 - Slash and earthen piles (8/04)

Piles or windrows of earth along roads and landings that have been widened or constructed shall be leveled. Slash from road maintenance or construction, including stumps, shall be dispersed throughout the sale.

##### 4.1.4 - Timber removed for construction (12/09)

Trees cut or damaged in the process of pre-approved road, landing or skid trail construction will be decked in an area separate from other Designated Timber and not removed until measured by the sale administrator. Payment will be made at the specified Purchase Unit Price.

##### 4.1.6 - Road construction (1/09)

Construction of new roads or improvements of existing roads shall be done in such a way as to minimize the environmental and visual impacts. Merchantable trees shall be cut and utilized unless otherwise directed. Non-merchantable trees shall be severed and laid flat on the ground. Slash shall be scattered, and not left in windrows and kept a minimum of 10 feet back from the road edge. Stumps shall be set upright, not left on edge, and be moved at least Disturbed soil shall be feathered into the woods and not left in berms or windrows.

##### 4.1.7 - Road closure (10/11)



All new roads built into the sale must be blocked to vehicle traffic upon completion of the sale. Overgrown roads that are reopened shall be considered new roads. In general, this will require constructing a four (4') foot high berm of stumps and logs covered with earth. Stumps and brush must be placed along the remainder of the trail. These roads must be rendered impassable to cars and trucks. All stumps from road building and landing construction must be reserved to block any newly constructed roads upon completion of the sale. These stumps must be scattered along the road system to prohibit vehicular movement. Contact the sale administrator for specific details of design and placement.

## **5 - Operations**

### 5.2 - Conduct of Operations

#### 5.2.2 - Hazard Trees/Snags

##### 5.2.2.1 - Den trees (10/16)

Obvious hollow and/or den trees shall be protected and left standing unless they are a safety hazard.

#### 5.2.3 - Operating Restrictions

##### 5.2.3.6 - Bark beetle restriction (12/08)

In the event drought creates a high risk of pine bark beetle infestation, pine is not to be cut during the period March 1 through July 1, unless all portions of trees greater than two inches in diameter are removed from the sale area, reduced to chips, or treated to the satisfaction of the Unit Manager or his/her representative, within fifteen days of being severed from the stump. Pine log decks, pulpwood piles and treetops that are piled for chipping in the fall or winter within a 1/4 mile of susceptible sites must be removed before March 15. Residual slash must not be placed in piles or rows and must be spread over the site for quick drying. The Department of Natural Resources will exercise this specification if the risk of damage warrants.

##### 5.2.32 - Decking/landing restoration (9/13)

All decking and landing areas must have the surface area restored to a condition equal to or better than before. This is to ensure the proper regeneration of the stand. Wood debris, chips and "cookies" from trimmings must be removed or scattered away from landing and loading areas and may not be windrowed on the edge.

##### 5.2.38 - No decking against live trees (2/04)

Cut products may not be decked against unmarked or designated leave trees.

##### 5.2.41 - Snowmobile trail protection (9/11)

H-58 and the Adams Trail are snowmobile trails. Do not cut or damage posts with orange trail markers or traffic control signs. H-58 North of Kingston Corners cannot be used during the Snowmobile season, December 1 thru March 31. If the Adams Trail is used during the snowmobile season, then a snow covered base must be left on the trail. Maintain a 20 foot wide slash, debris, and rut free zone daily using the snowmobile trail as the centerline. No decking of forest products will be permitted along the snowmobile trail. All stumps within 20 feet of the snowmobile trail must be cut at ground level.

### 5.8 - Protection of Endangered Species

#### 5.8.3 - Red shoulder hawk or goshawk (2/16)

In the event that an active red shoulder hawk or goshawk nest is found, the contract may be amended to protect the nest site until the nest is determined to be inactive. The value of the trees in this excluded area will be refunded or credited to the Purchaser. The nest will be buffered with a five-chain radius (eight acre) protection area, centered on the nest tree, in which there will be no cutting or new roads constructed. Avoid human disturbance, including loading and skidding, in the protection area.

An additional zone of five chains (ten chains centered on the active nest tree) will be established in which there is no management activity from April 1 to July 30 (UP). Limit biomass harvesting and chipping operations within this ten-chain zone, retain the maximum one-third of residues per the Woody Biomass Harvesting Guidelines (Michigan DNR 2010). Nests determined to be inactive will be protected with a one-chain no-harvest buffer.

## **6 - Safety and Fire Prevention**

### 6.2 - Signing

#### 6.2.3 - Recreational trail posting (10/20)

The Purchaser is responsible for posting and maintaining caution signs on H-58 and the Adams Trail prior to beginning operations. The trail must be posted at appropriate distances from the sale area to warn of logging activity and truck traffic at both ends of the trail. Signs must be removed when harvest operations are suspended or completed. The Purchaser will provide these signs.



# TIMBER SALE MAP

This information provided by authority of Part 5, 1994 PA 451, as amended.

Sale Number	Year
41-15-01	22
Date	Page of
9/12/22	1 of 1

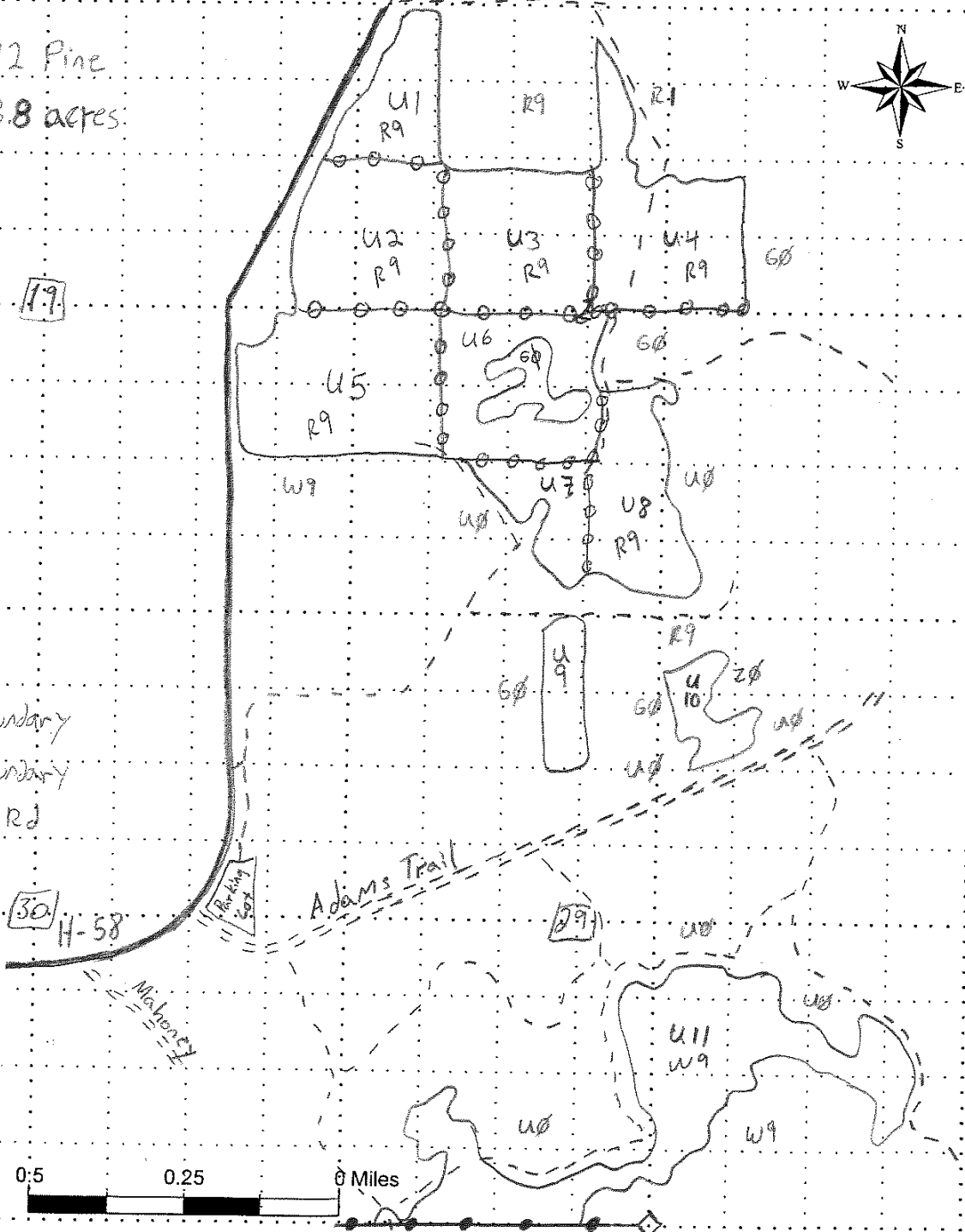
Forest Management Unit Shingleton	County Alger	Mapped By	Date	Page	of
Compartiment Number 142	Township 48N	Cruised By	19, 20, 28, 29	1	1
	Range 15 W				

Cover Type				Density	
A = Aspen	J = Jack Pine	O = Oak	U = Upland Brush	0 = Non Stocked	5 = Pole Timber Medium
B = Paper Birch	K = Rock	P = Lowland Poplar	UM = Upland Mix Forest	1 = Seedling Sapling Poor	6 = Pole Timber Well
C = Cedar	L = Lowland Brush	Q = Mixed Swamp Conifer	V = Bog or Marsh	2 = Seedling Sapling Medium	7 = Saw Timber Poor
D = Tread Bog	LM = Lowland Mix Forest	R = Red Pine	W = White Pine	3 = Seedling Sapling Well	8 = Saw Timber Medium
E = Swamp Hardwoods	M = Maple, Beech, Birch	S = Black Spruce	X = Non Stocked	4 = Pole Timber Poor	9 = Saw Timber Well
F = Spruce/Fir	MC = Mixed Conifer	T = Tamarack	Y = Sand		
G = Grass	MD = Mixed Deciduous		Z = Water		
H = Hemlock	N = Marsh				

C-142 Pine  
358.8 acres

Unit	Acres
1	19.6
2	38.3
3	36.5
4	39.7
5	49.6
6	35.2
7	15.6
8	27.4
9	9.9
10	9.3
11	77.7

- Red boundary
- Yellow unit boundary
- Blue P.V. boundary
- Paved county Rd
- Gravel Rd
- 2-track





# TIMBER SALE INFORMATION

## C-104 Contract (41-017-22)

T49N, R13W, SEC. 27; T49N, R13W, SEC. 28; T49N, R13W, SEC. 34; T49N, R13W, SEC. 35.  
Alger County (Advertised Price \$233,061.30)

**SALE NOTE:** The County must be contacted prior to crossing or harvesting in the County Road R-O-W. This applies to Payment Units 9 and 13 and the Old Seney Road.

Permission for access across private land and other public land is the responsibility of the Purchaser. The other public landowner is Burt Township.

Within Payment Unit(s) 4, 9 and 13, harvesting is limited to frozen conditions (generally December 1 to March 31) due to sensitive soils.

Within Payment Unit(s) 5, 7 and 10, harvesting is not permitted during the period of April 15 to July 15 because of bark slippage.

The Old Seney Road is a snowmobile trail and is shown on the Timber Sale Map. See Sale Spec 5.2.41 for restrictions.

A recreation site such as a trail, pathway, or campground is within the sale area or the vicinity. Certain restrictions/specifications may be applicable including time restrictions. Access may be through other public land.

A timber sale contract for this lump sum, sealed bid timber sale will be awarded to the responsible bidder offering the highest sealed bid price. All units of volume listed below were estimated using the Inventory Manager computer program and the new Michigan taper model. Bids must be at or above the following advertised price for each product and species:

<u>PRODUCTS &amp; SPECIES</u>	<u>ESTIMATED UNITS*</u>	<u>ADVERTISED PRICE</u>
Sawtimber		
Red Maple	16.4 MBF	\$ 92.00 / MBF
Sugar Maple	1.9 MBF	\$ 327.00 / MBF
Pulpwood		
Balsam Fir	445 Cords	\$ 14.85 / Cord
Black Spruce	733 Cords	\$ 23.15 / Cord
Jack Pine	3,136 Cords	\$ 32.10 / Cord
Mixed Aspen	488 Cords	\$ 32.00 / Cord
Mixed Hardwood	1,468 Cords	\$ 19.60 / Cord
N. White Cedar	68 Cords	\$ 5.45 / Cord
Paper Birch	8 Cords	\$ 18.15 / Cord
Tamarack	14 Cords	\$ 2.40 / Cord
White Pine	1,595 Cords	\$ 29.60 / Cord
White Spruce	628 Cords	\$ 23.15 / Cord

\* The total volume is statistically estimated within plus (+) or minus (-) 7.11 percent. There are an estimated 8,536 cords on this timber sale, plus or minus 607 cords at the 95% confidence level. The estimated units are final and not subject to adjustment. Prospective bidders are urged to examine this timber and to make their own estimates of quantity and quality.

### **BOND AND PAYMENT SCHEDULE:**

1. A bond in the amount of \$11,653.00 to insure faithful performance of the conditions of the contract will be deposited by the successful bidder within 21 days of the sale award.
2. Cutting in any sale or unit without the required advance payment would be considered a trespass.
3. Total payment must be paid in advance or according to the following schedule:
  - (a) Ten percent (10%) of the sale value must be paid within 21 days of the sale award.
  - (b) The 10% down payment will be credited towards the first unit cut.

(c) Payment for each of the following units must be made before cutting begins in that unit:

PAYMENT UNIT NUMBER	PERCENT OF TOTAL SALE VALUE
01	2.9%
02	2.0%
03	1.6%
04	5.0%
05	0.7%
06	2.2%
07	1.6%
08	10.4%
09	4.4%
10	1.4%
11	7.4%
12	3.0%
13	3.9%
14	1.2%
15	12.7%
16	11.9%
17	19.3%
18	5.7%
19	2.7%

4. If no cutting takes place, the 10% down payment will not be refunded.

5. Operations on the contract issued will terminate on 06/30/2026.

**SALE STATISTICS**

Volumes were calculated in cubic feet using the Michigan taper model. Cubic foot volume includes all wood inside bark for the product indicated. For display purposes, cubic feet were converted to cords and MBF using a simple conversion factor, e.g. 79 cubic feet per cord and 185 cubic feet per MBF. The cubic foot volumes are precise; the cords and MBF volumes are not. Cubic foot volume cannot be directly converted to cords or boards with precision.

**SALE VOLUMES**

The total estimated sale volume may not equal the sum of the species/products due to the nature of statistical calculations associated with double sampling methodology.

VOLUME		PERCENT ERROR	STATISTICAL RANGE IN CORDS	
TOTAL CUBIC FEET	TOTAL CORDS		MINIMUM	MAXIMUM
674,317	8,536	7.11%	7,928	9,143

## VDU VOLUMES

A VDU is a Volume Determination Unit. Volumes and their associated statistics are calculated at the VDU level and summarized to the sale level. There is often a one to one relationship between a VDU and a Payment Unit, but not always, depending on the cruise design. Refer to the VDU TO PAYMENT UNIT table.

VDU	VOLUME		PERCENT ERROR	RANGE IN CORDS	
	TOTAL CUBIC FEET	TOTAL CORDS		MINIMUM	MAXIMUM
1	149,341	1,890	10.40%	1,694	2,087
2	33,507	424	15.19%	360	489
3	86,258	1,092	16.79%	909	1,275
4	39,430	499	17.78%	410	588
5	42,181	534	21.46%	419	649
6	8,489	107	35.58%	69	146
7	37,206	471	20.28%	375	566
8	15,162	192	49.75%	96	287
9	8,074	102	66.06%	35	170
10	245,882	3,112	10.73%	2,778	3,446
11	3,863	49	104.69%	2	100
12	4,924	62	63.67%	23	102
<b>TOTAL:</b>	<b>674,317</b>	<b>8,536</b>		<b>7,167</b>	<b>9,905</b>

## VDU TO PAYMENT UNIT

When a VDU is associated with more than one Payment Unit (PU), the VDU volumes are assigned to the PU based on acres of the VDU within the PU.

VDU	VDU ACRES	PU	PU ACRES
1	79.2	2	8.1
		8	41.6
		11	29.5
2	46.9	5	9.2
		7	20.6
		10	17.1
3	43.7	9	17.6
		13	15.4
		19	10.7
4	19.0	1	3.4
		3	3.8
		12	11.8
5	83.8	18	83.8
6	6.2	1	6.2
7	27.4	4	27.4
8	10.5	6	10.5
9	3.8	14	3.8
10	110.2	15	32.0
		16	30.0
		17	48.2
11	3.1	3	3.1
12	1.8	1	1.8
<b>TOTAL:</b>	<b>435.6</b>		<b>435.6</b>

**DESCRIPTION OF TIMBER BY PAYMENT UNIT (PU)**

PU	MARKET GROUP	PRODUCT	QUANTITY	UNIT	ACRES	ADVERTISE PRICE
1	Red Maple	Sawtimber	1.8	MBF	11.4	\$6,850.75
	Balsam Fir	Pulpwood	18	Cords		
	Black Spruce		23	Cords		
	Mixed Aspen		43	Cords		
	<i>B. T. Aspen</i>		2	<i>Cords</i>		
	<i>Quaking Aspen</i>		41	<i>Cords</i>		
	Mixed Hardwood		75	Cords		
	<i>American Elm</i>		2	<i>Cords</i>		
	<i>Black Cherry</i>		4	<i>Cords</i>		
	<i>Red Maple</i>		60	<i>Cords</i>		
	<i>Sugar Maple</i>		9	<i>Cords</i>		
	Paper Birch		1	Cords		
	Tamarack		1	Cords		
	White Pine		84	Cords		
	White Spruce		23	Cords		
2	Red Maple	Sawtimber	0.2	MBF	8.1	\$4,746.55
	Balsam Fir	Pulpwood	28	Cords		
	Black Spruce		2	Cords		
	Mixed Aspen		18	Cords		
	<i>Quaking Aspen</i>		18	<i>Cords</i>		
	Mixed Hardwood		38	Cords		
	<i>Red Maple</i>		34	<i>Cords</i>		
	<i>Sugar Maple</i>		4	<i>Cords</i>		
	White Pine		69	Cords		
	White Spruce		39	Cords		
	3	Red Maple	Sawtimber	0.9		
Balsam Fir		Pulpwood	16	Cords		
Mixed Aspen			16	Cords		
<i>B. T. Aspen</i>			2	<i>Cords</i>		
<i>Quaking Aspen</i>			14	<i>Cords</i>		
Mixed Hardwood			58	Cords		
<i>Black Cherry</i>			1	<i>Cords</i>		
<i>Red Maple</i>			54	<i>Cords</i>		
<i>Sugar Maple</i>			3	<i>Cords</i>		
White Pine			59	Cords		
White Spruce			4	Cords		
4	Balsam Fir	Pulpwood	32	Cords	27.4	\$11,727.80
	Black Spruce		41	Cords		
	Mixed Aspen		129	Cords		
	<i>Quaking Aspen</i>		129	<i>Cords</i>		
	Mixed Hardwood		122	Cords		
	<i>Black Cherry</i>		9	<i>Cords</i>		
	<i>Red Maple</i>		101	<i>Cords</i>		
	<i>Sugar Maple</i>		8	<i>Cords</i>		
	<i>Yellow Birch</i>		4	<i>Cords</i>		
	Paper Birch		5	Cords		
	Tamarack		2	Cords		
	White Pine		73	Cords		
	White Spruce		66	Cords		
	5	Red Maple	Sawtimber	1.4		
Balsam Fir		Pulpwood	4	Cords		
Mixed Aspen			7	Cords		
<i>B. T. Aspen</i>			1	<i>Cords</i>		
<i>Quaking Aspen</i>			6	<i>Cords</i>		
Mixed Hardwood			64	Cords		
<i>Black Cherry</i>			8	<i>Cords</i>		



**DESCRIPTION OF TIMBER BY PAYMENT UNIT (PU), CON'T**

PU	MARKET GROUP	PRODUCT	QUANTITY	UNIT	ACRES	ADVERTISE PRICE
5 con't	<i>Red Maple</i> <i>Sugar Maple</i> White Spruce	<i>Pulpwood</i>	37 19 3	<i>Cords</i> <i>Cords</i> Cords		
6	Red Maple Sugar Maple Balsam Fir Mixed Aspen <i>Quaking Aspen</i> Mixed Hardwood <i>Black Cherry</i> <i>Red Maple</i> <i>Sugar Maple</i> White Pine White Spruce	Sawtimber  Pulpwood	1.4 1.9 3 38 38 58 7 32 19 22 62	MBF MBF Cords Cords <i>Cords</i> Cords <i>Cords</i> <i>Cords</i> <i>Cords</i> Cords Cords	10.5	\$5,233.95
7	Red Maple Balsam Fir Mixed Aspen <i>B. T. Aspen</i> <i>Quaking Aspen</i> Mixed Hardwood <i>Black Cherry</i> <i>Red Maple</i> <i>Sugar Maple</i> White Spruce	Sawtimber Pulpwood	3.0 8 15 1 14 141 18 82 41 6	MBF Cords Cords <i>Cords</i> <i>Cords</i> Cords <i>Cords</i> <i>Cords</i> <i>Cords</i> Cords	20.6	\$3,777.30
8	Red Maple Balsam Fir Black Spruce Jack Pine Mixed Aspen <i>Quaking Aspen</i> Mixed Hardwood <i>Red Maple</i> <i>Sugar Maple</i> <i>Yellow Birch</i> White Pine White Spruce	Sawtimber Pulpwood	1.1 141 9 1 92 92 199 176 22 1 354 197	MBF Cords Cords Cords Cords <i>Cords</i> Cords <i>Cords</i> <i>Cords</i> <i>Cords</i> Cords Cords	41.6	\$24,318.85
9	Balsam Fir Black Spruce Mixed Aspen <i>Quaking Aspen</i> Mixed Hardwood <i>Black Cherry</i> <i>Red Maple</i> N. White Cedar Tamarack White Pine White Spruce	Pulpwood	11 263 9 9 22 4 18 27 4 101 5	Cords Cords Cords <i>Cords</i> Cords <i>Cords</i> <i>Cords</i> Cords Cords Cords Cords	17.6	\$10,233.10
10	Red Maple Balsam Fir Mixed Aspen <i>B. T. Aspen</i> <i>Quaking Aspen</i> Mixed Hardwood <i>Black Cherry</i> <i>Red Maple</i> <i>Sugar Maple</i>	Sawtimber Pulpwood	2.6 7 13 1 12 118 15 68 35	MBF Cords Cords <i>Cords</i> <i>Cords</i> Cords <i>Cords</i> <i>Cords</i> <i>Cords</i>	17.1	\$3,187.70

**DESCRIPTION OF TIMBER BY PAYMENT UNIT (PU), CON'T**

PU	MARKET GROUP	PRODUCT	QUANTITY	UNIT	ACRES	ADVERTISE PRICE
10 con't	White Spruce	Pulpwood	5	Cords		
11	Red Maple	Sawtimber	0.8	MBF	29.5	\$17,294.20
	Balsam Fir	Pulpwood	101	Cords		
	Black Spruce		7	Cords		
	Jack Pine		1	Cords		
	Mixed Aspen		66	Cords		
	<i>Quaking Aspen</i>		66	Cords		
	Mixed Hardwood		140	Cords		
	<i>Red Maple</i>		124	Cords		
	<i>Sugar Maple</i>		15	Cords		
	<i>Yellow Birch</i>		1	Cords		
	White Pine		251	Cords		
	White Spruce		140	Cords		
12	Red Maple	Sawtimber	2.7	MBF	11.8	\$6,938.65
	Balsam Fir	Pulpwood	44	Cords		
	Mixed Aspen		23	Cords		
	<i>B. T. Aspen</i>		8	Cords		
	<i>Quaking Aspen</i>		15	Cords		
	Mixed Hardwood		161	Cords		
	<i>Black Cherry</i>		4	Cords		
	<i>Red Maple</i>		147	Cords		
	<i>Sugar Maple</i>		9	Cords		
	<i>Yellow Birch</i>		1	Cords		
	White Pine		67	Cords		
	White Spruce		7	Cords		
13	Balsam Fir	Pulpwood	10	Cords	15.4	\$8,988.40
	Black Spruce		229	Cords		
	Mixed Aspen		8	Cords		
	<i>Quaking Aspen</i>		8	Cords		
	Mixed Hardwood		20	Cords		
	<i>Black Cherry</i>		4	Cords		
	<i>Red Maple</i>		16	Cords		
	N. White Cedar		24	Cords		
	Tamarack		4	Cords		
	White Pine		89	Cords		
	White Spruce		5	Cords		
14	Balsam Fir	Pulpwood	7	Cords	3.8	\$2,840.45
	Mixed Aspen		6	Cords		
	<i>Quaking Aspen</i>		6	Cords		
	Mixed Hardwood		13	Cords		
	<i>Red Maple</i>		13	Cords		
	Paper Birch		2	Cords		
	White Pine		73	Cords		
	White Spruce		4	Cords		
15	Jack Pine	Pulpwood	910	Cords	32.0	\$29,623.00
	Mixed Hardwood		18	Cords		
	<i>Black Cherry</i>		7	Cords		
	<i>Red Maple</i>		11	Cords		
	White Pine		2	Cords		
16	Jack Pine	Pulpwood	853	Cords	30.0	\$27,754.10
	Mixed Hardwood		16	Cords		
	<i>Black Cherry</i>		6	Cords		
	<i>Red Maple</i>		10	Cords		
	White Pine		2	Cords		
17	Jack Pine	Pulpwood	1,370	Cords	48.2	\$44,575.40

**DESCRIPTION OF TIMBER BY PAYMENT UNIT (PU), CON'T**

PU	MARKET GROUP	PRODUCT	QUANTITY	UNIT	ACRES	ADVERTISE PRICE				
17 con't	Mixed Hardwood	Pulpwood	26	Cords						
	<i>Black Cherry</i>		10	<i>Cords</i>						
	<i>Red Maple</i>		16	<i>Cords</i>						
	White Pine		3	Cords						
18	Red Maple	Sawtimber	0.5	MBF	83.8	\$13,222.75				
	Balsam Fir	Pulpwood	8	Cords						
	Jack Pine		1	Cords						
	Mixed Hardwood		166	Cords						
	<i>Black Cherry</i>		135	<i>Cords</i>						
	<i>Red Maple</i>		31	<i>Cords</i>						
	White Pine		284	Cords						
	White Spruce		59	Cords						
19	Balsam Fir		Pulpwood	7	Cords	10.7	\$6,204.10			
	Black Spruce	159		Cords						
	Mixed Aspen	5		Cords						
	<i>Quaking Aspen</i>	5		<i>Cords</i>						
	Mixed Hardwood	13		Cords						
	<i>Black Cherry</i>	2		<i>Cords</i>						
	<i>Red Maple</i>	11		<i>Cords</i>						
	N. White Cedar	17		Cords						
	Tamarack	3		Cords						
	White Pine	62		Cords						
	White Spruce	3		Cords						
	TOTAL:			18.3	MBF					
	TOTAL:			8,583	Cords					

# Sale Specific Conditions & Requirements

**Sale Name: C-104 Contract**

**Sale Number: 41-017-22 Seq#: 1**

## 1 - Sale Area

### 1.2 - Boundaries

#### 1.2.1 - Painted boundaries (9/19)

The sale boundary and Payment Unit boundaries are marked and identified by blue, red and yellow paint. Exterior sale boundary lines against private property are marked with blue paint. Exterior sale boundary lines against state are marked with red paint. Interior Payment Unit boundaries are marked with yellow paint. Retention patches are marked with red paint; no harvesting activities may occur within these areas. The painted boundary line trees are not Included Timber and are to be protected unless marked with orange paint. Yellow painted trees designating an interior Payment Unit boundary are only to be cut when all surrounding Payment Units have been paid.

## 2 - Timber Specifications

### 2.1 - Included Timber

#### 2.1.1 - Clearcut unit(s) with unmerchantable trees (6/14)

Within Payment Unit(s) 1, 3, 6, & 15-18, cut all trees that are two (2) inches or more at DBH. In addition, within Payment Units 1,3 and 6 do not cut oak or hemlock.

#### 2.1.2 - Clearcut unit(s) w/o unmerchantable trees (8/11)

Within Payment Unit(s) 4, 9, 12-14, & 19, cut all trees which meet minimum piece specifications in 2.2 Utilization, except oak and hemlock. In addition, do not cut trees marked in green in Payment Unit 12.

#### 2.1.3 - Cut tree marked unit(s) (12/08)

Within Payment Unit(s) 5, 7 & 10, all trees are designated for cutting when marked with orange paint above and below stump height, regardless of merchantability. In addition, all aspen, spruce and fir are designated for cutting unless marked in green paint.

#### 2.1.7 - Leave tree marked unit(s) (6/14)

Within Payment Unit(s) 2, 8, & 11, cut all trees which meet minimum piece specifications in 2.2 Utilization, except for black cherry, hemlock, and trees marked with green paint.

### 2.2 - Utilization

#### 2.2.3 - Stump heights (4/07)

Stump heights within Payment Unit(s) 15-18 shall not exceed 12 inches for trees greater than 10 inches DBH, and 4 inches for trees smaller than 10 inches DBH. This is in order to facilitate planting operations.

## 3 - Payments

### 3.3 - Pre-measured Sales

#### 3.3.4 - Dividing payment units (7/14)

Payment Unit(s) exceeding \$20,000 may be divided at the request of the Purchaser and upon approval of the Unit Manager. Dividing Payment Units is a contract modification which requires a Timber Sale Contract Amendment.

## 4 - Transportation

### 4.1 - Construction

#### 4.1.3 - Slash and earthen piles (8/04)

Piles or windrows of earth along roads and landings that have been widened or constructed shall be leveled. Slash from road maintenance or construction, including stumps, shall be dispersed throughout the sale.

#### 4.1.4 - Timber removed for construction (12/09)

Trees cut or damaged in the process of pre-approved road, landing or skid trail construction will be decked in an area separate from other Designated Timber and not removed until measured by the sale administrator. Payment will be made at the

specified Purchase Unit Price.

#### 4.1.6 - Road construction (1/09)

Construction of new roads or improvements of existing roads shall be done in such a way as to minimize the environmental and visual impacts. Merchantable trees shall be cut and utilized unless otherwise directed. Non-merchantable trees shall be severed and laid flat on the ground. Slash shall be scattered, and not left in windrows and kept a minimum of 10 feet back from the road edge. Stumps shall be set upright, not left on edge, and be moved at least 10 feet away from the road edge. Disturbed soil shall be feathered into the woods and not left in berms or windrows.

#### 4.1.7 - Road closure (10/11)

All new roads built into the sale must be blocked to vehicle traffic upon completion of the sale. Overgrown roads that are reopened shall be considered new roads. In general, this will require constructing a four (4') foot high berm of stumps and logs covered with earth. These roads must be rendered impassable to cars and trucks. Contact the sale administrator for specific details of design and placement.

### 4.2 - Maintenance

#### 4.2.4 - Grading (10/16)

For completion of the sale, state forest roads must be graded. In general, this will require a road grader or bull dozer to shape up the roads after forest products have been hauled off site. This includes cleaning of drainage areas, grading, crowning and filling with gravel, if necessary. The grading equipment to be used must be approved by the Unit Manager or his/her representative.

### 4.3 - Public Right-of-Way

#### 4.3.2 - County R-O-W (12/06)

The county must be contacted prior to crossing or harvesting in the county road R-O-W. This applies to Payment Units 9 & 13, and Old Seney Road.

### 4.4 - Access

#### 4.4.1 - Private property access (3/11)

Permission for access across private land and other public land is the responsibility of the Purchaser. The other public land owner is Burt Township.

## 5 - Operations

### 5.2 - Conduct of Operations

#### 5.2.1 - Slash

##### 5.2.1.2 - Slash Removal

##### 5.2.1.2.6 - Slash removal, general (7/05)

All slash must be removed from the drainage located in Payment Unit 6 and is indicated on the Timber Sale Map. In addition, the drainage can only be crossed in one location to be determined before harvesting begins.

##### 5.2.1.8 - Slash height (12/08)

No slash or tree tops may exceed 24 inches in height. This applies to Payment Units 9 & 13.

##### 5.2.1.11 - Slash for reforestation (3/21)

To facilitate reforestation, Payment Unit(s) 15-18 shall be left with slash evenly distributed. Bunched tops within the cutting area shall be broken up and scattered. Stumps shall be cut low to the ground. Processing sites shall not be left with a compacted layer of slash; tops from these sites shall be hauled back into the cut area and scattered.

#### 5.2.2 - Hazard Trees/Snags

##### 5.2.2.1 - Den trees (10/16)

Obvious hollow and/or den trees shall be protected and left standing unless they are a safety hazard.

#### 5.2.3 - Operating Restrictions

##### 5.2.3.1 - Operating restrictions (9/11)

Within Payment Unit(s) 4, 9, & 13, unless changed by written agreement, cutting, skidding, and hauling are limited to frozen conditions (generally December 1 to March 31). This restriction is because of sensitive soils.

#### 5.2.3.3 - Bark slippage restriction (3/09)

Within Payment Unit(s) 5, 7, & 10, unless changed by written agreement, cutting and skidding are not permitted during the period of April 15 to July 15. This restriction is because of bark slippage.

#### 5.2.3.6 - Bark beetle restriction (12/08)

In the event drought creates a high risk of pine bark beetle infestation, pine is not to be cut during the period March 1 through July 1, unless all portions of trees greater than two inches in diameter are removed from the sale area, reduced to chips, or treated to the satisfaction of the Unit Manager or his/her representative, within fifteen days of being severed from the stump. Pine log decks, pulpwood piles and treetops that are piled for chipping in the fall or winter within a 1/4 mile of susceptible sites must be removed before March 15. Residual slash must not be placed in piles or rows and must be spread over the site for quick drying. The Department of Natural Resources will exercise this specification if the risk of damage warrants.

#### 5.2.32 - Decking/landing restoration (9/13)

All decking and landing areas must have the surface area restored to a condition equal to or better than before. This is to ensure the proper regeneration of the stand. Wood debris, chips and "cookies" from trimmings must be removed or scattered away from landing and loading areas and may not be windrowed on the edge.

#### 5.2.38 - No decking against live trees (2/04)

Cut products may not be decked against unmarked or designated leave trees.

#### 5.2.41 - Snowmobile trail protection (9/11)

The Old Seney Road is a snowmobile trail and is shown on the Timber Sale Map. Do not cut or damage posts with orange trail markers or traffic control signs. If the trail road is to be used for hauling during the snowmobile season, then a snow covered base must be left on the trail. Maintain a 20-foot-wide slash, debris, and rut free zone daily using the snowmobile trail as the centerline. No decking of forest products will be permitted along the snowmobile trail unless approved by the sale administrator. All stumps within 20 feet of the snowmobile trail must be cut at ground level.

### 5.8 - Protection of Endangered Species

#### 5.8.3 - Red shoulder hawk or goshawk (2/16)

In the event that an active red shoulder hawk or goshawk nest is found, the contract may be amended to protect the nest site until the nest is determined to be inactive. The value of the trees in this excluded area will be refunded or credited to the Purchaser. The nest will be buffered with a five-chain radius (eight acre) protection area, centered on the nest tree, in which there will be no cutting or new roads constructed. Avoid human disturbance, including loading and skidding, in the protection area.

An additional zone of five chains (ten chains centered on the active nest tree) will be established in which there is no management activity from April 1 to July 30. Limit biomass harvesting and chipping operations within this ten-chain zone, retain the maximum one-third of residues per the Woody Biomass Harvesting Guidelines (Michigan DNR 2010). Nests determined to be inactive will be protected with a one-chain no-harvest buffer.

## 6 - Safety and Fire Prevention

### 6.2 - Signing

#### 6.2.1 - Road posting (10/20)

The Purchaser is responsible for posting and maintaining caution signs on Old Seney Road and Whitewash Road prior to beginning operations. The road must be posted at appropriate distances from the sale area to warn of logging activity and truck traffic. Signs must be removed when harvest operations are suspended or completed. The Purchaser will provide these signs.

#### 6.2.2 - Snowmobile trail posting (10/20)

The Purchaser is responsible for posting and maintaining caution signs on the Old Seney Road prior to beginning operations during the snowmobile season (approximately December 1 to March 31). The trail must be posted at appropriate distances from the sale area to warn of logging activity and truck traffic. Signs must be removed when harvest operations are suspended or completed. The Purchaser will provide these signs.

## **7 - Other Conditions**

### **7.3 - Contract Modifications**

#### **7.3.3 - Modification for reforestation (8/05)**

When contractual work of Purchaser has been accepted for any Payment Unit identified on Sale Area Map, Payment Unit will be eliminated from the Sale Area on written notice so that reforestation operations can begin.



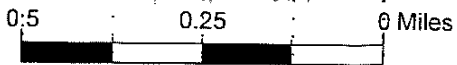
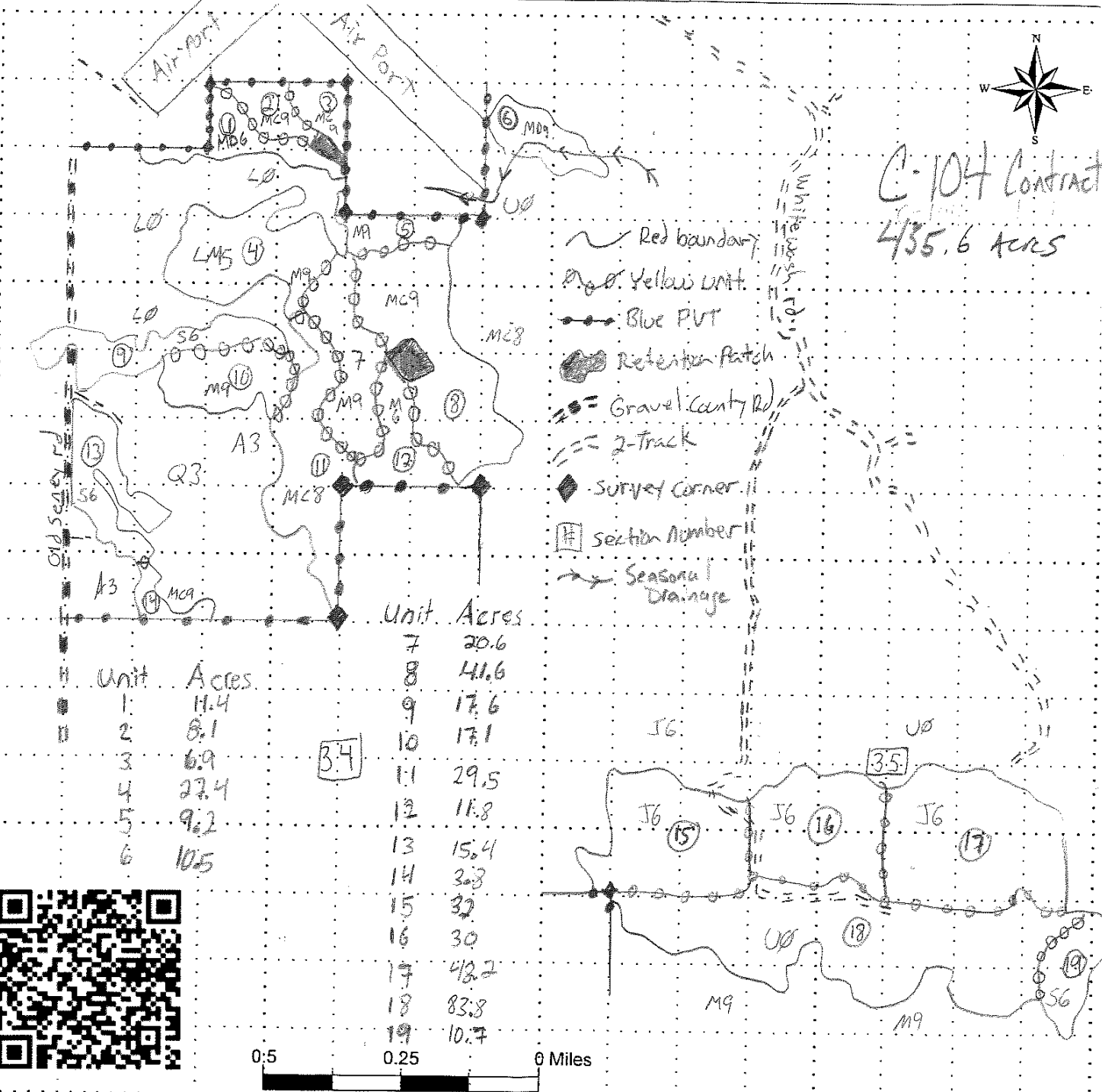
# TIMBER SALE MAP

This information provided by authority of Part 5, 1994 PA 451, as amended.

Sale Number	Year
41-017-22-01	22
Date	Page of
9/16/22	1 1

Forest Management Unit <i>Shingletown</i>	County <i>Alger</i>	Mapped By <i>Maria Moha</i>	Section(s) and Subdivision(s) <i>27 28 34 35</i>	
Compartment Number <i>104</i>	Township <i>49 N</i>	Cruised By <i>Grossman Forestry</i>	Range <i>13 W</i>	

Cover Type				Density	
A = Aspen	J = Jack Pine	O = Oak	U = Upland Brush	0 = Non Stocked	5 = Pole Timber Medium
B = Paper Birch	K = Rock	P = Lowland Poplar	UM = Upland Mix Forest	1 = Seedling Sapling Poor	6 = Pole Timber Well
C = Cedar	L = Lowland Brush	Q = Mixed Swamp Conifer	V = Bog or Marsh	2 = Seedling Sapling Medium	7 = Saw Timber Poor
D = Treed Bog	LM = Lowland Mix Forest	R = Red Pine	W = White Pine	3 = Seedling Sapling Well	8 = Saw Timber Medium
E = Swamp Hardwoods	M = Maple, Beech, Birch	S = Black Spruce	X = Non Stocked	4 = Pole Timber Poor	9 = Saw Timber Well
F = Spruce/Fir	MC = Mixed Conifer	T = Tamarack	Y = Sand		
G = Grass	MD = Mixed Deciduous		Z = Water		
H = Hemlock	N = Marsh				





C-142 Pine (41-015-22)

T48N, R15W, SEC. 19; T48N, R15W, SEC. 20; T48N, R15W, SEC. 28; T48N,

In response to the notice of sale to be held 2:00 p.m. (local time) on July 12, 2023, I am hereby submitting my sealed bid ( firm offer) for the following forest products to be cut. Bids for individual species must be at or above the advertised price. All non-responsive bid forms may be rejected.

<u>PRODUCTS &amp; SPECIES</u>	<u>ESTIMATED VOLUME*</u>	<u>ADVERTISED PRICE</u>	<u>BID PRICE/UNIT</u>
Pulpwood			
Balsam Fir	269 Cords	\$ 14.85/Cord	\$ _____
Jack Pine	17 Cords	\$ 32.10/Cord	\$ _____
Red Pine	2,024 Cords	\$ 89.90/Cord	\$ _____
White Pine	41 Cords	\$ 29.60/Cord	\$ _____
White Spruce	326 Cords	\$ 23.15/Cord	\$ _____

\*The volumes are statistically estimated within plus (+) or minus (-) 9.46 percent at 95% confidence level. These estimated volumes are final and not subject to adjustment. Prospective bidders are urged to examine this timber and to make their own estimates of quantity and quality.

I understand that any or all bids may be rejected. All bids must be signed and all bid items must be bid or the bid form may be rejected. I also understand that consideration and awarding a contract will be based upon my past performance and ability to complete the contract based upon equipment and staffing subject to my control .

FEDERAL ID: \_\_\_\_ - \_\_\_\_ - \_\_\_\_ or SOCIAL SECURITY NUMBER: \_\_\_\_ - \_\_\_\_ - \_\_\_\_

Company or individual bidding: \_\_\_\_\_

Company representative's name: \_\_\_\_\_

Address: \_\_\_\_\_

City: \_\_\_\_\_ State: \_\_\_\_\_ Zip: \_\_\_\_\_

IF AVAILABLE, PLEASE PLACE THE PERSONALIZED LABEL FROM YOUR PROSPECTUS IN THE ABOVE BOX.

Individual or company representative's signature: \_\_\_\_\_ Date: \_\_\_\_\_

Phone number : \_\_\_\_\_ Email (optional): \_\_\_\_\_

**THE WINNING BIDDER MUST COMPLETE THE VERIFICATION OF WORKER'S DISABILITY COMPENSATION ACT COMPLIANCE (ON REVERSE SIDE IF DOUBLE SIDED) WITHIN 21 DAYS OF SALE AWARD DATE**



<b>FOR DEPARTMENT USE ONLY</b>
Sale Number (XX - XXX - XX - XX)
Forest Management Unit:

## TIMBER SALE VERIFICATION OF WORKER'S DISABILITY COMPENSATION ACT COMPLIANCE

*As required by Act 317, P.A. 1969 (Worker's Compensation) and  
Part 5 of Act 451 of 1994, as amended.*

### VERIFICATION OF WORKER'S DISABILITY COMPENSATION ACT COMPLIANCE

- This verification must be completed and submitted within 21 days of contract award and prior to the issuance of the timber sale contract.
- In addition, if boxes 2B or 2C are checked, then Notice of Exclusion or Certificate of Insurance must be submitted within twenty-one (21) days of the contract award and prior to the issuance of the timber sale contract.
- All information must be typed or printed except for written signatures.

Please Check Appropriate Categories:

1. My business is organized as (you **must** check one of the boxes below):
  - A.  Sole Proprietorship (individual)
  - B.  Partnership
  - C.  Corporation
2. You **must** check one of the boxes below:
  - A.  I certify my business is a sole proprietorship and it has no employees but the sole proprietor. I am not subject to the Worker's Compensation Laws.
  - B.  I certify my business has satisfied its obligation to the Worker's Compensation Act through the use of an approved Notice of Exclusion (BWC-337, Rev. 5/96). I will provide a copy of the Notice of Exclusion within 21 days of the contract award. (For questions or a copy of the BWC-337, please call the Worker's Compensation Bureau at 517-322-1195).
  - C.  I certify my business has a Worker's Compensation Policy. I will provide an original Certificate of Insurance within twenty-one (21) days of the contract award.
3. If you have checked item 2(A) or 2(B), you **must** indicate the number of **both** full-time and part-time employees, other than yourself, including family members and active partners (if none, you must enter "0").

\_\_\_\_\_ Full-time Employees

\_\_\_\_\_ Part-time Employees

Name of Business		Federal ID (or) Social Security No.	
Address		Telephone (       )	
City	State	ZIP	

*I hereby certify that the above information is true and correct. I agree to notify the Michigan DNR of any changes that occur in factors affecting my coverage during any of my present and future operations.*

\_\_\_\_\_  
Signature of Owner or Authorized Representative

\_\_\_\_\_  
Title

\_\_\_\_\_  
Date

**Please complete the "SEALED BID" information on the next page**

C-104 Contract (41-017-22)

T49N, R13W, SEC. 27; T49N, R13W, SEC. 28; T49N, R13W, SEC. 34; T49N,

In response to the notice of sale to be held 2:00 p.m. (local time) on July 12, 2023, I am hereby submitting my sealed bid ( firm offer) for the following forest products to be cut. Bids for individual species must be at or above the advertised price. All non-responsive bid forms may be rejected.

<u>PRODUCTS &amp; SPECIES</u>	<u>ESTIMATED VOLUME*</u>	<u>ADVERTISED PRICE</u>	<u>BID PRICE/UNIT</u>
<b>Sawtimber</b>			
Red Maple	16.4 MBF	\$ 92.00/MBF	\$ _____
Sugar Maple	1.9 MBF	\$ 327.00/MBF	\$ _____
<b>Pulpwood</b>			
Balsam Fir	445 Cords	\$ 14.85/Cord	\$ _____
Black Spruce	733 Cords	\$ 23.15/Cord	\$ _____
Jack Pine	3,136 Cords	\$ 32.10/Cord	\$ _____
Mixed Aspen	488 Cords	\$ 32.00/Cord	\$ _____
Mixed Hardwood	1,468 Cords	\$ 19.60/Cord	\$ _____
N. White Cedar	68 Cords	\$ 5.45/Cord	\$ _____
Paper Birch	8 Cords	\$ 18.15/Cord	\$ _____
Tamarack	14 Cords	\$ 2.40/Cord	\$ _____
White Pine	1,595 Cords	\$ 29.60/Cord	\$ _____
White Spruce	628 Cords	\$ 23.15/Cord	\$ _____

\*The volumes are statistically estimated within plus (+) or minus (-) 7.11 percent at 95% confidence level. These estimated volumes are final and not subject to adjustment. Prospective bidders are urged to examine this timber and to make their own estimates of quantity and quality.

I understand that any or all bids may be rejected. All bids must be signed and all bid items must be bid or the bid form may be rejected. I also understand that consideration and awarding a contract will be based upon my past performance and ability to complete the contract based upon equipment and staffing subject to my control.

FEDERAL ID: \_\_\_\_ - \_\_\_\_ - \_\_\_\_ or SOCIAL SECURITY NUMBER: \_\_\_\_ - \_\_\_\_ - \_\_\_\_

Company or individual bidding: \_\_\_\_\_

Company representative's name: \_\_\_\_\_

Address: \_\_\_\_\_

City: \_\_\_\_\_ State: \_\_\_\_\_ Zip: \_\_\_\_\_

IF AVAILABLE, PLEASE PLACE THE PERSONALIZED LABEL FROM YOUR PROSPECTUS IN THE ABOVE BOX.

Individual or company representative's signature: \_\_\_\_\_ Date: \_\_\_\_\_

Phone number : \_\_\_\_\_ Email (optional): \_\_\_\_\_

**THE WINNING BIDDER MUST COMPLETE THE VERIFICATION OF WORKER'S DISABILITY COMPENSATION ACT COMPLIANCE (ON REVERSE SIDE IF DOUBLE SIDED) WITHIN 21 DAYS OF SALE AWARD DATE**



# TIMBER SALE VERIFICATION OF WORKER'S DISABILITY COMPENSATION ACT COMPLIANCE

As required by Act 317, P.A. 1969 (Worker's Compensation) and  
Part 5 of Act 451 of 1994, as amended.

FOR DEPARTMENT USE ONLY	
Sale Number (XX - XXX - XX - XX)	
Forest Management Unit:	

## VERIFICATION OF WORKER'S DISABILITY COMPENSATION ACT COMPLIANCE

- This verification must be completed and submitted within 21 days of contract award and prior to the issuance of the timber sale contract.
- In addition, if boxes 2B or 2C are checked, then Notice of Exclusion or Certificate of Insurance must be submitted within twenty-one (21) days of the contract award and prior to the issuance of the timber sale contract.
- All information must be typed or printed except for written signatures.

Please Check Appropriate Categories:

1. My business is organized as (you **must** check one of the boxes below):
  - A.  Sole Proprietorship (individual)
  - B.  Partnership
  - C.  Corporation
2. You **must** check one of the boxes below:
  - A.  I certify my business is a sole proprietorship and it has no employees but the sole proprietor. I am not subject to the Worker's Compensation Laws.
  - B.  I certify my business has satisfied its obligation to the Worker's Compensation Act through the use of an approved Notice of Exclusion (BWC-337, Rev. 5/96). I will provide a copy of the Notice of Exclusion within 21 days of the contract award. (For questions or a copy of the BWC-337, please call the Worker's Compensation Bureau at 517-322-1195).
  - C.  I certify my business has a Worker's Compensation Policy. I will provide an original Certificate of Insurance within twenty-one (21) days of the contract award.
3. If you have checked item 2(A) or 2(B), you **must** indicate the number of **both** full-time and part-time employees, other than yourself, including family members and active partners (if none, you must enter "0").

\_\_\_\_\_ Full-time Employees

\_\_\_\_\_ Part-time Employees

Name of Business		Federal ID (or) Social Security No.	
Address		Telephone (       )	
City	State	ZIP	

*I hereby certify that the above information is true and correct. I agree to notify the Michigan DNR of any changes that occur in factors affecting my coverage during any of my present and future operations.*

\_\_\_\_\_  
Signature of Owner or Authorized Representative

\_\_\_\_\_  
Title

\_\_\_\_\_  
Date

Please complete the "SEALED BID" information on the next page