



**DEPARTMENT OF NATURAL RESOURCES
STATE OF MICHIGAN
TIMBER SALE PROSPECTUS #7275**

SCHEDULED SALE DATE AND TIME: 3:00 p.m. (local time) on August 22, 2023.

LOCATION: NAUBINWAY DNR FIELD OFFICE, PO BOX 287, US 2 W11569, NAUBINWAY, MI 49762.

PROSPECTUS NOTE: The bidder is advised to inspect the sale area and review the location, estimated volumes, operating costs and contract terms of proposed sales. Please be aware that some landowners may request 60 days or more notice for access across their land.

Notice is hereby given that bids will be received by the Unit Manager, SAULT STE MARIE MANAGEMENT UNIT, for certain timber on the following described lands:

On The Side (45-118-22) / T42N, R06W, SEC. 6 , N1/2NW, SENW, NWNE, NESW, NWSE.

T43N, R06W, SEC. 30, SENE, E1/2SE.

T43N, R06W, SEC. 31, S1/2SW, SWSE.

Mackinac County, Advertised Price \$22,749.85, 87.3 Acres, Spruce/Fir/Tamarack, Hardwood.

SALE NOTE: A recreation site such as a trail, pathway, or campground is within the sale area or the vicinity. Certain restrictions/specifications may be applicable including time restrictions.

One Oh Nine Mix (45-105-21) / T43N, R06W, SEC. 3 , NENE.

T44N, R06W, SEC. 33, NENE, SESE.

T44N, R06W, SEC. 34, N1/2NW, NENE, S1/2SW, S1/2SE.

T44N, R06W, SEC. 36, E1/2NW, W1/2NE.

Mackinac County, Advertised Price \$16,663.65, 79.6 Acres, Spruce/Fir/Tamarack, N White Cedar.

SALE NOTE: All units of volume listed for this sale were estimated using the Inventory Manager computer program and the new Michigan taper model.

Some Payment Units are seasonally restricted.

A recreation site such as a trail, pathway, or campground is within the sale area or the vicinity. Certain restrictions/specifications may be applicable including time restrictions.

BID INSTRUCTIONS (VER. 10/10/2022):

1. Scheduled Bid Location, Date, and Time (2/11)

Bids must be received by the Unit Manager, NAUBINWAY DNR FIELD OFFICE, PO Box 287 US 2 W11569, Naubinway, MI 49762, no later than 3:00 p.m. (local time) on August 22, 2023. For further information concerning this sale, contact Karen Rodock at 906-477-6048 extension 2040.

2. Bidder's Qualifications (10/22)

If all or part of a timber sale was prepared by a private contractor, the contractor and that contractor's company are not permitted to bid on the timber sale. A person must be 18 years of age or older to purchase timber. Permanent employees of the Department of Natural Resources or members of their immediate household may not bid. Former employees, in the permanent or seasonal class, may not bid until 3 months after the last day of active duty. Bids will not be accepted from individuals or companies appearing on the DNR/FRD No-Bid List. This list contains the names of purchasers who previously failed to execute a contract within 21-days or who have a history of poor performance.

3. Preparation of Sealed Bids (5/16)

Bid Forms may be completed online thru Michigan DNR Timber Sale Online Bidding (OLB) at www.michigan.gov/timberbidding or by completing the hardcopy Bid Form found in the Timber Sale Prospectus. Hardcopy Bid Forms shall be manually signed in ink. Registration in OLB is considered your 'signature' for all bids submitted thru that system. Bid prices must be entered for each species and product in the Bid Price column for all material subject to bidding and all fill-in blanks must be completed. If erasures or other changes appear on the hardcopy Bid Form, each erasure or change must be initialed by the person signing the bid.

4. Submission of Sealed Bids (5/16)

Bid forms may be obtained from the Unit Manager or thru OLB. Bids may be submitted hardcopy or thru OLB. All hardcopy bids must be submitted on the bid form and in an envelope clearly identified as described in this section. NOTE: Only one bid form per bid envelope. Sealed bids must be submitted to the Unit office designated in the prospectus and must be submitted at or prior to the time established in the prospectus. The envelope should show on the outside (a) the sale name or number and (b) the date and time of bid opening, as shown in the prospectus. Bids received after the time specified in the sale prospectus are late bids and will be rejected.

It is possible for a bidder to submit multiple bids on a single sale. For example, a bid may be submitted hardcopy and a bid may be submitted thru OLB. Or, two bidders from the same company could both submit bids on the same sale. If this were to happen, the State would accept all bids received and award the contract accordingly. All bidding and contractual requirements would apply to all bids received.

5. Public Opening of Sealed Bids (7/16)

If conditions permit, the sealed bids will be publicly opened and posted at the time and place set in the prospectus.

If a bidder, present at a bid opening, has submitted bids on more than one sale, that bidder may withdraw their unopened bid envelopes or announce the withdrawal of their online bid after being declared the successful bidder on one sale.

6. Award of Contract (1/11)

Award of the contract will be made to the Bidder whose bid, conforming to the prospectus, is most advantageous to the State of Michigan on the basis of total value at rates bid for the estimated quantities. The State reserves the right to reject any bid or waive any minor irregularity in bids received. A written award mailed (or otherwise furnished) to the successful Bidder shall be deemed to result in a binding contract without further action by either party.

7. Down Payment (1/11)

The Bidder to whom award is made must make a down payment within 21 days of the sale award. The amount of the down payment will be calculated as shown in the Bond and Payment Schedule of this prospectus. Only cash may be used to meet this requirement.

8. Performance Security (1/11)

As guarantee of faithful performance, a cash bond, certificate of deposit, surety bond or irrevocable letter of credit (LOC) is required within 21 days of the sale award. The amount of the performance security is shown in the Bond and

Payment Schedule of this prospectus. If an LOC or surety is used, the coverage must extend for at least 6 months beyond the contract expiration.

9. Worker's Compensation (10/22)

Purchaser shall obtain worker's compensation insurance to cover claims under Michigan's Worker's Disability Compensation Act of 1969 or similar employee benefit act of any other state applicable to an employee. Verification of Worker's Disability Compensation Act Compliance must be completed and submitted within 21 days of contract award and prior to the issuance of the timber sale contract. In addition, if applicable, Notice of Exclusion or Certificate of Insurance must also be submitted.

10. Timber Sale Contract (10/22)

Additional conditions and requirements common to all timber sales are listed on the timber sale contract (R4031) and are available on line at www.michigan.gov/timber. Contact the Unit Manager for additional information or a sample contract. Within 21 days of the date of the award letter, the bidder must sign the contract and provide the required down payment, performance security, and verification of worker's disability compensation. The down payment and performance security shall be in accordance with the provisions of the timber sale contract, in the sums stated in this prospectus. If these actions are not taken, then the Bidder, the Bidder's corporation, and the corporation's principals may not be permitted to bid on State timber sales for a period of 3 months after the first offense, 6 months after the second offense, and 1 year after the third offense. An offense will only be counted against the Bidder for 5 years. In addition, the Bidder certifies that if awarded this contract, the Bidder will complete the timber sale contract in accordance with its terms and any modifications thereof including requirements to purchase, cut, and remove the included timber by the expiration date.

Payment Unit values in the State Forest Timber Sale Contract are calculated based on the advertised value of the Payment Unit as a percentage of the total advertised value of the contract. The advertised value of each Payment Unit is given in the Description of Timber by Payment Unit table on the Timber Sale Information page. For example, if the value of Payment Unit 1 is advertised as \$1,500 and the total Timber Sale value is advertised as \$10,000, the contract price for Payment Unit 1 will be 15% of the total bid price ($\$1,500/\$10,000 * 100$).

11. Disclaimer of Estimates and Bidder's Warranty of Inspection (10/22)

Before submitting this bid, the Bidder is advised and cautioned to inspect the sale area, review the requirements of the sale contract, and take other steps as may be reasonably necessary to ascertain the location, estimated volumes, construction estimates, and operating costs of the proposed sale. Failure to do so will not relieve the Bidder from responsibility for completing the contract.

The Bidder warrants that this bid is submitted solely on the basis of the Bidder's examination and inspection of the quality and quantity of the timber offered for sale and the Bidder's opinion of the value thereof and the costs of recovery. No reliance should be placed on the State of Michigan's estimates of timber quality, quantity or costs of recovery. Bidder further acknowledges that the State of Michigan: (i) expressly disclaims any warranty of fitness of timber for any purpose; (ii) offers this timber as is without any warranty of quality (merchantability) or quantity and (iii) expressly disclaims any warranty as to the quantity or quality of timber sold.

12. Certification and Chain-of-Custody (10/22)

Unless otherwise indicated in the contract under section 7 – Other Conditions of the Sale Specific Conditions & Requirements, the area encompassed by this timber sale is certified to the standards of the Forest Stewardship Council (FSC) - Certificate #SCS-FM/COC-00090N and the Sustainable Forestry Initiative (SFI) - Certificate #NSF-SFIS-5Y031-SF5. Forest products from this sale may be delivered to the mill as "FSC 100% and / or SFI certified" as long as the contractor hauling the forest products is chain-of-custody (COC) certified or covered under a COC certificate from the destination mill. The purchaser is responsible for maintaining COC after leaving the sale area.

13. Good Neighbor Authority (GNA) Requirements (10/22)

If the name of this timber sales contains the acronym GNA, it is authorized by the Good Neighbor Authority (GNA) and covered by various agreements between the U.S. Forest Service and the State. The timber sale occurs on federal land and the following conditions apply:

GNA contracts on US Forest Service land will not be awarded to purchasers on the Federal list of excluded parties. The System for Award Management (SAM) will be checked for active excluded parties prior to award of contract. In

addition, the Bidder to whom award is made must complete an Assurance Regarding Felony Conviction or Tax Delinquent Status for Corporate Applicants (AD-3031).

14. Good Neighbor Authority (GNA) Requirements, con't (10/22)

Bidder certifies, by signing this bid form, that to the best of Bidder's knowledge that the following representations are accurate and complete.

- a. That the Bidder and its principals are not presently debarred, suspended, proposed for debarment, declared ineligible, or voluntary excluded from timber sales (covered transactions) by any Federal department or agency.
- b. That the Bidder and its principals have not within a 3-year period preceding this bid been convicted of or had a civil judgment rendered against them for commission of fraud or a criminal offense in connection with obtaining, attempting to obtain, or performing a public (Federal, State, or local) transaction or contract under a public transaction; violation of Federal or State antitrust statutes or commission of embezzlement, theft, forgery, bribery, falsification or destruction of records, making false statements, or receiving stolen property.
- c. That the Bidder and its principals are not presently indicted for or otherwise criminally or civilly charged by a governmental entity (Federal, State, or local) with commission of any of the offenses enumerated in paragraph b of this certification.
- d. That the Bidder and its principals have not within a 3-year period preceding this bid had one or more public transactions (Federal, State, or local) terminated for breach or default of a timber or forest product contract.

Bidders that cannot certify this requirement, in whole or in part, shall submit an explanation with their bid.

SHANNON LOTT, Acting
Director

TIMBER SALE INFORMATION

On The Side (45-118-22)

T42N, R06W, SEC. 6; T43N, R06W, SEC. 30; T43N, R06W, SEC. 31.
Mackinac County (Advertised Price \$22,749.85)

SALE NOTE: A recreation site such as a trail, pathway, or campground is within the sale area or the vicinity. Certain restrictions/specifications may be applicable including time restrictions.

A timber sale contract for this lump sum, sealed bid timber sale will be awarded to the responsible bidder offering the highest sealed bid price. All units of volume listed below were estimated using the Inventory Manager computer program and the new Michigan taper model. Bids must be at or above the following advertised price for each product and species:

<u>PRODUCTS & SPECIES</u>	<u>ESTIMATED UNITS*</u>	<u>ADVERTISED PRICE</u>
Sawtimber		
Paper Birch	11.0 MBF	\$ 35.00 / MBF
Red Maple	18.8 MBF	\$ 116.00 / MBF
Yellow Birch	3.6 MBF	\$ 63.00 / MBF
Pulpwood		
Balsam Fir	185 Cords	\$ 9.55 / Cord
Mixed Aspen	128 Cords	\$ 22.25 / Cord
Mixed Spruce	444 Cords	\$ 9.20 / Cord
Paper Birch	244 Cords	\$ 6.10 / Cord
Red Maple	317 Cords	\$ 10.95 / Cord
Red Pine	7 Cords	\$ 70.45 / Cord
White Pine	380 Cords	\$ 14.70 / Cord
Yellow Birch	20 Cords	\$ 10.95 / Cord

* The total volume is statistically estimated within plus (+) or minus (-) 12.33 percent. There are an estimated 1,821 cords on this timber sale, plus or minus 225 cords at the 95% confidence level. The estimated units are final and not subject to adjustment. Prospective bidders are urged to examine this timber and to make their own estimates of quantity and quality.

BOND AND PAYMENT SCHEDULE:

1. A bond in the amount of \$2,275.00 to insure faithful performance of the conditions of the contract will be deposited by the successful bidder within 21 days of the sale award.
2. Cutting in any sale or unit without the required advance payment would be considered a trespass.
3. Total payment must be paid in advance or according to the following schedule :
 - (a) Ten percent (10%) of the sale value must be paid within 21 days of the sale award.
 - (b) The 10% down payment will be credited towards the first unit cut.
 - (c) Payment for each of the following units must be made before cutting begins in that unit:

PAYMENT UNIT NUMBER	PERCENT OF TOTAL SALE VALUE
01	36.6%
02	9.2%
03	19.6%
04	13.5%
05	21.1%

4. If no cutting takes place, the 10% down payment will not be refunded.
5. Operations on the contract issued will terminate on 06/30/2027.

SALE STATISTICS

Volumes were calculated in cubic feet using the Michigan taper model. Cubic foot volume includes all wood inside bark for the product indicated. For display purposes, cubic feet were converted to cords and MBF using a simple conversion factor, e.g. 79 cubic feet per cord and 185 cubic feet per MBF. The cubic foot volumes are precise; the cords and MBF volumes are not. Cubic foot volume cannot be directly converted to cords or boards with precision.

SALE VOLUMES

The total estimated sale volume may not equal the sum of the species/products due to the nature of statistical calculations associated with double sampling methodology.

VOLUME			STATISTICAL RANGE IN CORDS	
TOTAL CUBIC FEET	TOTAL CORDS	PERCENT ERROR	MINIMUM	MAXIMUM
143,892	1,821	12.33%	1,597	2,046

VDU VOLUMES

A VDU is a Volume Determination Unit. Volumes and their associated statistics are calculated at the VDU level and summarized to the sale level. There is often a one to one relationship between a VDU and a Payment Unit, but not always, depending on the cruise design. Refer to the VDU TO PAYMENT UNIT table.

	VOLUME			RANGE IN CORDS	
VDU	TOTAL CUBIC FEET	TOTAL CORDS	PERCENT ERROR	MINIMUM	MAXIMUM
37	53,678	679	19.24%	549	810
49	24,448	309	27.27%	225	394
751	16,673	211	36.12%	135	287
752	26,001	329	34.86%	214	444
753	23,093	292	24.09%	222	363
TOTAL:	143,892	1,821		1,345	2,298

VDU TO PAYMENT UNIT

When a VDU is associated with more than one Payment Unit (PU), the VDU volumes are assigned to the PU based on acres of the VDU within the PU.

VDU	VDU ACRES	PU	PU ACRES
37	23.9	1	23.9
49	20.2	5	20.2
751	10.4	2	10.4
752	15.0	3	15.0
753	17.8	4	17.8
TOTAL:	87.3		87.3

DESCRIPTION OF TIMBER BY PAYMENT UNIT (PU)

PU	MARKET GROUP	PRODUCT	QUANTITY	UNIT	ACRES	ADVERTISE PRICE
1	Paper Birch	Sawtimber Pulpwood	11.0	MBF	23.9	\$8,300.60
	Red Maple		17.9	MBF		
	Yellow Birch		3.6	MBF		
	Balsam Fir		49	Cords		
	Mixed Aspen		14	Cords		
	<i>B. T. Aspen</i>		14	Cords		
	Mixed Spruce		181	Cords		
	<i>Black Spruce</i>		26	Cords		
	<i>White Spruce</i>		155	Cords		
	Paper Birch		119	Cords		
	Red Maple		203	Cords		
Yellow Birch	20	Cords				
2	Balsam Fir	Pulpwood	8	Cords	10.4	\$2,089.75
	Mixed Aspen		10	Cords		
	<i>B. T. Aspen</i>		5	Cords		
	<i>Quaking Aspen</i>		5	Cords		
	Mixed Spruce		107	Cords		
	<i>Black Spruce</i>		101	Cords		
	<i>White Spruce</i>		6	Cords		
	Paper Birch		50	Cords		
	Red Maple		27	Cords		
	White Pine		14	Cords		
	3		Red Maple	Sawtimber		
Balsam Fir		Pulpwood	49	Cords		
Mixed Aspen			75	Cords		
<i>Quaking Aspen</i>			75	Cords		
Mixed Spruce			72	Cords		
<i>Black Spruce</i>			7	Cords		
<i>White Spruce</i>			65	Cords		
Paper Birch			6	Cords		
Red Maple			59	Cords		
White Pine			60	Cords		
4	Balsam Fir	Pulpwood	66	Cords	17.8	\$3,079.95
	Mixed Aspen		29	Cords		
	<i>Quaking Aspen</i>		29	Cords		
	Mixed Spruce		51	Cords		
	<i>Black Spruce</i>		3	Cords		
	<i>White Spruce</i>		48	Cords		
	Paper Birch		65	Cords		
	Red Maple		28	Cords		
	White Pine		43	Cords		
5	Balsam Fir	Pulpwood	13	Cords	20.2	\$4,811.40
	Mixed Spruce		33	Cords		
	<i>Black Spruce</i>		4	Cords		
	<i>White Spruce</i>		29	Cords		
	Paper Birch		4	Cords		
	Red Pine		7	Cords		
	White Pine		263	Cords		
TOTAL:			33.4	MBF		
TOTAL:			1,725	Cords		

Sale Specific Conditions & Requirements

Sale Name: On The Side

Sale Number: 45-118-22 Seq#: 2

1 - Sale Area

1.2 - Boundaries

1.2.1 - Painted boundaries (9/19)

The sale boundary is marked and identified by red paint. Exterior sale boundary lines against state are marked with red paint. The painted boundary line trees are not Included Timber and are to be protected.

2 - Timber Specifications

2.1 - Included Timber

2.1.1 - Clearcut unit(s) with unmerchantable trees (6/14)

Within Payment Unit(s) 2-4, cut all deciduous trees that are two (2) inches or more at DBH and all conifer trees that are four (4) inches or more at DBH except, DO NOT cut any cedar and hemlock, also do not cut any white pine over 16" DBH.

2.1.7 - Leave tree marked unit(s) (6/14)

Within Payment Unit(s) 5, cut all trees that are two (2) inches or more at DBH except trees marked with green paint above and below stump height. Within Payment Unit 1, cut all trees that are two (2) inches or more at DBH except cedar, hemlock, white pine, and trees marked with green paint above and below stump height.

4 - Transportation

4.1 - Construction

4.1.2 - Stream crossings, specific (3/11)

The road accessing Unit 1 will require a temporary portable bridge for a stream crossing. Access to the cutting areas of Unit 1 will include two separate intermittent creek crossings requiring the temporary installation of two (2) separate culverts. The bridge and culverts may be borrowed from the DNR. The bridge installation and removal will be done by the DNR. The culvert installations and removals will be done by the purchaser. All bridge and culvert installations and removals will be performed in accordance with the specifications on the appropriate permits which shall be provided by the DNR.

NOTE:

The temporary portable bridge has been installed.

4.1.3 - Slash and earthen piles (8/04)

Piles or windrows of earth along roads and landings that have been widened or constructed shall be leveled. Slash from road maintenance or construction, including stumps, shall be dispersed throughout the sale.

4.1.6 - Road construction (1/09)

Construction of new roads or improvements of existing roads shall be done in such a way as to minimize the environmental and visual impacts. Merchantable trees shall be cut and utilized unless otherwise directed. Non-merchantable trees shall be severed and laid flat on the ground. Slash shall be scattered, and not left in windrows and kept a minimum of 10 feet back from the road edge. Stumps shall be set upright, not left on edge, and be moved at least 10 feet away from the road edge. Disturbed soil shall be feathered into the woods and not left in berms or windrows.

4.1.7 - Road closure (10/11)

All new roads built into the sale must be blocked to vehicle traffic upon completion of the sale. Overgrown roads that are reopened shall be considered new roads. In general, this will require constructing double earthen berms at strategic locations. These roads must be rendered impassable to cars and trucks. Temporary berms may be required if no sale activity occurs for 30 or more consecutive days. Contact the sale administrator for specific details of design and placement.

4.1.11 - Permits (2/12)

The DNR will secure any necessary stream crossing permits that may be required.

4.2 - Maintenance

4.2.3 - Road maintenance (8/13)

The following road maintenance may be required: Within 60 days of completion of hauling, or if no hauling occurs for 60 days, the road must be maintained and graded. This includes cleaning of drainage areas, grading, crowning and filling with gravel, if necessary. Damages may be assessed if grading/repair does not occur.

4.2.5 - Two wheel drive condition (2/04)

All existing trail roads on and adjacent to the sale area must be passable by two-wheel drive traffic for the duration of the sale.

5 - Operations

5.2 - Conduct of Operations

5.2.2 - Hazard Trees/Snags

5.2.2.1 - Den trees (10/16)

Obvious hollow and/or den trees shall be protected and left standing unless they are a safety hazard.

5.2.3 - Operating Restrictions

5.2.3.1 - Operating restrictions (9/11)

Within Payment Unit(s) 2-4, unless changed by written agreement, cutting, skidding, and hauling are limited to the period of Dec. 1 to March 31. This restriction is because of wet soil conditions and for winter deer browse.

5.2.22 - Operating Caution

5.2.22.1 - Operating caution (6/11)

It is recommended, but not required, that within Payment Unit(s) 1, cutting, skidding, and hauling occur during dry summer or frozen winter conditions. The reason for the recommendation is to protect potentially sensitive ground during wet periods.

5.2.32 - Decking/landing restoration (9/13)

All decking and landing areas must have the surface area restored to a condition equal to or better than before. This is to ensure the proper regeneration of the stand. Wood debris, chips and "cookies" from trimmings must be removed or scattered away from landing and loading areas and may not be windrowed on the edge.

5.2.38 - No decking against live trees (2/04)

Cut products may not be decked against unmarked or designated leave trees.

5.2.39 - ORV trail/route protection (4/18)

"A route" is an ORV trail or route and is shown on the Timber Sale Map. Do not damage posts with yellow ORV markers. All stumps within 5 feet of the trail must be cut flush with the ground. Maintain a 20 foot wide slash, debris, and rut free zone daily using the ORV trail or route as the centerline. No decking along trail or route.

5.2.41 - Snowmobile trail protection (9/11)

"A route" is a snowmobile trail and is shown on the Timber Sale Map. Do not cut or damage posts with orange trail markers or traffic control signs. If the trail is used, it must be maintained and restored to a condition equal to or better than before the sale. The road maintenance/restoration must be done prior to December 1. If the trail is used for hauling, it must be graded to the satisfaction of the Unit Manager or his/her representative prior to December 1st. If the trail road is to be used for hauling during the snowmobile season, then a snow covered base must be left on the trail. Maintain a 20 foot wide slash, debris, and rut free zone daily using the snowmobile trail as the centerline. No decking of forest products will be permitted along the snowmobile trail.

5.8 - Protection of Endangered Species

5.8.5 - Protection of raptor nests (3/13)

All trees with raptor nests will be protected if found during harvesting operations. Notification will be made to the Unit Manager or his/her representative who will notify the Wildlife Biologist so an on-site evaluation and recommendation can be made, if necessary.

6 - Safety and Fire Prevention

6.2 - Signing

6.2.1 - Road posting (10/20)

The Purchaser is responsible for posting and maintaining caution signs on Cut River Trail and/or Prout Rd (whichever is used for hauling) prior to beginning operations. The road must be posted at appropriate distances from the sale area to warn of logging activity and truck traffic. Signs must be removed when harvest operations are suspended or completed. The Purchaser will provide these signs.

6.2.2 - Snowmobile trail posting (10/20)

The Purchaser is responsible for posting and maintaining caution signs on "A route" prior to beginning operations during the snowmobile season (approximately December 1 to March 31). The trail must be posted at appropriate distances from the sale area to warn of logging activity and truck traffic. Signs must be removed when harvest operations are suspended or completed. The Purchaser will provide these signs.

6.2.3 - Recreational trail posting (10/20)

The Purchaser is responsible for posting and maintaining caution signs on "A route" prior to beginning operations. The trail must be posted at appropriate distances from the sale area to warn of logging activity and truck traffic at both ends of the trail. Signs must be removed when harvest operations are suspended or completed. The Purchaser will provide these signs.



TIMBER SALE MAP

This information provided by authority of Part 525, 1994 PA 451, as amended.

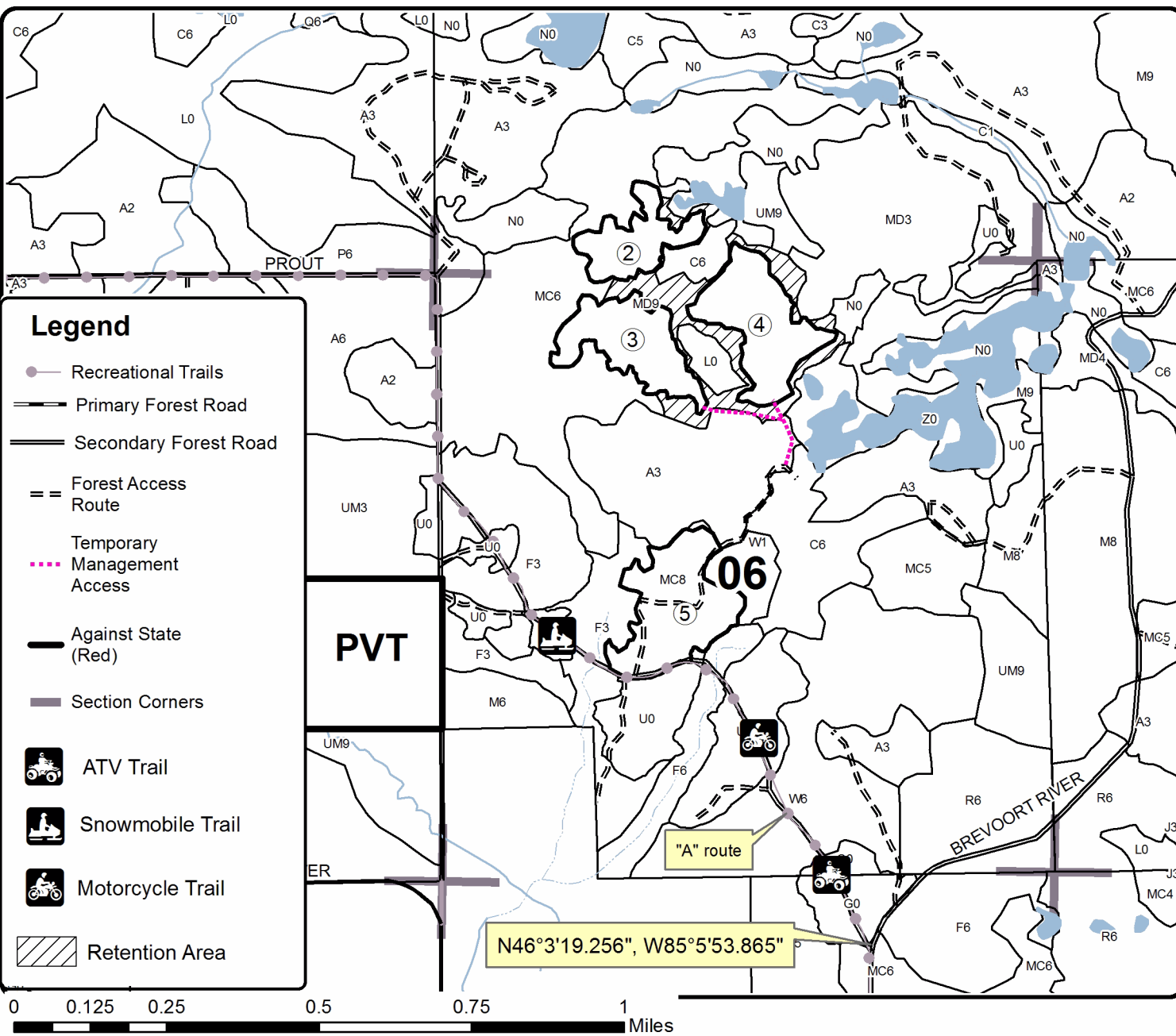
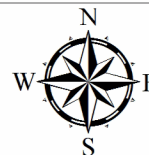
Sale Number	Year
45-118	22

Forest Management Unit	County	Mapped By	Date	Page	of
Sault Ste Marie Mgt Unit	Mackinac	Flatt	09/30/2022	1	2
Township	Range	Section(s) and Subdivision(s)	Scale		
42N & 43N	06W	6: N1/2NW, SENW, NWNE, NESW, NWSE 31: S1/2SW, SWSE	1:15,840		

Cover Type				Density	
A = Aspen	H = Hemlock	N = Marsh	U = Upland Brush	0 = Non Stocked	5 = Pole Timber Medium
B = Paper Birch	J = Jack Pine	O = Oak	UM = Upland Mixed	1 = Seedling Sapling Poor	6 = Pole Timber Well
C = Cedar	L = Lowland Brush	P = Lowland Poplar	V = Bog or Marsh	2 = Seedling Sapling Medium	7 = Saw Timber Poor
D = Treed Bog	LM = Lowland Mixed	Q = Mixed Swamp Conifer	W = White Pine	3 = Seedling Sapling Well	8 = Saw Timber Medium
E = Swamp Hdwoods	M = Mpl, Bch, Brch	R = Red Pine	X = Non Stocked	4 = Pole Timber Poor	9 = Saw Timber Well
F = Spruce Fir	MC = Mixed Conifer	S = Black Spruce	Z = Water		
G = Grass	MD = Mixed Deciduous	T = Tamarack			

PU	Acres	PU	Acres
1	23.9	4	17.8
2	10.4	5	20.2
3	15		

On The Side
Compartment 119 & 122
87.3 Acres





Sale Number	Year
45-118	22

TIMBER SALE MAP

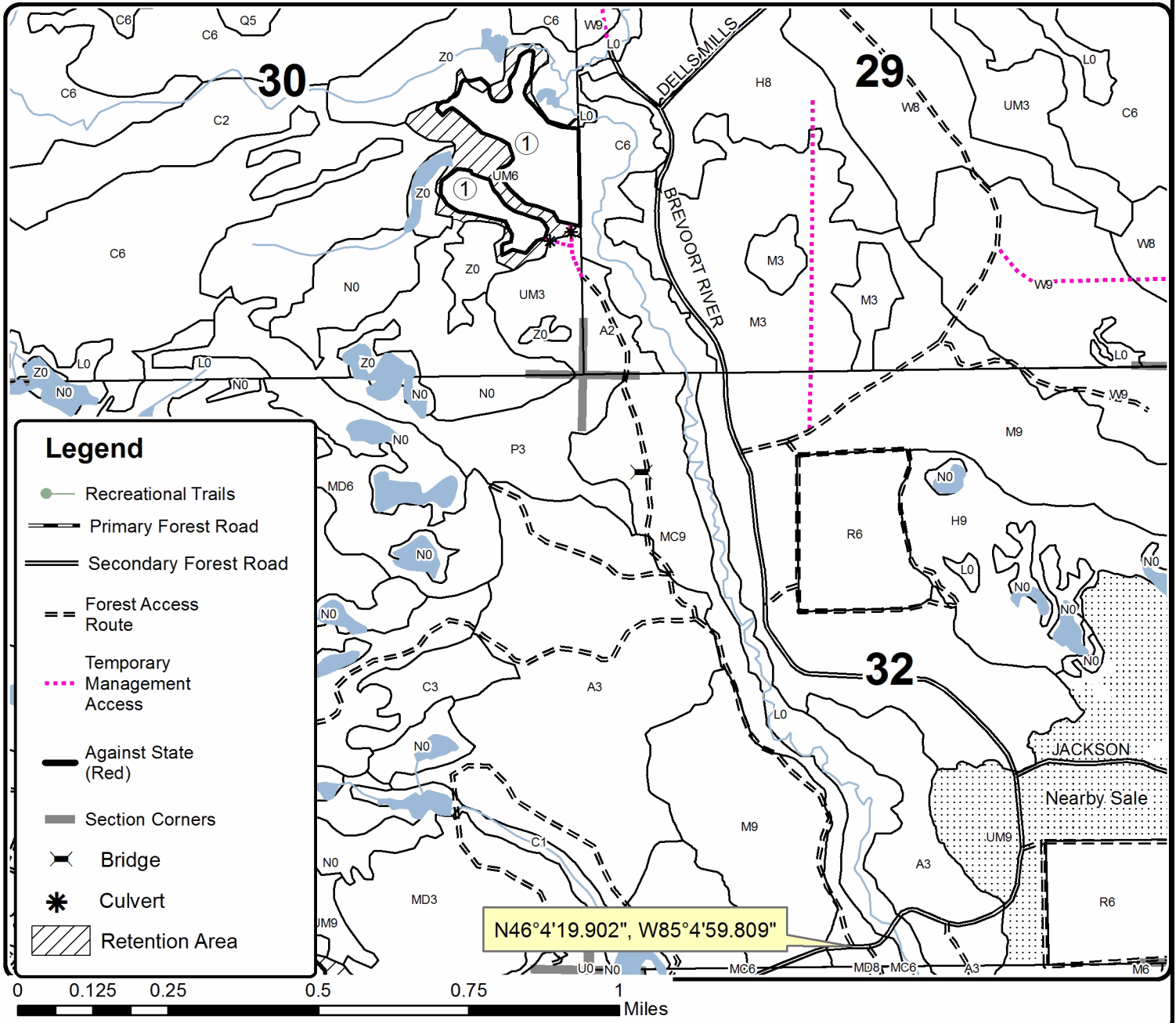
This information provided by authority of Part 525, 1994 PA 451, as amended.

Forest Management Unit	County	Mapped By	Date	Page	of
Sault Ste Marie Mgt Unit	Mackinac	Flatt	09/30/2022	2	2
Township	Range	Section(s) and Subdivision(s)	Scale		
43N	06W	30: SENE,E1/2SE	1:15,840		

Cover Type				Density	
A = Aspen	H = Hemlock	N = Marsh	U = Upland Brush	0 = Non Stocked	5 = Pole Timber Medium
B = Paper Birch	J = Jack Pine	O = Oak	UM = Upland Mixed	1 = Seedling Sapling Poor	6 = Pole Timber Well
C = Cedar	L = Lowland Brush	P = Lowland Poplar	V = Bog or Marsh	2 = Seedling Sapling Medium	7 = Saw Timber Poor
D = Treed Bog	LM = Lowland Mixed	Q = Mixed Swamp Conifer	W = White Pine	3 = Seedling Sapling Well	8 = Saw Timber Medium
E = Swamp Hdwoods	M = Mpl. Bch. Brch	R = Red Pine	X = Non Stocked	4 = Pole Timber Poor	9 = Saw Timber Well
F = Spruce Fir	MC = Mixed Conifer	S = Black Spruce	Z = Water		
G = Grass	MD = Mixed Deciduous	T = Tamarack			

PU	Acres	PU	Acres
1	23.9	4	17.8
2	10.4	5	20.2
3	15		

On The Side
Compartment 119 & 122
87.3 Acres



TIMBER SALE INFORMATION

One Oh Nine Mix (45-105-21)

T43N, R06W, SEC. 3; T44N, R06W, SEC. 33; T44N, R06W, SEC. 34; T44N, R06W, SEC. 36.
Mackinac County (Advertised Price \$16,663.65)

SALE NOTE: All units of volume listed for this sale were estimated using the Inventory Manager computer program and the new Michigan taper model.

Some Payment Units are seasonally restricted.

A recreation site such as a trail, pathway, or campground is within the sale area or the vicinity. Certain restrictions/specifications may be applicable including time restrictions.

A timber sale contract for this lump sum, sealed bid timber sale will be awarded to the responsible bidder offering the highest sealed bid price. All units of volume listed below were estimated using the Inventory Manager computer program and the new Michigan taper model. Bids must be at or above the following advertised price for each product and species:

<u>PRODUCTS & SPECIES</u>	<u>ESTIMATED UNITS*</u>	<u>ADVERTISED PRICE</u>
Sawtimber		
Paper Birch	23.7 MBF	\$ 35.00 / MBF
Red Maple	6.9 MBF	\$ 116.00 / MBF
Pulpwood		
Balsam Fir	107 Cords	\$ 9.55 / Cord
Jack Pine	92 Cords	\$ 18.85 / Cord
Misc. Species 1	10.5 Acres	\$ 10.00 / Acre
Mixed Aspen	85 Cords	\$ 22.25 / Cord
Mixed Hardwood	230 Cords	\$ 10.95 / Cord
Mixed Spruce	289 Cords	\$ 9.20 / Cord
N. White Cedar	311 Cords	\$ 2.50 / Cord
Paper Birch	133 Cords	\$ 6.10 / Cord
Red Pine	46 Cords	\$ 70.45 / Cord
Tamarack	51 Cords	\$ 1.35 / Cord
White Pine	14 Cords	\$ 14.70 / Cord

* The total volume is statistically estimated within plus (+) or minus (-) 6.94 percent. There are an estimated 1,634 cords on this timber sale, plus or minus 113 cords at the 95% confidence level. The estimated units are final and not subject to adjustment. Prospective bidders are urged to examine this timber and to make their own estimates of quantity and quality.

BOND AND PAYMENT SCHEDULE:

1. A bond in the amount of \$833.00 to insure faithful performance of the conditions of the contract will be deposited by the successful bidder within 21 days of the sale award.
2. Cutting in any sale or unit without the required advance payment would be considered a trespass.
3. Total payment must be paid in advance or according to the following schedule :
 - (a) Ten percent (10%) of the sale value must be paid within 21 days of the sale award.
 - (b) The 10% down payment will be credited towards the first unit cut.
 - (c) Payment for each of the following units must be made before cutting begins in that unit:

PAYMENT UNIT NUMBER	PERCENT OF TOTAL SALE VALUE
01	28.8%
02	2.9%
03	0.6%
04	4.6%
05	13.2%
06	10.3%
07	17.9%
08	21.7%

4. If no cutting takes place, the 10% down payment will not be refunded.
5. Operations on the contract issued will terminate on 06/30/2027.

SALE STATISTICS

Volumes were calculated in cubic feet using the Michigan taper model. Cubic foot volume includes all wood inside bark for the product indicated. For display purposes, cubic feet were converted to cords and MBF using a simple conversion factor, e.g. 79 cubic feet per cord and 185 cubic feet per MBF. The cubic foot volumes are precise; the cords and MBF volumes are not. Cubic foot volume cannot be directly converted to cords or boards with precision.

SALE VOLUMES

The total estimated sale volume may not equal the sum of the species/products due to the nature of statistical calculations associated with double sampling methodology.

VOLUME			STATISTICAL RANGE IN CORDS	
TOTAL CUBIC FEET	TOTAL CORDS	PERCENT ERROR	MINIMUM	MAXIMUM
129,058	1,634	6.94%	1,520	1,747
10.60 acres are being sold by the acre and do not have cubic foot or cord volumes.				

VDU VOLUMES

A VDU is a Volume Determination Unit. Volumes and their associated statistics are calculated at the VDU level and summarized to the sale level. There is often a one to one relationship between a VDU and a Payment Unit, but not always, depending on the cruise design. Refer to the VDU TO PAYMENT UNIT table.

	VOLUME			RANGE IN CORDS	
VDU	TOTAL CUBIC FEET	TOTAL CORDS	PERCENT ERROR	MINIMUM	MAXIMUM
2	33,986	430	13.40%	373	488
10	4,435	56	27.08%	41	71
47	16,813	213	18.26%	174	252
51	17,430	221	23.87%	168	273
54	24,150	306	19.91%	245	367
68	15,151	192	8.30%	176	208
92	7,333	93	28.10%	67	119
97	9,099	115	17.07%	96	135
109 *			N/A		
TOTAL:	128,397	1,625		1,338	1,912

* This VDU is being sold by the acre. There are no cruise statistics available.

VDU TO PAYMENT UNIT

When a VDU is associated with more than one Payment Unit (PU), the VDU volumes are assigned to the PU based on acres of the VDU within the PU.

VDU	VDU ACRES	PU	PU ACRES
2	13.9	1	13.9
10	2.3	2	2.3
47	10.6	7	10.6
51	8.9	6	8.9
54	11.6	6	6.2
		7	5.4
68	7.1	8	7.1
92	6.0	4	6.0
97	8.6	5	8.6
109	10.6	3	10.6
TOTAL:	79.6		79.6

DESCRIPTION OF TIMBER BY PAYMENT UNIT (PU)

PU	MARKET GROUP	PRODUCT	QUANTITY	UNIT	ACRES	ADVERTISE PRICE
1	Paper Birch	Sawtimber	23.0	MBF	13.9	\$4,803.80
	Red Maple		2.0	MBF		
	Balsam Fir	Pulpwood	63	Cords		
	Mixed Aspen		55	Cords		
	<i>B. T. Aspen</i>	<i>Sawtimber</i>	2.7	<i>MBF</i>		
	<i>Quaking Aspen</i>		17.1	<i>MBF</i>		
	<i>B. T. Aspen</i>	<i>Pulpwood</i>	1	<i>Cords</i>		
	<i>Quaking Aspen</i>		15	<i>Cords</i>		
	Mixed Hardwood		112	Cords		
	<i>Red Maple</i>		112	<i>Cords</i>		
	Mixed Spruce		3	Cords		
	<i>White Spruce</i>		3	<i>Cords</i>		
	N. White Cedar		3	Cords		
	Paper Birch		97	Cords		
White Pine		6	Cords			
2	Paper Birch	Sawtimber	0.7	MBF	2.3	\$480.60
	Balsam Fir	Pulpwood	16	Cords		
	Mixed Hardwood		16	Cords		
	<i>Red Maple</i>		16	<i>Cords</i>		
	Paper Birch		21	Cords		
3	Misc. Species 1	Pulpwood	10.5	Acres	10.6	\$105.00
4	Red Maple	Sawtimber	2.8	MBF	6.0	\$760.90
	Balsam Fir	Pulpwood	7	Cords		
	Mixed Hardwood		27	Cords		
	<i>Red Maple</i>		20	<i>Cords</i>		
	<i>Sugar Maple</i>		7	<i>Cords</i>		
	Mixed Spruce		8	Cords		
<i>Black Spruce</i>		8	<i>Cords</i>			
5	Balsam Fir	Pulpwood	2	Cords	8.6	\$2,194.35
	Jack Pine		92	Cords		
	Mixed Aspen		19	Cords		
	<i>Quaking Aspen</i>		19	<i>Cords</i>		
	Paper Birch		3	Cords		
6	Red Maple	Sawtimber	1.1	MBF	15.1	\$1,721.65
	Balsam Fir	Pulpwood	19	Cords		
	Mixed Hardwood		59	Cords		
	<i>Red Maple</i>		59	<i>Cords</i>		
	Mixed Spruce		20	Cords		
	<i>Black Spruce</i>		9	<i>Cords</i>		
	<i>White Spruce</i>		11	<i>Cords</i>		
	N. White Cedar		223	Cords		
	Paper Birch		3	Cords		
Tamarack		5	Cords			
7	Red Maple	Sawtimber	1.0	MBF	16.0	\$2,988.20
	Mixed Aspen	Pulpwood	11	Cords		
	<i>B. T. Aspen</i>	<i>Sawtimber</i>	2.3	<i>MBF</i>		
	<i>B. T. Aspen</i>	<i>Pulpwood</i>	1	<i>Cords</i>		
	<i>Quaking Aspen</i>		5	<i>Cords</i>		
	Mixed Hardwood		16	Cords		
	<i>Red Maple</i>		16	<i>Cords</i>		
	Mixed Spruce		139	Cords		
	<i>Black Spruce</i>		135	<i>Cords</i>		
	<i>White Spruce</i>		4	<i>Cords</i>		
	N. White Cedar		85	Cords		
	Paper Birch		9	Cords		

DESCRIPTION OF TIMBER BY PAYMENT UNIT (PU), CON'T

PU	MARKET GROUP	PRODUCT	QUANTITY	UNIT	ACRES	ADVERTISE PRICE
7 con't	Red Pine	Pulpwood	11	Cords		
	<i>Red Pine</i>	<i>Sawtimber</i>	3.0	<i>MBF</i>		
	<i>Red Pine</i>	<i>Pulpwood</i>	5	<i>Cords</i>		
	Tamarack		10	Cords		
	White Pine		8	Cords		
8	Mixed Spruce	Pulpwood	119	Cords	7.1	\$3,609.15
	<i>Black Spruce</i>		119	<i>Cords</i>		
	Red Pine		35	Cords		
	<i>Red Pine</i>		35	<i>Cords</i>		
	Tamarack		36	Cords		
TOTAL:			30.6	MBF		
TOTAL:			1,358	Cords		
TOTAL:			10.5	Acres		

Sale Specific Conditions & Requirements

Sale Name: One Oh Nine Mix

Sale Number: 45-105-21 Seq#: 2

1 - Sale Area

1.2 - Boundaries

1.2.1 - Painted boundaries (9/19)

The sale boundary and Payment Unit boundaries are marked and identified by blue, red, and yellow paint. Exterior sale boundary lines against private property are marked with blue paint. Exterior sale boundary lines against state are marked with red paint. Interior Payment Unit boundaries are marked with yellow paint. Retention patches are marked with red paint; no harvesting activities may occur within these areas. The painted boundary line trees are not Included Timber and are to be protected. Yellow painted trees designating an interior Payment Unit boundary are only to be cut when all surrounding Payment Units have been paid.

2 - Timber Specifications

2.1 - Included Timber

2.1.1 - Clearcut unit(s) with unmerchantable trees (6/14)

Within Payment Unit(s) 1-8, cut all trees that are two (2) inches or more at DBH. Additionally, do not cut any white pine or green marked trees in Payment Unit 4 or any hemlock in any Payment Unit.

4 - Transportation

4.1 - Construction

4.1.6 - Road construction (1/09)

Construction of new roads or improvements of existing roads shall be done in such a way as to minimize the environmental and visual impacts. Merchantable trees shall be cut and utilized unless otherwise directed. Non-merchantable trees shall be severed and laid flat on the ground. Slash shall be scattered, and not left in windrows and kept a minimum of 10 feet back from the road edge. Stumps shall be set upright, not left on edge, and be moved at least 10 feet away from the road edge. Disturbed soil shall be feathered into the woods and not left in berms or windrows.

4.1.7 - Road closure (10/11)

All new roads built into the sale must be blocked to vehicle traffic upon completion of the sale. Overgrown roads that are reopened shall be considered new roads. In general, this will require constructing a four (4') foot high berm of stumps and logs covered with earth. These roads must be rendered impassable to cars and trucks. All stumps from road building and landing construction must be reserved to block any newly constructed roads upon completion of the sale. These stumps must be scattered along the road system to prohibit vehicular movement. Temporary berms may be required if no sale activity occurs for 30 or more consecutive days. Contact the sale administrator for specific details of design and placement.

4.2 - Maintenance

4.2.5 - Two wheel drive condition (2/04)

All existing trail roads on and adjacent to the sale area must be passable by two-wheel drive traffic for the duration of the sale.

5 - Operations

5.2 - Conduct of Operations

5.2.1 - Slash

5.2.1.8 - Slash height (12/08)

No slash or tree tops may exceed 24 inches in height.

5.2.2 - Hazard Trees/Snags

5.2.2.1 - Den trees (10/16)

Obvious hollow and/or den trees shall be protected and left standing unless they are a safety hazard.

5.2.3 - Operating Restrictions

5.2.3.1 - Operating restrictions (9/11)

Within Payment Unit(s) 6-8, unless changed by written agreement, cutting, skidding, and hauling are limited to the period of December 1 to March 31. This restriction is because of wet soil conditions.

5.2.3.2 - Operating restrictions (9/11)

Within Payment Unit(s) 5, unless changed by written agreement, cutting, skidding, and hauling are only permitted during snow free conditions. This restriction is to allow for scarification of the soil during regular operations for the purpose of naturally regenerating pine.

5.2.4 - Dead and Down Creation

5.2.4.6 - Dead and down creation, other (9/09)

To improve habitat for wildlife, the Purchaser is to leave one brush pile on the ground for every two acres within Payment Unit 5. Piles must be at least 4 feet tall and scattered throughout the Payment Unit. Note: piles can be created by encouraging limbing in piles during normal harvesting procedures.

5.2.32 - Decking/landing restoration (9/13)

All decking and landing areas must have the surface area restored to a condition equal to or better than before. This is to ensure the proper regeneration of the stand. Wood debris, chips, and "cookies" from trimmings must be removed or scattered away from landing and loading areas and may not be windrowed on the edge.

5.2.38 - No decking against live trees (2/04)

Cut products may not be decked against unmarked or designated leave trees.

5.2.39 - ORV trail/route protection (4/18)

The Carp River Truck Trail is an ORV route and is shown on the Timber Sale Map. Do not cut trees or damage posts with yellow ORV markers. All stumps within 5 feet of the trail must be cut flush with the ground. Maintain a 20-foot-wide slash, debris, and rut free zone daily using the ORV trail or route as the centerline. Do not run equipment down the ORV trail or route. Skidding across the trail or route may only occur in locations approved by the sale administrator.

5.2.41 - Snowmobile trail protection (9/11)

The Carp River Truck Trail is a snowmobile trail and is shown on the Timber Sale Map. Do not cut or damage posts with orange trail markers or traffic control signs. If the trail is used, it must be maintained and restored to a condition equal to or better than before the sale. The road maintenance/restoration must be done prior to December 1. If the trail is used for hauling, it must be graded to the satisfaction of the Unit Manager or his/her representative prior to December 1. If the trail road is to be used for hauling during the snowmobile season, then a snow-covered base must be left on the trail. The snowmobile trail may only be crossed at right angles. Maintain a 20-foot-wide slash, debris, and rut free zone daily using the snowmobile trail as the centerline. No decking of forest products will be permitted along the snowmobile trail. All stumps within 5 feet of the snowmobile trail must be cut at ground level.

5.3 - Stream Protection

5.3.1 - Operating near stream (7/04)

No tracked or wheeled vehicles shall be operated within 50 feet of intermittent streams in Payment Unit 1. No crossing will be approved.

5.8 - Protection of Endangered Species

5.8.5 - Protection of raptor nests (3/13)

All trees with raptor nests will be protected if found during harvesting operations. Notification will be made to the Unit Manager or his/her representative who will notify the Wildlife Biologist so an on-site evaluation and recommendation can be made, if necessary.

6 - Safety and Fire Prevention

6.2 - Signing

6.2.2 - Snowmobile trail posting (10/20)

The Purchaser is responsible for posting and maintaining caution signs on Carp River Truck Trail prior to beginning operations

during the snowmobile season (approximately December 1 to March 31). The trail must be posted at appropriate distances from the Sale Area to warn of logging activity and truck traffic. Signs must be removed when harvest operations are suspended or completed. The Purchaser will provide these signs.

6.2.3 - Recreational trail posting (10/20)

The Purchaser is responsible for posting and maintaining caution signs on Carp River Truck Trail prior to beginning operations. The trail must be posted at appropriate distances from the Sale Area to warn of logging activity and truck traffic at both ends of the trail. Signs must be removed when harvest operations are suspended or completed. The Purchaser will provide these signs.



TIMBER SALE MAP

This information provided by authority of Part 525, 1994 PA 451, as amended.

Forest Management Unit Sault Ste Marie	County Chippewa/Mackinac	Mapped By Fanelli	Date 09/01/2021	Page 1	of 2
Township 44N (Chip) 43N (Mack)	Range 06W (Chip) 06W (Mack)	Section(s) and Subdivision(s) Sec 33: NENE, SESE; Sec 34: N1/2NW, NENE, S1/2SW, S1/2SE; Sec 36: E1/2NW, W1/2NE; Sec 3 NENE	Scale 1:15,840		

Cover Type

Density

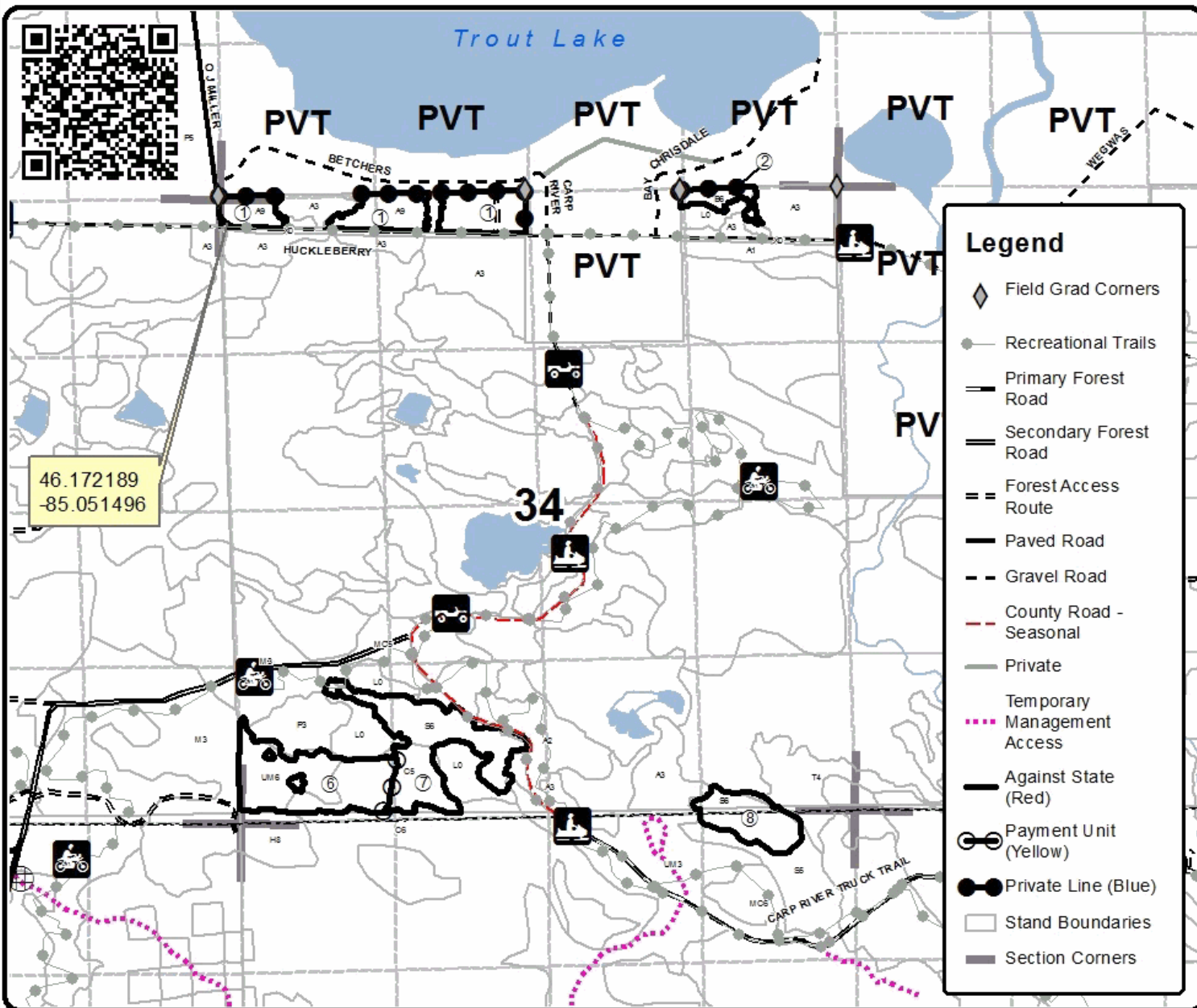
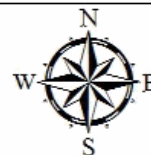
A = Aspen	H = Hemlock	N = Marsh	U = Upland Brush	0 = Non Stacked	5 = Pole Timber Medium
B = Paper Birch	J = Jack Pine	O = Oak	UM = Upland Mixed	1 = Seedling Sapling Poor	6 = Pole Timber Well
C = Cedar	L = Lowland Brush	P = Lowland Poplar	V = Bog or Marsh	2 = Seedling Sapling Medium	7 = Saw Timber Poor
D = Treed Bog	LM = Lowland Mixed	Q = Mixed Swamp Conifer	W = White Pine	3 = Seedling Sapling Well	8 = Saw Timber Medium
E = Swamp Hdwoods	M = Mpl. Boh, Broh	R = Red Pine	X = Non Stacked	4 = Pole Timber Poor	9 = Saw Timber Well
F = Spruce Fir	MC = Mixed Conifer	S = Black Spruce	Z = Water		
G = Grass	MD = Mixed Deciduous	T = Tamarack			

PU	Acres	PU	Acres
1	13.9	5	8.6
2	2.3	6	15.1
3	10.6	7	16.0
4	6.0	8	7.1

One Oh Nine Mix

Compartment 109/108

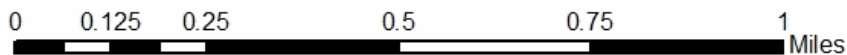
79.6 Acres



46.172189
-85.051496

Legend

- Field Grad Corners
- Recreational Trails
- Primary Forest Road
- Secondary Forest Road
- Forest Access Route
- Paved Road
- Gravel Road
- County Road - Seasonal
- Private
- Temporary Management Access
- Against State (Red)
- Payment Unit (Yellow)
- Private Line (Blue)
- Stand Boundaries
- Section Corners





Sale Number	Year
45-105	21

TIMBER SALE MAP

This information provided by authority of Part 525, 1994 PA 451, as amended.

Forest Management Unit Sault Ste Marie	County Chippewa/Mackinac	Mapped By Fanelli	Date 09/01/2021	Page 2	of 2
Township 44N (Chip) 43N (Mack)	Range 06W (Chip) 06W (Mack)	Section(s) and Subdivision(s) See Map	Scale 1:15,840		

Cover Type

- A = Aspen
- B = Paper Birch
- C = Cedar
- D = Treed Bog
- E = Swamp Hdwoods
- F = Spruce Fir
- G = Grass
- H = Hemlock
- J = Jack Pine
- L = Lowland Brush
- LM = Lowland Mixed
- M = Mpl. Boh, Broh
- MC = Mixed Conifer
- MD = Mixed Deciduous
- N = Marsh
- O = Oak
- P = Lowland Poplar
- Q = Mixed Swamp Conifer
- R = Red Pine
- S = Black Spruce
- T = Tamarack
- U = Upland Brush
- UM = Upland Mixed
- V = Bog or Marsh
- W = White Pine
- X = Non Stacked
- Z = Water

Density

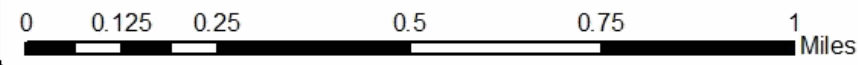
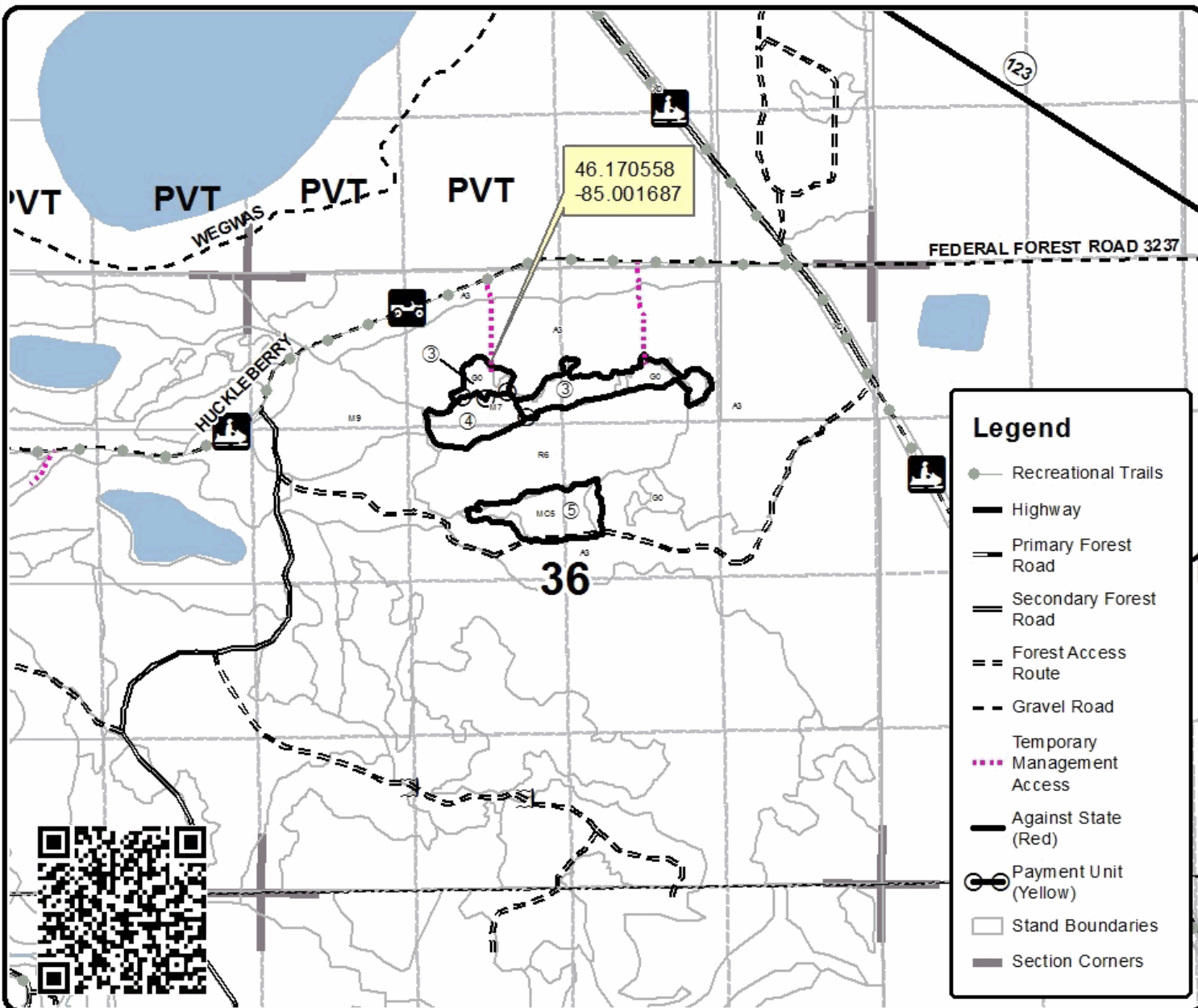
- 0 = Non Stacked
- 1 = Seedling Sapling Poor
- 2 = Seedling Sapling Medium
- 3 = Seedling Sapling Well
- 4 = Pole Timber Poor
- 5 = Pole Timber Medium
- 6 = Pole Timber Well
- 7 = Saw Timber Poor
- 8 = Saw Timber Medium
- 9 = Saw Timber Well

PU	Acres	PU	Acres
1	13.9	5	8.6
2	2.3	6	15.1
3	10.6	7	16.0
4	6.0	8	7.1

One Oh Nine Mix

Compartment 109/108

79.6 Acres



On The Side (45-118-22)

T42N, R06W, SEC. 6; T43N, R06W, SEC. 30; T43N, R06W, SEC. 31; Mackinac

In response to the notice of sale to be held 3:00 p.m. (local time) on August 22, 2023, I am hereby submitting my sealed bid (firm offer) for the following forest products to be cut. Bids for individual species must be at or above the advertised price. All non-responsive bid forms may be rejected.

<u>PRODUCTS & SPECIES</u>	<u>ESTIMATED VOLUME*</u>	<u>ADVERTISED PRICE</u>	<u>BID PRICE/UNIT</u>
Sawtimber			
Paper Birch	11.0 MBF	\$ 35.00/MBF	\$ _____
Red Maple	18.8 MBF	\$ 116.00/MBF	\$ _____
Yellow Birch	3.6 MBF	\$ 63.00/MBF	\$ _____
Pulpwood			
Balsam Fir	185 Cords	\$ 9.55/Cord	\$ _____
Mixed Aspen	128 Cords	\$ 22.25/Cord	\$ _____
Mixed Spruce	444 Cords	\$ 9.20/Cord	\$ _____
Paper Birch	244 Cords	\$ 6.10/Cord	\$ _____
Red Maple	317 Cords	\$ 10.95/Cord	\$ _____
Red Pine	7 Cords	\$ 70.45/Cord	\$ _____
White Pine	380 Cords	\$ 14.70/Cord	\$ _____
Yellow Birch	20 Cords	\$ 10.95/Cord	\$ _____

*The volumes are statistically estimated within plus (+) or minus (-) 12.33 percent at 95% confidence level. These estimated volumes are final and not subject to adjustment. Prospective bidders are urged to examine this timber and to make their own estimates of quantity and quality.

I understand that any or all bids may be rejected. All bids must be signed and all bid items must be bid or the bid form may be rejected. I also understand that consideration and awarding a contract will be based upon my past performance and ability to complete the contract based upon equipment and staffing subject to my control.

FEDERAL ID: _____ or SOCIAL SECURITY NUMBER: _____

Company or individual bidding: _____

Company representative's name: _____

Address: _____

City: _____ State: _____ Zip: _____

IF AVAILABLE, PLEASE PLACE THE PERSONALIZED LABEL FROM YOUR PROSPECTUS IN THE ABOVE BOX.

Individual or company representative's signature: _____ Date: _____

Phone number : _____ Email (optional): _____

THE WINNING BIDDER MUST COMPLETE THE VERIFICATION OF WORKER'S DISABILITY COMPENSATION ACT COMPLIANCE (ON REVERSE SIDE IF DOUBLE SIDED) WITHIN 21 DAYS OF SALE AWARD DATE



TIMBER SALE VERIFICATION OF WORKER'S DISABILITY COMPENSATION ACT COMPLIANCE

As required by Act 317, P.A. 1969 (Worker's Compensation) and
Part 5 of Act 451 of 1994, as amended.

FOR DEPARTMENT USE ONLY	
Sale Number (XX - XXX - XX - XX)	
Forest Management Unit:	

VERIFICATION OF WORKER'S DISABILITY COMPENSATION ACT COMPLIANCE

- This verification must be completed and submitted within 21 days of contract award and prior to the issuance of the timber sale contract.
- In addition, if boxes 2B or 2C are checked, then Notice of Exclusion or Certificate of Insurance must be submitted within twenty-one (21) days of the contract award and prior to the issuance of the timber sale contract.
- All information must be typed or printed except for written signatures.

Please Check Appropriate Categories:

1. My business is organized as (you **must** check one of the boxes below):
 - A. Sole Proprietorship (individual)
 - B. Partnership
 - C. Corporation
2. You **must** check one of the boxes below:
 - A. I certify my business is a sole proprietorship and it has no employees but the sole proprietor. I am not subject to the Worker's Compensation Laws.
 - B. I certify my business has satisfied its obligation to the Worker's Compensation Act through the use of an approved Notice of Exclusion (BWC-337, Rev. 5/96). I will provide a copy of the Notice of Exclusion within 21 days of the contract award. (For questions or a copy of the BWC-337, please call the Worker's Compensation Bureau at 517-322-1195).
 - C. I certify my business has a Worker's Compensation Policy. I will provide an original Certificate of Insurance within twenty-one (21) days of the contract award.
3. If you have checked item 2(A) or 2(B), you **must** indicate the number of **both** full-time and part-time employees, other than yourself, including family members and active partners (if none, you must enter "0").

_____ Full-time Employees

_____ Part-time Employees

Name of Business		Federal ID (or) Social Security No.	
Address		Telephone ()	
City	State	ZIP	

I hereby certify that the above information is true and correct. I agree to notify the Michigan DNR of any changes that occur in factors affecting my coverage during any of my present and future operations.

Signature of Owner or Authorized Representative

Title

Date

Please complete the "SEALED BID" information on the next page

One Oh Nine Mix (45-105-21)

T43N, R06W, SEC. 3; T44N, R06W, SEC. 33; T44N, R06W, SEC. 34; T44N, R06W,

In response to the notice of sale to be held 3:00 p.m. (local time) on August 22, 2023, I am hereby submitting my sealed bid (firm offer) for the following forest products to be cut. Bids for individual species must be at or above the advertised price. All non-responsive bid forms may be rejected.

<u>PRODUCTS & SPECIES</u>	<u>ESTIMATED VOLUME*</u>	<u>ADVERTISED PRICE</u>	<u>BID PRICE/UNIT</u>
Sawtimber			
Paper Birch	23.7 MBF	\$ 35.00/MBF	\$ _____
Red Maple	6.9 MBF	\$ 116.00/MBF	\$ _____
Pulpwood			
Balsam Fir	107 Cords	\$ 9.55/Cord	\$ _____
Jack Pine	92 Cords	\$ 18.85/Cord	\$ _____
Misc. Species 1	10.5 Acres	\$ 10.00/Acres	\$ _____
Mixed Aspen	85 Cords	\$ 22.25/Cord	\$ _____
Mixed Hardwood	230 Cords	\$ 10.95/Cord	\$ _____
Mixed Spruce	289 Cords	\$ 9.20/Cord	\$ _____
N. White Cedar	311 Cords	\$ 2.50/Cord	\$ _____
Paper Birch	133 Cords	\$ 6.10/Cord	\$ _____
Red Pine	46 Cords	\$ 70.45/Cord	\$ _____
Tamarack	51 Cords	\$ 1.35/Cord	\$ _____
White Pine	14 Cords	\$ 14.70/Cord	\$ _____

*The volumes are statistically estimated within plus (+) or minus (-) 6.94 percent at 95% confidence level. These estimated volumes are final and not subject to adjustment. Prospective bidders are urged to examine this timber and to make their own estimates of quantity and quality.

I understand that any or all bids may be rejected. All bids must be signed and all bid items must be bid or the bid form may be rejected. I also understand that consideration and awarding a contract will be based upon my past performance and ability to complete the contract based upon equipment and staffing subject to my control.

FEDERAL ID: _____ - _____ or SOCIAL SECURITY NUMBER: _____ - _____ - _____

Company or individual bidding: _____

Company representative's name: _____

Address: _____

City: _____ State: _____ Zip: _____

IF AVAILABLE, PLEASE PLACE THE PERSONALIZED LABEL FROM YOUR PROSPECTUS IN THE ABOVE BOX.

Individual or company representative's signature: _____ Date: _____

Phone number : _____ Email (optional): _____

THE WINNING BIDDER MUST COMPLETE THE VERIFICATION OF WORKER'S DISABILITY COMPENSATION ACT COMPLIANCE (ON REVERSE SIDE IF DOUBLE SIDED) WITHIN 21 DAYS OF SALE AWARD DATE



FOR DEPARTMENT USE ONLY	
Sale Number (XX - XXX - XX - XX)	
Forest Management Unit:	

TIMBER SALE VERIFICATION OF WORKER'S DISABILITY COMPENSATION ACT COMPLIANCE

As required by Act 317, P.A. 1969 (Worker's Compensation) and
Part 5 of Act 451 of 1994, as amended.

VERIFICATION OF WORKER'S DISABILITY COMPENSATION ACT COMPLIANCE

- This verification must be completed and submitted within 21 days of contract award and prior to the issuance of the timber sale contract.
- In addition, if boxes 2B or 2C are checked, then Notice of Exclusion or Certificate of Insurance must be submitted within twenty-one (21) days of the contract award and prior to the issuance of the timber sale contract.
- All information must be typed or printed except for written signatures.

Please Check Appropriate Categories:

1. My business is organized as (you **must** check one of the boxes below):
 - A. Sole Proprietorship (individual)
 - B. Partnership
 - C. Corporation
2. You **must** check one of the boxes below:
 - A. I certify my business is a sole proprietorship and it has no employees but the sole proprietor. I am not subject to the Worker's Compensation Laws.
 - B. I certify my business has satisfied its obligation to the Worker's Compensation Act through the use of an approved Notice of Exclusion (BWC-337, Rev. 5/96). I will provide a copy of the Notice of Exclusion within 21 days of the contract award. (For questions or a copy of the BWC-337, please call the Worker's Compensation Bureau at 517-322-1195).
 - C. I certify my business has a Worker's Compensation Policy. I will provide an original Certificate of Insurance within twenty-one (21) days of the contract award.
3. If you have checked item 2(A) or 2(B), you **must** indicate the number of **both** full-time and part-time employees, other than yourself, including family members and active partners (if none, you must enter "0").

_____ Full-time Employees

_____ Part-time Employees

Name of Business		Federal ID (or) Social Security No.	
Address		Telephone ()	
City	State	ZIP	

I hereby certify that the above information is true and correct. I agree to notify the Michigan DNR of any changes that occur in factors affecting my coverage during any of my present and future operations.

Signature of Owner or Authorized Representative

Title

Date

Please complete the "SEALED BID" information on the next page