



**DEPARTMENT OF NATURAL RESOURCES  
STATE OF MICHIGAN  
TIMBER SALE PROSPECTUS #7232**

**SCHEDULED SALE DATE AND TIME: 10:00 a.m. (local time) on August 29, 2023.**

**LOCATION: ATLANTA MGMT UNIT, 13501 M 33, ATLANTA, MI 49709.**

**PROSPECTUS NOTE:** The bidder is advised to inspect the sale area and review the location, estimated volumes, operating costs and contract terms of proposed sales. Please be aware that some landowners may request 60 days or more notice for access across their land.

Notice is hereby given that bids will be received by the Unit Manager, ATLANTA MANAGEMENT UNIT, for certain timber on the following described lands:

**Friends in Lowland Places (54-018-22) / T37N, R01E, SEC. 35, E1/2NE,N1/2SE.**

T37N, R01E, SEC. 36, NWNW,N1/2NE.

Cheboygan County, Advertised Price \$22,756.50, 31.5 Acres, Aspen, N White Cedar.

**SALE NOTE:** Cutting, skidding, and hauling are limited to very dry or frozen ground conditions. See spec 5.2.3.1 for details.

A recreation site such as a trail, pathway, or campground is within the sale area or the vicinity. Certain restrictions/specifications may be applicable including time restrictions.

**Looner Aspen (54-019-22) / T37N, R01E, SEC. 21, SENE,NESE.**

T37N, R01E, SEC. 22, SWNW,S1/2NE,W1/2SW,SE.

T37N, R01E, SEC. 27, NWNW,S1/2NW,NESW.

T37N, R01E, SEC. 28, E1/2NE.

Cheboygan County, Advertised Price \$92,941.60, 89.9 Acres, Aspen, Hardwood.

**SALE NOTE:** Payment Unit 3 has a seasonal operating restriction (see spec 5.2.3.1). In addition, access to Payment Unit 3 will be difficult and will likely require crane or composite mats (see spec 5.2.17).

A recreation site such as a trail, pathway, or campground is within the sale area or the vicinity. Certain restrictions/specifications may be applicable including time restrictions. Access may be through private or other public land.

**Busy Beaver Aspen (54-023-22) / T37N, R01W, SEC. 2 , S1/2NW,W1/2SW.**

Cheboygan County, Advertised Price \$70,091.05, 44.8 Acres, Aspen, Red Oak.

**SALE NOTE:** The sale has fair to good timber quality with good operating terrain. In addition, there is good access from Gilpin Road to this sale. There is also an oak wilt restriction.

A recreation site such as a trail, pathway, or campground is within the sale area or the vicinity. Certain restrictions/specifications may be applicable including time restrictions. Access may be through private or other public land.

Euripides Pants Spruce 2.0 (54-029-22) / T37N, R01E, SEC. 20, W1/2NW,N1/2SW.

Cheboygan County, Advertised Price \$27,994.90, 31.6 Acres, Spruce/Fir/Tamarack, Red Pine.

SALE NOTE: This timber sale has some restrictions due to wet nature of each Payment Unit. In addition, the timber within the sale is fair to good quality.

A recreation site such as a trail, pathway, or campground is within the sale area or the vicinity. Certain restrictions/specifications may be applicable including time restrictions.

Turtle Time Red Pine (54-030-19) / T36N, R01E, SEC. 1 , E1/2NW,NWNE,S1/2NE,NESW.

T36N, R01E, SEC. 2 , NWNE.

Cheboygan County, Advertised Price \$162,387.90, 127.5 Acres, Red Pine.

SALE NOTE: A recreation site such as a trail, pathway, or campground is within the sale area or the vicinity. Certain restrictions/specifications may be applicable including time restrictions.

## BID INSTRUCTIONS (VER. 10/10/2022):

### 1. Scheduled Bid Location, Date, and Time (2/11)

Bids must be received by the Unit Manager, ATLANTA OFFICE, 13501 M 33, ATLANTA, MI 49709, no later than 10:00 a.m. (local time) on August 29, 2023. For further information concerning this sale, contact Cody Stevens at 989-785-4251 extension 5240.

### 2. Bidder's Qualifications (10/22)

If all or part of a timber sale was prepared by a private contractor, the contractor and that contractor's company are not permitted to bid on the timber sale. A person must be 18 years of age or older to purchase timber. Permanent employees of the Department of Natural Resources or members of their immediate household may not bid. Former employees, in the permanent or seasonal class, may not bid until 3 months after the last day of active duty. Bids will not be accepted from individuals or companies appearing on the DNR/FRD No-Bid List. This list contains the names of purchasers who previously failed to execute a contract within 21-days or who have a history of poor performance.

### 3. Preparation of Sealed Bids (5/16)

Bid Forms may be completed online thru Michigan DNR Timber Sale Online Bidding (OLB) at [www.michigan.gov/timberbidding](http://www.michigan.gov/timberbidding) or by completing the hardcopy Bid Form found in the Timber Sale Prospectus. Hardcopy Bid Forms shall be manually signed in ink. Registration in OLB is considered your 'signature' for all bids submitted thru that system. Bid prices must be entered for each species and product in the Bid Price column for all material subject to bidding and all fill-in blanks must be completed. If erasures or other changes appear on the hardcopy Bid Form, each erasure or change must be initialed by the person signing the bid.

### 4. Submission of Sealed Bids (5/16)

Bid forms may be obtained from the Unit Manager or thru OLB. Bids may be submitted hardcopy or thru OLB. All hardcopy bids must be submitted on the bid form and in an envelope clearly identified as described in this section. NOTE: Only one bid form per bid envelope. Sealed bids must be submitted to the Unit office designated in the prospectus and must be submitted at or prior to the time established in the prospectus. The envelope should show on the outside (a) the sale name or number and (b) the date and time of bid opening, as shown in the prospectus. Bids received after the time specified in the sale prospectus are late bids and will be rejected.

It is possible for a bidder to submit multiple bids on a single sale. For example, a bid may be submitted hardcopy and a bid may be submitted thru OLB. Or, two bidders from the same company could both submit bids on the same sale. If this were to happen, the State would accept all bids received and award the contract accordingly. All bidding and contractual requirements would apply to all bids received.

### 5. Public Opening of Sealed Bids (7/16)

If conditions permit, the sealed bids will be publicly opened and posted at the time and place set in the prospectus.

If a bidder, present at a bid opening, has submitted bids on more than one sale, that bidder may withdraw their unopened bid envelopes or announce the withdrawal of their online bid after being declared the successful bidder on one sale.

### 6. Award of Contract (1/11)

Award of the contract will be made to the Bidder whose bid, conforming to the prospectus, is most advantageous to the State of Michigan on the basis of total value at rates bid for the estimated quantities. The State reserves the right to reject any bid or waive any minor irregularity in bids received. A written award mailed (or otherwise furnished) to the successful Bidder shall be deemed to result in a binding contract without further action by either party.

### 7. Down Payment (1/11)

The Bidder to whom award is made must make a down payment within 21 days of the sale award. The amount of the down payment will be calculated as shown in the Bond and Payment Schedule of this prospectus. Only cash may be used to meet this requirement.

### 8. Performance Security (1/11)

As guarantee of faithful performance, a cash bond, certificate of deposit, surety bond or irrevocable letter of credit (LOC) is required within 21 days of the sale award. The amount of the performance security is shown in the Bond and

Payment Schedule of this prospectus. If an LOC or surety is used, the coverage must extend for at least 6 months beyond the contract expiration.

#### 9. Worker's Compensation (10/22)

Purchaser shall obtain worker's compensation insurance to cover claims under Michigan's Worker's Disability Compensation Act of 1969 or similar employee benefit act of any other state applicable to an employee. Verification of Worker's Disability Compensation Act Compliance must be completed and submitted within 21 days of contract award and prior to the issuance of the timber sale contract. In addition, if applicable, Notice of Exclusion or Certificate of Insurance must also be submitted.

#### 10. Timber Sale Contract (10/22)

Additional conditions and requirements common to all timber sales are listed on the timber sale contract (R4031) and are available on line at [www.michigan.gov/timber](http://www.michigan.gov/timber). Contact the Unit Manager for additional information or a sample contract. Within 21 days of the date of the award letter, the bidder must sign the contract and provide the required down payment, performance security, and verification of worker's disability compensation. The down payment and performance security shall be in accordance with the provisions of the timber sale contract, in the sums stated in this prospectus. If these actions are not taken, then the Bidder, the Bidder's corporation, and the corporation's principals may not be permitted to bid on State timber sales for a period of 3 months after the first offense, 6 months after the second offense, and 1 year after the third offense. An offense will only be counted against the Bidder for 5 years. In addition, the Bidder certifies that if awarded this contract, the Bidder will complete the timber sale contract in accordance with its terms and any modifications thereof including requirements to purchase, cut, and remove the included timber by the expiration date.

Payment Unit values in the State Forest Timber Sale Contract are calculated based on the advertised value of the Payment Unit as a percentage of the total advertised value of the contract. The advertised value of each Payment Unit is given in the Description of Timber by Payment Unit table on the Timber Sale Information page. For example, if the value of Payment Unit 1 is advertised as \$1,500 and the total Timber Sale value is advertised as \$10,000, the contract price for Payment Unit 1 will be 15% of the total bid price ( $\$1,500/\$10,000 * 100$ ).

#### 11. Disclaimer of Estimates and Bidder's Warranty of Inspection (10/22)

Before submitting this bid, the Bidder is advised and cautioned to inspect the sale area, review the requirements of the sale contract, and take other steps as may be reasonably necessary to ascertain the location, estimated volumes, construction estimates, and operating costs of the proposed sale. Failure to do so will not relieve the Bidder from responsibility for completing the contract.

The Bidder warrants that this bid is submitted solely on the basis of the Bidder's examination and inspection of the quality and quantity of the timber offered for sale and the Bidder's opinion of the value thereof and the costs of recovery. No reliance should be placed on the State of Michigan's estimates of timber quality, quantity or costs of recovery. Bidder further acknowledges that the State of Michigan: (i) expressly disclaims any warranty of fitness of timber for any purpose; (ii) offers this timber as is without any warranty of quality (merchantability) or quantity and (iii) expressly disclaims any warranty as to the quantity or quality of timber sold.

#### 12. Certification and Chain-of-Custody (10/22)

Unless otherwise indicated in the contract under section 7 – Other Conditions of the Sale Specific Conditions & Requirements, the area encompassed by this timber sale is certified to the standards of the Forest Stewardship Council (FSC) - Certificate #SCS-FM/COC-00090N and the Sustainable Forestry Initiative (SFI) - Certificate #NSF-SFIS-5Y031-SF5. Forest products from this sale may be delivered to the mill as "FSC 100% and / or SFI certified" as long as the contractor hauling the forest products is chain-of-custody (COC) certified or covered under a COC certificate from the destination mill. The purchaser is responsible for maintaining COC after leaving the sale area.

#### 13. Good Neighbor Authority (GNA) Requirements (10/22)

If the name of this timber sales contains the acronym GNA, it is authorized by the Good Neighbor Authority (GNA) and covered by various agreements between the U.S. Forest Service and the State. The timber sale occurs on federal land and the following conditions apply:

GNA contracts on US Forest Service land will not be awarded to purchasers on the Federal list of excluded parties. The System for Award Management (SAM) will be checked for active excluded parties prior to award of contract. In

addition, the Bidder to whom award is made must complete an Assurance Regarding Felony Conviction or Tax Delinquent Status for Corporate Applicants (AD-3031).

14. Good Neighbor Authority (GNA) Requirements, con't (10/22)

Bidder certifies, by signing this bid form, that to the best of Bidder's knowledge that the following representations are accurate and complete.

- a. That the Bidder and its principals are not presently debarred, suspended, proposed for debarment, declared ineligible, or voluntary excluded from timber sales (covered transactions) by any Federal department or agency.
- b. That the Bidder and its principals have not within a 3-year period preceding this bid been convicted of or had a civil judgment rendered against them for commission of fraud or a criminal offense in connection with obtaining, attempting to obtain, or performing a public (Federal, State, or local) transaction or contract under a public transaction; violation of Federal or State antitrust statutes or commission of embezzlement, theft, forgery, bribery, falsification or destruction of records, making false statements, or receiving stolen property.
- c. That the Bidder and its principals are not presently indicted for or otherwise criminally or civilly charged by a governmental entity (Federal, State, or local) with commission of any of the offenses enumerated in paragraph b of this certification.
- d. That the Bidder and its principals have not within a 3-year period preceding this bid had one or more public transactions (Federal, State, or local) terminated for breach or default of a timber or forest product contract.

Bidders that cannot certify this requirement, in whole or in part, shall submit an explanation with their bid.

SHANNON LOTT, Acting  
Director



# TIMBER SALE INFORMATION

Friends in Lowland Places (54-018-22)  
T37N, R01E, SEC. 35; T37N, R01E, SEC. 36.  
Cheboygan County (Advertised Price \$22,756.50)

SALE NOTE: Cutting, skidding, and hauling are limited to very dry or frozen ground conditions. See spec 5.2.3.1 for details.

A recreation site such as a trail, pathway, or campground is within the sale area or the vicinity. Certain restrictions/specifications may be applicable including time restrictions.

A timber sale contract for this lump sum, sealed bid timber sale will be awarded to the responsible bidder offering the highest sealed bid price. All units of volume listed below were estimated using the Inventory Manager computer program and the new Michigan taper model. Bids must be at or above the following advertised price for each product and species:

<u>PRODUCTS &amp; SPECIES</u>	<u>ESTIMATED UNITS*</u>	<u>ADVERTISED PRICE</u>
<b>Sawtimber</b>		
Mixed Aspen	13.8 MBF	\$ 108.00 / MBF
White Pine	7.0 MBF	\$ 142.00 / MBF
<b>Pulpwood</b>		
Balsam Fir	57 Cords	\$ 35.30 / Cord
Black Spruce	37 Cords	\$ 17.40 / Cord
Mixed Aspen	294 Cords	\$ 26.55 / Cord
Mixed Hardwood	136 Cords	\$ 30.10 / Cord
N. White Cedar	273 Cords	\$ 18.90 / Cord
Paper Birch	22 Cords	\$ 16.30 / Cord
Red Oak	2 Cords	\$ 29.25 / Cord
White Pine	6 Cords	\$ 23.35 / Cord

\* The total volume is statistically estimated within plus (+) or minus (-) 31.26 percent. There are an estimated 896 cords on this timber sale, plus or minus 280 cords at the 95% confidence level. The estimated units are final and not subject to adjustment. Prospective bidders are urged to examine this timber and to make their own estimates of quantity and quality.

**BOND AND PAYMENT SCHEDULE:**

1. A bond in the amount of \$1,138.00 to insure faithful performance of the conditions of the contract will be deposited by the successful bidder within 21 days of the sale award.
2. Cutting in any sale or unit without the required advance payment would be considered a trespass.
3. Total payment must be paid in advance or according to the following schedule :
  - (a) Ten percent (10%) of the sale value must be paid within 21 days of the sale award.
  - (b) The 10% down payment will be credited towards the first unit cut.
  - (c) Payment for each of the following units must be made before cutting begins in that unit:
 

PAYMENT UNIT NUMBER	PERCENT OF TOTAL SALE VALUE
01	16.2%
02	50.7%
03	33.1%
4. If no cutting takes place, the 10% down payment will not be refunded.
5. Operations on the contract issued will terminate on 12/31/2026.

**SALE STATISTICS**

Volumes were calculated in cubic feet using the Michigan taper model. Cubic foot volume includes all wood inside bark for the product indicated. For display purposes, cubic feet were converted to cords and MBF using a simple conversion factor, e.g. 79 cubic feet per cord and 185 cubic feet per MBF. The cubic foot volumes are precise; the cords and MBF volumes are not. Cubic foot volume cannot be directly converted to cords or boards with precision.

**SALE VOLUMES**

The total estimated sale volume may not equal the sum of the species/products due to the nature of statistical calculations associated with double sampling methodology.

VOLUME		STATISTICAL RANGE IN CORDS		
TOTAL CUBIC FEET	TOTAL CORDS	PERCENT ERROR	MINIMUM	MAXIMUM
70,782	896	31.26%	616	1,176

**VDU VOLUMES**

A VDU is a Volume Determination Unit. Volumes and their associated statistics are calculated at the VDU level and summarized to the sale level. There is often a one to one relationship between a VDU and a Payment Unit, but not always, depending on the cruise design. Refer to the VDU TO PAYMENT UNIT table.

VDU	VOLUME		PERCENT ERROR	RANGE IN CORDS	
	TOTAL CUBIC FEET	TOTAL CORDS		MINIMUM	MAXIMUM
16	17,497	221	41.83%	129	314
26	10,256	130	83.46%	21	238
36	43,028	545	46.70%	290	799
<b>TOTAL:</b>	<b>70,782</b>	<b>896</b>		<b>441</b>	<b>1,351</b>

**VDU TO PAYMENT UNIT**

When a VDU is associated with more than one Payment Unit (PU), the VDU volumes are assigned to the PU based on acres of the VDU within the PU.

VDU	VDU ACRES	PU	PU ACRES
16	14.1	3	14.1
26	4.2	1	4.2
36	13.2	2	13.2
<b>TOTAL:</b>	<b>31.5</b>		<b>31.5</b>



**DESCRIPTION OF TIMBER BY PAYMENT UNIT (PU)**

PU	MARKET GROUP	PRODUCT	QUANTITY	UNIT	ACRES	ADVERTISE PRICE
1	Mixed Aspen	Sawtimber	7.0	MBF	4.2	\$3,681.90
	<i>B. T. Aspen</i>		7.0	<i>MBF</i>		
	Balsam Fir	Pulpwood	14	Cords		
	Mixed Aspen		2	Cords		
	<i>B. T. Aspen</i>		2	<i>Cords</i>		
	Mixed Hardwood		74	Cords		
	<i>Red Maple</i>	<i>Sawtimber</i>	3.5	<i>MBF</i>		
	<i>Red Maple</i>	<i>Pulpwood</i>	43	<i>Cords</i>		
	<i>Sugar Maple</i>		24	<i>Cords</i>		
	N. White Cedar		8	Cords		
	<i>N. White Cedar</i>	<i>Sawtimber</i>	3.4	<i>MBF</i>		
	<i>N. White Cedar</i>	<i>Pulpwood</i>	1	<i>Cords</i>		
	2	Black Spruce	Pulpwood	37		
Mixed Aspen			206	Cords		
<i>Balsam Poplar</i>			14	<i>Cords</i>		
<i>Quaking Aspen</i>			192	<i>Cords</i>		
Mixed Hardwood			7	Cords		
<i>Red Maple</i>			7	<i>Cords</i>		
N. White Cedar			257	Cords		
<i>N. White Cedar</i>		<i>Sawtimber</i>	40.8	<i>MBF</i>		
<i>N. White Cedar</i>		<i>Pulpwood</i>	175	<i>Cords</i>		
Paper Birch			22	Cords		
3		Mixed Aspen	Sawtimber	6.8	MBF	14.1
	<i>B. T. Aspen</i>		5.4	<i>MBF</i>		
	<i>Quaking Aspen</i>		1.4	<i>MBF</i>		
	White Pine		7.0	MBF		
	Balsam Fir	Pulpwood	43	Cords		
	Mixed Aspen		86	Cords		
	<i>B. T. Aspen</i>		19	<i>Cords</i>		
	<i>Quaking Aspen</i>		67	<i>Cords</i>		
	Mixed Hardwood		55	Cords		
	<i>Sugar Maple</i>	<i>Sawtimber</i>	0.9	<i>MBF</i>		
	<i>Red Maple</i>	<i>Pulpwood</i>	49	<i>Cords</i>		
	<i>Sugar Maple</i>		4	<i>Cords</i>		
	N. White Cedar		8	Cords		
	<i>N. White Cedar</i>		8	<i>Cords</i>		
	Red Oak		2	Cords		
	White Pine		6	Cords		
TOTAL:			20.8	MBF		
TOTAL:			827	Cords		

## Sale Specific Conditions & Requirements

Sale Name: Friends in Lowland Places

Sale Number: 54-018-22 Seq#: 2

### 1 - Sale Area

#### 1.2 - Boundaries

##### 1.2.1 - Painted boundaries (9/19)

The sale boundary and Payment Unit boundaries are marked and identified by blue and red paint. Exterior sale boundary lines against private property are marked with blue paint. Exterior sale boundary lines against state are marked with red paint. The painted boundary line trees are not Included Timber and are to be protected.

### 2 - Timber Specifications

#### 2.1 - Included Timber

##### 2.1.1 - Clearcut unit(s) with unmerchantable trees (6/14)

Within Payment Unit(s) 1-3, cut all trees that are two (2) inches or more at DBH, with the following exceptions:

- Within Payment Unit 1, do not cut hemlock, yellow birch and the single tree ringed with green paint.
- Within Payment Unit 2, if present, do not cut hemlock, yellow birch or white pine.
- Within Payment Unit 3, do not cut white pine that are eighteen (18) inches or more at DBH. In addition, do not cut any hemlock, yellow birch, or trees marked with green paint.

#### 2.2 - Utilization

##### 2.2.6 - Roundwood operation required (3/21)

The skidding of whole trees or tree segments with limbs attached is prohibited within Payment Unit(s) 1-3. All products must be produced as roundwood and forwarded to existing roads or landing areas in final product length.

##### 2.2.9 - No chipping permitted (12/08)

Within Payment Unit(s) 1-3, all wood must be removed by tree segment or roundwood. No chipping is permitted.

### 3 - Payments

#### 3.4 - Damaged Timber

##### 3.4.1 - Damaged timber (7/16)

General Condition and Requirement 3.4 Damaged Timber, defines liquidated damages for undesignated live merchantable trees which are cut or injured.

No damage is acceptable to undesignated live merchantable trees and designated retention areas. Within the Sale Area, if more than 5% of trees (> 4.5" DBH) within a specified area of the sale are damaged, liquidated damages will be assessed for all trees damaged. Rates will be in accordance with General Condition and Requirement 3.4 Damaged Timber.

### 4 - Transportation

#### 4.1 - Construction

##### 4.1.3 - Slash and earthen piles (8/04)

Piles or windrows of earth along roads and landings that have been widened or constructed shall be leveled. Slash from road maintenance or construction, including stumps, shall be dispersed throughout the sale.

##### 4.1.6 - Road construction (1/09)

Improvements of existing roads shall be done in such a way as to minimize the environmental and visual impacts. Merchantable trees shall be cut and utilized unless otherwise directed. Non-merchantable trees shall be severed and laid flat on the ground. Slash shall be scattered, and not left in windrows and kept a minimum of 10 feet back from the road edge. Stumps shall be set upright, not left on edge, and be moved at least 10 feet away from the road edge. Disturbed soil shall be feathered into the woods and not left in berms or windrows.

#### 4.1.7 - Road closure (10/11)

Roads that are grown over and re-opened must be blocked to vehicle traffic upon completion of the sale. Some existing roads may also need to be closed, see the Timber Sale Map for locations. In general, this will require constructing a four (4') foot high berm of stumps and logs covered with earth. These roads must be rendered impassable to cars and trucks. Contact the Sale Administrator for specific details of design and placement.

#### 4.2 - Maintenance

##### 4.2.2 - Fill material (4/07)

To maintain roads, fill material may be needed in areas where "holes" exist or may be expected to develop. This fill material should be placed before trucking begins. The Unit Manager or his/her representative must approve the type of fill material used prior to placement. In general, suitable fill material includes cobble and/or crushed rock.

##### 4.2.5 - Two wheel drive condition (2/04)

All existing trail roads on and adjacent to the sale area must be passable by two-wheel drive traffic for the duration of the sale.

### 5 - Operations

#### 5.2 - Conduct of Operations

##### 5.2.2 - Hazard Trees/Snags

###### 5.2.2.1 - Den trees (10/16)

Obvious hollow and/or den trees shall be protected and left standing unless they are a safety hazard.

##### 5.2.3 - Operating Restrictions

###### 5.2.3.1 - Operating restrictions (9/11)

Within Payment Unit(s) 1-3, unless changed by written agreement, cutting, skidding, and hauling are limited to very dry or frozen ground conditions. This restriction is because of operationally difficult wet and sensitive soils.

###### 5.2.3.11 - Coppice regeneration protection (4/10)

Any post harvest operations, such as skidding and chipping, must be completed within 30 days of severing all stems. This is meant to limit damage to sprouting of regeneration. If it is anticipated that chipping will be delayed, then tops shall be carried to one central location or left unchipped. The Unit Manager or his/her representative may cease such operations if sprouting occurs before the operation is complete.

##### 5.2.4 - Dead and Down Creation

###### 5.2.4.2 - Dead and down creation, hare and grouse (1/14)

To improve habitat for snowshoe hare, grouse, and other species, the Purchaser is to leave evenly scattered, linear (not round) brush piles composed of at least six (6) of the largest available tops on the ground for every 2 acres within Payment Units 1-3. These brush piles can be constructed from the tops of any available tree species. Contact the Sale Administrator for specific details of design and placement.

###### 5.2.4.3 - Dead and down creation, dead trees (6/07)

Except as provided for in General Condition and Requirement 5.2.2, no dead trees, standing or down, are to be cut, skidded, or processed.

##### 5.2.17 - Timber Mats and Interlocking Composite Mats (10/20)

Some roads or skid trails may require extra protection such as that afforded by timber mats, interlocking composite mats, or another approved system. If available, mats may be borrowed from the DNR. A Timber Sale Contract Supplement will be used to document the Purchaser's use of the DNR's mats. Contact the sale administrator regarding availability and pick-up. Timber mats are available from various field offices. Composite mats are only available from the Grayling field office and the Marquette ICC. The Purchaser is responsible for picking up and hauling the mats to and from the site. The composite mats will require DNR staff onsite for installation and removal. Contact the Sale Administrator to schedule at least 30 days before desired install/removal date. All mats must be cleaned prior to drop off. This may include, but is not limited to, power washing and brushing to remove mud and debris. A charge of \$700.00 per timber mat and \$2,000.00 per composite mat will be assessed for all damaged or non-returned mats. Damage for the crane/timber mats is defined as three or more broken

cants. Damage for the composite mats is defined as cracked or broken mats.

#### 5.2.31 - Landing locations (9/13)

Landing areas are marked on the Timber Sale Map with the letter "L". Landings must be confined to these designated sites unless otherwise authorized by the Unit Manager or his/her representative.

#### 5.2.32 - Decking/landing restoration (9/13)

All decking and landing areas must have the surface area restored to a condition equal to or better than before. This is to ensure the proper regeneration of the stand. Wood debris, chips and "cookies" from trimmings must be removed or scattered away from landing and loading areas and may not be windrowed on the edge.

#### 5.2.38 - No decking against live trees (2/04)

Cut products may not be decked against unmarked or designated leave trees.

#### 5.2.39 - ORV trail/route protection (4/18)

Black Lake ATV Trail is located near the western boundary of Payment Unit 3. Also, Black Lake ORV Route is located near the southern boundary locations of Payment Unit 3. Both features are shown on the Timber Sale Map. Do not cut trees or damage posts with yellow trail or route markers. If hauling occurs on Black Lake ORV Route, maintain a 10-foot-wide slash, debris, and rut free zone daily using the trail as the centerline. Do not run harvest equipment down either trail or route.

#### 5.2.41 - Snowmobile trail protection (9/11)

Snowmobile Trail 99, which is also Black Lake ORV Route, is located just south of Payment Unit 3 and is shown on the Timber Sale Map. Do not cut or damage posts with orange trail markers or traffic control signs. If the trail is used, it must be maintained and restored to a condition equal to or better than before the sale. The road maintenance/restoration must be done prior to December 1. If the trail is used for hauling, it must be graded to the satisfaction of the Unit Manager or his/her representative prior to December 1. If the trail road is to be used for hauling during the snowmobile season, then a snow covered base must be left on the trail. Maintain a 10-foot-wide slash, debris, and rut free zone daily using the snowmobile trail as the centerline. No decking of forest products will be permitted along the snowmobile trail.

### 5.4 - Soil Protection

#### 5.4.1 - Rutting restriction, general (7/16)

Operations are to cease immediately if equipment and weather conditions result in rutting of roads and/or skid trails which are 12 inches or greater in depth and 50 feet in length. The Unit Manager or his/her representative may restrict hauling and/or skidding if ruts exceed the specified depth. With the Unit Manager or his/her representative's approval, the Purchaser may return to the area when the risk of rutting has decreased.

### 5.8 - Protection of Endangered Species

#### 5.8.5 - Protection of raptor nests (3/13)

All trees with raptor nests will be protected if found during harvesting operations. Notification will be made to the Unit Manager or his/her representative who will notify the Wildlife Biologist so an on-site evaluation and recommendation can be made, if necessary.

## 6 - Safety and Fire Prevention

### 6.2 - Signing

#### 6.2.1 - Road posting (10/20)

The Purchaser is responsible for posting and maintaining caution signs on haul roads prior to beginning operations. The road must be posted at appropriate distances from the Sale Area to warn of logging activity and truck traffic. Signs must be removed when harvest operations are suspended or completed. The Purchaser will provide these signs.

#### 6.2.2 - Snowmobile trail posting (10/20)

The Purchaser is responsible for posting and maintaining caution signs on Snowmobile Trail 99 prior to beginning operations during the snowmobile season (approximately December 1 to March 31). The trail must be posted at appropriate distances from the Sale Area to warn of logging activity and truck traffic. Signs must be removed when harvest operations are suspended or completed. The Purchaser will provide these signs.

#### 6.2.3 - Recreational trail posting (10/20)

The Purchaser is responsible for posting and maintaining caution signs on Black Lake ATV Trail and Black Lake ORV Route

prior to beginning operations. The trail must be posted at appropriate distances from the Sale Area to warn of logging activity and truck traffic at both ends of the trail. Signs must be removed when harvest operations are suspended or completed. The Purchaser will provide these signs.



# TIMBER SALE MAP

This information provided by authority of Part 525, 1994 PA 451, as amended.

Forest Management Unit Atlanta	County Cheboygan	Mapped By C. Fate	Date 9/12/2022	Page 1	of 1
Township 37N	Range 01E	Section(s) and Subdivision(s) Sec.35: E1/2NE,N1/2SE Sec.36: NWNW,N1/2NE	Scale 1:15,840		

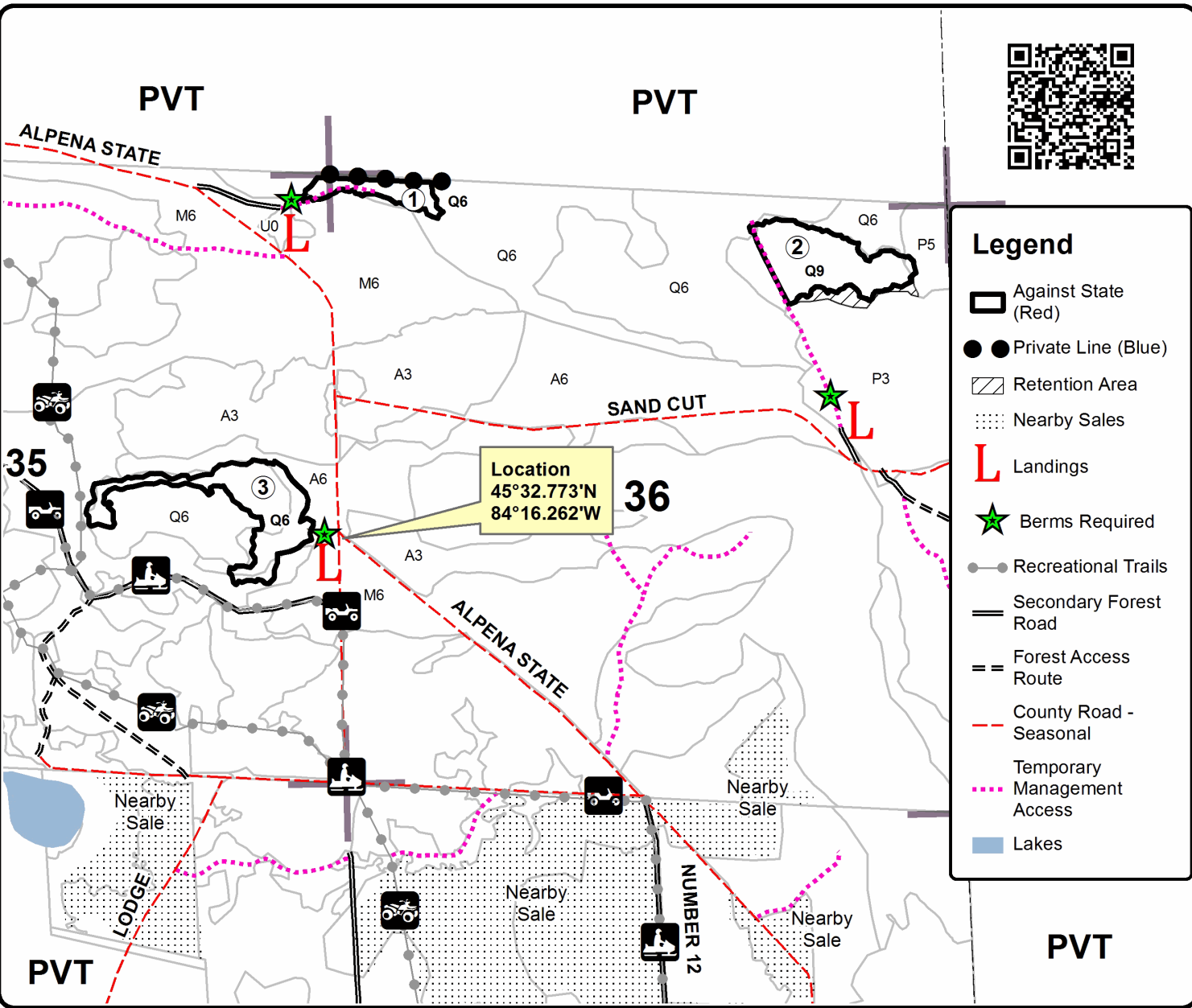
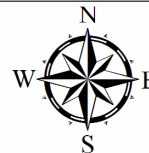
Cover Type				Density	
A = Aspen	H = Hemlock	N = Marsh	U = Upland Brush	0 = Non Stocked	5 = Pole Timber Medium
B = Paper Birch	J = Jack Pine	O = Oak	UM = Upland Mixed	1 = Seedling Sapling Poor	6 = Pole Timber Well
C = Cedar	L = Lowland Brush	P = Lowland Poplar	V = Bog or Marsh	2 = Seedling Sapling Medium	7 = Saw Timber Poor
D = Treed Bog	LM = Lowland Mixed	Q = Mixed Swamp Conifer	W = White Pine	3 = Seedling Sapling Well	8 = Saw Timber Medium
E = Swamp Hdwoods	M = Mpl, Bch, Brch	R = Red Pine	X = Non Stocked	4 = Pole Timber Poor	9 = Saw Timber Well
F = Spruce Fir	MC = Mixed Conifer	S = Black Spruce	Z = Water		
G = Grass	MD = Mixed Deciduous	T = Tamarack			

PU	Acres
1	4.2
2	13.2
3	14.1

## Friends in Lowland Places

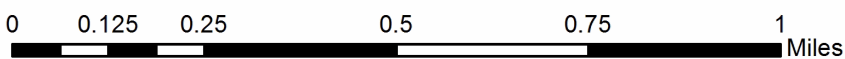
Compartment 174

31.5 Acres



### Legend

- Against State (Red)
- Private Line (Blue)
- Retention Area
- Nearby Sales
- Landings
- Berms Required
- Recreational Trails
- Secondary Forest Road
- Forest Access Route
- County Road - Seasonal
- Temporary Management Access
- Lakes



## TIMBER SALE INFORMATION

### Looner Aspen (54-019-22)

T37N, R01E, SEC. 21; T37N, R01E, SEC. 22; T37N, R01E, SEC. 27; T37N, R01E, SEC. 28.  
Cheboygan County (Advertised Price \$92,941.60)

SALE NOTE: Payment Unit 3 has a seasonal operating restriction (see spec 5.2.3.1). In addition, access to Payment Unit 3 will be difficult and will likely require crane or composite mats (see spec 5.2.17).

A recreation site such as a trail, pathway, or campground is within the sale area or the vicinity. Certain restrictions/specifications may be applicable including time restrictions. Access may be through private or other public land.

A timber sale contract for this lump sum, sealed bid timber sale will be awarded to the responsible bidder offering the highest sealed bid price. All units of volume listed below were estimated using the Inventory Manager computer program and the new Michigan taper model. Bids must be at or above the following advertised price for each product and species:

<u>PRODUCTS &amp; SPECIES</u>	<u>ESTIMATED UNITS*</u>	<u>ADVERTISED PRICE</u>
<b>Sawtimber</b>		
Mixed Aspen	86.7 MBF	\$ 125.00 / MBF
Red Maple	43.8 MBF	\$ 112.00 / MBF
Red Oak	6.9 MBF	\$ 213.00 / MBF
Red Pine	3.3 MBF	\$ 164.00 / MBF
Sugar Maple	5.3 MBF	\$ 333.00 / MBF
<b>Pulpwood</b>		
Balsam Fir	224 Cords	\$ 40.70 / Cord
Mixed Aspen	1,102 Cords	\$ 30.65 / Cord
Mixed Hardwood	771 Cords	\$ 34.75 / Cord
Mixed Spruce	23 Cords	\$ 20.05 / Cord
Paper Birch	160 Cords	\$ 18.80 / Cord
Red Oak	4 Cords	\$ 45.00 / Cord
Red Pine	2 Cords	\$ 44.10 / Cord

\* The total volume is statistically estimated within plus (+) or minus (-) 12.75 percent. There are an estimated 2,656 cords on this timber sale, plus or minus 339 cords at the 95% confidence level. The estimated units are final and not subject to adjustment. Prospective bidders are urged to examine this timber and to make their own estimates of quantity and quality.

### **BOND AND PAYMENT SCHEDULE:**

1. A bond in the amount of \$4,647.00 to insure faithful performance of the conditions of the contract will be deposited by the successful bidder within 21 days of the sale award.
2. Cutting in any sale or unit without the required advance payment would be considered a trespass.
3. Total payment must be paid in advance or according to the following schedule :
  - (a) Ten percent (10%) of the sale value must be paid within 21 days of the sale award.
  - (b) The 10% down payment will be credited towards the first unit cut.
  - (c) Payment for each of the following units must be made before cutting begins in that unit:

PAYMENT UNIT NUMBER	PERCENT OF TOTAL SALE VALUE
01	49.1%
02	16.1%
03	34.8%

4. If no cutting takes place, the 10% down payment will not be refunded.
5. Operations on the contract issued will terminate on 12/31/2026.

### **SALE STATISTICS**

Volumes were calculated in cubic feet using the Michigan taper model. Cubic foot volume includes all wood inside bark for the product indicated. For display purposes, cubic feet were converted to cords and MBF using a simple conversion factor, e.g. 79 cubic feet per cord and 185 cubic feet per MBF. The cubic foot volumes are precise; the cords and MBF volumes are not. Cubic foot volume cannot be directly converted to cords or boards with precision.

## SALE VOLUMES

The total estimated sale volume may not equal the sum of the species/products due to the nature of statistical calculations associated with double sampling methodology.

VOLUME			STATISTICAL RANGE IN CORDS	
TOTAL CUBIC FEET	TOTAL CORDS	PERCENT ERROR	MINIMUM	MAXIMUM
209,822	2,656	12.75%	2,317	2,995

## VDU VOLUMES

A VDU is a Volume Determination Unit. Volumes and their associated statistics are calculated at the VDU level and summarized to the sale level. There is often a one to one relationship between a VDU and a Payment Unit, but not always, depending on the cruise design. Refer to the VDU TO PAYMENT UNIT table.

	VOLUME			RANGE IN CORDS	
VDU	TOTAL CUBIC FEET	TOTAL CORDS	PERCENT ERROR	MINIMUM	MAXIMUM
6	96,418	1,220	20.29%	973	1,468
13	62,072	786	22.54%	609	963
14	22,251	282	49.06%	143	420
41	29,080	368	39.97%	221	515
<b>TOTAL:</b>	<b>209,822</b>	<b>2,656</b>		<b>1,946</b>	<b>3,366</b>

## VDU TO PAYMENT UNIT

When a VDU is associated with more than one Payment Unit (PU), the VDU volumes are assigned to the PU based on acres of the VDU within the PU.

VDU	VDU ACRES	PU	PU ACRES
6	38.9	1	38.9
13	28.2	3	28.2
14	7.2	3	7.2
41	15.6	2	15.6
<b>TOTAL:</b>	<b>89.9</b>		<b>89.9</b>



**DESCRIPTION OF TIMBER BY PAYMENT UNIT (PU)**

PU	MARKET GROUP	PRODUCT	QUANTITY	UNIT	ACRES	ADVERTISE PRICE	
1	Mixed Aspen	Sawtimber	44.9	MBF	38.9	\$45,627.30	
	<i>B. T. Aspen</i>		41.9	<i>MBF</i>			
	<i>Quaking Aspen</i>		3.0	<i>MBF</i>			
	Red Maple		22.1	MBF			
	Red Pine		3.3	MBF			
	Sugar Maple		4.2	MBF			
	Balsam Fir		Pulpwood	32			Cords
	Mixed Aspen			722			Cords
	<i>B. T. Aspen</i>			501			<i>Cords</i>
	<i>Quaking Aspen</i>			221			<i>Cords</i>
	Mixed Hardwood			346			Cords
	<i>Black Cherry</i>			6			<i>Cords</i>
	<i>Red Maple</i>			327			<i>Cords</i>
	<i>Sugar Maple</i>			13			<i>Cords</i>
	Paper Birch			3			Cords
	Red Pine			2			Cords
	2		Mixed Aspen	Sawtimber			22.6
<i>B. T. Aspen</i>		22.6	<i>MBF</i>				
Red Maple		7.4	MBF				
Red Oak		6.9	MBF				
Sugar Maple		1.1	MBF				
Balsam Fir		Pulpwood	19		Cords		
Mixed Aspen			77		Cords		
<i>B. T. Aspen</i>			77		<i>Cords</i>		
Mixed Hardwood			168		Cords		
<i>Beech</i>			6		<i>Cords</i>		
<i>Ironwood</i>			2		<i>Cords</i>		
<i>Red Maple</i>			77		<i>Cords</i>		
<i>Sugar Maple</i>			83		<i>Cords</i>		
Paper Birch		16	Cords				
Red Oak	4	Cords					
3	Mixed Aspen	Sawtimber	19.2	MBF	35.4	\$32,372.35	
	<i>B. T. Aspen</i>		19.2	<i>MBF</i>			
	Red Maple		14.3	MBF			
	Balsam Fir		Pulpwood	173			Cords
	Mixed Aspen			303			Cords
	<i>B. T. Aspen</i>			25			<i>Cords</i>
	<i>Balsam Poplar</i>			42			<i>Cords</i>
	<i>Quaking Aspen</i>			236			<i>Cords</i>
	Mixed Hardwood			257			Cords
	<i>Red Maple</i>			257			<i>Cords</i>
	Mixed Spruce			23			Cords
	<i>Black Spruce</i>		5	<i>Cords</i>			
	<i>White Spruce</i>		18	<i>Cords</i>			
	Paper Birch		141	Cords			
TOTAL:			146.0	MBF			
TOTAL:			2,286	Cords			

## Sale Specific Conditions & Requirements

**Sale Name: Looner Aspen**

**Sale Number: 54-019-22 Seq#: 2**

### 1 - Sale Area

#### 1.2 - Boundaries

##### 1.2.1 - Painted boundaries (9/19)

The sale boundary and Payment Unit boundaries are marked and identified by red and blue paint. Exterior sale boundary lines against private property are marked with blue paint. Exterior sale boundary lines against state are marked with red paint. Interior retention islands are marked with red painted X's. Boundary excluded retention areas are present and shown on the Timber Sale Map. No harvesting activities may occur within these areas. The red and blue painted boundary line trees are not Included Timber and are to be protected.

### 2 - Timber Specifications

#### 2.1 - Included Timber

##### 2.1.1 - Clearcut unit(s) with unmerchantable trees (6/14)

Within Payment Unit(s) 1-3, cut all trees that are two (2) inches or more at DBH. In addition, the following specifications apply:

- Within Payment Unit 1, do not cut red pine that are eighteen (18) inches or more at DBH. In addition, do not cut any white pine, hemlock, yellow birch, or trees marked with green paint.
- Within Payment Unit 2, do not cut white pine greater than sixteen (16) inches at DBH. In addition, do not cut any hemlock, red pine, or trees marked with green paint.
- Within Payment Unit 3, do not cut spruce that are eighteen (18) inches or more at DBH. In addition, do not cut any cedar, pine, hemlock, yellow birch, or trees marked with green paint.

See Sale Condition 3.4.1 - "Damaged Timber" regarding hemlock, oak, and spruce seedling/sapling protection within Payment Units 2 & 3.

### 3 - Payments

#### 3.3 - Pre-measured Sales

##### 3.3.4 - Dividing payment units (7/14)

Payment Unit(s) 1, may be divided at the request of the Purchaser and upon approval of the Unit Manager. Dividing Payment Units is a contract modification which requires a Timber Sale Contract Amendment. There will be only one division per Payment Unit.

#### 3.4 - Damaged Timber

##### 3.4.1 - Damaged timber (7/16)

General Condition and Requirement 3.4 Damaged Timber, defines liquidated damages for undesignated live merchantable trees which are cut or injured. No damage is acceptable to undesignated live merchantable trees and designated retention areas.

Within the Sale Area, if more than 5% of trees (> 4.5" DBH) within a specified area of the sale are damaged, liquidated damages will be assessed for all trees damaged. Rates will be in accordance with General Condition and Requirement 3.4 Damaged Timber.

In addition, extreme care should be taken to avoid damage to hemlock and oak seedlings/saplings in Payment Unit 2 and spruce seedlings/saplings in Payment Unit 3. As much as possible, harvesting operations should try to go around pockets that are heavy with hemlock, oak and spruce seedlings/saplings, many of which are 5-20 feet tall. Within Payment Unit 2, if more than 50% of hemlock and oak seedlings/saplings (1/4" to 4.5" DBH) within a specified portion of the Sale Area are damaged, liquidated damages will be assessed at \$300 per acre for all acreage within that specified portion of the Sale Area that was damaged. Within Payment Unit 3, if more than 50% of spruce seedlings or saplings (1/4" to 4.5" DBH) within a specified

portion of the Sale Area are damaged, liquidated damages will be assessed at \$300 per acre for all acreage within that specified portion of the Sale Area that was damaged. Seedling and saplings cut cleanly in skid rows for operability will not be counted as damaged timber.

## **4 - Transportation**

### 4.1 - Construction

#### 4.1.3 - Slash and earthen piles (8/04)

Piles or windrows of earth along roads and landings that have been widened or constructed shall be leveled. Slash from road maintenance or construction, including stumps, shall be dispersed throughout the sale.

#### 4.1.6 - Road construction (1/09)

Improvements of existing roads shall be done in such a way as to minimize the environmental and visual impacts. Merchantable trees shall be cut and utilized unless otherwise directed. Non-merchantable trees shall be severed and laid flat on the ground. Slash shall be scattered, and not left in windrows and kept a minimum of 10 feet back from the road edge. Stumps shall be set upright, not left on edge, and be moved at least 10 feet away from the road edge. Disturbed soil shall be feathered into the woods and not left in berms or windrows.

#### 4.1.7 - Road closure (10/11)

Roads that are grown over and re-opened must be blocked to vehicle traffic upon completion of the sale. Some existing roads may also need to be closed, see the Timber Sale Map for locations. In general, this will require constructing a four (4') foot high berm of stumps and logs covered with earth. These roads must be rendered impassable to cars and trucks. Contact the Sale Administrator for specific details of design and placement.

### 4.2 - Maintenance

#### 4.2.2 - Fill material (4/07)

To maintain roads, fill material may be needed in areas where "holes" exist or may be expected to develop. This fill material should be placed before trucking begins. The Unit Manager or his/her representative must approve the type of fill material used prior to placement. In general, suitable fill material includes cobble and/or crushed rock.

#### 4.2.5 - Two wheel drive condition (2/04)

All existing trail roads on and adjacent to the sale area must be passable by two-wheel drive traffic for the duration of the sale.

## **5 - Operations**

### 5.2 - Conduct of Operations

#### 5.2.2 - Hazard Trees/Snags

##### 5.2.2.1 - Den trees (10/16)

Obvious hollow and/or den trees shall be protected and left standing unless they are a safety hazard.

#### 5.2.3 - Operating Restrictions

##### 5.2.3.1 - Operating restrictions (9/11)

Within Payment Unit(s) 3, unless changed by written agreement, cutting, skidding, and hauling are limited to very dry or frozen ground conditions from January 2 to August 31. This restriction is because of operationally difficult wet and sensitive soils.

##### 5.2.3.11 - Coppice regeneration protection (4/10)

Any post harvest operations, such as skidding and chipping, must be completed within 30 days of severing all stems. This is meant to limit damage to sprouting regeneration. If it is anticipated that chipping will be delayed, then tops shall be carried to one central location or left unchipped. The Unit Manager or his/her representative may cease such operations if sprouting occurs before the operation is complete.

#### 5.2.4 - Dead and Down Creation

##### 5.2.4.2 - Dead and down creation, hare and grouse (1/14)

To improve habitat for snowshoe hare, grouse, and other species, the Purchaser is to leave evenly scattered, linear (not

round) brush piles composed of at least six (6) of the largest available tops on the ground for every 2 acres within Payment Units 1-3. These brush piles can be constructed from the tops of any available tree species. Focus placing brush piles near or against lowland ground that borders areas of Payment Units 1-3. Contact the Sale Administrator for specific details of design and placement.

#### 5.2.4.3 - Dead and down creation, dead trees (6/07)

Except as provided for in General Condition and Requirement 5.2.2, no dead trees, standing or down, are to be cut, skidded, or processed.

#### 5.2.4.7 - Dead and down creation: hare, grouse, deer and other species (5/15)

To improve horizontal cover habitat for snowshoe hare, grouse, deer, and other species, the Purchaser is to push over all trees marked with orange paint within Payment Units 1-3. These trees should be tipped over with the root ball still attached so the base of the tree is suspended off the ground. The crown of the fallen tree should be at or near ground level after it is pushed over.

#### 5.2.17 - Timber Mats and Interlocking Composite Mats (10/20)

Some roads or skid trails, especially for Payment Unit 3, may require extra protection such as that afforded by timber mats, interlocking composite mats, or another approved system. If available, mats may be borrowed from the DNR. A Timber Sale Contract Supplement will be used to document the Purchaser's use of the DNR's mats. Contact the Sale Administrator regarding availability and pick-up. Timber mats are available from various field offices. Composite mats are only available from the Grayling field office and the Marquette ICC. The Purchaser is responsible for picking up and hauling the mats to and from the site. The composite mats will require DNR staff onsite for installation and removal. Contact the Sale Administrator to schedule at least 30 days before desired install/removal date. All mats must be cleaned prior to drop off. This may include, but is not limited to, power washing and brushing to remove mud and debris. A charge of \$700.00 per timber mat and \$2,000.00 per composite mat will be assessed for all damaged or non-returned mats. Damage for the crane/timber mats is defined as three or more broken cants. Damage for the composite mats is defined as cracked or broken mats.

#### 5.2.22 - Operating Caution

##### 5.2.22.1 - Operating caution (6/11)

It is recommended, but not required, that within Payment Unit(s) 1, cutting, skidding, and hauling occur during very dry summer or frozen winter conditions. The reason for the recommendation is because of seasonal flooding across Lake 16 Rd and operationally difficult wet and sensitive soils along the eastern boundary of Payment Unit 1.

#### 5.2.32 - Decking/landing restoration (9/13)

All decking and landing areas must have the surface area restored to a condition equal to or better than before. This is to ensure the proper regeneration of the stand. Wood debris, chips and "cookies" from trimmings must be removed or scattered away from landing and loading areas and may not be windrowed on the edge.

#### 5.2.38 - No decking against live trees (2/04)

Cut products may not be decked against unmarked or designated leave trees.

#### 5.2.39 - ORV trail/route protection (4/18)

Black Lake ATV Trail is located against (but not inside) portions of Payment Unit 2. The trail is shown on the Timber Sale Map. Do not cut trees or damage posts with yellow trail or route markers. Maintain a 10-foot-wide slash, debris, and rut free zone daily using the trail as the centerline. Do not run harvest equipment down the ATV Trail.

#### 5.2.41 - Snowmobile trail protection (9/11)

A portion of Snowmobile Trail 99 travels down Alpena State Road just south of Payment Unit 2, as shown on the Timber Sale Map. Do not cut or damage posts with orange trail markers or traffic control signs. If the trail is used, it must be maintained and restored to a condition equal to or better than before the sale. The road maintenance/restoration must be done prior to December 1. If the trail is used for hauling, it must be graded to the satisfaction of the Unit Manager or his/her representative prior to December 1. If the trail road is to be used for hauling during the snowmobile season, then a snow covered base must be left on the trail. Maintain a 10-foot-wide slash, debris, and rut free zone daily using the snowmobile trail as the centerline. No decking of forest products will be permitted along the snowmobile trail.

### 5.4 - Soil Protection

#### 5.4.1 - Rutting restriction, general (7/16)

Operations are to cease immediately if equipment and weather conditions result in rutting of roads and/or skid trails which are 12 inches or greater in depth and 50 feet in length. The Unit Manager or his/her representative may restrict hauling and/or skidding if ruts exceed the specified depth. With the Unit Manager or his/her representative's approval, the Purchaser may return to the area when the risk of rutting has decreased.

#### 5.5 - Protection of Improvements

##### 5.5.3 - Protection of improvements detail (10/13)

The following are specific protection measures for this sale: A wire fence borders private property against and near portions of Payment Unit 3. Do not damage this fence or leave slash hanging on the fence.

#### 5.8 - Protection of Endangered Species

##### 5.8.5 - Protection of raptor nests (3/13)

All trees with raptor nests will be protected if found during harvesting operations. Notification will be made to the Unit Manager or his/her representative who will notify the Wildlife Biologist so an on-site evaluation and recommendation can be made, if necessary.

### 6 - Safety and Fire Prevention

#### 6.2 - Signing

##### 6.2.1 - Road posting (10/20)

The Purchaser is responsible for posting and maintaining caution signs on haul roads prior to beginning operations. The road must be posted at appropriate distances from the Sale Area to warn of logging activity and truck traffic. Signs must be removed when harvest operations are suspended or completed. The Purchaser will provide these signs.

##### 6.2.2 - Snowmobile trail posting (10/20)

The Purchaser is responsible for posting and maintaining caution signs on Snowmobile Trail 99 prior to beginning operations during the snowmobile season (approximately December 1 to March 31). The trail must be posted at appropriate distances from the Sale Area to warn of logging activity and truck traffic. Signs must be removed when harvest operations are suspended or completed. The Purchaser will provide these signs.

##### 6.2.3 - Recreational trail posting (10/20)

The Purchaser is responsible for posting and maintaining caution signs on Black Lake ATV Trail prior to beginning operations. The trail must be posted at appropriate distances from the Sale Area to warn of logging activity and truck traffic at both ends of the trail. Signs must be removed when harvest operations are suspended or completed. The Purchaser will provide these signs.



# TIMBER SALE MAP

This information provided by authority of Part 525, 1994 PA 451, as amended.

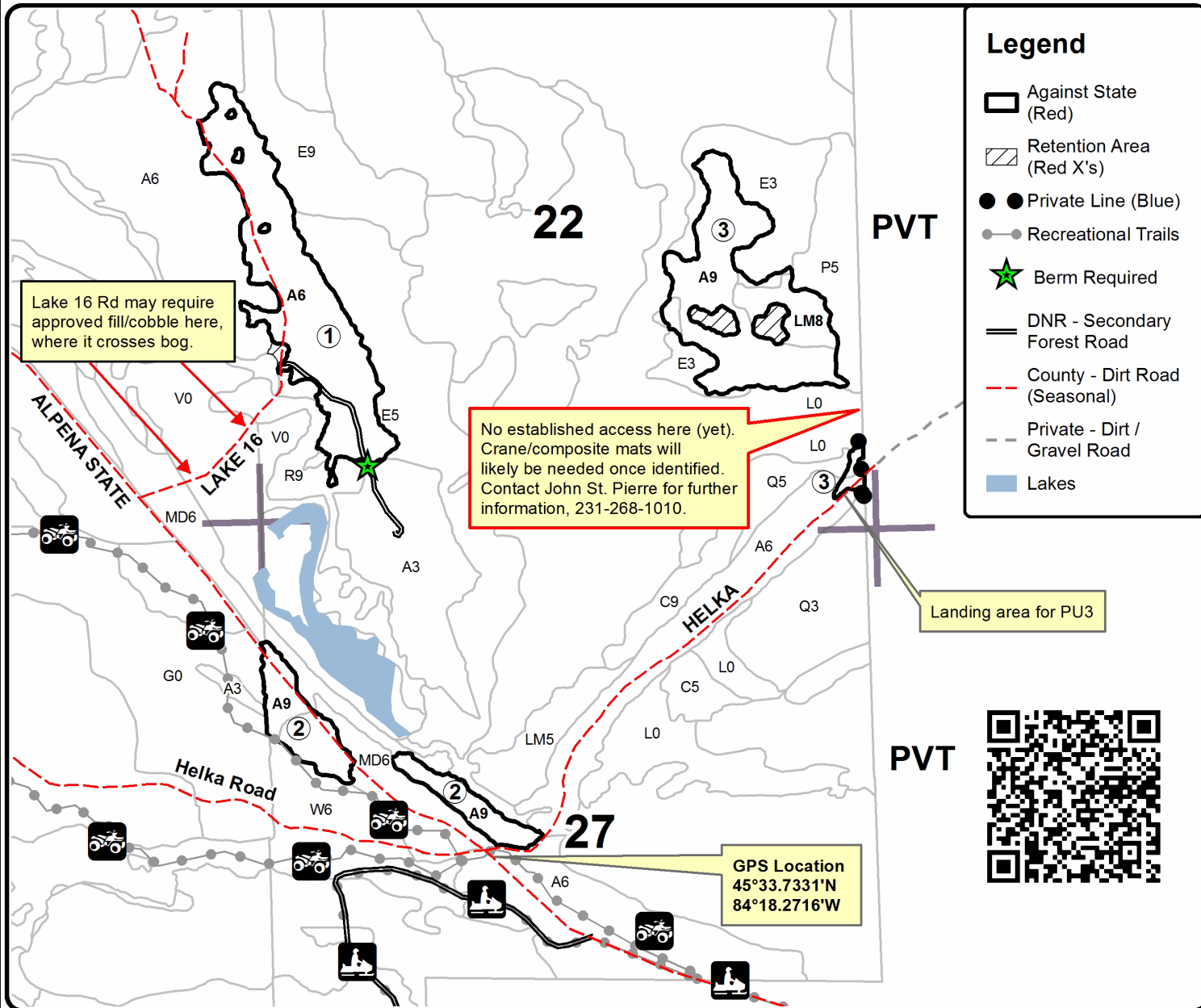
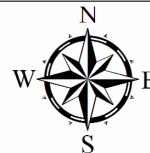
Sale Number	Year
54 - 019	22

Forest Management Unit Atlanta	County Cheboygan	Mapped By J. St. Pierre	Date 9/12/2022	Page 1	of 1
Township 37N	Range 01E	Section(s) and Subdivision(s) Sec.21: SENE,NESE	Sec.22: SWNW,S1/2NE,W1/2SW,SE Sec.27: NWNW,S1/2NW,NESW Sec.28: E1/2NE	Scale 1:15,840	

Cover Type				Density	
A = Aspen	H = Hemlock	N = Marsh	U = Upland Brush	0 = Non Stocked	5 = Pole Timber Medium
B = Paper Birch	J = Jack Pine	O = Oak	UM = Upland Mixed	1 = Seedling Sapling Poor	6 = Pole Timber Well
C = Cedar	L = Lowland Brush	P = Lowland Poplar	V = Bog or Marsh	2 = Seedling Sapling Medium	7 = Saw Timber Poor
D = Treed Bog	LM = Lowland Mixed	Q = Mixed Swamp Conifer	W = White Pine	3 = Seedling Sapling Well	8 = Saw Timber Medium
E = Swamp Hdwoods	M = Mpl, Bch, Brch	R = Red Pine	X = Non Stocked	4 = Pole Timber Poor	9 = Saw Timber Well
F = Spruce Fir	MC = Mixed Conifer	S = Black Spruce	Z = Water		
G = Grass	MD = Mixed Deciduous	T = Tamarack			

PU	Acres
1	38.9
2	15.6
3	35.4

## Looner Aspen Compartment 173 89.9 Acres



### Legend

- Against State (Red)
- Retention Area (Red X's)
- Private Line (Blue)
- Recreational Trails
- Berm Required
- DNR - Secondary Forest Road
- County - Dirt Road (Seasonal)
- Private - Dirt / Gravel Road
- Lakes

## TIMBER SALE INFORMATION

Busy Beaver Aspen (54-023-22)  
T37N, R01W, SEC. 2.  
Cheboygan County (Advertised Price \$70,091.05)

SALE NOTE: The sale has fair to good timber quality with good operating terrain. In addition, there is good access from Gilpin Road to this sale. There is also an oak wilt restriction.

A recreation site such as a trail, pathway, or campground is within the sale area or the vicinity. Certain restrictions/specifications may be applicable including time restrictions. Access may be through private or other public land.

A timber sale contract for this lump sum, sealed bid timber sale will be awarded to the responsible bidder offering the highest sealed bid price. All units of volume listed below were estimated using the Inventory Manager computer program and the new Michigan taper model. Bids must be at or above the following advertised price for each product and species:

<u>PRODUCTS &amp; SPECIES</u>	<u>ESTIMATED UNITS*</u>	<u>ADVERTISED PRICE</u>
Sawtimber		
B. T. Aspen	183.7 MBF	\$ 125.00 / MBF
Red Oak	23.5 MBF	\$ 213.00 / MBF
White Pine	13.6 MBF	\$ 164.00 / MBF
Pulpwood		
B. T. Aspen	711 Cords	\$ 30.65 / Cord
Balsam Fir	41 Cords	\$ 40.70 / Cord
Mixed Hardwood	187 Cords	\$ 34.75 / Cord
Paper Birch	76 Cords	\$ 18.80 / Cord
Red Oak	186 Cords	\$ 45.00 / Cord
White Pine	5 Cords	\$ 26.95 / Cord

\* The total volume is statistically estimated within plus (+) or minus (-) 17.81 percent. There are an estimated 1,653 cords on this timber sale, plus or minus 294 cords at the 95% confidence level. The estimated units are final and not subject to adjustment. Prospective bidders are urged to examine this timber and to make their own estimates of quantity and quality.

### **BOND AND PAYMENT SCHEDULE:**

1. A bond in the amount of \$3,505.00 to insure faithful performance of the conditions of the contract will be deposited by the successful bidder within 21 days of the sale award.
2. Cutting in any sale or unit without the required advance payment would be considered a trespass.
3. Total payment must be paid in advance or according to the following schedule :
  - (a) Ten percent (10%) of the sale value must be paid within 21 days of the sale award.
  - (b) The 10% down payment will be credited towards the first unit cut.
  - (c) Payment for each of the following units must be made before cutting begins in that unit:
 

PAYMENT UNIT NUMBER	PERCENT OF TOTAL SALE VALUE
01	48.9%
02	51.1%
4. If no cutting takes place, the 10% down payment will not be refunded.
5. Operations on the contract issued will terminate on 12/31/2026.

### **SALE STATISTICS**

Volumes were calculated in cubic feet using the Michigan taper model. Cubic foot volume includes all wood inside bark for the product indicated. For display purposes, cubic feet were converted to cords and MBF using a simple conversion factor, e.g. 79 cubic feet per cord and 185 cubic feet per MBF. The cubic foot volumes are precise; the cords and MBF volumes are not. Cubic foot volume cannot be directly converted to cords or boards with precision.

### **SALE VOLUMES**

The total estimated sale volume may not equal the sum of the species/products due to the nature of statistical calculations associated with double sampling methodology.

VOLUME		STATISTICAL RANGE IN CORDS		
TOTAL CUBIC FEET	TOTAL CORDS	PERCENT ERROR	MINIMUM	MAXIMUM
130,610	1,653	17.81%	1,359	1,948

**VDU VOLUMES**

A VDU is a Volume Determination Unit. Volumes and their associated statistics are calculated at the VDU level and summarized to the sale level. There is often a one to one relationship between a VDU and a Payment Unit, but not always, depending on the cruise design. Refer to the VDU TO PAYMENT UNIT table.

VDU	VOLUME		PERCENT ERROR	RANGE IN CORDS	
	TOTAL CUBIC FEET	TOTAL CORDS		MINIMUM	MAXIMUM
33	130,610	1,653	17.81%	1,359	1,948
<b>TOTAL:</b>	<b>130,610</b>	<b>1,653</b>		<b>1,359</b>	<b>1,948</b>

**VDU TO PAYMENT UNIT**

When a VDU is associated with more than one Payment Unit (PU), the VDU volumes are assigned to the PU based on acres of the VDU within the PU.

VDU	VDU ACRES	PU	PU ACRES
33	44.8	1	21.9
		2	22.9
<b>TOTAL:</b>	<b>44.8</b>		<b>44.8</b>

**DESCRIPTION OF TIMBER BY PAYMENT UNIT (PU)**

PU	MARKET GROUP	PRODUCT	QUANTITY	UNIT	ACRES	ADVERTISE PRICE
1	B. T. Aspen	Sawtimber	89.8	MBF	21.9	\$34,243.85
	Red Oak		11.5	MBF		
	White Pine		6.6	MBF		
	B. T. Aspen	Pulpwood	348	Cords		
	Balsam Fir		20	Cords		
	Mixed Hardwood		91	Cords		
	<i>Red Maple</i>		0.7	MBF		
	<i>Sugar Maple</i>		2.1	MBF		
	<i>Beech</i>		16	Cords		
	<i>Red Maple</i>		66	Cords		
	<i>Sugar Maple</i>	4	Cords			
	Paper Birch	37	Cords			
	Red Oak	91	Cords			
	White Pine	2	Cords			
2	B. T. Aspen	Sawtimber	93.9	MBF	22.9	\$35,812.45
	Red Oak		12.0	MBF		
	White Pine		7.0	MBF		
	B. T. Aspen	Pulpwood	363	Cords		
	Balsam Fir		21	Cords		
	Mixed Hardwood		95	Cords		
	<i>Red Maple</i>		0.8	MBF		
	<i>Sugar Maple</i>		2.2	MBF		
	<i>Beech</i>		16	Cords		
	<i>Red Maple</i>		69	Cords		
	<i>Sugar Maple</i>	4	Cords			
	Paper Birch	39	Cords			
	Red Oak	95	Cords			
	White Pine	3	Cords			
<b>TOTAL:</b>			220.8	MBF		
<b>TOTAL:</b>			1,205	Cords		



## Sale Specific Conditions & Requirements

**Sale Name: Busy Beaver Aspen**

**Sale Number: 54-023-22 Seq#: 2**

### 1 - Sale Area

#### 1.2 - Boundaries

##### 1.2.1 - Painted boundaries (9/19)

The sale boundary and Payment Unit boundaries are marked and identified by blue, red and yellow paint. Exterior sale boundary lines against private property are marked with blue paint. Exterior sale boundary lines against state are marked with red paint. Interior Payment Unit boundaries are marked with yellow paint.

### 2 - Timber Specifications

#### 2.1 - Included Timber

##### 2.1.1 - Clearcut unit(s) with unmerchantable trees (6/14)

Within Payment Unit(s) 1 & 2, cut all trees that are two (2) inches or more at DBH.

### 4 - Transportation

#### 4.1 - Construction

##### 4.1.3 - Slash and earthen piles (8/04)

Piles or windrows of earth along roads and landings that have been widened or constructed shall be leveled. Slash from road maintenance or construction, including stumps, shall be dispersed throughout the sale.

##### 4.1.6 - Road construction (1/09)

Construction of new roads or improvements of existing roads shall be done in such a way as to minimize the environmental and visual impacts. Merchantable trees shall be cut and utilized unless otherwise directed. Non-merchantable trees shall be severed and laid flat on the ground. Slash shall be scattered, and not left in windrows and kept a minimum of 10 feet back from the road edge. Stumps shall be set upright, not left on edge, and be moved at least 10 feet away from the road edge. Disturbed soil shall be feathered into the woods and not left in berms or windrows.

##### 4.1.7 - Road closure (10/11)

All new roads built into the sale must be blocked to vehicle traffic within 30 days of completion of hauling. Overgrown roads that are reopened shall be considered new roads. In general, this will require constructing a four (4') foot high berm of stumps and logs covered with earth. Stumps and brush must be placed along the remainder of the trail. These roads must be rendered impassable to cars and trucks. Contact the Sale Administrator for specific details of design and placement.

#### 4.2 - Maintenance

##### 4.2.3 - Road maintenance (8/13)

The following road maintenance is required: Within 60 days of completion of hauling, or if no hauling occurs for 60 days, the road must be maintained and graded. This includes cleaning of drainage areas, grading, crowning and filling with gravel, if necessary. Damages will be assessed if grading/repair does not occur.

##### 4.2.5 - Two wheel drive condition (2/04)

All existing trail roads on and adjacent to the sale area must be passable by two-wheel drive traffic for the duration of the sale.

#### 4.4 - Access

##### 4.4.1 - Private property access (3/11)

Permission for access across private land is the responsibility of the Purchaser. Should the Purchaser desire to cross private land, a copy of the written permission from the private land-owner may be required by the DNR.

### 5 - Operations

#### 5.1 - Notification

#### 5.1.1 - Pre-sale conference (10/16)

A pre-sale conference between the Purchaser and sale administrator is required prior to beginning any operations; to determine landing and road locations. The Unit Manager or his/her representative must be contacted at least 5 days in advance to schedule the conference.

#### 5.1.4 - Post-sale conference (10/16)

A post-sale conference on site between the Purchaser and sale administrator is required 5 days prior to the completion of active logging operations to determine clean-up and repair of landings, road edges, and the fulfillment of other contract specifications.

### 5.2 - Conduct of Operations

#### 5.2.2 - Hazard Trees/Snags

##### 5.2.2.1 - Den trees (10/16)

Obvious hollow and/or den trees shall be protected and left standing unless they are a safety hazard.

#### 5.2.3 - Operating Restrictions

##### 5.2.3.5 - Oak wilt restriction (1/18)

Within Payment Unit(s) 1 & 2, unless changed by written agreement, cutting, skidding, hauling within the sale and brushing of access roads to the sale are not permitted during the period of April 15 to July 15. Operations may be allowed if specific steps are taken to prevent damaging uncut oak during the high risk period. Those steps may include completing all road brushing before April 15th and clearing a tree-length buffer along uncut oak cover before April 15th. This is necessary to reduce the spread of oak wilt. For more information, contact the Unit Manager or his/her representative.

##### 5.2.3.11 - Coppice regeneration protection (4/10)

Timber harvesting in any Payment Unit must be completed before significant aspen sprouting occurs in that Payment Unit so as to minimize damage to the new regeneration. Any post harvest operations, such as chipping, must be completed before sprouting of regeneration occurs. If it is anticipated that chipping will be delayed, then tops shall be carried to one central location or left unchipped. The Unit Manager or his/her representative may cease such operations if sprouting occurs before the operation is complete.

#### 5.2.4 - Dead and Down Creation

##### 5.2.4.7 - Dead and down creation: hare, grouse, deer and other species (5/15)

To improve horizontal cover habitat for snowshoe hare, grouse, deer, and other species, the Purchaser is to push over trees that are marked with an orange slash. These trees should be tipped over with the root ball still attached so the base of the tree is suspended off the ground. The crown of the fallen tree should be at or near ground level after it is pushed over.

##### 5.2.32 - Decking/landing restoration (9/13)

All decking and landing areas must have the surface area restored to a condition equal to or better than before. This is to ensure the proper regeneration of the stand.

##### 5.2.41 - Snowmobile trail protection (9/11)

Trail 99 is a snowmobile trail and is shown on the Timber Sale Map. Do not cut or damage posts with orange trail markers or traffic control signs. If the trail is used, it must be maintained and restored to a condition equal to or better than before the sale. If the trail is used for hauling, it must be graded to the satisfaction of the Unit Manager or his/her representative prior to December 1. If the trail road is to be used for hauling during the snowmobile season, then a snow covered base must be left on the trail. Maintain a 20-foot-wide slash, debris, and rut free zone daily using the snowmobile trail as the centerline. No decking of forest products will be permitted along the snowmobile trail. All stumps within 20 feet of the snowmobile trail must be cut at ground level. In addition, any trees cut within 5 feet of the trail must have the stumps removed and be disposed of according to the direction of the Unit Manager or his/her representative.

### 5.4 - Soil Protection

#### 5.4.1 - Rutting restriction, general (7/16)

Operations are to cease immediately if equipment and weather conditions result in rutting of roads and/or skid trails which are 12 inches or greater in depth and 50 feet in length. The Unit Manager or his/her representative may restrict hauling and/or

skidding if ruts exceed the specified depth. With the Unit Manager or his/her representative's approval, the Purchaser may return to the area when the risk of rutting has decreased.

#### 5.8 - Protection of Endangered Species

##### 5.8.5 - Protection of raptor nests (3/13)

All trees with raptor nests will be protected if found during harvesting operations. Notification will be made to the Unit Manager or his/her representative who will notify the Wildlife Biologist so an on-site evaluation and recommendation can be made, if necessary.

### **6 - Safety and Fire Prevention**

#### 6.2 - Signing

##### 6.2.2 - Snowmobile trail posting (10/20)

The Purchaser is responsible for posting and maintaining caution signs on snowmobile trail 99 prior to beginning operations during the snowmobile season (approximately December 1 to March 31). The trail must be posted at appropriate distances from the Sale Area to warn of logging activity and truck traffic. Signs must be removed when harvest operations are suspended or completed. The Purchaser will provide these signs.



# TIMBER SALE MAP

This information provided by authority of Part 525, 1994 PA 451, as amended.

Forest Management Unit Atlanta Management Unit		County Cheboygan	Mapped By Michaud	Date 9/28/22	Page 1	of 1
Township 37N	Range 01W	Section(s) and Subdivision(s) Section 2 S1/2NW,W1/2SW		Scale 1:15,840		

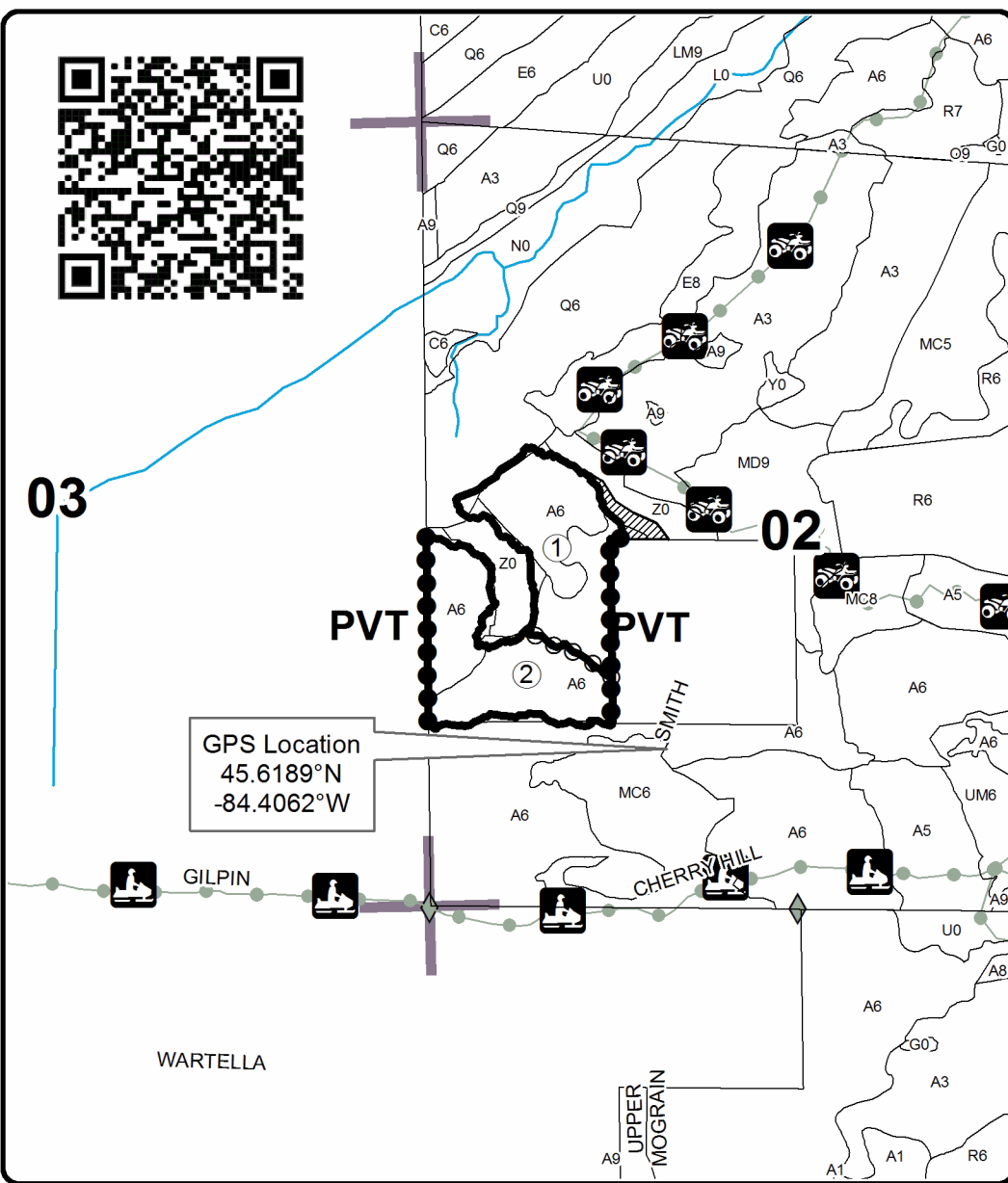
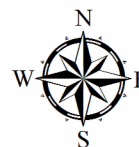
Cover Type				Density			
A = Aspen	H = Hemlock	N = Marsh	U = Upland Brush	0 = Non Stocked	5 = Pole Timber Medium		
B = Paper Birch	J = Jack Pine	O = Oak	UM = Upland Mixed	1 = Seedling Sapling Poor	6 = Pole Timber Well		
C = Cedar	L = Lowland Brush	P = Lowland Poplar	V = Bog or Marsh	2 = Seedling Sapling Medium	7 = Saw Timber Poor		
D = Treed Bog	LM = Lowland Mixed	Q = Mixed Swamp Conifer	W = White Pine	3 = Seedling Sapling Well	8 = Saw Timber Medium		
E = Swamp Hdwoods	M = Mpl, Bch, Brch	R = Red Pine	X = Non Stocked	4 = Pole Timber Poor	9 = Saw Timber Well		
F = Spruce Fir	MC = Mixed Conifer	S = Black Spruce	Z = Water				
G = Grass	MD = Mixed Deciduous	T = Tamarack					

PU	Acres
1	21.9
2	22.9

## Busy Beaver Aspen

### Compartment 165

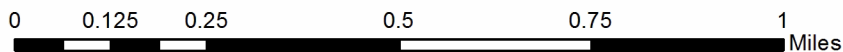
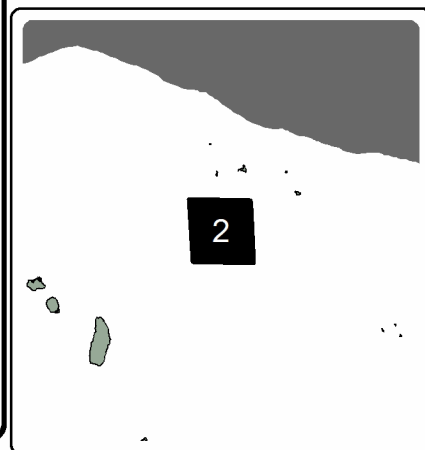
44.8 Acres



### Legend

- Against State (Red)
- ⊗ Payment Unit (Yellow)
- Private Line (Blue)
- ▨ Retention Area (Red)
- Payment Unit
- Stand Boundaries
- Recreational Trail
- Perennial River
- Section Corners

Locator Map  
1:200,000



**TIMBER SALE INFORMATION**

Euripides Pants Spruce 2.0 (54-029-22)  
 T37N, R01E, SEC. 20.  
 Cheboygan County (Advertised Price \$27,994.90)

SALE NOTE: This timber sale has some restrictions due to wet nature of each Payment Unit. In addition, the timber within the sale is fair to good quality.

A recreation site such as a trail, pathway, or campground is within the sale area or the vicinity. Certain restrictions/specifications may be applicable including time restrictions.

A timber sale contract for this lump sum, sealed bid timber sale will be awarded to the responsible bidder offering the highest sealed bid price. All units of volume listed below were estimated using the Inventory Manager computer program and the new Michigan taper model. Bids must be at or above the following advertised price for each product and species:

<u>PRODUCTS &amp; SPECIES</u>	<u>ESTIMATED UNITS*</u>	<u>ADVERTISED PRICE</u>
Sawtimber		
Red Pine	35.7 MBF	\$ 153.00 / MBF
White Pine	12.2 MBF	\$ 153.00 / MBF
Pulpwood		
Balsam Fir	13 Cords	\$ 38.00 / Cord
Black Spruce	956 Cords	\$ 18.70 / Cord
N. White Cedar	10 Cords	\$ 20.35 / Cord
Paper Birch	8 Cords	\$ 17.55 / Cord
Red Maple	20 Cords	\$ 32.40 / Cord
Red Pine	28 Cords	\$ 41.15 / Cord
White Pine	6 Cords	\$ 25.15 / Cord

\* The total volume is statistically estimated within plus (+) or minus (-) 18.67 percent. There are an estimated 1,181 cords on this timber sale, plus or minus 221 cords at the 95% confidence level. The estimated units are final and not subject to adjustment. Prospective bidders are urged to examine this timber and to make their own estimates of quantity and quality.

**BOND AND PAYMENT SCHEDULE:**

- A bond in the amount of \$1,400.00 to insure faithful performance of the conditions of the contract will be deposited by the successful bidder within 21 days of the sale award.
- Cutting in any sale or unit without the required advance payment would be considered a trespass.
- Total payment must be paid in advance or according to the following schedule :
  - Ten percent (10%) of the sale value must be paid within 21 days of the sale award.
  - The 10% down payment will be credited towards the first unit cut.
  - Payment for each of the following units must be made before cutting begins in that unit:
 

PAYMENT UNIT NUMBER	PERCENT OF TOTAL SALE VALUE
01	20.4%
02	79.6%
- If no cutting takes place, the 10% down payment will not be refunded.
- Operations on the contract issued will terminate on 12/31/2026.

**SALE STATISTICS**

Volumes were calculated in cubic feet using the Michigan taper model. Cubic foot volume includes all wood inside bark for the product indicated. For display purposes, cubic feet were converted to cords and MBF using a simple conversion factor, e.g. 79 cubic feet per cord and 185 cubic feet per MBF. The cubic foot volumes are precise; the cords and MBF volumes are not. Cubic foot volume cannot be directly converted to cords or boards with precision.

**SALE VOLUMES**

The total estimated sale volume may not equal the sum of the species/products due to the nature of statistical calculations associated with double sampling methodology.

VOLUME		STATISTICAL RANGE IN CORDS		
TOTAL CUBIC FEET	TOTAL CORDS	PERCENT ERROR	MINIMUM	MAXIMUM
93,301	1,181	18.67%	961	1,402

## VDU VOLUMES

A VDU is a Volume Determination Unit. Volumes and their associated statistics are calculated at the VDU level and summarized to the sale level. There is often a one to one relationship between a VDU and a Payment Unit, but not always, depending on the cruise design. Refer to the VDU TO PAYMENT UNIT table.

VDU	VOLUME		PERCENT ERROR	RANGE IN CORDS	
	TOTAL CUBIC FEET	TOTAL CORDS		MINIMUM	MAXIMUM
2	18,839	238	36.51%	151	326
13	74,462	943	22.51%	730	1,155
<b>TOTAL:</b>	<b>93,301</b>	<b>1,181</b>		<b>882</b>	<b>1,480</b>

## VDU TO PAYMENT UNIT

When a VDU is associated with more than one Payment Unit (PU), the VDU volumes are assigned to the PU based on acres of the VDU within the PU.

VDU	VDU ACRES	PU	PU ACRES
2	4.9	1	4.9
13	26.7	2	26.7
<b>TOTAL:</b>	<b>31.6</b>		<b>31.6</b>

## DESCRIPTION OF TIMBER BY PAYMENT UNIT (PU)

PU	MARKET GROUP	PRODUCT	QUANTITY	UNIT	ACRES	ADVERTISE PRICE			
1	Red Pine	Sawtimber	6.7	MBF	4.9	\$5,711.10			
	White Pine		2.2	MBF					
	Black Spruce	Pulpwood	176	Cords					
	<i>Black Spruce</i>	<i>Sawtimber</i>	19.2	<i>MBF</i>					
	<i>Black Spruce</i>	<i>Pulpwood</i>	138	<i>Cords</i>					
	N. White Cedar		10	Cords					
	<i>N. White Cedar</i>	<i>Sawtimber</i>	2.1	<i>MBF</i>					
	<i>N. White Cedar</i>	<i>Pulpwood</i>	6	<i>Cords</i>					
	Paper Birch		8	Cords					
	<i>Paper Birch</i>	<i>Sawtimber</i>	1.9	<i>MBF</i>					
	<i>Paper Birch</i>	<i>Pulpwood</i>	4	<i>Cords</i>					
	Red Maple		20	Cords					
	<i>Red Maple</i>	<i>Sawtimber</i>	2.3	<i>MBF</i>					
	<i>Red Maple</i>	<i>Pulpwood</i>	15	<i>Cords</i>					
	Red Pine		1	Cords					
	White Pine		1	Cords					
2	Red Pine	Sawtimber	29.0	MBF	26.7	\$22,283.80			
	White Pine		10.0	MBF					
	Balsam Fir	Pulpwood	13	Cords					
	Black Spruce		780	Cords					
	<i>Black Spruce</i>	<i>Sawtimber</i>	75.2	<i>MBF</i>					
	<i>Black Spruce</i>	<i>Pulpwood</i>	630	<i>Cords</i>					
	Red Pine		27	Cords					
	White Pine		5	Cords					
	TOTAL:			47.9			MBF		
	TOTAL:			1,041			Cords		

## Sale Specific Conditions & Requirements

**Sale Name: Euripides Pants Spruce 2.0**

**Sale Number: 54-029-22 Seq#: 2**

### 1 - Sale Area

#### 1.2 - Boundaries

##### 1.2.1 - Painted boundaries (9/19)

The sale boundary and Payment Unit boundaries are marked and identified by red paint. Exterior sale boundary lines against state are marked with red paint. Retention patches are marked with red paint; no harvesting activities may occur within these areas and are identified on the map. The painted boundary line trees are not Included Timber and are to be protected.

### 2 - Timber Specifications

#### 2.1 - Included Timber

##### 2.1.1 - Clearcut unit(s) with unmerchantable trees (6/14)

Within Payment Unit(s) 1 & 2, cut all trees that are two (2) inches or more at DBH, except do not cut spruce that is less than 4.5 inches at DBH. In addition, within Payment Unit 2, do not cut aspen, red maple, and pockets of yellow marked spruce and pine trees. Special protection trees identified in accordance with condition 3.4.2, within clearcutting unit boundaries, are not Included Timber and are to be protected.

#### 2.2 - Utilization

##### 2.2.10 - No chipping tops and limbs (8/16)

Within Payment Unit(s) 1 & 2, chipping of limbs or tops is not permitted. Limbs and the remaining top must be left on site and scattered. For additional information, see General Condition and Requirement 5.2.1 - Slash.

### 3 - Payments

#### 3.4 - Damaged Timber

##### 3.4.1 - Damaged timber (7/16)

General Condition and Requirement 3.4 Damaged Timber, defines liquidated damages for undesignated live merchantable trees which are cut or injured. In addition, extreme care should be taken to avoid damage to spruce seedlings and saplings within all Payment Units. No damage is acceptable to undesignated live merchantable trees. Within the Sale Area, if more than 5% of trees (> 4.5" DBH) within a specified area of the sale are damaged, liquidated damages will be assessed for all trees damaged. Rates will be in accordance with General Condition and Requirement 3.4 Damaged Timber.

### 4 - Transportation

#### 4.1 - Construction

##### 4.1.3 - Slash and earthen piles (8/04)

Piles or windrows of earth along roads and landings that have been widened or constructed shall be leveled. Slash from road maintenance or construction, including stumps, shall be leveled. Slash from road maintenance or construction, including stumps, shall be dispersed throughout Payment Units 1 & 2.

##### 4.1.6 - Road construction (1/09)

Construction of new roads or improvements of existing roads shall be done in such a way as to minimize the environmental and visual impacts. Merchantable trees shall be cut and utilized unless otherwise directed. Non-merchantable trees shall be severed and laid flat on the ground. Slash shall be scattered, and not left in windrows and kept a minimum of 10 feet back from the road edge. Stumps shall be set upright, not left on edge, and be moved at least 10 feet away from the road edge. Disturbed soil shall be feathered into the woods and not left in berms or windrows.

##### 4.1.7 - Road closure (10/11)

All new roads built into the sale must be blocked to vehicle traffic within 30 days of completion of hauling. In general, this will require constructing a four (4') foot high berm of stumps and logs covered with earth. Stumps and brush must be placed along the remainder of the trail. These roads must be rendered impassable to cars and trucks. Stumps from road building and landing construction must be reserved to block any newly constructed roads upon completion of the sale. These stumps must

be scattered along the road system to prohibit vehicular movement. Temporary berms may be required if no sale activity occurs for 30 or more consecutive days. Contact the Sale Administrator for specific details of design and placement.

#### 4.2 - Maintenance

##### 4.2.5 - Two wheel drive condition (2/04)

All existing trail roads on and adjacent to the sale area must be passable by two-wheel drive traffic for the duration of the sale.

### 5 - Operations

#### 5.1 - Notification

##### 5.1.1 - Pre-sale conference (10/16)

A pre-sale conference on site between the Purchaser and sale administrator is required prior to beginning any operations. The Unit Manager or his/her representative must be contacted at least 5 days in advance to schedule the conference.

##### 5.1.4 - Post-sale conference (10/16)

A post-sale conference on site between the Purchaser and sale administrator is required 5 days prior to the completion of active logging operations to determine clean-up and repair of landings, road edges, and the fulfillment of other contract specifications.

#### 5.2 - Conduct of Operations

##### 5.2.1 - Slash

###### 5.2.1.11 - Slash for reforestation (3/21)

To facilitate reforestation, within the Sale Area, slash shall be left evenly distributed. Bunched tops within the cutting area shall be broken up and scattered. Stumps shall be cut low to the ground. Processing sites shall not be left with a compacted layer of slash; tops from these sites shall be hauled back into the cut area and scattered.

##### 5.2.2 - Hazard Trees/Snags

###### 5.2.2.1 - Den trees (10/16)

Obvious hollow and/or den trees shall be protected and left standing unless they are a safety hazard.

##### 5.2.3 - Operating Restrictions

###### 5.2.3.1 - Operating restrictions (9/11)

Within Payment Unit(s) 1 & 2, cutting and skidding are restricted to July 1 to March 15. The Unit Manager or his/her representative reserve the right to allow operations outside of the above timeline if climatic conditions warrant. This restriction is to protect the sensitive soils and seasonally wet & low ground located within Payment Units 1 & 2.

###### 5.2.3.6 - Bark beetle restriction (12/08)

In the event drought creates a high risk of pine bark beetle infestation, pine is not to be cut during the period March 1 through July 1, unless all portions of trees greater than two inches in diameter are removed from the sale area, reduced to chips, or treated to the satisfaction of the Unit Manager or his/her representative, within fifteen days of being severed from the stump. Pine log decks, pulpwood piles and treetops that are piled for chipping in the fall or winter within a 1/4 mile of susceptible sites must be removed before March 15. Residual slash must not be placed in piles or rows and must be spread over the site for quick drying. The Department of Natural Resources will exercise this specification if the risk of damage warrants.

##### 5.2.17 - Timber Mats and Interlocking Composite Mats (10/20)

Some roads or skid trails may require extra protection such as that afforded by timber mats, interlocking composite mats, or another approved system. If available, mats may be borrowed from the DNR. A Timber Sale Contract Supplement will be used to document the Purchaser's use of the DNR's mats. Contact the Sale Administrator regarding availability and pick-up. Composite mats are only available from the Grayling field office and the Marquette ICC. The Purchaser is responsible for picking up and hauling the mats to and from the site. The composite mats will require DNR staff onsite for installation and removal. Contact the Sale Administrator to schedule at least 30 days before desired install/removal date. All mats must be cleaned prior to drop off. This may include, but is not limited to, power washing and brushing to remove mud and debris. A charge of \$700.00 per timber mat and \$2,000.00 per composite mat will be assessed for all damaged or non-returned mats.



Damage for the crane/timber mats is defined as three or more broken cants. Damage for the composite mats is defined as cracked or broken mats.

#### 5.2.18 - Equipment requirements (1/09)

The use of low-impact equipment is highly recommended within all Payment Units.

#### 5.2.32 - Decking/landing restoration (9/13)

All decking and landing areas must have the surface area restored to a condition equal to or better than before. This is to ensure the proper regeneration of the stand. Wood debris, chips and "cookies" from trimmings must be removed or scattered away from landing and loading areas and may not be windrowed on the edge.

#### 5.2.38 - No decking against live trees (2/04)

Cut products may not be decked against unmarked or designated leave trees.

#### 5.2.41 - Snowmobile trail protection (9/11)

The "Snowmobile Trail #99" is a snowmobile trail and is shown on the Timber Sale Map. Do not cut or damage posts with orange trail markers or traffic control signs. If the trail is used, it must be maintained and restored to a condition equal to or better than before the sale. If the trail is used for hauling, it must be graded to the satisfaction of the Unit Manager or his/her representative prior to December 1. If the trail road is to be used for hauling during the snowmobile season, then a snow covered base must be left on the trail. The snowmobile trail may only be crossed at right angles. Maintain a 20-foot-wide slash, debris, and rut free zone daily using the snowmobile trail as the centerline. No decking of forest products will be permitted along the snowmobile trail.

### 5.4 - Soil Protection

#### 5.4.1 - Rutting restriction, general (7/16)

Operations are to cease immediately if equipment and weather conditions result in rutting of roads and/or skid trails which are 12 inches or greater in depth and 50 feet in length. The Unit Manager or his/her representative may restrict hauling and/or skidding if ruts exceed the specified depth. With the Unit Manager or his/her representative's approval, the Purchaser may return to the area when the risk of rutting has decreased.

### 5.8 - Protection of Endangered Species

#### 5.8.5 - Protection of raptor nests (3/13)

All trees with raptor nests will be protected if found during harvesting operations. Notification will be made to the Unit Manager or his/her representative who will notify the Wildlife Biologist so an on-site evaluation and recommendation can be made, if necessary.

## 6 - Safety and Fire Prevention

### 6.2 - Signing

#### 6.2.1 - Road posting (10/20)

The Purchaser is responsible for posting and maintaining caution signs on haul routes prior to beginning operations. The road must be posted at appropriate distances from the Sale Area to warn of logging activity and truck traffic. Signs must be removed when harvest operations are suspended or completed. The Purchaser will provide these signs.

#### 6.2.2 - Snowmobile trail posting (10/20)

The Purchaser is responsible for posting and maintaining caution signs on snowmobile trail "Trail #99" prior to beginning operations during the snowmobile season (approximately December 1 to March 31). The trail must be posted at appropriate distances from the Sale Area to warn of logging activity and truck traffic. Signs must be removed when harvest operations are suspended or completed. The Purchaser will provide these signs.



Sale Number	Year
54-029	22

# TIMBER SALE MAP

This information provided by authority of Part 525, 1994 PA 451, as amended.

Forest Management Unit Atlanta Management Unit	County Cheboygan	Mapped By Michaud	Date 10/04/22	Page 1	of 1
Cruised By Michaud					

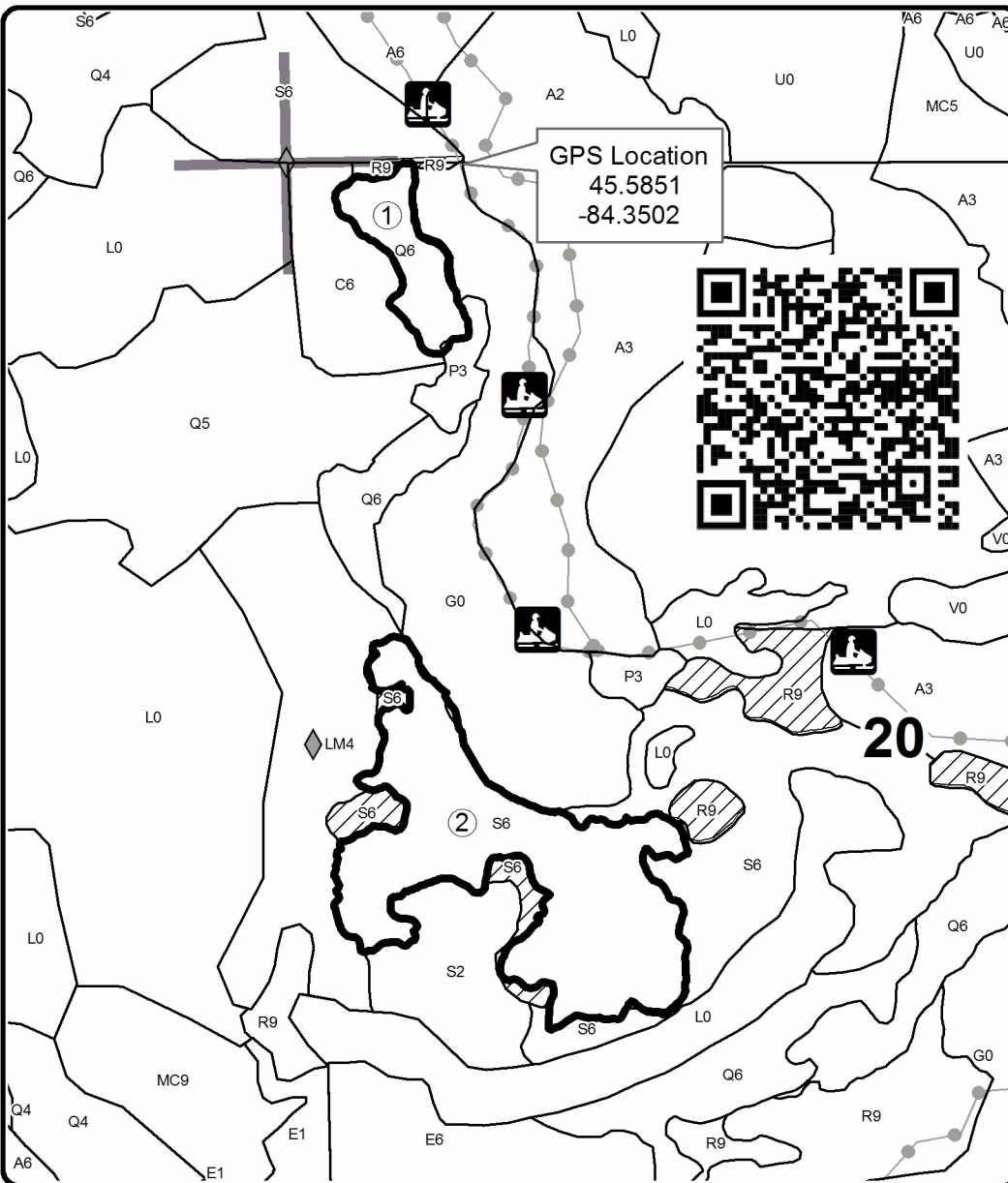
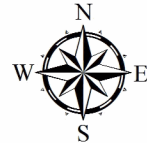
Township 37N	Range 01E	Section(s) and Subdivision(s) Section 20 W1/2NW,N1/2SW	Scale 1:10,000
-----------------	--------------	---	-------------------

Cover Type				Density	
A = Aspen	H = Hemlock	N = Marsh	U = Upland Brush	0 = Non Stocked	5 = Pole Timber Medium
B = Paper Birch	J = Jack Pine	O = Oak	UM = Upland Mixed	1 = Seedling Sapling Poor	6 = Pole Timber Well
C = Cedar	L = Lowland Brush	P = Lowland Poplar	V = Bog or Marsh	2 = Seedling Sapling Medium	7 = Saw Timber Poor
D = Treed Bog	LM = Lowland Mixed	Q = Mixed Swamp Conifer	W = White Pine	3 = Seedling Sapling Well	8 = Saw Timber Medium
E = Swamp Hdwoods	M = Mpl, Bch, Brch	R = Red Pine	X = Non Stocked	4 = Pole Timber Poor	9 = Saw Timber Well
F = Spruce Fir	MC = Mixed Conifer	S = Black Spruce	Z = Water		
G = Grass	MD = Mixed Deciduous	T = Tamarack			

PU	Acres
1	4.9
2	26.7

## Europides Pants Spruce 2.0

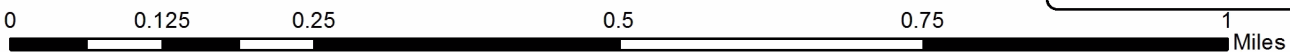
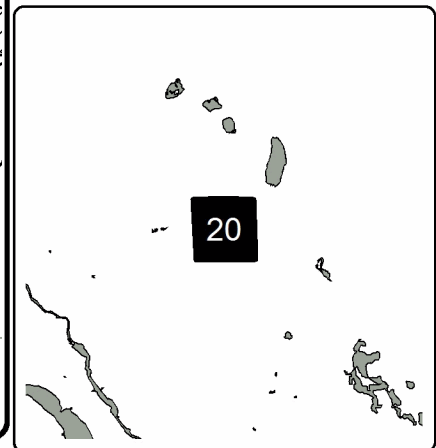
Compartment 172  
31.6 Acres



**Legend**

- Retention Area
- Stand Boundaries (Red)
- Recreational Trail
- Field Grade Corners
- Section Corners

Locator Map  
1:200,000



## TIMBER SALE INFORMATION

Turtle Time Red Pine (54-030-19)  
 T36N, R01E, SEC. 1; T36N, R01E, SEC. 2.  
 Cheboygan County (Advertised Price \$162,387.90)

SALE NOTE: A recreation site such as a trail, pathway, or campground is within the sale area or the vicinity. Certain restrictions/specifications may be applicable including time restrictions.

A timber sale contract for this lump sum, sealed bid timber sale will be awarded to the responsible bidder offering the highest sealed bid price. All units of volume listed below were estimated using the T-Sale computer program and our traditional volume equations. Bids must be at or above the following advertised price for each product and species:

<u>PRODUCTS &amp; SPECIES</u>	<u>ESTIMATED UNITS*</u>	<u>ADVERTISED PRICE</u>
Sawtimber		
Red Pine	524.7 MBF	\$ 164.00 / MBF
Pulpwood		
Red Pine	1,731 Cords	\$ 44.10 / Cord

\* The total volume is statistically estimated within plus (+) or minus (-) 15.33 percent. There are an estimated 2,781 cords on this timber sale, plus or minus 426 cords at the 95% confidence level. The estimated units are final and not subject to adjustment. Prospective bidders are urged to examine this timber and to make their own estimates of quantity and quality.

### **BOND AND PAYMENT SCHEDULE:**

1. A bond in the amount of \$8,119.00 to insure faithful performance of the conditions of the contract will be deposited by the successful bidder within 21 days of the sale award.
2. Cutting in any sale or unit without the required advance payment would be considered a trespass.
3. Total payment must be paid in advance or according to the following schedule :
  - (a) Ten percent (10%) of the sale value must be paid within 21 days of the sale award.
  - (b) The 10% down payment will be credited towards the first unit cut.
  - (c) Payment for each of the following units must be made before cutting begins in that unit:
 

PAYMENT UNIT NUMBER	PERCENT OF TOTAL SALE VALUE
01	32.4%
02	19.5%
03	12.6%
04	21.0%
05	14.5%
4. If no cutting takes place, the 10% down payment will not be refunded.
5. Operations on the contract issued will terminate on 12/31/2025.

### **SALE STATISTICS**

#### **SALE VOLUMES**

VOLUME		STATISTICAL RANGE IN CORDS		
TOTAL CUBIC FEET	TOTAL CORDS	PERCENT ERROR	MINIMUM	MAXIMUM
219,691	2,781	15.33%	2,355	3,207

#### **VDU VOLUMES**

A VDU is a Volume Determination Unit. Volumes and their associated statistics are calculated at the VDU level and summarized to the sale level. There is often a one to one relationship between a VDU and a Payment Unit, but not always, depending on the cruise design. Refer to the VDU TO PAYMENT UNIT table.

VDU	VOLUME			RANGE IN CORDS	
	TOTAL CUBIC FEET	TOTAL CORDS	PERCENT ERROR	MINIMUM	MAXIMUM
16	0	0	16.89%	0	0
33	0	0	16.06%	0	0
<b>TOTAL:</b>	<b>0</b>	<b>0</b>		<b>0</b>	<b>0</b>

**VDU TO PAYMENT UNIT**

When a VDU is associated with more than one Payment Unit (PU), the VDU volumes are assigned to the PU based on acres of the VDU within the PU.

VDU	VDU ACRES	PU	PU ACRES
16	22.6	1	22.6
33	104.9	2	30.3
		3	19.6
		4	32.5
		5	22.5
		<b>TOTAL:</b>	<b>127.5</b>

**DESCRIPTION OF TIMBER BY PAYMENT UNIT (PU)**

PU	MARKET GROUP	PRODUCT	QUANTITY	UNIT	ACRES	ADVERTISE PRICE
1	Red Pine	Sawtimber	207.5	MBF	22.6	\$52,596.10
	Red Pine	Pulpwood	421	Cords		
2	Red Pine	Sawtimber	91.6	MBF	30.3	\$31,692.20
	Red Pine	Pulpwood	378	Cords		
3	Red Pine	Sawtimber	59.3	MBF	19.6	\$20,529.70
	Red Pine	Pulpwood	245	Cords		
4	Red Pine	Sawtimber	98.3	MBF	32.5	\$34,025.80
	Red Pine	Pulpwood	406	Cords		
5	Red Pine	Sawtimber	68.0	MBF	22.5	\$23,544.10
	Red Pine	Pulpwood	281	Cords		
<b>TOTAL:</b>			524.7	MBF		
<b>TOTAL:</b>			1,731	Cords		

# Sale Specific Conditions & Requirements

**Sale Name: Turtle Time Red Pine**

**Sale Number: 54-030-19 Seq#: 2**

## 1 - Sale Area

### 1.2 - Boundaries

#### 1.2.1 - Painted boundaries (9/19)

The sale boundary and Payment Unit boundaries are marked and identified by red, blue and yellow paint. Exterior sale boundary lines against private are marked with blue paint. Exterior sale boundary lines against state are marked with red paint. Interior Payment Unit boundaries are marked with yellow paint. Retention patches are marked with red paint; no harvesting activities may occur within these areas. Yellow painted trees designating an interior Payment Unit boundary are only to be cut when marked with orange paint. The painted boundary line trees are not Included Timber and are to be protected.

## 2 - Timber Specifications

### 2.1 - Included Timber

#### 2.1.1 - Clearcut unit(s) with unmerchantable trees (6/14)

Within Payment Unit(s) 1, cut all trees that are two (2) inches or more at DBH.

#### 2.1.3 - Cut tree marked unit(s) (12/08)

Within Payment Unit(s) 2-5, all trees are designated for cutting when marked with orange paint above and below stump height, regardless of merchantability.

### 2.2 - Utilization

#### 2.2.2 - Chipping required (2/18)

Payment Unit 1 must be chip harvested to facilitate subsequent planting operations. The Purchaser has the option to produce sawlogs or pulpwood bolts, but the remaining portion of the trees must be chipped and hauled. Products may be produced as roundwood and forwarded to decking areas in final product length, but the tops must be left intact and skidded to the landing for chipping in order to minimize the amount of residual slash. If market conditions limit the practicality of chipping, tops and slash must be arranged in a way that will not inhibit future planting operations, as directed by the Sale Administrator. A chipping exemption can be obtained if proposed operations are determined to be suitable for planting by reforestation staff. This exemption must be granted in writing. The requirement to retain approximately 1/6 to 1/3 of tree tops and limbs less than four inches in diameter is still applicable (G. C. & R. 2.2).

#### 2.2.3 - Stump heights (4/07)

Stump heights within Payment Unit 1 shall not exceed 6 inches for all trees. This is in order to facilitate planting operations.

#### 2.2.5 - Limbed tree skidding (1/09)

The skidding of whole trees or tree segments with limbs attached is prohibited within Payment Units 2-5, unless approved by the Unit Manager or his/her representative.

## 4 - Transportation

### 4.1 - Construction

#### 4.1.6 - Road construction (1/09)

Construction of new roads or improvements of existing roads shall be done in such a way as to minimize the environmental and visual impacts. Merchantable trees shall be cut and utilized unless otherwise directed. Non-merchantable trees shall be severed and laid flat on the ground. Slash shall be scattered, and not left in windrows and kept a minimum of 10 feet back from the road edge. Stumps shall be set upright, not left on edge, and be moved at least 10 feet from road edge. Disturbed soil shall be feathered into the woods and not left in berms or windrows.

#### 4.1.7 - Road closure (10/11)

All new roads built into the sale must be blocked to vehicle traffic upon completion of the sale. Overgrown roads that are reopened shall be considered new roads. In general, this will require constructing a four (4') foot high berm of stumps and logs covered with earth. These roads must be rendered impassable to cars and trucks. All stumps from road building and

landing construction must be reserved to block any newly constructed roads upon completion of the sale. These stumps must be scattered along the road system to prohibit vehicular movement. Temporary berms may be required if no sale activity occurs for 30 or more consecutive days. Contact the Sale Administrator for specific details of design and placement.

#### 4.2 - Maintenance

##### 4.2.5 - Two wheel drive condition (2/04)

All existing trail roads on and adjacent to the sale area must be passable by two-wheel drive traffic for the duration of the sale.

### 5 - Operations

#### 5.1 - Notification

##### 5.1.1 - Pre-sale conference (10/16)

A pre-sale conference on site between the Purchaser and sale administrator is required prior to beginning any operations to determine landing and road locations. The Unit Manager or his/her representative must be contacted at least 10 days in advance to schedule the conference.

##### 5.1.4 - Post-sale conference (10/16)

A post-sale conference on site between the Purchaser and sale administrator is required 5 days prior to the completion of active logging operations to determine clean-up and repair of landings, road edges, and the fulfillment of other contract specifications.

#### 5.2 - Conduct of Operations

##### 5.2.3 - Operating Restrictions

###### 5.2.3.1 - Operating restrictions (9/11)

Within Payment Unit(s) 2-5, cutting, skidding, and hauling are limited to the period of September 15 to May 15. This restriction is because of Blanding's turtle within the area.

##### 5.2.32 - Decking/landing restoration (9/13)

All decking and landing areas must have the surface area restored to a condition equal to or better than before. This is to ensure the proper regeneration of the stand. Wood debris, chips and "cookies" from trimmings must be removed or scattered away from landing and loading areas and may not be windrowed on the edge.

##### 5.2.39 - ORV trail/route protection (4/18)

The ORV trail and route and is shown on the Timber Sale Map. Trees with yellow ORV markers shall be cut off above the markers and at least 5 feet above ground. All stumps within 5 feet of the trail must be cut flush with the ground. Maintain a 20-foot-wide slash, debris, and rut free zone daily using the ORV trail or route as the centerline. Do not run equipment down the ORV trail or route. Skidding across the trail or route may only occur in locations approved by the Sale Administrator.

##### 5.2.41 - Snowmobile trail protection (9/11)

The Trail 99 is a snowmobile trail and is shown on the Timber Sale Map. Do not cut or damage posts with orange trail markers or traffic control signs. If the trail is used, it must be maintained and restored to a condition equal to or better than before the sale. The road maintenance/restoration must be done prior to December 1. If the trail is used for hauling, it must be graded to the satisfaction of the Unit Manager or his/her representative prior to December 1. If the trail road is to be used for hauling during the snowmobile season, then a snow covered base must be left on the trail. If operations occur during the December 1 to March 31 period, all wood must be decked at least 20 feet back from the centerline of the snowmobile trail. The snowmobile trail may only be crossed at right angles. Maintain a 20-foot-wide slash, debris, and rut free zone daily using the snowmobile trail as the centerline. No decking of forest products will be permitted along the snowmobile trail. All stumps within 20 feet of the snowmobile trail must be cut at ground level.

#### 5.4 - Soil Protection

##### 5.4.1 - Rutting restriction, general (7/16)

Operations are to cease immediately if equipment and weather conditions result in rutting of roads and/or skid trails which are 12 inches or greater in depth and 50 feet in length. The Unit Manager or his/her representative may restrict hauling and/or skidding if ruts exceed the specified depth. With the Unit Manager or his/her representative's approval, the Purchaser may return to the area when the risk of rutting has decreased.

## **6 - Safety and Fire Prevention**

### **6.2 - Signing**

#### **6.2.2 - Snowmobile trail posting (10/20)**

The Purchaser is responsible for posting and maintaining caution signs on snowmobile Trail 99 prior to beginning operations during the snowmobile season (approximately December 1 to March 31). The trail must be posted at appropriate distances from the Sale Area to warn of logging activity and truck traffic. Signs must be removed when harvest operations are suspended or completed. The Purchaser will provide these signs.

#### **6.2.3 - Recreational trail posting (10/20)**

The Purchaser is responsible for posting and maintaining caution signs on Black Lake ORV Trails and Routes prior to beginning operations. The trail must be posted at appropriate distances from the Sale Area to warn of logging activity and truck traffic at both ends of the trail. Signs must be removed when harvest operations are suspended or completed. The Purchaser will provide these signs.



# TIMBER SALE MAP

54 - 030

2019

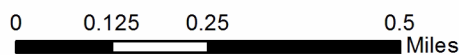
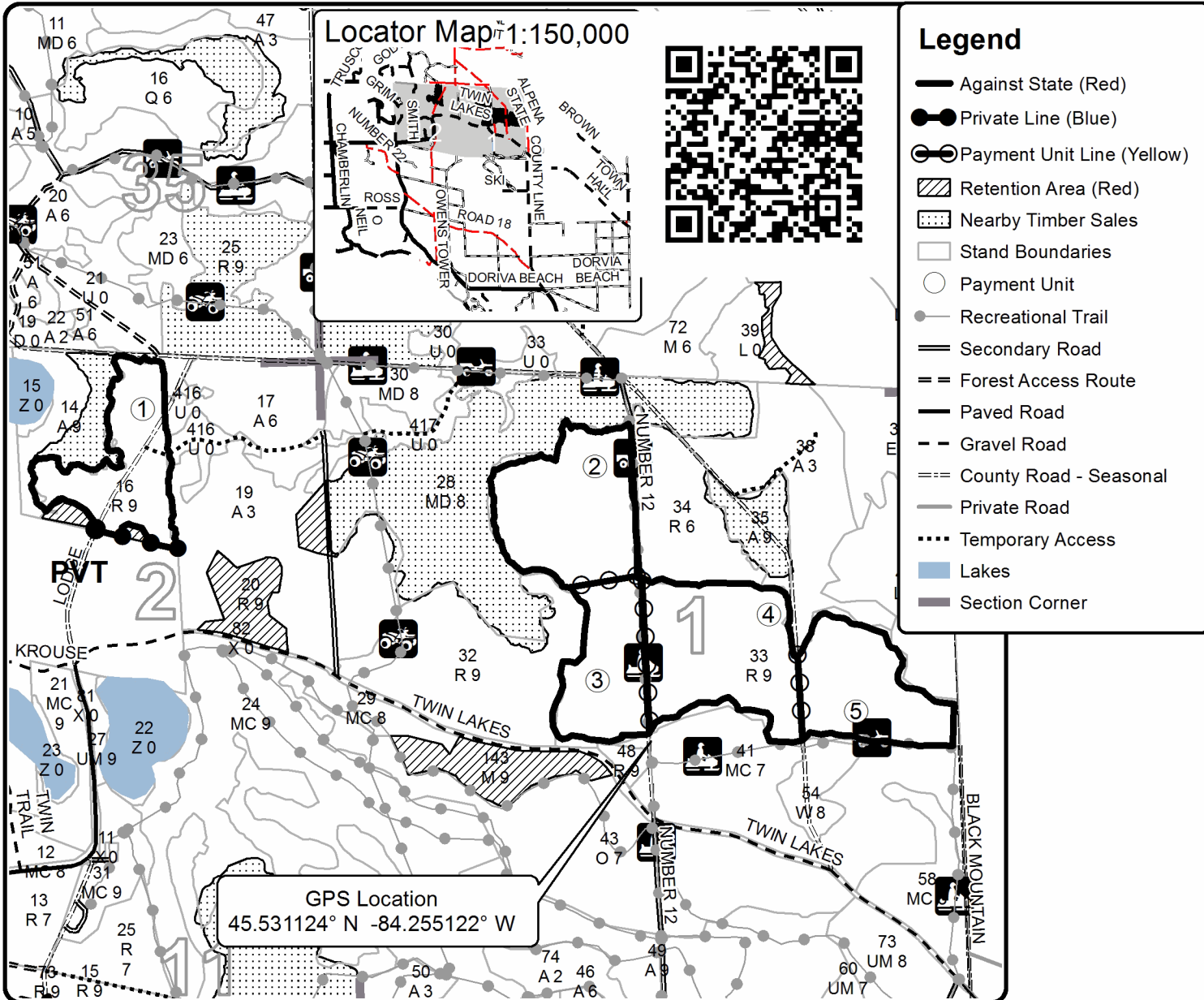
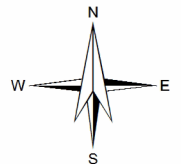
This information provided by authority of Part 525, 1994 PA 451, as amended.

Forest Management Unit Atlanta Management Unit	County Cheboygan	Mapped By Coy	Date 08/03/2022	Page 1	of 1
Township 36N	Range 01E	Section(s) and Subdivision(s) 1- E1/2NW,NWNE,S1/2NE,NESW 2- NWNE	1:15,840		

Cover Type				Density	
A = Aspen	J = Jack Pine	O = Oak	U = Upland Brush	0 = Non Stocked	5 = Pole Timber Medium
B = Paper Birch	K = Rock	P = Lowland Poplar	UM = Upland Mix Forest	1 = Seedling Sapling Poor	6 = Pole Timber Well
C = Cedar	L = Lowland Brush	Q = Mixed Swamp Conifer	V = Bog or Marsh	2 = Seedling Sapling Medium	7 = Saw Timber Poor
D = Tread Bog	LM = Lowland Mix Forest	R = Red Pine	W = White Pine	3 = Seedling Sapling Well	8 = Saw Timber Medium
E = Swamp Hardwoods	M = Maple, Beech, Birch	S = Black Spruce	X = Non Stocked	4 = Pole Timber Poor	9 = Saw Timber Well
F = Spruce/Fir	MC = Mixed Conifer	T = Tamarack	Y = Sand		
G = Grass	MD = Mixed Deciduous		Z = Water		
H = Hemlock	N = Marsh				

PU	Acres
1	22.6
2	30.3
3	19.6
4	32.5
5	22.5

## Turtle Time Red Pine Compartment 175 127.5 Acres





Turtle Time Red Pine (54-030-19)  
T36N, R01E, SEC. 1; T36N, R01E, SEC. 2; Cheboygan COUNTY

In response to the notice of sale to be held 10:00 a.m. (local time) on August 29, 2023, I am hereby submitting my sealed bid (firm offer) for the following forest products to be cut. Bids for individual species must be at or above the advertised price. All non-responsive bid forms may be rejected.

<u>PRODUCTS &amp; SPECIES</u>	<u>ESTIMATED VOLUME*</u>	<u>ADVERTISED PRICE</u>	<u>BID PRICE/UNIT</u>
Sawtimber Red Pine	524.7 MBF	\$ 164.00/MBF	\$ _____
Pulpwood Red Pine	1,731 Cords	\$ 44.10/Cord	\$ _____

\*The volumes are statistically estimated within plus (+) or minus (-) 15.33 percent at 95% confidence level. These estimated volumes are final and not subject to adjustment. Prospective bidders are urged to examine this timber and to make their own estimates of quantity and quality.

I understand that any or all bids may be rejected. All bids must be signed and all bid items must be bid or the bid form may be rejected. I also understand that consideration and awarding a contract will be based upon my past performance and ability to complete the contract based upon equipment and staffing subject to my control.

FEDERAL ID: \_\_\_\_ - \_\_\_\_ - \_\_\_\_ or SOCIAL SECURITY NUMBER: \_\_\_\_ - \_\_\_\_ - \_\_\_\_

Company or individual bidding: \_\_\_\_\_

Company representative's name: \_\_\_\_\_

Address: \_\_\_\_\_

City: \_\_\_\_\_ State: \_\_\_\_\_ Zip: \_\_\_\_\_

IF AVAILABLE, PLEASE PLACE THE PERSONALIZED LABEL FROM YOUR PROSPECTUS IN THE ABOVE BOX.

Individual or company representative's signature: \_\_\_\_\_ Date: \_\_\_\_\_  
Phone number : \_\_\_\_\_ Email (optional): \_\_\_\_\_

**THE WINNING BIDDER MUST COMPLETE THE VERIFICATION OF WORKER'S DISABILITY COMPENSATION ACT COMPLIANCE (ON REVERSE SIDE IF DOUBLE SIDED) WITHIN 21 DAYS OF SALE AWARD DATE**



FOR DEPARTMENT USE ONLY	
Sale Number (XX - XXX - XX - XX)	
Forest Management Unit:	

# TIMBER SALE VERIFICATION OF WORKER'S DISABILITY COMPENSATION ACT COMPLIANCE

As required by Act 317, P.A. 1969 (Worker's Compensation) and  
Part 5 of Act 451 of 1994, as amended.

## VERIFICATION OF WORKER'S DISABILITY COMPENSATION ACT COMPLIANCE

- This verification must be completed and submitted within 21 days of contract award and prior to the issuance of the timber sale contract.
- In addition, if boxes 2B or 2C are checked, then Notice of Exclusion or Certificate of Insurance must be submitted within twenty-one (21) days of the contract award and prior to the issuance of the timber sale contract.
- All information must be typed or printed except for written signatures.

Please Check Appropriate Categories:

1. My business is organized as (you **must** check one of the boxes below):
  - A.  Sole Proprietorship (individual)
  - B.  Partnership
  - C.  Corporation
2. You **must** check one of the boxes below:
  - A.  I certify my business is a sole proprietorship and it has no employees but the sole proprietor. I am not subject to the Worker's Compensation Laws.
  - B.  I certify my business has satisfied its obligation to the Worker's Compensation Act through the use of an approved Notice of Exclusion (BWC-337, Rev. 5/96). I will provide a copy of the Notice of Exclusion within 21 days of the contract award. (For questions or a copy of the BWC-337, please call the Worker's Compensation Bureau at 517-322-1195).
  - C.  I certify my business has a Worker's Compensation Policy. I will provide an original Certificate of Insurance within twenty-one (21) days of the contract award.
3. If you have checked item 2(A) or 2(B), you **must** indicate the number of **both** full-time and part-time employees, other than yourself, including family members and active partners (if none, you must enter "0").

\_\_\_\_\_ Full-time Employees

\_\_\_\_\_ Part-time Employees

Name of Business		Federal ID (or) Social Security No.	
Address		Telephone (       )	
City	State	ZIP	

*I hereby certify that the above information is true and correct. I agree to notify the Michigan DNR of any changes that occur in factors affecting my coverage during any of my present and future operations.*

\_\_\_\_\_  
Signature of Owner or Authorized Representative

\_\_\_\_\_  
Title

\_\_\_\_\_  
Date

Please complete the "SEALED BID" information on the next page

Friends in Lowland Places (54-018-22)  
T37N, R01E, SEC. 35; T37N, R01E, SEC. 36; Cheboygan COUNTY

In response to the notice of sale to be held 10:00 a.m. (local time) on August 29, 2023, I am hereby submitting my sealed bid (firm offer) for the following forest products to be cut. Bids for individual species must be at or above the advertised price. All non-responsive bid forms may be rejected.

<u>PRODUCTS &amp; SPECIES</u>	<u>ESTIMATED VOLUME*</u>	<u>ADVERTISED PRICE</u>	<u>BID PRICE/UNIT</u>
<b>Sawtimber</b>			
Mixed Aspen	13.8 MBF	\$ 108.00/MBF	\$ _____
White Pine	7.0 MBF	\$ 142.00/MBF	\$ _____
<b>Pulpwood</b>			
Balsam Fir	57 Cords	\$ 35.30/Cord	\$ _____
Black Spruce	37 Cords	\$ 17.40/Cord	\$ _____
Mixed Aspen	294 Cords	\$ 26.55/Cord	\$ _____
Mixed Hardwood	136 Cords	\$ 30.10/Cord	\$ _____
N. White Cedar	273 Cords	\$ 18.90/Cord	\$ _____
Paper Birch	22 Cords	\$ 16.30/Cord	\$ _____
Red Oak	2 Cords	\$ 29.25/Cord	\$ _____
White Pine	6 Cords	\$ 23.35/Cord	\$ _____

\*The volumes are statistically estimated within plus (+) or minus (-) 31.26 percent at 95% confidence level. These estimated volumes are final and not subject to adjustment. Prospective bidders are urged to examine this timber and to make their own estimates of quantity and quality.

I understand that any or all bids may be rejected. All bids must be signed and all bid items must be bid or the bid form may be rejected. I also understand that consideration and awarding a contract will be based upon my past performance and ability to complete the contract based upon equipment and staffing subject to my control.

FEDERAL ID: \_\_\_\_\_ or SOCIAL SECURITY NUMBER: \_\_\_\_\_

Company or individual bidding: \_\_\_\_\_

Company representative's name: \_\_\_\_\_

Address: \_\_\_\_\_

City: \_\_\_\_\_ State: \_\_\_\_\_ Zip: \_\_\_\_\_

IF AVAILABLE, PLEASE PLACE THE PERSONALIZED LABEL FROM YOUR PROSPECTUS IN THE ABOVE BOX.

Individual or company representative's signature: \_\_\_\_\_ Date: \_\_\_\_\_

Phone number : \_\_\_\_\_ Email (optional): \_\_\_\_\_

**THE WINNING BIDDER MUST COMPLETE THE VERIFICATION OF WORKER'S DISABILITY COMPENSATION ACT COMPLIANCE (ON REVERSE SIDE IF DOUBLE SIDED) WITHIN 21 DAYS OF SALE AWARD DATE**



# TIMBER SALE VERIFICATION OF WORKER'S DISABILITY COMPENSATION ACT COMPLIANCE

As required by Act 317, P.A. 1969 (Worker's Compensation) and  
Part 5 of Act 451 of 1994, as amended.

FOR DEPARTMENT USE ONLY	
Sale Number (XX - XXX - XX - XX)	
Forest Management Unit:	

## VERIFICATION OF WORKER'S DISABILITY COMPENSATION ACT COMPLIANCE

- This verification must be completed and submitted within 21 days of contract award and prior to the issuance of the timber sale contract.
- In addition, if boxes 2B or 2C are checked, then Notice of Exclusion or Certificate of Insurance must be submitted within twenty-one (21) days of the contract award and prior to the issuance of the timber sale contract.
- All information must be typed or printed except for written signatures.

Please Check Appropriate Categories:

1. My business is organized as (you **must** check one of the boxes below):
  - A.  Sole Proprietorship (individual)
  - B.  Partnership
  - C.  Corporation
2. You **must** check one of the boxes below:
  - A.  I certify my business is a sole proprietorship and it has no employees but the sole proprietor. I am not subject to the Worker's Compensation Laws.
  - B.  I certify my business has satisfied its obligation to the Worker's Compensation Act through the use of an approved Notice of Exclusion (BWC-337, Rev. 5/96). I will provide a copy of the Notice of Exclusion within 21 days of the contract award. (For questions or a copy of the BWC-337, please call the Worker's Compensation Bureau at 517-322-1195).
  - C.  I certify my business has a Worker's Compensation Policy. I will provide an original Certificate of Insurance within twenty-one (21) days of the contract award.
3. If you have checked item 2(A) or 2(B), you **must** indicate the number of **both** full-time and part-time employees, other than yourself, including family members and active partners (if none, you must enter "0").

\_\_\_\_\_ Full-time Employees

\_\_\_\_\_ Part-time Employees

Name of Business		Federal ID (or) Social Security No.	
Address		Telephone (       )	
City	State	ZIP	

*I hereby certify that the above information is true and correct. I agree to notify the Michigan DNR of any changes that occur in factors affecting my coverage during any of my present and future operations.*

\_\_\_\_\_  
Signature of Owner or Authorized Representative

\_\_\_\_\_  
Title

\_\_\_\_\_  
Date

Please complete the "SEALED BID" information on the next page

Looner Aspen (54-019-22)

T37N, R01E, SEC. 21; T37N, R01E, SEC. 22; T37N, R01E, SEC. 27; T37N, R01E,

In response to the notice of sale to be held 10:00 a.m. (local time) on August 29, 2023, I am hereby submitting my sealed bid (firm offer) for the following forest products to be cut. Bids for individual species must be at or above the advertised price. All non-responsive bid forms may be rejected.

<u>PRODUCTS &amp; SPECIES</u>	<u>ESTIMATED VOLUME*</u>	<u>ADVERTISED PRICE</u>	<u>BID PRICE/UNIT</u>
<b>Sawtimber</b>			
Mixed Aspen	86.7 MBF	\$ 125.00/MBF	\$ _____
Red Maple	43.8 MBF	\$ 112.00/MBF	\$ _____
Red Oak	6.9 MBF	\$ 213.00/MBF	\$ _____
Red Pine	3.3 MBF	\$ 164.00/MBF	\$ _____
Sugar Maple	5.3 MBF	\$ 333.00/MBF	\$ _____
<b>Pulpwood</b>			
Balsam Fir	224 Cords	\$ 40.70/Cord	\$ _____
Mixed Aspen	1,102 Cords	\$ 30.65/Cord	\$ _____
Mixed Hardwood	771 Cords	\$ 34.75/Cord	\$ _____
Mixed Spruce	23 Cords	\$ 20.05/Cord	\$ _____
Paper Birch	160 Cords	\$ 18.80/Cord	\$ _____
Red Oak	4 Cords	\$ 45.00/Cord	\$ _____
Red Pine	2 Cords	\$ 44.10/Cord	\$ _____

\*The volumes are statistically estimated within plus (+) or minus (-) 12.75 percent at 95% confidence level. These estimated volumes are final and not subject to adjustment. Prospective bidders are urged to examine this timber and to make their own estimates of quantity and quality.

I understand that any or all bids may be rejected. All bids must be signed and all bid items must be bid or the bid form may be rejected. I also understand that consideration and awarding a contract will be based upon my past performance and ability to complete the contract based upon equipment and staffing subject to my control.

FEDERAL ID: \_\_\_\_ - \_\_\_\_ - \_\_\_\_ or SOCIAL SECURITY NUMBER: \_\_\_\_ - \_\_\_\_ - \_\_\_\_

Company or individual bidding: \_\_\_\_\_

Company representative's name: \_\_\_\_\_

Address: \_\_\_\_\_

City: \_\_\_\_\_ State: \_\_\_\_\_ Zip: \_\_\_\_\_

IF AVAILABLE, PLEASE PLACE THE PERSONALIZED LABEL FROM YOUR PROSPECTUS IN THE ABOVE BOX.

Individual or company representative's signature: \_\_\_\_\_ Date: \_\_\_\_\_

Phone number : \_\_\_\_\_ Email (optional): \_\_\_\_\_

**THE WINNING BIDDER MUST COMPLETE THE VERIFICATION OF WORKER'S DISABILITY COMPENSATION ACT COMPLIANCE (ON REVERSE SIDE IF DOUBLE SIDED) WITHIN 21 DAYS OF SALE AWARD DATE**



<b>FOR DEPARTMENT USE ONLY</b>
Sale Number (XX - XXX - XX - XX)
Forest Management Unit:

## TIMBER SALE VERIFICATION OF WORKER'S DISABILITY COMPENSATION ACT COMPLIANCE

*As required by Act 317, P.A. 1969 (Worker's Compensation) and  
Part 5 of Act 451 of 1994, as amended.*

### VERIFICATION OF WORKER'S DISABILITY COMPENSATION ACT COMPLIANCE

- This verification must be completed and submitted within 21 days of contract award and prior to the issuance of the timber sale contract.
- In addition, if boxes 2B or 2C are checked, then Notice of Exclusion or Certificate of Insurance must be submitted within twenty-one (21) days of the contract award and prior to the issuance of the timber sale contract.
- All information must be typed or printed except for written signatures.

Please Check Appropriate Categories:

1. My business is organized as (you **must** check one of the boxes below):
  - A.  Sole Proprietorship (individual)
  - B.  Partnership
  - C.  Corporation
2. You **must** check one of the boxes below:
  - A.  I certify my business is a sole proprietorship and it has no employees but the sole proprietor. I am not subject to the Worker's Compensation Laws.
  - B.  I certify my business has satisfied its obligation to the Worker's Compensation Act through the use of an approved Notice of Exclusion (BWC-337, Rev. 5/96). I will provide a copy of the Notice of Exclusion within 21 days of the contract award. (For questions or a copy of the BWC-337, please call the Worker's Compensation Bureau at 517-322-1195).
  - C.  I certify my business has a Worker's Compensation Policy. I will provide an original Certificate of Insurance within twenty-one (21) days of the contract award.
3. If you have checked item 2(A) or 2(B), you **must** indicate the number of **both** full-time and part-time employees, other than yourself, including family members and active partners (if none, you must enter "0").

\_\_\_\_\_ Full-time Employees

\_\_\_\_\_ Part-time Employees

Name of Business		Federal ID (or) Social Security No.	
Address		Telephone (       )	
City	State	ZIP	

*I hereby certify that the above information is true and correct. I agree to notify the Michigan DNR of any changes that occur in factors affecting my coverage during any of my present and future operations.*

\_\_\_\_\_  
Signature of Owner or Authorized Representative

\_\_\_\_\_  
Title

\_\_\_\_\_  
Date

**Please complete the "SEALED BID" information on the next page**

Euripides Pants Spruce 2.0 (54-029-22)  
T37N, R01E, SEC. 20; Cheboygan COUNTY

In response to the notice of sale to be held 10:00 a.m. (local time) on August 29, 2023, I am hereby submitting my sealed bid (firm offer) for the following forest products to be cut. Bids for individual species must be at or above the advertised price. All non-responsive bid forms may be rejected.

<u>PRODUCTS &amp; SPECIES</u>	<u>ESTIMATED VOLUME*</u>	<u>ADVERTISED PRICE</u>	<u>BID PRICE/UNIT</u>
<b>Sawtimber</b>			
Red Pine	35.7 MBF	\$ 153.00/MBF	\$ _____
White Pine	12.2 MBF	\$ 153.00/MBF	\$ _____
<b>Pulpwood</b>			
Balsam Fir	13 Cords	\$ 38.00/Cord	\$ _____
Black Spruce	956 Cords	\$ 18.70/Cord	\$ _____
N. White Cedar	10 Cords	\$ 20.35/Cord	\$ _____
Paper Birch	8 Cords	\$ 17.55/Cord	\$ _____
Red Maple	20 Cords	\$ 32.40/Cord	\$ _____
Red Pine	28 Cords	\$ 41.15/Cord	\$ _____
White Pine	6 Cords	\$ 25.15/Cord	\$ _____

\*The volumes are statistically estimated within plus (+) or minus (-) 18.67 percent at 95% confidence level. These estimated volumes are final and not subject to adjustment. Prospective bidders are urged to examine this timber and to make their own estimates of quantity and quality.

I understand that any or all bids may be rejected. All bids must be signed and all bid items must be bid or the bid form may be rejected. I also understand that consideration and awarding a contract will be based upon my past performance and ability to complete the contract based upon equipment and staffing subject to my control.

FEDERAL ID: \_\_\_\_ - \_\_\_\_ - \_\_\_\_ or SOCIAL SECURITY NUMBER: \_\_\_\_ - \_\_\_\_ - \_\_\_\_

Company or individual bidding: \_\_\_\_\_

Company representative's name: \_\_\_\_\_

Address: \_\_\_\_\_

City: \_\_\_\_\_ State: \_\_\_\_\_ Zip: \_\_\_\_\_

IF AVAILABLE, PLEASE PLACE THE PERSONALIZED LABEL FROM YOUR PROSPECTUS IN THE ABOVE BOX.

Individual or company representative's signature: \_\_\_\_\_ Date: \_\_\_\_\_

Phone number : \_\_\_\_\_ Email (optional): \_\_\_\_\_

**THE WINNING BIDDER MUST COMPLETE THE VERIFICATION OF WORKER'S DISABILITY COMPENSATION ACT COMPLIANCE (ON REVERSE SIDE IF DOUBLE SIDED) WITHIN 21 DAYS OF SALE AWARD DATE**



<b>FOR DEPARTMENT USE ONLY</b>	
Sale Number (XX - XXX - XX - XX)	
Forest Management Unit:	

# TIMBER SALE VERIFICATION OF WORKER'S DISABILITY COMPENSATION ACT COMPLIANCE

As required by Act 317, P.A. 1969 (Worker's Compensation) and  
Part 5 of Act 451 of 1994, as amended.

## VERIFICATION OF WORKER'S DISABILITY COMPENSATION ACT COMPLIANCE

- This verification must be completed and submitted within 21 days of contract award and prior to the issuance of the timber sale contract.
- In addition, if boxes 2B or 2C are checked, then Notice of Exclusion or Certificate of Insurance must be submitted within twenty-one (21) days of the contract award and prior to the issuance of the timber sale contract.
- All information must be typed or printed except for written signatures.

Please Check Appropriate Categories:

1. My business is organized as (you **must** check one of the boxes below):
  - A.  Sole Proprietorship (individual)
  - B.  Partnership
  - C.  Corporation
2. You **must** check one of the boxes below:
  - A.  I certify my business is a sole proprietorship and it has no employees but the sole proprietor. I am not subject to the Worker's Compensation Laws.
  - B.  I certify my business has satisfied its obligation to the Worker's Compensation Act through the use of an approved Notice of Exclusion (BWC-337, Rev. 5/96). I will provide a copy of the Notice of Exclusion within 21 days of the contract award. (For questions or a copy of the BWC-337, please call the Worker's Compensation Bureau at 517-322-1195).
  - C.  I certify my business has a Worker's Compensation Policy. I will provide an original Certificate of Insurance within twenty-one (21) days of the contract award.
3. If you have checked item 2(A) or 2(B), you **must** indicate the number of **both** full-time and part-time employees, other than yourself, including family members and active partners (if none, you must enter "0").

\_\_\_\_\_ Full-time Employees

\_\_\_\_\_ Part-time Employees

Name of Business		Federal ID (or) Social Security No.	
Address		Telephone (       )	
City	State	ZIP	

*I hereby certify that the above information is true and correct. I agree to notify the Michigan DNR of any changes that occur in factors affecting my coverage during any of my present and future operations.*

\_\_\_\_\_  
Signature of Owner or Authorized Representative

\_\_\_\_\_  
Title

\_\_\_\_\_  
Date

Please complete the "SEALED BID" information on the next page



Busy Beaver Aspen (54-023-22)  
T37N, R01W, SEC. 2; Cheboygan COUNTY

In response to the notice of sale to be held 10:00 a.m. (local time) on August 29, 2023, I am hereby submitting my sealed bid (firm offer) for the following forest products to be cut. Bids for individual species must be at or above the advertised price. All non-responsive bid forms may be rejected.

<u>PRODUCTS &amp; SPECIES</u>	<u>ESTIMATED VOLUME*</u>	<u>ADVERTISED PRICE</u>	<u>BID PRICE/UNIT</u>
<b>Sawtimber</b>			
B. T. Aspen	183.7 MBF	\$ 125.00/MBF	\$ _____
Red Oak	23.5 MBF	\$ 213.00/MBF	\$ _____
White Pine	13.6 MBF	\$ 164.00/MBF	\$ _____
<b>Pulpwood</b>			
B. T. Aspen	711 Cords	\$ 30.65/Cord	\$ _____
Balsam Fir	41 Cords	\$ 40.70/Cord	\$ _____
Mixed Hardwood	187 Cords	\$ 34.75/Cord	\$ _____
Paper Birch	76 Cords	\$ 18.80/Cord	\$ _____
Red Oak	186 Cords	\$ 45.00/Cord	\$ _____
White Pine	5 Cords	\$ 26.95/Cord	\$ _____

\*The volumes are statistically estimated within plus (+) or minus (-) 17.81 percent at 95% confidence level. These estimated volumes are final and not subject to adjustment. Prospective bidders are urged to examine this timber and to make their own estimates of quantity and quality.

I understand that any or all bids may be rejected. All bids must be signed and all bid items must be bid or the bid form may be rejected. I also understand that consideration and awarding a contract will be based upon my past performance and ability to complete the contract based upon equipment and staffing subject to my control.

FEDERAL ID: \_\_\_\_ - \_\_\_\_ - \_\_\_\_ or SOCIAL SECURITY NUMBER: \_\_\_\_ - \_\_\_\_ - \_\_\_\_

Company or individual bidding: \_\_\_\_\_

Company representative's name: \_\_\_\_\_

Address: \_\_\_\_\_

City: \_\_\_\_\_ State: \_\_\_\_\_ Zip: \_\_\_\_\_

IF AVAILABLE, PLEASE PLACE THE PERSONALIZED LABEL FROM YOUR PROSPECTUS IN THE ABOVE BOX.

Individual or company representative's signature: \_\_\_\_\_ Date: \_\_\_\_\_

Phone number : \_\_\_\_\_ Email (optional): \_\_\_\_\_

**THE WINNING BIDDER MUST COMPLETE THE VERIFICATION OF WORKER'S DISABILITY COMPENSATION ACT COMPLIANCE (ON REVERSE SIDE IF DOUBLE SIDED) WITHIN 21 DAYS OF SALE AWARD DATE**



FOR DEPARTMENT USE ONLY	
Sale Number (XX - XXX - XX - XX)	
Forest Management Unit:	

## TIMBER SALE VERIFICATION OF WORKER'S DISABILITY COMPENSATION ACT COMPLIANCE

As required by Act 317, P.A. 1969 (Worker's Compensation) and  
Part 5 of Act 451 of 1994, as amended.

### VERIFICATION OF WORKER'S DISABILITY COMPENSATION ACT COMPLIANCE

- This verification must be completed and submitted within 21 days of contract award and prior to the issuance of the timber sale contract.
- In addition, if boxes 2B or 2C are checked, then Notice of Exclusion or Certificate of Insurance must be submitted within twenty-one (21) days of the contract award and prior to the issuance of the timber sale contract.
- All information must be typed or printed except for written signatures.

Please Check Appropriate Categories:

1. My business is organized as (you **must** check one of the boxes below):
  - A.  Sole Proprietorship (individual)
  - B.  Partnership
  - C.  Corporation
2. You **must** check one of the boxes below:
  - A.  I certify my business is a sole proprietorship and it has no employees but the sole proprietor. I am not subject to the Worker's Compensation Laws.
  - B.  I certify my business has satisfied its obligation to the Worker's Compensation Act through the use of an approved Notice of Exclusion (BWC-337, Rev. 5/96). I will provide a copy of the Notice of Exclusion within 21 days of the contract award. (For questions or a copy of the BWC-337, please call the Worker's Compensation Bureau at 517-322-1195).
  - C.  I certify my business has a Worker's Compensation Policy. I will provide an original Certificate of Insurance within twenty-one (21) days of the contract award.
3. If you have checked item 2(A) or 2(B), you **must** indicate the number of **both** full-time and part-time employees, other than yourself, including family members and active partners (if none, you must enter "0").

\_\_\_\_\_ Full-time Employees

\_\_\_\_\_ Part-time Employees

Name of Business		Federal ID (or) Social Security No.	
Address		Telephone (       )	
City	State	ZIP	

*I hereby certify that the above information is true and correct. I agree to notify the Michigan DNR of any changes that occur in factors affecting my coverage during any of my present and future operations.*

\_\_\_\_\_  
Signature of Owner or Authorized Representative

\_\_\_\_\_  
Title

\_\_\_\_\_  
Date

Please complete the "SEALED BID" information on the next page