



**DEPARTMENT OF NATURAL RESOURCES
STATE OF MICHIGAN
TIMBER SALE PROSPECTUS #7278**

SCHEDULED SALE DATE AND TIME: 2:00 p.m. (local time) on September 6, 2023.

LOCATION: SHINGLETON MGMT UNIT, PO BOX 67, M 28 WEST, SHINGLETON, MI 49884.

PROSPECTUS NOTE: The bidder is advised to inspect the sale area and review the location, estimated volumes, operating costs and contract terms of proposed sales. Please be aware that some landowners may request 60 days or more notice for access across their land.

Notice is hereby given that bids will be received by the Unit Manager, SHINGLETON MANAGEMENT UNIT, for certain timber on the following described lands:

Cooks Breakup (41-001-23) / T41N, R17W, SEC. 31, SWNW,S1/2NE,NWSW.

Schoolcraft County, Advertised Price \$12,095.25, 29.3 Acres, Spruce/Fir/Tamarack, Hardwood.

SALE NOTE: Permission for access across private land is the responsibility of the Purchaser. If purchaser decides to access Payment Unit 1 from the west, access from the USFS will also be needed.

It is the responsibility of the Purchaser to obtain permission from the utility company to utilize the power line R.O.W. for operations.

It is recommended, within Payment Unit(s) 1 and 2, harvesting occur during dry summer or frozen winter conditions because Payment Units 1 and 2 have some lowland areas.

Access may be through other public land.

A Little Bit of Everything (41-004-23) / T40N, R18W, SEC. 21, E1/2NE,N1/2SE.

T40N, R18W, SEC. 22, N1/2NE,SENE,N1/2SW,NESE,SWSE.

T40N, R18W, SEC. 23, N1/2NW,SENW,NE,N1/2SW.

T40N, R18W, SEC. 24, W1/2NW.

Delta County, Advertised Price \$259,086.35, 361.5 Acres, Red Pine, Red Oak.

SALE NOTE: Note that Payment Unit 6 is an optional unit due to the trees containing char from a fire.

Access through private land in Section 22 needs to be re-routed utilizing the grown over road as indicated the Timber Sale Map. See Sale Spec 4.1.8 for additional information.

Permission for access across private land is the responsibility of the Purchaser.

It is the responsibility of the Purchaser to obtain permission from the utility company to utilize the power line R.O.W. for operations.

Within Payment Unit(s) 1-3 and 17, harvesting within the sale and brushing of access roads to the sale are not permitted during the period of April 15 to July 15. See Sale Spec 5.2.3.5 for details.

The Cooks Garden Grade is a snowmobile trail and is shown on the Timber Sale Map. See Sale Spec 5.2.41 for restrictions.

A recreation site such as a trail, pathway, or campground is within the sale area or the vicinity. Certain restrictions/specifications may be applicable including time restrictions. Access may be through private land.

Build Back Better Mix (41-010-22) / T47N, R17W, SEC. 21, NE.

T47N, R17W, SEC. 22, SENW,SWNE,E1/2SW,SE.

T47N, R17W, SEC. 27, NW,NENE,SWNE,SW,NWSE,S1/2SE.

T47N, R17W, SEC. 28, S1/2NE,E1/2SE.

T47N, R17W, SEC. 33, NENE.

T47N, R17W, SEC. 34, N1/2NE.

Alger County, Advertised Price \$182,051.35, 344.2 Acres, Hardwood, Aspen.

SALE NOTE: Road work is required on this sale. See Sale Spec 4.1.8 for details.

Within Payment Unit(s) 3-5, cutting and skidding are not permitted during the period of April 15 to July 15 because of bark slippage.

The Petrel Road and Sunrise Grade are snowmobile trails and are shown on the Timber Sale Map. See Sale Spec 5.2.41 for restrictions.

A recreation site such as a trail, pathway, or campground is within the sale area or the vicinity. Certain restrictions/specifications may be applicable including time restrictions.

BID INSTRUCTIONS (VER. 10/10/2022):

1. Scheduled Bid Location, Date, and Time (2/11)

Bids must be received by the Unit Manager, SHINGLETON OFFICE, PO Box 67 M 28 West, Shingleton, MI 49884, no later than 2:00 p.m. (local time) on September 6, 2023. For further information concerning this sale, contact Robert Burnham at 906-420-1645 extension n/a.

2. Bidder's Qualifications (10/22)

If all or part of a timber sale was prepared by a private contractor, the contractor and that contractor's company are not permitted to bid on the timber sale. A person must be 18 years of age or older to purchase timber. Permanent employees of the Department of Natural Resources or members of their immediate household may not bid. Former employees, in the permanent or seasonal class, may not bid until 3 months after the last day of active duty. Bids will not be accepted from individuals or companies appearing on the DNR/FRD No-Bid List. This list contains the names of purchasers who previously failed to execute a contract within 21-days or who have a history of poor performance.

3. Preparation of Sealed Bids (5/16)

Bid Forms may be completed online thru Michigan DNR Timber Sale Online Bidding (OLB) at www.michigan.gov/timberbidding or by completing the hardcopy Bid Form found in the Timber Sale Prospectus. Hardcopy Bid Forms shall be manually signed in ink. Registration in OLB is considered your 'signature' for all bids submitted thru that system. Bid prices must be entered for each species and product in the Bid Price column for all material subject to bidding and all fill-in blanks must be completed. If erasures or other changes appear on the hardcopy Bid Form, each erasure or change must be initialed by the person signing the bid.

4. Submission of Sealed Bids (5/16)

Bid forms may be obtained from the Unit Manager or thru OLB. Bids may be submitted hardcopy or thru OLB. All hardcopy bids must be submitted on the bid form and in an envelope clearly identified as described in this section. NOTE: Only one bid form per bid envelope. Sealed bids must be submitted to the Unit office designated in the prospectus and must be submitted at or prior to the time established in the prospectus. The envelope should show on the outside (a) the sale name or number and (b) the date and time of bid opening, as shown in the prospectus. Bids received after the time specified in the sale prospectus are late bids and will be rejected.

It is possible for a bidder to submit multiple bids on a single sale. For example, a bid may be submitted hardcopy and a bid may be submitted thru OLB. Or, two bidders from the same company could both submit bids on the same sale. If this were to happen, the State would accept all bids received and award the contract accordingly. All bidding and contractual requirements would apply to all bids received.

5. Public Opening of Sealed Bids (7/16)

If conditions permit, the sealed bids will be publicly opened and posted at the time and place set in the prospectus.

If a bidder, present at a bid opening, has submitted bids on more than one sale, that bidder may withdraw their unopened bid envelopes or announce the withdrawal of their online bid after being declared the successful bidder on one sale.

6. Award of Contract (1/11)

Award of the contract will be made to the Bidder whose bid, conforming to the prospectus, is most advantageous to the State of Michigan on the basis of total value at rates bid for the estimated quantities. The State reserves the right to reject any bid or waive any minor irregularity in bids received. A written award mailed (or otherwise furnished) to the successful Bidder shall be deemed to result in a binding contract without further action by either party.

7. Down Payment (1/11)

The Bidder to whom award is made must make a down payment within 21 days of the sale award. The amount of the down payment will be calculated as shown in the Bond and Payment Schedule of this prospectus. Only cash may be used to meet this requirement.

8. Performance Security (1/11)

As guarantee of faithful performance, a cash bond, certificate of deposit, surety bond or irrevocable letter of credit (LOC) is required within 21 days of the sale award. The amount of the performance security is shown in the Bond and

Payment Schedule of this prospectus. If an LOC or surety is used, the coverage must extend for at least 6 months beyond the contract expiration.

9. Worker's Compensation (10/22)

Purchaser shall obtain worker's compensation insurance to cover claims under Michigan's Worker's Disability Compensation Act of 1969 or similar employee benefit act of any other state applicable to an employee. Verification of Worker's Disability Compensation Act Compliance must be completed and submitted within 21 days of contract award and prior to the issuance of the timber sale contract. In addition, if applicable, Notice of Exclusion or Certificate of Insurance must also be submitted.

10. Timber Sale Contract (10/22)

Additional conditions and requirements common to all timber sales are listed on the timber sale contract (R4031) and are available on line at www.michigan.gov/timber. Contact the Unit Manager for additional information or a sample contract. Within 21 days of the date of the award letter, the bidder must sign the contract and provide the required down payment, performance security, and verification of worker's disability compensation. The down payment and performance security shall be in accordance with the provisions of the timber sale contract, in the sums stated in this prospectus. If these actions are not taken, then the Bidder, the Bidder's corporation, and the corporation's principals may not be permitted to bid on State timber sales for a period of 3 months after the first offense, 6 months after the second offense, and 1 year after the third offense. An offense will only be counted against the Bidder for 5 years. In addition, the Bidder certifies that if awarded this contract, the Bidder will complete the timber sale contract in accordance with its terms and any modifications thereof including requirements to purchase, cut, and remove the included timber by the expiration date.

Payment Unit values in the State Forest Timber Sale Contract are calculated based on the advertised value of the Payment Unit as a percentage of the total advertised value of the contract. The advertised value of each Payment Unit is given in the Description of Timber by Payment Unit table on the Timber Sale Information page. For example, if the value of Payment Unit 1 is advertised as \$1,500 and the total Timber Sale value is advertised as \$10,000, the contract price for Payment Unit 1 will be 15% of the total bid price ($\$1,500/\$10,000 * 100$).

11. Disclaimer of Estimates and Bidder's Warranty of Inspection (10/22)

Before submitting this bid, the Bidder is advised and cautioned to inspect the sale area, review the requirements of the sale contract, and take other steps as may be reasonably necessary to ascertain the location, estimated volumes, construction estimates, and operating costs of the proposed sale. Failure to do so will not relieve the Bidder from responsibility for completing the contract.

The Bidder warrants that this bid is submitted solely on the basis of the Bidder's examination and inspection of the quality and quantity of the timber offered for sale and the Bidder's opinion of the value thereof and the costs of recovery. No reliance should be placed on the State of Michigan's estimates of timber quality, quantity or costs of recovery. Bidder further acknowledges that the State of Michigan: (i) expressly disclaims any warranty of fitness of timber for any purpose; (ii) offers this timber as is without any warranty of quality (merchantability) or quantity and (iii) expressly disclaims any warranty as to the quantity or quality of timber sold.

12. Certification and Chain-of-Custody (10/22)

Unless otherwise indicated in the contract under section 7 – Other Conditions of the Sale Specific Conditions & Requirements, the area encompassed by this timber sale is certified to the standards of the Forest Stewardship Council (FSC) - Certificate #SCS-FM/COC-00090N and the Sustainable Forestry Initiative (SFI) - Certificate #NSF-SFIS-5Y031-SF5. Forest products from this sale may be delivered to the mill as "FSC 100% and / or SFI certified" as long as the contractor hauling the forest products is chain-of-custody (COC) certified or covered under a COC certificate from the destination mill. The purchaser is responsible for maintaining COC after leaving the sale area.

13. Good Neighbor Authority (GNA) Requirements (10/22)

If the name of this timber sales contains the acronym GNA, it is authorized by the Good Neighbor Authority (GNA) and covered by various agreements between the U.S. Forest Service and the State. The timber sale occurs on federal land and the following conditions apply:

GNA contracts on US Forest Service land will not be awarded to purchasers on the Federal list of excluded parties. The System for Award Management (SAM) will be checked for active excluded parties prior to award of contract. In

addition, the Bidder to whom award is made must complete an Assurance Regarding Felony Conviction or Tax Delinquent Status for Corporate Applicants (AD-3031).

14. Good Neighbor Authority (GNA) Requirements, con't (10/22)

Bidder certifies, by signing this bid form, that to the best of Bidder's knowledge that the following representations are accurate and complete.

- a. That the Bidder and its principals are not presently debarred, suspended, proposed for debarment, declared ineligible, or voluntary excluded from timber sales (covered transactions) by any Federal department or agency.
- b. That the Bidder and its principals have not within a 3-year period preceding this bid been convicted of or had a civil judgment rendered against them for commission of fraud or a criminal offense in connection with obtaining , attempting to obtain, or performing a public (Federal, State, or local) transaction or contract under a public transaction; violation of Federal or State antitrust statutes or commission of embezzlement, theft, forgery, bribery, falsification or destruction of records, making false statements, or receiving stolen property.
- c. That the Bidder and its principals are not presently indicted for or otherwise criminally or civilly charged by a governmental entity (Federal, State, or local) with commission of any of the offenses enumerated in paragraph b of this certification.
- d. That the Bidder and its principals have not within a 3-year period preceding this bid had one or more public transactions (Federal, State, or local) terminated for breach or default of a timber or forest product contract.

Bidders that cannot certify this requirement, in whole or in part, shall submit an explanation with their bid.

SHANNON LOTT, Acting
Director

TIMBER SALE INFORMATION

Cooks Breakup (41-001-23)

T41N, R17W, SEC. 31.

Schoolcraft County (Advertised Price \$12,095.25)

SALE NOTE: Permission for access across private land is the responsibility of the Purchaser. If purchaser decides to access Payment Unit 1 from the west, access from the USFS will also be needed.

It is the responsibility of the Purchaser to obtain permission from the utility company to utilize the power line R.O.W. for operations.

It is recommended, within Payment Unit(s) 1 and 2, harvesting occur during dry summer or frozen winter conditions because Payment Units 1 and 2 have some lowland areas.

Access may be through other public land.

A timber sale contract for this lump sum, sealed bid timber sale will be awarded to the responsible bidder offering the highest sealed bid price. All units of volume listed below were estimated using the Inventory Manager computer program and the new Michigan taper model. Bids must be at or above the following advertised price for each product and species:

<u>PRODUCTS & SPECIES</u>	<u>ESTIMATED UNITS*</u>	<u>ADVERTISED PRICE</u>
Sawtimber		
Paper Birch	0.7 MBF	\$ 121.00 / MBF
Pulpwood		
B. T. Aspen	2 Cords	\$ 32.95 / Cord
Balsam Fir	14 Cords	\$ 15.75 / Cord
Mixed Spruce	435 Cords	\$ 21.85 / Cord
N. White Cedar	46 Cords	\$ 5.45 / Cord
Paper Birch	12 Cords	\$ 18.50 / Cord
Red Maple	52 Cords	\$ 20.30 / Cord
Red Pine	3 Cords	\$ 92.35 / Cord
White Pine	13 Cords	\$ 31.85 / Cord

* The total volume is statistically estimated within plus (+) or minus (-) 25.15 percent. There are an estimated 601 cords on this timber sale, plus or minus 151 cords at the 95% confidence level. The estimated units are final and not subject to adjustment. Prospective bidders are urged to examine this timber and to make their own estimates of quantity and quality.

BOND AND PAYMENT SCHEDULE:

1. A bond in the amount of \$605.00 to insure faithful performance of the conditions of the contract will be deposited by the successful bidder within 21 days of the sale award.
2. Cutting in any sale or unit without the required advance payment would be considered a trespass.
3. Total payment must be paid in advance or according to the following schedule:
 - (a) Ten percent (10%) of the sale value must be paid within 21 days of the sale award.
 - (b) The 10% down payment will be credited towards the first unit cut.
 - (c) Payment for each of the following units must be made before cutting begins in that unit:

<u>PAYMENT UNIT NUMBER</u>	<u>PERCENT OF TOTAL SALE VALUE</u>
01	62.3%
02	37.7%
4. If no cutting takes place, the 10% down payment will not be refunded.
5. Operations on the contract issued will terminate on 06/30/2026.

SALE STATISTICS

Volumes were calculated in cubic feet using the Michigan taper model. Cubic foot volume includes all wood inside bark for the product indicated. For display purposes, cubic feet were converted to cords and MBF using a simple conversion factor, e.g. 79 cubic feet per cord and 185 cubic feet per MBF. The cubic foot volumes are precise; the cords and MBF volumes are not. Cubic foot volume cannot be directly converted to cords or boards with precision.

SALE VOLUMES

The total estimated sale volume may not equal the sum of the species/products due to the nature of statistical calculations associated with double sampling methodology.

VOLUME		STATISTICAL RANGE IN CORDS		
TOTAL CUBIC FEET	TOTAL CORDS	PERCENT ERROR	MINIMUM	MAXIMUM
47,478	601	25.15%	450	752

VDU VOLUMES

A VDU is a Volume Determination Unit. Volumes and their associated statistics are calculated at the VDU level and summarized to the sale level. There is often a one to one relationship between a VDU and a Payment Unit, but not always, depending on the cruise design. Refer to the VDU TO PAYMENT UNIT table.

VDU	VOLUME			RANGE IN CORDS	
	TOTAL CUBIC FEET	TOTAL CORDS	PERCENT ERROR	MINIMUM	MAXIMUM
1	27,251	345	35.79%	221	468
2	20,227	256	42.54%	147	365
TOTAL:	47,478	601		369	833

VDU TO PAYMENT UNIT

When a VDU is associated with more than one Payment Unit (PU), the VDU volumes are assigned to the PU based on acres of the VDU within the PU.

VDU	VDU ACRES	PU	PU ACRES
1	16.1	1	16.1
2	13.2	2	13.2
TOTAL:	29.3		29.3

DESCRIPTION OF TIMBER BY PAYMENT UNIT (PU)

PU	MARKET GROUP	PRODUCT	QUANTITY	UNIT	ACRES	ADVERTISE PRICE
1	Balsam Fir	Pulpwood	3	Cords	16.1	\$7,536.70
	Mixed Spruce		308	Cords		
	<i>Black Spruce</i>		308	Cords		
	Paper Birch		11	Cords		
	Red Maple		7	Cords		
	White Pine		13	Cords		
2	Paper Birch	Sawtimber	0.7	MBF	13.2	\$4,558.55
	B. T. Aspen	Pulpwood	2	Cords		
	Balsam Fir		11	Cords		
	Mixed Spruce		127	Cords		
	<i>Black Spruce</i>		33	Cords		
	<i>White Spruce</i>		94	Cords		
	N. White Cedar		46	Cords		
	Paper Birch		1	Cords		
	Red Maple		45	Cords		
	Red Pine		3	Cords		
	TOTAL:			0.7		
TOTAL:			577	Cords		

Sale Specific Conditions & Requirements

Sale Name: Cooks Breakup

Sale Number: 41-001-23 Seq#: 1

1 - Sale Area

1.2 - Boundaries

1.2.1 - Painted boundaries (9/19)

The sale boundary and Payment Unit boundaries are marked and identified by red paint. Exterior sale boundary lines against state are marked with red paint.

2 - Timber Specifications

2.1 - Included Timber

2.1.2 - Clearcut unit(s) w/o unmerchantable trees (8/11)

Within Payment Unit(s) 1 & 2, cut all trees which meet minimum piece specifications in 2.2 Utilization, except hemlock. In addition, do not cut cedar in Payment Unit 1. Special protection trees identified in accordance with condition 3.4.2, within clearcutting unit boundaries, are not Included Timber and are to be protected.

3 - Payments

3.4 - Damaged Timber

3.4.2 - Special Protection Trees (4/14)

The Purchaser shall not cut live or dead special protection trees within cutting units or clearings. Special protection trees are hemlock. If the Purchaser's operations have cut or damaged special protection trees through carelessness, the Purchaser shall pay \$100 as fixed, agreed and liquidated damages for each special protection tree cut or damaged. Such payment does not constitute ownership of the undesignated timber.

4 - Transportation

4.1 - Construction

4.1.3 - Slash and earthen piles (8/04)

Piles or windrows of earth along roads and landings that have been widened or constructed shall be leveled. Slash from road maintenance or construction, including stumps, shall be dispersed throughout the sale.

4.1.6 - Road construction (1/09)

Construction of new roads or improvements of existing roads shall be done in such a way as to minimize the environmental and visual impacts. Merchantable trees shall be cut and utilized unless otherwise directed. Non-merchantable trees shall be severed and laid flat on the ground. Slash shall be scattered, and not left in windrows and kept a minimum of 10 feet back from the road edge. Stumps shall be set upright, not left on edge, and be moved at least 10 feet away from the road edge. Disturbed soil shall be feathered into the woods and not left in berms or windrows.

4.1.7 - Road closure (10/11)

All new roads built into the sale must be blocked to vehicle traffic upon completion of the sale. Overgrown roads that are reopened shall be considered new roads. In general, this will require constructing a four (4') foot high berm of stumps and logs covered with earth. Stumps and brush must be placed along the remainder of the trail. Berms must also be placed at intervals of not over 50 feet and at all junctions. These roads must be rendered impassable to cars and trucks. All stumps from road building and landing construction must be reserved to block any newly constructed roads upon completion of the sale. These stumps must be scattered along the road system to prohibit vehicular movement. Contact the sale administrator for specific details of design and placement.

4.2 - Maintenance

4.2.4 - Grading (10/16)

For completion of the sale, state forest roads must be graded if harvesting occurs during non-frozen conditions. In general, this will require a road grader or bull dozer to shape up the roads after forest products have been hauled off site. This includes cleaning of drainage areas, grading, crowning and filling with gravel, if necessary. The grading equipment to be used

must be approved by the Unit Manager or his/her representative.

4.4 - Access

4.4.1 - Private property access (3/11)

Permission for access across private land is the responsibility of the Purchaser. If purchaser decides to access Payment Unit 1 from the west, access from the USFS will also be needed.

5 - Operations

5.1 - Notification

5.1.6 - Utility R.O.W. (4/19)

It is the responsibility of the Purchaser to obtain permission from the utility company to utilize the power line R.O.W. for operations.

5.2 - Conduct of Operations

5.2.2 - Hazard Trees/Snags

5.2.2.1 - Den trees (10/16)

Obvious hollow and/or den trees shall be protected and left standing unless they are a safety hazard.

5.2.22 - Operating Caution

5.2.22.1 - Operating caution (6/11)

It is recommended, but not required, that within Payment Unit(s) 1 & 2, cutting, skidding, and hauling occur during dry summer or frozen winter conditions. The reason for the recommendation is because Payment Units 1 & 2 have some lowland areas.

5.2.32 - Decking/landing restoration (9/13)

All decking and landing areas must have the surface area restored to a condition equal to or better than before. This is to ensure the proper regeneration of the stand. Wood debris, chips and "cookies" from trimmings must be removed or scattered away from landing and loading areas and may not be windrowed on the edge.

5.8 - Protection of Endangered Species

5.8.3 - Red shoulder hawk or goshawk (2/16)

In the event that an active red shoulder hawk or goshawk nest is found, the contract may be amended to protect the nest site until the nest is determined to be inactive. The value of the trees in this excluded area will be refunded or credited to the Purchaser. The nest will be buffered with a five-chain radius (eight acre) protection area, centered on the nest tree, in which there will be no cutting or new roads constructed. Avoid human disturbance, including loading and skidding, in the protection area.

An additional zone of five chains (ten chains centered on the active nest tree) will be established in which there is no management activity from April 1 to July 30. Limit biomass harvesting and chipping operations within this ten-chain zone, retain the maximum one-third of residues per the Woody Biomass Harvesting Guidelines (Michigan DNR 2010). Nests determined to be inactive will be protected with a one-chain no-harvest buffer.



TIMBER SALE MAP

This information provided by authority of Part 5, 1994 PA 451, as amended.

Sale Number	001	Year	23
Date	1-6	Page	1 of 1
Scale: [... 4"] = 1 mile			

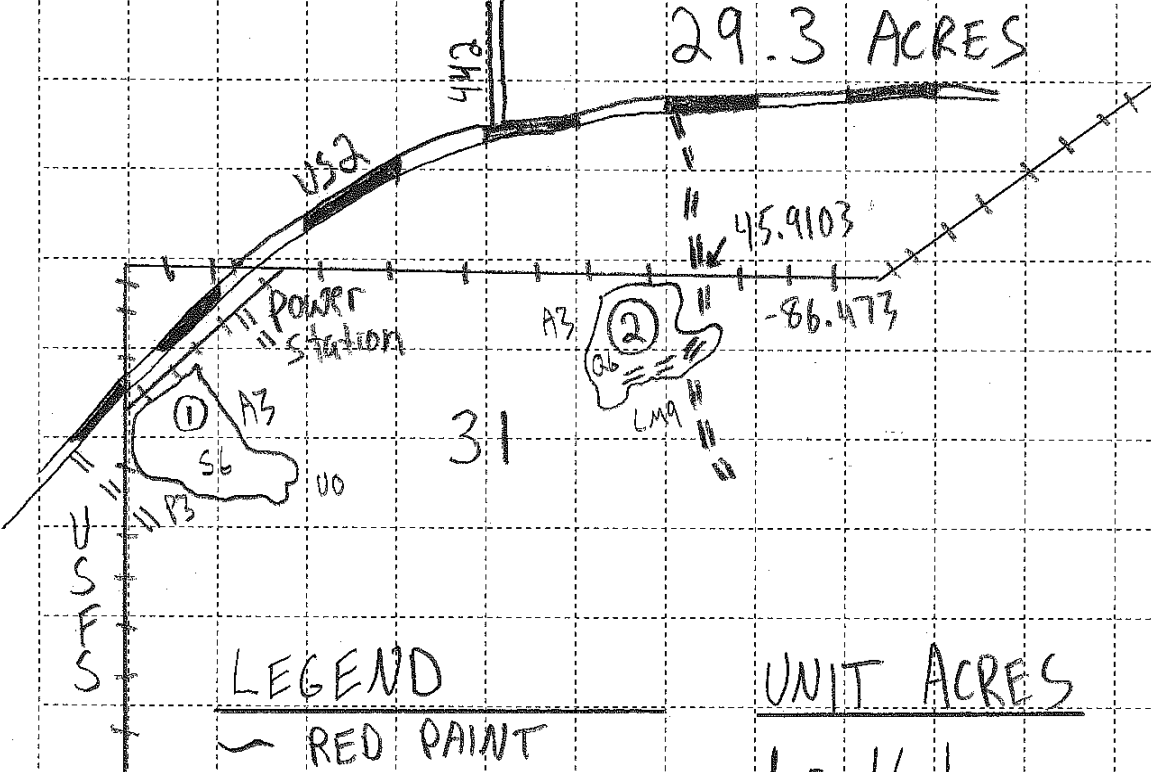
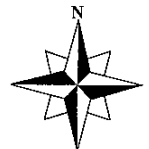
Forest Management Unit	County	Mapped By	Cruised By
Shingle ton	Schoolcraft	Petrelus	Petrelus
Compartment Number	Township	Range	Section(s) and Subdivision(s)
87	41N	17W	31: S 1/2 NE, SWNW, NWSW

Cover Type			
A = Aspen	J = Jack Pine	O = Oak	U = Upland Brush
B = Paper Birch	K = Rock	P = Lowland Poplar	UM = Upland Mix Forest
C = Cedar	L = Lowland Brush	Q = Mixed Swamp Conifer	V = Bog or Marsh
D = Treed Bog	LM = Lowland Mix Forest	R = Red Pine	W = White Pine
E = Swamp Hardwoods	M = Maple, Beech, Birch	S = Black Spruce	X = Non Stocked
F = Spruce/Fir	MC = Mixed Conifer	T = Tamarack	Y = Sand
G = Grass	MD = Mixed Deciduous	N = Marsh	Z = Water
H = Hemlock			

Density	
0 = Non Stocked	5 = Pole Timber Medium
1 = Seedling Sapling Poor	6 = Pole Timber Well
2 = Seedling Sapling Medium	7 = Saw Timber Poor
3 = Seedling Sapling Well	8 = Saw Timber Medium
4 = Pole Timber Poor	9 = Saw Timber Well

COOKS BREAKUP

29.3 ACRES



LEGEND

- ~ RED PAINT
- ① UNIT #
- +++ POWER LINE
- = WOODS ROAD

UNIT ACRES

- 1 - 16.1
- 2 - 13.2



TIMBER SALE INFORMATION

A Little Bit of Everything (41-004-23)

T40N, R18W, SEC. 21; T40N, R18W, SEC. 22; T40N, R18W, SEC. 23; T40N, R18W, SEC. 24.
Delta County (Advertised Price \$259,086.35)

SALE NOTE: Note that Payment Unit 6 is an optional unit due to the trees containing char from a fire.

Access through private land in Section 22 needs to be re-routed utilizing the grown over road as indicated the Timber Sale Map. See Sale Spec 4.1.8 for additional information.

Permission for access across private land is the responsibility of the Purchaser.

It is the responsibility of the Purchaser to obtain permission from the utility company to utilize the power line R.O.W. for operations.

Within Payment Unit(s) 1-3 and 17, harvesting within the sale and brushing of access roads to the sale are not permitted during the period of April 15 to July 15. See Sale Spec 5.2.3.5 for details.

The Cooks Garden Grade is a snowmobile trail and is shown on the Timber Sale Map. See Sale Spec 5.2.41 for restrictions.

A recreation site such as a trail, pathway, or campground is within the sale area or the vicinity. Certain restrictions/specifications may be applicable including time restrictions. Access may be through private land.

A timber sale contract for this lump sum, sealed bid timber sale will be awarded to the responsible bidder offering the highest sealed bid price. All units of volume listed below were estimated using the Inventory Manager computer program and the new Michigan taper model. Bids must be at or above the following advertised price for each product and species:

<u>PRODUCTS & SPECIES</u>	<u>ESTIMATED UNITS*</u>	<u>ADVERTISED PRICE</u>
Sawtimber		
Red Oak	168.1 MBF	\$ 134.00 / MBF
Pulpwood		
B. T. Aspen	488 Cords	\$ 32.95 / Cord
Jack Pine	214 Cords	\$ 27.50 / Cord
Paper Birch	2 Cords	\$ 18.50 / Cord
Red Maple	119 Cords	\$ 20.30 / Cord
Red Oak	563 Cords	\$ 33.75 / Cord
Red Pine	2,069 Cords	\$ 92.35 / Cord
White Pine	65 Cords	\$ 31.85 / Cord

* The total volume is statistically estimated within plus (+) or minus (-) 11.96 percent. There are an estimated 3,931 cords on this timber sale, plus or minus 471 cords at the 95% confidence level. The estimated units are final and not subject to adjustment. Prospective bidders are urged to examine this timber and to make their own estimates of quantity and quality.

BOND AND PAYMENT SCHEDULE:

1. A bond in the amount of \$12,954.00 to insure faithful performance of the conditions of the contract will be deposited by the successful bidder within 21 days of the sale award.
2. Cutting in any sale or unit without the required advance payment would be considered a trespass.
3. Total payment must be paid in advance or according to the following schedule:
 - (a) Ten percent (10%) of the sale value must be paid within 21 days of the sale award.
 - (b) The 10% down payment will be credited towards the first unit cut.

(c) Payment for each of the following units must be made before cutting begins in that unit:

PAYMENT UNIT NUMBER	PERCENT OF TOTAL SALE VALUE
01	3.8%
02	2.0%
03	1.6%
04	7.4%
05	10.5%
06	0.6%
07	2.7%
08	6.0%
09	7.5%
10	4.2%
11	8.3%
12	3.7%
13	2.9%
14	7.7%
15	5.9%
16	15.4%
17	9.8%

4. If no cutting takes place, the 10% down payment will not be refunded.

5. Operations on the contract issued will terminate on 06/30/2026.

SALE STATISTICS

Volumes were calculated in cubic feet using the Michigan taper model. Cubic foot volume includes all wood inside bark for the product indicated. For display purposes, cubic feet were converted to cords and MBF using a simple conversion factor, e.g. 79 cubic feet per cord and 185 cubic feet per MBF. The cubic foot volumes are precise; the cords and MBF volumes are not. Cubic foot volume cannot be directly converted to cords or boards with precision.

SALE VOLUMES

The total estimated sale volume may not equal the sum of the species/products due to the nature of statistical calculations associated with double sampling methodology.

VOLUME			STATISTICAL RANGE IN CORDS	
TOTAL CUBIC FEET	TOTAL CORDS	PERCENT ERROR	MINIMUM	MAXIMUM
310,576	3,931	11.96%	3,461	4,402

VDU VOLUMES

A VDU is a Volume Determination Unit. Volumes and their associated statistics are calculated at the VDU level and summarized to the sale level. There is often a one to one relationship between a VDU and a Payment Unit, but not always, depending on the cruise design. Refer to the VDU TO PAYMENT UNIT table.

	VOLUME			RANGE IN CORDS	
VDU	TOTAL CUBIC FEET	TOTAL CORDS	PERCENT ERROR	MINIMUM	MAXIMUM
1	35,744	452	19.70%	363	542
2	38,514	488	38.26%	301	674
3	15,031	190	36.02%	122	259
4	12,684	161	24.26%	122	200
5	125,687	1,591	15.98%	1,337	1,845
6	46,297	586	19.56%	471	701
7	36,619	464	16.50%	387	540
TOTAL:	310,576	3,931		3,103	4,760

VDU TO PAYMENT UNIT

When a VDU is associated with more than one Payment Unit (PU), the VDU volumes are assigned to the PU based on acres of the VDU within the PU.

VDU	VDU ACRES	PU	PU ACRES
1	27.3	16	27.3
2	22.3	15	22.3
3	24.6	14	24.6
4	3.7	14	3.7
5	179.8	4	24.8
		5	35.3
		6	1.9
		7	8.9
		8	20.1
		9	25.0
		10	14.0
		11	27.7
		12	12.4
		13	9.7
6	33.0	17	33.0
7	70.8	1	35.9
		2	19.1
		3	15.8
TOTAL:	361.5		361.5

DESCRIPTION OF TIMBER BY PAYMENT UNIT (PU)

PU	MARKET GROUP	PRODUCT	QUANTITY	UNIT	ACRES	ADVERTISE PRICE
1	Red Oak	Sawtimber	34.6	MBF	35.9	\$9,810.05
	B. T. Aspen	Pulpwood	17	Cords		
	Red Maple		10	Cords		
	Red Oak		117	Cords		
	Red Pine		5	Cords		
2	Red Oak	Sawtimber	18.4	MBF	19.1	\$5,140.85
	B. T. Aspen	Pulpwood	9	Cords		
	Red Maple		5	Cords		
	Red Oak		62	Cords		
	Red Pine		2	Cords		
3	Red Oak	Sawtimber	15.2	MBF	15.8	\$4,254.60
	B. T. Aspen	Pulpwood	7	Cords		
	Red Maple		4	Cords		
	Red Oak		51	Cords		
	Red Pine		2	Cords		
4	B. T. Aspen	Pulpwood	1	Cords	24.8	\$19,134.95
	Jack Pine		7	Cords		
	Red Pine		202	Cords		
	White Pine		8	Cords		
5	B. T. Aspen	Pulpwood	2	Cords	35.3	\$27,260.55
	Jack Pine		9	Cords		
	Red Pine		288	Cords		
	White Pine		11	Cords		
6	Jack Pine	Pulpwood	1	Cords	1.9	\$1,444.60
	Red Pine		15	Cords		
	White Pine		1	Cords		
7	Jack Pine	Pulpwood	2	Cords	8.9	\$6,892.10
	Red Pine		73	Cords		
	White Pine		3	Cords		
8	B. T. Aspen	Pulpwood	1	Cords	20.1	\$15,506.95
	Jack Pine		5	Cords		
	Red Pine		164	Cords		
	White Pine		6	Cords		
9	B. T. Aspen	Pulpwood	1	Cords	25.0	\$19,319.65
	Jack Pine		7	Cords		
	Red Pine		204	Cords		
	White Pine		8	Cords		
10	B. T. Aspen	Pulpwood	1	Cords	14.0	\$10,798.25
	Jack Pine		4	Cords		
	Red Pine		114	Cords		
	White Pine		4	Cords		
11	B. T. Aspen	Pulpwood	2	Cords	27.7	\$21,416.15
	Jack Pine		7	Cords		
	Red Pine		226	Cords		
	White Pine		9	Cords		
12	B. T. Aspen	Pulpwood	1	Cords	12.4	\$9,570.20
	Jack Pine		3	Cords		
	Red Pine		101	Cords		
	White Pine		4	Cords		
13	B. T. Aspen	Pulpwood	1	Cords	9.7	\$7,506.65
	Jack Pine		3	Cords		
	Red Pine		79	Cords		
	White Pine		3	Cords		
14	B. T. Aspen	Pulpwood	18	Cords	28.3	\$19,916.45
	Jack Pine		162	Cords		

DESCRIPTION OF TIMBER BY PAYMENT UNIT (PU), CON'T

PU	MARKET GROUP	PRODUCT	QUANTITY	UNIT	ACRES	ADVERTISE PRICE
14 con't	Red Pine	Pulpwood	161	Cords		
15	B. T. Aspen Jack Pine Red Maple White Pine	Pulpwood	410 4 75 8	Cords Cords Cords Cords	22.3	\$15,396.80
16	Red Maple Red Pine	Pulpwood	12 433	Cords Cords	27.3	\$40,231.15
17	Red Oak B. T. Aspen Paper Birch Red Maple Red Oak	Sawtimber Pulpwood	99.9 17 2 13 333	MBF Cords Cords Cords Cords	33.0	\$25,486.40
TOTAL:			168.1	MBF		
TOTAL:			3,520	Cords		

Sale Specific Conditions & Requirements

Sale Name: A Little Bit of Everything

Sale Number: 41-004-23 Seq#: 1

1 - Sale Area

1.2 - Boundaries

1.2.1 - Painted boundaries (9/19)

The sale boundary and Payment Unit boundaries are marked and identified by blue, red, and yellow paint. Exterior sale boundary lines against private property are marked with blue paint. Exterior sale boundary lines against state are marked with red paint. Interior Payment Unit boundaries are marked with yellow paint. The painted boundary line trees are not Included Timber and are to be protected unless marked with orange paint. Yellow painted trees designating an interior Payment Unit boundary are only to be cut when all surrounding Payment Units have been paid.

2 - Timber Specifications

2.1 - Included Timber

2.1.1 - Clearcut unit(s) with unmerchantable trees (6/14)

Within Payment Unit(s) 14 & 15, cut all trees that are two (2) inches or more at DBH. In addition, within Payment Unit 14, cut all trees live or dead. Also, within Payment Unit 15, do not cut oak or hemlock.

2.1.3 - Cut tree marked unit(s) (12/08)

Within Payment Unit(s) 4-13, all trees are designated for cutting when marked with orange or green (Payment Unit 9 is marked with green) paint above and below stump height, regardless of merchantability.

2.1.4 - Designated timber unit(s) (6/17)

Within Payment Unit(s) 1-3, all trees within the patch cut areas bounded by orange paint, are designated for cutting regardless of merchantability. Also, the orange boundary trees are designated for harvest. In addition, cut all trees 2" and larger within the patch.

2.1.7 - Leave tree marked unit(s) (6/14)

Within Payment Unit(s) 17, cut all trees that are four (4) inches or more at DBH, except trees marked with green paint above and below stump height.

2.1.8 - Designated plantation row unit(s) (12/08)

Within Payment Unit(s) 16, all trees which meet minimum piece specifications in 2.2 Utilization, within designated plantation rows are designated for cutting. Designated plantation rows are identified by orange paint. Not all trees within the rows are marked with paint, it is the purchaser's responsibility to maintain cutting in the proper row.

2.1.11 - Description of timber note (2/04)

Note that Payment Unit 6 is an optional unit due to the trees containing char from a fire.

2.2 - Utilization

2.2.3 - Stump heights (4/07)

Stump heights within Payment Unit(s) 4-14, & 16, shall not exceed 12 inches for trees greater than 10 inches at DBH and 4 inches for trees smaller than 10 inches at DBH. This is in order to facilitate planting operations.

4 - Transportation

4.1 - Construction

4.1.3 - Slash and earthen piles (8/04)

Piles or windrows of earth along roads and landings that have been widened or constructed shall be leveled. Slash from road maintenance or construction, including stumps, shall be dispersed throughout the sale.

4.1.6 - Road construction (1/09)

Construction of new roads or improvements of existing roads shall be done in such a way as to minimize the environmental and visual impacts. Merchantable trees shall be cut and utilized unless otherwise directed. Non-merchantable trees shall be severed and laid flat on the ground. Slash shall be scattered, and not left in windrows and kept a minimum of 10 feet back

from the road edge. Stumps shall be set upright, not left on edge, and be moved at least 10 feet away from the road edge. Disturbed soil shall be feathered into the woods and not left in berms or windrows. Access through private land in section 22 needs to be re-routed utilizing the grown over road as indicated on the Timber Sale Map. This road will become the main road moving forward and not closed when the sale is complete.

4.1.7 - Road closure (10/11)

All new roads built into the sale must be blocked to vehicle traffic upon completion of the sale. Overgrown roads that are reopened shall be considered new roads. In general, this will require constructing a four (4') foot high berm of stumps and logs covered with earth. Stumps and brush must be placed along the remainder of the trail. These roads must be rendered impassable to cars and trucks. All stumps from road building and landing construction must be reserved to block any newly constructed roads upon completion of the sale. These stumps must be scattered along the road system to prohibit vehicular movement. Contact the sale administrator for specific details of design and placement.

4.1.8 - Road work (1) (8/07)

Access through private land in Section 22 needs to be re-routed utilizing the grown over road as indicated on the Timber Sale Map. This road will become the main road moving forward and not closed when the sale is complete. In addition, 500 cubic yards of breaker run gravel needs to be purchased, hauled and spread between M-183 and the Sale Area. The specific locations will be determined at the Pre-Sale meeting by the Sale Administrator. All work is at the Purchaser's expense and no deductions will be given. All roadwork including the re-route needs to be done before hauling begins unless approved by the Unit Manager.

4.4 - Access

4.4.1 - Private property access (3/11)

Permission for access across private land is the responsibility of the Purchaser.

5 - Operations

5.1 - Notification

5.1.6 - Utility R.O.W. (4/19)

It is the responsibility of the Purchaser to obtain permission from the utility company to utilize the power line R.O.W. for operations.

5.2 - Conduct of Operations

5.2.1 - Slash

5.2.1.11 - Slash for reforestation (3/21)

To facilitate reforestation, Payment Unit 14 shall be left with slash evenly distributed. Bunched tops within the cutting area shall be broken up and scattered. Stumps shall be cut low to the ground. Processing sites shall not be left with a compacted layer of slash; tops from these sites shall be hauled back into the cut area and scattered.

5.2.3 - Operating Restrictions

5.2.3.5 - Oak wilt restriction (1/18)

Within Payment Unit(s) 1-3, & 17, unless changed by written agreement, cutting, skidding, hauling within the sale and brushing of access roads to the sale are not permitted during the period of April 15 to July 15. Operations may be allowed if specific steps are taken to prevent damaging uncut oak during the high risk period. Those steps may include completing all road brushing before April 15th and clearing a tree-length buffer along uncut oak cover before April 15th. This is necessary to reduce the spread of oak wilt. For more information, contact the Unit Manager or his/her representative.

5.2.3.6 - Bark beetle restriction (12/08)

In the event drought creates a high risk of pine bark beetle infestation, pine is not to be cut during the period March 1 through July 1, unless all portions of trees greater than two inches in diameter are removed from the sale area, reduced to chips, or treated to the satisfaction of the Unit Manager or his/her representative, within fifteen days of being severed from the stump. Pine log decks, pulpwood piles and treetops that are piled for chipping in the fall or winter within a 1/4 mile of susceptible sites must be removed before March 15. Residual slash must not be placed in piles or rows and must be spread over the site for quick drying. The Department of Natural Resources will exercise this specification if the risk of damage warrants.

5.2.4 - Dead and Down Creation

5.2.4.4 - Dead and down creation, grouse (6/18)

To encourage grouse and other wildlife, in Payment Unit(s) 15, leave one, 8" diameter or larger log-length (8 foot minimum) piece on the ground for every 1 acre. This piece will come from the butt of the tree and these trees should have a 4' stump. The log should be left as it lays next to the stump. These will be evenly scattered throughout the unit.

5.2.32 - Decking/landing restoration (9/13)

All decking and landing areas must have the surface area restored to a condition equal to or better than before. This is to ensure the proper regeneration of the stand. Wood debris, chips and "cookies" from trimmings must be removed or scattered away from landing and loading areas and may not be windrowed on the edge.

5.2.38 - No decking against live trees (2/04)

Cut products may not be decked against unmarked or designated leave trees.

5.2.41 - Snowmobile trail protection (9/11)

The Cooks Garden Grade is a snowmobile trail and is shown on the Timber Sale Map. Do not cut or damage posts with orange trail markers or traffic control signs. If the trail is used, it must be maintained and restored to a condition equal to or better than before the sale. The road maintenance/restoration must be done prior to December 1. If the trail road is to be used for hauling during the snowmobile season, then a snow covered base must be left on the trail. No decking of forest products will be permitted along the snowmobile trail.

5.8 - Protection of Endangered Species

5.8.3 - Red shoulder hawk or goshawk (2/16)

In the event that an active red shoulder hawk or goshawk nest is found, the contract may be amended to protect the nest site until the nest is determined to be inactive. The value of the trees in this excluded area will be refunded or credited to the Purchaser. The nest will be buffered with a five-chain radius (eight acre) protection area, centered on the nest tree, in which there will be no cutting or new roads constructed. Avoid human disturbance, including loading and skidding, in the protection area.

An additional zone of five chains (ten chains centered on the active nest tree) will be established in which there is no management activity from April 1 to July 30. Limit biomass harvesting and chipping operations within this ten-chain zone, retain the maximum one-third of residues per the Woody Biomass Harvesting Guidelines (Michigan DNR 2010). Nests determined to be inactive will be protected with a one-chain no-harvest buffer.

6 - Safety and Fire Prevention

6.2 - Signing

6.2.2 - Snowmobile trail posting (10/20)

The Purchaser is responsible for posting and maintaining caution signs on the Cooks Garden Grade prior to beginning operations during the snowmobile season (approximately December 1 to March 31). The trail must be posted at appropriate distances from the Sale Area to warn of logging activity and truck traffic. Signs must be removed when harvest operations are suspended or completed. The Purchaser will provide these signs.



TIMBER SALE MAP

This information provided by authority of Part 5, 1994 PA 451, as amended.

Sale Number	Year
004	23

Forest Management Unit Shingleton	County Delta	Mapped By T. Burns	Date 2/1/23	Page 1	of 12
Compartment Number 91	Township 40N	Cruised By T. Burns, S. Clark	Section(s) and Subdivision(s) 33; see map 21: E 1/2 NE 1/4, SE 1/4 22: N 1/2 NE 1/4, N 1/2 SW 1/4, NE 1/4, SW 1/4		
Range 18W					

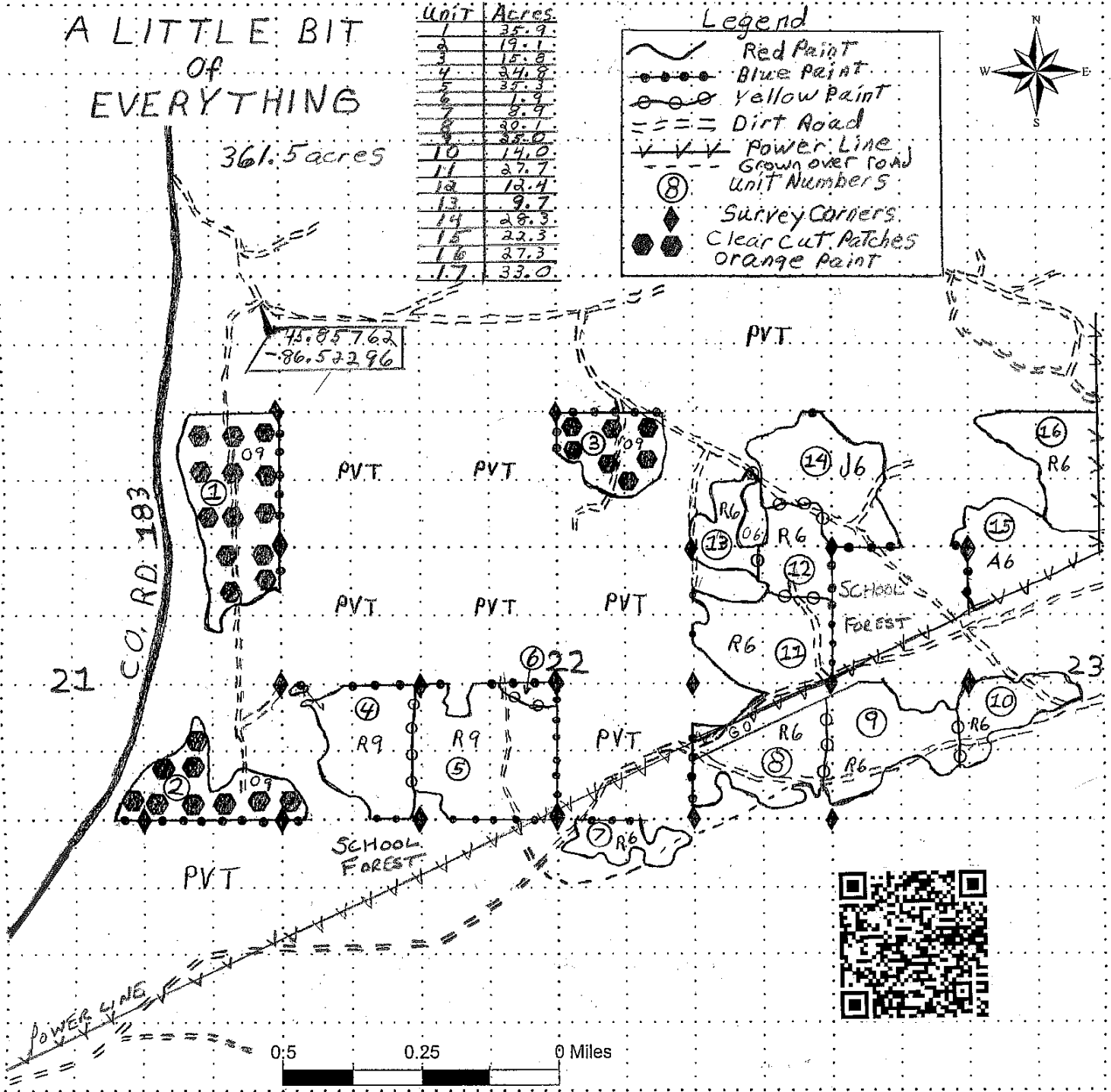
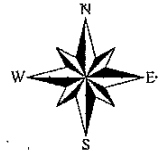
Cover Type				Density			
A = Aspen	J = Jack Pine	O = Oak	U = Upland Brush	0 = Non Stocked	5 = Pole Timber Medium		
B = Paper Birch	K = Rock	P = Lowland Poplar	UM = Upland Mix Forest	1 = Seedling Sapling Poor	6 = Pole Timber Well		
C = Cedar	L = Lowland Brush	Q = Mixed Swamp Conifer	V = Bog or Marsh	2 = Seedling Sapling Medium	7 = Saw Timber Poor		
D = Tread Bog	LM = Lowland Mix Forest	R = Red Pine	W = White Pine	3 = Seedling Sapling Well	8 = Saw Timber Medium		
E = Swamp Hardwoods	M = Maple, Beech, Birch	S = Black Spruce	X = Non Stocked	4 = Pole Timber Poor	9 = Saw Timber Well		
F = Spruce/Flr	MC = Mixed Conifer	T = Tamarack	Y = Sand				
G = Grass	MD = Mixed Deciduous	Z = Water					
H = Hemlock	N = Marsh						

A LITTLE BIT
OF
EVERYTHING

Unit	Acres
1	35.9
2	19.1
3	15.8
4	34.8
5	35.3
6	1.9
7	8.9
8	30.1
9	38.0
10	14.0
11	27.7
12	13.4
13	9.7
14	28.3
15	22.5
16	27.3
17	33.0

Legend

- Red Paint
- Blue Paint
- Yellow Paint
- Dirt Road
- Power Line
- Grown over road
- Unit Numbers
- Survey Corners
- Clear Cut Patches
- Orange Paint





Sale Number	Year
004	23

TIMBER SALE MAP

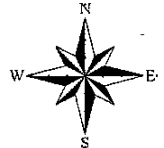
This information provided by authority of Part 5, 1994 PA 451, as amended.

Forest Management Unit <i>Shingleton</i>	County <i>Delta</i>	Mapped By <i>T. Buonis</i>	Date <i>2/1/23</i>	Page <i>2</i>	of <i>2</i>
Compartment Number <i>91</i>	Township <i>HON</i>	Cruised By <i>T. Buonis S. Clark</i>	Section(s) and Subdivision(s) <i>23: N1/2 NW, SE, NE, N1/2 SW 24: W1/2 NW</i>		
Range <i>18 W</i>					

Cover Type				Density	
A = Aspen	J = Jack Pine	O = Oak	U = Upland Brush	0 = Non Stocked	5 = Pole Timber Medium
B = Paper Birch	K = Rock	P = Lowland Poplar	UM = Upland Mix Forest	1 = Seedling Sapling Poor	6 = Pole Timber Well
C = Cedar	L = Lowland Brush	Q = Mixed Swamp Conifer	V = Bog or Marsh	2 = Seedling Sapling Medium	7 = Saw Timber Poor
D = Treed Bog	LM = Lowland Mix Forest	R = Red Pine	W = White Pine	3 = Seedling Sapling Well	8 = Saw Timber Medium
E = Swamp Hardwoods	M = Maple, Beech, Birch	S = Black Spruce	X = Non Stocked	4 = Pole Timber Poor	9 = Saw Timber Well
F = Spruce/Fir	MC = Mixed Conifer	T = Tamarack	Y = Sand		
G = Grass	MD = Mixed Deciduous		Z = Water		
H = Hemlock	N = Marsh				

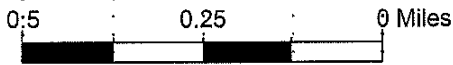
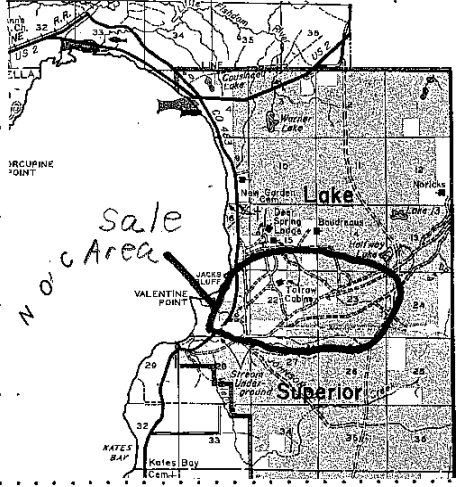
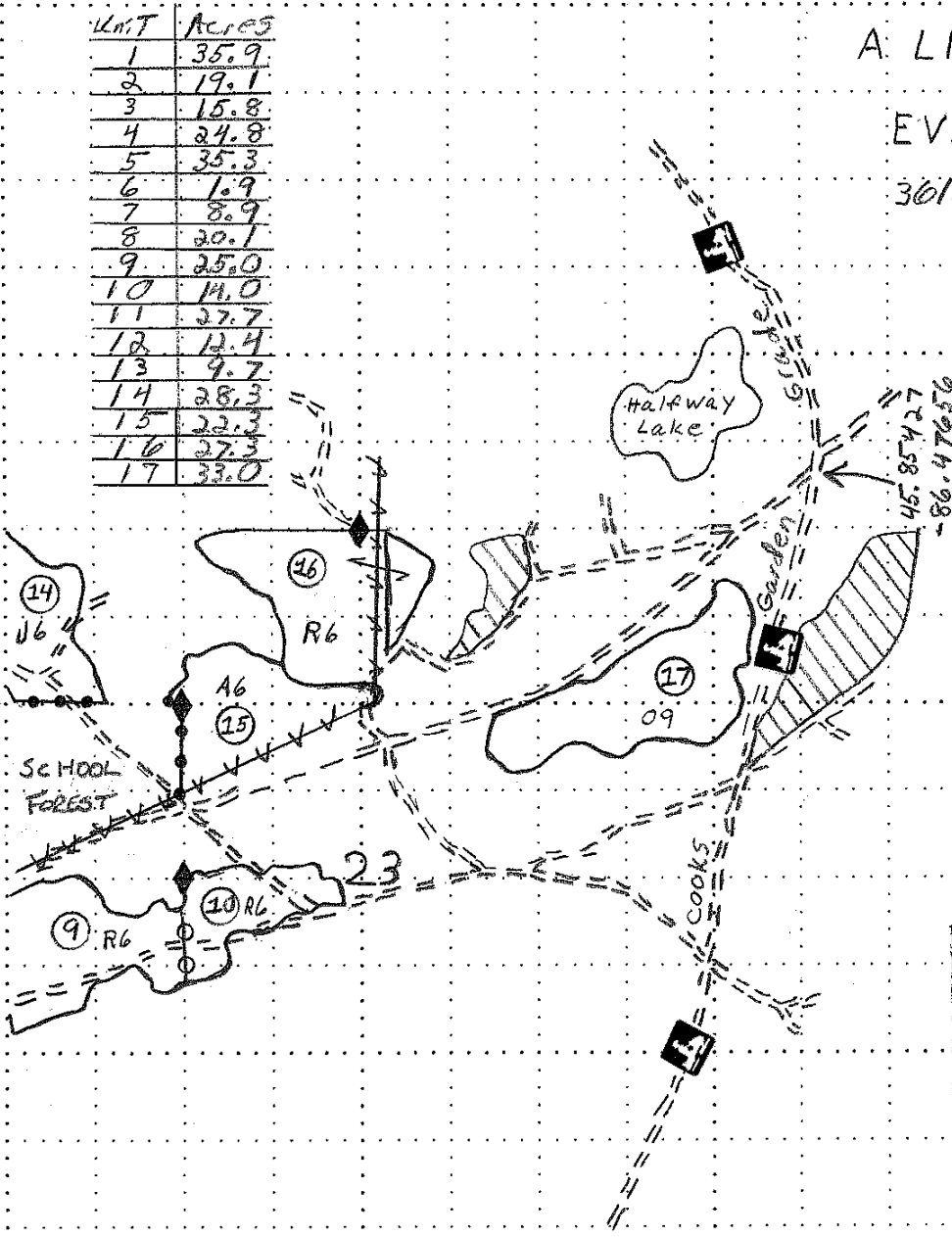
Unit	Acres
1	35.9
2	19.1
3	15.8
4	24.8
5	35.3
6	1.9
7	8.9
8	20.1
9	25.0
10	11.0
11	27.7
12	12.4
13	4.7
14	28.3
15	22.3
16	27.3
17	33.0

A LITTLE BIT
OF
EVERYTHING
361.5 acres



Legend

- Red Paint
- Blue Paint
- Yellow Paint
- Dirt Road
- Unit Numbers
- Power Line
- Survey corner
- Nearby Sale
- Snow Mobile Trail



TIMBER SALE INFORMATION

Build Back Better Mix (41-010-22)

T47N, R17W, SEC. 21; T47N, R17W, SEC. 22; T47N, R17W, SEC. 27; T47N, R17W, SEC. 28; T47N, R17W, SEC. 33; T47N, R17W, SEC. 34.

SALE NOTE: Road work is required on this sale. See Sale Spec 4.1.8 for details.

Within Payment Unit(s) 3-5, cutting and skidding are not permitted during the period of April 15 to July 15 because of bark slippage.

The Petrel Road and Sunrise Grade are snowmobile trails and are shown on the Timber Sale Map. See Sale Spec 5.2.41 for restrictions.

A recreation site such as a trail, pathway, or campground is within the sale area or the vicinity. Certain restrictions/specifications may be applicable including time restrictions.

A timber sale contract for this lump sum, sealed bid timber sale will be awarded to the responsible bidder offering the highest sealed bid price. All units of volume listed below were estimated using the Inventory Manager computer program and the new Michigan taper model. Bids must be at or above the following advertised price for each product and species:

<u>PRODUCTS & SPECIES</u>	<u>ESTIMATED UNITS*</u>	<u>ADVERTISED PRICE</u>
Sawtimber		
Black Cherry	0.7 MBF	\$ 112.00 / MBF
Paper Birch	0.8 MBF	\$ 121.00 / MBF
Red Maple	98.7 MBF	\$ 93.00 / MBF
Sugar Maple	325.1 MBF	\$ 331.00 / MBF
Pulpwood		
Balsam Fir	160 Cords	\$ 15.75 / Cord
Basswood	24 Cords	\$ 9.45 / Cord
Mixed Hardwood	1,358 Cords	\$ 20.30 / Cord
N. White Cedar	8 Cords	\$ 5.45 / Cord
Paper Birch	96 Cords	\$ 18.50 / Cord
Quaking Aspen	822 Cords	\$ 32.95 / Cord
White Pine	8 Cords	\$ 31.85 / Cord
White Spruce	257 Cords	\$ 21.85 / Cord

* The total volume is statistically estimated within plus (+) or minus (-) 9.18 percent. There are an estimated 3,683 cords on this timber sale, plus or minus 338 cords at the 95% confidence level. The estimated units are final and not subject to adjustment. Prospective bidders are urged to examine this timber and to make their own estimates of quantity and quality.

BOND AND PAYMENT SCHEDULE:

1. A bond in the amount of \$9,103.00 to insure faithful performance of the conditions of the contract will be deposited by the successful bidder within 21 days of the sale award.
2. Cutting in any sale or unit without the required advance payment would be considered a trespass.
3. Total payment must be paid in advance or according to the following schedule :
 - (a) Ten percent (10%) of the sale value must be paid within 21 days of the sale award.
 - (b) The 10% down payment will be credited towards the first unit cut.
 - (c) Payment for each of the following units must be made before cutting begins in that unit:

PAYMENT UNIT NUMBER	PERCENT OF TOTAL SALE VALUE
01	7.0%
02	3.4%
03	16.3%
04	20.2%
05	15.4%
06	6.1%
07	2.1%
08	0.6%
09	17.4%
10	2.4%
11	0.4%
12	8.3%
13	0.4%

4. If no cutting takes place, the 10% down payment will not be refunded.
5. Operations on the contract issued will terminate on 06/30/2026.

SALE STATISTICS

Volumes were calculated in cubic feet using the Michigan taper model. Cubic foot volume includes all wood inside bark for the product indicated. For display purposes, cubic feet were converted to cords and MBF using a simple conversion factor, e.g. 79 cubic feet per cord and 185 cubic feet per MBF. The cubic foot volumes are precise; the cords and MBF volumes are not. Cubic foot volume cannot be directly converted to cords or boards with precision.

SALE VOLUMES

The total estimated sale volume may not equal the sum of the species/products due to the nature of statistical calculations associated with double sampling methodology.

VOLUME			STATISTICAL RANGE IN CORDS	
TOTAL CUBIC FEET	TOTAL CORDS	PERCENT ERROR	MINIMUM	MAXIMUM
290,980	3,683	9.18%	3,345	4,021

VDU VOLUMES

A VDU is a Volume Determination Unit. Volumes and their associated statistics are calculated at the VDU level and summarized to the sale level. There is often a one to one relationship between a VDU and a Payment Unit, but not always, depending on the cruise design. Refer to the VDU TO PAYMENT UNIT table.

VDU	VOLUME		PERCENT ERROR	RANGE IN CORDS	
	TOTAL CUBIC FEET	TOTAL CORDS		MINIMUM	MAXIMUM
1	33,390	423	22.52%	327	518
2	17,195	218	28.33%	156	279
3	66,121	837	18.92%	679	995
5	33,252	421	19.70%	338	504
6	29,692	376	44.77%	208	544
7	12,705	161	30.94%	111	211
8	4,440	56	21.47%	44	68
9	53,967	683	12.46%	598	768
10	15,903	201	33.66%	134	269
11	1,854	23	54.46%	11	36
12	20,098	254	30.36%	177	332
13	2,361	30	97.74%	1	59
TOTAL:	290,980	3,683		2,783	4,584

VDU TO PAYMENT UNIT

When a VDU is associated with more than one Payment Unit (PU), the VDU volumes are assigned to the PU based on acres of the VDU within the PU.

VDU	VDU ACRES	PU	PU ACRES
1	54.7	1	54.7
2	17.7	2	17.7
3	74.2	3	33.1
		4	41.1
5	35.6	5	35.6
6	10.7	6	10.7
7	12.8	7	12.8
8	8.1	8	8.1
9	62.7	9	62.7
10	36.8	10	36.8
11	9.2	11	9.2
12	19.6	12	19.6
13	2.1	13	2.1
TOTAL:	344.2		344.2

DESCRIPTION OF TIMBER BY PAYMENT UNIT (PU)

PU	MARKET GROUP	PRODUCT	QUANTITY	UNIT	ACRES	ADVERTISE PRICE
1	Balsam Fir	Pulpwood	2	Cords	54.7	\$12,701.75
	Mixed Hardwood		65	Cords		
	<i>Black Cherry</i>		37	Cords		
	<i>Ironwood</i>		4	Cords		
	<i>Red Maple</i>		9	Cords		
	<i>Sugar Maple</i>		15	Cords		
	Paper Birch		40	Cords		
	Quaking Aspen		275	Cords		
	White Pine		2	Cords		
	White Spruce		68	Cords		
	<i>White Spruce</i>		68	Cords		
2	Balsam Fir	Pulpwood	15	Cords	17.7	\$6,252.45
	Mixed Hardwood		30	Cords		
	<i>Black Cherry</i>		6	Cords		
	<i>Red Maple</i>		18	Cords		
	<i>Sugar Maple</i>		6	Cords		
	N. White Cedar		8	Cords		
	Paper Birch		27	Cords		
	Quaking Aspen		139	Cords		
	White Spruce		13	Cords		
	<i>White Spruce</i>		13	Cords		
3	Red Maple	Sawtimber	24.4	MBF	33.1	\$29,657.00
	Sugar Maple		74.0	MBF		
	Balsam Fir	Pulpwood	2	Cords		
	Mixed Hardwood		141	Cords		
	<i>Beech</i>		8	Cords		
	<i>Red Maple</i>		38	Cords		
<i>Sugar Maple</i>	95	Cords				
4	Red Maple	Sawtimber	30.4	MBF	41.1	\$36,809.80
	Sugar Maple		91.9	MBF		
	Balsam Fir	Pulpwood	2	Cords		
	Mixed Hardwood		174	Cords		
	<i>Beech</i>		9	Cords		
	<i>Red Maple</i>		47	Cords		
<i>Sugar Maple</i>	118	Cords				
5	Black Cherry	Sawtimber	0.7	MBF	35.6	\$27,948.60
	Paper Birch		0.8	MBF		
	Red Maple		26.7	MBF		
	Sugar Maple	63.1	MBF			
	Balsam Fir	Pulpwood	6	Cords		
	Mixed Hardwood		157	Cords		
	<i>Beech</i>		4	Cords		
	<i>Black Cherry</i>		2	Cords		
	<i>Ironwood</i>		2	Cords		
	<i>Red Maple</i>		45	Cords		
	<i>Sugar Maple</i>		104	Cords		
	Paper Birch		2	Cords		
	Quaking Aspen		23	Cords		
	White Spruce		15	Cords		
<i>White Spruce</i>	15	Cords				
6	Balsam Fir	Pulpwood	54	Cords	10.7	\$11,165.80
	Mixed Hardwood		43	Cords		
	<i>Black Cherry</i>		8	Cords		
	<i>Red Maple</i>		35	Cords		
	Paper Birch		6	Cords		
	Quaking Aspen		258	Cords		

DESCRIPTION OF TIMBER BY PAYMENT UNIT (PU), CON'T

PU	MARKET GROUP	PRODUCT	QUANTITY	UNIT	ACRES	ADVERTISE PRICE			
6 con't	White Spruce	Pulpwood	38	Cords					
	<i>White Spruce</i>		38	<i>Cords</i>					
7	Balsam Fir	Pulpwood	17	Cords	12.8	\$3,871.10			
	Mixed Hardwood		53	Cords					
	<i>Red Maple</i>		53	<i>Cords</i>					
	Paper Birch		21	Cords					
	Quaking Aspen		49	Cords					
	White Spruce		24	Cords					
	<i>White Spruce</i>		24	<i>Cords</i>					
8	Sugar Maple	Sawtimber	0.4	MBF	8.1	\$1,179.40			
	Balsam Fir	Pulpwood	7	Cords					
	Mixed Hardwood		30	Cords					
	<i>Black Ash</i>		1	<i>Cords</i>					
	<i>Black Cherry</i>		3	<i>Cords</i>					
	<i>Red Maple</i>		11	<i>Cords</i>					
	<i>Sugar Maple</i>		15	<i>Cords</i>					
	White Spruce		15	Cords					
	<i>White Spruce</i>		15	<i>Cords</i>					
	9	Sugar Maple	Sawtimber	62.6			MBF	62.7	\$31,640.60
Balsam Fir		Pulpwood	30	Cords					
Basswood			4	Cords					
Mixed Hardwood			441	Cords					
<i>Black Ash</i>			9	<i>Cords</i>					
<i>Black Cherry</i>			31	<i>Cords</i>					
<i>Red Maple</i>			70	<i>Cords</i>					
<i>Sugar Maple</i>			331	<i>Cords</i>					
Quaking Aspen			25	Cords					
White Spruce			29	Cords					
<i>White Spruce</i>		<i>Sawtimber</i>	0.9	<i>MBF</i>					
<i>White Spruce</i>		<i>Pulpwood</i>	27	<i>Cords</i>					
10		Balsam Fir	Pulpwood	24	Cords	36.8	\$4,348.85		
		Basswood		20	Cords				
	Mixed Hardwood		93	Cords					
	<i>Black Ash</i>		5	<i>Cords</i>					
	<i>Black Cherry</i>		28	<i>Cords</i>					
	<i>Red Maple</i>		32	<i>Cords</i>					
	<i>Sugar Maple</i>		28	<i>Cords</i>					
	Quaking Aspen		33	Cords					
	White Pine		2	Cords					
	White Spruce		34	Cords					
	<i>White Spruce</i>		34	<i>Cords</i>					
	11	Balsam Fir	Pulpwood	1	Cords			9.2	\$669.15
		Mixed Hardwood		2	Cords				
<i>Red Maple</i>			2	<i>Cords</i>					
Quaking Aspen			11	Cords					
White Pine			1	Cords					
White Spruce			10	Cords					
<i>White Spruce</i>			10	<i>Cords</i>					
12	Red Maple	Sawtimber	17.2	MBF	19.6	\$15,046.25			
	Sugar Maple		33.1	MBF					
	Mixed Hardwood	Pulpwood	113	Cords					
	<i>Ironwood</i>		3	<i>Cords</i>					
	<i>Red Maple</i>		60	<i>Cords</i>					
	<i>Sugar Maple</i>		50	<i>Cords</i>					
	White Spruce		9	Cords					

DESCRIPTION OF TIMBER BY PAYMENT UNIT (PU), CON'T

PU	MARKET GROUP	PRODUCT	QUANTITY	UNIT	ACRES	ADVERTISE PRICE
12 con't	<i>White Spruce</i>	<i>Pulpwood</i>	9	<i>Cords</i>		
13	Mixed Hardwood	Pulpwood	16	Cords	2.1	\$760.60
	<i>Black Cherry</i>		3	<i>Cords</i>		
	<i>Red Maple</i>		13	<i>Cords</i>		
	Quaking Aspen		9	Cords		
	White Pine		3	Cords		
	White Spruce		2	Cords		
	<i>White Spruce</i>		2	<i>Cords</i>		
TOTAL:			425.3	MBF		
TOTAL:			2,733	Cords		

Sale Specific Conditions & Requirements

Sale Name: Build Back Better Mix

Sale Number: 41-010-22 Seq#: 2

1 - Sale Area

1.2 - Boundaries

1.2.1 - Painted boundaries (9/19)

The sale boundary and Payment Unit boundaries are marked and identified by blue, red and yellow paint. Exterior sale boundary lines against private property are marked with blue paint. Exterior sale boundary lines against state are marked with red paint. Interior Payment Unit boundaries are marked with yellow paint. Retention patches are marked with red paint; no harvesting activities may occur within these areas. The painted boundary line trees are not Included Timber and are to be protected unless marked with orange paint. Yellow painted trees designating an interior Payment Unit boundary are only to be cut when all surrounding Payment Units have been paid.

2 - Timber Specifications

2.1 - Included Timber

2.1.1 - Clearcut unit(s) with unmerchantable trees (6/14)

Within Payment Unit(s) 1, 2, 6-8, 10, 11, & 13, cut all trees that are two (2) inches or more at DBH, except for oak and hemlock. Special protection areas identified in accordance with condition 3.4.3, within clearcutting unit boundaries, are not Included Timber and are to be protected.

2.1.3 - Cut tree marked unit(s) (12/08)

Within Payment Unit(s) 3-5, & 12, all trees are designated for cutting when marked with orange paint above and below stump height, regardless of merchantability.

2.1.4 - Designated timber unit(s) (6/17)

Within Payment Unit(s) 9, all trees are designated for cutting which meet minimum piece specifications in 2.2 - Utilization. In addition, do not cut hemlock, cedar, white pine, yellow birch, and oak, or trees marked with green paint.

3 - Payments

3.3 - Pre-measured Sales

3.3.4 - Dividing payment units (7/14)

Payment Unit(s) \$20,000 or greater in value, may be divided at the request of the Purchaser and upon approval of the Unit Manager. Dividing Payment Units is a contract modification which requires a Timber Sale Contract Amendment.

3.4 - Damaged Timber

3.4.3 - Special Protection Areas (8/11)

The Purchaser shall protect special protection areas from damage by the Purchaser's operations. Special protection areas are excluded with the sale boundary and shown on the Timber Sale Map. Do not operate within this area. If the Purchaser's operations have cut or damaged special protection areas through carelessness, the Purchaser shall pay \$10,000 as fixed, agreed and liquidated damages for each acre or part thereof cut or damaged. Such payment does not constitute ownership of the undesignated timber.

4 - Transportation

4.1 - Construction

4.1.3 - Slash and earthen piles (8/04)

Piles or windrows of earth along roads and landings that have been widened or constructed shall be leveled. Slash from road maintenance or construction, including stumps, shall be dispersed throughout the sale.

4.1.6 - Road construction (1/09)

Construction of new roads or improvements of existing roads shall be done in such a way as to minimize the environmental and visual impacts. Merchantable trees shall be cut and utilized unless otherwise directed. Non-merchantable trees shall be severed and laid flat on the ground. Slash shall be scattered, and not left in windrows and kept a minimum of 10 feet back

from the road edge. Stumps shall be set upright, not left on edge, and be moved at least 10 feet away from the road edge. Disturbed soil shall be feathered into the woods and not left in berms or windrows.

4.1.7 - Road closure (10/11)

All new roads built into the sale must be blocked to vehicle traffic upon completion of the sale. Overgrown roads that are reopened shall be considered new roads. In general, this will require constructing a four (4') foot high berm of stumps and logs covered with earth. Stumps and brush must be placed along the remainder of the trail. These roads must be rendered impassable to cars and trucks. All stumps from road building and landing construction must be reserved to block any newly constructed roads upon completion of the sale. These stumps must be scattered along the road system to prohibit vehicular movement. Contact the Sale Administrator for specific details of design and placement.

4.1.8 - Road work (1) (8/07)

The following road work is required: 500 cubic yards of breaker run gravel must be purchased, hauled and spread on the Petrel Road. All work is at the Purchaser's expense, no deductions will be given. Specific locations will be determined at the Pre-Sale meeting by the Sale Administrator. All work must be completed before hauling begins unless approved by the Unit Manager.

4.1.10 - Oversight (12/08)

The Unit Manager, or his/her representative, must be present when the road improvement project is initiated.

4.2 - Maintenance

4.2.4 - Grading (10/16)

For completion of the sale, state forest roads must be graded. In general, this will require a road grader or bull dozer to shape up the roads after forest products have been hauled off site. This includes cleaning of drainage areas, grading, crowning and filling with gravel, if necessary. The grading equipment to be used must be approved by the Unit Manager or his/her representative.

5 - Operations

5.2 - Conduct of Operations

5.2.2 - Hazard Trees/Snags

5.2.2.1 - Den trees (10/16)

Obvious hollow and/or den trees shall be protected and left standing unless they are a safety hazard.

5.2.3 - Operating Restrictions

5.2.3.3 - Bark slippage restriction (3/09)

Within Payment Unit(s) 3-5, unless changed by written agreement, cutting and skidding are not permitted during the period of April 15 to July 15. This restriction is because of bark slippage.

5.2.4 - Dead and Down Creation

5.2.4.4 - Dead and down creation, grouse (6/18)

To encourage grouse and other wildlife, in Payment Unit(s) 1, 2, 6-8, 10, 11, 13, leave one, 10" diameter or larger log-length (8 foot minimum) piece on the ground for every 1 acre. The log should come from the butt of the tree and cut 4' above the ground leaving a 4' stump. The log should be left as it lays next to the stump. These trees will be evenly scattered throughout the unit, preferably at least two chains from any roads, two-tracks, or trails open to vehicles.

5.2.29 - Shrub protection (1/20)

Do not cut or damage crab apple, apple, or juneberry. These woody-shrub plants are highly beneficial to various wildlife species.

5.2.32 - Decking/landing restoration (9/13)

All decking and landing areas must have the surface area restored to a condition equal to or better than before. This is to ensure the proper regeneration of the stand. Wood debris, chips and "cookies" from trimmings must be removed or scattered away from landing and loading areas and may not be windrowed on the edge.

5.2.38 - No decking against live trees (2/04)

Cut products may not be decked against unmarked or designated leave trees.

5.2.41 - Snowmobile trail protection (9/11)

The Petrel Road and Sunrise Grade are snowmobile trails and are shown on the Timber Sale Map. Do not cut or damage posts with orange trail markers or traffic control signs. If the trail is used, it must be maintained and restored to a condition equal to or better than before the sale. If the trail road is to be used for hauling during the snowmobile season, then a snow covered base must be left on the trail. The Sunrise Grade may not be used for any timber sale operations from December 1 to March 31. Maintain a 20-foot-wide slash, debris, and rut free zone daily using the snowmobile trail as the centerline. No decking of forest products will be permitted along the snowmobile trail. All stumps within 20 feet of the snowmobile trail must be cut at ground level.

5.8 - Protection of Endangered Species

5.8.3 - Red shoulder hawk or goshawk (2/16)

In the event that an active red shoulder hawk or goshawk nest is found, the contract may be amended to protect the nest site until the nest is determined to be inactive. The value of the trees in this excluded area will be refunded or credited to the Purchaser. The nest will be buffered with a five-chain radius (eight acre) protection area, centered on the nest tree, in which there will be no cutting or new roads constructed. Avoid human disturbance, including loading and skidding, in the protection area.

An additional zone of five chains (ten chains centered on the active nest tree) will be established in which there is no management activity from April 1 to July 30. Limit biomass harvesting and chipping operations within this ten-chain zone, retain the maximum one-third of residues per the Woody Biomass Harvesting Guidelines (Michigan DNR 2010). Nests determined to be inactive will be protected with a one-chain no-harvest buffer.

6 - Safety and Fire Prevention

6.2 - Signing

6.2.1 - Road posting (10/20)

The Purchaser is responsible for posting and maintaining caution signs on H-58 prior to beginning operations. The road must be posted at appropriate distances from the Sale Area to warn of logging activity and truck traffic. Signs must be removed when harvest operations are suspended or completed. The Purchaser will provide these signs.

6.2.2 - Snowmobile trail posting (10/20)

The Purchaser is responsible for posting and maintaining caution signs on snowmobile trails prior to beginning operations during the snowmobile season (approximately December 1 to March 31). The trail must be posted at locations designated on the map approximately 350 feet from the Sale Area to warn of logging activity and truck traffic. Signs must be removed when harvest operations are suspended or completed. The Purchaser will provide these signs.



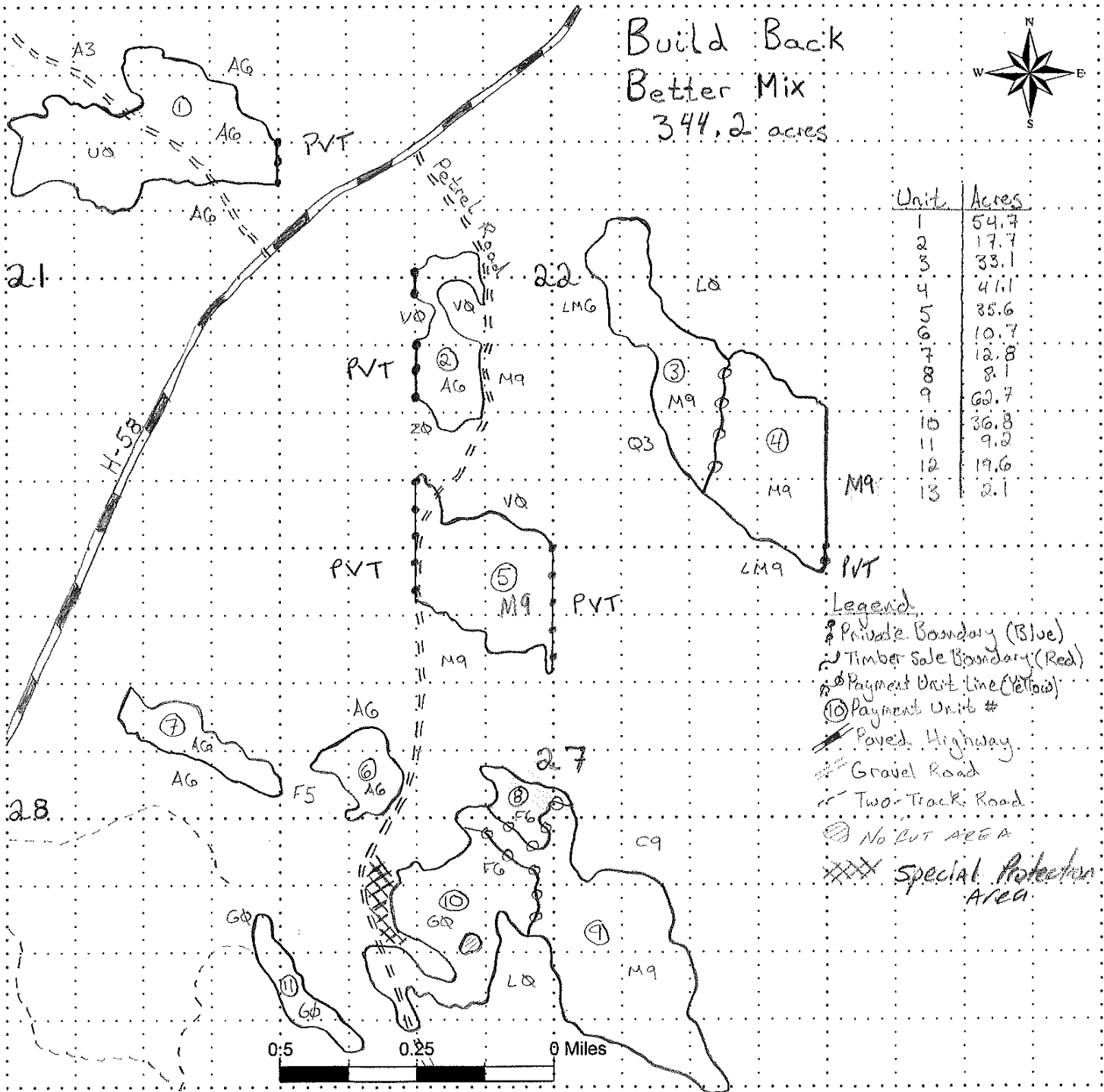
TIMBER SALE MAP

This information provided by authority of Part 5, 1994 PA 451, as amended.

Sale Number	Year
41-010	22
Date 7/20/22	Page 1 of 2
Section(s) and Subdivision(s) 21, 22, 28, 27, 33, 34	

Forest Management Unit Shingleton	County Alger	Mapped By S. Kentner
Compartment Number 179 + 180	Township 47N	Cruised By S. Kentner
	Range 17W	

Cover Type				Density			
A = Aspen	J = Jack Pine	O = Oak	U = Upland Brush	0 = Non Stocked	5 = Pole Timber Medium		
B = Paper Birch	K = Rock	P = Lowland Poplar	UM = Upland Mix Forest	1 = Seedling Sapling Poor	6 = Pole Timber Well		
C = Cedar	L = Lowland Brush	Q = Mixed Swamp Conifer	V = Bog or Marsh	2 = Seedling Sapling Medium	7 = Saw Timber Poor		
D = Treed Bog	LM = Lowland Mix Forest	R = Red Pine	W = White Pine	3 = Seedling Sapling Well	8 = Saw Timber Medium		
E = Swamp Hardwoods	M = Maple, Beech, Birch	S = Black Spruce	X = Non Stocked	4 = Pole Timber Poor	9 = Saw Timber Well		
F = Spruce/Fir	MC = Mixed Conifer	T = Tamarack	Y = Sand				
G = Grass	MD = Mixed Deciduous		Z = Water				
H = Hemlock	N = Marsh						





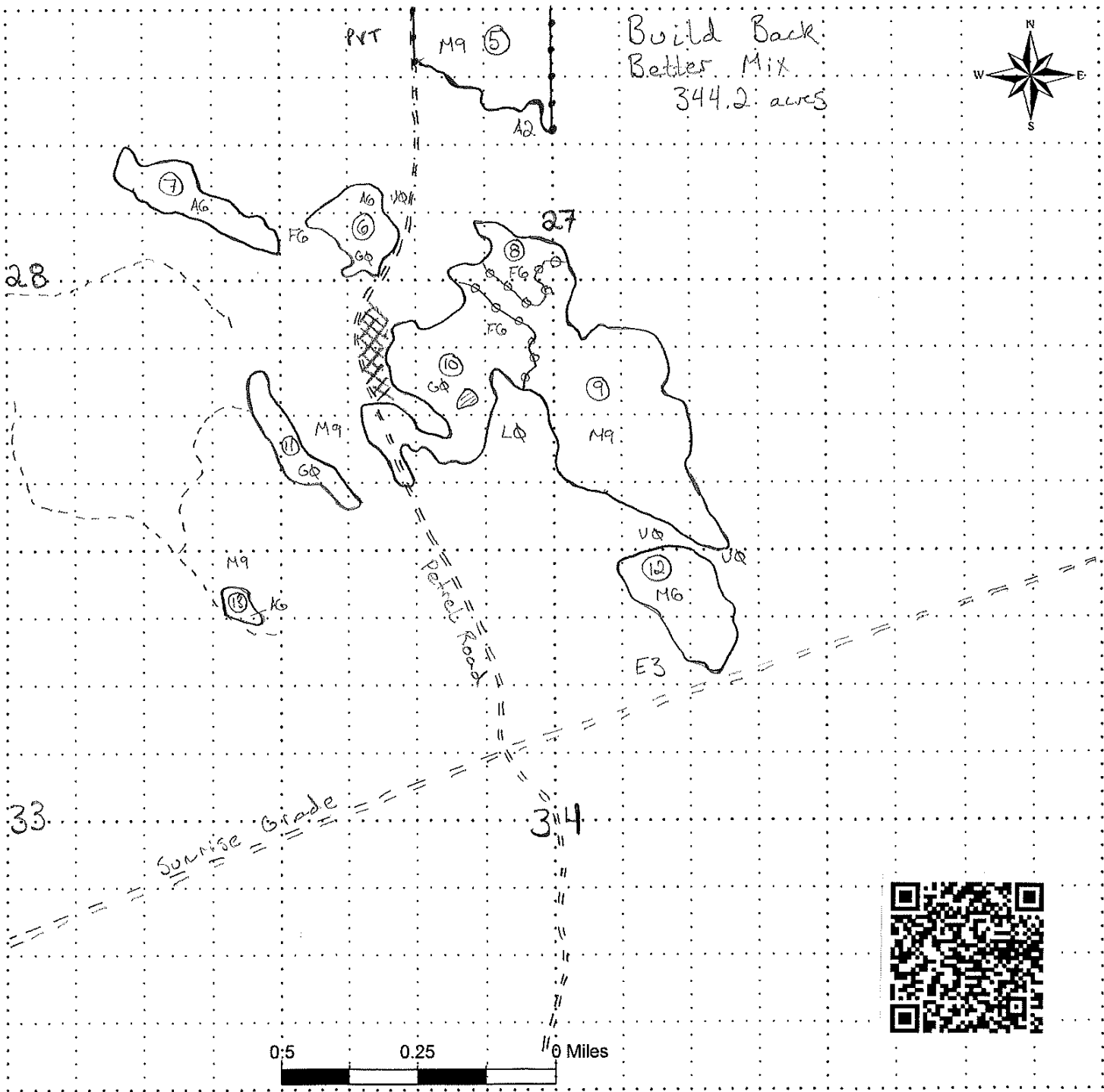
Sale Number	Year
41-010	22

TIMBER SALE MAP

This information provided by authority of Part 5, 1994 PA 451, as amended.

Forest Management Unit Shingleton	County Alger	Mapped By S. Kentner	Date 7/20/22	Page 2	of 2
Compartment Number 179 + 180	Township 47N	Range 17W	Section(s) and Subdivision(s) 21, 22, 28, 27, 33, 34		

Cover Type				Density	
A = Aspen	J = Jack Pine	O = Oak	U = Upland Brush	0 = Non Stocked	5 = Pole Timber Medium
B = Paper Birch	K = Rock	P = Lowland Poplar	UM = Upland Mix Forest	1 = Seedling Sapling Poor	6 = Pole Timber Well
C = Cedar	L = Lowland Brush	Q = Mixed Swamp Conifer	V = Bog or Marsh	2 = Seedling Sapling Medium	7 = Saw Timber Poor
D = Treed Bog	LM = Lowland Mix Forest	R = Red Pine	W = White Pine	3 = Seedling Sapling Well	8 = Saw Timber Medium
E = Swamp Hardwoods	M = Maple, Beech, Birch	S = Black Spruce	X = Non Stocked	4 = Pole Timber Poor	9 = Saw Timber Well
F = Spruce/Fir	MC = Mixed Conifer	T = Tamarack	Y = Sand		
G = Grass	MD = Mixed Deciduous		Z = Water		
H = Hemlock	N = Marsh				



Cooks Breakup (41-001-23)
T41N, R17W, SEC. 31; Schoolcraft COUNTY

In response to the notice of sale to be held 2:00 p.m. (local time) on September 6, 2023, I am hereby submitting my sealed bid (firm offer) for the following forest products to be cut. Bids for individual species must be at or above the advertised price. All non-responsive bid forms may be rejected.

<u>PRODUCTS & SPECIES</u>	<u>ESTIMATED VOLUME*</u>	<u>ADVERTISED PRICE</u>	<u>BID PRICE/UNIT</u>
Sawtimber			
Paper Birch	0.7 MBF	\$ 121.00/MBF	\$ _____
Pulpwood			
B. T. Aspen	2 Cords	\$ 32.95/Cord	\$ _____
Balsam Fir	14 Cords	\$ 15.75/Cord	\$ _____
Mixed Spruce	435 Cords	\$ 21.85/Cord	\$ _____
N. White Cedar	46 Cords	\$ 5.45/Cord	\$ _____
Paper Birch	12 Cords	\$ 18.50/Cord	\$ _____
Red Maple	52 Cords	\$ 20.30/Cord	\$ _____
Red Pine	3 Cords	\$ 92.35/Cord	\$ _____
White Pine	13 Cords	\$ 31.85/Cord	\$ _____

*The volumes are statistically estimated within plus (+) or minus (-) 25.15 percent at 95% confidence level. These estimated volumes are final and not subject to adjustment. Prospective bidders are urged to examine this timber and to make their own estimates of quantity and quality.

I understand that any or all bids may be rejected. All bids must be signed and all bid items must be bid or the bid form may be rejected. I also understand that consideration and awarding a contract will be based upon my past performance and ability to complete the contract based upon equipment and staffing subject to my control.

FEDERAL ID: ____ - ____ - ____ or SOCIAL SECURITY NUMBER: ____ - ____ - ____

Company or individual bidding: _____

Company representative's name: _____

Address: _____

City: _____ State: _____ Zip: _____

IF AVAILABLE, PLEASE PLACE THE PERSONALIZED LABEL FROM YOUR PROSPECTUS IN THE ABOVE BOX.

Individual or company representative's signature: _____ Date: _____

Phone number : _____ Email (optional): _____

THE WINNING BIDDER MUST COMPLETE THE VERIFICATION OF WORKER'S DISABILITY COMPENSATION ACT COMPLIANCE (ON REVERSE SIDE IF DOUBLE SIDED) WITHIN 21 DAYS OF SALE AWARD DATE



FOR DEPARTMENT USE ONLY	
Sale Number (XX - XXX - XX - XX)	
Forest Management Unit:	

TIMBER SALE VERIFICATION OF WORKER'S DISABILITY COMPENSATION ACT COMPLIANCE

As required by Act 317, P.A. 1969 (Worker's Compensation) and
Part 5 of Act 451 of 1994, as amended.

VERIFICATION OF WORKER'S DISABILITY COMPENSATION ACT COMPLIANCE

- This verification must be completed and submitted within 21 days of contract award and prior to the issuance of the timber sale contract.
- In addition, if boxes 2B or 2C are checked, then Notice of Exclusion or Certificate of Insurance must be submitted within twenty-one (21) days of the contract award and prior to the issuance of the timber sale contract.
- All information must be typed or printed except for written signatures.

Please Check Appropriate Categories:

1. My business is organized as (you **must** check one of the boxes below):
 - A. Sole Proprietorship (individual)
 - B. Partnership
 - C. Corporation
2. You **must** check one of the boxes below:
 - A. I certify my business is a sole proprietorship and it has no employees but the sole proprietor. I am not subject to the Worker's Compensation Laws.
 - B. I certify my business has satisfied its obligation to the Worker's Compensation Act through the use of an approved Notice of Exclusion (BWC-337, Rev. 5/96). I will provide a copy of the Notice of Exclusion within 21 days of the contract award. (For questions or a copy of the BWC-337, please call the Worker's Compensation Bureau at 517-322-1195).
 - C. I certify my business has a Worker's Compensation Policy. I will provide an original Certificate of Insurance within twenty-one (21) days of the contract award.
3. If you have checked item 2(A) or 2(B), you **must** indicate the number of **both** full-time and part-time employees, other than yourself, including family members and active partners (if none, you must enter "0").

_____ Full-time Employees

_____ Part-time Employees

Name of Business		Federal ID (or) Social Security No.	
Address		Telephone ()	
City	State	ZIP	

I hereby certify that the above information is true and correct. I agree to notify the Michigan DNR of any changes that occur in factors affecting my coverage during any of my present and future operations.

Signature of Owner or Authorized Representative

Title

Date

Please complete the "SEALED BID" information on the next page

A Little Bit of Everything (41-004-23)

T40N, R18W, SEC. 21; T40N, R18W, SEC. 22; T40N, R18W, SEC. 23; T40N,

In response to the notice of sale to be held 2:00 p.m. (local time) on September 6, 2023, I am hereby submitting my sealed bid (firm offer) for the following forest products to be cut. Bids for individual species must be at or above the advertised price. All non-responsive bid forms may be rejected.

<u>PRODUCTS & SPECIES</u>	<u>ESTIMATED VOLUME*</u>	<u>ADVERTISED PRICE</u>	<u>BID PRICE/UNIT</u>
Sawtimber			
Red Oak	168.1 MBF	\$ 134.00/MBF	\$ _____
Pulpwood			
B. T. Aspen	488 Cords	\$ 32.95/Cord	\$ _____
Jack Pine	214 Cords	\$ 27.50/Cord	\$ _____
Paper Birch	2 Cords	\$ 18.50/Cord	\$ _____
Red Maple	119 Cords	\$ 20.30/Cord	\$ _____
Red Oak	563 Cords	\$ 33.75/Cord	\$ _____
Red Pine	2,069 Cords	\$ 92.35/Cord	\$ _____
White Pine	65 Cords	\$ 31.85/Cord	\$ _____

*The volumes are statistically estimated within plus (+) or minus (-) 11.96 percent at 95% confidence level. These estimated volumes are final and not subject to adjustment. Prospective bidders are urged to examine this timber and to make their own estimates of quantity and quality.

I understand that any or all bids may be rejected. All bids must be signed and all bid items must be bid or the bid form may be rejected. I also understand that consideration and awarding a contract will be based upon my past performance and ability to complete the contract based upon equipment and staffing subject to my control.

FEDERAL ID: ___ - ___ - ___ or SOCIAL SECURITY NUMBER: ___ - ___ - ___

Company or individual bidding: _____

Company representative's name: _____

Address: _____

City: _____ State: _____ Zip: _____

IF AVAILABLE, PLEASE PLACE THE PERSONALIZED LABEL FROM YOUR PROSPECTUS IN THE ABOVE BOX.

Individual or company representative's signature: _____ Date: _____

Phone number : _____ Email (optional): _____

THE WINNING BIDDER MUST COMPLETE THE VERIFICATION OF WORKER'S DISABILITY COMPENSATION ACT COMPLIANCE (ON REVERSE SIDE IF DOUBLE SIDED) WITHIN 21 DAYS OF SALE AWARD DATE

Build Back Better Mix (41-010-22)
T47N, R17W, SEC. 21; T47N, R17W, SEC. 22; T47N, R17W, SEC. 27; T47N,

In response to the notice of sale to be held 2:00 p.m. (local time) on September 6, 2023, I am hereby submitting my sealed bid (firm offer) for the following forest products to be cut. Bids for individual species must be at or above the advertised price. All non-responsive bid forms may be rejected.

<u>PRODUCTS & SPECIES</u>	<u>ESTIMATED VOLUME*</u>	<u>ADVERTISED PRICE</u>	<u>BID PRICE/UNIT</u>
Sawtimber			
Black Cherry	0.7 MBF	\$ 112.00/MBF	\$ _____
Paper Birch	0.8 MBF	\$ 121.00/MBF	\$ _____
Red Maple	98.7 MBF	\$ 93.00/MBF	\$ _____
Sugar Maple	325.1 MBF	\$ 331.00/MBF	\$ _____
Pulpwood			
Balsam Fir	160 Cords	\$ 15.75/Cord	\$ _____
Basswood	24 Cords	\$ 9.45/Cord	\$ _____
Mixed Hardwood	1,358 Cords	\$ 20.30/Cord	\$ _____
N. White Cedar	8 Cords	\$ 5.45/Cord	\$ _____
Paper Birch	96 Cords	\$ 18.50/Cord	\$ _____
Quaking Aspen	822 Cords	\$ 32.95/Cord	\$ _____
White Pine	8 Cords	\$ 31.85/Cord	\$ _____
White Spruce	257 Cords	\$ 21.85/Cord	\$ _____

*The volumes are statistically estimated within plus (+) or minus (-) 9.18 percent at 95% confidence level. These estimated volumes are final and not subject to adjustment. Prospective bidders are urged to examine this timber and to make their own estimates of quantity and quality.

I understand that any or all bids may be rejected. All bids must be signed and all bid items must be bid or the bid form may be rejected. I also understand that consideration and awarding a contract will be based upon my past performance and ability to complete the contract based upon equipment and staffing subject to my control.

FEDERAL ID: ____ - ____ - ____ or SOCIAL SECURITY NUMBER: ____ - ____ - ____

Company or individual bidding: _____

Company representative's name: _____

Address: _____

City: _____ State: _____ Zip: _____

IF AVAILABLE, PLEASE PLACE THE PERSONALIZED LABEL FROM YOUR PROSPECTUS IN THE ABOVE BOX.

Individual or company representative's signature: _____ Date: _____

Phone number : _____ Email (optional): _____

THE WINNING BIDDER MUST COMPLETE THE VERIFICATION OF WORKER'S DISABILITY COMPENSATION ACT COMPLIANCE (ON REVERSE SIDE IF DOUBLE SIDED) WITHIN 21 DAYS OF SALE AWARD DATE



FOR DEPARTMENT USE ONLY	
Sale Number (XX - XXX - XX - XX)	
Forest Management Unit:	

TIMBER SALE VERIFICATION OF WORKER'S DISABILITY COMPENSATION ACT COMPLIANCE

As required by Act 317, P.A. 1969 (Worker's Compensation) and
Part 5 of Act 451 of 1994, as amended.

VERIFICATION OF WORKER'S DISABILITY COMPENSATION ACT COMPLIANCE

- This verification must be completed and submitted within 21 days of contract award and prior to the issuance of the timber sale contract.
- In addition, if boxes 2B or 2C are checked, then Notice of Exclusion or Certificate of Insurance must be submitted within twenty-one (21) days of the contract award and prior to the issuance of the timber sale contract.
- All information must be typed or printed except for written signatures.

Please Check Appropriate Categories:

1. My business is organized as (you **must** check one of the boxes below):
 - A. Sole Proprietorship (individual)
 - B. Partnership
 - C. Corporation
2. You **must** check one of the boxes below:
 - A. I certify my business is a sole proprietorship and it has no employees but the sole proprietor. I am not subject to the Worker's Compensation Laws.
 - B. I certify my business has satisfied its obligation to the Worker's Compensation Act through the use of an approved Notice of Exclusion (BWC-337, Rev. 5/96). I will provide a copy of the Notice of Exclusion within 21 days of the contract award. (For questions or a copy of the BWC-337, please call the Worker's Compensation Bureau at 517-322-1195).
 - C. I certify my business has a Worker's Compensation Policy. I will provide an original Certificate of Insurance within twenty-one (21) days of the contract award.
3. If you have checked item 2(A) or 2(B), you **must** indicate the number of **both** full-time and part-time employees, other than yourself, including family members and active partners (if none, you must enter "0").

_____ Full-time Employees

_____ Part-time Employees

Name of Business		Federal ID (or) Social Security No.	
Address		Telephone ()	
City	State	ZIP	

I hereby certify that the above information is true and correct. I agree to notify the Michigan DNR of any changes that occur in factors affecting my coverage during any of my present and future operations.

Signature of Owner or Authorized Representative

Title

Date

Please complete the "SEALED BID" information on the next page