



**DEPARTMENT OF NATURAL RESOURCES
STATE OF MICHIGAN
TIMBER SALE PROSPECTUS #7347**

SCHEDULED SALE DATE AND TIME: 10:00 a.m. (local time) on January 9, 2024.

LOCATION: ATLANTA MGMT UNIT, 13501 M 33, ATLANTA, MI 49709.

PROSPECTUS NOTE: The bidder is advised to inspect the sale area and review the location, estimated volumes, operating costs and contract terms of proposed sales. Please be aware that some landowners may request 60 days or more notice for access across their land.

Notice is hereby given that bids will be received by the Unit Manager, ATLANTA MANAGEMENT UNIT, for certain timber on the following described lands:

Spring Lk and Elk Rd Pine (54-001-23) / T33N, R02E, SEC. 25, NESW,SE.

T33N, R02E, SEC. 26, NW,NESW.

T33N, R02E, SEC. 27, SENE.

Presque Isle County, Advertised Price \$56,839.10, 120.8 Acres, Jack Pine, Red Pine.

SALE NOTE: 5.2.3.1 - Operating restrictions - Within Payment Units 1-6, cutting, skidding & hauling are limited to the period of August 16 to April 15. This restriction is to limit oak wilt spread and protect adjacent Kirtland's warbler habitat.

A recreation site such as a trail, pathway, or campground is within the sale area or the vicinity. Certain restrictions/specifications may be applicable including time restrictions.

Smokey's Home Pine Oak (54-026-23) / T34N, R03E, SEC. 1, SENW,S1/2NE,SW,SE.

Presque Isle County, Advertised Price \$319,392.25, 177.1 Acres, Red Pine, Red Oak.

SALE NOTE: Good red pine & oak with good access. Operating restrictions for all Payment Units from April 15 to July 15. See sale spec 5.2.3.5 for more details.

A recreation site such as a trail, pathway, or campground is within the sale area or the vicinity. Certain restrictions/specifications may be applicable including time restrictions.

Meridian Line Mix 2.0 (54-036-23) / T31N, R01E, SEC. 18, S1/2SE.

T31N, R01E, SEC. 19, N1/2NE,NESE.

T31N, R01E, SEC. 20, NWNW.

T31N, R01E, SEC. 31, NW,S1/2NE,N1/2SW,NWSE.

Montmorency County, Advertised Price \$121,820.65, 112.8 Acres, Aspen, Hardwood.

SALE NOTE: Fair to good quality timber. Winter harvest restrictions on Payment Units 1 & 2, and soft Oak Wilt restrictions on Payment Units 4-9. Units 4-7 contain some difficult terrain with steep slopes in areas. It is encouraged that the producer opens up these units at the same time because of the variable terrain. No recreational trails present.

Elk Valley Aspen (54-002-22) / T31N, R03E, SEC. 28, SESE.

T31N, R03E, SEC. 33, NENE.

Montmorency County, Advertised Price \$23,256.05, 31.0 Acres, Aspen, Red Oak.

SALE NOTE: Oak wilt restrictions apply to this sale.

Graham's Knotty Pine and Aspen (54-028-22) / T32N, R06E, SEC. 24, NWSW,S1/2SW.
T32N, R06E, SEC. 25, NENW,NWNE,NWSW.

Alpena County, Advertised Price \$65,861.15, 66.8 Acres, Aspen, White Pine.

SALE NOTE: Contacting the Sale Administrator is required before beginning any sale operations. Refer to timber sale spec 5.7.1 for more details. Payment Units 2 & 3 must be completed before beginning Payment Units 1 & 4. Refer to sale spec 3.6.1 for more details.

Road work will be required before hauling/forwarding timber from Payment Units 2 and 3. Refer to sale spec 4.1.8 for road work details.

Mats and/or culverts may be needed for forest road access to Payment Units 2 and 3. Refer to sale specs 5.2.17 and 4.1.5 for more details.

A recreation site such as a trail, pathway, or campground is within the sale area or the vicinity. Certain restrictions/specifications may be applicable including time restrictions.

BID INSTRUCTIONS (VER. 10/10/2022):

1. Scheduled Bid Location, Date, and Time (2/11)

Bids must be received by the Unit Manager, ATLANTA OFFICE, 13501 M 33, ATLANTA, MI 49709, no later than 10:00 a.m. (local time) on January 9, 2024. For further information concerning this sale, contact Matt Foster at 989-619-5921 extension .

2. Bidder's Qualifications (10/22)

If all or part of a timber sale was prepared by a private contractor, the contractor and that contractor's company are not permitted to bid on the timber sale. A person must be 18 years of age or older to purchase timber. Permanent employees of the Department of Natural Resources or members of their immediate household may not bid. Former employees, in the permanent or seasonal class, may not bid until 3 months after the last day of active duty. Bids will not be accepted from individuals or companies appearing on the DNR/FRD No-Bid List. This list contains the names of purchasers who previously failed to execute a contract within 21-days or who have a history of poor performance.

3. Preparation of Sealed Bids (5/16)

Bid Forms may be completed online thru Michigan DNR Timber Sale Online Bidding (OLB) at www.michigan.gov/timberbidding or by completing the hardcopy Bid Form found in the Timber Sale Prospectus . Hardcopy Bid Forms shall be manually signed in ink. Registration in OLB is considered your 'signature' for all bids submitted thru that system. Bid prices must be entered for each species and product in the Bid Price column for all material subject to bidding and all fill-in blanks must be completed. If erasures or other changes appear on the hardcopy Bid Form, each erasure or change must be initialed by the person signing the bid.

4. Submission of Sealed Bids (5/16)

Bid forms may be obtained from the Unit Manager or thru OLB. Bids may be submitted hardcopy or thru OLB. All hardcopy bids must be submitted on the bid form and in an envelope clearly identified as described in this section. NOTE: Only one bid form per bid envelope. Sealed bids must be submitted to the Unit office designated in the prospectus and must be submitted at or prior to the time established in the prospectus. The envelope should show on the outside (a) the sale name or number and (b) the date and time of bid opening, as shown in the prospectus. Bids received after the time specified in the sale prospectus are late bids and will be rejected.

It is possible for a bidder to submit multiple bids on a single sale. For example, a bid may be submitted hardcopy and a bid may be submitted thru OLB. Or, two bidders from the same company could both submit bids on the same sale. If this were to happen, the State would accept all bids received and award the contract accordingly. All bidding and contractual requirements would apply to all bids received.

5. Public Opening of Sealed Bids (7/16)

If conditions permit, the sealed bids will be publicly opened and posted at the time and place set in the prospectus.

If a bidder, present at a bid opening, has submitted bids on more than one sale, that bidder may withdraw their unopened bid envelopes or announce the withdrawal of their online bid after being declared the successful bidder on one sale.

6. Award of Contract (1/11)

Award of the contract will be made to the Bidder whose bid, conforming to the prospectus, is most advantageous to the State of Michigan on the basis of total value at rates bid for the estimated quantities. The State reserves the right to reject any bid or waive any minor irregularity in bids received. A written award mailed (or otherwise furnished) to the successful Bidder shall be deemed to result in a binding contract without further action by either party.

7. Down Payment (1/11)

The Bidder to whom award is made must make a down payment within 21 days of the sale award. The amount of the down payment will be calculated as shown in the Bond and Payment Schedule of this prospectus. Only cash may be used to meet this requirement.

8. Performance Security (1/11)

As guarantee of faithful performance, a cash bond, certificate of deposit, surety bond or irrevocable letter of credit (LOC) is required within 21 days of the sale award. The amount of the performance security is shown in the Bond and

Payment Schedule of this prospectus. If an LOC or surety is used, the coverage must extend for at least 6 months beyond the contract expiration.

9. Worker's Compensation (10/22)

Purchaser shall obtain worker's compensation insurance to cover claims under Michigan's Worker's Disability Compensation Act of 1969 or similar employee benefit act of any other state applicable to an employee. Verification of Worker's Disability Compensation Act Compliance must be completed and submitted within 21 days of contract award and prior to the issuance of the timber sale contract. In addition, if applicable, Notice of Exclusion or Certificate of Insurance must also be submitted.

10. Timber Sale Contract (10/22)

Additional conditions and requirements common to all timber sales are listed on the timber sale contract (R4031) and are available on line at www.michigan.gov/timber. Contact the Unit Manager for additional information or a sample contract. Within 21 days of the date of the award letter, the bidder must sign the contract and provide the required down payment, performance security, and verification of worker's disability compensation. The down payment and performance security shall be in accordance with the provisions of the timber sale contract, in the sums stated in this prospectus. If these actions are not taken, then the Bidder, the Bidder's corporation, and the corporation's principals may not be permitted to bid on State timber sales for a period of 3 months after the first offense, 6 months after the second offense, and 1 year after the third offense. An offense will only be counted against the Bidder for 5 years. In addition, the Bidder certifies that if awarded this contract, the Bidder will complete the timber sale contract in accordance with its terms and any modifications thereof including requirements to purchase, cut, and remove the included timber by the expiration date.

Payment Unit values in the State Forest Timber Sale Contract are calculated based on the advertised value of the Payment Unit as a percentage of the total advertised value of the contract. The advertised value of each Payment Unit is given in the Description of Timber by Payment Unit table on the Timber Sale Information page. For example, if the value of Payment Unit 1 is advertised as \$1,500 and the total Timber Sale value is advertised as \$10,000, the contract price for Payment Unit 1 will be 15% of the total bid price ($\$1,500/\$10,000 * 100$).

11. Disclaimer of Estimates and Bidder's Warranty of Inspection (10/22)

Before submitting this bid, the Bidder is advised and cautioned to inspect the sale area, review the requirements of the sale contract, and take other steps as may be reasonably necessary to ascertain the location, estimated volumes, construction estimates, and operating costs of the proposed sale. Failure to do so will not relieve the Bidder from responsibility for completing the contract.

The Bidder warrants that this bid is submitted solely on the basis of the Bidder's examination and inspection of the quality and quantity of the timber offered for sale and the Bidder's opinion of the value thereof and the costs of recovery. No reliance should be placed on the State of Michigan's estimates of timber quality, quantity or costs of recovery. Bidder further acknowledges that the State of Michigan: (i) expressly disclaims any warranty of fitness of timber for any purpose; (ii) offers this timber as is without any warranty of quality (merchantability) or quantity and (iii) expressly disclaims any warranty as to the quantity or quality of timber sold.

12. Certification and Chain-of-Custody (10/22)

Unless otherwise indicated in the contract under section 7 – Other Conditions of the Sale Specific Conditions & Requirements, the area encompassed by this timber sale is certified to the standards of the Forest Stewardship Council (FSC) - Certificate #SCS-FM/COC-00090N and the Sustainable Forestry Initiative (SFI) - Certificate #NSF-SFIS-5Y031-SF5. Forest products from this sale may be delivered to the mill as "FSC 100% and / or SFI certified" as long as the contractor hauling the forest products is chain-of-custody (COC) certified or covered under a COC certificate from the destination mill. The purchaser is responsible for maintaining COC after leaving the sale area.

13. Good Neighbor Authority (GNA) Requirements (10/22)

If the name of this timber sales contains the acronym GNA, it is authorized by the Good Neighbor Authority (GNA) and covered by various agreements between the U.S. Forest Service and the State. The timber sale occurs on federal land and the following conditions apply:

GNA contracts on US Forest Service land will not be awarded to purchasers on the Federal list of excluded parties. The System for Award Management (SAM) will be checked for active excluded parties prior to award of contract. In

addition, the Bidder to whom award is made must complete an Assurance Regarding Felony Conviction or Tax Delinquent Status for Corporate Applicants (AD-3031).

14. Good Neighbor Authority (GNA) Requirements, con't (10/22)

Bidder certifies, by signing this bid form, that to the best of Bidder's knowledge that the following representations are accurate and complete.

- a. That the Bidder and its principals are not presently debarred, suspended, proposed for debarment, declared ineligible, or voluntary excluded from timber sales (covered transactions) by any Federal department or agency.
- b. That the Bidder and its principals have not within a 3-year period preceding this bid been convicted of or had a civil judgment rendered against them for commission of fraud or a criminal offense in connection with obtaining , attempting to obtain, or performing a public (Federal, State, or local) transaction or contract under a public transaction; violation of Federal or State antitrust statutes or commission of embezzlement, theft, forgery, bribery, falsification or destruction of records, making false statements, or receiving stolen property.
- c. That the Bidder and its principals are not presently indicted for or otherwise criminally or civilly charged by a governmental entity (Federal, State, or local) with commission of any of the offenses enumerated in paragraph b of this certification.
- d. That the Bidder and its principals have not within a 3-year period preceding this bid had one or more public transactions (Federal, State, or local) terminated for breach or default of a timber or forest product contract.

Bidders that cannot certify this requirement, in whole or in part, shall submit an explanation with their bid.

Scott Bowen
Director

TIMBER SALE INFORMATION

Spring Lk and Elk Rd Pine (54-001-23)
 T33N, R02E, SEC. 25; T33N, R02E, SEC. 26; T33N, R02E, SEC. 27.
 Presque Isle County (Advertised Price \$56,839.10)

SALE NOTE: 5.2.3.1 - Operating restrictions - Within Payment Units 1-6, cutting, skidding & hauling are limited to the period of August 16 to April 15. This restriction is to limit oak wilt spread and protect adjacent Kirtland's warbler habitat.

A recreation site such as a trail, pathway, or campground is within the sale area or the vicinity. Certain restrictions/specifications may be applicable including time restrictions.

A timber sale contract for this lump sum, sealed bid timber sale will be awarded to the responsible bidder offering the highest sealed bid price. All units of volume listed below were estimated using the Inventory Manager computer program and the new Michigan taper model. Bids must be at or above the following advertised price for each product and species:

<u>PRODUCTS & SPECIES</u>	<u>ESTIMATED UNITS*</u>	<u>ADVERTISED PRICE</u>
Sawtimber		
B. T. Aspen	17.3 MBF	\$ 119.00 / MBF
Black/Red (Hybrid) Oak	9.1 MBF	\$ 144.00 / MBF
Jack Pine	42.1 MBF	\$ 45.00 / MBF
Red Oak	0.9 MBF	\$ 195.00 / MBF
Red Pine	169.5 MBF	\$ 141.00 / MBF
White Oak	5.5 MBF	\$ 76.00 / MBF
Pulpwood		
B. T. Aspen	73 Cords	\$ 27.35 / Cord
Jack Pine	1,188 Cords	\$ 12.40 / Cord
Mixed Hardwood	47 Cords	\$ 26.10 / Cord
Mixed Oak	125 Cords	\$ 33.70 / Cord
Quaking Aspen	12 Cords	\$ 27.35 / Cord
Red Oak	14 Cords	\$ 33.70 / Cord
Red Pine	99 Cords	\$ 41.25 / Cord
White Pine	1 Cords	\$ 31.80 / Cord

* The total volume is statistically estimated within plus (+) or minus (-) 12.43 percent. There are an estimated 2,065 cords on this timber sale, plus or minus 257 cords at the 95% confidence level. The estimated units are final and not subject to adjustment. Prospective bidders are urged to examine this timber and to make their own estimates of quantity and quality.

BOND AND PAYMENT SCHEDULE:

1. A bond in the amount of \$2,842.00 to insure faithful performance of the conditions of the contract will be deposited by the successful bidder within 21 days of the sale award.
2. Cutting in any sale or unit without the required advance payment would be considered a trespass.
3. Total payment must be paid in advance or according to the following schedule :
 - (a) Ten percent (10%) of the sale value must be paid within 21 days of the sale award.
 - (b) The 10% down payment will be credited towards the first unit cut.
 - (c) Payment for each of the following units must be made before cutting begins in that unit:

PAYMENT UNIT NUMBER	PERCENT OF TOTAL SALE VALUE
01	7.4%
02	34.0%
03	20.8%
04	9.4%
05	16.4%
06	12.0%

4. If no cutting takes place, the 10% down payment will not be refunded.
5. Operations on the contract issued will terminate on 06/30/2027.

SALE STATISTICS

Volumes were calculated in cubic feet using the Michigan taper model. Cubic foot volume includes all wood inside bark for the product indicated. For display purposes, cubic feet were converted to cords and MBF using a simple conversion factor, e.g. 79 cubic feet per cord and 185 cubic feet per MBF. The cubic foot volumes are precise; the cords and MBF volumes are not. Cubic foot volume cannot be directly converted to cords or boards with precision.

SALE VOLUMES

The total estimated sale volume may not equal the sum of the species/products due to the nature of statistical calculations associated with double sampling methodology.

VOLUME			STATISTICAL RANGE IN CORDS	
TOTAL CUBIC FEET	TOTAL CORDS	PERCENT ERROR	MINIMUM	MAXIMUM
163,141	2,065	12.43%	1,808	2,322

VDU VOLUMES

A VDU is a Volume Determination Unit. Volumes and their associated statistics are calculated at the VDU level and summarized to the sale level. There is often a one to one relationship between a VDU and a Payment Unit, but not always, depending on the cruise design. Refer to the VDU TO PAYMENT UNIT table.

	VOLUME			RANGE IN CORDS	
VDU	TOTAL CUBIC FEET	TOTAL CORDS	PERCENT ERROR	MINIMUM	MAXIMUM
2	8,422	107	91.78%	9	204
22	16,907	214	20.75%	170	258
47	39,671	502	18.51%	409	595
51	20,877	264	29.68%	186	343
58	38,575	488	21.30%	384	592
75	20,701	262	23.54%	200	324
76	17,987	228	28.14%	164	292
TOTAL:	163,141	2,065		1,522	2,609

VDU TO PAYMENT UNIT

When a VDU is associated with more than one Payment Unit (PU), the VDU volumes are assigned to the PU based on acres of the VDU within the PU.

VDU	VDU ACRES	PU	PU ACRES
2	3.6	5	3.6
22	13.8	1	13.8
47	33.2	2	8.4
		3	24.8
51	5.3	2	5.3
58	24.7	5	0.8
		6	23.9
75	20.0	4	19.9
		5	0.1
76	20.2	5	20.2
TOTAL:	120.8		120.8

DESCRIPTION OF TIMBER BY PAYMENT UNIT (PU)

PU	MARKET GROUP	PRODUCT	QUANTITY	UNIT	ACRES	ADVERTISE PRICE
1	B. T. Aspen	Sawtimber	3.1	MBF	13.8	\$4,218.05
	Black/Red (Hybrid		0.7	MBF		
	Red Pine		4.3	MBF		
	B. T. Aspen	Pulpwood	7	Cords		
	Jack Pine		152	Cords		
	Mixed Hardwood		2	Cords		
	<i>Red Maple</i>		2	Cords		
	Mixed Oak		4	Cords		
	<i>/Red (Hybrid) Oak</i>		4	Cords		
	Quaking Aspen		8	Cords		
Red Pine	16	Cords				
2	Jack Pine	Sawtimber	2.7	MBF	13.7	\$19,312.05
	Red Pine		114.7	MBF		
	Jack Pine	Pulpwood	68	Cords		
	Mixed Oak		4	Cords		
	<i>/Red (Hybrid) Oak</i>		1	Cords		
	<i>White Oak</i>		3	Cords		
	Red Oak		3	Cords		
	Red Pine		47	Cords		
3	Jack Pine	Sawtimber	8.0	MBF	24.8	\$11,837.85
	Red Pine		49.6	MBF		
	Jack Pine	Pulpwood	199	Cords		
	Mixed Oak		10	Cords		
	<i>/Red (Hybrid) Oak</i>		1	Cords		
	<i>White Oak</i>		9	Cords		
	Red Oak		7	Cords		
	Red Pine		35	Cords		
4	Black/Red (Hybrid	Sawtimber	2.9	MBF	19.9	\$5,355.10
	Jack Pine		7.7	MBF		
	White Oak		2.1	MBF		
	Jack Pine	Pulpwood	178	Cords		
	Mixed Oak		66	Cords		
	<i>/Red (Hybrid) Oak</i>		64	Cords		
	<i>White Oak</i>		2	Cords		
5	B. T. Aspen	Sawtimber	14.2	MBF	24.7	\$9,319.45
	Black/Red (Hybrid		5.5	MBF		
	Jack Pine		6.0	MBF		
	Red Oak	0.9	MBF			
	Red Pine	0.9	MBF			
	White Oak	3.4	MBF			
	B. T. Aspen	Pulpwood	66	Cords		
	Jack Pine		140	Cords		
	Mixed Hardwood		41	Cords		
	<i>Black Cherry</i>		3	Cords		
	<i>Ironwood</i>		2	Cords		
	<i>Red Maple</i>		36	Cords		
	Mixed Oak		32	Cords		
	<i>/Red (Hybrid) Oak</i>		22	Cords		
	<i>White Oak</i>		10	Cords		
	Quaking Aspen		4	Cords		
	Red Oak		4	Cords		
	Red Pine		1	Cords		
	White Pine		1	Cords		
6	Jack Pine	Sawtimber	17.7	MBF	23.9	\$6,796.60
	Jack Pine	Pulpwood	451	Cords		
	Mixed Hardwood	4	Cords			

DESCRIPTION OF TIMBER BY PAYMENT UNIT (PU), CON'T

PU	MARKET GROUP	PRODUCT	QUANTITY	UNIT	ACRES	ADVERTISE PRICE
6 con't	<i>Red Maple</i>	<i>Pulpwood</i>	4	<i>Cords</i>		
	Mixed Oak		9	<i>Cords</i>		
	<i>Northern Pin Oak</i>		5	<i>Cords</i>		
	<i>White Oak</i>		4	<i>Cords</i>		
TOTAL:			244.4	MBF		
TOTAL:			1,559	Cords		

Sale Specific Conditions & Requirements

Sale Name: Spring Lk and Elk Rd Pine

Sale Number: 54-001-23 Seq#: 1

1 - Sale Area

1.2 - Boundaries

1.2.1 - Painted boundaries (9/19)

The sale boundary and Payment Unit boundaries are marked and identified by red and yellow paint. Exterior sale boundary lines against state are marked with red paint. Interior Payment Unit boundaries are marked with yellow paint. The painted boundary line trees are not Included Timber and are to be protected. Yellow painted trees designating an interior Payment Unit boundary are only to be cut when all surrounding Payment Units have been paid.

2 - Timber Specifications

2.1 - Included Timber

2.1.1 - Clearcut unit(s) with unmerchantable trees (6/14)

Within Payment Unit(s) 1, 2, 3, & 6, cut all trees that are 2 inches or more at DBH.

2.1.5 - Overstory removal unit(s) (8/11)

Within Payment Unit(s) 4 & 5, all trees with DBH equal to or greater than 4.5 inches which meet minimum piece specifications in 2.2 Utilization, are designated for cutting. Note: See spec 5.2.4.7 - 'Dead and down creation' for instructions on orange marked trees.

2.2 - Utilization

2.2.2 - Chipping required (2/18)

Payment Units 1-6 must be chip harvested to facilitate subsequent planting operations. The Purchaser has the option to produce sawlogs or pulpwood bolts, but the remaining portion of the trees must be chipped and hauled. Products may be produced as roundwood and forwarded to decking areas in final product length, but the tops must be left intact and skidded to the landing for chipping in order to minimize the amount of residual slash.

If market conditions or the 2.2.5 restriction in Payment Units 4 & 5 limit the practicality of chipping, the following is required: Tops must be cut into lengths 4 feet or less and trees greater than 4 inches at DBH must be cut to a 2-inch top or smaller. Sub-merchantable trees, and hardwood limbs 4 inches or greater where they attach to the stem, are to be cut/reduced to 4-foot lengths. Tops and slash must also be spread evenly across the sale and not left in windrows. This is to speed the breakdown of tops and slash. The requirement to retain approximately 1/6 to 1/3 of treetops and limbs less than four inches in diameter is still applicable (G. C. & R. 2.2).

To not delay follow-up cultivation work, this work must be completed within 30 days of severing stems. No additional Payment Units can be entered until these Payment Units are considered complete and in compliance with specifications 2.2.2 and 2.2.3.

2.2.3 - Stump heights (4/07)

Stump heights within Payment Units 1-6 shall not exceed 6 inches for all trees. This is in order to facilitate planting operations.

2.2.5 - Limbed tree skidding (1/09)

The skidding of whole trees or tree segments with limbs attached is prohibited within Payment Units 4 & 5.

3 - Payments

3.3 - Pre-measured Sales

3.3.4 - Dividing payment units (7/14)

Payment Unit(s) greater than \$20,000 may be divided at the request of the Purchaser and upon approval of the Unit Manager. Dividing Payment Units is a contract modification which requires a Timber Sale Contract Amendment. There will be only one division per Payment Unit.

3.4 - Damaged Timber

3.4.1 - Damaged timber (7/16)

General Condition and Requirement 3.4 Damaged Timber, defines liquidated damages for undesignated live merchantable trees which are cut or injured. In addition, extreme care should be taken to avoid damage to tree seedlings and saplings.

Within Payment Units 4 & 5, if more than 50% of the tree seedlings or saplings (1/4" to 4.5" DBH) within a specified portion of the Sale Area are damaged, liquidated damages will be assessed at \$500 per acre for all acreage within that specified portion of the Sale Area that was damaged.

4 - Transportation

4.1 - Construction

4.1.3 - Slash and earthen piles (8/04)

Piles or windrows of earth along roads and landings that have been widened or constructed shall be leveled. Slash from road maintenance or construction, including stumps, shall be chipped, utilized or otherwise removed from the sale.

4.1.6 - Road construction (1/09)

Construction or improvements of existing roads shall be done in such a way as to minimize the environmental and visual impacts. Merchantable trees shall be cut and utilized unless otherwise directed. Non-merchantable trees shall be severed and laid flat on the ground. Slash shall be scattered, and not left in windrows and kept a minimum of 10 feet back from the road edge. Stumps shall be set upright, not left on edge, and be moved at least 10 feet away from the road edge. Disturbed soil shall be feathered into the woods and not left in berms or windrows.

Narrow access into some Payment Units will require widening and blading on lengths of state forest roads. Additional access timber must be piled separately for scaling by the Sale Administrator. The improved roads and constructed roads must not be unreasonably widened beyond 15 feet.

4.1.7 - Road closure (10/11)

All new roads built into the sale must be blocked to vehicle traffic upon completion of the sale. Overgrown roads that are reopened shall be considered new roads. In general, this will require constructing a four (4') foot high berm of stumps and logs covered with earth. Stumps and brush must be placed along the remainder of the trail. These roads must be rendered impassable to cars and trucks. Contact the Sale Administrator for specific details of design and placement.

4.2 - Maintenance

4.2.5 - Two wheel drive condition (2/04)

All existing trail roads on and adjacent to the sale area must be passable by two-wheel drive traffic for the duration of the sale.

5 - Operations

5.1 - Notification

5.1.1 - Pre-sale conference (10/16)

A pre-sale conference between the Purchaser and sale administrator is required prior to beginning any operations to determine landing and road locations. The Unit Manager or his/her representative must be contacted at least 5 days in advance to schedule the conference.

5.1.4 - Post-sale conference (10/16)

A post-sale conference on site between the Purchaser and sale administrator is required 5 days prior to the completion of active logging operations to determine clean-up and repair of landings, road edges, and the fulfillment of other contract specifications.

5.2 - Conduct of Operations

5.2.2 - Hazard Trees/Snags

5.2.2.1 - Den trees (10/16)

Obvious hollow and/or den trees shall be protected and left standing unless they are a safety hazard.

5.2.3 - Operating Restrictions

5.2.3.1 - Operating restrictions (9/11)

Within Payment Unit(s) 1-6, cutting, skidding, and hauling are limited to the period of August 16 to April 15. This restriction is to limit the spread of oak wilt and to protect adjacent Kirtland's warbler habitat.

5.2.3.6 - Bark beetle restriction (12/08)

In the event drought creates a high risk of pine bark beetle infestation, pine is not to be cut during the period March 1 through July 1, unless all portions of trees greater than two inches in diameter are removed from the sale area, reduced to chips, or treated to the satisfaction of the Unit Manager or his/her representative, within fifteen days of being severed from the stump. Pine log decks, pulpwood piles and treetops that are piled for chipping in the fall or winter within a 1/4 mile of susceptible sites must be removed before March 15. Residual slash must not be placed in piles or rows and must be spread over the site for quick drying. The Department of Natural Resources will exercise this specification if the risk of damage warrants.

5.2.3.11 - Coppice regeneration protection (4/10)

Timber harvesting in Payment Units 4 & 5 must be completed within 30 days of severing/cutting stem(s) to minimize damage to deciduous regeneration. Any post harvest operations, such as chipping, must be completed before sprouting of regeneration occurs. If it is anticipated that chipping will be delayed, then tops shall be carried to one central location or left unchipped. The Unit Manager or his/her representative may cease such operations if sprouting occurs before the operation is complete.

5.2.4 - Dead and Down Creation

5.2.4.7 - Dead and down creation: hare, grouse, deer and other species (5/15)

To improve horizontal cover habitat for snowshoe hare, grouse, deer, and other species, the Purchaser is to push over all orange painted trees in Payment Units 5. These trees should be tipped over with the root ball still attached so the base of the tree is suspended off the ground. The crown of the fallen tree should be at or near ground level after it is pushed over. If it is impractical to push the trees over, they may be cut or partially cut and pushed over.

5.2.18 - Equipment requirements (1/09)

No feller bunchers are allowed in Payment Units 4 & 5, unless operators demonstrate care and are damaging less than 50% of the regeneration.

5.2.31 - Landing locations (9/13)

Landing locations are shown on the Timber Sale Map. Landings must be confined to these designated sites unless otherwise authorized by the Unit Manager or his/her representative.

5.2.32 - Decking/landing restoration (9/13)

All decking and landing areas must have the surface area restored to a condition equal to or better than before. This is to ensure the proper regeneration of the stand. Wood debris, chips and "cookies" from trimmings must be removed or scattered away from landing and loading areas and may not be windrowed on the edge.

5.2.38 - No decking against live trees (2/04)

Cut products may not be decked against unmarked or designated leave trees.

5.2.39 - ORV trail/route protection (4/18)

The Atlanta ORV and motorcycle trails and route are shown on the Timber Sale Map. Do not cut trees or damage posts with yellow, brown, or orange trail markers. All stumps within 5 feet of the trail must be cut flush with the ground. Maintain a 20-foot-wide slash, debris, and rut free zone daily using the trails or routes as the centerline. Do not run equipment down the trails or routes. Skidding across the trails or routes may only occur in locations approved by the Sale Administrator.

5.2.40 - Pathway protection (10/10)

The High Country Pathway is shown on the Timber Sale Map. Do not cut trees or damage posts with blue pathway markers. Maintain a 20-foot wide slash, debris, and rut free zone daily, using the pathway as the centerline. Do not run equipment down the pathway. Skidding across the trail may only occur in locations approved by the Sale Administrator.

5.4 - Soil Protection

5.4.1 - Rutting restriction, general (7/16)

Operations are to cease immediately if equipment and weather conditions result in rutting of roads and/or skid trails which is 12 inches or greater in depth and 50 feet in length. The Unit Manager or his/her representative may restrict hauling and/or skidding if ruts exceed the specified depth. With the Unit Manager or his/her representative's approval, the Purchaser may return to the area when the risk of rutting has decreased.

5.8 - Protection of Endangered Species

5.8.5 - Protection of raptor nests (3/13)

All trees with raptor nests will be protected if found during harvesting operations. Notification will be made to the Unit Manager or his/her representative who will notify the Wildlife Biologist so an on-site evaluation and recommendation can be made, if necessary.

6 - Safety and Fire Prevention

6.2 - Signing

6.2.3 - Recreational trail posting (10/20)

The Purchaser is responsible for posting and maintaining caution signs on the Atlanta ATV Route, High Country Pathway, and Motorcycle (Red Bridge To Atlanta MCCCT South) trails prior to beginning operations. The trail must be posted at appropriate distances from the Sale Area to warn of logging activity and truck traffic at both ends of the trail. Signs must be removed when harvest operations are suspended or completed. The Purchaser will provide these signs.



TIMBER SALE MAP

This information provided by authority of Part 525, 1994 PA 451, as amended.

Forest Management Unit
Atlanta Management Unit

County
Presque Isle

Mapped By
Coy
Cruised By
Coy

Date
04/07/2023

Page
1 of
2

Township
33N

Range
02E

Section(s) and Subdivision(s)
25- NESW,SE 26- NW,NESW 27- SENE

1:15,840

Cover Type

A = Aspen	J = Jack Pine	O = Oak	U = Upland Brush
B = Paper Birch	K = Rock	P = Lowland Poplar	UM = Upland Mix Forest
C = Cedar	L = Lowland Brush	Q = Mixed Swamp Conifer	V = Bog or Marsh
D = Treed Bog	LM = Lowland Mix Forest	R = Red Pine	W = White Pine
E = Swamp Hardwoods	M = Maple, Beech, Birch	S = Black Spruce	X = Non Stocked
F = Spruce/Fir	MC = Mixed Conifer	T = Tamarack	Y = Sand
G = Grass	MD = Mixed Deciduous	Z = Water	
H = Hemlock	N = Marsh		

Density

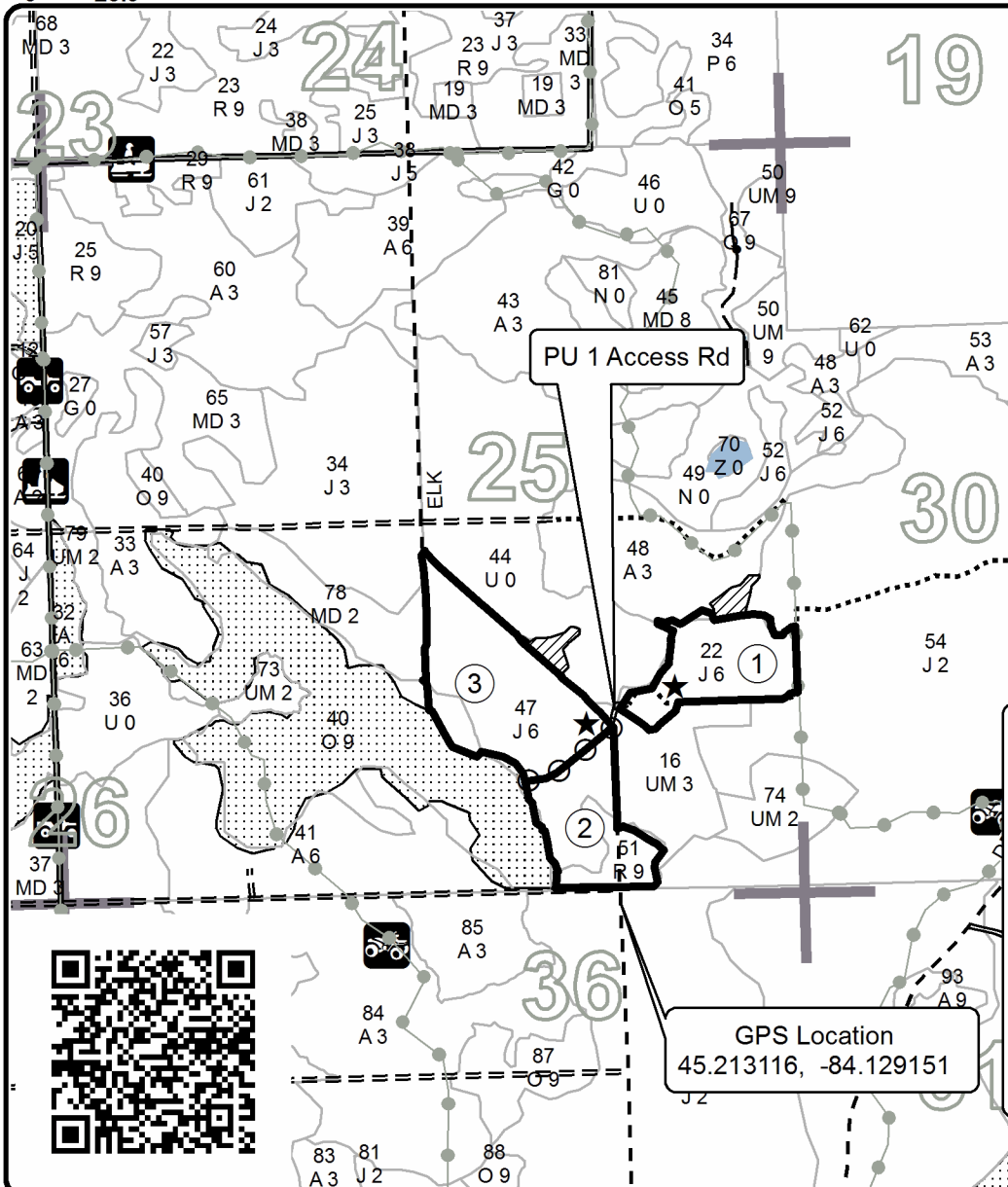
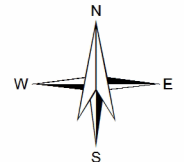
0 = Non Stocked	5 = Pole Timber Medium
1 = Seedling Sapling Poor	6 = Pole Timber Well
2 = Seedling Sapling Medium	7 = Saw Timber Poor
3 = Seedling Sapling Well	8 = Saw Timber Medium
4 = Pole Timber Poor	9 = Saw Timber Well

PU	Acres
1	13.8
2	13.7
3	24.8
4	19.9
5	24.7
6	23.9

Spring Lk and Elk Rd Pine

Compartment 124

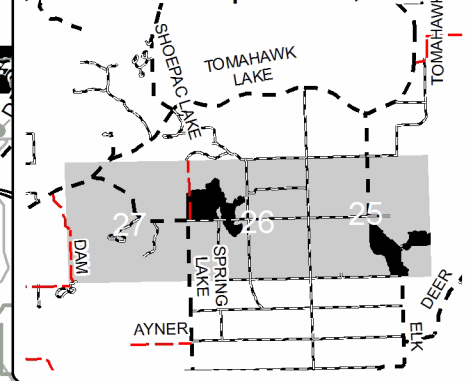
120.8 Acres



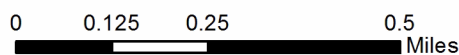
Legend

- Against State (Red)
- Payment Unit Line (Yellow)
- Retention Area (Outside of Sale)
- Nearby Timber Sales
- Stand Boundaries
- Lakes
- Payment Unit
- Landing
- Recreational Trail
- Secondary Road
- Forest Access Route
- Gravel Road
- Temporary Access
- Drain
- Section Corner

Locator Map 1:100,000



GPS Location
45.213116, -84.129151





TIMBER SALE MAP

54 - 001

2023

This information provided by authority of Part 525, 1994 PA 451, as amended.

Forest Management Unit
Atlanta Management Unit

County
Presque Isle

Mapped By
Coy
Cruised By
Coy

Date
04/07/2023

Page
2
of
2

Township
33N

Range
02E

Section(s) and Subdivision(s)
25- NESW,SE 26- NW,NESW 27- SENE

1:15,840

Cover Type

A = Aspen	J = Jack Pine	O = Oak	U = Upland Brush
B = Paper Birch	K = Rock	P = Lowland Poplar	UM = Upland Mix. Forest
C = Cedar	L = Lowland Brush	Q = Mixed Swamp Conifer	V = Bog or Marsh
D = Tread Bog	LM = Lowland Mix. Forest	R = Red Pine	W = White Pine
E = Swamp Hardwoods	M = Maple, Beech, Birch	S = Black Spruce	X = Non Stocked
F = Spruce/Fir	MC = Mixed Conifer	T = Tamarack	Y = Sand
G = Grass	MD = Mixed Deciduous	Z = Water	
H = Hemlock	N = Marsh		

Density

0 = Non Stocked	5 = Pole Timber Medium
1 = Seedling Sapling Poor	6 = Pole Timber Well
2 = Seedling Sapling Medium	7 = Saw Timber Poor
3 = Seedling Sapling Well	8 = Saw Timber Medium
4 = Pole Timber Poor	9 = Saw Timber Well

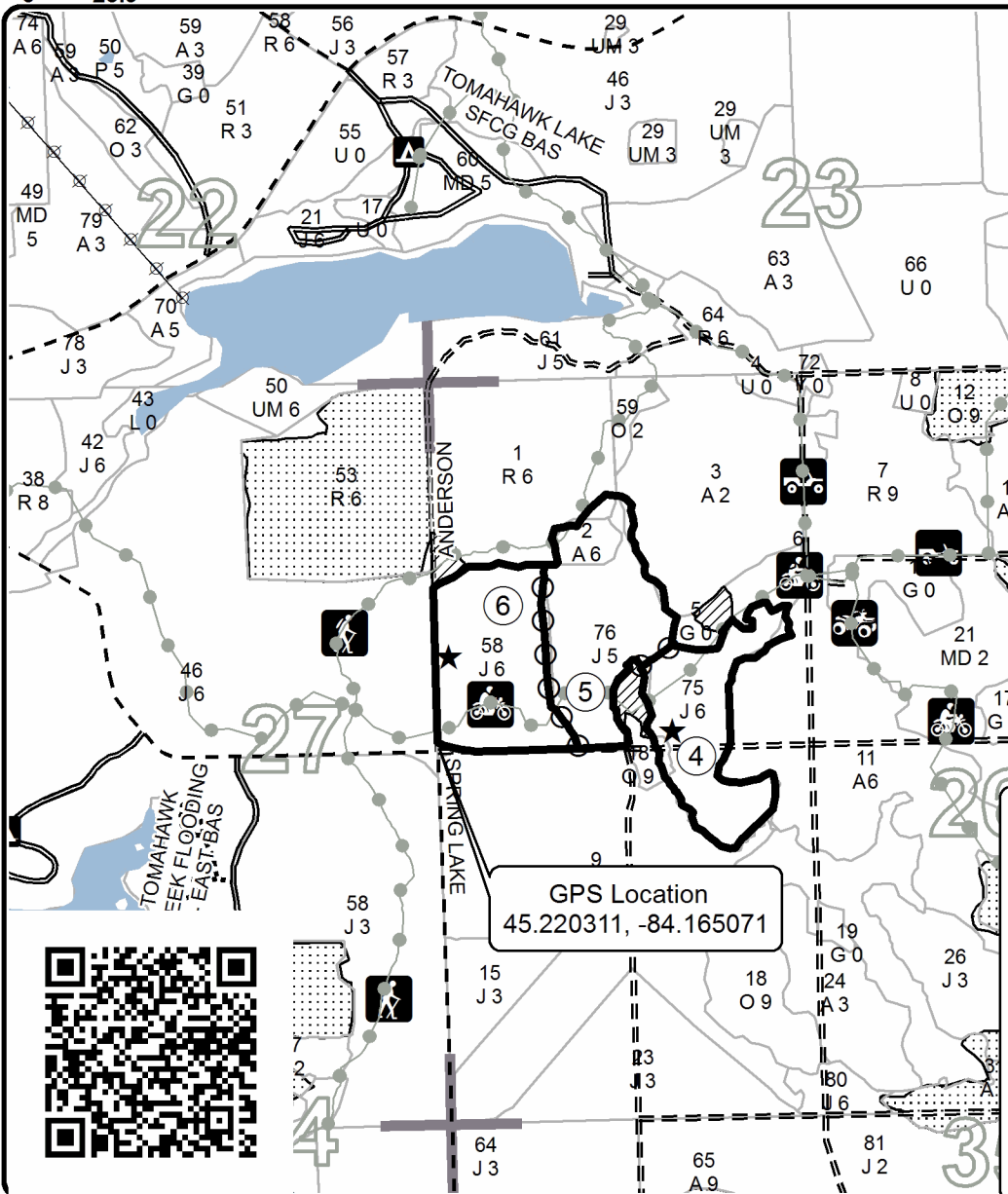
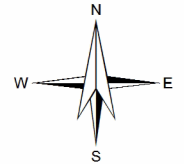
PU Acres

1	13.8
2	13.7
3	24.8
4	19.9
5	24.7
6	23.9

Spring Lk and Elk Rd Pine

Compartment 124

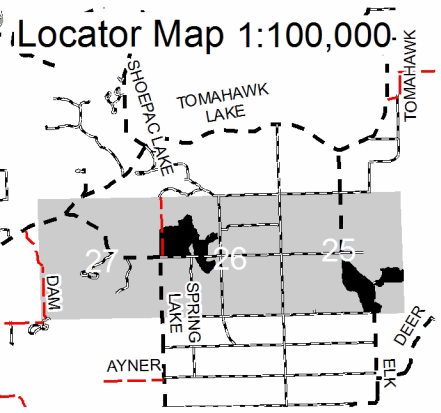
120.8 Acres



Legend

- Against State (Red)
- Payment Unit Line (Yellow)
- Retention Area (Outside of Sale)
- Nearby Timber Sales
- Stand Boundaries
- Lakes
- Payment Unit
- Landing
- State Forest Campgrounds
- Recreational Trail
- Secondary Road
- Forest Access Route
- Gravel Road
- County Road - Seasonal
- Temporary Access
- Powerline
- Section Corner

GPS Location
45.220311, -84.165071



TIMBER SALE INFORMATION

Smokey's Home Pine Oak (54-026-23)
T34N, R03E, SEC. 1.
Presque Isle County (Advertised Price \$319,392.25)

SALE NOTE: Good red pine & oak with good access. Operating restrictions for all Payment Units from April 15 to July 15. See sale spec 5.2.3.5 for more details.

A recreation site such as a trail, pathway, or campground is within the sale area or the vicinity. Certain restrictions/specifications may be applicable including time restrictions.

A timber sale contract for this lump sum, sealed bid timber sale will be awarded to the responsible bidder offering the highest sealed bid price. All units of volume listed below were estimated using the Inventory Manager computer program and the new Michigan taper model. Bids must be at or above the following advertised price for each product and species:

<u>PRODUCTS & SPECIES</u>	<u>ESTIMATED UNITS*</u>	<u>ADVERTISED PRICE</u>
Sawtimber		
Red Oak	470.5 MBF	\$ 195.00 / MBF
Red Pine	958.0 MBF	\$ 141.00 / MBF
White Pine	141.3 MBF	\$ 143.00 / MBF
Pulpwood		
B. T. Aspen	10 Cords	\$ 27.35 / Cord
Black Spruce	62 Cords	\$ 9.15 / Cord
Jack Pine	38 Cords	\$ 12.40 / Cord
Red Maple	67 Cords	\$ 26.10 / Cord
Red Oak	683 Cords	\$ 33.75 / Cord
Red Pine	930 Cords	\$ 41.25 / Cord
White Pine	248 Cords	\$ 31.80 / Cord

* The total volume is statistically estimated within plus (+) or minus (-) 9.77 percent. There are an estimated 5,449 cords on this timber sale, plus or minus 532 cords at the 95% confidence level. The estimated units are final and not subject to adjustment. Prospective bidders are urged to examine this timber and to make their own estimates of quantity and quality.

BOND AND PAYMENT SCHEDULE:

1. A bond in the amount of \$15,970.00 to insure faithful performance of the conditions of the contract will be deposited by the successful bidder within 21 days of the sale award.
2. Cutting in any sale or unit without the required advance payment would be considered a trespass.
3. Total payment must be paid in advance or according to the following schedule :
 - (a) Ten percent (10%) of the sale value must be paid within 21 days of the sale award.
 - (b) The 10% down payment will be credited towards the first unit cut.
 - (c) Payment for each of the following units must be made before cutting begins in that unit:

PAYMENT UNIT NUMBER	PERCENT OF TOTAL SALE VALUE
01	15.9%
02	12.4%
03	13.1%
04	15.8%
05	9.4%
06	10.6%
07	11.7%
08	11.1%
4. If no cutting takes place, the 10% down payment will not be refunded.
5. Operations on the contract issued will terminate on 06/30/2027.

SALE STATISTICS

Volumes were calculated in cubic feet using the Michigan taper model. Cubic foot volume includes all wood inside bark for the product indicated. For display purposes, cubic feet were converted to cords and MBF using a simple conversion factor, e.g. 79 cubic feet per cord and 185 cubic feet per MBF. The cubic foot volumes are precise; the cords and MBF volumes are not. Cubic foot volume cannot be directly converted to cords or boards with precision.

SALE VOLUMES

The total estimated sale volume may not equal the sum of the species/products due to the nature of statistical calculations associated with double sampling methodology.

VOLUME			STATISTICAL RANGE IN CORDS	
TOTAL CUBIC FEET	TOTAL CORDS	PERCENT ERROR	MINIMUM	MAXIMUM
430,492	5,449	9.77%	4,917	5,982

VDU VOLUMES

A VDU is a Volume Determination Unit. Volumes and their associated statistics are calculated at the VDU level and summarized to the sale level. There is often a one to one relationship between a VDU and a Payment Unit, but not always, depending on the cruise design. Refer to the VDU TO PAYMENT UNIT table.

	VOLUME			RANGE IN CORDS	
VDU	TOTAL CUBIC FEET	TOTAL CORDS	PERCENT ERROR	MINIMUM	MAXIMUM
28	40,799	516	19.30%	417	616
34	53,651	679	24.71%	511	847
39	170,136	2,154	19.97%	1,724	2,584
56	35,994	456	16.09%	382	529
60	125,543	1,589	13.81%	1,370	1,809
122	4,368	55	52.88%	26	85
TOTAL:	430,492	5,449		4,430	6,469

VDU TO PAYMENT UNIT

When a VDU is associated with more than one Payment Unit (PU), the VDU volumes are assigned to the PU based on acres of the VDU within the PU.

VDU	VDU ACRES	PU	PU ACRES
28	14.5	1	2.1
		2	5.1
		3	7.3
34	18.7	1	18.7
		39	64.8
39	64.8	1	3.8
		2	17.2
		3	16.5
		4	27.3
56	10.8	5	10.8
		60	58.5
60	58.5	6	18.5
		7	20.5
		8	19.5
122	9.8	5	9.8
		TOTAL:	177.1

DESCRIPTION OF TIMBER BY PAYMENT UNIT (PU)

PU	MARKET GROUP	PRODUCT	QUANTITY	UNIT	ACRES	ADVERTISE PRICE			
1	Red Oak	Sawtimber	10.4	MBF	24.6	\$50,778.50			
	Red Pine		254.0	MBF					
	White Pine		15.4	MBF					
	Black Spruce	Pulpwood	8	Cords					
	Jack Pine		3	Cords					
	Red Maple		9	Cords					
	<i>Red Maple</i>	<i>Sawtimber</i>	<i>0.5</i>	<i>MBF</i>					
	<i>Red Maple</i>	<i>Pulpwood</i>	<i>8</i>	<i>Cords</i>					
	Red Oak		18	Cords					
	Red Pine		214	Cords					
	White Pine		30	Cords					
2	Red Oak	Sawtimber	9.3	MBF	22.3	\$39,684.30			
	Red Pine		156.0	MBF					
	White Pine		36.8	MBF					
	Black Spruce	Pulpwood	21	Cords					
	Jack Pine		8	Cords					
	Red Maple		22	Cords					
	<i>Red Maple</i>	<i>Sawtimber</i>	<i>1.2</i>	<i>MBF</i>					
	<i>Red Maple</i>	<i>Pulpwood</i>	<i>20</i>	<i>Cords</i>					
	Red Oak		24	Cords					
	Red Pine		165	Cords					
	White Pine		67	Cords					
3	Red Oak	Sawtimber	9.2	MBF	23.8	\$41,876.35			
	Red Pine		158.2	MBF					
	White Pine		45.3	MBF					
	Black Spruce	Pulpwood	30	Cords					
	Jack Pine		10	Cords					
	Red Maple		33	Cords					
	<i>Red Maple</i>	<i>Sawtimber</i>	<i>1.8</i>	<i>MBF</i>					
	<i>Red Maple</i>	<i>Pulpwood</i>	<i>29</i>	<i>Cords</i>					
	Red Oak		25	Cords					
	Red Pine		162	Cords					
	White Pine		79	Cords					
4	Red Oak	Sawtimber	13.6	MBF	27.3	\$50,388.85			
	Red Pine		219.0	MBF					
	White Pine		25.3	MBF					
	Black Spruce	Pulpwood	3	Cords					
	Jack Pine		5	Cords					
	Red Oak		30	Cords					
	Red Pine		248	Cords					
	White Pine		60	Cords					
	5	Red Oak	Sawtimber	24.1			MBF	20.6	\$29,893.95
		Red Pine		131.2			MBF		
White Pine			10.1	MBF					
B. T. Aspen		Pulpwood	10	Cords					
<i>B. T. Aspen</i>		<i>Sawtimber</i>	<i>3.8</i>	<i>MBF</i>					
<i>B. T. Aspen</i>		<i>Pulpwood</i>	<i>2</i>	<i>Cords</i>					
Red Maple			3	Cords					
<i>Red Maple</i>			<i>3</i>	<i>Cords</i>					
Red Oak			36	Cords					
Red Pine			87	Cords					
White Pine			3	Cords					
6	Red Oak	Sawtimber	127.8	MBF	18.5	\$33,788.35			
	Red Pine		12.5	MBF					
	White Pine		2.7	MBF					
	Jack Pine	Pulpwood	4	Cords					

DESCRIPTION OF TIMBER BY PAYMENT UNIT (PU), CON'T

PU	MARKET GROUP	PRODUCT	QUANTITY	UNIT	ACRES	ADVERTISE PRICE
6 con't	Red Oak	Pulpwood	174	Cords		
	Red Pine		17	Cords		
	White Pine		3	Cords		
7	Red Oak	Sawtimber	141.4	MBF	20.5	\$37,390.10
	Red Pine		13.9	MBF		
	White Pine		2.9	MBF		
	Jack Pine	Pulpwood	4	Cords		
	Red Oak		193	Cords		
	Red Pine		19	Cords		
	White Pine		3	Cords		
8	Red Oak	Sawtimber	134.7	MBF	19.5	\$35,591.85
	Red Pine		13.2	MBF		
	White Pine		2.8	MBF		
	Jack Pine	Pulpwood	4	Cords		
	Red Oak		183	Cords		
	Red Pine		18	Cords		
	White Pine		3	Cords		
TOTAL:			1,569.8	MBF		
TOTAL:			2,038	Cords		

Sale Specific Conditions & Requirements

Sale Name: Smokey's Home Pine Oak

Sale Number: 54-026-23 Seq#: 1

1 - Sale Area

1.2 - Boundaries

1.2.1 - Painted boundaries (9/19)

The sale boundary and Payment Unit boundaries are marked and identified by red and yellow paint. Exterior sale boundary lines against state are marked with red paint. Interior Payment Unit boundaries are marked with yellow paint. Retention patches are marked with red paint; no harvesting activities may occur within these areas. The painted boundary line trees are not Included Timber and are to be protected. Yellow painted trees designating an interior Payment Unit boundary are only to be cut when all surrounding Payment Units have been paid.

2 - Timber Specifications

2.1 - Included Timber

2.1.1 - Clearcut unit(s) with unmerchantable trees (6/14)

Within Payment Unit(s) 1-8, cut all trees that are two (2) inches or more at DBH, except trees marked with green paint.

2.2 - Utilization

2.2.2 - Chipping required (2/18)

Payment Unit(s) 1-5 must be chip harvested to facilitate subsequent planting operations. The Purchaser has the option to produce sawlogs or pulpwood bolts, but the remaining portion of the trees must be chipped and hauled. If market conditions limit the practicality of chipping, tops and slash must be arranged in a way that will not inhibit future planting operations, as directed by the Sale Administrator. The requirement to retain approximately 1/6 to 1/3 of treetops and limbs less than four inches in diameter is still applicable (G. C. & R. 2.2).

2.2.3 - Stump heights (4/07)

Stump heights within Payment Units 1-5 shall not exceed 6 inches for all trees. This is in order to facilitate planting operations.

3 - Payments

3.4 - Damaged Timber

3.4.1 - Damaged timber (7/16)

General Condition and Requirement 3.4 Damaged Timber, defines liquidated damages for undesignated live merchantable trees which are cut or injured. In addition, in Payment Units 6, 7, & 8, extreme care should be taken to avoid damage to advanced pine seedlings and saplings that are less than two (2) inches at DBH.

3.4.2 - Special Protection Trees (4/14)

The Purchaser shall not cut live or dead special protection trees within cutting units or clearings. Special protection trees are marked with green paint. If the Purchaser's operations have cut or damaged special protection trees through carelessness, the Purchaser shall pay \$200.00 as fixed, agreed and liquidated damages for each special protection tree cut or damaged. Such payment does not constitute ownership of the undesignated timber.

3.6 - Payment Unit Cutting Schedule

3.6.8 - Operating period (5/16)

Once cutting begins, operations must continue until all Payment Units are completed. This requirement is for Payment Units 1-5. This is required to facilitate follow up cultivation work.

4 - Transportation

4.1 - Construction

4.1.3 - Slash and earthen piles (8/04)

Piles or windrows of earth along roads and landings that have been widened or constructed shall be leveled. Slash from road

maintenance or construction, including stumps, shall be chipped, utilized or otherwise removed from the sale.

4.1.6 - Road construction (1/09)

Construction of new roads or improvements of existing roads shall be done in such a way as to minimize the environmental and visual impacts. Merchantable trees shall be cut and utilized unless otherwise directed. Non-merchantable trees shall be severed and laid flat on the ground. Slash shall be chipped, utilized or otherwise removed from the sale. Stumps shall be set upright, not left on edge, and be moved at least 20 feet away from the road edge. Disturbed soil shall be feathered into the woods and not left in berms or windrows.

4.1.7 - Road closure (10/11)

All new roads built into the sale must be blocked to vehicle traffic upon completion of the sale. All new roads built into the sale must be blocked to vehicle traffic within 30 days of completion of hauling. Overgrown roads that are reopened shall be considered new roads. Some existing roads may also need to be closed. In general, this will require constructing a four (4') foot high berm of stumps and logs covered with earth. These roads must be rendered impassable to cars and trucks. All stumps from road building and landing construction must be reserved to block any newly constructed roads upon completion of the sale. These stumps must be scattered along the road system to prohibit vehicular movement. Contact the Sale Administrator for specific details of design and placement.

4.2 - Maintenance

4.2.5 - Two wheel drive condition (2/04)

All existing trail roads on and adjacent to the sale area must be passable by two-wheel drive traffic for the duration of the sale.

5 - Operations

5.1 - Notification

5.1.1 - Pre-sale conference (10/16)

A pre-sale conference on site between the Purchaser and sale administrator is required prior to beginning any operations to determine landing and road locations. The Unit Manager or his/her representative must be contacted at least 10 days in advance to schedule the conference.

5.1.4 - Post-sale conference (10/16)

A post-sale conference on site between the Purchaser and sale administrator is required 5 days prior to the completion of active logging operations to determine clean-up and repair of landings, road edges, and the fulfillment of other contract specifications.

5.2 - Conduct of Operations

5.2.1 - Slash

5.2.1.8 - Slash height (12/08)

No slash or tree tops may exceed 24 inches in height.

5.2.2 - Hazard Trees/Snags

5.2.2.1 - Den trees (10/16)

Obvious hollow and/or den trees shall be protected and left standing unless they are a safety hazard.

5.2.3 - Operating Restrictions

5.2.3.5 - Oak wilt restriction (1/18)

Within Payment Units 1-8, unless changed by written agreement, cutting, skidding, hauling within the sale and brushing of access roads to the sale are not permitted during the period of April 15 to July 15. Operations may be allowed if specific steps are taken to prevent damaging uncut oak during the high risk period. Those steps may include completing all road brushing before April 15th and clearing a tree-length buffer along uncut oak cover before April 15th. This is necessary to reduce the spread of oak wilt. For more information, contact the Unit Manager or his/her representative.

5.2.3.6 - Bark beetle restriction (12/08)

In the event drought creates a high risk of pine bark beetle infestation, pine is not to be cut during the period March 1 through July 1, unless all portions of trees greater than two inches in diameter are removed from the sale area, reduced to

chips, or treated to the satisfaction of the Unit Manager or his/her representative, within fifteen days of being severed from the stump. Pine log decks, pulpwood piles and treetops that are piled for chipping in the fall or winter within a 1/4 mile of susceptible sites must be removed before March 15. Residual slash must not be placed in piles or rows and must be spread over the site for quick drying. The Department of Natural Resources will exercise this specification if the risk of damage warrants.

5.2.3.11 - Coppice regeneration protection (4/10)

To promote oak and aspen regeneration, harvesting is limited to December 1 through March 31 in Payment Units 6-8. Timber harvesting must be completed before significant oak or aspen sprouting occurs so as to minimize damage to the new regeneration. Any post harvest operations, such as chipping, must be completed before sprouting of regeneration occurs. If it is anticipated that chipping will be delayed, then tops shall be carried to one central location or left unchipped. The Unit Manager or his/her representative may cease such operations if sprouting occurs before the operation is complete.

5.2.32 - Decking/landing restoration (9/13)

All decking and landing areas must have the surface area restored to a condition equal to or better than before. This is to ensure the proper regeneration of the stand. Wood debris, chips and "cookies" from trimmings must be removed or scattered away from landing and loading areas and may not be windrowed on the edge.

5.2.41 - Snowmobile trail protection (9/11)

Trail 990 is a snowmobile trail and is shown on the Timber Sale Map. Do not cut or damage posts with orange trail markers or traffic control signs. If the trail is used, it must be maintained and restored to a condition equal to or better than before the sale. The road maintenance/restoration must be done prior to December 1. If the trail road is to be used for hauling during the snowmobile season, then a snow-covered base must be left on the trail. The snowmobile trail may only be crossed at right angles. Maintain a 20-foot-wide slash, debris, and rut free zone daily using the snowmobile trail as the centerline. No decking of forest products will be permitted along the snowmobile trail. All stumps within 10 feet of the snowmobile trail must be cut at ground level.

5.4 - Soil Protection

5.4.1 - Rutting restriction, general (7/16)

Operations are to cease immediately if equipment and weather conditions result in rutting of roads and/or skid trails which is 12 inches or greater in depth and 50 feet in length. The Unit Manager or his/her representative may restrict hauling and/or skidding if ruts exceed the specified depth. With the Unit Manager or his/her representative's approval, the Purchaser may return to the area when the risk of rutting has decreased.

5.8 - Protection of Endangered Species

5.8.5 - Protection of raptor nests (3/13)

All trees with raptor nests will be protected if found during harvesting operations. Notification will be made to the Unit Manager or his/her representative who will notify the Wildlife Biologist so an on-site evaluation and recommendation can be made, if necessary.

6 - Safety and Fire Prevention

6.2 - Signing

6.2.1 - Road posting (10/20)

The Purchaser is responsible for posting and maintaining caution signs on snowmobile trail 990 and Hill Road prior to beginning operations. The road must be posted at appropriate distances from the Sale Area to warn of logging activity and truck traffic. Signs must be removed when harvest operations are suspended or completed. The Purchaser will provide these signs.

6.2.2 - Snowmobile trail posting (10/20)

The Purchaser is responsible for posting and maintaining caution signs on snowmobile trail 990 prior to beginning operations during the snowmobile season (approximately December 1 to March 31). The trail must be posted at appropriate distances from the Sale Area to warn of logging activity and truck traffic. Signs must be removed when harvest operations are suspended or completed. The Purchaser will provide these signs.



TIMBER SALE MAP

This information provided by authority of Part 525, 1994 PA 451, as amended.

Sale Number	Year
54-026	23

Forest Management Unit Atlanta Management Unit	County Presque Isle	Mapped By Michaud	Date 07/20/23	Page 1	of 1
Township 34N	Range 03E	Section(s) and Subdivision(s) Section 1 SENW,S1/2NE,SW,SE	Scale 1:15,840		

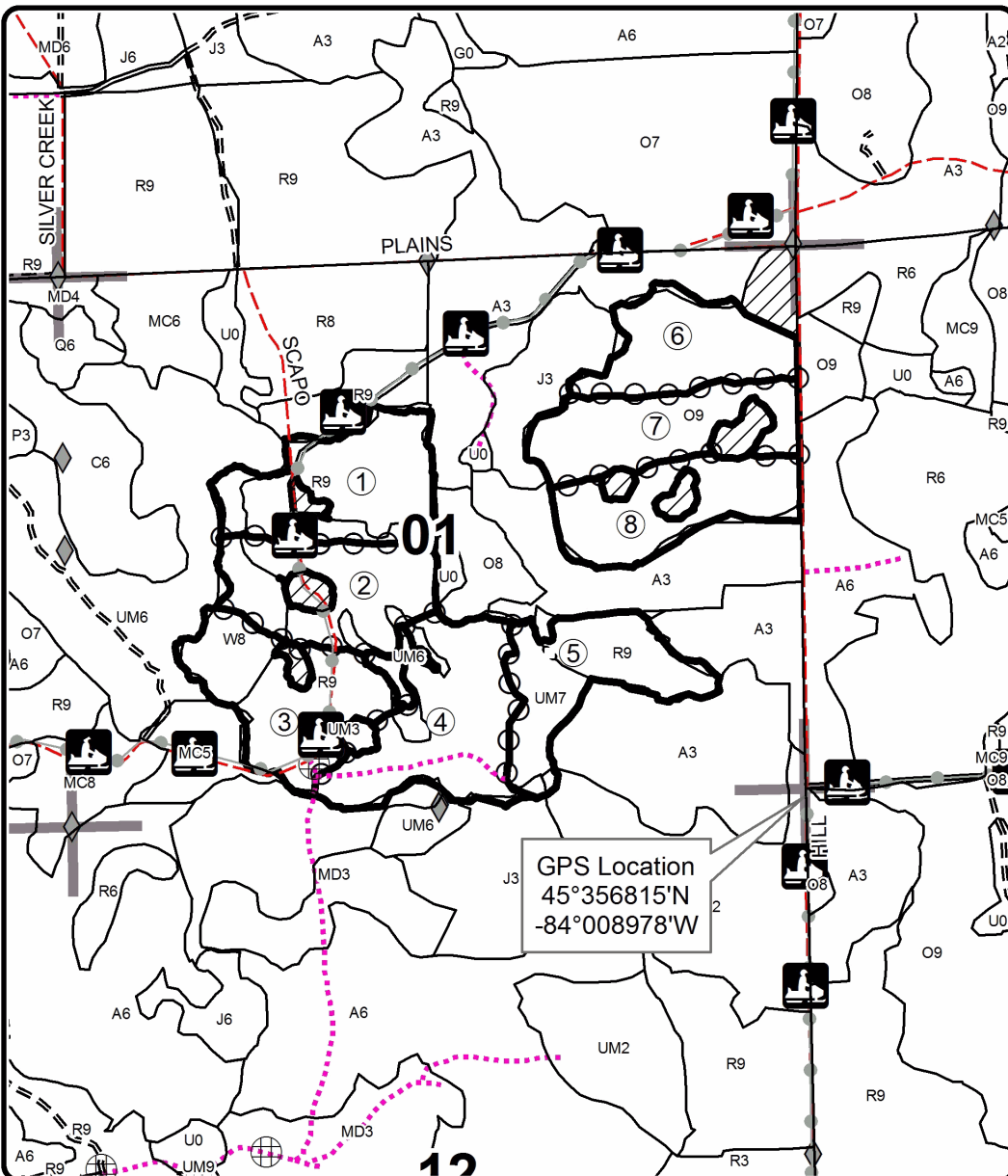
Cover Type				Density			
A = Aspen	H = Hemlock	N = Marsh	U = Upland Brush	0 = Non Stocked	5 = Pole Timber Medium		
B = Paper Birch	J = Jack Pine	O = Oak	UM = Upland Mixed	1 = Seedling Sapling Poor	6 = Pole Timber Well		
C = Cedar	L = Lowland Brush	P = Lowland Poplar	V = Bog or Marsh	2 = Seedling Sapling Medium	7 = Saw Timber Poor		
D = Treed Bog	LM = Lowland Mixed	Q = Mixed Swamp Conifer	W = White Pine	3 = Seedling Sapling Well	8 = Saw Timber Medium		
E = Swamp Hdwoods	M = Mpl, Bch, Brch	R = Red Pine	X = Non Stocked	4 = Pole Timber Poor	9 = Saw Timber Well		
F = Spruce Fir	MC = Mixed Conifer	S = Black Spruce	Z = Water				
G = Grass	MD = Mixed Deciduous	T = Tamarack					

PU	Acres	PU	Acres
1	24.6	5	20.6
2	22.3	6	18.5
3	23.8	7	20.5
4	27.3	8	19.5

Smokey's Home Pine Oak

Compartment 135

177.1 Acres



Legend

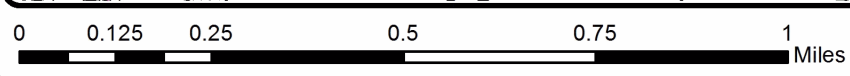
- Retention
- Against State (Red)
- Payment Unit (Yellow)
- Stand Boundaries
- Recreational Trail
- Field Grade Corners
- Secondary Forest Road
- Forest Access Route
- County Road - Seasonal
- Temporary Management Access
- Nearby Timber Sales
- Section Corners

Best access is M-68 to Tonkey Hwy

QR Code



GPS Location
 45°356815'N
 -84°008978'W



TIMBER SALE INFORMATION

Meridian Line Mix 2.0 (54-036-23)

T31N, R01E, SEC. 18; T31N, R01E, SEC. 19; T31N, R01E, SEC. 20; T31N, R01E, SEC. 31.
Montmorency County (Advertised Price \$121,820.65)

SALE NOTE: Fair to good quality timber. Winter harvest restrictions on Payment Units 1 & 2, and soft Oak Wilt restrictions on Payment Units 4-9. Units 4-7 contain some difficult terrain with steep slopes in areas. It is encouraged that the producer opens up these units at the same time because of the variable terrain. No recreational trails present.

A timber sale contract for this lump sum, sealed bid timber sale will be awarded to the responsible bidder offering the highest sealed bid price. All units of volume listed below were estimated using the Inventory Manager computer program and the new Michigan taper model. Bids must be at or above the following advertised price for each product and species:

<u>PRODUCTS & SPECIES</u>	<u>ESTIMATED UNITS*</u>	<u>ADVERTISED PRICE</u>
Sawtimber		
Black/Red (Hybrid) Oak	88.0 MBF	\$ 134.00 / MBF
Red Maple	29.5 MBF	\$ 79.00 / MBF
Red Oak	112.9 MBF	\$ 182.00 / MBF
Red Pine	5.9 MBF	\$ 131.00 / MBF
Sugar Maple	18.3 MBF	\$ 297.00 / MBF
Pulpwood		
Balsam Fir	297 Cords	\$ 23.90 / Cord
Black Spruce	34 Cords	\$ 8.55 / Cord
Mixed Aspen	1,666 Cords	\$ 25.55 / Cord
Mixed Hardwood	506 Cords	\$ 24.35 / Cord
Mixed Oak	569 Cords	\$ 31.45 / Cord
White Pine	26 Cords	\$ 29.65 / Cord

* The total volume is statistically estimated within plus (+) or minus (-) 10.57 percent. There are an estimated 3,648 cords on this timber sale, plus or minus 386 cords at the 95% confidence level. The estimated units are final and not subject to adjustment. Prospective bidders are urged to examine this timber and to make their own estimates of quantity and quality.

BOND AND PAYMENT SCHEDULE:

1. A bond in the amount of \$6,091.00 to insure faithful performance of the conditions of the contract will be deposited by the successful bidder within 21 days of the sale award.
2. Cutting in any sale or unit without the required advance payment would be considered a trespass.
3. Total payment must be paid in advance or according to the following schedule :
 - (a) Ten percent (10%) of the sale value must be paid within 21 days of the sale award.
 - (b) The 10% down payment will be credited towards the first unit cut.
 - (c) Payment for each of the following units must be made before cutting begins in that unit:

PAYMENT UNIT NUMBER	PERCENT OF TOTAL SALE VALUE
01	13.6%
02	18.1%
03	7.3%
04	9.6%
05	3.2%
06	3.3%
07	3.6%
08	11.9%
09	29.4%

4. If no cutting takes place, the 10% down payment will not be refunded.
5. Operations on the contract issued will terminate on 06/30/2027.

SALE STATISTICS

Volumes were calculated in cubic feet using the Michigan taper model. Cubic foot volume includes all wood inside bark for the product indicated. For display purposes, cubic feet were converted to cords and MBF using a simple conversion factor, e.g. 79 cubic feet per cord and 185 cubic feet per MBF. The cubic foot volumes are precise; the cords and MBF volumes are not. Cubic foot volume cannot be directly converted to cords or boards with precision.

SALE VOLUMES

The total estimated sale volume may not equal the sum of the species/products due to the nature of statistical calculations associated with double sampling methodology.

VOLUME			STATISTICAL RANGE IN CORDS	
TOTAL CUBIC FEET	TOTAL CORDS	PERCENT ERROR	MINIMUM	MAXIMUM
288,156	3,648	10.57%	3,262	4,033

VDU VOLUMES

A VDU is a Volume Determination Unit. Volumes and their associated statistics are calculated at the VDU level and summarized to the sale level. There is often a one to one relationship between a VDU and a Payment Unit, but not always, depending on the cruise design. Refer to the VDU TO PAYMENT UNIT table.

	VOLUME			RANGE IN CORDS	
VDU	TOTAL CUBIC FEET	TOTAL CORDS	PERCENT ERROR	MINIMUM	MAXIMUM
6	62,373	790	27.30%	574	1,005
15	8,111	103	52.38%	49	156
24	24,355	308	55.81%	136	480
27	30,901	391	29.52%	276	507
34	10,250	130	67.20%	43	217
37	65,603	830	20.80%	658	1,003
41	31,646	401	35.30%	259	542
49	15,275	193	27.91%	139	247
58	29,250	370	38.73%	227	514
64	10,392	132	93.19%	9	254
TOTAL:	288,156	3,648		2,369	4,926

VDU TO PAYMENT UNIT

When a VDU is associated with more than one Payment Unit (PU), the VDU volumes are assigned to the PU based on acres of the VDU within the PU.

VDU	VDU ACRES	PU	PU ACRES
6	23.8	9	23.8
15	4.9	6	4.9
24	7.0	1	7.0
27	17.3	8	17.3
34	4.0	5	4.0
37	24.3	2	24.3
41	11.6	1	11.6
49	4.9	3	4.9
58	8.1	4	8.1
64	6.9	7	6.9
TOTAL:	112.8		112.8

DESCRIPTION OF TIMBER BY PAYMENT UNIT (PU)

PU	MARKET GROUP	PRODUCT	QUANTITY	UNIT	ACRES	ADVERTISE PRICE
1	Red Maple	Sawtimber	0.7	MBF	18.6	\$16,551.00
	Balsam Fir	Pulpwood	188	Cords		
	<i>Balsam Fir</i>	<i>Sawtimber</i>	9.0	<i>MBF</i>		
	<i>Balsam Fir</i>	<i>Pulpwood</i>	170	<i>Cords</i>		
	Black Spruce		29	Cords		
	<i>Black Spruce</i>	<i>Sawtimber</i>	7.6	<i>MBF</i>		
	<i>Black Spruce</i>	<i>Pulpwood</i>	14	<i>Cords</i>		
	Mixed Aspen		441	Cords		
	<i>Balsam Poplar</i>	<i>Sawtimber</i>	19.5	<i>MBF</i>		
	<i>Quaking Aspen</i>		62.9	<i>MBF</i>		
	<i>Balsam Poplar</i>	<i>Pulpwood</i>	54	<i>Cords</i>		
	<i>Quaking Aspen</i>		222	<i>Cords</i>		
	Mixed Hardwood		20	Cords		
	<i>Black Cherry</i>		8	<i>Cords</i>		
	<i>Ironwood</i>		5	<i>Cords</i>		
	<i>Red Maple</i>		7	<i>Cords</i>		
2	Red Maple	Sawtimber	2.8	MBF	24.3	\$22,055.05
	Balsam Fir	Pulpwood	109	Cords		
	<i>Balsam Fir</i>	<i>Sawtimber</i>	16.3	<i>MBF</i>		
	<i>Balsam Fir</i>	<i>Pulpwood</i>	76	<i>Cords</i>		
	Black Spruce		5	Cords		
	<i>Black Spruce</i>		5	<i>Cords</i>		
	Mixed Aspen		729	Cords		
	<i>B. T. Aspen</i>	<i>Sawtimber</i>	20.8	<i>MBF</i>		
	<i>Quaking Aspen</i>		125.4	<i>MBF</i>		
	<i>B. T. Aspen</i>	<i>Pulpwood</i>	62	<i>Cords</i>		
	<i>Quaking Aspen</i>		374	<i>Cords</i>		
	Mixed Hardwood		23	Cords		
	<i>Black Cherry</i>		4	<i>Cords</i>		
	<i>Paper Birch</i>		3	<i>Cords</i>		
	<i>Red Maple</i>		16	<i>Cords</i>		
	3	Sugar Maple	Sawtimber	16.2		
Mixed Aspen		Pulpwood	102	Cords		
<i>B. T. Aspen</i>		<i>Sawtimber</i>	28.8	<i>MBF</i>		
<i>B. T. Aspen</i>		<i>Pulpwood</i>	44	<i>Cords</i>		
Mixed Hardwood			63	Cords		
<i>Basswood</i>		<i>Sawtimber</i>	0.5	<i>MBF</i>		
<i>Basswood</i>		<i>Pulpwood</i>	6	<i>Cords</i>		
<i>Ironwood</i>			19	<i>Cords</i>		
<i>Sugar Maple</i>			37	<i>Cords</i>		
4		Black/Red (Hybrid)	Sawtimber	15.1	MBF	8.1
	Red Pine		3.3	MBF		
	Mixed Aspen	Pulpwood	271	Cords		
	<i>B. T. Aspen</i>	<i>Sawtimber</i>	40.1	<i>MBF</i>		
	<i>B. T. Aspen</i>	<i>Pulpwood</i>	191	<i>Cords</i>		
	Mixed Hardwood		4	Cords		
	<i>Red Maple</i>		4	<i>Cords</i>		
	Mixed Oak		65	Cords		
	<i>/Red (Hybrid) Oak</i>		65	<i>Cords</i>		
	White Pine		7	Cords		
	<i>White Pine</i>	<i>Sawtimber</i>	1.7	<i>MBF</i>		
	<i>Red Pine</i>	<i>Pulpwood</i>	2	<i>Cords</i>		
	<i>White Pine</i>		2	<i>Cords</i>		
5	Black/Red (Hybrid)	Sawtimber	5.5	MBF	4.0	\$3,913.55
	Red Maple		4.2	MBF		
	Mixed Aspen	Pulpwood	38	Cords		

DESCRIPTION OF TIMBER BY PAYMENT UNIT (PU), CON'T

PU	MARKET GROUP	PRODUCT	QUANTITY	UNIT	ACRES	ADVERTISE PRICE
5 con't	<i>B. T. Aspen</i>	<i>Sawtimber</i>	7.0	<i>MBF</i>		
	<i>B. T. Aspen</i>	<i>Pulpwood</i>	24	<i>Cords</i>		
	Mixed Hardwood		24	Cords		
	<i>Red Maple</i>		24	<i>Cords</i>		
	Mixed Oak		41	Cords		
	<i>/Red (Hybrid) Oak</i>		41	<i>Cords</i>		
6	Black/Red (Hybrid)	Sawtimber	12.7	MBF	4.9	\$4,002.75
	Mixed Hardwood	Pulpwood	17	Cords		
	<i>Sugar Maple</i>		17	<i>Cords</i>		
	Mixed Oak		60	Cords		
	<i>/Red (Hybrid) Oak</i>		60	<i>Cords</i>		
7	Black/Red (Hybrid)	Sawtimber	8.7	MBF	6.9	\$4,328.50
	Mixed Aspen	Pulpwood	62	Cords		
	<i>B. T. Aspen</i>	<i>Sawtimber</i>	8.8	<i>MBF</i>		
	<i>B. T. Aspen</i>	<i>Pulpwood</i>	44	<i>Cords</i>		
	Mixed Hardwood		8	Cords		
	<i>Red Maple</i>		8	<i>Cords</i>		
	Mixed Oak		44	Cords		
	<i>/Red (Hybrid) Oak</i>		44	<i>Cords</i>		
	8	Black/Red (Hybrid)	Sawtimber	46.0		
Red Maple			2.7	MBF		
Red Pine			2.6	MBF		
Mixed Aspen		Pulpwood	11	Cords		
<i>B. T. Aspen</i>		<i>Sawtimber</i>	3.3	<i>MBF</i>		
<i>B. T. Aspen</i>		<i>Pulpwood</i>	4	<i>Cords</i>		
Mixed Hardwood			115	Cords		
<i>Paper Birch</i>			14	<i>Cords</i>		
<i>Red Maple</i>			101	<i>Cords</i>		
Mixed Oak			130	Cords		
<i>/Red (Hybrid) Oak</i>			130	<i>Cords</i>		
White Pine			19	Cords		
<i>Red Pine</i>			1	<i>Cords</i>		
<i>White Pine</i>			18	<i>Cords</i>		
9	Red Maple	Sawtimber	19.1	MBF	23.8	\$35,838.25
	Red Oak		112.9	MBF		
	Sugar Maple		2.1	MBF		
	Mixed Aspen	Pulpwood	12	Cords		
	<i>B. T. Aspen</i>	<i>Sawtimber</i>	3.1	<i>MBF</i>		
	<i>B. T. Aspen</i>	<i>Pulpwood</i>	6	<i>Cords</i>		
	Mixed Hardwood		232	Cords		
	<i>Red Maple</i>		161	<i>Cords</i>		
	<i>Sugar Maple</i>		71	<i>Cords</i>		
	Mixed Oak		229	Cords		
	<i>Red Oak</i>		229	<i>Cords</i>		
TOTAL:			254.6	MBF		
TOTAL:			3,098	Cords		

Sale Specific Conditions & Requirements

Sale Name: Meridian Line Mix 2.0

Sale Number: 54-036-23 Seq#: 1

1 - Sale Area

1.2 - Boundaries

1.2.1 - Painted boundaries (9/19)

The sale boundary and Payment Unit boundaries are marked and identified by blue, red and yellow paint. Exterior sale boundary lines against private property are marked with blue paint. Exterior sale boundary lines against state are marked with red paint. Interior Payment Unit boundaries are marked with yellow paint. Retention patches are marked with red paint; no harvesting activities may occur within these areas. The painted boundary line trees are not Included Timber and are to be protected. In Payment Units 1 & 2, any Red Painted trees along the edge of the wildlife openings are designated for harvest. This is to reduce any blowdown into the managed wildlife openings. Yellow painted trees designating an interior Payment Unit boundary are only to be cut when all surrounding Payment Units have been paid

2 - Timber Specifications

2.1 - Included Timber

2.1.1 - Clearcut unit(s) with unmerchantable trees (6/14)

Within Payment Unit(s) 1, cut all trees that are two (2) inches or more at DBH except DO NOT CUT Northern White Cedar.

Within Payment Units 2, 3, 4 & 8, cut all trees that are two (2) inches or more at DBH.

Within Payment Unit 5, 6 & 9, cut all trees that are two (2) inches or more at DBH, except do not cut red pine and white pine unless marked with orange paint.

Within Payment Unit 7, cut all trees that are two (2) inches or more at DBH, except do not cut red pine or any trees marked with timber teal paint.

2.2 - Utilization

2.2.6 - Roundwood operation required (3/21)

The skidding of whole trees or tree segments with limbs attached is prohibited within Payment Unit(s) 5, 6 & 9 All products must be produced as roundwood and forwarded to existing roads or landing areas in final product length. Trees must be harvested with in-woods processor (feller bunching harvester will not be allowed) in order to retain existing understory.

3 - Payments

3.3 - Pre-measured Sales

3.3.4 - Dividing payment units (7/14)

Payment Unit(s) \$25,000 or more may be divided at the request of the Purchaser and upon approval of the Unit Manager. Dividing Payment Units is a contract modification which requires a Timber Sale Contract Amendment. There will be only one division per Payment Unit.

3.4 - Damaged Timber

3.4.1 - Damaged timber (7/16)

General Condition and Requirement 3.4 Damaged Timber, defines liquidated damages for undesignated live merchantable trees which are cut or injured. In addition, extreme care should be taken to avoid damage to Red and White Pine seedlings and saplings.

Within Payment Units 5, 6 & 9, if more than 50% of the tree seedlings or saplings (1/4" to 4.5" DBH) within a specified portion of the sale area are damaged, liquidated damages will be assessed at \$500 per acre for all acreage within that specified portion of the sale area that was damaged.

No damage is acceptable to undesignated live merchantable trees. Within the sale area, if more than 5% of trees (> 4.5" DBH) within a specified area of the sale are damaged, liquidated damages will be assessed for all trees damaged. Rates will be in accordance with General Condition and Requirement 3.4 Damaged Timber.

4 - Transportation

4.1 - Construction

4.1.3 - Slash and earthen piles (8/04)

Piles or windrows of earth along roads and landings that have been widened or constructed shall be leveled. Slash from road maintenance or construction, including stumps, shall be dispersed throughout the sale, chipped, utilized or otherwise removed from the sale.

4.1.6 - Road construction (1/09)

Construction of new roads or improvements of existing roads shall be done in such a way as to minimize the environmental and visual impacts. Merchantable trees shall be cut and utilized unless otherwise directed. Non-merchantable trees shall be severed and laid flat on the ground. Slash shall be scattered, and not left in windrows and kept a minimum of 10 feet back from the road edge or be chipped, utilized or otherwise removed from the sale. Stumps shall be set upright, not left on edge, and be moved at least 10 feet away from the road edge. Disturbed soil shall be feathered into the woods and not left in berms or windrows.

4.1.7 - Road closure (10/11)

All new roads built into the sale must be blocked to vehicle traffic upon completion of the sale. Overgrown roads that are reopened shall be considered new roads. In general, this will require constructing a four (4') foot high berm of stumps and logs covered with earth. Stumps and brush must be placed along the remainder of the trail. These roads must be rendered impassable to cars and trucks. All stumps from road building and landing construction must be reserved to block any newly constructed roads upon completion of the sale. These stumps must be scattered along the road system to prohibit vehicular movement. Temporary berms may be required if no sale activity occurs for 30 or more consecutive days. Contact the sale administrator for specific details of design and placement.

4.1.11 - Permits (2/12)

The Purchaser will secure any necessary permits that may be required.

4.2 - Maintenance

4.2.2 - Fill material (4/07)

To maintain roads, fill material may be needed in areas where "holes" exist or may be expected to develop. This fill material should be placed before trucking begins.

4.4 - Access

4.4.3 - Access gate (12/08)

Access to Payment Units 1 & 2 is through a locked Wildlife gate. Contact the timber sale administrator for access. The access gate must be locked at the completion of each day unless otherwise approved by the Unit Manager or his/her representative.

5 - Operations

5.1 - Notification

5.1.1 - Pre-sale conference (10/16)

A pre-sale conference on site between the Purchaser and sale administrator is required prior to beginning any operations to determine landing and road locations. The Unit Manager or his/her representative must be contacted at least 5 days in advance to schedule the conference.

5.1.3 - Well heads and natural gas pipelines (11/15)

The Purchaser is responsible for contacting the gas or pipeline company 14 days prior to operating equipment in the vicinity of well heads or natural gas pipelines.

5.1.4 - Post-sale conference (10/16)

A post-sale conference on site between the Purchaser and sale administrator is required 5 days prior to the completion of

active logging operations to determine clean-up and repair of landings, road edges, and the fulfillment of other contract specifications.

5.2 - Conduct of Operations

5.2.1 - Slash

5.2.1.8 - Slash height (12/08)

No slash or tree tops may exceed 36 inches in height. Slash and/or tree tops must be scattered and not left in windrows.

5.2.1.10 - No slash in openings (5/10)

No brush or logging debris is to be left in the maintained wildlife opening which is indicated by G0 on the Timber Sale Map. Any damage to the opening shall be repaired according to specifications of the Unit Manager or his/her representative.

5.2.2 - Hazard Trees/Snags

5.2.2.1 - Den trees (10/16)

Obvious hollow and/or den trees shall be protected and left standing unless they are a safety hazard.

5.2.3 - Operating Restrictions

5.2.3.1 - Operating restrictions (9/11)

Within Payment Unit(s) 1 & 2, unless changed by written agreement, all harvest operations including cutting, skidding, and hauling are to occur between November 1st and March 31st. The ground must be frozen to start operations. This restriction is to minimize rutting and soil compaction around the managed wildlife opening, as well as reduce user conflict due to the Elk Viewing area nearby. Consult with the timber sale administrator to determine if conditions are sufficient for operations.

5.2.3.5 - Oak wilt restriction (1/18)

Within Payment Units 4-9 unless changed by written agreement, cutting, skidding, hauling within the sale and brushing of access roads to the sale are not permitted during the period of April 15 to July 15. Operations may be allowed if specific steps are taken to prevent damaging uncut oak during the high risk period. Those steps may include completing all road brushing before April 15th and clearing a tree-length buffer along uncut oak cover before April 15th. This is necessary to reduce the spread of oak wilt. For more information, contact the Unit Manager or his/her representative.

5.2.17 - Timber Mats and Interlocking Composite Mats (5/23)

Some roads or skid trails may require extra protection such as that afforded by timber mats, interlocking composite mats, or another approved system. Approximately 50 feet of road or trail will need extra protection at locations within Payment Units 1 and 2. If available, mats may be borrowed from the DNR. A Timber Sale Contract Supplement will be used to document the Purchaser's use of the DNR's mats. Contact the sale administrator regarding availability and pick-up. Timber mats are available from various field offices. Composite mats are only available from the Grayling field office and the Marquette ICC. The Purchaser is responsible for picking up and hauling the mats to and from the site. The composite mats will require DNR staff onsite for installation and removal. Contact the sale administrator to schedule at least 30 days before desired install/removal date. All mats must be cleaned prior to drop off. This may include, but is not limited to, power washing and brushing to remove mud and debris. A charge of \$700.00 per timber mat and \$2,000.00 per composite mat will be assessed for all damaged or non-returned mats. Damage for the crane/timber mats is defined as three or more broken cants. Damage for the composite mats is defined as cracked or broken mats.

5.2.32 - Decking/landing restoration (9/13)

All decking and landing areas must have the surface area restored to a condition equal to or better than before. This is to ensure the proper regeneration of the stand. Wood debris, chips and "cookies" from trimmings must be removed or scattered away from landing and loading areas and may not be windrowed on the edge.

5.2.38 - No decking against live trees (2/04)

Cut products may not be decked against unmarked or designated leave trees.

5.4 - Soil Protection

5.4.4 - Slope protection (9/19)

Skid trails and roads on slopes shall be water barred with slash, stumps, and/or clean straw bales native to the area as soon as

use is complete to prevent erosion.

5.8 - Protection of Endangered Species

5.8.5 - Protection of raptor nests (3/13)

All trees with raptor nests will be protected if found during harvesting operations. Notification will be made to the Unit Manager or his/her representative who will notify the Wildlife Biologist so an on-site evaluation and recommendation can be made, if necessary.

6 - Safety and Fire Prevention

6.2 - Signing

6.2.1 - Road posting (10/20)

The Purchaser is responsible for posting and maintaining caution signs on Meridian Line Rd or County Rd 622 (depending on unit) prior to beginning operations. The road must be posted at appropriate distances from the sale area to warn of logging activity and truck traffic. Signs must be removed when harvest operations are suspended or completed. The Purchaser will provide these signs.



TIMBER SALE MAP

This information provided by authority of Part 525, 1994 PA 451, as amended.

Forest Management Unit Atlanta Management Area	County Montmorency	Mapped By T. Kubitskey	Date 7/26/2023	Page 1	of 2
Township 31N	Range 01E	Section(s) and Subdivision(s) Sec. 18 S1/2SE, Sec 19 N1/2NE, NESE Sec 20 NWNW, Sec 31 NW, S1/2NE, N1/2SW, NWSE	Scale 1:7,920		

Cover Type

A = Aspen	H = Hemlock	N = Marsh	U = Upland Brush
B = Paper Birch	J = Jack Pine	O = Oak	UM = Upland Mixed
C = Cedar	L = Lowland Brush	P = Lowland Poplar	V = Bog or Marsh
D = Treed Bog	LM = Lowland Mixed	Q = Mixed Swamp Conifer	W = White Pine
E = Swamp Hdwoods	M = Mpl, Bch, Brch	R = Red Pine	X = Non Stocked
F = Spruce Fir	MC = Mixed Conifer	S = Black Spruce	Z = Water
G = Grass	MD = Mixed Deciduous	T = Tamarack	

Density

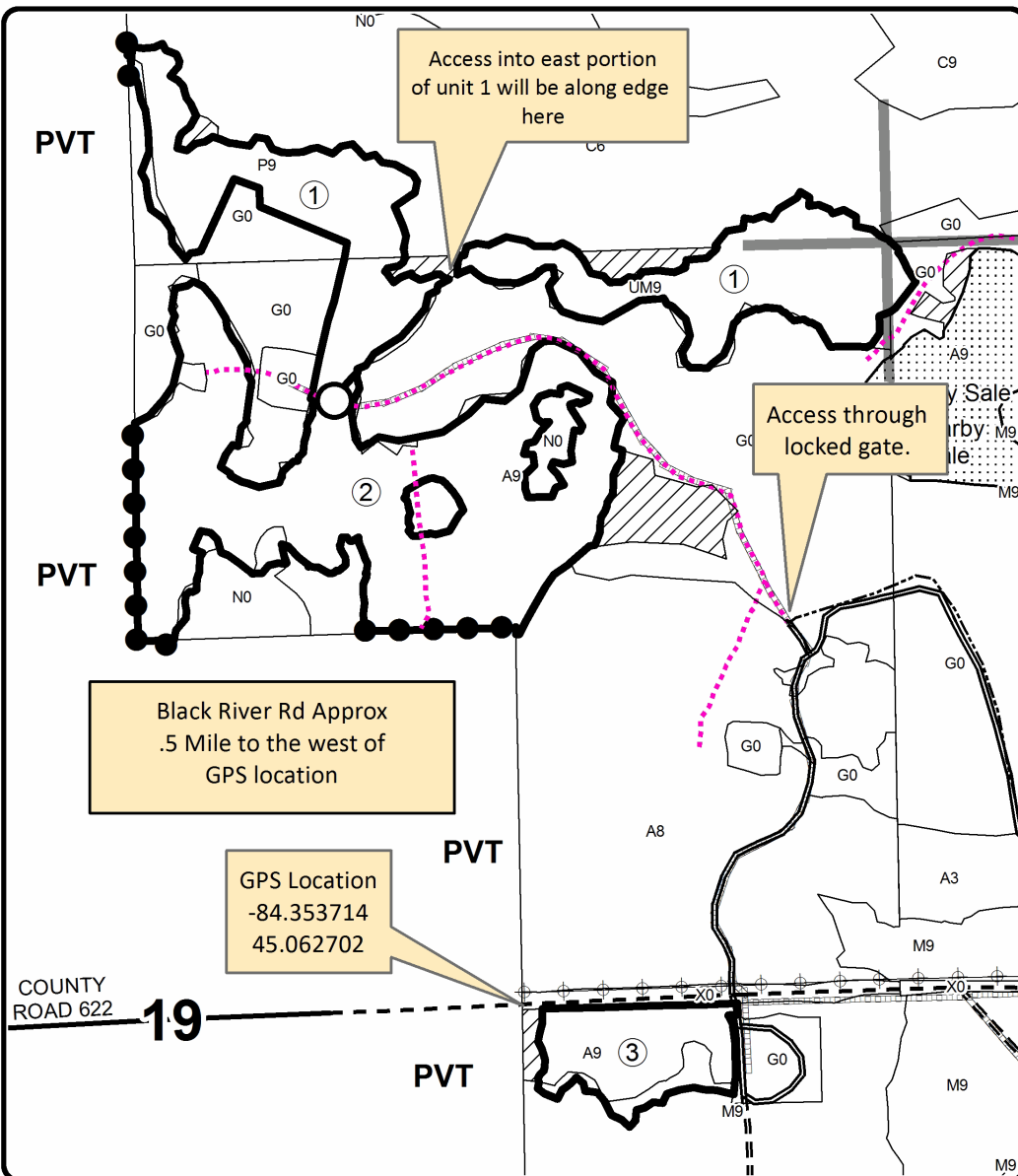
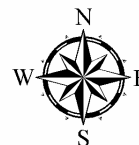
0 = Non Stocked	5 = Pole Timber Medium
1 = Seedling Sapling Poor	6 = Pole Timber Well
2 = Seedling Sapling Medium	7 = Saw Timber Poor
3 = Seedling Sapling Well	8 = Saw Timber Medium
4 = Pole Timber Poor	9 = Saw Timber Well

PU	Acres	PU	Acres
1	18.6	6	4.9
2	24.3	7	8.5
3	4.9	8	15.7
4	8.1	9	23.8
5	4.0		

Meridian Line Mix

Compartment 32 & 33

112.8 Acres

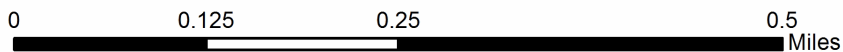
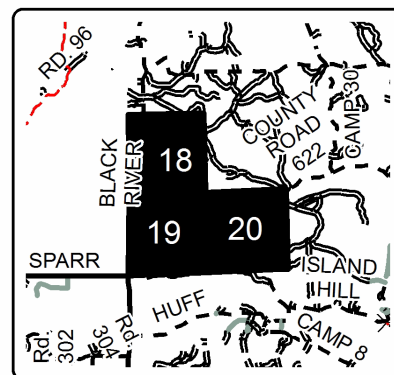


Legend

- Against State (Red)
- ○ Payment Unit (Yellow)
- ● Private Line (Blue)
- ▨ Nearby Timber Sales
- ▨ Retention Area
- ▭ Stand Boundaries
- Secondary Forest Road
- == Forest Access Route
- Paved Road
- - Gravel Road
- ⋯ Temporary Management Access
- Section Corners
- ▨ Pipeline
- ⚡ Powerline
- ② Payment Unit
- PVT Private Property

Locator Map

1:150,000



TIMBER SALE INFORMATION

Elk Valley Aspen (54-002-22)
T31N, R03E, SEC. 28; T31N, R03E, SEC. 33.
Montmorency County (Advertised Price \$23,256.05)

SALE NOTE: Oak wilt restrictions apply to this sale.

A timber sale contract for this lump sum, sealed bid timber sale will be awarded to the responsible bidder offering the highest sealed bid price. All units of volume listed below were estimated using the Inventory Manager computer program and the new Michigan taper model. Bids must be at or above the following advertised price for each product and species:

<u>PRODUCTS & SPECIES</u>	<u>ESTIMATED UNITS*</u>	<u>ADVERTISED PRICE</u>
Sawtimber		
B. T. Aspen	23.1 MBF	\$ 71.00 / MBF
Red Oak	58.7 MBF	\$ 117.00 / MBF
Pulpwood		
B. T. Aspen	557 Cords	\$ 16.40 / Cord
Balsam Fir	3 Cords	\$ 15.35 / Cord
Mixed Hardwood	58 Cords	\$ 15.65 / Cord
Paper Birch	4 Cords	\$ 10.10 / Cord
Red Oak	206 Cords	\$ 20.25 / Cord
Red Pine	5 Cords	\$ 24.75 / Cord
White Pine	17 Cords	\$ 19.05 / Cord

* The total volume is statistically estimated within plus (+) or minus (-) 23.98 percent. There are an estimated 993 cords on this timber sale, plus or minus 238 cords at the 95% confidence level. The estimated units are final and not subject to adjustment. Prospective bidders are urged to examine this timber and to make their own estimates of quantity and quality.

BOND AND PAYMENT SCHEDULE:

1. A bond in the amount of \$1,163.00 to insure faithful performance of the conditions of the contract will be deposited by the successful bidder within 21 days of the sale award.
2. Cutting in any sale or unit without the required advance payment would be considered a trespass.
3. Total payment must be paid in advance or according to the following schedule :
 - (a) Ten percent (10%) of the sale value must be paid within 21 days of the sale award.
 - (b) The remainder is due before cutting begins.
 - (c) Payment for each of the following units must be made before cutting begins in that unit:

PAYMENT UNIT NUMBER	PERCENT OF TOTAL SALE VALUE
01	100.0%
4. If no cutting takes place, the 10% down payment will not be refunded.
5. Operations on the contract issued will terminate on 06/30/2026.

SALE STATISTICS

Volumes were calculated in cubic feet using the Michigan taper model. Cubic foot volume includes all wood inside bark for the product indicated. For display purposes, cubic feet were converted to cords and MBF using a simple conversion factor, e.g. 79 cubic feet per cord and 185 cubic feet per MBF. The cubic foot volumes are precise; the cords and MBF volumes are not. Cubic foot volume cannot be directly converted to cords or boards with precision.

SALE VOLUMES

The total estimated sale volume may not equal the sum of the species/products due to the nature of statistical calculations associated with double sampling methodology.

VOLUME		STATISTICAL RANGE IN CORDS		
TOTAL CUBIC FEET	TOTAL CORDS	PERCENT ERROR	MINIMUM	MAXIMUM
78,440	993	23.98%	755	1,231

VDU VOLUMES

A VDU is a Volume Determination Unit. Volumes and their associated statistics are calculated at the VDU level and summarized to the sale level. There is often a one to one relationship between a VDU and a Payment Unit, but not always, depending on the cruise design. Refer to the VDU TO PAYMENT UNIT table.

VDU	VOLUME		PERCENT ERROR	RANGE IN CORDS	
	TOTAL CUBIC FEET	TOTAL CORDS		MINIMUM	MAXIMUM
176	78,440	993	23.98%	755	1,231
TOTAL:	78,440	993		755	1,231

VDU TO PAYMENT UNIT

When a VDU is associated with more than one Payment Unit (PU), the VDU volumes are assigned to the PU based on acres of the VDU within the PU.

VDU	VDU ACRES	PU	PU ACRES
176	31.0	1	31.0
TOTAL:	31.0		31.0

DESCRIPTION OF TIMBER BY PAYMENT UNIT (PU)

PU	MARKET GROUP	PRODUCT	QUANTITY	UNIT	ACRES	ADVERTISE PRICE
1	B. T. Aspen	Sawtimber	23.1	MBF	31.0	\$23,256.05
	Red Oak		58.7	MBF		
	B. T. Aspen	Pulpwood	557	Cords		
	Balsam Fir		3	Cords		
	Mixed Hardwood		58	Cords		
	<i>Red Maple</i>		53	<i>Cords</i>		
	<i>Sugar Maple</i>		5	<i>Cords</i>		
	Paper Birch		4	Cords		
	Red Oak		206	Cords		
	Red Pine	5	Cords			
	White Pine	17	Cords			
	TOTAL:			81.8		
TOTAL:			850	Cords		

Sale Specific Conditions & Requirements

Sale Name: Elk Valley Aspen

Sale Number: 54-002-22 Seq#: 3

1 - Sale Area

1.2 - Boundaries

1.2.1 - Painted boundaries (9/19)

The sale boundary is marked and identified by red and yellow paint, along with roads. Exterior sale boundary lines against state are marked with red paint, with the exception of the southern boundary, which is marked with yellow paint. In addition, the eastern boundary and southwest boundary are unpainted and identified by Orm Road and Elk Valley Road, respectively (see Timber Sale Map). Retention patches are marked with red paint; no harvesting activities may occur within these areas. The painted boundary line trees are not Included Timber and are to be protected.

2 - Timber Specifications

2.1 - Included Timber

2.1.1 - Clearcut unit(s) with unmerchantable trees (6/14)

Within Payment Unit(s) 1, cut all trees that are two (2) inches or more at DBH, except trees that are marked with green paint.

2.1.15 - Hazard trees near roads (11/20)

Cut and remove all standing dead trees within 100 feet of the cleared portion of designated county roads. These trees may be utilized or must be scattered back into the Sale Area.

2.2 - Utilization

2.2.11 - Chipping restriction (9/14)

If chipping occurs on this sale, then no woody debris present on the ground at the start of the sale may be chipped.

3 - Payments

3.3 - Pre-measured Sales

3.3.4 - Dividing payment units (7/14)

Payment Unit(s) exceeding \$25,000 in value may be divided at the request of the Purchaser and upon approval of the Unit Manager. Dividing Payment Units is a contract modification which requires a Timber Sale Contract Amendment. There will be only one division per Payment Unit.

3.4 - Damaged Timber

3.4.2 - Special Protection Trees (4/14)

The Purchaser shall not cut live or dead special protection trees within cutting units or clearings. Special protection trees are marked with green paint. If the Purchaser's operations have cut or damaged special protection trees through carelessness, the Purchaser shall pay \$200 as fixed, agreed and liquidated damages for each special protection tree cut or damaged. Such payment does not constitute ownership of the undesignated timber.

4 - Transportation

4.1 - Construction

4.1.3 - Slash and earthen piles (8/04)

Piles or windrows of earth along roads and landings that have been widened or constructed shall be leveled. Slash from road maintenance or construction, including stumps, shall be dispersed throughout the sale.

4.1.12 - No new roads (1/12)

No new roads will be permitted in any Payment Unit. All operations are limited to existing roads. Skid trails only will be allowed.

4.2 - Maintenance

4.2.2 - Fill material (4/07)

To maintain roads, fill material may be needed in areas where "holes" exist or may be expected to develop. This fill material should be placed before trucking begins. This fill shall consist of crushed rock, gravel, or cobbles and should not contain clay or organic material.

4.2.5 - Two wheel drive condition (2/04)

All existing trail roads on and adjacent to the sale area must be passable by two-wheel drive traffic for the duration of the sale.

5 - Operations

5.1 - Notification

5.1.1 - Pre-sale conference (10/16)

A pre-sale conference on site between the Purchaser and sale administrator is required prior to beginning any operations to determine landing and road locations. The Unit Manager or his/her representative must be contacted at least 10 days in advance to schedule the conference.

5.1.4 - Post-sale conference (10/16)

A post-sale conference on site between the Purchaser and sale administrator is required 5 days prior to the completion of active logging operations to determine clean-up and repair of landings, road edges, and the fulfillment of other contract specifications.

5.2 - Conduct of Operations

5.2.2 - Hazard Trees/Snags

5.2.2.1 - Den trees (10/16)

Obvious hollow and/or den trees shall be protected and left standing unless they are a safety hazard.

5.2.3 - Operating Restrictions

5.2.3.5 - Oak wilt restriction (1/18)

Within Payment Unit 1, unless changed by written agreement, cutting, skidding, hauling within the sale and brushing of access roads to the sale are not permitted during the period of April 15 to July 15. Operations may be allowed if specific steps are taken to prevent damaging uncut oak during the high risk period. Those steps may include completing all road brushing before April 15th and clearing a tree-length buffer along uncut oak cover before April 15th. This is necessary to reduce the spread of oak wilt. For more information, contact the Unit Manager or his/her representative.

5.2.3.11 - Coppice regeneration protection (4/10)

Timber harvesting in any Payment Unit must be completed before significant aspen sprouting occurs in that Payment Unit so as to minimize damage to the new regeneration. Any post harvest operations, such as chipping, must be completed before sprouting of regeneration occurs. If it is anticipated that chipping will be delayed, then tops shall be carried to one central location or left unchipped. The Unit Manager or his/her representative may cease such operations if sprouting occurs before the operation is complete.

5.2.4 - Dead and Down Creation

5.2.4.7 - Dead and down creation: hare, grouse, deer and other species (5/15)

To improve horizontal cover habitat for snowshoe hare, grouse, deer, and other species, the Purchaser is to push over trees indicated by an orange paint. These trees should be tipped over with the root ball still attached so the base of the tree is suspended off the ground. The crown of the fallen tree should be at or near ground level after it is pushed over. If it is nearly impossible or impractical to push these trees over, they may be severed or partially severed at the stump. Whenever possible, the stem of the tree shall rest above ground level.

5.2.32 - Decking/landing restoration (9/13)

All decking and landing areas must have the surface area restored to a condition equal to or better than before. This is to ensure the proper regeneration of the stand. Wood debris, chips and "cookies" from trimmings must be removed or scattered away from landing and loading areas and may not be windrowed on the edge.

5.4 - Soil Protection

5.4.1 - Rutting restriction, general (7/16)

Operations are to cease immediately if equipment and weather conditions result in rutting of roads and/or skid trails which is 12 inches or greater in depth and 50 feet in length. The Unit Manager or his/her representative may restrict hauling and/or skidding if ruts exceed the specified depth. With the Unit Manager or his/her representative's approval, the Purchaser may return to the area when the risk of rutting has decreased.

5.8 - Protection of Endangered Species

5.8.5 - Protection of raptor nests (3/13)

All trees with raptor nests will be protected if found during harvesting operations. Notification will be made to the Unit Manager or his/her representative who will notify the Wildlife Biologist so an on-site evaluation and recommendation can be made, if necessary.

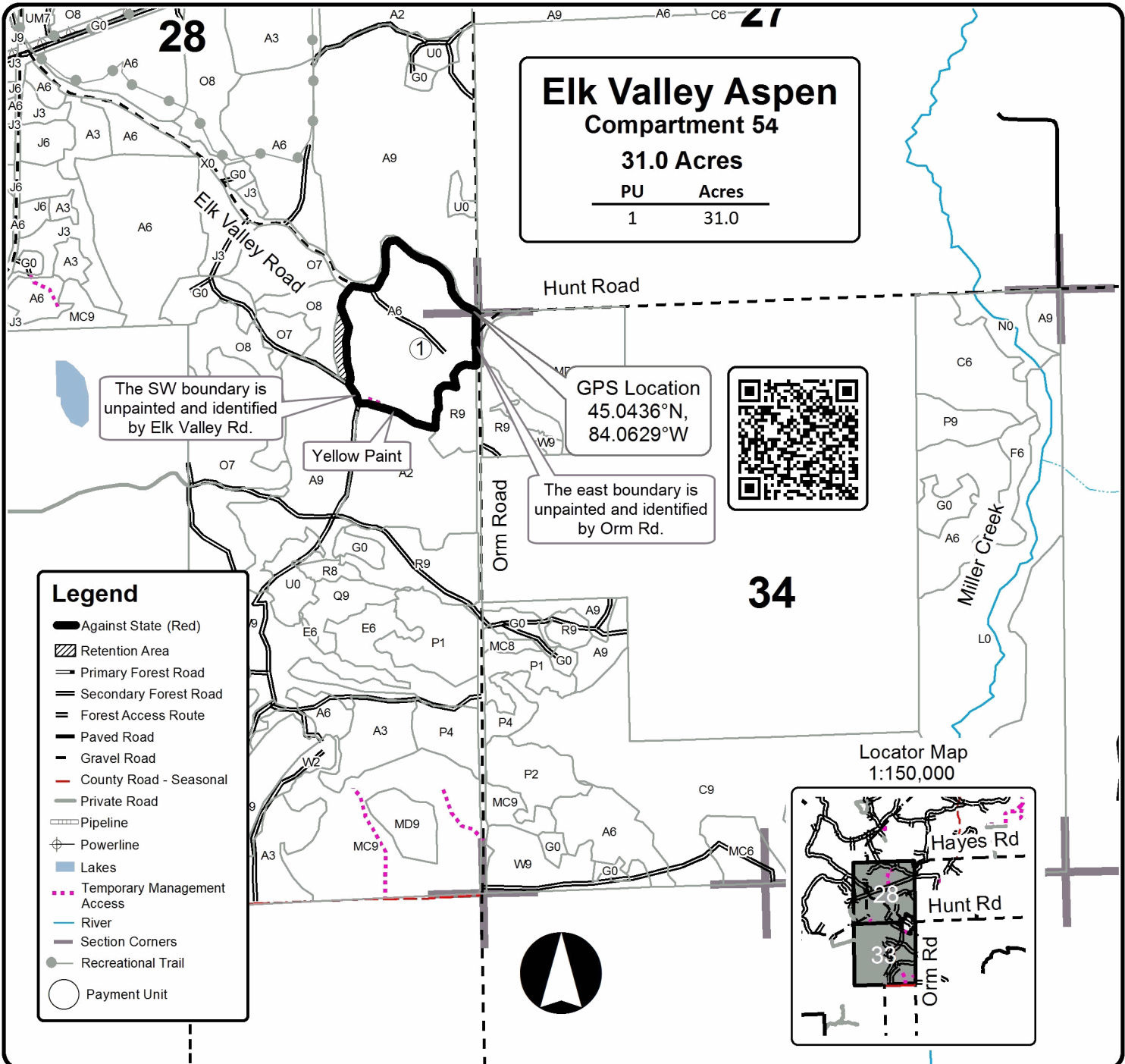


TIMBER SALE MAP

This information provided by authority of Part 525, 1994 PA 451, as amended.

Forest Management Unit Atlanta	County Montmorency	Mapped By Natzke	Date 09/27/2022	Page 1	of 1
Township 31N	Range 03E	Section(s) and Subdivision(s) Sec. 28 SESE, Sec. 33 NENE	Scale 1:15,840		

Cover Type				Density	
A = Aspen	H = Hemlock	N = Marsh	U = Upland Brush	0 = Non Stocked	5 = Pole Timber Medium
B = Paper Birch	J = Jack Pine	O = Oak	UM = Upland Mixed	1 = Seedling Sapling Poor	6 = Pole Timber Well
C = Cedar	L = Lowland Brush	P = Lowland Poplar	V = Bog or Marsh	2 = Seedling Sapling Medium	7 = Saw Timber Poor
D = Treed Bog	LM = Lowland Mixed	Q = Mixed Swamp Conifer	W = White Pine	3 = Seedling Sapling Well	8 = Saw Timber Medium
E = Swamp Hdwoods	M = Mpl, Bch, Brch	R = Red Pine	X = Non Stocked	4 = Pole Timber Poor	9 = Saw Timber Well
F = Spruce Fir	MC = Mixed Conifer	S = Black Spruce	Z = Water		
G = Grass	MD = Mixed Deciduous	T = Tamarack			



Elk Valley Aspen
Compartment 54
31.0 Acres

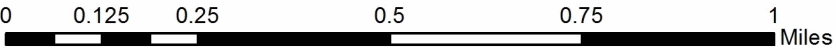
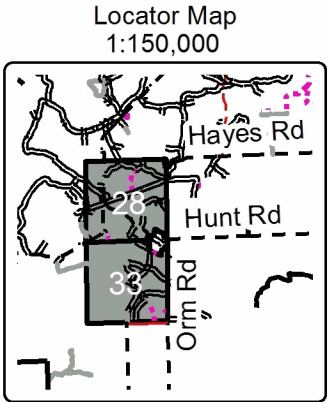
PU	Acres
1	31.0

GPS Location
 45.0436°N,
 84.0629°W



Legend

- Against State (Red)
- Retention Area
- Primary Forest Road
- Secondary Forest Road
- Forest Access Route
- Paved Road
- Gravel Road
- County Road - Seasonal
- Private Road
- Pipeline
- Powerline
- Lakes
- Temporary Management Access
- River
- Section Corners
- Recreational Trail
- Payment Unit



TIMBER SALE INFORMATION

Graham's Knotty Pine and Aspen (54-028-22)

T32N, R06E, SEC. 24; T32N, R06E, SEC. 25.

Alpena County (Advertised Price \$65,861.15)

SALE NOTE: Contacting the Sale Administrator is required before beginning any sale operations. Refer to timber sale spec 5.7.1 for more details. Payment Units 2 & 3 must be completed before beginning Payment Units 1 & 4. Refer to sale spec 3.6.1 for more details.

Road work will be required before hauling/forwarding timber from Payment Units 2 and 3. Refer to sale spec 4.1.8 for road work details.

Mats and/or culverts may be needed for forest road access to Payment Units 2 and 3. Refer to sale specs 5.2.17 and 4.1.5 for more details.

A recreation site such as a trail, pathway, or campground is within the sale area or the vicinity. Certain restrictions/specifications may be applicable including time restrictions.

A timber sale contract for this lump sum, sealed bid timber sale will be awarded to the responsible bidder offering the highest sealed bid price. All units of volume listed below were estimated using the Inventory Manager computer program and the new Michigan taper model. Bids must be at or above the following advertised price for each product and species:

<u>PRODUCTS & SPECIES</u>	<u>ESTIMATED UNITS*</u>	<u>ADVERTISED PRICE</u>
Sawtimber		
Black/Red (Hybrid) Oak	2.5 MBF	\$ 124.00 / MBF
Mixed Aspen	137.6 MBF	\$ 103.00 / MBF
Red Maple	5.1 MBF	\$ 74.00 / MBF
Red Pine	10.1 MBF	\$ 122.00 / MBF
White Pine	45.8 MBF	\$ 72.00 / MBF
Pulpwood		
Balsam Fir	171 Cords	\$ 22.20 / Cord
Basswood	2 Cords	\$ 14.25 / Cord
Black/Red (Hybrid) Oak	5 Cords	\$ 29.20 / Cord
Jack Pine	11 Cords	\$ 10.75 / Cord
Mixed Aspen	689 Cords	\$ 23.70 / Cord
Mixed Hardwood	217 Cords	\$ 22.60 / Cord
Mixed Spruce	48 Cords	\$ 7.95 / Cord
N. White Cedar	11 Cords	\$ 15.90 / Cord
Paper Birch	57 Cords	\$ 14.55 / Cord
Red Pine	9 Cords	\$ 35.75 / Cord
Tamarack	5 Cords	\$ 20.20 / Cord
White Pine	702 Cords	\$ 27.55 / Cord

* The total volume is statistically estimated within plus (+) or minus (-) 11.33 percent. There are an estimated 2,350 cords on this timber sale, plus or minus 266 cords at the 95% confidence level. The estimated units are final and not subject to adjustment. Prospective bidders are urged to examine this timber and to make their own estimates of quantity and quality.

BOND AND PAYMENT SCHEDULE:

1. A bond in the amount of \$3,293.00 to insure faithful performance of the conditions of the contract will be deposited by the successful bidder within 21 days of the sale award.
2. Cutting in any sale or unit without the required advance payment would be considered a trespass.
3. Total payment must be paid in advance or according to the following schedule :
 - (a) Ten percent (10%) of the sale value must be paid within 21 days of the sale award.
 - (b) The 10% down payment will be credited towards the first unit cut.
 - (c) Payment for each of the following units must be made before cutting begins in that unit:

PAYMENT UNIT NUMBER	PERCENT OF TOTAL SALE VALUE
01	31.5%
02	20.3%
03	21.2%
04	27.0%

4. If no cutting takes place, the 10% down payment will not be refunded.
5. Operations on the contract issued will terminate on 06/30/2027.

SALE STATISTICS

Volumes were calculated in cubic feet using the Michigan taper model. Cubic foot volume includes all wood inside bark for the product indicated. For display purposes, cubic feet were converted to cords and MBF using a simple conversion factor, e.g. 79 cubic feet per cord and 185 cubic feet per MBF. The cubic foot volumes are precise; the cords and MBF volumes are not. Cubic foot volume cannot be directly converted to cords or boards with precision.

SALE VOLUMES

The total estimated sale volume may not equal the sum of the species/products due to the nature of statistical calculations associated with double sampling methodology.

VOLUME			STATISTICAL RANGE IN CORDS	
TOTAL CUBIC FEET	TOTAL CORDS	PERCENT ERROR	MINIMUM	MAXIMUM
185,662	2,350	11.33%	2,084	2,617

VDU VOLUMES

A VDU is a Volume Determination Unit. Volumes and their associated statistics are calculated at the VDU level and summarized to the sale level. There is often a one to one relationship between a VDU and a Payment Unit, but not always, depending on the cruise design. Refer to the VDU TO PAYMENT UNIT table.

VDU	VOLUME			RANGE IN CORDS	
	TOTAL CUBIC FEET	TOTAL CORDS	PERCENT ERROR	MINIMUM	MAXIMUM
10	48,937	619	27.74%	448	791
23	17,092	216	36.37%	138	295
25	34,243	433	26.87%	317	550
27	51,125	647	14.21%	555	739
31	3,561	45	122.93%	0	100
41	30,704	389	20.72%	308	469
TOTAL:	185,662	2,350		1,766	2,945

VDU TO PAYMENT UNIT

When a VDU is associated with more than one Payment Unit (PU), the VDU volumes are assigned to the PU based on acres of the VDU within the PU.

VDU	VDU ACRES	PU	PU ACRES
10	12.2	1	12.2
23	8.9	2	1.7
		3	7.2
25	16.5	2	2.7
		3	13.8
27	16.8	4	16.8
31	1.6	4	1.6
41	10.8	2	10.8
TOTAL:	66.8		66.8

DESCRIPTION OF TIMBER BY PAYMENT UNIT (PU)

PU	MARKET GROUP	PRODUCT	QUANTITY	UNIT	ACRES	ADVERTISE PRICE
1	Mixed Aspen	Sawtimber	101.4	MBF	12.2	\$20,723.20
	<i>B. T. Aspen</i>		86.0	<i>MBF</i>		
	<i>Quaking Aspen</i>		15.4	<i>MBF</i>		
	Red Pine		5.8	MBF		
	White Pine		7.9	MBF		
	Balsam Fir	Pulpwood	22	Cords		
	<i>Balsam Fir</i>	<i>Sawtimber</i>	0.9	<i>MBF</i>		
	<i>Balsam Fir</i>	<i>Pulpwood</i>	20	<i>Cords</i>		
	Basswood		2	Cords		
	Jack Pine		11	Cords		
	<i>Jack Pine</i>	<i>Sawtimber</i>	1.5	<i>MBF</i>		
	<i>Jack Pine</i>	<i>Pulpwood</i>	8	<i>Cords</i>		
	Mixed Aspen		269	Cords		
	<i>B. T. Aspen</i>		163	<i>Cords</i>		
	<i>Balsam Poplar</i>		4	<i>Cords</i>		
	<i>Quaking Aspen</i>		102	<i>Cords</i>		
	Mixed Hardwood		69	Cords		
	<i>Red Maple</i>		69	<i>Cords</i>		
	Paper Birch		4	Cords		
	<i>Paper Birch</i>		4	<i>Cords</i>		
	Red Pine		2	Cords		
	White Pine		11	Cords		
	2	Red Maple	Sawtimber	0.3		
White Pine			34.0	MBF		
Balsam Fir		Pulpwood	17	Cords		
<i>Balsam Fir</i>		<i>Sawtimber</i>	0.3	<i>MBF</i>		
<i>Balsam Fir</i>		<i>Pulpwood</i>	16	<i>Cords</i>		
Mixed Aspen			16	Cords		
<i>Balsam Poplar</i>			4	<i>Cords</i>		
<i>Quaking Aspen</i>			12	<i>Cords</i>		
Mixed Hardwood			26	Cords		
<i>Black Cherry</i>			4	<i>Cords</i>		
<i>Red Maple</i>			21	<i>Cords</i>		
<i>White Ash</i>			1	<i>Cords</i>		
Mixed Spruce			16	Cords		
<i>White Spruce</i>		<i>Sawtimber</i>	2.3	<i>MBF</i>		
<i>White Spruce</i>		<i>Pulpwood</i>	11	<i>Cords</i>		
N. White Cedar			11	Cords		
Paper Birch			21	Cords		
<i>Paper Birch</i>		<i>Sawtimber</i>	0.2	<i>MBF</i>		
<i>Paper Birch</i>		<i>Pulpwood</i>	21	<i>Cords</i>		
Tamarack			1	Cords		
White Pine		325	Cords			
3	Paper Birch	Pulpwood	19	Cords		\$13,963.25
	Red Maple	Sawtimber	1.2	MBF		
	<i>Paper Birch</i>		0.6	<i>MBF</i>		
	White Pine		3.9	MBF		
	<i>Paper Birch</i>	<i>Pulpwood</i>	18	<i>Cords</i>		
	Balsam Fir		59	Cords		
	Red Pine		2	Cords		
	<i>Balsam Fir</i>	<i>Sawtimber</i>	1.3	<i>MBF</i>		
	Tamarack	Pulpwood	4	Cords		
	<i>Balsam Fir</i>		56	<i>Cords</i>		
	White Pine		348	Cords		
	Mixed Aspen		74	Cords		
	<i>B. T. Aspen</i>		2	<i>Cords</i>		

DESCRIPTION OF TIMBER BY PAYMENT UNIT (PU), CON'T

PU	MARKET GROUP	PRODUCT	QUANTITY	UNIT	ACRES	ADVERTISE PRICE			
3 con't	<i>Balsam Poplar</i>	<i>Pulpwood</i>	20	<i>Cords</i>					
	<i>Quaking Aspen</i>		52	<i>Cords</i>					
	Mixed Hardwood		15	<i>Cords</i>					
	<i>Red Maple</i>		13	<i>Cords</i>					
	<i>White Ash</i>		2	<i>Cords</i>					
	Mixed Spruce		22	<i>Cords</i>					
	<i>White Spruce</i>	<i>Sawtimber</i>	2.2	<i>MBF</i>					
	<i>Black Spruce</i>	<i>Pulpwood</i>	2	<i>Cords</i>					
	<i>White Spruce</i>		16	<i>Cords</i>					
	4	Black/Red (Hybrid)	Sawtimber	2.5	MBF	18.4	\$17,786.35		
Mixed Aspen			36.2	MBF					
<i>B. T. Aspen</i>			35.2	<i>MBF</i>					
<i>Quaking Aspen</i>			1.0	<i>MBF</i>					
Red Maple			3.6	MBF					
Red Pine			4.3	MBF					
Balsam Fir		Pulpwood	74	Cords					
<i>Balsam Fir</i>		<i>Sawtimber</i>	2.9	<i>MBF</i>					
<i>Balsam Fir</i>		<i>Pulpwood</i>	68	<i>Cords</i>					
Black/Red (Hybrid)			5	Cords					
Mixed Aspen			330	Cords					
<i>B. T. Aspen</i>			167	<i>Cords</i>					
<i>Quaking Aspen</i>			163	<i>Cords</i>					
Mixed Hardwood			107	Cords					
<i>Red Maple</i>			107	<i>Cords</i>					
Mixed Spruce			10	Cords					
<i>Black Spruce</i>		<i>Sawtimber</i>	1.0	<i>MBF</i>					
<i>Black Spruce</i>		<i>Pulpwood</i>	4	<i>Cords</i>					
<i>White Spruce</i>			4	<i>Cords</i>					
Paper Birch			12	Cords					
<i>Paper Birch</i>			12	<i>Cords</i>					
Red Pine			5	Cords					
White Pine			18	Cords					
TOTAL:			201.1	MBF					
TOTAL:			1,927	Cords					

Sale Specific Conditions & Requirements

Sale Name: Graham's Knotty Pine and Aspen

Sale Number: 54-028-22 Seq#: 2

1 - Sale Area

1.2 - Boundaries

1.2.1 - Painted boundaries (9/19)

The sale boundary and Payment Unit boundaries are marked and identified by blue, red, and yellow paint along with unmarked roads & a grassy opening. Exterior sale boundary lines against private property are marked with blue paint. Exterior sale boundary lines against state are marked with red paint. Additionally, the westernmost, easternmost, and southernmost boundaries of Payment Unit 4 are unmarked and represented by Graham Road on the west, a grassy opening on the east, and Fitzpatrick Road to the south. Interior Payment Unit boundaries are marked with yellow paint. Yellow painted trees designating an interior Payment Unit boundary are only to be cut when all surrounding Payment Units have been paid. The painted boundary line trees are not Included Timber and are to be protected unless bordering the openings marked with "G0" on the timber sale map between Payment Units 2 and 3: these red painted trees are Included Timber. Retention patches are marked with red paint; no harvesting activities may occur within these areas.

2 - Timber Specifications

2.1 - Included Timber

2.1.1 - Clearcut unit(s) with unmerchantable trees (6/14)

Within Payment Unit(s) 1-4, cut all trees that are two (2) inches or more at DBH, except do not cut or damage trees marked with green paint. In addition, all apple trees within Payment Units 2 & 3 are not to be cut and are to be protected during harvest operations. Special protection trees identified in accordance with condition 3.4.2, within clearcutting unit boundaries, are not Included Timber and are to be protected.

3 - Payments

3.3 - Pre-measured Sales

3.3.4 - Dividing payment units (7/14)

Payment Unit(s) \$25,000 in value or greater may be divided at the request of the Purchaser and upon approval of the Unit Manager. Dividing Payment Units is a contract modification which requires a Timber Sale Contract Amendment. There will be only one division per Payment Unit.

3.4 - Damaged Timber

3.4.1 - Damaged timber (7/16)

General Condition and Requirement 3.4 Damaged Timber, defines liquidated damages for undesignated live merchantable trees which are cut or injured. In addition, extreme care should be taken to avoid damage to specified tree seedlings and saplings.

Within Payment Units 1-4, if more than 25% of the pine seedlings or saplings (1/4" to 4.5" DBH) within a specified portion of the Sale Area are damaged, liquidated damages will be assessed at \$200 per acre for all acreage within that specified portion of the Sale Area that was damaged.

3.4.2 - Special Protection Trees (4/14)

The Purchaser shall not cut live or dead special protection trees within cutting units or clearings. Special protection trees are marked with green paint. If the Purchaser's operations have cut or damaged special protection trees through carelessness, the Purchaser shall pay \$200 as fixed, agreed and liquidated damages for each special protection tree cut or damaged. Such payment does not constitute ownership of the undesignated timber.

3.4.3 - Special Protection Areas (8/11)

The Purchaser shall protect special protection areas from damage by the Purchaser's operations. Special protection areas are retention pockets within and along the edge of Payment Units 2 & 3.

3.6 - Payment Unit Cutting Schedule

3.6.1 - Order of cutting (1/09)

Payment Units 2 & 3 must be completed before starting Payment Units 1 & 4.

4 - Transportation

4.1 - Construction

4.1.3 - Slash and earthen piles (8/04)

Piles or windrows of earth along roads and landings that have been widened or constructed shall be leveled. Slash from road maintenance or construction, including stumps, shall be dispersed throughout the sale.

4.1.4 - Timber removed for construction (3/23)

Trees cut or damaged in the process of pre-approved road, landing or skid trail construction will be decked in an area separate from other Designated Timber and not removed until measured by the sale administrator. Payment will be made at contract prices or average prices, if not on the contract.

4.1.5 - Culverts (5/14)

Roads may require the installation of culverts for cross drainage or at natural drainage-ways. If culverts are needed in these locations, their placement will be specified by the Sale Administrator and they shall be installed prior to hauling. The culverts shall be new, corrugated metal or plastic gauge. Culverts will be a minimum of 12 inches in diameter and 24 feet in length. If culverts are removed, fill shall be removed from wetland soils as specified. Soils shall be maintained and left in a non-erodible condition, with water bars, seed, fertilizer, mulch, and slash installed as directed by the Sale Administrator and as specified in the BMP manual. Stream crossing permits, if needed, will be obtained by the DNR.

4.1.6 - Road construction (1/09)

Construction of new roads or improvements of existing roads shall be done in such a way as to minimize the environmental and visual impacts. Merchantable trees shall be cut and utilized unless otherwise directed. Non-merchantable trees shall be severed and laid flat on the ground. Slash shall be scattered, and not left in windrows and kept a minimum of 10 feet back from the road edge. Stumps shall be set upright, not left on edge, and be moved at least 10 feet away from the road edge. Disturbed soil shall be feathered into the woods and not left in berms or windrows.

4.1.8 - Road work (1) (8/07)

The following road work is required to access Payment Units 1-3: the temporary management access forest road extending eastward from the snowmobile trail to Payment Units 1-3 will require straightening, grading, and/or filling before hauling starts. All fill material must be approved by the Unit Manager or his/her representative. This access route spans approximately 275 feet of low ground that is seasonably wet and may require the use of mats for hauling and/or forwarding of wood. Refer to sale spec 5.2.17 for mat information. Contact DNR Forester Dale Parris at 989-590-1204 for additional information.

5 - Operations

5.1 - Notification

5.1.1 - Pre-sale conference (10/16)

A pre-sale conference on site between the Purchaser and sale administrator is required prior to beginning any operations a Payment Unit to determine landing and road locations. The Unit Manager or his/her representative must be contacted at least 5 days in advance to schedule the conference.

5.1.4 - Post-sale conference (10/16)

A post-sale conference on site between the Purchaser and sale administrator is required 5 days prior to the completion of active logging operations to determine clean-up and repair of landings, road edges, and the fulfillment of other contract specifications.

5.2 - Conduct of Operations

5.2.2 - Hazard Trees/Snags

5.2.2.1 - Den trees (10/16)

Obvious hollow and/or den trees shall be protected and left standing unless they are a safety hazard.

5.2.3 - Operating Restrictions

5.2.3.1 - Operating restrictions (9/11)

Within Payment Unit(s) 1-3 unless approved by the Unit Manager, hauling is not permitted from 5:00 p.m. Friday evening through 6:00 a.m. Monday morning during the December 1 to March 31 period. This restriction is due to the necessity of using the snowmobile trail for hauling wood from the sale.

5.2.3.11 - Coppice regeneration protection (4/10)

Timber harvesting in any Payment Unit must be completed before significant tree sprouting occurs in that Payment Unit so as to minimize damage to the new regeneration. Any post harvest operations, such as chipping, must be completed before sprouting of regeneration occurs. If it is anticipated that chipping will be delayed, then tops shall be carried to one central location or left unchipped. The Unit Manager or his/her representative may cease such operations if sprouting occurs before the operation is complete.

5.2.4 - Dead and Down Creation

5.2.4.7 - Dead and down creation: hare, grouse, deer and other species (5/15)

To improve horizontal cover habitat for snowshoe hare, grouse, deer, and other species, the Purchaser is to push over all purple ringed trees after all designated wood has been forwarded from a Payment Unit. These trees should be tipped over with the root ball still attached so the base of the tree is suspended off the ground. The crown of the fallen tree should be at or near ground level after it is pushed over.

5.2.17 - Timber Mats and Interlocking Composite Mats (5/23)

The forest road described in timber sale spec 4.1.8 may require extra protection such as that afforded by timber mats, interlocking composite mats, or another approved system. Approximately 275 feet of road or trail will need extra protection at locations shown on the Timber Sale Map. If available, mats may be borrowed from the DNR. A Timber Sale Contract Amendment will be used to document the Purchaser's use of the DNR's mats. Contact the sale administrator regarding availability and pick-up. Timber mats are available from various field offices. Composite mats are only available from the Grayling field office and the Marquette ICC. The Purchaser is responsible for picking up and hauling the mats to and from the site. The composite mats will require DNR staff onsite for installation and removal. Contact the sale administrator to schedule at least 30 days before desired install/removal date. All mats must be cleaned prior to drop off. This may include, but is not limited to, power washing and brushing to remove mud and debris. A charge of \$700.00 per timber mat and \$2,000.00 per composite mat will be assessed for all damaged or non-returned mats. Damage for the crane/timber mats is defined as three or more broken cants. Damage for the composite mats is defined as cracked or broken mats.

5.2.32 - Decking/landing restoration (9/13)

All decking and landing areas must have the surface area restored to a condition equal to or better than before. This is to ensure the proper regeneration of the stand. Wood debris, chips and "cookies" from trimmings must be removed or scattered away from landing and loading areas and may not be windrowed on the edge.

5.2.38 - No decking against live trees (2/04)

Cut products may not be decked against unmarked or designated leave trees.

5.2.41 - Snowmobile trail protection (9/11)

LP 464 is a snowmobile trail and is shown on the Timber Sale Map. Do not cut or damage posts with orange trail markers or traffic control signs. If the trail is used, it must be maintained and restored to a condition equal to or better than before the sale. The road maintenance/restoration must be done prior to December 1. If the trail is used for hauling, it must be graded to the satisfaction of the Unit Manager or his/her representative prior to December 1. If the trail road is to be used for hauling during the snowmobile season, then a snow covered base must be left on the trail. The snowmobile trail may only be crossed at right angles. Maintain a 20-foot-wide slash, debris, and rut free zone daily using the snowmobile trail as the centerline. No decking of forest products will be permitted along the snowmobile trail.

Within Payment Units 1-3, unless approved by the Unit Manager, hauling is not permitted from 5:00 p.m. Friday evening through 6:00 a.m. Monday morning during the December 1 to March 31 period. This restriction is due to the necessity of using the snowmobile trail for hauling wood from the sale.

5.2.43 - Opening protection (2/21)

Pertaining to the opening between Payment Units 2 & 3 marked on the Timber Sale Map with "G0", the following restrictions are in place:

-In order to protect irreplaceable landscape features, no activities are permitted in the east half of the opening. Damage to this area is unacceptable under any circumstances.

-In order to protect sensitive soils, the Sale Administrator or his/her representative must approve any operations using the west half of this opening.

-No brush or logging debris shall be left in this opening.

-Any damage to the opening shall be repaired according to specifications of the Unit Manager or his/her representative.

5.4 - Soil Protection

5.4.1 - Rutting restriction, general (7/16)

Operations are to cease immediately if equipment and weather conditions result in rutting of roads and/or skid trails which is 12 inches or greater in depth and 50 feet in length. The Unit Manager or his/her representative may restrict hauling and/or skidding if ruts exceed the specified depth. With the Unit Manager or his/her representative's approval, the Purchaser may return to the area when the risk of rutting has decreased.

5.7 - Protection of Historical Sites

5.7.1 - Historical sites (7/12)

The Purchaser shall not cut live or dead trees or operate equipment within historical sites. Historical sites are present within the vicinity of the Sale Area. The Purchaser shall protect historical sites from damage by the Purchaser's operations. If Purchaser's operations have cut or damaged historical sites through carelessness, the Purchaser shall pay \$500 as fixed, agreed and liquidated damages for each acre or part thereof cut or damaged. The purchaser is required to contract DNR Forester Dale Parris at 989-590-1204 prior to beginning any sale operations for specifics towards protecting these designated historic areas.

5.8 - Protection of Endangered Species

5.8.5 - Protection of raptor nests (3/13)

All trees with raptor nests will be protected if found during harvesting operations. Notification will be made to the Unit Manager or his/her representative who will notify the Wildlife Biologist so an on-site evaluation and recommendation can be made, if necessary.

6 - Safety and Fire Prevention

6.2 - Signing

6.2.1 - Road posting (10/20)

The Purchaser is responsible for posting and maintaining caution signs on forest roads used for hauling prior to beginning operations. The road must be posted at appropriate distances from the Sale Area to warn of logging activity and truck traffic. Signs must be removed when harvest operations are suspended or completed. The Purchaser will provide these signs.

6.2.2 - Snowmobile trail posting (10/20)

The Purchaser is responsible for posting and maintaining caution signs on Snowmobile Trail LP 464 prior to beginning operations during the snowmobile season (approximately December 1 to March 31). The trail must be posted at appropriate distances from the Sale Area to warn of logging activity and truck traffic. Signs must be removed when harvest operations are suspended or completed. The Purchaser will provide these signs.



TIMBER SALE MAP

This information provided by authority of Part 525, 1994 PA 451, as amended.

Forest Management Unit Atlanta	County Alpena	Mapped By D. Parris	Date 9/30/22	Page 1	of 2
Cruised By D. Parris					

Township 32N	Range 06E	Section(s) and Subdivision(s) Sec 24 NWSW,S1/2SW; Sec 25 NENW,NWNE,NWSW	Scale 1:7,920
-----------------	--------------	--	------------------

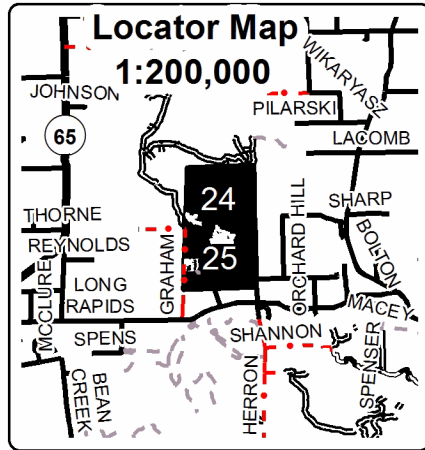
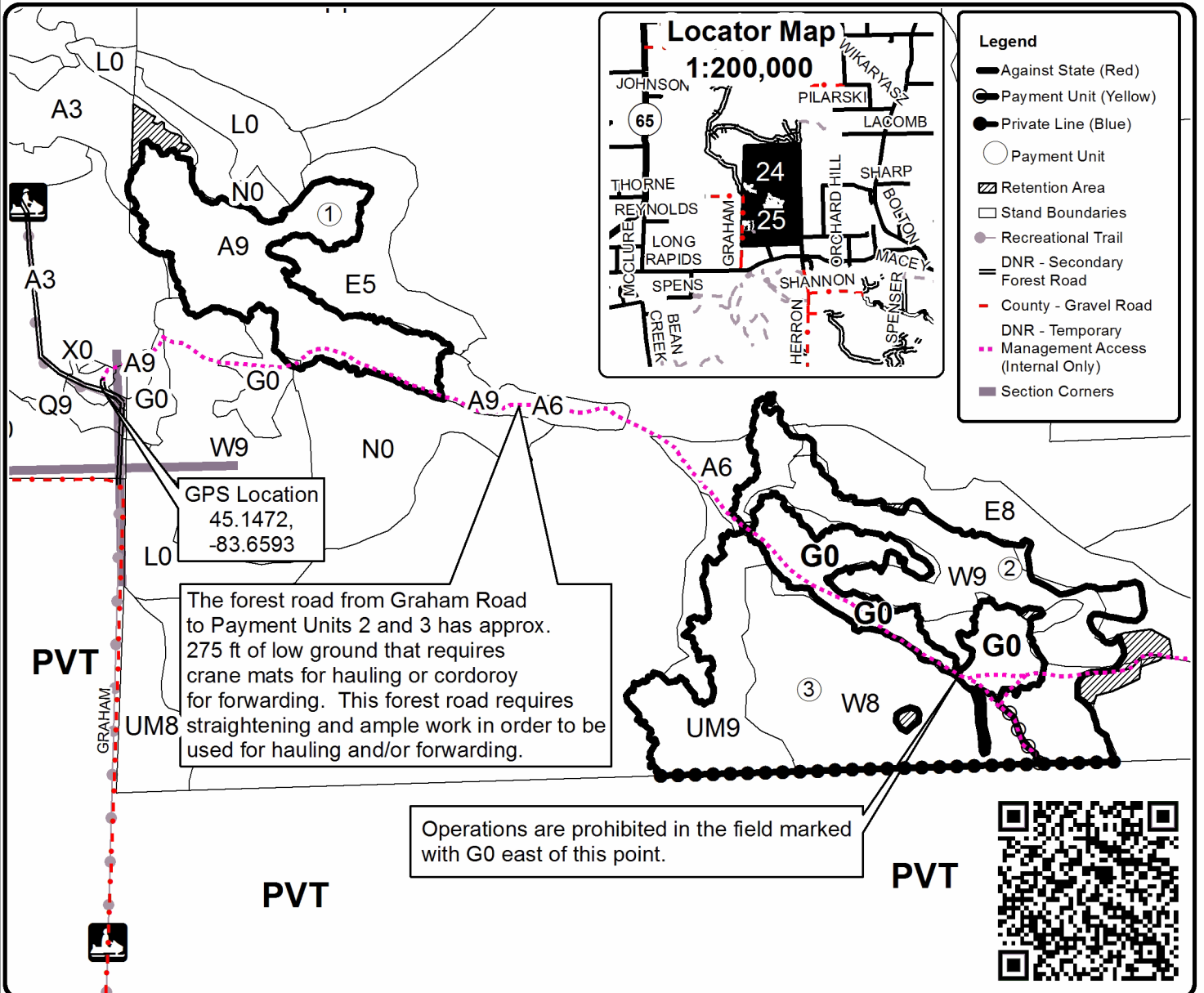
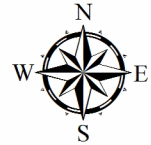
Cover Type				Density	
A = Aspen	H = Hemlock	N = Marsh	U = Upland Brush	0 = Non Stocked	5 = Pole Timber Medium
B = Paper Birch	J = Jack Pine	O = Oak	UM = Upland Mixed	1 = Seedling Sapling Poor	6 = Pole Timber Well
C = Cedar	L = Lowland Brush	P = Lowland Poplar	V = Bog or Marsh	2 = Seedling Sapling Medium	7 = Saw Timber Poor
D = Tread Bog	LM = Lowland Mixed	Q = Mixed Swamp Conifer	W = White Pine	3 = Seedling Sapling Well	8 = Saw Timber Medium
E = Swamp Hdwoods	M = Mpl, Bch, Brch	R = Red Pine	X = Non Stocked	4 = Pole Timber Poor	9 = Saw Timber Well
F = Spruce Fir	MC = Mixed Conifer	S = Black Spruce	Z = Water		
G = Grass	MD = Mixed Deciduous	T = Tamarack			

PU	Acres
1	12.2
2	15.2
3	21.0
4	18.4

Graham's Knotty Pine and Aspen

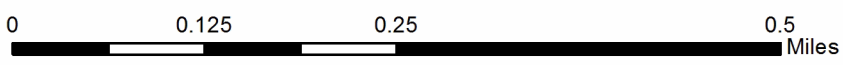
Compartment 113

66.8 Acres



Legend

- Against State (Red)
- Payment Unit (Yellow)
- Private Line (Blue)
- Payment Unit
- ▨ Retention Area
- Stand Boundaries
- Recreational Trail
- DNR - Secondary Forest Road
- County - Gravel Road
- DNR - Temporary Management Access (Internal Only)
- Section Corners





TIMBER SALE MAP

This information provided by authority of Part 525, 1994 PA 451, as amended.

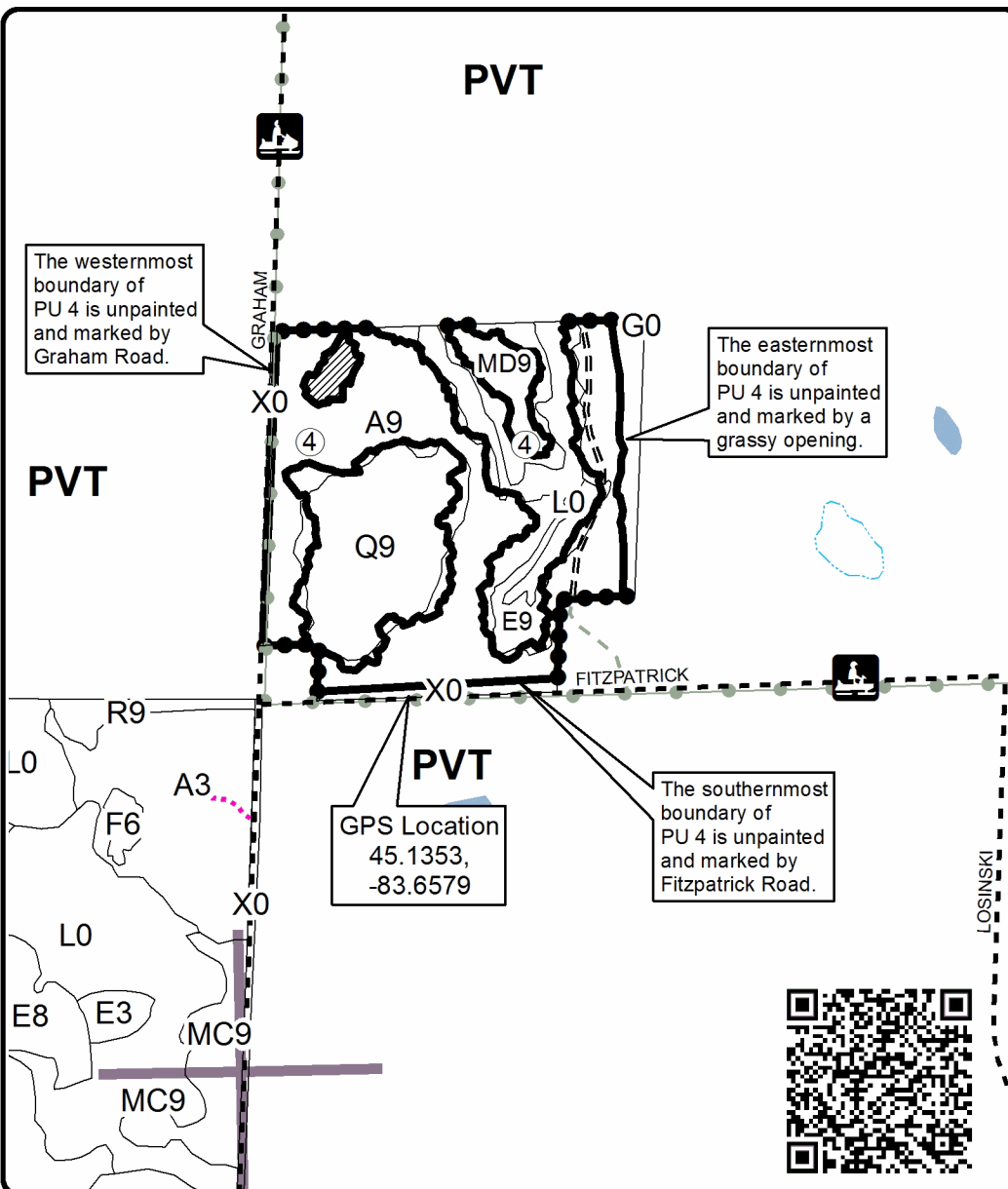
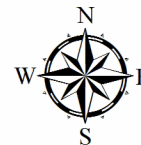
Forest Management Unit Atlanta		County Alpena	Mapped By D. Parris	Date 9/30/22	Page 2	of 2
Township 32N	Range 06E	Section(s) and Subdivision(s) Sec 24 NWSW,S1/2SW; Sec 25 NENW,NWNE,NWSW		Scale 1:7,920		

Cover Type				Density	
A = Aspen	H = Hemlock	N = Marsh	U = Upland Brush	0 = Non Stocked	5 = Pole Timber Medium
B = Paper Birch	J = Jack Pine	O = Oak	UM = Upland Mixed	1 = Seedling Sapling Poor	6 = Pole Timber Well
C = Cedar	L = Lowland Brush	P = Lowland Poplar	V = Bog or Marsh	2 = Seedling Sapling Medium	7 = Saw Timber Poor
D = Treed Bog	LM = Lowland Mixed	Q = Mixed Swamp Conifer	W = White Pine	3 = Seedling Sapling Well	8 = Saw Timber Medium
E = Swamp Hdwoods	M = Mpl, Bch, Brch	R = Red Pine	X = Non Stocked	4 = Pole Timber Poor	9 = Saw Timber Well
F = Spruce Fir	MC = Mixed Conifer	S = Black Spruce	Z = Water		
G = Grass	MD = Mixed Deciduous	T = Tamarack			

PU	Acres
1	12.2
2	15.2
3	21.0
4	18.4

Graham's Knotty Pine and Aspen

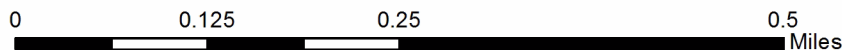
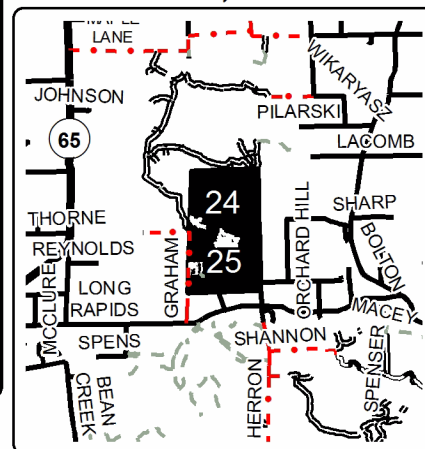
Compartment 113
66.8 Acres



Legend

- Against State (Red)
- Private Line (Blue)
- Payment Unit
- Retention Area (Red)
- Stand Boundaries
- Nearby Timber Sales
- Private - Dirt / Gravel Road
- County - Gravel Road
- Forest Access Route
- Temporary Management Access
- Recreational Trail
- Pipeline
- Powerline
- Lakes and Rivers
- Section Corners

Locator Map 1:200,000



Graham's Knotty Pine and Aspen (54-028-22)
T32N, R06E, SEC. 24; T32N, R06E, SEC. 25; Alpena COUNTY

In response to the notice of sale to be held 10:00 a.m. (local time) on January 9, 2024, I am hereby submitting my sealed bid (firm offer) for the following forest products to be cut. Bids for individual species must be at or above the advertised price. All non-responsive bid forms may be rejected.

<u>PRODUCTS & SPECIES</u>	<u>ESTIMATED VOLUME*</u>	<u>ADVERTISED PRICE</u>	<u>BID PRICE/UNIT</u>
Sawtimber			
Black/Red (Hybrid) Oak	2.5 MBF	\$ 124.00/MBF	\$ _____
Mixed Aspen	137.6 MBF	\$ 103.00/MBF	\$ _____
Red Maple	5.1 MBF	\$ 74.00/MBF	\$ _____
Red Pine	10.1 MBF	\$ 122.00/MBF	\$ _____
White Pine	45.8 MBF	\$ 72.00/MBF	\$ _____
Pulpwood			
Balsam Fir	171 Cords	\$ 22.20/Cord	\$ _____
Basswood	2 Cords	\$ 14.25/Cord	\$ _____
Black/Red (Hybrid) Oak	5 Cords	\$ 29.20/Cord	\$ _____
Jack Pine	11 Cords	\$ 10.75/Cord	\$ _____
Mixed Aspen	689 Cords	\$ 23.70/Cord	\$ _____
Mixed Hardwood	217 Cords	\$ 22.60/Cord	\$ _____
Mixed Spruce	48 Cords	\$ 7.95/Cord	\$ _____
N. White Cedar	11 Cords	\$ 15.90/Cord	\$ _____
Paper Birch	57 Cords	\$ 14.55/Cord	\$ _____
Red Pine	9 Cords	\$ 35.75/Cord	\$ _____
Tamarack	5 Cords	\$ 20.20/Cord	\$ _____
White Pine	702 Cords	\$ 27.55/Cord	\$ _____

*The volumes are statistically estimated within plus (+) or minus (-) 11.33 percent at 95% confidence level. These estimated volumes are final and not subject to adjustment. Prospective bidders are urged to examine this timber and to make their own estimates of quantity and quality.

I understand that any or all bids may be rejected. All bids must be signed and all bid items must be bid or the bid form may be rejected. I also understand that consideration and awarding a contract will be based upon my past performance and ability to complete the contract based upon equipment and staffing subject to my control.

FEDERAL ID: _____ - _____ or SOCIAL SECURITY NUMBER: _____ - _____ - _____

Company or individual bidding: _____

Company representative's name: _____

Address: _____

City: _____ State: _____ Zip: _____

IF AVAILABLE, PLEASE PLACE THE PERSONALIZED LABEL FROM YOUR PROSPECTUS IN THE ABOVE BOX.

Individual or company representative's signature: _____ Date: _____

Phone number : _____ Email (optional): _____

THE WINNING BIDDER MUST COMPLETE THE VERIFICATION OF WORKER'S DISABILITY COMPENSATION ACT COMPLIANCE (ON REVERSE SIDE IF DOUBLE SIDED) WITHIN 21 DAYS OF SALE AWARD DATE



FOR DEPARTMENT USE ONLY	
Sale Number (XX - XXX - XX - XX)	
Forest Management Unit:	

TIMBER SALE VERIFICATION OF WORKER'S DISABILITY COMPENSATION ACT COMPLIANCE

As required by Act 317, P.A. 1969 (Worker's Compensation) and
Part 5 of Act 451 of 1994, as amended.

VERIFICATION OF WORKER'S DISABILITY COMPENSATION ACT COMPLIANCE

- This verification must be completed and submitted within 21 days of contract award and prior to the issuance of the timber sale contract.
- In addition, if boxes 2B or 2C are checked, then Notice of Exclusion or Certificate of Insurance must be submitted within twenty-one (21) days of the contract award and prior to the issuance of the timber sale contract.
- All information must be typed or printed except for written signatures.

Please Check Appropriate Categories:

1. My business is organized as (you **must** check one of the boxes below):
 - A. Sole Proprietorship (individual)
 - B. Partnership
 - C. Corporation
2. You **must** check one of the boxes below:
 - A. I certify my business is a sole proprietorship and it has no employees but the sole proprietor. I am not subject to the Worker's Compensation Laws.
 - B. I certify my business has satisfied its obligation to the Worker's Compensation Act through the use of an approved Notice of Exclusion (BWC-337, Rev. 5/96). I will provide a copy of the Notice of Exclusion within 21 days of the contract award. (For questions or a copy of the BWC-337, please call the Worker's Compensation Bureau at 517-322-1195).
 - C. I certify my business has a Worker's Compensation Policy. I will provide an original Certificate of Insurance within twenty-one (21) days of the contract award.
3. If you have checked item 2(A) or 2(B), you **must** indicate the number of **both** full-time and part-time employees, other than yourself, including family members and active partners (if none, you must enter "0").

_____ Full-time Employees

_____ Part-time Employees

Name of Business		Federal ID (or) Social Security No.	
Address		Telephone ()	
City	State	ZIP	

I hereby certify that the above information is true and correct. I agree to notify the Michigan DNR of any changes that occur in factors affecting my coverage during any of my present and future operations.

Signature of Owner or Authorized Representative

Title

Date

Please complete the "SEALED BID" information on the next page

Spring Lk and Elk Rd Pine (54-001-23)
T33N, R02E, SEC. 25; T33N, R02E, SEC. 26; T33N, R02E, SEC. 27; Presque Isle

In response to the notice of sale to be held 10:00 a.m. (local time) on January 9, 2024, I am hereby submitting my sealed bid (firm offer) for the following forest products to be cut. Bids for individual species must be at or above the advertised price. All non-responsive bid forms may be rejected.

<u>PRODUCTS & SPECIES</u>	<u>ESTIMATED VOLUME*</u>	<u>ADVERTISED PRICE</u>	<u>BID PRICE/UNIT</u>
Sawtimber			
B. T. Aspen	17.3 MBF	\$ 119.00/MBF	\$ _____
Black/Red (Hybrid) Oak	9.1 MBF	\$ 144.00/MBF	\$ _____
Jack Pine	42.1 MBF	\$ 45.00/MBF	\$ _____
Red Oak	0.9 MBF	\$ 195.00/MBF	\$ _____
Red Pine	169.5 MBF	\$ 141.00/MBF	\$ _____
White Oak	5.5 MBF	\$ 76.00/MBF	\$ _____
Pulpwood			
B. T. Aspen	73 Cords	\$ 27.35/Cord	\$ _____
Jack Pine	1,188 Cords	\$ 12.40/Cord	\$ _____
Mixed Hardwood	47 Cords	\$ 26.10/Cord	\$ _____
Mixed Oak	125 Cords	\$ 33.70/Cord	\$ _____
Quaking Aspen	12 Cords	\$ 27.35/Cord	\$ _____
Red Oak	14 Cords	\$ 33.70/Cord	\$ _____
Red Pine	99 Cords	\$ 41.25/Cord	\$ _____
White Pine	1 Cords	\$ 31.80/Cord	\$ _____

*The volumes are statistically estimated within plus (+) or minus (-) 12.43 percent at 95% confidence level. These estimated volumes are final and not subject to adjustment. Prospective bidders are urged to examine this timber and to make their own estimates of quantity and quality.

I understand that any or all bids may be rejected. All bids must be signed and all bid items must be bid or the bid form may be rejected. I also understand that consideration and awarding a contract will be based upon my past performance and ability to complete the contract based upon equipment and staffing subject to my control.

FEDERAL ID: _____ - _____ or SOCIAL SECURITY NUMBER: _____ - _____ - _____

Company or individual bidding: _____

Company representative's name: _____

Address: _____

City: _____ State: _____ Zip: _____

IF AVAILABLE, PLEASE PLACE THE PERSONALIZED LABEL FROM YOUR PROSPECTUS IN THE ABOVE BOX.

Individual or company representative's signature: _____ Date: _____

Phone number : _____ Email (optional): _____

THE WINNING BIDDER MUST COMPLETE THE VERIFICATION OF WORKER'S DISABILITY COMPENSATION ACT COMPLIANCE (ON REVERSE SIDE IF DOUBLE SIDED) WITHIN 21 DAYS OF SALE AWARD DATE



FOR DEPARTMENT USE ONLY	
Sale Number (XX - XXX - XX - XX)	
Forest Management Unit:	

TIMBER SALE VERIFICATION OF WORKER'S DISABILITY COMPENSATION ACT COMPLIANCE

As required by Act 317, P.A. 1969 (Worker's Compensation) and
Part 5 of Act 451 of 1994, as amended.

VERIFICATION OF WORKER'S DISABILITY COMPENSATION ACT COMPLIANCE

- This verification must be completed and submitted within 21 days of contract award and prior to the issuance of the timber sale contract.
- In addition, if boxes 2B or 2C are checked, then Notice of Exclusion or Certificate of Insurance must be submitted within twenty-one (21) days of the contract award and prior to the issuance of the timber sale contract.
- All information must be typed or printed except for written signatures.

Please Check Appropriate Categories:

1. My business is organized as (you **must** check one of the boxes below):
 - A. Sole Proprietorship (individual)
 - B. Partnership
 - C. Corporation
2. You **must** check one of the boxes below:
 - A. I certify my business is a sole proprietorship and it has no employees but the sole proprietor. I am not subject to the Worker's Compensation Laws.
 - B. I certify my business has satisfied its obligation to the Worker's Compensation Act through the use of an approved Notice of Exclusion (BWC-337, Rev. 5/96). I will provide a copy of the Notice of Exclusion within 21 days of the contract award. (For questions or a copy of the BWC-337, please call the Worker's Compensation Bureau at 517-322-1195).
 - C. I certify my business has a Worker's Compensation Policy. I will provide an original Certificate of Insurance within twenty-one (21) days of the contract award.
3. If you have checked item 2(A) or 2(B), you **must** indicate the number of **both** full-time and part-time employees, other than yourself, including family members and active partners (if none, you must enter "0").

_____ Full-time Employees

_____ Part-time Employees

Name of Business		Federal ID (or) Social Security No.	
Address		Telephone ()	
City	State	ZIP	

I hereby certify that the above information is true and correct. I agree to notify the Michigan DNR of any changes that occur in factors affecting my coverage during any of my present and future operations.

Signature of Owner or Authorized Representative

Title

Date

Please complete the "SEALED BID" information on the next page

Smokey's Home Pine Oak (54-026-23)
T34N, R03E, SEC. 1; Presque Isle COUNTY

In response to the notice of sale to be held 10:00 a.m. (local time) on January 9, 2024, I am hereby submitting my sealed bid (firm offer) for the following forest products to be cut. Bids for individual species must be at or above the advertised price. All non-responsive bid forms may be rejected.

<u>PRODUCTS & SPECIES</u>	<u>ESTIMATED VOLUME*</u>	<u>ADVERTISED PRICE</u>	<u>BID PRICE/UNIT</u>
Sawtimber			
Red Oak	470.5 MBF	\$ 195.00/MBF	\$ _____
Red Pine	958.0 MBF	\$ 141.00/MBF	\$ _____
White Pine	141.3 MBF	\$ 143.00/MBF	\$ _____
Pulpwood			
B. T. Aspen	10 Cords	\$ 27.35/Cord	\$ _____
Black Spruce	62 Cords	\$ 9.15/Cord	\$ _____
Jack Pine	38 Cords	\$ 12.40/Cord	\$ _____
Red Maple	67 Cords	\$ 26.10/Cord	\$ _____
Red Oak	683 Cords	\$ 33.75/Cord	\$ _____
Red Pine	930 Cords	\$ 41.25/Cord	\$ _____
White Pine	248 Cords	\$ 31.80/Cord	\$ _____

*The volumes are statistically estimated within plus (+) or minus (-) 9.77 percent at 95% confidence level. These estimated volumes are final and not subject to adjustment. Prospective bidders are urged to examine this timber and to make their own estimates of quantity and quality.

I understand that any or all bids may be rejected. All bids must be signed and all bid items must be bid or the bid form may be rejected. I also understand that consideration and awarding a contract will be based upon my past performance and ability to complete the contract based upon equipment and staffing subject to my control.

FEDERAL ID: _____ or SOCIAL SECURITY NUMBER: _____

Company or individual bidding: _____

Company representative's name: _____

Address: _____

City: _____ State: _____ Zip: _____

IF AVAILABLE, PLEASE PLACE THE PERSONALIZED LABEL FROM YOUR PROSPECTUS IN THE ABOVE BOX.

Individual or company representative's signature: _____ Date: _____

Phone number : _____ Email (optional): _____

THE WINNING BIDDER MUST COMPLETE THE VERIFICATION OF WORKER'S DISABILITY COMPENSATION ACT COMPLIANCE (ON REVERSE SIDE IF DOUBLE SIDED) WITHIN 21 DAYS OF SALE AWARD DATE



FOR DEPARTMENT USE ONLY
Sale Number (XX - XXX - XX - XX)
Forest Management Unit:

TIMBER SALE VERIFICATION OF WORKER'S DISABILITY COMPENSATION ACT COMPLIANCE

*As required by Act 317, P.A. 1969 (Worker's Compensation) and
Part 5 of Act 451 of 1994, as amended.*

VERIFICATION OF WORKER'S DISABILITY COMPENSATION ACT COMPLIANCE

- This verification must be completed and submitted within 21 days of contract award and prior to the issuance of the timber sale contract.
- In addition, if boxes 2B or 2C are checked, then Notice of Exclusion or Certificate of Insurance must be submitted within twenty-one (21) days of the contract award and prior to the issuance of the timber sale contract.
- All information must be typed or printed except for written signatures.

Please Check Appropriate Categories:

1. My business is organized as (you **must** check one of the boxes below):
 - A. Sole Proprietorship (individual)
 - B. Partnership
 - C. Corporation
2. You **must** check one of the boxes below:
 - A. I certify my business is a sole proprietorship and it has no employees but the sole proprietor. I am not subject to the Worker's Compensation Laws.
 - B. I certify my business has satisfied its obligation to the Worker's Compensation Act through the use of an approved Notice of Exclusion (BWC-337, Rev. 5/96). I will provide a copy of the Notice of Exclusion within 21 days of the contract award. (For questions or a copy of the BWC-337, please call the Worker's Compensation Bureau at 517-322-1195).
 - C. I certify my business has a Worker's Compensation Policy. I will provide an original Certificate of Insurance within twenty-one (21) days of the contract award.
3. If you have checked item 2(A) or 2(B), you **must** indicate the number of **both** full-time and part-time employees, other than yourself, including family members and active partners (if none, you must enter "0").

_____ Full-time Employees

_____ Part-time Employees

Name of Business		Federal ID (or) Social Security No.	
Address		Telephone ()	
City	State	ZIP	

I hereby certify that the above information is true and correct. I agree to notify the Michigan DNR of any changes that occur in factors affecting my coverage during any of my present and future operations.

Signature of Owner or Authorized Representative

Title

Date

Please complete the "SEALED BID" information on the next page

Meridian Line Mix 2.0 (54-036-23)

T31N, R01E, SEC. 18; T31N, R01E, SEC. 19; T31N, R01E, SEC. 20; T31N, R01E,

In response to the notice of sale to be held 10:00 a.m. (local time) on January 9, 2024, I am hereby submitting my sealed bid (firm offer) for the following forest products to be cut. Bids for individual species must be at or above the advertised price. All non-responsive bid forms may be rejected.

<u>PRODUCTS & SPECIES</u>	<u>ESTIMATED VOLUME*</u>	<u>ADVERTISED PRICE</u>	<u>BID PRICE/UNIT</u>
Sawtimber			
Black/Red (Hybrid) Oak	88.0 MBF	\$ 134.00/MBF	\$ _____
Red Maple	29.5 MBF	\$ 79.00/MBF	\$ _____
Red Oak	112.9 MBF	\$ 182.00/MBF	\$ _____
Red Pine	5.9 MBF	\$ 131.00/MBF	\$ _____
Sugar Maple	18.3 MBF	\$ 297.00/MBF	\$ _____
Pulpwood			
Balsam Fir	297 Cords	\$ 23.90/Cord	\$ _____
Black Spruce	34 Cords	\$ 8.55/Cord	\$ _____
Mixed Aspen	1,666 Cords	\$ 25.55/Cord	\$ _____
Mixed Hardwood	506 Cords	\$ 24.35/Cord	\$ _____
Mixed Oak	569 Cords	\$ 31.45/Cord	\$ _____
White Pine	26 Cords	\$ 29.65/Cord	\$ _____

*The volumes are statistically estimated within plus (+) or minus (-) 10.57 percent at 95% confidence level. These estimated volumes are final and not subject to adjustment. Prospective bidders are urged to examine this timber and to make their own estimates of quantity and quality.

I understand that any or all bids may be rejected. All bids must be signed and all bid items must be bid or the bid form may be rejected. I also understand that consideration and awarding a contract will be based upon my past performance and ability to complete the contract based upon equipment and staffing subject to my control.

FEDERAL ID: _____ - _____ or SOCIAL SECURITY NUMBER: _____ - _____ - _____

Company or individual bidding: _____

Company representative's name: _____

Address: _____

City: _____ State: _____ Zip: _____

IF AVAILABLE, PLEASE PLACE THE PERSONALIZED LABEL FROM YOUR PROSPECTUS IN THE ABOVE BOX.

Individual or company representative's signature: _____ Date: _____

Phone number : _____ Email (optional): _____

THE WINNING BIDDER MUST COMPLETE THE VERIFICATION OF WORKER'S DISABILITY COMPENSATION ACT COMPLIANCE (ON REVERSE SIDE IF DOUBLE SIDED) WITHIN 21 DAYS OF SALE AWARD DATE



FOR DEPARTMENT USE ONLY
Sale Number (XX - XXX - XX - XX)
Forest Management Unit:

TIMBER SALE VERIFICATION OF WORKER'S DISABILITY COMPENSATION ACT COMPLIANCE

*As required by Act 317, P.A. 1969 (Worker's Compensation) and
Part 5 of Act 451 of 1994, as amended.*

VERIFICATION OF WORKER'S DISABILITY COMPENSATION ACT COMPLIANCE

- This verification must be completed and submitted within 21 days of contract award and prior to the issuance of the timber sale contract.
- In addition, if boxes 2B or 2C are checked, then Notice of Exclusion or Certificate of Insurance must be submitted within twenty-one (21) days of the contract award and prior to the issuance of the timber sale contract.
- All information must be typed or printed except for written signatures.

Please Check Appropriate Categories:

1. My business is organized as (you **must** check one of the boxes below):
 - A. Sole Proprietorship (individual)
 - B. Partnership
 - C. Corporation

2. You **must** check one of the boxes below:
 - A. I certify my business is a sole proprietorship and it has no employees but the sole proprietor. I am not subject to the Worker's Compensation Laws.
 - B. I certify my business has satisfied its obligation to the Worker's Compensation Act through the use of an approved Notice of Exclusion (BWC-337, Rev. 5/96). I will provide a copy of the Notice of Exclusion within 21 days of the contract award. (For questions or a copy of the BWC-337, please call the Worker's Compensation Bureau at 517-322-1195).
 - C. I certify my business has a Worker's Compensation Policy. I will provide an original Certificate of Insurance within twenty-one (21) days of the contract award.

3. If you have checked item 2(A) or 2(B), you **must** indicate the number of **both** full-time and part-time employees, other than yourself, including family members and active partners (if none, you must enter "0").

_____ Full-time Employees

_____ Part-time Employees

Name of Business		Federal ID (or) Social Security No.	
Address		Telephone ()	
City	State	ZIP	

I hereby certify that the above information is true and correct. I agree to notify the Michigan DNR of any changes that occur in factors affecting my coverage during any of my present and future operations.

Signature of Owner or Authorized Representative

Title

Date

Please complete the "SEALED BID" information on the next page

Elk Valley Aspen (54-002-22)
T31N, R03E, SEC. 28; T31N, R03E, SEC. 33; Montmorency COUNTY

In response to the notice of sale to be held 10:00 a.m. (local time) on January 9, 2024, I am hereby submitting my sealed bid (firm offer) for the following forest products to be cut. Bids for individual species must be at or above the advertised price. All non-responsive bid forms may be rejected.

<u>PRODUCTS & SPECIES</u>	<u>ESTIMATED VOLUME*</u>	<u>ADVERTISED PRICE</u>	<u>BID PRICE/UNIT</u>
Sawtimber			
B. T. Aspen	23.1 MBF	\$ 71.00/MBF	\$ _____
Red Oak	58.7 MBF	\$ 117.00/MBF	\$ _____
Pulpwood			
B. T. Aspen	557 Cords	\$ 16.40/Cord	\$ _____
Balsam Fir	3 Cords	\$ 15.35/Cord	\$ _____
Mixed Hardwood	58 Cords	\$ 15.65/Cord	\$ _____
Paper Birch	4 Cords	\$ 10.10/Cord	\$ _____
Red Oak	206 Cords	\$ 20.25/Cord	\$ _____
Red Pine	5 Cords	\$ 24.75/Cord	\$ _____
White Pine	17 Cords	\$ 19.05/Cord	\$ _____

*The volumes are statistically estimated within plus (+) or minus (-) 23.98 percent at 95% confidence level. These estimated volumes are final and not subject to adjustment. Prospective bidders are urged to examine this timber and to make their own estimates of quantity and quality.

I understand that any or all bids may be rejected. All bids must be signed and all bid items must be bid or the bid form may be rejected. I also understand that consideration and awarding a contract will be based upon my past performance and ability to complete the contract based upon equipment and staffing subject to my control.

FEDERAL ID: ____ - ____ - ____ or SOCIAL SECURITY NUMBER: ____ - ____ - ____

Company or individual bidding: _____

Company representative's name: _____

Address: _____

City: _____ State: _____ Zip: _____

IF AVAILABLE, PLEASE PLACE THE PERSONALIZED LABEL FROM YOUR PROSPECTUS IN THE ABOVE BOX.

Individual or company representative's signature: _____ Date: _____

Phone number : _____ Email (optional): _____

THE WINNING BIDDER MUST COMPLETE THE VERIFICATION OF WORKER'S DISABILITY COMPENSATION ACT COMPLIANCE (ON REVERSE SIDE IF DOUBLE SIDED) WITHIN 21 DAYS OF SALE AWARD DATE



FOR DEPARTMENT USE ONLY	
Sale Number (XX - XXX - XX - XX)	
Forest Management Unit:	

TIMBER SALE VERIFICATION OF WORKER'S DISABILITY COMPENSATION ACT COMPLIANCE

As required by Act 317, P.A. 1969 (Worker's Compensation) and
Part 5 of Act 451 of 1994, as amended.

VERIFICATION OF WORKER'S DISABILITY COMPENSATION ACT COMPLIANCE

- This verification must be completed and submitted within 21 days of contract award and prior to the issuance of the timber sale contract.
- In addition, if boxes 2B or 2C are checked, then Notice of Exclusion or Certificate of Insurance must be submitted within twenty-one (21) days of the contract award and prior to the issuance of the timber sale contract.
- All information must be typed or printed except for written signatures.

Please Check Appropriate Categories:

1. My business is organized as (you **must** check one of the boxes below):
 - A. Sole Proprietorship (individual)
 - B. Partnership
 - C. Corporation
2. You **must** check one of the boxes below:
 - A. I certify my business is a sole proprietorship and it has no employees but the sole proprietor. I am not subject to the Worker's Compensation Laws.
 - B. I certify my business has satisfied its obligation to the Worker's Compensation Act through the use of an approved Notice of Exclusion (BWC-337, Rev. 5/96). I will provide a copy of the Notice of Exclusion within 21 days of the contract award. (For questions or a copy of the BWC-337, please call the Worker's Compensation Bureau at 517-322-1195).
 - C. I certify my business has a Worker's Compensation Policy. I will provide an original Certificate of Insurance within twenty-one (21) days of the contract award.
3. If you have checked item 2(A) or 2(B), you **must** indicate the number of **both** full-time and part-time employees, other than yourself, including family members and active partners (if none, you must enter "0").

_____ Full-time Employees

_____ Part-time Employees

Name of Business		Federal ID (or) Social Security No.	
Address		Telephone ()	
City	State	ZIP	

I hereby certify that the above information is true and correct. I agree to notify the Michigan DNR of any changes that occur in factors affecting my coverage during any of my present and future operations.

Signature of Owner or Authorized Representative

Title

Date

Please complete the "SEALED BID" information on the next page