



**DEPARTMENT OF NATURAL RESOURCES
STATE OF MICHIGAN
TIMBER SALE PROSPECTUS #7295**

SCHEDULED SALE DATE AND TIME: 3:00 p.m. (local time) on October 24, 2023.

LOCATION: ESCANABA MGMT UNIT, 6833 HWY'S 2, 41 & M-35, GLADSTONE, MI 49837.

PROSPECTUS NOTE: The bidder is advised to inspect the sale area and review the location, estimated volumes, operating costs and contract terms of proposed sales. Please be aware that some landowners may request 60 days or more notice for access across their land.

Notice is hereby given that bids will be received by the Unit Manager, ESCANABA MANAGEMENT UNIT, for certain timber on the following described lands:

Loaded Carbs (33-003-23) / T41N, R23W, SEC. 10, SENW,SWNE,E1/2SW,SE.

T41N, R23W, SEC. 11, NWSW.

T41N, R23W, SEC. 9 , S1/2SE.

Delta County, Advertised Price \$17,072.95, 117.4 Acres, Spruce/Fir/Tamarack, N White Cedar.

SALE NOTE: This sale can be accessed off of the Woodtick road but there is a DNR gate on the Woodtick.

Note that all ash, softwood and aspen species are calculated as pulpwood volumes regardless of diameter at breast height (dbh) size class.

Cedar River Hardwood (33-006-23) / T35N, R25W, SEC. 3 , NW,W1/2NE,NESW,NWSE.

T36N, R25W, SEC. 34, SWSW.

Menominee County, Advertised Price \$43,729.75, 83.5 Acres, Hardwood, N White Cedar.

SALE NOTE: All softwood and aspen species are cruised as pulpwood regardless of DBH. Misc. Species 1 is dying ash with merchantability.

A recreation site such as a trail, pathway, or campground is within the sale area or the vicinity. Certain restrictions/specifications may be applicable including time restrictions.

Ross Creek Mix (33-024-23) / T36N, R27W, SEC. 4 , NW,W1/2SW.

T36N, R27W, SEC. 5 , NENE.

T37N, R27W, SEC. 32, SESE.

Menominee County, Advertised Price \$9,754.35, 56.5 Acres, Hardwood, Red Pine.

BID INSTRUCTIONS (VER. 10/10/2022):

1. Scheduled Bid Location, Date, and Time (2/11)

Bids must be received by the Unit Manager, ESCANABA OFFICE, 6833 Hwy's 2, 41 & M-35, Gladstone, MI 49837, no later than 3:00 p.m. (local time) on October 24, 2023. For further information concerning this sale, contact Eric Thompson at 906-789-8231.

2. Bidder's Qualifications (10/22)

If all or part of a timber sale was prepared by a private contractor, the contractor and that contractor's company are not permitted to bid on the timber sale. A person must be 18 years of age or older to purchase timber. Permanent employees of the Department of Natural Resources or members of their immediate household may not bid. Former employees, in the permanent or seasonal class, may not bid until 3 months after the last day of active duty. Bids will not be accepted from individuals or companies appearing on the DNR/FRD No-Bid List. This list contains the names of purchasers who previously failed to execute a contract within 21-days or who have a history of poor performance.

3. Preparation of Sealed Bids (5/16)

Bid Forms may be completed online thru Michigan DNR Timber Sale Online Bidding (OLB) at www.michigan.gov/timberbidding or by completing the hardcopy Bid Form found in the Timber Sale Prospectus. Hardcopy Bid Forms shall be manually signed in ink. Registration in OLB is considered your 'signature' for all bids submitted thru that system. Bid prices must be entered for each species and product in the Bid Price column for all material subject to bidding and all fill-in blanks must be completed. If erasures or other changes appear on the hardcopy Bid Form, each erasure or change must be initialed by the person signing the bid.

4. Submission of Sealed Bids (5/16)

Bid forms may be obtained from the Unit Manager or thru OLB. Bids may be submitted hardcopy or thru OLB. All hardcopy bids must be submitted on the bid form and in an envelope clearly identified as described in this section. NOTE: Only one bid form per bid envelope. Sealed bids must be submitted to the Unit office designated in the prospectus and must be submitted at or prior to the time established in the prospectus. The envelope should show on the outside (a) the sale name or number and (b) the date and time of bid opening, as shown in the prospectus. Bids received after the time specified in the sale prospectus are late bids and will be rejected.

It is possible for a bidder to submit multiple bids on a single sale. For example, a bid may be submitted hardcopy and a bid may be submitted thru OLB. Or, two bidders from the same company could both submit bids on the same sale. If this were to happen, the State would accept all bids received and award the contract accordingly. All bidding and contractual requirements would apply to all bids received.

5. Public Opening of Sealed Bids (7/16)

If conditions permit, the sealed bids will be publicly opened and posted at the time and place set in the prospectus.

If a bidder, present at a bid opening, has submitted bids on more than one sale, that bidder may withdraw their unopened bid envelopes or announce the withdrawal of their online bid after being declared the successful bidder on one sale.

6. Award of Contract (1/11)

Award of the contract will be made to the Bidder whose bid, conforming to the prospectus, is most advantageous to the State of Michigan on the basis of total value at rates bid for the estimated quantities. The State reserves the right to reject any bid or waive any minor irregularity in bids received. A written award mailed (or otherwise furnished) to the successful Bidder shall be deemed to result in a binding contract without further action by either party.

7. Down Payment (1/11)

The Bidder to whom award is made must make a down payment within 21 days of the sale award. The amount of the down payment will be calculated as shown in the Bond and Payment Schedule of this prospectus. Only cash may be used to meet this requirement.

8. Performance Security (1/11)

As guarantee of faithful performance, a cash bond, certificate of deposit, surety bond or irrevocable letter of credit (LOC) is required within 21 days of the sale award. The amount of the performance security is shown in the Bond and

Payment Schedule of this prospectus. If an LOC or surety is used, the coverage must extend for at least 6 months beyond the contract expiration.

9. Worker's Compensation (10/22)

Purchaser shall obtain worker's compensation insurance to cover claims under Michigan's Worker's Disability Compensation Act of 1969 or similar employee benefit act of any other state applicable to an employee. Verification of Worker's Disability Compensation Act Compliance must be completed and submitted within 21 days of contract award and prior to the issuance of the timber sale contract. In addition, if applicable, Notice of Exclusion or Certificate of Insurance must also be submitted.

10. Timber Sale Contract (10/22)

Additional conditions and requirements common to all timber sales are listed on the timber sale contract (R4031) and are available on line at www.michigan.gov/timber. Contact the Unit Manager for additional information or a sample contract. Within 21 days of the date of the award letter, the bidder must sign the contract and provide the required down payment, performance security, and verification of worker's disability compensation. The down payment and performance security shall be in accordance with the provisions of the timber sale contract, in the sums stated in this prospectus. If these actions are not taken, then the Bidder, the Bidder's corporation, and the corporation's principals may not be permitted to bid on State timber sales for a period of 3 months after the first offense, 6 months after the second offense, and 1 year after the third offense. An offense will only be counted against the Bidder for 5 years. In addition, the Bidder certifies that if awarded this contract, the Bidder will complete the timber sale contract in accordance with its terms and any modifications thereof including requirements to purchase, cut, and remove the included timber by the expiration date.

Payment Unit values in the State Forest Timber Sale Contract are calculated based on the advertised value of the Payment Unit as a percentage of the total advertised value of the contract. The advertised value of each Payment Unit is given in the Description of Timber by Payment Unit table on the Timber Sale Information page. For example, if the value of Payment Unit 1 is advertised as \$1,500 and the total Timber Sale value is advertised as \$10,000, the contract price for Payment Unit 1 will be 15% of the total bid price ($\$1,500/\$10,000 * 100$).

11. Disclaimer of Estimates and Bidder's Warranty of Inspection (10/22)

Before submitting this bid, the Bidder is advised and cautioned to inspect the sale area, review the requirements of the sale contract, and take other steps as may be reasonably necessary to ascertain the location, estimated volumes, construction estimates, and operating costs of the proposed sale. Failure to do so will not relieve the Bidder from responsibility for completing the contract.

The Bidder warrants that this bid is submitted solely on the basis of the Bidder's examination and inspection of the quality and quantity of the timber offered for sale and the Bidder's opinion of the value thereof and the costs of recovery. No reliance should be placed on the State of Michigan's estimates of timber quality, quantity or costs of recovery. Bidder further acknowledges that the State of Michigan: (i) expressly disclaims any warranty of fitness of timber for any purpose; (ii) offers this timber as is without any warranty of quality (merchantability) or quantity and (iii) expressly disclaims any warranty as to the quantity or quality of timber sold.

12. Certification and Chain-of-Custody (10/22)

Unless otherwise indicated in the contract under section 7 – Other Conditions of the Sale Specific Conditions & Requirements, the area encompassed by this timber sale is certified to the standards of the Forest Stewardship Council (FSC) - Certificate #SCS-FM/COC-00090N and the Sustainable Forestry Initiative (SFI) - Certificate #NSF-SFIS-5Y031-SF5. Forest products from this sale may be delivered to the mill as "FSC 100% and / or SFI certified" as long as the contractor hauling the forest products is chain-of-custody (COC) certified or covered under a COC certificate from the destination mill. The purchaser is responsible for maintaining COC after leaving the sale area.

13. Good Neighbor Authority (GNA) Requirements (10/22)

If the name of this timber sales contains the acronym GNA, it is authorized by the Good Neighbor Authority (GNA) and covered by various agreements between the U.S. Forest Service and the State. The timber sale occurs on federal land and the following conditions apply:

GNA contracts on US Forest Service land will not be awarded to purchasers on the Federal list of excluded parties. The System for Award Management (SAM) will be checked for active excluded parties prior to award of contract. In

addition, the Bidder to whom award is made must complete an Assurance Regarding Felony Conviction or Tax Delinquent Status for Corporate Applicants (AD-3031).

14. Good Neighbor Authority (GNA) Requirements, con't (10/22)

Bidder certifies, by signing this bid form, that to the best of Bidder's knowledge that the following representations are accurate and complete.

- a. That the Bidder and its principals are not presently debarred, suspended, proposed for debarment, declared ineligible, or voluntary excluded from timber sales (covered transactions) by any Federal department or agency.
- b. That the Bidder and its principals have not within a 3-year period preceding this bid been convicted of or had a civil judgment rendered against them for commission of fraud or a criminal offense in connection with obtaining , attempting to obtain, or performing a public (Federal, State, or local) transaction or contract under a public transaction; violation of Federal or State antitrust statutes or commission of embezzlement, theft, forgery, bribery, falsification or destruction of records, making false statements, or receiving stolen property.
- c. That the Bidder and its principals are not presently indicted for or otherwise criminally or civilly charged by a governmental entity (Federal, State, or local) with commission of any of the offenses enumerated in paragraph b of this certification.
- d. That the Bidder and its principals have not within a 3-year period preceding this bid had one or more public transactions (Federal, State, or local) terminated for breach or default of a timber or forest product contract.

Bidders that cannot certify this requirement, in whole or in part, shall submit an explanation with their bid.

Scott Bowen
Director

TIMBER SALE INFORMATION

Loaded Carbs (33-003-23)

T41N, R23W, SEC. 10; T41N, R23W, SEC. 11; T41N, R23W, SEC. 9.
Delta County (Advertised Price \$17,072.95)

SALE NOTE: This sale can be accessed off of the Woodtick road but there is a DNR gate on the Woodtick. Note that all ash, softwood and aspen species are calculated as pulpwood volumes regardless of diameter at breast height (dbh) size class.

A timber sale contract for this lump sum, sealed bid timber sale will be awarded to the responsible bidder offering the highest sealed bid price. All units of volume listed below were estimated using the Inventory Manager computer program and the new Michigan taper model. Bids must be at or above the following advertised price for each product and species:

<u>PRODUCTS & SPECIES</u>	<u>ESTIMATED UNITS*</u>	<u>ADVERTISED PRICE</u>
Pulpwood		
Balsam Fir	76 Cords	\$ 6.00 / Cord
Black Spruce	48 Cords	\$ 6.70 / Cord
Mixed Aspen	289 Cords	\$ 13.15 / Cord
Mixed Hardwood	125 Cords	\$ 9.85 / Cord
N. White Cedar	372 Cords	\$ 5.05 / Cord
Paper Birch	91 Cords	\$ 5.15 / Cord
Tamarack	1,049 Cords	\$ 8.50 / Cord

* The total volume is statistically estimated within plus (+) or minus (-) 10.86 percent. There are an estimated 2,041 cords on this timber sale, plus or minus 222 cords at the 95% confidence level. The estimated units are final and not subject to adjustment. Prospective bidders are urged to examine this timber and to make their own estimates of quantity and quality.

BOND AND PAYMENT SCHEDULE:

1. A bond in the amount of \$854.00 to insure faithful performance of the conditions of the contract will be deposited by the successful bidder within 21 days of the sale award.
2. Cutting in any sale or unit without the required advance payment would be considered a trespass.
3. Total payment must be paid in advance or according to the following schedule :
 - (a) Ten percent (10%) of the sale value must be paid within 21 days of the sale award.
 - (b) The 10% down payment will be credited towards the first unit cut.
 - (c) Payment for each of the following units must be made before cutting begins in that unit:

PAYMENT UNIT NUMBER	PERCENT OF TOTAL SALE VALUE
01	30.1%
02	14.3%
03	19.1%
04	17.4%
05	19.1%
4. If no cutting takes place, the 10% down payment will not be refunded.
5. Operations on the contract issued will terminate on 06/30/2026.

SALE STATISTICS

Volumes were calculated in cubic feet using the Michigan taper model. Cubic foot volume includes all wood inside bark for the product indicated. For display purposes, cubic feet were converted to cords and MBF using a simple conversion factor, e.g. 79 cubic feet per cord and 185 cubic feet per MBF. The cubic foot volumes are precise; the cords and MBF volumes are not. Cubic foot volume cannot be directly converted to cords or boards with precision.

SALE VOLUMES

The total estimated sale volume may not equal the sum of the species/products due to the nature of statistical calculations associated with double sampling methodology.

VOLUME		STATISTICAL RANGE IN CORDS		
TOTAL CUBIC FEET	TOTAL CORDS	PERCENT ERROR	MINIMUM	MAXIMUM
161,265	2,041	10.86%	1,820	2,263

VDU VOLUMES

A VDU is a Volume Determination Unit. Volumes and their associated statistics are calculated at the VDU level and summarized to the sale level. There is often a one to one relationship between a VDU and a Payment Unit, but not always, depending on the cruise design. Refer to the VDU TO PAYMENT UNIT table.

VDU	VOLUME		PERCENT ERROR	RANGE IN CORDS	
	TOTAL CUBIC FEET	TOTAL CORDS		MINIMUM	MAXIMUM
31	36,302	460	23.47%	352	567
41	124,963	1,582	12.64%	1,382	1,782
TOTAL:	161,265	2,041		1,734	2,349

VDU TO PAYMENT UNIT

When a VDU is associated with more than one Payment Unit (PU), the VDU volumes are assigned to the PU based on acres of the VDU within the PU.

VDU	VDU ACRES	PU	PU ACRES
31	25.3	1	25.3
41	92.1	2	18.8
		3	25.3
		4	22.8
		5	25.2
TOTAL:	117.4		117.4

DESCRIPTION OF TIMBER BY PAYMENT UNIT (PU)

PU	MARKET GROUP	PRODUCT	QUANTITY	UNIT	ACRES	ADVERTISE PRICE
	Balsam Fir	Pulpwood	68	Cords		
	Mixed Hardwood		95	Cords		
	Balsam Fir		2	Cords		
	Black Spruce		10	Cords		
	N. White Cedar		76	Cords		
	Paper Birch		19	Cords		
	Tamarack		214	Cords		
	Balsam Fir		2	Cords		
	Black Spruce		13	Cords		
	N. White Cedar		102	Cords		
	Paper Birch		24	Cords		
	Tamarack		288	Cords		
	Balsam Fir		2	Cords		
	Black Spruce		12	Cords		
	N. White Cedar		92	Cords		
	Paper Birch		23	Cords		
	Tamarack		260	Cords		
	Balsam Fir		2	Cords		
	Black Spruce		13	Cords		
	N. White Cedar		102	Cords		
	Paper Birch		25	Cords		
	Tamarack	287	Cords			
	Mixed Aspen	Pulpwood	289	Cords	25.3	
	<i>Balsam Poplar</i>		19	<i>Cords</i>		
	<i>Quaking Aspen</i>		270	<i>Cords</i>		
2	Mixed Hardwood	Pulpwood	6	Cords	18.8	\$2,438.75
	<i>Green Ash</i>		1	<i>Cords</i>		
	<i>Red Maple</i>		5	<i>Cords</i>		
3	Mixed Hardwood	Pulpwood	8	Cords	25.3	\$3,264.60
	<i>Green Ash</i>		2	<i>Cords</i>		
	<i>Red Maple</i>		6	<i>Cords</i>		
4	Mixed Hardwood	Pulpwood	8	Cords	22.8	\$2,964.25
	<i>Green Ash</i>		2	<i>Cords</i>		
	<i>Red Maple</i>		6	<i>Cords</i>		
5	Mixed Hardwood	Pulpwood	8	Cords	25.2	\$3,261.25
	<i>Green Ash</i>		2	<i>Cords</i>		
	<i>Red Maple</i>		6	<i>Cords</i>		
TOTAL:			2,050	Cords		

Sale Specific Conditions & Requirements

Sale Name: Loaded Carbs

Sale Number: 33-003-23 Seq#: 2

1 - Sale Area

1.2 - Boundaries

1.2.1 - Painted boundaries (9/19)

The sale boundary and Payment Unit boundaries are marked and identified by blue, red and yellow paint. Exterior sale boundary lines against private property are marked with blue paint. Exterior sale boundary lines against state are marked with red paint. Interior Payment Unit boundaries are marked with yellow paint. Retention patches are marked with red paint; no harvesting activities may occur within these areas. The painted boundary line trees are not Included Timber and are to be protected unless marked with orange paint. Yellow painted trees designating an interior Payment Unit boundary are only to be cut when all surrounding Payment Units have been paid.

2 - Timber Specifications

2.1 - Included Timber

2.1.1 - Clearcut unit(s) with unmerchantable trees (6/14)

Within Payment Unit(s) 1-5, cut all trees that are three (3) inches or more at DBH.

2.1.11 - Description of timber note (2/04)

Note that all ash, softwood and aspen species are calculated as pulpwood volumes regardless of diameter at breast height (dbh) size class.

3 - Payments

3.3 - Pre-measured Sales

3.3.4 - Dividing payment units (7/14)

Payment Unit(s) with a contract bid value of \$18,000 or greater may be divided at the request of the Purchaser and upon approval of the Unit Manager. Dividing Payment Units is a contract modification which requires a Timber Sale Contract Amendment. There will be only one division per Payment Unit.

4 - Transportation

4.1 - Construction

4.1.6 - Road construction (1/09)

Improvements of existing roads shall be done in such a way as to minimize the environmental and visual impacts. Merchantable trees shall be cut and utilized unless otherwise directed. Non-merchantable trees shall be severed and laid flat on the ground. Slash shall be scattered, and not left in windrows and kept a minimum of 10 feet back from the road edge. Stumps shall be set upright, not left on edge, and be moved at least 10 feet away from the road edge. Disturbed soil shall be feathered into the woods and not left in berms or windrows.

5 - Operations

5.1 - Notification

5.1.1 - Pre-sale conference (10/16)

A pre-sale conference between the Purchaser and sale administrator is required prior to beginning any operations. The Unit Manager or his/her representative must be contacted at least 10 days in advance to schedule the conference.

5.1.3 - Well heads and natural gas pipelines (11/15)

The Purchaser is responsible for contacting the gas or pipeline company 30 days prior to operating equipment in the vicinity of well heads or natural gas pipelines. Contact the Enbridge Gas Company at 906-789-1221 and Great Lakes Gas Transmission Company at 906-474-6414.

5.1.4 - Post-sale conference (10/16)

A post-sale conference on site between the Purchaser and sale administrator is required 5 days prior to the completion of

active logging operations to determine clean-up and repair of landings, road edges, and the fulfillment of other contract specifications.

5.2 - Conduct of Operations

5.2.2 - Hazard Trees/Snags

5.2.2.1 - Den trees (10/16)

Obvious hollow and/or den trees shall be protected and left standing unless they are a safety hazard.

5.2.22 - Operating Caution

5.2.22.1 - Operating caution (6/11)

It is recommended, but not required, that within Payment Unit(s) 1-5, cutting, skidding, and hauling occur during dry summer or frozen winter conditions. The reason for the recommendation is because the access to and within these units is low and wet in areas.

5.4 - Soil Protection

5.4.1 - Rutting restriction, general (7/16)

Operations are to cease immediately if equipment and weather conditions result in rutting of roads and/or skid trails which is 12 inches or greater in depth and 50 feet in length. The Unit Manager or his/her representative may restrict hauling and/or skidding if ruts exceed the specified depth. With the Unit Manager or his/her representative's approval, the Purchaser may return to the area when the risk of rutting has decreased.

6 - Safety and Fire Prevention

6.2 - Signing

6.2.1 - Road posting (10/20)

The Purchaser is responsible for posting and maintaining caution signs on I road and St. Nicholas (31st) road prior to beginning operations. The road must be posted at appropriate distances from the sale area to warn of logging activity and truck traffic. Signs must be removed when harvest operations are suspended or completed. The Purchaser will provide these signs.



TIMBER SALE MAP

This information provided by authority of Part 525, 1994 PA 451, as amended.

Forest Management Unit Escanaba	County Delta	Mapped By Reger	Date 02/21/2023	Page 1	of 1
		Cruised By Reger			

Township 41N	Range 23W	Section(s) and Subdivision(s) 9; S1/2SE 10; SENW,SWNE,E1/2SW,SE 11; NWSW	Scale 1:15,840
-----------------	--------------	---	-------------------

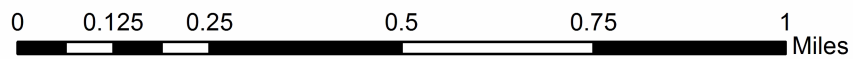
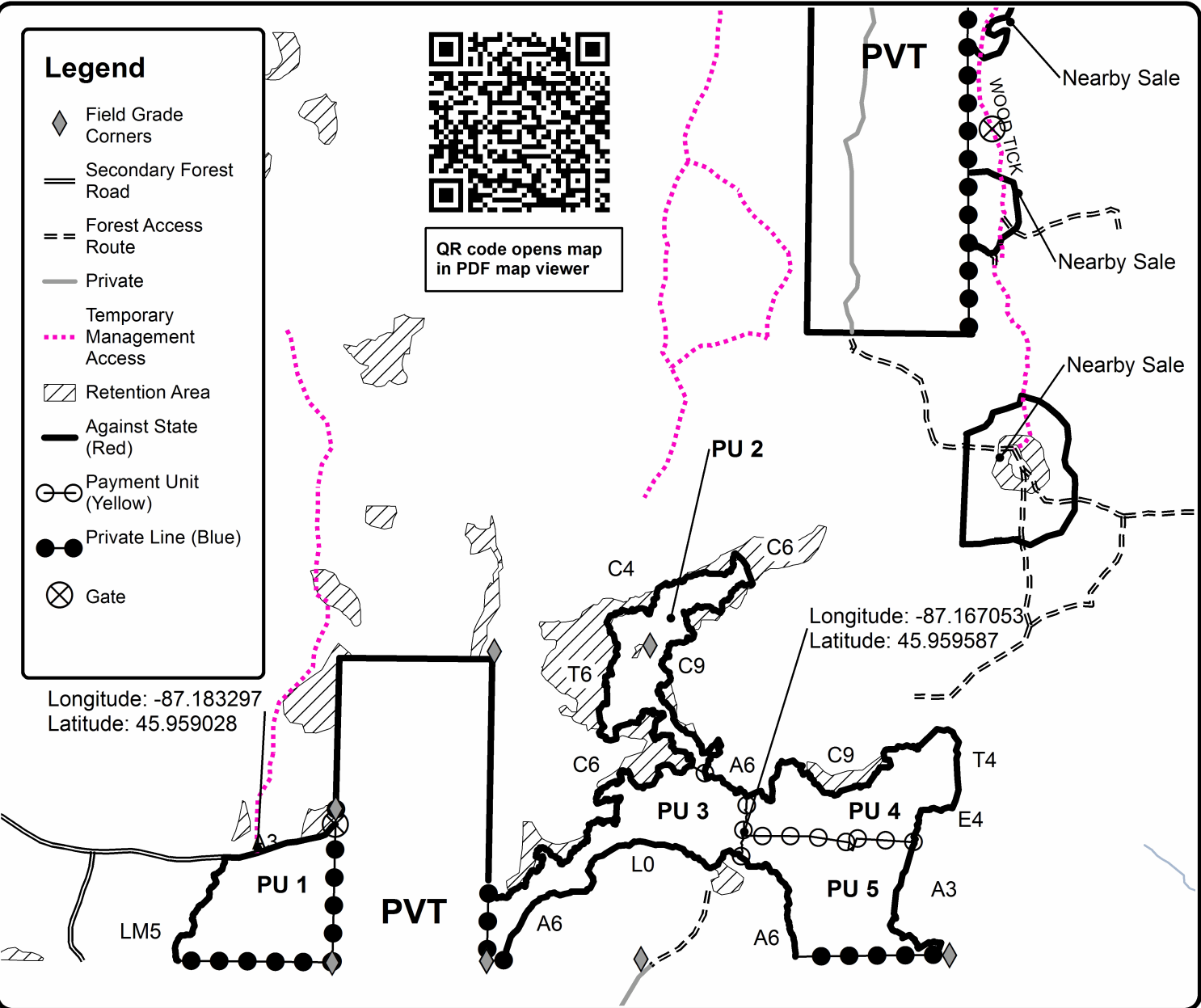
Cover Type				Density	
A = Aspen	H = Hemlock	N = Marsh	U = Upland Brush	0 = Non Stocked	5 = Pole Timber Medium
B = Paper Birch	J = Jack Pine	O = Oak	UM = Upland Mixed	1 = Seedling Sapling Poor	6 = Pole Timber Well
C = Cedar	L = Lowland Brush	P = Lowland Poplar	V = Bog or Marsh	2 = Seedling Sapling Medium	7 = Saw Timber Poor
D = Treed Bog	LM = Lowland Mixed	Q = Mixed Swamp Conifer	W = White Pine	3 = Seedling Sapling Well	8 = Saw Timber Medium
E = Swamp Hdwoods	M = Mpl, Bch, Brch	R = Red Pine	X = Non Stocked	4 = Pole Timber Poor	9 = Saw Timber Well
F = Spruce Fir	MC = Mixed Conifer	S = Black Spruce	Z = Water		
G = Grass	MD = Mixed Deciduous	T = Tamarack			

PU	Acres	PU	Acres
1	25.3	4	22.8
2	18.8	5	25.2
3	25.3		

Loaded Carbs

Compartment 87

117.4 Acres



TIMBER SALE INFORMATION

Cedar River Hardwood (33-006-23)
 T35N, R25W, SEC. 3; T36N, R25W, SEC. 34.
 Menominee County (Advertised Price \$43,729.75)

SALE NOTE: All softwood and aspen species are cruised as pulpwood regardless of DBH. Misc. Species 1 is dying ash with merchantability.

A recreation site such as a trail, pathway, or campground is within the sale area or the vicinity. Certain restrictions/specifications may be applicable including time restrictions.

A timber sale contract for this lump sum, sealed bid timber sale will be awarded to the responsible bidder offering the highest sealed bid price. All units of volume listed below were estimated using the Inventory Manager computer program and the new Michigan taper model. Bids must be at or above the following advertised price for each product and species:

<u>PRODUCTS & SPECIES</u>	<u>ESTIMATED UNITS*</u>	<u>ADVERTISED PRICE</u>
Sawtimber		
Basswood	1.2 MBF	\$ 47.00 / MBF
Beech	1.0 MBF	\$ 34.00 / MBF
Paper Birch	4.0 MBF	\$ 99.00 / MBF
Red Maple	104.5 MBF	\$ 155.00 / MBF
Sugar Maple	15.8 MBF	\$ 288.00 / MBF
Yellow Birch	1.6 MBF	\$ 71.00 / MBF
Pulpwood		
Balsam Fir	49 Cords	\$ 12.80 / Cord
Basswood	1 Cords	\$ 9.40 / Cord
Black Ash	73 Cords	\$ 7.50 / Cord
Green Ash	103 Cords	\$ 7.50 / Cord
Misc. Species 1	51 Cords	\$ 1.00 / Cord
Mixed Hardwood	787 Cords	\$ 21.10 / Cord
Mixed Spruce	57 Cords	\$ 14.35 / Cord
N. White Cedar	128 Cords	\$ 10.80 / Cord
Quaking Aspen	7 Cords	\$ 28.15 / Cord
Red Pine	4 Cords	\$ 52.20 / Cord
Tamarack	7 Cords	\$ 18.15 / Cord
White Pine	29 Cords	\$ 35.70 / Cord

* The total volume is statistically estimated within plus (+) or minus (-) 14.40 percent. There are an estimated 1,654 cords on this timber sale, plus or minus 238 cords at the 95% confidence level. The estimated units are final and not subject to adjustment. Prospective bidders are urged to examine this timber and to make their own estimates of quantity and quality.

BOND AND PAYMENT SCHEDULE:

1. A bond in the amount of \$2,186.00 to insure faithful performance of the conditions of the contract will be deposited by the successful bidder within 21 days of the sale award.
2. Cutting in any sale or unit without the required advance payment would be considered a trespass.
3. Total payment must be paid in advance or according to the following schedule :
 - (a) Ten percent (10%) of the sale value must be paid within 21 days of the sale award.
 - (b) The 10% down payment will be credited towards the first unit cut.
 - (c) Payment for each of the following units must be made before cutting begins in that unit:

PAYMENT UNIT NUMBER	PERCENT OF TOTAL SALE VALUE
01	25.0%
02	23.7%
03	15.5%
04	35.8%
4. If no cutting takes place, the 10% down payment will not be refunded.
5. Operations on the contract issued will terminate on 09/30/2027.

SALE STATISTICS

Volumes were calculated in cubic feet using the Michigan taper model. Cubic foot volume includes all wood inside bark for the product indicated. For display purposes, cubic feet were converted to cords and MBF using a simple conversion factor, e.g. 79 cubic feet per cord and 185 cubic feet per MBF. The cubic foot volumes are precise; the cords and MBF volumes are not. Cubic foot volume cannot be directly converted to cords or boards with precision.

SALE VOLUMES

The total estimated sale volume may not equal the sum of the species/products due to the nature of statistical calculations associated with double sampling methodology.

VOLUME			STATISTICAL RANGE IN CORDS	
TOTAL CUBIC FEET	TOTAL CORDS	PERCENT ERROR	MINIMUM	MAXIMUM
130,667	1,654	14.40%	1,416	1,892

VDU VOLUMES

A VDU is a Volume Determination Unit. Volumes and their associated statistics are calculated at the VDU level and summarized to the sale level. There is often a one to one relationship between a VDU and a Payment Unit, but not always, depending on the cruise design. Refer to the VDU TO PAYMENT UNIT table.

VDU	VOLUME			RANGE IN CORDS	
	TOTAL CUBIC FEET	TOTAL CORDS	PERCENT ERROR	MINIMUM	MAXIMUM
3	50,070	634	26.58%	465	802
8	11,805	149	26.13%	110	188
13	42,552	539	16.65%	449	628
81	26,240	332	25.31%	248	416
TOTAL:	130,667	1,654		1,273	2,035

VDU TO PAYMENT UNIT

When a VDU is associated with more than one Payment Unit (PU), the VDU volumes are assigned to the PU based on acres of the VDU within the PU.

VDU	VDU ACRES	PU	PU ACRES
3	25.9	1	25.9
8	21.9	3	21.9
13	21.9	4	21.9
81	13.8	2	13.8
TOTAL:	83.5		83.5

DESCRIPTION OF TIMBER BY PAYMENT UNIT (PU)

PU	MARKET GROUP	PRODUCT	QUANTITY	UNIT	ACRES	ADVERTISE PRICE
	Red Maple	Sawtimber	16.1	MBF		
	Balsam Fir	Pulpwood	31	Cords		
	Black Ash		73	Cords		
	Green Ash		61	Cords		
	Mixed Hardwood		168	Cords		
	N. White Cedar		128	Cords		
	Red Pine		4	Cords		
	Tamarack		7	Cords		
	White Pine		29	Cords		
	Paper Birch	Sawtimber	4.0	MBF		
	Red Maple		34.0	MBF		
	Yellow Birch		1.6	MBF		
	Balsam Fir	Pulpwood	8	Cords		
	Green Ash		23	Cords		
	Misc. Species 1		19	Cords		
	Mixed Hardwood		203	Cords		
	Basswood	Sawtimber	1.2	MBF		
	Beech		1.0	MBF		
	Red Maple		4.3	MBF		
	Sugar Maple		14.1	MBF		
	Basswood	Pulpwood	1	Cords		
	Mixed Hardwood		87	Cords		
	Red Maple	Sawtimber	50.1	MBF		
	Sugar Maple		1.7	MBF		
	Balsam Fir	Pulpwood	10	Cords		
	Green Ash		6	Cords		
	Misc. Species 1		32	Cords		
	Mixed Hardwood		329	Cords		
	Quaking Aspen		7	Cords		
	Mixed Spruce	Pulpwood	50	Cords	25.9	
	<i>Black Spruce</i>		34	<i>Cords</i>		
	<i>White Spruce</i>		16	<i>Cords</i>		
2	Mixed Spruce	Pulpwood	2	Cords	13.8	\$10,385.50
	<i>White Spruce</i>		2	<i>Cords</i>		
3	Green Ash	Pulpwood	13	Cords	21.9	\$6,760.30
	<i>Green Ash</i>		13	<i>Cords</i>		
4	Mixed Spruce	Pulpwood	5	Cords	21.9	\$15,670.80
	<i>White Spruce</i>		5	<i>Cords</i>		
TOTAL:			128.1	MBF		
TOTAL:			1,296	Cords		

Sale Specific Conditions & Requirements

Sale Name: Cedar River Hardwood

Sale Number: 33-006-23 Seq#: 1

1 - Sale Area

1.2 - Boundaries

1.2.1 - Painted boundaries (9/19)

The sale boundary and Payment Unit boundaries are marked and identified by red and yellow paint. Exterior sale boundary lines against state are marked with red paint. Interior Payment Unit boundaries are marked with yellow paint. Retention patches are marked with red paint; no harvesting activities may occur within these areas. The painted boundary line trees are not Included Timber and are to be protected unless marked with orange paint. Yellow painted trees designating an interior Payment Unit boundary are only to be cut when all surrounding Payment Units have been paid.

2 - Timber Specifications

2.1 - Included Timber

2.1.1 - Clearcut unit(s) with unmerchantable trees (6/14)

Within Payment Unit(s) 1 & 2, cut all trees that are three (3) inches or more at DBH, except in Payment Unit 2 do not cut any cedar, hemlock, or pine.

2.1.3 - Cut tree marked unit(s) (12/08)

Within Payment Unit(s) 3, all trees are designated for cutting when marked with orange paint above and below stump height, regardless of merchantability.

2.1.7 - Leave tree marked unit(s) (6/14)

Within Payment Unit(s) 4, all trees, which meet minimum piece specifications in 2.2 Utilization, are designated for cutting, except do not cut any cedar, hemlock, pine, and trees marked with green paint above and below stump height.

3 - Payments

3.3 - Pre-measured Sales

3.3.4 - Dividing payment units (7/14)

Payment Unit(s) with a contract bid value of \$18,000 dollars or greater may be divided at the request of the Purchaser and upon approval of the Unit Manager. Dividing Payment Units is a contract modification which requires a Timber Sale Contract Amendment. There will be only one division per Payment Unit.

4 - Transportation

4.1 - Construction

4.1.1 - Stream crossings, general (3/11)

All stream crossing structures will be temporary and therefore, shall be provided by the Purchaser, and must be removed upon completion of the sale. All permits for stream crossings will be provided by the DNR.

4.1.5 - Culverts (5/14)

Roads may require the installation of culverts for cross drainage or at natural drainage-ways. If culverts are needed in these locations, their placement will be specified by the Sale Administrator and they shall be installed prior to hauling. The culverts shall be new, corrugated metal or plastic gauge. Culverts will be a minimum of 18 inches in diameter and 24 feet in length. If culverts are removed, fill shall be removed from wetland soils as specified. Soils shall be maintained and left in a non-erodible condition, with water bars, seed, fertilizer, mulch, and slash installed as directed by the Sale Administrator and as specified in the BMP manual. Stream crossing permits, if needed, will be obtained by the DNR.

4.1.6 - Road construction (1/09)

Construction of new roads or improvements of existing roads shall be done in such a way as to minimize the environmental and visual impacts. Merchantable trees shall be cut and utilized unless otherwise directed. Non-merchantable trees shall be severed and laid flat on the ground. Slash shall be scattered, and not left in windrows and kept a minimum of 10 feet back from the road edge. Stumps shall be set upright, not left on edge, and be moved at least 10 feet away from the road edge.

Disturbed soil shall be feathered into the woods and not left in berms or windrows.

4.1.7 - Road closure (10/11)

All new roads built into the sale must be blocked to vehicle traffic upon completion of the sale. Overgrown roads that are reopened shall be considered new roads. In general, this will require constructing a four (4') foot high berm of stumps and logs covered with earth. These roads must be rendered impassable to cars and trucks. Contact the Sale Administrator for specific details of design and placement.

4.2 - Maintenance

4.2.2 - Fill material (4/07)

To maintain roads, fill material may be needed in areas where "holes" exist or may be expected to develop. This fill material should be placed before trucking begins. Contact the Sale Administrator regarding the availability of onsite sand or gravel from adjacent State-owned lands.

4.2.4 - Grading (10/16)

For completion of the sale, state forest roads must be graded. In general, this will require a road grader or bulldozer to shape up the roads after forest products have been hauled off site. This includes cleaning of drainage areas, grading, crowning, and filling with gravel, if necessary. The grading equipment to be used must be approved by the Unit Manager or his/her representative.

5 - Operations

5.2 - Conduct of Operations

5.2.3 - Operating Restrictions

5.2.3.1 - Operating restrictions (9/11)

Within Payment Unit(s) 1, cutting, skidding, and hauling are limited to the period of December 1 to March 31, unless there is an extended dry or frozen period, and the Sale Administrator allows harvesting during that time. This restriction is because of low wet ground access through state forest land.

5.2.3.3 - Bark slippage restriction (3/09)

Within Payment Unit(s) 3, unless changed by written agreement, cutting and skidding are not permitted during the period of April 15 to July 15. This restriction is because of bark slippage.

5.2.39 - ORV trail/route protection (4/18)

The Cedar River Forest Islands trail is an ORV trail or route and is shown on the Timber Sale Map. Do not cut trees or damage posts with yellow ORV markers. All stumps within 5 feet of the trail must be cut flush with the ground. Maintain a 20-foot-wide slash, debris, and rut free zone daily using the ORV trail or route as the centerline.

5.4 - Soil Protection

5.4.1 - Rutting restriction, general (7/16)

Operations are to cease immediately if equipment and weather conditions result in rutting of roads and/or skid trails which is 12 inches or greater in depth and 50 feet in length. The Unit Manager or his/her representative may restrict hauling and/or skidding if ruts exceed the specified depth. With the Unit Manager or his/her representative's approval, the Purchaser may return to the area when the risk of rutting has decreased.

6 - Safety and Fire Prevention

6.2 - Signing

6.2.3 - Recreational trail posting (10/20)

The Purchaser is responsible for posting and maintaining caution signs on the Cedar River Forest Islands ORV trail/route prior to beginning operations. The trail must be posted at appropriate distances from the Sale Area to warn of logging activity and truck traffic at both ends of the trail. Signs must be removed when harvest operations are suspended or completed. The Purchaser will provide these signs.

7 - Other Conditions

7.5 - Loss

7.5.1 - Deteriorating timber (7/09)

The sale area has received damage from Emerald Ash Borer in Payment Unit 1. The Purchaser should harvest the wood as soon as possible. The Department of Natural Resources is held free of responsibility of any further damage or deterioration due to delay in harvesting.



TIMBER SALE MAP

This information provided by authority of Part 525, 1994 PA 451, as amended.

Sale Number	Year
33 - 006	23

Forest Management Unit Escanaba	County Menominee	Mapped By Racine	Date 07/27/2023	Page 1	of 1
Township 35N, 36N	Range 25W	Section(s) and Subdivision(s) 35N, 25W Sec.3 NW, W1/2NE, NESW, NWSE, 36N 25W Sec.34 SWSW	Scale 1:15,840		

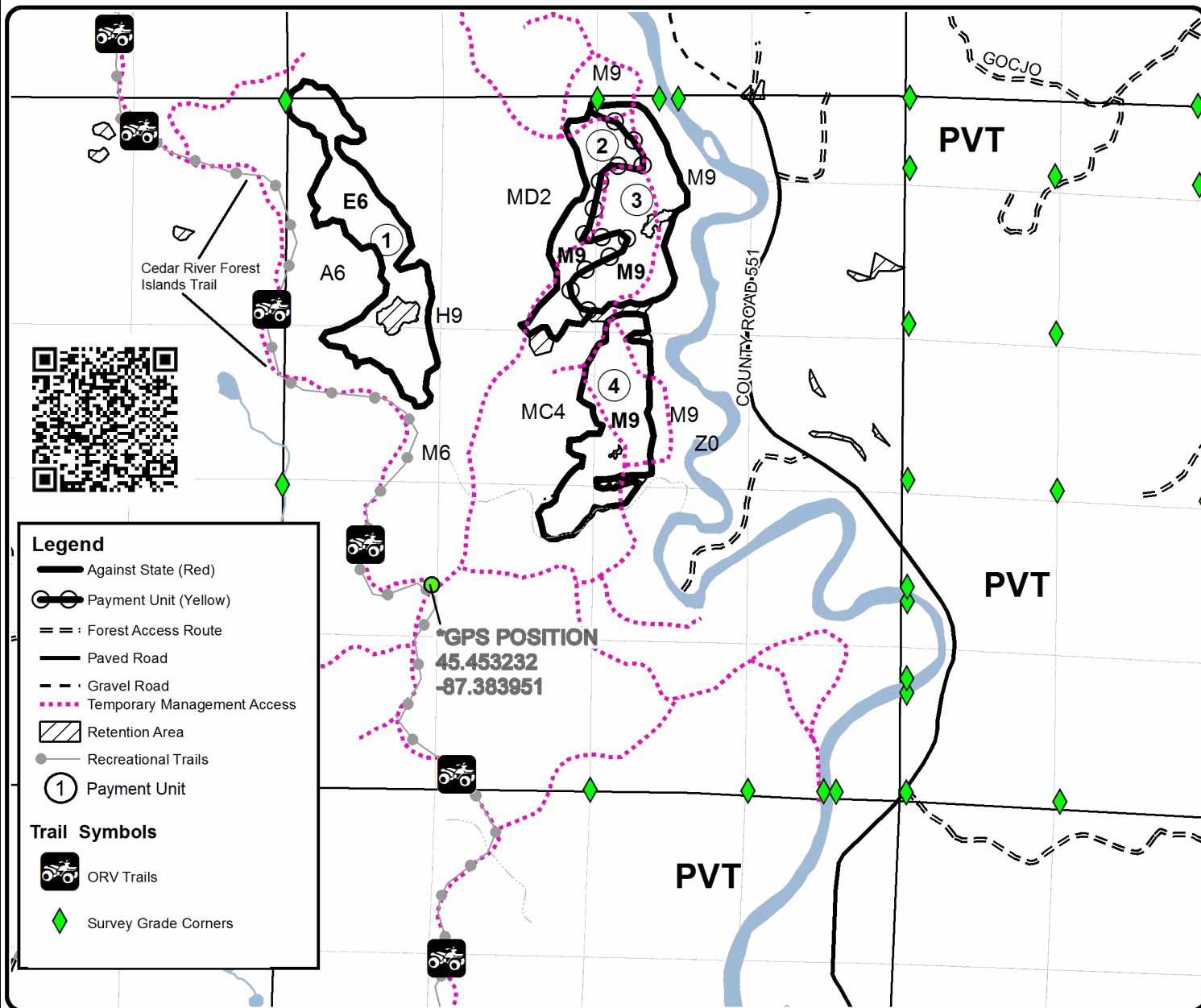
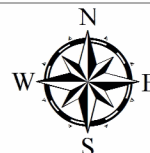
Cover Type				Density	
A = Aspen	H = Hemlock	N = Marsh	U = Upland Brush	0 = Non Stocked	5 = Pole Timber Medium
B = Paper Birch	J = Jack Pine	O = Oak	UM = Upland Mixed	1 = Seedling Sapling Poor	6 = Pole Timber Well
C = Cedar	L = Lowland Brush	P = Lowland Poplar	V = Bog or Marsh	2 = Seedling Sapling Medium	7 = Saw Timber Poor
D = Treed Bog	LM = Lowland Mixed	Q = Mixed Swamp Conifer	W = White Pine	3 = Seedling Sapling Well	8 = Saw Timber Medium
E = Swamp Hdwoods	M = Mpl, Bch, Brch	R = Red Pine	X = Non Stocked	4 = Pole Timber Poor	9 = Saw Timber Well
F = Spruce Fir	MC = Mixed Conifer	S = Black Spruce	Z = Water		
G = Grass	MD = Mixed Deciduous	T = Tamarack			

PU	Acres	PU	Acres
1	25.9	4	21.9
2	13.8		
3	21.9		

Cedar River Hardwood

Compartment 055

83.5 Acres

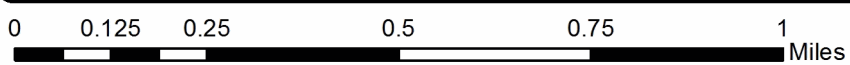


Legend

- Against State (Red)
- Payment Unit (Yellow)
- - - Forest Access Route
- Paved Road
- - - Gravel Road
- · - · Temporary Management Access
- ▨ Retention Area
- Recreational Trails
- ① Payment Unit

Trail Symbols

- 🛵 ORV Trails
- ◆ Survey Grade Corners



TIMBER SALE INFORMATION

Ross Creek Mix (33-024-23)

T36N, R27W, SEC. 4; T36N, R27W, SEC. 5; T37N, R27W, SEC. 32.
Menominee County (Advertised Price \$9,754.35)

A timber sale contract for this lump sum, sealed bid timber sale will be awarded to the responsible bidder offering the highest sealed bid price. All units of volume listed below were estimated using the Inventory Manager computer program and the new Michigan taper model. Bids must be at or above the following advertised price for each product and species:

<u>PRODUCTS & SPECIES</u>	<u>ESTIMATED UNITS*</u>	<u>ADVERTISED PRICE</u>
Sawtimber		
Basswood	2.6 MBF	\$ 22.00 / MBF
Paper Birch	0.7 MBF	\$ 46.00 / MBF
Red Maple	4.0 MBF	\$ 72.00 / MBF
Sugar Maple	3.5 MBF	\$ 134.00 / MBF
Pulpwood		
Balsam Fir	34 Cords	\$ 6.00 / Cord
Basswood	3 Cords	\$ 4.40 / Cord
Mixed Aspen	62 Cords	\$ 13.15 / Cord
Mixed Hardwood	425 Cords	\$ 9.85 / Cord
Mixed Spruce	8 Cords	\$ 6.70 / Cord
N. White Cedar	17 Cords	\$ 5.05 / Cord
Paper Birch	16 Cords	\$ 5.15 / Cord
Red Pine	141 Cords	\$ 24.35 / Cord
Tamarack	4 Cords	\$ 8.50 / Cord

* The total volume is statistically estimated within plus (+) or minus (-) 15.63 percent. There are an estimated 754 cords on this timber sale, plus or minus 118 cords at the 95% confidence level. The estimated units are final and not subject to adjustment. Prospective bidders are urged to examine this timber and to make their own estimates of quantity and quality.

BOND AND PAYMENT SCHEDULE:

1. A bond in the amount of \$488.00 to insure faithful performance of the conditions of the contract will be deposited by the successful bidder within 21 days of the sale award.
2. Cutting in any sale or unit without the required advance payment would be considered a trespass.
3. Total payment must be paid in advance or according to the following schedule :
 - (a) Ten percent (10%) of the sale value must be paid within 21 days of the sale award.
 - (b) The 10% down payment will be credited towards the first unit cut.
 - (c) Payment for each of the following units must be made before cutting begins in that unit:

PAYMENT UNIT NUMBER	PERCENT OF TOTAL SALE VALUE
01	21.9%
02	11.7%
03	8.7%
04	8.0%
05	8.8%
06	28.9%
07	12.0%

4. If no cutting takes place, the 10% down payment will not be refunded.
5. Operations on the contract issued will terminate on 06/30/2026.

SALE STATISTICS

Volumes were calculated in cubic feet using the Michigan taper model. Cubic foot volume includes all wood inside bark for the product indicated. For display purposes, cubic feet were converted to cords and MBF using a simple conversion factor, e.g. 79 cubic feet per cord and 185 cubic feet per MBF. The cubic foot volumes are precise; the cords and MBF volumes are not. Cubic foot volume cannot be directly converted to cords or boards with precision.

SALE VOLUMES

The total estimated sale volume may not equal the sum of the species/products due to the nature of statistical calculations associated with double sampling methodology.

VOLUME			STATISTICAL RANGE IN CORDS	
TOTAL CUBIC FEET	TOTAL CORDS	PERCENT ERROR	MINIMUM	MAXIMUM
59,561	754	15.63%	636	872

VDU VOLUMES

A VDU is a Volume Determination Unit. Volumes and their associated statistics are calculated at the VDU level and summarized to the sale level. There is often a one to one relationship between a VDU and a Payment Unit, but not always, depending on the cruise design. Refer to the VDU TO PAYMENT UNIT table.

	VOLUME			RANGE IN CORDS	
VDU	TOTAL CUBIC FEET	TOTAL CORDS	PERCENT ERROR	MINIMUM	MAXIMUM
20	5,779	73	56.83%	32	115
21	17,039	216	36.16%	138	294
23	2,060	26	38.01%	16	36
25	5,849	74	56.67%	32	116
30	7,376	93	95.40%	4	182
32	3,336	42	76.72%	10	75
33	2,883	36	165.08%	0	97
36	11,473	145	33.65%	96	194
37	3,767	48	13.61%	41	54
TOTAL:	59,561	754		369	1,162

VDU TO PAYMENT UNIT

When a VDU is associated with more than one Payment Unit (PU), the VDU volumes are assigned to the PU based on acres of the VDU within the PU.

VDU	VDU ACRES	PU	PU ACRES
20	4.6	2	4.6
21	13.5	1	13.5
23	1.6	3	1.6
25	8.2	3	8.2
30	5.4	5	5.4
32	1.9	4	1.9
33	3.6	4	3.6
36	15.5	6	15.5
37	2.2	7	2.2
TOTAL:	56.5		56.5

DESCRIPTION OF TIMBER BY PAYMENT UNIT (PU)

PU	MARKET GROUP	PRODUCT	QUANTITY	UNIT	ACRES	ADVERTISE PRICE
	Balsam Fir	Pulpwood	2	Cords		
	Mixed Aspen		20	Cords		
	Mixed Hardwood		177	Cords		
	N. White Cedar		16	Cords		
	Tamarack		1	Cords		
	Basswood	Sawtimber	1.6	MBF		
	Red Maple		1.0	MBF		
	Sugar Maple		3.5	MBF		
	Balsam Fir	Pulpwood	5	Cords		
	Basswood		2	Cords		
	Basswood	Sawtimber	1.0	MBF		
	Paper Birch		0.7	MBF		
	Red Maple		1.3	MBF		
	Balsam Fir	Pulpwood	3	Cords		
	Basswood		1	Cords		
	Mixed Aspen		4	Cords		
	Mixed Hardwood		52	Cords		
	Paper Birch		16	Cords		
	Tamarack		3	Cords		
	Red Maple	Sawtimber	1.2	MBF		
	Balsam Fir	Pulpwood	1	Cords		
	N. White Cedar		1	Cords		
	Red Maple	Sawtimber	0.5	MBF		
	Balsam Fir	Pulpwood	9	Cords		
	Mixed Hardwood		66	Cords		
	Balsam Fir		14	Cords		
	Mixed Aspen		29	Cords		
	Mixed Hardwood		8	Cords		
	Red Pine		93	Cords		
	Mixed Spruce	Pulpwood	4	Cords	13.5	
	<i>White Spruce</i>		4	<i>Cords</i>		
2	Mixed Hardwood	Pulpwood	53	Cords	4.6	\$1,137.05
	<i>Ironwood</i>		2	<i>Cords</i>		
	<i>Red Maple</i>		3	<i>Cords</i>		
	<i>Sugar Maple</i>		48	<i>Cords</i>		
3	Mixed Spruce	Pulpwood	1	Cords	9.8	\$849.60
	<i>Black Spruce</i>		1	<i>Cords</i>		
4	Mixed Hardwood	Pulpwood	69	Cords	5.5	\$777.10
	<i>Black Ash</i>		37	<i>Cords</i>		
	<i>Green Ash</i>		23	<i>Cords</i>		
	<i>Red Maple</i>		6	<i>Cords</i>		
	<i>Yellow Birch</i>		3	<i>Cords</i>		
5	Mixed Aspen	Pulpwood	9	Cords	5.4	\$858.45
	<i>Quaking Aspen</i>		9	<i>Cords</i>		
6	Mixed Spruce	Pulpwood	3	Cords	15.5	\$2,828.80
	<i>White Spruce</i>		3	<i>Cords</i>		
7	Red Pine	Pulpwood	48	Cords	2.2	\$1,168.80
TOTAL:			10.8	MBF		
TOTAL:			710	Cords		

Sale Specific Conditions & Requirements

Sale Name: Ross Creek Mix

Sale Number: 33-024-23 Seq#: 2

1 - Sale Area

1.2 - Boundaries

1.2.1 - Painted boundaries (9/19)

The sale boundary and Payment Unit boundaries are marked and identified by blue, red and yellow paint. Exterior sale boundary lines against private property are marked with blue paint. Exterior sale boundary lines against state are marked with red paint. Interior Payment Unit boundaries are marked with yellow paint. Retention patches are marked with red paint; no harvesting activities may occur within these areas. The painted boundary line trees are not Included Timber and are to be protected unless marked with orange paint. Yellow painted trees designating an interior Payment Unit boundary are only to be cut when all surrounding Payment Units have been paid for.

2 - Timber Specifications

2.1 - Included Timber

2.1.1 - Clearcut unit(s) with unmerchantable trees (6/14)

Within Payment Unit(s) 1 & 3-5, cut all trees that are three (3) inches or more at DBH, with the following exceptions:

- Within Payment Unit 1, do not cut white pine.
- Within Payment Units 3 & 5, do not cut cedar.

2.1.3 - Cut tree marked unit(s) (12/08)

Within Payment Unit(s) 6 & 7, all red pine are designated for cutting when marked with orange paint above and below stump height, regardless of merchantability. In addition, cut all other species greater than three (3) inches at DBH.

2.1.7 - Leave tree marked unit(s) (6/14)

Within Payment Unit(s) 2, cut all trees that are three (3) inches or more at DBH, except do not cut trees marked with green paint above and below stump height.

2.1.9 - Harvest exception (12/08)

Do not cut any cedar trees within Payment Units 3 & 5; other than those that are necessary to remove in order to operate within the sale area. Every effort must be made to preserve the existing cedar and to leave an intact stand upon sale completion. All cut cedar shall be piled separately by products and scaled in the woods unless other scaling arrangements are agreed to by the Unit Manager or his/her representative. Stumpage price for cedar shall be \$40.00 per cord.

2.2 - Utilization

2.2.4 - Skidding length (2/14)

Skidding of unlimbed tops or lengths over 17 feet is not permissible within Payment Units 3, 6, & 7, unless the Sale Administrator approves the method and machinery used.

3 - Payments

3.3 - Pre-measured Sales

3.3.4 - Dividing payment units (7/14)

Payment Unit(s) \$18,000 in value or greater, may be divided at the request of the Purchaser and upon approval of the Unit Manager. Dividing Payment Units is a contract modification which requires a Timber Sale Contract Amendment. There will be only one division per Payment Unit.

4 - Transportation

4.2 - Maintenance

4.2.1 - Hauling restriction (12/08)

Hauling may be restricted on forest roads by the Unit Manager or his/her representative. The restriction may occur during spring breakup or during other wet weather conditions.

4.2.4 - Grading (10/16)

For completion of the sale, state forest roads must be graded. In general, this will require a road grader or bull dozer to shape up the roads after forest products have been hauled off site. This includes cleaning of drainage areas, grading, crowning and filling with gravel, if necessary. The grading equipment to be used must be approved by the Unit Manager or his/her representative.

5 - Operations

5.2 - Conduct of Operations

5.2.3 - Operating Restrictions

5.2.3.1 - Operating restrictions (9/11)

Within Payment Unit(s) 1 & 3-5, cutting and skidding are limited to the period of December 1 to March 31, unless there is an extended dry or frozen period, and the Sale Administrator allows harvesting during that period of time. This restriction is because of low wet ground within each of the Payment Units.

5.2.3.3 - Bark slippage restriction (3/09)

Within Payment Unit(s) 6 & 7, unless changed by written agreement, cutting and skidding are not permitted during the period of April 15 to July 15. This restriction is because of bark slippage.

6 - Safety and Fire Prevention

6.2 - Signing

6.2.1 - Road posting (10/20)

The Purchaser is responsible for posting and maintaining caution signs on Wiregrass Lake Road prior to beginning operations. The road must be posted at appropriate distances from the Sale Area to warn of logging activity and truck traffic. Signs must be removed when harvest operations are suspended or completed. The Purchaser will provide these signs.

7 - Other Conditions

7.5 - Loss

7.5.1 - Deteriorating timber (7/09)

The sale area has received damage from the spruce budworm, eastern larch beetle and the emerald ash borer. The Purchaser should harvest the wood as soon as possible. The Department of Natural Resources is held free of responsibility of any further damage or deterioration due to delay in harvesting.



TIMBER SALE MAP

This information provided by authority of Part 525, 1994 PA 451, as amended.

Sale Number	Year
33-024	23

Forest Management Unit	County	Mapped By	Date	Page	of
Escanaba Management Unit	Menominee County	Beardo	5/23/23	1	1
Township	Range	Section(s) and Subdivision(s)	Scale		
36N 37N	27W	36N: Sec 4 - NW, W 1/2SW; Sec 5 - NENE. 37N: Sec 32 - SESE.	1:15,840		

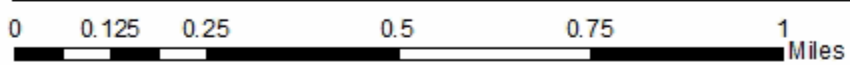
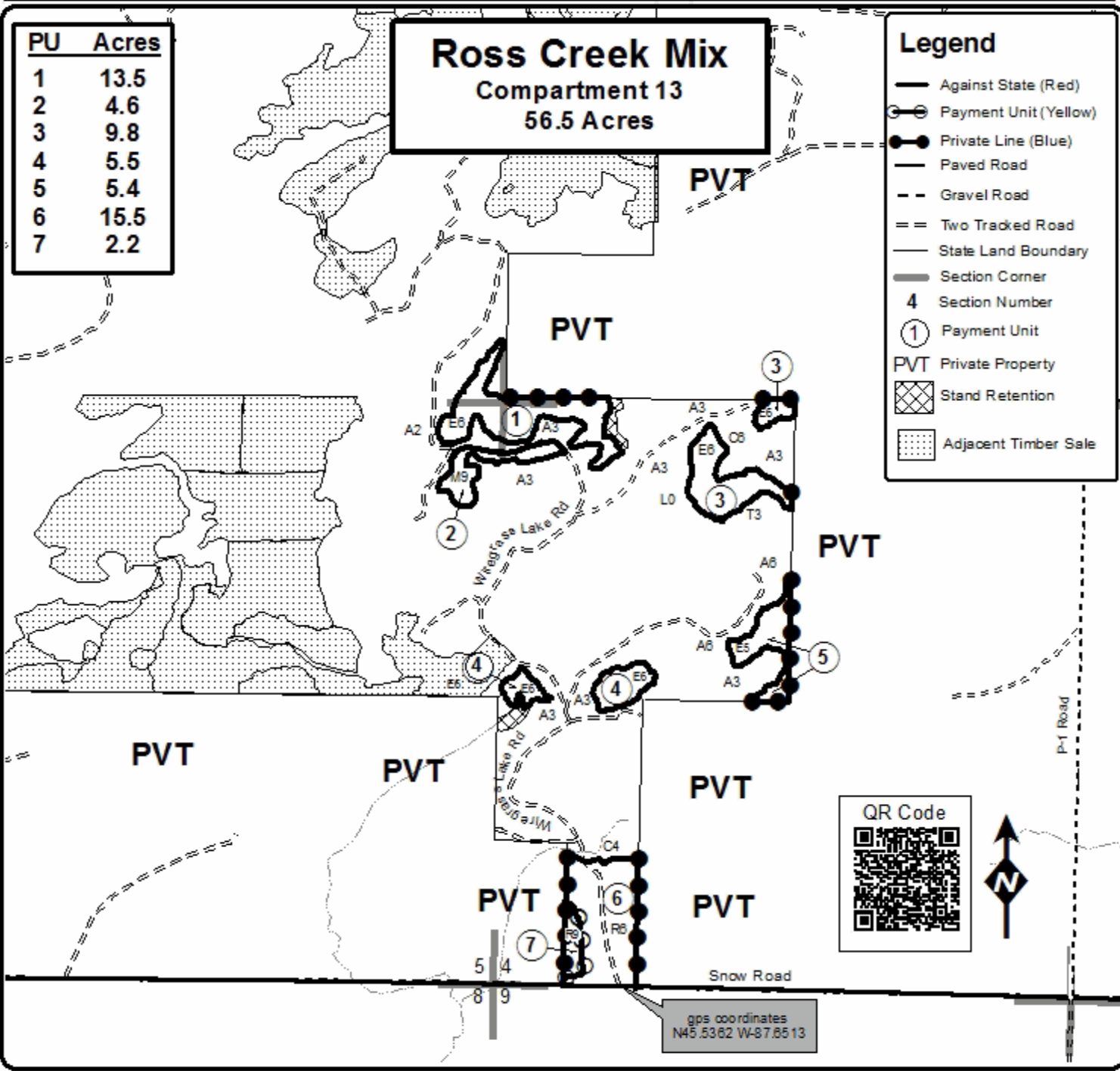
Cover Type				Density	
A = Aspen	H = Hemlock	N = Marsh	U = Upland Brush	0 = Non Stocked	5 = Pole Timber Medium
B = Paper Birch	J = Jack Pine	O = Oak	UM = Upland Mixed	1 = Seeding Sapling Poor	6 = Pole Timber Well
C = Cedar	L = Lowland Brush	P = Lowland Poplar	V = Bog or Marsh	2 = Seeding Sapling Medium	7 = Saw Timber Poor
D = Tread Bog	LM = Lowland Mixed	Q = Mixed Swamp Conifer	W = White Pine	3 = Seeding Sapling Well	8 = Saw Timber Medium
E = Swamp Hdwoods	M = Mpl, Bch, Bach	R = Red Pine	X = Non Stocked	4 = Pole Timber Poor	9 = Saw Timber Well
F = Spruce Fir	MC = Mixed Conifer	S = Black Spruce	Z = Water		
G = Grass	MD = Mixed Deciduous	T = Tamarack			

PU	Acres
1	13.5
2	4.6
3	9.8
4	5.5
5	5.4
6	15.5
7	2.2

Ross Creek Mix
 Compartment 13
 56.5 Acres

Legend

- Against State (Red)
- ⊙ Payment Unit (Yellow)
- Private Line (Blue)
- Paved Road
- - - Gravel Road
- = = Two Tracked Road
- State Land Boundary
- Section Corner
- 4 Section Number
- ① Payment Unit
- PVT Private Property
- ⊠ Stand Retention
- ⋯ Adjacent Timber Sale



Cedar River Hardwood (33-006-23)
T35N, R25W, SEC. 3; T36N, R25W, SEC. 34; Menominee COUNTY

In response to the notice of sale to be held 3:00 p.m. (local time) on October 24, 2023, I am hereby submitting my sealed bid (firm offer) for the following forest products to be cut. Bids for individual species must be at or above the advertised price. All non-responsive bid forms may be rejected.

<u>PRODUCTS & SPECIES</u>	<u>ESTIMATED VOLUME*</u>	<u>ADVERTISED PRICE</u>	<u>BID PRICE/UNIT</u>
Sawtimber			
Basswood	1.2 MBF	\$ 47.00/MBF	\$ _____
Beech	1.0 MBF	\$ 34.00/MBF	\$ _____
Paper Birch	4.0 MBF	\$ 99.00/MBF	\$ _____
Red Maple	104.5 MBF	\$ 155.00/MBF	\$ _____
Sugar Maple	15.8 MBF	\$ 288.00/MBF	\$ _____
Yellow Birch	1.6 MBF	\$ 71.00/MBF	\$ _____
Pulpwood			
Balsam Fir	49 Cords	\$ 12.80/Cord	\$ _____
Basswood	1 Cords	\$ 9.40/Cord	\$ _____
Black Ash	73 Cords	\$ 7.50/Cord	\$ _____
Green Ash	103 Cords	\$ 7.50/Cord	\$ _____
Misc. Species 1	51 Cords	\$ 1.00/Cord	\$ _____
Mixed Hardwood	787 Cords	\$ 21.10/Cord	\$ _____
Mixed Spruce	57 Cords	\$ 14.35/Cord	\$ _____
N. White Cedar	128 Cords	\$ 10.80/Cord	\$ _____
Quaking Aspen	7 Cords	\$ 28.15/Cord	\$ _____
Red Pine	4 Cords	\$ 52.20/Cord	\$ _____
Tamarack	7 Cords	\$ 18.15/Cord	\$ _____
White Pine	29 Cords	\$ 35.70/Cord	\$ _____

*The volumes are statistically estimated within plus (+) or minus (-) 14.40 percent at 95% confidence level. These estimated volumes are final and not subject to adjustment. Prospective bidders are urged to examine this timber and to make their own estimates of quantity and quality.

I understand that any or all bids may be rejected. All bids must be signed and all bid items must be bid or the bid form may be rejected. I also understand that consideration and awarding a contract will be based upon my past performance and ability to complete the contract based upon equipment and staffing subject to my control.

FEDERAL ID: ____ - ____ - ____ or SOCIAL SECURITY NUMBER: ____ - ____ - ____

Company or individual bidding: _____

Company representative's name: _____

Address: _____

City: _____ State: _____ Zip: _____

IF AVAILABLE, PLEASE PLACE THE PERSONALIZED LABEL FROM YOUR PROSPECTUS IN THE ABOVE BOX.

Individual or company representative's signature: _____ Date: _____

Phone number : _____ Email (optional): _____

THE WINNING BIDDER MUST COMPLETE THE VERIFICATION OF WORKER'S DISABILITY COMPENSATION ACT COMPLIANCE (ON REVERSE SIDE IF DOUBLE SIDED) WITHIN 21 DAYS OF SALE AWARD DATE



TIMBER SALE VERIFICATION OF WORKER'S DISABILITY COMPENSATION ACT COMPLIANCE

As required by Act 317, P.A. 1969 (Worker's Compensation) and
Part 5 of Act 451 of 1994, as amended.

FOR DEPARTMENT USE ONLY	
Sale Number (XX - XXX - XX - XX)	
Forest Management Unit:	

VERIFICATION OF WORKER'S DISABILITY COMPENSATION ACT COMPLIANCE

- This verification must be completed and submitted within 21 days of contract award and prior to the issuance of the timber sale contract.
- In addition, if boxes 2B or 2C are checked, then Notice of Exclusion or Certificate of Insurance must be submitted within twenty-one (21) days of the contract award and prior to the issuance of the timber sale contract.
- All information must be typed or printed except for written signatures.

Please Check Appropriate Categories:

1. My business is organized as (you **must** check one of the boxes below):
 - A. Sole Proprietorship (individual)
 - B. Partnership
 - C. Corporation
2. You **must** check one of the boxes below:
 - A. I certify my business is a sole proprietorship and it has no employees but the sole proprietor. I am not subject to the Worker's Compensation Laws.
 - B. I certify my business has satisfied its obligation to the Worker's Compensation Act through the use of an approved Notice of Exclusion (BWC-337, Rev. 5/96). I will provide a copy of the Notice of Exclusion within 21 days of the contract award. (For questions or a copy of the BWC-337, please call the Worker's Compensation Bureau at 517-322-1195).
 - C. I certify my business has a Worker's Compensation Policy. I will provide an original Certificate of Insurance within twenty-one (21) days of the contract award.
3. If you have checked item 2(A) or 2(B), you **must** indicate the number of **both** full-time and part-time employees, other than yourself, including family members and active partners (if none, you must enter "0").

_____ Full-time Employees

_____ Part-time Employees

Name of Business		Federal ID (or) Social Security No.	
Address		Telephone ()	
City	State	ZIP	

I hereby certify that the above information is true and correct. I agree to notify the Michigan DNR of any changes that occur in factors affecting my coverage during any of my present and future operations.

Signature of Owner or Authorized Representative

Title

Date

Please complete the "SEALED BID" information on the next page

Loaded Carbs (33-003-23)

T41N, R23W, SEC. 10; T41N, R23W, SEC. 11; T41N, R23W, SEC. 9; Delta

In response to the notice of sale to be held 3:00 p.m. (local time) on October 24, 2023, I am hereby submitting my sealed bid (firm offer) for the following forest products to be cut. Bids for individual species must be at or above the advertised price. All non-responsive bid forms may be rejected.

<u>PRODUCTS & SPECIES</u>	<u>ESTIMATED VOLUME*</u>	<u>ADVERTISED PRICE</u>	<u>BID PRICE/UNIT</u>
Pulpwood			
Balsam Fir	76 Cords	\$ 6.00/Cord	\$ _____
Black Spruce	48 Cords	\$ 6.70/Cord	\$ _____
Mixed Aspen	289 Cords	\$ 13.15/Cord	\$ _____
Mixed Hardwood	125 Cords	\$ 9.85/Cord	\$ _____
N. White Cedar	372 Cords	\$ 5.05/Cord	\$ _____
Paper Birch	91 Cords	\$ 5.15/Cord	\$ _____
Tamarack	1,049 Cords	\$ 8.50/Cord	\$ _____

*The volumes are statistically estimated within plus (+) or minus (-) 10.86 percent at 95% confidence level. These estimated volumes are final and not subject to adjustment. Prospective bidders are urged to examine this timber and to make their own estimates of quantity and quality.

I understand that any or all bids may be rejected. All bids must be signed and all bid items must be bid or the bid form may be rejected. I also understand that consideration and awarding a contract will be based upon my past performance and ability to complete the contract based upon equipment and staffing subject to my control.

FEDERAL ID: ____ - ____ - ____ or SOCIAL SECURITY NUMBER: ____ - ____ - ____

Company or individual bidding: _____

Company representative's name: _____

Address: _____

City: _____ State: _____ Zip: _____

IF AVAILABLE, PLEASE PLACE THE PERSONALIZED LABEL FROM YOUR PROSPECTUS IN THE ABOVE BOX.

Individual or company representative's signature: _____ Date: _____

Phone number : _____ Email (optional): _____

THE WINNING BIDDER MUST COMPLETE THE VERIFICATION OF WORKER'S DISABILITY COMPENSATION ACT COMPLIANCE (ON REVERSE SIDE IF DOUBLE SIDED) WITHIN 21 DAYS OF SALE AWARD DATE



FOR DEPARTMENT USE ONLY	
Sale Number (XX - XXX - XX - XX)	
Forest Management Unit:	

TIMBER SALE VERIFICATION OF WORKER'S DISABILITY COMPENSATION ACT COMPLIANCE

As required by Act 317, P.A. 1969 (Worker's Compensation) and
Part 5 of Act 451 of 1994, as amended.

VERIFICATION OF WORKER'S DISABILITY COMPENSATION ACT COMPLIANCE

- This verification must be completed and submitted within 21 days of contract award and prior to the issuance of the timber sale contract.
- In addition, if boxes 2B or 2C are checked, then Notice of Exclusion or Certificate of Insurance must be submitted within twenty-one (21) days of the contract award and prior to the issuance of the timber sale contract.
- All information must be typed or printed except for written signatures.

Please Check Appropriate Categories:

1. My business is organized as (you **must** check one of the boxes below):
 - A. Sole Proprietorship (individual)
 - B. Partnership
 - C. Corporation
2. You **must** check one of the boxes below:
 - A. I certify my business is a sole proprietorship and it has no employees but the sole proprietor. I am not subject to the Worker's Compensation Laws.
 - B. I certify my business has satisfied its obligation to the Worker's Compensation Act through the use of an approved Notice of Exclusion (BWC-337, Rev. 5/96). I will provide a copy of the Notice of Exclusion within 21 days of the contract award. (For questions or a copy of the BWC-337, please call the Worker's Compensation Bureau at 517-322-1195).
 - C. I certify my business has a Worker's Compensation Policy. I will provide an original Certificate of Insurance within twenty-one (21) days of the contract award.
3. If you have checked item 2(A) or 2(B), you **must** indicate the number of **both** full-time and part-time employees, other than yourself, including family members and active partners (if none, you must enter "0").

_____ Full-time Employees

_____ Part-time Employees

Name of Business		Federal ID (or) Social Security No.	
Address		Telephone ()	
City	State	ZIP	

I hereby certify that the above information is true and correct. I agree to notify the Michigan DNR of any changes that occur in factors affecting my coverage during any of my present and future operations.

Signature of Owner or Authorized Representative

Title

Date

Please complete the "SEALED BID" information on the next page

Ross Creek Mix (33-024-23)

T36N, R27W, SEC. 4; T36N, R27W, SEC. 5; T37N, R27W, SEC. 32; Menominee

In response to the notice of sale to be held 3:00 p.m. (local time) on October 24, 2023, I am hereby submitting my sealed bid (firm offer) for the following forest products to be cut. Bids for individual species must be at or above the advertised price. All non-responsive bid forms may be rejected.

<u>PRODUCTS & SPECIES</u>	<u>ESTIMATED VOLUME*</u>	<u>ADVERTISED PRICE</u>	<u>BID PRICE/UNIT</u>
Sawtimber			
Basswood	2.6 MBF	\$ 22.00/MBF	\$ _____
Paper Birch	0.7 MBF	\$ 46.00/MBF	\$ _____
Red Maple	4.0 MBF	\$ 72.00/MBF	\$ _____
Sugar Maple	3.5 MBF	\$ 134.00/MBF	\$ _____
Pulpwood			
Balsam Fir	34 Cords	\$ 6.00/Cord	\$ _____
Basswood	3 Cords	\$ 4.40/Cord	\$ _____
Mixed Aspen	62 Cords	\$ 13.15/Cord	\$ _____
Mixed Hardwood	425 Cords	\$ 9.85/Cord	\$ _____
Mixed Spruce	8 Cords	\$ 6.70/Cord	\$ _____
N. White Cedar	17 Cords	\$ 5.05/Cord	\$ _____
Paper Birch	16 Cords	\$ 5.15/Cord	\$ _____
Red Pine	141 Cords	\$ 24.35/Cord	\$ _____
Tamarack	4 Cords	\$ 8.50/Cord	\$ _____

*The volumes are statistically estimated within plus (+) or minus (-) 15.63 percent at 95% confidence level. These estimated volumes are final and not subject to adjustment. Prospective bidders are urged to examine this timber and to make their own estimates of quantity and quality.

I understand that any or all bids may be rejected. All bids must be signed and all bid items must be bid or the bid form may be rejected. I also understand that consideration and awarding a contract will be based upon my past performance and ability to complete the contract based upon equipment and staffing subject to my control.

FEDERAL ID: _____ or SOCIAL SECURITY NUMBER: _____

Company or individual bidding: _____

Company representative's name: _____

Address: _____

City: _____ State: _____ Zip: _____

IF AVAILABLE, PLEASE PLACE THE PERSONALIZED LABEL FROM YOUR PROSPECTUS IN THE ABOVE BOX.

Individual or company representative's signature: _____ Date: _____

Phone number : _____ Email (optional): _____

THE WINNING BIDDER MUST COMPLETE THE VERIFICATION OF WORKER'S DISABILITY COMPENSATION ACT COMPLIANCE (ON REVERSE SIDE IF DOUBLE SIDED) WITHIN 21 DAYS OF SALE AWARD DATE



TIMBER SALE VERIFICATION OF WORKER'S DISABILITY COMPENSATION ACT COMPLIANCE

As required by Act 317, P.A. 1969 (Worker's Compensation) and
Part 5 of Act 451 of 1994, as amended.

FOR DEPARTMENT USE ONLY	
Sale Number (XX - XXX - XX - XX)	
Forest Management Unit:	

VERIFICATION OF WORKER'S DISABILITY COMPENSATION ACT COMPLIANCE

- This verification must be completed and submitted within 21 days of contract award and prior to the issuance of the timber sale contract.
- In addition, if boxes 2B or 2C are checked, then Notice of Exclusion or Certificate of Insurance must be submitted within twenty-one (21) days of the contract award and prior to the issuance of the timber sale contract.
- All information must be typed or printed except for written signatures.

Please Check Appropriate Categories:

1. My business is organized as (you **must** check one of the boxes below):
 - A. Sole Proprietorship (individual)
 - B. Partnership
 - C. Corporation
2. You **must** check one of the boxes below:
 - A. I certify my business is a sole proprietorship and it has no employees but the sole proprietor. I am not subject to the Worker's Compensation Laws.
 - B. I certify my business has satisfied its obligation to the Worker's Compensation Act through the use of an approved Notice of Exclusion (BWC-337, Rev. 5/96). I will provide a copy of the Notice of Exclusion within 21 days of the contract award. (For questions or a copy of the BWC-337, please call the Worker's Compensation Bureau at 517-322-1195).
 - C. I certify my business has a Worker's Compensation Policy. I will provide an original Certificate of Insurance within twenty-one (21) days of the contract award.
3. If you have checked item 2(A) or 2(B), you **must** indicate the number of **both** full-time and part-time employees, other than yourself, including family members and active partners (if none, you must enter "0").

_____ Full-time Employees

_____ Part-time Employees

Name of Business		Federal ID (or) Social Security No.	
Address		Telephone ()	
City	State	ZIP	

I hereby certify that the above information is true and correct. I agree to notify the Michigan DNR of any changes that occur in factors affecting my coverage during any of my present and future operations.

Signature of Owner or Authorized Representative

Title

Date

Please complete the "SEALED BID" information on the next page