



**DEPARTMENT OF NATURAL RESOURCES
STATE OF MICHIGAN
TIMBER SALE PROSPECTUS #7334**

SCHEDULED SALE DATE AND TIME: **3:00 p.m. (local time) on November 28, 2023.**

LOCATION: **ESCANABA MGMT UNIT, 6833 HWY'S 2, 41 & M-35, GLADSTONE, MI 49837.**

PROSPECTUS NOTE: The bidder is advised to inspect the sale area and review the location, estimated volumes, operating costs and contract terms of proposed sales. Please be aware that some landowners may request 60 days or more notice for access across their land.

Notice is hereby given that bids will be received by the Unit Manager, CRYSTAL FALLS MANAGEMENT UNIT, for certain timber on the following described lands:

Wells Grade Mix (12-001-23) / T42N, R29W, SEC. 17, N1/2NW,SWNW,N1/2NE,W1/2SW.
T42N, R29W, SEC. 18, E1/2NE.
T42N, R29W, SEC. 5 , NENW,S1/2NW,NE,N1/2SW,SWSW.
T42N, R29W, SEC. 5 , NWSE.
T42N, R29W, SEC. 6 , NW,SENE,NWSW,N1/2SE,SESE.
T42N, R29W, SEC. 7 , W1/2NE,SW,E1/2SE.
T42N, R29W, SEC. 8 , NENW,S1/2NW,NE,SW,SE.
T43N, R29W, SEC. 31, S1/2SW.

Dickinson County, Advertised Price \$351,104.05, 650.6 Acres, Aspen, Hardwood.

SALE NOTE: Extensive road work is required on this sale. The advertised price has been reduced by the estimate cost of this road work to off-set the additional expense. An 18" x 30" culvert will be provided and installed by producer. Approximately 530 yards of pit run gravel will be provided in a state pit for producer to haul and spread on road.

A recreation site such as a trail, pathway, or campground is within the sale area or the vicinity. Certain restrictions/specifications may be applicable including time restrictions.

Blue Beary Ridge (12-005-23) / T43N, R27W, SEC. 23, SESW,S1/2SE.
T43N, R27W, SEC. 24, SWSW,N1/2SE,SESE.
T43N, R27W, SEC. 25, NW,N1/2SW.
T43N, R27W, SEC. 26, NW,NWNE,S1/2NE,W1/2SW,N1/2SE.
T43N, R27W, SEC. 26, SWSE.
T43N, R27W, SEC. 27, SESE.

Dickinson County, Advertised Price \$112,381.85, 266.1 Acres, Spruce/Fir/Tamarack, Aspen.

Popplesky (12-015-23) / T43N, R27W, SEC. 15, W1/2SW.
T43N, R27W, SEC. 16, SENW,S1/2NE,N1/2SE,SESE.

Dickinson County, Advertised Price \$75,353.45, 122.4 Acres, Hardwood, Aspen.

SALE NOTE: Access may be through private land.

BID INSTRUCTIONS (VER. 10/10/2022):

1. Scheduled Bid Location, Date, and Time (2/11)

Bids must be received by the Unit Manager, ESCANABA OFFICE, 6833 Hwy's 2, 41 & M-35, Gladstone, MI 49837, no later than 3:00 p.m. (local time) on November 28, 2023. For further information concerning this sale, contact Eric Thompson at 906-789-8231.

2. Bidder's Qualifications (10/22)

If all or part of a timber sale was prepared by a private contractor, the contractor and that contractor's company are not permitted to bid on the timber sale. A person must be 18 years of age or older to purchase timber. Permanent employees of the Department of Natural Resources or members of their immediate household may not bid. Former employees, in the permanent or seasonal class, may not bid until 3 months after the last day of active duty. Bids will not be accepted from individuals or companies appearing on the DNR/FRD No-Bid List. This list contains the names of purchasers who previously failed to execute a contract within 21-days or who have a history of poor performance.

3. Preparation of Sealed Bids (5/16)

Bid Forms may be completed online thru Michigan DNR Timber Sale Online Bidding (OLB) at www.michigan.gov/timberbidding or by completing the hardcopy Bid Form found in the Timber Sale Prospectus. Hardcopy Bid Forms shall be manually signed in ink. Registration in OLB is considered your 'signature' for all bids submitted thru that system. Bid prices must be entered for each species and product in the Bid Price column for all material subject to bidding and all fill-in blanks must be completed. If erasures or other changes appear on the hardcopy Bid Form, each erasure or change must be initialed by the person signing the bid.

4. Submission of Sealed Bids (5/16)

Bid forms may be obtained from the Unit Manager or thru OLB. Bids may be submitted hardcopy or thru OLB. All hardcopy bids must be submitted on the bid form and in an envelope clearly identified as described in this section. NOTE: Only one bid form per bid envelope. Sealed bids must be submitted to the Unit office designated in the prospectus and must be submitted at or prior to the time established in the prospectus. The envelope should show on the outside (a) the sale name or number and (b) the date and time of bid opening, as shown in the prospectus. Bids received after the time specified in the sale prospectus are late bids and will be rejected.

It is possible for a bidder to submit multiple bids on a single sale. For example, a bid may be submitted hardcopy and a bid may be submitted thru OLB. Or, two bidders from the same company could both submit bids on the same sale. If this were to happen, the State would accept all bids received and award the contract accordingly. All bidding and contractual requirements would apply to all bids received.

5. Public Opening of Sealed Bids (7/16)

If conditions permit, the sealed bids will be publicly opened and posted at the time and place set in the prospectus.

If a bidder, present at a bid opening, has submitted bids on more than one sale, that bidder may withdraw their unopened bid envelopes or announce the withdrawal of their online bid after being declared the successful bidder on one sale.

6. Award of Contract (1/11)

Award of the contract will be made to the Bidder whose bid, conforming to the prospectus, is most advantageous to the State of Michigan on the basis of total value at rates bid for the estimated quantities. The State reserves the right to reject any bid or waive any minor irregularity in bids received. A written award mailed (or otherwise furnished) to the successful Bidder shall be deemed to result in a binding contract without further action by either party.

7. Down Payment (1/11)

The Bidder to whom award is made must make a down payment within 21 days of the sale award. The amount of the down payment will be calculated as shown in the Bond and Payment Schedule of this prospectus. Only cash may be used to meet this requirement.

8. Performance Security (1/11)

As guarantee of faithful performance, a cash bond, certificate of deposit, surety bond or irrevocable letter of credit (LOC) is required within 21 days of the sale award. The amount of the performance security is shown in the Bond and

Payment Schedule of this prospectus. If an LOC or surety is used, the coverage must extend for at least 6 months beyond the contract expiration.

9. Worker's Compensation (10/22)

Purchaser shall obtain worker's compensation insurance to cover claims under Michigan's Worker's Disability Compensation Act of 1969 or similar employee benefit act of any other state applicable to an employee. Verification of Worker's Disability Compensation Act Compliance must be completed and submitted within 21 days of contract award and prior to the issuance of the timber sale contract. In addition, if applicable, Notice of Exclusion or Certificate of Insurance must also be submitted.

10. Timber Sale Contract (10/22)

Additional conditions and requirements common to all timber sales are listed on the timber sale contract (R4031) and are available on line at www.michigan.gov/timber. Contact the Unit Manager for additional information or a sample contract. Within 21 days of the date of the award letter, the bidder must sign the contract and provide the required down payment, performance security, and verification of worker's disability compensation. The down payment and performance security shall be in accordance with the provisions of the timber sale contract, in the sums stated in this prospectus. If these actions are not taken, then the Bidder, the Bidder's corporation, and the corporation's principals may not be permitted to bid on State timber sales for a period of 3 months after the first offense, 6 months after the second offense, and 1 year after the third offense. An offense will only be counted against the Bidder for 5 years. In addition, the Bidder certifies that if awarded this contract, the Bidder will complete the timber sale contract in accordance with its terms and any modifications thereof including requirements to purchase, cut, and remove the included timber by the expiration date.

Payment Unit values in the State Forest Timber Sale Contract are calculated based on the advertised value of the Payment Unit as a percentage of the total advertised value of the contract. The advertised value of each Payment Unit is given in the Description of Timber by Payment Unit table on the Timber Sale Information page. For example, if the value of Payment Unit 1 is advertised as \$1,500 and the total Timber Sale value is advertised as \$10,000, the contract price for Payment Unit 1 will be 15% of the total bid price ($\$1,500/\$10,000 * 100$).

11. Disclaimer of Estimates and Bidder's Warranty of Inspection (10/22)

Before submitting this bid, the Bidder is advised and cautioned to inspect the sale area, review the requirements of the sale contract, and take other steps as may be reasonably necessary to ascertain the location, estimated volumes, construction estimates, and operating costs of the proposed sale. Failure to do so will not relieve the Bidder from responsibility for completing the contract.

The Bidder warrants that this bid is submitted solely on the basis of the Bidder's examination and inspection of the quality and quantity of the timber offered for sale and the Bidder's opinion of the value thereof and the costs of recovery. No reliance should be placed on the State of Michigan's estimates of timber quality, quantity or costs of recovery. Bidder further acknowledges that the State of Michigan: (i) expressly disclaims any warranty of fitness of timber for any purpose; (ii) offers this timber as is without any warranty of quality (merchantability) or quantity and (iii) expressly disclaims any warranty as to the quantity or quality of timber sold.

12. Certification and Chain-of-Custody (10/22)

Unless otherwise indicated in the contract under section 7 – Other Conditions of the Sale Specific Conditions & Requirements, the area encompassed by this timber sale is certified to the standards of the Forest Stewardship Council (FSC) - Certificate #SCS-FM/COC-00090N and the Sustainable Forestry Initiative (SFI) - Certificate #NSF-SFIS-5Y031-SF5. Forest products from this sale may be delivered to the mill as "FSC 100% and / or SFI certified" as long as the contractor hauling the forest products is chain-of-custody (COC) certified or covered under a COC certificate from the destination mill. The purchaser is responsible for maintaining COC after leaving the sale area.

13. Good Neighbor Authority (GNA) Requirements (10/22)

If the name of this timber sales contains the acronym GNA, it is authorized by the Good Neighbor Authority (GNA) and covered by various agreements between the U.S. Forest Service and the State. The timber sale occurs on federal land and the following conditions apply:

GNA contracts on US Forest Service land will not be awarded to purchasers on the Federal list of excluded parties. The System for Award Management (SAM) will be checked for active excluded parties prior to award of contract. In

addition, the Bidder to whom award is made must complete an Assurance Regarding Felony Conviction or Tax Delinquent Status for Corporate Applicants (AD-3031).

14. Good Neighbor Authority (GNA) Requirements, con't (10/22)

Bidder certifies, by signing this bid form, that to the best of Bidder's knowledge that the following representations are accurate and complete.

- a. That the Bidder and its principals are not presently debarred, suspended, proposed for debarment, declared ineligible, or voluntary excluded from timber sales (covered transactions) by any Federal department or agency.
- b. That the Bidder and its principals have not within a 3-year period preceding this bid been convicted of or had a civil judgment rendered against them for commission of fraud or a criminal offense in connection with obtaining , attempting to obtain, or performing a public (Federal, State, or local) transaction or contract under a public transaction; violation of Federal or State antitrust statutes or commission of embezzlement, theft, forgery, bribery, falsification or destruction of records, making false statements, or receiving stolen property.
- c. That the Bidder and its principals are not presently indicted for or otherwise criminally or civilly charged by a governmental entity (Federal, State, or local) with commission of any of the offenses enumerated in paragraph b of this certification.
- d. That the Bidder and its principals have not within a 3-year period preceding this bid had one or more public transactions (Federal, State, or local) terminated for breach or default of a timber or forest product contract.

Bidders that cannot certify this requirement, in whole or in part, shall submit an explanation with their bid.

Scott Bowen
Director

TIMBER SALE INFORMATION

Wells Grade Mix (12-001-23)

T42N, R29W, SEC. 17; T42N, R29W, SEC. 18; T42N, R29W, SEC. 5; T42N, R29W, SEC. 6; T42N, R29W, SEC. 7; T42N, R29W, SEC. 8; T43N, R29W, SEC. 31.

SALE NOTE: Extensive road work is required on this sale. The advertised price has been reduced by the estimate cost of this road work to off-set the additional expense. An 18" x 30" culvert will be provided and installed by producer. Approximately 530 yards of pit run gravel will be provided in a state pit for producer to haul and spread on road.

A recreation site such as a trail, pathway, or campground is within the sale area or the vicinity. Certain restrictions/specifications may be applicable including time restrictions.

A timber sale contract for this lump sum, sealed bid timber sale will be awarded to the responsible bidder offering the highest sealed bid price. All units of volume listed below were estimated using the Inventory Manager computer program and the new Michigan taper model. Bids must be at or above the following advertised price for each product and species:

<u>PRODUCTS & SPECIES</u>	<u>ESTIMATED UNITS*</u>		<u>ADVERTISED PRICE</u>
Sawtimber			
Basswood	645.4	MBF	\$ 125.00 / MBF
Paper Birch	24.2	MBF	\$ 146.00 / MBF
Red Maple	76.3	MBF	\$ 111.00 / MBF
Sugar Maple	292.8	MBF	\$ 189.00 / MBF
White Ash	33.8	MBF	\$ 97.00 / MBF
Pulpwood			
Balsam Fir	366	Cords	\$ 11.90 / Cord
Basswood	1,006	Cords	\$ 8.60 / Cord
Mixed Aspen	5,285	Cords	\$ 27.80 / Cord
Mixed Hardwood	2,960	Cords	\$ 12.70 / Cord
Mixed Spruce	120	Cords	\$ 15.60 / Cord
Paper Birch	79	Cords	\$ 5.25 / Cord

* The total volume is statistically estimated within plus (+) or minus (-) 4.67 percent. There are an estimated 12,180 cords on this timber sale, plus or minus 570 cords at the 95% confidence level. The estimated units are final and not subject to adjustment. Prospective bidders are urged to examine this timber and to make their own estimates of quantity and quality.

BOND AND PAYMENT SCHEDULE:

1. A bond in the amount of \$24,577.00 to insure faithful performance of the conditions of the contract will be deposited by the successful bidder within 21 days of the sale award.
2. Cutting in any sale or unit without the required advance payment would be considered a trespass.
3. Total payment must be paid in advance or according to the following schedule :
 - (a) Ten percent (10%) of the sale value must be paid within 21 days of the sale award.
 - (b) The 10% down payment will be credited towards the first unit cut.
 - (c) Payment for each of the following units must be made before cutting begins in that unit:

PAYMENT UNIT NUMBER	PERCENT OF TOTAL SALE VALUE
01	9.5%
02	7.8%
03	9.1%
04	8.7%
05	7.9%
06	6.6%
07	9.6%
08	9.9%
09	8.4%
10	8.5%
11	6.0%
12	8.0%

4. If no cutting takes place, the 10% down payment will not be refunded.
5. Operations on the contract issued will terminate on 06/30/2027.

SALE STATISTICS

Volumes were calculated in cubic feet using the Michigan taper model. Cubic foot volume includes all wood inside bark for the product indicated. For display purposes, cubic feet were converted to cords and MBF using a simple conversion factor, e.g. 79 cubic feet per cord and 185 cubic feet per MBF. The cubic foot volumes are precise; the cords and MBF volumes are not. Cubic foot volume cannot be directly converted to cords or boards with precision.

SALE VOLUMES

The total estimated sale volume may not equal the sum of the species/products due to the nature of statistical calculations associated with double sampling methodology.

VOLUME			STATISTICAL RANGE IN CORDS	
TOTAL CUBIC FEET	TOTAL CORDS	PERCENT ERROR	MINIMUM	MAXIMUM
962,230	12,180	4.67%	11,610	12,750

VDU VOLUMES

A VDU is a Volume Determination Unit. Volumes and their associated statistics are calculated at the VDU level and summarized to the sale level. There is often a one to one relationship between a VDU and a Payment Unit, but not always, depending on the cruise design. Refer to the VDU TO PAYMENT UNIT table.

VDU	VOLUME		PERCENT ERROR	RANGE IN CORDS	
	TOTAL CUBIC FEET	TOTAL CORDS		MINIMUM	MAXIMUM
2	9,804	124	24.87%	93	155
4	112,632	1,426	9.32%	1,293	1,559
12	46,733	592	20.24%	472	711
19	29,029	367	28.85%	261	473
24	172,899	2,189	8.15%	2,010	2,367
25	74,011	937	11.66%	828	1,046
26	13,919	176	22.15%	137	215
29	24,279	307	28.20%	221	394
31	16,248	206	24.57%	155	256
38	40,010	506	19.71%	407	606
40	85,705	1,085	13.04%	943	1,226
54	233,203	2,952	9.44%	2,673	3,231
56	35,025	443	24.90%	333	554
58	68,734	870	15.09%	739	1,001
TOTAL:	962,230	12,180		10,565	13,795

VDU TO PAYMENT UNIT

When a VDU is associated with more than one Payment Unit (PU), the VDU volumes are assigned to the PU based on acres of the VDU within the PU.

VDU	VDU ACRES	PU	PU ACRES
2	10.6	1	10.6
4	55.5	8	55.5
12	39.6	1	39.6
19	27.1	1	27.1
24	92.4	9	45.9
		10	46.5
25	35.5	11	35.5
26	12.0	7	12.0
29	19.5	1	19.5
31	16.1	7	16.1
38	33.9	7	33.9
40	30.7	12	30.7
54	170.5	3	47.8
		4	46.1
		5	41.8
		6	34.8
56	28.9	7	28.9
58	78.3	2	78.3
TOTAL:	650.6		650.6

DESCRIPTION OF TIMBER BY PAYMENT UNIT (PU)

PU	MARKET GROUP	PRODUCT	QUANTITY	UNIT	ACRES	ADVERTISE PRICE
1	Basswood	Sawtimber	30.5	MBF	96.8	\$33,230.00
	Paper Birch		15.7	MBF		
	Red Maple		28.0	MBF		
	Sugar Maple		30.2	MBF		
	Basswood	Pulpwood	195	Cords		
	Mixed Aspen		325	Cords		
	<i>B. T. Aspen</i>		90	<i>Cords</i>		
	<i>Balsam Poplar</i>		4	<i>Cords</i>		
	<i>Quaking Aspen</i>		231	<i>Cords</i>		
	Mixed Hardwood		585	Cords		
	<i>Black Cherry</i>		2	<i>Cords</i>		
	<i>Ironwood</i>		19	<i>Cords</i>		
	<i>Red Maple</i>		129	<i>Cords</i>		
	<i>Sugar Maple</i>		435	<i>Cords</i>		
	Paper Birch		32	Cords		
2	Basswood	Sawtimber	89.6	MBF	78.3	\$27,242.45
	Paper Birch		2.1	MBF		
	Red Maple		17.9	MBF		
	Sugar Maple		39.2	MBF		
	Basswood	Pulpwood	138	Cords		
	Mixed Aspen		24	Cords		
	<i>Balsam Poplar</i>		13	<i>Cords</i>		
	<i>Quaking Aspen</i>		11	<i>Cords</i>		
	Mixed Hardwood		352	Cords		
	<i>Red Maple</i>		60	<i>Cords</i>		
	<i>Sugar Maple</i>		290	<i>Cords</i>		
	<i>Yellow Birch</i>		2	<i>Cords</i>		
	Paper Birch		3	Cords		
	3	Basswood	Sawtimber	127.0		
Red Maple			0.6	MBF		
Sugar Maple			55.1	MBF		
White Ash			6.8	MBF		
Basswood		Pulpwood	135	Cords		
Mixed Aspen			31	Cords		
<i>B. T. Aspen</i>			14	<i>Cords</i>		
<i>Balsam Poplar</i>			2	<i>Cords</i>		
<i>Quaking Aspen</i>			15	<i>Cords</i>		
Mixed Hardwood			219	Cords		
<i>Black Ash</i>		<i>Sawtimber</i>	0.3	<i>MBF</i>		
<i>Yellow Birch</i>			0.3	<i>MBF</i>		
<i>Black Ash</i>		<i>Pulpwood</i>	4	<i>Cords</i>		
<i>Red Maple</i>			1	<i>Cords</i>		
<i>Sugar Maple</i>			205	<i>Cords</i>		
<i>White Ash</i>			6	<i>Cords</i>		
<i>Yellow Birch</i>			1	<i>Cords</i>		
4	Basswood	Sawtimber	122.5	MBF	46.1	\$30,693.30
	Red Maple		0.5	MBF		
	Sugar Maple		53.0	MBF		
	White Ash		6.6	MBF		
	Basswood	Pulpwood	131	Cords		
	Mixed Aspen		31	Cords		
	<i>B. T. Aspen</i>		14	<i>Cords</i>		
	<i>Balsam Poplar</i>		2	<i>Cords</i>		
	<i>Quaking Aspen</i>		15	<i>Cords</i>		
	Mixed Hardwood		211	Cords		
	<i>Black Ash</i>	<i>Sawtimber</i>	0.2	<i>MBF</i>		

DESCRIPTION OF TIMBER BY PAYMENT UNIT (PU), CON'T

PU	MARKET GROUP	PRODUCT	QUANTITY	UNIT	ACRES	ADVERTISE PRICE			
4 con't	<i>Yellow Birch</i>	<i>Sawtimber</i>	0.4	<i>MBF</i>					
	<i>Black Ash</i>	<i>Pulpwood</i>	4	<i>Cords</i>					
	<i>Red Maple</i>		1	<i>Cords</i>					
	<i>Sugar Maple</i>		198	<i>Cords</i>					
	<i>White Ash</i>		6	<i>Cords</i>					
	<i>Yellow Birch</i>		1	<i>Cords</i>					
	5	Basswood	Sawtimber	111.0	MBF	41.8	\$27,822.30		
Red Maple			0.5	MBF					
Sugar Maple			48.1	MBF					
White Ash			6.0	MBF					
Basswood		Pulpwood	118	Cords					
Mixed Aspen			28	Cords					
<i>B. T. Aspen</i>			13	<i>Cords</i>					
<i>Balsam Poplar</i>			2	<i>Cords</i>					
<i>Quaking Aspen</i>			13	<i>Cords</i>					
Mixed Hardwood			191	Cords					
<i>Black Ash</i>		<i>Sawtimber</i>	0.2	<i>MBF</i>					
<i>Yellow Birch</i>			0.3	<i>MBF</i>					
<i>Black Ash</i>		<i>Pulpwood</i>	3	<i>Cords</i>					
<i>Red Maple</i>			1	<i>Cords</i>					
<i>Sugar Maple</i>			180	<i>Cords</i>					
<i>White Ash</i>			6	<i>Cords</i>					
6		Basswood	Sawtimber	92.4	MBF			34.8	\$23,134.40
		Red Maple		0.4	MBF				
	Sugar Maple		40.0	MBF					
	White Ash		5.0	MBF					
	Basswood	Pulpwood	99	Cords					
	Mixed Aspen		22	Cords					
	<i>B. T. Aspen</i>		10	<i>Cords</i>					
	<i>Balsam Poplar</i>		1	<i>Cords</i>					
	<i>Quaking Aspen</i>		11	<i>Cords</i>					
	Mixed Hardwood		160	Cords					
	<i>Black Ash</i>	<i>Sawtimber</i>	0.2	<i>MBF</i>					
	<i>Yellow Birch</i>		0.3	<i>MBF</i>					
	<i>Black Ash</i>	<i>Pulpwood</i>	3	<i>Cords</i>					
	<i>Red Maple</i>		1	<i>Cords</i>					
	<i>Sugar Maple</i>		150	<i>Cords</i>					
	<i>White Ash</i>		5	<i>Cords</i>					
	7	Basswood	Sawtimber	55.6	MBF	90.9	\$33,742.00		
		Red Maple		8.3	MBF				
Sugar Maple			17.2	MBF					
White Ash			9.4	MBF					
Basswood		Pulpwood	130	Cords					
Mixed Aspen			520	Cords					
<i>B. T. Aspen</i>			356	<i>Cords</i>					
<i>Balsam Poplar</i>			52	<i>Cords</i>					
<i>Quaking Aspen</i>			112	<i>Cords</i>					
Mixed Hardwood			483	Cords					
<i>Black Ash</i>		<i>Sawtimber</i>	2.2	<i>MBF</i>					
<i>Black Ash</i>		<i>Pulpwood</i>	17	<i>Cords</i>					
<i>Ironwood</i>			9	<i>Cords</i>					
<i>Red Maple</i>			113	<i>Cords</i>					
<i>Sugar Maple</i>			321	<i>Cords</i>					
<i>White Ash</i>			19	<i>Cords</i>					
8		Red Maple	Sawtimber	5.7	MBF			55.5	\$34,877.20
		Balsam Fir	Pulpwood	197	Cords				

DESCRIPTION OF TIMBER BY PAYMENT UNIT (PU), CON'T

PU	MARKET GROUP	PRODUCT	QUANTITY	UNIT	ACRES	ADVERTISE PRICE	
8 con't	Basswood	Pulpwood	10	Cords			
	Mixed Aspen		1,060	Cords			
	<i>B. T. Aspen</i>		65	<i>Cords</i>			
	<i>Balsam Poplar</i>		36	<i>Cords</i>			
	<i>Quaking Aspen</i>		959	<i>Cords</i>			
	Mixed Hardwood		170	Cords			
	<i>Black Cherry</i>		19	<i>Cords</i>			
	<i>Red Maple</i>		72	<i>Cords</i>			
	<i>Sugar Maple</i>		79	<i>Cords</i>			
	Mixed Spruce		12	Cords			
	<i>White Spruce</i>		12	<i>Cords</i>			
	9		Paper Birch	Sawtimber			0.4
Red Maple			1.1	MBF			
Sugar Maple			0.7	MBF			
Balsam Fir		Pulpwood	30	Cords			
Mixed Aspen			984	Cords			
<i>B. T. Aspen</i>			38	<i>Cords</i>			
<i>Balsam Poplar</i>			65	<i>Cords</i>			
<i>Quaking Aspen</i>			881	<i>Cords</i>			
Mixed Hardwood			100	Cords			
<i>Black Cherry</i>			39	<i>Cords</i>			
<i>Ironwood</i>			7	<i>Cords</i>			
<i>Red Maple</i>			33	<i>Cords</i>			
<i>Sugar Maple</i>			21	<i>Cords</i>			
Mixed Spruce			12	Cords			
<i>Black Spruce</i>			4	<i>Cords</i>			
<i>White Spruce</i>			8	<i>Cords</i>			
Paper Birch			3	Cords			
10	Paper Birch		Sawtimber	0.4	MBF	46.5	\$29,947.50
	Red Maple			1.2	MBF		
	Sugar Maple		0.8	MBF			
	Balsam Fir	Pulpwood	31	Cords			
	Mixed Aspen		997	Cords			
	<i>B. T. Aspen</i>		39	<i>Cords</i>			
	<i>Balsam Poplar</i>		65	<i>Cords</i>			
	<i>Quaking Aspen</i>		893	<i>Cords</i>			
	Mixed Hardwood		102	Cords			
	<i>Black Cherry</i>		40	<i>Cords</i>			
	<i>Ironwood</i>		8	<i>Cords</i>			
	<i>Red Maple</i>		33	<i>Cords</i>			
	<i>Sugar Maple</i>		21	<i>Cords</i>			
	Mixed Spruce		13	Cords			
	<i>Black Spruce</i>		5	<i>Cords</i>			
	<i>White Spruce</i>		8	<i>Cords</i>			
	Paper Birch		4	Cords			
11	Paper Birch		Sawtimber	5.6	MBF	35.5	\$21,121.75
	Red Maple			10.6	MBF		
	Sugar Maple		0.9	MBF			
	Balsam Fir	Pulpwood	108	Cords			
	Mixed Aspen		520	Cords			
	<i>B. T. Aspen</i>		25	<i>Cords</i>			
	<i>Balsam Poplar</i>		44	<i>Cords</i>			
	<i>Quaking Aspen</i>		451	<i>Cords</i>			
	Mixed Hardwood		136	Cords			
	<i>Black Ash</i>		5	<i>Cords</i>			
	<i>Red Maple</i>		88	<i>Cords</i>			

DESCRIPTION OF TIMBER BY PAYMENT UNIT (PU), CON'T

PU	MARKET GROUP	PRODUCT	QUANTITY	UNIT	ACRES	ADVERTISE PRICE
11 con't	<i>Sugar Maple</i>	<i>Pulpwood</i>	34	<i>Cords</i>		
	<i>Yellow Birch</i>		9	<i>Cords</i>		
	Mixed Spruce		83	<i>Cords</i>		
	<i>Black Spruce</i>		64	<i>Cords</i>		
	<i>White Spruce</i>		19	<i>Cords</i>		
	Paper Birch		37	<i>Cords</i>		
	12		Basswood	Sawtimber		
Red Maple	1.5	MBF				
Sugar Maple	7.6	MBF				
Basswood	Pulpwood	50	<i>Cords</i>			
Mixed Aspen		743	<i>Cords</i>			
<i>B. T. Aspen</i>		221	<i>Cords</i>			
<i>Balsam Poplar</i>		268	<i>Cords</i>			
<i>Quaking Aspen</i>		254	<i>Cords</i>			
Mixed Hardwood		250	<i>Cords</i>			
<i>Red Maple</i>		3	<i>Cords</i>			
<i>Sugar Maple</i>		234	<i>Cords</i>			
<i>Yellow Birch</i>		13	<i>Cords</i>			
TOTAL:			1,072.5	MBF		
TOTAL:			9,815	Cords		

Sale Specific Conditions & Requirements

Sale Name: Wells Grade Mix

Sale Number: 12-001-23 Seq#: 1

1 - Sale Area

1.2 - Boundaries

1.2.1 - Painted boundaries (9/19)

The sale boundary and Payment Unit boundaries are marked and identified by blue and red paint. Exterior sale boundary lines against private property are marked with blue paint. Exterior sale boundary lines against state are marked with red paint. Interior Payment Unit boundaries are marked with red slashes. The painted boundary line trees are not Included Timber and are to be protected unless marked with orange paint.

2 - Timber Specifications

2.1 - Included Timber

2.1.2 - Clearcut unit(s) w/o unmerchantable trees (8/11)

Within Payment Unit(s) 8-11, cut all aspen and mixed hardwood trees which meet minimum piece specifications in 2.2 Utilization, except do not cut any red pine, white pine, oak, cedar or hemlock. Additionally, cut all spruce and balsam fir with two or more pulpwood sticks.

Within Payment Unit(s) 12, cut all aspen and mixed hardwood trees with one or more pulpwood stick, except do not cut red pine, white pine, balsam fir, oak, ash, cedar, spruce or hemlock. Special protection areas identified in accordance with condition 3.4.3, within clearcutting unit boundaries, are not Included Timber and are to be protected.

2.1.3 - Cut tree marked unit(s) (12/08)

Within Payment Unit(s) 1-7, all trees are designated for cutting when marked with orange paint above and below stump height, regardless of merchantability. Additionally, cut all aspen and balsam poplar with three or more pulpwood sticks.

3 - Payments

3.4 - Damaged Timber

3.4.3 - Special Protection Areas (8/11)

The Purchaser shall protect special protection areas from damage by the Purchaser's operations. Special protection areas are black ash regeneration areas within Payment Unit 7. The Purchaser shall not cut black ash trees within special protection areas. If the Purchaser's operations have cut or damaged special protection areas through carelessness, the Purchaser shall pay \$100 as fixed, agreed and liquidated damages for each acre or part thereof cut or damaged. Such payment does not constitute ownership of the undesignated timber.

4 - Transportation

4.1 - Construction

4.1.4 - Timber removed for construction (3/23)

Trees cut or damaged in the process of pre-approved road, landing or skid trail construction will be decked in an area separate from other Designated Timber and not removed until measured by the sale administrator. Payment will be made at contract prices or average prices, if not on the contract. Any trees cut or damaged during logging operations shall be tallied and slips will be turned into the Sale Administrator. Payment for these damaged trees will be made at contract prices.

4.1.6 - Road construction (1/09)

Construction of new roads or improvements of existing roads shall be done in such a way as to minimize the environmental and visual impacts. Merchantable trees shall be cut and utilized unless otherwise directed. Non-merchantable trees shall be severed and laid flat on the ground. Slash shall be scattered, and not left in windrows and kept a minimum of 10 feet back from the road edge. Stumps shall be set upright, not left on edge, and be moved at least 10 feet away from the road edge. Disturbed soil shall be feathered into the woods and not left in berms or windrows.

4.1.7 - Road closure (10/11)

All new roads built into the sale must be blocked to vehicle traffic upon completion of the sale. Overgrown roads that are

reopened shall be considered new roads. In general, this will require constructing a four (4') foot high berm of stumps and logs covered with earth. Contact the Sale Administrator for specific details of design and placement.

4.1.8 - Road work (1) (8/07)

The following road work is required: 0.7 miles of the two-track road running south down the power line to Payment Units 2, 3, 4, 5 & 10 will need to be ditched and crowned. This portion will need a 18" x 30' cross drain culvert installed and approximately 500 yards of pit run gravel will need to be hauled and tailgate spread on this portion of road and to cover culvert. The remaining portion of this two-track, out to Solberg Lake Road, will need to be shaped up. Run outs will need to be installed in a couple areas that currently have water pooling. Another 30 yards of pit run gravel will be needed to cover washouts on two hills. Gravel is available for all road work in a State pit on site.

4.2 - Maintenance

4.2.3 - Road maintenance (8/13)

The following road maintenance is required: Within 60 days of completion of hauling, or if no hauling occurs for 60 days, the road must be maintained and graded. This includes cleaning of drainage areas, grading, crowning and filling with gravel, if necessary. Damages will be assessed if grading/repair does not occur.

4.2.4 - Grading (10/16)

For completion of the sale, state forest roads must be graded. In general, this will require a road grader or bulldozer to shape up the roads after forest products have been hauled off site. This includes cleaning of drainage areas, grading, crowning and filling with gravel, if necessary. The grading equipment to be used must be approved by the Unit Manager or his/her representative.

4.2.5 - Two wheel drive condition (2/04)

All existing trail roads on and adjacent to the sale area must be passable by two-wheel drive traffic for the duration of the sale.

4.4 - Access

4.4.2 - Alternate route on private property (2/04)

It is the Purchaser's responsibility to obtain access across private land for any routes other than the route shown on the Timber Sale Map.

5 - Operations

5.2 - Conduct of Operations

5.2.1 - Slash

5.2.1.8 - Slash height (12/08)

No slash or tree tops may exceed 36 inches in height.

5.2.3 - Operating Restrictions

5.2.3.3 - Bark slippage restriction (3/09)

Within Payment Unit(s) 1-7, unless changed by written agreement, cutting and skidding are not permitted during the period of April 15 to July 15. This restriction is because of bark slippage.

5.2.22 - Operating Caution

5.2.22.1 - Operating caution (6/11)

It is recommended, but not required, that within Payment Unit(s) 11 & 12, cutting and skidding occur during dry summer or frozen winter conditions. The reason for the recommendation is because of areas of wet soils within the Payment Units.

5.2.38 - No decking against live trees (2/04)

Cut products may not be decked against unmarked or designated leave trees.

5.2.41 - Snowmobile trail protection (9/11)

The snowmobile trail is shown on the Timber Sale Map. Do not cut or damage posts with orange trail markers or traffic control signs. If the trail is used, it must be maintained and restored to a condition equal to or better than before the sale. The

road maintenance/restoration must be done prior to December 1. If the trail is used for hauling, it must be graded to the satisfaction of the Unit Manager or his/her representative prior to December 1. If the trail road is to be used for hauling during the snowmobile season, then a snow-covered base must be left on the trail. Maintain a 20-foot-wide slash, debris, and rut free zone daily using the snowmobile trail as the centerline.

5.4 - Soil Protection

5.4.1 - Rutting restriction, general (7/16)

Operations are to cease immediately if equipment and weather conditions result in rutting of roads and/or skid trails which is 12 inches or greater in depth and 50 feet in length. The Unit Manager or his/her representative may restrict hauling and/or skidding if ruts exceed the specified depth. With the Unit Manager or his/her representative's approval, the Purchaser may return to the area when the risk of rutting has decreased.

6 - Safety and Fire Prevention

6.2 - Signing

6.2.1 - Road posting (10/20)

The Purchaser is responsible for posting and maintaining caution signs on all haul roads prior to beginning operations. The road must be posted approximately 350 feet from the Sale Area to warn of logging activity and truck traffic. Signs must be removed when harvest operations are suspended or completed. The Purchaser will provide these signs.

6.2.2 - Snowmobile trail posting (10/20)

The Purchaser is responsible for posting and maintaining caution signs on the snowmobile trail prior to beginning operations during the snowmobile season (approximately December 1 to March 31). The trail must be posted approximately 350 feet from the Sale Area to warn of logging activity and truck traffic. Signs must be removed when harvest operations are suspended or completed. The Purchaser will provide these signs.



TIMBER SALE MAP

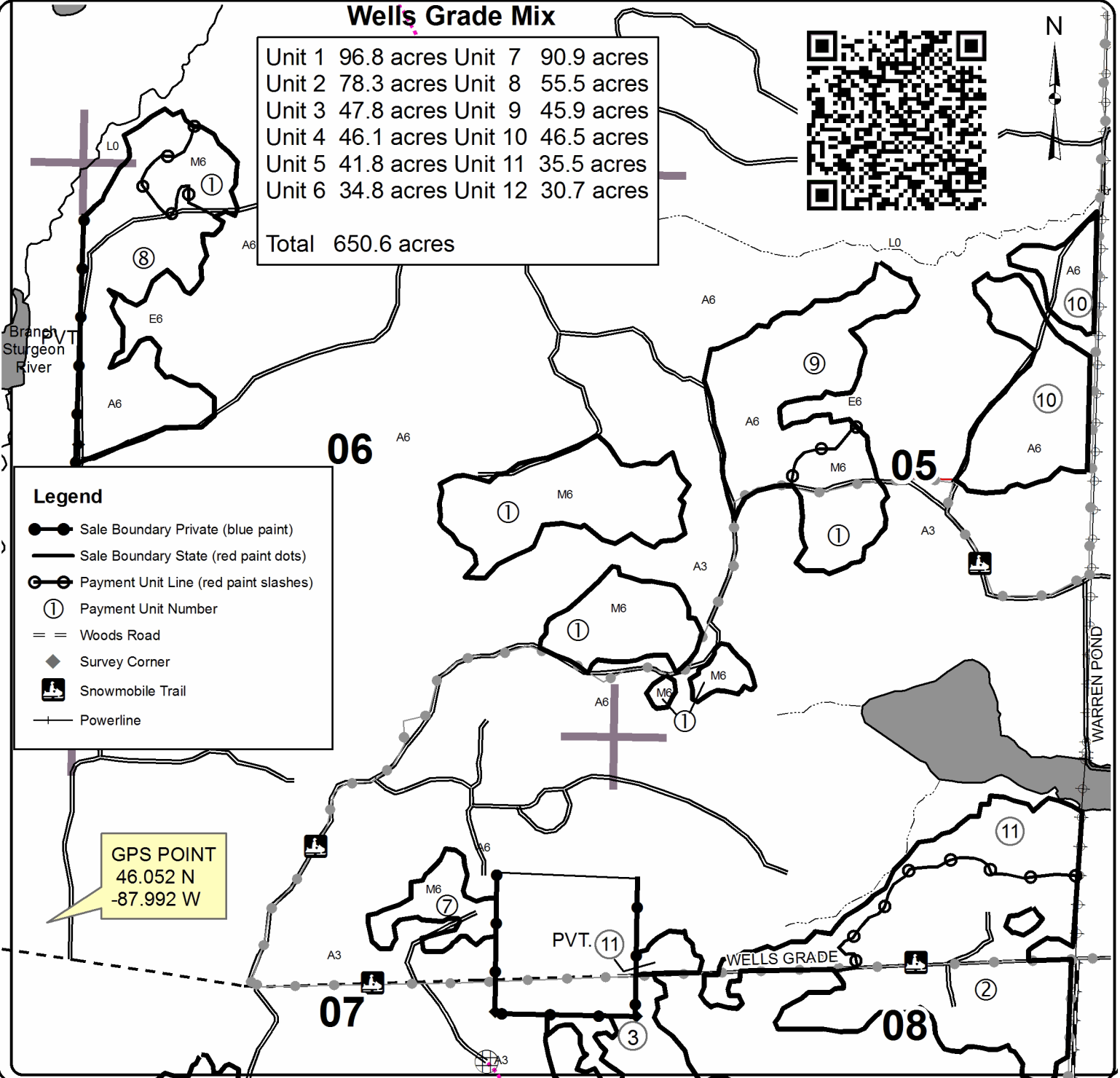
This information provided by authority of Part 525, 1994 PA 451, as amended.

Forest Management Unit Escanaba		County Dickinson	Mapped By Scott Sebero		Date 08/28/2023	Page 1	of 2
Township 42N & 43N	Range 29W	Section(s) and Subdivision(s) <small>Sec 5 NWSE, NENW, S1/2NW, NE, N1/2SW, SWSW, Sec 6 NW, SENE, NWSW, N1/2SE, SESE, Sec 7 W1/2NE, SW, E1/2SE, Sec 8 NENW, S1/2NW, NE, SW, SE Sec 17 N1/2NW, SWNW, N1/2NE, W1/2SW, Sec 18 E1/2NE Sec 31 S1/2SW</small>			Scale 4 inches = 1 mile		

Cover Type				Density			
A = Aspen	H = Hemlock	N = Marsh	U = Upland Brush	0 = Non Stocked	5 = Pole Timber Medium		
B = Paper Birch	J = Jack Pine	O = Oak	UM = Upland Mixed	1 = Seedling Sapling Poor	6 = Pole Timber Well		
C = Cedar	L = Lowland Brush	P = Lowland Poplar	V = Bog or Marsh	2 = Seedling Sapling Medium	7 = Saw Timber Poor		
D = Treed Bog	LM = Lowland Mixed	Q = Mixed Swamp Conifer	W = White Pine	3 = Seedling Sapling Well	8 = Saw Timber Medium		
E = Swamp Hdwoods	M = Mpl, Bch, Brch	R = Red Pine	X = Non Stocked	4 = Pole Timber Poor	9 = Saw Timber Well		
F = Spruce Fir	MC = Mixed Conifer	S = Black Spruce	Z = Water				
G = Grass	MD = Mixed Deciduous	T = Tamarack					

Wells Grade Mix

Unit 1	96.8 acres	Unit 7	90.9 acres
Unit 2	78.3 acres	Unit 8	55.5 acres
Unit 3	47.8 acres	Unit 9	45.9 acres
Unit 4	46.1 acres	Unit 10	46.5 acres
Unit 5	41.8 acres	Unit 11	35.5 acres
Unit 6	34.8 acres	Unit 12	30.7 acres
Total 650.6 acres			





TIMBER SALE MAP

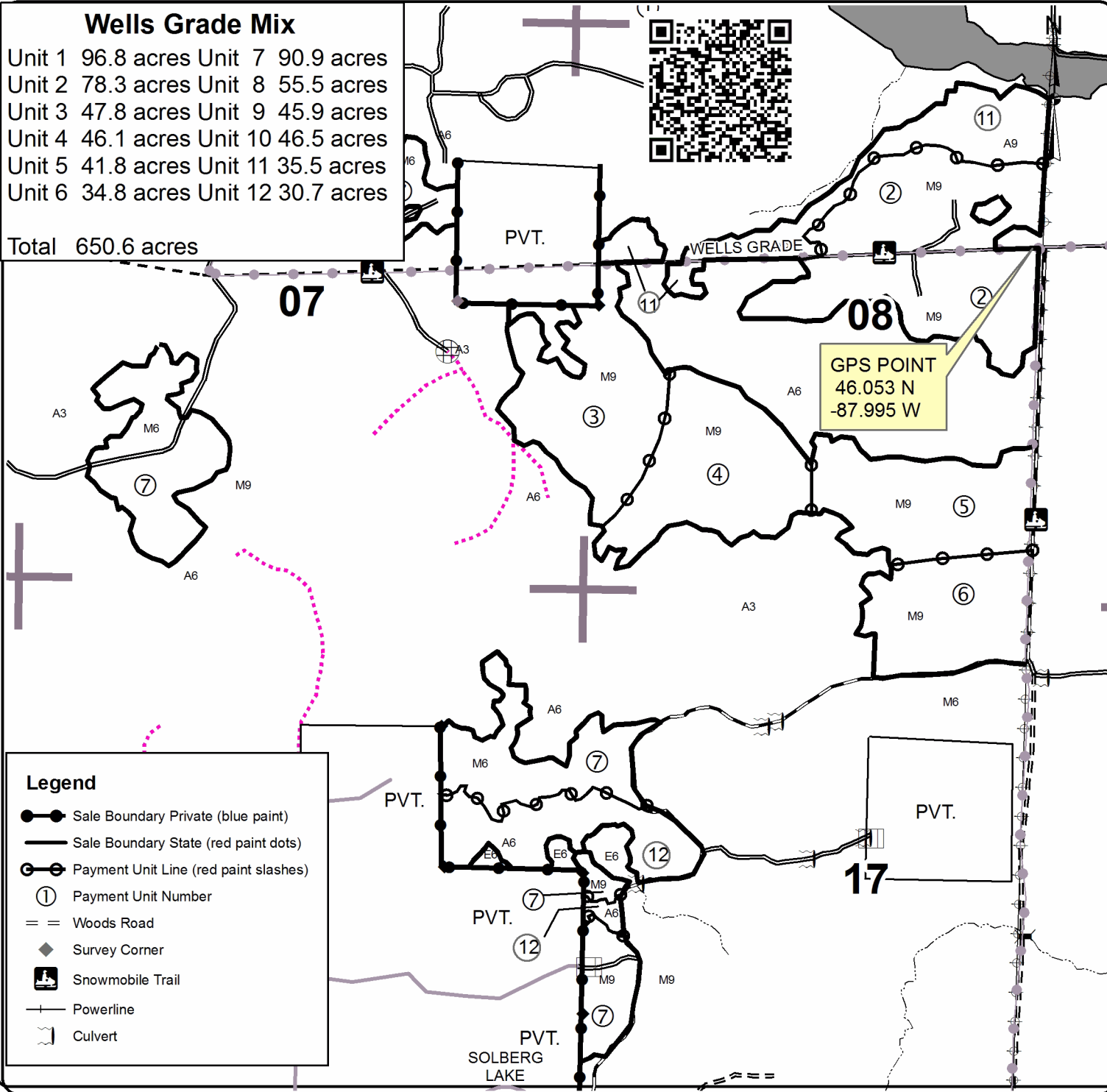
This information provided by authority of Part 525, 1994 PA 451, as amended.

Forest Management Unit Escanaba	County Dickinson	Mapped By Scott Sebero	Date 08/28/2023	Page 2	of 2
Township 42N and 43N	Range 29W	Section(s) and Subdivision(s)	Scale 4 inches = 1 mile		

Cover Type				Density	
A = Aspen	H = Hemlock	N = Marsh	U = Upland Brush	0 = Non Stocked	5 = Pole Timber Medium
B = Paper Birch	J = Jack Pine	O = Oak	UM = Upland Mixed	1 = Seedling Sapling Poor	6 = Pole Timber Well
C = Cedar	L = Lowland Brush	P = Lowland Poplar	V = Bog or Marsh	2 = Seedling Sapling Medium	7 = Saw Timber Poor
D = Tread Bog	LM = Lowland Mixed	Q = Mixed Swamp Conifer	W = White Pine	3 = Seedling Sapling Well	8 = Saw Timber Medium
E = Swamp Hdwoods	M = Mpl, Bch, Brch	R = Red Pine	X = Non Stocked	4 = Pole Timber Poor	9 = Saw Timber Well
F = Spruce Fir	MC = Mixed Conifer	S = Black Spruce	Z = Water		
G = Grass	MD = Mixed Deciduous	T = Tamarack			

Wells Grade Mix

Unit 1 96.8 acres	Unit 7 90.9 acres
Unit 2 78.3 acres	Unit 8 55.5 acres
Unit 3 47.8 acres	Unit 9 45.9 acres
Unit 4 46.1 acres	Unit 10 46.5 acres
Unit 5 41.8 acres	Unit 11 35.5 acres
Unit 6 34.8 acres	Unit 12 30.7 acres
Total 650.6 acres	



Legend

- Sale Boundary Private (blue paint)
- Sale Boundary State (red paint dots)
- Payment Unit Line (red paint slashes)
- Payment Unit Number
- Woods Road
- Survey Corner
- Snowmobile Trail
- Powerline
- Culvert

TIMBER SALE INFORMATION

Blue Beary Ridge (12-005-23)

T43N, R27W, SEC. 23; T43N, R27W, SEC. 24; T43N, R27W, SEC. 25; T43N, R27W, SEC. 26; T43N, R27W, SEC. 27.
Dickinson County (Advertised Price \$112,381.85)

A timber sale contract for this mixed, sealed bid timber sale will be awarded to the responsible bidder offering the highest sealed bid price. All units of volume listed below were estimated using the Inventory Manager computer program and the new Michigan taper model. Bids must be at or above the following advertised price for each product and species:

<u>PRODUCTS & SPECIES</u>	<u>ESTIMATED UNITS*</u>		<u>ADVERTISED PRICE</u>
Sawtimber			
Basswood	182.1	MBF	\$ 129.00 / MBF
Sugar Maple	48.6	MBF	\$ 194.00 / MBF
White Ash	17.3	MBF	\$ 100.00 / MBF
Pulpwood			
Balsam Fir	108	Cords	\$ 12.25 / Cord
Basswood	263	Cords	\$ 8.85 / Cord
Mixed Hardwood	639	Cords	\$ 13.05 / Cord
Mixed Spruce	1,047	Cords	\$ 16.05 / Cord
Quaking Aspen	1,563	Cords	\$ 28.60 / Cord
Tamarack	487	Cords	\$ 8.70 / Cord

* The total volume is statistically estimated within plus (+) or minus (-) 14.52 percent. There are an estimated 4,561 cords on this timber sale, plus or minus 663 cords at the 95% confidence level. The estimated units are final and not subject to adjustment. Prospective bidders are urged to examine this timber and to make their own estimates of quantity and quality.

BOND AND PAYMENT SCHEDULE:

1. A bond in the amount of \$5,619.00 to insure faithful performance of the conditions of the contract will be deposited by the successful bidder within 21 days of the sale award.
2. Cutting in any sale or unit without the required advance payment would be considered a trespass.
3. Total payment must be paid in advance or according to the following schedule :
 - (a) Ten percent (10%) of the sale value must be paid within 21 days of the sale award.
 - (b) The 10% down payment will be credited towards the first unit cut.
 - (c) Payment for each of the following units must be made before cutting begins in that unit:

PAYMENT UNIT NUMBER	PERCENT OF TOTAL SALE VALUE
01	8.9%
02	14.9%
03	16.6%
04	14.5%
05	2.8%
06	6.1%
07	25.0%
08	11.2%
4. If no cutting takes place, the 10% down payment will not be refunded.
5. Operations on the contract issued will terminate on 06/30/2027.

SALE STATISTICS

Volumes were calculated in cubic feet using the Michigan taper model. Cubic foot volume includes all wood inside bark for the product indicated. For display purposes, cubic feet were converted to cords and MBF using a simple conversion factor, e.g. 79 cubic feet per cord and 185 cubic feet per MBF. The cubic foot volumes are precise; the cords and MBF volumes are not. Cubic foot volume cannot be directly converted to cords or boards with precision.

SALE VOLUMES

The total estimated sale volume may not equal the sum of the species/products due to the nature of statistical calculations associated with double sampling methodology.

VOLUME		STATISTICAL RANGE IN CORDS		
TOTAL CUBIC FEET	TOTAL CORDS	PERCENT ERROR	MINIMUM	MAXIMUM
360,290	4,561	14.52%	3,898	5,223

VDU VOLUMES

A VDU is a Volume Determination Unit. Volumes and their associated statistics are calculated at the VDU level and summarized to the sale level. There is often a one to one relationship between a VDU and a Payment Unit, but not always, depending on the cruise design. Refer to the VDU TO PAYMENT UNIT table.

VDU	VOLUME		PERCENT ERROR	RANGE IN CORDS	
	TOTAL CUBIC FEET	TOTAL CORDS		MINIMUM	MAXIMUM
48	50,103	634	44.48%	352	916
64	48,184	610	29.25%	432	788
66	67,664	857	16.38%	716	997
73	90,389	1,144	27.32%	832	1,457
77	64,274	814	0.00%	814	814
92	39,675	502	23.95%	382	622
TOTAL:	360,290	4,561		3,527	5,594

VDU TO PAYMENT UNIT

When a VDU is associated with more than one Payment Unit (PU), the VDU volumes are assigned to the PU based on acres of the VDU within the PU.

VDU	VDU ACRES	PU	PU ACRES
48	16.7	2	16.7
64	26.5	5	8.3
		6	18.2
66	71.9	3	38.4
		4	33.5
73	43.2	7	43.2
77	67.3	1	67.3
92	40.5	8	40.5
TOTAL:	266.1		266.1

DESCRIPTION OF TIMBER BY PAYMENT UNIT (PU)

PU	MARKET GROUP	PRODUCT	QUANTITY	UNIT	ACRES	ADVERTISE PRICE
1	Mixed Spruce	Pulpwood	393	Cords	67.3	\$9,970.35
	<i>Black Spruce</i>		393	Cords		
	Tamarack		421	Cords		
2	Basswood	Pulpwood	61	Cords	16.7	\$16,748.25
	Mixed Hardwood		52	Cords		
	<i>Balsam Poplar</i>		38	Cords		
	<i>Black Cherry</i>		14	Cords		
	Quaking Aspen		543	Cords		
3	Basswood	Sawtimber	97.3	MBF	38.4	\$18,655.80
	Sugar Maple	Pulpwood	15.4	MBF		
	White Ash		9.2	MBF		
	Basswood		89	Cords		
	Mixed Hardwood		97	Cords		
	<i>Ironwood</i>		2	Cords		
	<i>Paper Birch</i>		3	Cords		
	<i>Sugar Maple</i>		77	Cords		
	<i>White Ash</i>		15	Cords		
	Quaking Aspen		5	Cords		
4	Basswood		Sawtimber	84.8	MBF	33.5
	Sugar Maple	Pulpwood	13.5	MBF		
	White Ash		8.1	MBF		
	Basswood		77	Cords		
	Mixed Hardwood		85	Cords		
	<i>Ironwood</i>		2	Cords		
	<i>Paper Birch</i>		2	Cords		
	<i>Sugar Maple</i>		67	Cords		
	<i>White Ash</i>		14	Cords		
	Quaking Aspen		4	Cords		
5	Balsam Fir		Pulpwood	16	Cords	8.3
	Mixed Hardwood	36		Cords		
	<i>Balsam Poplar</i>	10		Cords		
	<i>Black Ash</i>	6		Cords		
	<i>Paper Birch</i>	8		Cords		
	<i>Red Maple</i>	8		Cords		
	<i>Sugar Maple</i>	4		Cords		
	Mixed Spruce	121		Cords		
	<i>Black Spruce</i>	55		Cords		
	<i>White Spruce</i>	66		Cords		
	Quaking Aspen	16		Cords		
	Tamarack	5		Cords		
6	Balsam Fir	Pulpwood	36	Cords	18.2	\$6,813.70
	Mixed Hardwood		80	Cords		
	<i>Balsam Poplar</i>		23	Cords		
	<i>Black Ash</i>		12	Cords		
	<i>Paper Birch</i>		17	Cords		
	<i>Red Maple</i>		18	Cords		
	<i>Sugar Maple</i>		10	Cords		
	Mixed Spruce		266	Cords		
	<i>Black Spruce</i>		121	Cords		
	<i>White Spruce</i>		145	Cords		
	Quaking Aspen		34	Cords		
	Tamarack		10	Cords		
	7		Sugar Maple	Sawtimber		
Balsam Fir		Pulpwood	30	Cords		
Basswood			36	Cords		

DESCRIPTION OF TIMBER BY PAYMENT UNIT (PU), CON'T

PU	MARKET GROUP	PRODUCT	QUANTITY	UNIT	ACRES	ADVERTISE PRICE
7 con't	Mixed Hardwood	Pulpwood	253	Cords		
	<i>Paper Birch</i>	<i>Sawtimber</i>	2.4	<i>MBF</i>		
	<i>Black Cherry</i>	<i>Pulpwood</i>	5	<i>Cords</i>		
	<i>Ironwood</i>		42	<i>Cords</i>		
	<i>Paper Birch</i>		4	<i>Cords</i>		
	<i>Sugar Maple</i>		187	<i>Cords</i>		
	<i>Yellow Birch</i>		10	<i>Cords</i>		
	Mixed Spruce		149	Cords		
	<i>Black Spruce</i>		109	<i>Cords</i>		
	<i>White Spruce</i>		40	<i>Cords</i>		
	Quaking Aspen		614	Cords		
	Tamarack		51	Cords		
	8	Balsam Fir	Pulpwood	26		
Mixed Hardwood			36	Cords		
<i>Balsam Poplar</i>			5	<i>Cords</i>		
<i>Black Cherry</i>			31	<i>Cords</i>		
Mixed Spruce			118	Cords		
<i>White Spruce</i>			118	<i>Cords</i>		
Quaking Aspen			347	Cords		
TOTAL:			248.0	MBF		
TOTAL:			4,107	Cords		

Sale Specific Conditions & Requirements

Sale Name: Blue Beary Ridge

Sale Number: 12-005-23 Seq#: 1

1 - Sale Area

1.2 - Boundaries

1.2.1 - Painted boundaries (9/19)

The sale boundary and Payment Unit boundaries are marked and identified by blue, red and yellow paint. Exterior sale boundary lines against private property are marked with blue paint. Exterior sale boundary lines against state are marked with red paint. Interior Payment Unit boundaries are marked with yellow paint. The painted boundary line trees are not Included Timber and are to be protected unless marked with orange paint. Yellow painted trees designating an interior Payment Unit boundary are only to be cut when all surrounding Payment Units have been paid.

2 - Timber Specifications

2.1 - Included Timber

2.1.2 - Clearcut unit(s) w/o unmerchantable trees (8/11)

Within Payment Unit(s) #'s 1,2,5,6,7,8, cut all trees which meet minimum piece specifications in 2.2 Utilization except Cedar, Hemlock, and Pine.

2.1.3 - Cut tree marked unit(s) (12/08)

Within Payment Unit(s) #'s 3,4, all trees are designated for cutting when marked with orange paint above and below stump height, regardless of merchantability.

2.1.11 - Description of timber note (2/04)

Note that volume within payment Unit #1 will be scaled and sold at contract prices.

3 - Payments

3.2 - Scaled Sales

3.2.1 - Scale location (2/04)

Forest products will be placed for measurement roadside. Unit 1 will be scaled.

3.4 - Damaged Timber

3.4.1 - Damaged timber (7/16)

General Condition and Requirement 3.4 Damaged Timber, defines liquidated damages for undesignated live merchantable trees which are cut or injured.

No damage is acceptable to undesignated live merchantable trees. Within the sale area, if more than 10% of trees (> 4.5" DBH) within a specified area of the sale are damaged, liquidated damages will be assessed for all trees damaged. Rates will be in accordance with General Condition and Requirement 3.4 Damaged Timber.

4 - Transportation

4.1 - Construction

4.1.6 - Road construction (1/09)

Construction of new roads or improvements of existing roads shall be done in such a way as to minimize the environmental and visual impacts. Merchantable trees shall be cut and utilized unless otherwise directed. Non-merchantable trees shall be severed and laid flat on the ground. Slash shall be scattered, and not left in windrows and kept a minimum of 10 feet back from the road edge. Stumps shall be set upright, not left on edge, and be moved at least 10 feet away from the road edge. Disturbed soil shall be feathered into the woods and not left in berms or windrows.

4.1.7 - Road closure (10/11)

All new roads built into the sale must be blocked to vehicle traffic upon completion of the sale. In general, this will require constructing a four (4') foot high berm of stumps and logs covered with earth. These roads must be rendered impassable to cars and trucks. Contact the sale administrator for specific details of design and placement.

4.1.12 - No new roads (1/12)

No new roads will be permitted into Payment Unit #6. Skid trails only will be allowed within Payment Unit #6.

5 - Operations

5.2 - Conduct of Operations

5.2.2 - Hazard Trees/Snags

5.2.2.1 - Den trees (10/16)

Obvious hollow and/or den trees shall be protected and left standing unless they are a safety hazard.

5.2.3 - Operating Restrictions

5.2.3.3 - Bark slippage restriction (3/09)

Within Payment Unit(s) #'s 3-4, unless changed by written agreement, cutting and skidding are not permitted during the period of April 15 to July 1. This restriction is because of bark slippage.

5.2.4 - Dead and Down Creation

5.2.4.2 - Dead and down creation, hare and grouse (1/14)

To improve habitat for snowshoe hare, grouse, and other species, the Purchaser is to leave slash piles on the ground for every 2 acres within Unit #5. These 4 piles, measuring a minimum of 6 feet tall, will be scattered throughout Unit #5. In addition, within Unit #6, two windrows of slash measuring a minimum of 6 feet tall and 50 feet long must be constructed. They can be of any tree species and can be an un-merchantable piece of wood or a full tree.

5.2.22 - Operating Caution

5.2.22.1 - Operating caution (6/11)

It is recommended, but not required, that within Payment Unit(s) #1,5,6, cutting, skidding, and hauling occur during dry summer or frozen winter conditions. The reason for the recommendation is because of the wet soils.

5.4 - Soil Protection

5.4.1 - Rutting restriction, general (7/16)

Operations are to cease immediately if equipment and weather conditions result in rutting of roads and/or skid trails which is 12 inches or greater in depth and 50 feet in length. The Unit Manager or his/her representative may restrict hauling and/or skidding if ruts exceed the specified depth. With the Unit Manager or his/her representative's approval, the Purchaser may return to the area when the risk of rutting has decreased.



TIMBER SALE MAP

This information provided by authority of Part 525, 1994 PA 451, as amended.

Forest Management Unit Escanaba FMU	County Dickinson	Mapped By Andy Church	Date 09/06/2023	Page 1	of 2
Township 43N	Range 27W	Section(s) and Subdivision(s) Sec23 SESW,S1/2SE Sec24 SWSW,N1/2SE,SESE Sec25 NW,N1/2SW Sec26 NW,NWNE,S1/2NE,W1/2SW,N1/2SE Sec26 SWSE Sec27 SESE	Scale 1:15,840		

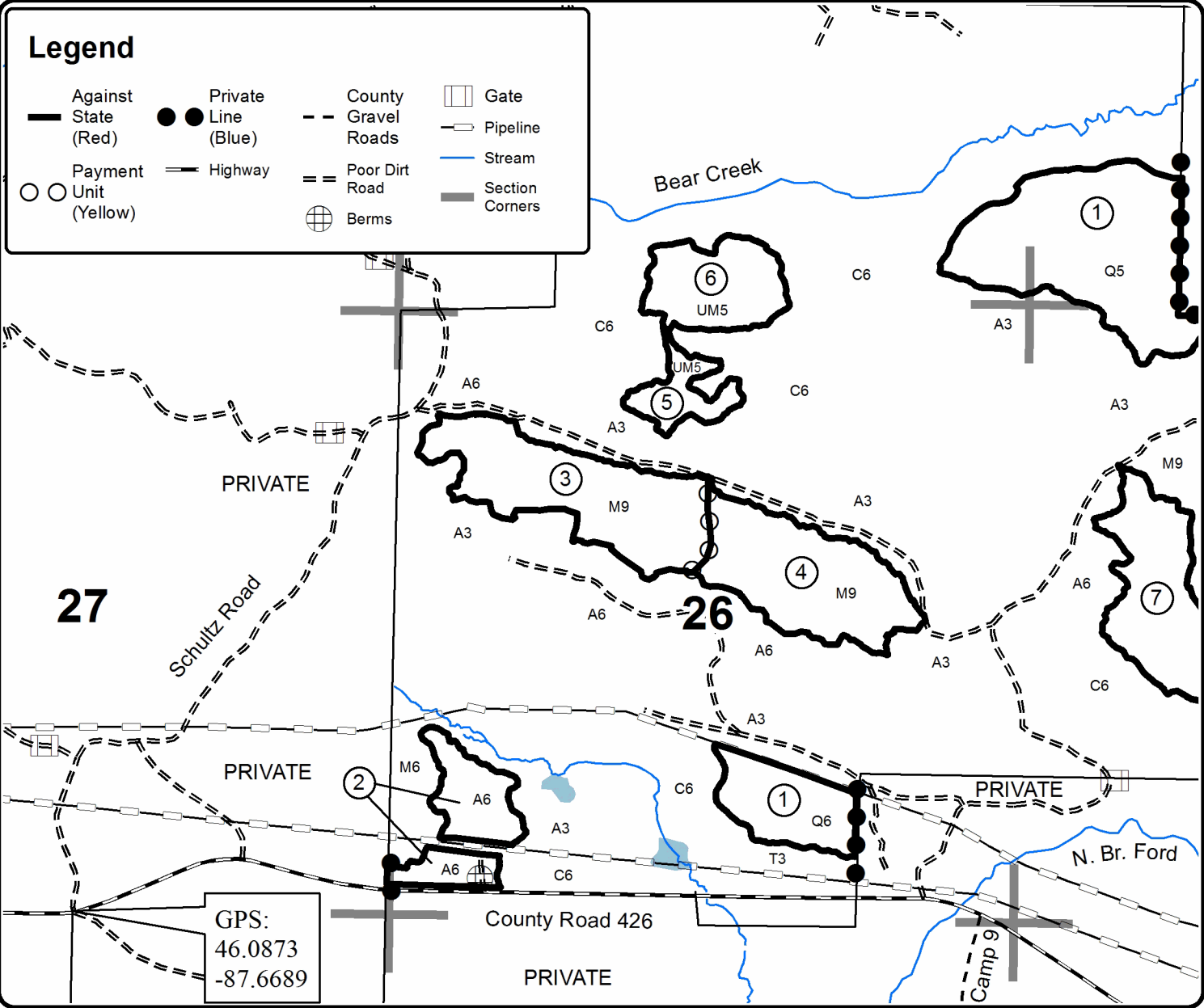
Cover Type				Density	
A = Aspen	H = Hemlock	N = Marsh	U = Upland Brush	0 = Non Stocked	5 = Pole Timber Medium
B = Paper Birch	J = Jack Pine	O = Oak	UM = Upland Mixed	1 = Seedling Sapling Poor	6 = Pole Timber Well
C = Cedar	L = Lowland Brush	P = Lowland Poplar	V = Bog or Marsh	2 = Seedling Sapling Medium	7 = Saw Timber Poor
D = Treed Bog	LM = Lowland Mixed	Q = Mixed Swamp Conifer	W = White Pine	3 = Seedling Sapling Well	8 = Saw Timber Medium
E = Swamp Hdwoods	M = Mpl. Bch, Brch	R = Red Pine	X = Non Stocked	4 = Pole Timber Poor	9 = Saw Timber Well
F = Spruce Fir	MC = Mixed Conifer	S = Black Spruce	Z = Water		
G = Grass	MD = Mixed Deciduous	T = Tamarack			

PU	Acres	PU	Acres
1	67.3	5	8.3
2	16.7	6	18.2
3	38.4	7	43.2
4	33.5	8	40.5

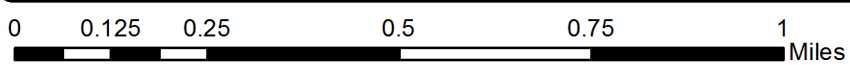
Blue Beary Ridge

Compartment 28

266.1 Acres



GPS:
46.0873
-87.6689





Sale Number	Year
12 - 005	23

TIMBER SALE MAP

This information provided by authority of Part 525, 1994 PA 451, as amended.

Forest Management Unit Escanaba FMU	County Dickinson	Mapped By Andy Church	Date 09/06/2023	Page 2	of 2
Township 43N	Range 27W	Section(s) and Subdivision(s) Sec23 SESW,S1/2SE Sec24 SWSW,N1/2SE,SESE Sec25 NW,N1/2SW Sec26 NW,NWNE,S1/2NE,W1/2SW,N1/2SE Sec26 SWSE Sec27 SESE	Scale 1:15,840		

Cover Type

A = Aspen	H = Hemlock	N = Marsh	U = Upland Brush
B = Paper Birch	J = Jack Pine	O = Oak	UM = Upland Mixed
C = Cedar	L = Lowland Brush	P = Lowland Poplar	V = Bog or Marsh
D = Treed Bog	LM = Lowland Mixed	Q = Mixed Swamp Conifer	W = White Pine
E = Swamp Hdwoods	M = Mpl, Bch, Brch	R = Red Pine	X = Non Stocked
F = Spruce Fir	MC = Mixed Conifer	S = Black Spruce	Z = Water
G = Grass	MD = Mixed Deciduous	T = Tamarack	

Density

0 = Non Stocked	5 = Pole Timber Medium
1 = Seedling Sapling Poor	6 = Pole Timber Well
2 = Seedling Sapling Medium	7 = Saw Timber Poor
3 = Seedling Sapling Well	8 = Saw Timber Medium
4 = Pole Timber Poor	9 = Saw Timber Well

PU	Acres	PU	Acres
1	67.3	5	8.3
2	16.7	6	18.2
3	38.4	7	43.2
4	33.5	8	40.5

Blue Beary Ridge

Compartment 28

266.1 Acres

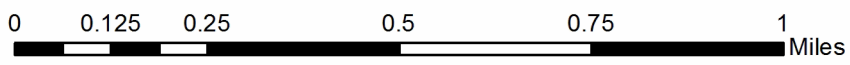
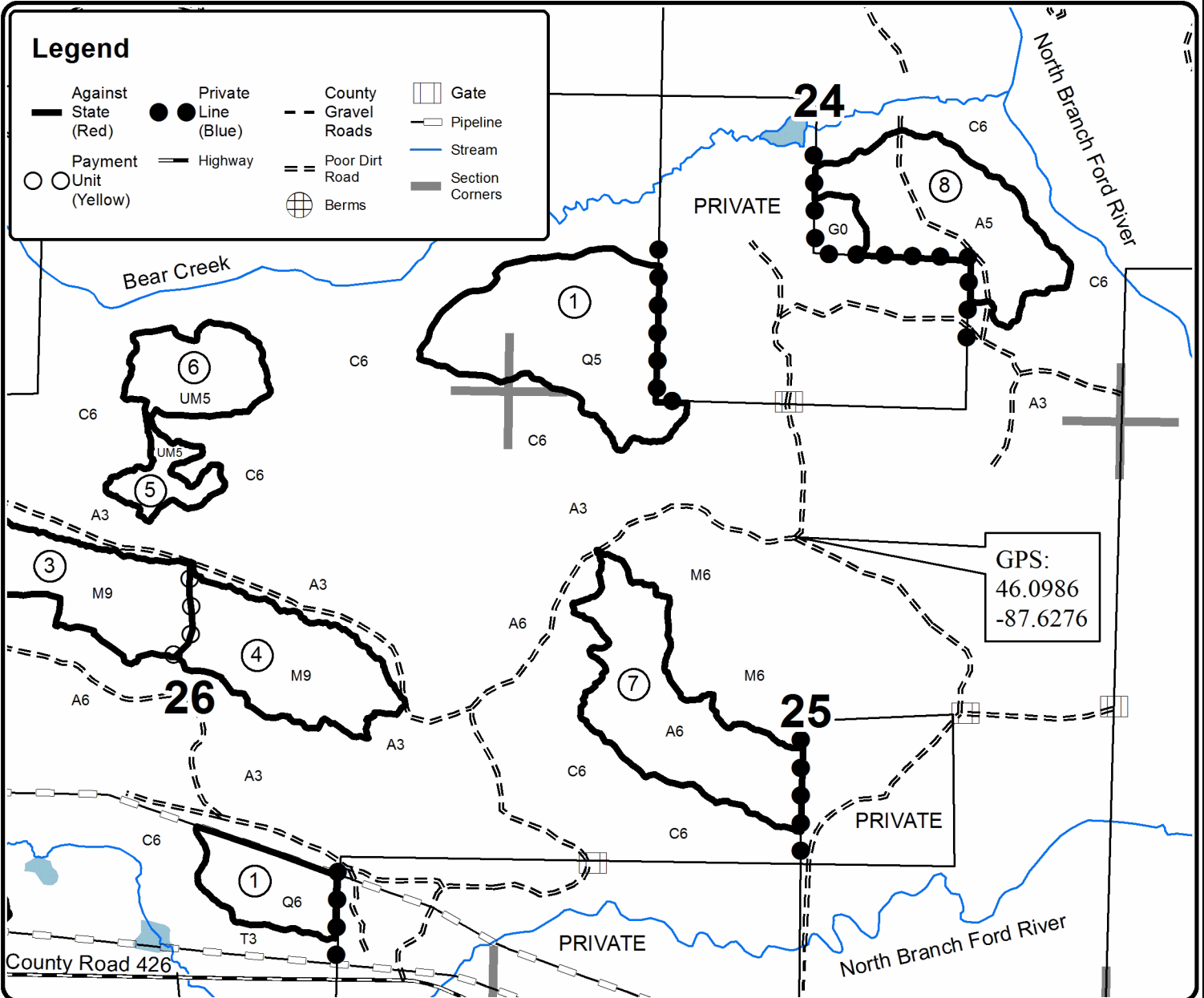


QR code for GeoRef PDF



Legend

Against State (Red)	●● Private Line (Blue)	--- County Gravel Roads	□ Gate
○ Payment Unit (Yellow)	== Highway	== Poor Dirt Road	— Pipeline
	⊕ Berms	— Section Corners	— Stream



TIMBER SALE INFORMATION

Popplesky (12-015-23)

T43N, R27W, SEC. 15; T43N, R27W, SEC. 16.
Dickinson County (Advertised Price \$75,353.45)

SALE NOTE: Access may be through private land.

A timber sale contract for this lump sum, sealed bid timber sale will be awarded to the responsible bidder offering the highest sealed bid price. All units of volume listed below were estimated using the Inventory Manager computer program and the new Michigan taper model. Bids must be at or above the following advertised price for each product and species:

<u>PRODUCTS & SPECIES</u>	<u>ESTIMATED UNITS*</u>	<u>ADVERTISED PRICE</u>
Sawtimber		
Basswood	10.7 MBF	\$ 129.00 / MBF
Paper Birch	24.2 MBF	\$ 150.00 / MBF
Red Maple	25.4 MBF	\$ 114.00 / MBF
Sugar Maple	82.3 MBF	\$ 194.00 / MBF
Pulpwood		
Balsam Fir	26 Cords	\$ 12.25 / Cord
Basswood	116 Cords	\$ 8.85 / Cord
Mixed Aspen	1,132 Cords	\$ 28.60 / Cord
Mixed Hardwood	1,172 Cords	\$ 13.05 / Cord
Mixed Spruce	117 Cords	\$ 16.05 / Cord
Paper Birch	109 Cords	\$ 5.40 / Cord

* The total volume is statistically estimated within plus (+) or minus (-) 21.35 percent. There are an estimated 3,007 cords on this timber sale, plus or minus 642 cords at the 95% confidence level. The estimated units are final and not subject to adjustment. Prospective bidders are urged to examine this timber and to make their own estimates of quantity and quality.

BOND AND PAYMENT SCHEDULE:

1. A bond in the amount of \$3,768.00 to insure faithful performance of the conditions of the contract will be deposited by the successful bidder within 21 days of the sale award.
2. Cutting in any sale or unit without the required advance payment would be considered a trespass.
3. Total payment must be paid in advance or according to the following schedule :
 - (a) Ten percent (10%) of the sale value must be paid within 21 days of the sale award.
 - (b) The 10% down payment will be credited towards the first unit cut.
 - (c) Payment for each of the following units must be made before cutting begins in that unit:

PAYMENT UNIT NUMBER	PERCENT OF TOTAL SALE VALUE
01	4.8%
02	39.4%
03	8.6%
04	30.3%
05	16.9%
4. If no cutting takes place, the 10% down payment will not be refunded.
5. Operations on the contract issued will terminate on 06/30/2027.

SALE STATISTICS

Volumes were calculated in cubic feet using the Michigan taper model. Cubic foot volume includes all wood inside bark for the product indicated. For display purposes, cubic feet were converted to cords and MBF using a simple conversion factor, e.g. 79 cubic feet per cord and 185 cubic feet per MBF. The cubic foot volumes are precise; the cords and MBF volumes are not. Cubic foot volume cannot be directly converted to cords or boards with precision.

SALE VOLUMES

The total estimated sale volume may not equal the sum of the species/products due to the nature of statistical calculations associated with double sampling methodology.

VOLUME			STATISTICAL RANGE IN CORDS	
TOTAL CUBIC FEET	TOTAL CORDS	PERCENT ERROR	MINIMUM	MAXIMUM
237,527	3,007	21.35%	2,365	3,649

VDU VOLUMES

A VDU is a Volume Determination Unit. Volumes and their associated statistics are calculated at the VDU level and summarized to the sale level. There is often a one to one relationship between a VDU and a Payment Unit, but not always, depending on the cruise design. Refer to the VDU TO PAYMENT UNIT table.

VDU	VOLUME		PERCENT ERROR	RANGE IN CORDS	
	TOTAL CUBIC FEET	TOTAL CORDS		MINIMUM	MAXIMUM
15	31,870	403	28.59%	288	519
17	167,708	2,123	18.90%	1,722	2,524
20	37,949	480	20.54%	382	579
TOTAL:	237,527	3,007		2,392	3,622

VDU TO PAYMENT UNIT

When a VDU is associated with more than one Payment Unit (PU), the VDU volumes are assigned to the PU based on acres of the VDU within the PU.

VDU	VDU ACRES	PU	PU ACRES
15	22.9	1	8.2
		3	14.7
17	56.3	2	31.8
		4	24.5
20	43.2	5	43.2
TOTAL:	122.4		122.4

DESCRIPTION OF TIMBER BY PAYMENT UNIT (PU)

PU	MARKET GROUP	PRODUCT	QUANTITY	UNIT	ACRES	ADVERTISE PRICE
1	Basswood Paper Birch Red Maple Sugar Maple	Sawtimber	1.2	MBF	8.2	\$3,638.15
			1.9	MBF		
			0.4	MBF		
			7.3	MBF		
	Basswood Mixed Aspen <i>Balsam Poplar</i> <i>Quaking Aspen</i> Mixed Hardwood <i>Ironwood</i> <i>Red Maple</i> <i>Sugar Maple</i> Paper Birch	Pulpwood	4	Cords		
			15	Cords		
			2	Cords		
			13	Cords		
			95	Cords		
			4	Cords		
			11	Cords		
			80	Cords		
			6	Cords		
			2	Basswood Paper Birch Red Maple Sugar Maple	Sawtimber	
10.6	MBF					
13.7	MBF					
18.3	MBF					
Balsam Fir Basswood Mixed Aspen <i>B. T. Aspen</i> <i>Balsam Poplar</i> <i>Quaking Aspen</i> Mixed Hardwood <i>Black Ash</i> <i>Red Maple</i> <i>Sugar Maple</i> <i>Yellow Birch</i> Mixed Spruce <i>Black Spruce</i> <i>White Spruce</i> Paper Birch	Pulpwood	15		Cords		
		43		Cords		
		560		Cords		
		5		Cords		
		11		Cords		
		544		Cords		
		355		Cords		
		2		Cords		
		89		Cords		
		256		Cords		
		8		Cords		
		66		Cords		
		12		Cords		
		54		Cords		
53	Cords					
3	Basswood Paper Birch Red Maple Sugar Maple	Sawtimber	2.2	MBF	14.7	\$6,512.25
			3.5	MBF		
			0.7	MBF		
			13.1	MBF		
	Basswood Mixed Aspen <i>Balsam Poplar</i> <i>Quaking Aspen</i> Mixed Hardwood <i>Ironwood</i> <i>Red Maple</i> <i>Sugar Maple</i> Paper Birch	Pulpwood	6	Cords		
			26	Cords		
			4	Cords		
			22	Cords		
			171	Cords		
			8	Cords		
			20	Cords		
			143	Cords		
10	Cords					
4	Basswood Paper Birch Red Maple Sugar Maple	Sawtimber	2.1	MBF	24.5	\$22,845.80
			8.2	MBF		
			10.6	MBF		
			14.1	MBF		
	Balsam Fir Basswood Mixed Aspen <i>B. T. Aspen</i> <i>Balsam Poplar</i> <i>Quaking Aspen</i> Mixed Hardwood	Pulpwood	11	Cords		
			34	Cords		
			432	Cords		
			4	Cords		
			8	Cords		
			420	Cords		
			274	Cords		

DESCRIPTION OF TIMBER BY PAYMENT UNIT (PU), CON'T

PU	MARKET GROUP	PRODUCT	QUANTITY	UNIT	ACRES	ADVERTISE PRICE
4 con't	<i>Black Ash</i>	<i>Pulpwood</i>	1	<i>Cords</i>		
	<i>Red Maple</i>		69	<i>Cords</i>		
	<i>Sugar Maple</i>		198	<i>Cords</i>		
	<i>Yellow Birch</i>		6	<i>Cords</i>		
	Mixed Spruce		51	<i>Cords</i>		
	<i>Black Spruce</i>		10	<i>Cords</i>		
	<i>White Spruce</i>		41	<i>Cords</i>		
	Paper Birch		40	<i>Cords</i>		
	5		Basswood	Sawtimber		
Sugar Maple			29.5	MBF		
Basswood		Pulpwood	29	<i>Cords</i>		
Mixed Aspen			99	<i>Cords</i>		
<i>B. T. Aspen</i>			24	<i>Cords</i>		
<i>Quaking Aspen</i>			75	<i>Cords</i>		
Mixed Hardwood			277	<i>Cords</i>		
<i>Red Maple</i>			5	<i>Cords</i>		
<i>Sugar Maple</i>			272	<i>Cords</i>		
TOTAL:			142.6	MBF		
TOTAL:			2,672	Cords		

Sale Specific Conditions & Requirements

Sale Name: Popplesky

Sale Number: 12-015-23 Seq#: 1

1 - Sale Area

1.2 - Boundaries

1.2.1 - Painted boundaries (9/19)

The sale boundary and Payment Unit boundaries are marked and identified by blue, red and yellow paint. Exterior sale boundary lines against private property are marked with blue paint. Exterior sale boundary lines against state are marked with red paint. Interior Payment Unit boundaries are marked with yellow paint. The painted boundary line trees are not Included Timber and are to be protected unless marked with orange paint. Yellow painted trees designating an interior Payment Unit boundary are only to be cut when all surrounding Payment Units have been paid.

2 - Timber Specifications

2.1 - Included Timber

2.1.2 - Clearcut unit(s) w/o unmerchantable trees (8/11)

Within Payment Unit(s) 2 & 4, cut all trees which meet minimum piece specifications in 2.2 Utilization, except do not cut cedar, pine, and hemlock.

2.1.3 - Cut tree marked unit(s) (12/08)

Within Payment Unit(s) 1, 3, & 5, all trees are designated for cutting when marked with orange paint above and below stump height, regardless of merchantability.

3 - Payments

3.3 - Pre-measured Sales

3.3.4 - Dividing payment units (7/14)

Payment Unit(s) 2 & 4 may be divided at the request of the Purchaser and upon approval of the Unit Manager. Dividing Payment Units is a contract modification which requires a Timber Sale Contract Amendment. There will be only one division per Payment Unit.

3.4 - Damaged Timber

3.4.1 - Damaged timber (7/16)

General Condition and Requirement 3.4 Damaged Timber, defines liquidated damages for undesignated live merchantable trees which are cut or injured. No damage is acceptable to undesignated live merchantable trees. Within the Sale Area, if more than 10% of trees (> 4.5" DBH) within a specified area of the sale are damaged, liquidated damages will be assessed for all trees damaged. Rates will be in accordance with General Condition and Requirement 3.4 Damaged Timber.

4 - Transportation

4.1 - Construction

4.1.6 - Road construction (1/09)

Construction of new roads or improvements of existing roads shall be done in such a way as to minimize the environmental and visual impacts. Merchantable trees shall be cut and utilized unless otherwise directed. Non-merchantable trees shall be severed and laid flat on the ground. Slash shall be scattered, and not left in windrows and kept a minimum of 10 feet back from the road edge. Stumps shall be set upright, not left on edge, and be moved at least 10 feet away from the road edge. Disturbed soil shall be feathered into the woods and not left in berms or windrows.

4.1.7 - Road closure (10/11)

All new roads built into the sale must be blocked to vehicle traffic upon completion of the sale. In general, this will require constructing a four (4') foot high berm of stumps and logs covered with earth. These roads must be rendered impassable to cars and trucks. Contact the Sale Administrator for specific details of design and placement.

4.2 - Maintenance

4.2.4 - Grading (10/16)

Haul route portion of Schultz Road must be graded post-harvest, unless all operations are on frozen ground conditions. In general, this will require a road grader or bulldozer to shape up the roads after forest products have been hauled off site. The grading equipment to be used must be approved by the Unit Manager or his/her representative.

4.4 - Access

4.4.1 - Private property access (3/11)

Permission for access across private land is the responsibility of the Purchaser.

5 - Operations

5.2 - Conduct of Operations

5.2.2 - Hazard Trees/Snags

5.2.2.1 - Den trees (10/16)

Obvious hollow and/or den trees shall be protected and left standing unless they are a safety hazard.

5.2.3 - Operating Restrictions

5.2.3.3 - Bark slippage restriction (3/09)

Within Payment Unit(s) 1, 3, & 5, unless changed by written agreement, cutting and skidding are not permitted during the period of April 15 to July 1. This restriction is because of bark slippage.

5.4 - Soil Protection

5.4.1 - Rutting restriction, general (7/16)

Operations are to cease immediately if equipment and weather conditions result in rutting of roads and/or skid trails which are 12 inches or greater in depth and 50 feet in length. The Unit Manager or his/her representative may restrict hauling and/or skidding if ruts exceed the specified depth. With the Unit Manager or his/her representative's approval, the Purchaser may return to the area when the risk of rutting has decreased.



TIMBER SALE MAP

This information provided by authority of Part 525, 1994 PA 451, as amended.

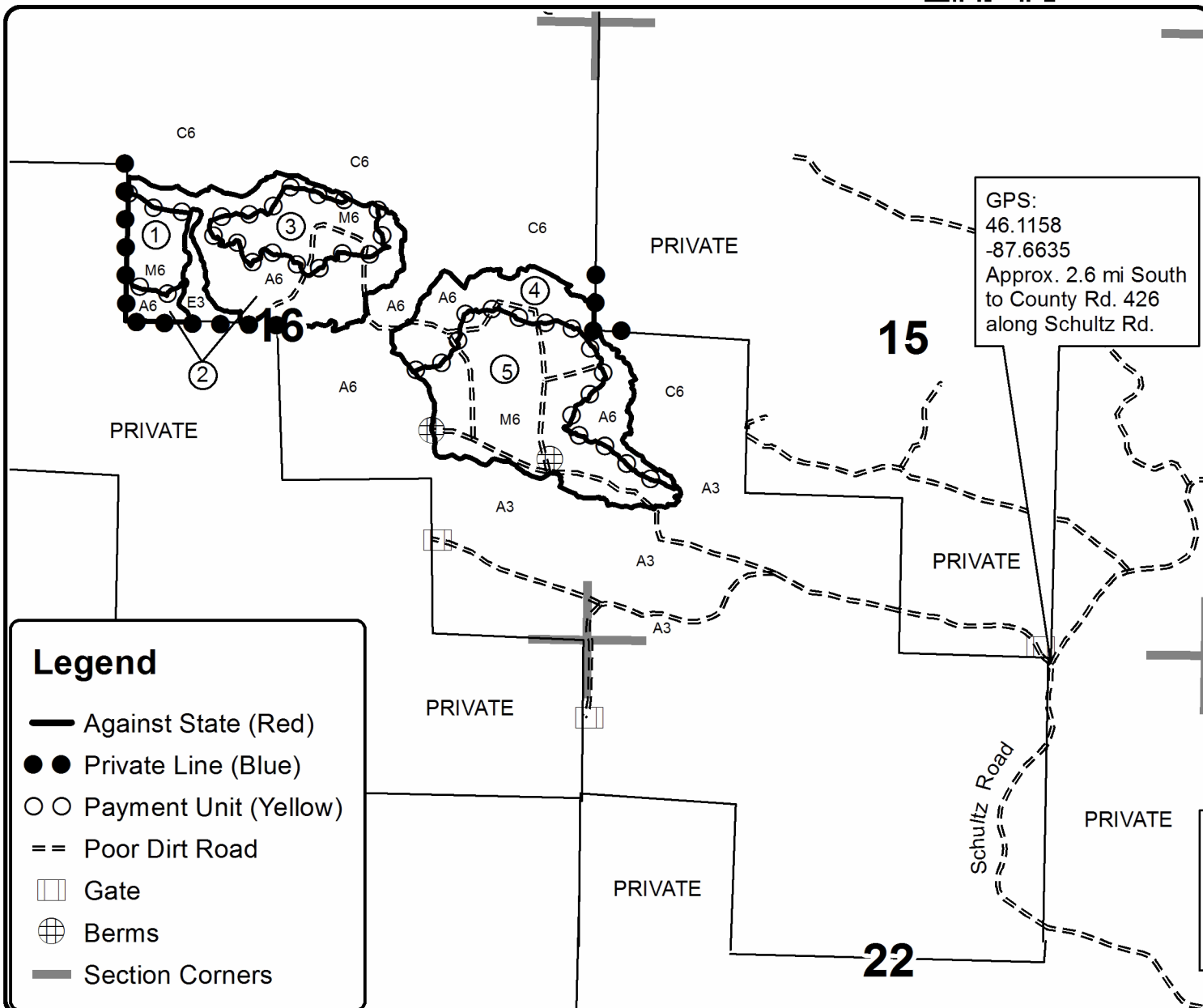
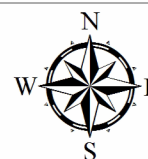
Forest Management Unit Escanaba FMU	County Dickinson	Mapped By Andy Church	Date 09/22/2023	Page 1	of 1
Township 43N	Range 27W	Section(s) and Subdivision(s) Sec 15: W1/2SW Sec 16: SENW,S1/2NE,N1/2SE,SESE	Scale 1:15,840		

Cover Type				Density	
A = Aspen	H = Hemlock	N = Marsh	U = Upland Brush	0 = Non Stocked	5 = Pole Timber Medium
B = Paper Birch	J = Jack Pine	O = Oak	UM = Upland Mixed	1 = Seedling Sapling Poor	6 = Pole Timber Well
C = Cedar	L = Lowland Brush	P = Lowland Poplar	V = Bog or Marsh	2 = Seedling Sapling Medium	7 = Saw Timber Poor
D = Treed Bog	LM = Lowland Mixed	Q = Mixed Swamp Conifer	W = White Pine	3 = Seedling Sapling Well	8 = Saw Timber Medium
E = Swamp Hdwoods	M = Mpl. Bch, Brch	R = Red Pine	X = Non Stocked	4 = Pole Timber Poor	9 = Saw Timber Well
F = Spruce Fir	MC = Mixed Conifer	S = Black Spruce	Z = Water		
G = Grass	MD = Mixed Deciduous	T = Tamarack			

PU	Acres	PU	Acres
1	8.2	4	24.5
2	31.8	5	43.2
3	14.7		

Popplesky
Compartment 27
122.4 Acres

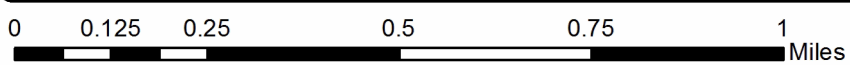
QR code for
GeoRef PDF



GPS:
46.1158
-87.6635
Approx. 2.6 mi South
to County Rd. 426
along Schultz Rd.

Legend

- Against State (Red)
- Private Line (Blue)
- Payment Unit (Yellow)
- == Poor Dirt Road
- Gate
- ⊕ Berms
- Section Corners



Wells Grade Mix (12-001-23)

T42N, R29W, SEC. 17; T42N, R29W, SEC. 18; T42N, R29W, SEC. 5; T42N, R29W,

In response to the notice of sale to be held 3:00 p.m. (local time) on November 28, 2023, I am hereby submitting my sealed bid (firm offer) for the following forest products to be cut. Bids for individual species must be at or above the advertised price. All non-responsive bid forms may be rejected.

<u>PRODUCTS & SPECIES</u>	<u>ESTIMATED VOLUME*</u>	<u>ADVERTISED PRICE</u>	<u>BID PRICE/UNIT</u>
Sawtimber			
Basswood	645.4 MBF	\$ 125.00/MBF	\$ _____
Paper Birch	24.2 MBF	\$ 146.00/MBF	\$ _____
Red Maple	76.3 MBF	\$ 111.00/MBF	\$ _____
Sugar Maple	292.8 MBF	\$ 189.00/MBF	\$ _____
White Ash	33.8 MBF	\$ 97.00/MBF	\$ _____
Pulpwood			
Balsam Fir	366 Cords	\$ 11.90/Cord	\$ _____
Basswood	1,006 Cords	\$ 8.60/Cord	\$ _____
Mixed Aspen	5,285 Cords	\$ 27.80/Cord	\$ _____
Mixed Hardwood	2,960 Cords	\$ 12.70/Cord	\$ _____
Mixed Spruce	120 Cords	\$ 15.60/Cord	\$ _____
Paper Birch	79 Cords	\$ 5.25/Cord	\$ _____

*The volumes are statistically estimated within plus (+) or minus (-) 4.67 percent at 95% confidence level. These estimated volumes are final and not subject to adjustment. Prospective bidders are urged to examine this timber and to make their own estimates of quantity and quality.

I understand that any or all bids may be rejected. All bids must be signed and all bid items must be bid or the bid form may be rejected. I also understand that consideration and awarding a contract will be based upon my past performance and ability to complete the contract based upon equipment and staffing subject to my control.

FEDERAL ID: _____ or SOCIAL SECURITY NUMBER: _____

Company or individual bidding: _____

Company representative's name: _____

Address: _____

City: _____ State: _____ Zip: _____

IF AVAILABLE, PLEASE PLACE THE PERSONALIZED LABEL FROM YOUR PROSPECTUS IN THE ABOVE BOX.

Individual or company representative's signature: _____ Date: _____

Phone number : _____ Email (optional): _____

THE WINNING BIDDER MUST COMPLETE THE VERIFICATION OF WORKER'S DISABILITY COMPENSATION ACT COMPLIANCE (ON REVERSE SIDE IF DOUBLE SIDED) WITHIN 21 DAYS OF SALE AWARD DATE



FOR DEPARTMENT USE ONLY
Sale Number (XX - XXX - XX - XX)
Forest Management Unit:

TIMBER SALE VERIFICATION OF WORKER'S DISABILITY COMPENSATION ACT COMPLIANCE

*As required by Act 317, P.A. 1969 (Worker's Compensation) and
Part 5 of Act 451 of 1994, as amended.*

VERIFICATION OF WORKER'S DISABILITY COMPENSATION ACT COMPLIANCE

- This verification must be completed and submitted within 21 days of contract award and prior to the issuance of the timber sale contract.
- In addition, if boxes 2B or 2C are checked, then Notice of Exclusion or Certificate of Insurance must be submitted within twenty-one (21) days of the contract award and prior to the issuance of the timber sale contract.
- All information must be typed or printed except for written signatures.

Please Check Appropriate Categories:

1. My business is organized as (you **must** check one of the boxes below):
 - A. Sole Proprietorship (individual)
 - B. Partnership
 - C. Corporation
2. You **must** check one of the boxes below:
 - A. I certify my business is a sole proprietorship and it has no employees but the sole proprietor. I am not subject to the Worker's Compensation Laws.
 - B. I certify my business has satisfied its obligation to the Worker's Compensation Act through the use of an approved Notice of Exclusion (BWC-337, Rev. 5/96). I will provide a copy of the Notice of Exclusion within 21 days of the contract award. (For questions or a copy of the BWC-337, please call the Worker's Compensation Bureau at 517-322-1195).
 - C. I certify my business has a Worker's Compensation Policy. I will provide an original Certificate of Insurance within twenty-one (21) days of the contract award.
3. If you have checked item 2(A) or 2(B), you **must** indicate the number of **both** full-time and part-time employees, other than yourself, including family members and active partners (if none, you must enter "0").

_____ Full-time Employees

_____ Part-time Employees

Name of Business		Federal ID (or) Social Security No.	
Address		Telephone ()	
City	State	ZIP	

I hereby certify that the above information is true and correct. I agree to notify the Michigan DNR of any changes that occur in factors affecting my coverage during any of my present and future operations.

Signature of Owner or Authorized Representative

Title

Date

Please complete the "SEALED BID" information on the next page

Popplesky (12-015-23)

T43N, R27W, SEC. 15; T43N, R27W, SEC. 16; Dickinson COUNTY

In response to the notice of sale to be held 3:00 p.m. (local time) on November 28, 2023, I am hereby submitting my sealed bid (firm offer) for the following forest products to be cut. Bids for individual species must be at or above the advertised price. All non-responsive bid forms may be rejected.

<u>PRODUCTS & SPECIES</u>	<u>ESTIMATED VOLUME*</u>	<u>ADVERTISED PRICE</u>	<u>BID PRICE/UNIT</u>
Sawtimber			
Basswood	10.7 MBF	\$ 129.00/MBF	\$ _____
Paper Birch	24.2 MBF	\$ 150.00/MBF	\$ _____
Red Maple	25.4 MBF	\$ 114.00/MBF	\$ _____
Sugar Maple	82.3 MBF	\$ 194.00/MBF	\$ _____
Pulpwood			
Balsam Fir	26 Cords	\$ 12.25/Cord	\$ _____
Basswood	116 Cords	\$ 8.85/Cord	\$ _____
Mixed Aspen	1,132 Cords	\$ 28.60/Cord	\$ _____
Mixed Hardwood	1,172 Cords	\$ 13.05/Cord	\$ _____
Mixed Spruce	117 Cords	\$ 16.05/Cord	\$ _____
Paper Birch	109 Cords	\$ 5.40/Cord	\$ _____

*The volumes are statistically estimated within plus (+) or minus (-) 21.35 percent at 95% confidence level. These estimated volumes are final and not subject to adjustment. Prospective bidders are urged to examine this timber and to make their own estimates of quantity and quality.

I understand that any or all bids may be rejected. All bids must be signed and all bid items must be bid or the bid form may be rejected. I also understand that consideration and awarding a contract will be based upon my past performance and ability to complete the contract based upon equipment and staffing subject to my control.

FEDERAL ID: _____ - _____ or SOCIAL SECURITY NUMBER: _____ - _____ - _____

Company or individual bidding: _____

Company representative's name: _____

Address: _____

City: _____ State: _____ Zip: _____

IF AVAILABLE, PLEASE PLACE THE PERSONALIZED LABEL FROM YOUR PROSPECTUS IN THE ABOVE BOX.

Individual or company representative's signature: _____ Date: _____

Phone number : _____ Email (optional): _____

THE WINNING BIDDER MUST COMPLETE THE VERIFICATION OF WORKER'S DISABILITY COMPENSATION ACT COMPLIANCE (ON REVERSE SIDE IF DOUBLE SIDED) WITHIN 21 DAYS OF SALE AWARD DATE

Blue Beary Ridge (12-005-23)
T43N, R27W, SEC. 23; T43N, R27W, SEC. 24; T43N, R27W, SEC. 25; T43N,

In response to the notice of sale to be held 3:00 p.m. (local time) on November 28, 2023, I am hereby submitting my sealed bid (firm offer) for the following forest products to be cut. Bids for individual species must be at or above the advertised price. All non-responsive bid forms may be rejected.

<u>PRODUCTS & SPECIES</u>	<u>ESTIMATED VOLUME*</u>	<u>ADVERTISED PRICE</u>	<u>BID PRICE/UNIT</u>
Sawtimber			
Basswood	182.1 MBF	\$ 129.00/MBF	\$ _____
Sugar Maple	48.6 MBF	\$ 194.00/MBF	\$ _____
White Ash	17.3 MBF	\$ 100.00/MBF	\$ _____
Pulpwood			
Balsam Fir	108 Cords	\$ 12.25/Cord	\$ _____
Basswood	263 Cords	\$ 8.85/Cord	\$ _____
Mixed Hardwood	639 Cords	\$ 13.05/Cord	\$ _____
Mixed Spruce	1,047 Cords	\$ 16.05/Cord	\$ _____
Quaking Aspen	1,563 Cords	\$ 28.60/Cord	\$ _____
Tamarack	487 Cords	\$ 8.70/Cord	\$ _____

*The volumes are statistically estimated within plus (+) or minus (-) 14.52 percent at 95% confidence level. These estimated volumes are final and not subject to adjustment. Prospective bidders are urged to examine this timber and to make their own estimates of quantity and quality.

I understand that any or all bids may be rejected. All bids must be signed and all bid items must be bid or the bid form may be rejected. I also understand that consideration and awarding a contract will be based upon my past performance and ability to complete the contract based upon equipment and staffing subject to my control.

FEDERAL ID: ____ - ____ - ____ or SOCIAL SECURITY NUMBER: ____ - ____ - ____

Company or individual bidding: _____

Company representative's name: _____

Address: _____

City: _____ State: _____ Zip: _____

IF AVAILABLE, PLEASE PLACE THE PERSONALIZED LABEL FROM YOUR PROSPECTUS IN THE ABOVE BOX.

Individual or company representative's signature: _____ Date: _____

Phone number : _____ Email (optional): _____

THE WINNING BIDDER MUST COMPLETE THE VERIFICATION OF WORKER'S DISABILITY COMPENSATION ACT COMPLIANCE (ON REVERSE SIDE IF DOUBLE SIDED) WITHIN 21 DAYS OF SALE AWARD DATE



FOR DEPARTMENT USE ONLY
Sale Number (XX - XXX - XX - XX)
Forest Management Unit:

TIMBER SALE VERIFICATION OF WORKER'S DISABILITY COMPENSATION ACT COMPLIANCE

*As required by Act 317, P.A. 1969 (Worker's Compensation) and
Part 5 of Act 451 of 1994, as amended.*

VERIFICATION OF WORKER'S DISABILITY COMPENSATION ACT COMPLIANCE

- This verification must be completed and submitted within 21 days of contract award and prior to the issuance of the timber sale contract.
- In addition, if boxes 2B or 2C are checked, then Notice of Exclusion or Certificate of Insurance must be submitted within twenty-one (21) days of the contract award and prior to the issuance of the timber sale contract.
- All information must be typed or printed except for written signatures.

Please Check Appropriate Categories:

1. My business is organized as (you **must** check one of the boxes below):
 - A. Sole Proprietorship (individual)
 - B. Partnership
 - C. Corporation

2. You **must** check one of the boxes below:
 - A. I certify my business is a sole proprietorship and it has no employees but the sole proprietor. I am not subject to the Worker's Compensation Laws.
 - B. I certify my business has satisfied its obligation to the Worker's Compensation Act through the use of an approved Notice of Exclusion (BWC-337, Rev. 5/96). I will provide a copy of the Notice of Exclusion within 21 days of the contract award. (For questions or a copy of the BWC-337, please call the Worker's Compensation Bureau at 517-322-1195).
 - C. I certify my business has a Worker's Compensation Policy. I will provide an original Certificate of Insurance within twenty-one (21) days of the contract award.

3. If you have checked item 2(A) or 2(B), you **must** indicate the number of **both** full-time and part-time employees, other than yourself, including family members and active partners (if none, you must enter "0").

_____ Full-time Employees

_____ Part-time Employees

Name of Business		Federal ID (or) Social Security No.	
Address		Telephone ()	
City	State	ZIP	

I hereby certify that the above information is true and correct. I agree to notify the Michigan DNR of any changes that occur in factors affecting my coverage during any of my present and future operations.

Signature of Owner or Authorized Representative

Title

Date

Please complete the "SEALED BID" information on the next page