



**DEPARTMENT OF NATURAL RESOURCES
STATE OF MICHIGAN
TIMBER SALE PROSPECTUS #7390**

SCHEDULED SALE DATE AND TIME: 3:00 p.m. (local time) on May 8, 2024.

LOCATION: ESCANABA MGMT UNIT, 6833 HWY'S 2, 41 & M-35, GLADSTONE, MI 49837.

PROSPECTUS NOTE: The bidder is advised to inspect the sale area and review the location, estimated volumes, operating costs and contract terms of proposed sales. Please be aware that some landowners may request 60 days or more notice for access across their land.

Notice is hereby given that bids will be received by the Unit Manager, ESCANABA MANAGEMENT UNIT, for certain timber on the following described lands:

Fortyseven Hardwood (33-021-24) / T40N, R25W, SEC. 31, NWNW,SWSW.

T40N, R26W, SEC. 25, S1/2SE.

T40N, R26W, SEC. 36, NW,NE,E1/2SW,SE.

Menominee County, Advertised Price \$36,578.20, 221.0 Acres, Hardwood, Spruce/Fir/Tamarack.

SALE NOTE: There are a few forest health issues within the timber sale, the Purchaser should harvest the sale as soon as possible. Some roadwork is required by the Purchaser.

Wolf Track Hardwood (33-022-24) / T40N, R25W, SEC. 19, NENW,N1/2NE,NWSW.

T40N, R25W, SEC. 29, SWNW,NWSW.

T40N, R25W, SEC. 30, NENW,NWSW,SE.

Menominee County, Advertised Price \$26,552.05, 127.2 Acres, Hardwood, N White Cedar.

SALE NOTE: A recreation site such as a trail, pathway, or campground is within the sale area or the vicinity. Certain restrictions/specifications may be applicable including time restrictions. Access may be through private land.

BID INSTRUCTIONS (VER. 10/10/2022):

1. Scheduled Bid Location, Date, and Time (2/11)

Bids must be received by the Unit Manager, ESCANABA OFFICE, 6833 Hwy's 2, 41 & M-35, Gladstone, MI 49837, no later than 3:00 p.m. (local time) on May 8, 2024. For further information concerning this sale, contact Eric Thompson at 906-789-8231.

2. Bidder's Qualifications (10/22)

If all or part of a timber sale was prepared by a private contractor, the contractor and that contractor's company are not permitted to bid on the timber sale. A person must be 18 years of age or older to purchase timber. Permanent employees of the Department of Natural Resources or members of their immediate household may not bid. Former employees, in the permanent or seasonal class, may not bid until 3 months after the last day of active duty. Bids will not be accepted from individuals or companies appearing on the DNR/FRD No-Bid List. This list contains the names of purchasers who previously failed to execute a contract within 21-days or who have a history of poor performance.

3. Preparation of Sealed Bids (5/16)

Bid Forms may be completed online thru Michigan DNR Timber Sale Online Bidding (OLB) at www.michigan.gov/timberbidding or by completing the hardcopy Bid Form found in the Timber Sale Prospectus. Hardcopy Bid Forms shall be manually signed in ink. Registration in OLB is considered your 'signature' for all bids submitted thru that system. Bid prices must be entered for each species and product in the Bid Price column for all material subject to bidding and all fill-in blanks must be completed. If erasures or other changes appear on the hardcopy Bid Form, each erasure or change must be initialed by the person signing the bid.

4. Submission of Sealed Bids (5/16)

Bid forms may be obtained from the Unit Manager or thru OLB. Bids may be submitted hardcopy or thru OLB. All hardcopy bids must be submitted on the bid form and in an envelope clearly identified as described in this section. NOTE: Only one bid form per bid envelope. Sealed bids must be submitted to the Unit office designated in the prospectus and must be submitted at or prior to the time established in the prospectus. The envelope should show on the outside (a) the sale name or number and (b) the date and time of bid opening, as shown in the prospectus. Bids received after the time specified in the sale prospectus are late bids and will be rejected.

It is possible for a bidder to submit multiple bids on a single sale. For example, a bid may be submitted hardcopy and a bid may be submitted thru OLB. Or, two bidders from the same company could both submit bids on the same sale. If this were to happen, the State would accept all bids received and award the contract accordingly. All bidding and contractual requirements would apply to all bids received.

5. Public Opening of Sealed Bids (7/16)

If conditions permit, the sealed bids will be publicly opened and posted at the time and place set in the prospectus.

If a bidder, present at a bid opening, has submitted bids on more than one sale, that bidder may withdraw their unopened bid envelopes or announce the withdrawal of their online bid after being declared the successful bidder on one sale.

6. Award of Contract (1/11)

Award of the contract will be made to the Bidder whose bid, conforming to the prospectus, is most advantageous to the State of Michigan on the basis of total value at rates bid for the estimated quantities. The State reserves the right to reject any bid or waive any minor irregularity in bids received. A written award mailed (or otherwise furnished) to the successful Bidder shall be deemed to result in a binding contract without further action by either party.

7. Down Payment (1/11)

The Bidder to whom award is made must make a down payment within 21 days of the sale award. The amount of the down payment will be calculated as shown in the Bond and Payment Schedule of this prospectus. Only cash may be used to meet this requirement.

8. Performance Security (1/11)

As guarantee of faithful performance, a cash bond, certificate of deposit, surety bond or irrevocable letter of credit (LOC) is required within 21 days of the sale award. The amount of the performance security is shown in the Bond and

Payment Schedule of this prospectus. If an LOC or surety is used, the coverage must extend for at least 6 months beyond the contract expiration.

9. Worker's Compensation (10/22)

Purchaser shall obtain worker's compensation insurance to cover claims under Michigan's Worker's Disability Compensation Act of 1969 or similar employee benefit act of any other state applicable to an employee. Verification of Worker's Disability Compensation Act Compliance must be completed and submitted within 21 days of contract award and prior to the issuance of the timber sale contract. In addition, if applicable, Notice of Exclusion or Certificate of Insurance must also be submitted.

10. Timber Sale Contract (10/22)

Additional conditions and requirements common to all timber sales are listed on the timber sale contract (R4031) and are available on line at www.michigan.gov/timber. Contact the Unit Manager for additional information or a sample contract. Within 21 days of the date of the award letter, the bidder must sign the contract and provide the required down payment, performance security, and verification of worker's disability compensation. The down payment and performance security shall be in accordance with the provisions of the timber sale contract, in the sums stated in this prospectus. If these actions are not taken, then the Bidder, the Bidder's corporation, and the corporation's principals may not be permitted to bid on State timber sales for a period of 3 months after the first offense, 6 months after the second offense, and 1 year after the third offense. An offense will only be counted against the Bidder for 5 years. In addition, the Bidder certifies that if awarded this contract, the Bidder will complete the timber sale contract in accordance with its terms and any modifications thereof including requirements to purchase, cut, and remove the included timber by the expiration date.

Payment Unit values in the State Forest Timber Sale Contract are calculated based on the advertised value of the Payment Unit as a percentage of the total advertised value of the contract. The advertised value of each Payment Unit is given in the Description of Timber by Payment Unit table on the Timber Sale Information page. For example, if the value of Payment Unit 1 is advertised as \$1,500 and the total Timber Sale value is advertised as \$10,000, the contract price for Payment Unit 1 will be 15% of the total bid price ($\$1,500/\$10,000 * 100$).

11. Disclaimer of Estimates and Bidder's Warranty of Inspection (10/22)

Before submitting this bid, the Bidder is advised and cautioned to inspect the sale area, review the requirements of the sale contract, and take other steps as may be reasonably necessary to ascertain the location, estimated volumes, construction estimates, and operating costs of the proposed sale. Failure to do so will not relieve the Bidder from responsibility for completing the contract.

The Bidder warrants that this bid is submitted solely on the basis of the Bidder's examination and inspection of the quality and quantity of the timber offered for sale and the Bidder's opinion of the value thereof and the costs of recovery. No reliance should be placed on the State of Michigan's estimates of timber quality, quantity or costs of recovery. Bidder further acknowledges that the State of Michigan: (i) expressly disclaims any warranty of fitness of timber for any purpose; (ii) offers this timber as is without any warranty of quality (merchantability) or quantity and (iii) expressly disclaims any warranty as to the quantity or quality of timber sold.

12. Certification and Chain-of-Custody (10/22)

Unless otherwise indicated in the contract under section 7 – Other Conditions of the Sale Specific Conditions & Requirements, the area encompassed by this timber sale is certified to the standards of the Forest Stewardship Council (FSC) - Certificate #SCS-FM/COC-00090N and the Sustainable Forestry Initiative (SFI) - Certificate #NSF-SFIS-5Y031-SF5. Forest products from this sale may be delivered to the mill as "FSC 100% and / or SFI certified" as long as the contractor hauling the forest products is chain-of-custody (COC) certified or covered under a COC certificate from the destination mill. The purchaser is responsible for maintaining COC after leaving the sale area.

13. Good Neighbor Authority (GNA) Requirements (10/22)

If the name of this timber sales contains the acronym GNA, it is authorized by the Good Neighbor Authority (GNA) and covered by various agreements between the U.S. Forest Service and the State. The timber sale occurs on federal land and the following conditions apply:

GNA contracts on US Forest Service land will not be awarded to purchasers on the Federal list of excluded parties. The System for Award Management (SAM) will be checked for active excluded parties prior to award of contract. In

addition, the Bidder to whom award is made must complete an Assurance Regarding Felony Conviction or Tax Delinquent Status for Corporate Applicants (AD-3031).

14. Good Neighbor Authority (GNA) Requirements, con't (10/22)

Bidder certifies, by signing this bid form, that to the best of Bidder's knowledge that the following representations are accurate and complete.

- a. That the Bidder and its principals are not presently debarred, suspended, proposed for debarment, declared ineligible, or voluntary excluded from timber sales (covered transactions) by any Federal department or agency.
- b. That the Bidder and its principals have not within a 3-year period preceding this bid been convicted of or had a civil judgment rendered against them for commission of fraud or a criminal offense in connection with obtaining , attempting to obtain, or performing a public (Federal, State, or local) transaction or contract under a public transaction; violation of Federal or State antitrust statutes or commission of embezzlement, theft, forgery, bribery, falsification or destruction of records, making false statements, or receiving stolen property.
- c. That the Bidder and its principals are not presently indicted for or otherwise criminally or civilly charged by a governmental entity (Federal, State, or local) with commission of any of the offenses enumerated in paragraph b of this certification.
- d. That the Bidder and its principals have not within a 3-year period preceding this bid had one or more public transactions (Federal, State, or local) terminated for breach or default of a timber or forest product contract.

Bidders that cannot certify this requirement, in whole or in part, shall submit an explanation with their bid.

Scott Bowen
Director

TIMBER SALE INFORMATION

Fortyseven Hardwood (33-021-24)

T40N, R25W, SEC. 31; T40N, R26W, SEC. 25; T40N, R26W, SEC. 36.
Menominee County (Advertised Price \$36,578.20)

SALE NOTE: There are a few forest health issues within the timber sale, the Purchaser should harvest the sale as soon as possible. Some roadwork is required by the Purchaser.

A timber sale contract for this lump sum, sealed bid timber sale will be awarded to the responsible bidder offering the highest sealed bid price. All units of volume listed below were estimated using the Inventory Manager computer program and the new Michigan taper model. Bids must be at or above the following advertised price for each product and species:

<u>PRODUCTS & SPECIES</u>	<u>ESTIMATED UNITS*</u>	<u>ADVERTISED PRICE</u>
Sawtimber		
Basswood	50.8 MBF	\$ 82.00 / MBF
Beech	2.9 MBF	\$ 49.00 / MBF
Paper Birch	31.0 MBF	\$ 89.00 / MBF
Red Maple	9.5 MBF	\$ 94.00 / MBF
Sugar Maple	37.0 MBF	\$ 168.00 / MBF
Pulpwood		
Balsam Fir	30 Cords	\$ 8.70 / Cord
Mixed Hardwood	593 Cords	\$ 12.15 / Cord
Mixed Spruce	212 Cords	\$ 13.45 / Cord
N. White Cedar	363 Cords	\$ 5.55 / Cord
Paper Birch	291 Cords	\$ 6.90 / Cord
Quaking Aspen	3 Cords	\$ 26.20 / Cord
Tamarack	537 Cords	\$ 8.40 / Cord
White Ash	505 Cords	\$ 5.20 / Cord
White Pine	48 Cords	\$ 17.65 / Cord

* The total volume is statistically estimated within plus (+) or minus (-) 16.86 percent. There are an estimated 2,902 cords on this timber sale, plus or minus 489 cords at the 95% confidence level. The estimated units are final and not subject to adjustment. Prospective bidders are urged to examine this timber and to make their own estimates of quantity and quality.

BOND AND PAYMENT SCHEDULE:

1. A bond in the amount of \$1,829.00 to insure faithful performance of the conditions of the contract will be deposited by the successful bidder within 21 days of the sale award.
2. Cutting in any sale or unit without the required advance payment would be considered a trespass.
3. Total payment must be paid in advance or according to the following schedule :
 - (a) Ten percent (10%) of the sale value must be paid within 21 days of the sale award.
 - (b) The 10% down payment will be credited towards the first unit cut.
 - (c) Payment for each of the following units must be made before cutting begins in that unit:

PAYMENT UNIT NUMBER	PERCENT OF TOTAL SALE VALUE
01	1.4%
02	4.5%
03	2.2%
04	10.4%
05	8.5%
06	16.2%
07	9.7%
08	14.3%
09	1.8%
10	14.4%
11	7.5%
12	9.1%

4. If no cutting takes place, the 10% down payment will not be refunded.
5. Operations on the contract issued will terminate on 06/30/2027.

SALE STATISTICS

Volumes were calculated in cubic feet using the Michigan taper model. Cubic foot volume includes all wood inside bark for the product indicated. For display purposes, cubic feet were converted to cords and MBF using a simple conversion factor, e.g. 79 cubic feet per cord and 185 cubic feet per MBF. The cubic foot volumes are precise; the cords and MBF volumes are not. Cubic foot volume cannot be directly converted to cords or boards with precision.

SALE VOLUMES

The total estimated sale volume may not equal the sum of the species/products due to the nature of statistical calculations associated with double sampling methodology.

VOLUME			STATISTICAL RANGE IN CORDS	
TOTAL CUBIC FEET	TOTAL CORDS	PERCENT ERROR	MINIMUM	MAXIMUM
229,221	2,902	16.86%	2,412	3,391

VDU VOLUMES

A VDU is a Volume Determination Unit. Volumes and their associated statistics are calculated at the VDU level and summarized to the sale level. There is often a one to one relationship between a VDU and a Payment Unit, but not always, depending on the cruise design. Refer to the VDU TO PAYMENT UNIT table.

VDU	VOLUME		PERCENT ERROR	RANGE IN CORDS	
	TOTAL CUBIC FEET	TOTAL CORDS		MINIMUM	MAXIMUM
33	22,306	282	26.80%	207	358
50	4,977	63	40.59%	37	89
52	92,259	1,168	18.39%	953	1,383
57	52,077	659	21.89%	515	804
59	3,328	42	57.22%	18	66
63	16,931	214	30.44%	149	280
64	37,344	473	25.60%	352	594
TOTAL:	229,221	2,902		2,231	3,572

VDU TO PAYMENT UNIT

When a VDU is associated with more than one Payment Unit (PU), the VDU volumes are assigned to the PU based on acres of the VDU within the PU.

VDU	VDU ACRES	PU	PU ACRES
33	32.6	2	22.0
		3	10.6
52	108.6	4	25.2
		5	20.7
		6	39.2
		7	23.5
		8	13.9
57	13.9	8	13.9
59	5.7	9	5.7
63	23.9	10	23.9
64	30.3	11	13.8
		12	16.5
TOTAL:	221.0		221.0

DESCRIPTION OF TIMBER BY PAYMENT UNIT (PU)

PU	MARKET GROUP	PRODUCT	QUANTITY	UNIT	ACRES	ADVERTISE PRICE
1	N. White Cedar	Pulpwood	8	Cords	6.0	\$504.90
	Paper Birch		1	Cords		
	Tamarack		54	Cords		
2	Mixed Spruce	Pulpwood	14	Cords	22.0	\$1,647.20
	<i>Black Spruce</i>		14	<i>Cords</i>		
	Paper Birch		13	Cords		
	Tamarack		163	Cords		
3	Mixed Spruce	Pulpwood	7	Cords	10.6	\$797.65
	<i>Black Spruce</i>		7	<i>Cords</i>		
	Paper Birch		7	Cords		
	Tamarack		78	Cords		
4	Basswood	Sawtimber	9.0	MBF	25.2	\$3,812.30
	Beech		0.7	MBF		
	Paper Birch		2.9	MBF		
	Red Maple		1.1	MBF		
	Sugar Maple		4.6	MBF		
	Balsam Fir	Pulpwood	4	Cords		
	Mixed Hardwood		95	Cords		
	<i>Basswood</i>		26	<i>Cords</i>		
	<i>Beech</i>		14	<i>Cords</i>		
	<i>Ironwood</i>		2	<i>Cords</i>		
	<i>Red Maple</i>		19	<i>Cords</i>		
	<i>Sugar Maple</i>		34	<i>Cords</i>		
	Mixed Spruce		1	Cords		
	<i>White Spruce</i>		1	<i>Cords</i>		
	N. White Cedar		9	Cords		
	Paper Birch		16	Cords		
	White Ash		101	Cords		
	<i>Black Ash</i>		6	<i>Cords</i>		
	<i>White Ash</i>		95	<i>Cords</i>		
	White Pine		1	Cords		
5	Basswood	Sawtimber	7.4	MBF	20.7	\$3,119.10
	Beech		0.6	MBF		
	Paper Birch		2.4	MBF		
	Red Maple		0.9	MBF		
	Sugar Maple		3.8	MBF		
	Balsam Fir	Pulpwood	3	Cords		
	Mixed Hardwood		76	Cords		
	<i>Basswood</i>		21	<i>Cords</i>		
	<i>Beech</i>		11	<i>Cords</i>		
	<i>Ironwood</i>		1	<i>Cords</i>		
	<i>Red Maple</i>		15	<i>Cords</i>		
	<i>Sugar Maple</i>		28	<i>Cords</i>		
	Mixed Spruce		1	Cords		
	<i>White Spruce</i>		1	<i>Cords</i>		
	N. White Cedar		8	Cords		
	Paper Birch		13	Cords		
	White Ash		83	Cords		
	<i>Black Ash</i>		5	<i>Cords</i>		
	<i>White Ash</i>		78	<i>Cords</i>		
	White Pine		1	Cords		
6	Basswood	Sawtimber	14.1	MBF	39.2	\$5,920.80
	Beech		1.0	MBF		
	Paper Birch		4.6	MBF		
	Red Maple		1.8	MBF		
	Sugar Maple		7.1	MBF		

DESCRIPTION OF TIMBER BY PAYMENT UNIT (PU), CON'T

PU	MARKET GROUP	PRODUCT	QUANTITY	UNIT	ACRES	ADVERTISE PRICE
6 con't	Balsam Fir	Pulpwood	6	Cords		
	Mixed Hardwood		147	Cords		
	<i>Basswood</i>		40	<i>Cords</i>		
	<i>Beech</i>		21	<i>Cords</i>		
	<i>Ironwood</i>		3	<i>Cords</i>		
	<i>Red Maple</i>		29	<i>Cords</i>		
	<i>Sugar Maple</i>		54	<i>Cords</i>		
	Mixed Spruce		2	Cords		
	<i>White Spruce</i>		2	<i>Cords</i>		
	N. White Cedar		14	Cords		
	Paper Birch		25	Cords		
	White Ash		156	Cords		
	<i>Black Ash</i>		9	<i>Cords</i>		
	<i>White Ash</i>		147	<i>Cords</i>		
	White Pine		1	Cords		
7	Basswood	Sawtimber	8.4	MBF	23.5	\$3,556.45
	Beech		0.6	MBF		
	Paper Birch		2.7	MBF		
	Red Maple		1.1	MBF		
	Sugar Maple		4.3	MBF		
	Balsam Fir		Pulpwood	4		
	Mixed Hardwood	88		Cords		
	<i>Basswood</i>	24		<i>Cords</i>		
	<i>Beech</i>	13		<i>Cords</i>		
	<i>Ironwood</i>	2		<i>Cords</i>		
	<i>Red Maple</i>	17		<i>Cords</i>		
	<i>Sugar Maple</i>	32		<i>Cords</i>		
	Mixed Spruce	1		Cords		
	<i>White Spruce</i>	1		<i>Cords</i>		
	N. White Cedar	9		Cords		
	Paper Birch	15		Cords		
	White Ash	93		Cords		
	<i>Black Ash</i>	5		<i>Cords</i>		
	<i>White Ash</i>	88		<i>Cords</i>		
	White Pine	1	Cords			
8	Paper Birch	Sawtimber	1.0	MBF	13.9	\$5,223.25
	Red Maple		1.0	MBF		
	Mixed Hardwood	Pulpwood	15	Cords		
	<i>Balsam Poplar</i>		7	<i>Cords</i>		
	<i>Red Maple</i>		8	<i>Cords</i>		
	Mixed Spruce		75	Cords		
	<i>Black Spruce</i>		75	<i>Cords</i>		
	N. White Cedar		299	Cords		
	Paper Birch		22	Cords		
	Tamarack		242	Cords		
	White Ash		1	Cords		
	<i>Black Ash</i>		1	<i>Cords</i>		
	9		Paper Birch	Sawtimber		
Sugar Maple		1.1	MBF			
Mixed Hardwood		Pulpwood	25	Cords		
<i>Beech</i>			4	<i>Cords</i>		
<i>Red Maple</i>			6	<i>Cords</i>		
<i>Sugar Maple</i>			8	<i>Cords</i>		
<i>Yellow Birch</i>			7	<i>Cords</i>		
N. White Cedar			4	Cords		
Paper Birch	2	Cords				

DESCRIPTION OF TIMBER BY PAYMENT UNIT (PU), CON'T

PU	MARKET GROUP	PRODUCT	QUANTITY	UNIT	ACRES	ADVERTISE PRICE
9 con't	White Pine	Pulpwood	5	Cords		
10	Basswood	Sawtimber	11.9	MBF	23.9	\$5,266.10
	Paper Birch		2.0	MBF		
	Red Maple		0.7	MBF		
	Sugar Maple		16.1	MBF		
	Mixed Hardwood	Pulpwood	75	Cords		
	<i>Basswood</i>		22	<i>Cords</i>		
	<i>Black Cherry</i>		3	<i>Cords</i>		
	<i>Ironwood</i>		3	<i>Cords</i>		
	<i>Red Maple</i>		11	<i>Cords</i>		
	<i>Sugar Maple</i>		36	<i>Cords</i>		
	Mixed Spruce		3	Cords		
	<i>White Spruce</i>		3	<i>Cords</i>		
	N. White Cedar		12	Cords		
	Paper Birch		5	Cords		
	White Ash		42	Cords		
	<i>White Ash</i>		42	<i>Cords</i>		
	White Pine		4	Cords		
11	Paper Birch	Sawtimber	6.7	MBF		
	Red Maple		1.3	MBF		
	Balsam Fir	Pulpwood	5	Cords		
	Mixed Hardwood		32	Cords		
	<i>Balsam Poplar</i>		26	<i>Cords</i>		
	<i>Black Cherry</i>		1	<i>Cords</i>		
	<i>Red Maple</i>		4	<i>Cords</i>		
	<i>Sugar Maple</i>		1	<i>Cords</i>		
	Mixed Spruce		49	Cords		
	<i>Black Spruce</i>		17	<i>Cords</i>		
	<i>White Spruce</i>		32	<i>Cords</i>		
	Paper Birch		79	Cords		
	Quaking Aspen		1	Cords		
	White Ash		13	Cords		
	<i>Black Ash</i>		13	<i>Cords</i>		
	White Pine		16	Cords		
12	Paper Birch	Sawtimber	8.2	MBF	16.5	\$3,342.00
	Red Maple		1.6	MBF		
	Balsam Fir	Pulpwood	8	Cords		
	Mixed Hardwood		40	Cords		
	<i>Balsam Poplar</i>		31	<i>Cords</i>		
	<i>Black Cherry</i>		2	<i>Cords</i>		
	<i>Red Maple</i>		5	<i>Cords</i>		
	<i>Sugar Maple</i>		1	<i>Cords</i>		
	<i>Yellow Birch</i>		1	<i>Cords</i>		
	Mixed Spruce		59	Cords		
	<i>Black Spruce</i>		21	<i>Cords</i>		
	<i>White Spruce</i>		38	<i>Cords</i>		
	Paper Birch		93	Cords		
	Quaking Aspen		2	Cords		
	White Ash		16	Cords		
	<i>Black Ash</i>		16	<i>Cords</i>		
	White Pine		19	Cords		
TOTAL:			131.2	MBF		
TOTAL:			2,582	Cords		

Sale Specific Conditions & Requirements

Sale Name: Fortyseven Hardwood

Sale Number: 33-021-24 Seq#: 1

1 - Sale Area

1.2 - Boundaries

1.2.1 - Painted boundaries (9/19)

The sale boundary and Payment Unit boundaries are marked and identified by blue, red and yellow paint. Exterior sale boundary lines against private property are marked with blue paint. Exterior sale boundary lines against state are marked with red paint. Interior Payment Unit boundaries are marked with yellow paint. Retention patches are marked with red paint; no harvesting activities may occur within these areas. The painted boundary line trees are not Included Timber and are to be protected unless marked with orange paint. Yellow painted trees designating an interior Payment Unit boundary are only to be cut when all surrounding Payment Units have been paid for.

2 - Timber Specifications

2.1 - Included Timber

2.1.1 - Clearcut unit(s) with unmerchantable trees (6/14)

Within Payment Unit(s) 1, 8, 11, and 12, cut all trees that are three (3) inches or more at DBH; except within Payment Units 11 and 12 do not cut cedar.

Within Payment Units 2 and 3, cut all trees that are four (4) inches or more at DBH, except do not cut cedar.

2.1.3 - Cut tree marked unit(s) (12/08)

Within Payment Unit(s) 4, 5, 6, 7, 9, and 10, all trees are designated for cutting when marked with orange paint above and below stump height, regardless of merchantability.

In addition, within Payment Units 4, 5, 6, and 7, cut all ash, balsam fir, spruce, aspen, balm, and ironwood that are more than four (4) inches at DBH.

2.1.9 - Harvest exception (12/08)

Do not cut any cedar trees within Payment Units 2, 3, 11, and 12, other than those that are necessary to remove in order to operate within the sale area. Every effort must be made to preserve the existing cedar and to leave an intact stand upon sale completion. All cut cedar shall be piled separately by products and scaled in the woods unless other scaling arrangements are agreed to by the Unit Manager or his/her representative. Stumpage price for cedar shall be \$40.00 per cord.

Do not cut hemlock within the sale area, other than those that are necessary to remove in order to operate in the sale area. All cut hemlock will be piled separately and scaled in the woods. The stumpage price for the hemlock will be \$20.00 per cord.

2.2 - Utilization

2.2.4 - Skidding length (2/14)

Skidding of unlimbed tops or lengths over 17 feet is not permissible within Payment Units 4 - 7 and 9 - 12.

3 - Payments

3.3 - Pre-measured Sales

3.3.4 - Dividing payment units (7/14)

Payment Unit(s) \$18,000 in value or greater may be divided at the request of the Purchaser and upon approval of the Unit Manager. Dividing Payment Units is a contract modification which requires a Timber Sale Contract Amendment. There will be only one division per Payment Unit.

4 - Transportation

4.1 - Construction

4.1.2 - Stream crossings, specific (3/11)

There is an intermittent stream between Payments Units 11 and 12 as shown on the Timber Sale Map. A temporary crossing will be needed, unless the Purchaser can get access from the landowner to the south to allow access across the creek using their road. Any temporary crossing will need to be approved by the timber sale administrator.

4.1.8 - Road work (1) (8/07)

The following road work is required: the Purchaser must haul and spread a minimum of 200 cubic yards of pit run gravel on the access road running north up into Payment Unit 4. A state gravel pit is available along the 47 Mile Creek road, about two miles from the sale. All roadwork must be completed prior to any hauling from Payment Units 1 - 7.

4.2 - Maintenance

4.2.1 - Hauling restriction (12/08)

Hauling may be restricted on forest roads by the Unit Manager or his/her representative. The restriction may occur during spring breakup or during other wet weather conditions.

4.2.4 - Grading (10/16)

For completion of the sale, state forest roads must be graded. In general, this will require a road grader or bull dozer to shape up the roads after forest products have been hauled off site. This includes cleaning of drainage areas, grading, crowning and filling with gravel, if necessary. The grading equipment to be used must be approved by the Unit Manager or his/her representative.

5 - Operations

5.2 - Conduct of Operations

5.2.3 - Operating Restrictions

5.2.3.1 - Operating restrictions (9/11)

Within Payment Unit(s) 1 - 3, 8, 11, and 12, cutting and skidding are limited to the period of December 1st to March 31st, unless there is an extended dry or frozen period and the sale administrator allows harvesting during that period of time. This restriction is because of low wet ground throughout these Payment Units.

5.2.3.3 - Bark slippage restriction (3/09)

Within Payment Unit(s) 4 - 7, 9, and 10, cutting and skidding are not permitted during the period of April 15 to July 15. This restriction is because of bark slippage.

6 - Safety and Fire Prevention

6.2 - Signing

6.2.1 - Road posting (10/20)

The Purchaser is responsible for posting and maintaining caution signs on the access road branching off the 47 Mile Creek Road, running east towards the sale prior to beginning operations. The road must be posted at appropriate distances from the sale area to warn of logging activity and truck traffic. Signs must be removed when harvest operations are suspended or completed. The Purchaser will provide these signs.

7 - Other Conditions

7.5 - Loss

7.5.1 - Deteriorating timber (7/09)

The sale area has received damage from the emerald ash borer, eastern larch beetle, spruce budworm, and beech bark disease. The Purchaser should harvest the wood as soon as possible. The Department of Natural Resources is held free of responsibility of any further damage or deterioration due to delay in harvesting. The ash is in various states of decline due to the borer.



TIMBER SALE MAP

This information provided by authority of Part 525, 1994 PA 451, as amended.

Sale Number	Year
33-021	24

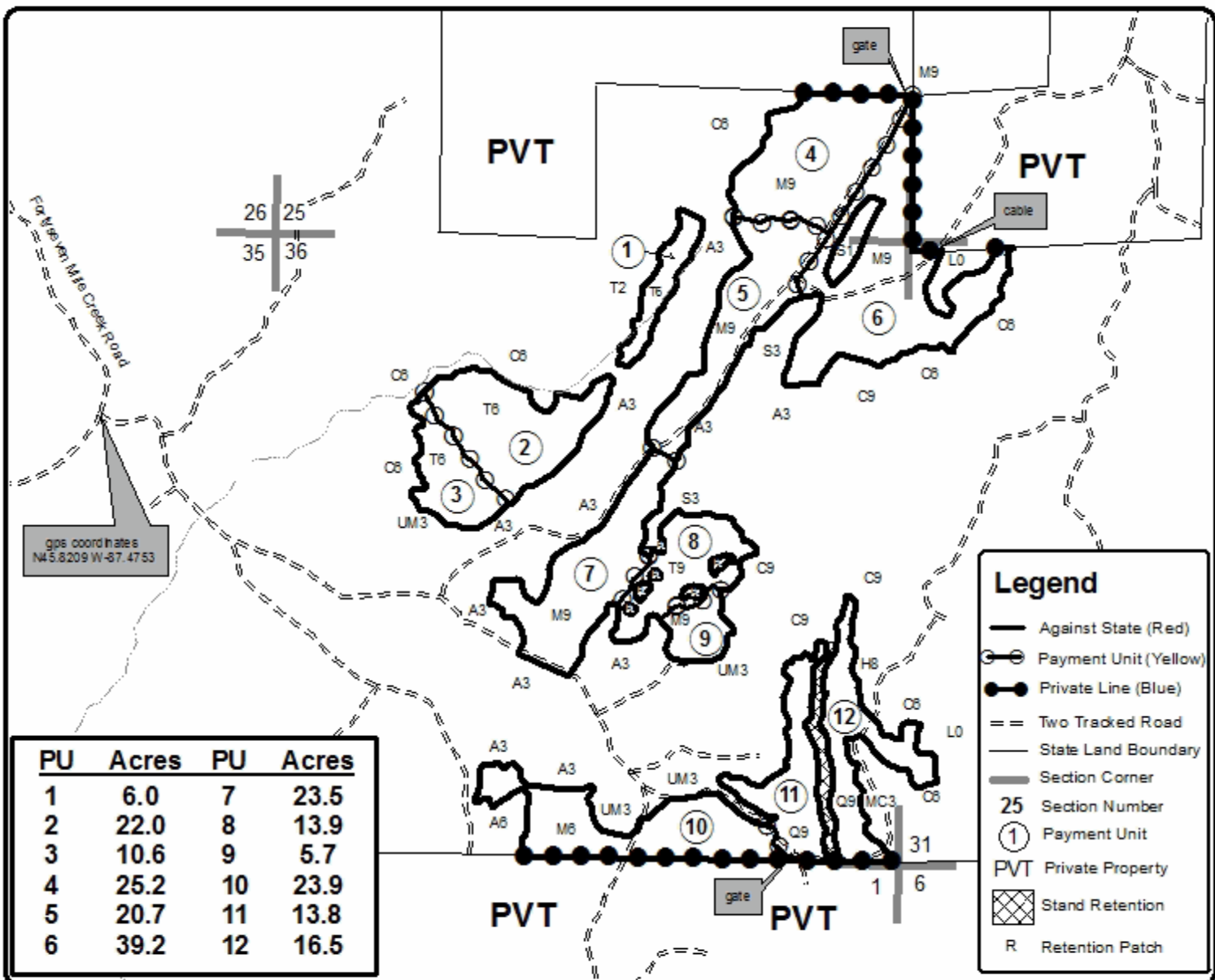
Forest Management Unit	County	Mapped By	Date	Page	of
Escanaba Management Unit	Menominee County	Beudo	11/28/2023	1	1
		Cruised By			
		Salter, Beudo			

Township	Range	Section(s) and Subdivision(s)	Scale
40N	25W 26W	R25W Sec 31 - NW/NW, SWSW R26W Sec 25 - S1/2SE; Sec 36 - NW, NE, E 1/2SW, SE.	1:15,840

Cover Type				Density	
A = Aspen	H = Hemlock	N = Marsh	U = Upland Brush	0 = Non Stocked	5 = Pole Timber Medium
B = Paper Birch	J = Jack Pine	O = Oak	UM = Upland Mixed	1 = Seeding Sapling Poor	6 = Pole Timber Well
C = Cedar	L = Lowland Brush	P = Lowland Poplar	V = Bog or Marsh	2 = Seeding Sapling Medium	7 = Saw Timber Poor
D = Tread Bog	LM = Lowland Mixed	Q = Mixed Swamp Conifer	W = White Pine	3 = Seeding Sapling Well	8 = Saw Timber Medium
E = Swamp Hdwoods	M = Mpl, Bch, Bach	R = Red Pine	X = Non Stocked	4 = Pole Timber Poor	9 = Saw Timber Well
F = Spruce Fir	MC = Mixed Conifer	S = Black Spruce	Z = Water		
G = Grass	MD = Mixed Deciduous	T = Tamarack			

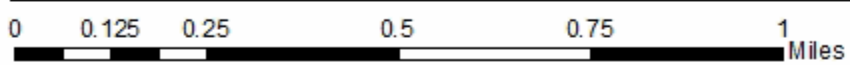


Fortyseven Hardwood
Compartment 70
221.0 Acres



gps coordinates
N45.8209 W-87.4753

PU	Acres	PU	Acres
1	6.0	7	23.5
2	22.0	8	13.9
3	10.6	9	5.7
4	25.2	10	23.9
5	20.7	11	13.8
6	39.2	12	16.5



TIMBER SALE INFORMATION

Wolf Track Hardwood (33-022-24)

T40N, R25W, SEC. 19; T40N, R25W, SEC. 29; T40N, R25W, SEC. 30.
Menominee County (Advertised Price \$26,552.05)

SALE NOTE: A recreation site such as a trail, pathway, or campground is within the sale area or the vicinity. Certain restrictions/specifications may be applicable including time restrictions. Access may be through private land.

A timber sale contract for this lump sum, sealed bid timber sale will be awarded to the responsible bidder offering the highest sealed bid price. All units of volume listed below were estimated using the Inventory Manager computer program and the new Michigan taper model. Bids must be at or above the following advertised price for each product and species:

<u>PRODUCTS & SPECIES</u>	<u>ESTIMATED UNITS*</u>	<u>ADVERTISED PRICE</u>
Sawtimber		
Basswood	8.7 MBF	\$ 95.00 / MBF
Sugar Maple	44.0 MBF	\$ 194.00 / MBF
Pulpwood		
Balsam Fir	61 Cords	\$ 10.05 / Cord
Basswood	19 Cords	\$ 8.20 / Cord
Hemlock	19 Cords	\$ 11.15 / Cord
Mixed Aspen	100 Cords	\$ 30.20 / Cord
Mixed Hardwood	774 Cords	\$ 14.00 / Cord
Mixed Spruce	22 Cords	\$ 15.50 / Cord
N. White Cedar	133 Cords	\$ 6.45 / Cord
Paper Birch	92 Cords	\$ 7.95 / Cord
Tamarack	10 Cords	\$ 9.70 / Cord
White Pine	16 Cords	\$ 20.35 / Cord

* The total volume is statistically estimated within plus (+) or minus (-) 36.56 percent. There are an estimated 1,389 cords on this timber sale, plus or minus 508 cords at the 95% confidence level. The estimated units are final and not subject to adjustment. Prospective bidders are urged to examine this timber and to make their own estimates of quantity and quality.

BOND AND PAYMENT SCHEDULE:

1. A bond in the amount of \$1,328.00 to insure faithful performance of the conditions of the contract will be deposited by the successful bidder within 21 days of the sale award.
2. Cutting in any sale or unit without the required advance payment would be considered a trespass.
3. Total payment must be paid in advance or according to the following schedule :
 - (a) Ten percent (10%) of the sale value must be paid within 21 days of the sale award.
 - (b) The 10% down payment will be credited towards the first unit cut.
 - (c) Payment for each of the following units must be made before cutting begins in that unit:

PAYMENT UNIT NUMBER	PERCENT OF TOTAL SALE VALUE
01	2.2%
02	0.9%
03	3.3%
04	2.1%
05	1.6%
06	1.2%
07	14.2%
08	13.0%
09	10.4%
10	7.8%
11	13.7%
12	21.2%
13	8.4%

4. If no cutting takes place, the 10% down payment will not be refunded.
5. Operations on the contract issued will terminate on 09/30/2027.

SALE STATISTICS

Volumes were calculated in cubic feet using the Michigan taper model. Cubic foot volume includes all wood inside bark for the product indicated. For display purposes, cubic feet were converted to cords and MBF using a simple conversion factor, e.g. 79 cubic feet per cord and 185 cubic feet per MBF. The cubic foot volumes are precise; the cords and MBF volumes are not. Cubic foot volume cannot be directly converted to cords or boards with precision.

SALE VOLUMES

The total estimated sale volume may not equal the sum of the species/products due to the nature of statistical calculations associated with double sampling methodology.

VOLUME			STATISTICAL RANGE IN CORDS	
TOTAL CUBIC FEET	TOTAL CORDS	PERCENT ERROR	MINIMUM	MAXIMUM
109,756	1,389	36.56%	881	1,897

VDU VOLUMES

A VDU is a Volume Determination Unit. Volumes and their associated statistics are calculated at the VDU level and summarized to the sale level. There is often a one to one relationship between a VDU and a Payment Unit, but not always, depending on the cruise design. Refer to the VDU TO PAYMENT UNIT table.

VDU	VOLUME			RANGE IN CORDS	
	TOTAL CUBIC FEET	TOTAL CORDS	PERCENT ERROR	MINIMUM	MAXIMUM
6	3,321	42	76.20%	10	74
12	1,701	22	94.67%	1	42
20	5,015	63	63.79%	23	104
23	4,037	51	56.14%	22	80
24	3,017	38	37.78%	24	53
30	18,946	240	37.60%	150	330
31	1,695	21	66.44%	7	36
32	6,531	83	39.72%	50	116
33	23,415	296	28.78%	211	382
38	8,282	105	34.43%	69	141
41	33,796	428	28.48%	306	550
TOTAL:	109,756	1,389		873	1,906

VDU TO PAYMENT UNIT

When a VDU is associated with more than one Payment Unit (PU), the VDU volumes are assigned to the PU based on acres of the VDU within the PU.

VDU	VDU ACRES	PU	PU ACRES
6	4.8	1	4.8
12	1.2	2	1.2
20	7.3	3	7.3
23	4.0	4	4.0
24	1.4	5	1.4
30	12.7	7	12.7
31	1.2	6	1.2
32	7.4	8	7.4
33	35.5	9	20.4
		10	15.1
38	13.4	13	13.4
41	38.3	11	15.1
		12	23.2
TOTAL:	127.2		127.2

DESCRIPTION OF TIMBER BY PAYMENT UNIT (PU)

PU	MARKET GROUP	PRODUCT	QUANTITY	UNIT	ACRES	ADVERTISE PRICE
1	Mixed Aspen	Pulpwood	8	Cords	4.8	\$591.20
	<i>B. T. Aspen</i>		3	<i>Cords</i>		
	<i>Balsam Poplar</i>		1	<i>Cords</i>		
	<i>Quaking Aspen</i>		4	<i>Cords</i>		
	Mixed Hardwood		2	Cords		
	<i>Red Maple</i>		2	<i>Cords</i>		
	Mixed Spruce		8	Cords		
	<i>White Spruce</i>		8	<i>Cords</i>		
	N. White Cedar		12	Cords		
	Paper Birch		10	Cords		
	<i>Paper Birch</i>		10	<i>Cords</i>		
	White Pine		2	Cords		
2	Mixed Aspen	Pulpwood	2	Cords	1.2	\$233.90
	<i>B. T. Aspen</i>		1	<i>Cords</i>		
	<i>Quaking Aspen</i>		1	<i>Cords</i>		
	Mixed Hardwood		2	Cords		
	<i>Black Cherry</i>		2	<i>Cords</i>		
	Mixed Spruce		2	Cords		
	<i>Black Spruce</i>		2	<i>Cords</i>		
	N. White Cedar		9	Cords		
	Paper Birch		1	Cords		
	<i>Paper Birch</i>		1	<i>Cords</i>		
	Tamarack		5	Cords		
3	Balsam Fir	Pulpwood	3	Cords	7.3	\$870.15
	Mixed Hardwood		60	Cords		
	<i>Beech</i>		3	<i>Cords</i>		
	<i>Red Maple</i>		18	<i>Cords</i>		
	<i>Sugar Maple</i>		6	<i>Cords</i>		
	<i>White Ash</i>		23	<i>Cords</i>		
	<i>Yellow Birch</i>		10	<i>Cords</i>		
4	Mixed Hardwood	Pulpwood	11	Cords	4.0	\$547.20
	<i>Red Maple</i>		0.6	<i>MBF</i>		
	<i>Red Maple</i>		10	<i>Cords</i>		
	Mixed Spruce		2	Cords		
	<i>White Spruce</i>		2	<i>Cords</i>		
	N. White Cedar		16	Cords		
	Paper Birch		11	Cords		
	<i>Paper Birch</i>		11	<i>Cords</i>		
	Tamarack		3	Cords		
	White Pine		7	Cords		
5	Mixed Aspen	Pulpwood	1	Cords	1.4	\$428.90
	<i>Quaking Aspen</i>		1	<i>Cords</i>		
	Mixed Hardwood		21	Cords		
	<i>Red Maple</i>		1.4	<i>MBF</i>		
	<i>Red Maple</i>		18	<i>Cords</i>		
	N. White Cedar		15	Cords		
	Paper Birch		1	Cords		
<i>Paper Birch</i>	1	<i>Cords</i>				
6	Basswood	Pulpwood	1	Cords	1.2	\$316.20
	Mixed Hardwood		22	Cords		
	<i>Beech</i>		1	<i>Cords</i>		
	<i>Sugar Maple</i>		3	<i>Cords</i>		
	<i>White Ash</i>		18	<i>Cords</i>		
7	Sugar Maple	Sawtimber	1.5	MBF	12.7	\$3,775.30
	Balsam Fir	Pulpwood	31	Cords		

DESCRIPTION OF TIMBER BY PAYMENT UNIT (PU), CON'T

PU	MARKET GROUP	PRODUCT	QUANTITY	UNIT	ACRES	ADVERTISE PRICE
7 con't	Hemlock	Pulpwood	8	Cords		
	Mixed Aspen		56	Cords		
	<i>Balsam Poplar</i>		56	Cords		
	Mixed Hardwood		49	Cords		
	<i>Red Maple</i>		1.2	MBF		
	<i>Black Cherry</i>		2	Cords		
	<i>Red Maple</i>		29	Cords		
	<i>Sugar Maple</i>		5	Cords		
	<i>White Ash</i>		11	Cords		
	Mixed Spruce		1	Cords		
	<i>White Spruce</i>		1	Cords		
	N. White Cedar		69	Cords		
	Paper Birch		13	Cords		
	<i>Paper Birch</i>		1.7	MBF		
	<i>Paper Birch</i>		10	Cords		
White Pine	7	Cords				
8	Sugar Maple	Sawtimber	14.8	MBF	7.4	\$3,464.35
	Balsam Fir	Pulpwood	2	Cords		
	Basswood		2	Cords		
	Hemlock		11	Cords		
	Mixed Hardwood		31	Cords		
	<i>Beech</i>	Sawtimber	0.7	MBF		
	<i>Red Maple</i>		2.5	MBF		
	<i>Beech</i>	Pulpwood	1	Cords		
	<i>Red Maple</i>		6	Cords		
	<i>Sugar Maple</i>		18	Cords		
9	Sugar Maple	Sawtimber	1.9	MBF	20.4	\$2,754.35
	Balsam Fir	Pulpwood	4	Cords		
	Mixed Aspen		15	Cords		
	<i>B. T. Aspen</i>		6	Cords		
	<i>Balsam Poplar</i>		4	Cords		
	<i>Quaking Aspen</i>		5	Cords		
	Mixed Hardwood		116	Cords		
	<i>Beech</i>		3	Cords		
	<i>Black Ash</i>		17	Cords		
	<i>Black Cherry</i>		1	Cords		
	<i>Ironwood</i>		3	Cords		
	<i>Red Maple</i>		3	Cords		
	<i>Sugar Maple</i>		24	Cords		
	<i>White Ash</i>		63	Cords		
	<i>Yellow Birch</i>		2	Cords		
	Mixed Spruce		5	Cords		
	<i>White Spruce</i>		5	Cords		
	N. White Cedar		1	Cords		
	Paper Birch		22	Cords		
	<i>Paper Birch</i>	Sawtimber	2.1	MBF		
<i>Paper Birch</i>	Pulpwood	18	Cords			
Tamarack		1	Cords			
10	Sugar Maple	Sawtimber	1.4	MBF	15.1	\$2,081.45
	Balsam Fir	Pulpwood	3	Cords		
	Mixed Aspen		12	Cords		
	<i>B. T. Aspen</i>		5	Cords		
	<i>Balsam Poplar</i>		3	Cords		
	<i>Quaking Aspen</i>		4	Cords		
	Mixed Hardwood		86	Cords		
	<i>Beech</i>		2	Cords		

DESCRIPTION OF TIMBER BY PAYMENT UNIT (PU), CON'T

PU	MARKET GROUP	PRODUCT	QUANTITY	UNIT	ACRES	ADVERTISE PRICE
10 con't	<i>Black Ash</i>	<i>Pulpwood</i>	13	<i>Cords</i>		
	<i>Black Cherry</i>		1	<i>Cords</i>		
	<i>Ironwood</i>		2	<i>Cords</i>		
	<i>Red Maple</i>		2	<i>Cords</i>		
	<i>Sugar Maple</i>		18	<i>Cords</i>		
	<i>White Ash</i>		47	<i>Cords</i>		
	<i>Yellow Birch</i>		1	<i>Cords</i>		
	Mixed Spruce		4	<i>Cords</i>		
	<i>White Spruce</i>		4	<i>Cords</i>		
	N. White Cedar		1	<i>Cords</i>		
	Paper Birch		17	<i>Cords</i>		
	<i>Paper Birch</i>	<i>Sawtimber</i>	1.5	<i>MBF</i>		
	<i>Paper Birch</i>	<i>Pulpwood</i>	14	<i>Cords</i>		
	Tamarack		1	<i>Cords</i>		
11	Basswood	Sawtimber	3.4	MBF	15.1	\$3,647.80
	Sugar Maple		7.3	MBF		
	Balsam Fir	Pulpwood	6	Cords		
	Basswood		6	Cords		
	Mixed Aspen		2	Cords		
	<i>B. T. Aspen</i>		1	<i>Cords</i>		
	<i>Balsam Poplar</i>		1	<i>Cords</i>		
	Mixed Hardwood		121	Cords		
	<i>Black Cherry</i>	<i>Sawtimber</i>	0.3	<i>MBF</i>		
	<i>Red Maple</i>		0.4	<i>MBF</i>		
	<i>Ironwood</i>	<i>Pulpwood</i>	1	<i>Cords</i>		
	<i>Red Maple</i>		4	<i>Cords</i>		
	<i>Sugar Maple</i>		43	<i>Cords</i>		
	<i>White Ash</i>		71	<i>Cords</i>		
	N. White Cedar		2	Cords		
	Paper Birch		4	Cords		
	<i>Paper Birch</i>		4	<i>Cords</i>		
12	Basswood	Sawtimber	5.3	MBF	23.2	\$5,630.20
	Sugar Maple		11.2	MBF		
	Balsam Fir	Pulpwood	10	Cords		
	Basswood		10	Cords		
	Mixed Aspen		4	Cords		
	<i>B. T. Aspen</i>		2	<i>Cords</i>		
	<i>Balsam Poplar</i>		2	<i>Cords</i>		
	Mixed Hardwood		185	Cords		
	<i>Black Cherry</i>	<i>Sawtimber</i>	0.4	<i>MBF</i>		
	<i>Red Maple</i>		0.7	<i>MBF</i>		
	<i>Black Cherry</i>	<i>Pulpwood</i>	1	<i>Cords</i>		
	<i>Ironwood</i>		1	<i>Cords</i>		
	<i>Red Maple</i>		6	<i>Cords</i>		
	<i>Sugar Maple</i>		67	<i>Cords</i>		
	<i>White Ash</i>		108	<i>Cords</i>		
	N. White Cedar		2	Cords		
	Paper Birch		6	Cords		
<i>Paper Birch</i>		6	<i>Cords</i>			
13	Sugar Maple	Sawtimber	5.9	MBF	13.4	\$2,225.05
	Balsam Fir	Pulpwood	2	Cords		
	Mixed Hardwood		69	Cords		
	<i>Red Maple</i>	<i>Sawtimber</i>	2.3	<i>MBF</i>		
	<i>Ironwood</i>	<i>Pulpwood</i>	2	<i>Cords</i>		
	<i>Red Maple</i>		11	<i>Cords</i>		
	<i>Sugar Maple</i>		18	<i>Cords</i>		

DESCRIPTION OF TIMBER BY PAYMENT UNIT (PU), CON'T

PU	MARKET GROUP	PRODUCT	QUANTITY	UNIT	ACRES	ADVERTISE PRICE
13 con't	<i>White Ash</i>	<i>Pulpwood</i>	33	<i>Cords</i>		
	N. White Cedar		6	Cords		
	Paper Birch		7	Cords		
	<i>Paper Birch</i>	<i>Sawtimber</i>	0.9	<i>MBF</i>		
	<i>Paper Birch</i>	<i>Pulpwood</i>	5	<i>Cords</i>		
TOTAL:			52.7	MBF		
TOTAL:			1,247	Cords		

Sale Specific Conditions & Requirements

Sale Name: Wolf Track Hardwood

Sale Number: 33-022-24 Seq#: 1

1 - Sale Area

1.2 - Boundaries

1.2.1 - Painted boundaries (9/19)

The sale boundary and Payment Unit boundaries are marked and identified by blue, red and yellow paint. Exterior sale boundary lines against private property are marked with blue paint. Exterior sale boundary lines against state are marked with red paint. Interior Payment Unit boundaries are marked with yellow paint. Retention patches are marked with red paint; no harvesting activities may occur within these areas. The painted boundary line trees are not Included Timber and are to be protected unless marked with orange paint. Yellow painted trees designating an interior Payment Unit boundary are only to be cut when all surrounding Payment Units have been paid for.

2 - Timber Specifications

2.1 - Included Timber

2.1.1 - Clearcut unit(s) with unmerchantable trees (6/14)

Within Payment Unit(s) 1, 2, 4, 5, & 7, cut all trees that are three (3) inches or more at DBH, with the following exceptions:

- Within Payment Unit 1, do not cut any trees marked with green paint.
- Within Payment Unit 4, do not cut cedar that are nine (9) inches or more at DBH, hemlock, or any trees marked with green paint.
- Within Payment Unit 5, do not cut hemlock.

2.1.3 - Cut tree marked unit(s) (12/08)

Within Payment Unit(s) 3, 6, & 8-13, all trees are designated for cutting when marked with orange paint above and below stump height, regardless of merchantability.

In addition, within Payment Units 6, & 8-13, cut all ash, aspen, balsam poplar, ironwood, tamarack, and spruce/fir greater than three (3) inches at DBH.

2.1.9 - Harvest exception (12/08)

Do not cut any hemlock trees within Payment Units 9-13, other than those that are necessary to remove in order to operate within the sale area. Every effort must be made to preserve the existing hemlock and to leave an intact stand upon sale completion. All cut hemlock shall be piled separately by products and scaled in the woods unless other scaling arrangements are agreed to by the Unit Manager or his/her representative. Stumpage price for hemlock shall be \$20.00 per cord.

2.2 - Utilization

2.2.4 - Skidding length (2/14)

Skidding of unlimbed tops or lengths over 17 feet is not permissible within Payment Units 3, 6, & 8-13.

3 - Payments

3.3 - Pre-measured Sales

3.3.4 - Dividing payment units (7/14)

Payment Unit(s) \$18,000 in value or greater may be divided at the request of the Purchaser and upon approval of the Unit Manager. Dividing Payment Units is a contract modification which requires a Timber Sale Contract Amendment. There will be only one division per Payment Unit.

4 - Transportation

4.1 - Construction

4.1.8 - Road work (1) (8/07)

The following road work is required: a temporary culvert, with a minimum size of 18" X 24' will be supplied and installed by the Purchaser on the access road between Payment Units 12 & 13. There is a small drain that flows through this area and currently does not have a culvert. This culvert will be removed once Payment Unit 13 is completed. The fill over the culvert will be pushed back, to prevent erosion into the drain.

4.2 - Maintenance

4.2.1 - Hauling restriction (12/08)

Hauling may be restricted on forest roads by the Unit Manager or his/her representative. The restriction may occur during spring breakup or during other wet weather conditions.

4.2.4 - Grading (10/16)

For completion of the sale, state forest roads must be graded. In general, this will require a road grader or bulldozer to shape up the roads after forest products have been hauled off site. This includes cleaning of drainage areas, grading, crowning and filling with gravel, if necessary. The grading equipment to be used must be approved by the Unit Manager or his/her representative.

4.4 - Access

4.4.1 - Private property access (3/11)

Permission for access across private land is the responsibility of the Purchaser. Permission must include access for DNR Timber Sale Inspectors.

5 - Operations

5.2 - Conduct of Operations

5.2.3 - Operating Restrictions

5.2.3.1 - Operating restrictions (9/11)

Within Payment Unit(s) 4 & 5, cutting and skidding are limited to the period of December 1 to March 31, unless there is an extended dry or frozen period and the Sale Administrator allows harvesting during that period of time. This restriction is because access into these Payment Units is through low wet ground.

5.2.3.3 - Bark slippage restriction (3/09)

Within Payment Unit(s) 3, 6, & 8-13, unless changed by written agreement, cutting and skidding are not permitted during the period of April 15 to July 15. This restriction is because of bark slippage.

5.2.22 - Operating Caution

5.2.22.1 - Operating caution (6/11)

It is recommended, but not required, that within Payment Unit(s) 1, 2, & 7, cutting and skidding occur during dry summer or frozen winter conditions. The reason for the recommendation is because of some low wet ground within the Payment Units.

5.2.39 - ORV trail/route protection (4/18)

The Felch Grade is an ORV trail or route and is shown on the Timber Sale Map. Trees with yellow ORV markers shall be cut off above the markers and at least 5 feet above ground. All stumps within 5 feet of the trail must be cut flush with the ground. Maintain a 20-foot-wide slash, debris, and rut free zone daily using the ORV trail or route as the centerline.

6 - Safety and Fire Prevention

6.2 - Signing

6.2.3 - Recreational trail posting (10/20)

The Purchaser is responsible for posting and maintaining caution signs on the Felch Grade prior to beginning operations. The trail must be posted at appropriate distances from the Sale Area to warn of logging activity and truck traffic at both ends of the trail. Signs must be removed when harvest operations are suspended or completed. The Purchaser will provide these signs.

7 - Other Conditions

7.5 - Loss

7.5.1 - Deteriorating timber (7/09)

The sale area has received damage from the emerald ash borer. The Purchaser should harvest the wood as soon as possible. The Department of Natural Resources is held free of responsibility of any further damage or deterioration due to delay in harvesting.



TIMBER SALE MAP

This information provided by authority of Part 525, 1994 PA 451, as amended.

Sale Number

33-022-24

Date

02/08/2024

Forest Management Unit

Escanaba Mgt Unit

County

Menominee

Mapped By: Beaudou

Cruised By: Beaudou, Salter

Scale

1:15,840

Page

1

Of

2

Township
40N

Range
25W

Section(s) and
Subdivision(s)

Sec. 19 NENW,N1/2NE,NWSW; Sec. 29 SWNW,NWSW; Sec. 30 NENW,NWSW,SE;

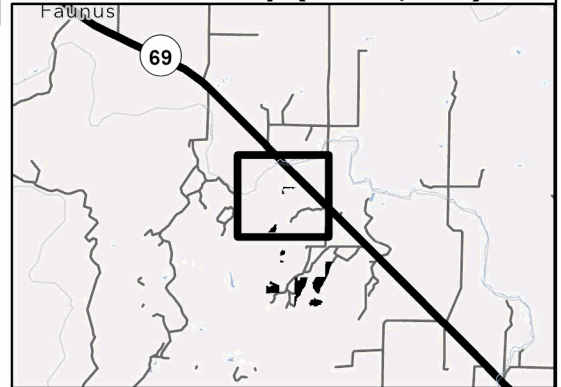
Cover Type

A = Aspen	J = Jack Pine	O = Oak	U = Upland Brush
B = Paper Birch	K = Rock	P = Lowland Poplar	UM = Upland Mix Forest
C = Cedar	L = Lowland Brush	Q = Mixed Swamp Conifer	V = Bog or Marsh
D = Treed Bog	LM = Lowland Mix Forest	R = Red Pine	W = White Pine
E = Swamp Hardwoods	M = Maple, Beech, Birch	S = Black Spruce	X = Non Stocked
F = Spruce/Fir	MC = Mixed Conifer	T = Tamarack	Y = Sand
G = Grass	MD = Mixed Deciduous	Z = Water	
H = Hemlock	N = Marsh		

Density

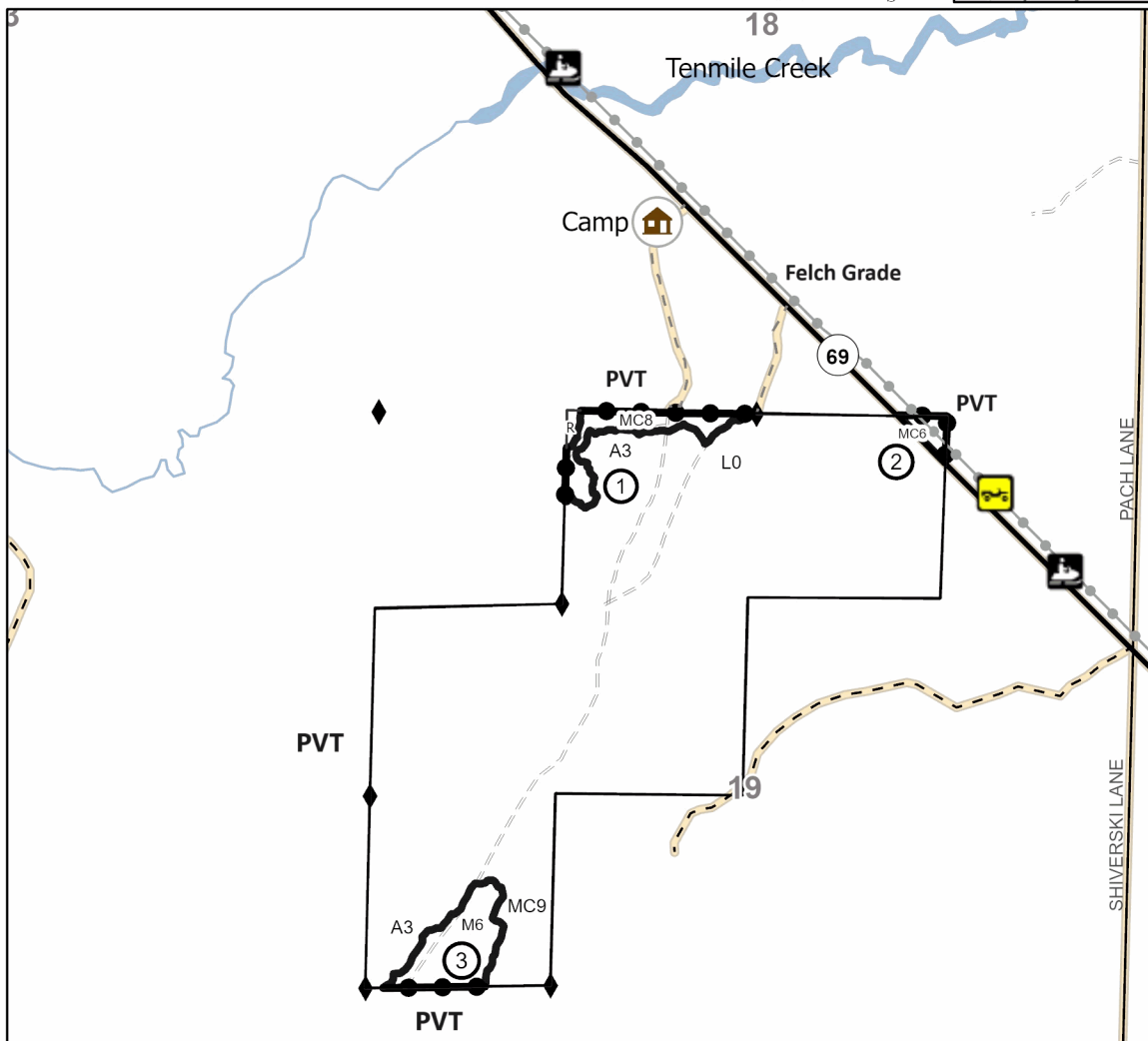
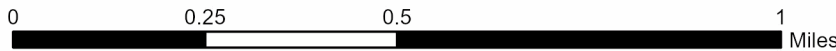
0 = Non Stocked	5 = Pole Timber Medium
1 = Seedling Sapling Poor	6 = Pole Timber Well
2 = Seedling Sapling Medium	7 = Saw Timber Poor
3 = Seedling Sapling Well	8 = Saw Timber Medium
4 = Pole Timber Poor	9 = Saw Timber Well

Locator Map (1:200,000)



**Wolf Track
Hardwood
127.2 Acres**

PU #	Acres	PU #	Acres	PU #	Acres
1	4.8	6	1.2	11	15.1
2	1.2	7	12.7	12	23.2
3	7.3	8	7.4	13	13.4
4	4	9	20.4		
5	1.4	10	15.1		



Legend

- Against State (Red)
- Private Line (Blue)
- Recreational Trail
- State Boundary
- Private Road
- Forest Access Route
- Non-DNR Road
- Highway
- Camp
- Survey Grade Corner

Map Note:

Access to Payment Units 1 & 3 are through private property. Contractor will need to get permission from landowner for

Use QR Code to open Map in App





TIMBER SALE MAP

This information provided by authority of Part 525, 1994 PA 451, as amended.

Sale Number
33-022-24

Date
02/08/2024

Forest Management Unit	County	Mapped By: Beaudou	Scale	Page	Of
Escanaba Mgt Unit	Menominee	Cruised By: Beaudou, Salter	1:15,840	2	2

Township	Range	Section(s) and Subdivision(s)
40N	25W	Sec. 19 NENW,N1/2NE,NWSW; Sec. 29 SWNW,NWSW; Sec. 30 NENW,NWSW,SE;

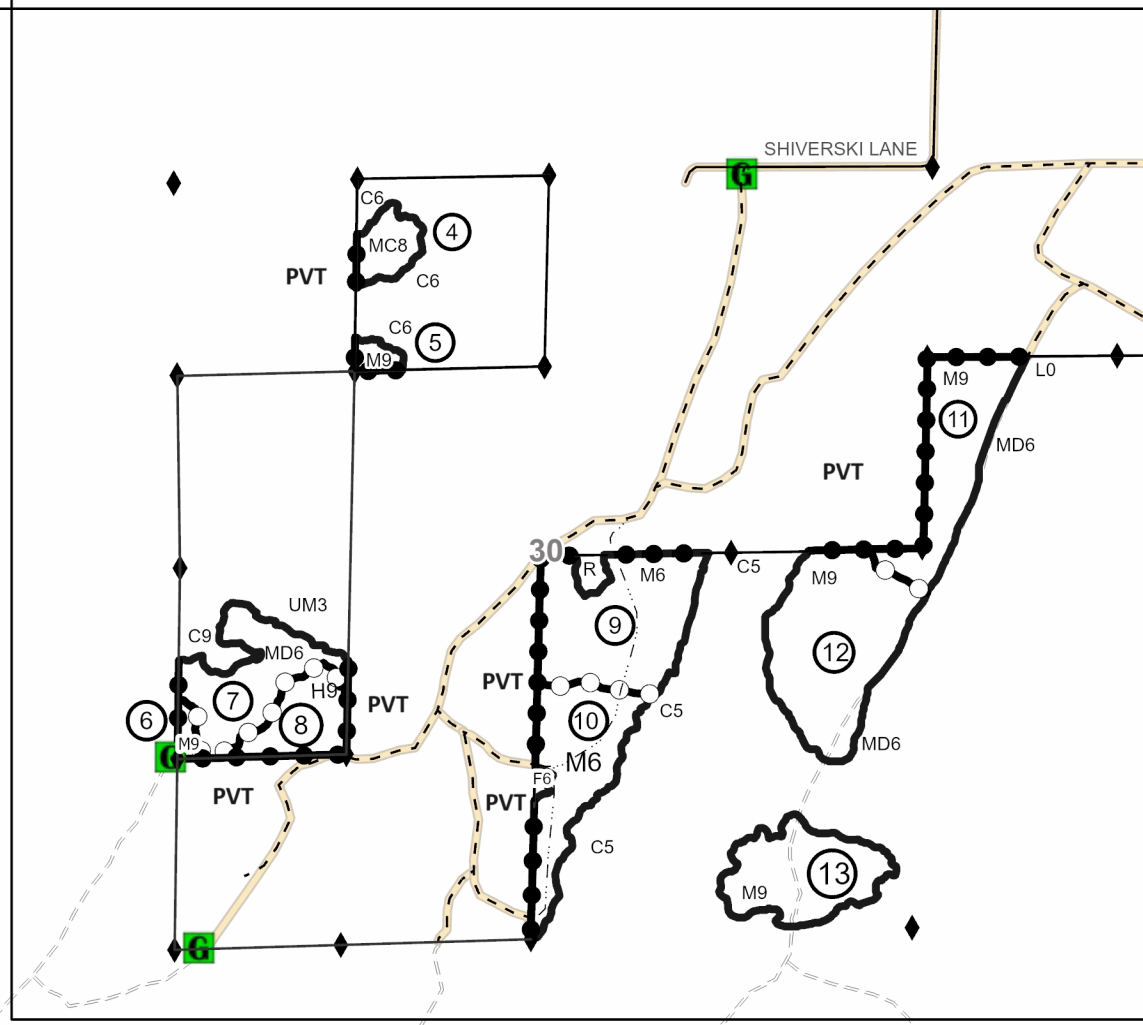
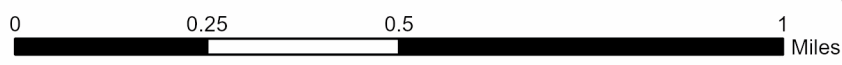
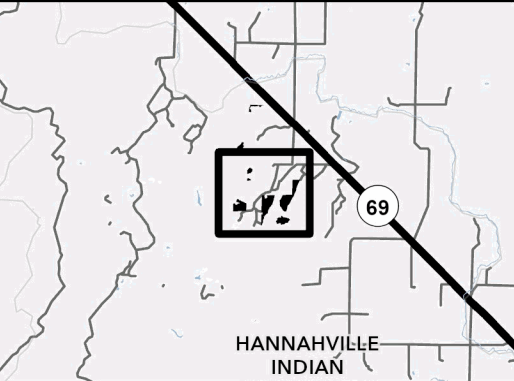
Cover Type			
A = Aspen	J = Jack Pine	O = Oak	U = Upland Brush
B = Paper Birch	K = Rock	P = Lowland Poplar	UM = Upland Mix Forest
C = Cedar	L = Lowland Brush	Q = Mixed Swamp Conifer	V = Bog or Marsh
D = Treed Bog	LM = Lowland Mix Forest	R = Red Pine	W = White Pine
E = Swamp Hardwoods	M = Maple, Beech, Birch	S = Black Spruce	X = Non Stocked
F = Spruce/Fir	MC = Mixed Conifer	T = Tamarack	Y = Sand
G = Grass	MD = Mixed Deciduous	Z = Water	
H = Hemlock	N = Marsh		

Density	
0 = Non Stocked	5 = Pole Timber Medium
1 = Seedling Sapling Poor	6 = Pole Timber Well
2 = Seedling Sapling Medium	7 = Saw Timber Poor
3 = Seedling Sapling Well	8 = Saw Timber Medium
4 = Pole Timber Poor	9 = Saw Timber Well

PU #	Acres	PU #	Acres	PU #	Acres
1	4.8	6	1.2	11	15.1
2	1.2	7	12.7	12	23.2
3	7.3	8	7.4	13	13.4
4	4	9	20.4		
5	1.4	10	15.1		

**Wolf Track
Hardwood
127.2 Acres**

Locator Map (1:200,000)



Legend

- Against State (Red)
- Payment Unit (Yellow)
- Private Line (Blue)
- State Boundary
- two track rd
- Paved Road
- Private Road
- Forest Access Route
- Non-DNR Road
- Survey Grade Corner
- Gate

Map Note:
Access to Payment Units 4-13 are through private property. Contractor will need to get permission from landowner for access

Use QR Code to open Map in App



Fortyseven Hardwood (33-021-24)

T40N, R25W, SEC. 31; T40N, R26W, SEC. 25; T40N, R26W, SEC. 36; Menominee

In response to the notice of sale to be held 3:00 p.m. (local time) on May 8, 2024, I am hereby submitting my sealed bid (firm offer) for the following forest products to be cut. Bids for individual species must be at or above the advertised price. All non-responsive bid forms may be rejected.

<u>PRODUCTS & SPECIES</u>	<u>ESTIMATED VOLUME*</u>	<u>ADVERTISED PRICE</u>	<u>BID PRICE/UNIT</u>
Sawtimber			
Basswood	50.8 MBF	\$ 82.00/MBF	\$ _____
Beech	2.9 MBF	\$ 49.00/MBF	\$ _____
Paper Birch	31.0 MBF	\$ 89.00/MBF	\$ _____
Red Maple	9.5 MBF	\$ 94.00/MBF	\$ _____
Sugar Maple	37.0 MBF	\$ 168.00/MBF	\$ _____
Pulpwood			
Balsam Fir	30 Cords	\$ 8.70/Cord	\$ _____
Mixed Hardwood	593 Cords	\$ 12.15/Cord	\$ _____
Mixed Spruce	212 Cords	\$ 13.45/Cord	\$ _____
N. White Cedar	363 Cords	\$ 5.55/Cord	\$ _____
Paper Birch	291 Cords	\$ 6.90/Cord	\$ _____
Quaking Aspen	3 Cords	\$ 26.20/Cord	\$ _____
Tamarack	537 Cords	\$ 8.40/Cord	\$ _____
White Ash	505 Cords	\$ 5.20/Cord	\$ _____
White Pine	48 Cords	\$ 17.65/Cord	\$ _____

*The volumes are statistically estimated within plus (+) or minus (-) 16.86 percent at 95% confidence level. These estimated volumes are final and not subject to adjustment. Prospective bidders are urged to examine this timber and to make their own estimates of quantity and quality.

I understand that any or all bids may be rejected. All bids must be signed and all bid items must be bid or the bid form may be rejected. I also understand that consideration and awarding a contract will be based upon my past performance and ability to complete the contract based upon equipment and staffing subject to my control .

FEDERAL ID: _____ - _____ or SOCIAL SECURITY NUMBER: _____ - _____ - _____

Company or individual bidding: _____

Company representative's name: _____

Address: _____

City: _____ State: _____ Zip: _____

IF AVAILABLE, PLEASE PLACE THE PERSONALIZED LABEL FROM YOUR PROSPECTUS IN THE ABOVE BOX.

Individual or company representative's signature: _____ Date: _____

Phone number : _____ Email (optional): _____

THE WINNING BIDDER MUST COMPLETE THE VERIFICATION OF WORKER'S DISABILITY COMPENSATION ACT COMPLIANCE (ON REVERSE SIDE IF DOUBLE SIDED) WITHIN 21 DAYS OF SALE AWARD DATE



FOR DEPARTMENT USE ONLY	
Sale Number (XX - XXX - XX - XX)	
Forest Management Unit:	

TIMBER SALE VERIFICATION OF WORKER'S DISABILITY COMPENSATION ACT COMPLIANCE

As required by Act 317, P.A. 1969 (Worker's Compensation) and
Part 5 of Act 451 of 1994, as amended.

VERIFICATION OF WORKER'S DISABILITY COMPENSATION ACT COMPLIANCE

- This verification must be completed and submitted within 21 days of contract award and prior to the issuance of the timber sale contract.
- In addition, if boxes 2B or 2C are checked, then Notice of Exclusion or Certificate of Insurance must be submitted within twenty-one (21) days of the contract award and prior to the issuance of the timber sale contract.
- All information must be typed or printed except for written signatures.

Please Check Appropriate Categories:

1. My business is organized as (you **must** check one of the boxes below):
 - A. Sole Proprietorship (individual)
 - B. Partnership
 - C. Corporation
2. You **must** check one of the boxes below:
 - A. I certify my business is a sole proprietorship and it has no employees but the sole proprietor. I am not subject to the Worker's Compensation Laws.
 - B. I certify my business has satisfied its obligation to the Worker's Compensation Act through the use of an approved Notice of Exclusion (BWC-337, Rev. 5/96). I will provide a copy of the Notice of Exclusion within 21 days of the contract award. (For questions or a copy of the BWC-337, please call the Worker's Compensation Bureau at 517-322-1195).
 - C. I certify my business has a Worker's Compensation Policy. I will provide an original Certificate of Insurance within twenty-one (21) days of the contract award.
3. If you have checked item 2(A) or 2(B), you **must** indicate the number of **both** full-time and part-time employees, other than yourself, including family members and active partners (if none, you must enter "0").

_____ Full-time Employees

_____ Part-time Employees

Name of Business		Federal ID (or) Social Security No.	
Address		Telephone ()	
City	State	ZIP	

I hereby certify that the above information is true and correct. I agree to notify the Michigan DNR of any changes that occur in factors affecting my coverage during any of my present and future operations.

Signature of Owner or Authorized Representative

Title

Date

Please complete the "SEALED BID" information on the next page

Wolf Track Hardwood (33-022-24)

T40N, R25W, SEC. 19; T40N, R25W, SEC. 29; T40N, R25W, SEC. 30; Menominee

In response to the notice of sale to be held 3:00 p.m. (local time) on May 8, 2024, I am hereby submitting my sealed bid (firm offer) for the following forest products to be cut. Bids for individual species must be at or above the advertised price. All non-responsive bid forms may be rejected.

<u>PRODUCTS & SPECIES</u>	<u>ESTIMATED VOLUME*</u>	<u>ADVERTISED PRICE</u>	<u>BID PRICE/UNIT</u>
Sawtimber			
Basswood	8.7 MBF	\$ 95.00/MBF	\$ _____
Sugar Maple	44.0 MBF	\$ 194.00/MBF	\$ _____
Pulpwood			
Balsam Fir	61 Cords	\$ 10.05/Cord	\$ _____
Basswood	19 Cords	\$ 8.20/Cord	\$ _____
Hemlock	19 Cords	\$ 11.15/Cord	\$ _____
Mixed Aspen	100 Cords	\$ 30.20/Cord	\$ _____
Mixed Hardwood	774 Cords	\$ 14.00/Cord	\$ _____
Mixed Spruce	22 Cords	\$ 15.50/Cord	\$ _____
N. White Cedar	133 Cords	\$ 6.45/Cord	\$ _____
Paper Birch	92 Cords	\$ 7.95/Cord	\$ _____
Tamarack	10 Cords	\$ 9.70/Cord	\$ _____
White Pine	16 Cords	\$ 20.35/Cord	\$ _____

*The volumes are statistically estimated within plus (+) or minus (-) 36.56 percent at 95% confidence level. These estimated volumes are final and not subject to adjustment. Prospective bidders are urged to examine this timber and to make their own estimates of quantity and quality.

I understand that any or all bids may be rejected. All bids must be signed and all bid items must be bid or the bid form may be rejected. I also understand that consideration and awarding a contract will be based upon my past performance and ability to complete the contract based upon equipment and staffing subject to my control.

FEDERAL ID: ____ - ____ - ____ or SOCIAL SECURITY NUMBER: ____ - ____ - ____

Company or individual bidding: _____

Company representative's name: _____

Address: _____

City: _____ State: _____ Zip: _____

IF AVAILABLE, PLEASE PLACE THE PERSONALIZED LABEL FROM YOUR PROSPECTUS IN THE ABOVE BOX.

Individual or company representative's signature: _____ Date: _____

Phone number : _____ Email (optional): _____

THE WINNING BIDDER MUST COMPLETE THE VERIFICATION OF WORKER'S DISABILITY COMPENSATION ACT COMPLIANCE (ON REVERSE SIDE IF DOUBLE SIDED) WITHIN 21 DAYS OF SALE AWARD DATE



FOR DEPARTMENT USE ONLY
Sale Number (XX - XXX - XX - XX)
Forest Management Unit:

TIMBER SALE VERIFICATION OF WORKER'S DISABILITY COMPENSATION ACT COMPLIANCE

*As required by Act 317, P.A. 1969 (Worker's Compensation) and
Part 5 of Act 451 of 1994, as amended.*

VERIFICATION OF WORKER'S DISABILITY COMPENSATION ACT COMPLIANCE

- This verification must be completed and submitted within 21 days of contract award and prior to the issuance of the timber sale contract.
- In addition, if boxes 2B or 2C are checked, then Notice of Exclusion or Certificate of Insurance must be submitted within twenty-one (21) days of the contract award and prior to the issuance of the timber sale contract.
- All information must be typed or printed except for written signatures.

Please Check Appropriate Categories:

1. My business is organized as (you **must** check one of the boxes below):
 - A. Sole Proprietorship (individual)
 - B. Partnership
 - C. Corporation
2. You **must** check one of the boxes below:
 - A. I certify my business is a sole proprietorship and it has no employees but the sole proprietor. I am not subject to the Worker's Compensation Laws.
 - B. I certify my business has satisfied its obligation to the Worker's Compensation Act through the use of an approved Notice of Exclusion (BWC-337, Rev. 5/96). I will provide a copy of the Notice of Exclusion within 21 days of the contract award. (For questions or a copy of the BWC-337, please call the Worker's Compensation Bureau at 517-322-1195).
 - C. I certify my business has a Worker's Compensation Policy. I will provide an original Certificate of Insurance within twenty-one (21) days of the contract award.
3. If you have checked item 2(A) or 2(B), you **must** indicate the number of **both** full-time and part-time employees, other than yourself, including family members and active partners (if none, you must enter "0").

_____ Full-time Employees

_____ Part-time Employees

Name of Business		Federal ID (or) Social Security No.	
Address		Telephone ()	
City	State	ZIP	

I hereby certify that the above information is true and correct. I agree to notify the Michigan DNR of any changes that occur in factors affecting my coverage during any of my present and future operations.

Signature of Owner or Authorized Representative

Title

Date

Please complete the "SEALED BID" information on the next page