



**DEPARTMENT OF NATURAL RESOURCES  
STATE OF MICHIGAN  
TIMBER SALE PROSPECTUS #7396**

**SCHEDULED SALE DATE AND TIME: 10:00 a.m. (local time) on May 9, 2024.**

**LOCATION: GLADWIN MGMT UNIT, 801 NORTH SILVERLEAF, GLADWIN, MI 48624.**

**PROSPECTUS NOTE:** The bidder is advised to inspect the sale area and review the location, estimated volumes, operating costs and contract terms of proposed sales. Please be aware that some landowners may request 60 days or more notice for access across their land.

Notice is hereby given that bids will be received by the Unit Manager, GLADWIN MANAGEMENT UNIT, for certain timber on the following described lands:

Arnie Lake Alert (73-006-23) / T20N, R03W, SEC. 1 , NW.  
T20N, R03W, SEC. 32, SESE.  
T20N, R03W, SEC. 33, SWSW,S1/2SE.  
T20N, R03W, SEC. 4 , NWNW,S1/2NW.  
T20N, R03W, SEC. 5 , E1/2NE.

Clare County, Advertised Price \$214,289.10, 99.8 Acres, Red Pine, White Pine.

**SALE NOTE:** There is a large opening south of Payment Unit 3 that will be utilized for decking. Payment Unit 4 has a large opening on the north end that will be utilized for decking.

A recreation site such as a trail, pathway, or campground is within the sale area or the vicinity. Certain restrictions/specifications may be applicable including time restrictions.

## BID INSTRUCTIONS (VER. 10/10/2022):

### 1. Scheduled Bid Location, Date, and Time (2/11)

Bids must be received by the Unit Manager, GLADWIN OFFICE, 801 NORTH SILVERLEAF, GLADWIN, MI 48624, no later than 10:00 a.m. (local time) on May 9, 2024. For further information concerning this sale, contact Blair Tweedale at 989-426-9205 extension 7640.

### 2. Bidder's Qualifications (10/22)

If all or part of a timber sale was prepared by a private contractor, the contractor and that contractor's company are not permitted to bid on the timber sale. A person must be 18 years of age or older to purchase timber. Permanent employees of the Department of Natural Resources or members of their immediate household may not bid. Former employees, in the permanent or seasonal class, may not bid until 3 months after the last day of active duty. Bids will not be accepted from individuals or companies appearing on the DNR/FRD No-Bid List. This list contains the names of purchasers who previously failed to execute a contract within 21-days or who have a history of poor performance.

### 3. Preparation of Sealed Bids (5/16)

Bid Forms may be completed online thru Michigan DNR Timber Sale Online Bidding (OLB) at [www.michigan.gov/timberbidding](http://www.michigan.gov/timberbidding) or by completing the hardcopy Bid Form found in the Timber Sale Prospectus. Hardcopy Bid Forms shall be manually signed in ink. Registration in OLB is considered your 'signature' for all bids submitted thru that system. Bid prices must be entered for each species and product in the Bid Price column for all material subject to bidding and all fill-in blanks must be completed. If erasures or other changes appear on the hardcopy Bid Form, each erasure or change must be initialed by the person signing the bid.

### 4. Submission of Sealed Bids (5/16)

Bid forms may be obtained from the Unit Manager or thru OLB. Bids may be submitted hardcopy or thru OLB. All hardcopy bids must be submitted on the bid form and in an envelope clearly identified as described in this section. NOTE: Only one bid form per bid envelope. Sealed bids must be submitted to the Unit office designated in the prospectus and must be submitted at or prior to the time established in the prospectus. The envelope should show on the outside (a) the sale name or number and (b) the date and time of bid opening, as shown in the prospectus. Bids received after the time specified in the sale prospectus are late bids and will be rejected.

It is possible for a bidder to submit multiple bids on a single sale. For example, a bid may be submitted hardcopy and a bid may be submitted thru OLB. Or, two bidders from the same company could both submit bids on the same sale. If this were to happen, the State would accept all bids received and award the contract accordingly. All bidding and contractual requirements would apply to all bids received.

### 5. Public Opening of Sealed Bids (7/16)

If conditions permit, the sealed bids will be publicly opened and posted at the time and place set in the prospectus.

If a bidder, present at a bid opening, has submitted bids on more than one sale, that bidder may withdraw their unopened bid envelopes or announce the withdrawal of their online bid after being declared the successful bidder on one sale.

### 6. Award of Contract (1/11)

Award of the contract will be made to the Bidder whose bid, conforming to the prospectus, is most advantageous to the State of Michigan on the basis of total value at rates bid for the estimated quantities. The State reserves the right to reject any bid or waive any minor irregularity in bids received. A written award mailed (or otherwise furnished) to the successful Bidder shall be deemed to result in a binding contract without further action by either party.

### 7. Down Payment (1/11)

The Bidder to whom award is made must make a down payment within 21 days of the sale award. The amount of the down payment will be calculated as shown in the Bond and Payment Schedule of this prospectus. Only cash may be used to meet this requirement.

### 8. Performance Security (1/11)

As guarantee of faithful performance, a cash bond, certificate of deposit, surety bond or irrevocable letter of credit (LOC) is required within 21 days of the sale award. The amount of the performance security is shown in the Bond and

Payment Schedule of this prospectus. If an LOC or surety is used, the coverage must extend for at least 6 months beyond the contract expiration.

#### 9. Worker's Compensation (10/22)

Purchaser shall obtain worker's compensation insurance to cover claims under Michigan's Worker's Disability Compensation Act of 1969 or similar employee benefit act of any other state applicable to an employee. Verification of Worker's Disability Compensation Act Compliance must be completed and submitted within 21 days of contract award and prior to the issuance of the timber sale contract. In addition, if applicable, Notice of Exclusion or Certificate of Insurance must also be submitted.

#### 10. Timber Sale Contract (10/22)

Additional conditions and requirements common to all timber sales are listed on the timber sale contract (R4031) and are available on line at [www.michigan.gov/timber](http://www.michigan.gov/timber). Contact the Unit Manager for additional information or a sample contract. Within 21 days of the date of the award letter, the bidder must sign the contract and provide the required down payment, performance security, and verification of worker's disability compensation. The down payment and performance security shall be in accordance with the provisions of the timber sale contract, in the sums stated in this prospectus. If these actions are not taken, then the Bidder, the Bidder's corporation, and the corporation's principals may not be permitted to bid on State timber sales for a period of 3 months after the first offense, 6 months after the second offense, and 1 year after the third offense. An offense will only be counted against the Bidder for 5 years. In addition, the Bidder certifies that if awarded this contract, the Bidder will complete the timber sale contract in accordance with its terms and any modifications thereof including requirements to purchase, cut, and remove the included timber by the expiration date.

Payment Unit values in the State Forest Timber Sale Contract are calculated based on the advertised value of the Payment Unit as a percentage of the total advertised value of the contract. The advertised value of each Payment Unit is given in the Description of Timber by Payment Unit table on the Timber Sale Information page. For example, if the value of Payment Unit 1 is advertised as \$1,500 and the total Timber Sale value is advertised as \$10,000, the contract price for Payment Unit 1 will be 15% of the total bid price ( $\$1,500/\$10,000 * 100$ ).

#### 11. Disclaimer of Estimates and Bidder's Warranty of Inspection (10/22)

Before submitting this bid, the Bidder is advised and cautioned to inspect the sale area, review the requirements of the sale contract, and take other steps as may be reasonably necessary to ascertain the location, estimated volumes, construction estimates, and operating costs of the proposed sale. Failure to do so will not relieve the Bidder from responsibility for completing the contract.

The Bidder warrants that this bid is submitted solely on the basis of the Bidder's examination and inspection of the quality and quantity of the timber offered for sale and the Bidder's opinion of the value thereof and the costs of recovery. No reliance should be placed on the State of Michigan's estimates of timber quality, quantity or costs of recovery. Bidder further acknowledges that the State of Michigan: (i) expressly disclaims any warranty of fitness of timber for any purpose; (ii) offers this timber as is without any warranty of quality (merchantability) or quantity and (iii) expressly disclaims any warranty as to the quantity or quality of timber sold.

#### 12. Certification and Chain-of-Custody (10/22)

Unless otherwise indicated in the contract under section 7 – Other Conditions of the Sale Specific Conditions & Requirements, the area encompassed by this timber sale is certified to the standards of the Forest Stewardship Council (FSC) - Certificate #SCS-FM/COC-00090N and the Sustainable Forestry Initiative (SFI) - Certificate #NSF-SFIS-5Y031-SF5. Forest products from this sale may be delivered to the mill as "FSC 100% and / or SFI certified" as long as the contractor hauling the forest products is chain-of-custody (COC) certified or covered under a COC certificate from the destination mill. The purchaser is responsible for maintaining COC after leaving the sale area.

#### 13. Good Neighbor Authority (GNA) Requirements (10/22)

If the name of this timber sales contains the acronym GNA, it is authorized by the Good Neighbor Authority (GNA) and covered by various agreements between the U.S. Forest Service and the State. The timber sale occurs on federal land and the following conditions apply:

GNA contracts on US Forest Service land will not be awarded to purchasers on the Federal list of excluded parties. The System for Award Management (SAM) will be checked for active excluded parties prior to award of contract. In

addition, the Bidder to whom award is made must complete an Assurance Regarding Felony Conviction or Tax Delinquent Status for Corporate Applicants (AD-3031).

14. Good Neighbor Authority (GNA) Requirements, con't (10/22)

Bidder certifies, by signing this bid form, that to the best of Bidder's knowledge that the following representations are accurate and complete.

- a. That the Bidder and its principals are not presently debarred, suspended, proposed for debarment, declared ineligible, or voluntary excluded from timber sales (covered transactions) by any Federal department or agency.
- b. That the Bidder and its principals have not within a 3-year period preceding this bid been convicted of or had a civil judgment rendered against them for commission of fraud or a criminal offense in connection with obtaining , attempting to obtain, or performing a public (Federal, State, or local) transaction or contract under a public transaction; violation of Federal or State antitrust statutes or commission of embezzlement, theft, forgery, bribery, falsification or destruction of records, making false statements, or receiving stolen property.
- c. That the Bidder and its principals are not presently indicted for or otherwise criminally or civilly charged by a governmental entity (Federal, State, or local) with commission of any of the offenses enumerated in paragraph b of this certification.
- d. That the Bidder and its principals have not within a 3-year period preceding this bid had one or more public transactions (Federal, State, or local) terminated for breach or default of a timber or forest product contract.

Bidders that cannot certify this requirement, in whole or in part, shall submit an explanation with their bid.

Scott Bowen  
Director

## TIMBER SALE INFORMATION

### Arnie Lake Alert (73-006-23)

T20N, R03W, SEC. 1; T20N, R03W, SEC. 32; T20N, R03W, SEC. 33; T20N, R03W, SEC. 4; T20N, R03W, SEC. 5.  
Clare County (Advertised Price \$214,289.10)

SALE NOTE: There is a large opening south of Payment Unit 3 that will be utilized for decking. Payment Unit 4 has a large opening on the north end that will be utilized for decking.

A recreation site such as a trail, pathway, or campground is within the sale area or the vicinity. Certain restrictions/specifications may be applicable including time restrictions.

A timber sale contract for this lump sum, sealed bid timber sale will be awarded to the responsible bidder offering the highest sealed bid price. All units of volume listed below were estimated using the Inventory Manager computer program and the new Michigan taper model. Bids must be at or above the following advertised price for each product and species:

<u>PRODUCTS &amp; SPECIES</u>	<u>ESTIMATED UNITS*</u>	<u>ADVERTISED PRICE</u>
<b>Sawtimber</b>		
Basswood	11.6 MBF	\$ 81.00 / MBF
Black/Red (Hybrid) Oak	61.7 MBF	\$ 122.00 / MBF
Mixed Aspen	31.4 MBF	\$ 68.00 / MBF
Red Maple	6.0 MBF	\$ 65.00 / MBF
Red Pine	687.6 MBF	\$ 135.00 / MBF
Sugar Maple	38.8 MBF	\$ 326.00 / MBF
White Oak	6.4 MBF	\$ 80.00 / MBF
White Pine	166.6 MBF	\$ 65.00 / MBF
<b>Pulpwood</b>		
Basswood	26 Cords	\$ 15.15 / Cord
Beech	18 Cords	\$ 20.75 / Cord
Jack Pine	7 Cords	\$ 25.45 / Cord
Mixed Aspen	169 Cords	\$ 30.40 / Cord
Mixed Hardwood	69 Cords	\$ 20.75 / Cord
Mixed Oak	122 Cords	\$ 17.10 / Cord
Paper Birch	10 Cords	\$ 22.40 / Cord
Red Pine	966 Cords	\$ 56.50 / Cord
White Pine	669 Cords	\$ 33.00 / Cord

\* The total volume is statistically estimated within plus (+) or minus (-) 24.07 percent. There are an estimated 4,422 cords on this timber sale, plus or minus 1,065 cords at the 95% confidence level. The estimated units are final and not subject to adjustment. Prospective bidders are urged to examine this timber and to make their own estimates of quantity and quality.

### **BOND AND PAYMENT SCHEDULE:**

1. A bond in the amount of \$10,714.00 to insure faithful performance of the conditions of the contract will be deposited by the successful bidder within 21 days of the sale award.
2. Cutting in any sale or unit without the required advance payment would be considered a trespass.
3. Total payment must be paid in advance or according to the following schedule :
  - (a) Ten percent (10%) of the sale value must be paid within 21 days of the sale award.
  - (b) The 10% down payment will be credited towards the first unit cut.
  - (c) Payment for each of the following units must be made before cutting begins in that unit:
 

PAYMENT UNIT NUMBER	PERCENT OF TOTAL SALE VALUE
01	22.2%
02	11.5%
03	2.7%
04	63.6%
4. If no cutting takes place, the 10% down payment will not be refunded.
5. Operations on the contract issued will terminate on 08/31/2026.

### **SALE STATISTICS**

Volumes were calculated in cubic feet using the Michigan taper model. Cubic foot volume includes all wood inside bark for the product indicated. For display purposes, cubic feet were converted to cords and MBF using a simple conversion factor, e.g. 79 cubic feet per cord and 185 cubic feet per MBF. The cubic foot volumes are precise; the cords and MBF volumes are not. Cubic foot volume cannot be directly converted to cords or boards with precision.

### SALE VOLUMES

The total estimated sale volume may not equal the sum of the species/products due to the nature of statistical calculations associated with double sampling methodology.

VOLUME			STATISTICAL RANGE IN CORDS	
TOTAL CUBIC FEET	TOTAL CORDS	PERCENT ERROR	MINIMUM	MAXIMUM
349,320	4,422	24.07%	3,357	5,486

### VDU VOLUMES

A VDU is a Volume Determination Unit. Volumes and their associated statistics are calculated at the VDU level and summarized to the sale level. There is often a one to one relationship between a VDU and a Payment Unit, but not always, depending on the cruise design. Refer to the VDU TO PAYMENT UNIT table.

VDU	VOLUME			RANGE IN CORDS	
	TOTAL CUBIC FEET	TOTAL CORDS	PERCENT ERROR	MINIMUM	MAXIMUM
26	68,868	872	29.00%	619	1,125
33	160,627	2,033	17.05%	1,687	2,380
95	71,497	905	38.11%	560	1,250
106	40,184	509	56.43%	222	796
112	8,145	103	76.80%	24	182
<b>TOTAL:</b>	<b>349,320</b>	<b>4,422</b>		<b>3,111</b>	<b>5,732</b>

### VDU TO PAYMENT UNIT

When a VDU is associated with more than one Payment Unit (PU), the VDU volumes are assigned to the PU based on acres of the VDU within the PU.

VDU	VDU ACRES	PU	PU ACRES
26	17.6	4	17.6
33	49.6	4	49.6
95	17.7	1	17.7
106	10.1	2	10.1
112	4.8	3	4.8
<b>TOTAL:</b>	<b>99.8</b>		<b>99.8</b>

**DESCRIPTION OF TIMBER BY PAYMENT UNIT (PU)**

PU	MARKET GROUP	PRODUCT	QUANTITY	UNIT	ACRES	ADVERTISE PRICE	
1	Basswood	Sawtimber	11.6	MBF	17.7	\$47,481.90	
	Black/Red (Hybrid)		2.9	MBF			
	Mixed Aspen		23.5	MBF			
	<i>B. T. Aspen</i>		23.5	<i>MBF</i>			
	Red Maple		6.0	MBF			
	Red Pine		110.4	MBF			
	Sugar Maple		31.9	MBF			
	Basswood		Pulpwood	26			Cords
	Beech			6			Cords
	<i>Beech</i>			<i>Sawtimber</i>			2.7
	<i>Beech</i>	<i>Pulpwood</i>		1			<i>Cords</i>
	Mixed Aspen	140		Cords			
	<i>B. T. Aspen</i>	140		<i>Cords</i>			
	Mixed Hardwood	50		Cords			
	<i>Red Maple</i>	12		<i>Cords</i>			
	<i>Sugar Maple</i>	38		<i>Cords</i>			
	Mixed Oak	12		Cords			
	<i>/Red (Hybrid) Oak</i>	12		<i>Cords</i>			
	Paper Birch	10		Cords			
	<i>Paper Birch</i>	<i>Sawtimber</i>	0.8	<i>MBF</i>			
	<i>Paper Birch</i>	<i>Pulpwood</i>	8	<i>Cords</i>			
	Red Pine	224	Cords				
2	Red Pine	Sawtimber	77.7	MBF	10.1	\$24,713.80	
	Sugar Maple		6.9	MBF			
	White Pine		40.5	MBF			
	Beech	Pulpwood	12	Cords			
	<i>Beech</i>		<i>Sawtimber</i>	2.7			<i>MBF</i>
	<i>Beech</i>		<i>Pulpwood</i>	7			<i>Cords</i>
	Jack Pine		7	Cords			
	Mixed Hardwood		17	Cords			
	<i>Red Maple</i>		4	<i>Cords</i>			
	<i>Sugar Maple</i>		13	<i>Cords</i>			
	Red Pine		113	Cords			
White Pine	66	Cords					
3	Red Pine	Sawtimber	8.3	MBF	4.8	\$5,866.50	
	Red Pine	Pulpwood	84	Cords			
4	Black/Red (Hybrid)	Sawtimber	58.8	MBF	67.2	\$136,226.90	
	Mixed Aspen		7.9	MBF			
	<i>B. T. Aspen</i>		4.1	<i>MBF</i>			
	<i>Quaking Aspen</i>		3.8	<i>MBF</i>			
	Red Pine		491.2	MBF			
	White Oak		6.4	MBF			
	White Pine		126.1	MBF			
	Mixed Aspen		Pulpwood	29			Cords
	<i>B. T. Aspen</i>			16			<i>Cords</i>
	<i>Quaking Aspen</i>			13			<i>Cords</i>
	Mixed Hardwood	2		Cords			
	<i>Black Cherry</i>	2		<i>Cords</i>			
	Mixed Oak	110		Cords			
	<i>/Red (Hybrid) Oak</i>	92		<i>Cords</i>			
	<i>White Oak</i>	18	<i>Cords</i>				
	Red Pine	545	Cords				
	White Pine	603	Cords				
TOTAL:			1,010.1	MBF			

TOTAL:	2,056	Cords
--------	-------	-------



## Sale Specific Conditions & Requirements

**Sale Name: Arnie Lake Alert**

**Sale Number: 73-006-23 Seq#: 1**

### 1 - Sale Area

#### 1.2 - Boundaries

##### 1.2.1 - Painted boundaries (9/19)

The sale boundary and Payment Unit boundaries are marked and identified by blue and red paint, along with roads. Exterior sale boundary lines against private property are marked with blue paint, with the exception of the southern boundaries of Payment Units 1 & 2, which are unpainted and designated by Arnold Lake Road. Exterior sale boundary lines against state are marked with red paint, with the exception of the northern boundary of Payment Unit 4, which is unpainted and designated by Claroskee Road. Retention patches are marked with red paint; no harvesting activities may occur within these areas. The painted boundary line trees are not Included Timber and are to be protected unless marked with orange paint.

### 2 - Timber Specifications

#### 2.1 - Included Timber

##### 2.1.1 - Clearcut unit(s) with unmerchantable trees (6/14)

Within Payment Unit(s) 1, 2, & 4, cut all trees that are two (2) inches or more at DBH.

##### 2.1.3 - Cut tree marked unit(s) (12/08)

Within Payment Unit(s) 3, all trees are designated for cutting when marked with orange paint above and below stump height, regardless of merchantability.

##### 2.1.15 - Hazard trees near roads (11/20)

Cut and remove all standing dead trees within 100 feet of the cleared portion of designated county roads. These trees may be utilized or must be scattered back into the Sale Area.

#### 2.2 - Utilization

##### 2.2.2 - Chipping required (2/18)

Payment Units 1 & 2 must be chip harvested to facilitate subsequent planting operations. The Purchaser has the option to produce sawlogs or pulpwood bolts, but the remaining portion of the trees must be chipped and hauled. A chipping exemption can be obtained if proposed operations are determined to be suitable for planting by reforestation staff. This exemption must be granted in writing. The requirement to retain approximately 1/6 to 1/3 of tree tops and limbs less than four inches in diameter is still applicable (G. C. & R. 2.2).

##### 2.2.3 - Stump heights (4/07)

Stump heights within Payment Units 1 & 2 shall not exceed 6 inches for all trees. This is in order to facilitate planting operations.

### 3 - Payments

#### 3.3 - Pre-measured Sales

##### 3.3.4 - Dividing payment units (7/14)

Payment Unit(s) may be divided at the request of the Purchaser and upon approval of the Unit Manager. Dividing Payment Units is a contract modification which requires a Timber Sale Contract Amendment. There will be only one division per Payment Unit.

#### 3.4 - Damaged Timber

##### 3.4.1 - Damaged timber (7/16)

General Condition and Requirement 3.4 Damaged Timber, defines liquidated damages for undesignated live merchantable trees which are cut or injured. No damage is acceptable to undesignated live merchantable trees. Within Payment Unit 3, if more than 20% of trees (> 4.5" DBH) within a specified area of the sale are damaged, liquidated damages will be assessed for all trees damaged. Rates will be in accordance with General Condition and Requirement 3.4 Damaged Timber.

### 4 - Transportation

## 4.1 - Construction

### 4.1.7 - Road closure (10/11)

All new roads built into the sale must be blocked to vehicle traffic upon completion of the sale. Overgrown roads that are reopened shall be considered new roads. In general, this will require constructing a four (4') foot high berm of stumps and logs covered with earth. Stumps and brush must be placed along the remainder of the trail. These roads must be rendered impassable to cars and trucks. Contact the Sale Administrator for specific details of design and placement.

## 5 - Operations

### 5.1 - Notification

#### 5.1.3 - Well heads and natural gas pipelines (11/15)

The Purchaser is responsible for contacting the gas or pipeline company 30 days prior to operating equipment in the vicinity of well heads or natural gas pipelines.

### 5.2 - Conduct of Operations

#### 5.2.1 - Slash

##### 5.2.1.8 - Slash height (12/08)

No slash may exceed 24 inches in height.

#### 5.2.3 - Operating Restrictions

##### 5.2.3.3 - Bark slippage restriction (3/09)

Within Payment Unit(s) 3, unless changed by written agreement, cutting and skidding are not permitted during the period of April 15 to July 15. This restriction is because of bark slippage.

##### 5.2.3.5 - Oak wilt restriction (1/18)

Within Payment Unit 4, unless changed by written agreement, cutting, skidding, hauling within the sale and brushing of access roads to the sale are not permitted during the period of April 15 to July 15. Operations may be allowed if specific steps are taken to prevent damaging uncut oak during the high risk period. Those steps may include completing all road brushing before April 15th and clearing a tree-length buffer along uncut oak cover before April 15th. This is necessary to reduce the spread of oak wilt. For more information, contact the Unit Manager or his/her representative.

##### 5.2.3.6 - Bark beetle restriction (12/08)

In the event drought creates a high risk of pine bark beetle infestation, pine is not to be cut during the period March 1 through July 1, unless all portions of trees greater than two inches in diameter are removed from the sale area, reduced to chips, or treated to the satisfaction of the Unit Manager or his/her representative, within fifteen days of being severed from the stump. Pine log decks, pulpwood piles and treetops that are piled for chipping in the fall or winter within a 1/4 mile of susceptible sites must be removed before March 15. Residual slash must not be placed in piles or rows and must be spread over the site for quick drying. The Department of Natural Resources will exercise this specification if the risk of damage warrants.

#### 5.2.32 - Decking/landing restoration (9/13)

All decking and landing areas must have the surface area restored to a condition equal to or better than before. This is to ensure the proper regeneration of the stand. Wood debris, chips and "cookies" from trimmings must be removed or scattered away from landing and loading areas and may not be windrowed on the edge.

#### 5.2.41 - Snowmobile trail protection (9/11)

LP 655 is a snowmobile trail and is shown on the Timber Sale Map. Do not cut or damage posts with orange trail markers or traffic control signs. If the trail is used, it must be maintained and restored to a condition equal to or better than before the sale. If the trail is used for hauling, it must be graded to the satisfaction of the Unit Manager or his/her representative prior to December 1. If the trail is to be used for hauling during the snowmobile season, then a snow-covered base must be left on the trail. The snowmobile trail may only be crossed at right angles. Maintain a 20-foot-wide slash, debris, and rut free zone daily using the snowmobile trail as the centerline. No decking of forest products will be permitted along the snowmobile trail. All stumps within 20 feet of the snowmobile trail must be cut at ground level.

## 6 - Safety and Fire Prevention

## 6.2 - Signing

### 6.2.1 - Road posting (10/20)

The Purchaser is responsible for posting and maintaining caution signs on Arnold Lake, Claroskee, & Angle Roads prior to beginning operations. The road must be posted at appropriate distances from the Sale Area to warn of logging activity and truck traffic. Signs must be removed when harvest operations are suspended or completed. The Purchaser will provide these signs.

### 6.2.2 - Snowmobile trail posting (10/20)

The Purchaser is responsible for posting and maintaining caution signs on the LP 655 Snowmobile Trail prior to beginning operations during the snowmobile season (approximately December 1 to March 31). The trail must be posted at appropriate distances from the Sale Area to warn of logging activity and truck traffic. Signs must be removed when harvest operations are suspended or completed. The Purchaser will provide these signs.



# TIMBER SALE MAP

This information provided by authority of Part 525, 1994 PA 451, as amended.

Sale Number	Year
73 - 006	23

Forest Management Unit	County	Mapped By	Date	Page	of
Gladwin Management Unit	Clare County	Behrmann	07/24/2023	1	3
Township	Range	Section(s) and Subdivision(s)	Scale		
20N	03W	Sec 32 SESE, Sec 33 SESE, Sec 1 NENW, Sec 4 S1/2NW	1:15,840		

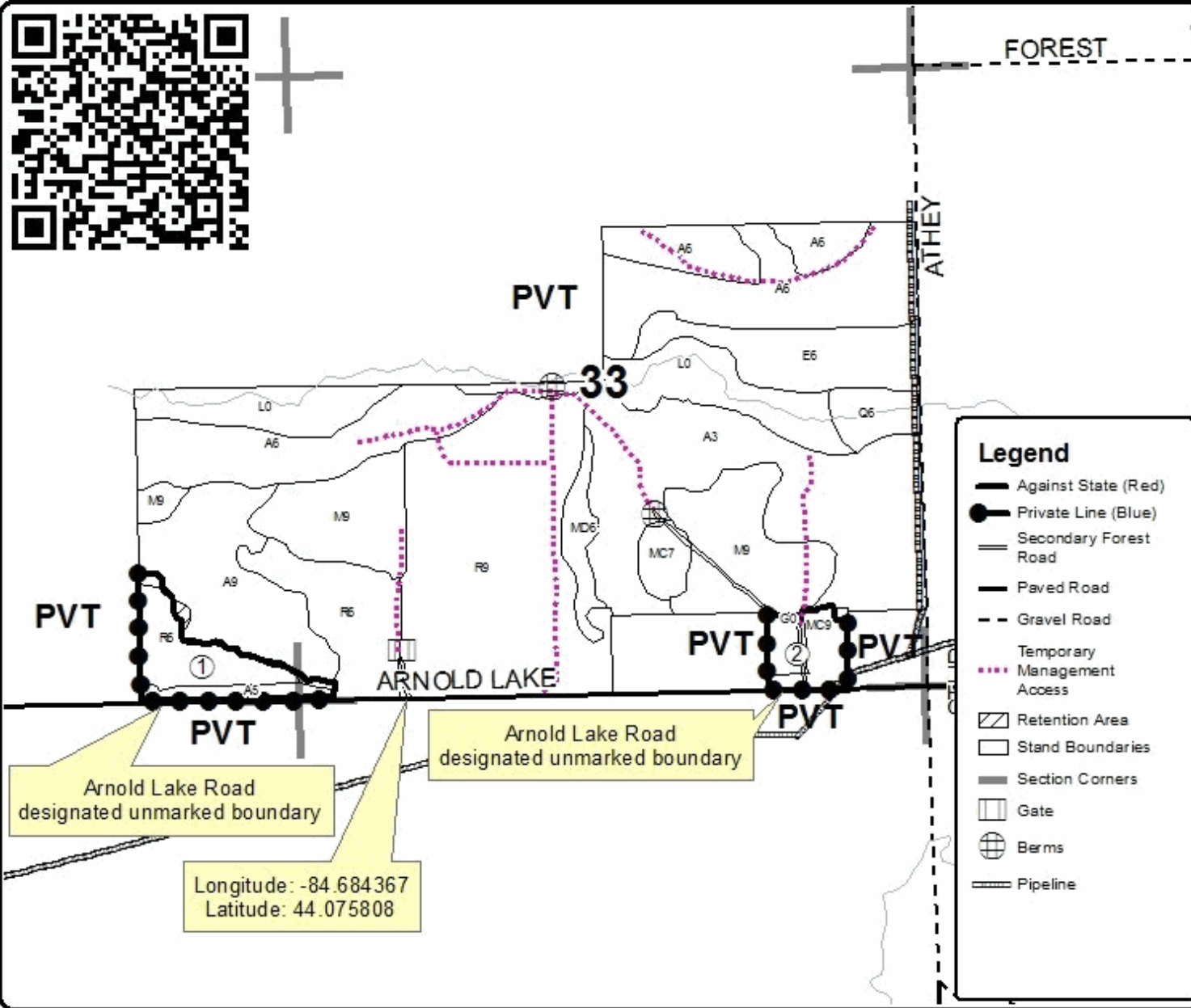
Cover Type				Density	
A = Aspen	H = Hemlock	N = Marsh	U = Upland Brush	0 = Non Stocked	5 = Pole Timber Medium
B = Paper Birch	J = Jack Pine	O = Oak	UM = Upland Mixed	1 = Seedling Sapling Poor	6 = Pole Timber Well
C = Cedar	L = Lowland Brush	P = Lowland Poplar	V = Bog or Marsh	2 = Seedling Sapling Medium	7 = Saw Timber Poor
D = Treed Bog	LM = Lowland Mixed	Q = Mxed Swamp Conifer	W = White Pine	3 = Seedling Sapling Well	8 = Saw Timber Medium
E = Swamp Hdwoods	M = Mpl, Boh, Brch	R = Red Pine	X = Non Stocked	4 = Pole Timber Poor	9 = Saw Timber Well
F = Spruce Fir	MC = Mixed Conifer	S = Black Spruce	Z = Water		
G = Grass	MD = Mixed Decidious	T = Tamarack			

PU	Acres	PU	Acres
1	17.7	3	4.8
2	10.1	4	67.2

## Arnie Lake Alert

### Compartment 2

99.8 Acres



Arnold Lake Road designated unmarked boundary

Arnold Lake Road designated unmarked boundary

Longitude: -84.684367  
Latitude: 44.075808



# TIMBER SALE MAP

This information provided by authority of Part 525, 1994 PA 451, as amended.

Sale Number	Year
73 - 006	23

Forest Management Unit	County	Mapped By	Date	Page	of
Gladwin Management Unit	Clare County	Behrmann	07/24/2023	2	3
Township	Range	Section(s) and Subdivision(s)	Scale		
20N	03W	Sec 32 SESE, Sec 33 SESE, Sec 1 NENW, Sec 4 S1/2NW	1:7,920		

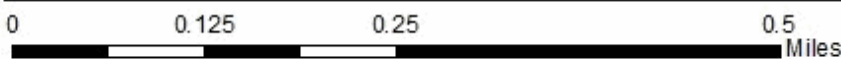
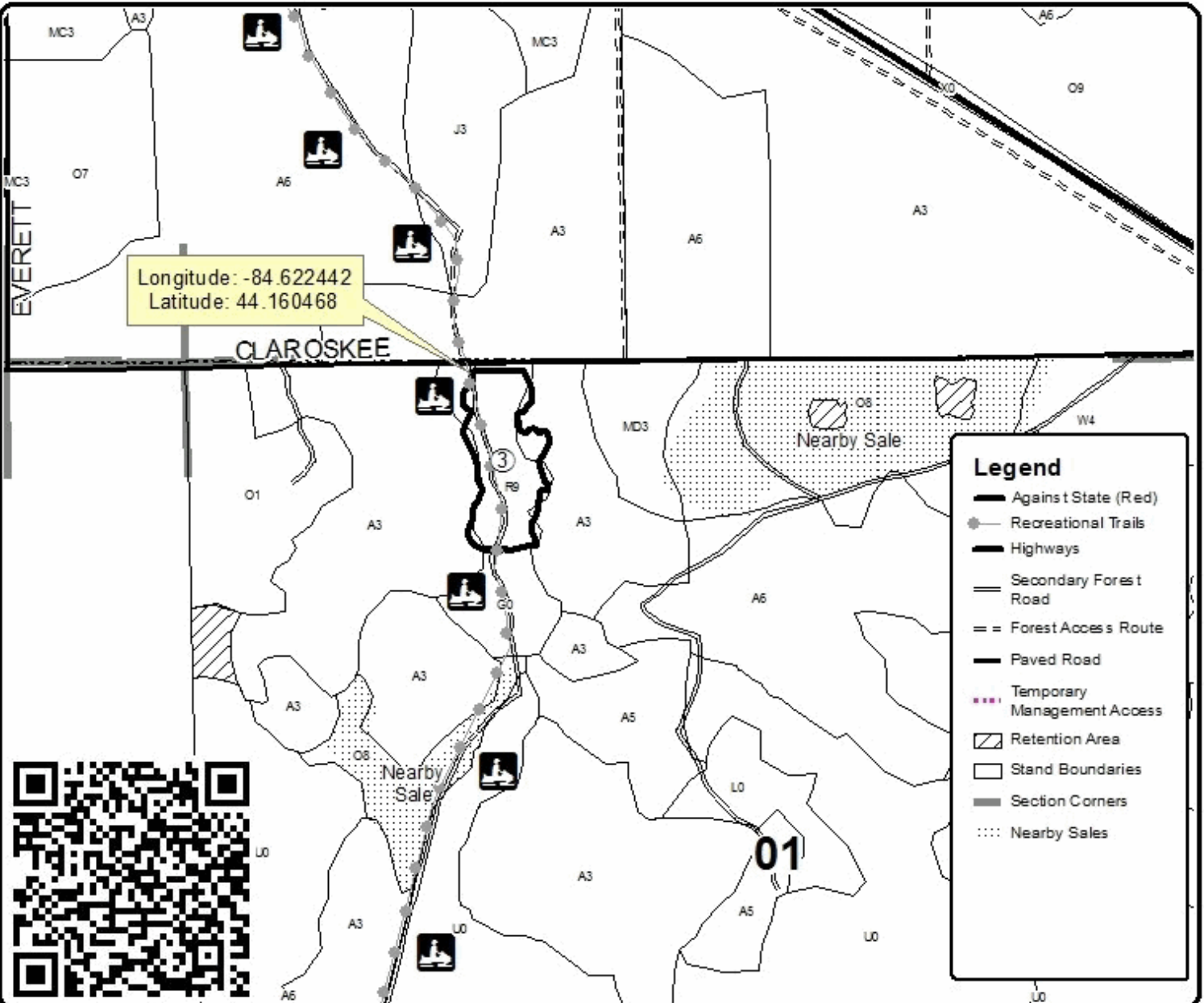
Cover Type				Density	
A = Aspen	H = Hemlock	N = Marsh	U = Upland Brush	0 = Non Stocked	5 = Pole Timber Medium
B = Paper Birch	J = Jack Pine	O = Oak	UM = Upland Mixed	1 = Seedling Sapling Poor	6 = Pole Timber Well
C = Cedar	L = Lowland Brush	P = Lowland Poplar	V = Bog or Marsh	2 = Seedling Sapling Medium	7 = Saw Timber Poor
D = Tread Bog	LM = Lowland Mixed	Q = Mixed Swamp Conifer	W = White Pine	3 = Seedling Sapling Well	8 = Saw Timber Medium
E = Swamp Hardwoods	M = Mpl, Boh, Brch	R = Red Pine	X = Non Stocked	4 = Pole Timber Poor	9 = Saw Timber Well
F = Spruce Fir	MC = Mixed Conifer	S = Black Spruce	Z = Water		
G = Grass	MD = Mixed Deciduous	T = Tamarack			

PU	Acres	PU	Acres
1	17.7	3	4.8
2	10.1	4	67.2

## Arnie Lake Alert

### Compartment 2

99.8 Acres





# TIMBER SALE MAP

This information provided by authority of Part 525, 1994 PA 451, as amended.

Sale Number	Year
73 - 006	23

Forest Management Unit	County	Mapped By	Date	Page	of
Gladwin Management Unit	Clare County	Behrmann	07/24/2023	3	3
Township	Range	Section(s) and Subdivision(s)	Scale		
20N	03W	Sec 32 SESE, Sec 33 SESE, Sec 1 NENW, Sec 4 S1/2NW	1:7,920		

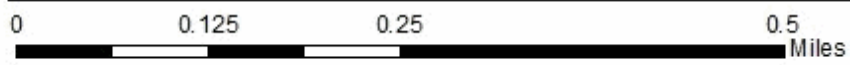
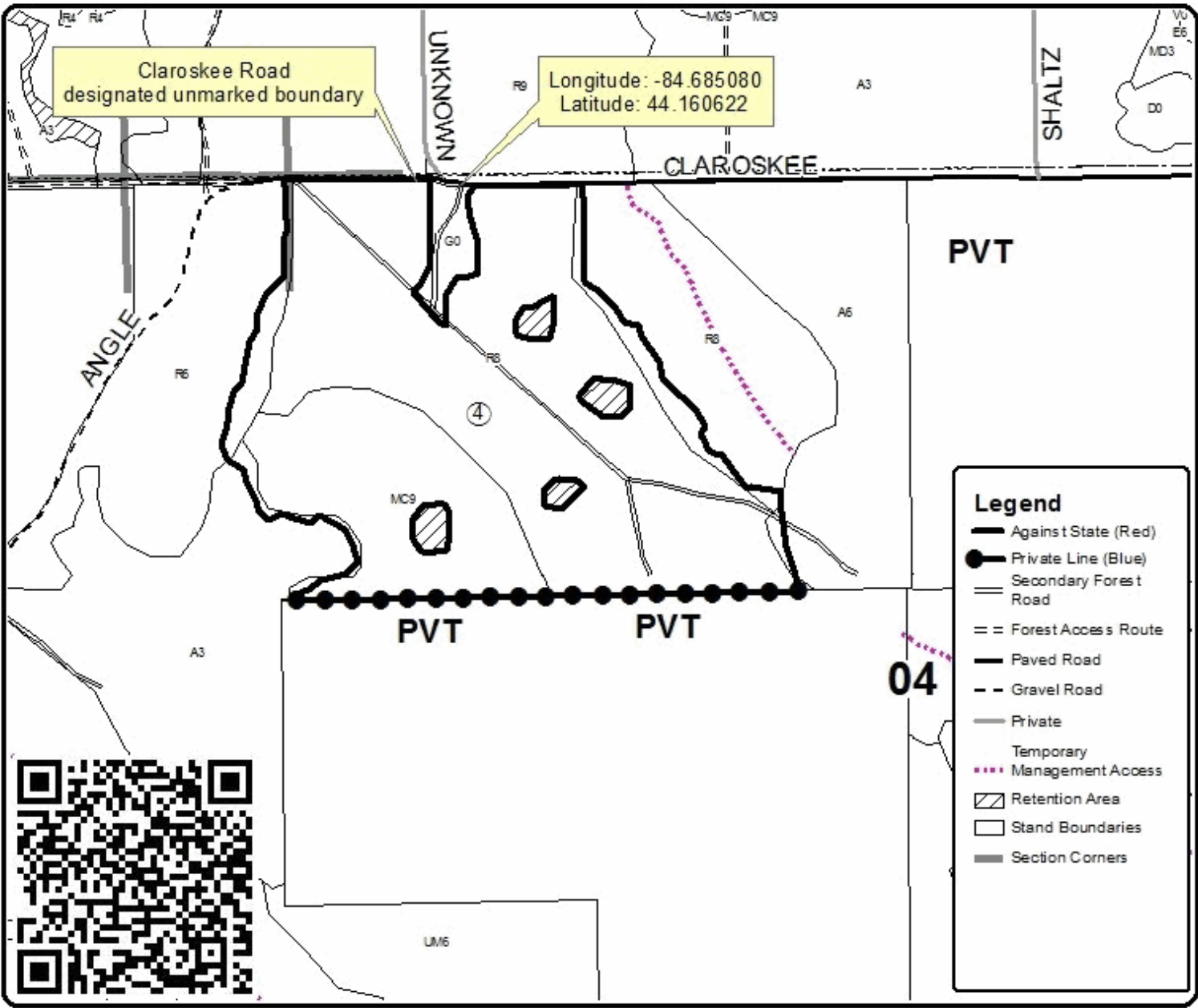
Cover Type				Density	
A = Aspen	H = Hemlock	N = Marsh	U = Upland Brush	0 = Non Stocked	5 = Pole Timber Medium
B = Paper Birch	J = Jack Pine	O = Oak	UM = Upland Mixed	1 = Seedling Sapling Poor	6 = Pole Timber Well
C = Cedar	L = Lowland Brush	P = Lowland Poplar	V = Bog or Marsh	2 = Seedling Sapling Medium	7 = Saw Timber Poor
D = Tread Bog	LM = Lowland Mixed	Q = Mixed Swamp Conifer	W = White Pine	3 = Seedling Sapling Well	8 = Saw Timber Medium
E = Swamp Hardwoods	M = Mpl, Boh, Brch	R = Red Pine	X = Non Stocked	4 = Pole Timber Poor	9 = Saw Timber Well
F = Spruce Fir	MC = Mixed Conifer	S = Black Spruce	Z = Water		
G = Grass	MD = Mixed Deciduous	T = Tamarack			

PU	Acres	PU	Acres
1	17.7	3	4.8
2	10.1	4	67.2

## Arnie Lake Alert

### Compartment 2

99.8 Acres



Arnie Lake Alert (73-006-23)  
T20N, R03W, SEC. 1; T20N, R03W, SEC. 32; T20N, R03W, SEC. 33; T20N, R03W,

In response to the notice of sale to be held 10:00 a.m. (local time) on May 9, 2024, I am hereby submitting my sealed bid ( firm offer) for the following forest products to be cut. Bids for individual species must be at or above the advertised price. All non-responsive bid forms may be rejected.

<u>PRODUCTS &amp; SPECIES</u>	<u>ESTIMATED VOLUME*</u>	<u>ADVERTISED PRICE</u>	<u>BID PRICE/UNIT</u>
<b>Sawtimber</b>			
Basswood	11.6 MBF	\$ 81.00/MBF	\$ _____
Black/Red (Hybrid) Oak	61.7 MBF	\$ 122.00/MBF	\$ _____
Mixed Aspen	31.4 MBF	\$ 68.00/MBF	\$ _____
Red Maple	6.0 MBF	\$ 65.00/MBF	\$ _____
Red Pine	687.6 MBF	\$ 135.00/MBF	\$ _____
Sugar Maple	38.8 MBF	\$ 326.00/MBF	\$ _____
White Oak	6.4 MBF	\$ 80.00/MBF	\$ _____
White Pine	166.6 MBF	\$ 65.00/MBF	\$ _____
<b>Pulpwood</b>			
Basswood	26 Cords	\$ 15.15/Cord	\$ _____
Beech	18 Cords	\$ 20.75/Cord	\$ _____
Jack Pine	7 Cords	\$ 25.45/Cord	\$ _____
Mixed Aspen	169 Cords	\$ 30.40/Cord	\$ _____
Mixed Hardwood	69 Cords	\$ 20.75/Cord	\$ _____
Mixed Oak	122 Cords	\$ 17.10/Cord	\$ _____
Paper Birch	10 Cords	\$ 22.40/Cord	\$ _____
Red Pine	966 Cords	\$ 56.50/Cord	\$ _____
White Pine	669 Cords	\$ 33.00/Cord	\$ _____

\*The volumes are statistically estimated within plus (+) or minus (-) 24.07 percent at 95% confidence level. These estimated volumes are final and not subject to adjustment. Prospective bidders are urged to examine this timber and to make their own estimates of quantity and quality.

I understand that any or all bids may be rejected. All bids must be signed and all bid items must be bid or the bid form may be rejected. I also understand that consideration and awarding a contract will be based upon my past performance and ability to complete the contract based upon equipment and staffing subject to my control.

FEDERAL ID: \_\_\_\_\_ or SOCIAL SECURITY NUMBER: \_\_\_\_\_

Company or individual bidding: \_\_\_\_\_

Company representative's name: \_\_\_\_\_

Address: \_\_\_\_\_

City: \_\_\_\_\_ State: \_\_\_\_\_ Zip: \_\_\_\_\_

IF AVAILABLE, PLEASE PLACE THE PERSONALIZED LABEL FROM YOUR PROSPECTUS IN THE ABOVE BOX.

Individual or company representative's signature: \_\_\_\_\_ Date: \_\_\_\_\_

Phone number : \_\_\_\_\_ Email (optional): \_\_\_\_\_

**THE WINNING BIDDER MUST COMPLETE THE VERIFICATION OF WORKER'S DISABILITY COMPENSATION ACT COMPLIANCE (ON REVERSE SIDE IF DOUBLE SIDED) WITHIN 21 DAYS OF SALE AWARD DATE**



<b>FOR DEPARTMENT USE ONLY</b>
Sale Number (XX - XXX - XX - XX)
Forest Management Unit:

## TIMBER SALE VERIFICATION OF WORKER'S DISABILITY COMPENSATION ACT COMPLIANCE

*As required by Act 317, P.A. 1969 (Worker's Compensation) and  
Part 5 of Act 451 of 1994, as amended.*

### VERIFICATION OF WORKER'S DISABILITY COMPENSATION ACT COMPLIANCE

- This verification must be completed and submitted within 21 days of contract award and prior to the issuance of the timber sale contract.
- In addition, if boxes 2B or 2C are checked, then Notice of Exclusion or Certificate of Insurance must be submitted within twenty-one (21) days of the contract award and prior to the issuance of the timber sale contract.
- All information must be typed or printed except for written signatures.

Please Check Appropriate Categories:

1. My business is organized as (you **must** check one of the boxes below):
  - A.  Sole Proprietorship (individual)
  - B.  Partnership
  - C.  Corporation
2. You **must** check one of the boxes below:
  - A.  I certify my business is a sole proprietorship and it has no employees but the sole proprietor. I am not subject to the Worker's Compensation Laws.
  - B.  I certify my business has satisfied its obligation to the Worker's Compensation Act through the use of an approved Notice of Exclusion (BWC-337, Rev. 5/96). I will provide a copy of the Notice of Exclusion within 21 days of the contract award. (For questions or a copy of the BWC-337, please call the Worker's Compensation Bureau at 517-322-1195).
  - C.  I certify my business has a Worker's Compensation Policy. I will provide an original Certificate of Insurance within twenty-one (21) days of the contract award.
3. If you have checked item 2(A) or 2(B), you **must** indicate the number of **both** full-time and part-time employees, other than yourself, including family members and active partners (if none, you must enter "0").

\_\_\_\_\_ Full-time Employees

\_\_\_\_\_ Part-time Employees

Name of Business		Federal ID (or) Social Security No.	
Address		Telephone (       )	
City	State	ZIP	

*I hereby certify that the above information is true and correct. I agree to notify the Michigan DNR of any changes that occur in factors affecting my coverage during any of my present and future operations.*

\_\_\_\_\_  
Signature of Owner or Authorized Representative

\_\_\_\_\_  
Title

\_\_\_\_\_  
Date

**Please complete the "SEALED BID" information on the next page**