



**DEPARTMENT OF NATURAL RESOURCES
STATE OF MICHIGAN
TIMBER SALE PROSPECTUS #7386**

SCHEDULED SALE DATE AND TIME: 3:00 p.m. (local time) on February 27, 2024.

LOCATION: NAUBINWAY DNR FIELD OFFICE, PO BOX 287, US 2 W11569, NAUBINWAY, MI 49762.

PROSPECTUS NOTE: The bidder is advised to inspect the sale area and review the location, estimated volumes, operating costs and contract terms of proposed sales. Please be aware that some landowners may request 60 days or more notice for access across their land.

Notice is hereby given that bids will be received by the Unit Manager, SAULT STE MARIE MANAGEMENT UNIT, for certain timber on the following described lands:

Copy That HW (45-102-24) / T43N, R07W, SEC. 22, NWNE,S1/2NE,SE.
T43N, R07W, SEC. 23, NWSW.

Mackinac County, Advertised Price \$88,036.05, 109.8 Acres, Hardwood, Sugar Maple.

Icebreaker Mix (45-104-24) / T43N, R07W, SEC. 27, S1/2NW,SWNE,N1/2SW,SESW,SE.

Mackinac County, Advertised Price \$82,389.80, 100.2 Acres, Spruce/Fir/Tamarack, Aspen.

Porcupine Soup Aspen (45-106-24) / T43N, R07W, SEC. 22, E1/2NW,W1/2NE,E1/2SW,W1/2SE.

Mackinac County, Advertised Price \$25,081.00, 47.6 Acres, Aspen, Hardwood.

BID INSTRUCTIONS (VER. 10/10/2022):

1. Scheduled Bid Location, Date, and Time (2/11)

Bids must be received by the Unit Manager, NAUBINWAY DNR FIELD OFFICE, PO Box 287 US 2 W11569, Naubinway, MI 49762, no later than 3:00 p.m. (local time) on February 27, 2024. For further information concerning this sale, contact Josh Brinks at 906-203-0210 extension .

2. Bidder's Qualifications (10/22)

If all or part of a timber sale was prepared by a private contractor, the contractor and that contractor's company are not permitted to bid on the timber sale. A person must be 18 years of age or older to purchase timber. Permanent employees of the Department of Natural Resources or members of their immediate household may not bid. Former employees, in the permanent or seasonal class, may not bid until 3 months after the last day of active duty. Bids will not be accepted from individuals or companies appearing on the DNR/FRD No-Bid List. This list contains the names of purchasers who previously failed to execute a contract within 21-days or who have a history of poor performance.

3. Preparation of Sealed Bids (5/16)

Bid Forms may be completed online thru Michigan DNR Timber Sale Online Bidding (OLB) at www.michigan.gov/timberbidding or by completing the hardcopy Bid Form found in the Timber Sale Prospectus . Hardcopy Bid Forms shall be manually signed in ink. Registration in OLB is considered your 'signature' for all bids submitted thru that system. Bid prices must be entered for each species and product in the Bid Price column for all material subject to bidding and all fill-in blanks must be completed. If erasures or other changes appear on the hardcopy Bid Form, each erasure or change must be initialed by the person signing the bid.

4. Submission of Sealed Bids (5/16)

Bid forms may be obtained from the Unit Manager or thru OLB. Bids may be submitted hardcopy or thru OLB. All hardcopy bids must be submitted on the bid form and in an envelope clearly identified as described in this section. NOTE: Only one bid form per bid envelope. Sealed bids must be submitted to the Unit office designated in the prospectus and must be submitted at or prior to the time established in the prospectus. The envelope should show on the outside (a) the sale name or number and (b) the date and time of bid opening, as shown in the prospectus. Bids received after the time specified in the sale prospectus are late bids and will be rejected.

It is possible for a bidder to submit multiple bids on a single sale. For example, a bid may be submitted hardcopy and a bid may be submitted thru OLB. Or, two bidders from the same company could both submit bids on the same sale. If this were to happen, the State would accept all bids received and award the contract accordingly. All bidding and contractual requirements would apply to all bids received.

5. Public Opening of Sealed Bids (7/16)

If conditions permit, the sealed bids will be publicly opened and posted at the time and place set in the prospectus.

If a bidder, present at a bid opening, has submitted bids on more than one sale, that bidder may withdraw their unopened bid envelopes or announce the withdrawal of their online bid after being declared the successful bidder on one sale.

6. Award of Contract (1/11)

Award of the contract will be made to the Bidder whose bid, conforming to the prospectus, is most advantageous to the State of Michigan on the basis of total value at rates bid for the estimated quantities. The State reserves the right to reject any bid or waive any minor irregularity in bids received. A written award mailed (or otherwise furnished) to the successful Bidder shall be deemed to result in a binding contract without further action by either party.

7. Down Payment (1/11)

The Bidder to whom award is made must make a down payment within 21 days of the sale award. The amount of the down payment will be calculated as shown in the Bond and Payment Schedule of this prospectus. Only cash may be used to meet this requirement.

8. Performance Security (1/11)

As guarantee of faithful performance, a cash bond, certificate of deposit, surety bond or irrevocable letter of credit (LOC) is required within 21 days of the sale award. The amount of the performance security is shown in the Bond and

Payment Schedule of this prospectus. If an LOC or surety is used, the coverage must extend for at least 6 months beyond the contract expiration.

9. Worker's Compensation (10/22)

Purchaser shall obtain worker's compensation insurance to cover claims under Michigan's Worker's Disability Compensation Act of 1969 or similar employee benefit act of any other state applicable to an employee. Verification of Worker's Disability Compensation Act Compliance must be completed and submitted within 21 days of contract award and prior to the issuance of the timber sale contract. In addition, if applicable, Notice of Exclusion or Certificate of Insurance must also be submitted.

10. Timber Sale Contract (10/22)

Additional conditions and requirements common to all timber sales are listed on the timber sale contract (R4031) and are available on line at www.michigan.gov/timber. Contact the Unit Manager for additional information or a sample contract. Within 21 days of the date of the award letter, the bidder must sign the contract and provide the required down payment, performance security, and verification of worker's disability compensation. The down payment and performance security shall be in accordance with the provisions of the timber sale contract, in the sums stated in this prospectus. If these actions are not taken, then the Bidder, the Bidder's corporation, and the corporation's principals may not be permitted to bid on State timber sales for a period of 3 months after the first offense, 6 months after the second offense, and 1 year after the third offense. An offense will only be counted against the Bidder for 5 years. In addition, the Bidder certifies that if awarded this contract, the Bidder will complete the timber sale contract in accordance with its terms and any modifications thereof including requirements to purchase, cut, and remove the included timber by the expiration date.

Payment Unit values in the State Forest Timber Sale Contract are calculated based on the advertised value of the Payment Unit as a percentage of the total advertised value of the contract. The advertised value of each Payment Unit is given in the Description of Timber by Payment Unit table on the Timber Sale Information page. For example, if the value of Payment Unit 1 is advertised as \$1,500 and the total Timber Sale value is advertised as \$10,000, the contract price for Payment Unit 1 will be 15% of the total bid price ($\$1,500/\$10,000 * 100$).

11. Disclaimer of Estimates and Bidder's Warranty of Inspection (10/22)

Before submitting this bid, the Bidder is advised and cautioned to inspect the sale area, review the requirements of the sale contract, and take other steps as may be reasonably necessary to ascertain the location, estimated volumes, construction estimates, and operating costs of the proposed sale. Failure to do so will not relieve the Bidder from responsibility for completing the contract.

The Bidder warrants that this bid is submitted solely on the basis of the Bidder's examination and inspection of the quality and quantity of the timber offered for sale and the Bidder's opinion of the value thereof and the costs of recovery. No reliance should be placed on the State of Michigan's estimates of timber quality, quantity or costs of recovery. Bidder further acknowledges that the State of Michigan: (i) expressly disclaims any warranty of fitness of timber for any purpose; (ii) offers this timber as is without any warranty of quality (merchantability) or quantity and (iii) expressly disclaims any warranty as to the quantity or quality of timber sold.

12. Certification and Chain-of-Custody (10/22)

Unless otherwise indicated in the contract under section 7 – Other Conditions of the Sale Specific Conditions & Requirements, the area encompassed by this timber sale is certified to the standards of the Forest Stewardship Council (FSC) - Certificate #SCS-FM/COC-00090N and the Sustainable Forestry Initiative (SFI) - Certificate #NSF-SFIS-5Y031-SF5. Forest products from this sale may be delivered to the mill as "FSC 100% and / or SFI certified" as long as the contractor hauling the forest products is chain-of-custody (COC) certified or covered under a COC certificate from the destination mill. The purchaser is responsible for maintaining COC after leaving the sale area.

13. Good Neighbor Authority (GNA) Requirements (10/22)

If the name of this timber sales contains the acronym GNA, it is authorized by the Good Neighbor Authority (GNA) and covered by various agreements between the U.S. Forest Service and the State. The timber sale occurs on federal land and the following conditions apply:

GNA contracts on US Forest Service land will not be awarded to purchasers on the Federal list of excluded parties. The System for Award Management (SAM) will be checked for active excluded parties prior to award of contract. In

addition, the Bidder to whom award is made must complete an Assurance Regarding Felony Conviction or Tax Delinquent Status for Corporate Applicants (AD-3031).

14. Good Neighbor Authority (GNA) Requirements, con't (10/22)

Bidder certifies, by signing this bid form, that to the best of Bidder's knowledge that the following representations are accurate and complete.

- a. That the Bidder and its principals are not presently debarred, suspended, proposed for debarment, declared ineligible, or voluntary excluded from timber sales (covered transactions) by any Federal department or agency.
- b. That the Bidder and its principals have not within a 3-year period preceding this bid been convicted of or had a civil judgment rendered against them for commission of fraud or a criminal offense in connection with obtaining , attempting to obtain, or performing a public (Federal, State, or local) transaction or contract under a public transaction; violation of Federal or State antitrust statutes or commission of embezzlement, theft, forgery, bribery, falsification or destruction of records, making false statements, or receiving stolen property.
- c. That the Bidder and its principals are not presently indicted for or otherwise criminally or civilly charged by a governmental entity (Federal, State, or local) with commission of any of the offenses enumerated in paragraph b of this certification.
- d. That the Bidder and its principals have not within a 3-year period preceding this bid had one or more public transactions (Federal, State, or local) terminated for breach or default of a timber or forest product contract.

Bidders that cannot certify this requirement, in whole or in part, shall submit an explanation with their bid.

Scott Bowen
Director

TIMBER SALE INFORMATION

Copy That HW (45-102-24)

T43N, R07W, SEC. 22; T43N, R07W, SEC. 23.
Mackinac County (Advertised Price \$88,036.05)

A timber sale contract for this lump sum, sealed bid timber sale will be awarded to the responsible bidder offering the highest sealed bid price. All units of volume listed below were estimated using the Inventory Manager computer program and the new Michigan taper model. Bids must be at or above the following advertised price for each product and species:

<u>PRODUCTS & SPECIES</u>	<u>ESTIMATED UNITS*</u>	<u>ADVERTISED PRICE</u>
Sawtimber		
Beech	3.2 MBF	\$ 117.00 / MBF
Black Cherry	0.6 MBF	\$ 102.00 / MBF
Paper Birch	1.0 MBF	\$ 16.00 / MBF
Red Maple	59.6 MBF	\$ 106.00 / MBF
Sugar Maple	262.5 MBF	\$ 260.00 / MBF
Pulpwood		
Balsam Fir	41 Cords	\$ 6.30 / Cord
Mixed Aspen	139 Cords	\$ 25.15 / Cord
Mixed Hardwood	812 Cords	\$ 11.40 / Cord
Paper Birch	2 Cords	\$ 2.95 / Cord

* The total volume is statistically estimated within plus (+) or minus (-) 24.05 percent. There are an estimated 1,759 cords on this timber sale, plus or minus 423 cords at the 95% confidence level. The estimated units are final and not subject to adjustment. Prospective bidders are urged to examine this timber and to make their own estimates of quantity and quality.

BOND AND PAYMENT SCHEDULE:

1. A bond in the amount of \$8,804.00 to insure faithful performance of the conditions of the contract will be deposited by the successful bidder within 21 days of the sale award.
2. Cutting in any sale or unit without the required advance payment would be considered a trespass.
3. Total payment must be paid in advance or according to the following schedule :
 - (a) Ten percent (10%) of the sale value must be paid within 21 days of the sale award.
 - (b) The 10% down payment will be credited towards the first unit cut.
 - (c) Payment for each of the following units must be made before cutting begins in that unit:

PAYMENT UNIT NUMBER	PERCENT OF TOTAL SALE VALUE
01	35.1%
02	39.0%
03	16.0%
04	9.9%
4. If no cutting takes place, the 10% down payment will not be refunded.
5. Operations on the contract issued will terminate on 12/31/2026.

SALE STATISTICS

Volumes were calculated in cubic feet using the Michigan taper model. Cubic foot volume includes all wood inside bark for the product indicated. For display purposes, cubic feet were converted to cords and MBF using a simple conversion factor, e.g. 79 cubic feet per cord and 185 cubic feet per MBF. The cubic foot volumes are precise; the cords and MBF volumes are not. Cubic foot volume cannot be directly converted to cords or boards with precision.

SALE VOLUMES

The total estimated sale volume may not equal the sum of the species/products due to the nature of statistical calculations associated with double sampling methodology.

VOLUME		STATISTICAL RANGE IN CORDS		
TOTAL CUBIC FEET	TOTAL CORDS	PERCENT ERROR	MINIMUM	MAXIMUM
138,956	1,759	24.05%	1,336	2,182

VDU VOLUMES

A VDU is a Volume Determination Unit. Volumes and their associated statistics are calculated at the VDU level and summarized to the sale level. There is often a one to one relationship between a VDU and a Payment Unit, but not always, depending on the cruise design. Refer to the VDU TO PAYMENT UNIT table.

VDU	VOLUME		PERCENT ERROR	RANGE IN CORDS	
	TOTAL CUBIC FEET	TOTAL CORDS		MINIMUM	MAXIMUM
17	87,832	1,112	14.16%	954	1,269
24	51,123	647	24.84%	486	808
TOTAL:	138,956	1,759		1,441	2,077

VDU TO PAYMENT UNIT

When a VDU is associated with more than one Payment Unit (PU), the VDU volumes are assigned to the PU based on acres of the VDU within the PU.

VDU	VDU ACRES	PU	PU ACRES
17	71.4	1	33.8
		2	37.6
24	38.4	3	23.8
		4	14.6
TOTAL:	109.8		109.8

DESCRIPTION OF TIMBER BY PAYMENT UNIT (PU)

PU	MARKET GROUP	PRODUCT	QUANTITY	UNIT	ACRES	ADVERTISE PRICE	
1	Beech	Sawtimber	0.8	MBF	33.8	\$30,937.10	
	Black Cherry		0.3	MBF			
	Red Maple		7.5	MBF			
	Sugar Maple		103.6	MBF			
	Balsam Fir		Pulpwood	2			Cords
	Mixed Aspen			6			Cords
	<i>B. T. Aspen</i>			6			Cords
	Mixed Hardwood			256			Cords
	<i>Beech</i>			14			Cords
	<i>Black Cherry</i>			1			Cords
	<i>Red Maple</i>			15			Cords
	<i>Sugar Maple</i>			226			Cords
2	Beech	Sawtimber	0.9	MBF	37.6	\$34,375.10	
	Black Cherry		0.3	MBF			
	Red Maple		8.3	MBF			
	Sugar Maple		115.2	MBF			
	Balsam Fir		Pulpwood	3			Cords
	Mixed Aspen			6			Cords
	<i>B. T. Aspen</i>			6			Cords
	Mixed Hardwood			284			Cords
	<i>Beech</i>			15			Cords
	<i>Black Cherry</i>			1			Cords
	<i>Red Maple</i>			17			Cords
	<i>Sugar Maple</i>			251			Cords
3	Beech	Sawtimber	0.9	MBF	23.8	\$14,051.95	
	Paper Birch		0.6	MBF			
	Red Maple		27.1	MBF			
	Sugar Maple		27.1	MBF			
	Balsam Fir		Pulpwood	22			Cords
	Mixed Aspen			78			Cords
	<i>B. T. Aspen</i>			66			Cords
	<i>Quaking Aspen</i>			12			Cords
	Mixed Hardwood			168			Cords
	<i>Beech</i>			3			Cords
	<i>Black Cherry</i>			3			Cords
	<i>Red Maple</i>			79			Cords
	<i>Sugar Maple</i>		83	Cords			
	Paper Birch		1	Cords			
4	Beech	Sawtimber	0.6	MBF	14.6	\$8,671.90	
	Paper Birch		0.4	MBF			
	Red Maple		16.7	MBF			
	Sugar Maple		16.6	MBF			
	Balsam Fir		Pulpwood	14			Cords
	Mixed Aspen			49			Cords
	<i>B. T. Aspen</i>			41			Cords
	<i>Quaking Aspen</i>			8			Cords
	Mixed Hardwood			104			Cords
	<i>Beech</i>			2			Cords
	<i>Black Cherry</i>			2			Cords
	<i>Red Maple</i>			49			Cords
	<i>Sugar Maple</i>		51	Cords			
	Paper Birch		1	Cords			
TOTAL:			326.9	MBF			
TOTAL:			994	Cords			

Sale Specific Conditions & Requirements

Sale Name: Copy That HW

Sale Number: 45-102-24 Seq#: 1

1 - Sale Area

1.2 - Boundaries

1.2.1 - Painted boundaries (9/19)

The sale boundary and Payment Unit boundaries are marked and identified by red and yellow paint, along with a road. Exterior sale boundary lines against state are marked with red paint, with the exception of the northern boundary of Payment Unit 2, which is unpainted and identified by Hiawatha Trail. Interior Payment Unit boundaries are marked with yellow paint, with the exception of the interior Payment Unit boundary between Payment Units 2 & 3 and 2 & 4 which are unpainted and identified by Hiawatha Trail. Yellow painted trees designating an interior Payment Unit boundary are only to be cut when all surrounding Payment Units have been paid and marked with orange paint.

2 - Timber Specifications

2.1 - Included Timber

2.1.3 - Cut tree marked unit(s) (12/08)

Within Payment Unit(s) 1-4, all trees are designated for cutting when marked with orange paint above and below stump height, regardless of merchantability. Additionally, cut all aspen and balsam fir that are four (4) inches or more at DBH, unless marked with green paint.

2.2 - Utilization

2.2.9 - No chipping permitted (12/08)

Within Payment Unit(s) 1-4, all wood must be removed by tree segment or roundwood. No chipping is permitted.

3 - Payments

3.3 - Pre-measured Sales

3.3.4 - Dividing payment units (7/14)

Payment Unit(s) 1-4 may be divided at the request of the Purchaser and upon approval of the Unit Manager. Dividing Payment Units is a contract modification which requires a Timber Sale Contract Amendment. There will be only one division per Payment Unit.

4 - Transportation

4.1 - Construction

4.1.3 - Slash and earthen piles (8/04)

Piles or windrows of earth along roads and landings that have been widened or constructed shall be leveled. Slash from road maintenance or construction, including stumps, shall be dispersed throughout the sale.

4.1.4 - Timber removed for construction (3/23)

Trees cut or damaged in the process of pre-approved road, landing or skid trail construction will be decked in an area separate from other Designated Timber and not removed until measured by the sale administrator. Payment will be made at contract prices or average prices, if not on the contract.

4.1.6 - Road construction (1/09)

Construction of new roads or improvements of existing roads shall be done in such a way as to minimize the environmental and visual impacts. Merchantable trees shall be cut and utilized unless otherwise directed. Non-merchantable trees shall be severed and laid flat on the ground. Slash shall be scattered, and not left in windrows and kept a minimum of 10 feet back from the road edge. Stumps shall be set upright, not left on edge, and be moved at least 10 feet away from the road edge. Disturbed soil shall be feathered into the woods and not left in berms or windrows.

4.2 - Maintenance

4.2.3 - Road maintenance (8/13)

The following road maintenance is required: Within 60 days of completion of hauling, or if no hauling occurs for 60 days, the road must be maintained and graded. This includes cleaning of drainage areas, grading, crowning and filling with gravel, if necessary. Damages will be assessed if grading/repair does not occur.

4.2.5 - Two wheel drive condition (2/04)

All existing trail roads on and adjacent to the sale area must be passable by two-wheel drive traffic for the duration of the sale.

5 - Operations

5.2 - Conduct of Operations

5.2.2 - Hazard Trees/Snags

5.2.2.1 - Den trees (10/16)

Obvious hollow and/or den trees shall be protected and left standing unless they are a safety hazard.

5.2.3 - Operating Restrictions

5.2.3.3 - Bark slippage restriction (3/09)

Within Payment Unit(s) 1-4, unless changed by written agreement, cutting and skidding are not permitted during the period of May 1 to July 15. This restriction is because of bark slippage.

5.2.32 - Decking/landing restoration (9/13)

All decking and landing areas must have the surface area restored to a condition equal to or better than before. This is to ensure the proper regeneration of the stand. Wood debris, chips and "cookies" from trimmings must be removed or scattered away from landing and loading areas and may not be windrowed on the edge.

5.2.38 - No decking against live trees (2/04)

Cut products may not be decked against unmarked or designated leave trees.

5.8 - Protection of Endangered Species

5.8.5 - Protection of raptor nests (3/13)

All trees with raptor nests will be protected if found during harvesting operations. Notification will be made to the Unit Manager or his/her representative who will notify the Wildlife Biologist so an on-site evaluation and recommendation can be made, if necessary.

5.8.7 - Protection of walking fern habitat (9/08)

If walking fern is discovered on boulders within the sale area, operations in that immediate area should be suspended and the Unit Manager contacted. The contract may be amended to protect these sites. An area surrounding the boulders could be designated as a "no-cut" zone with appropriate adjustments made to the State Forest Timber Sale Contract.

6 - Safety and Fire Prevention

6.2 - Signing

6.2.1 - Road posting (10/20)

The Purchaser is responsible for posting and maintaining caution signs on Hiawatha Trail prior to beginning operations. The road must be posted at appropriate distances from the Sale Area to warn of logging activity and truck traffic. Signs must be removed when harvest operations are suspended or completed. The Purchaser will provide these signs.



TIMBER SALE MAP

This information provided by authority of Part 525, 1994 PA 451, as amended.

Sale Number 45-102-24	Date 12/06/2023
Scale 1:7,920	Page 1
	Of 1

Forest Management Unit Sault Ste Marie Mgt Unit	County Mackinac	Mapped By: Plato
		Cruised By: Contractor

Township 43N	Range 07W	Section(s) and Subdivision(s) Sec. 22 NWNE,S1/2NE,SE; Sec. 23 NWSW;
-----------------	--------------	---

Cover Type			
A = Aspen	J = Jack Pine	O = Oak	U = Upland Brush
B = Paper Birch	K = Rock	P = Lowland Poplar	UM = Upland Mix Forest
C = Cedar	L = Lowland Brush	Q = Mixed Swamp Conifer	V = Bog or Marsh
D = Treed Bog	LM = Lowland Mix Forest	R = Red Pine	W = White Pine
E = Swamp Hardwoods	M = Maple, Beech, Birch	S = Black Spruce	X = Non Stocked
F = Spruce/Fir	MC = Mixed Conifer	T = Tamarack	Y = Sand
G = Grass	MD = Mixed Deciduous	Z = Water	
H = Hemlock	N = Marsh		

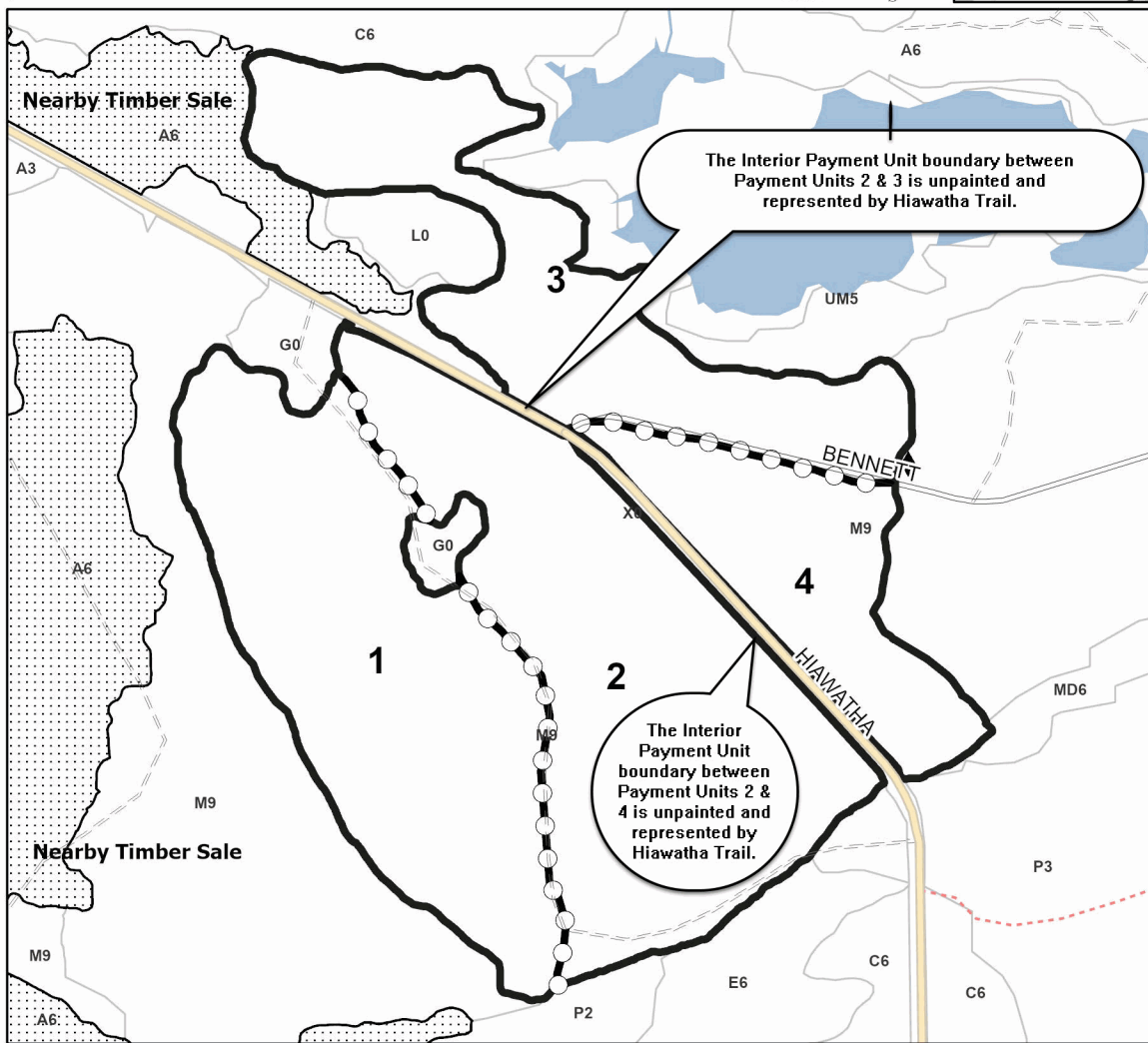
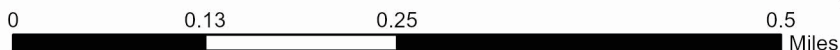
Density	
0 = Non Stocked	5 = Pole Timber Medium
1 = Seedling Sapling Poor	6 = Pole Timber Well
2 = Seedling Sapling Medium	7 = Saw Timber Poor
3 = Seedling Sapling Well	8 = Saw Timber Medium
4 = Pole Timber Poor	9 = Saw Timber Well

PU #	Acres
1	33.8
2	37.7
3	23.8
4	14.6

Copy That HW

109.8 Acres

Locator Map (1:200,000)



Legend

- Sale Boundary (Red & Hiawatha Trl.)
- Stand
- Payment Unit (Yellow)
- Paved Road
- Gravel Road
- County Road - Seasonal
- Private Road
- Secondary Forest Road
- Forest Access Route
- Administrative Access Only
- Non-DNR Road
- Survey Grade Corner
- Nearby Timber Sale

Use QR Code to open Map in App



TIMBER SALE INFORMATION

Icebreaker Mix (45-104-24)

T43N, R07W, SEC. 27.

Mackinac County (Advertised Price \$82,389.80)

A timber sale contract for this lump sum, sealed bid timber sale will be awarded to the responsible bidder offering the highest sealed bid price. All units of volume listed below were estimated using the Inventory Manager computer program and the new Michigan taper model. Bids must be at or above the following advertised price for each product and species:

<u>PRODUCTS & SPECIES</u>	<u>ESTIMATED UNITS*</u>	<u>ADVERTISED PRICE</u>
Pulpwood		
Balsam Fir	661 Cords	\$ 6.30 / Cord
Jack Pine	7 Cords	\$ 39.05 / Cord
Mixed Aspen	1,010 Cords	\$ 25.15 / Cord
Mixed Hardwood	70 Cords	\$ 11.40 / Cord
Paper Birch	34 Cords	\$ 2.95 / Cord
Red Pine	395 Cords	\$ 109.50 / Cord
White Pine	501 Cords	\$ 10.45 / Cord
White Spruce	586 Cords	\$ 5.40 / Cord

* The total volume is statistically estimated within plus (+) or minus (-) 26.98 percent. There are an estimated 3,264 cords on this timber sale, plus or minus 881 cords at the 95% confidence level. The estimated units are final and not subject to adjustment. Prospective bidders are urged to examine this timber and to make their own estimates of quantity and quality.

BOND AND PAYMENT SCHEDULE:

1. A bond in the amount of \$8,239.00 to insure faithful performance of the conditions of the contract will be deposited by the successful bidder within 21 days of the sale award.
2. Cutting in any sale or unit without the required advance payment would be considered a trespass.
3. Total payment must be paid in advance or according to the following schedule :
 - (a) Ten percent (10%) of the sale value must be paid within 21 days of the sale award.
 - (b) The 10% down payment will be credited towards the first unit cut.
 - (c) Payment for each of the following units must be made before cutting begins in that unit:

PAYMENT UNIT NUMBER	PERCENT OF TOTAL SALE VALUE
01	3.6%
02	5.2%
03	9.0%
04	40.3%
05	7.3%
06	17.3%
07	17.3%
4. If no cutting takes place, the 10% down payment will not be refunded.
5. Operations on the contract issued will terminate on 12/31/2026.

SALE STATISTICS

Volumes were calculated in cubic feet using the Michigan taper model. Cubic foot volume includes all wood inside bark for the product indicated. For display purposes, cubic feet were converted to cords and MBF using a simple conversion factor, e.g. 79 cubic feet per cord and 185 cubic feet per MBF. The cubic foot volumes are precise; the cords and MBF volumes are not. Cubic foot volume cannot be directly converted to cords or boards with precision.

SALE VOLUMES

The total estimated sale volume may not equal the sum of the species/products due to the nature of statistical calculations associated with double sampling methodology.

VOLUME		STATISTICAL RANGE IN CORDS		
TOTAL CUBIC FEET	TOTAL CORDS	PERCENT ERROR	MINIMUM	MAXIMUM
257,819	3,264	26.98%	2,383	4,144

VDU VOLUMES

A VDU is a Volume Determination Unit. Volumes and their associated statistics are calculated at the VDU level and summarized to the sale level. There is often a one to one relationship between a VDU and a Payment Unit, but not always, depending on the cruise design. Refer to the VDU TO PAYMENT UNIT table.

VDU	VOLUME		PERCENT ERROR	RANGE IN CORDS	
	TOTAL CUBIC FEET	TOTAL CORDS		MINIMUM	MAXIMUM
36	58,879	745	21.35%	586	904
41	71,798	909	24.52%	686	1,132
48	30,086	381	33.12%	255	507
54	47,282	599	28.99%	425	772
59	35,248	446	31.28%	307	586
411	8,377	106	40.05%	64	149
481	6,149	78	39.01%	47	108
TOTAL:	257,819	3,264		2,370	4,158

VDU TO PAYMENT UNIT

When a VDU is associated with more than one Payment Unit (PU), the VDU volumes are assigned to the PU based on acres of the VDU within the PU.

VDU	VDU ACRES	PU	PU ACRES
36	21.7	6	21.7
41	34.1	1	9.9
		3	24.2
48	9.2	4	9.2
54	18.9	7	18.9
59	11.3	7	11.3
411	2.6	2	2.6
481	2.4	5	2.4
TOTAL:	100.2		100.2

DESCRIPTION OF TIMBER BY PAYMENT UNIT (PU)

PU	MARKET GROUP	PRODUCT	QUANTITY	UNIT	ACRES	ADVERTISE PRICE
1	Balsam Fir Jack Pine Mixed Aspen <i>Quaking Aspen</i> Mixed Hardwood <i>Black Cherry</i> <i>Red Maple</i> Paper Birch Red Pine White Pine White Spruce	Pulpwood	63 2 22 22 5 2 3 1 4 108 58	Cords Cords Cords <i>Cords</i> Cords <i>Cords</i> <i>Cords</i> Cords Cords Cords Cords	9.9	\$2,968.05
2	Balsam Fir Mixed Aspen <i>B. T. Aspen</i> <i>Quaking Aspen</i> Mixed Hardwood <i>Black Cherry</i> Red Pine White Pine White Spruce	Pulpwood	7 9 6 3 2 2 31 53 3	Cords Cords <i>Cords</i> <i>Cords</i> Cords <i>Cords</i> Cords Cords Cords	2.6	\$4,257.80
3	Balsam Fir Jack Pine Mixed Aspen <i>Quaking Aspen</i> Mixed Hardwood <i>Black Cherry</i> <i>Red Maple</i> Paper Birch Red Pine White Pine White Spruce	Pulpwood	154 5 53 53 13 5 8 3 11 265 142	Cords Cords Cords <i>Cords</i> Cords <i>Cords</i> <i>Cords</i> Cords Cords Cords Cords	24.2	\$7,396.00
4	Balsam Fir Mixed Hardwood <i>Black Cherry</i> <i>Red Maple</i> Red Pine White Pine White Spruce	Pulpwood	34 30 3 27 297 16 3	Cords Cords <i>Cords</i> <i>Cords</i> Cords Cords Cords	9.2	\$33,261.10
5	Balsam Fir Mixed Aspen <i>Quaking Aspen</i> Paper Birch Red Pine	Pulpwood	6 10 10 10 52	Cords Cords <i>Cords</i> Cords Cords	2.4	\$6,012.80
6	Balsam Fir Mixed Aspen <i>Balsam Poplar</i> <i>Quaking Aspen</i> Mixed Hardwood <i>Black Cherry</i> <i>Red Maple</i> Paper Birch White Spruce	Pulpwood	172 509 51 458 6 3 3 13 47	Cords Cords <i>Cords</i> <i>Cords</i> Cords <i>Cords</i> <i>Cords</i> Cords Cords	21.7	\$14,245.50
7	Balsam Fir Mixed Aspen <i>B. T. Aspen</i>	Pulpwood	225 407 195	Cords Cords <i>Cords</i>	30.2	\$14,248.55

DESCRIPTION OF TIMBER BY PAYMENT UNIT (PU), CON'T

PU	MARKET GROUP	PRODUCT	QUANTITY	UNIT	ACRES	ADVERTISE PRICE
7 con't	<i>Quaking Aspen</i>	<i>Pulpwood</i>	212	<i>Cords</i>		
	Mixed Hardwood		14	Cords		
	<i>Black Cherry</i>		11	<i>Cords</i>		
	<i>Red Maple</i>		3	<i>Cords</i>		
	Paper Birch		7	Cords		
	White Pine		59	Cords		
	White Spruce		333	Cords		
	TOTAL:			3,264	Cords	

Sale Specific Conditions & Requirements

Sale Name: Icebreaker Mix

Sale Number: 45-104-24 Seq#: 1

1 - Sale Area

1.2 - Boundaries

1.2.1 - Painted boundaries (9/19)

The sale boundary and Payment Unit boundaries are marked and identified by red and purple paint. Exterior sale boundary lines against state are marked with red paint. Interior Payment Unit boundaries are marked with purple paint. The painted boundary line trees are not Included Timber and are to be protected unless marked with orange paint. Purple painted trees designating an interior Payment Unit boundary are only to be cut when all surrounding Payment Units have been paid.

2 - Timber Specifications

2.1 - Included Timber

2.1.1 - Clearcut unit(s) with unmerchantable trees (6/14)

Within Payment Unit(s) 1, 3, & 4, cut all trees that are two (2) inches or more at DBH.

Within Payment Units 6 & 7, cut all deciduous trees that are two (2) inches or more at DBH & all conifers that are four (4) inches or more at DBH.

2.1.3 - Cut tree marked unit(s) (12/08)

Within Payment Unit(s) 5, all red pine are designated for cutting when marked with orange paint above and below stump height, regardless of merchantability. Additionally, cut all other trees that are two (2) inches or more at DBH.

2.1.7 - Leave tree marked unit(s) (6/14)

Within Payment Unit(s) 2, cut all trees that are two (2) inches or more at DBH, except do not cut any trees marked with green paint above and below stump height.

2.2 - Utilization

2.2.3 - Stump heights (4/07)

Stump heights within Payment Units 3 & 4 shall not exceed 6 inches for all trees. This is in order to facilitate planting operations. A written waiver of this requirement may be obtained if wet summer weather makes winter logging necessary.

3 - Payments

3.3 - Pre-measured Sales

3.3.4 - Dividing payment units (7/14)

Payment Unit(s) 1-7 may be divided at the request of the Purchaser and upon approval of the Unit Manager. Dividing Payment Units is a contract modification which requires a Timber Sale Contract Amendment. There will be only one division per Payment Unit.

4 - Transportation

4.1 - Construction

4.1.3 - Slash and earthen piles (8/04)

Piles or windrows of earth along roads and landings that have been widened or constructed shall be leveled. Slash from road maintenance or construction, including stumps, shall be dispersed throughout the sale.

4.1.4 - Timber removed for construction (3/23)

Trees cut or damaged in the process of pre-approved road, landing or skid trail construction will be decked in an area separate from other Designated Timber and not removed until measured by the sale administrator. Payment will be made at contract prices or average prices, if not on the contract.

4.1.6 - Road construction (1/09)

Construction of new roads or improvements of existing roads shall be done in such a way as to minimize the environmental

and visual impacts. Merchantable trees shall be cut and utilized unless otherwise directed. Non-merchantable trees shall be severed and laid flat on the ground. Slash shall be scattered, and not left in windrows and kept a minimum of 10 feet back from the road edge. Stumps shall be set upright, not left on edge, and be moved at least 10 feet away from the road edge. Disturbed soil shall be feathered into the woods and not left in berms or windrows.

4.1.7 - Road closure (10/11)

All new roads built into the sale must be blocked to vehicle traffic upon completion of the sale. All new roads built into the sale must be blocked to vehicle traffic within 30 days of completion of hauling. Overgrown roads that are reopened shall be considered new roads. In general, this will require constructing a four (4') foot high berm of stumps and logs covered with earth. These roads must be rendered impassable to cars and trucks. Contact the Sale Administrator for specific details of design and placement.

4.2 - Maintenance

4.2.3 - Road maintenance (8/13)

The following road maintenance is required: Within 60 days of completion of hauling, or if no hauling occurs for 60 days, the road must be maintained and graded. This includes cleaning of drainage areas, grading, crowning and filling with gravel, if necessary. Damages will be assessed if grading/repair does not occur.

4.2.4 - Grading (10/16)

For completion of the sale, state forest roads must be graded. In general, this will require a road grader or bulldozer to shape up the roads after forest products have been hauled off site. This includes cleaning of drainage areas, grading, crowning and filling with gravel, if necessary. The grading equipment to be used must be approved by the Unit Manager or his/her representative.

4.2.5 - Two wheel drive condition (2/04)

All existing trail roads on and adjacent to the sale area must be passable by two-wheel drive traffic for the duration of the sale.

5 - Operations

5.2 - Conduct of Operations

5.2.1 - Slash

5.2.1.11 - Slash for reforestation (3/21)

Within Payment Units 3 & 4, chipping is encouraged, as it is the most effective and efficient way to mitigate slash for reforestation. Chipping is also allowed in Payment Units 1, 6 & 7. Other tactics to mitigate slash for site preparation would need to be approved by the Unit Manager or his/her representative. Liquidated damages may be assessed at \$250 per acre if it is determined that slash mitigation was inadequate, and mastication is needed for the DNR to conduct site preparation for planting.

5.2.2 - Hazard Trees/Snags

5.2.2.1 - Den trees (10/16)

Obvious hollow and/or den trees shall be protected and left standing unless they are a safety hazard.

5.2.22 - Operating Caution

5.2.22.1 - Operating caution (6/11)

It is recommended, but not required, that within Payment Unit(s) 6, cutting, skidding, and hauling occur during dry summer or frozen winter conditions. The reason for the recommendation is because of wet, sensitive soils within the Payment Unit.

5.2.32 - Decking/landing restoration (9/13)

All decking and landing areas must have the surface area restored to a condition equal to or better than before. This is to ensure the proper regeneration of the stand. Wood debris, chips and "cookies" from trimmings must be removed or scattered away from landing and loading areas and may not be windrowed on the edge.

5.2.38 - No decking against live trees (2/04)

Cut products may not be decked against unmarked or designated leave trees.

5.8 - Protection of Endangered Species

5.8.5 - Protection of raptor nests (3/13)

All trees with raptor nests will be protected if found during harvesting operations. Notification will be made to the Unit Manager or his/her representative who will notify the Wildlife Biologist so an on-site evaluation and recommendation can be made, if necessary.

6 - Safety and Fire Prevention

6.2 - Signing

6.2.1 - Road posting (10/20)

The Purchaser is responsible for posting and maintaining caution signs on Hiawatha Trail prior to beginning operations. The road must be posted at appropriate distances from the Sale Area to warn of logging activity and truck traffic. Signs must be removed when harvest operations are suspended or completed. The Purchaser will provide these signs.



TIMBER SALE MAP

This information provided by authority of Part 525, 1994 PA 451, as amended.

Sale Number 45-104-24	Date 01/11/2024	
Scale 1:15,840	Page 1	Of 1

Forest Management Unit Sault Ste Marie Mgt Unit	County Mackinac	Mapped By: Plato
		Cruised By: Plato

Township 43N	Range 07W	Section(s) and Subdivision(s) Sec. 27 S1/2NW,SWNE,N1/2SW,SESW,SE;
-----------------	--------------	---

Cover Type			
A = Aspen	J = Jack Pine	O = Oak	U = Upland Brush
B = Paper Birch	K = Rock	P = Lowland Poplar	UM = Upland Mix Forest
C = Cedar	L = Lowland Brush	Q = Mixed Swamp Conifer	V = Bog or Marsh
D = Treed Bog	LM = Lowland Mix Forest	R = Red Pine	W = White Pine
E = Swamp Hardwoods	M = Maple, Beech, Birch	S = Black Spruce	X = Non Stocked
F = Spruce/Fir	MC = Mixed Conifer	T = Tamarack	Y = Sand
G = Grass	MD = Mixed Deciduous	Z = Water	
H = Hemlock	N = Marsh		

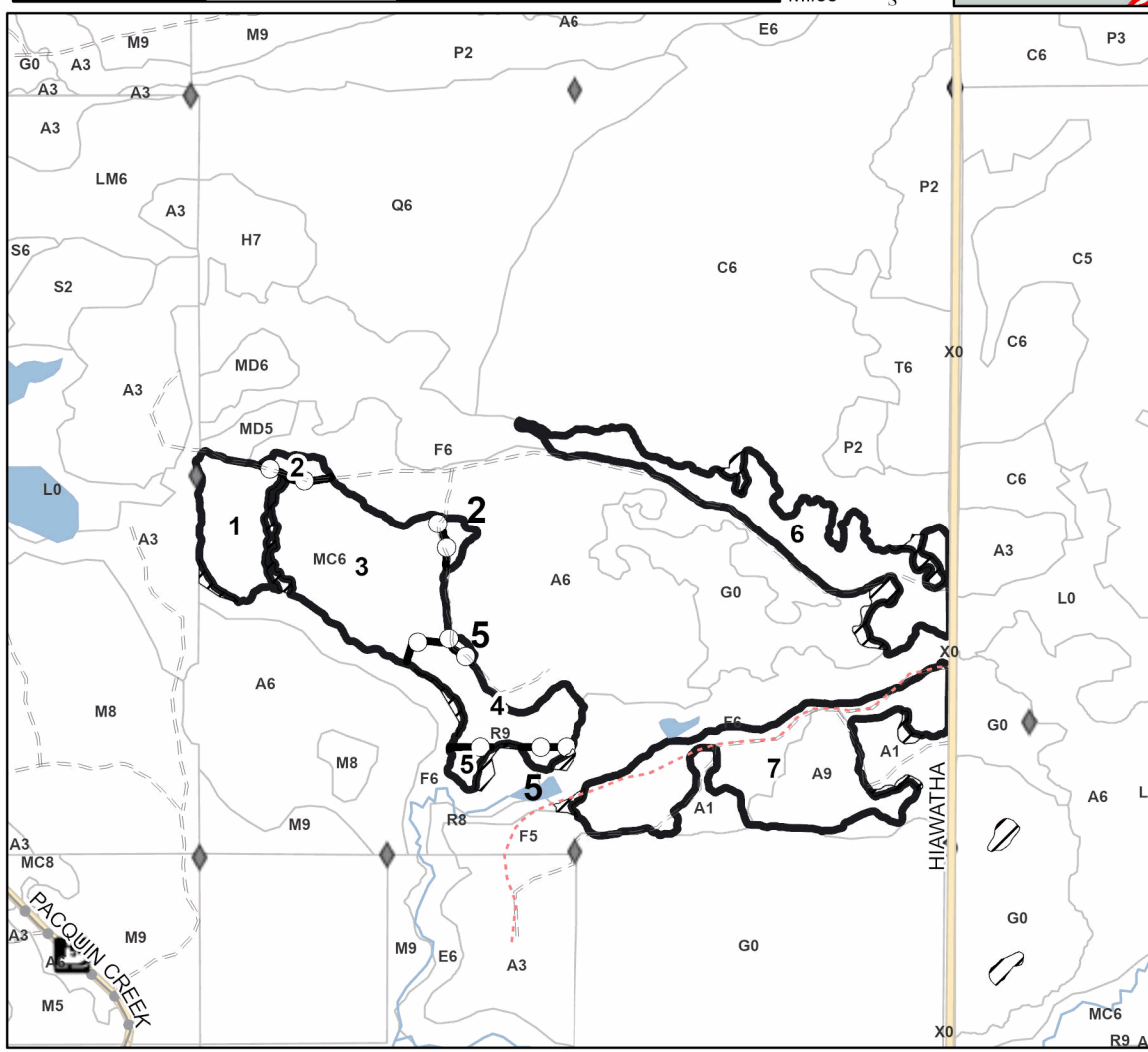
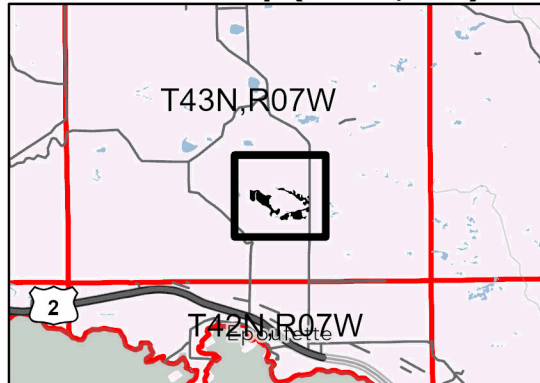
Density	
0 = Non Stocked	5 = Pole Timber Medium
1 = Seedling Sapling Poor	6 = Pole Timber Well
2 = Seedling Sapling Medium	7 = Saw Timber Poor
3 = Seedling Sapling Well	8 = Saw Timber Medium
4 = Pole Timber Poor	9 = Saw Timber Well

PU #	Acres	PU #	Acres
1	9.9	5	2.4
2	2.6	6	21.7
3	24.2	7	30.2
4	9.2		

Icebreaker Mix

100.2 Acres

Locator Map (1:200,000)



Legend	
	Sale Boundary - Red
	Stand
	Retention Areas
	Payment Unit (Purple)
	Recreational Trail
	Paved Road
	Gravel Road
	County Road - Seasonal
	Private Road
	Forest Access Route
	Administrative Access Only
	Non-DNR Road
	Field Grade Corner

Use QR Code to open Map in App



TIMBER SALE INFORMATION

Porcupine Soup Aspen (45-106-24)
 T43N, R07W, SEC. 22.
 Mackinac County (Advertised Price \$25,081.00)

A timber sale contract for this lump sum, sealed bid timber sale will be awarded to the responsible bidder offering the highest sealed bid price. All units of volume listed below were estimated using the Inventory Manager computer program and the new Michigan taper model. Bids must be at or above the following advertised price for each product and species:

<u>PRODUCTS & SPECIES</u>	<u>ESTIMATED UNITS*</u>	<u>ADVERTISED PRICE</u>
Sawtimber		
Red Maple	7.4 MBF	\$ 106.00 / MBF
Sugar Maple	10.3 MBF	\$ 260.00 / MBF
Pulpwood		
Balsam Fir	319 Cords	\$ 6.30 / Cord
Basswood	3 Cords	\$ 8.00 / Cord
Mixed Aspen	565 Cords	\$ 25.15 / Cord
Mixed Hardwood	442 Cords	\$ 11.40 / Cord
Paper Birch	17 Cords	\$ 2.95 / Cord
White Spruce	53 Cords	\$ 5.40 / Cord

* The total volume is statistically estimated within plus (+) or minus (-) 29.50 percent. There are an estimated 1,440 cords on this timber sale, plus or minus 425 cords at the 95% confidence level. The estimated units are final and not subject to adjustment. Prospective bidders are urged to examine this timber and to make their own estimates of quantity and quality.

BOND AND PAYMENT SCHEDULE:

- A bond in the amount of \$2,508.00 to insure faithful performance of the conditions of the contract will be deposited by the successful bidder within 21 days of the sale award.
- Cutting in any sale or unit without the required advance payment would be considered a trespass.
- Total payment must be paid in advance or according to the following schedule :
 - Ten percent (10%) of the sale value must be paid within 21 days of the sale award.
 - The 10% down payment will be credited towards the first unit cut.
 - Payment for each of the following units must be made before cutting begins in that unit:

PAYMENT UNIT NUMBER	PERCENT OF TOTAL SALE VALUE
01	28.3%
02	58.5%
03	13.2%
- If no cutting takes place, the 10% down payment will not be refunded.
- Operations on the contract issued will terminate on 12/31/2026.

SALE STATISTICS

Volumes were calculated in cubic feet using the Michigan taper model. Cubic foot volume includes all wood inside bark for the product indicated. For display purposes, cubic feet were converted to cords and MBF using a simple conversion factor, e.g. 79 cubic feet per cord and 185 cubic feet per MBF. The cubic foot volumes are precise; the cords and MBF volumes are not. Cubic foot volume cannot be directly converted to cords or boards with precision.

SALE VOLUMES

The total estimated sale volume may not equal the sum of the species/products due to the nature of statistical calculations associated with double sampling methodology.

VOLUME		PERCENT ERROR	STATISTICAL RANGE IN CORDS	
TOTAL CUBIC FEET	TOTAL CORDS		MINIMUM	MAXIMUM
113,777	1,440	29.50%	1,015	1,865

VDU VOLUMES

A VDU is a Volume Determination Unit. Volumes and their associated statistics are calculated at the VDU level and summarized to the sale level. There is often a one to one relationship between a VDU and a Payment Unit, but not always, depending on the cruise design. Refer to the VDU TO PAYMENT UNIT table.

VDU	VOLUME		PERCENT ERROR	RANGE IN CORDS	
	TOTAL CUBIC FEET	TOTAL CORDS		MINIMUM	MAXIMUM
5	65,255	826	21.75%	646	1,006
7	29,561	374	37.36%	234	514
8	3,145	40	39.65%	24	56
18	15,817	200	41.15%	118	283
TOTAL:	113,777	1,440		1,023	1,858

VDU TO PAYMENT UNIT

When a VDU is associated with more than one Payment Unit (PU), the VDU volumes are assigned to the PU based on acres of the VDU within the PU.

VDU	VDU ACRES	PU	PU ACRES
5	26.1	2	26.1
7	12.4	1	12.4
8	1.2	1	1.2
18	7.9	3	7.9
TOTAL:	47.6		47.6

DESCRIPTION OF TIMBER BY PAYMENT UNIT (PU)

PU	MARKET GROUP	PRODUCT	QUANTITY	UNIT	ACRES	ADVERTISE PRICE
1	Red Maple	Sawtimber	0.4	MBF	13.6	\$7,100.85
	Sugar Maple		3.1	MBF		
	Balsam Fir	Pulpwood	105	Cords		
	Mixed Aspen		179	Cords		
	<i>B. T. Aspen</i>		11	<i>Cords</i>		
	<i>Quaking Aspen</i>		168	<i>Cords</i>		
	Mixed Hardwood		74	Cords		
	<i>Beech</i>		2	<i>Cords</i>		
	<i>Black Cherry</i>		33	<i>Cords</i>		
	<i>Red Maple</i>		26	<i>Cords</i>		
	<i>Sugar Maple</i>		13	<i>Cords</i>		
	Paper Birch		10	Cords		
	White Spruce		40	Cords		
	2	Red Maple	Sawtimber	2.1		
Sugar Maple			7.2	MBF		
Balsam Fir		Pulpwood	153	Cords		
Basswood			3	Cords		
Mixed Aspen			315	Cords		
<i>Balsam Poplar</i>			11	<i>Cords</i>		
<i>Quaking Aspen</i>			304	<i>Cords</i>		
Mixed Hardwood			314	Cords		
<i>Beech</i>			3	<i>Cords</i>		
<i>Black Cherry</i>			135	<i>Cords</i>		
<i>Red Maple</i>			146	<i>Cords</i>		
<i>Sugar Maple</i>			30	<i>Cords</i>		
Paper Birch			5	Cords		
White Spruce			13	Cords		
3	Red Maple	Sawtimber	4.9	MBF	7.9	\$3,310.85
	Balsam Fir	Pulpwood	61	Cords		
	Mixed Aspen		71	Cords		
	<i>B. T. Aspen</i>		71	<i>Cords</i>		
	Mixed Hardwood		54	Cords		
	<i>Beech</i>		3	<i>Cords</i>		
	<i>Black Cherry</i>		2	<i>Cords</i>		
	<i>Red Maple</i>		41	<i>Cords</i>		
	<i>Sugar Maple</i>		8	<i>Cords</i>		
	Paper Birch		2	Cords		
	TOTAL:			17.7		
TOTAL:			1,399	Cords		

Sale Specific Conditions & Requirements

Sale Name: Porcupine Soup Aspen

Sale Number: 45-106-24 Seq#: 1

1 - Sale Area

1.2 - Boundaries

1.2.1 - Painted boundaries (9/19)

The sale boundary and Payment Unit boundaries are marked and identified by red paint, along with a road. Exterior sale boundary lines against state are marked with red paint, with the exception of the southern boundary of Payment Unit 1, which is unpainted and identified by Hiawatha Trail. The painted boundary line trees are not Included Timber and are to be protected.

2 - Timber Specifications

2.1 - Included Timber

2.1.1 - Clearcut unit(s) with unmerchantable trees (6/14)

Within Payment Unit(s) 1-3, cut all deciduous trees that are two (2) inches or more at DBH, along with all conifers that are four (4) inches or more at DBH.

2.1.9 - Harvest exception (12/08)

Do not cut any cedar trees within Payment Unit 2 other than those that are necessary to remove in order to operate within the sale area. Every effort must be made to preserve the existing cedar and to leave an intact stand upon sale completion. All cut cedar shall be piled separately by products and scaled in the woods unless other scaling arrangements are agreed to by the Unit Manager or his/her representative. Stumpage price for cedar shall be \$20.00 per cord for posts and pulpwood, and \$40.00 per cord for bolts and sawlogs.

3 - Payments

3.3 - Pre-measured Sales

3.3.4 - Dividing payment units (7/14)

Payment Unit(s) 1-3 may be divided at the request of the Purchaser and upon approval of the Unit Manager. Dividing Payment Units is a contract modification which requires a Timber Sale Contract Amendment. There will be only one division per Payment Unit.

4 - Transportation

4.1 - Construction

4.1.3 - Slash and earthen piles (8/04)

Piles or windrows of earth along roads and landings that have been widened or constructed shall be leveled. Slash from road maintenance or construction, including stumps, shall be dispersed throughout the sale.

4.1.6 - Road construction (1/09)

Construction of new roads or improvements of existing roads shall be done in such a way as to minimize the environmental and visual impacts. Merchantable trees shall be cut and utilized unless otherwise directed. Non-merchantable trees shall be severed and laid flat on the ground. Slash shall be scattered, and not left in windrows and kept a minimum of 10 feet back from the road edge. Stumps shall be set upright, not left on edge, and be moved at least 10 feet away from the road edge. Disturbed soil shall be feathered into the woods and not left in berms or windrows.

4.1.7 - Road closure (10/11)

All new roads built into the sale must be blocked to vehicle traffic upon completion of the sale. Overgrown roads that are reopened shall be considered new roads. In general, this will require constructing a four (4') foot high berm of stumps and logs covered with earth. These roads must be rendered impassable to cars and trucks. Contact the Sale Administrator for specific details of design and placement.

4.2 - Maintenance

4.2.3 - Road maintenance (8/13)

The following road maintenance is required: Within 60 days of completion of hauling, or if no hauling occurs for 60 days, the road must be maintained and graded. This includes cleaning of drainage areas, grading, crowning and filling with gravel, if necessary. Damages will be assessed if grading/repair does not occur.

4.2.4 - Grading (10/16)

For completion of the sale, state forest roads must be graded. In general, this will require a road grader or bulldozer to shape up the roads after forest products have been hauled off site. This includes cleaning of drainage areas, grading, crowning and filling with gravel, if necessary. The grading equipment to be used must be approved by the Unit Manager or his/her representative.

4.2.5 - Two wheel drive condition (2/04)

All existing trail roads on and adjacent to the sale area must be passable by two-wheel drive traffic for the duration of the sale.

5 - Operations

5.2 - Conduct of Operations

5.2.2 - Hazard Trees/Snags

5.2.2.1 - Den trees (10/16)

Obvious hollow and/or den trees shall be protected and left standing unless they are a safety hazard.

5.2.32 - Decking/landing restoration (9/13)

All decking and landing areas must have the surface area restored to a condition equal to or better than before. This is to ensure the proper regeneration of the stand. Wood debris, chips and "cookies" from trimmings must be removed or scattered away from landing and loading areas and may not be windrowed on the edge.

5.2.38 - No decking against live trees (2/04)

Cut products may not be decked against unmarked or designated leave trees.

5.8 - Protection of Endangered Species

5.8.5 - Protection of raptor nests (3/13)

All trees with raptor nests will be protected if found during harvesting operations. Notification will be made to the Unit Manager or his/her representative who will notify the Wildlife Biologist so an on-site evaluation and recommendation can be made, if necessary.

6 - Safety and Fire Prevention

6.2 - Signing

6.2.1 - Road posting (10/20)

The Purchaser is responsible for posting and maintaining caution signs on Hiawatha Trail prior to beginning operations. The road must be posted at appropriate distances from the Sale Area to warn of logging activity and truck traffic. Signs must be removed when harvest operations are suspended or completed. The Purchaser will provide these signs.



TIMBER SALE MAP

This information provided by authority of Part 525, 1994 PA 451, as amended.

Sale Number 45-106-24	Date 01/11/2024
Scale 1:10,000	Page 1
	Of 1

Forest Management Unit Sault Ste Marie Mgt Unit	County Mackinac	Mapped By: Plato
		Cruised By: Plato

Township 43N	Range 07W	Section(s) and Subdivision(s) Sec. 22 E1/2NW,W1/2NE,E1/2SW,W1/2SE;
-----------------	--------------	--

Cover Type			
A = Aspen	J = Jack Pine	O = Oak	U = Upland Brush
B = Paper Birch	K = Rock	P = Lowland Poplar	UM = Upland Mix Forest
C = Cedar	L = Lowland Brush	Q = Mixed Swamp Conifer	V = Bog or Marsh
D = Treed Bog	LM = Lowland Mix Forest	R = Red Pine	W = White Pine
E = Swamp Hardwoods	M = Maple, Beech, Birch	S = Black Spruce	X = Non Stocked
F = Spruce/Fir	MC = Mixed Conifer	T = Tamarack	Y = Sand
G = Grass	MD = Mixed Deciduous	Z = Water	
H = Hemlock	N = Marsh		

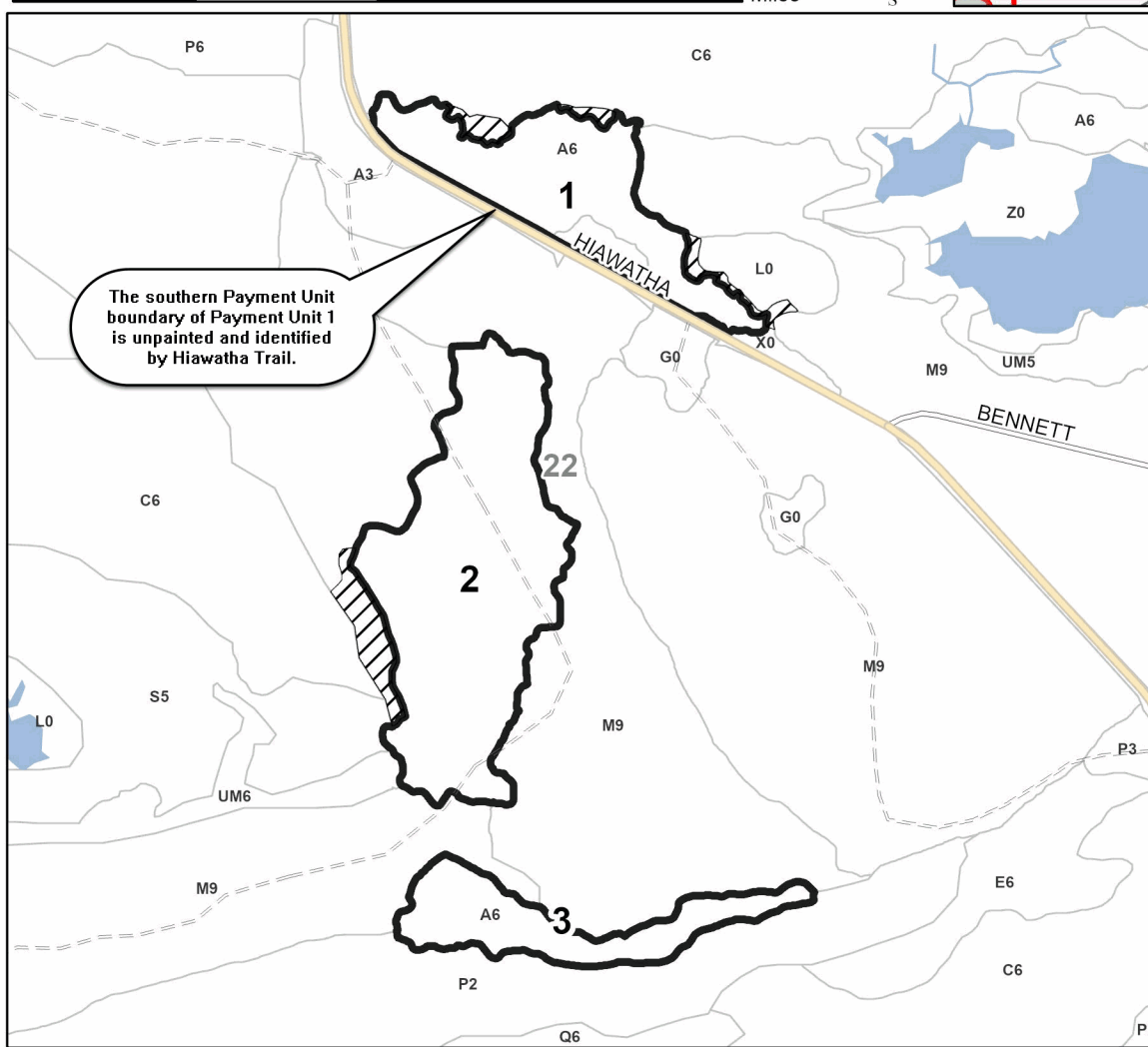
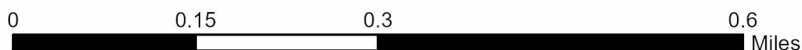
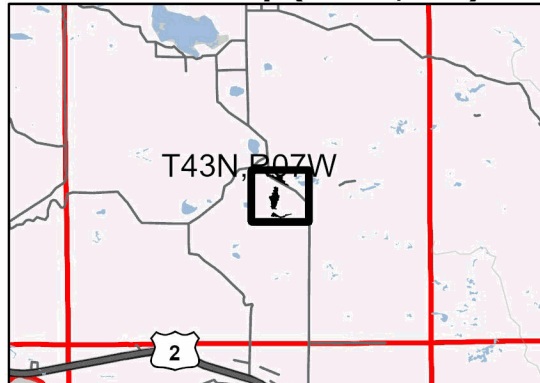
Density	
0 = Non Stocked	5 = Pole Timber Medium
1 = Seedling Sapling Poor	6 = Pole Timber Well
2 = Seedling Sapling Medium	7 = Saw Timber Poor
3 = Seedling Sapling Well	8 = Saw Timber Medium
4 = Pole Timber Poor	9 = Saw Timber Well

PU #	Acres
1	13.6
2	26.1
3	7.9

Porcupine Soup Aspen

47.6 Acres

Locator Map (1:200,000)



Legend

- Sale Boundary - Red or Hiawatha Trail
 - Stand
 - Retention Areas
 - Sections
 - Paved Road
 - Gravel Road
 - County Road - Seasonal
 - Private Road
 - Survey Grade Corner
 - Nearby Timber Sale
- #### DNR Roads
- Primary Forest Road
 - Secondary Forest Road
 - Forest Access Route
 - Administrative Access Only
 - Non-DNR Road

Use QR Code to open Map in App



Copy That HW (45-102-24)
T43N, R07W, SEC. 22; T43N, R07W, SEC. 23; Mackinac COUNTY

In response to the notice of sale to be held 3:00 p.m. (local time) on February 27, 2024, I am hereby submitting my sealed bid (firm offer) for the following forest products to be cut. Bids for individual species must be at or above the advertised price. All non-responsive bid forms may be rejected.

<u>PRODUCTS & SPECIES</u>	<u>ESTIMATED VOLUME*</u>	<u>ADVERTISED PRICE</u>	<u>BID PRICE/UNIT</u>
Sawtimber			
Beech	3.2 MBF	\$ 117.00/MBF	\$ _____
Black Cherry	0.6 MBF	\$ 102.00/MBF	\$ _____
Paper Birch	1.0 MBF	\$ 16.00/MBF	\$ _____
Red Maple	59.6 MBF	\$ 106.00/MBF	\$ _____
Sugar Maple	262.5 MBF	\$ 260.00/MBF	\$ _____
Pulpwood			
Balsam Fir	41 Cords	\$ 6.30/Cord	\$ _____
Mixed Aspen	139 Cords	\$ 25.15/Cord	\$ _____
Mixed Hardwood	812 Cords	\$ 11.40/Cord	\$ _____
Paper Birch	2 Cords	\$ 2.95/Cord	\$ _____

*The volumes are statistically estimated within plus (+) or minus (-) 24.05 percent at 95% confidence level. These estimated volumes are final and not subject to adjustment. Prospective bidders are urged to examine this timber and to make their own estimates of quantity and quality.

I understand that any or all bids may be rejected. All bids must be signed and all bid items must be bid or the bid form may be rejected. I also understand that consideration and awarding a contract will be based upon my past performance and ability to complete the contract based upon equipment and staffing subject to my control.

FEDERAL ID: ____ - ____ - ____ or SOCIAL SECURITY NUMBER: ____ - ____ - ____

Company or individual bidding: _____

Company representative's name: _____

Address: _____

City: _____ State: _____ Zip: _____

IF AVAILABLE, PLEASE PLACE THE PERSONALIZED LABEL FROM YOUR PROSPECTUS IN THE ABOVE BOX.

Individual or company representative's signature: _____ Date: _____

Phone number : _____ Email (optional): _____

THE WINNING BIDDER MUST COMPLETE THE VERIFICATION OF WORKER'S DISABILITY COMPENSATION ACT COMPLIANCE (ON REVERSE SIDE IF DOUBLE SIDED) WITHIN 21 DAYS OF SALE AWARD DATE



TIMBER SALE VERIFICATION OF WORKER'S DISABILITY COMPENSATION ACT COMPLIANCE

As required by Act 317, P.A. 1969 (Worker's Compensation) and
Part 5 of Act 451 of 1994, as amended.

FOR DEPARTMENT USE ONLY	
Sale Number (XX - XXX - XX - XX)	
Forest Management Unit:	

VERIFICATION OF WORKER'S DISABILITY COMPENSATION ACT COMPLIANCE

- This verification must be completed and submitted within 21 days of contract award and prior to the issuance of the timber sale contract.
- In addition, if boxes 2B or 2C are checked, then Notice of Exclusion or Certificate of Insurance must be submitted within twenty-one (21) days of the contract award and prior to the issuance of the timber sale contract.
- All information must be typed or printed except for written signatures.

Please Check Appropriate Categories:

1. My business is organized as (you **must** check one of the boxes below):
 - A. Sole Proprietorship (individual)
 - B. Partnership
 - C. Corporation
2. You **must** check one of the boxes below:
 - A. I certify my business is a sole proprietorship and it has no employees but the sole proprietor. I am not subject to the Worker's Compensation Laws.
 - B. I certify my business has satisfied its obligation to the Worker's Compensation Act through the use of an approved Notice of Exclusion (BWC-337, Rev. 5/96). I will provide a copy of the Notice of Exclusion within 21 days of the contract award. (For questions or a copy of the BWC-337, please call the Worker's Compensation Bureau at 517-322-1195).
 - C. I certify my business has a Worker's Compensation Policy. I will provide an original Certificate of Insurance within twenty-one (21) days of the contract award.
3. If you have checked item 2(A) or 2(B), you **must** indicate the number of **both** full-time and part-time employees, other than yourself, including family members and active partners (if none, you must enter "0").

_____ Full-time Employees

_____ Part-time Employees

Name of Business		Federal ID (or) Social Security No.	
Address		Telephone ()	
City	State	ZIP	

I hereby certify that the above information is true and correct. I agree to notify the Michigan DNR of any changes that occur in factors affecting my coverage during any of my present and future operations.

Signature of Owner or Authorized Representative

Title

Date

Please complete the "SEALED BID" information on the next page

Icebreaker Mix (45-104-24)
T43N, R07W, SEC. 27; Mackinac COUNTY

In response to the notice of sale to be held 3:00 p.m. (local time) on February 27, 2024, I am hereby submitting my sealed bid (firm offer) for the following forest products to be cut. Bids for individual species must be at or above the advertised price. All non-responsive bid forms may be rejected.

<u>PRODUCTS & SPECIES</u>	<u>ESTIMATED VOLUME*</u>	<u>ADVERTISED PRICE</u>	<u>BID PRICE/UNIT</u>
Pulpwood			
Balsam Fir	661 Cords	\$ 6.30/Cord	\$ _____
Jack Pine	7 Cords	\$ 39.05/Cord	\$ _____
Mixed Aspen	1,010 Cords	\$ 25.15/Cord	\$ _____
Mixed Hardwood	70 Cords	\$ 11.40/Cord	\$ _____
Paper Birch	34 Cords	\$ 2.95/Cord	\$ _____
Red Pine	395 Cords	\$ 109.50/Cord	\$ _____
White Pine	501 Cords	\$ 10.45/Cord	\$ _____
White Spruce	586 Cords	\$ 5.40/Cord	\$ _____

*The volumes are statistically estimated within plus (+) or minus (-) 26.98 percent at 95% confidence level. These estimated volumes are final and not subject to adjustment. Prospective bidders are urged to examine this timber and to make their own estimates of quantity and quality.

I understand that any or all bids may be rejected. All bids must be signed and all bid items must be bid or the bid form may be rejected. I also understand that consideration and awarding a contract will be based upon my past performance and ability to complete the contract based upon equipment and staffing subject to my control.

FEDERAL ID: _____ - _____ or SOCIAL SECURITY NUMBER: _____ - _____ - _____

Company or individual bidding: _____

Company representative's name: _____

Address: _____

City: _____ State: _____ Zip: _____

IF AVAILABLE, PLEASE PLACE THE PERSONALIZED LABEL FROM YOUR PROSPECTUS IN THE ABOVE BOX.

Individual or company representative's signature: _____ Date: _____

Phone number : _____ Email (optional): _____

THE WINNING BIDDER MUST COMPLETE THE VERIFICATION OF WORKER'S DISABILITY COMPENSATION ACT COMPLIANCE (ON REVERSE SIDE IF DOUBLE SIDED) WITHIN 21 DAYS OF SALE AWARD DATE



FOR DEPARTMENT USE ONLY	
Sale Number (XX - XXX - XX - XX)	
Forest Management Unit:	

TIMBER SALE VERIFICATION OF WORKER'S DISABILITY COMPENSATION ACT COMPLIANCE

As required by Act 317, P.A. 1969 (Worker's Compensation) and
Part 5 of Act 451 of 1994, as amended.

VERIFICATION OF WORKER'S DISABILITY COMPENSATION ACT COMPLIANCE

- This verification must be completed and submitted within 21 days of contract award and prior to the issuance of the timber sale contract.
- In addition, if boxes 2B or 2C are checked, then Notice of Exclusion or Certificate of Insurance must be submitted within twenty-one (21) days of the contract award and prior to the issuance of the timber sale contract.
- All information must be typed or printed except for written signatures.

Please Check Appropriate Categories:

1. My business is organized as (you **must** check one of the boxes below):
 - A. Sole Proprietorship (individual)
 - B. Partnership
 - C. Corporation
2. You **must** check one of the boxes below:
 - A. I certify my business is a sole proprietorship and it has no employees but the sole proprietor. I am not subject to the Worker's Compensation Laws.
 - B. I certify my business has satisfied its obligation to the Worker's Compensation Act through the use of an approved Notice of Exclusion (BWC-337, Rev. 5/96). I will provide a copy of the Notice of Exclusion within 21 days of the contract award. (For questions or a copy of the BWC-337, please call the Worker's Compensation Bureau at 517-322-1195).
 - C. I certify my business has a Worker's Compensation Policy. I will provide an original Certificate of Insurance within twenty-one (21) days of the contract award.
3. If you have checked item 2(A) or 2(B), you **must** indicate the number of **both** full-time and part-time employees, other than yourself, including family members and active partners (if none, you must enter "0").

_____ Full-time Employees

_____ Part-time Employees

Name of Business		Federal ID (or) Social Security No.	
Address		Telephone ()	
City	State	ZIP	

I hereby certify that the above information is true and correct. I agree to notify the Michigan DNR of any changes that occur in factors affecting my coverage during any of my present and future operations.

Signature of Owner or Authorized Representative

Title

Date

Please complete the "SEALED BID" information on the next page

Porcupine Soup Aspen (45-106-24)
T43N, R07W, SEC. 22; Mackinac COUNTY

In response to the notice of sale to be held 3:00 p.m. (local time) on February 27, 2024, I am hereby submitting my sealed bid (firm offer) for the following forest products to be cut. Bids for individual species must be at or above the advertised price. All non-responsive bid forms may be rejected.

<u>PRODUCTS & SPECIES</u>	<u>ESTIMATED VOLUME*</u>	<u>ADVERTISED PRICE</u>	<u>BID PRICE/UNIT</u>
Sawtimber			
Red Maple	7.4 MBF	\$ 106.00/MBF	\$ _____
Sugar Maple	10.3 MBF	\$ 260.00/MBF	\$ _____
Pulpwood			
Balsam Fir	319 Cords	\$ 6.30/Cord	\$ _____
Basswood	3 Cords	\$ 8.00/Cord	\$ _____
Mixed Aspen	565 Cords	\$ 25.15/Cord	\$ _____
Mixed Hardwood	442 Cords	\$ 11.40/Cord	\$ _____
Paper Birch	17 Cords	\$ 2.95/Cord	\$ _____
White Spruce	53 Cords	\$ 5.40/Cord	\$ _____

*The volumes are statistically estimated within plus (+) or minus (-) 29.50 percent at 95% confidence level. These estimated volumes are final and not subject to adjustment. Prospective bidders are urged to examine this timber and to make their own estimates of quantity and quality.

I understand that any or all bids may be rejected. All bids must be signed and all bid items must be bid or the bid form may be rejected. I also understand that consideration and awarding a contract will be based upon my past performance and ability to complete the contract based upon equipment and staffing subject to my control.

FEDERAL ID: ____ - ____ - ____ or SOCIAL SECURITY NUMBER: ____ - ____ - ____

Company or individual bidding: _____

Company representative's name: _____

Address: _____

City: _____ State: _____ Zip: _____

IF AVAILABLE, PLEASE PLACE THE PERSONALIZED LABEL FROM YOUR PROSPECTUS IN THE ABOVE BOX.

Individual or company representative's signature: _____ Date: _____

Phone number : _____ Email (optional): _____

THE WINNING BIDDER MUST COMPLETE THE VERIFICATION OF WORKER'S DISABILITY COMPENSATION ACT COMPLIANCE (ON REVERSE SIDE IF DOUBLE SIDED) WITHIN 21 DAYS OF SALE AWARD DATE



FOR DEPARTMENT USE ONLY	
Sale Number (XX - XXX - XX - XX)	
Forest Management Unit:	

TIMBER SALE VERIFICATION OF WORKER'S DISABILITY COMPENSATION ACT COMPLIANCE

As required by Act 317, P.A. 1969 (Worker's Compensation) and
Part 5 of Act 451 of 1994, as amended.

VERIFICATION OF WORKER'S DISABILITY COMPENSATION ACT COMPLIANCE

- This verification must be completed and submitted within 21 days of contract award and prior to the issuance of the timber sale contract.
- In addition, if boxes 2B or 2C are checked, then Notice of Exclusion or Certificate of Insurance must be submitted within twenty-one (21) days of the contract award and prior to the issuance of the timber sale contract.
- All information must be typed or printed except for written signatures.

Please Check Appropriate Categories:

1. My business is organized as (you **must** check one of the boxes below):
 - A. Sole Proprietorship (individual)
 - B. Partnership
 - C. Corporation
2. You **must** check one of the boxes below:
 - A. I certify my business is a sole proprietorship and it has no employees but the sole proprietor. I am not subject to the Worker's Compensation Laws.
 - B. I certify my business has satisfied its obligation to the Worker's Compensation Act through the use of an approved Notice of Exclusion (BWC-337, Rev. 5/96). I will provide a copy of the Notice of Exclusion within 21 days of the contract award. (For questions or a copy of the BWC-337, please call the Worker's Compensation Bureau at 517-322-1195).
 - C. I certify my business has a Worker's Compensation Policy. I will provide an original Certificate of Insurance within twenty-one (21) days of the contract award.
3. If you have checked item 2(A) or 2(B), you **must** indicate the number of **both** full-time and part-time employees, other than yourself, including family members and active partners (if none, you must enter "0").

_____ Full-time Employees

_____ Part-time Employees

Name of Business		Federal ID (or) Social Security No.	
Address		Telephone ()	
City	State	ZIP	

I hereby certify that the above information is true and correct. I agree to notify the Michigan DNR of any changes that occur in factors affecting my coverage during any of my present and future operations.

Signature of Owner or Authorized Representative

Title

Date

Please complete the "SEALED BID" information on the next page