



**DEPARTMENT OF NATURAL RESOURCES  
STATE OF MICHIGAN  
TIMBER SALE PROSPECTUS #7355**

SCHEDULED SALE DATE AND TIME: 9:00 a.m. (local time) on December 5, 2023.

LOCATION: ROSCOMMON MGMT UNIT, PO BOX 218, ROSCOMMON, MI 48653.

PROSPECTUS NOTE: The bidder is advised to inspect the sale area and review the location, estimated volumes, operating costs and contract terms of proposed sales. Please be aware that some landowners may request 60 days or more notice for access across their land.

Notice is hereby given that bids will be received by the Unit Manager, ROSCOMMON MANAGEMENT UNIT, for certain timber on the following described lands:

Impact Bit Aspen (71-002-23) / T21N, R04W, SEC. 15, NENE,S1/2NE,N1/2SE.

Roscommon County, Advertised Price \$61,466.90, 39.4 Acres, Aspen, Hardwood.

SALE NOTE: A recreation site such as a trail, pathway, or campground is within the sale area or the vicinity. Certain restrictions/specifications may be applicable including time restrictions.

USFWS Aspen (71-004-23) / T24N, R02E, SEC. 20, NESW,S1/2SW,SWSE.

T24N, R02E, SEC. 29, E1/2NW,N1/2NE,SWNE.

Ogemaw County, Advertised Price \$181,640.30, 113.8 Acres, Aspen, Hardwood.

Panda Oak Strips (71-005-23) / T21N, R03W, SEC. 13, S1/2SW.

T21N, R03W, SEC. 23, NENE.

T21N, R03W, SEC. 24, NW,N1/2SW,SWSW.

Roscommon County, Advertised Price \$75,698.35, 142.0 Acres, Red Oak, Hardwood.

SALE NOTE: A recreation site such as a trail, pathway, or campground is within the sale area or the vicinity. Certain restrictions/specifications may be applicable including time restrictions.

Red Pine Seed Cone (71-007-23) / T21N, R04W, SEC. 10, SW.

Roscommon County, Advertised Price \$20,400.85, 22.7 Acres, Red Pine.

SALE NOTE: This sale has a very specific time frame for cutting and processing that must be adhered to in order to conduct red pine seed cone research (see spec 5.2.3.1).

Heideman Mix (71-009-23) / T24N, R04W, SEC. 15, W1/2SW.

T24N, R04W, SEC. 16, S1/2NW,NENE,SESE.

T24N, R04W, SEC. 3, SWSW.

Roscommon County, Advertised Price \$127,005.10, 68.8 Acres, Aspen, Hardwood.

SALE NOTE: A recreation site such as a trail, pathway, or campground is within the sale area or the vicinity. Certain restrictions/specifications may be applicable including time restrictions.

## BID INSTRUCTIONS (VER. 10/10/2022):

### 1. Scheduled Bid Location, Date, and Time (2/11)

Bids must be received by the Unit Manager, ROSCOMMON OFFICE, PO BOX 218, ROSCOMMON, MI 48653, no later than 9:00 a.m. (local time) on December 5, 2023. For further information concerning this sale, contact Jason Lewicki at 989-275-4622 extension 2741.

### 2. Bidder's Qualifications (10/22)

If all or part of a timber sale was prepared by a private contractor, the contractor and that contractor's company are not permitted to bid on the timber sale. A person must be 18 years of age or older to purchase timber. Permanent employees of the Department of Natural Resources or members of their immediate household may not bid. Former employees, in the permanent or seasonal class, may not bid until 3 months after the last day of active duty. Bids will not be accepted from individuals or companies appearing on the DNR/FRD No-Bid List. This list contains the names of purchasers who previously failed to execute a contract within 21-days or who have a history of poor performance.

### 3. Preparation of Sealed Bids (5/16)

Bid Forms may be completed online thru Michigan DNR Timber Sale Online Bidding (OLB) at [www.michigan.gov/timberbidding](http://www.michigan.gov/timberbidding) or by completing the hardcopy Bid Form found in the Timber Sale Prospectus. Hardcopy Bid Forms shall be manually signed in ink. Registration in OLB is considered your 'signature' for all bids submitted thru that system. Bid prices must be entered for each species and product in the Bid Price column for all material subject to bidding and all fill-in blanks must be completed. If erasures or other changes appear on the hardcopy Bid Form, each erasure or change must be initialed by the person signing the bid.

### 4. Submission of Sealed Bids (5/16)

Bid forms may be obtained from the Unit Manager or thru OLB. Bids may be submitted hardcopy or thru OLB. All hardcopy bids must be submitted on the bid form and in an envelope clearly identified as described in this section. NOTE: Only one bid form per bid envelope. Sealed bids must be submitted to the Unit office designated in the prospectus and must be submitted at or prior to the time established in the prospectus. The envelope should show on the outside (a) the sale name or number and (b) the date and time of bid opening, as shown in the prospectus. Bids received after the time specified in the sale prospectus are late bids and will be rejected.

It is possible for a bidder to submit multiple bids on a single sale. For example, a bid may be submitted hardcopy and a bid may be submitted thru OLB. Or, two bidders from the same company could both submit bids on the same sale. If this were to happen, the State would accept all bids received and award the contract accordingly. All bidding and contractual requirements would apply to all bids received.

### 5. Public Opening of Sealed Bids (7/16)

If conditions permit, the sealed bids will be publicly opened and posted at the time and place set in the prospectus.

If a bidder, present at a bid opening, has submitted bids on more than one sale, that bidder may withdraw their unopened bid envelopes or announce the withdrawal of their online bid after being declared the successful bidder on one sale.

### 6. Award of Contract (1/11)

Award of the contract will be made to the Bidder whose bid, conforming to the prospectus, is most advantageous to the State of Michigan on the basis of total value at rates bid for the estimated quantities. The State reserves the right to reject any bid or waive any minor irregularity in bids received. A written award mailed (or otherwise furnished) to the successful Bidder shall be deemed to result in a binding contract without further action by either party.

### 7. Down Payment (1/11)

The Bidder to whom award is made must make a down payment within 21 days of the sale award. The amount of the down payment will be calculated as shown in the Bond and Payment Schedule of this prospectus. Only cash may be used to meet this requirement.

### 8. Performance Security (1/11)

As guarantee of faithful performance, a cash bond, certificate of deposit, surety bond or irrevocable letter of credit (LOC) is required within 21 days of the sale award. The amount of the performance security is shown in the Bond and

Payment Schedule of this prospectus. If an LOC or surety is used, the coverage must extend for at least 6 months beyond the contract expiration.

#### 9. Worker's Compensation (10/22)

Purchaser shall obtain worker's compensation insurance to cover claims under Michigan's Worker's Disability Compensation Act of 1969 or similar employee benefit act of any other state applicable to an employee. Verification of Worker's Disability Compensation Act Compliance must be completed and submitted within 21 days of contract award and prior to the issuance of the timber sale contract. In addition, if applicable, Notice of Exclusion or Certificate of Insurance must also be submitted.

#### 10. Timber Sale Contract (10/22)

Additional conditions and requirements common to all timber sales are listed on the timber sale contract (R4031) and are available on line at [www.michigan.gov/timber](http://www.michigan.gov/timber). Contact the Unit Manager for additional information or a sample contract. Within 21 days of the date of the award letter, the bidder must sign the contract and provide the required down payment, performance security, and verification of worker's disability compensation. The down payment and performance security shall be in accordance with the provisions of the timber sale contract, in the sums stated in this prospectus. If these actions are not taken, then the Bidder, the Bidder's corporation, and the corporation's principals may not be permitted to bid on State timber sales for a period of 3 months after the first offense, 6 months after the second offense, and 1 year after the third offense. An offense will only be counted against the Bidder for 5 years. In addition, the Bidder certifies that if awarded this contract, the Bidder will complete the timber sale contract in accordance with its terms and any modifications thereof including requirements to purchase, cut, and remove the included timber by the expiration date.

Payment Unit values in the State Forest Timber Sale Contract are calculated based on the advertised value of the Payment Unit as a percentage of the total advertised value of the contract. The advertised value of each Payment Unit is given in the Description of Timber by Payment Unit table on the Timber Sale Information page. For example, if the value of Payment Unit 1 is advertised as \$1,500 and the total Timber Sale value is advertised as \$10,000, the contract price for Payment Unit 1 will be 15% of the total bid price ( $\$1,500/\$10,000 * 100$ ).

#### 11. Disclaimer of Estimates and Bidder's Warranty of Inspection (10/22)

Before submitting this bid, the Bidder is advised and cautioned to inspect the sale area, review the requirements of the sale contract, and take other steps as may be reasonably necessary to ascertain the location, estimated volumes, construction estimates, and operating costs of the proposed sale. Failure to do so will not relieve the Bidder from responsibility for completing the contract.

The Bidder warrants that this bid is submitted solely on the basis of the Bidder's examination and inspection of the quality and quantity of the timber offered for sale and the Bidder's opinion of the value thereof and the costs of recovery. No reliance should be placed on the State of Michigan's estimates of timber quality, quantity or costs of recovery. Bidder further acknowledges that the State of Michigan: (i) expressly disclaims any warranty of fitness of timber for any purpose; (ii) offers this timber as is without any warranty of quality (merchantability) or quantity and (iii) expressly disclaims any warranty as to the quantity or quality of timber sold.

#### 12. Certification and Chain-of-Custody (10/22)

Unless otherwise indicated in the contract under section 7 – Other Conditions of the Sale Specific Conditions & Requirements, the area encompassed by this timber sale is certified to the standards of the Forest Stewardship Council (FSC) - Certificate #SCS-FM/COC-00090N and the Sustainable Forestry Initiative (SFI) - Certificate #NSF-SFIS-5Y031-SF5. Forest products from this sale may be delivered to the mill as "FSC 100% and / or SFI certified" as long as the contractor hauling the forest products is chain-of-custody (COC) certified or covered under a COC certificate from the destination mill. The purchaser is responsible for maintaining COC after leaving the sale area.

#### 13. Good Neighbor Authority (GNA) Requirements (10/22)

If the name of this timber sales contains the acronym GNA, it is authorized by the Good Neighbor Authority (GNA) and covered by various agreements between the U.S. Forest Service and the State. The timber sale occurs on federal land and the following conditions apply:

GNA contracts on US Forest Service land will not be awarded to purchasers on the Federal list of excluded parties. The System for Award Management (SAM) will be checked for active excluded parties prior to award of contract. In

addition, the Bidder to whom award is made must complete an Assurance Regarding Felony Conviction or Tax Delinquent Status for Corporate Applicants (AD-3031).

14. Good Neighbor Authority (GNA) Requirements, con't (10/22)

Bidder certifies, by signing this bid form, that to the best of Bidder's knowledge that the following representations are accurate and complete.

- a. That the Bidder and its principals are not presently debarred, suspended, proposed for debarment, declared ineligible, or voluntary excluded from timber sales (covered transactions) by any Federal department or agency.
- b. That the Bidder and its principals have not within a 3-year period preceding this bid been convicted of or had a civil judgment rendered against them for commission of fraud or a criminal offense in connection with obtaining , attempting to obtain, or performing a public (Federal, State, or local) transaction or contract under a public transaction; violation of Federal or State antitrust statutes or commission of embezzlement, theft, forgery, bribery, falsification or destruction of records, making false statements, or receiving stolen property.
- c. That the Bidder and its principals are not presently indicted for or otherwise criminally or civilly charged by a governmental entity (Federal, State, or local) with commission of any of the offenses enumerated in paragraph b of this certification.
- d. That the Bidder and its principals have not within a 3-year period preceding this bid had one or more public transactions (Federal, State, or local) terminated for breach or default of a timber or forest product contract.

Bidders that cannot certify this requirement, in whole or in part, shall submit an explanation with their bid.

Scott Bowen  
Director

## TIMBER SALE INFORMATION

### Impact Bit Aspen (71-002-23)

T21N, R04W, SEC. 15.

Roscommon County (Advertised Price \$61,466.90)

SALE NOTE: A recreation site such as a trail, pathway, or campground is within the sale area or the vicinity. Certain restrictions/specifications may be applicable including time restrictions.

A timber sale contract for this lump sum, sealed bid timber sale will be awarded to the responsible bidder offering the highest sealed bid price. All units of volume listed below were estimated using the Inventory Manager computer program and the new Michigan taper model. Bids must be at or above the following advertised price for each product and species:

<u>PRODUCTS &amp; SPECIES</u>	<u>ESTIMATED UNITS*</u>	<u>ADVERTISED PRICE</u>
<b>Sawtimber</b>		
B. T. Aspen	69.4 MBF	\$ 107.00 / MBF
Black/Red (Hybrid) Oak	14.4 MBF	\$ 138.00 / MBF
Paper Birch	7.1 MBF	\$ 56.00 / MBF
Quaking Aspen	108.6 MBF	\$ 107.00 / MBF
Red Maple	19.5 MBF	\$ 97.00 / MBF
Red Pine	3.8 MBF	\$ 173.00 / MBF
White Pine	32.8 MBF	\$ 70.00 / MBF
<b>Pulpwood</b>		
Balsam Fir	80 Cords	\$ 32.55 / Cord
Black/Red (Hybrid) Oak	79 Cords	\$ 24.90 / Cord
Mixed Aspen	540 Cords	\$ 46.90 / Cord
Mixed Hardwood	44 Cords	\$ 24.50 / Cord
Paper Birch	7 Cords	\$ 21.55 / Cord
Red Pine	1 Cords	\$ 61.25 / Cord
White Pine	80 Cords	\$ 50.05 / Cord

\* The total volume is statistically estimated within plus (+) or minus (-) 39.66 percent. There are an estimated 1,430 cords on this timber sale, plus or minus 567 cords at the 95% confidence level. The estimated units are final and not subject to adjustment. Prospective bidders are urged to examine this timber and to make their own estimates of quantity and quality.

### **BOND AND PAYMENT SCHEDULE:**

1. A bond in the amount of \$3,073.00 to insure faithful performance of the conditions of the contract will be deposited by the successful bidder within 21 days of the sale award.
2. Cutting in any sale or unit without the required advance payment would be considered a trespass.
3. Total payment must be paid in advance or according to the following schedule :
  - (a) Ten percent (10%) of the sale value must be paid within 21 days of the sale award.
  - (b) The 10% down payment will be credited towards the first unit cut.
  - (c) Payment for each of the following units must be made before cutting begins in that unit:

PAYMENT UNIT NUMBER	PERCENT OF TOTAL SALE VALUE
01	52.1%
02	47.9%

4. If no cutting takes place, the 10% down payment will not be refunded.
5. Operations on the contract issued will terminate on 12/31/2026.

### **SALE STATISTICS**

Volumes were calculated in cubic feet using the Michigan taper model. Cubic foot volume includes all wood inside bark for the product indicated. For display purposes, cubic feet were converted to cords and MBF using a simple conversion factor, e.g. 79 cubic feet per cord and 185 cubic feet per MBF. The cubic foot volumes are precise; the cords and MBF volumes are not. Cubic foot volume cannot be directly converted to cords or boards with precision.

## SALE VOLUMES

The total estimated sale volume may not equal the sum of the species/products due to the nature of statistical calculations associated with double sampling methodology.

VOLUME			STATISTICAL RANGE IN CORDS	
TOTAL CUBIC FEET	TOTAL CORDS	PERCENT ERROR	MINIMUM	MAXIMUM
112,947	1,430	39.66%	863	1,997

## VDU VOLUMES

A VDU is a Volume Determination Unit. Volumes and their associated statistics are calculated at the VDU level and summarized to the sale level. There is often a one to one relationship between a VDU and a Payment Unit, but not always, depending on the cruise design. Refer to the VDU TO PAYMENT UNIT table.

	VOLUME			RANGE IN CORDS	
VDU	TOTAL CUBIC FEET	TOTAL CORDS	PERCENT ERROR	MINIMUM	MAXIMUM
108	82,155	1,040	28.84%	740	1,340
118	30,791	390	56.78%	168	611
<b>TOTAL:</b>	<b>112,947</b>	<b>1,430</b>		<b>908</b>	<b>1,951</b>

## VDU TO PAYMENT UNIT

When a VDU is associated with more than one Payment Unit (PU), the VDU volumes are assigned to the PU based on acres of the VDU within the PU.

VDU	VDU ACRES	PU	PU ACRES
108	31.9	1	23.0
		2	8.9
118	7.5	2	7.5
<b>TOTAL:</b>	<b>39.4</b>		<b>39.4</b>

**DESCRIPTION OF TIMBER BY PAYMENT UNIT (PU)**

PU	MARKET GROUP	PRODUCT	QUANTITY	UNIT	ACRES	ADVERTISE PRICE	
1	B. T. Aspen	Sawtimber	34.1	MBF	23.0	\$32,031.55	
	Black/Red (Hybrid		6.2	MBF			
	Quaking Aspen		78.3	MBF			
	Red Maple		14.1	MBF			
	Red Pine		2.7	MBF			
	White Pine		11.5	MBF			
	Balsam Fir		Pulpwood	56			Cords
	Black/Red (Hybrid			53			Cords
	Mixed Aspen			252			Cords
	<i>B. T. Aspen</i>			58			<i>Cords</i>
	<i>Quaking Aspen</i>	194		<i>Cords</i>			
	Mixed Hardwood	28		Cords			
	<i>Black Cherry</i>	6		<i>Cords</i>			
	<i>Red Maple</i>	22	<i>Cords</i>				
	Red Pine	1	Cords				
	White Pine	16	Cords				
	2	B. T. Aspen	Sawtimber	35.3			MBF
Black/Red (Hybrid		8.2		MBF			
Paper Birch		7.1		MBF			
Quaking Aspen		30.3		MBF			
Red Maple		5.4		MBF			
Red Pine		1.1		MBF			
White Pine		21.3		MBF			
Balsam Fir		Pulpwood		24	Cords		
Black/Red (Hybrid				26	Cords		
Mixed Aspen				288	Cords		
<i>B. T. Aspen</i>			192	<i>Cords</i>			
<i>Quaking Aspen</i>			96	<i>Cords</i>			
Mixed Hardwood			16	Cords			
<i>Black Cherry</i>			3	<i>Cords</i>			
<i>Red Maple</i>		13	<i>Cords</i>				
Paper Birch		7	Cords				
White Pine		64	Cords				
TOTAL:			255.6	MBF			
TOTAL:			831	Cords			

# Sale Specific Conditions & Requirements

**Sale Name: Impact Bit Aspen**

**Sale Number: 71-002-23 Seq#: 1**

## 1 - Sale Area

### 1.2 - Boundaries

#### 1.2.1 - Painted boundaries (9/19)

The sale boundary and Payment Unit boundaries are marked and identified by red paint. Exterior sale boundary lines against state are marked with red paint. The painted boundary line trees are not Included Timber and are to be protected.

## 2 - Timber Specifications

### 2.1 - Included Timber

#### 2.1.1 - Clearcut unit(s) with unmerchantable trees (6/14)

Within Payment Unit(s) 1 & 2, cut all trees that are two (2) inches or more at DBH, except in Payment Unit 2 do not cut any trees marked with green paint.

## 3 - Payments

### 3.4 - Damaged Timber

#### 3.4.1 - Damaged timber (7/16)

General Condition and Requirement 3.4 Damaged Timber, defines liquidated damages for undesignated live merchantable trees which are cut or injured. In addition, should chipping occur in any Payment Unit, it must be done before sprouting of new regeneration. If more than 33% of the newly sprouted tree seedlings within a specified portion of the Sale Area are damaged, liquidated damages will be assessed at \$500 per acre for all acreage within that specified portion of the Sale Area that was damaged.

## 4 - Transportation

### 4.1 - Construction

#### 4.1.6 - Road construction (1/09)

Construction of new roads or improvements of existing roads shall be done in such a way as to minimize the environmental and visual impacts. Merchantable trees shall be cut and utilized unless otherwise directed. Non-merchantable trees shall be severed and laid flat on the ground. Slash shall be scattered, and not left in windrows and kept a minimum of 10 feet back from the road edge. Stumps shall be set upright, not left on edge, and be moved at least 10 feet away from the road edge. Disturbed soil shall be feathered into the woods and not left in berms or windrows.

#### 4.1.7 - Road closure (10/11)

All new roads built into the sale must be blocked to vehicle traffic upon completion of the sale. Overgrown roads that are reopened shall be considered new roads. In general, this will require constructing a four (4') foot high berm of stumps and logs covered with earth. These roads must be rendered impassable to cars and trucks. Contact the Sale Administrator for specific details of design and placement.

### 4.2 - Maintenance

#### 4.2.3 - Road maintenance (8/13)

The following road maintenance may be needed: Within 60 days of completion of hauling, or if no hauling occurs for 60 days, the road must be maintained and graded. This includes cleaning of drainage areas, grading, crowning and filling with gravel, if necessary. Damages will be assessed if grading/repair does not occur.

#### 4.2.5 - Two wheel drive condition (2/04)

All existing trail roads on and adjacent to the sale area must be passable by two-wheel drive traffic for the duration of the sale.

## 5 - Operations

### 5.1 - Notification



#### 5.1.1 - Pre-sale conference (10/16)

A pre-sale conference between the Purchaser and sale administrator is required prior to beginning any operations to determine landing and road locations. The Unit Manager or his/her representative must be contacted in advance to schedule the conference.

#### 5.1.3 - Well heads and natural gas pipelines (11/15)

The Purchaser is responsible for contacting the pipeline company prior to operating equipment in the vicinity of well heads or natural gas pipelines.

#### 5.1.4 - Post-sale conference (10/16)

A post-sale conference on site between the Purchaser and sale administrator is required prior to the completion of active logging operations to determine clean-up and repair of landings, road edges, and the fulfillment of other contract specifications.

### 5.2 - Conduct of Operations

#### 5.2.1 - Slash

##### 5.2.1.8 - Slash height (12/08)

No slash or tree tops may exceed 24 inches in height. If not chipped, slash must be evenly scattered and distributed throughout the sale.

#### 5.2.3 - Operating Restrictions

##### 5.2.3.11 - Coppice regeneration protection (4/10)

Timber harvesting in any Payment Unit must be completed before significant aspen sprouting occurs in that Payment Unit so as to minimize damage to the new regeneration. Any post harvest operations, such as chipping, must be completed before sprouting of regeneration occurs. Should damages occur to the new regeneration, the damages will be assessed per Specification 3.4.1 - Damaged Timber. If it is anticipated that chipping will be delayed, then tops shall be carried to one central location, preferably the landing. A third-party entity may be brought in to chip the tops/slash, before new sprouting occurs, should the contract holder fail to present in a timely manner arrangements approved by the Unit Manager for protecting the new regeneration. The Unit Manager or his/her representative may also cease such operations if sprouting occurs before the operation is complete and the Payment Unit(s) will be counted as incomplete with liquidated damages assessed accordingly.

#### 5.2.4 - Dead and Down Creation

##### 5.2.4.2 - Dead and down creation, hare and grouse (1/14)

To improve habitat for snowshoe hare, grouse, and other species, the Purchaser is to leave two trees, nine (9) inches or larger in diameter on the ground for every four acres. They should be scattered throughout the sale or positioned per the Sale Administrator's instructions. If possible, the logs or trees should be felled so they overlap. Note these pieces should have a minimum length of five feet. They can be of any tree species and can be an un-merchantable piece of wood or a full tree.

Additionally, 10 brush piles must be left along the northern lowland edge. Contact the Sale Administrator for details.

#### 5.2.22 - Operating Caution

##### 5.2.22.1 - Operating caution (6/11)

It is recommended, but not required, that within Payment Unit(s) 1-2, cutting and skidding occur during dry summer or frozen winter conditions. The reason for the recommendation is because of wet/sensitive soils that may be present in some areas.

#### 5.2.32 - Decking/landing restoration (9/13)

All decking and landing areas must have the surface area restored to a condition equal to or better than before. This is to ensure the proper regeneration of the stand. Wood debris, chips, and "cookies" from trimmings must be removed or scattered away from landing and loading areas and may not be windrowed on the edge.

#### 5.2.39 - ORV trail/route protection (4/18)

Elwell is an ORV trail or route and is shown on the Timber Sale Map. Do not cut trees or damage posts with yellow ORV markers.

## 5.4 - Soil Protection

### 5.4.1 - Rutting restriction, general (7/16)

Operations are to cease immediately if equipment and weather conditions result in rutting of roads and/or skid trails which is 12 inches or greater in depth and 50 feet in length. The Unit Manager or his/her representative may restrict hauling and/or skidding if ruts exceed the specified depth. With the Unit Manager or his/her representative's approval, the Purchaser may return to the area when the risk of rutting has decreased.

## 6 - Safety and Fire Prevention

### 6.2 - Signing

#### 6.2.1 - Road posting (10/20)

The Purchaser is responsible for posting and maintaining caution signs on Elwell Road prior to beginning operations. The road must be posted at appropriate distances from the Sale Area to warn of logging activity and truck traffic. Signs must be removed when harvest operations are suspended or completed. The Purchaser will provide these signs.



### TIMBER SALE MAP

This information provided by authority of Part 525, 1994 PA 451, as amended.

Sale Number <b>71-002-23</b>	Date 10/25/2023
Scale 1:7,920	Page 1
	Of 1

Forest Management Unit Roscommon Mgt Unit	County Roscommon	Mapped By: Martell
		Cruised By: Lewicki and Ewald

Township 21N	Range 04W	Section(s) and Subdivision(s) Sec. 15 NENE,S1/2NE,N1/2SE;
-----------------	--------------	---

Cover Type			
A = Aspen	J = Jack Pine	O = Oak	U = Upland Brush
B = Paper Birch	K = Rock	P = Lowland Poplar	UM = Upland Mix Forest
C = Cedar	L = Lowland Brush	Q = Mixed Swamp Conifer	V = Bog or Marsh
D = Treed Bog	LM = Lowland Mix Forest	R = Red Pine	W = White Pine
E = Swamp Hardwoods	M = Maple, Beech, Birch	S = Black Spruce	X = Non Stocked
F = Spruce/Fir	MC = Mixed Conifer	T = Tamarack	Y = Sand
G = Grass	MD = Mixed Deciduous	Z = Water	
H = Hemlock	N = Marsh		

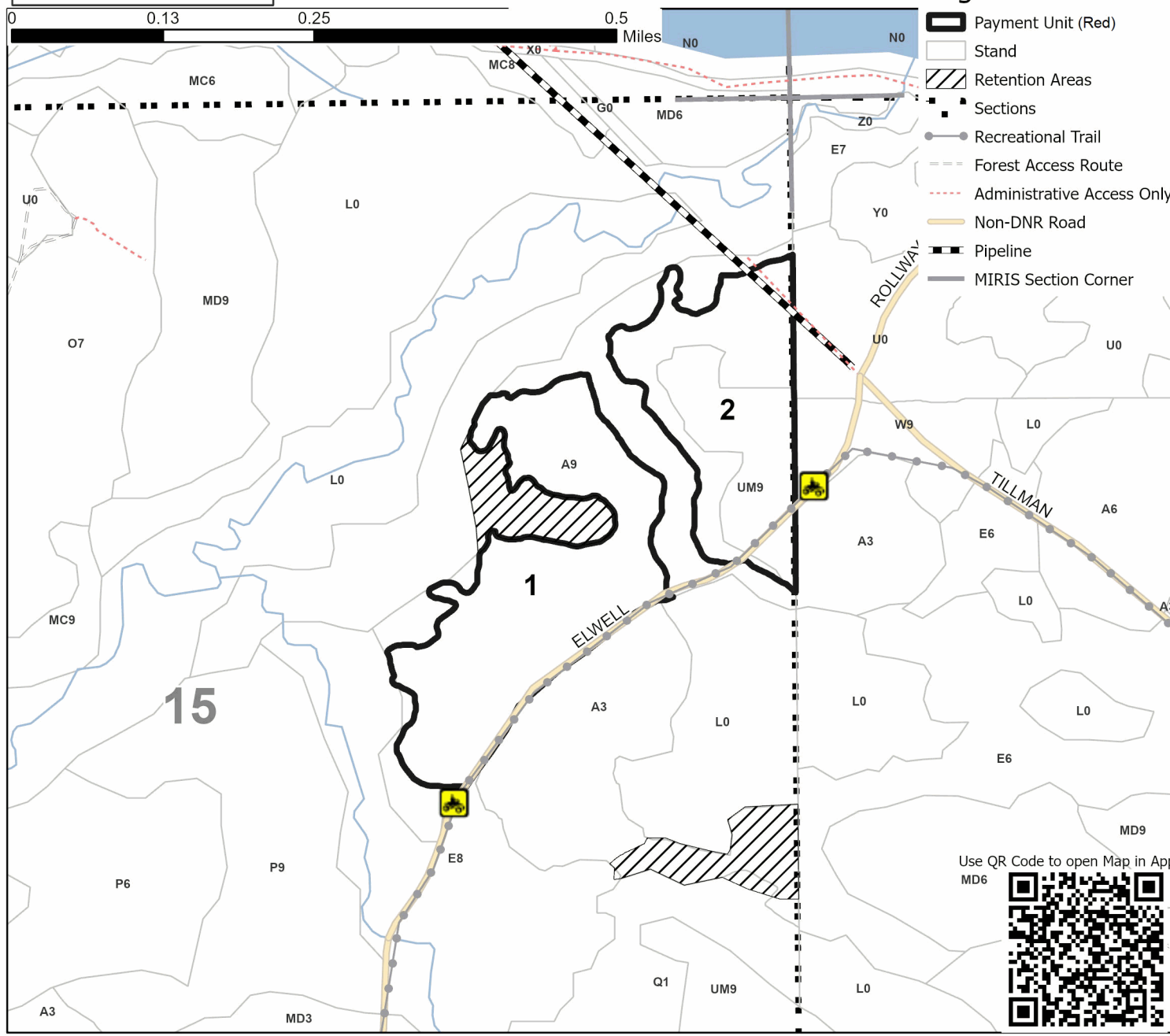
Density	
0 = Non Stocked	5 = Pole Timber Medium
1 = Seedling Sapling Poor	6 = Pole Timber Well
2 = Seedling Sapling Medium	7 = Saw Timber Poor
3 = Seedling Sapling Well	8 = Saw Timber Medium
4 = Pole Timber Poor	9 = Saw Timber Well



PU #	Acres	PU #	Acres
1	23	2	16.4

## Impact Bit Aspen

### 39.4 Acres



Use QR Code to open Map in App





## TIMBER SALE INFORMATION

USFWS Aspen (71-004-23)

T24N, R02E, SEC. 20; T24N, R02E, SEC. 29.  
Ogemaw County (Advertised Price \$181,640.30)

A timber sale contract for this lump sum, sealed bid timber sale will be awarded to the responsible bidder offering the highest sealed bid price. All units of volume listed below were estimated using the Inventory Manager computer program and the new Michigan taper model. Bids must be at or above the following advertised price for each product and species:

<u>PRODUCTS &amp; SPECIES</u>	<u>ESTIMATED UNITS*</u>	<u>ADVERTISED PRICE</u>
<b>Sawtimber</b>		
B. T. Aspen	224.8 MBF	\$ 107.00 / MBF
Black/Red (Hybrid) Oak	23.8 MBF	\$ 138.00 / MBF
Quaking Aspen	167.2 MBF	\$ 107.00 / MBF
Red Maple	18.1 MBF	\$ 97.00 / MBF
Red Pine	74.8 MBF	\$ 173.00 / MBF
White Oak	28.7 MBF	\$ 81.00 / MBF
<b>Pulpwood</b>		
Jack Pine	64 Cords	\$ 13.90 / Cord
Mixed Aspen	2,140 Cords	\$ 46.90 / Cord
Mixed Hardwood	140 Cords	\$ 24.50 / Cord
Mixed Oak	278 Cords	\$ 24.90 / Cord
Red Pine	114 Cords	\$ 61.25 / Cord
White Pine	16 Cords	\$ 50.05 / Cord

\* The total volume is statistically estimated within plus (+) or minus (-) 26.28 percent. There are an estimated 4,012 cords on this timber sale, plus or minus 1,055 cords at the 95% confidence level. The estimated units are final and not subject to adjustment. Prospective bidders are urged to examine this timber and to make their own estimates of quantity and quality.

### **BOND AND PAYMENT SCHEDULE:**

1. A bond in the amount of \$9,082.00 to insure faithful performance of the conditions of the contract will be deposited by the successful bidder within 21 days of the sale award.
2. Cutting in any sale or unit without the required advance payment would be considered a trespass.
3. Total payment must be paid in advance or according to the following schedule :
  - (a) Ten percent (10%) of the sale value must be paid within 21 days of the sale award.
  - (b) The 10% down payment will be credited towards the first unit cut.
  - (c) Payment for each of the following units must be made before cutting begins in that unit:
 

PAYMENT UNIT NUMBER	PERCENT OF TOTAL SALE VALUE
01	23.4%
02	20.3%
03	26.9%
04	12.9%
05	16.5%
4. If no cutting takes place, the 10% down payment will not be refunded.
5. Operations on the contract issued will terminate on 12/31/2025.

### **SALE STATISTICS**

Volumes were calculated in cubic feet using the Michigan taper model. Cubic foot volume includes all wood inside bark for the product indicated. For display purposes, cubic feet were converted to cords and MBF using a simple conversion factor, e.g. 79 cubic feet per cord and 185 cubic feet per MBF. The cubic foot volumes are precise; the cords and MBF volumes are not. Cubic foot volume cannot be directly converted to cords or boards with precision.

### **SALE VOLUMES**

The total estimated sale volume may not equal the sum of the species/products due to the nature of statistical calculations associated with double sampling methodology.

VOLUME		STATISTICAL RANGE IN CORDS		
TOTAL CUBIC FEET	TOTAL CORDS	PERCENT ERROR	MINIMUM	MAXIMUM
316,932	4,012	26.28%	2,957	5,066

**VDU VOLUMES**

A VDU is a Volume Determination Unit. Volumes and their associated statistics are calculated at the VDU level and summarized to the sale level. There is often a one to one relationship between a VDU and a Payment Unit, but not always, depending on the cruise design. Refer to the VDU TO PAYMENT UNIT table.

VDU	VOLUME		PERCENT ERROR	RANGE IN CORDS	
	TOTAL CUBIC FEET	TOTAL CORDS		MINIMUM	MAXIMUM
24	185,354	2,346	26.75%	1,719	2,974
158	131,578	1,666	29.17%	1,180	2,151
<b>TOTAL:</b>	<b>316,932</b>	<b>4,012</b>		<b>2,899</b>	<b>5,125</b>

**VDU TO PAYMENT UNIT**

When a VDU is associated with more than one Payment Unit (PU), the VDU volumes are assigned to the PU based on acres of the VDU within the PU.

VDU	VDU ACRES	PU	PU ACRES
24	59.8	3	28.6
		4	13.7
		5	17.5
158	54.0	1	28.9
		2	25.1
<b>TOTAL:</b>	<b>113.8</b>		<b>113.8</b>

**DESCRIPTION OF TIMBER BY PAYMENT UNIT (PU)**

PU	MARKET GROUP	PRODUCT	QUANTITY	UNIT	ACRES	ADVERTISE PRICE
1	B. T. Aspen	Sawtimber	54.9	MBF	28.9	\$42,463.20
	Black/Red (Hybrid		3.8	MBF		
	Quaking Aspen		25.4	MBF		
	Red Pine		26.5	MBF		
	Jack Pine	Pulpwood	20	Cords		
	<i>Jack Pine</i>		20	<i>Cords</i>		
	Mixed Aspen		506	Cords		
	<i>B. T. Aspen</i>		355	<i>Cords</i>		
	<i>Quaking Aspen</i>		151	<i>Cords</i>		
	Mixed Hardwood		1	Cords		
	<i>Red Maple</i>		1	<i>Cords</i>		
	Mixed Oak		45	Cords		
	<i>/Red (Hybrid) Oak</i>		45	<i>Cords</i>		
	Red Pine		54	Cords		
White Pine		6	Cords			
2	B. T. Aspen	Sawtimber	47.6	MBF	25.1	\$36,891.90
	Black/Red (Hybrid		3.3	MBF		
	Quaking Aspen		22.1	MBF		
	Red Pine		23.0	MBF		
	Jack Pine	Pulpwood	18	Cords		
	<i>Jack Pine</i>		18	<i>Cords</i>		
	Mixed Aspen		440	Cords		
	<i>B. T. Aspen</i>		309	<i>Cords</i>		
	<i>Quaking Aspen</i>		131	<i>Cords</i>		
	Mixed Hardwood		1	Cords		
	<i>Red Maple</i>		1	<i>Cords</i>		
	Mixed Oak		39	Cords		
	<i>/Red (Hybrid) Oak</i>		39	<i>Cords</i>		
	Red Pine		46	Cords		
White Pine		6	Cords			
3	B. T. Aspen	Sawtimber	58.5	MBF	28.6	\$48,966.15
	Black/Red (Hybrid		8.0	MBF		
	Quaking Aspen		57.3	MBF		
	Red Maple		8.7	MBF		
	Red Pine		12.1	MBF		
	White Oak		13.7	MBF		
	Jack Pine	Pulpwood	13	Cords		
	<i>Jack Pine</i>	<i>Sawtimber</i>	1.0	<i>MBF</i>		
	<i>Jack Pine</i>	<i>Pulpwood</i>	11	<i>Cords</i>		
	Mixed Aspen		570	Cords		
	<i>B. T. Aspen</i>		399	<i>Cords</i>		
	<i>Quaking Aspen</i>		171	<i>Cords</i>		
	Mixed Hardwood		67	Cords		
	<i>Black Cherry</i>		3	<i>Cords</i>		
	<i>Red Maple</i>		64	<i>Cords</i>		
	Mixed Oak		94	Cords		
	<i>/Red (Hybrid) Oak</i>		54	<i>Cords</i>		
	<i>White Oak</i>		40	<i>Cords</i>		
	Red Pine		7	Cords		
White Pine		2	Cords			
4	B. T. Aspen	Sawtimber	28.0	MBF	13.7	\$23,410.80
	Black/Red (Hybrid		3.8	MBF		
	Quaking Aspen		27.4	MBF		
	Red Maple		4.1	MBF		
	Red Pine		5.8	MBF		
	White Oak		6.6	MBF		

**DESCRIPTION OF TIMBER BY PAYMENT UNIT (PU), CON'T**

PU	MARKET GROUP	PRODUCT	QUANTITY	UNIT	ACRES	ADVERTISE PRICE
4 con't	Jack Pine	Pulpwood	6	Cords		
	<i>Jack Pine</i>	<i>Sawtimber</i>	0.5	<i>MBF</i>		
	<i>Jack Pine</i>	<i>Pulpwood</i>	5	<i>Cords</i>		
	Mixed Aspen		274	Cords		
	<i>B. T. Aspen</i>		192	<i>Cords</i>		
	<i>Quaking Aspen</i>		82	<i>Cords</i>		
	Mixed Hardwood		31	Cords		
	<i>Black Cherry</i>		1	<i>Cords</i>		
	<i>Red Maple</i>		30	<i>Cords</i>		
	Mixed Oak		44	Cords		
	<i>/Red (Hybrid) Oak</i>		25	<i>Cords</i>		
	<i>White Oak</i>		19	<i>Cords</i>		
	Red Pine		3	Cords		
	White Pine		1	Cords		
5	B. T. Aspen	Sawtimber	35.8	MBF	17.5	\$29,908.25
	Black/Red (Hybrid)		4.9	MBF		
	Quaking Aspen		35.0	MBF		
	Red Maple		5.3	MBF		
	Red Pine		7.4	MBF		
	White Oak		8.4	MBF		
	Jack Pine	Pulpwood	7	Cords		
	<i>Jack Pine</i>	<i>Sawtimber</i>	0.6	<i>MBF</i>		
	<i>Jack Pine</i>	<i>Pulpwood</i>	6	<i>Cords</i>		
	Mixed Aspen		350	Cords		
	<i>B. T. Aspen</i>		245	<i>Cords</i>		
	<i>Quaking Aspen</i>		105	<i>Cords</i>		
	Mixed Hardwood		40	Cords		
	<i>Black Cherry</i>		1	<i>Cords</i>		
	<i>Red Maple</i>		39	<i>Cords</i>		
	Mixed Oak		56	Cords		
	<i>/Red (Hybrid) Oak</i>		32	<i>Cords</i>		
	<i>White Oak</i>		24	<i>Cords</i>		
	Red Pine		4	Cords		
	White Pine		1	Cords		
	TOTAL:			537.4		
TOTAL:			2,752	Cords		



# Sale Specific Conditions & Requirements

**Sale Name: USFWS Aspen**

**Sale Number: 71-004-23 Seq#: 1**

## 1 - Sale Area

### 1.2 - Boundaries

#### 1.2.1 - Painted boundaries (9/19)

The sale boundary and Payment Unit boundaries are marked and identified by blue, red and yellow paint. Exterior sale boundary lines against private property are marked with blue paint. Exterior sale boundary lines against state are marked with red paint. Interior Payment Unit boundaries are marked with yellow paint. The painted boundary line trees are not Included Timber and are to be protected. Yellow painted trees designating an interior Payment Unit boundary are only to be cut when all surrounding Payment Units have been paid.

## 2 - Timber Specifications

### 2.1 - Included Timber

#### 2.1.1 - Clearcut unit(s) with unmerchantable trees (6/14)

Within Payment Unit(s) 1-5, cut all trees that are two (2) inches or more at DBH, except trees marked with green paint.

### 2.2 - Utilization

#### 2.2.3 - Stump heights (4/07)

Stump heights within the Sale Area shall not exceed 6 inches for all trees.

## 3 - Payments

### 3.3 - Pre-measured Sales

#### 3.3.4 - Dividing payment units (7/14)

Payment Unit(s) may be divided at the request of the Purchaser and upon approval of the Unit Manager. Dividing Payment Units is a contract modification which requires a Timber Sale Contract Amendment.

### 3.4 - Damaged Timber

#### 3.4.1 - Damaged timber (7/16)

General Condition and Requirement 3.4 Damaged Timber, defines liquidated damages for undesignated live merchantable trees which are cut or injured. In addition, should chipping occur in any Payment Unit, it must be done before sprouting of new regeneration. If more than 33% of the newly sprouted tree seedlings within a specified portion of the Sale Area are damaged, liquidated damages will be assessed at \$500 per acre for all acreage within that specified portion of the Sale Area that was damaged.

## 4 - Transportation

### 4.1 - Construction

#### 4.1.6 - Road construction (1/09)

Construction of new roads or improvements of existing roads shall be done in such a way as to minimize the environmental and visual impacts. Merchantable trees shall be cut and utilized unless otherwise directed. Non-merchantable trees shall be severed and laid flat on the ground. Slash shall be scattered, and not left in windrows and kept a minimum of 10 feet back from the road edge. Stumps shall be set upright, not left on edge, and be moved at least 10 feet away from the road edge. Disturbed soil shall be feathered into the woods and not left in berms or windrows.

#### 4.1.7 - Road closure (10/11)

All new roads built into the sale must be blocked to vehicle traffic upon completion of the sale. Overgrown roads that are reopened shall be considered new roads. In general, this will require constructing a four (4') foot high berm of stumps and logs covered with earth. These roads must be rendered impassable to cars and trucks. Contact the Sale Administrator for specific details of design and placement.

### 4.2 - Maintenance

#### 4.2.3 - Road maintenance (8/13)

The following road maintenance may be needed: Within 60 days of completion of hauling, or if no hauling occurs for 60 days, the road must be maintained and graded. This includes cleaning of drainage areas, grading, crowning and filling with gravel, if necessary. Damages will be assessed if grading/repair does not occur.

#### 4.2.5 - Two wheel drive condition (2/04)

All existing trail roads on and adjacent to the sale area must be passable by two-wheel drive traffic for the duration of the sale.

### 5 - Operations

#### 5.1 - Notification

##### 5.1.1 - Pre-sale conference (10/16)

A pre-sale conference between the Purchaser and sale administrator is required prior to beginning any operations, in any Payment Unit, to determine landing and road locations. The Unit Manager or his/her representative must be contacted in advance to schedule the conference.

##### 5.1.3 - Well heads and natural gas pipelines (11/15)

The Purchaser is responsible for contacting the gas or pipeline company prior to operating equipment in the vicinity of well heads or natural gas pipelines.

##### 5.1.4 - Post-sale conference (10/16)

A post-sale conference on site between the Purchaser and sale administrator is required prior to the completion of active logging operations to determine clean-up and repair of landings, road edges, and the fulfillment of other contract specifications.

#### 5.2 - Conduct of Operations

##### 5.2.1 - Slash

###### 5.2.1.8 - Slash height (12/08)

No slash or tree tops may exceed 24 inches in height.

##### 5.2.3 - Operating Restrictions

###### 5.2.3.5 - Oak wilt restriction (1/18)

Within Payment Units 1-5, unless changed by written agreement, cutting, skidding, hauling within the sale and brushing of access roads to the sale are not permitted during the period of April 15 to July 15. Operations may be allowed if specific steps are taken to prevent damaging uncut oak during the high risk period. Those steps may include completing all road brushing before April 15th and clearing a tree-length buffer along uncut oak cover before April 15th. This is necessary to reduce the spread of oak wilt. For more information, contact the Unit Manager or his/her representative.

###### 5.2.3.11 - Coppice regeneration protection (4/10)

Timber harvesting in any Payment Unit must be completed before significant aspen sprouting occurs in that Payment Unit so as to minimize damage to the new regeneration. Any post harvest operations, such as chipping, must be completed before sprouting of regeneration occurs. Should damages occur to the new regeneration, the damages will be assessed per Specification 3.4.1 - Damaged Timber. If it is anticipated that chipping will be delayed, then tops shall be carried to one central location, preferably the landing. A third-party entity may be brought in to chip the tops/slash, before new sprouting occurs, should the contract holder fail to present in a timely manner arrangements approved by the Unit Manager for protecting the new regeneration. The Unit Manager or his/her representative may also cease such operations if sprouting occurs before the operation is complete and the Payment Unit(s) will be counted as incomplete with liquidated damages assessed accordingly.

##### 5.2.4 - Dead and Down Creation

###### 5.2.4.2 - Dead and down creation, hare and grouse (1/14)

To improve habitat for snowshoe hare, grouse, and other species, the Purchaser is to leave two trees, nine (9) inches or larger in diameter on the ground for every 4 acres. They should be scattered throughout the sale or positioned per the Sale Administrator's instructions. If possible, the logs or trees should be felled so they overlap. Note these pieces should have a minimum length of five feet. They can be of any tree species and can be an un-merchantable piece of wood or a full tree.

#### 5.2.32 - Decking/landing restoration (9/13)

All decking and landing areas must have the surface area restored to a condition equal to or better than before. This is to ensure the proper regeneration of the stand. Wood debris, chips and "cookies" from trimmings must be removed or scattered away from landing and loading areas and may not be windrowed on the edge.

### **6 - Safety and Fire Prevention**

#### 6.2 - Signing

##### 6.2.1 - Road posting (10/20)

The Purchaser is responsible for posting and maintaining caution signs on Oyster Road prior to beginning operations. The road must be posted at appropriate distances from the Sale Area to warn of logging activity and truck traffic. Signs must be removed when harvest operations are suspended or completed. The Purchaser will provide these signs.



### TIMBER SALE MAP

This information provided by authority of Part 525, 1994 PA 451, as amended.

Sale Number	Date	
<b>71-004-23</b>	10/25/2023	
Scale	Page	Of
1:10,000	1	1

Forest Management Unit	County	Mapped By: Martell
Roscommon Mgt Unit	Ogemaw	Cruised By: Martell

Township	Range	Section(s) and Subdivision(s)
24N	02E	Sec. 20 NESW,S1/2SW,SWSE; Sec. 29 E1/2NW,N1/2NE,SWNE;

Cover Type			
A = Aspen	J = Jack Pine	O = Oak	U = Upland Brush
B = Paper Birch	K = Rock	P = Lowland Poplar	UM = Upland Mix Forest
C = Cedar	L = Lowland Brush	Q = Mixed Swamp Conifer	V = Bog or Marsh
D = Treed Bog	LM = Lowland Mix Forest	R = Red Pine	W = White Pine
E = Swamp Hardwoods	M = Maple, Beech, Birch	S = Black Spruce	X = Non Stocked
F = Spruce/Fir	MC = Mixed Conifer	T = Tamarack	Y = Sand
G = Grass	MD = Mixed Deciduous	Z = Water	
H = Hemlock	N = Marsh		

Density	
0 = Non Stocked	5 = Pole Timber Medium
1 = Seedling Sapling Poor	6 = Pole Timber Well
2 = Seedling Sapling Medium	7 = Saw Timber Poor
3 = Seedling Sapling Well	8 = Saw Timber Medium
4 = Pole Timber Poor	9 = Saw Timber Well

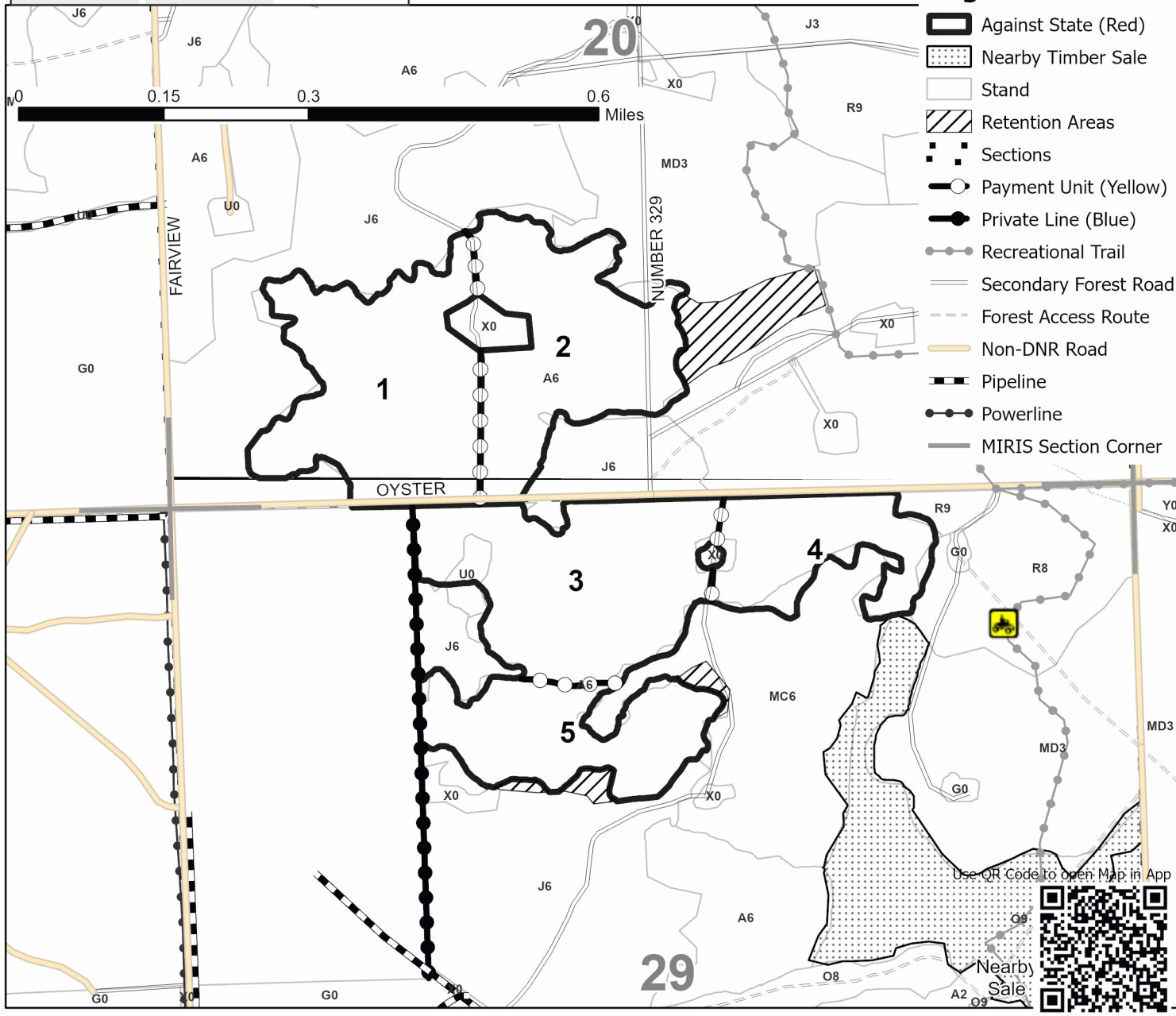


PU #	Acres	PU #	Acres	PU #	Acres
1	28.9	3	28.6	5	17.5
2	25	4	13.7		

## USFWS Aspen 113.8 Acres

### Legend

- Against State (Red)
- Nearby Timber Sale
- Stand
- Retention Areas
- Sections
- Payment Unit (Yellow)
- Private Line (Blue)
- Recreational Trail
- Secondary Forest Road
- Forest Access Route
- Non-DNR Road
- Pipeline
- Powerline
- MIRIS Section Corner



## TIMBER SALE INFORMATION

### Panda Oak Strips (71-005-23)

T21N, R03W, SEC. 13; T21N, R03W, SEC. 23; T21N, R03W, SEC. 24.  
Roscommon County (Advertised Price \$75,698.35)

SALE NOTE: A recreation site such as a trail, pathway, or campground is within the sale area or the vicinity. Certain restrictions/specifications may be applicable including time restrictions.

A timber sale contract for this lump sum, sealed bid timber sale will be awarded to the responsible bidder offering the highest sealed bid price. All units of volume listed below were estimated using the T-Sale computer program and our traditional volume equations. Bids must be at or above the following advertised price for each product and species:

<u>PRODUCTS &amp; SPECIES</u>	<u>ESTIMATED UNITS*</u>	<u>ADVERTISED PRICE</u>
<b>Sawtimber</b>		
B. T. Aspen	62.2 MBF	\$ 107.00 / MBF
Paper Birch	2.1 MBF	\$ 56.00 / MBF
Red Maple	10.4 MBF	\$ 97.00 / MBF
Red Oak	213.5 MBF	\$ 155.00 / MBF
Red Pine	9.5 MBF	\$ 173.00 / MBF
White Oak	37.0 MBF	\$ 81.00 / MBF
<b>Pulpwood</b>		
B. T. Aspen	54 Cords	\$ 46.90 / Cord
Mixed Oak	230 Cords	\$ 24.90 / Cord
Paper Birch	7 Cords	\$ 21.55 / Cord
Red Maple	109 Cords	\$ 24.50 / Cord
Red Oak	517 Cords	\$ 24.90 / Cord
Red Pine	11 Cords	\$ 61.25 / Cord
White Pine	111 Cords	\$ 50.05 / Cord

\* The total volume is statistically estimated within plus (+) or minus (-) 11.41 percent. There are an estimated 1,709 cords on this timber sale, plus or minus 195 cords at the 95% confidence level. The estimated units are final and not subject to adjustment. Prospective bidders are urged to examine this timber and to make their own estimates of quantity and quality.

### **BOND AND PAYMENT SCHEDULE:**

1. A bond in the amount of \$3,785.00 to insure faithful performance of the conditions of the contract will be deposited by the successful bidder within 21 days of the sale award.
2. Cutting in any sale or unit without the required advance payment would be considered a trespass.
3. Total payment must be paid in advance or according to the following schedule :
  - (a) Ten percent (10%) of the sale value must be paid within 21 days of the sale award.
  - (b) The 10% down payment will be credited towards the first unit cut.
  - (c) Payment for each of the following units must be made before cutting begins in that unit:
 

PAYMENT UNIT NUMBER	PERCENT OF TOTAL SALE VALUE
01	12.7%
02	16.3%
03	26.8%
04	14.1%
05	14.5%
06	15.6%
4. If no cutting takes place, the 10% down payment will not be refunded.
5. Operations on the contract issued will terminate on 12/31/2025.

### **SALE STATISTICS**

#### **SALE VOLUMES**

VOLUME		STATISTICAL RANGE IN CORDS		
TOTAL CUBIC FEET	TOTAL CORDS	PERCENT ERROR	MINIMUM	MAXIMUM
134,974	1,709	11.41%	1,514	1,903

**VDU VOLUMES**

A VDU is a Volume Determination Unit. Volumes and their associated statistics are calculated at the VDU level and summarized to the sale level. There is often a one to one relationship between a VDU and a Payment Unit, but not always, depending on the cruise design. Refer to the VDU TO PAYMENT UNIT table.

VDU	VOLUME		PERCENT ERROR	RANGE IN CORDS	
	TOTAL CUBIC FEET	TOTAL CORDS		MINIMUM	MAXIMUM
117	0	0	14.76%	0	0
118	0	0	16.87%	0	0
<b>TOTAL:</b>	<b>0</b>	<b>0</b>		<b>0</b>	<b>0</b>

**VDU TO PAYMENT UNIT**

When a VDU is associated with more than one Payment Unit (PU), the VDU volumes are assigned to the PU based on acres of the VDU within the PU.

VDU	VDU ACRES	PU	PU ACRES
117	95.7	1	17.3
		2	22.3
		3	36.8
		4	19.3
118	46.3	5	22.2
		6	24.1
<b>TOTAL:</b>	<b>142.0</b>		<b>142.0</b>

**DESCRIPTION OF TIMBER BY PAYMENT UNIT (PU)**

PU	MARKET GROUP	PRODUCT	QUANTITY	UNIT	ACRES	ADVERTISE PRICE
1	B. T. Aspen	Sawtimber	5.5	MBF	17.3	\$9,591.60
	Red Maple		1.2	MBF		
	Red Oak		31.3	MBF		
	White Oak		5.6	MBF		
	B. T. Aspen	Pulpwood	4	Cords		
	Mixed Oak		28	Cords		
	/Red (Hybrid) Oak	Sawtimber	0.6	MBF		
	/Red (Hybrid) Oak	Pulpwood	1	Cords		
	White Oak		26	Cords		
	Paper Birch		1	Cords		
	Red Maple		10	Cords		
	Red Oak		67	Cords		
	Red Pine		1	Cords		
	White Pine		14	Cords		
	2	B. T. Aspen	Sawtimber	7.1		
Red Maple			1.5	MBF		
Red Oak			40.3	MBF		
White Oak			7.2	MBF		
B. T. Aspen		Pulpwood	6	Cords		
Mixed Oak			35	Cords		
/Red (Hybrid) Oak		Sawtimber	0.7	MBF		
/Red (Hybrid) Oak		Pulpwood	1	Cords		
White Oak			33	Cords		
Paper Birch			1	Cords		
Red Maple			13	Cords		
Red Oak			86	Cords		
Red Pine			1	Cords		
White Pine			18	Cords		
3		B. T. Aspen	Sawtimber	11.7	MBF	36.8
	Red Maple		2.5	MBF		
	Red Oak		66.5	MBF		
	White Oak		11.7	MBF		
	B. T. Aspen	Pulpwood	9	Cords		
	Mixed Oak		59	Cords		
	/Red (Hybrid) Oak	Sawtimber	1.2	MBF		
	/Red (Hybrid) Oak	Pulpwood	2	Cords		
	White Oak		55	Cords		
	Paper Birch		2	Cords		
	Red Maple		22	Cords		
	Red Oak		142	Cords		
	Red Pine		1	Cords		
	White Pine		30	Cords		
	4	B. T. Aspen	Sawtimber	6.1	MBF	
Red Maple			1.3	MBF		
Red Oak			34.9	MBF		
White Oak			6.2	MBF		
B. T. Aspen		Pulpwood	5	Cords		
Mixed Oak			31	Cords		
/Red (Hybrid) Oak		Sawtimber	0.6	MBF		
/Red (Hybrid) Oak		Pulpwood	1	Cords		
White Oak			29	Cords		
Paper Birch			1	Cords		
Red Maple			11	Cords		
Red Oak			74	Cords		
Red Pine			1	Cords		
White Pine			16	Cords		

**DESCRIPTION OF TIMBER BY PAYMENT UNIT (PU), CON'T**

PU	MARKET GROUP	PRODUCT	QUANTITY	UNIT	ACRES	ADVERTISE PRICE		
5	B. T. Aspen	Sawtimber	15.3	MBF	22.2	\$10,948.85		
	Paper Birch		1.0	MBF				
	Red Maple		1.9	MBF				
	Red Oak		19.4	MBF				
	Red Pine		4.6	MBF				
	White Oak		3.0	MBF				
	B. T. Aspen		Pulpwood	14			Cords	
	Mixed Oak			37			Cords	
	<i>/Red (Hybrid) Oak</i>			<i>Sawtimber</i>			0.9	<i>MBF</i>
	<i>/Red (Hybrid) Oak</i>			<i>Pulpwood</i>			1	<i>Cords</i>
	<i>White Oak</i>			34			<i>Cords</i>	
	Paper Birch			1			Cords	
	Red Maple		25	Cords				
	Red Oak		71	Cords				
	Red Pine		4	Cords				
	White Pine		16	Cords				
6	B. T. Aspen	Sawtimber	16.5	MBF	24.1	\$11,787.55		
	Paper Birch		1.1	MBF				
	Red Maple		2.0	MBF				
	Red Oak		21.1	MBF				
	Red Pine		4.9	MBF				
	White Oak		3.3	MBF				
	B. T. Aspen		Pulpwood	16			Cords	
	Mixed Oak			39			Cords	
	<i>/Red (Hybrid) Oak</i>			<i>Sawtimber</i>			0.9	<i>MBF</i>
	<i>/Red (Hybrid) Oak</i>			<i>Pulpwood</i>			1	<i>Cords</i>
	<i>White Oak</i>			36			<i>Cords</i>	
	Paper Birch			1			Cords	
	Red Maple		28	Cords				
	Red Oak		77	Cords				
	Red Pine		3	Cords				
	White Pine		17	Cords				
TOTAL:			334.7	MBF				
TOTAL:			1,038	Cords				



## Sale Specific Conditions & Requirements

**Sale Name: Panda Oak Strips**

**Sale Number: 71-005-23 Seq#: 1**

### 1 - Sale Area

#### 1.2 - Boundaries

##### 1.2.1 - Painted boundaries (1/14)

The sale boundary and Payment Unit boundaries are marked and identified by red and yellow paint. Exterior sale boundary lines against state are marked with red paint. Interior Payment Unit boundaries are marked with yellow paint. Interior Payment Unit boundaries are marked with yellow paint. The painted boundary line trees are not Included Timber and are to be protected unless marked with orange paint.

### 2 - Timber Specifications

#### 2.1 - Included Timber

##### 2.1.3 - Cut tree marked unit(s) (12/08)

Within Payment Unit(s) 1-6, all trees are designated for cutting when marked with orange paint above and below stump height, regardless of merchantability.

#### 2.2 - Utilization

##### 2.2.3 - Stump heights (4/07)

Stump heights within the Sale Area shall not exceed 6 inches for all trees.

##### 2.2.6 - Roundwood operation required (5/07)

The skidding of whole trees or tree segments with limbs attached is prohibited. All products must be produced as roundwood and forwarded to existing roads or landing areas in final product length.

##### 2.2.8 - Utilization and removal (5/14)

All products meeting standards set forth in General Condition and Requirement 2.2 - Utilization must be removed from the Sale Area. This is because too much slash buildup may occur from merchantable product being left in woods.

##### 2.2.9 - No chipping permitted (12/08)

Within Payment Unit(s) 1-6, all wood must be removed by roundwood. No chipping is permitted.

### 3 - Payments

#### 3.3 - Pre-measured Sales

##### 3.3.4 - Dividing payment units (7/14)

Payment Unit(s) 1-6 may be divided at the request of the Purchaser and upon approval of the Unit Manager. Dividing Payment Units is a contract modification which requires a Timber Sale Contract Amendment. There will be only one division per Payment Unit.

#### 3.4 - Damaged Timber

##### 3.4.1 - Damaged timber (6/14)

General Condition and Requirement 3.4 Damaged Timber, defines liquidated damages for undesignated live merchantable trees which are cut or injured. In addition, extreme care should be taken to avoid damage to tree seedlings and saplings. Within the Sale Area, if more than 30% of the tree seedlings or saplings (1/4" to 4.5" DBH) within a specified portion of the Sale Area are damaged, liquidated damages will be assessed at \$300 per acre for all acreage within that specified portion of the sale area that was damaged.

No damage is acceptable to merchantable trees. Within the Sale Area, if more than 5% of trees (> 4.5" DBH) within a specified area of the sale are damaged, liquidated damages will be assessed for all trees damaged. Rates will be in accordance with General Condition and Requirement 3.4 Damaged Timber.

### 4 - Transportation

#### 4.1 - Construction

##### 4.1.3 - Slash and earthen piles (8/04)

Piles or windrows of earth along roads and landings that have been widened or constructed shall be leveled. Slash from road maintenance or construction, including stumps, shall be dispersed throughout the sale.

##### 4.1.12 - No new roads (1/12)

No new roads will be permitted. All operations are limited to existing roads. Skid trails only will be allowed.

#### 4.2 - Maintenance

##### 4.2.3 - Road maintenance (8/13)

The following road maintenance is required: Within 60 days of completion of hauling, or if no hauling occurs for 60 days, the road must be maintained and graded to the condition it was prior to usage. This may include cleaning of drainage areas, grading, crowning and filling with gravel, if necessary. Damages will be assessed if grading/repair does not occur.

##### 4.2.5 - Two wheel drive condition (2/04)

All existing trail roads on and adjacent to the sale area must be passable by two-wheel drive traffic for the duration of the sale.

### 5 - Operations

#### 5.1 - Notification

##### 5.1.1 - Pre-sale conference (10/16)

A pre-sale conference on site between the Purchaser and sale administrator is required prior to beginning any operations to determine landing and haul routes.

##### 5.1.4 - Post-sale conference (10/16)

A post-sale conference on site between the Purchaser and sale administrator is required 5 days prior to the completion of active logging operations to determine clean-up and repair of landings, road edges, and the fulfillment of other contract specifications.

#### 5.2 - Conduct of Operations

##### 5.2.1 - Slash

###### 5.2.1.2 - Slash Removal

###### 5.2.1.2.1 - Slash removal, right-of-way (9/16)

All slash must be removed at least 15 feet from the cleared right-of-way of of the overhead powerline.

###### 5.2.1.8 - Slash height (12/08)

No slash or tree tops may exceed 24 inches in height.

##### 5.2.2 - Hazard Trees/Snags

###### 5.2.2.1 - Den trees (10/16)

Obvious hollow and/or den trees shall be protected and left standing unless they are a safety hazard.

##### 5.2.3 - Operating Restrictions

###### 5.2.3.1 - Operating restrictions (9/11)

Within Payment Unit(s) 5-6, unless authorized by the Timber Sale Administrator, creation of skids trails are not permitted through the strips of younger regeneration. No trees are marked within the strips for removal. This restriction is to protect the regeneration already established within these strips.

###### 5.2.3.4 - Oak wilt restriction, no exceptions (1/18)

Within Payment Unit(s) 1-6, cutting, skidding, hauling within the sale and brushing of access roads to the sale are not permitted during the period of April 15 to July 15. No exceptions will be granted. This is necessary to reduce the spread of oak wilt.

##### 5.2.32 - Decking/landing restoration (9/13)

All decking and landing areas must have the surface area restored to a condition equal to or better than before. This is to ensure the proper regeneration of the stand. Wood debris and "cookies" from trimmings must be removed or scattered away from landing and loading areas and may not be windrowed on the edge.

#### 5.4 - Soil Protection

##### 5.4.1 - Rutting restriction, general (7/16)

Operations are to cease immediately if equipment and weather conditions result in rutting of roads and/or skid trails which is 12 inches or greater in depth and 50 feet in length. The Unit Manager or his/her representative may restrict hauling and/or skidding if ruts exceed the specified depth. With the Unit Manager or his/her representative's approval, the Purchaser may return to the area when the risk of rutting has decreased.

##### 5.4.2 - Skid trails (2/04)

Skid trails up and down slopes should be avoided. If however this is unavoidable, these trails will be left in a non-erodible condition using water bars, logs, and slash. Placing of slash on these skid trails while logging is ongoing may alleviate need for any further action. At the direction of the sale administrator, seed, fertilizer, and mulch may also be required.

### 6 - Safety and Fire Prevention

#### 6.2 - Signing

##### 6.2.1 - Road posting (9/09)

The Purchaser is responsible for posting and maintaining caution signs on roads used for hauling prior to beginning operations. The road must be posted at appropriate distances from the Sale Area to warn of logging activity and truck traffic. Signs must be removed when harvest operations are suspended or completed. The Purchaser will provide these signs.



# TIMBER SALE MAP

This information provided by authority of Part 525, 1994 PA 451, as amended.

Forest Management Unit Roscommon	County Roscommon	Mapped By Contractor/Martell	Date 04/19/2019	Page 1	of 1
Township 21N	Range 03W	Section(s) and Subdivision(s) Sec. 13 - S1/2SW; Sec. 23 - NENE; Sec. 24 - NW, N1/2SW, SWSW	Scale 1:15,840		

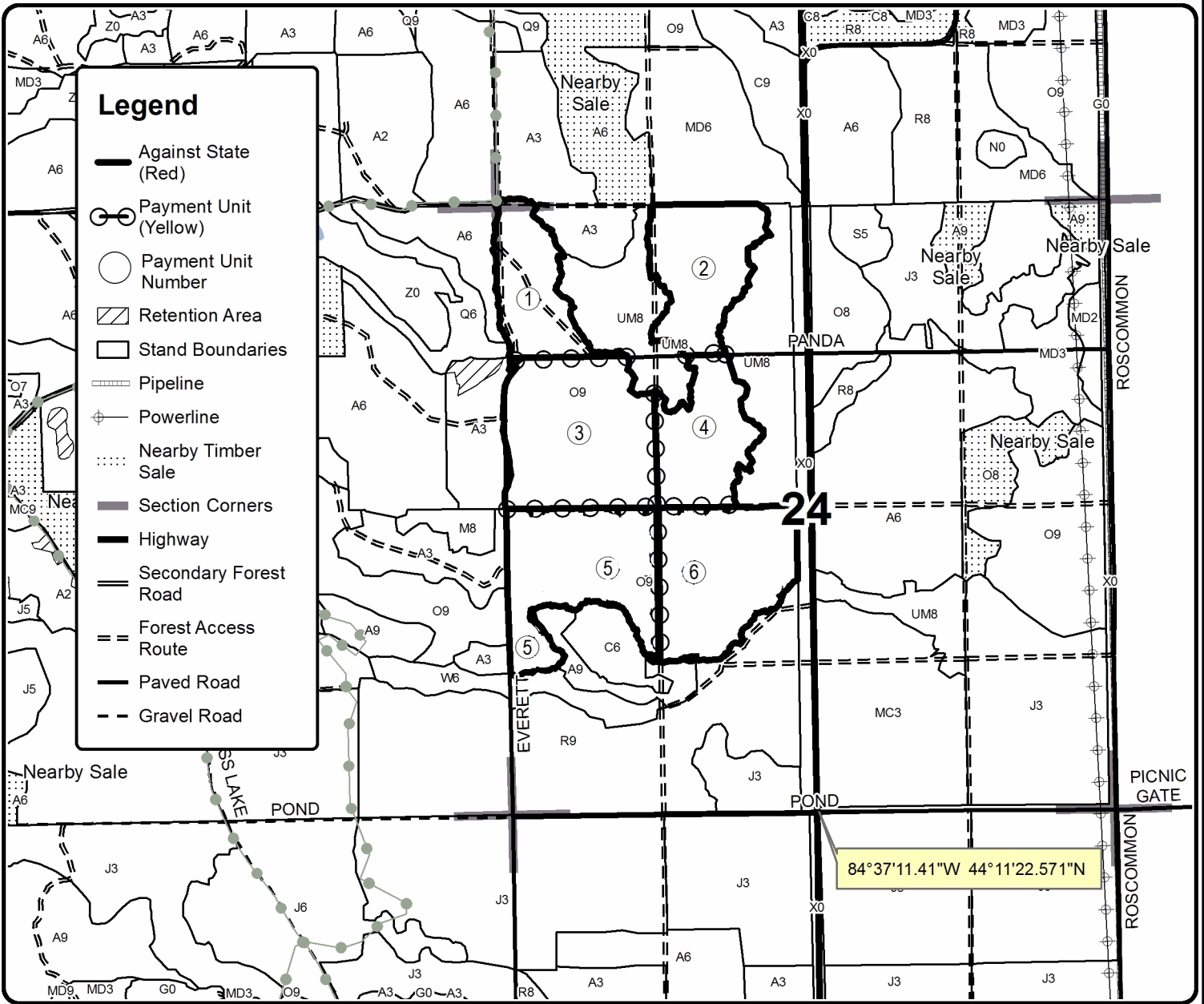
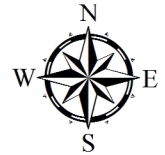
Cover Type				Density	
A = Aspen	H = Hemlock	N = Marsh	U = Upland Brush	0 = Non Stocked	5 = Pole Timber Medium
B = Paper Birch	J = Jack Pine	O = Oak	UM = Upland Mixed	1 = Seedling Sapling Poor	6 = Pole Timber Well
C = Cedar	L = Lowland Brush	P = Lowland Poplar	V = Bog or Marsh	2 = Seedling Sapling Medium	7 = Saw Timber Poor
D = Treed Bog	LM = Lowland Mixed	Q = Mixed Swamp Conifer	W = White Pine	3 = Seedling Sapling Well	8 = Saw Timber Medium
E = Swamp Hdwoods	M = Mpl, Bch, Brch	R = Red Pine	X = Non Stocked	4 = Pole Timber Poor	9 = Saw Timber Well
F = Spruce Fir	MC = Mixed Conifer	S = Black Spruce	Z = Water		
G = Grass	MD = Mixed Deciduous	T = Tamarack			

PU	Acres	PU	Acres
1	17.0	4	19.5
2	22.2	5	22.0
3	37.0	6	24.3

## Panda Oak Strips

### Compartment 027

142 Acres



**TIMBER SALE INFORMATION**

Red Pine Seed Cone (71-007-23)

T21N, R04W, SEC. 10.

Roscommon County (Advertised Price \$20,400.85)

SALE NOTE: This sale has a very specific time frame for cutting and processing that must be adhered to in order to conduct red pine seed cone research (see spec 5.2.3.1).

A timber sale contract for this lump sum, sealed bid timber sale will be awarded to the responsible bidder offering the highest sealed bid price. All units of volume listed below were estimated using the Inventory Manager computer program and the new Michigan taper model. Bids must be at or above the following advertised price for each product and species:

<u>PRODUCTS &amp; SPECIES</u>	<u>ESTIMATED UNITS*</u>	<u>ADVERTISED PRICE</u>
Sawtimber		
Red Pine	102.7 MBF	\$ 173.00 / MBF
Pulpwood		
Red Pine	43 Cords	\$ 61.25 / Cord

\* The total volume is statistically estimated within plus (+) or minus (-) 38.74 percent. There are an estimated 284 cords on this timber sale, plus or minus 110 cords at the 95% confidence level. The estimated units are final and not subject to adjustment. Prospective bidders are urged to examine this timber and to make their own estimates of quantity and quality.

**BOND AND PAYMENT SCHEDULE:**

- A bond in the amount of \$1,020.00 to insure faithful performance of the conditions of the contract will be deposited by the successful bidder within 21 days of the sale award.
- Cutting in any sale or unit without the required advance payment would be considered a trespass.
- Total payment must be paid in advance or according to the following schedule :
  - Ten percent (10%) of the sale value must be paid within 21 days of the sale award.
  - The remainder is due before cutting begins.
  - Payment for each of the following units must be made before cutting begins in that unit:
 

PAYMENT UNIT NUMBER	PERCENT OF TOTAL SALE VALUE
01	100.0%
- If no cutting takes place, the 10% down payment will not be refunded.
- Operations on the contract issued will terminate on 12/31/2024.

**SALE STATISTICS**

Volumes were calculated in cubic feet using the Michigan taper model. Cubic foot volume includes all wood inside bark for the product indicated. For display purposes, cubic feet were converted to cords and MBF using a simple conversion factor, e.g. 79 cubic feet per cord and 185 cubic feet per MBF. The cubic foot volumes are precise; the cords and MBF volumes are not. Cubic foot volume cannot be directly converted to cords or boards with precision.

**SALE VOLUMES**

The total estimated sale volume may not equal the sum of the species/products due to the nature of statistical calculations associated with double sampling methodology.

VOLUME		STATISTICAL RANGE IN CORDS		
TOTAL CUBIC FEET	TOTAL CORDS	PERCENT ERROR	MINIMUM	MAXIMUM
22,409	284	38.74%	174	394

**VDU VOLUMES**

A VDU is a Volume Determination Unit. Volumes and their associated statistics are calculated at the VDU level and summarized to the sale level. There is often a one to one relationship between a VDU and a Payment Unit, but not always, depending on the cruise design. Refer to the VDU TO PAYMENT UNIT table.

VDU	VOLUME		PERCENT ERROR	RANGE IN CORDS	
	TOTAL CUBIC FEET	TOTAL CORDS		MINIMUM	MAXIMUM
72	22,409	284	23.02%	218	349
<b>TOTAL:</b>	<b>22,409</b>	<b>284</b>		<b>218</b>	<b>349</b>

**VDU TO PAYMENT UNIT**

When a VDU is associated with more than one Payment Unit (PU), the VDU volumes are assigned to the PU based on acres of the VDU within the PU.

VDU	VDU ACRES	PU	PU ACRES
72	22.7	1	22.7
<b>TOTAL:</b>	<b>22.7</b>		<b>22.7</b>

**DESCRIPTION OF TIMBER BY PAYMENT UNIT (PU)**

PU	MARKET GROUP	PRODUCT	QUANTITY	UNIT	ACRES	ADVERTISE PRICE
1	Red Pine	Sawtimber	102.7	MBF	22.7	\$20,400.85
	Red Pine	Pulpwood	43	Cords		
TOTAL:			102.7	MBF		
TOTAL:			43	Cords		

## Sale Specific Conditions & Requirements

**Sale Name: Red Pine Seed Cone**

**Sale Number: 71-007-23 Seq#: 1**

### 1 - Sale Area

#### 1.2 - Boundaries

##### 1.2.1 - Painted boundaries (9/19)

The sale boundary is marked with red paint. Retention patches are marked with red paint; no harvesting activities may occur within these areas. The painted boundary line trees are not Included Timber and are to be protected.

### 2 - Timber Specifications

#### 2.1 - Included Timber

##### 2.1.1 - Clearcut unit(s) with unmerchantable trees (6/14)

Within Payment Unit(s) 1, cut all trees that are one (1) inch or more at DBH.

#### 2.2 - Utilization

##### 2.2.2 - Chipping required (2/18)

This area must be chip harvested to facilitate future silvicultural activities. The Purchaser has the option to produce sawlogs or pulpwood bolts, but the remaining portion of the trees must be chipped and hauled. Products may be produced as roundwood and forwarded to decking areas in final product length, but the tops must be left intact and skidded to the landing for chipping in order to minimize the amount of residual slash. If market conditions limit the practicality of chipping, a chipping exemption could be obtained if tops and slash are arranged in a way that will not inhibit future planting operations, as directed by the Sale Administrator. If the deadline is not met, damages will be collected determined by the cost to complete this work. This exemption must be granted in writing. There is no guarantee that an exemption will be granted. The requirement to retain approximately 1/6 to 1/3 of tree tops and limbs less than four inches in diameter is still applicable (G. C. & R. 2.2).

##### 2.2.3 - Stump heights (4/07)

Stump heights within the Sale Area shall not exceed 6 inches for all trees. This is in order to facilitate planting operations.

### 4 - Transportation

#### 4.1 - Construction

##### 4.1.7 - Road closure (10/11)

Overgrown roads that are reopened must be blocked to vehicle traffic upon completion of the sale. In general, this will require constructing a four (4') foot high berm of stumps and logs covered with earth. These roads must be rendered impassable to cars and trucks. Contact the Sale Administrator for specific details of design and placement.

##### 4.1.12 - No new roads (1/12)

No new roads will be permitted. All operations are limited to existing roads.

#### 4.2 - Maintenance

##### 4.2.5 - Two wheel drive condition (2/04)

All existing trail roads on and adjacent to the sale area must be passable by two-wheel drive traffic for the duration of the sale.

### 5 - Operations

#### 5.1 - Notification

##### 5.1.1 - Pre-sale conference (10/16)

A pre-sale conference between the Purchaser and sale administrator is required prior to beginning any operations, to determine landing and road locations. The Unit Manager or his/her representative must be contacted in advance to schedule the conference.

##### 5.1.4 - Post-sale conference (10/16)

A post-sale conference on site between the Purchaser and sale administrator is required 5 days prior to the completion of active logging operations to determine clean-up and repair of landings, road edges, and the fulfillment of other contract specifications.

## 5.2 - Conduct of Operations

### 5.2.3 - Operating Restrictions

#### 5.2.3.1 - Operating restrictions (9/11)

Within Payment Unit(s) 1, all red pine trees must be felled and left on-site during the week of August 25 to August 31, 2024. Trees must be felled separately and may not be bunched together in piles on the ground. In addition, no harvesting or forwarding equipment will be permitted to operate within the Sale Area from September 2 to September 6. Processing and forwarding operations may resume September 7. This restriction is because DNR crews will be collecting red pine cones from all felled trees.

Note that if pine cone collection is finished early, the Sale Administrator will contact the Purchaser and allow harvesting equipment to return to the site.

#### 5.2.32 - Decking/landing restoration (9/13)

All decking and landing areas must have the surface area restored to a condition equal to or better than before. This is to ensure the proper regeneration of the stand. Wood debris, chips and "cookies" from trimmings must be removed or scattered away from landing and loading areas and may not be windrowed on the edge.

## 6 - Safety and Fire Prevention

### 6.2 - Signing

#### 6.2.1 - Road posting (10/20)

The Purchaser is responsible for posting and maintaining caution signs on Old-127 prior to beginning operations. The road must be posted at appropriate distances from the Sale Area to warn of logging activity and truck traffic. Signs must be removed when harvest operations are suspended or completed. The Purchaser will provide these signs.

## 7 - Other Conditions

### 7.2 - Extensions

#### 7.2.2 - No extensions (3/09)

There will be no extensions granted on this contract. The purpose of this sale is to conduct red pine seed cone research which must be done at specific times.





**TIMBER SALE MAP**

This information provided by authority of Part 525, 1994 PA 451, as amended.

Sale Number <b>71-007-23</b>	Date <b>08/30/2023</b>
---------------------------------	---------------------------

Forest Management Unit Roscommon Mgt Unit	County Roscommon	Mapped By: Martell Cruised By: Martell	Scale 1:5,000	Page 1	Of 1
--	---------------------	---	------------------	-----------	---------

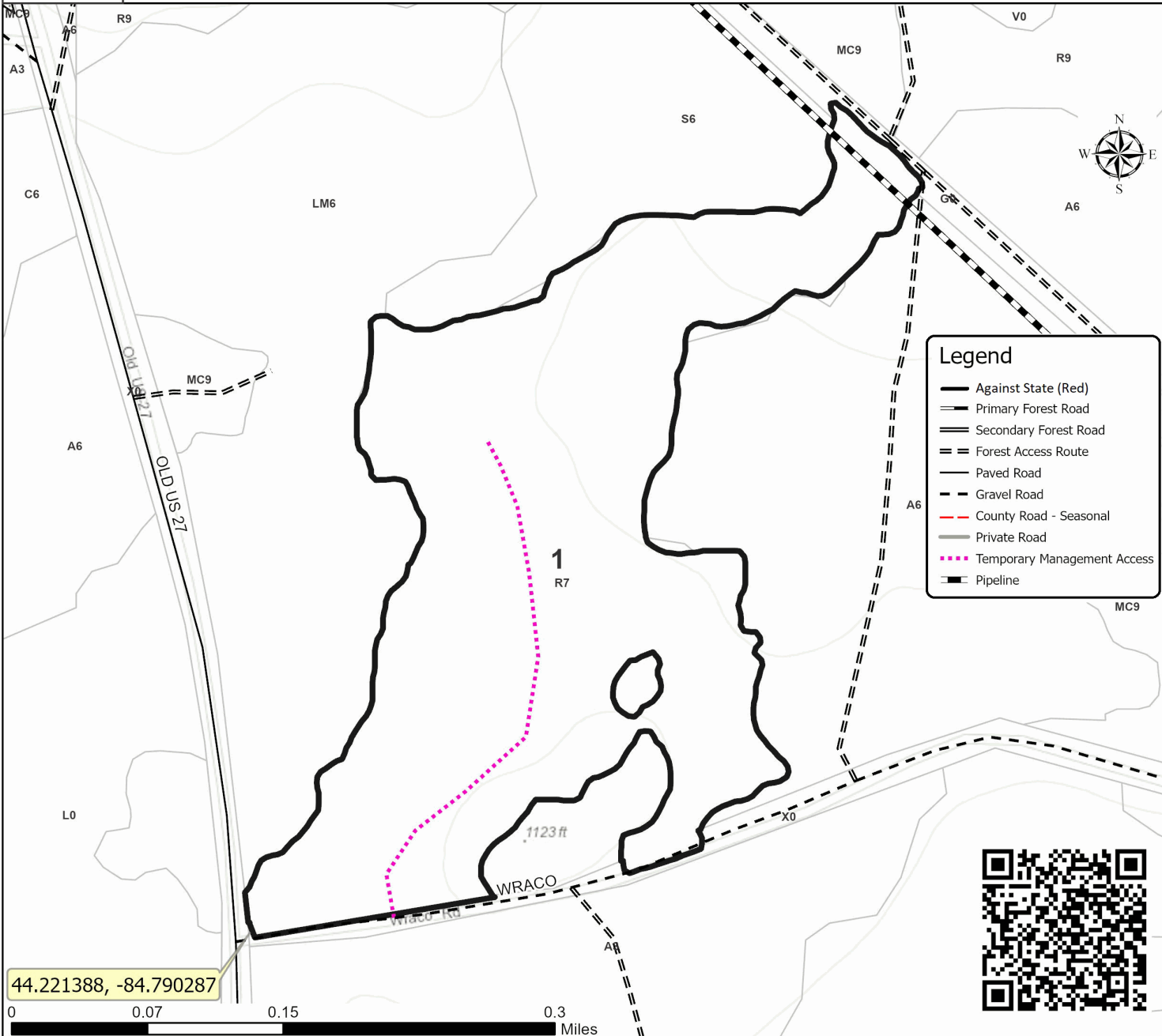
Township 21N	Range 04W	Section(s) and Subdivision(s) Sec. 10 SW;
-----------------	--------------	---

Cover Type			
A = Aspen	J = Jack Pine	O = Oak	U = Upland Brush
B = Paper Birch	K = Rock	P = Lowland Poplar	UM = Upland Mix Forest
C = Cedar	L = Lowland Brush	Q = Mixed Swamp Conifer	V = Bog or Marsh
D = Treed Bog	LM = Lowland Mix Forest	R = Red Pine	W = White Pine
E = Swamp Hardwoods	M = Maple, Beech, Birch	S = Black Spruce	X = Non Stocked
F = Spruce/Fir	MC = Mixed Conifer	T = Tamarack	Y = Sand
G = Grass	MD = Mixed Deciduous	Z = Water	
H = Hemlock	N = Marsh		

Density	
0 = Non Stocked	5 = Pole Timber Medium
1 = Seedling Sapling Poor	6 = Pole Timber Well
2 = Seedling Sapling Medium	7 = Saw Timber Poor
3 = Seedling Sapling Well	8 = Saw Timber Medium
4 = Pole Timber Poor	9 = Saw Timber Well

PU #	Acres
1	22.7

**Red Pine Seed Cone**  
22.7 Acres





## TIMBER SALE INFORMATION

### Heideman Mix (71-009-23)

T24N, R04W, SEC. 15; T24N, R04W, SEC. 16; T24N, R04W, SEC. 3.  
Roscommon County (Advertised Price \$127,005.10)

SALE NOTE: A recreation site such as a trail, pathway, or campground is within the sale area or the vicinity. Certain restrictions/specifications may be applicable including time restrictions.

A timber sale contract for this lump sum, sealed bid timber sale will be awarded to the responsible bidder offering the highest sealed bid price. All units of volume listed below were estimated using the Inventory Manager computer program and the new Michigan taper model. Bids must be at or above the following advertised price for each product and species:

<u>PRODUCTS &amp; SPECIES</u>	<u>ESTIMATED UNITS*</u>	<u>ADVERTISED PRICE</u>
<b>Sawtimber</b>		
B. T. Aspen	32.6 MBF	\$ 107.00 / MBF
Black/Red (Hybrid) Oak	50.8 MBF	\$ 138.00 / MBF
Quaking Aspen	28.1 MBF	\$ 107.00 / MBF
Red Maple	63.7 MBF	\$ 97.00 / MBF
Red Oak	32.5 MBF	\$ 155.00 / MBF
Red Pine	170.2 MBF	\$ 173.00 / MBF
White Oak	13.9 MBF	\$ 81.00 / MBF
White Pine	12.1 MBF	\$ 70.00 / MBF
<b>Pulpwood</b>		
B. T. Aspen	904 Cords	\$ 46.90 / Cord
Balsam Fir	6 Cords	\$ 32.55 / Cord
Jack Pine	96 Cords	\$ 13.90 / Cord
Mixed Hardwood	404 Cords	\$ 24.50 / Cord
Mixed Oak	203 Cords	\$ 24.90 / Cord
Quaking Aspen	122 Cords	\$ 46.90 / Cord
Red Oak	24 Cords	\$ 24.90 / Cord
Red Pine	68 Cords	\$ 61.25 / Cord
White Pine	30 Cords	\$ 50.05 / Cord

\* The total volume is statistically estimated within plus (+) or minus (-) 27.15 percent. There are an estimated 2,808 cords on this timber sale, plus or minus 762 cords at the 95% confidence level. The estimated units are final and not subject to adjustment. Prospective bidders are urged to examine this timber and to make their own estimates of quantity and quality.

### **BOND AND PAYMENT SCHEDULE:**

1. A bond in the amount of \$6,350.00 to insure faithful performance of the conditions of the contract will be deposited by the successful bidder within 21 days of the sale award.
2. Cutting in any sale or unit without the required advance payment would be considered a trespass.
3. Total payment must be paid in advance or according to the following schedule :
  - (a) Ten percent (10%) of the sale value must be paid within 21 days of the sale award.
  - (b) The 10% down payment will be credited towards the first unit cut.
  - (c) Payment for each of the following units must be made before cutting begins in that unit:
 

PAYMENT UNIT NUMBER	PERCENT OF TOTAL SALE VALUE
01	32.9%
02	26.7%
03	17.4%
04	11.4%
05	11.6%
4. If no cutting takes place, the 10% down payment will not be refunded.
5. Operations on the contract issued will terminate on 12/31/2025.

### **SALE STATISTICS**

Volumes were calculated in cubic feet using the Michigan taper model. Cubic foot volume includes all wood inside bark for the product indicated. For display purposes, cubic feet were converted to cords and MBF using a simple conversion factor, e.g. 79 cubic feet per cord and 185 cubic feet per MBF. The cubic foot volumes are precise; the cords and MBF volumes are not. Cubic foot volume cannot be directly converted to cords or boards with precision.

## SALE VOLUMES

The total estimated sale volume may not equal the sum of the species/products due to the nature of statistical calculations associated with double sampling methodology.

VOLUME			STATISTICAL RANGE IN CORDS	
TOTAL CUBIC FEET	TOTAL CORDS	PERCENT ERROR	MINIMUM	MAXIMUM
221,793	2,808	27.15%	2,045	3,570

## VDU VOLUMES

A VDU is a Volume Determination Unit. Volumes and their associated statistics are calculated at the VDU level and summarized to the sale level. There is often a one to one relationship between a VDU and a Payment Unit, but not always, depending on the cruise design. Refer to the VDU TO PAYMENT UNIT table.

	VOLUME			RANGE IN CORDS	
VDU	TOTAL CUBIC FEET	TOTAL CORDS	PERCENT ERROR	MINIMUM	MAXIMUM
108	70,700	895	25.69%	665	1,125
133	49,356	625	55.06%	281	969
138	75,207	952	22.90%	734	1,170
145	15,920	202	77.81%	45	358
148	10,610	134	66.53%	45	224
<b>TOTAL:</b>	<b>221,793</b>	<b>2,808</b>		<b>1,769</b>	<b>3,846</b>

## VDU TO PAYMENT UNIT

When a VDU is associated with more than one Payment Unit (PU), the VDU volumes are assigned to the PU based on acres of the VDU within the PU.

VDU	VDU ACRES	PU	PU ACRES
108	11.4	1	11.4
133	11.2	2	11.2
138	36.7	3	22.1
		4	14.6
145	4.0	5	4.0
148	5.5	5	5.5
<b>TOTAL:</b>	<b>68.8</b>		<b>68.8</b>

**DESCRIPTION OF TIMBER BY PAYMENT UNIT (PU)**

PU	MARKET GROUP	PRODUCT	QUANTITY	UNIT	ACRES	ADVERTISE PRICE	
1	B. T. Aspen	Sawtimber	7.3	MBF	11.4	\$41,859.90	
	Red Oak		14.7	MBF			
	White Oak		6.6	MBF			
	B. T. Aspen	Pulpwood	790	Cords			
	Balsam Fir		6	Cords			
	Mixed Hardwood		10	Cords			
	<i>Black Cherry</i>		8	<i>Cords</i>			
	<i>Red Maple</i>		2	<i>Cords</i>			
	Mixed Oak		4	Cords			
	<i>White Oak</i>		4	<i>Cords</i>			
	Red Oak		7	Cords			
	White Pine		10	Cords			
2	B. T. Aspen	Sawtimber	9.5	MBF	11.2	\$33,899.65	
	Red Maple		23.8	MBF			
	Red Oak		8.9	MBF			
	Red Pine	117.1	MBF				
	White Pine	12.1	MBF				
	B. T. Aspen	Pulpwood	47	Cords			
	Jack Pine		42	Cords			
	<i>Jack Pine</i>		42	<i>Cords</i>			
	Mixed Hardwood		57	Cords			
	<i>Black Cherry</i>		8	<i>Cords</i>			
	<i>Red Maple</i>		49	<i>Cords</i>			
	Mixed Oak		13	Cords			
	<i>/Red (Hybrid) Oak</i>		6	<i>Cords</i>			
	<i>White Oak</i>		7	<i>Cords</i>			
	Red Oak		5	Cords			
	Red Pine		45	Cords			
	White Pine		14	Cords			
	3		B. T. Aspen	Sawtimber			2.0
Black/Red (Hybrid)			29.7		MBF		
Quaking Aspen			6.9		MBF		
Red Maple		19.5	MBF				
Red Pine		24.2	MBF				
White Oak		3.1	MBF				
B. T. Aspen		Pulpwood	25	Cords			
Jack Pine			26	Cords			
<i>Jack Pine</i>			4.5	<i>MBF</i>			
<i>Jack Pine</i>			17	<i>Cords</i>			
Mixed Hardwood			164	Cords			
<i>Black Cherry</i>			2	<i>Cords</i>			
<i>Red Maple</i>			162	<i>Cords</i>			
Mixed Oak			109	Cords			
<i>/Red (Hybrid) Oak</i>			86	<i>Cords</i>			
<i>White Oak</i>			23	<i>Cords</i>			
Quaking Aspen			33	Cords			
Red Pine			11	Cords			
White Pine			4	Cords			
4	B. T. Aspen	Sawtimber	1.4	MBF	14.6	\$14,506.05	
	Black/Red (Hybrid)		19.6	MBF			
	Quaking Aspen		4.5	MBF			
	Red Maple		12.9	MBF			
	Red Pine		16.0	MBF			
	White Oak		2.0	MBF			
	B. T. Aspen	Pulpwood	16	Cords			
	Jack Pine		17	Cords			

**DESCRIPTION OF TIMBER BY PAYMENT UNIT (PU), CON'T**

PU	MARKET GROUP	PRODUCT	QUANTITY	UNIT	ACRES	ADVERTISE PRICE
4 con't	<i>Jack Pine</i>	<i>Sawtimber</i>	2.9	<i>MBF</i>		
	<i>Jack Pine</i>	<i>Pulpwood</i>	11	<i>Cords</i>		
	Mixed Hardwood		109	<i>Cords</i>		
	<i>Black Cherry</i>		2	<i>Cords</i>		
	<i>Red Maple</i>		107	<i>Cords</i>		
	Mixed Oak		73	<i>Cords</i>		
	<i>/Red (Hybrid) Oak</i>		57	<i>Cords</i>		
	<i>White Oak</i>		16	<i>Cords</i>		
	Quaking Aspen		21	<i>Cords</i>		
	Red Pine		7	<i>Cords</i>		
	White Pine		2	<i>Cords</i>		
5	B. T. Aspen	Sawtimber	12.4	MBF	9.5	\$14,671.75
	Black/Red (Hybrid)		1.5	MBF		
	Quaking Aspen		16.7	MBF		
	Red Maple		7.5	MBF		
	Red Oak		8.9	MBF		
	Red Pine		12.9	MBF		
	White Oak		2.2	MBF		
	B. T. Aspen	Pulpwood	26	Cords		
	Jack Pine		11	Cords		
	<i>Jack Pine</i>	<i>Sawtimber</i>	1.4	<i>MBF</i>		
	<i>Jack Pine</i>	<i>Pulpwood</i>	8	<i>Cords</i>		
	Mixed Hardwood		64	<i>Cords</i>		
	<i>Black Cherry</i>	<i>Sawtimber</i>	3.5	<i>MBF</i>		
	<i>Black Cherry</i>	<i>Pulpwood</i>	12	<i>Cords</i>		
	<i>Red Maple</i>		45	<i>Cords</i>		
	Mixed Oak		4	<i>Cords</i>		
	<i>/Red (Hybrid) Oak</i>		1	<i>Cords</i>		
	<i>White Oak</i>		3	<i>Cords</i>		
	Quaking Aspen		68	<i>Cords</i>		
	Red Oak		12	<i>Cords</i>		
	Red Pine		5	<i>Cords</i>		
TOTAL:			403.9	MBF		
TOTAL:			1,857	Cords		

# Sale Specific Conditions & Requirements

**Sale Name: Heideman Mix**

**Sale Number: 71-009-23 Seq#: 1**

## 1 - Sale Area

### 1.2 - Boundaries

#### 1.2.1 - Painted boundaries (9/19)

The sale boundary and Payment Unit boundaries are marked and identified by blue, red and yellow paint. Exterior sale boundary lines against private property are marked with blue paint. Exterior sale boundary lines against state are marked with red paint. Interior Payment Unit boundaries are marked with yellow paint. Retention patches are marked with red paint; no harvesting activities may occur within these areas. The painted boundary line trees are not Included Timber and are to be protected. Yellow painted trees designating an interior Payment Unit boundary are only to be cut when all surrounding Payment Units have been paid.

## 2 - Timber Specifications

### 2.1 - Included Timber

#### 2.1.1 - Clearcut unit(s) with unmerchantable trees (6/14)

Within Payment Unit(s) 1-5, cut all trees that are two (2) inches or more at DBH, except trees marked with green paint.

### 2.2 - Utilization

#### 2.2.3 - Stump heights (4/07)

Stump heights within the Sale Area shall not exceed 6 inches for all trees.

## 3 - Payments

### 3.3 - Pre-measured Sales

#### 3.3.4 - Dividing payment units (7/14)

Payment Unit(s) may be divided at the request of the Purchaser and upon approval of the Unit Manager. Dividing Payment Units is a contract modification which requires a Timber Sale Contract Amendment. There will be only one division per Payment Unit.

### 3.4 - Damaged Timber

#### 3.4.1 - Damaged timber (7/16)

General Condition and Requirement 3.4 Damaged Timber, defines liquidated damages for undesignated live merchantable trees which are cut or injured. In addition, should chipping occur in any Payment Unit, it must be done before sprouting of new regeneration. If more than 33% of the newly sprouted tree seedlings within a specified portion of the Sale Area are damaged, liquidated damages will be assessed at \$500 per acre for all acreage within that specified portion of the Sale Area that was damaged.

## 4 - Transportation

### 4.1 - Construction

#### 4.1.6 - Road construction (1/09)

Construction of new roads or improvements of existing roads shall be done in such a way as to minimize the environmental and visual impacts. Merchantable trees shall be cut and utilized unless otherwise directed. Non-merchantable trees shall be severed and laid flat on the ground. Slash shall be scattered, and not left in windrows and kept a minimum of 10 feet back from the road edge. Stumps shall be set upright, not left on edge, and be moved at least 10 feet away from the road edge. Disturbed soil shall be feathered into the woods and not left in berms or windrows.

#### 4.1.7 - Road closure (10/11)

All new roads built into the sale must be blocked to vehicle traffic upon completion of the sale. Overgrown roads that are reopened shall be considered new roads. In general, this will require constructing a four (4') foot high berm of stumps and logs covered with earth. These roads must be rendered impassable to cars and trucks. Contact the Sale Administrator for

specific details of design and placement.

## 4.2 - Maintenance

### 4.2.3 - Road maintenance (8/13)

The following road maintenance is required: Within 60 days of completion of hauling, or if no hauling occurs for 60 days, the road must be maintained and graded. This includes cleaning of drainage areas, grading, crowning and filling with gravel, if necessary. Damages will be assessed if grading/repair does not occur.

### 4.2.5 - Two wheel drive condition (2/04)

All existing trail roads on and adjacent to the sale area must be passable by two-wheel drive traffic for the duration of the sale.

## 5 - Operations

### 5.1 - Notification

#### 5.1.1 - Pre-sale conference (10/16)

A pre-sale conference between the Purchaser and sale administrator is required prior to beginning any operations, to determine landing and road locations. The Unit Manager or his/her representative must be contacted in advance to schedule the conference.

#### 5.1.4 - Post-sale conference (10/16)

A post-sale conference on site between the Purchaser and sale administrator is required prior to the completion of active logging operations to determine clean-up and repair of landings, road edges, and the fulfillment of other contract specifications.

### 5.2 - Conduct of Operations

#### 5.2.1 - Slash

##### 5.2.1.8 - Slash height (12/08)

No slash or tree tops may exceed 24 inches in height.

##### 5.2.1.11 - Slash for reforestation (3/21)

Within Payment Unit 2, all jack pine tops must be left scattered. If not chipped, all other slash and tops within the sale must be evenly spread throughout the Sale Area. Bunched tops within the cutting area shall be broken up and scattered. Stumps shall be cut low to the ground. Processing sites shall not be left with a compacted layer of slash; tops from these sites shall be hauled back into the cut area and scattered.

#### 5.2.3 - Operating Restrictions

##### 5.2.3.5 - Oak wilt restriction (1/18)

Within Payment Units 1-5, unless changed by written agreement, cutting, skidding, hauling within the sale and brushing of access roads to the sale are not permitted during the period of April 15 to July 15. Operations may be allowed if specific steps are taken to prevent damaging uncut oak during the high risk period. Those steps may include completing all road brushing before April 15th and clearing a tree-length buffer along uncut oak cover before April 15th. This is necessary to reduce the spread of oak wilt. For more information, contact the Unit Manager or his/her representative.

##### 5.2.3.11 - Coppice regeneration protection (4/10)

Timber harvesting in any Payment Unit must be completed before significant aspen sprouting occurs in that Payment Unit so as to minimize damage to the new regeneration. Any post-harvest operations, such as chipping, must be completed before sprouting of regeneration occurs. Should damages occur to the new regeneration, the damages will be assessed per Specification 3.4.1 - Damaged Timber. If it is anticipated that chipping will be delayed, then tops shall be carried to one central location, preferably the landing. A third-party entity may be brought in to chip the tops/slash, before new sprouting occurs, should the contract holder fail to present in a timely manner arrangements approved by the Unit Manager for protecting the new regeneration. The Unit Manager or his/her representative may also cease such operations if sprouting occurs before the operation is complete and the Payment Unit(s) will be counted as incomplete with liquidated damages assessed accordingly.

#### 5.2.4 - Dead and Down Creation

##### 5.2.4.2 - Dead and down creation, hare and grouse (1/14)



To improve habitat for snowshoe hare, grouse, and other species, the Purchaser is to leave two 10 inch diameter or larger log size pieces on the ground for every two acres in Payment Unit 1. They should be scattered throughout the Payment Unit or positioned per the Sale Administrator's instructions. If possible, the logs or trees should be felled so they overlap. Note these pieces should have a minimum length of five feet. They can be of any tree species and can be an un-merchantable piece of wood or a full tree.

#### 5.2.32 - Decking/landing restoration (9/13)

All decking and landing areas must have the surface area restored to a condition equal to or better than before. This is to ensure the proper regeneration of the stand. Wood debris, chips and "cookies" from trimmings must be removed or scattered away from landing and loading areas and may not be windrowed on the edge.

#### 5.2.41 - Snowmobile trail protection (9/11)

A snowmobile trail is present in the Sale Area and is shown on the Timber Sale Map. Do not cut or damage posts with orange trail markers or traffic control signs. If the trail is used, it must be maintained and restored to a condition equal to or better than before the sale. The road maintenance/restoration must be done prior to December 1. If the trail road is to be used for hauling during the snowmobile season, then a snow-covered base must be left on the trail. The snowmobile trail may only be crossed at right angles. All stumps within 20 feet of the snowmobile trail must be cut at ground level.

## 6 - Safety and Fire Prevention

### 6.2 - Signing

#### 6.2.1 - Road posting (10/20)

The Purchaser is responsible for posting and maintaining caution signs on the snowmobile trail and County Road 301/N. Deadstream Road prior to beginning operations. The road must be posted at appropriate distances from the Sale Area to warn of logging activity and truck traffic. Signs must be removed when harvest operations are suspended or completed. The Purchaser will provide these signs.



### TIMBER SALE MAP

This information provided by authority of Part 525, 1994 PA 451, as amended.

Sale Number <b>71-009-23</b>	Date <b>10/25/2023</b>
---------------------------------	---------------------------

Forest Management Unit Roscommon Mgt Unit	County Roscommon	Mapped By: Martell Cruised By: Martell and Lewicki	Scale 1:31,680	Page 1	Of 1
--	---------------------	---	-------------------	-----------	---------

Township 24N	Range 04W	Section(s) and Subdivision(s) Sec. 15 W1/2SW; Sec. 16 S1/2NW,NENE,SESE; Sec. 3 SWSW;
-----------------	--------------	--

Cover Type			
A = Aspen	J = Jack Pine	O = Oak	U = Upland Brush
B = Paper Birch	K = Rock	P = Lowland Poplar	UM = Upland Mix Forest
C = Cedar	L = Lowland Brush	Q = Mixed Swamp Conifer	V = Bog or Marsh
D = Treed Bog	LM = Lowland Mix Forest	R = Red Pine	W = White Pine
E = Swamp Hardwoods	M = Maple, Beech, Birch	S = Black Spruce	X = Non Stocked
F = Spruce/Fir	MC = Mixed Conifer	T = Tamarack	Y = Sand
G = Grass	MD = Mixed Deciduous	Z = Water	
H = Hemlock	N = Marsh		

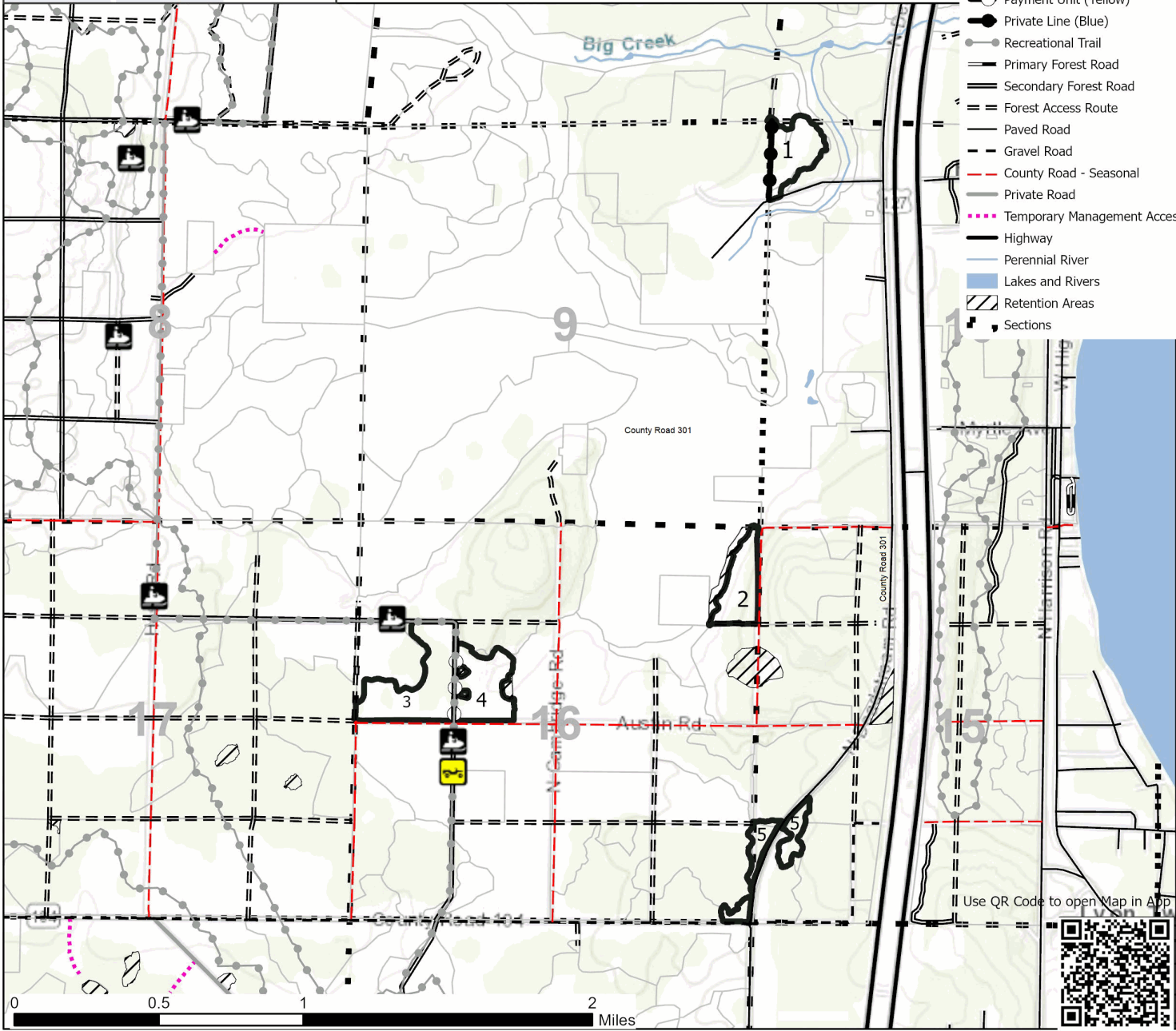
Density	
0 = Non Stocked	5 = Pole Timber Medium
1 = Seedling Sapling Poor	6 = Pole Timber Well
2 = Seedling Sapling Medium	7 = Saw Timber Poor
3 = Seedling Sapling Well	8 = Saw Timber Medium
4 = Pole Timber Poor	9 = Saw Timber Well



PU #	Acres	PU #	Acres	PU #	Acres
1	11.4	3	22.1	5	9.6
2	11.2	4	14.6		

## Heideman Mix

### 68.8 Acres



Impact Bit Aspen (71-002-23)  
T21N, R04W, SEC. 15; Roscommon COUNTY

In response to the notice of sale to be held 9:00 a.m. (local time) on December 5, 2023, I am hereby submitting my sealed bid (firm offer) for the following forest products to be cut. Bids for individual species must be at or above the advertised price. All non-responsive bid forms may be rejected.

<u>PRODUCTS &amp; SPECIES</u>	<u>ESTIMATED VOLUME*</u>	<u>ADVERTISED PRICE</u>	<u>BID PRICE/UNIT</u>
<b>Sawtimber</b>			
B. T. Aspen	69.4 MBF	\$ 107.00/MBF	\$ _____
Black/Red (Hybrid) Oak	14.4 MBF	\$ 138.00/MBF	\$ _____
Paper Birch	7.1 MBF	\$ 56.00/MBF	\$ _____
Quaking Aspen	108.6 MBF	\$ 107.00/MBF	\$ _____
Red Maple	19.5 MBF	\$ 97.00/MBF	\$ _____
Red Pine	3.8 MBF	\$ 173.00/MBF	\$ _____
White Pine	32.8 MBF	\$ 70.00/MBF	\$ _____
<b>Pulpwood</b>			
Balsam Fir	80 Cords	\$ 32.55/Cord	\$ _____
Black/Red (Hybrid) Oak	79 Cords	\$ 24.90/Cord	\$ _____
Mixed Aspen	540 Cords	\$ 46.90/Cord	\$ _____
Mixed Hardwood	44 Cords	\$ 24.50/Cord	\$ _____
Paper Birch	7 Cords	\$ 21.55/Cord	\$ _____
Red Pine	1 Cords	\$ 61.25/Cord	\$ _____
White Pine	80 Cords	\$ 50.05/Cord	\$ _____

\*The volumes are statistically estimated within plus (+) or minus (-) 39.66 percent at 95% confidence level. These estimated volumes are final and not subject to adjustment. Prospective bidders are urged to examine this timber and to make their own estimates of quantity and quality.

I understand that any or all bids may be rejected. All bids must be signed and all bid items must be bid or the bid form may be rejected. I also understand that consideration and awarding a contract will be based upon my past performance and ability to complete the contract based upon equipment and staffing subject to my control.

FEDERAL ID: \_\_\_\_\_ - \_\_\_\_\_ or SOCIAL SECURITY NUMBER: \_\_\_\_\_ - \_\_\_\_\_ - \_\_\_\_\_

Company or individual bidding: \_\_\_\_\_

Company representative's name: \_\_\_\_\_

Address: \_\_\_\_\_

City: \_\_\_\_\_ State: \_\_\_\_\_ Zip: \_\_\_\_\_

IF AVAILABLE, PLEASE PLACE THE PERSONALIZED LABEL FROM YOUR PROSPECTUS IN THE ABOVE BOX.

Individual or company representative's signature: \_\_\_\_\_ Date: \_\_\_\_\_

Phone number : \_\_\_\_\_ Email (optional): \_\_\_\_\_

**THE WINNING BIDDER MUST COMPLETE THE VERIFICATION OF WORKER'S DISABILITY COMPENSATION ACT COMPLIANCE (ON REVERSE SIDE IF DOUBLE SIDED) WITHIN 21 DAYS OF SALE AWARD DATE**



# TIMBER SALE VERIFICATION OF WORKER'S DISABILITY COMPENSATION ACT COMPLIANCE

As required by Act 317, P.A. 1969 (Worker's Compensation) and  
Part 5 of Act 451 of 1994, as amended.

FOR DEPARTMENT USE ONLY	
Sale Number (XX - XXX - XX - XX)	
Forest Management Unit:	

## VERIFICATION OF WORKER'S DISABILITY COMPENSATION ACT COMPLIANCE

- This verification must be completed and submitted within 21 days of contract award and prior to the issuance of the timber sale contract.
- In addition, if boxes 2B or 2C are checked, then Notice of Exclusion or Certificate of Insurance must be submitted within twenty-one (21) days of the contract award and prior to the issuance of the timber sale contract.
- All information must be typed or printed except for written signatures.

Please Check Appropriate Categories:

1. My business is organized as (you **must** check one of the boxes below):
  - A.  Sole Proprietorship (individual)
  - B.  Partnership
  - C.  Corporation
2. You **must** check one of the boxes below:
  - A.  I certify my business is a sole proprietorship and it has no employees but the sole proprietor. I am not subject to the Worker's Compensation Laws.
  - B.  I certify my business has satisfied its obligation to the Worker's Compensation Act through the use of an approved Notice of Exclusion (BWC-337, Rev. 5/96). I will provide a copy of the Notice of Exclusion within 21 days of the contract award. (For questions or a copy of the BWC-337, please call the Worker's Compensation Bureau at 517-322-1195).
  - C.  I certify my business has a Worker's Compensation Policy. I will provide an original Certificate of Insurance within twenty-one (21) days of the contract award.
3. If you have checked item 2(A) or 2(B), you **must** indicate the number of **both** full-time and part-time employees, other than yourself, including family members and active partners (if none, you must enter "0").

\_\_\_\_\_ Full-time Employees

\_\_\_\_\_ Part-time Employees

Name of Business		Federal ID (or) Social Security No.	
Address		Telephone (       )	
City	State	ZIP	

*I hereby certify that the above information is true and correct. I agree to notify the Michigan DNR of any changes that occur in factors affecting my coverage during any of my present and future operations.*

\_\_\_\_\_  
Signature of Owner or Authorized Representative

\_\_\_\_\_  
Title

\_\_\_\_\_  
Date

Please complete the "SEALED BID" information on the next page

USFWS Aspen (71-004-23)  
T24N, R02E, SEC. 20; T24N, R02E, SEC. 29; Ogemaw COUNTY

In response to the notice of sale to be held 9:00 a.m. (local time) on December 5, 2023, I am hereby submitting my sealed bid (firm offer) for the following forest products to be cut. Bids for individual species must be at or above the advertised price. All non-responsive bid forms may be rejected.

<u>PRODUCTS &amp; SPECIES</u>	<u>ESTIMATED VOLUME*</u>	<u>ADVERTISED PRICE</u>	<u>BID PRICE/UNIT</u>
<b>Sawtimber</b>			
B. T. Aspen	224.8 MBF	\$ 107.00/MBF	\$ _____
Black/Red (Hybrid) Oak	23.8 MBF	\$ 138.00/MBF	\$ _____
Quaking Aspen	167.2 MBF	\$ 107.00/MBF	\$ _____
Red Maple	18.1 MBF	\$ 97.00/MBF	\$ _____
Red Pine	74.8 MBF	\$ 173.00/MBF	\$ _____
White Oak	28.7 MBF	\$ 81.00/MBF	\$ _____
<b>Pulpwood</b>			
Jack Pine	64 Cords	\$ 13.90/Cord	\$ _____
Mixed Aspen	2,140 Cords	\$ 46.90/Cord	\$ _____
Mixed Hardwood	140 Cords	\$ 24.50/Cord	\$ _____
Mixed Oak	278 Cords	\$ 24.90/Cord	\$ _____
Red Pine	114 Cords	\$ 61.25/Cord	\$ _____
White Pine	16 Cords	\$ 50.05/Cord	\$ _____

\*The volumes are statistically estimated within plus (+) or minus (-) 26.28 percent at 95% confidence level. These estimated volumes are final and not subject to adjustment. Prospective bidders are urged to examine this timber and to make their own estimates of quantity and quality.

I understand that any or all bids may be rejected. All bids must be signed and all bid items must be bid or the bid form may be rejected. I also understand that consideration and awarding a contract will be based upon my past performance and ability to complete the contract based upon equipment and staffing subject to my control.

FEDERAL ID: \_\_\_\_ - \_\_\_\_ - \_\_\_\_ or SOCIAL SECURITY NUMBER: \_\_\_\_ - \_\_\_\_ - \_\_\_\_

Company or individual bidding: \_\_\_\_\_

Company representative's name: \_\_\_\_\_

Address: \_\_\_\_\_

City: \_\_\_\_\_ State: \_\_\_\_\_ Zip: \_\_\_\_\_

IF AVAILABLE, PLEASE PLACE THE PERSONALIZED LABEL FROM YOUR PROSPECTUS IN THE ABOVE BOX.

Individual or company representative's signature: \_\_\_\_\_ Date: \_\_\_\_\_

Phone number : \_\_\_\_\_ Email (optional): \_\_\_\_\_

**THE WINNING BIDDER MUST COMPLETE THE VERIFICATION OF WORKER'S DISABILITY COMPENSATION ACT COMPLIANCE (ON REVERSE SIDE IF DOUBLE SIDED) WITHIN 21 DAYS OF SALE AWARD DATE**



# TIMBER SALE VERIFICATION OF WORKER'S DISABILITY COMPENSATION ACT COMPLIANCE

As required by Act 317, P.A. 1969 (Worker's Compensation) and  
Part 5 of Act 451 of 1994, as amended.

FOR DEPARTMENT USE ONLY	
Sale Number (XX - XXX - XX - XX)	
Forest Management Unit:	

## VERIFICATION OF WORKER'S DISABILITY COMPENSATION ACT COMPLIANCE

- This verification must be completed and submitted within 21 days of contract award and prior to the issuance of the timber sale contract.
- In addition, if boxes 2B or 2C are checked, then Notice of Exclusion or Certificate of Insurance must be submitted within twenty-one (21) days of the contract award and prior to the issuance of the timber sale contract.
- All information must be typed or printed except for written signatures.

Please Check Appropriate Categories:

1. My business is organized as (you **must** check one of the boxes below):
  - A.  Sole Proprietorship (individual)
  - B.  Partnership
  - C.  Corporation
2. You **must** check one of the boxes below:
  - A.  I certify my business is a sole proprietorship and it has no employees but the sole proprietor. I am not subject to the Worker's Compensation Laws.
  - B.  I certify my business has satisfied its obligation to the Worker's Compensation Act through the use of an approved Notice of Exclusion (BWC-337, Rev. 5/96). I will provide a copy of the Notice of Exclusion within 21 days of the contract award. (For questions or a copy of the BWC-337, please call the Worker's Compensation Bureau at 517-322-1195).
  - C.  I certify my business has a Worker's Compensation Policy. I will provide an original Certificate of Insurance within twenty-one (21) days of the contract award.
3. If you have checked item 2(A) or 2(B), you **must** indicate the number of **both** full-time and part-time employees, other than yourself, including family members and active partners (if none, you must enter "0").

\_\_\_\_\_ Full-time Employees

\_\_\_\_\_ Part-time Employees

Name of Business		Federal ID (or) Social Security No.	
Address		Telephone (       )	
City	State	ZIP	

*I hereby certify that the above information is true and correct. I agree to notify the Michigan DNR of any changes that occur in factors affecting my coverage during any of my present and future operations.*

\_\_\_\_\_  
Signature of Owner or Authorized Representative

\_\_\_\_\_  
Title

\_\_\_\_\_  
Date

Please complete the "SEALED BID" information on the next page

Panda Oak Strips (71-005-23)  
T21N, R03W, SEC. 13; T21N, R03W, SEC. 23; T21N, R03W, SEC. 24;

In response to the notice of sale to be held 9:00 a.m. (local time) on December 5, 2023, I am hereby submitting my sealed bid (firm offer) for the following forest products to be cut. Bids for individual species must be at or above the advertised price. All non-responsive bid forms may be rejected.

<u>PRODUCTS &amp; SPECIES</u>	<u>ESTIMATED VOLUME*</u>	<u>ADVERTISED PRICE</u>	<u>BID PRICE/UNIT</u>
<b>Sawtimber</b>			
B. T. Aspen	62.2 MBF	\$ 107.00/MBF	\$ _____
Paper Birch	2.1 MBF	\$ 56.00/MBF	\$ _____
Red Maple	10.4 MBF	\$ 97.00/MBF	\$ _____
Red Oak	213.5 MBF	\$ 155.00/MBF	\$ _____
Red Pine	9.5 MBF	\$ 173.00/MBF	\$ _____
White Oak	37.0 MBF	\$ 81.00/MBF	\$ _____
<b>Pulpwood</b>			
B. T. Aspen	54 Cords	\$ 46.90/Cord	\$ _____
Mixed Oak	230 Cords	\$ 24.90/Cord	\$ _____
Paper Birch	7 Cords	\$ 21.55/Cord	\$ _____
Red Maple	109 Cords	\$ 24.50/Cord	\$ _____
Red Oak	517 Cords	\$ 24.90/Cord	\$ _____
Red Pine	11 Cords	\$ 61.25/Cord	\$ _____
White Pine	111 Cords	\$ 50.05/Cord	\$ _____

\*The volumes are statistically estimated within plus (+) or minus (-) 11.41 percent at 95% confidence level. These estimated volumes are final and not subject to adjustment. Prospective bidders are urged to examine this timber and to make their own estimates of quantity and quality.

I understand that any or all bids may be rejected. All bids must be signed and all bid items must be bid or the bid form may be rejected. I also understand that consideration and awarding a contract will be based upon my past performance and ability to complete the contract based upon equipment and staffing subject to my control.

FEDERAL ID: \_\_\_\_\_ or SOCIAL SECURITY NUMBER: \_\_\_\_\_

Company or individual bidding: \_\_\_\_\_

Company representative's name: \_\_\_\_\_

Address: \_\_\_\_\_

City: \_\_\_\_\_ State: \_\_\_\_\_ Zip: \_\_\_\_\_

IF AVAILABLE, PLEASE PLACE THE PERSONALIZED LABEL FROM YOUR PROSPECTUS IN THE ABOVE BOX.

Individual or company representative's signature: \_\_\_\_\_ Date: \_\_\_\_\_

Phone number : \_\_\_\_\_ Email (optional): \_\_\_\_\_

**THE WINNING BIDDER MUST COMPLETE THE VERIFICATION OF WORKER'S DISABILITY COMPENSATION ACT COMPLIANCE (ON REVERSE SIDE IF DOUBLE SIDED) WITHIN 21 DAYS OF SALE AWARD DATE**



FOR DEPARTMENT USE ONLY	
Sale Number (XX - XXX - XX - XX)	
Forest Management Unit:	

## TIMBER SALE VERIFICATION OF WORKER'S DISABILITY COMPENSATION ACT COMPLIANCE

As required by Act 317, P.A. 1969 (Worker's Compensation) and  
Part 5 of Act 451 of 1994, as amended.

### VERIFICATION OF WORKER'S DISABILITY COMPENSATION ACT COMPLIANCE

- This verification must be completed and submitted within 21 days of contract award and prior to the issuance of the timber sale contract.
- In addition, if boxes 2B or 2C are checked, then Notice of Exclusion or Certificate of Insurance must be submitted within twenty-one (21) days of the contract award and prior to the issuance of the timber sale contract.
- All information must be typed or printed except for written signatures.

Please Check Appropriate Categories:

1. My business is organized as (you **must** check one of the boxes below):
  - A.  Sole Proprietorship (individual)
  - B.  Partnership
  - C.  Corporation
2. You **must** check one of the boxes below:
  - A.  I certify my business is a sole proprietorship and it has no employees but the sole proprietor. I am not subject to the Worker's Compensation Laws.
  - B.  I certify my business has satisfied its obligation to the Worker's Compensation Act through the use of an approved Notice of Exclusion (BWC-337, Rev. 5/96). I will provide a copy of the Notice of Exclusion within 21 days of the contract award. (For questions or a copy of the BWC-337, please call the Worker's Compensation Bureau at 517-322-1195).
  - C.  I certify my business has a Worker's Compensation Policy. I will provide an original Certificate of Insurance within twenty-one (21) days of the contract award.
3. If you have checked item 2(A) or 2(B), you **must** indicate the number of **both** full-time and part-time employees, other than yourself, including family members and active partners (if none, you must enter "0").

\_\_\_\_\_ Full-time Employees

\_\_\_\_\_ Part-time Employees

Name of Business		Federal ID (or) Social Security No.	
Address		Telephone (       )	
City	State	ZIP	

*I hereby certify that the above information is true and correct. I agree to notify the Michigan DNR of any changes that occur in factors affecting my coverage during any of my present and future operations.*

\_\_\_\_\_  
Signature of Owner or Authorized Representative

\_\_\_\_\_  
Title

\_\_\_\_\_  
Date

Please complete the "SEALED BID" information on the next page



Red Pine Seed Cone (71-007-23)  
T21N, R04W, SEC. 10; Roscommon COUNTY

In response to the notice of sale to be held 9:00 a.m. (local time) on December 5, 2023, I am hereby submitting my sealed bid (firm offer) for the following forest products to be cut. Bids for individual species must be at or above the advertised price. All non-responsive bid forms may be rejected.

<u>PRODUCTS &amp; SPECIES</u>	<u>ESTIMATED VOLUME*</u>	<u>ADVERTISED PRICE</u>	<u>BID PRICE/UNIT</u>
Sawtimber Red Pine	102.7 MBF	\$ 173.00/MBF	\$ _____
Pulpwood Red Pine	43 Cords	\$ 61.25/Cord	\$ _____

\*The volumes are statistically estimated within plus (+) or minus (-) 38.74 percent at 95% confidence level. These estimated volumes are final and not subject to adjustment. Prospective bidders are urged to examine this timber and to make their own estimates of quantity and quality.

I understand that any or all bids may be rejected. All bids must be signed and all bid items must be bid or the bid form may be rejected. I also understand that consideration and awarding a contract will be based upon my past performance and ability to complete the contract based upon equipment and staffing subject to my control.

FEDERAL ID: \_\_\_\_ - \_\_\_\_ - \_\_\_\_ or SOCIAL SECURITY NUMBER: \_\_\_\_ - \_\_\_\_ - \_\_\_\_

Company or individual bidding: \_\_\_\_\_

Company representative's name: \_\_\_\_\_

Address: \_\_\_\_\_

City: \_\_\_\_\_ State: \_\_\_\_\_ Zip: \_\_\_\_\_

IF AVAILABLE, PLEASE PLACE THE PERSONALIZED LABEL FROM YOUR PROSPECTUS IN THE ABOVE BOX.

Individual or company representative's signature: \_\_\_\_\_ Date: \_\_\_\_\_

Phone number : \_\_\_\_\_ Email (optional): \_\_\_\_\_

**THE WINNING BIDDER MUST COMPLETE THE VERIFICATION OF WORKER'S DISABILITY COMPENSATION ACT COMPLIANCE (ON REVERSE SIDE IF DOUBLE SIDED) WITHIN 21 DAYS OF SALE AWARD DATE**



Heideman Mix (71-009-23)

T24N, R04W, SEC. 15; T24N, R04W, SEC. 16; T24N, R04W, SEC. 3; Roscommon

In response to the notice of sale to be held 9:00 a.m. (local time) on December 5, 2023, I am hereby submitting my sealed bid (firm offer) for the following forest products to be cut. Bids for individual species must be at or above the advertised price. All non-responsive bid forms may be rejected.

<u>PRODUCTS &amp; SPECIES</u>	<u>ESTIMATED VOLUME*</u>	<u>ADVERTISED PRICE</u>	<u>BID PRICE/UNIT</u>
<b>Sawtimber</b>			
B. T. Aspen	32.6 MBF	\$ 107.00/MBF	\$ _____
Black/Red (Hybrid) Oak	50.8 MBF	\$ 138.00/MBF	\$ _____
Quaking Aspen	28.1 MBF	\$ 107.00/MBF	\$ _____
Red Maple	63.7 MBF	\$ 97.00/MBF	\$ _____
Red Oak	32.5 MBF	\$ 155.00/MBF	\$ _____
Red Pine	170.2 MBF	\$ 173.00/MBF	\$ _____
White Oak	13.9 MBF	\$ 81.00/MBF	\$ _____
White Pine	12.1 MBF	\$ 70.00/MBF	\$ _____
<b>Pulpwood</b>			
B. T. Aspen	904 Cords	\$ 46.90/Cord	\$ _____
Balsam Fir	6 Cords	\$ 32.55/Cord	\$ _____
Jack Pine	96 Cords	\$ 13.90/Cord	\$ _____
Mixed Hardwood	404 Cords	\$ 24.50/Cord	\$ _____
Mixed Oak	203 Cords	\$ 24.90/Cord	\$ _____
Quaking Aspen	122 Cords	\$ 46.90/Cord	\$ _____
Red Oak	24 Cords	\$ 24.90/Cord	\$ _____
Red Pine	68 Cords	\$ 61.25/Cord	\$ _____
White Pine	30 Cords	\$ 50.05/Cord	\$ _____

\*The volumes are statistically estimated within plus (+) or minus (-) 27.15 percent at 95% confidence level. These estimated volumes are final and not subject to adjustment. Prospective bidders are urged to examine this timber and to make their own estimates of quantity and quality.

I understand that any or all bids may be rejected. All bids must be signed and all bid items must be bid or the bid form may be rejected. I also understand that consideration and awarding a contract will be based upon my past performance and ability to complete the contract based upon equipment and staffing subject to my control.

FEDERAL ID: \_\_\_\_\_ or SOCIAL SECURITY NUMBER: \_\_\_\_\_

Company or individual bidding: \_\_\_\_\_

Company representative's name: \_\_\_\_\_

Address: \_\_\_\_\_

City: \_\_\_\_\_ State: \_\_\_\_\_ Zip: \_\_\_\_\_

IF AVAILABLE, PLEASE PLACE THE PERSONALIZED LABEL FROM YOUR PROSPECTUS IN THE ABOVE BOX.

Individual or company representative's signature: \_\_\_\_\_ Date: \_\_\_\_\_

Phone number : \_\_\_\_\_ Email (optional): \_\_\_\_\_

**THE WINNING BIDDER MUST COMPLETE THE VERIFICATION OF WORKER'S DISABILITY COMPENSATION ACT COMPLIANCE (ON REVERSE SIDE IF DOUBLE SIDED) WITHIN 21 DAYS OF SALE AWARD DATE**



FOR DEPARTMENT USE ONLY	
Sale Number (XX - XXX - XX - XX)	
Forest Management Unit:	

## TIMBER SALE VERIFICATION OF WORKER'S DISABILITY COMPENSATION ACT COMPLIANCE

As required by Act 317, P.A. 1969 (Worker's Compensation) and  
Part 5 of Act 451 of 1994, as amended.

### VERIFICATION OF WORKER'S DISABILITY COMPENSATION ACT COMPLIANCE

- This verification must be completed and submitted within 21 days of contract award and prior to the issuance of the timber sale contract.
- In addition, if boxes 2B or 2C are checked, then Notice of Exclusion or Certificate of Insurance must be submitted within twenty-one (21) days of the contract award and prior to the issuance of the timber sale contract.
- All information must be typed or printed except for written signatures.

Please Check Appropriate Categories:

1. My business is organized as (you **must** check one of the boxes below):
  - A.  Sole Proprietorship (individual)
  - B.  Partnership
  - C.  Corporation
2. You **must** check one of the boxes below:
  - A.  I certify my business is a sole proprietorship and it has no employees but the sole proprietor. I am not subject to the Worker's Compensation Laws.
  - B.  I certify my business has satisfied its obligation to the Worker's Compensation Act through the use of an approved Notice of Exclusion (BWC-337, Rev. 5/96). I will provide a copy of the Notice of Exclusion within 21 days of the contract award. (For questions or a copy of the BWC-337, please call the Worker's Compensation Bureau at 517-322-1195).
  - C.  I certify my business has a Worker's Compensation Policy. I will provide an original Certificate of Insurance within twenty-one (21) days of the contract award.
3. If you have checked item 2(A) or 2(B), you **must** indicate the number of **both** full-time and part-time employees, other than yourself, including family members and active partners (if none, you must enter "0").

\_\_\_\_\_ Full-time Employees

\_\_\_\_\_ Part-time Employees

Name of Business		Federal ID (or) Social Security No.	
Address		Telephone (       )	
City	State	ZIP	

*I hereby certify that the above information is true and correct. I agree to notify the Michigan DNR of any changes that occur in factors affecting my coverage during any of my present and future operations.*

\_\_\_\_\_  
Signature of Owner or Authorized Representative

\_\_\_\_\_  
Title

\_\_\_\_\_  
Date

Please complete the "SEALED BID" information on the next page