



**DEPARTMENT OF NATURAL RESOURCES
STATE OF MICHIGAN
TIMBER SALE PROSPECTUS #7266**

SCHEDULED SALE DATE AND TIME: 4:00 p.m. (local time) on November 7, 2023.

LOCATION: TRAVERSE CITY MGMT UNIT, 2122 M 37 SOUTH, TRAVERSE CITY, MI 49685.

PROSPECTUS NOTE: Effective immediately: all bid openings for the Traverse City Management Unit (Kalkaska Field Office and Traverse City Field Office) will be held at the Traverse City Field Office regardless of sale location within the unit. All payments will now be handled through the Traverse City Field Office. The Kalkaska Field Office will no longer accept payments or hard paper copies of timber sale bids. Payments for all contracts, use permits, bonds, etc. should be sent to the Traverse City Field Office.

The bidder is advised to inspect the sale area and review the location, estimated volumes, operating costs and contract terms of proposed sales. Please be aware that some landowners may request 60 days or more notice for access across their land.

Notice is hereby given that bids will be received by the Unit Manager, TRAVERSE CITY MANAGEMENT UNIT, for certain timber on the following described lands:

Camp Pug Complex (61-014-23) / T25N, R09W, SEC. 20, E1/2NW,NE.

T25N, R09W, SEC. 21, W1/2NW,SWSW.

Grand Traverse County, Advertised Price \$125,957.10, 122.4 Acres, Red Pine, Red Oak.

SALE NOTE: A recreation site such as a trail, pathway, or campground is within the sale area or the vicinity. Certain restrictions/specifications may be applicable including time restrictions.

Fife Lake Mix (61-015-23) / T25N, R09W, SEC. 15, W1/2NW.

T25N, R09W, SEC. 16, SENW,NE,NESW,SESE.

T25N, R09W, SEC. 21, NE.

Grand Traverse County, Advertised Price \$249,435.35, 191.2 Acres, Red Pine, Hardwood.

SALE NOTE: A recreation site such as a trail, pathway, or campground is within the sale area or the vicinity. Certain restrictions/specifications may be applicable including time restrictions.

Walton Restart (61-017-23) / T25N, R09W, SEC. 21, SESW,SE.

Grand Traverse County, Advertised Price \$121,187.80, 76.3 Acres, Red Pine, Hardwood.

SALE NOTE: A recreation site such as a trail, pathway, or campground is within the sale area or the vicinity. Certain restrictions/specifications may be applicable including time restrictions.

M-186 Oak/Pine (61-018-23) / T25N, R09W, SEC. 10, NWNW,NWNE,SW.

T25N, R09W, SEC. 15, N1/2NW.

Grand Traverse County, Advertised Price \$141,594.35, 129.9 Acres, Hardwood, Red Oak.

SALE NOTE: A recreation site such as a trail, pathway, or campground is within the sale area or the vicinity. Certain restrictions/specifications may be applicable including time restrictions.

First Thin Jobbie (61-021-23) / T26N, R14W, SEC. 3, SWSW.

Benzie County, Advertised Price \$12,828.90, 24.9 Acres, Red Pine.

Happy Ending Hardwood (61-039-22) / T28N, R14W, SEC. 33, NESE.

T28N, R14W, SEC. 34, SENW,NE,SW,N1/2SE,SWSE.

T28N, R14W, SEC. 35, SWNW.

Leelanau County, Advertised Price \$103,999.30, 133.6 Acres, Hardwood, Sugar Maple.

SALE NOTE: A recreation site such as a trail, pathway, or campground is within the sale area or the vicinity.
Certain restrictions/specifications may be applicable including time restrictions.

BID INSTRUCTIONS (VER. 10/10/2022):

1. Scheduled Bid Location, Date, and Time (2/11)

Bids must be received by the Unit Manager, TRAVERSE CITY OFFICE, 2122 M 37 South, Traverse City, MI 49685, no later than 4:00 p.m. (local time) on November 7, 2023. For further information concerning this sale, contact Patrick Cotant at 231-649-0544.

2. Bidder's Qualifications (10/22)

If all or part of a timber sale was prepared by a private contractor, the contractor and that contractor's company are not permitted to bid on the timber sale. A person must be 18 years of age or older to purchase timber. Permanent employees of the Department of Natural Resources or members of their immediate household may not bid. Former employees, in the permanent or seasonal class, may not bid until 3 months after the last day of active duty. Bids will not be accepted from individuals or companies appearing on the DNR/FRD No-Bid List. This list contains the names of purchasers who previously failed to execute a contract within 21-days or who have a history of poor performance.

3. Preparation of Sealed Bids (5/16)

Bid Forms may be completed online thru Michigan DNR Timber Sale Online Bidding (OLB) at www.michigan.gov/timberbidding or by completing the hardcopy Bid Form found in the Timber Sale Prospectus. Hardcopy Bid Forms shall be manually signed in ink. Registration in OLB is considered your 'signature' for all bids submitted thru that system. Bid prices must be entered for each species and product in the Bid Price column for all material subject to bidding and all fill-in blanks must be completed. If erasures or other changes appear on the hardcopy Bid Form, each erasure or change must be initialed by the person signing the bid.

4. Submission of Sealed Bids (5/16)

Bid forms may be obtained from the Unit Manager or thru OLB. Bids may be submitted hardcopy or thru OLB. All hardcopy bids must be submitted on the bid form and in an envelope clearly identified as described in this section. NOTE: Only one bid form per bid envelope. Sealed bids must be submitted to the Unit office designated in the prospectus and must be submitted at or prior to the time established in the prospectus. The envelope should show on the outside (a) the sale name or number and (b) the date and time of bid opening, as shown in the prospectus. Bids received after the time specified in the sale prospectus are late bids and will be rejected.

It is possible for a bidder to submit multiple bids on a single sale. For example, a bid may be submitted hardcopy and a bid may be submitted thru OLB. Or, two bidders from the same company could both submit bids on the same sale. If this were to happen, the State would accept all bids received and award the contract accordingly. All bidding and contractual requirements would apply to all bids received.

5. Public Opening of Sealed Bids (7/16)

If conditions permit, the sealed bids will be publicly opened and posted at the time and place set in the prospectus.

If a bidder, present at a bid opening, has submitted bids on more than one sale, that bidder may withdraw their unopened bid envelopes or announce the withdrawal of their online bid after being declared the successful bidder on one sale.

6. Award of Contract (1/11)

Award of the contract will be made to the Bidder whose bid, conforming to the prospectus, is most advantageous to the State of Michigan on the basis of total value at rates bid for the estimated quantities. The State reserves the right to reject any bid or waive any minor irregularity in bids received. A written award mailed (or otherwise furnished) to the successful Bidder shall be deemed to result in a binding contract without further action by either party.

7. Down Payment (1/11)

The Bidder to whom award is made must make a down payment within 21 days of the sale award. The amount of the down payment will be calculated as shown in the Bond and Payment Schedule of this prospectus. Only cash may be used to meet this requirement.

8. Performance Security (1/11)

As guarantee of faithful performance, a cash bond, certificate of deposit, surety bond or irrevocable letter of credit (LOC) is required within 21 days of the sale award. The amount of the performance security is shown in the Bond and

Payment Schedule of this prospectus. If an LOC or surety is used, the coverage must extend for at least 6 months beyond the contract expiration.

9. Worker's Compensation (10/22)

Purchaser shall obtain worker's compensation insurance to cover claims under Michigan's Worker's Disability Compensation Act of 1969 or similar employee benefit act of any other state applicable to an employee. Verification of Worker's Disability Compensation Act Compliance must be completed and submitted within 21 days of contract award and prior to the issuance of the timber sale contract. In addition, if applicable, Notice of Exclusion or Certificate of Insurance must also be submitted.

10. Timber Sale Contract (10/22)

Additional conditions and requirements common to all timber sales are listed on the timber sale contract (R4031) and are available on line at www.michigan.gov/timber. Contact the Unit Manager for additional information or a sample contract. Within 21 days of the date of the award letter, the bidder must sign the contract and provide the required down payment, performance security, and verification of worker's disability compensation. The down payment and performance security shall be in accordance with the provisions of the timber sale contract, in the sums stated in this prospectus. If these actions are not taken, then the Bidder, the Bidder's corporation, and the corporation's principals may not be permitted to bid on State timber sales for a period of 3 months after the first offense, 6 months after the second offense, and 1 year after the third offense. An offense will only be counted against the Bidder for 5 years. In addition, the Bidder certifies that if awarded this contract, the Bidder will complete the timber sale contract in accordance with its terms and any modifications thereof including requirements to purchase, cut, and remove the included timber by the expiration date.

Payment Unit values in the State Forest Timber Sale Contract are calculated based on the advertised value of the Payment Unit as a percentage of the total advertised value of the contract. The advertised value of each Payment Unit is given in the Description of Timber by Payment Unit table on the Timber Sale Information page. For example, if the value of Payment Unit 1 is advertised as \$1,500 and the total Timber Sale value is advertised as \$10,000, the contract price for Payment Unit 1 will be 15% of the total bid price ($\$1,500/\$10,000 * 100$).

11. Disclaimer of Estimates and Bidder's Warranty of Inspection (10/22)

Before submitting this bid, the Bidder is advised and cautioned to inspect the sale area, review the requirements of the sale contract, and take other steps as may be reasonably necessary to ascertain the location, estimated volumes, construction estimates, and operating costs of the proposed sale. Failure to do so will not relieve the Bidder from responsibility for completing the contract.

The Bidder warrants that this bid is submitted solely on the basis of the Bidder's examination and inspection of the quality and quantity of the timber offered for sale and the Bidder's opinion of the value thereof and the costs of recovery. No reliance should be placed on the State of Michigan's estimates of timber quality, quantity or costs of recovery. Bidder further acknowledges that the State of Michigan: (i) expressly disclaims any warranty of fitness of timber for any purpose; (ii) offers this timber as is without any warranty of quality (merchantability) or quantity and (iii) expressly disclaims any warranty as to the quantity or quality of timber sold.

12. Certification and Chain-of-Custody (10/22)

Unless otherwise indicated in the contract under section 7 – Other Conditions of the Sale Specific Conditions & Requirements, the area encompassed by this timber sale is certified to the standards of the Forest Stewardship Council (FSC) - Certificate #SCS-FM/COC-00090N and the Sustainable Forestry Initiative (SFI) - Certificate #NSF-SFIS-5Y031-SF5. Forest products from this sale may be delivered to the mill as "FSC 100% and / or SFI certified" as long as the contractor hauling the forest products is chain-of-custody (COC) certified or covered under a COC certificate from the destination mill. The purchaser is responsible for maintaining COC after leaving the sale area.

13. Good Neighbor Authority (GNA) Requirements (10/22)

If the name of this timber sales contains the acronym GNA, it is authorized by the Good Neighbor Authority (GNA) and covered by various agreements between the U.S. Forest Service and the State. The timber sale occurs on federal land and the following conditions apply:

GNA contracts on US Forest Service land will not be awarded to purchasers on the Federal list of excluded parties. The System for Award Management (SAM) will be checked for active excluded parties prior to award of contract. In

addition, the Bidder to whom award is made must complete an Assurance Regarding Felony Conviction or Tax Delinquent Status for Corporate Applicants (AD-3031).

14. Good Neighbor Authority (GNA) Requirements, con't (10/22)

Bidder certifies, by signing this bid form, that to the best of Bidder's knowledge that the following representations are accurate and complete.

- a. That the Bidder and its principals are not presently debarred, suspended, proposed for debarment, declared ineligible, or voluntary excluded from timber sales (covered transactions) by any Federal department or agency.
- b. That the Bidder and its principals have not within a 3-year period preceding this bid been convicted of or had a civil judgment rendered against them for commission of fraud or a criminal offense in connection with obtaining , attempting to obtain, or performing a public (Federal, State, or local) transaction or contract under a public transaction; violation of Federal or State antitrust statutes or commission of embezzlement, theft, forgery, bribery, falsification or destruction of records, making false statements, or receiving stolen property.
- c. That the Bidder and its principals are not presently indicted for or otherwise criminally or civilly charged by a governmental entity (Federal, State, or local) with commission of any of the offenses enumerated in paragraph b of this certification.
- d. That the Bidder and its principals have not within a 3-year period preceding this bid had one or more public transactions (Federal, State, or local) terminated for breach or default of a timber or forest product contract.

Bidders that cannot certify this requirement, in whole or in part, shall submit an explanation with their bid.

Scott Bowen
Director

TIMBER SALE INFORMATION

Camp Pug Complex (61-014-23)
 T25N, R09W, SEC. 20; T25N, R09W, SEC. 21.
 Grand Traverse County (Advertised Price \$125,957.10)

SALE NOTE: A recreation site such as a trail, pathway, or campground is within the sale area or the vicinity. Certain restrictions/specifications may be applicable including time restrictions.

A timber sale contract for this lump sum, sealed bid timber sale will be awarded to the responsible bidder offering the highest sealed bid price. All units of volume listed below were estimated using the Inventory Manager computer program and the new Michigan taper model. Bids must be at or above the following advertised price for each product and species:

<u>PRODUCTS & SPECIES</u>	<u>ESTIMATED UNITS*</u>	<u>ADVERTISED PRICE</u>
Sawtimber		
B. T. Aspen	79.3 MBF	\$ 113.00 / MBF
Black Cherry	2.9 MBF	\$ 191.00 / MBF
Red Maple	23.8 MBF	\$ 140.00 / MBF
Red Oak	262.1 MBF	\$ 105.00 / MBF
Red Pine	242.9 MBF	\$ 112.00 / MBF
Sugar Maple	14.1 MBF	\$ 256.00 / MBF
White Oak	70.5 MBF	\$ 68.00 / MBF
White Pine	127.5 MBF	\$ 69.00 / MBF
Pulpwood		
B. T. Aspen	203 Cords	\$ 18.10 / Cord
Mixed Hardwood	39 Cords	\$ 19.90 / Cord
Red Maple	151 Cords	\$ 19.90 / Cord
Red Oak	224 Cords	\$ 26.15 / Cord
Red Pine	427 Cords	\$ 48.40 / Cord
White Oak	102 Cords	\$ 26.15 / Cord
White Pine	213 Cords	\$ 21.30 / Cord

* The total volume is statistically estimated within plus (+) or minus (-) 10.26 percent. There are an estimated 3,147 cords on this timber sale, plus or minus 323 cords at the 95% confidence level. The estimated units are final and not subject to adjustment. Prospective bidders are urged to examine this timber and to make their own estimates of quantity and quality.

BOND AND PAYMENT SCHEDULE:

1. A bond in the amount of \$6,298.00 to insure faithful performance of the conditions of the contract will be deposited by the successful bidder within 21 days of the sale award.
2. Cutting in any sale or unit without the required advance payment would be considered a trespass.
3. Total payment must be paid in advance or according to the following schedule :
 - (a) Ten percent (10%) of the sale value must be paid within 21 days of the sale award.
 - (b) The 10% down payment will be credited towards the first unit cut.
 - (c) Payment for each of the following units must be made before cutting begins in that unit:

PAYMENT UNIT NUMBER	PERCENT OF TOTAL SALE VALUE
01	26.4%
02	5.4%
03	5.7%
04	18.3%
05	2.1%
06	10.0%
07	32.1%

4. If no cutting takes place, the 10% down payment will not be refunded.
5. Operations on the contract issued will terminate on 12/31/2026.

SALE STATISTICS

Volumes were calculated in cubic feet using the Michigan taper model. Cubic foot volume includes all wood inside bark for the product indicated. For display purposes, cubic feet were converted to cords and MBF using a simple conversion factor, e.g. 79 cubic feet per cord and 185 cubic feet per MBF. The cubic foot volumes are precise; the cords and MBF volumes are not. Cubic foot volume cannot be directly converted to cords or boards with precision.

SALE VOLUMES

The total estimated sale volume may not equal the sum of the species/products due to the nature of statistical calculations associated with double sampling methodology.

VOLUME			STATISTICAL RANGE IN CORDS	
TOTAL CUBIC FEET	TOTAL CORDS	PERCENT ERROR	MINIMUM	MAXIMUM
248,614	3,147	10.26%	2,824	3,470

VDU VOLUMES

A VDU is a Volume Determination Unit. Volumes and their associated statistics are calculated at the VDU level and summarized to the sale level. There is often a one to one relationship between a VDU and a Payment Unit, but not always, depending on the cruise design. Refer to the VDU TO PAYMENT UNIT table.

	VOLUME			RANGE IN CORDS	
VDU	TOTAL CUBIC FEET	TOTAL CORDS	PERCENT ERROR	MINIMUM	MAXIMUM
8	37,958	480	34.48%	315	646
12	27,607	349	49.17%	178	521
22	15,475	196	84.84%	30	362
25	4,446	56	54.13%	26	87
38	35,947	455	21.61%	357	553
40	28,579	362	36.68%	229	494
44	11,083	140	39.40%	85	196
71	87,520	1,108	14.08%	952	1,264
TOTAL:	248,614	3,147		2,171	4,123

VDU TO PAYMENT UNIT

When a VDU is associated with more than one Payment Unit (PU), the VDU volumes are assigned to the PU based on acres of the VDU within the PU.

VDU	VDU ACRES	PU	PU ACRES
8	23.9	1	23.9
12	10.9	1	10.9
22	6.2	3	6.2
25	4.7	5	4.7
38	20.3	4	20.3
40	14.6	6	14.6
44	6.2	2	6.2
71	35.6	7	35.6
TOTAL:	122.4		122.4

DESCRIPTION OF TIMBER BY PAYMENT UNIT (PU)

PU	MARKET GROUP	PRODUCT	QUANTITY	UNIT	ACRES	ADVERTISE PRICE	
1	B. T. Aspen	Sawtimber	26.9	MBF	34.8	\$33,230.45	
	Red Maple		14.4	MBF			
	Red Oak		162.5	MBF			
	Red Pine		6.8	MBF			
	Sugar Maple		14.1	MBF			
	White Oak		2.9	MBF			
	B. T. Aspen		Pulpwood	121			Cords
	Mixed Hardwood			33			Cords
	<i>Sugar Maple</i>			33			<i>Cords</i>
	Red Maple			30			Cords
	Red Oak			101			Cords
	Red Pine			4			Cords
	White Oak			2			Cords
	White Pine			10			Cords
	2	Red Pine	Sawtimber	9.8			MBF
Red Pine		Pulpwood	117	Cords			
3	B. T. Aspen	Sawtimber	21.2	MBF	6.2	\$7,195.25	
	Red Maple		4.4	MBF			
	Red Oak		17.6	MBF			
	White Oak		9.7	MBF			
	B. T. Aspen		Pulpwood	18			Cords
	Red Maple			35			Cords
	Red Oak			11			Cords
	White Oak			14			Cords
4	Red Oak	Sawtimber	18.8	MBF	20.3	\$22,993.40	
	Red Pine		140.9	MBF			
	B. T. Aspen	Pulpwood	25	Cords			
	Red Oak		18	Cords			
	Red Pine		87	Cords			
	White Oak		4	Cords			
5	Red Pine	Sawtimber	5.1	MBF	4.7	\$2,700.80	
	Red Pine	Pulpwood	44	Cords			
6	B. T. Aspen	Sawtimber	6.6	MBF	14.6	\$12,536.45	
	Black Cherry		2.9	MBF			
	Red Maple		2.5	MBF			
	Red Oak		41.4	MBF			
	White Oak		35.7	MBF			
	White Pine		8.9	MBF			
	B. T. Aspen		Pulpwood	11			Cords
	Mixed Hardwood			6			Cords
	<i>Black Cherry</i>			6			<i>Cords</i>
	Red Maple			11			Cords
	Red Oak			58			Cords
	White Oak			43			Cords
	White Pine			15			Cords
	7			B. T. Aspen			Sawtimber
Red Maple		2.5	MBF				
Red Oak		21.8	MBF				
Red Pine		80.3	MBF				
White Oak		22.2	MBF				
White Pine		118.6	MBF				
B. T. Aspen		Pulpwood	28	Cords			
Red Maple			75	Cords			
Red Oak			36	Cords			
Red Pine			175	Cords			

DESCRIPTION OF TIMBER BY PAYMENT UNIT (PU), CON'T

PU	MARKET GROUP	PRODUCT	QUANTITY	UNIT	ACRES	ADVERTISE PRICE
7 con't	White Oak	Pulpwood	39	Cords		
	White Pine		188	Cords		
TOTAL:			823.1	MBF		
TOTAL:			1,359	Cords		

Sale Specific Conditions & Requirements

Sale Name: Camp Pug Complex

Sale Number: 61-014-23 Seq#: 1

1 - Sale Area

1.2 - Boundaries

1.2.1 - Painted boundaries (9/19)

The sale boundary and Payment Unit boundaries are marked and identified by blue and red paint. Exterior sale boundary lines against private property are marked with blue paint. Exterior sale boundary lines against state are marked with red paint. Retention patches are marked with red paint; no harvesting activities may occur within these areas. The painted boundary line trees are not Included Timber and are to be protected unless marked with orange paint.

2 - Timber Specifications

2.1 - Included Timber

2.1.1 - Clearcut unit(s) with unmerchantable trees (6/14)

Within Payment Unit(s) 3, cut all trees that are two (2) inches or more at DBH, except leave all red and white pine.

2.1.2 - Clearcut unit(s) w/o unmerchantable trees (8/11)

Within Payment Unit(s) 6 & 7, cut all trees which meet minimum piece specifications in 2.2 Utilization, except leave all trees marked with green paint. In addition, do not cut retention islands marked in red in Payment Unit 7, as shown on the Timber Sale Map.

2.1.3 - Cut tree marked unit(s) (12/08)

Within Payment Unit(s) 5, all trees are designated for cutting when marked with orange paint above and below stump height, regardless of merchantability. Additionally, cut all aspen.

2.1.5 - Overstory removal unit(s) (8/11)

Within Payment Unit(s) 1 & 4, all trees with DBH equal to or greater than five (5) inches which meet minimum piece specifications in 2.2 Utilization, are designated for cutting, except hemlock and any trees marked with green paint. Additionally, in Payment Unit 1, leave all red and white pine unless marked with orange paint.

2.1.8 - Designated plantation row unit(s) (12/08)

Within Payment Unit(s) 2, all trees which meet minimum piece specifications in 2.2 Utilization, within designated plantation rows are designated for cutting. Designated plantation rows are every third row. Begin with the third row in from the outside of the plantation, then continue every third row. Because of the variability of row direction, it shall be the responsibility of the producer to maintain the third-row sequence. In addition, to every third row, cut all orange marked trees.

4 - Transportation

4.1 - Construction

4.1.12 - No new roads (1/12)

No new roads will be permitted in any Payment Unit. All operations are limited to existing roads. Skid trails only will be allowed.

4.2 - Maintenance

4.2.5 - Two wheel drive condition (2/04)

All existing trail roads on and adjacent to the sale area must be passable by two-wheel drive traffic for the duration of the sale.

5 - Operations

5.1 - Notification

5.1.1 - Pre-sale conference (10/16)

A pre-sale conference on site between the Purchaser and sale administrator is required prior to beginning any operations to determine landing and road locations. The Unit Manager or his/her representative must be contacted at least 3 days in

advance to schedule the conference.

5.2 - Conduct of Operations

5.2.2 - Hazard Trees/Snags

5.2.2.1 - Den trees (10/16)

Obvious hollow and/or den trees shall be protected and left standing unless they are a safety hazard.

5.2.3 - Operating Restrictions

5.2.3.3 - Bark slippage restriction (3/09)

Within Payment Unit(s) 2, unless changed by written agreement, cutting and skidding are not permitted during the period of April 15 to July 15. This restriction is because of bark slippage. If the producer can work without damage to residual trees, this restriction may be lifted upon approval from the Sale Administrator.

5.2.3.4 - Oak wilt restriction, no exceptions (1/18)

Within Payment Unit(s) 1 & 4, cutting and skidding within the sale, along with brushing of access roads to the sale are not permitted during the period of April 15 to July 15. No exceptions will be granted. This is necessary to reduce the spread of oak wilt.

5.2.3.5 - Oak wilt restriction (1/18)

Within Payment Unit(s) 3, 6, & 7, unless changed by written agreement, cutting, skidding, hauling within the sale and brushing of access roads to the sale are not permitted during the period of April 15 to July 15. Operations may be allowed if specific steps are taken to prevent damaging uncut oak during the high risk period. Those steps may include completing all road brushing before April 15th and clearing a tree-length buffer along uncut oak cover before April 15th. This is necessary to reduce the spread of oak wilt. For more information, contact the Unit Manager or his/her representative.

5.2.39 - ORV trail/route protection (4/18)

A dirt bike trail runs through Payment Unit 7 and is shown on the Timber Sale Map. Do not cut trees or damage posts with yellow ORV markers. All stumps within 5 feet of the trail must be cut flush with the ground. Maintain a 15-foot-wide slash, debris, and rut free zone daily using the ORV trail or route as the centerline. Do not run equipment down the ORV trail or route. Skidding across the trail or route may only occur in locations approved by the Sale Administrator.

5.2.40 - Pathway protection (10/10)

The NCT hiking trail runs along the two track road on the east edge of Payment Unit 7. Do not cut trees or damage posts with blue pathway markers. Maintain a 20-foot-wide slash, debris, and rut free zone daily, using the pathway as the centerline. Do not run equipment or trucks down the pathway.

6 - Safety and Fire Prevention

6.2 - Signing

6.2.1 - Road posting (10/20)

The Purchaser is responsible for posting and maintaining caution signs on timber access roads near the landing prior to beginning operations. The road must be posted at appropriate distances from the Sale Area to warn of logging activity and truck traffic. Signs must be removed when harvest operations are suspended or completed. The Purchaser will provide these signs.

6.2.3 - Recreational trail posting (10/20)

The Purchaser is responsible for posting and maintaining caution signs on the ORV trail that runs through Payment Unit 7 prior to beginning operations. The trail must be posted at appropriate distances from the Sale Area to warn of logging activity and truck traffic at both ends of the trail. Signs must be removed when harvest operations are suspended or completed. The Purchaser will provide these signs.



TIMBER SALE MAP

This information provided by authority of Part 525, 1994 PA 451, as amended.

Forest Management Unit Traverse City	County Grand Traverse	Mapped By Ventimiglia	Date 06/16/23	Page 1	of 1
Township 25N	Range 09W	Section(s) and Subdivision(s) Section 20 and 21 Various	Scale 1:15,840		

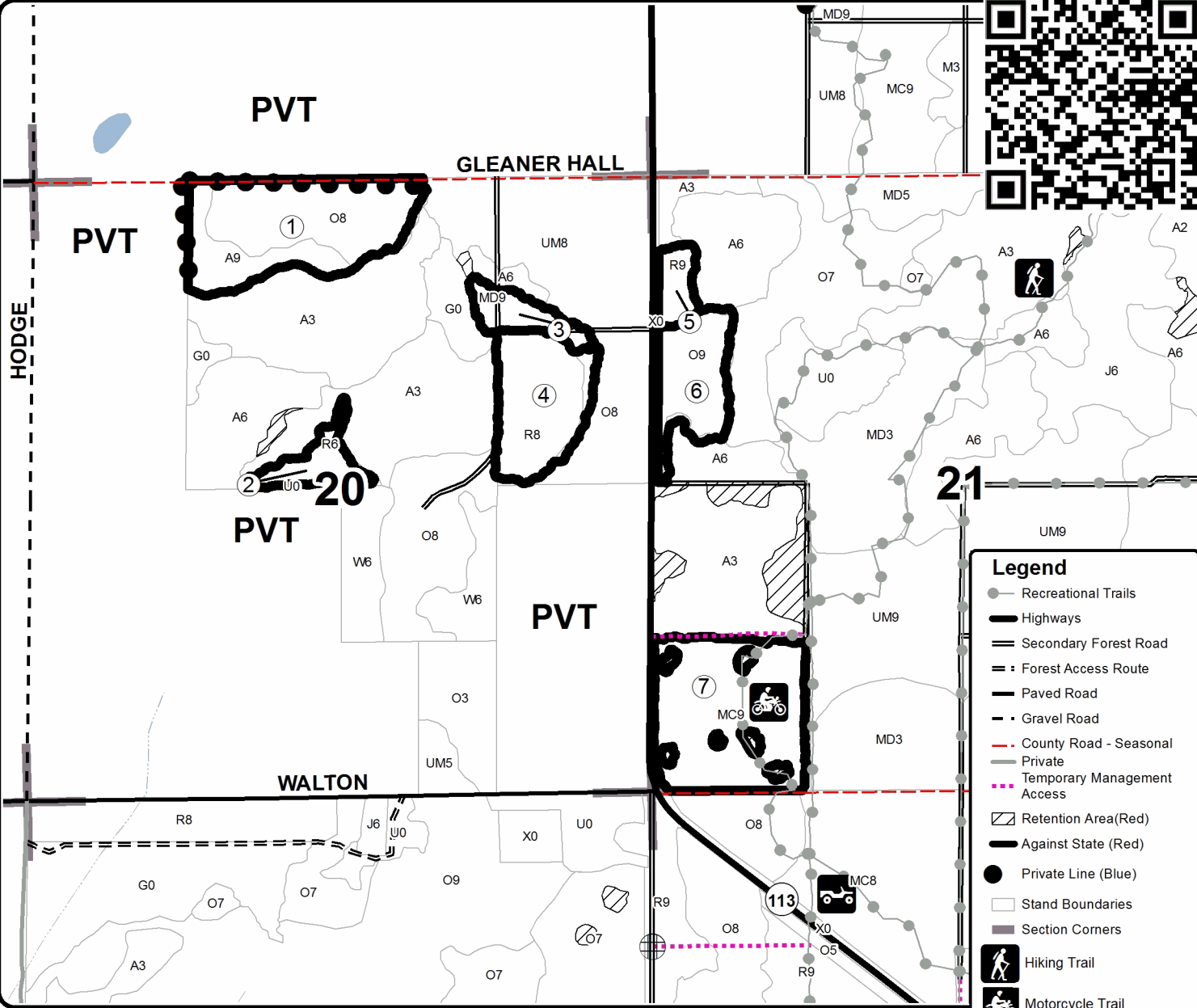
Cover Type				Density	
A = Aspen	H = Hemlock	N = Marsh	U = Upland Brush	0 = Non Stocked	5 = Pole Timber Medium
B = Paper Birch	J = Jack Pine	O = Oak	UM = Upland Mixed	1 = Seedling Sapling Poor	6 = Pole Timber Well
C = Cedar	L = Lowland Brush	P = Lowland Poplar	V = Bog or Marsh	2 = Seedling Sapling Medium	7 = Saw Timber Poor
D = Treed Bog	LM = Lowland Mixed	Q = Mixed Swamp Conifer	W = White Pine	3 = Seedling Sapling Well	8 = Saw Timber Medium
E = Swamp Hdwoods	M = Mpl, Bch, Brch	R = Red Pine	X = Non Stocked	4 = Pole Timber Poor	9 = Saw Timber Well
F = Spruce Fir	MC = Mixed Conifer	S = Black Spruce	Z = Water		
G = Grass	MD = Mixed Deciduous	T = Tamarack			

PU	Acres	PU	Acres
1	34.8	5	4.7
2	6.2	6	14.6
3	6.2	7	35.6
4	20.3		

Camp Pug Mix

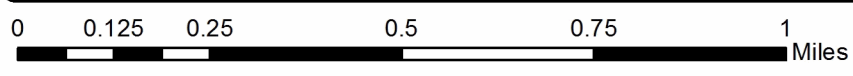
Compartment 56

122.4 Acres



Legend

- Recreational Trails
- Highways
- Secondary Forest Road
- Forest Access Route
- Paved Road
- Gravel Road
- County Road - Seasonal
- Private
- Temporary Management Access
- ▨ Retention Area (Red)
- Against State (Red)
- Private Line (Blue)
- Stand Boundaries
- Section Corners
- 🚶 Hiking Trail
- 🏍 Motorcycle Trail
- 🚗 Vehicular Trail



TIMBER SALE INFORMATION

Fife Lake Mix (61-015-23)

T25N, R09W, SEC. 15; T25N, R09W, SEC. 16; T25N, R09W, SEC. 21.
Grand Traverse County (Advertised Price \$249,435.35)

SALE NOTE: A recreation site such as a trail, pathway, or campground is within the sale area or the vicinity. Certain restrictions/specifications may be applicable including time restrictions.

A timber sale contract for this lump sum, sealed bid timber sale will be awarded to the responsible bidder offering the highest sealed bid price. All units of volume listed below were estimated using the Inventory Manager computer program and the new Michigan taper model. Bids must be at or above the following advertised price for each product and species:

<u>PRODUCTS & SPECIES</u>	<u>ESTIMATED UNITS*</u>	<u>ADVERTISED PRICE</u>
Sawtimber		
B. T. Aspen	34.4 MBF	\$ 113.00 / MBF
Jack Pine	13.8 MBF	\$ 35.00 / MBF
Red Maple	33.8 MBF	\$ 140.00 / MBF
Red Oak	382.5 MBF	\$ 105.00 / MBF
Red Pine	803.6 MBF	\$ 112.00 / MBF
White Oak	35.1 MBF	\$ 68.00 / MBF
White Pine	14.0 MBF	\$ 69.00 / MBF
Pulpwood		
B. T. Aspen	89 Cords	\$ 18.10 / Cord
Jack Pine	256 Cords	\$ 22.50 / Cord
Mixed Hardwood	378 Cords	\$ 19.90 / Cord
Mixed Oak	769 Cords	\$ 26.15 / Cord
Red Pine	1,467 Cords	\$ 48.40 / Cord
White Pine	38 Cords	\$ 21.30 / Cord

* The total volume is statistically estimated within plus (+) or minus (-) 9.93 percent. There are an estimated 5,923 cords on this timber sale, plus or minus 588 cords at the 95% confidence level. The estimated units are final and not subject to adjustment. Prospective bidders are urged to examine this timber and to make their own estimates of quantity and quality.

BOND AND PAYMENT SCHEDULE:

1. A bond in the amount of \$12,472.00 to insure faithful performance of the conditions of the contract will be deposited by the successful bidder within 21 days of the sale award.
2. Cutting in any sale or unit without the required advance payment would be considered a trespass.
3. Total payment must be paid in advance or according to the following schedule :
 - (a) Ten percent (10%) of the sale value must be paid within 21 days of the sale award.
 - (b) The 10% down payment will be credited towards the first unit cut.
 - (c) Payment for each of the following units must be made before cutting begins in that unit:

PAYMENT UNIT NUMBER	PERCENT OF TOTAL SALE VALUE
01	19.9%
02	9.1%
03	10.3%
04	19.7%
05	13.1%
06	21.0%
07	6.9%
4. If no cutting takes place, the 10% down payment will not be refunded.
5. Operations on the contract issued will terminate on 12/31/2026.

SALE STATISTICS

Volumes were calculated in cubic feet using the Michigan taper model. Cubic foot volume includes all wood inside bark for the product indicated. For display purposes, cubic feet were converted to cords and MBF using a simple conversion factor, e.g. 79 cubic feet per cord and 185 cubic feet per MBF. The cubic foot volumes are precise; the cords and MBF volumes are not. Cubic foot volume cannot be directly converted to cords or boards with precision.

SALE VOLUMES

The total estimated sale volume may not equal the sum of the species/products due to the nature of statistical calculations associated with double sampling methodology.

VOLUME			STATISTICAL RANGE IN CORDS	
TOTAL CUBIC FEET	TOTAL CORDS	PERCENT ERROR	MINIMUM	MAXIMUM
467,880	5,923	9.93%	5,334	6,511

VDU VOLUMES

A VDU is a Volume Determination Unit. Volumes and their associated statistics are calculated at the VDU level and summarized to the sale level. There is often a one to one relationship between a VDU and a Payment Unit, but not always, depending on the cruise design. Refer to the VDU TO PAYMENT UNIT table.

	VOLUME			RANGE IN CORDS	
VDU	TOTAL CUBIC FEET	TOTAL CORDS	PERCENT ERROR	MINIMUM	MAXIMUM
1	152,768	1,934	11.29%	1,715	2,152
55	6,920	88	30.54%	61	114
58	44,395	562	15.22%	476	647
310	120,506	1,525	14.82%	1,299	1,751
311	143,290	1,814	13.15%	1,575	2,052
TOTAL:	467,880	5,923		5,127	6,718

VDU TO PAYMENT UNIT

When a VDU is associated with more than one Payment Unit (PU), the VDU volumes are assigned to the PU based on acres of the VDU within the PU.

VDU	VDU ACRES	PU	PU ACRES
1	37.7	1	25.8
		2	11.9
55	7.8	7	7.8
		7	40.6
310	59.4	3	20.4
		4	39.0
311	45.7	5	17.6
		6	28.1
TOTAL:	191.2		191.2

DESCRIPTION OF TIMBER BY PAYMENT UNIT (PU)

PU	MARKET GROUP	PRODUCT	QUANTITY	UNIT	ACRES	ADVERTISE PRICE
1	B. T. Aspen	Sawtimber	23.5	MBF	25.8	\$49,566.70
	Red Maple		23.1	MBF		
	Red Oak		145.1	MBF		
	Red Pine		65.6	MBF		
	White Oak		13.6	MBF		
	B. T. Aspen	Pulpwood	24	Cords		
	Mixed Hardwood		196	Cords		
	<i>Red Maple</i>		196	<i>Cords</i>		
	Mixed Oak		302	Cords		
	<i>Red Oak</i>		240	<i>Cords</i>		
	<i>White Oak</i>		62	<i>Cords</i>		
	Red Pine		164	Cords		
2	B. T. Aspen	Sawtimber	10.9	MBF	11.9	\$22,819.95
	Red Maple		10.7	MBF		
	Red Oak		66.9	MBF		
	Red Pine		30.2	MBF		
	White Oak		6.3	MBF		
	B. T. Aspen	Pulpwood	11	Cords		
	Mixed Hardwood		90	Cords		
	<i>Red Maple</i>		90	<i>Cords</i>		
	Mixed Oak		139	Cords		
	<i>Red Oak</i>		110	<i>Cords</i>		
	<i>White Oak</i>		29	<i>Cords</i>		
	Red Pine		75	Cords		
3	Red Oak	Sawtimber	3.6	MBF	20.4	\$25,717.70
	Red Pine		150.1	MBF		
	White Pine		1.7	MBF		
	Jack Pine	Pulpwood	1	Cords		
	Mixed Hardwood		10	Cords		
	<i>Red Maple</i>		10	<i>Cords</i>		
	Mixed Oak		30	Cords		
	<i>Red Oak</i>		24	<i>Cords</i>		
	<i>White Oak</i>		6	<i>Cords</i>		
	Red Pine		153	Cords		
4	Red Oak	Sawtimber	7.0	MBF	39.0	\$49,185.10
	Red Pine		286.9	MBF		
	White Pine		3.2	MBF		
	Jack Pine	Pulpwood	3	Cords		
	Mixed Hardwood		18	Cords		
	<i>Red Maple</i>		18	<i>Cords</i>		
	Mixed Oak		58	Cords		
	<i>Red Oak</i>		47	<i>Cords</i>		
	<i>White Oak</i>		11	<i>Cords</i>		
	Red Pine		292	Cords		
White Pine	1	Cords				
5	Red Oak	Sawtimber	48.8	MBF	17.6	\$32,703.75
	Red Pine		104.3	MBF		
	Mixed Oak	Pulpwood	49	Cords		
	<i>Red Oak</i>		49	<i>Cords</i>		
	Red Pine		302	Cords		
6	Red Oak	Sawtimber	77.9	MBF	28.1	\$52,147.60
	Red Pine		166.5	MBF		
	Mixed Oak	Pulpwood	78	Cords		
	<i>Red Oak</i>		78	<i>Cords</i>		
	Red Pine		481	Cords		

DESCRIPTION OF TIMBER BY PAYMENT UNIT (PU), CON'T

PU	MARKET GROUP	PRODUCT	QUANTITY	UNIT	ACRES	ADVERTISE PRICE		
7	Jack Pine	Sawtimber	13.8	MBF	48.4	\$17,294.55		
	Red Oak		33.2	MBF				
	White Oak		15.2	MBF				
	White Pine		9.1	MBF				
	B. T. Aspen	Pulpwood	54	Cords				
	Jack Pine		252	Cords				
	Mixed Hardwood		64	Cords				
	<i>Black Cherry</i>	<i>Sawtimber</i>	<i>0.7</i>	<i>MBF</i>				
	<i>Black Cherry</i>	<i>Pulpwood</i>	<i>27</i>	<i>Cords</i>				
	<i>Red Maple</i>		<i>36</i>	<i>Cords</i>				
	Mixed Oak		113	Cords				
	<i>Red Oak</i>		<i>79</i>	<i>Cords</i>				
	<i>White Oak</i>		<i>34</i>	<i>Cords</i>				
	White Pine		37	Cords				
TOTAL:			1,317.2	MBF				
TOTAL:			2,997	Cords				

Sale Specific Conditions & Requirements

Sale Name: Fife Lake Mix

Sale Number: 61-015-23 Seq#: 1

1 - Sale Area

1.2 - Boundaries

1.2.1 - Painted boundaries (9/19)

The sale boundary and Payment Unit boundaries are marked and identified by blue, yellow and red paint, or are unmarked and identified by two tracks. Exterior sale boundary lines against private property are marked with blue paint. Exterior sale boundary lines against state are marked with red paint. Interior Payment Unit boundaries are unpainted and identified by two track roads, with the exception of the boundary between Payment Units 1 & 2, which is marked with yellow paint. Retention patches are marked with red paint; no harvesting activities may occur within these areas. The painted boundary line trees are not Included Timber and are to be protected unless marked with orange paint.

2 - Timber Specifications

2.1 - Included Timber

2.1.1 - Clearcut unit(s) with unmerchantable trees (6/14)

Within Payment Unit(s) 7, cut all trees that are five (5) inches or more at DBH, except do not cut red pine or any trees marked with green paint. In addition, do not cut white pine 15 inches or more at DBH. Protect all trees four (4) inches or less at DBH, as much as possible during operations.

2.1.2 - Clearcut unit(s) w/o unmerchantable trees (8/11)

Within Payment Unit(s) 1 & 2, cut all trees which meet minimum piece specifications in 2.2 Utilization, except do not cut any trees marked with green paint.

2.1.5 - Overstory removal unit(s) (8/11)

Within Payment Unit(s) 3, 4, 5, & 6, all trees five (5) inches or more at DBH, which meet minimum piece specifications in 2.2 Utilization, are designated for cutting, except do not cut any trees marked with green paint. In addition, within Payment Units 5 & 6, do not cut any white oak.

3 - Payments

3.3 - Pre-measured Sales

3.3.4 - Dividing payment units (7/14)

Payment Unit(s) 7, may be divided at the request of the Purchaser and upon approval of the Unit Manager. Dividing Payment Units is a contract modification which requires a Timber Sale Contract Amendment. There will be only one division per Payment Unit.

4 - Transportation

4.1 - Construction

4.1.12 - No new roads (1/12)

No new roads will be permitted in any Payment Unit. All operations are limited to existing roads. Skid trails only will be allowed.

4.2 - Maintenance

4.2.5 - Two wheel drive condition (2/04)

All existing trail roads on and adjacent to the sale area must be passable by two-wheel drive traffic for the duration of the sale.

5 - Operations

5.1 - Notification

5.1.1 - Pre-sale conference (10/16)

A pre-sale conference on site between the Purchaser and sale administrator is required prior to beginning any operations in a Payment Unit, to determine landing and road locations. The Unit Manager or his/her representative must be contacted at least 3 days in advance to schedule the conference.

5.2 - Conduct of Operations

5.2.2 - Hazard Trees/Snags

5.2.2.1 - Den trees (10/16)

Obvious hollow and/or den trees shall be protected and left standing unless they are a safety hazard.

5.2.3 - Operating Restrictions

5.2.3.4 - Oak wilt restriction, no exceptions (1/18)

Within Payment Unit(s) 3-7, cutting and skidding within the sale and brushing of access roads to the sale are not permitted during the period of April 15 to July 15. No exceptions will be granted. This is necessary to reduce the spread of oak wilt.

5.2.3.5 - Oak wilt restriction (1/18)

Within Payment Unit(s) 1 & 2, unless changed by written agreement, cutting, skidding, hauling within the sale and brushing of access roads to the sale are not permitted during the period of April 15 to July 15. Operations may be allowed if specific steps are taken to prevent damaging uncut oak during the high risk period. Those steps may include completing all road brushing before April 15th and clearing a tree-length buffer along uncut oak cover before April 15th. This is necessary to reduce the spread of oak wilt. For more information, contact the Unit Manager or his/her representative.

5.2.39 - ORV trail/route protection (4/18)

A dirt bike trail runs through Payment Units 1, 2 & 3, as shown on the Timber Sale Map. Do not cut trees or damage posts with yellow ORV markers. All stumps within 5 feet of the trail must be cut flush with the ground. Maintain a 15-foot-wide slash, debris, and rut free zone daily using the ORV trail or route as the centerline. Do not run equipment down the ORV trail or route. Skidding across the trail or route may only occur in locations approved by the Sale Administrator.

5.2.40 - Pathway protection (10/10)

The NCT hiking trail is shown on the Timber Sale Map running through Payment Unit 7 and along the east edge of Payment Unit 4. Do not cut trees or damage posts with orange pathway markers. Maintain a 10-foot-wide slash, debris, and rut free zone daily, using the pathway as the centerline. Do not run equipment down the pathway. Do not use trail for any operations when working in Payment Units 3 & 4.

6 - Safety and Fire Prevention

6.2 - Signing

6.2.1 - Road posting (10/20)

The Purchaser is responsible for posting and maintaining caution signs on timber access roads prior to beginning operations. The road must be posted at appropriate distances from the Sale Area to warn of logging activity and truck traffic. Signs must be removed when harvest operations are suspended or completed. The Purchaser will provide these signs.

6.2.3 - Recreational trail posting (10/20)

The Purchaser is responsible for posting and maintaining caution signs on the NCT trail and dirt bike ORV trail prior to beginning operations. The trail must be posted at appropriate distances from the Sale Area to warn of logging activity and truck traffic at both ends of the trail. Signs must be removed when harvest operations are suspended or completed. The Purchaser will provide these signs.

7 - Other Conditions

7.5 - Loss

7.5.1 - Deteriorating timber (7/09)

The sale area has received damage from deteriorating/aging jack pine in Payment Unit 7. The Purchaser should harvest the wood as soon as possible. The Department of Natural Resources is held free of responsibility of any further damage or deterioration due to delay in harvesting.



TIMBER SALE MAP

This information provided by authority of Part 525, 1994 PA 451, as amended.

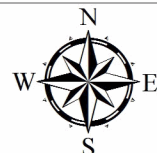
Forest Management Unit Traverse City	County Grand Traverse	Mapped By Ventimiglia	Date 06/16/23	Page 1	of 1
Township 25N	Range 09W	Section(s) and Subdivision(s) Section 15 W1/2 NW, Section 16 Various, Section 21 NE	Scale 1:15,840		

Cover Type				Density	
A = Aspen	H = Hemlock	N = Marsh	U = Upland Brush	0 = Non Stocked	5 = Pole Timber Medium
B = Paper Birch	J = Jack Pine	O = Oak	UM = Upland Mixed	1 = Seedling Sapling Poor	6 = Pole Timber Well
C = Cedar	L = Lowland Brush	P = Lowland Poplar	V = Bog or Marsh	2 = Seedling Sapling Medium	7 = Saw Timber Poor
D = Treed Bog	LM = Lowland Mixed	Q = Mixed Swamp Conifer	W = White Pine	3 = Seedling Sapling Well	8 = Saw Timber Medium
E = Swamp Hdwoods	M = Mpl, Bch, Brch	R = Red Pine	X = Non Stocked	4 = Pole Timber Poor	9 = Saw Timber Well
F = Spruce Fir	MC = Mixed Conifer	S = Black Spruce	Z = Water		
G = Grass	MD = Mixed Deciduous	T = Tamarack			

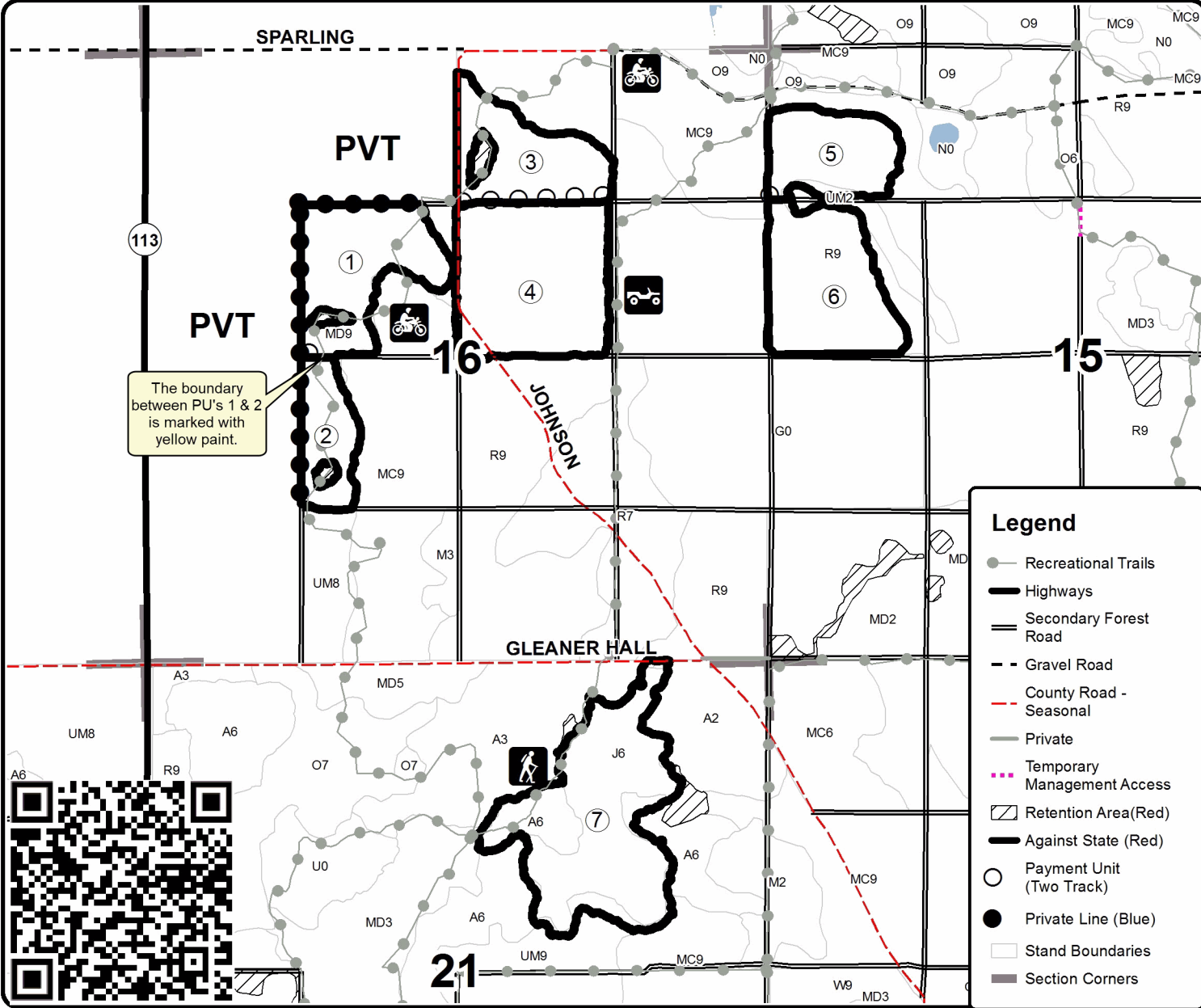
FIFE LAKE MIX

Compartment 56

191.1 Acres



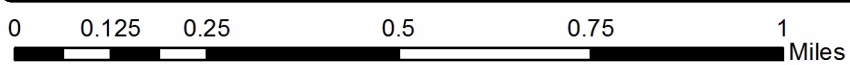
PU	Acres	PU	Acres
1	25.9	5	17.6
2	11.9	6	28.1
3	20.5	7	48.4
4	38.9		



The boundary between PU's 1 & 2 is marked with yellow paint.

Legend

- Recreational Trails
- Highways
- Secondary Forest Road
- Gravel Road
- County Road - Seasonal
- Private
- Temporary Management Access
- Retention Area (Red)
- Against State (Red)
- Payment Unit (Two Track)
- Private Line (Blue)
- Stand Boundaries
- Section Corners



TIMBER SALE INFORMATION

Walton Restart (61-017-23)

T25N, R09W, SEC. 21.

Grand Traverse County (Advertised Price \$121,187.80)

SALE NOTE: A recreation site such as a trail, pathway, or campground is within the sale area or the vicinity. Certain restrictions/specifications may be applicable including time restrictions.

A timber sale contract for this lump sum, sealed bid timber sale will be awarded to the responsible bidder offering the highest sealed bid price. All units of volume listed below were estimated using the Inventory Manager computer program and the new Michigan taper model. Bids must be at or above the following advertised price for each product and species:

<u>PRODUCTS & SPECIES</u>	<u>ESTIMATED UNITS*</u>	<u>ADVERTISED PRICE</u>
Sawtimber		
Mixed Oak	110.1 MBF	\$ 103.00 / MBF
Red Maple	17.7 MBF	\$ 151.00 / MBF
Red Pine	341.1 MBF	\$ 121.00 / MBF
White Oak	90.5 MBF	\$ 73.00 / MBF
White Pine	222.2 MBF	\$ 74.00 / MBF
Pulpwood		
B. T. Aspen	11 Cords	\$ 19.45 / Cord
Jack Pine	14 Cords	\$ 24.25 / Cord
Mixed Oak	375 Cords	\$ 28.15 / Cord
Red Maple	142 Cords	\$ 21.45 / Cord
Red Pine	408 Cords	\$ 52.15 / Cord
White Pine	324 Cords	\$ 22.90 / Cord

* The total volume is statistically estimated within plus (+) or minus (-) 9.35 percent. There are an estimated 3,000 cords on this timber sale, plus or minus 280 cords at the 95% confidence level. The estimated units are final and not subject to adjustment. Prospective bidders are urged to examine this timber and to make their own estimates of quantity and quality.

BOND AND PAYMENT SCHEDULE:

1. A bond in the amount of \$6,059.00 to insure faithful performance of the conditions of the contract will be deposited by the successful bidder within 21 days of the sale award.
2. Cutting in any sale or unit without the required advance payment would be considered a trespass.
3. Total payment must be paid in advance or according to the following schedule :
 - (a) Ten percent (10%) of the sale value must be paid within 21 days of the sale award.
 - (b) The 10% down payment will be credited towards the first unit cut.
 - (c) Payment for each of the following units must be made before cutting begins in that unit:

PAYMENT UNIT NUMBER	PERCENT OF TOTAL SALE VALUE
01	48.4%
02	51.6%
4. If no cutting takes place, the 10% down payment will not be refunded.
5. Operations on the contract issued will terminate on 12/31/2025.

SALE STATISTICS

Volumes were calculated in cubic feet using the Michigan taper model. Cubic foot volume includes all wood inside bark for the product indicated. For display purposes, cubic feet were converted to cords and MBF using a simple conversion factor, e.g. 79 cubic feet per cord and 185 cubic feet per MBF. The cubic foot volumes are precise; the cords and MBF volumes are not. Cubic foot volume cannot be directly converted to cords or boards with precision.

SALE VOLUMES

The total estimated sale volume may not equal the sum of the species/products due to the nature of statistical calculations associated with double sampling methodology.

VOLUME		STATISTICAL RANGE IN CORDS		
TOTAL CUBIC FEET	TOTAL CORDS	PERCENT ERROR	MINIMUM	MAXIMUM
236,962	3,000	9.35%	2,719	3,280

VDU VOLUMES

A VDU is a Volume Determination Unit. Volumes and their associated statistics are calculated at the VDU level and summarized to the sale level. There is often a one to one relationship between a VDU and a Payment Unit, but not always, depending on the cruise design. Refer to the VDU TO PAYMENT UNIT table.

VDU	VOLUME		PERCENT ERROR	RANGE IN CORDS	
	TOTAL CUBIC FEET	TOTAL CORDS		MINIMUM	MAXIMUM
87	236,962	3,000	9.35%	2,719	3,280
TOTAL:	236,962	3,000		2,719	3,280

VDU TO PAYMENT UNIT

When a VDU is associated with more than one Payment Unit (PU), the VDU volumes are assigned to the PU based on acres of the VDU within the PU.

VDU	VDU ACRES	PU	PU ACRES
87	76.3	1	36.9
		2	39.4
TOTAL:	76.3		76.3

DESCRIPTION OF TIMBER BY PAYMENT UNIT (PU)

PU	MARKET GROUP	PRODUCT	QUANTITY	UNIT	ACRES	ADVERTISE PRICE	
1	Mixed Oak	Sawtimber	53.3	MBF	36.9	\$58,616.95	
	<i>Northern Pin Oak</i>		15.7	<i>MBF</i>			
	<i>Red Oak</i>		37.6	<i>MBF</i>			
	Red Maple		8.6	MBF			
	Red Pine		165.0	MBF			
	White Oak		43.8	MBF			
	White Pine		107.5	MBF			
	B. T. Aspen		Pulpwood	5			Cords
	Jack Pine			7			Cords
	Mixed Oak			181			Cords
	<i>Northern Pin Oak</i>			32			<i>Cords</i>
	<i>Red Oak</i>			37			<i>Cords</i>
	<i>White Oak</i>			112			<i>Cords</i>
	Red Maple			69			Cords
	Red Pine			197			Cords
	White Pine	157		Cords			
	2	Mixed Oak	Sawtimber	56.8	MBF	39.4	\$62,570.85
		<i>Northern Pin Oak</i>		16.7	<i>MBF</i>		
<i>Red Oak</i>		40.1		<i>MBF</i>			
Red Maple		9.1		MBF			
Red Pine		176.1		MBF			
White Oak		46.7		MBF			
White Pine		114.7		MBF			
B. T. Aspen		Pulpwood		6	Cords		
Jack Pine				7	Cords		
Mixed Oak				194	Cords		
<i>Northern Pin Oak</i>				35	<i>Cords</i>		
<i>Red Oak</i>				40	<i>Cords</i>		
<i>White Oak</i>				119	<i>Cords</i>		
Red Maple				73	Cords		
Red Pine				211	Cords		
White Pine			167	Cords			
TOTAL:			781.6	MBF			
TOTAL:			1,274	Cords			

Sale Specific Conditions & Requirements

Sale Name: Walton Restart

Sale Number: 61-017-23 Seq#: 1

1 - Sale Area

1.2 - Boundaries

1.2.1 - Painted boundaries (9/19)

The sale boundary and Payment Unit boundaries are marked and identified by red and yellow paint. Exterior sale boundary lines against state are marked with red paint. Interior Payment Unit boundaries are marked with yellow paint. The painted boundary line trees are not Included Timber and are to be protected unless marked with orange paint. Yellow painted trees designating an interior Payment Unit boundary are only to be cut when all surrounding Payment Units have been paid.

2 - Timber Specifications

2.1 - Included Timber

2.1.1 - Clearcut unit(s) with unmerchantable trees (6/14)

Within Payment Unit(s) 1 and 2, cut all trees that are one (1) inch or more at DBH.

2.2 - Utilization

2.2.2 - Chipping required (2/18)

The sale must be chip harvested to facilitate subsequent planting operations. The Purchaser has the option to produce sawlogs or pulpwood bolts, but the remaining portion of the trees must be chipped and hauled. Products may be produced as roundwood and forwarded to decking areas in final product length, but the tops must be left intact and skidded to the landing for chipping in order to minimize the amount of residual slash. If market conditions limit the practicality of chipping, tops and slash must be arranged in a way that will not inhibit future planting operations, as directed by the sale administrator. A chipping exemption can be obtained if proposed operations are determined to be suitable for planting by reforestation staff. This exemption must be granted in writing. The requirement to retain approximately 1/6 to 1/3 of tree tops and limbs less than four inches in diameter is still applicable (G. C. & R. 2.2).

2.2.3 - Stump heights (4/07)

Stump heights within the Sale Area shall not exceed 6 inches for all trees. This is in order to facilitate planting operations.

3 - Payments

3.3 - Pre-measured Sales

3.3.4 - Dividing payment units (7/14)

Payment Unit(s) 1 and 2 may be divided at the request of the Purchaser and upon approval of the Unit Manager. Dividing Payment Units is a contract modification which requires a Timber Sale Contract Amendment. There will be only one division per Payment Unit.

4 - Transportation

4.1 - Construction

4.1.12 - No new roads (1/12)

No new roads will be permitted. All operations are limited to existing roads. Skid trails only will be allowed.

4.2 - Maintenance

4.2.5 - Two wheel drive condition (2/04)

All existing trail roads on and adjacent to the sale area must be passable by two-wheel drive traffic for the duration of the sale.

5 - Operations

5.1 - Notification

5.1.1 - Pre-sale conference (10/16)

A pre-sale conference on site between the Purchaser and sale administrator is required prior to beginning any operations in a Payment Unit to determine landing and road locations. The Unit Manager or his/her representative must be contacted at least 3 days in advance to schedule the conference.

5.1.4 - Post-sale conference (10/16)

A post-sale conference on site between the Purchaser and sale administrator is required 3 days prior to the completion of active logging operations to determine clean-up and repair of landings, road edges, and the fulfillment of other contract specifications.

5.2 - Conduct of Operations

5.2.39 - ORV trail/route protection (4/18)

ORV trails and routes are in the area of the sale as shown on the Timber Sale Map. Do not cut trees or damage posts with yellow ORV markers. Do not run equipment down the ORV trail or route. The route is not within the sale boundary but is near the east side of sale.

6 - Safety and Fire Prevention

6.2 - Signing

6.2.1 - Road posting (10/20)

The Purchaser is responsible for posting and maintaining caution signs on timber access road near landing prior to beginning operations. The road must be posted at appropriate distances from the sale area to warn of logging activity and truck traffic. Signs must be removed when harvest operations are suspended or completed. The Purchaser will provide these signs.



TIMBER SALE MAP

This information provided by authority of Part 525, 1994 PA 451, as amended.

Forest Management Unit Traverse City		County Grand Traverse	Mapped By Ventimiglia	Date 06/07/23	Page 1	of 1
Township 25N	Range 09W	Section(s) and Subdivision(s) Section 21 S1/2SE		Scale 1:15,840		

Cover Type				Density	
A = Aspen	H = Hemlock	N = Marsh	U = Upland Brush	0 = Non Stocked	5 = Pole Timber Medium
B = Paper Birch	J = Jack Pine	O = Oak	UM = Upland Mixed	1 = Seedling Sapling Poor	6 = Pole Timber Well
C = Cedar	L = Lowland Brush	P = Lowland Poplar	V = Bog or Marsh	2 = Seedling Sapling Medium	7 = Saw Timber Poor
D = Treed Bog	LM = Lowland Mixed	Q = Mixed Swamp Conifer	W = White Pine	3 = Seedling Sapling Well	8 = Saw Timber Medium
E = Swamp Hdwoods	M = Mpl, Bch, Brch	R = Red Pine	X = Non Stocked	4 = Pole Timber Poor	9 = Saw Timber Well
F = Spruce Fir	MC = Mixed Conifer	S = Black Spruce	Z = Water		
G = Grass	MD = Mixed Deciduous	T = Tamarack			

PU	Acres
1	36.9
2	39.4

Walton Restart

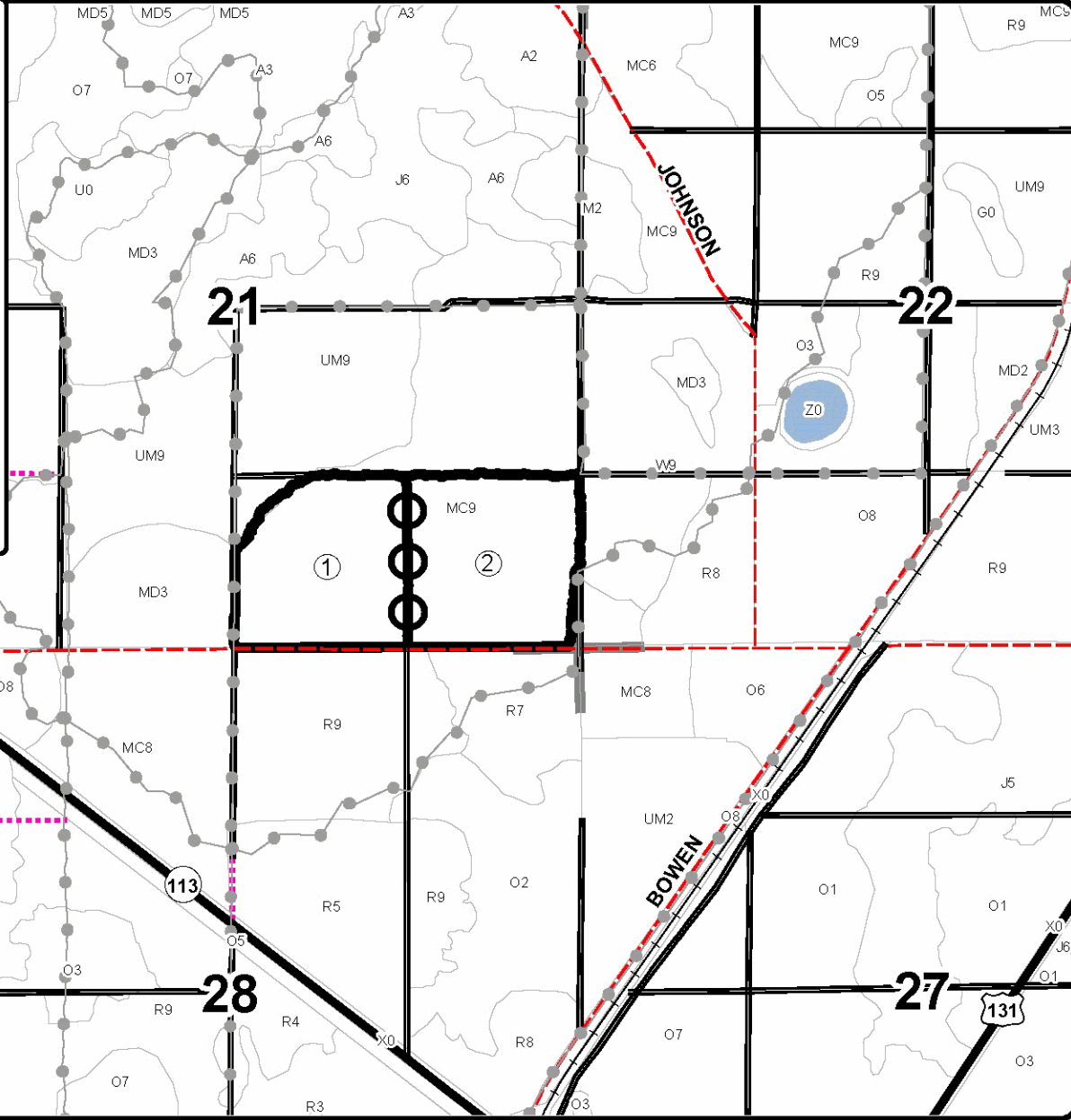
Compartment 56

76.3 Acres



Legend

- Against State (Red)
- ⊙ Payment Unit (Yellow)
- Recreational Trails
- Secondary Forest Road
- Paved Road
- - - County Road - Seasonal
- ⋯ Temporary Management Access
- Stand Boundaries
- Section Corners



TIMBER SALE INFORMATION

M-186 Oak/Pine (61-018-23)
 T25N, R09W, SEC. 10; T25N, R09W, SEC. 15.
 Grand Traverse County (Advertised Price \$141,594.35)

SALE NOTE: A recreation site such as a trail, pathway, or campground is within the sale area or the vicinity. Certain restrictions/specifications may be applicable including time restrictions.

A timber sale contract for this lump sum, sealed bid timber sale will be awarded to the responsible bidder offering the highest sealed bid price. All units of volume listed below were estimated using the Inventory Manager computer program and the new Michigan taper model. Bids must be at or above the following advertised price for each product and species:

<u>PRODUCTS & SPECIES</u>	<u>ESTIMATED UNITS*</u>	<u>ADVERTISED PRICE</u>
Sawtimber		
B. T. Aspen	119.1 MBF	\$ 113.00 / MBF
Red Maple	39.1 MBF	\$ 140.00 / MBF
Red Oak	489.5 MBF	\$ 105.00 / MBF
Red Pine	21.4 MBF	\$ 112.00 / MBF
White Oak	106.3 MBF	\$ 68.00 / MBF
White Pine	167.5 MBF	\$ 69.00 / MBF
Pulpwood		
B. T. Aspen	448 Cords	\$ 18.10 / Cord
Mixed Oak	735 Cords	\$ 26.15 / Cord
Red Maple	245 Cords	\$ 19.90 / Cord
Red Pine	126 Cords	\$ 48.40 / Cord
White Pine	553 Cords	\$ 21.30 / Cord

* The total volume is statistically estimated within plus (+) or minus (-) 8.44 percent. There are an estimated 4,338 cords on this timber sale, plus or minus 367 cords at the 95% confidence level. The estimated units are final and not subject to adjustment. Prospective bidders are urged to examine this timber and to make their own estimates of quantity and quality.

BOND AND PAYMENT SCHEDULE:

1. A bond in the amount of \$7,080.00 to insure faithful performance of the conditions of the contract will be deposited by the successful bidder within 21 days of the sale award.
2. Cutting in any sale or unit without the required advance payment would be considered a trespass.
3. Total payment must be paid in advance or according to the following schedule :
 - (a) Ten percent (10%) of the sale value must be paid within 21 days of the sale award.
 - (b) The 10% down payment will be credited towards the first unit cut.
 - (c) Payment for each of the following units must be made before cutting begins in that unit:

PAYMENT UNIT NUMBER	PERCENT OF TOTAL SALE VALUE
01	13.7%
02	12.8%
03	26.1%
04	20.5%
05	20.1%
06	6.8%
4. If no cutting takes place, the 10% down payment will not be refunded.
5. Operations on the contract issued will terminate on 12/31/2026.

SALE STATISTICS

Volumes were calculated in cubic feet using the Michigan taper model. Cubic foot volume includes all wood inside bark for the product indicated. For display purposes, cubic feet were converted to cords and MBF using a simple conversion factor, e.g. 79 cubic feet per cord and 185 cubic feet per MBF. The cubic foot volumes are precise; the cords and MBF volumes are not. Cubic foot volume cannot be directly converted to cords or boards with precision.

SALE VOLUMES

The total estimated sale volume may not equal the sum of the species/products due to the nature of statistical calculations associated with double sampling methodology.

VOLUME			STATISTICAL RANGE IN CORDS	
TOTAL CUBIC FEET	TOTAL CORDS	PERCENT ERROR	MINIMUM	MAXIMUM
342,699	4,338	8.44%	3,971	4,704

VDU VOLUMES

A VDU is a Volume Determination Unit. Volumes and their associated statistics are calculated at the VDU level and summarized to the sale level. There is often a one to one relationship between a VDU and a Payment Unit, but not always, depending on the cruise design. Refer to the VDU TO PAYMENT UNIT table.

	VOLUME			RANGE IN CORDS	
VDU	TOTAL CUBIC FEET	TOTAL CORDS	PERCENT ERROR	MINIMUM	MAXIMUM
3	43,213	547	21.99%	427	667
9	79,229	1,003	16.94%	833	1,173
20	92,126	1,166	11.21%	1,035	1,297
26	56,218	712	17.89%	584	839
27	19,769	250	30.33%	174	326
116	52,145	660	18.87%	536	785
TOTAL:	342,699	4,338		3,589	5,087

VDU TO PAYMENT UNIT

When a VDU is associated with more than one Payment Unit (PU), the VDU volumes are assigned to the PU based on acres of the VDU within the PU.

VDU	VDU ACRES	PU	PU ACRES
3	13.3	1	13.3
9	34.4	4	29.4
		5	5.0
20	28.9	3	28.9
26	31.6	5	31.6
27	8.7	6	8.7
116	13.0	2	13.0
TOTAL:	129.9		129.9

DESCRIPTION OF TIMBER BY PAYMENT UNIT (PU)

PU	MARKET GROUP	PRODUCT	QUANTITY	UNIT	ACRES	ADVERTISE PRICE				
1	B. T. Aspen	Sawtimber	55.6	MBF	13.3	\$19,397.95				
	Red Maple		6.8	MBF						
	Red Oak		44.9	MBF						
	Red Pine		2.1	MBF						
	White Oak		8.5	MBF						
	White Pine		10.8	MBF						
	B. T. Aspen		Pulpwood	184			Cords			
	Mixed Oak	73		Cords						
	<i>Red Oak</i>	57		<i>Cords</i>						
	<i>White Oak</i>	16		<i>Cords</i>						
	Red Maple	15		Cords						
	<i>Red Maple</i>	15		<i>Cords</i>						
	Red Pine	2		Cords						
	White Pine	12	Cords							
2	B. T. Aspen	Sawtimber	8.7	MBF	13.0	\$18,188.70				
	Red Maple		14.9	MBF						
	Red Oak		30.9	MBF						
	Red Pine		3.6	MBF						
	White Oak		19.1	MBF						
	White Pine		24.8	MBF						
	B. T. Aspen		Pulpwood	144			Cords			
	Mixed Oak	104		Cords						
	<i>Red Oak</i>	74		<i>Cords</i>						
	<i>White Oak</i>	30		<i>Cords</i>						
	Red Maple	92		Cords						
	<i>Red Maple</i>	92		<i>Cords</i>						
	Red Pine	1		Cords						
	White Pine	59	Cords							
3	B. T. Aspen	Sawtimber	54.8	MBF	28.9	\$36,895.25				
	Red Maple		15.7	MBF						
	Red Oak		83.6	MBF						
	White Oak		22.9	MBF						
	White Pine		73.4	MBF						
	B. T. Aspen		Pulpwood	115			Cords			
	Mixed Oak			175			Cords			
	<i>Red Oak</i>	74		<i>Cords</i>						
	<i>White Oak</i>	101		<i>Cords</i>						
	Red Maple	96		Cords						
	<i>Red Maple</i>	96		<i>Cords</i>						
	White Pine	213		Cords						
	4	Red Oak	Sawtimber	132.1			MBF	29.4	\$28,995.35	
		Red Pine		12.8			MBF			
White Oak		26.6		MBF						
White Pine		22.2		MBF						
Mixed Oak		Pulpwood		145	Cords					
<i>Red Oak</i>			101	<i>Cords</i>						
<i>White Oak</i>			44	<i>Cords</i>						
Red Maple			6	Cords						
<i>Red Maple</i>			6	<i>Cords</i>						
Red Pine			93	Cords						
White Pine			91	Cords						
5			Red Oak	Sawtimber	135.1	MBF	36.6			\$28,463.35
			Red Pine		2.9	MBF				
		White Oak	28.0		MBF					
	White Pine	36.3	MBF							
	Mixed Oak	Pulpwood	167	Cords						

DESCRIPTION OF TIMBER BY PAYMENT UNIT (PU), CON'T

PU	MARKET GROUP	PRODUCT	QUANTITY	UNIT	ACRES	ADVERTISE PRICE
5 con't	<i>Red Oak</i>	<i>Pulpwood</i>	101	<i>Cords</i>		
	<i>White Oak</i>		66	<i>Cords</i>		
	Red Maple		21	Cords		
	<i>Red Maple</i>		20	<i>Cords</i>		
	<i>Sugar Maple</i>		1	<i>Cords</i>		
	Red Pine		20	Cords		
	White Pine		178	Cords		
6	Red Maple	Sawtimber	1.7	MBF	8.7	\$9,653.75
	Red Oak		62.9	MBF		
	White Oak		1.2	MBF		
	B. T. Aspen	Pulpwood	5	Cords		
	Mixed Oak		71	Cords		
	<i>Red Oak</i>		58	<i>Cords</i>		
	<i>White Oak</i>		13	<i>Cords</i>		
	Red Maple		15	Cords		
	<i>Red Maple</i>		15	<i>Cords</i>		
	Red Pine		10	Cords		
TOTAL:			942.9	MBF		
TOTAL:			2,107	Cords		

Sale Specific Conditions & Requirements

Sale Name: M-186 Oak/Pine

Sale Number: 61-018-23 Seq#: 1

1 - Sale Area

1.2 - Boundaries

1.2.1 - Painted boundaries (9/19)

The sale boundary and Payment Unit boundaries are marked and identified by red and blue paint, along with a road. Exterior sale boundary lines against private property are marked with blue paint. Exterior sale boundary lines against state are marked with red paint. The interior Payment Unit boundaries between Payment Unit 4 & 5 is unpainted and identified by the two track road, as shown on the Timber Sale Map. Retention patches are marked with red paint; no harvesting activities may occur within these areas. The painted boundary line trees are not Included Timber and are to be protected.

2 - Timber Specifications

2.1 - Included Timber

2.1.1 - Clearcut unit(s) with unmerchantable trees (6/14)

Within Payment Unit(s) 1 and 2, cut all trees that are two (2) inches or more at DBH, except do not cut hemlock or any trees marked with green paint.

2.1.7 - Leave tree marked unit(s) (6/14)

Within Payment Unit(s) 3-6, all trees which meet minimum piece specifications in 2.2 Utilization are designated for cutting, except do not cut any trees marked with green paint above and below stump height. In addition, within Payment Unit 3, do not cut any red pine. Protect as much of the understory as possible within these units.

4 - Transportation

4.1 - Construction

4.1.12 - No new roads (1/12)

No new roads will be permitted. All operations are limited to existing roads. Skid trails only will be allowed.

4.2 - Maintenance

4.2.5 - Two wheel drive condition (2/04)

All existing trail roads on and adjacent to the sale area must be passable by two-wheel drive traffic for the duration of the sale.

5 - Operations

5.1 - Notification

5.1.1 - Pre-sale conference (10/16)

A pre-sale conference on site between the Purchaser and sale administrator is required prior to beginning any operations in a payment unit to determine landing and road locations. The Unit Manager or his/her representative must be contacted at least 3 days in advance to schedule the conference.

5.2 - Conduct of Operations

5.2.2 - Hazard Trees/Snags

5.2.2.1 - Den trees (10/16)

Obvious hollow and/or den trees shall be protected and left standing unless they are a safety hazard.

5.2.3 - Operating Restrictions

5.2.3.5 - Oak wilt restriction (1/18)

Within Payment Unit(s) 3, 4, and 5, unless changed by written agreement, cutting, skidding, hauling within the sale and brushing of access roads to the sale are not permitted during the period of April 15 to July 15. Operations may be allowed if specific steps are taken to prevent damaging uncut oak during the high risk period. Those steps may include completing

all road brushing before April 15th and clearing a tree-length buffer along uncut oak cover before April 15th. This is necessary to reduce the spread of oak wilt. For more information, contact the Unit Manager or his/her representative.

5.2.40 - Pathway protection (10/10)

The North County Trail runs along Payment Units 1 & 3 and is shown on the Timber Sale Map. Do not cut trees or damage posts with blue pathway markers. Maintain a 10-foot wide slash, debris, and rut free zone daily, using the pathway as the centerline. Do not run equipment down the pathway. Skidding across the trail may only occur in locations approved by the Sale Administrator.

5.2.41 - Snowmobile trail protection (9/11)

The snowmobile trail crosses Payment Unit 2 and is shown on the Timber Sale Map. Do not cut or damage posts with orange trail markers or traffic control signs. If the trail is used, it must be maintained and restored to a condition equal to or better than before the sale. If the trail is used for hauling, it must be graded to the satisfaction of the Unit Manager or his/her representative prior to December 1st. If the trail road is to be used for hauling during the snowmobile season, then a snow covered base must be left on the trail. The snowmobile trail may only be crossed at right angles. Maintain a 20 foot wide slash, debris, and rut free zone daily using the snowmobile trail as the centerline. All stumps within 20 feet of the snowmobile trail must be cut at ground level. In addition, any trees cut within 5 feet of the trail must have the stumps removed and be disposed of according to the direction of the Unit Manager or his/her representative.

6 - Safety and Fire Prevention

6.2 - Signing

6.2.1 - Road posting (10/20)

The Purchaser is responsible for posting and maintaining caution signs on roads near landings prior to beginning operations. The road must be posted at appropriate distances from the sale area to warn of logging activity and truck traffic. Signs must be removed when harvest operations are suspended or completed. The Purchaser will provide these signs.

6.2.2 - Snowmobile trail posting (10/20)

The Purchaser is responsible for posting and maintaining caution signs on the snowmobile trail that crosses through Payment Unit 2 prior to beginning operations during the snowmobile season (approximately December 1 to March 31). The trail must be posted at appropriate distances from the sale area to warn of logging activity and truck traffic. Signs must be removed when harvest operations are suspended or completed. The Purchaser will provide these signs.

6.2.3 - Recreational trail posting (10/20)

The Purchaser is responsible for posting and maintaining caution signs on ORV and North County Hiking trail prior to beginning operations. The trail must be posted at appropriate distances from the sale area to warn of logging activity and truck traffic at both ends of the trail. Signs must be removed when harvest operations are suspended or completed. The Purchaser will provide these signs.



TIMBER SALE MAP

This information provided by authority of Part 525, 1994 PA 451, as amended.

Forest Management Unit Traverse City	County Grand Traverse	Mapped By Ventimiglia	Date 08/07/23	Page 1	of 1
Township 25N	Range 09W	Section(s) and Subdivision(s) Section 10 and 15	Scale 1:15,840		

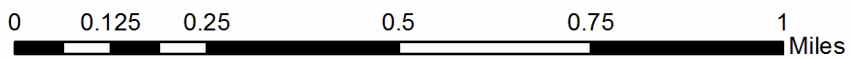
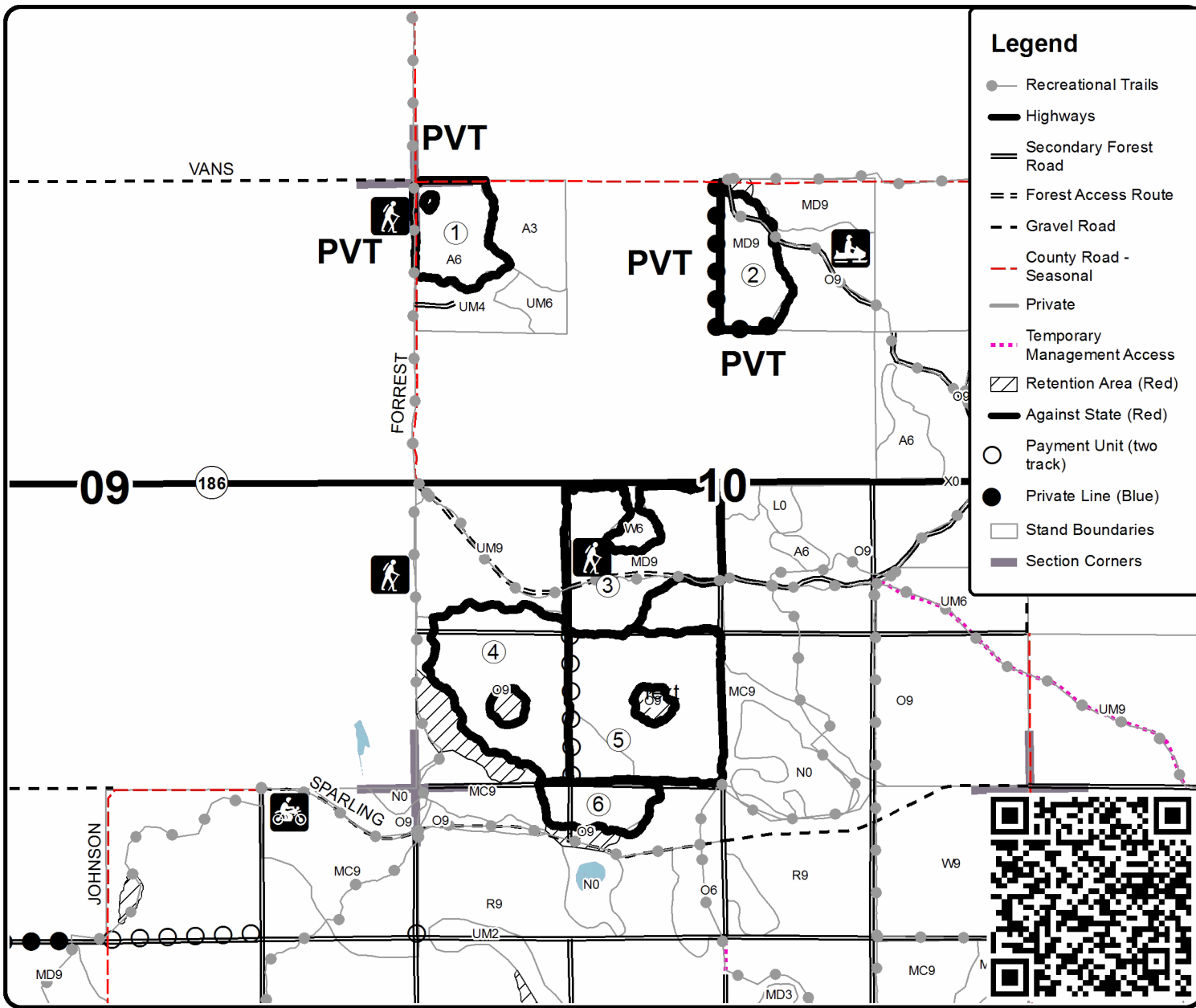
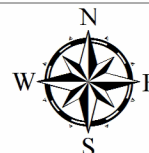
Cover Type				Density	
A = Aspen	H = Hemlock	N = Marsh	U = Upland Brush	0 = Non Stocked	5 = Pole Timber Medium
B = Paper Birch	J = Jack Pine	O = Oak	UM = Upland Mixed	1 = Seedling Sapling Poor	6 = Pole Timber Well
C = Cedar	L = Lowland Brush	P = Lowland Poplar	V = Bog or Marsh	2 = Seedling Sapling Medium	7 = Saw Timber Poor
D = Treed Bog	LM = Lowland Mixed	Q = Mixed Swamp Conifer	W = White Pine	3 = Seedling Sapling Well	8 = Saw Timber Medium
E = Swamp Hdwoods	M = Mpl, Bch, Brch	R = Red Pine	X = Non Stocked	4 = Pole Timber Poor	9 = Saw Timber Well
F = Spruce Fir	MC = Mixed Conifer	S = Black Spruce	Z = Water		
G = Grass	MD = Mixed Deciduous	T = Tamarack			

PU	Acres	PU	Acres
1	13.3	4	29.4
2	13	5	36.6
3	28.9	6	8.7

M- 186 Oak/Pine

Compartment 56

129.9 Acres



TIMBER SALE INFORMATION

First Thin Jobbie (61-021-23)
 T26N, R14W, SEC. 3.
 Benzie County (Advertised Price \$12,828.90)

A timber sale contract for this lump sum, sealed bid timber sale will be awarded to the responsible bidder offering the highest sealed bid price. All units of volume listed below were estimated using the Inventory Manager computer program and the new Michigan taper model. Bids must be at or above the following advertised price for each product and species:

<u>PRODUCTS & SPECIES</u>	<u>ESTIMATED UNITS*</u>	<u>ADVERTISED PRICE</u>
Pulpwood		
Red Pine	246 Cords	\$ 52.15 / Cord

* The total volume is statistically estimated within plus (+) or minus (-) 20.31 percent. There are an estimated 246 cords on this timber sale, plus or minus 50 cords at the 95% confidence level. The estimated units are final and not subject to adjustment. Prospective bidders are urged to examine this timber and to make their own estimates of quantity and quality.

BOND AND PAYMENT SCHEDULE:

1. A bond in the amount of \$641.00 to insure faithful performance of the conditions of the contract will be deposited by the successful bidder within 21 days of the sale award.
2. Cutting in any sale or unit without the required advance payment would be considered a trespass.
3. Total payment must be paid in advance or according to the following schedule :
 - (a) Ten percent (10%) of the sale value must be paid within 21 days of the sale award.
 - (b) The remainder is due before cutting begins.
 - (c) Payment for each of the following units must be made before cutting begins in that unit:

PAYMENT UNIT NUMBER	PERCENT OF TOTAL SALE VALUE
01	100.0%
4. If no cutting takes place, the 10% down payment will not be refunded.
5. Operations on the contract issued will terminate on 12/31/2025.

SALE STATISTICS

Volumes were calculated in cubic feet using the Michigan taper model. Cubic foot volume includes all wood inside bark for the product indicated. For display purposes, cubic feet were converted to cords and MBF using a simple conversion factor, e.g. 79 cubic feet per cord and 185 cubic feet per MBF. The cubic foot volumes are precise; the cords and MBF volumes are not. Cubic foot volume cannot be directly converted to cords or boards with precision.

SALE VOLUMES

The total estimated sale volume may not equal the sum of the species/products due to the nature of statistical calculations associated with double sampling methodology.

VOLUME		STATISTICAL RANGE IN CORDS		
TOTAL CUBIC FEET	TOTAL CORDS	PERCENT ERROR	MINIMUM	MAXIMUM
19,422	246	20.31%	196	296

VDU VOLUMES

A VDU is a Volume Determination Unit. Volumes and their associated statistics are calculated at the VDU level and summarized to the sale level. There is often a one to one relationship between a VDU and a Payment Unit, but not always, depending on the cruise design. Refer to the VDU TO PAYMENT UNIT table.

VDU	VOLUME			RANGE IN CORDS	
	TOTAL CUBIC FEET	TOTAL CORDS	PERCENT ERROR	MINIMUM	MAXIMUM
10	19,422	246	20.32%	196	296
TOTAL:	19,422	246		196	296

VDU TO PAYMENT UNIT

When a VDU is associated with more than one Payment Unit (PU), the VDU volumes are assigned to the PU based on acres of the VDU within the PU.

VDU	VDU ACRES	PU	PU ACRES
10	24.9	1	24.9
TOTAL:	24.9		24.9

DESCRIPTION OF TIMBER BY PAYMENT UNIT (PU)

PU	MARKET GROUP	PRODUCT	QUANTITY	UNIT	ACRES	ADVERTISE PRICE
1	Red Pine	Pulpwood	246	Cords	24.9	\$12,828.90
TOTAL:			246	Cords		

Sale Specific Conditions & Requirements

Sale Name: First Thin Jobbie

Sale Number: 61-021-23 Seq#: 1

1 - Sale Area

1.2 - Boundaries

1.2.1 - Painted boundaries (9/19)

The sale boundary is marked and identified by blue and red paint. Exterior sale boundary lines against private property are marked with blue paint. Exterior sale boundary lines against state are marked with red paint. The painted boundary line trees are not Included Timber and are to be protected.

2 - Timber Specifications

2.1 - Included Timber

2.1.8 - Designated plantation row unit(s) (12/08)

Within Payment Unit(s) 1, all trees which meet minimum piece specifications in 2.2 Utilization, within designated plantation rows are designated for cutting. Designated plantation rows are every third row. Begin with the third row in from the outside of the plantation, then continue every third row. Because of the variability of row direction, it shall be the responsibility of the producer to maintain the third row sequence.

2.2 - Utilization

2.2.6 - Roundwood operation required (3/21)

The skidding of whole trees or tree segments with limbs attached is prohibited. All products must be produced as roundwood and forwarded to existing roads or landing areas in final product length. This is due to concerns with whole tree skidding damaging residual trees.

3 - Payments

3.3 - Pre-measured Sales

3.3.4 - Dividing payment units (7/14)

Payment Unit(s) 1 may be divided at the request of the Purchaser and upon approval of the Unit Manager. Dividing Payment Units is a contract modification which requires a Timber Sale Contract Amendment. There will be only one division per Payment Unit.

4 - Transportation

4.1 - Construction

4.1.12 - No new roads (1/12)

No new roads will be permitted. All operations are limited to existing roads. Skid trails only will be allowed.

4.2 - Maintenance

4.2.5 - Two wheel drive condition (2/04)

All existing trail roads on and adjacent to the sale area must be passable by two-wheel drive traffic for the duration of the sale.

5 - Operations

5.1 - Notification

5.1.1 - Pre-sale conference (10/16)

A pre-sale conference on site between the Purchaser and sale administrator is required prior to beginning any operations in a Payment Unit to determine landing and road locations. The Unit Manager or his/her representative must be contacted at least 3 days in advance to schedule the conference.

5.2 - Conduct of Operations

5.2.3 - Operating Restrictions

5.2.3.3 - Bark slippage restriction (3/09)

Within Payment Unit(s) 1, unless changed by written agreement, cutting and skidding are not permitted during the period of April 15 to July 15. This restriction is because of bark slippage. Cutting and skidding may be permitted during this time period if the producer can operate without damaging residual trees and receives approval from the Sale Administrator.

6 - Safety and Fire Prevention

6.2 - Signing

6.2.1 - Road posting (10/20)

The Purchaser is responsible for posting and maintaining caution signs on access roads near landing prior to beginning operations. The road must be posted at appropriate distances from the sale area to warn of logging activity and truck traffic. Signs must be removed when harvest operations are suspended or completed. The Purchaser will provide these signs.



TIMBER SALE MAP

This information provided by authority of Part 525, 1994 PA 451, as amended.

Forest Management Unit Traverse City	County Benzie	Mapped By Ventimiglia	Date 07/28/23	Page 1	of 1
Cruised By Ventimiglia					

Township 26N	Range 14W	Section(s) and Subdivision(s) Section 3 SWSW	Scale 1:15,840
-----------------	--------------	---	-------------------

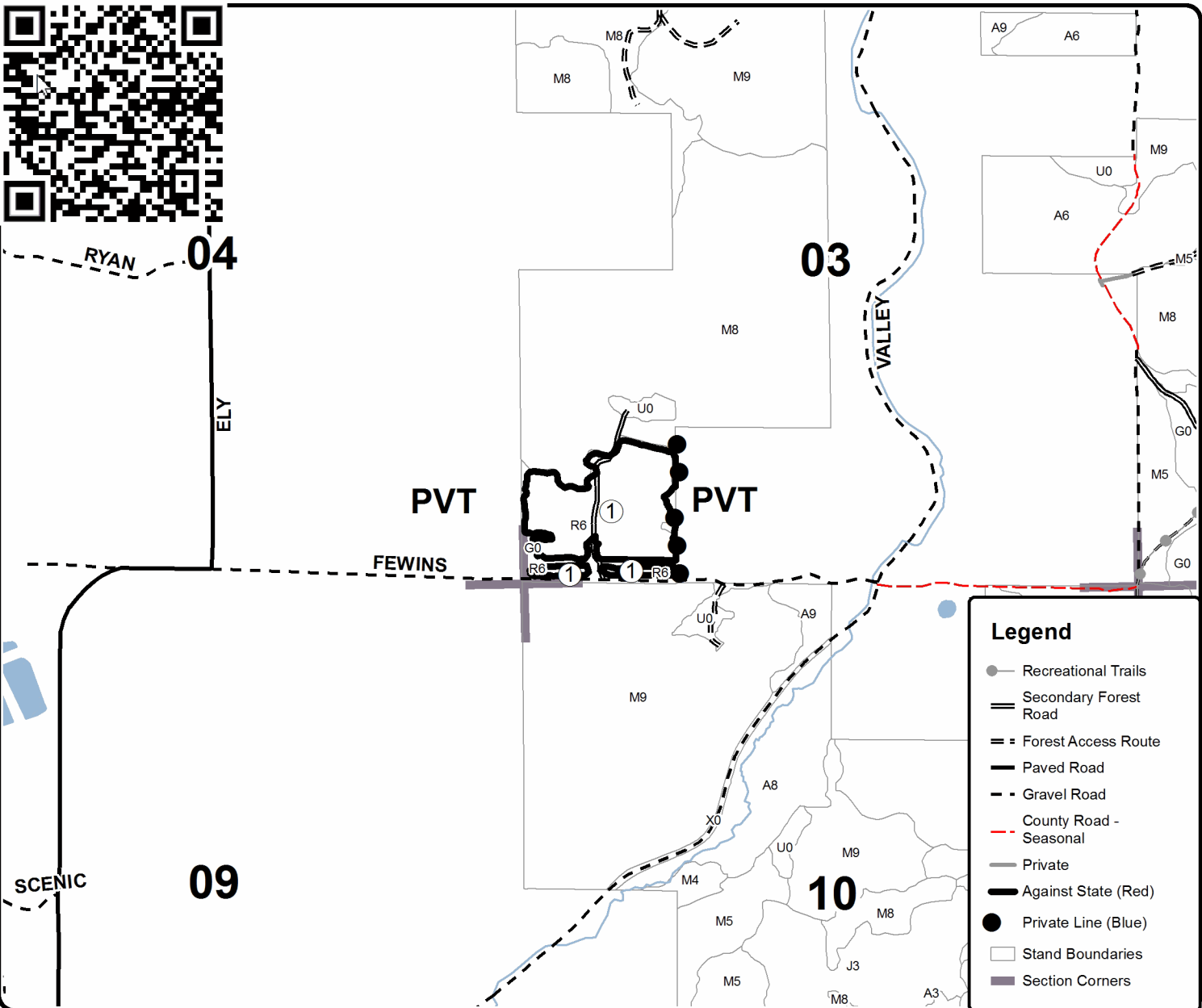
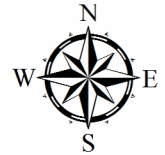
Cover Type				Density	
A = Aspen	H = Hemlock	N = Marsh	U = Upland Brush	0 = Non Stocked	5 = Pole Timber Medium
B = Paper Birch	J = Jack Pine	O = Oak	UM = Upland Mixed	1 = Seedling Sapling Poor	6 = Pole Timber Well
C = Cedar	L = Lowland Brush	P = Lowland Poplar	V = Bog or Marsh	2 = Seedling Sapling Medium	7 = Saw Timber Poor
D = Treed Bog	LM = Lowland Mixed	Q = Mixed Swamp Conifer	W = White Pine	3 = Seedling Sapling Well	8 = Saw Timber Medium
E = Swamp Hdwoods	M = Mpl, Bch, Brch	R = Red Pine	X = Non Stocked	4 = Pole Timber Poor	9 = Saw Timber Well
F = Spruce Fir	MC = Mixed Conifer	S = Black Spruce	Z = Water		
G = Grass	MD = Mixed Deciduous	T = Tamarack			

PU	Acres
1	24.9

First Thin Jobbie

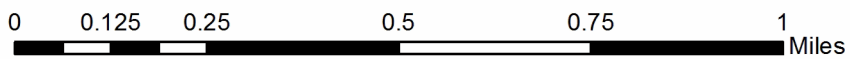
Compartment 14

24.9 Acres



Legend

- Recreational Trails
- Secondary Forest Road
- Forest Access Route
- Paved Road
- Gravel Road
- County Road - Seasonal
- Private
- Against State (Red)
- Private Line (Blue)
- Stand Boundaries
- Section Corners



TIMBER SALE INFORMATION

Happy Ending Hardwood (61-039-22)
 T28N, R14W, SEC. 33; T28N, R14W, SEC. 34; T28N, R14W, SEC. 35.
 Leelanau County (Advertised Price \$103,999.30)

SALE NOTE: A recreation site such as a trail, pathway, or campground is within the sale area or the vicinity. Certain restrictions/specifications may be applicable including time restrictions.

A timber sale contract for this lump sum, sealed bid timber sale will be awarded to the responsible bidder offering the highest sealed bid price. All units of volume listed below were estimated using the Inventory Manager computer program and the new Michigan taper model. Bids must be at or above the following advertised price for each product and species:

<u>PRODUCTS & SPECIES</u>	<u>ESTIMATED UNITS*</u>	<u>ADVERTISED PRICE</u>
Sawtimber		
Beech	44.5 MBF	\$ 123.00 / MBF
Black Cherry	69.8 MBF	\$ 162.00 / MBF
Mixed Aspen	58.7 MBF	\$ 96.00 / MBF
Red Maple	136.3 MBF	\$ 119.00 / MBF
Sugar Maple	191.2 MBF	\$ 216.00 / MBF
Pulpwood		
Mixed Aspen	42 Cords	\$ 15.30 / Cord
Mixed Hardwood	1,390 Cords	\$ 16.85 / Cord

* The total volume is statistically estimated within plus (+) or minus (-) 12.82 percent. There are an estimated 2,647 cords on this timber sale, plus or minus 340 cords at the 95% confidence level. The estimated units are final and not subject to adjustment. Prospective bidders are urged to examine this timber and to make their own estimates of quantity and quality.

BOND AND PAYMENT SCHEDULE:

1. A bond in the amount of \$5,200.00 to insure faithful performance of the conditions of the contract will be deposited by the successful bidder within 21 days of the sale award.
2. Cutting in any sale or unit without the required advance payment would be considered a trespass.
3. Total payment must be paid in advance or according to the following schedule :
 - (a) Ten percent (10%) of the sale value must be paid within 21 days of the sale award.
 - (b) The 10% down payment will be credited towards the first unit cut.
 - (c) Payment for each of the following units must be made before cutting begins in that unit:

PAYMENT UNIT NUMBER	PERCENT OF TOTAL SALE VALUE
01	3.7%
02	34.8%
03	54.5%
04	7.0%
4. If no cutting takes place, the 10% down payment will not be refunded.
5. Operations on the contract issued will terminate on 12/31/2025.

SALE STATISTICS

Volumes were calculated in cubic feet using the Michigan taper model. Cubic foot volume includes all wood inside bark for the product indicated. For display purposes, cubic feet were converted to cords and MBF using a simple conversion factor, e.g. 79 cubic feet per cord and 185 cubic feet per MBF. The cubic foot volumes are precise; the cords and MBF volumes are not. Cubic foot volume cannot be directly converted to cords or boards with precision.

SALE VOLUMES

The total estimated sale volume may not equal the sum of the species/products due to the nature of statistical calculations associated with double sampling methodology.

VOLUME		STATISTICAL RANGE IN CORDS		
TOTAL CUBIC FEET	TOTAL CORDS	PERCENT ERROR	MINIMUM	MAXIMUM
209,113	2,647	12.82%	2,307	2,987

VDU VOLUMES

A VDU is a Volume Determination Unit. Volumes and their associated statistics are calculated at the VDU level and summarized to the sale level. There is often a one to one relationship between a VDU and a Payment Unit, but not always, depending on the cruise design. Refer to the VDU TO PAYMENT UNIT table.

VDU	VOLUME		PERCENT ERROR	RANGE IN CORDS	
	TOTAL CUBIC FEET	TOTAL CORDS		MINIMUM	MAXIMUM
3	6,716	85	42.13%	49	121
16	75,404	954	19.47%	769	1,140
19	111,952	1,417	17.72%	1,166	1,668
26	15,041	190	56.62%	83	298
TOTAL:	209,113	2,647		2,066	3,228

VDU TO PAYMENT UNIT

When a VDU is associated with more than one Payment Unit (PU), the VDU volumes are assigned to the PU based on acres of the VDU within the PU.

VDU	VDU ACRES	PU	PU ACRES
3	9.6	1	9.6
16	42.1	2	42.1
19	66.9	3	66.9
26	15.0	4	15.0
TOTAL:	133.6		133.6

DESCRIPTION OF TIMBER BY PAYMENT UNIT (PU)

PU	MARKET GROUP	PRODUCT	QUANTITY	UNIT	ACRES	ADVERTISE PRICE	
1	Black Cherry	Sawtimber	4.9	MBF	9.6	\$3,899.70	
	Mixed Aspen		1.8	MBF			
	<i>B. T. Aspen</i>		1.8	<i>MBF</i>			
	Sugar Maple		10.7	MBF			
	Mixed Aspen		Pulpwood	1			Cords
	<i>B. T. Aspen</i>			1			<i>Cords</i>
	Mixed Hardwood			36			Cords
	<i>Beech</i>			9			<i>Cords</i>
	<i>Black Cherry</i>			4			<i>Cords</i>
<i>Sugar Maple</i>	23	<i>Cords</i>					
2	Beech	Sawtimber	11.2	MBF	42.1	\$36,183.20	
	Black Cherry		26.4	MBF			
	Mixed Aspen		47.5	MBF			
	<i>Quaking Aspen</i>		47.5	<i>MBF</i>			
	Red Maple		49.1	MBF			
	Sugar Maple		52.4	MBF			
	Mixed Aspen		Pulpwood	25			Cords
	<i>Quaking Aspen</i>			25			<i>Cords</i>
	Mixed Hardwood			500			Cords
	<i>Beech</i>			53			<i>Cords</i>
	<i>Black Cherry</i>			47			<i>Cords</i>
	<i>Ironwood</i>			14			<i>Cords</i>
	<i>Red Maple</i>			75			<i>Cords</i>
	<i>Sugar Maple</i>			311			<i>Cords</i>
3	Beech	Sawtimber	29.5	MBF	66.9	\$56,622.75	
	Black Cherry		35.7	MBF			
	Red Maple		65.3	MBF			
	Sugar Maple		121.2	MBF			
	Mixed Hardwood		Pulpwood	787			Cords
	<i>Beech</i>			113			<i>Cords</i>
	<i>Black Cherry</i>			43			<i>Cords</i>
	<i>Ironwood</i>			6			<i>Cords</i>
	<i>Red Maple</i>			137			<i>Cords</i>
	<i>Sugar Maple</i>			488			<i>Cords</i>
4	Beech	Sawtimber	3.8	MBF	15.0	\$7,293.65	
	Black Cherry		2.8	MBF			
	Mixed Aspen		9.4	MBF			
	<i>B. T. Aspen</i>		9.4	<i>MBF</i>			
	Red Maple		21.9	MBF			
	Sugar Maple		6.9	MBF			
	Mixed Aspen		Pulpwood	16			Cords
	<i>B. T. Aspen</i>			16			<i>Cords</i>
	Mixed Hardwood			67			Cords
	<i>Beech</i>			3			<i>Cords</i>
	<i>Black Cherry</i>			10			<i>Cords</i>
	<i>Red Maple</i>			37			<i>Cords</i>
	<i>Sugar Maple</i>			17			<i>Cords</i>
TOTAL:			500.5	MBF			
TOTAL:			1,432	Cords			

Sale Specific Conditions & Requirements

Sale Name: Happy Ending Hardwood

Sale Number: 61-039-22 Seq#: 3

1 - Sale Area

1.2 - Boundaries

1.2.1 - Painted boundaries (9/19)

The sale boundary and Payment Unit boundaries are marked and identified by blue, red and yellow paint. Exterior sale boundary lines against private property are marked with blue paint. Exterior sale boundary lines against state land are marked with red paint. Interior Payment Unit boundaries are marked with yellow paint. The painted boundary line trees are not Included Timber and are to be protected unless marked with orange paint.

2 - Timber Specifications

2.1 - Included Timber

2.1.3 - Cut tree marked unit(s) (12/08)

Within Payment Unit(s) 1-4, all trees are designated for cutting when marked with orange paint above and below stump height, regardless of merchantability. In addition, the following specifications apply:

- Within Payment Unit 2, cut all aspen and beech trees greater than 2-inches at DBH, unless marked with green paint.
- Within Payment Unit 3, cut all beech trees greater than 2-inches at DBH, unless marked with green paint.
- Within Payment Unit 4, cut all aspen trees greater than 2-inches at DBH, unless marked with green paint.

Note that beech and ironwood saplings (< 4.6" DBH) may be cut as necessary to facilitate the harvesting of Included Timber, but must be cut at ground level or uprooted and laid flat on the ground; not left bent, leaning or broken.

2.2 - Utilization

2.2.4 - Skidding length (2/14)

Skidding of unlimbed tops or lengths over 17 feet is not permissible unless approved by the Unit Manager or his/her representative.

3 - Payments

3.3 - Pre-measured Sales

3.3.4 - Dividing payment units (7/14)

Payment Unit(s) 2 & 3 may be divided at the request of the Purchaser and upon approval of the Unit Manager. Dividing Payment Units is a contract modification which requires a Timber Sale Contract Amendment. There will be only one division per Payment Unit.

4 - Transportation

4.1 - Construction

4.1.3 - Slash and earthen piles (8/04)

Piles or windrows of earth along roads and landings that have been widened or constructed shall be leveled. Slash from road maintenance or construction, including stumps, shall be dispersed throughout the sale.

4.1.12 - No new roads (1/12)

No new roads will be permitted in any Payment Unit. All operations are limited to existing roads. Skid trails only will be allowed.

5 - Operations

5.2 - Conduct of Operations

5.2.1 - Slash

5.2.1.8 - Slash height (12/08)

No slash or tree tops may exceed 36 inches in height.

5.2.3 - Operating Restrictions

5.2.3.3 - Bark slippage restriction (3/09)

Within Payment Unit(s) 1-4, cutting and skidding are not permitted during the period of April 15 to July 15. This restriction is because of bark slippage.

5.2.38 - No decking against live trees (2/04)

Cut products may not be decked against unmarked or designated leave trees.

5.2.40 - Pathway protection (10/10)

The Shore to Shore riding/hiking trail is shown on the Timber Sale Map. Do not cut trees or damage posts with blue pathway markers. Maintain a 20-foot-wide slash, debris, and rut free zone daily, using the pathway as the centerline. Do not run equipment down the pathway. No decking of timber will be allowed within 50 feet of the trail.

5.4 - Soil Protection

5.4.3 - Erosion control (12/08)

Skid trails or haul roads may require erosion control structures or berms per direction of the Unit Manager or his/her representative.

5.8 - Protection of Endangered Species

5.8.3 - Red shoulder hawk or goshawk (1) (2/16)

In the event that an active red shoulder hawk or goshawk nest is found, the contract may be amended to protect the nest site until the nest is determined to be inactive. The value of the trees in this excluded area will be refunded or credited to the Purchaser. The nest will be buffered with a five-chain radius (eight acre) protection area, centered on the nest tree, in which there will be no cutting or new roads constructed. Avoid human disturbance, including loading and skidding, in the protection area.

An additional zone of five chains (ten chains centered on the active nest tree) will be established in which there is no management activity from March 15 to July 15. Limit biomass harvesting and chipping operations within this ten-chain zone, retain the maximum one-third of residues per the Woody Biomass Harvesting Guidelines (Michigan DNR 2010). Nests determined to be inactive will be protected with a one-chain no-harvest buffer.

6 - Safety and Fire Prevention

6.2 - Signing

6.2.3 - Recreational trail posting (10/20)

The Purchaser is responsible for posting and maintaining caution signs on the Shore to Shore Trail prior to beginning operations. The trail must be posted at appropriate distances from the sale area to warn of logging activity and truck traffic at both ends of the trail. Signs must be removed when harvest operations are suspended or completed. The Purchaser will provide these signs.



TIMBER SALE MAP

This information provided by authority of Part 525, 1994 PA 451, as amended.

Sale Number	Year
61-039	22

Forest Management Unit Traverse City	County Leelanau	Mapped By Tim Webb	Date 08/26/2022	Page 1	of 1
Cruised By Tim Webb, contractors					

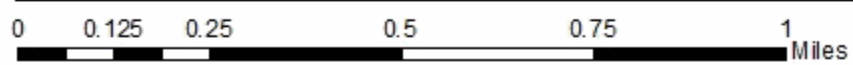
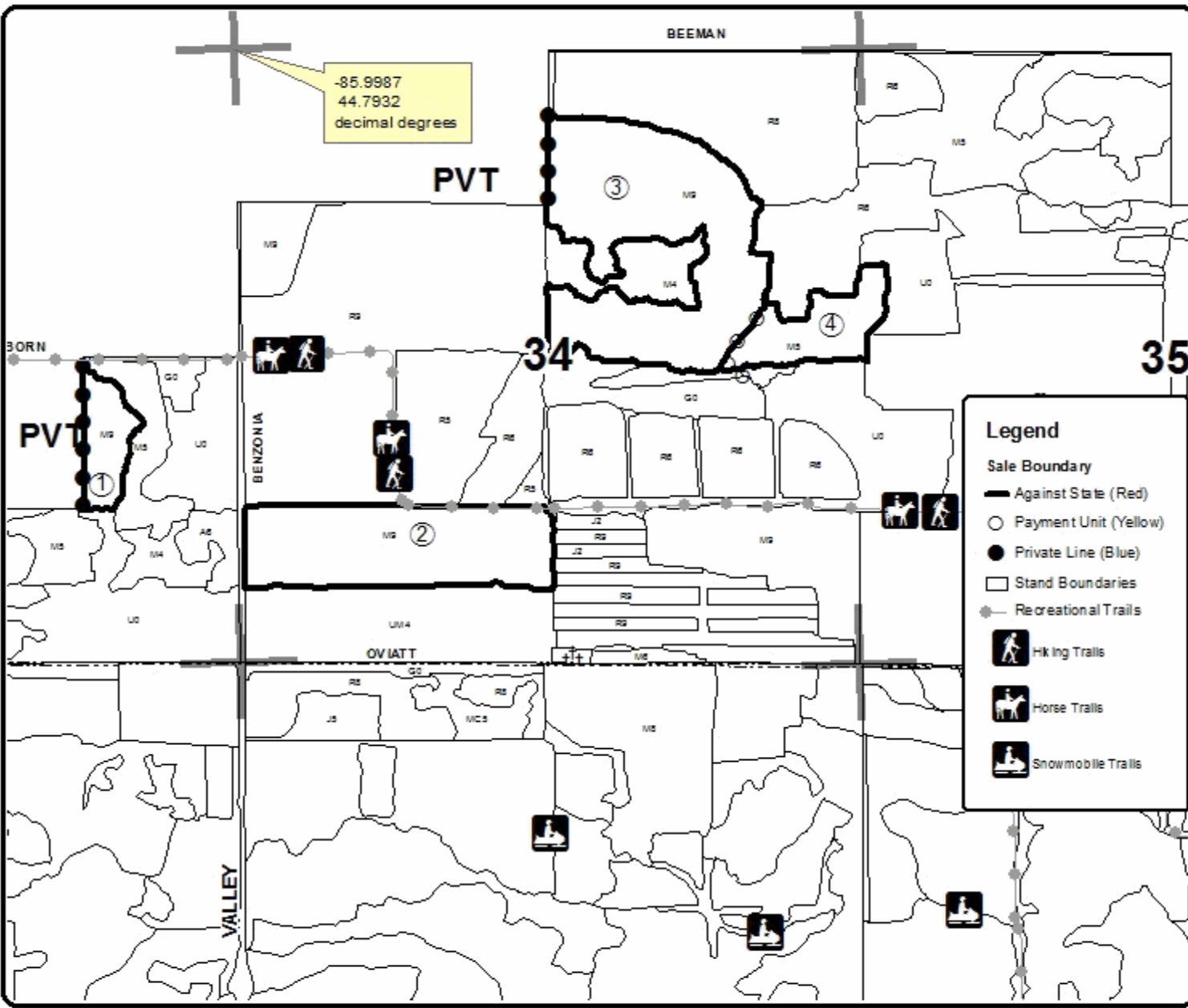
Township 28N	Range 14W	Section(s) and Subdivision(s) Sec. 33: NESE; Sec. 34: SENW,NE,SW,N1/2SE,SWSE; Sec. 35: SWNW	Scale 1:15,840
-----------------	--------------	---	-------------------

Cover Type				Density	
A = Aspen	H = Hemlock	N = Marsh	U = Upland Brush	0 = Non Stocked	5 = Pole Timber Medium
B = Paper Birch	J = Jack Pine	O = Oak	UM = Upland Mixed	1 = Seeding Sapling Poor	6 = Pole Timber Well
C = Cedar	L = Lowland Brush	P = Lowland Poplar	V = Bog or Marsh	2 = Seeding Sapling Medium	7 = Saw Timber Poor
D = Tread Bog	LM = Lowland Mixed	Q = Mixed Swamp Conifer	W = White Pine	3 = Seeding Sapling Well	8 = Saw Timber Medium
E = Swamp Hdwoods	M = Mpl, Bch, Bach	R = Red Pine	X = Non Stocked	4 = Pole Timber Poor	9 = Saw Timber Well
F = Spruce Fir	MC = Mixed Conifer	S = Black Spruce	Z = Water		
G = Grass	MD = Mixed Deciduous	T = Tamarack			

PU	Acres	PU	Acres
1	9.6	4	15
2	42.1		
3	66.9		

Happy Ending Hardwood

Compartment 61003
133.6 Acres



Camp Pug Complex (61-014-23)
T25N, R09W, SEC. 20; T25N, R09W, SEC. 21; Grand Traverse COUNTY

In response to the notice of sale to be held 4:00 p.m. (local time) on November 7, 2023, I am hereby submitting my sealed bid (firm offer) for the following forest products to be cut. Bids for individual species must be at or above the advertised price. All non-responsive bid forms may be rejected.

<u>PRODUCTS & SPECIES</u>	<u>ESTIMATED VOLUME*</u>	<u>ADVERTISED PRICE</u>	<u>BID PRICE/UNIT</u>
Sawtimber			
B. T. Aspen	79.3 MBF	\$ 113.00/MBF	\$ _____
Black Cherry	2.9 MBF	\$ 191.00/MBF	\$ _____
Red Maple	23.8 MBF	\$ 140.00/MBF	\$ _____
Red Oak	262.1 MBF	\$ 105.00/MBF	\$ _____
Red Pine	242.9 MBF	\$ 112.00/MBF	\$ _____
Sugar Maple	14.1 MBF	\$ 256.00/MBF	\$ _____
White Oak	70.5 MBF	\$ 68.00/MBF	\$ _____
White Pine	127.5 MBF	\$ 69.00/MBF	\$ _____
Pulpwood			
B. T. Aspen	203 Cords	\$ 18.10/Cord	\$ _____
Mixed Hardwood	39 Cords	\$ 19.90/Cord	\$ _____
Red Maple	151 Cords	\$ 19.90/Cord	\$ _____
Red Oak	224 Cords	\$ 26.15/Cord	\$ _____
Red Pine	427 Cords	\$ 48.40/Cord	\$ _____
White Oak	102 Cords	\$ 26.15/Cord	\$ _____
White Pine	213 Cords	\$ 21.30/Cord	\$ _____

*The volumes are statistically estimated within plus (+) or minus (-) 10.26 percent at 95% confidence level. These estimated volumes are final and not subject to adjustment. Prospective bidders are urged to examine this timber and to make their own estimates of quantity and quality.

I understand that any or all bids may be rejected. All bids must be signed and all bid items must be bid or the bid form may be rejected. I also understand that consideration and awarding a contract will be based upon my past performance and ability to complete the contract based upon equipment and staffing subject to my control.

FEDERAL ID: ____ - ____ - ____ or SOCIAL SECURITY NUMBER: ____ - ____ - ____

Company or individual bidding: _____

Company representative's name: _____

Address: _____

City: _____ State: _____ Zip: _____

IF AVAILABLE, PLEASE PLACE THE PERSONALIZED LABEL FROM YOUR PROSPECTUS IN THE ABOVE BOX.

Individual or company representative's signature: _____ Date: _____

Phone number : _____ Email (optional): _____

THE WINNING BIDDER MUST COMPLETE THE VERIFICATION OF WORKER'S DISABILITY COMPENSATION ACT COMPLIANCE (ON REVERSE SIDE IF DOUBLE SIDED) WITHIN 21 DAYS OF SALE AWARD DATE



FOR DEPARTMENT USE ONLY
Sale Number (XX - XXX - XX - XX)
Forest Management Unit:

TIMBER SALE VERIFICATION OF WORKER'S DISABILITY COMPENSATION ACT COMPLIANCE

*As required by Act 317, P.A. 1969 (Worker's Compensation) and
Part 5 of Act 451 of 1994, as amended.*

VERIFICATION OF WORKER'S DISABILITY COMPENSATION ACT COMPLIANCE

- This verification must be completed and submitted within 21 days of contract award and prior to the issuance of the timber sale contract.
- In addition, if boxes 2B or 2C are checked, then Notice of Exclusion or Certificate of Insurance must be submitted within twenty-one (21) days of the contract award and prior to the issuance of the timber sale contract.
- All information must be typed or printed except for written signatures.

Please Check Appropriate Categories:

1. My business is organized as (you **must** check one of the boxes below):
 - A. Sole Proprietorship (individual)
 - B. Partnership
 - C. Corporation
2. You **must** check one of the boxes below:
 - A. I certify my business is a sole proprietorship and it has no employees but the sole proprietor. I am not subject to the Worker's Compensation Laws.
 - B. I certify my business has satisfied its obligation to the Worker's Compensation Act through the use of an approved Notice of Exclusion (BWC-337, Rev. 5/96). I will provide a copy of the Notice of Exclusion within 21 days of the contract award. (For questions or a copy of the BWC-337, please call the Worker's Compensation Bureau at 517-322-1195).
 - C. I certify my business has a Worker's Compensation Policy. I will provide an original Certificate of Insurance within twenty-one (21) days of the contract award.
3. If you have checked item 2(A) or 2(B), you **must** indicate the number of **both** full-time and part-time employees, other than yourself, including family members and active partners (if none, you must enter "0").

_____ Full-time Employees

_____ Part-time Employees

Name of Business		Federal ID (or) Social Security No.	
Address		Telephone ()	
City	State	ZIP	

I hereby certify that the above information is true and correct. I agree to notify the Michigan DNR of any changes that occur in factors affecting my coverage during any of my present and future operations.

Signature of Owner or Authorized Representative

Title

Date

Please complete the "SEALED BID" information on the next page

Fife Lake Mix (61-015-23)

T25N, R09W, SEC. 15; T25N, R09W, SEC. 16; T25N, R09W, SEC. 21; Grand

In response to the notice of sale to be held 4:00 p.m. (local time) on November 7, 2023, I am hereby submitting my sealed bid (firm offer) for the following forest products to be cut. Bids for individual species must be at or above the advertised price. All non-responsive bid forms may be rejected.

<u>PRODUCTS & SPECIES</u>	<u>ESTIMATED VOLUME*</u>	<u>ADVERTISED PRICE</u>	<u>BID PRICE/UNIT</u>
Sawtimber			
B. T. Aspen	34.4 MBF	\$ 113.00/MBF	\$ _____
Jack Pine	13.8 MBF	\$ 35.00/MBF	\$ _____
Red Maple	33.8 MBF	\$ 140.00/MBF	\$ _____
Red Oak	382.5 MBF	\$ 105.00/MBF	\$ _____
Red Pine	803.6 MBF	\$ 112.00/MBF	\$ _____
White Oak	35.1 MBF	\$ 68.00/MBF	\$ _____
White Pine	14.0 MBF	\$ 69.00/MBF	\$ _____
Pulpwood			
B. T. Aspen	89 Cords	\$ 18.10/Cord	\$ _____
Jack Pine	256 Cords	\$ 22.50/Cord	\$ _____
Mixed Hardwood	378 Cords	\$ 19.90/Cord	\$ _____
Mixed Oak	769 Cords	\$ 26.15/Cord	\$ _____
Red Pine	1,467 Cords	\$ 48.40/Cord	\$ _____
White Pine	38 Cords	\$ 21.30/Cord	\$ _____

*The volumes are statistically estimated within plus (+) or minus (-) 9.93 percent at 95% confidence level. These estimated volumes are final and not subject to adjustment. Prospective bidders are urged to examine this timber and to make their own estimates of quantity and quality.

I understand that any or all bids may be rejected. All bids must be signed and all bid items must be bid or the bid form may be rejected. I also understand that consideration and awarding a contract will be based upon my past performance and ability to complete the contract based upon equipment and staffing subject to my control.

FEDERAL ID: _____ or SOCIAL SECURITY NUMBER: _____

Company or individual bidding: _____

Company representative's name: _____

Address: _____

City: _____ State: _____ Zip: _____

IF AVAILABLE, PLEASE PLACE THE PERSONALIZED LABEL FROM YOUR PROSPECTUS IN THE ABOVE BOX.

Individual or company representative's signature: _____ Date: _____

Phone number : _____ Email (optional): _____

THE WINNING BIDDER MUST COMPLETE THE VERIFICATION OF WORKER'S DISABILITY COMPENSATION ACT COMPLIANCE (ON REVERSE SIDE IF DOUBLE SIDED) WITHIN 21 DAYS OF SALE AWARD DATE



FOR DEPARTMENT USE ONLY	
Sale Number (XX - XXX - XX - XX)	
Forest Management Unit:	

TIMBER SALE VERIFICATION OF WORKER'S DISABILITY COMPENSATION ACT COMPLIANCE

As required by Act 317, P.A. 1969 (Worker's Compensation) and
Part 5 of Act 451 of 1994, as amended.

VERIFICATION OF WORKER'S DISABILITY COMPENSATION ACT COMPLIANCE

- This verification must be completed and submitted within 21 days of contract award and prior to the issuance of the timber sale contract.
- In addition, if boxes 2B or 2C are checked, then Notice of Exclusion or Certificate of Insurance must be submitted within twenty-one (21) days of the contract award and prior to the issuance of the timber sale contract.
- All information must be typed or printed except for written signatures.

Please Check Appropriate Categories:

1. My business is organized as (you **must** check one of the boxes below):
 - A. Sole Proprietorship (individual)
 - B. Partnership
 - C. Corporation
2. You **must** check one of the boxes below:
 - A. I certify my business is a sole proprietorship and it has no employees but the sole proprietor. I am not subject to the Worker's Compensation Laws.
 - B. I certify my business has satisfied its obligation to the Worker's Compensation Act through the use of an approved Notice of Exclusion (BWC-337, Rev. 5/96). I will provide a copy of the Notice of Exclusion within 21 days of the contract award. (For questions or a copy of the BWC-337, please call the Worker's Compensation Bureau at 517-322-1195).
 - C. I certify my business has a Worker's Compensation Policy. I will provide an original Certificate of Insurance within twenty-one (21) days of the contract award.
3. If you have checked item 2(A) or 2(B), you **must** indicate the number of **both** full-time and part-time employees, other than yourself, including family members and active partners (if none, you must enter "0").

_____ Full-time Employees

_____ Part-time Employees

Name of Business		Federal ID (or) Social Security No.	
Address		Telephone ()	
City	State	ZIP	

I hereby certify that the above information is true and correct. I agree to notify the Michigan DNR of any changes that occur in factors affecting my coverage during any of my present and future operations.

Signature of Owner or Authorized Representative

Title

Date

Please complete the "SEALED BID" information on the next page

Walton Restart (61-017-23)
T25N, R09W, SEC. 21; Grand Traverse COUNTY

In response to the notice of sale to be held 4:00 p.m. (local time) on November 7, 2023, I am hereby submitting my sealed bid (firm offer) for the following forest products to be cut. Bids for individual species must be at or above the advertised price. All non-responsive bid forms may be rejected.

<u>PRODUCTS & SPECIES</u>	<u>ESTIMATED VOLUME*</u>	<u>ADVERTISED PRICE</u>	<u>BID PRICE/UNIT</u>
Sawtimber			
Mixed Oak	110.1 MBF	\$ 103.00/MBF	\$ _____
Red Maple	17.7 MBF	\$ 151.00/MBF	\$ _____
Red Pine	341.1 MBF	\$ 121.00/MBF	\$ _____
White Oak	90.5 MBF	\$ 73.00/MBF	\$ _____
White Pine	222.2 MBF	\$ 74.00/MBF	\$ _____
Pulpwood			
B. T. Aspen	11 Cords	\$ 19.45/Cord	\$ _____
Jack Pine	14 Cords	\$ 24.25/Cord	\$ _____
Mixed Oak	375 Cords	\$ 28.15/Cord	\$ _____
Red Maple	142 Cords	\$ 21.45/Cord	\$ _____
Red Pine	408 Cords	\$ 52.15/Cord	\$ _____
White Pine	324 Cords	\$ 22.90/Cord	\$ _____

*The volumes are statistically estimated within plus (+) or minus (-) 9.35 percent at 95% confidence level. These estimated volumes are final and not subject to adjustment. Prospective bidders are urged to examine this timber and to make their own estimates of quantity and quality.

I understand that any or all bids may be rejected. All bids must be signed and all bid items must be bid or the bid form may be rejected. I also understand that consideration and awarding a contract will be based upon my past performance and ability to complete the contract based upon equipment and staffing subject to my control.

FEDERAL ID: _____ or SOCIAL SECURITY NUMBER: _____

Company or individual bidding: _____

Company representative's name: _____

Address: _____

City: _____ State: _____ Zip: _____

IF AVAILABLE, PLEASE PLACE THE PERSONALIZED LABEL FROM YOUR PROSPECTUS IN THE ABOVE BOX.

Individual or company representative's signature: _____ Date: _____

Phone number : _____ Email (optional): _____

THE WINNING BIDDER MUST COMPLETE THE VERIFICATION OF WORKER'S DISABILITY COMPENSATION ACT COMPLIANCE (ON REVERSE SIDE IF DOUBLE SIDED) WITHIN 21 DAYS OF SALE AWARD DATE



FOR DEPARTMENT USE ONLY	
Sale Number (XX - XXX - XX - XX)	
Forest Management Unit:	

TIMBER SALE VERIFICATION OF WORKER'S DISABILITY COMPENSATION ACT COMPLIANCE

As required by Act 317, P.A. 1969 (Worker's Compensation) and
Part 5 of Act 451 of 1994, as amended.

VERIFICATION OF WORKER'S DISABILITY COMPENSATION ACT COMPLIANCE

- This verification must be completed and submitted within 21 days of contract award and prior to the issuance of the timber sale contract.
- In addition, if boxes 2B or 2C are checked, then Notice of Exclusion or Certificate of Insurance must be submitted within twenty-one (21) days of the contract award and prior to the issuance of the timber sale contract.
- All information must be typed or printed except for written signatures.

Please Check Appropriate Categories:

1. My business is organized as (you **must** check one of the boxes below):
 - A. Sole Proprietorship (individual)
 - B. Partnership
 - C. Corporation
2. You **must** check one of the boxes below:
 - A. I certify my business is a sole proprietorship and it has no employees but the sole proprietor. I am not subject to the Worker's Compensation Laws.
 - B. I certify my business has satisfied its obligation to the Worker's Compensation Act through the use of an approved Notice of Exclusion (BWC-337, Rev. 5/96). I will provide a copy of the Notice of Exclusion within 21 days of the contract award. (For questions or a copy of the BWC-337, please call the Worker's Compensation Bureau at 517-322-1195).
 - C. I certify my business has a Worker's Compensation Policy. I will provide an original Certificate of Insurance within twenty-one (21) days of the contract award.
3. If you have checked item 2(A) or 2(B), you **must** indicate the number of **both** full-time and part-time employees, other than yourself, including family members and active partners (if none, you must enter "0").

_____ Full-time Employees

_____ Part-time Employees

Name of Business		Federal ID (or) Social Security No.	
Address		Telephone ()	
City	State	ZIP	

I hereby certify that the above information is true and correct. I agree to notify the Michigan DNR of any changes that occur in factors affecting my coverage during any of my present and future operations.

Signature of Owner or Authorized Representative

Title

Date

Please complete the "SEALED BID" information on the next page

M-186 Oak/Pine (61-018-23)
T25N, R09W, SEC. 10; T25N, R09W, SEC. 15; Grand Traverse COUNTY

In response to the notice of sale to be held 4:00 p.m. (local time) on November 7, 2023, I am hereby submitting my sealed bid (firm offer) for the following forest products to be cut. Bids for individual species must be at or above the advertised price. All non-responsive bid forms may be rejected.

<u>PRODUCTS & SPECIES</u>	<u>ESTIMATED VOLUME*</u>	<u>ADVERTISED PRICE</u>	<u>BID PRICE/UNIT</u>
Sawtimber			
B. T. Aspen	119.1 MBF	\$ 113.00/MBF	\$ _____
Red Maple	39.1 MBF	\$ 140.00/MBF	\$ _____
Red Oak	489.5 MBF	\$ 105.00/MBF	\$ _____
Red Pine	21.4 MBF	\$ 112.00/MBF	\$ _____
White Oak	106.3 MBF	\$ 68.00/MBF	\$ _____
White Pine	167.5 MBF	\$ 69.00/MBF	\$ _____
Pulpwood			
B. T. Aspen	448 Cords	\$ 18.10/Cord	\$ _____
Mixed Oak	735 Cords	\$ 26.15/Cord	\$ _____
Red Maple	245 Cords	\$ 19.90/Cord	\$ _____
Red Pine	126 Cords	\$ 48.40/Cord	\$ _____
White Pine	553 Cords	\$ 21.30/Cord	\$ _____

*The volumes are statistically estimated within plus (+) or minus (-) 8.44 percent at 95% confidence level. These estimated volumes are final and not subject to adjustment. Prospective bidders are urged to examine this timber and to make their own estimates of quantity and quality.

I understand that any or all bids may be rejected. All bids must be signed and all bid items must be bid or the bid form may be rejected. I also understand that consideration and awarding a contract will be based upon my past performance and ability to complete the contract based upon equipment and staffing subject to my control.

FEDERAL ID: _____ or SOCIAL SECURITY NUMBER: _____

Company or individual bidding: _____

Company representative's name: _____

Address: _____

City: _____ State: _____ Zip: _____

IF AVAILABLE, PLEASE PLACE THE PERSONALIZED LABEL FROM YOUR PROSPECTUS IN THE ABOVE BOX.

Individual or company representative's signature: _____ Date: _____

Phone number : _____ Email (optional): _____

THE WINNING BIDDER MUST COMPLETE THE VERIFICATION OF WORKER'S DISABILITY COMPENSATION ACT COMPLIANCE (ON REVERSE SIDE IF DOUBLE SIDED) WITHIN 21 DAYS OF SALE AWARD DATE

First Thin Jobbie (61-021-23)
T26N, R14W, SEC. 3; Benzie COUNTY

In response to the notice of sale to be held 4:00 p.m. (local time) on November 7, 2023, I am hereby submitting my sealed bid (firm offer) for the following forest products to be cut. Bids for individual species must be at or above the advertised price. All non-responsive bid forms may be rejected.

<u>PRODUCTS & SPECIES</u>	<u>ESTIMATED VOLUME*</u>	<u>ADVERTISED PRICE</u>	<u>BID PRICE/UNIT</u>
Pulpwood Red Pine	246 Cords	\$ 52.15/Cord	\$ _____

*The volumes are statistically estimated within plus (+) or minus (-) 20.31 percent at 95% confidence level. These estimated volumes are final and not subject to adjustment. Prospective bidders are urged to examine this timber and to make their own estimates of quantity and quality.

I understand that any or all bids may be rejected. All bids must be signed and all bid items must be bid or the bid form may be rejected. I also understand that consideration and awarding a contract will be based upon my past performance and ability to complete the contract based upon equipment and staffing subject to my control.

FEDERAL ID: ____ - ____ - ____ or SOCIAL SECURITY NUMBER: ____ - ____ - ____

Company or individual bidding: _____

Company representative's name: _____

Address: _____

City: _____ State: _____ Zip: _____

IF AVAILABLE, PLEASE PLACE THE PERSONALIZED LABEL FROM YOUR PROSPECTUS IN THE ABOVE BOX.

Individual or company representative's signature: _____ Date: _____

Phone number : _____ Email (optional): _____

THE WINNING BIDDER MUST COMPLETE THE VERIFICATION OF WORKER'S DISABILITY COMPENSATION ACT COMPLIANCE (ON REVERSE SIDE IF DOUBLE SIDED) WITHIN 21 DAYS OF SALE AWARD DATE



FOR DEPARTMENT USE ONLY
Sale Number (XX - XXX - XX - XX)
Forest Management Unit:

TIMBER SALE VERIFICATION OF WORKER'S DISABILITY COMPENSATION ACT COMPLIANCE

*As required by Act 317, P.A. 1969 (Worker's Compensation) and
Part 5 of Act 451 of 1994, as amended.*

VERIFICATION OF WORKER'S DISABILITY COMPENSATION ACT COMPLIANCE

- This verification must be completed and submitted within 21 days of contract award and prior to the issuance of the timber sale contract.
- In addition, if boxes 2B or 2C are checked, then Notice of Exclusion or Certificate of Insurance must be submitted within twenty-one (21) days of the contract award and prior to the issuance of the timber sale contract.
- All information must be typed or printed except for written signatures.

Please Check Appropriate Categories:

1. My business is organized as (you **must** check one of the boxes below):
 - A. Sole Proprietorship (individual)
 - B. Partnership
 - C. Corporation

2. You **must** check one of the boxes below:
 - A. I certify my business is a sole proprietorship and it has no employees but the sole proprietor. I am not subject to the Worker's Compensation Laws.
 - B. I certify my business has satisfied its obligation to the Worker's Compensation Act through the use of an approved Notice of Exclusion (BWC-337, Rev. 5/96). I will provide a copy of the Notice of Exclusion within 21 days of the contract award. (For questions or a copy of the BWC-337, please call the Worker's Compensation Bureau at 517-322-1195).
 - C. I certify my business has a Worker's Compensation Policy. I will provide an original Certificate of Insurance within twenty-one (21) days of the contract award.

3. If you have checked item 2(A) or 2(B), you **must** indicate the number of **both** full-time and part-time employees, other than yourself, including family members and active partners (if none, you must enter "0").

_____ Full-time Employees

_____ Part-time Employees

Name of Business		Federal ID (or) Social Security No.	
Address		Telephone ()	
City	State	ZIP	

I hereby certify that the above information is true and correct. I agree to notify the Michigan DNR of any changes that occur in factors affecting my coverage during any of my present and future operations.

Signature of Owner or Authorized Representative

Title

Date

Please complete the "SEALED BID" information on the next page

Happy Ending Hardwood (61-039-22)
T28N, R14W, SEC. 33; T28N, R14W, SEC. 34; T28N, R14W, SEC. 35; Leelanau

In response to the notice of sale to be held 4:00 p.m. (local time) on November 7, 2023, I am hereby submitting my sealed bid (firm offer) for the following forest products to be cut. Bids for individual species must be at or above the advertised price. All non-responsive bid forms may be rejected.

<u>PRODUCTS & SPECIES</u>	<u>ESTIMATED VOLUME*</u>	<u>ADVERTISED PRICE</u>	<u>BID PRICE/UNIT</u>
Sawtimber			
Beech	44.5 MBF	\$ 123.00/MBF	\$ _____
Black Cherry	69.8 MBF	\$ 162.00/MBF	\$ _____
Mixed Aspen	58.7 MBF	\$ 96.00/MBF	\$ _____
Red Maple	136.3 MBF	\$ 119.00/MBF	\$ _____
Sugar Maple	191.2 MBF	\$ 216.00/MBF	\$ _____
Pulpwood			
Mixed Aspen	42 Cords	\$ 15.30/Cord	\$ _____
Mixed Hardwood	1,390 Cords	\$ 16.85/Cord	\$ _____

*The volumes are statistically estimated within plus (+) or minus (-) 12.82 percent at 95% confidence level. These estimated volumes are final and not subject to adjustment. Prospective bidders are urged to examine this timber and to make their own estimates of quantity and quality.

I understand that any or all bids may be rejected. All bids must be signed and all bid items must be bid or the bid form may be rejected. I also understand that consideration and awarding a contract will be based upon my past performance and ability to complete the contract based upon equipment and staffing subject to my control.

FEDERAL ID: _____ or SOCIAL SECURITY NUMBER: _____

Company or individual bidding: _____

Company representative's name: _____

Address: _____

City: _____ State: _____ Zip: _____

IF AVAILABLE, PLEASE PLACE THE PERSONALIZED LABEL FROM YOUR PROSPECTUS IN THE ABOVE BOX.

Individual or company representative's signature: _____ Date: _____

Phone number : _____ Email (optional): _____

THE WINNING BIDDER MUST COMPLETE THE VERIFICATION OF WORKER'S DISABILITY COMPENSATION ACT COMPLIANCE (ON REVERSE SIDE IF DOUBLE SIDED) WITHIN 21 DAYS OF SALE AWARD DATE



FOR DEPARTMENT USE ONLY	
Sale Number (XX - XXX - XX - XX)	
Forest Management Unit:	

TIMBER SALE VERIFICATION OF WORKER'S DISABILITY COMPENSATION ACT COMPLIANCE

As required by Act 317, P.A. 1969 (Worker's Compensation) and
Part 5 of Act 451 of 1994, as amended.

VERIFICATION OF WORKER'S DISABILITY COMPENSATION ACT COMPLIANCE

- This verification must be completed and submitted within 21 days of contract award and prior to the issuance of the timber sale contract.
- In addition, if boxes 2B or 2C are checked, then Notice of Exclusion or Certificate of Insurance must be submitted within twenty-one (21) days of the contract award and prior to the issuance of the timber sale contract.
- All information must be typed or printed except for written signatures.

Please Check Appropriate Categories:

1. My business is organized as (you **must** check one of the boxes below):
 - A. Sole Proprietorship (individual)
 - B. Partnership
 - C. Corporation
2. You **must** check one of the boxes below:
 - A. I certify my business is a sole proprietorship and it has no employees but the sole proprietor. I am not subject to the Worker's Compensation Laws.
 - B. I certify my business has satisfied its obligation to the Worker's Compensation Act through the use of an approved Notice of Exclusion (BWC-337, Rev. 5/96). I will provide a copy of the Notice of Exclusion within 21 days of the contract award. (For questions or a copy of the BWC-337, please call the Worker's Compensation Bureau at 517-322-1195).
 - C. I certify my business has a Worker's Compensation Policy. I will provide an original Certificate of Insurance within twenty-one (21) days of the contract award.
3. If you have checked item 2(A) or 2(B), you **must** indicate the number of **both** full-time and part-time employees, other than yourself, including family members and active partners (if none, you must enter "0").

_____ Full-time Employees

_____ Part-time Employees

Name of Business		Federal ID (or) Social Security No.	
Address		Telephone ()	
City	State	ZIP	

I hereby certify that the above information is true and correct. I agree to notify the Michigan DNR of any changes that occur in factors affecting my coverage during any of my present and future operations.

Signature of Owner or Authorized Representative

Title

Date

Please complete the "SEALED BID" information on the next page