



**DEPARTMENT OF NATURAL RESOURCES
STATE OF MICHIGAN
TIMBER SALE PROSPECTUS #7479**

SCHEDULED SALE DATE AND TIME: 4:00 p.m. (local time) on September 19, 2024.

LOCATION: TRAVERSE CITY MGMT UNIT, 2122 M 37 SOUTH, TRAVERSE CITY, MI 49685.

PROSPECTUS NOTE: The bidder is advised to inspect the sale area and review the location, estimated volumes, operating costs and contract terms of proposed sales. Please be aware that some landowners may request 60 days or more notice for access across their land.

Notice is hereby given that bids will be received by the Unit Manager, TRAVERSE CITY MANAGEMENT UNIT, for certain timber on the following described lands:

1960 Red Pine (61-028-24) / T25N, R11W, SEC. 35, N1/2SW, SESW, W1/2SE.

Grand Traverse County, Advertised Price \$238,842.10, 102.2 Acres, Red Pine, Hardwood.

SALE NOTE: Note Heterobasidion Root Disease Spec (5.2.3.13).

Rackin' Up Red Pine (61-030-24) / T26N, R14W, SEC. 26, SWSE.

T26N, R14W, SEC. 32, SESW.

T26N, R14W, SEC. 36, E1/2NW, NESW.

Benzie County, Advertised Price \$152,664.05, 71.2 Acres, Red Pine, Hardwood.

North Buckley Mix (61-031-24) / T25N, R11W, SEC. 28, N1/2NW, SESW.

T25N, R11W, SEC. 32, S1/2SE.

T25N, R11W, SEC. 33, SWSW.

Grand Traverse County, Advertised Price \$98,368.15, 82.3 Acres, Red Pine, Aspen.

BID INSTRUCTIONS (VER. 10/10/2022):

1. Scheduled Bid Location, Date, and Time (2/11)

Bids must be received by the Unit Manager, TRAVERSE CITY OFFICE, 2122 M 37 South, Traverse City, MI 49685, no later than 4:00 p.m. (local time) on September 19, 2024. For further information concerning this sale, contact Patrick Cotant at 231-649-0544.

2. Bidder's Qualifications (10/22)

If all or part of a timber sale was prepared by a private contractor, the contractor and that contractor's company are not permitted to bid on the timber sale. A person must be 18 years of age or older to purchase timber. Permanent employees of the Department of Natural Resources or members of their immediate household may not bid. Former employees, in the permanent or seasonal class, may not bid until 3 months after the last day of active duty. Bids will not be accepted from individuals or companies appearing on the DNR/FRD No-Bid List. This list contains the names of purchasers who previously failed to execute a contract within 21-days or who have a history of poor performance.

3. Preparation of Sealed Bids (5/16)

Bid Forms may be completed online thru Michigan DNR Timber Sale Online Bidding (OLB) at www.michigan.gov/timberbidding or by completing the hardcopy Bid Form found in the Timber Sale Prospectus. Hardcopy Bid Forms shall be manually signed in ink. Registration in OLB is considered your 'signature' for all bids submitted thru that system. Bid prices must be entered for each species and product in the Bid Price column for all material subject to bidding and all fill-in blanks must be completed. If erasures or other changes appear on the hardcopy Bid Form, each erasure or change must be initialed by the person signing the bid.

4. Submission of Sealed Bids (5/16)

Bid forms may be obtained from the Unit Manager or thru OLB. Bids may be submitted hardcopy or thru OLB. All hardcopy bids must be submitted on the bid form and in an envelope clearly identified as described in this section. NOTE: Only one bid form per bid envelope. Sealed bids must be submitted to the Unit office designated in the prospectus and must be submitted at or prior to the time established in the prospectus. The envelope should show on the outside (a) the sale name or number and (b) the date and time of bid opening, as shown in the prospectus. Bids received after the time specified in the sale prospectus are late bids and will be rejected.

It is possible for a bidder to submit multiple bids on a single sale. For example, a bid may be submitted hardcopy and a bid may be submitted thru OLB. Or, two bidders from the same company could both submit bids on the same sale. If this were to happen, the State would accept all bids received and award the contract accordingly. All bidding and contractual requirements would apply to all bids received.

5. Public Opening of Sealed Bids (7/16)

If conditions permit, the sealed bids will be publicly opened and posted at the time and place set in the prospectus.

If a bidder, present at a bid opening, has submitted bids on more than one sale, that bidder may withdraw their unopened bid envelopes or announce the withdrawal of their online bid after being declared the successful bidder on one sale.

6. Award of Contract (1/11)

Award of the contract will be made to the Bidder whose bid, conforming to the prospectus, is most advantageous to the State of Michigan on the basis of total value at rates bid for the estimated quantities. The State reserves the right to reject any bid or waive any minor irregularity in bids received. A written award mailed (or otherwise furnished) to the successful Bidder shall be deemed to result in a binding contract without further action by either party.

7. Down Payment (1/11)

The Bidder to whom award is made must make a down payment within 21 days of the sale award. The amount of the down payment will be calculated as shown in the Bond and Payment Schedule of this prospectus. Only cash may be used to meet this requirement.

8. Performance Security (1/11)

As guarantee of faithful performance, a cash bond, certificate of deposit, surety bond or irrevocable letter of credit (LOC) is required within 21 days of the sale award. The amount of the performance security is shown in the Bond and

Payment Schedule of this prospectus. If an LOC or surety is used, the coverage must extend for at least 6 months beyond the contract expiration.

9. Worker's Compensation (10/22)

Purchaser shall obtain worker's compensation insurance to cover claims under Michigan's Worker's Disability Compensation Act of 1969 or similar employee benefit act of any other state applicable to an employee. Verification of Worker's Disability Compensation Act Compliance must be completed and submitted within 21 days of contract award and prior to the issuance of the timber sale contract. In addition, if applicable, Notice of Exclusion or Certificate of Insurance must also be submitted.

10. Timber Sale Contract (10/22)

Additional conditions and requirements common to all timber sales are listed on the timber sale contract (R4031) and are available on line at www.michigan.gov/timber. Contact the Unit Manager for additional information or a sample contract. Within 21 days of the date of the award letter, the bidder must sign the contract and provide the required down payment, performance security, and verification of worker's disability compensation. The down payment and performance security shall be in accordance with the provisions of the timber sale contract, in the sums stated in this prospectus. If these actions are not taken, then the Bidder, the Bidder's corporation, and the corporation's principals may not be permitted to bid on State timber sales for a period of 3 months after the first offense, 6 months after the second offense, and 1 year after the third offense. An offense will only be counted against the Bidder for 5 years. In addition, the Bidder certifies that if awarded this contract, the Bidder will complete the timber sale contract in accordance with its terms and any modifications thereof including requirements to purchase, cut, and remove the included timber by the expiration date.

Payment Unit values in the State Forest Timber Sale Contract are calculated based on the advertised value of the Payment Unit as a percentage of the total advertised value of the contract. The advertised value of each Payment Unit is given in the Description of Timber by Payment Unit table on the Timber Sale Information page. For example, if the value of Payment Unit 1 is advertised as \$1,500 and the total Timber Sale value is advertised as \$10,000, the contract price for Payment Unit 1 will be 15% of the total bid price ($\$1,500/\$10,000 * 100$).

11. Disclaimer of Estimates and Bidder's Warranty of Inspection (10/22)

Before submitting this bid, the Bidder is advised and cautioned to inspect the sale area, review the requirements of the sale contract, and take other steps as may be reasonably necessary to ascertain the location, estimated volumes, construction estimates, and operating costs of the proposed sale. Failure to do so will not relieve the Bidder from responsibility for completing the contract.

The Bidder warrants that this bid is submitted solely on the basis of the Bidder's examination and inspection of the quality and quantity of the timber offered for sale and the Bidder's opinion of the value thereof and the costs of recovery. No reliance should be placed on the State of Michigan's estimates of timber quality, quantity or costs of recovery. Bidder further acknowledges that the State of Michigan: (i) expressly disclaims any warranty of fitness of timber for any purpose; (ii) offers this timber as is without any warranty of quality (merchantability) or quantity and (iii) expressly disclaims any warranty as to the quantity or quality of timber sold.

12. Certification and Chain-of-Custody (10/22)

Unless otherwise indicated in the contract under section 7 – Other Conditions of the Sale Specific Conditions & Requirements, the area encompassed by this timber sale is certified to the standards of the Forest Stewardship Council (FSC) - Certificate #SCS-FM/COC-00090N and the Sustainable Forestry Initiative (SFI) - Certificate #NSF-SFIS-5Y031-SF5. Forest products from this sale may be delivered to the mill as "FSC 100% and / or SFI certified" as long as the contractor hauling the forest products is chain-of-custody (COC) certified or covered under a COC certificate from the destination mill. The purchaser is responsible for maintaining COC after leaving the sale area.

13. Good Neighbor Authority (GNA) Requirements (10/22)

If the name of this timber sales contains the acronym GNA, it is authorized by the Good Neighbor Authority (GNA) and covered by various agreements between the U.S. Forest Service and the State. The timber sale occurs on federal land and the following conditions apply:

GNA contracts on US Forest Service land will not be awarded to purchasers on the Federal list of excluded parties. The System for Award Management (SAM) will be checked for active excluded parties prior to award of contract. In

addition, the Bidder to whom award is made must complete an Assurance Regarding Felony Conviction or Tax Delinquent Status for Corporate Applicants (AD-3031).

14. Good Neighbor Authority (GNA) Requirements, con't (10/22)

Bidder certifies, by signing this bid form, that to the best of Bidder's knowledge that the following representations are accurate and complete.

- a. That the Bidder and its principals are not presently debarred, suspended, proposed for debarment, declared ineligible, or voluntary excluded from timber sales (covered transactions) by any Federal department or agency.
- b. That the Bidder and its principals have not within a 3-year period preceding this bid been convicted of or had a civil judgment rendered against them for commission of fraud or a criminal offense in connection with obtaining , attempting to obtain, or performing a public (Federal, State, or local) transaction or contract under a public transaction; violation of Federal or State antitrust statutes or commission of embezzlement, theft, forgery, bribery, falsification or destruction of records, making false statements, or receiving stolen property.
- c. That the Bidder and its principals are not presently indicted for or otherwise criminally or civilly charged by a governmental entity (Federal, State, or local) with commission of any of the offenses enumerated in paragraph b of this certification.
- d. That the Bidder and its principals have not within a 3-year period preceding this bid had one or more public transactions (Federal, State, or local) terminated for breach or default of a timber or forest product contract.

Bidders that cannot certify this requirement, in whole or in part, shall submit an explanation with their bid.

Scott Bowen
Director

TIMBER SALE INFORMATION

1960 Red Pine (61-028-24)

T25N, R11W, SEC. 35.

Grand Traverse County (Advertised Price \$238,842.10)

SALE NOTE: Note Heterobasidion Root Disease Spec (5.2.3.13).

A timber sale contract for this lump sum, sealed bid timber sale will be awarded to the responsible bidder offering the highest sealed bid price. All units of volume listed below were estimated using the Inventory Manager computer program and the new Michigan taper model. Bids must be at or above the following advertised price for each product and species:

<u>PRODUCTS & SPECIES</u>	<u>ESTIMATED UNITS*</u>	<u>ADVERTISED PRICE</u>
Sawtimber		
Beech	3.8 MBF	\$ 155.00 / MBF
Black Cherry	12.8 MBF	\$ 154.00 / MBF
Red Maple	51.4 MBF	\$ 130.00 / MBF
Red Pine	651.3 MBF	\$ 130.00 / MBF
Sugar Maple	109.5 MBF	\$ 305.00 / MBF
White Pine	17.0 MBF	\$ 86.00 / MBF
Pulpwood		
Mixed Hardwood	552 Cords	\$ 20.65 / Cord
Red Pine	1,956 Cords	\$ 50.35 / Cord
White Pine	8 Cords	\$ 23.50 / Cord

* The total volume is statistically estimated within plus (+) or minus (-) 13.42 percent. There are an estimated 4,496 cords on this timber sale, plus or minus 604 cords at the 95% confidence level. The estimated units are final and not subject to adjustment. Prospective bidders are urged to examine this timber and to make their own estimates of quantity and quality.

BOND AND PAYMENT SCHEDULE:

1. A bond in the amount of \$11,942.00 to insure faithful performance of the conditions of the contract will be deposited by the successful bidder within 21 days of the sale award.
2. Cutting in any sale or unit without the required advance payment would be considered a trespass.
3. Total payment must be paid in advance or according to the following schedule :
 - (a) Ten percent (10%) of the sale value must be paid within 21 days of the sale award.
 - (b) The 10% down payment will be credited towards the first unit cut.
 - (c) Payment for each of the following units must be made before cutting begins in that unit:

PAYMENT UNIT NUMBER	PERCENT OF TOTAL SALE VALUE
01	20.7%
02	38.8%
03	20.4%
04	20.1%
4. If no cutting takes place, the 10% down payment will not be refunded.
5. Operations on the contract issued will terminate on 12/31/2027.

SALE STATISTICS

Volumes were calculated in cubic feet using the Michigan taper model. Cubic foot volume includes all wood inside bark for the product indicated. For display purposes, cubic feet were converted to cords and MBF using a simple conversion factor, e.g. 79 cubic feet per cord and 185 cubic feet per MBF. The cubic foot volumes are precise; the cords and MBF volumes are not. Cubic foot volume cannot be directly converted to cords or boards with precision.

SALE VOLUMES

The total estimated sale volume may not equal the sum of the species/products due to the nature of statistical calculations associated with double sampling methodology.

VOLUME		STATISTICAL RANGE IN CORDS		
TOTAL CUBIC FEET	TOTAL CORDS	PERCENT ERROR	MINIMUM	MAXIMUM
355,183	4,496	13.42%	3,892	5,100

VDU VOLUMES

A VDU is a Volume Determination Unit. Volumes and their associated statistics are calculated at the VDU level and summarized to the sale level. There is often a one to one relationship between a VDU and a Payment Unit, but not always, depending on the cruise design. Refer to the VDU TO PAYMENT UNIT table.

VDU	VOLUME		PERCENT ERROR	RANGE IN CORDS	
	TOTAL CUBIC FEET	TOTAL CORDS		MINIMUM	MAXIMUM
133	355,183	4,496	13.43%	3,892	5,100
TOTAL:	355,183	4,496		3,892	5,100

VDU TO PAYMENT UNIT

When a VDU is associated with more than one Payment Unit (PU), the VDU volumes are assigned to the PU based on acres of the VDU within the PU.

VDU	VDU ACRES	PU	PU ACRES
133	102.2	1	21.1
		2	39.7
		3	20.9
		4	20.5
TOTAL:	102.2		102.2

DESCRIPTION OF TIMBER BY PAYMENT UNIT (PU)

PU	MARKET GROUP	PRODUCT	QUANTITY	UNIT	ACRES	ADVERTISE PRICE
1	Beech	Sawtimber	0.8	MBF	21.1	\$49,323.90
	Black Cherry		2.6	MBF		
	Red Maple		10.6	MBF		
	Red Pine		134.5	MBF		
	Sugar Maple		22.6	MBF		
	White Pine		3.5	MBF		
	Mixed Hardwood		Pulpwood	114		
	<i>Beech</i>	3		<i>Cords</i>		
	<i>Black Cherry</i>	9		<i>Cords</i>		
	<i>Red Maple</i>	61		<i>Cords</i>		
	<i>Sugar Maple</i>	41		<i>Cords</i>		
	Red Pine	404		Cords		
	White Pine	2	Cords			
2	Beech	Sawtimber	1.4	MBF	39.7	\$92,759.85
	Black Cherry		5.0	MBF		
	Red Maple		20.0	MBF		
	Red Pine		253.0	MBF		
	Sugar Maple		42.5	MBF		
	White Pine		6.6	MBF		
	Mixed Hardwood		Pulpwood	215		
	<i>Beech</i>	7		<i>Cords</i>		
	<i>Black Cherry</i>	17		<i>Cords</i>		
	<i>Red Maple</i>	115		<i>Cords</i>		
	<i>Sugar Maple</i>	76		<i>Cords</i>		
	Red Pine	760		Cords		
	White Pine	2	Cords			
3	Beech	Sawtimber	0.8	MBF	20.9	\$48,838.20
	Black Cherry		2.6	MBF		
	Red Maple		10.5	MBF		
	Red Pine		133.2	MBF		
	Sugar Maple		22.4	MBF		
	White Pine		3.5	MBF		
	Mixed Hardwood		Pulpwood	112		
	<i>Beech</i>	3		<i>Cords</i>		
	<i>Black Cherry</i>	9		<i>Cords</i>		
	<i>Red Maple</i>	60		<i>Cords</i>		
	<i>Sugar Maple</i>	40		<i>Cords</i>		
	Red Pine	400		Cords		
	White Pine	2	Cords			
4	Beech	Sawtimber	0.8	MBF	20.5	\$47,920.15
	Black Cherry		2.6	MBF		
	Red Maple		10.3	MBF		
	Red Pine		130.6	MBF		
	Sugar Maple		22.0	MBF		
	White Pine		3.4	MBF		
	Mixed Hardwood		Pulpwood	111		
	<i>Beech</i>	3		<i>Cords</i>		
	<i>Black Cherry</i>	9		<i>Cords</i>		
	<i>Red Maple</i>	59		<i>Cords</i>		
	<i>Sugar Maple</i>	40		<i>Cords</i>		
	Red Pine	392		Cords		
	White Pine	2	Cords			
TOTAL:			845.8	MBF		
TOTAL:			2,516	Cords		

Sale Specific Conditions & Requirements

Sale Name: 1960 Red Pine

Sale Number: 61-028-24 Seq#: 1

1 - Sale Area

1.2 - Boundaries

1.2.1 - Painted boundaries (9/19)

The sale boundary and Payment Unit boundaries are marked and identified by red paint and a two-track. Exterior sale boundary lines against State are marked with red paint. Interior Payment Unit boundaries are unpainted and designated by two tracks throughout the Sale Area (shown on the Timber Sale Map).

2 - Timber Specifications

2.1 - Included Timber

2.1.1 - Clearcut unit(s) with unmerchantable trees (6/14)

Within Payment Unit(s), cut all trees that are one (1) inches or more at DBH.

2.2 - Utilization

2.2.2 - Chipping required (2/18)

This area must be chip harvested to facilitate subsequent planting operations. The Purchaser has the option to produce sawlogs or pulpwood bolts, but the remaining portion of the trees must be chipped and hauled. Products may be produced as roundwood and forwarded to decking areas in final product length, but the tops must be left intact and skidded to the landing for chipping in order to minimize the amount of residual slash. The requirement to retain approximately 1/6 to 1/3 of tree tops and limbs less than four inches in diameter is still applicable (G. C. & R. 2.2).

2.2.3 - Stump heights (4/07)

Stump heights within the Sale Area shall not exceed 6 inches for all trees. This is in order to facilitate planting operations.

3 - Payments

3.3 - Pre-measured Sales

3.3.4 - Dividing payment units (7/14)

Payment Unit(s) may be divided at the request of the Purchaser and upon approval of the Unit Manager. Dividing Payment Units is a contract modification which requires a Timber Sale Contract Amendment. There will be only one division per Payment Unit.

4 - Transportation

4.1 - Construction

4.1.12 - No new roads (1/12)

No new roads will be permitted in any Payment Unit. All operations are limited to existing roads. Skid trails only will be allowed.

4.2 - Maintenance

4.2.5 - Two wheel drive condition (2/04)

All existing trail roads on and adjacent to the sale area must be passable by two-wheel drive traffic for the duration of the sale.

5 - Operations

5.1 - Notification

5.1.1 - Pre-sale conference (10/16)

A pre-sale conference on site between the Purchaser and sale administrator is required prior to beginning any operations to determine landing and road locations. The Unit Manager or his/her representative must be contacted at least 3 days in advance to schedule the conference.

5.2 - Conduct of Operations

5.2.3 - Operating Restrictions

5.2.3.13 - Heterobasidion root disease (HRD) (7/19)

This plantation is at risk of infection by the root rot fungus, *Heterobasidion irregulare*. To prevent the spread of this disease, cutting operations within Payment Unit(s) 1-4 are restricted to the period of January 1st through March 31st. Cutting may only occur outside this period with written permission of the Unit Manager or with the application of a preventative pesticide. Consultation with a forest health specialist will determine if cutting can occur prior to January 1 without pesticide application, dependent upon current and forecasted snow cover. Cellu-Treat and RotStop C are currently the only EPA registered products available in the United States for the control of *Heterobasidion*. Both products are a water-soluble powder that must be applied to the stump, in accordance with the product label. Dye must be added to these products to provide visible evidence of adequate coverage. Application of these pesticides requires licensing by the Michigan Department of Agriculture and Rural Development. All applicators are required to: provide to the Sale Administrator notification of application per requirements in 40 CFR 170.120; and document and provide to the Sale Administrator annually, by December 31 and prior to closure of sale, the volume of product used and acres treated.

6 - Safety and Fire Prevention

6.2 - Signing

6.2.1 - Road posting (10/20)

The Purchaser is responsible for posting and maintaining caution signs on roads and two tracks near landings and used to access landings prior to beginning operations. The road must be posted at appropriate distances from the Sale Area to warn of logging activity and truck traffic. Signs must be removed when harvest operations are suspended or completed. The Purchaser will provide these signs.



TIMBER SALE MAP

This information provided by authority of Part 525, 1994 PA 451, as amended.

Sale Number
61-028-24

Date
06/07/2024

Forest Management Unit	County	Mapped By: Ventimiglia
Traverse City Mgt Unit	Grand Traverse	Cruised By: Ventimiglia

Scale	Page	Of
1:15,840	1	1

Township	Range	Section(s) and Subdivision(s)
25N	11W	Sec. 35 N1/2SW,SESW,W1/2SE;

Cover Type			
A = Aspen	J = Jack Pine	O = Oak	U = Upland Brush
B = Paper Birch	K = Rock	P = Lowland Poplar	UM = Upland Mix Forest
C = Cedar	L = Lowland Brush	Q = Mixed Swamp Conifer	V = Bog or Marsh
D = Treed Bog	LM = Lowland Mix Forest	R = Red Pine	W = White Pine
E = Swamp Hardwoods	M = Maple, Beech, Birch	S = Black Spruce	X = Non Stocked
F = Spruce/Fir	MC = Mixed Conifer	T = Tamarack	Y = Sand
G = Grass	MD = Mixed Deciduous	Z = Water	
H = Hemlock	N = Marsh		

Density	
0 = Non Stocked	5 = Pole Timber Medium
1 = Seedling Sapling Poor	6 = Pole Timber Well
2 = Seedling Sapling Medium	7 = Saw Timber Poor
3 = Seedling Sapling Well	8 = Saw Timber Medium
4 = Pole Timber Poor	9 = Saw Timber Well

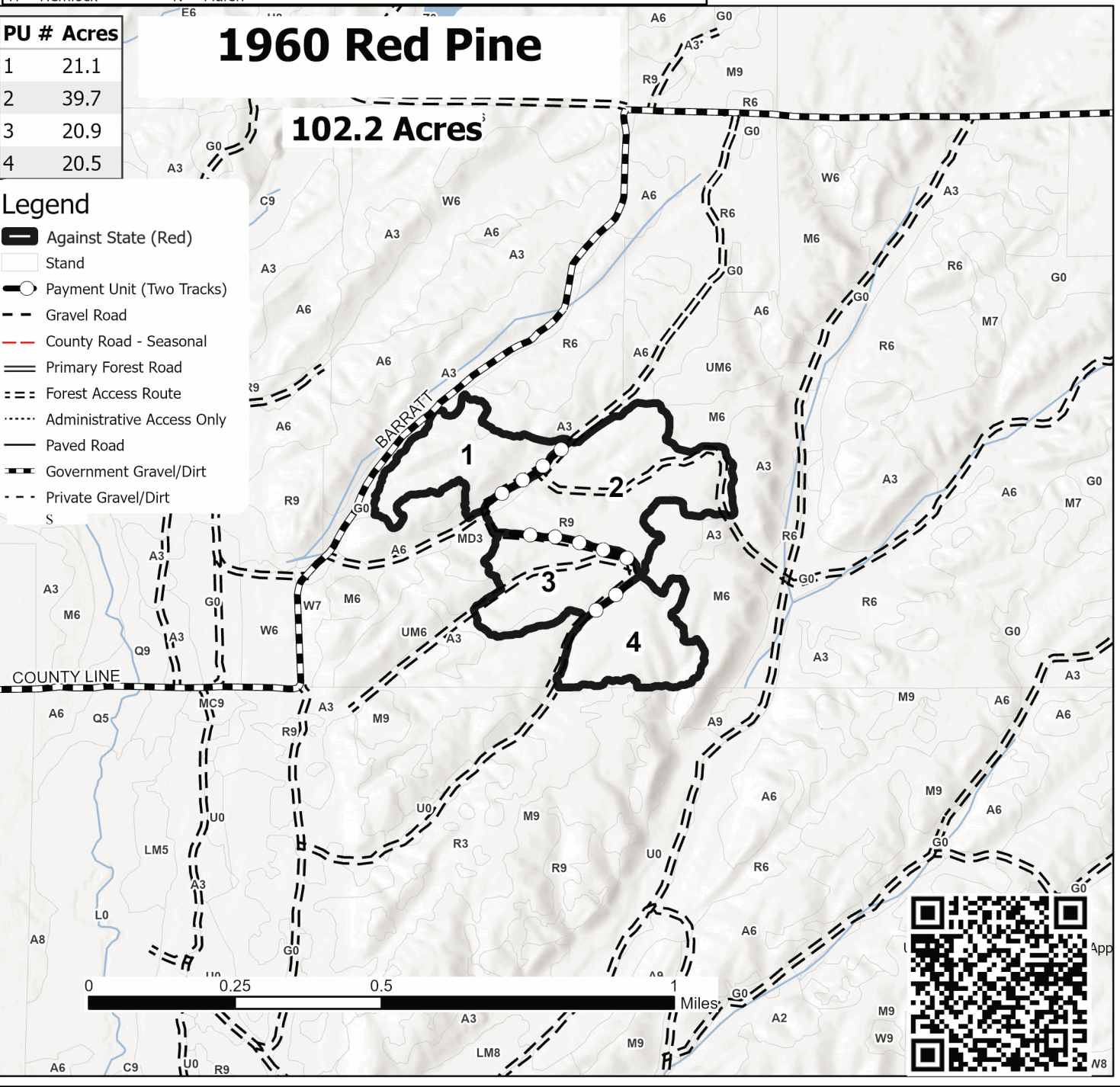
PU #	Acres
1	21.1
2	39.7
3	20.9
4	20.5

1960 Red Pine

102.2 Acres

Legend

- Against State (Red)
- Stand
- Payment Unit (Two Tracks)
- Gravel Road
- County Road - Seasonal
- Primary Forest Road
- Forest Access Route
- Administrative Access Only
- Paved Road
- Government Gravel/Dirt
- Private Gravel/Dirt



TIMBER SALE INFORMATION

Rackin' Up Red Pine (61-030-24)
T26N, R14W, SEC. 26; T26N, R14W, SEC. 32; T26N, R14W, SEC. 36.
Benzie County (Advertised Price \$152,664.05)

A timber sale contract for this lump sum, sealed bid timber sale will be awarded to the responsible bidder offering the highest sealed bid price. All units of volume listed below were estimated using the Inventory Manager computer program and the new Michigan taper model. Bids must be at or above the following advertised price for each product and species:

<u>PRODUCTS & SPECIES</u>	<u>ESTIMATED UNITS*</u>	<u>ADVERTISED PRICE</u>
Sawtimber		
Black Cherry	7.3 MBF	\$ 154.00 / MBF
Red Maple	11.8 MBF	\$ 130.00 / MBF
Red Pine	333.1 MBF	\$ 130.00 / MBF
Sugar Maple	5.5 MBF	\$ 305.00 / MBF
White Pine	2.7 MBF	\$ 86.00 / MBF
Pulpwood		
Mixed Hardwood	75 Cords	\$ 20.65 / Cord
Red Pine	2,044 Cords	\$ 50.35 / Cord
White Pine	14 Cords	\$ 23.50 / Cord

* The total volume is statistically estimated within plus (+) or minus (-) 10.36 percent. There are an estimated 2,977 cords on this timber sale, plus or minus 309 cords at the 95% confidence level. The estimated units are final and not subject to adjustment. Prospective bidders are urged to examine this timber and to make their own estimates of quantity and quality.

BOND AND PAYMENT SCHEDULE:

1. A bond in the amount of \$7,633.00 to insure faithful performance of the conditions of the contract will be deposited by the successful bidder within 21 days of the sale award.
2. Cutting in any sale or unit without the required advance payment would be considered a trespass.
3. Total payment must be paid in advance or according to the following schedule :
 - (a) Ten percent (10%) of the sale value must be paid within 21 days of the sale award.
 - (b) The 10% down payment will be credited towards the first unit cut.
 - (c) Payment for each of the following units must be made before cutting begins in that unit:

PAYMENT UNIT NUMBER	PERCENT OF TOTAL SALE VALUE
01	7.1%
02	7.4%
03	0.7%
04	26.9%
05	57.9%
4. If no cutting takes place, the 10% down payment will not be refunded.
5. Operations on the contract issued will terminate on 04/14/2027.

SALE STATISTICS

Volumes were calculated in cubic feet using the Michigan taper model. Cubic foot volume includes all wood inside bark for the product indicated. For display purposes, cubic feet were converted to cords and MBF using a simple conversion factor, e.g. 79 cubic feet per cord and 185 cubic feet per MBF. The cubic foot volumes are precise; the cords and MBF volumes are not. Cubic foot volume cannot be directly converted to cords or boards with precision.

SALE VOLUMES

The total estimated sale volume may not equal the sum of the species/products due to the nature of statistical calculations associated with double sampling methodology.

VOLUME			STATISTICAL RANGE IN CORDS	
TOTAL CUBIC FEET	TOTAL CORDS	PERCENT ERROR	MINIMUM	MAXIMUM
235,190	2,977	10.36%	2,669	3,286

VDU VOLUMES

A VDU is a Volume Determination Unit. Volumes and their associated statistics are calculated at the VDU level and summarized to the sale level. There is often a one to one relationship between a VDU and a Payment Unit, but not always, depending on the cruise design. Refer to the VDU TO PAYMENT UNIT table.

VDU	VOLUME		PERCENT ERROR	RANGE IN CORDS	
	TOTAL CUBIC FEET	TOTAL CORDS		MINIMUM	MAXIMUM
15	16,755	212	20.78%	168	256
41	17,486	221	23.03%	170	272
44	3,840	49	94.81%	3	95
85	197,108	2,495	12.06%	2,194	2,796
TOTAL:	235,190	2,977		2,535	3,419

VDU TO PAYMENT UNIT

When a VDU is associated with more than one Payment Unit (PU), the VDU volumes are assigned to the PU based on acres of the VDU within the PU.

VDU	VDU ACRES	PU	PU ACRES
15	10.8	1	10.8
41	8.5	2	8.5
44	1.8	3	1.8
85	50.1	4	15.9
		5	34.2
TOTAL:	71.2		71.2

DESCRIPTION OF TIMBER BY PAYMENT UNIT (PU)

PU	MARKET GROUP	PRODUCT	QUANTITY	UNIT	ACRES	ADVERTISE PRICE
1	Red Pine	Sawtimber	12.7	MBF	10.8	\$10,814.70
	Red Pine	Pulpwood	182	Cords		
2	Red Pine	Sawtimber	9.1	MBF	8.5	\$11,253.00
	Red Pine	Pulpwood	200	Cords		
3	White Pine	Sawtimber	2.7	MBF	1.8	\$1,139.40
	Mixed Hardwood	Pulpwood	28	Cords		
	<i>Black Cherry</i>		2	<i>Cords</i>		
	<i>Red Maple</i>		18	<i>Cords</i>		
	<i>Sugar Maple</i>		8	<i>Cords</i>		
	White Pine		14	Cords		
4	Black Cherry	Sawtimber	2.3	MBF	15.9	\$41,021.25
	Red Maple		3.7	MBF		
	Red Pine		98.8	MBF		
	Sugar Maple		1.7	MBF		
	Mixed Hardwood	Pulpwood	14	Cords		
	<i>Black Cherry</i>		3	<i>Cords</i>		
	<i>Red Maple</i>		10	<i>Cords</i>		
	<i>Sugar Maple</i>		1	<i>Cords</i>		
	Red Pine		527	Cords		
	5	Black Cherry	Sawtimber	5.0		
Red Maple			8.1	MBF		
Red Pine			212.5	MBF		
Sugar Maple			3.8	MBF		
Mixed Hardwood		Pulpwood	33	Cords		
<i>Black Cherry</i>			7	<i>Cords</i>		
<i>Red Maple</i>			23	<i>Cords</i>		
<i>Sugar Maple</i>			3	<i>Cords</i>		
Red Pine			1,135	Cords		
TOTAL:			360.4	MBF		
TOTAL:			2,133	Cords		

Sale Specific Conditions & Requirements

Sale Name: Rackin' Up Red Pine

Sale Number: 61-030-24 Seq#: 1

1 - Sale Area

1.2 - Boundaries

1.2.1 - Painted boundaries (9/19)

The sale boundary and Payment Unit boundaries are marked and identified by blue and red paint and a two track. Exterior sale boundary lines against private property are marked with blue paint. Exterior sale boundary lines against state are marked with red paint. Interior Payment Unit boundaries are marked with red paint with the exception of the interior Payment Unit boundary between Payment Units 4 and 5, which is unpainted and identified by the two-track. The painted boundary line trees are not Included Timber and are to be protected.

2 - Timber Specifications

2.1 - Included Timber

2.1.1 - Clearcut unit(s) with unmerchantable trees (6/14)

Within Payment Unit(s) 4 and 5, cut all trees that are one (1) inch or more at DBH, regardless of merchantability.

2.1.3 - Cut tree marked unit(s) (12/08)

Within Payment Unit(s) 1-3, all trees are designated for cutting when marked with orange paint above and below stump height, regardless of merchantability.

2.2 - Utilization

2.2.2 - Chipping required (2/18)

Payment Units 4 and 5 must be chip harvested to facilitate subsequent planting operations. The Purchaser has the option to produce sawlogs or pulpwood bolts, but the remaining portion of the trees must be chipped and hauled.

2.2.3 - Stump heights (4/07)

Stump heights within Payment Unit(s) 4 and 5 shall not exceed 6 inches for all trees. This is in order to facilitate planting operations.

2.2.6 - Roundwood operation required (3/21)

The skidding of whole trees or tree segments with limbs attached is prohibited within Payment Unit(s) 1-3. All products must be produced as roundwood and forwarded to existing roads or landing areas in final product length.

4 - Transportation

4.1 - Construction

4.1.6 - Road construction (4/24)

Construction of new roads or improvements of existing roads shall be done in such a way as to minimize the environmental and visual impacts. Merchantable trees shall be cut and utilized unless otherwise directed. Non-merchantable trees shall be severed and laid flat on the ground. Slash shall be scattered, and not left in windrows and kept a minimum of 10 feet back from the road edge. Stumps shall be set upright, not left on edge, and be moved at least 10 feet away from the road edge. A new road/driveway will need to be constructed for Payment Units 2 and 3.

4.1.7 - Road closure (10/11)

All new roads built into the sale must be blocked to vehicle traffic upon completion of the sale. In general, this will require constructing a four (4') foot high berm of stumps and logs covered with earth. These roads must be rendered impassable to cars and trucks. All stumps from road building and landing construction must be reserved to block any newly constructed roads upon completion of the sale. These stumps must be scattered along the road system to prohibit vehicular movement. Contact the Sale Administrator for specific details of design and placement.

This spec only applies to Payment Units 2 and 3.

4.1.12 - No new roads (1/12)

No new roads will be permitted in Payment Unit(s) 1, 4 & 5. All operations are limited to existing roads. Skid trails only will

be allowed.

4.2 - Maintenance

4.2.5 - Two wheel drive condition (2/04)

All existing trail roads on and adjacent to the sale area must be passable by two-wheel drive traffic for the duration of the sale.

5 - Operations

5.1 - Notification

5.1.1 - Pre-sale conference (10/16)

A pre-sale conference on site between the Purchaser and sale administrator is required prior to beginning any operations to determine landing and road locations. The Unit Manager or his/her representative must be contacted at least 3 days in advance to schedule the conference.

5.1.4 - Post-sale conference (10/16)

A post-sale conference on site between the Purchaser and sale administrator is required 5 days prior to the completion of active logging operations to determine clean-up and repair of landings, road edges, and the fulfillment of other contract specifications.

5.2 - Conduct of Operations

5.2.1 - Slash

5.2.1.1 - Slash within sale area (9/16)

No trees are to be felled outside the sale area and all slash is to be kept at least 10 feet back from the red and blue paint line. If sale boundary lines are along a public road or highway, then slash must be removed 50' from these lines per General Condition & Requirement 5.2.1.

5.2.38 - No decking against live trees (2/04)

Cut products may not be decked against unmarked or designated leave trees.

6 - Safety and Fire Prevention

6.2 - Signing

6.2.1 - Road posting (10/20)

The Purchaser is responsible for posting and maintaining caution signs on access roads prior to beginning operations. The road must be posted at appropriate distances from the Sale Area to warn of logging activity and truck traffic. Signs must be removed when harvest operations are suspended or completed. The Purchaser will provide these signs.



TIMBER SALE MAP

This information provided by authority of Part 525, 1994 PA 451, as amended.

Sale Number

61-030-24

Date

06/18/2024

Forest Management Unit

County

Mapped By: Melina Hurin

Traverse City Mgt Unit

Benzie

Cruised By: Melina Hurin

Scale

1:5,000

Page

1

Of

2

Township
26N

Range
14W

Section(s) and
Subdivision(s) Sec. 26 SWSE; Sec. 32 SESW; Sec. 36 E1/2NW,NESW;

Cover Type

A = Aspen	J = Jack Pine	O = Oak	U = Upland Brush
B = Paper Birch	K = Rock	P = Lowland Poplar	UM = Upland Mix Forest
C = Cedar	L = Lowland Brush	Q = Mixed Swamp Conifer	V = Bog or Marsh
D = Treed Bog	LM = Lowland Mix Forest	R = Red Pine	W = White Pine
E = Swamp Hardwoods	M = Maple, Beech, Birch	S = Black Spruce	X = Non Stocked
F = Spruce/Fir	MC = Mixed Conifer	T = Tamarack	Y = Sand
G = Grass	MD = Mixed Deciduous	Z = Water	
H = Hemlock	N = Marsh		

Density

0 = Non Stocked	5 = Pole Timber Medium
1 = Seedling Sapling Poor	6 = Pole Timber Well
2 = Seedling Sapling Medium	7 = Saw Timber Poor
3 = Seedling Sapling Well	8 = Saw Timber Medium
4 = Pole Timber Poor	9 = Saw Timber Well

Legend

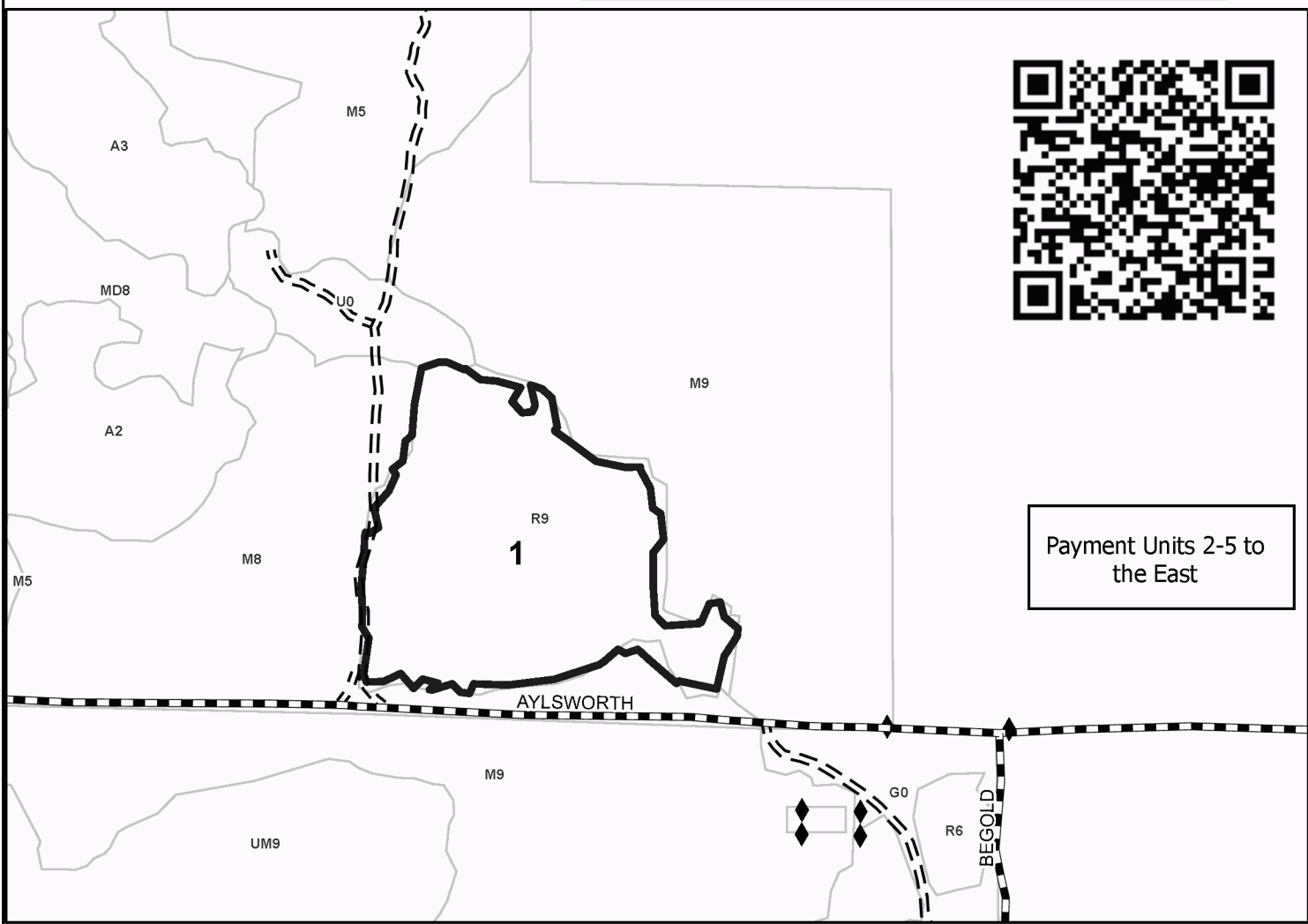
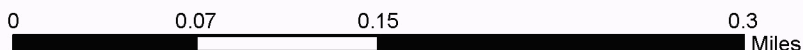
- Against State (Red)
- Stand
- Gravel Road
- Primary Forest Road
- Forest Access Route
- Administrative Access Only
- Paved Road
- Government Gravel/Dirt
- Private Gravel/Dirt
- Survey Corner

PU # Acres

1	10.8
2	8.5
3	1.8
4	15.9
5	34.2

Rackin' Up Red Pine

71.2 Acres





TIMBER SALE MAP

This information provided by authority of Part 525, 1994 PA 451, as amended.

Sale Number
61-030-24

Date
06/18/2024

Forest Management Unit	County	Mapped By: Melina Hurin
Traverse City Mgt Unit	Benzie	Cruised By: Melina Hurin

Scale	Page	Of
1:15,840	2	2

Township	Range	Section(s) and Subdivision(s)
26N	14W	Sec. 26 SWSE; Sec. 32 SESW; Sec. 36 E1/2NW, NESW;

Cover Type			
A = Aspen	J = Jack Pine	O = Oak	U = Upland Brush
B = Paper Birch	K = Rock	P = Lowland Poplar	UM = Upland Mix Forest
C = Cedar	L = Lowland Brush	Q = Mixed Swamp Conifer	V = Bog or Marsh
D = Treed Bog	LM = Lowland Mix Forest	R = Red Pine	W = White Pine
E = Swamp Hardwoods	M = Maple, Beech, Birch	S = Black Spruce	X = Non Stocked
F = Spruce/Fir	MC = Mixed Conifer	T = Tamarack	Y = Sand
G = Grass	MD = Mixed Deciduous	Z = Water	
H = Hemlock	N = Marsh		

Density	
0 = Non Stocked	5 = Pole Timber Medium
1 = Seedling Sapling Poor	6 = Pole Timber Well
2 = Seedling Sapling Medium	7 = Saw Timber Poor
3 = Seedling Sapling Well	8 = Saw Timber Medium
4 = Pole Timber Poor	9 = Saw Timber Well

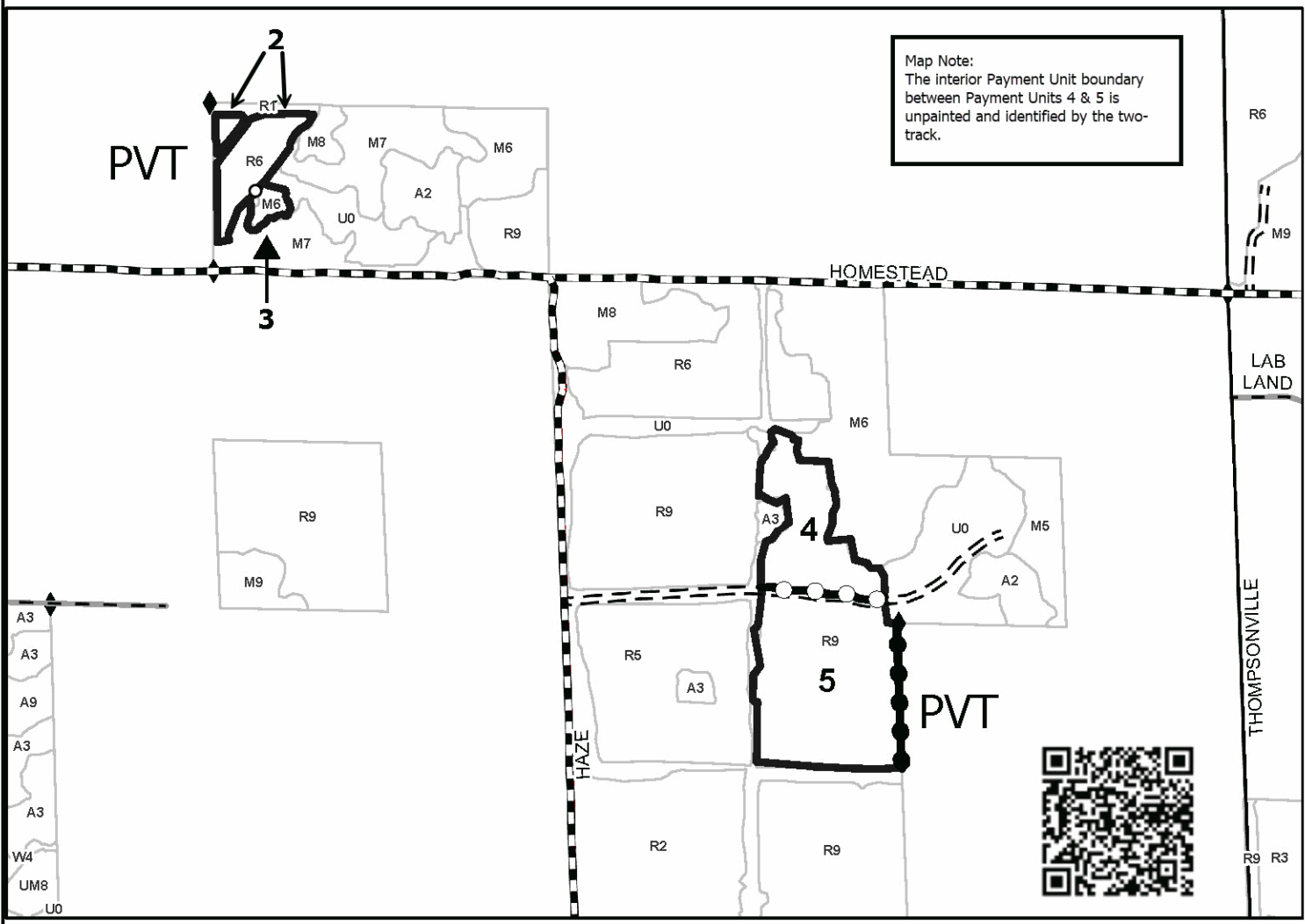
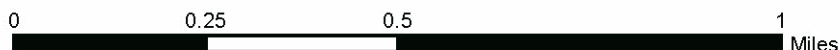
Legend

- Against State (Red)
- Stand
- Payment Unit (Red)
- Private Line (Blue)
- Paved Road
- Gravel Road
- County Road - Seasonal
- Private Road
- Primary Forest Road
- Forest Access Route
- Administrative Access Only
- Paved Road
- Government Gravel/Dirt
- Private Gravel/Dirt
- Survey Corner

PU #	Acres
1	10.8
2	8.5
3	1.8
4	15.9
5	34.2

Rackin' Up Red Pine

71.2 Acres



TIMBER SALE INFORMATION

North Buckley Mix (61-031-24)

T25N, R11W, SEC. 28; T25N, R11W, SEC. 32; T25N, R11W, SEC. 33.
Grand Traverse County (Advertised Price \$98,368.15)

A timber sale contract for this lump sum, sealed bid timber sale will be awarded to the responsible bidder offering the highest sealed bid price. All units of volume listed below were estimated using the Inventory Manager computer program and the new Michigan taper model. Bids must be at or above the following advertised price for each product and species:

<u>PRODUCTS & SPECIES</u>	<u>ESTIMATED UNITS*</u>	<u>ADVERTISED PRICE</u>
Sawtimber		
Basswood	13.9 MBF	\$ 109.00 / MBF
Black Cherry	10.9 MBF	\$ 143.00 / MBF
Mixed Aspen	159.5 MBF	\$ 129.00 / MBF
Red Maple	16.5 MBF	\$ 121.00 / MBF
Red Pine	47.6 MBF	\$ 121.00 / MBF
Sugar Maple	16.8 MBF	\$ 285.00 / MBF
White Pine	15.7 MBF	\$ 80.00 / MBF
Pulpwood		
Balsam Fir	26 Cords	\$ 22.65 / Cord
Mixed Aspen	593 Cords	\$ 19.30 / Cord
Mixed Hardwood	393 Cords	\$ 19.25 / Cord
Red Pine	867 Cords	\$ 47.00 / Cord
White Pine	26 Cords	\$ 21.95 / Cord

* The total volume is statistically estimated within plus (+) or minus (-) 10.56 percent. There are an estimated 2,562 cords on this timber sale, plus or minus 271 cords at the 95% confidence level. The estimated units are final and not subject to adjustment. Prospective bidders are urged to examine this timber and to make their own estimates of quantity and quality.

BOND AND PAYMENT SCHEDULE:

1. A bond in the amount of \$4,918.00 to insure faithful performance of the conditions of the contract will be deposited by the successful bidder within 21 days of the sale award.
2. Cutting in any sale or unit without the required advance payment would be considered a trespass.
3. Total payment must be paid in advance or according to the following schedule :
 - (a) Ten percent (10%) of the sale value must be paid within 21 days of the sale award.
 - (b) The 10% down payment will be credited towards the first unit cut.
 - (c) Payment for each of the following units must be made before cutting begins in that unit:

PAYMENT UNIT NUMBER	PERCENT OF TOTAL SALE VALUE
01	16.7%
02	14.4%
03	15.3%
04	28.6%
05	18.7%
06	6.3%
4. If no cutting takes place, the 10% down payment will not be refunded.
5. Operations on the contract issued will terminate on 04/15/2027.

SALE STATISTICS

Volumes were calculated in cubic feet using the Michigan taper model. Cubic foot volume includes all wood inside bark for the product indicated. For display purposes, cubic feet were converted to cords and MBF using a simple conversion factor, e.g. 79 cubic feet per cord and 185 cubic feet per MBF. The cubic foot volumes are precise; the cords and MBF volumes are not. Cubic foot volume cannot be directly converted to cords or boards with precision.

SALE VOLUMES

The total estimated sale volume may not equal the sum of the species/products due to the nature of statistical calculations associated with double sampling methodology.

VOLUME			STATISTICAL RANGE IN CORDS	
TOTAL CUBIC FEET	TOTAL CORDS	PERCENT ERROR	MINIMUM	MAXIMUM
202,407	2,562	10.56%	2,291	2,833

VDU VOLUMES

A VDU is a Volume Determination Unit. Volumes and their associated statistics are calculated at the VDU level and summarized to the sale level. There is often a one to one relationship between a VDU and a Payment Unit, but not always, depending on the cruise design. Refer to the VDU TO PAYMENT UNIT table.

	VOLUME			RANGE IN CORDS	
VDU	TOTAL CUBIC FEET	TOTAL CORDS	PERCENT ERROR	MINIMUM	MAXIMUM
17	46,262	586	23.11%	450	721
28	26,808	339	43.08%	193	486
30	38,467	487	24.46%	368	606
47	13,590	172	48.29%	89	255
145	77,281	978	13.57%	845	1,111
TOTAL:	202,407	2,562		1,946	3,179

VDU TO PAYMENT UNIT

When a VDU is associated with more than one Payment Unit (PU), the VDU volumes are assigned to the PU based on acres of the VDU within the PU.

VDU	VDU ACRES	PU	PU ACRES
17	22.7	1	22.7
28	7.4	2	7.4
30	11.5	3	11.5
47	9.9	6	9.9
145	30.8	4	18.6
		5	12.2
TOTAL:	82.3		82.3

DESCRIPTION OF TIMBER BY PAYMENT UNIT (PU)

PU	MARKET GROUP	PRODUCT	QUANTITY	UNIT	ACRES	ADVERTISE PRICE	
1	Black Cherry	Sawtimber	8.4	MBF	22.7	\$16,446.55	
	Mixed Aspen		41.8	MBF			
	<i>Quaking Aspen</i>		41.8	<i>MBF</i>			
	Red Maple		8.2	MBF			
	White Pine		2.3	MBF			
	Balsam Fir		Pulpwood	22			Cords
	Mixed Aspen			293			Cords
	<i>Quaking Aspen</i>			293			<i>Cords</i>
	Mixed Hardwood			114			Cords
	<i>Beech</i>			3			<i>Cords</i>
	<i>Black Cherry</i>			40			<i>Cords</i>
	<i>Paper Birch</i>			10			<i>Cords</i>
	<i>Red Maple</i>			61			<i>Cords</i>
	White Pine		15	Cords			
2	Mixed Aspen	Sawtimber	53.2	MBF	7.4	\$14,203.00	
	<i>B. T. Aspen</i>		53.2	<i>MBF</i>			
	Red Maple		4.0	MBF			
	Sugar Maple		10.0	MBF			
	White Pine		13.4	MBF			
	Balsam Fir		Pulpwood	4			Cords
	Mixed Aspen			68			Cords
	<i>B. T. Aspen</i>			68			<i>Cords</i>
	Mixed Hardwood			67			Cords
	<i>Red Maple</i>			39			<i>Cords</i>
	<i>Sugar Maple</i>			28			<i>Cords</i>
White Pine	11	Cords					
3	Mixed Aspen	Sawtimber	63.5	MBF	11.5	\$15,037.30	
	<i>B. T. Aspen</i>		63.5	<i>MBF</i>			
	Red Maple		4.3	MBF			
	Mixed Aspen		Pulpwood	230			Cords
	<i>B. T. Aspen</i>			230			<i>Cords</i>
	Mixed Hardwood			98			Cords
	<i>Paper Birch</i>			5			<i>Cords</i>
	<i>Red Maple</i>			87			<i>Cords</i>
<i>Sugar Maple</i>	6	<i>Cords</i>					
4	Red Pine	Sawtimber	28.7	MBF	18.6	\$28,100.70	
	Red Pine	Pulpwood	524	Cords			
5	Red Pine	Sawtimber	18.9	MBF	12.2	\$18,407.90	
	Red Pine	Pulpwood	343	Cords			
6	Basswood	Sawtimber	13.9	MBF	9.9	\$6,172.70	
	Black Cherry		2.5	MBF			
	Mixed Aspen		1.0	MBF			
	<i>B. T. Aspen</i>		1.0	<i>MBF</i>			
	Sugar Maple		6.8	MBF			
	Mixed Aspen		Pulpwood	2			Cords
	<i>B. T. Aspen</i>			2			<i>Cords</i>
	Mixed Hardwood			114			Cords
	<i>Basswood</i>			16			<i>Cords</i>
	<i>Black Cherry</i>			6			<i>Cords</i>
<i>Sugar Maple</i>	92	<i>Cords</i>					
TOTAL:			280.9	MBF			
TOTAL:			1,905	Cords			

Sale Specific Conditions & Requirements

Sale Name: North Buckley Mix

Sale Number: 61-031-24 Seq#: 1

1 - Sale Area

1.2 - Boundaries

1.2.1 - Painted boundaries (9/19)

The sale boundary and Payment Unit boundaries are marked and identified by blue, red and yellow paint. Exterior sale boundary lines against private property are marked with blue paint. Exterior sale boundary lines against state are marked with red paint. Interior Payment Unit boundaries are marked with yellow paint. Retention patches are marked with red paint; no harvesting activities may occur within these areas. The painted boundary line trees are not Included Timber and are to be protected unless marked with orange paint. Yellow painted trees designating an interior Payment Unit boundary are only to be cut when all surrounding Payment Units have been paid.

2 - Timber Specifications

2.1 - Included Timber

2.1.1 - Clearcut unit(s) with unmerchantable trees (6/14)

Within Payment Unit(s) 1 and 2, cut all trees that are two (2) inches or more at DBH, except do not cut any cedar or hemlock trees. In addition, do not cut any green or blue marked trees.

2.1.2 - Clearcut unit(s) w/o unmerchantable trees (8/11)

Within Payment Unit(s) 3, cut all trees which meet minimum piece specifications in 2.2 Utilization, except do not cut any coniferous trees or blue marked trees.

2.1.3 - Cut tree marked unit(s) (12/08)

Within Payment Unit(s) 6, all trees are designated for cutting when marked with orange paint above and below stump height, regardless of merchantability. In addition, cut all ironwood, regardless of merchantability.

2.1.8 - Designated plantation row unit(s) (12/08)

Within Payment Unit(s) 4 and 5, all trees which meet minimum piece specifications in 2.2 Utilization, within designated plantation rows are designated for cutting. Designated plantation rows follow a take two, leave four pattern. Because of the variability of row direction, it shall be the responsibility of the Purchaser to maintain the take two leave four sequence.

2.2 - Utilization

2.2.6 - Roundwood operation required (3/21)

The skidding of whole trees or tree segments with limbs attached is prohibited within Payment Unit(s) 4-6. All products must be produced as roundwood and forwarded to existing roads or landing areas in final product length.

4 - Transportation

4.1 - Construction

4.1.12 - No new roads (1/12)

No new roads will be permitted in any Payment Unit. All operations are limited to existing roads. Skid trails only will be allowed. Driveways will be needed in Payment Units 3-5 with enough access to get log trucks off main county roads.

4.2 - Maintenance

4.2.5 - Two wheel drive condition (2/04)

All existing trail roads on and adjacent to the sale area must be passable by two-wheel drive traffic for the duration of the sale.

5 - Operations

5.1 - Notification

5.1.1 - Pre-sale conference (10/16)

A pre-sale conference on site between the Purchaser and sale administrator is required prior to beginning any operations to determine landing and road locations. The Unit Manager or his/her representative must be contacted at least 3 days in advance to schedule the conference.

5.1.3 - Well heads and natural gas pipelines (11/15)

The Purchaser is responsible for contacting the gas/pipeline company 30 days prior to operating equipment in the vicinity of well heads or natural gas pipelines. This spec only applies to Payment Units 1 and 2. The name and phone number for company can be found on the well site itself along north end of Payment Unit 1.

5.2 - Conduct of Operations

5.2.3 - Operating Restrictions

5.2.3.3 - Bark slippage restriction (3/09)

Within Payment Unit(s) 4-6, unless changed by written agreement, cutting and skidding are not permitted during the period of April 15 to July 15. This restriction is because of bark slippage.

5.2.20 - Equipment width (2/04)

Equipment used to remove designated rows must be capable of moving through cut rows without damaging residual trees. This applies to Payment Units 4 and 5.

6 - Safety and Fire Prevention

6.2 - Signing

6.2.1 - Road posting (10/20)

The Purchaser is responsible for posting and maintaining caution signs on access roads near landings prior to beginning operations. The road must be posted at appropriate distances from the Sale Area to warn of logging activity and truck traffic. Signs must be removed when harvest operations are suspended or completed. The Purchaser will provide these signs.



TIMBER SALE MAP

This information provided by authority of Part 525, 1994 PA 451, as amended.

Sale Number
61-031-24

Date
06/25/2024

Forest Management Unit	County	Mapped By: Ventimiglia
Traverse City Mgt Unit	Grand Traverse	Cruised By: Ventimiglia

Scale	Page	Of
1:15,840	1	2

Township	Range	Section(s) and Subdivision(s)
25N	11W	Sec. 28 N1/2NW,SESW; Sec. 32 S1/2SE; Sec. 33 SWSW;

Cover Type

A = Aspen	J = Jack Pine	O = Oak	U = Upland Brush
B = Paper Birch	K = Rock	P = Lowland Poplar	UM = Upland Mix Forest
C = Cedar	L = Lowland Brush	Q = Mixed Swamp Conifer	V = Bog or Marsh
D = Treed Bog	LM = Lowland Mix Forest	R = Red Pine	W = White Pine
E = Swamp Hardwoods	M = Maple, Beech, Birch	S = Black Spruce	X = Non Stocked
F = Spruce/Fir	MC = Mixed Conifer	T = Tamarack	Y = Sand
G = Grass	MD = Mixed Deciduous	Z = Water	
H = Hemlock	N = Marsh		

Density

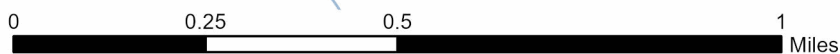
0 = Non Stocked	5 = Pole Timber Medium
1 = Seedling Sapling Poor	6 = Pole Timber Well
2 = Seedling Sapling Medium	7 = Saw Timber Poor
3 = Seedling Sapling Well	8 = Saw Timber Medium
4 = Pole Timber Poor	9 = Saw Timber Well

PU #	Acres	PU #	Acres
1	22.7	4	18.6
2	7.4	5	12.2
3	11.5	6	9.9



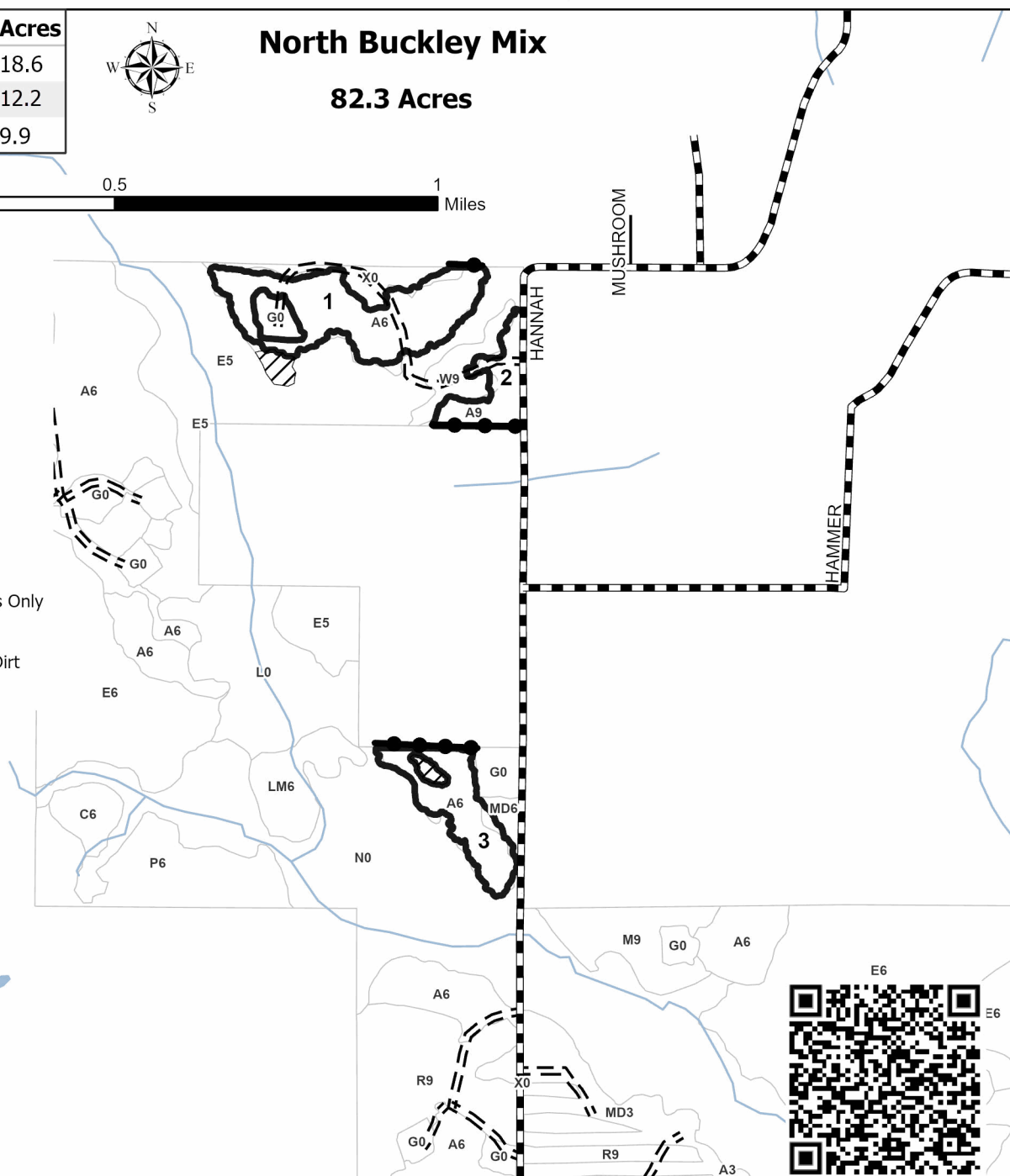
North Buckley Mix

82.3 Acres



Legend

- Sale Boundary(Red)
- Stand
- Retention Area(Red)
- Private Line (Blue)
- Paved Road
- Gravel Road
- Private Road
- Perennial River
- Primary Forest Road
- Forest Access Route
- Administrative Access Only
- Paved Road
- Government Gravel/Dirt
- Private Gravel/Dirt





TIMBER SALE MAP

This information provided by authority of Part 525, 1994 PA 451, as amended.

Sale Number
61-031-24

Date
07/08/2024

Forest Management Unit	County	Mapped By: Ventimiglia	Scale	Page	Of
Traverse City Mgt Unit	Grand Traverse	Cruised By: Ventimiglia	1:15,840	2	2

Township	Range	Section(s) and Subdivision(s)
25N	11W	Sec. 28 N1/2NW,SESW; Sec. 32 S1/2SE; Sec. 33 SWSW;

Cover Type			
A = Aspen	J = Jack Pine	O = Oak	U = Upland Brush
B = Paper Birch	K = Rock	P = Lowland Poplar	UM = Upland Mix Forest
C = Cedar	L = Lowland Brush	Q = Mixed Swamp Conifer	V = Bog or Marsh
D = Treed Bog	LM = Lowland Mix Forest	R = Red Pine	W = White Pine
E = Swamp Hardwoods	M = Maple, Beech, Birch	S = Black Spruce	X = Non Stocked
F = Spruce/Fir	MC = Mixed Conifer	T = Tamarack	Y = Sand
G = Grass	MD = Mixed Deciduous	Z = Water	
H = Hemlock	N = Marsh		

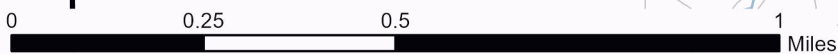
Density	
0 = Non Stocked	5 = Pole Timber Medium
1 = Seedling Sapling Poor	6 = Pole Timber Well
2 = Seedling Sapling Medium	7 = Saw Timber Poor
3 = Seedling Sapling Well	8 = Saw Timber Medium
4 = Pole Timber Poor	9 = Saw Timber Well

PU #	Acres	PU #	Acres
1	22.7	4	18.6
2	7.4	5	12.2
3	11.5	6	9.9



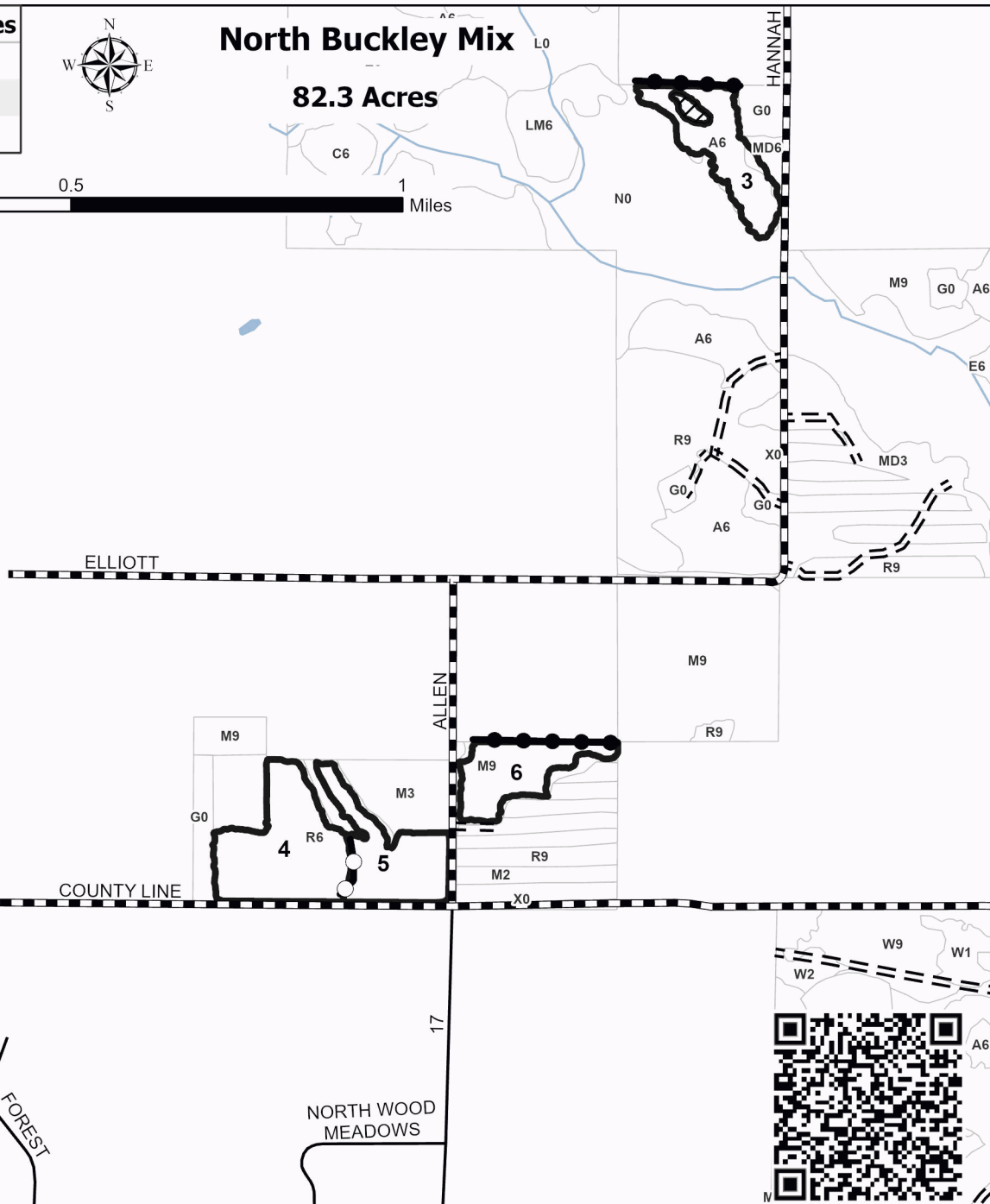
North Buckley Mix

82.3 Acres



Legend

- Sale Boundary (Red)
- Stand
- Retention Area (Red)
- Payment Unit (Yellow)
- Private Line (Blue)
- Paved Road
- Gravel Road
- Highway
- Perennial River
- Primary Forest Road
- Forest Access Route
- Administrative Access Only
- Paved Road
- Government Gravel/Dirt
- Private Gravel/Dirt



1960 Red Pine (61-028-24)
T25N, R11W, SEC. 35; Grand Traverse COUNTY

In response to the notice of sale to be held 4:00 p.m. (local time) on September 19, 2024, I am hereby submitting my sealed bid (firm offer) for the following forest products to be cut. Bids for individual species must be at or above the advertised price. All non-responsive bid forms may be rejected.

<u>PRODUCTS & SPECIES</u>	<u>ESTIMATED VOLUME*</u>	<u>ADVERTISED PRICE</u>	<u>BID PRICE/UNIT</u>
Sawtimber			
Beech	3.8 MBF	\$ 155.00/MBF	\$ _____
Black Cherry	12.8 MBF	\$ 154.00/MBF	\$ _____
Red Maple	51.4 MBF	\$ 130.00/MBF	\$ _____
Red Pine	651.3 MBF	\$ 130.00/MBF	\$ _____
Sugar Maple	109.5 MBF	\$ 305.00/MBF	\$ _____
White Pine	17.0 MBF	\$ 86.00/MBF	\$ _____
Pulpwood			
Mixed Hardwood	552 Cords	\$ 20.65/Cord	\$ _____
Red Pine	1,956 Cords	\$ 50.35/Cord	\$ _____
White Pine	8 Cords	\$ 23.50/Cord	\$ _____

*The volumes are statistically estimated within plus (+) or minus (-) 13.42 percent at 95% confidence level. These estimated volumes are final and not subject to adjustment. Prospective bidders are urged to examine this timber and to make their own estimates of quantity and quality.

I understand that any or all bids may be rejected. All bids must be signed and all bid items must be bid or the bid form may be rejected. I also understand that consideration and awarding a contract will be based upon my past performance and ability to complete the contract based upon equipment and staffing subject to my control.

FEDERAL ID: ____ - ____ - ____ or SOCIAL SECURITY NUMBER: ____ - ____ - ____

Company or individual bidding: _____

Company representative's name: _____

Address: _____

City: _____ State: _____ Zip: _____

IF AVAILABLE, PLEASE PLACE THE PERSONALIZED LABEL FROM YOUR PROSPECTUS IN THE ABOVE BOX.

Individual or company representative's signature: _____ Date: _____

Phone number : _____ Email (optional): _____

THE WINNING BIDDER MUST COMPLETE THE VERIFICATION OF WORKER'S DISABILITY COMPENSATION ACT COMPLIANCE (ON REVERSE SIDE IF DOUBLE SIDED) WITHIN 21 DAYS OF SALE AWARD DATE



FOR DEPARTMENT USE ONLY	
Sale Number (XX - XXX - XX - XX)	
Forest Management Unit:	

TIMBER SALE VERIFICATION OF WORKER'S DISABILITY COMPENSATION ACT COMPLIANCE

As required by Act 317, P.A. 1969 (Worker's Compensation) and
Part 5 of Act 451 of 1994, as amended.

VERIFICATION OF WORKER'S DISABILITY COMPENSATION ACT COMPLIANCE

- This verification must be completed and submitted within 21 days of contract award and prior to the issuance of the timber sale contract.
- In addition, if boxes 2B or 2C are checked, then Notice of Exclusion or Certificate of Insurance must be submitted within twenty-one (21) days of the contract award and prior to the issuance of the timber sale contract.
- All information must be typed or printed except for written signatures.

Please Check Appropriate Categories:

1. My business is organized as (you **must** check one of the boxes below):
 - A. Sole Proprietorship (individual)
 - B. Partnership
 - C. Corporation
2. You **must** check one of the boxes below:
 - A. I certify my business is a sole proprietorship and it has no employees but the sole proprietor. I am not subject to the Worker's Compensation Laws.
 - B. I certify my business has satisfied its obligation to the Worker's Compensation Act through the use of an approved Notice of Exclusion (BWC-337, Rev. 5/96). I will provide a copy of the Notice of Exclusion within 21 days of the contract award. (For questions or a copy of the BWC-337, please call the Worker's Compensation Bureau at 517-322-1195).
 - C. I certify my business has a Worker's Compensation Policy. I will provide an original Certificate of Insurance within twenty-one (21) days of the contract award.
3. If you have checked item 2(A) or 2(B), you **must** indicate the number of **both** full-time and part-time employees, other than yourself, including family members and active partners (if none, you must enter "0").

_____ Full-time Employees

_____ Part-time Employees

Name of Business		Federal ID (or) Social Security No.	
Address		Telephone ()	
City	State	ZIP	

I hereby certify that the above information is true and correct. I agree to notify the Michigan DNR of any changes that occur in factors affecting my coverage during any of my present and future operations.

Signature of Owner or Authorized Representative

Title

Date

Please complete the "SEALED BID" information on the next page

Rackin' Up Red Pine (61-030-24)

T26N, R14W, SEC. 26; T26N, R14W, SEC. 32; T26N, R14W, SEC. 36; Benzie

In response to the notice of sale to be held 4:00 p.m. (local time) on September 19, 2024, I am hereby submitting my sealed bid (firm offer) for the following forest products to be cut. Bids for individual species must be at or above the advertised price. All non-responsive bid forms may be rejected.

<u>PRODUCTS & SPECIES</u>	<u>ESTIMATED VOLUME*</u>	<u>ADVERTISED PRICE</u>	<u>BID PRICE/UNIT</u>
Sawtimber			
Black Cherry	7.3 MBF	\$ 154.00/MBF	\$ _____
Red Maple	11.8 MBF	\$ 130.00/MBF	\$ _____
Red Pine	333.1 MBF	\$ 130.00/MBF	\$ _____
Sugar Maple	5.5 MBF	\$ 305.00/MBF	\$ _____
White Pine	2.7 MBF	\$ 86.00/MBF	\$ _____
Pulpwood			
Mixed Hardwood	75 Cords	\$ 20.65/Cord	\$ _____
Red Pine	2,044 Cords	\$ 50.35/Cord	\$ _____
White Pine	14 Cords	\$ 23.50/Cord	\$ _____

*The volumes are statistically estimated within plus (+) or minus (-) 10.36 percent at 95% confidence level. These estimated volumes are final and not subject to adjustment. Prospective bidders are urged to examine this timber and to make their own estimates of quantity and quality.

I understand that any or all bids may be rejected. All bids must be signed and all bid items must be bid or the bid form may be rejected. I also understand that consideration and awarding a contract will be based upon my past performance and ability to complete the contract based upon equipment and staffing subject to my control.

FEDERAL ID: ____ - ____ - ____ or SOCIAL SECURITY NUMBER: ____ - ____ - ____

Company or individual bidding: _____

Company representative's name: _____

Address: _____

City: _____ State: _____ Zip: _____

IF AVAILABLE, PLEASE PLACE THE PERSONALIZED LABEL FROM YOUR PROSPECTUS IN THE ABOVE BOX.

Individual or company representative's signature: _____ Date: _____

Phone number : _____ Email (optional): _____

THE WINNING BIDDER MUST COMPLETE THE VERIFICATION OF WORKER'S DISABILITY COMPENSATION ACT COMPLIANCE (ON REVERSE SIDE IF DOUBLE SIDED) WITHIN 21 DAYS OF SALE AWARD DATE



FOR DEPARTMENT USE ONLY	
Sale Number (XX - XXX - XX - XX)	
Forest Management Unit:	

TIMBER SALE VERIFICATION OF WORKER'S DISABILITY COMPENSATION ACT COMPLIANCE

As required by Act 317, P.A. 1969 (Worker's Compensation) and
Part 5 of Act 451 of 1994, as amended.

VERIFICATION OF WORKER'S DISABILITY COMPENSATION ACT COMPLIANCE

- This verification must be completed and submitted within 21 days of contract award and prior to the issuance of the timber sale contract.
- In addition, if boxes 2B or 2C are checked, then Notice of Exclusion or Certificate of Insurance must be submitted within twenty-one (21) days of the contract award and prior to the issuance of the timber sale contract.
- All information must be typed or printed except for written signatures.

Please Check Appropriate Categories:

1. My business is organized as (you **must** check one of the boxes below):
 - A. Sole Proprietorship (individual)
 - B. Partnership
 - C. Corporation
2. You **must** check one of the boxes below:
 - A. I certify my business is a sole proprietorship and it has no employees but the sole proprietor. I am not subject to the Worker's Compensation Laws.
 - B. I certify my business has satisfied its obligation to the Worker's Compensation Act through the use of an approved Notice of Exclusion (BWC-337, Rev. 5/96). I will provide a copy of the Notice of Exclusion within 21 days of the contract award. (For questions or a copy of the BWC-337, please call the Worker's Compensation Bureau at 517-322-1195).
 - C. I certify my business has a Worker's Compensation Policy. I will provide an original Certificate of Insurance within twenty-one (21) days of the contract award.
3. If you have checked item 2(A) or 2(B), you **must** indicate the number of **both** full-time and part-time employees, other than yourself, including family members and active partners (if none, you must enter "0").

_____ Full-time Employees

_____ Part-time Employees

Name of Business		Federal ID (or) Social Security No.	
Address		Telephone ()	
City	State	ZIP	

I hereby certify that the above information is true and correct. I agree to notify the Michigan DNR of any changes that occur in factors affecting my coverage during any of my present and future operations.

Signature of Owner or Authorized Representative

Title

Date

Please complete the "SEALED BID" information on the next page

North Buckley Mix (61-031-24)

T25N, R11W, SEC. 28; T25N, R11W, SEC. 32; T25N, R11W, SEC. 33; Grand

In response to the notice of sale to be held 4:00 p.m. (local time) on September 19, 2024, I am hereby submitting my sealed bid (firm offer) for the following forest products to be cut. Bids for individual species must be at or above the advertised price. All non-responsive bid forms may be rejected.

<u>PRODUCTS & SPECIES</u>	<u>ESTIMATED VOLUME*</u>	<u>ADVERTISED PRICE</u>	<u>BID PRICE/UNIT</u>
Sawtimber			
Basswood	13.9 MBF	\$ 109.00/MBF	\$ _____
Black Cherry	10.9 MBF	\$ 143.00/MBF	\$ _____
Mixed Aspen	159.5 MBF	\$ 129.00/MBF	\$ _____
Red Maple	16.5 MBF	\$ 121.00/MBF	\$ _____
Red Pine	47.6 MBF	\$ 121.00/MBF	\$ _____
Sugar Maple	16.8 MBF	\$ 285.00/MBF	\$ _____
White Pine	15.7 MBF	\$ 80.00/MBF	\$ _____
Pulpwood			
Balsam Fir	26 Cords	\$ 22.65/Cord	\$ _____
Mixed Aspen	593 Cords	\$ 19.30/Cord	\$ _____
Mixed Hardwood	393 Cords	\$ 19.25/Cord	\$ _____
Red Pine	867 Cords	\$ 47.00/Cord	\$ _____
White Pine	26 Cords	\$ 21.95/Cord	\$ _____

*The volumes are statistically estimated within plus (+) or minus (-) 10.56 percent at 95% confidence level. These estimated volumes are final and not subject to adjustment. Prospective bidders are urged to examine this timber and to make their own estimates of quantity and quality.

I understand that any or all bids may be rejected. All bids must be signed and all bid items must be bid or the bid form may be rejected. I also understand that consideration and awarding a contract will be based upon my past performance and ability to complete the contract based upon equipment and staffing subject to my control.

FEDERAL ID: ____ - ____ - ____ or SOCIAL SECURITY NUMBER: ____ - ____ - ____

Company or individual bidding: _____

Company representative's name: _____

Address: _____

City: _____ State: _____ Zip: _____

IF AVAILABLE, PLEASE PLACE THE PERSONALIZED LABEL FROM YOUR PROSPECTUS IN THE ABOVE BOX.

Individual or company representative's signature: _____ Date: _____

Phone number : _____ Email (optional): _____

THE WINNING BIDDER MUST COMPLETE THE VERIFICATION OF WORKER'S DISABILITY COMPENSATION ACT COMPLIANCE (ON REVERSE SIDE IF DOUBLE SIDED) WITHIN 21 DAYS OF SALE AWARD DATE



FOR DEPARTMENT USE ONLY
Sale Number (XX - XXX - XX - XX)
Forest Management Unit:

TIMBER SALE VERIFICATION OF WORKER'S DISABILITY COMPENSATION ACT COMPLIANCE

*As required by Act 317, P.A. 1969 (Worker's Compensation) and
Part 5 of Act 451 of 1994, as amended.*

VERIFICATION OF WORKER'S DISABILITY COMPENSATION ACT COMPLIANCE

- This verification must be completed and submitted within 21 days of contract award and prior to the issuance of the timber sale contract.
- In addition, if boxes 2B or 2C are checked, then Notice of Exclusion or Certificate of Insurance must be submitted within twenty-one (21) days of the contract award and prior to the issuance of the timber sale contract.
- All information must be typed or printed except for written signatures.

Please Check Appropriate Categories:

1. My business is organized as (you **must** check one of the boxes below):
 - A. Sole Proprietorship (individual)
 - B. Partnership
 - C. Corporation
2. You **must** check one of the boxes below:
 - A. I certify my business is a sole proprietorship and it has no employees but the sole proprietor. I am not subject to the Worker's Compensation Laws.
 - B. I certify my business has satisfied its obligation to the Worker's Compensation Act through the use of an approved Notice of Exclusion (BWC-337, Rev. 5/96). I will provide a copy of the Notice of Exclusion within 21 days of the contract award. (For questions or a copy of the BWC-337, please call the Worker's Compensation Bureau at 517-322-1195).
 - C. I certify my business has a Worker's Compensation Policy. I will provide an original Certificate of Insurance within twenty-one (21) days of the contract award.
3. If you have checked item 2(A) or 2(B), you **must** indicate the number of **both** full-time and part-time employees, other than yourself, including family members and active partners (if none, you must enter "0").

_____ Full-time Employees

_____ Part-time Employees

Name of Business		Federal ID (or) Social Security No.	
Address		Telephone ()	
City	State	ZIP	

I hereby certify that the above information is true and correct. I agree to notify the Michigan DNR of any changes that occur in factors affecting my coverage during any of my present and future operations.

Signature of Owner or Authorized Representative

Title

Date

Please complete the "SEALED BID" information on the next page