



**DEPARTMENT OF NATURAL RESOURCES  
STATE OF MICHIGAN  
TIMBER SALE PROSPECTUS #7380**

SCHEDULED SALE DATE AND TIME: 10:00 a.m. (local time) on March 12, 2024.

LOCATION: ATLANTA MGMT UNIT, 13501 M 33, ATLANTA, MI 49709.

PROSPECTUS NOTE: The bidder is advised to inspect the sale area and review the location, estimated volumes, operating costs and contract terms of proposed sales. Please be aware that some landowners may request 60 days or more notice for access across their land.

Notice is hereby given that bids will be received by the Unit Manager, ATLANTA MANAGEMENT UNIT, for certain timber on the following described lands:

Balder Baldy Aspen (54-012-23) / T31N, R01E, SEC. 20, SESE.

T31N, R01E, SEC. 21, NW,N1/2NE,SWNE,NESW,S1/2SW.

T31N, R01E, SEC. 21, NWSE,S1/2SE.

T31N, R01E, SEC. 22, NWNW.

T31N, R01E, SEC. 28, NWNW,SENE,NE,NESW,N1/2SE.

Montmorency County, Advertised Price \$142,919.85, 205.4 Acres, Aspen, Hardwood.

SALE NOTE: Oak wilt restrictions. Seasonal operating restrictions in Payment Units 5, 6, & 9-11.

Up Down Aspen (54-024-23) / T29N, R03E, SEC. 20, E1/2SE.

T29N, R03E, SEC. 21, SENW,SW,W1/2SE.

Montmorency County, Advertised Price \$161,489.15, 94.7 Acres, Aspen, Hardwood.

SALE NOTE: Very good access into Payment Units 1-3. Operations in Payment Unit 4 are restricted to very cold or dry conditions due to soft ground. Minimal road work will be needed to access Payment Unit 4. Some areas within Payment Unit 4 may need to be matted with slash and/or treetops during operation. No recreational sites present. Soft Oak wilt restrictions within Payment Units 1 & 2. No chipping of oak and hardwood tops; these will be required to be placed over cut hardwood (sugar maple and oak) stumps. Some steep slopes present within portions of Payment Units 1 & 2.

C25 Aspen Mix SBW (54-029-23) / T29N, R03E, SEC. 5, E1/2NW,NWNE.

T30N, R03E, SEC. 19, SE.

T30N, R03E, SEC. 32, SESW,S1/2SE.

Montmorency County, Advertised Price \$85,871.60, 92.5 Acres, Aspen, Spruce/Fir/Tamarack.

SALE NOTE: A recreation site such as a trail, pathway, or campground is within the sale area or the vicinity. Certain restrictions/specifications may be applicable including time restrictions.

Brand O Mix (54-031-23) / T37N, R01E, SEC. 5, SWSW.

T37N, R01E, SEC. 7, NENE.

T37N, R01E, SEC. 8, NW,W1/2NE,NWSE.

Cheboygan County, Advertised Price \$124,835.15, 101.7 Acres, Aspen, Hardwood.

SALE NOTE: A recreation site such as a trail, pathway, or campground is within the sale area or the vicinity. Certain restrictions/specifications may be applicable including time restrictions.

C128 Southwest (54-027-22) / T33N, R04E, SEC. 32, E1/2NW,SWNE,E1/2SW,W1/2SE.  
Presque Isle County, Advertised Price \$90,413.25, 80.0 Acres, Aspen, Hardwood.

## BID INSTRUCTIONS (VER. 10/10/2022):

### 1. Scheduled Bid Location, Date, and Time (2/11)

Bids must be received by the Unit Manager, ATLANTA OFFICE, 13501 M 33, ATLANTA, MI 49709, no later than 10:00 a.m. (local time) on March 12, 2024. For further information concerning this sale, contact Matt Foster at 989-619-5921 extension .

### 2. Bidder's Qualifications (10/22)

If all or part of a timber sale was prepared by a private contractor, the contractor and that contractor's company are not permitted to bid on the timber sale. A person must be 18 years of age or older to purchase timber. Permanent employees of the Department of Natural Resources or members of their immediate household may not bid. Former employees, in the permanent or seasonal class, may not bid until 3 months after the last day of active duty. Bids will not be accepted from individuals or companies appearing on the DNR/FRD No-Bid List. This list contains the names of purchasers who previously failed to execute a contract within 21-days or who have a history of poor performance.

### 3. Preparation of Sealed Bids (5/16)

Bid Forms may be completed online thru Michigan DNR Timber Sale Online Bidding (OLB) at [www.michigan.gov/timberbidding](http://www.michigan.gov/timberbidding) or by completing the hardcopy Bid Form found in the Timber Sale Prospectus . Hardcopy Bid Forms shall be manually signed in ink. Registration in OLB is considered your 'signature' for all bids submitted thru that system. Bid prices must be entered for each species and product in the Bid Price column for all material subject to bidding and all fill-in blanks must be completed. If erasures or other changes appear on the hardcopy Bid Form, each erasure or change must be initialed by the person signing the bid.

### 4. Submission of Sealed Bids (5/16)

Bid forms may be obtained from the Unit Manager or thru OLB. Bids may be submitted hardcopy or thru OLB. All hardcopy bids must be submitted on the bid form and in an envelope clearly identified as described in this section. NOTE: Only one bid form per bid envelope. Sealed bids must be submitted to the Unit office designated in the prospectus and must be submitted at or prior to the time established in the prospectus. The envelope should show on the outside (a) the sale name or number and (b) the date and time of bid opening, as shown in the prospectus. Bids received after the time specified in the sale prospectus are late bids and will be rejected.

It is possible for a bidder to submit multiple bids on a single sale. For example, a bid may be submitted hardcopy and a bid may be submitted thru OLB. Or, two bidders from the same company could both submit bids on the same sale. If this were to happen, the State would accept all bids received and award the contract accordingly. All bidding and contractual requirements would apply to all bids received.

### 5. Public Opening of Sealed Bids (7/16)

If conditions permit, the sealed bids will be publicly opened and posted at the time and place set in the prospectus.

If a bidder, present at a bid opening, has submitted bids on more than one sale, that bidder may withdraw their unopened bid envelopes or announce the withdrawal of their online bid after being declared the successful bidder on one sale.

### 6. Award of Contract (1/11)

Award of the contract will be made to the Bidder whose bid, conforming to the prospectus, is most advantageous to the State of Michigan on the basis of total value at rates bid for the estimated quantities. The State reserves the right to reject any bid or waive any minor irregularity in bids received. A written award mailed (or otherwise furnished) to the successful Bidder shall be deemed to result in a binding contract without further action by either party.

### 7. Down Payment (1/11)

The Bidder to whom award is made must make a down payment within 21 days of the sale award. The amount of the down payment will be calculated as shown in the Bond and Payment Schedule of this prospectus. Only cash may be used to meet this requirement.

### 8. Performance Security (1/11)

As guarantee of faithful performance, a cash bond, certificate of deposit, surety bond or irrevocable letter of credit (LOC) is required within 21 days of the sale award. The amount of the performance security is shown in the Bond and

Payment Schedule of this prospectus. If an LOC or surety is used, the coverage must extend for at least 6 months beyond the contract expiration.

#### 9. Worker's Compensation (10/22)

Purchaser shall obtain worker's compensation insurance to cover claims under Michigan's Worker's Disability Compensation Act of 1969 or similar employee benefit act of any other state applicable to an employee. Verification of Worker's Disability Compensation Act Compliance must be completed and submitted within 21 days of contract award and prior to the issuance of the timber sale contract. In addition, if applicable, Notice of Exclusion or Certificate of Insurance must also be submitted.

#### 10. Timber Sale Contract (10/22)

Additional conditions and requirements common to all timber sales are listed on the timber sale contract (R4031) and are available on line at [www.michigan.gov/timber](http://www.michigan.gov/timber). Contact the Unit Manager for additional information or a sample contract. Within 21 days of the date of the award letter, the bidder must sign the contract and provide the required down payment, performance security, and verification of worker's disability compensation. The down payment and performance security shall be in accordance with the provisions of the timber sale contract, in the sums stated in this prospectus. If these actions are not taken, then the Bidder, the Bidder's corporation, and the corporation's principals may not be permitted to bid on State timber sales for a period of 3 months after the first offense, 6 months after the second offense, and 1 year after the third offense. An offense will only be counted against the Bidder for 5 years. In addition, the Bidder certifies that if awarded this contract, the Bidder will complete the timber sale contract in accordance with its terms and any modifications thereof including requirements to purchase, cut, and remove the included timber by the expiration date.

Payment Unit values in the State Forest Timber Sale Contract are calculated based on the advertised value of the Payment Unit as a percentage of the total advertised value of the contract. The advertised value of each Payment Unit is given in the Description of Timber by Payment Unit table on the Timber Sale Information page. For example, if the value of Payment Unit 1 is advertised as \$1,500 and the total Timber Sale value is advertised as \$10,000, the contract price for Payment Unit 1 will be 15% of the total bid price ( $\$1,500/\$10,000 * 100$ ).

#### 11. Disclaimer of Estimates and Bidder's Warranty of Inspection (10/22)

Before submitting this bid, the Bidder is advised and cautioned to inspect the sale area, review the requirements of the sale contract, and take other steps as may be reasonably necessary to ascertain the location, estimated volumes, construction estimates, and operating costs of the proposed sale. Failure to do so will not relieve the Bidder from responsibility for completing the contract.

The Bidder warrants that this bid is submitted solely on the basis of the Bidder's examination and inspection of the quality and quantity of the timber offered for sale and the Bidder's opinion of the value thereof and the costs of recovery. No reliance should be placed on the State of Michigan's estimates of timber quality, quantity or costs of recovery. Bidder further acknowledges that the State of Michigan: (i) expressly disclaims any warranty of fitness of timber for any purpose; (ii) offers this timber as is without any warranty of quality (merchantability) or quantity and (iii) expressly disclaims any warranty as to the quantity or quality of timber sold.

#### 12. Certification and Chain-of-Custody (10/22)

Unless otherwise indicated in the contract under section 7 – Other Conditions of the Sale Specific Conditions & Requirements, the area encompassed by this timber sale is certified to the standards of the Forest Stewardship Council (FSC) - Certificate #SCS-FM/COC-00090N and the Sustainable Forestry Initiative (SFI) - Certificate #NSF-SFIS-5Y031-SF5. Forest products from this sale may be delivered to the mill as "FSC 100% and / or SFI certified" as long as the contractor hauling the forest products is chain-of-custody (COC) certified or covered under a COC certificate from the destination mill. The purchaser is responsible for maintaining COC after leaving the sale area.

#### 13. Good Neighbor Authority (GNA) Requirements (10/22)

If the name of this timber sales contains the acronym GNA, it is authorized by the Good Neighbor Authority (GNA) and covered by various agreements between the U.S. Forest Service and the State. The timber sale occurs on federal land and the following conditions apply:

GNA contracts on US Forest Service land will not be awarded to purchasers on the Federal list of excluded parties. The System for Award Management (SAM) will be checked for active excluded parties prior to award of contract. In

addition, the Bidder to whom award is made must complete an Assurance Regarding Felony Conviction or Tax Delinquent Status for Corporate Applicants (AD-3031).

14. Good Neighbor Authority (GNA) Requirements, con't (10/22)

Bidder certifies, by signing this bid form, that to the best of Bidder's knowledge that the following representations are accurate and complete.

- a. That the Bidder and its principals are not presently debarred, suspended, proposed for debarment, declared ineligible, or voluntary excluded from timber sales (covered transactions) by any Federal department or agency.
- b. That the Bidder and its principals have not within a 3-year period preceding this bid been convicted of or had a civil judgment rendered against them for commission of fraud or a criminal offense in connection with obtaining , attempting to obtain, or performing a public (Federal, State, or local) transaction or contract under a public transaction; violation of Federal or State antitrust statutes or commission of embezzlement, theft, forgery, bribery, falsification or destruction of records, making false statements, or receiving stolen property.
- c. That the Bidder and its principals are not presently indicted for or otherwise criminally or civilly charged by a governmental entity (Federal, State, or local) with commission of any of the offenses enumerated in paragraph b of this certification.
- d. That the Bidder and its principals have not within a 3-year period preceding this bid had one or more public transactions (Federal, State, or local) terminated for breach or default of a timber or forest product contract.

Bidders that cannot certify this requirement, in whole or in part, shall submit an explanation with their bid.

Scott Bowen  
Director



# TIMBER SALE INFORMATION

Balder Baldy Aspen (54-012-23)

T31N, R01E, SEC. 20; T31N, R01E, SEC. 21; T31N, R01E, SEC. 22; T31N, R01E, SEC. 28.

Montmorency County (Advertised Price \$142,919.85)

SALE NOTE: Oak wilt restrictions. Seasonal operating restrictions in Payment Units 5, 6, & 9- 11.

A timber sale contract for this lump sum, sealed bid timber sale will be awarded to the responsible bidder offering the highest sealed bid price. All units of volume listed below were estimated using the Inventory Manager computer program and the new Michigan taper model. Bids must be at or above the following advertised price for each product and species:

<u>PRODUCTS &amp; SPECIES</u>	<u>ESTIMATED UNITS*</u>	<u>ADVERTISED PRICE</u>
<b>Sawtimber</b>		
Black/Red (Hybrid) Oak	4.3 MBF	\$ 128.00 / MBF
Mixed Aspen	134.4 MBF	\$ 116.00 / MBF
Red Maple	22.7 MBF	\$ 81.00 / MBF
Red Oak	38.7 MBF	\$ 191.00 / MBF
Sugar Maple	17.7 MBF	\$ 314.00 / MBF
White Pine	41.9 MBF	\$ 133.00 / MBF
<b>Pulpwood</b>		
Balsam Fir	186 Cords	\$ 22.50 / Cord
Basswood	48 Cords	\$ 16.00 / Cord
Black Spruce	30 Cords	\$ 9.95 / Cord
Black/Red (Hybrid) Oak	130 Cords	\$ 29.45 / Cord
Mixed Aspen	2,486 Cords	\$ 26.30 / Cord
Mixed Hardwood	771 Cords	\$ 25.10 / Cord
Paper Birch	94 Cords	\$ 17.15 / Cord
Red Oak	207 Cords	\$ 29.45 / Cord
White Pine	170 Cords	\$ 28.80 / Cord

\* The total volume is statistically estimated within plus (+) or minus (-) 9.52 percent. There are an estimated 4,741 cords on this timber sale, plus or minus 452 cords at the 95% confidence level. The estimated units are final and not subject to adjustment. Prospective bidders are urged to examine this timber and to make their own estimates of quantity and quality.

**BOND AND PAYMENT SCHEDULE:**

1. A bond in the amount of \$7,146.00 to insure faithful performance of the conditions of the contract will be deposited by the successful bidder within 21 days of the sale award.
2. Cutting in any sale or unit without the required advance payment would be considered a trespass.
3. Total payment must be paid in advance or according to the following schedule :
  - (a) Ten percent (10%) of the sale value must be paid within 21 days of the sale award.
  - (b) The 10% down payment will be credited towards the first unit cut.

(c) Payment for each of the following units must be made before cutting begins in that unit:

PAYMENT UNIT NUMBER	PERCENT OF TOTAL SALE VALUE
01	3.6%
02	11.7%
03	9.4%
04	6.3%
05	13.2%
06	13.0%
07	11.3%
08	4.6%
09	9.2%
10	9.9%
11	7.8%

4. If no cutting takes place, the 10% down payment will not be refunded.
5. Operations on the contract issued will terminate on 06/30/2027.

**SALE STATISTICS**

Volumes were calculated in cubic feet using the Michigan taper model. Cubic foot volume includes all wood inside bark for the product indicated. For display purposes, cubic feet were converted to cords and MBF using a simple conversion factor, e.g. 79 cubic feet per cord and 185 cubic feet per MBF. The cubic foot volumes are precise; the cords and MBF volumes are not. Cubic foot volume cannot be directly converted to cords or boards with precision.

## SALE VOLUMES

The total estimated sale volume may not equal the sum of the species/products due to the nature of statistical calculations associated with double sampling methodology.

VOLUME			STATISTICAL RANGE IN CORDS	
TOTAL CUBIC FEET	TOTAL CORDS	PERCENT ERROR	MINIMUM	MAXIMUM
374,573	4,741	9.52%	4,290	5,193

## VDU VOLUMES

A VDU is a Volume Determination Unit. Volumes and their associated statistics are calculated at the VDU level and summarized to the sale level. There is often a one to one relationship between a VDU and a Payment Unit, but not always, depending on the cruise design. Refer to the VDU TO PAYMENT UNIT table.

	VOLUME			RANGE IN CORDS	
VDU	TOTAL CUBIC FEET	TOTAL CORDS	PERCENT ERROR	MINIMUM	MAXIMUM
1	102,105	1,292	21.64%	1,013	1,572
15	145,913	1,847	14.60%	1,577	2,117
19	87,513	1,108	17.47%	914	1,301
34	39,043	494	21.19%	389	599
<b>TOTAL:</b>	<b>374,573</b>	<b>4,741</b>		<b>3,894</b>	<b>5,589</b>

## VDU TO PAYMENT UNIT

When a VDU is associated with more than one Payment Unit (PU), the VDU volumes are assigned to the PU based on acres of the VDU within the PU.

VDU	VDU ACRES	PU	PU ACRES
1	57.5	1	8.2
		2	27.1
		3	7.5
		4	14.7
15	62.6	5	18.9
		6	18.5
		10	14.1
		11	11.1
		19	67.7
19	67.7	7	34.5
		8	14.3
34	17.6	9	17.6
		<b>TOTAL:</b>	<b>205.4</b>



**DESCRIPTION OF TIMBER BY PAYMENT UNIT (PU)**

PU	MARKET GROUP	PRODUCT	QUANTITY	UNIT	ACRES	ADVERTISE PRICE
1	Black/Red (Hybrid)	Sawtimber	0.3	MBF	8.2	\$5,082.10
	Mixed Aspen		1.5	MBF		
	<i>B. T. Aspen</i>		0.7	<i>MBF</i>		
	<i>Quaking Aspen</i>		0.8	<i>MBF</i>		
	Red Maple		2.2	MBF		
	Red Oak		0.2	MBF		
	White Pine		5.5	MBF		
	Balsam Fir	Pulpwood	21	Cords		
	<i>Balsam Fir</i>	<i>Sawtimber</i>	0.5	<i>MBF</i>		
	<i>Balsam Fir</i>	<i>Pulpwood</i>	20	<i>Cords</i>		
	Black Spruce		4	Cords		
	Black/Red (Hybrid)		1	Cords		
	Mixed Aspen		75	Cords		
	<i>B. T. Aspen</i>		11	<i>Cords</i>		
	<i>Quaking Aspen</i>		64	<i>Cords</i>		
	Mixed Hardwood		26	Cords		
	<i>Black Cherry</i>		2	<i>Cords</i>		
	<i>Red Maple</i>		24	<i>Cords</i>		
	Paper Birch		2	Cords		
	<i>Paper Birch</i>	<i>Sawtimber</i>	0.7	<i>MBF</i>		
	<i>Paper Birch</i>	<i>Pulpwood</i>	1	<i>Cords</i>		
	Red Oak		1	Cords		
	White Pine		24	Cords		
2	Black/Red (Hybrid)	Sawtimber	0.9	MBF	27.1	\$16,713.30
	Mixed Aspen		4.7	MBF		
	<i>B. T. Aspen</i>		2.2	<i>MBF</i>		
	<i>Quaking Aspen</i>		2.5	<i>MBF</i>		
	Red Maple		7.2	MBF		
	Red Oak		0.6	MBF		
	White Pine		18.0	MBF		
	Balsam Fir	Pulpwood	70	Cords		
	<i>Balsam Fir</i>	<i>Sawtimber</i>	1.8	<i>MBF</i>		
	<i>Balsam Fir</i>	<i>Pulpwood</i>	66	<i>Cords</i>		
	Black Spruce		14	Cords		
	Black/Red (Hybrid)		2	Cords		
	Mixed Aspen		248	Cords		
	<i>B. T. Aspen</i>		35	<i>Cords</i>		
	<i>Quaking Aspen</i>		213	<i>Cords</i>		
	Mixed Hardwood		86	Cords		
	<i>Black Cherry</i>		6	<i>Cords</i>		
	<i>Red Maple</i>		80	<i>Cords</i>		
	Paper Birch		10	Cords		
	<i>Paper Birch</i>	<i>Sawtimber</i>	2.4	<i>MBF</i>		
	<i>Paper Birch</i>	<i>Pulpwood</i>	5	<i>Cords</i>		
	Red Oak		4	Cords		
	White Pine		77	Cords		
3	Black/Red (Hybrid)	Sawtimber	0.3	MBF	26.4	\$13,436.90
	Mixed Aspen		2.9	MBF		
	<i>B. T. Aspen</i>		1.9	<i>MBF</i>		
	<i>Quaking Aspen</i>		1.0	<i>MBF</i>		
	Red Maple		2.0	MBF		
	Red Oak		3.4	MBF		
	White Pine		6.0	MBF		
	Balsam Fir	Pulpwood	20	Cords		
	<i>Balsam Fir</i>	<i>Sawtimber</i>	0.5	<i>MBF</i>		
	<i>Balsam Fir</i>	<i>Pulpwood</i>	19	<i>Cords</i>		

**DESCRIPTION OF TIMBER BY PAYMENT UNIT (PU), CON'T**

PU	MARKET GROUP	PRODUCT	QUANTITY	UNIT	ACRES	ADVERTISE PRICE			
3 con't	Black Spruce	Pulpwood	4	Cords					
	Black/Red (Hybrid		32	Cords					
	Mixed Aspen		231	Cords					
	<i>B. T. Aspen</i>		148	<i>Cords</i>					
	<i>Quaking Aspen</i>		83	<i>Cords</i>					
	Mixed Hardwood		91	Cords					
	<i>Beech</i>		6	<i>Cords</i>					
	<i>Black Cherry</i>		5	<i>Cords</i>					
	<i>Ironwood</i>		2	<i>Cords</i>					
	<i>Red Maple</i>		36	<i>Cords</i>					
	<i>Sugar Maple</i>		40	<i>Cords</i>					
	<i>White Ash</i>		2	<i>Cords</i>					
	Paper Birch		5	Cords					
	<i>Paper Birch</i>		0.7	<i>MBF</i>					
	<i>Paper Birch</i>		4	<i>Cords</i>					
	Red Oak	31	Cords						
White Pine	23	Cords							
4	Black/Red (Hybrid	Sawtimber	0.5	MBF	14.7	\$9,056.45			
	Mixed Aspen		2.6	MBF					
	<i>B. T. Aspen</i>		1.2	<i>MBF</i>					
	<i>Quaking Aspen</i>		1.4	<i>MBF</i>					
	Red Maple		3.9	MBF					
	Red Oak		0.3	MBF					
	White Pine		9.8	MBF					
	Balsam Fir		Pulpwood	38			Cords		
	<i>Balsam Fir</i>			0.9			<i>MBF</i>		
	<i>Balsam Fir</i>			36			<i>Cords</i>		
	Black Spruce		8	Cords					
	Black/Red (Hybrid		1	Cords					
	Mixed Aspen		134	Cords					
	<i>B. T. Aspen</i>		19	<i>Cords</i>					
	<i>Quaking Aspen</i>		115	<i>Cords</i>					
	Mixed Hardwood	46	Cords						
	<i>Black Cherry</i>	3	<i>Cords</i>						
	<i>Red Maple</i>	43	<i>Cords</i>						
	Paper Birch	6	Cords						
	<i>Paper Birch</i>	1.3	<i>MBF</i>						
	<i>Paper Birch</i>	3	<i>Cords</i>						
	Red Oak	2	Cords						
	White Pine	42	Cords						
	5	Black/Red (Hybrid	Sawtimber	0.7			MBF	18.9	\$18,988.15
		Mixed Aspen		33.0			MBF		
		<i>B. T. Aspen</i>		33.0			<i>MBF</i>		
Red Maple		0.6		MBF					
Red Oak		6.6		MBF					
Sugar Maple		5.4		MBF					
Balsam Fir		Pulpwood		2	Cords				
<i>Balsam Fir</i>				2	<i>Cords</i>				
Basswood				14	Cords				
<i>Basswood</i>		0.8	<i>MBF</i>						
<i>Basswood</i>		12	<i>Cords</i>						
Black/Red (Hybrid		3	Cords						
Mixed Aspen		340	Cords						
<i>B. T. Aspen</i>		273	<i>Cords</i>						
<i>Quaking Aspen</i>		67	<i>Cords</i>						
Mixed Hardwood		72	Cords						

**DESCRIPTION OF TIMBER BY PAYMENT UNIT (PU), CON'T**

PU	MARKET GROUP	PRODUCT	QUANTITY	UNIT	ACRES	ADVERTISE PRICE			
5 con't	<i>Beech</i>	<i>Pulpwood</i>	2	<i>Cords</i>					
	<i>Black Cherry</i>		2	<i>Cords</i>					
	<i>Ironwood</i>		6	<i>Cords</i>					
	<i>Red Maple</i>		8	<i>Cords</i>					
	<i>Sugar Maple</i>		53	<i>Cords</i>					
	<i>White Ash</i>		1	<i>Cords</i>					
	Paper Birch		13	<i>Cords</i>					
	<i>Paper Birch</i>	<i>Sawtimber</i>	0.5	<i>MBF</i>					
	<i>Paper Birch</i>	<i>Pulpwood</i>	12	<i>Cords</i>					
	Red Oak		25	<i>Cords</i>					
6	Black/Red (Hybrid)	<i>Sawtimber</i>	0.7	<i>MBF</i>	18.5	\$18,537.45			
	Mixed Aspen		32.3	<i>MBF</i>					
	<i>B. T. Aspen</i>		32.3	<i>MBF</i>					
	Red Maple		0.6	<i>MBF</i>					
	Red Oak		6.4	<i>MBF</i>					
	Sugar Maple		5.2	<i>MBF</i>					
	Balsam Fir	<i>Pulpwood</i>	2	<i>Cords</i>					
	<i>Balsam Fir</i>		2	<i>Cords</i>					
	Basswood		15	<i>Cords</i>					
	<i>Basswood</i>	<i>Sawtimber</i>	0.8	<i>MBF</i>					
	<i>Basswood</i>	<i>Pulpwood</i>	13	<i>Cords</i>					
	Black/Red (Hybrid)		3	<i>Cords</i>					
	Mixed Aspen		333	<i>Cords</i>					
	<i>B. T. Aspen</i>		267	<i>Cords</i>					
	<i>Quaking Aspen</i>		66	<i>Cords</i>					
	Mixed Hardwood		68	<i>Cords</i>					
	<i>Beech</i>		1	<i>Cords</i>					
	<i>Black Cherry</i>		2	<i>Cords</i>					
	<i>Ironwood</i>		5	<i>Cords</i>					
	<i>Red Maple</i>		8	<i>Cords</i>					
	<i>Sugar Maple</i>		51	<i>Cords</i>					
	<i>White Ash</i>		1	<i>Cords</i>					
	Paper Birch		13	<i>Cords</i>					
	<i>Paper Birch</i>	<i>Sawtimber</i>	0.5	<i>MBF</i>					
	<i>Paper Birch</i>	<i>Pulpwood</i>	12	<i>Cords</i>					
	Red Oak		25	<i>Cords</i>					
	7	Mixed Aspen	<i>Sawtimber</i>	3.0			<i>MBF</i>	34.5	\$16,141.50
		<i>B. T. Aspen</i>		2.4			<i>MBF</i>		
		<i>Quaking Aspen</i>		0.6			<i>MBF</i>		
		Red Oak		5.9			<i>MBF</i>		
White Pine			1.8	<i>MBF</i>					
Balsam Fir		<i>Pulpwood</i>	1	<i>Cords</i>					
<i>Balsam Fir</i>			1	<i>Cords</i>					
Black/Red (Hybrid)			60	<i>Cords</i>					
Mixed Aspen			295	<i>Cords</i>					
<i>B. T. Aspen</i>			252	<i>Cords</i>					
<i>Quaking Aspen</i>			43	<i>Cords</i>					
Mixed Hardwood			123	<i>Cords</i>					
<i>Beech</i>			12	<i>Cords</i>					
<i>Black Cherry</i>			6	<i>Cords</i>					
<i>Ironwood</i>			4	<i>Cords</i>					
<i>Red Maple</i>			25	<i>Cords</i>					
<i>Sugar Maple</i>			72	<i>Cords</i>					
<i>White Ash</i>			4	<i>Cords</i>					
Paper Birch			5	<i>Cords</i>					
<i>Paper Birch</i>			5	<i>Cords</i>					

## DESCRIPTION OF TIMBER BY PAYMENT UNIT (PU), CON'T

PU	MARKET GROUP	PRODUCT	QUANTITY	UNIT	ACRES	ADVERTISE PRICE
7 con't	Red Oak	Pulpwood	55	Cords		
	White Pine		3	Cords		
8	Mixed Aspen	Sawtimber	1.2	MBF	14.3	\$6,633.95
	<i>B. T. Aspen</i>		1.0	<i>MBF</i>		
	<i>Quaking Aspen</i>		0.2	<i>MBF</i>		
	Red Oak		2.5	MBF		
	White Pine		0.8	MBF		
	Black/Red (Hybrid)	Pulpwood	24	Cords		
	Mixed Aspen		122	Cords		
	<i>B. T. Aspen</i>		104	<i>Cords</i>		
	<i>Quaking Aspen</i>		18	<i>Cords</i>		
	Mixed Hardwood		50	Cords		
	<i>Beech</i>		5	<i>Cords</i>		
	<i>Black Cherry</i>		3	<i>Cords</i>		
	<i>Ironwood</i>		1	<i>Cords</i>		
	<i>Red Maple</i>		10	<i>Cords</i>		
	<i>Sugar Maple</i>		30	<i>Cords</i>		
	<i>White Ash</i>		1	<i>Cords</i>		
	Paper Birch		2	Cords		
	<i>Paper Birch</i>		2	<i>Cords</i>		
	Red Oak		23	Cords		
	White Pine		1	Cords		
9	Mixed Aspen	Sawtimber	9.2	MBF	17.6	\$13,091.00
	<i>B. T. Aspen</i>		3.0	<i>MBF</i>		
	<i>Quaking Aspen</i>		6.2	<i>MBF</i>		
	Red Maple		5.3	MBF		
	Red Oak		4.0	MBF		
	Balsam Fir	Pulpwood	31	Cords		
	<i>Balsam Fir</i>		31	<i>Cords</i>		
	Mixed Aspen		254	Cords		
	<i>B. T. Aspen</i>		12	<i>Cords</i>		
	<i>Quaking Aspen</i>		242	<i>Cords</i>		
	Mixed Hardwood		115	Cords		
	<i>Black Cherry</i>		4	<i>Cords</i>		
	<i>Red Maple</i>		111	<i>Cords</i>		
	Paper Birch		21	Cords		
	<i>Paper Birch</i>	<i>Sawtimber</i>	0.6	<i>MBF</i>		
	<i>Paper Birch</i>	<i>Pulpwood</i>	20	<i>Cords</i>		
	Red Oak		7	Cords		
10	Black/Red (Hybrid)	Sawtimber	0.5	MBF	14.1	\$14,123.85
	Mixed Aspen		24.6	MBF		
	<i>B. T. Aspen</i>		24.6	<i>MBF</i>		
	Red Maple		0.5	MBF		
	Red Oak		4.9	MBF		
	Sugar Maple		4.0	MBF		
	Balsam Fir	Pulpwood	1	Cords		
	<i>Balsam Fir</i>		1	<i>Cords</i>		
	Basswood		11	Cords		
	<i>Basswood</i>	<i>Sawtimber</i>	0.6	<i>MBF</i>		
	<i>Basswood</i>	<i>Pulpwood</i>	10	<i>Cords</i>		
	Black/Red (Hybrid)		2	Cords		
	Mixed Aspen		254	Cords		
	<i>B. T. Aspen</i>		204	<i>Cords</i>		
	<i>Quaking Aspen</i>		50	<i>Cords</i>		
	Mixed Hardwood		52	Cords		
	<i>Beech</i>		1	<i>Cords</i>		

**DESCRIPTION OF TIMBER BY PAYMENT UNIT (PU), CON'T**

PU	MARKET GROUP	PRODUCT	QUANTITY	UNIT	ACRES	ADVERTISE PRICE			
10 con't	<i>Black Cherry</i>	<i>Pulpwood</i>	1	<i>Cords</i>					
	<i>Ironwood</i>		4	<i>Cords</i>					
	<i>Red Maple</i>		6	<i>Cords</i>					
	<i>Sugar Maple</i>		39	<i>Cords</i>					
	<i>White Ash</i>		1	<i>Cords</i>					
	Paper Birch		10	<i>Cords</i>					
	<i>Paper Birch</i>	<i>Sawtimber</i>	0.4	<i>MBF</i>					
	<i>Paper Birch</i>	<i>Pulpwood</i>	9	<i>Cords</i>					
	Red Oak		19	<i>Cords</i>					
11	Black/Red (Hybrid)	Pulpwood	2	Cords	16.4	\$24,706.50			
	Black/Red (Hybrid)	Sawtimber	0.4	MBF					
	Mixed Aspen	Pulpwood	200	Cords					
	Mixed Aspen	Sawtimber	19.4	MBF					
	<i>B. T. Aspen</i>	<i>Pulpwood</i>	160	<i>Cords</i>					
	<i>B. T. Aspen</i>	<i>Sawtimber</i>	19.4	<i>MBF</i>					
	<i>Quaking Aspen</i>	<i>Pulpwood</i>	40	<i>Cords</i>					
	Red Maple	Sawtimber	0.4	MBF					
	Mixed Hardwood	Pulpwood	42	Cords					
	Red Oak	Sawtimber	3.9	MBF					
	<i>Beech</i>	<i>Pulpwood</i>	1	<i>Cords</i>					
	Sugar Maple	Sawtimber	3.1	MBF					
	<i>Black Cherry</i>	<i>Pulpwood</i>	1	<i>Cords</i>					
	Balsam Fir		1	Cords					
	<i>Ironwood</i>		3	<i>Cords</i>					
	<i>Balsam Fir</i>		1	<i>Cords</i>					
	<i>Red Maple</i>		5	<i>Cords</i>					
	Basswood		9	Cords					
	<i>Sugar Maple</i>		31	<i>Cords</i>					
	<i>Basswood</i>	<i>Sawtimber</i>	0.5	<i>MBF</i>					
	<i>White Ash</i>	<i>Pulpwood</i>	1	<i>Cords</i>					
	<i>Basswood</i>		8	<i>Cords</i>					
	Paper Birch		8	Cords					
	<i>Paper Birch</i>	<i>Sawtimber</i>	0.3	<i>MBF</i>					
	<i>Paper Birch</i>	<i>Pulpwood</i>	7	<i>Cords</i>					
	Red Oak		15	Cords					
	TOTAL:			259.7			MBF		
	TOTAL:			4,125			Cords		

## Sale Specific Conditions & Requirements

**Sale Name: Balder Baldy Aspen**

**Sale Number: 54-012-23 Seq#: 2**

### 1 - Sale Area

#### 1.2 - Boundaries

##### 1.2.1 - Painted boundaries (9/19)

The sale boundary and Payment Unit boundaries are marked and identified by blue, red and yellow paint, along with roads. Exterior sale boundary lines against private property are marked with blue paint. Exterior sale boundary lines against state are marked with red paint, with the exception of the northern boundary of Payment Units 3 & 4, which is unpainted & identified by an unnamed forest road and the northern boundary of Payment Unit 9, which is unpainted & identified by Island Hill Road. Interior Payment Unit boundaries are marked with yellow paint, with the exception of the interior Payment Unit boundary separating Payment Units 5 & 6, which is unpainted and identified by an unnamed forest road. Yellow painted trees designating an interior Payment Unit boundary are only to be cut when all surrounding Payment Units have been paid.

### 2 - Timber Specifications

#### 2.1 - Included Timber

##### 2.1.1 - Clearcut unit(s) with unmerchantable trees (6/14)

Within Payment Unit(s) 1-11, cut all trees that are two (2) inches or more at DBH.

##### 2.1.15 - Hazard trees near roads (11/20)

Cut and remove all standing dead trees within 100 feet of the cleared portion of Island Hill Road. These trees must be scattered back into the Sale Area.

#### 2.2 - Utilization

##### 2.2.6 - Roundwood operation required (3/21)

The skidding of whole trees or tree segments with limbs attached is prohibited in Payment Units 5-11. All products must be produced as roundwood and forwarded to existing roads or landing areas in final product length.

### 3 - Payments

#### 3.3 - Pre-measured Sales

##### 3.3.4 - Dividing payment units (7/14)

Payment Unit(s) exceeding \$25,000 in value may be divided at the request of the Purchaser and upon approval of the Unit Manager. Dividing Payment Units is a contract modification which requires a Timber Sale Contract Amendment. There will be only one division per Payment Unit.

#### 3.6 - Payment Unit Cutting Schedule

##### 3.6.8 - Operating period (5/16)

Once cutting begins, operations must continue until all Payment Units are completed. This requirement is for elk browse management.

### 4 - Transportation

#### 4.1 - Construction

##### 4.1.3 - Slash and earthen piles (8/04)

Piles or windrows of earth along roads and landings that have been widened or constructed shall be leveled. Slash from road maintenance or construction, including stumps, shall be dispersed throughout the sale.

##### 4.1.6 - Road construction (1/09)

Improvements of existing roads shall be done in such a way as to minimize the environmental and visual impacts. Merchantable trees shall be cut and utilized unless otherwise directed. Non-merchantable trees shall be severed and laid flat on the ground. Slash shall be scattered, and not left in windrows and kept a minimum of 10 feet back from the road edge. Stumps shall be set upright, not left on edge, and be moved at least 10 feet away from the road edge. Disturbed soil shall be

feathered into the woods and not left in berms or windrows.

#### 4.2 - Maintenance

##### 4.2.2 - Fill material (4/07)

To maintain roads, fill material may be needed in areas where "holes" exist or may be expected to develop. This fill material should be placed before trucking begins. Acceptable fill must not contain any clay or organic matter.

##### 4.2.5 - Two wheel drive condition (2/04)

All existing trail roads on and adjacent to the sale area must be passable by two-wheel drive traffic for the duration of the sale.

### 5 - Operations

#### 5.1 - Notification

##### 5.1.1 - Pre-sale conference (10/16)

A pre-sale conference between the Purchaser and sale administrator is required prior to beginning any operations to determine landing and road locations. The Unit Manager or his/her representative must be contacted at least 10 days in advance to schedule the conference.

##### 5.1.3 - Well heads and natural gas pipelines (11/15)

The Purchaser is responsible for contacting the gas or pipeline company 30 days prior to operating equipment in the vicinity of well heads or natural gas pipelines. Contact Hoy Production LLC at 989-705-2850 and Jordan Development Co LLC at 231-935-4220.

##### 5.1.4 - Post-sale conference (10/16)

A post-sale conference on site between the Purchaser and sale administrator is required 5 days prior to the completion of active logging operations to determine clean-up and repair of landings, road edges, and the fulfillment of other contract specifications.

#### 5.2 - Conduct of Operations

##### 5.2.2 - Hazard Trees/Snags

###### 5.2.2.1 - Den trees (10/16)

Obvious hollow and/or den trees shall be protected and left standing unless they are a safety hazard.

##### 5.2.3 - Operating Restrictions

###### 5.2.3.1 - Operating restrictions (9/11)

Within Payment Unit(s) 5, 6, & 9-11, harvest is to occur from November through March. Additionally, the ground must be frozen or dry & firm. This restriction is to protect fragile wet soils, and to protect species of concern. Wood cut during this period must be hauled prior to April 1.

###### 5.2.3.5 - Oak wilt restriction (1/18)

Within the Sale Area, unless changed by written agreement, cutting, skidding, hauling within the sale and brushing of access roads to the sale are not permitted during the period of April 15 to July 15. Operations may be allowed if specific steps are taken to prevent damaging uncut oak during the high risk period. Those steps may include completing all road brushing before April 15th and clearing a tree-length buffer along uncut oak cover before April 15th. This is necessary to reduce the spread of oak wilt. For more information, contact the Unit Manager or his/her representative.

###### 5.2.3.11 - Coppice regeneration protection (4/10)

Timber harvesting in any Payment Unit must be completed before significant aspen sprouting occurs in that Payment Unit so as to minimize damage to the new regeneration. Any post harvest operations, such as chipping, must be completed before sprouting of regeneration occurs. If it is anticipated that chipping will be delayed, then tops shall be carried to one central location or left unchipped. The Unit Manager or his/her representative may cease such operations if sprouting occurs before the operation is complete.

##### 5.2.4 - Dead and Down Creation

###### 5.2.4.6 - Dead and down creation, other (9/09)

To encourage reptiles and amphibians, within Payment Unit 9, create one brush pile for every 2 acres. Brush piles must be at least 6 feet by 6 feet, with a thickness of 4 feet, and dense enough to substantially shade the ground. Place brush piles near lowland edges and at least 2 chains away from any roads, two-tracks, or trails open to vehicles.

#### 5.2.4.7 - Dead and down creation: hare, grouse, deer and other species (5/15)

To improve horizontal cover habitat for snowshoe hare, grouse, deer, and other species, the Purchaser is to push over trees marked in orange paint. These trees should be tipped over with the root ball still attached so the base of the tree is suspended off the ground. The crown of the fallen tree should be at or near ground level after it is pushed over. If it is impossible or impractical to push a tree over, it may be severed or partly severed from the stump.

#### 5.2.32 - Decking/landing restoration (9/13)

All decking and landing areas must have the surface area restored to a condition equal to or better than before. This is to ensure the proper regeneration of the stand. Wood debris, chips and "cookies" from trimmings must be removed or scattered away from landing and loading areas and may not be windrowed on the edge.

### 5.4 - Soil Protection

#### 5.4.1 - Rutting restriction, general (7/16)

Operations are to cease immediately if equipment and weather conditions result in rutting of roads and/or skid trails which is 12 inches or greater in depth and 50 feet in length. The Unit Manager or his/her representative may restrict hauling and/or skidding if ruts exceed the specified depth. With the Unit Manager or his/her representative's approval, the Purchaser may return to the area when the risk of rutting has decreased.

#### 5.4.2 - Skid trails (2/04)

Skid trails up and down slopes should be avoided. If however this is unavoidable, these trails will be left in a non-erodible condition using water bars, logs, and slash. Placing of slash on these skid trails while logging is ongoing may alleviate need for any further action. At the direction of the sale administrator, seed, fertilizer, and mulch may also be required.

### 5.8 - Protection of Endangered Species

#### 5.8.5 - Protection of raptor nests (3/13)

All trees with raptor nests will be protected if found during harvesting operations. Notification will be made to the Unit Manager or his/her representative who will notify the Wildlife Biologist so an on-site evaluation and recommendation can be made, if necessary.



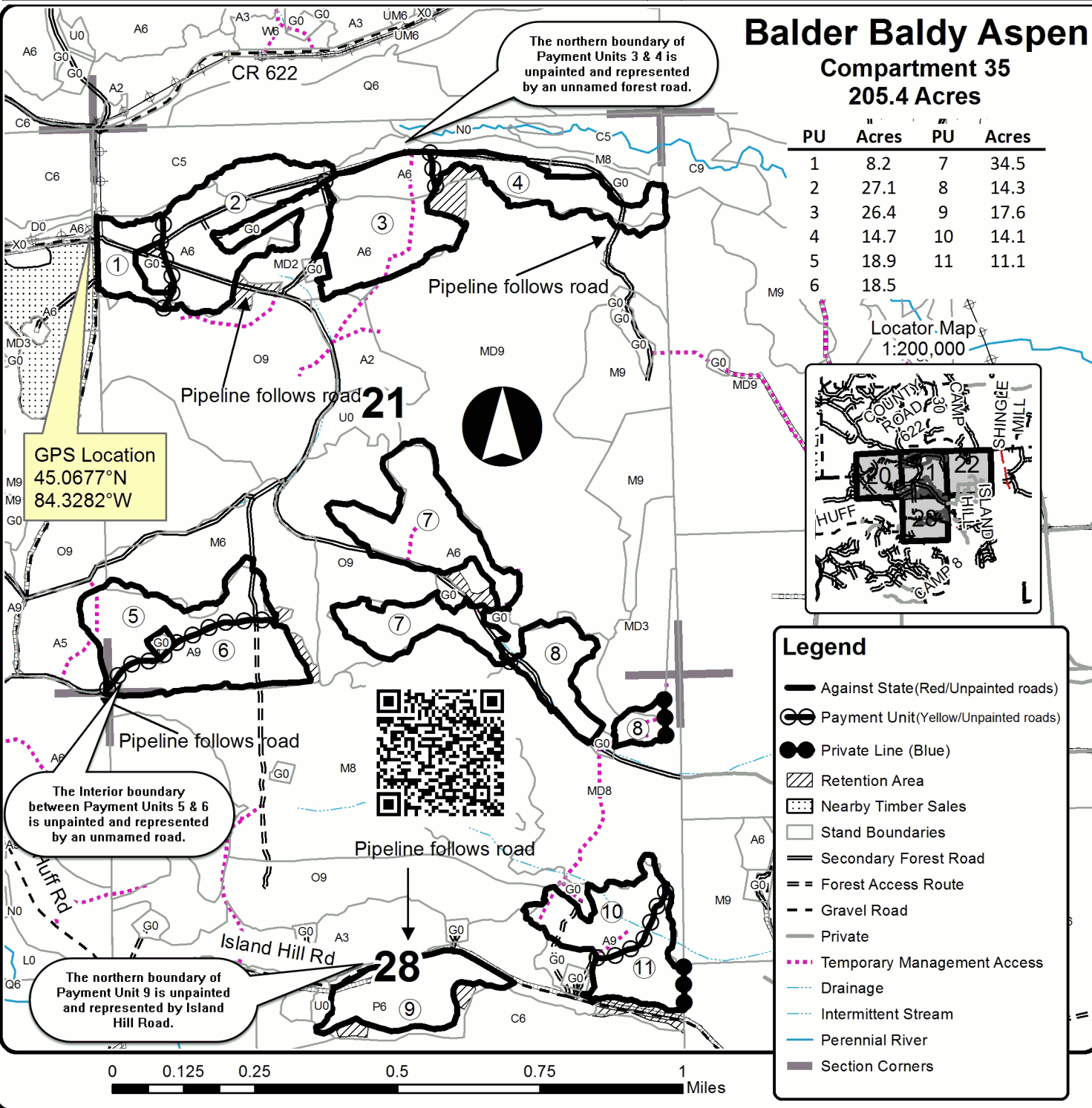


# TIMBER SALE MAP

This information provided by authority of Part 525, 1994 PA 451, as amended.

Forest Management Unit Atlanta	County Montmorency	Mapped By Natzke	Date 05/05/2023	Page 1	of 1
Township 31N	Range 01E	Section(s) and Subdivision(s) Sec 20, various; Sec 21, various; Sec 22, various; Sec 28, various	Scale 1:15,840		

Cover Type				Density			
A = Aspen	H = Hemlock	N = Marsh	U = Upland Brush	0 = Non Stocked	5 = Pole Timber Medium		
B = Paper Birch	J = Jack Pine	O = Oak	UM = Upland Mixed	1 = Seedling Sapling Poor	6 = Pole Timber Well		
C = Cedar	L = Lowland Brush	P = Lowland Poplar	V = Bog or Marsh	2 = Seedling Sapling Medium	7 = Saw Timber Poor		
D = Treed Bog	LM = Lowland Mixed	Q = Mixed Swamp Conifer	W = White Pine	3 = Seedling Sapling Well	8 = Saw Timber Medium		
E = Swamp Hdwoods	M = Mpl, Bch, Brch	R = Red Pine	X = Non Stocked	4 = Pole Timber Poor	9 = Saw Timber Well		
F = Spruce Fir	MC = Mixed Conifer	S = Black Spruce	Z = Water				
G = Grass	MD = Mixed Deciduous	T = Tamarack					



## Balder Baldy Aspen Compartment 35 205.4 Acres

PU	Acres	PU	Acres
1	8.2	7	34.5
2	27.1	8	14.3
3	26.4	9	17.6
4	14.7	10	14.1
5	18.9	11	11.1
6	18.5		

### Legend

- Against State (Red/Unpainted roads)
- ⊖ Payment Unit (Yellow/Unpainted roads)
- Private Line (Blue)
- ▨ Retention Area
- ▤ Nearby Timber Sales
- Stand Boundaries
- Secondary Forest Road
- == Forest Access Route
- - Gravel Road
- Private
- ⋯ Temporary Management Access
- ⋯ Drainage
- ⋯ Intermittent Stream
- Perennial River
- Section Corners



## TIMBER SALE INFORMATION

### Up Down Aspen (54-024-23)

T29N, R03E, SEC. 20; T29N, R03E, SEC. 21.

Montmorency County (Advertised Price \$161,489.15)

SALE NOTE: Very good access into Payment Units 1-3. Operations in Payment Unit 4 are restricted to very cold or dry conditions due to soft ground. Minimal road work will be needed to access Payment Unit 4. Some areas within Payment Unit 4 may need to be matted with slash and/or treetops during operation. No recreational sites present. Soft Oak wilt restrictions within Payment Units 1 & 2. No chipping of oak and hardwood tops; these will be required to be placed over cut hardwood (sugar maple and oak) stumps. Some steep slopes present within portions of Payment Units 1 & 2.

A timber sale contract for this lump sum, sealed bid timber sale will be awarded to the responsible bidder offering the highest sealed bid price. All units of volume listed below were estimated using the Inventory Manager computer program and the new Michigan taper model. Bids must be at or above the following advertised price for each product and species:

<u>PRODUCTS &amp; SPECIES</u>	<u>ESTIMATED UNITS*</u>	<u>ADVERTISED PRICE</u>
<b>Sawtimber</b>		
Basswood	46.9 MBF	\$ 87.00 / MBF
Mixed Aspen	230.3 MBF	\$ 116.00 / MBF
Red Maple	23.2 MBF	\$ 81.00 / MBF
Red Oak	206.0 MBF	\$ 191.00 / MBF
Sugar Maple	18.0 MBF	\$ 314.00 / MBF
White Pine	42.5 MBF	\$ 133.00 / MBF
<b>Pulpwood</b>		
Balsam Fir	265 Cords	\$ 22.50 / Cord
Basswood	87 Cords	\$ 16.00 / Cord
Black Spruce	46 Cords	\$ 9.95 / Cord
Mixed Aspen	1,567 Cords	\$ 26.30 / Cord
Mixed Hardwood	544 Cords	\$ 25.10 / Cord
Northern Pin Oak	7 Cords	\$ 29.45 / Cord
Paper Birch	75 Cords	\$ 17.15 / Cord
Red Oak	349 Cords	\$ 29.45 / Cord
White Pine	129 Cords	\$ 28.80 / Cord

\* The total volume is statistically estimated within plus (+) or minus (-) 9.05 percent. There are an estimated 4,303 cords on this timber sale, plus or minus 390 cords at the 95% confidence level. The estimated units are final and not subject to adjustment. Prospective bidders are urged to examine this timber and to make their own estimates of quantity and quality.

### **BOND AND PAYMENT SCHEDULE:**

1. A bond in the amount of \$8,074.00 to insure faithful performance of the conditions of the contract will be deposited by the successful bidder within 21 days of the sale award.
2. Cutting in any sale or unit without the required advance payment would be considered a trespass.
3. Total payment must be paid in advance or according to the following schedule :
  - (a) Ten percent (10%) of the sale value must be paid within 21 days of the sale award.
  - (b) The 10% down payment will be credited towards the first unit cut.
  - (c) Payment for each of the following units must be made before cutting begins in that unit:
 

PAYMENT UNIT NUMBER	PERCENT OF TOTAL SALE VALUE
01	38.4%
02	32.0%
03	14.2%
04	15.4%
4. If no cutting takes place, the 10% down payment will not be refunded.
5. Operations on the contract issued will terminate on 06/30/2027.

### **SALE STATISTICS**

Volumes were calculated in cubic feet using the Michigan taper model. Cubic foot volume includes all wood inside bark for the product indicated. For display purposes, cubic feet were converted to cords and MBF using a simple conversion factor, e.g. 79 cubic feet per cord and 185 cubic feet per MBF. The cubic foot volumes are precise; the cords and MBF volumes are not. Cubic foot volume cannot be directly converted to cords or boards with precision.

## SALE VOLUMES

The total estimated sale volume may not equal the sum of the species/products due to the nature of statistical calculations associated with double sampling methodology.

VOLUME			STATISTICAL RANGE IN CORDS	
TOTAL CUBIC FEET	TOTAL CORDS	PERCENT ERROR	MINIMUM	MAXIMUM
339,931	4,303	9.05%	3,913	4,693

## VDU VOLUMES

A VDU is a Volume Determination Unit. Volumes and their associated statistics are calculated at the VDU level and summarized to the sale level. There is often a one to one relationship between a VDU and a Payment Unit, but not always, depending on the cruise design. Refer to the VDU TO PAYMENT UNIT table.

	VOLUME			RANGE IN CORDS	
VDU	TOTAL CUBIC FEET	TOTAL CORDS	PERCENT ERROR	MINIMUM	MAXIMUM
8	42,247	535	26.76%	392	678
10	9,306	118	127.80%	0	268
16	94,720	1,199	18.70%	975	1,423
17	115,838	1,466	14.66%	1,251	1,681
23	77,819	985	22.70%	761	1,209
<b>TOTAL:</b>	<b>339,931</b>	<b>4,303</b>		<b>3,379</b>	<b>5,259</b>

## VDU TO PAYMENT UNIT

When a VDU is associated with more than one Payment Unit (PU), the VDU volumes are assigned to the PU based on acres of the VDU within the PU.

VDU	VDU ACRES	PU	PU ACRES
8	12.1	3	12.1
10	3.6	3	3.6
16	22.8	1	13.8
		2	9.0
17	31.9	1	15.2
		2	16.7
23	24.3	4	24.3
<b>TOTAL:</b>	<b>94.7</b>		<b>94.7</b>

**DESCRIPTION OF TIMBER BY PAYMENT UNIT (PU)**

PU	MARKET GROUP	PRODUCT	QUANTITY	UNIT	ACRES	ADVERTISE PRICE		
1	Basswood	Sawtimber	26.5	MBF	29.0	\$62,073.60		
	Mixed Aspen		98.8	MBF				
	<i>B. T. Aspen</i>		78.3	<i>MBF</i>				
	<i>Quaking Aspen</i>		20.5	<i>MBF</i>				
	Red Maple		4.8	MBF				
	Red Oak		119.6	MBF				
	Sugar Maple		9.1	MBF				
	Basswood		Pulpwood	46			Cords	
	Mixed Aspen			377			Cords	
	<i>B. T. Aspen</i>			256			<i>Cords</i>	
	<i>Quaking Aspen</i>			121			<i>Cords</i>	
	Mixed Hardwood			217			Cords	
	<i>Beech</i>			<i>Sawtimber</i>			4.1	<i>MBF</i>
	<i>Beech</i>						<i>Pulpwood</i>	36
	<i>Ironwood</i>	7						<i>Cords</i>
	<i>Red Maple</i>	11						<i>Cords</i>
	<i>Sugar Maple</i>	155						<i>Cords</i>
	Paper Birch	34	Cords					
	<i>Paper Birch</i>	<i>Sawtimber</i>	1.9	<i>MBF</i>				
	<i>Paper Birch</i>		<i>Pulpwood</i>	30			<i>Cords</i>	
Red Oak	188	Cords						
2	Basswood	Sawtimber	17.3	MBF	25.7	\$51,597.35		
	Mixed Aspen		106.1	MBF				
	<i>B. T. Aspen</i>		83.6	<i>MBF</i>				
	<i>Quaking Aspen</i>		22.5	<i>MBF</i>				
	Red Maple		3.3	MBF				
	Red Oak		79.0	MBF				
	Sugar Maple		6.3	MBF				
	Basswood		Pulpwood	37			Cords	
	Mixed Aspen			412			Cords	
	<i>B. T. Aspen</i>			280			<i>Cords</i>	
	<i>Quaking Aspen</i>			132			<i>Cords</i>	
	Mixed Hardwood			175			Cords	
	<i>Beech</i>			<i>Sawtimber</i>			2.7	<i>MBF</i>
	<i>Beech</i>						<i>Pulpwood</i>	27
	<i>Ironwood</i>	7						<i>Cords</i>
	<i>Red Maple</i>	8						<i>Cords</i>
	<i>Sugar Maple</i>	128						<i>Cords</i>
	Paper Birch	33	Cords					
	<i>Paper Birch</i>	<i>Sawtimber</i>	1.3	<i>MBF</i>				
	<i>Paper Birch</i>		<i>Pulpwood</i>	30			<i>Cords</i>	
Red Oak	138	Cords						
3	Basswood	Sawtimber	3.1	MBF	15.7	\$23,001.10		
	Mixed Aspen		25.4	MBF				
	<i>B. T. Aspen</i>		15.9	<i>MBF</i>				
	<i>Quaking Aspen</i>		9.5	<i>MBF</i>				
	Red Maple		15.1	MBF				
	Red Oak		7.4	MBF				
	Sugar Maple		2.6	MBF				
	White Pine		29.8	MBF				
	Balsam Fir		Pulpwood	58			Cords	
	<i>Balsam Fir</i>			<i>Sawtimber</i>			0.8	<i>MBF</i>
	<i>Balsam Fir</i>	<i>Pulpwood</i>					56	<i>Cords</i>
	Basswood		4	Cords				
	Mixed Aspen	203	Cords					
	<i>B. T. Aspen</i>	113	<i>Cords</i>					

**DESCRIPTION OF TIMBER BY PAYMENT UNIT (PU), CON'T**

PU	MARKET GROUP	PRODUCT	QUANTITY	UNIT	ACRES	ADVERTISE PRICE
3 con't	<i>Quaking Aspen</i>	<i>Pulpwood</i>	90	<i>Cords</i>		
	Mixed Hardwood		71	Cords		
	<i>Black Cherry</i>		5	<i>Cords</i>		
	<i>Ironwood</i>		6	<i>Cords</i>		
	<i>Red Maple</i>		40	<i>Cords</i>		
	<i>Sugar Maple</i>		20	<i>Cords</i>		
	Northern Pin Oak		7	Cords		
	<i>Northern Pin Oak</i>	<i>Sawtimber</i>	1.4	<i>MBF</i>		
	<i>Northern Pin Oak</i>	<i>Pulpwood</i>	4	<i>Cords</i>		
	Red Oak		23	Cords		
	White Pine		104	Cords		
	4	White Pine	Sawtimber	12.7	MBF	24.3
Balsam Fir		Pulpwood	207	Cords		
<i>Balsam Fir</i>			207	<i>Cords</i>		
Black Spruce			46	Cords		
Mixed Aspen			575	Cords		
<i>B. T. Aspen</i>			64	<i>Cords</i>		
<i>Quaking Aspen</i>			511	<i>Cords</i>		
Mixed Hardwood			80	Cords		
<i>Black Cherry</i>			11	<i>Cords</i>		
<i>Red Maple</i>			69	<i>Cords</i>		
Paper Birch			9	Cords		
<i>Paper Birch</i>			9	<i>Cords</i>		
White Pine			25	Cords		
TOTAL:			566.9	MBF		
TOTAL:			3,069	Cords		

## Sale Specific Conditions & Requirements

**Sale Name: Up Down Aspen**

**Sale Number: 54-024-23 Seq#: 2**

### 1 - Sale Area

#### 1.2 - Boundaries

##### 1.2.1 - Painted boundaries (9/19)

The sale boundary and Payment Unit boundaries are marked and identified by blue, red, orange, and yellow paint, along with a road. Exterior sale boundary lines against private property are marked with blue paint. Exterior sale boundary lines against state are marked with red or orange paint, with the exception of the eastern boundaries of Payment Units 1 & 2 and the western boundary of Payment Unit 3, which are unpainted and represented by Blue Lake Road. The western boundaries of Payment Units 1 & 2 are marked with orange, all other painted state boundaries are marked with red. Interior Payment Unit boundaries are marked with yellow paint. Retention patches are marked with red X's; no harvesting activities may occur within these areas. The painted boundary line trees are not Included Timber and are to be protected unless marked with orange paint. Yellow painted trees designating an interior Payment Unit boundary are only to be cut when all surrounding Payment Units have been paid.

### 2 - Timber Specifications

#### 2.1 - Included Timber

##### 2.1.1 - Clearcut unit(s) with unmerchantable trees (6/14)

Within Payment Unit(s) 1-4, cut all trees that are two (2) inches or more at DBH, except in Payment Units 1-4, do not cut any trees marked with timber teal paint and in Payment Unit 4 do not cut any cedar. Special protection trees identified in accordance with condition 3.4.2, within clearcutting unit boundaries, are not Included Timber and are to be protected.

#### 2.2 - Utilization

##### 2.2.9 - No chipping permitted (12/08)

Within Payment Unit(s) 1 & 2, in the "M9" portions which are labeled on the Timber Sale Map, the chipping of tops is not permitted. Tops and/or slash must be placed over top of cut oak and sugar maple stumps. See spec 5.2.1.11 for more details.

### 3 - Payments

#### 3.3 - Pre-measured Sales

##### 3.3.4 - Dividing payment units (7/14)

Payment Unit(s) may be divided at the request of the Purchaser and upon approval of the Unit Manager. Dividing Payment Units is a contract modification which requires a Timber Sale Contract Amendment. There will be only one division per Payment Unit.

#### 3.4 - Damaged Timber

##### 3.4.1 - Damaged timber (7/16)

General Condition and Requirement 3.4 Damaged Timber, defines liquidated damages for undesignated live merchantable trees which are cut or injured. No damage is acceptable to undesignated live merchantable trees. Within the Sale Area, if more than 5% of trees (> 4.5" DBH) within a specified area of the sale are damaged, liquidated damages will be assessed for all trees damaged. Rates will be in accordance with General Condition and Requirement 3.4 Damaged Timber.

##### 3.4.2 - Special Protection Trees (4/14)

The Purchaser shall not cut live or dead special protection trees within cutting units or clearings. Special protection trees are marked with timber teal paint. If the Purchaser's operations have cut or damaged special protection trees through carelessness, the Purchaser shall pay \$250 as fixed, agreed and liquidated damages for each special protection tree cut or damaged. Such payment does not constitute ownership of the undesignated timber.

### 4 - Transportation

#### 4.1 - Construction

#### 4.1.3 - Slash and earthen piles (8/04)

Piles or windrows of earth along roads and landings that have been widened or constructed shall be leveled. Slash from road maintenance or construction, including stumps, shall be dispersed throughout the sale, or be chipped, utilized & otherwise removed from the sale.

#### 4.1.6 - Road construction (1/09)

Construction of new roads or improvements of existing roads shall be done in such a way as to minimize the environmental and visual impacts. Merchantable trees shall be cut and utilized unless otherwise directed. Non-merchantable trees shall be severed and laid flat on the ground. Slash shall be chipped, utilized or otherwise removed from the sale. Stumps shall be set upright, not left on edge, and be moved at least 10 feet away from the road edge. Disturbed soil shall be feathered into the woods and not left in berms or windrows.

#### 4.1.7 - Road closure (10/11)

All new roads built into the sale must be blocked to vehicle traffic upon completion of the sale. Overgrown roads that are reopened shall be considered new roads. In general, this will require constructing double earthen berms at strategic locations. In general, this will require constructing a four (4') foot high berm of stumps and logs covered with earth. Stumps and brush must be placed along the remainder of the trail. These roads must be rendered impassable to cars and trucks. All stumps from road building and landing construction must be reserved to block any newly constructed roads upon completion of the sale. These stumps must be scattered along the road system to prohibit vehicular movement. Temporary berms may be required if no sale activity occurs for 30 or more consecutive days. Contact the Sale Administrator for specific details of design and placement.

#### 4.1.11 - Permits (2/12)

The Purchaser will secure any necessary permits that may be required.

### 4.2 - Maintenance

#### 4.2.2 - Fill material (4/07)

To maintain roads, fill material may be needed in areas where "holes" exist or may be expected to develop. This fill material should be placed before trucking begins. Access into Payment Unit 4 may require fill and minor road work.

## 5 - Operations

### 5.1 - Notification

#### 5.1.1 - Pre-sale conference (10/16)

A pre-sale conference on site between the Purchaser and sale administrator is required prior to beginning any operations to determine landing and road locations. The Unit Manager or his/her representative must be contacted at least 5 days in advance to schedule the conference.

#### 5.1.3 - Well heads and natural gas pipelines (11/15)

The Purchaser is responsible for contacting the gas or pipeline company 14 days prior to operating equipment in the vicinity of well heads or natural gas pipelines.

#### 5.1.4 - Post-sale conference (10/16)

A post-sale conference on site between the Purchaser and sale administrator is required 5 days prior to the completion of active logging operations to determine clean-up and repair of landings, road edges, and the fulfillment of other contract specifications.

### 5.2 - Conduct of Operations

#### 5.2.1 - Slash

##### 5.2.1.11 - Slash for reforestation (3/21)

To facilitate reforestation within portions of Payment Units 1 & 2 that are labeled as "M9" on the Timber Sale Map, slash and/or treetops must be piled over cut sugar maple & oak stumps. This is in attempt to reduce deer browse pressure on sugar maple & oak regeneration. There is a clear transition between the "A9" aspen and the "M9" hardwood stands.

#### 5.2.2 - Hazard Trees/Snags

##### 5.2.2.1 - Den trees (10/16)



Obvious hollow and/or den trees shall be protected and left standing unless they are a safety hazard.

### 5.2.3 - Operating Restrictions

#### 5.2.3.5 - Oak wilt restriction (1/18)

Within Payment Units 1 & 2, unless changed by written agreement, cutting, skidding, hauling within the sale and brushing of access roads to the sale are not permitted during the period of April 15 to July 15. Operations may be allowed if specific steps are taken to prevent damaging uncut oak during the high risk period. Those steps may include completing all road brushing before April 15th and clearing a tree-length buffer along uncut oak cover before April 15th. This is necessary to reduce the spread of oak wilt. For more information, contact the Unit Manager or his/her representative.

### 5.2.4 - Dead and Down Creation

#### 5.2.4.2 - Dead and down creation, hare and grouse (1/14)

To improve habitat for snowshoe hare, grouse, and other species, the Purchaser is to leave two 10 inch diameter or larger log size pieces on the ground for every two acres. They should be scattered throughout the sale and left at least 1-2 chains from any road or trail. If possible, the trees should be felled so they overlap and still have the root ball still attached. They can be of any tree species. This will apply to the "A9" stand in Payment Units 1 & 2, along with the entirety of Payment Units 3 & 4.

### 5.2.22 - Operating Caution

#### 5.2.22.1 - Operating caution (6/11)

It is recommended, but not required, that within Payment Unit(s) 4, cutting, skidding, and hauling occur during dry summer or frozen winter conditions. The reason for the recommendation is because of saturated soils and seasonally wet ground within the Payment Unit.

### 5.2.32 - Decking/landing restoration (9/13)

All decking and landing areas must have the surface area restored to a condition equal to or better than before. This is to ensure the proper regeneration of the stand. Wood debris, chips and "cookies" from trimmings must be removed or scattered away from landing and loading areas and may not be windrowed on the edge.

### 5.2.38 - No decking against live trees (2/04)

Cut products may not be decked against unmarked or designated leave trees.

## 5.4 - Soil Protection

### 5.4.4 - Slope protection (9/19)

Skid trails and roads on slopes shall be water barred with slash and stumps as soon as use is complete to prevent erosion. Payment Units 1 & 2 contain steep hills in some areas.

## 5.8 - Protection of Endangered Species

### 5.8.5 - Protection of raptor nests (3/13)

All trees with raptor nests will be protected if found during harvesting operations. Notification will be made to the Unit Manager or his/her representative who will notify the Wildlife Biologist so an on-site evaluation and recommendation can be made, if necessary.

## 6 - Safety and Fire Prevention

### 6.2 - Signing

#### 6.2.1 - Road posting (10/20)

The Purchaser is responsible for posting and maintaining caution signs on Blue Lake Road prior to beginning operations. The road must be posted at appropriate distances from the Sale Area to warn of logging activity and truck traffic. Signs must be removed when harvest operations are suspended or completed. The Purchaser will provide these signs.



# TIMBER SALE MAP

This information provided by authority of Part 525, 1994 PA 451, as amended.

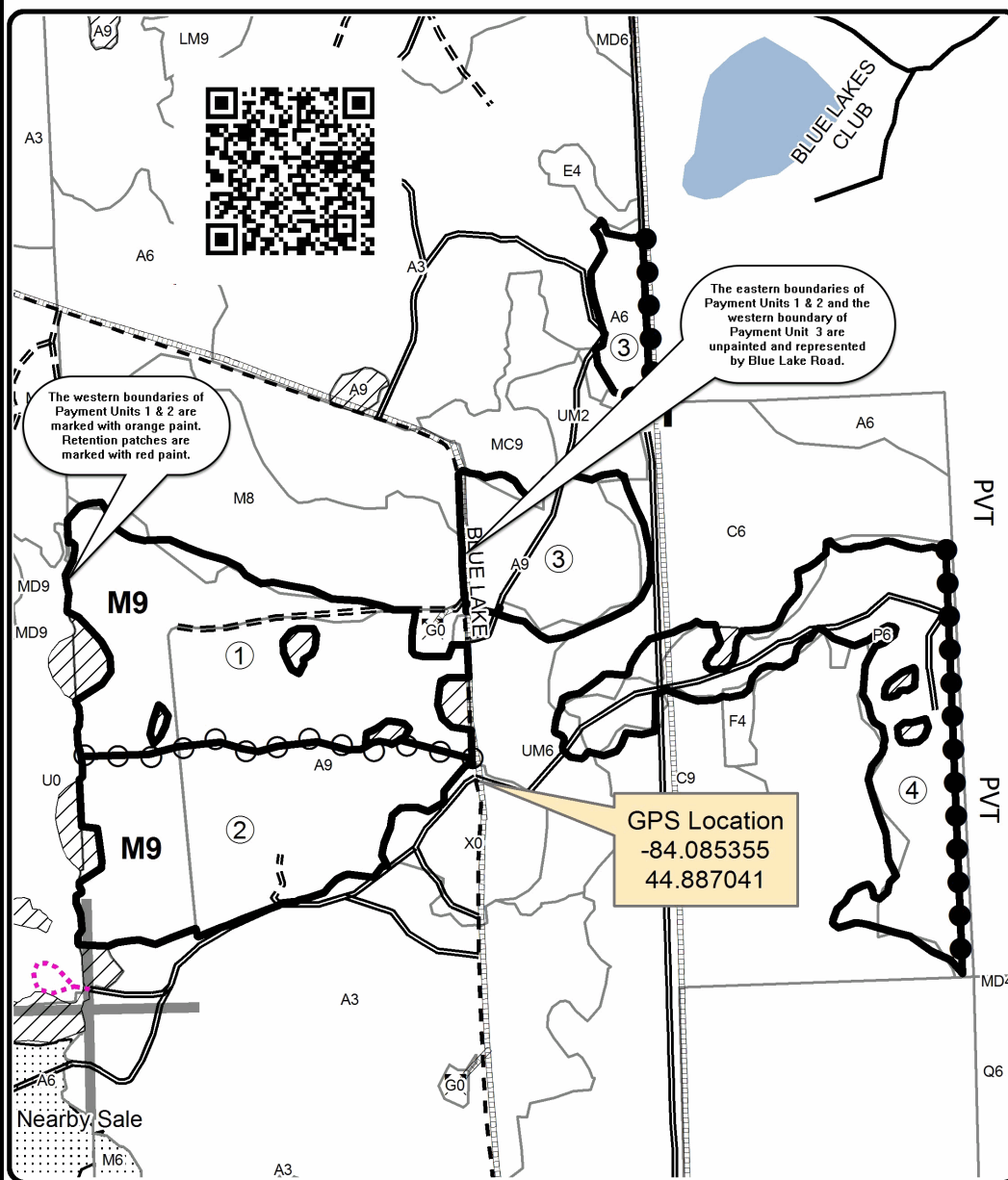
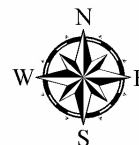
Sale Number	Year
54-024	23

Forest Management Unit Atlanta Management Unit	County Montmorency	Mapped By T. Kubitskey	Date 9/08/2023	Page 1	of 1
Township 29N	Range 03E	Section(s) and Subdivision(s) Sec 20 E1/2SE, Sec 21 SENW, SW, W1/2SE	Scale 1:15,840		

Cover Type				Density			
A = Aspen	H = Hemlock	N = Marsh	U = Upland Brush	0 = Non Stocked	5 = Pole Timber Medium		
B = Paper Birch	J = Jack Pine	O = Oak	UM = Upland Mixed	1 = Seedling Sapling Poor	6 = Pole Timber Well		
C = Cedar	L = Lowland Brush	P = Lowland Poplar	V = Bog or Marsh	2 = Seedling Sapling Medium	7 = Saw Timber Poor		
D = Treed Bog	LM = Lowland Mixed	Q = Mixed Swamp Conifer	W = White Pine	3 = Seedling Sapling Well	8 = Saw Timber Medium		
E = Swamp Hdwoods	M = Mpl, Bch, Brch	R = Red Pine	X = Non Stocked	4 = Pole Timber Poor	9 = Saw Timber Well		
F = Spruce Fir	MC = Mixed Conifer	S = Black Spruce	Z = Water				
G = Grass	MD = Mixed Deciduous	T = Tamarack					

PU	Acres	PU	Acres
1	29.0	4	24.3
2	25.7		
3	15.7		

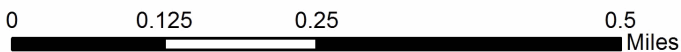
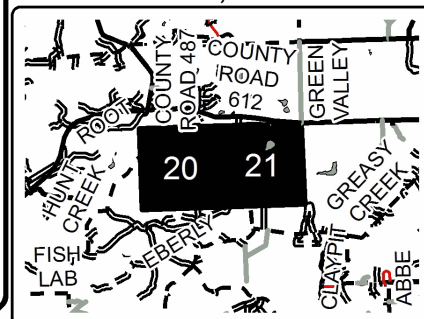
## Up Down Aspen Compartment 18 94.7 Acres



### Legend

- Against State (Red, orange, or the unpainted Blue Lake Rd.)
- Payment Unit (Yellow)
- Private Line (Blue)
- Nearby Timber Sales
- Stand Boundaries
- Retention Area
- Secondary Forest Road
- Forest Access Route
- Paved Road
- Gravel Road
- Temporary Management Access
- Lakes and Rivers
- Section Corners
- Payment Unit
- PVT Private Property
- Pipeline
- Powerline

### Locator Map 1:150,000



## TIMBER SALE INFORMATION

C25 Aspen Mix SBW (54-029-23)  
 T29N, R03E, SEC. 5; T30N, R03E, SEC. 19; T30N, R03E, SEC. 32.  
 Montmorency County (Advertised Price \$85,871.60)

SALE NOTE: A recreation site such as a trail, pathway, or campground is within the sale area or the vicinity. Certain restrictions/specifications may be applicable including time restrictions.

A timber sale contract for this lump sum, sealed bid timber sale will be awarded to the responsible bidder offering the highest sealed bid price. All units of volume listed below were estimated using the Inventory Manager computer program and the new Michigan taper model. Bids must be at or above the following advertised price for each product and species:

<u>PRODUCTS &amp; SPECIES</u>	<u>ESTIMATED UNITS*</u>	<u>ADVERTISED PRICE</u>
<b>Sawtimber</b>		
Balsam Fir	11.0 MBF	\$ 45.00 / MBF
Black/Red (Hybrid) Oak	3.2 MBF	\$ 128.00 / MBF
Mixed Aspen	84.9 MBF	\$ 116.00 / MBF
Red Maple	9.9 MBF	\$ 81.00 / MBF
Red Oak	7.3 MBF	\$ 191.00 / MBF
White Pine	9.1 MBF	\$ 79.00 / MBF
<b>Pulpwood</b>		
Balsam Fir	506 Cords	\$ 22.50 / Cord
Black/Red (Hybrid) Oak	5 Cords	\$ 29.45 / Cord
Jack Pine	19 Cords	\$ 11.55 / Cord
Mixed Aspen	1,968 Cords	\$ 26.30 / Cord
Mixed Hardwood	258 Cords	\$ 25.10 / Cord
Mixed Spruce	18 Cords	\$ 9.95 / Cord
N. White Cedar	6 Cords	\$ 7.95 / Cord
Paper Birch	13 Cords	\$ 17.15 / Cord
Red Oak	33 Cords	\$ 29.45 / Cord
Red Pine	7 Cords	\$ 40.60 / Cord
Tamarack	6 Cords	\$ 22.90 / Cord
White Pine	13 Cords	\$ 28.80 / Cord

\* The total volume is statistically estimated within plus (+) or minus (-) 22.08 percent. There are an estimated 3,149 cords on this timber sale, plus or minus 695 cords at the 95% confidence level. The estimated units are final and not subject to adjustment. Prospective bidders are urged to examine this timber and to make their own estimates of quantity and quality.

### **BOND AND PAYMENT SCHEDULE:**

1. A bond in the amount of \$4,294.00 to insure faithful performance of the conditions of the contract will be deposited by the successful bidder within 21 days of the sale award.
2. Cutting in any sale or unit without the required advance payment would be considered a trespass.
3. Total payment must be paid in advance or according to the following schedule :
  - (a) Ten percent (10%) of the sale value must be paid within 21 days of the sale award.
  - (b) The 10% down payment will be credited towards the first unit cut.
  - (c) Payment for each of the following units must be made before cutting begins in that unit:
 

PAYMENT UNIT NUMBER	PERCENT OF TOTAL SALE VALUE
01	14.9%
02	13.5%
03	7.9%
04	14.7%
05	18.1%
06	22.6%
07	8.3%
4. If no cutting takes place, the 10% down payment will not be refunded.
5. Operations on the contract issued will terminate on 06/30/2026.

### **SALE STATISTICS**

Volumes were calculated in cubic feet using the Michigan taper model. Cubic foot volume includes all wood inside bark for the product indicated. For display purposes, cubic feet were converted to cords and MBF using a simple conversion factor, e.g. 79 cubic feet per cord and 185 cubic feet per MBF. The cubic foot volumes are precise; the cords and MBF volumes are not. Cubic foot volume cannot be directly converted to cords or boards with precision.

### SALE VOLUMES

The total estimated sale volume may not equal the sum of the species/products due to the nature of statistical calculations associated with double sampling methodology.

VOLUME			STATISTICAL RANGE IN CORDS	
TOTAL CUBIC FEET	TOTAL CORDS	PERCENT ERROR	MINIMUM	MAXIMUM
248,754	3,149	22.08%	2,453	3,844

### VDU VOLUMES

A VDU is a Volume Determination Unit. Volumes and their associated statistics are calculated at the VDU level and summarized to the sale level. There is often a one to one relationship between a VDU and a Payment Unit, but not always, depending on the cruise design. Refer to the VDU TO PAYMENT UNIT table.

VDU	VOLUME		PERCENT ERROR	RANGE IN CORDS	
	TOTAL CUBIC FEET	TOTAL CORDS		MINIMUM	MAXIMUM
59	19,763	250	30.60%	174	327
113	156,927	1,986	17.77%	1,633	2,339
149	63,866	808	27.57%	586	1,031
151	8,199	104	34.24%	68	139
<b>TOTAL:</b>	<b>248,754</b>	<b>3,149</b>		<b>2,461</b>	<b>3,837</b>

### VDU TO PAYMENT UNIT

When a VDU is associated with more than one Payment Unit (PU), the VDU volumes are assigned to the PU based on acres of the VDU within the PU.

VDU	VDU ACRES	PU	PU ACRES
59	4.9	3	4.9
113	55.5	4	12.8
		5	15.8
		6	19.7
		7	7.2
149	26.9	1	14.0
		2	12.9
151	5.2	1	2.8
		2	2.4
<b>TOTAL:</b>	<b>92.5</b>		<b>92.5</b>

**DESCRIPTION OF TIMBER BY PAYMENT UNIT (PU)**

PU	MARKET GROUP	PRODUCT	QUANTITY	UNIT	ACRES	ADVERTISE PRICE
1	Balsam Fir	Sawtimber	5.7	MBF	16.8	\$12,800.05
	Black/Red (Hybrid)		1.0	MBF		
	Mixed Aspen		14.7	MBF		
	<i>B. T. Aspen</i>		3.7	<i>MBF</i>		
	<i>Quaking Aspen</i>		11.0	<i>MBF</i>		
	White Pine		1.8	MBF		
	Balsam Fir	Pulpwood	96	Cords		
	Black/Red (Hybrid)		2	Cords		
	Jack Pine		11	Cords		
	<i>Jack Pine</i>	<i>Sawtimber</i>	0.3	<i>MBF</i>		
	<i>Jack Pine</i>	<i>Pulpwood</i>	10	<i>Cords</i>		
	Mixed Aspen		266	Cords		
	<i>B. T. Aspen</i>		55	<i>Cords</i>		
	<i>Quaking Aspen</i>		211	<i>Cords</i>		
	Mixed Hardwood		26	Cords		
	<i>Black Cherry</i>		4	<i>Cords</i>		
	<i>Red Maple</i>		22	<i>Cords</i>		
	Mixed Spruce		8	Cords		
	<i>Black Spruce</i>		8	<i>Cords</i>		
	Red Oak		6	Cords		
	Red Pine		4	Cords		
	<i>Red Pine</i>	<i>Sawtimber</i>	1.6	<i>MBF</i>		
	<i>Red Pine</i>	<i>Pulpwood</i>	1	<i>Cords</i>		
Tamarack		3	Cords			
White Pine		3	Cords			
2	Balsam Fir	Sawtimber	5.3	MBF	15.3	\$11,587.90
	Black/Red (Hybrid)		1.0	MBF		
	Mixed Aspen		13.4	MBF		
	<i>B. T. Aspen</i>		3.3	<i>MBF</i>		
	<i>Quaking Aspen</i>		10.1	<i>MBF</i>		
	White Pine		1.7	MBF		
	Balsam Fir	Pulpwood	86	Cords		
	Black/Red (Hybrid)		1	Cords		
	Jack Pine		8	Cords		
	<i>Jack Pine</i>	<i>Sawtimber</i>	0.2	<i>MBF</i>		
	<i>Jack Pine</i>	<i>Pulpwood</i>	8	<i>Cords</i>		
	Mixed Aspen		245	Cords		
	<i>B. T. Aspen</i>		51	<i>Cords</i>		
	<i>Quaking Aspen</i>		194	<i>Cords</i>		
	Mixed Hardwood		23	Cords		
	<i>Black Cherry</i>		3	<i>Cords</i>		
	<i>Red Maple</i>		20	<i>Cords</i>		
	Mixed Spruce		6	Cords		
	<i>Black Spruce</i>		6	<i>Cords</i>		
	Red Oak		5	Cords		
	Red Pine		3	Cords		
	<i>Red Pine</i>	<i>Sawtimber</i>	1.3	<i>MBF</i>		
	Tamarack	Pulpwood	3	Cords		
White Pine		2	Cords			
3	Black/Red (Hybrid)	Sawtimber	1.2	MBF	4.9	\$6,749.30
	Mixed Aspen		3.9	MBF		
	<i>B. T. Aspen</i>		2.9	<i>MBF</i>		
	<i>Quaking Aspen</i>		1.0	<i>MBF</i>		
	White Pine		3.5	MBF		
	Balsam Fir	Pulpwood	40	Cords		
	Black/Red (Hybrid)		2	Cords		

**DESCRIPTION OF TIMBER BY PAYMENT UNIT (PU), CON'T**

PU	MARKET GROUP	PRODUCT	QUANTITY	UNIT	ACRES	ADVERTISE PRICE	
3 con't	Mixed Aspen	Pulpwood	160	Cords			
	<i>B. T. Aspen</i>		41	<i>Cords</i>			
	<i>Quaking Aspen</i>		119	<i>Cords</i>			
	Mixed Hardwood		21	Cords			
	<i>Black Cherry</i>		2	<i>Cords</i>			
	<i>Red Maple</i>		19	<i>Cords</i>			
	White Pine		6	Cords			
4	Mixed Aspen	Sawtimber	12.2	MBF	12.8	\$12,587.80	
	<i>B. T. Aspen</i>		2.0	<i>MBF</i>			
	<i>Quaking Aspen</i>		10.2	<i>MBF</i>			
	Red Maple		2.3	MBF			
	Red Oak		1.7	MBF			
	White Pine		0.5	MBF			
	Balsam Fir	Pulpwood	65	Cords			
	Mixed Aspen		299	Cords			
	<i>B. T. Aspen</i>		53	<i>Cords</i>			
	<i>Quaking Aspen</i>		246	<i>Cords</i>			
	Mixed Hardwood		43	Cords			
	<i>American Elm</i>		3	<i>Cords</i>			
	<i>Red Maple</i>		35	<i>Cords</i>			
	<i>æberry (Juneberry)</i>		2	<i>Cords</i>			
	<i>Sugar Maple</i>		2	<i>Cords</i>			
	<i>White Ash</i>		1	<i>Cords</i>			
	Mixed Spruce		1	Cords			
	<i>White Spruce</i>		1	<i>Cords</i>			
	N. White Cedar		1	Cords			
	<i>N. White Cedar</i>		0.6	<i>MBF</i>			
	Paper Birch		Pulpwood	3			Cords
	Red Oak			5			Cords
	5		Mixed Aspen	Sawtimber			15.1
<i>B. T. Aspen</i>		2.5	<i>MBF</i>				
<i>Quaking Aspen</i>		12.6	<i>MBF</i>				
Red Maple		2.8	MBF				
Red Oak		2.1	MBF				
White Pine		0.6	MBF				
Balsam Fir		Pulpwood	81	Cords			
Mixed Aspen			369	Cords			
<i>B. T. Aspen</i>			65	<i>Cords</i>			
<i>Quaking Aspen</i>			304	<i>Cords</i>			
Mixed Hardwood			53	Cords			
<i>American Elm</i>			4	<i>Cords</i>			
<i>Red Maple</i>			43	<i>Cords</i>			
<i>æberry (Juneberry)</i>			2	<i>Cords</i>			
<i>Sugar Maple</i>			3	<i>Cords</i>			
<i>White Ash</i>			1	<i>Cords</i>			
Mixed Spruce			1	Cords			
<i>White Spruce</i>			1	<i>Cords</i>			
N. White Cedar			1	Cords			
<i>N. White Cedar</i>			0.7	<i>MBF</i>			
Paper Birch			Pulpwood	4	Cords		
Red Oak				6	Cords		
White Pine				1	Cords		
6	Mixed Aspen	Sawtimber	18.8	MBF	19.7	\$19,435.20	
	<i>B. T. Aspen</i>		3.1	<i>MBF</i>			
	<i>Quaking Aspen</i>		15.7	<i>MBF</i>			
	Red Maple		3.5	MBF			

**DESCRIPTION OF TIMBER BY PAYMENT UNIT (PU), CON'T**

PU	MARKET GROUP	PRODUCT	QUANTITY	UNIT	ACRES	ADVERTISE PRICE
6 con't	Red Oak	Sawtimber	2.6	MBF		
	White Pine		0.7	MBF		
	Balsam Fir	Pulpwood	101	Cords		
	Mixed Aspen		460	Cords		
	<i>B. T. Aspen</i>		81	<i>Cords</i>		
	<i>Quaking Aspen</i>		379	<i>Cords</i>		
	Mixed Hardwood		67	Cords		
	<i>American Elm</i>		6	<i>Cords</i>		
	<i>Red Maple</i>		54	<i>Cords</i>		
	<i>æberry (Juneberry)</i>		2	<i>Cords</i>		
	<i>Sugar Maple</i>		4	<i>Cords</i>		
	<i>White Ash</i>		1	<i>Cords</i>		
	Mixed Spruce		1	Cords		
	<i>White Spruce</i>		1	<i>Cords</i>		
	N. White Cedar		3	Cords		
	<i>N. White Cedar</i>	<i>Sawtimber</i>	1.0	<i>MBF</i>		
	<i>N. White Cedar</i>	<i>Pulpwood</i>	1	<i>Cords</i>		
	Paper Birch		4	Cords		
	Red Oak		8	Cords		
	White Pine		1	Cords		
7	Mixed Aspen	Sawtimber	6.8	MBF	7.2	\$7,134.95
	<i>B. T. Aspen</i>		1.1	<i>MBF</i>		
	<i>Quaking Aspen</i>		5.7	<i>MBF</i>		
	Red Maple		1.3	MBF		
	Red Oak		0.9	MBF		
	White Pine		0.3	MBF		
	Balsam Fir	Pulpwood	37	Cords		
	Mixed Aspen		169	Cords		
	<i>B. T. Aspen</i>		30	<i>Cords</i>		
	<i>Quaking Aspen</i>		139	<i>Cords</i>		
	Mixed Hardwood		25	Cords		
	<i>American Elm</i>		2	<i>Cords</i>		
	<i>Red Maple</i>		20	<i>Cords</i>		
	<i>æberry (Juneberry)</i>		1	<i>Cords</i>		
	<i>Sugar Maple</i>		1	<i>Cords</i>		
	<i>White Ash</i>		1	<i>Cords</i>		
	Mixed Spruce		1	Cords		
	<i>White Spruce</i>		1	<i>Cords</i>		
	N. White Cedar		1	Cords		
	<i>N. White Cedar</i>	<i>Sawtimber</i>	0.3	<i>MBF</i>		
	Paper Birch	Pulpwood	2	Cords		
	Red Oak		3	Cords		
	TOTAL:			125.4		
TOTAL:			2,852	Cords		

## Sale Specific Conditions & Requirements

Sale Name: C25 Aspen Mix SBW

Sale Number: 54-029-23 Seq#: 2

### 1 - Sale Area

#### 1.2 - Boundaries

##### 1.2.1 - Painted boundaries (9/19)

The sale boundary and Payment Unit boundaries are marked and identified by blue, red, and yellow paint, along with a road and two grassy clearings. Exterior sale boundary lines against private property are marked with blue paint, with the exception of the southern boundary of Payment Unit 3, which is unpainted and represented by McMurphy road and the easternmost boundary of Payment Unit 2, which is unpainted and represented by DeWyse Road. Exterior sale boundary lines against state are marked with red paint, with the exception of the southern boundary of Payment Unit 1, which is unpainted and represented by McMurphy road, the western boundary of Payment Unit 1, which is unpainted and represented by an unnamed forest road, the northern boundary of Payment Unit 1, which is unpainted and represented by a grassy clearing, the partial southern boundary of Payment Unit 4 & the partial western boundary of Payment Unit 5, which are unpainted and represented by the same grassy clearing, and the eastern boundary of Payment Unit 3, which is unpainted and represented by DeWyse Road (see Timber Sale Map). Interior Payment Unit boundaries are marked with yellow paint. Retention patches are marked with red paint; no harvesting activities may occur within these areas. The painted boundary line trees are not Included Timber and are to be protected. Yellow painted trees designating an interior Payment Unit boundary are only to be cut when all surrounding Payment Units have been paid.

### 2 - Timber Specifications

#### 2.1 - Included Timber

##### 2.1.1 - Clearcut unit(s) with unmerchantable trees (6/14)

Within Payment Unit(s) 1-7, cut all trees that are two (2) inches or more at DBH, except in Payment Units 1 & 2, do not cut any trees marked with green paint and in Payment Units 1-3, do not cut any sub-merchantable red & white pine. Special protection trees identified in accordance with condition 3.4.2, within clearcutting unit boundaries, are not Included Timber and are to be protected.

### 3 - Payments

#### 3.3 - Pre-measured Sales

##### 3.3.4 - Dividing payment units (7/14)

Payment Unit(s) \$25,000 in value or greater may be divided at the request of the Purchaser and upon approval of the Unit Manager. Dividing Payment Units is a contract modification which requires a Timber Sale Contract Amendment. There will be only one division per Payment Unit.

#### 3.4 - Damaged Timber

##### 3.4.1 - Damaged timber (7/16)

General Condition and Requirement 3.4 Damaged Timber, defines liquidated damages for undesignated live merchantable trees which are cut or injured. In addition, extreme care should be taken to avoid damage to specified tree seedlings and saplings.

Within the Payment Units 1-3, if more than 20% of the red pine and/or white pine seedlings or saplings (1/4" to 4.5" DBH) within a specified portion of the Sale Area are damaged, liquidated damages will be assessed at \$250 per acre for all acreage within that specified portion of the Sale Area that was damaged.

No damage is acceptable to undesignated live merchantable trees. Within the Sale Area, if more than 5% of trees (> 4.5" DBH) within a specified area of the sale are damaged, liquidated damages will be assessed for all trees damaged. Rates will be in accordance with General Condition and Requirement 3.4 Damaged Timber.

##### 3.4.2 - Special Protection Trees (4/14)

The Purchaser shall not cut live or dead special protection trees within cutting units or clearings. Special protection trees are eighteen (18) inches or more at DBH & are marked with green paint. If the Purchaser's operations have cut or damaged



special protection trees through carelessness, the Purchaser shall pay \$250 as fixed, agreed and liquidated damages for each special protection tree cut or damaged. Such payment does not constitute ownership of the undesignated timber.

## **4 - Transportation**

### 4.1 - Construction

#### 4.1.3 - Slash and earthen piles (8/04)

Piles or windrows of earth along roads and landings that have been widened or constructed shall be leveled. Slash from road maintenance or construction, including stumps, shall be dispersed throughout the sale.

#### 4.1.6 - Road construction (1/09)

Improvements of existing roads shall be done in such a way as to minimize the environmental and visual impacts. Merchantable trees shall be cut and utilized unless otherwise directed. Non-merchantable trees shall be severed and laid flat on the ground. Slash shall be scattered, and not left in windrows and kept a minimum of 10 feet back from the road edge. Stumps shall be set upright, not left on edge, and be moved at least 10 feet away from the road edge. Disturbed soil shall be feathered into the woods and not left in berms or windrows.

#### 4.1.12 - No new roads (1/12)

No new roads will be permitted in any Payment Unit. All operations are limited to existing roads. Skid trails only will be allowed.

### 4.2 - Maintenance

#### 4.2.5 - Two wheel drive condition (2/04)

All existing trail roads on and adjacent to the sale area must be passable by two-wheel drive traffic for the duration of the sale.

## **5 - Operations**

### 5.1 - Notification

#### 5.1.1 - Pre-sale conference (10/16)

A pre-sale conference on site between the Purchaser and sale administrator is required prior to beginning any operations within a Payment Unit to determine landing and road locations. The Unit Manager or his/her representative must be contacted at least 5 days in advance to schedule the conference.

#### 5.1.3 - Well heads and natural gas pipelines (11/15)

The Purchaser is responsible for contacting the gas or pipeline company 30 days prior to operating equipment in the vicinity of well heads or natural gas pipelines.

#### 5.1.4 - Post-sale conference (10/16)

A post-sale conference on site between the Purchaser and sale administrator is required 5 days prior to the completion of active logging operations to determine clean-up and repair of landings, road edges, and the fulfillment of other contract specifications.

### 5.2 - Conduct of Operations

#### 5.2.1 - Slash

##### 5.2.1.10 - No slash in openings (5/10)

No brush or logging debris is to be left in the maintained wildlife openings which are indicated by "G0" on the Timber Sale Maps. Any damage to the opening shall be repaired according to specifications of the Unit Manager or his/her representative.

#### 5.2.2 - Hazard Trees/Snags

##### 5.2.2.1 - Den trees (10/16)

Obvious hollow and/or den trees shall be protected and left standing unless they are a safety hazard.

#### 5.2.3 - Operating Restrictions

##### 5.2.3.5 - Oak wilt restriction (1/18)

Within Payment Units 2, 4, & 5, unless changed by written agreement, cutting, skidding, hauling within the sale and brushing of access roads to the sale are not permitted during the period of April 15 to July 15. Operations may be allowed if specific steps are taken to prevent damaging uncut oak during the high risk period. Those steps may include completing all road brushing before April 15th and clearing a tree-length buffer along uncut oak cover before April 15th. This is necessary to reduce the spread of oak wilt. For more information, contact the Unit Manager or his/her representative.

#### 5.2.3.11 - Coppice regeneration protection (4/10)

Timber harvesting in any Payment Unit must be completed before significant deciduous tree sprouting occurs in that Payment Unit so as to minimize damage to the new regeneration. Any post harvest operations, such as chipping, must be completed before sprouting of regeneration occurs. If it is anticipated that chipping will be delayed, then tops shall be carried to one central location or left unchipped. The Unit Manager or his/her representative may cease such operations if sprouting occurs before the operation is complete.

#### 5.2.3.15 - Oak wilt restriction, access roads (11/23)

Brushing of access roads to Payment Units 1, 3, 6, & 7 must be completed prior to April 15 in order to use these roads for hauling timber or moving machinery between April 15 and July 15. No exceptions will be granted. This is necessary to reduce the spread of oak wilt.

### 5.2.4 - Dead and Down Creation

#### 5.2.4.7 - Dead and down creation: hare, grouse, deer and other species (5/15)

To improve horizontal cover habitat for snowshoe hare, grouse, deer, and other species, the Purchaser is to push over all orange ringed trees within Payment Units 1-7 after all designated wood has been forwarded from a Payment Unit.

These trees should be tipped over with the root ball still attached so the base of the tree is suspended off the ground. The crown of the fallen tree should be at or near ground level after it is pushed over.

#### 5.2.32 - Decking/landing restoration (9/13)

All decking and landing areas must have the surface area restored to a condition equal to or better than before. This is to ensure the proper regeneration of the stand. Wood debris, chips and "cookies" from trimmings must be removed or scattered away from landing and loading areas and may not be windrowed on the edge.

#### 5.2.33 - Gas well re-vegetation (12/08)

In the event that the gas well is utilized for a landing, the site must be re-vegetated with a seeding mixture specified by the Unit Manager or his/her representative.

#### 5.2.38 - No decking against live trees (2/04)

Cut products may not be decked against unmarked or designated leave trees.

#### 5.2.41 - Snowmobile trail protection (9/11)

The LP 4/9 snowmobile trail is shown on the Timber Sale Map. Do not cut or damage posts with orange trail markers or traffic control signs. If the trail is used, it must be maintained and restored to a condition equal to or better than before the sale. The road maintenance/restoration must be done prior to December 1. If the trail is used for hauling, it must be graded to the satisfaction of the Unit Manager or his/her representative prior to December 1. If the trail road is to be used for hauling during the snowmobile season, then a snow-covered base must be left on the trail. The snowmobile trail may only be crossed at right angles. Maintain a 20-foot-wide slash, debris, and rut free zone daily using the snowmobile trail as the centerline. No decking of forest products will be permitted along the snowmobile trail. All stumps within 5 feet of the snowmobile trail must be cut at ground level.

### 5.4 - Soil Protection

#### 5.4.1 - Rutting restriction, general (7/16)

Operations are to cease immediately if equipment and weather conditions result in rutting of roads and/or skid trails which is 12 inches or greater in depth and 50 feet in length. The Unit Manager or his/her representative may restrict hauling and/or skidding if ruts exceed the specified depth. With the Unit Manager or his/her representative's approval, the Purchaser may return to the area when the risk of rutting has decreased.

### 5.8 - Protection of Endangered Species

#### 5.8.5 - Protection of raptor nests (3/13)

All trees with raptor nests will be protected if found during harvesting operations. Notification will be made to the Unit

Manager or his/her representative who will notify the Wildlife Biologist so an on-site evaluation and recommendation can be made, if necessary.

## **6 - Safety and Fire Prevention**

### **6.2 - Signing**

#### **6.2.1 - Road posting (10/20)**

The Purchaser is responsible for posting and maintaining caution signs on forest roads used for hauling prior to beginning operations. The road must be posted at appropriate distances from the Sale Area to warn of logging activity and truck traffic. Signs must be removed when harvest operations are suspended or completed. The Purchaser will provide these signs.

#### **6.2.2 - Snowmobile trail posting (10/20)**

The Purchaser is responsible for posting and maintaining caution signs on the LP 4/9 snowmobile trail prior to beginning operations during the snowmobile season (approximately December 1 to March 31). The trail must be posted at appropriate distances from the Sale Area to warn of logging activity and truck traffic. Signs must be removed when harvest operations are suspended or completed. The Purchaser will provide these signs.



**TIMBER SALE MAP**

This information provided by authority of Part 525, 1994 PA 451, as amended.

Sale Number	Date	
<b>54-029-23</b>	11/03/2023	
Scale	Page	Of
1:15,840	1	2

Forest Management Unit	County	Mapped By: D. Parris
Atlanta Mgt Unit	Montmorency	Cruised By: D. Parris

Township	Range	Section(s) and Subdivision(s)
29N / 30N	03E	Sec. 19 SE; Sec. 32 SESW,S1/2SE; Sec. 5 E1/2NW,NWNE;

Cover Type			
A = Aspen	J = Jack Pine	O = Oak	U = Upland Brush
B = Paper Birch	K = Rock	P = Lowland Poplar	UM = Upland Mix Forest
C = Cedar	L = Lowland Brush	Q = Mixed Swamp Conifer	V = Bog or Marsh
D = Treed Bog	LM = Lowland Mix Forest	R = Red Pine	W = White Pine
E = Swamp Hardwoods	M = Maple, Beech, Birch	S = Black Spruce	X = Non Stocked
F = Spruce/Fir	MC = Mixed Conifer	T = Tamarack	Y = Sand
G = Grass	MD = Mixed Deciduous	Z = Water	
H = Hemlock	N = Marsh		

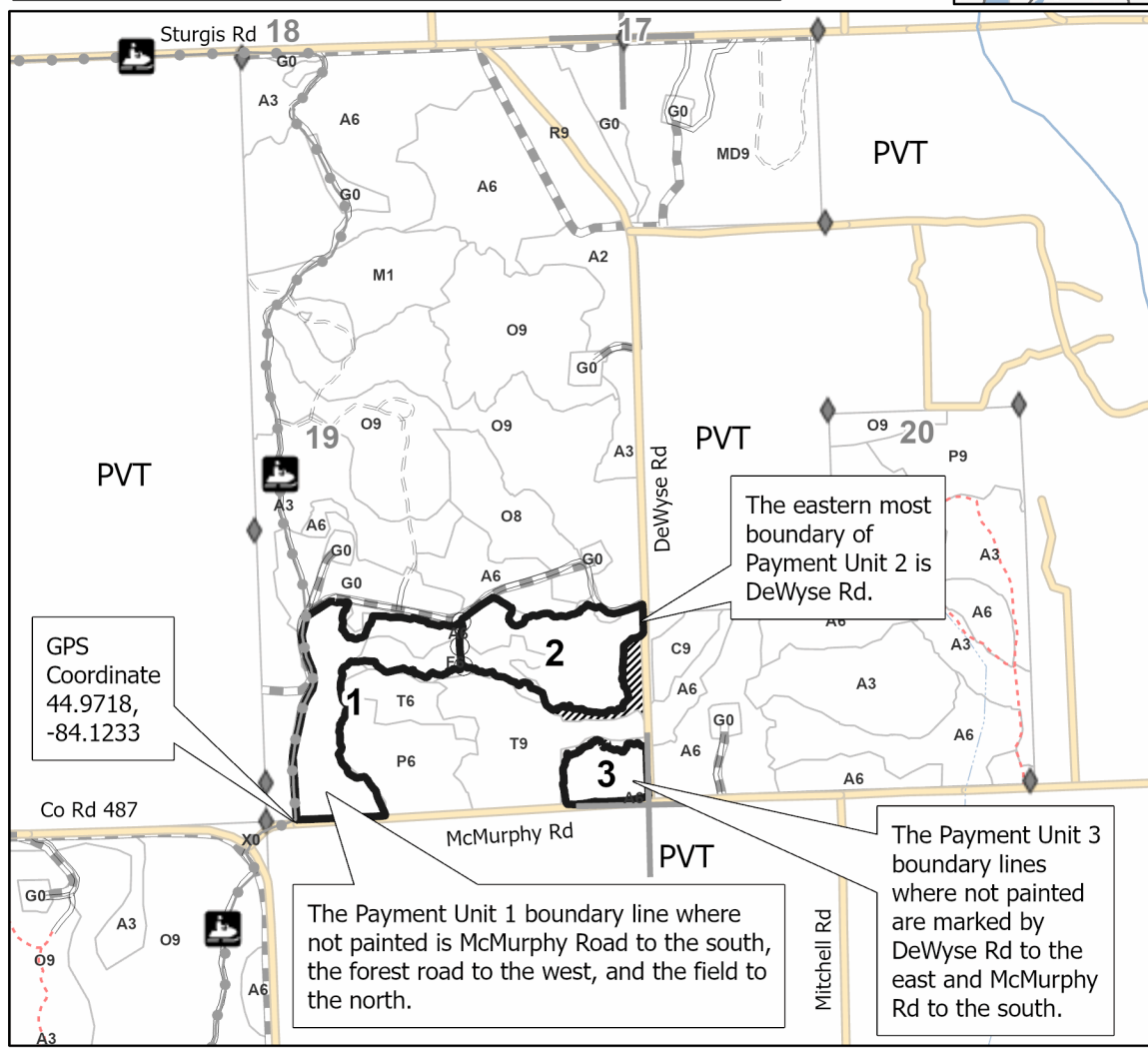
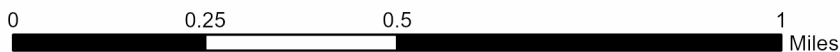
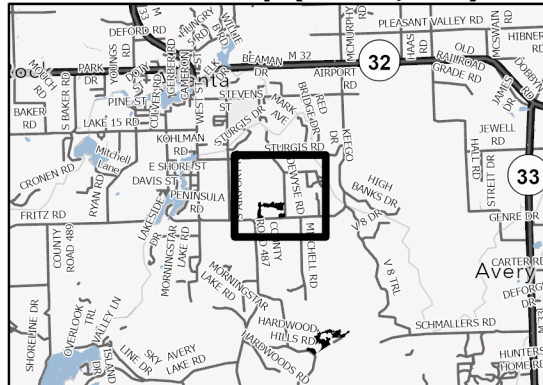
Density	
0 = Non Stocked	5 = Pole Timber Medium
1 = Seedling Sapling Poor	6 = Pole Timber Well
2 = Seedling Sapling Medium	7 = Saw Timber Poor
3 = Seedling Sapling Well	8 = Saw Timber Medium
4 = Pole Timber Poor	9 = Saw Timber Well

PU #	Acres	PU #	Acres
1	16.8	5	15.8
2	15.3	6	19.7
3	4.9	7	7.2
4	12.8		

**C25 Aspen Mix SBW  
92.5 Acres**



**Locator Map (1:200,000)**



**Legend**

- Against State (Red)
- Payment Unit (Yellow)
- Stand
- ▨ Retention (Red)
- Recreational Trail
- Intermittent Stream
- Perennial River
- Secondary Forest Road
- Forest Access Route
- Administrative Access Only
- Non-DNR Road
- Pipeline
- ◆ Survey Corner
- Section Corner

Use QR Code to open Map in App





### TIMBER SALE MAP

This information provided by authority of Part 525, 1994 PA 451, as amended.

Sale Number	Date	
<b>54-029-23</b>	11/03/2023	
Scale	Page	Of
1:10,000	2	2

Forest Management Unit	County	Mapped By: D. Parris
Atlanta Mgt Unit	Montmorency	Cruised By: D. Parris

Township	Range	Section(s) and Subdivision(s)
29N / 30N	03E	Sec. 19 SE; Sec. 32 SESW,S1/2SE; Sec. 5 E1/2NW,NWNE;

Cover Type			
A = Aspen	J = Jack Pine	O = Oak	U = Upland Brush
B = Paper Birch	K = Rock	P = Lowland Poplar	UM = Upland Mix Forest
C = Cedar	L = Lowland Brush	Q = Mixed Swamp Conifer	V = Bog or Marsh
D = Treed Bog	LM = Lowland Mix Forest	R = Red Pine	W = White Pine
E = Swamp Hardwoods	M = Maple, Beech, Birch	S = Black Spruce	X = Non Stocked
F = Spruce/Fir	MC = Mixed Conifer	T = Tamarack	Y = Sand
G = Grass	MD = Mixed Deciduous	Z = Water	
H = Hemlock	N = Marsh		

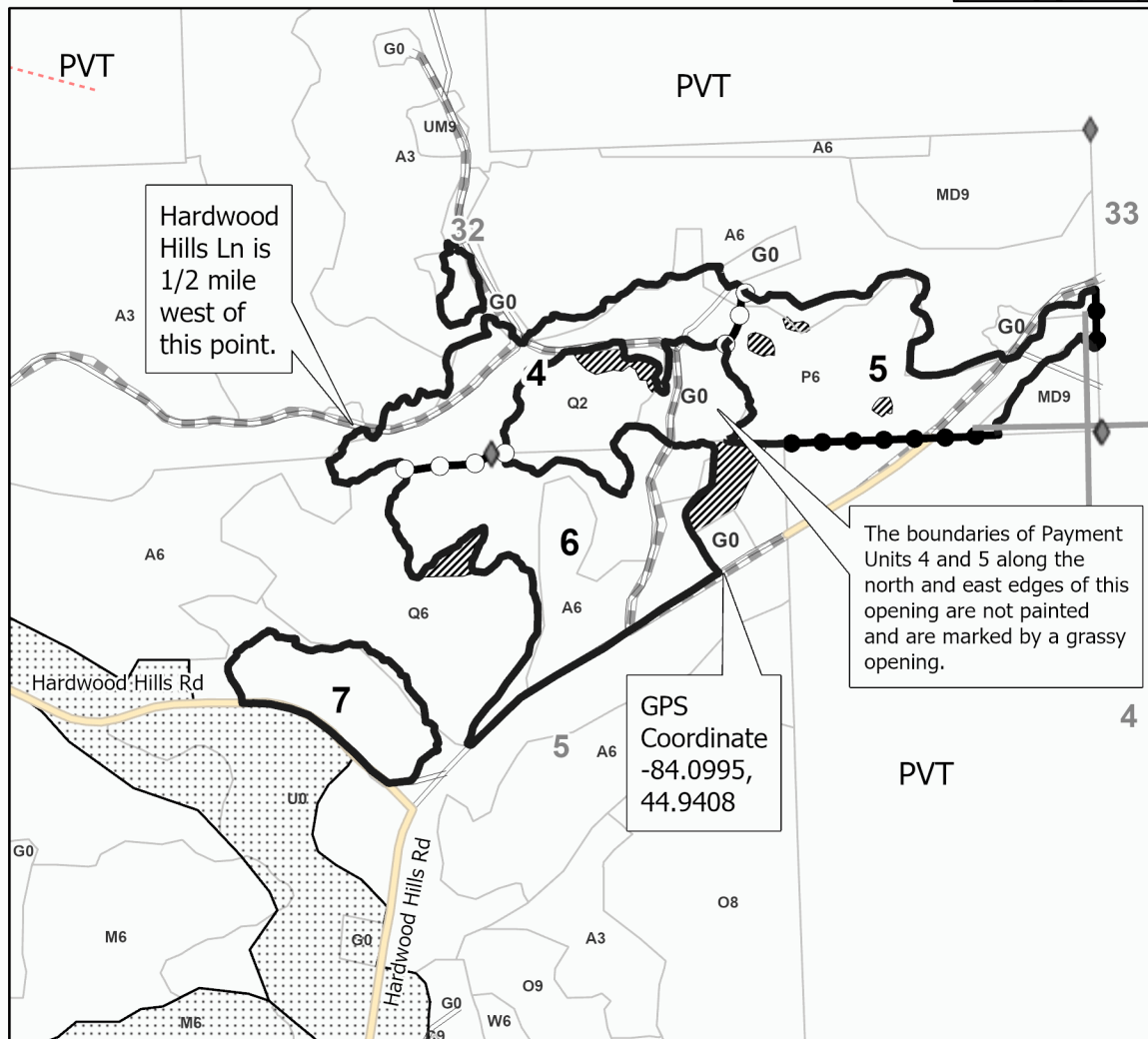
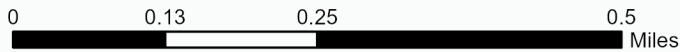
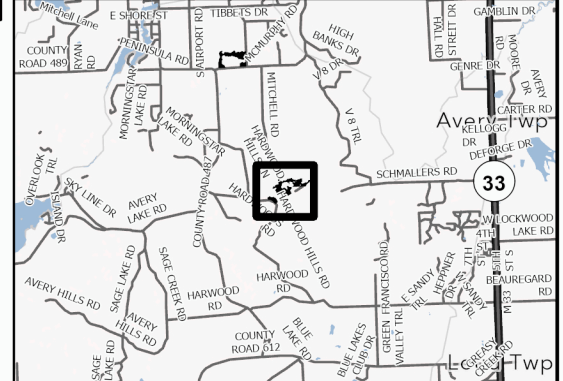
Density	
0 = Non Stocked	5 = Pole Timber Medium
1 = Seedling Sapling Poor	6 = Pole Timber Well
2 = Seedling Sapling Medium	7 = Saw Timber Poor
3 = Seedling Sapling Well	8 = Saw Timber Medium
4 = Pole Timber Poor	9 = Saw Timber Well

PU #	Acres	PU #	Acres
1	16.8	5	15.8
2	15.3	6	19.7
3	4.9	7	7.2
4	12.8		

**C25 Aspen  
Mix SBW  
92.5 Acres**



### Locator Map (1:200,000)



### Legend

- Against State (Red)
- Payment Unit (Yellow)
- Private Line (Blue)
- Retention (Red)
- Nearby Timber Sale
- Stand
- Secondary Forest Road
- Administrative Access Only
- Non-DNR Road
- Pipeline
- Survey Corner
- Section Corner

Use QR Code to open Map in App





## TIMBER SALE INFORMATION

Brand O Mix (54-031-23)

T37N, R01E, SEC. 5; T37N, R01E, SEC. 7; T37N, R01E, SEC. 8.  
Cheboygan County (Advertised Price \$124,835.15)

SALE NOTE: A recreation site such as a trail, pathway, or campground is within the sale area or the vicinity. Certain restrictions/specifications may be applicable including time restrictions.

A timber sale contract for this lump sum, sealed bid timber sale will be awarded to the responsible bidder offering the highest sealed bid price. All units of volume listed below were estimated using the Inventory Manager computer program and the new Michigan taper model. Bids must be at or above the following advertised price for each product and species:

<u>PRODUCTS &amp; SPECIES</u>	<u>ESTIMATED UNITS*</u>	<u>ADVERTISED PRICE</u>
Sawtimber		
Red Maple	17.5 MBF	\$ 81.00 / MBF
Red Oak	29.9 MBF	\$ 191.00 / MBF
Sugar Maple	15.1 MBF	\$ 314.00 / MBF
Pulpwood		
Balsam Fir	10 Cords	\$ 22.50 / Cord
Mixed Aspen	3,652 Cords	\$ 26.30 / Cord
Mixed Hardwood	527 Cords	\$ 25.10 / Cord
Paper Birch	82 Cords	\$ 17.15 / Cord
Red Oak	61 Cords	\$ 33.75 / Cord

\* The total volume is statistically estimated within plus (+) or minus (-) 11.72 percent. There are an estimated 4,295 cords on this timber sale, plus or minus 504 cords at the 95% confidence level. The estimated units are final and not subject to adjustment. Prospective bidders are urged to examine this timber and to make their own estimates of quantity and quality.

### **BOND AND PAYMENT SCHEDULE:**

1. A bond in the amount of \$6,242.00 to insure faithful performance of the conditions of the contract will be deposited by the successful bidder within 21 days of the sale award.
2. Cutting in any sale or unit without the required advance payment would be considered a trespass.
3. Total payment must be paid in advance or according to the following schedule :
  - (a) Ten percent (10%) of the sale value must be paid within 21 days of the sale award.
  - (b) The 10% down payment will be credited towards the first unit cut.
  - (c) Payment for each of the following units must be made before cutting begins in that unit:
 

PAYMENT UNIT NUMBER	PERCENT OF TOTAL SALE VALUE
01	32.4%
02	35.0%
03	32.6%
4. If no cutting takes place, the 10% down payment will not be refunded.
5. Operations on the contract issued will terminate on 06/30/2026.

### **SALE STATISTICS**

Volumes were calculated in cubic feet using the Michigan taper model. Cubic foot volume includes all wood inside bark for the product indicated. For display purposes, cubic feet were converted to cords and MBF using a simple conversion factor, e.g. 79 cubic feet per cord and 185 cubic feet per MBF. The cubic foot volumes are precise; the cords and MBF volumes are not. Cubic foot volume cannot be directly converted to cords or boards with precision.

### **SALE VOLUMES**

The total estimated sale volume may not equal the sum of the species/products due to the nature of statistical calculations associated with double sampling methodology.

VOLUME		STATISTICAL RANGE IN CORDS		
TOTAL CUBIC FEET	TOTAL CORDS	PERCENT ERROR	MINIMUM	MAXIMUM
339,296	4,295	11.72%	3,791	4,799

**VDU VOLUMES**

A VDU is a Volume Determination Unit. Volumes and their associated statistics are calculated at the VDU level and summarized to the sale level. There is often a one to one relationship between a VDU and a Payment Unit, but not always, depending on the cruise design. Refer to the VDU TO PAYMENT UNIT table.

VDU	VOLUME		PERCENT ERROR	RANGE IN CORDS	
	TOTAL CUBIC FEET	TOTAL CORDS		MINIMUM	MAXIMUM
10	339,296	4,295	11.73%	3,791	4,799
<b>TOTAL:</b>	<b>339,296</b>	<b>4,295</b>		<b>3,791</b>	<b>4,799</b>

**VDU TO PAYMENT UNIT**

When a VDU is associated with more than one Payment Unit (PU), the VDU volumes are assigned to the PU based on acres of the VDU within the PU.

VDU	VDU ACRES	PU	PU ACRES
10	101.7	1	32.9
		2	35.6
		3	33.2
<b>TOTAL:</b>	<b>101.7</b>		<b>101.7</b>



**DESCRIPTION OF TIMBER BY PAYMENT UNIT (PU)**

PU	MARKET GROUP	PRODUCT	QUANTITY	UNIT	ACRES	ADVERTISE PRICE
1	Red Maple	Sawtimber	5.7	MBF	32.9	\$40,385.85
	Red Oak		9.7	MBF		
	Sugar Maple		4.9	MBF		
	Balsam Fir	Pulpwood	3	Cords		
	Mixed Aspen		1,181	Cords		
	<i>B. T. Aspen</i>		1,098	<i>Cords</i>		
	<i>Quaking Aspen</i>		83	<i>Cords</i>		
	Mixed Hardwood		170	Cords		
	<i>Red Maple</i>		118	<i>Cords</i>		
	<i>Sugar Maple</i>		52	<i>Cords</i>		
	Paper Birch		27	Cords		
	Red Oak		20	Cords		
	2	Red Maple	Sawtimber	6.1		
Red Oak			10.4	MBF		
Sugar Maple			5.3	MBF		
Balsam Fir		Pulpwood	4	Cords		
Mixed Aspen			1,279	Cords		
<i>B. T. Aspen</i>			1,188	<i>Cords</i>		
<i>Quaking Aspen</i>			91	<i>Cords</i>		
Mixed Hardwood			185	Cords		
<i>Red Maple</i>			128	<i>Cords</i>		
<i>Sugar Maple</i>			57	<i>Cords</i>		
Paper Birch			28	Cords		
Red Oak			21	Cords		
3		Red Maple	Sawtimber	5.7	MBF	33.2
	Red Oak		9.8	MBF		
	Sugar Maple		4.9	MBF		
	Balsam Fir	Pulpwood	3	Cords		
	Mixed Aspen		1,192	Cords		
	<i>B. T. Aspen</i>		1,108	<i>Cords</i>		
	<i>Quaking Aspen</i>		84	<i>Cords</i>		
	Mixed Hardwood		172	Cords		
	<i>Red Maple</i>		119	<i>Cords</i>		
	<i>Sugar Maple</i>		53	<i>Cords</i>		
	Paper Birch		27	Cords		
	Red Oak		20	Cords		
	TOTAL:			62.5	MBF	
TOTAL:			4,332	Cords		

# Sale Specific Conditions & Requirements

**Sale Name: Brand O Mix**

**Sale Number: 54-031-23 Seq#: 2**

## 1 - Sale Area

### 1.2 - Boundaries

#### 1.2.1 - Painted boundaries (9/19)

The sale boundary and Payment Unit boundaries are marked and identified by red and blue paint, along with roads. Exterior sale boundary lines against private property are marked with blue paint. Exterior sale boundary lines against state are marked with red paint. Interior Payment Unit boundaries are marked with roads, as the interior Payment Unit boundary between Payment Units 1 & 2 is unpainted and identified by an unnamed forest road and the interior Payment Unit boundary between Payment Units 2 & 3 is unpainted and identified by a Duck Lake Road (see Timber Sale Map). Boundary excluded retention areas are present and shown on the Timber Sale Map. No harvesting activities may occur within these areas. The red and blue painted boundary line trees are not Included Timber and are to be protected.

## 2 - Timber Specifications

### 2.1 - Included Timber

#### 2.1.1 - Clearcut unit(s) with unmerchantable trees (6/14)

Within Payment Unit(s) 1-3, cut all trees that are two (2) inches or more at DBH, except do not cut any pine or trees marked with green paint.

## 3 - Payments

### 3.3 - Pre-measured Sales

#### 3.3.4 - Dividing payment units (7/14)

Payment Unit(s) 1-3 may be divided at the request of the Purchaser and upon approval of the Unit Manager. Dividing Payment Units is a contract modification which requires a Timber Sale Contract Amendment. There will be only one division per Payment Unit.

### 3.4 - Damaged Timber

#### 3.4.1 - Damaged timber (7/16)

General Condition and Requirement 3.4 Damaged Timber, defines liquidated damages for undesignated live merchantable trees which are cut or injured. No damage is acceptable to undesignated live merchantable trees and designated retention areas. Within the Sale Area, if more than 5% of trees (> 4.5" DBH) within a specified area of the sale are damaged, liquidated damages will be assessed for all trees damaged. Rates will be in accordance with General Condition and Requirement 3.4 Damaged Timber.

## 4 - Transportation

### 4.1 - Construction

#### 4.1.3 - Slash and earthen piles (8/04)

Piles or windrows of earth along roads and landings that have been widened or constructed shall be leveled. Slash from road maintenance or construction, including stumps, shall be dispersed throughout the sale.

#### 4.1.6 - Road construction (1/09)

Improvements of existing roads shall be done in such a way as to minimize the environmental and visual impacts. Merchantable trees shall be cut and utilized unless otherwise directed. Non-merchantable trees shall be severed and laid flat on the ground. Slash shall be scattered, and not left in windrows and kept a minimum of 10 feet back from the road edge. Stumps shall be set upright, not left on edge, and be moved at least 10 feet away from the road edge. Disturbed soil shall be feathered into the woods and not left in berms or windrows.

#### 4.1.7 - Road closure (10/11)

Roads that are overgrown and reopened must be blocked to vehicle traffic upon completion of the sale. Some existing roads may also need to be closed, see the Timber Sale Map for locations. In general, this will require constructing a four (4') foot

high berm of stumps and logs covered with earth. These roads must be rendered impassable to cars and trucks. Contact the Sale Administrator for specific details of design and placement.

#### 4.2 - Maintenance

##### 4.2.2 - Fill material (4/07)

To maintain roads, fill material may be needed in areas where "holes" exist or may be expected to develop. This fill material should be placed before trucking begins. The Unit Manager or his/her representative must approve the type of fill material used prior to placement. In general, suitable fill material includes cobble and/or crushed rock.

##### 4.2.5 - Two wheel drive condition (2/04)

All existing trail roads on and adjacent to the sale area must be passable by two-wheel drive traffic for the duration of the sale.

### 5 - Operations

#### 5.2 - Conduct of Operations

##### 5.2.1 - Slash

###### 5.2.1.10 - No slash in openings (5/10)

No brush or logging debris is to be left in openings which are indicated by "G0" on the Timber Sale Map. Any damage to the opening shall be repaired according to specifications of the Unit Manager or his/her representative.

##### 5.2.2 - Hazard Trees/Snags

###### 5.2.2.1 - Den trees (10/16)

Obvious hollow and/or den trees shall be protected and left standing unless they are a safety hazard.

##### 5.2.4 - Dead and Down Creation

###### 5.2.4.3 - Dead and down creation, dead trees (6/07)

Except as provided for in General Condition and Requirement 5.2.2, no dead trees, standing or down, are to be cut, skidded, or processed.

###### 5.2.4.7 - Dead and down creation: hare, grouse, deer and other species (5/15)

To improve horizontal cover habitat for snowshoe hare, grouse, deer, and other species, the Purchaser is to push over all trees painted with an orange or pink "D" within Payment Units 1-3. These trees should be tipped over with the root ball still attached so the base of the tree is suspended off the ground. The crown of the fallen tree should be at or near ground level after it is pushed over. If it becomes impractical or impossible to push over a tree, severing or partially severing the tree is acceptable.

##### 5.2.32 - Decking/landing restoration (9/13)

All decking and landing areas must have the surface area restored to a condition equal to or better than before. This is to ensure the proper regeneration of the stand. Wood debris, chips and "cookies" from trimmings must be removed or scattered away from landing and loading areas and may not be windrowed on the edge.

##### 5.2.38 - No decking against live trees (2/04)

Cut products may not be decked against unmarked or designated leave trees.

#### 5.4 - Soil Protection

##### 5.4.1 - Rutting restriction, general (7/16)

Operations are to cease immediately if equipment and weather conditions result in rutting of roads and/or skid trails which is 12 inches or greater in depth and 50 feet in length. The Unit Manager or his/her representative may restrict hauling and/or skidding if ruts exceed the specified depth. With the Unit Manager or his/her representative's approval, the Purchaser may return to the area when the risk of rutting has decreased.

#### 5.8 - Protection of Endangered Species

##### 5.8.5 - Protection of raptor nests (3/13)

All trees with raptor nests will be protected if found during harvesting operations. Notification will be made to the Unit

Manager or his/her representative who will notify the Wildlife Biologist so an on-site evaluation and recommendation can be made, if necessary.

## **6 - Safety and Fire Prevention**

### 6.2 - Signing

#### 6.2.1 - Road posting (10/20)

The Purchaser is responsible for posting and maintaining caution signs on roads used for hauling prior to beginning operations. The road must be posted at appropriate distances from the Sale Area to warn of logging activity and truck traffic. Signs must be removed when harvest operations are suspended or completed. The Purchaser will provide these signs.

#### 6.2.3 - Recreational trail posting (10/20)

The Purchaser is responsible for posting and maintaining caution signs on the Black Lake ORV Route (located near the northwest boundary of sale) prior to beginning operations. The trail must be posted at appropriate distances from the Sale Area to warn of logging activity and truck traffic at both ends of the trail. Signs must be removed when harvest operations are suspended or completed. The Purchaser will provide these signs.



# TIMBER SALE MAP

This information provided by authority of Part 525, 1994 PA 451, as amended.

Forest Management Unit Atlanta		County Cheboygan	Mapped By J. St. Pierre	Date 8/29/2023	Page 1	of 1
Township 37N	Range 01E	Section(s) and Subdivision(s) Sec.5: SWSW Sec.7: NENE Sec.8: NW, W1/2NE, NWSE		Scale 1:15,840		

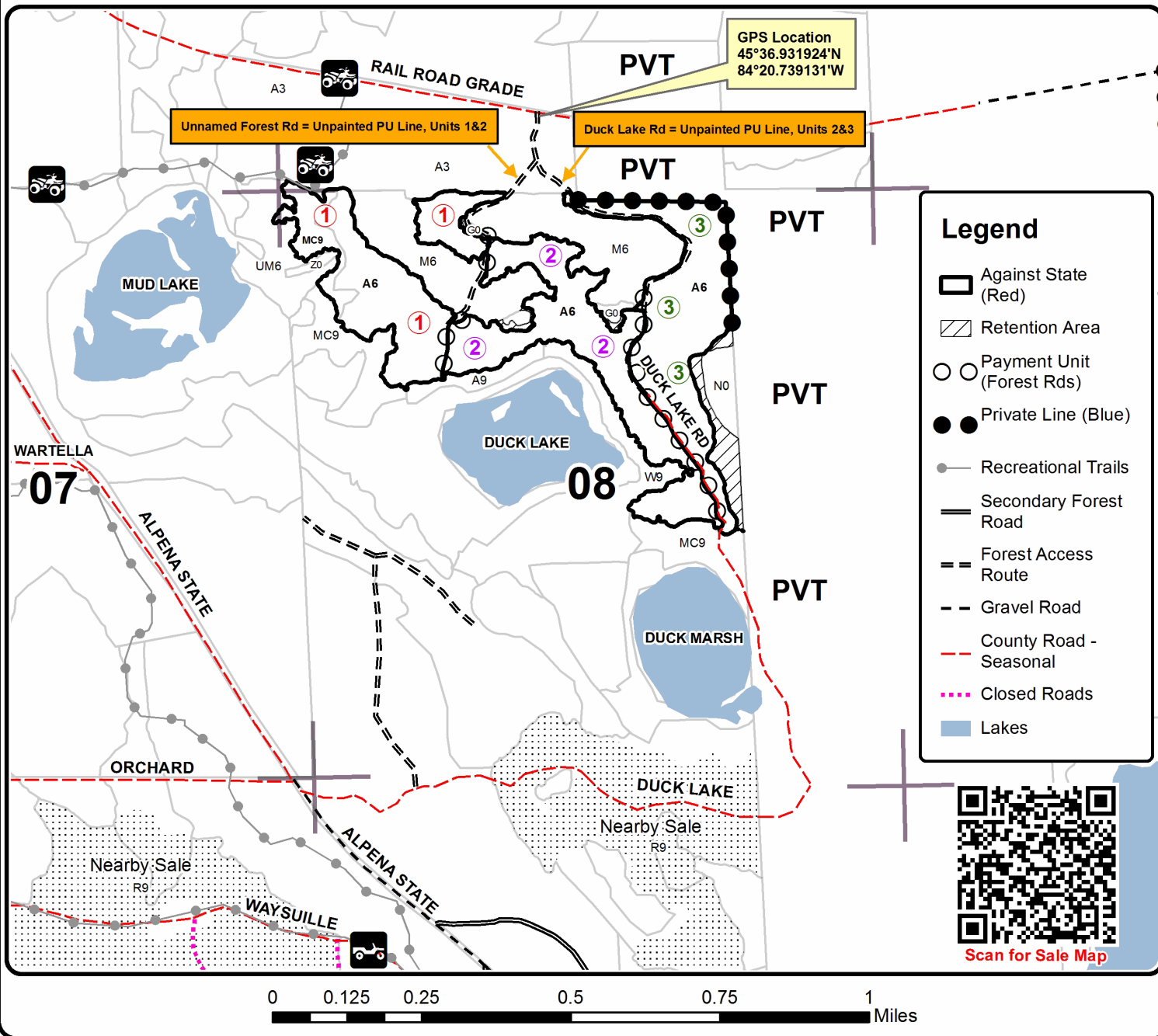
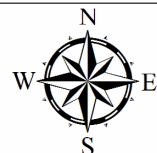
Cover Type				Density	
A = Aspen	H = Hemlock	N = Marsh	U = Upland Brush	0 = Non Stocked	5 = Pole Timber Medium
B = Paper Birch	J = Jack Pine	O = Oak	UM = Upland Mixed	1 = Seedling Sapling Poor	6 = Pole Timber Well
C = Cedar	L = Lowland Brush	P = Lowland Poplar	V = Bog or Marsh	2 = Seedling Sapling Medium	7 = Saw Timber Poor
D = Treed Bog	LM = Lowland Mixed	Q = Mixed Swamp Conifer	W = White Pine	3 = Seedling Sapling Well	8 = Saw Timber Medium
E = Swamp Hdwoods	M = Mpl, Bch, Brch	R = Red Pine	X = Non Stocked	4 = Pole Timber Poor	9 = Saw Timber Well
F = Spruce Fir	MC = Mixed Conifer	S = Black Spruce	Z = Water		
G = Grass	MD = Mixed Deciduous	T = Tamarack			

PU	Acres
1	32.9
2	35.6
3	33.2

## Brand O Mix

### Compartment 169

101.7 Acres



### Legend

- Against State (Red)
- Retention Area
- Payment Unit (Forest Rds)
- Private Line (Blue)
- Recreational Trails
- Secondary Forest Road
- Forest Access Route
- Gravel Road
- County Road - Seasonal
- Closed Roads
- Lakes



## TIMBER SALE INFORMATION

C128 Southwest (54-027-22)  
 T33N, R04E, SEC. 32.  
 Presque Isle County (Advertised Price \$90,413.25)

A timber sale contract for this lump sum, sealed bid timber sale will be awarded to the responsible bidder offering the highest sealed bid price. All units of volume listed below were estimated using the Inventory Manager computer program and the new Michigan taper model. Bids must be at or above the following advertised price for each product and species:

<u>PRODUCTS &amp; SPECIES</u>	<u>ESTIMATED UNITS*</u>	<u>ADVERTISED PRICE</u>
<b>Sawtimber</b>		
Mixed Aspen	80.6 MBF	\$ 116.00 / MBF
Mixed Oak	135.1 MBF	\$ 128.00 / MBF
Red Maple	6.3 MBF	\$ 81.00 / MBF
Red Pine	15.8 MBF	\$ 140.00 / MBF
White Pine	6.0 MBF	\$ 133.00 / MBF
<b>Pulpwood</b>		
Balsam Fir	53 Cords	\$ 22.50 / Cord
Black Spruce	9 Cords	\$ 9.95 / Cord
Jack Pine	11 Cords	\$ 11.55 / Cord
Mixed Aspen	1,197 Cords	\$ 26.30 / Cord
Mixed Oak	402 Cords	\$ 45.00 / Cord
Paper Birch	5 Cords	\$ 17.15 / Cord
Red Maple	232 Cords	\$ 25.10 / Cord
Red Pine	53 Cords	\$ 40.60 / Cord
White Pine	42 Cords	\$ 28.80 / Cord

\* The total volume is statistically estimated within plus (+) or minus (-) 13.82 percent. There are an estimated 2,529 cords on this timber sale, plus or minus 350 cords at the 95% confidence level. The estimated units are final and not subject to adjustment. Prospective bidders are urged to examine this timber and to make their own estimates of quantity and quality.

### **BOND AND PAYMENT SCHEDULE:**

1. A bond in the amount of \$4,521.00 to insure faithful performance of the conditions of the contract will be deposited by the successful bidder within 21 days of the sale award.
2. Cutting in any sale or unit without the required advance payment would be considered a trespass.
3. Total payment must be paid in advance or according to the following schedule :
  - (a) Ten percent (10%) of the sale value must be paid within 21 days of the sale award.
  - (b) The 10% down payment will be credited towards the first unit cut.
  - (c) Payment for each of the following units must be made before cutting begins in that unit:
 

PAYMENT UNIT NUMBER	PERCENT OF TOTAL SALE VALUE
01	24.6%
02	25.4%
03	27.4%
04	22.6%
4. If no cutting takes place, the 10% down payment will not be refunded.
5. Operations on the contract issued will terminate on 06/30/2026.

### **SALE STATISTICS**

Volumes were calculated in cubic feet using the Michigan taper model. Cubic foot volume includes all wood inside bark for the product indicated. For display purposes, cubic feet were converted to cords and MBF using a simple conversion factor, e.g. 79 cubic feet per cord and 185 cubic feet per MBF. The cubic foot volumes are precise; the cords and MBF volumes are not. Cubic foot volume cannot be directly converted to cords or boards with precision.

## SALE VOLUMES

The total estimated sale volume may not equal the sum of the species/products due to the nature of statistical calculations associated with double sampling methodology.

VOLUME			STATISTICAL RANGE IN CORDS	
TOTAL CUBIC FEET	TOTAL CORDS	PERCENT ERROR	MINIMUM	MAXIMUM
199,773	2,529	13.82%	2,179	2,878

## VDU VOLUMES

A VDU is a Volume Determination Unit. Volumes and their associated statistics are calculated at the VDU level and summarized to the sale level. There is often a one to one relationship between a VDU and a Payment Unit, but not always, depending on the cruise design. Refer to the VDU TO PAYMENT UNIT table.

	VOLUME			RANGE IN CORDS	
VDU	TOTAL CUBIC FEET	TOTAL CORDS	PERCENT ERROR	MINIMUM	MAXIMUM
41	155,891	1,973	15.40%	1,669	2,277
44	4,212	53	58.99%	22	85
53	31,989	405	36.56%	257	553
84	7,681	97	71.52%	28	167
<b>TOTAL:</b>	<b>199,773</b>	<b>2,529</b>		<b>1,976</b>	<b>3,082</b>

## VDU TO PAYMENT UNIT

When a VDU is associated with more than one Payment Unit (PU), the VDU volumes are assigned to the PU based on acres of the VDU within the PU.

VDU	VDU ACRES	PU	PU ACRES
41	61.1	1	20.3
		2	20.1
		3	2.0
		4	18.7
44	4.7	2	4.5
		3	0.2
53	10.3	3	10.3
84	3.9	3	3.9
<b>TOTAL:</b>	<b>80.0</b>		<b>80.0</b>



**DESCRIPTION OF TIMBER BY PAYMENT UNIT (PU)**

PU	MARKET GROUP	PRODUCT	QUANTITY	UNIT	ACRES	ADVERTISE PRICE
1	Mixed Aspen	Sawtimber	26.9	MBF	20.3	\$22,269.60
	<i>B. T. Aspen</i>		1.4	<i>MBF</i>		
	<i>Quaking Aspen</i>		25.5	<i>MBF</i>		
	Mixed Oak		17.5	MBF		
	<i>/Red (Hybrid) Oak</i>		16.7	<i>MBF</i>		
	<i>White Oak</i>		0.8	<i>MBF</i>		
	Red Maple		2.1	MBF		
	Red Pine		4.6	MBF		
	White Pine		2.0	MBF		
	Balsam Fir	Pulpwood	18	Cords		
	<i>Balsam Fir</i>	<i>Sawtimber</i>	0.5	<i>MBF</i>		
	<i>Balsam Fir</i>	<i>Pulpwood</i>	17	<i>Cords</i>		
	Mixed Aspen		377	Cords		
	<i>B. T. Aspen</i>		94	<i>Cords</i>		
	<i>Quaking Aspen</i>		283	<i>Cords</i>		
	Mixed Oak		61	Cords		
	<i>/Red (Hybrid) Oak</i>		54	<i>Cords</i>		
	<i>White Oak</i>		7	<i>Cords</i>		
	Red Maple		70	Cords		
	Red Pine		17	Cords		
White Pine		11	Cords			
2	Mixed Aspen	Sawtimber	26.5	MBF	24.6	\$22,949.10
	<i>B. T. Aspen</i>		1.3	<i>MBF</i>		
	<i>Quaking Aspen</i>		25.2	<i>MBF</i>		
	Mixed Oak		17.4	MBF		
	<i>/Red (Hybrid) Oak</i>		16.6	<i>MBF</i>		
	<i>White Oak</i>		0.8	<i>MBF</i>		
	Red Maple		2.1	MBF		
	Red Pine		6.5	MBF		
	White Pine		2.0	MBF		
	Balsam Fir	Pulpwood	17	Cords		
	<i>Balsam Fir</i>	<i>Sawtimber</i>	0.5	<i>MBF</i>		
	<i>Balsam Fir</i>	<i>Pulpwood</i>	16	<i>Cords</i>		
	Black Spruce		9	Cords		
	<i>Black Spruce</i>	<i>Sawtimber</i>	1.3	<i>MBF</i>		
	<i>Black Spruce</i>	<i>Pulpwood</i>	6	<i>Cords</i>		
	Jack Pine		11	Cords		
	Mixed Aspen		376	Cords		
	<i>B. T. Aspen</i>		93	<i>Cords</i>		
	<i>Quaking Aspen</i>		283	<i>Cords</i>		
	Mixed Oak		60	Cords		
	<i>/Red (Hybrid) Oak</i>		53	<i>Cords</i>		
	<i>White Oak</i>		7	<i>Cords</i>		
	Paper Birch		4	Cords		
	<i>Paper Birch</i>	<i>Sawtimber</i>	1.2	<i>MBF</i>		
<i>Paper Birch</i>	<i>Pulpwood</i>	2	<i>Cords</i>			
Red Maple		75	Cords			
Red Pine		18	Cords			
White Pine		15	Cords			
3	Mixed Aspen	Sawtimber	2.6	MBF	16.4	\$24,706.50
	Balsam Fir	Pulpwood	2	Cords		
	<i>B. T. Aspen</i>	<i>Sawtimber</i>	0.1	<i>MBF</i>		
	<i>Balsam Fir</i>	<i>Pulpwood</i>	2	<i>Cords</i>		
	<i>Quaking Aspen</i>	<i>Sawtimber</i>	2.5	<i>MBF</i>		
	Mixed Aspen	Pulpwood	97	Cords		
	Mixed Oak	Sawtimber	84.1	MBF		

**DESCRIPTION OF TIMBER BY PAYMENT UNIT (PU), CON'T**

PU	MARKET GROUP	PRODUCT	QUANTITY	UNIT	ACRES	ADVERTISE PRICE
3 con't	<i>B. T. Aspen</i>	<i>Pulpwood</i>	59	<i>Cords</i>		
	<i>/Red (Hybrid) Oak</i>	<i>Sawtimber</i>	83.2	<i>MBF</i>		
	<i>Quaking Aspen</i>	<i>Pulpwood</i>	38	<i>Cords</i>		
	<i>White Oak</i>	<i>Sawtimber</i>	0.9	<i>MBF</i>		
	Mixed Oak	Pulpwood	225	Cords		
	Red Maple	Sawtimber	0.2	MBF		
	<i>/Red (Hybrid) Oak</i>	<i>Pulpwood</i>	214	<i>Cords</i>		
	Red Pine	Sawtimber	0.5	MBF		
	<i>White Oak</i>	<i>Pulpwood</i>	11	<i>Cords</i>		
	White Pine	Sawtimber	0.2	MBF		
	Red Maple	Pulpwood	22	Cords		
	Red Pine		2	Cords		
	White Pine		6	Cords		
	4	Mixed Aspen	Sawtimber	24.6	MBF	18.7
<i>B. T. Aspen</i>			1.2	<i>MBF</i>		
<i>Quaking Aspen</i>			23.4	<i>MBF</i>		
Mixed Oak			16.1	MBF		
<i>/Red (Hybrid) Oak</i>			15.4	<i>MBF</i>		
<i>White Oak</i>			0.7	<i>MBF</i>		
Red Maple			1.9	MBF		
Red Pine			4.2	MBF		
White Pine			1.8	MBF		
Balsam Fir		Pulpwood	16	Cords		
<i>Balsam Fir</i>		<i>Sawtimber</i>	0.4	<i>MBF</i>		
<i>Balsam Fir</i>		<i>Pulpwood</i>	15	<i>Cords</i>		
Mixed Aspen			347	Cords		
<i>B. T. Aspen</i>			87	<i>Cords</i>		
<i>Quaking Aspen</i>			260	<i>Cords</i>		
Mixed Oak			56	Cords		
<i>/Red (Hybrid) Oak</i>			50	<i>Cords</i>		
<i>White Oak</i>			6	<i>Cords</i>		
Red Maple			65	Cords		
Red Pine			16	Cords		
White Pine		10	Cords			
TOTAL:			243.8	MBF		
TOTAL:			2,003	Cords		

# Sale Specific Conditions & Requirements

**Sale Name: C128 Southwest**

**Sale Number: 54-027-22 Seq#: 2**

## 1 - Sale Area

### 1.2 - Boundaries

#### 1.2.1 - Painted boundaries (9/19)

The sale boundary and Payment Unit boundaries are marked and identified by blue, red and yellow paint. Exterior sale boundary lines against private property are marked with blue paint. Exterior sale boundary lines against state are marked with red paint. Interior Payment Unit boundaries are marked with yellow paint. Retention patches are marked with red paint; no harvesting activities may occur within these areas. The painted boundary line trees are not Included Timber and are to be protected. Yellow painted trees designating an interior Payment Unit boundary are only to be cut when all surrounding Payment Units have been paid.

## 2 - Timber Specifications

### 2.1 - Included Timber

#### 2.1.1 - Clearcut unit(s) with unmerchantable trees (6/14)

Within Payment Unit(s) 1-4, cut all trees that are two (2) inches or more at DBH, except do not cut or damage trees marked with green paint. Special protection trees identified in accordance with condition 3.4.2, within clearcutting unit boundaries, are not Included Timber and are to be protected.

## 3 - Payments

### 3.3 - Pre-measured Sales

#### 3.3.4 - Dividing payment units (7/14)

Payment Unit(s) \$25,000 in value or greater may be divided at the request of the Purchaser and upon approval of the Unit Manager. Dividing Payment Units is a contract modification which requires a Timber Sale Contract Amendment. There will be only one division per Payment Unit.

### 3.4 - Damaged Timber

#### 3.4.1 - Damaged timber (7/16)

General Condition and Requirement 3.4 Damaged Timber, defines liquidated damages for undesignated live merchantable trees which are cut or injured. In addition, extreme care should be taken to avoid damage to tree seedlings and saplings.

Within the Sale Area, if more than 25% of the pine seedlings or saplings (1/4" to 4.5" DBH) within a specified portion of the Sale Area are damaged, liquidated damages will be assessed at \$150 per acre for all acreage within that specified portion of the Sale Area that was damaged.

No damage is acceptable to undesignated live merchantable trees. Within the Sale Area, if more than 5% of green painted trees, less 18 inches in DBH, within a specified area of the sale are damaged, liquidated damages will be assessed for all trees damaged. Rates will be in accordance with General Condition and Requirement 3.4 Damaged Timber.

#### 3.4.2 - Special Protection Trees (4/14)

The Purchaser shall not cut live or dead special protection trees within cutting units or clearings. Special protection trees are 18 inches at DBH or greater and marked with green paint. If the Purchaser's operations have cut or damaged special protection trees through carelessness, the Purchaser shall pay \$200 as fixed, agreed and liquidated damages for each special protection tree cut or damaged. Such payment does not constitute ownership of the undesignated timber.

## 4 - Transportation

### 4.1 - Construction

#### 4.1.3 - Slash and earthen piles (8/04)

Piles or windrows of earth along roads and landings that have been widened or constructed shall be leveled. Slash from road maintenance or construction, including stumps, shall be dispersed throughout the sale.

#### 4.1.6 - Road construction (1/09)

Improvements of existing roads shall be done in such a way as to minimize the environmental and visual impacts. Merchantable trees shall be cut and utilized unless otherwise directed. Non-merchantable trees shall be severed and laid flat on the ground. Slash shall be scattered, and not left in windrows and kept a minimum of 10 feet back from the road edge. Stumps shall be set upright, not left on edge, and be moved at least 10 feet away from the road edge. Disturbed soil shall be feathered into the woods and not left in berms or windrows.

#### 4.1.12 - No new roads (1/12)

No new roads will be permitted in any Payment Unit. All operations are limited to existing roads. Skid trails only will be allowed.

### 4.2 - Maintenance

#### 4.2.5 - Two wheel drive condition (2/04)

All existing trail roads on and adjacent to the sale area must be passable by two-wheel drive traffic for the duration of the sale.

## 5 - Operations

### 5.1 - Notification

#### 5.1.1 - Pre-sale conference (10/16)

A pre-sale conference on site between the Purchaser and sale administrator is required prior to beginning any operations to determine landing and road locations. The Unit Manager or his/her representative must be contacted at least 5 days in advance to schedule the conference.

#### 5.1.4 - Post-sale conference (10/16)

A post-sale conference on site between the Purchaser and sale administrator is required 5 days prior to the completion of active logging operations to determine clean-up and repair of landings, road edges, and the fulfillment of other contract specifications.

### 5.2 - Conduct of Operations

#### 5.2.1 - Slash

##### 5.2.1.10 - No slash in openings (5/10)

No brush or logging debris is to be left in openings which are indicated by "G0" and/or "U0" on the Timber Sale Map. Use of these areas for operations and/or decking of wood must be pre-approved. Any damage to the opening shall be repaired according to specifications of the Unit Manager or his/her representative.

#### 5.2.2 - Hazard Trees/Snags

##### 5.2.2.1 - Den trees (10/16)

Obvious hollow and/or den trees shall be protected and left standing unless they are a safety hazard.

#### 5.2.3 - Operating Restrictions

##### 5.2.3.4 - Oak wilt restriction, no exceptions (1/18)

Within Payment Unit(s) 1-4, cutting, skidding, and hauling within the sale and brushing of access roads to the sale are not permitted during the period of April 15 to July 15. No exceptions will be granted. This is necessary to reduce the spread of oak wilt.

##### 5.2.3.11 - Coppice regeneration protection (4/10)

Timber harvesting in any Payment Unit must be completed before significant tree sprouting occurs in that Payment Unit so as to minimize damage to the new regeneration. Any post harvest operations, such as chipping, must be completed before sprouting of regeneration occurs. If it is anticipated that chipping will be delayed, then tops shall be carried to one central location or left unchipped. The Unit Manager or his/her representative may cease such operations if sprouting occurs before the operation is complete.

#### 5.2.4 - Dead and Down Creation

#### 5.2.4.7 - Dead and down creation: hare, grouse, deer and other species (5/15)

To improve horizontal cover habitat for snowshoe hare, grouse, deer, and other species, the Purchaser is to push over all purple ringed trees after all designated wood has been forwarded from a Payment Unit. These trees should be tipped over with the root ball still attached so the base of the tree is suspended off the ground. The crown of the fallen tree should be at or near ground level after it is pushed over.

#### 5.2.32 - Decking/landing restoration (9/13)

All decking and landing areas must have the surface area restored to a condition equal to or better than before. This is to ensure the proper regeneration of the stand. Wood debris, chips and "cookies" from trimmings must be removed or scattered away from landing and loading areas and may not be windrowed on the edge.

#### 5.2.38 - No decking against live trees (2/04)

Cut products may not be decked against unmarked or designated leave trees.

### 5.4 - Soil Protection

#### 5.4.2 - Skid trails (2/04)

Skid trails up and down slopes should be avoided. If however this is unavoidable, these trails will be left in a non-erodible condition using water bars, logs, and slash. Placing of slash on these skid trails while logging is ongoing may alleviate need for any further action. At the direction of the sale administrator, seed, fertilizer, and mulch may also be required.

#### 5.4.5 - Soil caution (11/04)

Care must be taken to minimize soil damage due to the sandy soils.

### 5.8 - Protection of Endangered Species

#### 5.8.5 - Protection of raptor nests (3/13)

All trees with raptor nests will be protected if found during harvesting operations. Notification will be made to the Unit Manager or his/her representative who will notify the Wildlife Biologist so an on-site evaluation and recommendation can be made, if necessary.

## 6 - Safety and Fire Prevention

### 6.2 - Signing

#### 6.2.1 - Road posting (10/20)

The Purchaser is responsible for posting and maintaining caution signs on forest roads prior to beginning operations. The road must be posted at appropriate distances from the Sale Area to warn of logging activity and truck traffic. Signs must be removed when harvest operations are suspended or completed. The Purchaser will provide these signs.



# TIMBER SALE MAP

This information provided by authority of Part 525, 1994 PA 451, as amended.

Forest Management Unit Atlanta	County Presque Isle	Mapped By D. Parris	Date 09/27/2022	Page 1	of 1
Township 33N		Range 04E		Section(s) and Subdivision(s) Sec 32 E1/2NW,SWNE,E1/2SW,W1/2SE	

Scale	1:15,840
-------	----------

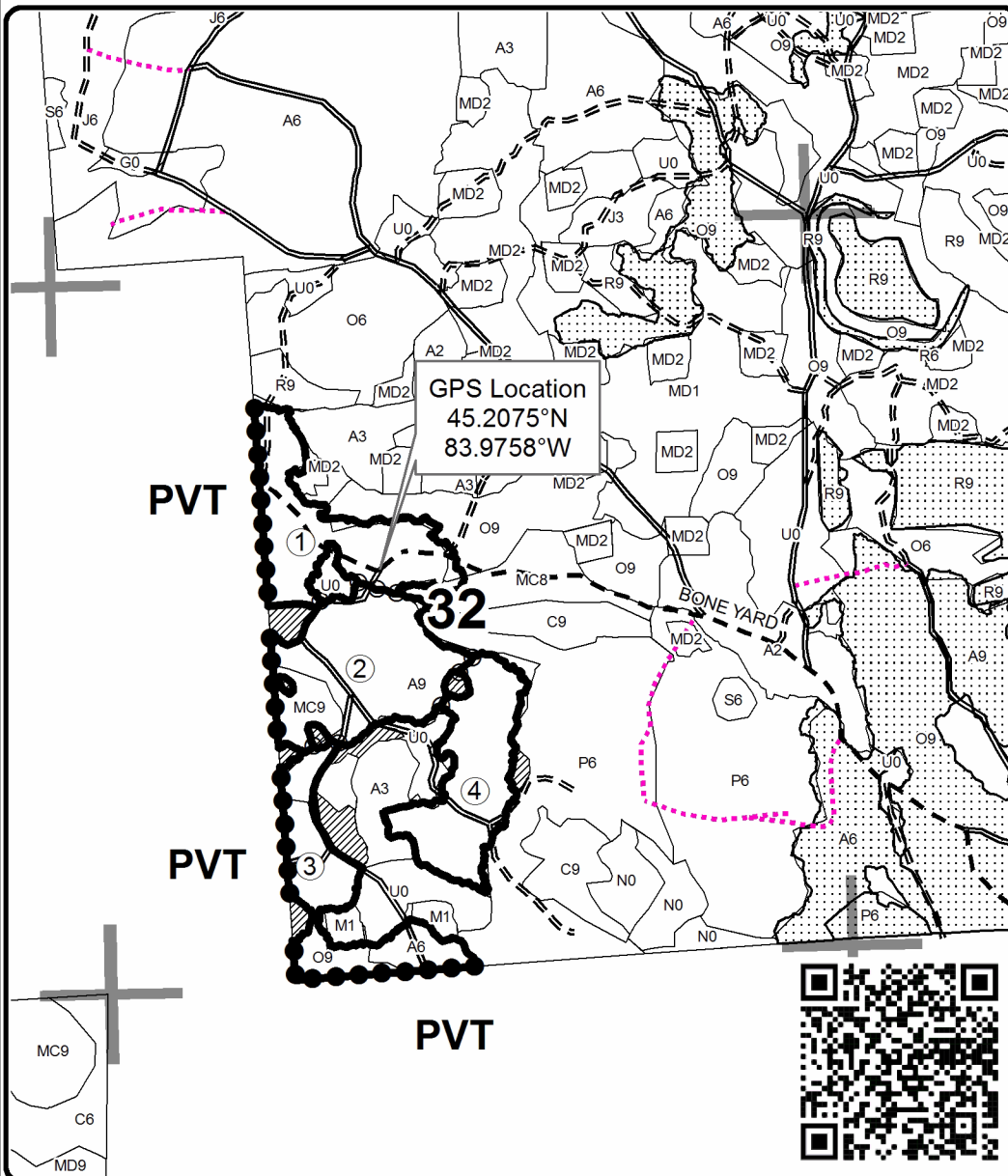
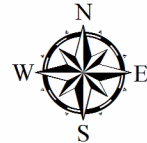
Cover Type				Density			
A = Aspen	H = Hemlock	N = Marsh	U = Upland Brush	0 = Non Stocked	5 = Pole Timber Medium		
B = Paper Birch	J = Jack Pine	O = Oak	UM = Upland Mixed	1 = Seedling Sapling Poor	6 = Pole Timber Well		
C = Cedar	L = Lowland Brush	P = Lowland Poplar	V = Bog or Marsh	2 = Seedling Sapling Medium	7 = Saw Timber Poor		
D = Treed Bog	LM = Lowland Mixed	Q = Mixed Swamp Conifer	W = White Pine	3 = Seedling Sapling Well	8 = Saw Timber Medium		
E = Swamp Hdwoods	M = Mpl, Bch, Brch	R = Red Pine	X = Non Stocked	4 = Pole Timber Poor	9 = Saw Timber Well		
F = Spruce Fir	MC = Mixed Conifer	S = Black Spruce	Z = Water				
G = Grass	MD = Mixed Deciduous	T = Tamarack					

PU	Acres
1	20.3
2	24.6
3	16.4
4	18.7

## C128 Southwest

### Compartment 128

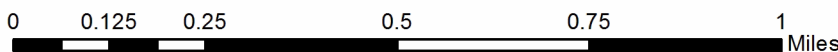
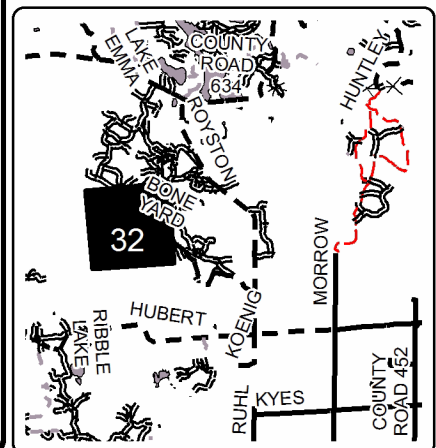
80.0 Acres



### Legend

- Against State (Red)
- Payment Unit (Yellow)
- Private Line (Blue)
- Retention Area (Red)
- Stand Boundaries
- Retention
- Nearby Timber Sales
- Payment Unit
- DNR - Secondary Forest Road
- DNR - Forest Access Route
- County - Gravel Road
- Temporary Management Access
- Section Corners

Locator Map  
1:150,000



C128 Southwest (54-027-22)  
T33N, R04E, SEC. 32; Presque Isle COUNTY

In response to the notice of sale to be held 10:00 a.m. (local time) on March 12, 2024, I am hereby submitting my sealed bid (firm offer) for the following forest products to be cut. Bids for individual species must be at or above the advertised price. All non-responsive bid forms may be rejected.

<u>PRODUCTS &amp; SPECIES</u>	<u>ESTIMATED VOLUME*</u>	<u>ADVERTISED PRICE</u>	<u>BID PRICE/UNIT</u>
<b>Sawtimber</b>			
Mixed Aspen	80.6 MBF	\$ 116.00/MBF	\$ _____
Mixed Oak	135.1 MBF	\$ 128.00/MBF	\$ _____
Red Maple	6.3 MBF	\$ 81.00/MBF	\$ _____
Red Pine	15.8 MBF	\$ 140.00/MBF	\$ _____
White Pine	6.0 MBF	\$ 133.00/MBF	\$ _____
<b>Pulpwood</b>			
Balsam Fir	53 Cords	\$ 22.50/Cord	\$ _____
Black Spruce	9 Cords	\$ 9.95/Cord	\$ _____
Jack Pine	11 Cords	\$ 11.55/Cord	\$ _____
Mixed Aspen	1,197 Cords	\$ 26.30/Cord	\$ _____
Mixed Oak	402 Cords	\$ 45.00/Cord	\$ _____
Paper Birch	5 Cords	\$ 17.15/Cord	\$ _____
Red Maple	232 Cords	\$ 25.10/Cord	\$ _____
Red Pine	53 Cords	\$ 40.60/Cord	\$ _____
White Pine	42 Cords	\$ 28.80/Cord	\$ _____

\*The volumes are statistically estimated within plus (+) or minus (-) 13.82 percent at 95% confidence level. These estimated volumes are final and not subject to adjustment. Prospective bidders are urged to examine this timber and to make their own estimates of quantity and quality.

I understand that any or all bids may be rejected. All bids must be signed and all bid items must be bid or the bid form may be rejected. I also understand that consideration and awarding a contract will be based upon my past performance and ability to complete the contract based upon equipment and staffing subject to my control.

FEDERAL ID: \_\_\_\_\_ - \_\_\_\_\_ or SOCIAL SECURITY NUMBER: \_\_\_\_\_ - \_\_\_\_\_ - \_\_\_\_\_

Company or individual bidding: \_\_\_\_\_

Company representative's name: \_\_\_\_\_

Address: \_\_\_\_\_

City: \_\_\_\_\_ State: \_\_\_\_\_ Zip: \_\_\_\_\_

IF AVAILABLE, PLEASE PLACE THE PERSONALIZED LABEL FROM YOUR PROSPECTUS IN THE ABOVE BOX.

Individual or company representative's signature: \_\_\_\_\_ Date: \_\_\_\_\_

Phone number : \_\_\_\_\_ Email (optional): \_\_\_\_\_

**THE WINNING BIDDER MUST COMPLETE THE VERIFICATION OF WORKER'S DISABILITY COMPENSATION ACT COMPLIANCE (ON REVERSE SIDE IF DOUBLE SIDED) WITHIN 21 DAYS OF SALE AWARD DATE**



FOR DEPARTMENT USE ONLY	
Sale Number (XX - XXX - XX - XX)	
Forest Management Unit:	

## TIMBER SALE VERIFICATION OF WORKER'S DISABILITY COMPENSATION ACT COMPLIANCE

As required by Act 317, P.A. 1969 (Worker's Compensation) and  
Part 5 of Act 451 of 1994, as amended.

### VERIFICATION OF WORKER'S DISABILITY COMPENSATION ACT COMPLIANCE

- This verification must be completed and submitted within 21 days of contract award and prior to the issuance of the timber sale contract.
- In addition, if boxes 2B or 2C are checked, then Notice of Exclusion or Certificate of Insurance must be submitted within twenty-one (21) days of the contract award and prior to the issuance of the timber sale contract.
- All information must be typed or printed except for written signatures.

Please Check Appropriate Categories:

1. My business is organized as (you **must** check one of the boxes below):
  - A.  Sole Proprietorship (individual)
  - B.  Partnership
  - C.  Corporation
2. You **must** check one of the boxes below:
  - A.  I certify my business is a sole proprietorship and it has no employees but the sole proprietor. I am not subject to the Worker's Compensation Laws.
  - B.  I certify my business has satisfied its obligation to the Worker's Compensation Act through the use of an approved Notice of Exclusion (BWC-337, Rev. 5/96). I will provide a copy of the Notice of Exclusion within 21 days of the contract award. (For questions or a copy of the BWC-337, please call the Worker's Compensation Bureau at 517-322-1195).
  - C.  I certify my business has a Worker's Compensation Policy. I will provide an original Certificate of Insurance within twenty-one (21) days of the contract award.
3. If you have checked item 2(A) or 2(B), you **must** indicate the number of **both** full-time and part-time employees, other than yourself, including family members and active partners (if none, you must enter "0").

\_\_\_\_\_ Full-time Employees

\_\_\_\_\_ Part-time Employees

Name of Business		Federal ID (or) Social Security No.	
Address		Telephone (       )	
City	State	ZIP	

*I hereby certify that the above information is true and correct. I agree to notify the Michigan DNR of any changes that occur in factors affecting my coverage during any of my present and future operations.*

\_\_\_\_\_  
Signature of Owner or Authorized Representative

\_\_\_\_\_  
Title

\_\_\_\_\_  
Date

Please complete the "SEALED BID" information on the next page



C25 Aspen Mix SBW (54-029-23)

T29N, R03E, SEC. 5; T30N, R03E, SEC. 19; T30N, R03E, SEC. 32; Montmorency

In response to the notice of sale to be held 10:00 a.m. (local time) on March 12, 2024, I am hereby submitting my sealed bid (firm offer) for the following forest products to be cut. Bids for individual species must be at or above the advertised price. All non-responsive bid forms may be rejected.

<u>PRODUCTS &amp; SPECIES</u>	<u>ESTIMATED VOLUME*</u>	<u>ADVERTISED PRICE</u>	<u>BID PRICE/UNIT</u>
<b>Sawtimber</b>			
Balsam Fir	11.0 MBF	\$ 45.00/MBF	\$ _____
Black/Red (Hybrid) Oak	3.2 MBF	\$ 128.00/MBF	\$ _____
Mixed Aspen	84.9 MBF	\$ 116.00/MBF	\$ _____
Red Maple	9.9 MBF	\$ 81.00/MBF	\$ _____
Red Oak	7.3 MBF	\$ 191.00/MBF	\$ _____
White Pine	9.1 MBF	\$ 79.00/MBF	\$ _____
<b>Pulpwood</b>			
Balsam Fir	506 Cords	\$ 22.50/Cord	\$ _____
Black/Red (Hybrid) Oak	5 Cords	\$ 29.45/Cord	\$ _____
Jack Pine	19 Cords	\$ 11.55/Cord	\$ _____
Mixed Aspen	1,968 Cords	\$ 26.30/Cord	\$ _____
Mixed Hardwood	258 Cords	\$ 25.10/Cord	\$ _____
Mixed Spruce	18 Cords	\$ 9.95/Cord	\$ _____
N. White Cedar	6 Cords	\$ 7.95/Cord	\$ _____
Paper Birch	13 Cords	\$ 17.15/Cord	\$ _____
Red Oak	33 Cords	\$ 29.45/Cord	\$ _____
Red Pine	7 Cords	\$ 40.60/Cord	\$ _____
Tamarack	6 Cords	\$ 22.90/Cord	\$ _____
White Pine	13 Cords	\$ 28.80/Cord	\$ _____

\*The volumes are statistically estimated within plus (+) or minus (-) 22.08 percent at 95% confidence level. These estimated volumes are final and not subject to adjustment. Prospective bidders are urged to examine this timber and to make their own estimates of quantity and quality.

I understand that any or all bids may be rejected. All bids must be signed and all bid items must be bid or the bid form may be rejected. I also understand that consideration and awarding a contract will be based upon my past performance and ability to complete the contract based upon equipment and staffing subject to my control.

FEDERAL ID: \_\_\_\_ - \_\_\_\_ - \_\_\_\_ or SOCIAL SECURITY NUMBER: \_\_\_\_ - \_\_\_\_ - \_\_\_\_

Company or individual bidding: \_\_\_\_\_

Company representative's name: \_\_\_\_\_

Address: \_\_\_\_\_

City: \_\_\_\_\_ State: \_\_\_\_\_ Zip: \_\_\_\_\_

IF AVAILABLE, PLEASE PLACE THE PERSONALIZED LABEL FROM YOUR PROSPECTUS IN THE ABOVE BOX.

Individual or company representative's signature: \_\_\_\_\_ Date: \_\_\_\_\_

Phone number : \_\_\_\_\_ Email (optional): \_\_\_\_\_

**THE WINNING BIDDER MUST COMPLETE THE VERIFICATION OF WORKER'S DISABILITY COMPENSATION ACT COMPLIANCE (ON REVERSE SIDE IF DOUBLE SIDED) WITHIN 21 DAYS OF SALE AWARD DATE**



FOR DEPARTMENT USE ONLY	
Sale Number (XX - XXX - XX - XX)	
Forest Management Unit:	

# TIMBER SALE VERIFICATION OF WORKER'S DISABILITY COMPENSATION ACT COMPLIANCE

As required by Act 317, P.A. 1969 (Worker's Compensation) and  
Part 5 of Act 451 of 1994, as amended.

## VERIFICATION OF WORKER'S DISABILITY COMPENSATION ACT COMPLIANCE

- This verification must be completed and submitted within 21 days of contract award and prior to the issuance of the timber sale contract.
- In addition, if boxes 2B or 2C are checked, then Notice of Exclusion or Certificate of Insurance must be submitted within twenty-one (21) days of the contract award and prior to the issuance of the timber sale contract.
- All information must be typed or printed except for written signatures.

Please Check Appropriate Categories:

1. My business is organized as (you **must** check one of the boxes below):
  - A.  Sole Proprietorship (individual)
  - B.  Partnership
  - C.  Corporation
2. You **must** check one of the boxes below:
  - A.  I certify my business is a sole proprietorship and it has no employees but the sole proprietor. I am not subject to the Worker's Compensation Laws.
  - B.  I certify my business has satisfied its obligation to the Worker's Compensation Act through the use of an approved Notice of Exclusion (BWC-337, Rev. 5/96). I will provide a copy of the Notice of Exclusion within 21 days of the contract award. (For questions or a copy of the BWC-337, please call the Worker's Compensation Bureau at 517-322-1195).
  - C.  I certify my business has a Worker's Compensation Policy. I will provide an original Certificate of Insurance within twenty-one (21) days of the contract award.
3. If you have checked item 2(A) or 2(B), you **must** indicate the number of **both** full-time and part-time employees, other than yourself, including family members and active partners (if none, you must enter "0").

\_\_\_\_\_ Full-time Employees

\_\_\_\_\_ Part-time Employees

Name of Business		Federal ID (or) Social Security No.	
Address		Telephone (       )	
City	State	ZIP	

*I hereby certify that the above information is true and correct. I agree to notify the Michigan DNR of any changes that occur in factors affecting my coverage during any of my present and future operations.*

\_\_\_\_\_  
Signature of Owner or Authorized Representative

\_\_\_\_\_  
Title

\_\_\_\_\_  
Date

Please complete the "SEALED BID" information on the next page

Brand O Mix (54-031-23)

T37N, R01E, SEC. 5; T37N, R01E, SEC. 7; T37N, R01E, SEC. 8; Cheboygan

In response to the notice of sale to be held 10:00 a.m. (local time) on March 12, 2024, I am hereby submitting my sealed bid (firm offer) for the following forest products to be cut. Bids for individual species must be at or above the advertised price. All non-responsive bid forms may be rejected.

<u>PRODUCTS &amp; SPECIES</u>	<u>ESTIMATED VOLUME*</u>	<u>ADVERTISED PRICE</u>	<u>BID PRICE/UNIT</u>
<b>Sawtimber</b>			
Red Maple	17.5 MBF	\$ 81.00/MBF	\$ _____
Red Oak	29.9 MBF	\$ 191.00/MBF	\$ _____
Sugar Maple	15.1 MBF	\$ 314.00/MBF	\$ _____
<b>Pulpwood</b>			
Balsam Fir	10 Cords	\$ 22.50/Cord	\$ _____
Mixed Aspen	3,652 Cords	\$ 26.30/Cord	\$ _____
Mixed Hardwood	527 Cords	\$ 25.10/Cord	\$ _____
Paper Birch	82 Cords	\$ 17.15/Cord	\$ _____
Red Oak	61 Cords	\$ 33.75/Cord	\$ _____

\*The volumes are statistically estimated within plus (+) or minus (-) 11.72 percent at 95% confidence level. These estimated volumes are final and not subject to adjustment. Prospective bidders are urged to examine this timber and to make their own estimates of quantity and quality.

I understand that any or all bids may be rejected. All bids must be signed and all bid items must be bid or the bid form may be rejected. I also understand that consideration and awarding a contract will be based upon my past performance and ability to complete the contract based upon equipment and staffing subject to my control.

FEDERAL ID: \_\_\_\_ - \_\_\_\_ - \_\_\_\_ or SOCIAL SECURITY NUMBER: \_\_\_\_ - \_\_\_\_ - \_\_\_\_

Company or individual bidding: \_\_\_\_\_

Company representative's name: \_\_\_\_\_

Address: \_\_\_\_\_

City: \_\_\_\_\_ State: \_\_\_\_\_ Zip: \_\_\_\_\_

IF AVAILABLE, PLEASE PLACE THE PERSONALIZED LABEL FROM YOUR PROSPECTUS IN THE ABOVE BOX.

Individual or company representative's signature: \_\_\_\_\_ Date: \_\_\_\_\_

Phone number : \_\_\_\_\_ Email (optional): \_\_\_\_\_

**THE WINNING BIDDER MUST COMPLETE THE VERIFICATION OF WORKER'S DISABILITY COMPENSATION ACT COMPLIANCE (ON REVERSE SIDE IF DOUBLE SIDED) WITHIN 21 DAYS OF SALE AWARD DATE**



FOR DEPARTMENT USE ONLY	
Sale Number (XX - XXX - XX - XX)	
Forest Management Unit:	

# TIMBER SALE VERIFICATION OF WORKER'S DISABILITY COMPENSATION ACT COMPLIANCE

As required by Act 317, P.A. 1969 (Worker's Compensation) and  
Part 5 of Act 451 of 1994, as amended.

## VERIFICATION OF WORKER'S DISABILITY COMPENSATION ACT COMPLIANCE

- This verification must be completed and submitted within 21 days of contract award and prior to the issuance of the timber sale contract.
- In addition, if boxes 2B or 2C are checked, then Notice of Exclusion or Certificate of Insurance must be submitted within twenty-one (21) days of the contract award and prior to the issuance of the timber sale contract.
- All information must be typed or printed except for written signatures.

Please Check Appropriate Categories:

1. My business is organized as (you **must** check one of the boxes below):
  - A.  Sole Proprietorship (individual)
  - B.  Partnership
  - C.  Corporation
2. You **must** check one of the boxes below:
  - A.  I certify my business is a sole proprietorship and it has no employees but the sole proprietor. I am not subject to the Worker's Compensation Laws.
  - B.  I certify my business has satisfied its obligation to the Worker's Compensation Act through the use of an approved Notice of Exclusion (BWC-337, Rev. 5/96). I will provide a copy of the Notice of Exclusion within 21 days of the contract award. (For questions or a copy of the BWC-337, please call the Worker's Compensation Bureau at 517-322-1195).
  - C.  I certify my business has a Worker's Compensation Policy. I will provide an original Certificate of Insurance within twenty-one (21) days of the contract award.
3. If you have checked item 2(A) or 2(B), you **must** indicate the number of **both** full-time and part-time employees, other than yourself, including family members and active partners (if none, you must enter "0").

\_\_\_\_\_ Full-time Employees

\_\_\_\_\_ Part-time Employees

Name of Business		Federal ID (or) Social Security No.	
Address		Telephone (       )	
City	State	ZIP	

*I hereby certify that the above information is true and correct. I agree to notify the Michigan DNR of any changes that occur in factors affecting my coverage during any of my present and future operations.*

\_\_\_\_\_  
Signature of Owner or Authorized Representative

\_\_\_\_\_  
Title

\_\_\_\_\_  
Date

Please complete the "SEALED BID" information on the next page

Balder Baldy Aspen (54-012-23)

T31N, R01E, SEC. 20; T31N, R01E, SEC. 21; T31N, R01E, SEC. 22; T31N, R01E,

In response to the notice of sale to be held 10:00 a.m. (local time) on March 12, 2024, I am hereby submitting my sealed bid (firm offer) for the following forest products to be cut. Bids for individual species must be at or above the advertised price. All non-responsive bid forms may be rejected.

<u>PRODUCTS &amp; SPECIES</u>	<u>ESTIMATED VOLUME*</u>	<u>ADVERTISED PRICE</u>	<u>BID PRICE/UNIT</u>
<b>Sawtimber</b>			
Black/Red (Hybrid) Oak	4.3 MBF	\$ 128.00/MBF	\$ _____
Mixed Aspen	134.4 MBF	\$ 116.00/MBF	\$ _____
Red Maple	22.7 MBF	\$ 81.00/MBF	\$ _____
Red Oak	38.7 MBF	\$ 191.00/MBF	\$ _____
Sugar Maple	17.7 MBF	\$ 314.00/MBF	\$ _____
White Pine	41.9 MBF	\$ 133.00/MBF	\$ _____
<b>Pulpwood</b>			
Balsam Fir	186 Cords	\$ 22.50/Cord	\$ _____
Basswood	48 Cords	\$ 16.00/Cord	\$ _____
Black Spruce	30 Cords	\$ 9.95/Cord	\$ _____
Black/Red (Hybrid) Oak	130 Cords	\$ 29.45/Cord	\$ _____
Mixed Aspen	2,486 Cords	\$ 26.30/Cord	\$ _____
Mixed Hardwood	771 Cords	\$ 25.10/Cord	\$ _____
Paper Birch	94 Cords	\$ 17.15/Cord	\$ _____
Red Oak	207 Cords	\$ 29.45/Cord	\$ _____
White Pine	170 Cords	\$ 28.80/Cord	\$ _____

\*The volumes are statistically estimated within plus (+) or minus (-) 9.52 percent at 95% confidence level. These estimated volumes are final and not subject to adjustment. Prospective bidders are urged to examine this timber and to make their own estimates of quantity and quality.

I understand that any or all bids may be rejected. All bids must be signed and all bid items must be bid or the bid form may be rejected. I also understand that consideration and awarding a contract will be based upon my past performance and ability to complete the contract based upon equipment and staffing subject to my control.

FEDERAL ID: \_\_\_\_ - \_\_\_\_ - \_\_\_\_ or SOCIAL SECURITY NUMBER: \_\_\_\_ - \_\_\_\_ - \_\_\_\_

Company or individual bidding: \_\_\_\_\_

Company representative's name: \_\_\_\_\_

Address: \_\_\_\_\_

City: \_\_\_\_\_ State: \_\_\_\_\_ Zip: \_\_\_\_\_

IF AVAILABLE, PLEASE PLACE THE PERSONALIZED LABEL FROM YOUR PROSPECTUS IN THE ABOVE BOX.

Individual or company representative's signature: \_\_\_\_\_ Date: \_\_\_\_\_

Phone number : \_\_\_\_\_ Email (optional): \_\_\_\_\_

**THE WINNING BIDDER MUST COMPLETE THE VERIFICATION OF WORKER'S DISABILITY COMPENSATION ACT COMPLIANCE (ON REVERSE SIDE IF DOUBLE SIDED) WITHIN 21 DAYS OF SALE AWARD DATE**



FOR DEPARTMENT USE ONLY	
Sale Number (XX - XXX - XX - XX)	
Forest Management Unit:	

# TIMBER SALE VERIFICATION OF WORKER'S DISABILITY COMPENSATION ACT COMPLIANCE

As required by Act 317, P.A. 1969 (Worker's Compensation) and  
Part 5 of Act 451 of 1994, as amended.

## VERIFICATION OF WORKER'S DISABILITY COMPENSATION ACT COMPLIANCE

- This verification must be completed and submitted within 21 days of contract award and prior to the issuance of the timber sale contract.
- In addition, if boxes 2B or 2C are checked, then Notice of Exclusion or Certificate of Insurance must be submitted within twenty-one (21) days of the contract award and prior to the issuance of the timber sale contract.
- All information must be typed or printed except for written signatures.

Please Check Appropriate Categories:

1. My business is organized as (you **must** check one of the boxes below):
  - A.  Sole Proprietorship (individual)
  - B.  Partnership
  - C.  Corporation
2. You **must** check one of the boxes below:
  - A.  I certify my business is a sole proprietorship and it has no employees but the sole proprietor. I am not subject to the Worker's Compensation Laws.
  - B.  I certify my business has satisfied its obligation to the Worker's Compensation Act through the use of an approved Notice of Exclusion (BWC-337, Rev. 5/96). I will provide a copy of the Notice of Exclusion within 21 days of the contract award. (For questions or a copy of the BWC-337, please call the Worker's Compensation Bureau at 517-322-1195).
  - C.  I certify my business has a Worker's Compensation Policy. I will provide an original Certificate of Insurance within twenty-one (21) days of the contract award.
3. If you have checked item 2(A) or 2(B), you **must** indicate the number of **both** full-time and part-time employees, other than yourself, including family members and active partners (if none, you must enter "0").

\_\_\_\_\_ Full-time Employees

\_\_\_\_\_ Part-time Employees

Name of Business		Federal ID (or) Social Security No.	
Address		Telephone (       )	
City	State	ZIP	

*I hereby certify that the above information is true and correct. I agree to notify the Michigan DNR of any changes that occur in factors affecting my coverage during any of my present and future operations.*

\_\_\_\_\_  
Signature of Owner or Authorized Representative

\_\_\_\_\_  
Title

\_\_\_\_\_  
Date

Please complete the "SEALED BID" information on the next page

Up Down Aspen (54-024-23)  
T29N, R03E, SEC. 20; T29N, R03E, SEC. 21; Montmorency COUNTY

In response to the notice of sale to be held 10:00 a.m. (local time) on March 12, 2024, I am hereby submitting my sealed bid (firm offer) for the following forest products to be cut. Bids for individual species must be at or above the advertised price. All non-responsive bid forms may be rejected.

<u>PRODUCTS &amp; SPECIES</u>	<u>ESTIMATED VOLUME*</u>	<u>ADVERTISED PRICE</u>	<u>BID PRICE/UNIT</u>
<b>Sawtimber</b>			
Basswood	46.9 MBF	\$ 87.00/MBF	\$ _____
Mixed Aspen	230.3 MBF	\$ 116.00/MBF	\$ _____
Red Maple	23.2 MBF	\$ 81.00/MBF	\$ _____
Red Oak	206.0 MBF	\$ 191.00/MBF	\$ _____
Sugar Maple	18.0 MBF	\$ 314.00/MBF	\$ _____
White Pine	42.5 MBF	\$ 133.00/MBF	\$ _____
<b>Pulpwood</b>			
Balsam Fir	265 Cords	\$ 22.50/Cord	\$ _____
Basswood	87 Cords	\$ 16.00/Cord	\$ _____
Black Spruce	46 Cords	\$ 9.95/Cord	\$ _____
Mixed Aspen	1,567 Cords	\$ 26.30/Cord	\$ _____
Mixed Hardwood	544 Cords	\$ 25.10/Cord	\$ _____
Northern Pin Oak	7 Cords	\$ 29.45/Cord	\$ _____
Paper Birch	75 Cords	\$ 17.15/Cord	\$ _____
Red Oak	349 Cords	\$ 29.45/Cord	\$ _____
White Pine	129 Cords	\$ 28.80/Cord	\$ _____

\*The volumes are statistically estimated within plus (+) or minus (-) 9.05 percent at 95% confidence level. These estimated volumes are final and not subject to adjustment. Prospective bidders are urged to examine this timber and to make their own estimates of quantity and quality.

I understand that any or all bids may be rejected. All bids must be signed and all bid items must be bid or the bid form may be rejected. I also understand that consideration and awarding a contract will be based upon my past performance and ability to complete the contract based upon equipment and staffing subject to my control.

FEDERAL ID: \_\_\_\_ - \_\_\_\_ - \_\_\_\_ or SOCIAL SECURITY NUMBER: \_\_\_\_ - \_\_\_\_ - \_\_\_\_

Company or individual bidding: \_\_\_\_\_

Company representative's name: \_\_\_\_\_

Address: \_\_\_\_\_

City: \_\_\_\_\_ State: \_\_\_\_\_ Zip: \_\_\_\_\_

IF AVAILABLE, PLEASE PLACE THE PERSONALIZED LABEL FROM YOUR PROSPECTUS IN THE ABOVE BOX.

Individual or company representative's signature: \_\_\_\_\_ Date: \_\_\_\_\_

Phone number : \_\_\_\_\_ Email (optional): \_\_\_\_\_

**THE WINNING BIDDER MUST COMPLETE THE VERIFICATION OF WORKER'S DISABILITY COMPENSATION ACT COMPLIANCE (ON REVERSE SIDE IF DOUBLE SIDED) WITHIN 21 DAYS OF SALE AWARD DATE**



<b>FOR DEPARTMENT USE ONLY</b>	
Sale Number (XX - XXX - XX - XX)	
Forest Management Unit:	

# TIMBER SALE VERIFICATION OF WORKER'S DISABILITY COMPENSATION ACT COMPLIANCE

As required by Act 317, P.A. 1969 (Worker's Compensation) and  
Part 5 of Act 451 of 1994, as amended.

## VERIFICATION OF WORKER'S DISABILITY COMPENSATION ACT COMPLIANCE

- This verification must be completed and submitted within 21 days of contract award and prior to the issuance of the timber sale contract.
- In addition, if boxes 2B or 2C are checked, then Notice of Exclusion or Certificate of Insurance must be submitted within twenty-one (21) days of the contract award and prior to the issuance of the timber sale contract.
- All information must be typed or printed except for written signatures.

Please Check Appropriate Categories:

- My business is organized as (you **must** check one of the boxes below):
  - Sole Proprietorship (individual)
  - Partnership
  - Corporation
- You **must** check one of the boxes below:
  - I certify my business is a sole proprietorship and it has no employees but the sole proprietor. I am not subject to the Worker's Compensation Laws.
  - I certify my business has satisfied its obligation to the Worker's Compensation Act through the use of an approved Notice of Exclusion (BWC-337, Rev. 5/96). I will provide a copy of the Notice of Exclusion within 21 days of the contract award. (For questions or a copy of the BWC-337, please call the Worker's Compensation Bureau at 517-322-1195).
  - I certify my business has a Worker's Compensation Policy. I will provide an original Certificate of Insurance within twenty-one (21) days of the contract award.
- If you have checked item 2(A) or 2(B), you **must** indicate the number of **both** full-time and part-time employees, other than yourself, including family members and active partners (if none, you must enter "0").

\_\_\_\_\_ Full-time Employees

\_\_\_\_\_ Part-time Employees

Name of Business		Federal ID (or) Social Security No.	
Address		Telephone (        )	
City	State	ZIP	

*I hereby certify that the above information is true and correct. I agree to notify the Michigan DNR of any changes that occur in factors affecting my coverage during any of my present and future operations.*

\_\_\_\_\_  
Signature of Owner or Authorized Representative

\_\_\_\_\_  
Title

\_\_\_\_\_  
Date

Please complete the "SEALED BID" information on the next page