



**DEPARTMENT OF NATURAL RESOURCES  
STATE OF MICHIGAN  
TIMBER SALE PROSPECTUS #7309**

SCHEDULED SALE DATE AND TIME: 2:00 p.m. (local time) on May 6, 2024.

LOCATION: **GWINN MGMT UNIT, 410 WEST M 35, GWINN, MI 49841.**

PROSPECTUS NOTE: The bidder is advised to inspect the sale area and review the location, estimated volumes, operating costs and contract terms of proposed sales. Please be aware that some landowners may request 60 days or more notice for access across their land.

Notice is hereby given that bids will be received by the Unit Manager, GWINN MANAGEMENT UNIT, for certain timber on the following described lands:

Yellow Brick Road (32-006-23) / T43N, R24W, SEC. 3 , N1/2NW,N1/2NE.

T44N, R24W, SEC. 34, S1/2NE,S1/2SW,SE.

T44N, R24W, SEC. 35, S1/2NE,SWSW,NESE.

Marquette County, Advertised Price \$69,396.05, 200.0 Acres, Hardwood, Aspen.

SALE NOTE: Access may be through private or other public land.

Snowmobile the Stack (32-016-23) / T44N, R23W, SEC. 5 , NENW.

T45N, R23W, SEC. 28, S1/2SW,S1/2SE.

T45N, R23W, SEC. 29, S1/2SE.

T45N, R23W, SEC. 32, N1/2NE,SENE,E1/2SW,NESE,SWSE.

Marquette County, Advertised Price \$67,874.50, 178.5 Acres, Hardwood, Spruce/Fir/Tamarack.

SALE NOTE: Access from the south is through private and will require road work on private property.

Access may be through private or other public land.

Hemmings Lake Pine (32-017-23) / T45N, R26W, SEC. 7 , NE.

T45N, R27W, SEC. 1 , NENW,S1/2NW,E1/2NE,SW,SE.

T45N, R27W, SEC. 12, N1/2NE,SWNE.

Marquette County, Advertised Price \$146,966.70, 259.9 Acres, Red Pine, Aspen.

Huber North (32-017-22) / T45N, R23W, SEC. 20, N1/2NE,SENE,E1/2SE.

T45N, R23W, SEC. 21, W1/2NW,SW,S1/2SE.

T45N, R23W, SEC. 22, NW,N1/2SW.

T45N, R23W, SEC. 28, NENW.

Marquette County, Advertised Price \$32,532.70, 145.1 Acres, Hardwood, Spruce/Fir/Tamarack.

SALE NOTE: Note that a lot of the mapped road grids are significantly grown in but could be re-opened for access across units. There are numerous cross drainage ditches accessing the sale area, contact the sale administrator to discuss access options.

Access may be through other public land.

## BID INSTRUCTIONS (VER. 10/10/2022):

### 1. Scheduled Bid Location, Date, and Time (2/11)

Bids must be received by the Unit Manager, GWINN OFFICE, 410 WEST M 35, GWINN, MI 49841, no later than 2:00 p.m. (local time) on May 6, 2024. For further information concerning this sale, contact Mike Brodeur at 906-346-9201 extension 103.

### 2. Bidder's Qualifications (10/22)

If all or part of a timber sale was prepared by a private contractor, the contractor and that contractor's company are not permitted to bid on the timber sale. A person must be 18 years of age or older to purchase timber. Permanent employees of the Department of Natural Resources or members of their immediate household may not bid. Former employees, in the permanent or seasonal class, may not bid until 3 months after the last day of active duty. Bids will not be accepted from individuals or companies appearing on the DNR/FRD No-Bid List. This list contains the names of purchasers who previously failed to execute a contract within 21-days or who have a history of poor performance.

### 3. Preparation of Sealed Bids (5/16)

Bid Forms may be completed online thru Michigan DNR Timber Sale Online Bidding (OLB) at [www.michigan.gov/timberbidding](http://www.michigan.gov/timberbidding) or by completing the hardcopy Bid Form found in the Timber Sale Prospectus. Hardcopy Bid Forms shall be manually signed in ink. Registration in OLB is considered your 'signature' for all bids submitted thru that system. Bid prices must be entered for each species and product in the Bid Price column for all material subject to bidding and all fill-in blanks must be completed. If erasures or other changes appear on the hardcopy Bid Form, each erasure or change must be initialed by the person signing the bid.

### 4. Submission of Sealed Bids (5/16)

Bid forms may be obtained from the Unit Manager or thru OLB. Bids may be submitted hardcopy or thru OLB. All hardcopy bids must be submitted on the bid form and in an envelope clearly identified as described in this section. NOTE: Only one bid form per bid envelope. Sealed bids must be submitted to the Unit office designated in the prospectus and must be submitted at or prior to the time established in the prospectus. The envelope should show on the outside (a) the sale name or number and (b) the date and time of bid opening, as shown in the prospectus. Bids received after the time specified in the sale prospectus are late bids and will be rejected.

It is possible for a bidder to submit multiple bids on a single sale. For example, a bid may be submitted hardcopy and a bid may be submitted thru OLB. Or, two bidders from the same company could both submit bids on the same sale. If this were to happen, the State would accept all bids received and award the contract accordingly. All bidding and contractual requirements would apply to all bids received.

### 5. Public Opening of Sealed Bids (7/16)

If conditions permit, the sealed bids will be publicly opened and posted at the time and place set in the prospectus.

If a bidder, present at a bid opening, has submitted bids on more than one sale, that bidder may withdraw their unopened bid envelopes or announce the withdrawal of their online bid after being declared the successful bidder on one sale.

### 6. Award of Contract (1/11)

Award of the contract will be made to the Bidder whose bid, conforming to the prospectus, is most advantageous to the State of Michigan on the basis of total value at rates bid for the estimated quantities. The State reserves the right to reject any bid or waive any minor irregularity in bids received. A written award mailed (or otherwise furnished) to the successful Bidder shall be deemed to result in a binding contract without further action by either party.

### 7. Down Payment (1/11)

The Bidder to whom award is made must make a down payment within 21 days of the sale award. The amount of the down payment will be calculated as shown in the Bond and Payment Schedule of this prospectus. Only cash may be used to meet this requirement.

### 8. Performance Security (1/11)

As guarantee of faithful performance, a cash bond, certificate of deposit, surety bond or irrevocable letter of credit (LOC) is required within 21 days of the sale award. The amount of the performance security is shown in the Bond and

Payment Schedule of this prospectus. If an LOC or surety is used, the coverage must extend for at least 6 months beyond the contract expiration.

#### 9. Worker's Compensation (10/22)

Purchaser shall obtain worker's compensation insurance to cover claims under Michigan's Worker's Disability Compensation Act of 1969 or similar employee benefit act of any other state applicable to an employee. Verification of Worker's Disability Compensation Act Compliance must be completed and submitted within 21 days of contract award and prior to the issuance of the timber sale contract. In addition, if applicable, Notice of Exclusion or Certificate of Insurance must also be submitted.

#### 10. Timber Sale Contract (10/22)

Additional conditions and requirements common to all timber sales are listed on the timber sale contract (R4031) and are available on line at [www.michigan.gov/timber](http://www.michigan.gov/timber). Contact the Unit Manager for additional information or a sample contract. Within 21 days of the date of the award letter, the bidder must sign the contract and provide the required down payment, performance security, and verification of worker's disability compensation. The down payment and performance security shall be in accordance with the provisions of the timber sale contract, in the sums stated in this prospectus. If these actions are not taken, then the Bidder, the Bidder's corporation, and the corporation's principals may not be permitted to bid on State timber sales for a period of 3 months after the first offense, 6 months after the second offense, and 1 year after the third offense. An offense will only be counted against the Bidder for 5 years. In addition, the Bidder certifies that if awarded this contract, the Bidder will complete the timber sale contract in accordance with its terms and any modifications thereof including requirements to purchase, cut, and remove the included timber by the expiration date.

Payment Unit values in the State Forest Timber Sale Contract are calculated based on the advertised value of the Payment Unit as a percentage of the total advertised value of the contract. The advertised value of each Payment Unit is given in the Description of Timber by Payment Unit table on the Timber Sale Information page. For example, if the value of Payment Unit 1 is advertised as \$1,500 and the total Timber Sale value is advertised as \$10,000, the contract price for Payment Unit 1 will be 15% of the total bid price ( $\$1,500/\$10,000 * 100$ ).

#### 11. Disclaimer of Estimates and Bidder's Warranty of Inspection (10/22)

Before submitting this bid, the Bidder is advised and cautioned to inspect the sale area, review the requirements of the sale contract, and take other steps as may be reasonably necessary to ascertain the location, estimated volumes, construction estimates, and operating costs of the proposed sale. Failure to do so will not relieve the Bidder from responsibility for completing the contract.

The Bidder warrants that this bid is submitted solely on the basis of the Bidder's examination and inspection of the quality and quantity of the timber offered for sale and the Bidder's opinion of the value thereof and the costs of recovery. No reliance should be placed on the State of Michigan's estimates of timber quality, quantity or costs of recovery. Bidder further acknowledges that the State of Michigan: (i) expressly disclaims any warranty of fitness of timber for any purpose; (ii) offers this timber as is without any warranty of quality (merchantability) or quantity and (iii) expressly disclaims any warranty as to the quantity or quality of timber sold.

#### 12. Certification and Chain-of-Custody (10/22)

Unless otherwise indicated in the contract under section 7 – Other Conditions of the Sale Specific Conditions & Requirements, the area encompassed by this timber sale is certified to the standards of the Forest Stewardship Council (FSC) - Certificate #SCS-FM/COC-00090N and the Sustainable Forestry Initiative (SFI) - Certificate #NSF-SFIS-5Y031-SF5. Forest products from this sale may be delivered to the mill as "FSC 100% and / or SFI certified" as long as the contractor hauling the forest products is chain-of-custody (COC) certified or covered under a COC certificate from the destination mill. The purchaser is responsible for maintaining COC after leaving the sale area.

#### 13. Good Neighbor Authority (GNA) Requirements (10/22)

If the name of this timber sales contains the acronym GNA, it is authorized by the Good Neighbor Authority (GNA) and covered by various agreements between the U.S. Forest Service and the State. The timber sale occurs on federal land and the following conditions apply:

GNA contracts on US Forest Service land will not be awarded to purchasers on the Federal list of excluded parties. The System for Award Management (SAM) will be checked for active excluded parties prior to award of contract. In

addition, the Bidder to whom award is made must complete an Assurance Regarding Felony Conviction or Tax Delinquent Status for Corporate Applicants (AD-3031).

14. Good Neighbor Authority (GNA) Requirements, con't (10/22)

Bidder certifies, by signing this bid form, that to the best of Bidder's knowledge that the following representations are accurate and complete.

- a. That the Bidder and its principals are not presently debarred, suspended, proposed for debarment, declared ineligible, or voluntary excluded from timber sales (covered transactions) by any Federal department or agency.
- b. That the Bidder and its principals have not within a 3-year period preceding this bid been convicted of or had a civil judgment rendered against them for commission of fraud or a criminal offense in connection with obtaining , attempting to obtain, or performing a public (Federal, State, or local) transaction or contract under a public transaction; violation of Federal or State antitrust statutes or commission of embezzlement, theft, forgery, bribery, falsification or destruction of records, making false statements, or receiving stolen property.
- c. That the Bidder and its principals are not presently indicted for or otherwise criminally or civilly charged by a governmental entity (Federal, State, or local) with commission of any of the offenses enumerated in paragraph b of this certification.
- d. That the Bidder and its principals have not within a 3-year period preceding this bid had one or more public transactions (Federal, State, or local) terminated for breach or default of a timber or forest product contract.

Bidders that cannot certify this requirement, in whole or in part, shall submit an explanation with their bid.

Scott Bowen  
Director

## TIMBER SALE INFORMATION

Yellow Brick Road (32-006-23)  
 T43N, R24W, SEC. 3; T44N, R24W, SEC. 34; T44N, R24W, SEC. 35.  
 Marquette County (Advertised Price \$69,396.05)

SALE NOTE: Access may be through private or other public land.

A timber sale contract for this lump sum, sealed bid timber sale will be awarded to the responsible bidder offering the highest sealed bid price. All units of volume listed below were estimated using the Inventory Manager computer program and the new Michigan taper model. Bids must be at or above the following advertised price for each product and species:

<u>PRODUCTS &amp; SPECIES</u>	<u>ESTIMATED UNITS*</u>	<u>ADVERTISED PRICE</u>
Sawtimber		
Basswood	0.7 MBF	\$ 28.00 / MBF
Paper Birch	9.1 MBF	\$ 60.00 / MBF
Red Maple	52.7 MBF	\$ 74.00 / MBF
Sugar Maple	17.2 MBF	\$ 116.00 / MBF
White Spruce	3.8 MBF	\$ 40.00 / MBF
Pulpwood		
Balsam Fir	309 Cords	\$ 10.30 / Cord
Basswood	2 Cords	\$ 6.10 / Cord
Mixed Aspen	1,342 Cords	\$ 19.80 / Cord
Mixed Hardwood	1,382 Cords	\$ 11.70 / Cord
Mixed Spruce	655 Cords	\$ 12.70 / Cord
Paper Birch	493 Cords	\$ 14.55 / Cord
Tamarack	91 Cords	\$ 14.90 / Cord

\* The total volume is statistically estimated within plus (+) or minus (-) 9.69 percent. There are an estimated 4,462 cords on this timber sale, plus or minus 433 cords at the 95% confidence level. The estimated units are final and not subject to adjustment. Prospective bidders are urged to examine this timber and to make their own estimates of quantity and quality.

### **BOND AND PAYMENT SCHEDULE:**

1. A bond in the amount of \$3,470.00 to insure faithful performance of the conditions of the contract will be deposited by the successful bidder within 21 days of the sale award.
2. Cutting in any sale or unit without the required advance payment would be considered a trespass.
3. Total payment must be paid in advance or according to the following schedule :
  - (a) Ten percent (10%) of the sale value must be paid within 21 days of the sale award.
  - (b) The 10% down payment will be credited towards the first unit cut.
  - (c) Payment for each of the following units must be made before cutting begins in that unit:

PAYMENT UNIT NUMBER	PERCENT OF TOTAL SALE VALUE
01	4.5%
02	4.0%
03	4.8%
04	1.6%
05	27.8%
06	3.5%
07	2.2%
08	5.2%
09	22.9%
10	14.1%
11	9.4%

4. If no cutting takes place, the 10% down payment will not be refunded.
5. Operations on the contract issued will terminate on 06/30/2027.

### **SALE STATISTICS**

Volumes were calculated in cubic feet using the Michigan taper model. Cubic foot volume includes all wood inside bark for the product indicated. For display purposes, cubic feet were converted to cords and MBF using a simple conversion factor, e.g. 79 cubic feet per cord and 185 cubic feet per MBF. The cubic foot volumes are precise; the cords and MBF volumes are not. Cubic foot volume cannot be directly converted to cords or boards with precision.

## SALE VOLUMES

The total estimated sale volume may not equal the sum of the species/products due to the nature of statistical calculations associated with double sampling methodology.

VOLUME			STATISTICAL RANGE IN CORDS	
TOTAL CUBIC FEET	TOTAL CORDS	PERCENT ERROR	MINIMUM	MAXIMUM
352,487	4,462	9.69%	4,029	4,895

## VDU VOLUMES

A VDU is a Volume Determination Unit. Volumes and their associated statistics are calculated at the VDU level and summarized to the sale level. There is often a one to one relationship between a VDU and a Payment Unit, but not always, depending on the cruise design. Refer to the VDU TO PAYMENT UNIT table.

	VOLUME			RANGE IN CORDS	
VDU	TOTAL CUBIC FEET	TOTAL CORDS	PERCENT ERROR	MINIMUM	MAXIMUM
1	35,772	453	35.04%	294	611
2	128,053	1,621	16.11%	1,360	1,882
3	21,840	276	36.11%	177	376
4	92,636	1,173	19.22%	947	1,398
17	8,453	107	28.27%	77	137
23	14,049	178	71.13%	51	304
32	5,482	69	66.25%	23	115
37	26,137	331	21.79%	259	403
105	20,064	254	25.05%	190	318
<b>TOTAL:</b>	<b>352,487</b>	<b>4,462</b>		<b>3,378</b>	<b>5,545</b>

## VDU TO PAYMENT UNIT

When a VDU is associated with more than one Payment Unit (PU), the VDU volumes are assigned to the PU based on acres of the VDU within the PU.

VDU	VDU ACRES	PU	PU ACRES
1	21.0	11	21.0
2	57.4	9	35.5
		10	21.9
3	10.2	8	10.2
4	44.7	5	44.7
17	6.1	7	6.1
23	13.7	6	13.7
32	2.5	4	2.5
37	28.3	2	12.9
		3	15.4
105	16.1	1	16.1
<b>TOTAL:</b>	<b>200.0</b>		<b>200.0</b>

**DESCRIPTION OF TIMBER BY PAYMENT UNIT (PU)**

PU	MARKET GROUP	PRODUCT	QUANTITY	UNIT	ACRES	ADVERTISE PRICE
1	Red Maple	Sawtimber	6.5	MBF	16.1	\$3,136.40
	Balsam Fir	Pulpwood	8	Cords		
	Mixed Aspen		9	Cords		
	<i>Quaking Aspen</i>		9	<i>Cords</i>		
	Mixed Hardwood		196	Cords		
	<i>Red Maple</i>		196	<i>Cords</i>		
	Mixed Spruce		8	Cords		
	<i>White Spruce</i>		8	<i>Cords</i>		
2	Basswood	Sawtimber	0.3	MBF	12.9	\$2,743.50
	Red Maple		7.3	MBF		
	Sugar Maple		7.8	MBF		
	Balsam Fir	Pulpwood	3	Cords		
	Basswood		1	Cords		
	Mixed Aspen		7	Cords		
	<i>Quaking Aspen</i>		7	<i>Cords</i>		
	Mixed Hardwood		92	Cords		
	<i>Red Maple</i>		50	<i>Cords</i>		
	<i>Sugar Maple</i>		42	<i>Cords</i>		
	Mixed Spruce		3	Cords		
	<i>White Spruce</i>		3	<i>Cords</i>		
3	Basswood	Sawtimber	0.4	MBF	15.4	\$3,310.10
	Red Maple		8.7	MBF		
	Sugar Maple		9.4	MBF		
	Balsam Fir	Pulpwood	3	Cords		
	Basswood		1	Cords		
	Mixed Aspen		9	Cords		
	<i>Quaking Aspen</i>		9	<i>Cords</i>		
	Mixed Hardwood		111	Cords		
	<i>Red Maple</i>		60	<i>Cords</i>		
	<i>Sugar Maple</i>		51	<i>Cords</i>		
	Mixed Spruce		4	Cords		
	<i>White Spruce</i>		4	<i>Cords</i>		
4	Paper Birch	Sawtimber	0.9	MBF	2.5	\$1,105.65
	Red Maple		2.0	MBF		
	Balsam Fir	Pulpwood	2	Cords		
	Mixed Hardwood		22	Cords		
	<i>Red Maple</i>		22	<i>Cords</i>		
	Paper Birch		43	Cords		
5	Red Maple	Sawtimber	10.2	MBF	44.7	\$19,255.85
	Balsam Fir	Pulpwood	36	Cords		
	Mixed Aspen		536	Cords		
	<i>B. T. Aspen</i>		175	<i>Cords</i>		
	<i>Quaking Aspen</i>		361	<i>Cords</i>		
	Mixed Hardwood		454	Cords		
	<i>Red Maple</i>		450	<i>Cords</i>		
	<i>Yellow Birch</i>		4	<i>Cords</i>		
	Mixed Spruce		74	Cords		
	<i>White Spruce</i>		74	<i>Cords</i>		
	Paper Birch		87	Cords		
6	Balsam Fir	Pulpwood	18	Cords	13.7	\$2,445.85
	Mixed Aspen		22	Cords		
	<i>Quaking Aspen</i>		22	<i>Cords</i>		
	Mixed Spruce		13	Cords		
	<i>Black Spruce</i>		9	<i>Cords</i>		
	<i>White Spruce</i>		4	<i>Cords</i>		
	Paper Birch		111	Cords		

**DESCRIPTION OF TIMBER BY PAYMENT UNIT (PU), CON'T**

PU	MARKET GROUP	PRODUCT	QUANTITY	UNIT	ACRES	ADVERTISE PRICE			
6 con't	Tamarack	Pulpwood	3	Cords					
7	Mixed Spruce	Pulpwood	46	Cords	6.1	\$1,508.00			
	<i>Black Spruce</i>		46	<i>Cords</i>					
	Tamarack		62	Cords					
8	Paper Birch	Sawtimber	1.8	MBF	10.2	\$3,642.80			
	Mixed Aspen	Pulpwood	46	Cords					
	<i>B. T. Aspen</i>		46	<i>Cords</i>					
	Mixed Spruce		158	Cords					
	<i>Black Spruce</i>		158	<i>Cords</i>					
	Paper Birch		24	Cords					
	Tamarack		18	Cords					
9	Paper Birch	Sawtimber	4.0	MBF	35.5	\$15,876.10			
	Red Maple		11.1	MBF					
	White Spruce		2.3	MBF					
	Balsam Fir	Pulpwood	92	Cords					
	Mixed Aspen		344	Cords					
	<i>Quaking Aspen</i>	<i>Sawtimber</i>	1.6	<i>MBF</i>					
	<i>B. T. Aspen</i>	<i>Pulpwood</i>	171	<i>Cords</i>					
	<i>Balsam Poplar</i>		15	<i>Cords</i>					
	<i>Quaking Aspen</i>		155	<i>Cords</i>					
	Mixed Hardwood		289	Cords					
	<i>Red Maple</i>		285	<i>Cords</i>					
	<i>Yellow Birch</i>		4	<i>Cords</i>					
	Mixed Spruce		125	Cords					
	<i>Black Spruce</i>	<i>Sawtimber</i>	4.9	<i>MBF</i>					
	<i>Black Spruce</i>	<i>Pulpwood</i>	109	<i>Cords</i>					
	<i>White Spruce</i>		6	<i>Cords</i>					
	Paper Birch		132	Cords					
	Tamarack		5	Cords					
	10	Paper Birch	Sawtimber	2.4			MBF	21.9	\$9,817.40
		Red Maple		6.9			MBF		
White Spruce			1.5	MBF					
Balsam Fir		Pulpwood	57	Cords					
Mixed Aspen			213	Cords					
<i>Quaking Aspen</i>		<i>Sawtimber</i>	1.0	<i>MBF</i>					
<i>B. T. Aspen</i>		<i>Pulpwood</i>	106	<i>Cords</i>					
<i>Balsam Poplar</i>			9	<i>Cords</i>					
<i>Quaking Aspen</i>			96	<i>Cords</i>					
Mixed Hardwood			178	Cords					
<i>Red Maple</i>			176	<i>Cords</i>					
<i>Yellow Birch</i>			2	<i>Cords</i>					
Mixed Spruce			77	Cords					
<i>Black Spruce</i>		<i>Sawtimber</i>	3.1	<i>MBF</i>					
<i>Black Spruce</i>		<i>Pulpwood</i>	67	<i>Cords</i>					
<i>White Spruce</i>			4	<i>Cords</i>					
Paper Birch			82	Cords					
Tamarack		3	Cords						
11	Balsam Fir	Pulpwood	90	Cords	21.0	\$6,554.40			
	Mixed Aspen		156	Cords					
	<i>B. T. Aspen</i>		146	<i>Cords</i>					
	<i>Quaking Aspen</i>		10	<i>Cords</i>					
	Mixed Hardwood		40	Cords					
	<i>Red Maple</i>		40	<i>Cords</i>					
	Mixed Spruce		147	Cords					
	<i>Black Spruce</i>		141	<i>Cords</i>					
	<i>White Spruce</i>		6	<i>Cords</i>					



**DESCRIPTION OF TIMBER BY PAYMENT UNIT (PU), CON'T**

PU	MARKET GROUP	PRODUCT	QUANTITY	UNIT	ACRES	ADVERTISE PRICE
11 con't	Paper Birch	Pulpwood	14	Cords		
TOTAL:			83.5	MBF		
TOTAL:			4,274	Cords		

# Sale Specific Conditions & Requirements

**Sale Name: Yellow Brick Road**

**Sale Number: 32-006-23 Seq#: 2**

## 1 - Sale Area

### 1.2 - Boundaries

#### 1.2.1 - Painted boundaries (9/19)

The sale boundary and Payment Unit boundaries are marked and identified by blue, red, and yellow paint. Exterior sale boundary lines against private are marked with blue paint. Exterior sale boundary lines against state are marked with red paint. Interior Payment Unit boundaries are marked with yellow paint, with the exception of the interior Payment Unit boundary separating Payment Units 1 & 2, which is marked with red paint. The painted boundary line trees are not Included Timber and are to be protected unless marked with orange paint. Yellow painted trees designating an interior Payment Unit boundary are only to be cut when all surrounding Payment Units have been paid. These yellow painted trees are designated for cutting in all adjoining Payment Units.

## 2 - Timber Specifications

### 2.1 - Included Timber

#### 2.1.1 - Clearcut unit(s) with unmerchantable trees (6/14)

Within Payment Unit(s) 7-11, cut all trees that are two (2) inches or more at DBH, except do not cut any cedar, hemlock, or pine.

#### 2.1.3 - Cut tree marked unit(s) (12/08)

Within Payment Unit(s) 2 & 3, all trees are designated for cutting when marked with orange paint above and below stump height, regardless of merchantability. In addition, cut all merchantable spruce and fir.

#### 2.1.4 - Designated timber unit(s) (6/17)

Within Payment Unit(s) 1, 4, & 5, all red maple, aspen, spruce, fir, and paper birch trees are designated for cutting which meet minimum piece specifications in 2.2 Utilization. Additionally, do not cut any trees marked in green paint above and below stump height.

Within Payment Unit 6, aspen, spruce, fir, tamarack, and paper birch are designated or cutting which meet minimum piece specifications in 2.2 Utilization. Additionally, do not cut any trees marked with green paint above and below stump height.

## 3 - Payments

### 3.4 - Damaged Timber

#### 3.4.1 - Damaged timber (7/16)

General Condition and Requirement 3.4 Damaged Timber, defines liquidated damages for undesigned live merchantable trees which are cut or injured. No damage is acceptable to undesigned live merchantable trees. Within the Sale Area, if more than 5% of trees (> 4.5" DBH) within a specified area of the sale are damaged, liquidated damages will be assessed for all trees damaged. Rates will be in accordance with General Condition and Requirement 3.4 Damaged Timber.

## 4 - Transportation

### 4.1 - Construction

#### 4.1.3 - Slash and earthen piles (8/04)

Piles or windrows of earth along roads and landings that have been widened or constructed shall be leveled. Slash from road maintenance or construction, including stumps, shall be dispersed throughout the sale.

#### 4.1.4 - Timber removed for construction (3/23)

Trees cut or damaged in the process of pre-approved road, landing or skid trail construction will be decked in an area separate from other Designated Timber and not removed until measured by the sale administrator. Payment will be made at contract prices or average prices, if not on the contract.

#### 4.1.6 - Road construction (1/09)

Construction of new roads or improvements of existing roads shall be done in such a way as to minimize the environmental and visual impacts. Merchantable trees shall be cut and utilized unless otherwise directed. Non-merchantable trees shall be severed and laid flat on the ground. Slash shall be scattered, and not left in windrows and kept a minimum of 10 feet back from the road edge. Stumps shall be set upright, not left on edge, and be moved at least 10 feet away from the road edge. Disturbed soil shall be feathered into the woods and not left in berms or windrows.

#### 4.1.7 - Road closure (10/11)

All new roads built into the sale must be blocked to vehicle traffic upon completion of the sale. Overgrown roads that are reopened shall be considered new roads. In general, this will require constructing a four (4') foot high berm of stumps and logs covered with earth. Contact the Sale Administrator for specific details of design and placement.

### 4.2 - Maintenance

#### 4.2.2 - Fill material (4/07)

To maintain roads, fill material may be needed in areas where "holes" exist or may be expected to develop. This fill material should be placed before trucking begins. Depending on the time of year, multiple areas may require fill material for access across the Sale Area. Contact the Sale Administrator regarding the availability of onsite sand or gravel from adjacent State-owned lands.

#### 4.2.3 - Road maintenance (8/13)

The following road maintenance may be needed: Within 60 days of completion of hauling, or if no hauling occurs for 60 days, the road must be maintained and graded. This includes cleaning of drainage areas, grading, crowning and filling with gravel, if necessary. Damages will be assessed if grading/repair does not occur.

#### 4.2.4 - Grading (10/16)

For completion of the sale, state forest roads must be graded. In general, this will require a road grader or bulldozer to shape up the roads after forest products have been hauled off site. This includes cleaning of drainage areas, grading, crowning and filling with gravel, if necessary. The grading equipment to be used must be approved by the Unit Manager or his/her representative.

### 4.4 - Access

#### 4.4.1 - Private property access (3/11)

Permission for access across private land is the responsibility of the Purchaser. Contact the Sale Administrator to assist with private property access.

#### 4.4.3 - Access gate (12/08)

The access gate must be locked at the completion of each day, unless otherwise approved by the Unit Manager or his/her representative.

## 5 - Operations

### 5.1 - Notification

#### 5.1.1 - Pre-sale conference (10/16)

A pre-sale conference between the Purchaser and sale administrator is required prior to beginning any operations. The Unit Manager or his/her representative must be contacted at least 3 business days in advance to schedule the conference.

### 5.2 - Conduct of Operations

#### 5.2.3 - Operating Restrictions

##### 5.2.3.1 - Operating restrictions (9/11)

Within Payment Unit(s) 7-11, unless changed by written agreement, cutting, skidding, and hauling are limited to the period of 12/15 to 4/1. This restriction is because of wet soils.

##### 5.2.3.3 - Bark slippage restriction (3/09)

Within Payment Unit(s) 2 & 3, unless changed by written agreement, cutting and skidding are not permitted during the period of April 15 to July 15. This restriction is because of bark slippage.

#### 5.2.22 - Operating Caution

#### 5.2.22.1 - Operating caution (6/11)

It is recommended, but not required, that within Payment Unit(s) 5 & 6, cutting, skidding, and hauling occur during dry summer or frozen winter conditions. The reason for the recommendation is due to wet areas within these Payment Units.

#### 5.2.32 - Decking/landing restoration (9/13)

All decking and landing areas must have the surface area restored to a condition equal to or better than before. This is to ensure the proper regeneration of the stand. Wood debris, chips and "cookies" from trimmings must be removed or scattered away from landing and loading areas and may not be windrowed on the edge.

#### 5.2.38 - No decking against live trees (2/04)

Cut products may not be decked against unmarked or designated leave trees.

### 5.4 - Soil Protection

#### 5.4.1 - Rutting restriction, general (7/16)

Operations are to cease immediately if equipment and weather conditions result in rutting of roads and/or skid trails which is 12 inches or greater in depth and 50 feet in length. The Unit Manager or his/her representative may restrict hauling and/or skidding if ruts exceed the specified depth. With the Unit Manager or his/her representative's approval, the Purchaser may return to the area when the risk of rutting has decreased.

#### 5.4.2 - Skid trails (2/04)

Skid trails up and down slopes should be avoided. If however this is unavoidable, these trails will be left in a non-erodible condition using water bars, logs, and slash. Placing of slash on these skid trails while logging is ongoing may alleviate need for any further action. At the direction of the sale administrator, seed, fertilizer, and mulch may also be required.

### 5.8 - Protection of Endangered Species

#### 5.8.5 - Protection of raptor nests (3/13)

All trees with raptor nests will be protected if found during harvesting operations. Notification will be made to the Unit Manager or his/her representative who will notify the Wildlife Biologist so an on-site evaluation and recommendation can be made, if necessary.

## 6 - Safety and Fire Prevention

### 6.2 - Signing

#### 6.2.1 - Road posting (10/20)

The Purchaser is responsible for posting and maintaining caution signs on County Road RM prior to beginning operations. The road must be posted at appropriate distances from the Sale Area from both directions to warn of logging activity and truck traffic. Signs must be removed when harvest operations are suspended or completed. The Purchaser will provide these signs.

## 7 - Other Conditions

### 7.5 - Loss

#### 7.5.1 - Deteriorating timber (7/09)

The sale area has received damage from spruce budworm. The Purchaser should harvest the wood as soon as possible. The Department of Natural Resources is held free of responsibility of any further damage or deterioration due to delay in harvesting.



### TIMBER SALE MAP

This information provided by authority of Part 525, 1994 PA 451, as amended.

Sale Number  
**32-006-23**

Date  
**09/19/2023**

Forest Management Unit	County	Mapped By: Brolin
Gwinn Mgt Unit	Marquette	Cruised By: Brolin, Gould, Holodnick

Scale	Page	Of
1:24,000	1	1

Township	Range	Section(s) and Subdivision(s)
43N / 44N	24W	Sec. 3 N1/2NW,N1/2NE; Sec. 34 S1/2NE,S1/2SW,SE; Sec. 35 S1/2NE,SWSW,NESE;

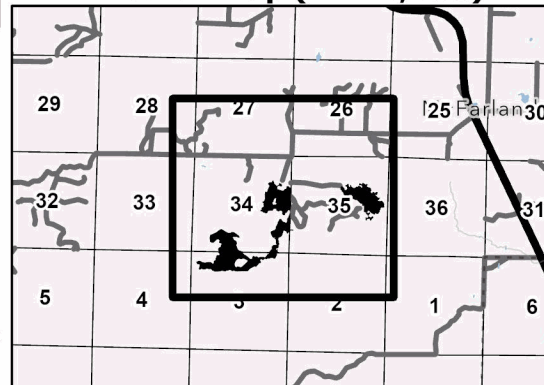
#### Cover Type

A = Aspen	J = Jack Pine	O = Oak	U = Upland Brush
B = Paper Birch	K = Rock	P = Lowland Poplar	UM = Upland Mix Forest
C = Cedar	L = Lowland Brush	Q = Mixed Swamp Conifer	V = Bog or Marsh
D = Treed Bog	LM = Lowland Mix Forest	R = Red Pine	W = White Pine
E = Swamp Hardwoods	M = Maple, Beech, Birch	S = Black Spruce	X = Non Stocked
F = Spruce/Fir	MC = Mixed Conifer	T = Tamarack	Y = Sand
G = Grass	MD = Mixed Deciduous	Z = Water	
H = Hemlock	N = Marsh		

#### Density

0 = Non Stocked	5 = Pole Timber Medium
1 = Seedling Sapling Poor	6 = Pole Timber Well
2 = Seedling Sapling Medium	7 = Saw Timber Poor
3 = Seedling Sapling Well	8 = Saw Timber Medium
4 = Pole Timber Poor	9 = Saw Timber Well

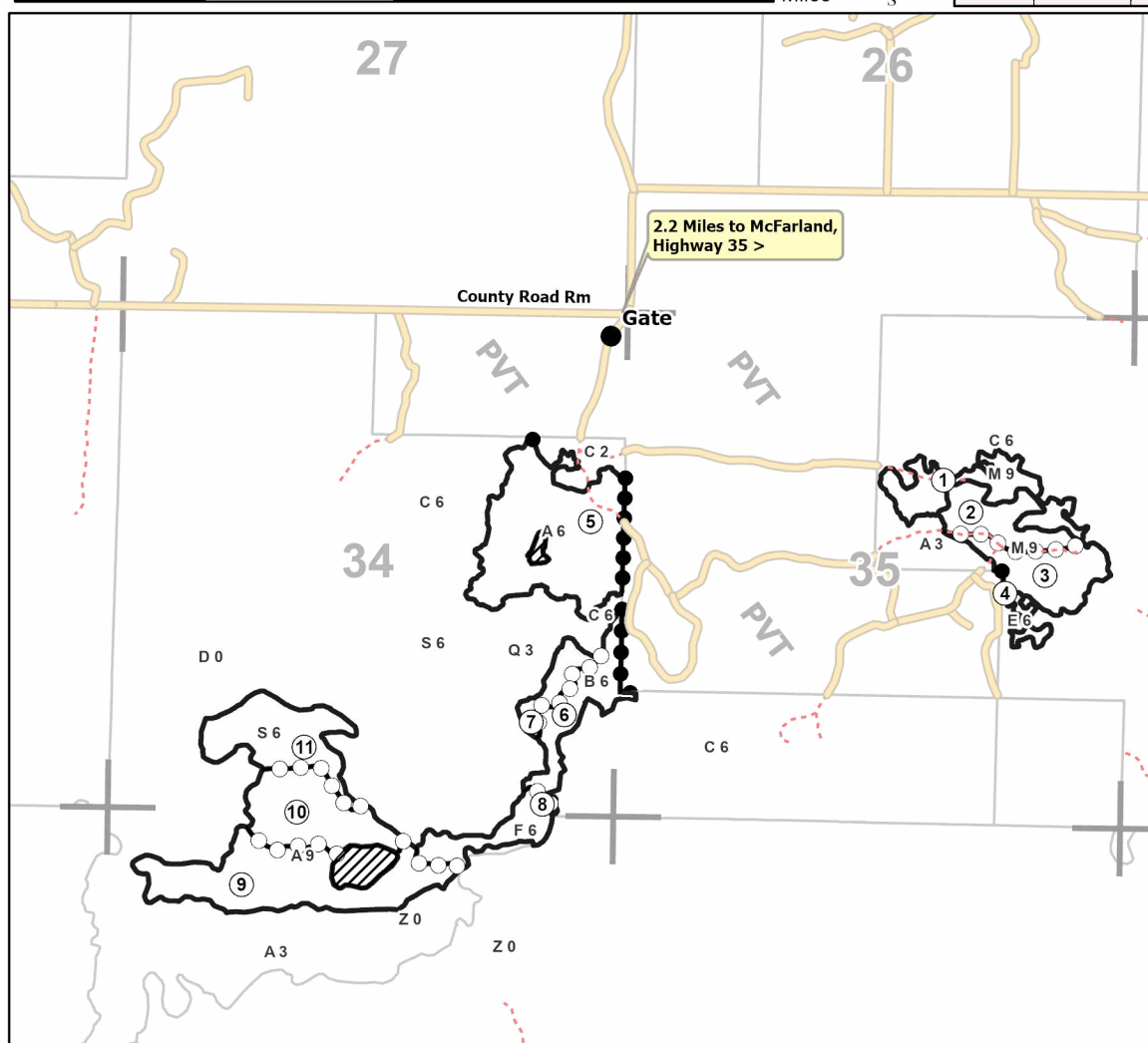
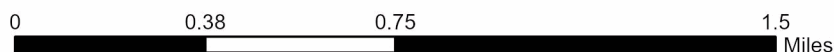
#### Locator Map (1:125,000)



PU #	Acres	PU #	Acres	PU #	Acres
1	16.1	5	44.7	9	35.5
2	12.9	6	13.7	10	21.9
3	15.4	7	6.1	11	21
4	2.5	8	10.2		

## Yellow Brick Road

200.0 Acres



#### Legend

- Against State (Red)
- Payment Unit (Yellow)
- Private Line (Blue)
- Retention Areas
- Primary Forest Road
- Secondary Forest Road
- Forest Access Route
- Administrative Access Only
- Non-DNR Road
- MIRIS Section Corner

Use QR Code to open Map in App





## TIMBER SALE INFORMATION

### Snowmobile the Stack (32-016-23)

T44N, R23W, SEC. 5; T45N, R23W, SEC. 28; T45N, R23W, SEC. 29; T45N, R23W, SEC. 32.  
Marquette County (Advertised Price \$67,874.50)

SALE NOTE: Access from the south is through private and will require road work on private property.

Access may be through private or other public land.

A timber sale contract for this lump sum, sealed bid timber sale will be awarded to the responsible bidder offering the highest sealed bid price. All units of volume listed below were estimated using the Inventory Manager computer program and the new Michigan taper model. Bids must be at or above the following advertised price for each product and species:

<u>PRODUCTS &amp; SPECIES</u>	<u>ESTIMATED UNITS*</u>	<u>ADVERTISED PRICE</u>
Sawtimber		
Black Cherry	3.9 MBF	\$ 62.00 / MBF
Red Maple	189.5 MBF	\$ 101.00 / MBF
Sugar Maple	13.4 MBF	\$ 158.00 / MBF
Yellow Birch	6.1 MBF	\$ 41.00 / MBF
Pulpwood		
Balsam Fir	105 Cords	\$ 14.05 / Cord
Mixed Aspen	36 Cords	\$ 26.95 / Cord
Mixed Hardwood	2,240 Cords	\$ 15.95 / Cord
Mixed Spruce	268 Cords	\$ 17.30 / Cord
N. White Cedar	125 Cords	\$ 6.45 / Cord
Tamarack	45 Cords	\$ 20.30 / Cord
White Pine	51 Cords	\$ 31.30 / Cord

\* The total volume is statistically estimated within plus (+) or minus (-) 7.97 percent. There are an estimated 3,333 cords on this timber sale, plus or minus 266 cords at the 95% confidence level. The estimated units are final and not subject to adjustment. Prospective bidders are urged to examine this timber and to make their own estimates of quantity and quality.

### **BOND AND PAYMENT SCHEDULE:**

1. A bond in the amount of \$3,394.00 to insure faithful performance of the conditions of the contract will be deposited by the successful bidder within 21 days of the sale award.
2. Cutting in any sale or unit without the required advance payment would be considered a trespass.
3. Total payment must be paid in advance or according to the following schedule :
  - (a) Ten percent (10%) of the sale value must be paid within 21 days of the sale award.
  - (b) The 10% down payment will be credited towards the first unit cut.
  - (c) Payment for each of the following units must be made before cutting begins in that unit:

PAYMENT UNIT NUMBER	PERCENT OF TOTAL SALE VALUE
01	7.9%
02	4.9%
03	12.5%
04	14.3%
05	13.7%
06	7.3%
07	16.1%
08	15.8%
09	4.5%
10	3.0%

4. If no cutting takes place, the 10% down payment will not be refunded.
5. Operations on the contract issued will terminate on 06/30/2027.

### **SALE STATISTICS**

Volumes were calculated in cubic feet using the Michigan taper model. Cubic foot volume includes all wood inside bark for the product indicated. For display purposes, cubic feet were converted to cords and MBF using a simple conversion factor, e.g. 79 cubic feet per cord and 185 cubic feet per MBF. The cubic foot volumes are precise; the cords and MBF volumes are not. Cubic foot volume cannot be directly converted to cords or boards with precision.

## SALE VOLUMES

The total estimated sale volume may not equal the sum of the species/products due to the nature of statistical calculations associated with double sampling methodology.

VOLUME			STATISTICAL RANGE IN CORDS	
TOTAL CUBIC FEET	TOTAL CORDS	PERCENT ERROR	MINIMUM	MAXIMUM
263,281	3,333	7.97%	3,067	3,598

## VDU VOLUMES

A VDU is a Volume Determination Unit. Volumes and their associated statistics are calculated at the VDU level and summarized to the sale level. There is often a one to one relationship between a VDU and a Payment Unit, but not always, depending on the cruise design. Refer to the VDU TO PAYMENT UNIT table.

	VOLUME			RANGE IN CORDS	
VDU	TOTAL CUBIC FEET	TOTAL CORDS	PERCENT ERROR	MINIMUM	MAXIMUM
1	32,830	416	14.76%	354	477
2	42,594	539	17.27%	446	632
3	77,919	986	16.29%	826	1,147
4	40,386	511	22.27%	397	625
5	22,593	286	18.02%	234	338
7	38,397	486	25.89%	360	612
10	8,561	108	26.48%	80	137
<b>TOTAL:</b>	<b>263,281</b>	<b>3,333</b>		<b>2,698</b>	<b>3,968</b>

## VDU TO PAYMENT UNIT

When a VDU is associated with more than one Payment Unit (PU), the VDU volumes are assigned to the PU based on acres of the VDU within the PU.

VDU	VDU ACRES	PU	PU ACRES
1	30.5	1	18.9
		2	11.6
2	22.6	4	22.6
		7	17.8
		8	17.4
3	40.1	9	4.9
		5	30.8
4	18.5	6	18.5
		3	27.8
5	27.8	10	8.2
7	8.2		
10			
<b>TOTAL:</b>	<b>178.5</b>		<b>178.5</b>



**DESCRIPTION OF TIMBER BY PAYMENT UNIT (PU)**

PU	MARKET GROUP	PRODUCT	QUANTITY	UNIT	ACRES	ADVERTISE PRICE
1	Black Cherry	Sawtimber    Pulpwood	2.4	MBF	18.9	\$5,386.00
	Red Maple		6.1	MBF		
	Sugar Maple		8.3	MBF		
	Balsam Fir		7	Cords		
	Mixed Hardwood		197	Cords		
	<i>Black Cherry</i>		23	<i>Cords</i>		
	<i>Red Maple</i>		69	<i>Cords</i>		
	<i>Sugar Maple</i>		105	<i>Cords</i>		
	Mixed Spruce		4	Cords		
	<i>Black Spruce</i>		2	<i>Cords</i>		
	<i>White Spruce</i>		2	<i>Cords</i>		
2	Black Cherry	Sawtimber    Pulpwood	1.5	MBF	11.6	\$3,317.40
	Red Maple		3.8	MBF		
	Sugar Maple		5.1	MBF		
	Balsam Fir		5	Cords		
	Mixed Hardwood		121	Cords		
	<i>Black Cherry</i>		14	<i>Cords</i>		
	<i>Red Maple</i>		42	<i>Cords</i>		
	<i>Sugar Maple</i>		65	<i>Cords</i>		
	Mixed Spruce		2	Cords		
	<i>Black Spruce</i>		1	<i>Cords</i>		
	<i>White Spruce</i>		1	<i>Cords</i>		
3	Red Maple	Sawtimber   Pulpwood	6.9	MBF	27.8	\$8,481.35
	Yellow Birch		4.7	MBF		
	Balsam Fir		26	Cords		
	Mixed Aspen		12	Cords		
	<i>Quaking Aspen</i>		12	<i>Cords</i>		
	Mixed Hardwood		397	Cords		
	<i>Red Maple</i>		374	<i>Cords</i>		
	<i>Yellow Birch</i>		23	<i>Cords</i>		
	Mixed Spruce		33	Cords		
	<i>White Spruce</i>		33	<i>Cords</i>		
4	Red Maple	Sawtimber   Pulpwood	17.4	MBF	22.6	\$9,721.05
	Yellow Birch		1.4	MBF		
	Balsam Fir		6	Cords		
	Mixed Aspen		24	Cords		
	<i>Quaking Aspen</i>		24	<i>Cords</i>		
	Mixed Hardwood		405	Cords		
	<i>Black Ash</i>		22	<i>Cords</i>		
	<i>Red Maple</i>		363	<i>Cords</i>		
	<i>Yellow Birch</i>		20	<i>Cords</i>		
	Mixed Spruce		16	Cords		
	<i>Black Spruce</i>		16	<i>Cords</i>		
N. White Cedar	68	Cords				
5	Red Maple	Sawtimber  Pulpwood	19.4	MBF	30.8	\$9,284.80
	Balsam Fir		20	Cords		
	Mixed Hardwood		382	Cords		
	<i>Red Maple</i>		349	<i>Cords</i>		
	<i>Yellow Birch</i>		33	<i>Cords</i>		
	Mixed Spruce		55	Cords		
	<i>Black Spruce</i>		55	<i>Cords</i>		
6	Balsam Fir	Pulpwood	5	Cords	18.5	\$4,928.20
	Mixed Hardwood		110	Cords		
	<i>Black Ash</i>		2	<i>Cords</i>		
	<i>Red Maple</i>		80	<i>Cords</i>		
	<i>Yellow Birch</i>		28	<i>Cords</i>		

**DESCRIPTION OF TIMBER BY PAYMENT UNIT (PU), CON'T**

PU	MARKET GROUP	PRODUCT	QUANTITY	UNIT	ACRES	ADVERTISE PRICE
6 con't	Mixed Spruce	Pulpwood	60	Cords		
	<i>Black Spruce</i>		60	<i>Cords</i>		
	N. White Cedar		57	Cords		
	Tamarack		5	Cords		
	White Pine		51	Cords		
7	Red Maple	Sawtimber	60.3	MBF	17.8	\$10,967.85
	Balsam Fir	Pulpwood	16	Cords		
	Mixed Hardwood		257	Cords		
	<i>Red Maple</i>		245	<i>Cords</i>		
	<i>Sugar Maple</i>		12	<i>Cords</i>		
	Mixed Spruce		32	Cords		
	<i>White Spruce</i>		32	<i>Cords</i>		
8	Red Maple	Sawtimber	59.0	MBF	17.4	\$10,742.75
	Balsam Fir	Pulpwood	15	Cords		
	Mixed Hardwood		252	Cords		
	<i>Red Maple</i>		240	<i>Cords</i>		
	<i>Sugar Maple</i>		12	<i>Cords</i>		
	Mixed Spruce		32	Cords		
	<i>White Spruce</i>		32	<i>Cords</i>		
9	Red Maple	Sawtimber	16.6	MBF	4.9	\$3,020.95
	Balsam Fir	Pulpwood	4	Cords		
	Mixed Hardwood		71	Cords		
	<i>Red Maple</i>		68	<i>Cords</i>		
	<i>Sugar Maple</i>		3	<i>Cords</i>		
	Mixed Spruce		9	Cords		
	<i>White Spruce</i>		9	<i>Cords</i>		
10	Balsam Fir	Pulpwood	1	Cords	8.2	\$2,024.15
	Mixed Hardwood		48	Cords		
	<i>Red Maple</i>		48	<i>Cords</i>		
	Mixed Spruce		25	Cords		
	<i>Black Spruce</i>		25	<i>Cords</i>		
	Tamarack		40	Cords		
TOTAL:			212.9	MBF		
TOTAL:			2,870	Cords		

# Sale Specific Conditions & Requirements

**Sale Name: Snowmobile the Stack**

**Sale Number: 32-016-23 Seq#: 1**

## 1 - Sale Area

### 1.2 - Boundaries

#### 1.2.1 - Painted boundaries (9/19)

The sale boundary and Payment Unit boundaries are marked and identified by blue, red, and yellow paint. Exterior sale boundary lines against private are marked with blue paint. Exterior sale boundary lines against state are marked with red paint. Interior Payment Unit boundaries are marked with yellow paint. Interior Payment Unit boundaries between Payments Units 6 & 7 and 8 & 10 are marked with red paint. The painted boundary line trees are not Included Timber and are to be protected unless marked with orange paint. Yellow painted trees designating an interior Payment Unit boundary are only to be cut when all surrounding Payment Units have been paid and if designated for cutting in both payment units.

## 2 - Timber Specifications

### 2.1 - Included Timber

#### 2.1.1 - Clearcut unit(s) with unmerchantable trees (6/14)

Within Payment Unit(s) 4,, cut all trees that are two (2) inches or more at DBH, do not cut white pine or hemlock. Within Payment Unit(s) 6, cut all trees that are two (2) inches or more at DBH, do not cut hemlock or white pine 24" diameter or larger at the stump. Within Payment Unit(s) 10, cut all trees that are two (2) inches or more at DBH, do not cut hemlock, cedar, white pine, paper birch or yellow birch.

#### 2.1.3 - Cut tree marked unit(s) (12/08)

Within Payment Unit(s) 7-9, all trees are designated for cutting when marked with orange paint above and below stump height, regardless of merchantability. In addition, within payment unit 8 & 9, cut all merchantable spruce and fir.

#### 2.1.7 - Leave tree marked unit(s) (6/14)

Within Payment Unit(s) 1, cut all trees that are two (2) inches or more at DBH, do not cut cedar, hemlock, red pine, yellow birch, and white pine, and trees marked with green paint above and below stump height. Within Payment Unit(s) 2, 3 & 5, cut all trees that are two (2) inches or more at DBH, do not cut cedar, hemlock, and white pine, and trees marked with green paint above and below stump height.

## 3 - Payments

### 3.4 - Damaged Timber

#### 3.4.1 - Damaged timber (7/16)

General Condition and Requirement 3.4 Damaged Timber, defines liquidated damages for undesigned live merchantable trees which are cut or injured. In addition, extreme care should be taken to avoid damage to tree seedlings and saplings.

No damage is acceptable to undesigned live merchantable trees. Within the sale area, if more than 5% of trees (> 4.5" DBH) within a specified area of the sale are damaged, liquidated damages will be assessed for all trees damaged. Rates will be in accordance with General Condition and Requirement 3.4 Damaged Timber.

## 4 - Transportation

### 4.1 - Construction

#### 4.1.3 - Slash and earthen piles (8/04)

Piles or windrows of earth along roads and landings that have been widened or constructed shall be leveled. Slash from road maintenance or construction, including stumps, shall be dispersed throughout the sale.

#### 4.1.6 - Road construction (1/09)

Construction of new roads or improvements of existing roads shall be done in such a way as to minimize the environmental and visual impacts. Merchantable trees shall be cut and utilized unless otherwise directed. Non-merchantable trees shall be severed and laid flat on the ground. Slash shall be scattered, and not left in windrows and kept a minimum of 10 feet back from the road edge. Stumps shall be set upright, not left on edge, and be moved at least 10 feet away from the road edge.

Disturbed soil shall be feathered into the woods and not left in berms or windrows.

#### 4.1.7 - Road closure (10/11)

All new roads built into the sale must be blocked to vehicle traffic upon completion of the sale. Overgrown roads that are reopened shall be considered new roads. In general, this will require constructing a four (4') foot high berm of stumps and logs covered with earth. Contact the sale administrator for specific details of design and placement.

### 4.2 - Maintenance

#### 4.2.2 - Fill material (4/07)

To maintain roads, fill material may be needed in areas where "holes" exist or may be expected to develop. This fill material should be placed before trucking begins. Depending on the time of year, multiple areas may require fill material for access across the sale area. Contact the sale administrator regarding the availability of onsite sand or gravel from adjacent State-owned lands.

#### 4.2.3 - Road maintenance (8/13)

The following road maintenance may be needed: Within 60 days of completion of hauling, or if no hauling occurs for 60 days, the road must be maintained and graded. This includes cleaning of drainage areas, grading, crowning and filling with gravel, if necessary. Damages will be assessed if grading/repair does not occur.

#### 4.2.4 - Grading (10/16)

For completion of the sale, state forest roads must be graded. In general, this will require a road grader or bull dozer to shape up the roads after forest products have been hauled off site. This includes cleaning of drainage areas, grading, crowning and filling with gravel, if necessary. The grading equipment to be used must be approved by the Unit Manager or his/her representative.

### 4.4 - Access

#### 4.4.1 - Private property access (3/11)

Permission for access across private land is the responsibility of the Purchaser.

## 5 - Operations

### 5.1 - Notification

#### 5.1.1 - Pre-sale conference (10/16)

A pre-sale conference between the Purchaser and sale administrator is required prior to beginning any operations. The Unit Manager or his/her representative must be contacted at least 3 business days in advance to schedule the conference.

### 5.2 - Conduct of Operations

#### 5.2.2 - Hazard Trees/Snags

##### 5.2.2.1 - Den trees (10/16)

Obvious hollow and/or den trees shall be protected and left standing unless they are a safety hazard.

#### 5.2.3 - Operating Restrictions

##### 5.2.3.1 - Operating restrictions (9/11)

Within Payment Unit(s) 1-10, unless changed by written agreement, cutting, skidding, and hauling are limited to frozen conditions. This restriction is due to wet soils and winter roads.

##### 5.2.3.3 - Bark slippage restriction (3/09)

Within Payment Unit(s) 1, 2, and 7-9, unless changed by written agreement, cutting and skidding are not permitted during the period of April 15 to July 15. This restriction is because of bark slippage.

#### 5.2.32 - Decking/landing restoration (9/13)

All decking and landing areas must have the surface area restored to a condition equal to or better than before. This is to ensure the proper regeneration of the stand. Wood debris, chips and "cookies" from trimmings must be removed or scattered away from landing and loading areas and may not be windrowed on the edge.

#### 5.2.38 - No decking against live trees (2/04)

Cut products may not be decked against unmarked or designated leave trees.

## 5.4 - Soil Protection

### 5.4.1 - Rutting restriction, general (7/16)

Operations are to cease immediately if equipment and weather conditions result in rutting of roads and/or skid trails which is 12 inches or greater in depth and 50 feet in length. The Unit Manager or his/her representative may restrict hauling and/or skidding if ruts exceed the specified depth. With the Unit Manager or his/her representative's approval, the Purchaser may return to the area when the risk of rutting has decreased.

### 5.4.2 - Skid trails (2/04)

Skid trails up and down slopes should be avoided. If however this is unavoidable, these trails will be left in a non-erodible condition using water bars, logs, and slash. Placing of slash on these skid trails while logging is ongoing may alleviate need for any further action. At the direction of the sale administrator, seed, fertilizer, and mulch may also be required.

### 5.4.3 - Erosion control (12/08)

Skid trails or haul roads may require erosion control structures or berms per direction of the Unit Manager or his/her representative.

## 5.8 - Protection of Endangered Species

### 5.8.5 - Protection of raptor nests (3/13)

All trees with raptor nests will be protected if found during harvesting operations. Notification will be made to the Unit Manager or his/her representative who will notify the Wildlife Biologist so an on-site evaluation and recommendation can be made, if necessary.

## 6 - Safety and Fire Prevention

### 6.2 - Signing

#### 6.2.1 - Road posting (10/20)

The Purchaser is responsible for posting and maintaining caution signs on the Stack Grade prior to beginning operations. The road must be posted at appropriate distances from the sale area to warn of logging activity and truck traffic. Signs must be removed when harvest operations are suspended or completed. The Purchaser will provide these signs.

## 7 - Other Conditions

### 7.5 - Loss

#### 7.5.1 - Deteriorating timber (7/09)

The sale area has received damage from spruce budworm. The Purchaser should harvest the wood as soon as possible. The Department of Natural Resources is held free of responsibility of any further damage or deterioration due to delay in harvesting.



### TIMBER SALE MAP

This information provided by authority of Part 525, 1994 PA 451, as amended.

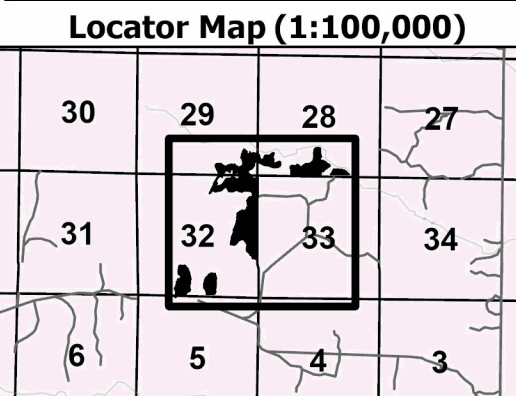
Sale Number <b>32-016-23</b>	Date 09/28/2023
Scale 1:15,840	Page 1
	Of 1

Forest Management Unit Gwinn Mgt Unit	County Marquette	Mapped By: Gabler
		Cruised By: Gould

Township 44N / 45N	Range 23W	Section(s) and Subdivision(s)	NENW; Sec. 28 S1/2SW,S1/2SE; Sec. 29 S1/2SE; Sec. 32 N1/2NE,SENE,E1/2SW,NESE,SWSE; Sec. 5
-----------------------	--------------	----------------------------------	--

Cover Type			
A = Aspen	J = Jack Pine	O = Oak	U = Upland Brush
B = Paper Birch	K = Rock	P = Lowland Poplar	UM = Upland Mix Forest
C = Cedar	L = Lowland Brush	Q = Mixed Swamp Conifer	V = Bog or Marsh
D = Treed Bog	LM = Lowland Mix Forest	R = Red Pine	W = White Pine
E = Swamp Hardwoods	M = Maple, Beech, Birch	S = Black Spruce	X = Non Stocked
F = Spruce/Fir	MC = Mixed Conifer	T = Tamarack	Y = Sand
G = Grass	MD = Mixed Deciduous	Z = Water	
H = Hemlock	N = Marsh		

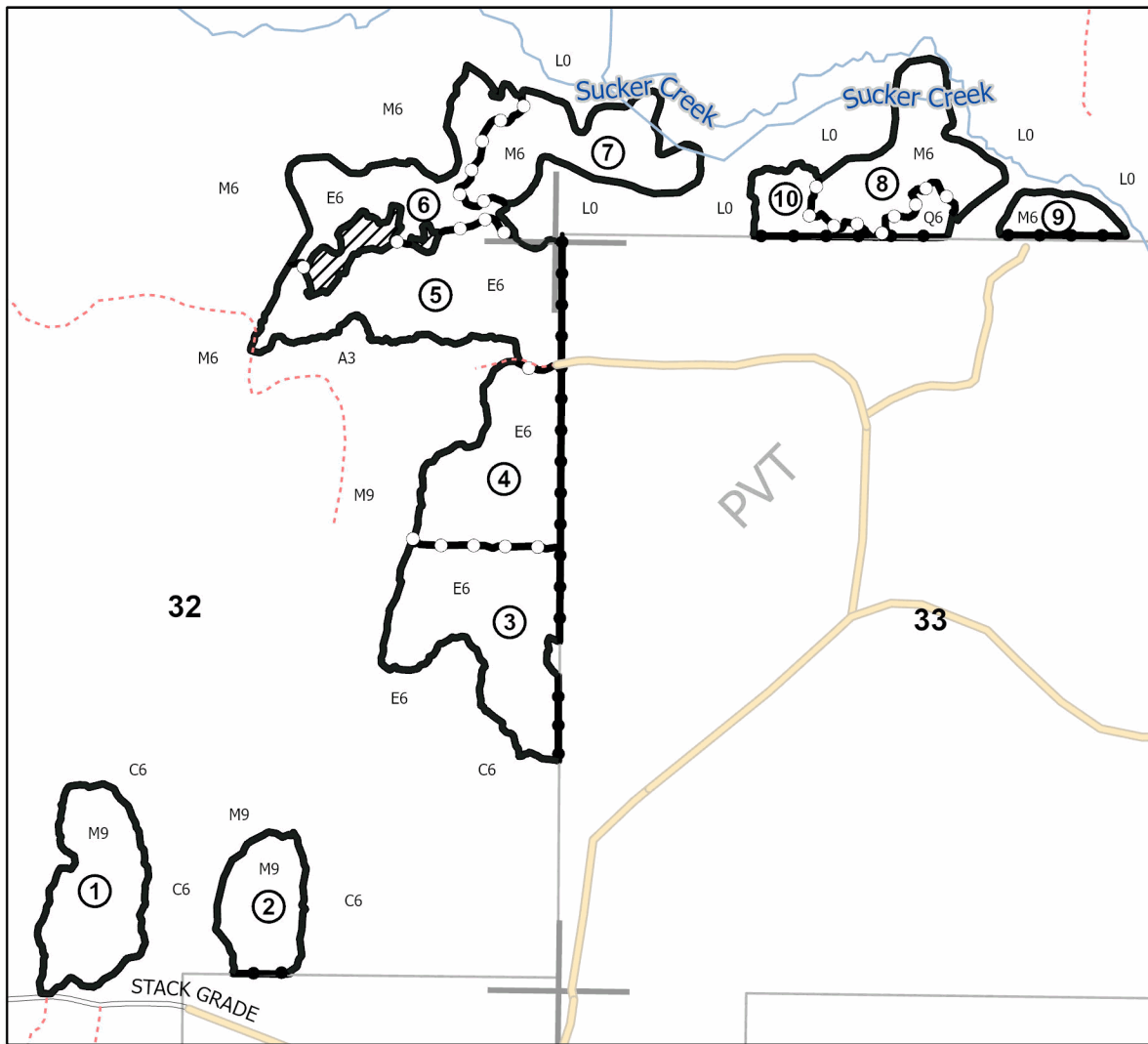
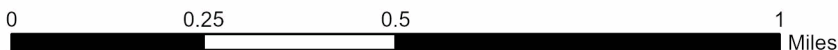
Density	
0 = Non Stocked	5 = Pole Timber Medium
1 = Seedling Sapling Poor	6 = Pole Timber Well
2 = Seedling Sapling Medium	7 = Saw Timber Poor
3 = Seedling Sapling Well	8 = Saw Timber Medium
4 = Pole Timber Poor	9 = Saw Timber Well



PU #	Acres	PU #	Acres
1	18.9	6	18.5
2	11.6	7	17.8
3	27.8	8	17.4
4	22.6	9	4.9
5	30.8	10	8.2

## Snowmobile the Stack

178.5 Acres



### Legend

- Against State (Red)
- Payment Unit (Yellow/Red)
- Private Line (Blue)
- MIRIS Section Corner
- Perennial River
- Retention (No Cut)
- Primary Forest Road
- Secondary Forest Road
- Forest Access Route
- Administrative Access Only
- Non-DNR Road

Use QR Code to open Map in App



## TIMBER SALE INFORMATION

Hemmings Lake Pine (32-017-23)  
T45N, R26W, SEC. 7; T45N, R27W, SEC. 1; T45N, R27W, SEC. 12.  
Marquette County (Advertised Price \$146,966.70)

A timber sale contract for this lump sum, sealed bid timber sale will be awarded to the responsible bidder offering the highest sealed bid price. All units of volume listed below were estimated using the Inventory Manager computer program and the new Michigan taper model. Bids must be at or above the following advertised price for each product and species:

<u>PRODUCTS &amp; SPECIES</u>	<u>ESTIMATED UNITS*</u>	<u>ADVERTISED PRICE</u>
Pulpwood		
Balsam Fir	12 Cords	\$ 14.05 / Cord
Jack Pine	187 Cords	\$ 37.10 / Cord
Mixed Aspen	482 Cords	\$ 26.95 / Cord
Mixed Hardwood	50 Cords	\$ 15.95 / Cord
Mixed Spruce	99 Cords	\$ 17.30 / Cord
Red Pine	1,992 Cords	\$ 60.30 / Cord
Tamarack	209 Cords	\$ 20.30 / Cord

\* The total volume is statistically estimated within plus (+) or minus (-) 11.99 percent. There are an estimated 2,994 cords on this timber sale, plus or minus 359 cords at the 95% confidence level. The estimated units are final and not subject to adjustment. Prospective bidders are urged to examine this timber and to make their own estimates of quantity and quality.

### **BOND AND PAYMENT SCHEDULE:**

1. A bond in the amount of \$7,348.00 to insure faithful performance of the conditions of the contract will be deposited by the successful bidder within 21 days of the sale award.
2. Cutting in any sale or unit without the required advance payment would be considered a trespass.
3. Total payment must be paid in advance or according to the following schedule :
  - (a) Ten percent (10%) of the sale value must be paid within 21 days of the sale award.
  - (b) The 10% down payment will be credited towards the first unit cut.
  - (c) Payment for each of the following units must be made before cutting begins in that unit:

PAYMENT UNIT NUMBER	PERCENT OF TOTAL SALE VALUE
01	11.4%
02	10.9%
03	8.5%
04	11.0%
05	1.4%
06	6.6%
07	1.7%
08	5.2%
09	8.7%
10	8.3%
11	10.7%
12	5.5%
13	6.0%
14	4.1%

4. If no cutting takes place, the 10% down payment will not be refunded.
5. Operations on the contract issued will terminate on 06/30/2027.

### **SALE STATISTICS**

Volumes were calculated in cubic feet using the Michigan taper model. Cubic foot volume includes all wood inside bark for the product indicated. For display purposes, cubic feet were converted to cords and MBF using a simple conversion factor, e.g. 79 cubic feet per cord and 185 cubic feet per MBF. The cubic foot volumes are precise; the cords and MBF volumes are not. Cubic foot volume cannot be directly converted to cords or boards with precision.

## SALE VOLUMES

The total estimated sale volume may not equal the sum of the species/products due to the nature of statistical calculations associated with double sampling methodology.

VOLUME			STATISTICAL RANGE IN CORDS	
TOTAL CUBIC FEET	TOTAL CORDS	PERCENT ERROR	MINIMUM	MAXIMUM
236,534	2,994	11.99%	2,635	3,353

## VDU VOLUMES

A VDU is a Volume Determination Unit. Volumes and their associated statistics are calculated at the VDU level and summarized to the sale level. There is often a one to one relationship between a VDU and a Payment Unit, but not always, depending on the cruise design. Refer to the VDU TO PAYMENT UNIT table.

	VOLUME			RANGE IN CORDS	
VDU	TOTAL CUBIC FEET	TOTAL CORDS	PERCENT ERROR	MINIMUM	MAXIMUM
1	7,324	93	69.55%	28	157
2	123,526	1,564	14.01%	1,345	1,783
3	51,807	656	20.18%	523	788
4	30,087	381	27.31%	277	485
50	23,790	301	49.97%	151	452
<b>TOTAL:</b>	<b>236,534</b>	<b>2,994</b>		<b>2,324</b>	<b>3,664</b>

## VDU TO PAYMENT UNIT

When a VDU is associated with more than one Payment Unit (PU), the VDU volumes are assigned to the PU based on acres of the VDU within the PU.

VDU	VDU ACRES	PU	PU ACRES
1	6.9	5	6.9
2	134.4	1	26.2
		2	24.8
		3	19.3
		4	24.9
		6	15.0
		11	24.2
3	49.3	8	11.6
		9	19.2
		10	18.5
4	58.9	6	0.1
		7	7.5
		12	24.4
		13	26.9
50	10.4	14	10.4
<b>TOTAL:</b>	<b>259.9</b>		<b>259.9</b>



**DESCRIPTION OF TIMBER BY PAYMENT UNIT (PU)**

PU	MARKET GROUP	PRODUCT	QUANTITY	UNIT	ACRES	ADVERTISE PRICE
1	Balsam Fir Jack Pine Mixed Aspen <i>Quaking Aspen</i> Mixed Hardwood <i>Red Maple</i> Red Pine	Pulpwood	3 11 37 37 2 2 258	Cords Cords Cords <i>Cords</i> Cords <i>Cords</i> Cords	26.2	\$17,036.70
2	Balsam Fir Jack Pine Mixed Aspen <i>Quaking Aspen</i> Mixed Hardwood <i>Black Cherry</i> <i>Red Maple</i> Mixed Spruce <i>White Spruce</i> Red Pine	Pulpwood	2 10 35 35 3 1 2 1 1 243	Cords Cords Cords <i>Cords</i> Cords <i>Cords</i> <i>Cords</i> Cords <i>Cords</i> Cords	24.8	\$16,060.40
3	Balsam Fir Jack Pine Mixed Aspen <i>Quaking Aspen</i> Mixed Hardwood <i>Red Maple</i> Mixed Spruce <i>White Spruce</i> Red Pine	Pulpwood	2 8 27 27 1 1 1 1 189	Cords Cords Cords <i>Cords</i> Cords <i>Cords</i> Cords <i>Cords</i> Cords	19.3	\$12,482.50
4	Balsam Fir Jack Pine Mixed Aspen <i>Quaking Aspen</i> Mixed Hardwood <i>Black Cherry</i> <i>Red Maple</i> Mixed Spruce <i>White Spruce</i> Red Pine	Pulpwood	2 10 35 35 3 1 2 1 1 244	Cords Cords Cords <i>Cords</i> Cords <i>Cords</i> <i>Cords</i> Cords <i>Cords</i> Cords	24.9	\$16,120.70
5	Jack Pine Mixed Spruce <i>Black Spruce</i>	Pulpwood	20 73 73	Cords Cords <i>Cords</i>	6.9	\$2,004.90
6	Balsam Fir Jack Pine Mixed Aspen <i>Quaking Aspen</i> Mixed Hardwood <i>Red Maple</i> Red Pine	Pulpwood	1 6 21 21 1 1 147	Cords Cords Cords <i>Cords</i> Cords <i>Cords</i> Cords	15.1	\$9,682.65
7	Jack Pine Mixed Aspen <i>Quaking Aspen</i> Red Pine	Pulpwood	5 11 11 33	Cords Cords <i>Cords</i> Cords	7.5	\$2,471.85
8	Jack Pine Mixed Aspen <i>Quaking Aspen</i> Red Pine	Pulpwood	17 41 41 98	Cords Cords <i>Cords</i> Cords	11.6	\$7,645.05
9	Jack Pine	Pulpwood	30	Cords	19.2	\$12,768.10

**DESCRIPTION OF TIMBER BY PAYMENT UNIT (PU), CON'T**

PU	MARKET GROUP	PRODUCT	QUANTITY	UNIT	ACRES	ADVERTISE PRICE
9 con't	Mixed Aspen	Pulpwood	70	Cords		
	<i>Quaking Aspen</i>		70	<i>Cords</i>		
	Red Pine		162	Cords		
10	Jack Pine	Pulpwood	27	Cords	18.5	\$12,187.20
	Mixed Aspen		66	Cords		
	<i>Quaking Aspen</i>		66	<i>Cords</i>		
	Red Pine		156	Cords		
11	Balsam Fir	Pulpwood	2	Cords	24.2	\$15,671.65
	Jack Pine		10	Cords		
	Mixed Aspen		34	Cords		
	<i>Quaking Aspen</i>		34	<i>Cords</i>		
	Mixed Hardwood		3	Cords		
	<i>Black Cherry</i>		1	<i>Cords</i>		
	<i>Red Maple</i>		2	<i>Cords</i>		
	Mixed Spruce		1	Cords		
	<i>White Spruce</i>		1	<i>Cords</i>		
	Red Pine		237	Cords		
	12		Jack Pine	Pulpwood		
Mixed Aspen		36	Cords			
<i>Quaking Aspen</i>		36	<i>Cords</i>			
Red Pine		107	Cords			
13	Jack Pine	Pulpwood	17	Cords	26.9	\$8,797.15
	Mixed Aspen		39	Cords		
	<i>Quaking Aspen</i>		39	<i>Cords</i>		
	Red Pine		118	Cords		
14	Mixed Aspen	Pulpwood	30	Cords	10.4	\$6,021.95
	<i>Quaking Aspen</i>		30	<i>Cords</i>		
	Mixed Hardwood		37	Cords		
	<i>Paper Birch</i>		37	<i>Cords</i>		
	Mixed Spruce		22	Cords		
	<i>Black Spruce</i>		22	<i>Cords</i>		
Tamarack	209	Cords				
TOTAL:			3,031	Cords		

# Sale Specific Conditions & Requirements

**Sale Name: Hemmings Lake Pine**

**Sale Number: 32-017-23 Seq#: 1**

## 1 - Sale Area

### 1.2 - Boundaries

#### 1.2.1 - Painted boundaries (9/19)

The sale boundary and Payment Unit boundaries are marked and identified by blue, red, and yellow paint. Exterior sale boundary lines against private are marked with blue paint. Exterior sale boundary lines against state are marked with red paint. Interior Payment Unit boundaries are marked with yellow paint. The painted boundary line trees are not Included Timber and are to be protected unless marked with orange paint. Yellow painted trees designating an interior Payment Unit boundary are only to be cut when all surrounding Payment Units have been paid and if designated for cutting in all adjoining Payment Units.

## 2 - Timber Specifications

### 2.1 - Included Timber

#### 2.1.1 - Clearcut unit(s) with unmerchantable trees (6/14)

Within Payment Unit(s) 5, cut all trees that are 2 inches or more at DBH, do not cut cedar, red pine, and white pine.

Within Payment Unit(s) 14, cut all trees that are 2 inches or more at DBH, do not cut hemlock and cedar.

#### 2.1.3 - Cut tree marked unit(s) (12/08)

Within Payment Unit(s) 1-4 and 6-13, all trees are designated for cutting when marked with orange paint above and below stump height, regardless of merchantability. In addition, cut all merchantable aspen.

### 2.2 - Utilization

#### 2.2.3 - Stump heights (4/07)

Stump heights within Payment Unit(s) 1-4 and 6-13 shall not exceed 12 inches for trees greater than 10 inches DBH and 4 inches for trees smaller than 10 inches DBH. This is in order to facilitate planting operations.

## 3 - Payments

### 3.3 - Pre-measured Sales

#### 3.3.4 - Dividing payment units (7/14)

Payment Unit(s) valued at over \$40,000 may be divided at the request of the Purchaser and upon approval of the Unit Manager. Dividing Payment Units is a contract modification which requires a Timber Sale Contract Amendment.

## 4 - Transportation

### 4.1 - Construction

#### 4.1.3 - Slash and earthen piles (8/04)

Piles or windrows of earth along roads and landings that have been widened or constructed shall be leveled. Slash from road maintenance or construction, including stumps, shall be dispersed throughout the sale.

#### 4.1.4 - Timber removed for construction (3/23)

Trees cut or damaged in the process of pre-approved road, landing or skid trail construction will be decked in an area separate from other Designated Timber and not removed until measured by the sale administrator. Payment will be made at contract prices or average prices, if not on the contract.

#### 4.1.6 - Road construction (1/09)

Construction of new roads or improvements of existing roads shall be done in such a way as to minimize the environmental and visual impacts. Merchantable trees shall be cut and utilized unless otherwise directed. Non-merchantable trees shall be severed and laid flat on the ground. Slash shall be scattered, and not left in windrows and kept a minimum of 10 feet back from the road edge. Stumps shall be set upright, not left on edge, and be moved at least 10 feet away from the road edge. Disturbed soil shall be feathered into the woods and not left in berms or windrows.

#### 4.1.7 - Road closure (10/11)

All new roads built into the sale must be blocked to vehicle traffic upon completion of the sale. Overgrown roads that are reopened shall be considered new roads. In general, this will require constructing a four (4') foot high berm of stumps and logs covered with earth. Contact the sale administrator for specific details of design and placement.

#### 4.1.8 - Road work (1) (8/07)

The following road work is required: 200 cubic yards of gravel must be added to state forest roads. Contact the sale administrator for specifics on where to place the gravel.

### 4.2 - Maintenance

#### 4.2.2 - Fill material (4/07)

To maintain roads, fill material may be needed in areas where "holes" exist or may be expected to develop. This fill material should be placed before trucking begins. Depending on the time of year, multiple areas may require fill material for access across the sale area. Contact the sale administrator regarding the availability of onsite sand or gravel from adjacent State-owned lands.

#### 4.2.3 - Road maintenance (8/13)

The following road maintenance may be needed: Within 60 days of completion of hauling, or if no hauling occurs for 60 days, the road must be maintained and graded. This includes cleaning of drainage areas, grading, crowning and filling with gravel, if necessary. Damages will be assessed if grading/repair does not occur.

#### 4.2.4 - Grading (10/16)

For completion of the sale, state forest roads must be graded. In general, this will require a road grader or bull dozer to shape up the roads after forest products have been hauled off site. This includes cleaning of drainage areas, grading, crowning and filling with gravel, if necessary. The grading equipment to be used must be approved by the Unit Manager or his/her representative.

## 5 - Operations

### 5.1 - Notification

#### 5.1.1 - Pre-sale conference (10/16)

A pre-sale conference between the Purchaser and sale administrator is required prior to beginning any operations. The Unit Manager or his/her representative must be contacted at least 3 business days in advance to schedule the conference.

### 5.2 - Conduct of Operations

#### 5.2.1 - Slash

##### 5.2.1.11 - Slash for reforestation (3/21)

To facilitate reforestation, the Sale Area shall be left with slash evenly distributed. Bunched tops within the cutting area shall be broken up and scattered. Stumps shall be cut low to the ground. Processing sites shall not be left with a compacted layer of slash; tops from these sites shall be hauled back into the cut area and scattered.

#### 5.2.2 - Hazard Trees/Snags

##### 5.2.2.1 - Den trees (10/16)

Obvious hollow and/or den trees shall be protected and left standing unless they are a safety hazard.

#### 5.2.3 - Operating Restrictions

##### 5.2.3.1 - Operating restrictions (9/11)

Within Payment Unit(s) 5 and 14, unless changed by written agreement, cutting, skidding, and hauling are limited to the period of 12/15 to 4/1. This restriction is due to wet soils.

##### 5.2.32 - Decking/landing restoration (9/13)

All decking and landing areas must have the surface area restored to a condition equal to or better than before. This is to ensure the proper regeneration of the stand. Wood debris, chips and "cookies" from trimmings must be removed or scattered away from landing and loading areas and may not be windrowed on the edge.

#### 5.2.38 - No decking against live trees (2/04)

Cut products may not be decked against unmarked or designated leave trees.

### 5.4 - Soil Protection

#### 5.4.1 - Rutting restriction, general (7/16)

Operations are to cease immediately if equipment and weather conditions result in rutting of roads and/or skid trails which is 12 inches or greater in depth and 50 feet in length. The Unit Manager or his/her representative may restrict hauling and/or skidding if ruts exceed the specified depth. With the Unit Manager or his/her representative's approval, the Purchaser may return to the area when the risk of rutting has decreased.

#### 5.4.2 - Skid trails (2/04)

Skid trails up and down slopes should be avoided. If however this is unavoidable, these trails will be left in a non-erodible condition using water bars, logs, and slash. Placing of slash on these skid trails while logging is ongoing may alleviate need for any further action. At the direction of the sale administrator, seed, fertilizer, and mulch may also be required.

### 5.8 - Protection of Endangered Species

#### 5.8.5 - Protection of raptor nests (3/13)

All trees with raptor nests will be protected if found during harvesting operations. Notification will be made to the Unit Manager or his/her representative who will notify the Wildlife Biologist so an on-site evaluation and recommendation can be made, if necessary.

## 6 - Safety and Fire Prevention

### 6.2 - Signing

#### 6.2.1 - Road posting (10/20)

The Purchaser is responsible for posting and maintaining caution signs on Hemmings Lake Rd and County Road 565 prior to beginning operations. The road must be posted at appropriate distances from the sale area to warn of logging activity and truck traffic. Signs must be removed when harvest operations are suspended or completed. The Purchaser will provide these signs.

## 7 - Other Conditions

### 7.3 - Contract Modifications

#### 7.3.3 - Modification for reforestation (8/05)

When contractual work of Purchaser has been accepted for any Payment Unit identified on Sale Area Map, Payment Unit will be eliminated from the Sale Area on written notice so that reforestation operations can begin.

### 7.5 - Loss

#### 7.5.1 - Deteriorating timber (7/09)

The sale area has received damage from spruce budworm. The Purchaser should harvest the wood as soon as possible. The Department of Natural Resources is held free of responsibility of any further damage or deterioration due to delay in harvesting.



**TIMBER SALE MAP**

This information provided by authority of Part 525, 1994 PA 451, as amended.

Sale Number

**32-017-23**

Date

09/28/2023

Forest Management Unit

Gwinn Mgt Unit

County

Marquette

Mapped By: Christian Gabler

Cruised By: Gwinn Mgt Unit

Scale

1:20,000

Page

1

Of

1

Township  
45N

Range  
26W /

Section(s) and  
Subdivision(s)

Sec. 1 NENW,S1/2NW,E1/2NE,SW,SE; Sec. 12 N1/2NE,SWNE; Sec. 7 NE;

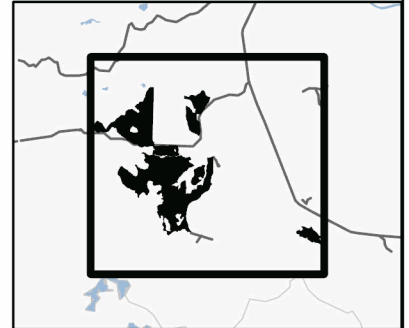
**Cover Type**

A = Aspen	J = Jack Pine	O = Oak	U = Upland Brush
B = Paper Birch	K = Rock	P = Lowland Poplar	UM = Upland Mix Forest
C = Cedar	L = Lowland Brush	Q = Mixed Swamp Conifer	V = Bog or Marsh
D = Treed Bog	LM = Lowland Mix Forest	R = Red Pine	W = White Pine
E = Swamp Hardwoods	M = Maple, Beech, Birch	S = Black Spruce	X = Non Stocked
F = Spruce/Fir	MC = Mixed Conifer	T = Tamarack	Y = Sand
G = Grass	MD = Mixed Deciduous	Z = Water	
H = Hemlock	N = Marsh		

**Density**

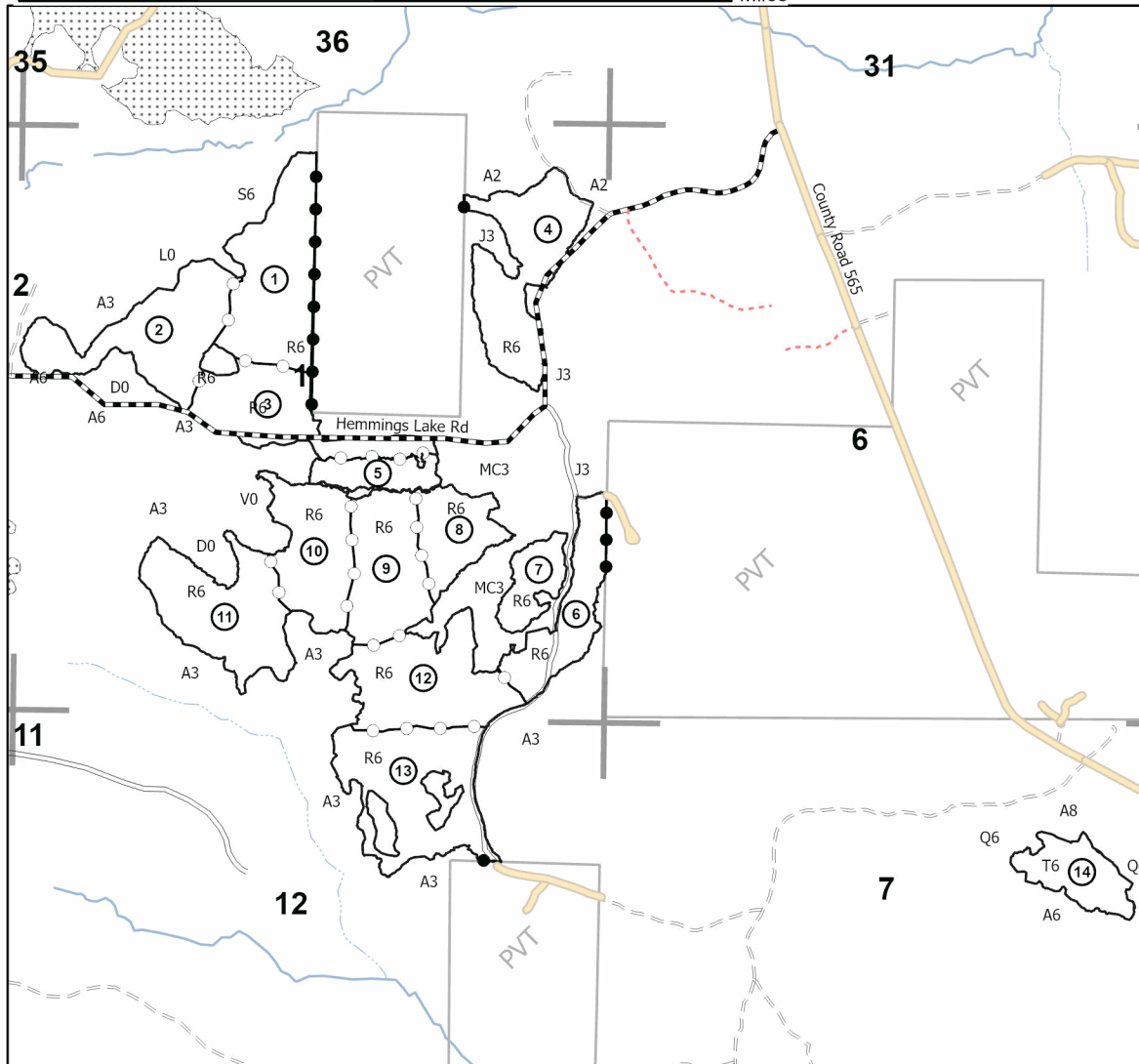
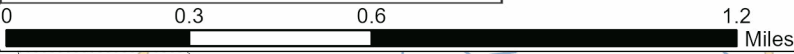
0 = Non Stocked	5 = Pole Timber Medium
1 = Seedling Sapling Poor	6 = Pole Timber Well
2 = Seedling Sapling Medium	7 = Saw Timber Poor
3 = Seedling Sapling Well	8 = Saw Timber Medium
4 = Pole Timber Poor	9 = Saw Timber Well

**Locator Map(1:100,000)**



PU #	Acres	PU #	Acres	PU #	Acres
1	26.2	6	15	11	24.2
2	24.7	7	7.5	12	24.5
3	19.3	8	11.6	13	26.9
4	24.9	9	19.2	14	10.4
5	6.9	10	18.5		

**Hemmings Lake Pine**  
259.9 Acres



**Legend**

- Against State (Red)
- Payment Unit (Yellow)
- Private Line (Blue)
- ▨ Nearby Timber Sale
- MIRIS Section Corner
- Intermittent Stream
- Perennial River
- Primary Forest Road
- Secondary Forest Road
- Forest Access Route
- Administrative Access Only
- Non-DNR Road

Use QR Code to open Map in App



## TIMBER SALE INFORMATION

### Huber North (32-017-22)

T45N, R23W, SEC. 20; T45N, R23W, SEC. 21; T45N, R23W, SEC. 22; T45N, R23W, SEC. 28.  
Marquette County (Advertised Price \$32,532.70)

SALE NOTE: Note that a lot of the mapped road grids are significantly grown in but could be re-opened for access across units. There are numerous cross drainage ditches accessing the sale area, contact the sale administrator to discuss access options.

Access may be through other public land.

A timber sale contract for this lump sum, sealed bid timber sale will be awarded to the responsible bidder offering the highest sealed bid price. All units of volume listed below were estimated using the Inventory Manager computer program and the new Michigan taper model. Bids must be at or above the following advertised price for each product and species:

<u>PRODUCTS &amp; SPECIES</u>	<u>ESTIMATED UNITS*</u>	<u>ADVERTISED PRICE</u>
Sawtimber		
Basswood	15.6 MBF	\$ 18.00 / MBF
Black Cherry	5.8 MBF	\$ 29.00 / MBF
Red Maple	84.5 MBF	\$ 47.00 / MBF
Sugar Maple	21.5 MBF	\$ 74.00 / MBF
Yellow Birch	21.6 MBF	\$ 19.00 / MBF
Pulpwood		
Balsam Fir	285 Cords	\$ 6.55 / Cord
Basswood	21 Cords	\$ 3.85 / Cord
Mixed Hardwood	2,414 Cords	\$ 7.45 / Cord
Mixed Spruce	473 Cords	\$ 8.10 / Cord
Paper Birch	43 Cords	\$ 9.25 / Cord
Quaking Aspen	43 Cords	\$ 12.60 / Cord
Tamarack	149 Cords	\$ 9.45 / Cord

\* The total volume is statistically estimated within plus (+) or minus (-) 10.94 percent. There are an estimated 3,876 cords on this timber sale, plus or minus 424 cords at the 95% confidence level. The estimated units are final and not subject to adjustment. Prospective bidders are urged to examine this timber and to make their own estimates of quantity and quality.

### **BOND AND PAYMENT SCHEDULE:**

1. A bond in the amount of \$1,627.00 to insure faithful performance of the conditions of the contract will be deposited by the successful bidder within 21 days of the sale award.
2. Cutting in any sale or unit without the required advance payment would be considered a trespass.
3. Total payment must be paid in advance or according to the following schedule :
  - (a) Ten percent (10%) of the sale value must be paid within 21 days of the sale award.
  - (b) The 10% down payment will be credited towards the first unit cut.
  - (c) Payment for each of the following units must be made before cutting begins in that unit:

PAYMENT UNIT NUMBER	PERCENT OF TOTAL SALE VALUE
01	8.8%
02	11.2%
03	8.3%
04	21.0%
05	7.9%
06	11.3%
07	23.0%
08	8.5%

4. If no cutting takes place, the 10% down payment will not be refunded.
5. Operations on the contract issued will terminate on 06/30/2027.

### **SALE STATISTICS**

Volumes were calculated in cubic feet using the Michigan taper model. Cubic foot volume includes all wood inside bark for the product indicated. For display purposes, cubic feet were converted to cords and MBF using a simple conversion factor, e.g. 79 cubic feet per cord and 185 cubic feet per MBF. The cubic foot volumes are precise; the cords and MBF volumes are not. Cubic foot volume cannot be directly converted to cords or boards with precision.

## SALE VOLUMES

The total estimated sale volume may not equal the sum of the species/products due to the nature of statistical calculations associated with double sampling methodology.

VOLUME			STATISTICAL RANGE IN CORDS	
TOTAL CUBIC FEET	TOTAL CORDS	PERCENT ERROR	MINIMUM	MAXIMUM
306,176	3,876	10.94%	3,451	4,300

## VDU VOLUMES

A VDU is a Volume Determination Unit. Volumes and their associated statistics are calculated at the VDU level and summarized to the sale level. There is often a one to one relationship between a VDU and a Payment Unit, but not always, depending on the cruise design. Refer to the VDU TO PAYMENT UNIT table.

	VOLUME			RANGE IN CORDS	
VDU	TOTAL CUBIC FEET	TOTAL CORDS	PERCENT ERROR	MINIMUM	MAXIMUM
1	25,674	325	60.03%	130	520
2	33,121	419	33.51%	279	560
3	21,349	270	27.00%	197	343
4	34,511	437	39.54%	264	610
5	19,251	244	22.61%	189	299
6	32,228	408	34.09%	269	547
7	80,552	1,020	21.15%	804	1,235
8	59,492	753	22.53%	583	923
<b>TOTAL:</b>	<b>306,176</b>	<b>3,876</b>		<b>2,715</b>	<b>5,036</b>

## VDU TO PAYMENT UNIT

When a VDU is associated with more than one Payment Unit (PU), the VDU volumes are assigned to the PU based on acres of the VDU within the PU.

VDU	VDU ACRES	PU	PU ACRES
1	6.9	1	6.9
2	15.4	2	15.4
3	8.1	3	8.1
4	17.7	6	17.7
5	13.5	5	13.5
6	26.0	8	26.0
7	34.4	7	34.4
8	23.1	4	23.1
<b>TOTAL:</b>	<b>145.1</b>		<b>145.1</b>



**DESCRIPTION OF TIMBER BY PAYMENT UNIT (PU)**

PU	MARKET GROUP	PRODUCT	QUANTITY	UNIT	ACRES	ADVERTISE PRICE
1	Red Maple	Sawtimber	15.4	MBF	6.9	\$2,862.30
	Yellow Birch		6.7	MBF		
	Mixed Hardwood	Pulpwood	258	Cords		
	<i>Red Maple</i>		216	<i>Cords</i>		
	<i>Sugar Maple</i>		5	<i>Cords</i>		
	<i>Yellow Birch</i>		37	<i>Cords</i>		
	Mixed Spruce		11	Cords		
	<i>White Spruce</i>		11	<i>Cords</i>		
2	Black Cherry	Sawtimber	1.4	MBF	15.4	\$3,656.60
	Red Maple		12.2	MBF		
	Yellow Birch		1.4	MBF		
	Balsam Fir	Pulpwood	9	Cords		
	Mixed Hardwood		373	Cords		
	<i>Black Cherry</i>		15	<i>Cords</i>		
	<i>Red Maple</i>		347	<i>Cords</i>		
	<i>Sugar Maple</i>		3	<i>Cords</i>		
	<i>Yellow Birch</i>		8	<i>Cords</i>		
	Mixed Spruce		22	Cords		
	<i>Black Spruce</i>		22	<i>Cords</i>		
	3	Black Cherry	Sawtimber	4.4		
Red Maple			15.8	MBF		
Sugar Maple			2.0	MBF		
Yellow Birch			2.1	MBF		
Balsam Fir		Pulpwood	9	Cords		
Mixed Hardwood			212	Cords		
<i>Black Cherry</i>			5	<i>Cords</i>		
<i>Red Maple</i>			84	<i>Cords</i>		
<i>Sugar Maple</i>			107	<i>Cords</i>		
<i>Yellow Birch</i>			16	<i>Cords</i>		
4	Red Maple	Sawtimber	30.1	MBF	23.1	\$6,821.70
	Sugar Maple		6.8	MBF		
	Balsam Fir	Pulpwood	20	Cords		
	Mixed Hardwood		588	Cords		
	<i>Red Maple</i>		467	<i>Cords</i>		
	<i>Sugar Maple</i>		121	<i>Cords</i>		
	Mixed Spruce		37	Cords		
	<i>White Spruce</i>		37	<i>Cords</i>		
	Paper Birch		10	Cords		
	5	Red Maple	Sawtimber	2.2		
Sugar Maple			12.7	MBF		
Balsam Fir		Pulpwood	2	Cords		
Mixed Hardwood			197	Cords		
<i>Black Ash</i>			3	<i>Cords</i>		
<i>Ironwood</i>			2	<i>Cords</i>		
<i>Red Maple</i>			76	<i>Cords</i>		
<i>Sugar Maple</i>			116	<i>Cords</i>		
Mixed Spruce			4	Cords		
<i>White Spruce</i>			4	<i>Cords</i>		
6	Mixed Hardwood	Pulpwood	28	Cords	17.7	\$3,665.95
	<i>Red Maple</i>		28	<i>Cords</i>		
	Mixed Spruce		253	Cords		
	<i>Black Spruce</i>		253	<i>Cords</i>		
	Tamarack		149	Cords		
7	Red Maple	Sawtimber	8.8	MBF	34.4	\$7,506.00
	Yellow Birch		11.4	MBF		

**DESCRIPTION OF TIMBER BY PAYMENT UNIT (PU), CON'T**

PU	MARKET GROUP	PRODUCT	QUANTITY	UNIT	ACRES	ADVERTISE PRICE
7 con't	Balsam Fir	Pulpwood	145	Cords		
	Mixed Hardwood		588	Cords		
	<i>Black Ash</i>		40	<i>Cords</i>		
	<i>Red Maple</i>		388	<i>Cords</i>		
	<i>Sugar Maple</i>		24	<i>Cords</i>		
	<i>Yellow Birch</i>		136	<i>Cords</i>		
	Mixed Spruce		136	Cords		
	<i>Black Spruce</i>		136	<i>Cords</i>		
	Paper Birch		33	Cords		
	Quaking Aspen		11	Cords		
8	Basswood	Sawtimber	15.6	MBF	26.0	\$2,767.35
	Balsam Fir	Pulpwood	100	Cords		
	Basswood		21	Cords		
	Mixed Hardwood		170	Cords		
	<i>Black Ash</i>		48	<i>Cords</i>		
	<i>Red Maple</i>		96	<i>Cords</i>		
	<i>Sugar Maple</i>		26	<i>Cords</i>		
	Mixed Spruce		10	Cords		
	<i>White Spruce</i>		10	<i>Cords</i>		
	Quaking Aspen		32	Cords		
TOTAL:			149.0	MBF		
TOTAL:			3,428	Cords		

## Sale Specific Conditions & Requirements

Sale Name: Huber North

Sale Number: 32-017-22 Seq#: 3

### 1 - Sale Area

#### 1.2 - Boundaries

##### 1.2.1 - Painted boundaries (9/19)

The sale boundary and Payment Unit boundaries are marked and identified by blue and red paint. Exterior sale boundary lines against private are marked with blue paint. Exterior sale boundary lines against state and Interior Payment Unit boundaries are marked with red paint. The painted boundary line trees are not Included Timber and are to be protected unless marked with orange paint.

### 2 - Timber Specifications

#### 2.1 - Included Timber

##### 2.1.1 - Clearcut unit(s) with unmerchantable trees (6/14)

Within Payment Unit(s) 6, 7, and 8, cut all trees that are two (2) inches or more at DBH except cedar, hemlock, and pine. In addition, within:

Payment Unit 6 and 8 - Leave yellow birch.

##### 2.1.3 - Cut tree marked unit(s) (12/08)

Within Payment Unit(s) 5, all trees are designated for cutting when marked with orange paint above and below stump height, regardless of merchantability. In addition, within Payment Unit 5, all merchantable spruce/fir is designated for cutting.

##### 2.1.7 - Leave tree marked unit(s) (6/14)

Within Payment Unit(s) 1, 2, 3, and 4, cut all trees that are two (2) inches or more at DBH except cedar, hemlock, pine, and trees marked with green paint above and below stump height. In addition, within:

Payment Unit 4 - leave aspen, black cherry, yellow birch, and trees over a 24" diameter at the stump.

#### 2.2 - Utilization

##### 2.2.4 - Skidding length (2/14)

Within Payment Unit 1, 2, 3, 4, and 5, skidding of unlimbed tops or lengths over 17 feet is not permissible unless approved by the Unit Manager or his/her representative.

### 3 - Payments

#### 3.4 - Damaged Timber

##### 3.4.1 - Damaged timber (7/16)

General Condition and Requirement 3.4 Damaged Timber, defines liquidated damages for undesignated live merchantable trees which are cut or injured. In addition, extreme care should be taken to avoid damage to tree seedlings and saplings within Payment Unit 5.

No damage is acceptable to undesignated live merchantable trees. Within the sale area, if more than 5% of trees (> 4.5" DBH) within a specified area of the sale are damaged, liquidated damages will be assessed for all trees damaged. Rates will be in accordance with General Condition and Requirement 3.4 Damaged Timber.

### 4 - Transportation

#### 4.1 - Construction

##### 4.1.3 - Slash and earthen piles (8/04)

Piles or windrows of earth along roads and landings that have been widened or constructed shall be leveled. Slash from road maintenance or construction, including stumps, shall be dispersed throughout the sale.

#### 4.1.4 - Timber removed for construction (12/09)

Trees cut or damaged in the process of pre-approved road, landing or skid trail construction will be decked in an area separate from other Designated Timber and not removed until measured by the sale administrator. Payment will be made at the specified Purchase Unit Price.

#### 4.1.6 - Road construction (1/09)

Construction of new roads or improvements of existing roads shall be done in such a way as to minimize the environmental and visual impacts. Merchantable trees shall be cut and utilized unless otherwise directed. Non-merchantable trees shall be severed and laid flat on the ground. Slash shall be scattered, and not left in windrows and kept a minimum of 10 feet back from the road edge. Stumps shall be set upright, not left on edge, and be moved at least 10 feet away from the road edge. Disturbed soil shall be feathered into the woods and not left in berms or windrows.

#### 4.1.7 - Road closure (10/11)

All new roads built into the sale must be blocked to vehicle traffic upon completion of the sale. Overgrown roads that are reopened shall be considered new roads. In general, this will require constructing a four (4') foot high berm of stumps and logs covered with earth. Contact the sale administrator for specific details of design and placement.

### 4.2 - Maintenance

#### 4.2.2 - Fill material (4/07)

To maintain roads, fill material may be needed in areas where "holes" exist or may be expected to develop. This fill material should be placed before trucking begins. Depending on the time of year, multiple areas may require fill material for access across the sale area. Contact the sale administrator regarding the availability of onsite sand or gravel from adjacent State-owned lands.

#### 4.2.4 - Grading (10/16)

For completion of the sale, state forest roads must be graded. In general, this will require a road grader or bull dozer to shape up the roads after forest products have been hauled off site. This includes cleaning of drainage areas, grading, crowning and filling with gravel, if necessary. The grading equipment to be used must be approved by the Unit Manager or his/her representative.

### 4.4 - Access

#### 4.4.1 - Private property access (3/11)

Permission for access across private land is the responsibility of the Purchaser. Access will be from the north across Lyme Timber property.

## 5 - Operations

### 5.1 - Notification

#### 5.1.1 - Pre-sale conference (10/16)

A pre-sale conference between the Purchaser and sale administrator is required prior to beginning any operations. The Unit Manager or his/her representative must be contacted at least 3 business days in advance to schedule the conference.

### 5.2 - Conduct of Operations

#### 5.2.1 - Slash

##### 5.2.1.11 - Slash for reforestation (3/21)

To facilitate reforestation, Payment Units 6, 7, and 8 shall be left with slash evenly distributed. Bunched tops within the cutting area shall be broken up and scattered. Stumps shall be cut low to the ground. Processing sites shall not be left with a compacted layer of slash; tops from these sites shall be hauled back into the cut area and scattered.

#### 5.2.2 - Hazard Trees/Snags

##### 5.2.2.1 - Den trees (10/16)

Obvious hollow and/or den trees shall be protected and left standing unless they are a safety hazard.

#### 5.2.3 - Operating Restrictions

#### 5.2.3.3 - Bark slippage restriction (3/09)

Within Payment Unit(s) 5, unless changed by written agreement, cutting and skidding are not permitted during the period of April 15 to July 15. This restriction is because of bark slippage.

#### 5.2.17 - Timber Mats and Interlocking Composite Mats (10/20)

Some roads or skid trails may require extra protection such as that afforded by timber mats. If available, mats may be borrowed from the DNR. A Timber Sale Contract Supplement will be used to document the Purchaser's use of the DNR's mats. Contact the sale administrator regarding availability and pick-up. Timber mats are available from various field offices. The Purchaser is responsible for picking up and hauling the mats to and from the site. Contact the sale administrator to schedule at least 30 days before desired install/removal date. All mats must be cleaned prior to drop off. This may include, but is not limited to, power washing and brushing to remove mud and debris. A charge of \$700.00 per timber mat will be assessed for all damaged or non-returned mats. Damage for the crane/timber mats is defined as three or more broken cants.

#### 5.2.22 - Operating Caution

##### 5.2.22.1 - Operating caution (6/11)

It is recommended, but not required, that within Payment Unit(s) 3, 4, 5, 6, 7, and 8, cutting, skidding, and hauling occur during dry summer or frozen winter conditions. The reason for the recommendation is due to soft ground within Payment Units and/or soft ground access to Payment Units.

#### 5.2.32 - Decking/landing restoration (9/13)

All decking and landing areas must have the surface area restored to a condition equal to or better than before. This is to ensure the proper regeneration of the stand. Wood debris, chips and "cookies" from trimmings must be removed or scattered away from landing and loading areas and may not be windrowed on the edge.

#### 5.2.38 - No decking against live trees (2/04)

Cut products may not be decked against unmarked or designated leave trees.

### 5.4 - Soil Protection

#### 5.4.1 - Rutting restriction, general (7/16)

Operations are to cease immediately if equipment and weather conditions result in rutting of roads and/or skid trails which is 12 inches or greater in depth and 50 feet in length. The Unit Manager or his/her representative may restrict hauling and/or skidding if ruts exceed the specified depth. With the Unit Manager or his/her representative's approval, the Purchaser may return to the area when the risk of rutting has decreased.

#### 5.4.2 - Skid trails (2/04)

Skid trails up and down slopes should be avoided. If however this is unavoidable, these trails will be left in a non-erodible condition using water bars, logs, and slash. Placing of slash on these skid trails while logging is ongoing may alleviate need for any further action. At the direction of the sale administrator, seed, fertilizer, and mulch may also be required.

### 5.8 - Protection of Endangered Species

#### 5.8.5 - Protection of raptor nests (3/13)

All trees with raptor nests will be protected if found during harvesting operations. Notification will be made to the Unit Manager or his/her representative who will notify the Wildlife Biologist so an on-site evaluation and recommendation can be made, if necessary.

## 6 - Safety and Fire Prevention

### 6.2 - Signing

#### 6.2.1 - Road posting (10/20)

The Purchaser is responsible for posting and maintaining caution signs on Carlshend Road / County Road 456 from both directions and any forest access roads used prior to beginning operations. The road must be posted at appropriate distances from the sale area to warn of logging activity and truck traffic. Signs must be removed when harvest operations are suspended or completed. The Purchaser will provide these signs.

## 7 - Other Conditions

### 7.5 - Loss

7.5.1 - Deteriorating timber (7/09)

The sale area has received damage from decline in black ash. The Purchaser should harvest the wood as soon as possible. The Department of Natural Resources is held free of responsibility of any further damage or deterioration due to delay in harvesting.



# TIMBER SALE MAP

This information provided by authority of Part 525, 1994 PA 451, as amended.

Forest Management Unit	County	Mapped By	Date	Page	of
Gwinn Management Unit	Marquette	Brolin	09/25/2022	1	1
Township	Range	Section(s) and Subdivision(s)	Scale		
45N	23W	Sections 20, 21, 22, and 28	1:15,840		

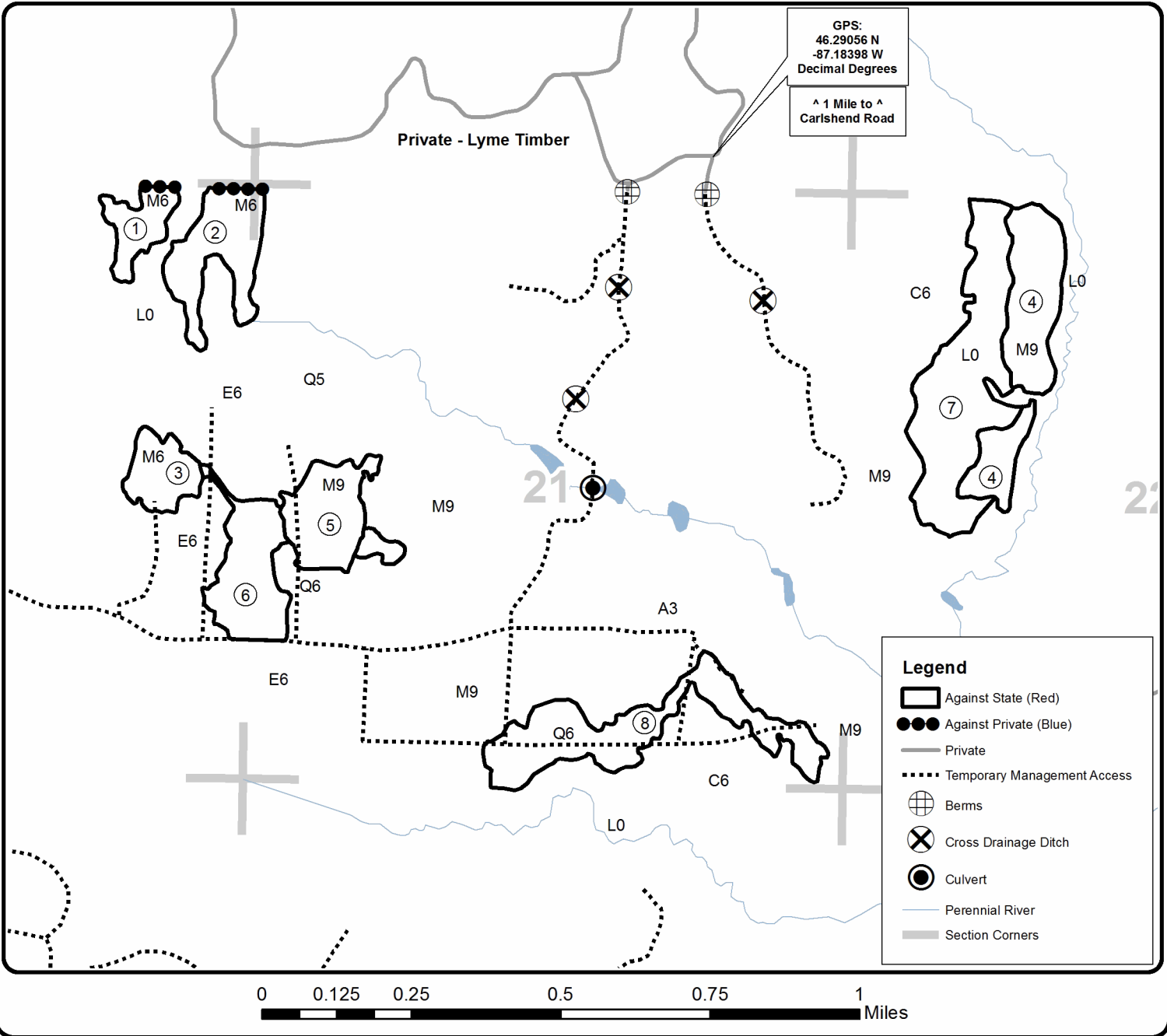
Cover Type				Density	
A = Aspen	H = Hemlock	N = Marsh	U = Upland Brush	0 = Non Stocked	5 = Pole Timber Medium
B = Paper Birch	J = Jack Pine	O = Oak	UM = Upland Mixed	1 = Seedling Sapling Poor	6 = Pole Timber Well
C = Cedar	L = Lowland Brush	P = Lowland Poplar	V = Bog or Marsh	2 = Seedling Sapling Medium	7 = Saw Timber Poor
D = Treed Bog	LM = Lowland Mixed	Q = Mixed Swamp Conifer	W = White Pine	3 = Seedling Sapling Well	8 = Saw Timber Medium
E = Swamp Hdwoods	M = Mpl, Bch, Brch	R = Red Pine	X = Non Stocked	4 = Pole Timber Poor	9 = Saw Timber Well
F = Spruce Fir	MC = Mixed Conifer	S = Black Spruce	Z = Water		
G = Grass	MD = Mixed Deciduous	T = Tamarack			

PU Acres	PU Acres
1 6.9	5 13.5
2 15.4	6 17.7
3 8.1	7 34.4
4 23.1	8 26.0

## Huber North Compartments 2 and 3 145.1 Acres



QR code for PDF Maps app







Snowmobile the Stack (32-016-23)

T44N, R23W, SEC. 5; T45N, R23W, SEC. 28; T45N, R23W, SEC. 29; T45N, R23W,

In response to the notice of sale to be held 2:00 p.m. (local time) on May 6, 2024, I am hereby submitting my sealed bid ( firm offer) for the following forest products to be cut. Bids for individual species must be at or above the advertised price. All non-responsive bid forms may be rejected.

<u>PRODUCTS &amp; SPECIES</u>	<u>ESTIMATED VOLUME*</u>	<u>ADVERTISED PRICE</u>	<u>BID PRICE/UNIT</u>
<b>Sawtimber</b>			
Black Cherry	3.9 MBF	\$ 62.00/MBF	\$ _____
Red Maple	189.5 MBF	\$ 101.00/MBF	\$ _____
Sugar Maple	13.4 MBF	\$ 158.00/MBF	\$ _____
Yellow Birch	6.1 MBF	\$ 41.00/MBF	\$ _____
<b>Pulpwood</b>			
Balsam Fir	105 Cords	\$ 14.05/Cord	\$ _____
Mixed Aspen	36 Cords	\$ 26.95/Cord	\$ _____
Mixed Hardwood	2,240 Cords	\$ 15.95/Cord	\$ _____
Mixed Spruce	268 Cords	\$ 17.30/Cord	\$ _____
N. White Cedar	125 Cords	\$ 6.45/Cord	\$ _____
Tamarack	45 Cords	\$ 20.30/Cord	\$ _____
White Pine	51 Cords	\$ 31.30/Cord	\$ _____

\*The volumes are statistically estimated within plus (+) or minus (-) 7.97 percent at 95% confidence level. These estimated volumes are final and not subject to adjustment. Prospective bidders are urged to examine this timber and to make their own estimates of quantity and quality.

I understand that any or all bids may be rejected. All bids must be signed and all bid items must be bid or the bid form may be rejected. I also understand that consideration and awarding a contract will be based upon my past performance and ability to complete the contract based upon equipment and staffing subject to my control .

FEDERAL ID: \_\_\_\_\_ or SOCIAL SECURITY NUMBER: \_\_\_\_\_

Company or individual bidding: \_\_\_\_\_

Company representative's name: \_\_\_\_\_

Address: \_\_\_\_\_

City: \_\_\_\_\_ State: \_\_\_\_\_ Zip: \_\_\_\_\_

IF AVAILABLE, PLEASE PLACE THE PERSONALIZED LABEL FROM YOUR PROSPECTUS IN THE ABOVE BOX.

Individual or company representative's signature: \_\_\_\_\_ Date: \_\_\_\_\_

Phone number : \_\_\_\_\_ Email (optional): \_\_\_\_\_

**THE WINNING BIDDER MUST COMPLETE THE VERIFICATION OF WORKER'S DISABILITY COMPENSATION ACT COMPLIANCE (ON REVERSE SIDE IF DOUBLE SIDED) WITHIN 21 DAYS OF SALE AWARD DATE**



<b>FOR DEPARTMENT USE ONLY</b>	
Sale Number (XX - XXX - XX - XX)	
Forest Management Unit:	

# TIMBER SALE VERIFICATION OF WORKER'S DISABILITY COMPENSATION ACT COMPLIANCE

As required by Act 317, P.A. 1969 (Worker's Compensation) and  
Part 5 of Act 451 of 1994, as amended.

## VERIFICATION OF WORKER'S DISABILITY COMPENSATION ACT COMPLIANCE

- This verification must be completed and submitted within 21 days of contract award and prior to the issuance of the timber sale contract.
- In addition, if boxes 2B or 2C are checked, then Notice of Exclusion or Certificate of Insurance must be submitted within twenty-one (21) days of the contract award and prior to the issuance of the timber sale contract.
- All information must be typed or printed except for written signatures.

Please Check Appropriate Categories:

1. My business is organized as (you **must** check one of the boxes below):
  - A.  Sole Proprietorship (individual)
  - B.  Partnership
  - C.  Corporation
2. You **must** check one of the boxes below:
  - A.  I certify my business is a sole proprietorship and it has no employees but the sole proprietor. I am not subject to the Worker's Compensation Laws.
  - B.  I certify my business has satisfied its obligation to the Worker's Compensation Act through the use of an approved Notice of Exclusion (BWC-337, Rev. 5/96). I will provide a copy of the Notice of Exclusion within 21 days of the contract award. (For questions or a copy of the BWC-337, please call the Worker's Compensation Bureau at 517-322-1195).
  - C.  I certify my business has a Worker's Compensation Policy. I will provide an original Certificate of Insurance within twenty-one (21) days of the contract award.
3. If you have checked item 2(A) or 2(B), you **must** indicate the number of **both** full-time and part-time employees, other than yourself, including family members and active partners (if none, you must enter "0").

\_\_\_\_\_ Full-time Employees

\_\_\_\_\_ Part-time Employees

Name of Business		Federal ID (or) Social Security No.	
Address		Telephone (       )	
City	State	ZIP	

*I hereby certify that the above information is true and correct. I agree to notify the Michigan DNR of any changes that occur in factors affecting my coverage during any of my present and future operations.*

\_\_\_\_\_  
Signature of Owner or Authorized Representative

\_\_\_\_\_  
Title

\_\_\_\_\_  
Date

Please complete the "SEALED BID" information on the next page

Hemmings Lake Pine (32-017-23)

T45N, R26W, SEC. 7; T45N, R27W, SEC. 1; T45N, R27W, SEC. 12; Marquette

In response to the notice of sale to be held 2:00 p.m. (local time) on May 6, 2024, I am hereby submitting my sealed bid ( firm offer) for the following forest products to be cut. Bids for individual species must be at or above the advertised price. All non-responsive bid forms may be rejected.

<u>PRODUCTS &amp; SPECIES</u>	<u>ESTIMATED VOLUME*</u>	<u>ADVERTISED PRICE</u>	<u>BID PRICE/UNIT</u>
Pulpwood			
Balsam Fir	12 Cords	\$ 14.05/Cord	\$ _____
Jack Pine	187 Cords	\$ 37.10/Cord	\$ _____
Mixed Aspen	482 Cords	\$ 26.95/Cord	\$ _____
Mixed Hardwood	50 Cords	\$ 15.95/Cord	\$ _____
Mixed Spruce	99 Cords	\$ 17.30/Cord	\$ _____
Red Pine	1,992 Cords	\$ 60.30/Cord	\$ _____
Tamarack	209 Cords	\$ 20.30/Cord	\$ _____

\*The volumes are statistically estimated within plus (+) or minus (-) 11.99 percent at 95% confidence level. These estimated volumes are final and not subject to adjustment. Prospective bidders are urged to examine this timber and to make their own estimates of quantity and quality.

I understand that any or all bids may be rejected. All bids must be signed and all bid items must be bid or the bid form may be rejected. I also understand that consideration and awarding a contract will be based upon my past performance and ability to complete the contract based upon equipment and staffing subject to my control.

FEDERAL ID: \_\_\_ - \_\_\_ - \_\_\_\_\_ or SOCIAL SECURITY NUMBER: \_\_\_ - \_\_\_ - \_\_\_\_\_

Company or individual bidding: \_\_\_\_\_

Company representative's name: \_\_\_\_\_

Address: \_\_\_\_\_

City: \_\_\_\_\_ State: \_\_\_\_\_ Zip: \_\_\_\_\_

IF AVAILABLE, PLEASE PLACE THE PERSONALIZED LABEL FROM YOUR PROSPECTUS IN THE ABOVE BOX.

Individual or company representative's signature: \_\_\_\_\_ Date: \_\_\_\_\_

Phone number : \_\_\_\_\_ Email (optional): \_\_\_\_\_

**THE WINNING BIDDER MUST COMPLETE THE VERIFICATION OF WORKER'S DISABILITY COMPENSATION ACT COMPLIANCE (ON REVERSE SIDE IF DOUBLE SIDED) WITHIN 21 DAYS OF SALE AWARD DATE**



<b>FOR DEPARTMENT USE ONLY</b>	
Sale Number (XX - XXX - XX - XX)	
Forest Management Unit:	

# TIMBER SALE VERIFICATION OF WORKER'S DISABILITY COMPENSATION ACT COMPLIANCE

As required by Act 317, P.A. 1969 (Worker's Compensation) and  
Part 5 of Act 451 of 1994, as amended.

## VERIFICATION OF WORKER'S DISABILITY COMPENSATION ACT COMPLIANCE

- This verification must be completed and submitted within 21 days of contract award and prior to the issuance of the timber sale contract.
- In addition, if boxes 2B or 2C are checked, then Notice of Exclusion or Certificate of Insurance must be submitted within twenty-one (21) days of the contract award and prior to the issuance of the timber sale contract.
- All information must be typed or printed except for written signatures.

Please Check Appropriate Categories:

1. My business is organized as (you **must** check one of the boxes below):
  - A.  Sole Proprietorship (individual)
  - B.  Partnership
  - C.  Corporation
2. You **must** check one of the boxes below:
  - A.  I certify my business is a sole proprietorship and it has no employees but the sole proprietor. I am not subject to the Worker's Compensation Laws.
  - B.  I certify my business has satisfied its obligation to the Worker's Compensation Act through the use of an approved Notice of Exclusion (BWC-337, Rev. 5/96). I will provide a copy of the Notice of Exclusion within 21 days of the contract award. (For questions or a copy of the BWC-337, please call the Worker's Compensation Bureau at 517-322-1195).
  - C.  I certify my business has a Worker's Compensation Policy. I will provide an original Certificate of Insurance within twenty-one (21) days of the contract award.
3. If you have checked item 2(A) or 2(B), you **must** indicate the number of **both** full-time and part-time employees, other than yourself, including family members and active partners (if none, you must enter "0").

\_\_\_\_\_ Full-time Employees

\_\_\_\_\_ Part-time Employees

Name of Business		Federal ID (or) Social Security No.	
Address		Telephone (       )	
City	State	ZIP	

*I hereby certify that the above information is true and correct. I agree to notify the Michigan DNR of any changes that occur in factors affecting my coverage during any of my present and future operations.*

\_\_\_\_\_  
Signature of Owner or Authorized Representative

\_\_\_\_\_  
Title

\_\_\_\_\_  
Date

Please complete the "SEALED BID" information on the next page

Huber North (32-017-22)

T45N, R23W, SEC. 20; T45N, R23W, SEC. 21; T45N, R23W, SEC. 22; T45N,

In response to the notice of sale to be held 2:00 p.m. (local time) on May 6, 2024, I am hereby submitting my sealed bid ( firm offer) for the following forest products to be cut. Bids for individual species must be at or above the advertised price. All non-responsive bid forms may be rejected.

<u>PRODUCTS &amp; SPECIES</u>	<u>ESTIMATED VOLUME*</u>	<u>ADVERTISED PRICE</u>	<u>BID PRICE/UNIT</u>
<b>Sawtimber</b>			
Basswood	15.6 MBF	\$ 18.00/MBF	\$ _____
Black Cherry	5.8 MBF	\$ 29.00/MBF	\$ _____
Red Maple	84.5 MBF	\$ 47.00/MBF	\$ _____
Sugar Maple	21.5 MBF	\$ 74.00/MBF	\$ _____
Yellow Birch	21.6 MBF	\$ 19.00/MBF	\$ _____
<b>Pulpwood</b>			
Balsam Fir	285 Cords	\$ 6.55/Cord	\$ _____
Basswood	21 Cords	\$ 3.85/Cord	\$ _____
Mixed Hardwood	2,414 Cords	\$ 7.45/Cord	\$ _____
Mixed Spruce	473 Cords	\$ 8.10/Cord	\$ _____
Paper Birch	43 Cords	\$ 9.25/Cord	\$ _____
Quaking Aspen	43 Cords	\$ 12.60/Cord	\$ _____
Tamarack	149 Cords	\$ 9.45/Cord	\$ _____

\*The volumes are statistically estimated within plus (+) or minus (-) 10.94 percent at 95% confidence level. These estimated volumes are final and not subject to adjustment. Prospective bidders are urged to examine this timber and to make their own estimates of quantity and quality.

I understand that any or all bids may be rejected. All bids must be signed and all bid items must be bid or the bid form may be rejected. I also understand that consideration and awarding a contract will be based upon my past performance and ability to complete the contract based upon equipment and staffing subject to my control.

FEDERAL ID: \_\_\_\_ - \_\_\_\_ - \_\_\_\_ or SOCIAL SECURITY NUMBER: \_\_\_\_ - \_\_\_\_ - \_\_\_\_

Company or individual bidding: \_\_\_\_\_

Company representative's name: \_\_\_\_\_

Address: \_\_\_\_\_

City: \_\_\_\_\_ State: \_\_\_\_\_ Zip: \_\_\_\_\_

IF AVAILABLE, PLEASE PLACE THE PERSONALIZED LABEL FROM YOUR PROSPECTUS IN THE ABOVE BOX.

Individual or company representative's signature: \_\_\_\_\_ Date: \_\_\_\_\_

Phone number : \_\_\_\_\_ Email (optional): \_\_\_\_\_

**THE WINNING BIDDER MUST COMPLETE THE VERIFICATION OF WORKER'S DISABILITY COMPENSATION ACT COMPLIANCE (ON REVERSE SIDE IF DOUBLE SIDED) WITHIN 21 DAYS OF SALE AWARD DATE**



<b>FOR DEPARTMENT USE ONLY</b>
Sale Number (XX - XXX - XX - XX)
Forest Management Unit:

## TIMBER SALE VERIFICATION OF WORKER'S DISABILITY COMPENSATION ACT COMPLIANCE

*As required by Act 317, P.A. 1969 (Worker's Compensation) and  
Part 5 of Act 451 of 1994, as amended.*

### VERIFICATION OF WORKER'S DISABILITY COMPENSATION ACT COMPLIANCE

- This verification must be completed and submitted within 21 days of contract award and prior to the issuance of the timber sale contract.
- In addition, if boxes 2B or 2C are checked, then Notice of Exclusion or Certificate of Insurance must be submitted within twenty-one (21) days of the contract award and prior to the issuance of the timber sale contract.
- All information must be typed or printed except for written signatures.

Please Check Appropriate Categories:

1. My business is organized as (you **must** check one of the boxes below):
  - A.  Sole Proprietorship (individual)
  - B.  Partnership
  - C.  Corporation
2. You **must** check one of the boxes below:
  - A.  I certify my business is a sole proprietorship and it has no employees but the sole proprietor. I am not subject to the Worker's Compensation Laws.
  - B.  I certify my business has satisfied its obligation to the Worker's Compensation Act through the use of an approved Notice of Exclusion (BWC-337, Rev. 5/96). I will provide a copy of the Notice of Exclusion within 21 days of the contract award. (For questions or a copy of the BWC-337, please call the Worker's Compensation Bureau at 517-322-1195).
  - C.  I certify my business has a Worker's Compensation Policy. I will provide an original Certificate of Insurance within twenty-one (21) days of the contract award.
3. If you have checked item 2(A) or 2(B), you **must** indicate the number of **both** full-time and part-time employees, other than yourself, including family members and active partners (if none, you must enter "0").

\_\_\_\_\_ Full-time Employees

\_\_\_\_\_ Part-time Employees

Name of Business		Federal ID (or) Social Security No.	
Address		Telephone (       )	
City	State	ZIP	

*I hereby certify that the above information is true and correct. I agree to notify the Michigan DNR of any changes that occur in factors affecting my coverage during any of my present and future operations.*

\_\_\_\_\_  
Signature of Owner or Authorized Representative

\_\_\_\_\_  
Title

\_\_\_\_\_  
Date

**Please complete the "SEALED BID" information on the next page**

Yellow Brick Road (32-006-23)  
T43N, R24W, SEC. 3; T44N, R24W, SEC. 34; T44N, R24W, SEC. 35; Marquette

In response to the notice of sale to be held 2:00 p.m. (local time) on May 6, 2024, I am hereby submitting my sealed bid ( firm offer) for the following forest products to be cut. Bids for individual species must be at or above the advertised price. All non-responsive bid forms may be rejected.

<u>PRODUCTS &amp; SPECIES</u>	<u>ESTIMATED VOLUME*</u>	<u>ADVERTISED PRICE</u>	<u>BID PRICE/UNIT</u>
<b>Sawtimber</b>			
Basswood	0.7 MBF	\$ 28.00/MBF	\$ _____
Paper Birch	9.1 MBF	\$ 60.00/MBF	\$ _____
Red Maple	52.7 MBF	\$ 74.00/MBF	\$ _____
Sugar Maple	17.2 MBF	\$ 116.00/MBF	\$ _____
White Spruce	3.8 MBF	\$ 40.00/MBF	\$ _____
<b>Pulpwood</b>			
Balsam Fir	309 Cords	\$ 10.30/Cord	\$ _____
Basswood	2 Cords	\$ 6.10/Cord	\$ _____
Mixed Aspen	1,342 Cords	\$ 19.80/Cord	\$ _____
Mixed Hardwood	1,382 Cords	\$ 11.70/Cord	\$ _____
Mixed Spruce	655 Cords	\$ 12.70/Cord	\$ _____
Paper Birch	493 Cords	\$ 14.55/Cord	\$ _____
Tamarack	91 Cords	\$ 14.90/Cord	\$ _____

\*The volumes are statistically estimated within plus (+) or minus (-) 9.69 percent at 95% confidence level. These estimated volumes are final and not subject to adjustment. Prospective bidders are urged to examine this timber and to make their own estimates of quantity and quality.

I understand that any or all bids may be rejected. All bids must be signed and all bid items must be bid or the bid form may be rejected. I also understand that consideration and awarding a contract will be based upon my past performance and ability to complete the contract based upon equipment and staffing subject to my control.

FEDERAL ID: \_\_\_\_ - \_\_\_\_ - \_\_\_\_ or SOCIAL SECURITY NUMBER: \_\_\_\_ - \_\_\_\_ - \_\_\_\_

Company or individual bidding: \_\_\_\_\_

Company representative's name: \_\_\_\_\_

Address: \_\_\_\_\_

City: \_\_\_\_\_ State: \_\_\_\_\_ Zip: \_\_\_\_\_

IF AVAILABLE, PLEASE PLACE THE PERSONALIZED LABEL FROM YOUR PROSPECTUS IN THE ABOVE BOX.

Individual or company representative's signature: \_\_\_\_\_ Date: \_\_\_\_\_

Phone number : \_\_\_\_\_ Email (optional): \_\_\_\_\_

**THE WINNING BIDDER MUST COMPLETE THE VERIFICATION OF WORKER'S DISABILITY COMPENSATION ACT COMPLIANCE (ON REVERSE SIDE IF DOUBLE SIDED) WITHIN 21 DAYS OF SALE AWARD DATE**



<b>FOR DEPARTMENT USE ONLY</b>	
Sale Number (XX - XXX - XX - XX)	
Forest Management Unit:	

# TIMBER SALE VERIFICATION OF WORKER'S DISABILITY COMPENSATION ACT COMPLIANCE

As required by Act 317, P.A. 1969 (Worker's Compensation) and  
Part 5 of Act 451 of 1994, as amended.

## VERIFICATION OF WORKER'S DISABILITY COMPENSATION ACT COMPLIANCE

- This verification must be completed and submitted within 21 days of contract award and prior to the issuance of the timber sale contract.
- In addition, if boxes 2B or 2C are checked, then Notice of Exclusion or Certificate of Insurance must be submitted within twenty-one (21) days of the contract award and prior to the issuance of the timber sale contract.
- All information must be typed or printed except for written signatures.

Please Check Appropriate Categories:

1. My business is organized as (you **must** check one of the boxes below):
  - A.  Sole Proprietorship (individual)
  - B.  Partnership
  - C.  Corporation
2. You **must** check one of the boxes below:
  - A.  I certify my business is a sole proprietorship and it has no employees but the sole proprietor. I am not subject to the Worker's Compensation Laws.
  - B.  I certify my business has satisfied its obligation to the Worker's Compensation Act through the use of an approved Notice of Exclusion (BWC-337, Rev. 5/96). I will provide a copy of the Notice of Exclusion within 21 days of the contract award. (For questions or a copy of the BWC-337, please call the Worker's Compensation Bureau at 517-322-1195).
  - C.  I certify my business has a Worker's Compensation Policy. I will provide an original Certificate of Insurance within twenty-one (21) days of the contract award.
3. If you have checked item 2(A) or 2(B), you **must** indicate the number of **both** full-time and part-time employees, other than yourself, including family members and active partners (if none, you must enter "0").

\_\_\_\_\_ Full-time Employees

\_\_\_\_\_ Part-time Employees

Name of Business		Federal ID (or) Social Security No.	
Address		Telephone (       )	
City	State	ZIP	

*I hereby certify that the above information is true and correct. I agree to notify the Michigan DNR of any changes that occur in factors affecting my coverage during any of my present and future operations.*

\_\_\_\_\_  
Signature of Owner or Authorized Representative

\_\_\_\_\_  
Title

\_\_\_\_\_  
Date

Please complete the "SEALED BID" information on the next page