



**DEPARTMENT OF NATURAL RESOURCES  
STATE OF MICHIGAN  
TIMBER SALE PROSPECTUS #7443**

SCHEDULED SALE DATE AND TIME: 4:00 p.m. (local time) on June 20, 2024.

LOCATION: TRAVERSE CITY MGMT UNIT, 2122 M 37 SOUTH, TRAVERSE CITY, MI 49685.

PROSPECTUS NOTE: The bidder is advised to inspect the sale area and review the location, estimated volumes, operating costs and contract terms of proposed sales. Please be aware that some landowners may request 60 days or more notice for access across their land.

Notice is hereby given that bids will be received by the Unit Manager, TRAVERSE CITY MANAGEMENT UNIT, for certain timber on the following described lands:

Farewell Miggy Red Pine (61-103-24) / T25N, R07W, SEC. 24, SESW,SE.  
Kalkaska County, Advertised Price \$21,519.55, 76.6 Acres, Red Pine, Jack Pine.

SALE NOTE: This sale has a 'no activity' period from May 2nd to August 15th. This is because of the adjacent Kirtland Warbler habitat.

Alfalfa Red Pine (61-105-24) / T28N, R07W, SEC. 24, SWNW,W1/2SW,NWSE,S1/2SE.  
T28N, R07W, SEC. 25, NWNE.  
Kalkaska County, Advertised Price \$47,187.20, 70.8 Acres, Red Pine, Aspen.

SALE NOTE: This sale has a bark slippage restriction within Payment Units 1, 2 and 4 (see spec 5.2.3.3).

A recreation site such as a trail, pathway, or campground is within the sale area or the vicinity. Certain restrictions/specifications may be applicable including time restrictions.

Dry Fly Pine & Oak (61-110-23) / T25N, R06W, SEC. 3 , NENW,S1/2NW,W1/2NE,N1/2SW.  
T25N, R06W, SEC. 4 , NESE.  
T26N, R06W, SEC. 34, SESW,NWSE,S1/2SE.  
Kalkaska County, Advertised Price \$71,329.35, 113.2 Acres, Hardwood, Aspen.

SALE NOTE: The sale has an oak wilt restriction, as well as a winter cut only within Payment Units 1 & 2.

A recreation site such as a trail, pathway, or campground is within the sale area or the vicinity. Certain restrictions/specifications may be applicable including time restrictions.

## BID INSTRUCTIONS (VER. 10/10/2022):

### 1. Scheduled Bid Location, Date, and Time (2/11)

Bids must be received by the Unit Manager, TRAVERSE CITY OFFICE, 2122 M 37 South, Traverse City, MI 49685, no later than 4:00 p.m. (local time) on June 20, 2024. For further information concerning this sale, contact Patrick Cotant at 231-649-0544.

### 2. Bidder's Qualifications (10/22)

If all or part of a timber sale was prepared by a private contractor, the contractor and that contractor's company are not permitted to bid on the timber sale. A person must be 18 years of age or older to purchase timber. Permanent employees of the Department of Natural Resources or members of their immediate household may not bid. Former employees, in the permanent or seasonal class, may not bid until 3 months after the last day of active duty. Bids will not be accepted from individuals or companies appearing on the DNR/FRD No-Bid List. This list contains the names of purchasers who previously failed to execute a contract within 21-days or who have a history of poor performance.

### 3. Preparation of Sealed Bids (5/16)

Bid Forms may be completed online thru Michigan DNR Timber Sale Online Bidding (OLB) at [www.michigan.gov/timberbidding](http://www.michigan.gov/timberbidding) or by completing the hardcopy Bid Form found in the Timber Sale Prospectus. Hardcopy Bid Forms shall be manually signed in ink. Registration in OLB is considered your 'signature' for all bids submitted thru that system. Bid prices must be entered for each species and product in the Bid Price column for all material subject to bidding and all fill-in blanks must be completed. If erasures or other changes appear on the hardcopy Bid Form, each erasure or change must be initialed by the person signing the bid.

### 4. Submission of Sealed Bids (5/16)

Bid forms may be obtained from the Unit Manager or thru OLB. Bids may be submitted hardcopy or thru OLB. All hardcopy bids must be submitted on the bid form and in an envelope clearly identified as described in this section. NOTE: Only one bid form per bid envelope. Sealed bids must be submitted to the Unit office designated in the prospectus and must be submitted at or prior to the time established in the prospectus. The envelope should show on the outside (a) the sale name or number and (b) the date and time of bid opening, as shown in the prospectus. Bids received after the time specified in the sale prospectus are late bids and will be rejected.

It is possible for a bidder to submit multiple bids on a single sale. For example, a bid may be submitted hardcopy and a bid may be submitted thru OLB. Or, two bidders from the same company could both submit bids on the same sale. If this were to happen, the State would accept all bids received and award the contract accordingly. All bidding and contractual requirements would apply to all bids received.

### 5. Public Opening of Sealed Bids (7/16)

If conditions permit, the sealed bids will be publicly opened and posted at the time and place set in the prospectus.

If a bidder, present at a bid opening, has submitted bids on more than one sale, that bidder may withdraw their unopened bid envelopes or announce the withdrawal of their online bid after being declared the successful bidder on one sale.

### 6. Award of Contract (1/11)

Award of the contract will be made to the Bidder whose bid, conforming to the prospectus, is most advantageous to the State of Michigan on the basis of total value at rates bid for the estimated quantities. The State reserves the right to reject any bid or waive any minor irregularity in bids received. A written award mailed (or otherwise furnished) to the successful Bidder shall be deemed to result in a binding contract without further action by either party.

### 7. Down Payment (1/11)

The Bidder to whom award is made must make a down payment within 21 days of the sale award. The amount of the down payment will be calculated as shown in the Bond and Payment Schedule of this prospectus. Only cash may be used to meet this requirement.

### 8. Performance Security (1/11)

As guarantee of faithful performance, a cash bond, certificate of deposit, surety bond or irrevocable letter of credit (LOC) is required within 21 days of the sale award. The amount of the performance security is shown in the Bond and

Payment Schedule of this prospectus. If an LOC or surety is used, the coverage must extend for at least 6 months beyond the contract expiration.

#### 9. Worker's Compensation (10/22)

Purchaser shall obtain worker's compensation insurance to cover claims under Michigan's Worker's Disability Compensation Act of 1969 or similar employee benefit act of any other state applicable to an employee. Verification of Worker's Disability Compensation Act Compliance must be completed and submitted within 21 days of contract award and prior to the issuance of the timber sale contract. In addition, if applicable, Notice of Exclusion or Certificate of Insurance must also be submitted.

#### 10. Timber Sale Contract (10/22)

Additional conditions and requirements common to all timber sales are listed on the timber sale contract (R4031) and are available on line at [www.michigan.gov/timber](http://www.michigan.gov/timber). Contact the Unit Manager for additional information or a sample contract. Within 21 days of the date of the award letter, the bidder must sign the contract and provide the required down payment, performance security, and verification of worker's disability compensation. The down payment and performance security shall be in accordance with the provisions of the timber sale contract, in the sums stated in this prospectus. If these actions are not taken, then the Bidder, the Bidder's corporation, and the corporation's principals may not be permitted to bid on State timber sales for a period of 3 months after the first offense, 6 months after the second offense, and 1 year after the third offense. An offense will only be counted against the Bidder for 5 years. In addition, the Bidder certifies that if awarded this contract, the Bidder will complete the timber sale contract in accordance with its terms and any modifications thereof including requirements to purchase, cut, and remove the included timber by the expiration date.

Payment Unit values in the State Forest Timber Sale Contract are calculated based on the advertised value of the Payment Unit as a percentage of the total advertised value of the contract. The advertised value of each Payment Unit is given in the Description of Timber by Payment Unit table on the Timber Sale Information page. For example, if the value of Payment Unit 1 is advertised as \$1,500 and the total Timber Sale value is advertised as \$10,000, the contract price for Payment Unit 1 will be 15% of the total bid price ( $\$1,500/\$10,000 * 100$ ).

#### 11. Disclaimer of Estimates and Bidder's Warranty of Inspection (10/22)

Before submitting this bid, the Bidder is advised and cautioned to inspect the sale area, review the requirements of the sale contract, and take other steps as may be reasonably necessary to ascertain the location, estimated volumes, construction estimates, and operating costs of the proposed sale. Failure to do so will not relieve the Bidder from responsibility for completing the contract.

The Bidder warrants that this bid is submitted solely on the basis of the Bidder's examination and inspection of the quality and quantity of the timber offered for sale and the Bidder's opinion of the value thereof and the costs of recovery. No reliance should be placed on the State of Michigan's estimates of timber quality, quantity or costs of recovery. Bidder further acknowledges that the State of Michigan: (i) expressly disclaims any warranty of fitness of timber for any purpose; (ii) offers this timber as is without any warranty of quality (merchantability) or quantity and (iii) expressly disclaims any warranty as to the quantity or quality of timber sold.

#### 12. Certification and Chain-of-Custody (10/22)

Unless otherwise indicated in the contract under section 7 – Other Conditions of the Sale Specific Conditions & Requirements, the area encompassed by this timber sale is certified to the standards of the Forest Stewardship Council (FSC) - Certificate #SCS-FM/COC-00090N and the Sustainable Forestry Initiative (SFI) - Certificate #NSF-SFIS-5Y031-SF5. Forest products from this sale may be delivered to the mill as "FSC 100% and / or SFI certified" as long as the contractor hauling the forest products is chain-of-custody (COC) certified or covered under a COC certificate from the destination mill. The purchaser is responsible for maintaining COC after leaving the sale area.

#### 13. Good Neighbor Authority (GNA) Requirements (10/22)

If the name of this timber sales contains the acronym GNA, it is authorized by the Good Neighbor Authority (GNA) and covered by various agreements between the U.S. Forest Service and the State. The timber sale occurs on federal land and the following conditions apply:

GNA contracts on US Forest Service land will not be awarded to purchasers on the Federal list of excluded parties. The System for Award Management (SAM) will be checked for active excluded parties prior to award of contract. In

addition, the Bidder to whom award is made must complete an Assurance Regarding Felony Conviction or Tax Delinquent Status for Corporate Applicants (AD-3031).

14. Good Neighbor Authority (GNA) Requirements, con't (10/22)

Bidder certifies, by signing this bid form, that to the best of Bidder's knowledge that the following representations are accurate and complete.

- a. That the Bidder and its principals are not presently debarred, suspended, proposed for debarment, declared ineligible, or voluntary excluded from timber sales (covered transactions) by any Federal department or agency.
- b. That the Bidder and its principals have not within a 3-year period preceding this bid been convicted of or had a civil judgment rendered against them for commission of fraud or a criminal offense in connection with obtaining , attempting to obtain, or performing a public (Federal, State, or local) transaction or contract under a public transaction; violation of Federal or State antitrust statutes or commission of embezzlement, theft, forgery, bribery, falsification or destruction of records, making false statements, or receiving stolen property.
- c. That the Bidder and its principals are not presently indicted for or otherwise criminally or civilly charged by a governmental entity (Federal, State, or local) with commission of any of the offenses enumerated in paragraph b of this certification.
- d. That the Bidder and its principals have not within a 3-year period preceding this bid had one or more public transactions (Federal, State, or local) terminated for breach or default of a timber or forest product contract.

Bidders that cannot certify this requirement, in whole or in part, shall submit an explanation with their bid.

Scott Bowen  
Director

## TIMBER SALE INFORMATION

Farewell Miggy Red Pine (61-103-24)

T25N, R07W, SEC. 24.

Kalkaska County (Advertised Price \$21,519.55)

SALE NOTE: This sale has a 'no activity' period from May 2nd to August 15th. This is because of the adjacent Kirtland Warbler habitat.

A timber sale contract for this lump sum, sealed bid timber sale will be awarded to the responsible bidder offering the highest sealed bid price. All units of volume listed below were estimated using the Inventory Manager computer program and the new Michigan taper model. Bids must be at or above the following advertised price for each product and species:

<u>PRODUCTS &amp; SPECIES</u>	<u>ESTIMATED UNITS*</u>	<u>ADVERTISED PRICE</u>
Sawtimber		
Red Pine	12.6 MBF	\$ 72.00 / MBF
Pulpwood		
Black Cherry	7 Cords	\$ 12.65 / Cord
Jack Pine	24 Cords	\$ 12.65 / Cord
Red Pine	707 Cords	\$ 28.60 / Cord

\* The total volume is statistically estimated within plus (+) or minus (-) 22.18 percent. There are an estimated 768 cords on this timber sale, plus or minus 170 cords at the 95% confidence level. The estimated units are final and not subject to adjustment. Prospective bidders are urged to examine this timber and to make their own estimates of quantity and quality.

### **BOND AND PAYMENT SCHEDULE:**

1. A bond in the amount of \$2,152.00 to insure faithful performance of the conditions of the contract will be deposited by the successful bidder within 21 days of the sale award.
2. Cutting in any sale or unit without the required advance payment would be considered a trespass.
3. Total payment must be paid in advance or according to the following schedule :
  - (a) Ten percent (10%) of the sale value must be paid within 21 days of the sale award.
  - (b) The 10% down payment will be credited towards the first unit cut.
  - (c) Payment for each of the following units must be made before cutting begins in that unit:
 

PAYMENT UNIT NUMBER	PERCENT OF TOTAL SALE VALUE
01	43.9%
02	56.1%
4. If no cutting takes place, the 10% down payment will not be refunded.
5. Operations on the contract issued will terminate on 09/30/2027.

### **SALE STATISTICS**

Volumes were calculated in cubic feet using the Michigan taper model. Cubic foot volume includes all wood inside bark for the product indicated. For display purposes, cubic feet were converted to cords and MBF using a simple conversion factor, e.g. 79 cubic feet per cord and 185 cubic feet per MBF. The cubic foot volumes are precise; the cords and MBF volumes are not. Cubic foot volume cannot be directly converted to cords or boards with precision.

### **SALE VOLUMES**

The total estimated sale volume may not equal the sum of the species/products due to the nature of statistical calculations associated with double sampling methodology.

VOLUME		STATISTICAL RANGE IN CORDS		
TOTAL CUBIC FEET	TOTAL CORDS	PERCENT ERROR	MINIMUM	MAXIMUM
60,662	768	22.18%	598	938

**VDU VOLUMES**

A VDU is a Volume Determination Unit. Volumes and their associated statistics are calculated at the VDU level and summarized to the sale level. There is often a one to one relationship between a VDU and a Payment Unit, but not always, depending on the cruise design. Refer to the VDU TO PAYMENT UNIT table.

VDU	VOLUME		PERCENT ERROR	RANGE IN CORDS	
	TOTAL CUBIC FEET	TOTAL CORDS		MINIMUM	MAXIMUM
78	60,662	768	22.19%	598	938
<b>TOTAL:</b>	<b>60,662</b>	<b>768</b>		<b>598</b>	<b>938</b>

**VDU TO PAYMENT UNIT**

When a VDU is associated with more than one Payment Unit (PU), the VDU volumes are assigned to the PU based on acres of the VDU within the PU.

VDU	VDU ACRES	PU	PU ACRES
78	76.6	1	33.6
		2	43.0
<b>TOTAL:</b>	<b>76.6</b>		<b>76.6</b>

**DESCRIPTION OF TIMBER BY PAYMENT UNIT (PU)**

PU	MARKET GROUP	PRODUCT	QUANTITY	UNIT	ACRES	ADVERTISE PRICE
1	Red Pine	Sawtimber	5.5	MBF	33.6	\$9,439.10
	Black Cherry	Pulpwood	3	Cords		
	Jack Pine		11	Cords		
	Red Pine		310	Cords		
2	Red Pine	Sawtimber	7.1	MBF	43.0	\$12,080.45
	Black Cherry	Pulpwood	4	Cords		
	Jack Pine		13	Cords		
	Red Pine		397	Cords		
TOTAL:			12.6	MBF		
TOTAL:			738	Cords		

# Sale Specific Conditions & Requirements

**Sale Name: Farewell Miggy Red Pine**

**Sale Number: 61-103-24 Seq#: 2**

## 1 - Sale Area

### 1.2 - Boundaries

#### 1.2.1 - Painted boundaries (9/19)

The sale boundary and Payment Unit boundaries are marked and identified by blue, red and yellow paint. Exterior sale boundary lines against private property are marked with blue paint. Exterior sale boundary lines against state are marked with red paint. Interior Payment Unit boundaries are marked with yellow paint and is along the two track. The painted boundary line trees are not Included Timber and are to be protected unless marked with orange paint.

## 2 - Timber Specifications

### 2.1 - Included Timber

#### 2.1.3 - Cut tree marked unit(s) (12/08)

Within Payment Unit(s) 1 and 2, all trees are designated for cutting when marked with orange paint above and below stump height, regardless of merchantability. In addition, cut all jack pine trees.

### 2.2 - Utilization

#### 2.2.3 - Stump heights (4/07)

Stump heights within the Sale Area shall not exceed 6 inches for all trees.

#### 2.2.4 - Skidding length (2/14)

Skidding of lengths over 17 feet is permissible as long as the Sale Administrator approves the method and machinery used. If at any point damage exceeds specification 3.4.1, all of the remaining wood must be skid in lengths less than 17 feet.

## 3 - Payments

### 3.3 - Pre-measured Sales

#### 3.3.4 - Dividing payment units (7/14)

Payment Unit(s) 1 and 2 may be divided at the request of the Purchaser and upon approval of the Unit Manager. Dividing Payment Units is a contract modification which requires a Timber Sale Contract Amendment. There will be only one division per Payment Unit.

### 3.4 - Damaged Timber

#### 3.4.1 - Damaged timber (7/16)

General Condition and Requirement 3.4 Damaged Timber, defines liquidated damages for undesignated live merchantable trees which are cut or injured.

No damage is acceptable to undesignated live merchantable trees. Within the Sale Area, if more than 10% of trees (> 4.5" DBH) within a specified area of the sale are damaged, liquidated damages will be assessed for all trees damaged. Rates will be in accordance with General Condition and Requirement 3.4 Damaged Timber.

## 4 - Transportation

### 4.1 - Construction

#### 4.1.6 - Road construction (1/09)

Improvements of existing roads shall be done in such a way as to minimize the environmental and visual impacts. Merchantable trees shall be cut and utilized unless otherwise directed. Non-merchantable trees shall be severed and laid flat on the ground. Slash shall be scattered, and not left in windrows and kept a minimum of 10 feet back from the road edge. Stumps shall be set upright, not left on edge, and be moved at least 10 feet away from the road edge. Disturbed soil shall be feathered into the woods and not left in berms or windrows.

#### 4.1.12 - No new roads (1/12)

No new roads will be permitted. All operations are limited to existing roads. Skid trails will only be allowed.

## 5 - Operations

### 5.1 - Notification

#### 5.1.1 - Pre-sale conference (10/16)

A pre-sale conference on site between the Purchaser and sale administrator is required prior to beginning any operations, to determine landing and road locations. The Unit Manager or his/her representative must be contacted at least 3 days in advance to schedule the conference.

### 5.2 - Conduct of Operations

#### 5.2.3 - Operating Restrictions

##### 5.2.3.6 - Bark beetle restriction (12/08)

In the event drought creates a high risk of pine bark beetle infestation, pine is not to be cut during the period March 1 through July 1, unless all portions of trees greater than two inches in diameter are removed from the sale area, reduced to chips, or treated to the satisfaction of the Unit Manager or his/her representative, within fifteen days of being severed from the stump. Pine log decks, pulpwood piles and treetops that are piled for chipping in the fall or winter within a 1/4 mile of susceptible sites must be removed before March 15. Residual slash must not be placed in piles or rows and must be spread over the site for quick drying. The Department of Natural Resources will exercise this specification if the risk of damage warrants.

#### 5.2.20 - Equipment width (2/04)

Equipment used to remove designated rows must be capable of moving through cut rows without damaging residual trees.

#### 5.2.32 - Decking/landing restoration (9/13)

All decking and landing areas must have the surface area restored to a condition equal to or better than before. This is to ensure the proper regeneration of the stand. Wood debris, chips and "cookies" from trimmings must be removed or scattered away from landing and loading areas and may not be windrowed on the edge.

#### 5.2.37 - No decking areas (12/08)

No decking is allowed within the wildlife openings designated on the Timber Sale Map.

#### 5.2.38 - No decking against live trees (2/04)

Cut products may not be decked against unmarked or designated leave trees.

### 5.4 - Soil Protection

#### 5.4.1 - Rutting restriction, general (7/16)

Operations are to cease immediately if equipment and weather conditions result in rutting of roads and/or skid trails which are 12 inches or greater in depth and 50 feet in length. The Unit Manager or his/her representative may restrict hauling and/or skidding if ruts exceed the specified depth. With the Unit Manager or his/her representative's approval, the Purchaser may return to the area when the risk of rutting has decreased.

### 5.8 - Protection of Endangered Species

#### 5.8.2 - Kirtland's warbler (2) (4/24)

This sale is adjacent to a young jack pine stand which is being used by Kirtland's Warbler. Due to the close proximity to occupied Kirtland's Warbler habitat, all operations are confined to August 16 through May 1 for this sale. Absolutely no operations will be allowed the remainder of the year.

#### 5.8.5 - Protection of raptor nests (3/13)

All trees with raptor nests will be protected if found during harvesting operations. Notification will be made to the Unit Manager or his/her representative who will notify the Wildlife Biologist so an on-site evaluation and recommendation can be made, if necessary.

## 6 - Safety and Fire Prevention

### 6.2 - Signing



#### 6.2.1 - Road posting (10/20)

The Purchaser is responsible for posting and maintaining caution signs on road used for hauling prior to beginning operations. The road must be posted at appropriate distances from the Sale Area to warn of logging activity and truck traffic. Signs must be removed when harvest operations are suspended or completed. The Purchaser will provide these signs.



### TIMBER SALE MAP

This information provided by authority of Part 525, 1994 PA 451, as amended.

Sale Number <b>61-103-24</b>	Date 11/21/2023
Scale 1:15,840	Page 1
	Of 1

Forest Management Unit Traverse City Mgt Unit	County Kalkaska	Mapped By: Crigier
		Cruised By: Crigier

Township 25N	Range 07W	Section(s) and Subdivision(s) Sec. 24 SESW,SE;
-----------------	--------------	---

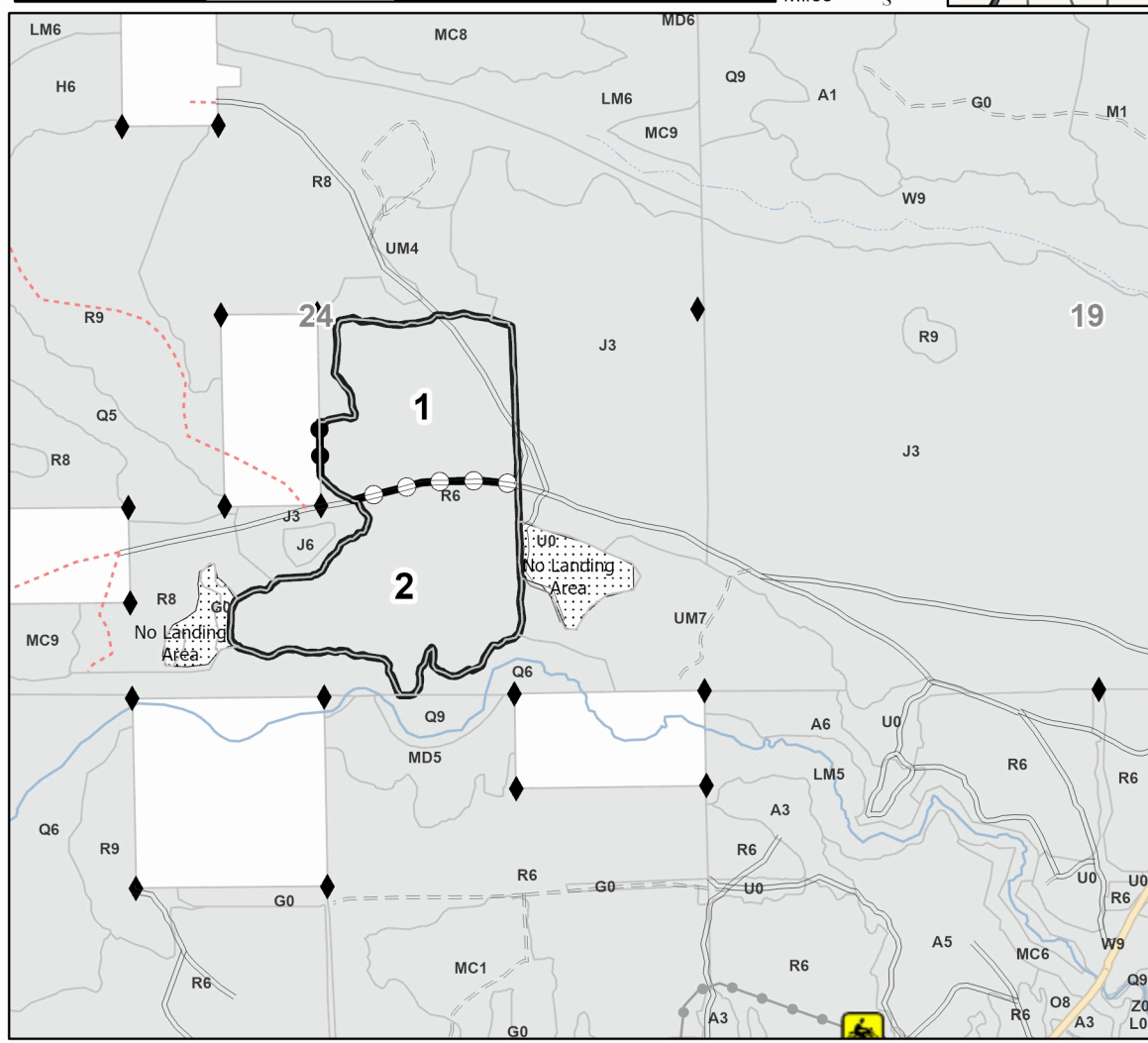
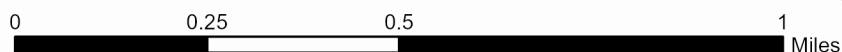
Cover Type			
A = Aspen	J = Jack Pine	O = Oak	U = Upland Brush
B = Paper Birch	K = Rock	P = Lowland Poplar	UM = Upland Mix Forest
C = Cedar	L = Lowland Brush	Q = Mixed Swamp Conifer	V = Bog or Marsh
D = Treed Bog	LM = Lowland Mix Forest	R = Red Pine	W = White Pine
E = Swamp Hardwoods	M = Maple, Beech, Birch	S = Black Spruce	X = Non Stocked
F = Spruce/Fir	MC = Mixed Conifer	T = Tamarack	Y = Sand
G = Grass	MD = Mixed Deciduous	Z = Water	
H = Hemlock	N = Marsh		

Density	
0 = Non Stocked	5 = Pole Timber Medium
1 = Seedling Sapling Poor	6 = Pole Timber Well
2 = Seedling Sapling Medium	7 = Saw Timber Poor
3 = Seedling Sapling Well	8 = Saw Timber Medium
4 = Pole Timber Poor	9 = Saw Timber Well

PU	Acres
1	33.6
2	43

**Farewell  
Miggy Red  
Pine**  
**76.6 Acres**

### Locator Map (1:200,000)



### Legend

- Against State (Red)
- Payment Unit (Yellow)
- Private Line (Blue)
- Stand
- State Forests
- WLD Opening (no landing area)
- Recreational Trail
- Secondary Forest Road
- Forest Access Route
- Administrative Access Only
- Non-DNR Road
- Survey Corner
- Rivers
- Streams

Use QR Code to open Map in App



## TIMBER SALE INFORMATION

Alfalfa Red Pine (61-105-24)  
T28N, R07W, SEC. 24; T28N, R07W, SEC. 25.  
Kalkaska County (Advertised Price \$47,187.20)

SALE NOTE: This sale has a bark slippage restriction within Payment Units 1, 2 and 4 (see spec 5.2.3.3).

A recreation site such as a trail, pathway, or campground is within the sale area or the vicinity. Certain restrictions/specifications may be applicable including time restrictions.

A timber sale contract for this lump sum, sealed bid timber sale will be awarded to the responsible bidder offering the highest sealed bid price. All units of volume listed below were estimated using the Inventory Manager computer program and the new Michigan taper model. Bids must be at or above the following advertised price for each product and species:

<u>PRODUCTS &amp; SPECIES</u>	<u>ESTIMATED UNITS*</u>	<u>ADVERTISED PRICE</u>
Pulpwood		
B. T. Aspen	38 Cords	\$ 16.45 / Cord
Balsam Fir	1 Cords	\$ 17.15 / Cord
Mixed Hardwood	23 Cords	\$ 16.85 / Cord
Paper Birch	1 Cords	\$ 15.00 / Cord
Red Pine	1,209 Cords	\$ 38.15 / Cord
White Pine	1 Cords	\$ 19.05 / Cord

\* The total volume is statistically estimated within plus (+) or minus (-) 19.10 percent. There are an estimated 1,275 cords on this timber sale, plus or minus 244 cords at the 95% confidence level. The estimated units are final and not subject to adjustment. Prospective bidders are urged to examine this timber and to make their own estimates of quantity and quality.

### **BOND AND PAYMENT SCHEDULE:**

1. A bond in the amount of \$2,359.00 to insure faithful performance of the conditions of the contract will be deposited by the successful bidder within 21 days of the sale award.
2. Cutting in any sale or unit without the required advance payment would be considered a trespass.
3. Total payment must be paid in advance or according to the following schedule :
  - (a) Ten percent (10%) of the sale value must be paid within 21 days of the sale award.
  - (b) The 10% down payment will be credited towards the first unit cut.
  - (c) Payment for each of the following units must be made before cutting begins in that unit:
 

PAYMENT UNIT NUMBER	PERCENT OF TOTAL SALE VALUE
01	55.2%
02	16.2%
03	1.8%
04	26.8%
4. If no cutting takes place, the 10% down payment will not be refunded.
5. Operations on the contract issued will terminate on 09/30/2026.

### **SALE STATISTICS**

Volumes were calculated in cubic feet using the Michigan taper model. Cubic foot volume includes all wood inside bark for the product indicated. For display purposes, cubic feet were converted to cords and MBF using a simple conversion factor, e.g. 79 cubic feet per cord and 185 cubic feet per MBF. The cubic foot volumes are precise; the cords and MBF volumes are not. Cubic foot volume cannot be directly converted to cords or boards with precision.

### **SALE VOLUMES**

The total estimated sale volume may not equal the sum of the species/products due to the nature of statistical calculations associated with double sampling methodology.

VOLUME		STATISTICAL RANGE IN CORDS		
TOTAL CUBIC FEET	TOTAL CORDS	PERCENT ERROR	MINIMUM	MAXIMUM
100,696	1,275	19.10%	1,031	1,518

**VDU VOLUMES**

A VDU is a Volume Determination Unit. Volumes and their associated statistics are calculated at the VDU level and summarized to the sale level. There is often a one to one relationship between a VDU and a Payment Unit, but not always, depending on the cruise design. Refer to the VDU TO PAYMENT UNIT table.

VDU	VOLUME		PERCENT ERROR	RANGE IN CORDS	
	TOTAL CUBIC FEET	TOTAL CORDS		MINIMUM	MAXIMUM
70	54,166	686	12.71%	599	773
88	15,813	200	16.41%	167	233
103	4,194	53	87.36%	7	99
110	26,522	336	21.99%	262	410
<b>TOTAL:</b>	<b>100,696</b>	<b>1,275</b>		<b>1,034</b>	<b>1,515</b>

**VDU TO PAYMENT UNIT**

When a VDU is associated with more than one Payment Unit (PU), the VDU volumes are assigned to the PU based on acres of the VDU within the PU.

VDU	VDU ACRES	PU	PU ACRES
70	41.6	1	41.6
88	9.7	2	9.7
103	3.6	3	3.6
110	15.9	4	15.9
<b>TOTAL:</b>	<b>70.8</b>		<b>70.8</b>

**DESCRIPTION OF TIMBER BY PAYMENT UNIT (PU)**

PU	MARKET GROUP	PRODUCT	QUANTITY	UNIT	ACRES	ADVERTISE PRICE
1	B. T. Aspen	Pulpwood	2	Cords	41.6	\$26,042.30
	Mixed Hardwood		4	Cords		
	<i>Black Cherry</i>		4	<i>Cords</i>		
	Red Pine		680	Cords		
2	Red Pine	Pulpwood	200	Cords	9.7	\$7,630.00
3	B. T. Aspen	Pulpwood	33	Cords	3.6	\$846.80
	Balsam Fir		1	Cords		
	Mixed Hardwood		15	Cords		
	<i>Red Maple</i>	<i>Sawtimber</i>	0.6	<i>MBF</i>		
	<i>Sugar Maple</i>		0.6	<i>MBF</i>		
	<i>Black Cherry</i>	<i>Pulpwood</i>	5	<i>Cords</i>		
	<i>Red Maple</i>		1	<i>Cords</i>		
	<i>Sugar Maple</i>		7	<i>Cords</i>		
	Paper Birch		1	Cords		
	White Pine		1	Cords		
4	B. T. Aspen	Pulpwood	3	Cords	15.9	\$12,668.10
	Mixed Hardwood		4	Cords		
	<i>Black Cherry</i>		4	<i>Cords</i>		
	Red Pine		329	Cords		
<b>TOTAL:</b>			1,273	Cords		

# Sale Specific Conditions & Requirements

**Sale Name: Alfalfa Red Pine**

**Sale Number: 61-105-24 Seq#: 1**

## 1 - Sale Area

### 1.2 - Boundaries

#### 1.2.1 - Painted boundaries (9/19)

The sale boundary and Payment Unit boundaries are marked and identified by blue and red paint. Exterior sale boundary lines against private property are marked with blue paint. Exterior sale boundary lines against state are marked with red paint. Retention patches are marked with red paint; no harvesting activities may occur within these areas. Note that the west boundary of Payment Unit 2 is marked with red paint, however the line against PVT property is marked with blue paint just beyond the west boundary of Payment Unit 2.

## 2 - Timber Specifications

### 2.1 - Included Timber

#### 2.1.1 - Clearcut unit(s) with unmerchantable trees (6/14)

Within Payment Unit(s) 3, cut all trees that are two (2) inches or more at DBH, except do not cut any white pine greater than 20 inches at DBH.

#### 2.1.8 - Designated plantation row unit(s) (12/08)

Within Payment Unit(s) 1, 2 & 4, all trees which meet minimum piece specifications in 2.2 Utilization, within designated plantation rows are designated for cutting. Designated plantation rows are every third row. Begin with the third row in from the outside of the plantation, then continue every third row. Because of the variability of row direction, it shall be the responsibility of the producer to maintain the third row sequence. Do not cut any black cherry, maple or oak unless it is needed for operability (see spec 4.1.4).

### 2.2 - Utilization

#### 2.2.3 - Stump heights (4/07)

Stump heights within the Sale Area shall not exceed 12 inches for trees greater than 10 inches at DBH and 4 inches for trees smaller than 10 inches at DBH.

#### 2.2.6 - Roundwood operation required (3/21)

The skidding of whole trees or tree segments with limbs attached is prohibited within Payment Unit(s) 1, 2 and 4. All products must be produced as roundwood and forwarded to existing roads or landing areas in final product length. Trees must be harvested with in-woods processor (feller bunching harvester will not be allowed) due to damaging trees within existing rows.

## 3 - Payments

### 3.3 - Pre-measured Sales

#### 3.3.4 - Dividing payment units (7/14)

Payment Unit(s) greater than \$25,000, may be divided at the request of the Purchaser and upon approval of the Unit Manager. Dividing Payment Units is a contract modification which requires a Timber Sale Contract Amendment. There will be only one division per Payment Unit.

## 4 - Transportation

### 4.1 - Construction

#### 4.1.3 - Slash and earthen piles (8/04)

Piles or windrows of earth along roads and landings that have been widened or constructed shall be leveled. Slash from road maintenance or construction, including stumps, shall be dispersed throughout the sale.

#### 4.1.4 - Timber removed for construction (3/23)

Trees cut or damaged in the process of pre-approved road, landing or skid trail construction will be decked in an area separate from other Designated Timber and not removed until measured by the sale administrator. Payment will be made at contract prices or average prices, if not on the contract.

#### 4.1.11 - Permits (2/12)

The Purchaser will secure any necessary county road permits that may be required.

#### 4.1.12 - No new roads (1/12)

No new roads will be permitted in any Payment Unit. All operations are limited to existing roads. Skid trails only will be allowed.

### 4.2 - Maintenance

#### 4.2.5 - Two wheel drive condition (2/04)

All existing trail roads on and adjacent to the sale area must be passable by two-wheel drive traffic for the duration of the sale.

## 5 - Operations

### 5.1 - Notification

#### 5.1.3 - Well heads and natural gas pipelines (11/15)

The Purchaser is responsible for contacting the gas or pipeline company 30 days prior to operating equipment in the vicinity of well heads or natural gas pipelines. Call Miss Dig #811 before the start of each Payment Unit. Written or Verbal permission is required before harvest operations begin and must be submitted to the Unit Manager.

### 5.2 - Conduct of Operations

#### 5.2.1 - Slash

##### 5.2.1.8 - Slash height (12/08)

No slash or tree tops may exceed 24 inches in height.

#### 5.2.3 - Operating Restrictions

##### 5.2.3.3 - Bark slippage restriction (3/09)

Within Payment Unit(s) 1, 2 & 4, unless changed by written agreement, cutting and skidding are not permitted during the period of April 15 to July 15. This restriction is because of bark slippage.

##### 5.2.3.6 - Bark beetle restriction (12/08)

In the event drought creates a high risk of pine bark beetle infestation, pine is not to be cut during the period March 1 through July 1, unless all portions of trees greater than two inches in diameter are removed from the sale area, reduced to chips, or treated to the satisfaction of the Unit Manager or his/her representative, within fifteen days of being severed from the stump. Pine log decks, pulpwood piles and treetops that are piled for chipping in the fall or winter within a 1/4 mile of susceptible sites must be removed before March 15. Residual slash must not be placed in piles or rows and must be spread over the site for quick drying. The Department of Natural Resources will exercise this specification if the risk of damage warrants.

#### 5.2.20 - Equipment width (2/04)

Equipment used to remove designated rows must be capable of moving through cut rows without damaging residual trees. No exemptions will be given for equipment that cannot make it down rows without damaging trees.

#### 5.2.32 - Decking/landing restoration (9/13)

All decking and landing areas must have the surface area restored to a condition equal to or better than before. This is to ensure the proper regeneration of the stand. Wood debris, chips and "cookies" from trimmings must be removed or scattered away from landing and loading areas and may not be windrowed on the edge.

#### 5.2.38 - No decking against live trees (2/04)

Cut products may not be decked against unmarked or designated leave trees.

#### 5.2.39 - ORV trail/route protection (4/18)

The recreational trail running through Payment Unit 1, is an ORV trail or route and is shown on the Timber Sale Map. Trees with yellow ORV markers shall be cut off above the markers and at least 5 feet above ground. All stumps within 5 feet of the trail must be cut flush with the ground. Maintain a 20-foot-wide slash, debris, and rut free zone daily using the ORV trail or route as the centerline. Do not run equipment down the ORV trail or route. Skidding across the trail or route may only occur

in locations approved by the Sale Administrator.

#### 5.4 - Soil Protection

##### 5.4.1 - Rutting restriction, general (7/16)

Operations are to cease immediately if equipment and weather conditions result in rutting of roads and/or skid trails which is 12 inches or greater in depth and 50 feet in length. The Unit Manager or his/her representative may restrict hauling and/or skidding if ruts exceed the specified depth. With the Unit Manager or his/her representative's approval, the Purchaser may return to the area when the risk of rutting has decreased.

### 6 - Safety and Fire Prevention

#### 6.2 - Signing

##### 6.2.1 - Road posting (10/20)

The Purchaser is responsible for posting and maintaining caution signs on all county roads and state two tracks affected by timber sale prior to beginning operations. The road must be posted at appropriate distances from the Sale Area to warn of logging activity and truck traffic. Signs must be removed when harvest operations are suspended or completed. The Purchaser will provide these signs.

##### 6.2.3 - Recreational trail posting (10/20)

The Purchaser is responsible for posting and maintaining caution signs on the ORV trail that runs through Payment Unit 1 prior to beginning operations. The trail must be posted at appropriate distances from the Sale Area to warn of logging activity and truck traffic at both ends of the trail. Signs must be removed when harvest operations are suspended or completed. The Purchaser will provide these signs.



### TIMBER SALE MAP

This information provided by authority of Part 525, 1994 PA 451, as amended.

Sale Number  
**61-105-24**

Date  
**03/22/2024**

Forest Management Unit	County	Mapped By: Tom Peterson
Traverse City Mgt Unit	Kalkaska	Cruised By: Tom Peterson

Scale	Page	Of
1:15,840	1	1

Township	Range	Section(s) and Subdivision(s)
28N	07W	Sec. 24 SWNW,W1/2SW,NWSE,S1/2SE; Sec. 25 NWNE;

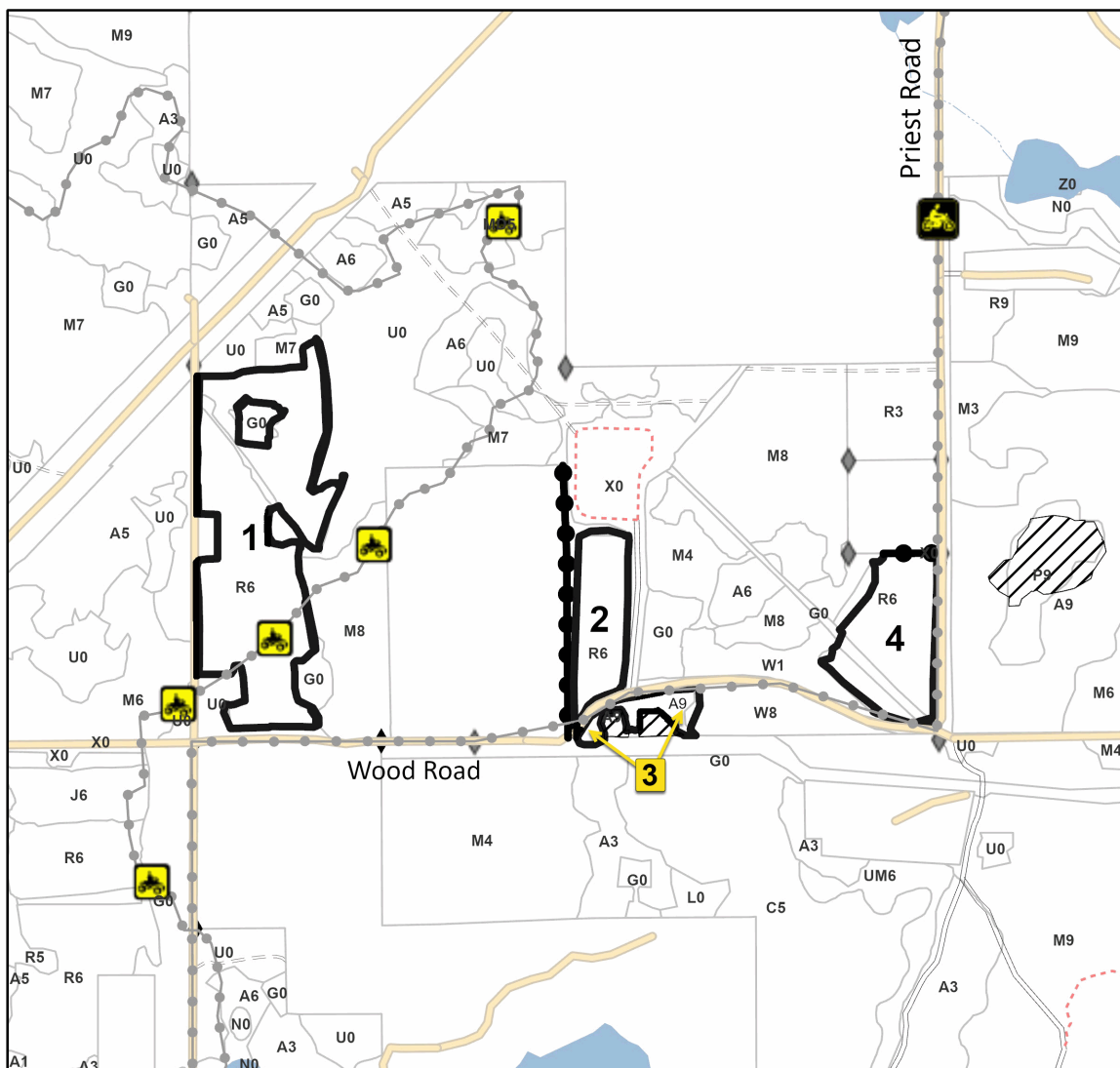
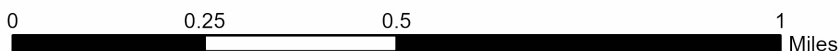
Cover Type			
A = Aspen	J = Jack Pine	O = Oak	U = Upland Brush
B = Paper Birch	K = Rock	P = Lowland Poplar	UM = Upland Mix Forest
C = Cedar	L = Lowland Brush	Q = Mixed Swamp Conifer	V = Bog or Marsh
D = Treed Bog	LM = Lowland Mix Forest	R = Red Pine	W = White Pine
E = Swamp Hardwoods	M = Maple, Beech, Birch	S = Black Spruce	X = Non Stocked
F = Spruce/Fir	MC = Mixed Conifer	T = Tamarack	Y = Sand
G = Grass	MD = Mixed Deciduous		Z = Water
H = Hemlock	N = Marsh		

Density	
0 = Non Stocked	5 = Pole Timber Medium
1 = Seedling Sapling Poor	6 = Pole Timber Well
2 = Seedling Sapling Medium	7 = Saw Timber Poor
3 = Seedling Sapling Well	8 = Saw Timber Medium
4 = Pole Timber Poor	9 = Saw Timber Well

## Alfalfa Red Pine

**70.8 Acres**

PU #	Acres
1	41.6
2	9.7
3	3.6
4	15.9



### Legend

- Against State (Red)
- Private Line (Blue)
- Stand
- Retention Areas
- Recreational Trail
- Secondary Forest Road
- Forest Access Route
- Administrative Access Only
- Non-DNR Road
- Field Grade Corner
- Survey Grade Corner

Use QR Code to open Map in App





## TIMBER SALE INFORMATION

### Dry Fly Pine & Oak (61-110-23)

T25N, R06W, SEC. 3; T25N, R06W, SEC. 4; T26N, R06W, SEC. 34.  
Kalkaska County (Advertised Price \$71,329.35)

SALE NOTE: The sale has an oak wilt restriction, as well as a winter cut only within Payment Units 1 & 2.

A recreation site such as a trail, pathway, or campground is within the sale area or the vicinity. Certain restrictions/specifications may be applicable including time restrictions.

A timber sale contract for this lump sum, sealed bid timber sale will be awarded to the responsible bidder offering the highest sealed bid price. All units of volume listed below were estimated using the Inventory Manager computer program and the new Michigan taper model. Bids must be at or above the following advertised price for each product and species:

<u>PRODUCTS &amp; SPECIES</u>	<u>ESTIMATED UNITS*</u>	<u>ADVERTISED PRICE</u>
<b>Sawtimber</b>		
Black/Red (Hybrid) Oak	26.3 MBF	\$ 91.00 / MBF
Mixed Aspen	45.4 MBF	\$ 114.00 / MBF
Red Maple	59.1 MBF	\$ 111.00 / MBF
Red Oak	2.4 MBF	\$ 129.00 / MBF
Red Pine	126.7 MBF	\$ 105.00 / MBF
White Oak	12.6 MBF	\$ 70.00 / MBF
White Pine	82.6 MBF	\$ 80.00 / MBF
<b>Pulpwood</b>		
Balsam Fir	27 Cords	\$ 18.55 / Cord
Jack Pine	9 Cords	\$ 18.25 / Cord
Mixed Aspen	445 Cords	\$ 17.80 / Cord
Mixed Oak	102 Cords	\$ 26.30 / Cord
Paper Birch	7 Cords	\$ 16.25 / Cord
Red Maple	547 Cords	\$ 18.30 / Cord
Red Pine	167 Cords	\$ 41.35 / Cord
Tamarack	15 Cords	\$ 24.35 / Cord
White Pine	360 Cords	\$ 20.65 / Cord

\* The total volume is statistically estimated within plus (+) or minus (-) 12.01 percent. There are an estimated 2,561 cords on this timber sale, plus or minus 308 cords at the 95% confidence level. The estimated units are final and not subject to adjustment. Prospective bidders are urged to examine this timber and to make their own estimates of quantity and quality.

### **BOND AND PAYMENT SCHEDULE:**

1. A bond in the amount of \$3,566.00 to insure faithful performance of the conditions of the contract will be deposited by the successful bidder within 21 days of the sale award.
2. Cutting in any sale or unit without the required advance payment would be considered a trespass.
3. Total payment must be paid in advance or according to the following schedule :
  - (a) Ten percent (10%) of the sale value must be paid within 21 days of the sale award.
  - (b) The 10% down payment will be credited towards the first unit cut.
  - (c) Payment for each of the following units must be made before cutting begins in that unit:

PAYMENT UNIT NUMBER	PERCENT OF TOTAL SALE VALUE
01	11.8%
02	32.7%
03	20.8%
04	22.6%
05	4.3%
06	7.8%

4. If no cutting takes place, the 10% down payment will not be refunded.
5. Operations on the contract issued will terminate on 06/30/2027.

### **SALE STATISTICS**

Volumes were calculated in cubic feet using the Michigan taper model. Cubic foot volume includes all wood inside bark for the product indicated. For display purposes, cubic feet were converted to cords and MBF using a simple conversion factor, e.g. 79 cubic feet per cord and 185 cubic feet per MBF. The cubic foot volumes are precise; the cords and MBF volumes are not. Cubic foot volume cannot be directly converted to cords or boards with precision.

### SALE VOLUMES

The total estimated sale volume may not equal the sum of the species/products due to the nature of statistical calculations associated with double sampling methodology.

VOLUME			STATISTICAL RANGE IN CORDS	
TOTAL CUBIC FEET	TOTAL CORDS	PERCENT ERROR	MINIMUM	MAXIMUM
202,291	2,561	12.01%	2,253	2,868

### VDU VOLUMES

A VDU is a Volume Determination Unit. Volumes and their associated statistics are calculated at the VDU level and summarized to the sale level. There is often a one to one relationship between a VDU and a Payment Unit, but not always, depending on the cruise design. Refer to the VDU TO PAYMENT UNIT table.

VDU	VOLUME			RANGE IN CORDS	
	TOTAL CUBIC FEET	TOTAL CORDS	PERCENT ERROR	MINIMUM	MAXIMUM
30	26,694	338	27.45%	245	431
41	15,379	195	56.90%	84	305
42	6,654	84	54.40%	38	130
45	107,951	1,366	17.47%	1,128	1,605
48	45,613	577	17.83%	474	680
<b>TOTAL:</b>	<b>202,291</b>	<b>2,561</b>		<b>1,970</b>	<b>3,152</b>

### VDU TO PAYMENT UNIT

When a VDU is associated with more than one Payment Unit (PU), the VDU volumes are assigned to the PU based on acres of the VDU within the PU.

VDU	VDU ACRES	PU	PU ACRES
30	7.9	1	7.9
41	12.9	6	12.9
42	2.7	5	2.7
45	61.7	2	37.7
		3	24.0
48	28.0	4	28.0
<b>TOTAL:</b>	<b>113.2</b>		<b>113.2</b>

**DESCRIPTION OF TIMBER BY PAYMENT UNIT (PU)**

PU	MARKET GROUP	PRODUCT	QUANTITY	UNIT	ACRES	ADVERTISE PRICE		
1	Mixed Aspen	Sawtimber	7.5	MBF	7.9	\$8,437.55		
	<i>B. T. Aspen</i>		7.5	<i>MBF</i>				
	Red Maple		17.0	MBF				
	Red Oak		2.4	MBF				
	White Pine		10.0	MBF				
	Balsam Fir		Pulpwood	7			Cords	
	Mixed Aspen			42			Cords	
	<i>B. T. Aspen</i>			34			<i>Cords</i>	
	<i>Quaking Aspen</i>			8			<i>Cords</i>	
	Mixed Oak			3			Cords	
	<i>Red Oak</i>			3			<i>Cords</i>	
	Paper Birch			7			Cords	
	Red Maple			118			Cords	
	Tamarack			15			Cords	
	<i>Tamarack</i>			<i>Sawtimber</i>			4.7	<i>MBF</i>
	<i>Tamarack</i>		<i>Pulpwood</i>	6			<i>Cords</i>	
	White Pine		48	Cords				
2	Mixed Aspen	Sawtimber	19.1	MBF	37.7	\$23,298.45		
	<i>B. T. Aspen</i>		9.3	<i>MBF</i>				
	<i>Quaking Aspen</i>		9.8	<i>MBF</i>				
	Red Maple		17.4	MBF				
	Red Pine		57.6	MBF				
	White Pine		29.8	MBF				
	Balsam Fir		Pulpwood	4			Cords	
	Jack Pine			5			Cords	
	<i>Jack Pine</i>			<i>Sawtimber</i>			0.7	<i>MBF</i>
	<i>Jack Pine</i>			<i>Pulpwood</i>			4	<i>Cords</i>
	Mixed Aspen			166			Cords	
	<i>B. T. Aspen</i>			46			<i>Cords</i>	
	<i>Quaking Aspen</i>			120			<i>Cords</i>	
	Red Maple			178			Cords	
	Red Pine			44			Cords	
	White Pine			124			Cords	
	3		Mixed Aspen	Sawtimber			12.3	MBF
<i>B. T. Aspen</i>		6.0	<i>MBF</i>					
<i>Quaking Aspen</i>		6.3	<i>MBF</i>					
Red Maple		11.0	MBF					
Red Pine		36.6	MBF					
White Pine		18.9	MBF					
Balsam Fir		Pulpwood	2		Cords			
Jack Pine			4		Cords			
<i>Jack Pine</i>			<i>Sawtimber</i>		0.5	<i>MBF</i>		
<i>Jack Pine</i>			<i>Pulpwood</i>		3	<i>Cords</i>		
Mixed Aspen			106		Cords			
<i>B. T. Aspen</i>			29		<i>Cords</i>			
<i>Quaking Aspen</i>			77		<i>Cords</i>			
Red Maple			114		Cords			
Red Pine			28		Cords			
White Pine			79		Cords			
4		Black/Red (Hybrid)	Sawtimber		24.7	MBF	28.0	\$16,128.15
	Mixed Aspen	1.4		MBF				
	<i>B. T. Aspen</i>	1.4		<i>MBF</i>				
	Red Maple	2.6		MBF				
	Red Pine	18.9		MBF				
	White Oak	12.6		MBF				
	White Pine	22.8		MBF				

**DESCRIPTION OF TIMBER BY PAYMENT UNIT (PU), CON'T**

PU	MARKET GROUP	PRODUCT	QUANTITY	UNIT	ACRES	ADVERTISE PRICE
4 con't	Mixed Aspen	Pulpwood	81	Cords		
	<i>B. T. Aspen</i>		67	<i>Cords</i>		
	<i>Quaking Aspen</i>		14	<i>Cords</i>		
	Mixed Oak		67	Cords		
	<i>/Red (Hybrid) Oak</i>		51	<i>Cords</i>		
	<i>White Oak</i>		16	<i>Cords</i>		
	Red Maple		96	Cords		
	Red Pine		42	Cords		
	White Pine		99	Cords		
5	Mixed Aspen	Sawtimber	1.7	MBF	2.7	\$3,046.30
	<i>Quaking Aspen</i>		1.7	<i>MBF</i>		
	Red Maple		1.7	MBF		
	Red Pine		2.9	MBF		
	White Pine		1.1	MBF		
	Mixed Aspen	Pulpwood	4	Cords		
	<i>Quaking Aspen</i>		4	<i>Cords</i>		
	Red Maple		5	Cords		
	Red Pine		46	Cords		
	White Pine		10	Cords		
6	Black/Red (Hybrid)	Sawtimber	1.6	MBF	12.9	\$5,568.45
	Mixed Aspen		3.4	MBF		
	<i>Quaking Aspen</i>		3.4	<i>MBF</i>		
	Red Maple	9.4	MBF			
	Red Pine	10.7	MBF			
	Balsam Fir	Pulpwood	14	Cords		
	Mixed Aspen		46	Cords		
	<i>Quaking Aspen</i>		46	<i>Cords</i>		
	Mixed Oak		32	Cords		
	<i>/Red (Hybrid) Oak</i>		32	<i>Cords</i>		
	Red Maple		36	Cords		
	Red Pine	7	Cords			
TOTAL:			355.1	MBF		
TOTAL:			1,679	Cords		

## Sale Specific Conditions & Requirements

Sale Name: Dry Fly Pine & Oak

Sale Number: 61-110-23 Seq#: 2

### 1 - Sale Area

#### 1.2 - Boundaries

##### 1.2.1 - Painted boundaries (9/19)

The sale boundary and Payment Unit boundaries are marked and identified by blue, red and yellow paint. Exterior sale boundary lines against private property are marked with blue paint. Exterior sale boundary lines against state are marked with red paint. Interior Payment Unit boundaries are marked with yellow paint. The painted boundary line trees are not Included Timber and are to be protected unless marked with orange paint. Yellow painted trees designating an interior Payment Unit boundary are only to be cut when all surrounding Payment Units have been paid.

### 2 - Timber Specifications

#### 2.1 - Included Timber

##### 2.1.1 - Clearcut unit(s) with unmerchantable trees (6/14)

Within Payment Unit(s) 6, cut all trees that are two (2) inches or more at DBH, except do not cut white pine, white oak, and trees marked with green paint.

##### 2.1.3 - Cut tree marked unit(s) (12/08)

Within Payment Unit(s) 2 & 3, all trees are designated for cutting when marked with orange paint above and below stump height, regardless of merchantability. In addition, cut all aspen, red maple, jack pine, and balsam fir which meet minimum piece specifications.

##### 2.1.7 - Leave tree marked unit(s) (6/14)

Within Payment Unit(s) 1 & 4, all trees, which meet minimum piece specifications in 2.2 Utilization, are designated for cutting. In addition, the following specifications apply;

- Within Payment Unit 1, do not cut any green painted trees, cedar, white oak, and white pine greater than 24 inches at DBH.
- Within Payment Unit 4, do not cut any green paint, as well as oak and pine less than 6 inches at DBH.

##### 2.1.8 - Designated plantation row unit(s) (12/08)

Within Payment Unit(s) 5, all red and white pine trees which meet minimum piece specifications in 2.2 Utilization, within designated plantation rows are designated for cutting. Designated plantation rows will begin on the 3rd and 4th row inside the boundary and follow a take two, leave two pattern. In addition cut all aspen and red maple.

#### 2.2 - Utilization

##### 2.2.3 - Stump heights (4/07)

Stump heights within the Sale Area shall not exceed 12 inches for trees greater than 10 inches at DBH and 4 inches for trees smaller than 10 inches at DBH.

### 3 - Payments

#### 3.3 - Pre-measured Sales

##### 3.3.4 - Dividing payment units (7/14)

Payment Unit(s) with a value greater than \$15,000 may be divided at the request of the Purchaser and upon approval of the Unit Manager. Dividing Payment Units is a contract modification which requires a Timber Sale Contract Amendment. There will be only one division per Payment Unit.

#### 3.4 - Damaged Timber

##### 3.4.1 - Damaged timber (7/16)

General Condition and Requirement 3.4 Damaged Timber, defines liquidated damages for undesignated live merchantable trees which are cut or injured. In addition, extreme care should be taken to avoid damage to tree seedlings and saplings.

Within the Sale Area, if more than 20% of the tree seedlings or saplings (1/4" to 4.5" DBH) within a specified portion of the

Sale Area are damaged, liquidated damages will be assessed at \$250 per acre for all acreage within that specified portion of the Sale Area that was damaged.

No damage is acceptable to undesignated live merchantable trees. Within the Sale Area, if more than 10 % of trees (> 4.5" DBH) within a specified area of the sale are damaged, liquidated damages will be assessed for all trees damaged. Rates will be in accordance with General Condition and Requirement 3.4 Damaged Timber.

#### **4 - Transportation**

##### 4.1 - Construction

###### 4.1.6 - Road construction (1/09)

Construction of new roads or improvements of existing roads must be approved by the Sale Administrator and shall be done in such a way as to minimize the environmental and visual impacts. Merchantable trees shall be cut and utilized unless otherwise directed. Non-merchantable trees shall be severed and laid flat on the ground. Slash shall be scattered, not left in windrows, and kept a minimum of 10 feet back from the road edge. Stumps shall be set upright, not left on edge, and be moved at least 10 feet away from the road edge. Disturbed soil shall be feathered into the woods and not left in berms or windrows.

###### 4.1.7 - Road closure (10/11)

All new roads built into the sale must be blocked to vehicle traffic within 30 days of completion of hauling. Overgrown roads that are reopened shall be considered new roads. In general, this will require constructing a four (4') foot high berm of stumps and logs covered with earth. Stumps and brush must be placed along the remainder of the trail. These roads must be rendered impassable to cars and trucks. Contact the Sale Administrator for specific details of design and placement.

##### 4.2 - Maintenance

###### 4.2.1 - Hauling restriction (12/08)

Hauling may be restricted on forest roads by the Unit Manager or his/her representative. The restriction may occur during wet weather conditions.

#### **5 - Operations**

##### 5.1 - Notification

###### 5.1.6 - Utility R.O.W. (4/19)

It is the responsibility of the Purchaser to obtain permission from the utility company to utilize the power line R.O.W. for operations.

##### 5.2 - Conduct of Operations

###### 5.2.1 - Slash

###### 5.2.1.2 - Slash Removal

###### 5.2.1.2.1 - Slash removal, right-of-way (9/16)

All slash must be removed at least 10 feet from the cleared right-of-way of the power line along King Rd.

###### 5.2.1.8 - Slash height (12/08)

No slash or tree tops may exceed 24 inches in height.

###### 5.2.3 - Operating Restrictions

###### 5.2.3.1 - Operating restrictions (9/11)

Within Payment Unit(s) 1 & 2, unless changed by written agreement, cutting, skidding, and hauling are limited to the period of November 1 to April 15. This restriction is because of proximity to the Manistee River and a frequently used boat launch.

###### 5.2.3.4 - Oak wilt restriction, no exceptions (1/18)

Within Payment Unit(s) 3-6, cutting, skidding, hauling within the sale and brushing of access roads to the sale are not permitted during the period of April 15 to July 15. No exceptions will be granted. This is necessary to reduce the spread of oak wilt.

#### 5.2.29 - Shrub protection (1/20)

Do not cut or damage hawthorn, witch-hazel, dogwood or juneberry. These woody-shrub plants are highly beneficial to various wildlife species.

#### 5.2.31 - Landing locations (9/13)

Locations and size of landings must be approved by the Sale Administrator before they are established.

#### 5.2.32 - Decking/landing restoration (9/13)

All decking and landing areas must have the surface area restored to a condition equal to or better than before. This is to ensure the proper regeneration of the stand. Wood debris, chips and "cookies" from trimmings must be removed or scattered away from landing and loading areas and may not be windrowed on the edge.

### 5.4 - Soil Protection

#### 5.4.1 - Rutting restriction, general (7/16)

Operations are to cease immediately if equipment and weather conditions result in rutting of roads and/or skid trails which are 12 inches or greater in depth and 50 feet in length. The Unit Manager or his/her representative may restrict hauling and/or skidding if ruts exceed the specified depth. With the Unit Manager or his/her representative's approval, the Purchaser may return to the area when the risk of rutting has decreased.

### 5.8 - Protection of Endangered Species

#### 5.8.5 - Protection of raptor nests (3/13)

All trees with raptor nests will be protected if found during harvesting operations. Notification will be made to the Unit Manager or his/her representative who will notify the Wildlife Biologist so an on-site evaluation and recommendation can be made, if necessary.

## 6 - Safety and Fire Prevention

### 6.2 - Signing

#### 6.2.1 - Road posting (10/20)

The Purchaser is responsible for posting and maintaining caution signs on King Road prior to beginning operations. The road must be posted at appropriate distances from the Sale Area to warn of logging activity and truck traffic. Signs must be removed when harvest operations are suspended or completed. The Purchaser will provide these signs.



# TIMBER SALE MAP

This information provided by authority of Part 525, 1994 PA 451, as amended.

Forest Management Unit Traverse City		County Kalkaska	Mapped By Crigier	Date 04/21/2023	Page 1	of 1
Township 25N 26N	Range 05W 05W	Section(s) and Subdivision(s) Sec 3 Sec 34	Cruised By Crigier	Scale 1:15,840		

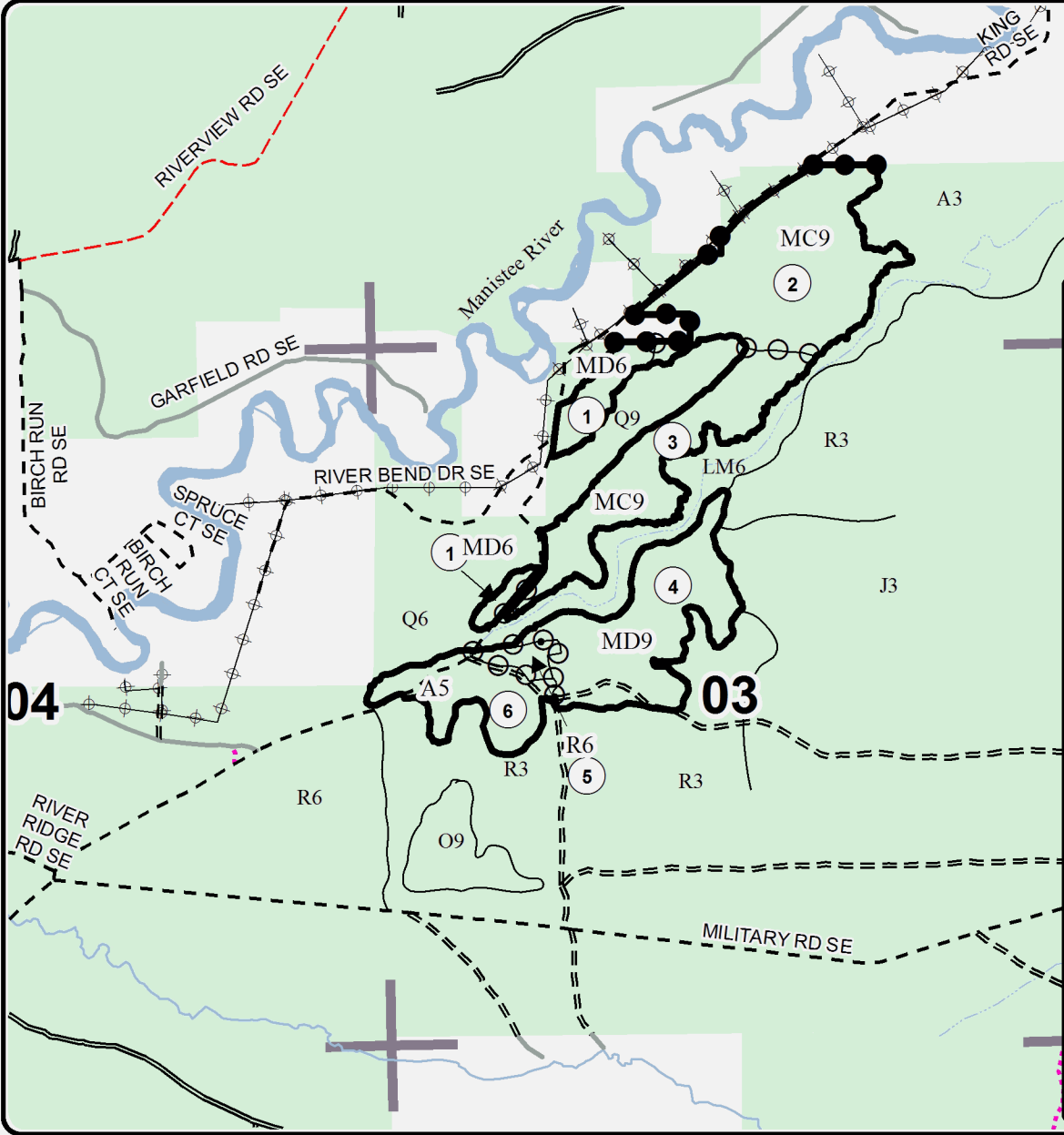
Cover Type				Density	
A = Aspen	H = Hemlock	N = Marsh	U = Upland Brush	0 = Non Stocked	5 = Pole Timber Medium
B = Paper Birch	J = Jack Pine	O = Oak	UM = Upland Mixed	1 = Seedling Sapling Poor	6 = Pole Timber Well
C = Cedar	L = Lowland Brush	P = Lowland Poplar	V = Bog or Marsh	2 = Seedling Sapling Medium	7 = Saw Timber Poor
D = Treed Bog	LM = Lowland Mixed	Q = Mixed Swamp Conifer	W = White Pine	3 = Seedling Sapling Well	8 = Saw Timber Medium
E = Swamp Hdwoods	M = Mpl, Bch, Brch	R = Red Pine	X = Non Stocked	4 = Pole Timber Poor	9 = Saw Timber Well
F = Spruce Fir	MC = Mixed Conifer	S = Black Spruce	Z = Water		
G = Grass	MD = Mixed Deciduous	T = Tamarack			

PU	Acres	PU	Acres
1	7.9	4	28
2	37.7	5	2.7
3	24	6	12.9

## Dry Fly Pine & Oak

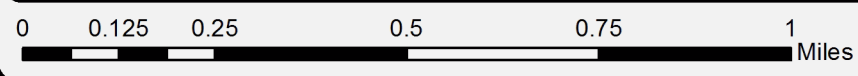
### Compartment 134

113.2 Acres



### Legend

- Against State (Red)
- Payment Unit (Yellow)
- Private Line (Blue)
- Secondary Forest Road
- Forest Access Route
- Gravel Road
- County Road - Seasonal
- Private
- Temporary Management Access
- Powerline
- Section Corners
- Intermittent Stream
- Perennial River
- State Forests





Alfalfa Red Pine (61-105-24)  
T28N, R07W, SEC. 24; T28N, R07W, SEC. 25; Kalkaska COUNTY

In response to the notice of sale to be held 4:00 p.m. (local time) on June 20, 2024, I am hereby submitting my sealed bid ( firm offer) for the following forest products to be cut. Bids for individual species must be at or above the advertised price. All non-responsive bid forms may be rejected.

<u>PRODUCTS &amp; SPECIES</u>	<u>ESTIMATED VOLUME*</u>	<u>ADVERTISED PRICE</u>	<u>BID PRICE/UNIT</u>
Pulpwood			
B. T. Aspen	38 Cords	\$ 16.45/Cord	\$ _____
Balsam Fir	1 Cords	\$ 17.15/Cord	\$ _____
Mixed Hardwood	23 Cords	\$ 16.85/Cord	\$ _____
Paper Birch	1 Cords	\$ 15.00/Cord	\$ _____
Red Pine	1,209 Cords	\$ 38.15/Cord	\$ _____
White Pine	1 Cords	\$ 19.05/Cord	\$ _____

\*The volumes are statistically estimated within plus (+) or minus (-) 19.10 percent at 95% confidence level. These estimated volumes are final and not subject to adjustment. Prospective bidders are urged to examine this timber and to make their own estimates of quantity and quality.

I understand that any or all bids may be rejected. All bids must be signed and all bid items must be bid or the bid form may be rejected. I also understand that consideration and awarding a contract will be based upon my past performance and ability to complete the contract based upon equipment and staffing subject to my control.

FEDERAL ID: \_\_\_\_ - \_\_\_\_ - \_\_\_\_ or SOCIAL SECURITY NUMBER: \_\_\_\_ - \_\_\_\_ - \_\_\_\_

Company or individual bidding: \_\_\_\_\_

Company representative's name: \_\_\_\_\_

Address: \_\_\_\_\_

City: \_\_\_\_\_ State: \_\_\_\_\_ Zip: \_\_\_\_\_

IF AVAILABLE, PLEASE PLACE THE PERSONALIZED LABEL FROM YOUR PROSPECTUS IN THE ABOVE BOX.

Individual or company representative's signature: \_\_\_\_\_ Date: \_\_\_\_\_

Phone number : \_\_\_\_\_ Email (optional): \_\_\_\_\_

**THE WINNING BIDDER MUST COMPLETE THE VERIFICATION OF WORKER'S DISABILITY COMPENSATION ACT COMPLIANCE (ON REVERSE SIDE IF DOUBLE SIDED) WITHIN 21 DAYS OF SALE AWARD DATE**



**TIMBER SALE  
VERIFICATION OF WORKER'S DISABILITY  
COMPENSATION ACT COMPLIANCE**

*As required by Act 317, P.A. 1969 (Worker's Compensation) and  
Part 5 of Act 451 of 1994, as amended.*

FOR DEPARTMENT USE ONLY	
Sale Number (XX - XXX - XX - XX)	
Forest Management Unit:	

**VERIFICATION OF WORKER'S DISABILITY COMPENSATION ACT COMPLIANCE**

- **This verification must be completed and submitted within 21 days of contract award and prior to the issuance of the timber sale contract.**
- **In addition, if boxes 2B or 2C are checked, then Notice of Exclusion or Certificate of Insurance must be submitted within twenty-one (21) days of the contract award and prior to the issuance of the timber sale contract.**
- **All information must be typed or printed except for written signatures.**

Please Check Appropriate Categories:

- My business is organized as (you **must** check one of the boxes below):
  - Sole Proprietorship (individual)
  - Partnership
  - Corporation
- You **must** check one of the boxes below:
  - I certify my business is a sole proprietorship and it has no employees but the sole proprietor. I am not subject to the Worker's Compensation Laws.
  - I certify my business has satisfied its obligation to the Worker's Compensation Act through the use of an approved Notice of Exclusion (BWC-337, Rev. 5/96). I will provide a copy of the Notice of Exclusion within 21 days of the contract award. (For questions or a copy of the BWC-337, please call the Worker's Compensation Bureau at 517-322-1195).
  - I certify my business has a Worker's Compensation Policy. I will provide an original Certificate of Insurance within twenty-one (21) days of the contract award.
- If you have checked item 2(A) or 2(B), you **must** indicate the number of **both** full-time and part-time employees, other than yourself, including family members and active partners (if none, you must enter "0").

\_\_\_\_\_ Full-time Employees

\_\_\_\_\_ Part-time Employees

Name of Business		Federal ID (or) Social Security No.	
Address		Telephone (        )	
City	State	ZIP	

*I hereby certify that the above information is true and correct. I agree to notify the Michigan DNR of any changes that occur in factors affecting my coverage during any of my present and future operations.*

\_\_\_\_\_  
Signature of Owner or Authorized Representative

\_\_\_\_\_  
Title

\_\_\_\_\_  
Date

Farewell Miggy Red Pine (61-103-24)  
T25N, R07W, SEC. 24; Kalkaska COUNTY

In response to the notice of sale to be held 4:00 p.m. (local time) on June 20, 2024, I am hereby submitting my sealed bid ( firm offer) for the following forest products to be cut. Bids for individual species must be at or above the advertised price. All non-responsive bid forms may be rejected.

<u>PRODUCTS &amp; SPECIES</u>	<u>ESTIMATED VOLUME*</u>	<u>ADVERTISED PRICE</u>	<u>BID PRICE/UNIT</u>
Sawtimber			
Red Pine	12.6 MBF	\$ 72.00/MBF	\$ _____
Pulpwood			
Black Cherry	7 Cords	\$ 12.65/Cord	\$ _____
Jack Pine	24 Cords	\$ 12.65/Cord	\$ _____
Red Pine	707 Cords	\$ 28.60/Cord	\$ _____

\*The volumes are statistically estimated within plus (+) or minus (-) 22.18 percent at 95% confidence level. These estimated volumes are final and not subject to adjustment. Prospective bidders are urged to examine this timber and to make their own estimates of quantity and quality.

I understand that any or all bids may be rejected. All bids must be signed and all bid items must be bid or the bid form may be rejected. I also understand that consideration and awarding a contract will be based upon my past performance and ability to complete the contract based upon equipment and staffing subject to my control.

FEDERAL ID: \_\_\_\_\_ - \_\_\_\_\_ or SOCIAL SECURITY NUMBER: \_\_\_\_\_ - \_\_\_\_\_ - \_\_\_\_\_

Company or individual bidding: \_\_\_\_\_

Company representative's name: \_\_\_\_\_

Address: \_\_\_\_\_

City: \_\_\_\_\_ State: \_\_\_\_\_ Zip: \_\_\_\_\_

IF AVAILABLE, PLEASE PLACE THE PERSONALIZED LABEL FROM YOUR PROSPECTUS IN THE ABOVE BOX.

Individual or company representative's signature: \_\_\_\_\_ Date: \_\_\_\_\_

Phone number : \_\_\_\_\_ Email (optional): \_\_\_\_\_

**THE WINNING BIDDER MUST COMPLETE THE VERIFICATION OF WORKER'S DISABILITY COMPENSATION ACT COMPLIANCE (ON REVERSE SIDE IF DOUBLE SIDED) WITHIN 21 DAYS OF SALE AWARD DATE**



<b>FOR DEPARTMENT USE ONLY</b>	
Sale Number (XX - XXX - XX - XX)	
Forest Management Unit:	

# TIMBER SALE VERIFICATION OF WORKER'S DISABILITY COMPENSATION ACT COMPLIANCE

As required by Act 317, P.A. 1969 (Worker's Compensation) and  
Part 5 of Act 451 of 1994, as amended.

## VERIFICATION OF WORKER'S DISABILITY COMPENSATION ACT COMPLIANCE

- This verification must be completed and submitted within 21 days of contract award and prior to the issuance of the timber sale contract.
- In addition, if boxes 2B or 2C are checked, then Notice of Exclusion or Certificate of Insurance must be submitted within twenty-one (21) days of the contract award and prior to the issuance of the timber sale contract.
- All information must be typed or printed except for written signatures.

Please Check Appropriate Categories:

1. My business is organized as (you **must** check one of the boxes below):
  - A.  Sole Proprietorship (individual)
  - B.  Partnership
  - C.  Corporation
2. You **must** check one of the boxes below:
  - A.  I certify my business is a sole proprietorship and it has no employees but the sole proprietor. I am not subject to the Worker's Compensation Laws.
  - B.  I certify my business has satisfied its obligation to the Worker's Compensation Act through the use of an approved Notice of Exclusion (BWC-337, Rev. 5/96). I will provide a copy of the Notice of Exclusion within 21 days of the contract award. (For questions or a copy of the BWC-337, please call the Worker's Compensation Bureau at 517-322-1195).
  - C.  I certify my business has a Worker's Compensation Policy. I will provide an original Certificate of Insurance within twenty-one (21) days of the contract award.
3. If you have checked item 2(A) or 2(B), you **must** indicate the number of **both** full-time and part-time employees, other than yourself, including family members and active partners (if none, you must enter "0").

\_\_\_\_\_ Full-time Employees

\_\_\_\_\_ Part-time Employees

Name of Business		Federal ID (or) Social Security No.	
Address		Telephone (       )	
City	State	ZIP	

*I hereby certify that the above information is true and correct. I agree to notify the Michigan DNR of any changes that occur in factors affecting my coverage during any of my present and future operations.*

\_\_\_\_\_  
Signature of Owner or Authorized Representative

\_\_\_\_\_  
Title

\_\_\_\_\_  
Date

Please complete the "SEALED BID" information on the next page

Dry Fly Pine & Oak (61-110-23)  
T25N, R06W, SEC. 3; T25N, R06W, SEC. 4; T26N, R06W, SEC. 34; Kalkaska

In response to the notice of sale to be held 4:00 p.m. (local time) on June 20, 2024, I am hereby submitting my sealed bid ( firm offer) for the following forest products to be cut. Bids for individual species must be at or above the advertised price. All non-responsive bid forms may be rejected.

<u>PRODUCTS &amp; SPECIES</u>	<u>ESTIMATED VOLUME*</u>	<u>ADVERTISED PRICE</u>	<u>BID PRICE/UNIT</u>
<b>Sawtimber</b>			
Black/Red (Hybrid) Oak	26.3 MBF	\$ 91.00/MBF	\$ _____
Mixed Aspen	45.4 MBF	\$ 114.00/MBF	\$ _____
Red Maple	59.1 MBF	\$ 111.00/MBF	\$ _____
Red Oak	2.4 MBF	\$ 129.00/MBF	\$ _____
Red Pine	126.7 MBF	\$ 105.00/MBF	\$ _____
White Oak	12.6 MBF	\$ 70.00/MBF	\$ _____
White Pine	82.6 MBF	\$ 80.00/MBF	\$ _____
<b>Pulpwood</b>			
Balsam Fir	27 Cords	\$ 18.55/Cord	\$ _____
Jack Pine	9 Cords	\$ 18.25/Cord	\$ _____
Mixed Aspen	445 Cords	\$ 17.80/Cord	\$ _____
Mixed Oak	102 Cords	\$ 26.30/Cord	\$ _____
Paper Birch	7 Cords	\$ 16.25/Cord	\$ _____
Red Maple	547 Cords	\$ 18.30/Cord	\$ _____
Red Pine	167 Cords	\$ 41.35/Cord	\$ _____
Tamarack	15 Cords	\$ 24.35/Cord	\$ _____
White Pine	360 Cords	\$ 20.65/Cord	\$ _____

\*The volumes are statistically estimated within plus (+) or minus (-) 12.01 percent at 95% confidence level. These estimated volumes are final and not subject to adjustment. Prospective bidders are urged to examine this timber and to make their own estimates of quantity and quality.

I understand that any or all bids may be rejected. All bids must be signed and all bid items must be bid or the bid form may be rejected. I also understand that consideration and awarding a contract will be based upon my past performance and ability to complete the contract based upon equipment and staffing subject to my control.

FEDERAL ID: \_\_\_\_ - \_\_\_\_ - \_\_\_\_ or SOCIAL SECURITY NUMBER: \_\_\_\_ - \_\_\_\_ - \_\_\_\_

Company or individual bidding: \_\_\_\_\_

Company representative's name: \_\_\_\_\_

Address: \_\_\_\_\_

City: \_\_\_\_\_ State: \_\_\_\_\_ Zip: \_\_\_\_\_

IF AVAILABLE, PLEASE PLACE THE PERSONALIZED LABEL FROM YOUR PROSPECTUS IN THE ABOVE BOX.

Individual or company representative's signature: \_\_\_\_\_ Date: \_\_\_\_\_

Phone number : \_\_\_\_\_ Email (optional): \_\_\_\_\_

**THE WINNING BIDDER MUST COMPLETE THE VERIFICATION OF WORKER'S DISABILITY COMPENSATION ACT COMPLIANCE (ON REVERSE SIDE IF DOUBLE SIDED) WITHIN 21 DAYS OF SALE AWARD DATE**



FOR DEPARTMENT USE ONLY	
Sale Number (XX - XXX - XX - XX)	
Forest Management Unit:	

# TIMBER SALE VERIFICATION OF WORKER'S DISABILITY COMPENSATION ACT COMPLIANCE

As required by Act 317, P.A. 1969 (Worker's Compensation) and  
Part 5 of Act 451 of 1994, as amended.

## VERIFICATION OF WORKER'S DISABILITY COMPENSATION ACT COMPLIANCE

- This verification must be completed and submitted within 21 days of contract award and prior to the issuance of the timber sale contract.
- In addition, if boxes 2B or 2C are checked, then Notice of Exclusion or Certificate of Insurance must be submitted within twenty-one (21) days of the contract award and prior to the issuance of the timber sale contract.
- All information must be typed or printed except for written signatures.

Please Check Appropriate Categories:

1. My business is organized as (you **must** check one of the boxes below):
  - A.  Sole Proprietorship (individual)
  - B.  Partnership
  - C.  Corporation
2. You **must** check one of the boxes below:
  - A.  I certify my business is a sole proprietorship and it has no employees but the sole proprietor. I am not subject to the Worker's Compensation Laws.
  - B.  I certify my business has satisfied its obligation to the Worker's Compensation Act through the use of an approved Notice of Exclusion (BWC-337, Rev. 5/96). I will provide a copy of the Notice of Exclusion within 21 days of the contract award. (For questions or a copy of the BWC-337, please call the Worker's Compensation Bureau at 517-322-1195).
  - C.  I certify my business has a Worker's Compensation Policy. I will provide an original Certificate of Insurance within twenty-one (21) days of the contract award.
3. If you have checked item 2(A) or 2(B), you **must** indicate the number of **both** full-time and part-time employees, other than yourself, including family members and active partners (if none, you must enter "0").

\_\_\_\_\_ Full-time Employees

\_\_\_\_\_ Part-time Employees

Name of Business		Federal ID (or) Social Security No.	
Address		Telephone (       )	
City	State	ZIP	

*I hereby certify that the above information is true and correct. I agree to notify the Michigan DNR of any changes that occur in factors affecting my coverage during any of my present and future operations.*

\_\_\_\_\_  
Signature of Owner or Authorized Representative

\_\_\_\_\_  
Title

\_\_\_\_\_  
Date

Please complete the "SEALED BID" information on the next page