



**DEPARTMENT OF NATURAL RESOURCES
STATE OF MICHIGAN
TIMBER SALE PROSPECTUS #7467**

SCHEDULED SALE DATE AND TIME: 2:00 p.m. (local time) on July 10, 2024.

LOCATION: SHINGLETON MGMT UNIT, PO BOX 67, M 28 WEST, SHINGLETON, MI 49884.

PROSPECTUS NOTE: The bidder is advised to inspect the sale area and review the location, estimated volumes, operating costs and contract terms of proposed sales. Please be aware that some landowners may request 60 days or more notice for access across their land.

Notice is hereby given that bids will be received by the Unit Manager, SHINGLETON MANAGEMENT UNIT, for certain timber on the following described lands:

Ecklund Experience (41-004-24) / T46N, R15W, SEC. 15, SWSW.

T46N, R15W, SEC. 21, NENE.

T46N, R15W, SEC. 22, N1/2NW, NENE.

T46N, R15W, SEC. 23, N1/2NW.

Schoolcraft County, Advertised Price \$59,910.85, 110.0 Acres, Hardwood, Spruce/Fir/Tamarack.

SALE NOTE: Hauling may be restricted on the Walsh Grade by the Unit Manager or his/her representative. The restriction may occur during spring break up (see spec 4.2.1).

Access may be through private land.

Highrollways Chips 2 (41-013-24) / T43N, R15W, SEC. 29, SESE.

T43N, R15W, SEC. 32, NE, NESE.

T43N, R15W, SEC. 33, NWNW, S1/2NW, SW.

Schoolcraft County, Advertised Price \$148.10, 148.1 Acres, .

SALE NOTE: Payment Unit 1 must be chip harvested to facilitate future wildlife habitat work. See Sale Spec 2.2.2 for details.

There is a snowmobile trail and is shown on the Timber Sale Map. See Sale Spec 5.2.41 for restrictions.

A recreation site such as a trail, pathway, or campground is within the sale area or the vicinity. Certain restrictions/specifications may be applicable including time restrictions.

GNA2 Cache (41-801-24) / T41N, R19W, SEC. 1 , NE,N1/2SE.

T42N, R18W, SEC. 30, S1/2SW,S1/2SE.

T42N, R18W, SEC. 31, NWNW,N1/2NE,SENE,SWSW.

T42N, R19W, SEC. 25, S1/2SE.

T42N, R19W, SEC. 36, NE,SE.

Delta County, Advertised Price \$509,562.15, 365.4 Acres, Red Pine, Hardwood.

SALE NOTE: This is a Good Neighbor Authority timber sale on national forest land. This timber sale was set-up and is being advertised by the Michigan DNR for the US Forest Service. The contract will be awarded and administered by the MDNR.

The Southwest Branch of the Fishdam Creek must be crossed to access Unit 12, this crossing will require the installation of a crane mat bridge. See Sale Spec 4.1.2 for details.

No new roads will be permitted in any Payment Unit. See Sale Spec 4.1.12 for additional information.

Hauling on Forest Service Road 2410 is restricted when Delta County Road Restrictions are in effect. The restriction is during spring break up.

Within Payment Unit(s) 4 and 5, harvesting is limited to frozen soil conditions, defined as frost at least 6 inches thick or compacted snow at least 12 inches thick, due to soft soils.

It is recommended, but not required, that within Payment Unit(s) 3 and 7, harvesting occur during dry summer or frozen winter due to soft soils.

A recreation site such as a trail, pathway, or campground is within the sale area or the vicinity. Certain restrictions/specifications may be applicable including time restrictions. Access may be through other public land.

Weasley woods (41-022-23) / T46N, R15W, SEC. 13, SWSW.

T46N, R15W, SEC. 14, SESE.

T46N, R15W, SEC. 23, NENE,SESW,SWSE.

T46N, R15W, SEC. 24, W1/2NW.

T46N, R15W, SEC. 25, SWNW,NWSW.

T46N, R15W, SEC. 26, NENW,NE,NESE.

Schoolcraft County, Advertised Price \$34,116.00, 151.2 Acres, Spruce/Fir/Tamarack, Jack Pine.

SALE NOTE: Within Payment Unit(s) 3-5, harvesting is limited to frozen or snow-covered conditions because of threatened or endangered species.

Hauling may be restricted on the Walsh Grade by the Unit Manager or his/her representative. The restriction may occur during spring break up.

BID INSTRUCTIONS (VER. 10/10/2022):

1. Scheduled Bid Location, Date, and Time (2/11)

Bids must be received by the Unit Manager, SHINGLETON OFFICE, PO Box 67 M 28 West, Shingleton, MI 49884, no later than 2:00 p.m. (local time) on July 10, 2024. For further information concerning this sale, contact Robert Burnham at 906-420-1645 extension n/a.

2. Bidder's Qualifications (10/22)

If all or part of a timber sale was prepared by a private contractor, the contractor and that contractor's company are not permitted to bid on the timber sale. A person must be 18 years of age or older to purchase timber. Permanent employees of the Department of Natural Resources or members of their immediate household may not bid. Former employees, in the permanent or seasonal class, may not bid until 3 months after the last day of active duty. Bids will not be accepted from individuals or companies appearing on the DNR/FRD No-Bid List. This list contains the names of purchasers who previously failed to execute a contract within 21-days or who have a history of poor performance.

3. Preparation of Sealed Bids (5/16)

Bid Forms may be completed online thru Michigan DNR Timber Sale Online Bidding (OLB) at www.michigan.gov/timberbidding or by completing the hardcopy Bid Form found in the Timber Sale Prospectus. Hardcopy Bid Forms shall be manually signed in ink. Registration in OLB is considered your 'signature' for all bids submitted thru that system. Bid prices must be entered for each species and product in the Bid Price column for all material subject to bidding and all fill-in blanks must be completed. If erasures or other changes appear on the hardcopy Bid Form, each erasure or change must be initialed by the person signing the bid.

4. Submission of Sealed Bids (5/16)

Bid forms may be obtained from the Unit Manager or thru OLB. Bids may be submitted hardcopy or thru OLB. All hardcopy bids must be submitted on the bid form and in an envelope clearly identified as described in this section. NOTE: Only one bid form per bid envelope. Sealed bids must be submitted to the Unit office designated in the prospectus and must be submitted at or prior to the time established in the prospectus. The envelope should show on the outside (a) the sale name or number and (b) the date and time of bid opening, as shown in the prospectus. Bids received after the time specified in the sale prospectus are late bids and will be rejected.

It is possible for a bidder to submit multiple bids on a single sale. For example, a bid may be submitted hardcopy and a bid may be submitted thru OLB. Or, two bidders from the same company could both submit bids on the same sale. If this were to happen, the State would accept all bids received and award the contract accordingly. All bidding and contractual requirements would apply to all bids received.

5. Public Opening of Sealed Bids (7/16)

If conditions permit, the sealed bids will be publicly opened and posted at the time and place set in the prospectus.

If a bidder, present at a bid opening, has submitted bids on more than one sale, that bidder may withdraw their unopened bid envelopes or announce the withdrawal of their online bid after being declared the successful bidder on one sale.

6. Award of Contract (1/11)

Award of the contract will be made to the Bidder whose bid, conforming to the prospectus, is most advantageous to the State of Michigan on the basis of total value at rates bid for the estimated quantities. The State reserves the right to reject any bid or waive any minor irregularity in bids received. A written award mailed (or otherwise furnished) to the successful Bidder shall be deemed to result in a binding contract without further action by either party.

7. Down Payment (1/11)

The Bidder to whom award is made must make a down payment within 21 days of the sale award. The amount of the down payment will be calculated as shown in the Bond and Payment Schedule of this prospectus. Only cash may be used to meet this requirement.

8. Performance Security (1/11)

As guarantee of faithful performance, a cash bond, certificate of deposit, surety bond or irrevocable letter of credit (LOC) is required within 21 days of the sale award. The amount of the performance security is shown in the Bond and

Payment Schedule of this prospectus. If an LOC or surety is used, the coverage must extend for at least 6 months beyond the contract expiration.

9. Worker's Compensation (10/22)

Purchaser shall obtain worker's compensation insurance to cover claims under Michigan's Worker's Disability Compensation Act of 1969 or similar employee benefit act of any other state applicable to an employee. Verification of Worker's Disability Compensation Act Compliance must be completed and submitted within 21 days of contract award and prior to the issuance of the timber sale contract. In addition, if applicable, Notice of Exclusion or Certificate of Insurance must also be submitted.

10. Timber Sale Contract (10/22)

Additional conditions and requirements common to all timber sales are listed on the timber sale contract (R4031) and are available on line at www.michigan.gov/timber. Contact the Unit Manager for additional information or a sample contract. Within 21 days of the date of the award letter, the bidder must sign the contract and provide the required down payment, performance security, and verification of worker's disability compensation. The down payment and performance security shall be in accordance with the provisions of the timber sale contract, in the sums stated in this prospectus. If these actions are not taken, then the Bidder, the Bidder's corporation, and the corporation's principals may not be permitted to bid on State timber sales for a period of 3 months after the first offense, 6 months after the second offense, and 1 year after the third offense. An offense will only be counted against the Bidder for 5 years. In addition, the Bidder certifies that if awarded this contract, the Bidder will complete the timber sale contract in accordance with its terms and any modifications thereof including requirements to purchase, cut, and remove the included timber by the expiration date.

Payment Unit values in the State Forest Timber Sale Contract are calculated based on the advertised value of the Payment Unit as a percentage of the total advertised value of the contract. The advertised value of each Payment Unit is given in the Description of Timber by Payment Unit table on the Timber Sale Information page. For example, if the value of Payment Unit 1 is advertised as \$1,500 and the total Timber Sale value is advertised as \$10,000, the contract price for Payment Unit 1 will be 15% of the total bid price ($\$1,500/\$10,000 * 100$).

11. Disclaimer of Estimates and Bidder's Warranty of Inspection (10/22)

Before submitting this bid, the Bidder is advised and cautioned to inspect the sale area, review the requirements of the sale contract, and take other steps as may be reasonably necessary to ascertain the location, estimated volumes, construction estimates, and operating costs of the proposed sale. Failure to do so will not relieve the Bidder from responsibility for completing the contract.

The Bidder warrants that this bid is submitted solely on the basis of the Bidder's examination and inspection of the quality and quantity of the timber offered for sale and the Bidder's opinion of the value thereof and the costs of recovery. No reliance should be placed on the State of Michigan's estimates of timber quality, quantity or costs of recovery. Bidder further acknowledges that the State of Michigan: (i) expressly disclaims any warranty of fitness of timber for any purpose; (ii) offers this timber as is without any warranty of quality (merchantability) or quantity and (iii) expressly disclaims any warranty as to the quantity or quality of timber sold.

12. Certification and Chain-of-Custody (10/22)

Unless otherwise indicated in the contract under section 7 – Other Conditions of the Sale Specific Conditions & Requirements, the area encompassed by this timber sale is certified to the standards of the Forest Stewardship Council (FSC) - Certificate #SCS-FM/COC-00090N and the Sustainable Forestry Initiative (SFI) - Certificate #NSF-SFIS-5Y031-SF5. Forest products from this sale may be delivered to the mill as "FSC 100% and / or SFI certified" as long as the contractor hauling the forest products is chain-of-custody (COC) certified or covered under a COC certificate from the destination mill. The purchaser is responsible for maintaining COC after leaving the sale area.

13. Good Neighbor Authority (GNA) Requirements (10/22)

If the name of this timber sales contains the acronym GNA, it is authorized by the Good Neighbor Authority (GNA) and covered by various agreements between the U.S. Forest Service and the State. The timber sale occurs on federal land and the following conditions apply:

GNA contracts on US Forest Service land will not be awarded to purchasers on the Federal list of excluded parties. The System for Award Management (SAM) will be checked for active excluded parties prior to award of contract. In

addition, the Bidder to whom award is made must complete an Assurance Regarding Felony Conviction or Tax Delinquent Status for Corporate Applicants (AD-3031).

14. Good Neighbor Authority (GNA) Requirements, con't (10/22)

Bidder certifies, by signing this bid form, that to the best of Bidder's knowledge that the following representations are accurate and complete.

- a. That the Bidder and its principals are not presently debarred, suspended, proposed for debarment, declared ineligible, or voluntary excluded from timber sales (covered transactions) by any Federal department or agency.
- b. That the Bidder and its principals have not within a 3-year period preceding this bid been convicted of or had a civil judgment rendered against them for commission of fraud or a criminal offense in connection with obtaining , attempting to obtain, or performing a public (Federal, State, or local) transaction or contract under a public transaction; violation of Federal or State antitrust statutes or commission of embezzlement, theft, forgery, bribery, falsification or destruction of records, making false statements, or receiving stolen property.
- c. That the Bidder and its principals are not presently indicted for or otherwise criminally or civilly charged by a governmental entity (Federal, State, or local) with commission of any of the offenses enumerated in paragraph b of this certification.
- d. That the Bidder and its principals have not within a 3-year period preceding this bid had one or more public transactions (Federal, State, or local) terminated for breach or default of a timber or forest product contract.

Bidders that cannot certify this requirement, in whole or in part, shall submit an explanation with their bid.

Scott Bowen
Director

TIMBER SALE INFORMATION

Ecklund Experience (41-004-24)

T46N, R15W, SEC. 15; T46N, R15W, SEC. 21; T46N, R15W, SEC. 22; T46N, R15W, SEC. 23.

Schoolcraft County (Advertised Price \$59,910.85)

SALE NOTE: Hauling may be restricted on the Walsh Grade by the Unit Manager or his/her representative. The restriction may occur during spring break up (see spec 4.2.1).

Access may be through private land.

A timber sale contract for this lump sum, sealed bid timber sale will be awarded to the responsible bidder offering the highest sealed bid price. All units of volume listed below were estimated using the Inventory Manager computer program and the new Michigan taper model. Bids must be at or above the following advertised price for each product and species:

<u>PRODUCTS & SPECIES</u>	<u>ESTIMATED UNITS*</u>	<u>ADVERTISED PRICE</u>
Sawtimber		
Black Cherry	12.4 MBF	\$ 101.00 / MBF
Red Maple	97.9 MBF	\$ 101.00 / MBF
Pulpwood		
Balsam Fir	189 Cords	\$ 9.80 / Cord
Mixed Hardwood	2,192 Cords	\$ 21.40 / Cord
Paper Birch	1 Cords	\$ 9.55 / Cord

* The total volume is statistically estimated within plus (+) or minus (-) 16.56 percent. There are an estimated 2,638 cords on this timber sale, plus or minus 437 cords at the 95% confidence level. The estimated units are final and not subject to adjustment. Prospective bidders are urged to examine this timber and to make their own estimates of quantity and quality.

BOND AND PAYMENT SCHEDULE:

1. A bond in the amount of \$2,996.00 to insure faithful performance of the conditions of the contract will be deposited by the successful bidder within 21 days of the sale award.
 2. Cutting in any sale or unit without the required advance payment would be considered a trespass.
 3. Total payment must be paid in advance or according to the following schedule :
 - (a) Ten percent (10%) of the sale value must be paid within 21 days of the sale award.
 - (b) The 10% down payment will be credited towards the first unit cut.
 - (c) Payment for each of the following units must be made before cutting begins in that unit:
- | PAYMENT UNIT NUMBER | PERCENT OF TOTAL SALE VALUE |
|---------------------|-----------------------------|
| 01 | 8.3% |
| 02 | 23.6% |
| 03 | 16.8% |
| 04 | 13.9% |
| 05 | 30.9% |
| 06 | 6.5% |
4. If no cutting takes place, the 10% down payment will not be refunded.
 5. Operations on the contract issued will terminate on 06/30/2027.

SALE STATISTICS

Volumes were calculated in cubic feet using the Michigan taper model. Cubic foot volume includes all wood inside bark for the product indicated. For display purposes, cubic feet were converted to cords and MBF using a simple conversion factor, e.g. 79 cubic feet per cord and 185 cubic feet per MBF. The cubic foot volumes are precise; the cords and MBF volumes are not. Cubic foot volume cannot be directly converted to cords or boards with precision.

SALE VOLUMES

The total estimated sale volume may not equal the sum of the species/products due to the nature of statistical calculations associated with double sampling methodology.

VOLUME		STATISTICAL RANGE IN CORDS		
TOTAL CUBIC FEET	TOTAL CORDS	PERCENT ERROR	MINIMUM	MAXIMUM
208,428	2,638	16.56%	2,201	3,075

VDU VOLUMES

A VDU is a Volume Determination Unit. Volumes and their associated statistics are calculated at the VDU level and summarized to the sale level. There is often a one to one relationship between a VDU and a Payment Unit, but not always, depending on the cruise design. Refer to the VDU TO PAYMENT UNIT table.

VDU	VOLUME		PERCENT ERROR	RANGE IN CORDS	
	TOTAL CUBIC FEET	TOTAL CORDS		MINIMUM	MAXIMUM
1	94,598	1,197	15.52%	1,012	1,383
2	100,106	1,267	17.19%	1,049	1,485
3	13,724	174	45.24%	95	252
TOTAL:	208,428	2,638		2,156	3,121

VDU TO PAYMENT UNIT

When a VDU is associated with more than one Payment Unit (PU), the VDU volumes are assigned to the PU based on acres of the VDU within the PU.

VDU	VDU ACRES	PU	PU ACRES
1	38.8	4	12.0
		5	26.8
2	61.4	1	10.5
		2	29.7
		3	21.2
3	9.8	6	9.8
TOTAL:	110.0		110.0

DESCRIPTION OF TIMBER BY PAYMENT UNIT (PU)

PU	MARKET GROUP	PRODUCT	QUANTITY	UNIT	ACRES	ADVERTISE PRICE
1	Black Cherry	Sawtimber	1.1	MBF	10.5	\$4,959.60
	Red Maple		9.7	MBF		
	Balsam Fir	Pulpwood	17	Cords		
	Mixed Hardwood		173	Cords		
	<i>Beech</i>		8	<i>Cords</i>		
	<i>Black Cherry</i>		17	<i>Cords</i>		
	<i>Red Maple</i>		144	<i>Cords</i>		
	<i>Sugar Maple</i>		4	<i>Cords</i>		
2	Black Cherry	Sawtimber	3.2	MBF	29.7	\$14,120.45
	Red Maple		27.3	MBF		
	Balsam Fir	Pulpwood	49	Cords		
	Mixed Hardwood		493	Cords		
	<i>Beech</i>		24	<i>Cords</i>		
	<i>Black Cherry</i>		49	<i>Cords</i>		
	<i>Red Maple</i>		408	<i>Cords</i>		
	<i>Sugar Maple</i>		12	<i>Cords</i>		
	Paper Birch		1	Cords		
	3	Black Cherry	Sawtimber	2.2		
Red Maple			19.5	MBF		
Balsam Fir		Pulpwood	35	Cords		
Mixed Hardwood			352	Cords		
<i>Beech</i>			17	<i>Cords</i>		
<i>Black Cherry</i>			35	<i>Cords</i>		
<i>Red Maple</i>			291	<i>Cords</i>		
<i>Sugar Maple</i>			9	<i>Cords</i>		
4	Black Cherry	Sawtimber	1.2	MBF	12.0	\$8,323.40
	Red Maple		11.6	MBF		
	Balsam Fir	Pulpwood	23	Cords		
	Mixed Hardwood		318	Cords		
	<i>Beech</i>		4	<i>Cords</i>		
	<i>Black Cherry</i>		17	<i>Cords</i>		
	<i>Red Maple</i>		297	<i>Cords</i>		
5	Black Cherry	Sawtimber	2.6	MBF	26.8	\$18,531.00
	Red Maple		25.8	MBF		
	Balsam Fir	Pulpwood	50	Cords		
	Mixed Hardwood		709	Cords		
	<i>Beech</i>		9	<i>Cords</i>		
	<i>Black Cherry</i>		37	<i>Cords</i>		
<i>Red Maple</i>		663	<i>Cords</i>			
6	Black Cherry	Sawtimber	2.1	MBF	9.8	\$3,908.90
	Red Maple		4.0	MBF		
	Balsam Fir	Pulpwood	15	Cords		
	Mixed Hardwood		147	Cords		
	<i>Beech</i>		3	<i>Cords</i>		
	<i>Black Cherry</i>		81	<i>Cords</i>		
	<i>Red Maple</i>		57	<i>Cords</i>		
	<i>Sugar Maple</i>		6	<i>Cords</i>		
TOTAL:			110.3	MBF		
TOTAL:			2,382	Cords		

Sale Specific Conditions & Requirements

Sale Name: Ecklund Experience

Sale Number: 41-004-24 Seq#: 1

1 - Sale Area

1.2 - Boundaries

1.2.1 - Painted boundaries (9/19)

The sale boundary and Payment Unit boundaries are marked and identified by blue, red and yellow paint. Exterior sale boundary lines against private property are marked with blue paint. Exterior sale boundary lines against state are marked with red paint. Interior Payment Unit boundaries are marked with yellow paint. The painted boundary line trees are not Included Timber.

2 - Timber Specifications

2.1 - Included Timber

2.1.2 - Clearcut unit(s) w/o unmerchantable trees (8/11)

Within Payment Unit(s) 6, cut all trees which meet minimum piece specifications in 2.2 Utilization, except do not cut hemlock, oak, white pine and yellow birch.

Special protection trees identified in accordance with condition 3.4.2, within clearcutting unit boundaries, are not Included Timber and are to be protected.

2.1.7 - Leave tree marked unit(s) (6/14)

Within Payment Unit(s) 1-5, cut all trees that meet minimum piece specifications, except do not cut hemlock, yellow birch, cedar, white pine and trees marked with green paint above and below stump height.

2.2 - Utilization

2.2.11 - Chipping restriction (9/14)

If chipping occurs on this sale, then no woody debris present on the ground at the start of the sale may be chipped. In addition, brush or chips may not be stored or stockpiled on-site for more than 30 days.

3 - Payments

3.3 - Pre-measured Sales

3.3.4 - Dividing payment units (7/14)

Payment Unit(s) exceeding \$15,000 may be divided at the request of the Purchaser and upon approval of the Unit Manager. Dividing Payment Units is a contract modification which requires a Timber Sale Contract Amendment.

3.4 - Damaged Timber

3.4.2 - Special Protection Trees (4/14)

The Purchaser shall not cut live or dead special protection trees within cutting units or clearings. Special protection trees are hemlock and oak. If the Purchaser's operations have cut or damaged special protection trees through carelessness, the Purchaser shall pay \$100 as fixed, agreed and liquidated damages for each special protection tree cut or damaged. Such payment does not constitute ownership of the undesignated timber.

4 - Transportation

4.1 - Construction

4.1.3 - Slash and earthen piles (8/04)

Piles or windrows of earth along roads and landings that have been widened or constructed shall be leveled. Slash from road maintenance or construction, including stumps, shall be dispersed throughout the sale.

4.1.4 - Timber removed for construction (3/23)

Trees cut or damaged in the process of pre-approved road, landing or skid trail construction will be decked in an area separate from other Designated Timber and not removed until measured by the sale administrator. Payment will be made at contract

prices or average prices, if not on the contract.

4.1.6 - Road construction (1/09)

Construction of new roads or improvements of existing roads shall be done in such a way as to minimize the environmental and visual impacts. Merchantable trees shall be cut and utilized unless otherwise directed. Non-merchantable trees shall be severed and laid flat on the ground. Slash shall be scattered, and not left in windrows and kept a minimum of 10 feet back from the road edge. Stumps shall be set upright, not left on edge, and be moved at least 10 feet away from the road edge. Disturbed soil shall be feathered into the woods and not left in berms or windrows.

4.1.7 - Road closure (10/11)

All new roads built into the sale must be blocked to vehicle traffic upon completion of the sale. Overgrown roads that are reopened shall be considered new roads. In general, this will require constructing a four (4') foot high berm of stumps and logs covered with earth. Stumps and brush must be placed along the remainder of the trail. These roads must be rendered impassable to cars and trucks. All stumps from road building and landing construction must be reserved to block any newly constructed roads upon completion of the sale. These stumps must be scattered along the road system to prohibit vehicular movement. Contact the Sale Administrator for specific details of design and placement.

4.2 - Maintenance

4.2.1 - Hauling restriction (12/08)

Hauling may be restricted on the Walsh Grade by the Unit Manager or his/her representative. The restriction may occur during spring breakup.

4.2.2 - Fill material (4/07)

To maintain roads, fill material may be needed in areas where "holes" exist or may be expected to develop. This fill material should be placed before trucking begins.

4.2.4 - Grading (10/16)

For completion of the sale, state forest roads must be graded. In general, this will require a road grader or bulldozer to shape up the roads after forest products have been hauled off site. This includes cleaning of drainage areas, grading, crowning and filling with gravel, if necessary. The grading equipment to be used must be approved by the Unit Manager or his/her representative.

5 - Operations

5.2 - Conduct of Operations

5.2.2 - Hazard Trees/Snags

5.2.2.1 - Den trees (10/16)

Obvious hollow and/or den trees shall be protected and left standing unless they are a safety hazard.

5.2.32 - Decking/landing restoration (9/13)

All decking and landing areas must have the surface area restored to a condition equal to or better than before. This is to ensure the proper regeneration of the stand. Wood debris, chips and "cookies" from trimmings must be removed or scattered away from landing and loading areas and may not be windrowed on the edge.

5.2.38 - No decking against live trees (2/04)

Cut products may not be decked against unmarked or designated leave trees.

5.8 - Protection of Endangered Species

5.8.3 - Red shoulder hawk or goshawk (1) (2/16)

In the event that an active red shoulder hawk or goshawk nest is found, the contract may be amended to protect the nest site until the nest is determined to be inactive. The value of the trees in this excluded area will be refunded or credited to the Purchaser. The nest will be buffered with a five-chain radius (eight acre) protection area, centered on the nest tree, in which there will be no cutting or new roads constructed. Avoid human disturbance, including loading and skidding, in the protection area.

An additional zone of five chains (ten chains centered on the active nest tree) will be established in which there is no management activity from April 1 to July 30. Limit biomass harvesting and chipping operations within this ten-chain zone,

retain the maximum one-third of residues per the Woody Biomass Harvesting Guidelines (Michigan DNR 2010). Nests determined to be inactive will be protected with a one-chain no-harvest buffer.

6 - Safety and Fire Prevention

6.2 - Signing

6.2.1 - Road posting (10/20)

The Purchaser is responsible for posting and maintaining caution signs on the Ecklund Road prior to beginning operations. The road must be posted at appropriate distances from the Sale Area to warn of logging activity and truck traffic. Signs must be removed when harvest operations are suspended or completed. The Purchaser will provide these signs.



TIMBER SALE MAP

This information provided by authority of Part 525, 1994 PA 451, as amended.

Sale Number

41-004-24

Date

10/11/2023

Forest Management Unit

County

Mapped By: S. Fischer

Shingleton Mgt Unit

Schoolcraft

Cruised By: S. Fischer, G. Wilson

Scale

1:15,840

Page

1

Of

1

Township
46N

Range
15W

Section(s) and
Subdivision(s) Sec. 15 SWSW; Sec. 21 NENE; Sec. 22 N1/2NW,NENE; Sec. 23 N1/2NW;

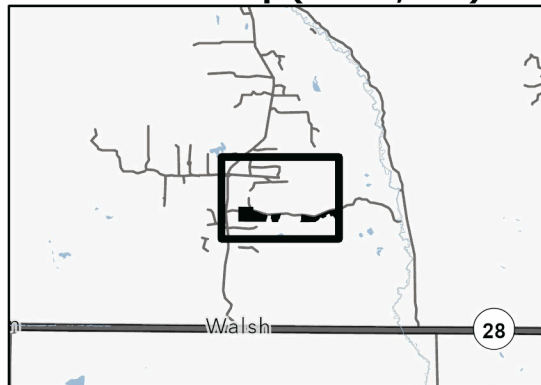
Cover Type

A = Aspen	J = Jack Pine	O = Oak	U = Upland Brush
B = Paper Birch	K = Rock	P = Lowland Poplar	UM = Upland Mix Forest
C = Cedar	L = Lowland Brush	Q = Mixed Swamp Conifer	V = Bog or Marsh
D = Treed Bog	LM = Lowland Mix Forest	R = Red Pine	W = White Pine
E = Swamp Hardwoods	M = Maple, Beech, Birch	S = Black Spruce	X = Non Stocked
F = Spruce/Fir	MC = Mixed Conifer	T = Tamarack	Y = Sand
G = Grass	MD = Mixed Deciduous	Z = Water	
H = Hemlock	N = Marsh		

Density

0 = Non Stocked	5 = Pole Timber Medium
1 = Seedling Sapling Poor	6 = Pole Timber Well
2 = Seedling Sapling Medium	7 = Saw Timber Poor
3 = Seedling Sapling Well	8 = Saw Timber Medium
4 = Pole Timber Poor	9 = Saw Timber Well

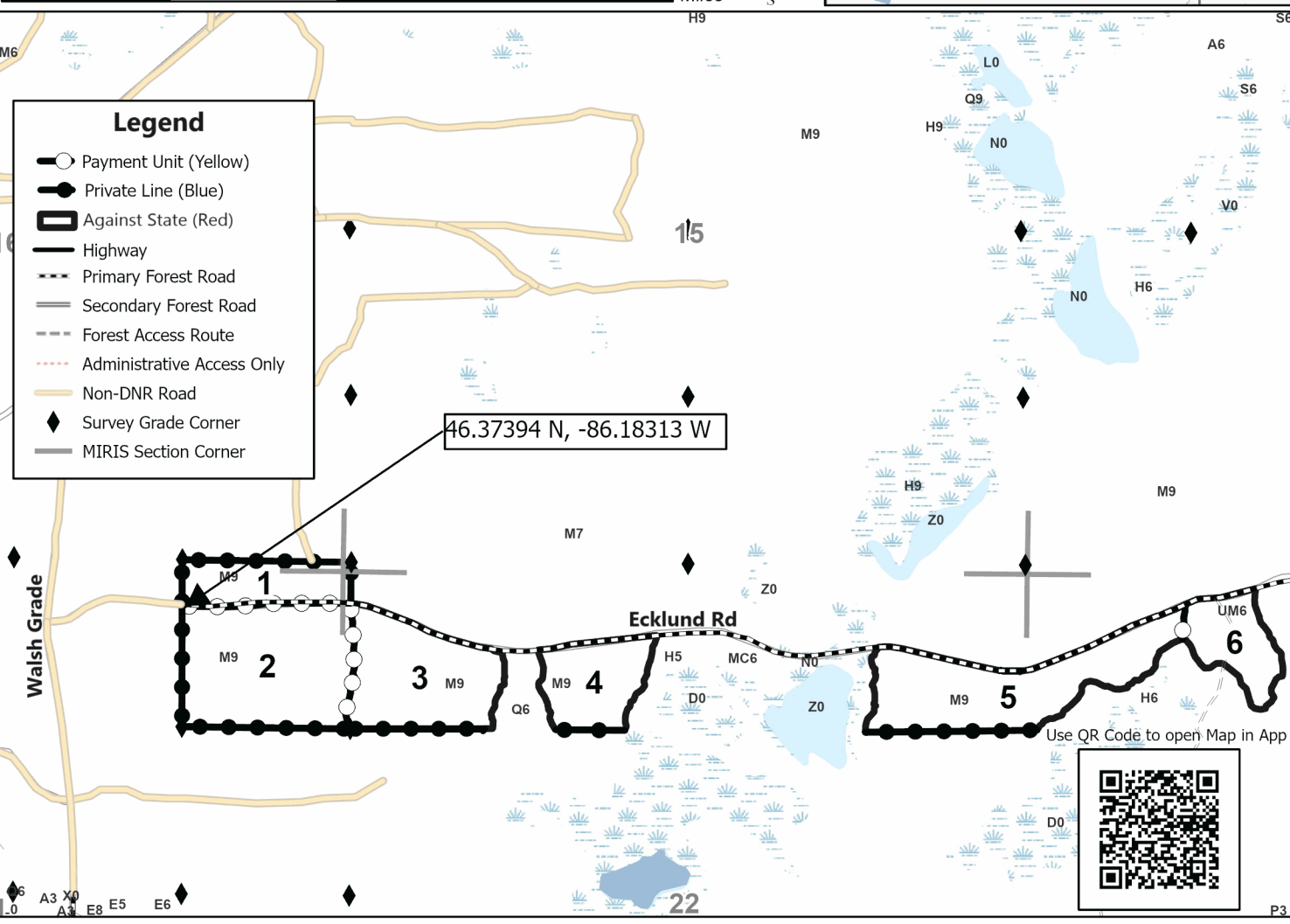
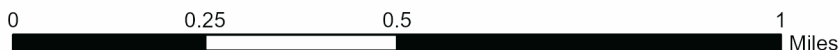
Locator Map (1:200,000)



Ecklund Experience

110.0 Acres

PU #	Acres	PU #	Acres
1	10.5	4	12
2	29.7	5	26.8
3	21.2	6	9.8



Legend

- Payment Unit (Yellow)
- Private Line (Blue)
- Against State (Red)
- Highway
- Primary Forest Road
- Secondary Forest Road
- Forest Access Route
- Administrative Access Only
- Non-DNR Road
- Survey Grade Corner
- MIRIS Section Corner

46.37394 N, -86.18313 W

Use QR Code to open Map in App



TIMBER SALE INFORMATION

Highrollways Chips 2 (41-013-24)

T43N, R15W, SEC. 29; T43N, R15W, SEC. 32; T43N, R15W, SEC. 33.
Schoolcraft County (Advertised Price \$148.10)

SALE NOTE: Payment Unit 1 must be chip harvested to facilitate future wildlife habitat work. See Sale Spec 2.2.2 for details.

There is a snowmobile trail and is shown on the Timber Sale Map. See Sale Spec 5.2.41 for restrictions.

A recreation site such as a trail, pathway, or campground is within the sale area or the vicinity. Certain restrictions/specifications may be applicable including time restrictions.

A timber sale contract for this lump sum, sealed bid timber sale will be awarded to the responsible bidder offering the highest sealed bid price. All units of volume listed below were estimated using the Inventory Manager computer program and the new Michigan taper model. Bids must be at or above the following advertised price for each product and species:

<u>PRODUCTS & SPECIES</u>	<u>ESTIMATED UNITS*</u>	<u>ADVERTISED PRICE</u>
Pulpwood		
Jack Pine	148.1 Acres	\$ 1.00 / Acre

* The estimated units are final and not subject to adjustment. Prospective bidders are urged to examine this timber and to make their own estimates of quantity and quality.

BOND AND PAYMENT SCHEDULE:

1. A bond in the amount of \$500.00 to insure faithful performance of the conditions of the contract will be deposited by the successful bidder within 21 days of the sale award.
2. Cutting in any sale or unit without the required advance payment would be considered a trespass.
3. Total payment must be paid in advance or according to the following schedule :
 - (a) Ten percent (10%) of the sale value must be paid within 21 days of the sale award.
 - (b) The remainder is due before cutting begins.
 - (c) Payment for each of the following units must be made before cutting begins in that unit:

PAYMENT UNIT NUMBER	PERCENT OF TOTAL SALE VALUE
01	100.0%
4. If no cutting takes place, the 10% down payment will not be refunded.
5. Operations on the contract issued will terminate on 03/31/2025.

SALE STATISTICS

Volumes were calculated in cubic feet using the Michigan taper model. Cubic foot volume includes all wood inside bark for the product indicated. For display purposes, cubic feet were converted to cords and MBF using a simple conversion factor, e.g. 79 cubic feet per cord and 185 cubic feet per MBF. The cubic foot volumes are precise; the cords and MBF volumes are not. Cubic foot volume cannot be directly converted to cords or boards with precision.

SALE VOLUMES

The total estimated sale volume may not equal the sum of the species/products due to the nature of statistical calculations associated with double sampling methodology.

VOLUME		STATISTICAL RANGE IN CORDS		
TOTAL CUBIC FEET	TOTAL CORDS	PERCENT ERROR	MINIMUM	MAXIMUM
0	0	N/A	0	0
148.10 acres are being sold by the acre and do not have cubic foot or cord volumes.				

VDU VOLUMES

A VDU is a Volume Determination Unit. Volumes and their associated statistics are calculated at the VDU level and summarized to the sale level. There is often a one to one relationship between a VDU and a Payment Unit, but not always, depending on the cruise design. Refer to the VDU TO PAYMENT UNIT table.

VDU	VOLUME		PERCENT ERROR	RANGE IN CORDS	
	TOTAL CUBIC FEET	TOTAL CORDS		MINIMUM	MAXIMUM
1 *			N/A		
TOTAL:	N/A	N/A		N/A	N/A

* This VDU is being sold by the acre. There are no cruise statistics available.

VDU TO PAYMENT UNIT

When a VDU is associated with more than one Payment Unit (PU), the VDU volumes are assigned to the PU based on acres of the VDU within the PU.

VDU	VDU ACRES	PU	PU ACRES
1	148.1	1	148.1
TOTAL:	148.1		148.1

DESCRIPTION OF TIMBER BY PAYMENT UNIT (PU)

PU	MARKET GROUP	PRODUCT	QUANTITY	UNIT	ACRES	ADVERTISE PRICE
1	Jack Pine	Pulpwood	148.1	Acres	148.1	\$148.10

TOTAL: 148.1 Acres

Sale Specific Conditions & Requirements

Sale Name: Highrollways Chips 2

Sale Number: 41-013-24 Seq#: 1

1 - Sale Area

1.2 - Boundaries

1.2.1 - Painted boundaries (9/19)

The sale boundary and Payment Unit boundaries are designated by GPS lines on attached QR code, Avenza maps file (see Timber Sale Map). All questions regarding sale boundaries should be directed towards Sale Administrator during pre-sale conference.

2 - Timber Specifications

2.1 - Included Timber

2.1.4 - Designated timber unit(s) (6/17)

Within Payment Unit(s) 1, all trees are designated for cutting regardless of merchantability.

2.1.11 - Description of timber note (2/04)

Note that Payment Unit 1 has pockets of jack pine that are designated for chip harvest to facilitate a prescribed burn after the sale is complete.

2.2 - Utilization

2.2.2 - Chipping required (2/18)

Payment Unit 1, must be chip harvested to facilitate future wildlife habitat work. The requirement to retain approximately 1/6 to 1/3 of tree tops and limbs less than four inches in diameter does not apply (G. C. & R. 2.2). This is because stand will be burned following harvest.

4 - Transportation

4.1 - Construction

4.1.3 - Slash and earthen piles (8/04)

Piles or windrows of earth along roads and landings that have been widened or constructed shall be leveled. Slash from road maintenance or construction, including stumps, shall be dispersed throughout the sale, chipped, utilized or otherwise removed from the sale.

4.2 - Maintenance

4.2.4 - Grading (10/16)

For completion of the sale, state forest roads must be graded. In general, this will require a road grader or bulldozer to shape up the roads after forest products have been hauled off site. The grading equipment to be used must be approved by the Unit Manager or his/her representative.

5 - Operations

5.2 - Conduct of Operations

5.2.32 - Decking/landing restoration (9/13)

All decking and landing areas must have the surface area restored to a condition equal to or better than before. This is to ensure the proper regeneration of the stand.

5.2.41 - Snowmobile trail protection (9/11)

There is a snowmobile trail and is shown on the Timber Sale Map. Do not cut or damage posts with orange trail markers or traffic control signs. If the trail is used, it must be maintained and restored to a condition equal to or better than before the sale. The road maintenance/restoration must be done prior to December 1. If the trail is used for hauling, it must be graded to the satisfaction of the Unit Manager or his/her representative prior to December 1. The snowmobile trail may not be used for any timber sale operations from December 1 to March 31. All stumps within 20 feet of the snowmobile trail must be cut at ground level. In addition, any trees cut within 5 feet of the trail must have the stumps removed and be disposed of

according to the direction of the Unit Manager or his/her representative.



TIMBER SALE MAP

This information provided by authority of Part 525, 1994 PA 451, as amended.

Sale Number

41-013-24

Date

06/03/2024

Forest Management Unit

Shingleton Mgt Unit

County

Schoolcraft

Mapped By: Petrelius

Cruised By: Petrelius

Scale

1:15,840

Page

1

Of

1

Township
43N

Range
15W

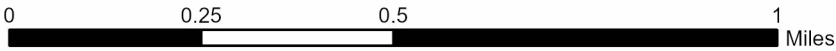
Section(s) and
Subdivision(s) Sec. 29 SESE; Sec. 32 NE,NESE; Sec. 33 NWNW,S1/2NW,SW;

Cover Type

A = Aspen	J = Jack Pine	O = Oak	U = Upland Brush
B = Paper Birch	K = Rock	P = Lowland Poplar	UM = Upland Mix Forest
C = Cedar	L = Lowland Brush	Q = Mixed Swamp Conifer	V = Bog or Marsh
D = Treed Bog	LM = Lowland Mix Forest	R = Red Pine	W = White Pine
E = Swamp Hardwoods	M = Maple, Beech, Birch	S = Black Spruce	X = Non Stocked
F = Spruce/Fir	MC = Mixed Conifer	T = Tamarack	Y = Sand
G = Grass	MD = Mixed Deciduous	Z = Water	
H = Hemlock	N = Marsh		

Density

0 = Non Stocked	5 = Pole Timber Medium
1 = Seedling Sapling Poor	6 = Pole Timber Well
2 = Seedling Sapling Medium	7 = Saw Timber Poor
3 = Seedling Sapling Well	8 = Saw Timber Medium
4 = Pole Timber Poor	9 = Saw Timber Well



Highrollways Chips 2

148.1 Acres

PU # Acres

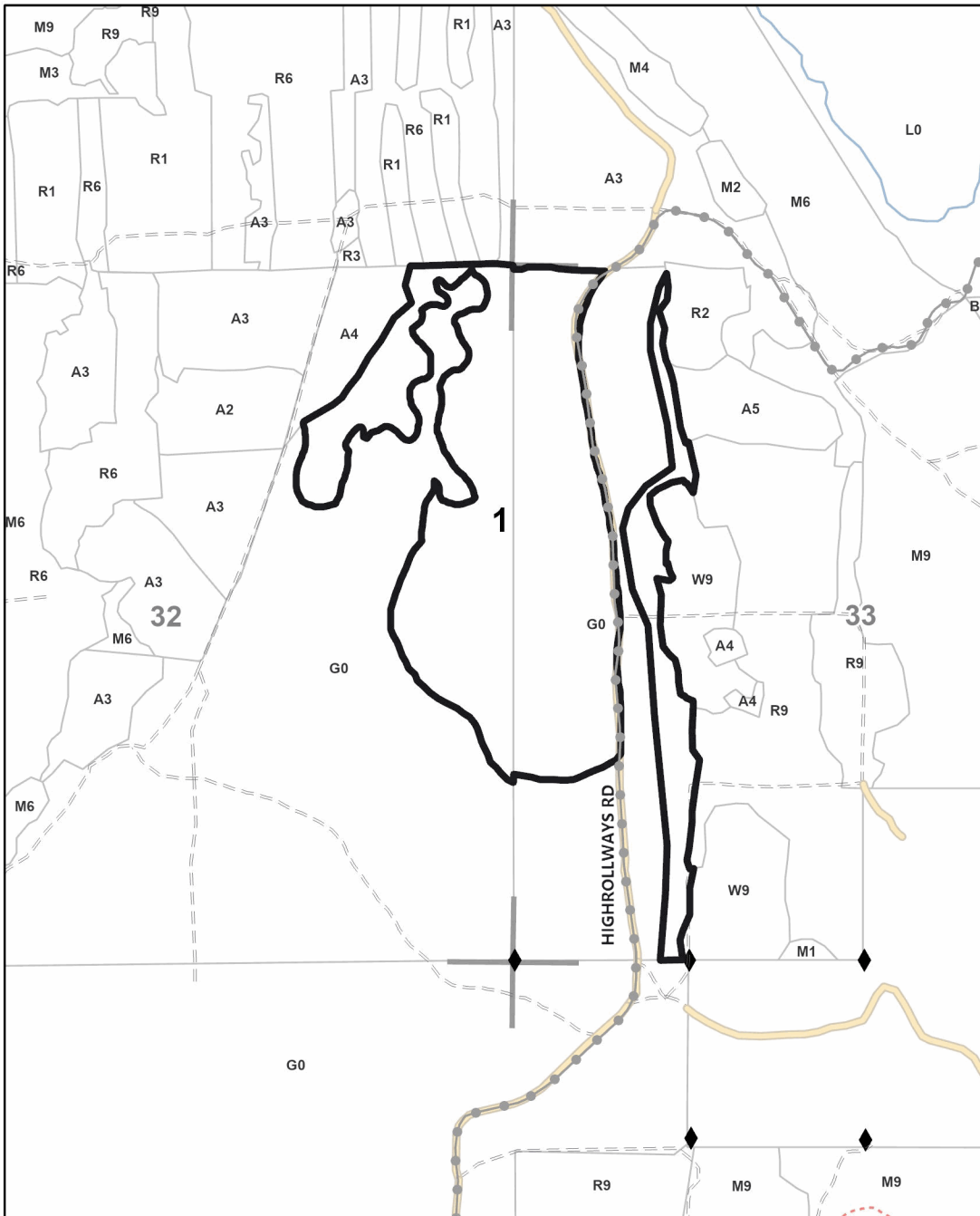
1	148.1
---	-------



Legend

- Sale Boundary - No paint - GPS line
- Stand
- Recreational Trail
- Highway
- Primary Forest Road
- Secondary Forest Road
- Forest Access Route
- Administrative Access Only
- Non-DNR Road
- Survey Grade Corner
- MIRIS Section Corner

Use QR Code to open Map in App



TIMBER SALE INFORMATION

GNA2 Cache (41-801-24)

T41N, R19W, SEC. 1; T42N, R18W, SEC. 30; T42N, R18W, SEC. 31; T42N, R19W, SEC. 25; T42N, R19W, SEC. 36.
Delta County (Advertised Price \$509,562.15)

SALE NOTE: This is a Good Neighbor Authority timber sale on national forest land. This timber sale was set-up and is being advertised by the Michigan DNR for the US Forest Service. The contract will be awarded and administered by the MDNR.

The Southwest Branch of the Fishdam Creek must be crossed to access Unit 12, this crossing will require the installation of a crane mat bridge. See Sale Spec 4.1.2 for details.

No new roads will be permitted in any Payment Unit. See Sale Spec 4.1.12 for additional information.

Hauling on Forest Service Road 2410 is restricted when Delta County Road Restrictions are in effect. The restriction is during spring break up.

Within Payment Unit(s) 4 and 5, harvesting is limited to frozen soil conditions, defined as frost at least 6 inches thick or compacted snow at least 12 inches thick, due to soft soils.

It is recommended, but not required, that within Payment Unit(s) 3 and 7, harvesting occur during dry summer or frozen winter due to soft soils.

A recreation site such as a trail, pathway, or campground is within the sale area or the vicinity. Certain restrictions/specifications may be applicable including time restrictions. Access may be through other public land.

A timber sale contract for this lump sum, sealed bid timber sale will be awarded to the responsible bidder offering the highest sealed bid price. All units of volume listed below were estimated using the Inventory Manager computer program and the new Michigan taper model. Bids must be at or above the following advertised price for each product and species:

<u>PRODUCTS & SPECIES</u>	<u>ESTIMATED UNITS*</u>	<u>ADVERTISED PRICE</u>
Sawtimber		
Paper Birch	10.3 MBF	\$ 44.00 / MBF
Red Maple	107.0 MBF	\$ 101.00 / MBF
Pulpwood		
Balsam Fir	129 Cords	\$ 9.80 / Cord
Jack Pine	19 Cords	\$ 27.70 / Cord
Mixed Aspen	478 Cords	\$ 20.90 / Cord
Mixed Hardwood	516 Cords	\$ 21.40 / Cord
Mixed Spruce	161 Cords	\$ 13.60 / Cord
Paper Birch	123 Cords	\$ 9.55 / Cord
Red Pine	5,770 Cords	\$ 81.40 / Cord
White Pine	124 Cords	\$ 19.65 / Cord

* The total volume is statistically estimated within plus (+) or minus (-) 21.91 percent. There are an estimated 7,602 cords on this timber sale, plus or minus 1,666 cords at the 95% confidence level. The estimated units are final and not subject to adjustment. Prospective bidders are urged to examine this timber and to make their own estimates of quantity and quality.

BOND AND PAYMENT SCHEDULE:

1. A bond in the amount of \$25,478.00 to insure faithful performance of the conditions of the contract will be deposited by the successful bidder within 21 days of the sale award.
2. Cutting in any sale or unit without the required advance payment would be considered a trespass.
3. Total payment must be paid in advance or according to the following schedule :
 - (a) Ten percent (10%) of the sale value must be paid within 21 days of the sale award.
 - (b) The 10% down payment will be credited towards the first unit cut.

(c) Payment for each of the following units must be made before cutting begins in that unit:

PAYMENT UNIT NUMBER	PERCENT OF TOTAL SALE VALUE
01	3.7%
02	10.0%
03	4.0%
04	2.5%
05	1.2%
06	2.5%
07	7.2%
08	8.4%
09	9.1%
10	6.5%
11	8.1%
12	1.9%
13	7.8%
14	14.8%
15	12.3%

4. If no cutting takes place, the 10% down payment will not be refunded.

5. Operations on the contract issued will terminate on 06/30/2027.

SALE STATISTICS

Volumes were calculated in cubic feet using the Michigan taper model. Cubic foot volume includes all wood inside bark for the product indicated. For display purposes, cubic feet were converted to cords and MBF using a simple conversion factor, e.g. 79 cubic feet per cord and 185 cubic feet per MBF. The cubic foot volumes are precise; the cords and MBF volumes are not. Cubic foot volume cannot be directly converted to cords or boards with precision.

SALE VOLUMES

The total estimated sale volume may not equal the sum of the species/products due to the nature of statistical calculations associated with double sampling methodology.

VOLUME		STATISTICAL RANGE IN CORDS		
TOTAL CUBIC FEET	TOTAL CORDS	PERCENT ERROR	MINIMUM	MAXIMUM
600,594	7,602	21.91%	5,937	9,268

VDU VOLUMES

A VDU is a Volume Determination Unit. Volumes and their associated statistics are calculated at the VDU level and summarized to the sale level. There is often a one to one relationship between a VDU and a Payment Unit, but not always, depending on the cruise design. Refer to the VDU TO PAYMENT UNIT table.

VDU	VOLUME		PERCENT ERROR	RANGE IN CORDS	
	TOTAL CUBIC FEET	TOTAL CORDS		MINIMUM	MAXIMUM
1	175,886	2,226	12.25%	1,954	2,499
2	130,195	1,648	20.96%	1,303	1,993
3	72,322	915	21.04%	723	1,108
4	25,588	324	35.20%	210	438
5	13,685	173	47.24%	91	255
6	82,511	1,044	24.51%	788	1,300
7	24,654	312	44.02%	175	449
8	32,698	414	46.13%	223	605
9	43,055	545	31.46%	374	716
TOTAL:	600,594	7,602		5,840	9,365

VDU TO PAYMENT UNIT

When a VDU is associated with more than one Payment Unit (PU), the VDU volumes are assigned to the PU based on acres of the VDU within the PU.

VDU	VDU ACRES	PU	PU ACRES
1	114.3	13	25.6
		14	48.6
		15	40.1
2	83.7	9	32.1
		10	22.9
		11	28.7
3	58.0	1	16.3
		2	41.7
4	16.8	2	1.7
		3	15.1
		4	8.8
5	8.8	7	21.0
		8	24.7
6	45.7	5	11.5
		12	11.0
7	11.5	6	15.6
8	11.0		
9	15.6		
TOTAL:	365.4		365.4

DESCRIPTION OF TIMBER BY PAYMENT UNIT (PU)

PU	MARKET GROUP	PRODUCT	QUANTITY	UNIT	ACRES	ADVERTISE PRICE
1	Paper Birch	Sawtimber	1.2	MBF	16.3	\$18,990.10
	Red Maple		3.2	MBF		
	Balsam Fir	Pulpwood	2	Cords		
	Jack Pine		1	Cords		
	Mixed Hardwood		12	Cords		
	<i>Red Maple</i>		12	Cords		
	Paper Birch		8	Cords		
	Red Pine		224	Cords		
2	Paper Birch	Sawtimber	2.9	MBF	43.4	\$50,886.85
	Red Maple		8.2	MBF		
	Balsam Fir	Pulpwood	5	Cords		
	Jack Pine		4	Cords		
	Mixed Hardwood		30	Cords		
	<i>Red Maple</i>		30	Cords		
	Paper Birch		20	Cords		
	Red Pine		600	Cords		
White Pine		5	Cords			
3	Jack Pine	Pulpwood	8	Cords	15.1	\$20,313.45
	Red Pine		235	Cords		
	White Pine		49	Cords		
4	Red Maple	Sawtimber	1.7	MBF	8.8	\$12,689.70
	Mixed Hardwood	Pulpwood	22	Cords		
	<i>Red Maple</i>		22	Cords		
	Red Pine		148	Cords		
5	Paper Birch	Sawtimber	2.2	MBF	11.5	\$5,917.75
	Red Maple		20.0	MBF		
	Balsam Fir	Pulpwood	10	Cords		
	Mixed Aspen		8	Cords		
	<i>B. T. Aspen</i>		8	Cords		
	Mixed Hardwood		70	Cords		
	<i>Red Maple</i>		70	Cords		
	Mixed Spruce		107	Cords		
	<i>Black Spruce</i>	Sawtimber	6.5	MBF		
	<i>Black Spruce</i>	Pulpwood	94	Cords		
Paper Birch		61	Cords			
6	Paper Birch	Sawtimber	1.0	MBF	15.6	\$12,732.00
	Red Maple		44.1	MBF		
	Balsam Fir	Pulpwood	54	Cords		
	Mixed Aspen		80	Cords		
	<i>B. T. Aspen</i>		80	Cords		
	Mixed Hardwood		204	Cords		
	<i>Black Cherry</i>		4	Cords		
	<i>Red Maple</i>		200	Cords		
	Mixed Spruce		14	Cords		
	<i>Black Spruce</i>		11	Cords		
	<i>White Spruce</i>		3	Cords		
	Paper Birch		25	Cords		
	White Pine		63	Cords		
7	Red Maple	Sawtimber	3.8	MBF	21.0	\$36,508.40
	Balsam Fir	Pulpwood	7	Cords		
	Mixed Aspen		4	Cords		
	<i>B. T. Aspen</i>		4	Cords		
	Mixed Hardwood		13	Cords		
	<i>Red Maple</i>		13	Cords		
	Mixed Spruce		9	Cords		

DESCRIPTION OF TIMBER BY PAYMENT UNIT (PU), CON'T

PU	MARKET GROUP	PRODUCT	QUANTITY	UNIT	ACRES	ADVERTISE PRICE
7 con't	<i>Black Spruce</i> <i>Black Spruce</i> Red Pine	<i>Sawtimber</i> <i>Pulpwood</i>	1.0 7 437	<i>MBF</i> <i>Cords</i> Cords		
8	Red Maple Balsam Fir Mixed Aspen <i>B. T. Aspen</i> Mixed Hardwood <i>Red Maple</i> Mixed Spruce <i>Black Spruce</i> <i>Black Spruce</i> Red Pine	Sawtimber Pulpwood <i>Sawtimber</i> <i>Pulpwood</i>	4.5 9 5 5 16 16 10 1.2 8 513	MBF Cords Cords <i>Cords</i> Cords Cords Cords <i>MBF</i> <i>Cords</i> Cords	24.7	\$42,883.80
9	Paper Birch Red Maple Balsam Fir Jack Pine Mixed Aspen <i>B. T. Aspen</i> Mixed Hardwood <i>Red Maple</i> Mixed Spruce <i>Black Spruce</i> Paper Birch Red Pine White Pine	Sawtimber Pulpwood	1.2 7.0 3 2 20 20 42 42 1 1 1 541 3	MBF MBF Cords Cords Cords <i>Cords</i> Cords <i>Cords</i> Cords <i>Cords</i> Cords Cords Cords	32.1	\$46,280.90
10	Paper Birch Red Maple Balsam Fir Jack Pine Mixed Aspen <i>B. T. Aspen</i> Mixed Hardwood <i>Red Maple</i> Mixed Spruce <i>Black Spruce</i> Paper Birch Red Pine White Pine	Sawtimber Pulpwood	0.8 5.0 2 2 14 14 30 30 1 1 1 386 2	MBF MBF Cords Cords Cords <i>Cords</i> Cords <i>Cords</i> Cords <i>Cords</i> Cords Cords Cords	22.9	\$33,032.65
11	Paper Birch Red Maple Balsam Fir Jack Pine Mixed Aspen <i>B. T. Aspen</i> Mixed Hardwood <i>Red Maple</i> Mixed Spruce <i>Black Spruce</i> Paper Birch Red Pine White Pine	Sawtimber Pulpwood	1.0 6.3 3 2 18 18 37 37 1 1 1 483 2	MBF MBF Cords Cords Cords <i>Cords</i> Cords <i>Cords</i> Cords <i>Cords</i> Cords Cords Cords	28.7	\$41,311.75
12	Red Maple Balsam Fir Mixed Aspen <i>B. T. Aspen</i>	Sawtimber Pulpwood	3.2 27 296 296	MBF Cords Cords <i>Cords</i>	11.0	\$9,856.10

DESCRIPTION OF TIMBER BY PAYMENT UNIT (PU), CON'T

PU	MARKET GROUP	PRODUCT	QUANTITY	UNIT	ACRES	ADVERTISE PRICE
12 con't	Mixed Hardwood	Pulpwood	31	Cords		
	<i>Red Maple</i>		31	<i>Cords</i>		
	Mixed Spruce		18	Cords		
	<i>White Spruce</i>		5.3	<i>MBF</i>		
	<i>White Spruce</i>					
	Paper Birch		6	Cords		
	Red Pine		26	Cords		
13	Balsam Fir	Pulpwood	2	Cords	25.6	\$39,931.90
	Mixed Aspen		7	Cords		
	<i>B. T. Aspen</i>		7	<i>Cords</i>		
	Mixed Hardwood		2	Cords		
	<i>Red Maple</i>		2	<i>Cords</i>		
	Red Pine		488	Cords		
14	Balsam Fir	Pulpwood	3	Cords	48.6	\$75,702.60
	Mixed Aspen		14	Cords		
	<i>B. T. Aspen</i>		14	<i>Cords</i>		
	Mixed Hardwood		4	Cords		
	<i>Red Maple</i>		4	<i>Cords</i>		
	Red Pine		925	Cords		
15	Balsam Fir	Pulpwood	2	Cords	40.1	\$62,524.20
	Mixed Aspen		12	Cords		
	<i>B. T. Aspen</i>		12	<i>Cords</i>		
	Mixed Hardwood		3	Cords		
	<i>Red Maple</i>		3	<i>Cords</i>		
	Red Pine		764	Cords		
TOTAL:			117.3	MBF		
TOTAL:			7,320	Cords		

Sale Specific Conditions & Requirements

Sale Name: GNA2 Cache

Sale Number: 41-801-24 Seq#: 1

1 - Sale Area

1.2 - Boundaries

1.2.1 - Painted boundaries (9/19)

The sale boundary and Payment Unit boundaries are marked and identified by orange paint. Exterior sale boundary lines against forest service are marked with orange paint. Interior Payment Unit boundaries are marked with orange paint. Retention patches are marked with orange paint; no harvesting activities may occur within these areas. The painted boundary line trees are not Included Timber and are to be protected unless marked with blue paint.

2 - Timber Specifications

2.1 - Included Timber

2.1.1 - Clearcut unit(s) with unmerchantable trees (6/14)

Within Payment Unit(s) 12, cut all aspen and hardwood trees that are two (2) inches or more at DBH, except trees marked in green. In addition, cut all other trees that meet minimum Utilization specifications in 2.1 except trees marked in green paint.

2.1.3 - Cut tree marked unit(s) (12/08)

Within Payment Unit(s) 1 - 4, 7 - 11 & 13 - 15, all trees are designated for cutting when marked with blue paint above and below stump height, regardless of merchantability.

2.1.7 - Leave tree marked unit(s) (6/14)

Within Payment Unit(s) 5 and 6, all trees, which meet minimum piece specifications in 2.2 Utilization, are designated for cutting, except cedar, hemlock and trees marked with green paint above and below stump height.

2.2 - Utilization

2.2.3 - Stump heights (4/07)

Stump heights within the Sale Area shall not exceed 12 inches for trees greater than 10 inches DBH and 6 inches for trees smaller than 10 inches DBH.

2.2.12 - GNA, cut and remove Included Timber (3/18)

Unless provided otherwise herein, the DNR agrees to sell and permit Purchaser to cut and remove Included Timber and Purchaser agrees to purchase, cut, and remove Included Timber.

3 - Payments

3.3 - Pre-measured Sales

3.3.4 - Dividing payment units (7/14)

Payment Unit(s) with a value greater than \$20,000 may be divided at the request of the Purchaser and upon approval of the Unit Manager. Dividing Payment Units is a contract modification which requires a Timber Sale Contract Amendment.

3.4 - Damaged Timber

3.4.3 - Special Protection Areas (8/11)

The Purchaser shall protect special protection areas from damage by the Purchaser's operations. Special protection areas are excluded with the sale boundary beyond Payment Unit 12. If the Purchaser's operations have cut or damaged special protection areas through carelessness, the Purchaser shall pay \$10,000 as fixed, agreed and liquidated damages for each acre or part thereof cut or damaged. Such payment does not constitute ownership of the undesignated timber.

4 - Transportation

4.1 - Construction

4.1.2 - Stream crossings, specific (3/11)

The Southwest Branch of the Fishdam Creek must be crossed to access Unit 12, this crossing will require the installation of a

crane mat bridge. This installation and removal will be performed in accordance with the specifications on the appropriate EGLE permits which shall be provided by the DNR. All bridge materials are the responsibility of the producer.

4.1.3 - Slash and earthen piles (8/04)

Piles or windrows of earth along roads and landings that have been widened or constructed shall be leveled. Slash from road maintenance or construction, including stumps, shall be dispersed throughout the sale.

4.1.4 - Timber removed for construction (3/23)

Trees cut or damaged in the process of pre-approved road, landing or skid trail construction will be decked in an area separate from other Designated Timber and not removed until measured by the sale administrator. Payment will be made at contract prices or average prices, if not on the contract.

4.1.7 - Road closure (10/11)

All new back-ins will be slashed in with stumps and brush when the sale is complete. Contact the Sale Administrator for specific details of design and placement.

4.1.12 - No new roads (1/12)

No new roads will be permitted in any Payment Unit. Only existing roads can be used. Back-ins will be required for decking and locations will be determined at the Pre-Sale conference.

4.2 - Maintenance

4.2.1 - Hauling restriction (12/08)

Hauling is restricted on Forest Service Road 2410. The restriction may occur during spring breakup/Delta County Road Restrictions are in effect.

5 - Operations

5.1 - Notification

5.1.1 - Pre-sale conference (10/16)

A pre-sale conference on site between the Purchaser and sale administrator is required prior to beginning any operations to determine landing and road locations. The Unit Manager or his/her representative must be contacted at least 10 days in advance to schedule the conference.

5.1.4 - Post-sale conference (10/16)

A post-sale conference on site between the Purchaser and sale administrator is required 5 days prior to the completion of active logging operations to determine clean-up and repair of landings, road edges, and the fulfillment of other contract specifications.

5.2 - Conduct of Operations

5.2.1 - Slash

5.2.1.2 - Slash Removal

5.2.1.2.1 - Slash removal, right-of-way (9/16)

All slash must be removed at least 10 feet from the cleared right-of-way of forest service roads. Within 25 feet of forest service roads, slash must be reduced to 1 foot and no higher than 4 feet anywhere else. Slash cannot be windrowed.

5.2.2 - Hazard Trees/Snags

5.2.2.1 - Den trees (10/16)

Obvious hollow and/or den trees shall be protected and left standing unless they are a safety hazard.

5.2.3 - Operating Restrictions

5.2.3.1 - Operating restrictions (9/11)

Within Payment Unit(s) 4 and 5, unless changed by written agreement, cutting, skidding, and hauling are limited to frozen soil conditions, defined as frost at least 6 inches thick or compacted snow at least 12 inches thick. This restriction is because of soft soils.

5.2.3.6 - Bark beetle restriction (12/08)

In the event drought creates a high risk of pine bark beetle infestation, pine is not to be cut during the period March 1 through July 1, unless all portions of trees greater than two inches in diameter are removed from the sale area, reduced to chips, or treated to the satisfaction of the Unit Manager or his/her representative, within fifteen days of being severed from the stump. Pine log decks, pulpwood piles and treetops that are piled for chipping in the fall or winter within a 1/4 mile of susceptible sites must be removed before March 15. Residual slash must not be placed in piles or rows and must be spread over the site for quick drying. The Department of Natural Resources will exercise this specification if the risk of damage warrants.

5.2.4 - Dead and Down Creation

5.2.4.1 - Dead and down creation, marked trees (10/13)

Within Units 1 -4, 7 - 11 & 13 - 15, trees marked in yellow paint must be topped at 15 feet (preferably 20 feet) off the ground. The top must be left intact on the ground and the remainder of the tree must be left standing. This is being done to create snags in the stands.

5.2.4.6 - Dead and down creation, other (9/09)

To encourage grouse, in Payment Unit 6, trees marked in yellow must be felled and left as they lie for drumming logs. These trees should be cut as low as possible.

5.2.22 - Operating Caution

5.2.22.1 - Operating caution (6/11)

It is recommended, but not required, that within Payment Unit(s) 3 and 7, cutting, skidding, and hauling occur during dry summer or frozen winter conditions. The reason for the recommendation is because there may be areas with the Units with soft soils.

5.2.32 - Decking/landing restoration (9/13)

All decking and landing areas must have the surface area restored to a condition equal to or better than before. This is to ensure the proper regeneration of the stand. Wood debris, chips and "cookies" from trimmings must be removed or scattered away from landing and loading areas and may not be windrowed on the edge.

5.2.37 - No decking areas (12/08)

No decking is allowed on KK Road or Forest Service Road 2410.

5.2.41 - Snowmobile trail protection (9/11)

Snowmobile Trail 2 is shown on the Timber Sale Map. Do not cut or damage posts with orange trail markers or traffic control signs. If the trail road is to be used for hauling during the snowmobile season, then a snow covered base must be left on the trail. If the trail is plowed there must be a smooth transition at the point the trail is no longer plowed, no snowbanks or snow piles can accumulate to cause a hazard. Maintain a 20-foot-wide slash, debris, and rut free zone daily using the snowmobile trail as the centerline. No decking of forest products will be permitted along the snowmobile trail. All stumps within 20 feet of the snowmobile trail must be cut at ground level.

5.4 - Soil Protection

5.4.7 - Rutting restriction, Riparian Management Zone (RMZ) (1/09)

Within the Riparian Management Zones (RMZ), operations are to cease immediately if equipment and weather conditions result in rutting of roads and skid trails which is 6 inches or greater in depth and 25 feet in length. The Unit Manager or his/her representative may restrict hauling and/or skidding if ruts exceed the specified depth. With the Unit Manager or his/her representative's approval, the Purchaser may return to the area when the risk of rutting has decreased.

5.6 - Debris and Waste Material

5.6.2 - GNA, equipment cleaning (4/24)

(a) Areas, known by the DNR prior to timber sale advertisement, that are infested with invasive species of concern are shown on the Timber Sale Map. A current list of invasive species of concern and a map showing the extent of known infestations is available from the DNR. For purposes of this provision, "Off-Road Equipment" includes all logging and construction machinery, except for log trucks, chip vans, service vehicles, water trucks, pickup trucks, cars, and similar vehicles.

(b) Purchaser shall adhere to the following requirements with regard to cleaning "Off-Road Equipment":

(i) Prior to moving Off-Road Equipment onto the Sale Area, Purchaser shall identify the location of the equipment's most recent operation. Purchaser shall not move any Off-Road Equipment that last operated in an area infested with one or more invasive species of concern onto Sale Area without having cleaned such equipment of seeds, soil, vegetative matter, and other debris that could contain or hold seeds, and having notified the DNR, as provided in (iii). If the location of prior operation cannot be identified, then Purchaser shall assume that the location is infested with invasive species of concern.

(ii) Prior to moving Off-Road Equipment from a cutting unit that is shown on the Timber Sale Map to be infested with invasive species of concern to, or through any other area that is shown as being free of invasive species of concern, or infested with a different invasive species, Purchaser shall clean such equipment of seeds, soil, vegetative matter, and other debris that could contain or hold seeds, and shall notify the DNR, as provided in (iii).

(iii) Prior to moving any Off-Road Equipment subject to the cleaning requirements set forth above, Purchaser shall advise DNR of its cleaning measures and make the equipment available for inspection. DNR shall have 2 days, excluding weekends and State holidays, to inspect equipment after it has been made available. After satisfactory inspection or after such 2 day period, Purchaser may move the equipment as planned. Equipment shall be considered clean when a visual inspection does not disclose seeds, soil, vegetative matter, and other debris that could contain or hold seeds. Purchaser shall not be required to disassemble equipment unless so directed by the DNR after inspection.

(iv) If Purchaser desires to clean Off-Road Equipment on National Forest land, such as at the end of a project or prior to moving to, or through an area that is free of invasive species of concern, Purchaser shall obtain prior approval from the Unit Manager or his/her representative as to the location for such cleaning and measures, if any, for controlling impacts.

(v) Unit Manager or his/her representative may order delay, interruption, or modification of this Contract pursuant to Condition & Requirement 7.3 or 7.3.4.

(c) Nothing contained in this Condition & Requirement shall be interpreted as creating any warranty on the part of the DNR that all locations of invasive species of concern have been described herein, elsewhere in this Contract, or designated on the ground. Following sale advertisement, additional locations may be described or designated, and other species may be added to the list of invasive species of concern. In such event, the Unit Manager or his/her representative may order delay, interruption, or modification of this Contract pursuant to Condition & Requirement 7.3 or 7.3.4.

(d) The parties shall promptly communicate with one another with respect to description or designation of additional locations; discovery of locations of new species or new infestation; and, addition of species to the list of invasive species of concern.

5.8 - Protection of Endangered Species

5.8.4 - Red shoulder hawk or goshawk (2) (5/24)

In the event that an active red shoulder hawk or goshawk nest is found, the contract may be amended to protect the nest site until the nest is determined to be inactive. The value of the trees in this excluded area will be refunded or credited to the Purchaser. The nest will be buffered with a ten-chain radius (31 acre) protection area, centered on the nest tree, in which there will be no cutting or new roads constructed. Avoid human disturbance, including loading and skidding, in the protection area.

Within a one half mile radius from the nest tree there shall be no harvest activities during the breeding period. For the northern goshawk, the restriction is from March 1 to July 31. For the red-shouldered hawk, the restriction is from April 1 to August 31.

For a nest to be considered inactive, it must be observed as inactive by a wildlife biologist.

5.8.9 - Bat habitat and roost trees (5/24)

If bats are observed emerging from a tree prior to being felled, or if injured or dead bats are found after a tree is felled, notify the Unit Manager for coordination with Forest Service biologists. If the tree is determined to be a roost, the contract may be amended to include a no activity buffer (typically 150 feet radius around the roost tree or trees).

6 - Safety and Fire Prevention

6.2 - Signing

6.2.1 - Road posting (10/20)

The Purchaser is responsible for posting and maintaining caution signs on KK Road and Forest Service Road 2410 prior to beginning operations. The road must be posted at appropriate distances from the Sale Area to warn of logging activity and truck traffic. Signs must be removed when harvest operations are suspended or completed. The Purchaser will provide these signs.

6.2.2 - Snowmobile trail posting (10/20)

The Purchaser is responsible for posting and maintaining caution signs on Trail 2 prior to beginning operations during the snowmobile season (approximately December 1 to March 31). The trail must be posted at appropriate distances from the Sale Area to warn of logging activity and truck traffic. Signs must be removed when harvest operations are suspended or completed. The Purchaser will provide these signs.

7 - Other Conditions

SKIP

7.1.1 - GNA, title (7/16)

General Condition & Requirement 7.1 is inapplicable. The following applies to this contract.

All right, title, and interest in and to any Included Timber shall remain in USDA Forest Service with the State of Michigan acting on behalf of the USDA Forest Service under this GNA contract, until it has been Measured, removed from Sale Area or other authorized cutting area, and paid for, at which time title shall vest in Purchaser. Title to any Included Timber that has been Measured and paid for, but not removed from Sale Area or other authorized cutting area by Purchaser on or prior to Termination Date, shall remain in USDA Forest Service.

7.3 - Contract Modifications

7.3.4 - GNA, contract suspension and modification (5/16)

(a) The Unit Manager may, by written order, delay or interrupt authorized operations under this contract or, notwithstanding Condition & Requirement 7.3, modify this contract, in whole or in part:

(i) To prevent environmental degradation or resource damage, including, but not limited to, harm to habitat, plants, animals, cultural resources, or cave resources;

(ii) To ensure consistency with land and resource management plans or other documents prepared pursuant to the National Environmental Policy Act of 1969, 42 USC 4321-4347;

(iii) To conduct environmental analysis, including, but not limited to, engaging in consultation pursuant to the Endangered Species Act of 1973, 16 USC 1531, et seq.; or

(iv) Upon agreement of the Forest Service, due to administrative appeal or litigation, regardless of whether the Unit Manager's order is required by a court order or this contract is named in such a proceeding.

(b) In the event of an order delaying or interrupting Purchaser's Operations under this Condition & Requirement, Purchaser's remedy shall be:

(i) a no cost contract extension,

(ii) reimbursement for Out-of-Pocket Expenses,

however, the foregoing remedies shall be available only to the extent that the Unit Manager's order was the sole and exclusive cause of the delay or interruption of Purchaser's operations.

(c) Remedies awarded to the Purchaser shall not be duplicative, and the Unit Manager shall have the right to structure remedies provided herein to avoid duplicative compensation.

(d) Purchaser agrees that this Condition & Requirement, and the remedies provided herein shall apply regardless of any finding by any court that the DNR failed to comply with any statute, regulation and/or policy in connection with awarding, advertising, or authorizing this sale, or a similar sale.

7.5 - Loss

7.5.2 - GNA, liability for loss (7/16)

If Included Timber is destroyed or damaged by an unexpected event that changes the nature of Included Timber, such as wind, flood, insects, disease, or similar cause, the Purchaser shall bear the timber value loss resulting from such destruction or damage.

Deterioration or loss of timber value due to delay or interruption under 7.3.4 - GNA, contract suspension and modification, shall be borne by the party holding title. In this event, Included Timber to which USDA Forest Service holds title, Purchaser of the State GNA contract will not be obligated to remove and pay for such timber. This Subsection shall not be construed to relieve either party of liability for negligence.

7.10 - Certified Timber

7.10.1 - Non-certified timber (2/16)

The area encompassed by this timber sale is not certified to the standards of the Forest Stewardship Council (FSC) or the Sustainable Forestry Initiative (SFI). Forest products from this sale may not be delivered to the mill as "FSC and / or SFI certified". The lands within this sale belong to the National Forest system and are being managed by the State as part of a Good Neighbor Authority (GNA) agreement.



TIMBER SALE MAP

This information provided by authority of Part 525, 1994 PA 451, as amended.

Sale Number	Date	
41-801-24	05/13/2024	
Scale	Page	Of
1:20,000	1	1

Forest Management Unit	County	Mapped By: George Wilson
Shingleton Mgt Unit	Delta	Cruised By: UMLMWS

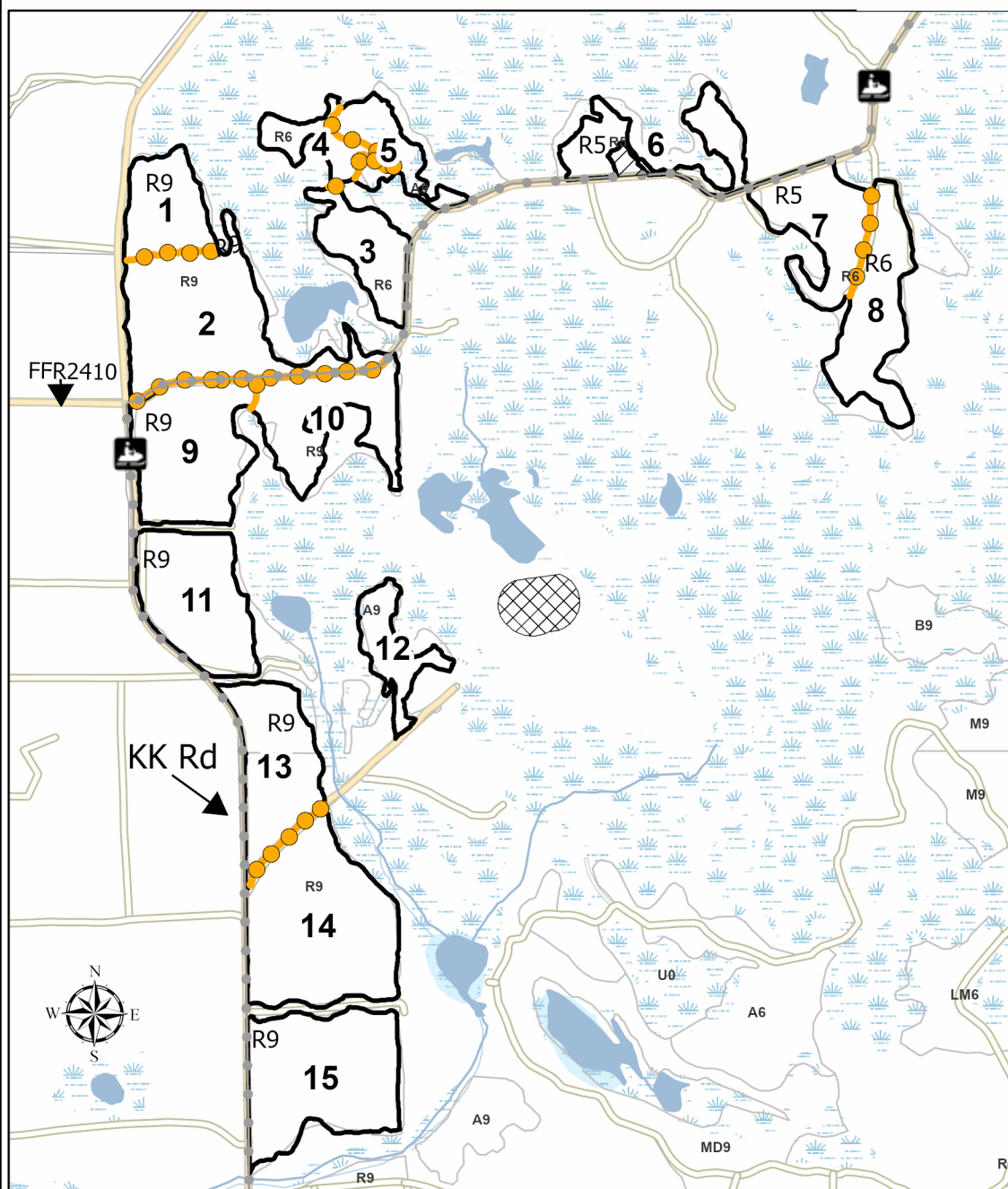
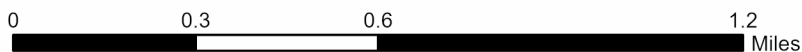
Township	Range	Section(s) and Subdivision(s)	Sec. 36 NE,SE; Sec. 1 NE,N1/2SE; Sec. 25 S1/2SE; Sec. 30 S1/2SW,S1/2SE; Sec. 31 NWNW,N1/2NE,SENE,SWSW;
41N / 42N	18W / 19W		

Cover Type			
A = Aspen	J = Jack Pine	O = Oak	U = Upland Brush
B = Paper Birch	K = Rock	P = Lowland Poplar	UM = Upland Mix Forest
C = Cedar	L = Lowland Brush	Q = Mixed Swamp Conifer	V = Bog or Marsh
D = Treed Bog	LM = Lowland Mix Forest	R = Red Pine	W = White Pine
E = Swamp Hardwoods	M = Maple, Beech, Birch	S = Black Spruce	X = Non Stocked
F = Spruce/Fir	MC = Mixed Conifer	T = Tamarack	Y = Sand
G = Grass	MD = Mixed Deciduous	Z = Water	
H = Hemlock	N = Marsh		

Density	
0 = Non Stocked	5 = Pole Timber Medium
1 = Seedling Sapling Poor	6 = Pole Timber Well
2 = Seedling Sapling Medium	7 = Saw Timber Poor
3 = Seedling Sapling Well	8 = Saw Timber Medium
4 = Pole Timber Poor	9 = Saw Timber Well

GNA2 Cache 365.4 Acres

Compartment(s) 78, 90, 96



Legend

- Retention Area
- Special Protection Area
- Against HWNF (Orange)
- Recreational Trail
- Non-DNR Road
- Payment Unit (Orange)
- Stand
- Road_MVUM

PU #	Acres
1	16.3
2	43.4
3	15.1
4	8.8
5	11.5
6	15.6
7	21
8	24.7
9	32.1
10	22.9
11	28.7
12	11
13	25.6
14	48.6
15	40.1



TIMBER SALE INFORMATION

Weasley woods (41-022-23)

T46N, R15W, SEC. 13; T46N, R15W, SEC. 14; T46N, R15W, SEC. 23; T46N, R15W, SEC. 24; T46N, R15W, SEC. 25; T46N, R15W, SEC. 26.

SALE NOTE: Within Payment Unit(s) 3-5, harvesting is limited to frozen or snow-covered conditions because of threatened or endangered species.

Hauling may be restricted on the Walsh Grade by the Unit Manager or his/her representative. The restriction may occur during spring break up.

A timber sale contract for this lump sum, sealed bid timber sale will be awarded to the responsible bidder offering the highest sealed bid price. All units of volume listed below were estimated using the Inventory Manager computer program and the new Michigan taper model. Bids must be at or above the following advertised price for each product and species:

<u>PRODUCTS & SPECIES</u>	<u>ESTIMATED UNITS*</u>	<u>ADVERTISED PRICE</u>
Pulpwood		
Balsam Fir	3 Cords	\$ 8.50 / Cord
Black Spruce	1,409 Cords	\$ 11.80 / Cord
Jack Pine	489 Cords	\$ 24.00 / Cord
Mixed Aspen	31 Cords	\$ 18.10 / Cord
Mixed Hardwood	28 Cords	\$ 18.55 / Cord
Paper Birch	32 Cords	\$ 8.25 / Cord
Tamarack	153 Cords	\$ 1.35 / Cord
White Pine	245 Cords	\$ 17.05 / Cord

* The total volume is statistically estimated within plus (+) or minus (-) 17.02 percent. There are an estimated 2,389 cords on this timber sale, plus or minus 407 cords at the 95% confidence level. The estimated units are final and not subject to adjustment. Prospective bidders are urged to examine this timber and to make their own estimates of quantity and quality.

BOND AND PAYMENT SCHEDULE:

1. A bond in the amount of \$1,706.00 to insure faithful performance of the conditions of the contract will be deposited by the successful bidder within 21 days of the sale award.
2. Cutting in any sale or unit without the required advance payment would be considered a trespass.
3. Total payment must be paid in advance or according to the following schedule :
 - (a) Ten percent (10%) of the sale value must be paid within 21 days of the sale award.
 - (b) The 10% down payment will be credited towards the first unit cut.
 - (c) Payment for each of the following units must be made before cutting begins in that unit:

PAYMENT UNIT NUMBER	PERCENT OF TOTAL SALE VALUE
01	20.4%
02	27.8%
03	1.1%
04	23.1%
05	27.6%
4. If no cutting takes place, the 10% down payment will not be refunded.
5. Operations on the contract issued will terminate on 06/30/2029.

SALE STATISTICS

Volumes were calculated in cubic feet using the Michigan taper model. Cubic foot volume includes all wood inside bark for the product indicated. For display purposes, cubic feet were converted to cords and MBF using a simple conversion factor, e.g. 79 cubic feet per cord and 185 cubic feet per MBF. The cubic foot volumes are precise; the cords and MBF volumes are not. Cubic foot volume cannot be directly converted to cords or boards with precision.

SALE VOLUMES

The total estimated sale volume may not equal the sum of the species/products due to the nature of statistical calculations associated with double sampling methodology.

VOLUME		STATISTICAL RANGE IN CORDS		
TOTAL CUBIC FEET	TOTAL CORDS	PERCENT ERROR	MINIMUM	MAXIMUM
188,693	2,389	17.02%	1,982	2,795

VDU VOLUMES

A VDU is a Volume Determination Unit. Volumes and their associated statistics are calculated at the VDU level and summarized to the sale level. There is often a one to one relationship between a VDU and a Payment Unit, but not always, depending on the cruise design. Refer to the VDU TO PAYMENT UNIT table.

VDU	VOLUME		PERCENT ERROR	RANGE IN CORDS	
	TOTAL CUBIC FEET	TOTAL CORDS		MINIMUM	MAXIMUM
1	64,348	815	22.83%	629	1,001
2	2,550	32	142.27%	0	78
3	121,795	1,542	16.45%	1,288	1,795
TOTAL:	188,693	2,389		1,917	2,874

VDU TO PAYMENT UNIT

When a VDU is associated with more than one Payment Unit (PU), the VDU volumes are assigned to the PU based on acres of the VDU within the PU.

VDU	VDU ACRES	PU	PU ACRES
1	46.7	1	19.8
		2	26.9
2	5.1	3	5.1
		4	45.4
3	99.4	5	54.0
TOTAL:	151.2		151.2

DESCRIPTION OF TIMBER BY PAYMENT UNIT (PU)

PU	MARKET GROUP	PRODUCT	QUANTITY	UNIT	ACRES	ADVERTISE PRICE
1	Balsam Fir Black Spruce Jack Pine Mixed Hardwood <i>Red Maple</i> Tamarack White Pine	Pulpwood	1 14 207 1 1 19 104	Cords Cords Cords Cords <i>Cords</i> Cords Cords	19.8	\$6,959.10
2	Balsam Fir Black Spruce Jack Pine Mixed Hardwood <i>Red Maple</i> Tamarack White Pine	Pulpwood	2 18 282 2 2 25 141	Cords Cords Cords Cords <i>Cords</i> Cords Cords	26.9	\$9,472.30
3	Black Spruce	Pulpwood	32	Cords	5.1	\$377.60
4	Black Spruce Mixed Aspen <i>Quaking Aspen</i> Mixed Hardwood <i>Black Cherry</i> <i>Red Maple</i> Paper Birch Tamarack	Pulpwood	614 14 14 11 1 10 15 50	Cords Cords <i>Cords</i> Cords <i>Cords</i> <i>Cords</i> Cords Cords	45.4	\$7,893.90
5	Black Spruce Mixed Aspen <i>Quaking Aspen</i> Mixed Hardwood <i>Black Cherry</i> <i>Red Maple</i> Paper Birch Tamarack	Pulpwood	731 17 17 14 2 12 17 59	Cords Cords <i>Cords</i> Cords <i>Cords</i> <i>Cords</i> Cords Cords	54.0	\$9,413.10
TOTAL:			2,390	Cords		

Sale Specific Conditions & Requirements

Sale Name: Weasley woods

Sale Number: 41-022-23 Seq#: 2

1 - Sale Area

1.2 - Boundaries

1.2.1 - Painted boundaries (9/19)

The sale boundary and Payment Unit boundaries are marked and identified by red and yellow paint. Exterior sale boundary lines against state are marked with red paint. Interior Payment Unit boundaries are marked with yellow paint. The painted boundary line trees are not Included Timber and are to be protected. Yellow painted trees designating an interior Payment Unit boundary are only to be cut when all surrounding Payment Units have been paid.

2 - Timber Specifications

2.1 - Included Timber

2.1.2 - Clearcut unit(s) w/o unmerchantable trees (8/11)

Within Payment Unit(s) 1-5, cut all trees which meet minimum piece specifications in 2.2 Utilization, except do not cut any hemlock and oak. In addition, the following exceptions apply:

- Within Payment Units 1 & 2, do not cut trees marked with green paint.

- Within Payment Unit 3, do not cut white pine and cedar.

Special protection trees identified in accordance with condition 3.4.2, within clearcutting unit boundaries, are not Included Timber and are to be protected.

2.2 - Utilization

2.2.3 - Stump heights (4/07)

Stump heights within Payment Unit(s) 1 & 2, shall not exceed 12 inches for trees greater than 10 inches at DBH and 4 inches for trees smaller than 10 inches at DBH. This is in order to facilitate regeneration operations.

3 - Payments

3.3 - Pre-measured Sales

3.3.4 - Dividing payment units (7/14)

Payment Unit(s) \$15,000 or greater in value, may be divided at the request of the Purchaser and upon approval of the Unit Manager. Dividing Payment Units is a contract modification which requires a Timber Sale Contract Amendment.

3.4 - Damaged Timber

3.4.2 - Special Protection Trees (4/14)

The Purchaser shall not cut live or dead special protection trees within cutting units or clearings. Special protection trees are hemlock and oak. If the Purchaser's operations have cut or damaged special protection trees through carelessness, the Purchaser shall pay \$100 as fixed, agreed and liquidated damages for each special protection tree cut or damaged. Such payment does not constitute ownership of the undesignated timber.

4 - Transportation

4.1 - Construction

4.1.3 - Slash and earthen piles (8/04)

Piles or windrows of earth along roads and landings that have been widened or constructed shall be leveled. Slash from road maintenance or construction, including stumps, shall be dispersed throughout the sale.

4.1.6 - Road construction (1/09)

Construction of new roads or improvements of existing roads shall be done in such a way as to minimize the environmental

and visual impacts. Merchantable trees shall be cut and utilized unless otherwise directed. Non-merchantable trees shall be severed and laid flat on the ground. Slash shall be scattered, and not left in windrows and kept a minimum of 10 feet back from the road edge. Stumps shall be set upright, not left on edge, and be moved at least 10 feet away from the road edge. Disturbed soil shall be feathered into the woods and not left in berms or windrows.

4.1.7 - Road closure (10/11)

All new roads built into the sale must be blocked to vehicle traffic upon completion of the sale. Overgrown roads that are reopened shall be considered new roads. In general, this will require constructing a four (4') foot high berm of stumps and logs covered with earth. Stumps and brush must be placed along the remainder of the trail. These roads must be rendered impassable to cars and trucks. Contact the Sale Administrator for specific details of design and placement.

4.2 - Maintenance

4.2.1 - Hauling restriction (12/08)

Hauling may be restricted on the Walsh Grade by the Unit Manager or his/her representative. The restriction may occur during spring breakup.

4.2.2 - Fill material (4/07)

To maintain roads, fill material may be needed in areas where "holes" exist or may be expected to develop. This fill material should be placed before trucking begins.

4.2.4 - Grading (10/16)

For completion of the sale, state forest roads must be graded. In general, this will require a road grader or bulldozer to shape up the roads after forest products have been hauled off site. This includes cleaning of drainage areas, grading, crowning and filling with gravel, if necessary. The grading equipment to be used must be approved by the Unit Manager or his/her representative.

5 - Operations

5.2 - Conduct of Operations

5.2.1 - Slash

5.2.1.11 - Slash for reforestation (3/21)

To facilitate reforestation, Payment Unit(s) 1 and 2 shall be left with slash evenly distributed. Bunched tops within the cutting area shall be broken up and scattered. Stumps shall be cut low to the ground. Processing sites shall not be left with a compacted layer of slash; tops from these sites shall be hauled back into the cut area and scattered.

5.2.2 - Hazard Trees/Snags

5.2.2.1 - Den trees (10/16)

Obvious hollow and/or den trees shall be protected and left standing unless they are a safety hazard.

5.2.3 - Operating Restrictions

5.2.3.1 - Operating restrictions (9/11)

Within Payment Unit(s) 3-5, unless changed by written agreement, cutting, skidding, and hauling are limited to frozen or snow-covered conditions. This restriction is because threatened or endangered species.

5.2.3.6 - Bark beetle restriction (12/08)

In the event drought creates a high risk of pine bark beetle infestation, pine is not to be cut during the period March 1 through July 1, unless all portions of trees greater than two inches in diameter are removed from the sale area, reduced to chips, or treated to the satisfaction of the Unit Manager or his/her representative, within fifteen days of being severed from the stump. Pine log decks, pulpwood piles and treetops that are piled for chipping in the fall or winter within a 1/4 mile of susceptible sites must be removed before March 15. Residual slash must not be placed in piles or rows and must be spread over the site for quick drying. The Department of Natural Resources will exercise this specification if the risk of damage warrants.

5.2.32 - Decking/landing restoration (9/13)

All decking and landing areas must have the surface area restored to a condition equal to or better than before. This is to ensure the proper regeneration of the stand. Wood debris, chips and "cookies" from trimmings must be removed or scattered

away from landing and loading areas and may not be windrowed on the edge.

5.8 - Protection of Endangered Species

5.8.3 - Red shoulder hawk or goshawk (1) (2/16)

In the event that an active red shoulder hawk or goshawk nest is found, the contract may be amended to protect the nest site until the nest is determined to be inactive. The value of the trees in this excluded area will be refunded or credited to the Purchaser. The nest will be buffered with a five-chain radius (eight acre) protection area, centered on the nest tree, in which there will be no cutting or new roads constructed. Avoid human disturbance, including loading and skidding, in the protection area.

An additional zone of five chains (ten chains centered on the active nest tree) will be established in which there is no management activity from April 1 to July 30. Limit biomass harvesting and chipping operations within this ten-chain zone, retain the maximum one-third of residues per the Woody Biomass Harvesting Guidelines (Michigan DNR 2010). Nests determined to be inactive will be protected with a one-chain no-harvest buffer.

5.8.8 - Protected species, other (2/12)

Within Payment Unit(s) 3-5, unless changed by written agreement, cutting, skidding, and hauling are limited to frozen or snow-covered conditions. This restriction is because of threatened or endangered species.

7 - Other Conditions

7.3 - Contract Modifications

7.3.3 - Modification for reforestation (8/05)

When contractual work of Purchaser has been accepted for any Payment Unit identified on Sale Area Map, Payment Unit will be eliminated from the Sale Area on written notice so that reforestation operations can begin.



TIMBER SALE MAP

This information provided by authority of Part 525, 1994 PA 451, as amended.

Sale Number 41-022-23	Date 02/23/2024
Scale 1:15,840	Page 1
	Of 1

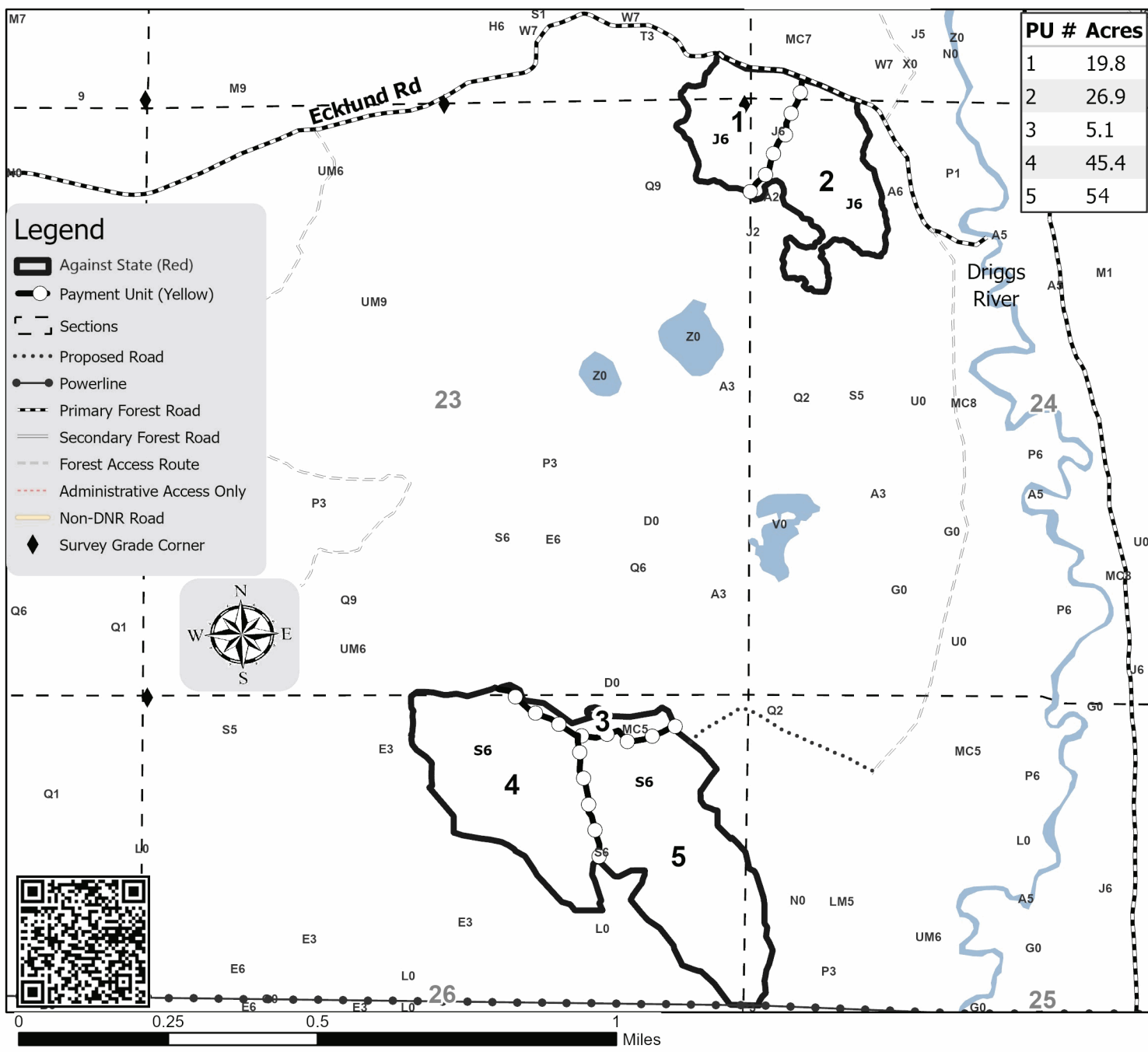
Forest Management Unit Shingleton Mgt Unit	County Schoolcraft	Mapped By: S. Kentner
		Cruised By: Gould, Kentner

Township 46N	Range 15W	Section(s) and Subdivision(s)	SWNW,NWSW; Sec. 26 NENW,NE,NESE; Sec. 13 SWSW; Sec. 14 SESE; Sec. 23 NENE,SESW,SWSE; Sec. 24 W1/2NW; Sec. 25
-----------------	--------------	----------------------------------	---

Cover Type			
A = Aspen	J = Jack Pine	O = Oak	U = Upland Brush
B = Paper Birch	K = Rock	P = Lowland Poplar	UM = Upland Mix Forest
C = Cedar	L = Lowland Brush	Q = Mixed Swamp Conifer	V = Bog or Marsh
D = Treed Bog	LM = Lowland Mix Forest	R = Red Pine	W = White Pine
E = Swamp Hardwoods	M = Maple, Beech, Birch	S = Black Spruce	X = Non Stocked
F = Spruce/Fir	MC = Mixed Conifer	T = Tamarack	Y = Sand
G = Grass	MD = Mixed Deciduous	Z = Water	
H = Hemlock	N = Marsh		

Density	
0 = Non Stocked	5 = Pole Timber Medium
1 = Seedling Sapling Poor	6 = Pole Timber Well
2 = Seedling Sapling Medium	7 = Saw Timber Poor
3 = Seedling Sapling Well	8 = Saw Timber Medium
4 = Pole Timber Poor	9 = Saw Timber Well

Weasley woods 151.2 Acres



Ecklund Experience (41-004-24)

T46N, R15W, SEC. 15; T46N, R15W, SEC. 21; T46N, R15W, SEC. 22; T46N,

In response to the notice of sale to be held 2:00 p.m. (local time) on July 10, 2024, I am hereby submitting my sealed bid (firm offer) for the following forest products to be cut. Bids for individual species must be at or above the advertised price. All non-responsive bid forms may be rejected.

<u>PRODUCTS & SPECIES</u>	<u>ESTIMATED VOLUME*</u>	<u>ADVERTISED PRICE</u>	<u>BID PRICE/UNIT</u>
Sawtimber			
Black Cherry	12.4 MBF	\$ 101.00/MBF	\$ _____
Red Maple	97.9 MBF	\$ 101.00/MBF	\$ _____
Pulpwood			
Balsam Fir	189 Cords	\$ 9.80/Cord	\$ _____
Mixed Hardwood	2,192 Cords	\$ 21.40/Cord	\$ _____
Paper Birch	1 Cords	\$ 9.55/Cord	\$ _____

*The volumes are statistically estimated within plus (+) or minus (-) 16.56 percent at 95% confidence level. These estimated volumes are final and not subject to adjustment. Prospective bidders are urged to examine this timber and to make their own estimates of quantity and quality.

I understand that any or all bids may be rejected. All bids must be signed and all bid items must be bid or the bid form may be rejected. I also understand that consideration and awarding a contract will be based upon my past performance and ability to complete the contract based upon equipment and staffing subject to my control .

FEDERAL ID: ____ - ____ or SOCIAL SECURITY NUMBER: ____ - ____ - ____

Company or individual bidding: _____

Company representative's name: _____

Address: _____

City: _____ State: _____ Zip: _____

IF AVAILABLE, PLEASE PLACE THE PERSONALIZED LABEL FROM YOUR PROSPECTUS IN THE ABOVE BOX.

Individual or company representative's signature: _____ Date: _____

Phone number : _____ Email (optional): _____

THE WINNING BIDDER MUST COMPLETE THE VERIFICATION OF WORKER'S DISABILITY COMPENSATION ACT COMPLIANCE (ON REVERSE SIDE IF DOUBLE SIDED) WITHIN 21 DAYS OF SALE AWARD DATE



FOR DEPARTMENT USE ONLY	
Sale Number (XX - XXX - XX - XX)	
Forest Management Unit:	

TIMBER SALE VERIFICATION OF WORKER'S DISABILITY COMPENSATION ACT COMPLIANCE

As required by Act 317, P.A. 1969 (Worker's Compensation) and
Part 5 of Act 451 of 1994, as amended.

VERIFICATION OF WORKER'S DISABILITY COMPENSATION ACT COMPLIANCE

- This verification must be completed and submitted within 21 days of contract award and prior to the issuance of the timber sale contract.
- In addition, if boxes 2B or 2C are checked, then Notice of Exclusion or Certificate of Insurance must be submitted within twenty-one (21) days of the contract award and prior to the issuance of the timber sale contract.
- All information must be typed or printed except for written signatures.

Please Check Appropriate Categories:

1. My business is organized as (you **must** check one of the boxes below):
 - A. Sole Proprietorship (individual)
 - B. Partnership
 - C. Corporation
2. You **must** check one of the boxes below:
 - A. I certify my business is a sole proprietorship and it has no employees but the sole proprietor. I am not subject to the Worker's Compensation Laws.
 - B. I certify my business has satisfied its obligation to the Worker's Compensation Act through the use of an approved Notice of Exclusion (BWC-337, Rev. 5/96). I will provide a copy of the Notice of Exclusion within 21 days of the contract award. (For questions or a copy of the BWC-337, please call the Worker's Compensation Bureau at 517-322-1195).
 - C. I certify my business has a Worker's Compensation Policy. I will provide an original Certificate of Insurance within twenty-one (21) days of the contract award.
3. If you have checked item 2(A) or 2(B), you **must** indicate the number of **both** full-time and part-time employees, other than yourself, including family members and active partners (if none, you must enter "0").

_____ Full-time Employees

_____ Part-time Employees

Name of Business		Federal ID (or) Social Security No.	
Address		Telephone ()	
City	State	ZIP	

I hereby certify that the above information is true and correct. I agree to notify the Michigan DNR of any changes that occur in factors affecting my coverage during any of my present and future operations.

Signature of Owner or Authorized Representative

Title

Date

Please complete the "SEALED BID" information on the next page

GNA2 Cache (41-801-24)

T41N, R19W, SEC. 1; T42N, R18W, SEC. 30; T42N, R18W, SEC. 31; T42N, R19W,

In response to the notice of sale to be held 2:00 p.m. (local time) on July 10, 2024, I am hereby submitting my sealed bid (firm offer) for the following forest products to be cut. Bids for individual species must be at or above the advertised price. All non-responsive bid forms may be rejected.

<u>PRODUCTS & SPECIES</u>	<u>ESTIMATED VOLUME*</u>	<u>ADVERTISED PRICE</u>	<u>BID PRICE/UNIT</u>
Sawtimber			
Paper Birch	10.3 MBF	\$ 44.00/MBF	\$ _____
Red Maple	107.0 MBF	\$ 101.00/MBF	\$ _____
Pulpwood			
Balsam Fir	129 Cords	\$ 9.80/Cord	\$ _____
Jack Pine	19 Cords	\$ 27.70/Cord	\$ _____
Mixed Aspen	478 Cords	\$ 20.90/Cord	\$ _____
Mixed Hardwood	516 Cords	\$ 21.40/Cord	\$ _____
Mixed Spruce	161 Cords	\$ 13.60/Cord	\$ _____
Paper Birch	123 Cords	\$ 9.55/Cord	\$ _____
Red Pine	5,770 Cords	\$ 81.40/Cord	\$ _____
White Pine	124 Cords	\$ 19.65/Cord	\$ _____

*The volumes are statistically estimated within plus (+) or minus (-) 21.91 percent at 95% confidence level. These estimated volumes are final and not subject to adjustment. Prospective bidders are urged to examine this timber and to make their own estimates of quantity and quality.

I understand that any or all bids may be rejected. All bids must be signed and all bid items must be bid or the bid form may be rejected. I also understand that consideration and awarding a contract will be based upon my past performance and ability to complete the contract based upon equipment and staffing subject to my control.

FEDERAL ID: _____ or SOCIAL SECURITY NUMBER: _____

Company or individual bidding: _____

Company representative's name: _____

Address: _____

City: _____ State: _____ Zip: _____

IF AVAILABLE, PLEASE PLACE THE PERSONALIZED LABEL FROM YOUR PROSPECTUS IN THE ABOVE BOX.

Individual or company representative's signature: _____ Date: _____

Phone number : _____ Email (optional): _____

THE WINNING BIDDER MUST COMPLETE THE VERIFICATION OF WORKER'S DISABILITY COMPENSATION ACT COMPLIANCE (ON REVERSE SIDE IF DOUBLE SIDED) WITHIN 21 DAYS OF SALE AWARD DATE



FOR DEPARTMENT USE ONLY	
Sale Number (XX - XXX - XX - XX)	
Forest Management Unit:	

TIMBER SALE VERIFICATION OF WORKER'S DISABILITY COMPENSATION ACT COMPLIANCE

As required by Act 317, P.A. 1969 (Worker's Compensation) and
Part 5 of Act 451 of 1994, as amended.

VERIFICATION OF WORKER'S DISABILITY COMPENSATION ACT COMPLIANCE

- This verification must be completed and submitted within 21 days of contract award and prior to the issuance of the timber sale contract.
- In addition, if boxes 2B or 2C are checked, then Notice of Exclusion or Certificate of Insurance must be submitted within twenty-one (21) days of the contract award and prior to the issuance of the timber sale contract.
- All information must be typed or printed except for written signatures.

Please Check Appropriate Categories:

1. My business is organized as (you **must** check one of the boxes below):
 - A. Sole Proprietorship (individual)
 - B. Partnership
 - C. Corporation
2. You **must** check one of the boxes below:
 - A. I certify my business is a sole proprietorship and it has no employees but the sole proprietor. I am not subject to the Worker's Compensation Laws.
 - B. I certify my business has satisfied its obligation to the Worker's Compensation Act through the use of an approved Notice of Exclusion (BWC-337, Rev. 5/96). I will provide a copy of the Notice of Exclusion within 21 days of the contract award. (For questions or a copy of the BWC-337, please call the Worker's Compensation Bureau at 517-322-1195).
 - C. I certify my business has a Worker's Compensation Policy. I will provide an original Certificate of Insurance within twenty-one (21) days of the contract award.
3. If you have checked item 2(A) or 2(B), you **must** indicate the number of **both** full-time and part-time employees, other than yourself, including family members and active partners (if none, you must enter "0").

_____ Full-time Employees

_____ Part-time Employees

Name of Business		Federal ID (or) Social Security No.	
Address		Telephone ()	
City	State	ZIP	

I hereby certify that the above information is true and correct. I agree to notify the Michigan DNR of any changes that occur in factors affecting my coverage during any of my present and future operations.

Signature of Owner or Authorized Representative

Title

Date

Please complete the "SEALED BID" information on the next page

Weasley woods (41-022-23)

T46N, R15W, SEC. 13; T46N, R15W, SEC. 14; T46N, R15W, SEC. 23; T46N,

In response to the notice of sale to be held 2:00 p.m. (local time) on July 10, 2024, I am hereby submitting my sealed bid (firm offer) for the following forest products to be cut. Bids for individual species must be at or above the advertised price. All non-responsive bid forms may be rejected.

<u>PRODUCTS & SPECIES</u>	<u>ESTIMATED VOLUME*</u>	<u>ADVERTISED PRICE</u>	<u>BID PRICE/UNIT</u>
Pulpwood			
Balsam Fir	3 Cords	\$ 8.50/Cord	\$ _____
Black Spruce	1,409 Cords	\$ 11.80/Cord	\$ _____
Jack Pine	489 Cords	\$ 24.00/Cord	\$ _____
Mixed Aspen	31 Cords	\$ 18.10/Cord	\$ _____
Mixed Hardwood	28 Cords	\$ 18.55/Cord	\$ _____
Paper Birch	32 Cords	\$ 8.25/Cord	\$ _____
Tamarack	153 Cords	\$ 1.35/Cord	\$ _____
White Pine	245 Cords	\$ 17.05/Cord	\$ _____

*The volumes are statistically estimated within plus (+) or minus (-) 17.02 percent at 95% confidence level. These estimated volumes are final and not subject to adjustment. Prospective bidders are urged to examine this timber and to make their own estimates of quantity and quality.

I understand that any or all bids may be rejected. All bids must be signed and all bid items must be bid or the bid form may be rejected. I also understand that consideration and awarding a contract will be based upon my past performance and ability to complete the contract based upon equipment and staffing subject to my control .

FEDERAL ID: ____ - ____ - ____ or SOCIAL SECURITY NUMBER: ____ - ____ - ____

Company or individual bidding: _____

Company representative's name: _____

Address: _____

City: _____ State: _____ Zip: _____

IF AVAILABLE, PLEASE PLACE THE PERSONALIZED LABEL FROM YOUR PROSPECTUS IN THE ABOVE BOX.

Individual or company representative's signature: _____ Date: _____

Phone number : _____ Email (optional): _____

THE WINNING BIDDER MUST COMPLETE THE VERIFICATION OF WORKER'S DISABILITY COMPENSATION ACT COMPLIANCE (ON REVERSE SIDE IF DOUBLE SIDED) WITHIN 21 DAYS OF SALE AWARD DATE



FOR DEPARTMENT USE ONLY	
Sale Number (XX - XXX - XX - XX)	
Forest Management Unit:	

TIMBER SALE VERIFICATION OF WORKER'S DISABILITY COMPENSATION ACT COMPLIANCE

As required by Act 317, P.A. 1969 (Worker's Compensation) and
Part 5 of Act 451 of 1994, as amended.

VERIFICATION OF WORKER'S DISABILITY COMPENSATION ACT COMPLIANCE

- This verification must be completed and submitted within 21 days of contract award and prior to the issuance of the timber sale contract.
- In addition, if boxes 2B or 2C are checked, then Notice of Exclusion or Certificate of Insurance must be submitted within twenty-one (21) days of the contract award and prior to the issuance of the timber sale contract.
- All information must be typed or printed except for written signatures.

Please Check Appropriate Categories:

1. My business is organized as (you **must** check one of the boxes below):
 - A. Sole Proprietorship (individual)
 - B. Partnership
 - C. Corporation
2. You **must** check one of the boxes below:
 - A. I certify my business is a sole proprietorship and it has no employees but the sole proprietor. I am not subject to the Worker's Compensation Laws.
 - B. I certify my business has satisfied its obligation to the Worker's Compensation Act through the use of an approved Notice of Exclusion (BWC-337, Rev. 5/96). I will provide a copy of the Notice of Exclusion within 21 days of the contract award. (For questions or a copy of the BWC-337, please call the Worker's Compensation Bureau at 517-322-1195).
 - C. I certify my business has a Worker's Compensation Policy. I will provide an original Certificate of Insurance within twenty-one (21) days of the contract award.
3. If you have checked item 2(A) or 2(B), you **must** indicate the number of **both** full-time and part-time employees, other than yourself, including family members and active partners (if none, you must enter "0").

_____ Full-time Employees

_____ Part-time Employees

Name of Business		Federal ID (or) Social Security No.	
Address		Telephone ()	
City	State	ZIP	

I hereby certify that the above information is true and correct. I agree to notify the Michigan DNR of any changes that occur in factors affecting my coverage during any of my present and future operations.

Signature of Owner or Authorized Representative

Title

Date

Please complete the "SEALED BID" information on the next page

Highrollways Chips 2 (41-013-24)

T43N, R15W, SEC. 29; T43N, R15W, SEC. 32; T43N, R15W, SEC. 33; Schoolcraft

In response to the notice of sale to be held 2:00 p.m. (local time) on July 10, 2024, I am hereby submitting my sealed bid (firm offer) for the following forest products to be cut. Bids for individual species must be at or above the advertised price. All non-responsive bid forms may be rejected.

<u>PRODUCTS & SPECIES</u>	<u>ESTIMATED VOLUME*</u>	<u>ADVERTISED PRICE</u>	<u>BID PRICE/UNIT</u>
Pulpwood			
Jack Pine	148.1 Acres	\$ 1.00/Acres	\$ _____

*These estimated volumes are final and not subject to adjustment. Prospective bidders are urged to examine this timber and to make their own estimates of quantity and quality.

I understand that any or all bids may be rejected. All bids must be signed and all bid items must be bid or the bid form may be rejected. I also understand that consideration and awarding a contract will be based upon my past performance and ability to complete the contract based upon equipment and staffing subject to my control.

FEDERAL ID: ____ - ____ - ____ or SOCIAL SECURITY NUMBER: ____ - ____ - ____

Company or individual bidding: _____

Company representative's name: _____

Address: _____

City: _____ State: _____ Zip: _____

IF AVAILABLE, PLEASE PLACE THE PERSONALIZED LABEL FROM YOUR PROSPECTUS IN THE ABOVE BOX.

Individual or company representative's signature: _____ Date: _____

Phone number : _____ Email (optional): _____

THE WINNING BIDDER MUST COMPLETE THE VERIFICATION OF WORKER'S DISABILITY COMPENSATION ACT COMPLIANCE (ON REVERSE SIDE IF DOUBLE SIDED) WITHIN 21 DAYS OF SALE AWARD DATE



FOR DEPARTMENT USE ONLY
Sale Number (XX - XXX - XX - XX)
Forest Management Unit:

TIMBER SALE VERIFICATION OF WORKER'S DISABILITY COMPENSATION ACT COMPLIANCE

*As required by Act 317, P.A. 1969 (Worker's Compensation) and
Part 5 of Act 451 of 1994, as amended.*

VERIFICATION OF WORKER'S DISABILITY COMPENSATION ACT COMPLIANCE

- This verification must be completed and submitted within 21 days of contract award and prior to the issuance of the timber sale contract.
- In addition, if boxes 2B or 2C are checked, then Notice of Exclusion or Certificate of Insurance must be submitted within twenty-one (21) days of the contract award and prior to the issuance of the timber sale contract.
- All information must be typed or printed except for written signatures.

Please Check Appropriate Categories:

1. My business is organized as (you **must** check one of the boxes below):
 - A. Sole Proprietorship (individual)
 - B. Partnership
 - C. Corporation

2. You **must** check one of the boxes below:
 - A. I certify my business is a sole proprietorship and it has no employees but the sole proprietor. I am not subject to the Worker's Compensation Laws.
 - B. I certify my business has satisfied its obligation to the Worker's Compensation Act through the use of an approved Notice of Exclusion (BWC-337, Rev. 5/96). I will provide a copy of the Notice of Exclusion within 21 days of the contract award. (For questions or a copy of the BWC-337, please call the Worker's Compensation Bureau at 517-322-1195).
 - C. I certify my business has a Worker's Compensation Policy. I will provide an original Certificate of Insurance within twenty-one (21) days of the contract award.

3. If you have checked item 2(A) or 2(B), you **must** indicate the number of **both** full-time and part-time employees, other than yourself, including family members and active partners (if none, you must enter "0").

_____ Full-time Employees

_____ Part-time Employees

Name of Business		Federal ID (or) Social Security No.	
Address		Telephone ()	
City	State	ZIP	

I hereby certify that the above information is true and correct. I agree to notify the Michigan DNR of any changes that occur in factors affecting my coverage during any of my present and future operations.

Signature of Owner or Authorized Representative

Title

Date

Please complete the "SEALED BID" information on the next page